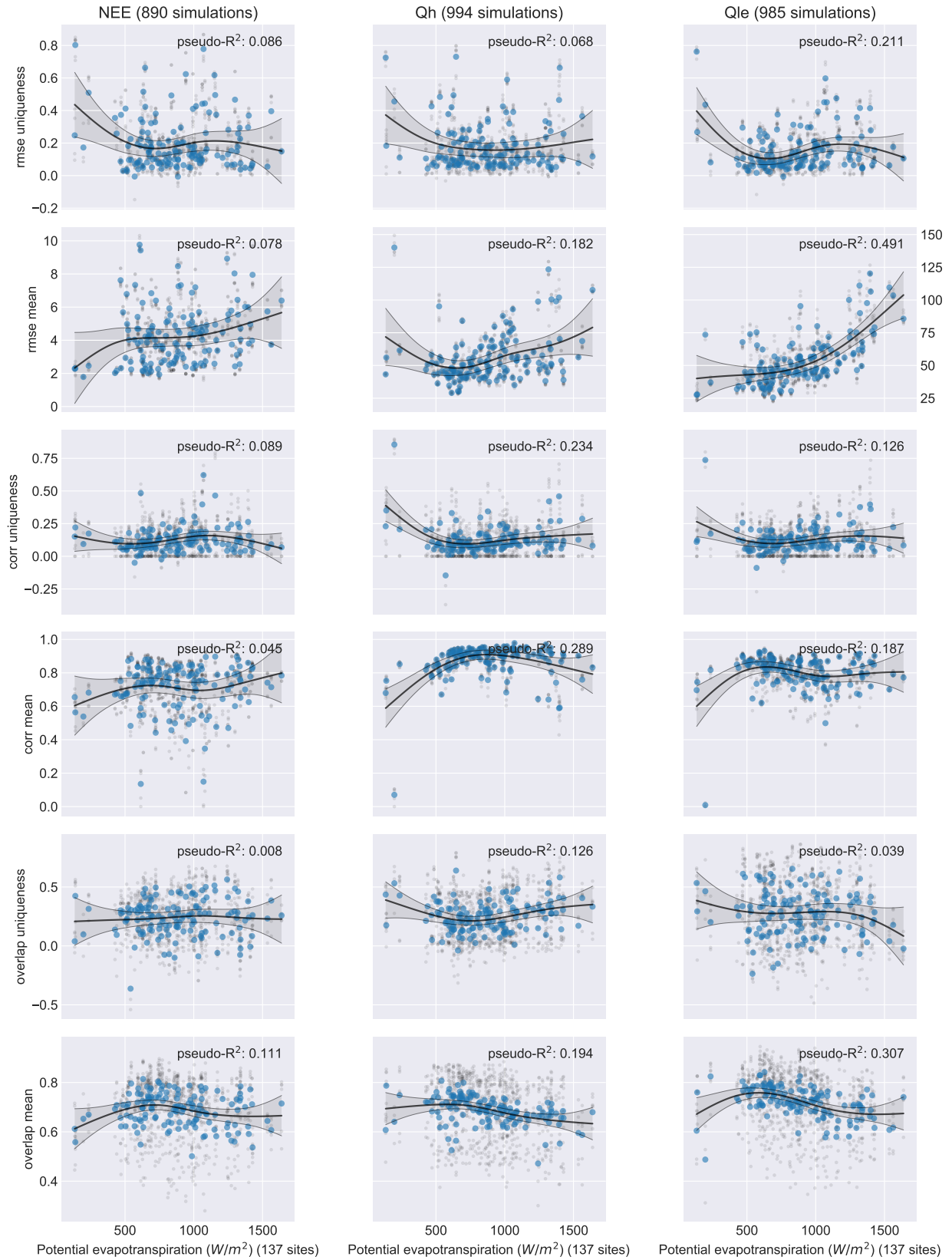


1 How unique are fluxes from different FLUXNET sites?

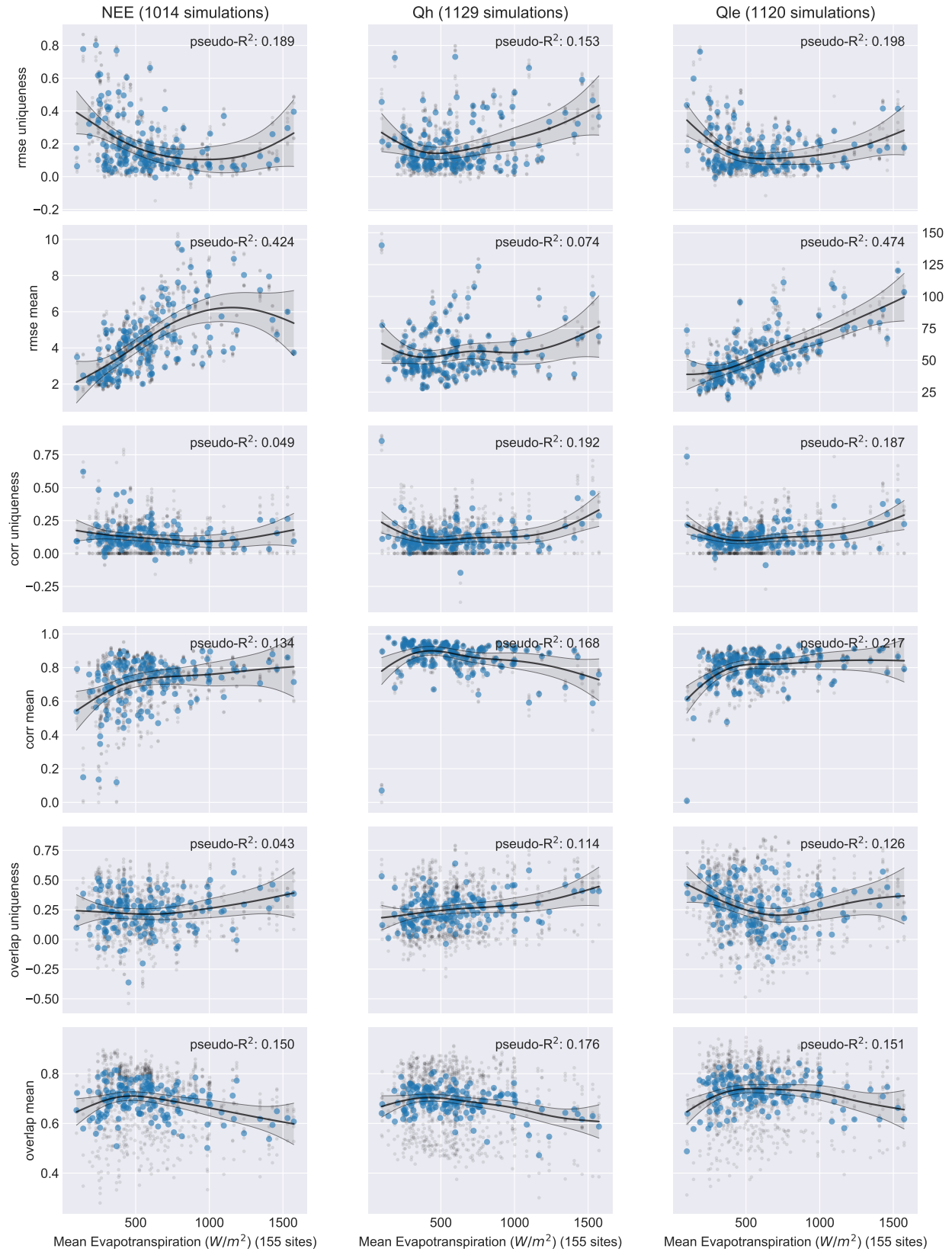
2

3 **Extended Budyko Analysis**

4 The following 2 plots show predictability metrics for Potential and Actual evapotranspiration.



Predictability metrics for Potential Evapotranspiration (PET).



Predictability metrics for Actual Evapotranspiration.

5 Extended BioClim plots

6 The following figures use the WorldClim BioClim variables.

- 7 • Figure 1 shows the remaining predictability metrics for diurnal temperature range,
- 8 • Figure 2 shows isothermality,
- 9 • Figure 3 shows temperature seasonality,
- 10 • Figure 4 temperature annual range,
- 11 • Figure 5 precipitation seasonality,
- 12 • Figure 6 precipitation of wettest quarter, and
- 13 • Figure 7 precipitation of the driest quarter.

14 There is a hint of a trend towards higher uniqueness in sites that are driest in their wettest quarter, which is
15 perhaps simply a reflection of the same effect seen in Figure 3 in the paper. Other determinants do not have
16 a clear pattern in RMSE uniqueness.

17 There are some other patterns visible in some of the other predictability metrics, for example there appears
18 to be a trend towards a better overlap metric at sites with a higher BioClim_t_annual_range, as well as sites
19 with a higher BioClim_t_seasonality.

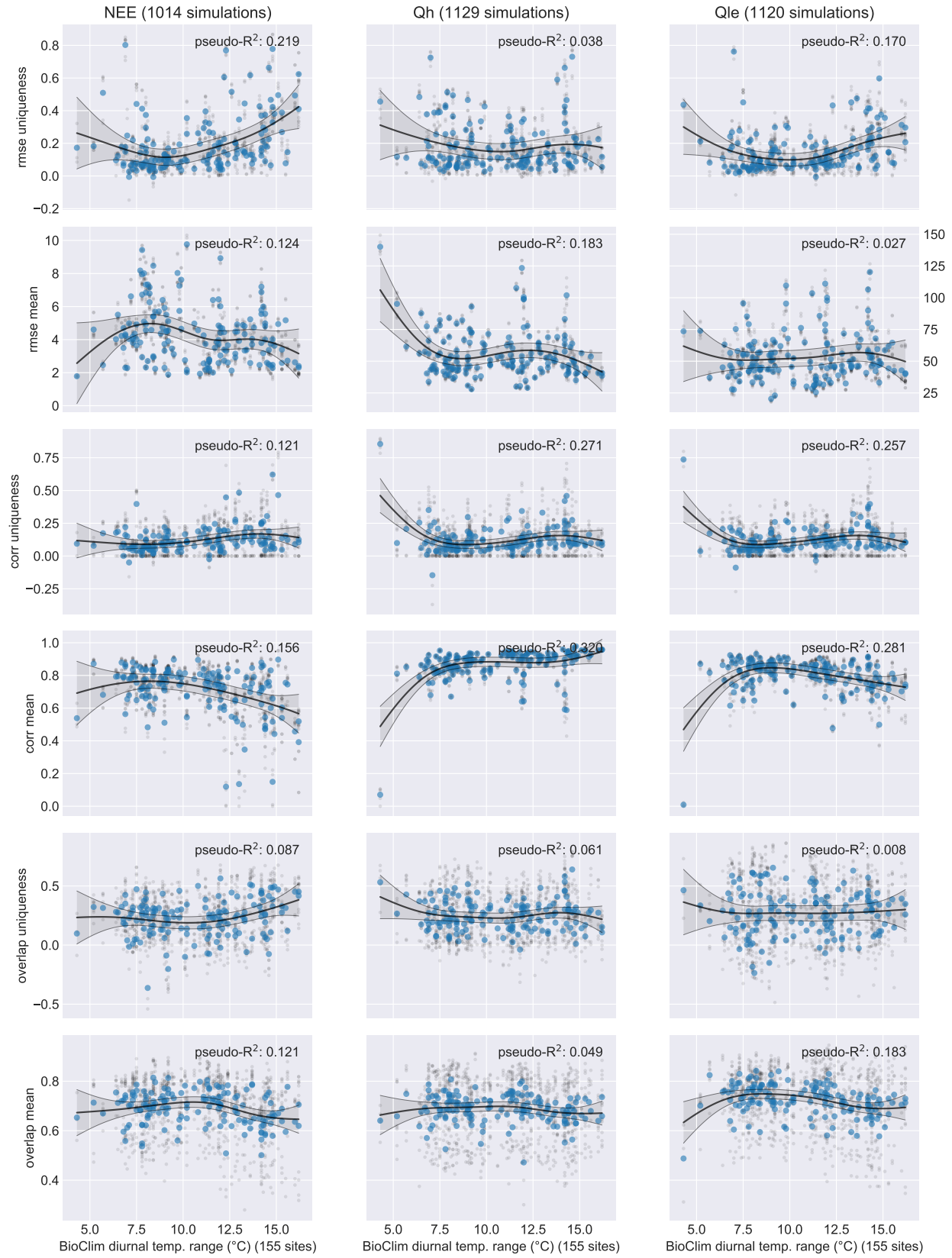


Figure 1: Predictability metrics for temperature diurnal range. Note: The first row is already included in the paper.

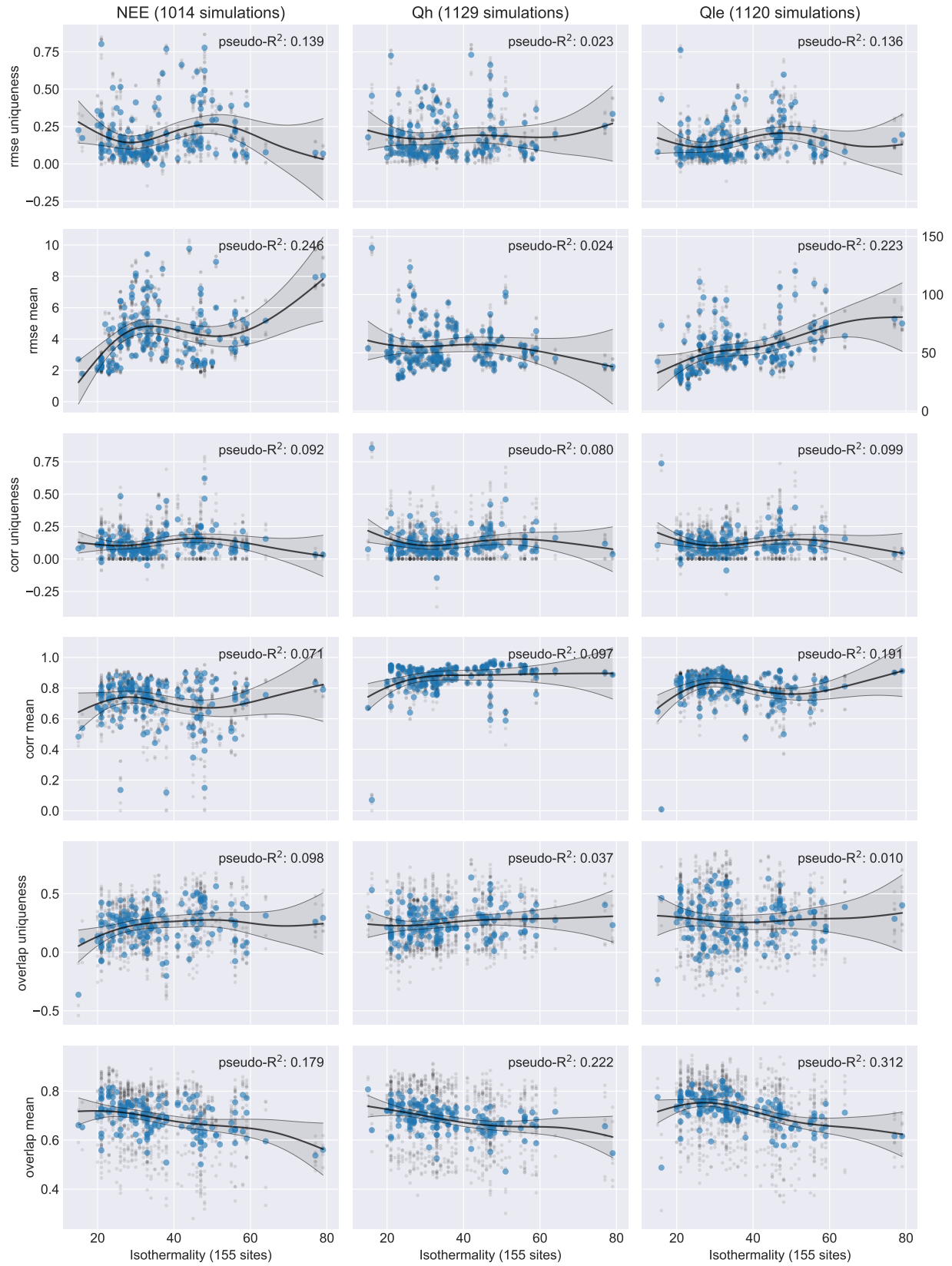


Figure 2: Predictability metrics for temperature isothermality.

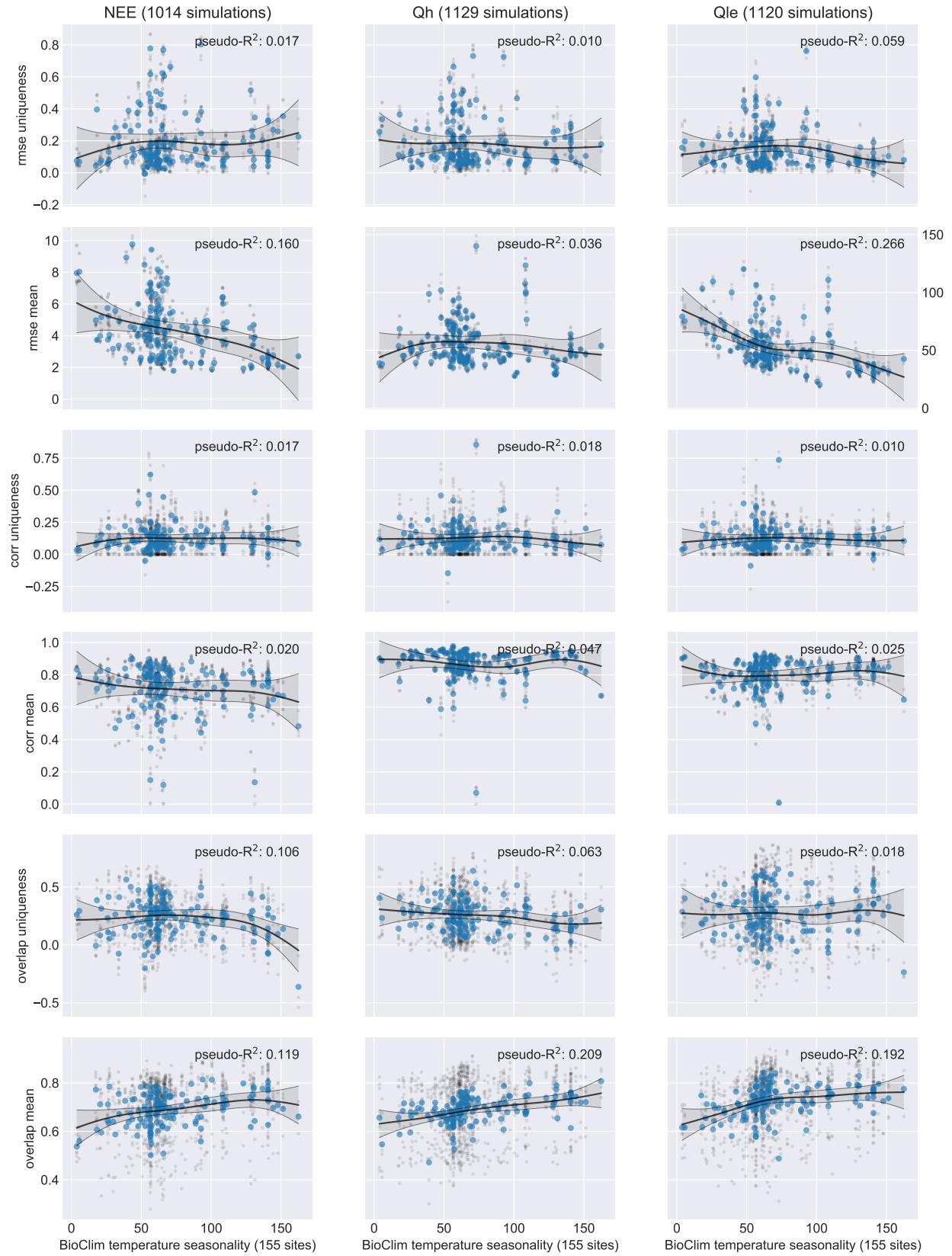


Figure 3: Predictability metrics for temperature seasonality.

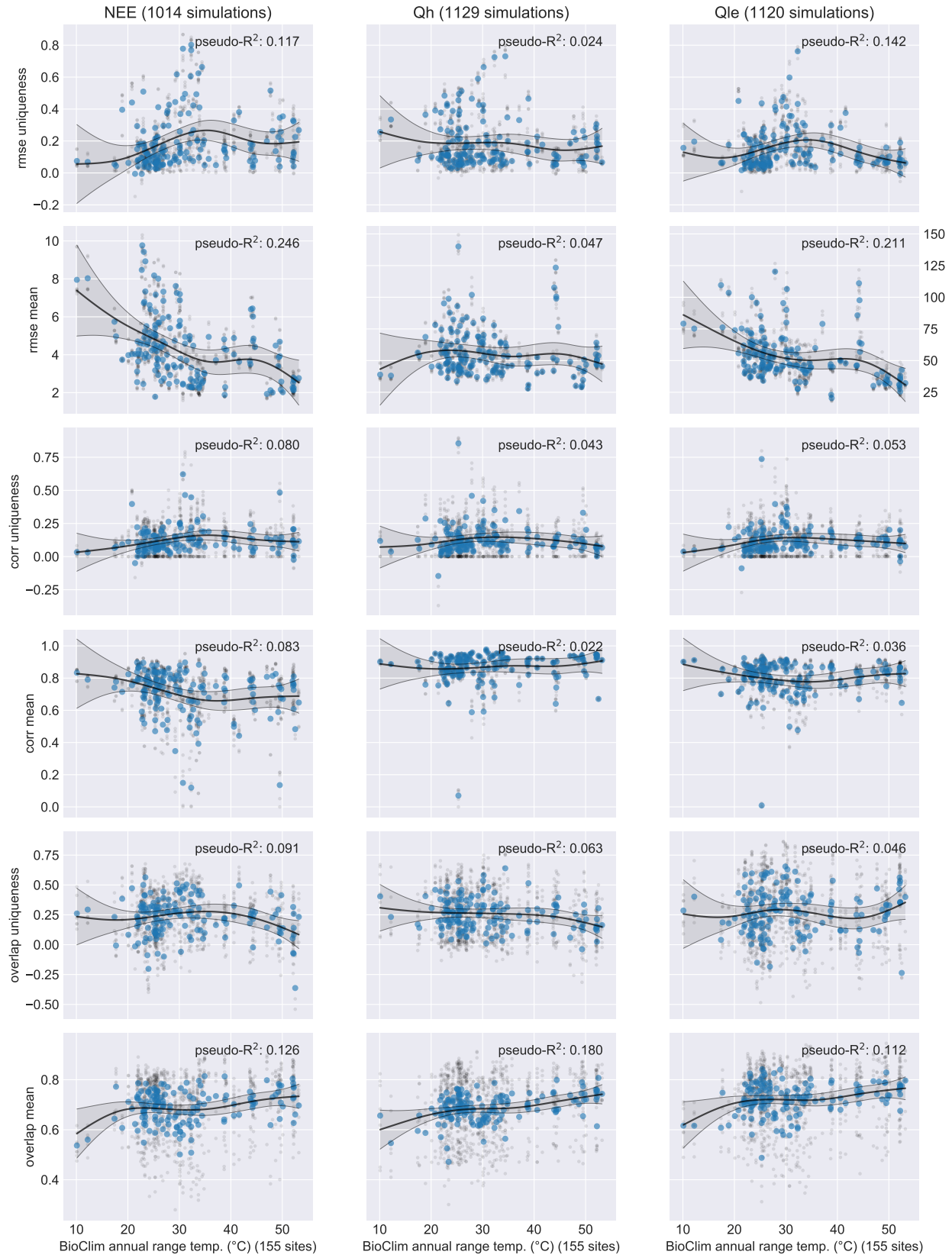


Figure 4: Predictability metrics for temperature annual range.

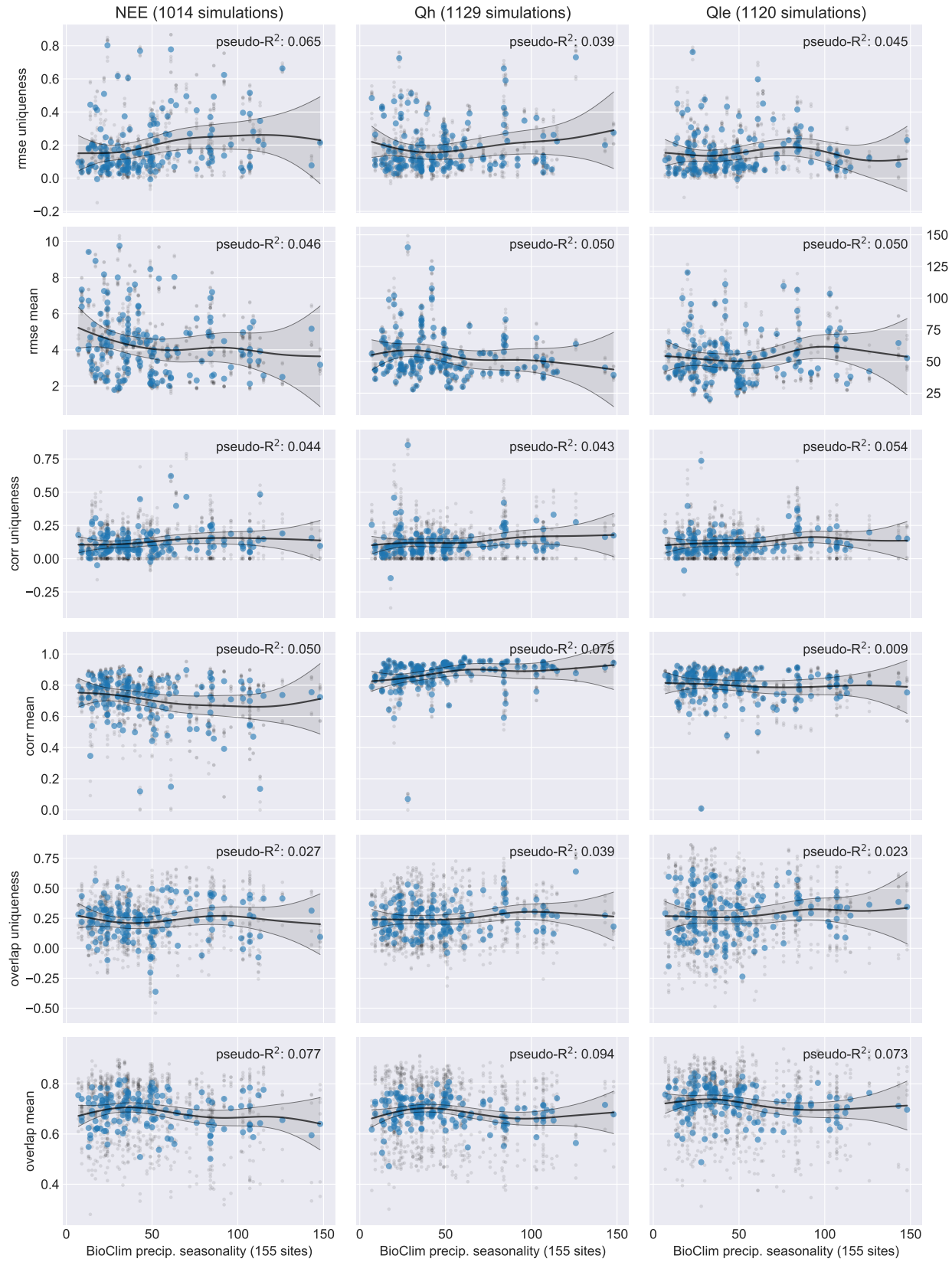


Figure 5: Predictability metrics for rainfall seasonality.

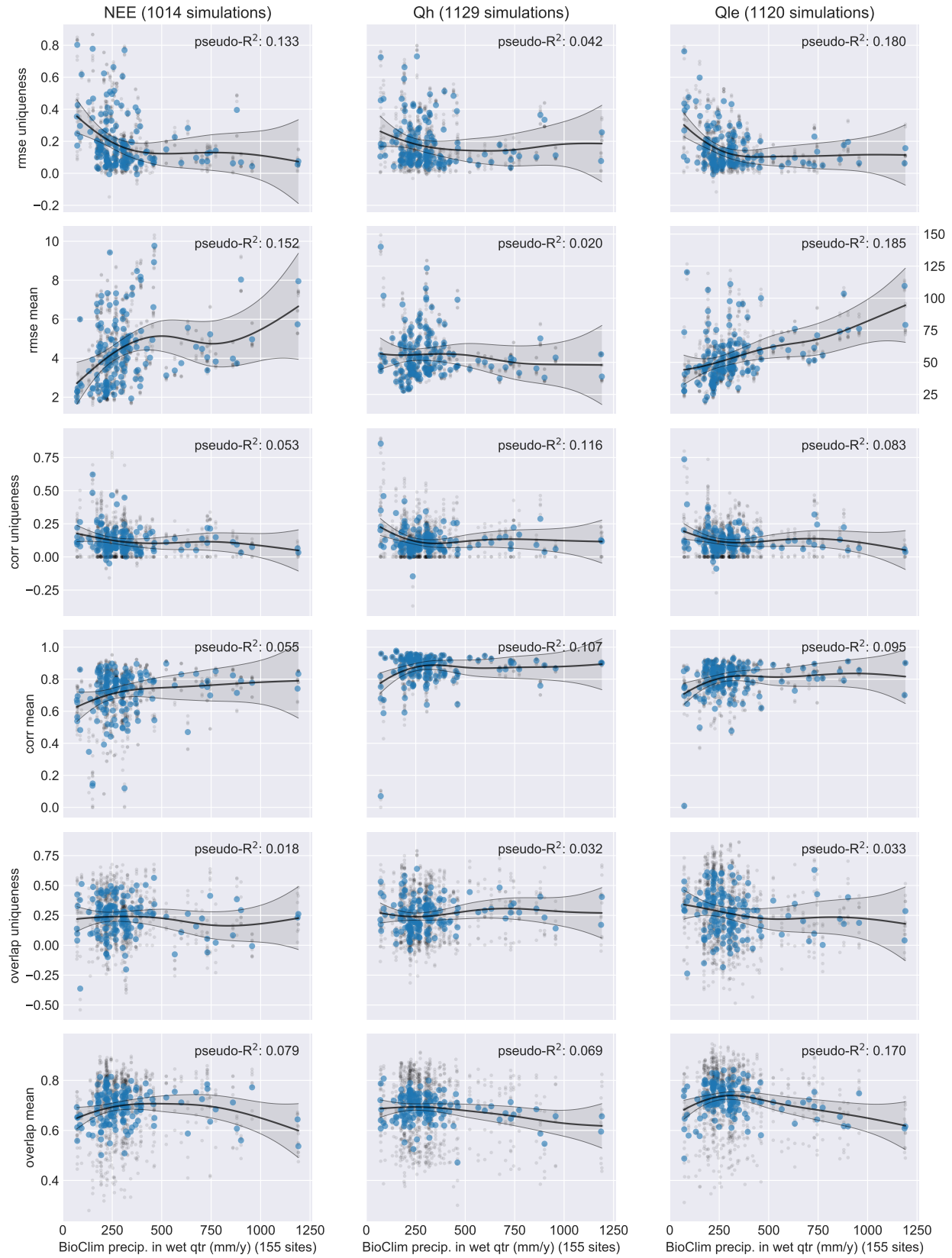


Figure 6: Predictability metrics for precipitation of the wettest quarter.

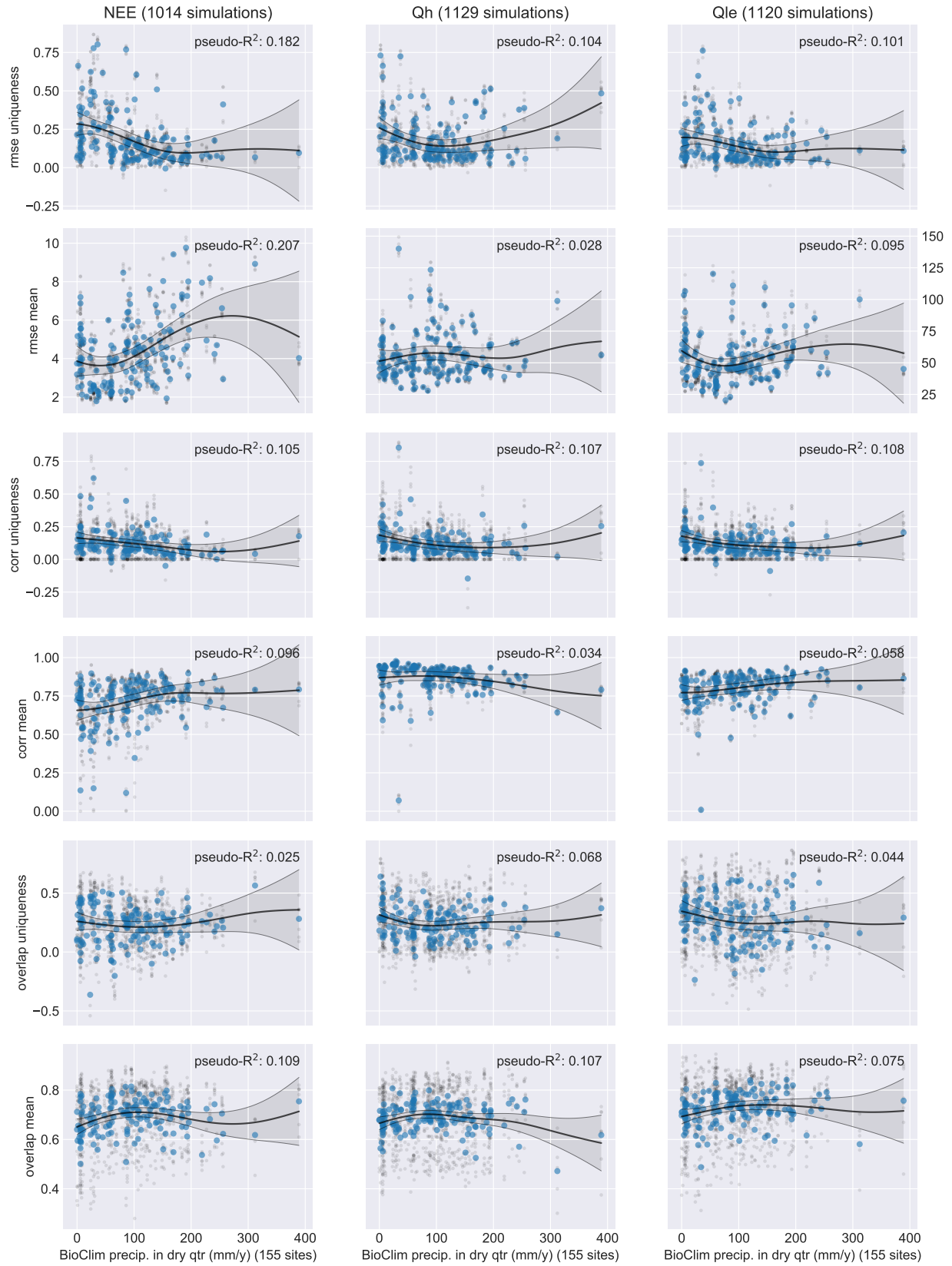


Figure 7: Predictability metrics for precipitation of the driest quarter.

20 **Extended Vegetation type analysis**

21 This figure shows the other predictability metrics for grouped vegetation type which were omitted from the
22 paper.

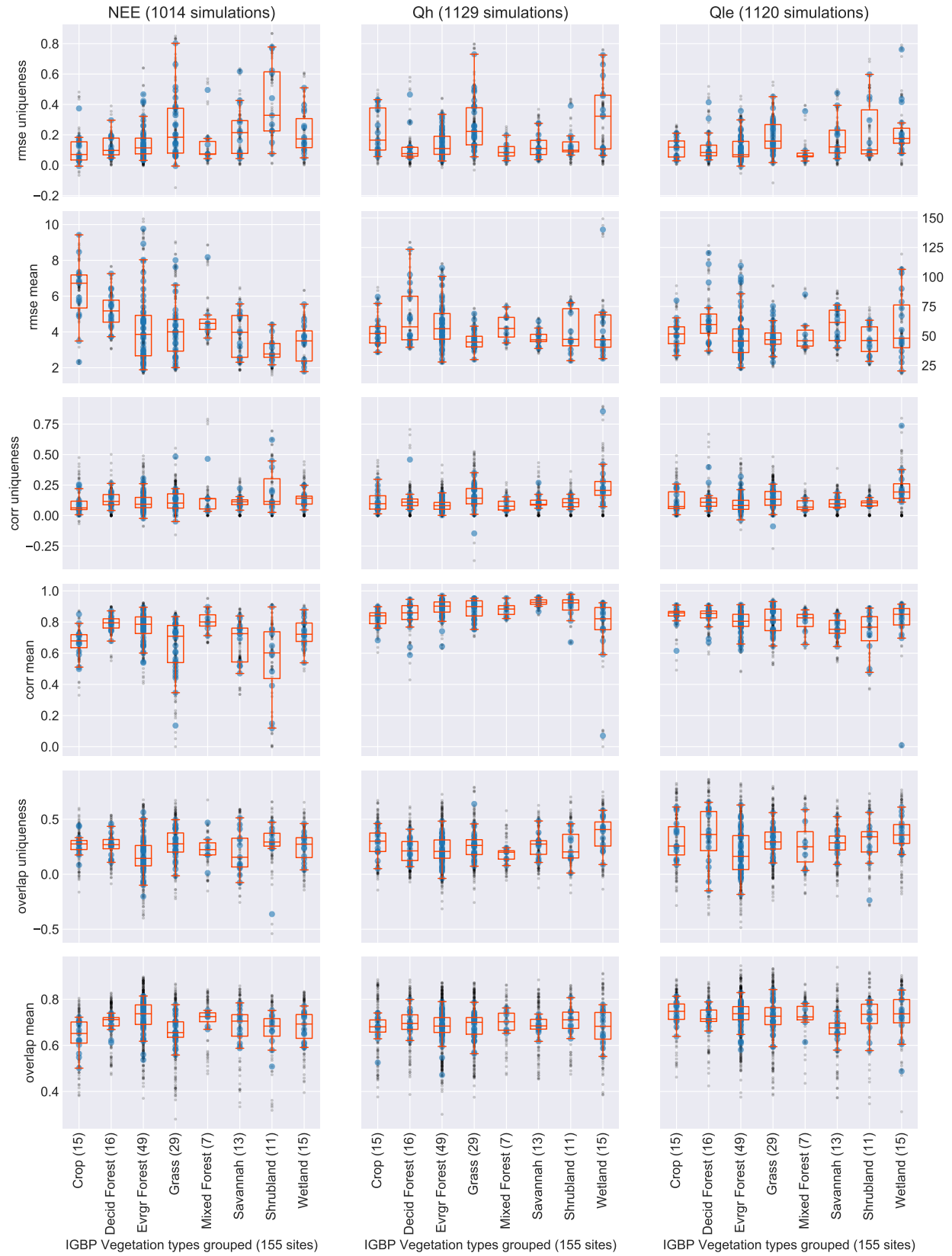


Figure 8: Predictability metrics for vegetation type (grouped, see Methods).

23 **Extended Geographic analysis**

24 This section includes maps of RMSE uniqueness mean for Qh and Qle, mapped as per Figure 11 in the paper,
25 as well as the remaining remoteness metrics, as per Figure 12. Distribution of uniqueness appears to be
26 different for Qh (more high-uniqueness sites), but over-all, both variables have a similar, but less distinct
27 pattern of uniqueness as seen in NEE in Figure 11.

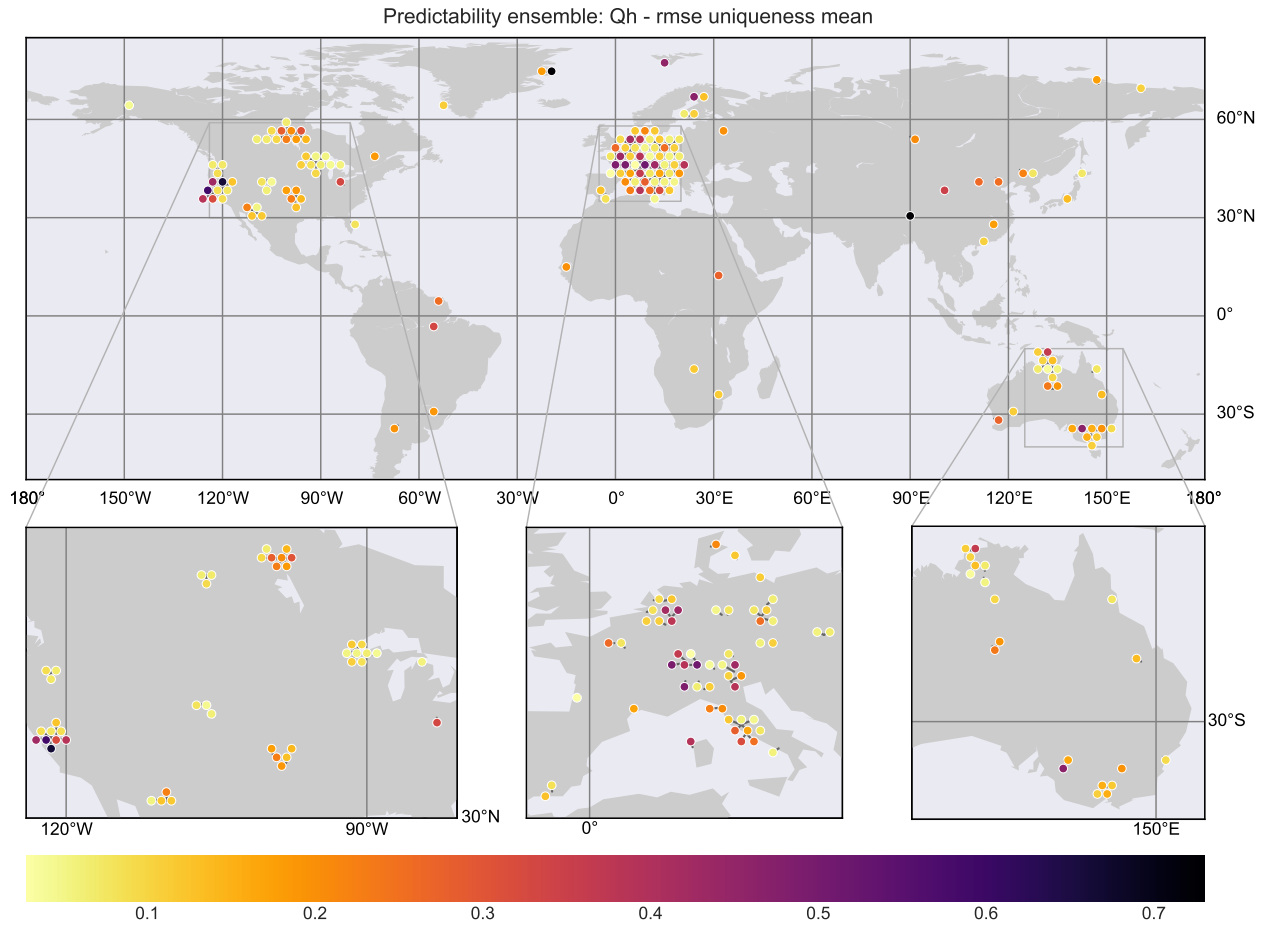


Figure 9: Map of Qh predictability - RMSE uniqueness, averaged across models, as per Figure 11 in the paper.

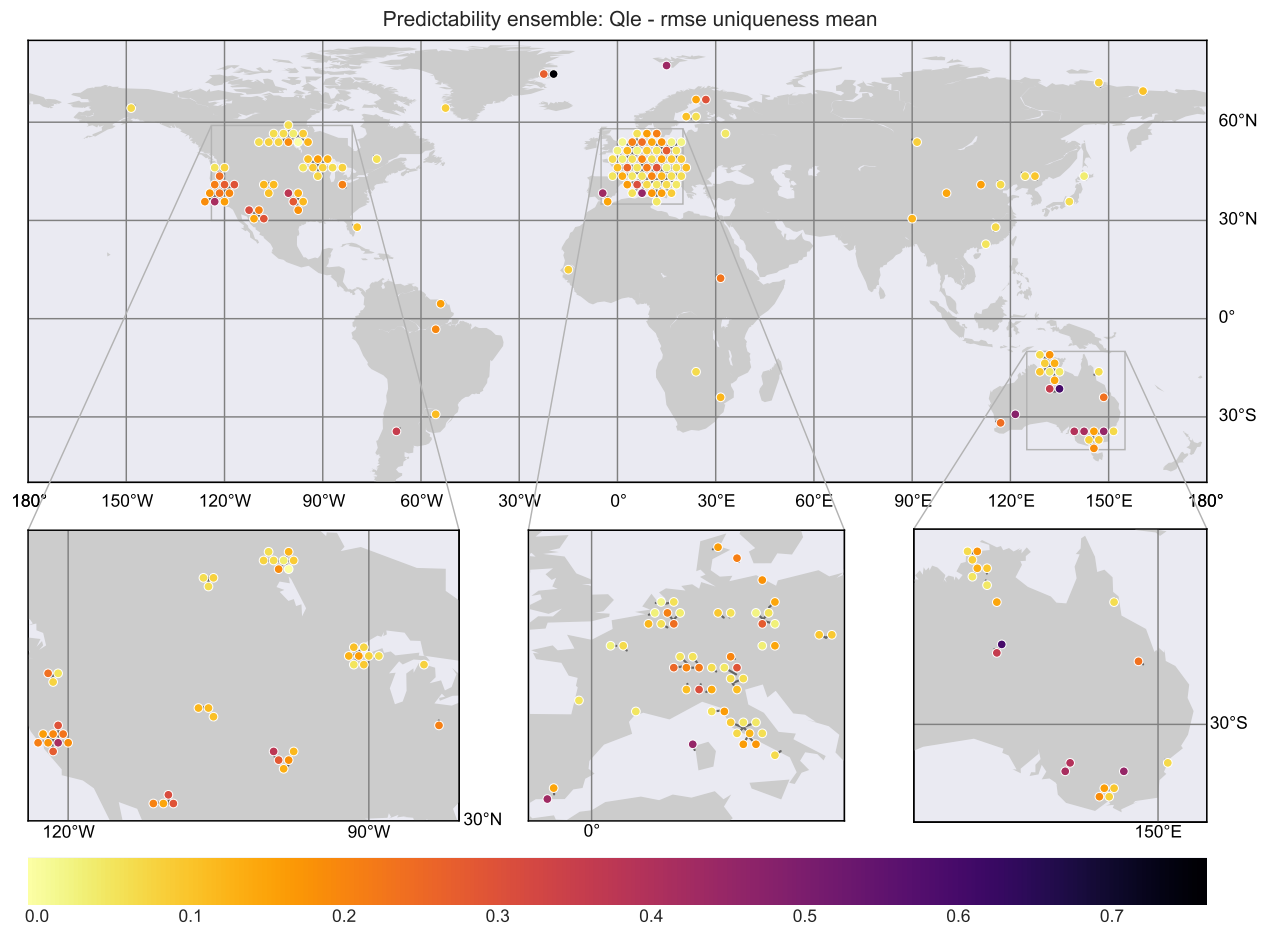
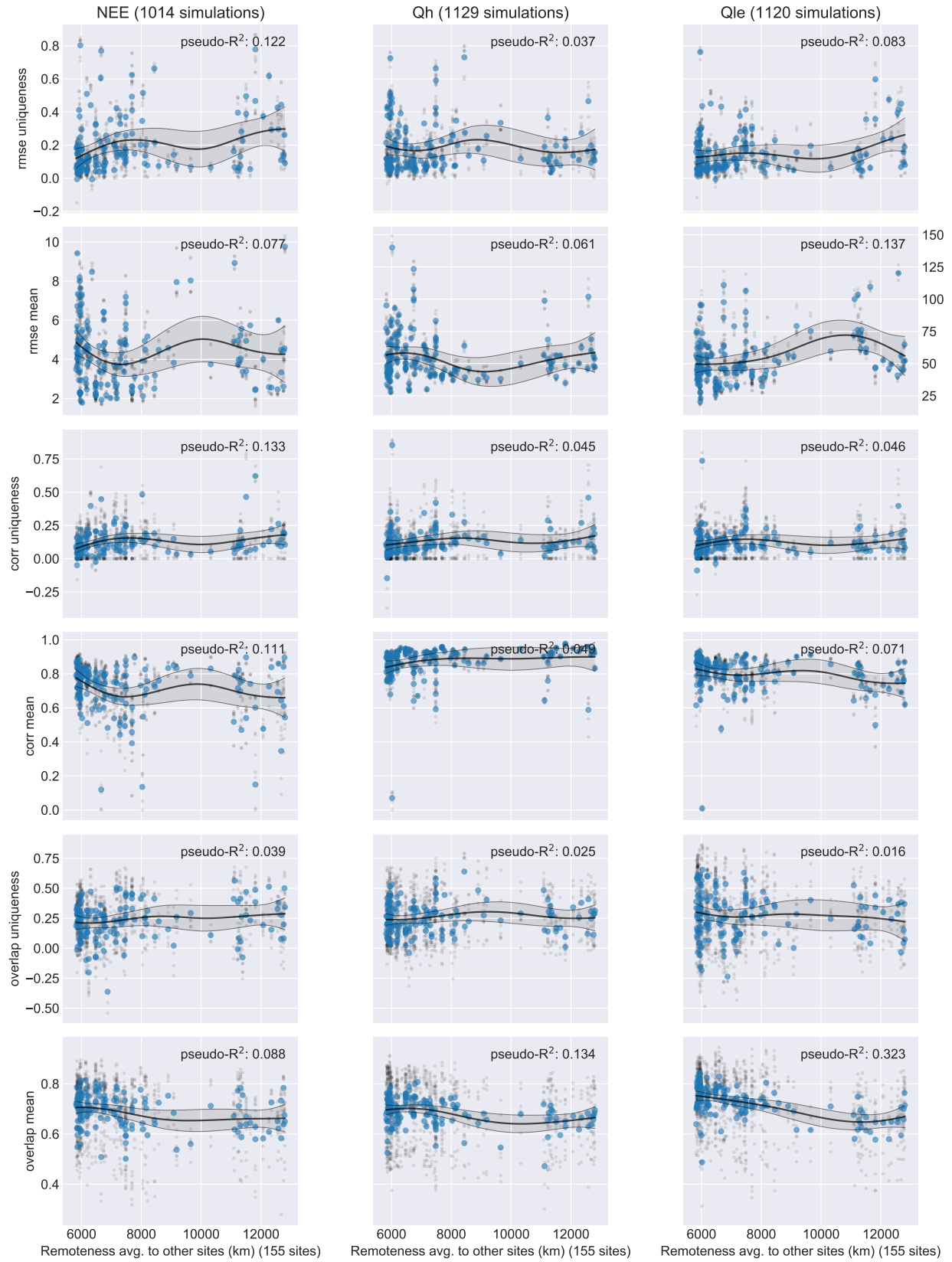


Figure 10: Map of Qle predictability - RMSE uniqueness, averaged across models, as per Figure 11 in the paper.



Predictability metrics by RMSE uniqueness

28 **Energy Gap Closure analysis**

29 The energy closure problem in FLUXNET is investigated in Figure 11, where we show the actual gap (in
30 W/m^2), and in Figure 12 where we show the absolute energy gap normalised by Rnet. In the first figure,
31 there is no trend in any flux. In the second figure, there is appears to be a tend toward higher uncertainty in
32 sites with large energy gaps relative to their total Rnet, however this trend is quite uncertain, due to the low
33 number of sites involved.

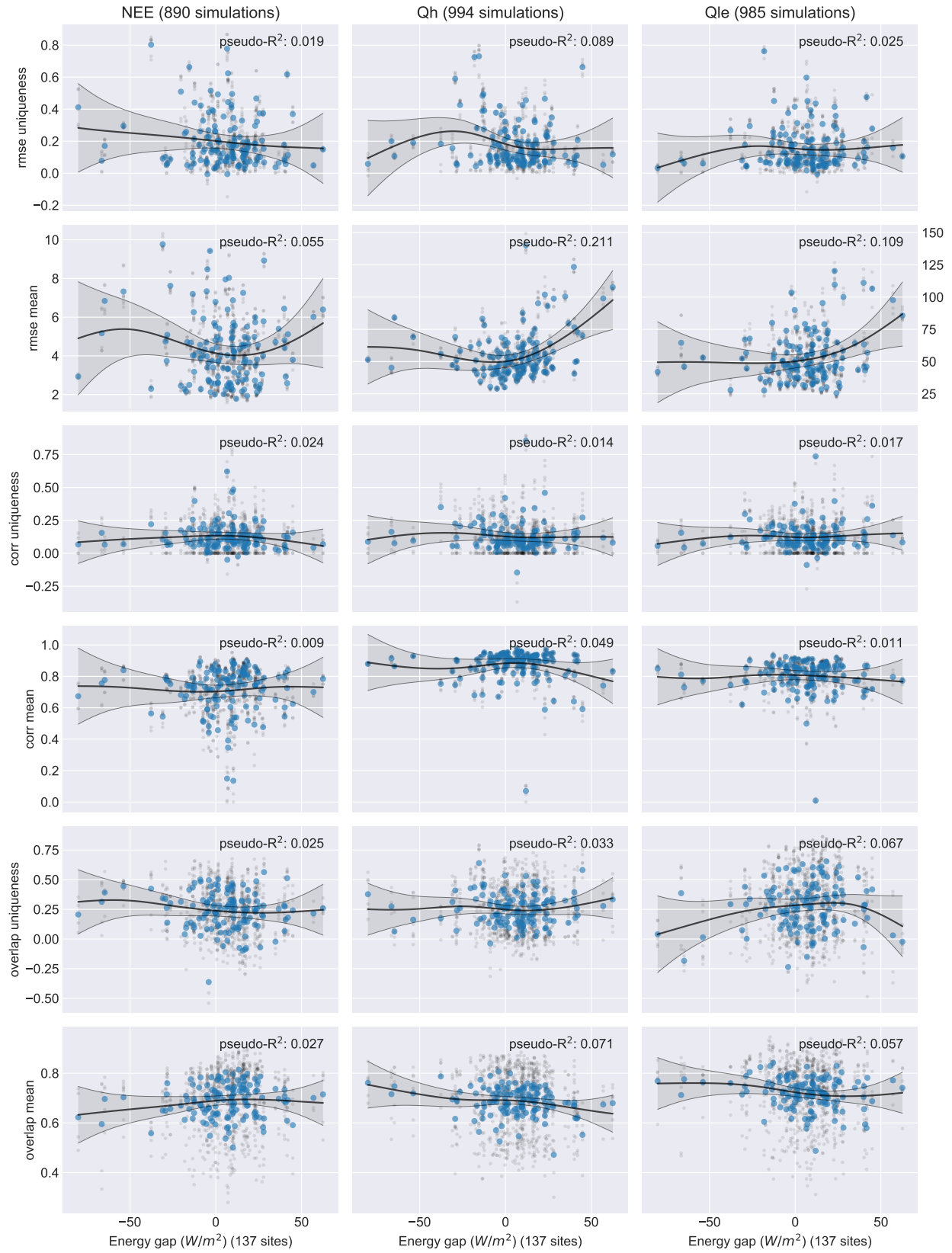


Figure 11: Predictability metrics for energy gap (W/m^2). Sites with positive energy gaps have too much Rnet relative to the over heat fluxes.

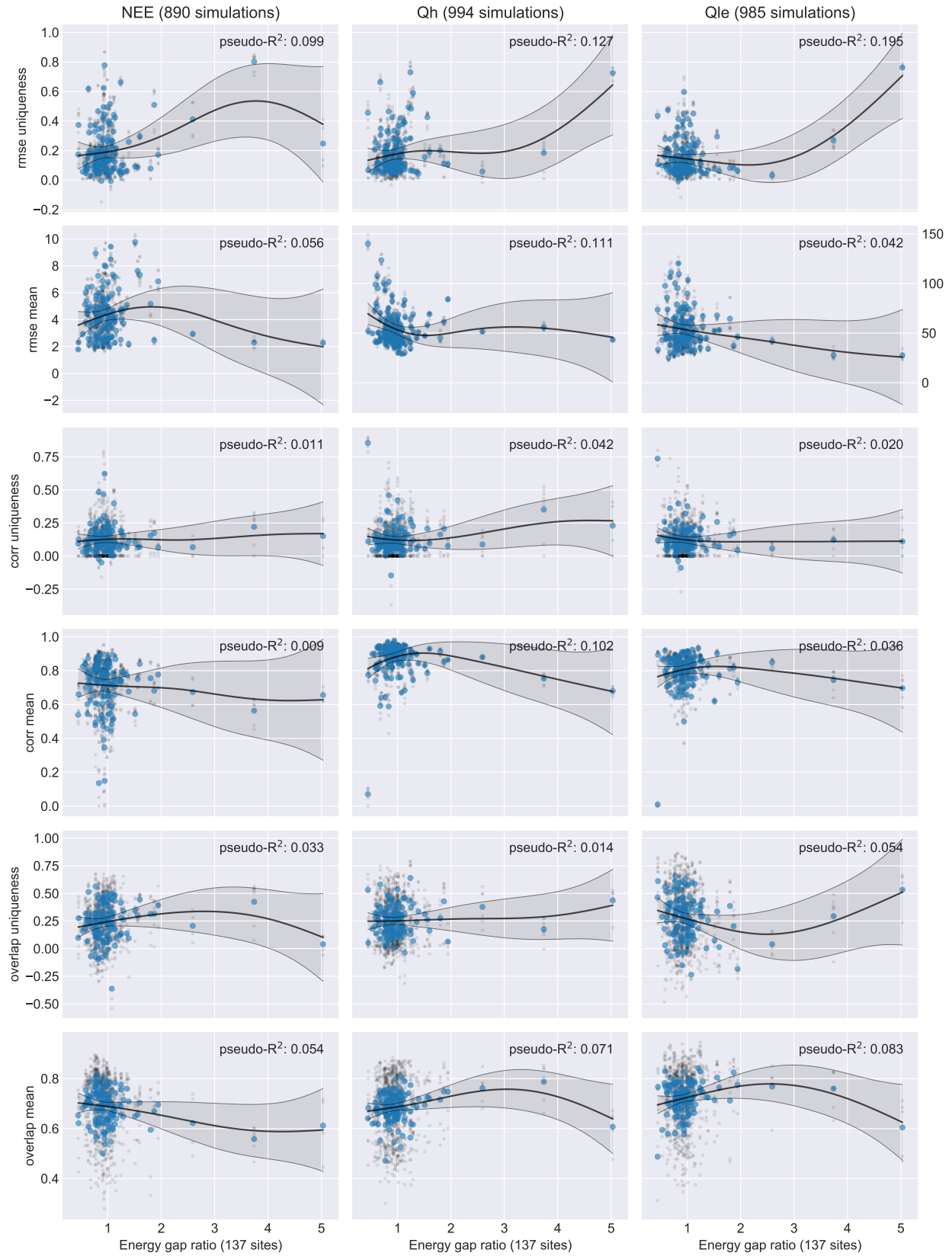
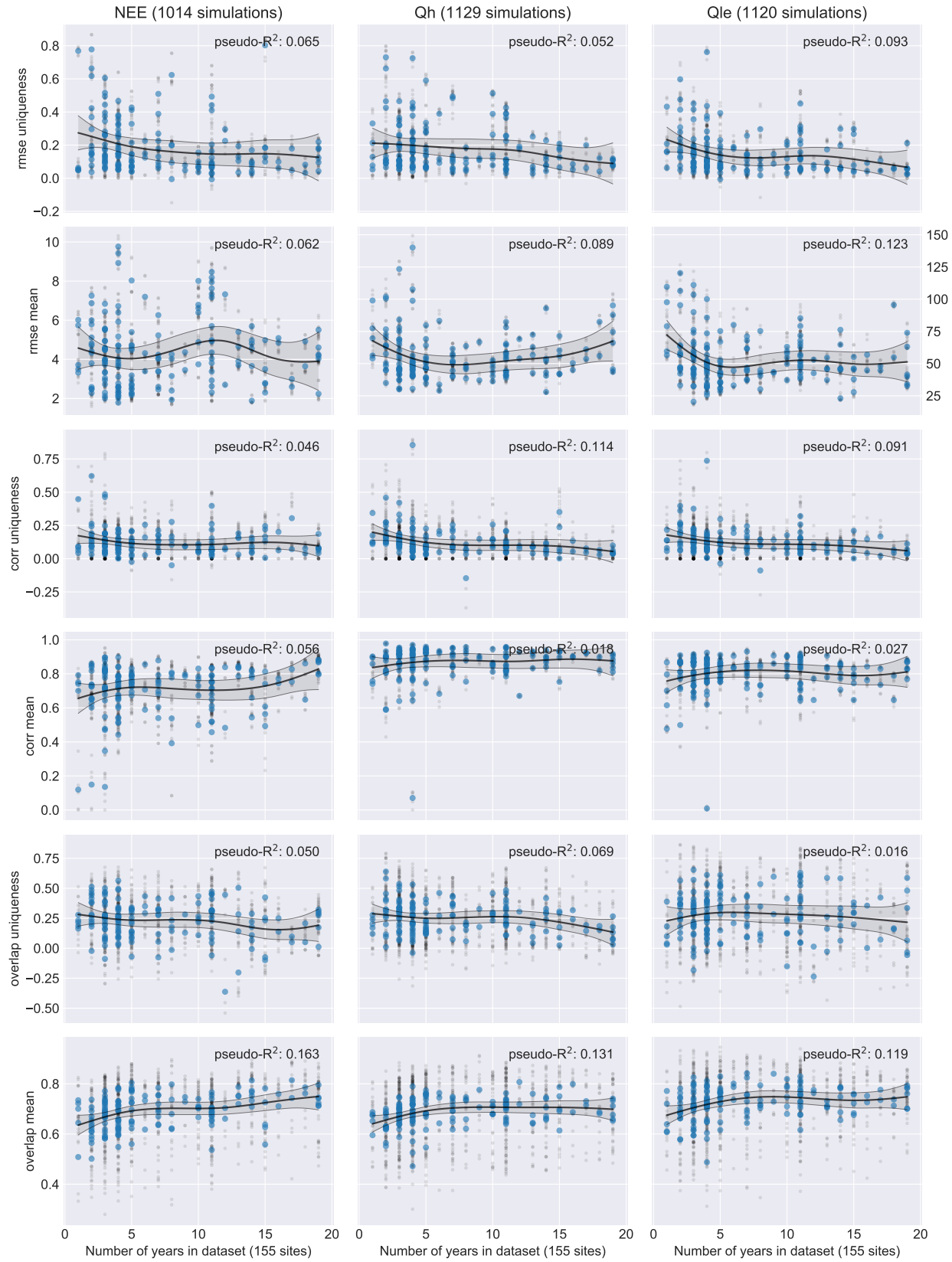


Figure 12: Predictability metrics for energy gap normalised by Rnet.

³⁴ **Extended dataset length analysis**

³⁵ The following plot shows the predictability metrics by data set length that were omitted from Figure 13.



Predictability metrics for number of years in dataset.

Sites, vegetation types, locations and studied periods of flux sites used in this analysis. All data originally from www.fluxdata.org, via https://github.com/trevorkeenon/FLUXNET_citations. Vegetation types: deciduous broadleaf forest (DBF); evergreen broadleaf forest (EBF); evergreen needleleaf forest (ENF); grassland (GRA); mixed deciduous and evergreen needleleaf forest (MF); savanna ecosystem (SAV); shrub ecosystem (SHR); wetland (WET).

Site code	Veg type	Latitude	Longitude	Period	References
AR-SLu	MF	-33.4648	-66.4598	2009-2011	(Ulke, Gattinoni, and Posse 2015)
AR-Vir	ENF	-28.2395	-56.1886	2009-2012	(Posse et al. 2016)
AT-Neu	GRA	47.1167	11.3175	2002-2012	(Wohlfahrt et al. 2008)
AU-Ade	WSA	-13.0769	131.1178	2007-2009	(J. Beringer, Hacker, et al. 2011)
AU-ASM	ENF	-22.2830	133.2490	2010-2013	(Cleverly et al. 2013)
AU-Cpr	SAV	-34.0021	140.5891	2010-2014	(Meyer, Kondrovà, and Koerber 2015)
AU-Cum	EBF	-33.6133	150.7225	2012-2014	(J. Beringer, Hutley, McHugh, et al. 2016a)
AU-DaP	GRA	-14.0633	131.3181	2007-2013	(J. Beringer, Hutley, Hacker, et al. 2011a)
AU-DaS	SAV	-14.1593	131.3881	2008-2014	(Hutley et al. 2011)
AU-Dry	SAV	-15.2588	132.3706	2008-2014	(Cernusak et al. 2011)
AU-Emr	GRA	-23.8587	148.4746	2011-2013	(???)
AU-Fog	WET	-12.5452	131.3072	2006-2008	(Beringer et al. 2013)
AU-Gin	WSA	-31.3764	115.7138	2011-2014	(???)
AU-GWW	SAV	-30.1913	120.6541	2013-2014	(???)
AU-How	WSA	-12.4943	131.1523	2001-2014	(Cernusak 2007)
AU-Lox	DBF	-34.4704	140.6551	2008-2009	(Stevens et al. 2011)
AU-RDF	WSA	-14.5636	132.4776	2011-2013	(Bristow et al. 2016)
AU-Rig	GRA	-36.6499	145.5759	2011-2014	(J. Beringer, Hutley, McHugh, et al. 2016b)
AU-Rob	EBF	-17.1175	145.6301	2014-2014	(J. Beringer, Hutley, McHugh, et al. 2016c)
AU-Stp	GRA	-17.1507	133.3502	2008-2014	(J. Beringer, Hutley, Hacker, et al. 2011b)
AU-TTE	OSH	-22.2870	133.6400	2012-2013	(???)
AU-Tum	EBF	-35.6566	148.1517	2001-2014	(Leuning et al. 2005)
AU-Wac	EBF	-37.4259	145.1878	2005-2008	(Kilinc et al. 2013)
AU-Whr	EBF	-36.6732	145.0294	2011-2014	(McHugh et al. 2017)
AU-Wom	EBF	-37.4222	144.0944	2010-2012	(???)
AU-Ync	GRA	-34.9893	146.2907	2012-2014	(Yee et al. 2015)
BE-Bra	MF	51.3092	4.5206	1996-2014	(Carrara et al. 2004)
BE-Lon	CRO	50.5516	4.7461	2004-2014	(Moureaux et al. 2006)
BE-Vie	MF	50.3051	5.9981	1996-2014	(Aubinet et al. 2001)
BR-Sa3	EBF	-3.0180	-54.9714	2000-2004	(Wick et al. 2005)
CA-Man	ENF	55.8796	-98.4808	1994-2008	(Dunn et al. 2007)
CA-NS1	ENF	55.8792	-98.4839	2001-2005	(Goulden et al. 2006a)
CA-NS2	ENF	55.9058	-98.5247	2001-2005	(Goulden et al. 2006b)
CA-NS3	ENF	55.9117	-98.3822	2001-2005	(Goulden et al. 2006c)
CA-NS4	ENF	55.9144	-98.3806	2002-2005	(Goulden et al. 2006d)
CA-NS5	ENF	55.8631	-98.4850	2001-2005	(Goulden et al. 2006e)
CA-NS6	OSH	55.9167	-98.9644	2001-2005	(Goulden et al. 2006f)
CA-NS7	OSH	56.6358	-99.9483	2002-2005	(Goulden et al. 2006g)
CA-Qfo	ENF	49.6925	-74.3421	2003-2010	(Bergeron et al. 2007)
CA-SF1	ENF	54.4850	-105.8176	2003-2006	(Mkhabela et al. 2009a)
CA-SF2	ENF	54.2539	-105.8775	2001-2005	(Mkhabela et al. 2009b)
CA-SF3	OSH	54.0916	-106.0053	2001-2006	(Mkhabela et al. 2009c)
CH-Cha	GRA	47.2102	8.4104	2005-2014	(Merbold et al. 2014)

Site code	Veg type	Latitude	Longitude	Period	References
CH-Dav	ENF	46.8153	9.8559	1997-2014	(Zielis et al. 2014)
CH-Fru	GRA	47.1158	8.5378	2005-2014	(Imer et al. 2013)
CH-Lae	MF	47.4781	8.3650	2004-2014	(Etzold et al. 2011)
CH-Oe1	GRA	47.2858	7.7319	2002-2008	(Ammann et al. 2009)
CH-Oe2	CRO	47.2863	7.7343	2004-2014	(Dietiker, Buchmann, and Eugster 2010)
CN-Cha	MF	42.4025	128.0958	2003-2005	(Guan et al. 2006)
CN-Cng	GRA	44.5934	123.5092	2007-2010	(???)
CN-Dan	GRA	30.4978	91.0664	2004-2005	(Shi et al. 2006)
CN-Din	EBF	23.1733	112.5361	2003-2005	(???)
CN-Du2	GRA	42.0467	116.2836	2006-2008	(Chen et al. 2009)
CN-Ha2	WET	37.6086	101.3269	2003-2005	(???)
CN-HaM	GRA	37.3700	101.1800	2002-2004	(Kato et al. 2006)
CN-Qia	ENF	26.7414	115.0581	2003-2005	(???)
CN-Sw2	GRA	41.7902	111.8971	2010-2012	(???)
CZ-BK1	ENF	49.5021	18.5369	2004-2008	(Acosta et al. 2013)
CZ-BK2	GRA	49.4944	18.5429	2004-2006	(???)
CZ-wet	WET	49.0247	14.7704	2006-2014	(Dušek et al. 2012)
DE-Akm	WET	53.8662	13.6834	2009-2014	(???)
DE-Geb	CRO	51.1001	10.9143	2001-2014	(Anthoni et al. 2004)
DE-Gri	GRA	50.9500	13.5126	2004-2014	(Prescher, Grünwald, and Bernhofer 2010a)
DE-Hai	DBF	51.0792	10.4530	2000-2012	(Knohl et al. 2003)
DE-Kli	CRO	50.8931	13.5224	2004-2014	(Prescher, Grünwald, and Bernhofer 2010b)
DE-Lkb	ENF	49.0996	13.3047	2009-2013	(Lindauer et al. 2014)
DE-Obe	ENF	50.7867	13.7213	2008-2014	(???)
DE-RuR	GRA	50.6219	6.3041	2011-2014	(Post et al. 2015)
DE-RuS	CRO	50.8659	6.4472	2011-2014	(Mauder et al. 2013)
DE-Seh	CRO	50.8706	6.4497	2007-2010	(Schmidt et al. 2012)
DE-SfN	WET	47.8064	11.3275	2012-2014	(Hommeltenberg et al. 2014)
DE-Spw	WET	51.8923	14.0337	2010-2014	(???)
DE-Tha	ENF	50.9624	13.5652	1996-2014	(Grünwald and Bernhofer 2007)
DK-Fou	CRO	56.4842	9.5872	2005-2005	(???)
DK-NuF	WET	64.1308	-51.3861	2008-2014	(Westergaard-Nielsen et al. 2013)
DK-Sor	DBF	55.4859	11.6446	1996-2014	(Pilegaard et al. 2011)
DK-ZaF	WET	74.4814	-20.5545	2008-2011	(Stiegler et al. 2016)
DK-ZaH	GRA	74.4732	-20.5503	2000-2014	(Lund et al. 2012)
ES-LgS	OSH	37.0979	-2.9658	2007-2009	(Reverter et al. 2010)
ES-Ln2	OSH	36.9695	-3.4758	2009-2009	(???)
FI-Hyy	ENF	61.8474	24.2948	1996-2014	(???)
FI-Jok	CRO	60.8986	23.5135	2000-2003	(Lohila 2004)
FI-Lom	WET	67.9972	24.2092	2007-2009	(???)
FI-Sod	ENF	67.3619	26.6378	2001-2014	(Thum et al. 2007)
FR-Fon	DBF	48.4764	2.7801	2005-2014	(Delpierre et al. 2015)
FR-Gri	CRO	48.8442	1.9519	2004-2013	(Loubet et al. 2011)
FR-LBr	ENF	44.7171	-0.7693	1996-2008	(Berbigier, Bonnefond, and Mellmann 2001)
FR-Pue	EBF	43.7414	3.5958	2000-2014	(Rambal et al. 2004)
GF-Guy	EBF	5.2788	-52.9249	2004-2014	(Bonal et al. 2008)
IT-BCi	CRO	40.5238	14.9574	2004-2014	(Vitale et al. 2015)
IT-CA1	DBF	42.3804	12.0266	2011-2014	(Sabbatini et al. 2016a)
IT-CA2	CRO	42.3772	12.0260	2011-2014	(Sabbatini et al. 2016b)
IT-CA3	DBF	42.3800	12.0222	2011-2014	(Sabbatini et al. 2016c)
IT-Col	DBF	41.8494	13.5881	1996-2014	(Valentini et al. 1996)
IT-Cp2	EBF	41.7043	12.3573	2012-2014	(Fares et al. 2014)

Site code	Veg type	Latitude	Longitude	Period	References
IT-Cpz	EBF	41.7052	12.3761	1997-2009	(Garbulsky et al. 2008)
IT-Isp	DBF	45.8126	8.6336	2013-2014	(Ferréa et al. 2012)
IT-La2	ENF	45.9542	11.2853	2000-2002	(B. Marcolla, Pitacco, and Cescatti 2003a)
IT-Lav	ENF	45.9562	11.2813	2003-2014	(B. Marcolla, Pitacco, and Cescatti 2003b)
IT-MBo	GRA	46.0147	11.0458	2003-2013	(Marcolla et al. 2011)
IT-Noe	CSH	40.6061	8.1515	2004-2014	(Papale et al. 2014)
IT-PT1	DBF	45.2009	9.0610	2002-2004	(Migliavacca et al. 2009)
IT-Ren	ENF	46.5869	11.4337	1998-2013	(Montagnani et al. 2009)
IT-Ro1	DBF	42.4081	11.9300	2000-2008	(Rey et al. 2002)
IT-Ro2	DBF	42.3903	11.9209	2002-2012	(Tedeschi et al. 2006)
IT-SR2	ENF	43.7320	10.2910	2013-2014	(???)
IT-SRo	ENF	43.7279	10.2844	1999-2012	(Chiesi et al. 2005)
IT-Tor	GRA	45.8444	7.5781	2008-2014	(Galvagno et al. 2013)
JP-MBF	DBF	44.3869	142.3186	2003-2005	(Matsumoto et al. 2008a)
JP-SMF	MF	35.2617	137.0788	2002-2006	(Matsumoto et al. 2008b)
NL-Hor	GRA	52.2404	5.0713	2004-2011	(Jacobs et al. 2007)
NL-Loo	ENF	52.1666	5.7436	1996-2013	(???)
NO-Adv	WET	78.1860	15.9230	2011-2014	(???)
NO-Blv	SNO	78.9216	11.8311	2008-2009	(Lüers et al. 2014)
RU-Che	WET	68.6130	161.3414	2002-2005	(Merbold, Kutsch, et al. 2009)
RU-Cok	OSH	70.8291	147.4943	2003-2014	(Molen et al. 2007)
RU-Fyo	ENF	56.4615	32.9221	1998-2014	(Kurbatova et al. 2008)
RU-Ha1	GRA	54.7252	90.0022	2002-2004	(Marchesini et al. 2007)
SD-Dem	SAV	13.2829	30.4783	2005-2009	(Ardo et al. 2008)
SN-Dhr	SAV	15.4028	-15.4322	2010-2013	(Tagesson et al. 2014)
US-AR1	GRA	36.4267	-99.4200	2009-2012	(Raz-Yaseef et al. 2015a)
US-AR2	GRA	36.6358	-99.5975	2009-2012	(Raz-Yaseef et al. 2015b)
US-ARb	GRA	35.5497	-98.0402	2005-2006	(Raz-Yaseef et al. 2015c)
US-ARc	GRA	35.5465	-98.0400	2005-2006	(Raz-Yaseef et al. 2015d)
US-ARM	CRO	36.6058	-97.4888	2003-2012	(Fischer et al. 2007)
US-Blo	ENF	38.8953	-120.6328	1997-2007	(Goldstein et al. 2000)
US-Cop	GRA	38.0900	-109.3900	2001-2007	(Bowling et al. 2010)
US-GBT	ENF	41.3658	-106.2397	1999-2006	(Zeller and Nikolov 2000)
US-GLE	ENF	41.3665	-106.2399	2004-2014	(Frank et al. 2014)
US-Ha1	DBF	42.5378	-72.1715	1991-2012	(Urbanski et al. 2007)
US-KS2	CSH	28.6086	-80.6715	2003-2006	(Powell et al. 2006)
US-Los	WET	46.0827	-89.9792	2000-2014	(Sulman et al. 2009)
US-Me1	ENF	44.5794	-121.5000	2004-2005	(Irvine, Law, and Hibbard 2007)
US-Me2	ENF	44.4523	-121.5574	2002-2014	(Irvine et al. 2008)
US-Me6	ENF	44.3233	-121.6078	2010-2014	(Ruehr, Martin, and Law 2012)
US-MMS	DBF	39.3232	-86.4131	1999-2014	(Dragoni et al. 2011)
US-Myb	WET	38.0498	-121.7651	2010-2014	(Matthes et al. 2014)
US-Ne1	CRO	41.1651	-96.4766	2001-2013	(Verma et al. 2005a)
US-Ne2	CRO	41.1649	-96.4701	2001-2013	(Verma et al. 2005b)
US-Ne3	CRO	41.1797	-96.4397	2001-2013	(Verma et al. 2005c)
US-NR1	ENF	40.0329	-105.5464	1998-2014	(Monson et al. 2002)
US-ORv	WET	40.0201	-83.0183	2011-2011	(Morin et al. 2014)
US-PFa	MF	45.9459	-90.2723	1995-2014	(Desai et al. 2015)
US-Prr	ENF	65.1237	-147.4876	2010-2013	(Nakai et al. 2013)
US-SRG	GRA	31.7894	-110.8277	2008-2014	(Scott et al. 2015a)
US-SRM	WSA	31.8214	-110.8661	2004-2014	(Scott et al. 2009)
US-Syv	MF	46.2420	-89.3477	2001-2014	(Desai et al. 2005)

Site code	Veg type	Latitude	Longitude	Period	References
US-Ton	WSA	38.4316	-120.9660	2001-2014	(Baldocchi et al. 2010)
US-Tw1	WET	38.1074	-121.6469	2012-2014	(Oikawa et al. 2017)
US-Tw2	CRO	38.1047	-121.6433	2012-2013	(Knox et al. 2016)
US-Tw3	CRO	38.1159	-121.6467	2013-2014	(Baldocchi, Sturtevant, and Contributors 2015)
US-Tw4	WET	38.1030	-121.6414	2013-2014	(Baldocchi 2016)
US-Twt	CRO	38.1087	-121.6530	2009-2014	(Hatala et al. 2012)
US-UMB	DBF	45.5598	-84.7138	2000-2014	(Gough et al. 2013a)
US-UMd	DBF	45.5625	-84.6975	2007-2014	(Gough et al. 2013b)
US-Var	GRA	38.4133	-120.9507	2000-2014	(Ma et al. 2007)
US-WCr	DBF	45.8059	-90.0799	1999-2014	(Cook et al. 2004)
US-Whs	OSH	31.7438	-110.0522	2007-2014	(Scott et al. 2015b)
US-Wi0	ENF	46.6188	-91.0814	2002-2002	(Noormets, Chen, and Crow 2007a)
US-Wi3	DBF	46.6347	-91.0987	2002-2004	(Noormets, Chen, and Crow 2007b)
US-Wi4	ENF	46.7393	-91.1663	2002-2005	(Noormets, Chen, and Crow 2007c)
US-Wi6	OSH	46.6249	-91.2982	2002-2003	(Noormets, Chen, and Crow 2007d)
US-Wi9	ENF	46.6188	-91.0814	2004-2005	(Noormets, Chen, and Crow 2007e)
US-Wkg	GRA	31.7365	-109.9419	2004-2014	(Scott et al. 2010)
ZA-Kru	SAV	-25.0197	31.4969	2000-2010	(Archibald et al. 2009)
ZM-Mon	DBF	-15.4378	23.2528	2000-2009	(Merbold, Ardö, et al. 2009)

- 37 Acosta, Manuel, Marian Pavelka, Leonardo Montagnani, Werner Kutsch, Anders Lindroth, Radosław Juszczak,
38 and Dalibor Janouš. 2013. “Soil Surface CO₂ Efflux Measurements in Norway Spruce Forests: Comparison
39 Between Four Different Sites Across Europe from Boreal to Alpine Forest.” *Geoderma* 192 (January). Elsevier
40 BV: 295–303. doi:10.1016/j.geoderma.2012.08.027.
- 41 Ammann, Christof, Christoph Spirig, Jens Leifeld, and Albrecht Neftel. 2009. “Assessment of the Nitrogen
42 and Carbon Budget of Two Managed Temperate Grassland Fields.” *Agriculture, Ecosystems & Environment*
43 133 (3-4). Elsevier BV: 150–62. doi:10.1016/j.agee.2009.05.006.
- 44 Anthoni, P. M., A. Knohl, C. Rebmann, A. Freibauer, M. Mund, W. Ziegler, O. Kolle, and E.-D. Schulze.
45 2004. “Forest and Agricultural Land-Use-Dependent CO₂ Exchange in Thuringia, Germany.” *Global Change*
46 *Biology* 10 (12). Wiley-Blackwell: 2005–19. doi:10.1111/j.1365-2486.2004.00863.x.
- 47 Archibald, S. A., A. Kirton, M. R. van der Merwe, R. J. Scholes, C. A. Williams, and N. Hanan. 2009.
48 “Drivers of Inter-Annual Variability in Net Ecosystem Exchange in a Semi-Arid Savanna Ecosystem, South
49 Africa.” *Biogeosciences* 6 (2). Copernicus GmbH: 251–66. doi:10.5194/bg-6-251-2009.
- 50 Ardo, Jonas, Meelis Molder, Bashir A El-Tahir, and Hatim A M Elkhidir. 2008. “Seasonal Variation of
51 Carbon Fluxes in a Sparse Savanna in Semi Arid Sudan.” *Carbon Balance and Management* 3 (1). Springer
52 Nature: 7. doi:10.1186/1750-0680-3-7.
- 53 Aubinet, M, B Chermanne, M Vandenhaute, B Longdoz, M Yernaux, and E Laitat. 2001. “Long Term Carbon
54 Dioxide Exchange Above a Mixed Forest in the Belgian Ardennes.” *Agricultural and Forest Meteorology* 108
55 (4). Elsevier BV: 293–315. doi:10.1016/s0168-1923(01)00244-1.
- 56 Baldocchi, Dennis. 2016. “AmeriFlux US-Tw4 Twitchell East End Wetland from 2013-Present.”
57 doi:10.17190/AMF/1246151.
- 58 Baldocchi, Dennis, Qi Chen, Xingyuan Chen, Siyan Ma, Gretchen Miller, Youngryel Ryu, Jingfeng Xiao,
59 Rebecca Wenk, and John Battles. 2010. “The Dynamics of Energy, Water, and Carbon Fluxes in a Blue
60 Oak (*Quercus Douglasii*) Savanna in California.” In *Ecosystem Function in Savannas*, 135–51. CRC Press.
61 doi:10.1201/b10275-10.
- 62 Baldocchi, Dennis, Cove Sturtevant, and Fluxnet Contributors. 2015. “Does Day and Night Sampling Reduce
63 Spurious Correlation Between Canopy Photosynthesis and Ecosystem Respiration?” *Agricultural and Forest*

- 64 *Meteorology* 207 (July). Elsevier BV: 117–26. doi:10.1016/j.agrformet.2015.03.010.
- 65 Berbigier, Paul, Jean-Marc Bonnefond, and Patricia Mellmann. 2001. “CO₂ and Water Vapour Fluxes for
66 2 Years Above Euroflux Forest Site.” *Agricultural and Forest Meteorology* 108 (3). Elsevier BV: 183–97.
67 doi:10.1016/s0168-1923(01)00240-4.
- 68 Bergeron, Onil, Hank A. Margolis, T. Andrew Black, Carole Coursolle, Allison L. Dunn, Alan G. Barr, and
69 Steven C. Wofsy. 2007. “Comparison of Carbon Dioxide Fluxes over Three Boreal Black Spruce Forests in
70 Canada.” *Global Change Biology* 13 (1). Wiley-Blackwell: 89–107. doi:10.1111/j.1365-2486.2006.01281.x.
- 71 Beringer, Jason, Jorg Hacker, Lindsay B. Hutley, Ray Leuning, Stefan K. Arndt, Reza Amiri, Lutz
72 Bannehr, et al. 2011. “SPECIALSavanna Patterns of Energy and Carbon Integrated Across the Land-
73 scape.” *Bulletin of the American Meteorological Society* 92 (11). American Meteorological Society: 1467–85.
74 doi:10.1175/2011bams2948.1.
- 75 Beringer, Jason, Lindsay B. Hutley, Jorg M. Hacker, Bruno Neininger, and Kyaw Tha Paw U. 2011a.
76 “Patterns and Processes of Carbon, Water and Energy Cycles Across Northern Australian Land-
77 scapes: From Point to Region.” *Agricultural and Forest Meteorology* 151 (11). Elsevier BV: 1409–16.
78 doi:10.1016/j.agrformet.2011.05.003.
- 79 ———. 2011b. “Patterns and Processes of Carbon, Water and Energy Cycles Across Northern Australian
80 Landscapes: From Point to Region.” *Agricultural and Forest Meteorology* 151 (11). Elsevier BV: 1409–16.
81 doi:10.1016/j.agrformet.2011.05.003.
- 82 Beringer, Jason, Lindsay B. Hutley, Ian McHugh, Stefan K. Arndt, David Campbell, Helen A. Cleugh, James
83 Cleverly, et al. 2016a. “An Introduction to the Australian and New Zealand Flux Tower Network OzFlux.”
84 *Biogeosciences* 13 (21). Copernicus GmbH: 5895–5916. doi:10.5194/bg-13-5895-2016.
- 85 ———. 2016b. “An Introduction to the Australian and New Zealand Flux Tower Network OzFlux.” *Biogeo-*
86 *sciences* 13 (21). Copernicus GmbH: 5895–5916. doi:10.5194/bg-13-5895-2016.
- 87 ———. 2016c. “An Introduction to the Australian and New Zealand Flux Tower Network OzFlux.” *Biogeo-*
88 *sciences* 13 (21). Copernicus GmbH: 5895–5916. doi:10.5194/bg-13-5895-2016.
- 89 Beringer, Jason, Stephen J. Livesley, Jennifer Randle, and Lindsay B. Hutley. 2013. “Carbon Diox-
90 ide Fluxes Dominate the Greenhouse Gas Exchanges of a Seasonal Wetland in the Wetdry Tropics of
91 Northern Australia.” *Agricultural and Forest Meteorology* 182–183 (December). Elsevier BV: 239–47.
92 doi:10.1016/j.agrformet.2013.06.008.
- 93 Bonal, Damien, Alexandre Bosc, Stéphane Ponton, Jean-Yves Goret, Benoît Burban, Patrick Gross, Jean-Marc
94 Bonnefond, et al. 2008. “Impact of Severe Dry Season on Net Ecosystem Exchange in the Neotropical
95 Rainforest of French Guiana.” *Global Change Biology* 14 (8). Wiley-Blackwell: 1917–33. doi:10.1111/j.1365-
96 2486.2008.01610.x.
- 97 Bowling, D. R., S. Bethers-Marchetti, C. K. Lunch, E. E. Grote, and J. Belnap. 2010. “Carbon, Water, and
98 Energy Fluxes in a Semiarid Cold Desert Grassland During and Following Multiyear Drought.” *Journal of*
99 *Geophysical Research* 115 (G4). Wiley-Blackwell. doi:10.1029/2010jg001322.
- 100 Bristow, M., L. B. Hutley, J. Beringer, S. J. Livesley, A. C. Edwards, and S. K. Arndt. 2016. “Quantifying the
101 Relative Importance of Greenhouse Gas Emissions from Current and Future Savanna Land Use Change Across
102 Northern Australia.” *Biogeosciences Discussions*, May. Copernicus GmbH, 1–47. doi:10.5194/bg-2016-191.
- 103 Carrara, Arnaud, Ivan A. Janssens, Jorge Curiel Yuste, and Reinhart Ceulemans. 2004. “Seasonal Changes in
104 Photosynthesis, Respiration and NEE of a Mixed Temperate Forest.” *Agricultural and Forest Meteorology* 126
105 (1–2). Elsevier BV: 15–31. doi:10.1016/j.agrformet.2004.05.002.
- 106 Cernusak, Jason Beringer And Lindsay B. Hutley And Nigel J. Tapper And Lucas A. 2007. “Savanna
107 Fires and Their Impact on Net Ecosystem Productivity in North Australia.” *Global Change Biology* 13 (5).
108 Wiley-Blackwell: 990–1004. doi:10.1111/j.1365-2486.2007.01334.x.
- 109 Cernusak, Lucas A., Lindsay B. Hutley, Jason Beringer, Joseph A.M. Holtum, and Benjamin L. Turner. 2011.
110 “Photosynthetic Physiology of Eucalypts Along a Sub-Continental Rainfall Gradient in Northern Australia.”

- 111 *Agricultural and Forest Meteorology* 151 (11). Elsevier BV: 1462–70. doi:10.1016/j.agrformet.2011.01.006.
- 112 Chen, Shiping, Jiquan Chen, Guanghui Lin, Wenli Zhang, Haixia Miao, Long Wei, Jianhui Huang,
113 and Xingguo Han. 2009. “Energy Balance and Partition in Inner Mongolia Steppe Ecosystems with
114 Different Land Use Types.” *Agricultural and Forest Meteorology* 149 (11). Elsevier BV: 1800–1809.
115 doi:10.1016/j.agrformet.2009.06.009.
- 116 Chiesi, M., F. Maselli, M. Bindi, L. Fibbi, P. Cherubini, E. Arlotta, G. Tirone, G. Matteucci, and G. Seufert.
117 2005. “Modelling Carbon Budget of Mediterranean Forests Using Ground and Remote Sensing Measurements.”
118 *Agricultural and Forest Meteorology* 135 (1-4). Elsevier BV: 22–34. doi:10.1016/j.agrformet.2005.09.011.
- 119 Cleverly, James, Nicolas Boulain, Randol Villalobos-Vega, Nicole Grant, Ralph Faux, Cameron Wood, Peter
120 G. Cook, Qiang Yu, Andrea Leigh, and Derek Eamus. 2013. “Dynamics of Component Carbon Fluxes in
121 a Semi-arid Acacia woodland, Central Australia.” *Journal of Geophysical Research: Biogeosciences* 118 (3).
122 Wiley-Blackwell: 1168–85. doi:10.1002/jgrg.20101.
- 123 Cook, Bruce D., Kenneth J. Davis, Weiguo Wang, Ankur Desai, Bradford W. Berger, Ron M. Teclaw,
124 Jonathan G. Martin, et al. 2004. “Carbon Exchange and Venting Anomalies in an Upland Deciduous
125 Forest in Northern Wisconsin, USA.” *Agricultural and Forest Meteorology* 126 (3-4). Elsevier BV: 271–95.
126 doi:10.1016/j.agrformet.2004.06.008.
- 127 Delpierre, Nicolas, Daniel Berveiller, Elena Granda, and Eric Dufrêne. 2015. “Wood Phenology, Not Carbon
128 Input, Controls the Interannual Variability of Wood Growth in a Temperate Oak Forest.” *New Phytologist*
129 210 (2). Wiley-Blackwell: 459–70. doi:10.1111/nph.13771.
- 130 Desai, Ankur R., Paul V. Bolstad, Bruce D. Cook, Kenneth J. Davis, and Eileen V. Carey. 2005. “Comparing
131 Net Ecosystem Exchange of Carbon Dioxide Between an Old-Growth and Mature Forest in the Upper Midwest,
132 USA.” *Agricultural and Forest Meteorology* 128 (1-2). Elsevier BV: 33–55. doi:10.1016/j.agrformet.2004.09.005.
- 133 Desai, Ankur R., Ke Xu, Hanqin Tian, Peter Weishampel, Jonathan Thom, Dan Baumann, Arlyn E. Andrews,
134 Bruce D. Cook, Jennifer Y. King, and Randall Kolka. 2015. “Landscape-Level Terrestrial Methane Flux
135 Observed from a Very Tall Tower.” *Agricultural and Forest Meteorology* 201 (February). Elsevier BV: 61–75.
136 doi:10.1016/j.agrformet.2014.10.017.
- 137 Dietiker, Dominique, Nina Buchmann, and Werner Eugster. 2010. “Testing the Ability of the DNDC Model
138 to Predict CO₂ and Water Vapour Fluxes of a Swiss Cropland Site.” *Agriculture, Ecosystems & Environment*
139 139 (3). Elsevier BV: 396–401. doi:10.1016/j.agee.2010.09.002.
- 140 Dragoni, Danilo, Hans Peter Schmid, Craig A. Wayson, Henry Potter, C. Susan B. Grimmond, and James C.
141 Randolph. 2011. “Evidence of Increased Net Ecosystem Productivity Associated with a Longer Vegetated
142 Season in a Deciduous Forest in South-Central Indiana, USA.” *Global Change Biology* 17 (2). Wiley-Blackwell:
143 886–97. doi:10.1111/j.1365-2486.2010.02281.x.
- 144 Dunn, Allison L., Carol C. Barford, Steven C. Wofsy, Michael L. Goulden, and Bruce C. Daube. 2007. “A
145 Long-Term Record of Carbon Exchange in a Boreal Black Spruce Forest: Means, Responses to Interannual
146 Variability, and Decadal Trends.” *Global Change Biology* 13 (3). Wiley-Blackwell: 577–90. doi:10.1111/j.1365-
147 2486.2006.01221.x.
- 148 Dušek, J., H. Čížková, S. Stellner, R. Czerný, and J. Květ. 2012. “Fluctuating Water Table Affects Gross
149 Ecosystem Production and Gross Radiation Use Efficiency in a Sedge-Grass Marsh.” *Hydrobiologia* 692 (1).
150 Springer Nature: 57–66. doi:10.1007/s10750-012-0998-z.
- 151 Etzold, Sophia, Nadine K. Ruehr, Roman Zweifel, Matthias Dobbertin, Andreas Zingg, Peter Pluess, Rudolf
152 Häsler, Werner Eugster, and Nina Buchmann. 2011. “The Carbon Balance of Two Contrasting Mountain
153 Forest Ecosystems in Switzerland: Similar Annual Trends, but Seasonal Differences.” *Ecosystems* 14 (8).
154 Springer Nature: 1289–1309. doi:10.1007/s10021-011-9481-3.
- 155 Fares, S., F. Savi, J. Muller, G. Matteucci, and E. Paoletti. 2014. “Simultaneous Measurements of Above
156 and Below Canopy Ozone Fluxes Help Partitioning Ozone Deposition Between Its Various Sinks in a

- 157 Mediterranean Oak Forest.” *Agricultural and Forest Meteorology* 198-199 (November). Elsevier BV: 181–91.
158 doi:10.1016/j.agrformet.2014.08.014.
- 159 Ferréa, Chiara, Terenzio Zenone, Roberto Comolli, and Günther Seufert. 2012. “Estimating Heterotrophic
160 and Autotrophic Soil Respiration in a Semi-Natural Forest of Lombardy, Italy.” *Pedobiologia* 55 (6). Elsevier
161 BV: 285–94. doi:10.1016/j.pedobi.2012.05.001.
- 162 Fischer, Marc L., David P. Billesbach, Joseph A. Berry, William J. Riley, and Margaret S. Torn. 2007.
163 “Spatiotemporal Variations in Growing Season Exchanges of CO₂, H₂O, and Sensible Heat in Agricultural
164 Fields of the Southern Great Plains.” *Earth Interactions* 11 (17). American Meteorological Society: 1–21.
165 doi:10.1175/ei231.1.
- 166 Frank, John M., William J. Massman, Brent E. Ewers, Laurie S. Huckaby, and José F. Negrón. 2014.
167 “Ecosystem CO₂/H₂O Fluxes Are Explained by Hydraulically Limited Gas Exchange During Tree Mortality
168 from Spruce Bark Beetles.” *Journal of Geophysical Research: Biogeosciences* 119 (6). Wiley-Blackwell:
169 1195–1215. doi:10.1002/2013jg002597.
- 170 Galvagno, M, G Wohlfahrt, E Cremonese, M Rossini, R Colombo, G Filippa, T Julitta, et al. 2013. “Phenology
171 and Carbon Dioxide Source/Sink Strength of a Subalpine Grassland in Response to an Exceptionally Short Snow
172 Season.” *Environmental Research Letters* 8 (2). IOP Publishing: 025008. doi:10.1088/1748-9326/8/2/025008.
- 173 Garbulsky, Martín F., Josep Peñuelas, Dario Papale, and Iolanda Filella. 2008. “Remote Estimation of
174 Carbon Dioxide Uptake by a Mediterranean Forest.” *Global Change Biology* 14 (12). Wiley-Blackwell: 2860–7.
175 doi:10.1111/j.1365-2486.2008.01684.x.
- 176 Goldstein, A.H., N.E. Hultman, J.M. Fracheboud, M.R. Bauer, J.A. Panek, M. Xu, Y. Qi, A.B. Guenther,
177 and W. Baugh. 2000. “Effects of Climate Variability on the Carbon Dioxide, Water, and Sensible Heat Fluxes
178 Above a Ponderosa Pine Plantation in the Sierra Nevada (CA).” *Agricultural and Forest Meteorology* 101
179 (2-3). Elsevier BV: 113–29. doi:10.1016/s0168-1923(99)00168-9.
- 180 Gough, Christopher M., Brady S. Hardiman, Lucas E. Nave, Gil Bohrer, Kyle D. Maurer, Christoph S.
181 Vogel, Knute J. Nadelhoffer, and Peter S. Curtis. 2013a. “Sustained Carbon Uptake and Storage Following
182 Moderate Disturbance in a Great Lakes Forest.” *Ecological Applications* 23 (5). Wiley-Blackwell: 1202–15.
183 doi:10.1890/12-1554.1.
- 184 ———. 2013b. “Sustained Carbon Uptake and Storage Following Moderate Disturbance in a Great Lakes
185 Forest.” *Ecological Applications* 23 (5). Wiley-Blackwell: 1202–15. doi:10.1890/12-1554.1.
- 186 Goulden, Michael L., Gregory C. Winston, Andrew M. S. McMillan, Marcy E. Litvak, Edward L. Read,
187 Adrian V. Rocha, and J. Rob Elliot. 2006a. “An Eddy Covariance Mesonet to Measure the Effect of
188 Forest Age on Land?atmosphere Exchange.” *Global Change Biology* 12 (11). Wiley-Blackwell: 2146–62.
189 doi:10.1111/j.1365-2486.2006.01251.x.
- 190 ———. 2006b. “An Eddy Covariance Mesonet to Measure the Effect of Forest Age on Land?atmosphere
191 Exchange.” *Global Change Biology* 12 (11). Wiley-Blackwell: 2146–62. doi:10.1111/j.1365-2486.2006.01251.x.
- 192 ———. 2006c. “An Eddy Covariance Mesonet to Measure the Effect of Forest Age on Land?atmosphere
193 Exchange.” *Global Change Biology* 12 (11). Wiley-Blackwell: 2146–62. doi:10.1111/j.1365-2486.2006.01251.x.
- 194 ———. 2006d. “An Eddy Covariance Mesonet to Measure the Effect of Forest Age on Land?atmosphere
195 Exchange.” *Global Change Biology* 12 (11). Wiley-Blackwell: 2146–62. doi:10.1111/j.1365-2486.2006.01251.x.
- 196 ———. 2006e. “An Eddy Covariance Mesonet to Measure the Effect of Forest Age on Land?atmosphere
197 Exchange.” *Global Change Biology* 12 (11). Wiley-Blackwell: 2146–62. doi:10.1111/j.1365-2486.2006.01251.x.
- 198 ———. 2006f. “An Eddy Covariance Mesonet to Measure the Effect of Forest Age on Land?atmosphere
199 Exchange.” *Global Change Biology* 12 (11). Wiley-Blackwell: 2146–62. doi:10.1111/j.1365-2486.2006.01251.x.
- 200 ———. 2006g. “An Eddy Covariance Mesonet to Measure the Effect of Forest Age on Land?atmosphere
201 Exchange.” *Global Change Biology* 12 (11). Wiley-Blackwell: 2146–62. doi:10.1111/j.1365-2486.2006.01251.x.
- 202 Grünwald, Thomas, and Christian Bernhofer. 2007. “A Decade of Carbon, Water and Energy Flux

- 203 Measurements of an Old Spruce Forest at the Anchor Station Tharandt.” *Tellus B* 59 (3). Informa UK
204 Limited. doi:10.3402/tellusb.v59i3.17000.
- 205 Guan, De-Xin, Jia-Bing Wu, Xiao-Song Zhao, Shi-Jie Han, Gui-Rui Yu, Xiao-Min Sun, and Chang-Jie Jin.
206 2006. “CO₂ Fluxes over an Old, Temperate Mixed Forest in Northeastern China.” *Agricultural and Forest*
207 *Meteorology* 137 (3-4). Elsevier BV: 138–49. doi:10.1016/j.agrformet.2006.02.003.
- 208 Hatala, Jaclyn A., Matteo Detto, Oliver Sonnentag, Steven J. Deverel, Joseph Verfaillie, and Dennis D.
209 Baldocchi. 2012. “Greenhouse Gas (CO₂, CH₄, H₂O) Fluxes from Drained and Flooded Agricultural Peatlands
210 in the Sacramento-San Joaquin Delta.” *Agriculture, Ecosystems & Environment* 150 (March). Elsevier BV:
211 1–18. doi:10.1016/j.agee.2012.01.009.
- 212 Hommeltenberg, J., H. P. Schmid, M. Drösler, and P. Werle. 2014. “Can a Bog Drained for Forestry Be a
213 Stronger Carbon Sink Than a Natural Bog Forest?” *Biogeosciences* 11 (13). Copernicus GmbH: 3477–93.
214 doi:10.5194/bg-11-3477-2014.
- 215 Hutley, Lindsay B., Jason Beringer, Peter R. Isaac, Jorg M. Hacker, and Lucas A. Cernusak. 2011.
216 “A Sub-Continental Scale Living Laboratory: Spatial Patterns of Savanna Vegetation over a Rainfall
217 Gradient in Northern Australia.” *Agricultural and Forest Meteorology* 151 (11). Elsevier BV: 1417–28.
218 doi:10.1016/j.agrformet.2011.03.002.
- 219 Imer, D., L. Merbold, W. Eugster, and N. Buchmann. 2013. “Temporal and Spatial Variations of Soil CO₂,
220 CH₄ and N₂O Fluxes at Three Differently Managed Grasslands.” *Biogeosciences* 10 (9). Copernicus GmbH:
221 5931–45. doi:10.5194/bg-10-5931-2013.
- 222 Irvine, J., B. E. Law, and K. A. Hibbard. 2007. “Postfire Carbon Pools and Fluxes in Semiarid Ponderosa
223 Pine in Central Oregon.” *Global Change Biology* 13 (8). Wiley-Blackwell: 1748–60. doi:10.1111/j.1365-
224 2486.2007.01368.x.
- 225 Irvine, J., B. E. Law, J. G. Martin, and D. Vickers. 2008. “Interannual Variation in Soil CO₂efflux and the
226 Response of Root Respiration to Climate and Canopy Gas Exchange in Mature Ponderosa Pine.” *Global*
227 *Change Biology* 14 (12). Wiley-Blackwell: 2848–59. doi:10.1111/j.1365-2486.2008.01682.x.
- 228 Jacobs, C. M. J., A. F. G. Jacobs, F. C. Bosveld, D. M. D. Hendriks, A. Hensen, P. S. Kroon, E. J. Moors,
229 L. Nol, A. Schrier-Uijl, and E. M. Veenendaal. 2007. “Variability of Annual CO₂ Exchange from Dutch
230 Grasslands.” *Biogeosciences* 4 (5). Copernicus GmbH: 803–16. doi:10.5194/bg-4-803-2007.
- 231 Kato, Tomomichi, Yanhong Tang, Song Gu, Mitsuru Hirota, Mingyuan Du, Yingnian Li, and Xinquan Zhao.
232 2006. “Temperature and Biomass Influences on Interannual Changes in CO₂ Exchange in an Alpine Meadow on
233 the Qinghai-Tibetan Plateau.” *Global Change Biology* 12 (7). Wiley-Blackwell: 1285–98. doi:10.1111/j.1365-
234 2486.2006.01153.x.
- 235 Kilinc, Musa, Jason Beringer, Lindsay B. Hutley, Nigel J. Tapper, and David A. McGuire. 2013. “Carbon
236 and Water Exchange of the Worlds Tallest Angiosperm Forest.” *Agricultural and Forest Meteorology* 182-183
237 (December). Elsevier BV: 215–24. doi:10.1016/j.agrformet.2013.07.003.
- 238 Knohl, Alexander, Ernst-Detlef Schulze, Olaf Kolle, and Nina Buchmann. 2003. “Large Carbon Uptake by an
239 Unmanaged 250-Year-Old Deciduous Forest in Central Germany.” *Agricultural and Forest Meteorology* 118
240 (3-4). Elsevier BV: 151–67. doi:10.1016/s0168-1923(03)00115-1.
- 241 Knox, Sara Helen, Jaclyn Hatala Matthes, Cove Sturtevant, Patricia Y. Oikawa, Joseph Verfaillie, and Dennis
242 Baldocchi. 2016. “Biophysical Controls on Interannual Variability in Ecosystem-Scale CO₂and CH₄exchange
243 in a California Rice Paddy.” *Journal of Geophysical Research: Biogeosciences* 121 (3). Wiley-Blackwell:
244 978–1001. doi:10.1002/2015jg003247.
- 245 Kurbatova, J., C. Li, A. Varlagin, X. Xiao, and N. Vygodskaya. 2008. “Modeling Carbon Dynamics in Two
246 Adjacent Spruce Forests with Different Soil Conditions in Russia.” *Biogeosciences* 5 (4). Copernicus GmbH:
247 969–80. doi:10.5194/bg-5-969-2008.
- 248 Leuning, Ray, Helen A. Cleugh, Steven J. Zieglin, and Dale Hughes. 2005. “Carbon and Water Fluxes over a
249 Temperate Eucalyptus Forest and a Tropical Wet/Dry Savanna in Australia: Measurements and Comparison

- 250 with MODIS Remote Sensing Estimates.” *Agricultural and Forest Meteorology* 129 (3-4). Elsevier BV: 151–73.
251 doi:10.1016/j.agrformet.2004.12.004.
- 252 Lindauer, M., H.P. Schmid, R. Grote, M. Mauder, R. Steinbrecher, and B. Wolpert. 2014. “Net Ecosystem
253 Exchange over a Non-Cleared Wind-Throw-Disturbed Upland Spruce Forest Measurements and Simulations.”
254 *Agricultural and Forest Meteorology* 197 (October). Elsevier BV: 219–34. doi:10.1016/j.agrformet.2014.07.005.
- 255 Lohila, Annalea. 2004. “Annual CO₂ exchange of a Peat Field Growing Spring Barley or Perennial Forage
256 Grass.” *Journal of Geophysical Research* 109 (D18). Wiley-Blackwell. doi:10.1029/2004jd004715.
- 257 Loubet, Benjamin, Patricia Laville, Simon Lehuger, Eric Larmanou, Christophe Fléchar, Nicolas Mascher,
258 Sophie Genermont, et al. 2011. “Carbon, Nitrogen and Greenhouse Gases Budgets over a Four Years Crop
259 Rotation in Northern France.” *Plant and Soil* 343 (1-2). Springer Nature: 109–37. doi:10.1007/s11104-011-
260 0751-9.
- 261 Lund, Magnus, Julie M. Falk, Thomas Friborg, Herbert N. Mbufong, Charlotte Sigsgaard, Henrik Soegaard,
262 and Mikkel P. Tamstorf. 2012. “Trends in CO₂ exchange in a High Arctic Tundra Heath, 2000-2010.” *Journal*
263 *of Geophysical Research: Biogeosciences* 117 (G2). Wiley-Blackwell: n/a–n/a. doi:10.1029/2011jg001901.
- 264 Lüers, J., S. Westermann, K. Piel, and J. Boike. 2014. “Annual CO₂ Budget and Seasonal CO₂ Exchange
265 Signals at a High Arctic Permafrost Site on Spitsbergen, Svalbard Archipelago.” *Biogeosciences* 11 (22).
266 Copernicus GmbH: 6307–22. doi:10.5194/bg-11-6307-2014.
- 267 Ma, Siyan, Dennis D. Baldocchi, Liukang Xu, and Ted Hehn. 2007. “Inter-Annual Variability in Carbon
268 Dioxide Exchange of an Oak/Grass Savanna and Open Grassland in California.” *Agricultural and Forest*
269 *Meteorology* 147 (3-4). Elsevier BV: 157–71. doi:10.1016/j.agrformet.2007.07.008.
- 270 Marchesini, L. Belelli, D. Papale, M. Reichstein, N. Vuichard, N. Tchebakova, and R. Valentini. 2007. “Carbon
271 Balance Assessment of a Natural Steppe of Southern Siberia by Multiple Constraint Approach.” *Biogeosciences*
272 *Discussions* 4 (1). Copernicus GmbH: 165–208. doi:10.5194/bgd-4-165-2007.
- 273 Marcolla, B., A. Pitacco, and A. Cescatti. 2003a. “Canopy Architecture and Turbulence Structure in a Conif-
274 erous Forest.” *Boundary-Layer Meteorology* 108 (1). Springer Nature: 39–59. doi:10.1023/a:1023027709805.
- 275 ———. 2003b. “Canopy Architecture and Turbulence Structure in a Coniferous Forest.” *Boundary-Layer*
276 *Meteorology* 108 (1). Springer Nature: 39–59. doi:10.1023/a:1023027709805.
- 277 Marcolla, Barbara, Alessandro Cescatti, Giovanni Manca, Roberto Zorer, Mauro Cavagna, Alessandro
278 Fiora, Damiano Gianelle, Mirco Rodeghiero, Matteo Sottocornola, and Roberto Zampedri. 2011. “Cli-
279 matic Controls and Ecosystem Responses Drive the Inter-Annual Variability of the Net Ecosystem Ex-
280 change of an Alpine Meadow.” *Agricultural and Forest Meteorology* 151 (9). Elsevier BV: 1233–43.
281 doi:10.1016/j.agrformet.2011.04.015.
- 282 Matsumoto, Kazuho, Takeshi Ohta, Taro Nakai, Takashi Kuwada, Ken’ichi Daikoku, Shin’ichi Iida, Hi-
283 ronori Yabuki, et al. 2008a. “Energy Consumption and Evapotranspiration at Several Boreal and Tem-
284 perate Forests in the Far East.” *Agricultural and Forest Meteorology* 148 (12). Elsevier BV: 1978–89.
285 doi:10.1016/j.agrformet.2008.09.008.
- 286 ———. 2008b. “Energy Consumption and Evapotranspiration at Several Boreal and Temperate
287 Forests in the Far East.” *Agricultural and Forest Meteorology* 148 (12). Elsevier BV: 1978–89.
288 doi:10.1016/j.agrformet.2008.09.008.
- 289 Matthes, Jaclyn Hatala, Cove Sturtevant, Joseph Verfaillie, Sara Knox, and Dennis Baldocchi. 2014. “Parsing
290 the Variability in CH₄ flux at a Spatially Heterogeneous Wetland: Integrating Multiple Eddy Covariance
291 Towers with High-Resolution Flux Footprint Analysis.” *Journal of Geophysical Research: Biogeosciences* 119
292 (7). Wiley-Blackwell: 1322–39. doi:10.1002/2014jg002642.
- 293 Mauder, Matthias, Matthias Cuntz, Clemens Drüe, Alexander Graf, Corinna Rebmann, Hans Peter Schmid,
294 Marius Schmidt, and Rainer Steinbrecher. 2013. “A Strategy for Quality and Uncertainty Assessment of

- 295 Long-Term Eddy-Covariance Measurements.” *Agricultural and Forest Meteorology* 169 (February). Elsevier
296 BV: 122–35. doi:10.1016/j.agrformet.2012.09.006.
- 297 McHugh, Ian D., Jason Beringer, Shaun C. Cunningham, Patrick J. Baker, Timothy R. Cavagnaro, Ralph
298 Mac Nally, and Ross M. Thompson. 2017. “Interactions Between Nocturnal Turbulent Flux, Storage and
299 Advection at an Ideal Eucalypt Woodland Site.” *Biogeosciences* 14 (12). Copernicus GmbH: 3027–50.
300 doi:10.5194/bg-14-3027-2017.
- 301 Merbold, L., J. Ardö, A. Arneth, R. J. Scholes, Y. Nouvellon, A. de Grandcourt, S. Archibald, et al. 2009.
302 “Precipitation as Driver of Carbon Fluxes in 11 African Ecosystems.” *Biogeosciences* 6 (6). Copernicus GmbH:
303 1027–41. doi:10.5194/bg-6-1027-2009.
- 304 Merbold, L., W. L. Kutsch, C. Corradi, O. Kolle, C. Rebmann, P. C. Stoy, S. A. Zimov, and E.-D. Schulze.
305 2009. “Artificial Drainage and Associated Carbon Fluxes (CO₂/CH₄) in a Tundra Ecosystem.” *Global Change*
306 *Biology* 15 (11). Wiley-Blackwell: 2599–2614. doi:10.1111/j.1365-2486.2009.01962.x.
- 307 Merbold, Lutz, Werner Eugster, Jacqueline Stieger, Mark Zahniser, David Nelson, and Nina Buchmann.
308 2014. “Greenhouse Gas Budget (CO₂, CH₄ and N₂o) of Intensively Managed Grassland Following Restoration.”
309 *Global Change Biology* 20 (6). Wiley-Blackwell: 1913–28. doi:10.1111/gcb.12518.
- 310 Meyer, W. S., E. Kondrlovà, and G. R. Koerber. 2015. “Evaporation of Perennial Semi-Arid Woodland in
311 Southeastern Australia Is Adapted for Irregular but Common Dry Periods.” *Hydrological Processes* 29 (17).
312 Wiley-Blackwell: 3714–26. doi:10.1002/hyp.10467.
- 313 Migliavacca, Mirco, Michele Meroni, Lorenzo Busetto, Roberto Colombo, Terenzio Zenone, Giorgio Matteucci,
314 Giovanni Manca, and Guenther Seufert. 2009. “Modeling Gross Primary Production of Agro-Forestry
315 Ecosystems by Assimilation of Satellite-Derived Information in a Process-Based Model.” *Sensors* 9 (2). MDPI
316 AG: 922–42. doi:10.3390/s90200922.
- 317 Mkhabela, M.S., B.D. Amiro, A.G. Barr, T.A. Black, I. Hawthorne, J. Kidston, J.H. McCaughey, et
318 al. 2009a. “Comparison of Carbon Dynamics and Water Use Efficiency Following Fire and Harvest-
319 ing in Canadian Boreal Forests.” *Agricultural and Forest Meteorology* 149 (5). Elsevier BV: 783–94.
320 doi:10.1016/j.agrformet.2008.10.025.
- 321 ———. 2009b. “Comparison of Carbon Dynamics and Water Use Efficiency Following Fire and Har-
322 vesting in Canadian Boreal Forests.” *Agricultural and Forest Meteorology* 149 (5). Elsevier BV: 783–94.
323 doi:10.1016/j.agrformet.2008.10.025.
- 324 ———. 2009c. “Comparison of Carbon Dynamics and Water Use Efficiency Following Fire and Har-
325 vesting in Canadian Boreal Forests.” *Agricultural and Forest Meteorology* 149 (5). Elsevier BV: 783–94.
326 doi:10.1016/j.agrformet.2008.10.025.
- 327 Molen, M. K. van der, J. van Huissteden, F. J. W. Parmentier, A. M. R. Petrescu, A. J. Dolman, T. C.
328 Maximov, A. V. Kononov, S. V. Karsanaev, and D. A. Suzdalov. 2007. “The Growing Season Greenhouse
329 Gas Balance of a Continental Tundra Site in the Indigirka Lowlands, NE Siberia.” *Biogeosciences* 4 (6).
330 Copernicus GmbH: 985–1003. doi:10.5194/bg-4-985-2007.
- 331 Monson, R. K., A. A. Turnipseed, J. P. Sparks, P. C. Harley, L. E. Scott-Denton, K. Sparks, and T. E.
332 Huxman. 2002. “Carbon Sequestration in a High-Elevation, Subalpine Forest.” *Global Change Biology* 8 (5).
333 Wiley-Blackwell: 459–78. doi:10.1046/j.1365-2486.2002.00480.x.
- 334 Montagnani, Leonardo, Giovanni Manca, Elisa Canepa, Emilia Georgieva, Manuel Acosta, Christian Feigen-
335 winter, Dalibor Janous, et al. 2009. “A New Mass Conservation Approach to the Study of CO₂ advection in
336 an Alpine Forest.” *Journal of Geophysical Research* 114 (D7). Wiley-Blackwell. doi:10.1029/2008jd010650.
- 337 Morin, T. H., G. Bohrer, R. P. d. M. Frasson, L. Naor-Azreli, S. Mesi, K. C. Stefanik, and K. V. R. Schäfer.
338 2014. “Environmental Drivers of Methane Fluxes from an Urban Temperate Wetland Park.” *Journal of*
339 *Geophysical Research: Biogeosciences* 119 (11). Wiley-Blackwell: 2188–2208. doi:10.1002/2014jg002750.
- 340 Moureaux, Christine, Alain Debacq, Bernard Bodson, Bernard Heinesch, and Marc Aubinet. 2006. “Annual
341 Net Ecosystem Carbon Exchange by a Sugar Beet Crop.” *Agricultural and Forest Meteorology* 139 (1-2).

- 342 Elsevier BV: 25–39. doi:10.1016/j.agrformet.2006.05.009.
- 343 Nakai, Taro, Yongwon Kim, Robert C. Busey, Rikie Suzuki, Shin Nagai, Hideki Kobayashi, Hotaek Park,
344 Konosuke Sugiura, and Akihiko Ito. 2013. “Characteristics of Evapotranspiration from a Permafrost Black
345 Spruce Forest in Interior Alaska.” *Polar Science* 7 (2). Elsevier BV: 136–48. doi:10.1016/j.polar.2013.03.003.
- 346 Noormets, Asko, Jiquan Chen, and Thomas R. Crow. 2007a. “Age-Dependent Changes in Ecosystem Carbon
347 Fluxes in Managed Forests in Northern Wisconsin, USA.” *Ecosystems* 10 (2). Springer Nature: 187–203.
348 doi:10.1007/s10021-007-9018-y.
- 349 ———. 2007b. “Age-Dependent Changes in Ecosystem Carbon Fluxes in Managed Forests in Northern
350 Wisconsin, USA.” *Ecosystems* 10 (2). Springer Nature: 187–203. doi:10.1007/s10021-007-9018-y.
- 351 ———. 2007c. “Age-Dependent Changes in Ecosystem Carbon Fluxes in Managed Forests in Northern
352 Wisconsin, USA.” *Ecosystems* 10 (2). Springer Nature: 187–203. doi:10.1007/s10021-007-9018-y.
- 353 ———. 2007d. “Age-Dependent Changes in Ecosystem Carbon Fluxes in Managed Forests in Northern
354 Wisconsin, USA.” *Ecosystems* 10 (2). Springer Nature: 187–203. doi:10.1007/s10021-007-9018-y.
- 355 ———. 2007e. “Age-Dependent Changes in Ecosystem Carbon Fluxes in Managed Forests in Northern
356 Wisconsin, USA.” *Ecosystems* 10 (2). Springer Nature: 187–203. doi:10.1007/s10021-007-9018-y.
- 357 Oikawa, P. Y., G. D. Jenerette, S. H. Knox, C. Sturtevant, J. Verfaillie, I. Dronova, C. M. Poindexter,
358 E. Eichelmann, and D. D. Baldocchi. 2017. “Evaluation of a Hierarchy of Models Reveals Importance of
359 Substrate Limitation for Predicting Carbon Dioxide and Methane Exchange in Restored Wetlands.” *Journal*
360 *of Geophysical Research: Biogeosciences* 122 (1). Wiley-Blackwell: 145–67. doi:10.1002/2016jg003438.
- 361 Papale, Dario, Mirco Migliavacca, Edoardo Cremonese, Alessandro Cescatti, Giorgio Alberti, Manuela
362 Balzarolo, Luca Beletti Marchesini, et al. 2014. “Carbon, Water and Energy Fluxes of Terrestrial Ecosystems
363 in Italy.” In *The Greenhouse Gas Balance of Italy*, 11–45. Springer Berlin Heidelberg. doi:10.1007/978-3-642-
364 32424-6_2.
- 365 Pilegaard, Kim, Andreas Ibrom, Michael S. Courtney, Poul Hummelshøj, and Niels Otto Jensen. 2011.
366 “Increasing Net CO₂ Uptake by a Danish Beech Forest During the Period from 1996 to 2009.” *Agricultural*
367 *and Forest Meteorology* 151 (7). Elsevier BV: 934–46. doi:10.1016/j.agrformet.2011.02.013.
- 368 Posse, G, N Lewczuk, K Richter, and P Cristiano. 2016. “Carbon and Water Vapor Balance in a Subtropical
369 Pine Plantation.” *iForest - Biogeosciences and Forestry* 9 (5). Italian Society of Silviculture; Forest Ecology
370 (SISEF): 736–42. doi:10.3832/ifor1815-009.
- 371 Post, H., H. J. Hendricks Franssen, A. Graf, M. Schmidt, and H. Vereecken. 2015. “Uncertainty Analysis of
372 Eddy Covariance CO₂ Flux Measurements for Different EC Tower Distances Using an Extended Two-Tower
373 Approach.” *Biogeosciences* 12 (4). Copernicus GmbH: 1205–21. doi:10.5194/bg-12-1205-2015.
- 374 Powell, Thomas L., Rosvel Bracho, Jiahong Li, Sabina Dore, C. Ross Hinkle, and Bert G. Drake. 2006.
375 “Environmental Controls over Net Ecosystem Carbon Exchange of Scrub Oak in Central Florida.” *Agricultural*
376 *and Forest Meteorology* 141 (1). Elsevier BV: 19–34. doi:10.1016/j.agrformet.2006.09.002.
- 377 Prescher, Anne-Katrin, Thomas Grünwald, and Christian Bernhofer. 2010a. “Land Use Regulates Carbon
378 Budgets in Eastern Germany: From NEE to NBP.” *Agricultural and Forest Meteorology* 150 (7-8). Elsevier
379 BV: 1016–25. doi:10.1016/j.agrformet.2010.03.008.
- 380 ———. 2010b. “Land Use Regulates Carbon Budgets in Eastern Germany: From NEE to NBP.” *Agricultural*
381 *and Forest Meteorology* 150 (7-8). Elsevier BV: 1016–25. doi:10.1016/j.agrformet.2010.03.008.
- 382 Rambal, S., R. Joffre, J. M. Ourcival, J. Cavender-Bares, and A. Rocheteau. 2004. “The Growth Respiration
383 Component in Eddy CO₂ Flux from a Quercus Ilex Mediterranean Forest.” *Global Change Biology* 10 (9).
384 Wiley-Blackwell: 1460–9. doi:10.1111/j.1365-2486.2004.00819.x.
- 385 Raz-Yaseef, Naama, Dave P. Billesbach, Marc L. Fischer, Sebastien C. Biraud, Stacey A. Gunter, James A.
386 Bradford, and Margaret S. Torn. 2015a. “Vulnerability of Crops and Native Grasses to Summer Drying in the

- 387 U.S. Southern Great Plains.” *Agriculture, Ecosystems & Environment* 213 (December). Elsevier BV: 209–18.
388 doi:10.1016/j.agee.2015.07.021.
- 389 ———. 2015b. “Vulnerability of Crops and Native Grasses to Summer Drying in the U.S. Southern Great Plains.”
390 *Agriculture, Ecosystems & Environment* 213 (December). Elsevier BV: 209–18. doi:10.1016/j.agee.2015.07.021.
- 391 ———. 2015c. “Vulnerability of Crops and Native Grasses to Summer Drying in the U.S. Southern Great Plains.”
392 *Agriculture, Ecosystems & Environment* 213 (December). Elsevier BV: 209–18. doi:10.1016/j.agee.2015.07.021.
- 393 ———. 2015d. “Vulnerability of Crops and Native Grasses to Summer Drying in the U.S. Southern Great Plains.”
394 *Agriculture, Ecosystems & Environment* 213 (December). Elsevier BV: 209–18. doi:10.1016/j.agee.2015.07.021.
- 395 Reverter, B. R., E. P. Sánchez-Cañete, V. Resco, P. Serrano-Ortiz, C. Oyonarte, and A. S. Kowalski. 2010.
396 “Analyzing the Major Drivers of NEE in a Mediterranean Alpine Shrubland.” *Biogeosciences* 7 (9). Copernicus
397 GmbH: 2601–11. doi:10.5194/bg-7-2601-2010.
- 398 Rey, Ana, Emiliano Pegoraro, Vanessa Tedeschi, Ilaria De Parri, Paul G. Jarvis, and Riccardo Valentini. 2002.
399 “Annual Variation in Soil Respiration and Its Components in a Coppice Oak Forest in Central Italy.” *Global*
400 *Change Biology* 8 (9). Wiley-Blackwell: 851–66. doi:10.1046/j.1365-2486.2002.00521.x.
- 401 Ruehr, Nadine K., Jonathan G. Martin, and Beverly E. Law. 2012. “Effects of Water Availability on Carbon
402 and Water Exchange in a Young Ponderosa Pine Forest: Above- and Belowground Responses.” *Agricultural*
403 *and Forest Meteorology* 164 (October). Elsevier BV: 136–48. doi:10.1016/j.agrformet.2012.05.015.
- 404 Sabbatini, S., N. Arriga, T. Bertolini, S. Castaldi, T. Chiti, C. Consalvo, S. Njakou Djomo, B. Gioli, G.
405 Matteucci, and D. Papale. 2016a. “Greenhouse Gas Balance of Cropland Conversion to Bioenergy Poplar
406 Short-Rotation Coppice.” *Biogeosciences* 13 (1). Copernicus GmbH: 95–113. doi:10.5194/bg-13-95-2016.
- 407 ———. 2016b. “Greenhouse Gas Balance of Cropland Conversion to Bioenergy Poplar Short-Rotation Coppice.”
408 *Biogeosciences* 13 (1). Copernicus GmbH: 95–113. doi:10.5194/bg-13-95-2016.
- 409 ———. 2016c. “Greenhouse Gas Balance of Cropland Conversion to Bioenergy Poplar Short-Rotation Coppice.”
410 *Biogeosciences* 13 (1). Copernicus GmbH: 95–113. doi:10.5194/bg-13-95-2016.
- 411 Schmidt, M., T.G. Reichenau, P. Fiener, and K. Schneider. 2012. “The Carbon Budget of a Winter Wheat
412 Field: An Eddy Covariance Analysis of Seasonal and Inter-Annual Variability.” *Agricultural and Forest*
413 *Meteorology* 165 (November). Elsevier BV: 114–26. doi:10.1016/j.agrformet.2012.05.012.
- 414 Scott, Russell L., Joel A. Biederman, Erik P. Hamerlynck, and Greg A. Barron-Gafford. 2015a. “The Carbon
415 Balance Pivot Point of Southwestern U.S. Semiarid Ecosystems: Insights from the 21st Century Drought.” *Journal*
416 *of Geophysical Research: Biogeosciences* 120 (12). Wiley-Blackwell: 2612–24. doi:10.1002/2015jg003181.
- 417 ———. 2015b. “The Carbon Balance Pivot Point of Southwestern U.S. Semiarid Ecosystems: Insights from the
418 21st Century Drought.” *Journal of Geophysical Research: Biogeosciences* 120 (12). Wiley-Blackwell: 2612–24.
419 doi:10.1002/2015jg003181.
- 420 Scott, Russell L., Erik P. Hamerlynck, G. Darrel Jenerette, M. Susan Moran, and Greg A. Barron-Gafford.
421 2010. “Carbon Dioxide Exchange in a Semidesert Grassland Through Drought-Induced Vegetation Change.”
422 *Journal of Geophysical Research* 115 (G3). Wiley-Blackwell. doi:10.1029/2010jg001348.
- 423 Scott, Russell L., G. Darrel Jenerette, Daniel L. Potts, and Travis E. Huxman. 2009. “Effects of Seasonal
424 Drought on Net Carbon Dioxide Exchange from a Woody-Plant-Encroached Semiarid Grassland.” *Journal of*
425 *Geophysical Research* 114 (G4). Wiley-Blackwell. doi:10.1029/2008jg000900.
- 426 Shi, Peili, Xiaomin Sun, Lingling Xu, Xianzhou Zhang, Yongtao He, Dongqiu Zhang, and Guirui Yu. 2006.
427 “Net Ecosystem CO₂ Exchange and Controlling Factors in a SteppeKobresia Meadow on the Tibetan Plateau.”
428 *Science in China Series D: Earth Sciences* 49 (S2). Springer Nature: 207–18. doi:10.1007/s11430-006-8207-4.
- 429 Stevens, Rob M., Caecilia M. Ewenz, Gary Grigson, and Samantha M. Conner. 2011. “Water Use by an
430 Irrigated Almond Orchard.” *Irrigation Science* 30 (3). Springer Nature: 189–200. doi:10.1007/s00271-011-
431 0270-8.
- 432 Stiegler, Christian, Magnus Lund, Torben Røjle Christensen, Mikhail Mastepanov, and Anders Lindroth.

- 433 2016. “Two Years with Extreme and Little Snowfall: Effects on Energy Partitioning and Surface Energy
434 Exchange in a High-Arctic Tundra Ecosystem.” *The Cryosphere* 10 (4). Copernicus GmbH: 1395–1413.
435 doi:10.5194/tc-10-1395-2016.
- 436 Sulman, B. N., A. R. Desai, B. D. Cook, N. Saliendra, and D. S. Mackay. 2009. “Contrasting Carbon Dioxide
437 Fluxes Between a Drying Shrub Wetland in Northern Wisconsin, USA, and Nearby Forests.” *Biogeosciences* 6
438 (6). Copernicus GmbH: 1115–26. doi:10.5194/bg-6-1115-2009.
- 439 Tagesson, Torbern, Rasmus Fensholt, Idrissa Guiro, Mads Olander Rasmussen, Silvia Huber, Cheikh Mbow,
440 Monica Garcia, et al. 2014. “Ecosystem Properties of Semiarid Savanna Grassland in West Africa and
441 Its Relationship with Environmental Variability.” *Global Change Biology* 21 (1). Wiley-Blackwell: 250–64.
442 doi:10.1111/gcb.12734.
- 443 Tedeschi, Vanessa, Ana Rey, Giovanni Manca, Riccardo Valentini, Paul G. Jarvis, and Marco Borghetti. 2006.
444 “Soil Respiration in a Mediterranean Oak Forest at Different Developmental Stages After Coppicing.” *Global
445 Change Biology* 12 (1). Wiley-Blackwell: 110–21. doi:10.1111/j.1365-2486.2005.01081.x.
- 446 Thum, Tea, Tuula Aalto, Tuomas Laurila, Mika Aurela, Pasi Kolari, and Pertti Hari. 2007. “Parametrization
447 of Two Photosynthesis Models at the Canopy Scale in a Northern Boreal Scots Pine Forest.” *Tellus B* 59 (5).
448 Informa UK Limited. doi:10.3402/tellusb.v59i5.17066.
- 449 Ulke, Ana Graciela, Natalia Noemí Gattinoni, and Gabriela Posse. 2015. “Analysis and Modelling of Turbulent
450 Fluxes in Two Different Ecosystems in Argentina.” *International Journal of Environment and Pollution* 58
451 (1/2). Inderscience Publishers: 52. doi:10.1504/ijep.2015.076583.
- 452 Urbanski, S., C. Barford, S. Wofsy, C. Kucharik, E. Pyle, J. Budney, K. McKain, D. Fitzjarrald, M. Czikowsky,
453 and J. W. Munger. 2007. “Factors Controlling CO₂ exchange on Timescales from Hourly to Decadal at
454 Harvard Forest.” *Journal of Geophysical Research* 112 (G2). Wiley-Blackwell. doi:10.1029/2006jg000293.
- 455 Valentini, R., P. Angelis, G. Matteucci, R. Monaco, S. Dore, and G. E. Scarascia Mucnozza. 1996. “Seasonal
456 Net Carbon Dioxide Exchange of a Beech Forest with the Atmosphere.” *Global Change Biology* 2 (3).
457 Wiley-Blackwell: 199–207. doi:10.1111/j.1365-2486.1996.tb00072.x.
- 458 Verma, Shashi B., Achim Dobermann, Kenneth G. Cassman, Daniel T. Walters, Johannes M. Knops,
459 Timothy J. Arkebauer, Andrew E. Suyker, et al. 2005a. “Annual Carbon Dioxide Exchange in Irrigated and
460 Rainfed Maize-Based Agroecosystems.” *Agricultural and Forest Meteorology* 131 (1-2). Elsevier BV: 77–96.
461 doi:10.1016/j.agrformet.2005.05.003.
- 462 ———. 2005b. “Annual Carbon Dioxide Exchange in Irrigated and Rainfed Maize-Based Agroecosystems.”
463 *Agricultural and Forest Meteorology* 131 (1-2). Elsevier BV: 77–96. doi:10.1016/j.agrformet.2005.05.003.
- 464 ———. 2005c. “Annual Carbon Dioxide Exchange in Irrigated and Rainfed Maize-Based Agroecosystems.”
465 *Agricultural and Forest Meteorology* 131 (1-2). Elsevier BV: 77–96. doi:10.1016/j.agrformet.2005.05.003.
- 466 Vitale, Luca, Paul Di Tommasi, Guido D’Urso, and Vincenzo Magliulo. 2015. “The Response of Ecosystem
467 Carbon Fluxes to LAI and Environmental Drivers in a Maize Crop Grown in Two Contrasting Seasons.”
468 *International Journal of Biometeorology* 60 (3). Springer Nature: 411–20. doi:10.1007/s00484-015-1038-2.
- 469 Westergaard-Nielsen, Andreas, Magnus Lund, Birger Ulf Hansen, and Mikkel Peter Tamstorf. 2013. “Cam-
470 era Derived Vegetation Greenness Index as Proxy for Gross Primary Production in a Low Arctic Wet-
471 land Area.” *ISPRS Journal of Photogrammetry and Remote Sensing* 86 (December). Elsevier BV: 89–99.
472 doi:10.1016/j.isprsjprs.2013.09.006.
- 473 Wick, B., E. Veldkamp, W. Z. de Mello, M. Keller, and P. Crill. 2005. “Nitrous Oxide Fluxes and Nitrogen
474 Cycling Along a Pasture Chronosequence in Central Amazonia, Brazil.” *Biogeosciences* 2 (2). Copernicus
475 GmbH: 175–87. doi:10.5194/bg-2-175-2005.
- 476 Wohlfahrt, Georg, Albin Hammerle, Alois Haslwanter, Michael Bahn, Ulrike Tappeiner, and Alexander
477 Cernusca. 2008. “Seasonal and Inter-Annual Variability of the Net Ecosystem CO₂ exchange of a Temperate

- 478 Mountain Grassland: Effects of Weather and Management.” *Journal of Geophysical Research* 113 (D8).
479 Wiley-Blackwell. doi:10.1029/2007jd009286.
- 480 Yee, Mei Sun, Valentijn R.N. Pauwels, Edoardo Daly, Jason Beringer, Christoph Rüdiger, Matthew F. McCabe,
481 and Jeffrey P. Walker. 2015. “A Comparison of Optical and Microwave Scintillometers with Eddy Covariance
482 Derived Surface Heat Fluxes.” *Agricultural and Forest Meteorology* 213 (November). Elsevier BV: 226–39.
483 doi:10.1016/j.agrformet.2015.07.004.
- 484 Zeller, K.F., and N.T. Nikolov. 2000. “Quantifying Simultaneous Fluxes of Ozone, Carbon Dioxide and
485 Water Vapor Above a Subalpine Forest Ecosystem.” *Environmental Pollution* 107 (1). Elsevier BV: 1–20.
486 doi:10.1016/s0269-7491(99)00156-6.
- 487 Zielis, S., S. Etzold, R. Zweifel, W. Eugster, M. Haeni, and N. Buchmann. 2014. “NEP of a Swiss Subalpine
488 Forest Is Significantly Driven Not Only by Current but Also by Previous Years Weather.” *Biogeosciences* 11
489 (6). Copernicus GmbH: 1627–35. doi:10.5194/bg-11-1627-2014.