

Interactive comment on “Diagnosing sea-surface dimethylsulfide (DMS) concentration from satellite data at global and regional scales” by Martí Galí et al.

Martí Galí et al.

marti.gali.tapias@gmail.com

Received and published: 13 April 2018

We posted our response to R1 and R2 as a supplement that includes (i) a general response and overview of proposed changes, (ii) detailed responses to R1, and (iii) detailed responses to R2.

Please also note the supplement to this comment:

<https://www.biogeosciences-discuss.net/bg-2018-18/bg-2018-18-AC1-supplement.pdf>

Interactive comment on Biogeosciences Discuss., <https://doi.org/10.5194/bg-2018-18>, 2018.

Printer-friendly version

Discussion paper



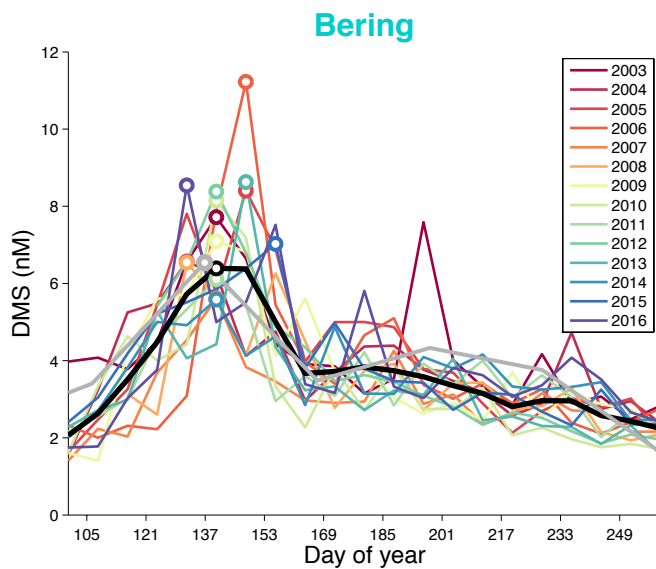


Fig. 1.

Printer-friendly version

Discussion paper



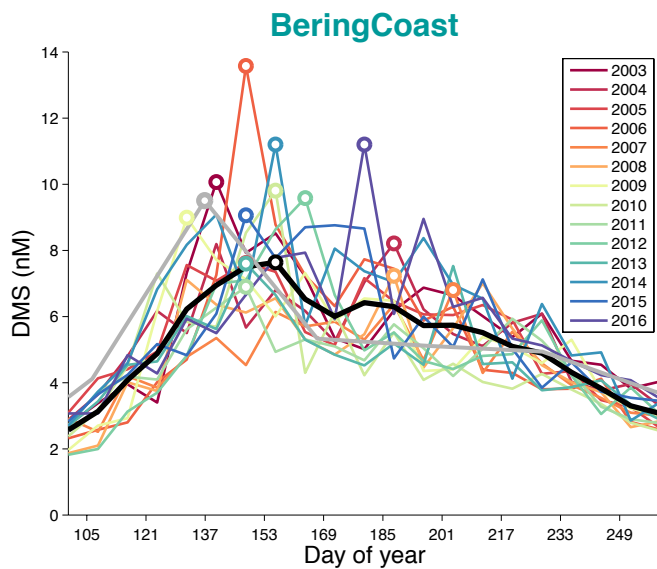


Fig. 2.

Printer-friendly version

Discussion paper



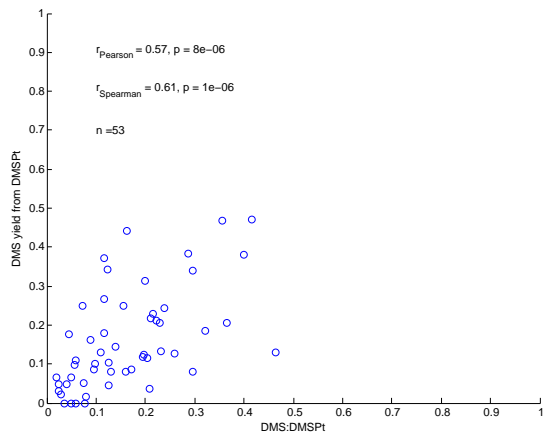


Fig. 3.