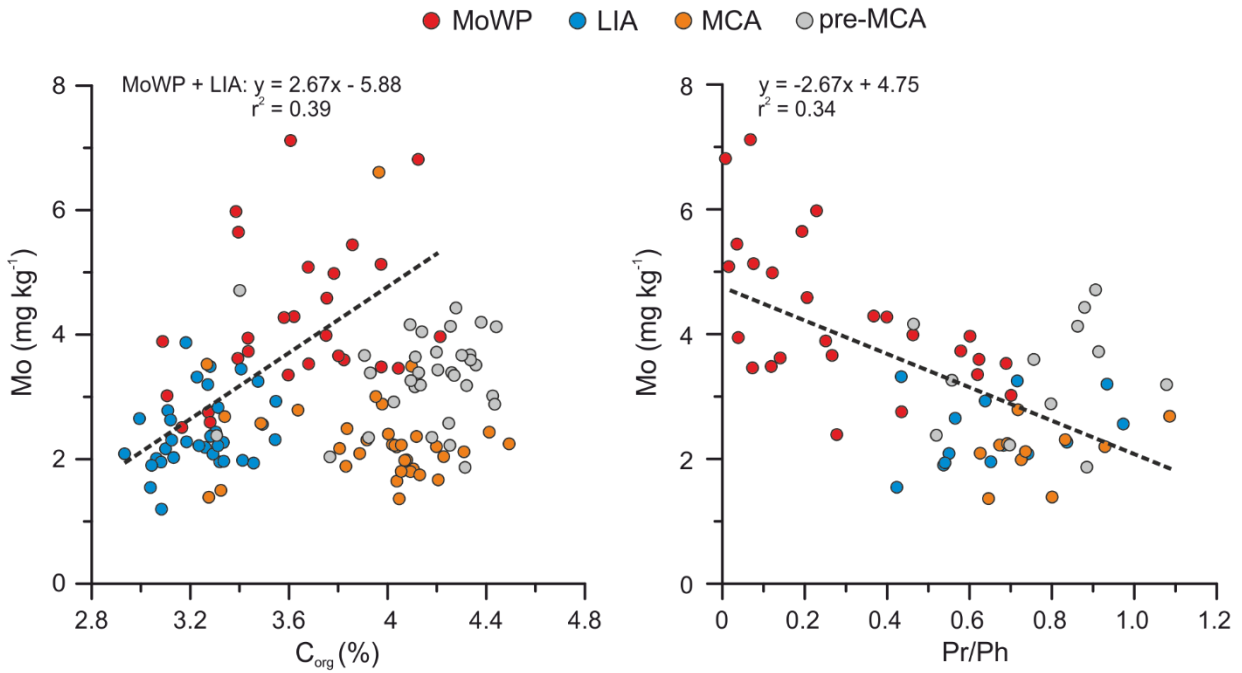


1

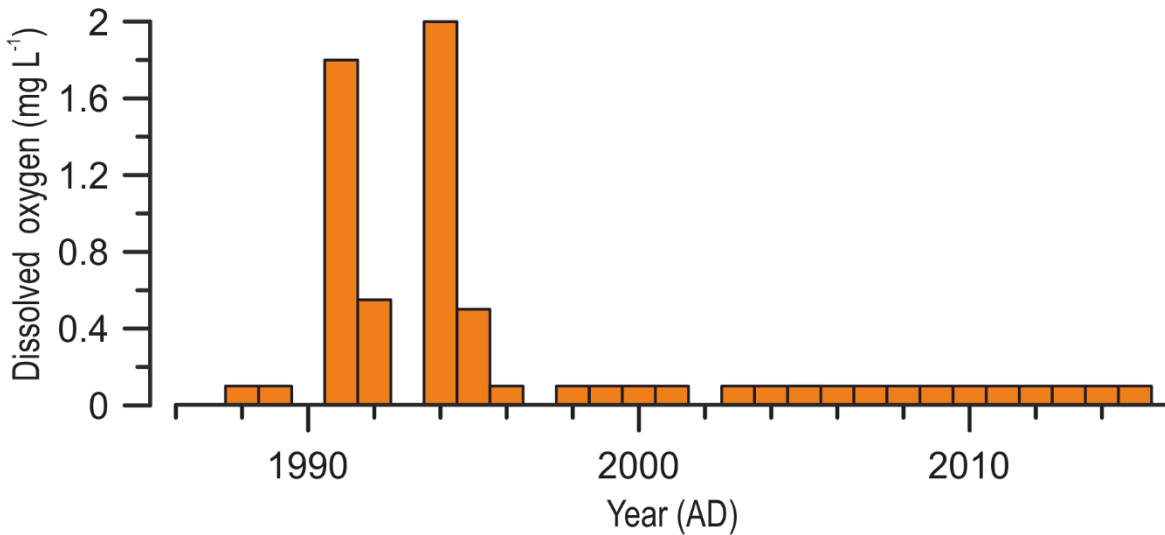


2

3 **Fig. S1.** Crossplots for Mo content against C_{org} content and Pr/Ph ratio. For Mo vs. C_{org} , a linear regression
4 for the samples post-dating the MCA is shown, while for Mo vs. Pr/Ph a regression for the entire data set is
5 presented.

6

7



8

9 **Fig S2.** Near-bottom water (1 m above seabed) dissolved oxygen concentrations at the study site in August
10 from 1988 to 2015 AD (data from HERTTA database: www.syke.fi/avoindata). The values at 0.1 mg L⁻¹
11 represent concentrations below the detection limit (0.2 mg L⁻¹).