

Comments to the Author:

Dear Dr. Birkholz,

We received a review of your revised manuscript. The referee was very pleased to find your nice improvements, but has still had severe concerns about the correction of Suess effect and a carbon exchange mechanism to explain the highly isotopically depleted long-chain fatty acid signatures in the deep sediments. So please read the following comments from the expert, and make a further revised manuscript with point-by-point responses.

Thank you again for your wonderful efforts to improve the manuscript.

Kind regards,

Koji Suzuki
Associate Editor

Dear editor, dear reviewer,

Thanks a lot for reviewing and editing our submitted manuscript. In the following we tried to split up the reviewer comments into suitable sections and did a point by point reply.

We think and hope that we now have found a good way to deal with the two main concerns of the reviewer, the missing source and the correction for the Suess effect. We completely removed the speculation about carbon exchange in fatty acid molecules in the sediment core and we also acknowledge the almost certain likelihood of an in-situ production of long chain FAs by bacteria, algae or other microorganisms in the lake. However, we rather would like to keep the hypothesis about the depleted FA origin from historical peatlands/riparian area in the manuscript and would appreciate, if you would agree on it. Regarding the Suess effect we have to admit, that our original calculation was wrong. We now have explained in more detail how our Suess effect estimation on soils was done and demonstrate why, from our perspective, the correction for the lake sediment samples is very difficult and can only be performed when the missing source and their isotopic signature would be known.

We hope that with this second revision we can convince you that the manuscript is suitable for being published in Biogeosciences.

Thank you again for investing so much time in improving our manuscript.

Kind regards,
Axel Birkholz, in the name of all Co-Authors.

Comments and over view:

The authors have generally responded well to the referee's comments and many of the concerns raised have been dealt with, appropriately. There is obviously a missing source in the polygons and that will affect the model output. It is Okay to state that there is an unknown source, but it would be better to complete the search and identify the most likely candidate. As I see it, the most likely candidate is the sediment bacteria that the authors speculated were exchanging the carbon isotopic signatures of the terrestrial FAs.

First of all, thanks a lot for the reviewer efforts to help making the manuscript better and more concise.

As shown in the 1st revised manuscript we hypothesized possible potential sources like algal production, bacterial production in the lake or production in historical wetlands/ reedbeds with isotopically depleted plant material (due to the use of depleted CO₂ (from bacterial methane oxidation) for photosynthesis).

For the new revised manuscript we removed the speculation about carbon exchange completely as we agree with the reviewer, that this is not based on scientific evidence.

Deleted paragraph P10L36-P11L2

Because of the fascination with trying to invoke this new source for isotopically depleted FAs in the

lake, the authors have drifted away from their stated aim:

"The need to precisely identify sediment sources is especially important in eutrophic systems to enable efficient and targeted restoration measures." "While the eutrophication history of the Lake Baldegg has extensively been studied (), an in-depth confrontation of the lake evolution with the recent history of the catchment (including land-use and agricultural practices changes) has not yet been performed." "Our project aimed at filling these gaps. In this paper, the soil isotopic signatures of FAs characterizing the main land-uses of Lake Baldegg catchment are quantified and confronted to the evolution of the CSIA imprint of a 130-yrs long lake sediment sequence." That fascination has led to speculation which is unsubstantiated but subsequently treated as fact.

No sorry, but we cannot completely agree with this. We can for a large part interpret the evolution of the CSSI signatures and the reflection of the land use change in this development and explain this in detail in the manuscript. Only part of the negative deviation is left unexplained and for this we try to develop explanatory hypotheses.

There are also errors in the calculation of the Suess effect.

We agree with you, but please see answers regarding the Suess effect below. where the reviewer is more detailed in his/her comment.

While the paper is important because of the in-depth study of the long-chain FAs in the sediment, the purpose of the paper has become buried in non-essential discussion and needs to be re-written in places to make it more concise and without speculation.

Specifics

The exchange concept has not been adequately dealt with. The authors are still speculating that a carbon exchange is the explanation for the highly isotopically depleted C28:0 fatty acid signature at depth in the sediment while ignoring scientific reasoning and weight of evidence that it is not. Because it is important to get this correct, I will explain. Look at the statement on Page 10; line 34 onwards:

"Here the example of van Bree et al. (2018) can be consulted, as they found a compound-specific enrichment of mostly C28:0 FA in the water column. Also the accompanying depletion of, in their case, C28:0 FA compared to the terrestrial C28:0 FA signal is hinting into the direction of an aquatic source. A diagenetic transformation of the FAs isotopic signal can also be speculated for the sediments older than 1940. Such an assumption would mean that these sediments would have been affected by carbon exchanges years to decades after their deposition, during the most severe eutrophic phases of the lake history. Why these exchanges would not have affected the younger sediments remains unexplained. And so far, no cases of such a diagenetic transformation have been described."

Statement: "C28:0 FA compared to the terrestrial C28:0 FA signal is hinting into the direction of an aquatic source". van Bree et al. (2018) are not just hinting at an aquatic source – they have documented it as an aquatic source and provided a strong "weight-of-evidence" case to support that conclusion.

In the new revised version, we will emphasize more clearly, that van Brees conclusions are also a likely scenario for Baldeggensee. We are not excluding or questioning van Brees theory. Please see in the last revised manuscript P7L18-36, where we already mentioned the same conditions in Lake Baldegg, like CO₂ undersaturation and pH as in Lake Chala. And P8L1-10. Regarding the reviewer comment above, in our case it is mostly C26:0 and C24:0 FAs which are depleted. C28:0 is staying within the mixing polygon during that time and is only depleted during the isotopical excursion in the 1960s/70s.

Changed "affected" to "masked" on P8L7.

And please see adapted chapter 4.2.

Statement: "A diagenetic transformation of the FAs isotopic signal can also be speculated ". This speculation is unsubstantiated and incorrect. There are good reasons why "no cases of such a diagenetic transformation have been described" – because it doesn't happen. A diagenetic exchange of carbon atoms that changed the isotopic signature of the original molecule is impossible. If it could occur, the original C28:0 molecule would be broken into smaller chain-length pieces and no longer contribute to the C28:0 carbon pool.

Yes, we agree with the reviewer. As already stated above, we will remove this part completely.

You could, however, mask the original isotopic signature with a more depleted isotopic signature and the observed isotopic signature would appear to have changed if that more depleted isotopic source was not included in the modelling.

We agree with this point of view and changed accordingly chapter 4.2. and the conclusions.

Come back to first principles:

1) The FA exudate from plant roots labels the soil by binding on to it. The plant litter does not label the soil because the FAs in the litter are already incorporated into the plant matter and are not available as free acid radicles to bind to soil particles. Water sorting in lakes and bacterial decomposition processes remove the plant litter carbon rapidly but not the FA carbon bound to the soil.

We agree that FA exudate from plant roots label the soil. However above ground plant material (e.g., leaves, needle) can also end up as humus material transferred to the soil via degradation in the humus layer and then downward transport in the soil profile and eventual binding to soil particles of the mineral soil. However, in both cases, FAs bound to soil particles are useful labels of the terrestrial plant growing on the soil.

2) The isotopic signature of the FA in the sediment does not "change" going down the sediment core. Because the FA must be produced close to the sediment particle it is bound to, it is the source of the FA that is changing down the core. Hence, we can use CSIA to identify sources.

We totally agree with the statement, that the source is changing. If we have formulated imprecisely which caused misunderstandings in the text we are sorry and we have changed it accordingly.

3) The source of highly depleted d13C isotopic signatures in sediment is associated with methane production and the presence of methane oxidising bacteria (MOB) at the sediment-water interface. Under stratified water column conditions, the MOB can convert methane into CO₂ (with the same highly depleted isotopic signature as the methane) at the oxic/anoxic interface in the water column. [Naeher et al. 2014: Tracing the methane cycle with lipid biomarkers in Lake Rotsee (Switzerland). *Organic Geochemistry* 66: 174–181] for use by algae such as cyanobacteria, which are known to produce C_{28:0} FAs, and other microbial processes, which produce long chain FAs – these will all have highly depleted isotopic signatures. Look at fig 10, fig 12 and fig 13 in van Bree et al. (2018). These figures show the timing of the production of highly isotopically depleted C_{26:0} and C_{28:0} to be after the collapse of an algal bloom in Autumn when their lake was thermally stratified and had probably achieved an anoxic (i.e., no oxygen but has oxygen containing molecules - SO₄, NO₃) hypolimnion. While van Bree et al. (2018) have linked the highly isotopically depleted long chain FAs to phytoplankton, other researchers have simply attributed the FA production to "bacteria" [e.g., Petrišič et al. 2017: Lipid biomarkers and their stable carbon isotopes in oxic and anoxic sediments of Lake Bled (NW Slovenia). *Geomicrobiology* 34(7):1-12; Steger et al. 2015: Comparative study on bacterial carbon sources in lake sediments: the role of methanotrophy. *Aquatic Microbial Ecology* 76: 39–47; and many other papers]. Most researchers haven't looked at the longer chain fatty acids, which is why this paper is important.

Yes, thanks for these thoughts, we totally agree with you and thought we made these points, at least regarding van Bree et al. (2018) already in the revised manuscript. So far it was assumed, that the long chain FAs are mainly produced by higher plants (Eglinton and Eglinton, 2008) which is the reason why bacteria studies mainly looked after the shorter ones (cf. Naeher et al. 2014, Steger et al., 2015; literature the reviewer was providing). Thanks a lot for providing the publication of Petrisic et al. (2017), which we didn't know yet. We will incorporate this publication into our new revised manuscript as another case study which is providing more evidence for the ability of bacteria to produce long chain fatty acids in a lacustrine environment.

Please see adapted chapter 4.2.

4) The organisms with highly depleted long chain FAs produced in the lake during stratification will deposit on the sediment surface and be buried with the next input of sediment and detritus. That will lock the depleted isotopic signature in the sediment as a marker for that time/depth. As the water quality of the lake changes after the removal of the sewage input, the overlying bottom water became anaerobic (i.e., no oxygen or molecules with oxygen -e.g., SO₄ and NO₃) depriving

the MOB of the oxygen source needed to function. Consequently, the MOB probably became a minor contributor to the long-chain FA pool.

Statement: "Why these exchanges would not have affected the younger sediments remains unexplained". The above is the explanation - the younger sediment was not deposited when the lake was hypertrophic so there would be little if any affect from the MOB process. Using this scenario, while sewage was entering Lake Baldegg, it is likely that the new source of long chain FAs, locally produced in association with MOB in the lake by the indirect utilization of isotopically highly depleted methane, has masked the stable isotope signatures of the original terrestrial long chain FAs.

Thanks a lot for this explanation. We agree, that it is very likely, that due to a change in the lakes trophic status, the presence or abundance of the organisms which are responsible for the depleted FAs has changed. We will incorporate that in the revised manuscript. However, the wastewater treatment plant was only introduced in the late 1960s.

Please see P12L5-6 and revised Chapter 5 P13P25-P14L22

It is likely that the isotopic signature from the MOB activity will remain relatively constant in the lake, while the sewage was being discharge into the lake. If this is correct, the MOB depleted isotopic signature would be the missing source end-member. It then follows that the isotopic mixing between allochthonous and autochthonous long chain FAs could result in the variability of the isotopic signatures observed in the sediment. The degree of variability being dependant on the amount of external inputs of long chain FAs added to the lake. As the water quality in the lake improves with remediation treatment, the methanogenic processes become smaller and the terrestrial signatures mask them as they become dominant. To determine the amount of terrestrial source in the deep sediment, the most depleted isotopic signatures could be used as a proxy for the in-situ production by the MOB, as the missing source in the mixing model.

Using the most depleted signal as proxy for the MOB produced FAs is a point we cannot fully agree with. This would implement, that the MOB signal is not only masking the terrestrial signal but totally overprinting it. And this is not very likely, since the transport of terrestrial material into the lake, also if masked, will still be an important process. If we look in addition at reported $d^{13}C$ values of methane influenced FAs produced by bacteria or algae (eg. Petrisic et al., 2017/van Bree et al., 2018) we would expect a more depleted signal. The possible range for the missing source is too big to be fixed to one point. Please see Fig S3.

This explanation is provided to help understanding of a set of very complicated limnological processes working in highly eutrophic lakes.

Recommendations:

1) The section speculating on carbon exchange should be rewritten without the speculation, or simply be deleted. Acceptance of the van Bree et al findings could be a way forward.

As stated above, we will remove this part and emphasize more clearly van Brees findings and interpretation.

Deleted P10L36-P11L2

And we adapted chapter 4.2 and conclusions, chapter 5.

2) The polygon test should be repeated with the isotopically depleted deep sediment signature as a proxy for the MOB end-member and the data re-modelled including that end-member.

As already pointed out above, we would rather assume a more depleted source, because from our perspective an exclusive source of bacterial FAs is not very likely. In Fig. S3 we show a possible range of the missing source. From our point of view a modelling of the FA contributions using the most depleted sediment values would be very speculative and therefore we refrain from doing the model in this manuscript.

Other specific points:

Page 3, Sentence starting on line 15 "Despite the ..." is confusing and should be rewritten. Suggested rewording "The introduction of an artificial oxygenation system into the lake water column in 1982 (Stadelmann et al., 2002) lead to the disappearance of the varves from 1995.

Despite a strong decrease of P concentrations in the lake to below 30 $\mu\text{g.l}^{-1}$ as the result of lake external and internal measures, the lake has not yet fully recovered from eutrophication (Müller et al, 2014).

Changed accordingly.

Page 6, line 3: "mostly grasslands since years," do you mean "grasslands for many years"?

Changed to "many years".

Page 6, I am not sure why the authors persist with discussing the Suess effect. It is a side issue easily dealt with by applying the correction. It is distracting from the main theme of the paper. It appears as though this discussion is trying to justify the speculation of carbon exchange, which is wrong.

No, we for sure do not want to justify the carbon exchange. On the contrary, we want to continue using the CSIA method to track sediments. However, the Suess effect correction for soil derived compounds, transported to lake sediments is not straight forward and far from easily done. Suess effect correction to soil organic matter is based on the estimation of many (unknown) variables like e.g. soil incorporation rate of plant material and the actual effect of the Suess effect on the plants (cf Zhao et al., 2001, straw). Our concerns regarding this correction have nothing to do with speculations about carbon exchange (which we deleted already anyway). Please see below for our thoughts on the Suess effect correction of soil bound material.

The interpretation of the Suess effect, as presented at bottom of page 6 and top of page 7, is ambiguous. The purpose of the Suess correction in the CSIA studies is to normalise all the historical mixture data to the present day isotopic signatures so that present day land use library samples can be used to identify likely land use sources at different depths (i.e., time before present) in the core.

The cited paper (Zhao et al. 2001) correctly states the isotopic depletion since pre-industrial age (generally accepted as 1700 AD) has been 2.5‰. This is the same factor identified by Verburg (2007) and can be calculated by the polynomial equation in Verburg (2007). That equation describes an exponential curve with little change between 1700 and 1840 but faster change from then to the present. The Suess correction required for sediment collected in 1940 is -1.6‰ and -1.3‰ for 1965. Those corrections need to be added to those sediment data to enable them to be modelled using present day land use samples as the source library.

The statement on page 7, first paragraph "The resulting maximum effect is a depletion of 0.22‰ from 1840 until 2016 for the soils. For the lake sediments the maximum depletion is 0.16‰ between 1840 to 2010. The older the sediments the smaller is the Suess effect on them." These values are very different to those required to normalise the sediment mixture isotopic signatures to present day equivalents. This indicates a calculation error that needs to be remedied before any further modelling.

The paragraph continues "In 1965 the calculated Suess effect on the lake sediments is only 0.01‰"

By my calculations a correction of -1.3‰ is required. And more "If we assume the calculated effect on the soils to be uniform and take into account that it is smaller than the analytical uncertainty, and further is based on the estimation of parameters like soil incorporation rate and actual effect of the Suess effect on the plants, we think that in our case it can be neglected."

The Suess effect cannot be neglected. The calculations used by the authors to generate the Suess corrections are clearly wrong and need to be redone and then the modelling needs to be redone with the corrected data.

First we want to acknowledge that there was a misunderstanding on our side about how to apply correctly the Suess effect correction. Many thanks to the reviewer for his effort to make things clear.

In the new revised manuscript, we replaced the existing chapter about Suess effect with a discussion how to apply the Suess effect to the lake sediment core if (mainly) terrestrial compounds are traced in the isotopic study.

Soil derived fatty acids are produced as wax lipids or from roots and are incorporated into the soil. They carry the atmospheric signature of the time when they were produced. After their incorporation into the soil they contribute to the continuum of soil organic matter with FA, as a mixture of FAs with very different ages (e.g. older than 1000years and recently built ones). Turnover times of FAs in

soils might vary widely. In lacustrine sediments, and also in coastal sediments *n*-alkane/FA ages of more than 1000 years were found.

The residence time and the accompanying mixing of FA with different ages in the soil and the time lag during transport is dampening the Suess effect in the soils. Using the $d^{13}C$ signature of our soils in 2015 as anchor point and knowing the atmospheric $d^{13}CO_2$ curve (Feng 1998, Verburgh 2007) we estimated the actual "Suess effect" on the soils with 3 different turnover times 10, 30 and 100 years (Fig S4-7), which cover the range discussed in the literature (Lichtfouse, 1997; Six and Jastrow, 2002; Wiesenberg et al, 2004). We did not consider possible changes during photosynthesis due to the increase of CO_2 concentration in the atmosphere or changes in the soil organic carbon content (which might be assumed to be fairly stable in forest and grassland soils, but might, of course, vary in agricultural soils).

Following these assumptions, for the different turnover times, the theoretical isotopic change from 1840 until 2015, induced by the Suess effect, was calculated:

-0.7permil, -1.33permil, and -1.91permil respectively.

These calculations are necessary to apply any correction for the Suess effect on terrestrial compounds in lake sediments. Because every age model of a lake sediment core can only give us the time of deposition. For autochthonous produced material, the production date and sedimentation date is in most cases identical, therefore the (from the reviewer) suggested correction (Verburgh 2007) can be applied. However, the soil derived compounds like long chain *n*-alkanes and long-chain FAs, have experienced mixing and ageing in the soils before sedimentation and this has to be taken in account, as suggested above.

Like (McCaroll et. al., 2009) we removed the Suess effect from the soils and lake sediments (calculation back to 1840), instead of applying an artificial Suess effect to the sediments. We see the strongest effect on today's soils which are all moved to more positive values. The younger sediments experienced a similar, slightly smaller correction to more positive values. Older lake sediment samples before 1940 are less effected by the correction, due to lower rates of fossil fuel burning and thus a smaller Suess effect. Therefore for all different turnover rate scenarios we observe a more clear separation from the older lake sediment samples compared to the source soils. This would suggest an even stronger influence of in-situ produced FAs. But in general, the corrections for the Suess effect haven't changed the general pattern of the FA isotopic data.

To sum up, we think that this valuable discussion points even stronger to the conclusion, that at least before 1940, in-situ production of long-chain fatty acids occurred in considerable amounts in the Lake Baldegg.

Recommendation: The calculation errors must be fixed and the section should be re-written to explain clearly why the Suess correction is being used.

A suggestion for this text is: "The Suess effect alters the isotopic signature of the FAs in the sediment from 1840 by around 2.2‰, which is substantially less than the isotopic depletion measured in the deep sediment. The source of that isotopic depletion is unknown but is consistent with methanogenetic processes in the sediment and water column of hyper eutrophic lakes (van Bree et al. 2018)."

Alternatively, the whole section on the Suess effect could be deleted as unnecessary.

Please see our comment above.

There are a lot of uncertainties that come along with the simulation of the Suess effect on soils and sediments, e.g. different isotope fractionation due to higher CO_2 concentration (Zhao et al., 2001), different turnover times in the different source soils, assumptions about the stability of the soil organic carbon pool etc.

In addition, studies which tried to estimate the Suess effect on soils by measurements, (Bird et al, 2003; Wiesenberg et al., 2004) arrived only with a smaller isotopic effect, -0,2- -0,3permil on the organic material. And to our knowledge, so far no study using terrestrial biomarkers in lake sediments was applying such a correction.

In the case of both, aquatic and terrestrial produced compounds in lake sediments, a mixed approach to correct for the Suess effect would have to be applied. But all sources must be known and isotopically characterized.

Page 11, line 38: remove the reference to carbon exchange (sec.4.2.)

Replaced "the carbon exchange" with "autochthonous production" on P11L36.

Page 12, line 9: The microbial activity overprints . . . I agree that this is what is happening. A better word than "overprints" is "masks". Optional change, not essential but has clearer meaning for an English-speaking audience.

Replaced "overprints" with "masks" on P12L7.

Page 12, Sentences starting line 29: "Potentially the algae or other microorganism responsible for the production of the long-chain FAs was [were] not present anymore after 1940. Following the hypothesis with organic material originated from the riparian zone and/or wetlands, the explanation could be that with time, wetlands, evolved after the lake level changes drained themselves or were drained by the farmers until 1940 for the intensification of agricultural practices".

It is correct that the microorganisms responsible for the production of the isotopically depleted long-chain FAs were no longer present after 1940 because the hypolimnion had become anaerobic to a depth of 40 m, removing the supply of oxygen required for the MOB activity in the sediment. The hypothesis that the organic material originated from the riparian zone is unsubstantiated speculation. If it is feasible, it should be measured and the isotopic values used to support the speculation.

It is correct, that these riparian processes were not yet described in the literature. But the timing of the events, the selective depletion of first C24:0/C26:0 and then C28:0 later, leaves this hypothesis at least to be a possible one. Neither in the study of van Bree et al. (2018) nor in Petrisics et al. (2017) study the actual producers are clearly identified. We would therefore leave it in the manuscript and hope that you agree on that.

We added more information on P7L11-13

Page 13, paragraph starting line 13: This will need to be re-written along with other sections of the paper to ensure the conclusions and recommendations are appropriate. These should also relate back to the original objectives of the study. The title says "Plants or Bacteria?". This manuscript clearly shows that it is both Plants and Bacteria, and that is a good conclusion. Don't change the title.

We adapted the conclusions chapter and we emphasized in the new revised version, that it is most likely both, bacteria and plants which are contributing to the long-chain FA pool in the sediments, but want to leave the hypothesis with the riparian organic material in the manuscript. We related the conclusions back to the paper title, which we of course leave as it is, but emphasize that for a clear source attribution the isotopic signal of the missing source has to be known.

Plants or bacteria? 130 years of mixed imprints in Lake Baldegg sediments (Switzerland), as revealed by compound-specific isotope analysis (CSIA) and biomarker analysis

Marlène Lavrieux^{1,2}, Axel Birkholz^{1,2}, Katrin Meusburger^{1,2}, Guido L.B. Wiesenberg³, Adrian Gilli⁴,
Christian Stamm⁵, Christine Alewell¹

¹Environmental Geosciences, Department Environmental Sciences, University of Basel, Basel, Switzerland

²Swiss Federal Institute for Forest, Snow and Landscape Research, Birmensdorf, Switzerland

³University of Zurich, Department of Geography, Zurich, Switzerland

⁴Geological Institute, ETH Zurich, Zurich, Switzerland

⁵Eawag, Swiss Federal Institute of Aquatic Science and Technology, Dübendorf, Switzerland

* These authors contributed equally to this work.

Correspondence to: Axel Birkholz (axel.birkholz@unibas.ch)

Abstract. Soil erosion and associated sediment transfer are among the major causes of aquatic ecosystem and surface water quality impairment. Through land-use and agricultural practices, human activities modify the soil erosive risk and the catchment connectivity, becoming a key factor of sediment dynamics. Hence, restoration and management plans of water bodies can only be efficient if the sediment sources and the proportion attributable to different land-uses are identified. To this aim, we applied two approaches, namely compound-specific isotope analysis (CSIA) of long-chain fatty acids (FA) and triterpenoid biomarker analysis, to the eutrophic Lake Baldegg and its agriculturally used catchment (Switzerland). Soils reflecting the five main land-uses of the catchment (arable lands, temporary and permanent grasslands, mixed forests, orchards) were subjected to CSIA. The compound-specific stable isotope $\delta^{13}\text{C}$ signatures clearly discriminate between potential grasslands (permanent and temporary) and forest sources. Signatures of agricultural land and orchards fall in-between. The soil signal was compared to the isotopic signature of a lake sediment sequence covering ca. 130 years (before 1885 to 2009). The recent lake samples (1940 – 2009, with the exception of 1964-1972) fall into the soil isotopic signature polygon and indicate an important contribution of the forests, which might be explained by (1) the location of the forests on steep slopes, resulting in a higher connectivity of the forests to the lake, and/or (2) potential direct inputs of trees and shrubs growing along the rivers feeding the lake and around the lake. However, the lake sediment samples older than 1940 lie outside the source soils polygon, as a result of FA contribution from a not yet identified source, most likely, produced by an in-situ aquatic source, either algae, bacteria or other microorganisms, or an ex-site historic source from wetland soils and plants (e.g. *Sphagnum spec.*). Despite the overprint of the yet unknown source on the historic isotopic signal of the lake sediments, land-use and catchment history are clearly reflected in the CSIA results, with isotopic shifts being synchronous, with changes in catchment, land-use and eutrophication history. The investigated highly specific biomarkers were not detected in the lake sediment even though they were present in the soils. However, two trimethyltetrahydrochrysenes (TTHCs), natural diagenetic products of pentacyclic triterpenoids, were found in the lake sediments. Their origin is attributed to the in-situ microbial degradation of some of the triterpenoids. While the need to apportion sediment sources is especially crucial in eutrophic systems, our study stresses the importance of using caution with CSIA and triterpenoid biomarkers in such environments, where the active metabolism of bacteria might mask the original terrestrial isotopic signals.

1 Introduction

While it is known that pollutant inputs have a severe impact on aquatic ecosystems, especially in agriculturally used catchments (Malaj et al., 2014; Allan, 2004; Liess et al. 2001), the influence of sediment input and sediment dynamics on biological quality

Gelöscht: ¶

Formatiert: Schriftart: Nicht Kursiv

Formatiert: Affiliation

Gelöscht:

Gelöscht: most likely

Gelöscht: potentially

Gelöscht: or by lateral transport from historical formerly drained wetlands

Gelöscht: consistent

Gelöscht: overprint

and recovery of rivers remains highly uncertain (Scheurer et al., 2009; Matthaei et al., 2010). Sediment loads to freshwaters are increasing worldwide, often being related to anthropogenic activities (Scheurer et al. 2009). Sediment pollution has been identified as one of the most relevant pressures to water bodies (Borja et al., 2006), and sediments are among the top ten causes of biological impairment in freshwater ecosystems (US EPA, 2009). Land-uses and agricultural practices modify the soils erosive risk and the catchments sedimentary connectivity, becoming a key factor of sediment dynamics and aquatic ecosystems health. Restoration and management plans of water bodies can only be efficient if the sediment sources and their respective contributions, i.e. the proportion attributable to different land uses are identified (Wasson et al. 2010; Sundermann et al. 2013).

The compound-specific isotope analysis (CSIA) technique, based on the compound specific stable isotope signatures of inherent organic biomarkers in the soil, was developed and applied to discriminate and apportion the source soil contribution from different land-uses (Gibbs, 2008; Blake et al., 2012; Hancock and Revill, 2013; Alewell et al., 2016). The FAs being transferable from plants to soils, stable, persistent in soils, mobile with sediments during flow events and easily isolatable from the other compounds in lipid mixtures, they are especially well suited for CSIA (Reiffarth et al., 2016). While FAs assemblages are not variable enough among plant species to discriminate them, their $\delta^{13}\text{C}$ signature differs among groups of plant species (Tolosa et al., 2013). The $\delta^{13}\text{C}$ signature of biomarkers is assumed to be more preserved than their concentration during degradation and transport processes (e.g. Marseille et al., 1999; Gibbs, 2008), allowing to discriminate sources in various studies in lake sediment and catchment studies (e.g. Galy et al., 2011; Fang et al., 2014), even dominated by C3 vegetation only (Alewell et al., 2016).

In addition to the CSIA, attention was given to some cyclic compounds as specific tracers for source identification. A large part of the cyclic compounds is synthesized by more restricted plant groups than linear alkyl lipids. Among the cyclic compounds, some triterpenes were validated as family- or even species-specific (e.g. some triterpenyl acetates for Asteraceae, some sesqui-, di- and triterpenoids for conifers, methoxyserratenes for Pinaceae; Lavrieux et al., 2011; Otto and Wilde, 2001; Le Milbeau et al., 2013; respectively). Mostly developed and successfully used for paleo-environmental studies (e.g. Jacob et al., 2008; Lavrieux, 2011; Guillemot et al., 2017), the high potential of these highly specific biomarkers (HSB) for tracking sediment sources and evaluating the soil vulnerability remains under-exploited.

The need to precisely identify sediment sources is especially important in eutrophic systems to enable efficient and targeted restoration measures. For this reason, we chose to use a mixed CSIA and HSB approach to the Lake Baldegg catchment (Central Switzerland). The eutrophic Lake Baldegg is a typical but also extreme example of a European freshwater body, as it suffered substantially from nutrient input (mainly phosphorus, P) during the second half of the 20th century. Studies have been carried out on the P source attribution into the lake but the origin of sediments remains unclear. While the eutrophication history of the Lake Baldegg has extensively been studied (e.g. Niessen and Sturm, 1982; Lotter et al., 1997; Lotter, 1998; Teranes and Bernasconi, 2005), an in-depth confrontation of the lake evolution with the recent history of the catchment (including land-use and agricultural practices changes) has not yet been performed.

Our project aimed at filling these gaps. In this paper, the soil isotopic signatures of FAs characterizing the main land-uses of Lake Baldegg catchment are quantified and confronted to the evolution of the CSIA imprint of a 130-yr long lake sediment sequence. This study is, to our knowledge, the first sediment fingerprinting CSIA concerning a lake sediment core covering more than a century.

2 Study site

Lake Baldegg (N47°12' 0", E8°15'40"; 463 m a.s.l.) is a eutrophic lake of glacial origin located on the central Swiss Plateau (Fig. 1). It has a maximum depth of 66 m, a surface area of 5.2 km² and a water volume of 0.173 km³. The lake is fed by 15 streams and has a mean residence time of 4.3 years (Wehrli et al., 1997). The outflow is located at its northern end. Its North-South catchment, having an area of 67.8 km², has hillslopes of 700-800 m a.s.l. elevation. The catchment is today intensively used for agriculture: 77% is used as agricultural land, 12% as forest (mostly on the slopes), 5% as urbanized areas (Wehrli et al., 1997). In 2015, one third of the agricultural land was devoted to permanent grassland, 40% to cereals and arable lands (including 10% of maize), 24% to temporary grasslands, while fruit production (small trees, mainly apples and pears) covered ca. 1% of the agricultural land (Federal Statistical Office, 2015). Intensive chicken farming and pig breeding are other important farming activities.

Previous studies have provided extensive information about the lake eutrophication history (e.g. Lotter et al., 1997, 1998; Wehrli et al., 1997). Briefly, this eutrophication, starting in 1885, translated into annually laminated (varved) sediments in a context of constant anoxic lake bottom until the 1980s (anoxia below 60 m depth between 1885-1940; below 40 m between 1940-1970; below 10 m between 1970-1982; Niessen and Sturm, 1987; Lotter et al., 1997). Along the 20th century, a severe increase in phosphorus loads stemming from the intensification of land-use, population and industrial activities, supported an increase in the eutrophication. The almost exponentially increasing phosphorus concentration in the lake water (up to > 500 µg L⁻¹; Wehrli et al., 1997), leading to hypereutrophic conditions with dramatic fish kills and algal blooms, was curbed after the introduction of wastewater treatment plants and several restoration efforts. The introduction of an artificial oxygenation system into the lake water column in 1982 (Stadelmann et al., 2002), lead to the disappearance of the varves from 1995. Despite the accompanying strong decrease of P concentrations in the lake to below 30 µg L⁻¹ as the result of lake external and internal measures, the lake has not yet fully recovered from eutrophication (Müller et al, 2014).

Gelöscht: Despite the

Gelöscht: , which

Gelöscht: ,

Gelöscht: and

3 Materials and methods

3.1 Connectivity index

With the purpose to sample the source soils most likely contributing to the recovered lake sediment, a connectivity index model and a connectivity map were built. Connectivity patterns in the catchment were identified using a modified sediment connectivity index (IC) based on the approach by Borselli et al. (2008) and modified by Cavalli et al. (2013) (Fig. 2). This index, calculating surface roughness from a high-resolution digital elevation model (2m resolution, swissALTI3D), indicates the degree of linkage controlling sediment fluxes throughout landscape, and, in particular, between sediment sources and downstream areas and finally the freshwater system.

3.2 Sampling

3.2.1 Soils

Soil sampling locations were chosen according to the abovementioned connectivity model approach, the land-use map (Fig. 2) and aerial photographs. The focus of this study was set on areas with high connectivity. Soil samples representing each main land-use type (arable lands, permanent grasslands, temporary grasslands, mixed forests, orchards) were taken. Five sites were selected for orchards and forests, four sites for arable lands and temporary grasslands, and three sites for permanent grasslands. Within each site, four soil cores were sampled and mixed into a composite sample. For all forest sites the humus layer was removed prior to sampling. At four of five investigated forest sites no Oa layer was present (only partly degraded material (Oe) and intact plant material (Oi)). Only at one site (Norwegian spruce and *Thuidium tamariscinum* moss) an Oa

layer had built up. For the orchards, samples were taken at the base of the trees, where no herbaceous vegetation was growing. Distinction between temporary and permanent grasslands was made from the vegetation diversity observed on the field, and the presence of a tilled horizon was checked with a Pürckhauer auger system. The 5 uppermost centimeters of the soil were sampled with a 5-cm high cylindrical steel ring (98.2 cm³) and stored in aluminum foil in the fridge until drying.

5 3.2.2 Lake sediment core

We subsampled in January 2016 a sediment core (Ba-09-03) retrieved in autumn 2009 in the deepest part of Lake Baldegg, which was stored in a refrigerated storage room since then. The varved sediment allows dating of the cores at a seasonal resolution back to 1885 CE. Detailed retrieving and sediment core information, as well as the age-depth model, is documented in van Raden (2012) and Kind (2012). The upper 45 cm of the core, covering the last 130 years, were sampled in 3 years slices.

10 The 9-mm-thick turbidite of 1956 CE was sampled apart. Every second sample between 1885 and 2009 CE, as well as one sample older than 1885 CE, i.e. before eutrophication start, were further analyzed. The oldest sample was dated to ca. 1870 CE by extrapolating the sedimentation rate of the well-dated last 19th century varved part.

3.3 Sample preparation

15 After freeze-drying (lake sediments) or oven-drying (soils; 40°C, 72 hours), the sediment samples were carefully crushed with a pestle and mortar. Soils were dry sieved at 2 mm, which was not necessary for the fine-grained lake sediment. With great care the macroscopic elements (vegetal remains, stones) were hand-picked from all the samples. 2–4 g of samples (soils and lake sediments) were processed for the lipid extraction, using a mixture of CH₂Cl₂:MeOH (9:1 v/v) in an Accelerated Solvent Extractor (Dionex ASE 200 for the lake sediments, Dionex ASE 350 for the soils). Lipid extracts were subsequently separated into neutral, acidic and polar fractions using solid-phase extraction on aminopropyl-bonded silica as described in Jacob et al.
20 (2005).

3.3.1 Fatty acid preparation for CSIA

The acidic fraction (including the free fatty acids) was methylated at 60°C for 1h using 1 mL of 12–14% BF₃ in MeOH. Fatty acid methyl esters (FAMES) were extracted from the solution by agitating four times with ca. 2 mL hexane in the presence of 1 mL of 0.1 M KCl. The final extract was stored in the freezer until analysis.

25 The purity of the extract and the concentration of the FAMES were checked using a Trace Ultra gas chromatograph (GC) with a flame ionization detector (FID; Thermo Scientific, Waltham, MA 02451, USA) as described in Alewell et al. (2016). Lake sediments FAMES stable carbon isotopic composition was measured as described in Alewell et al. (2016) using a Trace Ultra GC, coupled via combustion interface GC Isolink and Conflo IV with a Delta V Advantage isotope ratio mass spectrometer (Thermo Scientific). Soils FAMES stable carbon isotopic composition was measured using a Trace 1310 GC instrument
30 interfaced on-line via a GC-Isolink II to a Conflo IV and Delta V Plus isotope ratio mass spectrometer (Thermo Fisher Scientific). A DB 5ms column (J & W DB-5MS, 50 m × 0.2 mm i.d., 0.33 μm film thickness) was used. The GC temperature program was 70 °C (held 4 min) to 150°C at 20°C/min and afterwards to 320 °C (held 40 min) at 5 °C/min. He was used as carrier gas at a constant 1 ml/min. CO₂ of known δ¹³C composition was automatically introduced via Conflo IV into the isotopic ratio mass spectrometer in a series of 5 pulses at the beginning and 4 pulses the end of each analysis, respectively, and used as
35 reference gas during every measurement. The comparability of soils and lake sediment results was ensured by triplicate measurements of 3 lake samples realized on both instruments. Each sample was measured at least 3 times. Carbon stable isotope ratios were reported in delta notation, per mil deviation from Vienna Pee Dee Belemnite (VPDB). The instruments performance was routinely checked with an external isotopically characterized fatty acids mixture (F8-3) obtained from Arndt Schimmelmann (see <http://pages.iu.edu/~aschimme/hc.html>), to which a mixture of isotopically characterized C24:0, C26:0,

C28:0 and C30:0 FAMES was added. Performance was controlled with a C19:0 FA internal standard. The reported $\delta^{13}\text{C}$ values were corrected for the additional carbon atom introduced during methylation. Mean values of at least triplicate measurements, as well as their corresponding standard deviation, were calculated. The analytical uncertainty is lower than $\pm 0.5\%$. Only long-chain FAs $\geq \text{C24:0}$ were investigated. These are characteristic for the higher plant input into the soil (Eglinton and Eglinton, 2008). Short- or mid-chain FAs can also be produced by bacteria or aquatic plants and would bias our approach to trace back the terrestrial input into the lake.

3.3.2 Triterpenoids

The neutral fraction (including the cyclic biomarkers considered in this study) was further separated into aliphatics, aromatics, ethers and esters, ketones and acetates, and alcohols by flash chromatography on a Pasteur pipette filled with activated silica (24 h at 120 °C, then deactivated with 5% H₂O) and using a sequence of solvents of increasing polarity. The alcohol fraction was silylated before injection by reaction with N,O-bis-(trimethylsilyl)trifluoroacetamide (BSTFA) containing 1% trimethylchlorosilane and pyridine for approximately 1 h at 60°C. 5 α -cholestane, which was used as an internal standard, was added to all fractions, prior to analysis by gas chromatography-mass spectrometry (GC-MS) with a Trace GC Ultra coupled to a DSQII mass spectrometer (Thermo Fisher Scientific). The GC instrument was fitted with a Restek Rxi-5ms column (60m x 0.25mm i.d., 0.25 μm film thickness). Samples were injected in splitless mode, with the injector temperature set at 300 °C. He was the carrier gas at a constant flow of 1.2 ml.min⁻¹. The GC temperature program was 50 °C (held 2 min) to 140 °C (held 1 min) at 10 °C/min, then to 300°C (held 63 min) at 4°C/min. The transfer line to MS detector was operated at 260°C. The mass spectrometer was operated in the electron ionization (EI) mode at 70eV and scanned from m/z 40 to 1000. Component identification was based on comparison with literature data.

4 Results and discussion

4.1 CSIA of potential source soils

Among the FAs detected in soils (C17:0 to C32:0), only the longer chains, i.e. longer than C24:0, were further considered for this study to limit errors due to aquatic organisms contribution (Alewell et al., 2016). Though present in soils, C30:0 and C32:0 were not further considered here as their too low concentration (C30:0) or absence (C32:0) in the lake sediments hampers their use for fingerprinting. Fig. 3 displays the CSIA isoplots for the C24:0 vs. C26:0, C26:0 vs. C28:0, and C24:0 vs. C28:0. Data are provided in Table S1. The C26:0 vs. C28:0 show the best discrimination between the different land-use types.

All the samples align along a line, which ends are the isotopic signals of the grasslands and the forests soils. Halfway between them, orchard signature probably holds a mix between the inputs of the fruit trees, which signature might be supposed to be comparable to forest trees, and of the underlying grass. One orchard sample plots within the forest pool. Being covered of the same tree species as the other orchards (apple trees), and the age of the orchard having no influence on the measured imprint (Table S3), it is most probable that the corresponding sample was taken nearer from the trees than the other ones. CSIA signatures of arable lands plot near the orchards. The good separation between grasslands and forest pools confirm the results published on the Enziwigger catchment (ca. 30 km West of Lake Baldegg; Alewell et al., 2016), but our results show a better distinction between arable lands and grasslands – which could not be separated in this previous study. This can be either due to the greater surface covered with maize in Lake Baldegg catchment (ca. 10% of agricultural land in 2015; Federal Statistical Office) compared to Enziwigger catchment, where the low maize production does not produce any detectable effect on the stable isotope signature of soils (Schindler Wildhaber et al., 2012) or to more frequent rotation of grasslands and arable crops

in the Enziwigger study. As we cannot exclude for temporary grasslands to be part of crop rotations including cereals, we expected temporary grasslands to plot near arable lands at Lake Baldegg. But CSIA signatures cannot distinguish between non-permanent and permanent grasslands. As turnover times of one to several decades were reported for lipid fractions in croplands, permanent grasslands and forests (Wiesenberg et al., 2004; Wiesenberg et al., 2008; Griepentrog et al., 2015, respectively), the rapid loss of an arable land imprint after rotation to grassland seems unlikely. Most probably, the corresponding non-permanent grasslands are, even though regularly ploughed and the vegetation regularly re-sowed, used mostly as grasslands for many years, resulting in an imprint comparable to the permanent grasslands one. Further inquiries with local farmers confirmed, that most temporary grasslands were just plowed and reseeded to control for homogenous and highly productive species distribution.

Gelöscht: since

Gelöscht: either (1) that values have to be corrected for the atmospheric ^{13}C -depletion of the industrial era (Suess effect; Suess, 1955; Keeling, 1979) (2)

Gelöscht: ors

[1] nach unten verschoben: 4.2.1 The Suess effect as a possible influence on CSSI of lake sediments
The $\delta^{13}\text{C}$ value of atmospheric CO_2 has decreased by approximately 1.5‰ since the beginning of the industrial era in response to fossil fuel combustion (atmospheric $\delta^{13}\text{C} = -6.5\text{‰}$ in the preindustrial era vs. -8‰ today; Rubino et al., 2013; Keeling et al., 2005, respectively). Therefore, we would expect older lake sediment samples to be relatively enriched (less depleted) in $\delta^{13}\text{C}$ compared to our today's source soils or sediments. But actually, the lake sediments older than 1940 are depleted compared to the recent sediments and source soils. Therefore the Suess effect can be excluded as explanation for the negative $\delta^{13}\text{C}$ shift of C26:0 FA for the sediments older than 1940.

However, because long-term experiments have shown that a depletion due to the Suess effect with time is well recorded in plants (e.g. Zhao et al., 2001), this effect should also be recorded in soils, and consequently also in organic terrestrial markers archived in lake sediments, such as FAs. While numerous studies have revealed ^{13}C -enrichment with depth in soil profiles, microbial degradation and metabolism was identified as the key factor of such changes, the Suess effect being a minor contribution only (see discussion in Krull et al., 2005, and references therein). Besides, the Suess effect can only account for a maximum decrease of ca. 1.5‰, like observed in the atmosphere, or 2.5‰, taking the dataset of Zhao et al. (2001) for straw from 1845 until 1997 into account. And it might only have an influence in the case of a soil having a very fast (and unrealistic) turnover time of the overall soil organic matter of one to a few years (Garten et al., 2000). Longer turnover times imply necessarily a time lag in the recording of the Suess effect in soils. Accordingly, a shift in $\delta^{13}\text{C}$ of only 0.2-0.3‰ (i.e. in the range of the measurement precision) was calculated for an arable temperate soil between 1960s and 2000s, i.e. during the period when the Suess effect would be most relevant (Wiesenberg, 2004). These results are comparable to the 0.1-0.3‰ shift related to the Suess effect in a tropical soil with a <10 years turnover rate estimated by Bird et al. (2003). Furthermore, the ploughing of arable soils or non-permanent grasslands results in a mix of young and old organic matter, mitigating all the more the recording of the Suess effect in such soils. However, to avoid potential bias or errors we did a correction of the Suess effect for the soils and lake sediments (please see the corrected $\delta^{13}\text{C}$ values of the FAs for the Lake Baldegg catchment soils and lake sediments in Table S4). We assumed a rather unrealistic high incorporation rate of 3% of new organic material into the soil per year and as "Suess factor" the calculated $\delta^{13}\text{C}$ depletion curve of straw from Zhao et al. (2001), who recorded a shift of -2.5‰ in $\delta^{13}\text{C}$ of straw over the period between preindustrial era to 2000 and thus a stronger effect as in the atmospheric CO_2 . For a better comparability, both, soils and sediments were Suess-effect corrected to "before industrialization" values (1840). The resulting maximum effect is a depletion of 0.22‰ from 1840 until 2016 for the soils. For the lake sediments the maximum depletion is 0.16‰ between 1840 to 2010. The older the sediments the smaller is the Suess effect on them. In 1965 the calculated Suess effect on the lake sediments is only 0.01‰. If we assume the calculated effect on the soils to be uniform and take into account that it is smaller than the analytical uncertainty, and further is based on the estimation of parameters like soil incorporation rate and actual effect of the Suess effect on the plants, we think that in our case it can be neglected.

Gelöscht: 2

Gelöscht: al

10 4.2 CSIA of lake sediments

Considering the very low concentration of the C30:0 FA in the lake sediment, only the C24:0, C26:0 and C28:0 homologues were considered here to avoid any biases due to concentration effect (Fig. 4). Data are provided in Table S2. The isotopic signature of the samples older than 1940 and from 1964 - 1972 fall out of the source soils mixing polygon, making the use of a mixing model to quantify the contribution of different land-uses to sediment inputs impossible. This mismatch between soil and most of the lake sediment signals indicates that we did not catch all contributing sources, to the lake sediment FA isotopic signal.

4.2.1 The likelihood of missing an additional terrestrial source to the isotopic FA signal of lake sediments

Land-use and land-use change is exceptionally well documented in this Swiss catchment. Vegetation composition did not dramatically change during the last century and to our knowledge there are no plausible additional land-use types as soil sources to the lake sediments we might have missed over the last decades. Any input from sewage sludge or from pig faeces originating from the intensive farming attested since the mid-1960's around the lake can be excluded, even before the introduction of wastewater treatment plants in the late 1960's, since both are not known as sources of long-chain saturated FAs (Cummings, 1981; Jørgensen et al., 1993; Jardé et al., 2005; Réveillé et al., 2003, respectively).

The input of organics from humus material and mixing into the lake sediments might be discussed as a potential additional source. However, great care was paid to remove any macroscopic organic material from the sieved soil and lake sediment samples. Even if we missed some highly decomposed Oa material, a study about fractionation processes of FAs in the humus layer of forest soils at Baldegg Lake catchment recorded no or only slight changes in the isotopic signal from Oa to Ah horizon (unpublished data). For our site with the Oa horizon, C28:0 and C30:0 FA were only slightly depleted by 0.2 - 0.3‰ compared to the Ah horizon. C24:0 and C26:0 were depleted by 0.8 and 1‰ respectively. But these humus $\delta^{13}\text{C}$ values are -33.8‰ for C26:0 FA and -34.6‰ for C28:0 FA and can thus not explain shifts of C26:0/C28:0 to values more negative than -36‰ (compare Fig. 4). Further, these humus $\delta^{13}\text{C}$ values still lie in the isotopic range of the five analyzed forest locations (Fig. 4) and would not be separable as a discrete source. Also, as today's isotopic signals of lake sediment samples plot within the polygon of the source soil signals, we rather expect a source or process different from today's conditions being the cause for the deviation of isotopic signals.

Historical research (Kopp, 1962) has revealed that the lake level was lowered by 30-40 cm at the beginning of the 19th century. This lake level change has changed the hydrology of riparian zones and wetlands, which have drained into the lake and were drained by the farmers to use the fertile riparian area. As such, organic material from wetland soils (e.g., fens, riparian zones) might have been leached and eroded due to the change in hydrological regime and/or drainage of sites due to adapted land use.

Furthermore, established reedlands, with *phragmites australis*, next to the main inflow at the southern end of the catchment have been cut starting in 1944 and in 1955 they completely drained this reedland. Today this area is a small lake with small surrounding wetlands, still containing *phragmites australis* (Rezbanyai, 1981). As such, another possible explanation for the negative values of the FAs C24:0 and C26:0 could be a larger contribution of wetland organic matter derived from e.g. *phragmites australis* or *sphagnum* species, to the eroded sediments. Especially *sphagnum* species comprise high concentrations of C24:0 and C26:0 FAs (Baas et al., 2000, Pancost et al., 2002). Photosynthesis of *Phragmites* or mosses like *sphagnum* in the riparian zone or in peats respectively with CO₂ derived from oxidized methane could be an optional source for depleted long-chain fatty acids (cf. Alewell et al. 2011, δ¹³C depletion of mosses, induced by photosynthesis with methane derived CO₂, effected the bulk carbon δ¹³C in Scottish bog). However, δ¹³C values of long-chain FAs from a Scottish peat core were not depleted and range between -29.5‰ and -32.8‰ (Ficken et al., 1998) and would not be an adequate explanation for our missing source. Nevertheless, a depleted δ¹³C of C24:0 and C26:0 FAs from wetlands or peat could explain the deviation for most of our lake sediment samples. Even more so, if we consider the relatively low C28:0 FA concentration in Sphagnum (Baas et al., 2000, Pancost et al., 2002) compared to C24:0 and C26:0 FAs. The larger proportions of C24:0 and C26:0 FA would clearly dominate over the C28:0 FA signal and could explain the stronger shift of the lake sediments to more depleted C24:0 and C26:0 FA δ¹³C values compared to a C28:0 FA δ¹³C signal, dominated by the other land-use types. This hypothesis can not be tested in retrospect, as these reedlands/wetlands disappeared 50 – 75 years ago, but seems one possible explanation for the isotopic depletion of the FAs before 1940, especially if, we consider the high concentration of C24:0 in sphagnum (cf. Baas et al., 2000, Pancost et al., 2002).

Gelöscht: are

Gelöscht: has never been

Gelöscht:

Gelöscht: before

Gelöscht: , also if unlikely

Gelöscht: a

Gelöscht: . All the more if

Gelöscht: keep

Gelöscht: in the back of our minds. At least this is a hypothesis which should be tested.

Gelöscht: 3

Gelöscht: al

4.2.2 The likelihood of missing an in-situ source to the isotopic FA signal of lake sediments

One potential missed source might be the influence of complete organisms or residues of e.g. chironomid larvae on the δ¹³C signal of the lake sediment. Fatty acids produced by these larvae might be depleted in δ¹³C (Makhutova et al., 2017) and could act as a potential depleted source. However, sample preparation was done in paying attention to the possible occurrence of chironomid larvae, and we can thus exclude the presence of these organisms in relevant amounts. Moreover, no literature was found stating the production of FAs longer than C22:0 by these larvae.

Other sources for long-chain FAs might be lacustrine macrophytes and microbial organisms (e.g. Volkmann et al., 1988; Volkmann et al., 1998; Bovee and Pearson, 2014; Schouten et al., 1998; van Bree et al., 2018), but no reference to the production of long-chain FAs by organisms known to live in the Lake Baldegg could be found: the algae responsible for the blooms (toxic blue algae *Aphanizomenon* and *Anabaena* during the 1960's, green algae *Pediastrum* especially between 1965-1970; Stadelmann et al, 2002; van der Knaap et al., 2000) are indeed not reputed producing long-chain saturated FAs (Gugger et al., 2002; Caudales and Wells, 1992; Parker et al., 1967; Blokker et al, 1998). Very recently van Bree et al. (2018) were suggesting production of long-chain FAs, mainly C28:0, in the water column by algae or bacteria, while studying suspended particulate matter (SPM) from Lake Chala (Kenya/Tanzania). They draw their conclusions from a very strong seasonal variability in the SPM, different timing of the maximum concentrations of long-chain *n*-alkanes and long-chain fatty acids, and very negative δ¹³C values down to -46.3‰ for C28:0 FA and -41.9‰ for C26:0 FA. One possible explanation for the very depleted δ¹³C values of the FAs might be the CO₂ uptake of the lake surface water. During times of under saturation with CO₂ and high pH values (8.3-9) atmospheric CO₂ is reacting with OH⁻ to HCO₃⁻ (Hydroxilation of CO₂). This reaction results in a strong carbon isotopic fractionation of -12‰. This highly depleted HCO₃⁻ can heavily influence the isotopic signal of FAs

produced by aquatic organisms (van Bree et al., 2018 and references therein; Terranes et al., 1999 and reference therein, describing the same process for depleted $\delta^{18}\text{O}$ in Lake Baldegg).

As we have generally conditions of CO_2 undersaturation in Lake Baldegg beginning at the end of April when stratification is starting and epilimnic primary production is increasing (Müller et al., 2016), the above described incorporation of atmospheric CO_2 into FAs might also serve as a possible explanation for the depleted values of C24:0 and C26:0. Also pH values during that time of the year are above 8.3 and reach 8.6 during June (Terranes et al., 1999) and hydroxilation of CO_2 will be a dominant process.

Gelöscht: in Lake Baldegg

Gelöscht: this

Gelöscht: be

Gelöscht: the

We noted that the shorter the homologue is, the more deviated from the soils polygon its isotopic values are: while the soil values have a range of $\pm 3.5\%$ for C24:0, $\pm 2.6\%$ for C26:0, and $\pm 3.2\%$ for C28:0, the lake values have a range of ± 9 , ± 5 and $\pm 5\%$, respectively. For long-chain FAs of close chain-length, the $\delta^{13}\text{C}$ values are generally comprised in a range of a few permil because of their common biosynthesis pathway (Hayes, 1993; Wiesenberg et al., 2004). However, we observe considerable differences between isotopic signatures of the long-chain FAs. Both, the greater variation of the CSIA values in the lake compared to the soils as well as the discrepancies of up to 7 permil between C24:0 and C28:0, as observed here in lake sediments, suggest that an aquatic process might have masked the terrestrial isotopic signatures. Maybe similar to Lake Chala (van Bree et al., 2018), in Lake Baldegg the FAs C24:0 and C26:0 are primarily produced by an algal or bacterial source whereas C28:0 still reflects the signal of the terrestrial vegetation. However, we do not see any increase in concentration of C24:0 or C26:0 FA in the lake sediments until 1940 compared to today's soils (compare Fig. S1 and S2 in the supplementary material). We would expect higher FA concentrations in lake sediments compared to source soils with a significant enhanced in-situ production in the lake water column. However, we do not know the historic FA content of source soils.

Gelöscht: Interestingly in our study

Gelöscht: ,

Gelöscht: affected

Gelöscht: aquatic

Gelöscht: still

Gelöscht: This w

Gelöscht: as a consequence of

Gelöscht: an

The depleted $\delta^{13}\text{C}$ values might also be linked to bacterially assimilated carbon, associated to anoxic conditions in the water column, sediments or wetland soils (Summons et al., 1994; Terranes and Bernasconi, 2005). Biogenic methane carbon typically shows $\delta^{13}\text{C}$ values of -50 to -70% (Whiticar, 1999), leading to a very depleted methanotrophic bacterial biomass (e.g. Summons et al., 1994; Lehmann et al., 2004). The influence of the methanotrophic bacterial communities in the Lake Baldegg was already underlined by the study of Terranes and Bernasconi (2005). A $\delta^{13}\text{C}$ value of $-70\pm 15\%$ for methanotrophic bacteria using biogenic methane can be assumed (Lehmann et al., 2004 and references therein). In this case only little bacterial biomass would be needed to cause depletion effects like we observe in the Lake Baldegg sediments. As well, $\delta^{13}\text{C}$ depleted CO_2 produced by methane-oxidizing bacteria (MOB) would result in the depleted long-chain FAs. Algae or Cyanobacteria could take up this depleted CO_2 and produce on their part depleted FAs (Naeher et al., 2014). But the presence of these long-chain n -fatty acids produced in the lake seemed so far to be unlikely here, since to our knowledge, reports about the production of long-chain n -fatty acids by bacteria or algae are rare and constrained to extreme environments (e.g. Antarctic Ace Lake, Volkman et al., 1988; Volkman et al., 1998; van Bree et al., 2018). Gong and Hollander (1997) were suspecting marine bacteria contributing depleted long-chain FAs to the formerly assumed terrestrial long-chain FA pool in marine sediments. Also Feakins et al. (2007) described the in-situ production of long-chain FAs in a lacustrine environment by algae or bacteria as very likely. In their study not the depletion of the FAs was leading to this conclusion but the ratios between n -alkanes and FAs.

Gelöscht: Some of the

Gelöscht: and

Gelöscht: As such

Gelöscht:

Gelöscht: could be another explanation for

Gelöscht: by lake bacteria

Gelöscht: s

In a recent publication, Petrisic et al. (2017) were reporting $\delta^{13}\text{C}$ values of -40.0 - -43.3% for C26:0 FA from surface sediments from Lake Bled, Slovenia. They suspected either methanotroph bacteria or cyano bacteria as the producers of C26:0 FA. Petrisic's findings from Lake Bled are giving strong evidence that bacteria can play an important role for in-situ production of long chain FAs also in lakes beyond extreme environments. This leaves the open question why C24:0 FA in the Lake Bled sediments is not, or only slightly depleted with $\delta^{13}\text{C}$ values ranging from -36.3 - -37.7% . Unfortunately, no data for C28:0 FA

from Lake Bled is available (Petrisic et al., 2017). As explained above, the influence of the unknown source in Lake Baldegg sediments is increasing from C26:0 to C24:0 FA. However, Neunlist et al. (2002) presented isotopic data for C24:0 – C28:0 FA from Lake Bled and Lake Baldegg sediment samples. Interestingly, in the two more recent sediment samples from Lake Bled, 1993-1996 and 1984-1990, no depletion of the $\delta^{13}\text{C}$ values was observed, whereas the two older sample from 1967-1976 and 1943-1956 show a clear isotopic depletion. The Authors were suggesting a continuous change in the isotopic composition of the carbon source of the producing organisms. For Lake Baldegg, four sediment samples from different depths were analyzed, but in contrast to our study, no significant depletion of the FA $\delta^{13}\text{C}$ values was observed. However, none of the investigated samples originated from a time where we observed the strong isotopic depletion of C26:0 and C24:0 FA in Lake Baldegg. Neunlist et al. (2002) concluded, that there were constant stable sources for the linear compounds and a higher plant origin very likely.

Taking all this into account the likelihood of an in-situ production of long chain FAs by aquatic organisms like algae or bacteria is given. The most likely were algal (phytoplankton) production caused by uptake of depleted HCO_3^- due to undersaturation of CO_2 in the surface water, high pH values and associated hydroxylation of CO_2 (van Bree et al., 2018) or production by methanotroph bacteria and/or by algae or Cyanobacteria which used CO_2 depleted in $\delta^{13}\text{C}$, formerly produced by MOB (Naehrer et al., 2014; Petrisic et al., 2017).

4.2.3 The necessity of “Suess effect” correction for terrestrial lipids in lake sediments

The $\delta^{13}\text{C}$ value of atmospheric CO_2 has decreased by approximately 1.5‰ since the beginning of the industrial era in response to fossil fuel combustion (atmospheric $\delta^{13}\text{C} = -6.5\text{‰}$ in the preindustrial era vs. -8‰ today; Rubino et al., 2013; Keeling et al., 2005, respectively). Therefore, we would expect older lake sediment samples to be relatively enriched (less depleted) in $\delta^{13}\text{C}$ compared to our today's source soils or sediments. As such, the Suess effect can not explain our deviation of the isotopic signals between source soils polygon and lake sediments. However, it is widely recognized as necessary to correct for the Suess effect in autochthonous organic matter (Verburgh 2007). We thus want to discuss in the following the application of this correction for terrestrial derived organic matter in lake sediments (in our study long-chain FAs as biomarker for higher plants (Eglinton and Eglinton, 2008)).

Long-term experiments have shown that because a depletion due to the Suess effect is well recorded in plants (e.g. Zhao et al., 2001), this effect should also be recorded in soils, and consequently also in organic terrestrial markers archived in lake sediments, such as FAs. However, the Suess effect can only account for a maximum decrease of ca. 1.5‰ in the atmosphere, or taking the dataset of Zhao et al. (2001) for straw from 1845 until 1997 into account, for a maximum of 2.5‰. And it might only have an influence in the case of a soil having a fast turnover time of the overall soil organic matter of one to a few years (Garten et al., 2000). Longer turnover times imply necessarily a time lag in the recording of the Suess effect in soils accompanied with a strong dampening of the incoming isotopic signal.

To estimate the Suess effect on our soils and sediments we did a correction based on the atmospheric CO_2 curve of Feng (1998). We applied the following equation (1) to calculate the Suess effect induced changes from year to year with 1840 as the starting point.

$$\delta^{13}\text{C}_{\text{Soil}(t+1)} = (1-1/R) \delta^{13}\text{C}_{\text{Soil}(t)} + 1/R \cdot (\delta^{13}\text{C}_{\text{Soil}(t0)} + (\delta^{13}\text{C}_{\text{Atm}(t+1)} - \delta^{13}\text{C}_{\text{Atm}(t0)})) \quad (1)$$

Gelöscht: in this study

Gelöscht: in the upper paragraph

Gelöscht: time windows

Gelöscht: was covering

Gelöscht: were concluding on their results

Gelöscht: by

Gelöscht: methanotroph bacteria seems, also if unlikely, to be

Gelöscht: Different possible explanations for the production were described in this paragraph.

Gelöscht: 1

[1] verschoben (Einfügung)

Gelöscht: 1 The

Gelöscht: as a possible influence on CSSI of

Gelöscht: But actually, the lake sediments older than 1940 are depleted compared to the recent sediments and source soils. Therefore the Suess effect can be excluded as explanation for the negative $\delta^{13}\text{C}$ shift of C26:0 FA for the sediments older than 1940.

Gelöscht: While

Gelöscht: w

Gelöscht: in lake sediments

Gelöscht: However, because

Gelöscht: l

Gelöscht: with time

Gelöscht: While numerous studies have revealed ^{13}C -enrichment with depth in soil profiles, microbial degradation and metabolism is identified as the key factor of such changes, the Suess effect being a minor contribution only (see discussion in Krull et al., 2005, and references therein). Besides,

Gelöscht: t

Gelöscht: .

Gelöscht: like observed

Gelöscht: r 2.5‰,

Gelöscht: And

Gelöscht:

Gelöscht: very

Gelöscht: (and unrealistic)

Gelöscht: effect

Gelöscht: Accordingly, a shift in $\delta^{13}\text{C}$ of only 0.2-0.3‰ (i.e. in the range of the measurement precision) was calculated for an arable temperate soil between 1960s and 2000s, i.e. during the period when the Suess effect would be most relevant (Wiesenberg, 2004). These results are comparable to the 0.1-0.3‰ shift related to the Suess effect in a tropical soil with a <10 years turnover rate estimated by Bird et al. (2003). Furthermore, the ploughing of arable soils or non-permanent grasslands results in a mix of young and old organic matter, mitigating all the more the recording of the Suess effect in such soils. However, to avoid potential bias or errors

Gelöscht: w

Gelöscht: of the Suess effect for the soils and lake sediments

Gelöscht: (please see the corrected $\delta^{13}\text{C}$ values of the FAs for the Lake Baldegg catchment soils and lake sediments in Table S4).

Gelöscht: were

Gelöscht: y

Gelöscht: ng

Gelöscht: “Ausgangspunkt”

Gelöscht: x

Where t is the year of observation with $t=0$ equal to 1840, and R is the turnover time for the FAs in years. Further we assumed no changes in $\delta^{13}\text{C}$ of atmospheric CO_2 before 1840 and calculated the changes afterwards following the values of atmospheric CO_2 of Feng (1998). The soil organic carbon pool size was assumed to be stable over the time and no changes in isotope fractionation during photosynthesis due to a concentration increase in CO_2 were taken into account.

Gelöscht: is

Gelöscht: CO_2

Gelöscht: a rather unrealistic high incorporation

Gelöscht: rate

Gelöscht: used

Gelöscht: of 3% of new organic material into the soil per year and as "Suess factor" the calculated $\delta^{13}\text{C}$ depletion curve of straw from Zhao et al. (2001), who recorded a shift of -2.5‰ in $\delta^{13}\text{C}$ of straw over the period between preindustrial era to 2000 and thus a stronger effect as in the atmospheric CO_2

Gelöscht: T

Gelöscht: 0.22

Gelöscht: 6

Gelöscht: 0.16

Gelöscht: to

Gelöscht: is

Gelöscht: on them

Gelöscht: it

Gelöscht:

Gelöscht: as

Gelöscht: Actually, o

Gelöscht: nly

Gelöscht: a

Gelöscht: in $\delta^{13}\text{C}$

Gelöscht: calculated

Gelöscht: for an

Gelöscht: between

Gelöscht: and

Gelöscht: These results are comparable

Gelöscht: to the

Gelöscht:

Gelöscht: in

Gelöscht: turnover rate estimated

Gelöscht: Furthermore

Gelöscht: ,

Gelöscht: mitigating all the more the recording of the Suess effect in such soils

Gelöscht: ¶

Gelöscht: In 1965 the calculated Suess effect on the lake sediments is only 0.01‰. If we assume the calculated effect on the soils to be uniform and take into account that it is smaller than the analytical uncertainty, and further is based on the estimation of parameters like soil incorporation rate and actual effect of the Suess effect on the plants, we think that in our case it can be neglected.

Gelöscht: below

Gelöscht: But before,

Gelöscht: must

Gelöscht: be identified

Gelöscht:

Gelöscht: Table S??

Gelöscht: I

Gelöscht: the clear

5 We assumed three different turnover times for organic material in the soil of 10, 30 and 100 years, which are discussed in soil science (Lichtfouse, 1997; Six and Jastrow, 2002; Wiesenberg et al., 2004). For a better comparability, both soils and sediments were Suess-effect corrected, following equation 1, to "before industrialization" values (1840) like it was also done when correcting tree rings for the Suess effect (McCarroll et al., 2009) (for the results please see Fig. S4-7 and Table S4-5). For the highest turnover rate the resulting maximum effect is a depletion of 1.91‰ from 1840 until 2015 for the soils. For the lake sediments the maximum depletion is 1.71‰ between 1840 and 2010. The older the sediments the smaller the Suess effect.

10 For 100 years turnover time we observe smaller changes for the soils and sediments, of 0.7‰ and 0.63‰, respectively. Despite all uncertainties and simplifications, we can expect that the Suess effect will also affect the FAs deposited in the lake sediments. Thus, it is important to apply this correction also to the sediments, since the terrestrial derived long-chain FAs in the sediment express the $\delta^{13}\text{C}$ status of the soil in the year of deposition and have therefore to be corrected in parallel to the soils.

15 Our results in calculating the Suess effect are considerably higher than previously discussed in the literature from measurements of archived soil samples. A shift of 0.2-0.3‰ in $\delta^{13}\text{C}$ (i.e. in the range of the measurement precision) was measured in arable temperate soil samples from 1960s compared to 2000s, i.e. during the period when the Suess effect would be most relevant (Wiesenberg, 2004). Congruently, a 0.1-0.3‰ shift related to the Suess effect was measured for a tropical soil with an estimated turnover rate of <10 years by Bird et al. (2003). The considerably lower measured effects of the Suess effect compared to our calculated effects might be due to either (i) the ploughing of arable soils or non-permanent grasslands which results in a mix of young and old organic matter, or (ii) considerably lower turnover rates in soils than we assumed for our calculations.

20 However, with the new findings in our study and others (Petrisic et al., 2017; van Bree et al., 2018) the production of long-chain FAs within the lake has to be considered (see above for discussion). In this case, the Suess effect has a direct link to the autochthonous produced FAs and a correction for the resulting growing depletion with time should be carried out if the ratio between autochthonous produced and soil derived organic matter would be known. Since the responsible algae, bacteria or microorganisms are not yet identified and the $\delta^{13}\text{C}$ source signal is not yet known, a serious correction for the Suess effect is not possible. Therefore a correction for the Suess effect in this study is very speculative (please note that we document the Suess effect corrected values in the supporting information Figure S4-7 and Table S4-5).

4.2.4 Eutrophication, lake and catchment history, in the light of the CSIA

As the data indicate that the C24:0 signal is the most affected of the 3 considered homologues, the following discussion will focus on the C26:0 vs. C28:0 signals (Fig. 4), which were also the homologues allowing the best distinction between the land-uses in the source soils (Sect. 4.1.).

35 The C26:0 vs. C28:0 CSIA allows a distinction of different units (Fig. 4): before 1900; 1900 to 1940's; 1940's to early 1960's, early 1960's to early 1970's, early 1970's to today. These units confirm the land use changes along different time periods discussed in previous studies led in the lake (e.g. based on diatoms succession, bulk carbon isotopes, eutrophication history;

Lotter, 1998; Teranes and Bernasconi, 2005; Stadelmann et al. 2002, respectively), which attests to the reliability of the CSIA signal to discuss the lake and catchment history.

The oldest sediment samples are deposited prior to the eutrophication start, which beginning was dated from 1885 from (1) phosphorus concentrations inferred from the diatom assemblages and (2) the appearance of varves in the sediment sequence (Lotter et al., 1997; Lotter, 1998). At the onset of the 20th century, a deviation in the C26:0 CSIA data towards lower values is recorded (Fig. 4a) while simultaneously a first important step in eutrophication is reached. Indeed, at that time, the microbial biomass increases (Teranes and Bernasconi, 2005) and a change in diatoms assemblage is recorded (Lotter, 1998), in response to the important industrial development of the catchment and the associated massive wastewater inputs into the lake.

In the early 1940's, a strong shift towards higher values is recorded in the C26:0 CSIA data signal (Fig. 4a). The lake then enters in a severe eutrophication period, marked by an increased influence of the bacterial communities (Neunlist et al., 2002; Teranes and Bernasconi, 2005). Lake water is anoxic below 40 m depth (Niessen and Sturm, 1987). The influence of the land-use changes on the lake response deserves consideration. Indeed, as a result of the Wahlen Plan, a Swiss food self-sufficiency program launched at the beginning of the Second World War, arable lands expand at the country scale (Popp, 2001). In Lake Baldegg catchment, surfaces dedicated to open lands are multiplied by a factor of 3.6 between 1934 and 1945; they even increase by a factor of 4.1 for the cereals (Federal Statistical Office, 1949). Maize is introduced in the catchment during the 1940s, but its dedicated surface is under 3 ha in the mid-1940's and remains small until the 1980s (Federal Statistical Office, 1949; Lotter, 2010). No other cereal is introduced, but the relative proportion of winter wheat strongly increases (Federal Statistical Office, 1949). The agricultural intensification is reflected in the decline of grassland species, the decrease of ruderals of poor soils, the increase of *Urtica* and the appearance of *Ambrosia*, the latter testifying to soil destructuration (pollen analyses of van der Knaap, 2000; Ducerf, 2017). According to air photographs, forest composition also changes to include more coniferous trees, and forest roads develop. Besides, agricultural intensification leads to intense river corrections: for instance, on the Western part of the catchment, 4 small rivers are buried in the 1940s. Such corrections, accompanied by the development of drainage system, will continue until the 1960s.

The isotopic excursion begins in the early 1960's (Fig. 4a), as the lake tends towards its most severe hypertrophic conditions, with a hypolimnion anoxia from 10 m depth (Niessen and Sturm, 1987). The strongly increasing phosphorus concentration fosters the development of photoautotrophic biomass, while the chemautotrophic bacterial biomass is still largely present in the lake, though declining (Teranes and Bernasconi, 2005). This anoxic phase is synchronous to increased sewage sludge inputs, as well as to a strong intensification of pig breeding in the catchment.

This isotopic excursion ends with the introduction of wastewater treatment plants in the catchment (Stadelmann et al., 2002). Later, the artificial oxygenation system set up in the lake in 1982 allows the return to oxic conditions at the bottom of the lake. This favors the development of phytoplanktonic producers, at the expense of the chemautotrophic biomass (Teranes and Bernasconi, 2005).

It is worth noting that from the mid-1940's, all the lake samples (except the early 1960's to early 1970's isotopic excursion) fall into the source soil polygon (Fig. 4a), suggesting that these samples are not, or very little affected by depleted organic material from the unknown source. All the CSIA data of these samples from the forest / arable land / orchard areas fall into the polygon of the source soils signatures. While the sediment contribution from the arable lands can be explained by its associated discontinuous land cover and the agricultural practices (ploughing), the contribution of the forest pool is more surprising. However, most of the forests develop on steep slopes in the catchment, favoring the export of forest soil material towards the lake. Besides, sedimentary inputs into the Lake Baldegg occur mainly during high flow events, which CSIA

imprints were also shown to be dominated by forest contribution in a nearby catchment (Enziwigger catchment; Alewell et al., 2016). Furthermore, the development of trees and shrubs along the streams and on the shores of the lake since the 1940s (air photographs, pollen analysis; van der Knaap, 2000; field observation) may contribute directly to the signal.

4.2.5 General considerations

5 While the units defined with the CSIA match well with the eutrophication and the catchment history, it is remarkable that the oldest sediments (older than 1940) seem to be more affected by depleted material than the younger ones (except the isotopic excursion of the mid-1960's to mid-1970's). Indeed, the maximal extent of the chemotrophic biomass activity takes place during the most severe eutrophication periods of the lake, i.e. after 1940. But this could also be explained by a change of the presence or in abundance of the in-situ producers of long-chain FAs accompanying with the change of the lakes trophic status.

10 It is also worth noting that while C24:0 and C26:0 are more depleted than C28:0 for the oldest lake sediments, the opposite is observed for the mid-1960's to mid-1970's excursion. Changes in the microbial biomass composition, resulting in contrasted effects on the *n*-FAs isotopic signature, can be suspected. Here the example of van Bree et al. (2018) can be consulted, as they found a compound-specific enrichment of mostly C28:0 FA in the water column. Also, the accompanying depletion of, in their case, C28:0 FA compared to the terrestrial C28:0 FA signal is giving strong evidence for an aquatic source. However, we
15 conclude, that the modelling of the different source contributions for the lake sediments cannot be conducted in this study. Any approach to deduce the isotopic signal from the data, without identifying the actual sources and their isotopic signature would be very speculative (see Fig. S3) and would not lead to serious and concise results. Therefore, future research should focus on identification of the aquatic producers of long-chain FAs in lacustrine environments and its isotopic composition.

Gelöscht: 2

Gelöscht: hinting into the direction of an

Gelöscht: T

Gelöscht: its

Gelöscht: it would be of high interest to finally

Gelöscht: y

Gelöscht: possibility of

Gelöscht: the

Gelöscht: A diagenetic transformation of the FAs isotopic signal can also be speculated for the sediments older than 1940. Such an assumption would mean that these sediments would have been affected by carbon exchanges years to decades after their deposition, during the most severe eutrophic phases of the lake history. Why these exchanges would not have affected the younger sediments remains unexplained. And so far, no cases of such a diagenetic transformation have been described.

4.3 Triterpenoid biomarkers

20 The occurrence of cyclic highly specific biomarkers was checked both in soils and lake sediments. Pentacyclic triterpenes such as some triterpenyl acetates, tricyclic diterpenes and methoxyserratenes (biomarkers of Asteraceae, conifers, Pinaceae, respectively; Lavrieux et al., 2011; Otto and Wilde, 2001; Le Milbeau et al., 2013) were investigated. While some non-specific molecules of these families have been identified in soils under the expected land-uses, and some triterpenoids were detected in the lake sediment, the most specific of them were totally absent from the latter. The concentration of these HSB in sediments
25 is usually lower than the more common linear compounds such as *n*-fatty acids (e.g. Lavrieux, 2011). Accordingly, their non-detection in the Lake Baldegg archive can be due to small undetectable inputs from the catchment or a signal dilution into autochthonous (lake organisms) contribution. Besides, a possible degradation of these pentacyclic triterpenes after their deposition can be hypothesized although the successful use of these molecules for palaeoenvironmental studies suggest their high preservation potential (e.g. Lavrieux, 2011; Guillemot et al., 2017 for triterpenyl acetates; Simoneit, 1986; Stefanova et al., 2002 for tricyclic diterpenes).
30

However, in all lake sediment samples, two trimethyltetrahydrochrysenes (TTHCs) were detected: 3, 4, 7-trimethyl-1, 2, 3, 4-tetrahydrochrysene (TTHC2) and 3, 3, 7-trimethyl-1,2,3,4-tetrahydrochrysene (TTHC3). These polycyclic aromatic hydrocarbons (PAH) of natural origin derive from the rapid diagenesis of ubiquitous pentacyclic triterpenoids of the oleanane- and ursane series synthesized by upper plants (e.g. Wakeham et al., 1980). These TTHCs were reported during the last decades
35 in recent lakes sediments (e.g. Wakeham et al., 1980; Yunker and MacDonald, 1995; Jacob et al., 2008), as well as in deltaic environment (Bouloubassi and Salot, 1993). Their formation in anaerobic conditions via microbial activity (Wakeham et al., 1980) was confirmed by the laboratory experiment of anaerobic transformation of triterpenes into PAH by Lohmann et al. (1990). Despite their production conditions are known, it is still under debate where this transformation takes place and would depend on the study site context: the TTHCs would be synthesized either in leaf litter or in deep soils (Wakeham et al., 1980;

Jacob et al., 2008), during transport (Bouloubassi and Saliot, 1993), or produced *in-situ* in the lake sediment column (e.g. Bouloubassi et al., 2001; Yunker and MacDonald, 2003).

While our investigations revealed the occurrence of these TTHCs in lake core sediments, they were neither detected in the upper soils, nor in river suspended sediments from Lake Baldegg catchment (unpublished results). Hence, the formation of TTHCs in soils and during transport appears here very unlikely, although their presence in deep soils (as reported by Wakeham et al., 1980) and their subsequent transport through deep soil erosion cannot be fully excluded.

The temporal evolution of TTHCs concentration is provided in Fig. 5. The lowest concentrations are recorded in the earliest part of the archive, before the onset of the eutrophication, and increase as the latter start. The maximal concentration is reached in the middle of the 1960's, i.e. synchronously to the isotopic excursion recorded in CSIA. The evolution of TTHCs concentration was confronted to ratios of $\delta^{13}\text{C}$ FAs ($\delta^{13}\text{C}$ C24:0/ $\delta^{13}\text{C}$ C26:0; $\delta^{13}\text{C}$ C26:0/ $\delta^{13}\text{C}$ C28:0; $\delta^{13}\text{C}$ C24:0/ $\delta^{13}\text{C}$ C28:0). As expanded above (Sect. 4.2.), a high discrepancy in isotopic values between long-chain FAs of close chain-length points to a degradation of the isotopic signal. Then, the more the values differ (i.e. the more the ratio of their isotopic values is >1 or <1), the more the isotopic signal of one of the FAs can be considered as degraded. Keeping in mind that such a ratio is not an absolute indicator because of some variability results from the biosynthesis pathway, one can still consider the overall evolution of the ratio along the core. C28:0 being considered as only little affected by **autochthonous production** (Sect. 4.2.), $\delta^{13}\text{C}$ C26:0/ $\delta^{13}\text{C}$ C28:0 and $\delta^{13}\text{C}$ C24:0/ $\delta^{13}\text{C}$ C28:0 ratios are taken as more reliable than the $\delta^{13}\text{C}$ C24:0/ $\delta^{13}\text{C}$ C26:0 ratio.

Gelöscht: the carbon exchanges

Interestingly, the TTHCs concentration evolution is highly similar to the $\delta^{13}\text{C}$ FAs ratios trend, even more for the $\delta^{13}\text{C}$ C24:0/ $\delta^{13}\text{C}$ C28:0 than for the $\delta^{13}\text{C}$ C26:0/ $\delta^{13}\text{C}$ C28:0. This suggests a TTHCs concentration under the control of the lake bacterial activity, similarly as the CSIA signal. In other words, the TTHCs signal archived in the Lake Baldegg sediments most probably testifies to an in-situ degradation of pentacyclic triterpenes, consequent to the bacterial activity favored by the anoxic conditions in the water column (Wakeham and Canuel, 2016). While these compounds have successfully been used in many contexts for palaeoenvironmental reconstructions (e.g. Lavrieux, 2011; Dubois and Jacob, 2016; Guillemot et al., 2017), our results show the impossibility to use them to decipher the terrestrial inputs in the case of the highly eutrophic and microorganism-dominated Lake Baldegg environment.

Thus, the microbial activity **masks** to a large extent the terrestrial molecular inputs in the Lake Baldegg, and affects the linear compounds (as shown by the CSIA) as well as the cyclic ones (as shown by the HSB).

Gelöscht: overprints

5 Conclusions

The aim of this study was to apply a mixed CSIA and HSB approach to the highly eutrophic context of Lake Baldegg catchment. The main land-uses were successfully discriminated with the CSIA **but** align along a line. The CSIA signals of arable lands as well as orchards plot halfway between grasslands and forests, which may render difficult to correctly attribute the sources of sediment samples **lying** between grasslands and forests end-members. Most of the recent lake sediments plot within the forest soil pool, underlining the potential important contribution either of the steeply sloping and loosely structured forest soils or to tree lines growing along the streams and around the lake, which could contribute directly to the signal transported to the lake sediment archive. Further studies are required to investigate the extent of this potential contribution. However, all lake sediments older than 1940's, as well as those from mid-1960's to mid-1970's actually fall out of the polygon of **today's** source soils signatures.

Gelöscht: and

Gelöscht: the

Although the influence of not yet identified sources to our lake sediments, as expanded above, **is very likely**, the fact that the C28:0 lake isotopic values fall in the same range as the soils tends to indicate (1) that the soils are most probably the main sources of C28:0 FA and (2) would hint into the direction of an additional source with low C28:0 FA concentrations compared to C24:0 and C26:0 FAs. This **leaves a number of potential additional sources, namely, (i)** a larger contribution of Sphagnum/moss derived organic matter released from historical peat bogs or the riparian zone as described above, **or during time periods of hypereutrophic status of the lake (ii)**, in-situ FA production of **preferably C24/26:0 FA** by either **methanotroph bacteria or other bacteria which were using $\delta^{13}\text{C}$ depleted CO_2 derived from methane-oxidizing bacteria (MOB), (iii)**, algae **with** depleted $\delta^{13}\text{C}$ values due to described effects of hydroxilation reaction of CO_2 combined with high pH values in the epilimnion and CO_2 undersaturation, or **(iv) due to the uptake of MOB derived CO_2 depleted $\delta^{13}\text{C}$ analogous to the bacteria mentioned before.**

- Gelöscht: might be
- Gelöscht: could be true for example for
- Gelöscht: or (3) due to
- Gelöscht: or by
- Gelöscht: or other microorganisms
- Gelöscht: due to
- Gelöscht: with
- Gelöscht: by methanotroph bac
- Gelöscht: teria.

While the long-chain fatty acids are becoming widely used for CSIA as markers of the terrestrial **sediment contribution to rivers and lakes**, our results underline the need to temper this standpoint. Some lacustrine macrophytes, bacteria and microbial organisms were previously shown to produce also long-chain FAs, and **also** our study highlights that an interference of the terrestrial isotopic signal linked to **aquatic activity might** be underestimated. CSIA was proven to be **not suitable to** quantitatively unmix terrestrial sources from the Lake Baldegg **historic** sediments, and thus to apportion the relative contribution of different land-uses to the sedimentary archive as long as the **isotopic signal of the** missing source is not known.

Gelöscht: The reason for the occurrence of the depletion effects only before 1940, and during the interval in the 1960s and 1970s is so far unclear. One potential explanation could be the absence of MOB in the water column due to the large extent of the anaerobic zone, or the microorganism, responsible for the production of the long-chain FAs was not present anymore after 1940. Potentially the algae or other microorganism responsible for the production of the long-chain FAs was not present anymore after 1940. Following the hypothesis with organic material originated from the riparian zone and/or wetlands, the explanation could be that with time, wetlands evolved after the lake level changes drained themselves or were drained by the farmers until 1940 for the intensification of agricultural practices. With the fully drained wetlands the transport of organic material would have stopped. The 1960s and 70s excursion could be explained similarly as for the pre 1940 time interval. The temporary occurrence of an algae or microorganism, mainly producing C28:0 FA could be the explanation for this time interval. Alternatively, the reedland close to the southern inlet of the lake could have transported a lot of depleted, peat derived organic material into the lake, when it was drained after 1955 and being responsible for the isotopic excursion during the 1960s and 70s.

While the isotopic signal, especially C24:0 and C26:0 FAs until 1940 and C28:0 FA during the 1960s and 1970s, is clearly influenced by unknown, **but most likely aquatic** sources, land-use and catchment **historical development** are still surprisingly accurately reflected in the background patterns: human activities and land-uses directly impacted the trophic level of the lake and its accompanying biomass, imprinting its mark on the FAs isotopic signal. The main phases of land-uses and catchment history over the last 150 years are thus still visible in the CSIA results. More than affecting just linear compounds, it is highly probable that, **microbial activity** also affected the more specific cyclic molecule assemblages, as testified by the presence of **in-situ produced TTHCs**. Special care should thus be taken for further studies on eutrophic systems, where a strong bacterial activity is known or suspected.

- Formatiert: Hervorheben
- Formatiert: Hervorheben
- Formatiert: Hervorheben
- Gelöscht: ¶
- Gelöscht: only
- Gelöscht: such an
- Gelöscht: should not
- Gelöscht: unusable
- Gelöscht: y

To conclude, we see the imprints of plants AND bacteria in the Lake Baldegg sediments. the influence of terrestrial derived compounds and their changes with land use management are very precisely documented, but at the same time the influence of in-situ produced FAs is very likely and has an impact on the overall isotopic composition of long chain FAs.

- Gelöscht: the
- Gelöscht: which in-situ origin seems here clear
- Gelöscht: Taking all this into account, it is very likely that the question from the title, if

Acknowledgements. This study was funded by the European COST Action ES1306, "Connecting European connectivity research" and was finalized in the framework of the IAEA Coordinated Research Project (CRP) "Nuclear techniques for a better understanding of the impact of climate change on soil erosion in upland agro-ecosystems" (D1.50.17). Core recovery was financially supported by an ETH research grant (CH1-02-08-2). We wish to thank Dr. Stefano Bernasconi (ETH Zurich) for granting access to the ASE, and Judith Kobler-Waldis, Thomas Kuhn, Simon Imhof, Oliver Rehmann and Lukas Burgdorfer for their help in the laboratory. We thank Robert Lovas, Pius Stadelmann and Franz Stadelmann (Canton Lucerne) for providing helpful information about the catchment. Further we thank Stefano Crema and Marco Cavalli for their support to calculate the connectivity index. Our acknowledgements are also addressed to the land owners for sampling permissions and their curiosity about our work.

- Formatiert: Abstand Nach: 0 Pt.
- Gelöscht: or
- Gelöscht: , can be answered with "both". We see both,
- Gelöscht: , as well as
- Gelöscht: influenced
- Gelöscht: CSSI
- Gelöscht: ones
- Gelöscht: ¶

References

Alewel, C., Giesler, R., Klaminder, J., Leifeld, J., Rollog, M., Stable carbon isotopes as indicators for micro-geomorphic changes in peatlands. Biogeosciences, 8, 1769-1778, 2011.

Gelöscht: While our study revealed missing sources of FAs to our isotopic signal, this should be investigated for other families otherwise used in CSIA, such as *n*-alkanes. To find the responsible sources of the bias in our isotopic data and thus allow source apportionment, soil, plant and sediment samples from the riparian zone, reedlands and peat bogs (e.g. *Phragmites australis*, *Sphagnum* species) around Baldegger Lake should be studied to verify their potential contribution to the depleted $\delta^{13}\text{C}$ values of the FAs in the lake sediments. Another approach could be to analyze DOC from the contributing rivers and from different depth intervals of the ... [1]
Gelöscht: (including linear compounds), this linear regression... [2]

- Alewell, C., Birkholz, A., Meusburger, K., Wildhaber, Y. S. and Mabit, L.: Quantitative sediment source attribution with compound-specific isotope analysis in a C3 plant-dominated catchment (central Switzerland), *Biogeosciences*, 13, 1587-1596, 2016.
- 5 Allan, J.D.: Landscapes and riverscapes: the influence of landuse on stream ecosystems, *Annu. Rev. Ecol. Evol. S.*, 35, 257-284, 2004.
- Baas, M., Pancost, R., van Geel, B., Sinninghe-Damste, J. S.: A comparative study of lipids in *Sphagnum* species, *Org. Geochem.*, 31 (6), 535-541, 2000.
- Bird, M., Kracht, O., Derrien, D., and Zhou, Y., The effect of soil texture and roots on the stable carbon isotope composition of soil organic carbon, *Aust. J. Soil Res.*, 41, 77- 94, 2003.
- 10 Blake, W. H., Ficken, K. J., Taylor, P., Russell, M. A., and Walling, D. E.: Tracing crop-specific sediment sources in agricultural catchments, *Geomorphology*, 139, 322-329, 2012.
- Blokker, P., Schouten, S., van den Ende, H., de Leeuw, J., Hatcher, P.G. and Damsté, J.S.S.: Chemical structure of algaenans from the fresh water algae *Tetraedron minimum*, *Scenedesmus communis* and *Pediastrum boryanum*, *Org. Geochem.*, 29, 1453-1468, 1998.
- 15 Borja, Á., Galparsoro, I., Solaun, O., Muxika, I., Tello, E.M., Uriarte, A. and Valencia, V.: The European Water Framework Directive and the DPSIR, a methodological approach to assess the risk of failing to achieve good ecological status, *Estuar. Coast. Shelf S.*, 66, 84-96, 2006.
- Borselli, L., Cassi, P. and Torri, D.: Prolegomena to sediment and flow connectivity in the landscape: A GIS and field numerical assessment, *CATENA*, 75, 268-277, 2008.
- 20 Bouloubassi, I. and Saliot, A. Dissolved, particulate and sedimentary naturally derived polycyclic aromatic hydrocarbons in a coastal environment: geochemical significance, *Mar. Chem.* 42, 127-143, 1993.
- Bouloubassi, I., Fillaux, J. and Saliot, A.: Hydrocarbons in surface sediments from the Changjiang (Yangtze River) estuary, East China Sea, *Mar. Pollut. Bull.*, 42, 1335-1346, 2001.
- 25 Bovee, R.J. and Pearson, A.: Strong influence of the littoral zone on sedimentary lipid biomarkers in a meromictic lake, *Geobiology*, 12, 529-541, 2014.
- Caudales, R. and Wells, J.M.: Differentiation of free-living *Anabaena* and *Nostoc* cyanobacteria on the basis of fatty acid composition, *Int. J. Syst. Bacteriol.*, 42, 246-251, 1992.
- Cavalli, M., Trevisani, S., Comiti, F. and Marchi, L.: Geomorphometric assessment of spatial sediment connectivity in small Alpine catchments, *Geomorphology*, 188, 31-41, 2013.
- 30 Cummings, J.H.: Short chain fatty acids in the human colon, *Gut*, 22, 763-779, 1981.
- Dubois, N. and Jacob, J.: Molecular biomarkers of anthropic impacts in natural archives: A review, *Front. Ecol. Evol.*, 4, 92, 2016.
- Ducerf, G.: L'encyclopédie des plantes bio-indicatrices alimentaires et médicinales. Guide de diagnostic des sols, 4th edition, Promonature éditions, France, 352 pp, 2017.
- 35 Eglinton, T. I. and Eglinton G.: Molecular proxies for palaeoclimatology, *Earth Planet. Sci. Lett.*, 275 (1), 1-6, 2008.
- Fang, J., Wu, F., Xiong, Y., Li, F., Du, X., An, D., and Wang, L.: Source characterization of sedimentary organic matter using molecular and stable carbon isotopic composition of *n*-alkanes and fatty acids in sediment core from Lake Dianchi, China, *Sci. Total Environ.*, 473, 410-421, 2014.
- 40 Feakins, S.J., Eglinton, T.I., deMenocal, P.B., 2007. A comparison of biomarker records of northeast African vegetation from lacustrine and marine sediments (ca. 3.40 Ma). *Org. Geochem.* 38, 1607-1624, 2007.
- Federal Statistical Office: Surface Agricole Utile 1975-2015, Neuchâtel (Switzerland), 2015.
- Federal Statistical Office: Der Schweizerische Ackerbau in der Kriegszeit, Eidgenössische Anbauerhebungen 1939-1947, Bern, Switzerland, 360 pp, 1949.
- 45 Feng, X.: Long-term c/c_0 responses of trees in Western North America to atmospheric CO_2 concentration derived from carbon isotope chronologies. *Oecologia*, 117, 19-25, 1998.
- Ficken, K. J., Barber, K. E., Eglinton, G., Lipid biomarker, $\delta^{13}C$ and plant macrofossil stratigraphy of a Scottish montane peat bog over the last two millennia, *Org. Geochem.*, 28, 217-237, 1998.
- Galy, V., Eglinton, T., France-Lanord, C., and Sylva, S.: The provenance of vegetation and environmental signatures encoded in vascular plant biomarkers carried by the Ganges-Brahmaputra rivers, *Earth Planet. Sci. Lett.*, 304, 1-12, 2011.
- 50 Garten, C.T., Cooper, L.W., Post, W.M., and Hanson, P.J., Climate controls on forest soil C isotope ratios in the Southern Appalachian Mountains, *Ecology*, 81, 1108- 1119, 2000.

Formatiert: Englisch (USA)

Formatiert: Englisch (USA)

- Gibbs, M. M.: Identifying source soils in contemporary estuarine sediments: A new compound-specific isotope method, *Estuar. Coast.*, 31, 344-359, 2008.
- Gong, C.R., Hollander, D.J., Differential contribution of bacteria to sedimentary organic matter in oxic and anoxic environments, Santa Monica Basin, California, *Org Geochem*, 26, 545-563, 1997.
- 5 Griepentrog, M., Eglinton, T.I., Hagedorn, F., Schmidt, M.W.I. and Wiesenberg, G.L.B., Interactive effects of elevated CO₂ and nitrogen deposition on fatty acid molecular and isotope composition of above- and belowground tree biomass and forest soil fractions, *Glob. Change Biol.*, 21, 473-486, 2015.
- Gugger, M., Lyra, C., Suominen, I., Tsitko, I., Humbert, J.F., Salkinoja-Salonen, M.S. and Sivonen, K.: Cellular fatty acids as chemotaxonomic markers of the genera *Anabaena*, *Aphanizomenon*, *Microcystis*, *Nostoc* and *Planktothrix* (cyanobacteria), *Int. J. Syst. Evol. Micr.*, 52, 1007-1015, 2002.
- 10 Guillemot, T., Bichet, V., Gauthier, E., Zocattelli, R., Massa, C. and Richard, H.: Environmental responses of past and recent agropastoral activities on south Greenlandic ecosystems through molecular biomarkers, *Holocene*, 27, 783-795, 2017.
- Hancock, G.J. & Revill, A.T.: Erosion source discrimination in a rural Australian catchment using compound-specific isotope analysis (CSIA). *Hydrological Processes*, 27, 923-932, 2013.
- 15 Hayes, J.M.: Factors controlling ¹³C contents of sedimentary organic compounds: Principles and evidence, *Mar. Geol.*, 113, 111-125, 1993.
- Jacob, J., Disnar, J.R., Boussafir, M., Sifeddine, A., Albuquerque, A.L.S., and Turcq, B.: Pentacyclic triterpene methyl ethers in recent lacustrine sediments (Lagoa do Caçó, Brazil), *Org. Geochem.*, 36, 449-461, 2005.
- Jacob, J., Disnar, J.R., Arnaud, F., Chapron, E., Debret, M., Lallier-Vergès, E., Desmet, M. and Revel-Rolland, M.: Millet cultivation history in the French Alps as evidenced by a sedimentary molecule, *J. Archaeol. Sci.*, 35, 814-820, 2008.
- 20 Jansen, B., van Loon, E.E., Hooghiemstra, H. and Verstraten, J.M., Improved reconstruction of palaeo-environments through unravelling of preserved vegetation biomarker patterns, *Palaeogeogr. Palaeoclimatol.*, 285, 119-130.
- Jansen, B., de Boer, E.J., Cleef, A.M., Hooghiemstra, H., Moscol-Olivera, M., Tonneijck, F.H. and Verstraten, J.M., Reconstruction of late Holocene forest dynamics in northern Ecuador from biomarkers and pollen in soil cores, *Palaeogeogr. Palaeoclimatol.*, 386, 607-619, 2013.
- 25 Jardé, E., Mansuy, L. and Faure, P.: Organic markers in the lipidic fraction of sewage sludge, *Water Res.*, 39, 1215-1232, 2005.
- Jørgensen, H., Jakobsen, K. and Eggum, B.O.: Determination of endogenous fat and fatty acids at the terminal ileum and on faeces in growing pigs, *Acta Agric. Scand., Sect. A., Animal Sci.*, 43, 101-106, 1993.
- 30 Keeling, C. D., S. C. Piper, R. B. Bacastow, M. Wahlen, T. P. Whorf, M. Heimann, and Meijer, H. A., Atmospheric CO₂ and ¹³CO₂ exchange with the terrestrial biosphere and oceans from 1978 to 2000: Observations and carbon cycle implications, in: *A history of atmospheric CO₂ and its effects on plants, animals, and ecosystems*, Springer, New York, USA, 83-113, 2005.
- Keeling, C.D., The Suess effect: ¹³Carbon-¹⁴Carbon interrelations, *Environ. Int.*, 2, 229-300, 1979.
- 35 Kind, J.: Ferromagnetic resonance spectroscopy and Holocene Earth's magnetic field variations in sediment from Swiss lakes, Ph.D. thesis, ETH Zurich (Switzerland), 2012.
- Kopp, Joseph: Veränderung von Seen und Flussläufen in der Zentralschweiz in interglazialer und postglazialer Zeit, *Mitteilungen der naturforschenden Gesellschaft Luzern*, 19, 155-167, 1962.
- 40 Krull, E.S., Skjemstad, J.O., Burrows, W.H., Bray, S.G., Wynn, J.G., Bol, R., Spouncer, L., and Harms, B., Recent vegetation changes in central Queensland, Australia: Evidence from δ¹³C and ¹⁴C analyses of soil organic matter, *Geoderma*, 126, 241-259, 2005.
- Lavrieux, M.: Biomarqueurs moléculaires d'occupation des sols, du sol au sédiment : exemple du bassin-versant et du lac d'Aydat (Puy-de-Dôme), Ph.D. thesis, University Tours (France), 2011.
- 45 Lavrieux, M., Jacob, J., Le Milbeau, C., Zocattelli, R., Masuda, K., Bréheret, J.G., and Disnar, J.R.: Occurrence of triterpenyl acetates in soil and their potential as chemotaxonomical markers of Asteraceae, *Org. Geochem.*, 42, 2011.
- Le Milbeau, C., Lavrieux, M., Jacob, J., Bréheret, J.G., Zocattelli, R., and Disnar, J.R.: Methoxy-serratenes in a soil under conifers and their potential use as biomarkers of Pinaceae, *Org. Geochem.*, 55, 45-54, 2013.
- Lehmann, M.F., Bernasconi, S.M., McKenzie, J.A., Barbieri, A., Simona, M., and Veronesi, M.: Seasonal variation of the δ¹³C and δ¹⁵N of particulate and dissolved carbon and nitrogen in Lake Lugano: Constraints on biogeochemical cycling in a eutrophic lake, *Limnol. Oceanogr.*, 49, 415-429, 2004.
- 50 Lichtfouse, Eric: Heterogeneous turnover of molecular organic substances from crop soils as revealed by ¹³C labeling at natural abundance with *Zea mays*. *Die Naturwissenschaften*, 84 (1), 23-25, 1997.

Formatiert: Englisch (USA)

Gelöscht: Eric

Gelöscht: .

Formatiert: Hochgestellt

Gelöscht: , 1997

Gelöscht: pp.

Gelöscht: ¶

Formatiert: Deutsch (Schweiz)

- Liess, M., Schulz, R., Berenzen, N., Nanko-Drees, J. and Wogram, J.: Pflanzenschutzmittelbelastung und Lebensgemeinschaften in Fließgewässern mit landwirtschaftlich genutztem Umland, UBA Texte 65-01, Berlin, 227 pp, 2001.
- 5 Lohmann, F., Trendel, M.L., Hetru, C. and Albrecht, P.: C-29 tritiated β -amyrin: chemical synthesis aiming at the study of aromatization processes in sediments, *J. Label. Compd. Radiopharm.*, 28, 377–386, 1990.
- Lotter, A.F., Sturm, M., Teranes, J.L. and Wehrli, B.: Varve formation since 1885 and high-resolution varve analyses in hypertrophic Baldeggersee (Switzerland), *Aquat. Sci.*, 59, 304-325, 1997.
- Lotter, A.F.: The recent eutrophication of Baldeggersee (Switzerland) as assessed by fossil diatom assemblages, *Holocene*, 8, 395-405, 1998.
- 10 Lotter, A.F.: Pollen profile BALDEGG, Baldeggersee, Switzerland. European Pollen Database (EPD), doi:10.1594/PANGAEA.738987, 2010.
- Makhutova, O. N., Borisova, E. V., Shulepina, S. P., Kolmakova, A. A., Sushchik, N.N., Fatty acid composition and content in chironomid species at various life stages dominating in a saline Siberian lake, *Cont. Probl. of Ecol.*, 10, 230-239, 2017.
- Malaj, E., P. C. von der Ohe, M. Grote, R. Kühne, C. P. Mondy, P. Usseglio-Polatera, W. Brack and Schäfer, R. B.: Organic chemicals jeopardize the health of freshwater ecosystems on the continental scale, *Natl. A. Sci.*, 111, 9549-9554, 2014.
- 15 Marseille, F., Disnar, J.R., Guillet, B. and Noack, Y.: *n*-Alkanes and free fatty acids in humus and A1 horizons of soils under beech, spruce and grass in the Massif-Central (Mont-Lozère), France, *Eur. J. Soil Sci.*, 50, 433-441, 1999.
- Matthaei, C., Piggitt, J.J., and Townsend, C.R.: Multiple stressors in agricultural streams: interactions among sediment addition, nutrient enrichment and water abstraction, *J. Applied Ecology*, 47, 639-649, 2010.
- 20 Müller, B., Gächter, R. and Wüest, A., 2014, Accelerated Water Quality Improvement during Oligotrophication in Peri-Alpine Lakes, *Environ. Sci. Tech.*, 48, 6671-6677, 2014.
- Müller, B., Meyer, J. S., Gächter, R., Alkalinity regulation in calcium carbonate-buffered lakes, *Limn. Oceanogr.*, 61, 341-352, 2016.
- 25 [Naeher, S., Niemann, H., Peterse, F., Smittenberg, R. H., Zigah, P. Z., Schubert, C. J., Tracing the methane cycle with lipid biomarkers in Lake Rotsee \(Switzerland\), *Org. Geochem.*, 66, 174-181, 2004.](#)
- Neunlist, S., Rodier, C. and Llopiz, P.: Isotopic biogeochemistry of the lipids in recent sediments of Lake Bled (Slovenia) and Baldeggersee (Switzerland), *Org. Geochem.*, 33, 1183–1195, 2002.
- Niessen, F. and Sturm, M.: Die Sedimente des Baldeggersees (Schweiz) – Ablagerungsraum und Eutrophierungsentwicklung während der letzten 100 Jahre, *Arch. Hydrobiol.*, 108, 365–383, 1987.
- 30 Otto, A. and Wilde, V.: Sesqui-, di-, and triterpenoids as chemosystematic markers in extant conifers - a review, *Bot. Rev.*, 67, 141-238, 2001.
- Pancost, R., Baas, M., van Geel, B., Sinninghe-Damste, J. S.: [Biomarkers as proxies for plant inputs to peats: an example from a sub-boreal ombrotrophic bog](#), *Org. Geochem.*, 33, 675-690, 2002.
- 35 Parker, P.L., Van Baalen, C. and Maurer, L.: Fatty acids in eleven species of blue-green algae: geochemical significance, *Science*, 155, 707-708, 1967.
- [Petrišič, M. G., Heath, E., Ogrinc, N.: Lipid Biomarkers and Their Stable Carbon Isotopes in Oxidic and Anoxic Sediments of Lake Bled \(NW Slovenia\), *Geomicrobiol. J.*, 34 \(7\), 606-617, 2017.](#)
- Popp, H.: Le siècle de la révolution agricole. L'agriculture et la politique agricole suisses au 20e siècle, Agri, Lausanne, Switzerland, 111 pp, 2001.
- 40 Reiffarth, D.G., Petticrew, E.L., Owens, P.N. and Lobb, D.A.: Sources of variability in fatty acid (FA) biomarkers in the application of compound-specific stable isotopes (CSSIs) to soil and sediment fingerprinting and tracing: A review. *Sci. Total Environ.*, 565, 8–27, 2016.
- Réveillé, V., Mansuy, L., Jardé, E. and Garnier-Sillam, E.: Characterisation of sewage sludge-derived organic matter: lipids and humic acids, *Org. Geochem.*, 34, 615-627.
- 45 Rezbanyai, L.: Zur Insektenfauna des Siedereiteiches bei Hochdorf, Kanton Luzern, *Entomologische Berichte Luzern*, 5, 1981.
- Rubino, M., D. Etheridge, C. Trudinger, C. Allison, M. Battle, R. Langenfelds, L. Steele, M. Curran, M. Bender, and White, J., A revised 1000 year atmospheric $\delta^{13}\text{C-CO}_2$ record from Law Dome and South Pole, Antarctica, *J. Geophys. Res. Atmos.*, 118, 8482–8499, 2013.
- Schelske, C.L., and Hodell, D.A., Using carbon isotopes of bulk sedimentary organic matter to reconstruct the history of nutrient loading and eutrophication in Lake Erie, *Limnol. Oceanogr.*, 40, 918-929, 1995.
- 50

Formatiert: Englisch (USA)

Gelöscht: ¶

Gelöscht: ¶

Formatiert: Englisch (USA)

Formatiert: Englisch (USA)

Formatiert: Englisch (USA)

Formatiert: Englisch (USA)

Formatiert: Englisch (USA)

Formatiert: Englisch (USA)

Formatiert: Englisch (USA)

Formatiert: Englisch (USA)

Formatiert: Englisch (USA)

- Scheurer, K., Alewell, C., Bänninger, D. and Burkhardt-Holm, P.: Climate and land-use changes affecting river sediment and brown trout in alpine countries—a review, *Environ. Sci. Pollut. R.*, 16, 232-242, 2009.
- Schindler Wildhaber, Y., Liechti, R. and Alewell, C.: Organic matter dynamics and stable isotope signature as tracers of the sources of suspended sediment, *Biogeosciences* 9, 1985–1996, 2012.
- 5 Schouten, S., Klein Breteler, W.C.M., Blokker, P., Schogt, N., Rijpstra, I.C., Grice, K., Baas, M. and Damsté, J.S.S.: Biosynthetic effects on the stable carbon isotopic compositions of algal lipids: Implications for deciphering the carbon isotopic biomarker record, *Geochim. Cosmochim. Acta*, 62, 1397–1406, 1998.
- Simoneit, B.R.T.: Cyclic terpenoids of the geosphere, in: *Biological markers in the Sedimentary Record*, Johns, R.B. Elsevier, Amsterdam, Netherlands, 43-100, 1986.
- 10 [Six, J & Jastrow, Julie: Organic Matter Turnover. Encyclopedia of Soil Science. 10.1201/NOE0849338304.ch252. 2002.](#)
- Stadelmann, P., Lovas, R. and Butscher, E.: 20 Jahre Sanierung und Überwachung des Baldeggensees, *Mitteilungen der Naturforschenden Gesellschaft Luzern*, Volume 37, 2002.
- Stefanova, M., Oros, D.R., Otto, A. and Simoneit, B.R.T.: Polar aromatic biomarkers in the Miocene Maritza-East lignite, Bulgaria, *Org. Geochem.*, 33, 1079-1091, 2002.
- 15 [Steger, K., Premke, K., Gudasz, C., Boschker, H & Tranvik, L.: Comparative study on bacterial carbon sources in lake sediments: The role of methanotrophy. Aquat. Microb. Ecol., 76. 39-47, 2015](#)
- Suess, H.E., Radiocarbon concentration in modern wood, *Science*, 122, 415–417, 1955.
- Summons, R.E., Jahnke, L.L. and Roksandic, Z.: Carbon isotopic fractionation in lipids from methanotrophic bacteria: Relevance for interpretation of the geochemical record of biomarkers, *Geochim. Cosmochim. Acta*, 58, 2853-2863, 1994.
- 20 Sundermann, A., Gerhardt, M., Kappes, H. and Haase, P.: Stressor prioritisation in riverine ecosystems: Which environmental factors shape benthic invertebrate assemblage metrics?, *Ecol. Indic.*, 27, 83-96, 2013.
- Teranes, J.L. and Bernasconi, S.M.: Factors controlling $\delta^{13}\text{C}$ values of sedimentary carbon in hypertrophic Baldeggensee, Switzerland, and implications for interpreting isotope excursions in lake sedimentary records, *Limnol. Oceanogr.*, 50, 914–922, 2005.
- 25 Tolosa, I., Fiorini, S., Gasser, B., Martin, J. and Miquel, J.C.: Carbon sources in suspended particles and surface sediments from the Beaufort Sea revealed by molecular lipid biomarkers and compound-specific isotope analysis, *Biogeosciences*, 10, 2061-2087, 2013.
- Upadhyay, H.R., Bodé, S., Griepentrog, M., Huygens, D., Bajracharya, R.M., Blake, W.H., Dercon, G., Mabit, L., Gibbs, M., Semmens, B.X., Stock, B.C., Cornelis, W. and Boeckx, P.: Methodological perspectives on the application of compound-specific stable isotope fingerprinting for sediment source apportionment. *Journal of Soils and Sediments*, 17, 1537–1553, 2017.
- 30 US EPA: National Water Quality Inventory: Report to Congress 2004, Reporting Cycle January 2009, United States Environmental Protection Agency Office of Water Washington, DC 20460 EPA 841-R-08-001, 2009.
- van Bergen, P.F., Bull, I.D., Poulton, P.R. and Evershed, R.P.: Organic geochemical studies of soils from the Rothamsted classical experiments. I - Total lipid extracts, solvent insoluble residues and humic acids from Broadbalk wilderness, *Org. Geochem.*, 26, 117-135, 1997.
- 35 [van Bree, L. G. J., Peterse, F., van der Meer, M. T. J., Middelburg, J.J., Negash, A. M. D., De Crop, W., Cocquyt, C., Wieringa, J.J., Verschuren, D., Sinninghe Damsté, J.S.](#), Seasonal variability in the abundance and stable carbon-isotopic composition of lipid biomarkers in suspended particulate matter from a stratified equatorial lake (Lake Chala, Kenya/Tanzania): Implications for the sedimentary record, *Quat. Sc. Rev.*, 192. 208-224, 2018.
- 40 van der Knaap, W.O., van Leeuwen, J.F.N., Fankhauser, A. and Ammann, B.: Palynostratigraphy of the last centuries in Switzerland based on 23 lake and mire deposits: chronostratigraphic pollen markers, regional patterns, and local histories, *Rev. Palaeobot. Palyno.*, 108, 85–142, 2000.
- van Raden, U.: High resolution Swiss lake records of climate change, Ph.D. Thesis, ETH Zurich (Switzerland), 2012.
- 45 Verburg, P., The need to correct for the Suess effect in the application of $\delta^{13}\text{C}$ in sediment of autotrophic Lake Tanganyika, as a productivity proxy in the Anthropocene, *J. Paleolimnol.*, 37, 591-602, 2007.
- Volkman, J.K., Burton, H.R., Everitt, D.A. and Allen, D.I.: Pigment and lipid compositions of algal and bacterial communities in Ace Lake, Vestfold Hills, Antarctica, *Hydrobiologia*, 165, 41-57, 1988.
- 50 Volkman, J.K., Barrett, S.M., Blackburn, S.I., Mansour, M.P., Sikes, E.L. and Gelin, F.: Microalgal biomarkers: A review of recent research developments, *Org. Geochem.*, 29, 1163-1179, 1998.
- Wakeham, S.G., Schaffner, C. and Giger, W.: Polycyclic aromatic hydrocarbons in Recent lake sediments - II. Compounds derived from biogenic precursors during early diagenesis, *Geochim. Cosmochim. Acta*, 44, 415-429, 1980.

Formatiert: Einzug: Links: 0 cm, Erste Zeile: 0 cm, Abstand Nach: 0 Pt., Zeilenabstand: 1.5 Zeilen

Formatiert: Englisch (USA)

Gelöscht: Van

- Wakeham, S.G. and Canuel, E.A.: Biogenic polycyclic aromatic hydrocarbons in sediments of the San Joaquin River in California (USA), and current paradigms on their formation, *Environ. Sci. Pollut. Res.*, 23, 10426–10442, 2016.
- Wasson, J., Villeneuve, B., Iital, A., Murray-Bligh, J., Dobiasova, M., Bacikova, S., Timm, H., Pella, H., Mengin, N. and Chandesris, A.: Large-scale relationships between basin and riparian land cover and the ecological status of European rivers, *Freshwater Biol.*, 55, 1465–1482, 2010.
- 5 Wehrli, B., Lotter, A.F., Schaller, T. and Sturm, M.: High-resolution varve studies in Baldeggersee (Switzerland): Project overview and limnological background data, *Aquat. Sci.*, 59, 285–294, 1997.
- Whiticar, M.J.: Carbon and hydrogen isotope systematics of bacterial formation and oxidation of methane, *Chem. Geol.*, 161, 291–314, 1999.
- 10 Wiesenberg, G.L.B., Input and turnover of plant-derived lipids in arable soils, Ph.D. thesis, University Cologne (Germany), 2004.
- Wiesenberg, G.L.B., Schwarzbauer, J., Schmidt, M.W.I. and Schwark, L.: Source and turnover of organic matter in agricultural soils derived from *n*-alkane/*n*-carboxylic acid compositions and C-isotope signatures, *Org. Geochem.*, 35, 1371–1393, 2004.
- 15 Yunker, M.B. and MacDonald, R.W.: Composition and origins of polycyclic aromatic hydrocarbons in the Mackenzie River and on the Beaufort Sea shelf, Arctic, 48, 118–129, 1995.
- Yunker, M.B. and MacDonald, R.W.: Alkane and PAH depositional history, sources and fluxes in sediments from the Fraser river basin and strait of Georgia, Canada, *Org. Geochem.*, 34, 1429–1454, 2003.
- Zhao, F.J., Spiro, B. and McGrath, S.P., Trends in ¹³C/¹²C ratios and C isotope discrimination of wheat since 1845, *Oecologia*, 20 128, 336–342, 2001.

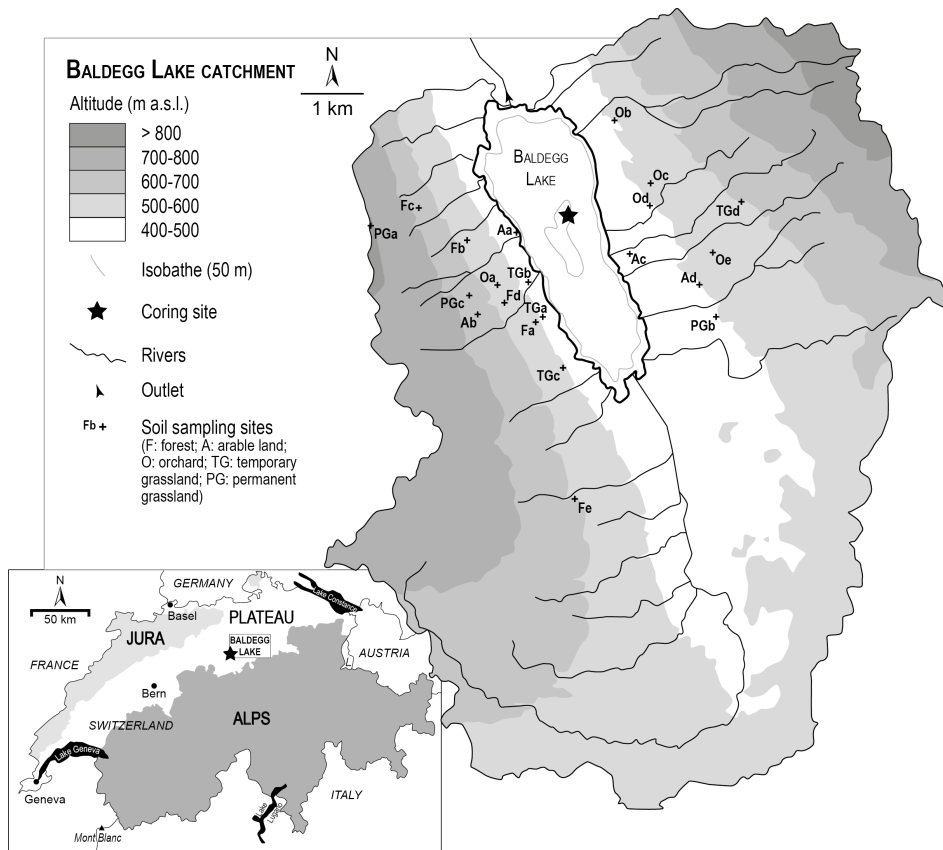


Figure 1: Catchment of Lake Baldegg with sampling sites.

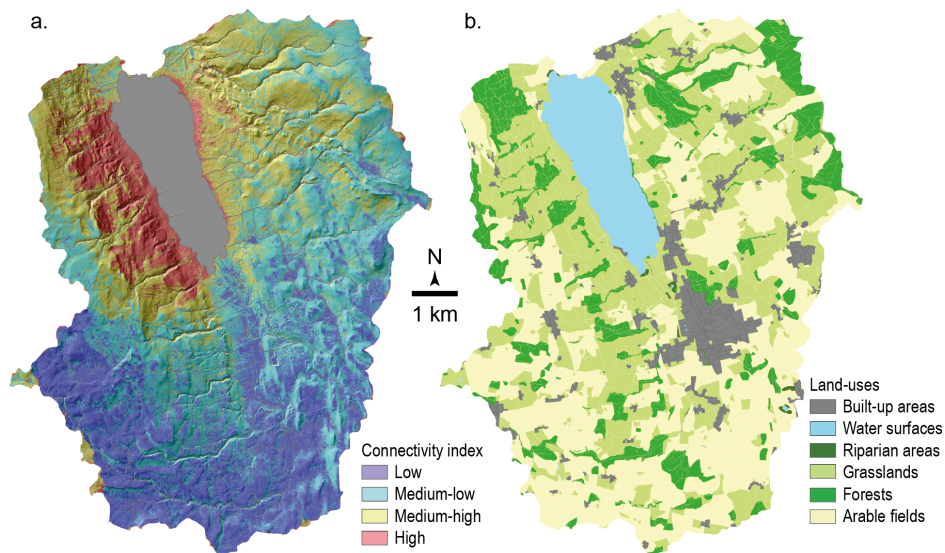


Figure 2: a. Connectivity index for the Lake Baldegg catchment, with a topographic map underlying. The lake is indicated in grey. b. Land-use map.

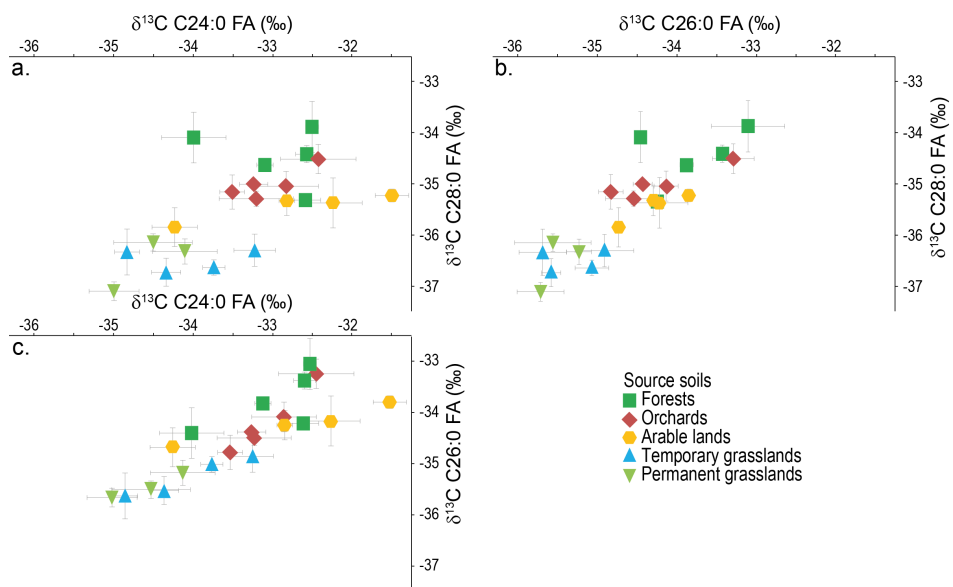


Figure 3: $\delta^{13}\text{C}$ of the FAs (a.) C24:0 vs. C28:0, (b.) C26:0 vs. C28:0, (c.) C24:0 vs. C26:0 in soils. Error bars: standard deviation of the triplicate measurements.

5

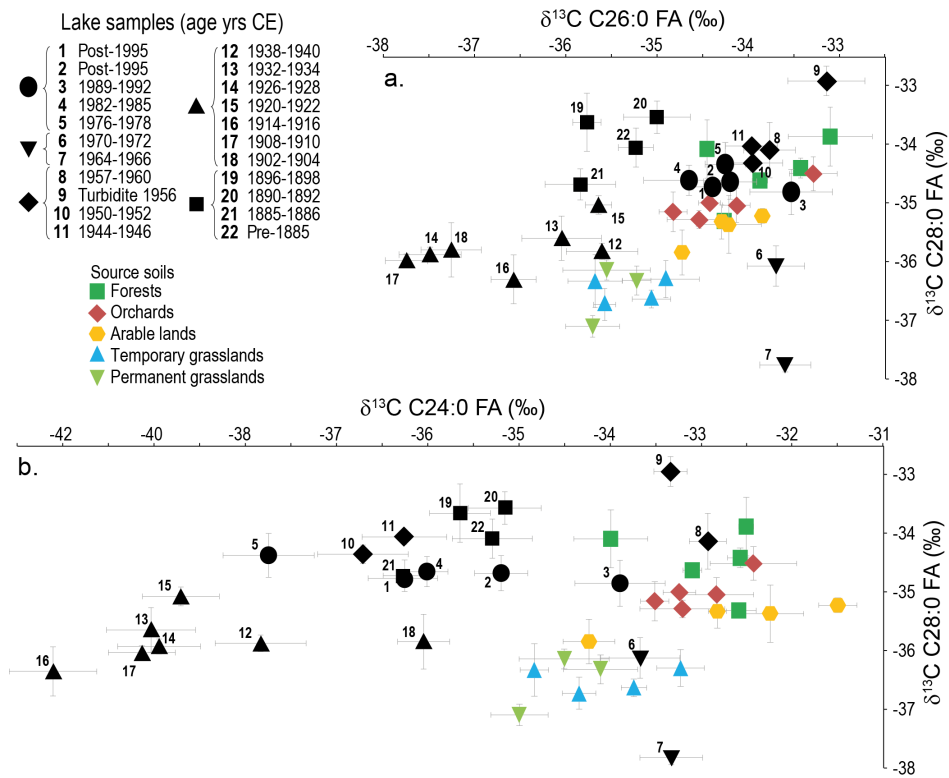


Figure 4: $\delta^{13}\text{C}$ of the FAs (a.) C26:0 vs. C28:0, (b.) C24:0 vs. C28:0, in lake sediments, compared to soils. Note the different scale for the x axis between (a.) and (b.). Error bars: standard deviation of the triplicate measurements.

5

10

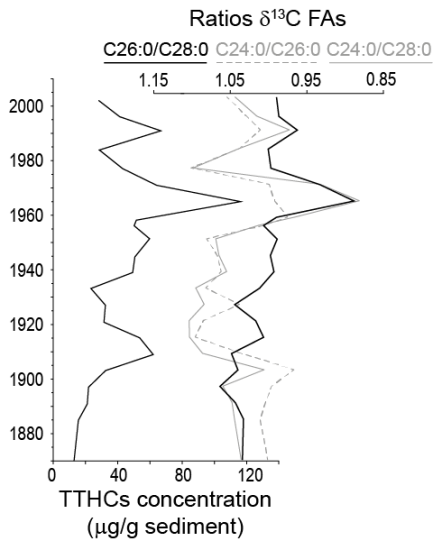


Figure 5: Evolution of the TTHCs concentration (sum of TTHC2 and TTHC3) along the sediment core, compared to evolution of the ratios of $\delta^{13}\text{C}$ of FAs,

Gelöscht: 8