

Supplementary materials for the manuscript: Varying relationships between fire intensity and fire size at global scale

Pierre Laurent¹, Florent Mouillot², Maria Vanesa Moreno², Chao Yue¹, Philippe Ciais¹

¹Laboratoire des Sciences du Climat et de l'Environnement (LSCE), CEA-CNRS-UVSQ, UMR8212, Gif-sur-Yvette, France

²UMR CEFE 5175, Centre National de la Recherche Scientifique (CNRS), Université de Montpellier, Université Paul-Valéry Montpellier, Ecole Pratique des Hautes Etudes (EPHE), Institut de Recherche pour le Développement, 1919 route de Mende, 34293 Montpellier CEDEX 5, France

Correspondence to: Pierre Laurent (pierre.laurent@ipsl.lsce.fr), Florent Mouillot (florent.mouillet@cefe.cnrs.fr)

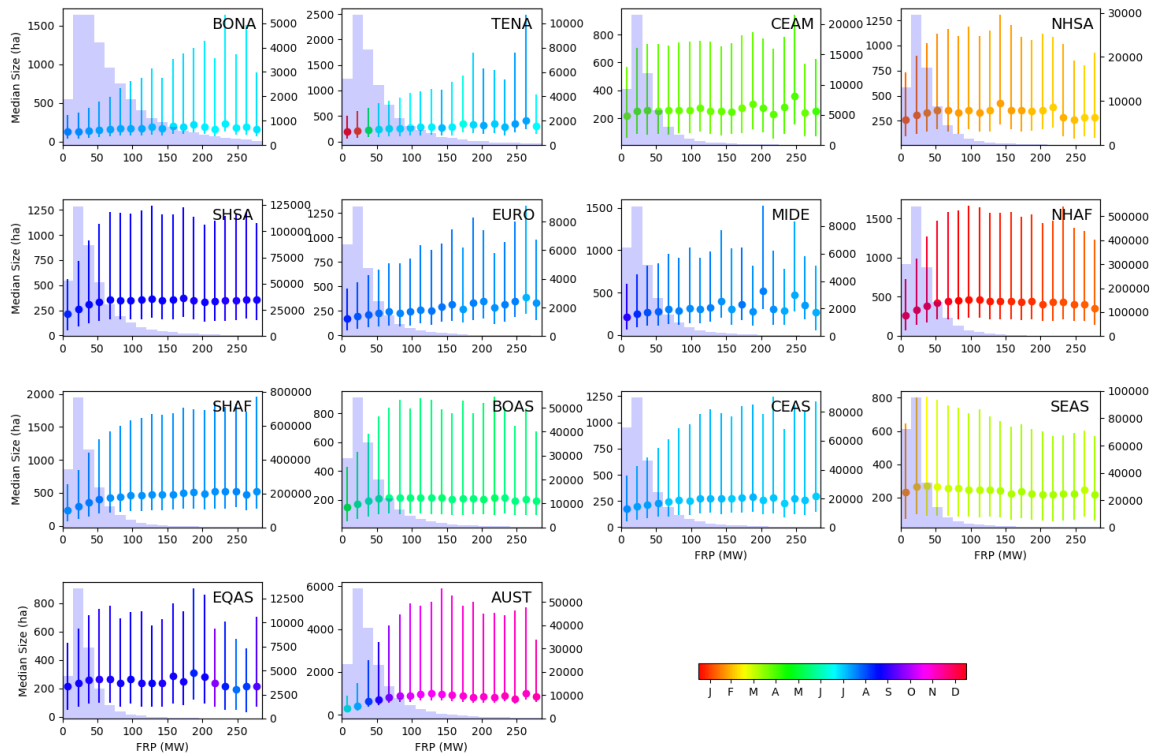
Product x cut-off	Number of patches	Number of patches with matching active fire pixels
MCD64A1 x 3	6,350,768	5,234,620
MCD64A1 x 5	5,552,765	4,550,807
MCD64A1 x 9	4,876,306	3,955,909
MCD64A1 x 14	4,450,084	3,583,996
FireCCI41 x 3	5,264,372	4,405,574
FireCCI41 x 5	3,941,415	3,285,806
FireCCI41 x 9	3,058,375	2,521,351
FireCCI41 x 14	2,246,239	1,826,388

Supplementary Table 1 : Total number of fire patches and number of patches with associated active fire pixels.

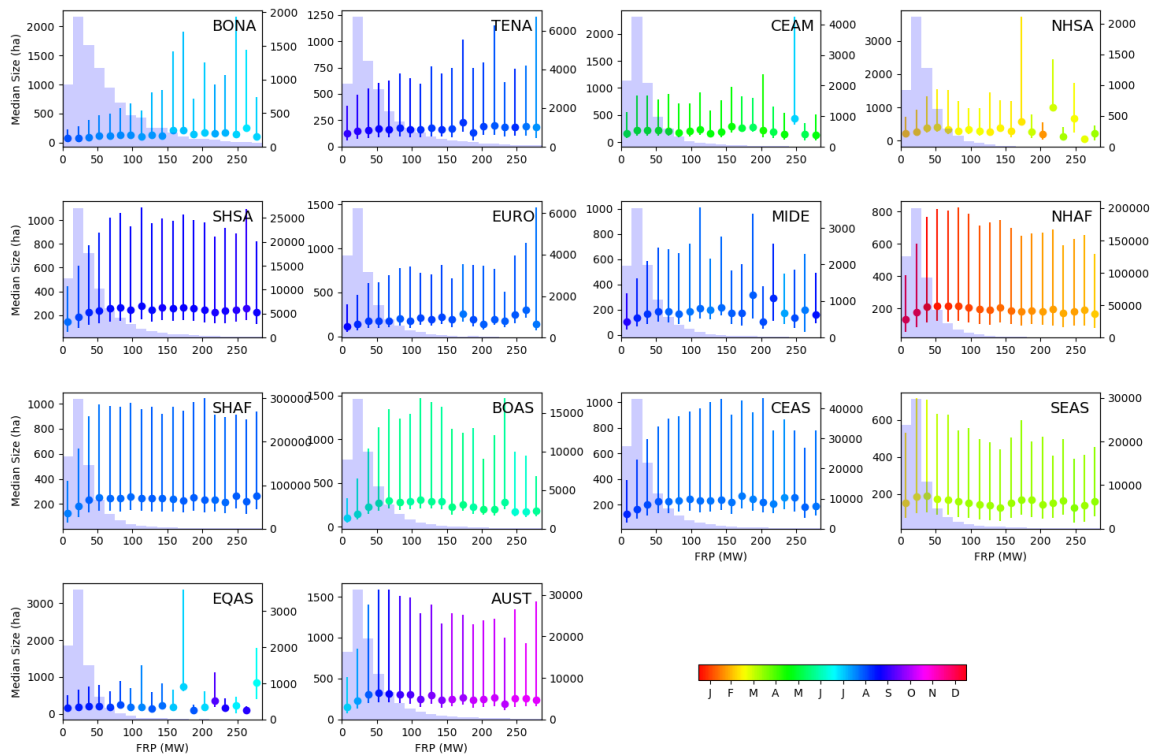


- | | | | |
|--------|-----------------------------------|---------|----------------------------|
| 1 BONA | Boreal North America | 8 NHAF | Northern Hemisphere Africa |
| 2 TENA | Temperate North America | 9 SHAF | Southern Hemisphere Africa |
| 3 CEAM | Central America | 10 BOAS | Boreal Asia |
| 4 NHSA | Northern Hemisphere South America | 11 CEAS | Central Asia |
| 5 SHSA | Southern Hemisphere South America | 12 SEAS | Southeast Asia |
| 6 EURO | Europe | 13 EQAS | Equatorial Asia |
| 7 MIDE | Middle East | 14 AUST | Australia and New Zealand |

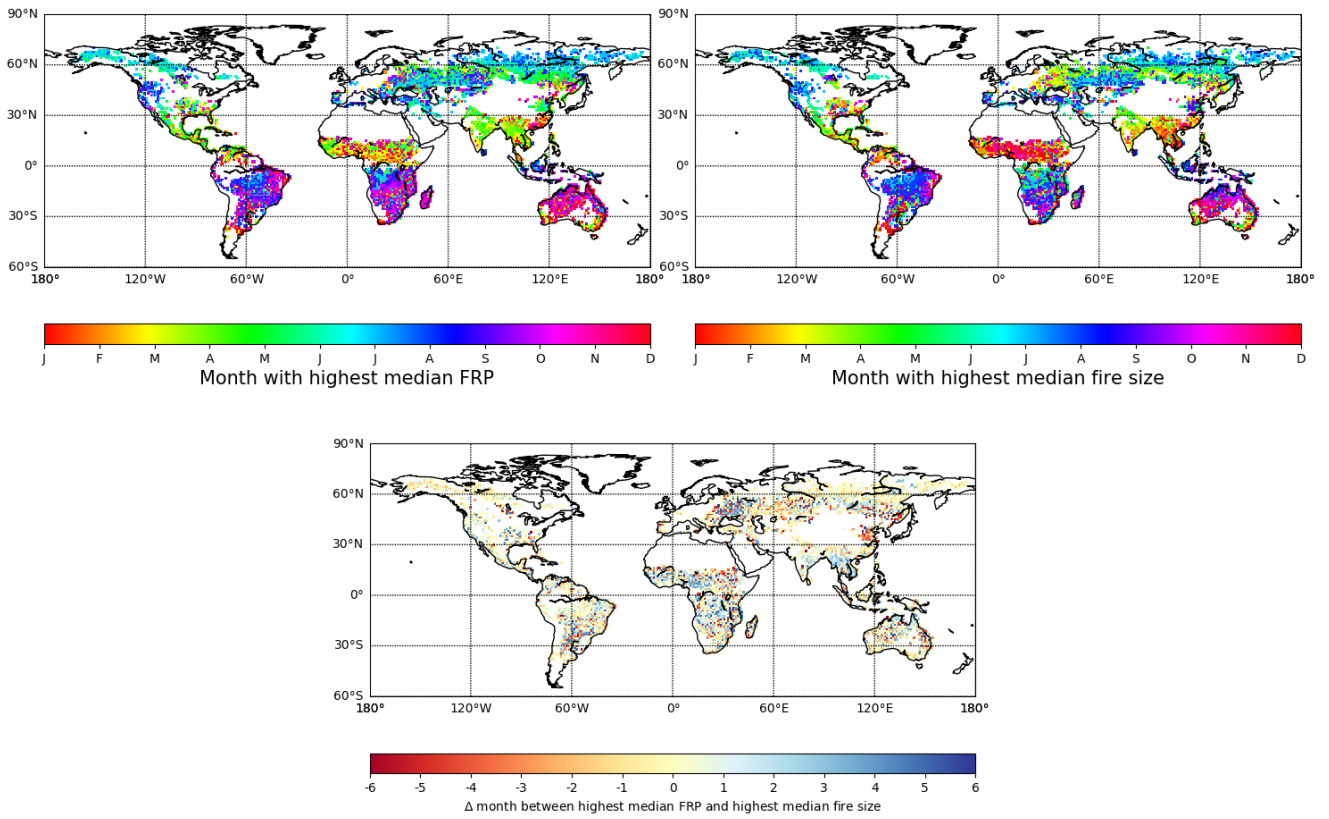
Supplementary Figure 1: GFED sub-regions (as defined in Giglio et al. 2013)



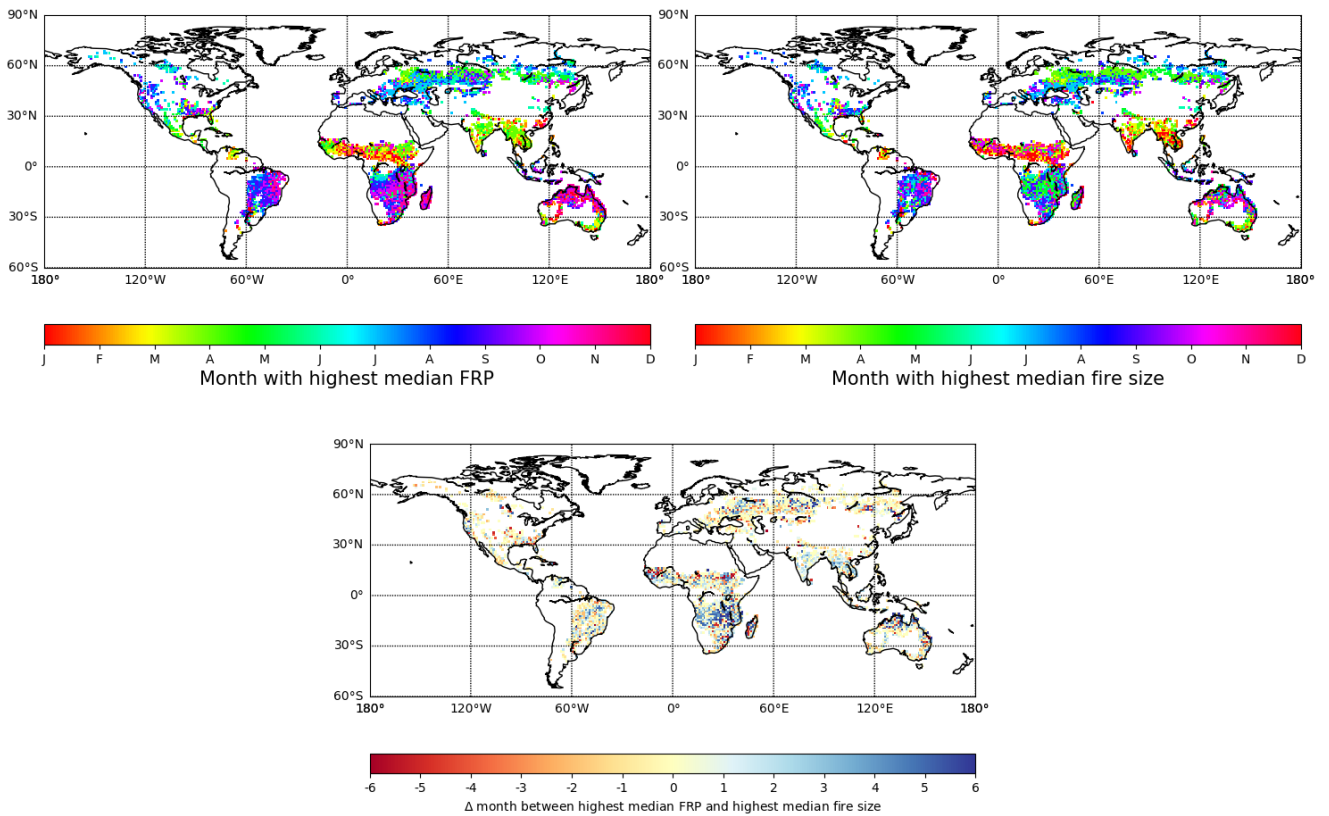
Supplementary Figure 2: Same as Figure 1 (MCD64A1), but with a cut-off of 3 days.



Supplementary Figure 3: Same as Figure 1, but with FireCCI41 (2005-2011) and a cut-off of 14 days.



Supplementary Figure 4: Same as Figure 4 (MCD64A1), with a cut-off of 3 day.



Supplementary Figure 5: Same as Figure 4 with FireCCI41, with a cut-off of 14 days.