

Replies to Comments on “Controls on zooplankton methane production in the central Baltic Sea” by Stawiarski et al., manuscript bg-2018-345

We sincerely thank both reviewers for their insightful comments on our manuscript, which have greatly helped to clarify our findings. The main changes made to our manuscript include:

- a shorter introduction which focuses on the main information which is essential for understanding the topic.
- discussing organic sulphur compounds generally as potential CH₄ source, e.g. inclusion of DMSO besides DMS and DMSP as methane precursors.
- inclusion of the locations of the stations in figure 6 for considering upwelling as being influential on the plankton community composition
- inclusion of an equation for calculating methane production rates
- discussion about the minimization of stress factors for the physiological response of the animals

Please find below the *original comments* (in italics) along with our replies (in standard).

On behalf of our co-authors with best regards from Rostock,
Oliver Schmale and Beate Stawiarski

Referee #1

General comments:

[...] The results presented shed new light on the still enigmatic accumulation of methane in oxic marine environments. The manuscript is well written and concise and the majority of the conclusions are justified by the presented data. However, I have a few major concerns (see pts 1), 9)-11) below)and, therefore, I can recommend publication only after major revisions.

We would like to thank the reviewer for acknowledging the value of our work and hope that the changes, which were applied will help to clarify the concerns.

Specific comments:

1) Introduction: The introduction looks more like a review. A lot of details are given; however, they do not help at all to place the new data/results in a broader context. I suggest to shorten the introduction and to focus it on the main points which are relevant for the discussion of the results.

We agree with the reviewer's suggestion and changed to introduction accordingly (see revised manuscript).

2) Introduction: The photochemical source of CH₄ is not mentioned. This source might be important in the Baltic Sea in view of the fact that the surface layers of the Baltic Sea are heavily influenced by rivers and rich in CDOM, see [Zhang and Xie, 2015].

We agree with the reviewer's comment and added the photochemical source as follows to the list of methane production pathways:

"(v) photochemical production of methane from colored dissolved organic matter (chromophoric dissolved organic matter, Zhang and Xie, 2015)"

The importance of CDOM in the Baltic Sea as a methane precursor might be interesting, but is not subject of this study, that focuses on the zooplankton associated methane production in the central Baltic Sea, where an immediate influence by river plumes cannot be expected. We agree with the reviewer that future investigations in the Baltic Sea are needed to study the importance of CDOM as a possible methane precursor in river plumes.

3) Introduction: DMSO can be a precursor for CH₄ as well, see e.g. [Zindler et al., 2013]. This source should be mentioned.

We thank the reviewer for making us aware of this additional precursor.

We added DMSO to the Introduction as follows:

"(iv) CH₄ production through microbial degradation of dimethylsulfide (DMS), dimethylsulfoniopropionate (DMSP) and dimethylsulfoxide (DMSO) (Damm et al., 2010, Zindler et al. 2013)."

We also added the following statement to the discussion:

"Dinophyceae, in particular the mixotrophic *Dinophysis norvegica*, were more abundant at stations with a distinct subthermocline methane enrichment. Dinophyceae produce relatively high amounts of DMSP and DMSO compared to the other phytoplankton species observed within our study (Keller et al. 1989, Hatton and Wilson 2007, Caruana & Malin 2014). Also, positive correlations have previously been observed between DMSP and CH₄ and DMSO and CH₄ in the surface ocean (Zindler et al, 2013)."

4) Page 3, lines 5/6: The statement that ocean and lakes contribute about 20% to the global natural CH₄ emissions is strongly misleading. The Baltic Sea is not a lake, thus, its emissions contribute to the oceanic/coastal CH₄ emissions which, in turn, contribute only 1% or less to the global CH₄ sources. Oceanic emissions are, therefore, a minor source of atmospheric CH₄. In the latest IPCC Report (which is also cited in the manuscript) oceanic emissions are not mentioned as a separate source.

We agree with the reviewer and deleted the statement from the manuscript.

5) P3L14-20: The role of methylphosphonate (MPn) as source of CH₄: There are contradicting results: Valle and Karl [del Valle and Karl, 2014] showed that CH₄ is not produced from dissolved MPn but rather from particulate/particle-bound MPn (pMPn); which seems to be in contrast to the results by Repeta et al., 2016.

We shortened the introduction to include information, which is essential for the discussion of the presented data. In this way, we reformulated our statement to be more general and included further references

"(ii) bacterial break-down of methylphosphonate (MPn) under phosphate-stressed conditions (Repeta et al., 2016; Karl et al., 2008; Wang et al., 2017; Teikari et al., 2018)"

6) P9L30: ‘... since it represents.’ I think a part of the sentence is missing.

This is correct. We deleted the sentence from the Introduction of the manuscript.

7) P12L7: Please remove ‘sea/air exchange’ from the subtitle. The air/sea exchange of CH₄ (i.e. CH₄ fluxes) is not presented or discussed at all.

We changed the title to "3.1 Subthermocline methane distribution"

8) P12L9/10: please present an equation (incl. a ref for the solubility of CH₄) for the calculation of the CH₄ saturations. (the equation should be placed to the Method section).

We have added the equation in section “2.1. Hydrographical and chemical characteristics of the water column”.

Surface water methane saturation is calculated following Eq. (1), where SV is the saturation value, C_w is the measured concentration of methane in seawater and C_{equi} the concentration in equilibrium with the atmosphere using the solubility coefficient given by Wiesenburg et al. (1979).

$$SV[\%] = \frac{C_w}{C_{equi}} * 100 \quad (1)$$

9) P15L5-7: In view of the large standard deviations, the given averages do not seem to be significantly different. Therefore, the conclusion of a composition-depending CH₄ production is not justified. Please provide the results of a statistical test which shows that the two averages are significant indeed.

The reviewer noticed correctly that the averages are not statistically significant. We mentioned that the rates were "higher", but did not present any statistics. For clarity we changed the paragraph as follows:

"The incubations with a high proportion of *T. longicornis* had higher production rates than the *Acartia* spp. dominated setups (125 ±49 vs. 84 ±19 fmol CH₄ copepod-1 d-1). This indicates that methane production may depended on the composition of the zooplankton community (Fig. 6a). However, the differences were not significant (Kruskall Wallis Test (p=0.150, df=1), which may be a consequence of the limited number of incubations."

10) P16L4/5: ‘... may have reflected a response of the animals to stress of being removed from their natural environment’. This statement questions all of the presented results. When the zooplankton is that much stressed, how did the authors make sure to get reliable/representative results?

We are aware that experiments with natural communities may cause stress to the animals. This general problem needs to be addressed by any researcher who conducts similar physiological experiments. Within our experiments we tried to avoid capture and food stress, which were identified to be influential. For clarity we included the following paragraph:

"To lower the capture stress we selected a rather gentle method for sampling and we avoided food shortage, which was shown to be more influential on the decrease in physiological rates (Ikeda and Skjoldal, 1980). Also, we used a food source which was previously shown to be of good quality (e.g. Knuckey et al. 2005, Koski and Breteler 2003)."

However, we are aware that the rates obtained in our artificial experiments can never be transferred directly into the natural environment but can serve as an essential contribution to study the factors controlling the shallow water methane production.

11) P17, discussion. I agree with the line of arguments for DMSP as a potential CH₄ precursor. However, there might have been other particle-bound potential CH₄ precursors around, e.g. DMSO and MPn. As said above, del Valle and Karl (2014) showed that pMPn is resulting in CH₄ production. So, I wonder whether the discussion is only considering DMSP.

We agree with the reviewer's concerns and adjusted the title of the discussion to include different organic sulfur compounds and included DMSO as a possible methane precursor in the discussion section:

"Organic sulfur compounds as possible substrates for methane production in oxic waters"

"They (Dinophyceae) produce relatively high amounts of DMSP and DMSO compared to the other phytoplankton species observed within our study (Keller et al. 1989, Hatton and Wilson 2007, Caruana & Malin 2014). Also, positive correlations have previously been observed between DMSP and CH₄ and DMSO and CH₄ in the surface ocean (Zindler et al, 2013)."

Teikari et al. (2018) recently found that *N. spumigena* could produce CH₄ when grown on MPn as phosphorus source. Since cyanobacteria are accumulated in the surface water it might be possible that the process described by Teikari et al. (2018) has an impact on methane production in the surface waters (above the thermocline). This agrees with the methane budget calculation published by Schmale et al. (2018), who point towards an additional shallow methane source, which is required to maintain the measured methane flux into the atmosphere. However, it is difficult to explain how cyanobacteria related CH₄ production can substantially contribute to the observed CH₄ enrichment below the thermocline, where the biomass of cyanobacteria is comparably low. Furthermore, there are currently no data available about the quantitative distribution of MPn in surface waters in the Baltic Sea. Based on this knowledge gap, we suggest that further studies should investigate the importance of MPn as a possible methane precursor in Baltic Sea surface waters.

12) P17L19: The authors 'believe'? We are scientists, that means we discuss results on the basis of arguments. Please rephrase.

We agree with the reviewer's comment and changed the sentence accordingly:

"We therefore suggest that anaerobic methanogenesis by archaea thriving within fecal pellets played only a minor role."

13) P24L23-27: This part of the text should be moved to the Conclusion section.

We moved the suggested section to the conclusions. In addition, we shortened the conclusions section to be more concise.

Referee #2

General comments:

Stawiarski et al. present measurements and experimental data, which they obtained to identify the origin of elevated methane concentrations in the oxic subsurface water of the Baltic Sea. They tested a hypothesis forwarded by Schmale et al. (2018), if spatial heterogeneity of subsurface methane concentrations result from differences in the copepod community and the associated food web. Therefore, they sampled zooplankton and phytoplankton. They incubated zooplankton communities of different surface and subsurface waters, fed them specific phytoplankton, and derive the methane production rates. Their experiments show that fed zooplankton generate methane and additional methane might be generated by microbial turnover of DMSP. Overall, it is a well-designed study and manuscript. I found it very interesting to read and have only a few comments.

We would like to thank the reviewer for acknowledging the value of our work and hope that the changes, which we applied will address the suggested comments to the reviewer's satisfaction.

Specific comments:

1) The spatial heterogeneity of the subsurface methane peak is partly discussed as the result of upwelling (page 14). In figure 4, the authors show the development of the surface water temperature indicating upwelling along the Swedish coast and southeast of Gotland. They relate the high methane concentrations in the surface water at station TF0284 to the upwelling, but do not discuss the other stations. If I consider the positions of the stations, upwelling might have influenced the waters at station TF0283, too. Therefore, I suggest 1) to add the locations of the other stations to figure 4 (longitudes and latitudes are missing on the maps, too) to identify where upwelling might have affected the subsurface methane concentration. Therefore, the spatial heterogeneity might be mainly due to upwelling and not a consequence of

different plankton communities and 2) consider the increased mixing to modify the plankton community.

We agree with the reviewer's concerns and applied the following changes according to the suggestions:

a) we added the other locations of the other stations to figure 4 and added longitudes and latitudes. These changes helped us to identify that no station was affected by upwelling during our time of sampling. Station TF0283 was indeed at the edge of the upwelling front, but from its temperature depth profile we suggest that the sampled water body must not have been affected, yet. We included the following statement:

"The other stations were not affected by upwelling events during the time of sampling. Even though our oceanographic model output indicated that the water mass at station TF0283 (sampled on the 11th of August) was located at the upwelling front (Fig. 4), our field measurements showed that the station was not affected by the event, as there is no drop in the surface water temperature visible (Fig. 3)."

b) We added the following statement to the introduction:

"Upwelling events can offset water column stratification through a replacement of warm, mostly nutrient-depleted surface water by cooler and usually nutrient-enriched subthermocline waters (Gidhagen, 1987; Lehmann and Myrberg, 2008; Reissmann et al., 2009). Such events may also cause a rapid decline in phytoplankton biomass in the surface water and affect the plankton composition (Vahtera et al. 2005, Nausch et al. 2009, Wasmund et al. 2012)."

c) We also added this statement to the results and discussion:

"However, the phytoplankton biomass was lower at station TF0284, which was recently influenced by an upwelling event. Hence, it needs to be considered that also the phytoplankton composition at this station could have been altered by the event."

2) The calculation of the specific activity of the phytoplankton (page 9) includes three terms that are constants, thus, can be ignored and only the first term, i.e. disintegration filter, which is the activity of the phytoplankton, should be presented in table 1. The three constants are the constant for converting DPM to MBq, the added activity, and the specific activity of the tracer.

We agree with the reviewer's comment. However, two out of the three mentioned constants must or may be modified in future experiments according to culture volume and activity of the tracer. Hence, for better and easier reproducibility we would like to keep the equation in its current form. The present equation (Eq. 1) is also identical with the equation listed in our reference paper published by de Angelis and Lee (1994), who performed similar incubations to measure zooplankton methane production rates.

3) Besides, how was the constant for converting DMP to MBq derived? It appears as if a quench correction is included, but usually, the quench of each sample is slightly different and is corrected by applying a quench curve. How was the quench determined?

We used the method described by Jakobs et al. (2013) along with the same equipment and chemicals. Hence we were also able to use the quench curve obtained by those authors.

4) Furthermore, how did you derive the specific activity of the tracer (SA_{tracer})? Did you measure it or did you use the value provided by the manufacturer? In my experience, the latter is erroneous and should be validated by own measurements.

We and other working groups in our institute made a different experience regarding the quality of radiolabels from this company. The quality of the radiolabel (NaHCO₃) was confirmed in different studies before and was also checked in the present study. We used the specific activity provided by the manufacturer, which was obtained individually for our solution.

5) Anyway, the activity of the phytoplankton is needed to calculate the methane production rate, but an equation of the rate is not included in the manuscript. Therefore, please review equation 1 and include an equation of the methane production rate.

We thank the reviewer for this hint and added an appropriate equation (Eq. 2) to the manuscript.

6) Are there any more accurate numbers for the percentages of Cryptophyceae and *N. spumigena* (page 10)? It is a very broad statement to distinguish between minor and dominant percentage to the total phytoplankton.

To the best of our knowledge no paper that presents any more numbers for the abundance of Cryptophyceae in the central Baltic Sea is available. Based on the IOW monitoring program we calculated the percentage of Cryptophyceae of the total phytoplankton biomass and added the following text:

“Rhodomonas sp. may be considered a model representative of the Cryptophyceae, which account for 5.5 % of the total phytoplankton biomass in the Baltic Sea in summer 2016 (IOW monitoring database: <https://www.io-warnemuende.de/datenportal.html>).”

For the numbers of *N. spumigena* we added the following sentence:

*“Here we selected *N. spumigena* as a food source, because this species was the dominant phytoplankton in the surface waters during our field campaign and accounted for 23% of the phytoplankton biomass.”*

7) Please include if the incubations were done in the dark or not (page 10).

The incubations were done in the dark. We included the following statement:

"All bottles were kept in the dark at in situ temperature for 1 to 3 days in temperature controlled incubators."

8) The difference between the measured methane production rates and the ones reported by de Angelis and Lee (1994) (page 16) might not be due to stressed copepods, but might result from filtration of the seawater (page 25). De Angelis and Lee (1994) most likely set up a similar experiment; therefore, their copepods were similarly stressed. Nevertheless, did they use filtered or unfiltered seawater? Could this explain the difference?

De Angelis and Lee (1994) used GF/C filtered seawater for their experiments. However, their pore size was slightly bigger (1.2µm) than within our experiments (0.2 µm, Millipore GVWP). We included the following statement:

"Another factor which may have led to lower methane production rates than measured by de Angelis and Lee (1994) is the quality of the filtered sea water used in the incubations. In our experiments we used filters with a pore size of 0.2 µm while de Angelis and Lee (1994) used filters with a pore size of 1.2 µm to prepare the incubation water. Our intention was to exclusively investigate the methane production by zooplankton while minimizing the influence of particulate material (e.g. fecal pellets) in the seawater. However, we are aware that the smaller pore size used in our studies may reduced the number of bacteria in the incubation water, which may have been important for the methane production outside the body of the copepods."

9) Typos: P2L6: space missing between _ and 6.1 P6L26: space missing between 1.5 and L

We included a space.

P6L29: Did Schmale et al. (2018) study the migration of copepod *T. longicornis* as suggested by citing the paper?

The reviewer noticed correctly that the citation was incorrect. We deleted it.

Table 1: It appears as if the duration of experiment 1 with surface zooplankton community is missing.

We moved the duration of the experiment to the center of the cell to be in line with "Exp." and "SAphy"

P10L3: space missing between Fig. and 8

We reformulated this section.

P12L21: subthermocline, the r is missing

We included an "r" in "subthermocline".

Controls on zooplankton methane production in the central Baltic Sea

5 Beate Stawiarski¹, Stefan Otto¹, Volker Thiel², Ulf Gräwe¹, Natalie Loick-Wilde¹, Anna K. Wittenborn^{1,2}, Stefan Schloemer³, Janine Wäge¹, Gregor Rehder¹, Matthias Labrenz¹, Norbert Wasmund¹, and Oliver Schmale¹

¹Leibniz Institute for Baltic Sea Research Warnemünde, Seestrasse 15, 18119 Rostock, Germany

²Geoscience Center, Georg-August University of Göttingen, Goldschmidtstr. 3, 37077 Göttingen, Germany

10 ³Federal Institute for Geosciences and Natural Resources, Stilleweg 2, D-30655 Hannover, Germany

Correspondence to: Oliver Schmale (oliver.schmale@io-warnemuende.de)

15

20

Abstract

Several methanogenic pathways in oxic surface waters were recently discovered, but their relevance in the natural environment is still unknown. Our study examines distinct methane enrichments that repeatedly occur below the thermocline during the summer months in the central Baltic Sea. In agreement with previous studies in this region, we discovered differences in the methane distributions between the Western and Eastern Gotland Basin, pointing to in situ methane production below the thermocline in the latter (conc. CH_4 14.1 ± 6.1 nM, $\delta^{13}\text{C}$ CH_4 -62.9‰). Through the use of a high resolution hydrographic model of the Baltic Sea, we showed that methane below the thermocline can be transported by upwelling events towards the sea surface thus contributing to the methane flux at the sea/air interface. To quantify zooplankton-associated methane production rates, we developed a sea-going methane stripping-oxidation line to determine methane release rates from copepods grazing on ^{14}C -labelled phytoplankton. We found that: (1) methane production increased with the number of copepods, (2) higher methane production rates were measured in incubations with *Temora longicornis* (125 ± 49 fmol methane copepod $^{-1}$ d $^{-1}$) than incubations with *Acartia* spp. (84 ± 19 fmol CH_4 copepod $^{-1}$ d $^{-1}$) dominated zooplankton communities, and (3) methane was only produced on a *Rhodomonas* sp. diet, but not on a cyanobacteria diet. Furthermore, copepod-specific methane production rates increased with incubation time. The latter finding suggests that methanogenic substrates for water-dwelling microbes are released by cell disruption during feeding, defecation, or diffusion from fecal pellets. In the field, particularly high methane concentrations coincided with stations showing a high abundance of DMSP-rich Dinophyceae. Lipid biomarkers extracted from phytoplankton- and copepod-rich samples revealed that Dinophyceae are a major food source of the *T. longicornis* dominated zooplankton community, supporting the proposed link between copepod grazing, DMSP release, and the buildup of subthermocline methane enrichments in the central Baltic Sea.

1 Introduction

Climate change, caused by increased greenhouse gas concentrations in the atmosphere, has an indisputable influence on societal and economical evolution on local, regional and global scales. In order to better predict future climate development, a more precise quantitative and mechanistic understanding of individual sources and sinks of relevant greenhouse gases, such as methane, is crucial. Methane as an atmospheric component has a relevant impact on the earth's climate (Etminan et al., 2016; IPCC, 2013). In general, biogenic sources of methane are associated with microorganisms (Archaea) in anoxic habitats, for example, in the ocean and lake sediments, wetlands, landfills, rice fields or the gastrointestinal tracts of termites and ruminants (IPCC, 2013). However, recent studies demonstrated that methanogenesis also occurs in oxic environments. These unconventional methanogenic pathways are mediated by aerobic prokaryotes (Yao et al., 2016) as well as eukaryotes, including plants (Keppler et al., 2006; Lenhart et al., 2016), animals (Tuboly et al., 2013), lichens (Lenhart et al., 2015), and fungi (Lenhart et al., 2012).

Methane concentrations in the oxygenated surface ocean and lake waters show strong regional and seasonal fluctuations (e.g. Jakobs et al., 2014; Donis et al., 2017). Large areas are supersaturated with methane and act as a net source to the atmosphere (e.g. Bange et al., 1994; Lamontagne et al., 1973; Tang et al., 2014). It is assumed that climate-driven modifications in aquatic systems such as increasing water temperatures, enhanced stratification, and nutrient limitation could further reinforce aquatic methane production (Karl et al., 2008). Such modifications are particularly important for shallow oxic methane production that largely bypasses microbial methane consumption as it places the methane source close to the water surface, intensifying fluxes to the atmosphere. However, the origin of methane in the oxic upper water column is still unclear and hence also referred to as “methane paradox” (Scranton and Brewer, 1977).

Recently, a growing number of studies have identified several pathways that could explain methane enrichments in shallow aerobic waters. The postulated CH₄ production pathways include: (i) Direct CH₄ production by algae from methyl sulfides such as methionine (Lenhart et al., 2016); (ii) bacterial break-down of methylphosphonate (MPn) under phosphate-stressed conditions (Repeta et al., 2016; Karl et al., 2008; Wang et al., 2017; Teikari et al., 2018); (iii) transfer of diazotroph-derived hydrogen among methanogens attached to algae (Grossart et al., 2011); (iv) CH₄ production through microbial degradation of dimethylsulfide (DMS), dimethylsulfoniopropionate (DMSP) and dimethylsulfoxide (DMSO; Damm et al., 2010, Zindler et al., 2013); (v) photochemical production of methane from colored dissolved organic matter (chromophoric dissolved organic matter, Zhang and Xie, 2015), and. (vi) the microbial formation of methane in anoxic microniches within decaying organic aggregates or zooplankton fecal pellets (Holmes et al., 2000; Karl and Tilbrook, 1994; Oremland, 1979). The latter hypothesis is supported by oxygen microsensor studies that showed that anoxic conditions can exist in carbon and nutrient rich aggregates (Ploug, 2001; Ploug et al., 1997, 2008; Ploug and Jørgensen, 1999). Furthermore, molecular biological studies identified methanogenic archaea within fecal pellets produced by *Temora longicornis* and *Acartia clausi* (Ditchfield et al. 2012). These results are in agreement with the studies conducted by de Angelis and Lee (1994), who observed methane production during experimental zooplankton grazing on unialgal cultures. The authors used selected growth stages (adult and C5 stages) from pure cultures of *T. longicornis*, *Acartia tonsa*, and *Calanus pacificus*, which had been isolated from the coastal waters from the North Atlantic. In these laboratory experiments, methane production was only detected in incubations containing *T. longicornis*.

The Baltic Sea is characterized by pronounced lateral gradients including e.g. temperature, salinity, oxygen and methane concentrations, which altogether strongly influence the biology of the ecosystem (Feistel et al., 2008 and references therein). It consists of several sub-basins, of which the Eastern Gotland Basin is the largest. The Eastern Gotland Basin has a maximum depth of 248 m and establishes a seasonal thermocline at 10–30 m water depth in the summer months, and a permanent halocline at 70–90 m (Omstedt et al., 2004). In general, bottom waters in this basin are anoxic, unless, episodic inflow events of more saline and oxygen rich North Sea water into the deep basins lead to temporary oxic conditions (Franck et al., 1987; Mohrholz et al., 2015).

Methane concentrations in the Baltic Sea tend to increase with depth due to its release from the anoxic sediments (Schmale et al., 2010). However, recent studies revealed a recurring methane accumulation in oxic waters right below the thermocline

during the summer months (Jakobs et al., 2014; Schmale et al., 2018). Stable carbon isotopes indicated an in situ biogenic methane origin, whereas clonal sequences pointed towards methanogenic Archaea as potential producers (Schmale et al., 2018). It was further shown that zooplankton-associated methane production contributed to the subthermocline methane enrichment (Schmale et al., 2018). The authors found that methane increased with increasing amount of zooplankton and they suggested that changes in the copepod community and food web structure may influence the spatial heterogeneity of methane accumulation in the upper part of the water column. However, zooplankton-associated methane production rates alone were not sufficient to fully explain the observed methane enrichment. They concluded that this was most likely a consequence of using incubations with very dense and probably food limited zooplankton communities (1000 times the natural density), leading to results that are difficult to transfer into the natural environment (Schmale et al., 2018). To overcome these experimental deficits, we developed a methane stripping-oxidation line to study zooplankton-associated methane production rates in the field. Our ship-based incubation experiments were performed with different zooplankton communities obtained from either the surface or from below the thermocline. We used almost natural copepod-densities (1.5–8.5 times the natural density), and different diets of ^{14}C -labeled phytoplankton. In conjunction with field investigations of methane concentrations and plankton distributions, the present study gives important insights into the controls of zooplankton-associated methane production in the central Baltic Sea.

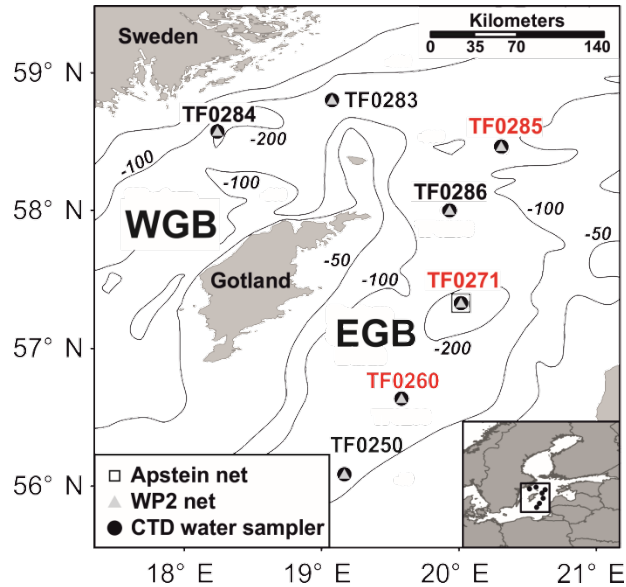
2 Methods

2.1. Hydrographical and chemical characteristics of the water column

During the cruise AL483 on R/V *Alkor* in August 2016 in the central Baltic Sea, seven stations in the Western (TF0283, TF0284) and the Eastern (from south to north: TF0250, TF0260, TF0271, TF0286, TF0285) Gotland Basin (Fig. 1) were investigated. At each station, the hydrographical variables, including temperature, salinity and oxygen concentrations, of the water column were examined along vertical profiles using a SBE 911 plus CTD system (Seabird Electronics, USA, see supplement S1). In addition, the vertical methane distribution pattern and the stable carbon isotope ratio of methane ($\delta^{13}\text{C}$ CH_4) were measured to differentiate between regions affected and regions unaffected by subthermocline methane production. For these studies, subsamples were taken from the rosette water sampler and analyzed in the home laboratory using a purge and trap system for methane concentration measurements and a continuous flow Isotope Ratio Mass Spectrometer IRMS for stable carbon isotope analyzes (see supplement S1). In order to investigate whether station TF0284 was affected by coastal upwelling during the time of sampling, we analyzed the output of a numerical ocean model, covering the North Sea / Baltic Sea. This hydrodynamical model computed a reconstruction of the state of the Baltic Sea with a spatial resolution of 1 nautical mile and 50 vertical levels. Further details of the model are given in Gräwe et al. (2015).

Surface water methane saturation is calculated following Eq. (1), where SV is the saturation value, C_w is the measured concentration of methane in seawater and C_{equi} the concentration in equilibrium with the atmosphere using the solubility coefficient given by Wiesenburg et al. (1979).

$$SV[\%] = \frac{c_w}{c_{equi}} * 100 \quad (1)$$



5 **Figure 1: Map of sampling stations in the Western Gotland Basin (WGB) and the Eastern Gotland Basin (EGB). Symbols describe the sampling gear. Stations with a distinct subthermocline methane enrichment are marked in red.**

2.2 Plankton community and lipid biomarker analyses

Phytoplankton samples for water column community analysis were taken from the 10 L free-flow bottles at stations TF0271, TF0284 and TF0286 (Fig. 1). Equal amounts of water from the mixed layer (depths: 0–1 m, 2.5 m, 5 m, 7.5 m and 10 m) were pooled in accordance with the guidelines of the Helsinki Commission (HELCOM, 2017). At stations characterized by a distinct subthermocline methane enrichment (TF0271, TF0260, TF0285 and TF0286), additional samples were taken from the subthermocline chlorophyll *a* maximum at about 20 m water depth. At station TF0271, three samples were taken on August 12th and 18th to investigate the temporal variability in the community composition at this location. All phytoplankton samples were transferred into 250 ml brown glass bottles and preserved with 1 ml of acetic Lugol solution (2 % final concentration). For later community analyses, 25 ml sub-samples were concentrated in settling chambers (Utermöhl, 1958). They were counted using an inverted microscope and the counts were converted into carbon biomass using the cell volumes (Olenina et al., 2006; HELCOM, 2017).

Zooplankton samples for water column community analyses were collected with a WP2 net (towed at 0.5 m s⁻¹, mouth opening, 25 m², mesh size 100 µm, according to HELCOM (2012)) independent of daytime. Vertically integrated hauls from two depth intervals were taken to obtain zooplankton samples: (i) thermocline to surface (e.g. 20–0 m, depending on the

physical structure of the water column), and (ii) halocline to thermocline (e.g. 60-20 m). The concentrated samples (500 ml) were preserved in borax-buffered formalin (4 % final concentration). For later copepod-specific community analyses, subsamples were counted using a compound microscope until at least 500 individual copepods were taxonomically classified. Nauplii were pooled together for all copepod species, while C1-C5 copepodite stages and adults were pooled for individual species. Finally, to exclude potential daytime effects through vertical migration of the zooplankton communities above the halocline, counts from both integrated hauls were averaged according to the filtered volume. Similar to the phytoplankton sampling strategy, three samples at TF0271 were taken in a period of ten days to investigate the temporal variability in the community composition at this station.

Lipid biomarkers were analyzed to obtain information on the trophic relationships of copepods in the field at station TF0271 that showed a distinct methane enrichment below the thermocline. For this purpose, their putative food source, phytoplankton in the mixed layer, was sampled with an Apstein-net. The phytoplankton was separated from co-sampled zooplankton using a simple self-built trap consisting of a 1.5 L transparent plastic bottle with a closable outlet at the bottom. The zooplankton was attracted towards the trap using a light source attached close to the outlet, and drained off. Then the phytoplankton, which remained in the bottle, was sampled. The target copepod *T. longicornis* has been known to migrate diurnally from the light-penetrated surface layer towards greater depths to escape predation (Hansen et al., 2006; Schmale et al., 2018). For lipid biomarker studies, a concentrated sample of zooplankton rich in *T. longicornis* was retrieved, avoiding major co-sampling of phytoplankton. This sampling was performed at station TF0271 by hauling a WP-2 net (see above) in the subthermocline layer (25-60 m) during the daytime. For comparison, a zooplankton sample was taken at station TF0250 without a distinct methane enrichment below the thermocline. Here, the community composition was low in *T. longicornis* and instead was dominated by *Acartia* spp. and *Pseudocalanus* spp. All samples were concentrated by sieving (20 µm) and kept frozen until further workup in the home laboratory. The samples were lyophilized and extracted (3x, ultrasound, 15 min, 20°C) with dichloromethane (DCM)/methanol (MeOH) (2:1, v:v), DCM/MeOH (3:1, v:v) and DCM/*n*-hexane (2:1, v:v). From the resulting total organic extract, neutral lipids (NL, largely containing storage lipids such as triglycerides, wax esters, and sterols) were separated using silica gel column chromatography by elution with DCM/acetone (9:1, v:v). After drying, fatty acids (FA) in the NL fraction were transesterified by reaction with trimethylchlorosilane (TMCS)/MeOH (1:9, v:v; 90 min, 80 °C). After partitioning into *n*-hexane (3x, 1 mL) and drying, alcohols contained in the NL were converted to their trimethylsilyl (TMS-) derivatives by reacting with 200 µl of a *n*-hexane/BSTFA/pyridine mixture (5:3:2, v:v:v; 40 °C, 60 min). The derivatized NL fractions were analyzed by coupled gas chromatography – mass spectrometry (GC-MS), as described elsewhere (Thiel and Hoppert 2018).

2.3 Sampling for ship-based laboratory experiments

Three ship-based grazing experiments were conducted at station TF0271, where a persistent and distinct methane enrichment below the thermocline was detected during the cruise. These experiments were designed to examine how (i) the abundance of copepods and (ii) their food source impacts zooplankton-associated methane production, and how (iii) the methane

production rates vary between different copepod communities. To measure copepod species-specific methane production rates, zooplankton communities were sampled from the surface- (e.g. 20-0 m) and from the subthermocline waters (e.g. 60-20 m). In the Central Baltic Sea, these layers are commonly dominated by *Acartia* spp. and *T. longicornis*, respectively (Hansen et al., 2006) and will be referred to as the surface and the subthermocline communities. For the sampling hauls the cod end of the WP2 net was sealed from outside and towed 0.1 m s^{-1} to reduce damage to the zooplankton, and the content was transferred immediately into a 25 L bucket filled with seawater from the depth where the zooplankton was sampled (i.e. surface or subthermocline water). The zooplankton mainly comprised of copepods and was left in the cold room at 10°C for an hour to allow damaged individuals to settle to the bottom of the bucket. A subsample of living copepods was removed gently with a 500 ml beaker from the upper layer of the bucket to avoid injured animals, and checked for species composition under the dissecting microscope before subsamples were used for the grazing experiments. The sampling took place at 14:00 UTC, before vertical migration of one of the target copepods, *T. longicornis*, started (Hansen et al., 2006). This time was chosen because it was more likely that *T. longicornis* in the deeper water column would be starved and thus, would start grazing within the experiments.

Table 1: Experimental conditions for the zooplankton grazing experiments (exp.). SA_{phy} is the specific activity of the phytoplankton fed to the copepods. POC stands for particulate organic carbon. No. of copepods is the average amount of copepods used in the incubation experiments.

Exp.	Food	SA_{phy} (MBq mmol^{-1})	POC conc. at start (mg C L^{-1})	POC conc. at end (mg C L^{-1})	Zooplankton community	No. of copepods	Duration of the exp. (d)
1	<i>Rhodomonas</i> sp.	695.23	1.34 ± 0.04	1.24 ± 0.08	sub- thermocline	25 ± 3	1
						56 ± 2	
						73 ± 2	
			1.22 ± 0.04	3.57 ± 0.38	surface	25 ± 8	
						50 ± 12	
						76 ± 18	
2	<i>Rhodomonas</i> sp.	613.46	1.61 ± 0.61	1.73 ± 0.45	sub- thermocline	64 ± 3	1-3
3	<i>Nodularia spumigena</i>	299.33	3.17 ± 0.26	3.09 ± 1.18	sub- thermocline	66 ± 7	1-3

Two phytoplankton compositions were used to test for the influence of the diet on zooplankton-associated methane production: (i) a *Rhodomonas* sp. (Cryptophyceae) laboratory culture, and (ii) a *N. spumigena* (Cyanophyceae) dominated

culture from the surface mixed layer in the field, which is typically found in these waters of the central Baltic Sea in summer (Wasmund, 1997). The laboratory culture of *Rhodomonas* sp. was grown in f/2 medium (Guillard, 1962), prepared in autoclaved bottles from 0.2 µm filtered seawater from 10 m depth. A new sub-culture was established every 3-5 days and the inoculum was chosen to be sufficient to keep the culture in exponential growth (cf. Knuckey et al., 2005). The second phytoplankton culture was established from the top chlorophyll *a* fluorescence maximum (0-10 m) sampled with an Apstein net (55 µm mesh size, Hydro-Bios). The culture was re-suspended in 500 ml of seawater and left for an hour to allow the *N. spumigena* cells to float on top. The cells were carefully collected with a pipette and transferred into an autoclaved 1 L glass bottle, which was filled up with surface seawater. Then, 36.2 µM of NaH₂PO₄ as for the f/2 medium were added. Both the *Rhodomonas* sp. and the *N. spumigena* culture bottles were incubated in 90 L tubs, which were placed in a shaded location on deck and continuously flushed with sea surface water at a temperature of ~18.5 °C. A third phytoplankton culture was collected from a subthermocline chlorophyll *a* peak closely below the thermocline (~20 m depth), where mixotrophic Dinophyceae were expected to be dominant (Carpenter et al., 1995; Hållfors et al., 2011). For this, up to 150 L of seawater were obtained from a CTD rosette and concentrated on a 20 µm mesh. However, this culture did not grow sufficiently under similar temperature and light conditions as in situ, and could not be used within the grazing experiments.

2.4 Phytoplankton ¹⁴C-labelling

Once a phytoplankton culture was selected for grazing experiments, three aliquots were split between three autoclaved 1 L incubation bottles (Duran) and filled up with the corresponding medium. One of these bottles was spiked with 18.5 MBq of ¹⁴C-labelled sodium bicarbonate (NaHCO₃, 2.18 GBq mmol⁻¹, Moravek Biochemicals, USA) for ¹⁴CH₄ production measurements (Sect. 2.5.1 Methane production and consumption rates). The other two bottles received equal amounts of unlabeled NaHCO₃ for measuring the particulate organic carbon concentration (Sect. 2.5.2 Analysis of particulate organic carbon) and microbial methane consumption (Sect. 2.5.1 Methane production and consumption rates). All bottles were incubated for 3-5 days to allow cells to grow and to take up the ¹⁴C-label (Welschmeyer & Lorenzen, 1984). The specific activity of the labeled phytoplankton (SA_{phy}) was measured daily by filtering 1-5 ml of the culture through a 0.45 µm cellulose nitrate filter (Millipore) and rinsing it thoroughly with Milli-Q water. The filter was then dissolved in Filter Count Scintillation Cocktail (Perkin Elmer) by vortexing and the amount of ¹⁴C-label that was incorporated into particles was measured on a liquid scintillation counter (Perkin Elmer, Tri-Carb 2800TR). Blanks for the specific activity of the cultures were collected and analyzed immediately after the label had been added to the incubation bottle.

SA_{phy} was calculated using Eq. (2) and used for calculating methane production rates (de Angelis and Lee, 1994), where SA_{phy} is the specific activity of the phytoplankton, Disintegrations_{filter} are the disintegrations ml⁻¹ on the filter, Volume_{culture} is the total volume of the incubated culture, 5.95 x 10⁷ dpm MBq⁻¹ is the constant for converting dpm into units of MBq, activity_{added} is the total activity of the tracer, which was added to the incubation and SA_{tracer} is the specific activity of the tracer.

$$SA_{phy} \left[\frac{MBq}{mmol} \right] = \frac{Desintegrations_{filter} \left[\frac{dpm}{ml} \right] \times Volume_{culture} [ml]}{5.95 \times 10^7 \left[\frac{dpm}{MBq} \right]} \times \frac{1}{activity_{added} [MBq]} \times SA_{tracer} \left[\frac{MBq}{mmol} \right] \quad (2)$$

2.5 Zooplankton grazing experiments

- 5 Three experiments with zooplankton grazing on phytoplankton (Table 1) were conducted. In experiment 1 we tested whether there was (i) a linear relationship between methane produced and the number of copepods incubated, and (ii) a difference in methane production between the surface and subthermocline zooplankton communities. In experiment 2 only the subthermocline zooplankton community was used and the incubation time was varied from 1 to 3 days to test if the increase in methane was stable over time and the production rate per copepod stayed constant. In experiment 1 and 2 a laboratory
- 10 strain of *Rhodomonas* sp. (Cryptophyceae), a standard food for copepod culturing (Dutz et al., 2008) was fed to the zooplankton communities. *Rhodomonas* sp. may be considered a model representative of the Cryptophyceae, which account for 5.5 % of the total phytoplankton biomass in the Baltic Sea in summer 2016 (IOW monitoring database: <https://www.iowarnemuende.de/datenportal.html>). In experiment 3 the subthermocline zooplankton community was fed the cyanobacterium *N. spumigena* and the incubation time was varied the same way as in experiment 2. Here we selected *N. spumigena* as a food
- 15 source, because this species was the dominant phytoplankton in the surface waters during our field campaign and accounted for 23% of the phytoplankton biomass. The different phytoplankton communities fed in these experiments allow one to assess the impact of the food source on zooplankton-associated methane production rates.
- Each of the 3 grazing experiments consisted of 3 sets of incubations. The first set of incubations was conducted with zooplankton grazing on ¹⁴C-labelled phytoplankton for methane production measurements (Sect. 2.5.1 Methane production and consumption). The second set of incubations was conducted with zooplankton grazing on unlabeled phytoplankton to determine the food availability over the course of the grazing experiments (Sect. 2.5.2 Analysis of particulate organic carbon). Also the third set of incubations was conducted with zooplankton grazing on unlabeled phytoplankton to measure the loss of methane by microbial oxidation under the experimental conditions (Sect. 2.5.1 Methane production and consumption).
- 20 In selective incubations the oxygen saturation was monitored over time using oxygen spots (5 mm, PreSens Precision Sensing) and an optode (Single Channel Oxygen Meter, Fibox 3 LCD, PreSens Precision Sensing). The average oxygen saturation was 75.2 ±2.9 % throughout the experiments.

2.5.1 Methane production and consumption rates

- For the methane production incubations, 250 ml gastight bottles (Duran) were used. The bottle lids were modified with one inlet and one outlet tube (Fig. 2), each sealed with autoclaved silicone stoppers. The inlet tube was long enough to reach into the lower third of the medium and had a glass frit attached at the end. The outlet tube was short enough to remain in the
- 30

headspace of the bottle. Each bottle was filled with 50 ml of ^{14}C -labelled phytoplankton, 3-15 ml of zooplankton stock culture and topped up to a total volume of 200 ml with $0.2\ \mu\text{m}$ filtered seawater (Millipore GVWP filter) from either 10 m or 20 m depth, according to the depth from which the zooplankton community was obtained. All bottles were kept in the dark at

in situ temperature for 1 to 3 days in temperature controlled incubators. The methane, which was produced within the time of incubation, was finally measured with a methane stripping-oxidation line (modified after de Angelis and Lee, 1994; Fig. 2; details to the work principle in supplement S1). In brief, the bottles were connected to the line, the water samples purged with helium carrier gas and the methane (and other hydrocarbons) was concentrated on a cold trap. After heating the trap the methane was released and separated from other hydrocarbons by gas chromatography (GC) and transferred to a furnace, where it was converted to ^{14}C -labelled carbon dioxide (CO_2). The $^{14}\text{CO}_2$ was trapped in scintillation vials and the activity was measured by liquid scintillation counting. Finally, the activities were used for calculating methane production rates with Eq. (3), where $Activity_{zoo+phy}$ is the activity measured in incubations containing zooplankton and phytoplankton, $Activity_{phy}$ is the activity measured in blank incubations.

$$^{14}\text{CH}_4_{\text{produced}}[\text{mmol}] = \frac{Activity_{zoo+phy}[\text{MBq}] - Activity_{phy}[\text{MBq}]}{SA_{phy}[\frac{\text{MBq}}{\text{mmol}}]} \quad (3)$$

Blank incubations were conducted with phytoplankton and seawater only and the volume of zooplankton was replaced with the corresponding amount of GF/F (Whatman) filtered seawater in which the zooplankton was kept before incubations. The CH_4 concentrations of all blank incubations were not different from the blank of the methane stripping-oxidation line (Mann-Whitney U test, $p = 0.9$, $df = 1$).

Microbial methane oxidation rates were measured and the production rates corrected accordingly. For these measurements, ^{14}C -labelled methane was injected into 600 ml incubation bottles, which were filled with the corresponding volumes of plankton and water as in the incubations for methane production measurements. The amount of produced $^{14}\text{CO}_2$ was measured according to the method of Jakobs et al. (2013). The rates were similar in all incubations and in the range of $0.13\text{--}0.44\ \text{pM d}^{-1}$. Neither the presence of copepods, nor the composition of their community or their food had a significant influence on the methane consumption rates. In incubations with *Rhodomonas* sp., methane oxidation rates were $0.13\text{--}0.39\ \text{pM d}^{-1}$ and accounted for a loss of $0.2\text{--}2.3\ \%$ of the produced methane. In incubations with cyanobacteria, the oxidation rates were slightly higher ($0.3\text{--}0.44\ \text{pM d}^{-1}$).

All sets of incubations included 2-3 replicates. For estimating the linear or exponential trends in methane concentration or production in relationship with the number of copepods or time, the Gauss-Newton method was used for minimizing the sum of squares between the fits and the measurements (Mystat 12, Systat software).

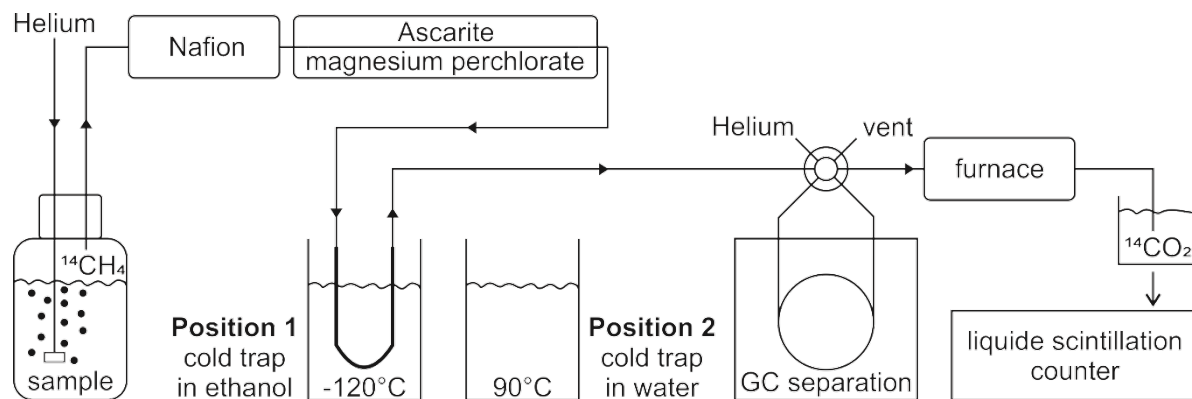


Figure 2: Schematic view of the methane stripping-oxidation line. Position 1 (displayed): the cold trap is placed in a -120°C ethanol bath to retain the hydrocarbons. Position 2: the cold trap is transferred into a water bath at 90°C to release the hydrocarbons towards the gas chromatograph (GC). A detailed description is included in supplement S1.

5 2.5.2 Analysis of particulate organic carbon

The particulate organic carbon (POC) content in the incubations was quantified at the beginning and end of our incubation experiments to determine the food availability over the course of the grazing experiments. For this, a larger volume of sample was required for later POC analysis using a Carlo Erba Elemental Analyser (Typ EA 1110; Carlo Erba; Nieuwenhuize et al., 1993), and 1 L bottles (Duran) were used for incubations. To achieve similar concentrations of zooplankton and phytoplankton (ml^{-1}) as in the first set of incubations, stock culture volumes were increased accordingly. For ambient POC analysis, one 50 ml sample was taken from each bottle at the beginning and at the end of the experiment on pre-combusted GF/F filters. The initial sample was removed from the experimental bottle before the copepods were added to it, and the final sample was taken after copepods had been removed with a 50 μm sieve. All POC measurements (Table 1) at the beginning and at the end of the incubations exceeded the threshold for food limitation of 1-0.5 mg C L^{-1} (Berggreen et al., 1988). As the food was diluted with 0.2 μm filtered seawater, all POC at the beginning of the experiments can be assigned to the diet that was added. However, at the end of the grazing experiments, excreted fecal pellets of the zooplankton may have added up to the organic carbon pool. Further, it was difficult to separate the copepods from *N. spumigena* by the 50 μm sieve, as *N. spumigena* typically exceeds 50 μm in size. In consequence, no grazing rates based on the decrease in POC were calculated for the individual incubations.

20

3 Results and Discussion

3.1 Subthermocline methane distribution

Surface waters were oversaturated with methane with respect to the atmosphere at all stations (saturation values between 118 and 198 %) using the mean atmospheric methane concentrations for August 2016 obtained from atmospheric tower

measurements at Utö (1919 ppb; position 59° 46'50N, 21° 22'23E; Finnish Meteorological Institute, J. Hatakka, personal communication). However, the Eastern Gotland Basin had much higher maximum subthermocline methane concentrations than the Western Gotland Basin (14.1 ± 6.1 nM vs. 8.7 ± 0.3 nM; Fig. 3). Such regional differences have previously been documented in the central Baltic Sea (Schmale et al., 2010; Jakobs et al., 2014; Schmale et al., 2018).

- 5 Concentration profiles and stable carbon isotopes obtained in these earlier studies indicated that the subthermocline methane enrichments resulted from in situ production within the oxic water body. A transport from the deep anoxic waters was excluded because the methane from this pool is efficiently oxidized by aerobic methanotrophic bacteria situated in the oxic/anoxic transition zone at about 100 m water depth (Jakobs et al., 2013; Schmale et al., 2012; 2016). As their metabolism favors the turnover of $^{12}\text{CH}_4$, the remaining $^{13}\text{CH}_4$ becomes enriched and $\delta^{13}\text{C CH}_4$ values in the respective water layer are
- 10 comparably high (e.g. -40‰ in 80 m water depth; Jakobs et al., 2013). In the present study, subthermocline methane enrichments in the Eastern Gotland Basin were characterized by strikingly depleted $\delta^{13}\text{C CH}_4$ values (-62.9‰ at 27 m at TF0271, Fig. 3), supporting the idea that the pronounced methane anomaly in this area originated from in situ biogenic production. In contrast, stable isotope ratios of methane in the upper water column of the Western Gotland Basin showed $\delta^{13}\text{C CH}_4$ values of -47.7‰ at 20 m water depth (TF0284, Fig. 3) that are close to atmospheric equilibrium (-47‰).

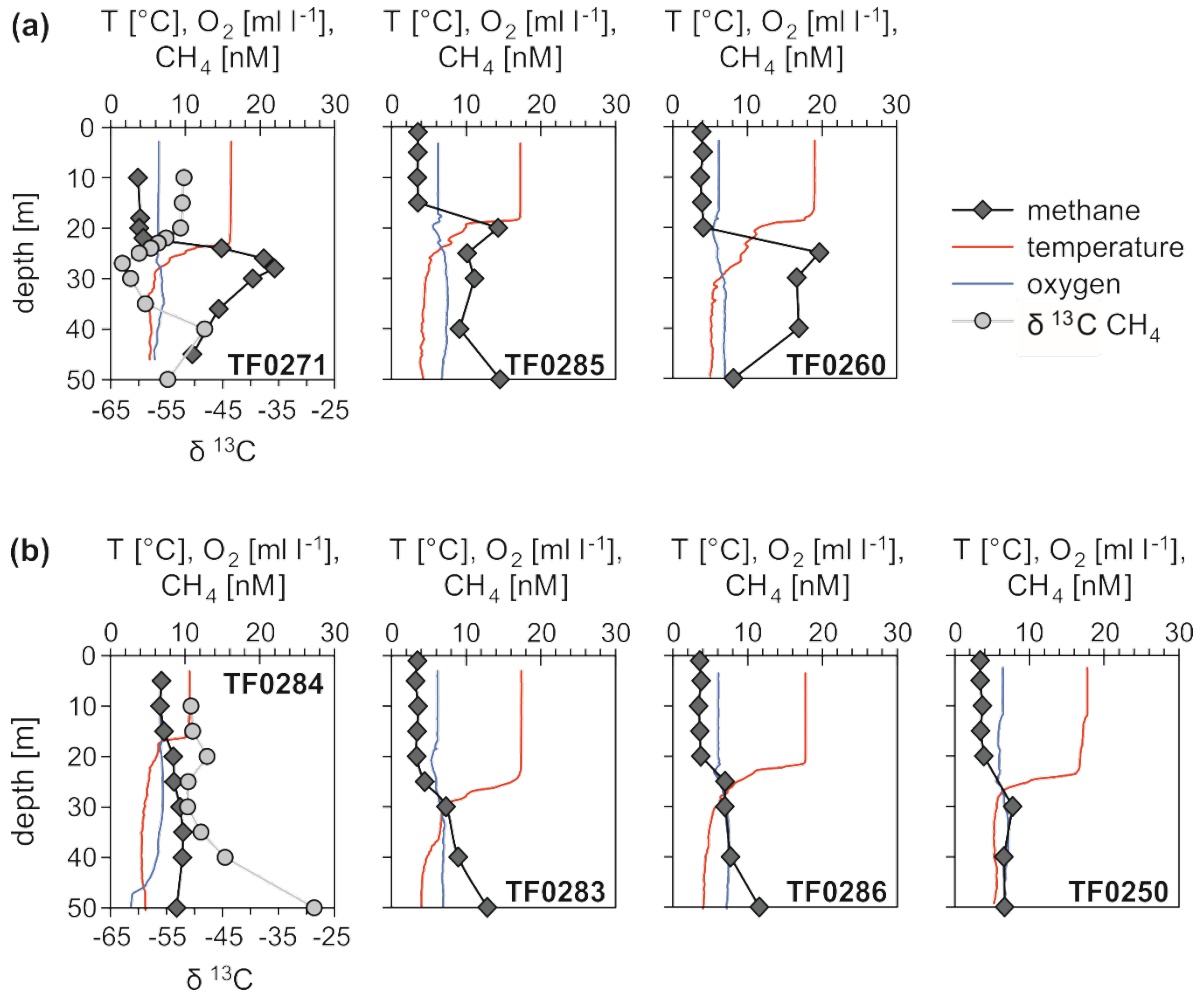


Figure 3: Vertical profiles of temperature (T), oxygen (O₂) and methane concentrations (CH₄) in the central Baltic Sea: (a) stations with a distinct, and (b) stations without a distinct subthermocline methane enrichment; stable carbon isotope values of methane ($\delta^{13}\text{C}$) are presented for station TF0284 (Western Gotland Basin) and TF0271 (Eastern Gotland Basin).

- 5 Seasonal observations in the Baltic Sea revealed that the development of a thermocline, which functions as a barrier and limits fluxes to the atmosphere, was essential for the build-up of subthermocline methane enrichments (Jakobs et al., 2014; Schmale et al., 2018). Upwelling events can offset water column stratification through a replacement of warm, mostly nutrient-depleted surface water by cooler and usually nutrient-enriched subthermocline waters (Gidhagen, 1987; Lehmann and Myrberg, 2008; Reissmann et al., 2009). Such events may also cause a rapid decline in phytoplankton biomass in the
- 10 surface water and affect the plankton composition (Vahtera et al. 2005, Nausch et al. 2009, Wasmund et al. 2012). Upwelling significantly increase surface water methane concentrations in the area around Gotland during the summer (Gülzow et al., 2013; Schneider et al., 2014). During our field campaign the sea surface temperature at station TF0284 in the Western Gotland Basin dropped from 18°C to 12°C, as indicated by our oceanographic model output (Fig. 4, see also the

temperature profile of station TF0284 in Fig. 3). Assuming the thermocline was located at 18-20 m depth we estimated that the upwelled water masses must have had originated from a depth of 25-35 m. Upwelling of cold, methane-rich subthermocline water can plausibly explain the strong surface water methane oversaturation observed at TF0284 (saturation value of 198 %). The other stations were not affected by upwelling events during the time of sampling. Even though our oceanographic model output indicated that the water mass at station TF0283 (sampled on the 11th of August) was located at the upwelling front (Fig. 4), our field measurements showed that the station was not affected by the event, as there is no drop in the surface water temperature visible (Fig. 3). However, our study indicates that in contrast to the deep water methane pool, which is efficiently separated from the surface water through the halocline in about 60 m depth (Schmale et al., 2010; Jakobs et al., 2014), upwelling of subthermocline waters has to be considered as an important mechanism that contributes to the sea/air methane fluxes in the Baltic Sea.

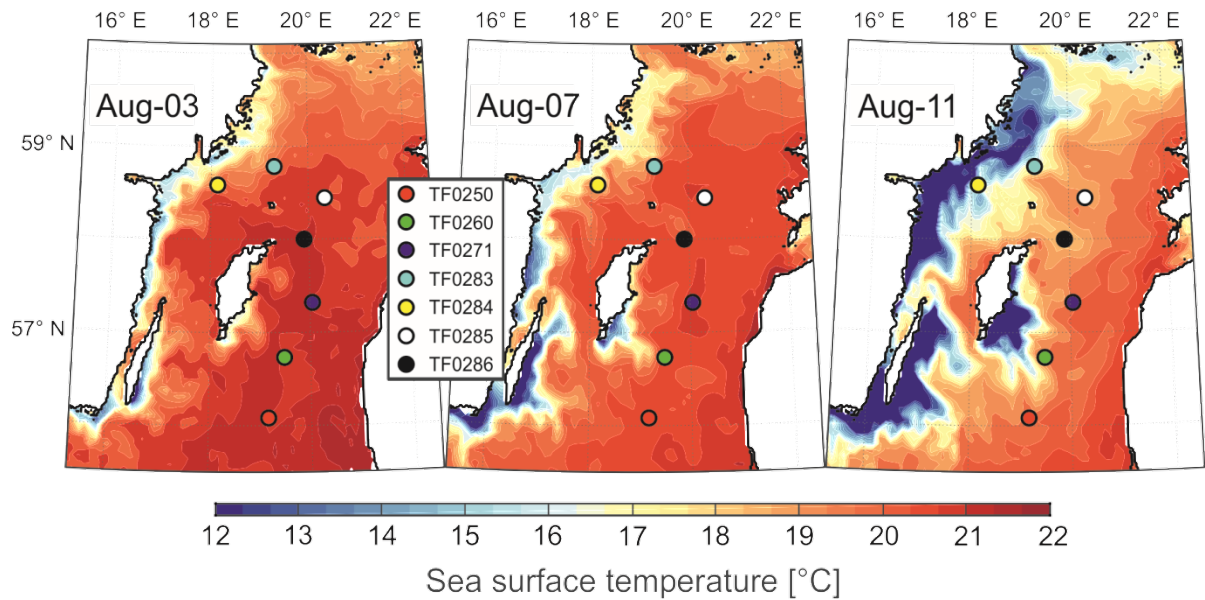


Figure 4: Development of sea surface temperatures in the central Baltic Sea between August 3rd and August 11th 2016 using the oceanographic model of Gräwe et al. (2015). The colored dots represent the sampling stations.

3.2 Controls on zooplankton associated methane production

We obtained species- and food-specific methane production rates in incubations, which contained field copepods (surface and subthermocline communities, Fig. 5) in nearly natural abundances (1.5-8.5 times the natural density) by using the methane stripping-oxidation line. We found a substantial increase in methane production with the number of copepods in the incubations, but no production in controls containing phytoplankton only (Fig. 6). This implies that the production of methane is associated with the active grazing of zooplankton.

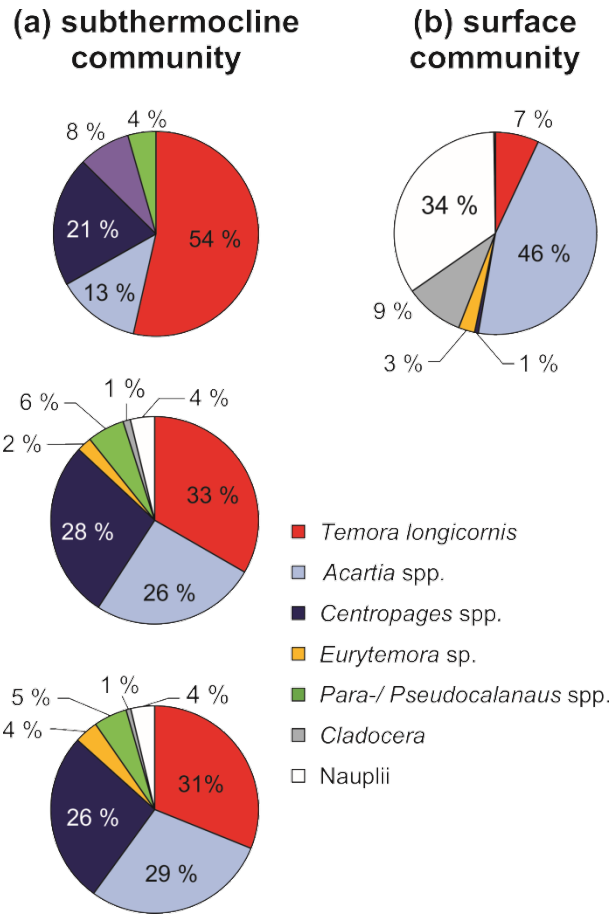


Figure 5: Relative zooplankton community composition of the three zooplankton grazing experiments listed in Table 1. (a) subthermocline (used in experiment 1-3), and (b) surface zooplankton community composition (used in experiment 1). Adults and copepodite stages C1-C5 were pooled for individual species, but Nauplii were pooled together for all copepod species.

- 5 The incubations with a high proportion of *T. longicornis* had higher production rates than the *Acartia* spp. dominated setups (125 ±49 vs. 84 ±19 fmol CH₄ copepod⁻¹ d⁻¹). This indicates that methane production may depended on the composition of the zooplankton community (Fig. 6a). However, the differences were not significant (Kruskall Wallis Test (p=0.150, df=1), which may be a consequence of the limited number of incubations. Similar observations were made in laboratory experiments using cultured species from the North Atlantic (De Angelis & Lee, 1994). These authors observed methane production in all experiments for *T. longicornis* grazing on phytoplankton, but not for *Acartia tonsa*. These differences may be due to species-specific differences in grazing rates, food preferences and gut floras. Furthermore, the methane production rates per copepod reported by de Angelis & Lee (1994) were two orders of magnitude higher (4-20 pmol CH₄ copepod⁻¹ d⁻¹) than the rates measured in our experiments. Still, our results are in agreement with those of previous zooplankton incubation experiments conducted in the central Baltic Sea (0.3 pmol CH₄ copepod⁻¹ d⁻¹ (Schmale et al., 2018)). This similarity is
- 10
- 15 notable as the previous experiments used zooplankton abundances that were about 1000 times higher than the natural density

in the field. The obvious discrepancy from the methane production rates reported by de Angelis & Lee (1994) might be related to the physiological differences (e.g. animal size) between the copepods used (length *T. longicornis* North Atlantic: 1300 μm vs. Baltic Sea: 700 μm). The methane production rates may also be lower for younger development stages of copepods, which contributed to the natural surface community used in our incubations (Fig. 5). Animal size affects the oxygen gradient in the guts of these copepods and affects the dimension of produced fecal pellets and thus, the penetration depth of oxygen into the pellet (Ploug and Jørgensen, 1999; Tang et al., 2011). Alternatively, lower methane production rates observed in our experiments may have reflected a response of the animals to stress of being removed from their natural environment. In contrast to the study of de Angelis and Lee (1994), who used cultured animals in their experiments, we immediately transferred the field copepods into incubation bottles and fed phytoplankton that was not representative for the phytoplankton biomass of the Baltic Sea (i.e. the cryptophyte *Rhodomonas* sp.) and thus did not belong to their natural food source. To lower the capture stress, we selected a rather gentle method for sampling, and we avoided food shortage, which was shown to be more influential on the decrease in physiological rates (Ikeda and Skjoldal, 1980). Also, we used a food source which was previously shown to be of good quality (e.g. Knuckey et al. 2005, Koski and Breteler 2003). Another factor which may have led to lower methane production rates than measured by de Angelis and Lee (1994) is the quality of the filtered sea water used in the incubations. In our experiments we used filters with a pore size of 0.2 μm while de Angelis and Lee (1994) used filters with a pore size of 1.2 μm to prepare the incubation water. Our intention was to exclusively investigate the methane production by zooplankton while minimizing the influence of particulate material (e.g. fecal pellets) in the seawater. However, we are aware that the smaller pore size used in our studies reduced the number of bacteria in the incubation water, which may have been important for the methane production outside the body of the copepods.

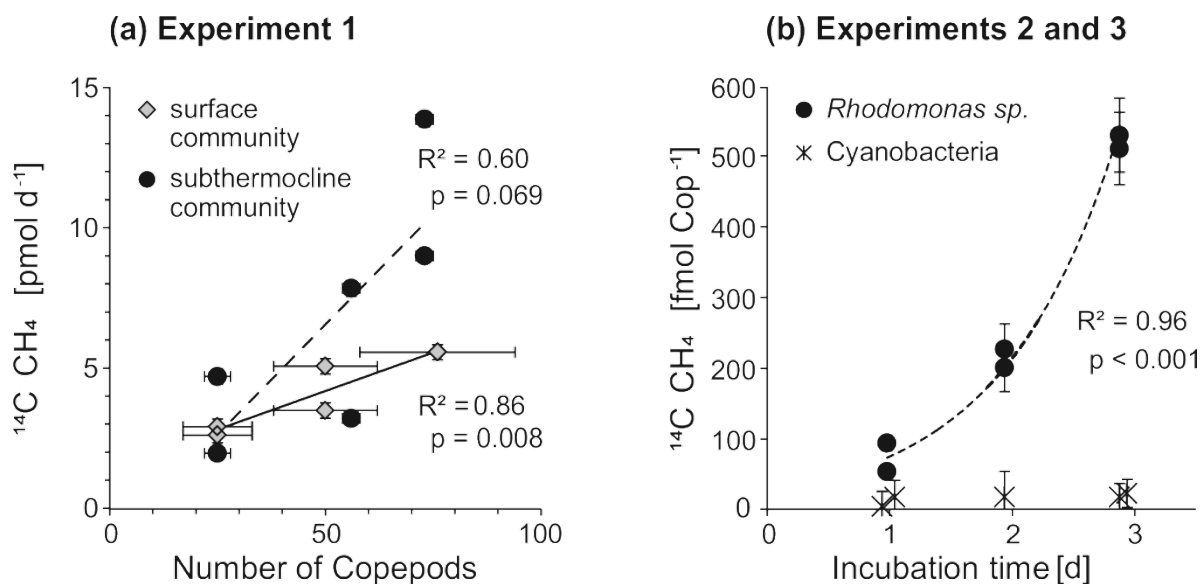


Figure 6: (a) Experiment 1: Methane production as a function of the number of copepods in the surface (dominated by *Acartia* spp.) and subthermocline zooplankton communities (dominated by *Temora longicornis*). (b) Experiment 2 and 3: Copepod-specific methane production over time when using the cryptophyte alga *Rhodomonas* sp. (experiment 2) or the cyanobacterium *Nodularia spumigena* (experiment 3) as food sources.

5 Measurable methane production occurred when the *T. longicornis* dominated community fed on *Rhodomonas* sp., while no production occurred when it was fed on the cyanobacterium *N. spumigena* (Fig. 6b). In fact it appears that these cyanobacteria are a rather negligible food source for planktonic herbivores due to their toxic properties, large size, and low lipide concentrations (Sellner et al., 1994, Eglite et al, 2018). Our experiments therefore reveal that the availability of a suitable phytoplankton diet is an important control on the zooplankton-associated methane production.

10

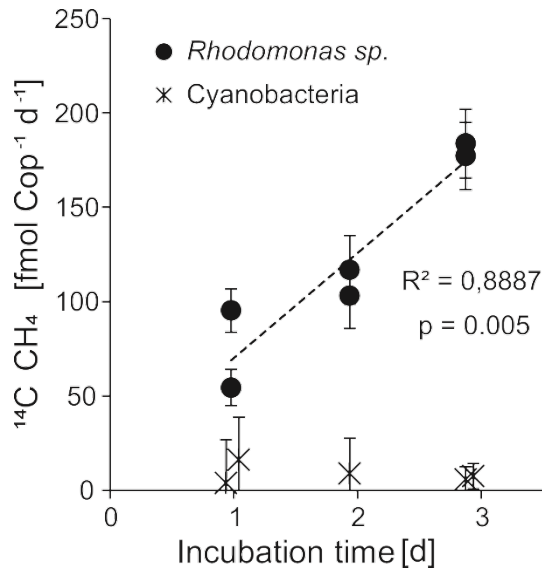


Figure 7: Experiment 2 and 3: Copepod-specific methane production rates over time for the two food sources *Rhodomonas* sp. and cyanobacterium *Nodularia spumigena*.

The observed exponential increase of methane with increasing incubation time implies that zooplankton-associated methane production is a continuous process (Fig. 6b). In addition, we measured a linear increase of the methane production rates per individual with increasing incubation time (Fig. 7). Potential explanations include (1) a delay in grazing by stress through experimental conditions, (2) the accumulation of fecal pellets within the incubation bottles followed by methane production in anoxic microenvironments, and (3) enhanced methane production through release of methane precursor substances from fecal pellets or from disrupted phytoplankton cells into the incubation water. In the first case we would expect the production rates to stabilize within the three days of the experiment, instead we observed a linear increase and a rather low variability among the replicates. In the second case, the fecal pellets could temporarily act as anoxic microenvironments for methanogenic archaea (Oremland et al., 1979; Bianchi et al., 1992; Marty et al., 1993; Karl & Tilbrook, 1994; Ditchfield et al., 2012). However, it is debatable whether anoxic conditions can persist within fecal pellets outside of the anoxic digestive

tracks of the copepods (Ditchfield et al., 2012; Ploug et al., 2008). For *T. longicornis* fed on *Rhodomonas* sp., the diffusive boundary layer of the fecal pellets through which the exchange of gases occurs was shown to be very thin, and no indications of anoxic conditions were detected (Ploug et al., 2008). Studies investigating the anoxic potential within particle aggregates were only able to confirm anoxic conditions in the interior of nutrient and carbon rich particles >600 µm and suggest that anoxia in marine aggregates is more likely to occur in an oxygen-depleted water column (Ploug et al., 1997; Ploug et al., 2001). On our cruise, a fecal pellet size of only <150 µm was measured for the surface and subthermocline zooplankton communities. We therefore suggest that anaerobic methanogenesis by archaea thriving within fecal pellets played only a minor role. Instead, continuous release of methanogenic substrates (like organic sulfur compounds) by cell disruption during feeding, defecation, or diffusion from fecal pellets may have resulted in an enrichment of these substances in the incubation water, and fostered a subsequent microbial turnover of these precursors outside the body of the copepod.

3.3 Organic sulfur compounds as possible substrates for methane production in oxic waters

The phytoplankton community composition in the surface (Fig. 8) and subthermocline waters (Fig. 9) was similar at all investigated stations during our field campaign. However, the phytoplankton biomass was lower at station TF0284, which was recently influenced by an upwelling event. Hence, it needs to be considered that also the phytoplankton composition at this station could have been altered by the event. Dinophyceae, in particular the mixotrophic *Dinophysis norvegica*, were more abundant at stations with a distinct subthermocline methane enrichment. They produce relatively high amounts of DMSP and DMSO compared to the other phytoplankton species observed within our study (Keller et al. 1989, Hatton and Wilson 2007, Caruana & Malin 2014). Also, positive correlations have previously been observed between DMSP and CH₄ and DMSO and CH₄ in the surface ocean (Zindler et al., 2013). Damm et al. (2010) suggested that the microbial metabolism of DMSP and its degradation products dimethylsulfide (DMS) and methanethiol to methane is favored under nitrogen-stressed conditions in oligotrophic waters. In the central Baltic Sea the dissolved inorganic nitrogen pool that builds up over the winter months is already exhausted after the first spring bloom in the photic zone and leaves behind nitrogen-stressed conditions for phytoplankton taxa, which are unable to fix molecular nitrogen (Schneider et al., 2009). These nitrogen-stressed conditions can lead to an accumulation of DMSP in phytoplankton cells (Sunda et al., 2007) that exceeds 10 % of the cell carbon (Matrai, 1994). In the central Baltic Sea a pronounced DMS maximum was detected during summer months in the surface waters (Leck et al., 1990). No correlation was identified between high DMS concentrations and any particular phytoplankton species. Instead, DMS production in the surface water was accelerated through phytoplankton growth under nitrogen-limited conditions, and correlated significantly with copepod and total zooplankton biomass. Hence, the release of DMSP, DMSO and DMS from phytoplankton was suggested to be controlled by zooplankton and heterotrophic bacteria (Leck et al., 1990; Kwint et al., 1996; Wolfe et al., 1997; Simo et al., 2002; Lee et al., 2003).

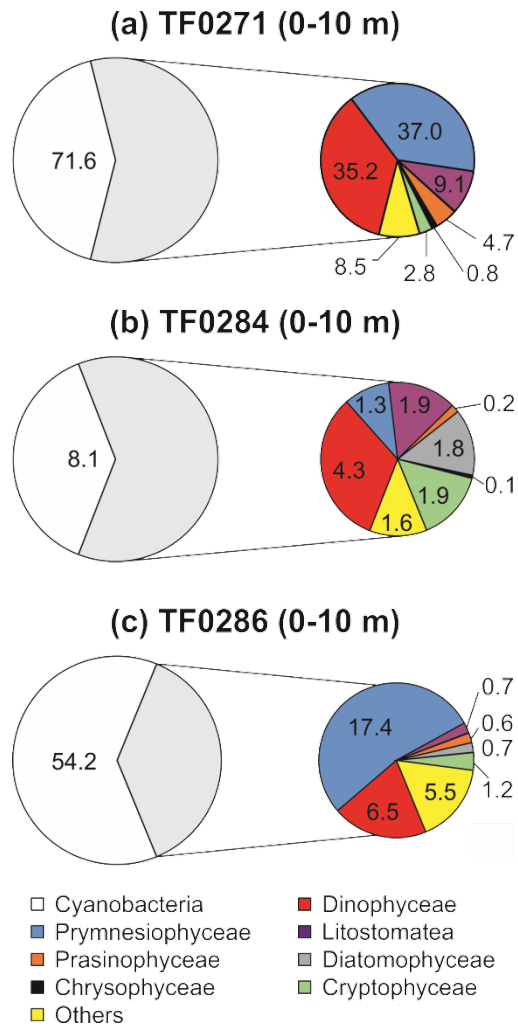


Figure 8: Surface phytoplankton community composition integrated over the upper 10 m of the water column (mg C m^{-3}) at stations with a distinct (a) and without a distinct subthermocline methane enrichment (b and c). The gray shaded non-cyanobacteria community is described in detail in the colored circles.

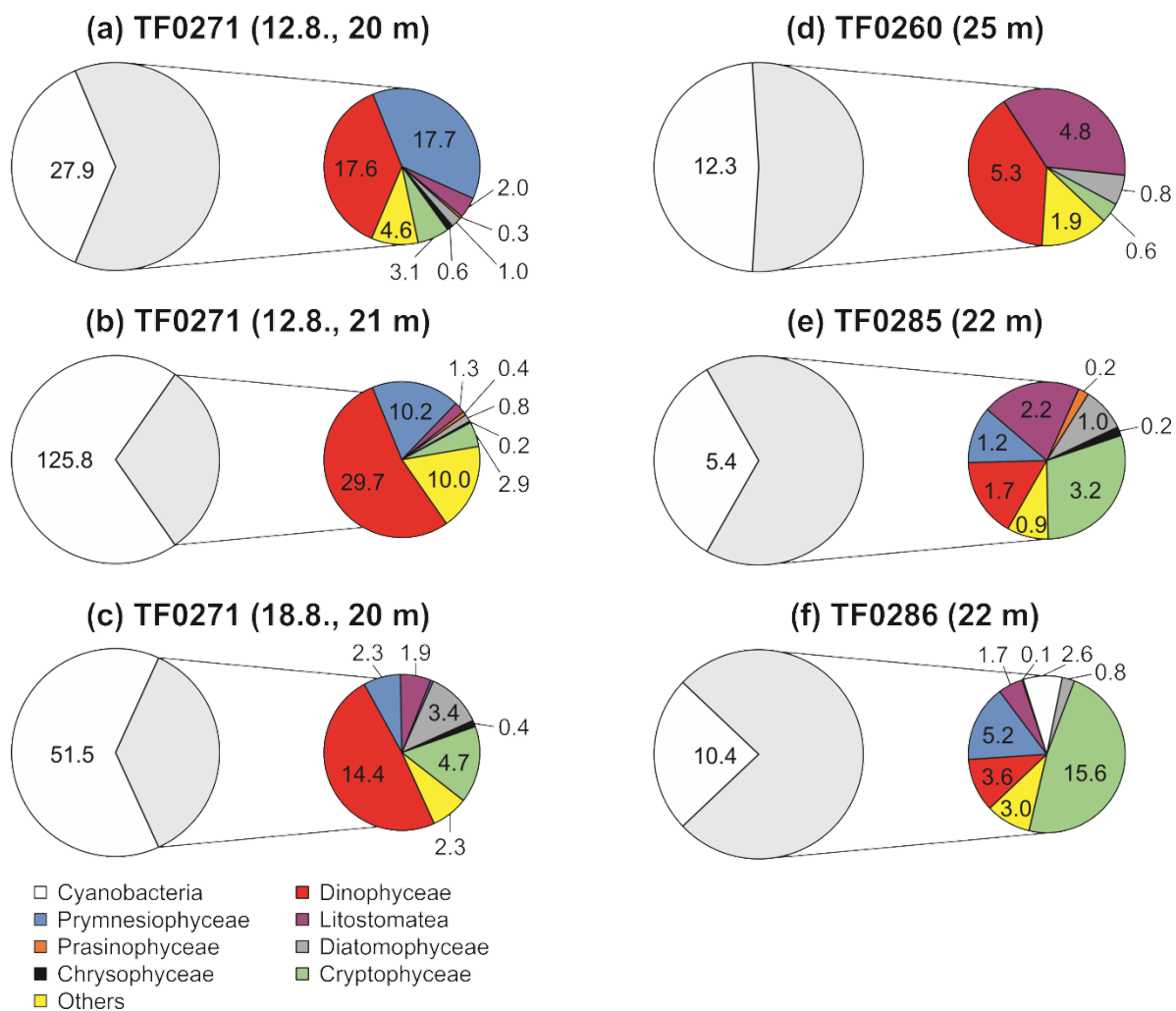


Figure 9: Phytoplankton community composition within the subthermocline chlorophyll *a* maximum (mg C m^{-3}) at three stations with a distinct subthermocline methane enrichment (a-e) and at one station without a distinct enrichment (f). The gray shaded non-cyanobacteria community is described in detail in the colored circles. Three replicate samples were taken at TF0271 in a period of seven days (a-c) showing that the prevalence of Dinophyceae below the thermocline is a consistent feature at this station.

Similar to phytoplankton, zooplankton, in particular copepods, may use DMSP for osmoregulation and were shown to increasingly assimilate DMSP at higher salinities (Tang et al., 1999). Likewise, DMSP ingestion by copepods increased with increasing DMSP content of the food (Tang et al., 1999). The observation reported by De Angelis & Lee (1994) showed that *T. longicornis* feeding on Dinophyceae (*Prorocentrum minimum*) resulted in the highest methane production rates per copepod, which suggests a link between the DMSP/DMSO content of the diet and zooplankton-associated methane production. Based on the observed zoo- and phytoplankton distributions (Fig. 8, 9 and 10), we speculate that the development of distinct subthermocline methane enrichments in the central Baltic Sea is influenced by the combination of *T. longicornis* and relatively high abundances of Dinophyceae.

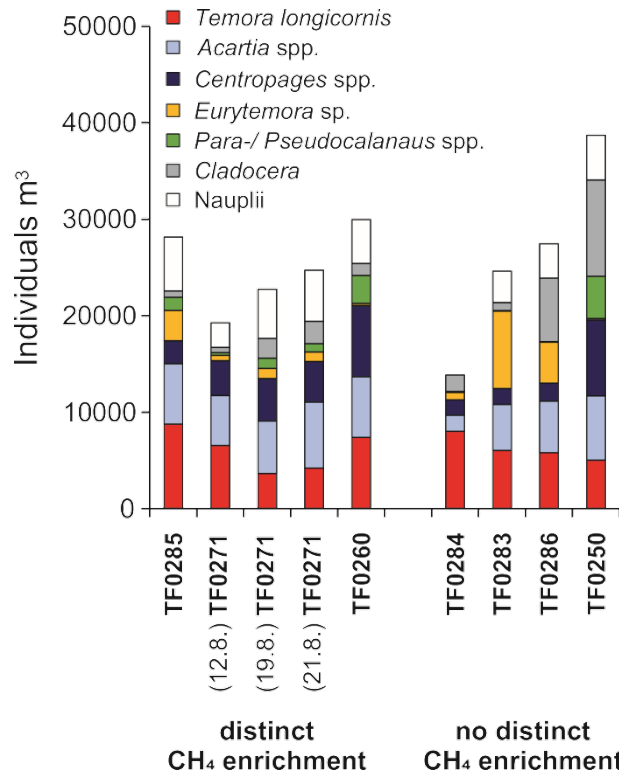


Figure 10: Average zooplankton community composition between the sea surface and the halocline for stations with distinct (left bars) and without distinct (right bars) subthermocline methane enrichments. Three replicate samples were taken at station TF0271 in a period of ten days to investigate the temporal variability in the community composition at this location.

- 5 To retrieve further information about potential trophic relationships between *T. longicornis* and Dinophyceae lipid biomarkers of concentrated plankton samples from two depths, the surface layer and from subthermocline waters were analyzed. Also, samples from stations with (TF0271) and without (TF0250) distinct subthermocline methane enrichment were compared. Although individual fatty acids have to be assigned cautiously to specific taxonomic groups, the distribution of these compounds in copepod neutral lipids has been shown to largely reflect the lipid composition of the prey (Peters et al., 2013). Fig. 11a shows the neutral lipids extracted from the surface layer phytoplankton obtained at station TF0271. The fatty acids contained in samples from this depth revealed major contributions from cyanobacteria (typically high in 16:0 and C₁₈ fatty acids), diatoms (high in 20:5), and Dinophyceae (22:6, cf. Peters et al., 2013), which corresponds to the phytoplankton community composition observed at this station by microscopy (Fig. 8a). The relatively high abundance of Dinophyceae in the surface layer was further reflected in the presence of 24-norcholesta-5,22-dienol (26^{5,22}), an unusual sterol that is regarded as a specific marker for these algae in temperate waters (Rampen et al., 2007).
- 10 Compounds extracted from the subthermocline zooplankton community at station TF0271, dominated by *T. longicornis* (52 %), revealed a broad similarity with the phytoplankton-derived lipids. It also consistently reflected the diurnal feeding behavior of these copepods in the surface mixed layer (Fig. 11b). Notably though, lipids of putative dinophyte origin were

considerably enriched, supporting the idea of a preferential uptake of these algae by *T. longicornis*. In contrast, mixed zooplankton obtained at the reference station TF0250, contained few *T. longicornis* (10 %) but relatively more *Acartia* spp. (37 %) and *Pseudocalanus* spp. (32 %). This sample showed much lower relative amounts of the Dinophyceae-derived biomarkers 22:6 ω 3 and 26^{5,22}, indicating only a minor importance of this food source at the reference station (Fig. 11c).

5 Altogether, our biomarker data further corroborates our suggestion that the feeding of *T. longicornis* on (DMSP/DMSO-rich) Dinophyceae may be an essential factor for the development of subthermocline methane enrichments in the central Baltic Sea.

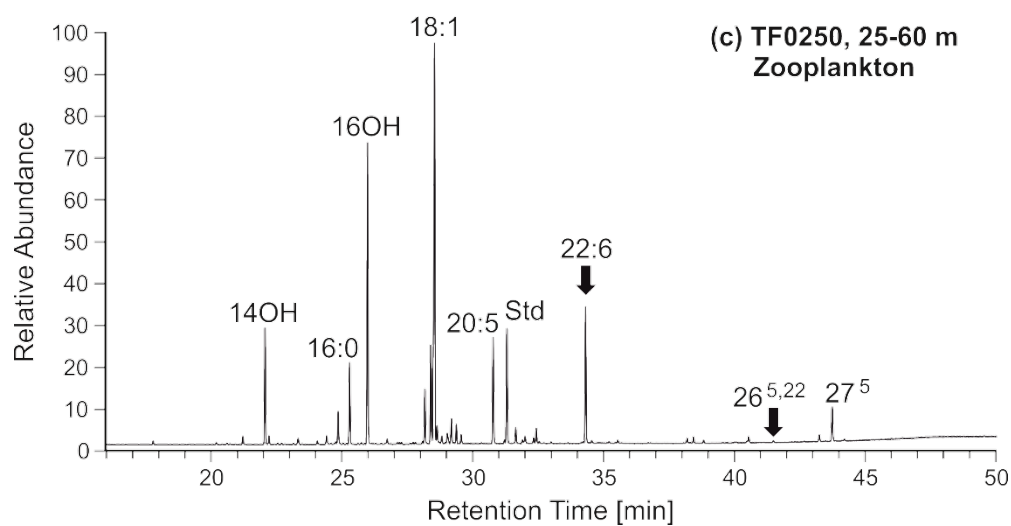
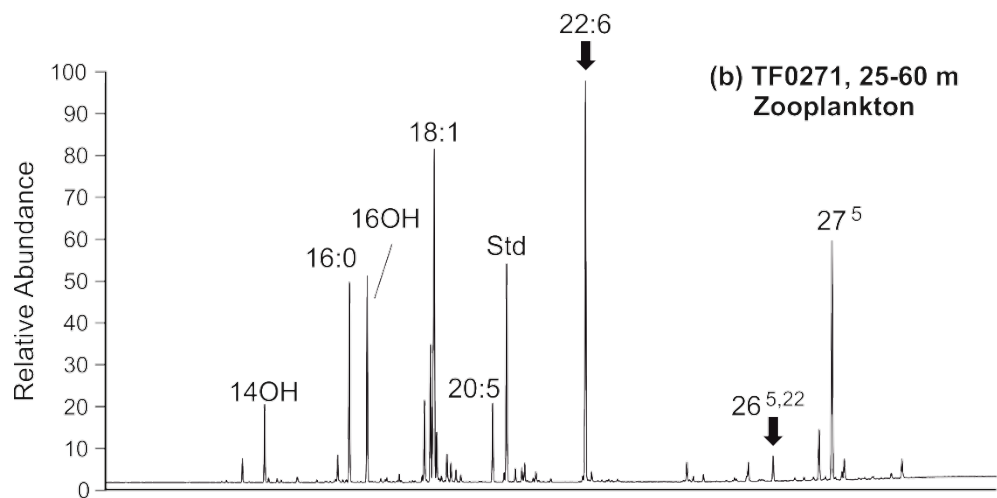
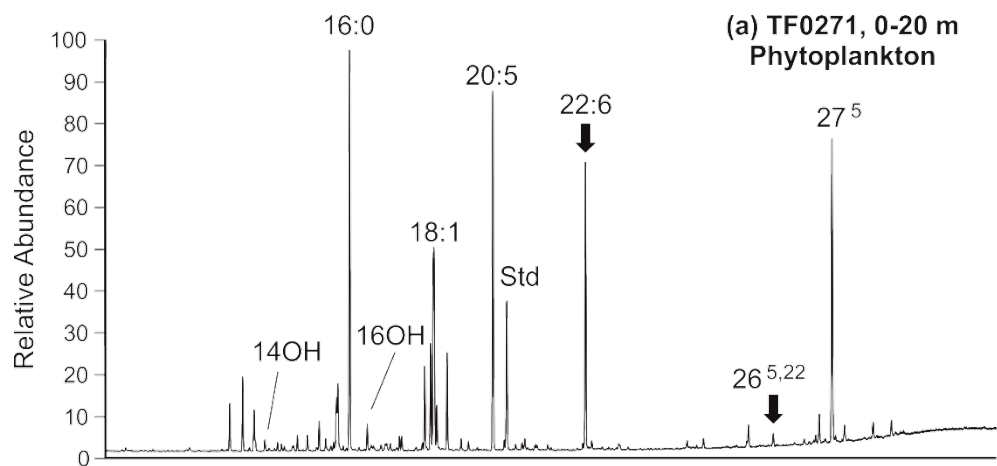


Figure 11: GC-MS chromatograms of neutral lipids (methyl ester/TMS derivatives) from mixed layer phytoplankton (a) and subthermocline zooplankton (b) at station TF0271 (with a distinct subthermocline methane enrichment). Data from subthermocline zooplankton at TF0250 (without a distinct subthermocline methane enrichment) are shown as a reference (c). Main compounds are labelled and interpreted as follows (see text for further discussion); 16:0, *n*-hexadecanoic acid (unspecific, high in bacteria); 14OH/16OH, *n*-tetradecanol and *n*-hexadecanol (copepod wax esters); 18:1, oleic acid (unspecific, high heterotrophs but also in (cyano)bacteria); 20:5, *n*-eicosapentaenoic acid (phytoplankton, high in diatoms); Std, internal standard; 22:6, *n*-docosahexaenoic acid (phytoplankton, high in Dinophyceae); 26^{5,22}, 24-norcholesta-5,22-dienol (specific for Dinophyceae); 27⁵, cholesterol (unspecific, high in zooplankton, but also found in some algae including Dinophyceae). Compounds indicating contributions from Dinophyceae-derived lipids are highlighted with an arrow. Note enhanced levels of these biomarkers in *T. longicornis* - dominated zooplankton at the station with a distinct subthermocline methane enrichment (TF0271).

We further assume that zooplankton-associated production of fecal pellets and the transit of these pellets through the water column plays a critical role in the build-up of the pool of organic sulfur compounds in the central Baltic Sea. Sinking velocities are low for pellets produced from Dinophyceae (Hansen & Bech, 1996; Thor et al., 2003). Hence, we propose that high degradation rates of those fecal pellets lead to an efficient microbial turnover of the contained organic sulfur compounds (e.g. DMSP; Tang, 2001) to methane contributes to the subthermocline methane enrichment. The gradual loss of organic sulfur compounds from fecal pellets could plausibly explain the increase of copepod-specific methane production over time, as measured in our incubation study (Fig. 6b and 7). Unfortunately, no Dinophyceae culture was available for our field experiments, because of their relatively low growth rates (Carpenter et al., 1995) and mixotrophic feeding requirements (Tong et al., 2010) that did not allow an adequate radiolabeling of the culture with sodium bicarbonate. Likewise, the relatively low production rates observed in our experiments could be explained by the lack of appropriate substrates for methane production, as Cryptophyceae (i.e. *Rhodomonas* sp.) contain only low amounts of DMSP as compared to other phytoplankton groups (Dong et al., 2013). Furthermore, we used 0.2 µm filtered seawater in our incubations, which was depleted in microorganisms. However, these microorganisms might be relevant for the turnover of DMSP to methane outside of the copepod bodies.

4 Conclusions

Several processes that produce methane in oxic waters have been recently identified and it is assumed that climate change will impact their source strength, with far reaching consequences for methane flux and climate feedback. However, mechanisms and magnitudes of these sources remain vague. Based on our findings, we conclude that zooplankton contributes to subthermocline methane enrichments in the central Baltic Sea by: (1) direct methane production within the digestive track of copepods and/or (2) indirect contribution to methane production through release of methane precursor substances into the surrounding water, followed by microbial degradation to methane outside the copepod's body. Further, our field observations combined with lipid biomarker studies indicate that a distinct food web segment consisting of DMSP-rich Dinophyceae and the copepod *T. longicornis* may foster the buildup of methane anomalies in oxic waters of the central Baltic Sea. For future studies, we recommend using unfiltered in situ water for the incubations. We further suggest to cultivate Dinophyceae under controlled laboratory conditions before the field campaign and to feed these radiolabeled

organisms to in situ copepods directly after sampling in the field. These incubations should be accompanied by a quantification of the DMSP and DMS content in phyto- and zooplankton as well as in the water column.

Data availability

The data presented here are included as supplemental material.

5 Author contribution

Beate Stawiarski, Oliver Schmale, Stefan Otto designed and built the methane stripping-oxidation line and performed the incubation experiments. Janine Wäge and Natalie Loick-Wilde supported the plankton sampling and the grazing experiments. Volker Thiel and Anna K. Wittenborn conducted the lipid biomarker analysis. Ulf Gräwe performed the oceanographic modelling of the upwelling event. Stefan Schloemer performed the stable carbon isotope analyses. Gregor 10 Rehder, Matthias Labrenz, and Norbert Wasmund helped with the data analyses and interpretation. All authors co-wrote the manuscript.

Competing interests

The authors declare that they have no conflict of interest

Acknowledgements

15 We thank Nicole C. Power Guerra for her help at sea and in the laboratory. We would also like to thank Michael Glockzin for producing the map and Juha Hatakka (Finnish Meteorological Institute) for providing the atmospheric methane concentration data from station Utö. Further, we appreciate the critical comments by Jörg Dutz. We thank the captain and crew of R/V *Alkor* for technical support. This work was supported by the German Research Foundation (DFG) through grant SCHM 2530/5-1 to O. Schmale, DFG grant LA 1466/10-1 to M. Labrenz, and DFG grant LO 1820/4-1 to N. Loick-Wilde.

20 References

Bange, H. W., Bartell, U. H., Rapsomanikis, S., and Andreae, M. O.: Methane in the Baltic and North Seas and a reassessment of the marine emission of methane, *Glob. Biogeochem. Cycles*, 8, 465-480, 1994.
Berggreen, U., Hansen, B. and Kiørboe, T.: Food size spectra, ingestion and growth of the copepod *Acartia tonsa* during development: Implications for determination of copepod production, *Mar. Biol.*, 99, 341–352, 1988.

- Bianchi, M., Marty, D., Teyssié, J.-L., and Fowler, S. W.: Strictly aerobic and anaerobic bacteria associated with sinking particulate matter and zooplankton fecal pellets, *Mar. Ecol. Prog. Ser.*, 88, 55-60, 1992.
- Born, D. A., Ulrich, E. C., Ju, K.-S., Peck, S. C., van der Donk, W. A., and Drennan, C. L.: Structural basis for methylphosphonate biosynthesis, *Science*, 358, 1336-1339, 2017.
- 5 Carpenter, E. J., Janson, S., Boje, R., Pollehne, F., and Chang, J.: The dinoflagellate *Dinophysis norvegica*: biological and ecological observations in the Baltic Sea, *Eur. J. Phycol.*, 30, 1-9, 1995.
- Caruana, A. M. N. and Malin, G.: The variability in DMSP content and DMSP lyase activity in marine dinoflagellates, *Prog. Oceanogr.*, 120, 2014.
- Damm, E., Helmke, E., Thoms, S., Schauer, U., Nothig, E., Bakker, K., and Kiene, R. P.: Methane production in aerobic
10 oligotrophic surface water in the central Arctic Ocean, *Biogeosciences*, 7, 1099-1108, 2010.
- De Angelis, M. A., and Lee, C.: Methane production during zooplankton grazing on marine phytoplankton, *Limnol. Oceanogr.*, 39, 1298-1308, 1994.
- Ditchfield, A. K., Wilson, S. T., Hart, M. C., Purdy, K. J., Green, D. H., and Hatton, A. D.: Identification of putative
15 methylotrophic and hydrogenotrophic methanogens within sedimenting material and copepod faecal pellets, *Aquat. Microb. Ecol.*, 67, 151-160, 2012.
- Dong, Y., Yang, G.-P., and Tang, K. W.: Dietary effects on abundance and carbon utilization ability of DMSP-consuming bacteria associated with the copepod *Acartia tonsa* Dana, *Mar. Biol. Res.*, 9, 809-814, 2013.
- Donis, D., Flury, S., Stöckli, A., Spangenberg, J. E., Vachon, D., and McGinnis, D. F.: Full-scale evaluation of methane production under oxic conditions in a mesotrophic lake, *Nat. Commun.*, 8, 1661, 2017.
- 20 Dutz, J., Koski, M., and Jónasdóttir, S. H.: Copepod reproduction is unaffected by diatom aldehydes or lipid composition, *Limnol. Oceanogr.*, 53, 225-235, 2008.
- Eglite, E., Wodarg, D., Dutz, J., Wasmund, N., Nausch, G., Liskow, I., Schulz-Bull, D., and Loick-Wilde, N.: Strategies of amino acid supply in mesozooplankton during cyanobacteria blooms: a stable nitrogen isotope approach. *Ecosphere*, 9(3), e02135. 10.1002/ecs2.2135, 2018.
- 25 Etminan, M., Myhre, G., Highwood, E. J., and Shine, K. P.: Radiative forcing of carbon dioxide, methane, and nitrous oxide: A significant revision of the methane radiative forcing, *Geophys. Res. Lett.*, 43, 2016.
- Feistel, R., Nausch, G., and Wasmund, N.: State and evolution of the Baltic Sea, 1952-2005: a detailed 50-year survey of meteorology and climate, physics, chemistry, biology, and marine environment, John Wiley & Sons, New Jersey, 2008.
- 30 Franck, H., Matthäus, W., and Sammler, W.: Major inflows of saline water into the Baltic Sea during the present century *Gerlands Beitr. Geophys.*, 96, 517-531, 1987.
- Gidhagen, L.: Coastal upwelling in the Baltic Sea—Satellite and in situ measurements of sea-surface temperatures indicating coastal upwelling, *Estuar. Coast. Shelf Sci.*, 24, 449-462, 1987.

- Gräwe, U., Holtermann, P., Klingbeil, K., and Burchard, H.: Advantages of vertically adaptive coordinates in numerical models of stratified shelf seas, *Ocean Model.*, 92, 56-68, 2015.
- Grossart, H. P., Frindte, K., Dziallas, C., Eckert, W., and Tang, K. W.: Microbial methane production in oxygenated water column of an oligotrophic lake, *Proc. Natl. Acad. Sci. USA*, 108, 19657-19661, 2011.
- 5 Guillard, R. R. L., and Ryther, J. H.: Studies of marine diatoms. I. *Cyclotella nana* Husdedt and *Detonula confervacea* (Cleve) Gran., *Can. J. Microbiol.*, 8, 229-239, 1962.
- Gülzow, W., Rehder, G., von Deimling, J. S., Seifert, T., and Toth, Z.: One year of continuous measurements constraining methane emissions from the Baltic Sea to the atmosphere using a ship of opportunity, *Biogeosciences*, 10, 81-99, 2013.
- 10 Hällfors, H., Hajdu, S., Kuosa, H., and Larsson, U.: Vertical and temporal distribution of the dinoflagellates *Dinophysis acuminata* and *D. norvegica* in the Baltic Sea, *Boreal Environ. Res.*, 16 (suppl. A), 121-135, 2011.
- Hansen, B., and Bech, G.: Bacteria associated with a marine planktonic copepod in culture. I. Bacterial genera in seawater, body surface, intestines and fecal pellets and succession during fecal pellet degradation, *J. Plankton Res.*, 18, 257-273, 1996.
- 15 Hansen, F. C., Möllmann, C., Schütz, U., and Neumann, T.: Spatio-temporal distribution and production of calanoid copepods in the central Baltic Sea, *J. Plankton Res.*, 28, 39-54, 2006.
- Hatton, A. D., and Wilson, S. T.: Particulate dimethylsulphoxide and dimethylsulphoniopropionate in phytoplankton cultures and Scottish coastal waters, *Aquat. Sci.*, 69, 330-340, 2007.
- HELCOM, Manual for marine monitoring in the COMBINE programme of HELCOM. – Internet, Last updated July 2017:
- 20 <http://www.helcom.fi/Documents/Action%20areas/Monitoring%20and%20assessment/Manuals%20and%20Guidelines/Manual%20for%20Marine%20Monitoring%20in%20the%20COMBINE%20Programme%20of%20HELCOM.pdf>
- Holmes, M. E., Sansone, F. J., Rust, T. M., and Popp, B. N.: Methane production, consumption, and air-sea exchange in the open ocean: An Evaluation based on carbon isotopic ratios, *Global Biogeochem. Cycles*, 14, 1-10, 2000.
- 25 Ikeda, T., and Skjoldal, H. R.: The effect of laboratory conditions on the extrapolation of experimental measurements to the ecology of marine zooplankton VI. Changes in physiological activities and biochemical components of *Acetes sibogae australis* and *Acartia australis* after capture, *Mar. Biol.*, 58, 285-293, 1980.
- IPCC: Climate Change 2013: The Physical Science Basis. Contribution of Working Group I to the Fifth Assessment Report of the Intergovernmental Panel on Climate Change edited by: Stocker, T. F., Qin, D., Plattner, G.-K., Tigno, M.,
- 30 Allen, S. K., Boschung, J., Nauels, A., Xia, Y., Bex, and Midgley, P. M., Cambridge University Press, Cambridge (UK) and New York (USA), 1535 pp., 2013.
- Jakobs, G., Rehder, G., Jost, G., Kießlich, K., Labrenz, M., and Schmale, O.: Comparative studies of pelagic microbial methane oxidation within the redox zones of the Gotland Deep and Landsort Deep (central Baltic Sea), *Biogeosciences*, 10, 7863-7875, 2013.

- Jakobs, G., Holtermann, P., Berndmeyer, C., Rehder, G., Blumenberg, M., Jost, G., Nausch, G., and Schmale, O.: Seasonal and spatial methane dynamics in the water column of the central Baltic Sea (Gotland Sea), *Cont. Shelf Res.*, 2014.
- Karl, D. M., and Tilbrook, B. D.: Production and transport of methane in oceanic particulate organic matter, *Nature*, 368, 732-734, 1994.
- 5 Karl, D. M., Beversdorf, L., Bjorkman, K. M., Church, M. J., Martinez, A., and Delong, E. F.: Aerobic production of methane in the sea, *Nat. Geosci.*, 1, 473-478, 2008.
- Keller, M. D., Bellows, W. K., and Guillard, R. R. L.: Dimethyl Sulfide Production in Marine Phytoplankton, in: *Biogenic Sulfur in the Environment*, ACS Symposium Series, 393, Am. Chem. S., 167-182, 1989.
- Keppler, F., Hamilton, J. T. G., Braß, M., and Röckmann, T.: Methane emissions from terrestrial plants under aerobic
- 10 conditions, *Nature*, 439, 187-191, 2006.
- Knuckey, R. M., Semmens, G. L., Mayer, R. J., and Rimmer, M. A.: Development of an optimal microalgal diet for the culture of the calanoid copepod *Acartia sinjiensis*: Effect of algal species and feed concentration on copepod development, *Aquaculture*, 249, 339-351, 2005.
- Koski, M., and Breteler, W. C. M. K.: Influence of diet on copepod survival in the laboratory, *Mar. Ecol.-Prog. Ser.*, 264, 73-
- 15 82, 2003.
- Kwint, R. L. J., Irigoien, X., and K.J.M., K.: Copepods and DMSP, in: *Biological and environmental chemistry of DMSP and related sulfonium compounds*, edited by: Kiene, R. P., Visscher, P. T., Keller, M. D., and Kirst, G. O., Plenum Press, New York, 239-252, 1996.
- Lamontagne, R. A., Swinnerton, J. W., Linnenbom, V. J., and Smith, W. D.: Methane concentrations in various marine
- 20 environments, *J. Geophys. Res.*, 78, 5317-5324, 1973.
- Leck, C., Larsson, U., Bågander, L. E., Johansson, S., and Hajdu, S.: Dimethyl sulfide in the Baltic Sea: Annual variability in relation to biological activity, *J. Geophys. Res. Oceans*, 95, 3353-3363, 1990.
- Lee, P. A., Saunders, P. A., J. de Mora, S., Deibel, D., and Levasseur, M.: Influence of copepod grazing on concentrations of dissolved dimethylsulfoxide and related sulfur compounds in the North Water, northern Baffin Bay, *Mar. Ecol.-*
- 25 *Prog. Ser.*, 255, 235-248, 2003.
- Lehmann, A., and Myrberg, K.: Upwelling in the Baltic Sea — A review, *J. Marine Syst.*, 74, S3-S12, 2008.
- Lenhart, K., Bunge, M., Ratering, S., Neu, T. R., Schuttmann, I., Greule, M., Krammann, C., Schnell, S., Müller, C., H, Z., and Keppler, F.: Evidence for methane production by saprotrophic fungi, *Nat. Commun.*, 3, 1046, 2012.
- Lenhart, K., Weber, B., Elbert, W., Steinkamp, J., Clough, T., Crutzen, P., Pöschl, U., and Keppler, F.: Nitrous oxide and
- 30 methane emissions from cryptogamic covers, *Glob. Change Biol.*, 21, 3889-3900, 2015.
- Lenhart, K., Klintzsch, T., Langer, G., Nehrke, G., Bunge, M., Schnell, S., and Keppler, F.: Evidence for methane production by the marine algae *Emiliana huxleyi*, *Biogeosciences*, 13, 3163-3174, 2016.
- Marty, D. G.: Methanogenic bacteria in seawater, *Limnol. Oceanogr.*, 38, 452-456, 1993.

- Matrai, P. A., and Keller, M. D.: Total organic sulfur and dimethylsulfoniopropionate in marine phytoplankton: intracellular variations, *Mar. Biol.*, 119, 61-68, 1994.
- Mohrholz, V., Naumann, M., Nausch, G., Krüger, S., and Gräwe, U.: Fresh oxygen for the Baltic Sea — An exceptional saline inflow after a decade of stagnation, *J. Marine Syst.*, 148, 152-166, 2015.
- 5 Nausch, M., Nausch, G., Lass, H. U., Mohrholz, V., Nagel, K., Siegel, H., and Wasmund, N.: Phosphorus input by upwelling in the eastern Gotland Basin (Baltic Sea) in summer and its effects on filamentous cyanobacteria, *Estuar. Coast. Shelf Sci.*, 83, 434-442, 2009.
- Nieuwenhuize, J., Maas, Y. E. M., and Middelburg, J. J.: Rapid analysis of organic carbon and nitrogen in particulate materials, *Mar. Chem.*, 45, 217-224, 1994.
- 10 Olenina, I., Hajdu, S., Andersson, A., Edler, L., Wasmund, N., Busch, S., Göbel, J., Gromisz, S., Huseby, S., Huttunen, M., Jaanus, A., Kokkonen, P., Ledaine, I., Niemkiewicz, E.: Biovolumes and size-classes of phytoplankton in the Baltic Sea. *Baltic Sea, Environment Proceedings*, 106, 1-144, 2006.
- Omstedt, A., Elken, J., Lehmann, A., and Piechura, J.: Knowledge of the Baltic Sea physics gained during the BALTEX and related programmes, *Prog. Oceanogr.*, 63, 1-28, 2004.
- 15 Oremland, R. S.: Methanogenic activity in plankton samples and fish intestines: A mechanism for in situ methanogenesis in oceanic surface waters, *Limnol. Oceanogr.*, 24, 1136-1141, 1979.
- Peters, J., Dutz, J., and Hagen, W.: Trophodynamics and life-cycle strategies of the copepods *Temora longicornis* and *Acartia longiremis* in the Central Baltic Sea, *J. Plankton Res.*, 35, 595–609, 2013.
- Ploug, H., Kühl, M., Buchholz-Cleven, B., and Jørgensen, B. B.: Anoxic aggregates - an ephemeral phenomenon in the pelagic environment?, *Aquat. Microb. Ecol.*, 13, 285-294, 1997.
- 20 Ploug, H., and Jørgensen, B. B.: A net-jet flow system for mass transfer and microsensor studies of sinking aggregates, *Mar. Ecol.-Prog. Ser.*, 176, 279-290, 1999.
- Ploug, H.: Small-scale oxygen fluxes and remineralization in sinking aggregates, *Limnol. Oceanogr.*, 46, 1624-1631, 2001.
- Ploug, H., Iversen, M. H., and Fischer, G.: Ballast, sinking velocity, and apparent diffusivity within marine snow and zooplankton fecal pellets: Implications for substrate turnover by attached bacteria, *Limnol. Oceanogr.*, 53, 1878-1886, 2008.
- 25 Rampen, S. W., Schouten, S., Abbas, B., Elda Panoto, F., Muyzer, G., Campbell, C. N., Fehling J., and Sinninghe Damsté, J. S.: On the origin of 24-norcholestanes and their use as age-diagnostic biomarkers, *Geology*, 35, 419-422, 2007.
- Reissmann, J. H., Burchard, H., Feistel, R., Hagen, E., Lass, H. U., Mohrholz, V., Nausch, G., Umlauf, L., and Wiczorek, G.: Vertical mixing in the Baltic Sea and consequences for eutrophication - A review, *Prog. Oceanogr.*, 82, 47-80, 2009.
- 30 Repeta, D. J., Ferron, S., Sosa, O. A., Johnson, C. G., Repeta, L. D., Acker, M., DeLong, E. F., and Karl, D. M.: Marine methane paradox explained by bacterial degradation of dissolved organic matter, *Nature Geosci.*, 9, 884-887, 2016.

- Schmale, O., Schneider von Deimling, J., Gülzow, W., Nausch, G., Waniek, J. J., and Rehder, G.: Distribution of methane in the water column of the Baltic Sea, *Geophys. Res. Lett.*, 37, L12604, 10.1029/2010gl043115, 2010.
- Schmale, O., Blumenberg, M., Kießlich, K., Jakobs, G., Berndmeyer, C., Labrenz, M., Thiel, V., and Rehder, G.: Aerobic methanotrophy within the pelagic redox-zone of the Gotland Deep (central Baltic Sea), *Biogeosciences*, 9, 4969-4977, 2012.
- Schmale, O., Krause, S., Holtermann, P., Power Guerra, N. C., and Umlauf, L.: Dense bottom gravity currents and their impact on pelagic methanotrophy at oxic/anoxic transition zones, *Geophys. Res. Lett.*, 43, 5225-5232, 2016.
- Schmale, O., Wäge, J., Mohrholz, V., Wasmund, N., Gräwe, U., Rehder, G., Labrenz, M., and Loick-Wilde, N.: The contribution of zooplankton to methane supersaturation in the oxygenated upper waters of the central Baltic Sea, *Limnol. Oceanogr.*, 63, 412-430, 2018.
- Schneider, B., Kaitala, S., Raateoja, M., and Sadkowiak, B.: A nitrogen fixation estimate for the Baltic Sea based on continuous pCO₂ measurements on a cargo ship and total nitrogen data, *Cont. Shelf Res.*, 29, 1535-1540, 2009.
- Schneider, B., Gülzow, W., Sadkowiak, B., and Rehder, G.: Detecting sinks and sources of CO₂ and CH₄ by ferrybox-based measurements in the Baltic Sea: Three case studies, *J. Marine Syst.*, 140, 13-25, 2014.
- Scranton, M. I., and Brewer, P. G.: Occurrence of methane in the near-surface waters of the western subtropical North-Atlantic, *Deep-Sea Res.*, 24, 127-138, 1977.
- Sellner, K. G., Olson, M. M., and Kononen, K.: Copepod grazing in a summer cyanobacteria bloom in the Gulf of Finland, *Hydrobiologia*, 292, 249-254, 1994.
- Simon, M., Grossart, H. P., Schweitzer, B., and Ploug, H.: Microbial ecology of organic aggregates in aquatic ecosystems, *Aquat. Microb. Ecol.*, 28, 175-211, 2002.
- Sunda, W. G., Hardison, R., Kiene, R. P., Bucciarelli, E., and Harada, H.: The effect of nitrogen limitation on cellular DMSP and DMS release in marine phytoplankton: climate feedback implications, *Aquat. Sci.*, 69, 341-351, 2007.
- Tang, K. W., Dam, H. G., Visscher, P. T., and Fenn, T. D.: Dimethylsulfoniopropionate (DMSP) in marine copepods and its relation with diets and salinity, *Mar. Ecol. Prog. Ser.*, 179, 71-79, 1999.
- Tang, K. W., Visscher, P. T., and Dam, H. G.: DMSP-consuming bacteria associated with the calanoid copepod *Acartia tonsa* (Dana), *J. Exp. Mar. Biol. Ecol.*, 256, 185-198, 2001.
- Tang, K. W., Glud, R. N., Glud, A., Rysgaard, S., and Nielsen, T. G.: Copepod guts as biogeochemical hotspots in the sea: Evidence from microelectrode profiling of *Calanus* spp., *Limnol. Oceanogr.*, 56, 666-672, 2011.
- Tang, K. W., McGinnis, D. F., Frindte, K., Brüchert, V., and Grossart, H.-P.: Paradox reconsidered: Methane oversaturation in well-oxygenated lake waters, *Limnol. Oceanogr.*, 59, 275-284, 2014.
- Teikari, J. E., Fewer, D. P., Shrestha, R., Hou, S., Leikoski, N., Mäkelä, M., Simojoki, A., Hess, W. R., and Sivonen, K.: Strains of the toxic and bloom-forming *Nodularia spumigena* (cyanobacteria) can degrade methylphosphonate and release methane, *ISME J.*, 12, 1619-1630, 2018.

- Thiel, V., Hoppert, M.: Fatty acids and other biomarkers in two Early Jurassic concretions and their immediate host rocks (Lias δ , Bittenheim clay pit, Bavaria, Germany), *Org. Geochem.*, 120, 42-55, 2018.
- Thor, P., Dam, H. G., and Rogers, D. R.: Fate of organic carbon released from decomposing copepod fecal pellets in relation to bacterial production and ectoenzymatic activity, *Aquat. Microb. Ecol.*, 33, 279-288, 2003.
- 5 Tong, M., Zhou, Q., Kulis, M. D., Jiang, T., Qi, Y., and Anderson, M. D.: Culture techniques and growth characteristics of *Dinophysis acuminata* and its prey, *Chin. J. Oceanol. Limn.*, 28, 1230-1239, 2010.
- Tuboly, E., Szabó, A., Garab, D., Bartha, G., Janovszky, Á., Ero's, G., Szabó, A., Mohácsi, Á., Szabó, G., Kaszaki, J., Ghyczy, M., and Boros, M.: Methane biogenesis during sodium azide-induced chemical hypoxia in rats, *Am. J. Physiol.-Cell Ph.*, 304, C207-C214, 2013.
- 10 Ütermöhl, H.: Zur Vervollkommnung der quantitativen Phytoplankton-Methodik, *Mitteilungen der Internationalen Vereinigung für Limnologie*, 9, 1-38, 1958.
- Vahtera, E., Laanemets, J., Pavelson, J., Huttunen, M., and Kononen, K.: Effect of upwelling on the pelagic environment and bloom-forming cyanobacteria in the western Gulf of Finland, Baltic Sea, *Journal of Marine Systems*, 58, 67-82, 2005.
- 15 Wang, Q., Dore, J. E., and McDermott, T. R.: Methylphosphonate metabolism by *Pseudomonas* sp. populations contributes to the methane oversaturation paradox in an oxic freshwater lake, *Environ. Microbiol.*, 19, 2366-2378, 2017.
- Wasmund, N.: Occurrence of cyanobacterial blooms in the baltic sea in relation to environmental conditions, *Int. Revue ges. Hydrobiol.*, 82, 169-184, 1997.
- Wasmund, N., Nausch, G., and Voss, M.: Upwelling events may cause cyanobacteria blooms in the Baltic Sea, *Journal of*
- 20 *Marine Systems*, 90, 67-76, 2012.
- Welschmeyer, N. A., and Lorenzen, C. J.: Carbon-14 labeling of phytoplankton carbon and chlorophyll a carbon: Determination of specific growth rates¹, *Limnol. Oceanogr.*, 29, 135-145, 1984.
- Wiesenburg, D. A., J. Norman, and L. Guinasso: Equilibrium solubilities of methane, carbon monoxide, and hydrogen in water and seawater, *J. Chem. Eng. Data*, 24(4), 356-360, 1979.
- 25 Wolfe, G. V., Steinke, M., and Kirst, G. O.: Grazing-activated chemical defence in a unicellular marine alga, *Nature*, 387, 894-897, 1997.
- Yao, M., Henny, C., and Maresca, J. A.: Freshwater bacteria release methane as a byproduct of phosphorus acquisition, *Appl. Environ. Microbiol.*, 28, 2016.
- Zhang, Y., and Xie, H.: Photomineralization and photomethanification of dissolved organic matter in Saguenay River
- 30 surface water, *Biogeosciences*, 12, 6823-6836, 2015.
- Zindler, C., Bracher, A., Marandino, C. A., Taylor, B., Torrecilla, E., Kock, A., and Bange, H. W.: Sulphur compounds, methane, and phytoplankton: interactions along a north-south transit in the western Pacific Ocean, *Biogeosciences*, 10, 3297-3311, 2013.