

Dear Editor,

Following the suggestions of the reviewers, we have revised our manuscript and introduced a few major changes. The main ones are related to:

- the incorporation of a parameterization representing CO dark production into the standard version of the model.
- a more thorough discussion about the representation of the coastal zones in our global model.
- the addition of "new" in situ CO measurements in the data-base we use to evaluate the model simulations.
- a better description of the physical forcings used to force the biogeochemical model
- the addition of maps for the model evaluation (Chl-a, SST and MLD) in the Supplementary Material.

We thank the reviewers for their comments that have helped to improve our manuscript, and we hope these changes will meet your expectations

Best regards,

Ludivine Conte and co-authors

Response for Referee #1

1) Major comments

Comment 1 — Coastal oceans (including shelf areas, estuaries etc) are important sources of CDOM which, in turn, is the prerequisite of the photochemical production of CO. I am wondering why the role of coastal oceans is not discussed in the article. It is only mentioned briefly on page 17, lines 30-33. I understand that the model is not suitable to simulate coastal oceans (shelf areas, estuaries etc.). To this end, the authors should modify the ms title and the discussion by stating that their results are only valid for the open ocean or include a discussion of CO in coastal areas (i.e. contribution to CO emissions etc).

Reply: we agree that coastal areas could be important for the oceanic CO cycle.

In the revised manuscript version, we better discussed the implications of not resolving properly the coastal ocean in the discussion section.

In the Methods, P9, L20: « Note that choosing a horizontal resolution of ~200km does not allow to fully resolve some fine-scale coastal processes such as tides or mesoscale and sub-mesoscale eddies and associated upwelling occurring in the coastal ocean and hence these areas are represented with large uncertainties in the simulations performed. »

In the Conclusion section, P19 L18: “Regarding the spatial scale, our simulated concentrations are probably impacted by the very coarse resolution of the model. In particular, this is critical to resolve the coastal ocean, where a number of in-situ measurements of CO concentrations have been performed. Indeed, the ~100-to-200 km horizontal resolution does not allow to fully resolve some fine-scale coastal processes and hence our estimation of the oceanic CO cycle is rather suitable to the blue waters, although a crude representation of specific processes occurring in coastal areas exists (like riverine nutrients inputs, iron input by sediment re-suspension, or coastal upwellings). »

Comment 2 — Important literature has been ignored:

- Kawagucci, S., et al. (2014). "Molecular hydrogen and carbon monoxide in seawater in an area adjacent to Kuroshio and Honshu Island in Japan." *Mar. Chem.* 164: 75-83.

Reply: In the revised manuscript version, we have considered the vertical CO profiles as well as the surface concentrations measured by Kawagucci et al.

- Park, K. and T. S. Rhee (2016). "Oceanic source strength of carbon monoxide on the basis of

basin-wide observations in the Atlantic." *Environmental Science-Processes & Impacts* 18(1): 104-114.

Reply: In the revised manuscript version, we have considered the oceanic CO concentrations measured by Park and Rhee, as well as discussed our global CO emission estimate against their estimate (4-24 Tg CO yr⁻¹).

In the Discussion, P18, L7: *“From Atlantic data, Stubbins et al. (2006a) estimated a yearly flux to the atmosphere of 3.7 ± 2.6 Tg C yr⁻¹ and Park and Rhee (2016) estimated the emissions in the range 1-12 Tg C yr⁻¹. From Pacific data, Zafiriou et al. (2003) estimated a flux of 6 Tg C yr⁻¹ and Bates et al. (1995) a range of 3-11 Tg C yr⁻¹.”*

- Xie, H. X. and O. C. Zafiriou (2009). "Evidence for significant photochemical production of carbon monoxide by particles in coastal and oligotrophic marine waters." *Geophys. Res. Lett.* 36.

Reply: In the revised manuscript version, we have discussed the potential CO photoproduction by organic particles

In the Conclusion section, P20 L9: *“Beyond a better knowledge of the CDOM pool, it must be mentioned that the whole organic matter pool needs to be better understood in order to better constrain photoproduction. Indeed, it has been suggested that even particulate organic matter could be a substrate for CO photoproduction (Xie and Zafiriou, 2009).”*

- Yang, G. P., et al. (2010). "Distribution, flux and biological consumption of carbon monoxide in the Southern Yellow Sea and the East China Sea." *Mar. Chem.* 122(1-4): 74-82.

Reply: we did consider Yang et al. oceanic CO measurements. However, due to the coarse model resolution and the very coastal location of the data, we are not able to include these data in our evaluation as there is no model grid cell associated to the location of their measurements.

Comment 3: The dark production (DP), which was shown by Zhang et al. (2008) to be a significant additional source of CO, has been ignored in the model approach (see equation (1)). However, in the conclusions (page 18, line 12-18) it is stated that ‘[...] analyses of the collected vertical profiles did not seem to clearly support the importance of such a mechanism to explain the differences with our simulated profiles.’ This is too vague and not acceptable. I think that the correct scientific approach to tackle this ‘problem’ would be to include the DP (I guess you can use the parameterization given by Zhang et al., 2008) in equation (1) and show the results of model

runs with DP/without DP. Only based on these model results you will be able to assess the role of the DP.

Reply: The dark production process has been added to PISCES as described by Zhang et al. 2008. Resulting in a global dark production budget of 8.5 Tg C yr⁻¹, we chose to integrate the process in our standard model version. Hence, all previous estimates and figures had been changed consequently.

2) Minor comments:

Comment 1: Page 3, line 21: please give the correct chemical formulas for nitrate, ammonium, phosphate, and iron.

Reply: NO₃, NH₄, PO₄, Si and Fe, has been changed for NO₃⁻, NH₄⁺, PO₄³⁻, Si(OH)₄ and dissolved Fe.

Comment 2: Page 6, section 2.1.4: please note that fCO is a ‘(dry) mole fraction’ (it is not correct to call it a ‘mixing ratio’ or a ‘concentration’).

Reply: We have replaced the term ‘mixing ratio’ by ‘dry mole fraction’.

Comment 3: Page 6, line 19: In view of the pronounced spatial and temporal variability of atm CO I am wondering why the atm CO was set to fixed global mean. Please discuss.

Reply: Tests had previously been performed about the atmospheric CO but were not shown in the manuscript version. They show that the value of the atmospheric CO dry mole fraction is of little influence on the oceanic emission. For example, using a homogeneous and constant CO dry mole fraction of 45 pptv leads to a global oceanic CO emission of 3.7 Tg C yr⁻¹ (against 3.6 Tg C yr⁻¹ using 90 pptv). We will specify these results in the next manuscript version.

In the Methods, P7, L13: “Note that the global oceanic CO emissions have a low sensitivity to the atmospheric mole fraction. Hence, using a constant dry atmospheric mole fraction of 45 ppbv instead of 90 ppbv changes the global oceanic CO emissions by only 3%”.

Comment 4: Page 7, wind speed: Please state whether you used a global mean wind speed (which value? ref?) or whether a global wind field (ref?) was used for the computation of the air/sea gas exchange.

Reply: As mentioned in Aumont et al. 2015, we are using a global climatological wind field based on European Remote-Sensing Satellite (ERS) satellite product and TAO observations (Menkes et al., 1998). We better explained the origin of the different forcing fields in the revised manuscript version.

See changes P9 L5, section 2.3 - Standard Experiment

Bibliography:

Aumont, O., Ethé, C., Tagliabue, A., Bopp, L., Gehlen, M.: PISCES-v2: an ocean biogeochemical model for carbon and ecosystem studies, *Geosci Model Dev*, 8, 2465–2513, doi:10.5194/gmd-8-2465-2015, 2015.

Bourgeois, T., Orr, J.C., Resplandy, L., Terhaar, J., Ethé, C., Gehlen, M., Bopp, L.: Coastal-ocean uptake of anthropogenic carbon, *Biogeosciences*, doi:10.5194/bg-13-4167-2016, 2016.

Menkes, C., Boulanger, J.-P., Busalacchi, A. J., J. Vialard, J., Delecluse, P., McPhaden, M. J., Hackert, E., and Grima, N.: Impact of TAO vs. ERS wind stresses onto simulations of the tropical Pacific Ocean during the 1993–1998 period by the OPA OGCM, in: *Climatic Impact of Scale Interactions for the Tropical Ocean-Atmosphere System*, EuroClivar Workshop Report, 46–48, 1998.

Zhang, Y., Xie, H., Fichot, C.G., Chen, G.: Dark production of carbon monoxide (CO) from dissolved organic matter in the St. Lawrence estuarine system: Implication for the global coastal and blue water CO budgets, *J. Geophys. Res.*, 113, doi:10.1029/2008JC004811, 2008. *Geophys. Res.*, 113, doi:10.1029/2008JC004811, 2008.

Response for Referee #2

Minor comments:

Comment 1: Diurnal cycle and discretization choices

If I get it correctly, for simulating CO you decided to choose a model setup that uses climatological forcing that does not resolve diurnal light cycle. Forcing data like NCEP or ERA interim however do resolve SW radiation fluxes on a 6 or 3 hourly basis. Given that you are using a sophisticated wave-length dependent CO production mechanism omitting on the other hand this feature seems like an odd decision on complexity versus simplification. As production and decay rates are highly uncertain, does resolving wave length dependency and omitting the day night cycle (thus also dark production, as described in Day and Falloona 2009, JGR Oceans 114) imply you expect the former to propagation stronger into the presented mean solution than the latter, i.e. more important to resolve in a realistic CO production scheme?

Reply: Indeed, forcing data like NCEP or ERA would enable us to resolve the diurnal cycle in terms of forcing fields. However, our choice for not including an explicit diurnal cycle for the CO photochemistry in our model set-up was mostly dictated by the consistency with the existing biogeochemical simulation (Aumont et al., 2015) in which we embed the CO module.

In the standard version of NEMO-PISCES, as described in Aumont et al. (2015), the lack of an explicit diurnal cycle is justified by the fact that:

- the simple phytoplankton model that is used (constant stoichiometry for N and C) does not enable to explicitly represent the decoupling of the plankton internal carbon and nitrogen cycles that is a main feature of the plankton diurnal cycle (Flynn and Fasham, 2003).
- the vertical resolution in the upper part of the ocean (10 m for the first layers) does not enable to adequately represent the diurnal variability of the mixed layer depth.

We thought it would have been inconsistent to explicitly resolve the diurnal cycle for the photochemical part, but not for the biological part.

That said, because the photochemical production of CO is described, in our model, as a linear function of irradiance, the average photoproduction term over 24h is probably not very different from what we would have obtained from resolving the diurnal cycle.

Concerning the dark production processes, it has been added to PISCES as described by Zhang et al. 2008. Resulting in a global dark production budget of 8.5 Tg C yr⁻¹, we chose to integrate the process in our standard model version. Hence, all previous estimates and figures

had been changed consequently.

Comment 2: Seasonal cycle

How does the seasonal cycle of CO look like in the model? Is the quality of the model solution different for different seasons, i.e. how does it relate to the models' ability to represent the seasonal cycle of Chla?

Reply:

We have added to the revised manuscript a brief description of the seasonal cycle of CO.

In section 3.1.2 P11 L23: "Figure 5 (panels B and D) also presents the seasonal variability of the surface patterns with latitude. Both CO and photoproduction surface patterns present a strong seasonal cycle with maximums reached at the end of spring and summer in both hemispheres »

For the evaluation of the Chla solution, we have included in the supplementary material a few plots comparing surface chlorophyll to estimates from available data-sets.

Comment 3: In situ data processing

3.1. In the evaluation of the concentrations you are using model data collocated to observational data. Does this mean you are using individual grid cells? If so, are these representative for a larger surrounding area – did you consider averaging several grid cells, as physical features such as the extent of subtropical gyres, location of fronts etc. are not geo-referenced, i.e. collocated with real world conditions during the ship cruises? In particular, for the vertical profiles it could be useful instead of showing one profile adding its variability taking into account several neighbouring cells (and eventually temporal standard deviations for within the averaging period).

Reply: The referee is right. We are using individual grid cells of the model output, which are co-located with the observations (this will be made explicit in the revised manuscript).

We did not consider averaging several grid cells as the model resolution is already very coarse (2°x2°). It would have been interesting to consider adjacent cells to capture specific physical features that are not exactly geo-referenced. However, this is limited first by the fact that we don't have access to the physical features associated to the in situ data and second by the fact that we are comparing model output which are climatological (with no inter-annual variability) with in situ data measured for a specific year and month.

3.2. Given that the compilation of observational data is presented to be unique and its averaging methods are very diverse I suggest to extend the section observations. E.g. it would be interesting to learn, also in light of the large temporal variability of CO concentrations, if certain months/seasons are better resolved in the observations than others. Now I can deduce this only from the tables, but do not get any direct information in the main text.

Reply: We have added in the Materials section a sentence to better present the spatio-temporal coverage of the data.

In section 2.4 Comparison to in situ data, P9 L26: *“This dataset covers all seasons and latitudes from 80°N to more than 70°S. However, whereas the Atlantic and Pacific Ocean are fairly well covered, some wide areas are not documented (such as in the Indian ocean).”*

However, considering the diversity of the seasons and location covered it is difficult to better present it in the text. Details are in the tables 1 and 2.

3.3. It would be important to know on how many values per averaging period the temporal means are based, as e.g. the observed diurnal cycle is very strong and partly not symmetric (afternoon maxima). Furthermore, I do not know if CO measurement techniques are comparable across the different observational sources wrt the limit of quantification / detection, or if there was development in the methodology from the 1970s to now. Are all of the published observational data equally reliable, in particular wrt to low CO values?

Reply: It is difficult to gather in situ data from literature as the quality of the metadata associated with measurements are very heterogeneous. For example, information about the time of the day at which the measure had been made is not always given, or in other cases the CO concentration given in the literature is already a mean upon a few measures taken during the day. Furthermore, it is true that the different data sets might not be equally reliable as the measurement's techniques have evolved since the late 70's, but this issue is not easily quantifiable. In the tables, we did our best to inform the reader about the origin and significance of the data used. We would like to emphasize that it is the first effort to gather observations from the first cruises in the 70' up to now in a CO observation-based data set.

Comment 4: Choices of the manuscript structure –

I struggled with the structure of the manuscript, presenting first simulation results and evaluation of the “standard” experiments followed by a separate discussion of the sensitivity experiments. Statements as “indicating again a possible bias in the production process” in the section on the standard experiment could be easily complemented by the results of the

sensitivity studies on process parameterization, instead of having to collect this information later in the manuscript. Also this separation of the evaluation of surface concentrations leads to inconsistent level of discussion of potential sources of discrepancies: Whereas in the standard experiment it was argued that missing processes related to sea ice or a missing spatial variability of the decomposition rate might be causes of discrepancies in polar regions, only later in the section of CO production the authors state that also missing terrestrial CDOM sources might be a source of model data discrepancies. It is not clear to me how it was decided which of the parameterizations are chosen to be “standard” vs “alternative”. For example, I understand that choosing the Launois et al. 2015 CDOM parameterization leads to high CO production and in combination with a consumption rate of 0.2 d⁻¹ CO concentrations get too high compared to observations. On the other hand, using the “standard” parameterization together with a consumption rate of 1 d⁻¹ lead to very low CO concentrations. The combination of the Launois et al. 2015 CDOM parameterization and a fast consumption rate was however not tested or presented without commenting on the reasons for this. If instead the authors would present all of the tested parameterizations in the methods part equally, present first an evaluation of the model results wrt to the range of parameters chosen and process parameterizations, and resulting from this discuss the source and sink budget, and emissions only for the most successful configuration, decisions taken and its consequences could become clearer.

Reply: We did initially chose a structure showing equally the different simulations with their respective evaluation. However, this structure was cumbersome as we had to evaluate against oceanic CO concentrations each simulation. Moreover, it did not permit to clearly highlight our “best guess” simulation (which we called “standard”), that we propose for use by the chemical atmospheric community. Indeed, considering the different tests performed and parameterizations, we think our standard simulation to be the best based on its CDOM parameterization. The section ‘Sensitivity to alternative parameterizations’ should be considered as a presentation of the possible range around the standard simulation. Simulations with a combination of the Launois et al. (2015) CDOM parameterization and a faster consumption rate, or with Preiswerk and Najjar (2000) with a slower consumption rate were indeed tested (but not included in the current version).

Considering the present comment, we have discussed about these other tests in the revised manuscript version:

At the end of section 3.3 Sensitivity to alternative parameterizations, P17 L12: “Based on these different tests, we show that the main terms controlling oceanic CO concentrations are still largely under-constrained, although available in situ CO concentrations, global budget estimates as well as the CDM concentrations retrieved from space are helping to choose a

standard, i.e. 'best guess' simulation. Here, the best parameterization of CDOM absorption compared to satellite products is given by Morel (2009), which then dictates our choice for the standard simulation. However, it is worth mentioning that using the parameterization of Launois et al. (2015) with a higher bacterial consumption rate, or the one of Preiswerk and Najjar (2000) with lower consumption rate would result in oceanic CO concentrations that give similar skill scores when compared to available CO concentration observations (tests not shown), but for which we have a less confidence in the CDOM parameterization."

Comment 5: Lack in the physical model evaluation

The model evaluation is lacking discussion of the simulated physical ocean solution, e.g. whereas contributions of MLD are mentioned in possible causes of discrepancies of modelled and observed CO concentrations these are not compared to the ship cruise or climatological T, S, or MLD data. I guess it would be possible to get the CTD data of the ship cruises and compare them. It would be useful to see in particular in the analysis of the vertical profiles, but also for the surface data whether how NEMO performs in regions with CO data.

Reply: In the supplementary material of the revised manuscript, we have included a few plots comparing SST and Mixed Layer Depth for different seasons to estimates from available datasets. The dynamical state of NEMO used here is partly evaluated elsewhere: e.g., Mixed Layer Depth in Southern Ocean (Person et al., 2018), Water masses and transport (Iudicone et al., 2016), but no one publication offers an extensive evaluation of the physics used here. However, for the in situ data collected, it is difficult to gather the corresponding physical features as most of the time the CTD data of the ship cruises are not given along with the CO concentrations.

Comment 6: Constant atmospheric CO

The authors assume a constant homogeneous atmospheric mixing ratio of CO in their emission calculation. As major sources of CO (fossil fuel combustion, biomass burning) are on land and a major sink is reaction with of a large hemispheric and seasonal variation of CO mixing ratios in air due to the continental distribution and OH seasonality is expected. Is the over-saturation of the ocean indeed that strong that these variations can be omitted in the emission calculation?

Reply: Tests had previously been carried out on the atmospheric CO but were not shown in the submitted version of the manuscript. These tests show that the value of the atmospheric CO dry mole fraction is of little influence on the oceanic emission. For example, using a homogeneous and constant CO dry mole fraction of 45 pptv leads to a global oceanic CO emission of 3.7 Tg C yr⁻¹ (against 3.6 Tg C yr⁻¹ using 90 pptv).

In the Methods, P7, L13: "Note that the global oceanic CO emissions have a low sensitivity to the atmospheric mole fraction. Hence, using a constant dry atmospheric mole fraction of 45

ppbv instead of 90 ppbv changes the global oceanic CO emissions by only 3%”.

Comment 7: Clarification of a few points

- p8 123: ... same forcing fields as the ones in Aumont et al. 2015. Please help the reader to easily understand implications of your model setup into the results by repeating main characteristics of that forcing (source, spatial and temporal resolution).

Reply: We have clarified the section 2.3 Standard experiment.

- p10 110: ... all vertically integrated over the upper 1000 m. The vertical profiles suggest that below the euphotic zone there is not much CO left, why do you choose to integrate over 1000 m?

Reply: Yes, the integration upon 1000 m is nearly equivalent with an integration over the whole water column as almost no CO remains under that depth.

- p12 124 ... which can be related to differences in the light penetration and mixed layer depth. Please be more specific... is the simulated MLD generally too low/high? Do you indicate a different mixing scheme would improve the profiles? How does the model's vertical resolution in the upper ocean affect the vertical profiles?

Reply: see reply to comment 5.

Comment 8: CDOM comparisons

P13 117: ... those minimums are best represented by the relation of Morel since the ones in Launois ... give too high and too low values. Could you please comment on the simulated Chl field here, so that it gets clear that these CDOM parameterizations are responsible for the discrepancies rather than the simulated Chl. Furthermore, satellite derived observations are based on a number of assumptions (e.g. also wrt to light penetration depth in turbid and non-turbid waters) and models (bio-optical, atmospheric correction...), in particular in derived product as CDM. Furthermore, the discussion of the evaluation could be more detailed in discussion the quality of the Chla solution, which influences CO production.

Reply: we have completed Fig. 8 by adding a plot showing modelled and satellite-derived Chla as a function of latitude. Also, in the text section 3.3.1 CDOM parameterization, we have better explained the CDOM solution regarding the Chla solution.

Comment 9: Inter-annual variability

Conclusions ii) [...] the model does not consider the inter-annual variability of ocean physics and biogeochemistry [...] Even with a climatological forcing both ocean physics and

biogeochemistry solutions will show inter-annual variability due to e.g. fluid dynamics (wave propagation) and different plankton over-wintering stocks. Clearly this variability will be lower than in simulations using transient forced boundary conditions or coupled atmosphere-ocean simulations. I suggest to rephrase this statement slightly.

Reply: We have clarified the section 2.3 Standard experiment. By construction, we do not simulate any inter-annual variability: the atmospheric forcing fields are climatological fields, the ocean dynamical state is also climatological as well as our biogeochemical simulation. In case of high spatial model resolution ($> 1/4^\circ$), it has been shown that an ocean-only simulation forced by climatological atmospheric forcing fields could indeed show some intrinsic variability at the inter-annual scale (Sérazin et al., 2018). This is clearly not the case at the typical resolution we're running our ocean-biogeochemical model.

Comment 10:

Fig.7: I find the colour coding of the lines confusing... is it time or location, what does it show in the subplot 'Swinnerton and Lamontagne 1973'?

Reply: Inside each subplot, one colour is for one profile. The dash line shows in situ measured profiles whereas full line shows the model profile co-located in space and time with the measured profile.

Bibliography:

Aumont, O., Ethé, C., Tagliabue, A., Bopp, L., Gehlen, M.: PISCES-v2: an ocean biogeochemical model for carbon and ecosystem studies, *Geosci Model Dev*, 8, 2465–2513, doi:10.5194/gmd-8-2465-2015, 2015.

Conkright, M. E., R. A. Locarnini, H. E. Garcia, T. D. O'Brien, T. P. Boyer, C. Stephens, and J. Antonov, *World Ocean Atlas 2001: Objective Analyses, Data Statistics and Figures*, CD-ROM Documentation, Tech. rep., National Oceanographic Data Centre, Silver Spring, MD, USA, 2002.

Flynn, K.J., and Fasham, M.J.R. (2003). Operation of light–dark cycles within simple ecosystem models of primary production and the consequences of using phytoplankton models with different abilities to assimilate N in darkness. *J Plankton Res* 25, 83–92.

Iudicone, D., K. B. Rodgers, Y. Plancherel, O. Aumont, T. Ito, R. M. Key, G. Madec, and M. Ishii, 2016: The formation of the ocean's anthropogenic carbon reservoir. *Sci. Rep.*, 6, 35473, doi: <https://doi.org/10.1038/srep35473>.

Launois, T., Belviso, S., Bopp, L., Fichot, C.G., Peylin, P.: A new model for the global biogeochemical cycle of carbonyl sulfide - Part 1: Assessment of direct marine emissions with

an oceanic general circulation and biogeochemistry model, *Atmos. Chem. Phys.*, 15, 2295–2312, doi:10.5194/acp-15-2295-2015, 2015.

Madec, G.: “NEMO Ocean Engine”, Note du Pôle de Modélisation 27, Institut Pierre-Simon Laplace (IPSL), France, <http://www.nemo-ocean.eu>, 2008.

Person, R., Aumont, O., and Lévy, M. (2018). The Biological Pump and Seasonal Variability of pCO₂ in the Southern Ocean: Exploring the Role of Diatom Adaptation to Low Iron. *Journal of Geophysical Research: Oceans* 123, 3204–3226.

Preiswerk, D. and Najjar, R.G.: A global, open-ocean model of carbonyl sulfide and its air-sea flux, *Global Biogeochem Cycles*, 14, 585–598, doi:10.1029/1999GB001210, 2000.

Sérazin, G., Penduff, T., Barnier, B., Molines, J.-M., Arbic, B.K., Müller, M., and Terray, L. (2018). Inverse Cascades of Kinetic Energy as a Source of Intrinsic Variability: A Global OGCM Study. *J. Phys. Oceanogr.* 48, 1385–1408.

The oceanic cycle of carbon monoxide and its emissions to the atmosphere

Ludivine Conte¹, Sophie Szopa¹, Roland Séférian², Laurent Bopp³

¹Laboratoire des Sciences du Climat et de l'Environnement, [IPSL](#), CEA/CNRS/UVSQ, Gif sur Yvette, 91191, France

²Centre National de Recherches Météorologiques, Météo-France/CNRS, Toulouse, 31057, France

³Laboratoire de Météorologie Dynamique, [IPSL](#), [Ecole Normale Supérieure / PSL Research University](#), [CNRS](#), [Ecole Polytechnique](#), [Sorbonne Université](#), Paris, 75005, France

Correspondence to: Ludivine Conte (ludivine.conte@lscce.ipsl.fr)

Abstract. The ocean is a source of atmospheric carbon monoxide (CO), a key component for the oxidizing capacity of the atmosphere. It constitutes a minor source at the global scale, but could play an important role far from continental anthropized emission zones. To date, this natural source is estimated with large uncertainties, especially because the processes driving the oceanic CO are related to the biological productivity and can thus have a large spatial and temporal variability. Here we use the NEMO-PISCES (Nucleus for European Modelling of the Ocean, Pelagic Interaction Scheme for Carbon and Ecosystem Studies) ocean general circulation and biogeochemistry model to dynamically assess the oceanic CO budget and its emission to the atmosphere at the global scale. The main bio-chemical sources and sinks of oceanic CO are explicitly represented in the model. The sensitivity to different parameterizations is assessed. In combination to the model, we present here the first compilation of literature reported *in situ* oceanic CO data, collected around the world during the last 50 years. The main processes driving the CO concentration are photoproduction and bacterial consumption and are estimated to ~~19.1~~ and ~~30.0~~ Tg C yr⁻¹ respectively with our best-guess modelling setup. There are however very large uncertainties on their respective magnitude. Despite the scarcity of the *in situ* CO measurements in terms of spatio-temporal coverage, the proposed best simulation is able to represent most of the data (~300 points) within a factor of two. Overall, the global emissions of CO to the atmosphere are ~~4.0~~ Tg C yr⁻¹, in the range of recent estimates, but very different from the ones published by Erickson in 1989, which were the only gridded global emission available to date. These oceanic CO emission maps are relevant for use by atmospheric chemical models, especially to study the oxidizing capacity of the atmosphere above the remote ocean.

1 Introduction

Atmospheric carbon monoxide (CO) plays an important role in atmospheric chemistry. It indirectly affects the lifetime of greenhouse gases like methane (CH₄) as it is the dominant sink for tropospheric hydroxyl radicals (Thompson, 1992; Taylor et al. 1996), and impacts air quality as it is involved in ozone chemistry (Crutzen, 1974; Cicerone, 1988). With the increasing concern about atmospheric pollution and the potential role of CO, one of the first motivation to study the

Supprimé: ENS

Mis en forme: Anglais (G.B.)

Supprimé: 2

Supprimé: 21.9

Supprimé: 3.6

oceanic CO concentrations was to evaluate the relative stability of its trend in the marine boundary layer (Swinnerton and Lamontagne, 1973). In 1968, Swinnerton et al. conducted in the Mediterranean Sea the first measurements of oceanic CO and reported a supersaturation of a few orders of magnitude in the surface waters with respect to the partial pressure of this gas in the atmosphere. Subsequent cruises confirmed the supersaturation of oceanic CO concentrations (Seiler and Junge, 1970; Swinnerton et al., 1970; Lamontagne et al., 1971; Swinnerton and Lamontagne, 1973; Linnenbom et al., 1973) and supported the idea that the world oceans serve as a source of CO for the atmosphere.

The CO concentration in the surface ocean is of a few nmol L⁻¹ and presents large diurnal variations with a characteristic minimum just before dawn and a maximum in the early afternoon (Swinnerton et al., 1970; Bullister et al., 1982; Conrad et al., 1982). Rapid changes in the oceanic concentration result from the interplay between strong source and sink processes and are associated to a small CO residence time of a few hours to a few days (Jones, 1991; Johnson and Bates, 1996). The photolysis of colored dissolved organic matter (CDOM) is thought to be the main source of CO in the ocean (Wilson et al., 1970; Redden, 1982; Gammon and Kelly, 1990; Zuo and Jones, 1995). CDOM is the photo-absorbing part of the dissolved organic matter (DOM) pool. Its absorption of solar radiations (mainly in the ultraviolet and blue wavelengths) initiates oxidation reactions that lead to the formation of a number of stable compounds, mainly CO₂ and CO (Miller and Zepp, 1995; Mopper and Kieber, 2001). Based on surface CDOM estimates from remote sensing and a model of CO production, Fichot et Miller (2010) have estimated this source as 41 Tg C yr⁻¹. Additional sources of CO have also been reported. Especially, direct production by phytoplankton has been observed in laboratory experiments (Gros et al., 2009) and dark production (presumably thermal) was inferred from modelling at BATS (Kettle, 2005) and from incubations of water samples of the Delaware Bay (Xie et al., 2005) and St. Lawrence estuary (Zhang et al., 2008). Whereas production pathways are not yet totally established, direct biological production is still considered to be a minor contributor for the global ocean (Tran et al., 2013; Fichot and Miller, 2010) and dark production is estimated to account for only 10-32% of the global CO photoproduction (Zhang et al., 2008). The main sinks for oceanic CO are the microbial uptake (Seiler, 1978; Conrad and Seiler, 1980; Conrad et al., 1982) and the sea-to-air fluxes (Jones, 1991; Doney et al., 1995). Diverse communities of marine bacteria have been shown to oxidize CO (Tolli et al., 2006; King and Weber, 2007), mainly for a supplemental source of energy (Moran and Miller 2007). Rates and kinetics of this biological sink are not well known, even if this sink may be responsible for about 86% of the global oceanic CO removal (Zafiriou et al., 2003).

The global oceanic source was assessed based on successive oceanic cruises. Linnenbom et al. (1973) first estimated a flux to the atmosphere of 94 Tg C yr⁻¹ by extrapolating data from the Arctic and the North Atlantic and Pacific Ocean. Later extrapolations from *in situ* measurements lead to global estimates ranging between 3 and 600 Tg C yr⁻¹ (Logan et al., 1981; Conrad et al., 1982; Bates et al., 1995; Springer-Young et al., 1996; Zuo and Jones, 1995). Such a range reflects the scarcity of the available data given the spatial and temporal heterogeneity of processes controlling oceanic CO. More recent estimations, using larger data sets from the remote ocean, stand on the lower range of previous estimates: Stubbins et al. (2006a) proposed a global oceanic flux of 3.7 ± 2.6 Tg C yr⁻¹ with Atlantic data and Zafiriou et al. (2003) a flux of 6 Tg C yr⁻¹ with the large Pacific data set of Bates et al. (1995). Therefore, the oceanic source of CO seems to play a minor role in the

Mis en forme: Anglais (G.B.)

Supprimé:). However,

Mis en forme: Anglais (G.B.)

Supprimé: remain unclear and this source

Supprimé: compared to marine photochemistry

Supprimé: .

Mis en forme: Anglais (G.B.)

global atmospheric budget of carbon monoxide since global emissions exceed 2000 Tg C yr⁻¹ (Duncan et al., 2007; Holloway et al., 2000) and are dominated by combustion processes (fossil fuel use and biomass burning) and secondary chemical production in particular due to CH₄ oxidation (Liss and Johnson, 2014). Nevertheless, oceanic emissions of CO may play a role in the remote ocean as it can regionally impact the oxidizing capacity of the troposphere. The only geographical distribution of **oceanic CO emissions**, for use in global atmospheric chemistry models was derived from a single model estimation (Erickson, 1989) based on a simple relationship relating the incoming radiation to CO concentration in surface waters. It constitutes to date the only spatialized data easily accessible for the atmospheric modeling community (see ECCAD database, 2018). Hence, the oceanic natural source needs to be better characterized in terms of process and amplitude.

Supprimé: CO

The present work proposes to assess the marine source of CO using a global 3-D oceanic biogeochemical model, in combination with an original dataset gathering *in situ* measurements of oceanic CO performed over the last 50 years. The main CO production and removal processes are explicitly added to the NEMO-PISCES (*Nucleus for European Modelling of the Ocean*, Madec et al. 2008, *Pelagic Interaction Scheme for Carbon and Ecosystem Studies*, Aumont et al., 2015) model. It allows **characterizing** the seasonal and spatial variability of CO at the global scale. Then, different experiments, exploring the parameterizations of the main processes, are presented. The resulting simulated oceanic CO concentrations are compared to the dataset of observed concentrations. Finally, an updated spatio-temporal distribution of oceanic CO emissions is proposed for use in current tropospheric chemical models.

Supprimé: to characterize

2 Methods

2.1 Oceanic CO model description

The oceanic CO sources and sinks are computed using the global ocean biogeochemistry model PISCES (*Pelagic Interaction Scheme for Carbon and Ecosystem Studies*, Aumont et al., 2015). The PISCES version used in this study (version 2) is described and evaluated in details in Aumont et al. (2015) and we only recall here its main characteristics. PISCES includes 24 tracer variables, with two phytoplankton types (nanophytoplankton and diatoms), two zooplankton size-classes (micro and mesozooplankton), two organic particles size-classes and semi-labile dissolved organic matter. It also includes five nutrients (NO₃⁻, NH₄⁺, PO₄³⁻, Si(OH)₄ and **dissolved Fe**), as well as a representation of the inorganic carbon cycle. Phytoplankton growth is limited by light, temperature and by the 5 limiting nutrients. The evolution of phytoplankton biomass is also influenced by mortality, aggregation and by grazing. Chlorophyll (Chla) concentrations for the two phytoplankton types are prognostically computed using the photo-adaptative model of Geider et al. (1996), with Chla/C ratio varying as a function of light and nutrient limitation.

Supprimé: ,

A specific module has been added to the PISCES – version 2 (**PISCES-v2, hereafter referred to as PISCES**) model in order to explicitly represent the currently identified oceanic CO sources and sinks. These sources and sinks are **photoproduction (*Prod_{photo}*)**, **phytoplanktonic production (*Prod_{phyto}*)**, **dark production (*Prod_{dark}*)**, bacterial consumption

Supprimé: the

Supprimé: the

Supprimé: the

($Cons_{Bact}$) and **air-sea gas exchange** ($Flux_{ocean-atmo}$). They affect the oceanic CO concentration according to:

$$\frac{dCO}{dt} = Prod_{photo} + Prod_{phyto} + Prod_{dark} - Cons_{Bact} - Flux_{ocean-atmo} \quad (1)$$

Supprimé: the flux to the atmosphere

2.1.1 Photoproduction

Supprimé: .

The photoproduction rate is driven by light, the quantity of organic matter bearing chromophoric function (CDOM) and the probability for excited CDOM to produce CO. It is a strongly wavelength-dependent process and according to Ficht and Miller (2010), the relevant range for CO photoproduction is 290-490 nm with a maximum production around a wavelength (referred as λ in nm) of 325 nm. Hereafter, we describe our main hypotheses to compute the photoproduction.

Spectral solar irradiance

We first derive the spectral solar irradiance in the range 290-490 nm ($E_{co}(\lambda,0)$ in $W m^{-2}$) reaching the surface of the ocean as a fraction $f_{co}(\lambda)$ of the total solar irradiance reaching the considered gridbox (E_{tot}):

$$E_{co}(\lambda,0) = f_{co}(\lambda) \times E_{tot} \quad (2)$$

For each wavelength this fraction has been determined using the standard solar spectrum ASTM G173-03 (2012). The spectra are modeled using the ground-based solar spectral irradiance SMARTS2 (version 2.9.2) *Simple Model for Atmospheric Transmission of Sunshine*. Only the incident irradiance is considered to determine the quantity of photons affecting CDOM since the upwelling irradiance has been shown to be negligible even in the presence of reflective sediments (Kirk, 1994). This assumption widely simplifies the computation of photochemistry in the ocean. Irradiance then decreases with depth z (in m), with seawater attenuation coefficients k (in m^{-1}) depending on both λ and on Chla concentration according to the relation:

$$E_{co}(\lambda,z) = E_{co}(\lambda,0) \times \exp\left[-\int_z (k(\lambda, Chla) dz)\right] \quad (3)$$

The attenuation coefficients are computed from the coefficients for pure water K_w and biogenic compounds K_{bio} according to Morel and Maritorena (2001):

$$k(\lambda, Chla) = K_w(\lambda) + K_{bio}(\lambda, Chla) \quad (4)$$

$$K_{bio}(\lambda, Chla) = \chi(\lambda)[Chla]e^{(\lambda)} \quad (5)$$

where the coefficients K_w , χ and e as published by Morel and Maritorena (2001) are known for wavelengths ranging between 350 nm and 800nm. A linear extrapolation of the coefficients is performed to retrieve coefficients between 290 and 350 nm.

CDOM content

The CDOM content is usually characterized by the absorption coefficient ($a_{cdom}(\lambda,z)$ in m^{-1}) at a given λ . For case 1 waters, i.e. far from terrestrial runoff and terrigenous influence, the CDOM is essentially composed of products released

during the initial photosynthetic process (Morel, 2009), and hence a_{cdom} and Chla co-vary (Morel and Gentili, 2009). We use here the Morel (2009) parameterization, which relates $a_{cdom}(400\text{ nm})$ to Chla (in mg m^{-3}):

$$a_{cdom}(400) = 0.065[\text{Chla}]^{0.63} \quad (6)$$

The $a_{cdom}(\lambda, z)$ values for each wavelength between 290 and 490 nm are then exponentially extrapolated from $a_{cdom}(ref=400\text{nm})$, with $S = -0.018\text{ nm}^{-1}$ (Morel, 2009) (Fig. 1):

$$a_{cdom}(\lambda) = a_{cdom}(ref) \times e^{(-S(ref-\lambda))} \quad (7)$$

5

Efficiency of the excited CDOM to produce CO

When the CDOM absorbs photons, only a small and variable fraction of the excited CDOM leads to a photochemical reaction. This fraction is called the apparent quantum yield (hereafter AQY in moles of CO produced / moles of photons absorbed by CDOM). We assume that CDOM is homogeneous in term of composition and thus consider a unique spectral distribution of AQY. We compute the spectral variation of AQY by taking the average of two published parameterizations, Ziolkowski and Miller (2007) (Eq. 8) and Zafiriou et al. (2003) (Eq. 9a and 9b) (Fig. 1):

$$AQY(\lambda) = \exp[-9,134 + 0,0425(\lambda - 290)] + \exp[-11,316 + 0,0142(\lambda - 290)] \quad (8)$$

$$AQY(\lambda) = (5,78 \times 10^{-6}) \times \exp[-0,05(\lambda - 360)] - (6,99 \times 10^{-7}) \quad \lambda < 360\text{ nm} \quad (9a)$$

$$AQY(\lambda) = (5,24 \times 10^{-6}) \times \exp[-0,0229(\lambda - 360)] \quad \lambda \geq 360\text{ nm} \quad (9b)$$

Supprimé: $\exp[-0,0229(\lambda - 360)]$ $\lambda > 360\text{ nm}$

These empirical parameterizations were derived statistically from measurements of AQY spectra made on seawater samples collected in the Gulf of Maine, the Sargasso Sea, and the North-West Atlantic waters for Ziolkowski and Miller (2007), and during a transect carried out between 70° S and 45° N in the Pacific Ocean for Zafiriou et al. (2003).

15

Photoproduction

Finally, the resulting CO photoproduction term is computed by integrating over the spectrum of photochemically active solar radiation, the product of three terms (solar irradiance, CDOM absorption and AQY):

$$Prod_{photo} = \int_{\lambda=290}^{\lambda=490} E_{CO}(\lambda, z) \times a_{cdom}(\lambda, z) \times AQY(\lambda) \times \frac{\lambda}{hc} \times 10^{-3} d\lambda \quad (10)$$

λ / hc converts moles of photons to Wxs (Joules), with h the Planck's constant ($6.6260755 \times 10^{-34}$ Js) and c the speed of light in a vacuum (3.00×10^8 m s⁻¹).

20

2.1.2 Direct phytoplankton production

The direct production of CO by phytoplankton is not well understood. So far, only one study assesses the direct CO production rates from phytoplankton (Gros et al., 2009), by experimentally exposing different micro-algal species to a

diurnal cycle of 12 h of light and 12 h of dark conditions. The measured rates were highly variable from one species to another (from 19 to 374 $\mu\text{mol CO g Chla}^{-1} \text{d}^{-1}$ for diatoms and from 6 to 344 $\mu\text{mol CO g Chla}^{-1} \text{d}^{-1}$ for non-diatoms). Here, we used the median values of Gros et al. (2009) reported in Tran et al. (2013): 85.5 (k_{nano}) and 33.0 $\mu\text{molCO gChla}^{-1} \text{d}^{-1}$ (k_{diat}) respectively for the nanophytoplankton and the diatom types. The direct CO production by phytoplankton is thus computed using the relation:

$$Prod_{\text{phyto}} = \frac{h}{12} \times (k_{\text{nano}} Chla_{\text{nano}} + k_{\text{diat}} Chla_{\text{diat}}) \quad (11)$$

with $Chla_{\text{nano}}$ and $Chla_{\text{diat}}$ (in g Chla L^{-1}) the respective Chla concentrations for nanophytoplankton and diatoms. Note that we do not explicitly resolve the diurnal cycle in PISCES. Hence, to account for the variation of the day light length, the production rates are divided by 12 hours for conversion in $\mu\text{mol CO g Chla}^{-1} \text{h}^{-1}$ and then multiplied by the number of hours of light h , computed as a function of latitude and the period of the year.

2.1.3 Dark production

The mechanisms underlying dark production of CO are poorly understood. Here we use the parameterization of Zhang et al. (2008) in which dark production is considered as a thermal abiotic process depending on the quantity of CDOM substrate (represented by its absorption at 350 nm), temperature T (in $^{\circ}\text{C}$), pH and salinity S by:

$$Prod_{\text{Dark}} = a_{\text{cdom}}(350, z) \times \beta_{\text{CO}} \quad (12)$$

$$\ln(\beta_{\text{CO}} \times 10^3) = -\frac{12305}{T + 273.15} + 0.494 \times pH - 0.0257 \times S + 41.9 \quad (13)$$

Where the rate β_{CO} is in $\text{nmol m L}^{-1} \text{h}^{-1}$. This parameterization was derived from dark incubations of water samples from the St. Lawrence estuary, with $a_{\text{cdom}}(350)$ ($0.23 - 15.32 \text{ m}^{-1}$) and salinity ($0.1 - 34.7$) ranges typical of coastal waters. This parameterization is the only one available in the literature. However, its extrapolation to the global ocean may lead to potentially large uncertainties (Zhang et al., 2008).

2.1.4 Bacterial consumption

The bacterial consumption of CO has been studied for the North Atlantic and for polar waters (Xie et al., 2005; 2009). According to these authors, it follows a first-order to zero-order chemical kinetic, or kinetics with a saturation threshold. The values of the parameters associated to these chemical kinetics are highly variable and depend on the environment and water masses characteristics. For a global application in PISCES, we chose a first-order chemical kinetic to reduce the number of uncertain parameters such as:

$$Cons_{\text{Bact}} = k_{\text{CO}} \times CO \quad (14)$$

Mis en forme: Anglais (G.B.)

Mis en forme: Anglais (G.B.)

Supprimé: 12

with k_{CO} the rate of bacterial consumption (0.2 d^{-1}) and CO the concentration of CO (mol L^{-1}).

2.1.5 Ocean-atmosphere CO exchanges

Supprimé: 4

The CO flux at the ocean-atmosphere interface is described in a similar way to the Fick's diffusion law. It depends on the concentration at the ocean surface and on the partial pressure in the atmosphere above the ocean (pCO_a in atm):

$$Flux_{ocean-atmo} = k_{flux}(CO - H \times pCO_a) \quad (15)$$

Supprimé: 13

$$pCO_a = p_{atm} \times f_{CO} \quad (16)$$

Supprimé: 14

- 5 with p_{atm} the atmospheric pressure and f_{CO} the atmospheric **dry mole fraction**. In PISCES, the atmospheric CO concentration over the ocean is considered as spatially constant and fixed to 90 ppbv, closed to its global surface average (Novelli et al., 2003 and ESRL NOAA-GMD website, 2018). H is the Henry's constant, which relates the partial pressure of a gas with the equilibrium concentration in solution (CO_w^*):

$$CO_w^* = H \times pCO_a \quad (17)$$

Supprimé: 15

It is calculated from Weisenburg and Guinasso (1979) by:

Supprimé: 16

$$\ln H = -169,4951 + 263,5657 \left[\frac{100}{T} \right] + 159,2552 \ln \left[\frac{T}{100} \right] - 25,4967 \left[\frac{T}{100} \right] + S\text{‰} \left[0,051198 - 0,044591 \left[\frac{T}{100} \right] + 0,0086462 \left[\frac{T}{100} \right]^2 \right] \quad (18)$$

Supprimé: 16

- 10 with $S\text{‰}$ the salinity in parts per thousand. Finally, k_{flux} is the gas transfer velocity (in m s^{-1}), which depends on the Schmidt number sch (Zafriou et al., 2008), the temperature (T in $^{\circ}\text{C}$) and the wind speed at 10 m high (u in m s^{-1}) (Wanninkhoff, 1992):

$$k_{flux} = [0,251 \times u^2] \times \left[\frac{660}{sch} \right]^{1/2} \quad (19)$$

Supprimé: 17

$$sch = -0,0553T^3 + 4,3825T^2 - 140,07T + 2124 \quad (20)$$

Supprimé: 18

Note that the global oceanic CO emissions have a low sensitivity to the atmospheric mole fraction. Hence, using a constant dry atmospheric mole fraction of 45 ppbv instead of 90 ppbv changes the global oceanic CO emissions by only 3%.

15

2.2 Tests of alternative parameterizations

Alternative parameterizations have been tested on the CDOM absorption coefficient and on the bacterial consumption rate. First because other parameterizations for these terms exist in the literature, and second because the photoproduction and the bacterial sink are the major processes controlling the oceanic CO . The table 1 summarizes these experiments.

20

CDOM parameterization

Regarding the CDOM absorption coefficient as a function of Chla, two parameterizations were tested in addition to the one of Morel (2009). The first one was initially developed for the photoproduction of carbonyl sulfide by Launois et al. (2015). It relates a_{cdom} at 350 nm to the log of Chla (C in mg m^{-3}):

$$\ln(a_{cdom}(350)) = 0,5346C - 0,0263C^2 - 0,0036C^3 + 0,0012C^4 - 1,6340 \quad (21)$$

Supprimé: 19

- 5 This relation has been derived from monthly climatologies of Chla concentrations and surface reflectances obtained with the MODIS Aqua ocean color between July 2002 and July 2010 (Maritorena et al., 2010; Fanton d'Andon et al., 2009). Using these reflectances, the SeaUV algorithm developed by Fichot et al. (2008) allows to calculate the attenuation coefficients K_d at 320 nm. Then a ratio $a_{cdom}(320) / K_d(320) = 0.68$ obtained from *in situ* measurements permits to calculate $a_{cdom}(320\text{nm})$ (Fichot and Miller, 2010). Finally, Eq. (7) has been used to estimate a_{cdom} at 350 nm. The second other parameterization
- 10 tested is based on the calculation of a_{cdom} at 440 nm with the relation Garver and Siegel (1998). It has been obtained from computed organic matter absorption and observed Chla concentration:

$$\text{per}(a_{cdom}(440)) = -26[\log(\text{Chla})] + 26 \quad (22)$$

Supprimé: 20

$\text{per}(a_{cdom}(440))$ is the contribution of CDOM to the total absorbed radiation of colored organic compounds in sea water. It is calculated by:

$$\text{per}(a_{cdom}(440)) = \frac{a_{cdom}(440)}{a_{ph}(440) + a_{cdom}(440)} \times 100 \quad (23)$$

Supprimé: 21

with $a_{ph}(440)$ the absorption of phytoplankton, proportional to the Chla (Preiswerk and Najjar, 2000):

$$a_{ph}(440) = 0,0448 \times \text{Chla} \quad (24)$$

Supprimé: 22

- 15 Equation (7) is then used to calculate a_{cdom} at each wavelength. The variations of the CDOM absorption with Chla for all the parameterizations we tested, including the relation of Morel (2009), are shown in Fig. 2.

Bacterial consumption rate

The rate of CO bacterial consumption is highly uncertain. According to experimental measurements, it seems to vary

20 from several orders of magnitude. For example, Zafiriou et al. (2003) measured consumption rates of the order of 0.1 d^{-1} in the Southern Ocean, while Day and Faloona (2009) measured rates of more than 19 d^{-1} . Hence, tests have been carried out on this rate. It is first considered constant with values ranging from 0.1 to 1.0 d^{-1} . Secondly, it is considered to vary with the intensity of phytoplanktonic activities (proportional to Chla) and the water temperature, according to the study of Xie et al. (2005):

$$k_{CO} = 24 \times \mu \times [A(T + 2)] \times \text{chl} + Y \quad (25)$$

Supprimé: 2

Supprimé: 23

- 25 with chl the Chla concentration in $\mu\text{g L}^{-1}$ et T the temperature in $^{\circ}\text{C}$. A and Y are constant parameters (0.0029 and 0.16

respectively). This equation was derived from dark incubations of 44 water samples from the Delaware bay, Beaufort Sea and North west Atlantic waters in summer and autumn. The study showed a positive correlation between k_{CO} , Chla and temperature ($R^2=0.69$ with $\mu=1$). For its use in the global ocean and to reduce the mean resulting rate to 0.2 d^{-1} , we have reduced the calculated rate k_{CO} from the original equation of Xie et al. (2005) by multiplying by a constant μ , fitted to 0.05.

5 2.3 Standard experiment

The PISCES version, including the CO module, is coupled to the ocean general circulation model Nucleus for European Modelling of the Ocean version 3.6 (NEMO v3.6). NEMO is used in an offline configuration, i.e. PISCES is run using a climatological ocean dynamical state obtained from a previous NEMO physics-only simulation (Maded, 2008). NEMO was first spun up for 200 years starting from the climatology of Conkright et al. (2002) for temperature and salinity. The last year of these dynamical fields at 5-day temporal mean resolution (ocean currents, temperature, salinity, mixed layer depth, surface radiation...) was then used to force the biogeochemical model. The PISCES initial biogeochemical conditions for all tracers except CO are obtained after a 3000-year long spin-up using the model as detailed in Aumont et al. (2015). PISCES is run for two additional years. The first year is considered as a short spin-up because of the very short life-time of CO in the ocean, and the second year is used for the analysis presented below. The same procedure is repeated for all alternative parameterizations of the CO module, i.e. a 2-year simulation with the last year used for the analysis. Climatological atmospheric forcing fields have been constructed from various data sets consisting of daily NCEP, described in details in Aumont et al. (2015). In particular, we are using a global climatological wind field based on European Remote-Sensing Satellite (ERS) satellite product and TAO observations (Menkes et al., 1998). We use the global configuration ORCA2, with a nominal horizontal resolution of 2° and 30 levels on the vertical (with 10 m vertical resolution in the first 200 meters). Note that choosing a horizontal resolution of $\sim 200\text{km}$ does not allow to fully resolve some fine-scale coastal processes such as tides or mesoscale and sub-mesoscale eddies and associated upwelling occurring in the costal ocean and hence these areas are represented with large uncertainties in the simulations performed.

2.4 Comparison to in situ data

We compiled the existing measurements of oceanic CO concentrations in order to evaluate the realism of the model results. Two types of measurements were included in this compilation: measurements of CO in the surface waters and profiles describing the concentrations as a function of depth. This dataset covers all seasons and latitudes from 80°N to more than 70°S . However, whereas the Atlantic and Pacific Ocean are fairly well covered, some wide areas are not documented (such as in the Indian ocean).

This compilation has been designed to be comparable as far as possible to the global model outputs. Indeed, as the model has a rather coarse horizontal resolution and as it does not resolve diurnal variation, we increased the spatial and temporal coverage of the data when necessary. To do so, we took the data described in the literature (which were sometimes already aggregated), and we averaged some of it. However, it is worth mentioning that averaging was not always possible

Supprimé: modified
Mis en forme: Couleur de police : Noir
Supprimé: in which we include
Mis en forme: Couleur de police : Noir
Mis en forme: Couleur de police : Noir
Supprimé: We use the global configuration ORCA2, with a nominal horizontal resolution of 2° and 30 levels on the vertical (with 10m vertical resolution in the first 200 meters). The
Mis en forme: Couleur de police : Noir
Supprimé: NEMO-PISCES
Mis en forme: Couleur de police : Noir
Déplacé vers le bas [1]: (2015).
Supprimé: CO concentrations are initialized at zero at the start of year 1 and NEMO-
Mis en forme: Couleur de police : Noir
Supprimé: then
Mis en forme: Couleur de police : Noir
Mis en forme: Couleur de police : Noir
Supprimé: using the same forcing fields than the ones described in Aumont et al.
Mis en forme: Couleur de police : Noir
Mis en forme: Couleur de police : Noir
Déplacé (insertion) [1]
Mis en forme: Couleur de police : Noir
Mis en forme: Couleur de police : Noir, Anglais (G.B.)
Supprimé: .
Supprimé: .
Supprimé: fairly well
Supprimé: although

and therefore after treatment each data point potentially includes a different number of observation. Tables 2 and 3 present the different datasets collected for the evaluation and the treatment we performed, respectively for the surface data (14 datasets) and for the profiles (10 datasets). After treatment, 309 surface data points and 26 vertical profiles were analyzed and compared to the model output.

Supprimé: 285
Supprimé: 24

5 For the surface data, the root mean square error (RMSE in nmol CO L⁻¹) has also been calculated:

$$RMSE = \sqrt{\frac{\sum_N (CO_{MOD} - CO_{OBS})^2}{N}}$$

(26) Supprimé: 24

with N the number of observed concentrations (N = 309 points).

Supprimé: 285
Mis en forme: Police :Pas Gras, Non souligné

3 Results and discussion

Mis en forme: Espace Avant : 12,25 pt

3.1 The oceanic CO budget

10 In this section we describe the oceanic CO cycle as simulated by PISCES using CO module implemented in this study. The global oceanic fluxes are first exposed. Then, the spatial patterns of the CO concentration as well as the different sources and sinks terms are presented.

3.1.1 Global oceanic fluxes

15 At the scale of the global ocean, the CO inventory is 0.4 Tg C, with a residence time of 4.3 days. The global photoproduction term in the ocean is of 19.1 Tg C yr⁻¹. It exceeds by a factor of 3 the direct phytoplankton production (6.2 Tg C yr⁻¹) and by a factor of 2 the dark production (8.5 Tg C yr⁻¹). The main CO sink is the bacterial consumption term (30.0 Tg C yr⁻¹). Indeed, the global CO emission to the atmosphere (4.0 Tg C yr⁻¹) is rather small compared to the biochemical sources and sinks processes. Figure 3 summarizes the values of the different terms of the CO budget in the oceanic surface layer. Only 0.1 Tg C of CO is contained in the surface layer (considered as the first 10 m of the ocean). Almost one half of the CO photoproduction takes place in the surface layer of the ocean (9.3 Tg C yr⁻¹ in the first 10 meters), whereas only 4.8% (0.3 Tg C yr⁻¹) of the phytoplankton production and 5.9% (0.5 Tg C yr⁻¹) of the dark production unfolds there. Most of the CO produced at the surface is either emitted to the atmosphere or transported vertically towards deeper layers. The mean downward flux from the surface layer (at 10 meters' depth) is estimated to be 2.1 Tg C yr⁻¹. It is therefore of the same order of magnitude as the estimated emissions to the atmosphere, which points out the importance of taking into account the effects of ocean circulation and mixing to estimate and map CO emissions.

Supprimé: .
Mis en forme: Espace Avant : 12 pt
Supprimé: 3
Supprimé: 2
Supprimé: , which is more than
Supprimé: times
Supprimé:),
Supprimé: of the same order
Supprimé: magnitude than
Supprimé: 21.9
Supprimé: The
Supprimé: 3.6
Supprimé: 1/20
Supprimé: (0.3 Tg C yr⁻¹).
Supprimé: 5

3.1.2 Spatial patterns of the sources and sinks

25 Figure 4 presents the annual mean of oceanic CO concentrations and the different sources and sink terms, all vertically integrated on the first 1000 meters. The integrated CO concentrations are highest at low latitudes and tend to

Supprimé: .
Mis en forme: Espace Avant : 12 pt
Mis en forme: Anglais (G.B.)

decrease poleward. A strong CO maximum of more than 140 $\mu\text{mol m}^{-2}$ is reached along the equator in the middle-east of the Pacific Ocean. Integrated CO concentrations pattern is close to the dark production one, which has a strong temperature dependence and hence higher values (exceeding 5 $\text{mmol m}^{-2} \text{yr}^{-1}$) located at the eastern part of the Pacific basins where warm waters penetrate deeper. Integrated concentrations are also influenced by photoproduction, whose integrated values are however highest (exceeding 8 $\text{mmol m}^{-2} \text{yr}^{-1}$) at the middle and western part of the basin. On the contrary, the integrated direct biological production is stronger at mid latitudes, especially in the Southern Ocean where it reaches more than 3 $\text{mmol m}^{-2} \text{yr}^{-1}$ and is weaker in the oligotrophic gyres (around 1 $\text{mmol m}^{-2} \text{yr}^{-1}$). The bacterial consumption term (from 0 to 12 $\text{mmol m}^{-2} \text{yr}^{-1}$) is linearly dependent on the CO concentration and is therefore following its spatial pattern.

In the surface layer (taken here as the first 10 meters), the patterns of the annual mean CO concentrations and the related fluxes are slightly different from the vertically integrated ones. Figure 5 presents the annual mean surface patterns of CO concentrations and of photoproduction (panels A and C). Whereas integrated CO concentrations patterns are influenced by the different sources and in particular the dark production, the surface ones are very close to the surface photoproduction patterns. Indeed, concentrations are higher at the equator, but with a strong maximum (more than 4 nmol L^{-1}) found in the eastern equatorial Pacific Ocean. This CO maximum occurs in a highly productive area where surface waters are enriched in nutrients by the equatorial upwelling, which stretches from Galapagos Island to the South Equatorial Current and decreases westward (Wyrki, 1981). CO is there produced by an active photoproduction (up to 1.4 $\text{nmol L}^{-1} \text{d}^{-1}$) due to both high irradiance (more than 6 W m^{-2}) and high level of CDOM, and is also easily concentrated in surface waters with the strong upward currents. Compared to the integrated patterns, the annual mean surface CO concentrations as well as the surface photoproduction present clear minima in the center of the subtropical gyres. Photoproduction is there around 0.5 $\text{nmol L}^{-1} \text{d}^{-1}$ and CO concentration less than 1 nmol L^{-1} . In the oligotrophic gyres, Chla and hence CDOM are low, which prevents high CO photoproduction. However, light penetrates deeper allowing photoproduction to occur, even at low rate, all along the irradiated water column. In an opposite way, photoproduction in highly productive areas occurs mainly in surface waters as organic materials absorb most of the available irradiance. Figure 5 (panels B and D) also presents the seasonal variability of the surface patterns with latitude. Both CO and photoproduction surface patterns present a strong seasonal cycle with maximums reached at the end of spring and summer in both hemispheres.

3.2 Evaluation of the oceanic CO concentration

Simulated surface CO concentrations have been compared to *in situ* concentrations, by extracting the model results collocated in time and space with measurements. A brief evaluation of simulated sea surface temperature, mixed layer depth and sea surface chlorophyll is also provided in the supplementary material (figures S2 and S3). Note that the model simulation is here climatological so that the year of measurement cannot be taken into account for the comparisons.

Supprimé: 0
Mis en forme: Couleur de police : Automatique, Anglais (G.B.)
Mis en forme: Couleur de police : Automatique, Anglais (G.B.)
Mis en forme: Couleur de police : Automatique, Anglais (G.B.)
Mis en forme: Couleur de police : Automatique, Anglais (G.B.), Décalage haut de 4 pt
Mis en forme: Couleur de police : Automatique, Anglais (G.B.)
Mis en forme: Couleur de police : Automatique, Anglais (G.B.)
Mis en forme: Police :11 pt, Couleur de police : Automatique, Français
Supprimé: Being the main
Mis en forme: Anglais (G.B.)
Supprimé: source. photoproduction shows a pattern similar to CO
Mis en forme: Anglais (G.B.)
Supprimé: , with a co-localization
Supprimé: their maximum
Supprimé: for photoproduction).
Mis en forme: Pas Exposant/ Indice
Mis en forme: Pas Exposant/ Indice
Mis en forme: Pas Exposant/ Indice
Supprimé: 8
Mis en forme: Pas Exposant/ Indice
Mis en forme: Couleur de police : Noir
Mis en forme: Éviter veuves et orphelines, Ajuster l'espace entre le texte latin et asiatique, Ajuster l'espace entre le texte asiatique et les nombres, Tabulations :Pas à 0,99 cm + 1,98 cm + 2,96 cm + 3,95 cm + 4,94 cm + 5,93 cm + 6,91 cm + 7,9 cm + 8,89 cm + 9,88 cm + 10,86 cm + 11,85 cm
Supprimé: . As for the
Supprimé: pattern,
Supprimé: concentration is
Supprimé: 3
Mis en forme: Couleur de police : Texte 1
Mis en forme: Police : (par défaut) Times New Roman, Couleur de police : Automatique, Anglais (G.B.)

3.2.1 Surface CO concentrations

Observed daily mean surface CO concentrations range from 0 to 13.9 nmol L⁻¹ with a mean value of 2.0 nmol L⁻¹. 75% of the observed data are below 2.5 nmol L⁻¹. The simulated concentrations range from 0 to 4.4 nmol L⁻¹, with a mean of 1.6 nmol L⁻¹ for the selected months and locations. The RMSE value resulting from the comparisons is 1.80 nmol L⁻¹.

Between 50°N and 50°S, the model is able to represent most concentrations within a factor of two (Fig. 6, C). For instance, the Atlantic Meridional Transect data (Stubbins et al., 2006b) from 45°N to 30°S, present rather constant surface CO concentrations around 1.5 nmol L⁻¹ which are particularly well reproduced by the model. In the Pacific Ocean, the data set of Bates et al. (1995) covers a broader range of latitudes and longitudes (Fig. 6, A) and the model is consistent with the measured concentrations. A longitudinal gradient is observed with concentrations significantly higher in the East and Central Equatorial Pacific as compared to the western part. Bates et al. (1995) attribute this gradient to increased biological productivity, Chla and CDOM in the eastern upwelling region. Second, Bates et al. (1995) data show a clear latitudinal pattern with higher concentrations from either side of the 15–30°S oligotrophic band (Fig. 6, B). This pattern has also been highlighted by Swinnerton and Lamontagne (1973) who sampled from 20°N to more than 60°S. However, their high values at the Equator (up to 6.3 nmol L⁻¹) are much higher than the ones of Bates et al. (3.0 nmol L⁻¹). Finally, the data set of Bates et al., which covers different periods of the year, points out the seasonal variability of the concentrations at mid-latitudes, in agreement with the photochemical nature of the main CO source.

At latitudes higher than 50° north or south, the model underestimates the reported high daily mean surface CO concentrations (Fig. 6, B). In the Southern Ocean, simulated surface concentrations do not exceed 4.5 nmol L⁻¹, whereas the data of Swinnerton and Lamontagne (1973), sampled in December, can reach 8.9 nmol L⁻¹. The Southern Ocean is also the basin where Bates et al. (1995) reported their highest surface values (up to 4.7 nmol L⁻¹). In addition, their concentration is higher for December (3.5 nmol L⁻¹) than for March and April (0.8 nmol L⁻¹). Therefore, the underestimation seems to occur mainly during the phytoplankton bloom season, indicating a possible bias in the CO production processes. In the Arctic, we compared simulated concentrations with the datasets of Xie et al. (2009) and Tran et al. (2013). Xie et al. (2009) measured in the open waters of the southeastern Beaufort Sea, a mean CO concentration of only 0.4 nmol L⁻¹ in autumn which is particularly well represented by the model. However, their higher mean value of 4.7 nmol L⁻¹ during the spring season is highly underestimated, indicating once again a possible bias with the CO production processes. Tran et al. sampled in July 2010 between Svalbard, Greenland and Iceland. Closer from the Norwegian basin, measurements have been performed in open ocean water. It presents there a high variability (from 1.4 to 8.7 nmol L⁻¹) but most data points are under 4.0 nmol L⁻¹ and represented within a factor of 2 by the model. Closer from the Greenland shelf, measurements have been performed in polar waters where pack ice was present. In this area, measured surface concentrations are significantly higher (up to 13.9 nmol L⁻¹) and are clearly underestimated by the model. Other studies have measured high surface CO concentrations in polar regions (Xie and Gosselin, 2005; Gros et al., personal communication), which tends to strengthen the conclusion that major mismatches between our modeled and the observed CO concentrations occur in that region. Indeed, Gros et al. (personal communication) measured, north of Svalbard, a mean concentration of 7.1 nmol L⁻¹ in May 2015. These high CO

Mis en forme: Espace Avant : 12 pt

Supprimé: 1.9

Supprimé: .3

Supprimé: 2

Supprimé: 5

Supprimé: 84

concentrations reported in polar region could be due to the release of organic matter in the open ocean during ice melting due to algae growing in the ice (Belzile et al., 2000). It could also be due to the direct release of CO produced inside the ice. Indeed, Xie and Gosselin (2005) mentioned that sea-ice is a suitable matrix for efficient photo-reactions involving CDOM, and measured concentrations in May exceeding 100 nmol L⁻¹ in the bottom layer of a few first-year sea-ice cores sampled in the southeastern Beaufort Sea. However, according to Xie et al. (2009) and Zafiriou et al. (2003), the high CO concentrations reported at high latitudes may be mainly due to slower microbial CO uptake rates in cold waters. Indeed, Zafiriou et al. estimated rates as low as 0.09 d⁻¹ in the Southern Ocean.

It is the first time that such a dataset of *in situ* CO concentrations in the surface ocean have been gathered and that a 3-D global biogeochemical model is used to simulate the oceanic CO cycle. Despite the scarcity of measurements regarding in space and time, PISCES reproduces the observed surface concentrations reasonably well, at least for the open ocean between 50°N and 50°S. While concentrations at low and mid latitudes are simulated within a factor of 2, photoproduction or consumption processes might not be well represented at high latitude.

3.2.2 Vertical CO profiles

In this section, we evaluate the vertical distribution of CO concentrations as simulated by PISCES against available observed vertical profiles. Only 10 available profiles upon 26 are shown hereafter (Fig. 7), covering different types of marine environments. Other ones are available in Supplementary section.

All simulated CO profiles exhibit a decrease with depth. They are mainly driven by the photoproduction source which is a combination of the CDOM and irradiance levels. Indeed, no clear sub-surface maximums, potentially associated to direct phytoplankton production, is seen. This is also the case for the observed profiles. At 100 meters, simulated as observed concentrations reach values close to zero, explained by the negligible influence of light irradiance under these depths. However, the shapes of the decreases differ with time and locations, which can be related both to differences in the light penetration and mixed layer depths.

When trying to compare simulated and observed profiles one by one, we observe quantitative differences. When the model is able to correctly simulate the concentration at the surface, the deeper concentration is also well simulated. On the contrary, when the model over or under estimate the surface concentration, it is also the case below (see as an example the representation of the two profiles of Zafiriou et al., 2008 taken in the Sargasso Sea in March and August). Nevertheless, the model is always in good agreement with the nearly zero concentrations below 100 meters. It is however particularly hard to bring out spatial or temporal trends for the observed under or over estimations. As an example for the equatorial Pacific region, the model underestimates with a factor of 2 the concentrations of Johnson and Bates (1996) whereas in the same region in November the data of Otha (1997) are well represented. Additionally, it is worth mentioning that high variability and uncertainty is associated to some measurements. For example, between 25 and 50 meters Yang et al. (2011) measured for spring month concentrations from 0.0 to 7.5 nmol L⁻¹ in the Coastal East China and Yellow Seas. Also, when no standard deviation is available the data reflects one-time measures. Especially, this is the case for the 10 profiles of Swinnerton and

Supprimé: -

Mis en forme: Espace Avant : 12 pt

Supprimé: 24

Supprimé: April

Lamontagne (1973), taken during early afternoon. It is hence difficult to compare these profiles with monthly averaged model outputs.

3.3 Sensitivity to alternative parameterizations

5 Alternative parameterizations have been tested ~~regarding the CDOM estimation (affecting photo and dark productions)~~ and the bacterial consumption term.

Supprimé: on

Supprimé: photoproduction

Supprimé: , which are respectively the main source and sink for oceanic CO

Supprimé: CO photoproduction

3.3.1 CDOM parameterization

10 *Surface CDOM absorption.* Different parameterizations for the CDOM absorption coefficient have been tested, all using the same simulated Chla concentrations. The latitudinal mean of these coefficients, taken at 443 nm and for the surface ocean, are shown on Fig. 8 and compared to the mean climatology of CDM (Colored Detrital Matter) distributed within the GlobColour products (Maritorena et al., 2010; Fanton d'Andon et al., 2009), averaged over 2002-2012 (top panel). As all CDOM parameterizations depend on Chla concentrations, figure 8 also shows the latitudinal mean of the Chla (bottom panel), simulated by PISCES and distributed within the GlobColour products, in order to better separate the respective roles of the CDOM parameterization versus Chla representation. Additional Chla comparison with satellite products are also available in Supplementary Material (figure S2). All CDOM parameterizations lead to similar distributions with higher values at high latitudes, intermediate ones near the Equator and the lowest in the subtropical gyres, as it is the case for Chla surface concentrations. However, the magnitudes of these CDOM absorption coefficients are very different and vary within a factor of 3 across the different parameterizations. The one of Morel (2009), chosen for our standard simulation, gives intermediate values (global mean is 0.014 m^{-1}) between Preiswerk and Najjar (mean 0.008 m^{-1}) and Launois et al. (mean 0.026 m^{-1}). The GlobColour CDM content can be considered as a proxy for CDOM as it has been postulated that the CDOM absorbance represents 90% of the CDM one (Siegel et al., 2002). Latitudinal variations are consistent between the satellite products and the tested parameterizations. Minima (less than 0.01 m^{-1}) are located in oligotrophic gyres. Quantitatively, those minima are best represented by the relation of Morel, since the ones of Launois et al. (2015) and of Preiswerk and Najjar (2000) give too high and too low values, respectively. Highest satellites-derived CDM absorptions are reached at high latitudes, especially in the northern hemisphere (latitudinal mean goes up to 0.060 m^{-1} between 50 and 80°N). These high CDM values correspond mainly to coastal areas, and none of the parameterizations tested here are able to reproduce them. Chla concentration being rather well represented in the northern hemisphere compared to satellite derived Chla (figure 8 and S2), this strong underestimation is attributable to the CDOM parameterization itself. Indeed, the different parameterizations are all depending on Chla and are therefore probably better suited for Case-1 waters (Matsushita et al., 2012), for which most dissolved organic matter comes from local phytoplanktonic activities like cell lyses, exsudation or grazing (Para et al., 2010). Indeed, the CDOM concentration in coastal waters is also regulated by the interactions with the continent (Bricaud et al.,

Supprimé: 8. The

Supprimé: , is shown as well. They all

Supprimé: ums

Supprimé: ums

Supprimé: It can be explained first by

Supprimé: fact that our simulation does not properly resolve

Mis en forme: Couleur de police : Noir

Supprimé: coastal zones due to its too coarse resolution (Aumont et al., 2015). Second

1981; Siegel et al., 2002), especially at rivers mouths where CDOM concentrations are generally higher than for the rest of the ocean (Para et al., 2010). This is the consequence of a local stimulation of primary production associated to nutrient supply (Carder et al., 1989), but also of a direct supply of continental CDOM (Nelson et al., 2007). This direct CDOM supply is not represented in the model, potentially leading to an underestimation of the CO photoproduction in coastal areas, and potentially also in open ocean waters under terrestrial influence. This is particularly the case for the Arctic ocean as it is enriched in terrestrial dissolved organic matter due to high river supply (Dittmar and Kattner, 2003). Additionally, this could explain part of the CO underestimations in the Arctic, together with the aforesaid mechanism associated to the presence of sea ice. In the Southern Ocean, the CDOM content is slightly above the CDM content retrieved from space (except at the very close Antarctic coast). This could be due to the Chla overestimation in that region (figure 8 and S2). However, whereas Chla is overestimated, CO underestimations were observed. Hence, to explain CO underestimations, we better opt in this region for a link with the representation of the bacterial consumption term. Finally, among the three parameterizations, we chose the one of Morel (2009) for our representation of the CDOM absorption despite the underestimations in the northern hemisphere, because it globally better fits the satellite-derived CDM as the amplitude of the latitudinal gradient is the largest (standard deviation is 0.007 m⁻¹, against 0.005 m⁻¹ for Launois and 0.003 m⁻¹ for Preiswerk and Najjar relations). Nevertheless, it is important to mention that CDOM is a very heterogeneous matter and therefore using Chla as a proxy for CDOM is in any case obviously reductive, as CDOM has its own dynamic.

Supprimé: Austral
Supprimé: however, whereas CO underestimations were observed.
Supprimé: r

Sensitivity of the oceanic CO budget to changes in the CDOM parameterization. Global fluxes have been calculated from the simulations using the different CDOM parameterization (table 1, lines 1-3). The global photoproduction flux is more than doubled when using the parameterization of Launois et al. (49.1 Tg C yr⁻¹ against 19.1 Tg C yr⁻¹ when using the Morel's one) and decreases with the one of Preiswerk and Najjar (14.2 Tg C yr⁻¹), in agreement with the quantitative tendencies of the CDOM surface values discussed above. In a similar way, the global dark production flux is more than tripled when using the parameterization of Launois et al. (29.5 Tg C yr⁻¹ against 8.5 Tg C yr⁻¹ when using the Morel's one) and reduced with the one of Preiswerk and Najjar (7.2 Tg C yr⁻¹). For these different tests, the bacterial consumption rates have been kept the same so that the changes in the CO budget and in other terms are solely due to changes in photo and dark productions. The CO flux to the atmosphere (3.0-10.2 Tg C yr⁻¹) and the bacterial sink (24.7-74.7 Tg C yr⁻¹) both vary accordingly with the changes in photo and dark productions. As a direct consequence, the oceanic CO total inventory is modified (0.3-1.0 Tg C), which also changes the values of the RMSE when comparing simulated surface CO concentrations with *in situ* measurements (it is 2.91 nmol L⁻¹ with Launois et al. and 1.91 nmol L⁻¹ with Preiswerk and Najjar whereas it is 1.80 nmol L⁻¹ with Morel). Note that the direct phytoplankton production term remains the same as it does not depend on CO concentrations. Photoproduction has also been integrated in the mixed layer in order to be compared to the value of 39.3 Tg C yr⁻¹ computed by Fichot and Miller (2010) with a global model using ocean color data for the CDOM parameterization. With a budget of 45.4 Tg C yr⁻¹, the photoproduction of Launois et al. gives the closest estimation, the ones resulting from Morel and from Preiswerk and Najjar being much lower (17.7 Tg C yr⁻¹ and 13.1 Tg C yr⁻¹ respectively). Those two latter

Mis en forme: Couleur de police : Noir

Supprimé: photoproduction.

Supprimé: 2

Supprimé: Morel

Supprimé: photoproduction.

Supprimé: 2.7-9

Supprimé: 17.9-46.5

Supprimé: photoproduction.

Supprimé: 2-

Supprimé: 6

Supprimé: 64

Supprimé: 98

Supprimé: 84

Supprimé: r

estimations are also lower than the most recent estimations based on extrapolations of *in situ* measurements. Indeed, Zafiriou et al. (2003) estimated the photoproduction between 30 and 70 Tg C yr⁻¹ based on a large data set collected in the Pacific Ocean and Stubbins et al. (2006b) estimated it between 38 and 84 Tg C yr⁻¹ with Atlantic Ocean data. For the dark production, the use of the CDOM parameterizations of Morel on the one hand and Preiswerk and Najjar on the other hand give global values in the range of previous estimates (4.9-15.8 Tg C yr⁻¹, Zhang et al., 2008) whereas Launois et al.'s resulting estimate is much higher (29.5 Tg C yr⁻¹).

3.3.2 CO consumption

Several simulations regarding the bacterial consumption have been performed. First, different values for a constant bacterial rate have been tested. Second, a variable rate as a function of Chla and temperature according to the relation of Xie et al. 2005 has also been tested. Global budgets resulted from these different tests are shown in table 1 (lines 4-8), using the same CDOM parameterization (Morel 2009) so that the impact of the photo and dark productions terms on the oceanic CO concentration remains the same. When increasing the rate from 0.1 to 2.0 d⁻¹ (with a constant value), the bacterial sink increases from 27.5 to 33.9 Tg C yr⁻¹. This rise of consumption induces a strong decrease of the CO inventory (from 0.8 to 0.04 Tg C) and therefore also decreases the flux to the atmosphere (from 6.4 to 0.5 Tg C yr⁻¹). When changing the rate, the fit of the surface CO concentration with observations is also modified. Indeed, when it is 0.1 d⁻¹, the RMSE value is increased (=1.97 nmol L⁻¹) compared to the control run (RMSE=1.80 nmol L⁻¹) because of an overall overestimation of CO concentrations. When the consumption rate exceeds 0.2 d⁻¹, the RMSE value is also increased but that time because of an overall underestimation. For the test using a spatio-temporal varying rate (table 1, line 8), we slightly modified the initial equation of Xie et al. (2005) by adding a factor $\mu=0.05$, so that the mean k_{CO} is 0.2 d⁻¹. Indeed, when using the original $\mu=1$ with our model, bacterial rates vary from 3.8 to 7.0 d⁻¹ and thus lead to a strong underestimation of CO concentrations. When a varying rate is applied, the global bacterial sink, the CO inventory and the CO flux to the atmosphere are pretty much the same than using the standard run with a constant rate of 0.2 d⁻¹. Also, the RMSE value is almost identical (1.79 nmol L⁻¹). Thus, applying this varying rate did not help to improve the fit of CO concentrations against *in situ* measurements, which could be explained by the very low standard deviation of the resulting k_{CO} values (0.01 d⁻¹).

Being the main CO sink in the ocean, a more accurate parameterization of the bacterial CO consumption term is essential to quantify CO emissions to the atmosphere. However, little is known on the CO bacterial consumption, although it has been shown to be ubiquitous in diverse marine ecosystems, particularly in the North East Atlantic and Arctic waters (Xie et al., 2005; 2009). According to Xie et al. (2005), this process could follow different patterns from first to zero-order kinetics or saturation, but most marine waters may be reasonably well approximated by the first-order kinetic as CO concentrations rarely exceed the half saturation constant value. It is nevertheless difficult to constrain the bacterial consumption rate based on experimental estimations as they present a very high variability. Highest rates seem to be found for coastal waters, suggesting the presence of active CO oxidizing communities (Tolli et al., 2006; Tolli and Taylor, 2005). For example, Day and Faloon (2009) measured rates from 1.2 to 19.2 d⁻¹ along the Californian coasts and Jones and

Supprimé: - Simulations

Supprimé: photoproduction term

Supprimé: 19.4

Supprimé: 25.4

Supprimé: 5

Supprimé: 0

Supprimé: 5.

Supprimé: 4

Supprimé: 93

Supprimé: 84

Supprimé: the

Supprimé: the

Supprimé: slightly the same

Supprimé: 81

Amador (1993) rates from 0.2 to 12 d⁻¹ in the Caribbean Sea. In the remote ocean, measured rates are lower but the variability remains high. Zafiriou et al. (2003) measured a rate as low as 0.1 d⁻¹ in the Southern Ocean, whereas Conrad et al. (1982) retrieved values around 0.7 d⁻¹ in the Equatorial Atlantic and Otha (1997) more than 3.0 d⁻¹ in the Equatorial Pacific. Part of this high variability might be explained by the fact that as for other microbial processes, the CO consumption should also depend on a number of parameters like microbial species, productivity, temperature or ocean acidity (Xie et al. 2005). Using the only study proposing to compute the k_{CO} value with Chla and temperature (Xie et al. 2005), we attempted to account for this variability. However, it seems that such an empirical equation, developed with data from the Delaware Bay, the North West Atlantic and the Beaufort Sea, is not suitable for a global application as it leads to very high k_{CO} values. Even when tuning with the factor μ , the remaining k_{CO} variability is too small to significantly improve the fit with the observed surface CO concentrations.

Based on these different tests, we show that the main terms controlling oceanic CO concentrations are still largely under-constrained, although available in situ CO concentrations, global budget estimates as well as the CDM concentrations retrieved from space are helping to choose a standard, i.e. 'best guess' simulation. Here, the best parameterization of CDOM absorption compared to satellite products is given by Morel (2009), which then dictates our choice for the standard simulation. However, it is worth mentioning that using the parameterization of Launois et al. (2015) with a higher bacterial consumption rate, or the one of Preiswerk and Najjar (2000) with lower consumption rate would result in oceanic CO concentrations that give similar skill scores when compared to available CO concentration observations (tests not shown), but for which we have a less confidence in the CDOM parameterization.

3.4 Simulated CO emissions

This section first presents the CO emissions to the atmosphere resulting from our standard simulation. Then, the emissions are compared to the canonical distribution of CO emissions published by Erickson (1989), which is the only gridded global CO emission dataset available to date in the literature.

Figure 9 presents the spatial patterns of emissions resulting from PISCES (panel A). All oceanic regions are net sources of CO for the atmosphere, with emissions varying spatially from 0 to 2.6 mmol m⁻² yr⁻¹ on an annual mean basis with a global mean flux of 0.8 mmol m⁻² yr⁻¹. The spatial pattern of emissions follows the one of the surface CO concentrations. The strongest emissions are simulated in the equatorial region, especially in the East Pacific Ocean on both sides of the equator. High emissions are also reached locally along the west coast of South America and Africa. Annual mean emissions are reduced to roughly 0.5 mmol m⁻² yr⁻¹ in the center of the subtropical gyres and to almost zero at latitudes higher than 60°. Simulated CO emissions also present a strong seasonal variability (Fig. 9, panel B). Whereas emissions at the equator (30°S-30°N) are roughly constant throughout the year (around 1.5 mmol m⁻² yr⁻¹), emissions at intermediate latitudes (30° to 60°) vary seasonally from 0 to the highest values encountered (up to 2.0 mmol m⁻² yr⁻¹). However, on a yearly basis, the equatorial

Supprimé: 1

Supprimé: 7

Supprimé: 0

region is the major contributor with a flux of 2.5 Tg C yr⁻¹, which is more than 60% of the global value (4.0 Tg C yr⁻¹). Intermediate latitudes contribute to 1.4 Tg C yr⁻¹ and polar regions (more than 60°N/S) to only 0.1 Tg C yr⁻¹. Additionally, emissions are stronger in the southern hemisphere than in the northern hemisphere (2.3 Tg C yr⁻¹ and 1.7 Tg C yr⁻¹ emitted respectively), which could be attributable to the larger surface area covered by oceans and to the slightly closer proximity of the Earth to the Sun during the southern summer solstice. Finally, our global emission of 4.0 Tg C yr⁻¹ simulated with PISCES fall well into the range of previous estimations based on extrapolations from *in situ* oceanic CO measurements. From Atlantic data, Stubbins et al. (2006a) estimated a yearly flux to the atmosphere of 3.7 ± 2.6 Tg C yr⁻¹ and Park and Rhee (2016) estimated the emissions in the range 1-12 Tg C yr⁻¹. From Pacific data, Zafiriou et al. (2003) estimated a flux of 6 Tg C yr⁻¹ and Bates et al. (1995) a range of 3-11 Tg C yr⁻¹.

The CO emissions produced by Erickson (1989) are still currently used as spatial distribution by global chemistry-climate models. They are presented here as published in 1989, but are now generally rescaled to lower total emissions for use in atmospheric models. Figure 9 presents the spatial patterns and seasonal variability of emissions resulting from Erickson's model (panels C and D respectively). In agreement with our simulation, all oceanic regions are sources of CO for the atmosphere. However, emissions present very large spatial and quantitative differences. On an annual mean basis, Erickson's emissions vary from 0 to more than 33 mmol m⁻² yr⁻¹ (mean is 9.0 mmol m⁻² yr⁻¹) which is one order of magnitude above the ones of PISCES. Emission pattern for Erickson presents clearly two bands of intense outgassing at mid latitudes (between 30° and 60° N/S), whereas pattern for PISCES presents maxima around the equatorial zone and minima in the center of the oligotrophic gyres. When looking at the seasonal variability, Erickson's model also simulates the highest emissions at mid latitudes in summer months but with much stronger maximum values (up to 40 mmol m⁻² yr⁻¹). Globally, Erickson's model produces a flux of 70.7 Tg C yr⁻¹, which is 20 times greater than the PISCES estimation. PISCES flux is therefore much closer to the most recent estimations (Stubbins et al., 2006a; Zafiriou et al., 2003; Bates et al., 1995).

The spatial and quantitative differences between Erickson's and PISCES's emissions are mainly attributable to the fact that the bio-chemical processes known to control the CO concentration at the surface ocean are not accounted for in the Erickson's representation. On a similar way to Eq. (15) of PISCES, the emissions of Erickson depend on the CO concentration gradient between the atmosphere and oceanic part. However, the oceanic part is not computed dynamically and linearly depends on the total available radiation at the surface ocean based on a relation derived empirically with Atlantic data of Conrad et al. (1982). In Fig. 10 is shown the mean annual surface CO concentrations as a function of the mean annual total solar radiation in PISCES, as well as the linear relation used by Erickson. Mean surface radiation in PISCES ranges from 0 to 300 W m⁻² and the stronger it is, the higher the concentrations for both models. However, for a same given radiation there is in PISCES a multitude of possible values for the CO concentration as it is controlled by different processes (light, CDOM content, Chla, bacterial consumption) and not only by the light intensity. As a result, the mean annual surface concentrations do not exceed 6.6 nmol L⁻¹ whereas it can reach 18.0 nmol L⁻¹ with 300 W m⁻² with the Erickson's relation. Values reached by Erickson's model are therefore much higher and this implies stronger outgassing to the atmosphere. It's worth mentioning that given the *in situ* measurements of surface CO concentrations presented in section 3.2, the relation of

- Supprimé: yearly
- Supprimé: 2
- Supprimé: 3.6
- Supprimé: 3
- Supprimé: 1
- Supprimé: 5
- Supprimé: the
- Supprimé: 3.6
- Supprimé: :
- Supprimé: from Atlantic data,
- Supprimé: estimated the emissions in the
- Mis en forme: Couleur de police : Texte 1
- Supprimé: with Pacific data

Supprimé: from

Supprimé: 13

Erickson would easily overestimate the concentrations for the regions with high radiation.

4 Conclusion

We used a global 3-D biogeochemical model to explicitly represent the oceanic CO cycle based on the up-to-date knowledge of its bio-chemical sources and sinks. With our best-guess modelling setup, we estimate a photoproduction of $19.1 \text{ Tg C yr}^{-1}$, a dark production of 8.5 Tg C yr^{-1} , a phytoplanktonic production of 6.2 Tg C yr^{-1} and a bacterial consumption of $30.0 \text{ Tg C yr}^{-1}$. The estimation of the CO flux to the atmosphere is 4.0 Tg C yr^{-1} and falls well into the range of previous recent estimates (Stubbins et al., 2006a; Zafiriou et al., 2003; Bates et al., 1995). The global downward flux at 10 m depth, estimated at 2.1 Tg C yr^{-1} , points out the importance of taking into account the effects of ocean circulation and mixing to model the oceanic CO cycle and the interplay between sources / sinks processes and emissions to the atmosphere.

The distribution of surface CO concentrations reflects primarily the distribution of CDOM in the surface ocean and its impact on the photoproduction source, with high concentrations of CO in the biologically productive regions of the ocean. For the first time, a large data set of *in situ* CO measurements collected from the literature has been gathered and used to evaluate these concentrations. Despite the scarcity of these measurements in terms of their spatial and temporal distribution, the proposed best simulation is able to represent most of the ~300 data points within a factor of two.

That said, there are a number of limitations that probably preclude a better agreement between our model and available data:

- (i) Regarding the spatial scale, our simulated concentrations are probably impacted by the very coarse resolution of the model. In particular, this is critical to resolve the coastal ocean, where a number of in-situ measurements of CO concentrations have been performed. Indeed, the ~100-to-200 km horizontal resolution does not allow to fully resolve some fine-scale coastal processes and hence our estimation of the oceanic CO cycle is rather suitable to the blue waters, although a crude representation of specific processes occurring in coastal areas exists (like riverine nutrients inputs, iron input by sediment re-suspension, or coastal upwellings).
- (ii) Regarding the temporal scale, the model does not explicitly resolve the diurnal cycle although the variations of surface CO concentrations during the day have been shown to be first-order variations (Carpenter et al., 2012). As well, the model does not consider the inter-annual variability of ocean physics and biogeochemistry, as it is forced by a climatology of surface fields (temperature, winds, precipitation, ...) (Aumont et al., 2015). This might be limiting for the evaluation of the simulated CO concentrations against *in situ* measurements, as it has not been always possible to average the data in order to be representative of daily means, and as the data are covering 50 years of measurement during which atmospheric forcing might have changed.
- (iii) In addition, we note a rather clear underestimation of the simulated CO concentrations when compared to *in situ* measurements at high latitudes. This may result from a lower bacterial consumption rate in these regions or/and from higher CDOM levels associated to the presence of sea-ice or to riverine input of organic matter.

Mis en forme: Couleur de police : Texte 1

Supprimé: 21.9

Supprimé: 3.6

Supprimé: 5

Supprimé: on

Supprimé: ocean

Supprimé: , which

Mis en forme: Anglais (G.B.)

Mis en forme: Couleur de police : Noir, Anglais (G.B.)

Mis en forme: Anglais (G.B.)

Supprimé: On

Neither the supply of CDOM by sea ice nor by rivers is represented in the model, which may prevent an accurate representation of the CO cycle in those regions.

Supprimé: are

We also want to emphasize the large uncertainties associated to the different terms, in particular to the main CO source: photoproduction. Indeed, we have shown that the global photoproduction can vary within a factor of 3 (14.2-49.1 Tg C yr⁻¹) depending on the CDOM parameterization chosen. Efforts should be focused toward a better understanding of the complex CDOM nature and on its representation in models. Especially as a good knowledge of its spatio-temporal distribution is critical not only for the CO production but also for a better understanding of remineralization of dissolved organic carbon in the ocean (Mopper and Kieber, 2001) and more generally of the biogeochemical cycles that are driven by light availability in the ocean (Shanmugam, 2011). Beyond a better knowledge of the CDOM pool, it must be mentioned that the whole organic matter pool needs to be better understood in order to better constrain photoproduction. Indeed, it has been suggested that even particulate organic matter could be a substrate for CO photoproduction (Xie and Zafiriou, 2009).

Supprimé: <#>Finally, our model does not include any representation of the so-called "dark production", a concept that had been first proposed by Kettle (2005) to explain high CO concentrations measured at depth. This term could be non-negligible as Zhang et al. (2008) estimated its contribution to be between 5 and 16 Tg C yr⁻¹. However, note that first this concept remains currently unclear and should be investigated in further laboratory experiments in order to provide modelers some potential parameterizations. Second, the analyses of the collected vertical profiles did not seem to clearly support the importance of such a mechanism to explain the differences with our simulated profiles. .

Supprimé: term

Supprimé: Hence, efforts

Supprimé: for

Finally, we compared our estimates of ocean CO emissions to that published by Erickson in 1989. Our emissions are quantitatively much closer from the most recent estimates and in better agreement in term of spatial distribution with the known processes controlling the oceanic CO. Future works will assess the impact of our estimates of CO emissions on the oxidizing capacity of the atmosphere with respect to that obtained with the canonical Erickson's estimates. Besides, the implementation of our ocean CO cycle module within an Earth system model will enable to explore potential Earth system feedbacks associated to the oceanic CO cycle.

Acknowledgments

We would like to thank the LEFE FORCAGE and EU-H2020-CRESCENDO (grant agreement No 641816) projects for funding. We also gratefully acknowledge Valérie Gros and Bernard Bonsang for their contribution and access to CO data from their TRANSSIZ and OOMPH cruises. A first version of the work was performed during the internship of Aïda Bellataf in 2012 with the help of Sophie Tran. The authors are thankful to them and have a sad though to Aïda, a very dynamic and enthusiastic student who brutally died in 2017 at the age of 32. Finally, we thank the GlobColour project for providing access to the CDM content (<http://globcolour.info>) and the ASTM for the distribution of the ground-based solar spectral irradiance SMARTS2 (version 2.9.2) *Simple Model for Atmospheric Transmission of Sunshine* (<https://www.astm.org/Standards/G173.htm>).

Supprimé: .

[1]

Mis en forme: Anglais (G.B.)

Mis en forme: Anglais (G.B.)

Mis en forme: Anglais (G.B.)

Mis en forme: Anglais (G.B.)

Mis en forme: Anglais (G.B.)

Mis en forme: Anglais (G.B.)

Mis en forme: Anglais (G.B.)

Supprimé: .

References

ASTM G173-03, Standard Tables for Reference Solar Spectral Irradiances: Direct Normal and Hemispherical on 37° Tilted Surface, ASTM International, West Conshohocken, PA, 2012, www.astm.org, 2012.

Aumont, O., Ethé, C., Tagliabue, A., Bopp, L., Gehlen, M.: PISCES-v2: an ocean biogeochemical model for carbon and ecosystem studies. *Geosci Model Dev*, 8, 2465–2513, doi:10.5194/gmd-8-2465-2015, 2015.

Bates, T.S., Kelly, K.C., Johnson, J.E., Gammon, R.H.: Regional and seasonal variations in the flux of oceanic carbon

- monoxide to the atmosphere, *J. Geophys. Res.*, 100, 23093, doi:10.1029/95JD02737, 1995.
- Belzile, C., Johannessen, S.C., Gosselin, M., Demers, S., Miller, W.L.: Ultraviolet attenuation by dissolved and particulate constituents of first-year ice during late spring in an Arctic polynya, *Limnol. Oceanogr.*, 45, 1265–1273, 2000.
- 5 Bricaud, A., Morel, A., Prieur, L.: Absorption by dissolved organic matter of the sea (yellow substance) in the UV and visible domains I, *Limnol. Oceanogr.*, 26, 43–53, doi:10.4319/lo.1981.26.1.0043, 1981.
- Bullister, J.L., Guinasso, N.L., Schink, D.R.: Dissolved hydrogen, carbon monoxide, and methane at the CEPEX site, *J. Geophys. Res.*, 87, 2022, doi:10.1029/JC087iC03p02022, 1982.
- 10 Carder, K.L., Steward, R.G., Harvey, G.R., Ortner, P.B.: Marine humic and fulvic acids: Their effects on remote sensing of ocean chlorophyll, *Limnol. Oceanogr.*, 34, 68–81, 1989.
- 15 Carpenter, L.J., Archer, S.D., Beale, R.: Ocean-atmosphere trace gas exchange, *Chemical Society Reviews*, 41, 6473, doi:10.1039/c2cs35121h, 2012.
- Cicerone, R.J.: How the Concentration of Atmospheric CO changed?, *The Changing Atmosphere*, 1988.
- 20 [Conkright, M. E., R. A. Locarnini, H. E. Garcia, T. D. O'Brien, T. P. Boyer, C. Stephens, and J. Antonov, World Ocean Atlas 2001: Objective Analyses, Data Statistics and Figures, CD- ROM Documentation, Tech. rep., National Oceanographic Data Centre, Silver Spring, MD, USA, 2002.](#)
- Conrad, R. and Seiler, W.: Photooxidative production and microbial consumption of carbon monoxide in seawater, *FEMS Microbiol. Lett.*, 9, 61–64, 1980.
- 25 Conrad, R., Seiler, W., Bunse, G., Giehl, H.: Carbon monoxide in seawater (Atlantic Ocean), *J. Geophys. Res.*, 87, 8839, doi:10.1029/JC087iC11p08839, 1982.
- 30 Crutzen, P.J.: Photochemical reactions initiated by and influencing ozone in unpolluted tropospheric air, *Tellus* 26, 47–57, doi:10.3402/tellusa.v26i1-2.9736, 1974.
- Day, D.A. and Faloona, I.: Carbon monoxide and chromophoric dissolved organic matter cycles in the shelf waters of the northern California upwelling system, *J. Geophys. Res.*, 114, doi:10.1029/2007JC004590, 2009.
- 35 Dittmar, T. and Kattner, G.: The biogeochemistry of the river and shelf ecosystem of the Arctic Ocean: a review, *Mar Chem*, 83, 103–120, doi:10.1016/S0304-4203(03)00105-1, 2003.
- 40 Doney, S.C., Najjar, R.G., Stewart, S.: Photochemistry, mixing and diurnal cycles in the upper ocean, *J. Mar. Res.*, 53, 341–369, 1995.
- Duncan, B.N., Logan, J.A., Bey, I., Megretskaia, I.A., Yantosca, R.M., Novelli, P.C., Jones, N.B., Rinsland, C.P.: Global budget of CO, 1988–1997: Source estimates and validation with a global model, *J. Geophys. Res.*, 112, doi:10.1029/2007JD008459, 2007.
- 45 ECCAD website: <http://eccad.aeris-data.fr>, last access: 25 September 2018.
- Erickson, D.J.: Ocean to atmosphere carbon monoxide flux: Global inventory and climate implications, *Global Biogeochem Cycles*, 3, 305–314, doi:10.1029/GB003i004p00305, 1989.
- 50

Mis en forme: Anglais (G.B.)

- ESRL NOAA website: <https://www.esrl.noaa.gov/gmd/ccgg/gallery/figures>, last access: 25 September 2018.
- Fanton d'Andon, O. H., Mangin, A., Lavender, S., Antoine, D., Maritorena, S., Morel, A., Barrot, G., et al.: GlobColour - the European Service for Ocean Colour, in Proceedings of the 2009 IEEE International Geoscience & Remote Sensing Symposium, Jul 12-17 2009, Cape Town South Africa: IEEE Geoscience and Remote Sensing Society, 2009.
- Fichot, C., Sathyendranath, S., Miller, W.: SeaUV and SeaUVC: Algorithms for the retrieval of UV/Visible diffuse attenuation coefficients from ocean color, *Remote Sens of Environ*, doi:10.1016/j.rse.2007.08.009, 2008.
- Fichot, C.G. and Miller, W.L.: An approach to quantify depth-resolved marine photochemical fluxes using remote sensing: Application to carbon monoxide (CO) photoproduction, *Remote Sens of Environ*, 114, 1363–1377, doi:10.1016/j.rse.2010.01.019, 2010.
- Gammon, R.H. and Kely, K.C.: Photochemical production of carbon monoxide in surface waters of the Pacific and Indian oceans. In: Blough, N.V., Zepp, R.G. (Eds.), *Effects of Solar Ultraviolet Radiation of Biogeochemical Dynamics in Aquatic Environments*. Woods Hole Oceanographic Institution, Woods Hole, Mass, WHOI-90-09, pp. 58–60, 1990.
- Garver, S.A. and Siegel D.A.: Global application of the UCSB non-linear inherent optical property inversion model, poster presented at SeaWiFS Science Team Meeting, U.S. Global Change Research Program, Baltimore, Md., Jan.6-8, 1998.
- Geider, R.J., MacIntyre, H.L., Kana, T.M.: A dynamic model of photoadaptation in phytoplankton, *Limnol. Oceanogr.*, 41, 1–15, 1996.
- Gros, V., Peeken, I., Bluhm, K., Zöllner, E., Sarda-Esteve, R., Bonsang, B.: Carbon monoxide emissions by phytoplankton: evidence from laboratory experiments, *Environ. Chem.*, 6, 369, doi:10.1071/EN09020, 2009.
- Holloway, T., Levy, H., Kasibhatla, P.: Global distribution of carbon monoxide, *J. Geophys. Res., Atmospheres* 105, 12123–12147, doi:10.1029/1999JD901173, 2000.
- Johnson, J.E. and Bates, T.S.: Sources and sinks of carbon monoxide in the mixed layer of the tropical South Pacific Ocean, *Global Biogeochem Cycles*, 10, 347–359, doi:10.1029/96GB00366, 1996.
- Jones, R.D.: Carbon monoxide and methane distribution and consumption in the photic zone of the Sargasso Sea, *Deep Sea Res A, Oceanographic Research Papers* 38, 625–635, 1991.
- Jones, R.D. and Amador, J.A.: Methane and carbon monoxide production, oxidation, and turnover times in the Caribbean Sea as influenced by the Orinoco River, *J. Geophys. Res., Oceans* 98, 2353–2359, doi:10.1029/92JC02769, 1993.
- [Kawagucci, S., Narita, T., Obata, H., Ogawa, H., Gamo, T.: Molecular hydrogen and carbon monoxide in seawater in an area adjacent to Kuroshio and Honshu Island in Japan, *Mar Chem*, 164, 75-83, doi: 10.1016/j.marchem.2014.06.006, 2014.](#)
- Kettle, A.J.: Diurnal cycling of carbon monoxide (CO) in the upper ocean near Bermuda, *Ocean Model*, 8, 337–367, doi:10.1016/j.ocemod.2004.01.003, 2005.
- King, G.M. and Weber, C.F.: Distribution, diversity and ecology of aerobic CO-oxidizing bacteria, *Nat. Rev. Microbiol.*, 5, 107–118, doi:10.1038/nrmicro1595, 2007.
- Kirk, J. T. O.: Optics of UV-b radiation in natural waters, *Archiv für Hydrobiologie*, 43, 1–16, 1994.
- Kitidis, V., Tilstone, G.H., Smyth, T.J., Torres, R., Law, C.S.: Carbon monoxide emission from a Mauritanian upwelling

- filament, *Mar Chem*, 127, 123–133, doi:10.1016/j.marchem.2011.08.004, 2011.
- Lamontagne, R.A., Swinnerton, J.W., Linnenbom, V.J.: Nonequilibrium of carbon monoxide and methane at the air-sea interface, *J. Geophys. Res.*, 76, 5117–5121, doi:10.1029/JC076i021p05117, 1971.
- 5 Launois, T., Belviso, S., Bopp, L., Fichot, C.G., Peylin, P.: A new model for the global biogeochemical cycle of carbonyl sulfide - Part 1: Assessment of direct marine emissions with an oceanic general circulation and biogeochemistry model, *Atmos. Chem. Phys.*, 15, 2295–2312, doi:10.5194/acp-15-2295-2015, 2015.
- 10 Linnenbom, V.J., Swinnerton, J.W., Lamontagne, R.A.: The ocean as a source for atmospheric carbon monoxide, *J. Geophys. Res.*, 78, 5333–5340, doi:10.1029/JC078i024p05333, 1973.
- Liss, P.S. and Johnson, M.T. (Eds.) *Ocean-Atmosphere Interactions of Gases and Particles*. Springer Berlin Heidelberg, Berlin, Heidelberg, doi:10.1007/978-3-642-25643-1, 2014.
- 15 Logan, J.A., Prather, M.J., Wofsy, S.C., McElroy, M.B.: Tropospheric chemistry: A global perspective, *J. Geophys. Res.*, 7210, doi:10.1029/JC086iC08p07210, 1981.
- 20 Madec, G.: “NEMO Ocean Engine”, Note du Pôle de Modélisation 27, Institut Pierre-Simon Laplace (IPSL), France, <http://www.nemo-ocean.eu>, 2008.
- Matsushita, B., Yang, W., Chang, P., Yang, F., Fukushima, T.: A simple method for distinguishing global Case-1 and Case-2 waters using SeaWiFS measurements, *ISPRS J Photogramm Remote Sens.*, 69, 74–87, doi:10.1016/j.isprsjprs.2012.02.008, 2012.
- 25 [Menkes, C., Boulanger, J.-P., Busalacchi, A. J., Vialard, J., Delecluse, P., McPhaden, M. J., Hackert, E., and Grima, N.: “Impact of TAO vs. ERS wind stresses onto simulations of the tropical Pacific Ocean during the 1993–1998 period by the OPA OGCM, in: Climatic Impact of Scale Interactions for the Tropical Ocean-Atmosphere System”, EuroClivar Workshop Report, 46–48, 1998.](#)
- 30 Miller, W.L. and Zepp, R.G.: Photochemical production of dissolved inorganic carbon from terrestrial organic matter: Significance to the oceanic organic carbon cycle, *Geophys Res Lett*, 22, 417–420, doi:10.1029/94GL03344, 1995.
- Mopper, K., and Kieber, D. J.: *Biogeochemistry of marine dissolved organic matter. Photochemistry and cycling of carbon, sulfur, nitrogen and phosphorus*, (pp. 456–509). San Diego: Academic Press Ch., 2001.
- 35 Moran, M. A., and Miller, W. L.: Resourceful heterotrophs make the most of light in the coastal ocean. *Nat. Rev. Microbiol.*, 2007.
- 40 Morel, A.: Are the empirical relationships describing the bio-optical properties of case 1 waters consistent and internally compatible?, *J. Geophys. Res.*, 114, doi:10.1029/2008JC004803, 2009.
- Morel, A. and Gentili, B.: A simple band ratio technique to quantify the colored dissolved and detrital organic material from ocean color remotely sensed data, *Remote Sens Environ*, 113, 998–1011, doi:10.1016/j.rse.2009.01.008, 2009.
- 45 Morel, A. and Maritorena, S.: Bio-optical properties of oceanic waters: A reappraisal. *J. Geophys. Res.: Oceans* 106, 7163–7180, doi:10.1029/2000JC000319, 2001.
- 50 Maritorena, S., Fanton d’Andon, O. H., Mangin, A., Siegel, D. A.: Merged satellite ocean color data products using a bio-optical model: Characteristics, benefits and issues, *Remote Sens Environ*, 114, 1791–1804, doi: 10.1016/j.rse.2010.04.002,

- 2010.
- Nelson, N.B., Siegel, D.A., Carlson, C.A., Swan, C., Smethie, W.M., Khatiwala, S.: Hydrography of chromophoric dissolved organic matter in the North Atlantic, *Deep Sea Res. Part I Oceanogr. Res. Pap.*, 54, 710–731, doi:10.1016/j.dsr.2007.02.006, 2007.
- Novelli, P. C., K. A. Masarie, P. M. Lang, B. D. Hall, R. C. Myers, and Elkins, J. W.: Reanalysis of tropospheric CO trends: Effects of the 1997–1998 wildfires, *J. Geophys. Res.*, 108(D15), 4464, doi:10.1029/2002JD003031, 2003.
- Ohta, K.: Diurnal variations of carbon monoxide concentration in the equatorial Pacific upwelling region, *Oceanograph Lit Rev*, 44, 1258–1258, 1997.
- Para, J., Coble, P.G., Charrière, B., Tedetti, M., Fontana, C., Sempéré, R.: Fluorescence and absorption properties of chromophoric dissolved organic matter (CDOM) in coastal surface waters of the northwestern Mediterranean Sea, influence of the Rhône River, *Biogeosciences*, 7, 4083–4103, doi:10.5194/bg-7-4083-2010, 2010.
- [Park, K. and Rhee, T. S.: Oceanic source strength of carbon monoxide on the basis of basin-wide observations in the Atlantic. *Environmental Science-Processes & Impacts* 18\(1\): 104-114, doi: 10.1039/c5em00546a, 2016.](#)
- Preiswerk, D. and Najjar, R.G.: A global, open-ocean model of carbonyl sulfide and its air-sea flux, *Global Biogeochem Cycles*, 14, 585–598, doi:10.1029/1999GB001210, 2000.
- Redden, G. D., Characteristics of photochemical production of carbon monoxide in seawater, M.S. thesis, Oregon State Univ., Corvallis, 1983.
- Seiler, W. and Junge, C.: Carbon monoxide in the atmosphere, *J. Geophys. Res.*, 75, 2217–2226, doi:10.1029/JC075i012p02217, 1970.
- Seiler, W., The influence of the biosphere on the atmospheric CO and H₂ cycles. In: Krumbein, W.E. (Ed.), *Environmental Biogeochemistry and Geomicrobiology*, vol. 3. Ann Arbor Science Publishers, Ann Arbor, pp. 773–810, 1978.
- Shanmugam, P.: New models for retrieving and partitioning the colored dissolved organic matter in the global ocean: Implications for remote sensing, *Remote Sens Environ*, 115, 1501–1521, doi:10.1016/j.rse.2011.02.009, 2011.
- Siegel, D.A., Maritorena, S., Nelson, N.B., Hansell, D.A., Lorenzi-Kayser, M.: Global distribution and dynamics of colored dissolved and detrital organic materials: colored dissolved and detrital organic materials, *J. Geophys. Res.: Oceans*, 107, 21-1-21–14, doi:10.1029/2001JC000965, 2002.
- Springer-Young, M., Erickson, D.J., Carsey, T.P.: Carbon monoxide gradients in the marine boundary layer of the North Atlantic Ocean, *J. Geophys. Res.: Atmospheres*, 101, 4479–4484, doi:10.1029/95JD01709, 1996.
- Stubbins, A., Uher, G., Kitidis, V., Law, C.S., Upstill-Goddard, R.C., Woodward, E.M.S.: The open-ocean source of atmospheric carbon monoxide, *Deep Sea Res. Part II Top. Stud. Oceanogr.*, 53, 1685–1694, doi: 10.1016/j.dsr2.2006.05.010, 2006a.
- Stubbins, A., Uher, G., Law, C.S., Mopper, K., Robinson, C., Upstill-Goddard, R.C.: Open-ocean carbon monoxide photoproduction, *Deep Sea Res. Part II Top. Stud. Oceanogr.*, 53, 1695–1705, doi:10.1016/j.dsr2.2006.05.011, 2006b.
- Swinnerton, J.W. and Lamontagne, R.A.: Carbon monoxide in the South Pacific Ocean, *Tellus* 26, 136–142, 1973.

Mis en forme: Couleur de police : Texte 1

- Swinerton, J.W., Linnenbom, V.J., Cheek, C.H.: A sensitive gas chromatographic method for determining carbon monoxide in seawater, *Limnol. Oceanogr.*, 13, 193–195, 1968.
- 5 Swinerton, J.W., Linnenbom, V.J., Lamontagne, R.A.: The ocean: a natural source of carbon monoxide, *Science*, 167, 984–986, 1970.
- Taylor, J.A., Zimmerman, P.R., Erickson, D.J.: A 3-D modelling study of the sources and sinks of atmospheric carbon monoxide, *Ecol Modell*, 88, 53–71, doi:10.1016/0304-3800(95)00069-0, 1996.
- 10 Thompson, A.M. The oxidizing capacity of the earth's atmosphere—probable past and future changes. *Science* 256 (5060), 1157–1165, 1992.
- Tolli, J.D., Sievert, S.M., Taylor, C.D.: Unexpected Diversity of Bacteria Capable of Carbon Monoxide Oxidation in a Coastal Marine Environment, and Contribution of the Roseobacter-Associated Clade to Total CO Oxidation, *Appl. Environ. Microbiol.*, 72, 1966–1973, doi:10.1128/AEM.72.3.1966-1973.2006, 2006.
- 15 Tolli, J.D. and Taylor, C.D.: Biological CO oxidation in the Sargasso sea and in vineyard sound, Massachusetts, *Limnol. Oceanogr.*, 50, 1205–1212, 2005.
- 20 Tran, S., Bonsang, B., Gros, V., Peeken, I., Sarda-Estève, R., Bernhardt, A., Belviso, S.: A survey of carbon monoxide and non-methane hydrocarbons in the Arctic Ocean during summer 2010, *Biogeosciences*, 10, 1909–1935, doi:10.5194/bg-10-1909-2013, 2013.
- Wiesenburg, D.A. and Guinasso Jr, N.L.: Equilibrium solubilities of methane, carbon monoxide, and hydrogen in water and sea water. *J. Chem. Eng. Data*, 24, 356–360, 1979.
- 25 Wilson, D.F., Swinerton, J.W., Lamontagne, R.A.: Production of Carbon Monoxide and Gaseous Hydrocarbons in Seawater: Relation to Dissolved Organic Carbon, *Science*, 168, 1577–1579, doi:10.1126/science.168.3939.1577, 1970.
- 30 Wyrski, K.: An Estimate of Equatorial Upwelling in the Pacific, *J. Phys. Oceanogr.*, 11, 1205–1214, doi:10.1175/1520-0485(1981)011<1205:AEOEUI>2.0.CO;2, 1981.
- Xie, H., Bélanger, S., Demers, S., Vincent, W.F., Papakyriakou, T.N.: Photobiogeochemical cycling of carbon monoxide in the southeastern Beaufort Sea in spring and autumn, *Limnol. Oceanogr.*, 54, 234, 2009.
- 35 Xie, H. and Gosselin, M.: Photoproduction of carbon monoxide in first-year sea ice in Franklin Bay, southeastern Beaufort Sea: photoproduction of CO in sea ice, *Geophys. Res. Lett.*, 32, doi:10.1029/2005GL022803, 2005.
- Xie, H., Zafiriou, O.C., Umile, T.P., Kieber, D.J.: Biological consumption of carbon monoxide in Delaware Bay, NW Atlantic and Beaufort Sea, *Mar. Ecol. Prog. Ser.*, 290, 1–14, 2005.
- 40 [Xie, H. and Zafiriou, O. C.: Evidence for significant photochemical production of carbon monoxide by particles in coastal and oligotrophic marine waters. *Geophys. Res. Lett.* 36, 2009.](#)
- 45 [Yang, G.-P., Ren, C.-Y., Lu, X.-L., Liu, C.-Y., Ding, H.-B.: Distribution, flux, and photoproduction of carbon monoxide in the East China Sea and Yellow Sea in spring. *J. Geophys. Res.*, 116, doi:10.1029/2010JC006300, 2011.](#)
- Zafiriou, O.C., Andrews, S.S., Wang, W.: Concordant estimates of oceanic carbon monoxide source and sink processes in the Pacific yield a balanced global “blue-water” CO budget: concordant oceanic CO budgets, *Global Biogeochem Cycles*, 17, doi:10.1029/2001GB001638, 2003.
- 50

Mis en forme: Anglais (G.B.)

Mis en forme: Couleur de police : Texte 1, Anglais (G.B.)

Supprimé: -

Mis en forme: Couleur de police : Texte 1, Anglais (G.B.)

Mis en forme: Anglais (G.B.)

Zafiriou, O.C., Xie, H., Nelson, N.B., Najjar, R.G., Wang, W.: Diel carbon monoxide cycling in the upper Sargasso Sea near Bermuda at the onset of spring and in midsummer, *Limnol. Oceanogr.*, 53, 835, 2008.

5 Zhang, Y., Xie, H., Fichot, C.G., Chen, G.: Dark production of carbon monoxide (CO) from dissolved organic matter in the St. Lawrence estuarine system: Implication for the global coastal and blue water CO budgets, *J. Geophys. Res.*, 113, doi:10.1029/2008JC004811, 2008.

Ziolkowski, L.A. and Miller, W.L.: Variability of the apparent quantum efficiency of CO photoproduction in the Gulf of Maine and Northwest Atlantic, *Mar Chem*, 105, 258–270, doi:10.1016/j.marchem.2007.02.004, 2007.

10 Zuo, Y. and Jones, R.D.: Formation of carbon monoxide by photolysis of dissolved marine organic material and its significance in the carbon cycling of the oceans, *Naturwissenschaften* 82, 472–474, 1995.

15

20

25

30

35

40

Mis en forme: Police : (par défaut) Times New Roman, 10 pt, Pas Gras, Couleur de police : Automatique

Mis en forme: Interligne : 1,5 ligne, Éviter veuves et orphelines, Ajuster l'espace entre le texte latin et asiatique, Ajuster l'espace entre le texte asiatique et les nombres, Tabulations : Pas à 0,99 cm + 1,98 cm + 2,96 cm + 3,95 cm + 4,94 cm + 5,93 cm + 6,91 cm + 7,9 cm + 8,89 cm + 9,88 cm + 10,86 cm + 11,85 cm

Table 1: photoproduction, dark production, direct phytoplankton production, bacterial sink and CO flux to the atmosphere at the global scale (TgC yr⁻¹) for the different simulations performed. For each experiment the oceanic CO inventory (TgC) and the RMSE value associated to the comparison with *in situ* CO concentrations are shown (nmol L⁻¹).

Experiment	CDOM parameterization	Consumption rate <i>k_s</i> (d ⁻¹)	Photoproduction (TgC yr ⁻¹)	Dark production (TgC yr ⁻¹)	Direct phytoplankton production (TgC yr ⁻¹)	Bacterial sink (TgC yr ⁻¹)	CO flux (TgC yr ⁻¹)	CO inventory (TgC)	RMSE (nmol L ⁻¹)
Standard	Morel, 2009	0.2	19.1	8.5	6.2	30.0	4.0	0.4	1.80
Tests on the CDOM absorption coefficient	Launois et al., 2015	0.2	49.1	29.5	6.2	74.7	10.2	1.0	2.91
	Preiswerk and Najjar, 2000	0.2	14.2	7.2	6.2	24.7	3.0	0.3	1.91
Tests on the bacterial consumption rate	Morel, 2009	0.1	19.1	8.5	6.2	27.5	6.4	0.8	1.97
	Morel, 2009	0.4	19.1	8.5	6.2	31.7	2.3	0.2	1.99
	Morel, 2009	1.0	19.1	8.5	6.2	33.2	1.0	0.1	2.30
	Morel, 2009	2.0	19.1	8.5	6.2	33.0	0.5	0.04	2.45
	Morel, 2009	Variable [mean=0.2]	19.1	8.5	6.2	30.1	3.9	0.4	1.79

- Supprimé: 2
- Supprimé: 21.9
- Supprimé: 3.6
- Supprimé: 3
- Supprimé: 84
- Supprimé: 0.6
- Supprimé: 46.5
- Supprimé: 9
- Supprimé: 64
- Supprimé: 17.9
- Supprimé: 2
- Supprimé: 2
- Supprimé: 98
- Supprimé: 5.6
- Supprimé: 2
- Supprimé: 19
- Supprimé: 5
- Supprimé: 93
- Supprimé: 2
- Supprimé: 23.4
- Supprimé: 1
- Supprimé: 2.03
- Supprimé: 2
- Supprimé: 24.7
- Supprimé: 9
- Supprimé: 33
- Supprimé: 2
- Supprimé: 25.4
- Supprimé: 4
- Supprimé: 0
- Supprimé: 48
- Supprimé: 2
- Supprimé: 22.0
- Supprimé: 5
- Supprimé: 3
- Supprimé: 81
- Mis en forme: Police :Times, 9 pt, Gras, Couleur de police : Texte 1
- Tableau mis en forme
- Mis en forme

Table 2: description of the observation datasets used to build the synthetic dataset of surface seawater CO concentrations.

Dataset	Sampling Location	Season/year	Sampling depth (when specified)	Type of data provided in the paper and digitalized	Data Treatment/Remarks	Representativity of each point	Number of points
Bates et al. 1995	Pacific Ocean 5 North-South transects	Different seasons between 1987 & 1994	5±5m	Daily means plotted in their Figure 3		Daily mean along path of 2-3° northward	150
Conrad et al. 1982	Equatorial Atlantic Ocean	February 1979	1-4m depth	Fig 13 plot of mean diurnal profile of measurements	Average of the diurnal profile to obtain daily mean	18-day mean over a 5° N-S transect	1
Jones 1991	Sargasso Sea	June and Sept 1986		Day and night punctual values from their Fig 2C and 3C 5 obs. for 2 days in June 12 obs. for 3 days in Sept	Mean over the whole cruise	Mean for 2 or 3 days Fixed location	2

Kawagucci et al. 2014	Sea adjacent to Honshu Island in Japan	June and July 2008	0, 5 and 10 m	Table 1: instantaneous values collected at 3 sites: Stn. C – 3 points (0.5, 10m at 17h41). Stn. F – 3 points (0.5, 10m at 11h22). Stn. G – 19 points (0.5, 10m values collected –every 6 hours, 5 times and 0 m values only collected every 6 hours, 4 times)	Average of the values at 0, 5 and 10m to better represent PISCES's grid surface (0-10m). And average of the values taken the same day at Stn. G. Coastal points of Stn. C and F have been removed from the dataset because any grid cell correspond in PISCES-ORCA2 model	Spatially: specific location Temporally: instantaneous values taken at a specific day time for the first two locations and daily mean for the third location	1
Kitidis et al. 2011	Mauritanian upwelling filament	April-May 2009		Mean before noon & mean after noon given in the text p127		Mean of 14 punctual obs. the same day along path ~2°	1
OOMP1 Gros & Bonsang, personal communication	South Atlantic E-W transect	January-February 2007		High frequency data provided directly by B. Bonsang and V. Gros	High frequency data averaged to daily means	Daily mean from roughly 150 observations along path ~5°	14
OOMP2 Gros & Bonsang, personal communication	South Atlantic E-W transect	February-March 2007		High frequency data provided directly by B. Bonsang and V. Gros	High frequency data averaged to daily means	Daily mean from roughly 150 observations along path ~5°	15
Otha 1997	Equatorial Pacific Upwelling region	Nov 1993		Data in Table 1 3 Daily Means		Mean for 3 days Fixed location	1
Park and Rhee 2016	AMT-7 from Grimsby, UK to Falkland Islands, UK	September and October 1998	Underway measurements	Over than 2300. Continuous concentrations given in Fig. 3 and 4.	With help of Fig. 1, 3 and 4 we averaged daily concentrations ((min+max)/2) for most days (23 days).	Each point is at a specific measurement location and represent a daily mean.	23
Stubbins et al. 2006b	Atlantic Meridional Transect	April 2000		Daily min from fig 3 and daily max from Fig4	Assumption Mean = (max-min)/2	Pseudo Daily mean along path ~5°	16
Swinnerton & Lamontagne 1973	South Pacific Ocean	November - December 1972		Daily Means from Fig 3 Identification of sites surrounded by ice	Flag for sampling sites surrounded by ice	Daily mean along path ~6-7°	23 no ice 3 with ice
Swinnerton et al. 1970	Tropical Atlantic Ocean	April 1969		Fig 1: 4 to 9 instantaneous values per day	Daily mean	Daily mean at fixed station	2
Xie et al. 2009	South-eastern Beaufort Sea	Autumn 2003 / Spring 2004		Means and standard deviation from Table 3		Spring= Mean over 18 stations (sampling at different hours in a 1.6°lat x 5.9°lon rectangle) Autumn= Mean over 19 stations (sampling at different hours in a 1.9°lat x 15.6°lon rectangle)	2
Yang et al. 2011	East China Sea Yellow Spring Sea	April-may 2009		Punctual values	Mean when > 3 obs/day	Daily mean over a small path (<2°)	15
Tran et al. 2013	Arctic Ocean	June-July 2010	Direct pumping of sea surface water by the ship	High frequency data provided directly by S. Tran Identification of sites surrounded by ice	Flag for sampling sites surrounded by ice	Daily Mean (between 46 and 246 obs/day)	27 no ice 11 with ice
Zafiriou et al. 2008	Sargasso Sea	August 1999 March 2000		Table 1 Mean of hourly obs for 9 days and for 12 days respectively		Mean for a few days Fixed station	2

Tableau mis en forme

Tableau mis en forme

Supprimé: 33

Table 3: description of the observation datasets used to build the synthetic dataset of vertical profiles of seawater CO₂ concentrations.

Supprimé: ... [3]

Mis en forme: Interligne : simple

Supprimé: ...

Supprimé: 33 ...

	Sampling Location	Season/year	Type of data provided in the paper and digitalized	Data Treatment/Remarks	Representativity of each point	Number of profiles originally / in this dataset
Conrad et al. 1982	Equatorial Atlantic Ocean 3°N to 2°S/22°W	February 1979	0-100meters, several hours from Fig 9	Average of the 17 profiles to obtain an averaged profile	Mean over a 5° N-S transect	17 / 1
Day & Faloon 2009	Northern California coastal upwelling System 38.2;38.3N 123;123.2W	February to May 2006	0-60m 4 individual profiles from Fig 3 for day and night	Coastal	Daily Mean for each site	4 / 2
Jones 1991	Sargasso Sea 27°N, 73°W	June 1986, September 1986 and June 1987	6 individual profiles over 0-200m (fig 2, 3 4) & one mean profile over 0-4500m (fig 5)		For 0-200m, interpolation on similar levels and average of the 6 profiles	6 / 1
Johnson & Bates 1996	Tropical Pacific Ocean RITS93 19°S,149.5°W and RITS94 4°S,140°W to 4°34'Sto140°55'W	April 1993 for 19°S,149.W and December 1993 for 4°S,140.W	0-250meters, for each site one profile at sunrise and 1 in the afternoon 2 contrasted sites, 1 static profile in oligotrophic area (RITS 93) & 1 in upwelling area (Lagrangian, ship, RITS 94) Fig 1	Mean of Sunrise and Afternoon profiles	Mean of 2 profiles per day	4 / 2
Kawagucci et al. 2014	Sea adjacent to Honshu Island in Japan	June and July 2008	Table 1: profiles collected at 3 sites: Stn. C / June – 1 profile, Stn. F / July – 1 profile, Stn. G / July – 5 profiles.	For Stn. F and G (July), we averaged the 6 profiles to produce one profile representative of a daily mean and mean location comprising the 2 original sites	Spatially: specific location for the June profile. For Stn. F and G (July), mean location comprising the 2 original sites. Temporally: specific day time for the June profile (17h41) and daily mean for the July profile.	7/2
Otha 1997	Equatorial Pacific Upwelling region 0°N-159°W	November 1993	0-100meters, several hours Data from fig 2 profiles at different hours (two days, same location)	Average	Mean for 2 days (3 prof/day) Fixed location	6 / 1
Swinerton & Lamontagne 1973	South Pacific Ocean 21N,77S/129W,17 7E	November - December 1972	0 – 100m vertical profiles at 14:00 local time from Fig 4	not indicated	One location at 14:00	10/10
Xie et al. 2009	South-eastern Beaufort Sea spring 70.2;71.8°N 123.5;129.4°E & autumn 69.9;71.8°N 123.1;138.7°E	Autumn 2003 / Spring 2004	0 – 50m vertical profiles Means and standard deviation from Fig 3		Spring= Mean of 37 profiles from 14 stations Autumn= Mean over 16 profiles from 14 stations	2
Yang et al. 2011	East China Sea Yellow Spring Sea 25.4-26.9°N 120.5-122.8°E & 30.8N;128.3E & 27.6N;126.2E	April-May 2009	0-900m, several hours (Fig 3 and 4)		8 of ten are averaged because on the same transect. One other is left alone.	10 / 2
Tran et al. 2013	Arctic Ocean 75°N, -7W;+8E	June-July 2010	0-100m 29 profiles provided directly by S.	Average of 29 profiles		29/1

Tableau mis en forme

Supprimé:

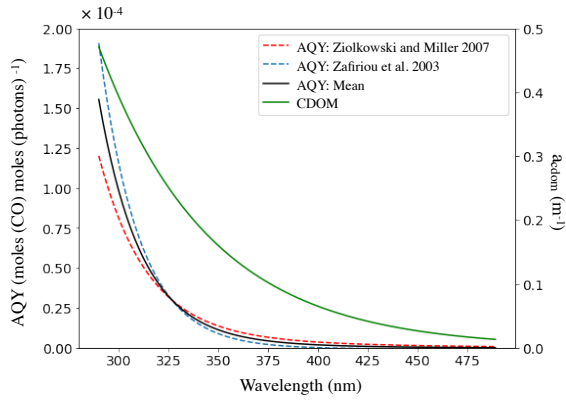
Tableau mis en forme

Supprimé: 33

Supprimé:

	Q23 profiles at 78.5°N -12W+8E		Tran			
Zafiriou et al. 2008	Sargasso Sea August 31.37:31.50°N 64.00:64.03°W March 32.01:32.03°N 64.01:64.02°W	August 1999 and March 2000	0-100m Fig 9 provides 3 mean profiles for different periods of the day (each based 7 or 8 profiles)		Averaged in 1 profile per period (march or august). can be considered as representative of daily means for 7 days	15 / 2

5
10



15 **Figure 1: CO apparent quantum yield (AQY in moles of CO per moles of photons) and CDOM absorption coefficient (a_{cdom} in m^{-1}) as a function of the wavelength (nm). For the AQY, the parameterizations of Ziolkowski and Miller (2007) and Zafiriou et al. (2003) are shown with dotted lines and the resulting mean relation used in PISCES is shown with a continuous line. For a_{cdom} , the relation is shown for a Chla concentration of 1 mg m^{-3} and is calculated according to the parameterization of Morel (2009).**

Supprimé: 33

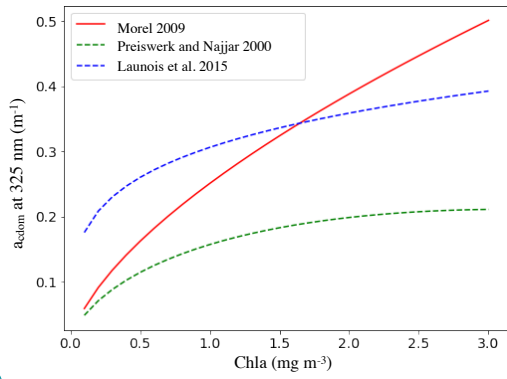
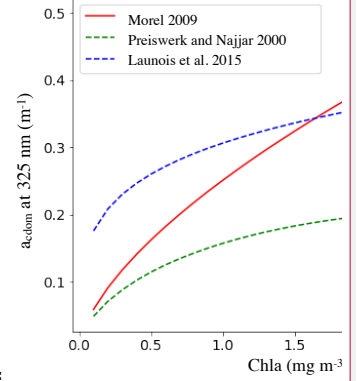


Figure 2: CDOM absorption coefficient (m^{-1}) at 325 nm as a function of the Chla concentration ($mg\ m^{-3}$) for the parameterizations of Morel (2009), Preiswerk and Najjar (2000) and Launois et al. (2015). The continuous line indicates the chosen parameterization.

Mis en forme: Police :Times



Supprimé:

Mis en forme: Police :Times

Mis en forme: Police :9 pt, Gras, Couleur de police : Noir

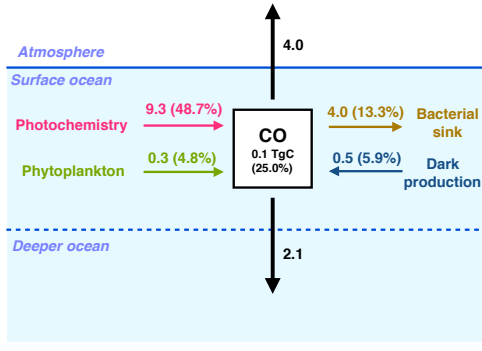
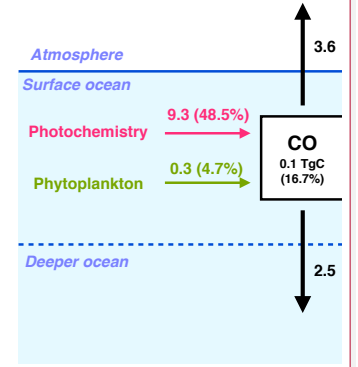


Figure 3: global fluxes in the surface ocean (between 0 and 10 meters) of the oceanic CO sources and sinks (in $TgC\ yr^{-1}$). For each biogeochemical term (photoproduction, direct phytoplankton production, dark production and bacterial consumption), the relative contribution of the surface layer to the whole water column budget is shown as a percentage.



Supprimé:

Mis en forme: Police :9 pt, Gras, Couleur de police : Noir

Supprimé: l

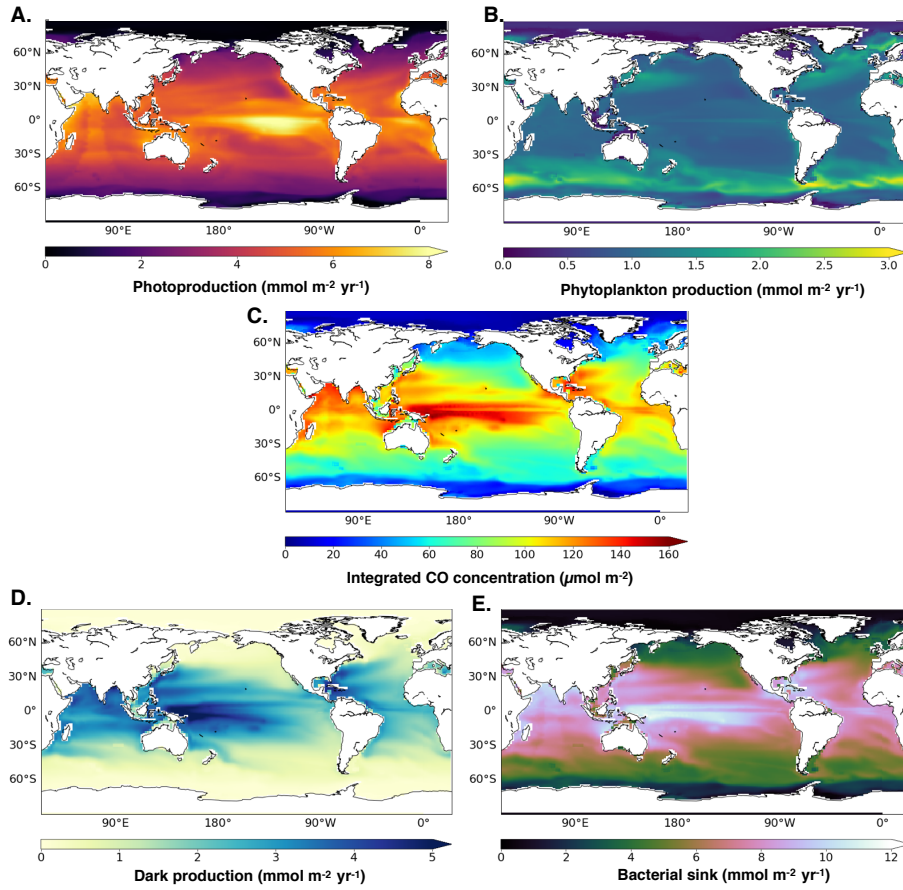
Supprimé: g

Mis en forme: Police :Times, 9 pt, Gras

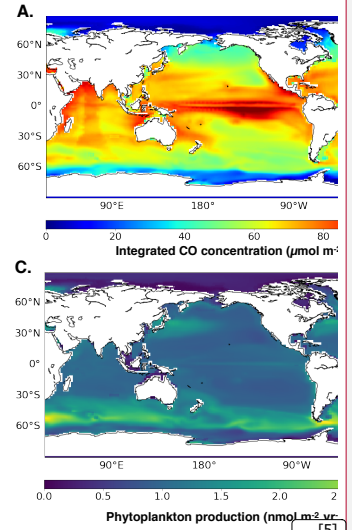
Mis en forme

... [4]

Supprimé: 33



Mis en forme: Police :(par défaut) Times, 9 pt, Gras



Supprimé:

Mis en forme: Police :(par défaut) Times, 9 pt, Gras, Couleur de police : Noir

Supprimé: oceanic CO concentration (A.),

Supprimé: B

Supprimé: C.)

Supprimé: D

Supprimé: 33

5 Figure 4: spatial distribution of the photoproduction (A.), direct phytoplankton production (B.), oceanic CO concentration (C.), dark production (D.) and bacterial sink (E.), vertically integrated upon 1000 meters.

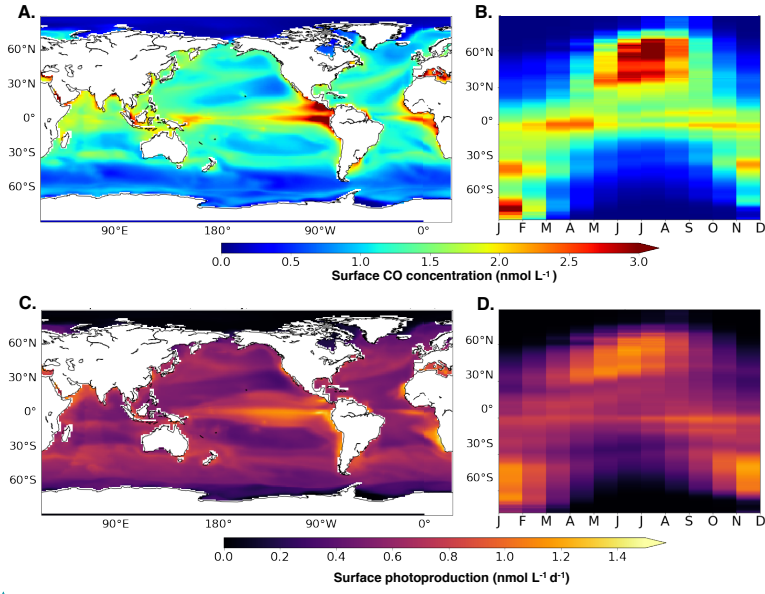


Figure 5: Oceanic CO concentration (A and B) and photoproduction (C and D) between 0 and 10 meters. Panels A and C present the surface spatial distribution of the annual mean. Panels B and D present the mean seasonal variation with latitude.

Mis en forme: Police :(par défaut) Times, 9 pt, Gras, Couleur de police : Noir

Supprimé: ... [6]

Mis en forme: Police :(par défaut) Times, 9 pt, Gras, Couleur de police : Noir

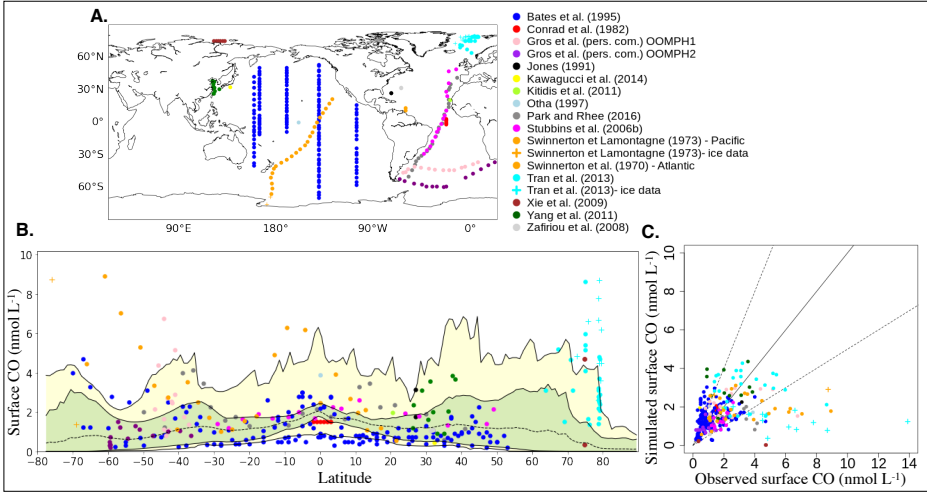
Supprimé: spatial distribution of oceanic

Supprimé: .)

Supprimé: B.)

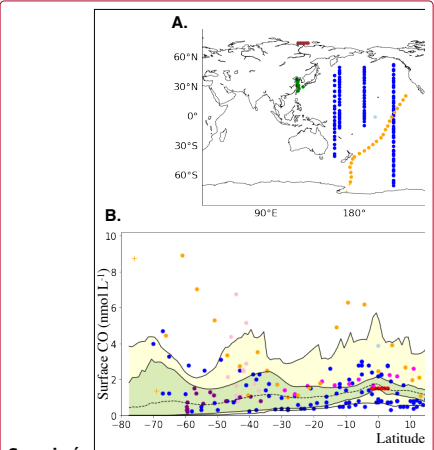
Supprimé: 33

Mis en forme: Police :(par défaut) Times, 9 pt, Gras



5 Figure 6: comparison of *in situ* oceanic CO concentrations between 0 and 10 meters simulated with PISCES with the ones measured in the surface ocean. A: position of the surface measurements collected in the literature. B: Surface CO concentrations as a function of the latitude [Dots = observed concentrations; dotted line = longitudinal and monthly mean simulated CO concentration; green area = interval between maximum and minimum longitudinal mean concentrations; yellow area = interval between maximum and minimum CO concentrations at a given latitude]. Remark= A data point of 13.9 nmol L⁻¹ from the dataset of Tran et al. (2013) has been removed for better visibility. C: Scatter plot the of the simulated CO surface concentrations vs the observed ones. The solid line represents the 1-1 line and dotted lines the 2-1 and 2-1 lines.

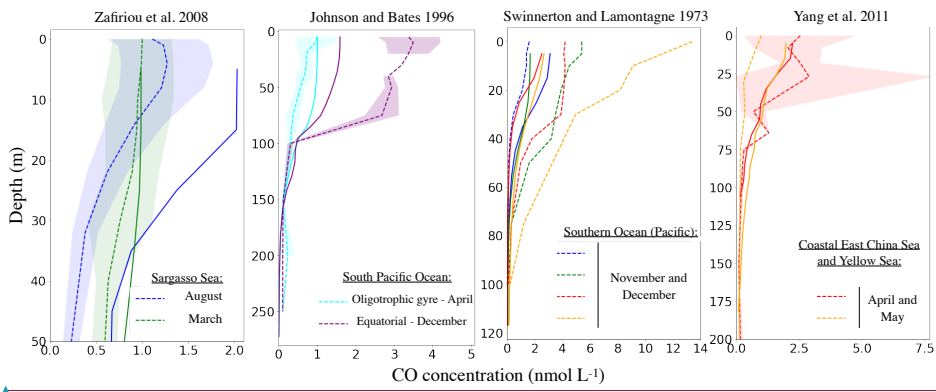
15



Supprimé:

Mis en forme: Police :(par défaut) Times, 9 pt, Gras

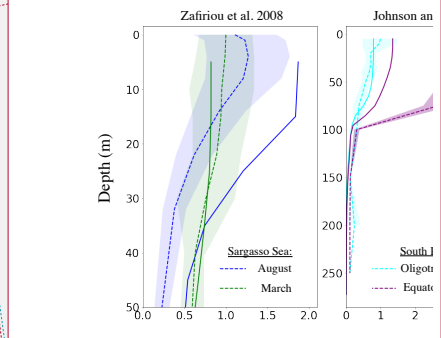
Supprimé: 33



Mis en forme: Police : (par défaut) Times, 9 pt, Gras

Figure 7: comparison of simulated oceanic CO profiles with the measured ones (simulated profiles for the same months and location than measurement). Only a few datasets are shown in this figure (others are available in the Supplement). Dotted lines represent the observed profiles and continuous lines the model output. The standard deviation of the observation, when available, is shown around each observed profiles with the shaded area of the same color.

5
10
15

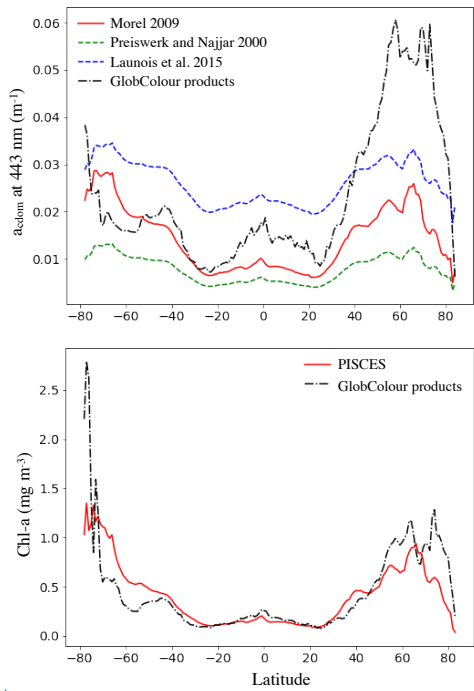


Supprimé:

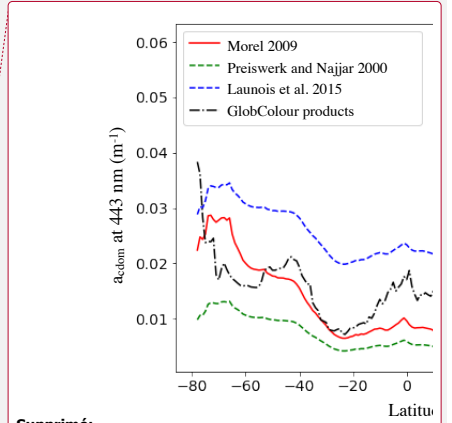
Mis en forme: Police : (par défaut) Times, 9 pt, Gras

Mis en forme: Centré, Tabulations : Pas à 4,21 cm

Supprimé: 33



Mis en forme: Police : (par défaut) Times, 9 pt, Gras, Couleur de police : Noir



Supprimé:

Mis en forme: Police : (par défaut) Times, 9 pt, Gras, Couleur de police : Noir

Supprimé: mean

Supprimé: m^{-1}

Supprimé: the

Supprimé: , for

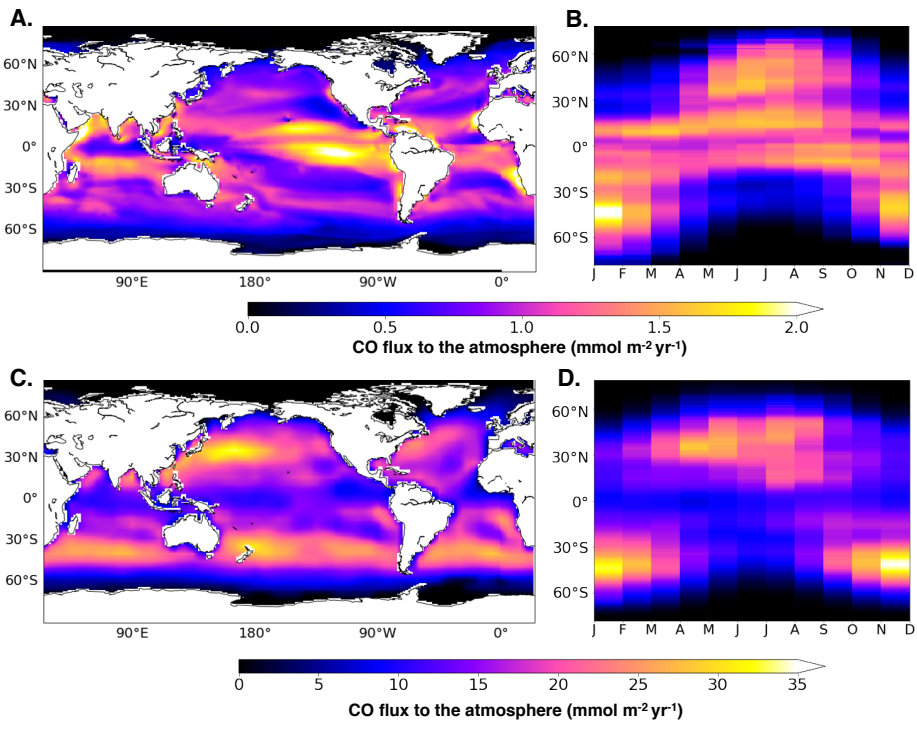
Supprimé: . The mean surface absorption coefficients for the colored detrital matter, retrieved from GlobColour products at 443 nm and averaged over 2002-2012,

Supprimé: also

Mis en forme: Anglais (G.B.)

Supprimé: 33

Figure 8: comparison of the CDOM absorption coefficient at 443 nm (top) and Chl-a (bottom) simulated by PISCES with GlobColour products averaged over 2002-2012, as a function of latitude. For the CDOM absorption coefficient, the different parameterizations tested are shown.



Mis en forme: Police :(par défaut) Times, 9 pt, Gras, Couleur de police : Noir

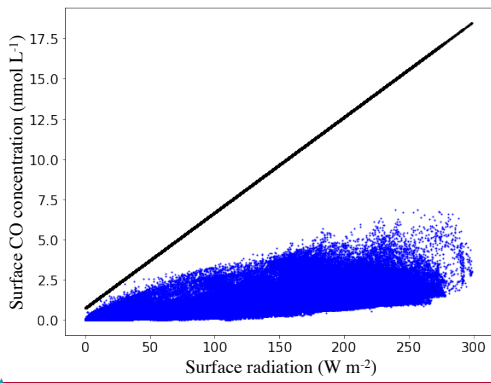
Supprimé: ... [7]

Mis en forme: Police :(par défaut) Times, 9 pt, Gras, Couleur de police : Noir

Supprimé: 33

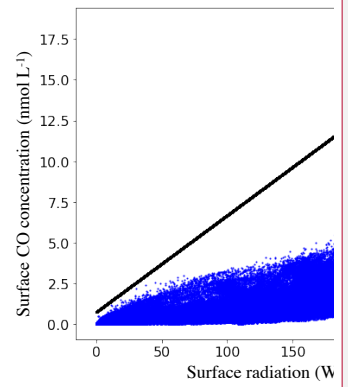
Figure 9: oceanic CO emissions simulated by PISCES (A and B) or by the model of Erickson (1989) (C and D). Panels A and C present the spatial distribution of annual mean emissions. Panels B and D present the mean seasonal variation with latitude. All fluxes are in $\text{mmol m}^{-2} \text{yr}^{-1}$ and are directed toward the atmosphere.

5
10
15



Mis en forme: Police : (par défaut) Times, 9 pt, Gras, Couleur de police : Noir

Figure 10: surface CO concentrations as a function of the total solar radiation available at the surface ocean. Blue dots are mean annual surface concentrations retrieved from PISCES and the black line is the linear relation used by Erickson (1989).



Supprimé:

Mis en forme: Police : (par défaut) Times, 9 pt, Gras, Couleur de police : Noir

Mis en forme: Centré, Éviter veuves et orphelines, Ajuster l'espace entre le texte latin et asiatique, Ajuster l'espace entre le texte asiatique et les nombres, Tabulations : 4,21 cm, À gauche + Pas à 0,99 cm + 1,98 cm + 2,96 cm + 3,95 cm + 4,94 cm + 5,93 cm + 6,91 cm + 7,9 cm + 8,89 cm + 9,88 cm + 10,86 cm + 11,85 cm

Mis en forme: Couleur de police : Noir, Anglais (E.U.)

Supprimé: 33

Éviter veuves et orphelines, Ajuster l'espace entre le texte latin et asiatique, Ajuster l'espace entre le texte asiatique et les nombres, Tabulations : Pas à 0,99 cm + 1,98 cm + 2,96 cm + 3,95 cm + 4,94 cm + 5,93 cm + 6,91 cm + 7,9 cm + 8,89 cm +

Éviter lignes veuves et orphelines, Ne pas ajuster l'espace entre le texte latin et asiatique, Ne pas ajuster l'espace entre le texte et les nombres asiatiques, Tabulations : 0,99 cm, À gauche + 1,98 cm, À gauche + 2,96 cm, À gauche + 3,95 cm, À gauche

