

## Responses to anonymous referee # 1

Thank you for your valuable comments. We incorporated suggestions from the reviewer and we also spent some time and efforts to improving the language in the revised version. Below are our responses to the reviewer and the changes we made to the manuscript. Changes in the revised manuscript are highlighted in yellow

Section of the paper	Comment from the referee #1	Author's response	Author's changes in manuscript
General comments covering all sections of the paper	The results are interesting but the discussion is rather terse and multiple English usage issues will make it necessary to make substantial improvements before I can recommend the manuscript be published. I find the modelling analysis as a whole to be described well but had a difficult time trying to realize what I had learned from the analysis beyond what was already known about applying models at local scales. Emphasizing the novelty of the study and improving the discussion are necessary steps.	We acknowledge the concerns raised by the reviewer	<ul style="list-style-type: none"> <li>• We improve the language in the revised version</li> <li>• We improved the discussion and emphasized the novelty of the study.</li> </ul>
Introduction	The introduction takes a rather conversational tone with rather obvious statements that don't need mentioning.	We acknowledge the concerns raised by the reviewer and we revised the introduction	The introduction was replaced with the new one. In this new introduction, we described in details about the Zambezi forests and included information on the forest extent, carbon storage, and deficiency in the existing literature.
Introduction	Baikiaea Plurijuga', small p	We revised the word 'Plurijuga'	We replaced capital 'P' with small 'p'

Section of the paper	Comment from the referee #1	Author's response	Author's changes in manuscript
Materials and methods	A few too many significant digits in Table 1	We revised the values in table 1 to reduce the number of significant digits.	Rainfall values were rounded to whole numbers and temperature values were written to one decimal place.
Materials and methods	Page 7: why were these GCMs chosen	We acknowledge the concerns raised by the reviewer and we revised the paragraph	We provided the reasons in the manuscript for our choice of GCMs
Results	Figure 3 is not convincing; this doesn't validate the model if that is the goal of this analysis	We acknowledge the concerns raised by the reviewer	Figure 3 was deleted from the revised manuscript
Results	Figure 7 is very hard to read. I recommend trying a different way to display the data.	We acknowledge the concerns raised by the reviewer and we displayed the data in a different way that is easier for the reader to understand.	<ul style="list-style-type: none"> <li>• This figure showed mean annual vegetation carbon stocks, LAI and NPP simulated with local and default soil and tree parameter values, and forcing the model with local and modelled climate data. In the manuscript, we only showed values simulated with a combination of default tree, default soil, and modelled climate data, and also a combination of local tree, local soil and local climate data. The results of the effects of each of these default tree parameters, default soil parameters, local tree, local soil parameters, local climate, and modelled climate data were taken to supplementary information (Figure S6).</li> <li>• After the revisions, figure 7 in the old version became figure 6 in the revised manuscript.</li> </ul>
Discussion	I'm confused as to why 1.5 m soil depth is chosen if 'In the sites, trees access soil water down to more than 5 m depth according to the trees' rooting depth in the Zambezi teak	We acknowledge the concerns raised by the reviewer and revised our argument after gaining more	We removed this argument from our discussion after gaining more insight from literature on how rooting depth affect water uptake by plants. Literature (For example Christoffersen et al. (2014)) indicates that

Section of the paper	Comment from the referee #1	Author's response	Author's changes in manuscript
	forests.' This really doesn't make sense to me, even if your measurements suggest that 1.5 is the maximum depth at the sites, it is easy to underestimate rooting depth	insight from literature on how rooting depth affect water uptake by plants.	<p>water uptake by plants is dependent on different factors and rooting depth is just one them. However, there is no direct relationship between water uptake by plants and the rooting depth. So far, no study has been conducted in the Zambezi teak forests to determine the depth at which the trees take up water.</p> <p>The effect of rooting depth on water uptake by plants differs with locality and species (Christoffersen et al., 2014). Our previous studies (Ngoma et al., 2018a, b) reported different species composition at each of the three studied sites (Kabompo, Namwala and Sesheke), though some of them are common. Roots were only uprooted at the drier Sesheke site, indicating that the rooting depths of trees at the Kabompo and Namwala sites are not yet known. Thus, simulating tree growth using the default 1.5 m rooting depth was logical as we did not have full information on the rooting depth of trees at the other two sites (Kabompo and Namwala). However, we studied soil characteristics down to 1.5 m depth at all the three sites, giving us the needed soil information at all the sites. Thus, using the default and uniform 1.5 m rooting depth enabled us to easily compare results at the three sites.</p>
Discussion	What does this mean 'This opens the novel concept to improve and validate LPJ-GUESS model'.	We adjusted this sentence to make it easier for the reader to understand	We clarified in the revised manuscript that the clear representation of carry-over effects in LPJ-GUESS model would improve model results. We therefore removed the sentence 'This opens the novel concept to

Section of the paper	Comment from the referee #1	Author's response	Author's changes in manuscript
			improve and validate LPJ-GUESS model' from the revised manuscript.
Discussion	Please re-read the manuscript carefully for usage, for example 'As a results,' on page 17. And the next sentence, 'to what extent modelling results are realistically since'	The sentences were revised	<ul style="list-style-type: none"> <li>The letter 's' was removed from the word 'results'. The correct word is 'result'.</li> <li>The sentence, 'to what extent modelling results are realistically since', was re-written as 'The reality of modelling results are therefore not certain since CO<sub>2</sub> enrichment experiments are lacking in the tropics'</li> </ul>
Discussion	'Activity of photosynthetic enzymes also reduces (Farquhar et al., 1980)'. Lots of wording needs changes.	The sentence was revised	The sentence was re-written as 'Higher temperatures of above 31°C also reduce activities of photosynthetic enzymes'
Discussion	The Discussion was rather short. What sorts of uncertainties need to be reduced, what directed studies would improve results, what have we learned from this study?	We acknowledge the concerns raised by the reviewer and we revised the discussion	We expanded the discussion by including the uncertainties that need to be reduced and by recommending some studies that would improve results. We further highlighted the lessons learned from the study by emphasising the novelty of the study

## References

- Christoffersen, B. O., Restrepo-Coupe, N., Arain, M. A., Baker, I. T., Cestaro, B. P., Ciais, P., Fisher, J. B., Galbraith, D., Guan, X., Gulden, L., van den Hurk, B., Ichii, K., Imbuzeiro, H., Jain, A., Levine, N., Miguez-Macho, G., Poulter, B., Roberti, D. R., Sakaguchi, K., Sahoo, A., Schaefer, K., Shi, M., Verbeeck, H., Yang, Z.-L., Araújo, A. C., Kruijt, B., Manzi, A. O., da Rocha, H. R., von Randow, C., Muza, M. N., Borak, J., Costa, M. H., Gonçalves de Gonçalves, L. G., Zeng, X., and Saleska, S. R.: Mechanisms of water supply and vegetation demand govern the seasonality and magnitude of evapotranspiration in Amazonia and Cerrado, *Agric. For. Meteorol.*, 191, 33-50, 2014.
- Ngoma, J., Moors, E., Kruijt, B., Speer, J. H., Vinya, R., Chidumayo, E. N., and Leemans, R.: Below and above-ground carbon distribution along a rainfall gradient. A case of the Zambezi teak forests, Zambia *Acta Oecologica* 87, 45-57, 2018a.
- 10 Ngoma, J., Moors, E., Kruijt, B., Speer, J. H., Vinya, R., Chidumayo, E. N., and Leemans, R.: Data for developing allometric models and evaluating carbon stocks of the Zambezi Teak Forests in Zambia, Data in Brief 17, 1361-1373, 2018b.

## Responses to anonymous referee #2

Thank you for your valuable comments. We incorporated suggestions from the reviewer and we also spent some time and efforts to improving the language in the revised version. Below are our responses to the reviewer and the changes we made to the manuscript. Changes in the revised manuscript are highlighted in yellow

Section of the paper	Comment from the referee #2	Author's response	Author's changes in manuscript
Title	The title could be improved again in my opinion; I found it a bit misleading as it sounds more like observational study than modelling study.	We modified the title to reflect the modelling approach.	The new title is: “Modelling the response of Net Primary Productivity of Zambezi teak forests to climate change along a rainfall gradient in Zambia”
Introduction	Page 3: The introduction doesn't describe much about the area of need for this study which I found it difficult to convince the readers the importance of this study. The authors state that Zambezi forests play a substantial role in mitigating climate change on line 24-25, but didn't elaborate further on this. I feel it is better to describe in details about the Zambezi forest in relation to NPP particularly the forest extent and carbon storage and also deficiency in the existing literature.	We acknowledge the concerns raised by the reviewer and we revised the introduction	The introduction was replaced with the new introduction. In this new introduction, we described in details about the Zambezi forests and included information on the forest extent, carbon storage, and deficiency in the existing literature.
Results	What are the uncertainties of projected changes in climate and NPP? I recommend to add error bars to the figures 2, 7 and 8.	We acknowledge the concerns raised by the reviewer and added the error bars as suggested	We added error bars to figures 2, 7 and 8 as highlighted by the reviewer. However, these figures 2, 7 and 8 in the old manuscript will be figures 2, 6 and 7 respectively in the revised manuscript

Section of the paper	Comment from the referee #2	Author's response	Author's changes in manuscript
Materials and methods	Page 6, line 28: LAI is a unit less measure	We acknowledge the concerns raised by the reviewer and revised line 28	The units were removed from LAI
Materials and methods	Page 6, line 32: CA <sub>max</sub> is not found in the listed equations	We acknowledge the concerns raised by the reviewer and we revised line 32.	CA <sub>max</sub> was removed since it is not in the listed equations
Results	Page 10, line 8-9: The authors described how much the rainfall will increase or decrease under RCP 8.5 but not for RCP 4.5. Please also provide values or statistics for RCP 4.5.	We acknowledge the concerns raised by the reviewer and we revised line 8-9.	The values of projected rainfall changes under RCP 4.5 were provided in the revised manuscript.
Discussions	<p>Page 16, line 23 to Page 17, line 7: I found these arguments or discussions are ambiguous and obscure. I don't understand what the authors mean by 'limited amount of soil water availability in LPJ-GUESS model'.</p> <p>Since the authors also discussed that the carry-over effects of rainfall on trees' productivity has been reported by other researchers, how does this be novel though?</p>	We acknowledge the concerns raised by the reviewer and we revised this section	<ul style="list-style-type: none"> <li>The argument presented on page 16, line 23 to Page 17, line 7 has been removed from the discussion after gaining more insight from literature on how rooting depth affect water uptake by plants. Literature (For example Christoffersen et al. (2014)) indicates that water uptake by plants is dependent on different factors and rooting depth is just one them. However, there is no direct relationship between water uptake by plants and the rooting depth. So far, no study has been conducted in the Zambezi teak forests to determine the depth at which the trees take up water. The effect of rooting depth on water uptake by plants differs with locality and species (Christoffersen et al., 2014). Our previous studies (Ngoma et al., 2018a, b) reported different species composition at each of the three studied sites (Kabompo, Namwala and Sesheke), though some of them are common. Roots were only uprooted at the drier</li> </ul>

Section of the paper	Comment from the referee #2	Author's response	Author's changes in manuscript
			<p>Sesheke site, indicating that the rooting depths of trees at the Kabompo and Namwala sites are not yet known. Thus, simulating tree growth using the default 1.5 m rooting depth was logical as we did not have full information on the rooting depth of trees at the other two sites (Kabompo and Namwala). However, we studied soil characteristics down to 1.5 m depth at all the three sites, giving us the needed soil information at all the sites. Thus, using the default and uniform 1.5 m rooting depth enabled us to easily compare results at the three sites.</p> <ul style="list-style-type: none"> <li>• We clarified in the revised manuscript that the clear representation of carry-over effects in LPJ-GUESS model would improve model results. We therefore removed the sentence 'This opens the novel concept to improve and validate LPJ-GUESS model' from the revised manuscript</li> </ul>
Discussions	Page 17, line 19-20: Please fix the typing error for 'As a result: : :'. :	We corrected the typing error	We removed the letter 's' from the word 'results'. The correct word was 'result'
Discussions	Page 18-19: Some acronyms are not found in Table 3 – JULES, ORCHIDEE, CEVSA, DLEM.	All acronyms that are not found in table 3 were removed	We removed JULES, ORCHIDEE, CEVSA and DLEM. from the list of acronyms
Discussions	Page 19, line 3: Please fix the typing error. : : :in there physiological properties.	The typing error was corrected	The word 'there' was replaced with the word 'their'

## References

- Christoffersen, B. O., Restrepo-Coupe, N., Arain, M. A., Baker, I. T., Cestaro, B. P., Ciais, P., Fisher, J. B., Galbraith, D., Guan, X., Gulden, L., van den Hurk, B., Ichii, K., Imbuzeiro, H., Jain, A., Levine, N., Miguez-Macho, G., Poulter, B., Roberti, D. R., Sakaguchi, K., Sahoo, A., Schaefer, K., Shi, M., Verbeeck, H., Yang, Z.-L., Araújo, A. C., Kruijt, B., Manzi, A. O., da Rocha, H. R., von Randow, C., Muza, M. N., Borak, J., Costa, M.

- H., Gonçalves de Gonçalves, L. G., Zeng, X., and Saleska, S. R.: Mechanisms of water supply and vegetation demand govern the seasonality and magnitude of evapotranspiration in Amazonia and Cerrado, *Agric. For. Meteorol.*, 191, 33-50, 2014.
- Ngoma, J., Moors, E., Kruijt, B., Speer, J. H., Vinya, R., Chidumayo, E. N., and Leemans, R.: Below and above-ground carbon distribution along a rainfall gradient. A case of the Zambezi teak forests, Zambia *Acta Oecologica* 87, 45-57, 2018a.
- 5 Ngoma, J., Moors, E., Kruijt, B., Speer, J. H., Vinya, R., Chidumayo, E. N., and Leemans, R.: Data for developing allometric models and evaluating carbon stocks of the Zambezi Teak Forests in Zambia, *Data in Brief* 17, 1361-1373, 2018b.



# **Modelling** the response of Net Primary Productivity of Zambezi teak forests to climate change along a rainfall gradient in Zambia

5 Justine Ngoma<sup>1,2</sup>, Maarten C. Braakhekke<sup>4</sup>, Bart Kruijt<sup>2</sup>, Eddy Moors<sup>4,6</sup>, Iwan Supit<sup>2</sup>, James H. Speer<sup>3</sup>, Royd Vinya<sup>1</sup> & Rik Leemans<sup>5</sup>

<sup>1</sup>School of Natural Resources, The Copperbelt University P.O. Box 21692, Kitwe, Zambia.

10 <sup>2</sup>Water Systems and Global Change Group, Wageningen University and Research, P.O. Box 47, 6700AA Wageningen, The Netherlands

<sup>3</sup>Department of Earth and Environmental Systems, Indiana State University, Terre Haute, Indiana, 47809 USA

<sup>4</sup>VU University Amsterdam, De Boelelaan 1085, 1081 HV Amsterdam, The Netherlands

<sup>5</sup>Environmental Systems Analysis Group, Wageningen University and Research, P.O. Box 47, 6700AA Wageningen, The Netherlands.

15 <sup>6</sup>IHE Delft Institute for Water Education, PO Box 3015, 2601 DA Delft, The Netherlands

*Correspondence to:* Justine Ngoma ([justinangoma@yahoo.com](mailto:justinangoma@yahoo.com))

20

25

30

**Abstract.** Understanding climate change effects on forests is important considering the role forests play in mitigating climate change. We studied the effects of changes in temperature, rainfall, atmospheric carbon dioxide (CO<sub>2</sub>) concentration, solar radiation, and number of wet days (as a measure of rainfall intensity) on net primary productivity (NPP) of the Zambian Zambezi teak forests along a rainfall gradient. Using 1960-1989 as base-line, we projected changes in NPP for the end of the 21<sup>st</sup> century (2070-2099). We adapted the parameters of the dynamic vegetation model, LPJ-GUESS, to simulate the growth of Zambian forests at three sites along a moisture gradient receiving annual rainfall of between 700 mm to more than 1000 mm. The thus adjusted plant functional type was tested against measured data. We forced the model with contemporary climate data (1960-2005) and with climatic forecasts of an ensemble of five General Circulation Models (GCMs) following RCP4.5 and RCP8.5. We used local soil parameter values to characterize texture and measured local tree parameter values for maximum crown area, wood density, leaf longevity, and allometry. The results simulated with the LPJ-GUESS model improved when we used these newly generated local parameters indicating that using local parameter values is essential to obtaining reliable simulations at site level. The adapted model setup provided a baseline for assessing the potential effects of climate change on NPP in the Zambezi teak forests. While increased CO<sub>2</sub> concentration enhances NPP at the wetter Kabompo and the intermediate Namwala sites, NPP decreases at the drier Sesheke site under both RCPs by the end of the 21<sup>st</sup> century. The projected decreased NPP under RCP8.5 at the Sesheke site results from the reduced rainfall coupled with increasing temperatures. We thus demonstrated that differences in rainfall pattern influence the way in which climate change will affect forest resources. The projected increase in CO<sub>2</sub> concentration would thus, have more effects on NPP in high rainfall receiving areas, while in arid regions, NPP would be affected more by the changes in rainfall and temperature.

25

30

## 1 Introduction

5 The tropical Zambezi teak forests represent important forest types of southern Africa. They are found in Angola, Botswana, Namibia, Zambia, and Zimbabwe. These forests are a source of valuable commercial timber produced from *Baikiaea plurijuga* Harm and provide employment through wood based industries (Pearce, 1986a; Pearce, 1986c). Additionally, the Zambezi teak forests play a substantial role in mitigating climate change as carbon sinks (Sarmiento and Gruber, 2002).

The Zambezi teak forests cover 9 % of Zambia's total forest area (Matakala et al., 2015) and store between 15t C ha<sup>-1</sup> to 36t C ha<sup>-1</sup> (Ngoma et al., 2018a) across a south-north climatic gradient with annual rainfall ranging from 700 mm to 1100 mm.

10 They are found on the flat areas covered with a thick layer of Kalahari sands (The Government of the Republic of Zambia, 1996). These Zambezi teak forests are threatened by deforestation, and between 1975 to 2005 the forests halved in area (Musgrave, 2016) due to logging and agricultural activities, driven by economic and population growth (Matakala et al., 2015; Theilade et al., 2001). Climate change is another threat to the Zambezi teak forests.

15 In southern Africa, rainfall has declined (Hoerling et al., 2006; Niang et al., 2014) and dry spells have increased (New et al., 2006) over the last few decades. Model projections indicate that this trend will continue in the future. During the past half century, mean annual temperatures increased by 0.5 °C in some parts of Africa (Niang et al., 2014). By the end of the 21<sup>st</sup> century, southern African mean temperatures are projected to increase by between 3.4 °C and 4.2 °C above the 1981-2000 baseline under the A2 scenario (Niang et al., 2014).

20 In southern Zambia, maximum temperatures increased by 1 °C between 1976 and 2016 (Dube and Nhamo, 2018), and over the past 30 years, the Zambian mean temperatures increased by 0.6 °C (Bwalya, 2010). A 31 years of temperature records showed a substantial increase in average seasonal temperatures (October–April) (Mulenga et al., 2017). By the year 2070, Zambia's temperatures are projected to increase by 2.9 °C with reference to 1880 (The Government of the Republic of Zambia et al., 2007). Rainfall reduced by 47 mm between 1976 and 2016 in Southern Zambia (Dube and Nhamo, 2018). Magadza (2011) reported a declining trend in rainfall beginning in the early 1980's though other researchers did not find significant

25 changes in Zambia's rainfall (Kampata et al., 2008; Mulenga et al., 2017; Stern and Cooper, 2011). Drought and seasonal floods have increased in Zambia and the worst drought was experienced in 1991/1992 (The Government of the Republic of Zambia et al., 2007). The latest drought was recorded in 2007/2008 rainy season (Bwalya, 2010). During the 1978/1979 season, Zambia experienced the wettest conditions ever (Bwalya, 2010). Projections show that by the year 2070, Zambia's rainfall will increase with reference to 2010 (The Government of the Republic of Zambia et al., 2007).

30 The effects of these climatic changes will vary with location, ecosystem types, and climate zones (Wu et al., 2011). While increased temperature stimulates plant productivity to its optimal temperature in some plants (Wu et al., 2011) it also exponentially stimulates autotrophic plant respiration (Burton et al., 2008; Wu et al., 2011). Such increasing temperature

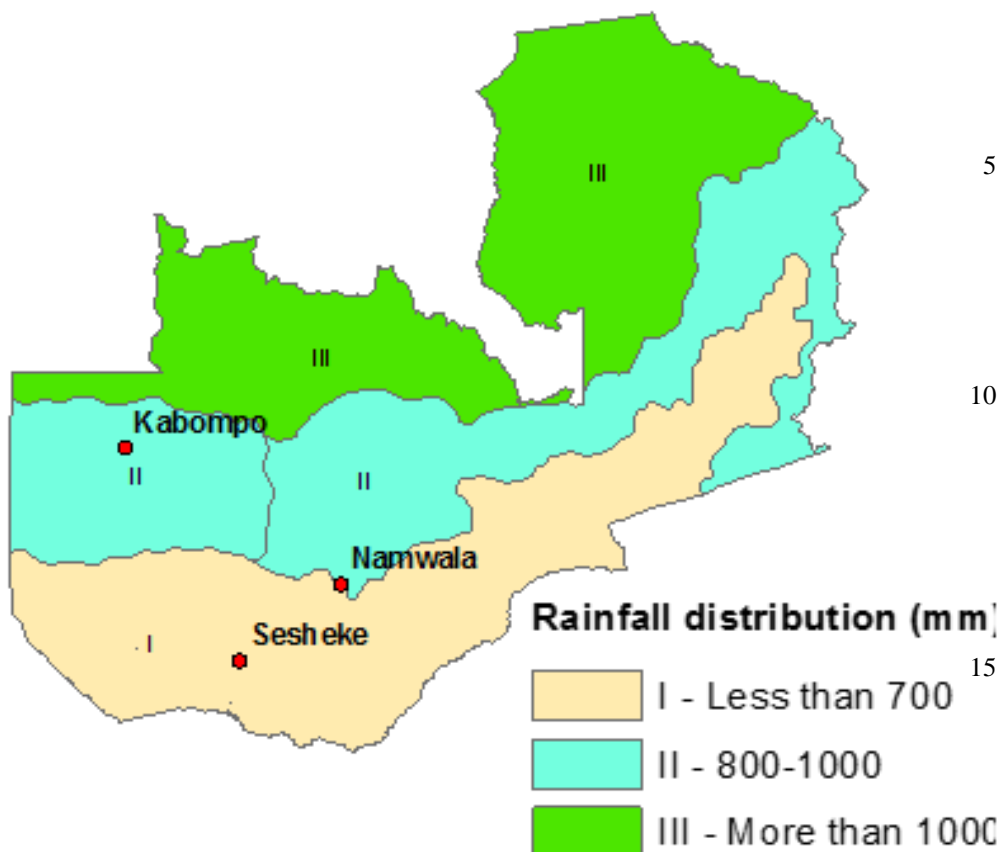
effects can either be enhanced or moderated, depending on whether water availability decreases or increases (Chen et al., 2013). Reduced rainfall, generally suppresses the productivity of the plants (Wu et al., 2011).

In Zambia, the potential effects of climate change on the forests remain uncertain and the response of net primary productivity (NPP) to climate change could be diverse due to strong heterogeneity and variability in regional contemporary climatic conditions and the differences in projected future climatic conditions. Understanding how terrestrial NPP responds to climate change is important as it subsequently affects forests' biomass. Biomass loss also implies a potential risk of losing the various ecosystem services provided by the forests (Pearce, 1986a; Pearce, 1986c; Sarmiento and Gruber, 2002). In this study, we applied the LPJ-GUESS model (Ahlström et al., 2012; Smith et al., 2001) to quantify the projected future effects of changes in temperature, rainfall, CO<sub>2</sub> concentration, solar radiation, and number of wet days on NPP under RCP4.5 and RCP8.5. We projected changes in NPP for the end of the 21<sup>st</sup> century (2070-2099) with reference to 1960-1989 period as baseline. Our overall objective was to assess the future response of the NPP to climate change in the Zambezi teak forests along a rainfall gradient in Zambia.

## 2 Materials and methods

### 2.1 Study sites

We carried out the study for the Zambian Zambezi teak forests at the Kabompo (14° 00.551S, 023° 35.106E), Namwala (15° 50.732S, 026° 28.927E), and Sesheke (17° 21.278S, 24° 22.560E) sites. At the Sesheke site, the Masese forest reserve was assessed while at the Namwala site, we assessed the Ila forest reserve. At the Kabompo site, we studied the Kabompo and Zambezi forest reserves. While the Masese forest reserve is found in the drier agro-ecological zone I, the Kabompo and Zambezi forest reserves are located in the wetter ecological zone II. The Ila forest reserve at the Namwala site stretches along ecological zones I and II (Fig. 1 and Table 1).



**Figure 1.** Rainfall pattern and distribution of study sites following the ecological zones I, II, and III (Wamunyima, 2014)

20 **Table 1.** Climate and soil characteristics at Kabompo, Namwala, and Sesheke. For rainfall and temperature, the period covered for average values presented are given in brackets.

Parameter	Kabompo	Namwala	Sesheke
Coordinates	14°00.551S, 023°35.106E	15°50.732S, 026°28.927E	17°21.278S, 24°22.560E
Ecological zone	II	I and II	I
Total annual rainfall (mm)	983 (1944-2011)	905 (1944-2011)	643 (1947-2011)
Mean annual temperature (°C)	21.4 (1959-2003)	21.6 (1959-2011)	21.5 (1950-2011)
Nitrogen (%)	0.04	0.03	0.03
Clay (%)	0.53	0.56	0.31
Silt (%)	0.54	0.55	0.43
Fine sand (%)	35.51	63.22	24.89
Course sand (%)	63.42	35.70	74.31
pH-H <sub>2</sub> O	5.55	5.74	5.86
Organic carbon (%)	0.77	0.73	0.90
Soil bulky density (g/m <sup>3</sup> )	1.54	1.53	1.87

## 2.2 The LPJ-GUESS model description

LPJ-GUESS (Ahlström et al., 2012; Smith et al., 2001) is a dynamic vegetation model (DVM) optimised for local, regional, and global applications. The model uses temperature, precipitation, solar radiation, number of wet days, CO<sub>2</sub> concentrations, and soil texture as input variables to simulate the exchange of water and carbon between soils, plants, and the atmosphere. The ecosystem composition and structure is then determined for each simulated scale. One grid cell has a number of patches of approximately 0.1 ha in size (Smith et al., 2001). Each patch has a mixture of PFTs (Ahlström et al., 2012; Sitch et al., 2003), distinguished by their bioclimatic niche (distribution in climate space), growth form (tree or herb), leaf phenology (evergreen, summer green, or rain green), photosynthetic pathway (C3 or C4), and life history type (shade-tolerant or shade-intolerant). In a patch, each woody plant belongs to one PFT and has a unique set of parameters that control establishment, phenology, carbon allocation, allometry, survival response to low light conditions, scaling of photosynthesis and respiration rates, and the limits in climate space the PFT can occupy. In the model, leaf longevity has a direct relationship with carbon storage, and in LPJ-GUESS the relationship is implemented by relating the specific leaf area (SLA; m<sup>2</sup> kg C<sup>-1</sup>) to leaf longevity (See Eq. (1)) according to the ‘leaf economics spectrum’ (Reich et al., 1997).

$$SLA = 0.2 \times e^{(6.15 - 0.46 \times \ln(12\alpha))} \quad (1)$$

where  $\alpha$  is leaf longevity (in years).

Photosynthesis, stomatal conductance, plant water uptake and evapotranspiration are modelled concurrently on a daily time step by a coupled photosynthesis and water module, which was adapted from the BIOME3 model (Haxeltine and Prentice, 1996). Soils have an upper (0.0 m to 0.5 m) and a lower (0.5 m to 1.5 m) layer, identical in texture. Water enters the upper soil layer through precipitation. Transpiration and evapotranspiration deplete the water content of the soil. Additional depletion of soil water may occur through percolation beyond the lower soil layer and out of reach by plant roots. Uptake by plants is partitioned according to the PFT specific fraction of roots situated in each layer (Smith et al., 2001).

Net Primary Productivity (NPP) is determined from Gross Primary Productivity (GPP) after accounting for maintenance and growth respiration. The accrued NPP is allocated on an annual basis to leaves, sapwood and fine roots, enabling tree growth (Sitch et al., 2003). This allocation is adjusted such that the following four allometric equations, or “constraints”, controlling the structural development of the average individual, remain satisfied: Leaf area to sapwood cross-sectional area relationship (McDowell et al., 2002) (See Eq. (2)), the functional balance constraint (See Eq. (3)), the stem mechanics equation (Huang et al., 1992) (See Eq. (4)), and the crowding constraint (See Eq. (5)) (Reineke, 1933). In LPJ-GUESS, crown area (m<sup>2</sup> per individual) is determined from stem diameter (See Eq. (6)) and tree diameter is derived from the sapwood, heartwood, and wood density (See Eq. (7)).

Changes in PFT populations occur through the establishment and mortality of individuals. Bioclimatic limits (average climate of the last 30 years) determine which PFTs are able to establish under current climatic conditions, and establishment is implemented at the end of each simulation year for each PFT. Individual plants die due to stress, senescence, disturbance, and fire. Fire depends on litter load, flammability and the available water content. Available water content is determined from the

uppermost soil layer as a surrogate for the litter moisture content, which is not modelled explicitly (Thonicke et al., 2001). Biomass-destroying disturbances are simulated as a stochastic (random) process, affecting individual patches. The generic disturbances with a 100 year expected interval were prescribed. These kill all individuals on an affected patch, converting their biomass to litter (Smith et al., 2001). We used LPJ-GUESS version 3.0 and implemented a ‘cohort mode’ for our study (Braakhekke et al., 2017; Smith et al., 2001). Though this model version accounts for nitrogen dynamics in soil and vegetation, we did not switch nitrogen on during our simulations.

$$LAI = K_{lasa} \times SA \quad (2)$$

$$C_{leaf} = K_{lr} \times \omega \times C_{root} \quad (3)$$

$$H = K_{allom2} \times D^{K_{allom3}} \quad (4)$$

$$N \approx D^{-K_{rp}} \quad (5)$$

$$CA = K_{allom1} \times D^{K_{rp}} \quad (6)$$

$$D = \left[ \frac{4 \times (C_{sapwood} + C_{heartwood})}{WD \times \pi \times K_{allom2}} \right]^{1/(2+K_{allom3})} \quad (7)$$

Where  $K_{lasa}$ ,  $K_{lr}$ ,  $K_{rp}$ ,  $K_{allom1}$ ,  $K_{allom2}$ , and  $K_{allom3}$  are all constants, LAI is the leaf area index, SA is the sapwood cross section area ( $m^2$ ),  $C_{leaf}$  is leaf carbon ( $kg\ C\ m^2$ ),  $C_{root}$  is root carbon ( $kg\ C\ m^2$ ),  $\omega$  is the mean annual value of a drought-stress factor which varies between 0 and 1 and higher values represent greater water availability. In our study we used a value of 0.35, which is the water stress threshold for leaf abscission (i.e. the point at which the leaves start shading). H stands for total tree height (m), D is tree diameter (m), N stands for population density (individuals per  $m^2$ ), CA is crown area ( $m^2$ ), WD stands for wood density ( $kg\ C\ m^{-3}$ ),  $C_{sapwood}$  is sapwood carbon ( $kg\ C\ m^2$ ), and  $C_{heartwood}$  is heartwood carbon ( $kg\ C\ m^2$ ).

### 2.3 Data sources

We collected data on soil and vegetation parameters from the field survey (Ngoma et al., 2018a, b) while climate data was collected from local weather stations and the dataset of the Coupled Model Inter-comparison Project phase 5 (CMIP5). Forcing data on observed temperature, rainfall, and cloud cover were collected from local weather stations within the respective ecological zones. We collected climate data from 15, 13, and 28 weather stations for Sesheke, Kabompo and Namwala sites respectively. The surveyed Ila forest reserve at the Namwala site stretches in zones I and II, thus climate data were averaged from all local weather stations in both zones. Contemporaneously number of wet days were downloaded from Climatic Research Unit (CRU) website (University of East Anglia Climatic Research Unit et al., 2015), while contemporaneously and projected temperature, rainfall, solar radiation and number of wet days were taken from CMIP5: CNRM-CM5.1 (Voldoire et al., 2013), EC-Earth (Hazeleger et al., 2011), HADGEM2-ES (Collins et al., 2011), IPSL-CM5A-LR (Dufresne et al., 2013), and MPI-ESM-LR (Giorgetta et al., 2016; Jungclaus et al., 2013) (See [Supplementary Information](#) Table S2 for full names and details on resolutions of these models). We analysed soil parameters down to 1.5 m depth from the plots where we conducted vegetation survey (Ngoma et al., 2018a). We determined soil texture and bulk density following the method by Sarkar and Haldar (2005) and organic carbon by Walkley and Black (1934) (See [Supplementary Information](#) Table S1 for

details). Data on CO<sub>2</sub> concentration was taken from Representative Concentration Pathway (RCP) database: RCP4.5 (Clarke et al., 2007; Smith and Wigley, 2006; Wise et al., 2009) and RCP8.5 (Riahi et al., 2007).

We collected data on crown area, tree diameter, and total tree height from the field survey in our previous studies (Ngoma et al., 2018a, b), while data on leaf longevity was determined from Specific Leaf Area (SLA) (Reich et al., 1997) to parameterize the LPJ-GUESS model. We determined SLA from tree leaves we collected from the trees that we felled to develop allometric equations (Ngoma et al., 2018a, b). Data on vegetation carbon and tree ring indices for the LPJ-GUESS model validation was taken from the biomass (Ngoma et al., 2018a, b) and dendrochronological (Ngoma et al., 2017) studies respectively.

#### 2.4 Description of the modelled climate data

We used the Representative Concentration Pathways 4.5 and 8.5 (RCP4.5 and RCP8.5) with an ensemble of five Global Circulation Models (GCMs): CNRM-CM5, EC-EARTH, HADGEM2-ES, IPSL-CM5A-LR, and MPI-ESM-LR (See Table 2 for full names) following the available GCMs for the project CMIP5 that we used as the source of our modelled climate data. Using more than one scenario and the use of ensemble means reduces the uncertainty in projected climate data compared to a single model. The climate data was re-gridded from the original spatial resolution of the climate model to a resolution of 0.5° x 0.5°. We applied the method by Piani et al. (2010) to bias-correct daily rainfall and temperature (minimum and maximum) values from the five GCMs against the WATCH Forcing Data (Weedon et al., 2011). The solar radiation data was bias-corrected following the method by Haddeland et al. (2012) using WATCH forcing data series (1971–2000) as a reference.

#### 2.5 Climate change

In this study, we defined climate as the average weather pattern over a period of 30 years. Climate change was thus, defined as the difference between the climates of two periods. We used 1960-1989 as the baseline to determine the relative climate change for the end of the 21<sup>st</sup> century (2070-2099).

#### 2.6 Description of the Zambezi teak forests.

Following the defined PFTs (Ahlström et al., 2012; Sitch et al., 2003), we used the “deciduous tropical broadleaved rain green” PFT in our study. Deciduous tropical trees shed their leaves during the dry season (See Appendix A in Ngoma et al. (2017) for the Zambezi teak forests in different seasons of the year). Trees of the Zambezi teak forests tolerate shade. For example, seedlings of *Baikiaea plurijuga* need some shade to survive (PROTA4U, 2017). Shade tolerant species are able to dominate a closed-forest and seeds are able to germinate in a closed forest. For *Baikiaea plurijuga*, regeneration is mainly from seeds, though seedlings are usually destroyed by wild animals within the forests (Pearce, 1986a).

The Zambezi Teak forests are two storeyed forests with either a closed or open canopy (Mulolwa, 1986). They are composed of 80 species (Ngoma et al., 2018a, b) but *Baikiaea plurijuga* Harms is most common (i.e. 50 %) (Ngoma et al., 2018a, b; Ngoma et al., 2017). Trees of the Zambezi teak forests grow up to 20 m high and 120 cm in diameter (Pearce, 1986b). The forests have a deciduous shrub layer which is locally known as mutemwa and grows up to 3 m to 6 m high. During the rainy



season the forests have a ground layer of herbs and grasses (Mulolwa, 1986). These herbs and grasses have shallow root systems that develop during the rainy season and die or become dormant during the dry season.

## 2.7 Model set-up

We initiated the model with a 1000 year spin-up at each site to allow the model time to reach equilibrium in all carbon pools.

5 We spun-up the model with observed climate data from local weather stations and contemporaneously modelled climate data during the respective model runs. Observed climate data are temperature, rainfall, and cloud cover data observed from local weather stations in the respective study sites, while contemporaneous data on CO<sub>2</sub> concentration were downloaded from the RCP database (RCP Database, 2018). Data on the number of wet days per month were downloaded from Centre for Environmental Data Analysis (University of East Anglia Climatic Research Unit et al., 2015). Contemporaneously modelled  
10 climate data are temperature, rainfall, number of wet days per month, and solar radiation averaged from the five GCMs described under Section 2.4, and CO<sub>2</sub> concentration data downloaded from RCP data base (RCP Database, 2018).

Using observed local climate data, we forced LPJ-GUESS during the spin-up with repeated cycle of 30-year climate data for 1959-1988 and a constant CO<sub>2</sub> concentration of 316 ppm, corresponding to the observed value for 1959. After the 1000-year spin-up period, the model was forced with a 53-year observed climate and CO<sub>2</sub> values, corresponding to the 1959-2011 period  
15 at Namwala and Sesheke sites. We forced the model with a 45-year observed climate and CO<sub>2</sub>, corresponding to the 1959-2003 period at Kabompo site. CO<sub>2</sub> had reached 375 ppm and 390 ppm by 2003 and 2011 respectively.

Before forcing the model with projected climate data, we first spun-up the model with 30 years modelled climate data from 1960-1989 and a constant CO<sub>2</sub> of 317 ppm, corresponding to 1960. We then forced the model with 46-year contemporaneously modelled climate data for the period 1960-2005. We used CO<sub>2</sub> data for the same period of 1960-2005 and by 2005, CO<sub>2</sub> had  
20 reached 379 ppm.

After the spin-up period, and using observed local climate data at the respective sites as forcing, we performed a factorial experiment to determine the effects of various tree parameters (Table 2) and soil textures (Table 1 and **Supplementary Information** Table S1) on different model output. We first ran the model with default tree parameters that were provided together with the model code (These are tree parameters from literature, but provided together with the model code. See Table  
25 2). After identifying some limitations (Section 3.2), we tested the effects of local tree parameter values listed in Table 2 that coincided with the locations of our measurement plots (Ngoma et al., 2018a). We assessed effects of changing each parameter separately and of changing all parameters combined at each site (Table 2). We further assessed the effects of soil by running the model with default soil parameters (provided with the model code on a 0.5 x 0.5 global grid) and with local soil parameters derived from samples at the respective sites (**Supplementary Information** Table S1). Results at each site were averaged for 45  
30 years (1959-2003) at Kabompo and for 53 years (1959-2011) at the Namwala and Sesheke sites. Forcing the model with observed climate data and using local tree and soil parameters, we compared the LPJ-GUESS simulated carbon stocks and NPP with measured carbon stock (Ngoma et al., 2018a, b) and tree-ring indices (Ngoma et al., 2017) respectively.

**Table 2.** Local and default tree parameter values used in LPJ-GUESS.  $K_{rp}$ ,  $K_{allom1}$ ,  $K_{allom2}$ , and  $K_{allom3}$  are constants in allometric equations (See Sec 2.2 and Smith et al. (2001)). Default parameters were provided together with the model code (Smith et al. (2001)).

Site	$K_{allom1}$	$K_{allom2}$	$K_{allom3}$	$K_{rp}$	Maximum crown area ( m <sup>2</sup> )	Wood density (kg m <sup>-3</sup> )	Leaf longevity (Years)
<b>Default</b>	250	60	0.67	1.60	50	200	0.50
<b>Kabompo</b>	279	21	0.48	1.11	336	790	0.95
<b>Namwala</b>	424	20	0.56	1.39	269	790	0.94
<b>Sesheke</b>	480	31	0.58	1.19	452	790	0.94

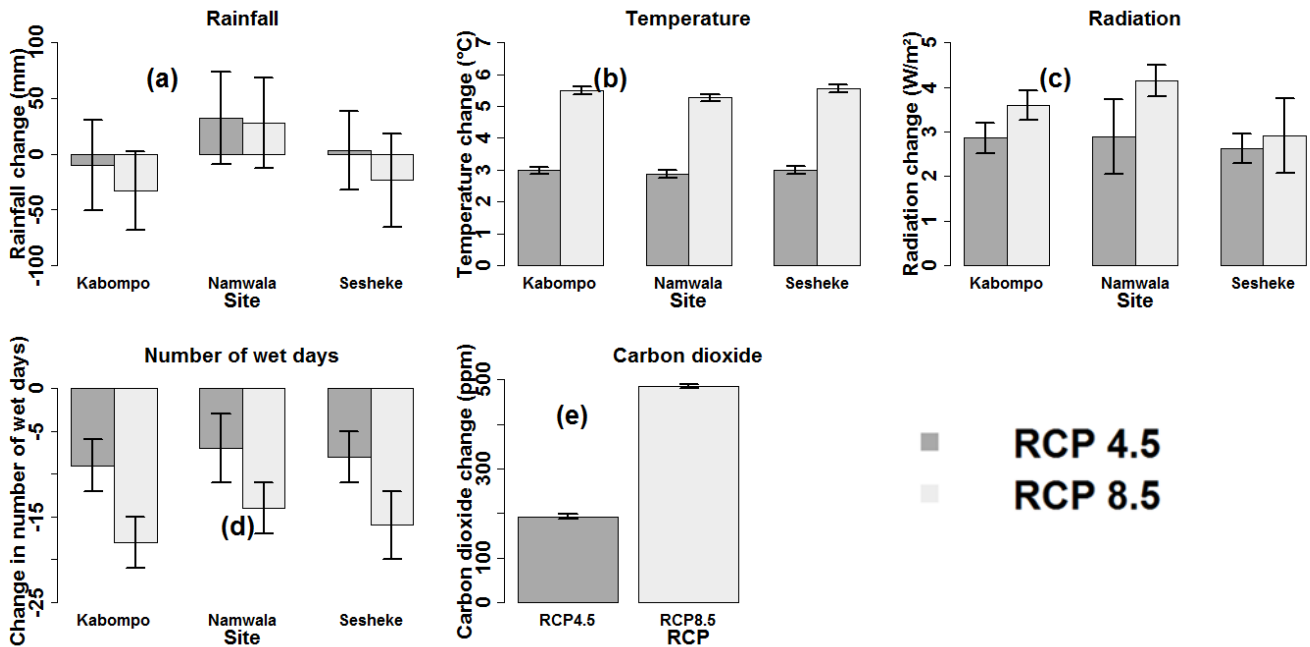
We performed a factorial experiment for projected effects of temperature, rainfall, CO<sub>2</sub> concentration, incoming solar radiation, and number of wet days per month for the end of the 21<sup>st</sup> century (2070-2099) following RCP4.5 and RCP8.5. To isolate the contemporaneous effects of each of these climatic variables, the model was forced with the 1960-2005 values of the input climate variable of interest while keeping the 1960 values constant for the other input climatic variables. When assessing the projected effects, we forced the model with projected climate values for the period 2006-2099 of the input climate variable of interest, while keeping the 2006 value constant for the other input climatic variables.

## 3 Results

### 3.1 Projected climate conditions: RCP 4.5 and RCP 8.5

Temperature (Fig. 2b) and incoming solar radiation (Fig. 2c) are projected to increase by the end of the 21<sup>st</sup> century (2070-2099) at all sites under both scenarios relative to 1960-1989. Temperature increases by 3°C at all sites by the end of the 21<sup>st</sup> century under RCP4.5 while, under RCP8.5, temperature is projected to increase by 5°C at the Kabompo and Namwala sites, and by 6°C at the Sesheke site.

Rainfall is projected to decrease by 33 mm and 23 mm at Kabompo and Sesheke respectively, and to increase by 28 mm at Namwala under RCP8.5 by 2099. Under RCP4.5, rainfall will increase by 32 mm and 3 mm at Namwala and Sesheke respectively while at Kabompo, rainfall will decrease by 10 mm by the end of the 21<sup>st</sup> century (Fig. 2a). The number of wet days will decrease at all sites under both scenarios by end of the 21<sup>st</sup> century (Fig. 2d). Carbon dioxide concentration is projected to almost double under RCP8.5 by 2099 (Fig. 2e).



**Figure 2.** Projected changes in rainfall (a), mean temperature (b), incoming solar radiation (c), number of wet days (d), and CO<sub>2</sub> concentration (e) under RCP4.5 and RCP8.5 by the end of the 21<sup>st</sup> century. End of the 21<sup>st</sup> century is the period 2070-2099. Values were determined as means of the five GCMs and changes were determined with reference to 1960-1989 period as baseline. For sources of data, refer to Sec 2.3.

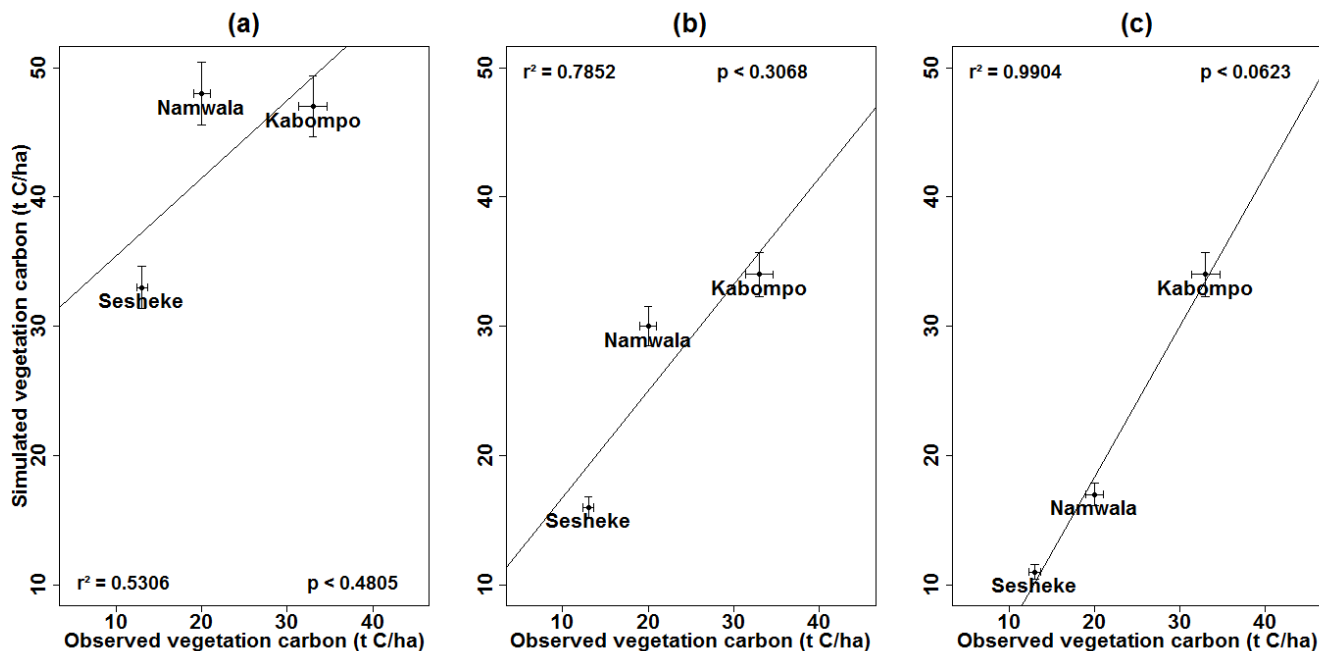
### 5 3.2 The LPJ-GUESS model validation

We forced the LPJ-GUESS model with observed local climate data and used local tree (Table 2) and soil parameter values (Supplementary Information Table S1) to validate the model. We validated the model by comparing standardised tree-ring indices to LPJ-GUESS simulated annual NPP, i.e. for the period 1970-2003 at the Kabompo site and 1959-2011 at the Namwala and Sesheke sites. The relationships were not significant at all the three sites.

10 We also validated the model by comparing measured vegetation carbon with simulated vegetation carbon at the respective study sites. We forced the model with local climate data and ran it with default soil and tree parameters to assess its performance and the model over-estimated vegetation carbon stock at all sites by between 44 % and 145 %. However, replacing default with local soil parameters (Supplementary Information Table S1), maximum crown area, wood density, leaf longevity, and allometry (Table 2), the error reduced to 5 %, 47 %, and 17 % at the Kabompo, Namwala, and Sesheke sites compared to  
 15 measured vegetation carbon (Fig. 3).

We further assessed the LPJ-GUESS model performance by comparing measured and simulated tree heights and crown area. Using Eq. (4), tree heights estimated using default tree parameter values (Table 2) of  $K_{allom2}$  and  $K_{allom3}$  were taller than those estimated using local tree parameters of these same constants for the measured tree diameter at breast height (DBH) at all sites (Fig. 4). Applying the Mean Absolute Percentage Error (Sileshi, 2014) to indicate allometric model performance, tree

heights were over-estimated by 111 % at Kabompo, 156 % at Namwala, and 56 % at Sesheke sites when we used default tree parameter values of  $K_{allom2}$  and  $K_{allom3}$  in the allometric equation compared to measured tree heights. Using local tree parameter values (Table 2), tree heights were over-estimated by 2 % and 1 % at Kabompo and Namwala and under-estimated by 8 % at Sesheke respectively. Thus, both default and local tree parameters over-estimated tree heights at Kabompo and Namwala compared to measured heights, though the over-estimation was largest with default parameters (Fig. 4).



**Figure 3.** Measured versus LPJ-GUESS simulated vegetation carbon stock simulated with default soil parameters, default tree parameters, and observed local climate (a), local soil, local tree parameters, and observed local climate (b), and with local soil, local tree parameters, and modelled contemporaneously climate (c).

10 The crown area, estimated with Eq. (6), was under-estimated by 61 % at Kabompo and Namwala and by 76 % at Sesheke when we used default tree parameters. However, with local tree parameters, the model under-estimated crown area by 15 %, 11 %, and 23 % at Kabompo, Namwala, and Sesheke, respectively compared to measured crown area (Fig. 5 and Table 2).

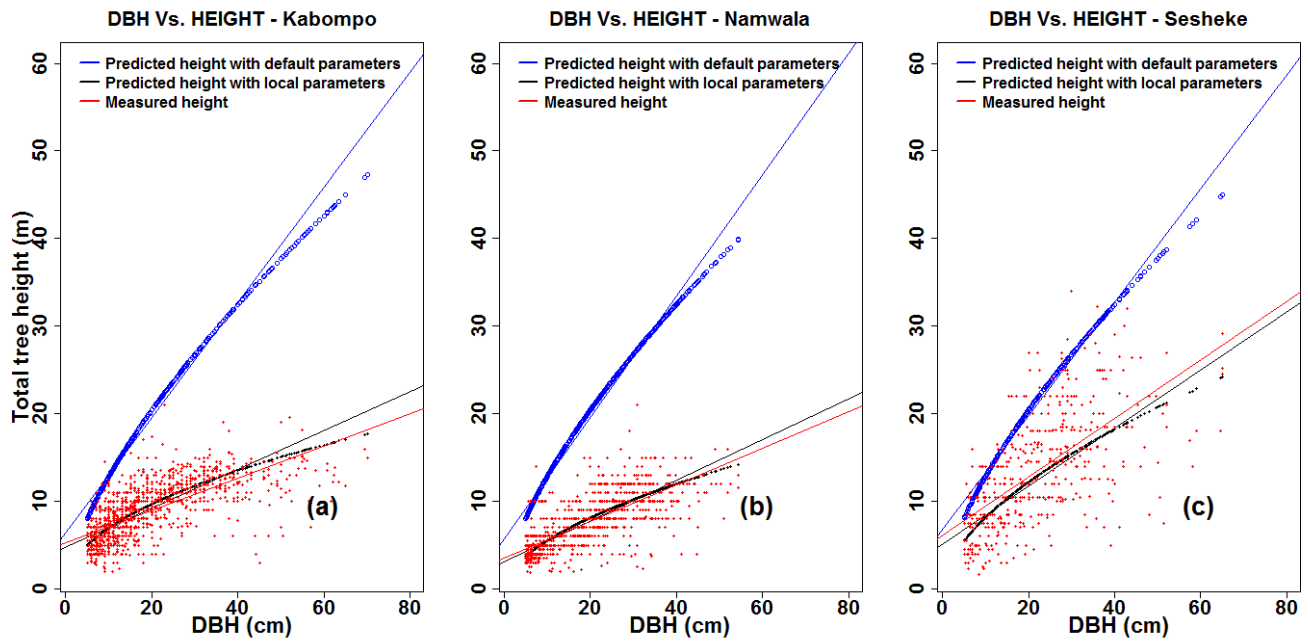


Figure 4. Measured and predicted total tree height, plotted against DBH at Kabompo (a), Namwala (b), and Sesheke (c).

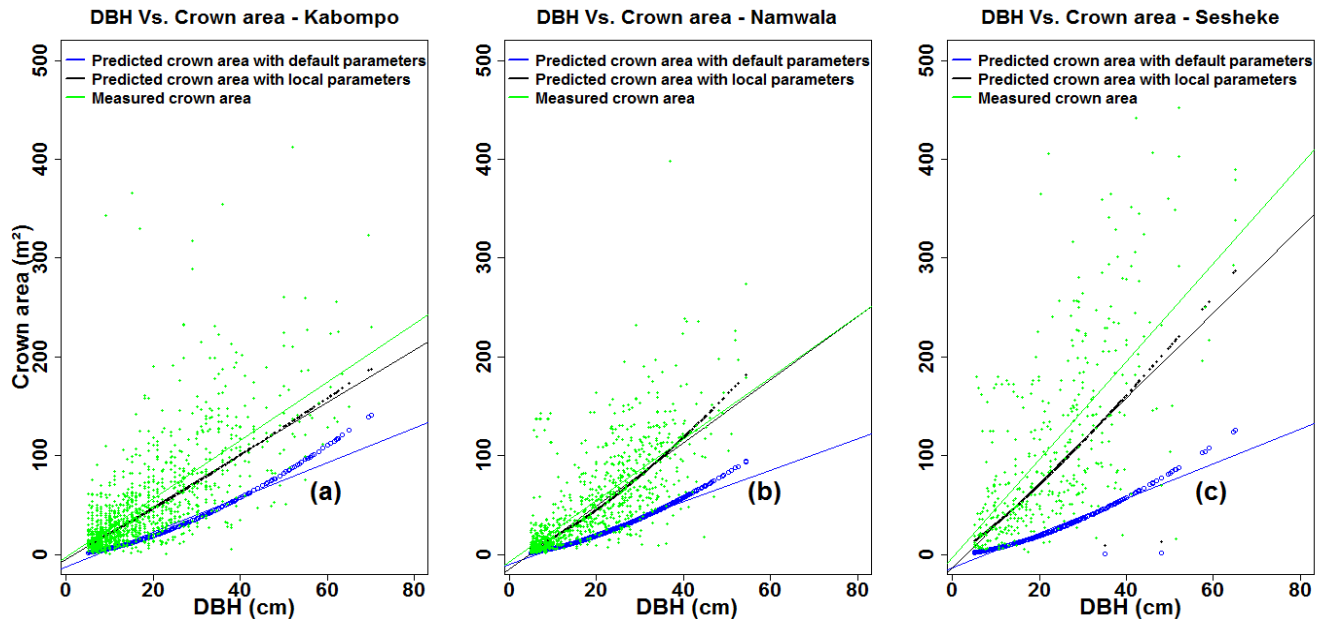
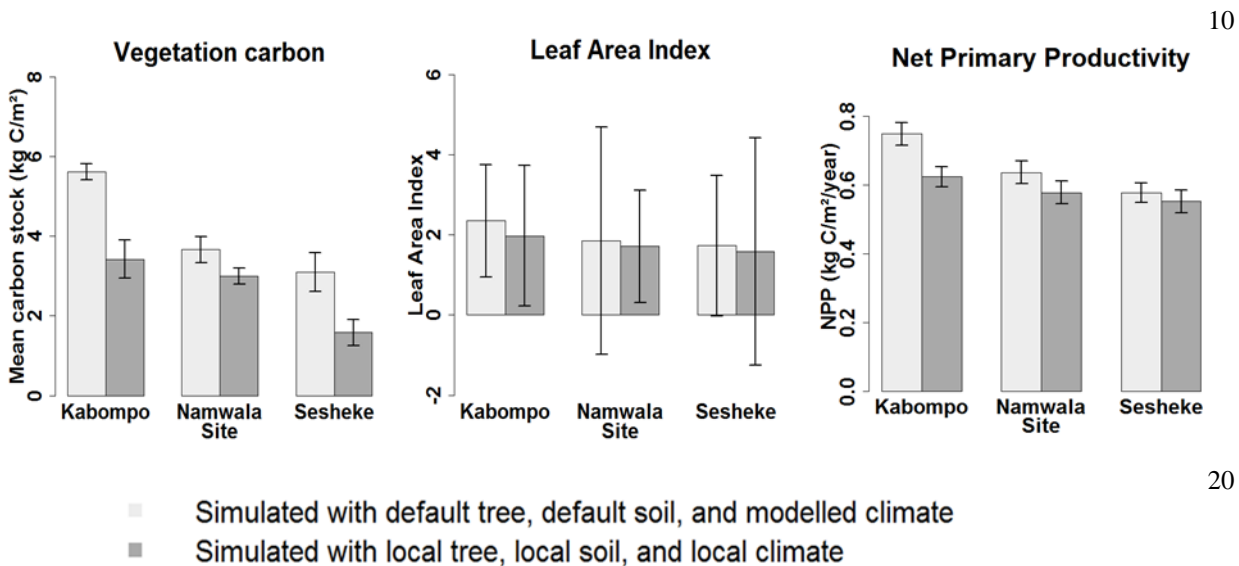


Figure 5. Measured and predicted crown area plotted against DBH at Kabompo (a), Namwala (b), and Sesheke (c).

### 3.3 Carbon stocks, LAI and NPP

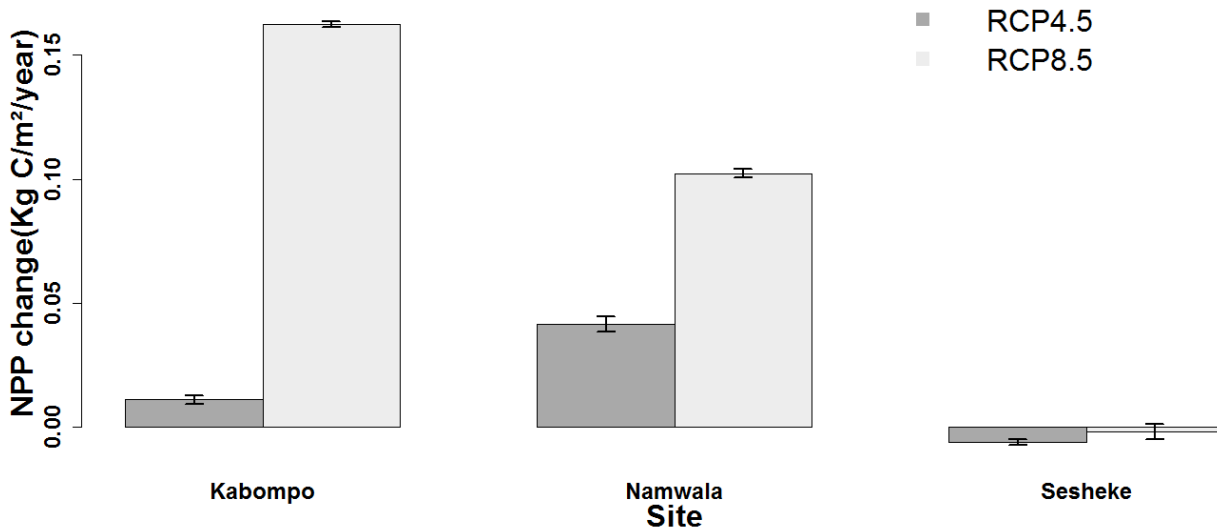
Running the LPJ-GUESS model with local soil and tree parameters, and forcing it with local observed climate data for the period 1960-2003, vegetation carbon stocks, and Leaf Area Index (LAI) were highest at Kabompo, and Sesheke had the lowest values. The aggregated three carbon pools (vegetation, litter, and soil carbon) were highest at Kabompo and lowest at Namwala. Vegetation carbon was lower when we forced the LPJ-GUESS model with contemporaneously modelled climate data for the period 1960-2003 at all sites compared to the values simulated with observed local climate data (Fig. 6 and **Supplementary Information** Fig. S6). Vegetation carbon stocks, LAI, and NPP simulated with both local soil and local tree parameters, and forcing the model with local climate data were lower at all sites compared to values generated by default tree and soil parameters (Fig. 6 and **Supplementary Information** Fig. S6).



**Figure 6.** Mean annual vegetation carbon stocks, LAI and NPP simulated with local and default soil and tree parameter values, and forcing the model with local and modelled climate data. Simulations were done for the period 1959-2003. This figure only shows values simulated with a combination of default tree, default soil, and modelled climate data, and also a combination of local tree, local soil and local climate data. The reader is referred to supplementary information (Figure S6) for the results of the effects of each of these default tree parameters, default soil parameters, local tree, local soil parameters, local climate, and modelled climate data.

### 3.4 Climate change effects on NPP

By the end of the 21<sup>st</sup> century, combined changes of all climatic variables is projected to increase NPP at all sites under both scenarios except at the Sesheke site where NPP reduces. NPP is projected to increase most at the Kabompo site under RCP8.5 (Fig. 7). Increased CO<sub>2</sub> concentration is projected to positively have most effects on NPP at Kabompo and Namwala under both scenarios, while under RCP8.5 decreased precipitation coupled with increasing temperature negatively affects NPP at Sesheke.



**Figure 7.** Projected changes in NPP at Kabompo, Namwala, and Sesheke resulting from combined changes in temperature, rainfall, CO<sub>2</sub> concentration, solar radiation and number of wet days by the end of the 21<sup>st</sup> century (2070-2099) with reference to 1960-1989 as the baseline.

## 4 Discussion

### 5 4.1 The LPJ-GUESS model performance

We generated new soil texture and tree parameter values for maximum crown area, wood density, leaf longevity, and allometry, and the results simulated with the LPJ-GUESS model improved when we used these local soil and tree parameter values compared to using the default parameters. The over-estimation of vegetation carbon that resulted from using default soil parameter values indicates the differences in clay, silt, and sand proportions between default and local soils of the Zambezi teak forests. Our field measurements (Ngoma et al., 2018a, b) showed that trees were between 2 m and 21 m tall. The high default tree heights of between 8 m and 47 m led to over-estimating vegetation carbon by between 33 % and 92 %.

We found no correlation between LPJ-GUESS-simulated NPP and tree-ring indices at all sites. This lack of correlation is probably due to differences in the number of tree species incorporated in the two methods. We used one species only in the tree-ring analysis, while in modelling studies, which were conducted at ecosystem level, all available tree species in the forests were incorporated to determine the net NPP. The forests' survey that we conducted in 2014 (Ngoma et al., 2018a, b) showed that the Zambezi teak forests have eighty tree species. Thus, the net growth rate of these eighty species incorporated in the modelling studies is probably not the same as the growth rate of one dominant species used in tree-ring analysis.

The significant positive relationship between tree ring indices and rainfall of previous two years at Sesheke (Supplementary Information Fig. S2 (i)) indicates a carry-over effects of rainfall on trees' productivity. Though rainfall of the previous years

is probably captured by trees through soil moisture in the model, this aspect is not clearly addressed in LPJ-GUESS model. Babst et al. (2013) reported the lack of representation of carry-over effects of rainfall in Dynamic Global Vegetation Models (DGVM's). The clear representation of carry-over effects in LPJ-GUESS model would improve model results. Also, increasing the number of tree species in tree-ring analysis would improve the relationship between LPJ-GUESS simulated NPP and tree-ring indices. Thus, further tree-ring studies would need to be conducted with similar number of species as those included in modelling studies to validate the LPJ-GUESS model.

#### 4.2 NPP's distribution

NPP was highest in the high rainfall receiving Kabompo site compared to the low rainfall receiving Sesheke site (Fig 6 and Supplementary Information Fig. S6). The upward trend in NPP from the drier site to the wetter site was similar to the trend in LAI and vegetation carbon (Fig. 6 and Supplementary Information Fig. S6). The trend in NPP was also similar to the trend reported in literature where the forests growing in high rainfall receiving areas were more productive than the forests growing in arid regions (Cao et al., 2001; Delire et al., 2008; Ngoma et al., 2019; Williams et al., 2008).

#### 4.3 NPP's climate response

We projected an NPP increase at Kabompo and Namwala caused by increasing CO<sub>2</sub> concentration and temperature. The positive temperature and CO<sub>2</sub> effects were clearly observed from the high positive correlations between NPP and temperature (Supplementary Information Fig. S5) and NPP and CO<sub>2</sub> (Supplementary Information Fig. S4). However, the positive temperature effects could just be up to an optimal temperature level. For tropical trees, carbon uptake reduces with leaf temperature of above 31 °C (Doughty and Goulden, 2008). Higher temperatures of above 31°C also reduce activities of photosynthetic enzymes (Farquhar et al., 1980), resulting in reduced NPP.

The projected NPP increase at Kabompo and Namwala is in the same direction as the results reported by other researchers (Alo and Wang, 2008; Mohammed et al., 2018; Pan et al., 2015) for some parts of Africa (Table 3). Some modelling studies on tropical forests (Braakhekke et al., 2017; Ciais et al., 2009; Doherty et al., 2010; Melillo et al., 1993; Midgley et al., 2005; Pan et al., 2015; Thuiller et al., 2006) also reported large positive effects of increased CO<sub>2</sub> concentration on forests' productivity. This positive effect could probably be due to increased Water-Use-Efficiency (WUE, which is a measure of a plant's water-use during photosynthesis in relation to the amount of water withdrawn (Grain Research and Development Cooperation, 2009)) by the plants. The stomata partially close to maintain a near constant concentration of CO<sub>2</sub> inside the leaf even under continually increasing atmospheric CO<sub>2</sub> levels. Such stomatal closure decreases evapotranspiration (Keenan et al., 2013) and thus increases WUE. The positive effects of increased CO<sub>2</sub> on NPP could also be due to increased Nitrogen-Use-Efficiency (NUE, i.e., the amount of carbon converted into sugars during the photosynthetic process per unit of leaf nitrogen) (Davey et al., 1999). When CO<sub>2</sub> concentration increases, the amount of rubisco enzymes are reduced. As a consequence, foliar nitrogen is mobilized out of leaves and into other areas of the plant. This decreases the amount of nitrogen in the leaves.



However, despite a reduction in leaf nitrogen, photosynthesis is still higher at elevated CO<sub>2</sub> concentrations. This result in increased carbon uptake at lower nutrient supplies. The higher photosynthesis activities and lower leaf nitrogen content increase the photosynthetic NUE (Davey et al., 1999). However some other studies indicate that herbaceous plants and deciduous trees acclimate quickly to increased CO<sub>2</sub> concentrations by reducing photosynthetic capacity and stomatal conductance (Ellsworth, 1999; Mooney et al., 1999). As a result, the required water and nitrogen needed to fix a given amount of carbon is reduced (Chapin et al., 2007). However, such acclimation has sometimes no effect on the photosynthetic rate and stomatal conductance (Curtis and Wang, 1998). To what extent our modelling results are realistic is therefore not fully clear. Currently, the responses of tropical trees and forests to increased CO<sub>2</sub> are still poorly understood (Thomas et al., 2008) since CO<sub>2</sub> enrichment experiments are lacking in the tropics. Such experiments should be done because they could explain whether the enhanced NPP that result from increased CO<sub>2</sub> is due to increased WUE, NUE or CO<sub>2</sub> fertilization. In our study, the correlations between tree ring indices and CO<sub>2</sub> concentration were not significant at all sites (Supplementary Information Fig. S3), contrary to modelling results, indicating the need for further research more especially the CO<sub>2</sub> enrichment experiments to ascertain modelling results.

The projected decreased NPP under RCP8.5 at the Sesheke site results from high negative effects of the projected reduced rainfall coupled with increasing temperatures. NPP of the drier areas is mainly influenced by water by enhancing the WUE of vegetation (Yu and Chen, 2016). Reduced rainfall decreases soil water availability needed by the plants. High temperature enhances evapotranspiration resulting in reduced soil moisture (Miyashita et al., 2005). When soil water decreases, the stomata close to restrict water loss. The closure of stomata prevents the movement of carbon into the plant, resulting in reduced NPP (McGuire and Joyce, 2005). Decreased soil water also limits nutrient absorption (e.g. Nitrogen) by the roots and transportation to the plants. Increased temperature enhances plant respiration, reducing photosynthetic activities (Burton et al., 2008; Wu et al., 2011). The projected reduced number of wet days likely have more effects on NPP at Sesheke under RCP4.5 by the year 2099. The projected NPP decrease at Sesheke is in the same direction as the findings of Delire et al. (2008) who reported an NPP reduction of 12 % for the savanna forests by 2080. Similar results were also reported by Ngoma et al. (2019) who projected an NPP decrease of 8 % by the end of the 21<sup>st</sup> century for the whole of Africa. Furthermore, Alo and Wang (2008) projected NPP decrease in west and southern Africa.

The differences in NPP's response to climate change at each of the study sites is especially caused by variability in rainfall and nutrient distribution (Fig. 1 and Table 1). Though the photosynthesis process is dependent on CO<sub>2</sub> concentration, plant's response to increasing CO<sub>2</sub> is limited by the availability of soil water and nutrients. Thus, plants growing in poor nutrient condition respond less to rising CO<sub>2</sub> concentration (Lloyd and Farquhar, 1996). This could be the case with the reduced NPP response at Sesheke where nitrogen content is lower than at Kabompo and Namwala (Table 1) despite the increasing projected CO<sub>2</sub> concentration. However, deciduous trees sometimes acclimate to increased CO<sub>2</sub> concentration by reducing photosynthetic capacity and stomatal conductance (Ellsworth, 1999; Mooney et al., 1999). As a result, the required nitrogen and water needed to fix a given amount of carbon is reduced (Chapin et al., 2007), resulting in decreased NPP.

**Table 3.** Projected changes in NPP: Current study compared to literature. A negative sign (-) under ‘Change in NPP (%)’, means a reduction in NPP.

Change in NPP (%)	Forest biome	Study site	Period covered	Applied model	Reference	Comments
<b>-16.98</b>	Tropical evergreen forest/woodland	Central and West Africa	1950-2000 to 2070-2099	IBIS	(Delire et al., 2008)	Used CRU data for control results
<b>-24.18</b>	Tropical deciduous forest/woodland					
<b>-6.06</b>	Savanna					
<b>10.00</b>	Grassland/steppe					
<b>0.00</b>	Open shrubland					
<b>-50.00</b>	Desert					
<b>-18.47</b>	Tropical evergreen forest/woodland	Central and West Africa	1961-1990 to 2070-2099	IBIS	(Delire et al., 2008)	Used climate data from Mark et al. (1999) for control results - Both rainfall and temperature changed
<b>-26.03</b>	Tropical deciduous forest/woodland					
<b>-15.12</b>	Savanna					
<b>12.99</b>	Grassland/steppe					
<b>-6.78</b>	Open shrubland					
<b>-16.67</b>	Desert					
<b>28.11</b>	All biomes	East Africa	1981–2000 and 2080–2099	LPJ DGVM	(Doherty et al., 2010)	Difference sources of climate data (Refer to the article)
<b>-8</b>	All biomes	Whole Africa	1950-2099	Various models	(Ngoma et al., 2019)	Difference sources of climate data
<b>1.50</b>	<b>Deciduous forests</b>	<b>Kabompo - Zambia - Southern Africa</b>	<b>1960-1989 and 2070 - 2099</b>	<b>LPJ GUESS</b>	<b>Current study</b>	<b>RCP4.5</b>
<b>6.70</b>	<b>Deciduous forests</b>	<b>Namwala - Zambia - Southern Africa</b>	<b>1960-1989 and 2070 - 2099</b>	<b>LPJ GUESS</b>	<b>Current study</b>	<b>RCP4.5</b>
<b>-0.90</b>	<b>Deciduous forests</b>	<b>Sesheke - Zambia - Southern Africa</b>	<b>1960-1989 and 2070 - 2099</b>	<b>LPJ GUESS</b>	<b>Current study</b>	<b>RCP4.5</b>
<b>21.70</b>	<b>Deciduous forests</b>	<b>Kabompo - Zambia - Southern Africa</b>	<b>1960-1989 and 2070 - 2099</b>	<b>LPJ GUESS</b>	<b>Current study</b>	<b>RCP8.5</b>
<b>16.40</b>	<b>Deciduous forests</b>	<b>Namwala - Zambia - Southern Africa</b>	<b>1960-1989 and 2070 - 2099</b>	<b>LPJ GUESS</b>	<b>Current study</b>	<b>RCP8.5</b>
<b>-0.30</b>	<b>Deciduous forests</b>	<b>Sesheke - Zambia - Southern Africa</b>	<b>1960-1989 and 2070 - 2099</b>	<b>LPJ GUESS</b>	<b>Current study</b>	<b>RCP8.5</b>
<b>Symbol</b>	<b>Meaning of symbol</b>					
<b>LPJ-DGVM</b>	Lund-Potsdam-Jena Dynamic Global Vegetation Model					
<b>IBIS</b>	Integrated Biosphere Simulator					
<b>LPJ-GUESS</b>	Lund-Potsdam-Jena General Ecosystem Simulator					

The different NPP responses to climate change at the three sites could also be attributed to differences in species composition and the variable responses of these distinct tree species to the environment caused by variation in **their** physiological properties. While 9 % of the total tree species are common in all the three sites, 25 % of the total surveyed species are found at Kabompo, 38 % at Namwala and 16 % at Sesheke only (Ngoma et al., 2018b).

Although we projected different NPP patterns at the three study sites, these projections depend on the accuracy of climate data. In our study, **we used** climate data from five GCMs considering the different climatic values generated by each GCM. The use

of ensembles improves the modelling of climate data compared to a single model, thereby reducing the uncertainty that might be caused by sources of climate data.

We carried out our study in the three study sites of the Zambezi teak forests in Zambia applying the LPJ-GUESS model. These sites experience some disturbances resulting from illegal activities (e.g. charcoal burning). The artificial disturbances are not captured by the model since the model does not provide for such kind of disturbances in the forests. Thus, an incorporation of such forest disturbances in the model would improve model results. The fires, which are also other forms of disturbances, are common in the Zambezi teak forests. These fires are usually caused by humans during the dry season. Though the LPJ-GUESS model provides for natural fires, it does not provide for artificial fires. Thus, the incorporation of these artificial fires would improve the model results further though more studies would need to be conducted to determine the frequency and intensity of these fires in the forests before incorporating them in the model. This would reduce the uncertainties of the model results.

Generally, there are some similarities in the results we generated in our study with literature (Tables 3) for similar forest types. The differences in actual values hint at the differences in models applied and the extent of area coverage. For example, while we conducted our study at local level, other researchers conducted similar studies at regional level (Doherty et al., 2010). Studies conducted at regional level constitute average results of different biomes while our study covered one biome only at all the three sites. Other factors such as species composition and soils also differ between our study sites and study sites of other researchers. We compared our results to few studies due to limited literature on modelling studies reported for African biomes. Also, studies using the same model as our study (LPJ- GUESS) are limited in Africa. We could not find any studies applying LPJ- GUESS model at local level in Africa as most studies are conducted at global level (Cao and Woodward, 1998; Schaphoff et al., 2006). Availability of such studies would give much insight on our results. This therefore presents an opportunity to focus modelling research in Africa so as to determine the potential response of the different biomes to climate change. However, our study highlighted the need to use local or regional specific parameter values in models in order to obtain reliable estimates unlike using default parameter values.

#### 4.4 Conclusions

We generated new soil texture and tree parameter values for maximum crown area, wood density, leaf longevity, and allometry. Using these newly generated local parameters, we adapted and evaluated the dynamic vegetation model LPJ-GUESS for the historical climate conditions. The results simulated with the LPJ-GUESS model improved when we used these newly generated local parameters. This indicates that using local parameter values is essential to obtaining reliable simulations at site-level. The adapted model setup provided a baseline for assessing the potential effects of climate change on NPP in the Zambezi teak forests in Zambia. NPP was thus projected to increase at the wetter Kabompo and intermediate Namwala sites under both RCPs especially caused by the increased CO<sub>2</sub> concentration by the end of the 21<sup>st</sup> century, while at the drier Sesheke site, NPP would decrease by the end of the 21<sup>st</sup> century under both RCPs. The projected decreased NPP under RCP8.5 at the Sesheke site results from the reduced rainfall coupled with increasing temperature . We thus demonstrated that differences in rainfall pattern influence the way in which climate change will affect forests resources. The projected increase in carbon dioxide

concentration would thus, have more effects on NPP in high rainfall receiving areas, while in arid regions, NPP would be affected more by the changes in rainfall and temperature.

**Data availability:** Refer to section 2.3 of this paper for sources of various data used in this article

5 **Author contribution:** Justine Ngoma, Bart Kruijt, Eddy Moors, Royd Vinya, and Rik Leemans conceived the idea and designed the study; Justine Ngoma prepared the paper, Justine Ngoma and Maarten C. Braakhekke analysed NPP data, Justine Ngoma and Iwan Supit analysed climate data; James H. Speer together with all other authors provided editorial comments, interpreted and discussed the results.

**Competing interests:** All authors have approved the final article and declare that there is no conflict of interest.

10 **Acknowledgements:** We would like to thank the Copperbelt University, the HEART project of the NUFFIC-NICHE programme, the International Foundation for Science (IFS) and the Schlumberger Foundation Faculty for the Future for providing financial support to conduct this research. We sincerely thank the LPJ-GUESS model development team at Lund University in Sweden for providing us with the model code and allowing us to use their model in our research.

## References

- 15 Ahlström, A., Schurgers, G., Arneeth, A., and Smith, B.: Robustness and uncertainty in terrestrial ecosystem carbon response to CMIP5 climate change projections, *Environmental Research Letters*, 7, 044008, 2012.
- Alo, C. A. and Wang, G.: Potential future changes of the terrestrial ecosystem based on climate projections by eight general circulation models, *Journal of Geophysical Research: Biogeosciences*, 113, 2008.
- 20 Babst, F., Poulter, B., Trouet, V., Tan, K., Neuwirth, B., Wilson, R., Carrer, M., Grabner, M., Tegel, W., Levanic, T., Panayotov, M., Urbinati, C., Bouriaud, O., Ciais, P., and Frank, D.: Site- and species-specific responses of forest growth to climate across the European continent, *Global Ecol. Biogeogr.*, 22, 706-717, 2013.
- Braakhekke, M. C., Rebel, K. T., Dekker, S. C., Smith, B., Beusen, A. H. W., and Wassen, M. J.: Nitrogen leaching from natural ecosystems under global change: a modelling study, *Earth System Dynamics*, 8, 1121-1139, 2017.
- Burton, A. J., Melillo, J. M., and Frey, S. D.: Adjustment of Forest Ecosystem Root Respiration as Temperature Warms, *Journal of Integrative Plant Biology*, 50, 1467-1483, 2008.
- 25 Bwalya, S., M. : Climate Change in Zambia: Opportunities for Adaptation and Mitigation through Africa Bio-Carbon Initiative, Center for International Forest Research. Southern Africa Regional Office, Lusaka, Zambia, 2010.
- Cao, M. and Woodward, F. I.: Dynamic responses of terrestrial ecosystem carbon cycling to global climate change, *Nature*, 393, 249-252, 1998.
- 30 Cao, M., Zhang, Q., and Shugart, H. H.: Dynamic responses of African ecosystem carbon cycling to climate change, *Climate Research*, 17 183-193, 2001.
- Chapin, F. S., Eviner, V. T., Holland, H. D., and Turekian, K. K.: 8.06 - Biogeochemistry of Terrestrial Net Primary Production. In: *Treatise on Geochemistry*, Schlesinger, W. H. (Ed.), Pergamon, Oxford, 2007.
- Chen, T., Werf, G. R., Jeu, R. A. M., Wang, G., and Dolman, A. J.: A global analysis of the impact of drought on net primary productivity, *Hydrology and Earth System Sciences*, 17, 1467-1483, 2013.
- 35 Christoffersen, B. O., Restrepo-Coupe, N., Arain, M. A., Baker, I. T., Cestaro, B. P., Ciais, P., Fisher, J. B., Galbraith, D., Guan, X., Gulden, L., van den Hurk, B., Ichii, K., Imbuzeiro, H., Jain, A., Levine, N., Miguez-Macho, G., Poulter, B., Roberti, D. R., Sakaguchi, K., Sahoo, A., Schaefer, K., Shi, M., Verbeeck, H., Yang, Z.-L., Araújo, A. C., Kruijt, B., Manzi, A. O., da Rocha, H. R., von Randow, C., Muza, M. N., Borak, J., Costa, M. H., Gonçalves de Gonçalves, L. G., Zeng, X., and Saleska, S. R.: Mechanisms of water supply and vegetation demand govern the seasonality and magnitude of evapotranspiration in Amazonia and Cerrado, *Agric. For. Meteorol.*, 191, 33-50, 2014.
- 40 Ciais, P., Piao, S. L., Cadule, P., Friedlingstein, P., and Chédin, A.: Variability and recent trends in the African terrestrial carbon balance, *Biogeosciences*, 6, 1935-1948, 2009.
- Clarke, L., J. Edmonds, H. Jacoby, H., Pitcher, J. Reilly, and R. Richels: Scenarios of Greenhouse Gas Emissions and Atmospheric Concentrations. Sub-report 2.1A of Synthesis and Assessment Product 2.1 by the U.S. Climate Change Science Program and the Subcommittee on Global Change Research Department of Energy (Ed.), Office of Biological & Environmental Research, Washington, USA, 45 2007.

- Collins, W. J., Bellouin, N., Doutriaux-Bouche, M., Gedney, N., Halloran, P., Hinton, T., Hughes, J., Jones, C. D., Joshi, M., Liddicoat, S., Martin, G., O'Connor, F., Rae, J., Senior, C., Sitch, S., Totterdell, I., Wiltshire, A., and Woodward, S.: Development and evaluation of an Earth-System model - HadGEM2, *Geoscientific Model Development* 4, 1051–1075, 2011.
- 5 Curtis, P. S. and Wang, X.: A meta-analysis of elevated CO<sub>2</sub> effects on woody plant mass, form, and physiology, *Oecologia*, 113, 299-313, 1998.
- Davey, P., Parsons, A., Atkinson, L., Wadge, K., and Long, S.: Does photosynthetic acclimation to elevated CO<sub>2</sub> increase photosynthetic nitrogen-use efficiency? A study of three native UK grassland species in open-top chambers, *Functional Ecology*, 13, 21-28, 1999.
- Delire, C., Ngomanda, A., and Jolly, D.: Possible impacts of 21st century climate on vegetation in Central and West Africa, *Global and Planetary Change*, 64, 3-15, 2008.
- 10 Doherty, R. M., Sitch, S., Smith, B., Lewis, S. L., and Thornton, P. K.: Implications of future climate and atmospheric CO<sub>2</sub> content for regional biogeochemistry, biogeography and ecosystem services across East Africa, *Global Change Biol.*, 16, 617-640, 2010.
- Doughty, C. E. and Goulden, M. L.: Are tropical forests near a high temperature threshold?, *Journal of Geophysical Research: Biogeosciences*, 113, 2008.
- Dube, K. and Nhamo, G.: Climate variability, change and potential impacts on tourism: Evidence from the Zambian side of the Victoria Falls, *Environmental Science & Policy*, 84, 113-123, 2018.
- 15 Dufresne, J.-L., Foujols, M.-A., Denvil, S., Caubel, A., Marti, O., Aumont, O., Balkanski, Y., Bekki, S., Bellenger, H., Benshila, R., Bony, S., Bopp, L., Braconnot, P., Brockmann, P., Cadule, P., Cheruy, F., Codron, F., Cozic, A., Cugnet, D., de Noblet, N., Duvel, J.-P., Ethé, C., Fairhead, L., Fichefet, T., Flavoni, S., Friedlingstein, P., Grandpeix, J.-Y., Guez, L., Guilyardi, E., Hauglustaine, D., Hourdin, F., Idelkadi, A., Ghattas, J., Joussaume, S., Kageyama, M., Krinner, G., Labetoulle, S., Lahellec, A., Lefebvre, M.-P., Lefebvre, F., Levy, C., Li, Z. X., Lloyd, J., Lott, F., Madec, G., Mancip, M., Marchand, M., Masson, S., Meurdesoif, Y., Mignot, J., Musat, I., Parouty, S., Polcher, J., Rio, C., Schulz, M., Swingedouw, D., Szopa, S., Talandier, C., Terray, P., Viovy, N., and Vuichard, N.: Climate change projections using the IPSL-CM5 Earth System Model: from CMIP3 to CMIP5, *Climate Dynamics*, 40, 2123-2165, 2013.
- 20 Ellsworth, D. S.: CO<sub>2</sub> enrichment in a maturing pine forest: are CO<sub>2</sub> exchange and water status in the canopy affected?, *Plant, Cell & Environment*, 22, 461-472, 1999.
- 25 Farquhar, G. D., von Caemmerer, S., and Berry, J. A.: A biochemical model of photosynthetic CO<sub>2</sub> assimilation in leaves of C<sub>3</sub> species, *Planta*, 149, 78-90, 1980.
- Gorgetta, M. A., Jungclaus, J., Reick, C. H., Legutke, S., Bader, J., Böttinger, M., Brovkin, V., Crueger, T., Esch, M., Fieg, K., Glushak, K., Gayler, V., Haak, H., Hollweg, H. D., Ilyina, T., Kinne, S., Kornbluh, L., Matei, D., Mauritsen, T., Mikolajewicz, U., Mueller, W., Notz, D., Pithan, F., Raddatz, T., Rast, S., Redler, R., Roeckner, E., Schmidt, H., Schnur, R., Segschneider, J., Six, K. D., Stockhause, M., Timmreck, C., Wegner, J., Widmann, H., Wieners, K. H., Claussen, M., Marotzke, J., and Stevens, B.: Climate and carbon cycle changes from 1850 to 2100 in MPI-ESM simulations for the Coupled Model Intercomparison Project phase 5, *J. Adv. Model. Earth Syst.*, 5, 572-597, 2016.
- Grain Research and Development Cooperation: Water Use Efficiency. Fact sheet, Southern and western region, 2009. 2009.
- 35 Haddeland, I., Heinke, J., Voß, F., Eisner, S., Chen, C., Hagemann, S., and Ludwig, F.: Effects of climate model radiation, humidity and wind estimates on hydrological simulations, *Hydrology and Earth System Sciences*, 16, 305-318, 2012.
- Haxeltine, A. and Prentice, I. C.: BIOME3: An equilibrium terrestrial biosphere model based on ecophysiological constraints, resource availability, and competition among plant functional types, *Global Biogeochemical Cycles*, 10, 693-709, 1996.
- Hazeleger, W., Wang, X., Severijns, C., tefanescu, S. S., Bintanja, R., Sterl, A., Wyser, K., Semmler, T., Yang, S., Van den Hurk, B., Van Noije, T., Van der Linden, E., and Van der Wiel, K.: EC-Earth V2.2: description and validation of a new seamless earth system prediction model, *Climate Dynamics*, doi: 10.1007/s00382-011-1228-5, 2011. 2011.
- 40 Hoerling, M., J. Hurrell, J. Eischeid, and Phillips, A.: Detection and Attribution of Twentieth-Century Northern and Southern African Rainfall Change, *Journal of Climate*, 19, 3989-4008, 2006.
- Huang, S., Titus, S. J., and Wiens, D. P.: Comparison of nonlinear height–diameter functions for major Alberta tree species, *Canadian Journal of Forest Research*, 22, 1297-1304, 1992.
- 45 Jungclaus, J. H., Fischer, N., Haak, H., Lohmann, K., Marotzke, J., Matei, D., Mikolajewicz, U., Notz, D., and Storch, J. S.: Characteristics of the ocean simulations in the Max Planck Institute Ocean Model (MPIOM) the ocean component of the MPI-Earth system model, *J. Adv. Model. Earth Syst.*, 5, 422-446, 2013.
- Kampata, J. M., Parida, B. P., and Moalafhi, D. B.: Trend analysis of rainfall in the headstreams of the Zambezi River Basin in Zambia, *Physics and Chemistry of the Earth, Parts A/B/C*, 33, 621-625, 2008.
- 50 Keenan, T. F., Hollinger, D. Y., Bohrer, G., Dragoni, D., Munger, J. W., Schmid, H. P., and Richardson, A. D.: Increase in forest water-use efficiency as atmospheric carbon dioxide concentrations rise, *Nature*, 499, 324, 2013.
- Lloyd, J. and Farquhar, G. D.: The carbon dioxide dependence of photosynthesis, plant growth responses to elevated atmospheric carbon dioxide concentrations and their interaction with soil nutrient status. I. General Principles and Forest Ecosystems, *Functional Ecology*, 10, 4-32, 1996.
- 55 Magadza, C.: Indications of the effects of climate change on the pelagic fishery of Lake Kariba, Zambia–Zimbabwe, *Lakes & Reservoirs: Research & Management*, 16, 15-22, 2011.

- Mark, N., Mike, H., and Phil, J.: Representing Twentieth-Century Space–Time Climate Variability. Part I: Development of a 1961–90 Mean Monthly Terrestrial Climatology, *Journal of Climate*, 12, 829–856, 1999.
- Matakala, P. W., Misael, K., and Jochen, S.: Zambia National Strategy to Reduce Emissions from Deforestation and Forest Degradation (REDD+). Forestry Department, Ministry of Lands Natural Resources and Environmental Protection, FAO, UNDP, and UNEP (Eds.), Government of the Republic of Zambia, Zambia, 2015.
- McDowell, N., Barnard, H., Bond, B., Hinckley, T., Hubbard, R., Ishii, H., Köstner, B., Magnani, F., Marshall, J., and Meinzer, F.: The relationship between tree height and leaf area: sapwood area ratio, *Oecologia*, 132, 12–20, 2002.
- McGuire, A. D. and Joyce, L. A.: Responses of Net Primary Production to Changes in CO<sub>2</sub> and Climate In: Productivity of America's forests to climate change, US Department of Agriculture (USDA), USA, 2005.
- Melillo, J. M., A. David McGuire, David W. Kicklighter, Berrien Moore III, Charles J. Vorosmarty, a., and Schloss., A. L.: Global climate change and terrestrial net primary production, *Nature*, 363, 1993.
- Midgley, G., Greg, H., Wilfried, T., Gill, D., and Wendy, F.: Assessment of potential climate change impacts on Namibia's floristic diversity, ecosystem structure and function Climate Change Research Group. South African National Biodiversity Institute Kirstenbosch Botanical Garden, Rhodes Drive Cape Town, Windhoek. Namibia, 2005.
- Miyashita, K., Tanakamaru, S., Maitani, T., and Kimura, K.: Recovery responses of photosynthesis, transpiration, and stomatal conductance in kidney bean following drought stress, *Environmental and Experimental Botany*, 53, 205–214, 2005.
- Mohammed, S., Jun, Z., and Shi, F.: Impacts of climate change on net primary productivity in Africa continent from 2001 to 2010, *International Journal of Science, Environment and Technology*, Vol. 7, No 2 365 – 381, 2018.
- Mooney, H. A., Canadell, J., Chapin, F. S., 111, , Ehleringer, J. R., Kijrner, C., McMurtrie, R. E., Parton, W. J., Piteka, L. F., and Schulze, E.-D.: Ecosystem physiology responses to global change. In: *The Terrestrial Biosphere and Global Change: Implications for Natural and Managed Ecosystems* Walker, B., Steffen, W. L., Canadell, J., and Ingram, J. (Eds.), Cambridge University Press, Cambridge, 1999.
- Mulenga, B. P., Wineman, A., and Sitko, N. J.: Climate trends and farmers' perceptions of climate change in Zambia, *Environmental management*, 59, 291–306, 2017.
- Mulolwa, J. M.: Forestry in Zambia's Western province. In: *The Zambezi teak forests : Proceedings of the first international conference on the teak forests of Southern Africa*, Livingstone, Zambia, 18 - 24th March 1984, Pearce, G. D. (Ed.), Forest Department [etc.], Ndola, 1986.
- Musgrave, M. K.: Carbon and the commons in the Zambezi teak (*Baikiaea plurijuga*, Harms) forests of western Zambia : sustainable forest management for commodity and community. PhD Thesis. The University of St Andrews, . 2016.
- New, M., Hewitson, B., Stephenson, D. B., Tsiga, A., Kruger, A., Manhique, A., Gomez, B., Coelho, C. A. S., Masisi, D. N., Kululanga, E., Mbambalala, E., Adesina, F., Saleh, H., Kanyanga, J., Adosi, J., Bulane, L., Fortunata, L., Mdoka, M. L., and Lajoie, R.: Evidence of trends in daily climate extremes over southern and west Africa, *Journal of Geophysical Research*, 111, D14102, 2006.
- Ngoma, J., Moors, E., Kruijt, B., Speer, J. H., Vinya, R., Chidumayo, E. N., and Leemans, R.: Below and above-ground carbon distribution along a rainfall gradient. A case of the Zambezi teak forests, *Zambia Acta Oecologica* 87, 45–57, 2018a.
- Ngoma, J., Moors, E., Kruijt, B., Speer, J. H., Vinya, R., Chidumayo, E. N., and Leemans, R.: Data for developing allometric models and evaluating carbon stocks of the Zambezi Teak Forests in Zambia, *Data in Brief* 17, 1361–1373, 2018b.
- Ngoma, J., Moors, E., Speer, J. H., Kruijt, B., Vinya, R., and Leemans, R.: Forest response to climate change – A review of net primary productivity in Africa, "Unpublished", 2019. 2019.
- Ngoma, J., Speer, J. H., Vinya, R., Kruijt, B., Moors, E., and Leemans, R.: The dendrochronological potential of *Baikiaea plurijuga* in Zambia, *Dendrochronologia*, 41, 65–77, 2017.
- Niang, I., Ruppel, O. C., Abdrabo, M. A., Essel, A., Lennard, C., Padgham, J., and Urquhart, P.: Africa. Climate Change 2014: Impacts, Adaptation, and Vulnerability. Part B: Regional Aspects. Contribution of Working Group II to the Fifth Assessment Report of the Intergovernmental Panel on Climate Change [Barros, V.R., C.B. Field, D.J. Dokken, M.D. Mastrandrea, K.J. Mach, T.E. Bilir, M. Chatterjee, K.L. Ebi, Y.O. Estrada, R.C. Genova, B. Girma, E.S. Kissel, A.N. Levy, S. MacCracken, P.R. Mastrandrea, and L.L. White (eds.)] Cambridge University Press, Cambridge, United Kingdom and New York, NY, USA pp. 1199–1265. pp., 2014.
- Pan, S., Dangal, S. R. S., Tao, B., Yang, J., and Tian, H.: Recent patterns of terrestrial net primary production in Africa influenced by multiple environmental changes, *Ecosystem Health and Sustainability*, 1, 18, 2015.
- Piani, C., Weedon, G. P., Best, M., Gomes, S. M., Viterbo, P., Hagemann, S., and Haerter, J. O.: Statistical bias correction of global simulated daily precipitation and temperature for the application of hydrological models, *J. Hydrol.*, 395, 199–215, 2010.
- Pearce, G. D.: How to save the Zambezi teak forests. . In: FAO (1986). *Unasylya - No. 152 - Genetics and the forests of the future*. An international journal of the forestry and food industries. FAO - Food and Agriculture Organization of the United Nations. SPECIAL FAO's Forestry Action Plan, 38pp, 1986a.
- Pearce, G. D.: Properties and end-uses of Zambezi teak. In: *The Zambezi teak forests : proceedings of the first international conference on the teak forests of Southern Africa*, Livingstone, Zambia, 18 - 24th March 1984, Pearce, G. D. (Ed.), Forest Department [etc.], Ndola, 1986b.
- Pearce, G. D.: The Zambezi teak forests : proceedings of the first international conference on the teak forests of Southern Africa, Livingstone, Zambia, 18 - 24th March 1984, Forest Department [etc.], Ndola, 1986c.
- 55 PROTA4U: *Baikiaea plurijuga* Harms. <https://www.prota4u.org/database/protav8.asp?g=pe&p=Baikiaea+plurijuga+Harms>. Accessed date: 15th December. 2017.



- RCP Database: RCP Database (Version 2.0.5). <https://tntcat.iiasa.ac.at/RcpDb/dsd?Action=htmlpage&page=compare>. Accessed date: 11th April, . 2018.
- Reich, P. B., Walters, M. B., and Ellsworth, D. S.: From tropics to tundra: Global convergence in plant functioning, *Proceedings of the National Academy of Sciences*, 94, 13730-13734, 1997.
- 5 Reineke, L. H.: Perfecting a stand-density index for even-aged forests, *Journal of Agricultural Research* 46, 627-638, 1933.
- Riahi, K., Gruebler, A., and N, N.: Scenarios of long-term socio-economic and environmental development under climate stabilization, *Technological Forecasting and Social Change* 74, 7, 887-935., 2007.
- Sarkar, D. and Haldar, A.: Physical and chemical methods in soil analysis. Fundamental concepts of analytical chemistry and instrumental techniques, New Age International (P) Limited, Publishers, New Delhi, 2005.
- 10 Sarmiento, J. L. and Gruber, N.: Sinks for Anthropogenic carbon, *American Institute of Physics*, 2002. 1-7, 2002.
- Schaphoff, S., Lucht, W., Gerten, D., Sitch, S., Cramer, W., and Prentice, I. C.: Terrestrial biosphere carbon storage under alternative climate projections, *Climatic Change*, 74, 97-122, 2006.
- Sileshi, G. W.: A critical review of forest biomass estimation models, common mistakes and corrective measures, *Forest Ecology and Management*, 329, 237-254, 2014.
- 15 Sitch, S., Smith, B., Prentice, I. C., Arneth, A., Bondeau, A., Cramer, W., Kaplan, J. O., Levis, S., Lucht, W., Sykes, M. T., Thonicke, K., and Venevsky, S.: Evaluation of ecosystem dynamics, plant geography and terrestrial carbon cycling in the LPJ dynamic global vegetation model, *Global Change Biol.*, 9, 161-185, 2003.
- Smith, B., Prentice, I. C., and Sykes, M. T.: Representation of vegetation dynamics in the modelling of terrestrial ecosystems: comparing two contrasting approaches within European climate space, *Global Ecol. Biogeogr.*, 10, 621-637, 2001.
- 20 Smith, S. J. and Wigley, T. M. L.: Multi-Gas Forcing Stabilization with the MiniCAM, *Energy Journal*, 2006. 373-391, 2006.
- Stern, R. and Cooper, P.: Assessing climate risk and climate change using rainfall data—a case study from Zambia, *Experimental Agriculture*, 47, 241-266, 2011.
- The Government of the Republic of Zambia: The Forest Resources Management Study for Zambia Teak Forests in South-western Zambia: Final Report. Volume 1. (summary section). In: Ministry of Environment and Natural Resources. Japan International Cooperation Agency, 1996.
- 25 The Government of the Republic of Zambia, United National Development Programme, and Global Environment Facility: Formulation of the National Adaptation Programme of Action on Climate Change., Ministry of Tourism Environment and Natural Resources (Ed.), Lusaka, Zambia, 2007.
- Theilade, I., Sekeli, P. M., Hald, S., and Graudal, L. O. V.: Conservation plan for genetic resources of Zambezi teak (*Baikiaea plurijuga*) in Zambia. Danida Forest Seed Centre. DFSC Case Study No. 2, . 2001.
- 30 Thomas, H., Benjamin, S., Colin, P. I., Kristina, M., Paul, M., Almut, A., and T., S. M.: CO2 fertilization in temperate FACE experiments not representative of boreal and tropical forests, *Global Change Biol.*, 14, 1531-1542, 2008.
- Thonicke, K., Venevsky, S., Sitch, S., and Cramer, W.: The role of fire disturbance for global vegetation dynamics: coupling fire into a Dynamic Global Vegetation Model, *Global Ecol. Biogeogr.*, 10, 661-677, 2001.
- 35 Thuiller, W., Midgley, G. F., Hughes, G. O., Bomhard, B., Drew, G., Rutherford, M. C., and Woodward, F. I.: Endemic species and ecosystem sensitivity to climate change in Namibia, *Global Change Biol.*, 12, 759-776, 2006.
- University of East Anglia Climatic Research Unit, Harris, I. C., and Jones, P. D.: CRU TS3.23: Climatic Research Unit (CRU) Time-Series (TS) Version 3.23 of High Resolution Gridded Data of Month-by-month Variation in Climate (Jan. 1901- Dec. 2014). , Centre for Environmental Data Analysis, 09 November 2015. doi:10.5285/4c7fdfa6-f176-4c58-acee-683d5e9d2ed5., . 2015.
- 40 Voldoire, A., Sanchez-Gomez, E., Salas y Méliá, D., Decharme, B., Cassou, C., Sénési, S., Valcke, S., Beau, I., Alias, A., Chevallier, M., Déqué, M., Deshayes, J., Douville, H., Fernandez, E., Madec, G., Maisonnave, E., Moine, M.-P., Planton, S., Saint-Martin, D., Szopa, S., Tyteca, S., Alkama, R., Belamari, S., Braun, A., Coquart, L., and Chauvin, F.: The CNRM-CM5.1 global climate model: description and basic evaluation, *Climate Dynamics*, 40, 2091-2121, 2013.
- 45 Walkley, A. and Black, I. A.: An examination of the Degtjareff method for determining soil organic matter, and a proposed modification of the chromic acid titration method, *Soil science*, 37, 29-38, 1934.
- Wamunyima, S.: Ecological zones of Zambia. Personal communication. Ngoma, J. (Ed.), Lusaka, Zambia, 2014.
- Weedon, G. P., Gomes, S., Viterbo, P., Shuttleworth, W. J., Blyth, E., Österle, H., Adam, J. C., Bellouin, N., Boucher, O., and Best, M.: Creation of the WATCH Forcing Data and Its Use to Assess Global and Regional Reference Crop Evaporation over Land during the Twentieth Century, *Journal of Hydrometeorology*, 12, 823-848, 2011.
- 50 Williams, C. A., Hanan, N. P., Baker, I., Collatz, G. J., Berry, J., and Denning, A. S.: Interannual variability of photosynthesis across Africa and its attribution, *Journal of Geophysical Research: Biogeosciences*, 113, 2008.
- Wise, M., KV Calvin, AM Thomson, LE Clarke, B Bond-Lamberty, RD Sands, SJ Smith, AC Janetos, and Edmonds, J.: Implications of Limiting CO2 Concentrations for Land Use and Energy, *Science*, 324, 1183-1186, 2009.
- Wu, Z., Dijkstra, P., Koch, G. W., PeñUelas, J., and Hungate, B. A.: Responses of terrestrial ecosystems to temperature and precipitation change: a meta-analysis of experimental manipulation, *Global Change Biol.*, 17, 927-942, 2011.
- 55

Yu, B. and Chen, F.: The global impact factors of net primary production in different land cover types from 2005 to 2011, SpringerPlus, 5, 1235, 2016.