

# Assessing shaded-leaf effects on photochemical reflectance index (PRI) for water stress detection in winter wheat

Xin Yang<sup>1</sup>, Shishi Liu<sup>1\*</sup>, Yinuo Liu<sup>1</sup>, Xifeng Ren<sup>2</sup>, Hang Su<sup>1</sup>

<sup>1</sup>School of Resources and Environment, Huazhong Agricultural University, Wuhan, 430070, China

<sup>2</sup>College of Plant Science and Technology, Huazhong Agricultural University, Wuhan, 430070, China

*Correspondence to:* Shishi Liu (carol.shishi@gmail.com)

**Abstract.** The photochemical reflectance index (PRI) has emerged to be a pre-visual indicator of water stress. However, whether the varying shaded-leaf fractions, which may be caused by multiple view angles or the changing crop density in the field, affects the performance of PRI in detecting water stress of crops is still uncertain. This study evaluated the impact of the varying shaded-leaf fractions on estimating relative water content (RWC) across growth stages of winter wheat using seven formulations of PRI. Results demonstrated that for the control treatment the mean PRI of sunlit leaves was slightly higher than those of shaded leaves, but the difference between PRI of sunlit and shaded leaves increased as water resources became more limiting. Despite the difference between PRI of sunlit and shaded leaves, the significance of the linear relationship between RWC and most studied formulations of PRI did not show obvious variations with shadow fractions, except for the 100% shaded-leaf condition. Among the studied formulations of PRI, PRI3 based on reflectance at 512 nm as the reference band provided the most accurate estimates of RWC with varying shaded-leaf fractions, except for the 100% shaded-leaf condition. The slope and the intercept of linear regression models with PRI3 also showed minimized variations with shaded-leaf fractions. We then applied a uniform RWC prediction model to the data of varying shaded-leaf fractions, and found that the accuracy of RWC predictions was not significantly affected in the mixture of sunlit and shaded leaves. However, RWC estimated with PRI of the 100% shaded-leaf condition had the highest RMSE, implying that PRI of the pure shaded leaves may yield inaccurate estimates of plant water status.

## 1 Introduction

Agriculture consumes about 80%-90% of fresh water worldwide (Gonzalez-Dugo, Durand, and Gastal, 2010). Water stress is one of the most critical abiotic stressors limiting plant growth and crop production (Chaves, Maroco, and Pereira, 2003). Climate change, increasing worldwide shortages of water, and frequent droughts are exacerbating the agricultural water crisis and putting global food security at risk (Hirich et al. 2016; Lei et al. 2016). The assessment of water status in crops is critical for precision irrigation practices, balancing crop production with water supply and sustainable farming.

Remote sensing provides a unique tool to unobtrusively, efficiently, and quantitatively assess water status in crops. Water stress induces plants' stomatal closure, leading to the increasing leaf temperature due to the decreasing evaporative

cooling. Remotely monitoring the change in canopy temperature provides information on instantaneous transpiration status, and hence, thermal remote sensing has been served as an effective tool in detecting water stress for decades (Idso et al. 1981; Sayago, Ovando, and Bocco 2017). However, thermal remote sensing of water stress has limitations in both physiological and operational aspects. The physiological relationship between canopy temperature and stress is not clear for some crops (Villalobos, Testi, and Moreno-Perez 2009). Due to the technical reasons, the spatial resolution of thermal imaging sensors is generally coarser than the visible and infrared sensors, limiting its applications at local scales.

In a recent decade, the photochemical reflectance index (PRI) has emerged to be a pre-visual indicator of water stress. PRI is a normalized difference of reflectance at 531 nm and reflectance at a reference band (e.g. 570 nm) in the visible domain. It was initially proposed as an indicator of the de-epoxidation state of xanthophyll pigments, which is related to photosynthesis (Gamon, Peñuelas, and Field 1992). When the light absorbed by the plants exceeds the photosynthetic demand, de-epoxidation of xanthophyll cycle pigments occurs, leading to the downregulation of photosynthesis (Gamon, Peñuelas, and Field 1992). Multiple abiotic stress, including nutrient deficiency (Shrestha, Brueck, and Asch 2012; Magney et al. 2016), excessive heat (Dobrowski et al. 2005), and water deficit (Muller 2001; Sun et al. 2008; Sarlikioti, Driever, and Marcelis 2010; Zarco-Tejada et al. 2013; Magney et al. 2016), has been shown to trigger the xanthophyll cycle, resulting in the apparent drop in reflectance at 531 nm.

As a promising alternative to thermal remote sensing for monitoring plant water stress, several previous studies have investigated the feasibility of assessing plant water status at leaf level and canopy level using PRI. At leaf level, a number of studies demonstrate a close relationship between PRI and physiological indicators of water stress (Thenot, Méthy, and Winkel, 2002; Shahenshah et al., 2010), but some other studies report a poorer relationship due to the confounding environmental factors (Sarlikioti, Driever, and Marcelis, 2010) or the changes in pigment pools (Sun et al., 2008). At canopy level, studies show stronger correlations between changes in physiological indicators of water stress and PRI, in comparisons with the other indices (e.g. normalized difference vegetation index (NDVI)) (Suárez et al. 2008; Rossini et al. 2013; Zarco-Tejada et al. 2013). However, the performance of canopy PRI in the water stress detection is affected by canopy structure, canopy cover, and viewing geometry (Rossini et al. 2013; Panigada et al., 2014). Particularly, at seasonal and inter-annual time scales, physiological changes, such as relative water content and pigment pools, concurrently occur with structural changes, such as leaf area index (LAI). Canopy PRI is sensitive to the structural changes during the growth season (Gitelson, Gamon, and Solovchenko, 2017). To minimize the impact of canopy structures on PRI, transformations of PRI are developed using the band insensitive to the canopy structure (Hernández-Clemente et al., 2011), the structural vegetation indices for the normalization (Zarco-Tejada et al., 2013; Gitelson, Gamon, and Solovchenko, 2017), or the radiative transfer modeling results (Hernández-Clemente et al., 2011).

PRI is primarily driven by the xanthophyll cycle at the short time scale (e.g. a few hours, two to three days), but shaded leaves may not experience de-epoxidation of the xanthophyll cycle as the sunlit leaves do. As PRI is expected to be applied to monitoring water stress at large scale, canopy PRI derived from satellite data includes contributions from both the sunlit leaves and shaded leaves. Hall et al. (2008) and Hilker et al. (2010) found that canopy PRI was strongly dependent on

canopy shadow fractions, because the xanthophyll cycle status was affected by incident PAR, which was in turn affected by the level of self-shading within a canopy. Cheng et al. (2009) examined the contributions of variable sunlit/shaded canopy ratios to the simulation of canopy PRI with the two-layer Markov chain analytical canopy reflectance model, confirming the importance of adding shaded leave in the simulation. Takala and Mältus (2016) demonstrated that the illumination-induced shadowing effects explained the observed dynamic range of apparent canopy PRI derived from the high spatial resolution airborne imaging spectroscopy data. Zhou et al. (2017) examined PRI of rice leaves and panicles in sunlit and shaded portions of canopies, and they found that the correlations between canopy chlorophyll content and PRI of shaded leaves were much higher than those of sunlit leaves.

Previous studies have shown that within-canopy shadowing effects directly affect PRI of a canopy, but whether the proportion of shaded leaves further influences the performance of detecting water stress in the growth season of a crop using PRI is still uncertain. The objective of this study is to analyze the impact of varying shaded-leaf fractions on the performance of canopy PRI in detecting water stress during the growth season of winter wheat using a hyperspectral imager. To accomplish this objective, we conducted water stress experiments on winter wheat for two consecutive years. Reflectance of shaded and sunlit leaves derived from hyperspectral imagery was mixed with varying fractions to quantify the impacts of shaded leaves on different formulations of PRI in detecting water stress during the growth season.

## **2 Materials and Methods**

### **2.1. Study site and experimental design**

During the growth seasons of 2016 and 2017, two water stress experiments were conducted in the facilities at Huazhong Agricultural University, China (30°28'N, 114°22'E). The mean annual temperature is approximately 17.0 °C and the mean annual total precipitation is around 1256 mm. The seeds of cultivar 'Zheng 9023', which is widely planted in central China, were used in the experiment. Seeds were sown on November 2<sup>nd</sup>, 2015 and November 26<sup>th</sup>, 2016 respectively, in a rectangular plastic pot (L70cm×W40cm×H35cm) with the density of approximately 250-300 seeds/pot. The soil was silt loam, with a volumetric water content of 26% at the field capacity. Sufficient NPK (5:4:1) fertilizers were applied in the soil before sowing. The experiments consisted of 28 pots in 2015-2016 and 15 pots in 2016-2017. Pest and disease control were conducted in the same time during the growth period, in order to avoid additional stress other than different levels of water stress.

Seedlings were grown outdoor under the natural condition before the water stress experiments started. Soil water content was measured every 4-5 days using time domain reflectometry (TDR300, Spectrum Technology Inc., USA), and tap water was supplied if soil water content was 70% off field capacity. Water stress treatments started at the end of February, which was during the tiller initiation stage. Pots were moved to a rain-out shelter to prevent external water supply. In 2015-2016, 28 pots were divided into five groups. A group of four pots was used as the control, which had sufficient water supplies throughout the experiment. The other four groups (with six pots for each group) stopped watering on Feb 24<sup>th</sup>,

March 6<sup>th</sup>, March 28<sup>th</sup>, and April 8<sup>th</sup> respectively. In 2016-2017, 15 pots were divided into five groups. A group of three pots was used as the control, which had sufficient water supplies throughout the experiment. The other four groups (with three pots for each group) stopped irrigation on March 15<sup>th</sup>, March 22<sup>th</sup>, March 29<sup>th</sup>, and April 12<sup>th</sup> respectively. After irrigation stopped, soils of the treated pots were left to dry to analog the natural drought condition. In 2016, measurements were taken every two to five days depending on the weather conditions until immature senescence occurred. For the water treatment group, three pots of winter wheat were used for capturing hyperspectral images, and the other three pots were used to collect samples. In 2017, measurements were taken every four to six days until immature senescence occurred. For the water treatment groups, one pot of winter wheat was used for capturing hyperspectral images, and the other two pots were used to collect samples. In both years, physiological and spectral measurements were taken in control groups during the whole experiment.

## 2.2 Physiological measurements

In this study, we used relative water content (RWC) as the indicator of water stress, because RWC was recommended by previous studies as an effective physiological indicator of water status (Hewitt et al., 1985; Siddique, Hamid, and Islam, 2000). We randomly chose three plants in the sampled pot, and top three leaves of the sampled plants were cut from the stem. Leaves were cut into ten small round pieces with a puncher and put into a zip lock bag. Leaf samples were enclosed in a cooler and brought to the laboratory to measure RWC. In the laboratory, fresh weight was measured with an electronic balance. The leaf samples were immersed in distilled water for 16-18 hours. We dried the surface moisture and weighed the turgid weight. Afterward, all samples were put into aluminum boxes to dry in the oven at 105 °C for 15-20 minutes, and then dried at 80 °C for about 10 hours when a constant dry weight was reached. The RWC of leaf samples was calculated as:

$$RWC = \frac{WF-WD}{WT-WD} \quad (\%) \quad (1)$$

where WF is the fresh weight, WT is the turgid weight, and WD is the dry weight.

## 2.3 Spectral data

### 2.3.1 Hyperspectral image acquisition

Hyperspectral images were recorded *in situ* using the SOC710VP Portable Hyperspectral Imager (Surface Optics Corporation, USA). The imager has 640×640 pixels and 128 bands in the range of 379-1039 nm, with a spectral resolution of 4.6875 nm and a 25 ° field of view. The transparent shed was open half an hour before measuring began. The imager was set up with a nadir view angle and approximately 1.5 m above the canopy, resulting in the spatial resolution of approximately 1 mm. Hyperspectral images were recorded under sunny and cloudless conditions around midday (12:00-14:00) local time. According to Magney et al. (2016)'s study on white spring wheat, PRI showed pronounced diurnal variations, but PRI measured during peak irradiance, which was approximately between 12:00 and 14:00, showed minimal variations. A reference spectral panel was placed on the pot for each measurement. Spectra of the panel were used to correct radiation

variations due to differences in solar illumination. The spectral data was acquired by LuCamSoftware Camera Drivers and the HyperScanner Software platform. After image acquisition, radiometric calibration was performed using the SOC's Spectral Radiance Analysis Toolkit (SRAnal), converting the raw DN values of the hyperspectral image to reflectance.

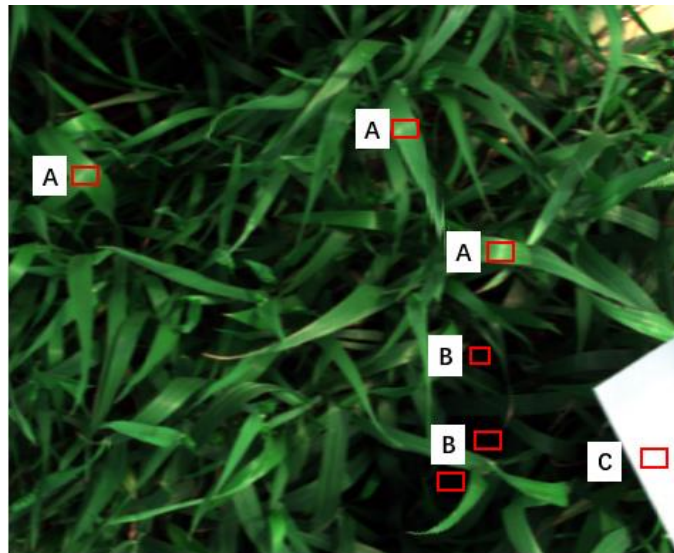
### 2.3.2 Spectral reflectance extraction and preprocessing

5 We manually selected region of interests (ROIs) of the most deeply shaded leaves and the brightest sunlit leaves in each image using ENVI 5.1 (The Environment for Visualizing Images) (Figure 1). Reflectance within ROIs were averaged and used as reflectance of sunlit and shaded leaves respectively. Based on the assumption of the linear mixture of shadow and sunlit leaves, we mixed different fractions of shaded-leaf reflectance with sunlit-leaf reflectance to evaluate the impact of shaded leaves on detecting water stress with PRI.

10 The derived spectral data was interpolated to 1 nm band width using the cubic spline interpolation function in MATLAB (R2011a) software. Seven formulations of PRI were calculated for both sunlit leaves and shaded leaves (Table 1). In addition, we calculated the difference ( $\Delta$ PRI) between PRI of sunlit leaves (PRI\_sunlit) and PRI of shaded leaves (PRI\_shaded):

$$\Delta \text{PRI} = \text{PRI}_{\text{sunlit}} - \text{PRI}_{\text{shaded}} \quad (2)$$

15



**Figure 1.** The original hyperspectral image shown as an RGB image. Region of interests (ROIs) A are the sunlit leaves, ROIs B are the shaded leaves, and ROI C is the reference spectral panel.

20 **Table 1.** Seven PRI formulations used in this study. R is the reflectance at the specified wavelength in nm.

Index	Equation	Reference
-------	----------	-----------

PRI <sub>570</sub>	$(R531-R570)/(R531+R570)$	Gamon, Peñuelas, and Field (1992)
PRI1	$(R528-R567)/(R528+R567)$	Gamon, Filella, and Penuelas (1993)
PRI2	$(R539-R570)/(R539+R570)$	Penuelas, Filella, and Gamon (1995)
PRI3	$(R531-R512)/(R531+R512)$	Hernández-Clemente et al. (2011)
PRI4	$(R531-R600)/(R531+R600)$	Gamon, Filella, and Penuelas (1993)
PRI5	$(R531-R670)/(R531+R670)$	Gamon, Filella, and Penuelas (1993)
PRI6	$RDVI=(R800-R670)/(R800+R670)^{0.5}$ $PRI570/[RDVI*(R700/R670)]$	Zarco-Tejada et al. (2013)

## 2.4. Statistical Analysis

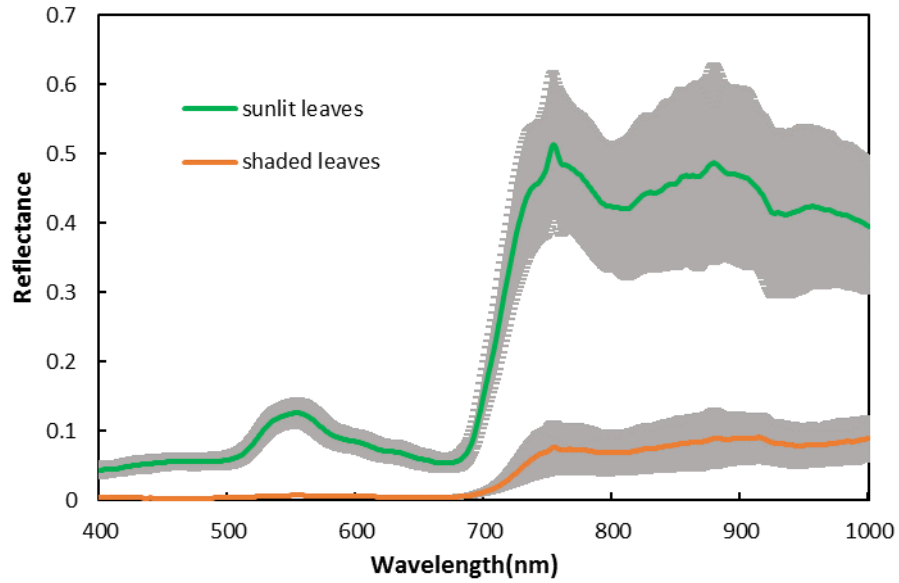
Measurements taken from pots that had the same water treatments were averaged and used in the analysis. The maximum, minimum, coefficient of variation (CV), and standard deviation were used to describe the range and the variation of observations. To analyse the variations of PRI in sunlit and shaded leaves during the water stress treatment, we divided all the data into seven groups according to RWC values (RWC between 0.2-0.3, 0.3-0.4, 0.4-0.5, 0.5-0.6, 0.6-0.7, 0.7-0.8, and >0.8). The mean and the standard deviation were calculated to evaluate the variations of PRI against RWC. The least-square linear regression model was established to estimate RWC with PRI of sunlit leaves and shaded leaves. The quadratic function was used to describe the relationships between shaded-leaf fractions and the slope/intercept of the linear regression model between PRI and RWC. R<sup>2</sup> was used to evaluate the significance of the regression model, and the root mean square error (RMSE) was used to measure the actual average differences between measurements and predictions. Statistical analyses were performed in MATLAB (R2011a) software.

## 3 Results

### 3.1 PRI of sunlit leaves and shaded leaves

The spectra of sunlit leaves and shaded leaves are presented in Figure 2. The reflectance of the shaded leaves was lower than that of the sunlit leaves. Unlike the spectra of sunlit leaves, the green peak of shaded leaves was not obvious.

We calculated the difference ( $\Delta$ PRI) between PRI of sunlit leaves and shaded leaves for the control treatment and water stress treatment separately (Table 2). For both the control treatment and water stress treatment, the positive mean value of  $\Delta$ PRI indicated that PRI of sunlit leaves were higher than those of shaded leaves, but the mean  $\Delta$ PRI was much larger for the water stress treatment. Take PRI<sub>570</sub> as an example, PRI<sub>570</sub> of sunlit leaves and shaded leaves declined as water resource became limiting after irrigation stopped (Figure 3).  $\Delta$ PRI<sub>570</sub> became pronounced at RWC smaller than 0.5, and  $\Delta$ PRI<sub>570</sub> was minimized at RWC higher than 0.8.



**Figure 2.** Spectra of sunlit and shaded leaves. The solid lines are the mean reflectance of the samples and the shadings are the standard deviation.

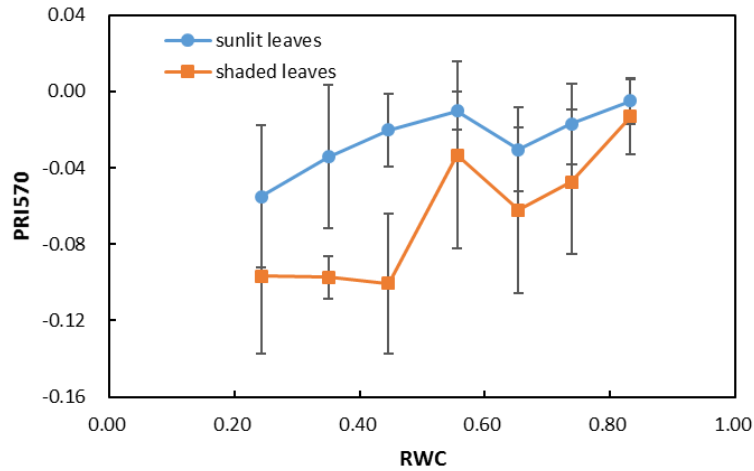
5 **Table 2.** The maximum, minimum, mean, CV and range of the difference ( $\Delta$ PRI) between PRI of sunlit leaves and PRI of shaded leaves for the control treatment (a) and the water stress treatment (b).

(a)

	Maximum	Minimum	Mean	CV	Range
$\Delta$ PRI570	0.0519	-0.0178	0.0192	1.1877	0.0696
$\Delta$ PRI1	0.0425	-0.0287	0.0106	2.1840	0.0713
$\Delta$ PRI2	0.0585	-0.0042	0.0227	0.7684	0.0627
$\Delta$ PRI3	0.0976	-0.0565	0.0047	0.9691	0.1541
$\Delta$ PRI4	0.1413	-0.0041	0.0643	0.6256	0.1454
$\Delta$ PRI5	0.3075	0.0327	0.1698	0.5289	0.2748
$\Delta$ PRI6	0.1549	-0.0152	0.0515	1.0431	0.1701

(b)

	Maximum	Minimum	Mean	CV	Range
$\Delta$ PRI570	0.1050	-0.0170	0.0441	0.8095	0.1220
$\Delta$ PRI1	0.0835	-0.0172	0.0253	1.1064	0.1007
$\Delta$ PRI2	0.1109	-0.0192	0.0519	0.7221	0.1301
$\Delta$ PRI3	0.1660	-0.1035	0.0374	1.5302	0.2695
$\Delta$ PRI4	0.2608	-0.0398	0.1362	0.6363	0.3006
$\Delta$ PRI5	0.6119	-0.0061	0.3084	0.5196	0.6180
$\Delta$ PRI6	1.3637	-0.0352	0.2596	1.2326	1.3989



**Figure 3.** The mean and the standard deviation of PRI570 in sunlit leaves and shaded leaves against RWC. Data were divided into seven groups according to RWC values (RWC between 0.2-0.3, 0.3-0.4, 0.4-0.5, 0.5-0.6, 0.6-0.7, 0.7-0.8, and >0.8).

5

### 3.2 The impact of shaded leaves on water stress detection

To assess the impact of shaded leaves on detecting water stress with PRI, we mixed different fractions of shaded-leaf reflectance with sunlit-leaf reflectance, and analyzed the relationship between RWC and PRI calculated from the mixed reflectance of shaded and sunlit leaves. Different formulations of PRI were all positively correlated with RWC (Table 3). Among the studied formulations of PRI2, PRI3, PRI4, and PRI6 showed significant correlations with RWC in winter wheat with the varying shaded-leaf fractions, except for the 100% shaded-leaf condition.  $R^2$  of the linear regression models between RWC and PRI2, PRI3, PRI4, and PRI6 did not show pronounced differences with varying shaded-leaf fractions. For PRI570, PRI1, and PRI5,  $R^2$  increased slightly with the increasing shaded-leaf fraction. Figure 4 illustrated examples of the significant relationships between RWC and PRI of sunlit leaves and shaded leaves, respectively.

10

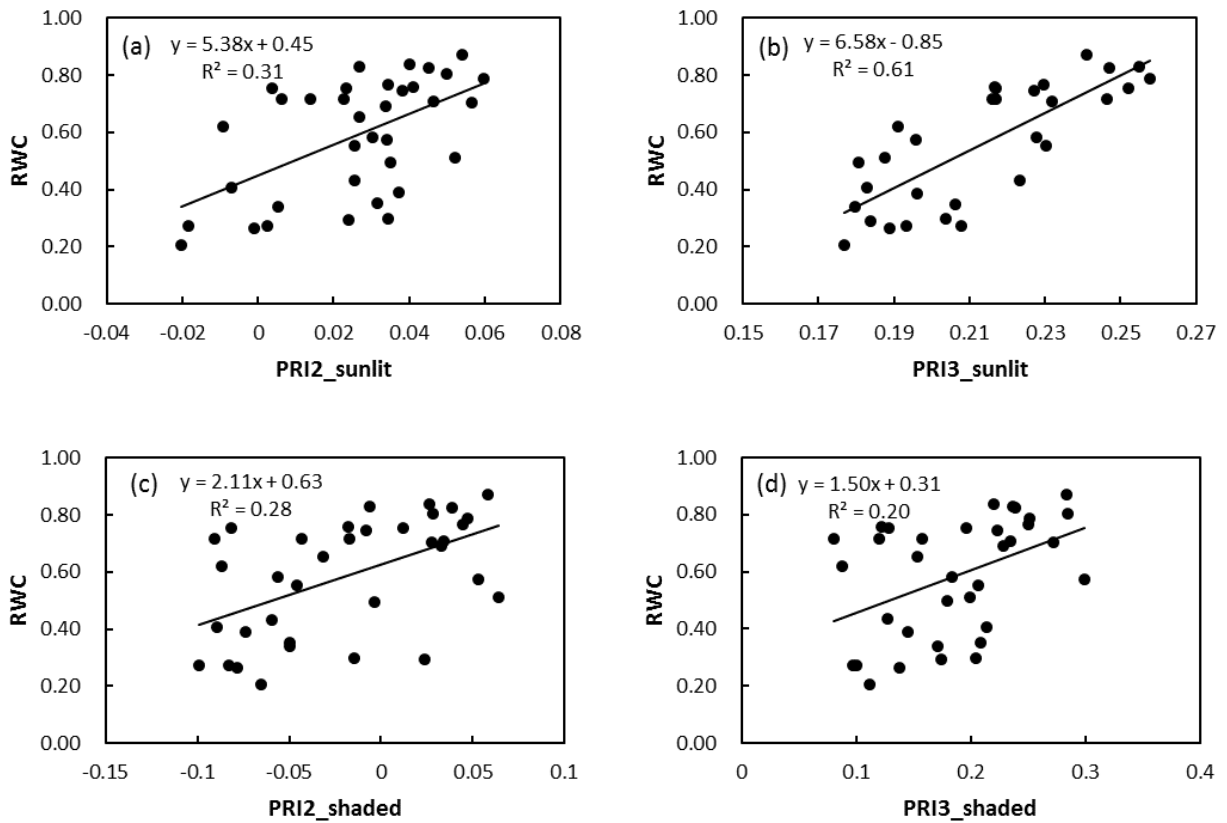
15

We further analyzed the impact of shaded-leaf fractions on the slope and intercept of the linear regression model between PRI and RWC. The slope and intercept of the linear regression models between different formulations of PRI and RWC were strongly correlated with fractions of shaded leaves (Table 4). The quadratic function was applied to describe the non-linear relationship between shaded-leaf fractions and the slope/intercept. Examples of non-linear relationships for PRI570 and PRI3 are shown in Figure 5. For all the studied formulations of PRI, the intercept remained relatively stable under different shaded-leaf fractions, except for the 100% shaded-leaf fraction. The slope increased non-linearly with shaded-leaf fractions for most of the studied PRI, but PRI3 did not show obvious variations in the slope under the shaded-leaf fractions below 70% (Figure 5(d)).

20



To evaluate if these changes in the values of linear regression parameters affected the accuracy of RWC estimates, we applied the linear regression model derived from the PRI of the generally applicable sunlit/shaded leaves ratio of 50/50 to detect water stress using PRI of the varying sunlit leaves/shadow ratio. We also evaluated the accuracy of RWC estimated with the linear regression models geared towards the known shaded-leaf fractions. Given the known shaded-leaf fractions, the slope and intercept of the linear regression models were estimated with the quadratic functions shown in Figure 5. Results showed that RMSE of RWC estimates did not vary significantly with shaded-leaf fractions, except for PRI1 (Figure 6). RMSE in RWC estimated with PRI1 was decreased with the increased shaded-leaf fractions, probably because the reference band (567 nm) in PRI1 was more sensitive to the change in the chlorophyll content of shaded leaves. However, for all the studied formulations of PRI, RWC estimated with PRI of 100% shaded leaves had the highest RMSE, implying that PRI of the pure shaded leaves may yield inaccurate estimates of plant water status.



**Figure 4.** Examples of the linear relationship between PRI of sunlit leaves (PRI2 (a), PRI3 (b)) and RWC, and the linear relationship between PRI of shaded leaves (PRI2 (c), PRI3 (d)) and RWC.

**Table 3.** R<sup>2</sup> of the linear relationship between RWC and different formulations of PRI calculated by reflectance of varying ratio of sunlit leaves to shaded leaves in winter wheat during the study period.

RWC	Shaded 0% Sunlit 100%	Shaded 10% Sunlit 90%	Shaded 20% Sunlit 80%	Shaded 30% Sunlit 70%	Shaded 40% Sunlit 60%	Shaded 50% Sunlit 50%	Shaded 60% Sunlit 40%	Shaded 70% Sunlit 30%	Shaded 80% Sunlit 20%	Shaded 90% Sunlit 10%	Shaded 100% Sunlit 0%
PRI570	0.17*	0.18*	0.19**	0.19**	0.20**	0.22**	0.23**	0.25**	0.28**	0.31**	0.31**
PRI1	0.07	0.07	0.07	0.08	0.09	0.10	0.12*	0.14*	0.18*	0.25**	0.33**
PRI2	0.31**	0.31**	0.32**	0.32**	0.33**	0.34**	0.35**	0.36**	0.36**	0.35**	0.28**
PRI3	0.61**	0.62**	0.63**	0.64**	0.66**	0.67**	0.67**	0.67**	0.62**	0.49**	0.20**
PRI4	0.29**	0.30**	0.30**	0.31**	0.32**	0.33**	0.34**	0.35**	0.35**	0.34**	0.27**
PRI5	0.03	0.03	0.04	0.05	0.06	0.07	0.09	0.11	0.13*	0.14*	0.12*
PRI6	0.22**	0.23**	0.23**	0.23**	0.23**	0.24**	0.24**	0.23**	0.22**	0.16*	0.04

\*\* . Correlation coefficient significant at p<0.01;

\* . Correlation coefficient significant at p<0.05.

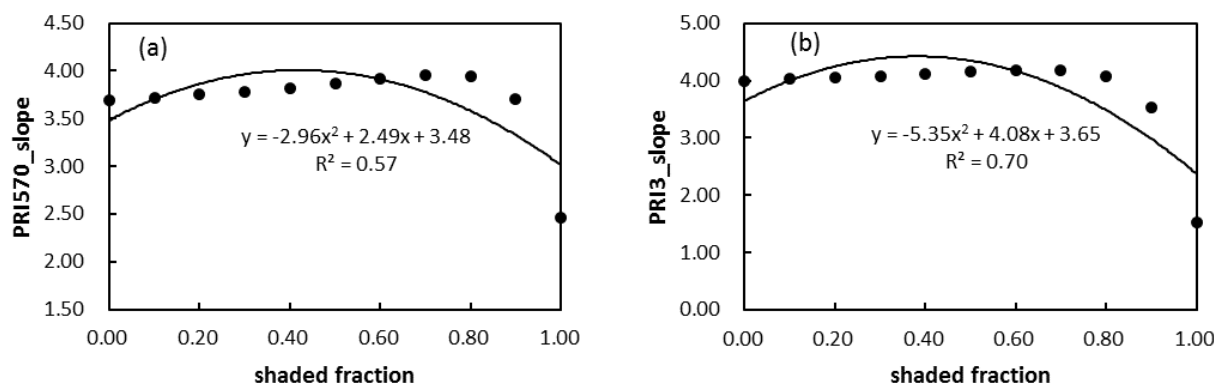
5

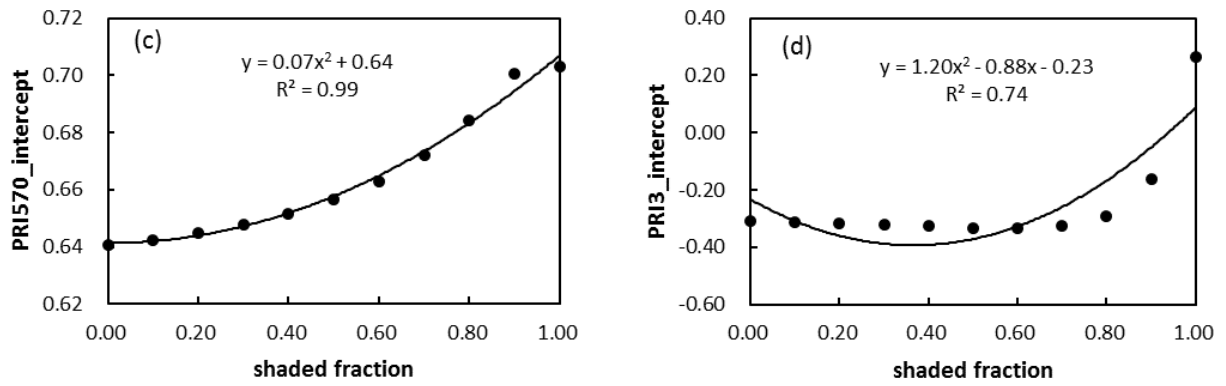
**Table 4.** R<sup>2</sup> of the quadratic function between shaded-leaf fractions and the slope and intercept of the linear regression models that are used to estimate RWC with different formulations of PRI.

	PRI570	PRI1	PRI2	PRI3	PRI4	PRI5	PRI6
Slope	0.57*	0.53*	0.79**	0.70**	0.81**	0.66*	0.59*
Intercept	0.99**	0.88**	0.94**	0.74**	0.93**	0.88**	0.93**

\*\* . Correlation coefficient significant at p<0.01;

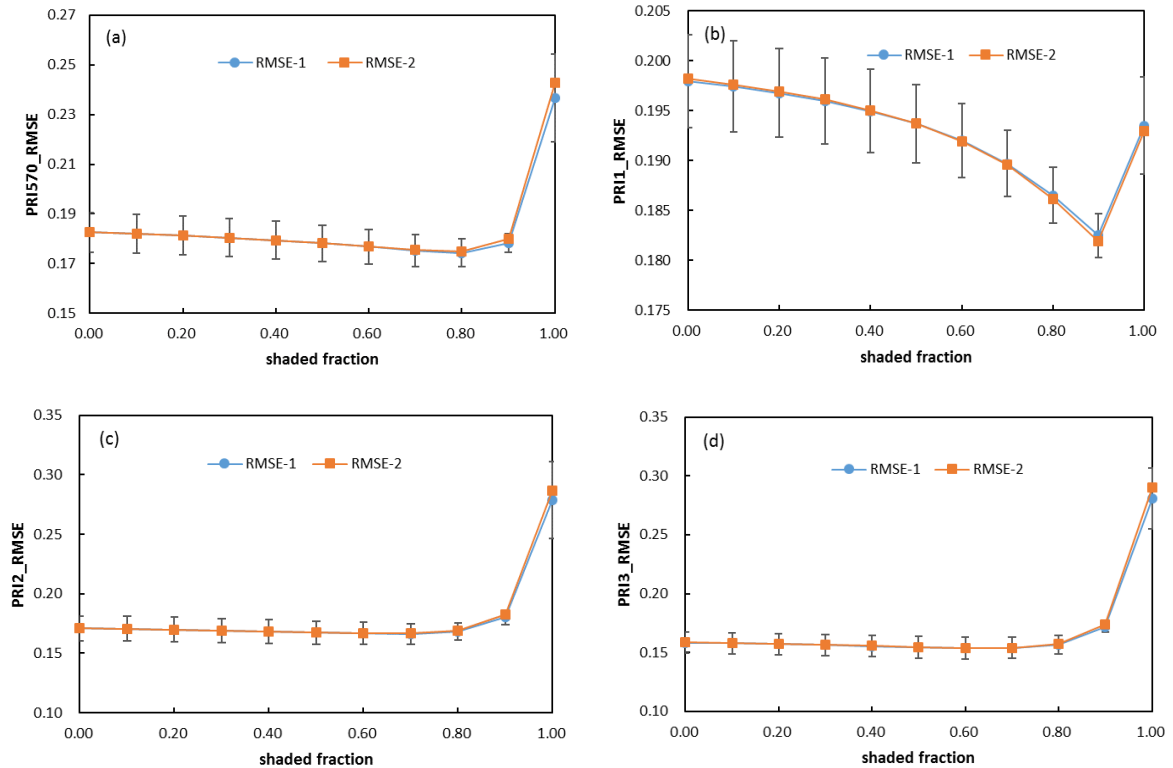
10 \* . Correlation coefficient significant at p<0.05.

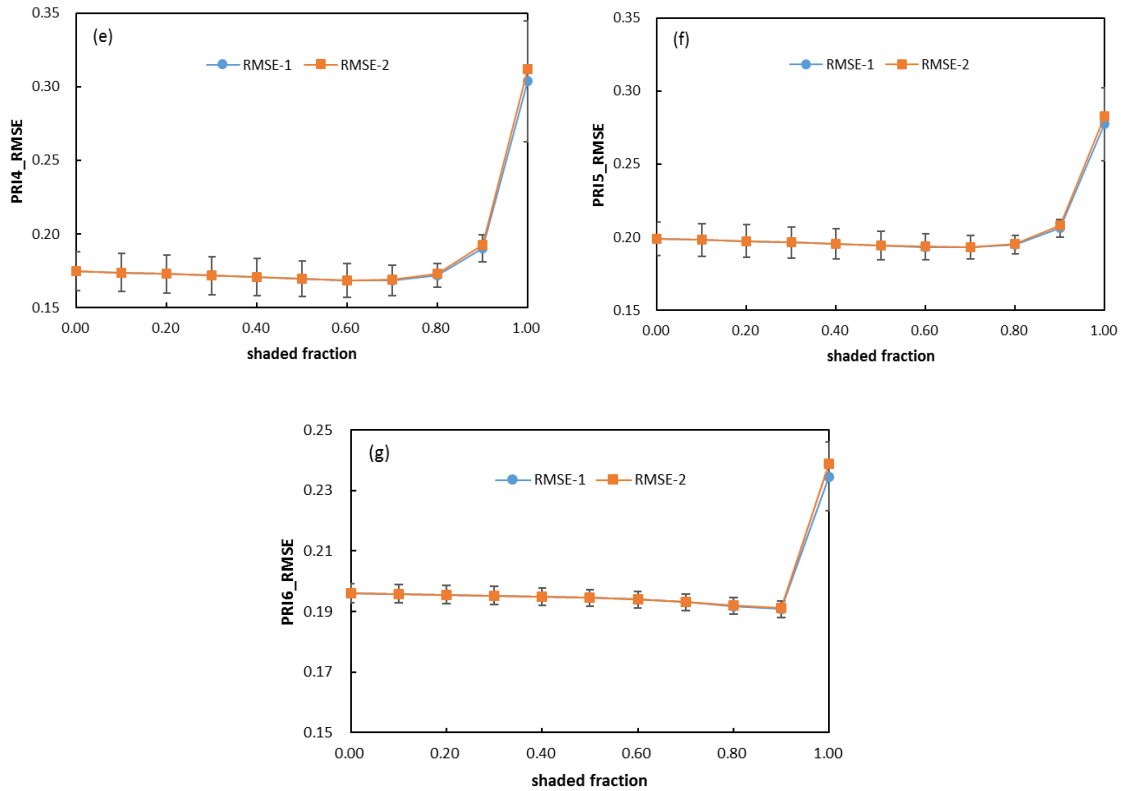




**Figure 5.** Relationships between shaded-leaf fractions and the slope of the linear regression models of RWC and PRI570 (a) and PRI3 (b); and relationships between shaded-leaf fractions and the intercept of the linear regression models of RWC and PRI570 (c) and PRI3 (d).

5





**Figure 6.** RMSE of RWC estimated with PRI570 (a), PRI1(b), PRI2(c) , PRI3(d) , PRI4(e) , PRI5(f) , PRI6(g) under different shaded-leaf fractions. RMSE-1 means RMSE of RWC estimated with the linear regression model derived from the PRI of the sunlit/shaded leaves ratio of 50/50; RMSE-2 means RMSE of RWC estimated with the linear regression models geared towards the known shaded-leaf fractions. Given the known shaded-leaf fractions, the slope and intercept of the linear regression models were estimated with the quadratic functions.

#### 4. Discussion

Theoretically, sunlit leaves are more likely to experience high light-induced environmental stress than shaded leaves (Hilker et al., 2008; Middleton et al., 2009; Cheng et al., 2012). Data from previous field samplings and model simulations, although limited, confirmed the impact of shaded-leaf fractions on PRI values (Middleton et al., 2009; Cheng et al., 2012; Takala and Mõttus, 2016). While interests of detecting plant water stress with PRI are increasing, studies rarely analyzed the impact of shaded leaves on the performance of PRI in water stress detection. This study quantified the differences between PRI of sunlit and shaded leaves in winter wheat under control and water stress conditions, and investigated the impact of

varying shaded-leaf fractions on water stress detection during the growth season, using different formulations of PRI derived from hyperspectral images.

Our results showed that for the control treatment the mean PRI of sunlit leaves was slightly higher than that of shaded leaves. Take PRI570 for example,  $\Delta$ PRI570 ranged from -0.0178 to 0.0519, roughly agreed with results presented in previous studies. Takala and Mõttus (2016) reported the range of  $\Delta$ PRI without a shadow correction was -0.01 – 0.10 at the boreal forest. Middleton et al. (2009) reported  $\Delta$ PRI of -0.035 at a Douglas-fir forest in Canada. Cheng et al. (2012) demonstrated that the average PRI values varied from -0.008 to 0.005 for sunlit leaves and from 0.002 to 0.022 for shaded leaves measured in the corn field. Mõttus et al. (2015) presented the difference between canopy PRI (including PRI of shaded leaves) and PRI of sunlit leaves ranged from -0.025 to 0.073 for pine, spruce and birch. In summary, both positive values and negative values of  $\Delta$ PRI570 can be found in previous studies (Hilker et al., 2008; Middleton et al., 2009; Cheng et al., 2012), but the difference between PRI of sunlit leaves and shaded leaves was small for healthy vegetation.

Interestingly, our results showed that  $\Delta$ PRI was much higher for the water stress treatment than the control treatment.  $\Delta$ PRI increased as water resources became more limiting, but it then decreased when prolonged drought caused premature senescence. The increased  $\Delta$ PRI might be due to the more severe chlorophyll degradation on old leaves, induced by a sustained water stress deficit (Bolhar-Nordenkamp, Hofer, and Lechner, 1991; Ciganda, Gitelson, and Schepers, 2012; Liu et al., 2015). As several studies proved that PRI was related to the pigment content (Suárez et al., 2009; Gitelson, Gamon, and Solovchenko, 2017), the early degradation of chlorophyll content in the bottom shaded leaves may influence their photosynthetic potential, and thus lead to the nonsynchronous change in PRI values between the top sunlit leaves and the bottom shaded leaves. The weaker correlation between PRI of shaded leaves and RWC (Figure 5) also supported the hypothesis of the nonsynchronous change in PRI values between the sunlit and shaded leaves. Both the sunlit and shaded leaves eventually wilt after the prolonged water stress, resulting in the decreased range in  $\Delta$ PRI at the end of the water stress treatment.

Although the PRI of shaded leaves were different from PRI of sunlit leaves under both control and water stress conditions, the effect of the varying fractions of shaded leaves did not lead to the substantial change in the significance of the relationship between PRI and RWC. We hypothesized it was because the shallow soil in the pot experiment caused the quick wilting during the water stress treatment, and thus the changes in leaf area and pigment content intertwined with physiological responses. Among the studied formulations of PRI proven to minimize the effect of structural change in canopies in previous studies (Hernández-Clemente et al., 2011; Zarco-Tejada et al., 2013), PRI3 that used reflectance at 512 nm as the reference band provided the most accurate estimates of RWC with varying shaded-leaf fractions, except for the 100% shaded-leaf fraction. PRI3 was originally developed for the needle tree based on the evidence that reflectance at 512 nm was not responsive to the change in xanthophyll epoxidation state (Hernández-Clemente et al. 2011). In their study, PRI3 showed the highest correlation with the stomatal conductance and water potential at the canopy level, and the lowest sensitivity to canopy structure, in comparison with PRI570 and NDVI. Our results also

showed the superior performance of PRI3 than the other formulations of PRI in estimating RWC, implying that for winter wheat band 512 nm might be a better reference band that could maximize the physiological responses of band 531 nm. Unfortunately, we could not provide direct evidence of PRI3's superior sensitivity to the change in xanthophyll epoxidation state, due to the lack of measurements of the xanthophyll epoxidation state and leaf area index.

5        Magney et al. (2016) used the difference between the midday PRI and early morning PRI (PRI<sub>0</sub>) to disentangle the facultative (diurnally changing) and the constitutive (seasonally changing) components of the PRI signal, based on the assumption that the early morning PRI represented a 'steady-state' prior to the xanthophyll cycle de-epoxidation. They found the stronger seasonal responses of PRI- PRI<sub>0</sub> to vapor pressure deficit, suggesting that PRI- PRI<sub>0</sub> was mainly facilitated by short term changes in the xanthophyll cycle as opposed to longer-term pigment changes. Hwang  
10 et al. (2017) found that the ratio (sPRI) of sunlit canopy PRI (backward direction images) to shaded canopy PRI (forward direction images) captured drought signals in a temperate deciduous forest. Inspired by these studies, we tried to use  $\Delta$ PRI and PRI\_sunlit/PRI\_shaded to disentangle the facultative and constitutive components. However, the correlation between RWC and  $\Delta$ PRI or PRI\_sunlit/PRI\_shaded was not significant, and thus results were not shown in the manuscript.

## 15 **5. Conclusion**

This study evaluated the impact of the varying shaded-leaf fractions on seasonal water stress detection in winter wheat using different formulations of PRI. Results demonstrated that for the control treatment the mean PRI of sunlit leaves was slightly higher than those of shaded leaves, but the difference between PRI of sunlit and shaded leaves increased as water resources became more limiting. Despite the difference between PRI\_shadow and PRI\_leaf, the significance of the linear  
20 relationship between RWC and different formulations of PRI did not show obvious variations with shadow fractions, except for the 100% shaded-leaf condition. Among the studied formulations of PRI, PRI3 based on reflectance at 512 nm as the reference band provided the most accurate estimates of RWC with varying shaded-leaf fractions, except for the 100% shaded-leaf condition. Furthermore, we applied the linear regression model derived from the PRI of the generally applicable sunlit/shaded leaves ratio of 50/50 to detect water stress using PRI of the varying shaded-leaf fractions, and found that the  
25 accuracy of RWC estimates did not vary significantly with shaded-leaf fractions. However, RWC estimated with PRI of 100% shaded leaves had the highest RMSE, implying that PRI of the pure shaded leaves may yield inaccurate estimates of plant water status. This study provides useful information on remote detection of water stress for accurate irrigation scheduling and yield forecast. Further research is indeed needed to investigate the shaded-leaf effect on PRI and water stress detection, especially for crops with different canopy geometries from winter wheat.

30

*Author Contributions.* Xin Yang participated in the data collection, conducted data pre-processing and statistical analysis, and wrote methods and results sections. Dr. Shishi Liu designed the experiment with Dr. Xifeng Ren, participated in the data collection, and wrote introduction, discussion, and conclusion sections. Yinuo Liu, Xifeng Ren, and Hang Su participated in the data collection, and provided valuable suggestions to the manuscript.

5

*Competing interests.* The authors declare no conflict of interest.

*Acknowledgments.* This research was supported by grants from the National Natural Science Foundation of China (Grant No. 41501367), National Key Research and Development Program of China (Grant No. 2017YFD0100802), and the Fundamental Research Funds for the Central Universities (Grant No. 2662018YJ018). We greatly appreciate comments and suggestions from anonymous reviewers.

## References

- 15 Bolhar-Nordenkamp, Harald R., Margit Hofer, and Elisabeth G. Lechner.: Analysis of Light-Induced Reduction of the Photochemical Capacity in Field-Grown Plants. Evidence for Photoinhibition?, *Photosynth. Res.*, 27 (1), 31–39, <https://doi.org/10.1007/BF00029974>, 1991.
- Chaves, Manuela M., João P. Maroco, and João S. Pereira.: Understanding Plant Responses to Drought — from Genes to the Whole Plant, *Funct. Plant Biol.*, 30 (3), 239, <https://doi.org/10.1071/FP02076>, 2003.
- 20 Cheng, Yen-Ben, Elizabeth M Middleton, Thomas Hilker, Nicholas C Coops, T Andrew Black, and Praveena Krishnan.: Dynamics of Spectral Bio-Indicators and Their Correlations with Light Use Efficiency Using Directional Observations at a Douglas-Fir Forest, *Meas. Sci. Technol.*, 20 (9), 095107, <https://doi.org/10.1088/0957-0233/20/9/095107>. 2009.
- Cheng, Yen-Ben, Elizabeth M. Middleton, Qingyuan Zhang, Lawrence A. Corp, Jonathan Dandois, and William P. Kustas.: The Photochemical Reflectance Index from Directional Cornfield Reflectances: Observations and Simulations, *Remote Sens. Environ.*, 124 (September), 444–53, <https://doi.org/10.1016/j.rse.2012.05.030>, 2012.
- 25 Ciganda, Veronica S., Anatoly A. Gitelson, and James Schepers.: How Deep Does a Remote Sensor Sense? Expression of Chlorophyll Content in a Maize Canopy, *Remote Sens. Environ.*, 126 (November), 240–47, <https://doi.org/10.1016/j.rse.2012.08.019>, 2012.
- Dobrowski, S, J Pushnik, P Zarcotejada, and S Ustin.: Simple Reflectance Indices Track Heat and Water Stress-Induced Changes in Steady-State Chlorophyll Fluorescence at the Canopy Scale, *Remote Sens. Environ.*, 97 (3), 403–14, <https://doi.org/10.1016/j.rse.2005.05.006>, 2005.
- 30 Gamon, J.A., A. Filella, and J. Penuelas.: The Dynamic 531-Nanometer Å Reflectance Signal: A Survey of Twenty Angiosperm Species, In *Photosynthetic Responses to the Environment*, 172–77, Rockville, MD: American Society of Plant Physiologists, 1993.
- 35 Gamon, J.A., J. Penuelas, and C.B. Field.: A Narrow-Waveband Spectral Index That Tracks Diurnal Changes in Photosynthetic Efficiency, *Remote Sens. Environ.*, 41 (1), 35–44, [https://doi.org/10.1016/0034-4257\(92\)90059-S](https://doi.org/10.1016/0034-4257(92)90059-S), 1992.
- 40 Gitelson, Anatoly A., John A. Gamon, and Alexei Solovchenko.: Multiple Drivers of Seasonal Change in PRI: Implications for Photosynthesis 2. Stand Level, *Remote Sens. Environ.*, 190 (March), 198–206, <https://doi.org/10.1016/j.rse.2016.12.015>, 2017.
- Gonzalez-Dugo, Victoria, Jean-Louis Durand, and François Gastal.: Water Deficit and Nitrogen Nutrition of Crops. A Review, *Agron. Sustain. Dev.*, 30 (3), 529–44, <https://doi.org/10.1051/agro/2009059>, 2010.

- Hall, Forrest G., Thomas Hilker, Nicholas C. Coops, Alexei Lyapustin, Karl F. Huemmrich, Elizabeth Middleton, Hank Margolis, Guillaume Drolet, and T. Andrew Black.: Multi-Angle Remote Sensing of Forest Light Use Efficiency by Observing PRI Variation with Canopy Shadow Fraction, *Remote Sens. Environ.*, 112 (7), 3201–11, <https://doi.org/10.1016/j.rse.2008.03.015>, 2008.
- 5 Hernández-Clemente, Roc ó, Rafael M. Navarro-Cerrillo, Lola Suárez, Fermín Morales, and Pablo J. Zarco-Tejada. : Assessing Structural Effects on PRI for Stress Detection in Conifer Forests, *Remote Sens. Environ.*, 115 (9), 2360–75, <https://doi.org/10.1016/j.rse.2011.04.036>, 2011.
- Hewitt, Fr, T Hough, P O'Neill, Jm Sasse, Eg Williams, and Ks Rowan.: Who Taught Plants Thermodynamics? The Unfulfilled Potential of Plant Water Potential, *Aust. J. Plant Physiol.*, 12 (3), 213, <https://doi.org/10.1071/PP9850213>, 1985.
- 10 Hilker, Thomas, Nicholas C. Coops, Forrest G. Hall, T. Andrew Black, Michael A. Wulder, Zoran Nestic, and Praveena Krishnan.: Separating Physiologically and Directionally Induced Changes in PRI Using BRDF Models, *Remote Sens. Environ.*, 112 (6), 2777–88, <https://doi.org/10.1016/j.rse.2008.01.011>, 2008
- 15 Hilker, Thomas, Forrest G. Hall, Nicholas C. Coops, Alexei Lyapustin, Yujie Wang, Zoran Nestic, Nick Grant, T. Andrew Black, Michael A. Wulder, and Natascha Kljun.: Remote Sensing of Photosynthetic Light-Use Efficiency across Two Forested Biomes: Spatial Scaling, *Remote Sens. Environ.*, 114 (12), 2863–74, <https://doi.org/10.1016/j.rse.2010.07.004>, 2010.
- Hirich, Abdelaziz, Hicham Fatnassi, Ragab Ragab, and Redouane Choukr-Allah.: Prediction of Climate Change Impact on Corn Grown in the South of Morocco Using the Saltmed Model: Prediction of Climate Change Impact on Corn, *Irrig. Drain.*, 65 (1), 9–18, <https://doi.org/10.1002/ird.2002>, 2016
- 20 Hwang, Taehee, Hamed Gholizadeh, Daniel A. Sims, Kimberly A. Novick, Edward R. Brzostek, Richard P. Phillips, Daniel T. Roman, Scott M. Robeson, and Abdullah F. Rahman.: Capturing Species-Level Drought Responses in a Temperate Deciduous Forest Using Ratios of Photochemical Reflectance Indices between Sunlit and Shaded Canopies, *Remote Sens. Environ.*, 199 (September), 350–59, <https://doi.org/10.1016/j.rse.2017.07.033>, 2017.
- 25 Idso, S.B., R.D. Jackson, P.J. Pinter, R.J. Reginato, and J.L. Hatfield.: Normalizing the Stress-Degree-Day Parameter for Environmental Variability, *Agricultural Meteorology*, 24 (January), 45–55, [https://doi.org/10.1016/0002-1571\(81\)90032-7](https://doi.org/10.1016/0002-1571(81)90032-7), 1981.
- Lei, Yongdeng, Hailin Zhang, Fu Chen, and Linbo Zhang.: How Rural Land Use Management Facilitates Drought Risk Adaptation in a Changing Climate — A Case Study in Arid Northern China, *Sci. Total Environ.*, 550 (April), 192–99, <https://doi.org/10.1016/j.scitotenv.2016.01.098>, 2016.
- 30 Liu, Shishi, Yi Peng, Wei Du, Yuan Le, and Lu Li.: Remote Estimation of Leaf and Canopy Water Content in Winter Wheat with Different Vertical Distribution of Water-Related Properties, *Remote Sens.*, 7 (4), 4626–50, <https://doi.org/10.3390/rs70404626>, 2015.
- 35 Magney, Troy S., Lee A. Vierling, Jan U.H. Eitel, David R. Huggins, and Steven R. Garrity.: Response of High Frequency Photochemical Reflectance Index (PRI) Measurements to Environmental Conditions in Wheat, *Remote Sens. Environ.*, 173 (February), 84–97, <https://doi.org/10.1016/j.rse.2015.11.013>, 2016.
- Middleton, Elizabeth M, Yen-Ben Cheng, Thomas Hilker, T. Andrew Black, Praveena Krishnan, Nicholas C Coops, and Karl Fred Huemmrich. “Linking Foliage Spectral Responses to Canopy-Level Ecosystem Photosynthetic Light-Use Efficiency at a Douglas-Fir Forest in Canada.” *Can. J. Remote Sens.*, 35 (2), 166–88, <https://doi.org/10.5589/m09-008>. 2009.
- 40 Mätus, Matti, Tuure L.H. Takala, Pauline Stenberg, Yuri Knyazikhin, Bin Yang, and Tiit Nilson.: Diffuse Sky Radiation Influences the Relationship between Canopy PRI and Shadow Fraction, *ISPRS-J. Photogramm. Remote Sens.*, 105 (July), 54–60, <https://doi.org/10.1016/j.isprsjprs.2015.03.012>, 2015.
- 45 Muller, P.: Non-Photochemical Quenching. A Response to Excess Light Energy, *Plant Physiol.*, 125 (4), 1558–66, <https://doi.org/10.1104/pp.125.4.1558>, 2001.
- Panigada, C., M. Rossini, M. Meroni, C. Cilia, L. Busetto, S. Amaducci, M. Boschetti, et al.: Fluorescence, PRI and Canopy Temperature for Water Stress Detection in Cereal Crops, *Int. J. Appl. Earth Obs. Geoinf.*, 30 (August), 167–78, <https://doi.org/10.1016/j.jag.2014.02.002>, 2014.
- 50 Penuelas, Josep, Iolanda Filella, and John A. Gamon: Assessment of Photosynthetic Radiation-Use Efficiency with Spectral Reflectance, *New Phytol.*, 131 (3), 291–96, <https://doi.org/10.1111/j.1469-8137.1995.tb03064.x>, 1995.



- Rossini, M., F. Fava, S. Cogliati, M. Meroni, A. Marchesi, C. Panigada, C. Giardino, et al.: Assessing Canopy PRI from Airborne Imagery to Map Water Stress in Maize, *ISPRS-J. Photogramm. Remote Sens.*, 86 (December), 168–77, <https://doi.org/10.1016/j.isprsjprs.2013.10.002>, 2013.
- 5 Sarlikioti, V., S.M. Driever, and L.F.M. Marcelis.: Photochemical Reflectance Index as a Mean of Monitoring Early Water Stress, *Ann. Appl. Biol.*, 157 (1), 81–89, <https://doi.org/10.1111/j.1744-7348.2010.00411.x>, 2010.
- Sayago, Silvina, Gustavo Ovando, and Mónica Bocco.: Landsat Images and Crop Model for Evaluating Water Stress of Rainfed Soybean, *Remote Sens. Environ.*, 198 (September), 30–39, <https://doi.org/10.1016/j.rse.2017.05.008>, 2017.
- Shahenshah, Yasuda Yoshizumi, Mao-song Li, and Isoda Akihiro.: Assessment of Photochemical Reflectance Index as a Tool for Evaluation of Chlorophyll Fluorescence Parameters in Cotton and Peanut Cultivars Under Water Stress Condition, *Agricultural Sciences in China*, 9 (5), 662–70, [https://doi.org/10.1016/S1671-2927\(09\)60141-3](https://doi.org/10.1016/S1671-2927(09)60141-3), 2010.
- 10 Shrestha, S., Brueck, H., and Asch, F.: Chlorophyll Index, Photochemical Reflectance Index and Chlorophyll Fluorescence Measurements of Rice Leaves Supplied with Different N Levels, *J. Photochem. Photobiol. B-Biol.*, 113 (August), 7–13, <https://doi.org/10.1016/j.jphotobiol.2012.04.008>, 2012.
- Siddique, M.R.B., A. Hamid, and M.S. Islam.: Drought Stress Effects on Water Relations of Wheat, *Botanical Bulletin-Academia Sinica Taipei*, 41 (1), 35–39, 2000.
- 15 Su árez, L., P.J. Zarco-Tejada, J.A.J. Berni, V. González-Dugo, and E. Fereres.: Modelling PRI for Water Stress Detection Using Radiative Transfer Models, *Remote Sens. Environ.*, 113 (4), 730–44, <https://doi.org/10.1016/j.rse.2008.12.001>, 2009.
- Su árez, L., P.J. Zarco-Tejada, G. Sepulcre-Cantó, O. Pérez-Priego, J.R. Miller, J.C. Jiménez-Muñoz, and J. Sobrino.: Assessing Canopy PRI for Water Stress Detection with Diurnal Airborne Imagery, *Remote Sens. Environ.*, 112 (2), 560–75, <https://doi.org/10.1016/j.rse.2007.05.009>, 2008.
- 20 Sun, P., A. Grignetti, S. Liu, R. Casacchia, R. Salvatori, F. Pietrini, F. Loreto, and M. Centritto.: Associated Changes in Physiological Parameters and Spectral Reflectance Indices in Olive (*Olea Europaea* L.) Leaves in Response to Different Levels of Water Stress, *Int. J. Remote Sens.*, 29 (6), 1725–43, <https://doi.org/10.1080/01431160701373754>, 2008.
- 25 Takala, Tuure L.H., and Matti Mõttus.: Spatial Variation of Canopy PRI with Shadow Fraction Caused by Leaf-Level Irradiation Conditions, *Remote Sens. Environ.*, 182 (September), 99–112, <https://doi.org/10.1016/j.rse.2016.04.028>, 2016.
- Thenot, F., M. Méthy, and T. Winkel.: The Photochemical Reflectance Index (PRI) as a Water-Stress Index, *Int. J. Remote Sens.*, 23 (23), 5135–39, <https://doi.org/10.1080/01431160210163100>, 2002.
- 30 Villalobos, F.J., L. Testi, and M.F. Moreno-Perez.: Evaporation and Canopy Conductance of Citrus Orchards, *Agric. Water Manage.*, 96 (4), 565–73, <https://doi.org/10.1016/j.agwat.2008.09.016>, 2009.
- Zarco-Tejada, P.J., V. González-Dugo, L.E. Williams, L. Su árez, J.A.J. Berni, D. Goldammer, and E. Fereres.: A PRI-Based Water Stress Index Combining Structural and Chlorophyll Effects: Assessment Using Diurnal Narrow-Band Airborne Imagery and the CWSI Thermal Index, *Remote Sens. Environ.*, 138 (November), 38–50, <https://doi.org/10.1016/j.rse.2013.07.024>, 2013.
- 35 Zhou, Kai, Xinqiang Deng, Xia Yao, Yongchao Tian, Weixing Cao, Yan Zhu, Susan Ustin, and Tao Cheng.: Assessing the Spectral Properties of Sunlit and Shaded Components in Rice Canopies with Near-Ground Imaging Spectroscopy Data, *Sensors*, 17 (3), 578, <https://doi.org/10.3390/s17030578>, 2017.
- 40