

Actions taken to accommodate the comments of reviewer #3 on “Arctic (Svalbard Islands) Active and Exported Diatom Stocks and Cell Health Status” by Susana Agustí et al.
<https://doi.org/10.5194/bg-2018-459-RC1>, 2018

Reviewer #3.- The article studies the impact of life stage of diatoms on their vertical export in the Svalbard area. The article would confirm the hypothesis that unhealthy diatoms are sinking whereas the healthy ones maintain better buoyancy and rather stay at surface.

I quite enjoyed the reading and I found it very instructive.

First, the topic is highly strategic and interesting. Diatoms dominate the primary production in this very productive region. However, very few (or no?) studies have in situ measurements. The hypothesis that senescent diatoms sink is often used without proper in situ proof. For these reasons, I think this article could potentially provide a valuable contribution.

However, I could just agree with the other reviewers. I have concerns about the significance of the results which are based on a very limited dataset. Yes, the authors found significant differences between photic and aphotic communities but still, this is a very weak. I acknowledge that the authors have done a great effort to re-frame their results during the review process and that there is not much more information to extract from the data set. I recommend say ‘moderate’ revisions to address remaining issues.

Authors: We thank the reviewer for the useful comments, which help us improve the manuscript further. We have revised the manuscript following all of your recommendations as detailed below.

Reviewer #3.- About the rate of mortality, I agree with most of the authors answer to reviewer #2. But I deeply encourage authors to be more specific. For example, it was not clear, before I read the answer to reviewer #2 the subtlety in the terminology of “survival”. Please clarify that you only consider vegetative cells here. Because this is clear there is survival of (resting) cells in the dark for a long period of time. Perhaps it could serve also in the discussion to understand that your approach is different from other studies. I have to admit I had exactly the same reaction than reviewer #2 during my first read of the revised manuscript (first appeared contradictory with the literature I know)

Authors: We agree that such clarifications are needed to avoid confusion, as happened in earlier version, and have revised the text and clarified this aspect.

Action: In lines 22-25, p7, we added the sentence: “*The decay rates calculated for living or viable vegetative cells were more than three times faster than those observed for the total cells in the population. These included both viable and non-viable vegetative cells, which are, however, morphologically similar and could not be differentiated unless using specific methods to discriminate living from dead cells, such as the staining test used here.*”

Reviewer #3.- I was also surprised some major references were not listed in your study. As global critic, this article still lacks of contextualization. Some articles (see below in gray) that I found related (you are not obliged to cite those but it could help you to improve the discussion).

See for example:

Kvernvik et al. 2019, <https://doi.org/10.1111/jpy.12750>. They say for example: “Our results suggest that some Arctic autotrophs maintain fully functional photosystem II and downstream electron acceptors during the polar night... This could allow Arctic microalgae to endure the polar night without the formation of dormant stages, enabling them to recover and take advantage of light immediately upon the sun's return during the winter–spring transition.”. I am really surprised the authors did not take more precaution while discussing this still debated topic.

In Berge et al. 2015:

“Many Arctic phototrophic plankters are able to persist during unfavorable conditions as resting stages such as spores or cysts (Garrison, 1984; Smetacek, 1985; Krempan and Anderson, 2000), and diatoms are known for their potential to survive long periods of darkness (Antia and Cheng, 1970; Smayda and Mitchell-Innes, 1974; Palmisano and Sullivan, 1982; Sakshaug et al., 2009; Quillfeldt et al., 2009). The survival strategies of the various plastidic flagellates of Arctic waters throughout the dark period, however, are largely unknown.”

Lacour et al. (2019) also suggest the opposite (<https://link.springer.com/article/10.1007%2Fs00300-019-02507-2>)

“*Chaetoceros neogracilis* was not able to grow in the dark but cell biovolume remained constant after 1 month in darkness. Rapid resumption of photosynthesis and growth recovery was also found when the

cells were transferred back to light at four different light levels ranging from 5 to 154 $\mu\text{mol photon m}^{-2} \text{ s}^{-1}$. This demonstrates the remarkable ability of this species to re-initiate growth over a wide range of irradiances even after a prolonged period in the dark with no apparent lag period or impact on survival.” As well as the extensive synthesis by Wulf et al. 2008 (<https://www.tandfonline.com/doi/abs/10.1080/0269249X.2008.9705774>) “Based on the rapid increase in Fv/Fm we safely draw the conclusion that although the cells probably were physiologically resting in the dark they were not forming resting stages such as spores or cysts. Physiologically resting cells are morphologically similar to the vegetative cells, but are physiologically dormant and can be induced when cells are transferred to cold and dark conditions (Anderson 1975a). Like in our study, these cells have condensed protoplasts which are transformed back to the former state (within hours) upon re-exposure”

Authors: We agree with the reviewer that additional contextualization based on published research will improve the paper and thank you for the references suggested. Indeed, the papers by Berge et al. 2015, Kvernvik et al. 2019, along with other studies, are very relevant. Most existing research, including the papers recommended, focus on explaining or testing the capacity of winter phytoplankton to resist darkness, which is relevant, but differs from our experiment goals and sampling conditions. Our experiment was run in the spring time with shallow mixing and no night, as solar radiation was received 24h per day. The phytoplankton we sampled during the cruise was not acclimated/selected to resist darkness, and most probably was photo-acclimated to high-light or long-photoperiod conditions. Hence, the results expected are quite different from those expected if the experiments had been done with phytoplankton sampled in the Arctic winter (i.e. prolonged darkness) as done in many of the papers suggested or existing literature with cultures.

Action: We added a new paragraph to the revised discussion where we updated the results reported in the context of new references, including the references indicated by the reviewer. The new paragraph (p7-8) reads: “*Our results reporting fast diatom cell death under aphotic conditions are contrasting with the expectation of high survival capacity of polar diatoms to darkness supported by existing evidence. Recent reports identified fast photosynthetic response to irradiance in diatoms sampled during the dark winter time around the Svalbard Islands (Kvernvik et al., 2019). Phenotypic selection for specific physiological properties allows polar diatoms to acclimate to low light and darkness (Lacour et al 2019). Our experiment, however, tested vegetative cell survival in a spring community under a 24 h light: 0 hours darkness photoperiod and with shallow mixing depths. The community tested, was, therefore, likely photo-acclimated to prolonged photoperiod and relatively high irradiance. Therefore, it is expected to respond differently under darkness than arctic microalgae growing underneath the ice or under very short photoperiods and/or minimal irradiance levels (Lacour et al., 2019; Berge et al., 2015). Hence, Arctic phytoplankton is expected to show contrasting responses to prolonged darkness in the spring, when acclimated to long photoperiods, than in winter, where surviving cells are expected to be acclimated to short photoperiods.*”

Reviewer#3- How the authors can be 100% confident that their unique culture experiment was reliable? Did something else than darkness could have killed the algae (i.e. contamination?) Could you discuss that ?

Authors: We agree that additional experiments would add more confidence on our findings, where the experiment discussed is but one supporting element, for a central data set consisting of diatom stocks and viability in situ. We hope that our experiment, which obviously elicits a lot of interest (as indicated by the comments of this and previous reviewers focusing on this experiment), will encourage the community to conduct additional experiments.

Action: We added the following sentence to the revised manuscript (Lines 11-13, p8): “*We cannot rule out that contamination from the vessel during experimental preparations may affected mortality rates in the incubations. As the decline rates were derived from a single test, further experiments on cell decay rates of Arctic diatoms sampled in the spring under dark conditions will be required to confirm our results*”.

Reviewer#3- Also, there is many syntax, grammar and terminology issues in the text (lot of them were introduced during the revision process, that is a pity). I recommend to carefully correct the text because it

makes the understanding sometimes difficult (I had to re-read many sentences many times). I have tried to list them in the specific comments but it became quickly overwhelming.

I encourage the authors to continue their efforts. Specific comments:

PAGE9 (abstract).

L.23: specify phytoplankton bloom, it could be sea ice algae. Or if no distinction, just microalgae.

L.26: regional = specify Svalbard or Northwest Barents Sea

L.27-28: very awkward sentence. Change “concurrent with” something like “together with”.

L.29: SE= Standard Error ? I don't think you could use undefined abbreviation in the abstract. Need confirmation from editor.

PAGE11 (2.1)

L.23: you cannot say MLD is an indicator of stability. Stability is usually related to stratification. Stratification is basically the density gradient which you don't measure here. MLD is an indicator of mixing, this is it. People know what is MLD (or UPM), I suggest you just erase “an index of the stability of the water column” and also later in the text.

PAGE12 (2.3)

L.32 Move “expected” before “mortality”.

L.35: I can understand but this is not well written. Perhaps change “, this simulated” par “simulating” ? or “which simulated” ?

PAGE13 (3)

please be consistent and use either r or R2 throughout the manuscript.

PAGE14

L.10: N or n ?

L.13: “from station 6 to station8”

L.14: a E is missing in the verb were. Change “these wre also the areas with” by something like “and where”

L.31-32: this is interpretation, should be moved in discussion.

PAGE 15, LINE 5 and PAGE 16 LINE 7: please do not use the term trend in this context. This is not appropriate, please re-word.

PAGE16

Line 23: among out ??? among OUR ?

Line 35-37: weird wording, had to re-read several times. I guess you wanted to say sedimentation is enhanced BY higher quotas for polar diatoms. Please re-word.

Action: We thank the reviewer for all the edits and suggestions. We have revised the wording, and corrected all the specific comments in the revised manuscript.

Arctic (Svalbard Islands) Active and Exported Diatom Stocks and Cell Health Status

5

Susana Agustí^{1,*}, Jeffrey W. Krause^{2,3}, Israel A. Marquez^{2,3}, Paul Wassmann⁴, Svein Kristiansen⁴, and Carlos M. Duarte^{1,5}

Formatted: English (US)

10 ¹ King Abdullah University of Science and Technology, Thuwal, 23955-6900, Kingdom of Saudi Arabia

² Dauphin Island Sea Lab, Dauphin Island, 36528-4603 United States

³ Department of Marine Sciences, University of South Alabama, Mobile, 36688-0002 United States

⁴ Department of Arctic and Marine Biology, UiT The Arctic University of Norway, 9037 Tromsø, Norway

15 ⁵ Arctic Research Centre, Department of Bioscience, Aarhus University, C.F. Møllers Alle 8, DK-8000 Århus C, Denmark

* Correspondence to: Susana Agustí (susana.agusti@kaust.edu.sa)

20

Abstract. Diatoms tend to dominate the Arctic spring [phytoplankton](#) bloom, a key event in the ecosystem including a rapid decline in surface-water $p\text{CO}_2$. While a mass sedimentation event of diatoms at the bloom terminus is commonly observed, there are few reports on the status of diatoms' health during Arctic blooms and its possible role on sedimentary fluxes. Thus, we examine the idea that the major diatom-sinking event which occurs at the end of the regional bloom is driven by physiologically deteriorated cells. [Here we quantify, using the Bottle-Net, Arctic diatom stocks below and above the photic zone and assess their cell health status.](#) The communities were sampled around the Svalbard Islands and encompassed pre- to post-bloom conditions. A mean of $24.2 \pm 6.7\%$ ~~SE (Standard Error)~~ of the total water column (max. 415 m) diatom standing stock was found below the photic zone, indicating significant diatom sedimentation. The fraction of living diatom cells in the photic zone averaged $59.4 \pm 6.3\%$ but showed the highest mean percentages (72.0%) in stations supporting active blooms. In contrast, populations below the photic layer were dominated by dead cells ($20.8 \pm 4.9\%$ living cells). The percentage of diatoms' standing stock found below the photic layer was negatively related to the percentage of living diatoms in the surface, indicating that healthy populations remained in the surface layer. Ship-board manipulation experiments demonstrated that 1) dead diatom cells sank faster than living cells, and 2) diatom cell mortality increased in darkness, showing an average half-life among diatom groups of 1.025 ± 0.075 days. The results conform to a conceptual model where diatoms grow during the bloom until resources are depleted and supports a link between diatom cell health status (affected by multiple factors) and sedimentation fluxes in the Arctic. Healthy Arctic phytoplankton communities remained at the photic layer, whereas the physiologically compromised (e.g. dying) communities exported a large fraction of the biomass to the aphotic zone, fuelling carbon sequestration to the mesopelagic and material to benthic ecosystems.

Deleted: Using the Bottle-Net system, we quantified diatom stocks, below and above the photic zone, concurrent with their cell health status

Commented [SA1]: Editor: Could we use SE or should indicate SE (Standard Error) ?

40

1. Introduction

5

Diatoms can support most of the Arctic primary production during the spring phytoplankton bloom (Krause et al. 2018), the key event setting the ecosystem and driving the intense carbon uptake characteristic of the Arctic (Vaquer-Sunyer et al., 2013). However, silicic acid concentrations $[\text{Si}(\text{OH})_4]$ are characteristically low in the European Sector of the Arctic, due to the inflow of Si-depleted Atlantic water (Rey, 2012). In the Svalbard Island region, Krause et al. (2018) showed diatoms to be limited by $[\text{Si}(\text{OH})_4]$ at the spring bloom and suggested that silicon limitation could collapse a diatom bloom before nitrogen when spring conditions favor diatoms, instead of the haptophyte *Phaeocystis*. A similar observation was made during the spring bloom in Southern Greenland, whereby diatom depletion of $[\text{Si}(\text{OH})_4]$ collapsed the bloom with $\sim 4 \mu\text{mol L}^{-1}$ remaining nitrate (Krause et al., 2019).

10

15

The termination of the Arctic spring bloom is characterized by rapid sinking of diatom cells, leading to high sedimentary fluxes in the spring (Oli et al., 2002; Wassmann et al., 2006; Bauerfeind et al., 2009), precluding this production from being recycled in the upper ocean. The apparent rapid sinking of the senescent diatom bloom appears to sustain the depletion of CO_2 in surface waters initiated by the bloom and drive strong atmospheric CO_2 uptake (Bates et al., 2009), as average $p\text{CO}_2$ values post bloom being typically below 300 ppm —with some values as low as 100 ppm (Takahashi et al., 2002; Holding et al., 2015).

20

Factors regulating diatom sedimentation have been explored for decades; however, there are few published reports on the status of diatoms' health in the Arctic during blooms and the possible role deteriorated cell health status may play in driving sedimentary fluxes. Alou-Font et al. (2016) observed large variability in the health status of phytoplankton in the Canadian Arctic, influenced by the light and temperature conditions, but not by nitrate concentration —typically thought to be the main yield-limiting nutrient. Silicon limitation has been shown to affect both autolysis (i.e. cell death) and the potential to form aggregates (which facilitate sinking) in *Coscinodiscus waiilesii* cultures, whereas the latter was less pronounced under nitrogen limitation (Armbrecht et al., 2014).

25

Because of diatoms' obligate silicon requirement, its depletion in the water column would exclusively affect their physiology, and potentially, their biogeochemical fate. Lomas et al. (2019) recently demonstrated that polar diatoms have high elemental density (i.e. element content per unit biovolume) relative to low-latitude diatoms, and this is especially true for silicon content (consistent with results from Baines et al., 2010). Therefore, short-term changes in diatom physiology, e.g. responses to nutrient stress, may favour rapid sinking of polar diatoms much more than in temperate diatom species. While one could examine diatom cells from sediment traps, which is a standard approach used to explore diatoms' sinking fluxes, this methodology precludes accurate analysis of physiological health due to both the time required to collect cells (i.e. cell status can change) and trap fixatives (necessary to avoid "swimmers" from consuming sedimented material) lead to mortality of all cells. A new instrument, the Bottle-Net, has been applied to address this methodological gap. The Bottle-Net is a plankton net fitted inside a Rosette sampling system that can be used to collect plankton samples at depth without a prolonged

30

35

Deleted: in review

deployment. This system was recently used to assess the stock and health status of microplankton in deep waters across the subtropical and tropical ocean (Agusti et al., 2015). Using the Bottle-Net at stations around the Svalbard Islands, we examined diatom stocks within and below the photic layer and assessed their health status along contrasting stages of bloom development. We also conducted two exploratory experiments to test the hypotheses that dead diatom cells in the field sink faster than living ones, based on previous culture experiment results (Smayda, 1971), and that [spring](#) field diatoms can die rapidly upon falling below the photic layer.

2. Methods

2.1 Sampling and study area.

The study was conducted between May 17 and 29 of 2016 on board the R/V *Helmer Hanssen*. The cruise started in the southwestern fjords of Svalbard Islands transited northward toward Erik Eriksen Strait and then south towards stations near the Polar Front and the Barents Sea (Fig. 1).

Vertical profiles with a Seabird Electronics 911 plus CTD, provided with an oxygen sensor, fluorometer, turbidity meter and PAR sensor (Biospherical/LI-CORR, SN 1060) were conducted at all stations sampled. Water samples were collected using a 12 five-liter Niskin bottles installed on a rosette sampler. Water samples were taken between the surface and the bottom (max. 500 meters) for analysis of nutrients, diatom silica, productivity, and other properties (Krause et al. 2018). We calculated the upper mixed layer (UPM) as the shallowest depth at which water density (σ_θ) differs from surface values by more than 0.05 kg m^{-3} (Mura et al., 1995).

At eight of the stations (Fig. 1) microphytoplankton samples were collected by using two Bottle-Net devices installed on the rosette sampler. The Bottle-Net is a new oceanographic device developed for the Malaspina 2010 Circumnavigation Expedition, which consists of a 20- μm conical plankton net housed in a cylindrical PVC pipe and is designed to be mounted in the place of a Niskin bottle on the rosette sampler. The Bottle-Net cover (on top) hermetically opens/closes bottle remotely, using the rosette's carousel bottle-firing mechanism, thereby initiating/terminating sample collection, the casing is open at the bottom to allow the water filtered through the internal plankton net to flow out (Agusti et al., 2015). The Bottle-Net is lowered with the top cover closed, opened at the desired bottom depth (D_b , m) during the ascension of the rosette, and then the top cover closed again at the upper depth (D_u , m) of the water column to be sampled. This results in one integrated sample, from D_b to D_u , per deployment. Two Bottle-Nets were used mounted in the rosette sampling system, one to collect phytoplankton at the aphotic zone and the second to collect the community in the upper water column (photic layer). The two layers were selected by combining the information on light penetration (PAR sensor) and chlorophyll *a* fluorescence obtained during the downward CTD cast. The upper layer included the thickness of the photic layer to the depth when chlorophyll fluorescence faded away, which typically corresponded with very low levels of PAR (e.g. ~0.1–1% of surface irradiance). For the aphotic zone, one Bottle-Net was remotely opened and started filtering water when the rosette reached the maximum depth at each station, and it collected until reaching the depth ten meters below the maximum depth of photic zone. The second Bottle-Net was opened at the bottom of the photic layer and maintained open until reaching the water surface. Once on deck, the Bottle-Nets were gently rinsed with filtered seawater to

Deleted: an index of the stability of surface water column,

retrieve the sample from the collector. Sampled volume was estimated as the product between the cross-sectional area of the mouth of the Bottle-Net and the vertical distance covered by the device from the start of the ascension to the closure of the top cover (D_b to D_u). The Bottle-Net presents an aspect ratio of 4, to avoid resuspension of materials filtered, displaying an efficiency of filtration of 96% for deep tows (2000–4000 m) at towing velocities around to 30 m min^{-1} , i.e. standard rosette retrieval velocities (Agusti et al., 2015).

2.2 Microplankton abundance and viability

Bottle-Net sub samples were processed to identify living and dead phytoplankton cells. The freshly-collected samples were filtered onto $0.8\text{-}\mu\text{m}$ pore size black Nucleopore filters, stained with the Bac-light viability Kit, placed on slides and frozen at -80°C until examination under epifluorescence microscopy. Another fraction of the sample collected by the Bottle-Net was fixed with formalin for further examination at the laboratory. The observed diatoms were classified to genera. The percentage of living or dead cells relative to the total (i.e. dead plus living) was calculated for the total community and by genera.

The Bac-light viability Kit (Molecular Probes™ Invitrogen) is a double staining technique to test cell membrane permeability and is proven to be an effective method for determining phytoplankton viability (Llabrès and Agusti, 2008; Agusti et al., 2015). When excited with blue light under the epifluorescence microscope, living phytoplankton cells with intact membranes fluoresce green (Syto 9, nucleic acid stain) and dead phytoplankton cells with compromised membranes fluoresce red (Propidium Iodine, nucleic acid stain). The samples were examined under blue light, most on board the research vessel, using a Partec CyScope® high power blue (470 nm) and green (528 nm) LED-illuminated epifluorescence microscope. In the laboratory at KAUST, all samples were examined using a Zeiss AxioObserver Z1 epifluorescence LED-illuminated microscope (Colibri 7 LED system). The fluorescence of the stained cells is well preserved at -80°C for several months, and samples were transported frozen between the port of arrival (Tromsø, Norway) and KAUST.

2.3 Decay and sinking rates of living microphytoplankton cells

The ~~expected~~ mortality rates of living phytoplankton cells when transferred from the photic to the aphotic layer were examined at station #3 with vertical tows from the photic layer. An aliquot of the photic-layer microphytoplankton sample was resuspended in 2 L of $0.7 \mu\text{m}$ filtered surface water and incubated in the dark at 4°C for 7 days ~~simulating sedimentation from the photic layer into the aphotic layer. The community was sampled at~~ the onset of the experiment and during set time intervals (i.e. 1, 3, 5, and 7 days). Immediately after sampling, cells were stained with the vital stain Bac-light Kit, then prepared and examined under epifluorescence microscope (as described above) to quantify the proportion of living cells in the community. The half-life (i.e. the time required for the number of living cells to decline by 50%) and the decay rate for each living-cell population were then calculated from the decline in living cells over time.

An experiment to test whether dead diatom cells sink faster than living cells was conducted shipboard using a sinking column (30 cm diameter, 1.35 m height, internal volume of 95 litres). The chamber was placed on deck, filled with $20 \mu\text{m}$ -filtered surface seawater, and left undisturbed for ~ 1 hour before starting the experiment.

Deleted: expected

Deleted: ; this simulated

Microplankton collected in a vertical net tow (20- μm mesh) from the photic layer of Erik Eriksen Strait (close to the position of station #7) was resuspended in 1-litre of 0.7- μm filtered seawater and gently added at the surface of the sinking column. A fresh subsample of the initial community, which was added to the surface of the chamber, was stained with the Bac-light Kit and the diatoms were examined for identification and the percentage of living/dead cells as described above. The samples at the bottom of the sinking column (sampling port located 1.35 m below the surface) were collected at intervals of time of 0 (time when the sample was added at the surface), 1, 4 and 12 hours after the initial time, and processed similar to the initial community material.

3. Results

The stations sampled encompassed a spectrum of bloom conditions. Station 4 (off the Western Svalbard shelf) waters were pre-bloom, as indicated by low diatom stocks, high dissolved inorganic nutrient concentrations (photic layer concentrations $\text{Si}(\text{OH})_4 = 4.15 \pm 0.04 \mu\text{mol Si L}^{-1}$, $\text{NO}_3 + \text{NO}_2 = 9.43 \pm 0.09 \mu\text{mol N L}^{-1}$, Table 1) and relatively low stratification (Table 1). All other stations sampled were characterized by comparatively depleted nutrient concentrations (photic layer concentrations $\text{Si}(\text{OH})_4 = 0.99 \pm 0.30 \mu\text{mol Si L}^{-1}$, $\text{NO}_3 + \text{NO}_2 = 1.93 \pm 0.76 \mu\text{mol N L}^{-1}$, Table 1), thereby representing communities that were either in advanced blooming stages or were senescent after blooming. Stations 6 (SW Svalbard shelf) and 8 (E Svalbard shelf) supported actively blooming diatom populations, with the highest chlorophyll *a* concentration ($10.5 \mu\text{g Chl } a \text{ L}^{-1}$ for station 8, as described in Krause et al. 2018), and a large fraction of living diatom cells (about 70%, Table 1). Both locations had the highest stratification among the stations, as indicated by the low UPM values (Table 1). In contrast, Station 9 (Polar Front) supported a senescent diatom population in post-bloom phase, as indicated by depleted nutrient pools and a low percentage of living diatom cells (46.0 %, Table 1). The highest mixing was observed at station sampled at the Barents Sea (Table 1). The percentage of living cells was not significantly correlated with the concentration of $\text{NO}_3 + \text{NO}_2$ (2-tail test, $r_s = -0.54$, $P = 0.17$) or $\text{Si}(\text{OH})_4$ (2-tail test, $r_s = -0.69$, $P = 0.06$).

Taxonomic classification under epifluorescence microscopy is not particularly accurate, but we were able to unambiguously identify different diatom genera, and some species. The more abundant genera found in the samples were *Thalassiosira* spp., differentiated between large (*L. Thalassiosira*) and small (*Thalassiosira*) morphotypes; *Chaetoceros* spp., with a large representation of *Chaetoceros socialis*; pennate diatoms including colonies of *Fragilariopsis* spp., *Navicula pelagica*, *Pseudo-nitzschia* sp., less abundant but identifiable cells of *Amphiprora hyperborean*, and *Coscinodiscus* sp. among others.

The living (green fluorescence) and dead (red fluorescence) cells were clearly identified under the LED-illumination of the epifluorescence microscopes used (Fig. 2). The fraction of living diatom cells in the photic layer averaged $59.4 \pm 6.3 \%$, but ranged broadly, from 20.9 % in station 4, in pre-bloom state, to 72.0 % in station 5, which supported an active bloom. In contrast, the population sinking below the photic layer was comprised mostly of dead cells ($20.8 \pm 4.9 \%$ living cells, Fig. 2). Indeed, the fraction of living diatoms was consistently greater in the

Deleted: r

Deleted: r

Field Code Changed

photic layer than in the diatom stock sinking below the photic layer (Wilcoxon ranked sign test, $P = 0.0078$, Fig. 3), a pattern consistent across taxa found in at least four of the stations (large celled *Thalassiosira* sp., $P = 0.02$, $N = 4$, *Fragilariopsis* sp., $P = 0.005$, $N = 6$; *Chaetoceros* sp., $P = 0.0054$, $N = 6$; Fig. 3), but the percent living cells in the photic layer and below this layer was not significantly different for the small-celled *Thalassiosira* ($P = 0.09$, $N = 6$).

Among stations, there was significant variability in the diatom assemblage structure. Earlier cruise stations were dominated by *Fragilariopsis* spp. and *Chaetoceros* spp. This changed from station 6 to 8, where communities were dominated by *Fragilariopsis* spp. and *Thalassiosira* spp., and were the areas with the highest diatom biomass observed (station #8, Fig. 4). Community composition changed at the Polar Front and Barents Sea stations (Fig. 4) with a larger contribution of other taxa, including *Navicula pelagica* (station #9, Fig. 4). The diversity of the diatoms found at the aphotic zone differed in several stations from that found at the photic layer (Fig. 4). The large celled *Thalassiosira* sp. colonies dominated the aphotic community in several stations although they were not dominant at the photic community (Fig. 4). At station #4, the community sampled was more diverse at the aphotic than at the photic layer (Fig. 4). The stock of diatoms that had sunk below the photic layer comprised, on average, $24.2 \pm 6.7\%$ of the total water column stock, with the proportional contribution ranging considerably among groups (Fig. 5). The proportion of biomass of the large-celled *Thalassiosira* colonies in the aphotic layer was the largest and *Chaetoceros* spp. the smallest (Fig. 5). Station #4 (pre-bloom status) had a larger proportion of diatom biomass in the aphotic layer and station #8, diatom bloom station, the lowest. At station #8, however, the photic-zone population of the dominant *Thalassiosira* species contained 54.8% of living cells and was paralleled with a significant contribution of dead cells at the aphotic layer (Fig. 4), suggesting the collapse of the bloom had already been initiated despite the considerable photic-layer biomass. Similarly, *Fragilariopsis* senescence at the photic layer of station #3 (only 35.1% of cells were alive at the photic layer) helps explain its larger contribution than in the aphotic layer (Fig. 4). There was a significant negative relationship between the percent of the diatom stock population that had sunk below the photic layer and the percent of living cells in the photic layer ($R^2 = 0.39$, $P < 0.001$, Fig. 5b), indicating that healthy, actively growing populations largely remain in the surface.

The suggestion that dead diatom cells sink faster than living cells was tested experimentally. Initially, only 6.7% of the cells of the *Flagilariopsis* sp. and *Thalassiosira* sp. colonies dominating the community tested were dead. However, all cells settling to the bottom of the sedimentation chamber within 1 h of the experiment start were dead, including large *Coscinodiscus* sp. cells (Fig. 6). The population of cells settling to the chamber bottom 4 h and 12 h following addition of the fresh, healthy community, was also largely dominated by dead *Flagilariopsis* sp. and *Thalassiosira* sp. colonies, 82.2 and 71.7%, respectively. And the fraction of living cells which had settled the height of the chamber proportionally increased with time (Fig. 6). These experimental results indicated that dead diatom cells among the groups examined sink faster than living cells.

The experiment testing diatom survival in aphotic zone indicated that once diatom cells sink below the photic layer, they would die rapidly. The incubation was performed close to the temperature below the photic layer that averaged $2.978 \text{ }^\circ\text{C} \pm 0.003$ at station #3, suggesting no thermal effects. The cell concentration at the onset of the experiment was 298 cells ml^{-1} . The half-life (i.e. percent of living cells reduced to half) survival times were remarkably uniform across diatom taxa, ranging from 0.9 days, for *Thalassiosira* sp. to 1.3 days for *Coscinodiscus* sp., depending on species (Fig. 7). Once dead, the cells lysed; half-life periods for cell death and lysis after transfer

Deleted: n

Deleted: at

Deleted: s

Deleted: s

Deleted: through

Deleted: these

Deleted: also

Deleted: , Fig. 4, Krause et al. 2018

Deleted: , whereas senescent ones sink out of the photic layer...

Deleted: that trends were

Deleted: t driven by

into aphotic darkness increasing from 1.6 days, for the smaller *Flagilariosis* sp. cells, to 5.3 days for the largest *Thalassiosira* sp. cells (Fig. 7).

4. Discussion

The results presented confirm that active and healthy diatom populations, as those actively growing during the spring bloom, are associated with relatively small stocks of fast-sinking diatoms. In contrast, unhealthy diatom populations, such as those present before blooming has initiated or in the senescent phase of the bloom, characterized by a large fraction of dead cells, support comparatively larger pools of sinking diatoms.

These observations are consistent with early reports, based mostly on laboratory cultures, indicating that dead diatom cells sink faster than living ones (Smayda, 1971). The experiment conducted, albeit at only one station, showed that dead cells sank much faster than living ones in a field assemblage with considerable diversity in species and physiological condition. Indeed, whereas the dominant populations tested were dominated by living, healthy cells, only dead cells were collected at the bottom of the sedimentation chamber over the first few hours of the experiment, and the proportion of living cells collected increased over time. Moreover, our experimental assessment of diatom survival incubated at aphotic conditions suggested that once sinking below the photic layer, diatoms cells could die at half-lives of 21.8 to 30.2 hours across species. This result, although limited to one experiment, was consistent among the major genera and functional groups analysed and reflected survival at “in situ” conditions. Smayda and Mitchell-Innes (1974) also reported the decrease in viable cells after darkness:

“After 6 days of dark incubation, the number of viable cells of *Chaetoceros curvisetus* recognizable decreased from 760 to 240 cells per ml”, representing a decay rate of 0.19 d⁻¹ (i.e. 50% loss of cells in 3.6 days) comparable to the rate reported here. Other studies also reported rates of living cell mortality in darkness close to those found here (Segovia and Berges, 2009; Agusti et al., 2015).

The decay rates calculated for living or viable vegetative cells were more than three times faster than those observed for the total cells in the population. These included both viable and non-viable vegetative cells, which are, however, morphologically similar and could not be differentiated unless using specific methods to discriminate living from dead cells, such as the staining test used here. Phytoplankton

vegetative cells do not survive under darkness (Smayda and Mitchell-Innes, 1974; Segovia and Berges, 2009; Segovia et al., 2003) and only resting spores and resting cells are able to survive in the dark (Ignitiades and Smayda, 1970; Smayda and Mitchell-Innes, 1974; Peters and Thomas, 1996).

Our results reporting fast diatom cell death under aphotic conditions are contrasting with the expectation of high survival capacity of polar diatoms to darkness supported by existing evidence. Recent reports identified fast photosynthetic response to irradiance in diatoms sampled during the dark winter time around the Svalbard Islands (Kvernvik et al., 2019). Phenotypic selection for specific physiological properties allows polar diatoms to acclimate to low light and darkness (Lacour et al 2019).

Our experiment, however, in a spring community under a 24 h light: 0 hours darkness photoperiod and with shallow mixing depths. The community tested, was, therefore, likely photo-acclimated to prolonged photoperiod and relatively high irradiance. Therefore, it is expected to respond differently under darkness than arctic microalgae growing underneath the ice or under very short photoperiods and/or minimal irradiance levels (Lacour et al., 2019; Berge et al., 2015). Hence, Arctic phytoplankton is expected to show contrasting responses to prolonged darkness in

Deleted:

Formatted: Font: Not Italic, Complex Script Font: Not Italic

Deleted:

Commented [SA2]: Kvernvik, A. C., Hoppe, C. J. M., Lawrenz, E., Prášil, O., Greenacre, M., Wiktor, J. M., & Leu, E. (2018). Fast reactivation of photosynthesis in arctic phytoplankton during the polar night¹. *Journal of phycology*, 54(4), 461-470.

Commented [SA3]: Lacour, T., Morin, P. I., Sciandra, T., Donaher, N., Campbell, D. A., Ferland, J., & Babin, M. (2019). Decoupling light harvesting, electron transport and carbon fixation during prolonged darkness supports rapid recovery upon re-illumination in the Arctic diatom *Chaetoceros neogracilis*. *Polar Biology*, 1-13.

Commented [SA4]: Berge, J., et al. "In the dark: a review of ecosystem processes during the Arctic polar night." *Progress in Oceanography* 139 (2015): 258-271.

the spring, when acclimated to long photoperiods, than in winter, where surviving cells are expected to be acclimated to short photoperiods.

Beyond the stressor of continuous darkness, the fast decay rates observed here under aphotic experimental conditions could also have been influenced, in addition to darkness, by the low nutrient availability and/or the possible presence of pathogens or parasites, suggesting that survival of natural populations below the photic layer may be lower than expected in the dark from axenic, high- nutrients “in vitro” studies with cultures, aspect already pointed by Ignitiades and Smayda (1970). The $[\text{Si}(\text{OH})_4]$ at station #3 was $0.75 \mu\text{mol Si L}^{-1}$ and $[\text{NO}_3 + \text{NO}_2]$ was $1.79 \mu\text{mol N L}^{-1}$; Lomas et al. (2019) demonstrated that polar diatoms have higher Si:N requirements (>1.5 mol:mol) than lower latitude diatoms, thus, nutrients data would predict Si would be the yield limiting relative to N.

We cannot rule out that contamination from the vessel during experimental preparations may affected mortality rates in the incubations. As the decline rates were derived from a single test, further experiments on cell decay rates of Arctic diatoms sampled in the spring under dark conditions will be required to confirm our results.

Cell abundances and health state observed were consistent with previous studies. In the Canadian Arctic, living cells in open-water and ice-covered stations represented the $57.3 \pm 5.8\%$ and $48.0 \pm 3.9\%$ (\pm SE), respectively (Alou-Font et al., 2016), similar to proportions in our study. The percentage of living cells was higher during the bloom periods than periods before and after (Alou-Font et al., 2016). This result appeared to be driven by light and low nutrient concentrations (Alou-Font et al., 2016). The quantification of the percent of living cells in our study helped to identify the different stages of the Arctic spring bloom among the stations sampled. A pre-bloom situation with low cell abundance and a small percentage of living cells was found at station #4 located further west of Svalbard Islands, where silicic acid and nitrogen concentrations were higher and mixing was more significant than in other arctic stations. The healthiest diatom community was observed at station #5, where the high stratification and $\text{Si}(\text{OH})_4$ concentration above the half saturation constant (K_s) of $2 \mu\text{M}$ (from kinetic experiments in the same region by Krause et al. 2018) helped the diatoms to grow actively. The highest cell abundance was observed at station #8, but this persisted with a lower percentage of living diatoms and the $\text{Si}(\text{OH})_4$ concentration well below the K_s value indicated that the bloom was reaching the maximum capacity, although diatom sinking was still low. A post-bloom situation was identified at the polar front community, with similar percentages of living cells at the photic and aphotic zones as a result of high sinking induced by Si and nitrogen limitation, as suggested by the lower $\text{Si}(\text{OH})_4$ K_s of $0.8 \mu\text{M}$ (Krause et al., 2018). The diatom community captured by the Bottle Net below the photic layer was consistent with the limited, but comparable, data obtained by sediment traps deployed in the area which also indicated *Fragilariopsis* and *Thalassiosira* species to be the dominant contributors to Si and biomass export (Krause et al., 2018).

Given the range of bloom development represented among our stations, the results presented conform to a conceptual model where nutrients, including Si (Rey 2012; Krause et al., 2018), and mixed layer drives the growth of diatoms during the Arctic spring bloom (Wassmann et al., 1997; Reigstad et al., 2002). For diatoms, Si depletion results in two potential physiological issues: yield limitation (i.e. diatom standing stock is too high to be supported by the available silicic acid) and intense kinetic/growth limitation (i.e. depleted silicic acid limits diatom Si uptake to such a degree that growth must slow, Krause et al., 2018). Thus, such a situation would stimulate mass

Deleted: ¶

Deleted:

Deleted: trend

Deleted: t

sedimentation, suggested to be an evolutionary adaptation to help diatoms communities persist when nutrients are limiting (Raven and Waite, 2004). A large fraction (30 – 50%) of the diatom cells in silicon-depleted photic layer were dead, pointing at acute silicic acid limitation as the likely factor triggering partial mortality, while the remaining cells are likely to be senescent. Unhealthy diatoms would then lose the capacity to actively regulate buoyancy that characterizes healthy diatom cells (Smayda, 1970), leading to rapid sinking of the bloom. Acute silicic acid limitation, is identified, therefore, as the event leading to loss of the capacity to actively regulate buoyancy that characterizes diatom cells (Smayda, 1970), and rapid sinking of the bloom. The potential for rapid sedimentation is enhanced by higher silica quotas for polar diatoms (Lomas et al., 2019) compared to lower-latitude diatoms (Brzezinski, 1985).

Diatoms have been shown to have a remarkable metabolic capacity to regulate buoyancy (Gemmell et al., 2016), both maintaining zero (Gemmell et al., 2016) and positive buoyancy (e.g. Villareal et al., 2014) involving regulation through the production of osmolytes (Gradmann and Boyd, 2002), which plays an important role in exploiting nutrient patchiness within the photic layer (Villareal et al., 2014). Diatom sinking rates are inversely related to growth rate (Gemmell et al., 2016), so that silicon depletion is expected to result in increased sinking rates, despite field diatoms reducing their silica per cell when kinetically limited by silicic acid (McNair et al., 2018). There is experimental demonstration that silicon depletion plays the most important role, compared to nitrogen or phosphorus, in triggering rapid sinking of diatom cells, indicating that biochemical aspects of silicon metabolism are particularly important to diatom buoyancy regulation (Bienfang et al., 1982). N:P ratios in this region do not suggest that phosphorus plays a limiting role in primary production, and when silicic acid is depleted, enough nitrate remains to fuel growth of other phytoplankton groups (e.g. *Phaeocystis*, Krause et al., 2018). Once diatoms lose their capacity to regulate buoyancy and sink below the photic layer, they die rapidly and are unable of ascending back to the photic layer, resulting in the rapid sinking fluxes that drives high sedimentation rates characteristic of the termination of the Arctic spring bloom (Oli et al., 2002; Wassmann et al., 2006; Bauerfeind et al., 2009). Rapid sinking of the Arctic spring bloom, in turn, precludes carbon recycling in the photic layer, thereby leading to undersaturated $p\text{CO}_2$ driving the large atmospheric CO_2 uptake characteristic of the European sector of the Arctic during this season which do not equilibrate with the atmosphere until months later (Bates et al., 2009, Takahashi et al., 2002; Holding et al., 2015).

A large fraction of the total water column phytoplankton biomass was observed below the photic layer, representing on average $24\% \pm 6.7$ ($\pm\text{SE}$) of the surface diatom populations in the study area. This considerable proportion can be explained by high diatom export from the photic zone, opposed to lateral advection. This is consistent with the high rates of biogenic silica (proxy for diatom biomass) export at stations 4, 7-8 and 10, rates were a factor of four higher than integrated diatom silica production in the upper water column and represented up to 40% of the integrated diatom silica standing stock (Krause et al., 2018). These cruise trends are in agreement with the observation of large sinking events in the Arctic as reported for ice diatoms (Boetius et al., 2014; Aumack et al., 2014) associated to ice melting in the Arctic, which represent a large carbon supply to benthic communities in the Arctic shelves (Moran et al., 2005; Tamelander et al., 2006). While we do not report data for an ice-diatom assemblage, data for the same cruise showed that ice diatoms silicon uptake rates near stations #7, #8 were strongly limited by $\text{Si}(\text{OH})_4$ concentration in the surface waters, likely to a degree limiting their growth (Krause et al., 2018),

Deleted: , due to the

and previous studies have noted their susceptibility to silicon limitation (Cota et al., 1990; Smith et al., 1990). Our results show that healthy phytoplankton communities remained at the photic layer, although dying communities exported a large fraction of the biomass (up to 65%) to the aphotic zone.

5 In summary, the results presented here support a link between diatom cell health status, likely driven by progressive nutrient limitation, and sedimentation fluxes in the Arctic. Whereas the link between diatom health status and sinking rates has long been established (Smayda, 1971), the evidence corresponded to algal cultures in the laboratory. This is the first demonstration of these ideas using natural diatom communities in this region —partially due to the logistical challenges of assessing both viability and settling in the field. Our conceptual model suggests that deterioration of diatom health, such as occurring when reaching acute silicon or other resources limitation along the spring bloom, leads to loss of the capacity to regulate buoyancy and leads to rapid sinking, with cells exported below the photic layer. Understanding the role of cell health status, and the role of silicic acid depletion, in the regulation of diatom sinking rates is fundamental to mechanistically understand the biological pump in the Arctic and its response to future changes.

15

Acknowledgements

This research was supported by King Abdullah University of Science and Technology through baseline funding BAS/1/1072-01-01 and BAS/1/1071-01-01 to SA and CMD, respectively; the ARCEX project funded by industry partners and the Research Council of Norway (project #228107) to PW; and funding provided by Dauphin Island Sea Lab to J. Krause. We thank the science team and crew of the R/V *Helmer Hanssen*, as well as S. Øygarden, E. Kube, A. Renner, D. Vogedes, H. Foshaug, S. Acton, D. Wiik, B. Vaaja and W. Dobbins for logistic support.

References

- Agusti, S., González-Gordillo, J. I., Vaqué, D., Estrada, M., Cerezo, M.I., Salazar, G., Gasol, J.M. and Duarte, C. M.: Ubiquitous healthy diatoms in the deep sea confirms deep carbon injection by the biological pump, *Nature Comms.* 6:7608. DOI: 10.1038/ncomms8608, 2015.
- 5 Alou-Font, E., Roy, S., Agustí, S. and Gosselin, M.: Cell viability, pigments and photosynthetic performance of Arctic phytoplankton in contrasting ice-covered and open-water conditions during the spring-summer transition, *Mar. Ecol. Progr. Ser.*, 3, 543:89-106, 2016.
- Ambrecht, L. H., Smetacek, V., Assmy, P., and Klaas, C.: Cell death and aggregate formation in the giant diatom *Coscinodiscus wailesii* (Gran & Angst, 1931). *J. Exp. Mar. Biol. Ecol.*, 452, 31-39, 2014.
- 10 Aumack, C. F., A. R. Juhl, and C. Krembs, C.: Diatom vertical migration within land-fast Arctic sea ice. *J. Mar. Systems* 139, 496-504, 2014.
- Baines, S. B., Twining, B.S., Brzezinski, M.A., Nelson, D.M., and Fisher, N.S.: Causes and biogeochemical implications of regional differences in silicification of marine diatoms. *Global Biogeochem. Cycles* 24, 2010.
- Bates, N. R., and Mathis, J. T. The Arctic Ocean marine carbon cycle: Evaluation of air–sea CO₂ exchanges, ocean acidification impacts and potential feedbacks. *Biogeosciences* 6, 2433–2459, 2009.
- 15 Bauerfeind, E., Nöthig, E.-M., Beszczynska, A., Fahl, K., Kaleschke, L., Kreker, K., Klages, M., Soltwedel, T., Lorenzen, C. and Wegner, J.: Variations in vertical particle flux in the Eastern Fram Strait (79°N/4°E) during 2000-2005. Results from the Deep-Sea Long-Term observatory HAUSGARTEN, *Deep-Sea Res. I*, 56, 1471-1487, 2009.
- 20 [Berge, J., Renaud, P.E., Darnis, G., Cottier, F., Last, K., Gabrielsen, T.M., Johnsen, G., Scuthe, L., Weslawski, J.M., Leu, E. and Moline, M.: In the dark: a review of ecosystem processes during the Arctic polar night. *Progr. Oceanogr.* 139, 258-271, 2015.](#)
- Bienfang, P. K., Harrison, P. J., and Quarmby, L. M.: Sinking rate response to depletion of nitrate, phosphate and silicate in four marine diatoms, *Marine Biology*, 67(3), 295-302, 1982.
- 25 Boetius, A., Albrecht, S., Bakker, K., Bienhold, C., Felden, J., Fernández-Méndez, M., ... and Nicolai, M.: Export of algal biomass from the melting Arctic sea ice. *Science*, 339(6126), 1430-1432, 2013.
- Cota, G. F., Anning, J. L., Harris, L. R., Harrison, W. G. and Smith, R. E.: Impact of ice algae on inorganic nutrients in seawater and sea ice in Barrow Strait, NWT, Canada, during spring. *Can. J. Fish. Aqu. Sci.* 47, 1402-1415, 1990.
- 30 Brzezinski, M. A.: The Si: C: N ratio of marine diatoms: Interspecific variability and the effect of some environmental variables 1. *Journal of Phycol.* 21, no. 3, 347-357, 1985.
- Gradmann D., and Boyd C.M.: Impact of osmolytes on buoyancy of marine phytoplankton, *Mar. Biol.*, 141: 605–618, 2002.
- 35 Holding, J., Duarte, C. M., Sanz-Martín, M., Mesa, E., Arrieta, JM., Chierici, M., Hendriks, I., García-Corral, L.S., Regaudie-de-Gioux, A., Delgado, A., Reigstad, M., Wassmann, P., and Agustí, S.: Temperature dependence of CO₂-enhanced primary production in the European Arctic Ocean. *Nat. Clim. Change*, 5 (12), 1079-1082, 2015.

Deleted: urnal

Deleted: of

Deleted: ine

Formatted: English (US)

Formatted: English (US)

Formatted: Font: Not Italic, Complex Script Font: Not Italic, English (US)

Formatted: Font: Not Italic, Complex Script Font: Not Italic, English (US)

Formatted: English (US)

Formatted: Font: Not Italic, Complex Script Font: Not Italic, English (US)

Formatted: English (US)

Formatted: English (US)

Formatted: Font: Not Italic, Complex Script Font: Italic

Deleted: ure

Deleted: ate

Ignatiades, L., and Smayda, T. J.: Autecological studies on the marine diatom *Rhizosolenia fragilissima* bergon. ii. enrichment and dark viability experiments I, *J. Phycol.*, **6**, 357-364, 1970.

Krause, J., Duarte, C.M., Marquez, I.A., Assmy, P., Fernandez-Mendez, M., Wiedmann, I., Wassmann, P., Kristiansen, S., and Agustí, S.: Biogenic silica production and diatom dynamics in the Svalbard region during spring. *Biogeosciences*, **15**, 6503–6517, 2018. <https://doi.org/10.5194/bg-15-6503-2018>.

Krause, J.W., Schulz, I.K, Rowe, K.A., Dobbins, W., Winding, M., Sejr, M., Duarte, C.M., Agustí, S.: Silicon limitation drives bloom termination and carbon sequestration in an Arctic bloom. *Sci. Reports*, **9**, 2019. doi: [10.1038/s41598-019-44587-4](https://doi.org/10.1038/s41598-019-44587-4)

Kvernvik, A. C., Hoppe, C. J. M., Lawrenz, E., Prášil, O., Greenacre, M., Wiktor, J. M., and Leu, E.: Fast reactivation of photosynthesis in arctic phytoplankton during the polar night. *J. Phycol.*, **54**(4), 461-470, 2018.

Lacour, T., Morin, P. I., Sciandra, T., Donaher, N., Campbell, D. A., Ferland, J., and Babin, M.: Decoupling light harvesting, electron transport and carbon fixation during prolonged darkness supports rapid recovery upon re-illumination in the Arctic diatom *Chaetoceros neogracilis*. *Polar Biol.*, **1-13**, 2019.

Llabrés, M., and Agustí, S.: Extending the cell digestion assay to quantify dead phytoplankton cells in cold and polar Waters, *Limnol. Oceanogr. Meth.* **6**, 659–666, 2008.

Lomas, M.W., Baer, S.E., Acton, S., Krause, J.W.: Pumped up by the Cold: Elemental Quotas and Stoichiometry of Polar Diatoms. *Front. Mar. Sci.* doi: [10.3389/fmars.2019.00197](https://doi.org/10.3389/fmars.2019.00197), 2019.

McNair, H. M., Brzezinski, M. A., and Krause, J. W.: Diatom populations in an upwelling environment decrease silica content to avoid growth limitation. *Environ. Microbiol.*, **20**(11), 4184-4193, 2018.

Moran, S. B., Kelly, R. P., Hagström, K., Smith, J. N., Grebmeier, J. M., Cooper, L. W., ... and Maslowski, W.: Seasonal changes in POC export flux in the Chukchi Sea and implications for water column-benthic coupling in Arctic shelves, *Deep Sea Res. II: Topical Studies in Oceanography*, **52**(24-26), 3427-3451, 2005.

Mura, M.P., M. P. Satta and Agustí, S.: Water-mass influences on summer Antarctic phytoplankton biomass and community structure, *Polar Biol.*, **15**, 15-20, 1995.

Olli, K., P. Wassmann, P. Ratkova, T. Arashkevich, E. and Pasternak, A.: Seasonal variation in vertical flux of biogenic matter in the marginal ice zone and the central Barents Sea, *J. Mar. Sys.*, **38**: 189-204, 2002.

Peters, E., and Thomas, D.N.: Prolonged darkness and diatom mortality I: Marine Antarctic species. *J. Exp. Mar. Biol. Ecol.*, **207**, 25-41, 1996.

Raven, J. A., Waite, A. M.: The evolution of silicification in diatoms: inescapable sinking and sinking as escape? *New phytologist*, **162**(1), 45-61, 2004.

Reigstad, M., Wassmann, P., Riser, C. W., Øygarden, S., and Rey, F.: Variations in hydrography, nutrients and chlorophyll a in the marginal ice-zone and the central Barents Sea, *J. Marine Syst.*, **38**, 9–29, 2002.

Rey, F.: Declining silicate concentrations in the Norwegian and Barents Seas, *ICES J. Mar. Sci.*, **69**, 208-212, 2012.

Segovia M., Haramaty, L., Berges, J. A., and Falkowski, P.G.: Cell Death in the Unicellular Chlorophyte *Dunaliella tertiolecta*. A Hypothesis on the Evolution of Apoptosis in Higher Plants and Metazoans, *Plant Physiol.*, **132**, 9-105, 2003; DOI: [10.1104/pp.102.017129](https://doi.org/10.1104/pp.102.017129).

- Deleted: urnal of
- Deleted: ogy
- Field Code Changed
- Deleted: entific
- Deleted: .
- Deleted: In review
- Formatted: English (US)
- Field Code Changed
- Formatted: English (US)
- Formatted: Font: Not Italic, Complex Script Font: Not Italic, English (US)
- Formatted: Font: Not Italic, Complex Script Font: Not Italic
- Formatted: Font: Not Italic, Complex Script Font: Not Italic, English (US)
- Formatted: Font: Not Italic, Complex Script Font: Not Italic
- Formatted: English (US)
- Formatted: ... [1]
- Formatted: English (US)
- Formatted: ... [2]
- Deleted: iers
- Deleted: in
- Deleted: ine
- Deleted: ence
- Deleted: mental
- Deleted: logy
- Formatted: ... [3]
- Formatted: English (US)
- Deleted: in press
- Formatted: English (US)
- Deleted: &
- Deleted: urnal of
- Deleted: erimental
- Deleted: ine
- Deleted: ogy
- Deleted: and
- Deleted: ogy
- Deleted: Journal of
- Deleted: ine
- Deleted: ence
- Deleted: ogy

Segovia, M. and Berges, J. A.: Inhibition of caspase-like activities prevents the appearance of reactive oxygen species and dark-induced apoptosis in the unicellular chlorophyte *Dunaliella tertiolecta*, *Journal of Phycology*, 45, 1116-1126, 2009. doi:[10.1111/j.1529-8817.2009.00733.x](https://doi.org/10.1111/j.1529-8817.2009.00733.x)

Smayda, T. J.: The suspension and sinking of phytoplankton in the sea, *Oceanogr. Mar. Biol.* 8, 353-414, 1970.

5 Smayda, T. J.: Normal and accelerated sinking of phytoplankton in the sea, *Mar. Geol.* 11, 105-122, 1971.

Smayda, T. J., and Mitchell-Innes, B.: Dark survival of autotrophic, planktonic marine diatoms, *Mar. Biol.*, 25, 195-202, 1974.

Smith, R. E., Harrison, W. G., Harris, L. R. ~~and~~ Herman, A. W.: Vertical fine structure of particulate matter and nutrients in sea ice of the high Arctic. *Canadian Journal of Fisheries and Aquatic Sciences* 47, 1348-1355, 10 1990.

Takahashi, T. et al.: Global sea-air CO₂ flux based on climatological surface ocean pCO₂, and seasonal biological and temperature effects. *Deep Sea Res. II* 49, 1601-1622, 2002.

Tamelander, T., Renaud, P. E., Hop, H., Carroll, M. L., Ambrose Jr, W. G., ~~and~~ Hobson, K. A.: Trophic relationships and pelagic-benthic coupling during summer in the Barents Sea Marginal Ice Zone, revealed by stable carbon and nitrogen isotope measurements, *Marine Ecology Progress Series*, 310, 33-46, 2006.

15 Vaquer-Sunyer, R. et al. Seasonal patterns in Arctic planktonic metabolism (Fram Strait—Svalbard region). *Biogeosciences* 10, 1451-1469, 2013.

Villareal, T. A., Pilskaln, C. H., Montoya, J. P., and Dennett, M.: Upward nitrate transport by phytoplankton in oceanic waters: balancing nutrient budgets in oligotrophic seas, *PeerJ*, 2, e302, 2014.

20 Wassmann, P., Egge, J. K., Reigstad, M., and Aksnes, D. L.: Influence of dissolved silicate on vertical flux of particulate biogenic matter, *Mar. Pollut. Bull.* 33: 10-21, 1997.

Wassmann, P., Slagstad, D., Rise CW, and Reigstad, M.: Modelling the ecosystem dynamics of the Barents Sea including the marginal ice zone II. Carbon flux and interannual variability, *J. Mar. Systems*, 59, 1-24, 2006.

Field Code Changed

Deleted: &

Deleted:

Deleted: &

Deleted: ournal

Deleted: of

Deleted: ine

25

Figure headings

Figure 1: ARCEX cruise study area with the insert showing the station number and location (green dot) around the Svalbard Islands.

5 **Figure 2:** Photographs of the natural Arctic diatoms sampled with the Bottle-Net observed under epifluorescence microscopy and stained with the Bac-light Kit. (a) Colonies of *Thalassiosira* sp. showing green fluorescence corresponding to living cells. (b) Colonies of *Fragilariopsis* sp. showing dead cells (red fluorescence, vertical-left colonies) and living cells (green fluorescence, transversal-right colony). (c) Surface layer community, composed of multiple diatom genera (*Chaetoceros* sp., *Fragilariopsis* sp., *Thalassiosira* sp., pennates), showing blend of living cells (green fluorescence) and dead cells (red fluorescence). (d) Aphotic zone sample showing dead colonies (red fluorescence) of *Fragilariopsis* sp. and *Thalassiosira* sp. (two-cell colony in the bottom-right of the photo).

10 **Figure 3:** Box plots showing the distribution of the percentage of living diatoms in the photo (blue) and aphotic (brown) layers. Percentage of living cells among (a) the total diatom community and (b) for the populations of the most abundant diatom taxa observed during the cruise. The asterisks indicate significant differences between photic and aphotic zones ($p < 0.05$). Boxes encompass the central 50% of the data, the horizontal line inside the box represents the median, and vertical bars encompass 90% of the data.

15 **Figure 4:** Pie charts showing the diatom community within the photic and aphotic zones among stations. Colours correspond to different taxa and the numbers indicate the percentage of cells relative to the total community.

20 **Figure 5:** (a) The proportion (mean \pm SE) of the water-column stock observed in the aphotic zone (relative to the sum of the aphotic and photic zones) among the different diatom taxa. (b) The relationship between the percentage of living diatoms cells among the different populations in the photic layer and the proportion of the water-column population stock observed in the aphotic zone. The line represents the fitted linear regression ($R^2 = 0.39$, $P < 0.001$).

25 **Figure 6:** Diatom cell viability among the sinking cells. The initial percentage of dead cells corresponds to the fresh photic-zone Arctic microplankton sample (see Methods) and added to the surface of the sinking column (1.35 m height) at time 0. The percentages of dead cells at the bottom of the sinking column were collected at intervals of time of 0, 1, 4 and 12 hours after sample inoculum addition.

30 **Figure 7:** Decay in the cell abundance of living (blue diamonds) and total (orange squares) diatoms when exposed to aphotic zone light conditions. (a) large celled *Thalassiosira* sp. sp. (b) *Fragilariopsis* spp. (c) *Thalassiosira* sp. (d) Pennate diatom. The solid black lines and equations show the fitted linear regressions for the percent of living cells (blue box, all fitted lines significant $p < 0.05$) and total population cells (orange box, none of the fitted lines were significant $p > 0.05$).

Table 1. Stations number and location, averaged (\pm SE) photic layer temperature, salinity, upper mixed layer (UPM) depth, nutrients, and measurements made with the Bottle-Net (BN) in the photic and aphotic zones, indicating the depth of the tows, and the abundance and percentage of living diatoms found at the two layers.

Station	Latitude N	Longitude E	Temperature (°C)	Salinity (psu)	UPM (m)	NO ₃ +NO ₂ (μ M)	PO ₄ (μ M)	Si(OH) ₄ (μ M)	BN Photic (range, m)	BN Aphotic (range, m)	Photic diatoms (cells · m ⁻²)	Aphotic diatoms (cells · m ⁻²)	Photic living diatoms (%)	Aphotic living diatoms (%)
# 3, Bellsund Hula	77 28.09	13 27.483	0.81 \pm 0.33	34.48 \pm 0.083	14.5	1.79 \pm 1.52	0.27 \pm 0.11	0.75 \pm 0.45	45-0	197-55	3.160E+07	6.843E+06	63.54	21.70
# 4, Bredjupet	77 03.356	13 23.369	4.64 \pm 0.025	35.0 \pm 0.001	65.5	9.44 \pm 0.097	0.63 \pm 0.019	4.16 \pm 0.046	60-0	415-100	3.04E+05	1.63E+05	20.93	9.47
# 5, Inngang Hornsund	76 58.73	15 44.113	-0.54 \pm 0.035	34.27 \pm 0.037	24.2	5.66 \pm 0.019	0.34 \pm 0.078	2.45 \pm 0.40	50-0	220-80	3.20E+07	3.00E+05	72.03	0.50
# 6, Hornsund Dyppet	76 51.244	15 13.143	-0.034 \pm 0.1	28.98 \pm 4.5	9.8	0.49 \pm 0.37	0.17 \pm 0.03	0.36 \pm 0.118	50-0	220-60	2.01E+09	4.69E+08	70.03	8.31
# 7, Erik Erikson Strait	79 09.986	26 02.20	-1.44 \pm 0.093	34.29 \pm 0.04	35.9	0.03 \pm 0.026	0.16 \pm 0.01	0.07 \pm 0.012	50-0	260-70	1.25E+07	1.13E+06	61.12	26.99
# 8, Erik Erikson Strait	79 10.479	26 27.518	-1.31 \pm 0.088	34.22 \pm 0.4	3.0	2.23 \pm 1.64	0.15 \pm 0.077	0.57 \pm 0.40	50-0	245-70	2.47E+10	5.56E+06	69.79	31.27
# 9, Polar Front	77 15.308	29 29.243	2.04 \pm 0.099	34.7 \pm 0.027	34.0	0.14 \pm 0.034	0.204 \pm 0.022	1.29 \pm 0.17	50-0	180-60	2.76E+07	2.27E+06	45.97	50.00
# 10, Barents Sea	76 13.513	29 43.710	4.06 \pm 0.044	34.9 \pm 0.001	75.0	3.21 \pm 0.20	0.345 \pm 0.03	1.48 \pm 0.156	50-0	180-60	1.45E+08	2.35E+07	71.77	13.14

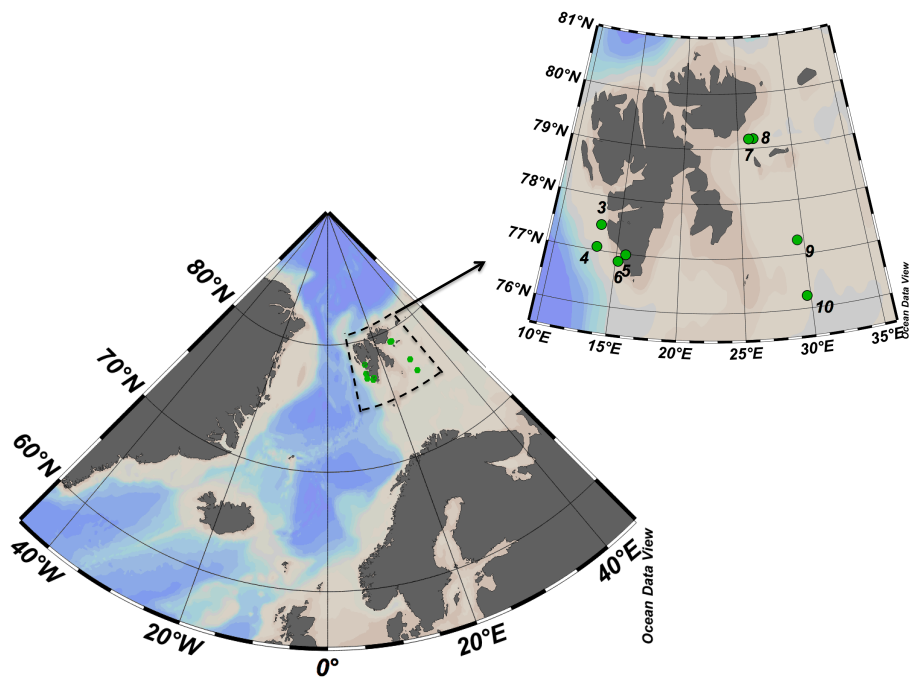


Figure 1

5

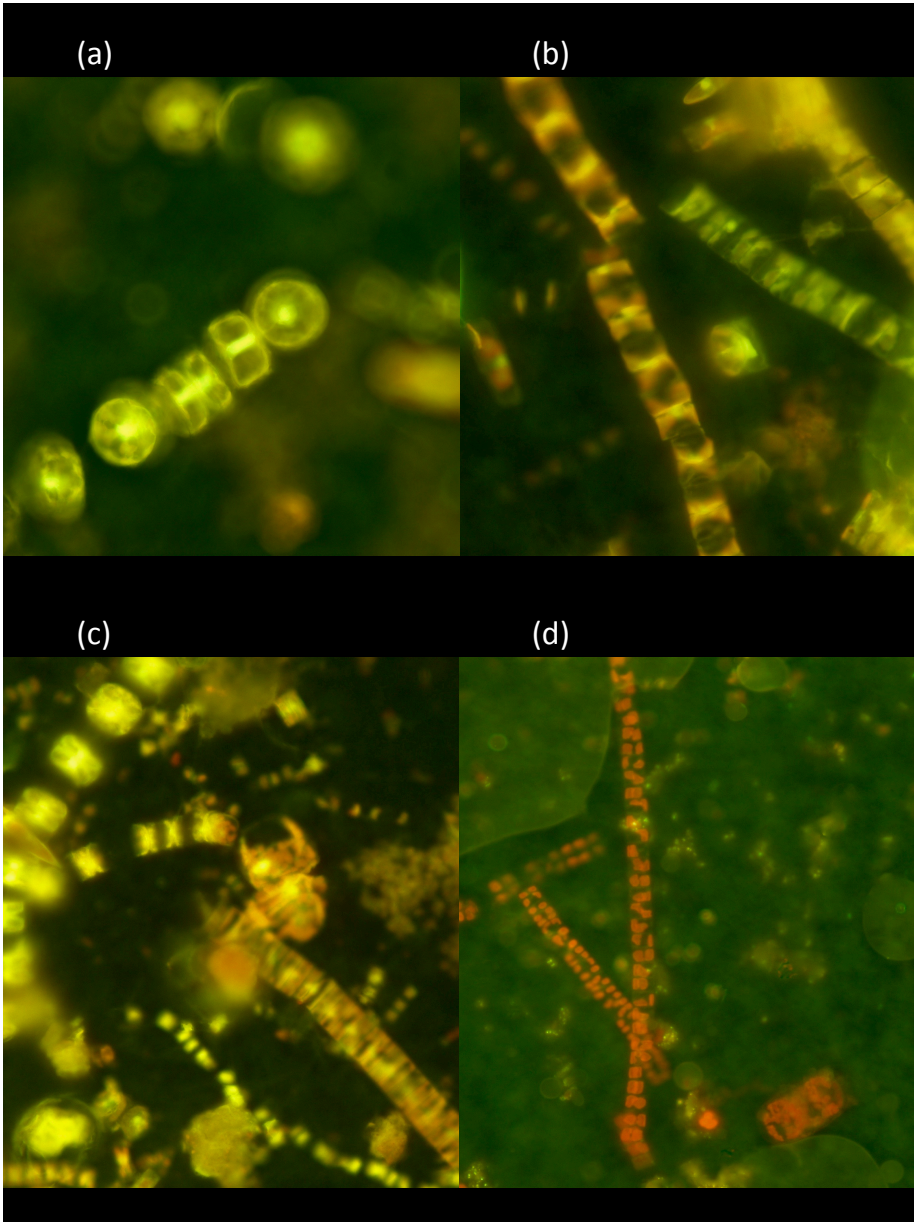
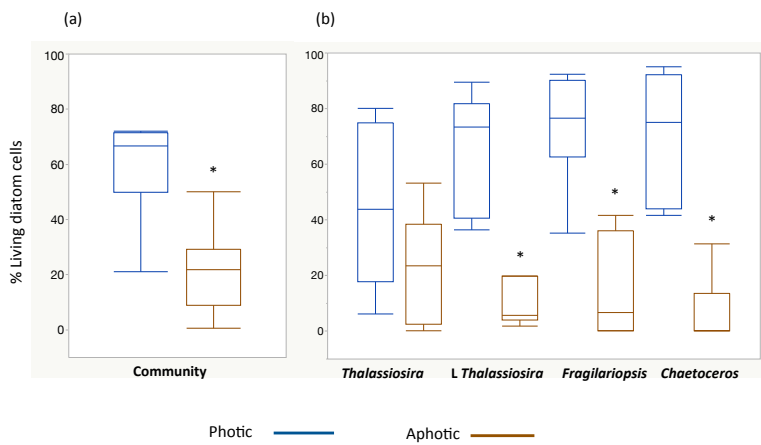


Figure 2



5 **Figure 3**

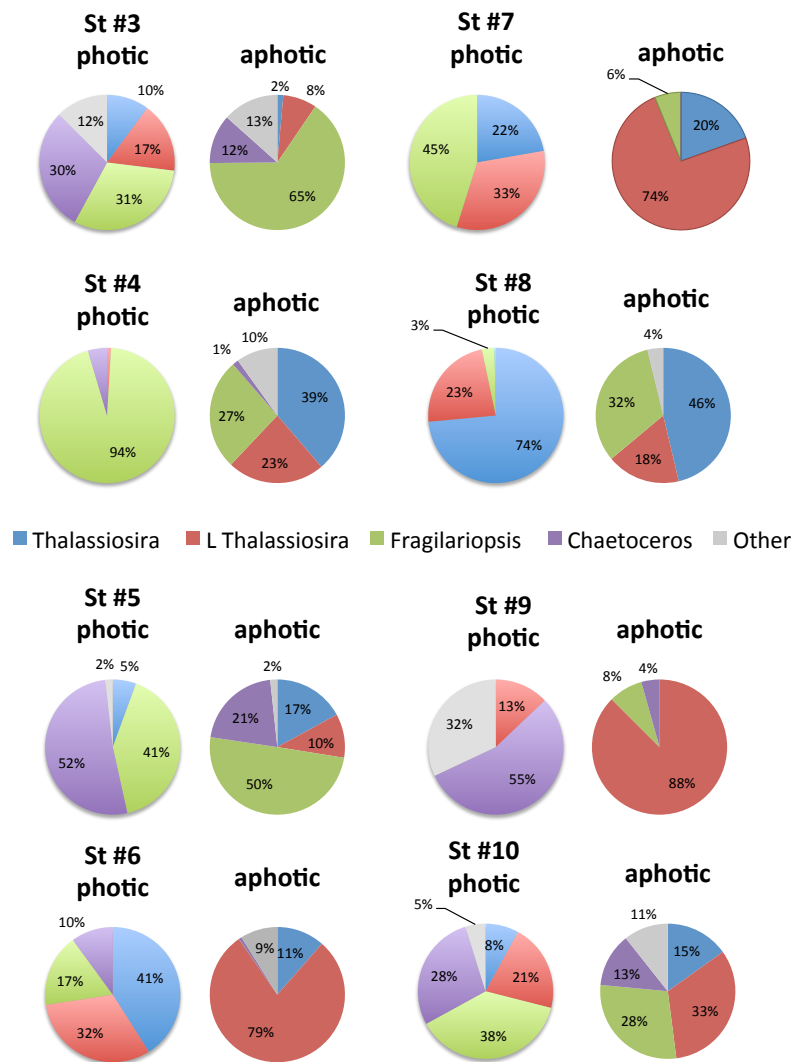


Figure 4

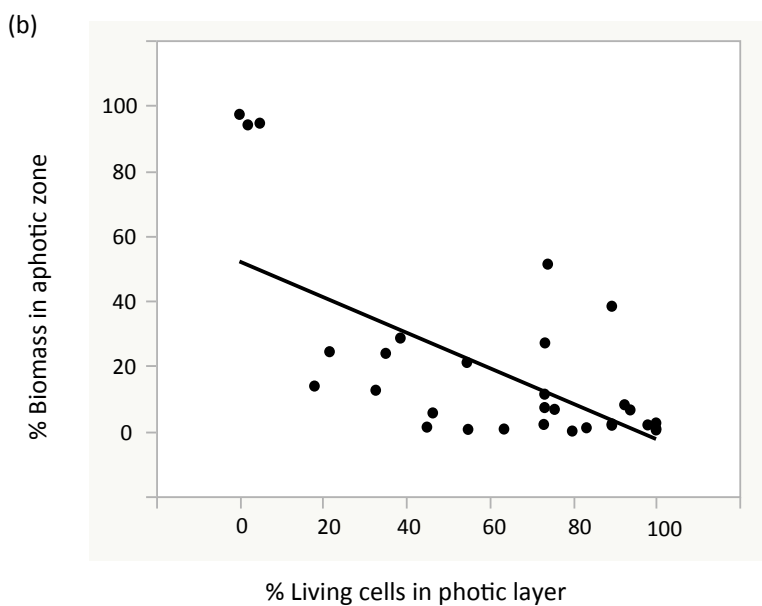
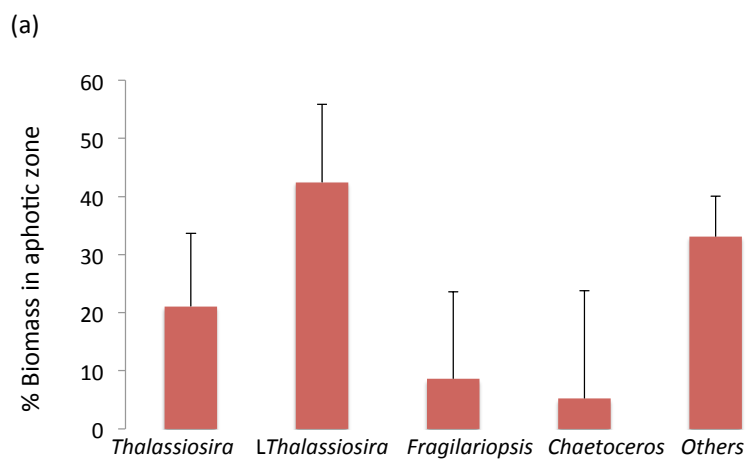


Figure 5

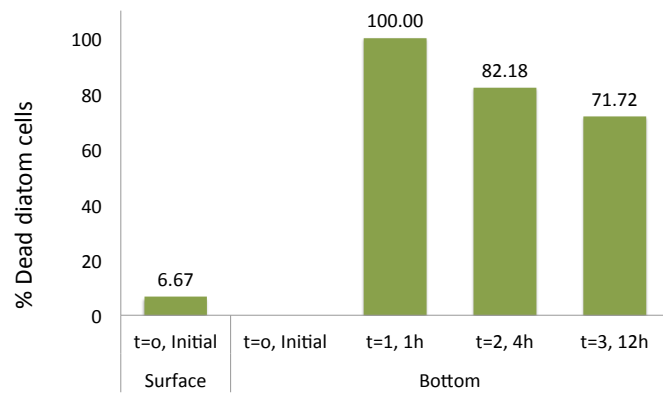


Figure 6

5

Deleted: ¶

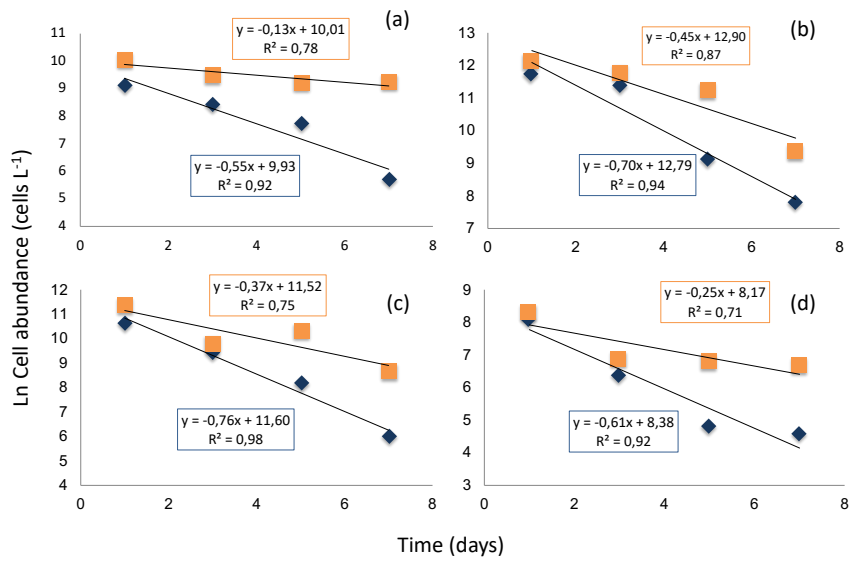


Figure 7

