

### **Author's Response**

Dear editor  
Dear Dr. Treude,

Please find below our responses to your final minor comments and the previous comments of two anonymous referees. We would like to thank you and the reviewers for your time and constructive remarks. All necessary changes have been made in the final version of the manuscript.

If further questions remain, do not hesitate to contact me.

Yours faithfully,

Dr. Freija Hauquier,  
On behalf of all authors.

Ghent University, Marine Biology Research group  
Krijgslaan 281, Sterrecampus (S8)  
B-9000 Ghent  
Belgium  
Tel + 32 9 264 85 18  
Fax + 32 9 264 85 98  
Email: freijahauquier@gmail.com

### **Author's response to Editor's comments**

1/ Page 11, Line 31: I guess you mean "similar" and not "comparable"? Everything is comparable, but you probably mean "unmined areas should be as similar as possible to the provisioned mining sites", correct? I suggest to change.

Author's response: *We agree with this change in vocabulary and have adapted the sentence accordingly.*

2/ Page 11, Line 32: "but see Kaiser et al., 2017" is irritating. Why the "but"? I did not understand. Can you clarify?

Author's response: *The editor is correct that the reference to Kaiser et al. (2017) was no longer clear so we removed the "but see..." from the sentence.*

### **Author's response to Referee's comments (RC1)**

RC1: This manuscript presented the diversity of nematodes in surface 5 cm of sediments in the license areas (of Germany, IOM, Belgium and France) and reference area of the CCZ. The data are important to help make a decision on the mining method and designation of source areas to protect the seabed ecosystem when large scale mining of the nodules is carried out.

1/ Referee comment: In the part of Materials and Methods, the authors stated that the IOM samples were sliced per cm down to 5 cm sediment depth. However, there is no mention of this result. Please clarify that authors only used the total amount instead of different depth.

Author's response: *This is indeed a valuable comment by the reviewer, and we failed to mention this properly in the first version of the manuscript. Therefore, we have added a sentence to the respective paragraph in the Material and Methods section. It now reads (Material and Methods, lines 30-32): "From each cm-slice (IOM) or bulk sample (all other areas), between 120 and 320 nematodes were randomly picked, transferred to anhydrous glycerol (Seinhorst, 1959; De Grisse, 1969) and mounted on slides. Later on, genus counts for the different sediment layers of the IOM samples were summed prior to statistical analysis."*

2/ Referee comment: BGR was further divided into BGR\_RA and BGR\_PA, but these subareas were not labelled in Fig. 1. Please try to label them so that readers could know the sampling sites.

Author's response: *The Figure 1 has been adapted and now includes labels for BGR\_RA and BGR\_PA. Also the Figure caption has been updated so that it is clear which sampling locations were investigated.*

3/ Referee comment: IOM should be the Interoceanmetal Joint Organization <https://iom.gov.pl/>. In the case of this manuscript with the same background of seabed mining, this abbreviation should be occupied by this organization. Therefore, I recommend the authors to have another abbreviation for Inter-Ocean Metal consortium (or maybe they are the same one in different forms).

Author's response: *The reviewer is correct to assume that we mean the same organization and that the abbreviation should be Interoceanmetal Joint Organization. This has been adapted in the respective paragraph in the Material and Methods section.*

4/ Referee comment: The title is "geographic distribution: ". Since all the sites are in the CCZ with similar geographical characteristics, I recommend the title to be "distribution: ".

Author's response: *Although we do believe that samples for this study were collected over a rather large geographic range, we do see the point that the reviewer is making here. So we are willing to remove the word 'Geographic' from the title of the manuscript since it would not change the focus of it.*

#### **Author's response to Referee's comments (RC2)**

RC2: This MS is on deep-sea meiofaunal distribution and diversity. Dataset is rather small, and analyses are simple. But the studied site CCZ is well-known deep-sea nodule mining area proposed and solid environmental/ecological assessment is urgently needed. In this regard, the dataset and analyses are basically reasonable enough. So the MS is of high importance and timely. I suggest relatively minor revision. Broader citation on deep-sea ecology & biodiversity and their environmental control is needed (as detailed below).

Specific comments are listed below:

1/ Referee comment: P. 2, Line 11 "...poorly understood (...". Add Sweetman et al. and Yasuhara & Danovaro 2016

- Sweetman, A. K., Thurber, A. R., Smith, C. R., Levin, L. A., Mora, C., Wei, C. L., Gooday, A. J., Jones, D. O. B., Rex, M., Yasuhara M., Ingels, J., Ruhl, H. A., Frieder, C. A., Danovaro, R., Würzburg, L., Baco, A., Grupe, B. M., Pasulka, A., Meyer, K. S., Dunlop, K. M., Henry, L. A., Roberts, J. M., 2017. Major impacts of climate change on deep-sea benthic ecosystems. *Elementa*: 5, doi:10.1525/elementa.203.
- Yasuhara, M. and Danovaro, R., 2016. Temperature impacts on deep-sea biodiversity. *Biological Reviews*, 91: 275–287.

Author's response: *We have consulted the proposed publications and have made proper reference to them where deemed appropriate. Although their focus is more on climate change impacts, which is not the main topic of our manuscript, they also touch upon the mining-related issues (especially Sweetman et al., 2017).*

2/ Referee comment: P. 2, Line 14 "...complicated by low sedimentation rates at these depths" Why?

Author's response: *With this sentence we mean that the phytoplankton-derived food input into the benthic system is typically rather low at abyssal depths (see also the proposed Sweetman et al. 2017 paper from the previous comment). Especially in this area, we know that primary production is small and sedimentation of phytodetritus low. We have added this link with the food input in the sentence which now reads (P. 2, lines 13-16): "Despite this dependency, which is further complicated by low sedimentation rates hence low food input at these depths (Petersen et al., 2016; Gollner et al., 2017; Sweetman et al., 2017), biodiversity is high in most deep-sea habitats (Levin et al., 2001), especially for the smaller-sized macro- and meiofauna (Ramirez-Llodra et al., 2010; Hessler and Sanders, 1967)."*

3/ Referee comment: P. 2, Line 15 "...the smaller-sized macro- and meiofauna (Ramirez-Llodra et al., 2010)." Add classic Hessler and Sanders papers for high deep-sea biodiversity.

Author's response: *This paper (Hessler & Sanders, 1967) has been added, which focuses on the macrofauna.*

4/ Referee comment: P. 2, Line 15-17 "This is partially a consequence of high heterogeneity that exists as a result of the complex geological and hydrological features of the deep seafloor (Vanreusel et al., 2010), which create microscale patchiness in both abiotic and biotic features." It seems the authors' result doesn't support this statement. Dominant species are the same in all the site, showing low heterogeneity. You may cite Levin et al reviews and some Yasuhara and McClain papers on temperature vs POC issues.

- Levin et al., 2001. Ann. Rev. Earth Planet. Sci. 32, 51–93
- Yasuhara, M., Hunt, G., Cronin, T.M. and Okahashi, H., 2009. Temporal latitudinal gradient dynamics and tropical instability of deep-sea species diversity. Proceedings of the National Academy of Sciences of the United States of America, 106: 21717–21720.
- Yasuhara, M., Okahashi, H., Cronin, T.M., Rasmussen, T.L. and Hunt, G., 2014. Response of deep-sea biodiversity to abrupt deglacial and Holocene climate changes in the North Atlantic Ocean. Global Ecology and Biogeography, 23 (9): 957–967.
- McClain et al. 2012. Energetics of life on the deep seafloor. PNAS
- Tittensor et al. 2011. Species–energy relationships in deep-sea molluscs. Biology Letters

Author's response: *We partly agree with the reviewer that our results don't seem to support the statement as this is indeed true for the dominant taxa. Nevertheless, the more rare taxa do differ a lot among locations, which suggests that at least part of the nematode community varies substantially over the spatial scale under consideration in this MS. We have consulted the proposed literature and have made reference to these publications where deemed appropriate. Since both references Yasuhara et al. (2009) and Yasuhara et al. (2014) focus on palaeoecology, we feel they are of less immediate interest for the context of the submitted manuscript. Nevertheless, they provide a very interesting read and a lot of insight in the environmental drivers of benthic diversity over larger timescales.*

5/ Referee comment: P. 3, Line 29 and other places. Brackets usage are strange in several places like "using the guide of (Higgins and Thiel, 1988)."

Author's response: *We are aware of the strange use of brackets, which is related to the EndNote insertion function. Although we adopted the required house style, the inline references still appear in this format. We will adapt this together with the editorial team once the paper gets accepted for publication.*

6/ Referee comment: P. 4, Line 12 “For this study, clay (sediment particles < 4 µm) and silt (4–63 µm) size fractions were considered in further analyses.” Good to specify what are the “further analyses” Did you address spatial auto-correlation for your regression models?

Author’s response: *We have added the specifications for the further analyses and the sentence now reads: “For this study, clay (sediment particles < 4 µm) and silt (4–63 µm) size fractions were considered in further analyses linking nematode communities to environmental parameters.” As for the spatial auto-correlation, we did check for multicollinearity in the environmental variables at the start of building the regression models, and this statement has now been added in the Material and Methods section. However, we did not specifically check for spatial auto-correlation using other methods since we believe that this would over-complicate the analyses. As pointed out by the reviewer as well, we are dealing with a limited number of sampling locations, at relatively large geographic distances, and we do not aim to generalize our findings to other unsampled locations. From previous studies, we know that nematode communities tend to differ even at very small spatial scales (e.g., (Gallucci et al., 2009;Fonseca et al., 2010;Leduc et al., 2012), so that dissimilarity between communities does not necessarily increase with increasing distance among sampling locations (see also (Hauquier et al., 2018)). Nevertheless, we are aware of the potential bias in our dataset since our different sampling locations do differ in environmental setting and other –potentially important- environmental variables which may structure community composition and abundance have not been measured. This means that there is per definition a spatial and latitudinal gradient underlying our environmental differences as well as our community differences.*

7/ Referee comment: P. 7 line 1. “repeatedly (e.g., (Wei et al., 2010)).” Check the house style of bracket usage. Not only here, but also other places.

Author’s response: *See reply to an earlier comment.*

8/ Referee comment: P. 9, line 4. “only few genera occurred in higher numbers” Higher than what? This sentence is unclear a bit.

Author’s response: *We agree that this sentence is not clear enough and have added the cut-off percentage which we considered as ‘higher numbers’. The sentence now reads (P. 9, lines 7-9): “With a total of 156 genera reported in this study, genus diversity was indeed substantial on a regional scale and only few genera occurred in higher numbers (i.e. relative abundance > 5 %; Tables 5, 6).”*

9/ Referee comment: P. 9 Line 30: “...ecosystem functioning” Cite Danovaro and Yasuhara papers regarding ecosystem functioning.

- Yasuhara, M., Doi, H., Wei, C. L., Danovaro, R. and Myhre, S. E., 2016. Biodiversity– ecosystem functioning relationships in long-term time series and palaeoecological records: deep sea as a test bed. Philosophical Transactions of the Royal Society B: doi:10.1098/rstb.2015.0282
- Danovaro et al., 2008. Exponential Decline of Deep-Sea Ecosystem Functioning Linked to Benthic Biodiversity Loss. Current Biology

Author’s response: *We have added these references where deemed appropriate.*

10/ Referee comment: In Discussion, the authors emphasized high number/diversity of rare genera and species. But such is not emphasized in the abstract. These rare taxa tend to be found in only one site and thus are highly vulnerable for mining, right? If this is correct, the authors need to emphasize this more.

Author’s response: *We agree with the reviewer and have adapted the abstract accordingly. The last paragraph now reads: “Nematodes were the most abundant meiobenthic taxon and their assemblages were typically dominated by a few genera*

(generally 2–6) accounting for 40–70 % of all individuals, which were also widely spread along the CCZ and shared among all sampled license areas. However, almost half of the communities consisted of rare genera each contributing less than 5 % to the overall abundances and displaying a distribution which was usually restricted to a single license area. The same observations (dominant and widely spread versus rare and scattered) could be made for the species of one of the dominant genera, *Halalaimus*, implying that it might be mainly these rare genera and species that will be vulnerable to mining-induced changes in their habitat.”

11/ Referee comment: Discussion is a bit lengthy too much and can be simpler, given the simple and small dataset. It seems the authors talk too much based on small data. Do you see any environmental control of diversity in your data?

Author’s response: *Although we understand the reviewer’s comment on the small dataset and rather lengthy discussion, we do believe that we should touch upon all these topics (without making too strong of a statement) in the light of future mining plans. Unfortunately, sampling at these depths and in these regions is always prone to logistic challenges, which makes the acquisition of extensive datasets very difficult. Nevertheless, even with a small dataset, we can at least hint at the potential impacts that mining operations may have and the vulnerability of the system as such. As monitoring programs are being established and data continues to be gathered in the respective license areas, information contained in this paper can help serving as a first baseline and new insights can either confirm or modify our conclusions made here. We therefore have made only a few modifications to shorten certain parts of the discussion.*

*Since the number of genera and diversity in general is relatively similar for the different sampling locations, we did not specifically check for a link with the environmental parameters of the sites. Based on other analyses that were not included in the manuscript (since they did not contribute any new insights), we also did not see any patterns in the respective proportions of different nematode feeding types (deposit feeders, predators, etc.). If there would be a clear environmental control, we would have expected that, for instance, the proportion of deposit feeders would be higher in those areas where organic matter content in the sediments is higher as well but this was not the case.*

#### **Additional references**

- Fonseca, G., Soltwedel, T., Vanreusel, A., and Lindegarth, M.: Variation in nematode assemblages over multiple spatial scales and environmental conditions in Arctic deep seas, *Progress in Oceanography*, 84, 174-184, 10.1016/j.pocean.2009.11.001, 2010.
- Gallucci, F., Moens, T., and Fonseca, G.: Small-scale spatial patterns of meiobenthos in the Arctic deep sea, *Marine Biodiversity*, 39, 9-25, 10.1007/s12526-009-0003-x, 2009.
- Gollner, S., Kaiser, S., Menzel, L., Jones, D. O. B., Brown, A., Mestre, N. C., van Oevelen, D., Menot, L., Colaço, A., Canals, M., Cuvelier, D., Durden, J. M., Gebruk, A., Egho, G. A., Haeckel, M., Marcon, Y., Mevenkamp, L., Morato, T., Pham, C. K., Purser, A., Sanchez-Vidal, A., Vanreusel, A., Vink, A., and Martinez Arbizu, P.: Resilience of benthic deep-sea fauna to mining activities, *Marine Environmental Research*, 129, 76-101, <https://doi.org/10.1016/j.marenvres.2017.04.010>, 2017.
- Hauquier, F., Verleyen, E., Tytgat, B., and Vanreusel, A.: Regional-scale drivers of marine nematode distribution in Southern Ocean continental shelf sediments, *Progress in Oceanography*, 165, 1-10, <https://doi.org/10.1016/j.pocean.2018.04.005>, 2018.
- Hessler, R. R., and Sanders, H. L.: Faunal diversity in the deep-sea, *Deep-Sea Research*, 14, 65-78, 1967.
- Leduc, D., Rowden, A. A., Bowden, D. A., Nodder, S. D., Probert, P. K., Pilditch, C. A., Duineveld, G. C. A., and Witbaard, R.: Nematode beta diversity on the continental slope of New Zealand: spatial patterns and environmental drivers, *Marine Ecology Progress Series*, 454, 37-52, 2012.

Levin, L. A., Etter, R. J., Rex, M. A., Gooday, A. J., Smith, C. R., Pineda, J., Stuart, C. T., Hessler, R. R., and Pawson, D.: Environmental Influences on Regional Deep-Sea Species Diversity, *Annual Review of Ecology and Systematics*, 32, 51-93, 10.1146/annurev.ecolsys.32.081501.114002, 2001.

Petersen, S., Krätschell, A., Augustin, N., Jamieson, J., Hein, J. R., and Hannington, M. D.: News from the seabed: Geological characteristics and resource potential of deep-sea mineral resources, *Marine Policy*, 70, 175-187, <https://doi.org/10.1016/j.marpol.2016.03.012>, 2016.

Ramirez-Llodra, E., Brandt, A., Danovaro, R., De Mol, B., Escobar, E., German, C. R., Levin, L. A., Martinez Arbizu, P., Menot, L., Buhl-Mortensen, P., Narayanaswamy, B. E., Smith, C. R., Tittensor, D. P., Tyler, P. A., Vanreusel, A., and Vecchione, M.: Deep, diverse and definitely different: unique attributes of the world's largest ecosystem, *Biogeosciences*, 7, 2851-2899, 10.5194/bg-7-2851-2010, 2010.

Sweetman, A., Thurber, A., Smith, C., Levin, L., Mora, C., Wei, C., Gooday, A., Jones, D., Rex, M., Yasuhara, M., Ingels, J., Ruhl, H., Frieder, C., Danovaro, R., Würzberg, L., Baco, A., Grupe, B., Pasulka, A., Meyer, K., Dunlop, K., Henry, L.-A., and Roberts, J.: Major impacts of climate change on deep-sea benthic ecosystems, *Elementa Science of the Anthropocene*, [doi.org/10.1525/elementa.203](https://doi.org/10.1525/elementa.203), 2017.

# ~~Geographie-d~~Distribution of free-living marine nematodes in the Clarion-Clipperton Zone: implications for future deep-sea mining scenarios

5 Freija Hauquier<sup>1</sup>, Lara Macheriotou<sup>1</sup>, Tania N. Bezerra<sup>1</sup>, Great Egho<sup>2</sup>, Pedro Martínez Arbizu<sup>2</sup>, Ann Vanreusel<sup>1</sup>

<sup>1</sup> Marine Biology Research Group, Ghent University (UGent), B-9000, Gent, Belgium

<sup>2</sup> German Center for Marine Biodiversity Research (DZMB), Senckenberg am Meer, D-26382, Wilhelmshaven, Germany

Correspondence to: Freija Hauquier (freija.hauquier@ugent.be)

10 **Abstract.** Mining of polymetallic nodules in abyssal seafloor sediments promises to address the growing worldwide demand for metallic minerals. Given that prospective mining operations are likely to have profound impacts on deep seafloor communities, industrial investment has been accompanied by scientific involvement for the assessment of baseline conditions and provision of guidelines for environmentally sustainable mining practices.

Benthic meiofaunal communities were studied in four prospective mining areas of the Clarion-Clipperton Zone (CCZ) in the  
15 east Pacific Ocean, arranged in a southeast-northwest fashion coinciding with the productivity gradient in the area. Additionally, samples were collected from an Area of Particular Environmental Interest (APEI-3) in the northwest of the CCZ where mining will be prohibited and which should serve as a 'source area' for the biota within the larger CCZ. Total densities in the 0–5 upper cm layer of the sediment were influenced by sedimentary characteristics, water depth and nodule density at the various sampling locations, indicating the importance of nodules for meiofaunal standing stock.

20 Nematodes were the most abundant meiobenthic taxon ~~and their anal displayed a relatively similar community composition for the different areas.~~ Assemblages were typically dominated by a few genera (generally 2–6), accounting for 40–70 % of all individuals, ~~which were also widely spread along the CCZ and shared among all sampled license areas. However, almost half of the communities consisted as well as a large number~~ of rare genera each contributing less than 5 % to the overall abundances ~~and displaying a distribution.~~ ~~Dominant genera were widely spread within the CCZ and shared among all~~  
25 ~~sampled license areas, whereas rare genera were usually~~ ~~which was usually limited restricted to one a single license area.~~ The same ~~trend-observations (dominant and widely spread versus rare and scattered) could be made as present when looking at~~ ~~for~~ the species ~~level~~ of one of the dominant genera, *Halalaimus*, implying that it might be mainly these rare genera and species that will be ~~affected-vulnerable to mining-induced~~ changes in their habitat ~~due to mining activities.~~

Formatted: Font: Italic

## 1 Introduction

30 As mining of mineral resources on land is increasingly burdened with logistic and geopolitical concerns (Petersen et al., 2016), humankind is now looking towards the deep seafloor (~ 4000–5000 m) as a potential source to meet the global

demand for metallic deposits. The abyssal plains of the Clarion-Clipperton Zone (CCZ) in the central eastern Pacific harbour the largest known accumulation of polymetallic nodules, rich in nickel, manganese, copper and cobalt (Halbach and Fellerer, 1980; Mewes et al., 2014). Their occurrence is relatively well-studied and has sparked economic interest from governments and industry. Since the CCZ falls beyond national jurisdiction, the regulatory framework for prospective nodule mining is provided by the International Seabed Authority (ISA), which has so far granted sixteen exploration licenses to interested parties (<https://www.isa.org.jm/deep-seabed-minerals-contractors>). One of the requirements of the ISA toward contractors is documentation of the biota in their license area and evaluation of the impact that planned mining activities will have on the environment (Lodge et al., 2014; Vanreusel et al., 2016). However, beside these baseline exploration studies, scientific knowledge on the abyssal communities of the CCZ is relatively scant, and generally of limited geographic coverage (Lambshhead et al., 2003; Singh et al., 2016).

The abyssal seafloor (> 3000 m) represents the largest benthic ecosystem of the planet, encompassing over 90% of the world's oceans. Yet faunal diversity and drivers structuring spatial and temporal variability in benthic communities remain poorly understood (Glover and Smith, 2003; Ramirez-Llodra et al., 2010; McClain and Schlacher, 2015; Yasuhara and Danovaro, 2016; Sweetman et al., 2017). Most deep-sea ecosystems are classified as heterotrophic, since they largely depend on photosynthetic production in overlying waters and the associated downward flux of particulate organic carbon for their food requirements (Levin et al., 2001; Ramirez-Llodra et al., 2010; Tittensor et al., 2011; McClain et al., 2012; Radziejewska, 2014). Despite this dependency, which is further complicated by low sedimentation rates hence low food input at these depths (Petersen et al., 2016; Gollner et al., 2017; Sweetman et al., 2017), biodiversity is high in most deep-sea habitats (Levin et al., 2001), especially for the smaller-sized macro- and meiofauna (Hessler and Sanders, 1967; Ramirez-Llodra et al., 2010). This is partially a consequence of high heterogeneity that exists as a result of the complex geological and hydrological features of the deep seafloor (Vanreusel et al., 2010), which create microscale patchiness in both abiotic and biotic features. Due to their particular role in several ecosystem functions, such as the transfer between bio- and geosphere and modulating biogeochemical cycling of carbon, nutrients and trace elements (Lessin et al., 2018), benthic faunal communities are a crucial constituent for consideration in deep-sea mining bioassessments.

Here the benthic meiofauna of the CCZ, an intermediate component between small microbes and larger-sized macro- and megafauna was investigated. This size class is mainly dominated by the phylum Nematoda, which occur in relatively high densities and biodiversity in abyssal soft sediments. Moreover, habitat heterogeneity (Vanreusel et al., 2010) and productivity regimes in overlying waters (Pape et al., 2013; Lins et al., 2014) dictate variability and patchiness in assemblages of this taxon (see also (Radziejewska, 2014)). Over the past few decades several studies have investigated meiofaunal communities, and nematodes specifically, within the CCZ (e.g., (Lambshhead et al., 2003; Mahatma, 2009; Miljutina et al., 2010; Radziejewska, 2014; Miljutin et al., 2015; Singh et al., 2016; Pape et al., 2017)); however, most of them focused on one particular area. This study reports data for meiofauna across a broad latitudinal and longitudinal range within the CCZ and includes species-level information for a typical subdominant deep-sea genus of nematodes, *Halalaimus* (see (Sebastian et al., 2007; Miljutina et al., 2010; Vanreusel et al., 2010) and references therein).



The main focus of this study is the characterization and comparison of nematode communities at six sites, located in four different license areas and the Area of Particular Environmental Interest #3 (APEI-3). Moreover, we aim to link any patterns of density, diversity and/or community composition to environmental conditions, nodule densities as well as the observed latitudinal productivity gradient (Vanreusel et al., 2016). In terms of mining impacts, we specifically want to identify nematode genera and species distributions across the wider CCZ, given that recovery of communities after mining will largely depend on the degree of connectivity between impacted and non-impacted zones. We hypothesize that widespread taxa would have an advantage in this case.

## 2 Material and methods

### 2.1 Sampling strategy

Sampling was conducted in the CCZ during the EcoResponse cruise SO239 with RV *Sonne* (Martínez Arbizu and Haeckel, 2015) in March-April 2015. Six different sites situated in four license areas and APEI-3, as established by the ISA, were visited to study the biological, geological and geochemical characteristics across a productivity gradient (Fig. 1, Table 1). License areas were those of contractors BGR (Germany), IOM (~~Inter-Ocean-Metal-consortium~~ [Interoceanmetal Joint Organization](#)), DEME (GSR, Belgium) and IFREMER (France), while APEI-3 was chosen as a no-mining reference. The German license area was further subdivided in a 'Reference area' (BGR\_RA; limited future mining) and 'Prospective area' (BGR\_PA; intensive future mining), leading to the following six sampling sites: APEI-3, IFREMER, GSR, IOM, BGR\_RA and BGR\_PA. The different sampling sites are located in an easterly fashion following a gradient in particulate organic carbon (POC) input (Vanreusel et al., 2016). Sampling depth increased in the opposite direction (Table 1). Finally, there is a latitudinal gradient in sampling locations as well, with APEI-3 being located farther to the north, IFREMER and GSR in the middle, and IOM and BGR in the south of the CCZ.

In each area, 3–6 multicorer (MUC; 12 cores; inner diameter 94 mm) deployments were carried out to retrieve undisturbed seafloor sediment samples for analyses of meiofauna and abiotic variables. From each deployment, one or two cores were preserved for meiofauna analysis and one for measurement of environmental variables. Meiofauna cores were stored as either bulk samples, i.e. preservation of the upper 0–5 cm in a borax-buffered formalin-seawater solution (final concentration 4–8 %), or sliced per cm down to 5 cm sediment depth for the IOM samples (each cm slice stored separately on formalin). All meiofauna, except that of the BGR areas, was separated from the sediment by density-gradient centrifugation ( $3 \times 12$  min at 3000 rpm) with the colloidal silica polymer Ludox® HS-40 as a flotation medium (specific density  $1.18 \text{ g cm}^{-3}$ ; (Heip et al., 1985; Vincx, 1996)) at the Marine Biology lab (Ghent University, Belgium). A similar protocol was adopted for the BGR samples at the DZMB lab (Senckenberg, Germany), using a slightly different centrifugation protocol ( $3 \times 6$  min at 4000 rpm) and different flotation medium (Levasil H.C. Stark 200/40 %; specific density  $1.17 \text{ g cm}^{-3}$ ). Retention of meiofauna was in both cases achieved using a  $32 \text{ }\mu\text{m}$  sieve, and individuals were dyed with Rose Bengal ( $0.5 \text{ g l}^{-1}$ ) to

facilitate identification. Meiofauna individuals were counted and identified to higher taxon level under a stereomicroscope (50 × magnification) using the guide of (Higgins and Thiel, 1988).

From each cm-slice (IOM) or bulk sample (all other areas), between 120 and 320 nematodes were randomly picked, transferred to anhydrous glycerol (Seinhorst, 1959; De Grisse, 1969) and mounted on slides. [Later on, genus counts for the](#)

[different sediment layers of the IOM samples were summed prior to statistical analysis.](#) Genus-level identification was performed under a Leica DMLS compound microscope (1000 × magnification) according to the pictorial keys of (Platt and Warwick, 1983; Platt and Warwick, 1988; Warwick et al., 1998), and the information contained in the NeMYS database (Bezerra et al., 2018). Undamaged mounted [adult](#)-specimens of the genus *Halalaimus* were further identified to species level, with the aid of the pictorial key of (Platt and Warwick, 1983) and other relevant species descriptions (Bussau, 1993).

Individuals were carefully assessed for their morphometric characteristics, vouchered by means of detailed photographs, and measured to calculate de Man's ratios (Fortuner, 1990).

Cores for measurement of abiotic variables were sliced in two parts (0–1 cm and 1–5 cm) and stored at -20 °C until further analysis at the UGent Marine Biology Research Group. A 1 ml subsample from each core was obtained and stored at -80 °C for pigment analysis which was carried out at the Max Planck Institute for Marine Microbiology (MPI Bremen). Several

sediment parameters were obtained from each slice, but since pigments were only measured in surface sediments, environmental variables used in later analyses are those for the 0–1 cm slice. Grain size distribution was determined by laser diffraction (Malvern Mastersizer hydro 2000 G, size range 0.02–2000 µm) and classified according to (Wentworth, 1922).

For this study, clay (sediment particles < 4 µm) and silt (4–63 µm) size fractions were considered in further analyses [linking nematode communities to environmental parameters](#).

Weight percentages of total organic carbon (TOC) and nitrogen (TN) were measured by combustion of freeze-dried samples using a Flash 2000 NC Sediment Analyser (protocol through Interscience B.V., Breda, The Netherlands). Pigment analysis included determination of concentrations of chlorophyll a and its degradation products, phaeopigments, the sum of which constitutes the Chloroplastic Pigment Equivalents (CPE, µg ml<sup>-1</sup>). Both chlorophyll and phaeopigments were extracted by means of 90 % acetone, and their concentrations were determined through fluorometry (Trilogy® Laboratory Fluorometer, Turner Designs) according to [the](#) manufacturer protocol. Finally, depth of the different sampling locations (a proxy for other – unmeasured – environmental variables that tend to vary with water depth; [see also](#) (Tittensor et al., 2011)), and approximate nodule density (in kg m<sup>-2</sup>) as determined from nodule counts and quantification of box core surfaces taken in the same area (50 × 50 cm; (Martínez Arbizu and Haeckel, 2015)) (Table 1), were included in later statistical analyses.

## 2.2 Statistical analyses

Total meiofauna and nematode densities [for the 0-5cm sediment layer](#) were standardized to number of individuals per 10 cm<sup>2</sup> prior to further analysis. A one-way analysis of variance (ANOVA, factor 'area' with 6 levels) was used to check for differences in densities among the sampling areas, after assumption checking in R (R Core Team, 2013). The relationship between densities and environmental variables was investigated through linear regression models (step-wise selection

procedure, Akaike Information Criterion AIC) in R, [after assessing multi-collinearity among environmental variables using variance inflation factors \(VIF\)](#).

Differences in environmental conditions as well as nematode genus communities between the different areas were assessed by means of permutational analysis of variance (PERMANOVA) in PRIMER v6 (Clarke and Gorley, 2006) with the PERMANOVA+ add-on (Anderson et al., 2008). The design included one fixed factor (area) and resulting P-values were based on 9999 permutations (unrestricted permutation of raw data; type III sum of squares). True permutational P-values  $P(\text{perm})$  were interpreted when the number of unique permutations exceeded 100; alternatively, Monte Carlo P-values  $P(\text{MC})$  were used. A PERMDISP test was carried out to assess homogeneity of dispersions in the multivariate space (distances to centroids; P-value by permutation of least-squares residuals). All environmental variables were standardized to zero mean and unit variance prior to analyses and (dis)similarity quantified using Euclidean distance matrices. Both silt and clay content were log-transformed to account for skewness in the data (assessed by draftsman plots). Differences between areas were then visualized by principal components analysis (PCA). In a similar fashion, differences in nematode communities of the different areas were visualized through non-metric multidimensional scaling plots (nMDS) based on Bray-Curtis similarities. Nematode genus counts were first standardized to relative abundances (to account for differences in the number of identified specimens), and then square-root transformed (Hellinger transformation) to reduce the influence of highly dominant genera. Since the number of nematodes that could be identified in each replicate sample varied among areas, absolute genus counts were rarefied to the lowest number of identified individuals (98) with the 'rrarefy' function in the package 'vegan' (Oksanen et al., 2017) in R. The use of rarefied counts yielded similar results in all analyses and are therefore not reported unless specified otherwise. Multivariate relationships between nematode community assemblages and environmental variables were investigated through the distance-based linear model (DISTLM) procedure in PERMANOVA+, the results of which were visualized in distance-based redundancy analysis (dbRDA) plots. The average number of specimens identified, the number of genera (observed and expected in a sample of 98 individuals – to account for differences in the number of individuals identified, see earlier), Hill's  $N_1$  (Hill, 1973) (the true numbers' equivalent of the Shannon-Wiener entropy (Jost, 2006)) and Pielou's evenness  $J'$  were calculated for each area using PRIMER v6. Differences in diversity and evenness indices between sampling areas were assessed by means of one-way ANOVA in R (factor 'area' with 6 levels).

### 3 Results

Apart from BGR\_RA and IOM, all areas within the CCZ showed substantial differences from each other with respect to environmental characteristics (significant PERMANOVA main test result, significant pairwise differences; Table 2; Fig. 2). The APEI-3, located farther to the north, had a finer sediment composition (highest clay fraction) and lower levels of pigments and TOC (Table 1; Fig. 2). A northwest-southeast trend in organic matter content was visible in the sediments, as CPE and TOC increased from APEI-3 to BGR. Other variables that differed notably between sampling sites were depth

(increasing from east to west), and nodule density, with highest nodule densities in the sites sampled in GSR, IFREMER and BGR\_PA license areas (Table 1).

Meiofaunal densities ranged between ~50 and 550 ind. 10 cm<sup>2</sup>, with significantly lower numbers in APEI-3 compared to the other areas (Table 3). Nematodes were clearly dominant (~86–91 % of total communities), followed by copepods and nauplii (~7.5–10.5 %) while other taxa occurred in very low abundances (max. 3 %). Multiple linear regression of nematode densities in function of the environmental variables yielded a model containing variables clay, depth and nodule density ( $F_{3,19} = 24.33$ ;  $P < 0.001$ ;  $R^2_{adj} = 0.76$ ; after removal of one outlier), all negatively influencing densities. Nematode densities were clearly lowest in the APEI-3 (Table 3; one-way ANOVA:  $F_{5,18} = 11.3$ ;  $P < 0.001$ ), characterized by a low amount of nodules, the finest sediment, and relatively deep location (Table 1), and highest in BGR and IOM.

Nematode genus composition was significantly different between areas (significant PERMANOVA main test,  $P < 0.05$ ; PERMDISP not significant:  $P = 0.3661$ ), although this effect could not be investigated in further detail due to the low number of unique permutations (Table 4). The same pattern arose (PERMANOVA main test  $P = 0.0002$ ; results not shown) when the analyses were repeated with genera grouped into families with the difference that pairwise comparisons of each of the areas IOM, IFREMER and APEI with BGR\_PA were significant despite low permutation numbers (PERMANOVA pairwise test; results not shown). Only when areas were grouped in a latitudinal fashion (APEI = northwest CCZ; IFREMER and GSR = middle CCZ; IOM and BGR = southeast CCZ) did all pairwise comparisons give significant differences (all  $P < 0.02$ ; results not shown). Overall, average within-area similarity ranged between 50 and 57 %, while between-area similarity was only slightly less, ranging between 45–57 %.

No clear relationship between community assemblages and environmental parameters could be discerned. The DISTLM procedure pointed towards ‘depth’ and ‘nodule density’ as the main variables explaining the community variation (both marginal and sequential P-values significant), but together they only accounted for 19.4 % of the variation (results not shown).

In total, 156 different genera belonging to 34 families were identified across all areas with average number of genera per area ranging between 32 and 50 (Table 5). The expected number of genera in a sample of 98 individuals (taking into account differences in the number of identified individuals per sample) was comparable for the different areas (one-way ANOVA:  $P = 0.43$ ), yet slightly (but insignificantly) lower for the BGR\_PA stations (Table 5). Hill’s index  $N_1$ , which takes genus richness as well as evenness into account, was highest for GSR and IOM (one-way ANOVA:  $P = 0.58$ ). Based on Pielou’s  $J'$ , evenness was roughly similar in most areas, yet significantly lower in BGR stations compared to GSR and APEI-3 (one-way ANOVA:  $F_{5,13} = 6.31$ ;  $P = 0.0035$ ). Communities were typically dominated by a few genera belonging to the families Monhysteridae, Xyalidae, Chromadoridae and Oxystominidae, which occurred in high relative abundances (> 5 %) (Table 5, 6). Genera *Acantholaimus*, *Halalaimus* and *Monhystrella* displayed especially high relative abundances in one or multiple sampling areas (Table 6). Whereas *Monhystrella* was the most abundant genus across all areas (except for BGR\_PA), the contribution of *Halalaimus* was largest in the APEI-3, while *Acantholaimus* became more important towards the southeast of the CCZ (BGR). *Halalaimus* showed a significant negative relationship with the amount of silt in the sediments ( $R^2_{adj} =$

0.633;  $P < 0.001$ ). In the case of *Acantholaimus*, absolute counts were negatively correlated with depth ( $R^2_{\text{adj}} = 0.495$ ;  $P < 0.001$ ), while relative abundance was positively associated with CPE values ( $R^2_{\text{adj}} = 0.499$ ;  $P < 0.001$ ), hence its higher contribution in BGR sediments (Table 1).

Notably, most of the genera occurring in high relative abundances were shared among the different sites. Of the 156 genera identified, roughly 15 % (corresponding to 23 genera) were shared among all sampling sites while nearly half (~44 %; 68 genera; or ~46 % and 72 genera when BGR is considered as one) were restricted to a single site (so-called 'unique' genera; Fig. 3 left panel; Table 5). Unique genera contributed only a minor fraction to total nematode densities (Table 5), and can thus be considered 'rare'. Furthermore, within-area variation in genus composition was also substantial, with more than half of the genera (~51 %) on average being unique within a single replicate sample. In the IOM area, nearly 60 % of the genera were found only once, while this number was much lower (43 %) in the IFREMER license area. Relatively more genera were shared between the mid (GSR, IFREMER) and southeast (IOM, BGR) latitudinal range of the CCZ, than between either of those and the APEI area in the northwest (Fig. 3 right panel).

A total of 143 individuals of the genus *Halalaimus* could be assigned to species level and were classified into 24 different morphospecies (Table 7). As was the case for nematode genera, a limited number of morphospecies was shared among all sampling areas (5 species), while several species had restricted distributions, occurring in just one or two areas (Table 7, Fig. 3 right panel). The highest species diversity (18) of *Halalaimus*, which was also accompanied by the highest relative abundances, was found within the APEI-3 (Fig. 3).

#### 4 Discussion

The importance of meiofauna in deep-sea abyssal sediments has been demonstrated repeatedly (e.g., (Wei et al., 2010)). While biomass, abundance and size of organisms of different size classes (mega-, macro- and meiofauna) all show a negative trend with increasing water depth (e.g., (Tittensor et al., 2011)), this decrease is less pronounced for the meiofauna (Rex et al., 2006; Wei et al., 2010) hence their numerical dominance in abyssal plains. Nematode densities in this study were comparable to those reported for other abyssal and CCZ seafloor sediments (e.g., (Veit-Köhler et al., 2011; Lins et al., 2014; Pape et al., 2017)), except for the rather low numbers in the APEI-3 area. Meiofaunal abundance, and that of nematodes in particular, is known to vary with the available food concentrations in the sediment (generally assessed by means of pigment concentrations), as well as with other environmental characteristics (Moens et al., 2013; Lins et al., 2014). Similarly, several environmental variables in this study were highly correlated with faunal densities, most notably nodule density, water depth and clay content. Contrary to what has been observed for other deep-sea regions worldwide (e.g., (Ramirez-Llodra et al., 2010; Pape et al., 2013; Lins et al., 2014)), the importance of phytodetritus-derived food at the seafloor (approximated by CPE and TOC values; Table 1) was not reflected directly in nematode standing stock and community composition, although their values varied considerably among the different areas of the CCZ (Table 1, Fig. 2). Only the relative importance of the genus *Acantholaimus* showed a positive relationship with CPE concentrations among the various locations. The productivity

gradient (POC flux; (Vanreusel et al., 2016)) in the area was therefore reflected mainly in the sediment abiotic variables and only to a lesser extent in the faunal parameters. Given that the entire CCZ is classified as oligotrophic (Volz et al., 2018), concentrations of phytodetritus-derived pigments might have been too low to result in any obvious explanatory relationship with faunal variables.

5 One of the parameters that did influence faunal densities was nodule density of the different areas. Previous work on benthic fauna of different size classes showed the importance of nodules in structuring communities (Miljutina et al., 2010; Radziejewska, 2014; Vanreusel et al., 2016). Judging from the results of this study, high nodule densities were associated with a lower meiofaunal standing stock (Tables 1, 3). This may seem rather-logical since an increase in nodule density leads to a decrease in the volume of fine-grained sediments which constitute the biotope of meiofauna and nematodes; however, it might also be the result of sediment volume differences due to the presence of nodules in the sampling cores. Nevertheless, a similar negative correlation between nodule density and nematode counts was observed at a smaller scale (Miljutina et al., 2010), where nodule-bearing sediments in the IFREMER license area displayed lower average nematode abundances than nodule-free sites within the same area. Similarly in our study, high-nodule sediments of GSR, IFREMER and BGR\_PA (see Table 1) had lower nematode densities than low-nodule IOM and BGR\_RA. The APEI-3 was exceptional as it was characterized by low nematode abundances despite low nodule densities. This area differed significantly from the rest in additional aspects such as lower CPE and TOC values and finer sediment, with an increase in the clay fraction ( $< 4 \mu\text{m}$ ; Table 1; Fig. 2). This was corroborated by a more detailed assessment of CCZ sediments which showed that biogeochemical features of the APEI-3 area differed considerably from other areas (Volz et al., 2018). Therefore, a different sedimentation rate resulting in finer sediments with lower POC input (Volz et al., 2018) may be the justification for the deprived nematode numbers at the APEI-3 stations rather than the effect of nodule densities.

As nodules are confined to the upper sediment layer (Radziejewska, 2014; Petersen et al., 2016), where the majority of the meiofauna also resides, their removal through mining activities will induce drastic changes to these small-sized biota (Thiel, 2001; Miljutin et al., 2015). Inevitably, the ploughing and removal of surface sediments associated with the mining process will lead to an initial decrease in densities (Shirayama et al., 2001; Radziejewska, 2014; Jones et al., 2017). Yet the ratio of nodule presence to bare sediment availability is not the only structuring factor of nematode communities, based on the results of this study. Rather, a complex interplay of several factors (here: particle size, water depth and nodule density) ultimately defines nematode densities. Other, more indirect, impacts of deep-sea mining activities (see (Thiel, 2001; Radziejewska, 2014; Gollner et al., 2017) and references therein) might therefore have an even larger impact on meiofauna numbers through their interference with the sediment biogeochemistry. Specifically, sediment blanketing and displacement which will accompany large-scale mining operations will likely impose considerable disturbances (Radziejewska, 2014). As shown before for the drilling industry, discharge of deep-sea muds can seriously impact meiofaunal communities, both in terms of abundance as well as community composition (Netto et al., 2009). In addition to chemical effects, physical alteration of the habitat (i.e. change in sediment granulometry and burying of organisms) was primarily responsible for the lack of recovery in communities one year after the disturbance took place (Netto et al., 2009). Also *in situ* disposal and

deposition of nodule debris onto disturbed seafloor sediments can result in altered behaviour of small-sized meiofauna communities as demonstrated in a small-scale experiment in the Peru Basin (characterized by similar presence of abyssal nodules; see (Mevenkamp et al., 2018)). Over an incubation period of 11 days, several meiofaunal taxa, including nematodes, changed their vertical position in the sediment after the addition of a top layer with crushed nodule particles (Mevenkamp et al., 2018). Finally, sediment compaction by vehicle tracks might also change sediment characteristics (e.g., porewater geochemistry), resulting in the inability of some meiofauna to penetrate these compacted sediments (i.e. explanation why densities were still deprived after 26 years in (Miljutin et al., 2011)). Moreover, the refractory carbon pool may be removed by mining and prevent recolonization.

It has been shown by various studies within the CCZ that nematode diversity at genus and morphospecies level is generally high at a local scale (see (Radziejewska, 2014) and references therein). Additionally, dominance of genera is usually limited and therefore evenness high (Radziejewska, 2014). With a total of 156 genera reported in this study, genus diversity was indeed substantial on a regional scale and only few genera occurred in higher numbers (i.e. relative abundance > 5 %; Tables 5, 6). Overall, diversity was similar for the different areas, but evenness was lower in the BGR stations (Table 5). This could be attributed to the presence of two highly dominant genera, *Acantholaimus* (> 17 %) and *Monhystrella* (> 21 %; Table 6), as compared to only *Monhystrella* in the other areas (> 25 %; Table 6). Nematode communities generally consisted of typical deep-sea families and genera such as *Monhystrella* (and Monhysteridae in general), *Acantholaimus* and *Halalaimus*, all of which have been reported from previous CCZ samplings (Lamshead et al., 2003; Miljutina et al., 2010; Miljutin et al., 2011; Radziejewska, 2014; Miljutin et al., 2015; Singh et al., 2016; Pape et al., 2017) (see Table 6) and other abyssal areas worldwide (Vanreusel et al., 2010; Lins et al., 2014; Singh et al., 2016). Differences between results described here and previous CCZ studies mainly lie in their relative abundances. For instance, higher contributions of the genus *Theristus* (ranging between 3.6 and 13 %) were reported in (Miljutina et al., 2010; Miljutin et al., 2015) for the French license area, while here it was subdominant across the CCZ (max. 4.4 %; Table 6). As was already observed before for the CCZ region, faunal differences among samples in nodule areas are typically driven by a high contribution of 'rare' species (defined as species with few individuals and/or a restricted geographical distribution; see definition reported in (Cao et al., 2001) and references therein) (Gollner et al., 2017). Also in this study, a high relative proportions of rare genera (~44 % occurring in only 1 site) and species (~63 % if BGR\_PA and BGR\_RA are considered as one area) were recovered in the different sampling areas. Moreover, even within a single area, roughly 50 % of the genera were found in only one of the replicates (nearly 60 % for the IOM area) with low abundances (generally only 1 or 2 individuals). Similar patterns could be observed for the morphospecies of *Halalaimus*. A total of 24 morphospecies of *Halalaimus* were identified in this study for the entire CCZ. This number is higher than the 11 and 13 morphotypes reported by (Lamshead et al., 2003) and (Miljutina et al., 2010), respectively, but comparable to 25 morphotypes reported for the Peru Basin under relatively similar conditions in terms of depth and nodule presence (Bussau, 1993). Some of the morphospecies were also described in the study by (Pape et al., 2017) for the GSR license area, indicating their consistent presence over time. As for the genera, most of these species

were found in only one or two areas, in low numbers (although not all *Halalaimus* individuals could be assigned to species level).

Our findings in terms of genus and species distribution have important implications for future mining scenarios and suggest that in the event of large-scale mining efforts, rare genera and/or species are likely to disappear completely from targeted areas. It is thus crucial to know what the impact of such a loss of species will be in a deep-sea context, especially in terms of ecosystem functioning (see also (Danovaro et al., 2008; Yasuhara et al., 2016)). It may be that these effects are obscured at first, but become more apparent over time (as demonstrated in various habitats; see (Gazcon et al., 2015) for examples), depending on the redundancy of the system. However, knowledge on the latter is particularly limited in the abyss (Radziejewska, 2014) and future studies should therefore aim to elucidate the particular roles of rare deep-sea species.

Nevertheless, as was shown by (Danovaro et al., 2008), loss in biodiversity will almost automatically translate into a loss in functions for the small-sized meiofauna. Additionally, the effect of rare species loss could be transferred to other levels of the trophic chain, and, as was shown in a rocky intertidal study (Bracken and Low, 2012), have a proportionally larger impact on the consumers than an equal loss of dominant species would have. Again, little is known about the importance and function of rare taxa in nematode communities. Finally, in terms of genetic diversity, loss of species in mined areas might result in diminished population exchange and genetic variation in the areas within and around mining sites, as was shown for massive sulphides (Boschen et al., 2016; Gollner et al., 2017). Despite the initial risk for a substantial loss of rare taxa after mining disturbance, disturbance can also be a prerequisite for some species to persist in deep-sea sediments, as these may benefit from the availability of space left behind by the removal of other, more competitive or dominant, taxa (see e.g. (Gallucci et al., 2008)). Regardless of the extent of species loss in case of deep-sea mining, the recovery of communities on-board experiment on these findings one can conclude that disturbance is a prerequisite for some species to be able to persist in deep-sea sediments, as these may benefit from the availability of space left behind by the removal of dominant taxa. If this can be generalised to all rare taxa, regardless of the circumstances, it means that in the case of large-scale mining, there might actually be an increase in density of rare nematode species rather than a decrease.

True rarity of taxa is only one of the factors that will influence the outcome of potential recolonization events a in both numbers and diversity after mining operations. Additionally, recovery of communities will largely depend to a large extent on the provision of food resources and the presence of a pool of colonizers in the vicinity of the disturbed areas (Radziejewska, 2014), both within single license areas (important for local dynamics) as well as across the larger CCZ (important for regional species dynamics). Low connectivity will result in a slow recovery potential of species (Gollner et al., 2017) as unmined sites within the license areas or the envisioned source areas (APEIs) will not be able to replenish the standing stocks of lost taxa. Again, given that many genera and *Halalaimus* species occurred in low numbers and with a limited geographic spread, source areas might fall short of their role for population replenishment. Although the number of rare taxa is a potential overestimation and would likely decrease with increasing sampling effort, however, the observed rarity is only partially the result of undersampling. In the context of deep-sea mining in the CCZ, it will therefore be of utmost importance to monitor post-impact communities to identify recovery over space and time. Results from previous work in



different benthic environments demonstrated that (re-)colonization by nematodes after disturbance events can take up to several decades (e.g., after iceberg scouring in Antarctic waters; (Lee et al., 2001)). Within the CCZ specifically, the recovery of nematode communities in a disturbance track in the IFREMER license area was found to be rather slow (Miljutin et al., 2011). Whereas densities are generally known to recover faster to pre-disturbance conditions (see  
5 (Radziejewska, 2014; Jones et al., 2017) and references therein), this is not necessarily true for community composition (Miljutin et al., 2011). Although some genera have been shown to actively colonize disturbed sediments (Gallucci et al., 2008), most genera are considered to have limited dispersal capacities (Derycke et al., 2013; Moens et al., 2013). Especially at larger geographic scales, it seems that at least some species are limited in their distribution (Derycke et al., 2013; Hauquier et al., 2017). In combination with the lack of a pelagic larval stage in nematodes, this further reduces their capacity for quick  
10 community recovery after disturbance. ~~Nevertheless, passive transport of nematodes by bottom currents eroding the topmost sediment layers has been documented (Thiel, 2001; Boeckner et al., 2009) although current speeds near the seafloor in the CCZ are generally rather low (1–9 cm s<sup>-1</sup>; (Mewes et al., 2014; Radziejewska, 2014)), casting doubt on their effectiveness for erosion and long-distance transportation of organisms and larvae.~~

Even when nematodes are able to (re-)colonize disturbed areas, the outcomes are generally very different due to the  
15 different environmental settings and processes acting on them. This effectively hampers our ability to predict responses of nematode assemblages to large-scale mining events. The lack of a consensus is demonstrated by the differing outcomes of several artificial disturbance studies carried out since the 1970s in a nodule context (see (Jones et al., 2017) and references therein). For instance, in the IOM-BIE experiment, one particular group of nematodes (Desmoscolecids) was responsible for a peak in post-impact abundances (Radziejewska, 2002), while in another CCZ study (Miljutin et al., 2011), this was  
20 attributed to the genera *Thalassomonhystera* and *Oncholaimus*. Another drawback for future predictions is the fact that most of these studies looked at recovery processes at relatively small scales, and are therefore not necessarily representative of the large-scale impact of mining operations at hand (Gollner et al., 2017). As far as can be predicted at this moment, the extraction of the nodules from the seabed will impose a disturbance to all biota at a scale that ranges from 10s to 1000s of km<sup>2</sup> (Glover and Smith, 2003). ~~Although disturbance events acting at multiple spatial scales (McClain and Schlacher, 2015)~~  
25 ~~are not uncommon in the deep sea, the consequences thereof remain difficult to predict.~~ The effects of the sediment plumes associated with mining especially are a major challenge, given that there is a lot of uncertainty on the spatial extent of this type of impact (Radziejewska, 2014; Gollner et al., 2017). Previous experiments mimicking mining effects and subsequent plume dispersal on a smaller scale have indicated that traveling distances of the bottom plumes ranged from a few hundreds of metres to several kilometres away (Sharma et al., 2001; Peukert et al., 2018).

30 As was already stated in previous works (e.g., (Vanreusel et al., 2016; Gollner et al., 2017)), in order to preserve current community structure, unmined areas should be ~~as comparable-similar as possible to the~~ provisioned mining sites (Boetius and Haeckel, 2018) and function as ~~a source of~~ recruitment ~~sources~~ after mining ~~takes place; the latter, however, remains to be tested~~ (Kaiser et al., 2017). This study therefore also focused on the APEI-3, in the northwest of the CCZ. While these areas were originally selected based on environmental proxies, our data shows that the APEI-3 at least, exhibits distinct

biotic and abiotic characteristics compared to the other sampled areas (see also (Volz et al., 2018)) as densities and community composition were significantly different (i.e. low abundances despite low nodule densities and a higher contribution and species number of *Halalaimus*; Tables 1, 3, 6; Fig. 3). While information for the other APEIs is scarce, especially in comparison to the license areas, data from this study suggest that the APEI-3 is ill-suited as a representative source area for the recovery of the mined communities. Additionally, given the large geographic distance between the APEI-3 and the license areas, exchange of individuals, hence genetic material, among remaining populations after mining may be hampered. In the case of nematodes, which are known to have limited dispersal capacity (see earlier), a network of APEIs that are randomly spread across the CCZ might have been more beneficial (as originally planned; see (Kaiser et al., 2017) and references therein). Therefore, as was suggested by (Vanreusel et al., 2016) we strongly advocate for the incorporation of no-mining sites within each of the license areas, in order to buffer the inevitable loss of biodiversity.

#### Data availability

Datasets supporting this manuscript can be accessed online through the PANGAEA database at <https://doi.org/10.1594/PANGAEA.873272>, <https://doi.org/10.1594/PANGAEA.873274> and <https://doi.org/10.1594/PANGAEA.903563>.

#### Author contribution

LM, AV and PM participated in expedition SO239 and collected the samples. FH, LM, PM and AV discussed sampling strategy and analyses to be performed. FH, TN and GE analysed the samples and performed the identifications. FH and AV executed statistical data analyses, with further contributions of LM and PM. All authors contributed to the writing of this manuscript.

#### Competing interests

The authors declare that they have no conflict of interest.

#### Acknowledgements

The authors wish to thank the captain, crew, chief scientist and scientific community of expedition SO239 onboard RV *Sonne* for their help and support in sample acquisition. Dr. Felix Janssen from MPI Bremen/AWI and co-workers are greatly acknowledged for the analyses of pigment data. Bart Beuselinck and Niels Viaene from UGent are thanked for their assistance in the analyses of abiotic parameters and extraction of meiofauna samples. Annick Van Kenhove and Guy De Smet from UGent helped in picking of nematodes and making of slides. The SO239 cruise with the RV *Sonne* was financed

by the German Federal Ministry of Education and Research BMBF (grant n° 03F0707A-G) as part of the JPI-Oceans pilot action MiningImpact – “Ecological Aspects of Deep-Sea Mining”. Additional funding was available through the Department of Economy, Science & Innovation of Flanders under the framework of JPI Oceans (grant n° 1242114N). Data are available through the online PANGAEA portal.

## 5 References

- Anderson, M. J., Gorley, R. N., and Clarke, K. R.: PERMANOVA+ for PRIMER: guide for software and statistical methods. Primer-E Ltd, Plymouth, 2008.
- Bezerra, T. N., Decraemer, W., Eisendle-Flöckner, U., Hodda, M., Holovachov, O., Leduc, D., Miljutin, D., Mokievsky, V.,  
10 Peña Santiago, R., Sharma, J., Smol, N., Tchesunov, A., Venekey, V., Zeng, Z., and Vanreusel, A.: Nemys: World Database of Nematodes. Bezerra, T. N. (Ed.), Ghent University, <http://nemys.ugent.be/>, 2018.
- Boeckner, J., Sharma, J., and Proctor, H.: Revisiting the meiofauna paradox: dispersal and colonisation of nematodes and  
15 other meiofaunal organisms in low- and high-energy environments, *Hydrobiologia*, 624, 91-106, 2009.
- Boetius, A., and Haeckel, M.: Mind the seafloor, *Science*, 359, 34, 10.1126/science.aap7301, 2018.
- Boschen, R. E., Collins, P. C., Tunnicliffe, V., Carlsson, J., Gardner, J. P. A., Lowe, J., McCrone, A., Metaxas, A., Sinniger,  
20 F., and Swaddling, A.: A primer for use of genetic tools in selecting and testing the suitability of set-aside sites protected from deep-sea seafloor massive sulfide mining activities, *Ocean & Coastal Management*, 122, 37-48, <https://doi.org/10.1016/j.ocecoaman.2016.01.007>, 2016.
- Bracken, M., and Low, N.: Realistic losses of rare species disproportionately impact higher trophic levels, *Ecology Letters*,  
25 15, 461-467, 2012.
- Bussau, C.: Taxonomische und ökologische Untersuchungen an Nematoden des Peru-Beckens, PhD, Christian-Albrechts-Universität zu Kiel, Germany, 1993.
- Cao, Y., Larsen, D., and Thorne, R.: Rare species in multivariate analysis for bioassessment: some considerations, *Journal of*  
30 *the North American Benthological Society*, 20, 144-153, 2001.
- Clarke, K., and Gorley, R.: PRIMER v6: User manual/tutorial, PRIMER-E, edited by: Plymouth, Plymouth, UK, 2006.
- Danovaro, R., Gambi, C., Dell'Anno, A., Corinaldesi, C., Fraschetti, S., Vanreusel, A., Vincx, M., and Gooday, A. J.:  
35 Exponential decline of deep-sea ecosystem functioning linked to benthic biodiversity loss, *Current Biology*, 18, 1-8, 10.1016/j.cub.2007.11.056, 2008.
- De Grisse, A.: Redescription ou modification de quelques techniques utilisées dans l'étude des nematodes phytoparasitaires, *Meded. Rijksfakulteit Landbouwwetenschappen Gent*, 34, 351-369, 1969.
- 40 Derycke, S., Backeljau, T., and Moens, T.: Dispersal and gene flow in free-living marine nematodes, *Frontiers in Zoology*, 10, 1, 2013.
- Fortuner, R.: Ratios and indexes in nematode taxonomy, *Nematologica*, 36, 205-216, 1990.
- 45

- Gallucci, F., Moens, T., Vanreusel, A., and Fonseca, G.: Active colonisation of disturbed sediments by deep-sea nematodes: evidence for the patch mosaic model, *Marine Ecology Progress Series*, 367, 173-183, 2008.
- 5 Gazcon, C., Brooks, T., Contreras-MacBeath, T., Heard, N., Konstant, W., Lamoreux, J., Launay, F., Maunder, M., Mittermeier, R., Molur, S., Al Mubarak, R., Parr, M., Rhodin, A., Rylands, A., Soorae, P., Sanderson, J., and Vié, J.-C.: The Importance and Benefits of Species, *Current Biology*, 25, R431–R438, <http://dx.doi.org/10.1016/j.cub.2015.03.041>, 2015.
- 10 Glover, A. G., and Smith, C. R.: The deep-sea floor ecosystem: current status and prospects of anthropogenic change by the year 2025, *Environmental Conservation*, 30, 219-241, [10.1017/S0376892903000225](https://doi.org/10.1017/S0376892903000225), 2003.
- 15 Gollner, S., Kaiser, S., Menzel, L., Jones, D. O. B., Brown, A., Mestre, N. C., van Oevelen, D., Menot, L., Colaço, A., Canals, M., Cuvelier, D., Durden, J. M., Gebruk, A., Eghe, G. A., Haeckel, M., Marcon, Y., Mevenkamp, L., Morato, T., Pham, C. K., Purser, A., Sanchez-Vidal, A., Vanreusel, A., Vink, A., and Martinez Arbizu, P.: Resilience of benthic deep-sea fauna to mining activities, *Marine Environmental Research*, 129, 76-101, <https://doi.org/10.1016/j.marenvres.2017.04.010>, 2017.
- Halbach, P., and Fellerer, R.: The metallic minerals of the Pacific Seafloor, *GeoJournal*, 4, 407-421, [10.1007/bf01795925](https://doi.org/10.1007/bf01795925), 1980.
- 20 Hauquier, F., Leliaert, F., Rigaux, A., Derycke, S., and Vanreusel, A.: Distinct genetic differentiation and species diversification within two marine nematodes with different habitat preference in Antarctic sediments, *BMC Evolutionary Biology*, 17, 120, [10.1186/s12862-017-0968-1](https://doi.org/10.1186/s12862-017-0968-1), 2017.
- 25 Heip, C., Vincx, M., and Vranken, G.: The ecology of marine nematodes, *Oceanography and Marine Biology*, 23, 399-489, 1985.
- Hessler, R. R., and Sanders, H. L.: Faunal diversity in the deep-sea, *Deep-Sea Research*, 14, 65-78, 1967.
- 30 Higgins, R., and Thiel, H.: Introduction to the study of Meiofauna, Smithsonian Institution Press, London, London, 1988.
- Hill, M.: Diversity and evenness: a unifying notation and its consequences, *Ecology*, 54, 427-432, 1973.
- 35 Jones, D. O. B., Kaiser, S., Sweetman, A. K., Smith, C. R., Menot, L., Vink, A., Trueblood, D., Greinert, J., Billett, D. S. M., Arbizu, P. M., Radziejewska, T., Singh, R., Ingole, B., Stratmann, T., Simon-Lledó, E., Durden, J. M., and Clark, M. R.: Biological responses to disturbance from simulated deep-sea polymetallic nodule mining, *PLoS ONE*, 12, e0171750, 2017.
- Jost, L.: Entropy and diversity, *Oikos*, 113, 363-375, [10.1111/j.2006.0030-1299.14714.x](https://doi.org/10.1111/j.2006.0030-1299.14714.x), 2006.
- 40 Kaiser, S., Smith, C., and Martinez Arbizu, P.: Editorial: Biodiversity of the Clarion Clipperton Fracture Zone, *Marine Biodiversity*, 47, 259-264, [10.1007/s12526-017-0733-0](https://doi.org/10.1007/s12526-017-0733-0), 2017.
- Lamshead, P. J. D., Brown, C. J., Ferrero, T. J., Hawkins, L. E., Smith, C. R., and Mitchell, N. J.: Biodiversity of nematode assemblages from the region of the Clarion-Clipperton Fracture Zone, an area of commercial mining interest, *BMC ecology*, 3, 2003.
- 45 Lee, H., Vanhove, S., Peck, L., and Vincx, M.: Recolonisation of meiofauna after catastrophic iceberg scouring in shallow Antarctic sediments, *Polar Biology*, 24, 918-925, 2001.
- 50 Lessin, G., Artioli, Y., Almroth-Rosell, E., Blackford, J. C., Dale, A. W., Glud, R. N., Middelburg, J. J., Pastres, R., Queirós, A. M., Rabouille, C., Regnier, P., Soetaert, K., Solidoro, C., Stephens, N., and Yakushev, E.: Modelling Marine Sediment

Biogeochemistry: Current Knowledge Gaps, Challenges, and Some Methodological Advice for Advancement, *Frontiers in Marine Science*, 5, 10.3389/fmars.2018.00019, 2018.

Levin, L. A., Etter, R. J., Rex, M. A., Gooday, A. J., Smith, C. R., Pineda, J., Stuart, C. T., Hessler, R. R., and Pawson, D.: Environmental Influences on Regional Deep-Sea Species Diversity, *Annual Review of Ecology and Systematics*, 32, 51-93, 10.1146/annurev.ecolsys.32.081501.114002, 2001.

Lins, L., Guilini, K., Veit-Köhler, G., Hauquier, F., Alves, R. M. d. S., Esteves, A. M., and Vanreusel, A.: The link between meiofauna and surface productivity in the Southern Ocean, *Deep Sea Research Part II: Topical Studies in Oceanography*, 108, 60-68, 2014.

Lodge, M., Johnson, D., Le Gurun, G., Wengler, M., Weaver, P., and Gunn, V.: Seabed mining: International Seabed Authority environmental management plan for the Clarion-Clipperton Zone. A partnership approach, *Marine Policy*, 49, 66-72, 10.1016/j.marpol.2014.04.006, 2014.

Mahatma, R.: Meiofauna communities of the Pacific Nodule Province: abundance, diversity and community structure, University of Oldenburg, 2009.

Martínez Arbizu, P., and Haeckel, M.: RV SONNE Fahrtbericht / Cruise Report SO239: EcoResponse Assessing the Ecology, Connectivity and Resilience of Polymetallic Nodule Field Systems, Balboa (Panama) - Manzanillo (Mexico,) 11.03.-30.04.2015, Kiel, Germany, Cruise Report doi:10.3289/GEOMAR\_REP\_NS\_25\_2015, 2015.

McClain, C. R., Allen, A. P., Tittensor, D. P., and Rex, M. A.: Energetics of life on the deep seafloor, *Proceedings of the National Academy of Sciences*, 109, 15366-15371, 10.1073/pnas.1208976109, 2012.

McClain, C. R., and Schlacher, T. A.: On some hypotheses of diversity of animal life at great depths on the sea floor, *Marine Ecology*, 36, 849-872, 10.1111/maec.12288, 2015.

Mevenkamp, L., Guilini, K., Boetius, A., De Grave, J., Laforce, B., Vandenberghe, D., Vincze, L., and Vanreusel, A.: Responses of an abyssal meiobenthic community to short-term burial with crushed nodule particles in the South-East Pacific, *Biogeosciences Discuss.*, <https://doi.org/10.5194/bg-2018-489>, 2018.

Mewes, K., Mogollón, J. M., Picard, A., Rühlemann, C., Kuhn, T., Nöthen, K., and Kasten, S.: Impact of depositional and biogeochemical processes on small scale variations in nodule abundance in the Clarion-Clipperton Fracture Zone, *Deep Sea Research Part I: Oceanographic Research Papers*, 91, 125-141, 10.1016/j.dsr.2014.06.001, 2014.

Miljutin, D., Miljutina, M., Arbizu, P. M., and Galéron, J.: Deep-sea nematode assemblage has not recovered 26 years after experimental mining of polymetallic nodules (Clarion-Clipperton Fracture Zone, Tropical Eastern Pacific), *Deep Sea Research Part I: Oceanographic Research Papers*, 58, 885-897, 10.1016/j.dsr.2011.06.003, 2011.

Miljutin, D., Miljutina, M., and Messié, M.: Changes in abundance and community structure of nematodes from the abyssal polymetallic nodule field, Tropical Northeast Pacific, *Deep Sea Research Part I: Oceanographic Research Papers*, 106, 126-135, 10.1016/j.dsr.2015.10.009, 2015.

Miljutina, M. A., Miljutin, D. M., Mahatma, R., and Galéron, J.: Deep-sea nematode assemblages of the Clarion-Clipperton Nodule Province (Tropical North-Eastern Pacific), *Marine Biodiversity*, 40, 1-15, 10.1007/s12526-009-0029-0, 2010.

Moens, T., Braeckman, U., Derycke, S., Fonseca, G., Gallucci, F., Gingold, R., Guilini, K., Ingels, J., Leduc, D., Vanaverbeke, J., Van Colen, C., Vanreusel, A., and Vincx, M.: Ecology of free-living marine nematodes, in: *Handbook of*

Zoology: Gastrotricha, Cycloneuralia and Gnathifera, vol. 2: Nematoda, edited by: Schmidt-Rhaesa, A., Walter de Gruyter GmbH, Berlin/Boston, 109-152, 2013.

Netto, S., Gallucci, F., and Fonseca, G.: Deep-sea meiofauna response to synthetic-based drilling mud discharge off SE Brazil, *Deep-Sea Research II*, 56, 41-49, 2009.

Oksanen, J., Blanchet, J. F., Friendly, M., Kindt, R., Legendre, P., McGlinn, D., Minchin, P. R., O'Hara, R. B., Simpson, G. L., Solymos, P., Stevens, M. H. H., Szoecs, E., and Wagner, H.: *Vegan: Community Ecology Package*. R package version 2.4-2., J., O. (Ed.), 2017.

Pape, E., Jones, D. O. B., Manini, E., Bezerra, T. N., and Vanreusel, A.: Benthic-Pelagic Coupling: Effects on Nematode Communities along Southern European Continental Margins, *PLoS ONE*, 8, e59954, 10.1371/journal.pone.0059954, 2013.

Pape, E., Bezerra, T. N., Hauquier, F., and Vanreusel, A.: Limited Spatial and Temporal Variability in Meiofauna and Nematode Communities at Distant but Environmentally Similar Sites in an Area of Interest for Deep-Sea Mining, *Frontiers in Marine Science*, 4, 10.3389/fmars.2017.00205, 2017.

Petersen, S., Krätschell, A., Augustin, N., Jamieson, J., Hein, J. R., and Hannington, M. D.: News from the seabed: Geological characteristics and resource potential of deep-sea mineral resources, *Marine Policy*, 70, 175-187, <https://doi.org/10.1016/j.marpol.2016.03.012>, 2016.

Peukert, A., Schoening, T., Alevizos, E., Köser, K., Kwasnitschka, T., and Greinert, J.: Understanding Mn-nodule distribution and evaluation of related deep-sea mining impacts using AUV-based hydroacoustic and optical data, *Biogeosciences*, 15, 2525-2549, <https://doi.org/10.5194/bg-15-2525-2018>, 2018.

Platt, H., and Warwick, R.: *Freeliving marine nematodes. Part II: British chromadorids. Pictorial key to world genera and notes for the identification of British species, Synopses of the British Fauna (New Series)*, edited by: Press, C. U., Cambridge University Press, 502 pp., 1988.

Platt, H. M., and Warwick, R. M.: *Freeliving marine nematodes. Part I: British enoplids. Pictorial key to world genera and notes for the identification of British species, Synopses of the British Fauna (New Series)*, edited by: Kermack, D. M., and Barnes, R. S. K., Cambridge University Press, Cambridge, UK, 307 pp., 1983.

R Core Team: *R: A language and environment for statistical computing*. Computing, R. F. f. S. (Ed.), R Foundation for Statistical Computing, Vienna, Austria, 2013.

Radziejewska, T.: Responses of Deep-Sea Meiobenthic Communities to Sediment Disturbance Simulating Effects of Polymetallic Nodule Mining, *International Review of Hydrobiology*, 87, 457-477, 10.1002/1522-2632(200207)87:4<457::aid-iroh457>3.0.co;2-3, 2002.

Radziejewska, T.: *Meiobenthos in the Sub-equatorial Pacific Abyss*, SpringerBriefs in Earth System Sciences, Springer Berlin Heidelberg, Berlin, Heidelberg, 2014.

Ramirez-Llodra, E., Brandt, A., Danovaro, R., De Mol, B., Escobar, E., German, C. R., Levin, L. A., Martinez Arbizu, P., Menot, L., Buhl-Mortensen, P., Narayanaswamy, B. E., Smith, C. R., Tittensor, D. P., Tyler, P. A., Vanreusel, A., and Vecchione, M.: Deep, diverse and definitely different: unique attributes of the world's largest ecosystem, *Biogeosciences*, 7, 2851-2899, 10.5194/bg-7-2851-2010, 2010.

Rex, M. A., Etter, R. J., Morris, J. S., Crouse, J., McClain, C. R., Johnson, N. A., Stuart, C. T., Deming, J. W., Thies, R., and Avery, R.: Global bathymetric patterns of standing stock and body size in the deep-sea benthos, *Marine Ecology Progress Series*, 317, 1-8, 2006.

- 5 Sebastian, S., Raes, M., De Mesel, I., and Vanreusel, A.: Comparison of the nematode fauna from the Weddell Sea Abyssal Plain with two North Atlantic abyssal sites, *Deep-Sea Research II*, 54, 1727-1736, 2007.

Seinhorst, J.: A rapid method for the transfer of nematodes from fixative to anhydrous glycerine, *Nematologica*, 4, 67-69, 1959.

10

Sharma, R., Nath, B., Parthiban, G., and Sankar, S.: Sediment redistribution during simulated benthic disturbance and its implications on deep seabed mining, *Deep-Sea Research II*, 48, 3363-3380, 2001.

15

Shirayama, Y., Fukushima, T., Matsu, T., and Kuboki, E.: The Responses Of Deep-Sea Benthic Organisms to Experimental Removal Of the Surface Sediment. *International Society of Offshore and Polar Engineers C1 - ISOPE*, 2001.

20

Singh, R., Miljutin, D. M., Vanreusel, A., Radziejewska, T., Miljutina, M. M., Tchesunov, A., Bussau, C., Galtsova, V., and Martinez Arbizu, P.: Nematode communities inhabiting the soft deep-sea sediment in polymetallic nodule fields: do they differ from those in the nodule-free abyssal areas?, *Marine Biology Research*, 12, 345-359, 10.1080/17451000.2016.1148822, 2016.

25

Sweetman, A., Thurber, A., Smith, C., Levin, L., Mora, C., Wei, C., Gooday, A., Jones, D., Rex, M., Yasuhara, M., Ingels, J., Ruhl, H., Frieder, C., Danovaro, R., Würzburg, L., Baco, A., Grupe, B., Pasulka, A., Meyer, K., Dunlop, K., Henry, L.-A., and Roberts, J.: Major impacts of climate change on deep-sea benthic ecosystems, *Elementa Science of the Anthropocene*, doi.org/10.1525/elementa.203, 2017.

30

Thiel, H.: Evaluation of the environmental consequences of polymetallic nodule mining based on the results of the TUSCH Research Association, *Deep Sea Research Part II: Topical Studies in Oceanography*, 48, 3433-3452, [https://doi.org/10.1016/S0967-0645\(01\)00051-0](https://doi.org/10.1016/S0967-0645(01)00051-0), 2001.

- 35 Tittensor, D. P., Rex, M. A., Stuart, C. T., McClain, C. R., and Smith, C. R.: Species-energy relationships in deep-sea molluscs, *Biology Letters*, 7, 718-722, 10.1098/rsbl.2010.1174, 2011.

35

Vanreusel, A., Fonseca, G., Danovaro, R., da Silva, M., Esteves, A., Ferrero, T., Gad, G., Galtsova, V., Gambi, C., da Fonseca Genevois, V., Ingels, J., Ingle, B., Lampadariou, N., Merckx, B., Miljutin, D., Miljutina, M., Muthumbi, A., Netto, S., Portnova, D., Radziejewska, T., Raes, M., Tchesunov, A., Vanaverbeke, J., Van Gaever, S., Venekey, V., Bezerra, T. N., Flint, H., Copley, J., Pape, E., Zeppilli, D., Arbizu Martinez, P., and Galéron, J.: The contribution of deep-sea macrohabitat heterogeneity to global nematode diversity, *Marine Ecology*, 31, 6-20, 2010.

- 40 Vanreusel, A., Hilario, A., Ribeiro, P. A., Menot, L., and Arbizu, P. M.: Threatened by mining, polymetallic nodules are required to preserve abyssal epifauna, *Scientific Reports*, 6, 26808, 10.1038/srep26808, 2016.

45

Veit-Köhler, G., Guilini, K., Peeken, I., Sachs, O., Sauter, E., and Würzburg, L.: Antarctic deep-sea meiofauna and bacteria react to the deposition of particulate organic matter after a phytoplankton bloom, *Deep-Sea Research II*, 58, 1983-1995, 2011.

Vincx, M.: Meiofauna in marine and freshwater sediments, in: *Methods for the examination of organismal diversity in soils and sediments*, edited by: Hall, G. S., Cab International, Wallingford, 187-195, 1996.

- Volz, J. B., Mogollón, J. M., Geibert, W., Arbizu, P. M., Koschinsky, A., and Kasten, S.: Natural spatial variability of depositional conditions, biogeochemical processes and element fluxes in sediments of the eastern Clarion-Clipperton Zone, Pacific Ocean, Deep Sea Research Part I: Oceanographic Research Papers, <https://doi.org/10.1016/j.dsr.2018.08.006>, 2018.
- 5 Warwick, R., Platt, H., and Somerfield, P.: Free-living marine nematodes part III: Monhysterids: pictorial key to world genera and notes for the identification of British species., *Synopses of the British fauna (new series)* 53, Field Studies Council, Shrewsbury, UK, 296 pp., 1998.
- 10 Wei, C.-L., Rowe, G. T., Escobar-Briones, E., Boetius, A., Soltwedel, T., Caley, M. J., Soliman, Y., Huettmann, F., Qu, F., Yu, Z., Pitcher, C. R., Haedrich, R. L., Wicksten, M. K., Rex, M. A., Baguley, J. G., Sharma, J., Danovaro, R., MacDonald, I. R., Nunnally, C. C., Deming, J. W., Montagna, P., Lévesque, M., Weslawski, J. M., Włodarska-Kowalczyk, M., Ingole, B. S., Bett, B. J., Billett, D. S. M., Yool, A., Bluhm, B. A., Iken, K., and Narayanaswamy, B. E.: Global Patterns and Predictions of Seafloor Biomass Using Random Forests, *PLOS ONE*, 5, e15323, [10.1371/journal.pone.0015323](https://doi.org/10.1371/journal.pone.0015323), 2010.
- 15 Wentworth, C.: A scale of grade and class terms for clastic sediments, *Journal of Geology*, 30, 377-392, 1922.
- Yasuhara, M., and Danovaro, R.: Temperature impacts on deep-sea biodiversity, *Biological Reviews*, 91, 275-287, [10.1111/brv.12169](https://doi.org/10.1111/brv.12169), 2016.
- 20 Yasuhara, M., Doi, H., Wei, C. L., Danovaro, R., and Myhre, S. E.: Biodiversity - ecosystem functioning relationships in long-term time series and palaeoecological records: deep sea as a test bed, *Philos Trans R Soc B*, 371, 20150282, [10.1098/rstb.2015.0282](https://doi.org/10.1098/rstb.2015.0282), 2016.



Tables

Table 1. Upper panel: sampling date, geographic location, depth, and approximate nodule coverage (based on information in (Vanreusel et al., 2016)) for the different license areas and APEI-3. Note that geographic locations are an approximation since each area encompasses a number of replicates that are located a few m's apart. Lower panel: average environmental parameters and standard deviation in the 0–1 cm layer. CPE = Chloroplastic Pigment Equivalents, TN = Total Nitrogen, TOC = Total Organic Carbon, clay = sediment fraction with grain size < 4 µm, silt = sediment fraction with grain size between 4 and 63 µm.

	Date	Latitude	longitude	depth (m)	nodule density (kg m <sup>-2</sup> )
APEI-3	23/04/2015	18°47.35' N	128°21.26' W	4839.1	3.65 ± 2.34
IFREMER	16/04/2015	14°02.60' N	130°07.82' W	4964.6	19.97 ± 4.05
GSR	9/04/2015	13°51.28' N	123°14.69' W	4511.8	26.15 ± 1.10
IOM	2/04/2015	11°04.63' N	119°39.60' W	4434.5	0.70 ± 0.44
BGR_RA	30/03/2015	11°47.88' N	117°30.62' W	4342.2	3.20 ± 4.23
BGR_PA	24/03/2015	11°51.06' N	117°03.46' W	4123.9	21.80 ± 1.15

	CPE (µg ml <sup>-1</sup> )	TN (weight %)	TOC (weight %)	clay (%)	silt (%)
APEI-3	0.06 ± 0.00	0.10 ± 0.00	0.29 ± 0.02	35.48 ± 5.40	61.63 ± 4.91
IFREMER	0.08 ± 0.02	0.12 ± 0.03	0.40 ± 0.07	15.41 ± 1.77	71.89 ± 3.80
GSR	0.11 ± 0.05	0.16 ± 0.07	0.47 ± 0.11	15.64 ± 1.66	70.89 ± 2.42
IOM	0.17 ± 0.03	0.12 ± 0.01	0.53 ± 0.12	10.74 ± 0.47	73.39 ± 0.89
BGR_RA	0.20 ± 0.09	0.10 ± 0.02	0.43 ± 0.12	11.21 ± 0.89	72.90 ± 1.27
BGR_PA	0.28 ± 0.11	0.12 ± 0.01	0.58 ± 0.08	12.21 ± 0.65	70.31 ± 3.01

**Table 2. PERMANOVA main and pairwise test results based on environmental variables.** PERMANOVA design with one fixed factor (area; 6 levels). P-values calculated by permutation (9999 permutations) at 5 % significance level. df = degrees of freedom, SS = sum of squares, MS = mean squares, Pseudo-F/t = effect size,  $P(\text{perm})/P(\text{MC})$  = permutational/Monte Carlo P-value, perms = number of unique permutations. Asterisks indicate significant P-values: \* < 0.05, \*\* < 0.01.

PERMANOVA						
main test						
Source of variation	df	SS	MS	Pseudo-F	$P(\text{perm})$	perms
Area	5	106.660	21.332	14.338	0.0001**	9929
Residual	13	19.341	1.4878			
Total	18	126				
pairwise test						
Groups	t	$P(\text{MC})$	perms			
BGR_PA vs. BGR_RA	3.2005	0.0105*	10			
BGR_PA vs. IOM	3.4114	0.006**	10			
BGR_PA vs. GSR	3.7457	0.0056**	10			
BGR_PA vs. IFREMER	4.7012	0.001**	35			
BGR_PA vs. APEI-3	6.5251	0.0006**	10			
BGR_RA vs. IOM	1.8302	0.1024	10			
BGR_RA vs. GSR	3.1678	0.0115*	10			
BGR_RA vs. IFREMER	3.2360	0.0054**	35			
BGR_RA vs. APEI-3	3.5571	0.0061**	10			
IOM vs. GSR	3.3624	0.0053**	10			
IOM vs. IFREMER	3.2318	0.003**	35			
IOM vs. APEI-3	4.9877	0.003**	10			
GSR vs. IFREMER	2.0347	0.0328*	35			
GSR vs. APEI-3	5.1015	0.0023**	10			
IFREMER vs. APEI-3	4.1434	0.0021**	35			

**Table 3. Average meiofauna densities (individuals 10 cm<sup>-2</sup>) and standard deviation for the different CCZ areas.** Copepoda includes both adults and nauplius larvae. Other taxa = meiofaunal taxa excluding nematodes and copepods.

	Nematoda	Copepoda	Other taxa	Meiofauna
<b>APEI-3</b>	45.82 ± 6.29	5.71 ± 2.02	1.71 ± 0.63	53.24 ± 8.86
<b>IFREMER</b>	162.99 ± 57.57	14.54 ± 4.53	4.62 ± 1.62	182.15 ± 62.42
<b>GSR</b>	186.31 ± 40.35	21.78 ± 8.81	3.40 ± 0.73	211.49 ± 40.36
<b>IOM</b>	504.58 ± 237.70	35.02 ± 14.42	13.11 ± 8.27	552.71 ± 260.32
<b>BGR_RA</b>	433.77 ± 86.00	37.36 ± 9.35	12.72 ± 3.56	483.84 ± 95.18
<b>BGR_PA</b>	336.43 ± 39.89	28.93 ± 6.47	6.48 ± 0.31	371.84 ± 33.11

**Table 4. PERMANOVA main and pairwise test results for nematode genus composition.** PERMANOVA design with one fixed factor (area; 6 levels). P-values calculated by permutation (9999 permutations) at 5 % significance level. df = degrees of freedom, SS = sum of squares, MS = mean squares, Pseudo-F/t = effect size,  $P(\text{perm})/P(\text{MC})$  = permutational/Monte Carlo P-value, perms = number of unique permutations. Asterisks indicate significant P-values.

PERMANOVA						
main test						
Source of variation	df	SS	MS	Pseudo-F	$P(\text{perm})$	perms
Area	5	7406.1	1481.2	1.6583	0.0002*	9773
Residual	13	11612	893.22			
Total	18	19018				
pairwise test						
Groups	t	$P(\text{MC})$	perms			
BGR_PA vs. BGR_RA	1.1242	0.3145	10			
BGR_PA vs. IOM	1.5766	0.0833	10			
BGR_PA vs. GSR	1.3795	0.1546	10			
BGR_PA vs. IFREMER	1.6038	0.0571	35			
BGR_PA vs. APEI-3	1.4471	0.1272	10			
BGR_RA vs. IOM	1.3324	0.1842	10			
BGR_RA vs. GSR	1.2396	0.2299	10			
BGR_RA vs. IFREMER	1.5702	0.0662	35			
BGR_RA vs. APEI-3	1.3551	0.1599	10			
IOM vs. GSR	1.0685	0.377	10			
IOM vs. IFREMER	1.0012	0.4303	35			
IOM vs. APEI-3	1.1271	0.3155	10			
GSR vs. IFREMER	0.9997	0.4364	35			
GSR vs. APEI-3	1.29	0.1968	10			
IFREMER vs. APEI-3	1.1718	0.2606	35			

5

**Table 5. Top:** Nematode genus diversity (averaged over samples per site  $\pm$  standard deviation) in the different CCZ areas.  $EG(98)$  = expected number of genera in a sample of 98 individuals,  $N_I$  = Hill's index,  $J'$  = Pielou's evenness. **Bottom:** Number of most abundant genera (averaged over samples per site  $\pm$  standard deviation) occurring with  $> 5\%$  in at least one replicate, and the fraction these represent in terms of nematode diversity (% of total genera) and density (% of total density). Additionally, the total number of unique genera per site (i.e. summed for all replicates) is given, together with their combined contribution to total nematode density for each site.

	N° identified	N° genera	$EG(98)$	$N_I$	$J'$
<b>APEI-3</b>	109.00 $\pm$ 6.00	32.33 $\pm$ 4.51	30.75 $\pm$ 3.91	17.72 $\pm$ 3.82	0.82 $\pm$ 0.04
<b>IFREMER</b>	104.25 $\pm$ 4.35	33.50 $\pm$ 1.29	32.46 $\pm$ 0.86	16.47 $\pm$ 1.38	0.80 $\pm$ 0.02
<b>GSR</b>	106.33 $\pm$ 5.03	36.00 $\pm$ 5.57	34.35 $\pm$ 4.60	19.08 $\pm$ 3.41	0.82 $\pm$ 0.02
<b>IOM</b>	169.00 $\pm$ 68.79	38.67 $\pm$ 5.86	30.88 $\pm$ 3.58	18.92 $\pm$ 1.27	0.81 $\pm$ 0.04
<b>BGR_RA</b>	265.67 $\pm$ 65.04	50.00 $\pm$ 6.08	30.97 $\pm$ 1.23	18.01 $\pm$ 3.84	0.73 $\pm$ 0.04
<b>BGR_PA</b>	220.33 $\pm$ 41.36	42.33 $\pm$ 1.53	28.32 $\pm$ 0.93	15.72 $\pm$ 0.92	0.74 $\pm$ 0.02

	N° dominant genera (> 5%)	% of total genera	% of total density	N° unique genera/site	% of total density/site
<b>APEI-3</b>	3.67 $\pm$ 1.53	11.64 $\pm$ 5.85	49.34 $\pm$ 11.8	11	4.28
<b>IFREMER</b>	3.00 $\pm$ 0.82	8.99 $\pm$ 2.65	48.12 $\pm$ 5.40	9	2.40
<b>GSR</b>	2.67 $\pm$ 1.15	7.45 $\pm$ 3.04	42.49 $\pm$ 8.09	8	3.76
<b>IOM</b>	3.33 $\pm$ 0.58	8.93 $\pm$ 3.10	44.65 $\pm$ 1.25	14	4.34
<b>BGR_RA</b>	2.67 $\pm$ 0.58	5.44 $\pm$ 1.60	48.92 $\pm$ 7.07	19	3.51
<b>BGR_PA</b>	4.33 $\pm$ 1.15	10.20 $\pm$ 2.51	60.48 $\pm$ 7.96	7	1.82

**Table 6. Overview of the most abundant genera (top; rel. abund. > 5 % in at least one replicate sample) and families (bottom; average rel. abund. > 5 % in at least one area) and their average relative abundance (± standard deviation) per area.** Note that *Halalaimus* is highlighted in grey as this is the genus that was identified up to species level.

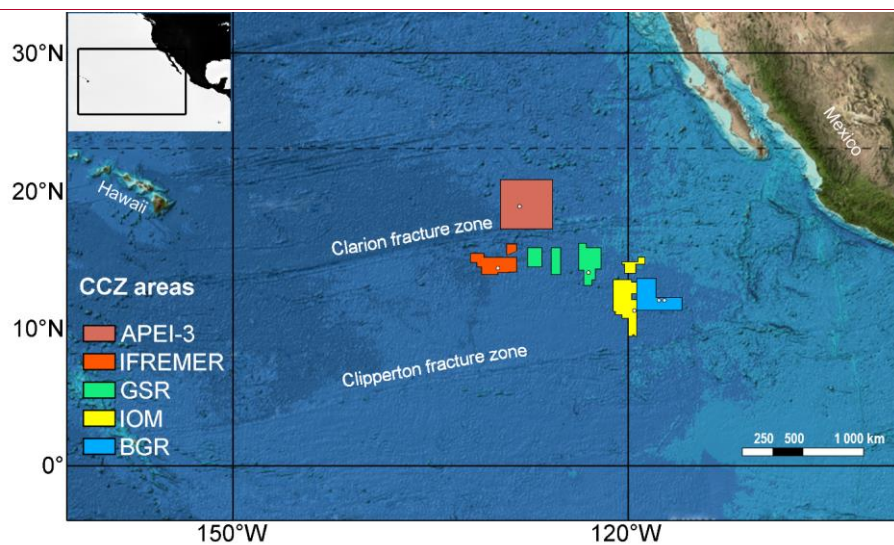
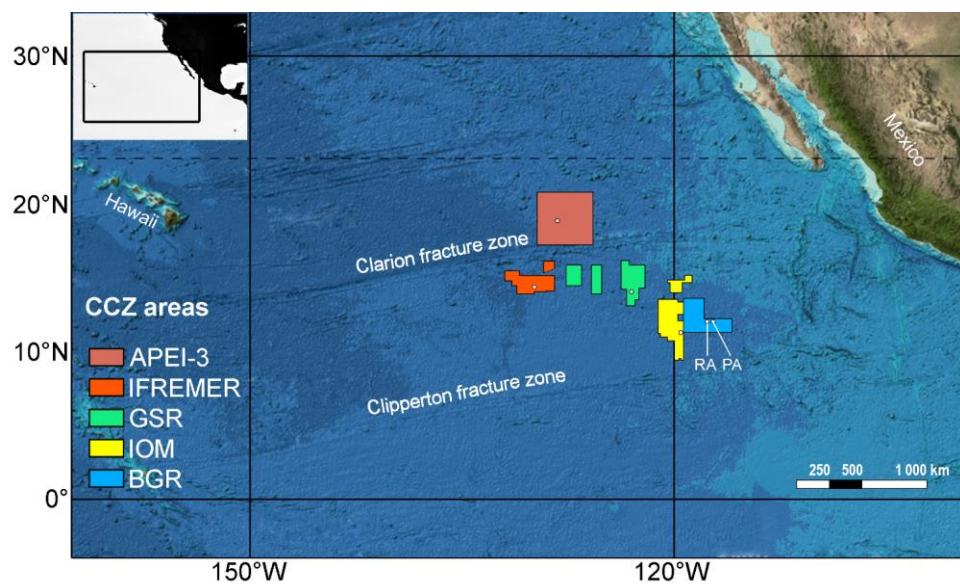
Genus	APEI-3	IFREMER	GSR	IOM	BGR_RA	BGR_PA
<i>Acantholaimus</i>	7.17 ± 5.10	9.15 ± 3.63	12.77 ± 3.55	9.05 ± 2.91	17.95 ± 7.51	25.42 ± 0.33
<i>Chromadorita</i>	0.89 ± 0.87	1.44 ± 1.22	3.76 ± 2.46	1.21 ± 0.75	3.00 ± 1.08	3.04 ± 1.38
<i>Daptonema</i>	3.06 ± 2.12	1.17 ± 0.89	0.93 ± 0.90	1.11 ± 0.66	3.75 ± 0.11	5.46 ± 1.30
<i>Endeolophos</i>	0.58 ± 1.00	1.16 ± 1.75	0.30 ± 0.52	0.14 ± 0.24	1.13 ± 0.86	2.72 ± 2.26
<i>Halalaimus</i>	10.76 ± 1.63	2.38 ± 1.21	2.82 ± 1.61	4.70 ± 1.01	3.61 ± 1.82	5.80 ± 1.07
<i>Leptolaimus</i>	2.08 ± 1.97	1.47 ± 1.31	2.87 ± 1.80	1.63 ± 0.61	2.51 ± 2.36	2.18 ± 0.75
<i>Microlaimus</i>	1.87 ± 1.84	3.16 ± 2.87	1.89 ± 0.95	4.59 ± 2.59	1.81 ± 1.06	0.46 ± 0.08
<i>Molgolaimus</i>	2.81 ± 2.75	0.73 ± 0.91	1.50 ± 2.60	1.76 ± 1.53	2.75 ± 0.26	1.20 ± 2.08
<i>Monhystrella</i>	26.09 ± 6.55	31.14 ± 3.96	25.81 ± 6.03	26.45 ± 5.41	27.53 ± 12.13	21.75 ± 2.05
<i>Prochromadorella</i>	0.31 ± 0.53	0.00 ± 0.00	2.10 ± 3.64	0.00 ± 0.00	0.00 ± 0.00	0.00 ± 0.00
<i>Prototricoma</i>	1.16 ± 2.01	6.01 ± 1.70	4.10 ± 0.74	1.63 ± 0.61	0.00 ± 0.00	0.00 ± 0.00
<i>Thalassomonhystera</i>	4.29 ± 2.65	4.15 ± 2.77	2.78 ± 1.55	4.36 ± 1.61	2.45 ± 1.34	3.27 ± 1.72
<i>Theristus</i>	0.61 ± 1.06	2.35 ± 2.22	0.97 ± 0.99	4.34 ± 4.04	1.71 ± 1.06	0.68 ± 0.79
<i>Tricoma</i>	3.31 ± 2.61	2.18 ± 0.97	2.26 ± 2.33	2.29 ± 1.30	0.29 ± 0.27	1.56 ± 0.45
Family	APEI-3	IFREMER	GSR	IOM	BGR_RA	BGR_PA
Chromadoridae	8.94 ± 6.69	12.98 ± 5.03	21.71 ± 7.51	11.45 ± 2.22	23.56 ± 9.55	32.92 ± 2.57
Desmoscolecidae	5.40 ± 4.78	10.09 ± 1.11	7.94 ± 3.46	5.31 ± 2.68	1.42 ± 1.03	2.37 ± 0.81
Diplopeltidae	2.50 ± 1.52	2.60 ± 1.54	4.40 ± 0.61	5.49 ± 3.27	3.85 ± 0.59	1.56 ± 0.47
Microlaimidae	2.48 ± 1.45	3.39 ± 2.77	3.14 ± 2.99	6.21 ± 2.91	2.43 ± 1.06	0.76 ± 0.26
Monhysteridae	34.69 ± 8.10	39.37 ± 5.53	29.54 ± 4.22	36.30 ± 3.93	30.61 ± 11.89	27.33 ± 1.33
Oxystominidae	12.65 ± 3.35	3.81 ± 1.27	5.37 ± 2.44	5.34 ± 2.05	4.73 ± 1.94	7.32 ± 0.67
Xyalidae	14.71 ± 1.74	12.87 ± 4.20	7.93 ± 3.75	16.39 ± 1.57	13.84 ± 1.47	13.51 ± 4.50

**Table 7. Species counts for *Halalaimus* per area.** Number of individuals per area for each species, ranked according to decreasing geographical spread. When individuals were strongly resembling a certain species but without a 100 % match for all the characteristics, they were labeled as ‘affinity’ (aff.) to the closest species.

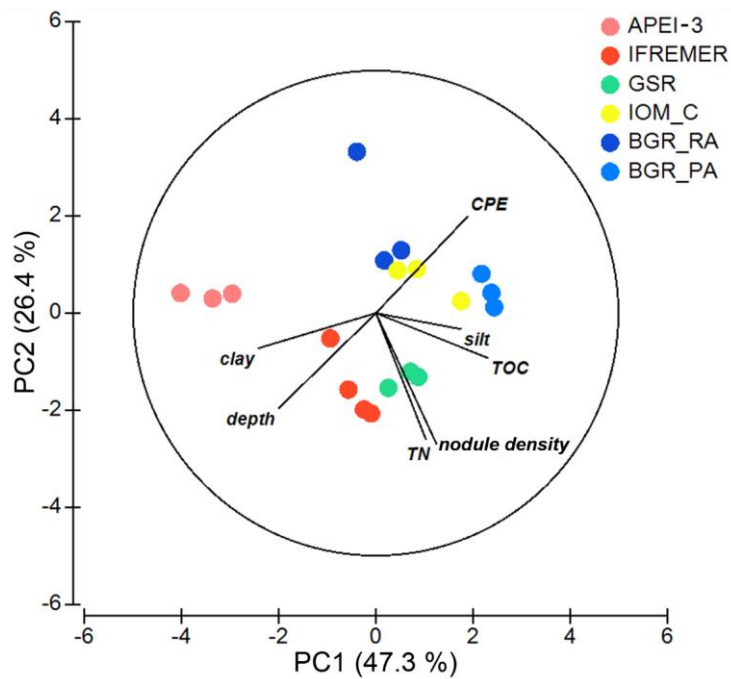
	APEI-3	IFREMER	GSR	IOM	BGR_RA	BGR_PA
<i>Halalaimus abyssus</i> Bussau, 1993	4	1	2	6	6	6
<i>Halalaimus egregius</i> Bussau, 1993	2	1	1	3	5	4
<i>Halalaimus longinquus</i> Bussau, 1993	6	1	1	2	4	3
<i>Halalaimus oblongus</i> Bussau, 1993	4	2	1	1	5	4
<i>Halalaimus praestans</i> Bussau, 1993	2	2	1	3	5	2
<i>Halalaimus absconditus</i> Bussau, 1993	2	1	1		5	3
<i>Halalaimus aedificandistudiosus</i> Bussau, 1970	1				1	1
<i>Halalaimus</i> aff. <i>amphidellus</i> Vitiello, 1970	1			1		2
<i>Halalaimus</i> aff. <i>delamarei</i> Vitiello, 1970			1	1		4
<i>Halalaimus</i> aff. <i>absconditus</i> Bussau, 1993	1					1
<i>Halalaimus</i> aff. <i>marri</i> Mawson, 1958	1	1				
<i>Halalaimus</i> aff. <i>praestans</i> Bussau, 1993	1			2		
<i>Halalaimus</i> sp. <i>indeterminabilis</i>	2			1		
<i>Halalaimus arundinaceus</i> Bussau, 1993	1			1		
<i>Halalaimus filicorpus</i> Vitiello, 1970	2					1
<i>Halalaimus longicolis</i> Allgén, 1932	1					1
<i>Halalaimus</i> aff. <i>abyssus</i> Bussau, 1993	2					
<i>Halalaimus</i> aff. <i>egregius</i> Bussau, 1993						3
<i>Halalaimus</i> aff. <i>longinquus</i> Bussau, 1993				1		
<i>Halalaimus</i> aff. <i>oblongus</i> Bussau, 1993		1				
<i>Halalaimus</i> aff. <i>tenuicapitatus</i> Filipjev, 1946	1					
<i>Halalaimus</i> aff. <i>turbidus</i> Vitiello, 1970				1		
<i>Halalaimus</i> n. sp.1	1					
<i>Halalaimus</i> n. sp.2						1
<b>Total species</b>	18	8	7	12	7	14
<b>Total individuals</b>	35	10	8	23	31	36

## Figures

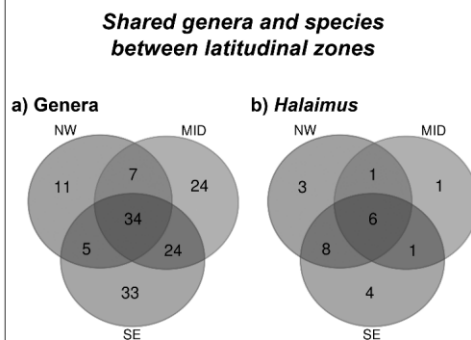
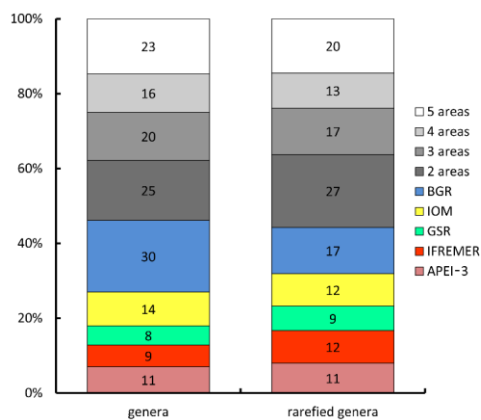




**Figure 1: Overview map of geographical sampling region and different license areas studied.** Exact sampling locations are indicated with white dots. Within the BGR area, two sites were sampled in close proximity, RA (Reference Area, left dot) and PA (Prospective Area, right dot). Colour code based on (Vanreusel et al., 2016) and will be maintained throughout the rest of the manuscript. Base map modified from GEBCO ([www.gebco.net](http://www.gebco.net)). Colour gradient from light to dark represents bathymetry.



**Figure 2. PCA plot of the different areas according to environmental conditions.** All variables were normalized prior to analysis. Note that silt and clay content was log-transformed to account for skewness in the data. Numbers along PCA axes represent the total variation percentage explained by that axis.



**Figure 3. Geographical distribution of genera and *Halalaimus* species.** Left panel: Number of shared genera between the different areas, and their relative contribution to totals, based on original count data, as well as rarefied genus numbers. Note that BGR\_RA and BGR\_PA were considered as 1 area in this case. Values along the Y-axis represent the relative contribution of unique and shared genera, while the number indicated in each bar represents the absolute count. Right panel: a) partitioning of genera between latitudinal zones (NW = APEI-3; MID = IFREMER + GSR; SE = IOM + BGR). Genus numbers based on rarefied counts. b) partitioning of *Halalaimus* species between latitudinal zones.