

Dear editor:

Thank you for your efforts.

5 The track change version of the revised manuscript is copied below.

Sincerely,

10 Mingxi Yang et al.

15

20

25

30

35

40

45

50

55

Insights from year-long measurements of air-water CH₄ and CO₂

60 exchange in a coastal environment

Mingxi Yang*, Thomas G. Bell, Ian J. Brown, James R. Fishwick, Vassilis Kitidis, Philip D. Nightingale, Andrew P. Rees, Timothy J. Smyth

65 Plymouth Marine Laboratory, Prospect Place, Plymouth, UK PL1 3DH.
* Correspondence to M. Yang (miya@pml.ac.uk)

Abstract. Air-water CH₄ and CO₂ fluxes were directly measured using the eddy covariance technique at the Penlee Point Atmospheric Observatory on the southwest coast of the United Kingdom from September 2015 to August 2016. The high frequency, year-long measurements provide unprecedented detail into the variability of these Greenhouse Gas fluxes from seasonal to diurnal and to semi-diurnal (tidal) timescales. Depending on the wind sector, fluxes measured at this site are indicative of air-water exchange in coastal seas as well as in an outer estuary. For the open water sector when winds were off the Atlantic Ocean, CH₄ flux was almost always positive (annual mean of $\sim 0.05 \text{ mmol m}^{-2} \text{ d}^{-1}$) except in December and January, when CH₄ flux was near zero. At times of high rainfall and river flow rate, CH₄ emission from the estuarine-influenced Plymouth Sound sector was several times higher than emission from the open water sector. The implied CH₄ saturation (derived from the measured fluxes and a wind speed dependent gas transfer velocity parameterization) of over 1000% in the Plymouth Sound is within range of in situ dissolved CH₄ measurements near the mouth of the river Tamar. CO₂ flux from the open water sector was generally from sea-to-air in autumn and winter and from air-to-sea in late spring and summer, with an annual mean flux of near zero. A diurnal signal in CO₂ flux and implied partial pressure of CO₂ in water (pCO₂) are clearly observed for the Plymouth Sound sector and also evident for the open water sector during biologically productive periods. These observations suggest that coastal CO₂ efflux may be underestimated if sampling strategies are limited to daytime only. Combining the flux data with seawater pCO₂ measurements made in situ within the flux footprint allows us to estimate the CO₂ transfer velocity. The gas transfer velocity vs. wind speed relationship at this coastal location agrees reasonably well with previous open water parameterizations in the mean, but demonstrates considerable variability. We discuss the influences of biological productivity, bottom-driven turbulence, and rainfall on coastal air-water gas exchange.

1 Introduction

Methane (CH₄) and carbon dioxide (CO₂) are two of the most important Greenhouse Gases (GHGs). Their tropospheric abundances have increased over the last few hundred years primarily due to human activities, with the fastest increases in the last

- Mingxi Yang 2/11/19 11:31 AM
Deleted: annual
- Mingxi Yang 2/11/19 11:31 AM
Deleted: emission
- Mingxi Yang 2/11/19 11:31 AM
Deleted: averaged
- Mingxi Yang 2/11/19 11:31 AM
Deleted: .
- Mingxi Yang 2/11/19 11:31 AM
Deleted: Open water
- Mingxi Yang 2/11/19 11:31 AM
Deleted: in December and January, probab... [1]
- Mingxi Yang 2/11/19 10:26 AM
Deleted: .
- Mingxi Yang 2/11/19 10:26 AM
Deleted: .
- Mingxi Yang 2/11/19 11:14 AM
Deleted: .
- Mingxi Yang 2/11/19 11:14 AM
Deleted: CO₂ flux from the Plymouth Soun... [2]
- Mingxi Yang 2/11/19 4:07 PM
Formatted ... [3]
- Mingxi Yang 2/11/19 4:04 PM
Deleted: dissolved
- Mingxi Yang 2/11/19 4:06 PM
Deleted: .
- Thomas Bell 2/14/19 11:13 AM
Deleted: the
- Thomas Bell 2/14/19 11:13 AM
Deleted: y is
- Thomas Bell 2/14/19 11:13 AM
Deleted: es
- Thomas Bell 2/14/19 11:14 AM
Deleted: in situ
- Mingxi Yang 2/11/19 4:04 PM
Deleted: dissolved
- Thomas Bell 2/14/19 11:14 AM
Deleted: s
- Mingxi Yang 2/8/19 12:00 PM
Deleted: and
- Thomas Bell 2/14/19 11:15 AM
Deleted: .
- Mingxi Yang 2/11/19 4:07 PM
Deleted: The tropospheric abundances of m
- Mingxi Yang 2/11/19 4:07 PM
Deleted: .
- Mingxi Yang 2/11/19 4:07 PM
Deleted: .
- Thomas Bell 2/14/19 11:15 AM
Deleted: been
- Thomas Bell 2/14/19 11:15 AM
Deleted: ing
- Thomas Bell 2/14/19 11:15 AM
Deleted: over

90 50 years (Hartmann et al. 2013). Highly dynamic estuarine and coastal regions can be important sources and sinks of these GHGs. Understanding the emissions and uptake of these gases by coastal waters and how they change is directly relevant to the fulfillment of the United Nations Framework Convention on Climate Change (UNFCCC) Paris 2016 agreement. We argue in this paper that the eddy covariance (EC) technique, with a temporal resolution of tens of minutes to hours, is an excellent method for long-term monitoring of coastal air-sea CH₄ and CO₂ fluxes.

95 There has been much debate over the causes of the recent tropospheric CH₄ trend, from varying wetland (e.g. Pison et al. 2013; Schaefer et al. 2016; Nisbet et al. 2016) and fossil fuel (e.g. Helmig et al. 2016; Rice et al. 2016) emissions, to changes in the atmospheric oxidative capacity (e.g. Rigby et al. 2017). Terrestrial aquatic systems may be important sources of tropospheric CH₄ (e.g. Borges et al., 2015). Similarly, due to benthic methanogenesis, large surface CH₄ supersaturations of thousands of percent have been observed in estuaries (e.g. Upstill-Goddard et al., 2000; Middelburg et al., 2002). CH₄

100 concentrations in estuaries can be influenced by processes including biological productivity, organic carbon input, benthic and particle-derived CH₄ production, oxygen content, as well as the hydrodynamics (e.g. Upstill-Goddard et al. 2000; 2016). In regions of intense benthic methanogenesis, gas bubbles supersaturated with CH₄ episodically rise through the water column to the surface (e.g. Dimitrov, 2002; Kitidis et al., 2007). This process of ebullition will result in CH₄ emissions that are not quantified using air-sea flux calculations based on seawater CH₄ concentration (see below). In coastal seas, CH₄ saturation tends to be lower than in estuaries, but is still much greater than 100% (e.g. mean >200% for European shelf waters; Bange et al. 2006). Consequently, estuaries and coastal seas tend to have much greater CH₄ emissions per unit area than the open ocean (Bange et al. 2006; Forster et al. 2009).

105 Due to both the 'solubility pump' and the 'biological pump', the surface ocean can be a net source or sink of CO₂, depending on location and time of the year (Khaliwala et al. 2013; Houghton 2003). The global open ocean is modelled to absorb 2.4±0.5 GtC yr⁻¹ over the last decade – a quarter of the anthropogenic CO₂ emission (Le Quéré et al. 2018). Shelf seas, despite their relatively small area, support high primary productivity, cause a large drawdown of CO₂ in the mean (Frankignoulle and Borges, 2001; Chen et al. 2013), and might be responsible for as much as 10-40% of global oceanic carbon sequestration (Muller-Karger et al. 2005; Cai et al. 2006; Chen et al. 2009; Laruelle et al. 2010). Estuaries, on the other hand, are generally net sources of CO₂ for the atmosphere (e.g. Frankignoulle et al. 1998). Inner estuaries are estimated to emit about 0.3 GtC yr⁻¹ of CO₂ globally (Laruelle et al. 2010; Cai 2011). Most of this CO₂ emission is due to the degradation of allochthonous organic matter rather than a direct input of dissolved inorganic carbon (Borges et al. 2006). The direction of net air-sea CO₂ flux is less certain in coastal areas that are influenced by riverine outflow and anthropogenic activities (Chen et al. 2013). Kitidis et al. (2012) showed a gradient of increasing air-to-sea CO₂ flux with distance offshore in the western English Channel. The coastal seas may have been heterotrophic during preindustrial conditions and thus a net source of CO₂ due to organic carbon degradation

- Mingxi Yang 2/11/19 10:39 AM
Deleted: the best
- Mingxi Yang 2/14/19 9:40 AM
Deleted: Consequently, estuaries and coastal seas tend to have much greater CH₄ emissions per unit area than the open ocean (Bange et al. 2006; Forster et al. 2009).
- Mingxi Yang 2/14/19 9:15 AM
Formatted: Font:(Default) Times, 10 pt, Font color: Auto
- Mingxi Yang 2/14/19 9:15 AM
Formatted: Font:(Default) Times, 10 pt, Font color: Auto
- Mingxi Yang 2/14/19 9:15 AM
Formatted: Font:(Default) Times, 10 pt, Font color: Auto
- Mingxi Yang 2/14/19 9:15 AM
Formatted: Font:(Default) Times, 10 pt, Font color: Auto
- Mingxi Yang 2/14/19 9:15 AM
Formatted: Font:(Default) Times, 10 pt, Font color: Auto
- Mingxi Yang 2/14/19 9:15 AM
Formatted: Font:(Default) Times, 10 pt, Font color: Auto
- Mingxi Yang 2/14/19 9:26 AM
Deleted:
- Mingxi Yang 2/16/19 6:41 PM
Deleted: Globally averaged, Modelling of t
- Mingxi Yang 2/16/19 6:41 PM
Deleted: global average estimates an uptake of
- Mingxi Yang 2/11/19 4:14 PM
Formatted: Superscript
- Mingxi Yang 2/11/19 4:14 PM
Deleted: about
- Mingxi Yang 2/11/19 4:14 PM
Deleted: 2015
- Mingxi Yang 2/14/19 9:15 AM
Formatted: Font:10 pt, Font color: Auto
- Mingxi Yang 2/14/19 9:15 AM
Formatted: Font:10 pt, Font color: Auto
- Mingxi Yang 2/14/19 9:15 AM
Formatted: Font:10 pt, Font color: Auto
- Mingxi Yang 2/14/19 9:15 AM
Formatted: Font:10 pt, Font color: Auto
- Mingxi Yang 2/14/19 9:28 AM
Deleted:
- Mingxi Yang 2/14/19 9:15 AM
Formatted: Font:10 pt
- Mingxi Yang 2/14/19 9:15 AM
Formatted: Font:10 pt, Font color: Auto

120 (e.g. Smith and Hollibaugh, 1993). Some studies (e.g. Andersson and Mackenzie, 2004; Cai, 2011) predict that shallow seas will become a net sink (or a reduced source) of CO₂ in the future due to rising atmospheric CO₂ levels and increased inorganic nutrient inputs. Modeling of the carbonate chemistry and hence CO₂ flux in the North Western European shelf is hindered partly because of the uncertain representation of riverine influence (Artioli et al. 2012).

125 To quantify the impacts of estuarine and coastal emissions on the atmospheric CH₄ and CO₂ burden, an indirect method requiring the inventories of air-sea concentration difference (ΔC) and the gas transfer velocity (K) is usually utilized: Flux = $K \cdot \Delta C$. Coastal areas tend to be highly dynamic, with greater spatial and temporal variability in physics and biology than the open ocean. This heterogeneity poses serious challenges to observational and modeling efforts aimed at constraining coastal air-sea GHG fluxes. Dissolved gas concentrations may be affected by tides, currents, mixed layer processes, and benthic/pelagic interactions. The sheltered nature of the coastal seas, coupled with freshwater input, often result in stratification (e.g. Sims et al. 130 2017), where biological processes can more quickly modify the near-surface dissolved gas concentrations. Mixed layer dynamics can vary on a diurnal timescale, due for example to buoyancy forcing (e.g. Esters et al. 2018). The atmospheric concentrations of GHGs at coastal locations also vary as a function of wind direction, air mass history, and boundary layer processes (e.g. Yang et al. 2016a). Estuaries and coastal seas in mid-latitudes also tend to experience large seasonal variability, which affect the dissolved gas concentrations (e.g. Crosswell et al. 2012; Joesoef et al. 2015).

135 The transfer velocity (K) primarily depends on near surface turbulence, and over the ocean is generally parameterized as a function of wind speed (e.g. Wanninkhof et al. 2009). Currents and resultant bottom-driven turbulence significantly affect gas exchange in shallower waters, resulting in K values that can be much higher than predicted based on wind speed alone (O'Connor and Dobbins, 1958; Borges et al. 2004; Ho et al. 2014). Rainfall is highly episodic, but may be important for gas exchange because it generates additional turbulence and/or alters near-surface gas concentrations (e.g. Ho et al. 1997; Zappa et al. 2009; Turk et al. 2010). Variability in biogeochemical processes could also affect K by changing the surface tension and modifying the turbulence at the air-sea interface. Pereira et al. (2016) observed a gradient of increased sea surface surfactant activity from the open sea towards the coast, which reduced the gas transfer velocity by approximately a factor of two in their laboratory tank simulations. Thus a wind speed-only dependent representation of K is probably even less appropriate for coastal environments than for the open ocean.

145 Measuring the fluxes directly with the eddy covariance technique is an ideal way to study the many controlling factors of air-sea exchange in dynamic and heterogeneous environments such as shallow waters and coastal seas. It also allows us to test the appropriateness of the indirect flux calculations. Furthermore, compared to shipboard EC observations, measuring fluxes from a stationary tower has the advantage of not requiring any motion correction on the winds (see Edson et al. 1998). This means that flux and K measurements at a coastal location are potentially more accurate, especially at high wind speeds when the

Mingxi Yang 2/14/19 9:15 AM
Formatted: Font:10 pt, Font color: Auto
Mingxi Yang 2/14/19 9:15 AM
Formatted: Font:10 pt, Font color: Auto
Mingxi Yang 2/14/19 9:29 AM
Deleted:
Mingxi Yang 2/14/19 9:29 AM
Deleted: The shallow seas are predicted to become a greater net sink of CO₂ in the future due to rising atmospheric CO₂ and increasing inorganic nutrients (e.g. Andersson and Mackenzie, 2004).
Mingxi Yang 2/14/19 4:14 PM
Formatted: Font color: Custom Color(RGB(26,26,26))
Thomas Bell 2/14/19 11:22 AM
Deleted: typically

Thomas Bell 2/14/19 11:24 AM
Deleted: ,
Thomas Bell 2/14/19 11:26 AM
Deleted: towards
Thomas Bell 2/14/19 11:25 AM
Deleted: under certain circumstances
Thomas Bell 2/14/19 11:26 AM
Deleted: y
Thomas Bell 2/14/19 11:26 AM
Deleted: providing
Thomas Bell 2/14/19 11:26 AM
Deleted: ing
Thomas Bell 2/14/19 11:26 AM
Deleted: the
Mingxi Yang 2/11/19 9:58 AM
Deleted:
Thomas Bell 2/14/19 11:26 AM
Deleted: stry
Mingxi Yang 2/11/19 4:16 PM
Deleted: Thus a wind speed-only dependent representation of K , incomplete for the open ocean (Wanninkhof et al. 2009), is possibly even less adequate for a coastal environment.
Thomas Bell 2/14/19 11:28 AM
Deleted: adequate
Mingxi Yang 2/8/19 12:07 PM
Deleted: K
Mingxi Yang 2/8/19 12:18 PM
Deleted: such
Thomas Bell 2/14/19 11:28 AM
Deleted: GHG

150 motion correction for a moving platform would become large. Only a few coastal stations exist worldwide that have reported
air-sea CO₂ fluxes by EC on a seasonal timescale, such as Östergarnsholm station in the Baltic Sea (Rutgersson et al. 2008), the
Utö Atmospheric and Marine Research Station also in the Baltic Sea (Honkanen et al. 2018), Punta Morro in Baja California,
Mexico (Gutierrez-Loza and Ocampo-Torres, 2016), and Oikirtaarjuk Island in the Canadian Arctic (Butterworth and Else,
2018). In the case of the Östergarnsholm station, concurrent measurements of partial pressure of seawater CO₂ (pCO₂) from a
155 nearby buoy allow for the determination of the CO₂ gas transfer velocity. CH₄ sensors with sufficient measurement frequency
and precision for the EC methods have only been developed in recent years (Yang et al. 2016b). We are not aware of any
published long-term air-sea CH₄ fluxes by the EC method.

In this paper, we describe a year-long set of air-water CO₂ and CH₄ flux measurements by EC at the coastal Penlee
Point Atmospheric Observatory. The high frequency fluxes allow us to characterize their variability across a range of time scales
160 (semi-diurnal to diurnal to seasonal). Combining these data with in situ observations of dissolved gas concentrations as well as
supporting physical and biogeochemical measurements enables us to quantify the gas transfer velocity at this coastal location and
examine its controls.

2 Experimental

165 The Penlee Point Atmospheric Observatory (PPAO, 50° 19.08' N, 4° 11.35' W;
<http://www.westernchannelobservatory.org.uk/penlee/>) was established in May 2014 on the southwest coast of the United
Kingdom. Understanding the controls of coastal air-sea exchange is one of the main scientific foci at this site. Yang et al
(2016a, 2016b) demonstrated that the PPAO is a suitable location to measure air-sea exchange by the EC method.

2.1 Eddy covariance fluxes

170 Atmospheric CH₄ and CO₂ mixing ratios were measured at a frequency of 10 Hz using a Los Gatos Research (LGR)
Fast Greenhouse Gas Analyzer (FGGA, enhanced performance model) between September 2015 and August 2016. As described
in detail by Yang et al (2016a), two Gill sonic anemometers (Windmaster Pro and R3) are installed on a mast on the rooftop of
PPAO (~18 m above mean sea level). For this paper, wind data from the Windmaster Pro sonic anemometer were used between
175 September 2015 and March 2016. Since March 2016, wind data from the R3 sonic anemometer (not operational for the first 6
months of this annual study) were preferred because of its higher precision and better performance during heavy rain events.

[The effect of rain on the EC gas flux measurement is discussed in the Supplementary Materials.](#)

The gas inlet tip, located ~30 cm below the Windmaster Pro sonic anemometer centre volume, is connected to the LGR
via ~18 m long PFA tubing (3/8" outer diameter). First a scroll pump (BOC Edwards XDS-35i) until 16 October 2015 and then

Mingxi Yang 2/8/19 12:06 PM
Deleted: -
Mingxi Yang 1/24/19 11:08 AM
Deleted: long
Mingxi Yang 2/11/19 10:46 AM
Deleted: ;
Mingxi Yang 2/11/19 10:46 AM
Deleted: ;
Mingxi Yang 1/24/19 11:08 AM
Deleted: and
Mingxi Yang 1/24/19 10:11 AM
Deleted:
Mingxi Yang 1/24/19 10:11 AM
Deleted: Unfortunately the open-path sensors utilized at Östergarnsholm and Punta Morro (LI-7500, LI-COR Biosciences) could well be affected by a CO₂-H₂O spectral interference (Blomquist et al. 2014; Landwehr et al. 2014; Butterworth and Else, 2018), likely resulting in biased fluxes under conditions of significant latent heat flux.

Thomas Bell 2/14/19 11:31 AM
Deleted: a

180 a rotary vane pump (Gast 1023) were used to pull sample air through the inlet tubing, an aerosol filter (2 μm pore size, Swagelok
SS-6F-05), and the LGR. The aerosol filter became laden with sea salt over time and the filter elements were replaced
approximately every ~ 2 months. As a result, the volumetric flow rate through the LGR varied between 23 and 78 LPM, which
affected the lag time and the high frequency attenuation of the fluxes. The lag time was determined from a maximum lag
correlation analysis between CO_2 and the instantaneous vertical wind velocity (w), varying from about 2.7 to 9.0 s. The strong
185 atmosphere-biosphere flux of CO_2 when winds were from land aided our determination of this lag time. The high frequency flux
attenuation was estimated from the instrument response time (see Yang et al. 2013, 2016a) and a wind speed dependent
correction was applied to the flux data (representing a $\sim 15\%$ gain in the mean).

Mingxi Yang 2/11/19 10:48 AM
Deleted: varying

Fluxes of CH_4 and CO_2 were initially computed in 10-minute intervals from the covariance of their lag-shifted dry
mixing ratios and w . Wind velocities were streamline corrected using the standard double rotation method (Tanner and Thurtell,
190 1969) on a 10-minute basis. Evaluations of the EC momentum transfer against the expected rate (Figure S2 in Supplementary
Materials), as well as stationarity in winds and gas mixing ratios, are used to quality control the 10-minute flux data. The filtered
10-minute fluxes are further averaged to hourly and also six-hourly intervals to reduce random noise. See Yang et al. (2016a,
2016b) for further details on data processing, quality control, and measurements of momentum and sensible heat fluxes.
Horizontal wind speed measurements are corrected for flow distortion and adjusted to a neutral atmosphere at 10-m height (see
195 Supplementary Materials).

Mingxi Yang 2/8/19 10:18 AM
Deleted: m

2.2 Flux footprints

The theoretical flux footprint model of Kljun et al. (2004) predicts the upwind distance of maximum flux contribution
(X_{max}) and the distance of 90% cumulative flux contribution (X_{90}). The semi-diurnal tidal range at this location is large (up to 6
200 m during spring tide), effectively raising the EC measurement height above water at low tide and reducing it at high tide. For a
neutral atmosphere, the Kljun et al (2004) model estimates X_{max} and X_{90} to be approximately 0.4 and 1.1 km at the highest tide
and 0.6 and 1.6 km at the lowest tide. As described in more detail by Yang et al. (2016a), stable and unstable atmospheres are
predicted to increase and decrease X_{max} as well as X_{90} by a few tens of percent, respectively.

Mingxi Yang 2/11/19 10:51 AM
Deleted: .

Mingxi Yang 2/11/19 10:52 AM
Deleted: We combine th

Mingxi Yang 2/11/19 10:52 AM
Deleted: e measurement height above mean sea level (18 m) with tidal height variations and

Mingxi Yang 2/11/19 10:52 AM
Deleted: (run in a neutral atmosphere) to

Mingxi Yang 2/11/19 10:53 AM
Deleted: as

In this paper we focus on air-water transfer over two different wind sectors. When winds are from the southwest (180-
205 240°), the eddy covariance flux footprint is over open water with a depth of approximately 20 m at X_{max} . When winds are from
the northeast (45-80°), the footprint is over the fetch-limited Plymouth Sound (approximately 5-6 km wide), which is ~ 10 m
deep and more influenced by the outflow of the Tamar estuary (Siddorn et al. 2003; Uncles et al. 2015). See Supplementary
Materials Figure S1 for a map of the site and the approximate flux footprints.

Thomas Bell 2/14/19 11:33 AM
Deleted: of

Mingxi Yang 1/24/19 10:14 AM
Deleted: s

Mingxi Yang 1/24/19 10:14 AM
Deleted: .

Thomas Bell 2/14/19 11:34 AM
Deleted: upwind distance of

Mingxi Yang 2/11/19 10:55 AM
Deleted: significantly

Mingxi Yang 2/8/19 10:17 AM
Deleted: m

210 **2.3 Seawater measurements**

We used the Plymouth Marine Laboratory's Research Vessels (RV) *Quest* and *Plymouth Explorer* to study the spatial heterogeneity in this coastal environment. Underway seawater measurements on the *Quest* from ~3 m depth include pCO₂ (Kitidis et al. 2012), salinity, temperature, chlorophyll, and dissolved oxygen. As a part of the Western Channel Observatory sampling program (<http://www.westernchannelobservatory.org.uk>), the *Quest* made approximately weekly trips to the L4 station (50° 15.0' N, 4° 13.0' W; ~6 km south of PPAO) and fortnightly trips to the E1 station (50° 02.6' N, 4° 22.5' W; ~20 km south of PPAO). These visits were always during the daytime. On the way back to Plymouth from L4 and E1, the *Quest* often idled at about 600 m to the south/southwest of PPAO for approximately 10 minutes, enabling the collection of underway measurements within the open water flux footprint of PPAO. The ship also passed through the Plymouth Sound flux footprint of PPAO en route back into port.

220 Seawater samples were taken at the L4 station from a CTD rosette. For CH₄ analysis, discrete seawater samples were collected directly into 500ml borosilicate bottles from Niskin bottles using clean Tygon tubing. Sample bottles were overfilled by three times their volume to eliminate air bubbles, poisoned with 100µl of a saturated mercuric chloride solution and returned to the laboratory where they were transferred to a water bath at 25°C and temperature equilibrated for a minimum of one hour before analysis. Samples were analysed for CH₄ by single-phase equilibration gas chromatography using a flame ionisation detector similar to that described by Upstill-Goddard et al. (1996). Samples were typically analysed at PML within 2 weeks of collection and calibrated against three certified (±5%) reference standards (Air Products Ltd), which are traceable to NOAA WMO-N2O-X2006A.

Thomas Bell 2/14/19 11:36 AM
Deleted: into 500ml borosilicate bottles

230 The other PML vessel (a hard-bottomed RHIB, *Plymouth Explorer*) was used to occasionally sample the estuary Tamar from the upper freshwater section near Gunnislake to the lower saltwater section near the Plymouth Sound in 2017 and 2018. This is a part of the NERC-funded LOCATE (Land Ocean Carbon Transfer; <http://www.locate.ac.uk>) research programme. Discrete seawater samples were collected at stations from the near surface into 500ml borosilicate bottles with care taken to eliminate air bubbles. Analysis for dissolved CH₄ was performed as described above.

3 Results

235 Over the one year of measurements, variability in physical parameters was large: wind speed at times exceeding 20 m s⁻¹, and seawater temperature varying between about 7 and 18°C. Chlorophyll a concentration ranged between about 0.2 and 5 mg m⁻³, with generally higher values from late spring to early autumn than in winter. Time series of ancillary data (meteorological parameters, Tamar river flow, and surface ocean physical and biogeochemical parameters) are shown in the Supplementary Materials (Figures S3 to S6). This region can be roughly characterised by a windier, wetter autumn and winter, and a calmer,

Mingxi Yang 2/1/19 4:32 PM
Deleted: and biogeochemical
Mingxi Yang 2/1/19 4:33 PM
Deleted: ,
Mingxi Yang 2/1/19 4:33 PM
Deleted: and c
Mingxi Yang 2/1/19 4:33 PM
Deleted: ing
Mingxi Yang 2/1/19 4:33 PM
Deleted: .
Mingxi Yang 2/8/19 10:17 AM
Deleted: m
Mingxi Yang 2/11/19 10:58 AM
Deleted: generalized

240 dryer spring and summer. Southwesterly winds off the Atlantic Ocean (annual mean wind speed of $\sim 8 \text{ m s}^{-1}$) occurred more frequently in the winter months, resulting in higher precipitation rates and greater riverine discharge. During these conditions, the temperatures in the sea surface and air were similar throughout the entire year, resulting in fairly small air-sea temperature differences and modest sensible heat fluxes (monthly average of typically -20 to 20 W m^{-2}). As a result, the atmosphere was often close to neutral stability with a monthly mean Monin-Obukhov stability parameter (z/L) between -1.7 and 0.04 .

Mingxi Yang 2/11/19 10:59 AM
Deleted: southwesterly

Thomas Bell 2/14/19 11:38 AM
Deleted: generally

Thomas Bell 2/14/19 11:38 AM
Deleted: (

Thomas Bell 2/14/19 11:39 AM
Deleted:)

245 3.1 CH₄ fluxes

Figure 1 shows the air-sea flux of CH₄ over the one-year measurement period. Flux data gaps are due to either wind direction outside of air-water sectors or instrumental failure. As shown by Yang et al. (2016b), under ideal conditions (moderate winds and steady atmospheric mixing ratio) the random uncertainty in the LGR CH₄ flux due to band-limited instrumental noise is on the order of 0.02 and $0.01 \text{ mmol m}^{-2} \text{ d}^{-1}$ for one-hour average and six-hour average, respectively. In comparison, the standard deviation (σ) in the six-hour averaged CH₄ flux for the open water sector is about $0.05 \text{ mmol m}^{-2} \text{ d}^{-1}$ (computed over the entire year). Thus much of the rapid temporal fluctuations in the measured CH₄ flux appear to be driven by natural variability

Mingxi Yang 1/24/19 10:26 AM
Deleted: noise

(due to changes in watermass within the flux footprint, wind, etc.), rather than due to random instrumental noise. CH₄ flux from the open water sector at times shows semi-diurnal (tidal) variability (consistent with Yang et al. 2016a), which is discussed in Section 3.3. We note that most of what appear to be negative CH₄ fluxes are within the uncertainty of the EC measurement, and are not significantly different from zero.

Mingxi Yang 2/11/19 11:00 AM
Deleted: measurement

Mingxi Yang 2/11/19 11:10 AM
Deleted:

Mingxi Yang 2/11/19 11:10 AM
Deleted: The semi-diurnal variability in

Mingxi Yang 2/11/19 11:11 AM
Deleted: as a result of the tide is

Mingxi Yang 2/11/19 11:11 AM
Deleted: .

Thomas Bell 2/14/19 11:40 AM
Deleted: statistically

To more clearly illustrate the seasonal variability, the means and 25/75 percentiles of the six-hour averaged CH₄ fluxes are computed in monthly intervals (Figure 2). CH₄ flux was consistently positive, indicating emission of CH₄ from these coastal waters. The only exception was during the months of December and January, when CH₄ flux was near zero. The annual mean CH₄ flux from the open water sector was 0.047 (standard error, or SE of 0.008) $\text{mmol m}^{-2} \text{ d}^{-1}$ when computed from monthly

Mingxi Yang 1/24/19 10:16 AM
Deleted: The second approach has a temporal bias because t

Thomas Bell 2/14/19 11:41 AM
Deleted: The frequency of appropriate w

Thomas Bell 2/14/19 11:42 AM
Deleted: is not the same during

mean fluxes and 0.039 (SE of 0.003) $\text{mmol m}^{-2} \text{ d}^{-1}$ when directly computed from six-hour mean fluxes. Wind directions that enable air-sea flux measurements did not occur with the same frequency throughout the year. For example, southwesterly winds were less frequent in spring (30% of time in March-May 2016) than in winter (60% of time in January 2016). Thus annual averages computed directly from the six-hour fluxes are more heavily weighted by the periods with a high proportion of valid flux measurements. In contrast, annual averages computed from the monthly means give more equal weight to all the months.

Mingxi Yang 1/24/19 10:17 AM
Deleted:

The annual mean CH₄ flux here is largely consistent with previous coastal estimates (e.g. Upstill-Goddard et al. 2016) and roughly an order of magnitude greater than estimates of CH₄ flux for the open ocean (e.g. Forster et al. 2009).

Mingxi Yang 1/24/19 10:18 AM
Deleted: Thus the annual means computed directly from six-hour fluxes are skewed by periods of extended measurements (although the results of the two approaches are not significantly different, with $p > 0.05$).

Mingxi Yang 1/24/19 10:19 AM
Deleted: d

CH₄ flux from the Plymouth Sound sector was noticeably higher than flux from the open water sector, with an annual mean of about 0.108 (SE of 0.026) $\text{mmol m}^{-2} \text{ d}^{-1}$. This enhancement in the flux was particularly noticeable at times of high

270 rainfall and river discharge rate, with fluxes over $0.2 \text{ mmol m}^{-2} \text{ d}^{-1}$ in February 2016. During the dry summer months of 2016 (May and June), CH_4 fluxes from the two wind sectors were comparable. Northerly winds occurred only 7.4% of the time overall during the one-year study period. Thus the seasonal variability in CH_4 emission from the Plymouth Sound is less well represented than emission from the open water sector.

We briefly compare our measured fluxes with existing estimates of riverine CH_4 emission. The 1-km^2 resolution UK National Atmospheric Emissions Inventory (NAEI, <http://naei.defra.gov.uk>) reports a natural CH_4 emission source of $0.17 \text{ mmol m}^{-2} \text{ d}^{-1}$ averaged over the area of the Plymouth Sound for year 2013. Our annual mean flux from the Plymouth Sound wind sector is about 64% of the NAEI estimate. Based on in situ measurements of dissolved CH_4 concentrations in six major UK estuaries, Upstill-Goddard et al. (2016) estimated CH_4 emissions of 4.3 Gg yr^{-1} for UK outer estuaries (using a total outer estuarine area of 1894 km^2). If we crudely assume that the Plymouth Sound is a representative outer UK estuary, scaling up our mean flux from this wind sector to the total outer estuarine area of 1894 km^2 yields an annual flux of 1.2 Gg yr^{-1} . This is lower than the estimate from Upstill-Goddard et al. (2016), likely because according to their survey the CH_4 saturation from the Tamar is fairly low compared to some of the other major UK estuaries. The UK has a 12429 km coastline. If the PPAO open water footprint is representative of the nearest 1.4 km (i.e. typical X_{90} of our fluxes, see Section 2.2) of the UK coast, our measurements crudely extrapolate to a total CH_4 flux of 4.8 Gg yr^{-1} for the UK coastal seas. This order-of-magnitude estimate is made from a mean flux of $0.047 \text{ mmol m}^{-2} \text{ d}^{-1}$ and a total coastal sea area of 12429 km by 1.4 km . We are not able to use PPAO EC flux data to provide estimates for CH_4 emission from the inner estuary, where fluxes are likely higher per unit area (Upstill-Goddard et al. 2016).

Mingxi Yang 2/1/19 4:26 PM
Deleted:

Thomas Bell 2/14/19 11:49 AM
Deleted: a

Mingxi Yang 2/11/19 11:04 AM
Deleted: in

Mingxi Yang 2/11/19 11:05 AM
Deleted: might be the highest

3.2 CO_2 fluxes

290 Figure 3 shows the air-sea flux of CO_2 over the one-year measurement period. The random uncertainty in the LGR CO_2 flux, estimated from the band-limited instrumental noise, is on the order of 4 and $2 \text{ mmol m}^{-2} \text{ d}^{-1}$ for one-hour average and six-hour average measurements, respectively (Yang et al. 2016b). The standard deviation in the six-hour averaged CO_2 flux for the open water sector is about $20 \text{ mmol m}^{-2} \text{ d}^{-1}$ (computed over the entire year), substantially greater than the random uncertainty due to instrumental noise. The rapid temporal fluctuations in CO_2 flux are likely to be driven by variability in winds as well as variability in seawater pCO_2 . The latter is unlikely to be fully captured by weekly or monthly seawater sampling.

Mingxi Yang 1/24/19 10:25 AM
Deleted: noise

Mingxi Yang 2/1/19 4:40 PM
Formatted: Font:10 pt

Mingxi Yang 2/1/19 4:40 PM
Formatted: Font:10 pt

Mingxi Yang 2/1/19 4:40 PM
Formatted: Font:10 pt

Mingxi Yang 2/1/19 4:40 PM

Deleted: Ambient variability (in e.g. dissolved concentrations) largely drives the rapid temporal fluctuations in CO_2 flux, which is unlikely to be fully captured by weekly or monthly seawater sampling.

Thomas Bell 2/14/19 11:57 AM
Deleted: here

The means and 25/75 percentiles of the six-hour averaged CO_2 fluxes are computed in monthly intervals (Figure 4). CO_2 flux from the open water sector was generally from sea-to-air in autumn and winter (up to $37 \text{ mmol m}^{-2} \text{ d}^{-1}$) and from air-to-sea in spring and early-summer (as much as $-26 \text{ mmol m}^{-2} \text{ d}^{-1}$). The seasonality in CO_2 flux is consistent with seawater pCO_2 observations by Litt et al. (2010) and Kitidis et al. (2012) from the same region, and is partly driven by biology. Figure S7

300 | shows that in situ pCO₂ generally decreased with increasing chlorophyll a concentrations during this annual study. CO₂ flux from the Plymouth Sound sector appeared to be more positive than from the open water sector in some months.

Mingxi Yang 2/1/19 4:34 PM
Deleted:
Mingxi Yang 2/1/19 4:35 PM
Formatted: Subscript

A three-day time series of CO₂ flux from July 2016 is shown in Figure 5A. Winds were consistently from the southwest during this period, varying from about 3 to 12 m s⁻¹ (Figure 5C). CO₂ flux during this period was clearly different between day (mean of about -13 mmol m⁻² d⁻¹) and night (mean of about +9 mmol m⁻² d⁻¹). with an overall mean of about -2 mmol m⁻² d⁻¹.

305 | Daytime pCO₂ measurements on the *Quest* from the 7th and 12th of July imply a ΔpCO₂ of about -40 μatm and a net flux into the water. The EC flux is consistent in sign with ΔpCO₂ during the day, but not at night. The computed transfer velocity of CO₂ ($K_{CO_2,660}$, see Section 5) using the linearly interpolated daytime pCO₂ measurements yielded positive values during the day (as expected), but negative values at night (which is not physically possible). The positive CO₂ flux at night is unlikely to be caused by a nocturnal flux footprint that overlaps with land because both sensible heat and CH₄ fluxes are consistent with air-sea exchange. The air temperature was about 1.2 °C warmer than the water temperature, implying a slightly stable atmosphere and a flux footprint that extends a few tens of percent further upwind from the PPAO site than in a neutral atmosphere (Kljun et al. 2004). The measured sensible heat flux averaged -9 W m⁻² and showed little diurnal variability. Similarly, CH₄ flux was positive (sea-to-air) and did not vary with the time of day.

Mingxi Yang 1/24/19 10:31 AM
Formatted: Superscript
Mingxi Yang 1/24/19 10:31 AM
Deleted: on the *Quest*
Mingxi Yang 1/24/19 10:31 AM
Formatted: Superscript

310 | The most likely reason for the negative nighttime $K_{CO_2,660}$ is that seawater pCO₂ varied diurnally, probably due to a combination of biological and dynamical processes. Wind speed was generally higher at night during these few days and the measured fluxes imply that the actual ΔpCO₂ (see next sections for this calculation) changed from about -40 μatm during the day to about 15 μatm at night. Similar diurnal cycles (with slightly reduced magnitudes) have been observed in pCO₂ measurements in the western English Channel by Marrec et al. (2014) and Litt et al. (2010). We note that a daytime CTD cast on 12th July 2016 showed a mixed layer at the L4 station of only ~10 m depth. Entrainment of deeper water could contribute towards a higher surface pCO₂ at night. A diurnal cycle in CO₂ flux was not obvious during times of expected evasion (sea-to-air flux). These periods of positive CO₂ flux occurred in autumn and winter when biological productivity was low and the water column was mixed to the bottom.

Mingxi Yang 2/1/19 11:15 AM
Deleted: , consistent with the air-sea temperature difference

320 | The annual mean CO₂ flux was 3.9 (SE of 4.9) mmol m⁻² d⁻¹ when computed from monthly mean fluxes (Figure 4) and 1.3 (SE of 1.3) mmol m⁻² d⁻¹ when directly computed from six-hour mean fluxes. If we sub-sample our EC observations to the period of 10:00–16:00 UTC only, the annual mean CO₂ flux becomes 2.5 (SE of 4.9) mmol m⁻² d⁻¹ when computed from monthly mean fluxes and -1.0 (SE of 2.2) mmol m⁻² d⁻¹ when directly computed from six-hour mean fluxes. These results highlight the value of continuous flux measurements and suggest that CO₂ flux estimates based only on daytime pCO₂ measurements may be biased towards greater seawater net uptake for coastal environments such as the western English Channel.

Thomas Bell 2/14/19 12:00 PM
Deleted: on
Thomas Bell 2/14/19 12:00 PM
Deleted: high frequency

Thomas Bell 2/14/19 12:02 PM
Deleted: our

330 3.3 Implied seawater CH₄ concentrations and saturations from fluxes

We wish to disentangle the processes that control the gas transfer velocity (*K*) from the processes that control the air-water concentration difference (ΔC). We first compute the implied seawater CH₄ and CO₂ concentrations from the eddy covariance fluxes by assuming a parameterization of the gas transfer velocity. Here the sea-minus-air concentration difference

335 (ΔC) is computed by dividing the EC flux by the wind speed-dependent *K_w* from Nightingale et al. (2000) (adjusted for ambient Schmidt number by the exponent of -0.5). Adding the atmospheric concentration to ΔC yields the implied seawater concentration. At low wind speeds, both the flux and *K* trend towards zero. To avoid excessive noise from dividing one small number by another, implied seawater concentrations at wind speeds lower than 5 m s⁻¹ are discarded. Note that we apply the Nightingale et al. (2000) wind speed-based *K* parameterization here largely because it is commonly used and lies between the very strong and the very weak wind speed dependent relationships. ↓

340 Implied seawater CH₄ concentration from the open water flux footprint ranges from about 3 to 26 nM on a monthly interval (mean of 14 nM; see Figure 6). It is often convenient to represent dissolved CH₄ as a saturation level relative to the atmosphere (saturation = CH_{4w} / (CH_{4a} • sol_{CH4}) • 100, where CH_{4w} and CH_{4a} are waterside and airside concentrations; sol_{CH4} is

345 the CH₄ solubility from Wanninkhof 2014). CH₄ saturations are shown in Figure S8. The lowest implied CH₄ concentration occurred in winter and corresponded to a saturation level close to 100%. The highest implied CH₄ concentration was from April to November, with an average saturation level of about 600%. The temperature and salinity-dependent solubility of CH₄ varies by only ~14% from summer to winter at this location. The seasonal variability in CH₄ concentration and saturation is thus more due to changing biological processes (methanogenesis and/or CH₄ oxidation) and hydrodynamics than due to dissolution (i.e. seasonal temperature changes). For the Plymouth Sound flux footprint, the implied concentration ranges from 9 to 99 nM (mean of 37 nM, corresponding to about 1200% saturation), with the highest values in late winter and early spring. These implied concentrations and saturations are compared with nearby dissolved CH₄ measurements in Section 4.3. We note that any contribution to CH₄ emission from ebullition would have been included in the EC flux measurements, potentially resulting in higher implied seawater CH₄ concentrations than the measured dissolved concentrations.

350 Based on measurements from April to June 2015 at PPAO, Yang et al. (2016a) observed that CH₄ flux from the open water flux footprint varied with the timing of the tide, but not with the tide height. Specifically, CH₄ flux tended to be the highest during the first ~4 hours after low water. This was attributed to the outflow of a lower salinity surface layer from the Tamar river during rising tide around the Penlee headland. A subtle semi-diurnal variability in CH₄ flux can be seen in Figure 5B, where adjacent six-hour mean fluxes always alternated between higher and lower values during these few days. The same general tidal pattern is apparent over an annual cycle in the implied saturation level of CH₄. On average, the implied CH₄ saturation within the open water sector was about 40% higher during rising tide than during falling tide.

Mingxi Yang 2/11/19 11:25 AM
Deleted: transfer velocity

Mingxi Yang 1/24/19 10:34 AM
Deleted:

Mingxi Yang 1/24/19 10:37 AM
Formatted: Font:Italic

Mingxi Yang 1/24/19 10:38 AM
Deleted: a small *K*

Thomas Bell 2/14/19 12:56 PM
Comment: Not sure you need this statement?

Thomas Bell 2/14/19 12:06 PM
Deleted: In Section 5 we compute the actual gas transfer velocity from measured the fluxes and ΔpCO_2 , which is then compared against Nightingale et al. (2000) and other *K* parameterizations.

Mingxi Yang 1/24/19 11:06 AM
Deleted: as a function of temperature and salinity

Thomas Bell 2/14/19 12:12 PM
Deleted: This

Thomas Bell 2/14/19 12:12 PM
Formatted: Subscript

Thomas Bell 2/14/19 12:12 PM
Deleted: is

Thomas Bell 2/14/19 12:59 PM
Deleted: of

Thomas Bell 2/14/19 1:00 PM
Deleted: Thus t

Thomas Bell 2/14/19 12:59 PM
Deleted: seems more

Mingxi Yang 2/16/19 6:44 PM
Deleted: likely

Thomas Bell 2/14/19 12:59 PM
Deleted: to be

Mingxi Yang 2/11/19 11:55 AM
Deleted: We compare t

Thomas Bell 2/14/19 5:47 PM
Deleted: actual

Thomas Bell 2/14/19 5:47 PM
Deleted: and estuary

3.4 Implied seawater CO₂ concentrations and saturations from fluxes

Monthly averaged implied seawater CO₂ concentrations from the two flux footprints are shown in Figure 7. The greatest supersaturation in CO₂ is observed in late autumn in the open water sector, with values exceeding 500 μatm. The greatest undersaturation in CO₂ is observed in late spring and early summer, coinciding with an increase in chlorophyll a concentration at the nearby L4 station (Figure S6). Average implied pCO₂ within the Plymouth Sound is 32 μatm higher than pCO₂ within the open water flux footprint during months when fluxes were available for both wind sectors. This difference between the outer estuary and the coastal seas qualitatively agree with previous observations of supersaturated pCO₂ in the river Tamar (Frankignoulle et al. 1998).

Average implied seawater CO₂ saturation for the open water sector over the entire year is about 100% in the daytime and slightly higher at night (Figure 8). In contrast, a marked diurnal variability in CO₂ saturation is observed for the Plymouth Sound sector, with a higher saturation level at night than during the day. Compared to the open water sector, Plymouth Sound is more sheltered and influenced by the Tamar outflow, thus subject to greater near surface stratification and possibly different biological processes. The diurnal variability we observed is important in the context of estuarine CO₂ (and carbonate system) observations that are only carried out during daytime. Our findings suggest that such a daytime-only monitoring strategy may underestimate estuarine pCO₂ and by extension the efflux of CO₂ to the atmosphere.

Semi-diurnal variability as a result of the tide is not obvious in the CO₂ flux or the implied CO₂ saturation. This suggests that the influence of the Tamar estuary on pCO₂ within the PPAO flux footprints is limited, consistent with the in situ pCO₂ measurements (see Section 4.2). The diurnal variability in pCO₂ might also be confounding any semi-diurnal tidal signal.

It is worth noting that our implied seawater GHG concentrations would be overestimated if the in situ gas transfer velocity were higher than the wind speed dependent parameterization of Nightingale et al. (2000). For example, bottom-driven turbulence could enhance the gas transfer velocity (e.g. Borges et al. 2004; Ho et al. 2014). We discuss the effects of depth and current velocity on gas exchange in Section 5.4.

4 Spatial variability in seawater concentrations

The estimation of the gas transfer velocity *K* requires concurrent measurements of flux and seawater concentration within the flux footprint. Seawater pCO₂ was typically measured once or twice a week, and only some of the measurements were made within the PPAO flux footprints. Observations of dissolved CH₄ were even scarcer and unfortunately none of them were made within the flux footprints. In order to relate the high frequency EC fluxes to the discrete in situ dissolved gas concentrations, we first evaluate the spatial homogeneity of our study region using the shipboard seawater measurements.

Thomas Bell 2/14/19 5:48 PM
 Deleted: For the open water sector, t...On a... during months when fluxes were available for both wind sectors,...

Mingxi Yang 2/16/19 6:50 PM
 Deleted: These results

Thomas Bell 2/14/19 5:50 PM
 Deleted: as might be expected given

Thomas Bell 2/14/19 5:51 PM
 Deleted: d...over the entire year, ... [5]

Mingxi Yang 2/11/19 11:35 AM
 Deleted: was ... was ... [6]

Thomas Bell 2/14/19 5:51 PM
 Deleted: the

Thomas Bell 2/14/19 5:52 PM
 Deleted: those

Mingxi Yang 2/1/19 4:42 PM
 Formatted: Font:10 pt

Mingxi Yang 2/1/19 4:42 PM
 Formatted ... [7]

Mingxi Yang 2/1/19 4:42 PM
 Deleted: The diurnal variability we observed is important in the context of estuarine CO₂ (and carbonate system) observations that are predominantly carried out during daytime when sampling and navigation are easier.

Thomas Bell 2/14/19 5:52 PM
 Deleted: observations

Thomas Bell 2/14/19 5:53 PM
 Deleted: Interestingly, a s

Mingxi Yang 2/1/19 4:43 PM
 Formatted ... [8]

Mingxi Yang 2/1/19 4:43 PM
 Deleted: This could be because the influence of Tamar estuary on the PPAO flux footprint is less in terms of pCO₂ (e.g. due to the already large burden of carbonate and bicarbonate in seawater), and more on physical and biogeochemical processes.

Thomas Bell 2/14/19 5:54 PM
 Deleted: actual

Mingxi Yang 1/24/19 10:50 AM
 Deleted: is

Thomas Bell 2/14/19 5:54 PM
 Deleted: Typically

Mingxi Yang 2/1/19 4:04 PM
 Deleted: dissolved

Thomas Bell 2/14/19 5:54 PM
 Deleted: s

Mingxi Yang 2/11/19 11:41 AM
 Deleted: Measurements

Thomas Bell 2/14/19 5:55 PM
 Deleted: Thus i...with ... [9]

365

370

375

380

385

4.1 Variability in salinity

Previous modeling studies (Siddorn et al. 2003; Uncles et al. 2015) show that freshwater discharge from the Tamar estuary mainly flows along the western edge of Plymouth Sound and bends around PPAO towards the southwest. In Figure 9, we compare underway salinity measured within the PPAO flux footprints (open water to the southwest as well as the Plymouth Sound to the northeast) with near-coincidental *Quest* observations at the L4 station (6 km south of PPAO). Compared to the L4 station, mean salinity was 1.2 ‰ and 2.1‰ lower in the open water and Plymouth Sound footprints, respectively. Periods of low salinity both within the footprints and at L4 coincided with the greatest outflow from the Tamar estuary. These observations indicate that the Tamar outflow influences this entire region, unsurprisingly water is generally fresher within the Plymouth Sound than in the open water flux footprint. We next assess how much this riverine outflow affects the seawater CO₂ and CH₄ concentrations within the flux footprints of PPAO and thus the measured fluxes.

4.2 Variability in seawater pCO₂

The underway in situ pCO₂ measured within the PPAO flux footprints is compared with near-coincidental observations from the *Quest* at the L4 station in Figure 10. The highest pCO₂ measured both within the footprints and at L4 occurred at times of large riverine discharge. This is seemingly consistent with a Tamar influence (e.g. Frankignoulle et al. 1998) but may also be driven by the seasonality in pCO₂ (Kitidis et al. 2012). As shown in Figures S9-S11 of the Supplementary Materials, fast responding sea surface temperature and chlorophyll a were not noticeably different between the flux footprints and L4, while dissolved oxygen was slightly lower within the footprints. pCO₂ measurements within both flux footprints were very similar to pCO₂ at the L4 station. The apparent agreement for pCO₂ could be in part because the measurement with a ‘shower head’ equilibrator has an integration time of 8 minutes (Kitidis et al., 2012). The *Quest* usually only idled for ~10 minutes within the open water flux footprint and did not idle within the Plymouth Sound footprint. It is possible that the pCO₂ spatial variability is under-represented in the pCO₂ measurements due to the fairly slow response time of the equilibrator.

In situ pCO₂ measurements from the Plymouth Sound footprint and from the open water footprint (plus L4, since they are not distinguishable) are shown in Figure 7, along with the 100% saturation value with respect to the atmosphere. Implied pCO₂ for the open water sector and the in situ pCO₂ within the open water footprint (plus L4) broadly agree. Constraining the implied pCO₂ estimate to during the day further improves the agreement with the in situ pCO₂ measurements (also daytime only, see Section 3.2). These observations suggest that the direct impact of the Tamar outflow on pCO₂ in the open water flux footprint at PPAO is fairly small relative to the air-sea concentration difference as well as other sources of variability.

- Thomas Bell 2/14/19 5:55 PM
Deleted: the
- Thomas Bell 2/14/19 5:55 PM
Deleted: est
- Mingxi Yang 2/11/19 11:42 AM
Deleted: , and
- Mingxi Yang 2/11/19 11:43 AM
Deleted: dissolved
- Mingxi Yang 2/11/19 4:04 PM
Deleted: dissolved
- Thomas Bell 2/14/19 5:56 PM
Deleted: the
- Mingxi Yang 2/11/19 11:43 AM
Deleted: were observed
- Thomas Bell 2/14/19 6:00 PM
Deleted: is
- Thomas Bell 2/14/19 6:00 PM
Deleted: primarily
- Mingxi Yang 2/11/19 4:47 PM
Deleted: Unlike salinity, the limited
- Mingxi Yang 2/11/19 10:15 AM
Deleted: .
- Mingxi Yang 2/11/19 4:47 PM
Deleted: As shown in Figures S7-S9 of the Supplementary materials, fast responding sea surface temperature and chlorophyll a were not noticeably different between the footprints and L4, whi [... [10]
- Thomas Bell 2/14/19 6:00 PM
Deleted: is
- Thomas Bell 2/14/19 6:00 PM
Formatted: Subscript
- Thomas Bell 2/14/19 6:01 PM
Deleted: pCO₂
- Thomas Bell 2/14/19 6:01 PM
Deleted: Thus i
- Thomas Bell 2/14/19 6:01 PM
Formatted: Subscript
- Thomas Bell 2/14/19 6:01 PM
Deleted: was
- Thomas Bell 2/14/19 6:01 PM
Deleted:
- Thomas Bell 2/14/19 6:01 PM
Deleted: some of
- Mingxi Yang 2/11/19 10:10 AM
Deleted: Limiting
- Thomas Bell 2/14/19 6:02 PM
Deleted: only
- Thomas Bell 2/14/19 6:02 PM
Deleted: time
- Mingxi Yang 2/11/19 11:47 AM
Deleted: only further
- Thomas Bell 2/14/19 6:02 PM
Deleted: , which were made only during the day
- Mingxi Yang 2/11/19 10:13 AM
Deleted: s

4.3 Variability in dissolved CH₄

Dissolved CH₄ was not measured within either of the PPAO flux footprints. Here we look at how our implied CH₄ concentrations from the fluxes compare to measurements of dissolved CH₄ in the river Tamar and at L4. On four separate days in April 2017, July 2017, January 2018, and April 2018, the *Plymouth Explorer* was used to sample dissolved CH₄ from the upper reaches of the Tamar to the seaward end during a falling tide. CH₄ in the estuarine part of the Tamar in general correlated inversely with salinity (Figure 11). For example, in April 2017 the CH₄ concentration was 491 nM at a salinity of 4.7 (upper Tamar), 274 nM at a salinity of 29.3 (lower Tamar), 15 nM at a salinity of 34.2 (at the mouth of the Tamar in the Plymouth Sound), and 2.4 nM at a salinity of 35.2 (L4). These correspond to CH₄ saturation values of ~10000% at a salinity of 29.3 and ~600% at a salinity of about 34.2 during this transect. The highest CH₄ concentration was measured in July 2017 following heavy rainfall, while relatively low CH₄ were observed in January and April 2018. The measurements from the river Tamar in 2001 by Upstill-Goddard et al. (2016) are within the range of these more recent transects. Long-term observations of surface dissolved CH₄ at L4 between October 2013 and July 2017 indicate a mean ($\pm\sigma$) saturation of $123 \pm 60\%$.

The implied seawater CH₄ concentrations for the Plymouth Sound sector (Section 3.3) are within range of the in situ measurements in the lower Tamar and near the Plymouth Sound. In contrast, implied seawater CH₄ concentrations for the open water sector are on average about four times higher than the in situ measurements at L4. Thus, while pCO₂ within the open water flux footprint of the PPAO agrees reasonably well with pCO₂ at L4, this is very likely not the case for CH₄. The differences in salinity (Figure 9) and in dissolved oxygen (Figure S11) indicate that the water masses within the open water flux footprint and at L4 are not identical.

Two features of the CH₄ concentration vs. salinity relationship are particularly relevant for the interpretation of our CH₄ flux measurements. First, the variability in dissolved CH₄ concentration in the Tamar is very large. For example, CH₄ concentration at a salinity of about 30 varies by a factor of 40 during the six transects. The interannual variation in CH₄ concentration during April in 2001, 2017 and 2018 at this salinity is a factor of 12. Secondly, the horizontal gradient in CH₄ concentration near the mouth of the Tamar estuary is very steep. Observations from April and July 2017 show a slope of between -20 and -50 nM per salinity unit. Salinity within the open water flux footprint varied between 32.2 and 35.2 between September 2015 and August 2016, while salinity within the Plymouth Sound flux footprint varied between 32.0 and 35.1. The large range in CH₄ concentration and the strong and variable CH₄ vs. salinity relationship make any salinity-based prediction of dissolved CH₄ concentration within the flux footprints highly uncertain. Thus we focus on estimating the transfer velocity of CO₂, but not CH₄ in the next section.

- Thomas Bell 2/14/19 6:03 PM
Deleted: of PPAO
- Mingxi Yang 2/16/19 6:53 PM
Deleted: and
- Thomas Bell 2/14/19 6:04 PM
Deleted: of the River Tamar
- Thomas Bell 2/14/19 6:04 PM
Deleted: for dissolved CH₄ concentration
- Thomas Bell 2/14/19 6:04 PM
Deleted: As shown in Figure 11,
- Mingxi Yang 1/24/19 11:17 AM
Deleted: measured
- Mingxi Yang 1/24/19 11:18 AM
Deleted: were
- Mingxi Yang 1/24/19 11:19 AM
Deleted: with saturation of 6040% in the lower Tamar. In contrast,
- Mingxi Yang 2/16/19 6:54 PM
Deleted: sduring
- Mingxi Yang 1/24/19 10:58 AM
Deleted: 9
- Mingxi Yang 1/24/19 11:23 AM
Deleted: s
- Thomas Bell 2/14/19 6:10 PM
Deleted: Even for measurements in the same month (April 2001, 2017, 2018), t
- Thomas Bell 2/14/19 6:10 PM
Deleted: s
- Thomas Bell 2/14/19 6:10 PM
Deleted: by
- Thomas Bell 2/14/19 6:10 PM
Deleted: about
- Thomas Bell 2/14/19 6:10 PM
Deleted: to
- Thomas Bell 2/14/19 6:11 PM
Deleted: Between September 2015 and August 2016, s

5 Estimation of the CO₂ gas transfer velocity

150 The implied $p\text{CO}_2$ from EC fluxes and in situ measured $p\text{CO}_2$ agree quite well over the annual cycle for the open water sector (Figure 7), suggesting that the use of the wind speed dependent transfer velocity parameterization of Nightingale et al. (2000) is largely reasonable in the mean. The variability in the implied $p\text{CO}_2$ (as indicated by the 25/75 percentiles), however, is sometimes greater than the variability in the in situ $p\text{CO}_2$. In this section, we estimate the time-varying CO_2 gas transfer velocity (K_{CO_2}) and examine its variability and possible controls.

Mingxi Yang 2/16/19 6:55 PM
Deleted: monthly

155 K_{CO_2} is computed as $\text{Flux} / \Delta p\text{CO}_2 / \text{sol}_{\text{CO}_2}$, where sol_{CO_2} is the solubility in CO_2 . As shown in the previous section, $p\text{CO}_2$ measured from the open water flux footprint of PPAO is comparable to near-coincidental measurements at L4. Thus to estimate K_{CO_2} for the open water sector, we combine $p\text{CO}_2$ measurements from the open water footprint with the more numerous measurements at L4. To estimate K_{CO_2} for the Plymouth Sound sector, only $p\text{CO}_2$ measurements from that footprint are used. We linearly interpolate these seawater $p\text{CO}_2$ measurements to the times of the hourly CO_2 flux measurements. Interpolation

Thomas Bell 2/14/19 6:13 PM
Deleted: f

Mingxi Yang 2/12/19 2:37 PM
Deleted: PPAO

160 more than four days away from the nearest $p\text{CO}_2$ observations is discarded. We chose four days (ca. half a week) here such that the computed K_{CO_2} values are retained if made between weekly $p\text{CO}_2$ measurements. The interpolated $p\text{CO}_2$ is then combined with the measured atmospheric CO_2 mixing ratio at PPAO to yield the air-sea $p\text{CO}_2$ difference ($\Delta p\text{CO}_2$). To normalize for the effect of temperature, K_{CO_2} is further adjusted to the Schmidt number of 660 ($K_{\text{CO}_2,660} = K_{\text{CO}_2} \cdot (660/\text{Sc}_{\text{CO}_2})^{-0.5}$). The CO_2 solubility and Schmidt number as a function of temperature and salinity are taken from Wanninkhof et al. (2014). In order to minimize any bias in the computed $K_{\text{CO}_2,660}$ due to the interpolation of daytime only $p\text{CO}_2$ measurements (see Section 3.2), we discard the nighttime (20:00 to 08:00 UTC) $K_{\text{CO}_2,660}$ data during times of expected invasion (i.e. air-to-sea flux). The filtered hourly $K_{\text{CO}_2,660}$ data are then averaged into 6-hour bins to reduce random noise.

Thomas Bell 2/14/19 6:14 PM
Deleted: sandwiched

Thomas Bell 2/14/19 6:14 PM
Deleted: by

Thomas Bell 2/14/19 6:15 PM
Deleted: :

Thomas Bell 2/14/19 6:15 PM
Deleted: Both t

Thomas Bell 2/14/19 6:15 PM
Formatted: Subscript

Thomas Bell 2/14/19 6:15 PM
Deleted: of CO_2

5.1 Dependence of $K_{\text{CO}_2,660}$ on wind speed

170 $K_{\text{CO}_2,660}$ is plotted against the 10-m neutral wind speed (U_{10m}) in Figure 12, along with a 2nd order polynomial fit. We have retained $K_{\text{CO}_2,660}$ data here only when the absolute value of $\Delta p\text{CO}_2$ exceeded $20 \mu\text{atm}$. This threshold is chosen as a balance between minimizing errors and maximizing data retention. A higher $|\Delta p\text{CO}_2|$ threshold (e.g. $40 \mu\text{atm}$) does not obviously reduce the scatter in the $K_{\text{CO}_2,660}$ vs. wind speed relationship. Error bars in $K_{\text{CO}_2,660}$ are propagated from the standard errors in the fluxes. For the open water sector, $K_{\text{CO}_2,660}$ shows a significant non-linear increase with wind speed ($R^2 = 0.35$, $p < 0.0001$). The scatter in the $K_{\text{CO}_2,660}$ and wind speed relationship is likely due to a combination of random uncertainties in the flux measurement (Yang et al. 2016b) and variability in seawater $p\text{CO}_2$, not captured by the weekly measurements, as well as processes other than wind speed that affect gas exchange (see below). $K_{\text{CO}_2,660}$ for the Plymouth Sound sector will be discussed in Section 5.4 within the context of bottom-driven turbulence.

Mingxi Yang 2/12/19 2:41 PM
Deleted:

Mingxi Yang 1/24/19 11:28 AM
Deleted: in order to

Mingxi Yang 1/24/19 11:28 AM
Deleted: e

Thomas Bell 2/14/19 6:16 PM
Deleted: Further restricting data with a

Thomas Bell 2/14/19 6:16 PM
Deleted: to

Thomas Bell 2/14/19 6:16 PM
Deleted: relationship significant with

Mingxi Yang 1/24/19 11:30 AM
Deleted: measurement

Thomas Bell 2/14/19 6:17 PM
Deleted: ,

Mingxi Yang 1/24/19 11:30 AM
Deleted: ,

180 The mean of the $K_{CO_2,660}$ vs. wind speed relationship, as represented by the 2nd order polynomial fit, agrees (within a
95% confidence interval) with the widely-used relationship derived by Nightingale et al. (2000) using the dual tracer (³He/SF₆)
technique. We note that more recent parameterizations of the gas transfer velocity based on ³He/SF₆ and radiocarbon budgets
(Ho et al. 2006; Sweeney et al. 2007; Wanninkhof 2014) are largely similar to Nightingale et al. (2000). In moderate-to-high
winds, measured $K_{CO_2,660}$ increases with wind speed at a rate that is less than cubic – a power fit yields an exponent of 1.3. This
is generally consistent with other recent closed-path EC CO₂ transfer velocity measurements (Butterworth and Miller 2016, Bell
185 et al. 2017, Blomquist et al. 2017, and Landwehr et al. 2018).

At wind speeds less than ~5 m s⁻¹, measured $K_{CO_2,660}$ at the PPAO are sometimes elevated and might not be entirely
representative of air-sea transfer (Yang et al. 2016a). The EC friction velocity in the open water sector (see below and in Figure
S2) is also at times higher than expected at these low wind speeds. The atmosphere was often **more** unstable **at low** wind speeds
(z/L of ~ -1), in part because low winds occurred more frequently during the warmer months. The Kljun et al. (2004) model
190 predicts a flux footprint that is closer to the PPAO site during these conditions, such that the near shore environment (i.e. from
the mast to the water's edge) might have **some** influence on the fluxes. Furthermore, the double rotation method used for the
streamline correction of wind **may** be more uncertain at lower wind speeds. The planar fit method (Wilczak et al. 2001) **could** be
superior under these conditions and will be an area of investigation during future **analyses of PPAO flux data**.

195 5.2 Dependence of $K_{CO_2,660}$ on friction velocity

The friction velocity (u_*), a measure of air-sea total momentum transfer, is long thought to be a more direct
representation of the drivers of turbulence and gas exchange than wind speed (e.g. Csanady et al. 1990). This appears to be the
case especially for moderately soluble gases that are not significantly affected by bubble-mediated gas transfer, such as dimethyl
sulfide (Huebert et al. 2010; Yang et al. 2011). The relationship between $K_{CO_2,660}$ and the EC-derived u_* shows a slightly better
500 fit ($R^2 = 0.38$; Figure 13) than between $K_{CO_2,660}$ and U_{10n} ($R^2 = 0.35$). This is consistent with the idea that u_* is a more suitable
predictor of K than wind speed. The other benefit of relating $K_{CO_2,660}$ with u_* instead of U_{10n} is that the u_* measurement **may** be
less affected by flow distortion than the U_{10n} measurement (Landwehr et al. 2018).

The linear fit from Landwehr et al. (2018), derived from EC measurements of CO₂ flux in the Southern Ocean, is also
shown **in Figure 13**. Compared to Landwehr et al. (2018), measurements at PPAO are similar **at moderate** u_* values. At high u_*
505 values (**strong** winds), our estimates of $K_{CO_2,660}$ increase with a greater power. Blomquist et al. (2017) demonstrated that waves
play a role in the open ocean air-sea exchange of CO₂ at high wind speeds and we expect waves to also influence u_* (e.g. Edson
et al. 2013). Waves shoal and steepen when they approach **shallow water at the coast** and generally break more frequently than

Mingxi Yang 2/12/19 2:45 PM

Deleted: when the

Mingxi Yang 2/12/19 2:45 PM

Deleted: were low

Thomas Bell 2/14/19 6:21 PM

Deleted: a greater

Mingxi Yang 1/24/19 11:45 AM

Deleted: is known to

Mingxi Yang 1/24/19 11:45 AM

Deleted: may

Thomas Bell 2/14/19 6:21 PM

Deleted: analyses

Mingxi Yang 2/12/19 2:46 PM

Deleted: $K_{CO_2,660}$

Thomas Bell 2/14/19 6:22 PM

Deleted: with

Thomas Bell 2/14/19 6:22 PM

Deleted: also by EC

Mingxi Yang 2/12/19 2:46 PM

Deleted: should

Thomas Bell 2/14/19 6:23 PM

Deleted: over

Mingxi Yang 2/12/19 2:47 PM

Deleted: high

Thomas Bell 2/14/19 6:23 PM

Deleted: the

Thomas Bell 2/14/19 6:23 PM

Deleted: er

in the open ocean, $K_{CO_2,660}$ measured at PPAO when waves are large might not be the same as $K_{CO_2,660}$ over the open ocean.

Thomas Bell 2/14/19 6:24 PM

Deleted: over

Unfortunately there were no wave measurements within the flux footprints to quantitatively investigate this effect.

Thomas Bell 2/14/19 6:24 PM

Deleted: as a result of the shallower depth

Thomas Bell 2/14/19 6:24 PM

Deleted: more quantitatively

5.3 Seasonal variability in $K_{CO_2,660}$

We might expect the relationship between $K_{CO_2,660}$ and wind speed to vary in different seasons due to the effects of bubbles and surfactants. Woolf et al. (1997) and Leighton et al. (2017) suggested an asymmetrical gas transfer rate that is faster for invasion than for evasion due to the hydrostatic pressure effect in bubble-mediated gas exchange, which is important for CO₂ (Bell et al., 2017; Blomquist et al. 2017). Figure 12 is color-coded by ΔpCO_2 (positive when the ocean is supersaturated). We see that invasion (i.e. air-to-sea) of CO₂, expected to occur in late spring and summer, was typically associated with low-to-moderate wind speeds. Evasion (i.e. sea-to-air) of CO₂, expected to occur in late autumn and winter, was typically associated with moderate-to-high wind speeds. There was limited overlap between invasion and evasion $K_{CO_2,660}$ cases in the same wind speed range, partly due to gaps in the pCO₂ observations. Nevertheless, many of the $K_{CO_2,660}$ data were well below the polynomial fit during periods of expected evasion and when U_{10m} was between 6 and 10 m s⁻¹.

Mingxi Yang 1/24/19 11:47 AM

Deleted: data

Recent measurements show large spatial and temporal differences in surfactant activity over the Atlantic Ocean (Sabbaghzadeh et al. 2017). A higher surfactant activity has been associated with suppression in the gas transfer velocity (e.g. Salter et al. 2011; Pereira et al. 2016, 2018). Figure 13 is color-coded by the near surface chlorophyll a concentration (Chl *a*), an indicator of phytoplankton biomass and biological activity. Chl *a* was as low as 0.2 mg m⁻³ in the winter and early spring, and as high as 5 mg m⁻³ during late spring and summer. Many of the $K_{CO_2,660}$ data for the open water sector were below the polynomial fit at times of high Chl *a* concentration. A seasonal variability in biologically-influenced surfactant activity seems likely and could alter the $K_{CO_2,660}$ vs. wind speed relationship. Higher frequency observations of pCO₂ within the flux footprint (e.g. from a buoy) would greatly increase the number of transfer velocity estimates and enable a more robust comparison between invasion and evasion. Approaches similar to Sabbaghzadeh et al. (2017) and Pereira et al. (2016) on a seasonal scale, coupled with EC gas flux measurements, would help to address the importance of naturally-produced surfactants on gas exchange.

Mingxi Yang 2/12/19 2:49 PM

Deleted: o

5.4 Dependence of $K_{CO_2,660}$ on bottom-driven turbulence

Gas transfer driven by bottom-driven turbulence is parameterized as by Borges et al. (2004) as: $1.719 v^{0.5} h^{-0.5}$ (cm hr⁻¹), where v is the current velocity (in cm s⁻¹), and h is water depth (in m). The authors treat this as a linearly additive term to wind driven gas exchange. For a depth of 10 m for the Plymouth Sound and a current velocity on the order of 1 m s⁻¹ during ebbing and flooding tides (Siddorn et al. 2003), this leads to a transfer velocity as a result of bottom-driven turbulence of ~5 cm hr⁻¹ at a Schmidt number of 660. For the open water sector, gas transfer driven by bottom-driven turbulence is calculated to be less than

Thomas Bell 2/14/19 6:27 PM

Deleted: ed

Mingxi Yang 2/12/19 3:48 PM

Deleted: we calculate

4 cm hr⁻¹ due to the deeper water. For reference, the Nightingale et al. (2000) parameterization at a wind speed of 6–9 m s⁻¹ is about 10–20 cm hr⁻¹. Thus bottom-driven turbulence may have a relatively large (~25%) influence on our observations of $K_{CO_2,660}$ at low-to-moderate wind speeds. Neglecting bottom-driven turbulence could have resulted in overestimates when calculating implied GHG concentrations (Sections 3.3, 3.4), particularly at low wind speeds. Note though that our calculations of implied GHG concentrations were limited to wind speeds >5 m s⁻¹.

$K_{CO_2,660}$ derived for the Plymouth Sound sector is also shown in Figures 12 and 13. Given the strong diurnal variability in the implied pCO₂ for this wind sector (see Figure 8), we have further limited $K_{CO_2,660}$ to the time of day of 10:00 to 16:00 UTC. This strict filtering as well as the small number of coincidental flux and pCO₂ measurements result in only five 6-hour $K_{CO_2,660}$ estimates for the Plymouth Sound sector. Plymouth Sound $K_{CO_2,660}$ values roughly increase with wind speed and friction velocity, and are within the range of variability of the open water $K_{CO_2,660}$ values. Note that four out of five of these $K_{CO_2,660}$ estimates were associated with wind speeds over 9 m s⁻¹, for which bottom-driven turbulence is expected to have less influence (≤25% of the wind driven $K_{CO_2,660}$). Future studies that combine EC flux measurements, frequent observations of seawater CO₂ and CH₄ concentrations within the footprint, and in situ measurements of current velocity would allow us to better test and improve K parameterizations in shallow water.

6. Effects of rain on air-sea CO₂ exchange

Our year-long EC flux observations provide a valuable opportunity to directly assess the importance of rain on gas exchange.

Mechanistically, rain could affect air-sea CO₂ flux through at least three mechanisms. First, lab studies show that the falling raindrops increase the near-surface turbulence, increasing total K (e.g. Ho et al. 1997; Zappa et al. 2009). This effect is relatively more important at low wind speeds (e.g. Harrison et al. 2012). Secondly, rainwater could reduce near-surface pCO₂ via changes in the carbonate chemistry and gas solubility (e.g. dilution effect, Turk et al. 2010), and so result in more negative (or less positive) CO₂ fluxes. Lastly, dissolved CO₂ in rain droplets is taken up by the sea, which is often termed the wet deposition flux (e.g. Ashton et al. 2016). We examine each of these three mechanisms below.

6.1 Effect of rain on K

Figure S12 shows the hourly $K_{CO_2,660}$ vs wind speed for the open water sector, color-coded by the measured precipitation rate at the surface (P_s). We use the hourly $K_{CO_2,660}$ data here (filtered by a $|\Delta pCO_2| > 20 \mu atm$ threshold) because rainfall is highly episodic. It is not obvious from our data that rain enhances K at a given wind speed, which could be in part because typical rain rates at PPAO are roughly an order of magnitude lower than lab studies or parts of the tropics where rain rates are often tens of mm hr⁻¹. A caveat here is that the pCO₂ measurements were made approximately once a week from ~3 m depth. Thus they do

Thomas Bell 2/14/19 6:29 PM	Deleted: non-negligible
Thomas Bell 2/14/19 6:29 PM	Deleted: at the PPAO
Thomas Bell 2/14/19 6:29 PM	Deleted: could have resulted in overestimates
Mingxi Yang 2/12/19 3:50 PM	Deleted: Knowing
Mingxi Yang 1/24/19 11:49 AM	Deleted: to reduce the temporal mismatch (... [11])
Mingxi Yang 2/12/19 3:50 PM	Deleted: limited
Thomas Bell 2/14/19 6:30 PM	Deleted: These few
Thomas Bell 2/14/19 6:31 PM	Deleted: seem to be
Thomas Bell 2/14/19 6:31 PM	Deleted: Plymouth Sound
Mingxi Yang 2/8/19 10:45 AM	Formatted (... [12])
Mingxi Yang 2/8/19 10:46 AM	Formatted (... [13])
Mingxi Yang 2/8/19 10:45 AM	Formatted (... [14])
Thomas Bell 2/14/19 6:31 PM	Deleted: affords
Thomas Bell 2/14/19 6:32 PM	Deleted: thereby
Mingxi Yang 2/8/19 11:01 AM	Formatted (... [15])
Thomas Bell 2/14/19 6:32 PM	Deleted: the
Thomas Bell 2/14/19 6:32 PM	Deleted: are
Mingxi Yang 2/8/19 10:46 AM	Formatted (... [16])
Thomas Bell 2/14/19 6:33 PM	Deleted: noisier
Thomas Bell 2/14/19 6:34 PM	Deleted: rain enhances K .
Mingxi Yang 2/8/19 10:47 AM	Formatted (... [17])
Thomas Bell 2/14/19 6:34 PM	Deleted: This
Thomas Bell 2/14/19 6:35 PM	Deleted: compared to
Thomas Bell 2/14/19 6:35 PM	Deleted: on the order of
Mingxi Yang 2/8/19 11:01 AM	Formatted (... [18])
Thomas Bell 2/14/19 6:35 PM	Deleted: , the typical rain rates at PPAO a (... [19])
Mingxi Yang 2/8/19 10:47 AM	Formatted (... [20])

not fully describe short-term changes in $p\text{CO}_2$ at the air-sea interface as a result of rain. This could in turn influence the K estimate.

Mingxi Yang 2/8/19 11:01 AM
Formatted: Font:Italic

570

6.2 Dilution effect on near-surface $p\text{CO}_2$

To tease out the effect of rain on CO_2 flux via the dilution effect (and not on K), we focus on periods where we do not ordinarily expect to see much flux (i.e. when the expected $|\Delta p\text{CO}_2|$ is approximately zero). Figure S13 shows hourly CO_2 flux vs. rain rate for the open water wind sector. Here we have only retained data where the expected $|\Delta p\text{CO}_2|$ is within $10 \mu\text{atm}$. Within our limited dataset and given the measurement uncertainties, it is not obvious that rain makes the CO_2 flux more negative (or less positive) via the dilution effect. For the open water sector with $|\Delta p\text{CO}_2| < 10 \mu\text{atm}$, the mean CO_2 flux during rainy periods was -5.3 (SE of 5.1) $\text{mmol m}^{-2} \text{d}^{-1}$. During non-rainy periods, the mean CO_2 flux was -2.1 (SE of 2.1) $\text{mmol m}^{-2} \text{d}^{-1}$. The two estimates are not statistically different from each other or from zero.

Mingxi Yang 2/8/19 10:45 AM
Formatted: Line spacing: double

Mingxi Yang 2/8/19 11:49 AM
Formatted: Font:Italic

575

6.3 Wet deposition flux

The wet deposition flux of CO_2 is estimated on an hourly basis as $-\text{sol}_{\text{CO}_2} \cdot \text{CO}_{2,\text{a}} \cdot P_{\text{r}}$. Here it is assumed that the falling rain droplets are in equilibrium with atmospheric CO_2 ($\text{CO}_{2,\text{a}}$). The mean wet deposition flux over the entire year (including rainy and non-rainy periods) was computed to be about $-0.1 \text{ mmol m}^{-2} \text{d}^{-1}$, which is orders of magnitude smaller than the air-sea gas flux (e.g. Figure 4). During rainy periods, the mean wet deposition flux was $-0.4 \text{ mmol m}^{-2} \text{d}^{-1}$. Overall, the impact of rain on air-sea CO_2 exchange is fairly limited at PPAO, largely as a result of the modest rain rate.

Thomas Bell 2/14/19 6:36 PM
Deleted: at PPAO

Thomas Bell 2/14/19 6:37 PM
Deleted: as well

Mingxi Yang 2/8/19 10:45 AM
Formatted: Line spacing: double

Mingxi Yang 2/8/19 10:56 AM
Formatted: Font:Italic

Mingxi Yang 2/8/19 10:56 AM
Formatted: Font:Italic, Subscript

Thomas Bell 2/14/19 6:37 PM
Deleted: only

Thomas Bell 2/14/19 6:37 PM
Deleted: we see that

Mingxi Yang 2/8/19 10:43 AM
Deleted: 6

Thomas Bell 2/14/19 6:38 PM
Deleted: d

Thomas Bell 2/14/19 6:38 PM
Deleted: also

Thomas Bell 2/14/19 6:38 PM
Deleted: ,

Thomas Bell 2/14/19 6:38 PM
Deleted: ed

Mingxi Yang 2/12/19 3:55 PM
Deleted: much

Thomas Bell 2/14/19 6:39 PM
Deleted: sector

Mingxi Yang 2/12/19 3:56 PM
Deleted: , influenced by the riverine outflow,

Mingxi Yang 2/12/19 3:56 PM
Deleted: was more positive than from the open water sector in the mean, and

Thomas Bell 2/14/19 6:39 PM
Formatted: Subscript

Thomas Bell 2/14/19 6:39 PM
Deleted: d

Thomas Bell 2/14/19 6:39 PM
Deleted: CO_2

Thomas Bell 2/14/19 6:39 PM
Deleted: In the mean, t

580

585

7 Conclusions

Air-sea CH_4 and CO_2 fluxes measured by eddy covariance from a coastal location in the southwest UK over one year demonstrate significant variability on seasonal timescales. CH_4 flux in the coastal seas varied on a semi-diurnal (i.e. tidal) scale, while CO_2 flux at times varied diurnally. These observations suggest that sporadic samplings of seawater concentrations that are limited to certain seasons, times of the day, or tidal cycle could result in biased annual mean flux estimates (see Sections 3.1 and 3.2). Surface ocean CH_4 saturations implied from the measured fluxes exceeded a few hundred percent, and were higher over the semi-enclosed Plymouth Sound than over open water. These results are consistent with the trend in dissolved CH_4 concentration observed from the upper part of the river Tamar to the mouth of the Plymouth Sound. The coastal sea was a net sink of CO_2 in late spring and summer, and a net source of CO_2 in autumn and winter. CO_2 flux from the Plymouth Sound demonstrated greater diurnal variability than the CO_2 flux from the open water sector. We estimate the CO_2 transfer velocity from our measurements of fluxes and in situ seawater concentrations. The mean derived CO_2 transfer velocity at this coastal location agrees reasonably

590

595

well with previous tracer-based and closed-path CO₂ eddy covariance estimates from the open ocean. [Rainfall does not appear to have a large direct effect on air-sea CO₂ exchange at our temperate coastal site.](#) There are hints of seasonality in the transfer velocity vs. wind speed relationship that may be related to asymmetric bubble-mediated gas exchange or biologically derived surfactants. [The effect of bubbles, surfactants and bottom-driven turbulence](#) warrant further investigation in order to improve understanding of air-sea gas exchange and estimates of coastal Greenhouse Gas budgets.

Thomas Bell 2/14/19 6:40 PM

Deleted: These effects as well as

Thomas Bell 2/14/19 6:40 PM

Deleted: our

Thomas Bell 2/14/19 6:40 PM

Deleted: our

Thomas Bell 2/14/19 6:41 PM

Deleted: Rainfall does not appear to have a large direct effect on air-sea CO₂ exchange at our temperate coastal site.

Author Contribution

MY and TB designed and performed the flux measurements and data analysis/interpretation. IB and AR measured dissolved CH₄ concentration, while VK measured seawater pCO₂. JF and TS supplied the underway and buoy data from the Western Channel Observatory. TS and PN provided helpful comments on the focus and context of the paper.

Acknowledgment

This work contributes to the ACSIS (The North Atlantic Climate System Integrated Study; NE/N018044/1), MOYA (Methane Observations and Yearly Assessments; NE/N015932/1), LOCATE (Land Ocean Carbon Transfer; NE/N018087/1), and CLASS (Climate Linked Atlantic Sector Science) projects funded by the Natural Environment Research Council (NERC), UK. The Western Channel Observatory is funded by NERC's National Capability programme. Trinity House (<http://www.trinityhouse.co.uk/>) owns the Penlee site and has kindly agreed to rent the building to PML so that instrumentation can be protected from the elements. We are able to access the site thanks to the cooperation of Mount Edgcumbe Estate (<http://www.mountedgcumbe.gov.uk/>). We thank the Environmental Agency for the Tamar flow data. We also thank F. E. Hopkins (PML), M. J. Yelland (National Oceanography Centre), I. M. Brooks (University of Leeds), and J. Prytherch (Stockholm University) for continued measurement support. This is contribution number 5 from the Penlee Point Atmospheric Observatory.

References

- Andersson, A.J., and Mackenzie F.T.: Shallow-water oceans: a source or sink of atmospheric CO₂? *Frontiers in Ecology and the Environment*. 2:348-353, 2004.
- Artoli, Y., Blackford, J. C., Butenschoen, M., Holt, J., Wakelin, S. L., Thomas, H., Borges, A. V., and Allen, J. I.: The carbonate system in the North Sea: Sensitivity and model validation, *J. Mar. Syst.*, 102–104, 1–13, 2012.
- [Ashton, I.G., Shutler, J.D., Land, P.E., Woolf, D.K., and Quartly, G.D.: A Sensitivity Analysis of the Impact of Rain on Regional and Global Sea-Air Fluxes of CO₂. *PLoS ONE* 11\(9\): e0161105. doi:10.1371/journal.pone.0161105, 2016.](#)
- Bange, H. W.: Nitrous oxide and methane in European coastal waters, *Estuar. Coast. Shelf Sci.*, 70, 361–374, 2006.

Mingxi Yang 2/8/19 11:59 AM

Formatted: Font:10 pt

535 Bell, T. G., Landwehr, S., Miller, S. D., de Bruyn, W. J., Callaghan, A. H., Scanlon, B., Ward, B., Yang, M., and Saltzman, E. S.: Estimation of bubble-mediated air–sea gas exchange from concurrent DMS and CO₂ transfer velocities at intermediate–high wind speeds, *Atmos. Chem. Phys.*, 17, 9019–9033, <https://doi.org/10.5194/acp-17-9019-2017>, 2017.

540 Blomquist, B. W., Brumer, S. E., Fairall, C. W., Huebert, B. J., Zappa, C. J., Brooks, I. M., Yang, M., Bariteau, L., Prytherch, J., Hare, J. E., Czerski, H., Matei, A., and Pascal, R. W.: Wind Speed and Sea State Dependencies of Air–Sea Gas Transfer: Results From the High Wind Speed Gas Exchange Study (HiWinGS), *Journal of Geophysical Research: Oceans*, pp. n/a–n/a, <https://doi.org/10.1002/2017JC013181>, <http://dx.doi.org/10.1002/2017JC013181>, 2017.

545 ~~Borges, A.V., Darchambeau, F., Teodoru, C.R., Marwick, T.R., Tamooh, F., Geeraert, N., Omengo, F.O., Guérin, F., Lambert, T., Morana, C., Okuku, E., Bouillon, S.: Globally significant greenhouse gas emissions from African inland waters. *Nat. Geosci.* <http://dx.doi.org/10.1038/NGeo2486>, 2015.~~

~~[Borges, A.V., Schiettecatte, L.-S., Abril, G., Delille, B., Gazeau, F., 2006, Carbon dioxide in European coastal waters. *Estuarine, Coastal and Shelf Science* 70 \(3\), 375–387.](#)~~

550 Butterworth, B. J. and Else, B. G. T.: Dried, closed-path eddy covariance method for measuring carbon dioxide flux over sea ice, *Atmos. Meas. Tech.*, 11, 6075–6090, <https://doi.org/10.5194/amt-11-6075-2018>, 2018.

555 Butterworth, B. J. and Miller, S. D.: Air–sea exchange of carbon dioxide in the Southern Ocean and Antarctic marginal ice zone, *Geophys. Res. Lett.*, 43, 7223–7230, <https://doi.org/10.1002/2016GL069581>, 2016.

~~[Cai, W.J.: Estuarine and coastal ocean carbon paradox: CO₂ sinks or sites of terrestrial carbon incineration? *Annu. Rev. Mar. Sci* 3: 123-145, 2011.](#)~~

560 Cai, W. J., Dai, M. H., and Wang, Y. C.: Air-sea exchange of carbon dioxide in ocean margins: A province-based synthesis, *Geophys. Res. Lett.*, 33, L12603, doi: 12610.11029/12006gl026219, doi:L12603, doi: 10.1029/2006gl026219, 2006.

Chen, C. T. A. & Borges, A. V.: Reconciling opposing views on carbon cycling in the coastal ocean: Continental shelves as sinks and near-shore ecosystems as sources of atmospheric CO₂. *Deep-Sea Res. Part II-Top. Stud. Oceanogr.* 56, 578-590, doi:10.1016/j.dsr2.2009.01.001, 2009.

565 Chen, C.T.A., Huang, T.H., Chen, Y.C., Bai, Y., He, X., Kang, Y.: Air-sea exchanges of CO₂ in the world's coastal seas. *Biogeosciences* 10, 6509-6544, 2013.

~~[Crosswell, J. R., Wetz, M. S., Hales, B. and Paerl, H. W., Air-water CO₂ fluxes in the microtidal Neuse River Estuary, North Carolina, *J. Geophys. Res.*, 117, C08017, doi:10.1029/2012JC007925, 2012.](#)~~

570 Csanady, G. T.: The role of breaking wavelets in air-sea gas transfer, *J. Geophys. Res.*, 95, 749–759, doi:10.1029/JC095iC01p00749, 1990.

575 ~~[Dimitrov, L. Contribution to atmospheric methane by natural seepages on the Bulgarian continental shelf. *Continental Shelf Research* 22, 2429-2442, 2002.](#)~~

Edson, J., Hinton, A., Prada, K., Hare, J., and Fairall, C.: Direct covariance flux estimates from mobile platforms at sea, *J. Atmos. Ocean. Technol.*, 15, 547–562, 1998.

580 Edson, J. B., Jampana, V., Weller, R. A., Bigorre, S. P., Plueddemann, A. J., Fairall, C. W., Miller, S. D., Mahrt, L., Vickers, D., and Hersbach H.: On the exchange of momentum over the open ocean, *J. Phys. Oceanogr.*, 43, 1589–1610, doi:10.1175/JPO-D-12-0173.1, 2013.

585 Esters, L., Breivik, O., Landwehr, S., ten Doeschate, A., Sutherland, G., Christensen, K. H., Bidlot, J., and Ward B., Turbulence scaling comparisons in the ocean surface boundary layer, *J. Geophys. Res.*, 123(3), 2172–2191, doi: 10.1002/2017JC013525, 2018.

590 Frankignoulle, M. and Borges, A. V.: European continental shelf as a significant sink for atmospheric carbon dioxide. *Global Biogeochem. Cycles*, 15, 569–576, 2001.

Frankignoulle, M., Abril, G., Borges, A., Bourge, I., Canon, C., Delille, B., Libert, E., and Theate, J.-M.: Carbon dioxide emission from European estuaries. *Science* 282: 434–436, 1998.

Mingxi Yang 1/24/19 10:12 AM

Deleted: Blomquist, B. W., Huebert, B. J., Fairall, C. W., Bariteau, L., Edson, J. B., Hare, J. E., and McGillis, W. R.: Advances in Air–Sea CO₂ Flux Measurement by Eddy Correlation, *Bound. -Lay. Meteorol.*, 152, 3, 245–276, doi:10.1007/s10546-014-9926-2, 2014.

Mingxi Yang 2/5/19 11:45 AM

Deleted: -

Mingxi Yang 2/5/19 11:45 AM

Formatted: Font:(Default) Times New Roman, 10 pt

Mingxi Yang 2/5/19 11:45 AM

Formatted: Font:(Default) Times New Roman, 10 pt

Mingxi Yang 2/5/19 11:45 AM

Formatted: Font:Times New Roman

Mingxi Yang 2/14/19 9:49 AM

Formatted: Font:Times New Roman, 10

Mingxi Yang 2/14/19 9:49 AM

Formatted: Font:Times New Roman, 10

Mingxi Yang 2/14/19 9:49 AM

Formatted: Font:Times New Roman, 10

Mingxi Yang 2/14/19 9:49 AM

Formatted: Font:Times New Roman, 10

Mingxi Yang 2/14/19 9:49 AM

Formatted: Font:Times New Roman, 10

Mingxi Yang 2/14/19 9:49 AM

Formatted: Font:Times New Roman

Mingxi Yang 2/14/19 9:49 AM

Deleted: -

- 595 Forster G.L., Upstill-Goddard R.C., Gist N., Robinson R., Uher G., Woodward E.M.S.: Nitrous oxide and methane in the Atlantic Ocean between 501N and 521S: Latitudinal distribution and sea-to-air flux. *Deep-Sea Research II* 56, 964–976. doi:10.1016/j.dsr2.2008.12.002, 2009.
- 700 Gutiérrez-Loza, L. and Ocampo-Torres, F. J.: Air-sea CO₂ fluxes measured by eddy covariance in a coastal station in Baja California, México, in: IOP Conference Series: Earth and Environmental Science, vol. 35, p. 012012, IOP Publishing, 2016.
- [Harrison, E.L., Vernon, F., Ho, D.T., Reid, M.R., Orton, P., and McGillis, W.R.: Nonlinear interaction between rain- and wind-induced air-water gas exchange. *Journal of Geophysical Research.*: 117\(C03034\). doi: 10.1029/2011JC007693, 2012.](#)
- 705 Hartmann, D.L., A.M.G. Klein Tank, M. Rusticucci, L.V. Alexander, S. Brönnimann, Y. Charabi, F.J. Dentener, E.J. Dlugokencky, D.R. Easterling, A. Kaplan, B.J. Soden, P.W. Thorne, M. Wild and P.M. Zhai, 2013: Observations: Atmosphere and Surface. In: *Climate Change 2013: The Physical Science Basis. Contribution of Working Group I to the Fifth Assessment Report of the Intergovernmental Panel on Climate Change* [Stocker, T.F., D. Qin, G.-K. Plattner, M. Tignor, S.K. Allen, J. Boschung, A. Nauels, Y. Xia, V. Bex and P.M. Midgley (eds.)]. Cambridge University Press, Cambridge, United Kingdom and New York, NY, USA, 2013.
- 710 Helmig, D., Rossabi, S., Hueber, J., Tans, P., Montzka, S. A., Masarie, K., Thoning, K., Plass-Duelmer, C., Claude, A., Carpenter, L. J., Lewis, A. C., Punjabi, S., Reimann, S., Vollmer, M. K., Steinbrecher, R., Hannigan, J. W., Emmons, L. K., Mahieu, E., Franco, B., Smale, D., and Pozzer, A.: Reversal of global atmospheric ethane and propane trends largely due to US oil and natural gas production, *Nat. Geosci.*, 9, 490–495, <https://doi.org/10.1038/ngeo2721>, 2016.
- 715 [Ho, D. T., Bliven, L. F., Wanninkhof, R., and P. Schlosser, P.: The effect of rain on air-water gas exchange. *Tellus, Ser. B.* 49, 149–158, doi:10.1034/j.1600-0889.49.issue2.3.x.1997.](#)
- 720 Ho, D. T., Ferrón, S., Engel, V. C., Larsen, L. G., and Barr, J. G.: Air-water gas exchange and CO₂ flux in a mangrove-dominated estuary, *Geophys. Res. Lett.*, 41, doi:10.1002/2013GL058785, 2014.
- Ho, D. T., Law, C. S., Smith, M. J., Schlosser, P., Harvey, M., and Hill, P.: Measurements of air-sea gas exchange at high wind speeds in the Southern Ocean: Implications for global parameterizations *Geophys. Res. Lett.* 33:L16611, doi:10.1029/2006GL026817, 2006.
- 725 Honkanen, M., Tuovinen, J.-P., Laurila, T., Mäkelä, T., Hatakka, J., Kielosto, S., and Laakso, L.: Measuring turbulent CO₂ fluxes with a closed-path gas analyzer in a marine environment, *Atmos. Meas. Tech.*, 11, 5335-5350, <https://doi.org/10.5194/amt-11-5335-2018>, 2018.
- 730 Houghton, R. A. in *Treatise on Geochemistry Vol. 8* (eds W.H. Schlesinger, H.D. Holland, & K.K. Turekian), 473-513, Elsevier, 2003.
- Huebert, B., Blomquist, B., Yang, M., Archer, S., Nightingale, P., Yelland, M., Stephens, J., Pascal, R., and Moat, B.: Linearity of DMS transfer coefficient with both friction velocity and wind speed in the moderate wind speed range, *Geophys. Res. Lett.*, 37, L01605, doi:10.1029/2009GL041203, 2010.
- 735 [Joesoef, A., Huang, W.-J., Gao, Y., and Cai, W.-J.: Air–water fluxes and sources of carbon dioxide in the Delaware Estuary: spatial and seasonal variability. *Biogeosciences*. 12, 6085-6101. <https://doi.org/10.5194/bg-12-6085-2015>.](#)
- 740 Khatiwala, S. et al. Global ocean storage of anthropogenic carbon. *Biogeosciences* 10, 2169-2191, doi:10.5194/bg-10-2169-2013, 2013.
- 745 Kitidis, V., Hardman-Mountford, N.J., Litt, E., Brown, I., Cummings, D., Hartman, S., Hydes, D., Fishwick, J.R., Harris, C., Martinez-Vicente, V., Malcolm, E., Woodward, S., Smyth, T.J.: Seasonal dynamics of the carbonate system in the Western English Channel. *Cont. Shelf Res.* 42, 30–40, 2012.
- 750 Kitidis, V., Tizzard, L., Uher, G., Judd, A., Upstill-Goddard, R.C., Head, I.M., Gray, N.D., Taylor, G., Duran, R., Diez, R., Iglesias, J., Garcia-Gil, S.: The biogeochemical cycling of methane in Ria de Vigo, NW Spain: Sediment processing and sea-air exchange. *J. Mar. Syst.* 66, 258-271, 2007.
- Kljun, N., Calanca, P., Rotach, M.W., Schmid, H.P.: A Simple Parameterisation for Flux Footprint Predictions, *Boundary-Layer Meteorology*, 112, 503-523, 2004.

Mingxi Yang 2/14/19 9:47 AM
Formatted: Font:(Default) Times New
Mingxi Yang 2/14/19 9:47 AM
Formatted: Font:Times New Roman, 10
pt

755 Landwehr, S., Miller, S. D., Smith, M. J., Bell, T. G., Saltzman, E. S., and Ward, B.: Using eddy covariance to measure the dependence of air–sea CO₂ exchange rate on friction velocity, *Atmos. Chem. Phys.*, 18, 4297–4315, <https://doi.org/10.5194/acp-18-4297-2018>, 2018.

760 Laruelle, G. G., Durr, H. H., Slomp, C. P., and Borges, A. V.: Evaluation of sinks and sources of CO₂ in the global coastal ocean using a spatially-explicit typology of estuaries and continental shelves. *Geophysical Research Letters* 37, doi: 10.1029/2010gl043691, 2010.

Mingxi Yang 1/24/19 10:13 AM

Deleted: -

765 [Le Quéré, C., Andrew, R. M., Friedlingstein, P., Sitch, S., Hauck, J., Pongratz, J., Pickers, P. A., Korsbakken, J. I., Peters, G. P., Canadell, J. G., Armeth, A., Arora, V. K., Barbero, L., Bastos, A., Bopp, L., Chevallier, F., Chini, L. P., Ciais, P., Doney, S. C., Gkritzalis, T., Goll, D. S., Harris, I., Haverd, V., Hoffman, F. M., Hoppema, M., Houghton, R. A., Hurtt, G., Ilyina, T., Jain, A. K., Johannessen, T., Jones, C. D., Kato, E., Keeling, R. F., Goldewijk, K. K., Landschützer, P., Lefèvre, N., Lienert, S., Liu, Z., Lombardozi, D., Metzl, N., Munro, D. R., Nabel, J. E. M. S., Nakaoka, S.-I., Neill, C., Olsen, A., Ono, T., Patra, P., Peregon, A., Peters, W., Peylin, P., Pfeil, B., Pierrot, D., Poulter, B., Rehder, G., Resplandy, L., Robertson, E., Rocher, M., Rödenbeck, C., Schuster, U., Schwinger, J., Séférian, R., Skjelvan, I., Steinhoff, T., Sutton, A., Tans, P. P., Tian, H., Tilbrook, B., Tubiello, F. N., van der Laan-Luijkx, I. T., van der Werf, G. R., Viovy, N., Walker, A. P., Wiltshire, A. J., Wright, R., Zaehle, S., and Zheng, B.: Global Carbon Budget 2018, *Earth Syst. Sci. Data*, 10, 2141–2194, <https://doi.org/10.5194/essd-10-2141-2018>, 2018.](#)

Mingxi Yang 2/1/19 4:15 PM

Formatted: Font:(Default) Times New Roman

770 Leighton, T., Coles, D.G.H., Srokosz, M., White, P.R., and Woolf, D.K.: Asymmetric transfer of CO₂ across a broken sea surface, *Nature Scientific Reports*, DOI:10.1038/s41598-018-25818-6, 2018.

775 Litt, E.J., Hardman-Mountford, N.J., Blackford, J.C., Mitchelson-Jacob, G., Goodman, A., Moore, G.F., Cummings, D.G., Butenschon, M.: Biological control of pCO₂ at station L4 in the Western English Channel over 3 years. *Journal of Plankton Research* 32, 621–629, 2010.

780 Marrec, P., et al., Spatio-temporal dynamics of biogeochemical processes and air–sea CO₂ fluxes in the Western English Channel based on two years of FerryBox deployment, *J. Mar. Syst.*, <http://dx.doi.org/10.1016/j.jmarsys.2014.05.010>, 2014.

Middelburg, J.J., Nieuwenhuize, J., Iversen, N., Høgh, N., De Wilde, H., Helder, W., Seifert, R., Christof, O.: Methane distribution in European tidal estuaries. *Biogeochemistry*, 59, 95e119, 2002.

785 Moat, B.J., Yelland, M. J., Pascal, R. W., and Molland, A. F.: An overview of the airflow distortion at anemometer sites on ships. *Int. J. Climatol.*, 25, 997–1006, 2005.

790 Muller-Karger, F. E., Varela, R. Thunell, R. Luerssen, R., Hu, C. and Walsh J. J.: The importance of continental margins in the global carbon cycle, *Geophys. Res. Lett.*, 32, L01602, doi:10.1029/2004GL021346, 2005.

Nightingale P.D., Malin G, Law C.S., Watson A.J., Liss P.S., Liddicoat M.I., Boutin J, Upstill-Goddard R.C.: In situ evaluation of air–sea gas exchange parameterizations using novel conservative and volatile tracers. *Glob Biogeochem Cycles* 14:373–387. 2000.

795 Nisbet, E.G., Dlugokencky, E. J., Manning, M. R., Lowry, D., Fisher, R. E., France, J. L., Michel, S. E., Miller, J. B., White, J. W. C., Vaughn, B., Bousquet, P., Pyle, J. A., Warwick, N. J., Cain, M., Brownlow, R., Zazzeri, G., Lanoisellé, M., Manning, A. C., Gloor, E., Worthy, D. E. J., Brunke, E.-G., Labuschagne, C., Wolff, E. W., and Ganesan, A. L.: Rising atmospheric methane: 2007–2014 growth and isotopic shift, *Global Biogeochem. Cy.*, 30, 1356–1370, doi:10.1002/2016GB005406, 2016.

300 O’Connor, D. J., and W. E. Dobbins, Mechanism of reaeration in natural streams, *Trans. Am. Soc. Civ. Eng.*, 123, 641–684, 1958.

305 Pereira, R., Schneider-Zapp, K., and Upstill-Goddard, R. C.: Surfactant control of gas transfer velocity along an offshore coastal transect: results from a laboratory gas exchange tank, *Biogeosciences*, 13, 3981–3989, <https://doi.org/10.5194/bg-13-3981-2016>, 2016.

Pereira, R., Ashton, I., Sabbaghzadeh, B., Shutler, J.D., Upstill-Goddard, R.C.: Reduced air–sea CO₂ exchange in the Atlantic Ocean due to biological surfactants, *Nature Geoscience*, 11, 492–496, <https://doi.org/10.1038/s41561-018-0136-2>, 2018.

310 Rigby, M., Montzka, S. A., Prinn, R. G., White, J. W. C., Young, D., O’Doherty, S., Lunt, M. F., Ganesan, A. L., Manning, A. J., Simmonds, P. G., Salameh, P. K., Harth, C. M., Mühle, J., Weiss, R. F., Fraser, P. J., Steele, L. P., Krummel, P. B., Mc-Culloch,

Mingxi Yang 2/1/19 4:15 PM

Deleted: Le Quéré, C., Moriarty, R., Andrew, R.M., Peters, G.P., Ciais, P., Friedlingstein, P., Jones, S.D., Sitch, S., Tans, P., Armeth, A., Boden, T.A., Bopp, L., Bozec, Y., Canadell, J.G., Chevallier, F., Cosca, C.E., Harris, I., Hoppema, M., Houghton, R.A., House, J.I., Jain, A., Johannessen, T., Kato, E., Keeling, R.F., Kitidis, V., Goldewijk, K.K., Koven, C., Landa, C.S., Landschützer, P., Lenton, A., Lima, I.D., Marland, G., Mathis, J.T., Metzl, N., Nojiri, Y., Olsen, A., Ono, T., Peters, W., Pfeil, B., Poulter, B., Raupach, M.R., Regnier, P., Rödenbeck, C., Saito, S., Salisbury, J.E., Schuster, U., Schwinger, J., Séférian, R., Segsneider, J., Steinhoff, T., Stocker, B.D., Sutton, A.J., Takahashi, T., Tilbrook, B., Werf, G.R.v.d., Viovy, N., Wang, Y.-P., Wanninkhof, R., Wiltshire, A., Zeng, N.: Global carbon budget 2014, *Earth System Science Data* 7, 47–85, 2015.

A., and Park, S.: Role of atmospheric oxidation in recent methane growth, *P. Natl. Acad. Sci.*, 114, 5373–5377, <https://doi.org/10.1073/pnas.1616426114>, 2017.

315 Pison, I., Ringeval, B., Bousquet, P., Prigent, C., and Papa, F.: Stable atmospheric methane in the 2000s: key-role of emissions from natural wetlands, *Atmos. Chem. Phys.*, 13, 11609–11623, <https://doi.org/10.5194/acp-13-11609-2013>, 2013.

Rice AL, et al.: Atmospheric methane isotopic record favors fossil sources flat in 1980s and 1990s with recent increase. *Proc Natl Acad Sci USA* 113:10791–10796, 2016.

320 Rutgersson, A., Norman, M., Schneider, B., Pettersson, H., Sahlée, E.: The annual cycle of carbon dioxide and parameters influencing the air–sea carbon exchange in the Baltic Proper. *J. Mar. Syst.* 74, 381–394, 2008.

325 Sabbaghzadeh, B., Upstill-Goddard, R. C., Beale, R., Pereira, R., and Nightingale, P. D.: The Atlantic Ocean surface microlayer from 50°N to 50°S is ubiquitously enriched in surfactants at wind speeds up to 13m s⁻¹. *Geophys. Res. Lett.* 44, 2852–2858. doi: 10.1002/2017GL072988, 2017.

330 Salter, M. E., Upstill-Goddard, R. C., Nightingale, P. D., Archer, S. D., Blomquist, B., Ho, D. T., Huebert, B., Schlosser, P., and Yang, M.: Impact of an artificial surfactant release on air-sea gas fluxes during Deep Ocean Gas Exchange Experiment II, *J. Geo-phys. Res.-Oceans*, 116, C11016, doi:10.1029/2011JC007023, 2011.

Schaefer, H., et al.: A 21st century shift from fossil-fuel to biogenic methane emissions indicated by 13CH₄, *Science*, 352, 80–84, 2016.

335 Siddorn, J.R., Allen, J.I. and Uncles, R.J.: Heat, salt and tracer transport in the Plymouth Sound coastal region: a 3-D modelling study, *J. Mar. Biol. Ass. U.K.*, 83, 673–682, 2003.

Sims, R. P., Schuster, U., Watson, A. J., Yang, M. X., Hopkins, F. E., Stephens, J., and Bell, T. G.: A measurement system for vertical seawater profiles close to the air–sea interface, *Ocean Sci.*, 13, 649–660, <https://doi.org/10.5194/os-13-649-2017>, 2017.

340 [Smith S.V., Hollibaugh J.T.: Coastal metabolism and the oceanic organic-carbon balance. *Rev. Geophys.* 31:75–89, 1993.](#)

Sweeney, C., et al.: Constraining global air-sea gas exchange for CO₂ with recent bomb C-14 measurements. *Global Biogeochem. Cycles* 21:GB2015, doi:10.1029/2006GB002784, 2007.

345 Tanner, C. B. and Thurtell, G. W.: Anemometer Measurements of Reynolds Stress and Heat Transport in the Atmospheric Surface Layer, University of Wisconsin Tech. Rep., ECOM-66-G22- F, 82 pp., 1969.

350 [Turk, D., Zappa, C. J., Meinen, C. S., Christian, J. R., Ho, D. T., Dickson, A. G., and McGillis, W. R.: Rain impacts on CO₂ exchange in the western equatorial Pacific Ocean. *Geophys. Res. Lett.*, 37, L23610, doi:10.1029/2010GL045520, 2010.](#)

Upstill-Goddard, R. C., et al.: Simultaneous high-precision measurements of methane and nitrous oxide in water and seawater by single phase equilibration gas chromatography, *Deep-Sea Research Part I-Oceanographic Research Papers*, 43, 1669–1682, 1996.

355 Upstill-Goddard, R. C.: Air-sea gas exchange in the coastal zone. *Estuar. Coast. Shelf Sci.* 70, 388–404, 2006.

Upstill-Goddard, R. C., Barnes, J., Frost, T., Punshon, S., Owens, N.J.P.: Methane in the southern North Sea: low-salinity inputs, estuarine removal, and atmospheric flux. *Global Biogeochemical Cycles* 14, 1205e1217, 2000.

360 Upstill-Goddard, R. C., Barnes, J.: Methane emissions from UK estuaries: Re-evaluating the estuarine source of tropospheric methane from Europe, *Marine Chemistry*, doi: 10.1016/j.marchem.2016.01.010, 2016.

Wanninkhof, R., Asher, W. E., Ho, D. T., Sweeney, C. S., and McGillis, W. R.: Advances in quantifying air-sea gas exchange and environmental forcing. *Ann. Rev. Mar. Sci- ence* 1:213–244, 2009.

365 Wilczak, J., Oncley, S., and Stage, S.: Sonic anemometer tilt correction algorithms, *Bound.-Lay. Meteorol.*, 99, 127–150, <https://doi.org/10.1023/A:1018966204465>, 2001.

370 Yang, M., Nightingale, P., Beale, R., Liss, P., Blomquist, B., and Fairall, C.: Atmospheric deposition of methanol over the Atlantic Ocean, *P. Natl. Acad. Sci.*, doi:10.1073/pnas.1317840110, 110, 20034–20039, 2013.

Mingxi Yang 2/5/19 11:56 AM
Formatted: Font:(Default) Times New Roman, 10 pt

Mingxi Yang 2/5/19 11:56 AM
Formatted: Font:(Default) Times New Roman, 10 pt

Mingxi Yang 2/5/19 11:56 AM
Formatted: Font:(Default) Times New Roman, 10 pt

Mingxi Yang 2/5/19 11:56 AM
Formatted: Font:(Default) Times New Roman, 10 pt

Mingxi Yang 2/5/19 11:56 AM
Formatted: Font:(Default) Times New Roman, 10 pt

Mingxi Yang 2/5/19 11:56 AM
Formatted: Font:Times New Roman

Mingxi Yang 2/5/19 11:56 AM
Formatted: Font:10 pt

Mingxi Yang 2/8/19 11:58 AM
Deleted: -

Wanninkhof, R.: Relationship between wind speed and gas exchange over the ocean revisited. *Limnology Oceanography: Methods*, 12, 351–362. <https://doi.org/10.4319/lom.2014.12.351>, 2014.

375 Woolf, D. K.: Bubbles and their role in gas exchange, in *The Sea Surface and Global Change*, edited by R. Duce and P. Liss, pp. 173–205, Cambridge Univ. Press, New York, doi:10.1017/CBO9780511525025.007, 1997.

380 Yang, M., Blomquist, B. W., Fairall, C. W., Archer, S. D., and Huebert, B. J.: Air-sea exchange of dimethylsulfide in the Southern Ocean: Measurements from SO GasEx compared to temperate and tropical regions, *J. Geophys. Res.-Oceans*, 116, C00F05, doi:10.1029/2010jc006526, 2011.

385 Yang, M., Bell, T. G., Hopkins, F. E., Kitidis, V., Cazenave, P. W., Nightingale, P. D., Yelland, M. J., Pascal, R. W., Prytherch, J., Brooks, I. M., and Smyth, T. J.: Air-sea fluxes of CO₂ and CH₄ from the Penlee Point Atmospheric Observatory on the southwest coast of the UK, *Atmos. Chem. Phys.*, 16, 5745–5761, <https://doi.org/10.5194/acp-16-5745-2016>, 2016a.

385 Yang, M., Prytherch, J., Kozlova, E., Yelland, M. J., Parenkat Mony, D., and Bell, T. G.: Comparison of two closed-path cavity-based spectrometers for measuring air–water CO₂ and CH₄ fluxes by eddy covariance, *Atmos. Meas. Tech.*, 9, 5509–5522, <https://doi.org/10.5194/amt-9-5509-2016>, 2016b.

390 [Zappa, C. J., Ho, D. T., McGillis, W. R., Banner, M. L., Dacey, J. W. H., Bliven, L. F., Ma, B., and Nystuen, J.: Rain-induced turbulence and air-sea gas transfer, *J. Geophys. Res.*, 114, C07009, doi:10.1029/2008JC005008, 2009.](#)

395

400

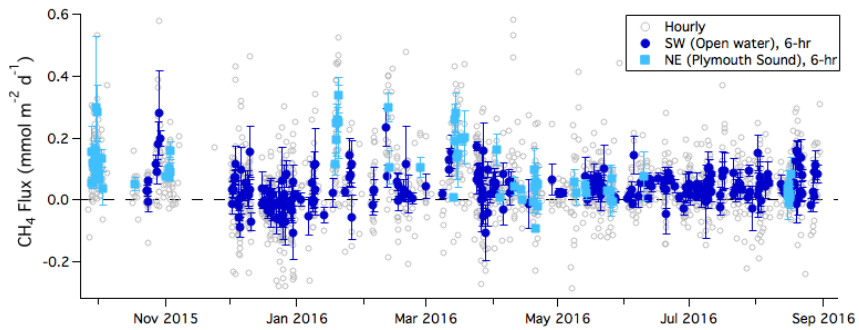
405

410

415

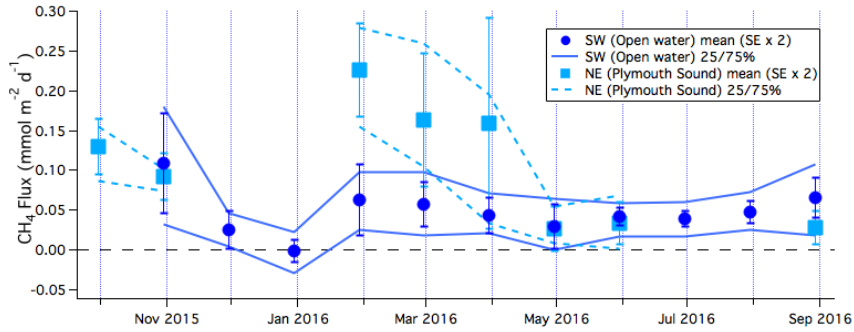
420

425



330 | Figure 1. One-year time series of CH₄ flux (hourly average) during times when winds were from the sea. Six-hour averages of fluxes are further separated into the southwest (open water) and northeast (Plymouth Sound) wind sectors. Error bars indicate standard error.

Mingxi Yang 1/24/19 4:40 PM
 Deleted: (southwest)
 Mingxi Yang 1/24/19 4:40 PM
 Deleted: (northeast)

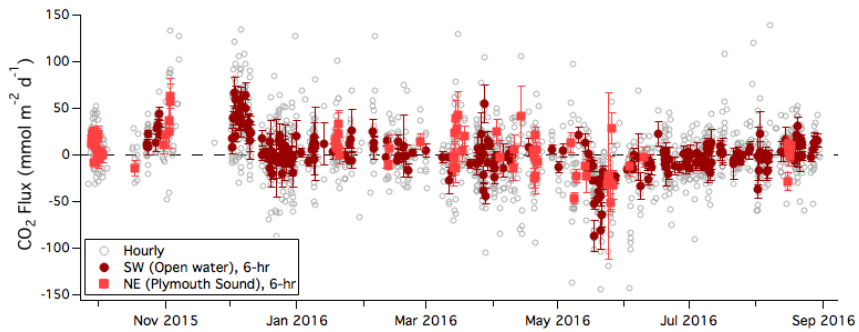


335 | Figure 2. Monthly averages and 25/75 percentiles of CH₄ flux from the southwest (open water) and northeast (Plymouth Sound) wind sectors. Error bars indicate 2 times standard error.

Mingxi Yang 1/24/19 4:40 PM
 Deleted: open water (southwest) and Plymouth Sound (northeast)

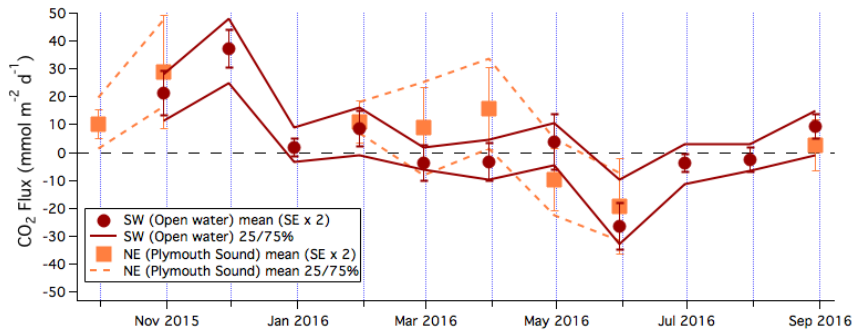
340

345



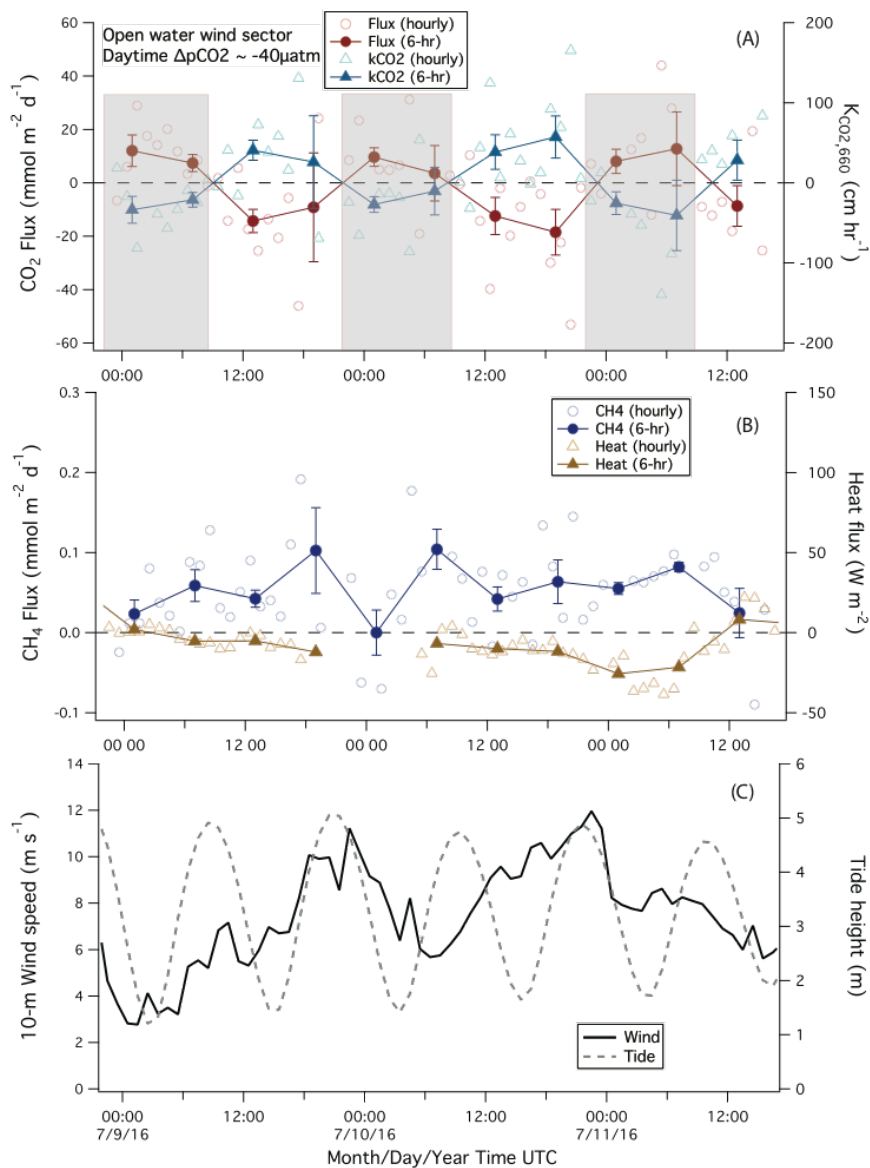
350 | Figure 3. One-year time series of CO₂ flux (hourly average) during times when winds were from the sea. Six-hour averages are further separated into the southwest (open water) and northeast (Plymouth Sound) wind sectors. Error bars indicate standard error.

Mingxi Yang 1/24/19 4:40 PM
 Deleted: open water (southwest) and Plymouth Sound (northeast)



355 | Figure 4. Monthly averages and 25/75 percentiles of CO₂ flux from the southwest (open water) and northeast (Plymouth Sound) wind sectors. Error bars indicate 2 times standard error.

Mingxi Yang 1/24/19 4:40 PM
 Deleted: open water (southwest) and Plymouth Sound (northeast)



360 | Figure 5. Example of variability in: A) CO_2 flux and computed transfer velocity, B) CH_4 flux and sensible heat flux, and C) wind speed and tidal height during a period of southwesterly winds. Fluxes are shown in both hourly and 6-hr averages. Note that the negative transfer velocity (K) values at night (shaded) computed from the measured CO_2 flux and interpolated daytime $p\text{CO}_2$ are non-physical, and likely due to unaccounted for diurnal variability in seawater $p\text{CO}_2$.

365

Thomas Bell 2/14/19 6:50 PM

Deleted: ,

Thomas Bell 2/14/19 6:50 PM

Deleted: ,

Mingxi Yang 1/24/19 3:53 PM

Deleted:

Mingxi Yang 1/24/19 3:53 PM

Deleted: Gaps in heat flux data were due to heavy rain, which does not significantly affect the gas flux measurement.

Mingxi Yang 2/16/19 7:00 PM

Formatted: Font:Italic

Mingxi Yang 1/24/19 3:51 PM

Formatted: Subscript

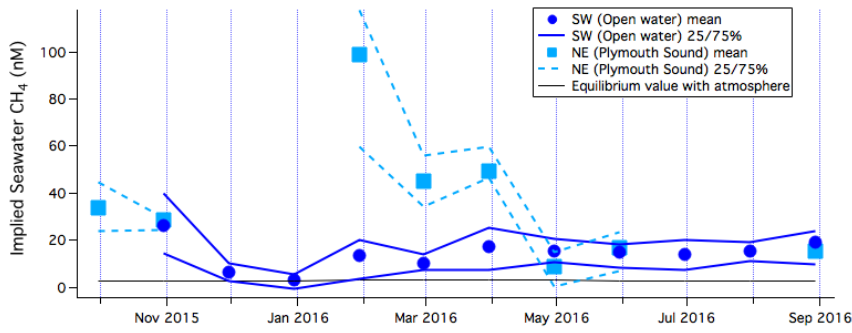


Figure 6. Monthly averages and 25/75 percentiles of implied CH_4 concentration for the southwest (open water) and northeast (Plymouth Sound) wind sectors, along with the equilibrium value with respect to the atmosphere.

Mingxi Yang 1/24/19 4:41 PM

Deleted: in the surface waters within the EC flux footprint

070

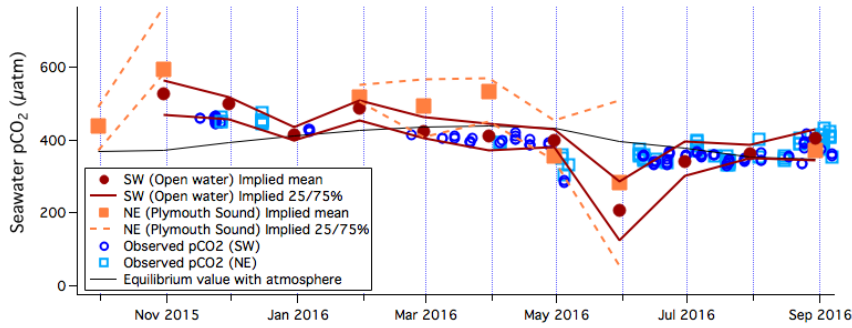


Figure 7. Monthly averages and 25/75 percentiles of implied seawater pCO_2 for the southwest (open water) and northeast (Plymouth Sound) wind sectors. Observed pCO_2 from the Plymouth Quest within the southwest sector (plus at L4) and within the northeast sector are also shown, along with the equilibrium value with respect to the atmosphere.

Mingxi Yang 2/1/19 4:52 PM

Deleted: concentration

Mingxi Yang 1/24/19 4:42 PM

Deleted: in the surface waters within the EC flux footprint

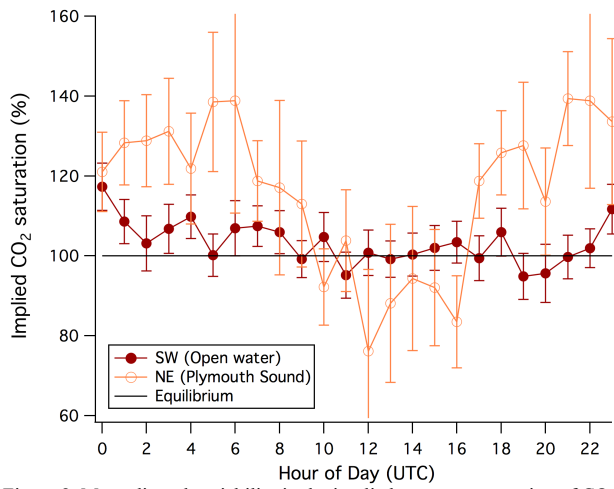
Mingxi Yang 1/24/19 4:42 PM

Deleted: open water

Mingxi Yang 1/24/19 4:42 PM

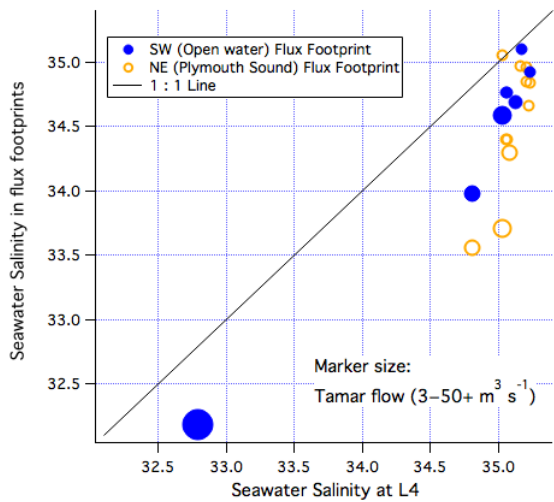
Deleted: Plymouth Sound

075



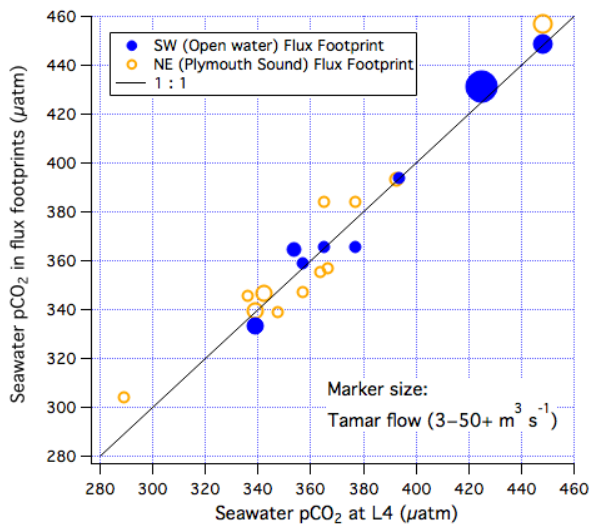
180 | Figure 8. Mean diurnal variability in the implied seawater saturation of CO₂ for the for the southwest (open water) and northeast (Plymouth Sound) wind sectors. Error bars indicate standard errors.

Mingxi Yang 1/24/19 4:42 PM
 Deleted: open water (southwest) sector and the Plymouth Sound (northeast) sector



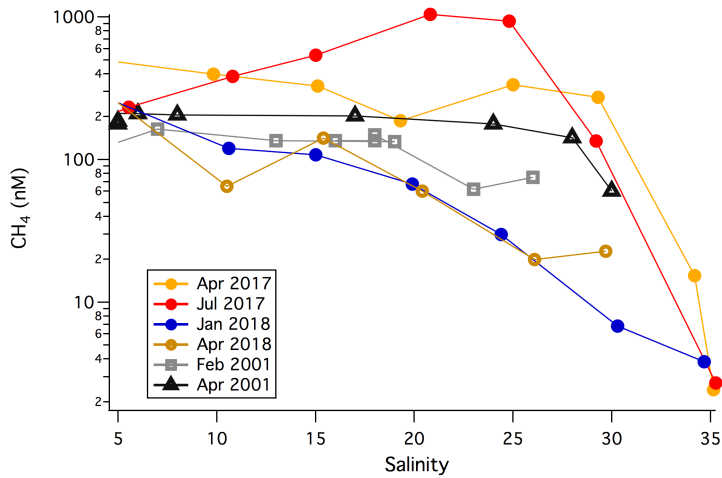
185 | Figure 9. Salinity measured within the two air-water flux footprints of Penlee vs. near-coincidental measurements from the *Quest* at the L4 station. The size of the markers corresponds to the flow rate in the Tamar river, as measured at Gunnislake.

Thomas Bell 2/14/19 6:53 PM
 Deleted: estuary



990 | Figure 10. pCO₂ measured within the two air-water flux footprints of Penlee vs. near-coincidental measurements from the *Quest* at the L4 station. The size of the markers corresponds to the flow rate in the Tamar river, as measured at Gunnislake.

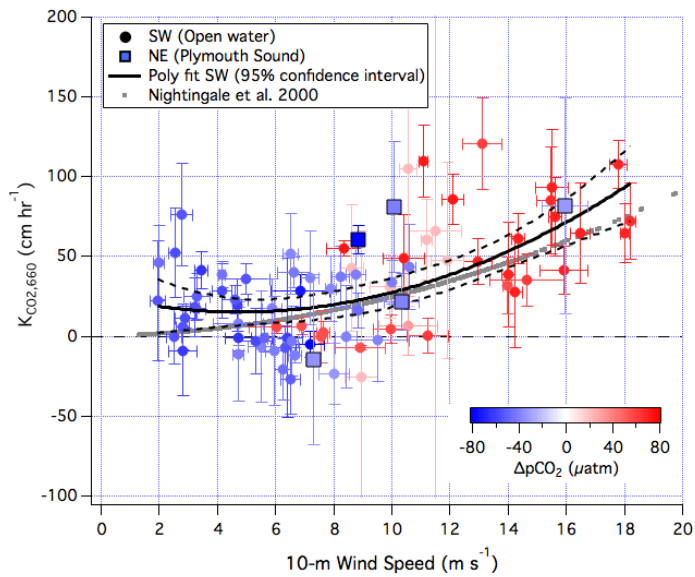
Thomas Bell 2/14/19 6:53 PM
Deleted: estuary



995 | Figure 11. Dissolved CH₄ concentration from the Tamar river to the L4 station varies with salinity. Data from 2017 and 2018 were made during LOCATE sampling. The 2001 data are taken from Upstill-Goddard et al. (2016).

Thomas Bell 2/14/19 6:54 PM
Deleted: estuary

Thomas Bell 2/14/19 6:54 PM
Deleted: are a part of the

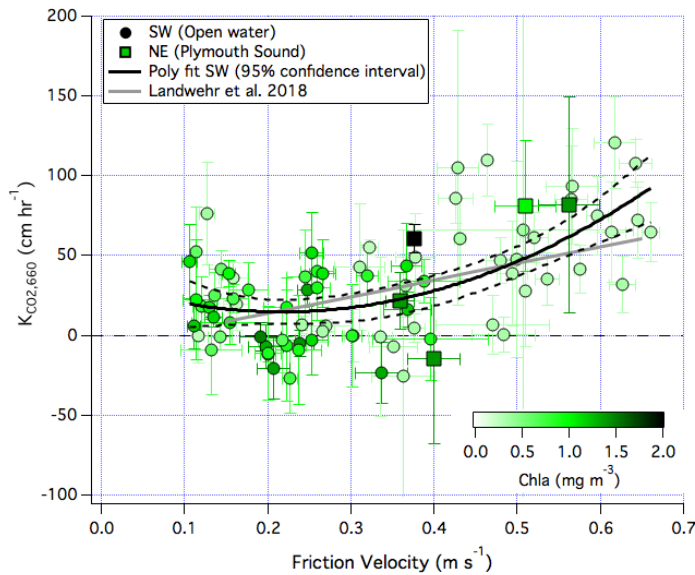


100

Figure 12. CO₂ transfer velocity (normalized to a Schmidt number of 660) vs. 10-m neutral wind speed for both the southwest (open water) and northeast (Plymouth Sound) wind sectors. Note that color-coding is capped at $|\Delta p\text{CO}_2|$ values of 80 μatm for clarity.

Mingxi Yang 1/24/19 4:44 PM
 Deleted: open water and the Plymouth Sound wind sectors

105



110

Figure 13. CO₂ transfer velocity (normalized to a Schmidt number of 660) vs. the friction velocity for both the southwest (open water) and northeast (Plymouth Sound) wind sectors. Note that color-coding is capped at a chlorophyll a concentration of 2 mg m^{-3} for clarity.

Mingxi Yang 1/24/19 4:44 PM
 Deleted: both the open water and the Plymouth Sound wind sectors

