

Subaqueous speleothems (Hells Bells) formed by the interplay of pelagic redoxcline biogeochemistry and specific hydraulic conditions in the El Zapote sinkhole, Yucatán Peninsula, Mexico

Simon Michael Ritter^{a, *}, Margot Isenbeck-Schröter^{a, b}, Christian Scholz^a, Frank Keppler^{a, b}, Johannes Gescher^{c, d}, Lukas Klose^a, Nils Schorndorf^a, Jerónimo Avilés Olguín^e, Arturo González-González^f and Wolfgang Stinnesbeck^{a, b}

^a Institute of Earth Sciences, Heidelberg University, Im Neuenheimer Feld 234–236, D-69120 Heidelberg, Germany

^b Heidelberg Center for the Environment (HCE), Heidelberg University, D-69120 Heidelberg, Germany

^c Institute for Applied Biosciences, Department of Applied Biology, Karlsruhe Institute of Technology (KIT), Karlsruhe, Germany

^d Institute for Biological Interfaces, Karlsruhe Institute of Technology (KIT), Eggenstein-Leopoldshafen, Germany

^e Instituto de la Prehistoria de América, Carretera federal 307, km 282, Solidaridad, 77711 Solidaridad, Quintana Roo, México

^f Museo del Desierto, Carlos Abedrop Davila 3745, Nuevo Centro Metropolitano de Saltillo, 25022 Saltillo, Coahuila, Mexico

*Corresponding author: S. Ritter, simon.ritter@geow.uni-heidelberg.de

Abstract

Unique bell-shaped underwater speleothems were recently reported from the deep (~55 m) meromictic El Zapote sinkhole (cenote) on the Yucatán Peninsula, Mexico. The local diving community has termed these speleothems as Hells Bells because of their shape and appearance in a dark environment in ~28–38 m water depth above a sulfidic halocline. It was also suggested that Hells Bells form under water, yet the mystery of their formation remained unresolved. Therefore, we conducted detailed hydrogeochemical and geochemical analyses of the water column and Hells Bells speleothems including stable carbon isotopes. Based on the comprehensive results presented in this study we deduce that both, biogeochemical processes in the pelagic redoxcline and a dynamic halocline elevation of El Zapote cenote, are essential for Hells Bells formation. Hells Bells most likely form in the redoxcline, a narrow 1–2 m thick water layer immediately above the halocline where a pelagic chemolithoautotrophic microbial community thrives from the upward diffusion of reduced carbon, nitrogen and sulfur species released from organic matter degradation in organic-rich debris. We hypothesize that chemolithoautotrophy, in particular the proton consuming nitrate-driven anaerobic sulfide oxidation, favors calcite precipitation in the redoxcline and hence Hells Bells formation. A dynamic elevation of the halocline as a hydraulic response to droughts, annual tidal variability and recharge events is further discussed, which might explain the shape of Hells Bells as well as their occurrence over a range of 10 m water depth. Finally, we infer that highly stagnant conditions, i.e. a thick halocline, a low-light environment and sufficient input of organic material into a deep meromictic cenote are apparent prerequisites for Hells Bells formation. This might explain their exclusivity to only a few cenotes in a restricted area of the northeastern Yucatán Peninsula.

1. Introduction

Speleothems, such as stalactites or dripstones, result from physicochemical processes under subaerial conditions in a cave atmosphere. Calcite usually precipitates due to CO₂-degassing and evaporation of water enriched in dissolved carbonate dripping into the cave. In recent years, however, researchers have identified a small group of speleothems that appear to have calcified underwater. For these formations, interactions between physicochemical and biological calcite precipitation processes are interpreted (Barton and Northup, 2007; Bontognali et al., 2016; Gradzinski et al., 2012; Guido et al., 2013; Holmes et al., 2001; Jones et al., 2008, 2012; Macalady et al., 2007; Macintyre, 1984; Melim et al., 2001; Queen and Melim, 2006; Tredici et al., 2018). We recently presented a spectacular example for these subaqueous speleothems termed Hells Bells from El Zapote sinkhole about 26 km west of Puerto Morelos on the Yucatán Península of southern Mexico (Fig. 1) (Stinnesbeck et al., 2017b).

These bell-shaped structures consist of calcite and reach lengths of up to two meters. Hells Bells conically expand downward with strictly horizontal ring-like concentric swellings and neckings on the surface (Fig. 2). Apparently, they form in a lightless environment in freshwater above the anoxic and sulfidic halocline (Stinnesbeck et al., 2017b). Because of these environmental conditions in complete darkness, the local diving community has termed the El Zapote speleothem formations as Hells Bells. They grow from the cavern ceiling and wall. Additionally, small individuals also cover a tree that has fallen into the sinkhole around ~3.5 cal kyr BP, which indicates that Hells Bells must have formed during the Holocene to at least historical times, and thus at periods when the deep sections of the cenote had already been submerged for thousands of years (Stinnesbeck et al., 2017b). Thus, the conditions for the formation of the biggest underwater speleothems worldwide must have existed consistently throughout the past thousands of years at El Zapote cenote.

The internal structure of Hells Bells is characterized by laminar fabrics of alternating units of elongated dogtooth spar calcite and microcrystalline spar calcite. Microspar layers and corroded lobes of dogtooth spar crystals indicate either discontinuous growth of Hells Bells and/or intermittent dissolution. Phylogenetic analyses of Hells Bells speleothem surfaces from specimens of 33 and 34 m water depth indicate that microorganisms inhabiting the Hells Bells potentially support a full nitrogen-circle and autotrophic growth (Stinnesbeck et al., 2017b). The growth of Hells Bells may thus be mediated by specific physical and biogeochemical conditions above and in the halocline, while formation of Hells Bells was likely restricted to the lowermost part of the freshwater body. However, due to the limited available data including geochemical parameters, the suggested processes for Hells Bells formation were regarded as highly speculative.

Therefore, in this study we conducted detailed geochemical analysis including stable carbon isotopes of the water body and Hells Bells speleothems of El Zapote cenote. Based on the results we present a hypothesis on the subaqueous growth of these exceptional structures. We deduce that both, biogeochemical processes in the pelagic redoxcline and a dynamic halocline elevation of El Zapote cenote, are essential for Hells Bells formation.

1.1 Geological background

The northeastern Yucatán Peninsula (YP) consists of horizontally layered shallow-water carbonates of Mio-, Plio- and Pleistocene ages (Lefticariu et al., 2006; Weidie, 1985) and probably hosts the largest network of underwater caves in the world. The Mexican state of Quintana Roo alone counts more than 370 underwater caves with a confirmed total length of ~1460 km and individual cave systems reaching up to >350 km in length (QRSS, 2018). These cave systems developed predominantly by the interaction of glacioeustasy, littoral processes and mixing-zone hydrology during glacial periods of the Pleistocene (Smart et al., 2006; Weidie, 1985). Precipitation rapidly infiltrates through the porous limestone into the underlying coastal aquifer consisting of a meteoric water mass, the fresh water lens above a saline water mass intruding from the coast (e.g. Kovacs et al., 2017a). The thickness of the freshwater lens varies between ~10–100 m and is generally thinner towards the coast (Beddows et al., 2002), while seawater intrudes up to 100 km inland (Beddows et al., 2007). The halocline separates the meteoric and marine water bodies and is usually characterized by undersaturation with respect to CaCO_3 , leading to cave formation and conduit enlargement in the coastal carbonate aquifer (Back et al., 1986; Gulley et al., 2016; Mylroie and Carew, 1990; Smart et al., 2006). The depth of the halocline increases with distance from the coast (Bauer-Gottwein et al., 2011); areas closer to the coast show a higher salinity of the freshwater lens than inland areas (Kovacs et al., 2017b). The position of the halocline is also dependent on global sea level and the thickness of the freshwater lens. Hydraulic gradients are generally very low with values of 1–10 cm km⁻¹ (Bauer-Gottwein et al., 2011 and references therein). Although Moore et al. (1992) and Stoessell et al. (1993) report that the thickness of the freshwater lens does not vary significantly between seasons or on a yearly basis, local and short-termed variations are possible and were reported by Escolero et al. (2007), who documented a significant halocline elevation of up to 17.5 m in between two measurements in the years 2000 and 2003.

Sinkholes (locally called *cenotes*) were formed by dissolution and collapse of the carbonate rock. They are common throughout the YP, connecting the subterranean cave system with the surface (Bauer-Gottwein et al., 2011). For more detailed information about the formation and occurrence of cenotes on the YP we refer the readers to Torres-Talamante et al. (2011) and Schmitter-Soto et al. (2002).

1.2 El Zapote cenote

El Zapote cenote is located 26 km west of Puerto Morelos on the YP of southeast Mexico (20°51'27.78" N 87°07'35.93" W; Fig. 1). In cross-section the cenote is bottle-shaped with a deep vertical water-filled shaft that opens at 28 m water depth to a wide cavern of 60 to >100 m in diameter that reaches to about 54 m water depth with a 20 m high debris mound in the center (Fig. 3a). A fallen tree stands on top of the debris mound and small Hells Bells cover the stem. There are no apparent passages or conduits that connect El Zapote cenote to a cave system. Additional details on El Zapote cenote are given in Stinnesbeck et al. (2017b) and in Stinnesbeck et al. (2017a) who described the new genus and species of a giant ground sloth, *Xibalbaonyx oviceps*, from an individual that was found on the floor of El Zapote cenote.

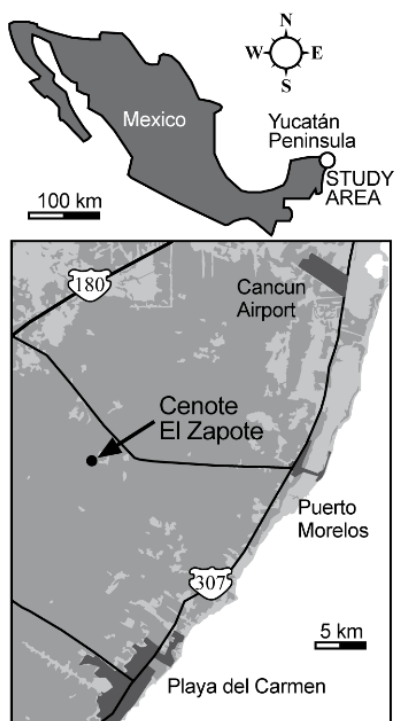


Fig. 1: Location of the studied El Zapote cenote with respect to Mexico and the Yucatán Peninsula.

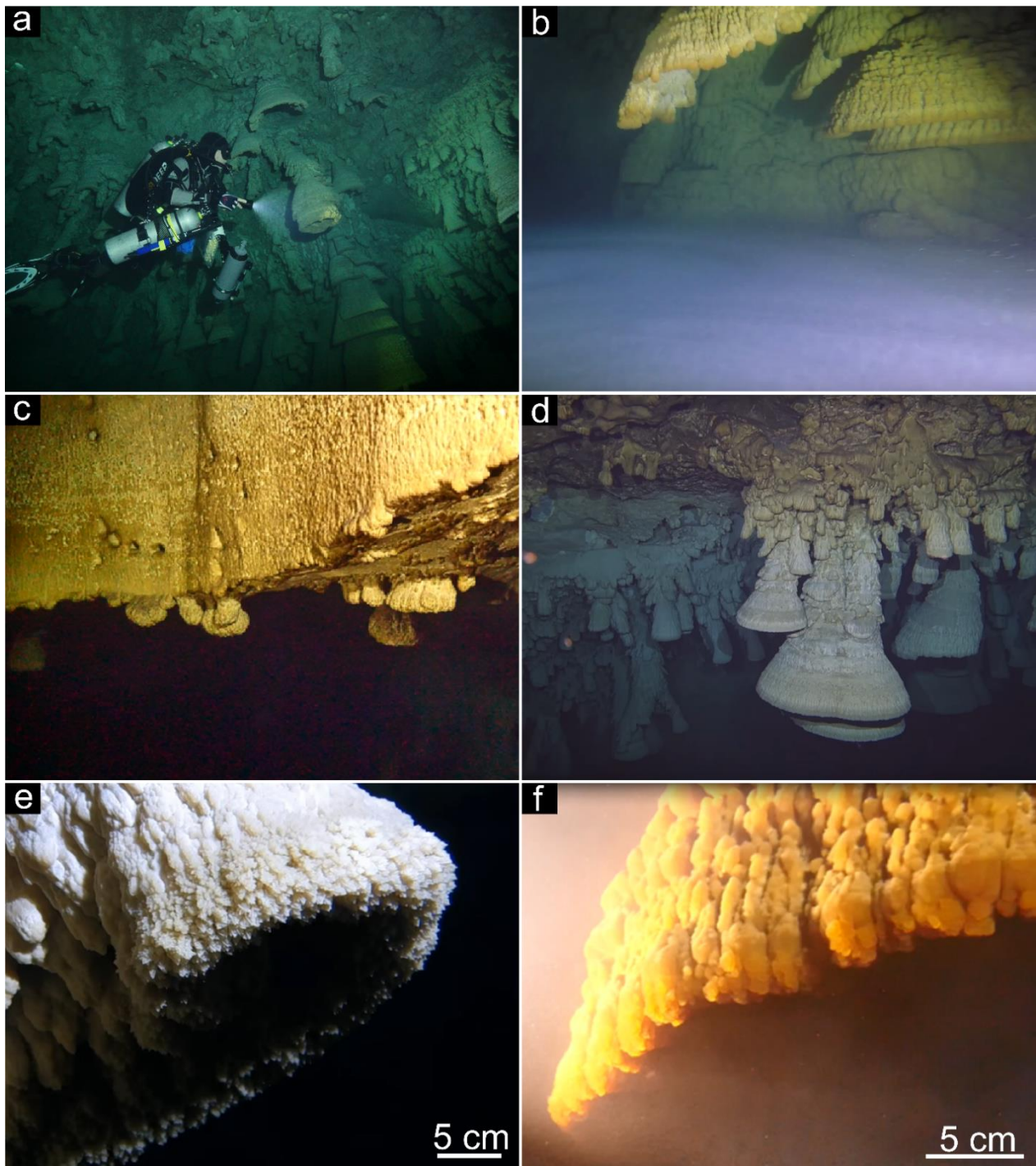


Fig. 2: Technical diver in El Zapote cenote during a sample collecting dive carrying the Niskin bottle, sample containers and the multiparameter sonde attached to the sidemount gas bottle (a). Turbid layer immediately above the halocline forming a distinct horizontal white cloud at around 36 m water depth (b). Transition of cenote shaft to the open dome-shaped cavern at 28 m water depth (c), where the vertical wall of the cenote shaft is devoid of Hells Bells speleothems (upper part of picture c), whereas small

specimens of Hells Bells grow down from the horizontal ceiling below (lower part of c). Brown-colored Mn-oxide coatings on host rock carbonates and Hells Bells speleothems reach down from 28 m water depth to around 30 m water depth at the transition of the cenote shaft to the wide dome-like cavern (c and d). Below around 30 m water depth, Hells Bells speleothem and host rock carbonate surfaces are devoid of brownish Mn-oxide coatings. They are white to light-grey colored revealing a distinct horizontal boundary (d). Close-up shot of the lowermost calcite rim of a Hells Bell speleothem at around 32–35 m water depth showing mm-sized calcite crystals (e).

2. Methods

2.1 Sampling

Sampling at El Zapote Cenote was carried out between December 10th and 15th 2017. Water samples were taken early in the morning prior to any tourist diving group activities to ensure sampling of an undisturbed water column. Water sample recovery and the recording of the in-situ parameters were carried out with a winch from the surface down to the top of the debris mound (0–36 m) and by technical divers from the top of the debris mound down to the cenote floor following the slope of the debris mound (Fig. 2a).

In-situ parameters pH (± 0.1), eH (± 20 mV), dissolved oxygen (± 0.1 mg l⁻¹, detection limit 0.2 mg/l), electrical conductivity (± 0.05 % of value), temperature (± 0.01 °C) and turbidity (± 2 % of value) were determined with a multiparameter water sonde EXO-1 (Xylem Analytics, Norway). All parameters, including water depth via pressure measurement, were internally logged by the sonde (± 0.04 m). Water depths were corrected to the ambient air pressure of the respective day of sampling. In order to reach the greatest possible water depth, a total of four winch-operated profiles were run within 2 days, with laterally shifting starting points of the profile at the surface. In order to complete the measurement in the whole water column, technical divers carried the EXO-1 Probe with them during sampling. Due to increasing sulfide concentrations in water depths below the turbid layer and interaction of sulfide with the Ag/Cl pH electrode, a shift of pH of up to 0.2 pH units towards higher values was observed when comparing the pH logs of the way down with the pH logs of the way up (Fig. S1). This shift is dependent on the exposure time of the electrode and the respective sulfide concentrations and could not be quantified nor corrected for. However, the sensor recovers to initial pH values after a certain time in non-sulfide water. Therefore, the pH values presented in this study are representative for the water column from 0 to 37 m water depth and are overestimated in water depths from 37–50 m where the actual absolute pH values are most likely lower, i.e. more acidic. Repeated measurement with a new sonde of the same type in June 2018 confirmed this assumption and showed lower pH values below 37 m water depth (Fig. S2).

Water samples from 15–35 m water depth were retrieved using a winch and a 5 L polyethylene Niskin bottle (Hydrobios, Kiel, Germany). Sampling depths represent the center of the 0.6 m tall sampling bottle and were determined by cable length with a depth counter attached to the winch. Water samples from 35.2–45 m water depth were retrieved by technical divers (Fig. 2a). Water samples collected by the technical divers were taken with 120 ml PE-containers. The containers were carried open and water-filled by the divers. At the desired sample depth, the water in the containers was exchanged by surrounding water via shaky motions, sealed underwater and the water depth was noted for each sample. Water samples for the analysis of dissolved gases (CO₂, CH₄) were taken in 24 ml glass vials and sealed underwater at the respective depth (four samples at each depth

level). The EXO-1 sonde was attached to a side mounted compressed air bottle pointing towards the front of the technical diver in order to record the in-situ parameters of each water sample (Fig. 2a). The depth of the water samples taken by technical divers was corrected to the depth of the attached logging device (EXO-1). For four samples between 35 and 37 m, depth was interpreted from the increase of sodium and chloride contents correlated to the electrical conductivity in this interval.

- 5 Water samples were treated on-site immediately after the water samples were retrieved. Samples for determination of dissolved ions were taken with 20 ml sterile polypropylene syringes and then filtered through a cellulose acetate filter (0.45 μm). Samples for cation determination were acidified with 50 μl of 65 % HNO_3 (A.G.) to adjust a $\text{pH} < 2$; they were stored in 15 ml Falcon polypropylene centrifuge tubes. Samples for anion determination were taken equivalent, but not acidified, and stored cool in 15 ml Falcon polypropylene centrifuge tubes. Samples for the determination of dissolved inorganic carbon (DIC) and dissolved organic carbon (DOC) were filtered through a cellulose acetate filter (0.45 μm), stored in 24 ml glass vials and sealed gas-tight. Samples for the determination of content and isotopic ratios of the dissolved gases CH_4 and CO_2 were filled in 24 ml glass vials; subsequently 100 μl 60 % HgCl_2 solution was added via a syringe pierced through the septum to sterilize the samples.

- 15 A large volume sample (5 l) of the turbid layer water at around 36 m water depth was taken with a Niskin bottle by technical divers and subsequently filtered through a 0.45 μm cellulose acetate filter with a vacuum pump. The filter was air-dried; back in the laboratory a small piece of the filter was coated with carbon for subsequent secondary electron (SE) imaging and analyses.

Sulfide and nitrite were determined on-site by photometric analysis with a Photometer (Hach Lange DR200) using Merck Spectroquant spectrometric methods

- 20 Technical divers collected several Hells Bells samples grown on the tree trunk from 7 water depth levels between 32.7 and 37.3 m. To obtain the youngest part of individual Hells Bells growth, samples were first studied under the microscope. Only samples with apparently fresh, well accentuated crystal tips were chosen for analysis geochemical and stable isotope analysis.

2.2 Analytical measurements

2.2.1 Major and trace element analysis

- 25 Major cation concentrations (Ca, Mg, Sr, Ba, K, Na, Si) of water samples were determined by optical emission spectroscopy with an Agilent 720 ICP-OES. Quality control was performed using the reference materials SPS-SW1, SPS-SW2 and TMDA 70.2. Recovery rates were in the range of 97–104 % for the analyzed elements. Measurement precision for each element was < 2 % (RSD, $n=3$).

- 30 Concentrations of anions Cl^- , SO_4^{2-} and NO_3^- were determined with ion-chromatography (Dionex ICS-1100) with a RSD of < 3 % derived from long-term repeated analysis of reference material SPS-WW1 NUTR. The concentrations of DOC were determined with a Total Carbon Analyzer (Shimadzu TOC-CPH) with a RSD of < 2 % derived from repeated analysis of an in-house standard water.

Orthophosphate was determined by the photometric molybdenum phenyl blue method on 880 nm light extinction with a UV/VIS photometer (Specord 50, Analytic Jena).

Trace element concentrations (Fe, Mn, Mo, P, S, U) of selected water samples were determined by HR-ICP-MS (Thermo Finnigan Element 2). Analyses were normalized by an internal Indium-standard. Calibration solutions were prepared with the

5 MERCK VI Multi Element Standard. The recovery rates of SLRS5 reference material were 95 % (Fe), 93 % (Mn), 82 % (Mo) and 133 % (U) with respect to the referenced values and P and S were within the range of reported uncertified values. The precision was <3.7 % (RSD) derived from repeated (n=5) measurements of the reference material in the measurement run.

Around 3 mg of the powdered speleothem samples were digested in 2ml 10% HNO_3 for major and trace cation analyses.

Subsequently, concentrations of Ca, Mg, Sr, Ba, P, S, Fe and Mn of the aliquots were determined by ICP-OES. Quality control
10 of the measurement was performed using reference materials SPS-SW1 and SPS-SW2 with recovery rates ranging from 99 to 111 % for the analyzed elements. Quality control for digestion of the carbonate material was performed with limestone reference material ECRM 752-1 with recovery rates between 106–110 % for the elements Ca, Mg, Ba, Sr and Mn and 82 % for the element Fe.

Calcite saturation and HS^- activity was calculated with PhreeqC (Parkhurst and Appelo, 1999) using phreeqc.dat. The diffusion
15 J was calculated with the first Fick's law with diffusion coefficients of D_{O_2} , $\text{D}_{\text{NO}_3^-}$, $\text{D}_{\text{HCO}_3^-}$ and D_{HS^-} of 2.1, 1.9, 1.2 and $1.8 \cdot 10^{-9} \text{ m}^2 \text{ s}^{-1}$, respectively taken from phreeqc.dat (Parkhurst and Appelo, 1999).

2.2.2 Stable carbon isotope and concentration measurements of CH_4 and CO_2

For the determination of dissolved gases, a 5 ml headspace with nitrogen gas (N_2 99.999 %) was created in each of the four samples of the respective water depth. Samples were taken for the analysis of dissolved gases at ambient laboratory
20 temperatures of 23 °C. After equilibration (~24h), the headspace of the four samples was transferred and combined in one 12 ml evacuated exetainer vial. To ensure a pressureless transfer of the gas phase from the headspace to the exetainer, a brine solution of 200 g l^{-1} NaCl was introduced at the bottom of the vial and the gas-phase was simultaneously removed and subsequently transferred to evacuated exetainer vials. Concentrations CH_4 and CO_2 in the gas samples were measured as follows: Headspace samples (50 μl) were injected in a flow of 1 mL min^{-1} of helium with a split ratio of 5:1 to a Shin Carbon
25 ST column (80/100 mesh, 2m x 0.53mm i.d., Restek Corporation) quantified by a gas chromatograph (GC-2010 Plus, Shimadzu Corporation, Kyoto, Japan) coupled to a Barrier Ionization Discharge (BID) detector (BID-2010 Plus, Shimadzu Corporation, Kyoto, Japan). The GC oven was initially held at 30°C for 1 min and then ramped at 10°C/min to 200°C. Quantification of CH_4 and CO_2 was carried out by comparison of the integrals of the peaks eluting at the same retention time as that of the authentic standard with calibration curves. The dissolved concentrations of CH_4 in the water were then calculated
30 from the measured mixing ratio using Henry's law (Wiesenburg and Guinasso, 1979) and solubility coefficients for CH_4 according to Weiss (1974) and Yamamoto et al. (1976).

Stable carbon isotope ratios of CO_2 ($\delta^{13}\text{C}\text{-CO}_2$ values) were analyzed by gas chromatography stable isotope ratio mass spectrometry (GC-IRMS) by a HP 6890N gas chromatograph, coupled to a 253 Plus™ isotope ratio mass spectrometer

(ThermoQuest Finnigan, Bremen, Germany) with average analytical uncertainties of 0.2‰ for $\delta^{13}\text{C}\text{-CO}_2$ values. 2 σ uncertainties were derived from 5 replicates. All $^{13}\text{C}/^{12}\text{C}$ isotope ratios are expressed in the conventional δ notation in per mil versus VPDB, defined in Eq. (1):

$$\delta^{13}C_{V-PDB} = \left[\left(^{13}C / ^{12}C_{\text{sample}} \right) / \left(^{13}C / ^{12}C_{\text{standard}} \right) \right] - 1 \quad (\text{Eq. 1})$$

- 5 For details of the $\delta^{13}\text{C}\text{-CO}_2$ measurements by GC-IRMS we would like to refer to previous studies by Keppler et al. (2010) and Laukenmann et al. (2010).

Stable carbon isotope ratios of CH_4 ($\delta^{13}\text{C}\text{-CH}_4$ values) were determined (GC-IRMS). In brief, CH_4 of the sample was trapped on Hayesep D and then transferred to the IRMS system (ThermoFinnigan Delta^{plus} XL, Thermo Finnigan, Bremen, Germany). The working reference gas was carbon dioxide of high purity (carbon dioxide 4.5, Messer Griesheim, Frankfurt, Germany)

- 10 with a known $\delta^{13}\text{C}\text{-CH}_4$ value of $-23.634 \text{ ‰} \pm 0.006 \text{ ‰}$ versus V-PDB. All $\delta^{13}\text{C}\text{-CH}_4$ values were corrected using two CH_4 working standards (isometric instruments, Victoria, Canada) and normalized by two-scale anchor calibration according to Paul et al. (2007). The average standard deviation of the analytical measurements was in the range of 0.1 ‰ to 0.3 ‰.

The $\delta^{13}\text{C}\text{-HCO}_3^-$ values were calculated from the measured $\delta^{13}\text{C}\text{-CO}_2$ of the headspace of the water samples that was generated in the laboratory as equilibrium fractionation at 23° C ($\delta^{13}\text{C}\text{-CO}_2 + 8.16 \text{ ‰} = \delta^{13}\text{C}\text{-HCO}_3^-$) after Mook (2000).

- 15 For stable carbon isotope analyses of carbonates, approximately 50 μg of powdered speleothem subsamples was analyzed using a ThermoFinnigan MAT253Plus gas source mass spectrometer equipped with a Thermo Fisher Scientific Kiel IV Carbonate Device at Heidelberg University. Values are reported relative to VPDB (Eq. 1) through the analysis of an in-house standard (Solnhofen limestone) calibrated to IAEA-603. The precision of the $\delta^{13}\text{C}$ analyses is better than 0.08 ‰ and 0.06 ‰ (at 1 σ level), respectively.

20 2.2.3 Optical methods

Hells Bells specimen ZPT 7, described in Stinnesbeck et al. (2017b) was vertically cut in half and thin sections were prepared from one half of the specimen. Photographs of the thin sections were taken with a Keyence VHX-6000.

Polished counterparts of the thin sections and small pieces of Hells Bells were coated with carbon for secondary electron (SE) imaging and energy dispersive X-ray (EDX) analyses. SE-imaging and element mapping was performed with a Leo 440 at 20

- 25 kV with a X-Max 80 mm² detector.

3. Results

3.1 Hydrogeochemistry

The water column of the El Zapote cenote is stratified into an oxygenated fresh water body overlying an anoxic transition zone of increasing electrical conductivity (EC), the halocline, and an anoxic salt water body below (Fig. 3 a). Water temperatures

- 30 vary little between 0 to 30 m water depth (24.37–24.42 °C); a steep increase is identified in a narrow zone from 30–32 m water

depth (24.42–24.55 °C), followed by almost invariable temperatures from 32 m water depth (24.55 °C) down to the bottom of the cenote (25.22°C) (Figs. 3a and b). A distinct density boundary, the top of the halocline, is identified at 36.6 m water depth by a steep increase in EC. Sea water-like salinity is reached at around 46 m water depth indicating a thick halocline layer of around 10 m thickness (Figs. 3a and b). Low turbidity readings indicate clear water throughout the water column, except for a

5 ~1.6 m thick layer of increased turbidity immediately above the halocline from 35.0–36.6 m water depth, with a peak of 8.0 FNU detected at 35.8 m water depth (Figs. 3a and b; Table S1). This turbid layer is also easily detected macroscopically in the water column as a white cloudy layer (Fig. 2b) and coincides with a distinct redoxcline from ~35–37 m water depth, in which the redox potential (EH) decreases from ~250 to ~140 mV (Figs. 3a and b). Dissolved oxygen (DO) decreases nearly linear from 30 m to concentrations below detection limit at ~35 m water depth just above the turbid layer. Below, DO was below

10 detection limit (Figs. 3a and b). The pH shows neutral values from 0–30 m water depth and slightly decreases to 6.90 at the top of the turbid layer (Fig. 3a). Within the turbid layer pH values increase to more alkaline values of around 6.94 at 35.8 m water depth. The pH values decrease again below the turbid layer to 6.73 at 40 m and invariably remain at about this value down to 48 m. From there, values increase to about neutral (6.95) close to the cenote bottom at 49 m water depth (Figs. 3a and b).

15 Concentrations of the major dissolved ions Na^+ , Cl^- , Ca^{2+} , Mg^{2+} and SO_4^{2-} reflect the stratification of the water column in the cenote, with generally low concentrations in the fresh water body from 0–30 m water depth and slightly increasing concentrations from 30 m water depth to the top of the turbid layer at 35 m water depth, a stronger increase within the turbid layer from 35–36.6 m water depth, and an even stronger increase from the top of the halocline at 36.6 m water depth down to the cenote bottom (Fig. 3c and Table S2). Mg/Ca ratios strongly increase from the top of the turbid layer at 35 m water

20 downwards, due to higher Mg concentrations in the salt water body (Fig. 3c). Although sulfate concentrations increase downwards from the top of the halocline, a relative decrease of SO_4^{2-} ions is detected, compared to the chemically conservative ion Cl^- , by a decrease in $\text{SO}_4^{2-}/\text{Cl}^-$ within the turbid layer and below in the halocline (Fig. 3c).

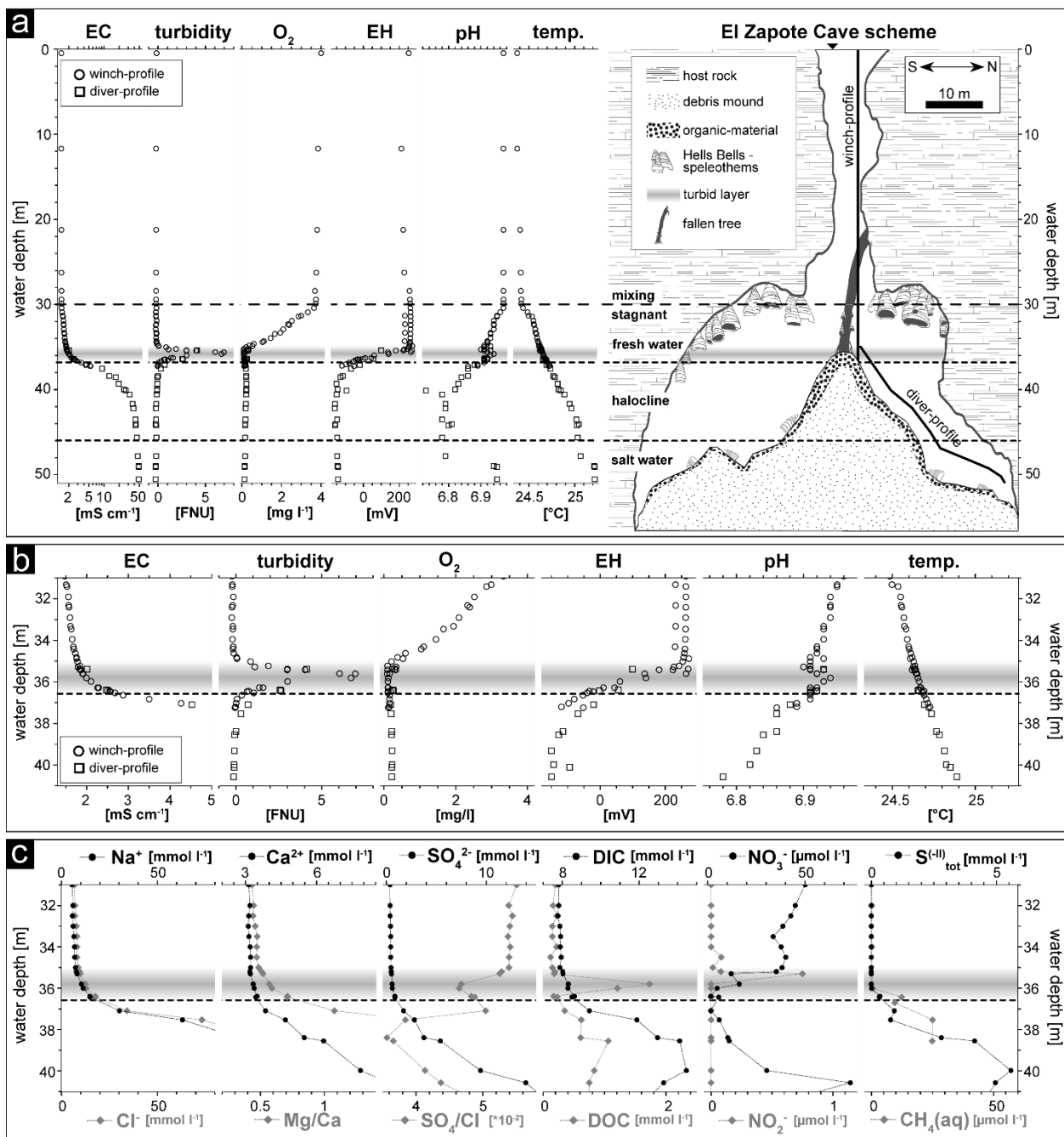


Fig. 3: Hydrogeochemistry of the water column of El Zapote cenote. The horizontal grey band indicates the depth position of the turbid layer, while the dashed line indicates the top of the halocline at 36.6 m water depth. **a:** Water in-situ parameters versus water depth (left) in relation to the El Zapote cenote cross section (right). In-situ parameters and samples were taken along a winch profile and a diver profile as shown in the cenote cross section. Note the logarithmic scale of the electrical conductivity (EC). **b:** Close-up of the water in-situ parameters in 31–41 m water depth. Note that the scale of EC is non-logarithmic and is only shown for the range between 1–5 mS cm⁻¹, in order to point out the increase in salinity at the beginning of the halocline. **c:** Water chemical parameters

determined in the water column between 31–41 m water depth. Na^+ and Cl^- concentrations are only shown in the range of 0–80 mmol l^{-1} to highlight the concentration pattern above and within the halocline.

Concentrations of DIC are about 7.8 mmol l^{-1} in the fresh water body. They increase in the turbid layer and show a peak at 40 m water depth with concentrations increasing to 14.5 mmol l^{-1} ; below, they decrease towards the cenote bottom (Fig. 3c and Table S2). The dissolved organic carbon (DOC) concentrations are low in the fresh water body and show a distinct peak within the turbid layer, coinciding with the peak in turbidity at 35.7 m water depth (Fig. 3c). Below the turbid layer DOC concentrations slightly increase and peak at 39–40 m water depth, decreasing from there towards the cenote bottom (Fig. 3c and Table S2). Nitrate concentrations are $\sim 50 \mu\text{mol l}^{-1}$ in the fresh water unit of the cenote shaft (Table S2). They decrease from 30 m water depth towards the top of the turbid layer and rapidly fall below detectable concentrations within this layer (Fig. 3c). Nitrite peaks in a narrow zone at the top of the turbid layer with concentrations of up to $0.8 \mu\text{mol l}^{-1}$ (Fig. 3c). High total sulfide (S(-II)) concentrations of up to 5.6 mmol l^{-1} were detected in 40 m water depth. Concentrations decrease upwards, fading in the lower part of the turbid layer at 36 m water depth (Fig. 3c). Below the 40 m depth level, S(-II) concentrations decrease to values around 3 mmol l^{-1} down to 45 m water depth (Fig. 3c and Table S2). Concentrations of dissolved CH_4 ($\text{CH}_4(\text{aq})$) are low in the fresh water body with values of about $0.09 \mu\text{mol l}^{-1}$. Methane concentrations increase from the turbid layer at 36 m water depth downwards to values of $25 \mu\text{mol l}^{-1}$ at 39 m water depth (Fig. 3c).

3.1.1 Calcite Saturation

The calculated saturation index (SI) of calcite shows calcite saturation in the fresh water body and the uppermost part of the halocline with values from 0.03–0.07 (Fig. S2). The SI closely follows the pH in the fresh water body revealing a distinct peak of slightly higher values of $\text{SI} = 0.1$ in the turbid layer at ~ 36 m water depth. The water body below the redoxcline is undersaturated with respect to calcite indicating calcite dissolution in the halocline (Fig. S2).

3.1.2 Trace elements

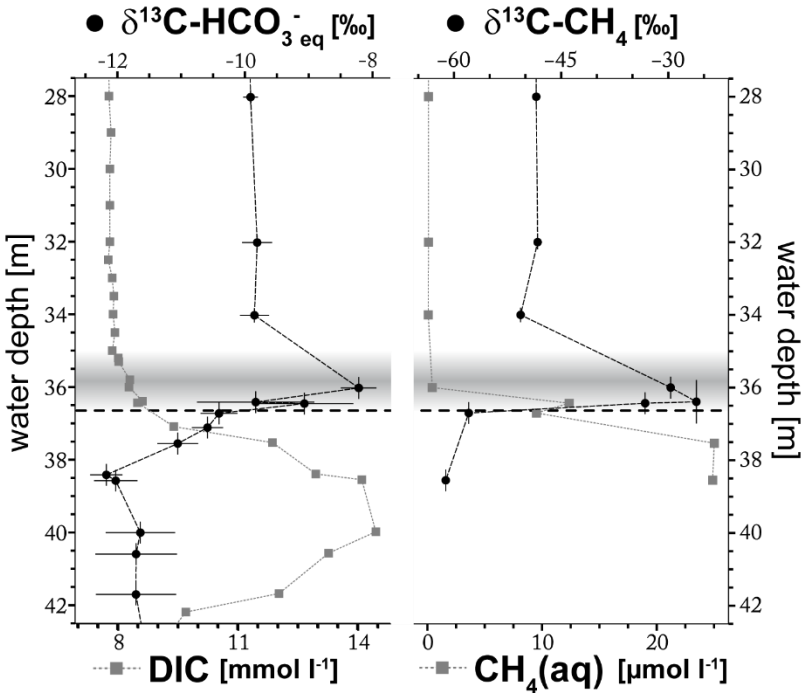
Dissolved iron and manganese concentrations are very low in the fresh water body with concentrations of 0.1 and $0.01 \mu\text{mol l}^{-1}$, respectively, and slightly increase within the turbid layer towards the salt water body, to concentrations of up to 0.47 (Fe) and 0.06 (Mn) $\mu\text{mol l}^{-1}$ (Fig. S3). Phosphate and silica concentrations are invariably low in the fresh water body ($\text{P}_{\text{ortho}} \sim 0.25$ and $\text{Si} \sim 63 \mu\text{mol l}^{-1}$) and increase in the salt water body peaking at 40 m water depth with concentrations up to 10.3 (P_{ortho}) and 275 (Si) $\mu\text{mol l}^{-1}$ (Fig. S3). Uranium content correlates to the redox potential of the water as indicated by uniform contents of $\sim 0.012 \mu\text{mol l}^{-1}$ in the fresh water column and rapidly decreasing values in one order of magnitude in the turbid layer, to $0.0012 \mu\text{mol l}^{-1}$ at 40 m water depth (Fig. 4 and Table S2).

3.1.3 Stable carbon isotopes of DIC and CH_4

The $\delta^{13}\text{C-HCO}_3^-$ values at water depth from 28 to 42 are shown in Figure. 4. The average $\delta^{13}\text{C-HCO}_3^-$ value is -9.8 ‰ in the fresh water body where DIC content is about 8 mmol l^{-1} . In the turbid layer $\delta^{13}\text{C-HCO}_3^-$ values show a distinct peak towards

less negative values of up to -7.9 ‰ at slightly increasing DIC concentrations. Below the turbid layer $\delta^{13}\text{C-HCO}_3^-$ values rapidly decrease towards more negative values of -12.4 ‰ between 39 and 42 m water depth at increasing DIC concentrations (Fig. 4). A rather slight increase of $\delta^{13}\text{C-HCO}_3^-$ values (-11.6 ± 0.7 ‰) is observed towards the cenote bottom at 44 m water depth (Table S3).

- 5 The $\delta^{13}\text{C-CH}_4$ values are shown alongside with the CH_4 concentrations in Figure 5. The pattern of $\delta^{13}\text{C-CH}_4$ within the water column is similar to that of $\delta^{13}\text{C-HCO}_3^-$. In the fresh water body values of $\delta^{13}\text{C-CH}_4$ are approximately constant at about -49 ‰ and CH_4 concentrations are very low, roughly corresponding to that of atmospheric equilibrium ($0.04\text{--}0.09\text{ }\mu\text{mol l}^{-1}$). $\delta^{13}\text{C-CH}_4$ increases to -28 ‰ within the turbid layer and again decreases to -61 ‰ below the turbid layer, while CH_4 concentrations increase within and below the turbid layer (Fig. 4).



10

Fig. 4: Stable carbon isotope values $\delta^{13}\text{C-HCO}_3^-$ of the dissolved HCO_3^- in equilibrium with $\delta^{13}\text{C-CO}_2$ values measured in headspace and $\delta^{13}\text{C-CH}_4$ values of water samples alongside the concentrations of DIC and CH_4 of water samples. The grey band represents the turbid layer in 35–36.6 m water depth and the horizontal dashed line indicates the top of the halocline at 36.6 m water depth. Horizontal error bars represent 2σ uncertainties, vertical error bars indicate up to 0.6 m uncertainty of gas samples that were not taken from the sample used to determine chemical parameters (see Sect. 2.1).

15

3.2. Petrography of Hells Bells speleothems

Petrographic characteristics of Hells Bells are shown in Fig. 6. The size of individual crystals of Hells Bells is varying from μm scale to several mm-sized crystals that are easily identified macroscopically. The latter are frequently dominant in the youngest calcite rims at the bottom of Hells Bells from water depths reaching from ~28 to ~35 m (Fig. 2e). Hells Bells from

greater water depths show rounded or globular calcite surfaces at the lowermost margin of the speleothems indicating dissolution (Fig. 2f). SEM-images of the lowermost part of Hells Bell surfaces are shown in Figs. 6a, b and c. The calcite morphology varies from bladed or book-like calcite crystals (Fig. 5 a), dogtooth-like calcite crystals (Fig. 5b) and blocky calcite rhombs (Fig. 5c). In thin sections of the specimen ZPT-7 (Fig. 5 d1) (see also Stinnesbeck et al., 2017b), these crystal morphologies are expressed as rather botryoidal (dog-tooth-like and bladed-shaped) and mosaic calcite phases (blocky calcite rhombs) (Fig. S5). Electron images of the polished counter pieces of the thin section are shown in Fig. 5d2. An element map of Mg shows that botryoidal calcite phases incorporated more Mg (appearing brighter in Fig. 5d3) than the mosaic calcite phases (appearing darker in Fig. 5d3).

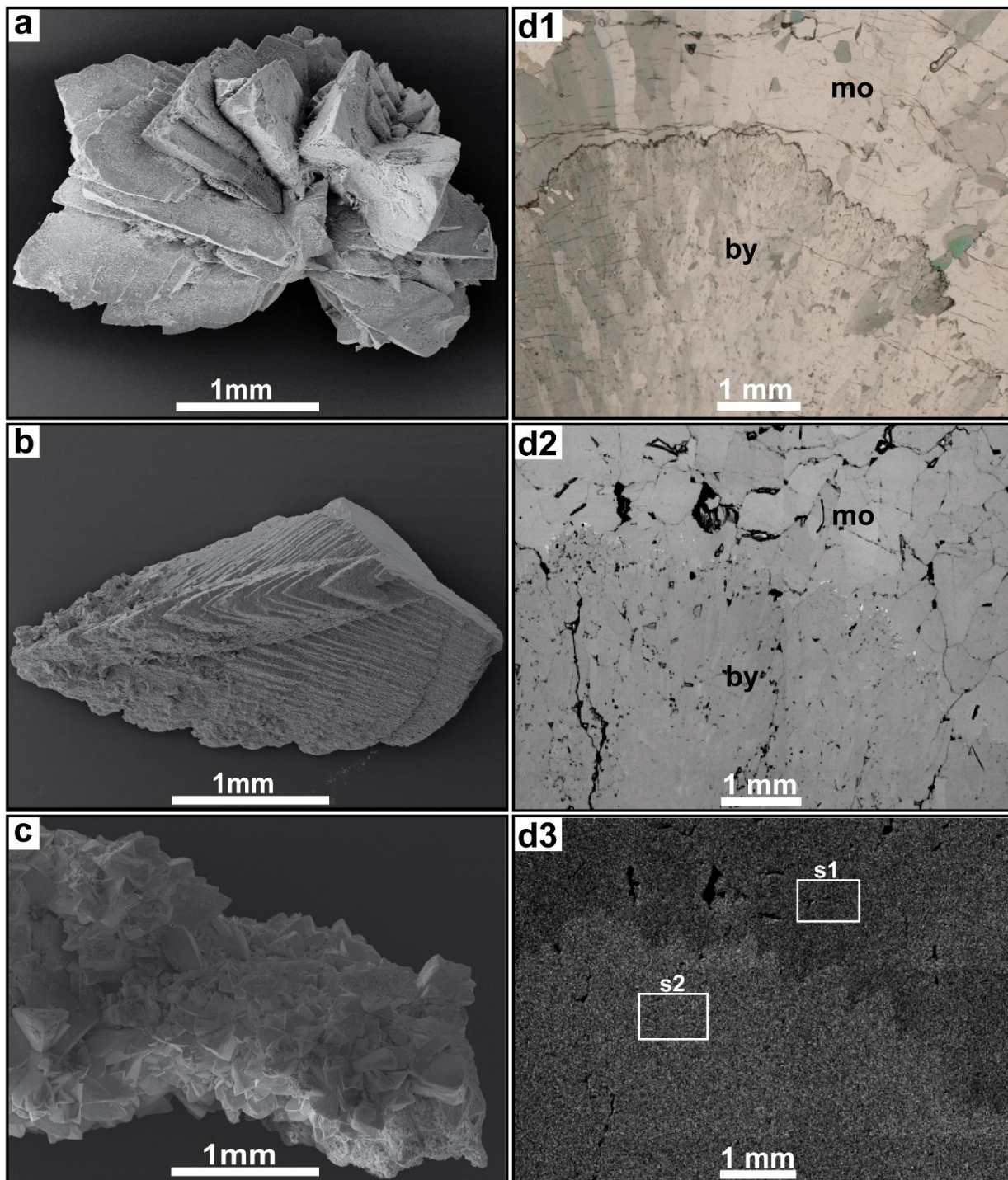


Fig. 5: Petrographic characteristics of Hells Bells speleothems. SE-images of Hells Bell samples Z17-8DC (a), Z17-18J (b), Z17-9J (c) of El Zapote cenote showing bladed (a), dogtooth-like (b) and blocky (c) calcite rhombs. Polarized transmitted light-microscopic images of a thin section from ZPT-7 (d1) (shown in Stinnesbeck et al., 2017b) showing different calcite fabrics of angular coarse-

grained mosaic calcite (mo) and fine grained elongated botryoidal calcite (by). The same detail is shown in the BSE-image of the polished counter slab that corresponds to the thin section (d2). The Mg-element map (d3), where higher abundances of Mg appear brighter, indicates a difference in Mg content between the botryoidal and mosaic calcite phases. The white rectangles represent areas of measured integrated element spectra.

5 3.3 Geochemistry of Hells Bells speleothems

Samples were collected from the lowermost and presumably youngest part of several Hells Bell specimens that grew on a ceiba tree fallen into the El Zapote cenote at about 3.5 cal kyr BP (Stinnesbeck et al., 2017b). They were analyzed for major and trace elements and stable carbon isotopes. The results are given in Table. 1.

3.3.1 Major and trace elements

- 10 The calcite of Hells Bell speleothems revealed no residues after digesting ~3 mg sample in 12 ml dilute 1 M Nitric indicating that Hells Bells calcite is devoid of acid insoluble impurities. The Mg/Ca, Sr/Ca and Ba/Ca ratios show narrow ranges with mean values of $22.5 \pm 2.9 \cdot 10^{-3}$, $38.6 \pm 5.9 \cdot 10^{-5}$ and $1.10 \pm 0.31 \cdot 10^{-5}$, respectively. They are closely related and positively correlate in each sample (Fig. 6a). There is also a trend towards decreasing ratios with increasing water depth of the respective sample (Fig. 6b). Iron and manganese show more variable concentrations with ratios of Fe/Ca and Mn/Ca between 3.0–
- 15 $11.3 \cdot 10^{-5}$ and $16\text{--}39.3 \cdot 10^{-6}$, respectively. Iron and manganese show a weak positive correlation but no dependency on water depth. The content of sulfur in Hells Bells carbonate is constantly high with concentrations of $0.8\text{--}1.0 \text{ g kg}^{-1}$ (Table S4) and mean S/Ca ratios of $2.87 \pm 0.42 \cdot 10^{-3}$, showing no dependency on water depth of the sample (Table 1).

3.3.2 Hells Bells stable carbon isotopes

- Stable carbon isotope values of Hells Bells calcite samples ($\delta^{13}\text{C}_{\text{calcite}}$) from different water depth range from -12.85 to -13.82
- 20 ‰ with a mean value of -13.37 ± 0.70 ‰ ($n=9$, Table 1). There is a weak correlation of increasing $\delta^{13}\text{C}_{\text{calcite}}$ values with water depth of the samples (Fig. 6b). Furthermore, $\delta^{13}\text{C}_{\text{calcite}}$ values show a strong negative correlation with Sr/Ca and Ba/Ca with r^2 of 0.82 and 0.89 (Fig. 6a).

- The stable carbon isotope ratio of the HCO_3^- that is in equilibrium with the Hells Bells calcite ($\delta^{13}\text{C}_{\text{-eqHCO}_3^-}$) at 25°C water temperature ($\delta^{13}\text{C}_{\text{Calcite}} - 0.91 \text{ ‰} = \delta^{13}\text{C}_{\text{-eqHCO}_3^-}$) was calculated after Mook (2000). The calculated $\delta^{13}\text{C}_{\text{-eqHCO}_3^-}$ is -
- 25 14.28 ± 0.70 ‰ which is lower than the $\delta^{13}\text{C}\text{-HCO}_3^-$ determined for the water column with a range of -9.1 to -12.3 ‰.

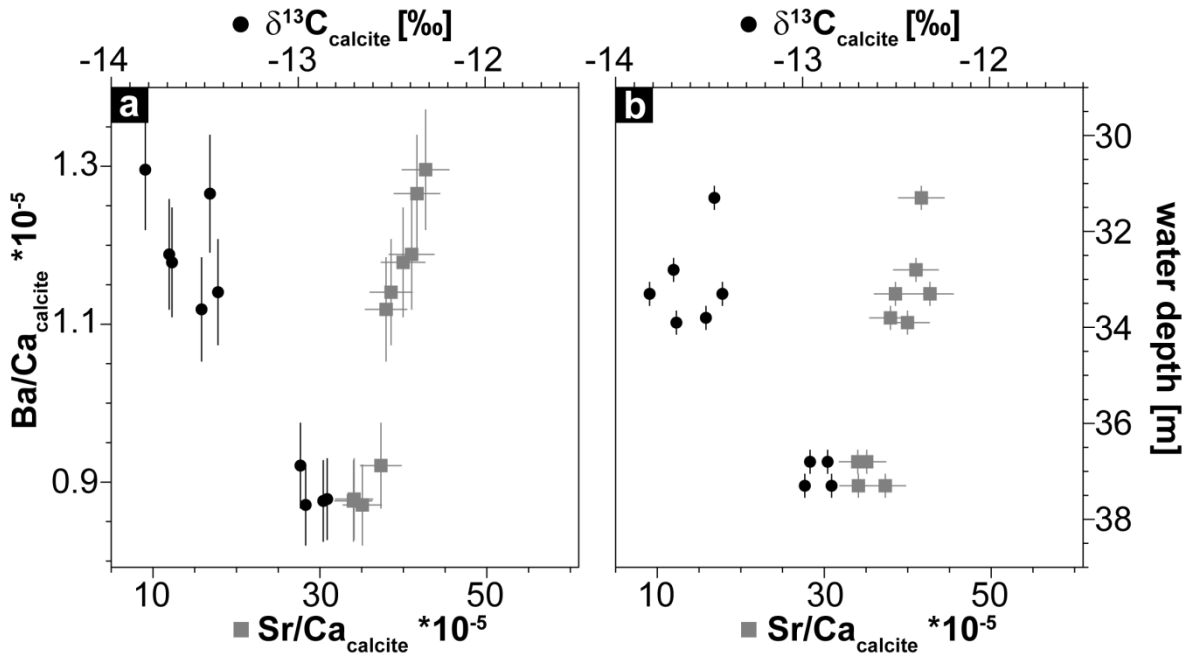


Fig. 6: Geochemical data of Hells Bell speleothems showing a strong correlation between Sr/Ca and Ba/Ca ratios ($r^2 = 0.91$) and between Ba/Ca and $\delta^{13}\text{C}_{\text{calcite}}$ ($r^2 = 0.89$) (a) and a trend of increasing $\delta^{13}\text{C}$ and decreasing Sr/Ca with increasing water depth of the samples (b). Given uncertainties represent 2σ standard deviations and ± 0.25 m is assumed as uncertainty for the water depth of the Hells Bell samples.

3.4 Turbid layer filtrate

Although the turbid layer appears dense in photographs taken during dives, the water sampled from the turbid layer was clear, with no visible turbidity during sample handling. Electron microscopy of the filter, however, reveals that abundant particles were extracted from the turbid layer (Fig. 7a). Particle sizes range between 1–100 μm , but most are in the range of 1–10 μm .

They consist of Ca-carbonate crystals (Figs. 7c and c1), globular particles consisting of elemental sulfur (Figs. 7d and d1) and silicate particles of different compositions (Figs. 7e and e1). Also, numerous intact and broken shells of siliceous diatoms were found on the filter. Some calcite crystals incorporated broken parts of silica shells (Figs. 7c1).

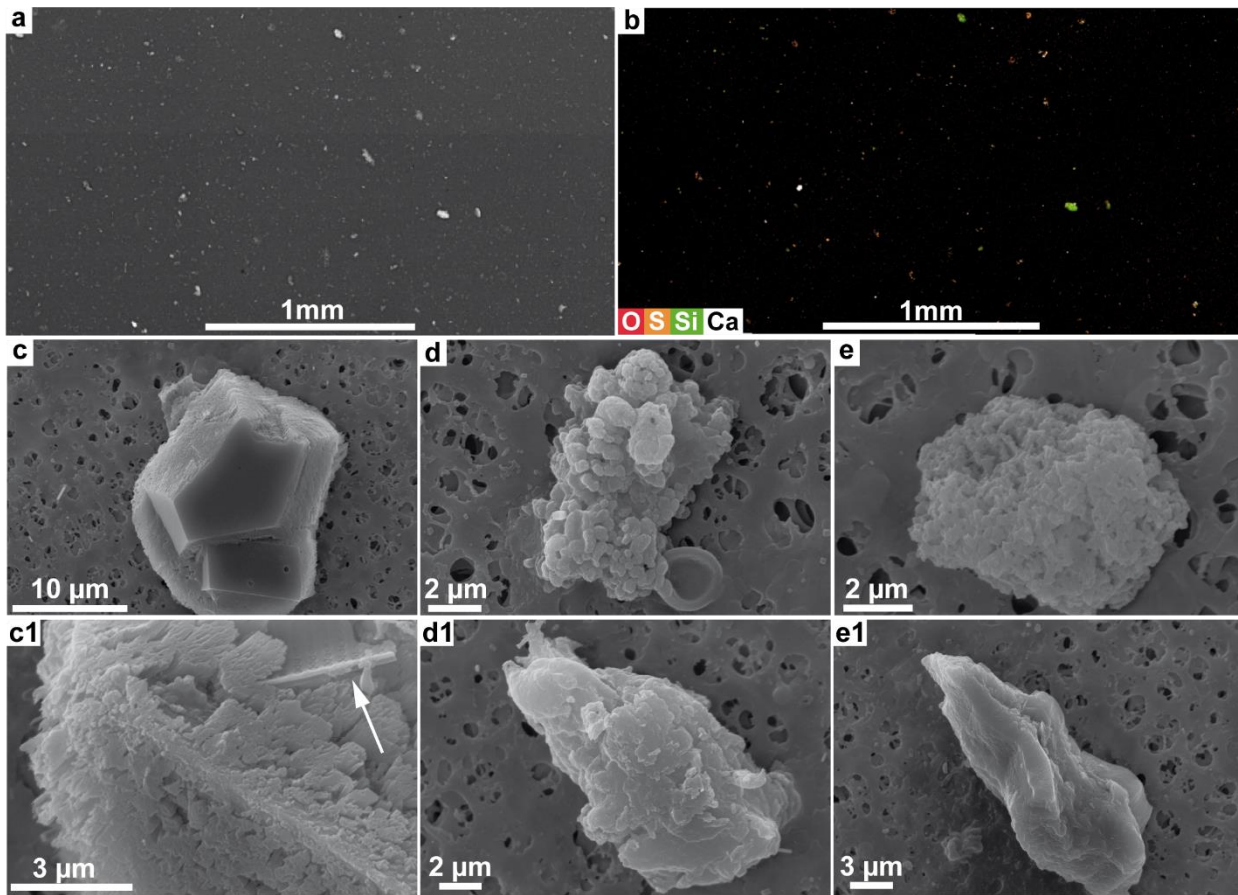


Fig. 7: SEM-analysis of turbid layer filtrate. Various particles on the filter are visible on the SEM picture of a larger area of the filter (a). An element map for O, S, Si and Ca of the same filter area of (a) is shown in (b) revealing that most particles consist of elemental sulfur, Ca-rich particles and silica particles. EDX analysis of individual particles on the filter verified the particles as Ca-carbonates (c, c1), elemental sulfur (d, d1) and silicate phases (e, e1). The white arrow in c1 points to a fragmentary silica shell.

4. Discussion

4.1 Limnological and hydrological conditions in El Zapote Cenote

The water temperature profile (Fig. 3a) offers valuable clues on the hydrological conditions in the El Zapote cenote. Mixing of the water in the narrow cenote shaft from 0–30 m water depth is indicated by constant temperatures and oxygenation, whereas linearly increasing temperatures in the wide dome-shaped cenote from 30–55 m water depth and linearly decreasing dissolved oxygen concentrations indicate conductive heat transport and oxygen diffusion, respectively (Fig. 3a). This suggests that the water body from 0–30 m water depth is mixing-dominated and diffusion-dominated from 30–>50 m water depth. This interpretation is also supported by constant EC values in the cenote shaft and constantly increasing EC values from 30 m water depth down to the top of the halocline at 36.8 m water depth (Fig. 3a). Another indication for stagnant conditions of the water

body is the shape of the halocline itself. Compared to other cenotes of the Yucatan Peninsula being deep enough to reach the halocline, El Zapote cenote particularly differs in the extent of the halocline, the transition zone from fresh to salt water. At El Zapote cenote, the halocline is about 10 m thick (Fig. 3a), as compared to a transition zone thickness of 1–5 m of other cenotes of Quintana Roo (Kovacs et al., 2017b; Stoessell et al., 1993).

5 The constant decrease of DIC, sulfide and orthophosphate below about 40 m water depth indicates a sink of these chemical species into depths greater than the cenote (>54 m water depth). This sink may result from advection of flowing water masses in conduits or zones of intensified hydraulic conductivity in a deeper cave system at around 60 m below the present sea level. Such deep cave systems could have developed during glacial sea level low stands (e.g. Smart et al., 2006).

In general, the water body of El Zapote cenote is stagnant from 30 m water depth down to the bottom of the cave where mass transfer is predominantly due to chemical diffusion. This is essential for the understanding of hydrogeochemistry and the ongoing biogeochemical processes in the El Zapote cenote.

4.2 Hydrogeochemical processes in El Zapote cenote

4.2.1 Sedimentary biogeochemical processes

The anaerobic conditions and high concentrations of metabolites such as S(-II) and CH₄ can be attributed to anaerobic heterotrophic organic matter (OM) decay in the debris mound sediments. Both the debris mound and the cenote floor are covered with a relatively thick layer (~1 m) of OM, mostly leaves and other plant remains, according to the descriptions of the divers. As a consequence of stagnancy in the meromictic water body and oxygen deficiency on the cave bottom, this OM is respired by heterotrophic microorganisms in the sediment via anaerobic fermentative and respiratory pathways.

Anaerobic OM degradation by fermentation and sulfate reducing bacteria produce hydrogen and hydrogen sulfide (S(-II)), CO₂ (DIC) and acidity, thus lowering the pH. Elevated concentrations of DIC and S(-II) are found in the halocline (Fig. 3c), and low $\delta^{13}\text{C-HCO}_3^-$ indicate a microbial origin of the hydrogen carbonate (e.g. Mook, 2000) (Fig. 4). Additionally, pH values are more acidic in the halocline (Fig. 3a and b) and sulfate reduction is further supported by decreasing SO₄²⁻/Cl⁻ ratios in the halocline of up to 32% compared to seawater ratio of 5.2 (Fig. 3c) (Stoessell et al., 1993).

Methane-producing archaea (methanogens) metabolize degraded OM releasing CH₄ and DIC. Although this pathway is less energy efficient than sulfate reduction, and methanogenesis is not expected in the presence of sulfate, methanogens may dominate in deeper parts of the sediments where sulfate is already consumed (e.g. (Whiticar, 1999) Diffusion of CH₄ from the sediment into the water column leads to CH₄ concentrations of up to 25 $\mu\text{mol l}^{-1}$ identified in the halocline of El Zapote.

Ammonium is likely released from organic matter degradation in the organic rich sediment and is also released to the water column at the halocline.

30 Other common anaerobic heterotrophic metabolic pathways in sediments, such as the reduction of iron, are subordinated processes, most likely due to low concentrations of iron in limestone and limited source of siliciclastic materials in this part of the YP. The elevated but still exceedingly low amounts of dissolved iron in the halocline as compared to the fresh water body

(Fig. S3) are rather not indicative for the absence of these processes, as iron solubility is limited by the affinity to form iron sulfides in the presence of high amounts of S^{II} .

4.2.2 Water column biogeochemical processes

The redoxcline from 35 to 36.8 m water depth coincides with a peak in turbidity which is detectable both visually (Fig. 2b) and geochemically (Figs. 3a and b). Dissolved oxygen (DO) concentrations drop to undetectable levels at the top of the redoxcline, indicating that anaerobic biogeochemical processes prevail within the redoxcline (Fig. 8).

In our previous study we tentatively attributed these conditions to a full heterotrophic redox zonation due to organic matter decomposition (Stinnesbeck et al., 2017b). Fine organic matter accumulates along the density contrast at the top of the halocline and heterotrophic microbial communities thrive from the aerobic and anaerobic decomposition of this organic matter. This is also indicated in the results of this study by minor nitrification from ~34–35 m water depth (Fig. 3b), non-linearly decreasing dissolved oxygen contents from ~34–35 m and by slightly more acidic pH values above and in the uppermost part of the turbid layer.

Nevertheless, the more detailed data presented in this study now underline the importance of planktonic chemolithoautotrophic processes in the pelagic redoxcline which are driven by the upward diffusion of reduced sulfur, carbon and nitrogen species released from the anaerobic degradation of organic material at the cenote floor. Pelagic redoxclines develop in density stratified marine (e.g. Berg et al., 2015) as well as lake environments (e.g. Noguerola et al., 2015). In redoxclines below the photic zone the microbial community is dominated by chemolithoautotrophs, with a considerable amount of chemoautotrophic production and dark carbon fixation (e.g. Grote et al., 2008; Jørgensen et al., 1991; Jost et al., 2010; Noguerola et al., 2015). The development of pelagic redoxclines was also reported for deep density stratified cenotes of the YP (e.g. Socki et al., 2002; Stoessell et al., 1993; Torres-Talamente et al., 2011).

In our previous study members β -proteobacteria *Hydrogeophilaceae* and the ϵ -proteobacteria genus *Sulfurovum* were reported as dominant within the aqueous microbial community. Most members of these bacterial groups are chemolithotrophic or mixotrophic using reduced sulfur compounds or hydrogen as electron donors and oxygen or nitrogen-compounds as electron acceptors (Stinnesbeck et al., 2017b).

The white cloudy turbid layer could be the result of a dense accumulation of these microorganisms e.g. sulfur-oxidizing bacteria, analogous to that reported for Bundera sinkhole in Australia (Seymour et al., 2007). Elemental sulfur particles or polysulfides were detected on the turbid layer filtrate and indicate sulfur oxidation in the turbid layer or redoxcline (Sect. 3.4 and Fig. 7); these particles are formed as intermediates in the microbial oxidation of sulfide (Findlay, 2016).

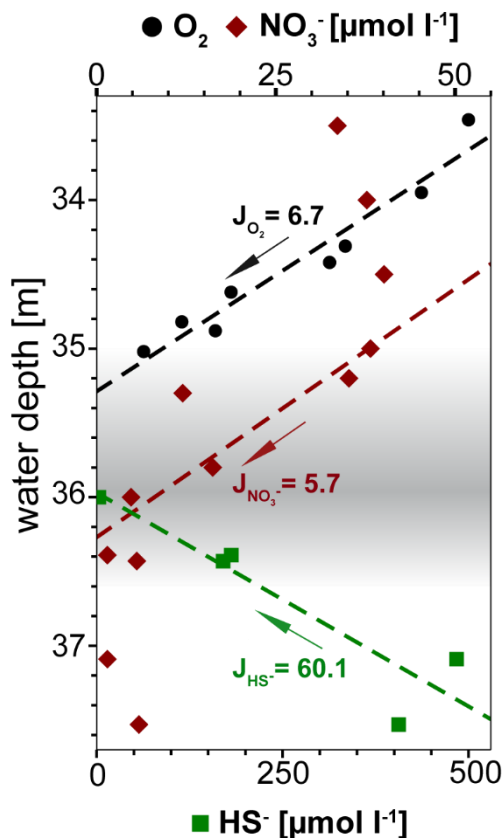
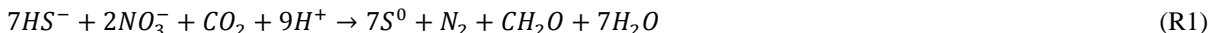


Fig. 8: Concentration profiles of dissolved O_2 , NO_3^- and HS^- (calculated with PhreeqC) in water depths around the redoxcline. The fluxes J are given in $10^{-5} \mu\text{mol m}^{-2} \text{s}^{-1}$. The linear fit of O_2 and HS^- is calculated for the range of plotted values, while for NO_3^- it is calculated only for the range from 34.4–36.6 m water depth. Only O_2 values above detection limit ($6.3 \mu\text{mol l}^{-1}$) from winch profile 2 were considered for the calculation (Table S1).

The oxidation of sulfide in the redoxcline is likely anaerobic, as sulfide vanishes at around 36 m while dissolved oxygen is already at undetectable levels at 35 m water depth and both concentration profiles are not overlapping (Fig. 8). Furthermore, the oxygen flux towards the redoxcline is around one magnitude lower than the flux of the reduced sulfur species HS^- indicating that sulfide oxidation via aerobic pathways is minor (Fig. 8). Thus, sulfide oxidation within the redoxcline must be predominantly via anaerobic pathways. As the downward flux of NO_3^- towards the redoxcline intersects with the upward flux of HS^- (Fig. 8), assimilatory anaerobic sulfide oxidation could be obtained with nitrate as terminal electron acceptor producing elemental sulfur and nitrogen under the consumption of protons (e.g. Bailey et al., 2009). The overall mass-balanced energy generating reaction for chemoautotrophic nitrate-driven anaerobic sulfide oxidation (ND-SO) is given in reaction (R1):



According to reaction (R1) ND-SO could account to one third of the HS^- oxidation, despite the flux of NO_3^- towards the redoxcline is around on order of magnitude lower than the HS^- flux (Fig. 8). Furthermore ND-SO is acid consuming and sulfide oxidation to elemental sulfur is more acid consuming than the full sulfide oxidation to sulfate (see also Visscher and Stolz,

2005). The abundance of elemental sulfur particles found in the turbid layer filtrate (Fig. 7) indicates that sulfide oxidation to elemental sulfur is predominant. Full oxidation of sulfide to sulfate is less likely as no increase of sulfate is observed in the redoxcline (Fig. 3c). Maxima in pH are known to occur when sulfide is oxidized to elemental sulfur with nitrate as electron acceptor (Kamp et al. 2006). In consequence, the minimum of nitrate in the redoxcline and slight alkaline pH shift, indicate
 5 that ND-SO is a relevant process in the redoxcline (Fig. 3b and c, Fig. 8). Therefore, the proton consuming ND-SO could be the biogeochemical process in the redoxcline creating a disequilibrium in the carbonate dissolution-precipitation reaction, favoring calcite precipitation. This mechanism was recently reported for the formation of stromatolites below the photic zone of the Arabian Sea. There, a collective effect of proton-consuming ND-SO and alkalinity-producing sulfate driven-oxidation of CH₄ (SD-OM) leads to authigenic carbonate precipitation in microbial mats in the vicinity of CH₄-seeps (Himmeler et al.,
 10 2018).

Anaerobic SD-OM (e.g. Bailey et al. 2009) is likely to occur at the redoxcline, as dissolved CH₄ concentrations vanish at around the same depth of sulfide (~36.5 m) and $\delta^{13}\text{C-CH}_4$ values show a strong peak towards higher values at the same water depth (Fig. 4).

Autotrophy also supports calcite precipitation by taking up CO₂ for the synthesis of biomass (Castanier et al., 1999; Kosamu
 15 and Obst, 2009). Although a decrease of DIC is not observed at the redoxcline, chemolithoautotrophy is indicated by the $\delta^{13}\text{C-HCO}_3^-$ in the water body (Fig. 4). The peak of higher values in the redoxcline indicates inorganic carbon assimilation by microorganisms (dark-CO₂ uptake). Organisms usually prefer to metabolize ¹²C (it takes less energy to break the ¹²C bond instead of ¹³C), which results in higher $\delta^{13}\text{C-HCO}_3^-$ values in the remaining dissolved inorganic carbon. Hence, the peak towards more positive $\delta^{13}\text{C-HCO}_3^-$ values identified in the redoxcline of El Zapote at ~36 m water depth, may be attributed to
 20 microbial CO₂ assimilation or dark CO₂ fixation.

4.3 Hypothesis on Hells Bells formation

It was suspected before that Hells Bells form within the freshwater body of El Zapote cenote (Stinnesbeck et al., 2017b). The depth zone of Hells Bells formation within the fresh water layer can now be narrowed down by the application of Eq. (2) with a given distribution coefficients D(Mg) of the temperature-dependent partitioning of Mg into calcite.

$$25 \quad (Mg/Ca)_{\text{solution}} = \frac{(Mg/Ca)_{\text{solid}}}{D(Mg)} \quad (\text{Eq. 2})$$

Applying the mean value of Mg/Ca_{solid} determined for Hells Bells calcites (Table 1) and D(Mg) at 25°C given by Huang and Fairchild (2001) and Rimstidt et al. (1998), the calculation of Mg/Ca of the solution from which the Hells Bells calcite precipitated yields a Mg/Ca_{solution} of 0.73 and 1.06, respectively. Mg/Ca_{solution} ratios in this range are found in the water of the redoxcline and the uppermost top of the halocline in 36–37 m water depth, thus supporting the interpretation that Hells Bells
 30 formation takes place in the redoxcline (Fig. 3c and Table S4).

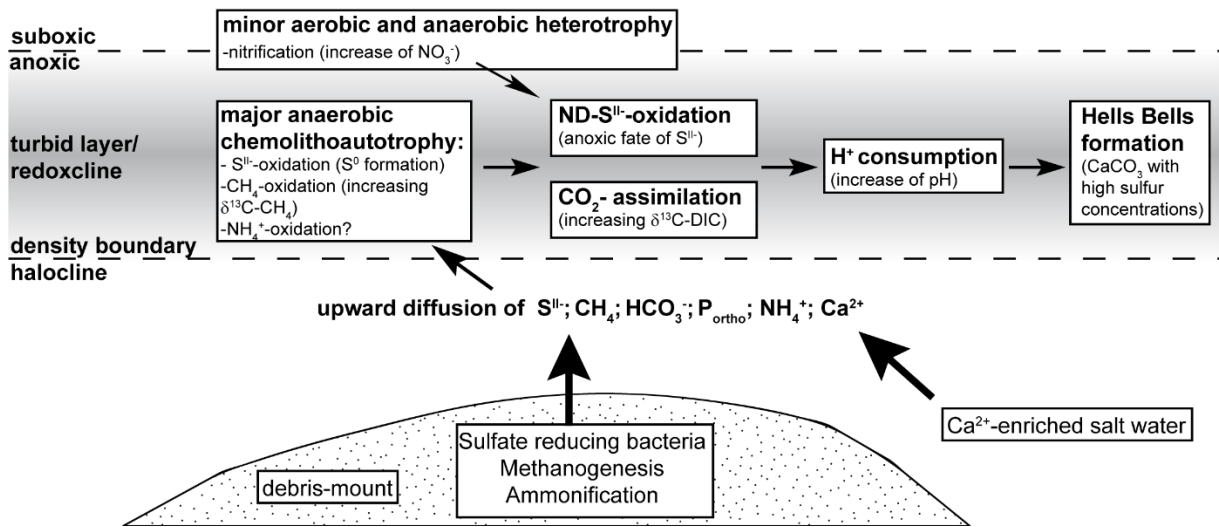
The calcite crystals found in the turbid layer filtrate give further hints on calcite precipitation in the redoxcline (Fig. 7c). It is not yet known whether these particles represent autochthonous matter of the turbid layer. Nevertheless, formation of calcite

crystals at the density boundary is likely, as fine particulate matter is accumulated there and may act as crystallization seeds. This process is indicated by calcite crystal formation around silica shells (Fig. 7c1). The high sulfur contents found in Hells Bells calcite also supports this assumption as small sulfur particles are abundant in this water layer and are easily enclosed in calcite crystals growing there (Table 1).

5 Based on the indications of Hells Bells formation in the redoxcline and taking the biogeochemical processes discussed before into account we propose the following scenario illustrated in Figure 9. It summarizes the biogeochemical processes inducing calcite oversaturation and calcite precipitation in the turbid layer and the redoxcline of El Zapote cenote. Heterotrophic bacterial decomposition of organic matter in sediment of the debris mound releases CO_2 (HCO_3^-), nutrients (P_{ortho}) and reduced species of sulfur ($\text{S}^{0/-}$) and nitrogen (NH_4^+). Due to the stagnant conditions in the cenote, these species are transported via

10 diffusion, thereby allowing for the formation of a defined and stable redoxcline. Here, anaerobic chemolithoautotrophy, and especially proton consuming nitrate-driven sulfide oxidation (ND-SO), increase alkalinity, thus favoring calcite precipitation (Fig. 9). The required Ca^{2+} ions for calcite precipitation are constantly supplied to the redoxcline by upward diffusion from the Ca-enriched saline water body (Stinnesbeck et al., 2017b).

Biogeochemical processes involved in Hells Bells formation



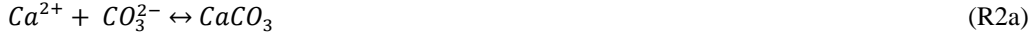
15 **Fig. 9: Scheme of the biogeochemical processes involved in the sediment and redoxcline of the water column of the El Zapote cenote that lead to Hells Bells formation.**

4.3.1 Calcite precipitation rates

In order to test the plausibility of the hypothesis on Hells Bells formation within the redoxcline, calcite precipitation rates of both biogeochemical processes, ND-SO and CO_2 -assimilation are assessed. All used parameters and results are given in Table

20 S5.

The overall chemical reaction of the carbonate balance is given in R2 and the partial reactions of R2 are given in R2a–R2d. Under equilibrium conditions, carbonate precipitation after R2 is acid producing because for each mole of precipitated calcite in reaction (R2) one proton is released to compensate for the abstracted carbonate ion (R2b) due to proton shift in the partial reactions (R2b–R2d).



- 10 Assuming that up to one third of the hydrogen sulfide flux towards the redoxcline (Fig. 8) is oxidized by the proton consuming ND-SO after reaction (R1) and that the proton consumption of this process is buffered by both, the observed increase in pH values of 0.04 within the redoxcline (Fig. 3b) and calcite precipitation after reaction (R2), allows for an estimation of the calcite precipitation rate R_{ND-SO} derived from ND-SO within the redoxcline after Eq. (3).

$$R_{ND-SO} = \frac{1}{3} J_{HS^-} * \left(\frac{\alpha}{m_{HS^-}} - \frac{\beta}{m_{HS^-}} \right) \left[\frac{mol}{m^2 s} \right] \quad (Eq. 3)$$

- 15 With $m_{HS^-} = 7$ (moles of HS^- in R1); $\alpha = 9$ (moles of H^+ in R1); $\beta = 0.91$ (moles of H^+ consumed in pH increase of 0.04). Equation 3 yields that 7.3 mmol calcite $m^{-2} a^{-1}$ or 0.73 g calcite $m^{-2} a^{-1}$ could be precipitated within the redoxcline due to ND-SO. This adds up to a total calcite precipitation rate R_{ND-SO} of 2.2–6.2 kg calcite a^{-1} in the whole redoxcline of the circular 60–100 m wide El Zapote cenote.

- Additionally, the second biogeochemical process in the redoxcline that might lead to calcite precipitation, the CO_2 -assimilation or dark CO_2 -fixation (Fig. 9), has to be taken into account. Under equilibrium conditions, for each mole of abstracted or assimilated CO_2 one proton is consumed due to the carbonate balance (R2a–R2d) and this proton consumption is compensated by calcite precipitation (R2). The CO_2 -assimilation rate in the redoxcline can be approached by the upward flux of DIC ($J_{DIC(HCO_3^-)}$) towards the redoxcline (calculated as HCO_3^- and given in Fig. S4). The calcite precipitation rate $R_{CO_2-assim.}$ derived from the CO_2 -assimilation is then limited to the half of the DIC flux towards the redoxcline as given in Eq. (4).

$$25 \quad R_{CO_2-assim.} = \frac{1}{2} J_{DIC(HCO_3^-)} \quad (Eq. 4)$$

- Equation 4 yields a calcite precipitation rate $R_{CO_2-assim.}$ of 40 mmol calcite $m^{-2} a^{-1}$, which is 12–34 kg a^{-1} in the whole redoxcline. Such rates seem reasonable when compared to reported dark CO_2 -fixation rates from 0.2–2.7 $\mu mol CO_2 l^{-1} d^{-1}$ of deep marine pelagic redoxclines in the Black Sea (Jørgensen et al., 1991), the Baltic sea (Glaubitz et al., 2009; Jost et al., 2008) as well as for a deep karstic lake pelagic redoxcline (Noguerola et al., 2015) (Table S5). Applied to the redoxcline of El Zapote cenote, these rates would yield calcite precipitation rates from 11–420 kg calcite a^{-1} in the 0.5 m thick and 60–100 m wide redoxcline of the circular El Zapote cenote.

The summed up calcite precipitation rates of $R_{\text{ND-SO}}$ and $R_{\text{CO}_2\text{-assim.}}$ in the redoxcline can be converted to calcite growth rates from $0.27\text{--}1.46\text{ }\mu\text{m a}^{-1}\text{ m}^{-2}$, taking a calcite density of 2.7 g cm^{-3} into account. Calcite growth, however, is likely to be concentrated on a much smaller area, i.e. the crystal or substrate surfaces of Hells Bells hanging in the redoxcline, the cenote walls and the tree stem within the redoxcline (Figs. 2 and 3). This would result in a higher actual calcite growth rate, for example if the calcite growth is concentrated to 1 % of the area, this would result in actual growth rates of $27\text{--}146\text{ }\mu\text{m a}^{-1}$. These growth rates are close to the reported net growth rates of $12\text{--}90\text{ }\mu\text{m a}^{-1}$ for a U-series dated Hells Bells specimen from the tree (Stinnesbeck et al., 2017b) demonstrating the plausibility of Hells Bells formation by the biogeochemical mechanisms proposed in this study. However, the actual calcite growth rates must be significantly higher than the reported net growth rates as these rates also comprise repeated phases of calcite dissolution (see Sect. 3.1.1 and 3.2; Stinnesbeck et al., 2017b). Eventually, the comparison of the estimated actual calcite precipitation rates in the redoxcline and the reported net growth rates is hindered by a lack of data of both, the actual area of calcite precipitation and the time and intensity of calcite dissolution.

4.3.2 The role of halocline elevation in Hells Bells formation

Hells Bells formed in modern to at least historic times and occur in a relatively thick vertical zone of about 10 m from 28–38 m water depth (Stinnesbeck et al., 2017b). This indicates that their underwater growth occurred under environmental conditions similar to the ones detected by us, as modern sea levels were already reached at about 4.5 ka BP (Hengstum et al., 2010) and thus significantly earlier. Hells Bells therefore precipitate either permanently in the entire depth zone reaching from 28–38 m, or in the narrow 1–2 m thick redoxcline or turbid layer above the halocline (Fig. 9). According to the data presented here the latter hypothesis appears much more likely to us. Therefore, we propose that growth of Hells Bells is a non-permanent episodic process which majorly depends on the halocline elevation in the cenote (Fig. 10). The depth of the halocline generally increases with increasing distance to the coast (Fig. 10a) (e.g. Bauer-Gottwein et al., 2011). The halocline depth position is a function of the hydrostatic pressure of the overlying fresh water layer, i.e. its thickness and the sea level. Therefore, the halocline elevation can vary on multiple timescales in response to droughts, recharge events and annual tidal fluctuations that are superimposed upon on a longer term sea level change. Extensive droughts occurred repeatedly in the Holocene (Hodell et al., 2001) and could have led to a prolonged elevation of the halocline as the fresh water layer was thinner in consequence of decreased precipitation (Evans et al., 2018). Although on much shorter timescales, extraordinary recharge events (e.g. hurricanes) must have an effect on the depth position of the halocline (Fig. 10b). Generally, during these events of enormous precipitation, the halocline is temporarily pushed downwards by the amount of the fresh water infiltrating into the Yucatán karst aquifer. However, it has been reported that the halocline can also be elevated as a response to precipitation events (Escolero et al., 2007). Regional and local vertical and lateral hydraulic transmissivities of both the epi- and the phreatic karst can result in spatially variable hydraulic pressure of the fresh water lens (Williams, 1983), thus leading to a lowered halocline beneath areas of higher, and an elevated halocline beneath areas of less vertical hydraulic transmissivity. El Zapote cenote is located in the Holbox fracture zone that in the area is characterized by N-S trending lineaments of increased permeability (Bauer-Gottwein

et al., 2011, and references therein). Hurricanes that pass the area frequently (Farfán et al., 2014) could therefore lead to episodic elevation of the halocline (Fig. 10).

Halocline dynamic at El Zapote Cenote

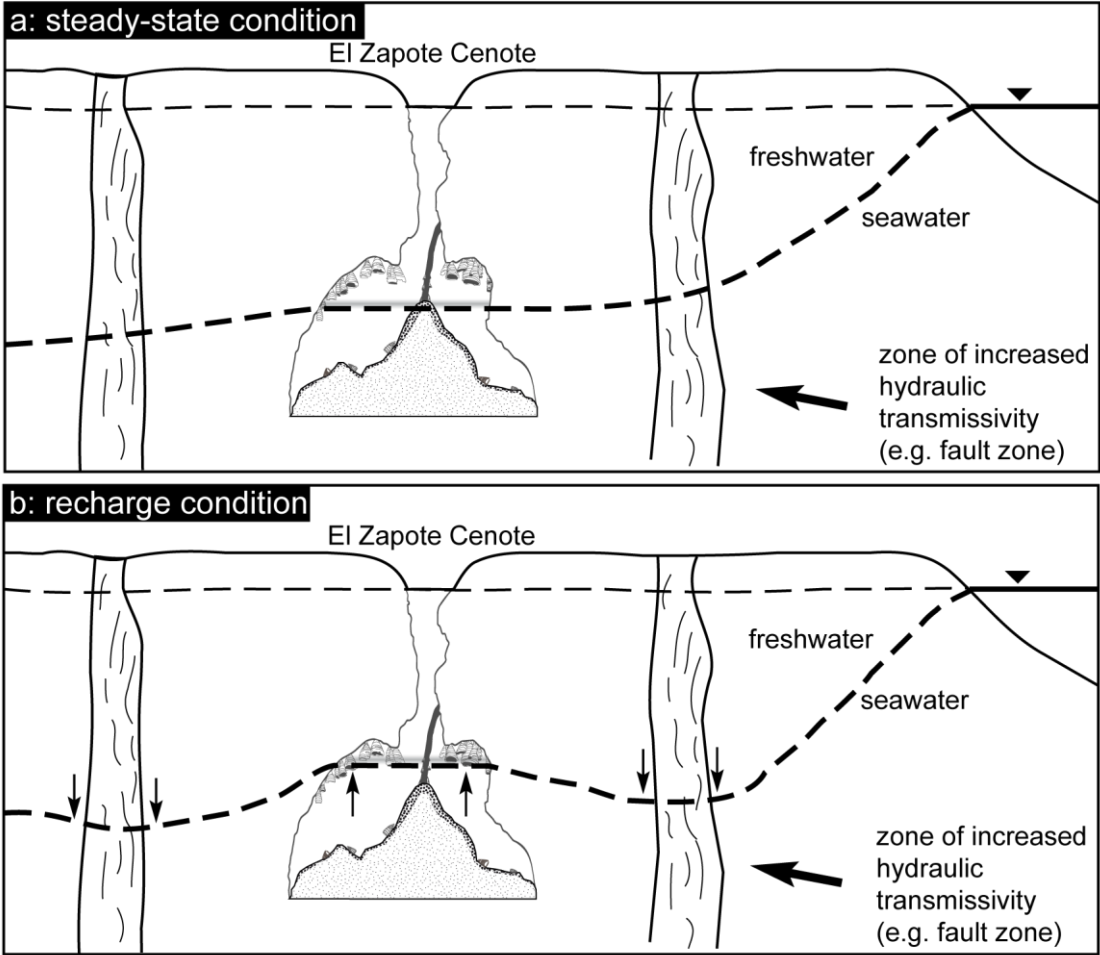


Fig. 10: Sketch of dynamic halocline elevation within the Yucatán Karst aquifer. Halocline depth increases with increasing distance from the coast in a steady-state condition (a). Recharge events result in a lower halocline beneath areas of high vertical transmissivities and an elevated halocline in areas of low hydraulic transmissivity, e.g. El Zapote cenote (b).

Both, a prolonged halocline elevation during droughts and short-term but frequent recharge-driven halocline elevations could result in the presence of Hells Bells in a zone of 28–38 m water depth. Furthermore, repeated phases of precipitation and dissolution indicated by the alternating layers of dog-tooth calcite and microcrystalline calcite of Hells Bells thin sections (Stinnesbeck et al., 2017b) suggest an episodic halocline elevation. During episodes of an elevated halocline, precipitation or dissolution of Hells Bells may occur in lower depths due to the concurrent elevation of the calcite precipitating redoxcline and the underlying sulfide-rich and carbonate undersaturated water.

A variable halocline depth position at El Zapote cenote is also supported by the positive correlation with water depth of Sr/Ca and a negative correlation of $\delta^{13}\text{C}$ of the Hells Bells calcite (Fig. 6). Hells Bells formed in lower water depths show slightly higher contents of the trace elements Sr, Mg and Ba and slightly lower $\delta^{13}\text{C}$ values than Hells Bells formed in greater water depths (Table 1 and Fig. 6). The higher incorporation of the trace elements Sr, Mg and Ba is either obtained by faster growth rates (Tesoriero and Pankow, 1996), or by elevated concentrations in the solution from which the calcite precipitated. The latter process is more likely, as the amount of saltwater increases in the turbid layer when the halocline is located at lower water depths. Lower $\delta^{13}\text{C}$ values support this assumption, as lowest $\delta^{13}\text{C}\text{-HCO}_3^-$ values are detected in the halocline of the modern El Zapote cenote (Fig. 4).

The increase in saltwater in the lowermost fresh water and the turbid layer could result from increased salinity of the freshwater body during droughts. Furthermore, turbulences induced by halocline elevation as a reaction to recharge events (Kovacs et al., 2017b). Minor mixing of the water bodies would be sufficient to increase the concentrations of Sr, Mg, Ba and decrease $\delta^{13}\text{C}\text{-HCO}_3^-$ in the turbid layer, as seen at El Zapote.

Following the model of an episodic halocline elevation, the question remains why Hells Bells are restricted to a zone of 28–38 m water depth. This range could solely depend on the hydraulic conditions, e.g. Hells Bells formation reflecting maximum and minimum elevations of the halocline as a result of droughts, recharge events and long-term sea level changes. The lower (38 m) level of Hells Bells formation may represent the stable environmental conditions in the modern El Zapote cave, influenced only by the thickness of the freshwater body and the mean sea level. The upper range boundary, on the other hand, could well be given by the shape of the sinkhole and limnological conditions in the narrow cenote shaft reaching from 0–30 m water depth. In this latter unit the water body is mixing- rather than diffusion-dominated (Fig. 3. Sect. 4.1). A rise of the halocline to about 28 m water depth would therefore lead to an exposure to fast and convective oxygen supply from the mixed-in fresh water body above, and consequently to aerobic microbial sulfide oxidation, which is an acid-producing reaction (e.g. Jones et al., 2015). Hells Bells formation would then stop as it is tied to anaerobic ND-SO. The occurrence of a zone of brown-colored manganese oxide coatings on Hells Bells and the cave wall at and above 30 m water depth, indicates that the redoxcline must temporarily have reached up to this level (Fig. 2c, d and Fig. S6). Manganese dissolved in the halocline and turbid layer was then oxidized to manganese oxide precipitates (Fig. S6).

The dynamic history of halocline elevation at El Zapote cenote cannot be resolved to date but raises an interesting issue of further research on the dynamic hydraulic response of the Yucatán aquifer to extraordinary recharge events, especially as this process could be a key factor for the formation of Hells Bells. We are currently addressing this issue by logging the hydraulic head of the fresh water body and the electrical conductivity at a fixed position in the halocline of El Zapote cenote.

4.3.3 Shape of Hells Bells

Previously, we attributed the growth of Hells Bells to microbial mediation (Stinnesbeck et al., 2017b). We hypothesized that autotrophy (ammonia oxidation) and denitrification are the main factors that trigger calcite precipitation at the surface of the

Hells Bells and that calcite precipitation could further be supported by the presence of negatively charged extracellular polymeric substances (EPS), leading to the accumulation of Ca^{2+} ions and to supersaturation of calcite within biofilms (e.g. Dupraz et al., 2009). However, the large size and form of the dog-tooth calcite crystals of Hells Bells rather resemble slow growing inorganic calcite crystals rather than biologically-mediated precipitates (Fig. 2e and Fig. 5). This hypothesis is supported by Bosak & Newman (2005) who investigated microbial kinetic controls on calcite morphology and found that microbially mediated calcite precipitated at low calcite supersaturation shows more anhedral crystal morphologies, compared to the more euhedral abiotic ones. Although the microbial activity in the redoxcline induces calcite oversaturation, the hypothesis presented in this study is compatible with an inorganic calcite precipitation of the Hells Bells from a biologically mediated water layer.

Ultimately, the hypotheses of dynamic halocline elevation and biogeochemically induced calcite precipitation in the redoxcline can be integrated to explain some morphological features of the Hells Bells. They grow downward and are conically divergent, with a strict horizontally lower margin and a hollow interior. Specimens also tend to be oriented towards the cenote center (Stinnesbeck et al., 2017b). The horizontal downward growth is indicative for a precipitation from a defined layer within the water column (i.e. the redoxcline). Also, an abrupt elevation of the redoxcline as a response to recharge events and a subsequent decelerated drop towards its original position serves to explain the downward growth of Hells Bells. This is indicated by the tendency towards downward orientation of the calcite crystal growth axis (Fig. 2e). The fact that Hells Bells specimens growing on the inclined cave wall are always oriented towards the cenote center could result from a lateral gradient in the chemolithoautotrophic intensity. The “energy sources” used by the chemolithotrophic microbial community in the redoxcline are the released reduced carbon, sulfur and nitrogen species from anaerobic organic matter decay in the organic-rich sediments on the debris mound. Both the morphology of the cenote and the diffusive mass transport likely result in radial concentration gradients of upwards diffusing reduced species from sediment of the debris mound. These conditions limit the availability of reduced species in locations of the redoxcline distal to the debris mound, and vice versa. Consequently, the intensity of chemolithoautotrophy and hence calcite oversaturation is preferentially higher in the center proximal to the debris mound and decreases towards the cenote walls. This accounts for both the inclined bells as well as for horse-shoe like horizontal openings of Hells Bells which always face towards the wall. Furthermore, the often observed hollow interior of Hells Bells could be due to preferential growth of the outer edges of Hells Bells, especially the parts facing towards the cenote center. Once such parts of Hells Bells grew slightly more, hence into deeper water depth, this will result in a higher net growth as these parts are likely to be reached more frequently by the narrow zone of calcite precipitation (redoxcline). The conical shape and downward divergence of Hells Bells could be a continuation from the microscopic to the macroscopic level as the angles of the botryoidal calcite phases in thin section (Fig. S5) strongly resemble those of the large specimens of Hells Bells (Fig. 2d).

Nevertheless, we can also not exclude the potential influence of microorganisms forming a biofilm community on the surface of Hells Bells. Stinnesbeck et al. (2017b) showed that this community does not resemble the planktonically growing microbial biocenosis but forms a distinct community that seems to thrive catalyzing the reduction and oxidation of different nitrogen

species. However, it is not known to date to what percentage the activity of these organisms contributes to the shape of the speleothems.

4.4 Prerequisites for the formation of Hells Bells

Hells Bells have so far been identified in a few cenotes only of a restricted area of the North-Eastern YP (Stinnesbeck et al., 2017b), although the peninsula hosts many thousands of sinkholes (Bauer-Gottwein et al., 2011). The question thus arises which factors are needed for the generation of these underwater speleothems. The following apparent prerequisites for Hells Bells formation appear likely to us:

- The cenote or sinkhole must be deep enough to reach the halocline in order to have a density stratified water column (meromixis).
- Sufficient input of organic material to the cenote bottom is required to create anoxia in the halocline with a release of reduced sulfur, carbon and nitrogen species.
- A meromictic stagnant water body indicated by a thick halocline is needed that allows for the formation of a redoxcline in which anaerobic chemolithoautotrophy prevails. This leads to a narrow zone of calcite oversaturation in the water body.
- Special hydraulic conditions are needed which allow the halocline to rise and fall in order to form subaqueous speleothems.

5. Conclusion

The unique underwater speleothems termed Hells Bells recently described from El Zapote west of Puerto Morelos on the northern Yucatán Peninsula, Mexico, are most likely formed in the redoxcline, a narrow layer in the lowermost fresh water body immediately overlying the halocline. We propose a biogeochemical mechanism for the formation of these structures, that induces calcite oversaturation and favoring calcite precipitation within the redoxcline. The upward diffusion of reduced sulfur, carbon and nitrogen stimulates a chemolithoautotrophic microbial community thriving above the halocline at El Zapote cenote. Chemolithoautotrophy and proton-consuming nitrate-driven anaerobic sulfide oxidation lead to calcite precipitation, and hence Hells Bells formation, in a narrow depth zone confined to the redoxcline, or turbid layer. We further postulate a dynamic elevation of the halocline as an episodic hydraulic response to both droughts and recharge events that may accounts for Hells Bells occurrence over a vertical range of 10 m water depth.

Video supplement

<https://doi.org/10.5446/39353>

Team list

Simon M. Ritter – SR

Margot Isenbeck-Schröter – MIS

Christian Scholz – CS

5 Frank Keppler – FK

Johannes Gescher – JG

Lukas Klose – LK

Nils Schorndorf – NS

Jerónimo Avilés Olguín – JAO

10 Arturo González-Gonzalez – AGG

Wolfgang Stinnesbeck – WS

Dirk Penzel – DP

Christine Loew – CL

Eugenio Aceves Núñez – EAN

15 Thomas Vogt – TV

Alexander Varychev – AV

Gregor Austermann – GA

Anne Hildenbrand – AH

Author contribution

20 WS and AGG initialized the project and funding was acquired by WS, AGG and MIS. Sampling was planned and conducted by SR and CS. Underwater sampling was conducted by JAO, DP, CL and EAN, while underwater videographer TV was documenting part of the sampling producing the footage for the video supplement. Instrumentation and methodology was provided by MIS for hydrogeochemical analyses, FK for gas and stable carbon isotope analytics, AH and GA for light microscope-imaging and AV for SEM-imaging and GA and. SR, LK and NS collected the data and CS, MIS, FK and AV
25 validated it. SR, CS, MIS, LK, NS interpreted the results. SR developed the hypotheses equally supported by CS and MIS. SR visualized the data and prepared the original draft, MIS supervised. JG, WS and FK critically reviewed the manuscript.

Competing interests

The authors declare that they have no conflict of interest.

Disclaimer

Acknowledgements

We gratefully acknowledge the owners of Cenote Zapote-Ecopark Mrs. Rosario Fátima González Alcocer and Mr. Santos
Zuñiga Roque and their Ecopark team members Daniel de Jesus Tum Canul, Israel Mendez Castro and Eunice Mendez Castro
5 de la Cruz for granting us access to the cenote and their great support during field work. We would like to thank the technical
cave divers Eugenio Aceves Núñez, Christine Loew, Dirk Penzel and Thomas Vogt for their excellent work in retrieving
samples from El Zapote cenote. Many thanks to Vicente Fito, the original El Zapote cenote explorer for sharing his discovery.
We thank Markus Greule, Bernd Knape, Silvia Rheinberger and Swaantje Brzelinski for conducting geochemical analyses and
Stefan Rheinberger in particular for many discussions that helped to produce and improve this dataset. We are grateful for the
10 help of Alexander Varychev, Anne Hildenbrand and Gregor Austermann with the optical analyses and thank Tianxiao Sun for
examining thin sections. We are grateful for the effort of the technicians Christian Mächtel and Andreas Thum of the Institute
of Earth Sciences for their technical and constructional support prior to the field trip. Finally, we thank Jan Hartmann, Andrea-
Schröder-Ritzrau, Tobias Anhäuser and Daniela Polag for their sincere proof-reading and many fruitful discussions during
lunch and coffee breaks. Finally, we are grateful for the valuable comments and suggestion of two anonymous referees helping
15 to improve the original version of the manuscript.

This research was funded by CONACYT-FONCICYT-DADC / 000000000278227 and the Deutsche Forschungsgemeinschaft
DFG (STI128/28 and STI128/36), as well as by the funding programme Open Access Publishing, by the Baden-Württemberg
Ministry of Science, Research and the Arts and by Ruprecht-Karls-Universität Heidelberg.

20 6. References

- Back, W., Hanshaw, B. B., Herman, J. S. and Van Driel, J. N.: Differential dissolution of a Pleistocene reef in the ground-
water mixing zone of coastal Yucatan, Mexico, *Geology*, 14(February 1986), 137–140, 1986.
- Bailey, J. V., Orphan, V. J., Joye, S. B. and Corsetti, F. A.: Chemotrophic Microbial Mats and Their Potential for Preservation
in the Rock Record, *Astrobiology*, 9(9), 843–859, 2009.
- 25 Barton, H. A. and Northup, D. E.: Geomicrobiology in Cave Environments: Past, current and future Perspectives, *J. Cave
Karst Stud.*, 69(1), 163–178, 2007.
- Bauer-Gottwein, P., Gondwe, B. R. N., Charvet, G., Marín, L. E., Rebolledo-Vieyra, M. and Merediz-Alonso, G.: Review :
The Yucatán Peninsula karst aquifer , Mexico, , (130), 507–524, doi:10.1007/s10040-010-0699-5, 2011.
- Beddows, P. A., Smart, P. L., Whitaker, F. F. and Smith, S. L.: Density stratified groundwater circulation on the Caribbean
30 Coast of Yucatan peninsula, Mexico, in *Karst Waters Institute Special Publication 7: Hydrogeology and Biology of Post-
Paleozoic Carbonate Aquifers*, edited by J. B. Martin, C. M. Wicks, and I. D. Sasowsky, pp. 129–134., 2002.

- Beddows, P. A., Smart, P. L., Whitaker, F. F. and Smith, S. L.: Decoupled fresh-saline groundwater circulation of a coastal carbonate aquifer: Spatial patterns of temperature and specific electrical conductivity, *J. Hydrol.*, 346(1–2), 18–32, doi:10.1016/j.jhydrol.2007.08.013, 2007.
- Berg, C., Vandieken, V., Thamdrup, B. and Ju, K.: Significance of archaeal nitrification in hypoxic waters of the Baltic Sea, *ISME J.*, 9, 1319–1332, doi:10.1038/ismej.2014.218, 2015.
- Bontognali, T. R. R., Angeli, I. M. D., Tisato, N., Vasconcelos, C., Bernasconi, S. M., Gonzales, E. R. G. and De Waele, J.: Mushroom Speleothems: Stromatolites That Formed in the Absence of Phototrophs, *Frontiers Earth Sci.*, 4(Article 4), 1–8, doi:10.3389/feart.2016.00049, 2016.
- Bosak, T. and Newman, D. K.: Microbial Kinetic Controls on Calcite Morphology in Supersaturated Solutions, *J. Sediment. Res.*, 75(2), 190–199, doi:10.2110/jsr.2005.015, 2005.
- Castanier, S., Métayer-Levrel, G. and Perthuisot, J.-P.: Ca-carbonates precipitation and limestone genesis – the microbiogeologist point of view, *Sediment. Geol.*, 126, 9–23, 1999.
- Dupraz, C., Reid, R. P., Braissant, O., Decho, A. W., Norman, R. S. and Visscher, P. T.: Processes of carbonate precipitation in modern microbial mats, *Earth-Science Rev.*, 96(3), 141–162, doi:10.1016/j.earscirev.2008.10.005, 2009.
- Escolero, O., Marin, L. E., Domínguez-Mariani, E. and Torres-Onofre, S.: Dynamic of the freshwater – saltwater interface in a karstic aquifer under extraordinary recharge action: the Merida Yucatan case study, *Environ. Geol.*, 51, 719–723, doi:10.1007/s00254-006-0383-1, 2007.
- Evans, N. P., Bauska, T. K., Gázquez-sánchez, F., Brenner, M., Curtis, J. H. and Hodell, D. A.: Quantification of drought during the collapse of the classic Maya civilization, *Science* (80-.), 361(August), 498–501, 2018.
- Farfán, L. M., D’Sa, E. J., Liu, K. and Rivera-Monroy, V.: Tropical Cyclone Impacts on Coastal Regions: the Case of the Yucatán and the Baja California Peninsulas, Mexico, *Estuaries and Coasts*, 37(February 2015), 1388–1402, doi:10.1007/s12237-014-9797-2, 2014.
- Findlay, A. J.: Microbial impact on polysulfide dynamics in the environment, *FEMS Microbiol. Lett.*, 363, 1–12, doi:10.1093/femsle/fnw103, 2016.
- Glaubitx, S., Lueders, T., Abraham, W., Jost, G., Jürgens, K. and Labrenz, M.: ¹³C-isotope analyses reveal that chemolithoautotrophic Gamma - and Epsilonproteobacteria feed a microbial food web in a pelagic redoxcline of the central Baltic Sea, *Environ. M.*, 11(2), 326–337, doi:10.1111/j.1462-2920.2008.01770.x, 2009.
- Gradzinski, M., Chmiel, M. J. and Motyka, J.: Formation of calcite by chemolithoautotrophic bacteria - a new hypothesis on microcrystalline cave pisoids, *Ann. Soc. Geol. Pol.*, 82, 361–369, 2012.
- Grote, J., Labrenz, M., Herndl, G. J. and Ju, K.: Epsilonproteobacteria Represent the Major Portion of Chemoautotrophic Bacteria in Sulfidic Waters of Pelagic Redoxclines of the Baltic and Black Seas, *Appl. Environ. Microbiol.*, 74(24), 7546–7551, doi:10.1128/AEM.01186-08, 2008.
- Guido, A., Heindel, K., Birgel, D., Rosso, A., Mastandrea, A., San, R., Russo, F. and Peckmann, J.: Pendant bioconstructions cemented by microbial carbonate in submerged marine caves (Holocene, SE Sicily), *Palaeogeogr. Palaeoclimatol. Palaeoecol.*,

- 388, 166–180, doi:10.1016/j.palaeo.2013.08.007, 2013.
- Gulley, J. D., Martin, J. B. and Brown, A.: Organic carbon inputs , common ions and degassing : rethinking mixing dissolution in coastal eogenetic carbonate aquifers, *Earth Surf. Process. Landforms*, 41, 2098–2110, doi:10.1002/esp.3975, 2016.
- Hengstum, P. J. Van, Reinhardt, E. G., Beddows, P. A. and Gabriel, J. J.: Linkages between Holocene paleoclimate and paleohydrogeology preserved in a Yucatan underwater cave, *Quat. Sci. Rev.*, 29(19–20), 2788–2798, doi:10.1016/j.quascirev.2010.06.034, 2010.
- Himmeler, T., Smrzka, D., Zwicker, J., Kasten, S., Shapiro, R. S. and Bohrmann, G.: Stromatolites below the photic zone in the northern Arabian Sea formed by calcifying chemotrophic microbial mats, *Geology*, (4), 2–5, 2018.
- Hodell, D. A., Brenner, M., Curtis, J. H. and Guilderson, T.: Solar Forcing of Drought Frequency in the Maya Lowlands, *Science* (80-.), 292(5520), 1367–1371, 2001.
- Holmes, A. J., Tujula, N. A., Holley, M., Contos, A., James, J. M., Rogers, P. and Gillings, M. R.: Phylogenetic structure of unusual aquatic microbial formations in Nullarbor caves, Australia, *Environ. Microbiol.*, 3(4), 256–264, 2001.
- Huang, Y. and Fairchild, I. J.: Partitioning of Sr²⁺ and Mg²⁺ into calcite under karst-analogue experimental conditions, *Geochim. Cosmochim. Acta*, 65(1), 47–62, doi:10.1016/S0016-7037(00)00513-5, 2001.
- Jones, D. S., Lyon, E. H. and Macalady, J. L.: Geomicrobiology of biovermiculations from the Frasassi cave system, Italy, *J. Cave Karst Stud.*, 70(2), 78–93, 2008.
- Jones, D. S., Albrecht, H. L., Dawson, K. S., Schaperdoth, I., Freeman, K. H., Pi, Y., Pearson, A. and Macalady, J. L.: Community genomic analysis of an extremely acidophilic sulfur-oxidizing biofilm, *ISME J.*, 6, 158–170, doi:10.1038/ismej.2011.75, 2012.
- Jones, D. S., Polerecky, L., Galdenzi, S., Dempsey, B. A. and Macalady, J. L.: Fate of sulfide in the Frasassi cave system and implications for sulfuric acid speleogenesis, *Chem. Geol.*, 410, 21–27, doi:10.1016/j.chemgeo.2015.06.002, 2015.
- Jørgensen, B. B., Fossing, H., Wirsent, C. and Jannasch, H.: Sulfide oxidation in the anoxic Black Sea chemocline, *Deep Sea Res.*, 38, 1083–1103, doi:10.1016/S0198-0149(10)80025-1, 1991.
- Jost, G., Zubkov, M. V., Yakushev, E., Labrenz, M. and Jürgens, K.: High abundance and dark CO₂ fixation of chemolithoautotrophic prokaryotes in anoxic waters of the Baltic Sea, *Limnol. Oceanogr.*, 53(1), 14–22, 2008.
- Jost, G., Martens-habbena, W., Pollehne, F., Schnetger, B. and Labrenz, M.: Anaerobic sulfur oxidation in the absence of nitrate dominates microbial chemoautotrophy beneath the pelagic chemocline of the eastern Gotland Basin, Baltic Sea ", *FEMS Microbiol. Ecol.*, 71, 226–236, doi:10.1111/j.1574-6941.2009.00798.x, 2010.
- Kamp, A., Stief, P., Schulz-vogt, H. N. and Icrobiol, A. P. P. L. E. N. M.: Anaerobic Sulfide Oxidation with Nitrate by a Freshwater Beggiatoa Enrichment Culture, , 72(7), 4755–4760, doi:10.1128/AEM.00163-06, 2006.
- Keppler, F., Laukenmann, S., Rinne, J., Heuwinkel, H., Greule, M., Whiticar, M. and Lelieveld, J.: Measurements of ¹³C/¹²C Methane from Anaerobic Digesters: Comparison of Optical Spectrometry with Continuous-Flow Isotope Ratio Mass Spectrometry, *Environ. Sci. Technol.*, 44, 5067–5073, 2010.
- Kosamu, I. B. M. and Obst, M.: The influence of picocyanobacterial photosynthesis on calcite precipitation, *Int. J. Environ.*

- Sci. Technol., 6(4), 557–562, 2009.
- Kovacs, S. E., Reinhardt, E. G., Chatters, J. C., Rissolo, D., Schwarcz, H. P., Collins, S. V., Kim, S., Blank, N. A. and Erreguerena, P. L.: Calcite raft geochemistry as a hydrological proxy for Holocene aquifer conditions in Hoyo Negro and Ich Balam (Sac Actun Cave System), Quintana Roo, Mexico, *Quat. Sci. Rev.*, 175, 97–111, doi:10.1016/j.quascirev.2017.09.006, 5 2017a.
- Kovacs, S. E., Reinhardt, E. G., Stastna, M., Coutino, A., Werner, C., Collins, S. V., Devos, F. and Le Maillot, C.: Hurricane Ingrid and Tropical Storm Hanna’s effects on the salinity of the coastal aquifer, Quintana Roo, Mexico, *J. Hydrol.*, 551, 703–714, doi:10.1016/j.jhydrol.2017.02.024, 2017b.
- Laukenmann, S., Polag, D., Heuwinkel, H., Greule, M., Gronauer, A., Lelieveld, J. and Keppler, F.: Identification of 10 methanogenic pathways in anaerobic digesters using stable carbon isotopes, *Eng. Life Sci.*, 10(6), 509–514, 2010.
- Lefticariu, M., Perry, E. C., Ward, W. C. and Lefticariu, L.: Post-Chicxulub depositional and diagenetic history of the northwestern Yucatan Peninsula, Mexico, *Sediment. Geol.*, 183, 51–69, doi:10.1016/j.sedgeo.2005.09.008, 2006.
- Macalady, J. L., Jones, D. S. and Lyon, E. H.: Extremely acidic, pendulous cave wall biofilms from the Frasassi cave system, Italy, *Environ. Microbiol.*, 9(6), 1402–1414, doi:10.1111/j.1462-2920.2007.01256.x, 2007.
- 15 Macintyre, I. G.: Extensive submarine lithification in a cave in the Belize Barrier Reef Platform, *J. Sediment. Petrol.*, 54(1), 221–235, 1984.
- Melim, L. A., Shinglman, K. M., Boston, P. J., Northup, D. E., Spilde, M. N. and Queen, M. J.: Evidence for Microbial Involvement in Pool Finger Precipitation, Hidden Cave, New Mexico, *Geomicrobiology Journal*, 18(February 2014), 311–239, doi:10.1080/01490450152467813, 2001.
- 20 Mook, W. G.: *Environmental isotopes in the hydrological cycle*, edited by W. G. Mook, UNESCO/IAEA, IHP-V Technical Documents in Hydrology No. 39, Vol. 1, Paris., 2000.
- Moore, Y. H., Stoessell, R. K. and Easley, D. H.: Fresh-Water/Sea-Water relationship within a Ground-Water flow system northeastern coast of the yucatan, *Ground Water*, 30(3), 343–350, 1992.
- Myroie, J. E. and Carew, J. L.: The flank margin model for dissolution cave development in carbonate platforms, *Earth Surf. 25 Process. Landforms*, 15, 413–424, 1990.
- Noguerola, I., Picazo, A., Llor, M., Camacho, A. and Borrego, C. M.: Diversity of freshwater Epsilonproteobacteria and dark inorganic carbon fixation in the sulphidic redoxcline of a meromictic karstic lake, *FEMS Microbiol. Ecol.*, 91(July), 1–15, doi:10.1093/femsec/fiv086, 2015.
- Parkhurst, B. D. L. and Appelo, C. A. J.: *User’s Guide To PHREEQC (version 2) – a Computer Program for Speciation, and 30 Inverse Geochemical Calculations*, *Exch. Organ. Behav. Teach. J.*, D(Version 2), 326, doi:Rep. 99-4259, 1999.
- Paul, D., Skrzypek, G. and Forizs, I.: Normalization of measured stable isotopic compositions to isotope reference scales – a review, *Rapid Commun. mass Spectrom.*, 21, 3006–3014, doi:10.1002/rcm.3185, 2007.
- QRSS: Quintana Roo Speleological Survey, [online] Available from: <http://caves.org/project/qrss/qrss.htm> (Accessed 23 November 2018), 2018.

- Queen, M. J. and Melim, L. A.: Biothems: biologically influenced speleothems in caves of the Guadalupe Mountains, New Mexico, USA, in *Caves and Karst of Southeastern New Mexico*, New Mexico Geological Society Guidebook, 57th Field Conference., edited by W. Raatz, L. Land, and P. J. Boston, pp. 167–174., 2006.
- Rimstidt, J. D., Balog, A. and Webb, J.: Distribution of trace elements between carbonate minerals and aqueous solutions, *5 Geochim. Cosmochim. Acta*, 62(11), 1851–1863, doi:10.1016/s0016-7037(98)00125-2, 1998.
- Schmitter-Soto, J. J., Comín, F. A., Escibar-Briones, E., Herrera- Silveira, J., Alcocer, J., Suárez-Morales, E., Elías-Gutiérrez, M., Díaz-Arce, V., Marín, L. E. and Steinich, B.: Hydrogeochemical and biological characteristics of cenotes in the Yucatan Peninsula (SE Mexico), *Hydrobiologia*, 467, 215–228, 2002.
- Seymour, J. R., Humphreys, W. F. and Mitchell, J. G.: Stratification of the microbial community inhabiting an anchialine sinkhole, *10 Aquat. Microb. Ecol.*, 50, 11–24, doi:10.3354/ame01153, 2007.
- Smart, P. L., Beddows, P. A., Coke, J., Doerr, S., Smith, S. and Whitaker, F. F.: Perspectives on karst geomorphology, hydrology, and geochemistry – a tribute volume to Derek C Ford and William B White, edited by R. S. Harmon and C. M. Wicks, Geological Society of America, Boulder, CO., 2006.
- Socki, R. A., Perry, E. C. and Romanek, C. S.: Stable isotope systematics of two cenotes from the northern Yucatan Peninsula, *15 Mexico, Limnol. Oceanogr.*, 47(6), 1808–1818, doi:10.4319/lo.2002.47.6.1808, 2002.
- Stinnesbeck, S. R., Frey, E., Avilés Olguín, J., Stinnesbeck, W., Zell, P., Mallison, H., González González, A., Núñez, E. A., Velázquez Morlet, A., Terrazas Mata, A., Benavente Sanvicente, M., Hering, F. and Rojas Sandoval, C.: Xibalbaonyx oviceps, a new megalonychid ground sloth (Folivora, Xenarthra) from the Late Pleistocene of the Yucatán Peninsula, Mexico, and its paleobiogeographic significance, *PalZ*, 91, 245–271, doi:10.1007/s12542-017-0349-5, 2017a.
- 20 Stinnesbeck, W., Frey, E., Zell, P., Avilés, J., Hering, F., Frank, N., Arps, J., Geenen, A., Gescher, J., Isenbeck-Schröter, M., Ritter, S., Stinnesbeck, S., Núñez, E. A., Dahne, V. F., González, A. G. and Deininger, M.: Hells Bells – unique speleothems from the Yucatán Peninsula, Mexico, generated under highly specific subaquatic conditions, *Palaeogeogr. Palaeoclimatol. Palaeoecol.*, 489(1 January 2018), 209–229, doi:10.1016/j.palaeo.2017.10.012, 2017b.
- Stoessell, R. K., Moore, Y. H. and Coke, J. G.: The Occurrence and Effect of Sulfate Reduction and Sulfide Oxidation on *25 Coastal Limestone Dissolution in Yucatan Cenotes, Ground Water*, 31(4), 566–575, 1993.
- Tesoriero, A. and Pankow, J.: Solid solution partitioning of Sr ²⁺, Ba ²⁺, and Cd ²⁺ to calcite, *Geochim. Cosmochim. Acta*, 60(6), 1053–1063 [online] Available from: <http://www.sciencedirect.com/science/article/pii/0016703795004491> (Accessed 13 February 2015), 1996.
- Torres-Talamente, O., Alcocer, J., Beddows, P. A., Escobar-Briones, E. G. and Lugo, A.: The key role of the chemolimnion in meromictic cenotes of the Yucatan Peninsula, Mexico, *Hydrobiologia*, 677(Anchialine Ecosystems), 107–127, doi:10.1007/s10750-011-0746-9, 2011.
- 30 Tredici, S. M., Buccolieri, A., Tanini, L., Manno, D., Alifano, P., Maurizio, S., Buccolieri, A., Tanini, L., Manno, D. and Alifano, P.: Calcite-forming *Bacillus licheniformis* Thriving on Underwater Speleothems of a Hydrothermal Cave Calcite-forming *Bacillus licheniformis* Thriving on Underwater Speleothems of a Hydrothermal cave, *Geomicrobiol. J.*, 1–14,

doi:10.1080/01490451.2018.1476626, 2018.

Visscher, P. T. and Stolz, J. F.: Microbial mats as bioreactors : populations, processes, and products, *Palaeogeogr. Palaeoclimatol. Palaeoecol.*, 219, 87–100, doi:10.1016/B978-0-444-52019-7.50009-7, 2005.

Weidie, A. E.: Geology of the Yucatán Plattform, in *Geology and Hydrogeology of the Yucatán and Quaternary Geology of Northeastern Yucatán Peninsula*, edited by W. C. Ward, A. E. Weidie, and W. Back, pp. 1–19, New Orleans Geological Society Publication., 1985.

Weiss, R. F.: Carbon Dioxide in Water and Seawater: The Solubility of a Non-Ideal Gas, *Mar. Chem.*, 2, 203–215, 1974.

Whiticar, M. J.: Carbon and hydrogen isotope systematics of bacterial formation and oxidation of methane, *Chem. Geol.*, 161, 191–314, 1999.

10 Wiesenburg, D. A. and Guinasso, N. L.: Equilibrium solubilities of methane, carbon monoxide, and hydrogen in water and sea water, *J. Chem. Eng. Data*, 24(4), 356–360, doi:10.1021/je60083a006, 1979.

Williams, P. W.: The role of the subcutaneous zone in karst hyrology, *J. Hydrol.*, 61, 45–67, 1983.

Yamamoto, S., Alcauskas, J. B. and Crozier, T. E.: Solubility of methane in distilled water and seawater, *J. Chem. Eng. Data*, 21(1), 78–80, doi:10.1021/je60068a029, 1976.

15

20 **Table 1: Geochemistry of samples from the lowermost tips of Hells Bells growing on a subfossil ceiba tree that fell into the El Zapote cenote about 3500 cal yr BP. Individual tree bells were sampled at water depths from 31.3 to 37.3 m. The lack of samples in water depths from 34.3 to 36.8 m water depth is due to poor visibility in the turbid layer above the halocline (compare Fig. 1b). Given uncertainties represent 2σ standard deviations.**

Sample No.	water depth [m] ^a	Mg/Ca [$\cdot 10^{-3}$]	Sr/Ca [$\cdot 10^{-5}$]	Ba/Ca [$\cdot 10^{-5}$]	Fe/Ca [$\cdot 10^{-5}$]	Mn/Ca [$\cdot 10^{-6}$]	S/Ca [$\cdot 10^{-3}$]	δ ¹³ C [‰ _{VPDB}]
1	31.3							
2	31.3	21.4	41.6	1.27	4.3	21	2.78	-13.47 ± 0.01
3	32.8	25.6	41.0	1.19	5.2	26	2.69	-13.69 ± 0.01
4	32.8							
5	33.3	22.0	42.7	1.30	3.8	24	3.05	-13.82 ± 0.01
6	33.3	22.3	38.5	1.14	3.0	16	2.54	-13.43 ± 0.01
7	33.8							
8	33.8	20.8	37.9	1.12	3.5	24	2.72	-13.52 ± 0.01
9	33.9	23.2	40.0	1.18	3.9	22	2.76	-13.68 ± 0.01
10	33.9							
11	36.8	22.3	34.0	0.88	11.3	39	3.14	-12.87 ± 0.02

12	36.8	21.1	34.1	0.88	10.6	28	3.02	-12.85 ± 0.00
13	37.3	24.0	37.3	0.92	6.2	32	3.17	-12.99 ± 0.01
14	37.3							
	Mean	22.5	38.6	1.10	5.76	25.8	2.87	-13.37
	2σ	2.9	5.9	0.31	5.84	12.8	0.42	0.70
