

Supplemental Table 1. The list of all species in grazing and grazing exclusion paddocks (Niu et al., 2009, 2010; Wu et al., 2009).

Species	Palatability	Functional group	Species	Palatability	Functional group
<i>Agrostis hugoniana</i>	P	GG	<i>Euphorbia esula</i>	UP	FG
<i>Agrostis micrantha</i>	P	GG	<i>Euphrasia regelii</i>	UP	FG
<i>Allium sikkimense</i>	P	FG	<i>Gentiana macrophylla</i> *	UP	FG
<i>Astragalus polycladus</i>	P	LG	<i>Gentiana sino-ornata</i>	UP	FG
<i>Blysmus sinocompressus</i>	P	SG	<i>Gentianopsis barbata</i>	UP	FG
<i>Carex brunnescens</i>	P	SG	<i>Geranium wilfordii</i>	UP	FG
<i>Elymus nutans</i>	P	GG	<i>Halenia elliptica</i>	UP	FG
<i>Festuca sinensis</i>	P	GG	<i>Lamiophlomis rotata</i>	UP	FG
<i>Gueldenstaedtia diversifolia</i>	P	LG	<i>Lancea tibetica</i>	UP	FG
<i>Kobresia graminifolia</i>	P	SG	<i>Leontopodium souliei</i>	UP	FG
<i>Kobresia humilis</i>	P	SG	<i>Ligularia virgaurea</i>	UP	FG
<i>Kobresia kansuensis</i>	P	SG	<i>Oxytropis kansuensis</i>	UP	LG
<i>Kobresia tibetica</i>	P	SG	<i>Parnassia palustris</i>	UP	FG
<i>Plantago depressa</i>	P	FG	<i>Pleurospermum pulszkyi</i>	UP	FG
<i>Poa chalarantha</i>	P	GG	<i>Polygonum viviparum</i>	UP	FG
<i>Poa poophagorum</i>	P	GG	<i>Potentilla anserine</i>	UP	FG
<i>Potentilla fragarioides</i>	P	FG	<i>Ranunculus tanguticus</i>	UP	FG
<i>Roegneria nutans</i>	P	SG	<i>Rumex patientia</i>	UP	FG

<i>Scirpus pumilus</i>	P	SG	<i>Saussurea hieracoides</i>	UP	FG
<i>Stipa aliena</i>	P	GG	<i>Saussurea pachyneura</i>	UP	FG
<i>Anaphalis lactea</i>	UP	FG	<i>Saussurea stella</i>	UP	FG
<i>Anemone obtusiloba</i>	UP	FG	<i>Swertia bimaculata</i>	UP	FG
<i>Anemone rioularis</i>	UP	FG	<i>Thalicturn alpinum</i>	UP	FG
<i>Anemone trullifolia</i>	UP	FG	<i>Thermopsis lanceolata</i>	UP	LG
<i>Arenaria serpyllifolia</i>	UP	FG	<i>Thlaspi arvense</i>	UP	FG
<i>Aster alpinus</i>	UP	FG	<i>Trollius farreri</i>	UP	FG
<i>Cerastium arvense</i>	UP	FG	<i>Veronica eriogyne</i>	UP	FG
<i>Cremanthodium lineare</i>	UP	FG			

Bold font indicates the dominant species. P, palatable species; UP, unpalatable species; GG, group of grass species; SG, group of sedge species; LG, group of leguminous species; FG, group of forbs species; **G. macrophylla* presented in GP only.

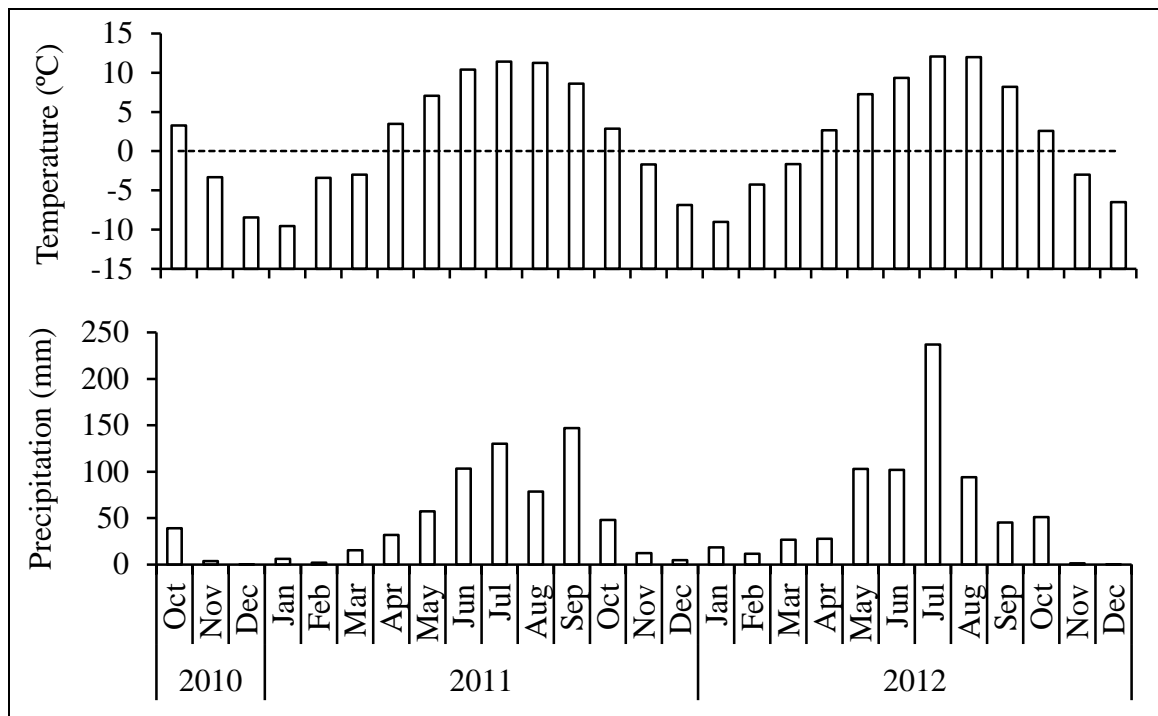


Figure S1. Mean temperature (°C) and total precipitation (mm) during the experiment.

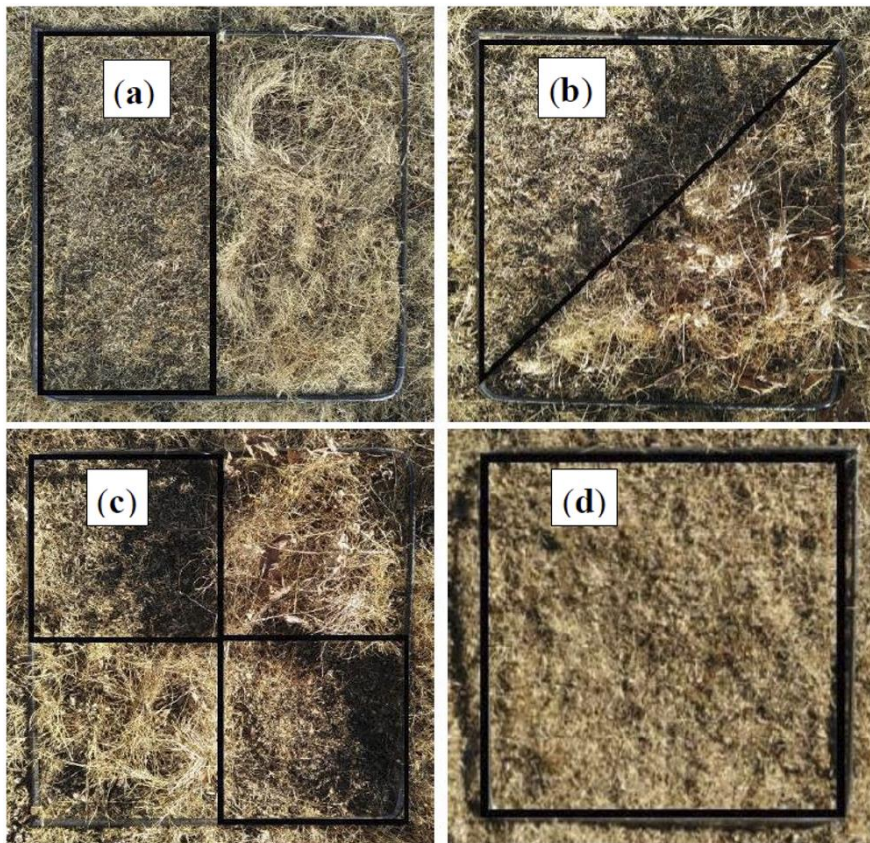


Figure S2. Field sampling methods: (a) half alongside, (b) half along diagonal, (c) two sub-quarters along diagonal, and (d) additional quarter for supplementary litter collection to make up 20 g in quarter (a), (b) or (c).