

1 **First *in situ* estimations of small phytoplankton carbon and nitrogen uptake rates in the**  
2 **Kara, Laptev, and East Siberian seas**

3 P. S. Bhavya<sup>1</sup>, Jang Han Lee<sup>1</sup>, Ho Won Lee<sup>1</sup>, Jae Joong Kang<sup>1</sup>, Jae Hyung Lee<sup>1</sup>, Dabin Lee<sup>1</sup>, So  
4 Hyun An<sup>1</sup>, Dean A. Stockwell<sup>2</sup>, Terry E. Whitledge<sup>2</sup>, Sang Heon Lee<sup>1\*</sup>

5

6 \*Correspondence to: Sang Heon Lee ([sanglee@pusan.ac.kr](mailto:sanglee@pusan.ac.kr))

7

8 <sup>1</sup>Department of Oceanography, Pusan National University, Busan 609-735, Korea

9 <sup>2</sup>Institute of Marine Science, University of Alaska, Fairbanks, AK 99775, USA

10

11

12

13

14

15

16

17

18

19

20

21 **Abstract.** Carbon and nitrogen uptake rates by small phytoplankton (0.7-5  $\mu\text{m}$ ) in the Kara,  
22 Laptev, and East Siberian seas in the Arctic Ocean were quantified using *in situ* isotope labeling  
23 experiments; this research was novel and part of the NABOS (Nansen and Amundsen Basins  
24 Observational System) program, took place from August 21 to September 22, 2013. The depth-  
25 integrated carbon (C), nitrate ( $\text{NO}_3^-$ ), and ammonium ( $\text{NH}_4^+$ ) uptake rates by small  
26 phytoplankton ranged from 0.54 to 15.96  $\text{mg C m}^{-2}\text{h}^{-1}$ , 0.05 to 1.02  $\text{mg C m}^{-2}\text{h}^{-1}$ , and 0.11 to 3.73  
27  $\text{mg N m}^{-2}\text{h}^{-1}$ , respectively. The contributions of small phytoplankton towards the total C,  $\text{NO}_3^-$ ,  
28 and  $\text{NH}_4^+$  varied from 25 to 89%, 31 to 89%, and 28 to 91%, respectively. The turnover times for  
29  $\text{NO}_3^-$  and  $\text{NH}_4^+$  by small phytoplankton found in the present study indicate the longer residence  
30 times (years) of the nutrients in the deeper waters, particularly for  $\text{NO}_3^-$ . Additionally, the  
31 relatively higher C and N uptake rates by small phytoplankton obtained in the present study from  
32 locations with less sea ice concentration indicate the possibility that small phytoplankton thrive  
33 under the retreat of sea ice as a result of warming conditions. The high contributions of small  
34 phytoplankton to the total C and N uptake rates suggest the capability of small autotrophs to  
35 withstand the adverse hydrographic conditions introduced by climate change.

36

37

38 *Keywords:* Arctic Ocean, nitrogen, carbon, and small phytoplankton.

39

40

41

## 42 **1. Introduction**

43 The Arctic Ocean has always been a key attraction for oceanic expeditions due to its rapid  
44 response to changing environmental conditions caused by both natural and anthropogenic factors.  
45 It has been reported that the rate of decrease in the sea ice extent in the Arctic Ocean is  
46 significantly high and has gradually caused a decline in sea ice thickness over recent decades  
47 (Stroeve et al., 2008; Comiso et al., 2008; Kwok et al., 2009; Overland and Wang, 2013). As an  
48 immediate effect, sea ice retreat could benefit the primary production by autotrophs due to  
49 increased exposure to sunlight (Hill and Cota, 2005; Gradinger, 2009; Arrigo et al., 2012, Arrigo  
50 and van Dijken, 2015; Bélanger et al., 2008; Kahru et al., 2016). It was also reported that  
51 primary production in the Barents Sea increased by 30% during the warm period (i.e., 1989-1995)  
52 compared to the cold period during the 1960s (Wassmann et al., 2011; Arrigo et al., 2008).  
53 However, as a result of sea ice melting, the ice-algal communities may be replaced by pelagic  
54 communities. Although ice-algal communities are not a large contributor to primary production,  
55 their absence could potentially alter the vertical flux of organic carbon and coupling between the  
56 euphotic and benthic zones (Walsh, 1989).

57         Sea surface warming can also result in strong water column stratification, which can  
58 reduce the nutrient supply to the surface water and consequently cause a decrease in primary  
59 production (Bopp et al., 2001; Tremblay and Gagnon, 2009; Lee et al., 2007, 2012; Li et al.,  
60 2009; Steinacher et al., 2010; Martin et al., 2010; McLaughlin et al., 2010; Slagstad et al., 2011;  
61 Thomas et al., 2012); these conditions would cause alterations in the C dynamics in the Arctic  
62 Ocean (Arrigo et al., 2008; Bates and Mathis, 2009; Cai et al., 2010). How phytoplankton  
63 communities in the Arctic Ocean would respond to the physical, chemical, and biological stress  
64 introduced by global warming has been a heavily debated topic. One group of researchers has

65 reported that there has been an enhancement in annual primary production due to increased light  
66 availability and warmer temperature in the Arctic Ocean (Arrigo et al., 2008; Arrigo and Dijken,  
67 2011; Thomas et al., 2012). However, another group has suggested that excess moisture fluxes  
68 under warmer sea conditions can introduce wider cloud cover conditions during summer and  
69 early fall, and thus, the possibility of reducing autotrophic primary production is inevitable  
70 (Eastman and Warren, 2010; Vavrus et al., 2012; Bélanger et al., 2013). Water column  
71 stratification is also a contrary effect introduced by global warming, and stratification can  
72 significantly reduce the amount of vertical mixing of nutrient-rich deep waters, lowering primary  
73 productivity (Tremblay and Gagnon, 2009; Lee et al., 2007, 2012; Yun et al., 2015). On the other  
74 hand, a decline in the nutrient concentrations in surface waters and sustained nutrient levels in  
75 the deeper waters could be an immediate effect of global warming (Vancoppenolle et al., 2013).  
76 Such an environment would be adverse for large phytoplankton communities who require more  
77 nutrients to achieve a given potential primary production level (Li et al., 2009). However, small  
78 phytoplankton (size range: 0.7-5  $\mu\text{m}$ ), which have lower nutrient requirements, proliferate under  
79 such conditions (Li et al., 2009; Daufresne et al., 2009). Hence, understanding the mechanism  
80 and processes of small phytoplankton metabolic activities under various environmental  
81 conditions would be a crucial aspect of Arctic Ocean ecosystem research.

82         A few studies have been conducted to understand the fate of small phytoplankton under  
83 changing environmental scenarios (Li et al., 2009; Yun et al., 2015). These studies have  
84 identified that the smallest phytoplankton cells can flourish under such nutrient-replete  
85 conditions; however, the larger cells decline in number (Li et al., 2009). Hence, the reduction in  
86 the community average body size of the autotrophs is expected to be an obvious response to  
87 global warming (Daufresne et al., 2009). Consequently, the primary production contribution by

88 small phytoplankton would be a substantial part of the Arctic Ocean biogeochemistry. However,  
89 the contribution of small phytoplankton to autotrophic C and dissolved inorganic nitrogen [here;  
90  $\text{DIN}=\text{NO}_3^- + \text{NH}_4^+$ ] fixation has been one of the least investigated topics in global oceanic  
91 research, particularly in the Arctic Ocean (Semiletov et al., 2005; Lee et al., 2007, 2012; Arrigo  
92 and Dijken, 2011; Yun et al., 2012, 2015; Hill et al., 2017).

93         Apart from global warming, localized influences are also an important factor in  
94 controlling primary production in the Arctic Ocean. It has been reported that Arctic Ocean  
95 biogeochemistry is mainly governed by the high riverine inputs and intrusions of Atlantic and  
96 Pacific waters (Shiklomanov et al., 2000; Carmack and Macdonald, 2002; Peterson, et. al., 2002;  
97 Anderson et al., 2004). The major rivers those flow into the Arctic Ocean are the Ob', Lena,  
98 Yenisey, and Mackenzie rivers, and numerous smaller rivers flow in both the Amerasian and  
99 Eurasian sectors. It has been reported that the Ob' and Yenisey rivers increased in their  
100 freshwater discharge since the 1980s (Semiletov et al., 2005; Anderson et al., 2009). These seas  
101 are situated along the continental shelf of the Arctic Ocean, which is known to be the widest and  
102 shallowest shelf in the world's oceans (Semiletov et al., 2005). These seas are characterized by  
103 highly dynamic organic matter production and export to the deeper ocean as well as profound  
104 atmospheric exchanges of volatile gases (Semiletov et al., 2005; Anderson et al., 2009).

105         A few studies have estimated the influence of river effluences on the C and DIN uptake  
106 rates (Lee et al., 2007, 2012; Yun et al., 2015). However, the potential impact of riverine influx  
107 on small phytoplankton uptake rates, which is relevant for the accountability of natural and  
108 anthropogenic influences on Arctic primary production, has not been investigated thus far. The  
109 present study reports the first investigation results on small phytoplankton (size: 0.7-5  $\mu\text{m}$ )  
110 contributions to the C,  $\text{NO}_3^-$ , and  $\text{NH}_4^+$  uptake rates in the Kara, Laptev, and East Siberian seas.

111 Considering the global relevance of Arctic Ocean biogeochemistry, the present study aimed to (1)  
112 estimate the contribution of small phytoplankton to total primary production as well as the  $\text{NO}_3^-$   
113 and  $\text{NH}_4^+$  uptake rates and (2) investigate various factors influencing small phytoplankton  
114 community efficiency in the Kara, Laptev, and East Siberian seas.

## 115 **2. Materials and Methods**

### 116 **2.1. Study Area**

117 The investigations on biochemical parameters and C and DIN transformation rates in the Kara,  
118 Laptev, and East Siberian seas were conducted at 19 monitoring stations selected from a total of  
119 116 NABOS stations (Fig. 1; Table 1). The geographical boundaries of each sea were defined as  
120 per the classification performed by Pabi et al. (2008) (Fig. 1). Based on this classification, there  
121 were 4, 13, and 2 stations located in the Kara, Laptev, and East Siberian seas, respectively. The  
122 Kara and East Siberian seas have surface areas almost two times ( $926 \times 10^3 \text{ km}^2$  and  $987 \times 10^3$   
123  $\text{km}^2$ , respectively) larger than that of the Laptev Sea ( $498 \times 10^3 \text{ km}^2$ ) (Jakobsson, 2001).  
124 Additionally, the Laptev and East Siberian seas hold the shallowest zones of the Arctic Ocean  
125 basin, with a mean depth of 48 m, while the Kara Sea has a mean depth of 131 m (Jakobsson,  
126 2001).

### 127 **2. 2. Sampling**

128 The sampling was conducted from 21<sup>st</sup> August to 22<sup>nd</sup> September 2013 onboard the Russian  
129 vessel “*Akademik Fedorov*”. The temperature and salinity were measured using a Seabird SBE9  
130 plus CTD (conductivity-temperature-depth tool) equipped with dual temperature (SBE3) and  
131 conductivity (SBE4) sensors. Samples for major inorganic nutrients [i.e.,  $\text{NO}_3^-$ , nitrite ( $\text{NO}_2^-$ ),  
132  $\text{NH}_4^+$ , phosphate (P), and silicate (Si)] were collected using Niskin bottles attached to the CTD

133 device, and analysis was performed onboard using an Alpkem Model 300 Rapid Flow Nutrient  
134 Analyzer (5 channels) based on Whitley et al. (1981). The chlorophyll *a* (Chl *a*) samples for  
135 the small phytoplankton fraction were obtained from 3 light depths (100, 30, and 1%). The  
136 preparation of Chl *a* samples was based on the standard procedure reported in previous studies  
137 on the Arctic Ocean (Lee and Whitley, 2005; Lee et al., 2012). Water samples for small Chl *a*  
138 fractions were sequentially filtered through a 5 $\mu$ m Nucleopore and then 0.7 $\mu$ m pore-sized  
139 Whatman GF/F filters (47 mm). Furthermore, the GF/F filters were wrapped in aluminum foil  
140 and kept frozen at -80 $^{\circ}$  C until analysis. During the analysis, the Chl *a* fractions from the filters  
141 were extracted using 90% acetone treatment at 5 $^{\circ}$ C for 24 hours. The extracted Chl *a* samples  
142 were subjected to spectrophotometric analysis onboard using a pre-calibrated Turner Designs  
143 model 10-AU fluorometer. Samples for the C and DIN uptake rates were collected from six *in*  
144 *situ* light level depths (100, 50, 30, 12, 5, and 1%) determined at each station based on the  
145 euphotic depth, which is based on Lambert-Beer's law. Underwater PAR sensors (and/or optical  
146 instruments) could not be used due to logistical problems, and the euphotic depth was calculated  
147 using the Secchi depth, which is a widely used method (Son et al., 2005; Tremblay et al., 2000;  
148 Lee et al. 2012; Bhavya et al., 2016; 2017; Lee et al., 2017a, 2017b).

### 149 **2.3 $^{13}\text{C}$ and $^{15}\text{N}$ labeling experiments**

150 The estimation of the C and DIN uptake rates was performed using  $^{13}\text{C}$  and  $^{15}\text{N}$  dual isotope  
151 labeling experiments (Dugdale and Goering, 1967; Slawyk et al 1977; Dugdale and Wilkerson,  
152 1986). Seawater samples at each light depth were collected using Niskin bottles attached to the  
153 CTD Rosette and transferred to acid-cleaned polycarbonate incubation bottles (approximately 1  
154 L) wrapped with neutral density light filters (LEE filters) to match the desired light levels.  
155 Immediately, samples were spiked with 98-99% enriched tracer solutions of  $\text{NaH}^{13}\text{CO}_3$ ,  $\text{K}^{15}\text{NO}_3$ ,

156 or  $^{15}\text{NH}_4\text{Cl}$  at concentrations of  $\sim 0.3$  mM,  $\sim 0.8\mu\text{M}$ , and  $\sim 0.1\mu\text{M}$  for the estimations of the C,  
157  $\text{NO}_3^-$ , and  $\text{NH}_4^+$  uptake rates, respectively. Furthermore, the samples were subjected to 4-6 hrs of  
158 incubation in large transparent Plexiglas incubators on deck under natural light conditions, and  
159 these incubators were provided with running surface seawater. Immediately after the incubation,  
160 0.3 L of incubated samples were filtered through pre-combusted GF/F filters (25 mm diameter)  
161 for the total uptake rate estimation. The samples for the small fraction, sub-samples (0.5 L) of the  
162 incubated waters were passed through  $5\mu\text{m}$  Nuclepore filters (47 mm) to remove large  
163 phytoplankton cells ( $>5\mu\text{m}$ ), and then the filtrate was passed through pre-combusted GF/F (25  
164 mm) for the small phytoplankton (Lee et al., 2013). The values for large phytoplankton in this  
165 study were obtained from the difference between the small and total fractions (Lee et al., 2013).  
166 Samples were kept frozen ( $-20^\circ\text{C}$ ) until the mass spectrometric analysis (Finnigan Delta+XL) at  
167 the stable isotope laboratory of University of Alaska Fairbanks, USA. The uncertainties for the  
168  $\delta^{13}\text{C}$  and  $\delta^{15}\text{N}$  measurements were  $\pm 0.1\text{‰}$  and  $\pm 0.3\text{‰}$ , respectively. The DIN uptake rates of  
169 small phytoplankton were estimated using the mathematical formula given by Dugdale and  
170 Goering (1967).

$$171 \text{ DIN uptake rate} = P * \Delta I_p / (T * (I_0 S_a + I_r S_t) / (S_a + S_t) - I_0)$$

172 where P is the amount of particulate N in the post-incubation sample;  $\Delta I_p$  is the increase in  $^{15}\text{N}$   
173 atom% in particulate N during incubation;  $S_a$  and  $S_t$  are the ambient and added  $\text{NO}_3^-$  (or  $\text{NH}_4^+$ )  
174 concentrations, respectively;  $I_r$  and  $I_0$  are  $^{15}\text{N}$  atom% of added tracer and natural  $^{15}\text{N}$  atom%; and  
175 T is the incubation time period. This equation assumes no formation of nutrients during  
176 incubation; therefore, the rates presented here are the potential rates. Similarly, the C uptake  
177 rates were also calculated using the same equation, where P denotes the particulate organic C,  
178 and  $S_a$  and  $S_t$  are the ambient dissolved inorganic carbon and added  $^{13}\text{C}$  tracer concentrations,



179 respectively.  $I_r$  and  $I_0$  are the  $^{13}\text{C}$  atoms% of the added tracer and natural  $^{13}\text{C}$  atom%,  
180 respectively (Slawyk et al. 1977).

### 181 **3. Results and discussion**

#### 182 **3.1 Environmental parameters in the Arctic Ocean**

183 The biological, chemical, and physical properties of the Arctic Ocean are mainly controlled by  
184 the circulation patterns governed by the waters of the Pacific and Atlantic Oceans (Anderson et  
185 al., 2004; Quadfasel, 2005) along with the river inputs (Peterson et al., 2002). The nutrient-rich,  
186 low saline (<33) Pacific Ocean waters and nutrients replete relatively more saline ( $\approx 34.8$ )  
187 Atlantic Ocean waters collectively regulate the biogeochemical activities of the Arctic Ocean  
188 (Maslowski et al., 2004). The present study was conducted during the late summer season, when  
189 the sea surface temperature (SST) ranged from  $-1.76^\circ\text{C}$  to  $1.62^\circ\text{C}$ . The sea surface salinity  
190 (SSS) during the study period varied from 28.29 to 33.44 (Table 1), which could be due to the  
191 influence of both the circulation patterns and the freshwater inputs. The present study retrieved  
192 the sea ice concentration (SIC) data from the National Snow & Ice Data Center, who obtained  
193 the data from a 2013 cruise. The results show that the SIC ranged from 0% to 100% (Table 1).

#### 194 **3.2 Carbon and nitrogen uptake rates by small phytoplankton**

195 Fig. 2 shows the depth profiles of the C,  $\text{NO}_3^-$ , and  $\text{NH}_4^+$  uptake rates per hour in the  
196 Laptev, Kara, and East Siberian seas. Only a few stations showed significant subsurface maxima  
197 for the C,  $\text{NO}_3^-$ , and  $\text{NH}_4^+$  uptake rates during the present study, while the rest of the stations  
198 exhibited no significant variation throughout the euphotic zone. The AF019 station showed  
199 exceptionally higher C,  $\text{NO}_3^-$ , and  $\text{NH}_4^+$  uptake rates, in general, with sharp subsurface maxima.  
200 The depth-integrated C,  $\text{NO}_3^-$ , and  $\text{NH}_4^+$  uptake rates by small phytoplankton in the East Siberian

201 Sea were observed to be very low compared to those of the other seas (Table 2, Figs. 3 & 4). The  
202 depth-integrated C uptake rates by small phytoplankton ranged from 0.54 to 15.96 mg C m<sup>-2</sup> h<sup>-1</sup>.  
203 The depth-integrated NO<sub>3</sub><sup>-</sup> uptake rates ranged from 0.05 to 1.02 mg N m<sup>-2</sup>h<sup>-1</sup>, while the NH<sub>4</sub><sup>+</sup>  
204 uptake rates varied from 0.11 to 3.73 mg N m<sup>-2</sup>h<sup>-1</sup>. The station AF019 showed the maximum  
205 small phytoplankton uptake rates for C (15.96 mg C m<sup>-2</sup>h<sup>-1</sup>), NO<sub>3</sub><sup>-</sup> (1.02 mg N m<sup>-2</sup>h<sup>-1</sup>), and NH<sub>4</sub><sup>+</sup>  
206 (3.73 mg N m<sup>-2</sup>h<sup>-1</sup>). The contribution of small phytoplankton to the total uptake was also very  
207 high at station AF019 (Table 2). The lowest C, NO<sub>3</sub><sup>-</sup>, and NH<sub>4</sub><sup>+</sup> uptake rates were observed at  
208 stations AF044 and AF041. The highest SIC (100% and 60% at AF044 and AF041, respectively)  
209 in this region might be one explanation for the lower primary productivity due to light limitation.

### 210 **3.3 Sea ice and small phytoplankton primary production**

211 Previous investigations on SIC over the Arctic Ocean proved that, during winter, high ice  
212 formation leads to the expelling of salt content to the surrounding water. This condition  
213 introduces a relatively higher salinity and density water layer at the surface or just below the sea  
214 ice layer relative to the surrounding area. Such conditions lead to the sinking of the very cold and  
215 saline surface waters and the replacement by nutrient-rich deeper water, which is less dense and  
216 slightly warmer. This process leads to deep vertical mixing and the replenishment of the surface  
217 nutrient inventories (Niebauer et al., 1990; Falk-Petersen et al., 2000). However, during spring,  
218 the melting of sea ice results in strong surface ocean stratification, where the nutrient-rich waters  
219 are exposed to light, creating favorable conditions for phytoplankton growth (Kirk, 1983;  
220 Niebauer et al., 1990; Falk-Petersen et al., 2000). It has also been reported that the increasing  
221 atmospheric temperature due to global warming has caused a considerable reduction in SIC in  
222 the Arctic Ocean over the past three decades, with a rapid decrease in recent years (Levi, 2000;  
223 Parkinson, 1999).

224 Because ice cover has a significant role in controlling primary production, the dynamics  
225 of SIC is an integral part of Arctic Ocean research (Arrigo et al., 2008; Ardyna et al., 2014;  
226 Kahru et al., 2016). It has been reported that a reduction in SIC would facilitate photosynthetic  
227 activity and increase CO<sub>2</sub> intake by the seas (Anderson and Kaitin, 2001; Bates et al., 2006;  
228 Kahru et al., 2016). Apparently, it can cause a relative decline in the contribution by algae  
229 growing within the sea ice (Subba Rao and Platt, 1984; Legendre et al., 1992; Gosselin et al.,  
230 1997), although the sea ice community contributes less than 10% to the total amount of Arctic  
231 Ocean C sequestration (Clasby et al., 1973; Horner and Schrader, 1982). A detailed study  
232 conducted on the inter-annual variations in SIC and primary production by Kahru et al. (2016)  
233 suggested that primary production is enhanced with a decline in SIC. Kahru et al. (2016)  
234 reported that a decrease in the SIC initially starts from June onwards in the northeastern Barents  
235 Sea and between Greenland and the North American continent, with an increase in primary  
236 productivity. This extends to the Kara and Laptev seas during July and August, and these areas  
237 exhibit a gradual enhancement in primary productivity. Furthermore, this process migrates  
238 towards the region off Siberia and eventually into the Beaufort and Chukchi seas. However, the  
239 major enhancement of primary production generally occurs in the Laptev and Barents seas  
240 (Kahru et al., 2016). In agreement with this, our results also show relatively lower SIC and  
241 higher small phytoplankton C and DIN uptake rates in the Laptev Sea region (Table 2, Figs. 3 &  
242 4). The maximum SIC in the Laptev Sea was observed at station AF071, with a value of 65%.  
243 The Kara Sea was mostly void of ice cover, and only one station (AF095) was observed with an  
244 SIC of 40%. Relatively lower small phytoplankton C and DIN uptake rates were observed at  
245 both stations in the East Siberian Sea (AF041: 60% and AF044: 100%), where the SIC was  
246 observed to be the maximum among all stations. However, there was no significant inverse

247 correlation between small phytoplankton C and DIN uptake rates and SIC found during the  
248 present study (Figure not shown). This result could be due to the influence of other  
249 environmental constraints, such as low nutrients and temperature, on the metabolic activities of  
250 small phytoplankton.

251         The investigations conducted in the Amundsen Sea, Antarctic Ocean, reported that there  
252 is no significant difference in the small phytoplankton C uptake rates between polynya and non-  
253 polynya regions. The depth-integrated small phytoplankton C uptake rates obtained from  
254 polynya and non-polynya regions in the Amundsen Sea ranged from 58.6–193 mg C m<sup>-2</sup>d<sup>-1</sup> (126  
255 ± 55.2 mg C m<sup>-2</sup>d<sup>-1</sup>) and 62.2– 266 mg C m<sup>-2</sup>d<sup>-1</sup> (124 ± 69.3 mg C m<sup>-2</sup>d<sup>-1</sup>), respectively (Lee et  
256 al., 2017a). These values showed that the depth-integrated small phytoplankton C uptake rates  
257 reported from the Amundsen Sea from both polynya and non-polynya regions were relatively  
258 higher than those obtained from the Arctic Ocean during the present study (5.86-191 mg C  
259 m<sup>-2</sup>d<sup>-1</sup>; average=37.7± 41.6). The daily NO<sub>3</sub><sup>-</sup> uptake rates of the small phytoplankton obtained  
260 from the Amundsen Sea were 7.5–26.6 mg N m<sup>-2</sup>d<sup>-1</sup> (16.7 ± 7.8 mg N m<sup>-2</sup>d<sup>-1</sup>) and 6.1–40.9 mg  
261 N m<sup>-2</sup>d<sup>-1</sup> (20.1 ± 13.1 mg N m<sup>-2</sup>d<sup>-1</sup>), and the values of the NH<sub>4</sub><sup>+</sup> uptake rates varied from 9.1–  
262 22.4 mg Nm<sup>-2</sup>d<sup>-1</sup> (15.8 ± 6.4 mg N m<sup>-2</sup>d<sup>-1</sup>) and 9.9–81.1 mg N m<sup>-2</sup>d<sup>-1</sup> (30.7 ± 24.5 mg N  
263 m<sup>-2</sup>d<sup>-1</sup>), respectively, for the non-polynya and polynya regions. Similar to the C uptake rates, the  
264 small phytoplankton uptake rates for NO<sub>3</sub><sup>-</sup> (0.75-12.2 mg N m<sup>-2</sup>d<sup>-1</sup>; 3.21±2.61 mg N m<sup>-2</sup>d<sup>-1</sup>) and  
265 NH<sub>4</sub><sup>+</sup> (2.68-69.3 mg N m<sup>-2</sup>d<sup>-1</sup>; average: 16.12±14.54 mg N m<sup>-2</sup>d<sup>-1</sup>) were also significantly lower  
266 than those of the Amundsen Sea. The lower small phytoplankton uptake rates in the Arctic  
267 waters compared to the Antarctic waters may be due to the lower nutrient concentrations and co-  
268 limitation of N in the Arctic waters (Harrison and Cota, 1991). Sakshaug & Holm-Hansen (1984)

269 reported that the maximum Arctic nutrient concentrations are typically lower than the minimum  
270 Antarctic concentrations.

### 271 **3.4 Nutrient sources and influences on small phytoplankton primary production**

272 The shallow water column depths and the existence of long coastlines along with river  
273 runoff provide a wide opportunity for autotrophs in the Arctic Ocean to obtain sufficient light  
274 and nutrients (Kirk, 1983). Additionally, the Arctic Ocean is known to be a large receptor of  
275 freshwater discharge that exceeds 4000 km<sup>3</sup> per year (Shiklomanov, 2000; Carmack and  
276 Macdonald, 2002). The riverine discharges may have a great role in keeping those stations near  
277 river inlets distinctive in terms of their physico-chemical conditions. Similarly, the freshwater  
278 discharge from the six largest Eurasian rivers has increased by 7% during the period of 1936-  
279 1999 (Peterson et al., 2002). Among the various seas in the Arctic Ocean, the Kara and Laptev  
280 seas are known to be the first and second largest receptors, respectively, of total organic carbon  
281 fluxes, while the East Siberian Sea receives the least (Rachold et al., 2000).

282 In most stations, the NO<sub>2</sub><sup>-</sup> + NO<sub>3</sub><sup>-</sup> concentrations were observed to be homogeneous in  
283 the water column up to a depth of 20 m (approximately 30% light depth); however, they  
284 increased exponentially towards the bottom waters (Figure not shown). The depth profiles of  
285 NH<sub>4</sub><sup>+</sup> and P did not show any significant variation throughout the euphotic zone (Figure used in  
286 Lee et al., unpublished). However, the nutrient concentrations were considerably distinct among  
287 the stations. The depth-integrated NO<sub>2</sub><sup>-</sup> + NO<sub>3</sub><sup>-</sup> concentrations varied between 22.3 and 189  
288 mmol m<sup>-2</sup>. The depth-integrated concentrations of P and Si ranged from 7.62 to 35.4 mmol m<sup>-2</sup>  
289 and 19.5 to 308 mmol m<sup>-2</sup>, respectively (Table 1). Generally, high concentrations of NO<sub>2</sub><sup>-</sup> +  
290 NO<sub>3</sub><sup>-</sup> and phosphate were found at the AF005, AF068, and AF071 stations in the Laptev Sea

291 and at one station in the Kara Sea (AF100), and they were relatively higher than those of the East  
292 Siberian Sea (Table 1, Figs. 3 & 4). However, the Si concentrations were higher in the East  
293 Siberian Sea than in the other two seas. These results are comparable with the earlier studies  
294 conducted by Codispoti and Richards (1968). They suggested that the concentrations of P and  
295  $\text{NO}_3^-$  were so low as to indicate nutrient limitation for phytoplankton production in the upper  
296 layers.

297 The details of the euphotic depths and the depth-integrated nutrient concentrations are  
298 shown in Table 1. The euphotic depths observed are different in almost all of the stations and  
299 range from 33 to 76 m. However, the data from our present study did not show any dependency  
300 of the depth-integrated nutrient budget with euphotic depth. For example, the AF019, AF080,  
301 and AF095 stations have deeper euphotic zones; however, they do not have depth-integrated  
302  $\text{NO}_2^- + \text{NO}_3^-$  concentrations close to the highest values obtained at the AF068, AF071, and AF005  
303 stations, which have relatively shallower euphotic depths. The depth-integrated P values also  
304 showed higher values at stations (AF019, AF068, AF100, AF080, AF095, and AF091) with both  
305 deeper and shallower euphotic depths. Hence, the variation in the euphotic depth seems to be  
306 insignificant in determining the nutrient budgets in the present study area.

307 The stations AF005, AF068, and AF071 in the Laptev Sea and AF100 in the Kara Sea,  
308 which were nearby the river inlets, were observed to have relatively higher nutrient  
309 concentrations (Table 1). The sampling locations away from the river inputs were mostly  
310 invaded by the nutrient-poor Atlantic waters instead of the nutrient-rich Pacific waters. Moreover,  
311 the Pacific Ocean nutrient inputs are generally restricted to the Chukchi Sea and the Amerasian  
312 Basin (Carmack et al., 1997; Dmitrenko et al., 2006). It is worth noting that all the sampling  
313 locations in the Arctic Ocean showed significantly lower small phytoplankton C and DIN uptake

314 rates, possibly due to the lack of light and nutrients. The nutrient stoichiometry analyses  
315 suggested that the Arctic Ocean waters are N starved and the N:P (here N = DIN:  $\text{NO}_2^- + \text{NO}_3^-$   
316 +  $\text{NH}_4^+$  and P:  $\text{PO}_4^{3-}$ ) ratios are always below Redfield's ratio, which is 16:1 (mol: mol)  
317 (Redfield, 1963; Sakshaug, 2004). The relative abundances of micronutrients are also important  
318 factors in controlling primary production (Glibert et al., 2013; Bhavya et al., 2016, 2017). The  
319 DIN: P observed during the current study ranged from 2.60 to 16.4, with an average of  $6.6 \pm 3.0$ ,  
320 which is also in agreement with the previous studies that have been reported. These ratios point  
321 towards the N-starvation of phytoplankton, which can potentially prevent them from growing to  
322 a bloom. It has been reported that such cases with lower nutrient concentrations are generally  
323 less starving for small phytoplankton sizes ranging from 0.7-5  $\mu\text{m}$ , and they appeared to be  
324 dominant in euphotic water columns (Lee and Whitley, 2005; Li et al., 2009; Yun et al., 2015).

325         In general, experimental and theoretical evidence suggest that smaller cells have higher  
326 rates of nutrient uptake per unit biomass and lower half-saturation constants due to their higher  
327 surface area to volume ratios (Eppley and Thomas, 1969; Aksnes and Egge, 1991; Hein et al.,  
328 1995). Hence, the lower minimum cellular metabolic requirement for small phytoplankton  
329 selectively allows them to survive under lower resource concentrations than those of larger cells  
330 (Shuter, 1978; Grover, 1991). Hence, small phytoplankton cells appear to have substantial  
331 advantages over larger phytoplankton cells under nutrient-limited steady-state environmental  
332 conditions (Grover, 1989; Grover, 1991). However, under very poor nutrient conditions, small  
333 phytoplankton may also undergo nutrient starvation.

334

335

### 336 **3.5 Nutrient co-limitation**

337 Nutrient co-limitation is a major problem facing marine phytoplankton in oligotrophic  
338 and pelagic ecosystems. Recent studies have suggested that the maximum uptake of  
339 phytoplankton generally occurs when the nutrient stoichiometry is close to Redfield's ratio,  
340 which is 16:1 (Li et al., 2011; Glibert et al., 2013; Bhavya et al., 2016, 2017), irrespective of the  
341 individual nutrient concentration. Because the present study addresses completely different  
342 ecosystems with high SIC, low nutrients and low SSTs, understanding the influence of DIN:P  
343 would be challenging. In agreement with this, there were no significant correlations observed  
344 between the C,  $\text{NO}_3^-$ , and  $\text{NH}_4^+$  uptake rates and the DIN: P during the present study. However,  
345 Fig. 5 shows a weak, although positive, correlation of small phytoplankton contribution towards  
346 DIN:P. This result indicates the possibility of small phytoplankton efficiency to peak at a  
347 nutrient stoichiometry close to Redfield's ratio. However, the lack of sufficient stations with  
348 higher DIN:P values limits the present study from claiming the influence of nutrient  
349 stoichiometry on the small phytoplankton contribution. It is also important to note that the  
350 stations are located at geographical locations with diverse hydrographical parameters. However,  
351 on the basis of few studies conducted from various parts of oceanic and estuarine regions, it has  
352 been shown that DIN:P has a strong control on the total C and DIN uptake rates (Li et al., 2011;  
353 Glibert et al., 2013; Bhavya et al., 2016, 2017). Although there was no significant correlation  
354 obtained between the small phytoplankton uptakes and the DIN:P, the N co-limitation in the  
355 Arctic Ocean is clearly seen (Table 1). Thus, the relative abundances of DIN and P are highly  
356 important for the proper functioning of the C and DIN uptake mechanisms by autotrophs.

357



### 358 3.6 Turnover times of nutrients

359 The present study shows that N co-limitation persists in the Arctic Ocean and can potentially  
360 limit the small phytoplankton contribution. In that case, any inorganic N substrate introduced to  
361 the surface waters might be immediately used by the phytoplankton to facilitate organic matter  
362 production under favorable environmental conditions. The turnover time for any substrate is an  
363 important measurement to estimate how rapid an N substrate can be consumed. The estimation  
364 of turnover time is performed by dividing the substrate concentrations with the corresponding  
365 uptake rates. Figs. 6 & 7 show the turnover times for the  $\text{NO}_3^-$  and  $\text{NH}_4^+$  substrates when small  
366 phytoplankton communities are the only consumers. Fig. 7 shows that the turnover times for the  
367  $\text{NH}_4^+$  substrate (within 500 hours) in the surface waters are longer; however, they are relatively  
368 faster than those of the  $\text{NO}_3^-$  in the upper layers of the euphotic zone at almost all the stations in  
369 the Arctic Ocean. However, the bottom waters of the euphotic zone showed relatively longer  
370 (1000-1700 hours) turnover times for  $\text{NH}_4^+$  substrate compared to the surface waters. The  
371 sampling location in the East Siberian Sea (AF044) was observed to have relatively longer  
372 turnover times for both  $\text{NO}_3^-$  and  $\text{NH}_4^+$  substrates at the surface layers (Figs. 6 & 7), which was  
373 possibly due to the lower uptake rates in that region. A continuous supply of nutrients through  
374 rivers and less efficient DIN uptake rates might be major reasons for longer turnover times.  
375 Compared to  $\text{NH}_4^+$ ,  $\text{NO}_3^-$  is consumed in distinctively longer periods as 14-fold at the surface  
376 waters and 25-fold at the bottom of the euphotic zone. Primarily, such a difference is due to the  
377 relative preference for  $\text{NH}_4^+$  by the small phytoplankton and second, due to the high  
378 concentrations of  $\text{NO}_3^-$  in the deep waters relative to the  $\text{NH}_4^+$  concentrations. The research  
379 outputs from a tropical eutrophic estuary in India have shown rapid turnover time (3.4-232 hrs  
380 for  $\text{NH}_4^+$  and 7.13-2419 hrs for  $\text{NO}_3^-$ ) by total phytoplankton communities for DIN substrates

381 despite higher nutrient concentrations (Bhavya et al., 2016). In general, inhibition of  $\text{NO}_3^-$   
382 uptake is a very common phenomenon when higher  $\text{NH}_4^+$  concentrations occur (e.g., Glibert,  
383 1982; Harrison et al., 1987; McCarthy et al., 1999; Bhavya et al. 2016). It is also very likely  
384 there will be different turnover times with similar DIN concentrations under different  
385 hydrographic properties that can govern the C and DIN metabolism in a given region.

### 386 **3.7 Quantum yield**

387 During the present study, the size-fractionated Chl *a* concentrations at the three light levels (100,  
388 30, and 1%) were measured. The comparative analysis with the total Chl *a* fraction suggests that  
389 the small phytoplankton communities are major contributors in the Laptev, Kara, and East  
390 Siberian seas (Figure not shown; data used from Lee et al., unpublished). The results showed  
391 significantly high contributions of small phytoplankton to total Chl *a* at all three light levels  
392 (63.3 (S.D. =  $\pm 17.5\%$ ), 61.4 (S.D. =  $\pm 19.9\%$ ), and 59.0% (S.D. =  $\pm 18.4\%$ ) at 100, 30, and 1%,  
393 respectively).

394 The ability of Chl *a* to fix C and DIN in small phytoplankton communities is a matter of  
395 concern in the Arctic Ocean. The quantum yield for the present study is defined as the efficiency  
396 of unit Chl *a* in the small phytoplankton communities to fix DIN and C, which is calculated by  
397 dividing the uptake rates by the Chl *a* concentration. The lower temperatures and salinities, ice  
398 cover, and poor light availability can potentially lower the quantum yields. The quantum yields  
399 for the C and DIN are shown in Figs. 8 and 9, respectively. The maximum yields for both C and  
400 DIN were observed at AF091 for the 100 and 30% light depths. However, the quantum yield for  
401 C at the 1% light level in all stations was observed to be very low, more likely due to light  
402 limitation (Talling, 1957). Although the quantum yield for DIN was lower at 1% than at the other

403 two light levels, a drastic drop in the quantum yield for DIN at the 1% light level, such as  
404 quantum yield for C, was not observed. This result can be due to the existence of significant  
405  $\text{NH}_4^+$  uptake rates in the light-scarce conditions.

### 406 **3.8 Small and large phytoplankton contributions**

407 It is known that the impact of global warming on the Arctic Ocean has introduced rapid changes  
408 in its physicochemical properties. Hence, the necessity to trace the changes in primary  
409 production patterns in the Arctic Ocean has gained attention in the recent era. It has been  
410 reported that the contribution of small phytoplankton to the total C and DIN fixations would  
411 increase under warming conditions (Li et al., 2009, Thomas et al., 2012). A significant number  
412 of total primary production estimates are available from the Arctic Ocean (Platt et al., 1982;  
413 Vedernikov et al., 1994; Gosselin et al., 1997; Boetius and Damm, 1998; Tremblay et al., 2002;  
414 Arrigo et al., 2008; Wassmann et al., 2011; Lee et al., 2007; 2012, 2017a; Arrigo and Dijken,  
415 2011; Yun et al., 2012, 2015; Kahru et al., 2016; Lee et al., unpublished). However, a deep  
416 understanding regarding the boosting of small phytoplankton under warming conditions and their  
417 contributions towards the total primary production is still rudimentary. The present study  
418 provides the first report on small phytoplankton contributions to the total primary production in  
419 the Kara, Laptev, and East Siberian seas in the Arctic Ocean. The results from the study suggest  
420 that the small phytoplankton potentially contributed 24 to 89%, 32 to 89%, and 28 to 91%, to the  
421 total C,  $\text{NO}_3^-$ , and  $\text{NH}_4^+$  uptake rates, respectively, in the whole study region. Studies from  
422 various oceanic bodies suggest that the small phytoplankton contribution to the total annual C  
423 and DIN fixation varies between 20 and 65% (Agawin et al., 2000; Hodal and Kristiansen, 2008;  
424 Joo et al. 2017; Lee et al. 2017a). The contributions of small phytoplankton to total C uptake  
425 rates were significantly higher in the Amundsen Sea, with an average of 50.8% ( $\pm 42.8\%$ ) and

426 14.9% ( $\pm 8.4\%$ ), respectively, for the non-polynya and polynya regions (Lee et al. 2017a). The  
427 contributions of small phytoplankton to the total  $\text{NO}_3^-$  uptake rates were 28.2% ( $\pm 15.9\%$ ) in the  
428 non-polynya region and 18.1% ( $\pm 6.8\%$ ) in the polynya region. Similar to the C assimilation rates,  
429 the small phytoplankton contributions to the total  $\text{NH}_4^+$  uptake rates were higher in both non-  
430 polynya (52.8%;  $\pm 40.5\%$ ) and polynya (31.6%;  $\pm 10.1\%$ ) regions (Lee et al., 2017a). Similarly,  
431 the small phytoplankton contribution in the western Canada basin in the Arctic Ocean was  
432 reported to be 64% (Yun et al., 2015). A recent study from the Chukchi Sea reported that the  
433 average contributions of small phytoplankton to the C and total DIN uptake rates were  
434 approximately 32% (S.D. =  $\pm 24\%$ ) and 37% (S. D. =  $\pm 26\%$ ), respectively (Lee et al., 2013).  
435 Similar investigations conducted in the northern Barents Sea found that small phytoplankton  
436 contributed almost half (46%) of the total primary production (Hodal and Kristiansen, 2008).  
437 The MODIS-derived data in the Ulleung Basin from 2003 to 2012 suggested that the annual  
438 contribution by small phytoplankton communities, in general, ranged from 19.6% to 28.4%, with  
439 an average of 23.6% (S.D. =  $\pm 8.1\%$ ) (Joo et al., 2017). This study suggested that large  
440 phytoplankton communities are the major contributors to primary production in the Ulleung  
441 Basin. Similarly, Legendre et al. (1992) reported that primary production in the high-latitude  
442 Arctic region waters, in general, was dominated by large phytoplankton cells ( $>5 \mu\text{m}$ ), while the  
443 standing stock was dominated by small cell-sized phytoplankton (0.7–5  $\mu\text{m}$ ) due to strong  
444 grazing stress on large cells. The present study also estimated large phytoplankton contributions  
445 (total-small phytoplankton contributions) to the total uptake rates (Table 2). The assessments by  
446 Tremblay et al. (2000) suggested that large phytoplankton can fix relatively more C per unit  
447  $\text{NO}_3^-$  and thus export more C than can small phytoplankton. However, the results from the  
448 present study showed that the large phytoplankton communities in the Arctic Ocean could

449 contribute only an average of 40%, 34%, and 35% to the total C,  $\text{NO}_3^-$ , and  $\text{NH}_4^+$  uptake rates,  
450 respectively. Hence, small phytoplankton appear to be the major contributors of C,  $\text{NO}_3^-$ , and  
451  $\text{NH}_4^+$  uptake, with percentage contributions of 60%, 66% and 65%, respectively, in the Laptev,  
452 Kara, and East Siberian seas. These values are much higher than the global average contribution  
453 (39%) of small phytoplankton production, as assessed by Agawin et al. (2000).

#### 454 **4. Conclusions**

455 The present study attempted to estimate small phytoplankton contributions towards the  
456 total C,  $\text{NO}_3^-$ , and  $\text{NH}_4^+$  uptake rates in the Kara, Laptev, and East Siberian seas. The  
457 contributions of small phytoplankton to the total C,  $\text{NO}_3^-$ , and  $\text{NH}_4^+$  uptake rates ranged from  
458 25-89%, 31-89%, and 28-91%, respectively, in the Arctic Ocean. There was no significant  
459 influence of ice cover on uptake rates; however, the stations with high SIC generally showed low  
460 surface small phytoplankton uptake of C,  $\text{NO}_3^-$ , and  $\text{NH}_4^+$ . It was also observed that the DIN: P  
461 can potentially play a major role in controlling the small phytoplankton contributions towards the  
462 DIN uptake rates by small phytoplankton. The significant contributions of small phytoplankton  
463 indicate their efficiency to withstand hostile conditions, such as low nutrients, changing SST, and  
464 high ice cover. However, to understand the influence of global warming on small phytoplankton  
465 activity, growth, and community shifts, long-term *in situ* analyses as well as laboratory  
466 manipulations and experiments are highly recommended.

#### 467 **Acknowledgments**

468 We thank the captain and crew of the *Akademik Fedorov* for their outstanding assistance during  
469 the cruise. This research was supported by the Korea Research Foundation (KRF) grant funded  
470 by the Korean government (MEST; NRF-2016015679). Support for T.E. Whitledge and D.A.  
471 Stockwell was provided by NSF grant #120347.

472 **References**

- 473 Agawin, N.S., Duarte, C.M. and Agustí, S.: Nutrient and temperature control of the contribution  
474 of picoplankton to phytoplankton biomass and production. *Limnol. Oceanogr.*, 45(3),  
475 pp.591-600, 2000.
- 476 Anderson, L. G. and Kaltin, S.: Carbon fluxes in the Arctic Ocean-potential impact by climate  
477 change. *Polar Resear.*, 20(2), 225-232, 2001.
- 478 Anderson, L. G., Jutterström, S., Kaltin, S., Jones, E.P. and Björk, G.: Variability in river runoff  
479 distribution in the Eurasian Basin of the Arctic Ocean. *J. Geophys. Res.: Oceans*,  
480 109(C1), 2004.
- 481 Anderson, L. G., Jutterström, S., Hjalmarrsson, S., Wåhlström, I. and Semiletov, I.: Out- gassing  
482 of CO<sub>2</sub> from Siberian Shelf seas by terrestrial organic matter decomposition. *Geophys.*  
483 *Res. Lett.*, 36, 2009.
- 484 Aksnes, D. L. and Egge, J. K.: A theoretical model for nutrient uptake in phytoplankton. *Mar.*  
485 *Ecol. Prog. Ser.* , 70, 65–72, 1991.
- 486 Ardyna, M., Babin, M., Gosselin, M., Devred, E., Rainville, L. and Tremblay, J.É.: Recent  
487 Arctic Ocean sea ice loss triggers novel fall phytoplankton blooms. *Geophys. Res. Lett.*,  
488 41(17), 6207-6212, 2014.
- 489 Arrigo, K. R., van Dijken, G., and Pabi, S.: Impact of a shrinking Arctic ice cover on marine  
490 primary production. *Geophys. Res. Lett.*, 35, L19603, 2008.
- 491 Arrigo, K. R. and van Dijken, G. L.: Secular trends in Arctic Ocean net primary production. *J.*  
492 *Geophys. Res.*, 116, C09011, doi:10.1029/2011JC007151, 2011.
- 493 Arrigo, K. R., Perovich, D. K., Pickart, R. S., Brown, Z. W., Van Dijken, G. L., Lowry, K. E.,  
494 Mills, M. M., Palmer, M. A., Balch, W. M., Bahr, F. and Bates, N. R., Massive  
495 phytoplankton blooms under Arctic sea ice. *Science*, 336(6087), 1408-1408, 2012.
- 496 Arrigo, K. R. and van Dijken, G. L., Continued increases in Arctic Ocean primary production.  
497 *Progr. Oceanogr.*, 136, 60-70, 2015.
- 498 Bates, N. R., Moran, S. B., Hansell, D. A. and Mathis, J. T.: An increasing CO<sub>2</sub> sink in the Arctic  
499 Ocean due to sea- ice loss. *Geophys. Res. Lett.*, 33(23), 2006.
- 500 Bates, N. R. and Mathis, J. T.: The Arctic Ocean marine carbon cycle: evaluation of air-sea CO<sub>2</sub>  
501 exchanges, ocean acidification impacts and potential feedbacks. *Biogeosciences*, 6(11),  
502 2433-2459, 2009.
- 503 Bélanger, S, Babin M, Larouche P.: An empirical ocean color algorithm for estimating the  
504 contribution of chromophoric dissolved organic matter to total light absorption in  
505 optically complex waters. *J. Geophys. Res.* 13, C04027. doi:10.1029/ 2007JC004436,  
506 2008.

- 507 B elanger, S., Babin, M. and Tremblay, J.E.: Increasing cloudiness in Arctic damps the increase  
508 in phytoplankton primary production due to sea ice receding. *Biogeosciences*, 10(6),  
509 p.4087, 2013.
- 510 Bhavya, P. S., Kumar, S., Gupta, G. V. M., Sudheesh, V., Sudharma, K. V., Varrier, D. S.,  
511 Dhanya, K. R., Saravanane, N.: Nitrogen uptake dynamics in a tropical eutrophic  
512 estuary (Cochin estuary) and adjacent coastal regions during pre-monsoon. *Estuar.  
513 Coast.* <http://dx.doi.org/10.1007/s12237-015-9982-y>, 2016.
- 514 Bhavya, P. S., Kumar, S., Gupta, G. V. M., Sudheesh, V.: Carbon uptake rates in the Cochin  
515 estuary and adjoining coastal Arabian Sea. *Estuar. Coast.*, 40, 447–456. [http://  
516 dx.doi.org/10.1007/s12237-016-0147-4](http://dx.doi.org/10.1007/s12237-016-0147-4), 2017.
- 517 Boetius, A. and Damm, E.: Benthic oxygen uptake, hydrolytic potentials and microbial biomass  
518 at the Arctic continental slope. *Deep Sea Res. Pt. I: Oceanogr. Res. Pap.*, 45(2-3), 239-  
519 275, 1998.
- 520 Bopp, L., Monfray, P., Aumont, O., Dufresne, J. L., Le Treut, H., Madec, G., Terray, L. and Orr,  
521 J.C.: Potential impact of climate change on marine export production. *Global  
522 Biogeochem. Cy.*, 15(1), 81-99, 2001.
- 523 Cai, W. J., Chen, L., Chen, B., Gao, Z., Lee, S. H., Chen, J., Pierrot, D., Sullivan, K., Wang, Y.,  
524 Hu, X. and Huang, W. J.: Decrease in the CO<sub>2</sub> uptake capacity in an ice-free Arctic  
525 Ocean basin. *Science*, 329(5991), 556-559, 2010.
- 526 Carmack, E. C., Aagaard, K., Swift, J. H., MacDonald, R. W., McLaughlin, F. A., Jones, E. P.,  
527 Perkin, R. G., Smith, J. N., Ellis, K. M. and Killius, L. R.: Changes in temperature and  
528 tracer distributions within the Arctic Ocean: Results from the 1994 Arctic Ocean section.  
529 *Deep Sea Res. Part II: Top. Stud. Oceanogr.*, 44(8), 1487-1502, 1997.
- 530 Carmack, E. C. and Macdonald, R. W.: Oceanography of the Canadian Shelf of the Beaufort Sea:  
531 a setting for marine life. *Arctic*, 29-45, 2002.
- 532 Clasby, R.C., Horner, R. and Alexander, V.: An in situ method for measuring primary  
533 productivity of Arctic sea ice algae. *J. Fish. Res. Board Can.*, 30(6), pp.835-838, 1973.
- 534 Codispoti, L. A. and Richards, F. A.: Micronutrient distributions in the East Siberian and Laptev  
535 seas during summer 1963. *Arctic*, 67-83, 1968.
- 536 Comiso, J. C., Parkinson, C. L., Gersten, R. and Stock, L.: Accelerated decline in the Arctic sea  
537 ice cover. *Geophys. Res. Lett.*, 35(1), 2008.
- 538 Daufresne, M., Lengfellner, K. and Sommer, U.: Global warming benefits the small in aquatic  
539 ecosystems. *Proc. Nat. Acad. Sci.*, 106(31), 12788-12793, 2009.
- 540 Dmitrenko, I. A., Polyakov, I. V., Kirillov, S. A., Timokhov, L. A., Simmons, H. L., Ivanov, V.  
541 V. and Walsh, D.: Seasonal variability of Atlantic water on the continental slope of the  
542 Laptev Sea during 2002–2004, *Earth Planet. Sci. Lett.*, 244, 735-743, 2006.

- 543 Dugdale, R. and Goering, J.: Uptake of new and regenerated forms of nitrogen in primary  
544 productivity, *Limnol. Oceanogr.*, 12, 196-206, 1967.
- 545 Dugdale, R. C. and Wilkerson, F. P.: The use of <sup>15</sup>N to measure nitrogen uptake in eutrophic  
546 oceans; experimental considerations. *Limnol. Oceanogr.*, 31(4), 673-689, 1986.
- 547 Eastman, R. and Warren, S. G.: Interannual variations of Arctic cloud types in relation to sea ice.  
548 *J. Clim.*, 23(15), 4216-4232, 2010.
- 549 Eppley, R. W. and Thomas, W. H.: Comparison of half-saturation constants for growth and  
550 nitrate uptake of marine phytoplankton. *J. Phycol.*, 5, 375-379, 1969.
- 551 Falk-Petersen, S., Hop, H., Budgell, W.P., Hegseth, E.N., Korsnes, R., Løyning, T. B., Ørbæk,  
552 J.B., Kawamura, T. and Shirasawa, K.: Physical and ecological processes in the  
553 marginal ice zone of the northern Barents Sea during the summer melt period. *J. Mar.  
554 Sys.*, 27(1), 131-159, 2000.
- 555 Glibert, P.M.: Regional studies of daily, seasonal and size fraction variability in ammonium  
556 remineralization. *Mari. Biol.*, 70(2), 209-222, 1982.
- 557 Glibert, P.M., Kana, T.M. and Brown, K. From limitation to excess: the consequences of  
558 substrate excess and stoichiometry for phytoplankton physiology, trophodynamics and  
559 biogeochemistry, and the implications for modeling. *J. Mar. Sys.* 125, 14-28., 2013.
- 560 Gosselin, M., Levasseur, M., Wheeler, P. A., Horner, R. A. and Booth, B. C.: New  
561 measurements of phytoplankton and ice algal production in the Arctic Ocean. *Deep Sea  
562 Res. Pt. II Top. Stud. Oceanogr.*, 44(8), 1623-1644, 1997.
- 563 Gradinger R.: Sea-ice algae: major contributors to primary production and algal biomass in the  
564 Chukchi and Beaufort seas during May/June 2002. *Deep Sea Res. Pt. II*, 44(8):1623-  
565 1644. doi: 10.1016/j.dsr2.2008.10016, 2009.
- 566 Grover, J. P.: Influence of cell shape and size on algal competitive ability. *J. Phycol.* , 25, 402-  
567 405, 1989.
- 568 Grover, J. P.: Resource competition in a variable environment: phytoplankton growing according  
569 to the variable-internal-stores model. *Am. Nat.* , 138, 811-835, 1991.
- 570 Harrison W. G, Li W. K. W., Smith J. C., Head E. J. H., Longhurst A. R.: Depth profiles of  
571 plankton, particulate organic matter and microbial activity in the Eastern Canadian  
572 Arctic during summer. *Polar Biol.* 7.207-224, 1987.
- 573 Harrison, W.G. and Cota, G.F.: Primary production in polar waters: relation to nutrient  
574 availability. *Polar Res.*, 10(1), pp.87-104, 1991.
- 575 Hein, M., Folager Pedersen, M. and Sand-Jensen, K.: Size-dependent nitrogen uptake in micro-  
576 and macroalgae. *Mar. Ecol. Prog. Ser.* , 118, 247-253, 1995.



- 577 Hill, V. J., and G. F. Cota.: Spatial patterns of primary production in the Chukchi Sea in the  
578 spring and summer of 2002, *Deep Sea Res., Pt. II*, 52, 3344–3354, 2005.
- 579 Hill, V., Ardyna, M., Lee, S. H., and Varela, D. E.: Decadal trends in phytoplankton production  
580 in the Pacific Arctic Region from 1950 to 2012, *Deep Sea Res. Pt. II*,  
581 <https://doi.org/10.1016/j.dsr2.2016.12.015>, 2017.
- 582 Hodal, H. and Kristiansen, S.: The importance of small-celled phytoplankton in spring blooms at  
583 the marginal ice zone in the northern Barents Sea. *Deep Sea Res. Part II Top. Stud.*  
584 *Oceanogr.* 55(20), 2176-2185, 2008.
- 585 Horner, R. and Schrader, G.C.: Relative contributions of ice algae, phytoplankton, and benthic  
586 microalgae to primary production in nearshore regions of the Beaufort Sea. *Arctic*,  
587 pp.485-503, 1982.
- 588 Irwin, A.J, Zoe V. F, Oscar M. E. Schofield, Falkowski, P.G.: Scaling-up from nutrient  
589 physiology to the size-structure of phytoplankton communities, *J. Plank. Res.*, 28 (5),  
590 459–471, 2006.
- 591 Jakobsson, M., and IBCAO Editorial Board Members, Improvement to the International  
592 Bathymetric Chart of the Arctic Ocean (IBCAO): Updating the Data Base and the Grid  
593 Model, *EOS Trans. AGU*, 82(46), Fall Meet. Suppl., Abstract no. OS11B-0371, 2001.
- 594 Joo, H., Son, S., Park, J.W., Kang, J.J., Jeong, J.Y., Kwon, J.I., Kang, C.K. and Lee, S.H.: Small  
595 phytoplankton contribution to the total primary production in the highly productive  
596 Ulleung Basin in the East/Japan Sea. *Deep Sea Res. Part II: Top. Stud. Oceanogr.*, 143,  
597 pp.54-61, 2017.
- 598 Kahru, M., Lee, Z., Mitchell, B. G. and Nevison, C. D.: Effects of sea ice cover on satellite-  
599 detected primary production in the Arctic Ocean. *Biol. Let.*, 12(11), p.20160223, 2016.
- 600 Kirk, J. T. O.: *Light and Photosynthesis in the Aquatic Ecosystems*, Cambridge Univ. Press,  
601 Cambridge, U. K., 1983.
- 602 Kwok, R., Cunningham, G. F., Wensnahan, M., Rigor, I., Zwally, H. J. and Yi, D.: Thinning and  
603 volume loss of the Arctic Ocean sea ice cover: 2003–2008. *J. Geophys. Res.* 114(C7),  
604 2009.
- 605 Lee, S. H. and Whitley, T. E.: Primary and new production in the deep Canada Basin during  
606 summer 2002, *Polar Biol.*, 28, 190-197, 2005.
- 607 Lee, S. H., Whitley, T. E. and Kang, S.: Recent carbon and nitrogen uptake rates of  
608 phytoplankton in Bering Strait and the Chukchi Sea, *Cont. Shelf Res.*, 27, 2231-2249,  
609 2007.
- 610 Lee, S. H., Joo, H. M., Liu, Z., Chen, J. and He, J.: Phytoplankton productivity in newly opened  
611 waters of the Western Arctic Ocean, *Deep Sea Res. Part II: Top. Stud. Oceanogr.*, 81,  
612 18-27, 2012.

- 613 Lee, S. H., Yun, M. S., Kim, B. K., Joo, H., Kang, S. J., Kang, C. K., and Whitley, T. E.:  
614 Contribution of small phytoplankton to total primary production in the Chukchi Sea,  
615 Cont. Shelf Res., 68, 43–50, 2013.
- 616 Lee, S. H., Kim, B. K., Lim, Y. J., Joo, H., Kang, J. J., Lee, D., Park, J., Sun-Yong, H. and Lee,  
617 S. H., Small phytoplankton contribution to the standing stocks and the total primary  
618 production in the Amundsen Sea. Biogeosciences, 14(15), 3705, 2017a.
- 619 Lee, S. H., Joo, H. T., Lee, J. H., Lee, J. H., Kang, J. J., Lee, H. W., Lee, D. and Kang, C. K.:  
620 Seasonal carbon uptake rates of phytoplankton in the northern East/Japan Sea, Deep-Sea  
621 Resear. II, <http://dx.doi.org/10/1016/j.dsr2.2017.04.009>, 2017b.
- 622 Legendre, L., Ackley, S. F., Dieckmann, G. S., Gulliksen, B., Horner, R., Hoshiai, T., Melnikov,  
623 I. A., Reeburgh, W. S., Spindler, M. and Sullivan, C.W.: Ecology of sea ice biota. Pol.  
624 Biol., 12(3-4), 429-444, 1992.
- 625 Levi, B. G.: The decreasing Arctic ice cover, Phys. Today, 53(1), 19–20, doi:10.1063/1.882931,  
626 2000.
- 627 Li, W. K., McLaughlin, F. A., Lovejoy, C. and Carmack, E. C.: Smallest algae thrive as the  
628 Arctic Ocean freshens, Science, 326, 539, 2009.
- 629 Li, J., Glibert, P. M. and Alexander, J. A. Effects of ambient DIN: DIP ratio on the nitrogen  
630 uptake of harmful dinoflagellate *Prorocentrum minimum* and *Prorocentrum*  
631 *donghaiense* in turbidistat. Chinese J. Oceanol. Limnol. 29(4), 746-761, 2011.
- 632 Martin, J., Tremblay, J. É., Gagnon, J., Tremblay, G., Lapoussière, A., Jose, C., Poulin, M.,  
633 Gosselin, M., Gratton, Y. and Michel, C.: Prevalence, structure and properties of  
634 subsurface chlorophyll maxima in Canadian Arctic waters. Mar. Ecol. Progr. Ser. 412,  
635 69-84, 2010.
- 636 Maslowski, W., Marble, D., Walczowski, W., Schauer, U., Clement, J. L. and Semtner, A. J.: On  
637 climatological mass, heat, and salt transports through the Barents Sea and Fram Strait  
638 from a pan- Arctic coupled ice- ocean model simulation. J. of Geophys. Res.: Oceans.  
639 109(C3), 2004.
- 640 McCarthy, J. J., Garside, C. and Nevins, J. L.: Nitrogen dynamics during the Arabian Sea  
641 northeast monsoon. Deep Sea Res. Part II Top. Stud. Oceanogr., 46(8), 1623-1664, 1999.
- 642 McLaughlin, F.A., Carmack, E.C., Jackson, J.M., Ingram, R.G. and Allen, S.E.: Identification,  
643 characterization, and change of the near-surface temperature maximum in the Canada  
644 Basin, 1993-2008 (Doctoral dissertation, University of British Columbia), 2010.
- 645 Niebauer, H. J., Alexander, V. and Henrichs, S.: Physical and biological oceanographic  
646 interaction in the spring bloom at the Bering Sea marginal ice edge zone. J. of Geophys.  
647 Res.: Oceans, 95(C12), 22229-22241, 1990.

- 648 Overland, J. E. and Wang, M.: When will the summer Arctic be nearly sea ice free?. *Geophys.*  
649 *Res. Lett.*, 40(10), 2097-2101, 2013.
- 650 Pabi S., van Dijken G., Arrigo K. R.: Primary production in the Arctic Ocean, 1998–2006. *J.*  
651 *Geophys. Res.* 113:C08005. doi: 10.1029/2007JC004578, 2008.
- 652 Parkinson, C. L., Cavalieri, D. J., Gloersen, P., Zwally, J. H., Comiso J. C.: Arctic sea ice  
653 extents, areas, and trends, 1978–1996. *J. Geophys. Res.*, 104 (C9), 20837-20856, 1999.
- 654 Peterson, B. J., Holmes, R. M., McClelland, J. W., Vörösmarty, C. J., Lammers, R. B.,  
655 Shiklomanov, A. I., Shiklomanov, I. A. and Rahmstorf, S.: Increasing river discharge to  
656 the Arctic Ocean. *Science*, 298(5601), 2171-2173, 2002.
- 657 Platt, T., Harrison, W.G., Irwin, B., Horne, E.P. and Gallegos, C.L.: Photosynthesis and photo  
658 adaptation of marine phytoplankton in the Arctic. *Deep Sea Res. Pt. I: Oceanogr. Res.*  
659 *Pap.*, 29(10), 1159-1170, 1982.
- 660 Quadfasel, D.: Oceanography: The Atlantic heat conveyor slows. *Nature*, 438 (7068), 565-566,  
661 2005.
- 662 Rachold V, Grigoriev MN, Are FE, Solomon S, Reimnitz E, Kassens H, Antonow M.: Coastal  
663 erosion vs. riverine sediment discharge in the Arctic shelf seas. *Int. J. Earth. Sci.* 89,  
664 450–460, 2000.
- 665 Redfield, A.C.: The influence of organisms on the composition of seawater. *The sea*, 2, 26-77,  
666 1963.
- 667 Sakshaug, E. and Holm-Hansen, O.: Factors governing pelagic production in polar oceans. In  
668 *Marine phytoplankton and productivity* (pp. 1-18). Springer, Berlin, Heidelberg, 1984.
- 669 Sakshaug E.: Primary and Secondary Production in the Arctic Seas. In: Stein R., MacDonald  
670 R.W. (eds) *The Organic Carbon Cycle in the Arctic Ocean*. Springer, Berlin, Heidelberg,  
671 978-3-642-62351-6, 2004.
- 672 Semiletov, I., Dudarev, O., Luchin, V., Charkin, A., Shin, K.H. and Tanaka, N.: The East  
673 Siberian Sea as a transition zone between Pacific- derived waters and Arctic shelf  
674 waters. *Geophys. Res. Lett.*, 32(10), 2005.
- 675 Shiklomanov, I.A., Shiklomanov, A.I., Lammers, R.B., Peterson, B.J. and Vorosmarty, C.J.: The  
676 dynamics of river water inflow to the Arctic Ocean. In *The freshwater budget of the*  
677 *Arctic Ocean* (281-296). Springer, Dordrecht, 2000.
- 678 Shuter, B. G.: Size dependence of phosphorus and nitrogen subsistence quotas in unicellular  
679 microorganisms. *Limnol. Oceanogr.*, 23, 1248–1255, 1978.
- 680 Slagstad, D. and Wassmann, P.: Climate change and carbon flux in the Barents Sea: 3-D  
681 simulations of ice-distribution, primary production and vertical export of particulate

- 682 organic carbon. *Memoirs of National Institute of Polar Research. Special issue*, 51, 119-  
683 141, 1996.
- 684 Slagstad D, Ellingsen I.H, Wassmann P.: Evaluating primary and secondary production in an  
685 Arctic Ocean void of summer sea ice: an experimental simulation approach. *Prog.*  
686 *Oceanogr.* 90, 117–131, 2011.
- 687 Slawyk, G., Y. Collos, and J.C. Auclair.: The use of the  $^{13}\text{C}$  and  $^{15}\text{N}$  isotopes for the  
688 simultaneous measurement of carbon and nitrogen turnover rates in marine  
689 phytoplankton. *Limnol. Oceanogr.* 22, 925–932, 1977.
- 690 Son, S. H., Campbell, J., Dowell, M., Yoo, S. and Noh, J.: Primary production in the Yellow Sea  
691 determined by ocean color remote sensing, *Mar. Ecol. Prog. Ser.*, 303, 91-103, 2005.
- 692 Steinacher, M., Joos, F., Frolicher, T.L., Bopp, L., Cadule, P., Cocco, V., Doney, S. C., Gehlen,  
693 M., Lindsay, K., Moore, J. K. and Schneider, B.: Projected 21st century decrease in  
694 marine productivity: a multi-model analysis. *Biogeosciences*, 7(3), 2010.
- 695 Stroeve J, Holland MM, Meier W et al.: Arctic sea ice decline: faster than forecast. *Geophys.*  
696 *Res. Lett.* 34: L09501, 2008.
- 697 Subba Rao, D. V. and Platt, T.: Primary production of Arctic waters. *Polar Biol.*, 3, 191-210,  
698 1984.
- 699 Talling, J. F.: The phytoplankton population as a compound photosynthetic system. *New Phytol.*,  
700 56(2), 133-149, 1957.
- 701 Thomas, M. K., C. T. Kremer, C. A. Klausmeier, and E. Litchman.: A global pattern of thermal  
702 adaptation in marine phytoplankton. *Science* 338, 1085–1088, 2012.
- 703 Tremblay, J. É., Legendre, L., Klein, B., and Therriault, C.: Size-differential uptake of nitrogen  
704 and carbon in a marginal sea (Gulf of St. Lawrence, Canada): Significance of diel  
705 periodicity and urea uptake. *Deep-Sea Res. II*, 47, 489-518, 2000.
- 706 Tremblay, J.É., Gratton, Y., Carmack, E.C., Payne, C.D. and Price, N.M.: Impact of the  
707 large- scale Arctic circulation and the North Water Polynya on nutrient inventories in  
708 Baffin Bay. *J. Geophys. Res.: Oceans*, 107(C8), pp.26-1, 2002.
- 709 Tremblay J. E, Gagnon G.: The effects of irradiance and nutrient supply on the productivity of  
710 Arctic waters: a perspective on climate change. In: Nihoul JCJ, Kostianoy AG (eds)  
711 Influence of climate change on the changing Arctic and sub-Arctic conditions.  
712 Proceedings of the NATO advanced research workshop, Liège, May 2008. Springer,  
713 Dordrecht, 73–94, 2009.
- 714 Vancoppenolle, M., Meiners, K.M., Michel, C., Bopp, L., Brabant, F., Carnat, G., Delille, B.,  
715 Lannuzel, D., Madec, G., Moreau, S. and Tison, J.L.: Role of sea ice in global

716 biogeochemical cycles: emerging views and challenges. *Quaternary science reviews*, 79,  
717 pp.207-230, 2013.

718 Vavrus, S. J., Holland, M. M., Jahn, A., Bailey, D. A. and Blazey, B. A.: Twenty-first-century  
719 Arctic climate change in CCSM4. *J. Clim.*, 25(8), 2696-2710, 2012.

720 Vedernikov, V. I., Demidov, A. B. and Sudbin, A. I.: Primary production and chlorophyll in the  
721 Kara Sea in September 1993. *Okeanologiya*, 34(5), 693-703, 1994.

722 Walsh J. J.: Arctic carbon sinks: present and future. *Global. Biogeochem. Cycles* 3:393, 1989.

723 Wassmann, P., Duarte, C. M., Agusti, S., and Sejr, M. K.: Footprints of climate change in the  
724 Arctic marine ecosystem, *Glob. Change Biol.*, 17, 1235–1249, 2011.

725 Whitley, T. E., Malloy, S. C., Patton, C. J. and Wirick, C. D.: Automated nutrient analyses in  
726 seawater (No. BNL-51398). Brookhaven National Lab., Upton, NY (USA), 1981.

727 Yun, M. S., Chung, K. H., Zimmermann, S., Zhao, J., Joo, H. M. and Lee, S. H.: Phytoplankton  
728 productivity and its response to higher light levels in the Canada Basin, *Polar Biol.*, 35,  
729 257-268, 2012.

730 Yun, M. S., Kim, B. K., Joo, H. T., Yang, E. J., Nishino, S., Chung, K. H., Kang, S. and Lee, S.  
731 H.: Regional productivity of phytoplankton in the Western Arctic Ocean during summer  
732 in 2010, *Deep-Sea Res. Part II: Part II Top. Stud. Oceanogr.*, 120, 61-71, 2015.

733 Yun, M.S., Whitley, T.E., Stockwell, D., Son, S.H., Lee, J.H., Park, J.W., Lee, D.B., Park, J.  
734 and Lee, S.H., Primary production in the Chukchi Sea with potential effects of  
735 freshwater content. *Biogeosciences*, 13(3), pp.737-749, 2016.

736

737

738

739

740

741

742

743

744

745 Table 1. The physical and chemical properties of the sampling locations in the East Siberian Sea  
746 and the Laptev Sea, where station depth, euphotic depth, sea surface temperature (SST), and sea  
747 ice cover (SIC) are represented in m, m, °C, and %, respectively. The sea surface salinity (SSS)  
748 is represented in practical salinity unit (PSU). The nutrient concentrations ( $\text{NO}_2^- + \text{NO}_3^-$ ,  
749 phosphate (P), silicate (Si), and  $\text{NH}_4^+$ ) are given as the depth-integrated values in the euphotic  
750 zones, with a unit of  $\text{mmol m}^{-2}$ . The DIN: P is the nutrient stoichiometry calculated from the  
751 available nutrient data.

Sector	Stn.	Longitude	Latitude	Date	Station depth	Euphotic depth	SST	SSS	SIC	$\text{NO}_2^- + \text{NO}_3^-$	P	Si	$\text{NH}_4^+$	DIN:P
	Name													
Laptev Sea	AF005	109.20	78.78	25-Aug-13	283	38	-0.08	31.42	0	142	17.30	184	31.34	10.00
	AF006	118.45	77.59	26-Aug-13	1244	50	0.75	31.36	0	129	16.73	158	18.72	8.81
	AF011	125.80	77.40	27-Aug-13	1543	51	1.62	30.01	0	83.7	23.82	137	2.46	3.62
	AF019	125.74	79.42	28-Aug-13	3196	60	-1.6	32.44	25	132	25.75	144	13.57	5.65
	AF024	125.69	80.72	29-Aug-13	3730	51	-1.48	30.96	45	127	22.34	166	13.74	6.29
	AF036	141.56	80.18	1-Sep-13	1480	54	-1.22	28.29	25	113	7.62	207	11.85	16.39
	AF049	137.77	78.95	5-Sep-13	1552	51	1.57	29.09	0	22.3	9.91	100	3.44	2.60
	AF057	128.83	77.98	5-Sep-13	2325	51	1.49	30.25	0	107	19.96	200	5.60	5.62
	AF061	125.83	78.40	6-Sep-13	2700	51	-0.07	31.39	10	99.4	23.15	190	8.27	4.65
	AF068	107.39	79.76	10-Sep-13	1200	33	-0.35	32.57	0	167	34.20	110	27.64	5.70
	AF071	112.10	82.02	11-Sep-13	3530	43	-1.73	31.86	65	166	20.81	144	15.46	8.72
	AF072	107.48	81.44	12-Sep-13	3349	49	-1.75	32.37	40	132	20.17	89.5	4.32	6.78
	AF080	102.31	80.60	13-Sep-13	315	76	-1.14	32.81	0	107	30.23	38.8	21.68	4.27
East Siberian Sea	AF041	149.38	79.85	2-Sep-13	561	51	-1.57	29.86	60	99.0	16.21	308	19.20	7.30
	AF044	154.98	80.22	3-Sep-13	1904	35	-1.67	30.91	100	88.7	14.48	205	17.43	7.33
Kara Sea	AF091	97.55	82.30	14-Sep-13	2959	38	-1.32	33.30	0	117	25.60	135	17.67	5.27
	AF095	94.79	83.74	15-Sep-13	3668	68	-1.76	32.36	40	121	35.44	165	5.23	3.56
	AF100	90.01	83.75	16-Sep-13	3410	46	-1.49	33.29	0	189	29.02	118	6.62	6.75
	AF116	66.87	81.34	19-Sep-13	530	46	0.47	33.44	0	105	20.52	19.5	22.62	6.22

752

753

754

755

756

757

758 Table 2. The contribution of small and large phytoplankton to the water column C, NO<sub>3</sub><sup>-</sup>, and NH<sub>4</sub><sup>+</sup> uptake rates. The units for the column-  
 759 integrated C and DIN uptake rates are mg C m<sup>-2</sup>h<sup>-1</sup> and mg N m<sup>-2</sup>h<sup>-1</sup>, respectively. The starred values indicate possibly incorrect data due to error in  
 760 uptake rate measurements.

761

Sector	Stn. Name	Small C uptake rates	Total C uptake rates	Small phytoplankton C uptake contribution (%)	Small NO <sub>3</sub> <sup>-</sup> uptake rates	Total NO <sub>3</sub> <sup>-</sup> uptake rates	Small phytoplankton NO <sub>3</sub> <sup>-</sup> uptake contribution (%)	Small NH <sub>4</sub> <sup>+</sup> uptake rates	Total NH <sub>4</sub> <sup>+</sup> uptake rates	Small phytoplankton NH <sub>4</sub> <sup>+</sup> uptake contribution (%)	Large phytoplankton C uptake contribution (%)	Large phytoplankton NO <sub>3</sub> <sup>-</sup> uptake contribution (%)	large phytoplankton NH <sub>4</sub> <sup>+</sup> uptake contribution (%)
Laptev Sea	AF005	0.86	1.25	68.28	0.06	0.09	72.41	0.94	1.03	90.95	31.72	27.59	9.05
	AF006	4.00	5.78	69.10	0.25	0.42	58.87	1.72	2.18	78.56	30.90	41.13	21.44
	AF011	2.85	4.31	66.02	0.16	0.42	38.47	0.53	0.89	59.83	33.98	61.53	40.17
	AF019	15.96	17.46	88.88	1.02	1.17	86.78	3.73	3.55	*105.1	11.12	13.22	
	AF024	0.69	1.34	51.62	0.08	0.14	56.81	0.31	0.85	36.06	48.38	43.19	63.94
	AF036	2.78	4.27	65.12	0.18	0.20	89.22	0.74	0.84	88.62	34.88	10.78	11.38
	AF049	1.76	4.02	43.86	0.17	0.22	75.57	0.46	0.78	58.44	56.14	24.43	41.56
	AF057	2.68	4.41	60.81	0.30	0.43	69.99	0.29	0.96	30.07	39.19	30.01	69.93
	AF061	1.91	4.38	43.56	0.48	1.53	31.46	0.53	1.91	27.77	56.44	68.54	72.23
	AF068	3.14	5.12	61.35	0.16	0.25	65.10	0.64	0.87	73.87	38.65	34.90	26.13
	AF071	0.54	2.19	24.59	0.22	0.27	79.83	0.33	0.28	*118.2	75.41	20.17	
	AF072	*0.63	*9.30	*6.79	0.27	0.43	63.42	0.27	0.41	65.27	*93.20	36.58	34.73
AF080	1.68	2.42	69.44	0.33	0.34	*96.66	0.86	1.02	84.58	30.56	*3.34	15.42	
East Siberian Sea	AF041	1.24	1.96	63.16	0.06	0.06	*109.6	0.50	0.57	86.92	36.84		13.08
	AF044	1.72	2.18	79.16	0.05	0.04	*129.7	0.11	0.14	75.18	20.84		24.82
Kara Sea	AF091	5.23	9.37	55.79	0.45	0.79	56.87	1.30	1.98	65.80	44.21	43.13	34.20
	AF095	1.73	2.52	68.59	0.28	0.24	*115.7	0.25	0.33	76.13	31.41		23.87
	AF100	1.63	4.85	33.60	0.31	0.56	55.58	0.37	0.82	44.97	66.40	44.42	55.03
	AF116				0.10	0.11	89.23						

762

763

764

765

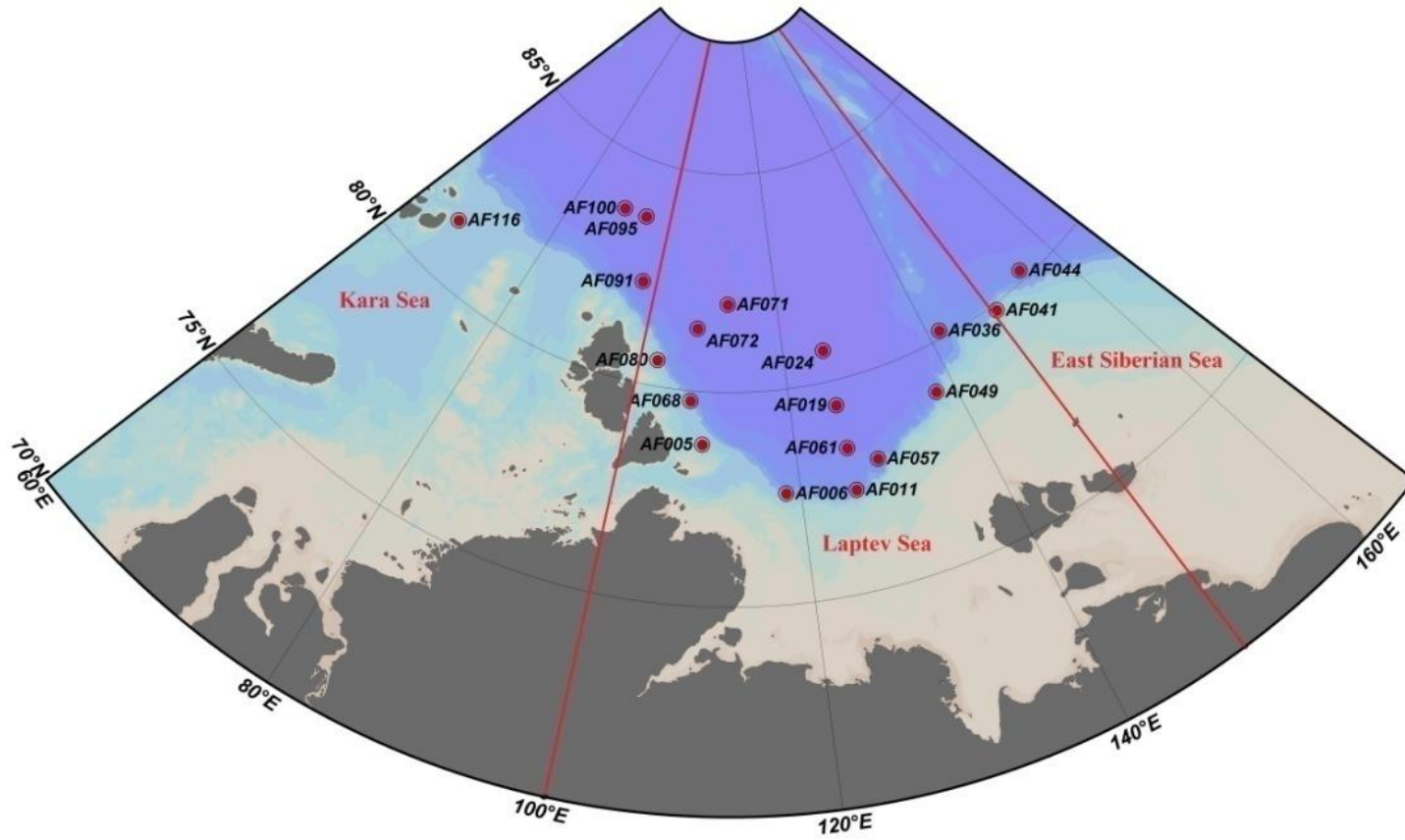
766

767

768

769

770



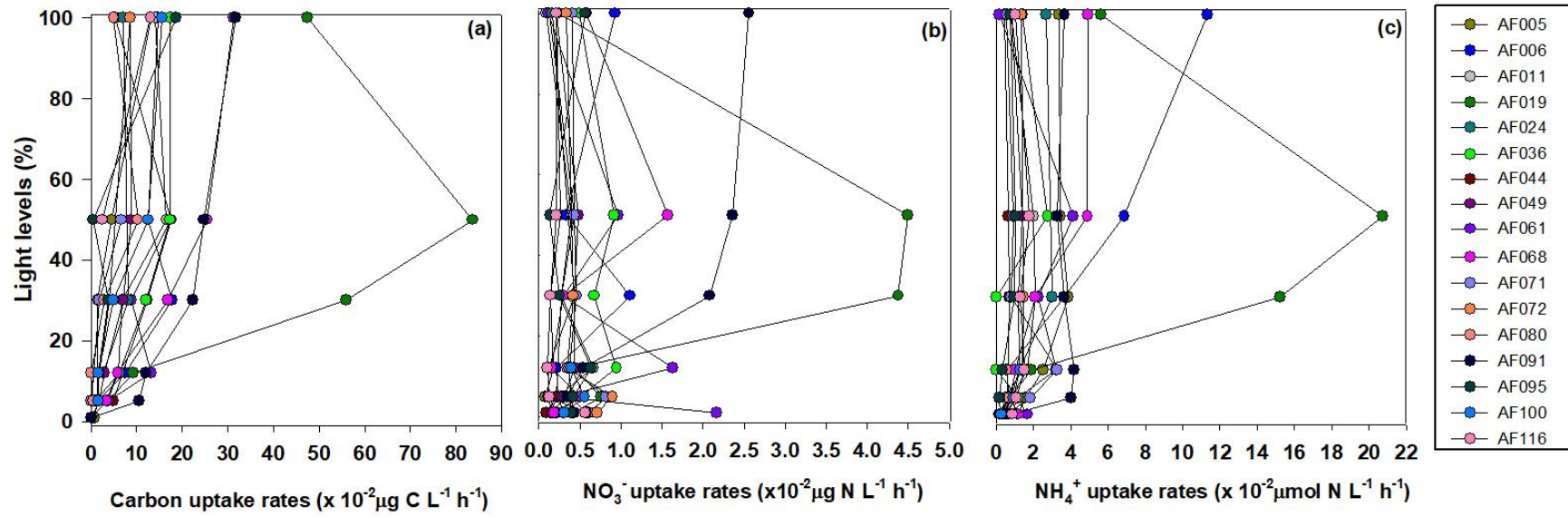
771

772 Figure 1. Sampling locations in the Kara, Laptev, and East Siberian seas in the Arctic Ocean. The red straight lines indicate the geographic  
773 boundaries used to define the seas as per Pabi et al. (2008).

774

775





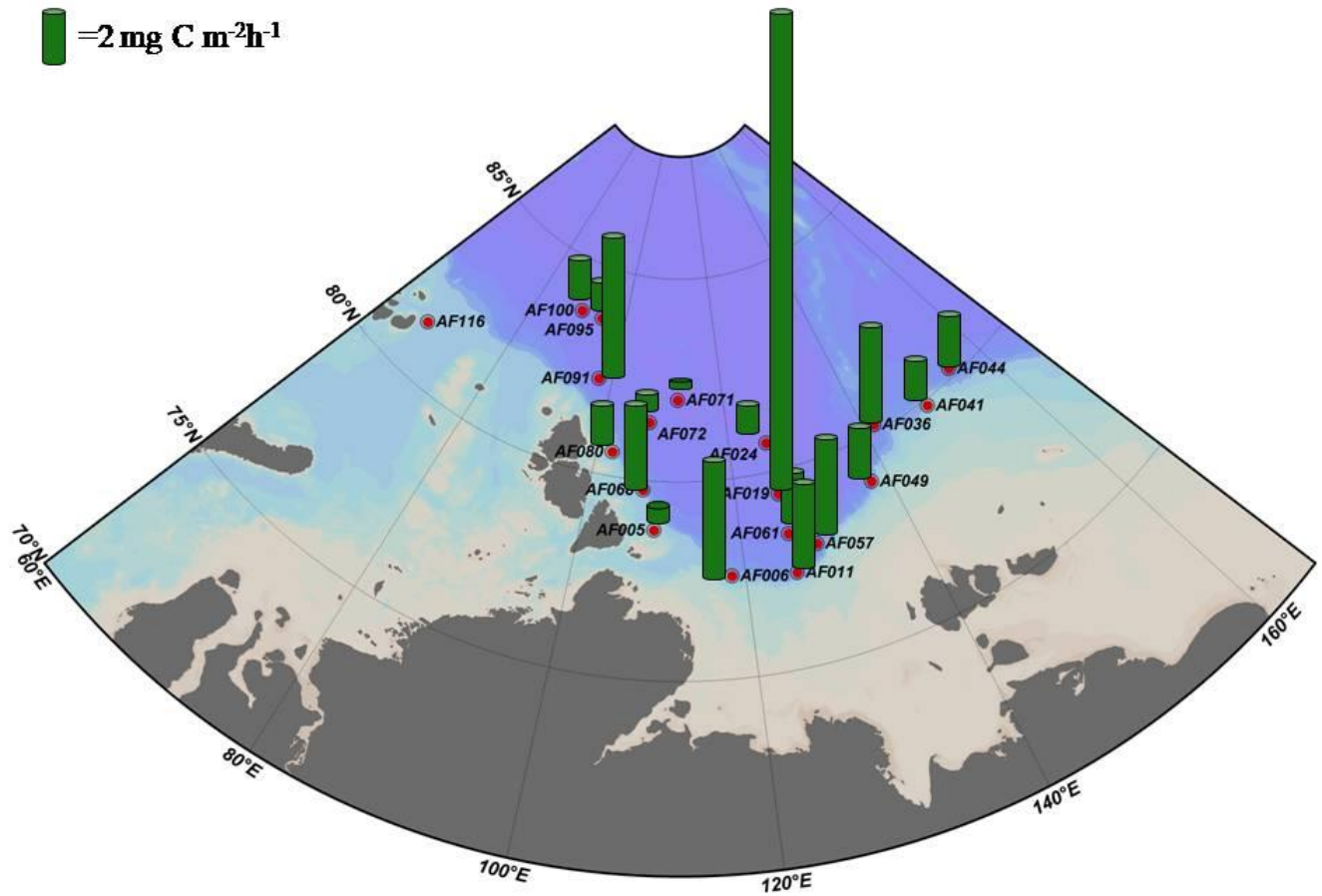
776

777 Figure 2. Depth-wise small phytoplankton uptake rates of C,  $\text{NO}_3^-$ , and  $\text{NH}_4^+$  in the Kara, Laptev, and East Siberian seas.

778

779

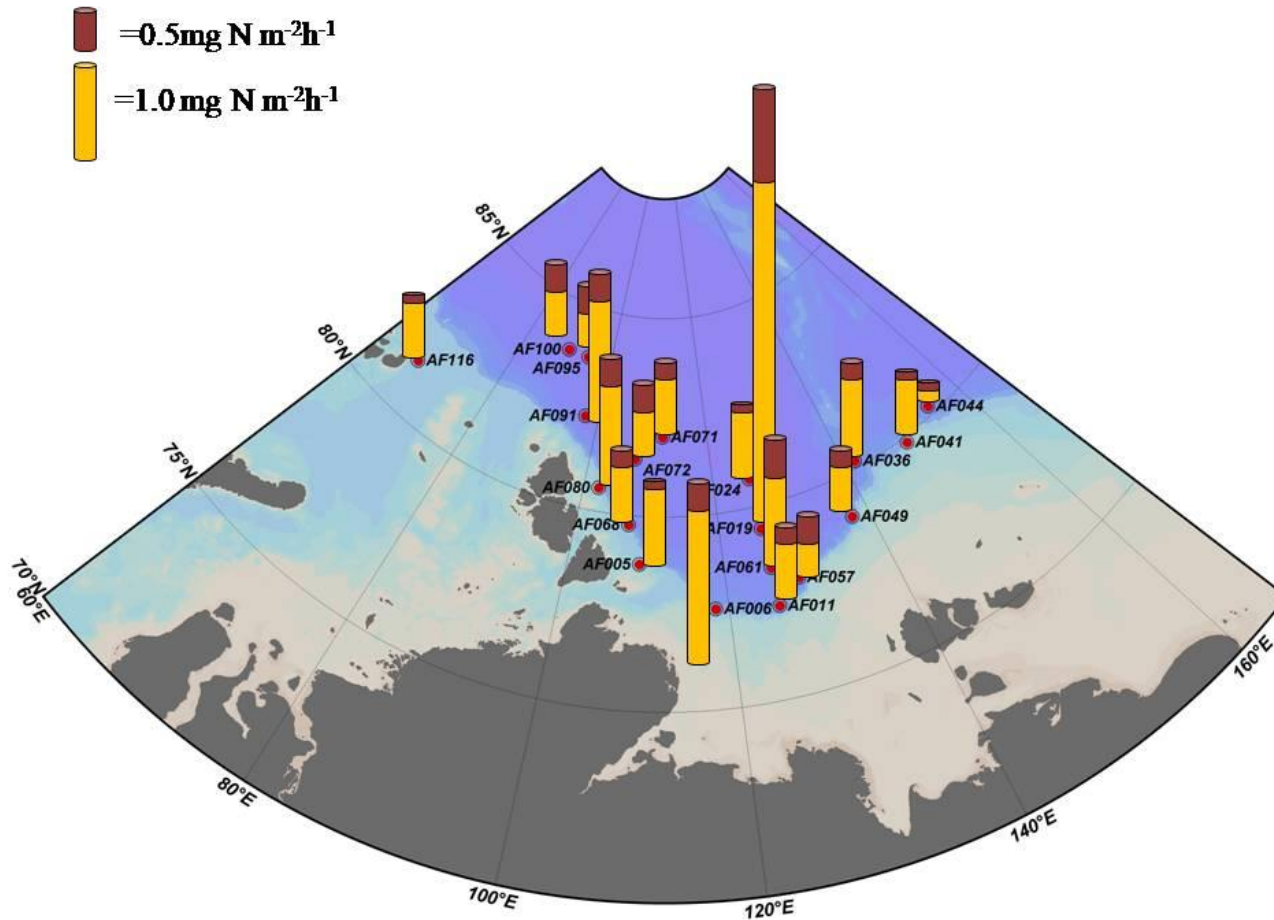
780



781

782 Figure 3. The depth-integrated small phytoplankton C uptake rates in the sampling locations.

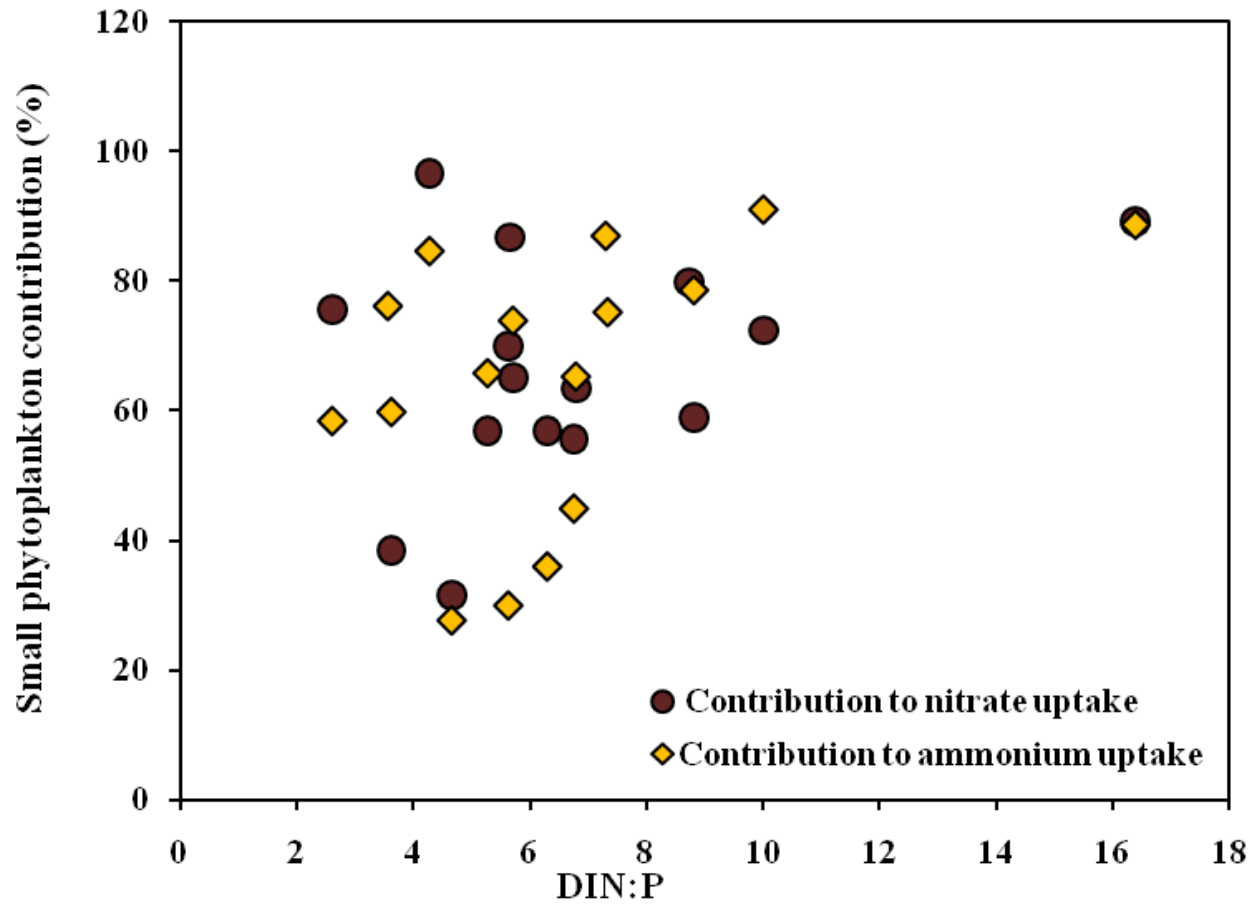
783



784

785 Figure 4. The depth-integrated small phytoplankton  $\text{NO}_3^-$  and  $\text{NH}_4^+$  uptake rates in the sampling locations. The maroon and yellow  
 786 cylinders indicate the small phytoplankton  $\text{NO}_3^-$  and  $\text{NH}_4^+$  depth-integrated uptake rates, respectively.

787

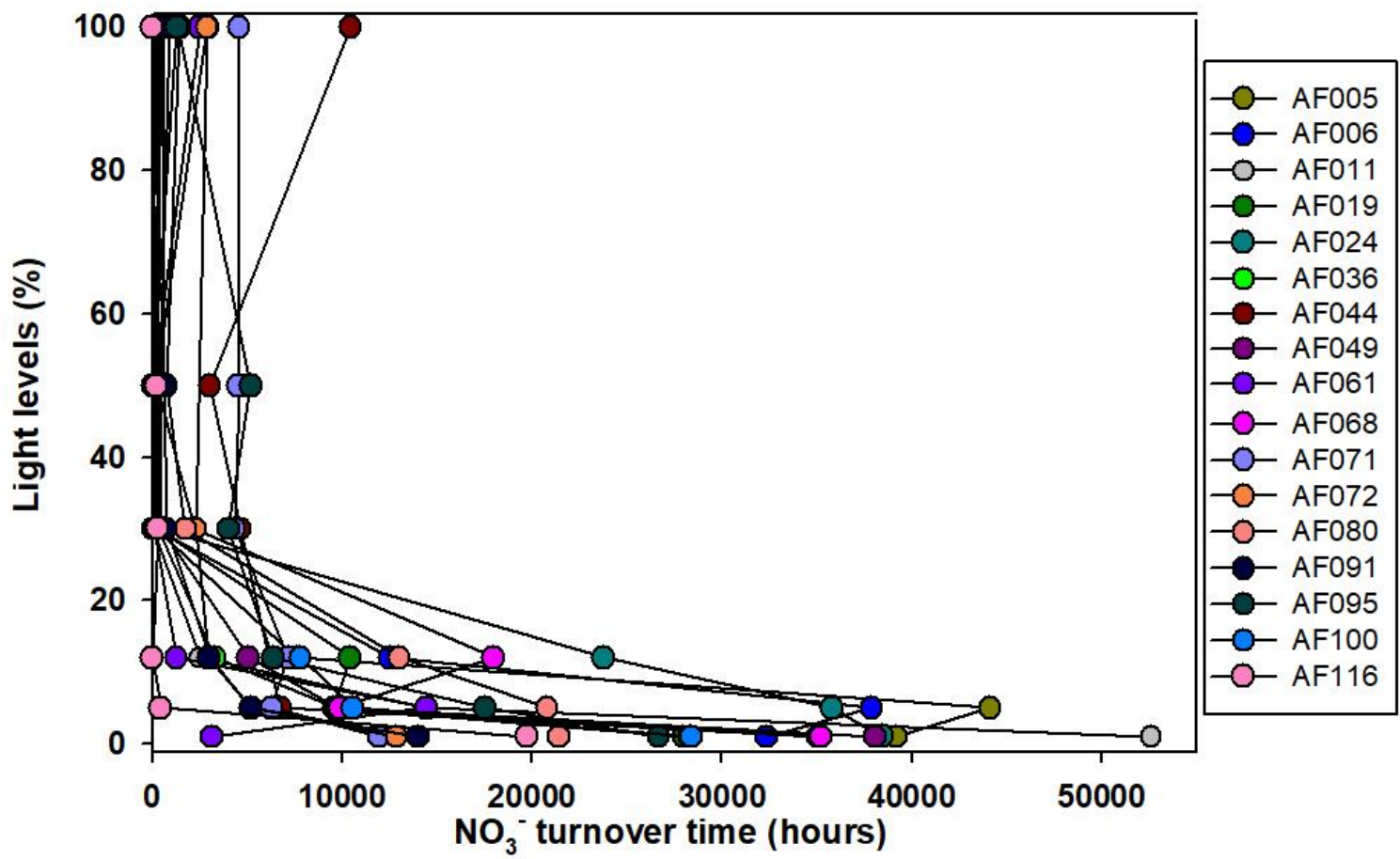


788

789 Figure 5. The relationship of the contribution of small phytoplankton towards the total  $\text{NO}_3^-$  and  $\text{NH}_4^+$  uptake rates with DIN: P.

790

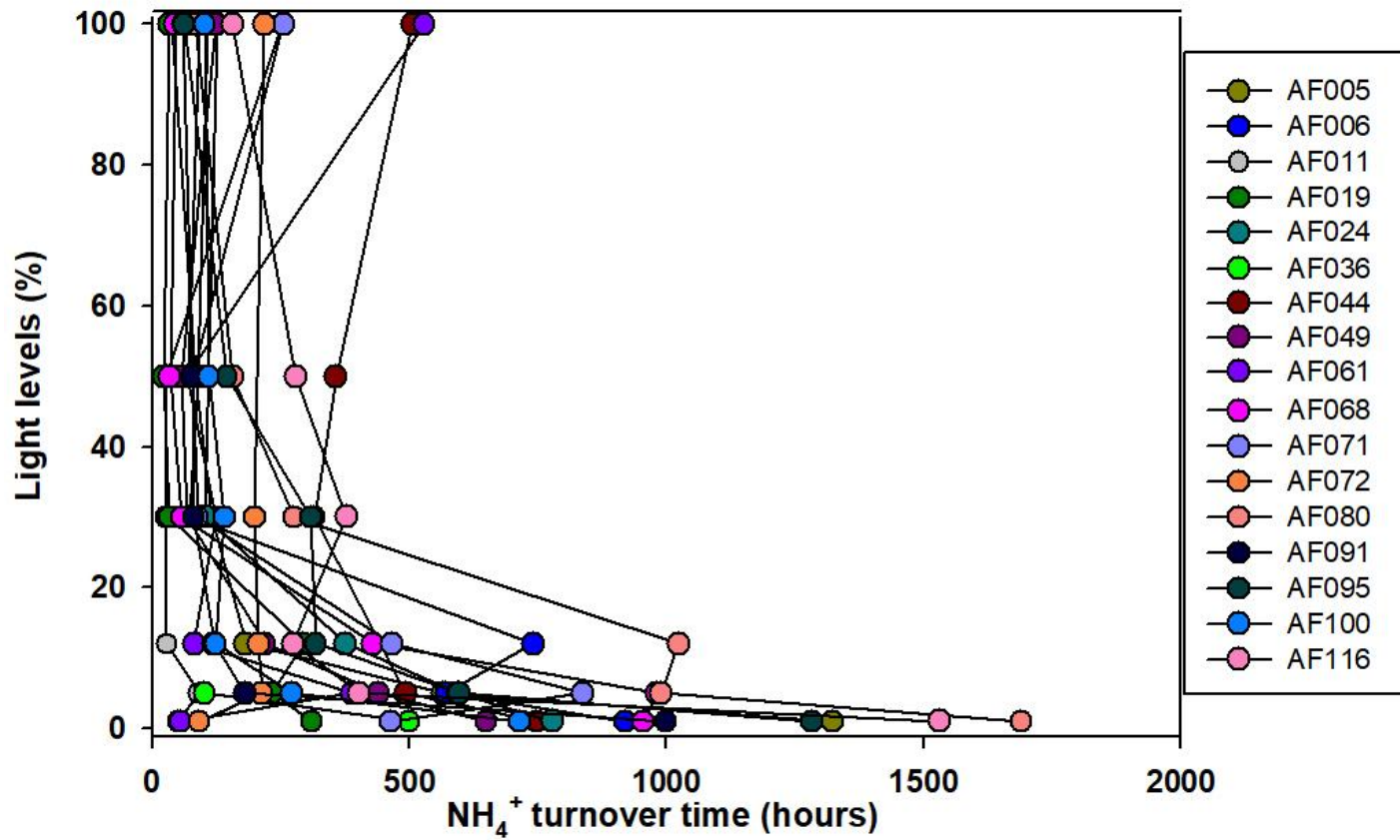
791



792

793 Figure 6. Turnover time for the NO<sub>3</sub><sup>-</sup> substrate, when small phytoplankton are the only consumers, in the sampling locations in the  
 794 Arctic Ocean.

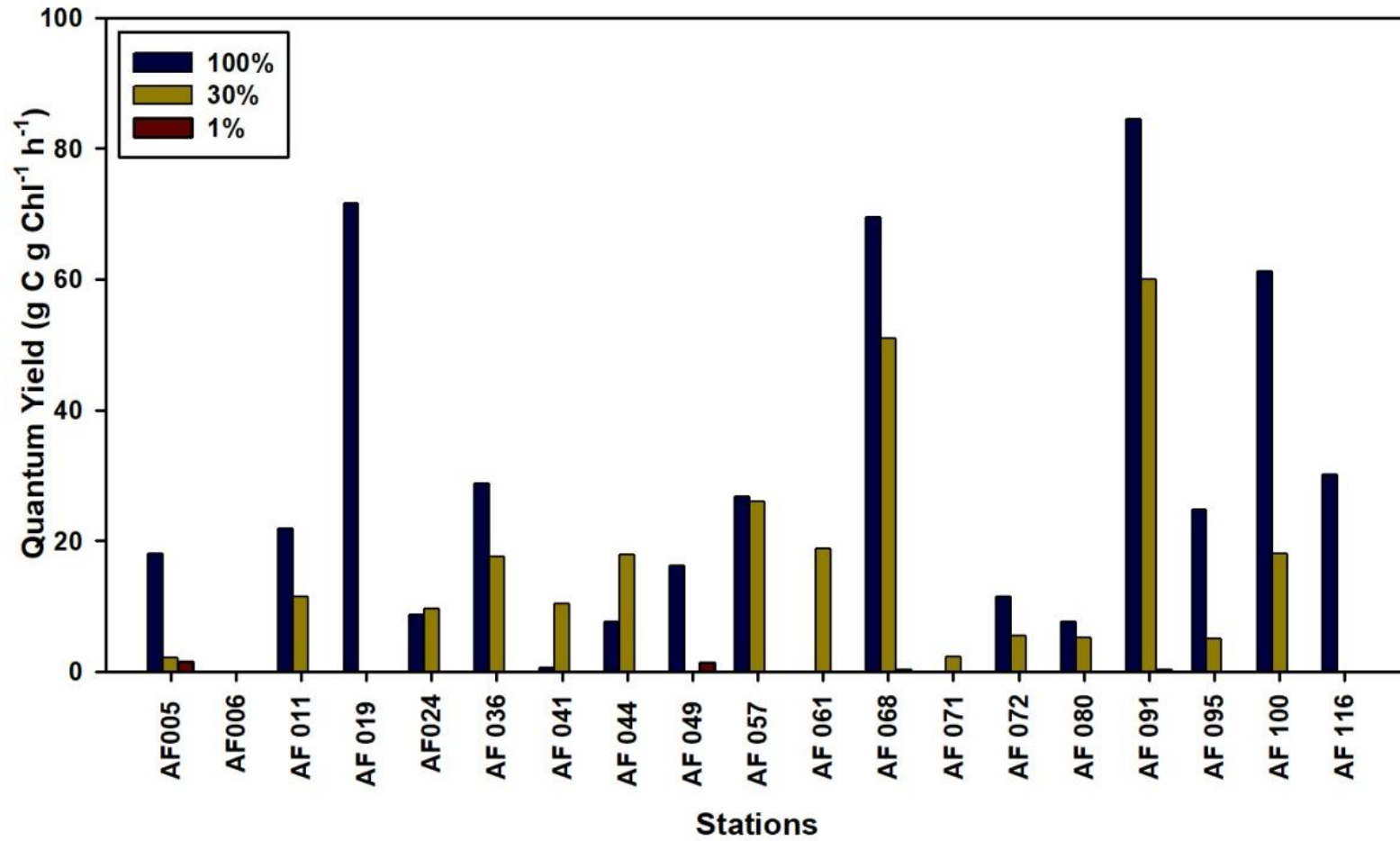
795



796

797 Figure 7. Turnover times for the NH<sub>4</sub><sup>+</sup> substrate, when small phytoplankton are the only consumers, in the sampling locations.

798

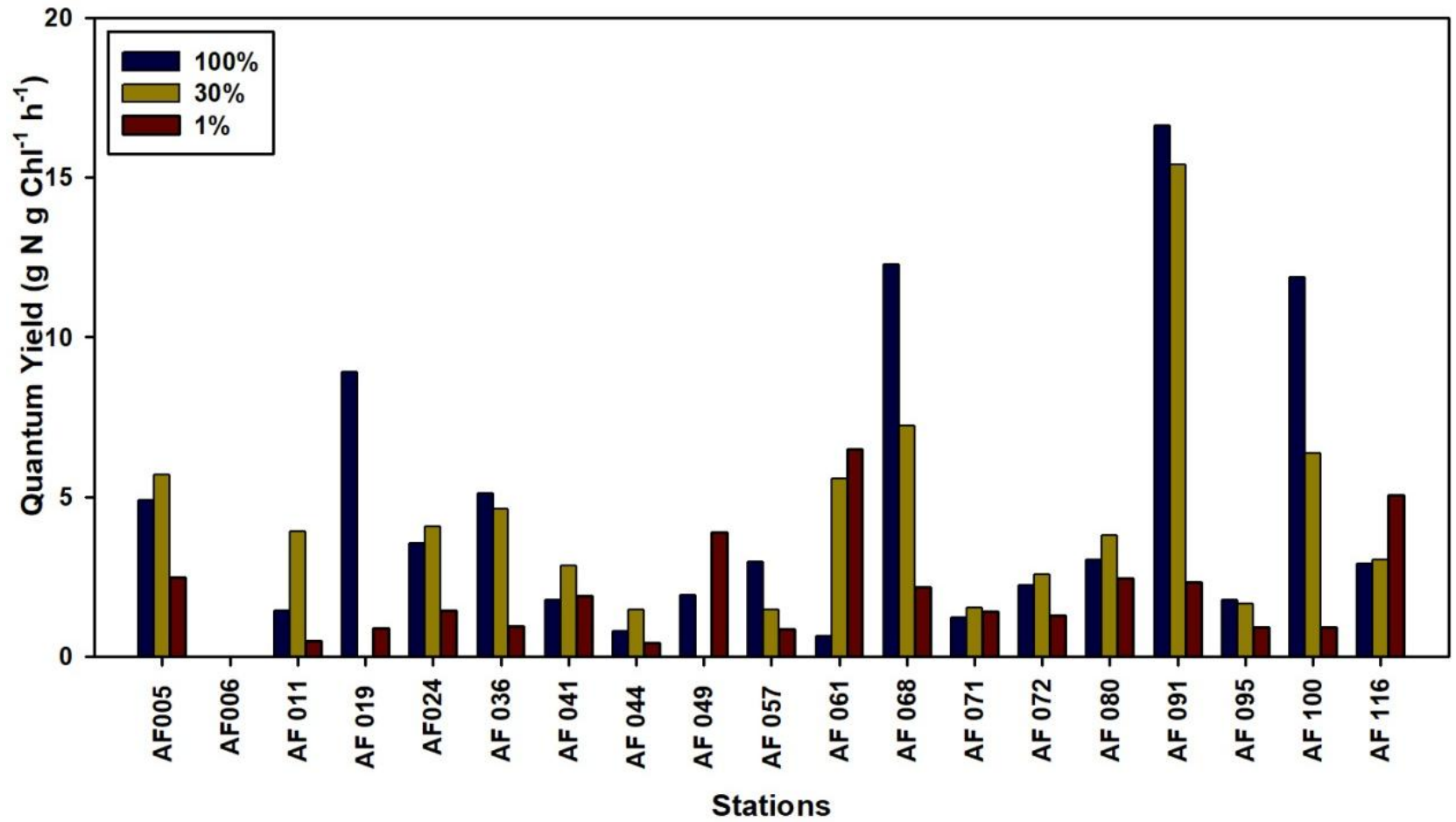


799

800 Figure 8. Quantum carbon yield of small phytoplankton in the sampling locations.

801

802



803

804 Figure 9. Quantum nitrogen yield of small phytoplankton in the sampling locations.

805