

RESPONSE to Referee #1 (Scott Doney)

The study uses a coupled ocean biogeochemical-physical model to diagnose the patterns and inter-annual variability in upper-ocean (surface layer) phytoplankton biomass concentration in the north North Atlantic. After a brief model-data comparison against satellite ocean color data (SeaWiFS and MODIS), the study quantifies model dynamics in terms of small and large phytoplankton biomass, nutrient and light limitation terms, and the physical and biological divergence terms for surface phosphate. A central question in the study is the relative role of lateral versus vertical processes in governing regional biomass patterns in the western and eastern subpolar gyre.

Overall, the study is well constructed and presented. Disentangling causes of interannual variability is no simple task, even in a 3-D model, and the study provides a convincing case that lateral nutrient transport plays a role in regional biogeochemical variability.

After addressing relatively minor comments below, I feel the manuscript is suitable for publication.

Thank you for the positive assessment. We have fully addressed these helpful comments, as detailed below.

Specific Comments

As a general comment, it would be good to clarify in the analysis when a finding reflects model results versus field and satellite observations with caveats like “In the simulation ...” or “simulated large phytoplankton ...”

We have added this text for clarity in multiple locations. Thank you.

Line 25:
“Surface ocean phytoplankton are the single largest biomass pool on Earth”
The surface ocean phytoplankton biomass pool amounts to 1 to 2 Pg C. Terrestrial plant vegetation is several hundred Pg C. I do not think this statement is well supported and needs to be modified.

Thank you for catching this error. We have corrected this, and the phrase now reads “Surface ocean phytoplankton contribute 50% of global net primary productivity [Field et al. 1998],...”

Line 33: There has been considerable discussion in the literature over the past decade about Sverdrup’s critical depth hypothesis and its underlying assumptions (e.g., papers by Behrenfeld, Boss, Sosik, Mahadevan, etc.). Much of this discussion has been framed for the subpolar North Atlantic, and the Introduction would benefit from an expanded discussion on the interaction of light and mixing.

Please see response to the next comment.

Line 52: “that interannual variability in stratification is uncorrelated with that of productivity”
On the other hand, Behrenfeld’s work does show a relationship between winter mixing and biomass inventory. To some extent, this may reflect differences between surface layer concentrations and vertically-integrated inventories, a topic that could be addressed in the Discussion Section. The statement on line 57 is certainly true: “Thus, there is growing evidence that vertical processes alone are not sufficient to explain productivity variability.” But the Introduction seems to underplay work by other research teams showing the importance of local vertical mixing processes. Even the results of this modeling study do show an influence for vertical mixing variability. The paper would benefit from a more balanced presentation.

We have added substantially to the Introduction (lines 43-70 of the revised text) so that this body of work is appropriately represented. Thank you.

Line 185: “Light limitation is calculated monthly in this way and then annually averaged.” Was biomass-weighting considered when averaging monthly light and nutrient limitation terms to an annual value?

Biomass weighting is not applied. We include note of this (line 201 of revision). Thank you.

Line 239: “In these three regions, annual anomalies of biomass are compared to satellite observations from SeaWiFS (1998-2007) and MODIS (2003-2015) (Fig. 2).” The paper would benefit from more quantitative analysis of observed-model comparisons. For example, what is the correlation and regression slope comparing annual anomalies between the model and the combined observational record?

We have added comparison of slopes and correlations (lines 258-274 of revision). Thank you.

Line 258: “The model captures the mean gradients of the phosphate field well, but mean values are 10-20% too low across most of the subpolar gyre” Figure 3 shows surface concentrations, not horizontal gradients, so the reader must do their own gradient estimates in their head. A 10% difference in gradient is not easy to determine by eye. It would be good to match the analysis in the text to the figures; if lateral gradients are essential to the analysis, then gradients should be computed and shown explicitly. Also, this addresses the magnitude; presumably it is the vector interaction of the flow field with nutrient gradient vector that is key.

We clarify here (line 278 of revised) that it is the large-scale pattern of phosphate that we intend to compare with Figure 3. Thank you.

Mechanisms of northern North Atlantic biomass variability

Galen A. McKinley^{1,2}, Alexis L. Ritzer¹, and Nicole S. Lovenduski³

¹Department of Atmospheric and Oceanic Sciences, University of Wisconsin—Madison, Wisconsin, USA

²now at Columbia University and Lamont Doherty Earth Observatory, New York, USA

5 ³Department of Atmospheric and Oceanic Sciences and Institute of Arctic and Alpine Research, University of Colorado Boulder, Colorado, USA

Correspondence to: Galen A. McKinley (mckinley@ldeo.columbia.edu)

Abstract. In the North Atlantic Ocean north of 40 °N, intense biological productivity occurs to form the base of a highly productive marine food web. SeaWiFS satellite observations indicate trends of biomass in this region over 1998-2007. Significant biomass increases occur in the northwest subpolar gyre and there are simultaneous significant declines to the east of 30-35 °W. These short-term changes, attributable to internal variability, offer an opportunity to explore the mechanisms of the coupled physical-biogeochemical system. We use a regional biogeochemical model that captures the observed changes for this exploration. Biomass increases in the northwest are due to a weakening of the subpolar gyre and associated shoaling of mixed layers that relieves light limitation. Biomass declines to the east of 30-35 °W are due to reduced horizontal convergence of phosphate. This reduced convergence is attributable to declines in vertical phosphate supply in the regions of deepest winter mixing that lie to the west of 30-35 °W. Over the full timeframe of the model experiment, 1949-2009, variability of both horizontal and vertical phosphate supply drive variability in biomass on the northeastern flank of the subtropical gyre. In the northeast subpolar gyre horizontal fluxes drive biomass variability for both timeframes. Though physically-driven changes in nutrient supply or light availability are the ultimate drivers of biomass changes, clear mechanistic links between biomass and standard physical variables or climate indices remain largely elusive.

25 **1 Introduction**

Surface ocean phytoplankton ~~contribute 50% of global net primary productivity [Field et al. 1998]~~, form the base of the oceanic food web, and contribute to ocean sequestration of carbon dioxide [Sarmiento and Gruber, 2006]. The North Atlantic north of 40 °N experiences a strong annual cycle of productivity that is controlled by ~~the interplay of physical and biogeochemical processes~~.

Deleted: are the single largest biomass pool on Earth

30 In general terms, marine phytoplankton growth is limited by nutrients in the subtropics and by light at subpolar latitudes [Fay and McKinley, 2017]. In the subtropics, an enhanced bloom occurs with relief of nutrient stress when vertical mixing is enhanced. In contrast, subpolar regions should have a reduced bloom with enhanced mixing because mixing enhances light limitation. Sverdrup [1953] used observations from a weather ship in the Norwegian Sea to propose the notion of a “critical depth” for subpolar regions. When the mixed layer reaches below the critical depth, physical mixing cycles phytoplankton through dark regions at
35 depth which increases light limitation and decreases production. Dutkiewicz et al. [2001] and Follows and Dutkiewicz [2002] directly characterize productivity drivers with the ratio of the spring critical depth to the winter mixed layer depth in a theoretical model and compare to observations. Their relationships most accurately represent satellite and in situ observations in the North Atlantic subtropics and are less predictive in the subpolar gyre. Also identified is an intergyre region where observed relationships do not fit ~~this~~ conceptual model, presumably because both nutrient and light limitation are of first-order importance.

Deleted: both light and nutrient limitation [Sverdrup 1953; Dutkiewicz et al. 2001; Follows and Dutkiewicz, 2002]

Deleted:]

~~In recent decades, ocean color satellites have allowed for synoptic assessments of surface ocean productivity and its variability [Yoder and Kennelly, 2003; McClain et al., 2004; Siegel et al., 2005]. The first few years of data from the satellite Sea-viewing Wide Field-of-view Sensor (SeaWiFS) indicated that the seasonal cycle of productivity is largely consistent with the “critical depth” hypothesis [Siegel et al. 2002]. More recently, there has been an active debate about whether ecological processes may be more important to the subpolar spring bloom than the relief of light limitation due to mixed layer shoaling, as proposed by Sverdrup. Behrenfeld [2010, 2014] use satellite records to argue that phytoplankton accumulation is most significant in winter due to mixing that dilutes their interaction with grazers and other drivers of loss, and further, that the spring bloom does not represent a significant change in biomass accumulation rates. These findings are supported by analysis of an ocean model [Behrenfeld et al. 2013]. In situ observations using autonomous platforms, however, continue to support the conclusion that the springtime shoaling of mixed layers that relieves light limitation is coincident with a substantial increase in the rate phytoplankton biomass accumulation [Mahadevan et al. 2012, Mignot et al. 2018]. The physical mechanisms most important for springtime shoaling remain in discussion [Taylor and Ferrari, 2011, Mahadevan et al. 2012].~~

Deleted: a

Deleted: heir

Deleted: .

Deleted: i

Deleted: Sverdrup

50 Longer records of ocean color ~~reveal large-scale interannual changes in ocean productivity~~. Explanations for multi-year changes, and by extension expected future trends with climate warming [Bopp et al., 2013], tend to be based on ~~the conceptual model of vertical processes controlling either nutrient or light limitation~~. Multiple analyses suggest that increased ~~large-scale middle and low latitude~~ stratification due to ocean
60 warming limits the vertical supply of nutrients to the surface ocean and thus causes reductions in productivity

Deleted: have

Deleted: ed

Deleted: in each gyre

Deleted: also

Deleted: th

Deleted: e simple Sverdrup hypothesis

Deleted: For example, m

[Behrenfeld et al. 2006; Polovina et al. 2008; Martinez et al. 2009]. However, in the North Atlantic and the North Pacific subtropics, it has been found that local interannual variability in stratification is uncorrelated with local productivity, findings that do not support a one-dimensional mixing-productivity framework [Lozier et al. 2011, Dave and Lozier 2010, 2013]. Instead, it has been shown that large-scale correlations between chlorophyll and sea surface temperature (SST, a proxy for stratification) at low and mid latitudes can be explained by advective processes in the equatorial Pacific [Dave and Lozier, 2015]. At subpolar and polar latitudes, Behrenfeld et al. [2016] find that satellite-based estimates of imbalances between phytoplankton growth and loss can drive biomass interannual variability. Yet the fundamental importance of Behrenfeld's proposed ecological mechanism remains in debate both for seasonal and interannual timescales [Hunter-Cevera et al. 2016, Mignot et al. 2018].

In sum, there is growing evidence that the modification of light and nutrient limitation by vertical processes is alone insufficient to explain observed variability in surface ocean productivity. At the same time, there is growing evidence that horizontal physical processes could play a role, particularly in the northern subtropical gyre or "intergyre" region of the North Atlantic [Williams and Follows, 1998; Dutkiewicz et al. 2001; Follows and Dutkiewicz 2002; Oschlies 2002; McGillicuddy et al. 2003; Dave et al. 2015].

Williams and Follows [1998] illustrate that on the mean, horizontal Ekman fluxes are critical to surface nutrient supply in the North Atlantic from 40-60 °N. However, Williams et al. [2000] find variability of horizontal fluxes to be an order of magnitude smaller than convective flux variability, and thus conclude that vertical processes dominate anomalies. Considering deeper processes, Williams et al. [2006] compare the magnitude of Ekman upwelling to the three-dimensional movement of volume or nutrients from the permanent thermocline to the full mixed layer, or "induction". Climatologically, nutrient supply to the subpolar gyre by induction is many times larger than the supply by Ekman upwelling. Induction is how the "nutrient stream" [Pelegri et al., 1996; Palter et al., 2005; Williams et al., 2006] is accessed to allow for large-scale supply of nutrients from outside to inside the subpolar gyre. To our knowledge, interannual variability in induction has not been discussed in the literature. Further consideration of both horizontal and vertical processes is warranted with respect to understanding of temporal variability in surface ocean productivity in the North Atlantic.

Changing ocean circulation should influence horizontal and vertical transports of nutrients in the northern North Atlantic. A slowdown of the gyre should relax isopycnal slopes and decrease geostrophic advection along isopycnals. The North Atlantic subpolar gyre has exhibited substantial change since the 1950s when regular observations began to be available [Lozier et al. 2008]. There is evidence these changes occur in response to changing buoyancy forcing and wind stress, in turn associated with modes of climate variability, specifically the North Atlantic Oscillation and East Atlantic Pattern [Häkkinen and Rhines, 2004; Hátún et al., 2005; Lozier et al., 2008; Foukal and Lozier, 2017]. Via Ekman processes, reduction in wind stress should directly reduce upwelling in the subpolar gyre and also the horizontal transport of nutrients [Williams et al. 2000; Dave et al. 2015]. Buoyancy and turbulent fluxes also impact mixed layer depths and influence bloom

- Deleted: these studies have been refuted
- Deleted: evidenced by the fact that
- Deleted: with that of
- Deleted: , and thus do
- Deleted: a
- Deleted: In contrast, I
- Deleted: have been shown to be strongly associated with

Deleted: .

- Deleted: Thus
- Deleted: are
- Deleted:
- Deleted: not
- Deleted: productivity

timing and strength [Bennington et al. 2009]. Consistent with this expectation, links between physical changes in the subpolar gyre and in situ observed changes in nutrients and ecosystems at several subpolar timeseries sites have been suggested [Johnson et al. 2013, Hátún et al. 2016, 2017].

130 In this study, we use a regional model to illustrate how changing light limitation and changing vertical and horizontal nutrient supply led to the significant changes in surface ocean biomass that were observed by SeaWiFS over 1998-2007 in the North Atlantic north of 40° N (Figure 1c). This is a mechanistic analysis of the drivers of SeaWiFS-observed changes in biomass that are best quantified as linear trends given the 10 year prime observational period. The degree to which these drivers are responsible for internal variability across the full model experiment (1948-2009) is also explored. Our approach can be contrasted to other possible approaches such as the use of ~~empirical orthogonal function~~ (EOFs) to consider dominant modes of variability [Ullman et al. 2009; Breeden and McKinley 2016]. The negative of EOF-type analysis is that it tends to explain at most 30% of the large-scale variance, and thus does not fully explain observations. This paper is a case study in which we aim to explain the drivers of the observed changes as fully as possible using a model that represents well the observed changes.

~~Deleted: Empirical~~
~~Deleted: Orthogonal~~
~~Deleted: Function~~

140

2 Methods

2.1 Satellite data

Our analysis focuses on the period 1998-2007. Monthly SeaWiFS data becomes inconsistent beginning in 2008. For study of interannual trends, avoiding the need to fill gaps in the record is desirable. For additional comparison and extension of the record, biomass estimated from MODIS for 2003-2015 is also presented, again selecting years for which all months are available. For both SeaWiFS and MODIS, biomass is estimated using the updated CbPM algorithm [Westberry et al. 2008]. Additionally, we ~~compare trends of modeled net primary productivity (NPP) to NPP from~~ SeaWiFS estimated with both CbPM and the VGPM algorithms (Behrenfeld and Falkowski, 1997). All data were provided by the Ocean Productivity Group at Oregon State University (<http://www.science.oregonstate.edu/ocean.productivity/index.php>). SeaWiFS biomass downloaded 11.28.16; MODIS biomass downloaded 01.24.18; NPP downloaded 05.29.18).

~~Deleted: make a brief~~
~~Deleted: comparison to~~
~~Deleted: from~~

2.2 Regional hindcast model

155 The Massachusetts Institute of Technology General Circulation Model configured for the North Atlantic (MITgcm.NA) [Marshall et al., 1997a; Marshall et al., 1997b], is used. The model domain extends from 20° S to 81.5° N, with a horizontal resolution of 0.5° x 0.5° and a vertical resolution of 23 levels that have a thickness of 10 m at the surface and gradually become coarser to 500 m thickness intervals for depth levels deeper than 2200 m. NCEP/NCAR Reanalysis I daily wind, heat, freshwater, and radiation fields from 1948-2009 force the model [Kalnay et al., 1996]. To correct for uncertainties in air-sea fluxes, SST and SSS (sea

165 surface salinity) are relaxed to monthly historical SST [HadISSTv1.0, Rayner et al., 2003] and climatological
SSS [Antonov et al. 2006] observations, on the timescale of 2 and 4 weeks, respectively [Ullman et al. 2009].
To characterize sub-grid-scale processes, the Gent-McWilliams [Gent and McWilliams, 1990] eddy
parameterization, the KPP boundary layer mixing schemes [Large et al., 1994], and Fox-Kemper et al. [2008]
170 submesoscale physical parameterization are used. The phosphorus-based ecosystem is parameterized
following Dutkiewicz et al. [2005], and with modest revisions by Bennington et al. [2009]. This ecosystem
has one zooplankton class and two phytoplankton classes (“large” diatoms and “small” phytoplankton). The
biogeochemical model explicitly cycles phosphorus, silica and iron, and complete carbon chemistry is also
included. This model is identical to the one presented in Breeden and McKinley [2016], and uses the same
biogeochemical code as Bennington et al. [2009], Ullman et al. [2009] and Koch et al. [2009].

175 The coupled model has previously been shown to capture the timing and magnitude of the subpolar spring
bloom chlorophyll and its variability as observed by SeaWiFS [Bennington et al. 2009]. Mixed layer depths,
carbon system variables and nutrients are well simulated at Bermuda and in the northwest subpolar gyre
[Ullman et al. 2009; Koch et al. 2009]. As is common to this type of moderate-resolution model, productivity
in the subtropics is too low [Bennington et al. 2009]. Physical variability since 1948 is consistent with
180 observations [Breeden and McKinley, 2016].

As in Breeden and McKinley [2016], the physical model was spun up for a 100 year period with 1948-1987
repeated twice and then followed again by 1948-1967, for a total physical spin up of 120 years. The
biogeochemical model was then initialized using World Ocean Atlas phosphate concentrations and spun up
for 10 years using 1948-1957 daily forcing. To avoid initialization shock, the model was then forced for 5
185 years with repeating 1948 fields before the 1948-2009 experiment started. Due to HadISSTv1.0 fields only
being available through 2009, this model integration ends in 2009. Future studies using HadISSTv1.1, which
extends beyond 2009, will require re-initialization and new spin up integrations.

2.3 Phosphate diagnostics

To assess the processes modifying phosphate concentration, we employ phosphate diagnostics that quantify
190 flux convergences (in $\text{mmol m}^{-3} \text{yr}^{-1}$) for net biological processes, vertical advection and diffusion, and
horizontal advection and diffusion. These terms describe the tendency of each process at every time step
during the model simulation, averaged to monthly for output [Ullman et al., 2009; Breeden and McKinley,
2016]. For conciseness, the biological uptake term presented here is the sum of separate diagnostic terms for
phosphate utilization by primary producers and remineralization that returns phosphate to the water column.

195 For analysis of mean and linear trends for 1998-2007, we use biological, vertical and horizontal diagnostic
terms. Unfortunately, the biological diagnostics prior to 1998 were lost after simulations were completed.
Thus, for correlations for 1949-2009, we use biomass in place of the biological diagnostics. This choice is
supported by strong correlations ($R=-0.87$ to -0.98) between biomass and the biological diagnostics in our

three focus regions (defined below) for 1998-2007. Biomass and biological diagnostics have an opposite sign
 200 because phosphate is removed as biomass accumulates.

2.4 Light and nutrient limitation

As detailed in Dutkiewicz et al. [2005], model phytoplankton growth is limited by light and the most limiting
 nutrient. Limiting nutrients are phosphate (PO_4) and iron (Fe) for small phytoplankton and PO_4 , Fe and
 silicate ($SiOH_4$) for large phytoplankton. There is no nitrogen cycle in the model, consistent with other
 205 ecological models of comparable complexity (Galbraith et al. 2010). The parameterization uses Michaelis-
 Menton ratios that tend to 0 as the resource becomes severely limiting to growth, and approach 1 when
 replete. A lower value indicates a greater stress, and thus the phytoplankton group with the larger half
 saturation constant will be more limited for the same ambient nutrient or light concentration.

Specifically, maximum growth rates ($\mu_{max,small} = 1/1.3 \text{ d}^{-1}$, $\mu_{max,large} = 1/1.1 \text{ d}^{-1}$) are reduced through
 210 multiplication by limitation terms. T_{func} modifies maximum growth based on temperature following Eppley
 (1972).

$$\mu = \mu_{max} \cdot T_{func} \cdot \gamma_{light} \cdot \min(\gamma_{PO_4}, \gamma_{Fe}, \gamma_{SiOH_4}(\text{large only})) \quad (1)$$

With half saturation constants $I_{0,small} = 15 \text{ Wm}^{-2}$, $I_{0,large} = 12 \text{ Wm}^{-2}$, light limitation is:

$$\gamma_{light} = \frac{I}{I + I_0} \quad (2)$$

215 And for nutrients

$$\gamma_X = \frac{X}{X + K_{0,X}} \quad (3)$$

For phosphate, $X = PO_4$ and $K_{0,PO_4,small} = 0.05 \text{ mmol m}^{-3}$ and $K_{0,PO_4,large} = 0.1 \text{ mmol m}^{-3}$. For iron, $X = Fe$
 and $K_{0,Fe,small} = 0.01 \text{ } \mu\text{mol m}^{-3}$, $K_{0,Fe,large} = 0.05 \text{ } \mu\text{mol m}^{-3}$. For large phytoplankton only, silicate limitation
 220 also applies, with $K_{0,SiOH_4,large} = 2 \text{ mmol m}^{-3}$. Because of their higher half saturation constant for phosphate,
 modeled large phytoplankton are more phosphate stressed than small phytoplankton. In contrast, the higher
 light half saturation makes small phytoplankton experience greater light stress. Due to high levels of aeolian
 dust deposition in the North Atlantic, parameterized here with the imposition of climatological fields from
 Mahowald et al. [2003], iron is never limiting in our study area and is not further discussed.

For this analysis, monthly mean light and nutrient fields are used to calculate limitation terms for light and
 225 nutrient for each phytoplankton type.

2.5 Analysis

Throughout the study, annual averages over the top 100 m are used. This depth is selected because it is a reasonable approximation for both the euphotic zone and the Ekman layer, and is a computationally efficient choice consistent with previous work [Long et al. 2013; Williams et al. 2000, 2014]. For analysis of light limitation, however, it is important to consider that deep mixing will move mixed layer phytoplankton to substantially below 100 m [Sverdrup, 1953]. This effect would be poorly captured if light limitation terms were averaged only over the surface 100 m. The more appropriate choice, used here, is to use either the depth of the monthly mixed layer or 100 m, whichever is deeper. Light limitation is calculated monthly in this way and then annually averaged. For consistency, we apply the same averaging approach for nutrient limitation.

235 However, since nutrients are homogenized by deep mixing, results for nutrient limitation are not substantially different from ~~this calculation using~~ of a strict 100m average. ~~Limitation terms are not biomass-weighted.~~

240 For physical comparisons, mixed layer depth (MLD) is calculated using monthly density fields and a criteria of 0.03 kg m^{-3} increase above the surface density. The barotropic streamfunction is calculated using a north to south integration of the full depth zonal velocity fields [Breedon and McKinley, 2016]. To find the minimum barotropic streamfunction of the subpolar gyre, the minimum within a region $60\text{-}30^\circ\text{W}$, $50\text{-}65^\circ\text{N}$ is used. A preliminary comparison of nutrient flux variability to climate indices uses the winter (DJFM) East Atlantic Pattern (<http://www.cpc.ncep.noaa.gov/data/teledoc/ea.shtml>, downloaded 12.15.2017) and the winter North Atlantic Oscillation (Hurrell and NCAR, 2017).

245 This analysis is based on annual mean fields for both the observations and the model. A 3-month lag of the biology diagnostics and biomass fields after physical diagnostics and other physical fields is employed to account for the maximum physical forcing occurring in the winter prior to the spring bloom. Thus, annual mean physical fields are averaged from October of the prior year to September of the year in question. The use of 0, 1, 2 or 4 month lags leads to lower correlations, but does not substantially modify results. Biological fields are January to December averages.

250 To compare directly to the 10-year period of prime SeaWiFS observations, our primary focus is on linear trends over 1998-2007, with significance bounds set at $p < 0.05$ (95%). To complement this analysis with a consideration of interannual variability across the full model experiment (1948-2009), we also consider correlations of physical and biogeochemical timeseries calculated as area-weighted averages over three selected regions (defined below), and then linearly detrended prior to correlation analysis. Because of the 255 aforementioned biological lag, the timeframe for correlations becomes 1949-2009.

3 Results

3.1 Model comparison to observations

260 The simulation captures the magnitude of mean 1998-2007 subpolar biomass reasonably in comparison to the satellite-based observations (Fig. 1a, b). The detailed spatial pattern of biomass is impacted by the North Atlantic Current extension being too diffuse and too directly east-west (i.e. not turning to the northeast as it

Deleted: important

Deleted: the

Deleted: use

Deleted:

265 should at about 25 °W), as is common in models of this resolution [Williams et al. 2014]. The maximum of biomass is displaced to the east. Also, subtropical biomass is too high in the Gulf Stream extension, but otherwise too low in the remainder of the basin and, thus the gradient from south to north in the model from 35-50 °N is too sharp [Bennington et al. 2009].

270 Despite ~~these~~ imperfections, the model captures well the pattern and magnitude of statistically significant biomass trends north of 40 °N over 1998-2007 (Fig. 1c, d). In both observations and the model, biomass declines to the east of 30 °W from 40-50 °N and 35 °W from 50-60 °N, while it increases to the west. For simplicity, we refer to this boundary as 30-35 °W in our discussion. Model trends are ~~slightly~~ weaker than the observed trends, but the coherent regions of statistically significant change are of similar size. Declines to the east occur in two regions in both model and observations, one in the northeast and one in the southeast.

275 Consistent with the mean biomass structure, ~~simulated~~ biomass trends are not in exactly the same locations as observed, but are displaced about 5° to the south in the southeast and northwest, and 5° to the south and 5° west for the northeast region. Comparison to net primary productivity (NPP) from SeaWiFS estimated with both the CbPM algorithm and older VGPM algorithm indicate comparable changes as in biomass, though trends in the northeast are not significant for NPP (Fig. S1).

280 In both observations and models, the magnitudes of these changes are large in comparison to the mean. In the declining regions where mean biomass is 15-25 mgC m⁻³ (Fig. 1, 2, S2), trends of -0.5 to -1.5 mgC m⁻³ yr⁻¹ over 10 years lead to changes of 30-50%. In the increasing region to the west, changes are of similar magnitude. To focus our analysis, we select three regions in the model that capture these significant biomass changes (Fig. 1d). We will use these regions for discussion and for averaging of biogeochemical and physical

285 terms. In the northeastern subtropical gyre, or “intergyre” [Follows and Dutkiewicz, 2002], lies our southeast (SE) region, just south of the physical separation between the subpolar and subtropical gyre based on the barotropic streamfunction (section 3.4). The SE region is bounded between 30-15 °W and 40-50 °N. The northeast (NE) region lies in the eastern subpolar gyre to the southeast of Iceland, 35-20 °W and 55-60 °N. The northwest (NW) region is south of Greenland at 35-20 °W and 50-60 °N. Regional mean changes in

290 biomass from SeaWiFS (in the model) are -19% (-17%) in the SE region and -15% (-10%) in the NE. To the west of 30-35 °W in the NW region, regional mean changes are +6% (+9%).

In these three regions, annual anomalies of ~~simulated~~ biomass are compared to ~~estimates from the~~ SeaWiFS (1998-2007) and MODIS (2003-2015) ~~satellites~~ (Fig. 2). ~~Monthly biomass timeseries are presented in Fig. S1. In all regions, simulated biomass anomalies are quantitatively different from the observations to a similar~~

295 degree that the observations differ from each other. In the SE region, the shift from positive biomass anomalies before 2004 to negative anomalies after 2004 is found in SeaWiFS and the model, and MODIS indicates a return to positive anomalies after 2010 (Fig. 2a). ~~Of the three regions, this is the one where annual changes in the model are significantly correlated to those in SeaWiFS (R = 0.79, p < 0.05), despite the small sample size (n = 10). Linear trends for 1998-2017 in SeaWiFS and the model are the same, -0.41 mgC m⁻³ yr⁻¹; however, the observations are better explained by this trend (R² = 0.76 for SeaWiFS, R² = 0.35 for~~

300

Deleted: its

Deleted: generally

Deleted: satellite observations

Deleted: The associated m

Deleted: model

Deleted:

model). In the NE region, higher frequency variability is suggested, with mostly positive anomalies over 1998-2003 and negative anomalies from 2005-2009 (Fig. 2b). In this region, the linear trend for 1998-2007 in SeaWiFS is $-0.26 \text{ mgC m}^{-3} \text{ yr}^{-1}$ ($R^2 = 0.15$) and $-0.34 \text{ mgC m}^{-3} \text{ yr}^{-1}$ ($R^2 = 0.50$) in the model. The spatial displacement between the modeled and observed anomalies (Fig. 1c, d) is not accounted for with the regions used for Fig. 2b, but these comparisons do not substantially change if the averaging region for the observations in the NE is shifted 5 degrees north and 5 degrees east (not shown). In the NW region, positive anomalies of comparable magnitude dominate 2003-2008, the timeframe over which the three records coincide (Fig. 2c). Negative anomalies are largely found both before and after. In the last 3 MODIS years, positive anomalies return to the NW region. For 1998-2007, the linear trend in SeaWiFS is $+0.22 \text{ mgC m}^{-3} \text{ yr}^{-1}$ ($R^2 = 0.22$) and for the model $+0.23 \text{ mgC m}^{-3} \text{ yr}^{-1}$ ($R^2 = 0.55$). Having demonstrated that this model reasonably captures the patterns and magnitudes of biomass change, we now use the model to explain the mechanistic drivers in all three regions over the SeaWiFS period, 1998-2007.

3.2 Nutrient changes

Modeled anomalies are not due to zooplankton top-down pressure on biomass, as evidenced by zooplankton trends that are positively correlated with biomass trends (Fig. S3). Thus nutrient and light, the bottom-up drivers in this model that change in a manner that drives biomass changes consistent with observations (Fig. 1), are the focus of this analysis. The model captures the large-scale pattern of the phosphate field well, but mean values are 10-20% too low across most of the subpolar gyre (Fig 3a, b). Changes in the nutrient field could drive these observed and modeled changes, and as temporally resolved large-scale nutrient datasets are not available, the model alone allows us to evaluate nutrient trends (Fig 3c). Modeled nutrient concentrations decline significantly over 1998-2007 across most of the region north of 50°N . The pattern suggests these changes are important to the declines of biomass in the SE and NE regions. However, there is no increase of phosphate in the NW region where biomass was observed to increase.

3.3 Trends of light and nutrient limitation

To better understand drivers of simulated biomass trends, a next step is to decompose the biomass trends into those occurring in the small and the large phytoplankton (Fig. 4). On the mean, in the open waters of the North Atlantic, simulated large phytoplankton have a greater contribution to the total biomass in the north and west (Fig 4a), while small phytoplankton are dominant to biomass throughout the basin and particularly in the south and east (Fig 4b). Trends in simulated small phytoplankton contribute most to total biomass change (Fig 1d) in the SE and NW regions, while large phytoplankton trends are more important in the NE region (Fig. 4c, d).

Phosphate limitation for large phytoplankton has a strong gradient of more limiting in the south and east to less limiting in the northwest (Fig. 5a), while light limitation for small phytoplankton has largely a south to north gradient from less to more limiting (Fig. 5b). Trends over 1998-2007 in the model limitation terms illustrate that the SE and NE declines of simulated biomass are spatially coherent with enhanced phosphate

Deleted: the mean gradients

Deleted:

Deleted: the

Deleted: but

limitation (Fig. 5c), while the NW increase in biomass is spatially coherent with regions experiencing relief of light limitation (Fig. 5d). As shown in Fig. S2, mean and trends for light limitation for large phytoplankton and phosphate limitation for small phytoplankton have nearly identical patterns.

This distinction between the dominant limitations driving **simulated** biomass change in the east and west is borne out with detrended interannual correlations over the full model period, 1949-2009 (Table 1). In the SE region, phosphate limitation is strongly correlated with both small ($R_{SE (small, PO4)} = 0.68$) and large phytoplankton ($R_{SE (large, PO4)} = 0.74$), while light limitation is anti-correlated with biomass, i.e. less biomass occurs with more light, clearly illustrating that light is not the driving limitation. With respect to limitation terms in the NE region, the only significant correlation for large phytoplankton is to nutrient limitation ($R_{NE (large, PO4)} = 0.31$). Thus, the large phytoplankton that quantitatively dominate the 1998-2007 biomass decline (Fig. 4d) due to nutrient limitation (Fig. 5c) also vary by a similar mechanism over the full model experiment.

In the NW region, the 1998-2007 biomass trend is dominated by small phytoplankton (Fig. 4d) via light limitation (Fig. 5d), and these relationships also hold for the full model experiment. Small phytoplankton light limitation is positively correlated with small phytoplankton biomass ($R_{NW (small, light)} = 0.61$), while small phytoplankton biomass is reduced when more phosphate is available ($R_{NW (small, PO4)} = -0.50$, Table 1). Though large phytoplankton have the opposite sensitivities ($R_{NW (large, light)} = -0.63$, $R_{NW (large, PO4)} = 0.83$), they are a smaller portion (40%) of the total biomass (Fig. 4a,b) and have a lesser role in total biomass changes (Fig. 4c).

In the model, silicate is also limiting to large phytoplankton and its limitation also becomes more intense over 1998-2007 to the north of 50 °N (Fig. S4f). **Yet**, variability in silicate limitation is highly correlated to variability of phosphate limitation in the NW and NE areas for 1949-2009 ($R_{NE (PO4, SiOH4)} = 0.91$, $R_{NW (PO4, SiOH4)} = 0.83$, Table S1). Due to these high correlations and the fact that large phytoplankton are only dominant to biomass trends in the NE region (Fig. 4c), the remaining analysis addresses only phosphate fluxes. For completeness, 1998-2007 light and silicate limitation trends for large phytoplankton and phosphate limitation for small phytoplankton are shown in Fig. S2, and 1949-2009 correlations in the three regions are given Table S1.

3.4 Physical changes and their impacts on light and nutrient limitation

Significant physical changes in the subpolar gyre influence **the simulated** nutrient and light fields. The model barotropic streamfunction experiences a positive change from a minimum value of -41 Sv for 1998-2000 to -28 Sv for 2005-2007 (Fig. 6, Fig. S5). With this anomaly, the zero line of the streamfunction shifts several degrees north at 45-40 °W and more modestly to the north in the east (bold black contours in Fig. 6a and Fig. 6b). The North Atlantic Current (NAC) flows along this contour, indicating a northward shift of the NAC.

Consistent with the weakening of the subpolar gyre, mixed layers shoal substantially, particularly to the west of 30-35 °W (Fig. 7a, b). A dramatic shoaling of maximum mixed layers is found in the NW region, going

Deleted:

Deleted: However,

Deleted: There are s

Deleted: that

Deleted: the

385 from almost 1200 m to less than 400 m (Fig. 7e, Våge et al. 2008). This shoaling explains the strong decline
in light limitation in the NW region. There is modest shoaling of mixed layers in the NE region (Fig. 7d) and
there is no significant trend in the SE region (Fig. 7c). Shoaling in the NE could contribute to the reduction
in phosphate availability and reduced biomass. However, the lack of mixed layer depth change in the SE
suggests that less vertical mixing is not the dominant driver of reduced biomass here.

390 **3.5 Phosphate diagnostic analysis**

Deleted: Analysis

To fully assess the three-dimensional physical drivers of phosphate supply to the NE and SE regions, we
employ the phosphate diagnostics that quantify flux convergences. On the mean for 1998-2007 across the
northern North Atlantic, vertical advection and diffusion supply phosphate to the euphotic zone (Fig. 8a),
with the supply being much stronger in the region of deepest mixed layers (Fig. 7). Horizontal advection and
395 diffusion strongly diverges the converging vertical flux (Fig. 8b), leading to strong negative fluxes
(divergence) coincident with strongly positive vertical fluxes. The horizontal flux divergence centered at
about 30-35 °W leads to positive horizontal fluxes (convergence) to the east and west. As the sum of the
vertical and horizontal components is net positive (Fig. 8c), the mean three-dimensional advection and
diffusion net supplies phosphate to the subpolar gyre. The pattern of this supply is strongly influenced by
400 both vertical and horizontal processes. Biological processes remove the physically-supplied phosphate from
the surface ocean (Fig. 8d).

Deleted: also to the
Deleted: south of 50 °N

To east of 30-35 °W, horizontal and vertical phosphate flux convergences are comparable in magnitude and
both supply nutrients to the surface (Fig. 8, 9). In the SE region, mean 1998-2007 vertical advection and
diffusion supplies 0.13 mmol m⁻³ yr⁻¹ while horizontal supplies 0.07 mmol m⁻³ yr⁻¹, together supporting
405 biological utilization of -0.20 mmol m⁻³ yr⁻¹ (Fig. 9a). In the NE region, the mean vertical supply is 0.24
mmol m⁻³ yr⁻¹ while horizontal supplies 0.08 mmol m⁻³ yr⁻¹, and thus a mean biological utilization of -0.32
mmol m⁻³ yr⁻¹ is supported (Fig. 9b). The net convergence of vertical and horizontal fluxes in these regions
can be contrasted to the NW region where the mean vertical flux converges 0.33 mmol m⁻³ yr⁻¹, and from this
the horizontal flux diverges about 25% (-0.08 mmol m⁻³ yr⁻¹) and biology diverges the remainder (-0.24 mmol
410 m⁻³ yr⁻¹, Fig. 9c). In all three regions, note that the variability of both horizontal and vertical flux convergences
are of magnitudes comparable to the biological flux variability (Fig. 9).

Deleted:
Deleted: the
Deleted: is
Deleted: a
Deleted: magnitude

For 1998-2007, simulated trends in the supply and removal of phosphate indicate a large decrease in supply
via vertical fluxes to the west of 30-35 °W (Fig. 10a) and a corresponding strong reduction in the horizontal
divergence of phosphate, a positive anomaly (Fig 10b, 9c). To the west of 30-35 °W, these opposing trends
415 of the vertical and horizontal flux convergence largely negate each other. However, to the east of 30-35 °W
there are weak and mostly negative tendencies in the vertical and significant negative trends in the horizontal
terms. Thus, the net physical phosphate supply in the eastern subpolar gyre has an overall negative trend,
albeit only large enough to be formally statistically significant in parts of the SE region (Fig. 10c). The pattern
of reduced phosphate supply is consistent with the pattern of significant reduction in biomass (Fig. 1d) and

Deleted: 9c

Deleted: (

430 significant positive tendencies in the biological diagnostic indicating reduced phosphate utilization by phytoplankton (Fig. 10d). In summary, the model indicates that from 1997 to 2008, reduced vertical convergence of nutrients to the west of 30-35 °W led to less horizontal convergence of nutrients to the east of 30-35 °W, and thus less phosphate available for biological production. In this model, this mechanism is sufficient to explain biomass changes consistent with SeaWiFS-observed declines in biomass in the eastern subpolar gyre (NE region) and northeastern subtropical gyre (SE region).

435 Long-term (1949-2009) correlations between physical diagnostic terms and biomass support the conclusion that variability in horizontal flux convergence is important to modeled biomass interannual variability to the east of 30-35 °W (Table 2). In both the SE and NE regions, horizontal flux convergence is significantly correlated to biomass ($R_{SE(Biomass,Horiz)} = 0.44$, $R_{NE(Biomass,Horiz)} = 0.48$), suggesting that the 1998-2007 relationships are indicative of interannual behavior over the long-term, wherein reduced horizontal nutrient
440 convergence leads to reduced biomass. For the SE region on the long term, vertical fluxes have also a significant correlation ($R_{SE(Biomass,Vert)} = 0.63$), indicating that longer term interannual change in biomass in this region is determined by variability in both horizontal and vertical flux convergences. In the NW region, biomass and horizontal flux convergence is also positively correlated ($R_{NW(Biomass,Horiz)} = 0.69$), but this appears to be an indirect relationship. As light limitation is relieved, biomass increases, and at the same time
445 vertical convergence of phosphate is reduced (Fig 10a) and there is a positive anomaly in the horizontal divergence (Fig. 10b). Consistent with this interpretation, vertical and horizontal convergence are strongly anti-correlated in the NW region ($R_{NW(Horiz,Vert)} = -0.76$).

The impact of the physical drivers discussed earlier in this section on 1949-2009 biomass variability varies by study region. For the SE region, where biomass is positively driven by both horizontal and vertical nutrient
450 flux convergence, biomass declines with positive anomalies of the minimum barotropic streamfunction of the subpolar gyre ($R_{SE(Biomass,PsiMin)} = -0.37$, Table 2), consistent with 1997-2008 relationships. However, the minimum barotropic streamfunction is not itself correlated to either horizontal or vertical flux convergence. Vertical supply is not a significant driver for 1997 to 2008 changes, but for the longer term, vertical nutrient fluxes decrease with shallower mixed layers (a negative anomaly) and warmer temperatures ($R_{SE(MLD,Vert)} = 0.66$, $R_{SE(SST,Vert)} = -0.64$).

For both the NE and NW regions, correlations between changing minimum barotropic streamfunction (Fig. 6), shoaling mixed layers (Fig. 7) and horizontal and vertical nutrient convergence (Fig. 10) for 1949-2009 are generally weak and, in fact, opposite in sign to the relationships for the SeaWiFS period. For 1998-2007, the minimum barotropic streamfunction experienced a positive anomaly, mixed layers shoaled, and
460 horizontal fluxes declined in the NE region. For 1949-2009, positive anomalies of the minimum barotropic streamfunction are, instead, weakly associated with increased horizontal nutrient fluxes ($R_{NE(PsiMin,Horiz)} = 0.25$). At the same time, shallower mixed layers (a negative anomaly) are associated with decreased vertical fluxes and increased horizontal fluxes ($R_{NE(MLD,Vert)} = 0.52$, $R_{NE(MLD,Horiz)} = -0.42$). In the NW region, light limitation is clearly the driver of biomass changes on both timescales (Fig. 1,4, Table 1), but large negative

anomalies of vertical fluxes and positive anomalies of horizontal fluxes also occur as mixed layers shoal over 1997-2008 (Fig. 9, 10). However, for 1949-2009 in the NW, the reverse is found; vertical flux convergence increases and horizontal nutrient flux convergence decreases coincident with shallower mixed layers ($R_{NW(MLD,Vert)} = -0.33$, $R_{NW(MLD,Horiz)} = 0.46$). Long-term correlations of physical changes to nutrient fluxes in the two subpolar regions differ from those occurring with 1998-2007 trends is consistent with the weak long-term correlations that explain no more than 30% of the variance. The lack of consistent associations between biomass and physical variability over both timescales illustrates the complexity of the system and makes clear that relationships revealed by relatively short-lived observing systems are not necessarily representative of the long term.

475 4 Discussion

The decline in the strength of the subpolar gyre modeled here (Fig. 6) is consistent with observations in the North Atlantic since the mid-1990s [Häkkinen and Rhines, 2004; Hátún et al., 2005; Våge et al., 2008; Foukal and Lozier, 2017]. We show here that these physical changes have **the potential to drive** substantial impacts on the light field and **on vertical and horizontal nutrient supply**. These changes are sufficient to explain the modeled biomass trends over 1998-2007 that are, **in turn**, consistent with satellite observations (Fig 1, S1).

Foukal and Lozier [2017] provide an updated analysis with respect to the relationship of physical changes in the gyre to the East Atlantic Pattern (EA) and the North Atlantic Oscillation (NAO). While the EA indicates the position of the westerly winds, NAO indicates their strength [Foukal and Lozier, 2017; Comas-Bru and McDermott, 2014]. A preliminary investigation using the winter (DJFM) EA index from NOAA CPC indicates that only in the nutrient-limited SE region are there significant correlations. Biomass is correlated to the EA ($R_{SE(EA,Biomass)} = 0.48$), a relationship apparently driven by horizontal flux convergence ($R_{SE(EA,Horiz)} = 0.43$). In the SE region, biomass is not significantly correlated to the winter (DJFM) NAO [Hurrell and NCAR, 2017], which may be due to significant opposing impacts of the NAO on horizontal and vertical nutrient flux convergence ($R_{SE(NAO, Horiz)} = 0.37$, $R_{SE(NAO, Vert)} = -0.30$). These correlations are all zero-lag. We do not find stronger correlations when biomass lags the EA or NAO by up to 3 years. That there are no significant correlations north of 50 °N, in the NE and NW regions, between these climate modes and biomass is consistent with the weak correlations of horizontal and vertical flux convergence to physical fields (Table 2).

Williams and Follows [1998] illustrate that on the mean, horizontal Ekman fluxes in the surface are critical to nutrient supply in the North Atlantic from 40-60 °N, particularly for the northeast subtropical gyre. Yet, Williams et al. [2000] find Ekman nitrate flux variability to be an order of magnitude smaller than convective flux variability in this region. We find that 0-100 m horizontal nutrient convergence contributes 25-35% of the mean nutrient supply in our two regions to the east of 35 °W. In contrast to Williams et al. [2000], we do find horizontal flux convergence to be important to variability, with the 1949-2009 standard deviation of horizontal flux convergence in the SE region being 66% of the standard deviation of the sum of vertical and

Deleted: the
Deleted: redistribution of nutrients in the
Deleted: the
Deleted: , and that
Deleted: t

Deleted:

Deleted:

horizontal, while the vertical flux convergence standard deviation is 95% of the sum. In the NE region, vertical and horizontal flux convergence are anti-correlated ($R_{NE(Vert, Horiz)} = -0.64$, Table 2) such that their variability partially cancels. The standard deviation of vertical flux convergence here is 125% of the sum, while the standard deviation of horizontal flux convergence is 108% of the sum. These very different findings can at least be partially attributed to the fact that Williams et al. [2000] had only a climatological nitrate data field to couple to their mixed layer model and windstress-based Ekman divergence calculation. The use of a smooth climatological nutrient field would not likely allow for the strong co-variance between vertical and horizontal supply terms that these run-time diagnostics are able to reveal. As variability of nutrient supply to the surface ocean is critical to subsolar North Atlantic biomass variability, datasets that temporally resolve upper ocean nutrient fields would be most valuable to future studies. Large-scale deployment of autonomous floats with biogeochemical sensors will be essential to the development of these critical datasets [Johnson et al. 2009].

Deleted:

Deleted:

Deleted:

Deleted: used here

In our model, reduced horizontal nutrient supply over the SeaWiFS period (1998-2007) drove the observed reductions in biomass on the northeastern flank of the North Atlantic subtropical gyre (our SE region). This mechanism contrasts to previous analyses that attribute the observed changes to locally increased stratification and the associated reduced vertical supply of nutrients [Behrenfeld et al. 2006; Polovina et al. 2008; Martinez et al. 2009] or to subtle shifts in the balance between phytoplankton accumulation and loss [Behrenfeld 2014]. Contrasting mechanisms in two different timeframes are found in this region. For 1949-2009, simulated biomass and SST are anti-correlated ($R_{SE(Biomass, SST)} = -0.57$, Table 2) while biomass anomalies are positively correlated to both vertical and horizontal nutrient supply changes ($R_{SE(Biomass, Vert)} = 0.63$, $R_{SE(Biomass, Horiz)} = 0.44$). However, over the SeaWiFS period, reduced horizontal flux convergence is more important than changes in vertical flux convergence to simulated biomass declines (Fig. 10). The fact that horizontal processes are important on both timescales is consistent with previous findings that horizontal nutrient fluxes are seasonally important [Dave et al. 2015] and also that SST as a proxy for stratification is alone insufficient to describe biomass interannual variability in this region [Lozier et al., 2011]. It is reasonable to expect similar mechanisms operate on the edges of the subtropical gyres elsewhere around the globe. Particularly in these intergyre regions, a three-dimensional perspective on nutrient supply should be taken when observations are interpreted and when expected mechanisms of future change are considered [Doney 2006; Bopp et al. 2013].

Deleted: Though for

Deleted: in our SE region

Deleted: we do find anti-correlation between

Deleted: and

Deleted: correlation of

Deleted: , that

Deleted:

Deleted: wa

Deleted: changes

Deleted: , and i

Deleted: the same

Deleted: Instead,

Deleted: a

Deleted: should be taken when

Deleted: the

Deleted: ;

In the context of 21st century climate-driven changes in biomass, Laufkötter et al. (2015) find zooplankton grazing to be important to biomass in some models under a strong climate change forcing scenario (RCP8.5). Zooplankton is not the driver of biomass changes in this model (Figure S3), with the very different timescales and levels of forcing for change -- 10 years of interannual variability in this study, ~100 years with strong forcing in Laufkötter et al. (2015) -- likely being a factor in this difference. That zooplankton grazing is not temperature dependent in this model may also contribute, but any potential effects would be limited by the annual mean temperature change from 1998-2000 to 2005-2007 being substantially smaller (+0.02 °C, +0.28

565 °C, +0.13 °C, in SE, NE and NW regions, respectively) than over the 21st century in the RCP8.5 scenario (1-4 °C at 40-60 °N, Laufkötter et al. 2015).

570 In this simulation, North Atlantic biomass variability to the north of 40 °N is quite heterogeneous and dependent on different mechanisms at distinct locations, with the dominant mechanisms shifting across timescales. Though a large-scale averaging approach may be appropriate for some biogeochemical studies [Fay and McKinley, 2013, 2014], relationships between the surface ocean carbon cycle and productivity may not be well captured by correlations over large-scale ocean biomes that take the whole of the subpolar gyre as one region [Fay and McKinley, 2017]. An approach using smaller subregions will likely support a deeper understanding of biological coupling to the carbon cycle in this region.

575 These findings suggest myriad directions for further analysis. In order to address the simplest measure of change, we use annual mean fields for both the observations and the model. A deeper consideration of how these changes operate in the context of the significant seasonality of the region would be very interesting. This analysis does not elucidate how variability in physical supply of silicate impacts biomass variability. Particularly considering long-term correlations between physical drivers and phosphate supply in NE and NW region that are opposite to those evidenced for 1998-2007, a complementary analysis of variability in silicate supply may be useful. Similarly, it would be of value to study the relative impacts of large and small 580 phytoplankton size classes on total biomass variability particularly in the northwest region where light and nutrient limitation drive biomass in opposite directions (Table 1). Assessment of the modulation of subsurface nutrient fields by subpolar gyre physical changes, and in turn how these subsurface changes influence surface biomass would be worthwhile. Spatial analysis based on empirical orthogonal functions [Breedon and McKinley, 2016] could illustrate the dominant large-scale modes of biomass variability and may reveal the degree to which climate modes impact biomass on longer timescales. With respect to the period of satellite observations, a numerical simulation that covers both the SeaWiFS and MODIS period would allow study of the period since 2007 in which 1998-2007 trends appear to largely have reversed (Fig. 2). For such a simulation, greater physical resolution should improve representation of the gyre structure and its variability. Though the current ecosystem is able to capture the large-scale patterns of biomass change 590 remarkably well, it would also be valuable to assess the impact of different levels of ecosystem complexity in future modeling work.

5 Conclusions

595 In the North Atlantic from 40-60 °N over 1998-2007, biomass estimated from SeaWiFS ocean color increases to the west of 30-35 °W and declines to the east. A regional coupled physical-biogeochemical model that reproduces 1998-2007 trends indicates that the relief of light limitation with shoaling mixed layers was sufficient to drive the observed biomass increase in the west. This model attributes biomass declines to the east of 30-35 °W over 1998-2007 to reduced nutrient supply. On the northeastern flank of subtropical gyre, in our southeast region, changing horizontal nutrient supply drives biomass change over the SeaWiFS period.

Deleted: We find that

600 For the full model experiment, 1949-2009, both horizontal and vertical nutrient supply are important to interannual variability here. In the northeast subpolar gyre, horizontal nutrient supply is the most important driver of biomass variability both for the 1998-2007 SeaWiFS period and for the full model experiment.

605 Though nutrient supply in three dimensions is ~~can explain~~ biomass changes to the east of 30-35 °W, clear connections between ~~these~~ supply terms and large-scale physics or climate indices are elusive. Neither does ~~the minimum barotropic streamfunction or local mixed layer depths~~ consistently explain nutrient flux ~~variability~~ both for the satellite period and the full model experiment. In the southeast, biomass variability over 1949-2009 weakly correlates to the East Atlantic (EA) pattern, but nowhere ~~is the NAO correlated with~~ biomass variability. Given ~~this~~ evidence ~~that~~ horizontal and vertical nutrient supply are important to ~~observed~~ biomass variability, and evidence from other studies that these modes of climate influence the gyre strength, 610 currents, deep mixing, and Ekman suction and divergence of the subpolar gyre, more investigation of the links between North Atlantic climate and biomass variability is clearly warranted.

Acknowledgments

615 The authors thank Val Bennington, Lucas Gloege, Dierk Polzin, Melissa Breeden, and Amanda Fay for their assistance with the model and datasets; ~~and the Oregon State Ocean Productivity group for providing satellite-based productivity and biomass estimates. We thank two anonymous reviewers and Scott Doney for their careful reviews. We gratefully acknowledge funding from NASA (NNX/11AF53G, NNX/13AC53G, NNX13AC94G).~~

- Deleted: clearly driving
- Deleted:
- Deleted: es
- Deleted: of the
- Deleted: of the subpolar gyre
- Deleted: change
- Deleted: changes
- Deleted: observed
- Deleted: does the
- Deleted: explain
- Deleted: e
- Deleted: here

- Deleted: . We gratefully acknowledge funding from NASA (NNX/11AF53G, NNX/13AC53G, NNX13AC94G). We thank
- Deleted: data

References

635 Antonov, J. I., Locarnini, R.A., Boyer, T.P., Mishonov, A.V., and Garcia, H.E.: World Ocean Atlas 2005, vol. 2, Salinity, NOAA Atlas NESDIS 62, edited by: Levitus, S., US Govt. Print. Off., Washington, D. C., 182 pp., 2006.

Behrenfeld, M.J., and Falkowski, P.G.: Photosynthetic rates derived from satellite-based chlorophyll concentration, *Limnol. Oceanogr.*, 42, 1997.

640 Behrenfeld, M.J.: Abandoning Sverdrup's Critical Depth Hypothesis on phytoplankton blooms. *Ecology* 91, 977–989 (2010).

Behrenfeld, M.J., Boss, E., Siegel, D.A. and Shea, D.M.: Carbon-based ocean productivity and phytoplankton physiology from space. *Global Biogeochem Cycles* 19, 57, 2005.

645 Behrenfeld, M.J., O'Malley, R., Siegel, D., McClain, C., Sarmiento, J., Feldman, G., Milligan, A.J., Falkowski, P.G., Letelier, R.M., and Boss, E.S.: Climate-driven trends in contemporary ocean productivity, *Nature*, 444, 752–755, 2006.

Behrenfeld, M.J., Doney, S.C., Lima, I., Boss, E. S. and Siegel, D.A.: Annual cycles of ecological disturbance and recovery underlying the subarctic Atlantic spring plankton bloom. *Global Biogeochem Cycles* 27, 526–540, 2013.

650 Behrenfeld, M.J.: Climate-mediated dance of the plankton. *Nature Climate Change* 4, 880–887, 2014.

Behrenfeld, M. J., Hu, Y., O'Malley, R.T., Boss, E.S., Hostetler, C.A., Siegel, D.A., Sarmiento, J.L., Schullien, J., Hair J.W., Lu, X., Rodier, S., and Scarino, A.J.: Annual boom–bust cycles of polar phytoplankton biomass revealed by space-based lidar. *Nature Geoscience* 10, 118–122, 2016.

655 Bennington, V., McKinley, G. A. , Dutkiewicz, S. and Ullman, D.: What does chlorophyll variability tell us about export and CO₂ flux variability in the North Atlantic?, *Global Biogeochem. Cycles*, 23, GB3002, doi:10.1029/2008GB003241, 2009.

Bopp, L., Resplandy L., Orr, J.C., Doney, S.C., Dunne, J.P., Gehlen, M., Halloran, P. Heinze, C., Ilyina, T., Séférian, R., Tjiputra, J. and Vichi, M.: Multiple stressors of ocean ecosystems in the 21st century: projections with CMIP5 models. *Biogeosciences* 10, 6225–6245, 2013.

660 Breeden, M.L. and McKinley, G.A.: Climate impacts on multidecadal pCO₂ variability in the North Atlantic: 1948–2009. *Biogeosciences* 13, 3387–3396, 2016.

Comas-Bru, L., and McDermott, F.: Impacts of the EA and SCA patterns on the European twentieth century NAO-winter climate relationship, *Q. J. R. Meteorol. Soc.*, 140, 354–363, 2014.

665 Dave, A.C. and Lozier, M.S.: Local stratification control of marine productivity in the subtropical North Pacific, *J. Geophys. Res.*, 115, C12032, doi:10.1029/2010JC006507, 2010.

Dave, A.C. and Lozier, M.S. Examining the global record of interannual variability in stratification and marine productivity in the low-latitude and mid-latitude ocean. *J Geophys Res-Oceans* 118, 3114–3127, doi: 10.1002/jgrc.20224, 2013.

670 Dave, A.C. and Lozier, M.S.: The impact of advection on stratification and chlorophyll variability in the equatorial Pacific. *Geophys Res Lett.* doi:10.1002/2015GL063290, 2015.

Dave, A.C., Barton, A.D., Lozier, M.S., and McKinley, G.A.: What drives seasonal change in oligotrophic area in the subtropical North Atlantic?, *J. Geophys. Res. Oceans*, 120, doi:10.1002/2015JC010787, 2015.

Doney, S.C.: Plankton in a warmer world, *Nature*, 444, 695-696, 2006.

675 Dutkiewicz, S., Follows, M.J., Marshall, J., and Gregg, W.W.: Interannual variability of phytoplankton abundances in the North Atlantic, *Deep-Sea Res. II*, 48, 2323-2344, 2001.

Dutkiewicz, S., Follows, M.J., and Parekh, P.: Interactions of the iron and phosphorus cycles: A three-dimensional model study, *Global Biogeochem. Cycles*, 19, GB1021, doi:10.1029/2004GB002342, 2005.

Eppley, R.W.: Temperature and phytoplankton growth in the sea, *Fish. Bull.*, 70, 1063, 1972.

Deleted:

Deleted: .

Deleted:

Deleted: P. G.

Deleted: ,

Deleted: ., 42, 1 1

Deleted:

Deleted: &

Deleted:

Deleted: .

Deleted: .

Deleted: ,

Deleted:

Deleted:

Deleted: Impact

Deleted: Advection

Deleted: Stratification

Deleted: Chlorophyll

Deleted: Variability

Deleted: Equatorial

Deleted:

Deleted:

Deleted: 1063al III

Fay, A.R. and McKinley G.A.: Global trends in surface ocean pCO₂ from in situ data. *Global Biogeochem Cycles* 27, 1–17, 2013.

Fay, A.R. and McKinley G.A.: Global open-ocean biomes: mean and temporal variability. *Earth Syst. Sci. Data* 6, 273–284, 2014.

710 Fay, A.R. and McKinley G.A.: Correlations of surface ocean pCO₂ to satellite chlorophyll on monthly to interannual timescales. *Global Biogeochem Cycles* 31, 436–455, 2017.

[Field, C. B., Behrenfeld, M. J., Randerson, J. T. and Falkowski, P.: Primary Production of the Biosphere: Integrating Terrestrial and Oceanic Components. *Science* 281, 237, 1998.](#)

715 Follows, M.J. and Dutkiewicz, S.: Meteorological modulation of the North Atlantic spring bloom, *Deep Sea Res. II*, 49, 321–344, 2002.

Foukal, N.P. and Lozier, M.S. Assessing variability in the size and strength of the North Atlantic subpolar gyre. *J Geophys Res-Oceans* 122, 6295–6308, 2017.

Fox-Kemper, B., Ferrari, R. and Hallberg, R.W.: Parameterization of mixed layer eddies. Part I: Theory and diagnosis. *Journal of Physical Oceanog.* 38, 1145–1165, 2008.

720 Galbraith, E.D., Gnanadesikan, A., Dunne, J.P. and Hiscock, M.R. Regional impacts of iron-light colimitation in a global biogeochemical model. *Biogeosciences* 7, 1043–1064, 2010.

Garcia, H.E., Locarnini, R.A., Boyer, T.P., and Antonov, J.I.: World Ocean Atlas 2005, vol. 4. Nutrients (Phosphate, Nitrate, Silicate), NOAA Atlas NESDIS 64, edited by S. Levitus, 396 pp., U.S. Govt. Print. Off., Washington, D. C., 2006.

725 Gent, P.R. and McWilliams, J.C.: Isopycnal mixing in ocean circulation models, *J. Phys. Oceanogr.*, 20, 150–155, 1990.

Häkkinen, S. and Rhines, P.B.: Decline of the subpolar North Atlantic circulation during the 1990s, *Science*, 304, 555–559, 2004.

730 Hátún, H., Sandø, A.B., Drange, H., Hansen, B. and Valdimarsson, H.: Influence of the Atlantic subpolar gyre on the thermohaline circulation, *Science*, 309, 1841–1844, 2005.

Hátún, H., Lohmann K., Matei D., Jungclauss J., Pacariz S., Bersch M., Gislason A., Olafsson J., and Reid R.C.: An inflated subpolar gyre blows life toward the northeastern Atlantic. *Progress in Oceanography* 147, 49–66, 2016.

735 Hátún, H. Azetsu-Scott K., Somavilla R., Rey F., Johnson C., Mathis M., Mikolajewicz U., Coupel P., Tremblay J., Hartman S., Pacariz S.V., Salter I., and Olafsson J.: The subpolar gyre regulates silicate concentrations in the North Atlantic. *Scientific Reports* 14576, doi:10.1038/s41598-017-14837-4, 2017.

[Hunter-Cevera, K.R., Neubert, M.G., Olson, R.J., Solow, A.R., Shalapyonok, A., and Sosik, H.M.: Physiological and ecological drivers of early spring blooms of a coastal phytoplankton. *Science* 354, 326–329, 2016.](#)

740 Hurrell, J. and NCAR (eds): The Climate Data Guide: Hurrell North Atlantic Oscillation (NAO) index (station based), 2017. Retrieved from <https://climatedataguide.ucar.edu/climate-data/hurrell-north-atlantic-oscillation-nao-index-station-based>. Last modified 07 Nov 2017.

Johnson, K. S., Berelson W. M., Boss, E.S., Chase, Z., Claustre, H., Emerson, S.R., Gruber, N., Koertzienger, A., Perry, M.J., and Riser, S.C.: Observing biogeochemical cycles at global scales with profiling floats and gliders prospects for a global array, *Oceanography*, 22(3), 216–225, doi:10.5670/oceanog.2009.81, 2009.

745 Johnson, C., Inall, M. and Häkkinen, S.: Declining nutrient concentrations in the northeast Atlantic as a result of a weakening Subpolar Gyre. *Deep-Sea Research Part I* 82, 95–107, 2013.

Kalnay, E., Kanamitsu, M., Kistler, R., Collins, W., Deaven, D., Gandin, L., Iredell, M., Saha, S., White, G., Woollen, J., Zhu, Y., Leetmaa, A., and Reynolds, R.: The NCAR/NECP 40-year reanalysis project, *Bull. Amer. Meteor. Soc.*, 77, 437–471, 1996.

750

Deleted: .

Deleted: .

Deleted:

Deleted:

Deleted:

Deleted: .

Deleted:

Deleted:

Deleted: &

Deleted:

Deleted:

Deleted:

Deleted: .

Deleted: .

765 Koch, J., McKinley, G.A., Bennington, V. and Ullman, D.: Do hurricanes cause significant interannual variability in the air-sea CO₂ flux of the subtropical North Atlantic? *Geophys Res Lett* 36, L07606, 2009.

Large, W. G., McWilliams, J.C., and Doney, S.C.: Oceanic vertical mixing: A review and a model with a nonlocal boundary layer parameterization, *Rev. Geophys.*, 32, 363-403, 1994.

770 Laufkötter, C., Vogt, M., Gruber, N., Aita-Noguchi, M., Aumont, O., Bopp, L., et al. Drivers and uncertainties of future global marine primary production in marine ecosystem models. *Biogeosciences*, 12(23), 6955–6984. <https://doi.org/10.5194/bg-12-6955-2015>, 2015.

Lozier, M. S., Leadbetter, S., Williams, R.G., Roussenov, V., Reed, M.S.C., and Moore, N.J.: The spatial pattern and mechanisms of heat-content change in the North Atlantic, *Science*, 319, 800-803, 2008.

775 Lozier, M.S., Dave, A.C., Palter, J.B., Gerber, L.M., and Barber, R.T.: On the relationship between stratification and primary productivity in the North Atlantic, *Geophys. Res. Lett.*, 38, L18609, doi:10.1029/2011GL049414., 2011.

[Mahadevan, A., D'Asaro, E., Lee, C. and Perry, M. J.: Eddy-driven stratification initiates North Atlantic spring phytoplankton blooms. *Science* 337, 54–58, 2012.](#)

780 Mahowald, N., Lou, C., del Corral, J., and Zender, C.: Interannual variability in atmospheric mineral aerosols from a 22-year model simulation and observational data, *J. Geophys. Res.*, 108(D12), 4352, doi:10.1029/2002JD002821, 2003.

Marshall, J. C., Adcroft, A., Hill, C., Perelman, L., and Heisey, C.: A finite volume, incompressible Navier-Stokes model for studies of the ocean on parallel computers, *J. Geophys. Res.*, 102, 5753-5766, 1997a.

785 Marshall, J.C., Hill, C., Perelman, L., and Adcroft, A.: Hydrostatic, quasi-hydrostatic and non-hydrostatic ocean modeling, *J. Geophys. Res.*, 102, 5733-5752, 1997b.

Martinez, E., Antoine, D., D'Ortenzio, F., and Gentili, B.: Climate-driven basin-scale decadal oscillations of oceanic phytoplankton, *Science*, 326, 1253-1256, 2009.

McClain, C.R., Feldman, G.C., and Hooker, S.B.: An overview of the SeaWiFS project and strategies for producing a climate research quality global ocean bio-optical time series, *Deep Sea Res. II*, 51, 5-42, 2004.

790 McGillicuddy, D.J., Jr., Anderson, L.A., Doney, S.C., and Maltrud, M.E.: Eddy-driven sources and sinks of nutrients in the upper ocean: Results from a 0.1° resolution model of the North Atlantic, *Global Biogeochem. Cycles*, 17, 1035, doi:10.1029/2002GB001987, 2003.

[Mignot, A., Ferrari, R. and Claustre, H.: Floats with bio-optical sensors reveal what processes trigger the North Atlantic bloom. *Nat Comms* 190, doi:10.1038/s41467-017-02143-6, 2018.](#)

795 Oschlies, A.: Nutrient supply to the surface waters of the North Atlantic: A model study, *J. Geophys. Res.*, 107, doi:10.1029/2000JC000275, 2002.

Palter, J.B., Lozier, M.S., and Barber, R.T.: The effect of advection on the nutrient reservoir in the North Atlantic subtropical gyre, *Nature*, 437, 687-692, 2005.

800 Pelegrí, J.L., Csanady, G.T., and Martins, A.: The North Atlantic nutrient stream, *J. Oceanogr.*, 52, 275-299, 1996.

Polovina, J. J., Howell, E.A., and Abecassis, M.: Ocean's least productive waters are expanding, *Geophys. Res. Lett.*, 35, L03618, doi:10.1029/2007GL031745, 2008.

805 Rayner, N.A., Parker, D.E., Horton, E.B., Folland, C.K., Alexander, L.V., Rowell, D.P., Kent, E.C., and Kaplan, A.: Global analyses of sea surface temperature, sea ice, and night marine air temperature since the late nineteenth century, *J. Geophys. Res.*, 108, 4407, doi:10.1029/2002JD002670, 2003.

Sarmiento, J.L. and Gruber, N.: *Ocean Biogeochemical Dynamics*, Princeton University Press, 2006.

Siegel, D.A., Doney, S.C., and Yoder, J.A.: The North Atlantic spring phytoplankton bloom and Sverdrup's critical depth hypothesis, *Science*, 296, 730-733, 2002.

Deleted:

Deleted: .

Deleted: .

Deleted: .

Deleted: 2

Deleted:

Deleted:

Deleted:

Deleted:

Deleted:

Deleted:

Deleted:

Deleted:

Deleted: N.

Deleted: ,

Siegel, D.A., Maritorena, S., Nelson, N.B., and Behrenfeld, M.J.: Independence and interdependencies among global ocean color properties: Reassessing the bio-optical assumption, *J. Geophys. Res.*, 110, C07011, doi:10.1029/2004JC002527, 2005.

830

Sverdrup, H.J.: On conditions for the vernal bloom of phytoplankton, *J. Cons. Perm. Int. Explor. Mer.*, 18, 287-295, 1953.

Deleted:

[Taylor, J.R. and Ferrari, R.: Ocean fronts trigger high latitude phytoplankton blooms. *Geophys Res Lett* 38, L23601, 2011.](#)

Ullman, D.J., McKinley, G.A., Bennington, V., and Dutkiewicz, S.: Trends in the North Atlantic carbon sink: 1992-2006, *Global Biogeochem. Cycles*, 23, GB4011, doi:10.1029/2008GB003383, 2009.

835

Våge, K., [Pickart, R.S.](#), [Thierry, V.](#), [Reverdin, G.](#), [Lee, C.M.](#), [Petrie, B.](#), [Agnew, T.A.](#), [Wong, A.](#), and [Ribergaard, M.H.](#) Surprising return of deep convection to the subpolar North Atlantic Ocean in winter 2007-2008. *Nature Geoscience* 2, 67-72, 2008.

Deleted:

Deleted: *et al.*

Deleted: .

Westberry, T., Behrenfeld, M.J., Siegel, D.A., and Boss, E.S.: Carbon-based primary productivity modeling with vertically resolved photoacclimation. *Global Biogeochem. Cycles*, 22, GB2024, doi:10.1029/2007GB003078, 2008.

840

Williams, R.G. and Follows, M.J.: The Ekman transfer of nutrients and maintenance of new production over the North Atlantic, *Deep-Sea Res. I*, 45, 461-489, 1998.

Williams, R.G., McLaren, A.J. and Follows, M.J.: Estimating the convective supply of nitrate and implied variability in export production over the North Atlantic. *Global Biogeochem Cy* 14, 1299-1313, 2000.

845

Williams, R.G., Roussenov, V. and Follows, M.J.: Nutrient streams and their induction into the mixed layer, *Global Biogeochem. Cycles*, 20, GB1016, doi:10.1029/2005GB002586, 2006.

Deleted:

Williams, R.G., Roussenov, V., Smith, D. and Lozier, M.S.: Decadal [evolution of ocean thermal anomalies](#) in the North Atlantic: The [effects of ekman, overturning, and horizontal transport](#). *Journal of Climate* 27, 698-719, 2014.

Deleted: Evolution

Deleted: Ocean

Deleted: Thermal

Deleted: Anomalies

Deleted: Effects

Deleted: Ekman

Deleted: Overturning

Deleted: Horizontal

Deleted: Transport

Deleted: .

850

Yoder, J.A. and Kennelly, M.A.: Seasonal and ENSO variability in global ocean phytoplankton chlorophyll derived from 4 years of SeaWiFS measurements, *Global Biogeochem. Cycles*, 17, 1112, doi:10.1029/2002GB001942, 2003.

Tables

870 **Table 1: Correlations of phosphate and light limitation for small phytoplankton to large and small biomass, 1949-2009.** For conciseness, shown here are only small phytoplankton limitation terms, but since these are ratios calculated from identical fields, the correlations are very similar large phytoplankton (Table S1). Bold indicates statistical significance ($p < 0.05$). Detrending is applied prior to correlation analysis.

		phosphate limitation, small phytoplankton	light limitation, small phytoplankton
SOUTHEAST	large biomass		
small biomass	0.52	0.68	-0.75
large biomass	-	0.74	-0.57
phosphate limitation, small		-	-0.87
NORTHEAST	large biomass		
small biomass	0.36	-0.09	-0.08
large biomass	-	0.31	-0.17
phosphate limitation, small		-	-0.87
NORTHWEST	large biomass		
small biomass	-0.34	-0.50	0.61
large biomass	-	0.83	-0.63
phosphate limitation, small		-	-0.71

875

Table 2: Correlations of biomass to physical drivers and horizontal and vertical phosphate flux convergence, 1949-2009. The minimum barotropic streamfunction is found within 60-30 °W, 50-65 °N; maximum mixed layer depth (MLD) and sea surface temperature (SST) are area-weighted averages for each of the three averaging regions. Bold indicates statistical significance ($p < 0.05$). Detrending is applied prior to correlation analysis.

	Minimum Barotropic				
SOUTHEAST	Streamfunction	Maximum MLD	SST	Horizontal	Vertical
Biomass	-0.37	0.54	-0.57	0.44	0.63
Minimum Barotropic Streamfunction	-	-0.42	0.38	-0.18	-0.23
Maximum MLD		-	-0.65	0.10	0.66
SST			-	-0.02	-0.64
Horizontal				-	-0.29
	Minimum Barotropic				
NORTHEAST	Streamfunction	Maximum MLD	SST	Horizontal	Vertical
Biomass	0.18	-0.02	0.08	0.48	-0.25
Minimum Barotropic Streamfunction	-	-0.60	0.72	0.25	-0.22
Maximum MLD		-	-0.76	-0.42	0.52
SST			-	0.34	-0.28
Horizontal				-	-0.64
	Minimum Barotropic				
NORTHWEST	Streamfunction	Maximum MLD	SST	Horizontal	Vertical
Biomass	0.14	0.28	-0.23	0.69	-0.42
Minimum Barotropic Streamfunction	-	-0.42	0.67	0.08	-0.10
Maximum MLD		-	-0.42	0.46	-0.33
SST			-	-0.52	0.43
Horizontal				-	-0.76

885 **Figures**

Figure 1: Surface ocean biomass (a) estimated from SeaWiFS using the CbPM model, (b) 0-100m modeled biomass, (c) SeaWiFS trend 1998-2007, and (d) 0-100m modeled biomass trend 1998-2007. In c and d, significant trends are marked with a black contour. In d, the three focus regions are outlined in red.

890 **Figure 2: Annual anomalies of surface ocean biomass** for SeaWiFS (1998-2007, red), MODIS (2003-2015, blue) and model (1998-2009, 0-100m, black) (a) SE region, (b) NE region, and (c) NW region. The corresponding monthly timeseries is shown in Fig. S1.

Figure 3: Phosphate (a) World Ocean Atlas (Garcia et al. 2006) (b) 0-100m modeled phosphate, (c) 0-100m modeled phosphate trend 1998-2007. In c, significant trends are marked with a black contour and the three focus regions are outlined in red.

895 **Figure 4: Surface ocean small and large phytoplankton biomass** (a) 0-100m modeled small phytoplankton biomass, (b) 0-100m modeled large phytoplankton biomass, (c) small phytoplankton trend 1998-2007, and (d) large phytoplankton trend 1998-2007. In c and d, significant trends are marked with a black contour and the three focus regions are outlined in red.

900 **Figure 5: Terms for limitation** by (a) phosphate, large phytoplankton (Eq. 3) (b) Light, small phytoplankton (Eq. 2), (c) 1998-2007 trend in phosphate limitation, and (d) 1998-2007 trend in light limitation. All are unitless. In c and d, significant trends are marked with a black contour and the three focus regions are outlined in red.

Figure 6: Barotropic streamfunction (a) 1998-2000 mean and (b) 2005-2007 mean. The zero streamfunction contours between 55-15°W for each period (bold black) and for the 1998-2007 mean (white) are marked. See Figure S5 for map of 1998-2007 trend.

905 **Figure 7: Maximum mixed layer depths** for (a) 1998-2000 mean and (b) 2005-2007 mean. Timeseries of monthly mixed layers for (c) SE region, (d) NE region, and (e) NW region.

Figure 8: Phosphate diagnostics, 0-100m flux convergence ($\text{mmol m}^{-3} \text{ yr}^{-1}$) for (a) vertical, (b) horizontal, (c) net physical, and (d) biological. Biological is negative because biomass removes phosphate from the surface ocean. The three focus regions are outlined in red in each panel.

910 **Figure 9: Phosphate diagnostics 1998-2007 annual timeseries**, 0-100m flux convergence ($\text{mmol m}^{-3} \text{ yr}^{-1}$) for (a) SE region, (b) NE region, and (c) NW region.

915 **Figure 10: Phosphate diagnostics 1998-2007 trends**, 0-100m flux convergence trend ($\text{mmol m}^{-3} \text{ yr}^{-2}$) for (a) vertical, (b) horizontal, (c) net physical, and (d) biological. Positive biological trends are consistent with negative biomass trends because less phosphate is removed as less biomass is formed. Significant trends are marked with a black contour and the three focus regions are outlined in red in each panel.

Figure 1

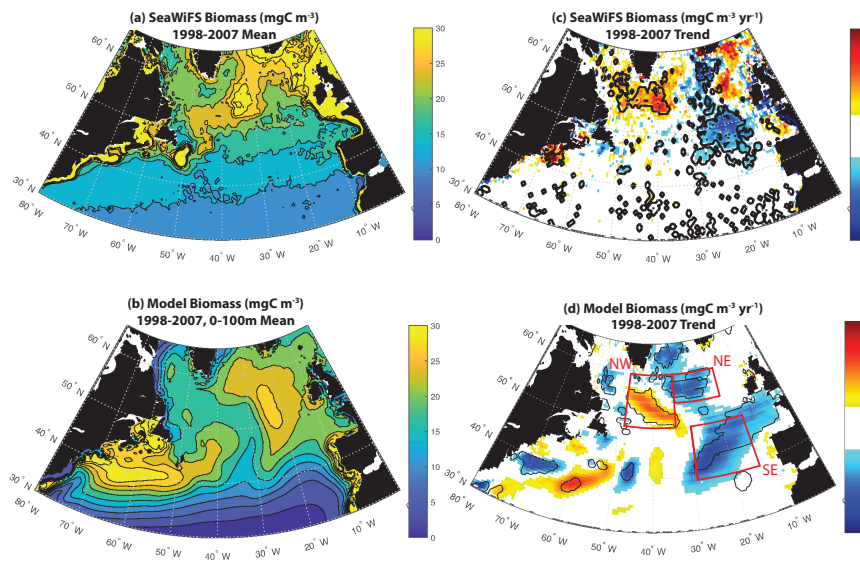
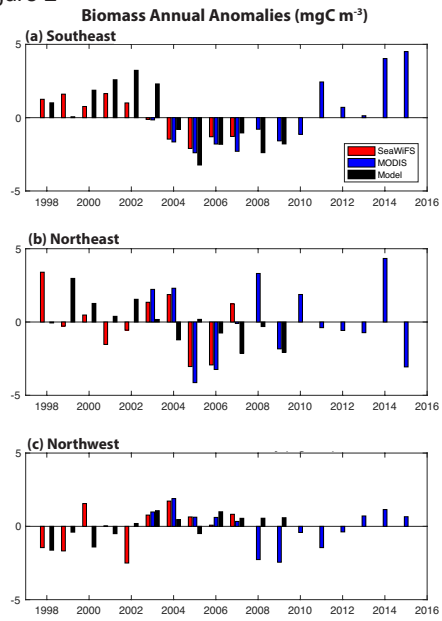


Figure 2



920

Figure 3

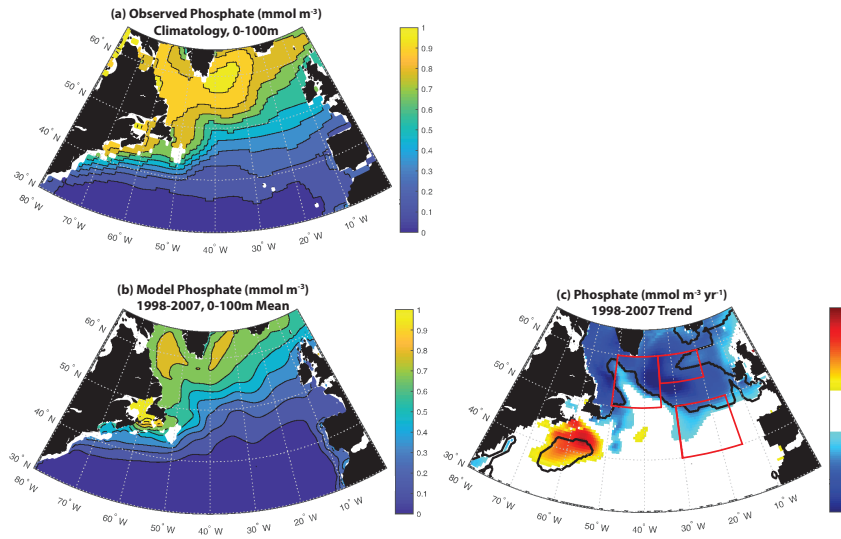


Figure 4

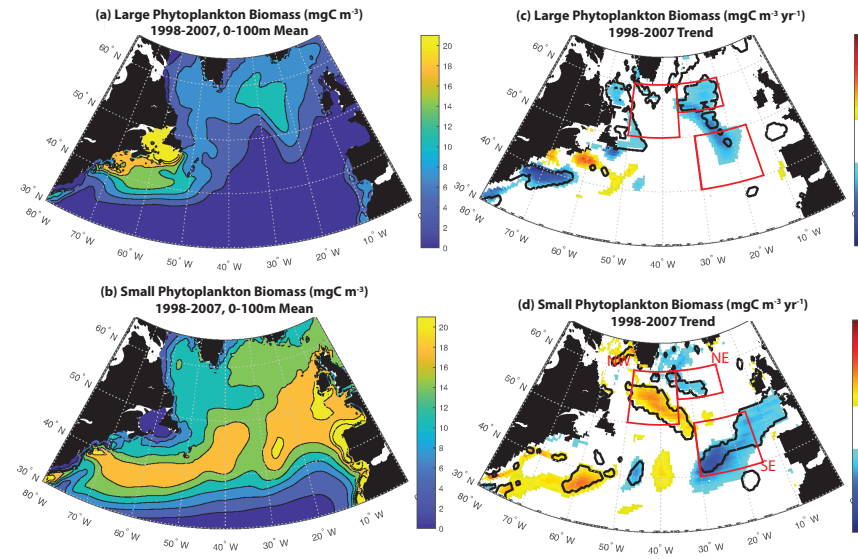


Figure 5

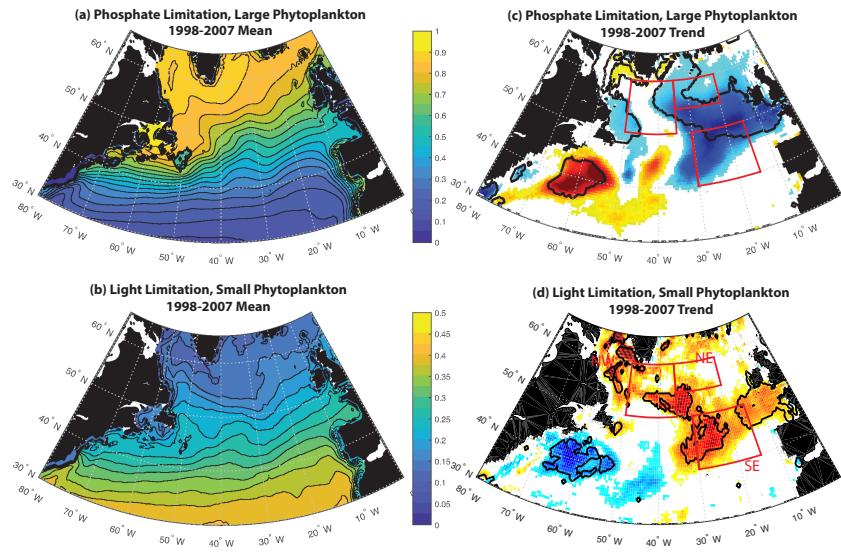


Figure 6

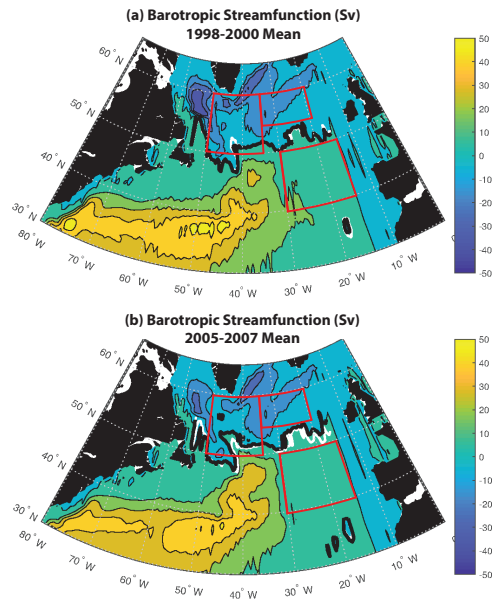


Figure 7

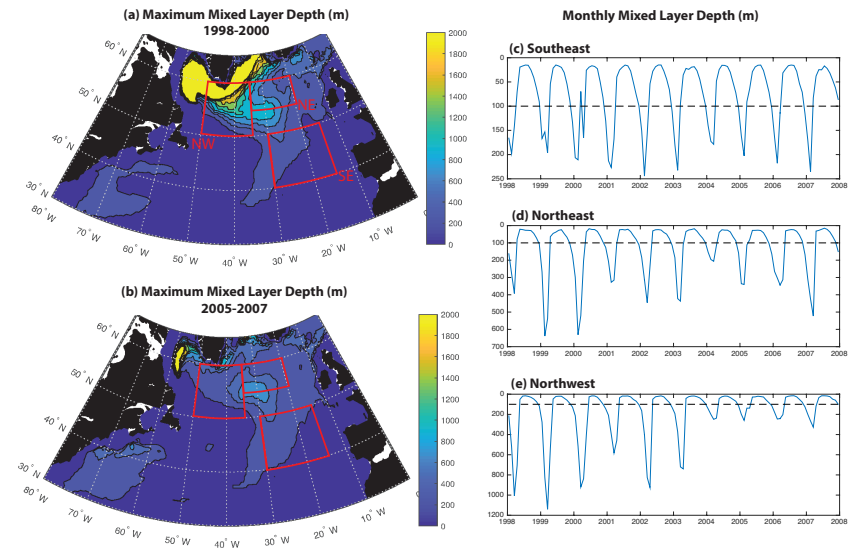


Figure 8

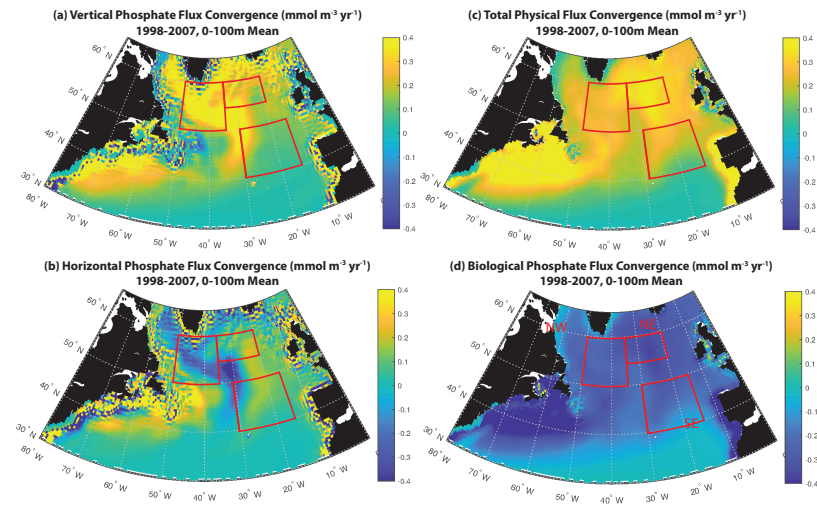


Figure 9

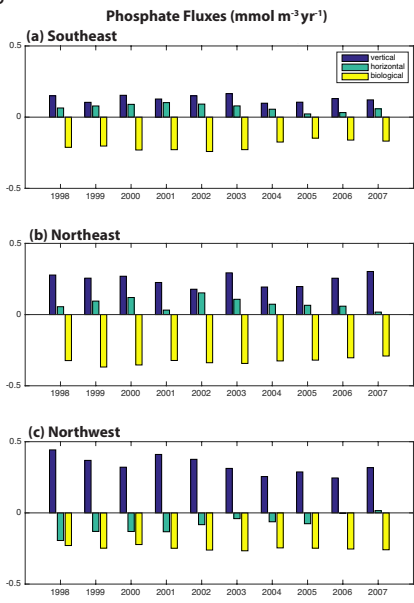


Figure 10

