

Interactive comment on “Effect of crustose lichen (*Ochrolecia frigida*) on soil CO₂ efflux in a sphagnum moss community over western Alaska tundra” by Yongwon Kim et al.

Yongwon Kim et al.

kimywjp@gmail.com

Received and published: 22 November 2019

The soil temperature and moisture dynamics in relation to lichen dominance should be explained a bit better. »> I have completely checked data for July-August hourly variations in soil temperature (above) and moisture (below) at intact and crustose lichen-infested sphagnum moss, as follows.

((Figure A #1)

»> However, I could not find any clues about why soil moisture at 2-cm depth of crustose lichen-infested sphagnum moss relative to 5-cm depth. Hence, we must have

Printer-friendly version

Discussion paper



additional observations, such as soil moisture and temperature at several centimeter depths, for the ascertainment of soil temperature and moisture dynamics for the unusual results. I appreciate your invaluable comments and suggestions for future work.

Interactive comment on Biogeosciences Discuss., <https://doi.org/10.5194/bg-2019-121>, 2019.

BGD

Interactive
comment

Printer-friendly version

Discussion paper



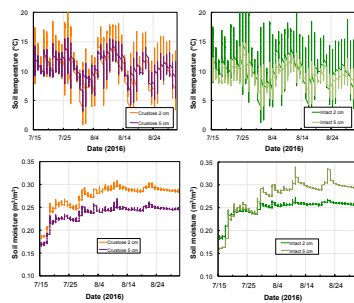


Fig. 1. Figure A#1