

Response to the reviews

Response to Keryn Gedan (referee 1)

5 General comment

Overall, I think this is a fantastic observational dataset of variation in fish communities during tidally driven variation in DO. The DO data themselves, sampled across a spatial gradient in the mangroves, are very interesting and nicely plotted. The authors recorded fish videos at an impressive number of sites and hours in this remote location, and identified a large number of fish species. The analysis is creative.

10

Response

We thank Keryn Gedan for her insightful comments that improved the manuscript. We carefully addressed each comment below.

15 Comment #1

Spatial patterns in DO within the mangrove forest: p. 12, Line 8 notes no difference between in-forest and edge sites, however in the results, p. 7, Line 20 describes a difference in the frequency of DO <50% saturation in-forest and edge environments, with low DO observed more frequently in edge (channel) sites than in-forest. This result surprised me, given that that the in-forest sites would have less water exchange than edge sites. Was this a true difference or not? If there was truly no difference, why do you think the expected pattern of lower DO in the forest than the channel was not observed?

20

Response

This is a very interesting point that surprised me as well. First of all, the difference in mean DO is not significant between edge and in-forest. The slightly lower DO levels found on the edge I believe are due to the fact that water decreases too fast compare to DO in-forest, therefore within the time that the in-forest is inundated, DO does not decline as much as on the edge where very shallow water remains permanently as it does not get exposed at low tide. This sentence has been added to the discussion to make this point: "There was no difference observed between DO dynamics on the edge and in-forest, however minimum values were slightly lower on the edge because water remained permanently at low tide being subjected to further decline compare to in-forest that became exposed earlier during the tide and therefore experiencing a shorter DO decline period." p.11, lines 17-20.

25

30

Comment #2

Discussion section 4.1 "Tidal migrations: stranding or hypoxia?": The text does not answer the question in the section title. Low DO was correlated with the tidal cycle, so it is impossible to disentangle fish movements in response to tidal variation/depth relative to DO. This is carefully worded in the introduction, but not the abstract, which suggests that fish migrate due to low DO, rather than DO being a factor that may drive tidal migrations. The first discussion section would be stronger with a different section title.

35

Response

The section title has been modified as suggested to be more accurate: "Depth and DO are both potential factors for observed tidal migrations" p.9, line 32.

40

Comment #3

Related, did in-forest sites bottom out during low tides? It looks as though they did in Fig. 2, for example, just after an ebb tide video period on 2/28/17. This would be an opportunity to investigate stranding patterns. Did all fish leave the site towards the end of this falling tide? That particular occasion was a relatively mild DO period (40-80% saturation), and so perhaps the effects of shallow water and low DO could be separated, at least anecdotally, if not statistically, on that date.

45

Response

This is a great idea! Unfortunately, I did not sample until the end of the falling tide this day, therefore I do not have the data to identify whether fish were still present towards the end of the ebbing tide. But a future targeted sampling at the end of ebbing tide could indeed provide interesting results to help disentangle the effect of low DO and shallow water depth. In Dubuc et al. (2019) we studied more specifically fish responses to depth patterns and showed that certain species did not use mangrove habitats while depth was high enough for fish to safely access, emphasising that water quality, and especially DO, is probably an important parameter to take into consideration for habitat utilisation.

Comment #4

Discussion section 4.2 “Tidal-induced dissolved oxygen variations” presents two processes that reduce DO in mangrove waters: 1) diel cycles that are the result of dominance of photosynthesis effects during daylight hours and respiration at night, and 2) tidal pumping of porewater into the water column on ebbing tides. These two processes should be better distinguished within the introduction and discussion sections. Separating discussion of the two factors and their relevance to this study (for which fish data is daytime-only) into separate paragraphs would be helpful.

Response

In the introduction, a brief explanation on how DO fluctuates in response to the autotrophic cycle and tide has been added: “The main factor responsible for DO fluctuations is the autotrophic cycle, with photosynthesis occurring during daylight hours, and respiration during nighttime hour, creating a diel-cycle in DO. Another important parameter to consider, especially in intertidal environments, is tide as it is responsible for many physical and chemical changes susceptible to impact oxygen cycle. If these two factors are considered, DO can be partially predicted, with the lowest DO levels occurring at night or dawn at low tide, following nighttime respiration, while maximum levels are recorded in the afternoon at high tide, following autotrophic production (Kenney et al., 1988; Mazda et al., 1990; D'Avanzo and Kremer, 1994; Tyler et al., 2009).” p.2, lines 25-30. The manuscript has been modified to clarify this point, especially the fact that fish assemblages were only collected during daytime, and therefore, part of the answer on how DO diel fluctuations impact fish assemblages is not known. p.11, lines 22-25.

Comment #5

The discussion section on “4.3 Species-specific responses to DO variations” highlights some very important results from this study. However, there is a missed opportunity that no species are specifically discussed. What can be said about the fish species, genera, or families observed in the high, medium, and low tolerance behavioral groups identified?

Response

This is an important result from the study indeed, and this discussion section has been extended and modified to emphasise it: section 4.3 p.11-12. It was interesting to notice that species observed in high tolerance group were all species commonly associated with mangrove habitats, using them extensively, while species from the other two groups are less commonly observed, even never recorded before in mangrove habitats.

Comment #6

Please add a legend to the map in Fig. 1.

Response

A legend has been added as suggested.

Comment #7

p. 3, Line 6, “implying that mangrove forests are especially vulnerable to anthropogenic deoxygenation due to their location along the coasts” – I would say, “the aquatic communities within mangrove forests” are vulnerable, since the mangrove forests themselves are fairly resistant to deoxygenation as low DO does not negatively affect the foundation species of mangroves, and the forest itself can withstand low DO stress quite well.

Response

The sentence has been modified as follow to address this unprecise language issues: “implying that mangrove ecosystems are especially prone to experience anthropogenic deoxygenation due to their location along the coasts.” p.3, lines 8-9.

Comment #8

5 p. 4, Line 28, What does VLC stand for?

Response

The acronym VLC has been defined in the manuscript to address this comment p.4, line 28.

Comment #9

10 p. 5, Line 20, In the random forest model, what happens in the case of co-linear variables? Also, can RF account for interactions between predictors?

Response

15 There is no agreement on how correlated variables impact the prediction of Random Forest models (Grömping, 2009; Neville, 2013). However random forest is a very robust method, and in this study, considering the large dataset used with only few predictors that are all relevant to explain fish assemblages, we believe that overfitting is not an issue. I am not aware of any coding available to account for interactions between predictors in random forest models, but a recent paper has suggested some that could be made available in the future (Gregorutti et al., 2017). Here, we tested for the effect of correlation by building two
20 models, one excluding depth, and the other one excluding DO, to confirm that both variables increased substantially the prediction capacity of the random forest, which was the case.

Comment #10

25 p. 5, Line 30, Please explain “out-of-bag error.”

Response

A short definition of “out-of-bag error” has been added to the manuscript: p.9, lines 30-31.

Comment #11

30 p. 10, Line 16, Tidal period is generally defined as high to high or low to low. High to low would be half of a period.

Response

The sentence has been modified to use the correct term as advised p.10, line 18.

Comment #12

35 p. 11, Line 21, parenthetical “High tolerance pattern” is confusing. I suggest “(i.e. most species exhibited the “High tolerance” pattern).”

Response

40 The sentence has been modified to enhance understanding as suggested: p.11, line 28-29.

Comment #13

p. 12, Line 15, it seems like “value” of mangroves, here, implies that fish diversity or abundance is a proxy for mangrove forest value? Please clarify.

45

Response

To avoid confusion around the term “value” a definition has been added when first mentioned in the introduction p.1, line 14; p.1, line 31.

Response to referee 2

General comment

Overall, the paper is well written and deals with an important gap in current knowledge around utilization patterns of mangrove habitats by fish species. The material and methods section is really impressive and authors provide sufficient results to support their conclusions. There are only a few clarifications that need to be done.

Response

We thank referee #2 for insightful comments that improved the manuscript. We carefully addressed each comment below.

Comment #1

For example, how could the correlation between DO and Depth affect the RF model? In the results section authors state that different models were created for each variable, but it is still unclear how the model is affected by this correlation.

Response

There is no agreement on how correlated variables impact the prediction of Random Forest models (Grömping, 2009; Neville, 2013). However random forest is a very robust method, and in this study, considering the large dataset used with only few predictors that are all relevant to explain fish assemblages, we believe that overfitting is not an issue. Moreover, the two different models created, one excluding depth and one excluding DO, confirmed that both variables substantially increased the prediction capacity of the model.

Comment #2

Also, in results, lunar phase was the second most important variable in explaining species richness, and although it seems to be an important result, there is no further discussion on this.

Response

The effect of lunar phase on fish assemblages has been discussed in detail in Dubuc et al. (2019), therefore the discussion of this paper focuses on water depth and DO, that are two factors potentially responsible for the main tidal variation pattern identified in fish assemblages. A sentence has been added at the beginning of the relevant discussion section to clarify this point: “The effects of lunar phase and location on fish assemblages were investigated in detail in Dubuc et al. (2019), therefore the following discussion focuses on water depth and DO, that both varied at a tidal scale.”, p.10 lines 2-3.

Comment #3

In results (page 9) and discussion 4.3 section (page 11) authors state that tolerance groups were represented by different groups of species (with reef associated taxa having low tolerance behavior). However, this statement is not further explored. Resident and vagrant fish are likely to differ in the way they use mangrove habitats, so, how DO may affect their patterns of utilization?

Response

This is an important result, and this discussion section has been extended and modified to emphasise it: section 4.3 p.11-12. We believe that species able to extensively use mangroves are able to do so partly because they are highly tolerant to hypoxia and probably highly tolerant to environmental stressors in general.

Comment #4

The discussion section ends with the following statement “This could explain why relatively few taxa venture inside the forest, and those that do, appear to be highly tolerant to hypoxia” (page 11), but there is no previous information on spatial distribution of fish species between both environments. Moreover, although no differences in DO was found between in forest and edge samples, what about the other environmental variables? Looking at table 1, it seems like water depth may differ between both sites, which could explain the lower species richness.

Response

A result section has been added to highlight the difference in fish taxonomic richness between the in-forest and the edge, showing that less taxa were observed in-forest: p.7, lines 33-34. Relevant references have also been added to support this point: p.11, line 31. I agree with your comment, and indeed differences in water depth, especially the fact that in-forest sites get exposed at low tide while edge sites remain submerged, could explain differences in taxonomic richness. This point was thoughtfully discussed in another paper (Dubuc et al., 2019). The relevant paragraph in the discussion has been modified to provide more information regarding this point: p.12, lines 20-27.

Response to Kenneth Rose (Editor)

General comment

There are several author responses to reviewers' comments that are unclear as to what, if any, changes will be made to a revised version of the manuscript. Please review all responses to ensure that what actual changes will be made to manuscript are very clearly stated. In particular, the responses to Comment #3 and Comment #9 of Reviewer 1, and Comment #1 of Reviewer 2 need to be clarified. Note that Comment #9 of reviewer 1 is very similar to Comment #1 of Reviewer 2 and so should be addressed in the revised manuscript. The response text to these comments comes close to what needs to be added to the manuscript.

Response

Dear Prof Rose,

We apologise if our responses were unclear as to what changes have been made. We carefully addressed each reviewer's comments and made the necessary changes to the manuscript. Please find below more details on the changes that have been made, especially regarding comments #3 and #9 of reviewer 1 and comment #1 of reviewer 2.

Reviewer 1:

Comment #3

Related, did in-forest sites bottom out during low tides? It looks as though they did in Fig. 2, for example, just after an ebb tide video period on 2/28/17. This would be an opportunity to investigate stranding patterns. Did all fish leave the site towards the end of this falling tide? That particular occasion was a relatively mild DO period (40-80% saturation), and so perhaps the effects of shallow water and low DO could be separated, at least anecdotally, if not statistically, on that date.

Response

To complete our response, the following sentence has been added to the manuscript to highlight this interesting suggestion: "Future targeted sampling could for instance specifically investigate fish movements at the end of ebbing tides experiencing relatively high DO and low DO, as on the 28 February afternoon and morning respectively. This would help to determine whether fish consistently leave mangrove habitats at a same depth or whether responses are indeed affected by DO levels abnormally low or high.", p.11, lines 3-6.

Comment #9

p. 5, Line 20, In the random forest model, what happens in the case of co-linear variables? Also, can RF account for interactions between predictors?

Response

To complete our response, the following sentence has been added to show that this issue was investigated and addressed: "DO and depth were highly correlated, which can potentially impact the RF prediction of variable importance, although there is no

agreement on what the effects of multicollinearity are (Gregorutti et al., 2017). However, RF is a very robust method, and in this study, considering the large dataset used with only few predictors that are all relevant to explain fish assemblages, we believe that overfitting is not an issue. Nevertheless, a RF model was built only with “Depth”, and then only with “DO” to test for the effect of multicollinearity on their relative importance.”, p.8, lines 9-14.

5

Reviewer 2:

Comment #1

For example, how could the correlation between DO and Depth affect the RF model? In the results section authors state that different models were created for each variable, but it is still unclear how the model is affected by this correlation.

10

Response

To complete our response, the following sentence has been added to show that this issue was investigated and addressed: “DO and depth were highly correlated, which can potentially impact the RF prediction of variable importance, although there is no agreement on what the effects of multicollinearity are (Gregorutti et al., 2017). However, RF is a very robust method, and in this study, considering the large dataset used with only few predictors that are all relevant to explain fish assemblages, we believe that overfitting is not an issue. Nevertheless, a RF model was built only with “Depth”, and then only with “DO” to test for the effect of multicollinearity on their relative importance.”, p.8, lines 9-14.

15

Hypoxia in mangroves: occurrence and impact on valuable tropical fish habitat

5 Alexia Dubuc^{1,2}, Ronald Baker³, Cyril Marchand⁴, Nathan J. Waltham^{1,2}, Marcus Sheaves^{1,2}

¹College of Science and Engineering, James Cook University, Townsville, 4810, Australia

²TropWATER, Townsville, 4810, Australia

³Department of Marine Sciences, University of South Alabama, Dauphin Island Sea Lab, Alabama, 36528, United States of America

10 ⁴Institute of Exact and Applied Sciences, University of New Caledonia, Noumea, 98800, New Caledonia

Correspondence to: Alexia Dubuc (alexia.dubuc1@my.jcu.edu.au)

Abstract. Intertidal mangrove forests are harsh environments that can naturally experience hypoxia in association with low tide. However, we know relatively little about dissolved oxygen (DO) fluctuations and DO-induced responses by fish, although

15 DO is a fundamental water quality parameter. This study examines DO as a potential factor regulating the utilisation of intertidal mangrove forests by fish, and consequently their ~~value~~widely recognised feeding, refuge and nursery values. We deployed underwater video cameras, coupled with DO and depth loggers, in a mangrove forest to record changes in fish assemblages in response to tidal variations in DO and other associated environmental parameters. Our results indicate that DO underwent extreme tidal fluctuations, reaching levels as low as 14 % saturation. As DO was identified as a significant factor

20 to explain variability in fish assemblage composition, we further investigated fish responses to DO fluctuations. Higher taxonomic richness and frequencies of occurrence were observed once DO reached 70-80 % saturation. More detailed examination revealed species-specific responses. Three distinct patterns of mangrove utilisation in response to DO were identified, driven by apparent taxa's behavioural DO avoidance thresholds. Most taxa did not display any behavioural avoidance, including presence at the lowest DO levels, while other taxa were not observed either below 50-60 % saturation,

25 or below 70-80 % saturation. This implies that tidal migrations, often observed in intertidal environments, could be the result of differential DO tolerances, and not simply initiated by changes in water depth. Taxa remaining in the mangrove forest even at low DO were on average more frequently observed than the other taxa, and were mostly species commonly associated with mangrove habitats. This suggests that being adapted to withstand low DO might be an important condition to use mangrove habitats extensively. The need of being tolerant to low DO could constrain fish utilisation and explain the relatively low species

30 richness often observed in other intertidal mangrove forests.

1 Introduction

Mangrove forests are recognised as important habitats for fish (Robertson and Duke, 1990; Nagelkerken et al., 2002; Nagelkerken et al., 2008). However, their commonly recognised feeding, refuge and nursery value has been shown to be heterogenous and influenced by local environmental factors influencing mangrove forests accessibility and suitability (Faunce and Serafy, 2006; Bradley et al., 2019). Mangroves can be challenging habitats, especially in regions where they are subjected to tide (Unsworth et al., 2007; Olds et al., 2012), as tidal variation generates a range of constraints. Mangrove forests generally become only accessible for short periods while flooded at high tide, and the decrease in water depth as the tide ebbs leads to eventual drainage of the forest (Sheaves, 2005; Baker et al., 2015). Tidal variation also induces short-term changes in environmental conditions such as salinity, temperature, water depth, turbidity, light, and dissolved oxygen (DO), that can lead to a temporarily unsuitable habitat for fish utilisation (Davis, 1988; Rountree and Able, 2007; Brady and Targett, 2013; Dubuc et al., 2017; Mattone and Sheaves, 2017).

Several studies have demonstrated that fish undertake regular migrations in intertidal mangrove forests. Migration patterns have been shown to be species-specific and influenced by tide (Laroche et al., 1997; Krumme, 2004; Ellis and Bell, 2008; Meynecke et al., 2008; Sheaves et al., 2016; Dubuc et al., 2019). Tidal migrations indicate that fish respond to one or several factors varying with tide. However, there is still uncertainty on what environmental factors induce these tidal migrations. The factors driving these species-specific tidal migrations could be changing water depth (Bretsch and Allen, 2006; Ellis and Bell, 2008; Reis-Filho et al., 2016), or alternatively the result of active avoidance to adverse changes in water quality.

A key factor determining water quality and that can change drastically across tide is DO. DO is crucial for all aerobic organisms, including fish (Driedzic and Hochachka, 1978; Falkowski and Raven, 1997). However, DO availability varies extremely over the tidal- and diel-cycle in mangrove habitats, reaching levels that can lead to physiological stress (Knight et al., 2013; Dubuc et al., 2017; Gedan et al., 2017; Mattone and Sheaves, 2017). Consequently, it is likely that some fish species respond to changes in DO by undertaking tidal migrations, or by avoiding mangrove forests permanently to prevent the adverse effects following exposure to low DO. Despite the importance of DO and its extreme variability in shallow-water environments, our understanding on how DO fluctuations shape patterns of fish utilisation on a tidal and diel scale is limited (Davis, 1988; Smith and Able, 2003; Rountree and Able, 2007).

DO is maybe the most complex and variable parameter to study, as it is influenced by multiple interacting biotic and abiotic parameters at a range of spatial and temporal scales (Buffoni and Cappelletti, 1999; Diaz and Rosenberg, 2008; Nezhlin et al., 2009). However, DO is partially predictable. The main factor responsible for DO fluctuations is the autotrophic cycle, with photosynthesis occurring during daylight hours, and respiration during nighttime hour, creating a diel-cycle in DO. Another important parameter to consider, especially in intertidal environments, is tide as it is responsible for many physical and chemical changes susceptible to impact oxygen cycle. If these two factors are considered, DO can be partially predicted, with the lowest DO levels occurring at night or dawn at low tide, following nighttime respiration, while maximum levels are recorded in the afternoon at high tide, following autotrophic production (Kenney et al., 1988; Mazda et al., 1990; D'Avanzo

and Kremer, 1994; Tyler et al., 2009). This diel pattern gives part of the answer of when fish could be able to use mangrove habitats without being exposed to high risks of low DO. However, fish species have developed physiological and behavioural adaptation strategies (Kramer, 1987; Breitburg, 1994; Diaz and Rosenberg, 1995), leading to species-specific hypoxia tolerances (Vaquer-Sunyer and Duarte, 2008). Consequently, these adaptations could result in species-specific tidal migrations, as species highly tolerant to hypoxia would be adapted to use more often and remain longer in mangrove forests, compared to other less tolerant species that would be restricted to access mangrove forests at higher DO levels.

Although it is known that mangrove forests experience natural low DO in some locations (Knight et al., 2013; Mattone and Sheaves, 2017), it is unknown how general this phenomenon is, and what are the potential consequences on fish populations. Understanding DO dynamics and the impacts on fish utilisation and value of highly productive habitats such as mangroves is crucial, especially in the context of global ocean deoxygenation (Diaz and Rosenberg, 2008; Breitburg et al., 2018). Ocean deoxygenation is mainly due to the increase of human activities along the coastlines during the past 50 years (Vaquer-Sunyer and Duarte, 2008), implying that mangrove ~~forest~~ecosystems are especially ~~vulnerable~~prone to ~~experience~~ anthropogenic deoxygenation due to their location along the coasts. By addressing the gaps of knowledge around hypoxia in mangrove forests, managers would be in a stronger position to implement adequate action plans to limit the impact of hypoxia that is predicted to worsen in the coming years (Breitburg et al., 2018).

This study examines the impact of DO fluctuations on the utilisation of mangrove forests by fish in a mangrove-coral reef seascape in the Indo West Pacific (IWP). We assessed how fish utilisation changes across tidally varying DO levels, and we determined the relative importance of DO, depth, lunar phase (neap vs spring), location within the mangrove forest (edge vs in-forest), time of day, and tide direction (flooding vs ebbing) in explaining variations in fish assemblages. To address this aim, we used unbaited underwater video cameras, simultaneously deployed at dawn and mid-afternoon on the edge and 5 m inside a mangrove forest, coupled with high frequency DO and depth loggers. The study site was located in an IWP mangrove-coral reef seascape experiencing a microtidal regime.

2 Materials and Methods

2.1 Study site

The study was conducted in a semi-enclosed lagoon (1.2 km long, 60 m wide, 1-2 m depth) located in Bourake, South Province of New Caledonia (21° 56.971S, 165° 59.481E; Fig. 1). The system comprises a 2.5 km² mangrove forest dominated by *Rhizophora stylosa* on the seaward edge and *Avicennia marina* on the landward margin. A channel (20-70 m wide, 2-6 m depth, 700 m long) bisects the mangrove forest and connects the semi-enclosed lagoon to the coastal waters of Pritzbuier Bay (~ 20 km²). The channel comprises two sheltered inlets (approximately 0.01 km² each), and a shallow (1-2 m depth) coral reef platform that extends from the middle of the channel to the edge of the mangrove forest. New Caledonia is an archipelago located in the South West Pacific, around 1500 km east of Australia. It is characterised by a semi-arid to tropical climate with

annual total rainfall of 1000 mm, and a mixed semi-diurnal microtidal regime (maximum 1.8 m tidal range). The study system receives little freshwater inflow with no defined drainages.

Figure 1: Map of the study system in Bouraké, South Province of New Caledonia. The 9 study sites sampled from 21 February to 1 March 2017 are indicated by their corresponding numbers. Light grey areas represent mangrove forest, dark grey areas represent mainland, and white areas represent water.

2.2 Data collection

Nine sites were selected on an inland/offshore gradient along the channel (Fig. 1). Sites 1 to 8 were 4 paired sites, with odd site numbers located on the mangrove forest edge (defined as the boundary between mangrove prop-roots and bare substrate) and even site numbers located 5 m inside the mangrove forest. Site 9 was located on the edge of scattered mangrove trees growing on the reef platform of the innermost inlet and was considered as an edge site.

Fish assemblages were examined at the sites using unbaited underwater video cameras (UVCs). UVCs were deployed at dawn until the battery was discharged (around 2.5 h) and again mid-afternoon, during neap (21 to 23 February 2017) and spring tides (28 February to 1 March 2017), simultaneously at the 9 sites. This sampling design was applied to capture fish assemblages as close as possible to the expected lowest daily DO levels (dawn), and the expected highest DO levels (mid-afternoon; Dubuc et al., 2017). Cameras were positioned around 7 cm above the substrate, facing towards the channel. A marker was placed 0.5 m in front of the camera lens as a visibility indicator to ensure all videos had a minimum visibility of 0.5 m. Visibility was relatively consistent during the sampling period, and fish could be identified confidently up to approximately 2 m from the UVCs in all videos.

Over this study, we examined the effects of: tidal factors (depth, lunar phase (spring vs neap) and tide direction (flooding vs ebbing)) related to habitat accessibility; DO, temperature and salinity related to habitat suitability; and two different components of the mangrove forest (edge and in-forest) related to the nature of mangrove habitats. Between 21 February and 1 March 2017, near-bottom (~ 5 cm above the sediment) DO (% saturation) and water temperature (°C) were measured every 15 minutes at each site using calibrated multi-parameter loggers (YSI Pro ODO model (accuracy ± 1 % saturation)). A depth logger (In-Situ Inc. Rugged Troll 100 model) was coupled with each multi-parameter logger to measure water depth (cm) every 15 minutes. Salinity was measured every 15 minutes from 21 to 23 February, and between 28 February to 1 March 2017 using another multi-parameter logger (YSI 6920 V2-2) positioned at site 5. Tidal range was obtained from the SHOM website (SHOM, 2017).

2.3 Data extraction from videos

Methodological details to extract data from the videos are reported in Dubuc et al. (2019). Briefly, as considerable time is required to process videos, we subsampled the acquired recordings. One neap tide and one spring tide sampling were randomly selected for processing. Five sites from the second neap and spring tide sampling were also processed so one randomly selected replicate on the reef platform (site 9), and two replicates of randomly selected paired sites, not located on the reef platform,

were acquired (sites 5-8). Videos were viewed using [VideoLAN Client media player \(VLC\)](#) and subdivided in 5-min intervals to follow the temporal variations in fish assemblages. All taxa observed in each 5-min interval were identified and recorded. Only presence/absence data were recorded to avoid biases induced by count data when using UVCs (Sheaves et al., 2016). Fish were identified to the lowest possible taxonomic level, with all fish identifications validated by two additional experts.

5 For each 5-min interval video, information about depth, DO, time of day, lunar phase (neap vs spring), habitat (edge vs in-forest), and tide direction (flooding vs ebbing) was recorded.

2.4 Data analysis

To graphically investigate temporal dynamics of DO on the edge and in-forest, and covariance with depth and temperature, cubic spline smoothers were fitted to the 3 time series using R. DO residuals were graphically added to emphasise extreme

10 DO levels. A Kendall's correlation test (as DO did not follow a normal distribution) was used to determine whether patterns of change in DO were significantly correlated between edge and in-forest sites. Cumulative DO frequency curves (Dubuc et al., 2017) were plotted for each site to highlight differences in spatial and temporal dynamics.

Following the methodology described in Dubuc et al. (2019), an index depending on observation per unit effort (OPUE) was used to calculate frequencies of occurrence for each taxa (the total number of 5-min intervals in which a taxon

15 was observed in one sample unit was divided by the total number of 5-min intervals recorded for the same sample unit). We acknowledge the existence of non-independence issue created by subsampling videos in 5-min intervals. Indeed, this can potentially lead to the count of the same individual fish in sequential time windows. However, the objective here was to characterise environmental conditions suitable for the utilisation of mangrove habitats through time by different taxa. Therefore, we assumed that if an individual of a taxon was present (no matter if it was the same individual or another one to

20 any recorded in previous 5-min intervals), then conditions were suitable. Frequencies of occurrence were first calculated per site. Only taxa with a frequency of occurrence ≥ 0.05 on at least one site were retained for analyses (hereafter referred to as “common taxa”).

We hypothesised that DO is an important factor in explaining the presence of fish taxa. To test this hypothesis, a random forest (RF) model (Breiman, 2001) was used to quantify the relative importance of DO and the other measured

25 environmental factors, and identify how well the combination of the selected environmental factors predicted fish taxonomic richness. This machine learning algorithm permits analysis of data that do not meet the requirements of normality and homoscedasticity required for approaches such as general linear models, and include repeated measurements (Mercier et al., 2011). The taxonomic richness was determined for each 5-min interval recorded (1434 5-min intervals in total). The dataset was then split in two to obtain a training dataset (875 5-min intervals obtained from the two entire sampling days processed)

30 to build the RF model, and a test dataset (559 5-min intervals obtained from the 5 replicate sites processed) to test the robustness of the model at predicting taxonomic richness. The RF model, consisting of 1000 regression trees generated using 2 predictors at each split (default value), was created to predict taxonomic richness, with “Habitat” (edge vs in-forest), “Depth”, “DO”, “Lunar phase” (neap vs spring), “Time of day” (morning vs afternoon), and “Tide direction” (flooding vs ebbing) as predictors.

The out-of-bag error estimate, corresponding to a measure of the prediction error of the random forest, was used to validate the model. The increase mean-square error was calculated to determine the variable importance in predicting taxonomic richness. The model was then run on the test dataset to generate a confusion matrix. From the confusion matrix, the percentage of cases when the model was able to predict the exact taxonomic richness observed was calculated, as well as the percentage of cases where the model was able to predict the taxonomic richness observed at ± 1 taxon. All RF model-related analyses were conducted using the ‘randomForest’ package in R (Breiman, 2001). As a RF model is built from many classification trees, it is not accurate to draw a single tree from this model. Therefore, a univariate classification tree analysis was carried out on the training dataset with the same variables as the RF, and the tree obtained from this analysis was used to visually interpret the RF model. The univariate classification tree analysis was performed using the package “party” in R (Hothorn et al., 2010).

After quantifying the importance of DO, the goal was to understand when fish initiated responses to DO. Each 5-min video interval was allocated to a DO % saturation class in 10 % intervals (from 30-40 % saturation to 100-110 % saturation) according to the DO level recorded. The frequency of occurrence of each common taxon per class of DO was then calculated to investigate whether intensity of utilisation varied in response to DO. A General Additive Mixed Model (GAMM) was built with $\log_{10}(X + 1)$ transformed frequencies of occurrence of each common taxon as the response variable, “DO” as a smooth term, and “Habitat” (edge vs in-forest) as a parametric term, using a Gaussian distribution and an identity link function. The model was built using the package “mgcv” in R (Wood, 2007). Frequencies were $\log_{10}(X + 1)$ transformed to reduce the impact of extreme values and improve visualisation. The frequencies of occurrence of each common taxon across DO were also plotted individually using a LOESS curve. Patterns were then investigated individually and visually grouped by similarity of mangrove utilisation in response to DO. No grouping was imposed, and visualisation of the data identified three common patterns of mangrove utilisation across DO among all common taxa. These three patterns were based on distinct preferences for DO with taxa recorded from 30 to 110 % saturation, taxa recorded from 50-110 % saturation, and taxa recorded from 70 to 110 % saturation.

Taxa observed in mangrove habitats even at low DO (from 30 to 110 % saturation) may indicate that these fish are well adapted to use mangrove habitats extensively and therefore expected to be observed more frequently than the other taxa. To test this hypothesis, overall frequencies of occurrence were calculated for each common taxon by dividing the total number of 5-min intervals in which a taxon was observed by the total number of 5-min intervals recorded during the study at the DO range corresponding to that taxon’s assigned pattern of utilisation (30-110 % saturation; 50-110 % saturation; 70-110 % saturation). Following this methodology allows to calculate frequencies of occurrence according to the effective sample size; it therefore overcomes the unbalanced sampling effort as species recorded across the entire range of DO would automatically be more frequent than species only recorded from 70-110 % saturation as it represents a smaller proportion of the sample size. Species-specific overall frequencies of occurrence were then plotted by type of patterns of utilisation assigned using boxplots. To test for differences in overall frequencies of occurrence among the different types of patterns of utilisation, a Kruskal-Wallis test followed by a post-hoc Dunn test were performed (data did not follow a normal distribution).

3. Results

DO was highly variable at the mangrove study sites in Bourake (Fig. 2). DO reached levels as low as 14 % saturation at night low neap tides during the entire logging period, and as low as 35 % saturation during the morning hours that coincided with low spring tides while UVCs were deployed (Fig. 2; Table 1). DO closely followed the diel- and tidal cycles, with daily maximum levels recorded during the afternoon high tide, and minimum levels during the night or early morning low tide. Temperatures followed a typical diel cycle, peaking during the late afternoon and declining at night reaching minimum levels in the early morning hours. Salinity was relatively constant during the study, ranging between 32.1 and 34.9.

Table 1: Summary of the environmental factors during the study period.

Figure 2: Cubic spline smoothers for dissolved oxygen (DO), depth and temperature. Data are from 21 February to 25 February 2017 and from 27 February to 1 March 2017. For DO, edge sites are represented by the blue smoother and black points, and in-forest sites by the grey smoother and red points. For the other factors, edge sites are represented by the black smoothers and in-forest sites by the grey smoothers. Shaded areas represent sunset to sunrise. Each red box represents an underwater camera sampling.

Temporal dynamics in DO were significantly correlated between in-forest and edge habitats ($p < 0.0001$; $r = 0.95$; Fig. 2; Fig. A1). DO minima and maxima were also similar between edge and in-forest sites (Table 1). Most DO levels were between 70 and 80 % saturation, nevertheless, DO levels were equal or below 50 % saturation (adopted threshold for hypoxia; Breithurg, 2002; Dubuc et al., 2017) for around 11 % of the time inside the forest and 21 % on the edge (Fig. 3). Mean and minimum DO levels were lower during neap tides than spring tides for both edge and in-forest sites (Table 1). The duration of low DO tended to increase with distance from the mouth of the channel, with DO at or below 50 % saturation 4 % of the time at the in-forest site closest to the channel entrance (site 2), and 14 % of the time at the in-forest site furthest from the channel entrance (site 8; Fig. 3).

Figure 3: Site-specific cumulative DO frequencies. Each colour represents a paired site (edge and in-forest), and edge sites are represented by solid coloured lines and in-forest sites by dashed coloured lines. The solid black line indicates the mean cumulative DO frequencies across edge sites and the dashed one the mean cumulative DO frequencies across in-forest sites. The frequency of hypoxia ($DO \leq 50$ % saturation) at sites 2 and 8 is indicated to help read the figure.

Fifty-six video deployments were processed (totalling more than 118 h of video). Seventy-two taxa from 29 families were recorded, with 36 common taxa (frequency of occurrence ≥ 0.05) retained for further statistical analyses (Table 2). The full list of taxa identified is provided in Table A1. Among the 36 common taxa identified, only 23 taxa were recorded in-forest, while on the edge 34 were recorded.

Table 2: The 36 common fish taxa identified by underwater video cameras at Bouraké, New Caledonia.

We used a RF model to assess the relative importance of several environmental factors in determining taxonomic richness. The robustness of the model in predicting taxonomic richness at this location was also tested. The RF model consisted of 875 5-min intervals and 6 independent environmental factors. It explained 50.2 % of the total variance in taxonomic richness.

“Depth” was the most important factor for predicting taxonomic richness with its exclusion from the model increasing the mean-square error (MSE) by more than 61 % (Fig. 4a). “Lunar phase”, “DO” and “Habitat” were also important predictors of taxonomic richness (between 45 and 55 % increase in MSE). “Time of day” and “Tide direction” were of less importance but still accounted for an increase in MSE of more than 35 %. The RF model successfully predicted the exact taxonomic richness observed on the replicate sites for 23 % of the 5-min intervals recorded, and for 60 % of them at ± 1 taxon (Table S1). As DO and depth were highly correlated, which can potentially impact the RF prediction of variable importance, although there is no agreement on what the effects of multicollinearity are (Gregorutti et al., 2017). However, RF is a very robust method, and in this study, considering the large dataset used with only few predictors that are all relevant to explain fish assemblages, we believe that overfitting is not an issue. Nevertheless, a RF model was built only with “Depth”, and then only with “DO” to test for the effect of multicollinearity on their relative importance. In both cases, the total variability explained by the model was much lower (33.42 % with only “Depth” included and 26.36 % with only “DO” included) than when “Depth” and “DO” were both included (50.22 %). The univariate tree corroborated the results of the RF in terms of variable importance, and proved to be an effective way of getting a visual interpretation of the RF (Fig. 4b). The taxonomic richness was the lowest at in-forest sites, and on the edge during spring tides. Conversely, taxonomic richness was the highest when water depth was the deepest during neap tides, and when DO was greater than 83 % saturation.

Figure 4: Importance of different environmental factors in explaining variations in taxonomic richness. (a) Random forest importance plot. Importance plot was obtained from a random forest model built with Site, Depth (cm), Lunar phase (neap vs spring), DO: Dissolved oxygen (% saturation), Time: Time of day (morning vs afternoon), Tide dir: Tide direction (flooding vs ebbing) and Habitat (in-forest vs edge) as predictors for taxonomic richness. (b) Univariate classification tree. The tree was built using the same variables and provides a visual interpretation of the random forest model. Numbers in the boxes in each terminal leaf represent the average taxonomic richness, the number of 5-min intervals (n), and the total % of 5-min intervals that n represents.

The RF model showed that DO was an important factor in explaining variations in taxonomic richness. We therefore further investigated fish responses to DO. Log10 transformed frequencies of occurrence of all taxa combined varied significantly across DO (GAMM: $F = 3.693$; $p = 0.0166$) and differ between habitat (GAMM: $F = 11.48$; $p < 0.0001$). On average, frequencies of occurrence were highest once DO reached 70-80 % saturation (Fig. 5a and b). The spread of the frequencies of occurrence around the median was also substantially reduced once DO was between 70 and 110 % saturation, indicating that taxa were more equally frequent, whereas at low DO levels only a few taxa were abundant, with the rest rarely observed, or absent entirely. The patterns of utilisation across DO intervals differed between the in-forest and edge habitat (Fig. 5a and b). Although, on average, the highest frequencies of occurrence were recorded once DO reached 70-80 % saturation for both habitats, there were larger disparities between taxa at edge sites, with some being frequently observed at low DO and some

being rarely observed, or absent entirely until DO reached 70-80 % saturation (Fig. 5a), while at in-forest sites, frequencies of occurrence were more stable across DO (Fig. 5b).

5 **Figure 5: Variation in frequencies of occurrence of fish across DO class. Frequencies of occurrence were \log_{10} transformed. Each data point used to draw the boxplots represents the frequency of occurrence of one common taxon during a specific DO class. The blue line represents the GAMM model fitted with DO as the smooth term using a Gaussian distribution and an identity link function for (a) Edge sites; and (b) In-forest sites. Shaded areas represent the confidence interval at 95 %.**

Disparities in frequencies of occurrence between taxa were explained as fish appeared to respond differently to DO variations.

10 We identified 3 distinct types of patterns of mangrove utilisation across DO while investigating species-specific variations in frequencies of occurrence across DO: 1) Pattern 1: "High tolerance" – these taxa (19 taxa) were recorded across the entire range of DO (30-110 % saturation) and were usually known to use mangrove habitats extensively (Fig. 6; Table 2; Fig. A2a and b); 2) Pattern 2: "Medium tolerance" – these taxa (7 taxa) were not observed once DO was below 50-60 % saturation and were also usually known to use mangrove habitats extensively (Fig. 6; Table 2; Fig. A2c); and 3) Pattern 3: "Low tolerance"

15 – these taxa (10 taxa) were not observed once DO was below 70-80 % saturation and were usually reef-associated taxa (Fig. 6; Table 2; Fig. A2d). Figure 6 only shows one example of taxa per type of patterns, however, all the species-specific patterns are provided in figures A2a, b, c and d.

20 **Figure 6: The 3 common patterns of mangrove utilisation across DO identified. Each LOESS curve represents one example of taxa per type of patterns of mangrove utilisation across DO: Pattern 1: "High tolerance" represented by taxon *Fibramia lateralis*; 2) Pattern 2: "Medium tolerance" represented by taxon *Acanthopagrus* sp.; 3) Pattern 3: "Low tolerance" represented by taxon *Heniochus acuminatus*. LOESS curves were built with the \log_{10} transformed frequencies of occurrence.**

The type of patterns followed by a taxon appeared to significantly influence its overall frequency of occurrence (Fig. 7; Kruskal-Wallis: $\chi^2 = 9.8757$; $p < 0.01$). Taxa following a "High tolerance" pattern were on average significantly more

25 frequently observed than taxa following a "Low tolerance" pattern (Dunn test: $p < 0.01$). Overall frequencies of occurrence of taxa following a "Medium tolerance" pattern were intermediate but not significantly different than "High tolerance" taxa (Dunn test: $p > 0.5$) or "Low tolerance" taxa (Dunn test: $p > 0.1$).

30 **Figure 7: Relationship between frequencies of occurrence and type of patterns followed. Overall frequencies of occurrence were calculated for each common taxon at the DO range corresponding to that taxon's assigned pattern of utilisation. Differential letters above boxes denote statistically different means of frequency of occurrence among types of patterns of utilisation (Dunn test: $p < 0.05$).**

4. Discussion

4.1 Tidal Depth and DO are both potential factors for observed tidal migrations: stranding or hypoxia?

Fish assemblages were shown to be highly variable over time and space in the study area (Dubuc et al., 2019). About half of this variability was explained by multiple environmental factors among which depth, DO, lunar phase, and location within the mangrove forest (edge or in-forest) were the most important. The main trend identified among the temporal variability in fish assemblages occurred at a tidal scale (Dubuc et al., 2019). This highlights, highlighting that fish were responding to one or several factors covarying with tide. The effects of lunar phase and location on fish assemblages were investigated in detail in Dubuc et al. (2019), therefore the following discussion focuses on water depth and DO, that both varied at a tidal scale. Tidal variations in fish assemblages are common in intertidal environments (Laroche et al., 1997; Ellis and Bell, 2008; Becker et al., 2012), however, the factors responsible for their occurrence have rarely been investigated. There was a high collinearity between depth and DO as both varied across the tidal cycle, and these two factors were greatly important to explain variations in fish assemblages. Consequently, it is likely that depth and DO play an essential role in triggering tidal migrations. Previous studies have shown that fish can respond to both water depth and DO changes (Wannamaker and Rice, 2000; Bretsch and Allen, 2006; Johnston and Sheaves, 2007; Rountree and Able, 2007; Ellis and Bell, 2008; Brady and Targett, 2013), emphasising the idea that fish could be using depth and DO interchangeably as cues to initiate tidal migrations, a trigger that might be dependent on the perceived upcoming risk (stranding or hypoxia).

Depth becomes limiting when fish cannot safely access the area because it is too shallow, with associated risk of stranding. However, many taxa, including small sized species, avoided mangrove habitats even when they potentially had enough water (Dubuc et al., 2019). On the other hand, changes in DO can rapidly impair fish fitness (Chabot and Claireaux, 2008; Vaquer-Sunyer and Duarte, 2008). Indeed, in aquatic environments, DO is considered as the primary limiting factor (Fry, 1971; Claireaux and Chabot, 2016) as it is naturally scarcer than in the atmosphere (Diaz, 2001), making it a perpetual challenge for fish to access available oxygen in the water. In the mangrove forest examined here, changes in DO across tide were extreme, with up to 80 % loss during onehalf of a tidal period (high to low), supporting the notion that DO could be an important constraint for fish to access mangrove habitats, even when depth is suitable. Considering the relevance of both factors, and the fact that the risk of stranding and hypoxia are concomitant, it is likely that fish are adapted to respond to either depth or DO, depending on which one becomes limiting first, and this may vary among taxa.

The hypothesis that fish can interchangeably respond and tolerate adverse depth and DO conditions was supported by the fact that all taxa that access mangrove habitats at low depth in Bourake (Pattern 3: “Low-depth users”; Dubuc et al., 2019) were all following a “High tolerance” pattern here in response to DO, indicating that they were able to tolerate low depth as well as low DO. The effects of depth and DO might well be mostly confounded as DO fluctuations overall follow depth, however, DO amplitude (difference between minimum and maximum levels) depends on many interacting factors including weather (Tyler et al., 2009), local geomorphology or biological and chemical activities (Mazda et al., 1990; Peña et al., 2010). Therefore, minimum and maximum DO levels for a same depth can differ and vary in complex spatial and temporal scales,

independent from the tidal scale, probably explaining why depth and DO were both highlighted as important factors. These results emphasise the importance to understand the DO dynamics and its impacts on fish to comprehend how mangrove forests are being used. Future targeted sampling could for instance specifically investigate fish movements at the end of ebbing tides experiencing relatively high DO and low DO, as on the 28 February afternoon and morning respectively. This would help to determine whether fish consistently leave mangrove habitats at a same depth or whether responses are indeed affected by DO levels abnormally low or high.

4.2 Tidal-induced dissolved oxygen variations

During this study, we hypothesised that DO could be an important limiting factor for fish utilising intertidal mangrove forests, and our findings support this hypothesis. However, the associated risk of hypoxia in the study system was still to be tested.

Diel-hypoxia conditions observed in other mangrove systems (Knight et al., 2013; Dubuc et al., 2017; Gedan et al., 2017; Mattone and Sheaves, 2017) was also a seemingly common condition in Bourake. DO showed extreme and rapid fluctuations with the diel and tidal cycles. Low DO was recorded daily and was most severe during nighttime ~~when the tide was~~ ebbing tide, reaching levels that can compromise fish fitness (Rogers et al., 2016). It is likely that hypoxia is a common condition of intertidal mangrove forests due to the mineralisation of a large amount of organic matter produced by mangrove trees, responsible for a high consumption of oxygen by bacteria (Alongi et al., 2004; Dittmar et al., 2006), but also due to the exchange of porewater between sediments and water column, known as “tidal pumping” (Li et al., 2009; Gleeson et al., 2013; Call et al., 2015; Leopold et al., 2017). Briefly, at each flooding tide, water infiltrates intertidal sediments and then drains back to the water column during the next ebbing tide. While in the sediments, water becomes enriched in reduced compounds such as NH₃, H₂S, FeS₂, resulting in water acidification and deoxygenation (Marchand et al., 2011). As porewater accumulates in the water column throughout ebbing tide (Bouillon et al., 2007), it drives extreme drops of oxygen usually observed at low tide. Connectivity with the Pritzbuier Bay was crucial here in this mangrove-coral semi-enclosed lagoon as the flooding tide presumably brings oceanic water that is more saturated, replenishing DO levels. During spring tides, higher DO levels were recorded, probably driven by higher water renewal compared to neap tides. There was no difference observed between DO dynamics on the edge and in-forest, however minimum values were slightly lower on the edge because water remained permanently at low tide being subjected to further decline compare to in-forest that became exposed earlier during the tide and therefore experiencing a shorter DO decline period.

4.3 ~~Species-specific responses~~ Responses to DO variations

Fish significantly responded to daytime DO variations, with taxonomic richness and average frequencies of occurrence higher and more consistent once DO reached 70-80 % saturation. ~~This~~ Even though fish data were only collected during daytime when photosynthesis occurs, this result indicated that DO levels reached during the study were probably low enough to cause harmful effects, and therefore, many taxa responded by temporarily avoiding the area. Apparent behavioural avoidance thresholds observed were somewhat species-specific ~~and were, being~~ initiated at different DO levels; potentially driven by differential

tolerances to low DO (Claireaux and Chabot, 2016). ~~Three main types~~ However, three broad groups of patterns of mangrove utilisation were identified driven by taxa's behavioural avoidance thresholds. Most taxa did not display any behavioural avoidance (~~"(i.e. most taxa exhibited a "~~High tolerance" pattern), and some of these taxa even reached their maximum frequency of occurrence at the lowest DO levels recorded (30-40 % saturation). Most of these taxa ~~are known to commonly use mangrove habitats,~~ such as *L. argentimaculatus*, Mugilidae spp., and Gobiidae spp. (Froese and Pauly, 2017), ~~are known to extensively use mangrove habitats (Sheaves et al., 2016; Dubuc et al., 2019).~~ On the other hand, other taxa were not observed either below 50-60 % saturation ("Medium tolerance" pattern), or below 70-80 % saturation ("Low tolerance" pattern). Taxa following a "Low tolerance" pattern, were mostly reef-associated species, and therefore are not usually seen in mangrove habitats, such as *C. vagabundus*, *H. acuminatus*, and *Scarus* sp. (Froese and Pauly, 2017). The three different types of patterns of utilisation observed may highlight that taxa following a "High tolerance" pattern, and therefore taxa commonly seen in mangrove habitats, are more tolerant to low DO than taxa following "Medium tolerance" and "Low tolerance" patterns.

Even though the underlying adaptations behind these patterns still need to be investigated, these observations suggest that ~~taxa able to withstand low DO were the most successful at using mangrove habitats over taxa displaying avoidance behaviour. Indeed, "High tolerance" taxa were on average more frequently observed than "Medium tolerance" taxa, themselves more frequently observed than "Low tolerance" taxa.~~ DO tolerance may partly explain species reliance on mangrove habitats. ~~Indeed, taxa extensively using mangrove habitats, such as *L. argentimaculatus*, Mugilidae spp. and Gobiidae spp., displayed an apparent higher tolerance to hypoxia than taxa occasionally using mangrove habitats such as *L. harak* and *Plectorhinchus* spp., themselves displaying a higher tolerance than species not usually found in mangroves but in coral reefs such as *C. vagabundus*, *H. acuminatus* and *Scarus* sp. (Sheaves et al., 2016; Froese and Pauly, 2017; Dubuc et al., 2019).~~ Tolerance to low DO provides an evident benefit as taxa can use mangrove habitats more often and for longer periods compared to taxa that need to migrate temporarily to avoid harmful DO levels. Moreover, remaining in low DO when most other taxa must leave, can provide opportunistic feeding and limited competition (Diaz et al., 1992; Rahel and Nutzman, 1994). On the other hand, tidal migrations can have indirect costs as they can increase risk exposure to predators as fish travel to open water, aggregate fish in suboptimal habitats (less food, more predation) while waiting for DO conditions to improve, and increase energetic costs during extended swimming activities (Eby et al., 2005; Shoji et al., 2005; Chabot and Claireaux, 2008; Craig, 2012). This implies that being adapted to withstand low DO might be an important feature of taxa using mangrove habitats extensively and spending a large part of their time in these habitats.

~~While no~~ No differences in DO levels were found between the edge and inside of the forest, suggesting that observed differences in fish assemblages between the two habitats could be explained by depth, especially the fact that in-forest sites get exposed during low tide while edge sites remain submerged. However, it was interesting to note that most taxa venturing in-forest (23 taxa) were following a "High tolerance" pattern (16 taxa; 4 taxa were following a "Medium tolerance" pattern, and 3 taxa a "Low tolerance" pattern). In other mangrove forests, DO can reach levels close to 0 % saturation (Knight et al., 2013; Mattone and Sheaves, 2017), so it is possible that such lethal levels are also occasionally reached in Bourake. ~~This~~ In

addition to the risk of stranding, the risk of developing hypoxia could explain why relatively few taxa venture inside the forest; (Sheaves et al., 2016; Dubuc et al., 2019) and those that do, appear to be highly tolerant to hypoxia.

5. Conclusion

The overall value of mangrove forests has been linked to parameters such as geographical location, tidal range (micro-, meso- or macrotidal), setting (coastal, estuarine, island, embayment), and connectivity to adjacent habitats (Unsworth et al., 2008; Igulu et al., 2014; Bradley et al., 2019). While these factors provide important information, this study also shows that for a same mangrove forest, its value is temporally and spatially variable. About half of the variability in fish assemblages was explained by changes in depth, DO, lunar phase, position within the mangrove forest, time of day and tide direction. Most of the temporal variability occurred on a tidal scale, highlighting the importance of tide in driving mangrove forests utilisation. Here, depth and DO were mostly considered to explain tidal variations in fish assemblages, however, tide can induce variations in many other factors. For instance, a recent study suggested that the resuspension of mangrove-derived organic matter via porewater exchange could temporally boosts primary and secondary production, attracting fish regardless of water quality conditions (David et al., 2018). These results highlight the complexity to quantify the utilisation, and consequently, the value of mangrove forests and call for more investigations, especially on the effects of tide.

This study is the first to provide insights on how mangrove forests utilisation by fish is influenced by DO. It suggests that tolerance to low DO may be a widespread adaptation for taxa commonly using mangrove forests and could explain why they manage to thrive in these harsh environments. The need of being tolerant to low DO, or able to undertake tidal migrations while limiting alternative costs, is likely to limit the number of taxa using intertidal mangrove habitats that experience low DO. However, with only field data it is difficult to attribute specific fish responses to DO. Physiological techniques could be used to determine whether a difference in hypoxia tolerance could explain why some species access mangrove habitats at low DO levels while others access at higher DO levels (Lawton, 1991; McGill et al., 2006). This is the first study to look at, and suggest, a relationship between DO and fish utilisation of mangrove habitats. It adds to our knowledge on factors determining mangrove habitats value and highlights the importance to consider DO as a key controlling factor. More in-depth evaluation of DO dynamics and its impacts on fish populations in other locations would certainly help understanding the heterogeneous value of intertidal mangrove forests.

Data availability

All relevant data are freely available online on the Tropical Data Hub repository.

DOI: <http://doi.org/10.25903/5cd4d312cbcfb>

Dubuc, A. (2019): Dataset: fish assemblages and environmental parameters in Bourake. James Cook University. (dataset).

<http://doi.org/10.25903/5cd4d312cbcfb>

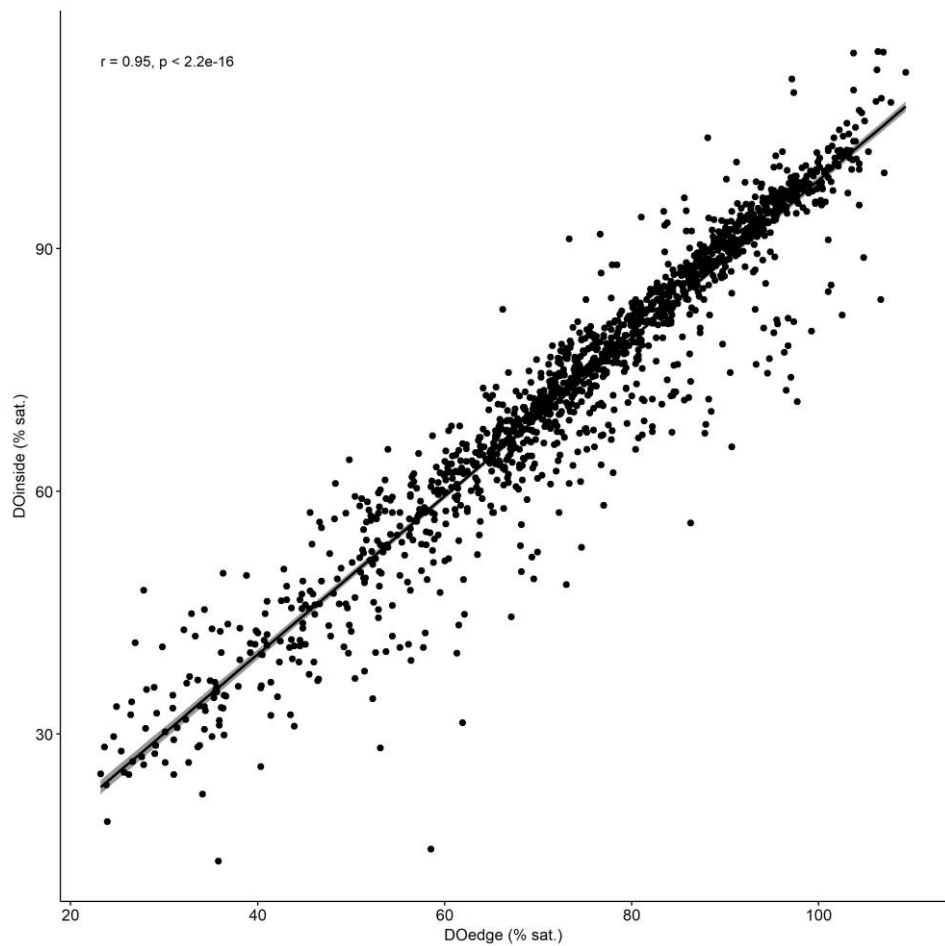
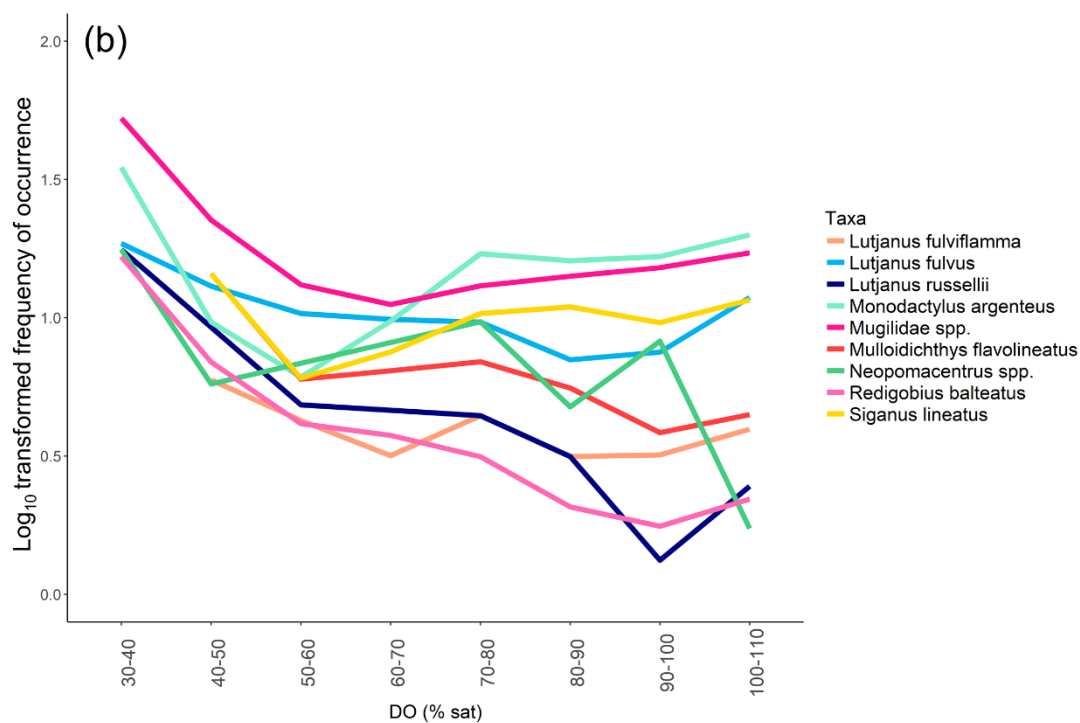
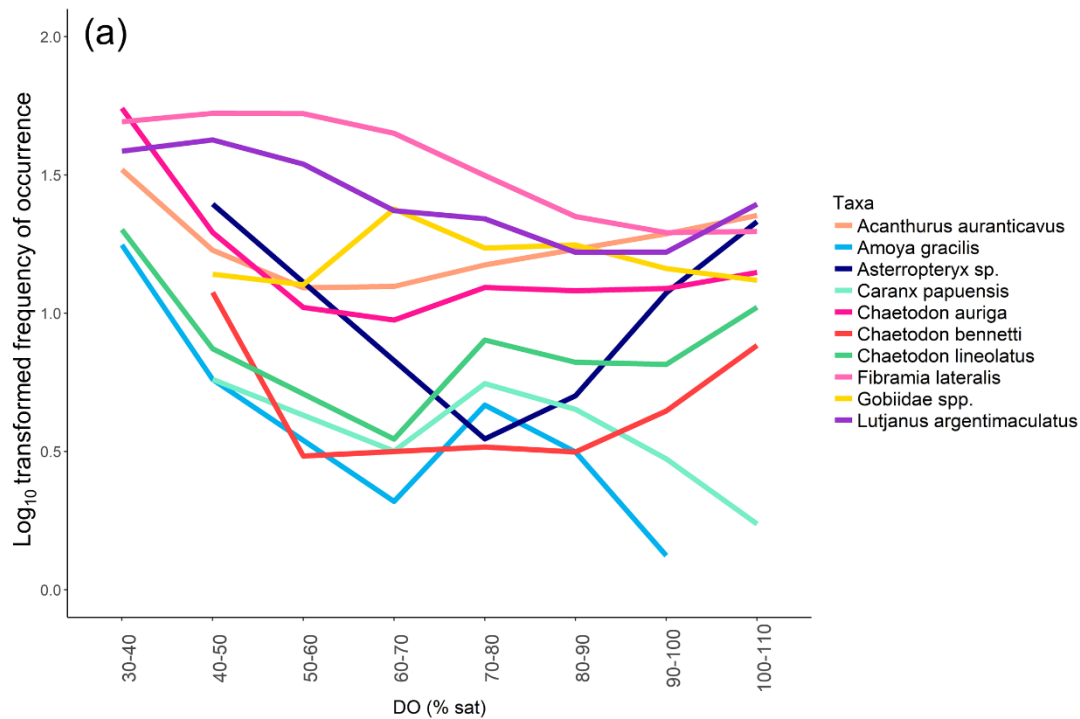


Figure A1: Kendall’s correlation test used to determine whether patterns of change in DO were significantly correlated between edge and in-forest sites.

Table A1: The full list of taxa identified by underwater video cameras at Bouraké, New Caledonia.

Family	Taxon	Table A1 (continued)	
Acanthuridae	<i>Acanthurus auranticavus</i>	Family	Taxon
	<i>Acanthurus grammoptilus</i>	Haemulidae	<i>Plectorhinchus lineatus</i>
	<i>Acanthurus</i> sp. cf <i>blochii</i>		<i>Plectorhinchus</i> spp.
	<i>Ctenochaetus</i> sp.		<i>Pomadasys argenteus</i>
	<i>Zebrasoma velifer</i>	Hemiramphidae	<i>Hyporhamphus</i> sp.
Apogonidae	<i>Fibramia lateralis</i>	Labridae	<i>Choerodon graphicus</i>

	<i>Ostorhinchus septemstriatus</i>		Labridae spp.
Belonidae	Belonidae spp.	Lethrinidae	<i>Lethrinus harak</i>
Blenniidae	Blenniidae spp.		<i>Lethrinus lentjan</i>
Carangidae	<i>Caranx ignobilis</i>		<i>Lethrinus obsoletus</i>
	<i>Caranx papuensis</i>	Lutjanidae	<i>Lutjanus argentimaculatus</i>
	<i>Caranx</i> sp.		<i>Lutjanus fulviflamma</i>
Chaetodontidae	<i>Chaetodon auriga</i>		<i>Lutjanus fulvus</i>
	<i>Chaetodon bennetti</i>		<i>Lutjanus russellii</i>
	<i>Chaetodon ephippium</i>	Monodactylidae	<i>Monodactylus argenteus</i>
	<i>Chaetodon flavirostris</i>	Mugilidae	Mugilidae spp.
	<i>Chaetodon lineolatus</i>	Mullidae	<i>Mulloidichthys flavolineatus</i>
	<i>Chaetodon lunula</i>		<i>Parupeneus ciliatus</i>
	<i>Chaetodon melannotus</i>		<i>Parupeneus indicus</i>
	<i>Chaetodon speculum</i>		<i>Upeneus tragula</i>
	<i>Chaetodon vagabundus</i>	Pomacanthidae	<i>Pomacanthus sexstriatus</i>
	<i>Heniochus acuminatus</i>	Pomacentridae	<i>Neopomacentrus</i> spp.
Clupeidae	Clupeidae spp.	Scaridae	<i>Bolbometopon muricatum</i>
Diodontidae	<i>Diodon hystrix</i>		<i>Scarus</i> sp. cf <i>ghobban</i>
Ephippidae	<i>Platax pinnatus</i>	Scatophagidae	<i>Scatophagus argus</i>
Fistulariidae	<i>Fistularia</i> spp.	Serranidae	<i>Epinephelus caeruleopunctatus</i>
Gerreidae	<i>Gerres filamentosus</i>		<i>Epinephelus lanceolatus</i>
	<i>Gerres oyena</i>		<i>Epinephelus malabaricus</i>
Gobiidae	<i>Amblygobius linki</i>		<i>Epinephelus</i> sp.
	<i>Amblygobius nocturnus</i>	Siganidae	<i>Siganus canaliculatus</i>
	<i>Amoya gracilis</i>		<i>Siganus lineatus</i>
	<i>Asterropteryx</i> sp. cf <i>striata</i>		<i>Siganus punctatus</i>
	<i>Cryptocentrus leptocephalus</i>	Sparidae	<i>Acanthopagrus</i> sp. cf <i>akazakii</i>
	<i>Eviota</i> sp.	Sphyraenidae	<i>Sphyraena barracuda</i>
	<i>Exyrias puntang</i>	Tetraodontidae	<i>Arothron hispidus</i>
	Gobiidae spp.		
	Gobiidae spp.2		
	<i>Redigobius balteatus</i>		



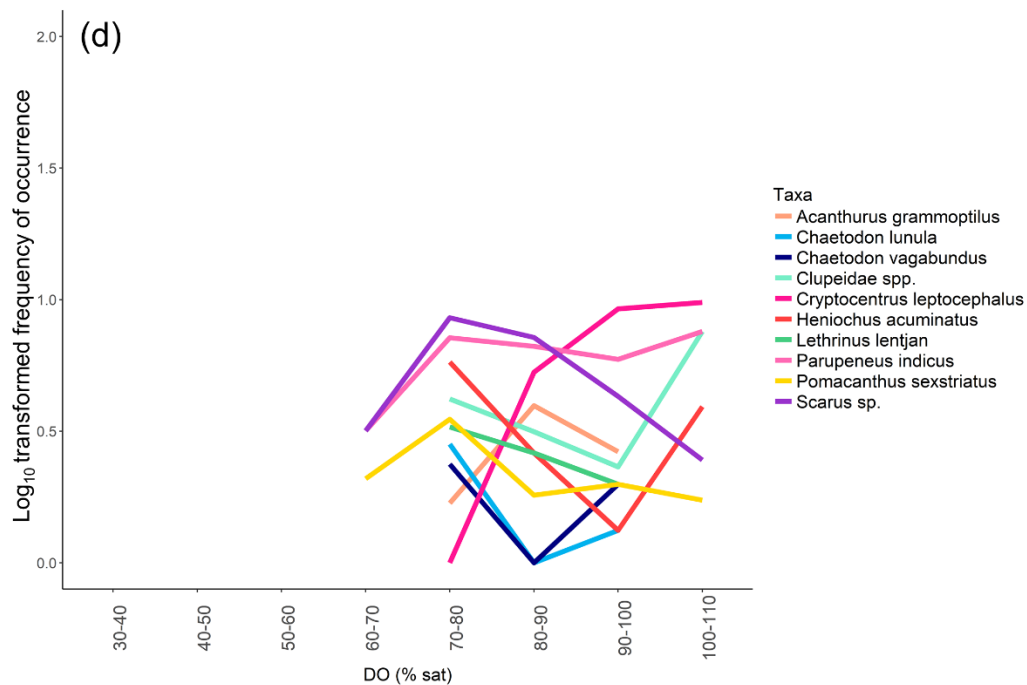
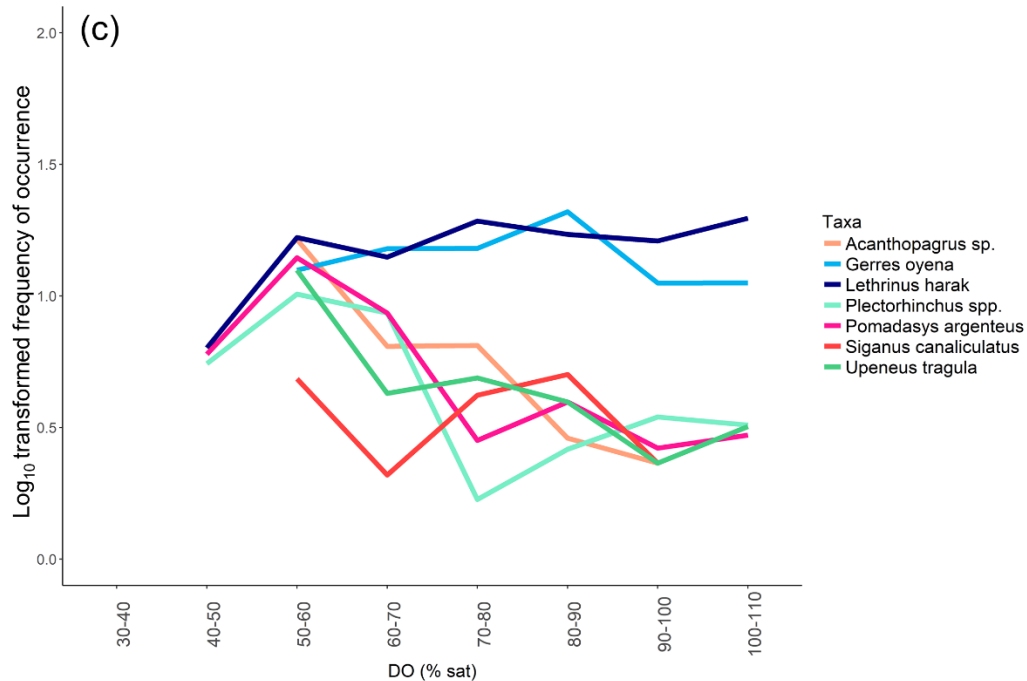


Figure A2: Species-specific patterns of mangrove utilisation grouped by type of patterns: (a) Pattern 1: “High tolerance; (b) Pattern 1: “High tolerance” (continued); (c) Pattern 2: “Medium tolerance”; (d) Pattern 3: “Low tolerance”.

Supplements

5 **Table S1: Robustness of the random forest model to predict taxonomic richness. The confusion matrix was generated by running the random forest model, built from the training dataset, on the test dataset to identify the percentage of cases when the model was able to predict the exact taxonomic richness observed and the taxonomic richness observed at ± 1 taxon.**

(uploaded as a pdf supplement)

Author contribution

AD, CM, NJW and MS contributed to the conceptualisation. AD led the investigation, project administration, formal analysis, visualisation and writing. CM, NJW, RB, and MS assisted with supervision and writing.

10 Competing interests

The authors declare that they have no conflict of interest.

Acknowledgements

15 We are grateful to Dr. Adrien Jacotot, Dr. Thanh Nho Nguyen and Mrs Clara Hass for their assistance in the field, and to the members of the Science for Integrated Coastal Ecosystem Management group for providing suggestions that improved the manuscript.

References

- 20 Alongi, D.M., Sasekumar, A., Chong, V.C., Pfitzner, J., Trott, L.A., Tirendi, F., Dixon, P., Brunskill, G.J.: Sediment accumulation and organic material flux in a managed mangrove ecosystem: estimates of land–ocean–atmosphere exchange in peninsular Malaysia, *Mar. Geol.*, 208, 383-402, 2004.
- Baker, R., Sheaves, M., Johnston, R.: Geographic variation in mangrove flooding and accessibility for fishes and nektonic crustaceans, *Hydrobiologia*, 762, 1-14, 2015.
- 25 Becker, A., Coppinger, C., Whitfield, A.K.: Influence of tides on assemblages and behaviour of fishes associated with shallow seagrass edges and bare sand, *Mar. Ecol. Prog. Ser.*, 456, 187-199, 2012.

- Bouillon, S., Middelburg, J.J., Dehairs, F., Borges, A.V., Abril, G., Flindt, M.R., Ulomi, S., Kristensen, E.: Importance of intertidal sediment processes and porewater exchange on the water column biogeochemistry in a pristine mangrove creek (Ras Dege, Tanzania), *Biogeosciences*, 4, 311-322, 2007.
- Bradley, M., Baker, R., Nagelkerken, I., Sheaves, M.: Context is more important than habitat type in determining use by juvenile fish, *Landsc. Ecol.*, 2019.
- Brady, D.C., Targett, T.E.: Movement of juvenile weakfish *Cynoscion regalis* and spot *Leiostomus xanthurus* in relation to diel-cycling hypoxia in an estuarine tidal tributary, *Mar. Ecol. Prog. Ser.*, 491, 199-219, 2013.
- Breiman, L.: Random Forests, in: *Machine Learning*, edited by: Schapire, R.E., Kluwer Academic Publishers, The Netherlands, 5-32, 2001.
- Breitburg, D.: Effects of hypoxia, and the balance between hypoxia and enrichment, on coastal fishes and fisheries, *Estuaries*, 25, 767-781, 2002.
- Breitburg, D., Levin, L.A., Oschlies, A., Grégoire, M., Chavez, F.P., Conley, D.J., Garçon, V., Gilbert, D., Gutiérrez, D., Isensee, K., Jacinto, G.S., Limburg, K.E., Montes, I., Naqvi, S.W.A., Pitcher, G.C., Rabalais, N.N., Roman, M.R., Rose, K.A., Seibel, B.A., Telszewski, M., Yasuhara, M., Zhang, J.: Declining oxygen in the global ocean and coastal waters, *Science*, 359, eaam7240, 2018.
- Breitburg, D.L.: Behavioral response of fish larvae to low dissolved-oxygen concentrations in a stratified water column, *Mar. Biol.*, 120, 615-625, 1994.
- Bretsch, K., Allen, D.M.: Tidal migrations of nekton in salt marsh intertidal creeks, *Estuar. Coasts*, 29, 474-486, 2006.
- Buffoni, G., Cappelletti, A.: Oxygen dynamics in a highly trophic aquatic environment. The case of Orbetello coastal lagoon, *Estuar. Coast. Shelf Sci.*, 49, 763-774, 1999.
- Call, M., Maher, D.T., Santos, I.R., Ruiz-Halpern, S., Mangion, P., Sanders, C.J., Erler, D.V., Oakes, J.M., Rosentreter, J., Murray, R., Eyre, B.D.: Spatial and temporal variability of carbon dioxide and methane fluxes over semi-diurnal and spring–neap–spring timescales in a mangrove creek, *Geochim. Cosmochim. Acta*, 150, 211-225, 2015.
- Chabot, D., Claireaux, G.: Environmental hypoxia as a metabolic constraint on fish: The case of Atlantic cod, *Gadus morhua*, *Mar. Pollut. Bull.*, 57, 287-294, 2008.
- Claireaux, G., Chabot, D.: Responses by fishes to environmental hypoxia: integration through Fry's concept of aerobic metabolic scope, *J. Fish Biol.*, 88, 232-251, 2016.
- Craig, J.K.: Aggregation on the edge: effects of hypoxia avoidance on the spatial distribution of brown shrimp and demersal fishes in the Northern Gulf of Mexico, *Mar. Ecol. Prog. Ser.*, 445, 75-95, 2012.
- D'Avanzo, C., Kremer, J.N.: Diel oxygen dynamics and anoxic events in an eutrophic estuary of Waquoit Bay, Massachusetts, *Estuaries*, 17, 131-139, 1994.
- David, F., Marchand, C., Taillardat, P., Thành-Nho, N., Meziane, T.: Nutritional composition of suspended particulate matter in a tropical mangrove creek during a tidal cycle (Can Gio, Vietnam), *Estuar. Coast. Shelf Sci.*, 200, 126-130, 2018.

- Davis, T.L.O.: Temporal changes in the fish fauna entering a tidal swamp system in tropical Australia, *Environ. Biol. Fishes*, 21, 161-172, 1988.
- Diaz, R.J.: Overview of hypoxia around the world, *J. Environ. Qual.*, 30, 275-281, 2001.
- Diaz, R.J., Neubauer, R.J., Schaffner, L.C., Pihl, L., Baden, S.P.: Continuous monitoring of dissolved oxygen in an estuary experiencing periodic hypoxia and the effect of hypoxia on macrobenthos and fish, in: *Marine Coastal Eutrophication*, edited by: Vollenweider, R.A., Marchetti, R., Viviani, R., Elsevier, Amsterdam, 1055-1068, 1992.
- 5 Diaz, R.J., Rosenberg, R.: Marine benthic hypoxia: A review of its ecological effects and the behavioural responses of benthic macrofauna, in: *Oceanography and Marine Biology - An Annual Review*, edited by: Ansell, A.D., Gibson, R.N., Barnes, M., UCL Press, London, 245-303, 1995.
- 10 Diaz, R.J., Rosenberg, R.: Spreading dead zones and consequences for marine ecosystems, *Science*, 321, 926-929, 2008.
- Dittmar, T., Hertkorn, N., Kattner, G., Lara, R.J.: Mangroves, a major source of dissolved organic carbon to the oceans, *Global Biogeochem. Cycles*, 20, GB1012, 2006.
- Driedzic, W.R., Hochachka, P.W.: Metabolism in Fish During Exercise, in: *Fish Physiology*, edited by: Hoar, W.S., Randall, D.J., Academic Press, Inc., New York, 503-543, 1978.
- 15 Dubuc, A., Waltham, N., Malerba, M., Sheaves, M.: Extreme dissolved oxygen variability in urbanised tropical wetlands: The need for detailed monitoring to protect nursery ground values, *Estuar. Coast. Shelf Sci.*, 198, 163-171, 2017.
- Dubuc, A., Waltham, N.J., Baker, R., Marchand, C., Sheaves, M.: Patterns of fish utilisation in a tropical Indo-Pacific mangrove-coral seascape, New Caledonia, *PLoS ONE*, 14, e0207168, 2019.
- Eby, L.A., Crowder, L.B., McClellan, C.M., Peterson, C.H., Powers, M.J.: Habitat degradation from intermittent hypoxia: impacts on demersal fishes, *Mar. Ecol. Prog. Ser.*, 291, 249-261, 2005.
- 20 Ellis, W.L., Bell, S.S.: Tidal influence on a fringing mangrove intertidal fish community as observed by in situ video recording: implications for studies of tidally migrating nekton, *Mar. Ecol. Prog. Ser.*, 370, 207-219, 2008.
- Falkowski, P.G., Raven, J.A. (Eds.): *Aquatic photosynthesis*, Malden Mass., Blackwell Science, Oxford, 1997.
- Faunce, C.H., Serafy, J.E.: Mangroves as fish habitat: 50 years of field studies, *Mar. Ecol. Prog. Ser.*, 318, 1-18, 2006.
- 25 Froese, R., Pauly, D. Fishbase: <http://www.fishbase.org>, last access: 4 December 2017.
- Fry, F.E.J. (Eds.): *The Effect of Environmental Factors on the Physiology of Fish*, University of Toronto Press, Toronto, 1971.
- Gedan, K.B., Altieri, A.H., Feller, I., Burrell, R., Breitburg, D.: Community composition in mangrove ponds with pulsed hypoxic and acidified conditions, *Ecosphere*, 8, e02053, 2017.
- Gleeson, J., Santos, I.R., Maher, D.T., Golsby-Smith, L.: Groundwater-surface water exchange in a mangrove tidal creek: Evidence from natural geochemical tracers and implications for nutrient budgets, *Mar. Chem.*, 156, 27-37, 2013.
- 30 [Gregorutti, B., Michel, B., Saint-Pierre, P.: Correlation and variable importance in random forests, *Statistics and Computing*, 27, 659-678, 2017.](#)
- Hothorn, T., Hornik, K., Zeileis, A.: Party: A Laboratory for Recursive Part(y)itioning, R package version 0.9-9999, <http://cran.r-project.org/package=party>, 2010

- Igulu, M.M., Nagelkerken, I., Dorenbosch, M., Grol, M.G.G., Harborne, A.R.: Mangrove habitat use by juvenile reef fish: meta-analysis reveals that tidal regime matters more than biogeographic region, *PLoS ONE*, 9, e114715, 2014.
- Johnston, R., Sheaves, M.: Small fish and crustaceans demonstrate a preference for particular small-scale habitats when mangrove forests are not accessible, *J. Exp. Mar. Biol. Ecol.*, 353, 164-179, 2007.
- 5 Kenney, B.E., Litaker, W., Duke, C.S., Ramus, J.: Community oxygen metabolism in a shallow tidal estuary, *Estuar. Coast. Shelf Sci.*, 27, 33-43, 1988.
- Knight, J.M., Griffin, L., Dale, P.E.R., Sheaves, M.: Short-term dissolved oxygen patterns in sub-tropical mangroves, *Estuar. Coast. Shelf Sci.*, 131, 290-296, 2013.
- Kramer, D.L.: Dissolved oxygen and fish behavior, *Environ. Biol. Fishes*, 18, 81-92, 1987.
- 10 Krumme, U.: Patterns in tidal migration of fish in a Brazilian mangrove channel as revealed by a split-beam echosounder, *Fish. Res.*, 70, 1-15, 2004.
- Laroche, J., Baran, E., Rasoanandrasana, N.B.: Temporal patterns in a fish assemblage of a semiarid mangrove zone in Madagascar, *J. Fish Biol.*, 51, 3-20, 1997.
- Lawton, J.H.: From Physiology to Population Dynamics and Communities, *Funct. Ecol.*, 5, 155-161, 1991.
- 15 Leopold, A., Marchand, C., Deborde, J., Allenbach, M.: Water Biogeochemistry of a Mangrove-Dominated Estuary Under a Semi-Arid Climate (New Caledonia), *Estuar. Coasts*, 40, 773-791, 2017.
- Li, X.Y., Hu, B.X., Burnett, W.C., Santos, I.R., Chanton, J.P.: Submarine Ground Water Discharge Driven by Tidal Pumping in a Heterogeneous Aquifer, *Ground Water*, 47, 558-568, 2009.
- Marchand, C., Lallier-Vergès, E., Allenbach, M.: Redox conditions and heavy metals distribution in mangrove forests receiving effluents from shrimp farms (Teremba Bay, New Caledonia), *J. Soils Sed.*, 11, 529-541, 2011.
- 20 Mattone, C., Sheaves, M.: Patterns, drivers and implications of dissolved oxygen dynamics in tropical mangrove forests, *Estuar. Coast. Shelf Sci.*, 197, 205-213, 2017.
- Mazda, Y., Sato, Y., Sawamoto, S., Yokochi, H., Wolanski, E.: Links between physical, chemical and biological processes in Bashita-minato, a mangrove swamp in Japan, *Estuar. Coast. Shelf Sci.*, 31, 817-833, 1990.
- 25 McGill, B.J., Enquist, B.J., Weiher, E., Westoby, M.: Rebuilding community ecology from functional traits, *Trends Ecol. Evol.*, 21, 178-185, 2006.
- Mercier, L., Darnaude, A.M., Bruguier, O., Vasconcelos, R.P., Cabral, H.N., Costa, M.J., Lara, M., Jones, D.L., Mouillot, D.: Selecting statistical models and variable combinations for optimal classification using otolith microchemistry, *Ecol. Appl.*, 21, 1352-1364, 2011.
- 30 Meynecke, J.-O., Poole, G.C., Werry, J., Lee, S.Y.: Use of PIT tag and underwater video recording in assessing estuarine fish movement in a high intertidal mangrove and salt marsh creek, *Estuar. Coast. Shelf Sci.*, 79, 168-178, 2008.
- Nagelkerken, I., Blaber, S.J.M., Bouillon, S., Green, P., Haywood, M., Kirton, L.G., Meynecke, J.O., Pawlik, J., Penrose, H.M., Sasekumar, A., Somerfield, P.J.: The habitat function of mangroves for terrestrial and marine fauna: A review, *Aquat. Bot.*, 89, 155-185, 2008.

- Nagelkerken, I., Roberts, C., van der Velde, G., Dorenbosch, M., van Riel, M.C., Cocheret de la Morinière, E., Nienhuis, P.: How important are mangroves and seagrass beds for coral-reef fish? The nursery hypothesis tested on an island scale, *Mar. Ecol. Prog. Ser.*, 244, 299-305, 2002.
- Nezlin, N.P., Kamer, K., Hyde, J., Stein, E.D.: Dissolved oxygen dynamics in a eutrophic estuary, Upper Newport Bay, California, *Estuar. Coast. Shelf Sci.*, 82, 139-151, 2009.
- Olds, A.D., Connolly, R.M., Pitt, K.A., Maxwell, P.S.: Habitat connectivity improves reserve performance, *Conserv. Lett.*, 5, 56-63, 2012.
- Peña, M.A., Katsev, S., Oguz, T., Gilbert, D.: Modeling dissolved oxygen dynamics and hypoxia, *Biogeosciences*, 7, 933-957, 2010.
- Rahel, F.J., Nutzman, J.W.: Foraging in a Lethal Environment: Fish Predation in Hypoxic Waters of a Stratified Lake, *Ecology*, 75, 1246-1253, 1994.
- Reis-Filho, J.A., Giarrizzo, T., Barros, F.: Tidal migration and cross-habitat movements of fish assemblage within a mangrove ecotone, *Mar. Biol.*, 163, 111, 2016.
- Robertson, A.I., Duke, N.C.: Mangrove fish-communities in tropical Queensland, Australia: Spatial and temporal patterns in densities, biomass and community structure, *Mar. Biol.*, 104, 369-379, 1990.
- Rogers, N.J., Urbina, M.A., Reardon, E.E., McKenzie, D.J., Wilson, R.W.: A new analysis of hypoxia tolerance in fishes using a database of critical oxygen level (Pcrit), *Conservation Physiology*, 4, cow012, 2016.
- Rountree, R.A., Able, K.W.: Spatial and temporal habitat use patterns for salt marsh nekton: implications for ecological functions, *Aquat. Ecol.*, 41, 25-45, 2007.
- Sheaves, M.: Nature and consequences of biological connectivity in mangrove systems, *Mar. Ecol. Prog. Ser.*, 302, 293-305, 2005.
- Sheaves, M., Johnston, R., Baker, R.: Use of mangroves by fish: new insights from in-forest videos, *Mar. Ecol. Prog. Ser.*, 549, 167-182, 2016.
- Shoji, J., Masuda, R., Yamashita, Y., Tanaka, M.: Effect of low dissolved oxygen concentrations on behavior and predation rates on red sea bream *Pagrus major* larvae by the jellyfish *Aurelia aurita* and by juvenile Spanish mackerel *Scomberomorus niphonius*, *Mar. Biol.*, 147, 863-868, 2005.
- SHOM (Service hydrographique et océanique de la marine): <https://www.shom.fr>, last access: 1 March 2017.
- Smith, K.J., Able, K.W.: Dissolved oxygen dynamics in salt marsh pools and its potential impacts on fish assemblages, *Mar. Ecol. Prog. Ser.*, 258, 223-232, 2003.
- Tyler, R.M., Brady, D.C., Targett, T.E.: Temporal and spatial dynamics of diel-cycling hypoxia in estuarine tributaries, *Estuar. Coasts*, 32, 123-145, 2009.
- Unsworth, R.K.F., Bell, J.J., Smith, D.J.: Tidal fish connectivity of reef and sea grass habitats in the Indo-Pacific, *J. Mar. Biolog. Assoc. U.K.*, 87, 1287-1296, 2007.

Unsworth, R.K.F., De Leon, P.S., Garrard, S.L., Jompa, J., Smith, D.J.: High connectivity of Indo-Pacific seagrass fish assemblages with mangrove and coral reef habitats, *Mar. Ecol. Prog. Ser.*, 353, 213-224, 2008.

Vaquer-Sunyer, R., Duarte, C.M.: Thresholds of hypoxia for marine biodiversity, *Proc. Natl. Acad. Sci. U.S.A.*, 105, 15452-15457, 2008.

5 Wannamaker, C.M., Rice, J.A.: Effects of hypoxia on movements and behavior of selected estuarine organisms from the southeastern United States, *J. Exp. Mar. Biol. Ecol.*, 249, 145-163, 2000.

Wood, S.N. (Eds.): *Generalized Additive Models: An Introduction With R*, Chapman and Hall/CRC, Florida, 2007.

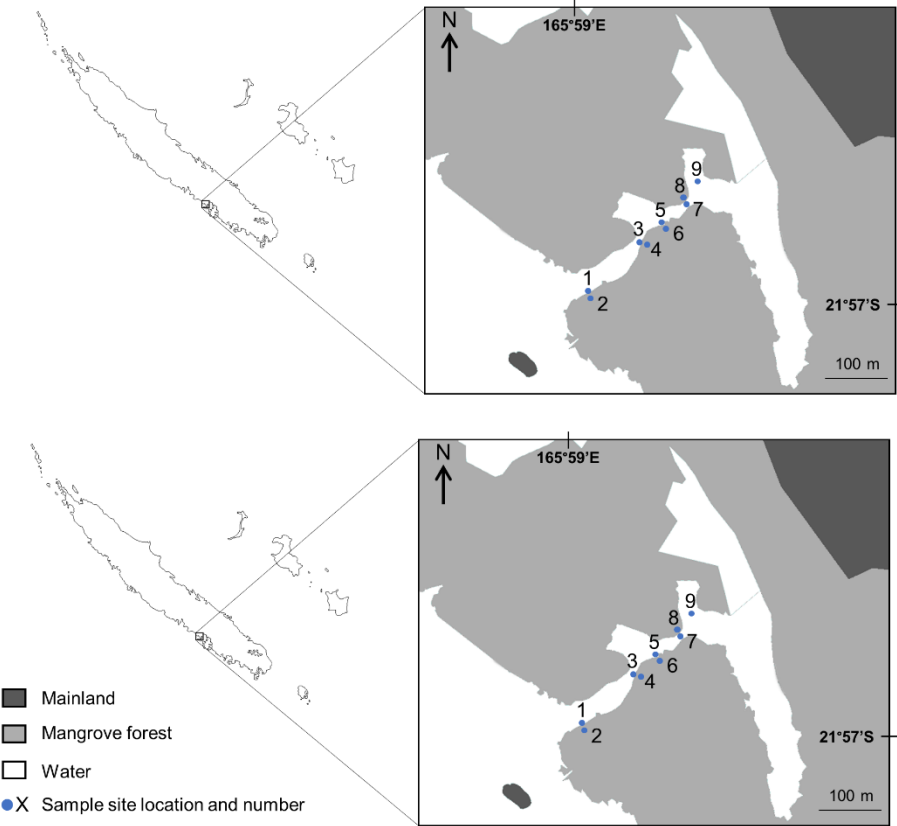


Figure 1: Map of the study system in Bouraké, South Province of New Caledonia. The 9 study sites sampled from 21 February to 1 March 2017 are indicated by their corresponding numbers. Light grey areas represent mangrove forest, dark grey areas represent mainland, and white areas represent water.

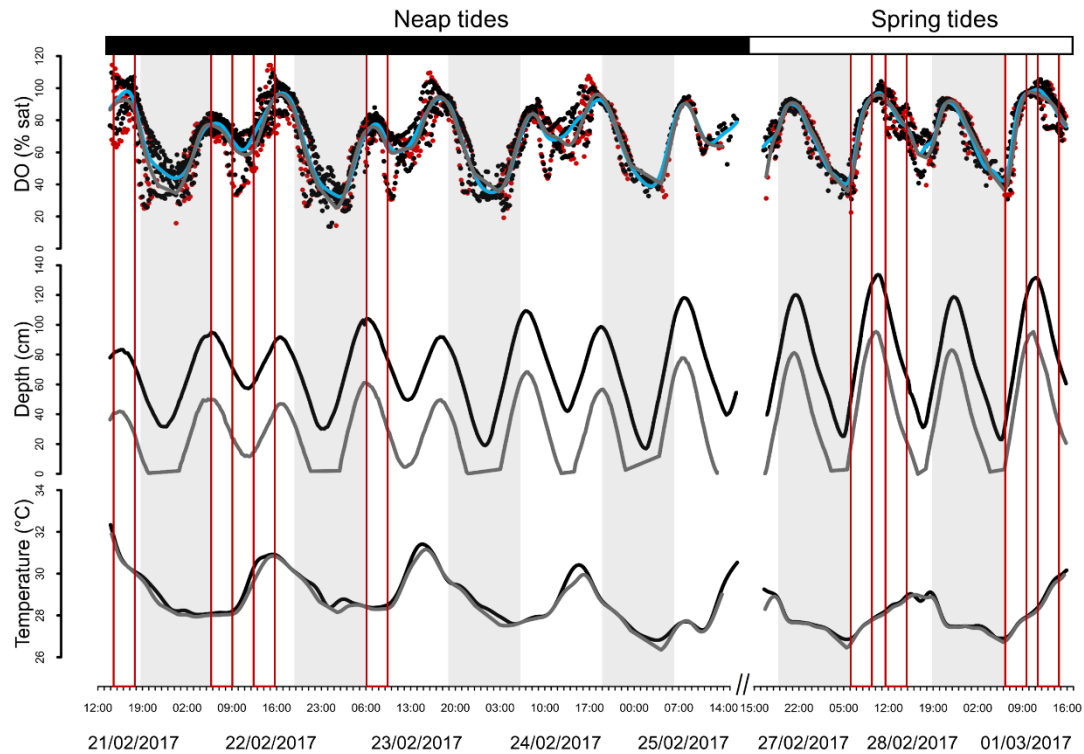


Figure 2: Cubic spline smoothers for dissolved oxygen (DO), depth and temperature. Data are from 21 February to 25 February 2017 and from 27 February to 1 March 2017. For DO, edge sites are represented by the blue smoother and black points, and in-forest sites by the grey smoother and red points. For the other factors, edge sites are represented by the black smoothers and in-forest sites by the grey smoothers. Shaded areas represent sunset to sunrise. Each red box represents an underwater camera sampling.

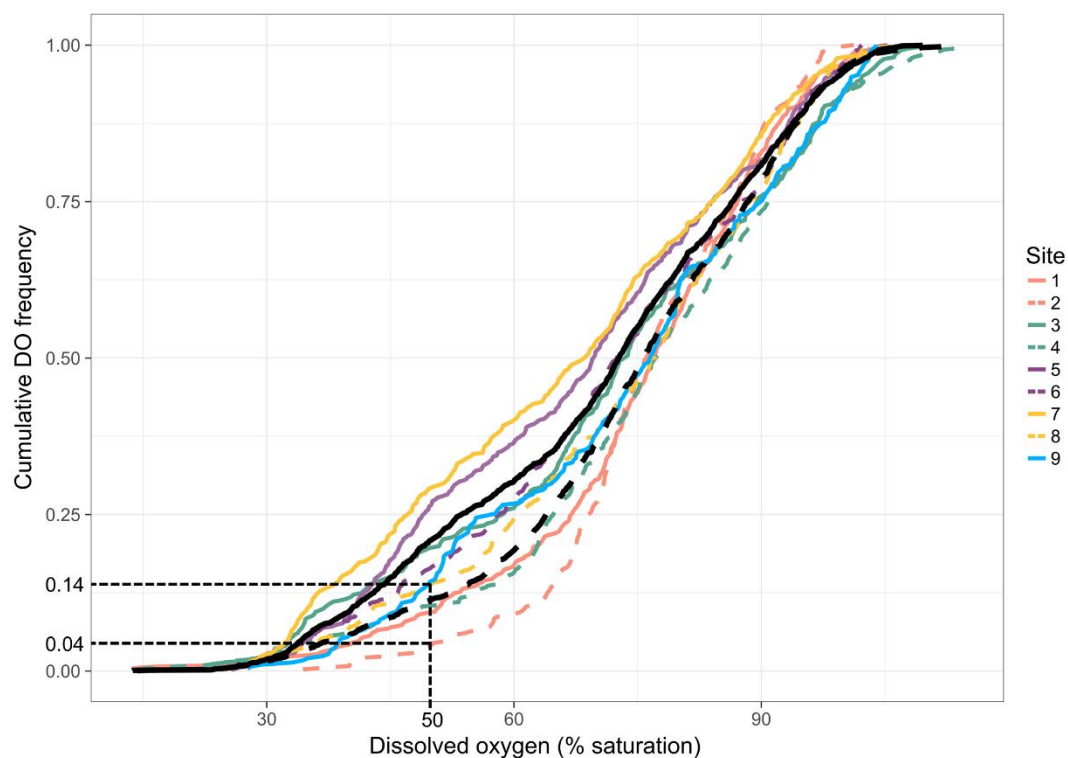


Figure 3: Site-specific cumulative DO frequencies. Each colour represents a paired site (edge and in-forest), and edge sites are represented by solid coloured lines and in-forest sites by dashed coloured lines. The solid black line indicates the mean cumulative DO frequencies across edge sites and the dashed one the mean cumulative DO frequencies across in-forest sites. The frequency of hypoxia ($\text{DO} \leq 50\%$ saturation) at sites 2 and 8 is indicated to help read the figure.

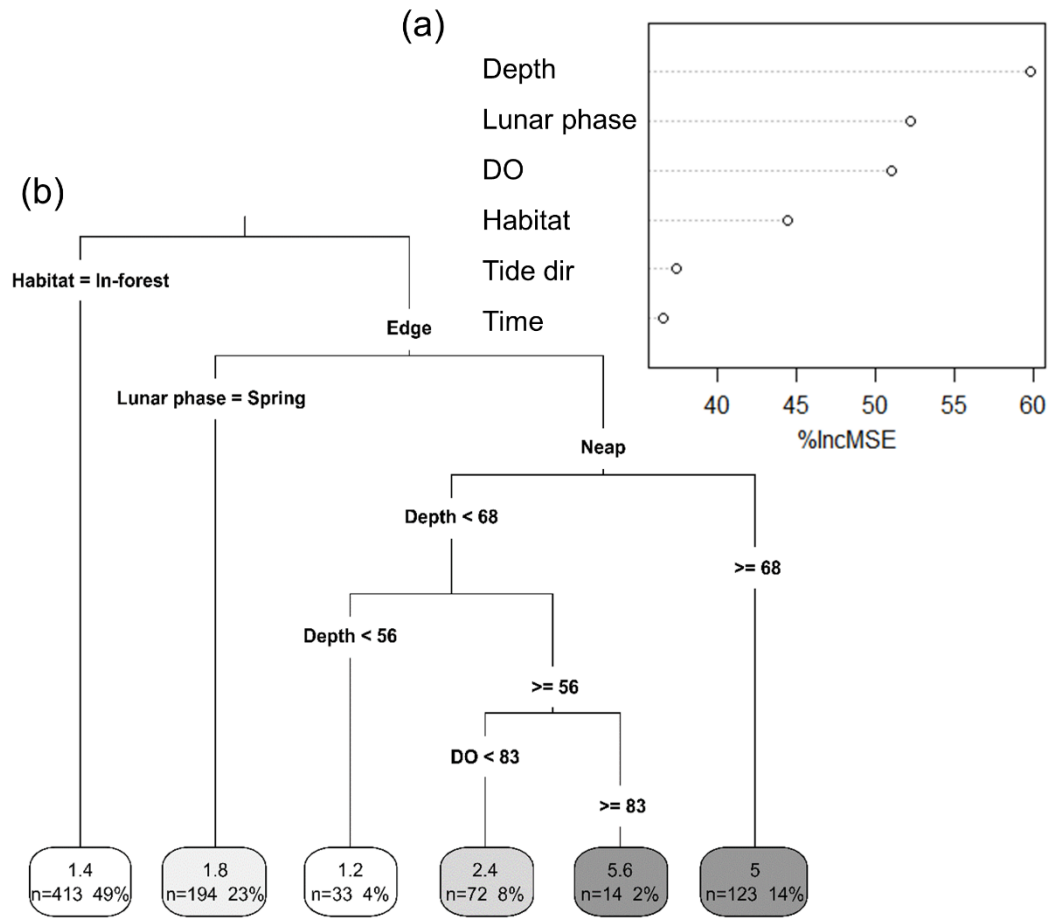


Figure 4: Importance of different environmental factors in explaining variations in taxonomic richness. (a) Random forest importance plot. Importance plot was obtained from a random forest model built with Site, Depth (cm), Lunar phase (neap vs spring), DO: Dissolved oxygen (% saturation), Time: Time of day (morning vs afternoon), Tide dir: Tide direction (flooding vs ebbing) and Habitat (in-forest vs edge) as predictors for taxonomic richness. (b) Univariate classification tree. The tree was built using the same variables and provides a visual interpretation of the random forest model. Numbers in the boxes in each terminal leaf represent the average taxonomic richness, the number of 5-min intervals (n), and the total % of 5-min intervals that n represents.

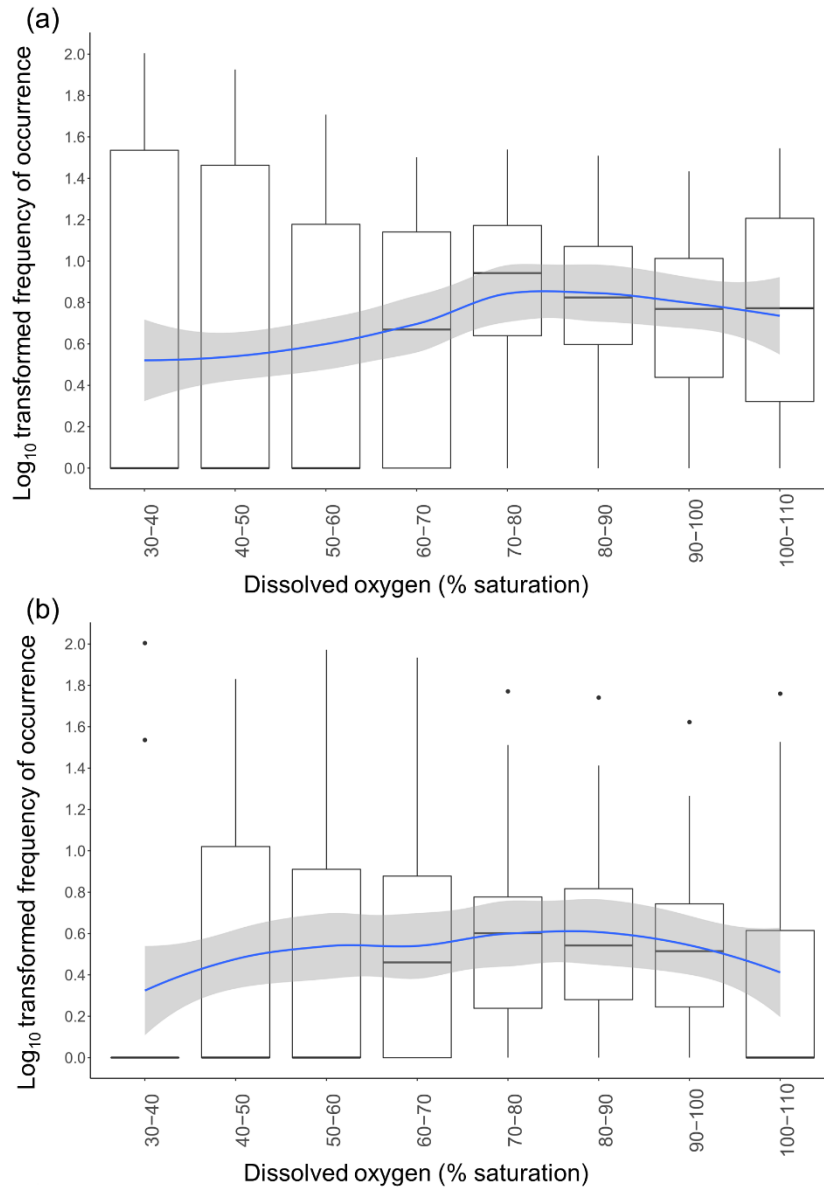


Figure 5: Variation in frequencies of occurrence of fish across DO class. Frequencies of occurrence were log₁₀ transformed. Each data point used to draw the boxplots represents the frequency of occurrence of one common taxon during a specific DO class. The blue line represents the GAMM model fitted with DO as the smooth term using a Gaussian distribution and an identity link function for (a) Edge sites; and (b) In-forest sites. Shaded areas represent the confidence interval at 95 %.

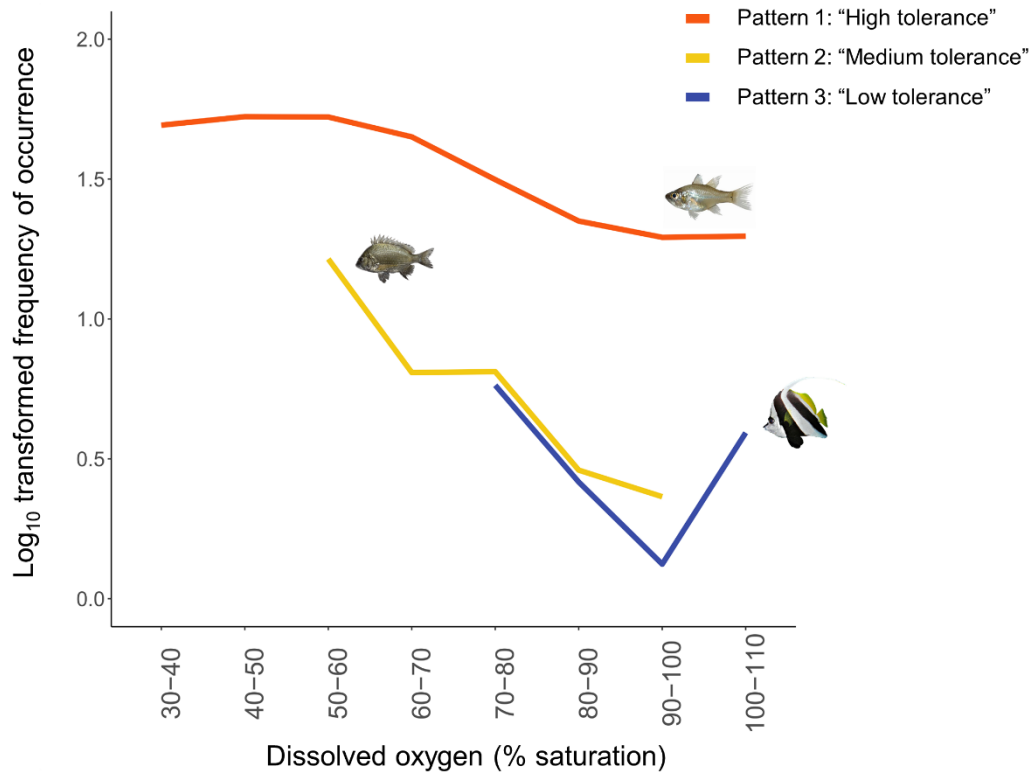


Figure 6: The 3 common patterns of mangrove utilisation across DO identified. Each LOESS curve represents one example of taxa per type of patterns of mangrove utilisation across DO: Pattern 1: "High tolerance" represented by taxon *Fibramia lateralis*; 2) Pattern 2: "Medium tolerance" represented by taxon *Acanthopagrus* sp.; 3) Pattern 3: "Low tolerance" represented by taxon *Heniochus acuminatus*. LOESS curves were built with the log₁₀ transformed frequencies of occurrence.

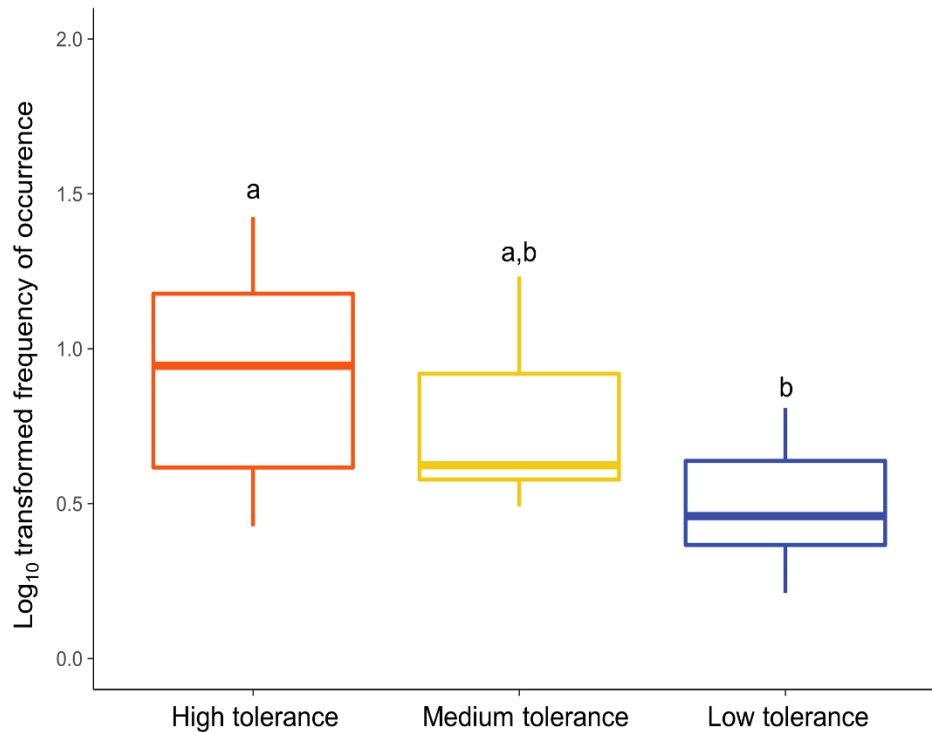


Figure 7: Relationship between frequencies of occurrence and type of patterns followed. Overall frequencies of occurrence were calculated for each common taxon at the DO range corresponding to that taxon's assigned pattern of utilisation. Differential letters above boxes denote statistically different means of frequency of occurrence among types of patterns of utilisation (Dunn test: $p < 0.05$).

Table 1: Summary of the environmental factors during the study period. For each factor, the minimum, maximum and mean (\pm SE) values are provided for neap tides and spring tides, on the edge and in-forest sites.

Environmental factors	Values	Neap		Spring	
		Edge	In-forest	Edge	In-forest
DO (% saturation)	Min	13.7	14.3	30.9	22.6
	Max	110.6	114.4	105.5	103.3
	Mean (\pm SE)	67.2 (\pm 0.6)	71.4 (\pm 0.6)	75.8 (\pm 0.7)	79.5 (\pm 0.7)
Temperature ($^{\circ}$ C)	Min	26.2	25.8	25.9	25.1
	Max	32.0	31.5	30.5	30.4
	Mean (\pm SE)	29.1 (\pm 0.0)	28.9 (\pm 0.0)	28.0 (\pm 0.0)	28.0 (\pm 0.0)
Water depth (cm)	Min	1.1	0.0	2.4	0.0
	Max	118.1	77.8	133.7	95.5
	Mean (\pm SE)	55 (\pm 0.7)	34 (\pm 0.6)	71 (\pm 1.2)	48 (\pm 1.1)
Tidal range (m)	Min	0.35	0.35	1.25	1.25
	Max	0.59	0.59	1.38	1.38

Mean	0.46	0.46	1.31	1.31
------	------	------	------	------

5 Table 2: The 36 common fish taxa identified by underwater video cameras at Bouraké, New Caledonia. The superscript number corresponds to the type of patterns of mangrove utilisation across DO followed by the taxon (Fig. 6): Pattern 1: “High tolerance”; Pattern 2: “Medium tolerance”; Pattern 3: “Low tolerance”. Taxa highlighted in bold represent the 10 most common taxa. Taxa recorded in-forest (5 m inside the forest) are underlined.

Family	Taxon	Table 2 (continued)	
Acanthuridae	<u>Acanthurus auranticavus</u> ¹	Family	Taxon
	<u>Acanthurus grammoptilus</u> ³	Lethrinidae	<u>Lethrinus harak</u> ²
Apogonidae	<u>Fibramia lateralis</u> ¹		<u>Lethrinus lentjan</u> ³
Carangidae	<u>Caranx papuensis</u> ¹	Lutjanidae	<u>Lutjanus argentimaculatus</u> ¹
Chaetodontidae	<u>Chaetodon auriga</u> ¹		<u>Lutjanus fulviflamma</u> ¹
	<u>Chaetodon bennetti</u> ¹		<u>Lutjanus fulvus</u> ¹
	<u>Chaetodon lineolatus</u> ¹		<u>Lutjanus russellii</u> ¹
	<u>Chaetodon lunula</u> ³	Monodactylidae	<u>Monodactylus argenteus</u> ¹
	<u>Chaetodon vagabundus</u> ³	Mugilidae	<u>Mugilidae spp.</u> ¹
	<u>Heniochus acuminatus</u> ³	Mullidae	<u>Mulloidichthys flavolineatus</u> ¹
Clupeidae	<u>Clupeidae spp.</u> ³		<u>Parupeneus indicus</u> ³
Gerreidae	<u>Gerres oyena</u> ²		<u>Upeneus tragula</u> ²
Gobiidae	<u>Amoya gracilis</u> ¹	Pomacanthidae	<u>Pomacanthus sexstriatus</u> ³
	<u>Asterropteryx sp. cf. striata</u> ¹	Pomacentridae	<u>Neopomacentrus spp.</u> ¹
	<u>Cryptocentrus leptocephalus</u> ³	Scaridae	<u>Scarus sp. cf. ghobban</u> ³
	<u>Gobiidae spp.</u> ¹	Siganidae	<u>Siganus canaliculatus</u> ²
	<u>Redigobius balteatus</u> ¹		<u>Siganus lineatus</u> ¹
Haemulidae	<u>Plectorhinchus spp.</u> ²	Sparidae	<u>Acanthopagrus sp. cf. akazakii</u> ²
	<u>Pomadasys argenteus</u> ²		