

Supplementary material

Table S1. Dissimilarity (%) between biotopes based on SIMPER results of microbial classes.

	Above Plume	Plume	Below plume	Near-bottom water
Above Plume				
Plume	44.83			
Below plume	25.39	35.37		
Near-bottom water	32.79	47.13	35.47	
Sediment	44.46	56.42	46.6	32.89

Figure S1. Temperature – salinity plot of all CTD casts showing the three distinct water masses found in the Rainbow area.

Figure S2. CTD casts of discussed stations showing the measured turbidity.

Figure S3. Group average clustering of plume and below plume microbial communities. (a) Dendrogram results (b) Similarity between plume and below plume samples.

Figure S4. Pearson correlation heatmap of the correlation between all environmental variables and all classes that were present in multiple samples within plume samples. Colour intensity refers to the strength of the correlation, red indicates a positive correlation and blue indicates a negative correlation. Dendrograms based on hierarchical clustering and groups based on clustering to 8 distinct groups.

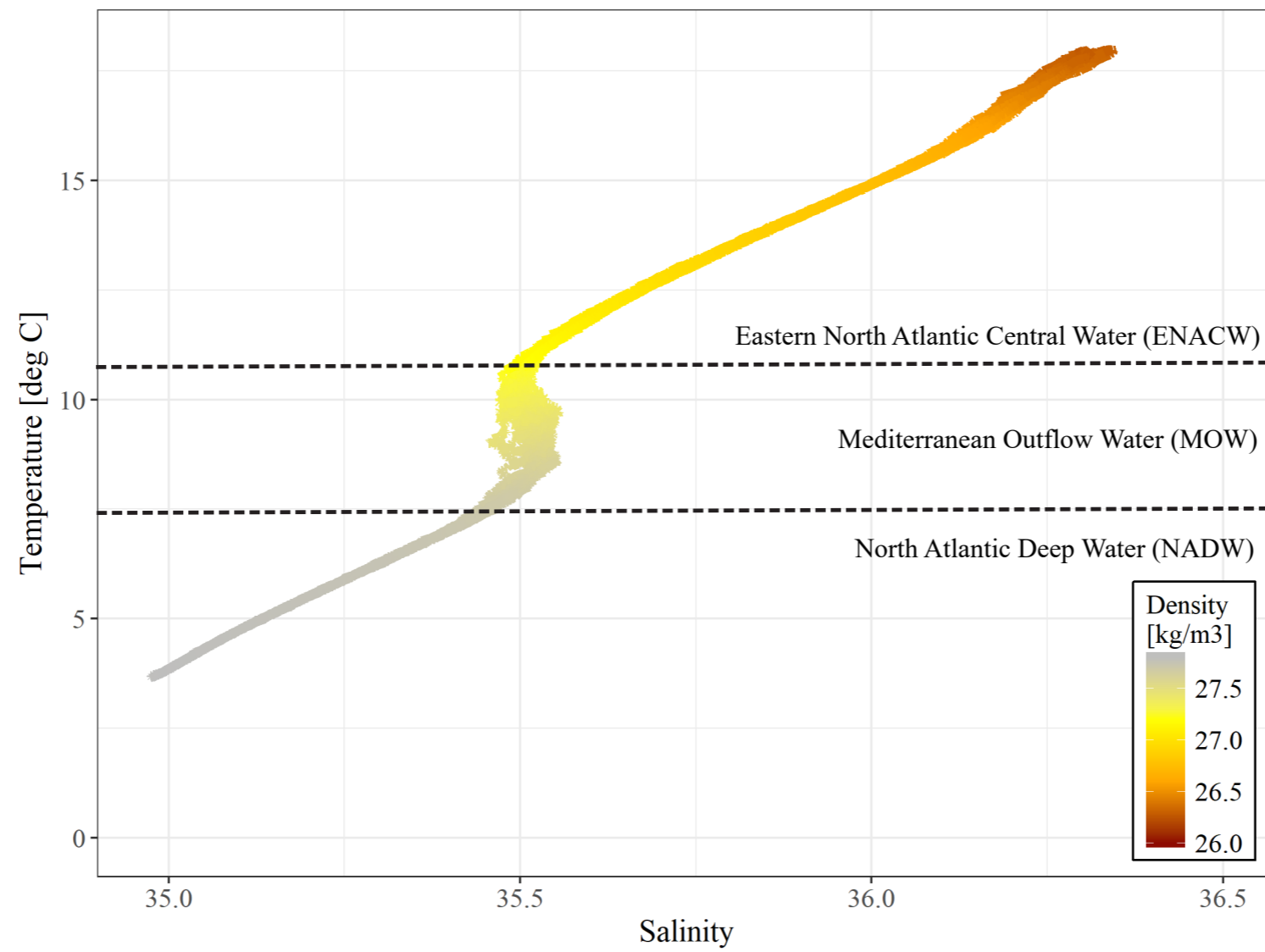


Figure S1: Temperature – salinity plot of all CTD casts showing the three distinct water masses found in the Rainbow area.

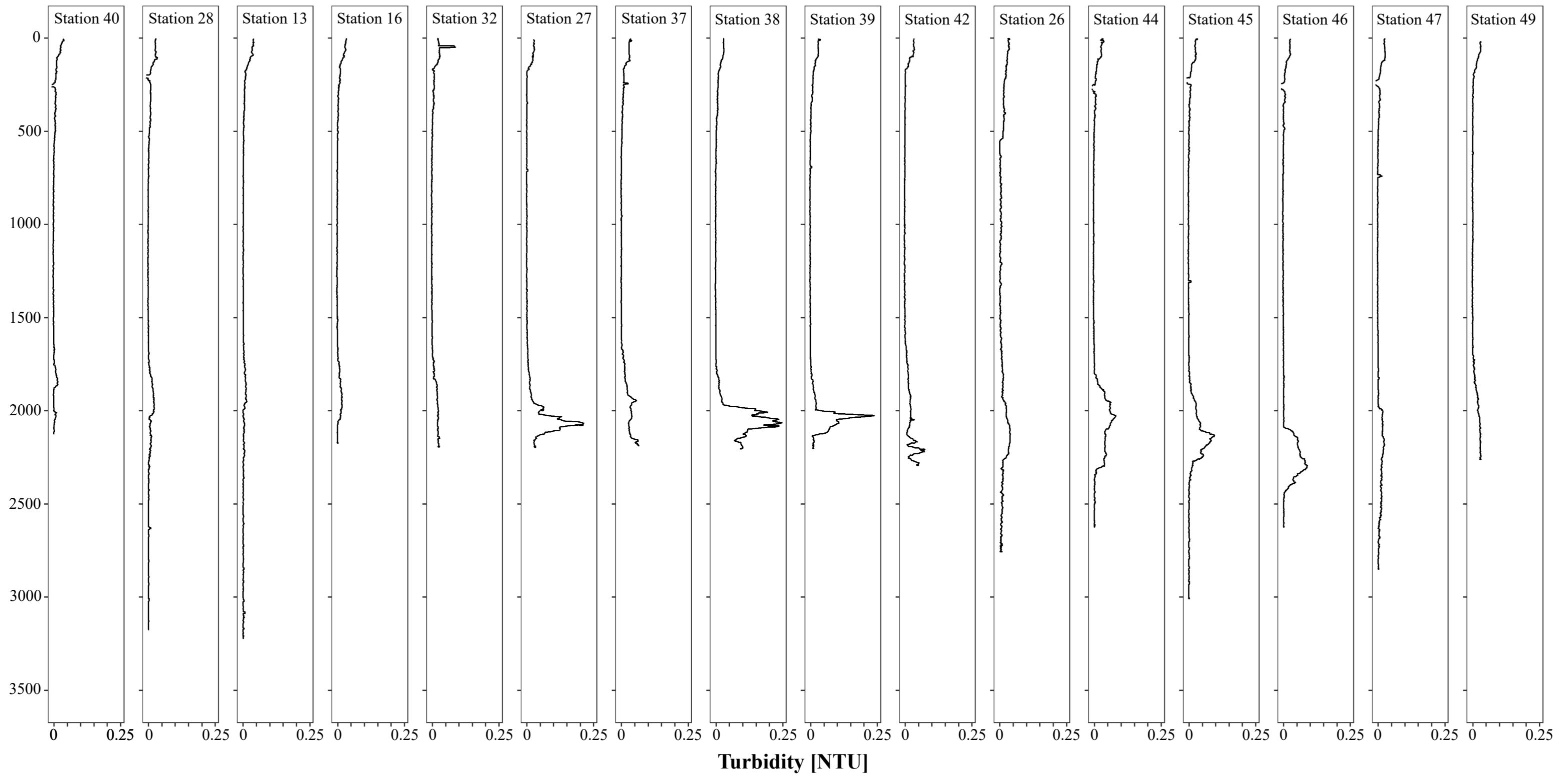


Figure S2: CTD casts of discussed stations showing the measured turbidity

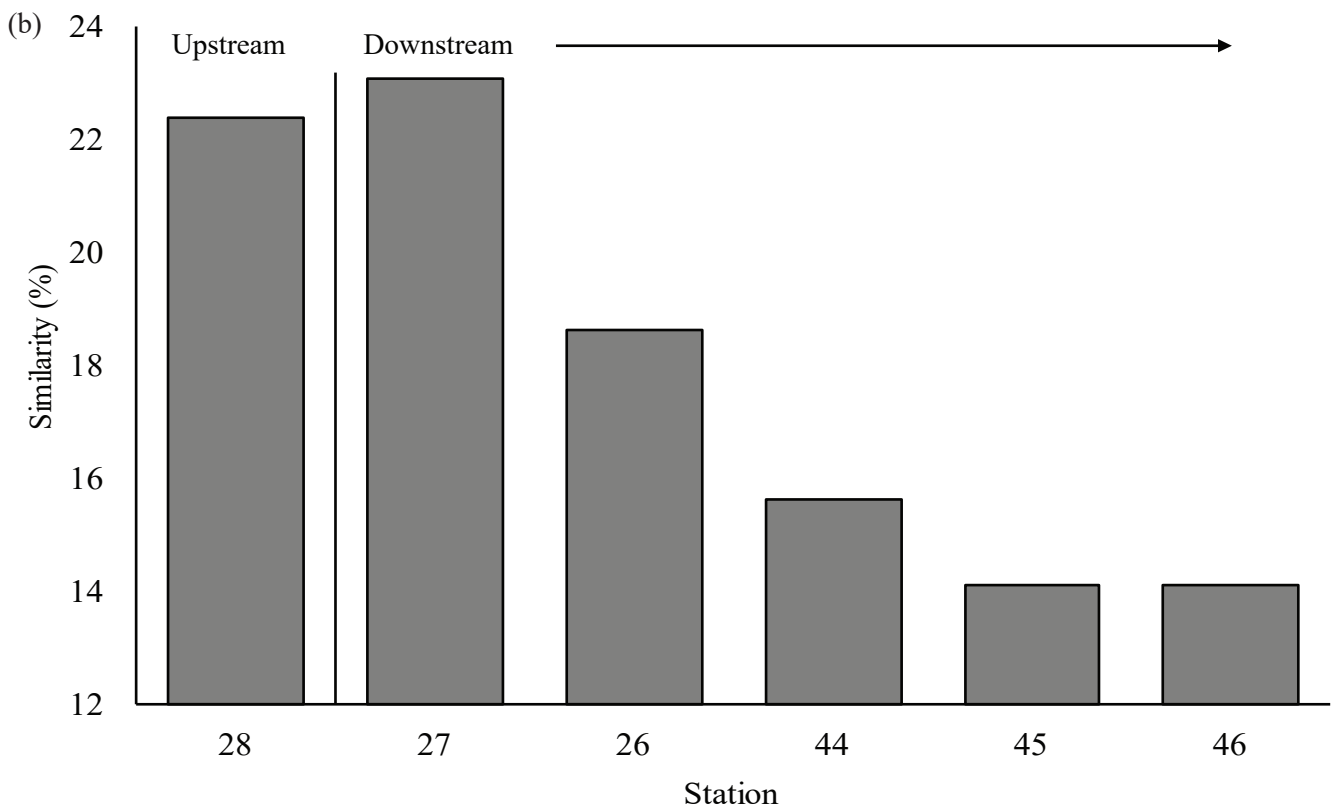
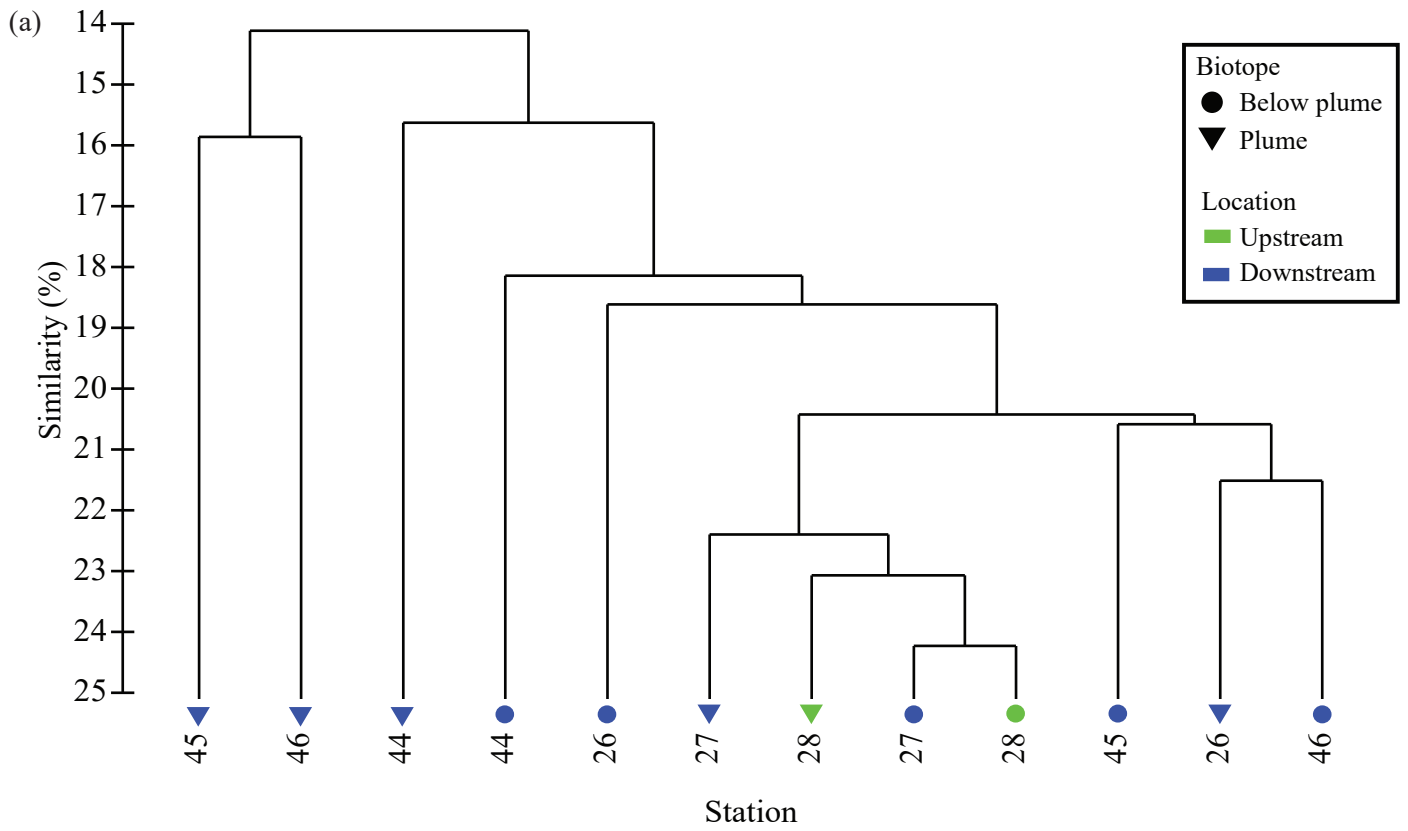


Figure S3: Group average clustering of plume and below plume microbial communities. (a) Dendrogram results (b) Similarity between plume and below plume samples.

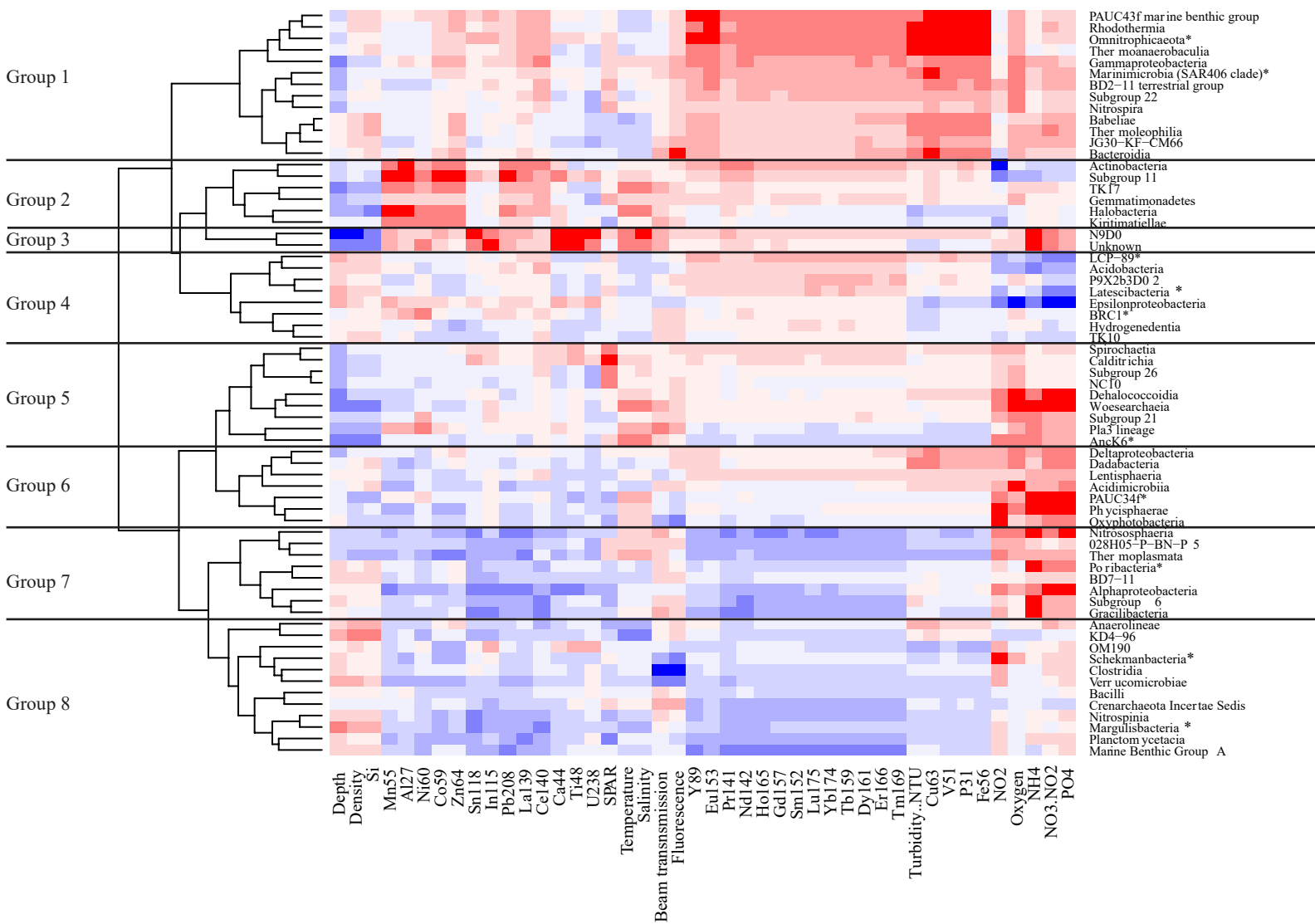


Figure S4: Pearson correlation heatmap of the correlation between all environmental variables and all classes that were present in multiple samples within plume samples. Colour intensity refers to the strength of the correlation, red indicates a positive correlation and blue indicates a negative correlation. Dendrograms based on hierarchical clustering and groups based on clustering to 8 distinct groups.