



# Phytoplankton community disruption caused by latest Cretaceous global warming

Johan Vellekoop<sup>1</sup>, Lineke Woelders<sup>1</sup>, Appy Sluijs<sup>2</sup>, Kenneth G. Miller<sup>3</sup>, Robert P. Speijer<sup>1</sup>

<sup>1</sup>Department of Earth and Environmental Sciences, Division of Geology, KU Leuven, , 3001 Heverlee, Belgium

5 <sup>2</sup>Department of Earth Sciences, Marine Palynology and Paleoceanography, Laboratory of Palaeobotany and Palynology, Utrecht University, 3584CB, Utrecht, The Netherlands

<sup>3</sup>Department of Earth and Planetary Sciences, Rutgers University, Piscataway, New Jersey 08854, USA

10 *Correspondence to:* Johan Vellekoop (johan.vellekoop@kuleuven.be)

**Abstract.** Phytoplankton responses to a ~350 kiloyear long phase of gradual late Maastrichtian (latest-Cretaceous) global warming starting at ~66.4 Ma can provide valuable insights into the long-term influences of global change on marine ecosystems. Here we perform micropaleontological analyses on three cores from the New Jersey paleoshelf, to assess the response of phytoplankton using cyst-forming dinoflagellates and benthic ecosystems using benthic foraminifera. Our records  
15 show that this Latest Maastrichtian Warming Event (LMWE), characterized by a  $4.0 \pm 1.3$  °C warming of sea-surface waters on the New Jersey paleoshelf, resulted in a succession of nearly monospecific dinoflagellate cyst assemblages, dominated by the species *Palynodinium grallator*. This response, likely triggered by the combination of warmer and seasonally thermally-stratified seas, appears to have been more intense at offshore sites than at nearshore sites. The LMWE, and related dinoflagellate response, is associated with an impoverished benthic ecosystem. A wider geographic survey of literature data  
20 reveals that the dominance of *P. grallator* is a marker for the LMWE throughout the northern mid-latitudes. While the dinocyst assemblage returned to a stable, normal marine community in the last tens of thousands of years of the Maastrichtian, benthic foraminiferal diversity remained slightly suppressed. Increased ecosystem stress during the latest Maastrichtian potentially primed global ecosystems for the subsequent mass extinction following the K-Pg boundary Chicxulub impact.

## 25 1 Introduction

Anthropogenically-forced increases in atmospheric greenhouse gas concentrations are projected to substantially impact climate on a global scale in the near future (IPCC; Pachauri et al., 2014). In the oceans, increasing concentrations of greenhouse gases are expected to increase surface temperatures, lower pH, and cause changes to vertical mixing and upwelling (Pachauri et al., 2014). The higher upper ocean temperatures predicted under future climate scenarios will increase stratification of the water  
30 column and differentially affect growth of phytoplankton groups in the global oceans (Behrenfeld et al., 2006; Boyd and Doney, 2002; Doney, 2006). Such a warmer ocean might bear analogies in the Cretaceous to Paleogene greenhouse world



(Hay, 2011). The geological record indicates that this greenhouse world favored dinoflagellates and coccolithophorids among the eukaryotic phytoplankton (Falkowski et al., 2004). Importantly, dinoflagellates are a key group of phytoplankton responsible for marine harmful algal blooms (Hallegraeff, 1993). It is likely that the frequency, duration and intensity of marine dinoflagellate blooms will increase as a result of a warming climate (Hallegraeff, 1993; Moore et al., 2008), which is supported  
5 by some paleoceanographic studies. Yet, the potential consequences of such large-scale patterns of climate variability for marine dinoflagellate communities is not well understood (Moore et al., 2008).

The latest Maastrichtian (i.e. latest Cretaceous) warming event (LMWE; 66.4-66.1) has been linked to severe disturbance of marine ecosystems (Petersen et al., 2016; Schoene et al., 2015; Woelders et al., 2017). This LMWE, likely related to an exceptionally large volcanic outpouring phase of the Deccan Traps large igneous province (Ravizza and Peucker-Ehrenbrink,  
10 2003), represents a 3-7 °C warming of sea-surface temperatures (SST) in the last ~350 kyrs of the Cretaceous (Olsson et al., 2002; Petersen et al., 2016; Vellekoop et al., 2016; Woelders et al., 2018). While the end-Cretaceous mass extinction event has been confidently linked to the Chicxulub impact (Schulte et al., 2010), it has been suggested that the LMWE increased ecosystem stress during the latest Maastrichtian, potentially priming global ecosystems for the subsequent mass extinction (Petersen et al., 2016). In recent work (Vellekoop et al., 2016; Woelders et al., 2018), we recorded the LMWE in three cores  
15 on the New Jersey paleoshelf (USA) using paleotemperature proxies, including TEX<sub>86</sub> (Schouten et al., 2002). The SST records of Meirs Farm, Fort Monmouth 3 and Bass River (Fig. 1) portray fairly stable Maastrichtian SSTs followed by a sharp rise by 4.0±1.3°C in the last ~0.4 million years of the Cretaceous (Vellekoop et al., 2016; Woelders et al., 2018; SI Fig. S1). Importantly, Meirs Farm and Fort Monmouth 3 are inner shelf sites (Miller et al., 2010; Vellekoop et al., 2016), while Bass River (ODP 174AX) is a middle to outer shelf locality (Esmeray-Senlet et al., 2015). Together, they provide an inshore-to-  
20 offshore transect (Fig. 1; SI Text S1 - Materials and Methods). Here, we perform palynological analyses to assess the dinoflagellate response to this warming event along this shelf transect. Furthermore, to understand the process of benthopelagic ecosystem coupling in this setting, we complement our palynological analyses with benthic foraminiferal analyses of the uppermost Maastrichtian of Bass River.

## 2 Materials & Methods

25 For palynological analyses, 90 oven-dried samples (~5-10 g dry mass) of the Meirs Farm, Fort Monmouth 3 and Bass River cores were processed at Utrecht University. A known amount of *Lycopodium clavatum* spores were added to the samples from Bass River and Meirs Farm for quantification purposes. Chemical processing comprised treatment with 10% HCl and 40% HF for carbonate and silica removal, respectively. Ultrasonication was used to disintegrate palynodebris. Residues were sieved over a 15-µm mesh and mounted on microscope slides, which were analyzed at x200 and x1000 magnification to a minimum  
30 of 250 dinocysts (Supplementary Table S3). For the taxonomy used, see SI Text S1). All slides are stored in the collection the Department of Earth and Environmental Sciences, KU Leuven, Belgium.



Previous work has indicated that late Cretaceous and Paleogene dinoflagellate paleoecology is best assessed by assessing the stratigraphic and spatial distribution of morphologically related genera (e.g. Brinkhuis, 1994; Frieling and Sluijs, 2018; Sluijs et al., 2005). Following Schiøler et al. (1997), Machalski et al. (2016) and Sluijs and Brinkhuis (2009), we assigned the recorded dinocyst taxa to 8 different morphological groups to extract paleoenvironmental signals: (1) the *Spiniferites* Group, combining all species of *Spiniferites* and the morphologically related genus *Achomosphaera*; (2) the *Areoligera* Group, lumping all dorsoventrally compressed gonyaulacoid cysts with an apical archeopyle, such as *Glaphyrocysta* and *Areoligera*; (3) *Hystrichosphaeridium* Group., combining all species within the genus *Hystrichosphaeridium*; (4) Peridinioids, combining all peridinioid dinocysts, apart from *Manumiella seelandica*; (5) fibrous Cribroperidinioids, combining all Cribroperidinioidea with a fibrous wall, such as *Cordosphaeridium*, *Disphaerogena*, *Damassadinium* and *Fibrocysta*; (6) *Palynodinium grallator*; (7) *Manumiella seelandica* and (8) other dinocysts, combining all dinocysts are not assigned to any of the previous groups.

For benthic foraminiferal analysis, 31 samples were weighed and washed over a mesh of 63µm at KU Leuven. A suitable split with approximately 200-400 specimens was obtained from the fraction greater than 125 µm with a microsplitter. From this split all the specimens were picked, counted and mounted on micropaleontological slides (Supplementary Table S2). For the taxonomy used, see SI Text S1).

### 3 Results

Our dinoflagellate cyst records show a strong response to the LMWE (SI Tables S1-5; Fig. 2 SI Figs S2-S4). The interval before the LMWE is characterized by stable, normal marine dinocyst assemblages, typically dominated by the *Spiniferites* and *Areoligera* groups and Peridinioids, with comparatively high diversity, indicated by average Shannon H values of 3.0. At the onset of the warming, there is a transition to assemblages that are alternately dominated by one or two specific dinocyst taxa (Fig. 2), with Shannon H diversity dropping to <0.75 (Fig. 3). The dominant taxa are *Palynodinium grallator* and fibrous Cribroperidinioids, the latter mostly represented by *Disphaerogena carposphaeropsis*. At these peak abundances, in particular *P. grallator* generally represent >50% of the assemblages, reaching >80% in many samples, where it occurs as near-monospecific aggregates of dinocysts (SI Fig. S5).

Before the LMWE, both *P. grallator* and *D. carposphaeropsis* were already well-established (e.g. Williams et al., 2004), but generally occurred in low numbers. At the onset of the LMWE relative abundances of these taxa increased considerably. Within the LMWE interval, concentration of dinocysts (in cysts/gram) increase; a doubling at Meirs Farm and a tenfold increase at Bass River (SI Tables S4&5). This increase is entirely caused by the additional contribution of *P. grallator* and fibrous Cribroperidinioid cysts, as the concentrations of other dinocyst taxa (in cysts/gram) remained rather stable (Fig. 4), ruling out a condensed section as the mechanism causing the observed high concentrations of dinocysts. While sea-level changes could potentially have significantly affected water depth and therefore sedimentation rates and micro-environments,



an increase in only one taxon, with other taxa remaining rather stable, is difficult to reconcile with such changes in sedimentation rates. Moreover, previous studies have argued for relatively constant sedimentation rates and sea level during the latest Maastrichtian of the New Jersey coastal plain (Olsson et al., 2002; Vellekoop et al., 2016; Woelders et al., 2018). Hence, the peak abundances of these taxa likely reflect massive production and deposition rates of dinoflagellate cysts. Whether this reflects an increase in encystment behavior or greater abundances of the vegetative cells remains difficult to assess in deep time records.

Peak abundances of *P. grallator* have also been recorded at various other latest Maastrichtian localities in northern mid-latitudes, such as Poland and the North Sea Basin (Machalski et al., 2016; Schiøler and Wilson, 1993). Mapping our and previously published data (Fig. 5) shows that these massive cyst-production events were a widespread phenomenon during the LMWE, occurring throughout large parts of the Northern Atlantic and Northern Europe. Accordingly, assemblages characterized by a dominance of *P. grallator* appear to be a marker for this event throughout the northern mid-latitudes. Similarly, among other phytoplankton groups, e.g. calcareous nannoplankton, the LMWE is also marked by peak occurrences of specific taxa, such as *Micula murus* in low latitudes and *Watznaueria barnesiae* at mid-latitudes (Sheldon et al., 2010; Thibault and Gardin, 2006; Thibault and Husson, 2016). The LMWE thus caused strong phytoplankton community perturbations worldwide.

## 4 Discussion

### 4.1 Causes of the *P. grallator* dominance

Peak abundances of *P. grallator* occurring during warming intervals around the K-Pg boundary interval raise the question to which environmental changes these dinoflagellates respond. Modelling responses of marine species and communities to modern climate change has shown that changes in local thermal regimes, caused by climate change, can cause nonlinear changes in marine the global ocean, including abrupt community shifts (Beaugrand et al., 2019). It is therefore likely that the LMWE caused similar large-scale community shifts amongst global marine phytoplankton communities. Traditionally, abundances of this taxon were interpreted to reflect a cooling signal in relatively low latitude Tethyan records such as El Kef and Elles in Tunisia (Brinkhuis et al., 1998; Vellekoop et al., 2015). This is because abundances of this species in Cretaceous sedimentary sequences are generally restricted to boreal regions (Brinkhuis et al., 1998). However, the massive increase in relative abundance of *P. grallator* during the LMWE implies that its thermal tolerances were not the limiting factor in its distribution before the LMWE. In turn, this indicates that an environmental factor other than temperature change allowed for it to flourish. Several studies have suggested that the LMWE caused intensification of the hydrological cycle and increased freshwater input at shelf localities (e.g. Woelders et al., 2017). Yet, there is no apparent increase of inferred freshwater-tolerant dinoflagellate cyst taxa (e.g. the *Senegalinium complex*, cf. Frieling and Sluijs, 2018) at the New Jersey paleoshelf (Fig. 2). Moreover, dorsoventrally compressed gonyaulacoid cysts like *P. grallator* are typically not considered indicative of high



5 nutrient, low salinity conditions (Frieling and Sluijs, 2018). The absence of a clear run-off or salinity signal in the dinocyst and foraminiferal records seems to rule out run-off or freshwater input as a trigger for the massive abundances of *P. grallator*. Similarly, while patterns like a sea-level fall could also result in environmental perturbations, affecting the dinoflagellate community at these shallow shelf sites (Sluijs et al., 2005), no sedimentological or paleontological evidence exists for any major changes in sea level across this interval at the New Jersey shelf (Miller et al., 1998; Woelders et al., 2018).

10 Based on a quantification of relations between dinoflagellate assemblages and high-quality geochemical and sedimentological data from sedimentary archives, Frieling et al. (2018) argued that high abundances of dorsoventrally compressed gonyaulacoid cysts could reflect recurring strong stratification. Possibly, the  $4.0 \pm 1.3^{\circ}\text{C}$  warming of surface waters resulted in a more frequent thermally-stratified waters over the New Jersey paleoshelf. We argue that the combination of a more frequent thermally-stratified water column with higher mean annual seawater temperatures during the LMWE stimulated dinoflagellate cyst production. Conceivably, although we cannot assess annual production rates with our data, the recorded enhanced dinoflagellate cyst production could be the result of recurrent dinoflagellate blooms. Dinoflagellates generally outcompete other phytoplankton groups in a more thermally-stratified water column because of their mobility (Moore et al., 2008). In addition, if the high late Cretaceous SSTs were still in any way limiting productivity, higher mean annual sea water temperatures may have further boosted growth rates (Eppley, 1972) and resulted in longer-lasting annual bloom windows (Hallegraeff, 2010). Moreover, bloom-forming dinoflagellates often flourish in "stressful" environmental conditions that are harmful to other phytoplankton (Almeda et al., 2018), giving them an advantage over other eukaryotic phytoplankton groups. Studies on modern bloom-forming dinoflagellate taxa have shown that their toxic or unpalatable nature disrupts top-down grazer control, thereby facilitating the formation of massive, monospecific blooms (Waggett et al., 2012). The occurrence of dinoflagellate blooms can therefore lead to a positive feedback loop that supports bloom formation while simultaneously starving the grazing species of the ecosystem (Waggett et al., 2012), providing a mechanism for the proliferation of blooming dinoflagellate taxa.

25 The massive abundance of *P. grallator* in our records likely reflects the response of an opportunistic species to environmental stress in sea-surface waters, potentially caused by the conjunction of warming causing stratification with other forms of environmental changes during the LMWE, for example ocean acidification caused by Deccan volcanism (Henehan et al., 2016). The strong increase in total dinocyst accumulation during the LMWE suggest that dinoflagellate productivity increased as a result of these environmental changes. A remarkable feature of the dinoflagellate response recorded on the New Jersey paleoshelf is the persistence of the amplified dinoflagellate cyst production, maintained throughout the LMWE (i.e., more than 30 250 kys). While we cannot positively confirm that the recorded amplified dinoflagellate cyst production is linked to actual dinoflagellate blooms, we hypothesize that throughout the LMWE, the conditions were repeatedly favorable for dinoflagellate blooms, which would result in the recurrence of blooms. If true, our records would not reflect one long-lasting dinoflagellate bloom, but rather the sum of many blooms. As the number of cysts produced during each bloom will likely have been a



multitude of the normal annual production, a strong bloom every few years could have resulted in a palynological record dominated by blooming taxa throughout the LMWE. Perhaps this can explain why, even though *P. grallator* is very abundant throughout the event, “normal marine” taxa like *Spiniferites*, consistently occur in almost the same concentrations in cysts/gram as before the event. These cysts could reflect the “normal” years in between the recurrent *P. grallator* blooms.

5

Our records show that the enhanced dinoflagellate cyst production was not uniform for the entire New Jersey paleoshelf. In the shallower, more proximal sites of Fort Monmouth 3 and Meirs Farm, the cyst-producing dinoflagellate community was less affected than at the outer shelf Bass River site. In modern coastal systems, tide- and wind-driven mechanisms dominate algal bloom formation in shallow well-mixed systems, while density-driven exchange controls algal bloom formation in deeper, seasonally stratified systems (Pitcher et al., 2010). The difference in intensity recorded in our records is likely related to such local paleoceanographic differences.

10

#### 4.2 Benthic-pelagic ecosystem coupling

Our benthic foraminiferal record of Bass River shows that the LMWE, and related perturbation of the dinoflagellate assemblages, also affected the benthic ecosystem of the New Jersey paleoshelf (Fig. 2 & 3 SI Fig. S6). Similarly, Olsson et al. (2002) also reported a distinct benthic foraminiferal biofacies restricted to the LMWE at the New Jersey paleoshelf. Benthic foraminiferal diversity was highest before the LMWE, when the stable dinocyst assemblage is characterized by normal marine taxa. During the LMWE, benthic foraminiferal diversity drops (Shannon H from 2.5 to <2.0; Fig. 3, SI Table S6; SI Fig. S7). Moreover, the onset of the LMWE is characterized by a decrease in the relative abundance of bi- and triserial endobenthic morphotypes (Fig. 2), a group that is generally considered typical for high-nutrient, low-oxygen conditions (Jorissen et al., 2007).

20

In modern day shallow marine settings, algal blooms are often associated with bottom water deoxygenation, related to short-term massive input of organic matter (Moore et al., 2008). Yet, the foraminiferal assemblages from the more open marine Bass River site rather suggests an overall decrease in food supply to the sea floor during the LMWE, without any indication for deoxygenation (i.e. no proliferation of bi- and triserials). Benthic foraminiferal abundances (in foraminifera/gram), which can be used as a proxy for food abundance on the sea floor (Jorissen et al., 2007), do not increase during the enhanced dinoflagellate cyst production event in our record (Figure S7), which also indicates that the food flux to the sea floor did not increase during the LMWE. This means that, paradoxically, while our dinocyst record suggests increased productivity, the produced organic matter did not reach the sea floor. Alternatively, the quality of the supplied organic matter was less during the LMWE. We postulate that, at the relatively offshore Bass River site, the combination of such thermally-driven oceanographic changes and the recurring massive dinocyst production had a profound effect on both the mode as well as the type and amount of food supply to the sea floor. Warmer and more stratified sea waters likely resulted in higher respiration rates of sinking organic matter. In addition, under some more thermally-stratified settings, the total phytoplankton biomass decreases, as nutrients become limiting in the photic zone (Behrenfeld et al., 2006; Doney, 2006), likely also resulting in a decreasing food supply to

25

30





the sea floor (Waggett et al., 2012). Likewise, during the Middle Eocene Climatic Optimum, a similar warming event during the Eocene, dinoflagellate blooms also coincided with a collapse of export productivity, resulting from intensified thermal stratification (Cramwinckel et al., 2019). T

5 The benthic foraminiferal community at Bass River may have been affected by changing surface ocean conditions across the New Jersey paleoshelf, including increased dinoflagellate cyst production. The benthic foraminiferal record of Bass River shows an increase of the relative abundance of the calcareous agglutinated foraminiferal taxon *Clavulinoides trilatera*, which increases from <10% of the assemblage before the warming interval, to 20-35% of the assemblage during the dinoflagellate-cyst peaks (Fig. 2). Our record suggests that *C. trilatera* may have profited from massive deposition of dinoflagellate cysts, as  
10 shown by the significant positive correlation between the relative abundances of *C. trilatera* and *P. grallator* ( $R^2=0.55$ ;  $p$ -value<0.01; Fig. 7). We speculate that this taxon might have been feeding on dinocysts or detritus derived from the hypothesized dinoflagellate blooms, potentially similar to modern-day “bloom-feeding” foraminifera (Kitazato et al., 2000; Lee, 1966). In the period after the LMWE, during the last tens of thousands of years of the Maastrichtian, the former Maastrichtian dinocyst assemblages returned, indicating more normal marine conditions, while benthic foraminiferal diversity  
15 at Bass River remained slightly suppressed.

## 5 Conclusions

Our records show that the LMWE resulted in a period of intensive enhanced dinoflagellate-cyst production at mid-latitudes shelves along the North Atlantic. This enhanced dinoflagellate-cyst production persisted during the LMWE and resulted from seasonally recurring ecosystem stress. The warm, seasonally stratified shallow seas resulted in repeatedly favorable conditions  
20 for particular cyst-producing dinoflagellate taxa, supporting the massive abundance of *P. grallator* in our records. Our study therefore indicates that shallow marine phytoplankton communities experienced major community level shifts in response to latest Cretaceous global warming. While we cannot positively confirm that the recorded amplified dinoflagellate cyst production is linked to actual dinoflagellate blooms, we hypothesize that throughout the LMWE, the conditions were likely more frequently favorable for dinoflagellate blooms, potentially resulting in recurrent blooms. Dinoflagellate-cyst production  
25 was more intense in the open marine seasonally stratified sites, compared to nearshore sites, highlighting a possible heterogeneous response to climate change across late Maastrichtian shelves. The benthic foraminiferal record of Bass River indicates that the LMWE, and related dinoflagellate cyst production, resulted in a stressed benthic ecosystem with a reduced benthic foraminiferal diversity. While the dinocyst assemblage returned to a stable, normal marine community in the last tens of thousands of years of the Maastrichtian, benthic foraminiferal diversity remained slightly suppressed. This increased  
30 ecosystem stress during the latest Maastrichtian potentially primed global ecosystems for the subsequent mass extinction following the K-Pg boundary Chicxulub impact.



## 6 Data availability

All data related to publication are available in the Supplement.

5

**The Supplement related to this article is available online at.....**

10 *Author contributions.* J.V. conceived the study; J.V. and L.W. generated the data. All authors contributed to the writing of the manuscript.

*Competing interests.* The authors declare that they have no conflict of interest.

15 *Acknowledgements.* This work was funded by FWO grant G.0B85.13 (to R.P.S.) and FWO grant 12Z6618N (to J.V.). AS thanks the European Research Council for Consolidator Grant

## 20 References

Almeda, R., Cosgrove, S. and Buskey, E. J.: Oil spills and dispersants can cause the initiation of potentially harmful dinoflagellate blooms (“red tides”), *Environ. Sci. Technol.*, 52, 5718–5724, doi:10.1021/acs.est.8b00335, 2018.

25 Beaugrand, G., Conversi, A., Atkinson, A., Cloern, J., Chiba, S., Kirby, R. R., Greene, C. H., Goberville, E., Otto, S. A., Reid, P. C., Stemann, L. and Edwards, M.: Prediction of unprecedented biological shifts in the global ocean, *Nat. Clim. Chang.*, 9(March), doi:10.1038/s41558-019-0420-1, 2019.

Behrenfeld, M. J., O’Malley, R. T., Siegel, D. A., McClain, C. R., Sarmiento, J. L., Feldman, G. C., Milligan, A. J., Falkowski, P. G., Letelier, R. M. and Boss, E. S.: Climate-driven trends in contemporary ocean productivity., *Nature*, 444(7120), 752–755, doi:10.1038/nature05317, 2006.

Boyd, P. W. and Doney, S. C.: Modelling regional responses by marine pelagic ecosystems to global climate change, *Geophys.*





- Res. Lett., 29(16), 1806, doi:10.1029/2001gl014130, 2002.
- Brinkhuis, H.: Late Eocene to Early Oligocene dinoflagellate cysts from the Priabonian type-area (Northeast Italy): biostratigraphy and paleoenvironmental interpretation, *Palaeogeogr. Palaeoclimatol. Palaeoecol.*, 107(1–2), 121–163, doi:10.1016/0031-0182(94)90168-6, 1994.
- 5 Brinkhuis, H., Bujak, J. P., Smit, J., Versteegh, G. J. M. and Visscher, H.: Dinoflagellate-based sea surface temperature reconstructions across the Cretaceous-Tertiary boundary, *Palaeogeogr. Palaeoclimatol. Palaeoecol.*, 141(1–2), 67–83, doi:10.1016/S0031-0182(98)00004-2, 1998.
- Cramwinckel, M. J., Ploeg, R. Van Der, Bijl, P. K., Peterse, F., Bohaty, S. M., Röhl, U., Schouten, S., Middelburg, J. J. and Sluijs, A.: Harmful algae and export production collapse in the equatorial Atlantic during the zenith of Middle Eocene Climatic  
10 Optimum warmth, *Geology*, 47(3), 1–4, doi:10.1130/G45614.1/4639671/g45614.pdf, 2019.
- Doney, S. C.: Plankton in a warmer world, *Nature*, 444, 695–696, 2006.
- Eppley, R. W.: Temperature and phytoplankton growth in the sea, *Fish. Bull.*, 70(4), 1063–1085, 1972.
- Esmeray-Senlet, S., Wright, J. D., Olsson, R. K., Miller, K. G., Browning, J. V and Quan, T. M.: Evidence for reduced export productivity following the Cretaceous/Paleogene mass extinction, *Paleoceanography*, 30, 1–21, doi:10.1002/2014PA002724,  
15 2015.
- Falkowski, P. G., Katz, M. E., Knoll, A. H., Quigg, A., Raven, J. A., Schofield, O. and Taylor, F. J. R.: The evolution of modern eukaryotic phytoplankton, *Science*, 305, 354–360, doi:10.1126/science.1095964, 2004.
- Frieling, J. and Sluijs, A.: Towards quantitative environmental reconstructions from ancient non-analogue microfossil assemblages: Ecological preferences of Paleocene – Eocene dinoflagellates, *Earth-Science Rev.*, 185(May), 956–973,  
20 doi:10.1016/j.earscirev.2018.08.014, 2018.
- Frieling, J., Reichart, G.-J., Middelburg, J. J., Röhl, U., Westerhold, T., Bohaty, S. M. and Sluijs, A.: Tropical Atlantic climate and ecosystem regime shifts during the Paleocene–Eocene Thermal Maximum, *Clim. Past*, 14(1), 39–55, doi:10.5194/cp-14-39-2018, 2018.
- Hallegraeff, G. M.: A review of harmful algal blooms and their apparent global increase, *Phycologia*, 32(2), 79–99,  
25 doi:10.2216/i0031-8884-32-2-79.1, 1993.
- Hallegraeff, G. M.: Ocean climate change, phytoplankton community responses, and harmful algal blooms: A formidable



- predictive challenge, *J. Phycol.*, 46(2), 220–235, doi:10.1111/j.1529-8817.2010.00815.x, 2010.
- Hay, W. W.: Can humans force a return to a “Cretaceous” climate?, *Sediment. Geol.*, 235(1–2), 5–16, doi:10.1016/j.sedgeo.2010.04.015, 2011.
- Henehan, M. J., Hull, P. M., Penman, D. E., Rae, J. W. B. and Schmidt, D. N.: Biogeochemical significance of pelagic ecosystem function: an end-Cretaceous case study, *Philos. Trans. R. Soc. B Biol. Sci.*, 371(1694), 20150510, doi:10.1098/rstb.2015.0510, 2016.
- Jorissen, F. J., Fontanier, C. and Thomas, E.: Paleooceanographical proxies based on deep-sea benthic foraminiferal assemblage characteristics, in *Proxies in Late Cenozoic Paleooceanography: Pt. 2*, edited by C. Hillaire-Marcel and A. de Vernal, pp. 263–326, Elsevier., 2007.
- 10 Kitazato, H., Shirayama, Y., Nakatsuka, T., Fujiwara, S., Shimanaga, M., Kato, Y., Okada, Y., Kanda, J., Yamaoka, A., Masuzawa, T. and Suzuki, K.: Seasonal phytodetritus deposition and responses of bathyal benthic foraminiferal populations in Sagami Bay, Japan: Preliminary results from “Project Sagami 1996-1999,” *Mar. Micropaleontol.*, 40(3), 135–149, doi:10.1016/S0377-8398(00)00036-0, 2000.
- Lee, J. J.: Tracer experiments in feeding littoral foraminifera., *J. Protozool.*, 13(4), 659–670, 1966.
- 15 Machalski, M., Vellekoop, J., Dubicka, Z., Peryt, D. and Harasimiuk, M.: Late Maastrichtian cephalopods, dinoflagellate cysts and foraminifera from the Cretaceous-Paleogene succession at Lechówka, southeast Poland: Stratigraphic and environmental implications, *Cretac. Res.*, 57, 208–227, doi:10.1016/j.cretres.2015.08.012, 2016.
- Miller, K. G., Sugarman, P. J., Browning, J. V., Olsson, R. K., Pekar, S. F., Reilly, T. J., Cramer, B. S., Aubry, M.-P., Lawrence, R. P., Curran, J., Stewart, M., Metzger, J. M., Uptegrove, J., Bukry, D., Burckle, L. H., Wright, J. D., Feigenson, M. D., 20 Brenner, G. J., Dalton, R. F. and Browning, L.: Bass river site, *Proc. Ocean Drill. Program, Initial Reports*, 174AX, 5–43, doi:10.2973/odp.proc.ir.174AX.1998, 1998.
- Miller, K. G., Sherrell, R. M., Browning, J. V., Field, M. P., Gallagher, W., Olsson, R. K., Sugarman, P. J., Tuorto, S. and Wahyudi, H.: Relationship between mass extinction and iridium across the Cretaceous-Paleogene boundary in New Jersey, *Geology*, 38(10), 867–870, doi:10.1130/G31135.1, 2010.
- 25 Moore, S. K., Trainer, V. L., Mantua, N. J., Parker, M. S., Laws, E. A., Backer, L. C. and Fleming, L. E.: Impacts of climate variability and future climate change on harmful algal blooms and human health, *Environ. Heal.*, 7(suppl 2), S4, doi:1476-069X-7-S2-S4 [pii]r10.1186/1476-069X-7-S2-S4, 2008.



- Nøhr-Hansen, H., Williams, G. L. and Fensome, R. A.: Biostratigraphic correlation of the western and eastern margins of the Labrador – Baffin Seaway and implications for the regional geology, *Geol. Surv. Denmark Greenl. Bull.*, 37, 74, 2016.
- Olsson, R. K., Miller, K. G., Browning, J. V., Wright, J. D. and Cramer, B. S.: Sequence stratigraphy and sea-level change across the Cretaceous-Tertiary boundary on the New Jersey passive margin, in *Catastrophic Events and Mass Extinctions: Impacts and Beyond*, vol. 356, edited by C. Koeberl and K. G. Macleod, pp. 97–108, Geological Society of America Special Paper, Boulder, Colorado., 2002.
- Pachauri, R. K., Allen, M. R., Barros, V. R., Broome, J., Cramer, W., Christ, R., Church, J. A., Clarke, L., Dahe, Q., Dasgupta, P., Dubash, N. K., Edenhofer, O., Elgizouli, I., Field, C. B., Forster, P., Friedlingstein, P., Fuglestvedt, J., Gomez-Echeverri, L., Hallegatte, S., Hegerl, G., Howden, M., Jiang, K., Jimenez Cisneros, B., Kattsov, V., Lee, H., Mach, K. J., Marotzke, J., Mastrandrea, M. D., Meyer, L., Minx, J., Mulugetta, Y., O'Brien, K., Oppenheimer, M., Pereira, J. J., Pichs-Madruga, R., Plattner, G.-K., Pörtner, H.-O., Power, S. B., Preston, B., Ravindranath, N. H., Reisinger, A., Riahi, K., Rusticucci, M., Scholes, R., Seyboth, K., Sokona, Y., Stavins, R., Stocker, T. F., Tschakert, P., van Vuuren, D. and van Ypersele, J.-P.: *Climate Change 2014: Synthesis Report. Contribution of Working Groups I, II and III to the fifth assessment report of the Intergovernmental Panel on Climate Change*, edited by R. K. Pachauri and L. Meyer, IPCC, Geneva, Switzerland., 2014.
- Petersen, S. V., Dutton, A. and Lohmann, K. C.: End-Cretaceous extinction in Antarctica linked to both Deccan volcanism and meteorite impact via climate change, *Nat. Commun.*, 7, 12079, doi:10.1038/ncomms12079, 2016.
- Pitcher, G. C., Figueiras, F. G., Hickey, B. M. and Moita, M. T.: The physical oceanography of upwelling systems and the development of harmful algal blooms, *Prog. Oceanogr.*, 85(1–2), 5–32, doi:10.1016/j.pocean.2010.02.002, 2010.
- Ravizza, G. and Peucker-Ehrenbrink, B.: Chemostratigraphic evidence of Deccan volcanism from the marine osmium isotope record, *Science*, 302(5649), 1392–1395, doi:10.1126/science.1089209, 2003.
- Schiøler, P. and Wilson, G. J.: Maastrichtian dinoflagellate zonation in the Dan Field, Danish North Sea, *Rev. Palaeobot. Palynol.*, 78, 312–351, doi:10.1016/0034-6667(93)90070-B, 1993.
- Schiøler, P., Brinkhuis, H., Roncaglia, L. and Wilson, G. J.: Dinoflagellate biostratigraphy and sequence stratigraphy of the type Maastrichtian (Upper Cretaceous), ENCI Quarry, The Netherlands, *Mar. Micropaleontol.*, 31(1–2), 65–95, doi:10.1016/S0377-8398(96)00058-8, 1997.
- Schoene, B., Samperton, K. M., Eddy, M. P., Keller, G., Adatte, T., Bowring, S. A., Khadri, S. F. R. and Gertsch, B.: U-Pb geochronology of the Deccan Traps and relation to the end-Cretaceous mass extinction, *Science*, 347(6218), 182–184, doi:10.1126/science.aaa0118, 2015.



- Schouten, S., Hopmans, E. C., Schefuß, E. and Sinninghe Damsté, J. S.: Distributional variations in marine crenarchaeotal membrane lipids: A new tool for reconstructing ancient sea water temperatures?, *Earth Planet. Sci. Lett.*, 204(1–2), 265–274, doi:10.1016/S0012-821X(02)00979-2, 2002.
- Schulte, P., Alegret, L., Arenillas, I., Arz, J. A., Barton, P. J., Bown, P. R., Bralower, T. J., Christeson, G. L., Claeys, P.,  
5 Cockell, C. S., Collins, G. S., Deutsch, A., Goldin, T. J., Goto, K., Grajales-Nishimura, J. M., Grieve, R. A. F., Gulick, S. P.  
S., Johnson, K. R., Kiessling, W., Koeberl, C., Kring, D. A., MacLeod, K. G., Matsui, T., Melosh, J., Montanari, A., Morgan,  
J. V., Neal, C. R., Nichols, D. J., Norris, R. D., Pierazzo, E., Ravizza, G., Rebolledo-vieyra, M., Reimold, W. U., Robin, E.,  
Salge, T., Speijer, R. P., Sweet, A. R., Urrutia-Fucugauchi, J., Vajda, V., Whalen, M. T. and Willumsen, P. S.: The Chicxulub  
asteroid impact and mass extinction at the Cretaceous-Paleogene Boundary, *Science*, 327(5970), 1214–1218,  
10 doi:10.1126/science.1177265, 2010.
- Sheldon, E., Ineson, J. and Bown, P.: Late Maastrichtian warming in the Boreal Realm: Calcareous nannofossil evidence from  
Denmark, *Palaeogeogr. Palaeoclimatol. Palaeoecol.*, 295(1–2), 55–75, doi:10.1016/j.palaeo.2010.05.016, 2010.
- Sluijs, A. and Brinkhuis, H.: A dynamic climate and ecosystem state during the Paleocene-Eocene Thermal Maximum –  
inferences from dinoflagellate cyst assemblages at the New Jersey Shelf, *Biogeosciences*, 6(3), 5163–5215, doi:10.5194/bg-  
15 6-5163-2009, 2009.
- Sluijs, A., Pross, J. and Brinkhuis, H.: From greenhouse to icehouse; organic-walled dinoflagellate cysts as paleoenvironmental  
indicators in the Paleogene, *Earth-Science Rev.*, 68(3–4), 281–315, doi:10.1016/j.earscirev.2004.06.001, 2005.
- Thibault, N. and Gardin, S.: Maastrichtian calcareous nannofossil biostratigraphy and paleoecology in the Equatorial Atlantic  
(Demerara Rise, ODP Leg 207 Hole 1258A), *Rev. Micropaléontologie*, 49(4), 199–214, doi:10.1016/j.revmic.2006.08.002,  
20 2006.
- Thibault, N. and Husson, D.: Climatic fluctuations and sea-surface water circulation patterns at the end of the Cretaceous era:  
Calcareous nannofossil evidence, *Palaeogeogr. Palaeoclimatol. Palaeoecol.*, 441, 152–164, doi:10.1016/j.palaeo.2015.07.049,  
2016.
- Vellekoop, J., Smit, J., van de Schootbrugge, B., Weijers, J. W. H., Galeotti, S., Sinninghe Damsté, J. S. and Brinkhuis, H.:  
25 Palynological evidence for prolonged cooling along the Tunisian continental shelf following the K-Pg boundary impact,  
*Palaeogeogr. Palaeoclimatol. Palaeoecol.*, 426, doi:10.1016/j.palaeo.2015.03.021, 2015.
- Vellekoop, J., Esmeray-Senlet, S., Miller, K. G., Browning, J. V., Sluijs, A., van de Schootbrugge, B., Sinninghe Damsté, J. S.  
and Brinkhuis, H.: Evidence for Cretaceous-Paleogene boundary bolide “impact winter” conditions from New Jersey, USA,



Geology, 44(8), 619–622, doi:10.1130/G37961.1, 2016.

Vellekoop, J., Woelders, L., van Helmond, N. A. G. M., Galeotti, S., Smit, J., Slomp, C. P., Brinkhuis, H., Claeys, P. and Speijer, R. P.: Shelf hypoxia in response to global warming after the Cretaceous-Paleogene boundary impact, *Geology*, 46(8), 683–686, doi:<https://doi.org/10.1130/G45000.1>, 2018.

- 5 Waggett, R. J., Hardison, D. R. and Tester, P. A.: Toxicity and nutritional inadequacy of *Karenia brevis*: Synergistic mechanisms disrupt top-down grazer control, *Mar. Ecol. Prog. Ser.*, 444, 15–30, doi:10.3354/meps09401, 2012.

Williams, G. L., Brinkhuis, H., Pearce, M. A., Fensome, R. A. and Weegink, J. W.: Southern Ocean and global dinoflagellate cyst events compared: index events for the Late Cretaceous–Neogene, in *Proceedings of the Ocean Drilling Program, Scientific Results*, vol. 189, edited by N. F. Exon, J. P. Kennett, and M. J. Malone, pp. 1–98., 2004.

- 10 Woelders, L., Vellekoop, J., Kroon, D., Smit, J., Casadio, S., Prámparo, M. B., Dinarès-Turell, J., Peterse, F., Sluijs, A. and Speijer, R. P.: Latest Cretaceous climatic and environmental change in the South Atlantic region, *Paleoceanography*, 32, 1–18, doi:10.1002/2016PA003007, 2017.

Woelders, L., Vellekoop, J., Weltje, G. J., de Nooijer, L., Reichert, G.-J., Peterse, F., Claeys, P. and Speijer, R. P.: Robust multi-proxy data integration, using late Cretaceous paleotemperature records as a case study, *Earth Planet. Sci. Lett.*, 500, 215–

- 15 224, doi:10.1016/j.epsl.2018.08.010, 2018.

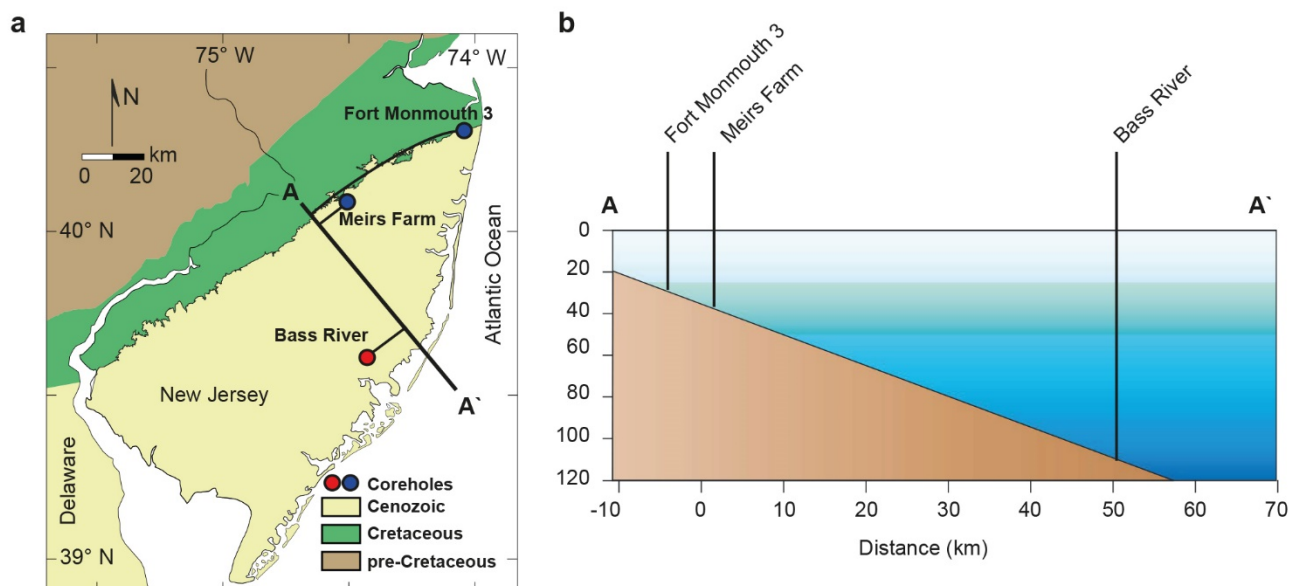
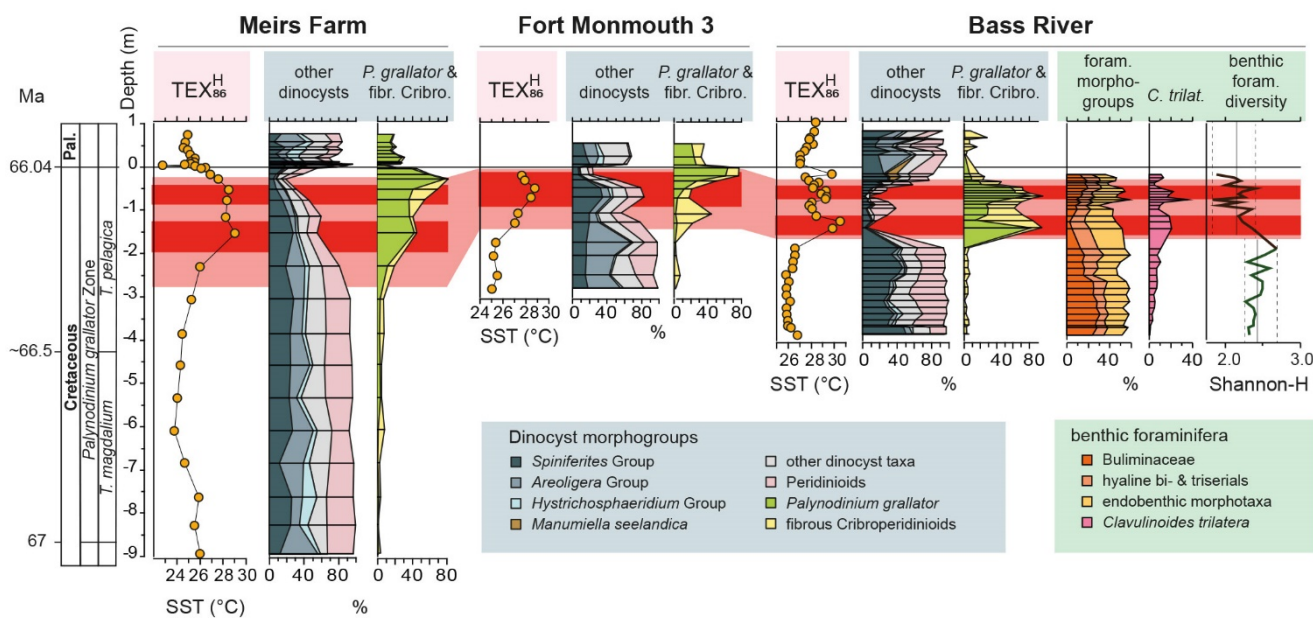


Figure 1: Geological map and paleoslope model of New Jersey coastal plain. a, geological map of the New Jersey coastal plain. Bass River (ODP Leg 174AX; Miller et al., 1998) is indicated by the red circle and the cores drilled by the Rutgers University K-Pg boundary drilling project (Meirs Farm and Fort Monmouth 3; Miller et al., 2010) are indicated by blue circles. b, paleoslope model of the New Jersey shelf showing locations of the Bass River, Meirs Farm and Fort Monmouth 3, after Esmeray-Senlet et al. (2015), assuming a paleoslope of 1:750. Vertical exaggeration: 250x.

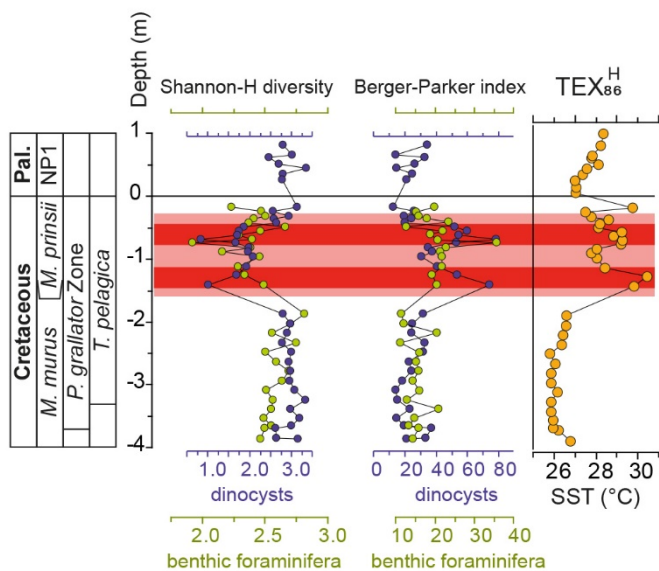
10

15



5 **Figure 2: Relative abundances of dinocyst and benthic foraminiferal morphological groups and TEX<sub>86</sub> SST records of Bass River, Meirs Farm and Fort Monmouth 3. TEX<sub>86</sub> data of Meirs Farm and Fort Monmouth 3 are from Vellekoop et al. (2016), TEX<sub>86</sub> data of Bass River is from Woelders et al. (2018). Depth in meters distance from the K-Pg boundary. The latest Maastrichtian warming interval is indicated in pink and red, with red marking peak warmth. For the stratigraphy and age models, see SI Text S2 - Age Model, for the raw data, see SI Tables S1-6. Foraminiferal morphogroups are cumulative. In these foraminiferal morphogroups, *Clavulinoides trilatera* is included in the ‘endobenthic morphotypes’. The total variation and average benthic foraminiferal diversity values are indicated for the pre-warming and warming intervals. Pal.–Paleogene; *T. pelagica* –*Thalassiphora pelagica*; *T. magdali* –*Tanyosphaeridium magdali*; *C. trilat.* – *Clavulinoides trilatera*.**





5 **Figure 3 – Overview of benthic foraminiferal and dinocyst diversity indices.  $TEX_{86}$  SST record of ODP 174AX Bass River (Woelders et al., 2018) and Shannon-H diversity and Berger-Parker index of the benthic foraminifera (green) and dinocysts (blue) of the Bass River core. For the raw data, see SI Tables S1 and S6. Pal.–Paleogene; *T. pelagica* –*Thalassiphora pelagica*; *M.*–*Micula*.**

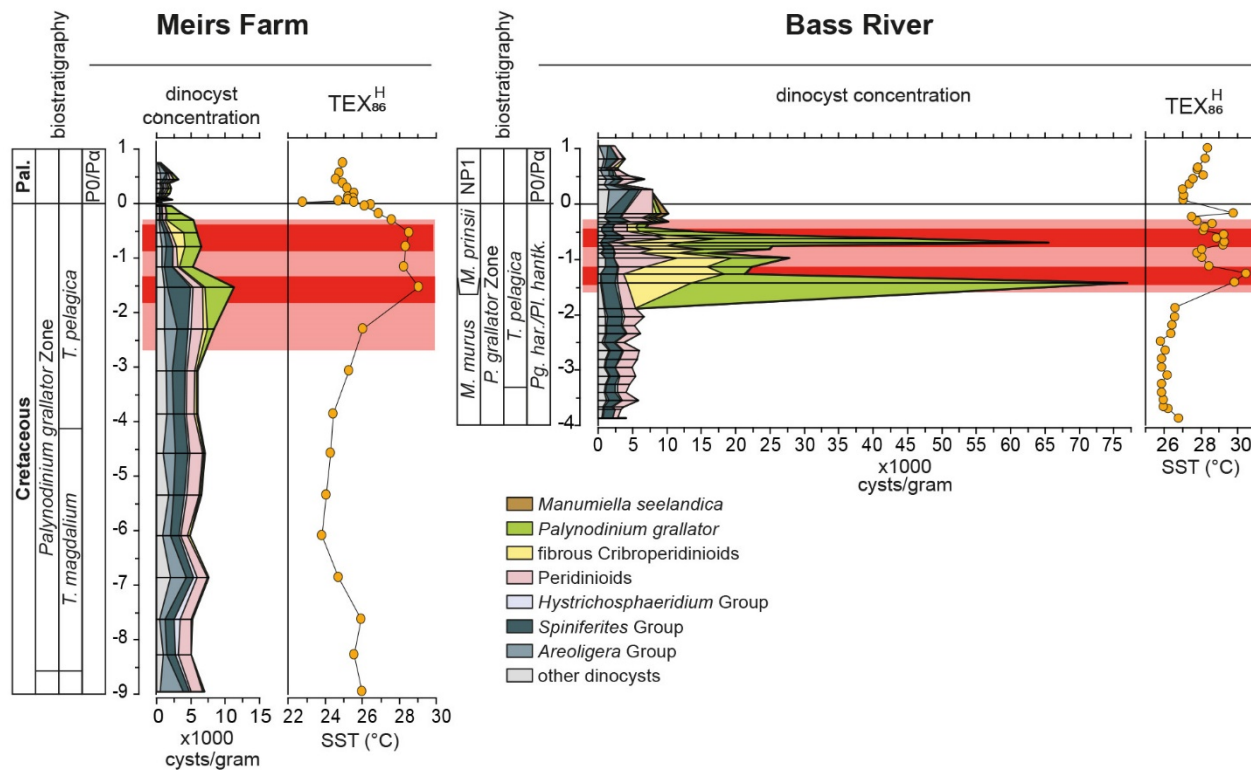


Figure 4: TEX<sub>86</sub> SST records and concentrations of dinocysts for Meirs Farm and Bass River. Dinocyst concentrations in cysts/gram dry sediment. For the raw data, see SI Tables S4&S5. *M.*–*Micula*; *Pg. har.*–*Pseudoguembelina hariiaensis*; *Pl. hantk.*–*Plummerita hantkeninoides*. For other abbreviations, see Figure 2.

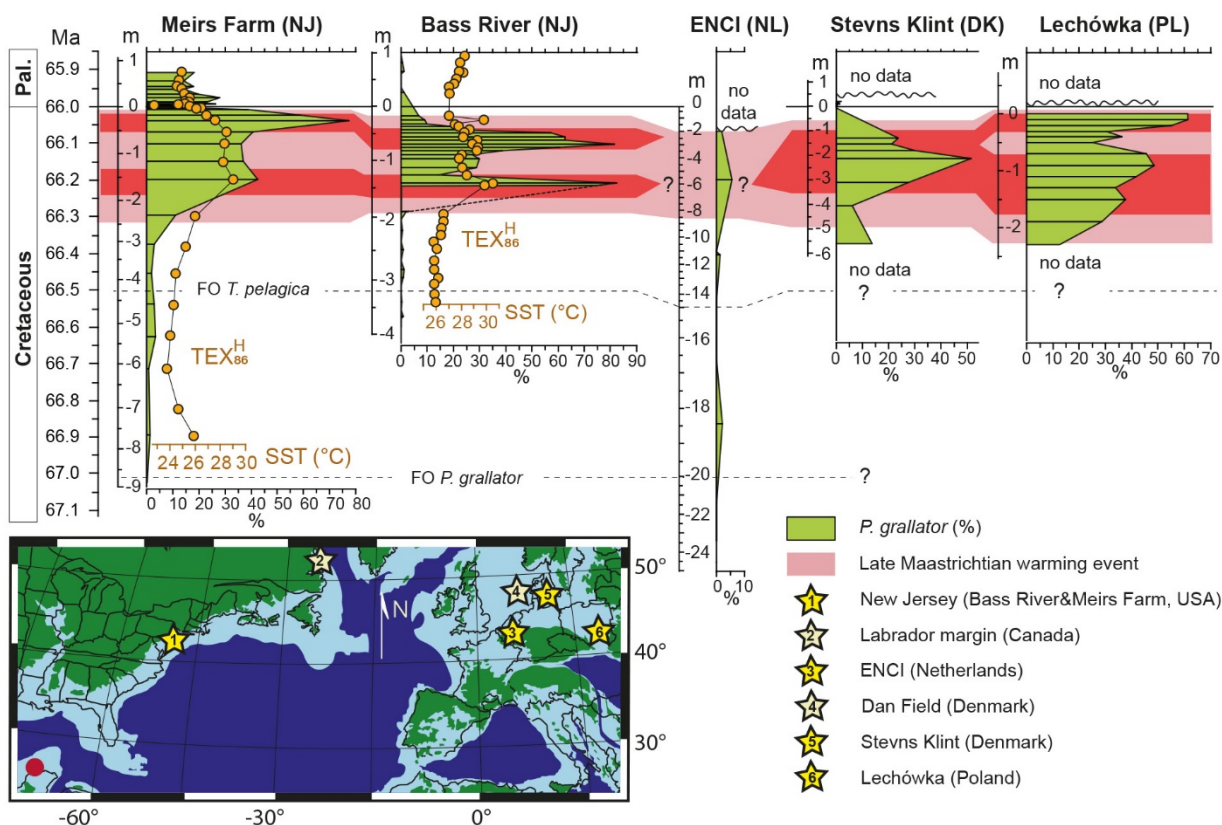
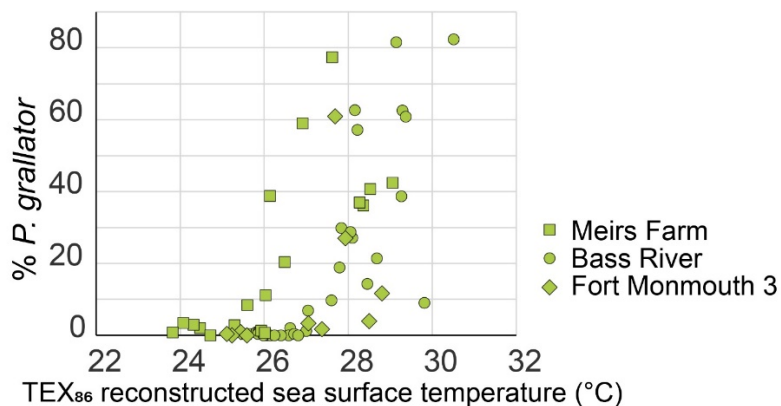
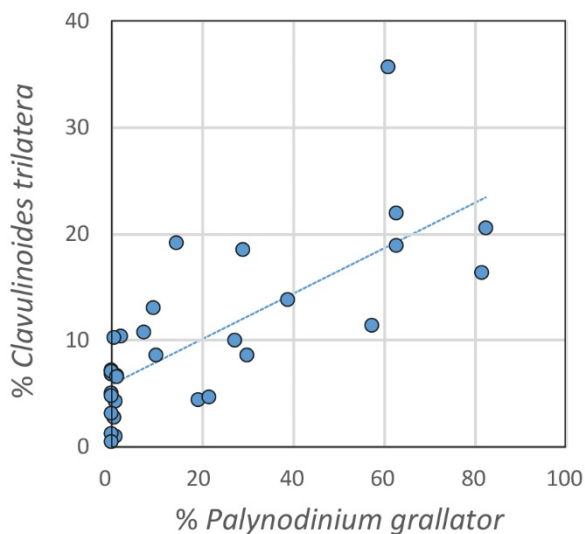


Figure 5: *Palynodinium grillator* acme across the Boreal Bioprovince. Relative abundances of *P. grillator* through the last million years of the Cretaceous on the New Jersey Paleoshelf (this study), the Maastrichtian type area (ENCI, Netherlands; Schiøler et al., 1997); Stevns Klint (Denmark; Vellekoop et al., 2018) and Lechówka (Poland; Machalski et al., 2016). For ENCI, Stevns Klint and 5 Léchowka, the peak warmth is inferred based on the *P. grillator* abundances. Red dot marks the Chicxulub impact site. Peak abundances of *P. grillator* in the topmost Maastrichtian is also recorded in the qualitative records of the Labrador margin (Canada; Nøhr-Hansen et al., 2016) and the North Sea Dan field (Schiøler and Wilson, 1993).



5 **Figure 6: Relative abundances of *Palynodinium grallator* versus temperature. TEX<sub>86</sub> sea surface temperatures of ODP 174AX Bass River (Woelders et al., 2018) and Meirs Farm and Fort Monmouth 3 (Vellekoop et al., 2016) versus relative abundances of *Palynodinium grallator* (this study), for the uppermost Maastrichtian. Paleocene samples are not included in this cross plot.**



10 **Figure 7: Correlation between the relative abundances of *Palynodinium grallator* and *Clavulinoides trilaterra*. (R<sup>2</sup>=0.55; p-value<0.01).**