

Supplementary material to “Nitrogen cycling in the Elbe estuary from a joint 3D-modelling and observational perspective“

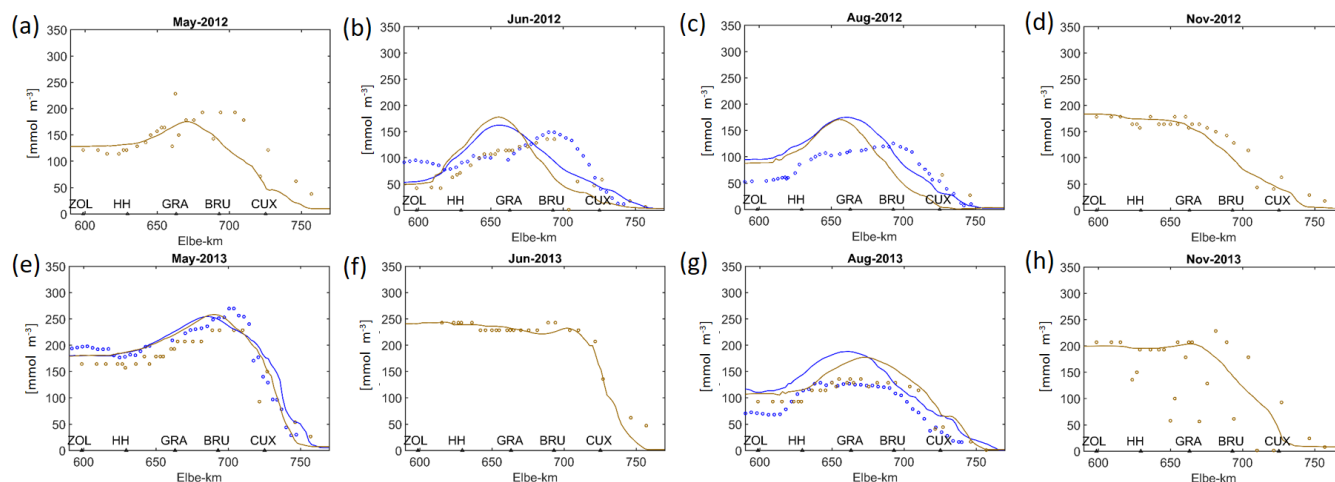


Figure S-1: Supplementary to Fig. 8 showing the observed surface nitrate concentrations obtained during several helicopter (brown circles, FGG) and ship surveys (blue circles, HZG) along Elbe estuary. Solid lines indicate model results averaged over the period of the surveys where blue (brown) solid lines compared to ship (helicopter) surveys.

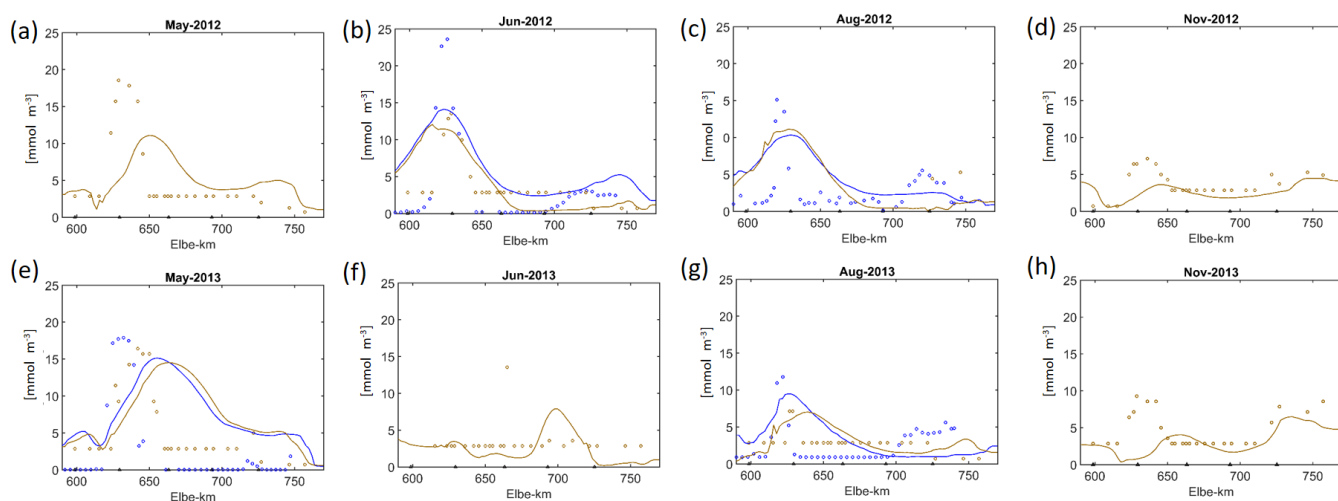


Figure S-2: Supplementary to Fig. 9 showing the observed surface ammonium concentrations obtained during several helicopter (brown circles, FGG) and ship surveys (blue circles, HZG) along Elbe estuary. Solid lines indicate model results averaged over the period of the surveys where blue (brown) solid lines compared to ship (helicopter) surveys.

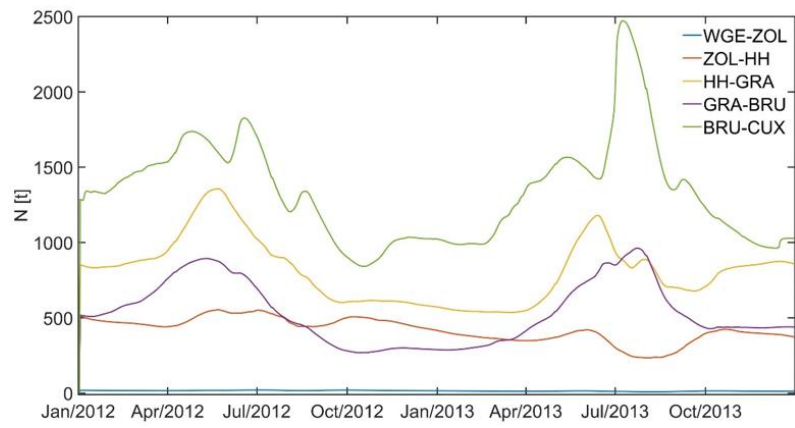


Figure S-3: Supplementary to Fig. 12c showing the time series of mass nitrogen in tons deposited as sediment per river section as defined in the legend (for location of river sections, see Fig. 1).