

Title: Wintertime carbon uptake of managed temperate grassland ecosystems may influence grassland dynamics

Authors: G. Katata et al.

Author response to reviewer comments

Response to Anonymous Referee #1

○General Comments: Overall, the paper does an excellent job using a process-based model to look at a critical period associated with montane grassland plants, the winter. Grasslands store lots of carbon belowground as roots and create a rich OM soil layer. The authors build a good argument for why they want to look at carbon fluxes and allocation during the winter months. The presentation of model results is good, and their conclusions adhere to what was found in their results. I do not have any major concerns with this paper as it stands.

Response: We appreciate your giving positive comments on our manuscript. We revised the manuscript based on your specific comments as follows. We hope that the manuscript is now ready to be published.

Specific Comments:

○The authors discuss low temperature photosynthesis in both the introduction and conclusion but do not go further in depth about temperature thresholds other than 5C when rubisco is very limited by temperature. I would suggest that the authors give a little more in the introduction about cold stress dynamics in relation to rubisco.

Response: We admit the description of physiological processes and acclimation dynamics to cold stress was insufficient. To emphasize the physiological importance of our work, we added the sentences with relevant publications into Introduction and Discussion as: “As reviewed in Sage and Kubien (2007), most C3 plants show an increase in photosynthetic rate below the thermal optimum (cooler temperature) due to cold acclimation, associated with enhancements of starch and sucrose synthesis, electron transport capacity, and Rubisco content.” (l.38-40) and “In our simulations, we treated these acclimation responses as a parameter change, although in future developments they might be described mechanistically in dependence on temperature development (Kumarathunge et al. 2019; Mediavilla et al. 2016). Other mechanisms are however, already implicitly considered in the photosynthesis model. For example, the limitation of photosynthesis and thus the optimum temperature shifts under low air temperature from electron-transport limited to Rubisco-limited (Sage and Kubien, 2007).” (l.242-246).

Kumarathunge, D. P., Medlyn, B. E., Drake, J. E., Tjoelker, M. G., Aspinwall, M. J., Battaglia, M., et al. (2019). Acclimation and adaptation components of the temperature dependence of plant photosynthesis at the global scale. *New Phytol.* 222, 768-784. doi: 10.1111/nph.15668

Mediavilla, S., González-Zurdo, P., Babiano, J. and Escudero, A. (2016). Responses of photosynthetic parameters

to differences in winter temperatures throughout a temperature gradient in two evergreen tree species. *Eur. J. Forest Res.* 135, 871-883. doi: 10.1007/s10342-016-0980-9

Sage, R. F. and Kubien, D. S. (2007). The temperature response of C3 and C4 photosynthesis. *Plant Cell Environ.* 30, 1086-1106. doi: 10.1111/j.1365-3040.2007.01682.x

○The second aspect of the carbon dynamics that should be addressed is how water movement is impacting photosynthesis and carbon allocation within the grassland at these low temperatures. The dynamics associated between photosynthesis and water need to be stated, especially when discussing freezing conditions that occur during winter.

Response: It is correct that drought as well as freezing could influence photosynthesis and growth behavior of plants. However, drought does not play a major role at our sites which has been explicitly addressed as “No drought stress to grasslands was apparent in the simulations at both sites during the study period (not shown in the figure).” (1.195-196).

○The last specific comment I have is that the authors talk about the grasslands as fodder for livestock and its importance in the introduction, but the authors do not revisit this broader impact in the discussion.

Response: As you suggested, we added a paragraph to the discussion that points to the importance of wintertime carbon uptake for livestock: “Therefore, the increased photosynthesis in the warmer winter does not necessarily increase grass yields, and thus fodder in mountainous regions. In order to quantify the impact on livestock supply, further research needs to investigate to which degree additional biomass is directed into above- and below-ground storages.” (1.277-279).

Technical Corrections:

○Pg 2 lines 25-27 – This is an awkward sentence.

Response: We corrected the sentence as “For example, winter conditions that are characterized by low temperature limits the productivity of grassland vegetation either directly due to its effects on photosynthesis or indirectly by inducing senescence and dormancy, particularly at high elevation areas.” (1.26-28).

○Pg 2 line 33 – I do not understand what is meant by “: : the above change in snow cover conditions: : :”, please state what changes in snow cover conditions, make the readers job easy to remember conditions or treatments.

Response: We acknowledge the complaint and revised the sentence as “These differences between grassland sites at different altitudes clearly indicate the importance of considering the responses to environmental changes that are expected under climate change. This particularly refers to the snow-free winter periods that affect air and soil temperatures and thus the whole carbon cycle in mountain grassland ecosystems.” (1.34-36).

○Pg 8 lines 220-225 – Please look at Sage and Kubien 2007 Plant, Cell and Environment. This article discusses how temperature influences Rubisco, maybe a useful article for refence to help.

Response: Thank you so much for useful information. We considered this information in the introduction and discussion sections as mentioned above (l.242-246).

○Figure 1 – This is an extremely complicated figure and hard to understand. This figure might be better suited as a supplementary figure. To help improve clarity of the figure I would suggest decomposing the figure into easier to understand panels. For instance, maybe have one panel that focuses on atmospheric parameters, another on plant processes, and another on soil processes. I do understand that many of the processes are inter-connected.

Response: As you suggested, Fig. 1 was moved to the supplement (Fig. S1). Furthermore, the figure was decomposed to four panels for each submodel(s) as reader-friendly.

○Figure 3 – The choice of having red and green on same figure is not color blind friendly. If one of the colors could be changed to a color-blind friendly palette that would enhance the clarity of the figure for all readers.

Response: The color of triangles in old Fig. 3 (now Fig. 2) was changed from green to orange as you suggested.

○Figure 6 – When printed in black and white the two colors orange and grey are too similar, please darken the grey to create a greater contrast between the two for improved interpretability when printed.

Response: The colors in old Fig. 6 (now Fig. 5) were revised for the black and white colored style.

Title: Wintertime carbon uptake of managed temperate grassland ecosystems may influence grassland dynamics

Authors: G. Katata et al.

Author response to reviewer comments

Response to Anonymous Referee #2

○General Comments: In general, the idea to look at wintertime carbon dynamics in grasslands and to include (biological) processes considering also cold stress in process-based models is very important.

Response: We appreciate your comment on the importance of our motivation. All of your suggestions were very crucial for improving our manuscript. After all revisions were made in the manuscript as follows, we hope that it is substantially improved and is now ready for publication.

○However, in my opinion this study doesn't make full use of this potential and is not very innovative. The 'new' model is based on integrating an already existing grass growth model into the SOLVEG model. However, whether this leads to an improvement or not is not analyzed (comparison of SOLVEG with and without the coupling of BASGRA) although it seems like relevant observational data exist to evaluate model performance.

Response: We are presenting an integrated analysis that includes an enhancement of modelling abilities because the original model SOLVEG treated vegetation properties as prescribed, while the combination with BASGRA enables a dynamic, process-based representation of vegetation dynamics. If we would drive SOLVEG with measured LAI and biomass, it would necessarily perform better regarding gas exchange, but long-term effects due to seasonal variations in carbon allocation could not be detected. Since uncovering this effect is our main intention in this manuscript, a comparison to the uncoupled version that uses the evaluation data as input doesn't seem appropriate. In order to clarify this point and minimize misunderstandings, we modified several sentences that imply a "model development" instead of a model coupling in Abstract and Introduction. Also, the following sentences were added to the "Calibration and validation procedure" subsection: "Direct comparisons between the results using the original (SOLVEG only) and integrated models (SOLVEG coupled with BASGLA) are difficult because the vegetation dynamics had been prescribed in the original model, requiring time series of total LAI or leaf biomass data, which is used for evaluation in this study. Thus, we simply focus on the calibration of the integrated model only to investigate the impact of wintertime carbon uptake on grassland dynamics." (l.157-160).

○The model is run with pre-determined parameters and running the model under two scenarios, where one is determined to more or less shut down grass physiology and photosynthesis during low temperatures, leads in this case – unsurprisingly – to less carbon uptake /productivity during wintertime. While the outcome for the other processes might be more interesting, they are simply the result of how the model is set-up in the first

place ... At least, this is discussed to some extent in the last paragraph.

Response: Thank you for your suggestion to improve the discussion. We now try to link the different model settings better to actual physiological processes. Therefore, we added the following sentences and refer to additional relevant publications in Introduction and Discussion as: “As reviewed in Sage and Kubien (2007), most C3 plants show an increase in photosynthetic rate below the thermal optimum (cooler temperature) due to cold acclimation, associated with enhancements of starch and sucrose synthesis, electron transport capacity, and Rubisco content.” (1.38-40) and “In our simulations, we treated these acclimation responses as a parameter change, although in future developments they might be described mechanistically in dependence on temperature development (Kumarathunge et al. 2019; Mediavilla et al. 2016). Other mechanisms are however, already implicitly considered in the photosynthesis model. For example, the limitation of photosynthesis and thus the optimum temperature shifts under low air temperature from electron-transport limited to Rubisco-limited (Sage and Kubien, 2007).” (1.242-246).

Kumarathunge, D. P., Medlyn, B. E., Drake, J. E., Tjoelker, M. G., Aspinwall, M. J., Battaglia, M., et al. (2019). Acclimation and adaptation components of the temperature dependence of plant photosynthesis at the global scale. *New Phytol.* 222, 768-784. doi: 10.1111/nph.15668

Mediavilla, S., González-Zurdo, P., Babiano, J. and Escudero, A. (2016). Responses of photosynthetic parameters to differences in winter temperatures throughout a temperature gradient in two evergreen tree species. *Eur. J. Forest Res.* 135, 871-883. doi: 10.1007/s10342-016-0980-9

Sage, R. F. and Kubien, D. S. (2007). The temperature response of C3 and C4 photosynthesis. *Plant Cell Environ.* 30, 1086-1106. doi: 10.1111/j.1365-3040.2007.01682.x

○Evaluating that the underlying processes of the model actually represent the 'true' ecosystem processes and calibrating the model parameters using an optimization process and the observational data, the model could be used to investigate differences between the study sites or to analyze different (climate) scenarios.

Response: Thank you for this comment. We fully that these issues are important and could be addressed with the presented methodology in the future. To highlight this opportunity, the following sentences were added to the revised manuscript: “The presented approach and model combination could be used in the future for analyzing climate change scenarios and the site dependency of responses. This will require more comprehensive datasets for evaluation, with which the importance of underlying processes can be revealed and model calibration can be carried out, possibly using an optimization procedure such as Monte Carlo simulation (e.g., Van Oijen et al., 2005).” (1.229-232).

Specific Comments:

○Line 65: ‘Observational data are used ...’ – what data exactly? How is it obtained/measured?

Response: We apologize for the uncomprehensive sentence; we revised as follows: “At the upper boundary conditions, the variables of horizontal wind speeds, potential temperature, specific humidity (and liquid water

content of the fog, gas and aerosol concentrations, if available) are typically obtained from hourly or half-hourly observational data. For further explanations see section 2.3.” (l.68-71).

○Line 121 ff, 2.2 Empirical parameterizations for cold acclimation: why not use an optimization algorithm to determine the parameter(s) for the two sites and compare if there are significant differences?

Response: It is true that using optimization procedures for model parametrization enables a more objective picture that could be used for site comparison and identification of process deficiencies. However, we feel that the current data set is too limited for such an exercise and holds some pitfalls in case of this coupled model exercise. Nevertheless, the possibility of using this methodology has now been addressed as already mentioned in the answers to general comments (l. 229-232).

○Line 154/155: ‘Since the lack of the data, most of the micrometeorological and hydrological parameters for SOLVEG runs are from previous studies conducted at the study sites’ Lack of what kind of data? Studies from previous years? Are those comparable to the actual years?

Response: The sentence was inappropriate. We revised it as “Typical values of soil hydrological parameters (e.g., saturated hydraulic conductivity) in the study area are given to SOLVEG runs from the past model study (Hingerl et al., 2016).” (l. 162-164).

○Line 158/159: ‘The unknown parameter, the threshold temperature for cold stresses [T_{ph} in Eq. (2)], is manually determined’ – based on which values? Are different values somehow compared and evaluated?

Response: More explanation was required. We added the sentence as “By changing the T_{ph} value from the range between 1 and 11 °C with an increment of 2 °C (not shown in the figure), we obtained the best results as $T_{ph} = 1$ °C and 11 °C for Graswang and Fendt, respectively.” (l.168-170).

○Line 187/188: it seems like that at Graswang there was more snow than in Fendt even during the warm winter. In general, are the climatic conditions comparable at the two sites?

Response: As shown in Table 1, mean annual air temperature differed by 2 °C between the two sites due to the difference in altitude (Table 1, Mauder et al. 2005, Zeeman et al. 2017). Precipitation in general is relatively similar at both sites. Simulation results includes this difference as input of meteorological data, which is important for the differences in snow coverage.

○Line 200: what about the results from Graswang?

Response: We insert new Fig. 6 for Graswang and added the sentence of “We focus on the Fendt site for illustration of the effect (Fig. 5) because the differences between scenarios were small for all variables at the Grasswang site.” (l.211-213).

○Line 202: 100 gC m⁻² – cumulative? per year? Per season?

Response: We revised the sentence as “this was particularly apparent as cumulative GPP differed by a factor of

three or by approximately 100 gC m⁻² per year”.

○Line 202: changes in leaf biomass in spring in the active scenario were lower because the starting leaf biomass was higher

Response: That is true. And what we wanted to state here is that we expected that the change would be similarly high because simulated carbon reserve contents (a potential of carbon allocation to the above-ground biomass) in both winter and spring were similar in the two simulation scenarios (Fig. 5e). Still there was the indicated difference. This is now better emphasized as follows: “Thus, we expected that the change in the above-ground biomass would be higher in the active scenario because simulated carbon reserve contents (a potential of carbon allocation to the above-ground biomass) in winter were similar in the two simulation scenarios (Fig. 5e). However, the above-ground biomass at the first cutting simulated in the active scenario was similar that in the dormant scenario (Fig. 5c).” (1.269-273).

○Line 210/211: ‘In particular, the model reproduced the low or near-zero CO₂ uptake during the normal winter period at the Graswang, regulated by the lowering of soil temperature due to snowfall’. In line 99 you write: ‘When snow covers grasses, no photosynthesis is assumed to occur...’ so this might actually (also) be a reason for the observed model output!!

Response: The sentence was inappropriate; it is now revised as “In particular, the model reproduced the low or near-zero CO₂ uptake during the normal winter period at the Graswang as a response to low soil temperatures that limit photosynthesis even throughout the snow-free conditions (Fig. 2d).” (1.223-225).

Line 218: ‘high CO₂ uptake rate at low altitude during winter was likely explained by high levels of physiological activity of grasslands’ – what else could be the reason? Isn’t the interesting question what influences physiological activity of grasslands during winter?

Response: We agree that the indicated formulation is not very informative. This section has been changed as indicated in responses to the general comments where underlying physiological processes are now addressed (1.242-246).

○Line 222-226 this whole paragraph is not written clearly.

Response: We agree that the paragraph was vaguely formulated; it is now revised as “A possible explanation for the lesser photosynthesis is a rapid acclimation response of grasslands to decline in photosynthetic capacity after the exposure to freezing temperatures since (e.g., Huner et al., 1993; Kolari et al., 2007). In fact, the Graswang site was exposed to frost during the extremely warm winter in 2013-2014 (Zeeman et al., 2017), which may support the above explanation. In our simulations, we treated these acclimation responses as a parameter change, although in future developments they might be described mechanistically in dependence on temperature development (Kumarathunge et al. 2019; Mediavilla et al. 2016). Other mechanisms are however, already implicitly considered in the photosynthesis model. For example, the limitation of photosynthesis and thus the optimum temperature shifts under low air temperature from electron-transport limited to Rubisco-limited (Sage and Kubien, 2007). Further

observational work is required at various grassland ecosystems in order to evaluate this hypothesis.” (l.239-247).

○Line 223: ‘The study site’ – which study site, Fendt or Graswang?

Response: We revised this as “The Graswang site” (l.241).

○Line 230: ‘annual mean air temperature (MAT) of less than 8 _C’ should be ‘more than 8 _C’

Response: This was a mistake; we revised it as “more than 8 °C” (l.252).

○Line 247: ‘increased annual GPP to 100 gC m⁻²’: from Fig. 6 it seems higher, the bar just for spring shows already about 600 gC m⁻² (which seems quite much for a grassland)

○Line 247f: ‘increased annual GPP to 100 gC m⁻² due to cold acclimation in the active scenario’: before you write that acclimation leads to a decline in photosynthetic capacity (see line 224-225).

Response: The sentence was inappropriate; we revised it as “According to this study, CO₂ uptake at the Fendt site, estimated as an annual GPP of 100 gC m⁻² in 2013-2014 was mainly due to the higher wintertime photosynthetic rate in the active scenario.” (l.268-269).

○Line 248f: ‘but the above-ground biomass of the first cutting simulated in this scenario was less than that in the dormant scenario’ – actually, in Fig. 5 you show that leaf biomass in the active scenario at the first cutting is higher or as high as in the dormant scenario ... The change from March to May is smaller, because the value in March is already much higher for the active scenario... See also comment to Line 202.

Response: Your suggestion is correct. As already described in the responses above is that we wanted to state here was that we expected a similarly high change, because simulated carbon reserve contents (a potential of carbon allocation to the above-ground biomass) in both winter and spring were similar in the two simulation scenarios (Fig. 5e) but it was not. This is emphasized as “However, the above-ground biomass of the first cutting simulated in the two scenarios (Fig. 5c). Since this was not the case, we revised the statement accordingly (see answer to Line 202)

○Fig. 4: So the results for Fendt are always with T_{ph} = 1 _C and for Graswang T_{ph} = 11 _C? How do the results look for the respective other simulation?

Response: Further explanation about manual calibration was required. As responded above, we added the sentence as “By changing the T_{ph} value from the range between 1 and 11 °C with an increment of 2 C (not shown in the figure), we obtained the best results as T_{ph} = 1 °C and 11 °C for Graswang and Fendt, respectively.” (l.168-170).

○Table 3 is more or less a repetition of Fig. 4; ME and RMSE could also be included in Fig. 4.

Response: We delete the Table 3 and ME and RMSE were incorporated into Fig. 3 (old Fig. 4).

○Supplement: ‘Modeling grassland vegetation growth and development’ – the whole paragraph contains a lot of repetition of what is already written in the main article’s Material and Methods section.

Response: We completely deleted the subsection of “Modeling grassland vegetation growth and development” from

the supplement to avoid its duplication.

Technical corrections:

Line 26: 'to a low' delete 'a'

Response: We correct the sentence accordingly.

Line 27: delete 'being dormant'

Response: The sentence has been removed after we responded to the other reviewer.

Line 33: 'it is necessary to understand the response of grassland productivity to changes in snow cover conditions in order to...'

Response: The sentence was revised based on the suggestion from the other reviewer as follows: "Clearly, it is necessary to understand the response of grassland productivity to the snow-free winter and air and soil temperatures in order to..." (l.33-34)

Line 37: delete 'of winter stress'

Line 75: 'are' instead of 'were'

Line 83: delete 'either'

Line 91: 'consists of both'

Line 130: 'leaves' instead of 'leaf'

Line 131: 'layers'

Line 140: 'of the sites'

Line 141: delete ', which is an area'

Line 147: H₂O subscript

Line 158: 'The threshold temperature for cold stresses...'

Throughout the manuscript: 'study period' instead of 'simulation/calculation period'

Response: We correct the words and sentences according to your suggestions. We appreciate your careful checking.

Fig. 2: check panel labels

Fig. 3: check panel labels in the caption.

Fig. 4: Adjust axis min/max to the min/max of the data. Check panel labels (2 times panel d)

Fig. 5: leaf not leaf

Fig. 6: red lines? Black lines? Should be grey bars / orange bars

Response: All figures were revised as you suggested, while figure numbers were reduced because previous Fig. 1 was moved to Fig. S1. Thank you so much.

Wintertime carbon uptake of managed temperate grassland ecosystems may influence grassland dynamics

Genki Katata^{1,2}, Matthias Mauder², Matthias J. Zeeman², Rüdiger Grote², and Masakazu Ota³

¹Institute for Global Change Adaptation Science (ICAS), Ibaraki University, Ibaraki, 310-8512, Japan

²Institute of Meteorology and Climate Research, Atmospheric Environmental Research (IMK-IFU), Karlsruhe Institute of Technology, Garmisch-Partenkirchen, 82467, Germany

³Research Group for Environmental Science, Japan Atomic Energy Agency (JAEA), Ibaraki, 319-1195, Japan

Correspondence: Genki Katata (genki.katata.mirai@vc.ibaraki.ac.jp)

Abstract. Rising temperatures and changes in snow cover, as can be expected under a global warmer climate, may have large impacts on mountain grassland productivity limited by cold and long winters. Here, we ~~elaborated~~ combined two existing models of a multi-layer atmosphere-soil-vegetation model ~~to account~~ (SOLVEG) with the grass growth model (BASGRA) which accounts for snow, freeze-thaw events, grass growth, and soil microbiology. The model was applied to simulate the responses of managed grasslands to anomalously warm winter conditions. The grass growth module represented key ecological processes under a cold environment, such as leaf formation, elongation and death, tillering, carbon allocation, and cold acclimation, in terms of photosynthetic activity. Input parameters were derived for the pre-alpine grassland sites in Germany, for which the model was run using three years of data that included a winter with an exceptionally limited amount of snow cover. The model reproduced the temporal variability of observed daily mean heat fluxes, soil temperatures and snow depth throughout the ~~simulation~~ study period. High physiological activity levels during the extremely warm winter led to a simulated CO₂ uptake of 100 gC m⁻², which was mainly allocated into the below-ground biomass and only to a minor extend used for additional plant growth during early spring. If this temporary dynamics is representative of the long-term changes, this process, which is so far largely unaccounted for in scenario analysis using global terrestrial biosphere models, may lead to carbon accumulation in the soil and/or carbon loss from the soil as a response to global warming.

1 Introduction

Grassland's productivity in temperate and boreal regions is important for food production as a means of fodder for livestock, and is expected to be highly influenced by climate change (Jing et al., 2014; Tubiello et al., 2007). It is also expected that mountain grassland ecosystems are particularly sensitive under climate warming scenarios, with future changes of snow cover at high altitudes (Xie et al., 2017). Therefore, understanding the response of mountain grassland productivity to snow cover conditions is crucial for the future prediction of grassland-based food productivity as well as possible feedback of carbon and energy balances in grassland ecosystems to climate change.

Although forage production from grasslands is known to be limited by cold and long winters in mountainous regions, there are still uncertainties regarding winter stresses on grassland vegetation (e.g., grasses, clover, other herbaceous species, flowers, and mosses) under a future climate (Rapacz et al., 2014). The properties of winter stress are complex, depending not only on environmental factors such as low temperature during winter, but also largely on the presence or absence of snow cover and factors that control the acclimation status of grassland vegetation to cold (Ergon et al., 2018). For example, winter stress due to a conditions that are characterized by low temperature limits the productivity of grassland vegetation, as it is linked to dormancy of grassland vegetation in cooler regions and at higher elevations (i. e., with lower ambient temperature) being dormant during winter, either directly due to its effects on photosynthesis or indirectly by inducing senescence and dormancy, particularly at high elevation areas. On the other hand, as for the effects of snow cover, a shorter duration of snow period was observed in a recent observational study at upland temperate grasslands (Zeeman et al., 2017), showing that grasslands at the low-elevation sites with a short snow period are photosynthetically active throughout the winter, while grassland vegetation remains dormant at sites of higher elevation even under the snow-free conditions. As a result, gross primary production (GPP) drastically increased at the low-elevation grasslands during the snow-free winter, enabling rapid spring growth that is mainly driven by soil temperature (Zeeman et al. 2017). Clearly, it is necessary to understand the response of grassland productivity to the above change in snow cover conditions in order to accurately estimate the response of the. These differences between grassland sites at different altitudes clearly indicate the importance of considering the responses to environmental changes that are expected under climate change. This particularly refers to the snow-free winter periods that affect air and soil temperatures and thus the whole carbon cycle in mountain grassland ecosystems to future climate change.

Winter stress influences the carbon dynamics in grassland vegetation in the growing season. The underlying mechanism of winter stress is that photosynthesis continues during winter in frost-tolerant species (Höglind et al., 2011; Tuba et al., 2008), but growth stops if soil temperatures are lower than 5 °C (Körner, 2008). As reviewed in Sage and Kubien (2007), most C3 plants show an increase in photosynthetic rate below the thermal optimum (cooler temperature) due to cold acclimation, associated with enhancements of starch and sucrose synthesis, electron transport capacity, and Rubisco content. In this situation, organic matter (organic carbon) produced by photosynthesis is not used for grass growth but accumulates in the plant as reserves during winter (e.g., Körner, 2008). The sink-limitation processes due to cold temperatures or any sink-limitation on growth is not accounted for in current grassland models. However, its importance increases under climate change since photosynthetic conditions may improve particularly during winter and the onset of spring growth may occur earlier (e.g., Desai et al., 2015). Therefore, the importance of representing wintertime grassland productivity considering direct and indirect impacts of climate (e.g., snow cover and its impact on soil temperatures) needs to be addressed.

This research focuses on how temperate grassland productivity responds to temperature and snow cover duration in mountainous areas. The underlying hypothesis is that winter dynamics is important for mountainous ecosystem carbon balance although most existing grassland models for temperate climate conditions focus exclusively on the spring and summer growing season (Höglind et al., 2016). In particular, sink limitations for grassland vegetation growth limited by environmental (e.g., temperature, water, and nutrient controls) or plant internal (e.g., ontogenetic) factors other than CO₂ assimilation (Fatichi et al., 2019; Körner et al., 2007) are not included as suggested by recent studies (Fatichi et al., 2014; Van Oijen et al., 2018).

Therefore, we suggest a process-based land surface model that can simulate both physical (snow and freeze-thaw) and biological processes (carbon allocation under cold stresses) and includes these sink limitations. This ~~new model is developed~~ integrated model is based on a multi-layer atmosphere-SOIL-VEgetation model (SOLVEG; Katata et al., 2014), and is applied to the CO₂ flux sites at two managed grasslands in the German pre-alpine region over a number of years that featured normal (2011-2012 and 2012-2013) as well as extremely warm (2013-2014) winters (Zeeman et al., 2017). The results are evaluated with measurements and are discussed based on sensitivity analysis.

2 Materials and Methods

2.1 SOLVEG

A one-dimensional multi-layer model SOLVEG consists of four sub-models: atmosphere, soil, vegetation, and radiation within the vegetation canopy as shown in Fig. ~~1-S1~~. The general description is available in Katata (2009), Katata and Ota (2017), Nagai (2004), and Ota et al. (2013). Details of the processes of snow accumulation and melting, freeze-thaw in soil, and grassland vegetation growth and development are described in the supporting information.

In the atmosphere sub-model, one-dimensional diffusion equations are solved between atmospheric layers for horizontal wind speeds, potential temperature, specific humidity, liquid water content of the fog, turbulent kinetic energy and length scale (Katata, 2009), and gas and aerosol concentrations (Katata and Ota, 2017). ~~Observational data are used for~~ At the upper boundary conditions, the variables of horizontal wind speeds, potential temperature, specific humidity (and liquid water content of the fog, gas and aerosol concentrations, if available) are typically obtained from hourly or half-hourly observational data. For further explanations see section 2.3. Bulk transfer equations are applied at the lowest layer using the soil surface temperature and specific humidity calculated in the soil sub-model. In the soil sub-model, the soil temperature, volumetric soil water content, and specific humidity in the soil pores are predicted based on heat conduction, mass balance in liquid water, and water vapor diffusion equations, respectively (Katata, 2009). Root water uptake is calculated from the transpiration rate in the vegetation sub-model. For CO₂ concentration in soil, mass conservation equations for liquid and gas phases are solved (Nagai, 2004). Organic matter dynamics are also considered (Ota et al., 2013) as microbial decomposition and dissolved organic carbon (DOC) leaching in the above-ground litter layer, below-ground input of carbon from roots (root litter), and soil organic carbon (SOC) turnover and DOC transport along water flows throughout the soil profile for three SOC pools (active, slow, and passive) with different turnover times.

In the vegetation sub-model, profiles of the leaf temperature, leaf surface water, and the vertical liquid water flux ~~were~~ are predicted (Nagai, 2004). The heat budget equation at the leaf surface is solved to predict the leaf temperature using key variables from the atmosphere sub-model combined with the radiation scheme. At the upper boundary of the sub-model, the given precipitation intensity is used for calculating vertical liquid water flux within the canopy based on the surface water budget equation. The CO₂ assimilation rate due to photosynthesis is predicted using the Farquhar's formulations (Farquhar et al., 1980) and stomatal resistance. In the radiation sub-model, direct and diffuse downward and upward fluxes of solar and

long-wave radiation are calculated to obtain the radiation energy input at the canopy layers. Fractions of sunlit and shaded
90 leaves at each canopy layer are computed for the stomatal resistance and energy budget calculations.

A multi-layer snow module is mainly developed based on ~~either~~ the Community Land Model (CLM; Oleson et al., 2010) and SNTherm (Jordan, 1991), while the model is unique in including the gravitational and capillary liquid water flows in the unsaturated snow layer based on van Genuchten's concept of water flow in the unsaturated zone (c.f., Hirashima et al., 2010). In the soil module, freeze-thaw processes in soil based on the freezing-point depression equation (Zhang, Sun, and Xue, 2007)
95 are considered in heat conduction and liquid water flow equations.

To simulate the winter-related processes for grassland phenology such as leaf development and senescence due to cold stresses, the relevant scheme in the grass growth model named BASic GRAssland model (BASGRA; Höglind et al., 2016) is coupled with the vegetation sub-model of SOLVEG to simulate vegetation growth. The three main features that characterize plant growth in BASGRA are: (1) simulation of source-sink relations where the source consists of both current photosynthesis
100 and remobilization of reserves; (2) simulation of leaf area dynamics and tillering for vegetative and generative tillers; and (3) cold hardening and the effect of physical winter stress factors on tiller survival and plant growth. BASGRA has been well validated by using several experimental datasets of harvestable dry matter of perennial rye grass collected in Europe (Schapendonk et al., 1998) and from five locations in Norway, covering a wide range of agroclimatic regions, day lengths, and soil conditions (Höglind et al., 2016). BASGRA consists of the LINGRA grassland model (Van Oijen et al., 2005) with models
105 for cold hardening and soil physical winter processes, while diurnal CO₂ assimilation is calculated as accumulation of the net assimilation for each time step within the vegetation sub-model (Nagai, 2004) instead of the original scheme of photosynthetic processes in BASGRA. When snow covers grasses, no photosynthesis is assumed to occur due to low light availability and only soil respiration is considered. BASGRA uses a so-called "big-leaf" approach (Monteith, 1981), thus predicting the total ~~LAI~~
leaf area index (LAI) of the whole grassland vegetation canopies. Since SOLVEG uses a multi-layer structure of canopies, the
110 profile of leaf area density is obtained from simply dividing total LAI by canopy height (h) by assuming vertically uniformity for all canopy layers. Canopy height, which is not simulated in BASGRA, is calculated by the function of LAI with fitting parameters.

Carbon gain from photosynthesis and remobilized reserves are allocated among sinks based on changing sink priorities and strengths. Sink strengths are calculated based on the dynamics of leaves and stems and the acclimation to low temperature.
115 The following five sinks are considered: the processes of cold hardening, replenishment of the reserves pool, leaf growth, stem growth, and root growth. Sink strengths are defined as the rate at which these processes would proceed with no source limitation. The hardening process has top priority, so its demand is met in full if source strength is large enough, irrespective of the four other sinks. Root growth has lowest priority and depends on carbon unused by other sinks. The strength priority between reserves on the one hand, and leaves and stems on the other hand changes with day length. When day lengths are
120 shorter than a cultivar-specific threshold, reserves have higher priority than stems and leaves, with the opposite during the rest of the year. Leaves and stems have equal priority so they receive carbon according to their sink strengths. The removal of tillers and leaves by cutting can be simulated during the growing season, with subsequent regrowth of the sward. The regrowth rate after cutting is calculated at each phenological stage. Natural turnover of leaves and roots is modeled using typical life spans

in years (Arora and Boer, 2005), while BASGRA does not simulate the senescence of elongating tillers or roots. The fraction
 125 of roots in soil layers and rooting depth are modeled as a function of root biomass (Arora and Boer, 2003), which may be
 required to be tested at multiple biomes. Daily amounts of the dead root biomass (root litter) are used as inputs to SOC in the
 soil sub-model of SOLVEG.

2.2 Empirical parameterizations for cold acclimation

Although the relation between the maximum catalytic capacity of Rubisco (V_{cmax}) and air temperature is quite well established
 130 (e.g., Bernacchi et al., 2001; Leuning, 2002; Smith and Dukes, 2013), parameters related to photosynthesis are still uncertain
 (Kattge and Knorr, 2007) also for low temperature (Höglind et al., 2011). Thus, in the vegetation sub-model, we introduced
 the empirical factor for cold stress of grasslands, f_{cold} , to empirically simulate the reduction of photosynthesis under low air
 temperature as per the following equations (see also Supplement):

$$A_n = \min(f_{cold}w_c, w_e, f_{cold}w_s) - R_d, \quad (1)$$

$$135 \quad f_{cold} = \min \left[1, \max \left\{ 0, \frac{(T_a + 4)}{(T_{ph} + 4)} \right\} \right], \quad (2)$$

where A_n ($\mu\text{mol m}^{-2} \text{s}^{-1}$) is the net CO_2 assimilation rate at each canopy layer, which is calculated by subtracting the
 leaf respiration rate R_d ($\mu\text{mol m}^{-2} \text{s}^{-1}$) from the assimilation rate, w_c ($\mu\text{mol m}^{-2} \text{s}^{-1}$) is the limitation by efficiency of
 the photosynthetic enzyme system (Rubisco), w_e ($\mu\text{mol m}^{-2} \text{s}^{-1}$) is the limitation by the absorbed photosynthetically active
 radiation (PAR), w_s ($\mu\text{mol m}^{-2} \text{s}^{-1}$) is the limitation by the capacity of [leaf-leaves](#) to export the products of photosynthesis,
 140 T_a ($^{\circ}\text{C}$) is the daily and vertical mean air temperature for all canopy [layerlayers](#), and T_{ph} ($^{\circ}\text{C}$) is the threshold air temperature
 above which grasslands are photosynthetically active. Determination of the value of this threshold temperature is important
 to avoid the overestimation (mainly from fall to winter) of photosynthesis at a low temperature (Höglind et al., 2011). In the
 original BASGRA, T_{ph} is set to 1°C , that is, V_{cmax} starts decreasing linearly when T_a drops below 1°C until it becomes zero
 at -4°C . However, in the SOLVEG simulation, since the values of T_{ph} may change depending on environmental conditions,
 145 the value of T_{ph} is calibrated for each site so that the model reproduce the observed CO_2 flux during the extremely warm winter
 period.

2.3 Study sites and observational data

The model is applied to two sites of managed grassland named the Graswang (47.5708°N , 11.0326°E , 864 m asl.) and the
 Fendt (47.8329°N , 11.0607°E , 595 m asl.) belonging to the TERrestrial ENvironmental Observatories (TERENO) network in
 150 Germany. General information on the climate and management of [the](#) sites is available in Table 1. Both sites are located in the
 Bavarian Alpine Foreland, ~~which is an area~~ in the south of Germany and north of the Alps (Mauder et al., 2013; Zeeman et
 al., 2017; Zeeman et al., 2019). The grasses are harvested several times during the growing season defined as the period from
 April to October.

Half-hourly data of precipitation, atmospheric pressure, horizontal wind speed, air temperature and humidity, and incoming long- and short-wave radiation were used at the top atmospheric layer as a height of 3.5 m. Data of friction velocity (u^*), sensible (H) and latent heat (λE), and CO_2 fluxes (F_{CO_2}) observed over the grassland based on the open-path eddy covariance method using a three-dimensional sonic anemometer (CSAT3; Campbell Scientific, USA) and an open-path $\text{CO}_2/\text{H}_2\text{O}-\text{H}_2\text{O}$ gas analyzer (LI-7500; Li-Cor, USA) were used for validation of the simulation results. The net radiation (R_{net}) over the canopies, soil temperature at 0.05 m in depth, and snow depth were also used to evaluate the simulated surface energy and water balances. Details of the site characteristics and micrometeorological observations are described by Zeeman et al. (2017).

2.4 Calibration and validation procedure

Direct comparisons between the results using the original (SOLVEG only) and integrated models (SOLVEG coupled with BASGLA) are difficult because the vegetation dynamics had been prescribed in the original model, requiring time series of total LAI or leaf biomass data, which is used for evaluation in this study. Thus, we simply focus on the calibration of the integrated model only to investigate the impact of wintertime carbon uptake on grassland dynamics. Parameters used for SOLVEG simulations are summarized in Table 2. The ~~simulation study~~ period is approximately three years from 1 December, 2011, to 1 November, 2014, which included both normal (2011-2012 and 2012-2013) and extremely warm (2013-2014) winters. ~~Since the lack of the data, most of the micrometeorological and hydrological parameters for SOLVEG runs are from previous studies conducted at the study sites~~ Typical values of soil hydrological parameters (e.g., saturated hydraulic conductivity) in the study area are given to SOLVEG runs from the past model study (Hingerl et al., 2016; ~~Kunstmann et al., 2004; Kunstmann et al., 2006~~). The set of parameters of BASGRA for typical perennial grass species of timothy in the Nordic region (Höglind et al., 2016) is applied. Grass cutting events are determined from clear reductions in CO_2 flux, surface albedo and phenology camera observations according to Zeeman et al. (2017). The ~~unknown parameter, the~~ threshold temperature for cold stresses [T_{ph} in Eq. (2)] ~~is~~ manually determined in the simulation for each site to obtain ~~a good~~ the best agreement between simulated and measured CO_2 flux over the canopy during winter. By changing the T_{ph} value from the range between 1 and 11 °C with an increment of 2 °C (not shown in the figure), we obtained the best results as $T_{ph} = 1$ °C and 11 °C for Graswang and Fendt, respectively. The calibration results of daily mean surface fluxes (R_{net} , H , λE , and F_{CO_2}) are statistically evaluated using the mean error (ME), the root mean squared error (RMSE), intercept and slope of linear regression lines, and the Pearson's correlation coefficient (R).

2.5 Scenario determination for sensitivity analysis

To investigate the impact of cold acclimation of grassland vegetation on the CO_2 balance and carbon allocation at mountain grassland ecosystems, two scenarios using the SOLVEG model are defined based on the experimental results of Höglind et al. (2011): "active scenario" ($T_{ph} = 1$ °C) and "dormant scenario" ($T_{ph} = 11$ °C). The former indicates that photosynthesis is active during most of the wintertime and photosynthesis works even at the low temperature of 1 °C. In contrast, the latter represents the situation where grass physiology is more or less shut down and photosynthesis ceases under the condition of a

relatively high temperature of 11 °C to protect from cold death. Both scenarios are adopted for both the Graswang and Fendt for the same period.

3 Results

3.1 Model calibration and validation

190 Figure [2-1](#) shows the temporal changes in simulated and observed daily surface heat fluxes over the grassland at the Fendt and Graswang throughout the three-year [simulation study](#) period. The model generally reproduced the typical seasonal changes measured at both sites, for example, low values of the Bowen ratio ($H/\lambda E$) at the Fendt during the growing season (from April to October) and negative sensible heat flux (H) at the Fendt in December 2013, as suggested by Zeeman et al. (2017).

Figure [3-2](#) illustrates the time series of modelled and observed daily soil temperature and snow depth at the two sites. 195 Observed changes in snow depth were reproduced by the model overall (Fig. [3a2a](#), c). Seasonal changes in observed soil temperature were also reproduced by the model; for example, when the grassland was under the snow cover at the Graswang from December 2012 to February 2013, soil temperature at a depth of 0.02 m remained almost 0 °C for both observed and simulated values (Fig. [3e2c](#)). Sudden increases in soil temperature over the snow-free condition were also reproduced by the model; this was particularly evident at the Fendt during the extremely warm winter of 2013-2014 (Fig. [3a2a](#)).

200 Simulated and observed daily CO₂ fluxes (F_{CO_2}) over the canopies and simulated LAI at both sites are presented in Fig. [3-2b](#). The model simulated the observed increase of CO₂ flux after the harvesting, which was achieved by the regrowth of grassland vegetation (Fig. [3b-2b](#) and d). [No drought stress to grasslands was apparent in the simulations at both sites during the study period \(not shown in the figure\).](#) During the extremely warm winter from December 2013 to February 2014, negative values of observed CO₂ flux at the Fendt were reproduced by the model (Fig. [3b2b](#)) using the calibrated value of $T_{ph} = 1$ °C 205 (Table 1). At the Graswang, both observed and simulated CO₂ fluxes were very small and near to zero (Fig. 3d) due to a high threshold temperature for cold acclimation calibrated as $T_{ph} = 11$ °C (Table 1).

Scatter diagrams and statistical comparisons of daily energy and CO₂ fluxes at the two sites throughout the [simulation study](#) period are presented in Fig. [4 and Table 3, respectively-3](#). At both sites, the slopes of the regression lines were overall close to unity and values of the intercepts were sufficiently small for R_{net} , H , and λE . High correlations were also observed between 210 measured and simulated CO₂ fluxes at both sites.

3.2 Sensitivity analysis

Figure [5-4](#) illustrates temporal changes in simulated snow depth and leaf biomass obtained for the active and dormant scenarios for the normal winter (2012-2013) and extremely warm winter (2013-2014). Significant differences between the two scenarios of at most a factor of two were found in the results during winter. Nevertheless, the leaf biomasses at the first cutting event 215 from May to June were similar at both sites and scenarios.

~~Figure Figures 5 and 6 depicts~~ depict the selected results of cumulative GPP and ecosystem respiration (RE), and mean leaf and root biomasses, carbon reserve content (total stock of carbon that can be allocated to any of the plant elements such as leaves, stems, and roots), and LAI simulated at the Fendt ~~and Graswang~~ during winter and spring in ~~2014. 2014, respectively.~~ We focus on the Fendt site for illustration of the effect (Fig. 5) because the differences between scenarios were small for all variables at the Grasswang site. Both GPP and RE were higher in the active scenario than in the dormant one as expected by the model construction (Fig. 6a-5a and b); this was particularly apparent as cumulative GPP differed by a factor of three or by approximately 100 gC m⁻² per year (Fig. 6a5a). Nevertheless, changes in leaf biomass and LAI during the subsequent spring in the active scenario were clearly lower than in the dormant scenario (Fig. 6e-5c and f). In contrast, changes in root (below-ground) biomass during spring in the active scenario were approximately three times higher than in the dormant scenario (Fig. 6d5d). Simulated carbon reserve contents in both winter and spring were similar in the two simulation scenarios (Fig. 6e5e) because the carbon fixed by photosynthesis was immediately allocated to the above- or below-ground biomass.

4 Discussion

The results demonstrate that the modified SOLVEG model that includes the physical (snow and freeze-thaw) and biological processes (carbon allocation under cold stresses) based on the existing land surface model (SOLVEG) can reasonably simulate heat and carbon transfer processes in managed grassland ecosystems (Figs. 2-4 and Table 31-3). In particular, the model reproduced the low or near-zero CO₂ uptake during the normal winter period at the Graswang ~~, regulated by the lowering of soil temperature due to snowfall as a response to low soil temperatures that limit photosynthesis even throughout the snow-free conditions~~ (Fig. 3d2d). On the other hand, the observed high uptake of CO₂ at the Fendt in the extremely warm winter was also simulated by the model (Fig. 3b2b). The key parameter that determined the above CO₂ uptake processes was the threshold air temperature of T_{ph} in Eq. (2) for the photosynthetic activity level of grassland ecosystems. Tuning of the above parameter is required for each site to simulate carbon dynamics in the grassland ecosystems in cold climate regions. The presented approach and model combination could be used in the future for analyzing climate change scenarios and the site dependency of responses. This will require more comprehensive datasets for evaluation, with which the importance of underlying processes can be revealed and model calibration can be carried out, possibly using an optimization procedure such as Monte Carlo simulation (e.g., Van Oijen et al., 2005).

Our approach uses the manually calibrated T_{ph} values for each site, while only typical (average) values are taken for different plant functional types of grassland vegetation in global biogeochemical models. Numerical experiments using $T_{ph} = 1$ °C revealed that the high CO₂ uptake rate at low altitude during winter was likely explained by high levels of physiological activity of grasslands (Fig. 5a4a). In this experiment, the impact of cold acclimation on the CO₂ balance for the two pre-alpine temperate grassland sites was evaluated by manually tuning the threshold temperature of photosynthesis to lower ($T_{ph} = 1$ °C) and higher values ($T_{ph} = 11$ °C) because the exact mechanism of model response to T_{ph} changes is unclear (Höglind et al., 2011). A possible explanation for the ~~altered photosynthesis is less photosynthesis is due to rapid acclimation responses of grasslands to decline in photosynthetic capacity after~~ the exposure to freezing temperatures since ~~this leads to rapid acclimation responses~~

(e.g., Huner et al., 1993; Kolari et al., 2007). ~~The study~~ In fact, the Graswang site was exposed to frost during the extremely
250 warm winter in 2013-2014 (Zeeman et al., 2017), ~~for which a rapid acclimation is a likely reason for the observed decline in
photosynthetic capacity. Thus, this study is still the preliminary step to define minimum thresholds of photosynthesis in order
to model this process for~~ which may support the above explanation. In our simulations, we treated these acclimation responses
as a parameter change, although in future developments they might be described mechanistically in dependence on temperature
development (Kumarathunge et al. 2019; Mediavilla et al. 2016). Other mechanisms are however, already implicitly considered
255 in the photosynthesis model. For example, the limitation of photosynthesis and thus the optimum temperature shifts under low
air temperature from electron-transport limited to Rubisco-limited (Sage and Kubien, 2007). Further observational work is
required at various grassland ecosystems in order to evaluate this hypothesis.

The high CO₂ uptake rate during the snow-free conditions was not limited to the Fendt site, but is likely a wide-spread phe-
nomenon at other mountain grasslands in Europe. This is illustrated in Table 1, which summarizes the full-year observational
260 studies that include wintertime CO₂ flux at European mountains. Indeed, except for the Austrian site of Rotholz, which has a
long grazing period that may intensively reduce grass productivity (Wohlfahrt et al., 2010), high CO₂ uptake during snow-free
periods was observed at all altitudes below 760 m, corresponding to annual mean air temperature (MAT) of ~~less~~ more than 8
°C. If the altitude or MAT is considered as a threshold of cold acclimation of grasses, the snow-free wintertime CO₂ uptake
may have a large impact on the carbon balance of grassland ecosystems over the European Alps. Since a rise of snowline and
265 wintertime air temperature up to 300-600 m or 2-4 °C, respectively, has been predicted for the latter part of the 21st century,
the effect is even likely to increase (Gobiet et al., 2014). It should be noted, however, that other indicators of the level of cold
acclimation might be superior to the use of MAT because physiological activities of grassland vegetation are often triggered
by temperatures during specific development stages. If, however, such activities are rather closely related to the MAT (as in-
dicated in Table 1), it is also possible that the differences in phenology and photosynthesis are caused by a different species
270 composition of grasslands. In this case, the acclimation speed and management options that facilitate a change to better adapted
ecosystems should be investigated.

Using the modified SOLVEG model that considers carbon dynamics in grassland vegetation that depends on the source
strength and the sink demands, the results of the active scenario demonstrated that a large fraction of carbon (CO₂) gained by
photosynthesis during winter was not directly allocated into above-ground biomass but used to grow roots during the spring
275 growth period (Fig. 6d5d), currently unsupported by observations. Most studies of alpine grassland ecosystems in Europe have
focused on the impact of climate changes on grass yield (i.e., grassland-based food production); for example, in the Nordic
region, future CO₂ increase, warming, and less snowfall are expected to increase the grassland productivity (Ergon et al., 2018).
According to this study, CO₂ uptake at the Fendt ~~in the extremely warm winter increased annual GPP to site, estimated as an
annual GPP of 100 gC m⁻² due to cold acclimation in 2013-2014 was mainly due to the higher wintertime photosynthetic rate~~
280 in the active scenario, but the. Thus, we expected that the change in the above-ground biomass ~~of the~~ would be higher in the
active scenario because simulated carbon reserve contents (a potential of carbon allocation to the above-ground biomass) in
winter were similar in the two simulation scenarios (Fig. 5e). However, the above-ground biomass at the first cutting simulated
~~in this scenario was less than the active scenario was similar~~ that in the dormant scenario (Fig. 6e5c). This indicates that grass

yield cannot be simply determined by the source-strength (CO₂ assimilation due to photosynthesis) and is controlled by the
285 sink-demand of the above-ground biomass (foliar, tiller, and stem growth). Indeed, an open-top-chamber warming experiment
in the alpine steppe on the north Tibetan Plateau showed that warming significantly increased total root biomass by 28 % at a
soil depth of 0-0.01 m in the growing season (Ma et al., 2016), supporting the possibility of larger below-ground allocation of
organic carbon, as suggested by this study. Therefore, the increased photosynthesis in the warmer winter does not necessarily
increase grass yields. ~~Further experimental evidence linking between the~~, and thus fodder in mountainous regions. In order to
290 quantify the impact on livestock supply, further research needs to investigate to which degree additional biomass is directed
into above- and below-ground ~~processes is required to obtain an accurate understanding of the carbon dynamics of grassland~~
~~ecosystems storages.~~

Another important implication from numerical experiments is that carbon stock/loss in/from the soil in the mountain grass-
lands may be greater in a future warmer climate. The root biomass simulated for the active scenario was three times greater
295 than that for the dormant scenario (Fig. 6d5d), indicating that more carbon is accumulated in the soil by root death (root litter
input) in grassland ecosystems in warmer winters. Indeed, recent studies suggest that a relatively high MAT accelerates the
turnover of roots to produce root litter input in managed mountain grassland ecosystems (Leifeld et al., 2015). This change in
the below-ground input of carbon in grassland ecosystem is particularly important for the carbon cycle at managed grassland
ecosystems because plant-fixed carbon from the above-ground biomass is substantially reduced following a cut. Furthermore,
300 this may enhance carbon loss from the soil due to heterotrophic respiration and leaching of CO₂ because grassland vegetation
typically has a high density of fine roots that are poorly lignified and with high turnover rates, providing a relatively labile
carbon substrate for microbial activity (Garcia-Pausas et al., 2017). The altered SOC dynamics in grassland ecosystems may
be of considerable importance for the global carbon cycle since soils of temperate grassland ecosystems are already estimated
to hold a large stock of carbon, that is, 7 % of total global soil carbon (Jobbágy and Jackson, 2000). Therefore, we suggest that
305 global terrestrial biosphere models (Fatichi et al., 2019) need to be elaborated with phenological and acclimation processes as
interactions with below-ground processes (Gill et al., 2002; Riedo et al., 1998; Soussana et al., 2012) in order to estimate the
carbon balance response of managed grassland ecosystems to global warming.

Data availability. The output data in this study are publicly accessible via contacting the first author.

Author contributions. GK developed the model with supports from RG and MO, and performed the simulations using the data collected by
310 MM and ZM. GK prepared the manuscript with contributions from all co-authors.

Competing interests. We have no conflict of interest to declare.

Acknowledgements. We thank the staff of KIT/IMK-IFU in Germany and ICAS in Japan for their support. We also express our gratitude to Dr. Georg Wohlfahrt of the University of Innsbruck, Austria; Dr. Jun Koarashi of the JAEA, Japan; Dr. Kentaro Takagi of Hokkaido University, Japan; and Dr. Ankur Desai of Wisconsin University for their helpful comments and suggestions on this study. The German weather data were provided by DWD. Fortran code of BASGRA was provided from <http://dx.doi.org/10.5281/zenodo.27867>. Output data in this study are all publicly available and are included in the supporting information. The TERENO pre-Alpine infrastructure is funded by the Helmholtz Association and the Federal Ministry of Education and Research. One of our co-authors, Dr. Matthias Zeeman, received support from the German Research Foundation (DFG; grant number ZE1006/2-1). This study was partly supported by a Postdoctoral Fellowship for Research Abroad and Leading Initiative for Excellent Young Researchers, provided by the Japan Society for the Promotion of Science and the Ministry of Education, Culture, Sports, Science and Technology.

References

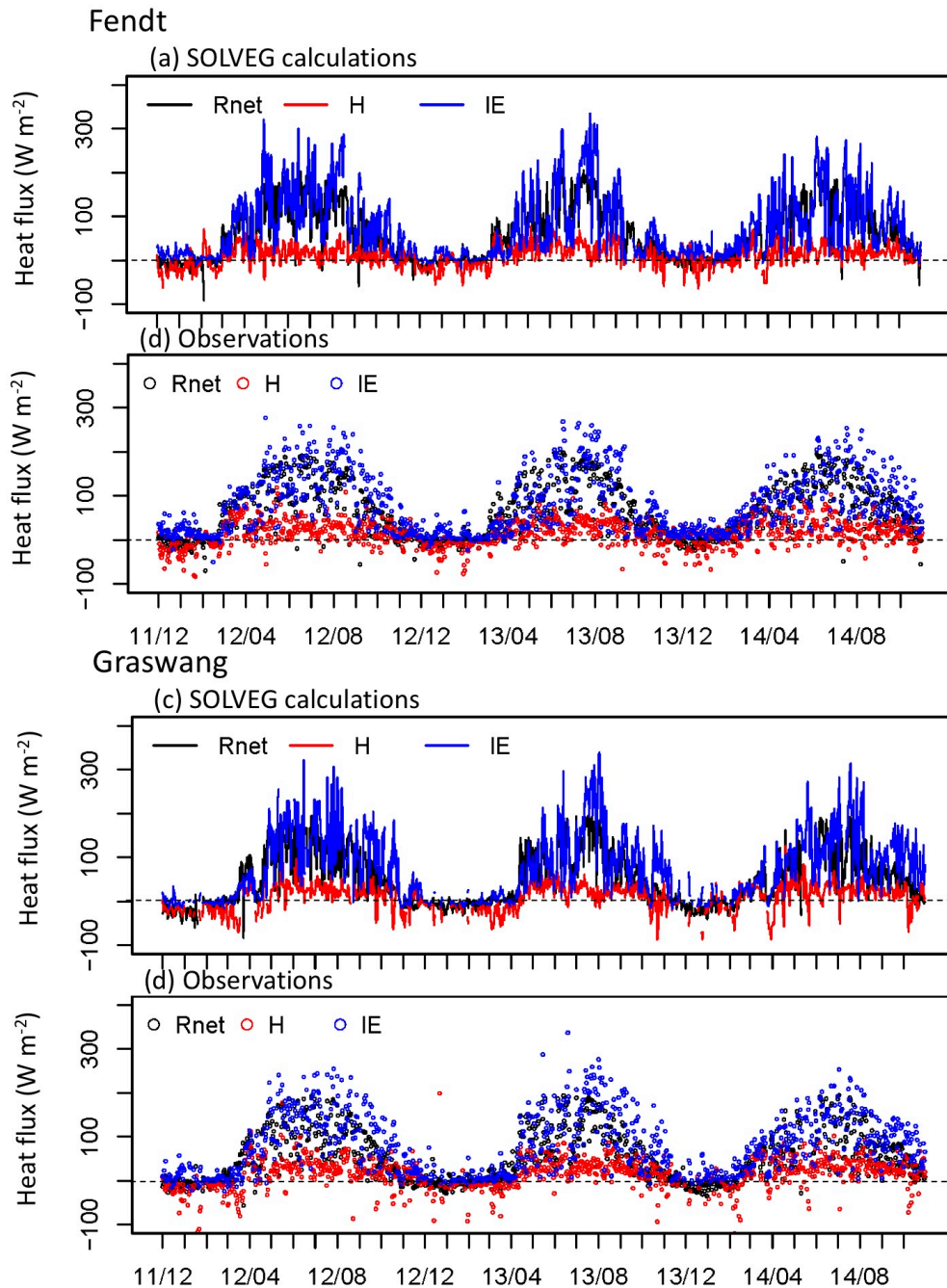
- Ammann, C., Flechard, C., Leifeld, J., Neftel, A., and Fuhrer, J.: The carbon budget of newly established temperate grassland depends on management intensity, *Agric. Ecosyst. Environ.*, 121, 5-20, <https://doi.org/10.1016/j.agee.2006.12.002>, 2001.
- Ammann, C., Spirig, C., Leifeld, J., and Neftel, A.: Assessment of the nitrogen and carbon budget of two managed temperate grassland fields. *Agric. Ecosyst. Environ.*, 133, 3-4, 150-162, <https://doi.org/10.1016/j.agee.2009.05.006>, 2009.
- 325 Arora, V. K., and Boer, G. J.: A representation of variable root distribution in dynamic vegetation models, *Earth Interact.*, 7, 1-19, [https://doi.org/10.1175/1087-3562\(2003\)007<0001:arovrd>2.0.co;2](https://doi.org/10.1175/1087-3562(2003)007<0001:arovrd>2.0.co;2), 2003.
- Arora, V. K., and Boer, G. J.: A parameterization of leaf phenology for the terrestrial ecosystem component of climate models, *Global Change Biol.*, 11, 39-59, <https://doi.org/10.1111/j.1365-2486.2004.00890.x>, 2005.
- 330 Bernacchi, C. J., Singsaas, E. L., Pimentel, C., Portis Jr., A. R., and Long, S. P.: Improved temperature response functions for models of Rubisco-limited photosynthesis, *Plant Cell Environ.*, 24, 253-259, <https://doi.org/10.1111/j.1365-3040.2001.00668.x>, 2001.
- Boone, A.: Description du schema de neige ISBA-ES (Explicit Snow), Centre National de Recherches Météorologiques, Météo-France, Toulouse, Available from, <http://www.cnrm.meteo.fr/IMG/pdf/snowdoc.pdf>, 2002.
- Desai, A. R., Wohlfahrt, G., Zeeman, M. J., Katata, G., Eugster, W., Montagnani, L., Gianelle, D., Mauder, M., and Schmid, H. P.: 335 Montane ecosystem productivity responds more to global circulation patterns than climatic trends, *Environ. Res. Lett.*, 11, 024013, <https://doi.org/10.1088/1748-9326/11/2/024013>, 2015.
- Ergon, Å., Seddaiu, G., Korhonen, P., Virkajärvi, P., Bellocchi, G., Jørgensen, M., Østrem, L., Reheul, D., and Volaire, F.: How can forage production in Nordic and Mediterranean Europe adapt to the challenges and opportunities arising from climate change?, *Eur. J. Agron.*, 92, 97-106, <https://doi.org/10.1016/j.eja.2017.09.016>, 2018
- 340 Essery, R., Morin, S., Lejeune, Y., and Menard, C.: A comparison of 1701 snow models using observations from an alpine site, *Adv. Water Res.*, 55, 131-148, <https://doi.org/10.1016/j.advwatres.2012.07.013>, 2013.
- Fatichi, S., Leuzinger, S., and Körner, C.: Moving beyond photosynthesis: from carbon source to sink-driven vegetation modeling, *New Phytol.*, 201, 4, 1086-1095, <https://doi.org/10.1111/nph.12614>, 2014.
- Fatichi, S., Pappas, C., Zscheischler, J., and Leuzinger, S.: Modelling carbon sources and sinks in terrestrial vegetation, *New Phytol.*, 221, 2, 345 652-668, <https://doi.org/10.1111/nph.15451>, 2019.
- Farquhar, G.D., von Caemmerer, S., and Berry, J.A.: A biochemical model of photosynthetic CO₂ assimilation in leaves of C₃ species, *Planta*, 149, 1, 78-90, <https://doi.org/10.1007/BF00386231>, 1980.
- Galvagno, M., Wohlfahrt, G., Cremonese, E., Rossini, M., Colombo, R., Filippa, G., Julitta, T., Manca, G., Siniscalco, C., di Cella, U.M., and Migliavacca, M.: Phenology and carbon dioxide source/sink strength of a subalpine grassland in response to an exceptionally short 350 snow season, *Environ. Res. Lett.*, 8, 025008, <https://doi.org/10.1088/1748-9326/8/2/025008>, 2013.
- Garcia-Pausas, J., Romanyà, J., Montanè, F., Rios, A.I., Taull, M., Rovira, P., and Casals, P.: Are soil carbon stocks in mountain grasslands compromised by land-use changes? In: J. Catalan, J.M. Ninot, M. Aniz (Eds.) *High Mountain Conservation in a Changing World*, *Adv. Global Change Res.*, 207-230, https://doi.org/10.1007/978-3-319-55982-7_9, 2017.
- Gill, R. A., Kelly, R. H., Parton, W. J., Day, K. A., Jackson, R. B., Morgan, J. A., Scurlock, J. M. O., Tieszen, L. L., Castle, J. V., Ojima, 355 D. S., and Zhang, X. S.: Using simple environmental variables to estimate belowground productivity in grasslands, *Glob. Ecol. Biogeogr.*, 11, 1, 79-86, <https://doi.org/10.1046/j.1466-822x.2001.00267.x>, 2002.

- Gobiet, A., Kotlarski, S., Beniston, M., Heinrich, G., Rajczak, J., and Stoffel, M.: 21st century climate change in the European Alps? a review, *Sci. Total Environ.*, 493, 1138-1151, <https://doi.org/10.1016/j.scitotenv.2013.07.050>, 2014.
- Hingerl, L., Kunstmann, H., Wagner, S., Mauder, M., Bliefernicht, J., and Rigon, R.: Spatio-temporal variability of water and energy fluxes? a case study for a mesoscale catchment in pre-alpine environment, *Hydrol. Process*, 30, 21, 3804-3823, <https://doi.org/10.1002/hyp.10893>, 2016.
- Hirashima, H., Yamaguchi, S., Sati, A., and Lehning, M.: Numerical modeling of liquid water movement through layered snow based on new measurements of the water retention curve, *Cold Regions Science and Technology*, 64, 2, 94-103, <https://doi.org/10.1016/j.coldregions.2010.09.003>, 2010.
- Höglind, M., Hanslin, H. M., and Mortensen, L. M.: Photosynthesis of *Lolium perenne* L. at low temperatures under low irradiances, *J. Exp. Bot.*, 70, 2-3, 297-304, <https://doi.org/10.1016/j.envexpbot.2010.10.007>, 2011.
- Höglind, M., Van Oijen, M., Cameron, D., and Persson, T.: Process-based simulation of growth and overwintering of grassland using the BASGRA model, *Ecol. Model.*, 335, 1-15, <https://doi.org/10.1016/j.ecolmodel.2016.04.024>, 2016.
- Huner, N. P. A., Öquist, G., Hurry, V. M., Krol, M., Falk, S., and Griffith, M.: Photosynthesis, photoinhibition and low temperature acclimation in cold tolerant plants, *Photosynthesis Res.*, 37, 1, 19-39, <https://doi.org/10.1007/bf02185436>, 1993.
- Jing, Q., Bélanger, G., Qian, B., and Baron, V.: Timothy yield and nutritive value with a three-harvest system under the projected future climate in Canada. *Canadian Journal of Plant Science*, 94, 2, 213-222, <https://doi.org/10.4141/cjps2013-279>, 2014.
- Jobbágy, E. G., and Jackson, R. B.: The vertical distribution of soil organic carbon and its relation to climate and vegetation, *Ecol. Appl.*, 10, 2, 423-436, <https://doi.org/10.2307/2641104>, 2000.
- Jordan, R.: A one-dimensional temperature model for a snow cover. Technical documentation for SN THERM.89. CRREL Special Report 91-16; US Army Core of Engineers Cold Regions Research and Engineering Laboratory, Hanover, NH, 48, 1991.
- Katata, G. (2009). Improvement of a land surface model for accurate prediction of surface energy and water balances, *JAEA-Data/Code*, 2008-033, 64, 2009.
- Katata, G., Kajino, M., Matsuda, K., Takahashi, A., and Nakaya, K.: A numerical study of the effects of aerosol hygroscopic properties to dry deposition on a broad-leaved forest, *Atmos. Environ.*, 97, 501-510, <https://doi.org/10.1016/j.atmosenv.2013.11.028>, 2014.
- Katata, G., and Ota, M.: A terrestrial ecosystem model (SOLVEG) coupled with atmospheric gas and aerosol exchange processes, *JAEA-Data/Code*, 2016-014, 35, 2017.
- Kattge, J., Knorr, W.: The temperature dependence of photosynthetic capacity in a photosynthesis model acclimates to plant growth temperature: a re-analysis of data from 36 species, *Plant Cell Environ.*, 30, 1176-1190, <https://doi.org/10.1111/j.1365-3040.2007.01690.x>, 2007.
- Kolari, P., Lappalainen, H. K., Hänninen, H., and Hari, P.: Relationship between temperature and the seasonal course of photosynthesis in Scots pine at northern timberline and in southern boreal zone, *Tellus*, 59B, 3, 542-552, <https://doi.org/10.3402/tellusb.v59i3.17033>, 2007.
- Körner, C.: Winter crop growth at low temperature may hold the answer for alpine treeline formation, *Plant Ecol. Divers.*, 1, 1, 3-11, <https://doi.org/10.1080/17550870802273411>, 2008.
- Körner, C, Morgan, J. A., and Norby, R. J.: CO₂ fertilization: when, where, how much? In: J.P. Canadell, D.E. Pataki, L.F. Pitelka (Eds.) *Terrestrial Ecosystems in a Changing World*, 9-21, Berlin, Germany, Springer, https://doi.org/10.1007/978-3-540-32730-1_2, 2007.
- ~~Kunstmann, H.~~
- [Kumarathunge, D. P., Medlyn, B. E., Drake, J. E., Tjoelker, M. G., Aspinwall, M. J., Battaglia, M., Cano, F. J., Carter, K. R., Cavaleri, M. A., Cernusak, L. A., Chambers, J. Q., Crous, K. Y., De Kauwe, M. G., Dillaway, D. N., Dreyer, E., Ellsworth, D. S., Krause, J., Ghannoum,](#)

- 395 [O., Han, Q., Hikosaka, K., Jensen, A. M., Kelly, J. W. G., Kruger, E. L., Mercado, L. M., Onoda, Y., Reich, P. B., Rogers, A., Slot, M., Smith, N. G., Tarvainen, L., Tissue, D. T., Togashi, H. F., Tribuzy, E. S., Uddling, J., Vårhammar, A., Wallin, G., Warren, J. M., and Way, D. A.: Acclimation and adaptation components of the temperature dependence of plant photosynthesis at the global scale, *New Phytol.*, and \[Mayr, S.: Inverse distributed hydrological modelling of Alpine catchments, *Hydrol. Earth Syst. Sci.*, 10, 395-412, <https://doi.org/10.5194/hessd-2-2581-2005>, 2006.\]\(#\) \[Kunstmann, H. 222, 768-784, Schneider, K., Forkel, R., and Knoche, R.: Impact analysis of\]\(#\)](#)
- 400 [climate change for an Alpine catchment using high resolution dynamic downscaling of ECHAM4 time slices, *Hydrol. Earth Syst. Sci.*, 8, 1031-1045, <https://doi.org/10.5194/10.1111/hess-8-1031-2004>, 2004.](#) [nph.15668, 2019.](#)
- Leifeld, J., Meyer, S., Budge, K., Sebastia, M. T., Zimmermann, M., and Fuhrer, J.: Turnover of grassland roots in mountain ecosystems revealed by their radiocarbon signature: Role of temperature and management, *PLoS ONE*, 10, e0119184, <https://doi.org/10.1371/journal.pone.0119184>, 2015.
- 405 Leuning, R.: Temperature dependence of two parameters in a photosynthesis model, *Plant Cell Environ.*, 25, 1205-1210, <https://doi.org/10.1046/j.1365-3040.2002.00898.x>, 2002.
- Ma, X.-X., Yan, Y., Hong, J.-T., Lu, X.-Y., and Wang, X.-D.: Impacts of warming on root biomass allocation in alpine steppe on the north Tibetan Plateau, *J. Mt. Sci.*, 14, 25, 1615-1623, <https://doi.org/10.1007/s11629-016-3966-7>, 2017.
- Marcolla, B., Cescatti, A., Manca, G., Zorer, R., Cavagna, M., Fiora, A., Gianelle, D., Rodeghiero, M., Sottocornola, M., and Zampedri, R.:
- 410 Climatic controls and ecosystem responses drive the inter-annual variability of the net ecosystem exchange of an alpine meadow, *Agr. Forest Meteorol.*, 151, 9, 1233-1243, <https://doi.org/10.1016/j.agrformet.2011.04.015>, 2011.
- Mauder, M., Cuntz, M., Drüe, C., Graf, A., Rebmann, C., Schmid, H. P., Schmidt, M., and Steinbrecher, R.: A strategy for quality and uncertainty assessment of long-term eddy-covariance measurements, *Agr. Forest Meteorol.*, 169, 122-135, <https://doi.org/10.1016/j.agrformet.2012.09.006>, 2013.
- 415 [Mediavilla, S., González-Zurdo, P., Babiano, J. and Escudero, A.: Responses of photosynthetic parameters to differences in winter temperatures throughout a temperature gradient in two evergreen tree species, *Eur. J. Forest Res.*, 135, 871-883, <https://doi.org/10.1007/s10342-016-0980-9>, 2016.](#)
- Merbold, L., Steinlin, C., and Hagedorn, F.: Winter greenhouse gas fluxes (CO₂, CH₄ and N₂O) from a subalpine grassland, *Biogeosci.*, 10, 3185-3203, https://doi.org/10.1007/3-540-26643-7_4, 2013.
- 420 Monteith, J. L.: Evaporation and Surface-Temperature. *Q. J. Royal Meteorol. Soc.*, 107, 451, 1-27, <https://doi.org/10.1002/qj.49710745102>, 1981.
- Nagai, H.: Atmosphere-soil-vegetation model including CO₂ exchange processes: SOLVEG2, JAERI-Data/Code, 2004-014, 92, 2004.
- Oleson, K. W., Lawrence, D. M., Bonan, G. B., Flanner, M. G., Kluzek, E., Lawrence, P. J., Levis, S., Swenson, S. C., and Thornton, P. E.: Technical description of version 4.0 of the Community Land Model (CLM), NCAR Technical Note NCAR/TN-461+STR, National
- 425 Center for Atmospheric Research (NCAR), Boulder, CO, 257, <https://doi.org/10.5065/D6FB50WZ>, 2010.
- Ota, M., Nagai, H., and Koarashi, J.: Root and dissolved organic carbon controls on subsurface soil carbon dynamics: A model approach, *J. Geophys. Res.*, 118, 4, 1646-1659, <https://doi.org/10.1002/2013jg002379>, 2013.
- Rapacz, M., Ergon, Å., Höglind, M., Jørgensen, M., Jurczyk, B., Østrem, L., Rognli, O. A., and Tronsmo, A. M.: Overwintering of herbaceous plants in a changing climate. Still more questions than answers, *Plant Sci.*, 225, 34-44, <https://doi.org/10.1016/j.plantsci.2014.05.009>,
- 430 2014.
- Riedo, M., Grub, A., Rosset, M., and Fuhrer, J.: A pasture simulation model for dry matter production, and fluxes of carbon, nitrogen, water and energy, *Ecol. Model.*, 105, 2-3, 141-183, [https://doi.org/10.1016/s0304-3800\(97\)00110-5](https://doi.org/10.1016/s0304-3800(97)00110-5), 1998.

- Rogiers, N., Eugster, W., Furger, M., and Siegwolf, R.: Effect of land management on ecosystem carbon fluxes at a subalpine grassland site in the Swiss Alps, *Theor. Appl. Climatol.*, 80, 2-4, 187-203, <https://doi.org/10.1007/s00704-004-0099-7>, 2005.
- 435 [Sage, R. F., and Kubien, D. S.: The temperature response of C3 and C4 photosynthesis, *Plant Cell Environ.*, 30, 1086-1106, <https://doi.org/10.1111/j.1365-3040.2007.01682.x>, 2007.](https://doi.org/10.1111/j.1365-3040.2007.01682.x)
- Schapendonk, A. H. M. C., Stol, W., van Kraalingen, D. W. G, and Bouman, B. A. M.: LINGRA - a source/sink model to simulate grassland productivity in Europe, *Eur. J. Agron.*, 9, 2-3, 87-100, [https://doi.org/10.1016/s1161-0301\(98\)00027-6](https://doi.org/10.1016/s1161-0301(98)00027-6), 1998.
- Smith, N. G., and Dukes, J. S.: Plant respiration and photosynthesis in global-scale models: incorporating acclimation to temperature and
440 CO₂, *Glob. Change Biol.*, 19, 45-63, <https://doi.org/10.1111/j.1365-2486.2012.02797.x>, 2013.
- Soussana, J. F., Maire, V., Gross, N., Bachelet, B., Pages, L., Martin, R., Hill, D., and Wirth, C.: Gemini: A grassland model simulating the role of plant traits for community dynamics and ecosystem functioning. Parameterization and evaluation, *Ecol. Model.*, 231, 134-145, <https://doi.org/10.1016/j.ecolmodel.2012.02.002>, 2012.
- Thornley, J. H. M., and France, J.: *Mathematical models in agriculture. Quantitative Methods for the Plant, Animal and Ecological Sciences*,
445 2nd Edition, Wallingford, CABI, 928, <https://doi.org/10.1017/S0021859608007788>, 2007.
- Tuba, Z., Csintalan, Z., Szente, K., Nagy, Z., Fekete, G., Larcher, W., and Lichtenthaler, H. K.: Winter photosynthetic activity of twenty temperate semi-desert sand grassland species, *J. Plant Physiol.*, 165, 14, 1438-1454, <https://doi.org/10.1016/j.jplph.2007.10.017>, 2008.
- Tubiello, F. N., Soussana, J.-F., and Howden, S. M.: Crop and pasture response to climate change, *Proc. Natl. Acad. Sci. USA*, 104, 50, 19686-19690, <https://doi.org/10.1073/pnas.0701728104>, 2007.
- 450 Van Oijen, M., Bellocchi, G., and Höglind, M.: Effects of climate change on grassland biodiversity and productivity: The need for a diversity of models, *Agron.*, 8, 14, <https://doi.org/10.20944/preprints201712.0102.v1>, 2018.
- Van Oijen, M., Höglind, M., Hanslin, M. H., and Caldwell, N.: Process-based modeling of timothy regrowth, *Agron. J.*, 97, 5, 1295-1303, <https://doi.org/10.2134/agronj2004.0251>, 2005.
- Wiscombe, W. J., and Warren, S. G.: A model for the spectral albedo of snow. I: pure snow, *J. Atmos. Sci.*, 37, 2712-2733,
455 [https://doi.org/10.1175/1520-0469\(1980\)037<2712:AMFTSA>2.0.CO;2](https://doi.org/10.1175/1520-0469(1980)037<2712:AMFTSA>2.0.CO;2), 1980.
- Wohlfahrt, G., Bahn, M., Tappeiner, U., and Cernusca, A.: A multi-component, multi-species model of vegetation-atmosphere CO₂ and energy exchange for mountain grasslands, *Agr. Forest Meteorol.*, 106, 4, 261-287, [https://doi.org/10.1016/s0168-1923\(00\)00224-0](https://doi.org/10.1016/s0168-1923(00)00224-0), 2001.
- Wohlfahrt, G., Hammerle, A., Haslwanter, A., Bahn, M., Tappeiner, U., and Cernusca, A.: Seasonal and inter-annual variability of the net ecosystem CO₂ exchange of a temperate mountain grassland: Effects of weather and management, *J. Geophys. Res.*, 113, D08110,
460 <https://doi.org/10.1029/2007jd009286>, 2008.
- Wohlfahrt, G., Piloni, S., Hörtnagl, L., and Hammerle, A.: Estimating carbon dioxide fluxes from temperate mountain grasslands using broad-band vegetation indices, *Biogeosci.*, 7, 2, 683-694, <https://doi.org/10.5194/bg-7-683-2010>, 2010.
- Xie, J., Kneubuhler, M., Garonna, I., Notarnicola, C., De Gregorio, L., De Jong, R., Chimani, B., and Schaepman, M. E.: Altitude-dependent influence of snow cover on alpine land surface phenology, *J. Geophys. Res.*, 122, 5, 1107-1122, <https://doi.org/10.1002/2016jg003728>,
465 2017.
- Yamazaki, T.: A one-dimensional land surface model adaptable to intensely cold regions and its applications in eastern Siberia, *J. Meteor. Soc. Japan*, 79, 6, 1107-1118, <https://doi.org/10.2151/jmsj.79.1107>, 2001.
- Zeeman, M. J., Hiller, R., Gilgen, A. K., Michna, P., Pluss, P., Buchmann, N., and Eugster, W.: Management and climate impacts on net CO₂ fluxes and carbon budgets of three grasslands along an elevational gradient in Switzerland, *Agr. Forest Meteorol.*, 150, 4, 519-530,
470 <https://doi.org/10.1016/j.agrformet.2010.01.011>, 2010.

- Zeeman, M. J., Mauder, M., Steinbrecher, R., Heidbach, K., Eckart, E., and Schmid, H. P.: Reduced snow cover affects productivity of upland temperate grasslands, *Agr. Forest Meteorol.*, 232, 514-526, <https://doi.org/10.1016/j.agrformet.2016.09.002>, 2017.
- Zeeman, M. J., Shupe, H., Baessler, C., and Ruehr, N. K.: Productivity and vegetation structure of three differently managed temperate grasslands, *Agric. Ecosyst. Environ.*, 270-271, 129-148, <https://doi.org/10.1016/j.agee.2018.10.003>, 2019.
- 475 Zhang, X., Sun, S., and Xue, Y.: Development and testing of a frozen soil parameterization for cold region studies, *J. Hydrometeorol.*, 8, 690-701, <https://doi.org/10.1175/jhm605.1>, 2007.



Time series for (a, c) calculated (lines) and (b, d) observed (open circles) daily mean net radiation (R_{net}), sensible heat flux (H), and latent heat flux (λE) at (a-b) [the Fendt](#) and (c-d) [the Graswang](#) throughout the [calculation-study](#) period.

Time series for (a, c) calculated (lines) and (b, d) observed (open circles) daily mean net radiation (R_{net}), sensible heat flux (H), and latent heat flux (λE) at (a-b) [the Fendt](#) and (c-d) [the Graswang](#) throughout the [calculation-study](#) period.

Figure 1. [Overview of biological and physico-chemical variables and processes \(underlined words\) for atmosphere, soil, vegetation, and snow submodels in SOLVEG. The part of the existing grass growth model of BASGRA is coupled in this study.](#)

Time series for (a, c) calculated (lines) and (b, d) observed (open circles) daily mean net radiation (R_{net}), sensible heat flux (H), and latent heat flux (λE) at (a-b) [the Fendt](#) and (c-d) [the Graswang](#) throughout the [calculation-study](#) period.

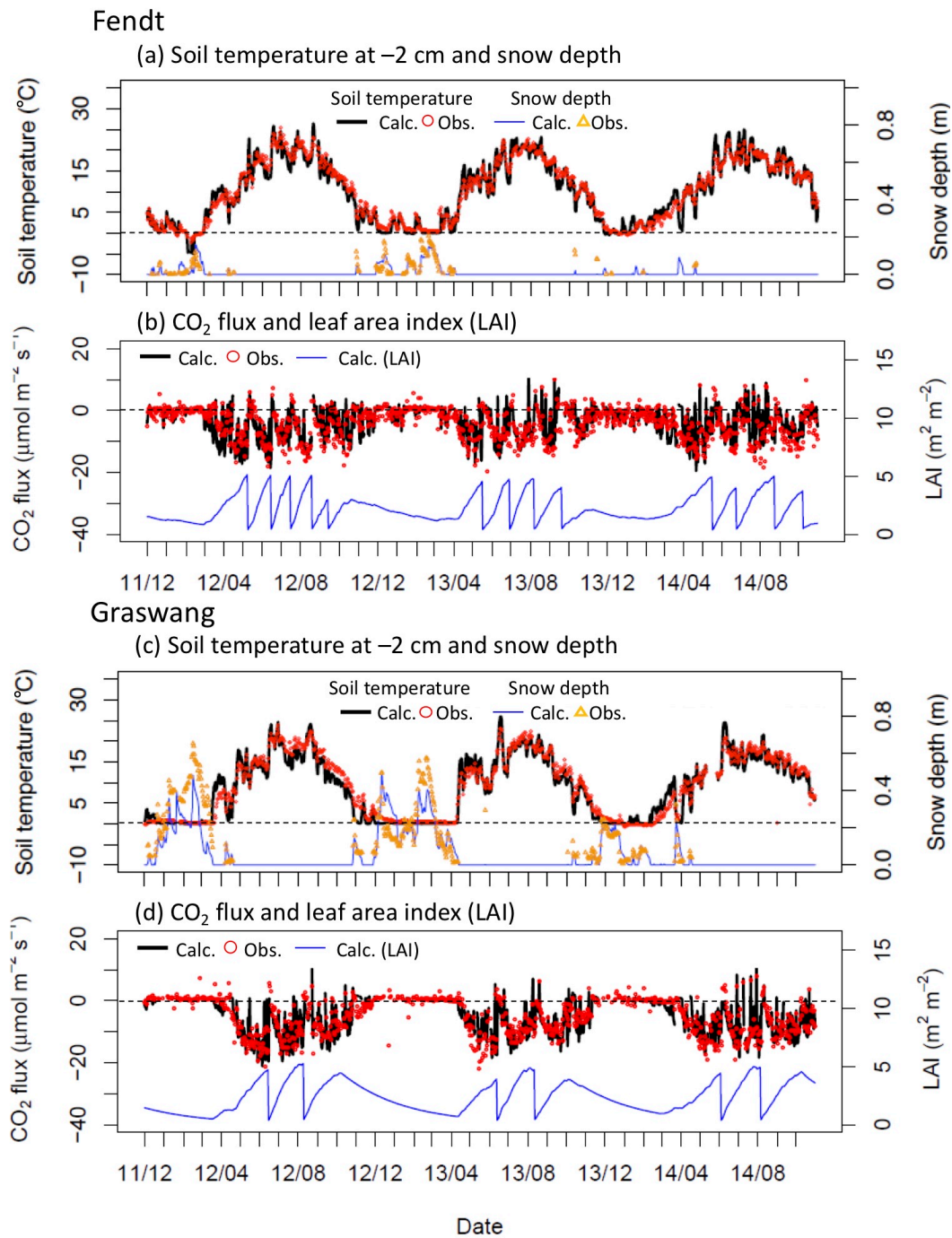


Figure 2. Time series for calculated (solid lines) and observed (open symbols) (a, c) daily mean soil temperature at a depth of 0.02 m, snow depth, and (b, d) CO₂ flux (F_{CO_2}), and leaf area index (LAI) at (a-d) [the Fendt](#) and (e-h) [the Graswang](#) throughout the [calculation study](#) period. Sudden decreases in calculated LAI in (b, d) represent grass cutting events.

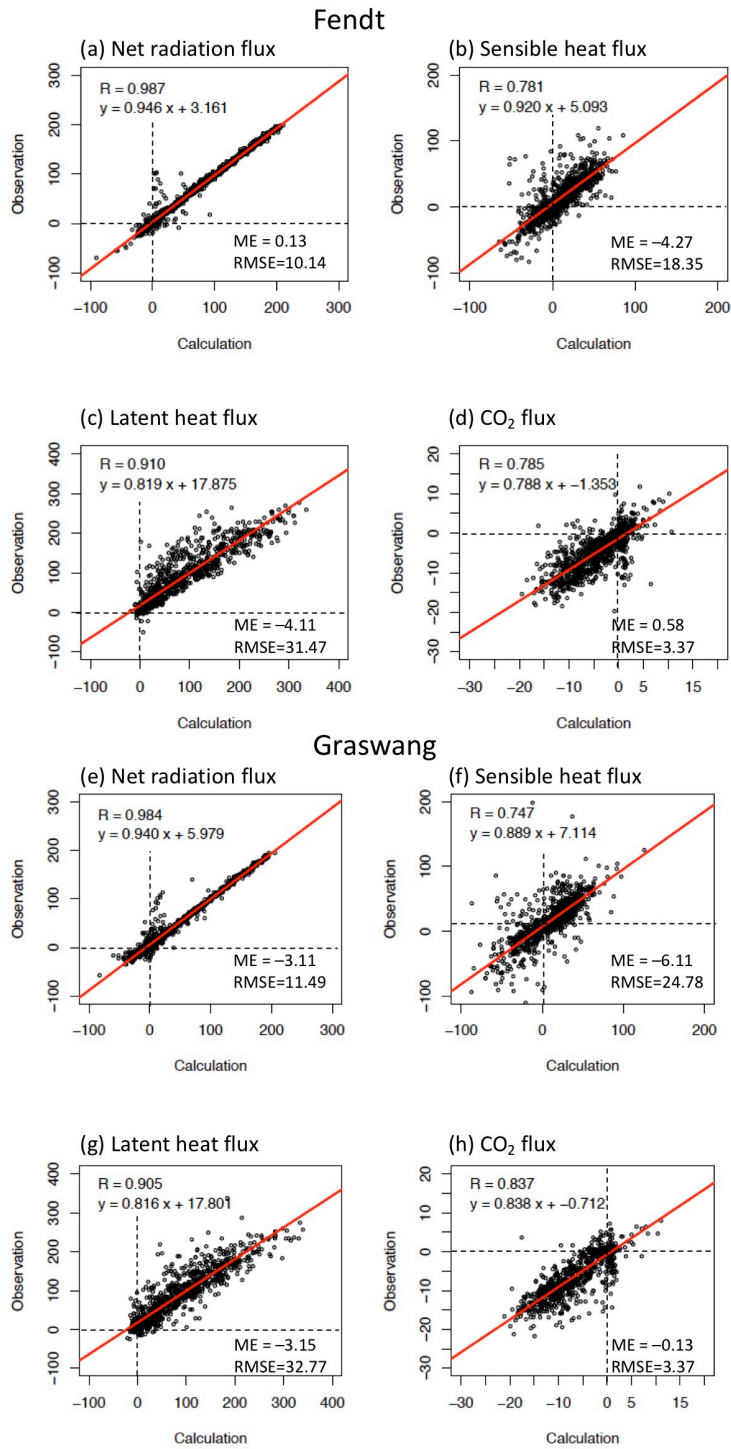


Figure 3. Scatter diagrams of calculated and observed (a, e) daily mean net radiation (R_{net}), (b, f) sensible (H) and (c, g) latent (λE) heat, and (d, h) CO₂ fluxes (F_{CO_2}) at (a-d) [the Fendt](#) and (e-h) [the Graswang](#) for the [calculation-study](#) period.

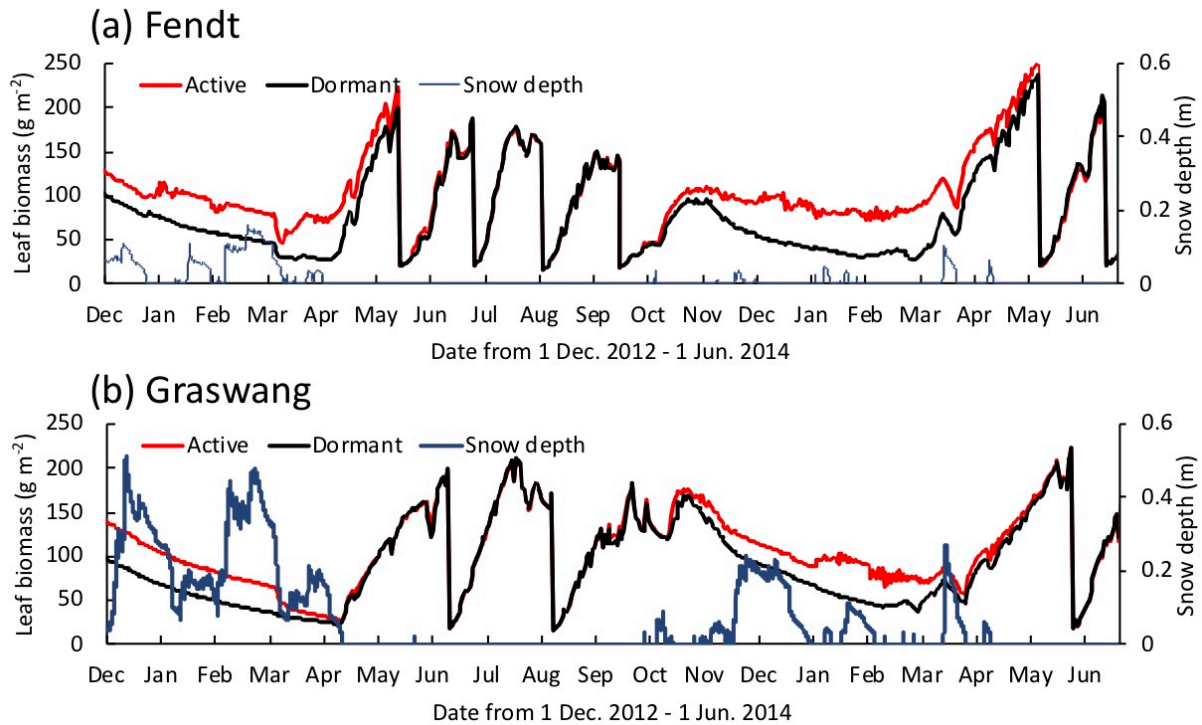


Figure 4. Time series for calculated leaf biomass and snow depth (blue lines) at (a) the Fendt and (b) the Graswang from 1 December, 2012 until 1 June, 2014, in active (red lines) and dormant cases (black lines).

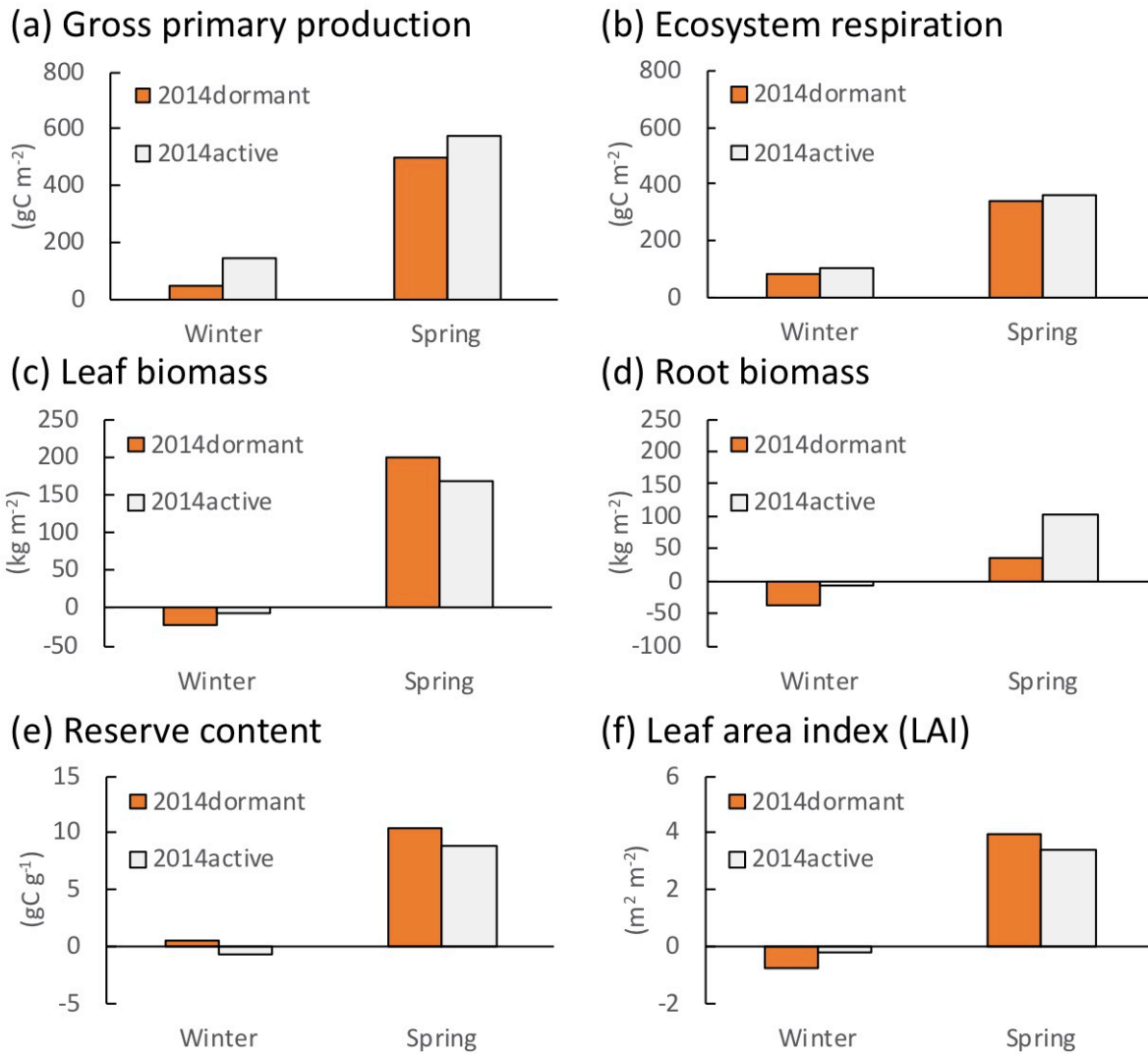


Figure 5. Changes in calculated (a) gross primary production (GPP), (b) ecosystem respiration, (c) live leaf and (d) root biomasses, (e) reserve content, and (f) leaf area index (LAI) at the Fendt during the winter (from December to February) and spring (from March to May) in 2014 in active (grey bars) and dormant cases (orange bars).

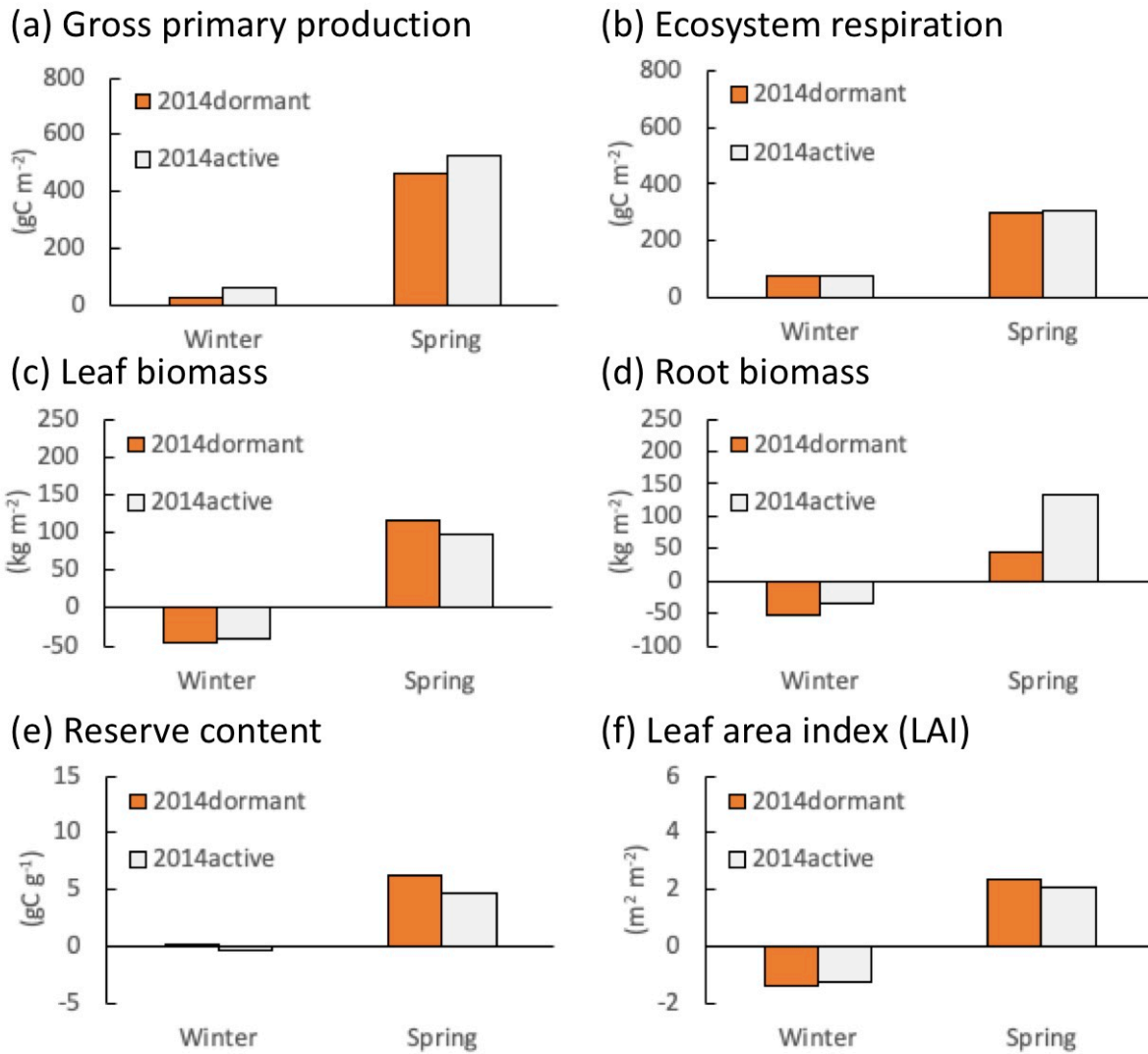


Figure 6. Changes in calculated (a) gross primary production (GPP), (b) ecosystem respiration, (c) live leaf and (d) root biomasses, (e) reserve content, and (f) leaf area index (LAI) at [Fendt the Graswang](#) during the winter (from December to February) and spring (from March to May) in 2014 in active ([red linesgrey bars](#)) and dormant cases ([black linesorange bars](#)).

Table 1. Characteristics of past or ongoing CO₂ flux observational sites over grassland ecosystems in European mountains. Snow-free CO₂ uptake (bold font) represents the situation of high negative values of CO₂ flux even during the wintertime (typically from December to February).

Site name	Elevation (m)	MAT (°C)	MAP (mm)	Snow-free CO ₂ uptake	Number of cuts per year	Source
Chamau	393	9.8	1184	Yes	6-7	Zeeman et al. (2010)
Oensingen	452	9.5	1100	Yes	3	Ammann et al. (2009)
Rotholz	523	8.2	1151	No	3 + occasional grazing	Wohlfahrt et al. (2010)
Fendt	600	8.0	1100	Yes	4-6	Zeeman et al. (2017)
Rottenbuch	760	8.0	1000	Yes	5	Zeeman et al. (2017)
Graswang	865	6.0	1000	No	2	Zeeman et al. (2017)
Neustift	970	6.3	852	No	3	Wohlfahrt et al. (2008)
Frëbüel	982	7.5	1708	No	4	Zeeman et al. (2010)
Seebodenalp	1025	7.3	1327	No	2	Rogiers et al. (2005)
Dischma	1250	2.8	1022	No	2 + occasional grazing	Merbold et al. (2013)
Monte Bondone	1553	5.5	1189	No	1	Marcolla et al. (2010)
Torgnon	2160	3.1	880	No	0	Galvagno et al. (2013)

Table 2. Simulation settings for the modified SOLVEG at Fendt and Graswang sites. Abbreviations: DM, dry matter; DW: dry weight.

Items	Values	Key reference
Time step	100 s	This study
Numbers of layers	15, 8, and 7 for atmosphere, vegetation, and soil, respectively	This study
Soil layer boundaries	0.02, 0.05, 0.1, 0.2, 0.5, 1.0, and 2.0 m depth	This study
Vegetation layer boundaries	0.05-0.5 m height with an increment of 0.05 m	This study
Atmospheric layer boundaries	Vegetation layers and 0.6, 0.8, 1.2, 1.6, 2.0, and 4.0 m height	This study
Soil texture	Silt	This study
Porosity	$0.55 \text{ m}^3 \text{ m}^{-3}$	This study
Initial and bottom soil temperature	$0 \text{ }^\circ\text{C}$ for all soil layers	This study
Snow layer thickness	5 mm	This study
Empirical parameter, C_k	8	Zhang et al. (2007)
Irreducible liquid water content in snow	$0.03 \text{ m}^3 \text{ m}^{-3}$	Hirashima et al. (2010)
Other parameters for snow and soil frozen sub-model		Same as Jordan (1991)
Maximum catalytic capacity of Rubisco at $25 \text{ }^\circ\text{C}$	$45 \mu \text{ mol m}^{-2} \text{ s}^{-1}$	This study and within range of Wohlfahrt et al. (2001)
Dark respiration rate of leaves at $25 \text{ }^\circ\text{C}$	$1.52 \mu \text{ mol m}^{-2} \text{ s}^{-1}$	Wohlfahrt et al. (2001)
Activation energy for dark respiration	48.9 kJ mol^{-1}	Wohlfahrt et al. (2001)
Minimum stomatal conductance	$0.08 \text{ mol m}^{-2} \text{ s}^{-1}$	Wohlfahrt et al. (2001)
Threshold air temperature when photosynthesis starts, T_{ph}	1 and $11 \text{ }^\circ\text{C}$ at Fendt and Graswang	This study
Other parameters for vegetation sub-model		C3-grass (Nagai, 2004)
Initial leaf area index (LAI)	$1.5 \text{ m}^2 \text{ m}^{-2}$	This study
Initial carbohydrate storage	100 kgDM ha^{-1}	This study
Initial root biomass	$7000 \text{ kgDM ha}^{-1}$	This study
Initial total tiller density	$1000 \text{ number m}^{-2}$	This study
Ratio of total generative tiller	0.1	Höglind et al. (2016)
Ratio of fast generative tiller	1.0	Höglind et al. (2016)
Initial total tiller density	$1000 \text{ number m}^{-2}$	This study
Initial stem biomass	0 kgDM ha^{-1}	This study
Initial stubble biomass	0 kgDM ha^{-1}	This study
Initial specific leaf area (SLA)	$0.002 \text{ m}^2 \text{ kgDW}^{-1}$	This study
Maximum SLA	$0.003 \text{ m}^2 \text{ kgDW}^{-1}$	Zeeman et al. (2017)
LAI after the grass cut	$0.5 \text{ m}^2 \text{ m}^{-2}$	This study
Root life span (residence time)	0.001 d^{-1} (2.74 yr)	Höglind et al. (2016)
Other parameters related to BASGRA module	24	Same as Höglind et al. (2016)
Parameters for soil microbiological processes		Same as Ota et al. (2013)

Comparisons of daily values between SOLVEG simulations and observations at Fendt and Graswang sites from 1 December, 2011, to 1 November, 2014. R_{net} , net radiation; H , sensible heat flux; λE , latent heat fluxes; F_{CO_2} , CO₂ flux. ME, average error = simulations - observations; RMSE, root-mean-square error. Variables ME RMSE Intercept Slope R ME RMSE Intercept

480 Slope R R_{net} ($W\ m^{-2}$) 0.130 10.139 3.161 0.946 0.987 -3.114 11.486 5.979 0.940 0.984 H ($W\ m^{-2}$) -4.268 18.354 5.093
0.920 0.781 -6.105 24.783 7.114 0.889 0.747 λE ($W\ m^{-2}$) -4.112 31.471 17.875 0.819 0.910 -3.145 32.770 17.801 0.816
0.905 F_{CO_2} ($\mu\ mol\ m^{-2}\ s^{-1}$) 0.579 3.372 -1.353 0.788 0.785 -0.133 3.372 -0.712 0.838 0.837