

Title: Wintertime grassland dynamics may influence below-ground biomass under climate change: a model analysis

Authors: G. Katata et al.

Author response to editor comment

The Referee makes interesting points but I note that perceptions of scientific novelty are not a criterion for acceptance or rejection to Biogeosciences. Please consider the referee comments in a letter addressed to me and. Will adjudge if the revised manuscript is sufficient for publication in Biogeosciences.

Response: We appreciate your comment on the importance of our motivation. All of your suggestions were very crucial for improving our manuscript. After all revisions were made in the manuscript as follows, we hope that it is substantially improved and is now ready for publication.

Title: Wintertime grassland dynamics may influence below-ground biomass under climate change: a model analysis

Authors: G. Katata et al.

Author response to reviewer comments

Response to Anonymous Referee #2

○ ‘Wintertime carbon uptake of managed temperate grassland ecosystems may influence grassland dynamics’ – the influence of reduced snowcover and its effects on carbon uptake was already analyzed based on the same data that is presented here in Zeeman et al 2017. Although the current study focuses more on model development and simulations and the data is only used for model validation, I still think what you present is not substantially new or innovative. In response to my review comment you write that uncovering long-term effects due to seasonal variations in carbon allocation is your main intention. However, this is not clear from the title and there is no straightforward introduction.

Response: Indeed, we think that a certain novelty of this paper originates from the potential change of the belowground carbon pool in grasslands, particularly in cold environments that may be specifically affected by climate change. This does not only incorporate the long-term storage but also living belowground biomass, which is different from the previous work by Zeeman et al. (2017) and may serve to inspire future model developments. However, the reviewer is correct in stating that the title and the introduction do not fully reflect our intention. Therefore, we modified the title into “Wintertime grassland dynamics may influence below-ground biomass under climate change: a model analysis” and the whole Introduction section. Now these better explain the importance of considering carbon dynamics during winter, and leads more straightforward to model requirements and set-up of the simulation study.

○ Moreover, from the results you present you are drawing inconsistent and unsupported conclusions. For example, you write in L 212 ‘differences between scenarios were small for all variables at the Grasswang site’. The new Figure 6, however, shows that the relative increase of GPP for the active scenario compared to the dormant scenario is probably of the same order of magnitude at the Grasswang site than at Fendt. That the absolute numbers are smaller can most likely be attributed to the fact, that Grasswang is at a higher altitude and therefore has lower temperatures and more snowcover even during the warm winter.

Response: We admit that our wording in this section is inconsistent with the presented results because we failed to update the text according to the newest simulations. We revised the respective sentence to “In the following, we focus on Fendt for illustration of the scenario differences (Fig. 5) but would like to emphasize that the responses are similar at both sites. The differences in absolute values, especially a smaller LAI and less biomass are due to the generally cooler conditions at the Grasswang site. ” (L210-213, P.7).

○And on the other hand, if the differences between the different scenarios indeed are not significant, then your argument that calibrated values for T_{ph} for each site are necessary is lapsed since the one that fits best for Fendt apparently fits for Grasweng well enough.

Response: We admit that our wording in this section is to some degree inconsistent with the presented results as also commented in one of the previous responses. Nevertheless, tuning the T_{ph} values has been still required for each site so that the model reproduced the measured CO₂ fluxes, indicating that this parameter is site-specific (as explained in subsection 2.2). This is emphasized at various places in the manuscript, e.g. by adding the sentences as “It should be noted that such difference in environmental conditions between both sites required the calibration of the value of T_{ph} for each site (subsection 2.2).” (L213-214, P.7)

○Moreover, I do not agree with your conclusion, that ‘a large fraction of carbon (CO₂) gained by photosynthesis during winter was [...] used to grow roots during the spring growth period’ (L 263ff). Neither the dormant nor the active scenario in Fendt as well as in Grasweng show an increase in the reserve content during winter (the active scenario even shows a reduction), so there is no carbon stored during winter that can be used for root growth?

Response: The sentence was inappropriate and caused the misunderstanding that the additional carbon gain during winter is stored and results in more growth during spring. However, we assume that the carbon is directly used for growth (mostly root growth and only to a very minor degree foliage growth) since soil temperatures were sufficiently high. We therefore revised the sentences to “The comparison between scenarios shows that root biomass clearly increased in the active compared to the dormant simulation during winter and spring (Fig. 5c and d) which can only be due to CO₂ gain by photosynthesis during this time (Fig. 5a). Note that this somewhat counter-intuitive results may be due to the inability of the model to grow specific storage organs that could later be emptied to growth other tissues. A differentiation, however, is not yet possible because respective observations are not available.” (L263-267, P.9).

○Moreover, the increased root biomass in spring in the active scenario can also be observed in Grasweng, although you argue previously that there is no relevant photosynthesis during winter.

Response: There is lack of detailed explanation in the last revision and caused your misunderstanding. Root biomass increased also at the Grasweng site because CO₂ uptake occurred in active scenarios as shown in Fig. 6a. Thus, we deleted the word of “or near zero” from and inserted “with calibrated T_{ph} value” into L225-226 in P.8, and also added the following sentences “It is obvious that leaf biomass during winter is higher in the active scenarios, mostly because of a higher leaf growth at the end of the vegetation period. In addition, some minor leaf growth also occurs in the snow free winter periods. Nevertheless, leaf biomasses converge during spring and are similar again at the first cutting event in May/June (Fig. 4b).” (L204-207, P.7).

○Indeed it is interesting to see, that the above ground biomass is almost the same at the first cutting for both scenarios. However, it seems like the rate of biomass gain at the beginning of spring is very high and about the same for both scenarios but levels off later indicating that a possible maximum is reached in both cases (e.g. no further increase due to light limitation when the canopy gets too dense). This could possibly be analyzed in more detail with different model scenarios...

Response: We appreciate your interest on our result and your suggestion. However, we feel that further scenario runs are not needed to discuss the phenomenon in more detail. To address this point, we added a paragraph that runs as follows: “Thus, it could be assumed that the increase in the above-ground biomass in spring would be higher in the active scenario. However, the above-ground biomass at the first cutting simulated in the active scenario was similar that in the dormant scenario (Fig. 5c). Still, the behavior is consistent with the simulated carbon reserve contents (a potential of carbon allocation to the above-ground biomass) in winter, which were similar in the two simulation scenarios (Fig. 5e). The actual limitation might have internal (e.g. determined growth) or external causes. For example, self-shading could result in decreasing carbon gain efficiency of new leaves which might induce a growth stop or an increase in senescence when the canopy gets denser. Indeed, calculated LAI values were similar to critical ones for self-shading shortly before the first cutting event in 2014 (Fig. 4), which is however not a process considered in the model and is thus the result of a reasonably parametrized determined growth. This is corroborated by a similar degree of leaf senescence in both scenarios (6.9 and -0.7 % at Fendt and Graswang, respectively).” (L271-279, P.9).

○If you want to improve and re-submit the manuscript I recommend as previously mentioned to carefully evaluate the underlying processes of the model and validate they actually present the ‘true’ ecosystem processes. Analyze the model output carefully and make sure your conclusions are consistent and that there is a clear central theme from the title, introduction, results to the discussion and conclusions.

Response: We acknowledge the recommendation and recognized that the manuscript indeed still lacked some consistency in several parts. We thus followed the suggestion to elaborate on the making title, introduction and result/discussion sections more consistent and straightforward.

○Make sure to cite the original papers. For example, you write: “but growth stops if soil temperatures are lower than 5 °C (Körner, 2008). [...] In this situation, organic matter (organic carbon) produced by photosynthesis is not used for grass growth but accumulates in the plant as reserves during winter (e.g., Körner, 2008).” But Körner 2008 mentions the 5 °C limit and that organic matter accumulates in reserves, but this is not the original research and he refers to other papers.

Response: As suggested by the reviewer, the original paper of Rabenhorst (2005) and Hoch and Körner (2003) were

referred for growth stops and organic matter accumulates, respectively (L.41 and 43, P.2). We also checked all references in the manuscript to appropriately support our sentences.

Wintertime ~~carbon uptake of managed temperate~~ grassland ~~ecosystems dynamics~~ may influence ~~grassland dynamics~~ below-ground biomass under climate change: a model analysis

Genki Katata^{1,2}, Rüdiger Grote², Matthias Mauder², Matthias J. Zeeman², and Masakazu Ota³

¹Institute for Global Change Adaptation Science (ICAS), Ibaraki University, Ibaraki, 310-8512, Japan

²Institute of Meteorology and Climate Research, Atmospheric Environmental Research (IMK-IFU), Karlsruhe Institute of Technology, Garmisch-Partenkirchen, 82467, Germany

³Research Group for Environmental Science, Japan Atomic Energy Agency (JAEA), Ibaraki, 319-1195, Japan

Correspondence: Genki Katata (genki.katata.mirai@vc.ibaraki.ac.jp)

Abstract. Rising temperatures and changes in snow cover, as can be expected under a global warmer climate, may have large impacts on mountain grassland productivity limited by cold and long winters. Here, we combined two existing models of a multi-layer atmosphere-soil-vegetation model (SOLVEG) with the grass growth model (BASGRA) which accounts for snow, freeze-thaw events, grass growth, and soil ~~microbiology~~ carbon balance. The model was applied to simulate the responses of managed grasslands to anomalously warm winter conditions. The grass growth module ~~represented~~ considered key ecological processes under a cold environment, such as leaf formation, elongation and death, tillering, carbon allocation, and cold acclimation, in terms of photosynthetic activity. Input parameters were derived for ~~the two~~ pre-alpine grassland sites in Germany, for which the model was run using three years of data that included a winter with an exceptionally ~~limited~~ small amount of snow ~~cover~~. The model reproduced the temporal variability of observed daily mean heat fluxes, soil temperatures and snow depth throughout the study period. High physiological activity levels during the extremely warm winter led to a simulated CO₂ uptake of 100 gC m⁻², which was mainly allocated into the below-ground biomass and only to a minor extend used for additional plant growth during early spring. If this temporary dynamics is representative of the long-term changes, this process, which is so far largely unaccounted for in scenario analysis using global terrestrial biosphere models, may lead to carbon accumulation in the soil and/or carbon loss from the soil as a response to global warming.

15 1 Introduction

~~Grassland's productivity in temperate and boreal regions is~~ Grasslands are important for food production as a means of fodder for livestock, ~~and is~~. There productivity strongly depends on climatic conditions and is thus expected to be highly influenced by climate change (Jing et al., 2014; Tubiello et al., 2007). ~~It is also expected~~ Particular large changes regarding temperature and snow cover alterations are predicted to occur in high latitudes and mountainous regions (Pepin et al., 2015), leading to the expectation that mountain grassland ecosystems ~~are particularly sensitive under climate warming scenarios, with future~~

~~changes of snow cover at high altitudes will be particularly affected~~ (Xie et al., 2017). Therefore, understanding the response of mountain grassland ~~productivity ecosystems~~ to snow cover conditions is crucial for ~~the future prediction of grassland-based food productivity as well as possible feedback of estimates of grassland productivity and respective impacts on~~ carbon and energy balances ~~in grassland ecosystems to under~~ climate change.

25 Although forage production from grasslands is known to be limited by cold and long winters in mountainous regions, there are still uncertainties regarding ~~winter stresses on grassland vegetation (e.g. the impacts of winter conditions on grassland ecology (i.e., grasses, clover, other herbaceous species, flowers, and mosses) under a future climate~~ (Rapacz et al., 2014). ~~The properties of winter stress are complex, depending not only on environmental factors such as low temperature during winter, but also largely on~~ During winter seasons, low temperatures interact with the presence or absence of snow cover ~~and factors that control in controlling~~ the acclimation status of grassland vegetation ~~to cold~~ (Ergon et al., 2018). For example, ~~winter conditions that are characterized by~~ low temperature limits the productivity of grassland vegetation either directly due to its effects on photosynthesis or cell growth, or indirectly by inducing senescence and dormancy, ~~particularly at high elevation areas. On the other hand, as for the effects of snowcover, a shorter duration of snow period was observed in a recent observational study at upland temperate grasslands (Zeeman et al., 2017), showing that grasslands at the low-elevation sites with a short snow period are photosynthetically active throughout the winter, while grassland vegetation remains dormant at sites of higher elevation even under the snow-free conditions. As a result,~~ In addition, photosynthesis and growth is prevented even under relatively mild temperatures as long as the vegetation is covered by snow. In turn, mild temperatures combined with only short snow periods enable photosynthetic activity throughout the whole winter leading to drastically increasing gross primary production (GPP) ~~drastically increased at the already observed at~~ low-elevation grasslands ~~during the snow-free winter, enabling rapid spring growth that is mainly driven by soil temperature~~ (Zeeman et al. 2017). ~~These differences between grassland sites at different altitudes clearly indicate the importance of considering the responses to environmental changes that are expected under climate change. This particularly refers to the snow-free winter periods that affect air and soil temperatures and thus the whole carbon cycle in mountain grassland ecosystems. The resulting increase in carbon availability may be used for increased aboveground growth during spring, be released or put into belowground organs for storage or resource acquisition, with largely different impacts on overall carbon cycle.~~

30
35
40
45

~~Winter stress influences the carbon dynamics in grassland vegetation in the growing season. The underlying mechanism is that photosynthesis continues during winter in frost-tolerant species~~ In order to assess the impacts of a changing environment, the general responses of photosynthesis and phenology to such as temperature and radiation have been explicitly described in common process-based grassland models (e.g. Cannell and Thornley, 1998; Soussana et al., 2012, as reviewed in Van Oijen et al., 2018), although the consideration of species-specific sensitivities may not always be adequate (Höglind et al., 2011; Tuba et al., 2008), but growth stops if soil temperatures are lower than 5 °C. Three major uncertainties can be depicted: The first is the representation of growth phases in phenological sub-models since photosynthesis gain and storage activation is often restricted to empirically determined periods that may considerably shift under climate change (e.g., Desai et al., 2015). The second uncertainty is related to the allocation process that is distributing acquired carbon according to certain rules that may depend on growth stages but generally do not consider an environmental change of sink strength such as the limitation of cell expansion

50
55

by low temperatures (Körner, 2008). ~~As reviewed in; Rabenhorst, 2005). Finally, acclimation processes that for example may lead to a relatively high photosynthesis in colder environments (Sage and Kubien, 2007), most C3 plants show an increase in photosynthetic rate below the thermal optimum (cooler temperature) due to cold acclimation, associated with enhancements of starch and sucrose synthesis, electron transport capacity, and Rubisco content. In this situation, organic matter (organic carbon) produced by photosynthesis is not used for grass growth but accumulates in the plant as reserves during winter (e.g., are not accounted for. Carbon production in the cold might thus lead to enhanced carbon storage rather than grass growth (Hoch and Körner, 2003; Körner, 2008). The sink-limitation processes due to cold temperatures or any sink-limitation on growth is not accounted for in current grassland models. However, its importance increases under climate change since photosynthetic conditions may improve particularly during winter and the onset of spring growth may occur earlier. In addition, models do need to have a close link to soil processes in order to quantify carbon releases from soil respiration that might also be enhanced by warmer winter temperatures (e.g., Desai-Scholz et al., 2015). Therefore, the importance of representing wintertime grassland productivity considering direct and indirect impacts of climate (e.g., snow cover and its impact on soil temperatures) needs to be addressed. (2018).~~

~~This~~ In order to improve the representation of wintertime grassland dynamics, this research focuses on ~~how temperate grassland productivity responds to~~ the relationship of productivity responses under varying temperature and snow cover duration in mountainous areas. ~~The underlying hypothesis is that winter dynamics is important for mountainous ecosystem carbon balance although most existing~~ In contrast to most existing studies with grassland models for temperate climate conditions ~~focus exclusively on the that focus on~~ spring and summer ~~growing season seasons~~ (Höglinde et al., 2016), ~~we investigate the effect of changing winter conditions.~~ In particular, ~~sink limitations for grassland vegetation growth limited by environmental~~ we differentiate between environmental limitations on photosynthesis and growth (e.g., temperature, water, and nutrient controls) ~~or plant internal; Boisvenue and Running, 2006) and also consider plant internal drivers (e.g., ontogenetic) factors other than CO₂ assimilation (Fatichi et al., 2019; Körner et al., 2007) are not included as suggested by recent studies (accumulation and depletion of accumulate nonstructural carbohydrates; Kozłowski, 1992; Fatichi et al., 2014; Van Oijen et al., 2018).~~ Therefore, we ~~suggest a process-based~~ apply a process based land surface model that can simulate both physical (snow and freeze-thaw) and biological processes (carbon allocation under cold stresses) and includes ~~these~~ sink limitations. This integrated model is based on a multi-layer ~~atmosphere-SOIL-VEGetation~~ atmosphere-soil-vegetation model (SOLVEG; Katata et al., 2014), and is ~~applied to the CO₂ flux sites run~~ at two managed ~~grasslands~~ grassland sites in the German pre-alpine region ~~over~~. ~~The simulation period covers~~ a number of years that ~~featured~~ include normal (2011-2012 and 2012-2013) as well as extremely warm (2013-2014) winters ~~(Zeeman et al., 2017)~~. The results are evaluated with measurements and are discussed based on sensitivity analysis.

2 Materials and Methods

2.1 SOLVEG

A one-dimensional multi-layer model SOLVEG consists of four sub-models: atmosphere, soil, vegetation, and radiation within the vegetation canopy as shown in Fig. S1. The general description is available in Katata (2009), Katata and Ota (2017), Nagai
90 (2004), and Ota et al. (2013). Details of the processes of snow accumulation and melting, freeze-thaw in soil, and grassland
vegetation growth and development are described in the supporting information.

In the atmosphere sub-model, one-dimensional diffusion equations are solved between atmospheric layers for horizontal
wind speeds, potential temperature, specific humidity, liquid water content of the fog, turbulent kinetic energy and length scale
(Katata, 2009), and gas and aerosol concentrations (Katata and Ota, 2017). At the upper boundary conditions, the variables
95 of horizontal wind speeds, potential temperature, specific humidity (and liquid water content of the fog, gas and aerosol
concentrations, if available) are typically obtained from hourly or half-hourly observational data. For further explanations
see section 2.3. Bulk transfer equations are applied at the lowest layer using the soil surface temperature and specific humidity
calculated in the soil sub-model. In the soil sub-model, the soil temperature, volumetric soil water content, and specific humidity
in the soil pores are predicted based on heat conduction, mass balance in liquid water, and water vapor diffusion equations,
100 respectively (Katata, 2009). Root water uptake is calculated from the transpiration rate in the vegetation sub-model. For CO₂
concentration in soil, mass conservation equations for liquid and gas phases are solved (Nagai, 2004). Organic matter dynamics
are also considered (Ota et al., 2013) as microbial decomposition and dissolved organic carbon (DOC) leaching in the above-
ground litter layer, below-ground input of carbon from roots (root litter), and soil organic carbon (SOC) turnover and DOC
transport along water flows throughout the soil profile for three SOC pools (active, slow, and passive) with different turnover
105 times.

In the vegetation sub-model, profiles of the leaf temperature, leaf surface water, and the vertical liquid water flux are predicted
(Nagai, 2004). The heat budget equation at the leaf surface is solved to predict the leaf temperature using key variables from the
atmosphere sub-model combined with the radiation scheme. At the upper boundary of the sub-model, the given precipitation
intensity is used for calculating vertical liquid water flux within the canopy based on the surface water budget equation. The
110 CO₂ assimilation rate due to photosynthesis is predicted using the Farquhar's formulations (Farquhar et al., 1980) and stomatal
resistance. In the radiation sub-model, direct and diffuse downward and upward fluxes of solar and long-wave radiation are
calculated to obtain the radiation energy input at the canopy layers. Fractions of sunlit and shaded leaves at each canopy layer
are computed for the stomatal resistance and energy budget calculations.

A multi-layer snow module is mainly developed based on the Community Land Model (CLM; Oleson et al., 2010) and
115 SNTHERM (Jordan, 1991), while the model is unique in including the gravitational and capillary liquid water flows in the
unsaturated snow layer based on van Genuchten's concept of water flow in the unsaturated zone (c.f., Hirashima et al., 2010).
In the soil module, freeze-thaw processes in soil based on the freezing-point depression equation (Zhang, Sun, and Xue, 2007)
are considered in heat conduction and liquid water flow equations.

To simulate the winter-related processes for grassland phenology such as leaf development and senescence due to cold stresses, the relevant scheme in the grass growth model named BASic GRAssland model (BASGRA; Höglind et al., 2016) is coupled with the vegetation sub-model of SOLVEG to simulate vegetation growth. The three main features that characterize plant growth in BASGRA are: (1) simulation of source-sink relations where the source consists of both current photosynthesis and remobilization of reserves; (2) simulation of leaf area dynamics and tillering for vegetative and generative tillers; and (3) cold hardening and the effect of physical winter stress factors on tiller survival and plant growth. BASGRA has been well validated by using several experimental datasets of harvestable dry matter of perennial rye grass collected in Europe (Schapendonk et al., 1998) and from five locations in Norway, covering a wide range of agroclimatic regions, day lengths, and soil conditions (Höglind et al., 2016). BASGRA consists of the LINGRA grassland model (Van Oijen et al., 2005) with models for cold hardening and soil physical winter processes, while diurnal CO₂ assimilation is calculated as accumulation of the net assimilation for each time step within the vegetation sub-model (Nagai, 2004) instead of the original scheme of photosynthetic processes in BASGRA. When snow covers grasses, no photosynthesis is assumed to occur due to low light availability and only soil respiration is considered. BASGRA uses a so-called "big-leaf" approach (Monteith, 1981), thus predicting the total leaf area index (LAI) of the whole grassland vegetation canopies. Since SOLVEG uses a multi-layer structure of canopies, the profile of leaf area density is obtained from simply dividing total LAI by canopy height (h) by assuming vertically uniformity for all canopy layers. Canopy height, which is not simulated in BASGRA, is calculated by the function of LAI with fitting parameters.

Carbon gain from photosynthesis and remobilized reserves are allocated among sinks based on changing sink priorities and strengths. Sink strengths are calculated based on the dynamics of leaves and stems and the acclimation to low temperature. The following five sinks are considered: the processes of cold hardening, replenishment of the reserves pool, leaf growth, stem growth, and root growth. Sink strengths are defined as the rate at which these processes would proceed with no source limitation. The hardening process has top priority, so its demand is met in full if source strength is large enough, irrespective of the four other sinks. Root growth has lowest priority and depends on carbon unused by other sinks. The strength priority between reserves on the one hand, and leaves and stems on the other hand changes with day length. When day lengths are shorter than a cultivar-specific threshold, reserves have higher priority than stems and leaves, with the opposite during the rest of the year. Leaves and stems have equal priority so they receive carbon according to their sink strengths. The removal of tillers and leaves by cutting can be simulated during the growing season, with subsequent regrowth of the sward. The regrowth rate after cutting is calculated at each phenological stage. Natural turnover of leaves and roots is modeled using typical life spans in years (Arora and Boer, 2005), while BASGRA does not simulate the senescence of elongating tillers or roots. The fraction of roots in soil layers and rooting depth are modeled as a function of root biomass (Arora and Boer, 2003), which may be required to be tested at multiple biomes. Daily amounts of the dead root biomass (root litter) are used as inputs to SOC in the soil sub-model of SOLVEG.

2.2 Empirical parameterizations for cold acclimation

Although the relation between the maximum catalytic capacity of Rubisco (V_{cmax}) and air temperature is quite well established (e.g., Bernacchi et al., 2001; Leuning, 2002; Smith and Dukes, 2013), parameters related to photosynthesis are still uncertain (Kattge and Knorr, 2007) also for low temperature (Höglind et al., 2011). Thus, in the vegetation sub-model, we introduced
155 the empirical factor for cold stress of grasslands, f_{cold} , to empirically simulate the reduction of photosynthesis under low air temperature as per the following equations (see also Supplement):

$$A_n = \min(f_{cold}w_c, w_e, f_{cold}w_s) - R_d, \quad (1)$$

$$f_{cold} = \min \left[1, \max \left\{ 0, \frac{(T_a + 4)}{(T_{ph} + 4)} \right\} \right], \quad (2)$$

where A_n ($\mu\text{mol m}^{-2} \text{s}^{-1}$) is the net CO_2 assimilation rate at each canopy layer, which is calculated by subtracting the
160 leaf respiration rate R_d ($\mu\text{mol m}^{-2} \text{s}^{-1}$) from the assimilation rate, w_c ($\mu\text{mol m}^{-2} \text{s}^{-1}$) is the limitation by efficiency of the photosynthetic enzyme system (Rubisco), w_e ($\mu\text{mol m}^{-2} \text{s}^{-1}$) is the limitation by the absorbed photosynthetically active radiation (PAR), w_s ($\mu\text{mol m}^{-2} \text{s}^{-1}$) is the limitation by the capacity of leaves to export the products of photosynthesis, T_a ($^{\circ}\text{C}$) is the daily and vertical mean air temperature for all canopy layers, and T_{ph} ($^{\circ}\text{C}$) is the threshold air temperature above which grasslands are photosynthetically active. Determination of the value of this threshold temperature is important to avoid
165 the overestimation (mainly from fall to winter) of photosynthesis at a low temperature (Höglind et al., 2011). In the original BASGRA, T_{ph} is set to 1°C , that is, V_{cmax} starts decreasing linearly when T_a drops below 1°C until it becomes zero at -4°C . However, in the SOLVEG simulation, since the values of T_{ph} may change depending on environmental conditions, the value of T_{ph} is calibrated for each site so that the model reproduce the observed CO_2 flux during the extremely warm winter period.

2.3 Study sites and observational data

170 The model is applied to two sites of managed grassland named ~~the~~ Graswang (47.5708°N , 11.0326°E , 864 m asl.) and ~~the~~ Fendt (47.8329°N , 11.0607°E , 595 m asl.) belonging to the TERrestrial ENvironmental Observatories (TERENO) network in Germany. General information on the climate and management of the sites is available in Table 1. Both sites are located in the Bavarian Alpine Foreland, in the south of Germany and north of the Alps (Mauder et al., 2013; Zeeman et al., 2017; Zeeman et al., 2019). The grasses are harvested several times during the growing season defined as the period from April to October.

175 Half-hourly data of precipitation, atmospheric pressure, horizontal wind speed, air temperature and humidity, and incoming long- and short-wave radiation were used at the top atmospheric layer as a height of 3.5 m. Data of friction velocity (u^*), sensible (H) and latent heat (λE), and CO_2 fluxes (F_{CO_2}) observed over the grassland based on the open-path eddy covariance method using a three-dimensional sonic anemometer (CSAT3; Campbell Scientific, USA) and an open-path $\text{CO}_2/\text{H}_2\text{O}$ gas analyzer (LI-7500; Li-Cor, USA) were used for validation of the simulation results. The net radiation (R_{net}) over the canopies,
180 soil temperature at 0.05 m in depth, and snow depth were also used to evaluate the simulated surface energy and water balances. Details of the site characteristics and micrometeorological observations are described by Zeeman et al. (2017).

2.4 Calibration and validation procedure

Direct comparisons between the results using the original (SOLVEG only) and integrated models (SOLVEG coupled with BASGLA) are difficult because the vegetation dynamics had been prescribed in the original model, requiring time series of total LAI or leaf biomass data, which is used for evaluation in this study. Thus, we simply focus on the calibration of the integrated model only to investigate the impact of wintertime carbon uptake on grassland dynamics. Parameters used for SOLVEG simulations are summarized in Table 2. The study period is approximately three years from 1 December, 2011, to 1 November, 2014, which included both normal (2011-2012 and 2012-2013) and extremely warm (2013-2014) winters. Typical values of soil hydrological parameters (e.g., saturated hydraulic conductivity) in the study area are given to SOLVEG runs from the past model study (Hingerl et al., 2016). The set of parameters of BASGRA for typical perennial grass species of timothy in the Nordic region (Höglind et al., 2016) is applied. Grass cutting events are determined from clear reductions in CO₂ flux, surface albedo and phenology camera observations according to Zeeman et al. (2017). The threshold temperature for cold stresses [T_{ph} in Eq. (2)] is manually determined in the simulation for each site to obtain the best agreement between simulated and measured CO₂ flux over the canopy during winter. By changing the T_{ph} value from the range between 1 and 11 °C with an increment of 2 °C (not shown in the figure), we obtained the best results as $T_{ph} = 1$ °C and 11 °C for Graswang and Fendt, respectively. The calibration results of daily mean surface fluxes (R_{net} , H , λE , and F_{CO_2}) are statistically evaluated using the mean error (ME), the root mean squared error (RMSE), intercept and slope of linear regression lines, and the Pearson's correlation coefficient (R).

2.5 Scenario determination for sensitivity analysis

To investigate the impact of cold acclimation of grassland vegetation on the CO₂ balance and carbon allocation at mountain grassland ecosystems, two scenarios using the SOLVEG model are defined based on the experimental results of Höglind et al. (2011): "active scenario" ($T_{ph} = 1$ °C) and "dormant scenario" ($T_{ph} = 11$ °C). The former indicates that photosynthesis is active during most of the wintertime and photosynthesis works even at the low temperature of 1 °C. In contrast, the latter represents the situation where grass physiology is more or less shut down and photosynthesis ceases under the condition of a relatively high temperature of 11 °C to protect from cold death. Both scenarios are adopted for both the Graswang and Fendt for covering the same period.

3 Results

3.1 Model calibration and validation

Figure 1 shows the temporal changes in simulated and observed daily surface heat fluxes over the grassland at the Fendt and Graswang throughout the three-year study period. The model generally reproduced the typical seasonal changes measured at both sites, for example, low values of the Bowen ratio ($H/\lambda E$) at the Fendt during the growing season (from April to October) and negative sensible heat flux (H) at the Fendt in December 2013, as suggested by Zeeman et al. (2017).

Figure 2 illustrates the time series of modelled and observed daily soil temperature and snow depth at the two sites. Observed changes in snow depth ~~were reproduced by the model overall~~ (Fig. 2a, c). ~~Seasonal changes in observed~~ soil temperature were also generally reproduced by the model; for example, when the grassland was ~~under the snow cover at the~~ covered by the snow at Graswang from December 2012 to February 2013, soil temperature at a depth of 0.02 m remained almost 0 °C ~~for in~~ both observed and simulated ~~values~~ (Fig. 2c). Sudden increases in soil temperature ~~over the~~ during periodical snow-free ~~condition~~ conditions were also reproduced by the model; this was particularly evident at ~~the~~ Fendt during the extremely warm winter of 2013-2014 (Fig. 2a).

220 Simulated and observed daily CO₂ fluxes (F_{CO_2}) over the canopies and simulated LAI at both sites are presented in Fig. 2b. The model ~~simulated simulation~~ the observed increase of CO₂ ~~flux after the harvesting, which was achieved by the~~ uptake due to regrowth of grassland vegetation as well as the sudden decline after harvests (Fig. 2b and d). No drought stress ~~to~~ grasslands was apparent in the simulations at both sites during the study period (not shown ~~in the figure~~). During the extremely warm winter from December 2013 to February 2014, ~~negative values of observed a net release of~~ CO₂ ~~flux at the Fendt were at~~ Fendt was also well reproduced by the model (Fig. 2b) using the calibrated value of $T_{ph} = 1$ °C (Table ~~1~~ 2). At ~~the~~ Graswang, both observed and simulated CO₂ fluxes were very small and ~~near close~~ to zero (Fig. 3d) ~~due to which was achieved in the~~ model by setting a high threshold temperature for cold acclimation (calibrated as $T_{ph} = 11$ °C (Table 1) (Table 2)).

Scatter diagrams and statistical comparisons of daily energy and CO₂ fluxes at the two sites throughout the study period are presented in Fig. 3. At both sites, the slopes of the regression lines were overall close to unity and values of the intercepts were 230 sufficiently small for R_{net} , H , and λE . High correlations were also observed between measured and simulated CO₂ fluxes at both sites.

3.2 Sensitivity analysis

Figure 4 illustrates temporal changes in simulated snow depth and leaf biomass obtained for the active and dormant scenarios at both sites for the normal winter (2012-2013) and extremely warm winter (2013-2014). ~~Significant differences between the~~ two scenarios of at most a factor of two were found in the results during winter It is obvious that leaf biomass during winter is higher in the active scenarios, mostly because of a higher leaf growth at the end of the vegetation period. In addition, some minor leaf growth also occurs in the snow free winter periods. Nevertheless, ~~the leaf biomasses~~ leaf biomasses converge during spring and are similar again at the first cutting event ~~from May to June were similar at both sites and scenarios. in May/June~~ (Fig. 4b).

240 Figures 5 and 6 depict the ~~selected results of~~ cumulative GPP and ecosystem respiration (RE), ~~and~~ mean leaf and root ~~biomasses~~ biomass, carbon reserve content (total stock of carbon that can be allocated to any of the plant elements such as leaves, stems, and roots), and LAI ~~simulated at the~~, simulated for Fendt and Graswang during winter and spring in 2014, respectively. ~~We focus on the Fendt site~~ In the following, we focus on Fendt for illustration of the ~~effect~~ scenario differences (Fig. 5) ~~because the differences between scenarios were small for all variables at the Grasswang site. but would like to emphasize~~ that the responses are similar at both sites. The differences in absolute values, especially a smaller LAI and less biomass are due to the generally cooler conditions at the Graswang site. It should be noted that such difference in environmental conditions

between both sites required the calibration of the value of T_{ph} for each site (subsection 2.2). Both GPP and RE were higher in the active scenario than in the dormant one as expected by the model construction (Fig. 5a and b); this was particularly apparent as cumulative GPP differed by a factor of three or by approximately 100 gC m^{-2} per year (Fig. 5a). ~~Nevertheless, changes~~ Changes in leaf biomass and LAI during the subsequent spring in the active scenario were ~~clearly slightly~~ lower than in the dormant scenario, indicating that a small part of the additional GPP has been used for foliage growth (Fig. 5c and f). In contrast, changes in root (below-ground) biomass ~~during both during winter and~~ spring in the active scenario were approximately three times higher than in the dormant scenario (Fig. 5d). Simulated carbon reserve contents in both winter and spring were similar in the two simulation scenarios (Fig. 5e) ~~because, showing that~~ the carbon fixed by photosynthesis was immediately allocated to the above- or below-ground biomass.

4 Discussion

The results demonstrate that the modified SOLVEG model that ~~includes the~~ considers the major physical (snow and freeze-thaw) and biological processes (carbon allocation under cold stresses) ~~based on the existing land surface model (SOLVEG)~~ can reasonably simulate heat and carbon transfer processes in managed grassland ecosystems (Figs. 1-3). In particular, the model with calibrated T_{ph} value reproduced the low ~~or near-zero~~ CO_2 uptake during the normal winter period at ~~the~~ Graswang as a response to low soil temperatures that limit photosynthesis even throughout the snow-free conditions (Fig. 2d). On the other hand, the observed high uptake of CO_2 at ~~the~~ Fendt in the extremely warm winter ~~was also simulated~~ could also be represented by the model (Fig. 2b). The key parameter that determined the above CO_2 uptake processes was the threshold air temperature of T_{ph} in Eq. (2) for the photosynthetic activity level of grassland ecosystems. Tuning of the above parameter is required for each site to simulate carbon dynamics in the grassland ecosystems in cold climate regions. ~~The presented approach and model combination could be used in the future for analyzing climate change scenarios and the site dependency of responses~~ In future applications, dependencies between this parameter and the environment or species composition could be evaluated, so that it does not need to be fitted anymore. This will require more comprehensive datasets ~~for evaluation, with which~~ with which also the importance of underlying processes can be revealed and model calibration can be carried out, possibly using an optimization procedure such as Monte Carlo simulation (e.g., Van Oijen et al., 2005).

Our approach uses the manually calibrated T_{ph} values for each site, while only typical (average) values are taken for different plant functional types of grassland vegetation in global biogeochemical models. Numerical experiments using $T_{ph} = 1 \text{ }^\circ\text{C}$ revealed that the high CO_2 uptake rate at low altitude during winter was likely explained by high levels of physiological activity of grasslands (Fig. 4a). In this experiment, the impact of cold acclimation on the CO_2 balance for the two pre-alpine temperate grassland sites was evaluated by manually tuning the threshold temperature of photosynthesis to lower ($T_{ph} = 1 \text{ }^\circ\text{C}$) and higher values ($T_{ph} = 11 \text{ }^\circ\text{C}$) because the exact mechanism of model response to T_{ph} changes is unclear (Höglin et al., 2011). ~~A possible explanation for the less photosynthesis is due to rapid acclimation responses of grasslands to decline in photosynthetic capacity after the~~ Such a down-regulation of photosynthesis is justified by numerous observations about acclimation responses particularly after exposure to freezing temperatures ~~since~~ (e.g., Huner et al., 1993; Kolari et al., 2007). In fact, the Graswang site

280 was exposed to frost even during the extremely warm winter in 2013-2014 (Zeeman et al., 2017); ~~which may support the above~~
~~explanation~~. In our simulations, we treated these acclimation responses as a parameter change, although in future developments
they might be described mechanistically in dependence on temperature development (Kumarathunge et al. 2019; Mediavilla
et al. 2016). Other mechanisms are however, already implicitly considered in the photosynthesis model. For example, the
limitation of photosynthesis and thus the optimum temperature shifts under low air temperature from electron-transport limited
285 to Rubisco-limited (Sage and Kubien, 2007). Further observational work is required at various grassland ecosystems in order
to evaluate this hypothesis.

The high CO₂ uptake rate during the snow-free conditions was not limited to the Fendt site, but is likely a wide-spread
phenomenon at other mountain grasslands in Europe. This ~~is illustrated in statement is supported by~~ Table 1, which summarizes
the full-year observational studies that include wintertime CO₂ flux at European mountains. Indeed, except for the Austrian
290 site of Rotholz, which has a long grazing period that may intensively reduce grass productivity (Wohlfahrt et al., 2010), high
CO₂ uptake during snow-free periods was observed at all altitudes below 760 m, corresponding to annual mean air temperature
(MAT) of more than 8 °C. If the altitude or MAT is considered as a threshold of cold acclimation of grasses, the snow-free
wintertime CO₂ uptake may have a large impact on the carbon balance of grassland ecosystems over the European Alps. Since
a rise of snowline and wintertime air temperature up to 300-600 m or 2-4 °C, respectively, has been predicted for the latter part
295 of the 21st century, the effect is even likely to increase (Gobiet et al., 2014). It should be noted, however, that other indicators
of the level of cold acclimation might be superior to the use of MAT because physiological activities of grassland vegetation
are often triggered by temperatures during specific development stages. If, however, such activities are rather closely related
to the MAT (as indicated in Table 1), it is also possible that the differences in phenology and photosynthesis are caused by a
different species composition of grasslands. In this case, the acclimation speed and management options that facilitate a change
300 to better adapted ecosystems should be investigated.

~~Using the modified SOLVEG model that considers carbon dynamics in grassland vegetation that depends on the source~~
~~strength and the sink demands, the results of the active scenario demonstrated that a large fraction of carbon~~ (The comparison
between scenarios shows that root biomass clearly increased in the active compared to the dormant simulation during winter
and spring (Fig. 5c and d) which can only be due to CO₂)-gained gain by photosynthesis during ~~winter was not directly~~
305 ~~allocated into above-ground biomass but used to grow roots during the spring growth period this time~~ (Fig. 5d), ~~currently~~
~~unsupported by observations~~ 5a). ~~Note that this somewhat counter-intuitive results may be due to the inability of the model to~~
~~grow specific storage organs that could later be emptied to growth other tissues. A differentiation, however, is not yet possible~~
~~because respective observations are not available~~. Most studies of alpine grassland ecosystems in Europe have focused on the
impact of climate changes on grass yield (i.e., grassland-based food production); for example, in the Nordic region, future CO₂
310 increase, warming, and less snowfall are expected to increase the grassland productivity (Ergon et al., 2018). According to this
study, CO₂ uptake at the Fendt site, estimated as an annual GPP of 100 gC m⁻² in 2013-2014 was mainly due to the higher
wintertime photosynthetic rate in the active scenario. Thus, ~~we expected that the change it could be assumed that the increase~~
in the above-ground biomass in spring would be higher in the active scenario ~~because simulated~~. ~~However, the above-ground~~
~~biomass at the first cutting simulated in the active scenario was similar that in the dormant scenario (Fig. 5c)~~. ~~Still, the behavior~~

315 is consistent with the simulated carbon reserve contents (a potential of carbon allocation to the above-ground biomass) in winter, which were similar in the two simulation scenarios (Fig. 5e). ~~However, The actual limitation might have internal (e.g. determined growth) or external causes. For example, self-shading could result in decreasing carbon gain efficiency of new leaves which might induce a growth stop or an increase in senescence when the canopy gets denser. Indeed, calculated LAI values were similar to critical ones for self-shading shortly before the above-ground biomass at the first cutting simulated in~~
320 ~~the active scenario was similar that in the dormant scenario event in 2014 (Fig. 5e). This indicates 4), which is however not a process considered in the model and is thus the result of a reasonably parametrized determined growth. This is corroborated by a similar degree of leaf senescence in both scenarios (6.9 and -0.7 % at Fendt and Graswang, respectively). These results indicate~~ that grass yield cannot be simply determined by the source-strength (CO₂ assimilation due to photosynthesis) and is controlled by the sink-demand of the above-ground biomass (foliar, tiller, and stem growth). Indeed, an open-top-chamber
325 warming experiment in the alpine steppe on the north Tibetan Plateau showed that warming significantly increased total root biomass by 28 % at a soil depth of 0-0.01 m in the growing season (Ma et al., 2016), supporting the possibility of larger below-ground allocation of organic carbon, as suggested by this study. Therefore, the increased photosynthesis in the warmer winter does not necessarily increase grass yields, and thus fodder in mountainous regions. In order to quantify the impact on livestock supply, further research needs to investigate to which degree additional biomass is directed into above- and below-ground
330 storages.

Another important implication from our numerical experiments is that carbon stock/loss in/from the soil in the mountain grasslands may be greater in a future warmer climate. The root biomass simulated for the active scenario was three times greater than that for the dormant scenario (Fig. 5d), indicating that more carbon is accumulated in ~~the soil by root death (root litter input) in grassland ecosystems in roots, storage organs, or in the soil due to higher input by root litter. in~~ warmer
335 winters. Indeed, recent studies suggest that a relatively high MAT accelerates the turnover of roots to produce root litter input in managed mountain grassland ecosystems (Leifeld et al., 2015). This change in the below-ground input of carbon in grassland ecosystem is particularly important for the carbon cycle at managed grassland ecosystems because plant-fixed carbon from the above-ground biomass is substantially reduced following a cut. Furthermore, this may enhance carbon loss from the soil due to heterotrophic respiration and leaching of CO₂ because grassland vegetation typically has a high density of fine roots that
340 are poorly lignified and with high turnover rates, providing a relatively labile carbon substrate for microbial activity (Garcia-Pausas et al., 2017). The altered SOC dynamics in grassland ecosystems may be of considerable importance for the global carbon cycle since soils of temperate grassland ecosystems are already estimated to hold a large stock of carbon, that is, 7 % of total global soil carbon (Jobbágy and Jackson, 2000). Therefore, we suggest that global terrestrial biosphere models (as reviewed by Fatichi et al., 2019) need to be elaborated with phenological and acclimation processes as interactions with below-
345 ground processes (Gill et al., 2002; Riedo et al., 1998; Soussana et al., 2012) in order to estimate the carbon balance response of managed grassland ecosystems to global warming .

Data availability. The output data in this study are publicly accessible via contacting the first author.

Author contributions. GK developed the model with supports from RG and MO, and performed the simulations using the data collected by MM and ZM. GK prepared the manuscript with contributions from all co-authors.

350 *Competing interests.* We have no conflict of interest to declare.

Acknowledgements. We thank the staff of KIT/IMK-IFU in Germany and ICAS in Japan for their support. We also express our gratitude to Dr. Georg Wohlfahrt of the University of Innsbruck, Austria; Dr. Jun Koarashi of the JAEA, Japan; Dr. Kentaro Takagi of Hokkaido University, Japan; and Dr. Ankur Desai of Wisconsin University for their helpful comments and suggestions on this study. The German weather data were provided by DWD. Fortran code of BASGRA was provided from <http://dx.doi.org/10.5281/zenodo.27867>. Output data in
355 this study are all publicly available and are included in the supporting information. The TERENO pre-Alpine infrastructure is funded by the Helmholtz Association and the Federal Ministry of Education and Research. One of our co-authors, Dr. Matthias Zeeman, received support from the German Research Foundation (DFG; grant number ZE1006/2-1). This study was partly supported by a Postdoctoral Fellowship for Research Abroad and Leading Initiative for Excellent Young Researchers, provided by the Japan Society for the Promotion of Science and the Ministry of Education, Culture, Sports, Science and Technology.

360 References

- Ammann, C., Flechard, C., Leifeld, J., Neftel, A., and Fuhrer, J.: The carbon budget of newly established temperate grassland depends on management intensity, *Agric. Ecosyst. Environ.*, 121, 5-20, <https://doi.org/10.1016/j.agee.2006.12.002>, 2001.
- Ammann, C., Spirig, C., Leifeld, J., and Neftel, A.: Assessment of the nitrogen and carbon budget of two managed temperate grassland fields. *Agric. Ecosyst. Environ.*, 133, 3-4, 150-162, <https://doi.org/10.1016/j.agee.2009.05.006>, 2009.
- 365 Arora, V. K., and Boer, G. J.: A representation of variable root distribution in dynamic vegetation models, *Earth Interact.*, 7, 1-19, [https://doi.org/10.1175/1087-3562\(2003\)007<0001:arovrd>2.0.co;2](https://doi.org/10.1175/1087-3562(2003)007<0001:arovrd>2.0.co;2), 2003.
- Arora, V. K., and Boer, G. J.: A parameterization of leaf phenology for the terrestrial ecosystem component of climate models, *Global Change Biol.*, 11, 39-59, <https://doi.org/10.1111/j.1365-2486.2004.00890.x>, 2005.
- Bernacchi, C. J., Singaas, E. L., Pimentel, C., Portis Jr., A. R., and Long, S. P.: Improved temperature response functions for models of Rubisco-limited photosynthesis, *Plant Cell Environ.*, 24, 253-259, <https://doi.org/10.1111/j.1365-3040.2001.00668.x>, 2001.
- [Boisvenue, C., and Running, S. W.: Impacts of climate change on natural forest productivity evidence since the middle of the 20th century. *Global Change Biol.*, 12, 862-882, <https://doi.org/10.1111/j.1365-2486.2006.01134.x>, 2006.](https://doi.org/10.1111/j.1365-2486.2006.01134.x)
- Boone, A.: Description du schema de neige ISBA-ES (Explicit Snow), Centre National de Recherches Météorologiques, Météo-France, Toulouse, Available from, <http://www.cnrm.meteo.fr/IMG/pdf/snowdoc.pdf>, 2002.
- 375 [Cannell, M. G. R., and Thornley, J. H. M.: N-poor ecosystems may respond more to elevated CO₂ than N-rich ones in the long term. A model analysis of grassland. *Global Change Biol.*, 4, 431-442, \[doi:10.1046/j.1365-2486.1998.00167.x\]\(https://doi.org/10.1046/j.1365-2486.1998.00167.x\), 1998.](https://doi.org/10.1046/j.1365-2486.1998.00167.x)
- Desai, A. R., Wohlfahrt, G., Zeeman, M. J., Katata, G., Eugster, W., Montagnani, L., Gianelle, D., Mauder, M., and Schmid, H. P.: Montane ecosystem productivity responds more to global circulation patterns than climatic trends, *Environ. Res. Lett.*, 11, 024013, <https://doi.org/10.1088/1748-9326/11/2/024013>, 2015.
- 380 Ergon, Å., Seddaiu, G., Korhonen, P., Virkajärvi, P., Bellocchi, G., Jørgensen, M., Østrem, L., Reheul, D., and Volaire, F.: How can forage production in Nordic and Mediterranean Europe adapt to the challenges and opportunities arising from climate change?, *Eur. J. Agron.*, 92, 97-106, <https://doi.org/10.1016/j.eja.2017.09.016>, ~~2018~~ [2018](https://doi.org/10.1016/j.eja.2017.09.016).
- Essery, R., Morin, S., Lejeune, Y., and Menard, C.: A comparison of 1701 snow models using observations from an alpine site, *Adv. Water Res.*, 55, 131-148, <https://doi.org/10.1016/j.advwatres.2012.07.013>, 2013.
- 385 Fatichi, S., Leuzinger, S., and Körner, C.: Moving beyond photosynthesis: from carbon source to sink-driven vegetation modeling, *New Phytol.*, 201, 4, 1086-1095, <https://doi.org/10.1111/nph.12614>, 2014.
- Fatichi, S., Pappas, C., Zscheischler, J., and Leuzinger, S.: Modelling carbon sources and sinks in terrestrial vegetation, *New Phytol.*, 221, 2, 652-668, <https://doi.org/10.1111/nph.15451>, 2019.
- Farquhar, G.D., von Caemmerer, S., and Berry, J.A.: A biochemical model of photosynthetic CO₂ assimilation in leaves of C₃ species, *Planta*, 149, 1, 78-90, <https://doi.org/10.1007/BF00386231>, 1980.
- 390 Galvagno, M., Wohlfahrt, G., Cremonese, E., Rossini, M., Colombo, R., Filippa, G., Julitta, T., Manca, G., Siniscalco, C., di Cella, U.M., and Migliavacca, M.: Phenology and carbon dioxide source/sink strength of a subalpine grassland in response to an exceptionally short snow season, *Environ. Res. Lett.*, 8, 025008, <https://doi.org/10.1088/1748-9326/8/2/025008>, 2013.
- Garcia-Pausas, J., Romanyà, J., Montanè, F., Rios, A.I., Taull, M., Rovira, P., and Casals, P.: Are soil carbon stocks in mountain grasslands compromised by land-use changes? In: J. Catalan, J.M. Ninot, M. Aniz (Eds.) *High Mountain Conservation in a Changing World*, *Adv. Global Change Res.*, 207-230, https://doi.org/10.1007/978-3-319-55982-7_9, 2017.

- Gill, R. A., Kelly, R. H., Parton, W. J., Day, K. A., Jackson, R. B., Morgan, J. A., Scurlock, J. M. O., Tieszen, L. L., Castle, J. V., Ojima, D. S., and Zhang, X. S.: Using simple environmental variables to estimate belowground productivity in grasslands, *Glob. Ecol. Biogeogr.*, 11, 1, 79-86, <https://doi.org/10.1046/j.1466-822x.2001.00267.x>, 2002.
- 400 Gobiet, A., Kotlarski, S., Beniston, M., Heinrich, G., Rajczak, J., and Stoffel, M.: 21st century climate change in the European Alps? a review, *Sci. Total Environ.*, 493, 1138-1151, <https://doi.org/10.1016/j.scitotenv.2013.07.050>, 2014.
- Hingerl, L., Kunstmann, H., Wagner, S., Mauder, M., Bliefernicht, J., and Rigon, R.: Spatio-temporal variability of water and energy fluxes? a case study for a mesoscale catchment in pre-alpine environment, *Hydrol. Process*, 30, 21, 3804-3823, <https://doi.org/10.1002/hyp.10893>, 2016.
- 405 Hirashima, H., Yamaguchi, S., Sati, A., and Lehning, M.: Numerical modeling of liquid water movement through layered snow based on new measurements of the water retention curve, *Cold Regions Science and Technology*, 64, 2, 94-103, <https://doi.org/10.1016/j.coldregions.2010.09.003>, 2010.
- [Hoch, G. and Körner, Ch: The carbon charging of pines at the climatic treeline: a global comparison, *Oecologia*, 135, 1021, https://doi.org/10.1007/s00442-002-1154-7, 2003.](https://doi.org/10.1007/s00442-002-1154-7)
- 410 Höglind, M., Hanslin, H. M., and Mortensen, L. M.: Photosynthesis of *Lolium perenne* L. at low temperatures under low irradiances, *J. Exp. Bot.*, 70, 2-3, 297-304, <https://doi.org/10.1016/j.envexpbot.2010.10.007>, 2011.
- Höglind, M., Van Oijen, M., Cameron, D., and Persson, T.: Process-based simulation of growth and overwintering of grassland using the BASGRA model, *Ecol. Model.*, 335, 1-15, <https://doi.org/10.1016/j.ecolmodel.2016.04.024>, 2016.
- Huner, N. P. A., Öquist, G., Hurry, V. M., Krol, M., Falk, S., and Griffith, M.: Photosynthesis, photoinhibition and low temperature acclimation in cold tolerant plants, *Photosynthesis Res.*, 37, 1, 19-39, <https://doi.org/10.1007/bf02185436>, 1993.
- 415 Jing, Q., Bélanger, G., Qian, B., and Baron, V.: Timothy yield and nutritive value with a three-harvest system under the projected future climate in Canada. *Canadian Journal of Plant Science*, 94, 2, 213-222, <https://doi.org/10.4141/cjps2013-279>, 2014.
- Jobbágy, E. G., and Jackson, R. B.: The vertical distribution of soil organic carbon and its relation to climate and vegetation, *Ecol. Appl.*, 10, 2, 423-436, <https://doi.org/10.2307/2641104>, 2000.
- 420 Jordan, R.: A one-dimensional temperature model for a snow cover. Technical documentation for SN THERM.89. CRREL Special Report 91-16; US Army Core of Engineers Cold Regions Research and Engineering Laboratory, Hanover, NH, 48, 1991.
- Katata, G. (2009). Improvement of a land surface model for accurate prediction of surface energy and water balances, *JAEA-Data/Code*, 2008-033, 64, 2009.
- Katata, G., Kajino, M., Matsuda, K., Takahashi, A., and Nakaya, K.: A numerical study of the effects of aerosol hygroscopic properties to dry deposition on a broad-leaved forest, *Atmos. Environ.*, 97, 501-510, <https://doi.org/10.1016/j.atmosenv.2013.11.028>, 2014.
- 425 Katata, G., and Ota, M.: A terrestrial ecosystem model (SOLVEG) coupled with atmospheric gas and aerosol exchange processes, *JAEA-Data/Code*, 2016-014, 35, 2017.
- Kattge, J., Knorr, W.: The temperature dependence of photosynthetic capacity in a photosynthesis model acclimates to plant growth temperature: a re-analysis of data from 36 species, *Plant Cell Environ.*, 30, 1176-1190, https://doi.org/10.1111/j.1365-3040.2007.01690_x,
- 430 2007.
- Kolari, P., Lappalainen, H. K., Hänninen, H., and Hari, P.: Relationship between temperature and the seasonal course of photosynthesis in Scots pine at northern timberline and in southern boreal zone, *Tellus*, 59B, 3, 542-552, <https://doi.org/10.3402/tellusb.v59i3.17033>, 2007.
- Körner, C.: Winter crop growth at low temperature may hold the answer for alpine treeline formation, *Plant Ecol. Divers.*, 1, 1, 3-11, <https://doi.org/10.1080/17550870802273411>, 2008.

- 435 Körner, C, Morgan, J. A., and Norby, R. J.: CO₂ fertilization: when, where, how much? In: J.P. Canadell, D.E. Pataki, L.F. Pitelka (Eds.) Terrestrial Ecosystems in a Changing World, 9-21, Berlin, Germany, Springer, https://doi.org/10.1007/978-3-540-32730-1_2, 2007.
- [Kozłowski, T. T.: Carbohydrate sources and sinks in woody plants. Bot. Rev., 58, 107-122, http://dx.doi.org/10.1007/BF02858600, 1992.](http://dx.doi.org/10.1007/BF02858600)
- Kumarathunge, D. P., Medlyn, B. E., Drake, J. E., Tjoelker, M. G., Aspinwall, M. J., Battaglia, M., Cano, F. J., Carter, K. R., Cavaleri, M. A., Cernusak, L. A., Chambers, J. Q., Crous, K. Y., De Kauwe, M. G., Dillaway, D. N., Dreyer, E., Ellsworth, D. S., Ghannoum, O., Han, Q., Hikosaka, K., Jensen, A. M., Kelly, J. W. G., Kruger, E. L., Mercado, L. M., Onoda, Y., Reich, P. B., Rogers, A., Slot, M., Smith, N. G., Tarvainen, L., Tissue, D. T., Togashi, H. F., Tribuzy, E. S., Uddling, J., Vårhammar, A., Wallin, G., Warren, J. M., and Way, D. A.: Acclimation and adaptation components of the temperature dependence of plant photosynthesis at the global scale, *New Phytol.*, 222, 768-784, <https://doi.org/10.1111/nph.15668>, 2019.
- Leifeld, J., Meyer, S., Budge, K., Sebastia, M. T., Zimmermann, M., and Fuhrer, J.: Turnover of grassland roots in mountain ecosystems revealed by their radiocarbon signature: Role of temperature and management, *PLoS ONE*, 10, e0119184, <https://doi.org/10.1371/journal.pone.0119184>, 2015.
- Leuning, R.: Temperature dependence of two parameters in a photosynthesis model, *Plant Cell Environ.*, 25, 1205-1210, <https://doi.org/10.1046/j.1365-3040.2002.00898.x>, 2002.
- Ma, X.-X., Yan, Y., Hong, J.-T., Lu, X.-Y., and Wang, X.-D.: Impacts of warming on root biomass allocation in alpine steppe on the north Tibetan Plateau, *J. Mt. Sci.*, 14, 25, 1615-1623, <https://doi.org/10.1007/s11629-016-3966-7>, 2017.
- Marcolla, B., Cescatti, A., Manca, G., Zorer, R., Cavagna, M., Fiora, A., Gianelle, D., Rodeghiero, M., Sottocornola, M., and Zampedri, R.: Climatic controls and ecosystem responses drive the inter-annual variability of the net ecosystem exchange of an alpine meadow, *Agr. Forest Meteorol.*, 151, 9, 1233-1243, <https://doi.org/10.1016/j.agrformet.2011.04.015>, 2011.
- Mauder, M., Cuntz, M., Drüe, C., Graf, A., Rebmann, C., Schmid, H. P., Schmidt, M., and Steinbrecher, R.: A strategy for quality and uncertainty assessment of long-term eddy-covariance measurements, *Agr. Forest Meteorol.*, 169, 122-135, <https://doi.org/10.1016/j.agrformet.2012.09.006>, 2013.
- Mediavilla, S., González-Zurdo, P., Babiano, J. and Escudero, A.: Responses of photosynthetic parameters to differences in winter temperatures throughout a temperature gradient in two evergreen tree species, *Eur. J. Forest Res.*, 135, 871-883, <https://doi.org/10.1007/s10342-016-0980-9>, 2016.
- 460 Merbold, L., Steinlin, C., and Hagedorn, F.: Winter greenhouse gas fluxes (CO₂, CH₄ and N₂O) from a subalpine grassland, *Biogeosci.*, 10, 3185-3203, https://doi.org/10.1007/3-540-26643-7_4, 2013.
- Monteith, J. L.: Evaporation and Surface-Temperature. *Q. J. Royal Meteorol. Soc.*, 107, 451, 1-27, <https://doi.org/10.1002/qj.49710745102>, 1981.
- Nagai, H.: Atmosphere-soil-vegetation model including CO₂ exchange processes: SOLVEG2, JAERI-Data/Code, 2004-014, 92, 2004.
- 465 Oleson, K. W., Lawrence, D. M., Bonan, G. B., Flanner, M. G., Kluzek, E., Lawrence, P. J., Levis, S., Swenson, S. C., and Thornton, P. E.: Technical description of version 4.0 of the Community Land Model (CLM), NCAR Technical Note NCAR/TN-461+STR, National Center for Atmospheric Research (NCAR), Boulder, CO, 257, <https://doi.org/10.5065/D6FB50WZ>, 2010.
- Ota, M., Nagai, H., and Koarashi, J.: Root and dissolved organic carbon controls on subsurface soil carbon dynamics: A model approach, *J. Geophys. Res.*, 118, 4, 1646-1659, <https://doi.org/10.1002/2013jg002379>, 2013.
- 470 [Pepin, N., Bradley, R. S., Diaz, H. F., Baraer, M., Caceres, E. B., Forsythe, N., Fowler, H., Greenwood, G., Hashmi, M. Z., Liu, X. D., Miller, J. R., Ning, L., Ohmura, A., Palazzi, E., Rangwala, I., Schöner, W., Severskiy, I., Shahgedanova, M., Wang, M. B., Williamson, S. N.,](http://dx.doi.org/10.1002/2013jg002379)

- [Yang, D. Q: Elevation-dependent warming in mountain regions of the world. *Nat. Clim. Chang.*, 5, 424430, doi:10.1038/nclimate2563, 2015](#)
- 475 [Rabenhorst, M. C: Biologic zero: a soil temperature concept, *Wetlands*, 25, 616621, https://doi.org/10.1672/0277-5212\(2005\)025\[0616:BZASTC\]2.0.CO;2, 2005.](#)
- Rapacz, M., Ergon, Å., Höglind, M., Jørgensen, M., Jurczyk, B., Østrem, L., Rognli, O. A., and Tronsmo, A. M.: Overwintering of herbaceous plants in a changing climate. Still more questions than answers, *Plant Sci.*, 225, 34-44, https://doi.org/10.1016/j.plantsci.2014.05.009, 2014.
- Riedo, M., Grub, A., Rosset, M., and Fuhrer, J.: A pasture simulation model for dry matter production, and fluxes of carbon, nitrogen, water and energy, *Ecol. Model.*, 105, 2-3, 141-183, https://doi.org/10.1016/s0304-3800(97)00110-5, 1998.
- 480 Rogiers, N., Eugster, W., Furger, M., and Siegwolf, R.: Effect of land management on ecosystem carbon fluxes at a subalpine grassland site in the Swiss Alps, *Theor. Appl. Climatol.*, 80, 2-4, 187-203, https://doi.org/10.1007/s00704-004-0099-7, 2005.
- Sage, R. F., and Kubien, D. S.: The temperature response of C3 and C4 photosynthesis, *Plant Cell Environ.*, 30, 1086-1106, https://doi.org/10.1111/j.1365-3040.2007.01682.x, 2007.
- 485 Schapendonk, A. H. M. C., Stol, W., van Kraalingen, D. W. G., and Bouman, B. A. M.: LINGRA - a source/sink model to simulate grassland productivity in Europe, *Eur. J. Agron.*, 9, 2-3, 87-100, https://doi.org/10.1016/s1161-0301(98)00027-6, 1998.
- [Scholz, K, Hammerle, A, Hiltbrunner, E, Wohlfahrt, G.: Analyzing the effects of growing season length on the net ecosystem production of an Alpine grassland using modeldata fusion. *Ecosystems*, 21, 982-999, https://doi.org/10.1007/s10021-017-0201-5, 2018.](#)
- Smith, N. G., and Dukes, J. S.: Plant respiration and photosynthesis in global-scale models: incorporating acclimation to temperature and CO₂, *Glob. Change Biol.*, 19, 45-63, https://doi.org/10.1111/j.1365-2486.2012.02797.x, 2013.
- 490 Soussana, J. F., Maire, V., Gross, N., Bachelet, B., Pages, L., Martin, R., Hill, D., and Wirth, C.: Gemini: A grassland model simulating the role of plant traits for community dynamics and ecosystem functioning. Parameterization and evaluation, *Ecol. Model.*, 231, 134-145, https://doi.org/10.1016/j.ecolmodel.2012.02.002, 2012.
- Thornley, J. H. M., and France, J.: *Mathematical models in agriculture. Quantitative Methods for the Plant, Animal and Ecological Sciences*, 2nd Edition, Wallingford, CABI, 928, https://doi.org/10.1017/S0021859608007788, 2007.
- 505 Tuba, Z., Csintalan, Z., Szente, K., Nagy, Z., Fekete, G., Larcher, W., and Lichtenthaler, H. K.: Winter photosynthetic activity of twenty temperate semi-desert sand grassland species, *J. Plant Physiol.*, 165, 14, 1438-1454, https://doi.org/10.1016/j.jplph.2007.10.017, 2008.
- Tubiello, F. N., Soussana, J.-F., and Howden, S. M.: Crop and pasture response to climate change, *Proc. Natl. Acad. Sci. USA*, 104, 50, 19686-19690, https://doi.org/10.1073/pnas.0701728104, 2007.
- 500 Van Oijen, M., Bellocchi, G., and Höglind, M.: Effects of climate change on grassland biodiversity and productivity: The need for a diversity of models, *Agron.*, 8, 14, https://doi.org/10.20944/10.3390/preprints201712.0102.v1/agronomy8020014, 2018.
- Van Oijen, M., Höglind, M., Hanslin, M. H., and Caldwell, N.: Process-based modeling of timothy regrowth, *Agron. J.*, 97, 5, 1295-1303, https://doi.org/10.2134/agronj2004.0251, 2005.
- Wiscombe, W. J., and Warren, S. G.: A model for the spectral albedo of snow. I: pure snow, *J. Atmos. Sci.*, 37, 2712-2733, https://doi.org/10.1175/1520-0469(1980)037<2712:AMFTSA>2.0.CO;2, 1980.
- 505 Wohlfahrt, G., Bahn, M., Tappeiner, U., and Cernusca, A.: A multi-component, multi-species model of vegetation-atmosphere CO₂ and energy exchange for mountain grasslands, *Agr. Forest Meteorol.*, 106, 4, 261-287, https://doi.org/10.1016/s0168-1923(00)00224-0, 2001.

- Wohlfahrt, G., Hammerle, A., Haslwanger, A., Bahn, M., Tappeiner, U., and Cernusca, A.: Seasonal and inter-annual variability of the net ecosystem CO₂ exchange of a temperate mountain grassland: Effects of weather and management, *J. Geophys. Res.*, 113, D08110, <https://doi.org/10.1029/2007jd009286>, 2008.
- 510
- Wohlfahrt, G., Piloni, S., Hörtnagl, L., and Hammerle, A.: Estimating carbon dioxide fluxes from temperate mountain grasslands using broad-band vegetation indices, *Biogeosci.*, 7, 2, 683-694, <https://doi.org/10.5194/bg-7-683-2010>, 2010.
- Xie, J., Kneubuhler, M., Garonna, I., Notarnicola, C., De Gregorio, L., De Jong, R., Chimani, B., and Schaepman, M. E.: Altitude-dependent influence of snow cover on alpine land surface phenology, *J. Geophys. Res.*, 122, 5, 1107-1122, <https://doi.org/10.1002/2016jg003728>, 2017.
- 515
- Yamazaki, T.: A one-dimensional land surface model adaptable to intensely cold regions and its applications in eastern Siberia, *J. Meteor. Soc. Japan*, 79, 6, 1107-1118, <https://doi.org/10.2151/jmsj.79.1107>, 2001.
- Zeeman, M. J., Hiller, R., Gilgen, A. K., Michna, P., Pluss, P., Buchmann, N., and Eugster, W.: Management and climate impacts on net CO₂ fluxes and carbon budgets of three grasslands along an elevational gradient in Switzerland, *Agr. Forest Meteorol.*, 150, 4, 519-530, <https://doi.org/10.1016/j.agrformet.2010.01.011>, 2010.
- 520
- Zeeman, M. J., Mauder, M., Steinbrecher, R., Heidbach, K., Eckart, E., and Schmid, H. P.: Reduced snow cover affects productivity of upland temperate grasslands, *Agr. Forest Meteorol.*, 232, 514-526, <https://doi.org/10.1016/j.agrformet.2016.09.002>, 2017.
- Zeeman, M. J., Shupe, H., Baessler, C., and Ruehr, N. K.: Productivity and vegetation structure of three differently managed temperate grasslands, *Agric. Ecosyst. Environ.*, 270-271, 129-148, <https://doi.org/10.1016/j.agee.2018.10.003>, 2019.
- 525
- Zhang, X., Sun, S., and Xue, Y.: Development and testing of a frozen soil parameterization for cold region studies, *J. Hydrometeorol.*, 8, 690-701, <https://doi.org/10.1175/jhm605.1>, 2007.

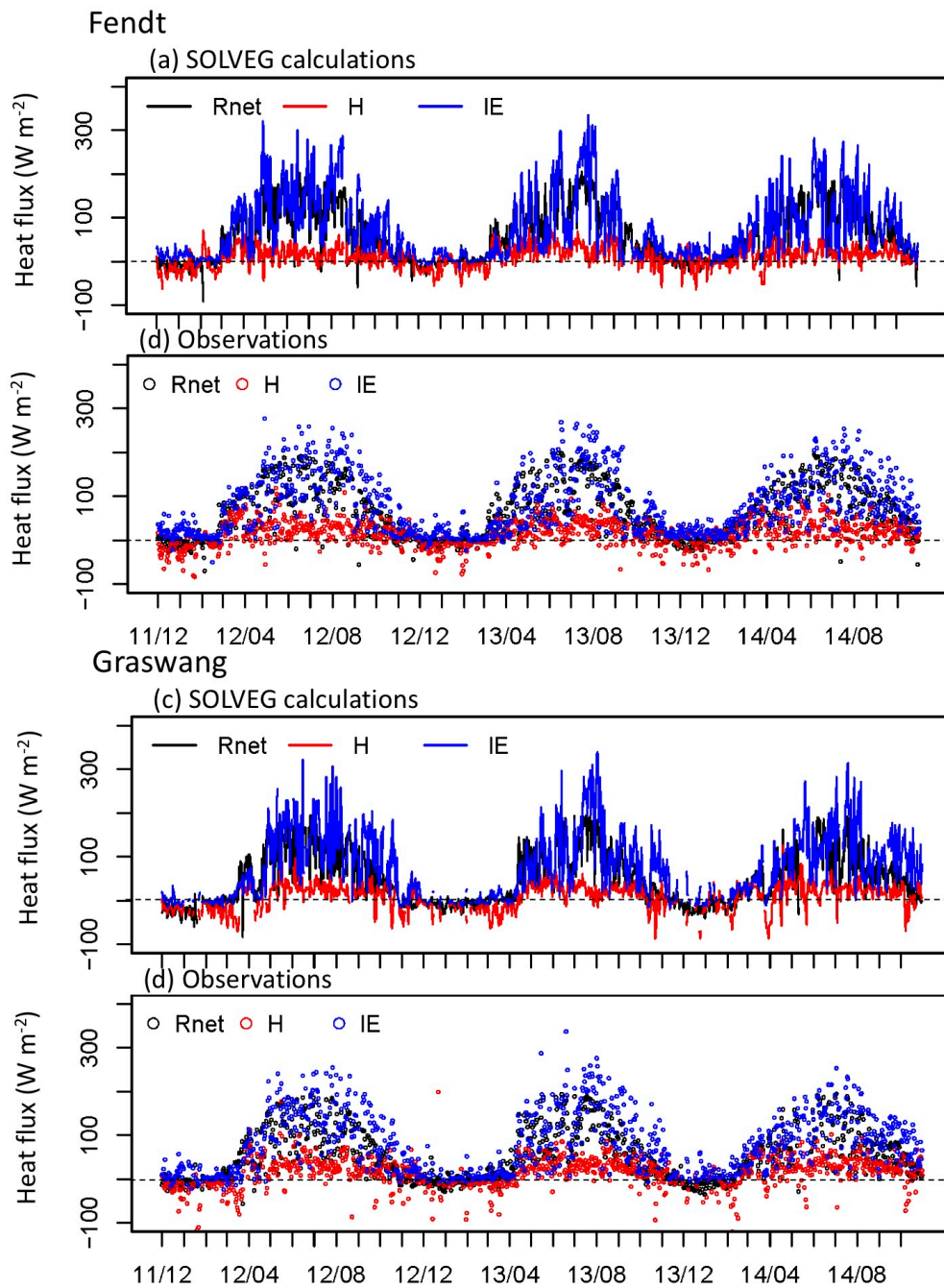


Figure 1. Time series for (a, c) calculated (lines) and (b, d) observed (open circles) daily mean net radiation (R_{net}), sensible heat flux (H), and latent heat flux (λE) at (a-b) the Fendt and (c-d) the Graswang throughout the study period.

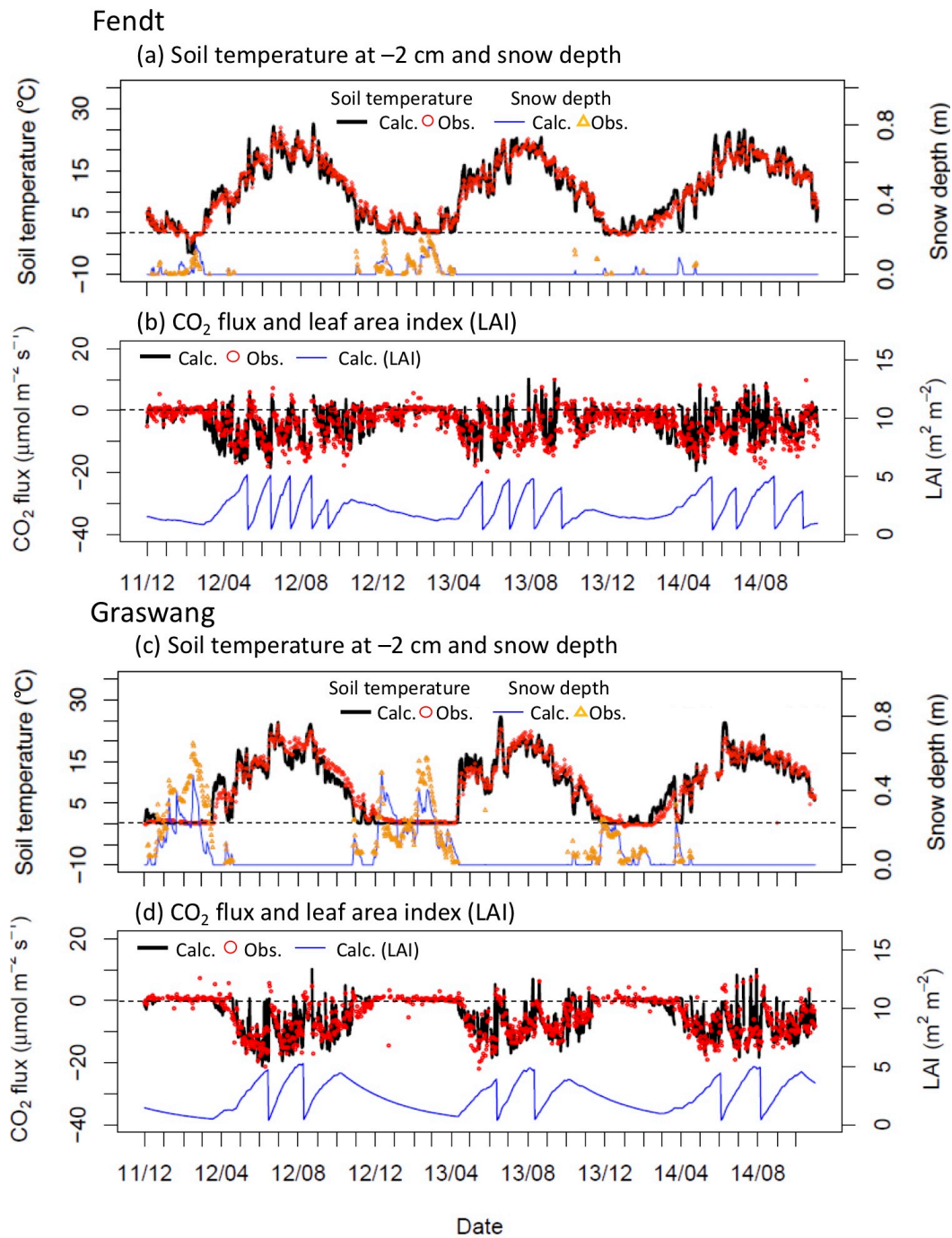


Figure 2. Time series for calculated (solid lines) and observed (open symbols) (a, c) daily mean soil temperature at a depth of 0.02 m, snow depth, and (b, d) CO₂ flux (F_{CO_2}), and leaf area index (LAI) at (a-d) the Fendt and (e-h) the Graswang throughout the study period. Sudden decreases in calculated LAI in (b, d) represent grass cutting events.

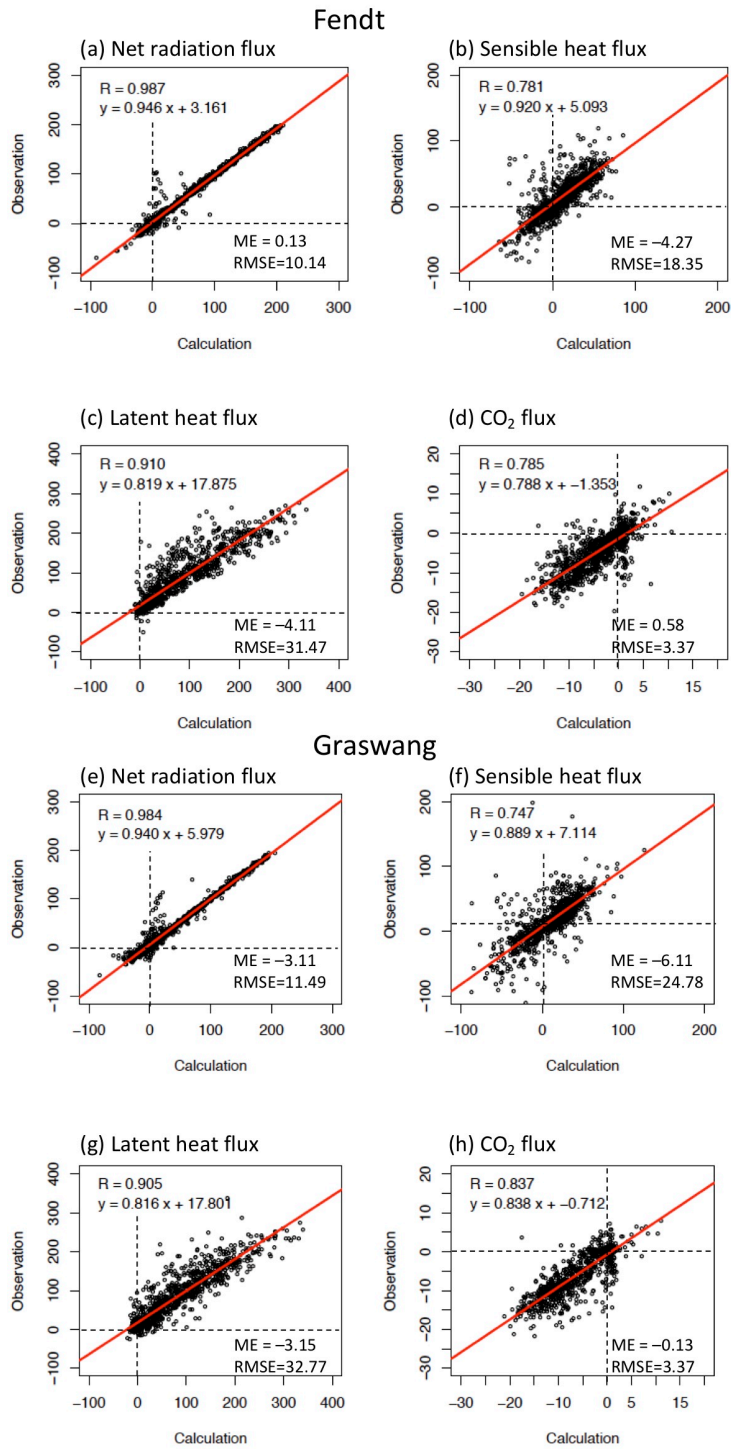


Figure 3. Scatter diagrams of calculated and observed (a, e) daily mean net radiation (R_{net}), (b, f) sensible (H) and (c, g) latent (λE) heat, and (d, h) CO₂ fluxes (F_{CO_2}) at (a-d) the Fendt and (e-h) the Graswang for the study period.

Fig.4

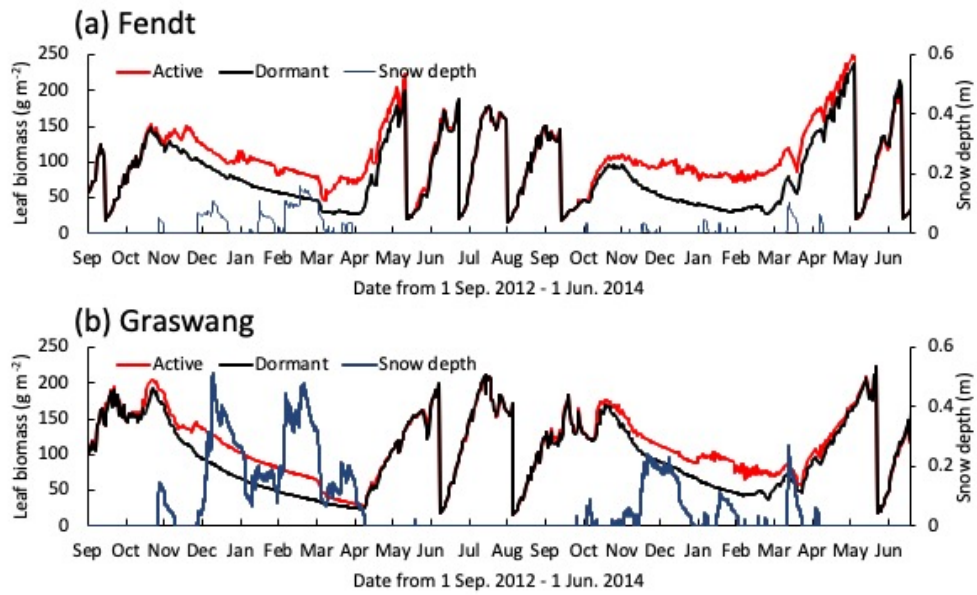


Figure 4. Time series for calculated leaf biomass and snow depth (blue lines) at (a) ~~the~~ Fendt and (b) ~~the~~ Graswang from 1 ~~December~~ September, 2012 until 1 June, 2014, in active (red lines) and dormant cases (black lines).

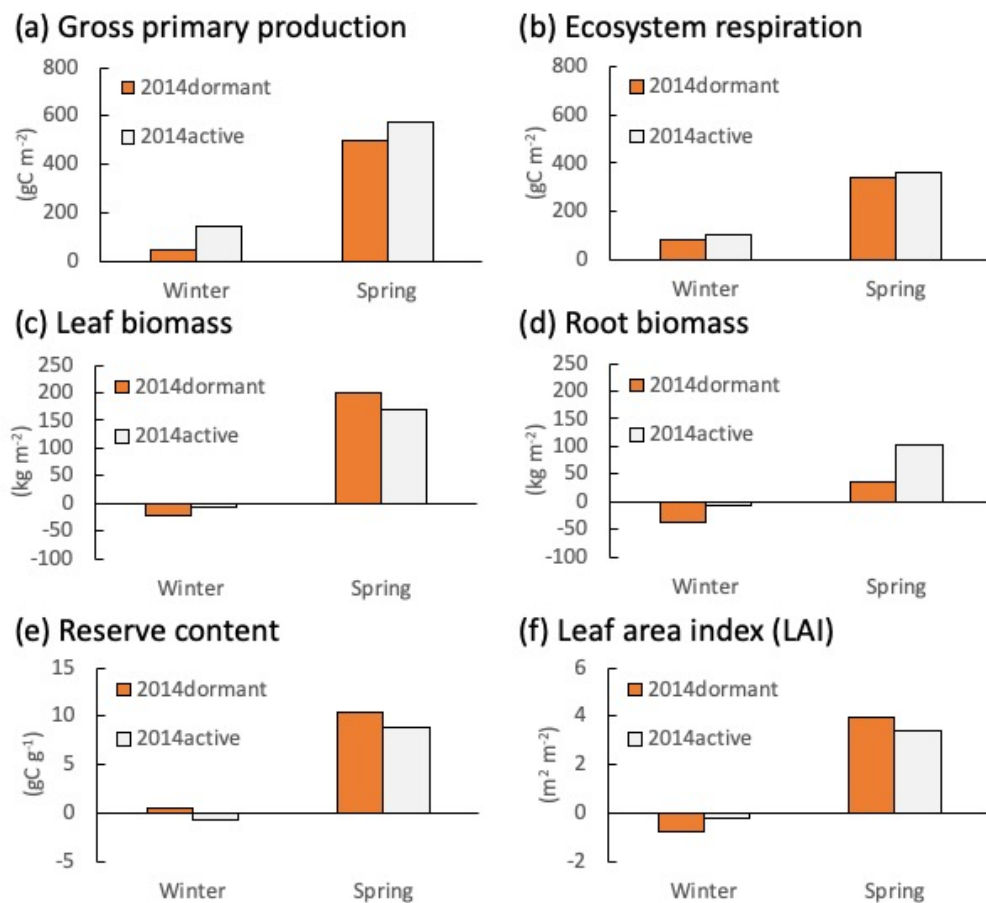


Figure 5. Changes in calculated (a) gross primary production (GPP), (b) ecosystem respiration, (c) live leaf and (d) root biomasses, (e) reserve content, and (f) leaf area index (LAI) at the Fendt during the winter (from December to February) and spring (from March to May) in 2014 in active (grey bars) and dormant cases (orange bars).

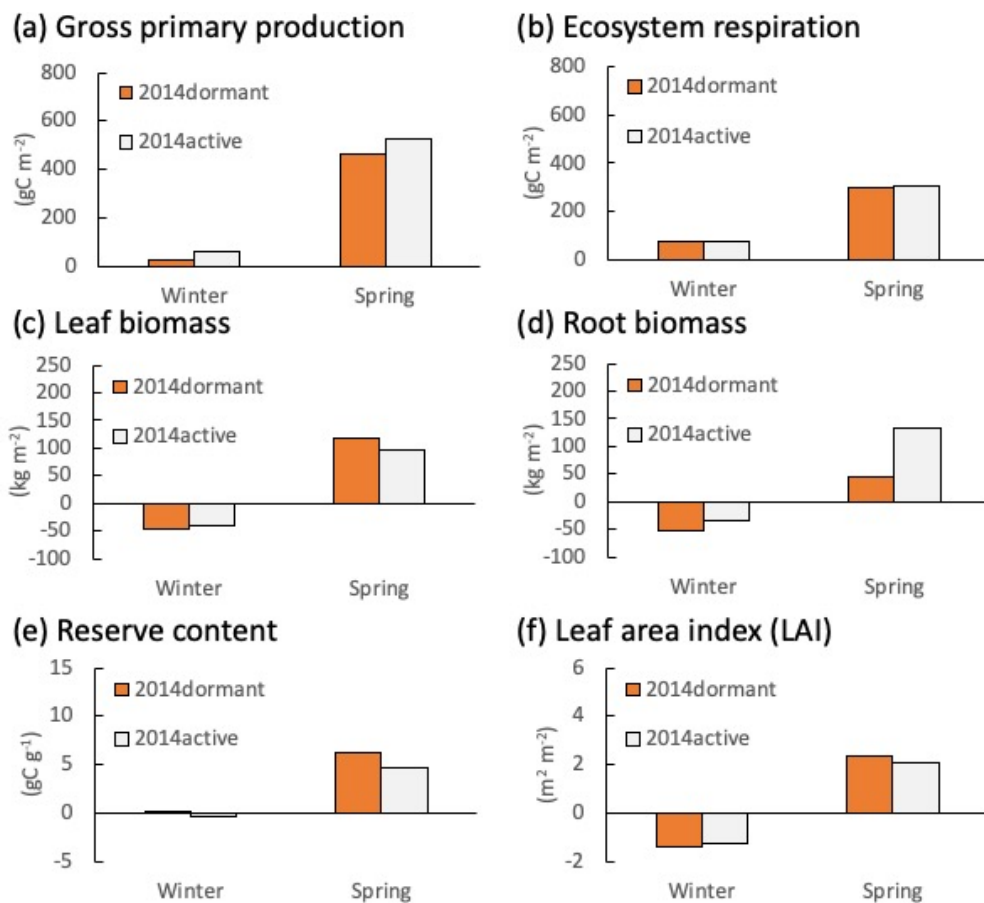


Figure 6. Changes in calculated (a) gross primary production (GPP), (b) ecosystem respiration, (c) live leaf and (d) root biomasses, (e) reserve content, and (f) leaf area index (LAI) at the Graswang during the winter (from December to February) and spring (from March to May) in 2014 in active (grey bars) and dormant cases (orange bars).

Table 1. Characteristics of past or ongoing CO₂ flux observational sites over grassland ecosystems in European mountains. Snow-free CO₂ uptake (bold font) represents the situation of high negative values of CO₂ flux even during the wintertime (typically from December to February).

Site name	Elevation (m)	MAT (°C)	MAP (mm)	Snow-free CO ₂ uptake	Number of cuts per year	Source
Chamau	393	9.8	1184	Yes	6-7	Zeeman et al. (2010)
Oensingen	452	9.5	1100	Yes	3	Ammann et al. (2009)
Rotholz	523	8.2	1151	No	3 + occasional grazing	Wohlfahrt et al. (2010)
Fendt	600	8.0	1100	Yes	4-6	Zeeman et al. (2017)
Rottenbuch	760	8.0	1000	Yes	5	Zeeman et al. (2017)
Graswang	865	6.0	1000	No	2	Zeeman et al. (2017)
Neustift	970	6.3	852	No	3	Wohlfahrt et al. (2008)
Frëbüel	982	7.5	1708	No	4	Zeeman et al. (2010)
Seebodenalp	1025	7.3	1327	No	2	Rogiers et al. (2005)
Dischma	1250	2.8	1022	No	2 + occasional grazing	Merbold et al. (2013)
Monte Bondone	1553	5.5	1189	No	1	Marcolla et al. (2010)
Torgnon	2160	3.1	880	No	0	Galvagno et al. (2013)

Table 2. Simulation settings for the modified SOLVEG at Fendt and Graswang sites. Abbreviations: DM, dry matter; DW: dry weight.

Items	Values	Key reference
Time step	100 s	This study
Numbers of layers	15, 8, and 7 for atmosphere, vegetation, and soil, respectively	This study
Soil layer boundaries	0.02, 0.05, 0.1, 0.2, 0.5, 1.0, and 2.0 m depth	This study
Vegetation layer boundaries	0.05-0.5 m height with an increment of 0.05 m	This study
Atmospheric layer boundaries	Vegetation layers and 0.6, 0.8, 1.2, 1.6, 2.0, and 4.0 m height	This study
Soil texture	Silt	This study
Porosity	$0.55 \text{ m}^3 \text{ m}^{-3}$	This study
Initial and bottom soil temperature	$0 \text{ }^\circ\text{C}$ for all soil layers	This study
Snow layer thickness	5 mm	This study
Empirical parameter, C_k	8	Zhang et al. (2007)
Irreducible liquid water content in snow	$0.03 \text{ m}^3 \text{ m}^{-3}$	Hirashima et al. (2010)
Other parameters for snow and soil frozen sub-model		Same as Jordan (1991)
Maximum catalytic capacity of Rubisco at $25 \text{ }^\circ\text{C}$	$45 \mu \text{ mol m}^{-2} \text{ s}^{-1}$	This study and within range of Wohlfahrt et al. (2001)
Dark respiration rate of leaves at $25 \text{ }^\circ\text{C}$	$1.52 \mu \text{ mol m}^{-2} \text{ s}^{-1}$	Wohlfahrt et al. (2001)
Activation energy for dark respiration	48.9 kJ mol^{-1}	Wohlfahrt et al. (2001)
Minimum stomatal conductance	$0.08 \text{ mol m}^{-2} \text{ s}^{-1}$	Wohlfahrt et al. (2001)
Threshold air temperature when photosynthesis starts, T_{ph}	1 and $11 \text{ }^\circ\text{C}$ at Fendt and Graswang	This study
Other parameters for vegetation sub-model		C3-grass (Nagai, 2004)
Initial leaf area index (LAI)	$1.5 \text{ m}^2 \text{ m}^{-2}$	This study
Initial carbohydrate storage	100 kgDM ha^{-1}	This study
Initial root biomass	$7000 \text{ kgDM ha}^{-1}$	This study
Initial total tiller density	$1000 \text{ number m}^{-2}$	This study
Ratio of total generative tiller	0.1	Höglind et al. (2016)
Ratio of fast generative tiller	1.0	Höglind et al. (2016)
Initial total tiller density	$1000 \text{ number m}^{-2}$	This study
Initial stem biomass	0 kgDM ha^{-1}	This study
Initial stubble biomass	0 kgDM ha^{-1}	This study
Initial specific leaf area (SLA)	$0.002 \text{ m}^2 \text{ kgDW}^{-1}$	This study
Maximum SLA	$0.003 \text{ m}^2 \text{ kgDW}^{-1}$	Zeeman et al. (2017)
LAI after the grass cut	$0.5 \text{ m}^2 \text{ m}^{-2}$	This study
<u>Critical LAI for self-shading</u>	<u>$4.5 \text{ m}^2 \text{ m}^{-2}$</u>	<u>Höglind et al. (2016)</u>
Root life span (residence time)	0.001 d^{-1} (2.74 yr)	Höglind et al. (2016)
Other parameters related to BASGRA module		Same as Höglind et al. (2016)
Parameters for soil microbiological processes		Same as Ota et al. (2013)