



# Quantifying the contributions of riverine vs. oceanic nitrogen to hypoxia in the East China Sea

Fabian Große<sup>1,2</sup>, Katja Fennel<sup>1</sup>, Haiyan Zhang<sup>1,3</sup>, and Arnaud Laurent<sup>1</sup>

<sup>1</sup>Department of Oceanography, Dalhousie University, Halifax, NS, Canada

<sup>2</sup>Department of Mathematics and Statistics, University of Strathclyde, Glasgow, United Kingdom

<sup>3</sup>School of Marine Science and Technology, Tianjin University, Tianjin, China

**Correspondence:** Fabian Große (fabian.grosse@dal.ca)

**Abstract.** In the East China Sea, hypoxia (oxygen  $\leq 62.5 \text{ mmol m}^{-3}$ ) is frequently observed off the Changjiang (or Yangtze) River estuary covering up to about 15,000 km<sup>2</sup>. The Changjiang River is a major contributor to hypoxia formation because it discharges large amounts of freshwater and nutrients into the region. However, modelling and observational studies have suggested that intrusions of nutrient-rich oceanic water from the Kuroshio Current also contribute to hypoxia formation. The relative contributions of riverine versus oceanic nutrient sources to hypoxia have not been estimated before. Here, we combine a three-dimensional, physical-biogeochemical model with an element tracing method to quantify the relative contributions of nitrogen from different riverine and oceanic sources to hypoxia formation during 2008–2013. Our results suggest that the hypoxic region north of 30 °N is dominated by Changjiang River inputs, with its nitrogen loads supporting 74% of oxygen consumption. South of 30 °N, oceanic nitrogen sources become more important supporting 39% of oxygen consumption during the hypoxic season, but the Changjiang River remains the main control of hypoxia formation also in this region. Model scenarios with reduced Changjiang River nitrogen loads and reduced open-ocean oxygen levels suggest that nitrogen load reductions can significantly reduce hypoxia in the East China Sea and counteract a potential future decline in oxygen supply from the open ocean into the region.

## 1 Introduction

In the East China Sea (ECS), hypoxic conditions (i.e. dissolved oxygen (O<sub>2</sub>) concentrations  $\leq 62.5 \text{ mmol m}^{-3}$ ) are frequently observed off the Changjiang River (or Yangtze) Estuary covering up to about 15,000 km<sup>2</sup> (Li et al., 2002; Zhu et al., 2017). Hypoxia was first reported in 1959 (Zhu et al., 2011), and a significant increase in its spatial extent has been observed since the 1980s (Li et al., 2011; Wang, 2009; Wang et al., 2015; Zhu et al., 2011). The Changjiang River is the fifth largest river in the world in terms of freshwater (FW) discharge ( $9 \times 10^{11} \text{ m}^3 \text{ y}^{-1}$ ) and its nutrient concentrations are comparable to other strongly anthropogenically affected rivers (Liu et al., 2003). The observed increase in hypoxic area since the 1980s has been



attributed to elevated nutrient loads due to fertilizer use in the Changjiang watershed (Siswanto et al., 2008; Wu et al., 2019; Yan et al., 2003).

Various studies have suggested that oceanic nutrients also play a role in hypoxia formation in the ECS (Chi et al., 2017; Li et al., 2002; Wang et al., 2018; Zhou et al., 2017b, 2018; Zhu et al., 2011). The importance of oceanic nutrient supply distinguishes hypoxia in the ECS from the otherwise comparable situation in the northern Gulf of Mexico (NGoM), where a similar spatial extent of hypoxic conditions is fueled by freshwater and anthropogenic nutrient inputs from a major river, the Mississippi (Fennel and Testa, 2019). Observations in the ECS indicate that south of 30 °N, intrusions of nutrient-rich water from the Kuroshio Current influence the shelf dynamics (Wang et al., 2018; Zhou et al., 2017b, 2018). These intrusions vary seasonally due to the influence of the East Asian monsoon, with weak northward winds in summer and strong southward winds in winter that lead to northward and southward water mass transport, respectively (Bian et al., 2013).

The complexity of the circulation and importance of different nutrient sources for hypoxia development make this system particularly amenable to model analyses with high spatio-temporal resolution (Fan and Song, 2014; Zhao and Guo, 2011; Zhang et al., same issue; Zheng et al., 2016; Zhou et al., 2017a; Zhang et al., 2018). Fan and Song (2014) used simulated salinity and nutrient distributions to show that Changjiang River inputs are transported southward in winter and northward in summer. Zhao and Guo (2011) and Zhou et al. (2017a) used model sensitivity studies to highlight the role of oceanic nutrient sources on productivity and hypoxia in the ECS, respectively. Zhang et al. (2019) combined a physical-biogeochemical model with an element tracing method (e.g. Ménesguen and Hoch, 1997) to quantify the relative contributions of different nutrient sources to primary production (PP). They found that riverine nitrogen (N) supports 56% of water column integrated PP in the ECS regions shallower than 50 m. With organic matter degradation being the main sink of O<sub>2</sub> in the subsurface waters of the ECS (Li et al., 2002), this suggests that riverine N also dominates O<sub>2</sub> consumption. However, a quantification of the relative contributions of riverine versus oceanic nutrient sources to hypoxia has not been available until now.

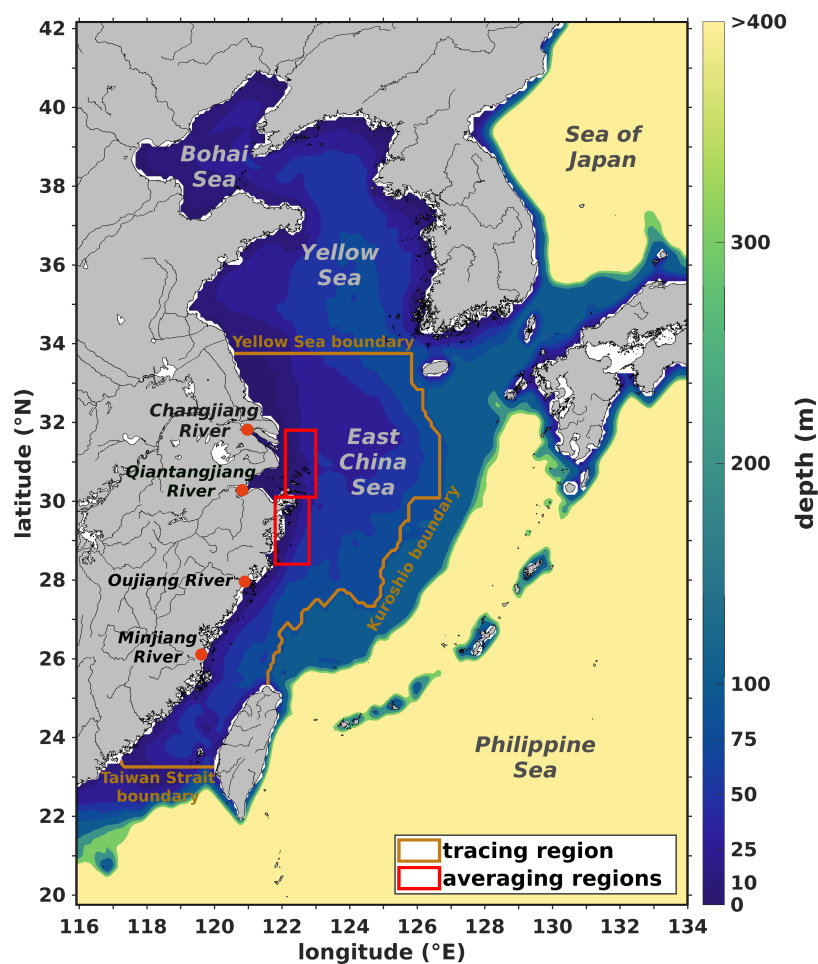
By combining a high-resolution biogeochemical model with this active element tracing method expanded for the quantification of the contributions to O<sub>2</sub> processes (Große et al., 2017, 2019), we provide such an analysis here. We apply the element tracing method to an implementation of the Regional Ocean Modeling System (ROMS; Fennel et al., 2006; Haidvogel et al., 2008) configured for the ECS (Zhang et al., same issue). This allows us to quantify the contributions of N from different riverine and oceanic sources to hypoxia formation in the ECS and analyze year-to-year and seasonal variability in the individual contributions resulting from the East Asian monsoon cycle. In addition to supplying nutrients, the intrusions of open-ocean subsurface waters are relevant to hypoxia by preconditioning O<sub>2</sub> concentrations in the region. Subsurface O<sub>2</sub> has declined over the past decades in the northwest Pacific (Schmidt et al., 2017) and is projected to continue decreasing in the future (Bopp et al., 2017), which may further exacerbate hypoxia in the region (Qian et al., 2017). We analyze the effect of reduced open-ocean O<sub>2</sub> concentrations on hypoxia under current and reduced N loads from the Changjiang River and compare our results to previous findings for the NGoM's hypoxic zone.



## 2 Methods

### 55 2.1 The physical-biogeochemical model

We used an implementation of ROMS (Haidvogel et al., 2008) for the ECS (Bian et al., 2013). The model covers the region from 116 °E to 134 °E and from 20 °N to 42 °N with a resolution of 1/12 ° (Fig. 1) with 30 terrain-following  $\sigma$ -layers.



**Figure 1.** Model domain and bathymetry, with sub-domain used for nitrogen tracing, rivers inside the tracing region, and northern and southern regions used for time series analysis.

The biogeochemical component is based on the N-cycle model of Fennel et al. (2006, 2011) but was expanded to include phosphate Laurent et al. (2012), oxygen Fennel et al. (2013) and riverine dissolved organic matter Yu et al. (2015). The model state variables are: nitrate ( $\text{NO}_3^-$ ), ammonium ( $\text{NH}_4^+$ ), phosphate ( $\text{PO}_4^{3-}$ ), one functional group each for phyto- and zooplankton, three groups of detritus (small, large, and riverine dissolved organic matter), and dissolved  $\text{O}_2$ . Instantaneous benthic



remineralization was applied at the sediment-water interface (Fennel et al., 2006, 2011). Light attenuation was expanded by including a term dependent on bottom depth (Zhang et al., same issue). For a complete set of model equations we refer the reader to the Appendix of Laurent et al. (2017).

65 Initial and open boundary conditions for temperature and salinity were derived from World Ocean Atlas 2013 version 2 (WOA13-v2) climatologies (Locarnini et al., 2013; Zweng et al., 2013). Temperature and salinity were nudged weekly toward the climatology using a nudging scale of 120 days. Horizontal velocities and sea surface elevation at the open boundaries are based on the SODA reanalysis (Carton and Giese, 2008). Eight tidal constituents ( $M_2$ ,  $S_2$ ,  $N_2$ ,  $K_2$ ,  $K_1$ ,  $O_1$ ,  $P_1$  and  $Q_1$ ) are imposed using tidal elevations, and tidal currents are derived from the global tide model of Egbert and Erofeeva (2002). Initial  
 70 and open boundary conditions for  $\text{NO}_3^-$ ,  $\text{PO}_4^{3-}$  and  $\text{O}_2$  are also based on WOA13-v2 (Garcia et al., 2013a, b), while small positive values are prescribed for all other biogeochemical variables. In regions deeper than 100 m and in the Yellow Sea north of  $34^\circ\text{N}$ ,  $\text{NO}_3^-$  concentrations are nudged toward the climatology using time constants of 7 and 10 days, respectively.

The model was run for the period 2006–2013, with the first two years used as spin-up, and forced by 6-hourly wind stress, surface heat and FW fluxes from the ECMWF ERA-Interim dataset (Dee et al., 2011). Daily FW discharge and nutrient loads  
 75 for 11 rivers were imposed, with the Changjiang River being by far the largest. Discharge for the Changjiang is obtained from Datong Hydrological Station (<http://www.cjh.com.cn/en/>). Concentrations of  $\text{NO}_3^-$ ,  $\text{NH}_4^+$  and  $\text{PO}_4^{3-}$  for the Changjiang River were obtained from the monthly Global NEWS data set (Seitzinger et al., 2005). For the other rivers, FW discharge and nutrient loads were prescribed using climatologies (Liu et al., 2009; Tong et al., 2015; Zhang, 1996). The model demonstrates good skill in representing the hydrography and biogeochemistry of the ECS (Zhang et al., same issue) and reproduces the  
 80 main features of the ECS circulation (see supplement Fig. S1). The simulation using this setup is hereafter referred to as the reference simulation.

In addition to the reference simulation, three scenario simulation were performed: (1) To assess the influence of a reduction in riverine N load on hypoxia, a nutrient reduction scenario was run with 50% smaller N concentrations in the Changjiang River input. All other forcing remained the same. (2) To investigate the potential effect of reduced open-ocean  $\text{O}_2$  supply, a  
 85 scenario similar to the reference simulation but with reduced  $\text{O}_2$  in the open ocean was performed where the initial and open-boundary  $\text{O}_2$  concentrations were reduced by 20% throughout the water column in regions deeper than 200 m. (3) The reduced open-ocean  $\text{O}_2$  scenario was repeated for reduced river N as in the N reduction scenario.

## 2.2 Passive freshwater and active nitrogen tracing

Passive dye tracers were used to track FW inputs from the Changjiang River similar to previous ROMS applications (Große  
 90 et al., 2019; Hetland and Zhang, 2017; Rutherford and Fennel, 2018; Zhang et al., 2010, 2012). The rate of change of the concentration of a passive dye tracer from the  $i$ -th source ( $C_p^i$ ) is described as:

$$\frac{\partial C_p^i}{\partial t} = \nabla \cdot (\overline{\overline{D}} \nabla) C_p^i - \nabla \cdot (C_p^i \mathbf{v}) + S_{C_p^i}. \quad (1)$$

Here,  $\overline{\overline{D}}$  is the second-order diffusion tensor (or diffusivity),  $\mathbf{v}$  is the velocity vector, and  $S_{C_p^i}$  represents the external dye tracer sources (i.e. riverine FW discharge). The dye tracer was initialized with zero in the entire model domain. Changjiang FW



95 discharge had a dye tracer concentration of 1 and the dye tracer was used to analyze the influence of FW from the Changjiang River on stratification (i.e. potential energy anomaly; Simpson, 1981).

In addition, we applied an active element tracing method (Große et al., 2017; Ménesguen et al., 2006; Radtke et al., 2012) to quantify the contributions of different N sources to O<sub>2</sub> consumption. For this purpose, each model variable containing N is subdivided into fractions from the different source regions or rivers. The rate of change of a specific source fraction is described  
 100 as:

$$\frac{\partial C_X^i}{\partial t} = \nabla \cdot (\bar{D} \nabla C_X) \cdot \frac{C_X^i}{C_X} - \nabla \cdot (C_X \mathbf{v}) \cdot \frac{C_X^i}{C_X} + R_{C_X} \cdot \frac{C_{X_{con}}^i}{C_{X_{con}}}. \quad (2)$$

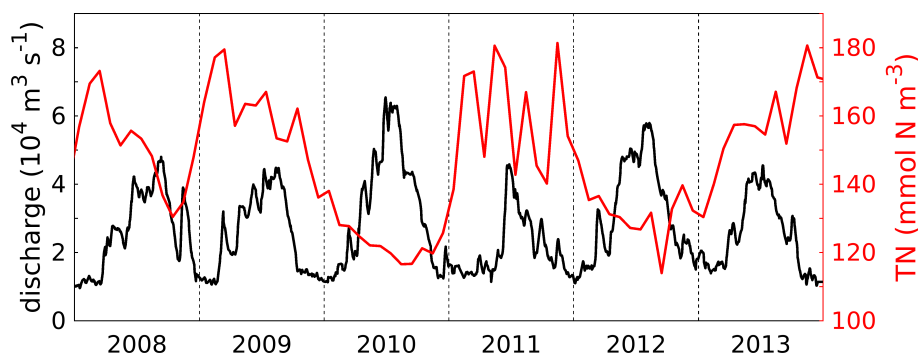
$C_X$  and  $C_X^i$  represent the concentrations of state variable  $X$  (e.g. NO<sub>3</sub><sup>-</sup>) and its labeled fraction from the  $i$ -th source (e.g. NO<sub>3</sub><sup>-</sup> from the Changjiang River), respectively.  $R_{C_X}$  describes internal and external sources and sinks of  $X$ . According to Eq. (2), source-specific processes are calculated as the product of the processes acting on each state variable (e.g. NH<sub>4</sub><sup>+</sup> uptake  
 105 during nitrification) and relative concentration of its source-specific fraction. The index ‘con’ in the source/sink term implies that the relative concentration of the variable consumed by a process is used; e.g. source-specific nitrification is calculated based on the relative concentration of NH<sub>4</sub><sup>+</sup>. For each traced source, one set of equations of the form of Eq. (2) is applied using the post-processing software of Große et al. (2017), which has been adapted for ROMS (Große et al., 2019). N tracing is only applied in the region without NO<sub>3</sub><sup>-</sup> nudging (see ‘tracing region’ in Fig. 1). Inside this region, we simultaneously traced N from  
 110 five different sources: the Changjiang River, three other smaller rivers (Minjiang, Hanjiang and Oujiang Rivers; grouped into one source), the Taiwan Strait (at the southern boundary of the tracing region), the Kuroshio Current (at the eastern boundary), and the Yellow Sea (at the northern boundary; see Fig. 1). Tracers that leave the tracing region cannot reenter. This tracer setup is similar to that of Zhang et al. (2019), with the difference that we separate the Changjiang River from smaller rivers and that we do not account for atmospheric nutrient deposition.

115 We applied the N tracing to the reference simulation. To spin up the tracing, we first re-ran year 2006 three times. For the first iteration, all N mass already in the system was attributed to the small rivers. Subsequent iterations were initialized from the final distribution of the previous year, followed by 2007 as an additional spin-up year. This procedure ensures that the different N mass fractions have reached a dynamic steady state and produced realistic distributions at the beginning of the analysis period 2008–2013.

## 120 3 Results

### 3.1 Changjiang freshwater discharge and nitrogen concentrations

The Changjiang River is the main source of FW and nutrients in the ECS. Daily time series of its FW discharge and total nitrogen (TN) concentrations are shown in Fig. 2. The FW discharge has a distinct seasonal cycle (highest in summer, lowest in winter) due to the monsoon season with high precipitation in summer (Wang et al., 2008), and significant year-to-year  
 125 variability. The TN concentrations also show high year-to-year variability.



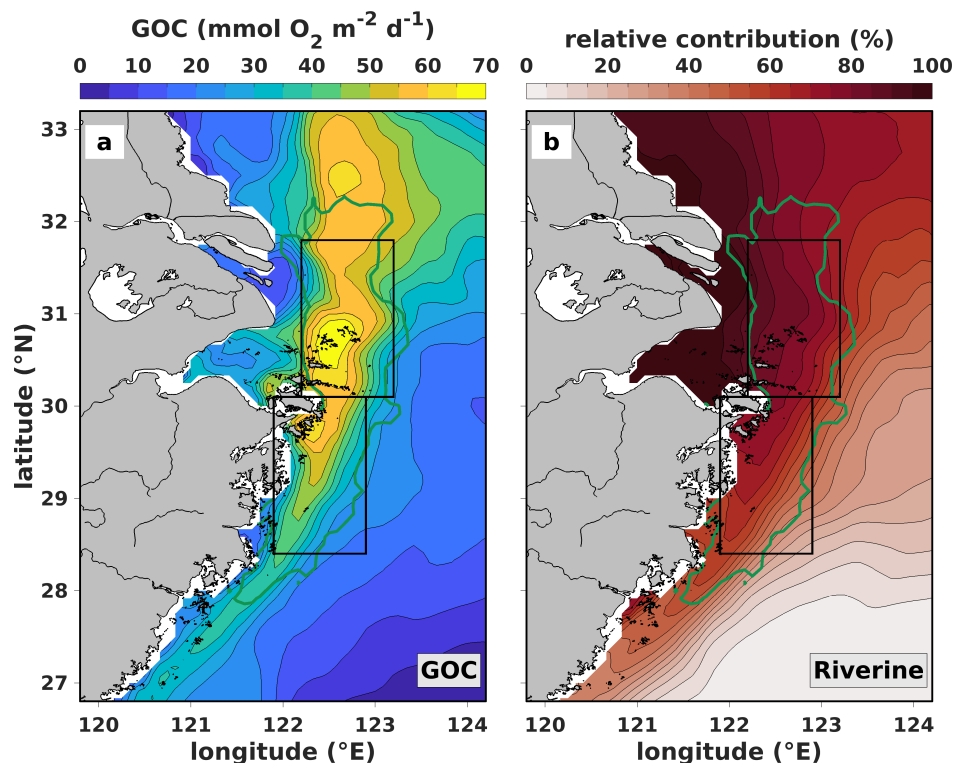
**Figure 2.** Daily time series of freshwater discharge (black, left y-axis) from and total nitrogen (TN) concentration in the Changjiang River (red, right y-axis).

### 3.2 Spatial patterns in oxygen consumption

We focus our analysis of  $O_2$  dynamics on gross  $O_2$  consumption (GOC), i.e. the sum of sediment  $O_2$  consumption (SOC) and water column respiration (WR; incl. nitrification), and integrate over the 12 deepest pelagic layers (analogous to Zhang et al., same issue). This is reasonable as Zhang et al. show that both SOC and WR are relevant  $O_2$  sinks in the hypoxic bottom boundary layer of the ECS. Hypoxia in the ECS is most pronounced between July and November; we hence focus most of our analyses on this time period. First, we analyze the general spatial patterns in GOC and the relative contributions from riverine and oceanic N sources.

Figures 3a and b show maps of GOC and its relative riverine contribution averaged from July to November over the years 2008 to 2013, respectively. GOC is highest (up to  $70 \text{ mmol } O_2 \text{ m}^{-2} \text{ d}^{-1}$ ) in the northern part ( $30^\circ \text{N}$  to  $31^\circ \text{N}$ ) of the region typically affected by hypoxia (indicated by the green line). Farther north, GOC is still high ( $50$  to  $60 \text{ mmol } O_2 \text{ m}^{-2} \text{ d}^{-1}$ ), but decreases significantly in the offshore and southward directions with the strongest gradient roughly between  $29^\circ$ ,  $122.5^\circ \text{E}$  and  $31^\circ \text{N}$ ,  $123^\circ \text{E}$ . The riverine contribution to GOC is highest ( $>95\%$ ) in the coastal regions between  $30^\circ \text{N}$  and  $32^\circ \text{N}$  and steadily decreases offshore and southward. South of  $32^\circ \text{N}$  the strongest gradient in the riverine contribution corresponds to the maximum gradient in GOC.

Based on the hypoxic area locations simulated in our model and the spatial patterns in GOC and its riverine contribution, we defined two distinct analysis regions (black boxes in Fig. 3): a northern region where GOC is supported mainly by riverine N ( $>70\%$ ) and a southern region where the riverine contribution declines strongly from  $75\%$  to  $20\%$  in southeastward direction. These regions are used to quantify how the relative contributions of riverine (Changjiang River and smaller rivers) and oceanic N sources (Kuroshio, Taiwan Strait and Yellow Sea) to GOC differ regionally.



**Figure 3.** (a) Gross  $O_2$  consumption (GOC) and (b) relative contribution supported by nitrogen from rivers (Changjiang and other rivers) averaged from July to November 2008–2013. Green line: area affected by hypoxia. Boxes: analysis regions used in sections 3.3 and 3.4.

### 145 3.3 Year-to-year variability in source-specific oxygen consumption

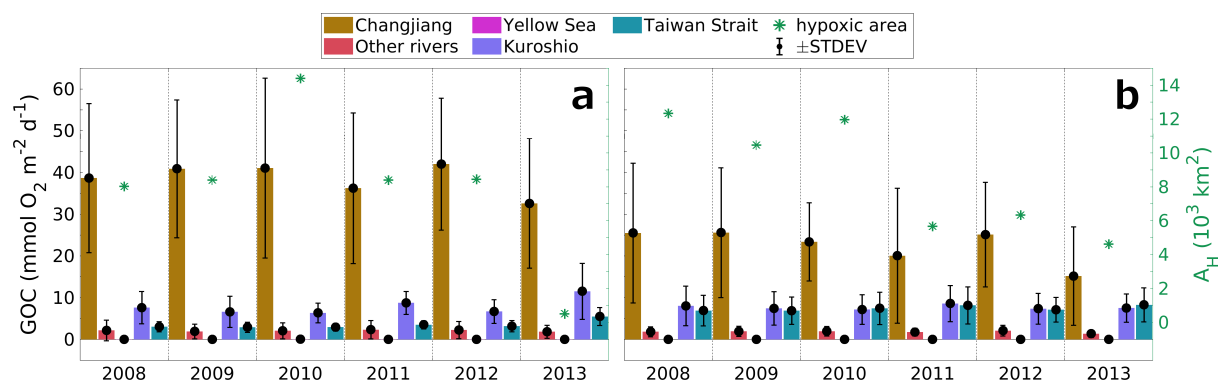
In order to provide insight in the relative importance of the different N sources for hypoxia formation in the northern and southern hypoxic regions, Fig. 4 shows time series of average source-specific GOC and total hypoxic area from July to November for 2008 to 2013 in both regions. Here, we define total hypoxic area as the area experiencing hypoxia at any time during July to November. The corresponding values of total GOC and the relative contributions of the different sources are provided in Table

150 S1.

In the northern region (Fig. 4a), riverine N sources (Changjiang and other rivers) account for  $78.0 \pm 5.9\%$  of GOC averaged over 2008–2013, while oceanic sources support only  $22.0 \pm 5.9\%$ . The Changjiang River constitutes the largest contribution ranging between 63.3% in 2013 and 78.2% in 2010, which are also the years of the smallest and largest hypoxic areas in this time series, respectively. This indicates that the Changjiang River is the main control on  $O_2$  consumption in the northern region.

155 In the southern region (Fig. 4b), total GOC is about 24% lower than in the northern region, and the riverine contribution is also lower ( $61.6 \pm 5.7\%$ ). The average Changjiang contribution is  $56.9 \pm 5.1\%$ , while the contributions from the Kuroshio and





**Figure 4.** Average source-specific gross  $O_2$  consumption (GOC) and total hypoxic area during July–November of 2008 to 2013 in the (a) northern and (b) southern regions (see Fig. 1). Same legend for both panels.

Taiwan Strait account for  $19.5 \pm 2.2\%$  and  $18.9 \pm 3.2\%$ , respectively. Clearly, N sources other than from the rivers play a role in the southern region.

Interestingly, larger hypoxic areas tend to coincide with high contributions from the Changjiang River and small oceanic contributions (2008–2010), while the tends to be Changjiang is less important in years of small hypoxic areas (2011 and 2013). This suggests that the water mass distribution is an important factor for controlling the extent of hypoxia in the southern region, with a higher Changjiang contribution supporting larger hypoxic areas.

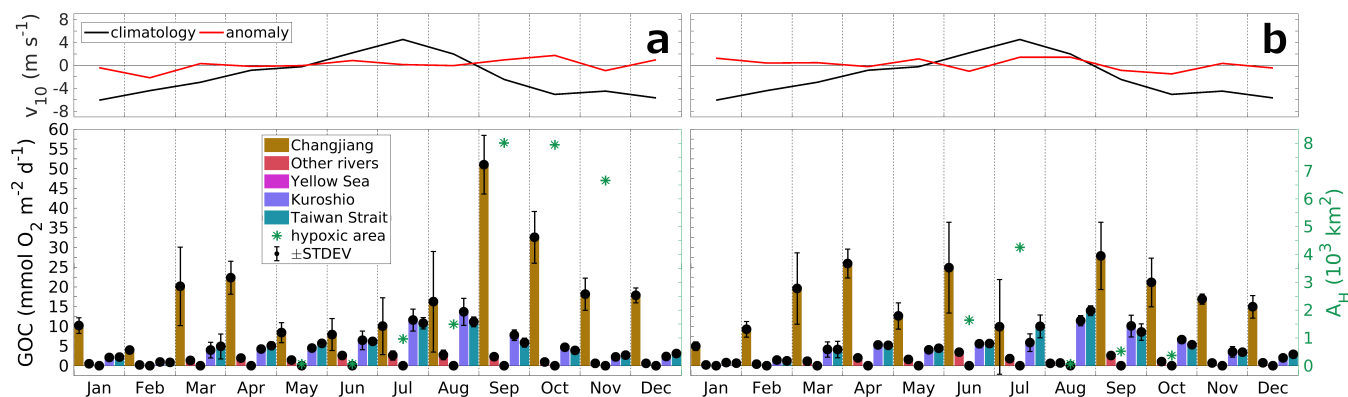
The water mass distribution in the southern region is strongly influenced by large-scale wind patterns, i.e. the East Asian monsoon, and variations in the wind field may affect both seasonal and year-to-year variability in GOC and thus hypoxia. Next, we analyze the seasonality of source-specific GOC and hypoxic area in relation to the large-scale winds in the southern region in years of small and large hypoxic areas.

### 3.4 Seasonal cycle of oxygen consumption and hypoxia in the southern region

In the southern region, the largest and smallest hypoxic areas are simulated in 2008 and 2013, respectively. Figure 5 presents monthly time series of source-specific GOC and total hypoxic area for both years. In addition, it shows the 6-year monthly average of the meridional wind speed 10 m above sea level ( $v_{10}$ ) and the corresponding anomalies for both years.

In general, the Changjiang's GOC fraction tends to be high in spring (March and April) and in late summer (September). This seasonal pattern is explained by shifts in the dominant wind direction, where the transition from southward to northward winds from March to July results in a northward transport of both the Changjiang River plume and Kuroshio and Taiwan Strait waters increasing the oceanic contribution to GOC. In contrast, the reversal from northward to southward winds in September results in a southward movement of river-influenced water masses. Year-to-year differences in hypoxia, e.g. in June or September, result from differences in the Changjiang contribution. The large Changjiang contribution to GOC in September 2008 (Fig. 5a) and in June 2013 (Fig. 5b) are followed by large hypoxic areas, while hypoxia almost vanishes in August 2013 when the





**Figure 5.** Monthly time series of source-specific contributions to GOC and total hypoxic area ( $A_H$ ) in the southern region (see Fig. 1) in (a) 2008 (year of largest  $A_H$ ) and (b) 2013 (smallest  $A_H$ ), and anomaly of northward wind speed 10 m above sea level ( $v_{10}$ ) relative to 2008–2013 ('climatology') averaged over the ECS (25–33 °N, 119–125 °E). Same legend and axes for both panels.

Changjiang contribution diminishes. These increases (decreases) in the Changjiang contribution also coincide with significant increases (decreases) in FW thickness and thus stratification (see Fig. S2).

180 The significant year-to-year differences in both the Changjiang contribution to GOC and thus the hypoxic area can be related to year-to-year variability in the wind field and also in FW discharge. The anomalously weak southward winds in September/October of 2008 allowed for a longer presence of Changjiang FW and nutrients in the region stimulating organic matter production and stabilizing vertical density stratification (see Fig. S2). The higher FW discharge in 2008 compared to 2013 (see Fig. 2) also supported stronger stratification. Consequently, the Changjiang contribution to GOC and thus hypoxic  
 185 area remained large through October and only dropped in November. In June 2013, the anomalously weak northward winds allowed Changjiang water to be transported into the region. This caused an increase in GOC and – supported by less wind-induced mixing – stratification, and thus hypoxia. The opposite occurred in July/August of 2013, when anomalously strong northward winds pushed the Changjiang River water northward resulting in a decrease in GOC, stratification and thus hypoxia.

The results from sections 3.3 and 3.4 highlight the importance of Changjiang River nutrients for hypoxia formation in both  
 190 the northern and the southern regions and suggest that N load reductions in the Changjiang River would mitigate hypoxia also in the southern region. This raises the question how a potential future decline in open-ocean  $O_2$  concentrations would affect hypoxia in the ECS, which is analyzed next.

### 3.5 Potential future changes in hypoxia

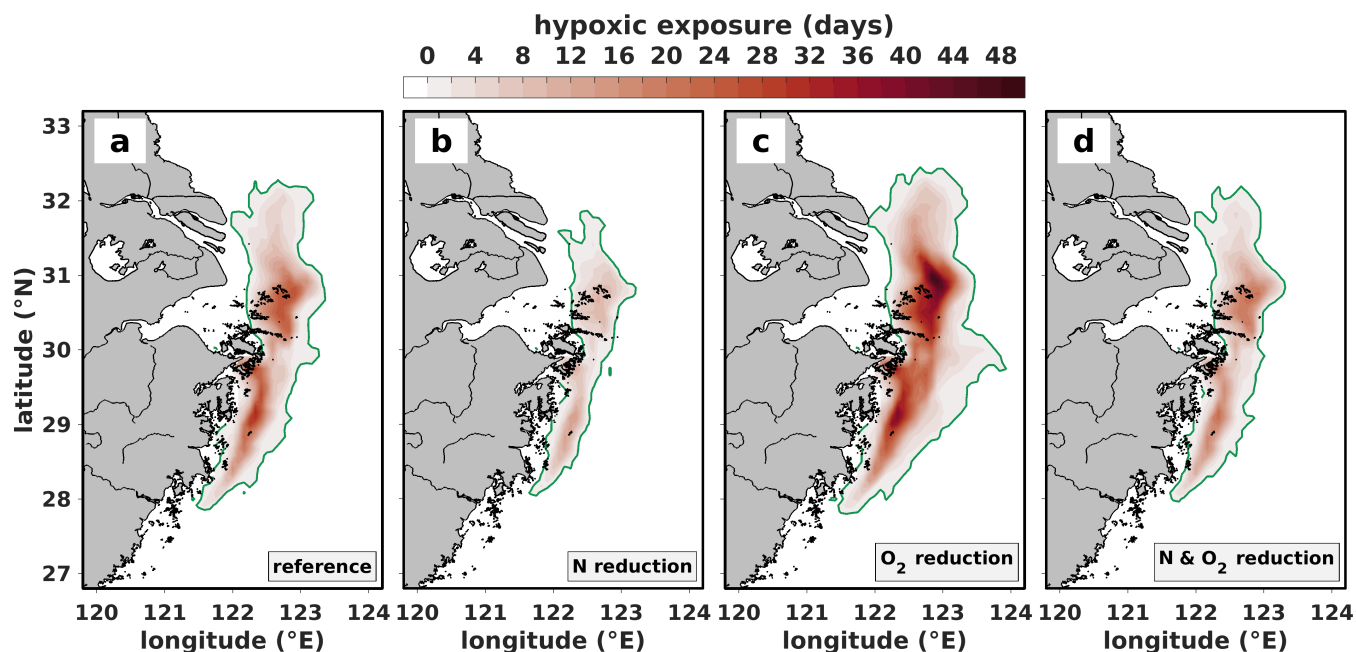
The open-ocean water masses travelling to the hypoxic region are not only relevant as N sources but may also act as sources  
 195 of low- $O_2$  water, thus preconditioning the region for hypoxia. Consequently, a future decline in subsurface open-ocean  $O_2$  concentrations may exacerbate hypoxia in the ECS. To investigate how reduced open-ocean  $O_2$  concentrations and reduced Changjiang River N loads would affect hypoxia, we performed the scenario simulations described in section 2.1. Figure 6



shows the cumulative hypoxic exposure in the bottom layer from July to November averaged over 2008–2013 for the reference simulation (Fig. 6a), the nutrient reduction scenario with 50% lower Changjiang River N loads (Fig. 6b), the scenario with 20% lower open-ocean  $O_2$  concentrations (Fig. 6c) and the combined scenario with reduced N load and lower open-ocean  $O_2$  (Fig. 6d). Table 1 presents the corresponding changes in different hypoxia metrics between the reference case and the scenarios.

In the reference case (Fig. 6a), hypoxia occurs between 28–32 °N and from the coast to about 123 °E, on average affecting  $19.3 \pm 8.1 \times 10^3 \text{ km}^2$ . Maximum hypoxic exposure is 28 days in the central parts of the hypoxic region. Hypoxia is still present in the simulation with 50% lower Changjiang River N loads (Fig. 6b), but its areal extent and hypoxic exposure are significantly reduced. Areas affected by continuous hypoxia of more than one and two weeks are reduced by >60%. Hypoxic area increases by about 50% under reduced open-ocean  $O_2$  concentrations (Fig. 6c) and regions affected by continuous hypoxia for more than one and two weeks expand by 86% and 118%, respectively (Table 1).

Under reduced open-ocean  $O_2$  and reduced Changjiang River N load (Fig. 6d), simulated changes relative to the reference are still negative, although comparably small (see Table 1). This suggests that N load reductions constitute a potent means to mitigate hypoxia under present conditions and to counteract deterioration of  $O_2$  conditions in ECS due to open-ocean deoxygenation.



**Figure 6.** Average cumulative hypoxia during 2008–2013 derived from simulated bottom  $O_2$  concentrations for (a) the reference simulation, (b) the nitrogen reduction scenario, (c) the reference simulation with reduced oceanic  $O_2$  concentrations, and (d) the nitrogen reduction scenario with reduced oceanic  $O_2$  concentrations.



**Table 1.** Hypoxia metrics for the four different cases presented in Fig. 6.  $A_H$ : hypoxic area;  $A_{H,1w}/A_{H,2w}$ : areas with continuous hypoxia for one and two weeks, respectively;  $A_A$ : anoxic area (all in  $10^3 \text{ km}^2$ ). Values for the reference simulation are total areas. Other values are changes in area ( $\Delta$ ) relative to the reference simulation.

Metric	2008	2009	2010	2011	2012	2013	mean $\pm$ stdev
Reference							
$A_H$	23.3	20.8	31.0	16.3	18.2	6.4	$19.3 \pm 8.1$
$A_{H,1w}$	11.2	11.5	18.7	2.8	5.2	0.1	$8.2 \pm 6.8$
$A_{H,2w}$	4.0	5.7	11.8	0.6	0.9	0.0	$3.8 \pm 4.5$
$A_A$	1.8	2.2	3.5	0.1	0.6	0.0	$1.4 \pm 1.4$
N reduction							
$\Delta A_H$	-11.2	-8.3	-12.4	-14.9	-13.8	-4.9	$-10.9 \pm 3.8$
$\Delta A_{H,1w}$	-6.9	-7.4	-11.7	-2.8	-4.7	-0.1	$-5.6 \pm 4.0$
$\Delta A_{H,2w}$	-3.0	-4.4	-8.8	-0.6	-0.9	0.0	$-2.9 \pm 3.3$
$\Delta A_A$	-1.3	-1.9	-3.5	-0.1	-0.6	0.0	$-1.4 \pm 1.3$
O <sub>2</sub> reduction							
$\Delta A_H$	13.6	10.7	9.3	10.6	11.4	9.3	$10.8 \pm 1.6$
$\Delta A_{H,1w}$	10.4	6.6	7.5	6.5	9.3	2.3	$7.1 \pm 5.1$
$\Delta A_{H,2w}$	6.8	6.8	7.0	3.0	3.1	0.0	$4.5 \pm 2.9$
$\Delta A_A$	0.5	0.5	2.8	0.1	0.3	0.0	$0.7 \pm 1.1$
N and O <sub>2</sub> reduction							
$\Delta A_H$	-2.3	-2.5	-3.9	-11.8	-5.8	-3.8	$-5.0 \pm 3.6$
$\Delta A_{H,1w}$	-2.1	-2.5	-4.4	-2.8	-3.2	-0.1	$-2.5 \pm 1.4$
$\Delta A_{H,2w}$	-1.1	-1.6	-4.1	-0.6	0.0	0.0	$-1.4 \pm 1.4$
$\Delta A_A$	-0.7	-1.5	-3.2	-0.1	0.0	0.0	$-1.0 \pm 1.2$

## 4 Discussion

### 4.1 Hypoxia under current environmental conditions

Previous observational studies of the hypoxic region off the Changjiang River Estuary have concluded that the regions north and south of  $30^\circ \text{N}$  differ with respect to the nutrient sources contributing to hypoxia formation (Chi et al., 2017; Li et al., 2002; Zhu et al., 2011). The northern region is considered to be dominated by Changjiang River inputs, while oceanic nutrient sources are thought to be important in the southern region. Here, we present the first quantification of the relative contributions of the different nutrient sources to hypoxia formation. Our results show that the riverine contribution to GOC during the hypoxia



season (July to November) during 2008–2013 steadily decreases from the northwest to the southeast in the region typically  
 220 affected by hypoxia (see Fig. 3). The riverine contribution to GOC dominates the northern region, supporting  $78.0 \pm 5.9\%$  of  
 GOC ( $73.9 \pm 5.4\%$  attributed to Changjiang River), while oceanic N supports only  $22.0 \pm 5.9\%$  ( $15.2 \pm 3.7\%$  from Kuroshio;  
 see Fig. 4a and Table S1) confirming that Changjiang River nutrient loads control  $O_2$  consumption and thus hypoxia formation  
 in the northern region.

When considering July–November averages in the southern region, the relative contribution of riverine N to GOC is  
 225  $61.6 \pm 5.7\%$  ( $56.9 \pm 5.1\%$  from Changjiang River), while the oceanic contribution is  $38.4 \pm 5.7\%$ , nearly twice the oceanic  
 contribution in the northern region, with roughly equal contributions from Kuroshio and Taiwan Strait (see Fig. 4b and Table  
 S1). However, analysis of the seasonal cycles of the source-specific contributions to GOC reveals that hypoxia expands when-  
 ever the Changjiang contribution to GOC increases (see Fig. 5 and Table S2). This demonstrates that the Changjiang River also  
 is the major factor for hypoxia development in the southern region.

230 High Changjiang contributions to GOC correspond to high FW thicknesses and thus strong stratification (see Fig. S2), the  
 other essential factor for hypoxia formation and maintenance than biological  $O_2$  consumption. In contrast, the hypoxic area  
 is smaller during periods with high oceanic contributions as a result of reduced GOC and weaker stratification (see Figs. 5  
 and S2). Nevertheless, the relatively low subsurface  $O_2$  concentrations in the oceanic water masses precondition the southern  
 region for hypoxia formation.

235 Our analyses of the seasonal cycles of GOC and stratification in relation to the large-scale meridional winds further show  
 that the East Asian monsoon and its year-to-year variability result in seasonal and year-to-year variability in the contributions  
 to GOC, in stratification, and thus in hypoxia in the southern region (see Fig. 5). During winter monsoon (September–April),  
 the southward winds transport the Changjiang River plume towards the southern region, where it arrives in August/September  
 supporting the formation of hypoxia. The opposite occurs during summer monsoon (May–August), when the northward winds  
 240 transport oceanic water masses into the southern region and push the river plume northward out of the southern region.

With respect to year-to-year variability, our analysis further shows that anomalies in the meridional winds during summer  
 and during the transition from summer to winter monsoon (August–October) significantly affect the water mass distribution,  
 and thus GOC and hypoxia on subseasonal scales, especially south of  $30^\circ N$  (see Fig. 5 and Table S2). Particularly weak  
 southward winds in September/October of 2008 resulted in a longer presence of the Changjiang River plume in the southern  
 245 region, increasing stratification and GOC, which in turn caused the formation of the largest hypoxic area in that region during  
 2008–2013. The opposite occurred in July/August of 2013, when particularly strong northward winds pushed the Changjiang  
 River plume north. This resulted in a drop in GOC and stratification, and in the vanishing of hypoxia, which had started  
 forming in June through early July as anomalously weak northward winds allowed a southward transport of the Changjiang  
 River plume. This is in agreement with Zhang et al. (2018) who simulated similar almost immediate responses of hypoxia to  
 250 changes in the wind field as a result of the redistribution of Changjiang FW causing changes in stratification. Our study expands  
 on their work by additionally demonstrating the importance of the redistribution of Changjiang nutrients for GOC.

These short-term changes in GOC, stratification and hypoxic area in response to variations in the large-scale winds illustrate  
 the complexity of the region with respect to atmosphere–ocean interaction and their effect on hypoxia. They further highlight



the necessity of a high spatio-temporal resolution of both model approaches and observations to understand the causes of hypoxia formation and maintenance in the ECS under current environmental conditions.

In general, our results are in agreement with Zhang et al. (2019) who found that riverine N supports 56% of water column integrated PP (8-year average) in the ECS regions shallower than 50 m, which are most susceptible to hypoxia (see Fig. 3). This confirms the high contribution of Changjiang N to GOC found for our analysis regions. Similarly, the comparably low oceanic contributions, especially in the northern region, are in line with their results. Zhang et al. (2019) also found a relatively high contribution (22%) of atmospheric N to PP suggesting that atmospheric N deposition should be considered in future biogeochemical modeling studies of the ECS.

## 4.2 Mitigation of hypoxia in the present and future

Our analysis of the changes in hypoxic area and hypoxic exposure under reduced Changjiang River N loads (see Fig. 6 and Table 1) underlines the high potential of riverine N load reductions to mitigate hypoxia. The simulated average reduction in hypoxic area by 56.5% is almost proportional to the N load reduction of 50% but varies significantly from year to year (39.9% in 2009 to 91.4% in 2011). Comprehensive further studies are needed to assess the effect of Changjiang River nutrient reductions on hypoxia. In this context, it is important to consider all processes relevant for hypoxia formation. Zhou et al. (2017b) conducted a scenario with 50% lower Changjiang River nutrient loads and found a reduction in hypoxic area by only about 20%. However, they did not consider SOC, a major sink of  $O_2$  in the ECS (Zhang et al., 2017), which may explain this discrepancy.

Analysis of the scenario where open-ocean  $O_2$  concentrations were 20% lower than at present shows that the reduced lateral supply due to declining open-ocean  $O_2$  concentrations (Bopp et al., 2017) may significantly exacerbate hypoxia in the ECS, indicated by the expansion of both hypoxic and anoxic areas by about 50% (see Fig. 6 and Table 1). However, we further found that a 50% reduction of the Changjiang River N loads more than compensates for this increase in hypoxia.

The 20% reduction of open-ocean  $O_2$  concentrations that was applied here corresponds to changes in subsurface  $O_2$  of about 30–40  $mmol\ O_2\ m^{-3}$  projected by earth system models (Bopp et al., 2017), but does not consider other climate change effects such as local changes in water temperature or stratification. For instance, an increase in temperature would reduce  $O_2$  solubility, which would worsen  $O_2$  conditions further as shown, e.g. for the NGoM (Laurent et al., 2018). Therefore, more comprehensive studies on climate change impacts on hypoxia in the ECS are required.

## 4.3 Comparison with the northern Gulf of Mexico

In the following, we compare the hypoxic zones of the ECS and the NGoM with respect to their sizes and timing, based on observations, and the main sources of  $O_2$  consumption, based on the results of this study and an analogous nutrient tracing study for the NGoM (Große et al., 2019). The key messages of this comparison are summarized in Table 2.

The spatial extent of observed hypoxia in the ECS is similar to that in the NGoM, affecting areas on the order of 15,000  $km^2$ . In the NGoM, hypoxia is frequently observed from May to September when seasonal stratification is strongest due to high riverine freshwater inputs. In the ECS, the hypoxic season starts about one month later in June, with hypoxia forming directly off



**Table 2.** Comparison of hypoxia in the northern Gulf of Mexico (NGoM) and the East China Sea (ECS).

Characteristic	NGoM	ECS
Hypoxic area (km <sup>2</sup> )	15,000 <sup>1</sup>	15,000 <sup>2</sup>
Hypoxic season	May–September <sup>1</sup>	June–November <sup>3</sup>
GOC controls (seasonal average)	riverine ≫ oceanic	>30 °N: riverine ≫ oceanic <30 °N: riverine ≈ oceanic
Main riverine source(s)	Mississippi & Atchafalaya	Changjiang
Controls of year-to-year variability	Mississippi & wind field	Changjiang & wind field

<sup>1</sup> Rabalais et al. (2002); <sup>2</sup> Li et al. (2002), Zhu et al. (2011, 2017); <sup>3</sup> Wang et al. (2012)

the Changjiang River Estuary. Hypoxia can be observed until October/November, though the hypoxic zone moves southward over summer.

In the NGoM, riverine nutrients from the Mississippi and Atchafalaya Rivers dominate O<sub>2</sub> consumption. In the ECS, only  
 290 in the region north of 30 °N is O<sub>2</sub> consumption dominated by riverine nutrient inputs that almost exclusively originate from  
 the Changjiang River. South of 30 °N, the oceanic contribution to O<sub>2</sub> consumption is comparable to that of riverine nutrients.  
 However, driven by year-to-year variability in the East Asian monsoon, the Changjiang River appears to be the main control  
 of hypoxia formation also in the southern region. Similarly, the Mississippi River in concert with the local wind field seems to  
 be the main control of year-to-year variability in hypoxic area in the NGoM. There, episodic upwelling-favorable winds can  
 295 result in an offshore transport of Mississippi FW and nutrients leading to a reduction in stratification and O<sub>2</sub> consumption and  
 thus hypoxia (Feng et al., 2014).

## 5 Conclusions

To our knowledge, this is the first study quantifying the relative contributions of individual riverine and oceanic nutrient  
 sources on hypoxia formation in ECS using active element tracing. Therefore, it constitutes an important milestone towards  
 300 the quantification of the contributions of riverine vs. oceanic nutrient sources to hypoxia formation in the ECS.

Our results suggest that N from the Changjiang River is the dominant driver of O<sub>2</sub> consumption ( $73.9 \pm 5.4\%$ ) north of 30 °N  
 under present-day environmental conditions (2008–2013). Contrary to observational insights and despite high contributions of  
 N from Kuroshio and Taiwan Strait to O<sub>2</sub> consumption on seasonal time scales ( $19.5 \pm 2.2\%$  and  $18.9 \pm 3.2\%$ , respectively),  
 the Changjiang River waters are also the main factor for hypoxia formation south of 30 °N.

305 Our analysis highlights the importance of considering subseasonal time scales for understanding the controls of hypoxia  
 formation and its year-to-year variability in this region. The East Asian monsoon and its associated change in large-scale wind  
 patterns control water mass distribution and thus O<sub>2</sub> consumption and stratification. Year-to-year variability in the intensity



of the winds can lead to significant differences in the amount of Changjiang River water in the southern region explaining year-to-year variability in hypoxia.

310 Reductions in the Changjiang River nutrient loads appear to have a high potential for mitigating hypoxia and to counteract the likely future decline of open-ocean O<sub>2</sub> supplied to the region. However, more comprehensive studies of both the effect of riverine nutrient load reductions and climate change effects are required.

*Code and data availability.* A modified version of the ROMS source code that facilitates writing of model diagnostics needed by the element tracing software (ETRAC) is available at [https://github.com/FabianGrosse/ROMS\\_3.7\\_for\\_ETRAC](https://github.com/FabianGrosse/ROMS_3.7_for_ETRAC).

315 ETRAC is available via <https://github.com/FabianGrosse/ETRAC>. Due to the large data size, ROMS and ETRAC output is freely available upon request from the corresponding author ([fabian.grosse@dal.ca](mailto:fabian.grosse@dal.ca)).

*Competing interests.* The authors declare that they have no conflict of interest.

*Acknowledgements.* All figures in this article were created with MATLAB, benefiting significantly from the toolboxes for TEOS-10 (Mc-Dougall and Barker, 2011), the *cmocean* color schemes (Thyng et al., 2016) and *m\_map* (<https://www.eoas.ubc.ca/~rich/map.html>). The  
320 authors of these toolboxes are thankfully acknowledged. The geographical information used for creation of Fig. 1 were obtained from the Global Self-consistent, Hierarchical, High-resolution Geography Database (GSHHG; <https://www.soest.hawaii.edu/wessel/gshhg/>). We thank Compute Canada for providing computing resources under the resource allocation project qqh-593-ac. KF acknowledges funding from the Natural Sciences and Engineering Research Council of Canada (NSERC) Discovery program. Financial support to HZ from the China Scholarship Council (CSC) is gratefully acknowledged.





## 325 References

- Bian, C., Jiang, W., and Greatbatch, R. J.: An exploratory model study of sediment transport sources and deposits in the Bohai Sea, Yellow Sea, and East China Sea, *J. Geophys. Res.-Oceans*, 118, 5908–5923, <https://doi.org/10.1002/2013JC009116>, 2013.
- Bopp, L., Resplandy, L., Untersee, A., Le Mezo, P., and Kageyama, M.: Ocean (de)oxygenation from the Last Glacial Maximum to the twenty-first century: insights from Earth System models, *Philos. T. Roy. Soc. A*, 375, <https://doi.org/10.1098/rsta.2016.0323>, 2017.
- 330 Carton, J. A. and Giese, B. S.: A Reanalysis of Ocean Climate Using Simple Ocean Data Assimilation (SODA), *Mon. Weather Rev.*, 136, 2999–3017, <https://doi.org/10.1175/2007MWR1978.1>, 2008.
- Chi, L., Song, X., Yuan, Y., Wang, W., Zhou, P., Fan, X., Cao, X., and Yu, Z.: Distribution and key influential factors of dissolved oxygen off the Changjiang River Estuary (CRE) and its adjacent waters in China, *Mar. Pollut. Bull.*, 125, 440–450, <https://doi.org/10.1016/j.marpolbul.2017.09.063>, 2017.
- 335 Dee, D. P., Uppala, S. M., Simmons, A. J., Berrisford, P., Poli, P., Kobayashi, S., Andrae, U., Balmaseda, M. A., Balsamo, G., Bauer, P., Bechtold, P., Beljaars, A. C. M., van de Berg, L., Bidlot, J., Bormann, N., Delsol, C., Dragani, R., Fuentes, M., Geer, A. J., Haimberger, L., Healy, S. B., Hersbach, H., Hólm, E. V., Isaksen, I., Kallberg, P., Köhler, M., Matricardi, M., McNally, A. P., Monge-Sanz, B. M., Morcrette, J.-J., Park, B.-K., Peubey, C., de Rosnay, P., Tavolato, C., Thépaut, J.-N., and Vitart, F.: The ERA-Interim reanalysis: configuration and performance of the data assimilation system, *Q. J. Roy. Meteor. Soc.*, 137, 553–597, <https://doi.org/10.1002/qj.828>, 2011.
- 340 Egbert, G. D. and Erofeeva, S. Y.: Efficient Inverse Modeling of Barotropic Ocean Tides, *J. Atmos. Ocean. Tech.*, 19, 183–204, [https://doi.org/10.1175/1520-0426\(2002\)019<0183:EIMOBO>2.0.CO;2](https://doi.org/10.1175/1520-0426(2002)019<0183:EIMOBO>2.0.CO;2), 2002.
- Fan, W. and Song, J.: A numerical study of the seasonal variations of nutrients in the Changjiang River estuary and its adjacent sea area, *Ecol. Model.*, 291, 69–81, <https://doi.org/10.1016/j.ecolmodel.2014.07.026>, 2014.
- Feng, Y., Fennel, K., Jackson, G. A., DiMarco, S. F., and Hetland, R. D.: A model study of the response of hypoxia to upwelling-favorable wind on the northern Gulf of Mexico shelf, *J. Marine Syst.*, 131, 63–73, <https://doi.org/10.1016/j.jmarsys.2013.11.009>, 2014.
- 345 Fennel, K. and Testa, J. M.: Biogeochemical Controls on Coastal Hypoxia, *Annu. Rev. Mar. Sci.*, 11, 105–130, <https://doi.org/10.1146/annurev-marine-010318-095138>, 2019.
- Fennel, K., Wilkin, J., Levin, J., Moisan, J., O'Reilly, J., and Haidvogel, D.: Nitrogen cycling in the Middle Atlantic Bight: Results from a three-dimensional model and implications for the North Atlantic nitrogen budget, *Global Biogeochem. Cy.*, 20, 1–14, <https://doi.org/10.1029/2005GB002456>, 2006.
- 350 Fennel, K., Hetland, R., Feng, Y., and DiMarco, S.: A coupled physical-biological model of the Northern Gulf of Mexico shelf: model description, validation and analysis of phytoplankton variability, *Biogeosciences*, 8, 1881–1899, <https://doi.org/10.5194/bg-8-1881-2011>, 2011.
- Fennel, K., Hu, J., Laurent, A., Marta-Almeida, M., and Hetland, R.: Sensitivity of hypoxia predictions for the northern Gulf of Mexico to sediment oxygen consumption and model nesting, *J. Geophys. Res.-Oceans*, 118, 990–1002, <https://doi.org/10.1002/jgrc.20077>, 2013.
- 355 Garcia, H. E., Boyer, T. P., Locarnini, R. A., Antonov, J. I., Mishonov, A. V., Baranova, O. K., Zweng, M. M., Reagan, J. R., Johnson, D. R., and Levitus, S.: World Ocean Atlas 2013. Volume 3: Dissolved oxygen, apparent oxygen utilization, and oxygen saturation, Tech. rep., National Oceanic and Atmospheric Administration (NOAA), Silver Spring, MD, <https://doi.org/10.7289/V5XG9P2W>, 2013a.
- Garcia, H. E., Locarnini, R. A., Boyer, T. P., Antonov, J. I., Baranova, O. K., Zweng, M. M., Reagan, J. R., Johnson, D. R., Mishonov, A. V., and Levitus, S.: World Ocean Atlas 2013. Volume 4: Dissolved inorganic nutrients (phosphate, nitrate, silicate), Tech. rep., National Oceanic and Atmospheric Administration (NOAA), Silver Spring, MD, <https://doi.org/10.7289/V5J67DWD>, 2013b.
- 360



- Große, F., Kreus, M., Lenhart, H.-J., Pätsch, J., and Pohlmann, T.: A Novel Modeling Approach to Quantify the Influence of Nitrogen Inputs on the Oxygen Dynamics of the North Sea, *Front. Mar. Sci.*, 4, 383, <https://doi.org/10.3389/fmars.2017.00383>, 2017.
- Große, F., Fennel, K., and Laurent, A.: Quantifying the Relative Importance of Riverine and Open-Ocean Nitrogen Sources for Hypoxia Formation in the Northern Gulf of Mexico, *J. Geophys. Res.-Oceans*, <https://doi.org/10.1029/2019JC015230>, 2019.
- Haidvogel, D. B., Arango, H., Budgell, W. P., Cornuelle, B. D., Curchitser, E., Di Lorenzo, E., Fennel, K., Geyer, W. R., Hermann, A. J., Lanerolle, L., Levin, J., McWilliams, J. C., Miller, A. J., Moore, A. M., Powell, T. M., Shchepetkin, A. F., Sherwood, C. R., Signell, R. P., Warner, J. C., and Wilkin, J.: Ocean forecasting in terrain-following coordinates: Formulation and skill assessment of the Regional Ocean Modeling System, *J. Comput. Phys.*, 227, 3595–3624, <https://doi.org/10.1016/j.jcp.2007.06.016>, 2008.
- Hetland, R. D. and Zhang, X.: Interannual Variation in Stratification over the Texas–Louisiana Continental Shelf and Effects on Seasonal Hypoxia, in: *Modeling Coastal Hypoxia*, edited by Dubravko, J., Rose, K. A., Hetland, R. D., and Fennel, K., pp. 49–60, Springer, [https://doi.org/10.1007/978-3-319-54571-4\\_3](https://doi.org/10.1007/978-3-319-54571-4_3), 2017.
- Laurent, A., Fennel, K., Hu, J., and Hetland, R.: Simulating the effects of phosphorus limitation in the Mississippi and Atchafalaya River plumes, *Biogeosciences*, 9, 4707–4723, <https://doi.org/10.5194/bg-9-4707-2012>, 2012.
- Laurent, A., Fennel, K., Cai, W.-J., Huang, W.-J., Barbero, L., and Wanninkhof, R.: Eutrophication-induced acidification of coastal waters in the northern Gulf of Mexico: Insights into origin and processes from a coupled physical-biogeochemical model, *Geophys. Res. Lett.*, 44, 946–956, <https://doi.org/10.1002/2016GL071881>, 2017.
- Laurent, A., Fennel, K., Ko, D. S., and Lehrter, J.: Climate Change Projected to Exacerbate Impacts of Coastal Eutrophication in the Northern Gulf of Mexico, *J. Geophys. Res.-Oceans*, 123, 3408–3426, <https://doi.org/10.1002/2017JC013583>, 2018.
- Li, D., Zhang, J., Huang, D., Wu, Y., and Liang, J.: Oxygen depletion off the Changjiang (Yangtze River) estuary, *Sci. China Ser. D*, 45, 1137–1146, <https://doi.org/10.1360/02yd9110>, 2002.
- Li, X., Bianchi, T., Yang, Z., Osterman, L. E., Allison, M. E., DiMarco, S. F., and Yang, H.: Historical trends of hypoxia in Changjiang River estuary: Applications of chemical biomarkers and microfossils, *J. Marine Syst.*, 86, 57–68, <https://doi.org/10.1016/j.jmarsys.2011.02.003>, 2011.
- Liu, S. M., Zhang, J., Chen, H. T., Wu, Y., Xiong, H., and Zhang, Z. F.: Nutrients in the Changjiang and its tributaries, *Biogeochemistry*, 62, 1–18, <https://doi.org/10.1023/A:1021162214304>, 2003.
- Liu, S. M., Hong, G.-H., Zhang, J., Ye, X. W., and Jiang, X. L.: Nutrient budgets for large Chinese estuaries, *Biogeosciences*, 6, 2245–2263, <https://doi.org/10.5194/bg-6-2245-2009>, 2009.
- Locarnini, R. A., Mishonov, A. V., Antonov, J. I., Boyer, T. P., Garcia, H. E., Baranova, O. K., Zweng, M. M., Paver, C. R., Reagan, J. R., Johnson, D. R., Hamilton, M., Seidov, D., and Levitus, S.: *World Ocean Atlas 2013. Volume 1: Temperature*, Tech. rep., National Oceanic and Atmospheric Administration (NOAA), Silver Spring, MD, <https://doi.org/10.7289/V55X26VD>, 2013.
- McDougall, T. J. and Barker, P. M.: *Getting started with TEOS-10 and the Gibbs Seawater (GSW) oceanographic toolbox*, Tech. rep., SCOR/IAPSO, [http://www.teos-10.org/pubs/gsw/v3\\_04/pdf/Getting\\_Started.pdf](http://www.teos-10.org/pubs/gsw/v3_04/pdf/Getting_Started.pdf), 2011.
- Ménèsghien, A. and Hoch, T.: Modelling the biogeochemical cycles of elements limiting primary production in the English Channel. I. Role of thermohaline stratification, *Mar. Ecol. Prog. Ser.*, pp. 173–188, <https://doi.org/10.3354/meps146173>, 1997.
- Ménèsghien, A., Cugier, P., and Leblond, I.: A new numerical technique for tracking chemical species in a multi-source, coastal ecosystem, applied to nitrogen causing *Ulva* blooms in the Bay of Brest (France), *Limnol. Oceanogr.*, 51, 591–601, [https://doi.org/10.4319/lo.2006.51.1\\_part\\_2.0591](https://doi.org/10.4319/lo.2006.51.1_part_2.0591), 2006.



- Qian, W., Dai, M., Xu, M., Kao, S.-J., Du, C., Liu, J., Wang, H., Guo, L., and Wang, L.: Non-local drivers of the summer hypoxia in the East  
 400 China Sea off the Changjiang Estuary, *Estuar. Coast. Shelf S.*, 198, 393–399, <https://doi.org/10.1016/j.ecss.2016.08.032>, 2017.
- Rabalais, N. N., Turner, R. E., and Wiseman Jr., W. J.: Gulf of Mexico Hypoxia, A.K.A. “The Dead Zone”, *Annu. Rev. Ecol. Syst.*, 33, 235–263, <https://doi.org/10.1146/annurev.ecolsys.33.010802.150513>, 2002.
- Radtke, H., Neumann, T., Voss, M., and Fennel, W.: Modeling pathways of riverine nitrogen and phosphorus in the Baltic Sea, *Journal of Geophysical Research: Oceans*, 117, 1–15, <https://doi.org/10.1029/2012JC008119>, 2012.
- 405 Rutherford, K. and Fennel, K.: Diagnosing transit times on the northwestern North Atlantic continental shelf, *Ocean Sci.*, 14, 1207–1221, <https://doi.org/10.5194/os-14-1207-2018>, 2018.
- Schmidtko, S., Stramma, L., and Visbeck, M.: Decline in global oceanic oxygen content during the past five decades, *Nature*, 542, 335, <https://doi.org/10.1038/nature21399>, 2017.
- Seitzinger, S. P., Harrison, J. A., Dumont, E., Beusen, A. H. W., and Bouwman, A. F.: Sources and delivery of carbon, nitrogen, and  
 410 phosphorus to the coastal zone: An overview of Global Nutrient Export from Watersheds (NEWS) models and their application, *Global Biogeochem. Cy.*, 19, <https://doi.org/10.1029/2005GB002606>, 2005.
- Simpson, J. H.: The shelf-sea fronts: implications of their existence and behaviour, *Philos. T. Roy. Soc. A*, 302, 531–546, <https://doi.org/10.1098/rsta.1981.0181>, 1981.
- Siswanto, E., Nakata, H., Matsuoka, Y., Tanaka, K., Kiyomoto, Y., Okamura, K., Zhu, J., and Ishizaka, J.: The long-term freshening and  
 415 nutrient increases in summer surface water in the northern East China Sea in relation to Changjiang discharge variation, *J. Geophys. Res.-Oceans*, 113, <https://doi.org/10.1029/2008JC004812>, 2008.
- Thyng, K. M., Greene, C. A., Hetland, R. D., Zimmerle, H. M., and DiMarco, S. F.: True Colors of Oceanography: Guidelines for Effective and Accurate Colormap Selection, *Oceanography*, 29, <https://doi.org/10.5670/oceanog.2016.66>, 2016.
- Tong, Y., Zhao, Y., Zhen, G., Chi, J., Liu, X., Lu, Y., Wang, X., Yao, R., Chen, J., and Zhang, W.: Nutrient loads flowing into coastal waters  
 420 from the main rivers of China (2006–2012), *Sci. Rep.*, 5, 16678, <https://doi.org/10.1038/srep16678>, 2015.
- Wang, B.: Hydromorphological mechanisms leading to hypoxia off the Changjiang estuary, *Mar. Environ. Res.*, 67, 53–58, <https://doi.org/10.1016/j.marenvres.2008.11.001>, 2009.
- Wang, B., Wei, Q., Chen, J., and Xie, L.: Annual cycle of hypoxia off the Changjiang (Yangtze River) Estuary, *Mar. Environ. Res.*, 77, 1–5, <https://doi.org/10.1016/j.marenvres.2011.12.007>, 2012.
- 425 Wang, H., Yang, Z., Wang, Y., Saito, Y., and Liu, J. P.: Reconstruction of sediment flux from the Changjiang (Yangtze River) to the sea since the 1860s, *J. Hydrol.*, 349, 318–332, <https://doi.org/10.1016/j.jhydrol.2007.11.005>, 2008.
- Wang, J., Yan, W., Chen, N., Li, X., and Liu, L.: Modeled long-term changes of DIN:DIP ratio in the Changjiang River in relation to Chl- $\alpha$  and DO concentrations in adjacent estuary, *Estuar. Coast. Shelf S.*, 166, 153–160, <https://doi.org/10.1016/j.ecss.2014.11.028>, 2015.
- Wang, W., Yu, Z., Song, X., Yuan, Y., Wu, Z., Zhou, P., and Cao, X.: Intrusion Pattern of the Offshore Kuroshio Branch Current and Its Effects  
 430 on Nutrient Contributions in the East China Sea, *J. Geophys. Res.-Oceans*, 123, 2116–2128, <https://doi.org/10.1002/2017JC013538>, 2018.
- Wu, G., Cao, W., Wang, F., Su, X., Yan, Y., and Guan, Q.: Riverine nutrient fluxes and environmental effects on China’s estuaries, *Sci. Total Environ.*, 661, 130–137, <https://doi.org/10.1016/j.scitotenv.2019.01.120>, 2019.
- Yan, W., Zhang, S., Sun, P., and Seitzinger, S. P.: How do nitrogen inputs to the Changjiang basin impact the Changjiang River nitrate: A temporal analysis for 1968–1997, *Global Biogeochem. Cy.*, 17, 1091, <https://doi.org/10.1029/2002GB002029>, 2003.
- 435 Yu, L., Fennel, K., Laurent, A., Murrell, M. C., and Lehrter, J. C.: Numerical analysis of the primary processes controlling oxygen dynamics on the Louisiana shelf, *Biogeosciences*, 12, 2063–2076, <https://doi.org/10.5194/bg-12-2063-2015>, 2015.



- Zhang, H., Zhao, L., Sun, Y., Wang, J., and Wei, H.: Contribution of sediment oxygen demand to hypoxia development off the Changjiang Estuary, *Estuar. Coast. Shelf S.*, 192, 149–157, <https://doi.org/10.1016/j.ecss.2017.05.006>, 2017.
- 440 Zhang, H., Fennel, K., Laurent, A., and Bian, C.: A numerical model study of the main factors contributing to hypoxia and its sub-seasonal to interannual variability off the Changjiang Estuary, *Biogeosciences Discussions*, same issue.
- Zhang, J.: Nutrient elements in large Chinese estuaries, *Cont. Shelf Res.*, 16, 1023–1045, [https://doi.org/10.1016/0278-4343\(95\)00055-0](https://doi.org/10.1016/0278-4343(95)00055-0), 1996.
- Zhang, J., Guo, X., and Zhao, L.: Tracing external sources of nutrients in the East China Sea and evaluating their contributions to primary production, *Prog. Oceanogr.*, 176, 102 122, <https://doi.org/10.1016/j.pocean.2019.102122>, <http://www.sciencedirect.com/science/article/pii/S0079661118301046>, 2019.
- 445 Zhang, W., Wu, H., and Zhu, Z.: Transient Hypoxia Extent Off Changjiang River Estuary due to Mobile Changjiang River Plume, *J. Geophys. Res.-Oceans*, 123, 9196–9211, <https://doi.org/10.1029/2018JC014596>, 2018.
- Zhang, W. G., Wilkin, J. L., and Schofield, O. M. E.: Simulation of Water Age and Residence Time in New York Bight, *J. Phys. Oceanogr.*, 40, 965–982, <https://doi.org/10.1175/2009JPO4249.1>, 2010.
- 450 Zhang, X., Hetland, R. D., Marta-Almeida, M., and DiMarco, S. F.: A numerical investigation of the Mississippi and Atchafalaya freshwater transport, filling and flushing times on the Texas-Louisiana Shelf, *J. Geophys. Res.-Oceans*, 117, C11 009, <https://doi.org/10.1029/2012JC008108>, 2012.
- Zhao, L. and Guo, X.: Influence of cross-shelf water transport on nutrients and phytoplankton in the East China Sea: a model study, *Ocean Sci.*, 7, 27–43, <https://doi.org/10.5194/os-7-27-2011>, 2011.
- 455 Zheng, J., Gao, S., Liu, G., Wang, H., and Zhu, X.: Modeling the impact of river discharge and wind on the hypoxia off Yangtze Estuary, *Nat. Hazard. Earth Sys.*, 16, 2559–2576, <https://doi.org/10.5194/nhess-16-2559-2016>, 2016.
- Zhou, F., Chai, F., Huang, D., Xue, H., Chen, J., Xiu, P., Xuan, J., Li, J., Zeng, D., Ni, X., and Wang, K.: Investigation of hypoxia off the Changjiang Estuary using a coupled model of ROMS-CoSiNE, *Prog. Oceanogr.*, 159, 237–254, <https://doi.org/10.1016/j.pocean.2017.10.008>, 2017a.
- 460 Zhou, P., Song, X., Yuan, Y., Wang, W., Cao, X., and Yu, Z.: Intrusion pattern of the Kuroshio Subsurface Water onto the East China Sea continental shelf traced by dissolved inorganic iodine species during the spring and autumn of 2014, *Mar. Chem.*, 196, 24–34, <https://doi.org/10.1016/j.marchem.2017.07.006>, 2017b.
- Zhou, P., Song, X., Yuan, Y., Wang, W., Chi, L., Cao, X., and Yu, Z.: Intrusion of the Kuroshio Subsurface Water in the southern East China Sea and its variation in 2014 and 2015 traced by dissolved inorganic iodine species, *Prog. Oceanogr.*, 165, 287–298, <https://doi.org/10.1016/j.pocean.2018.06.011>, 2018.
- 465 Zhu, Z.-Y., Zhang, J., Wu, Y., Zhang, Y.-Y., Lin, J., and Liu, S.-M.: Hypoxia off the Changjiang (Yangtze River) Estuary: oxygen depletion and organic matter decomposition, *Mar. Chem.*, 125, 108–116, <https://doi.org/10.1016/j.marchem.2011.03.005>, 2011.
- Zhu, Z.-Y., Wu, H., Liu, S.-M., Wu, Y., Huang, D.-J., Zhang, J., and Zhang, G.-S.: Hypoxia off the Changjiang (Yangtze River) estuary and in the adjacent East China Sea: Quantitative approaches to estimating the tidal impact and nutrient regeneration, *Mar. Pollut. Bull.*, 125, 103–114, <https://doi.org/10.1016/j.marpolbul.2017.07.029>, 2017.
- 470 Zweng, M. M., Reagan, J. R., Antonov, J. I., Locarnini, R. A., Mishonov, A. V., Boyer, T. P., Garcia, H. E., Baranova, O. K., Johnson, D. R., Seidov, D., Biddle, M. M., and Levitus, S.: World Ocean Atlas 2013. Volume 2: Salinity, Tech. rep., National Oceanic and Atmospheric Administration (NOAA), Silver Spring, MD, <https://doi.org/10.7289/V5251G4D>, 2013.