

We would like to thank both Reviewers for the detailed and valuable comments which allowed us to improve this manuscript. Implementation of reviewers' suggestions added a lot of quality to the manuscript.

Review 1 of revised manuscript version bg-2019-367

Some specific comments on the response to the author document:

- 5
- In the 'Author response' they do state that there is no protocol they could have used ('we do not believe there is a single accepted protocol for bivalve shells, that is tested and validated for a large range of trace elements'), however, if the whole aim of your study is to compare such a wide range of elements in different shells, maybe some method development should have taken place before. Even (relatively) simple comparison of shell fragments of a single shell with different cleaning treatment (versus no cleaning) applied, could have make their dataset more robust. I highly suggest that for future work cleaning methods as well as the impact of organics should be investigated!
- 10

We did not have an opportunity to implement this approach at this stage, but we agree that organic matter is an important factor in biogeochemical research and we will make every effort to improve the methodology in our future research.

- 15
- Authors: In the revised version of the manuscript, we emphasise that the contribution of the organic matter to the elemental variation is likely to be relatively minor considering that bivalve and barnacle shells contain, in general, less than 5% organic matter (Bourget, 1987; Marin and Luquet, 2004; Rueda and Smaal, 2004)
- Reviewer: 5% in weight? Is there any idea about the concentration of certain elements in this organic matter? Even if it is 5% of the total weight, if the concentration of e.g. Na is very high, this still leads to a biased E/Ca for the CaCO₃. Also, you refer to Takesue et al., 2008, who found e.g. 19% organic matter.
- 20

We agree that even a small amount of the organic content of a shell can affect its chemical composition. According to literature data, the organic content of the studied organisms ranges up to about 5% in weight (e.g. Wolowicz and Gouletquer, 1999). Unfortunately, we are not able to determine what proportion of the examined elements comes from the organic matter and this is our task for the future research. In the presented manuscript, we noted that the entire skeletons were analyzed and we tried to highlight it in the discussion of the results. One of the references we refer to is Takesue et al. (2008) and in fact the authors studied shells there by up to 19% of organic matter. But the trends of metal accumulation were similar to many other researchers, which was widely discussed in this publication, therefore we decided include this work in our manuscript.

25

- After comments by both me and the other reviewer, I still do not see any discussion on the fact that lager (and thus older) shells have also experienced more time, and more environmental fluctuations. Can the authors comment on this directly?
- 30

Please look at the fragment in Lines 398 – 412, where we discussed this issue.

Minor comments:

35 (General comment) The manuscript is incredibly dense in information. Of course, it is great to have numerous references and explanations for observed patterns, but also makes it sometimes difficult to absorb the main take home messages. Be careful for repetition, for instance, please check overlap between paragraph 2.2 and 4.3. *In the reviewed version of the manuscript, we tried to limit the overlapping information, for example on paragraph 2.2.*

- Line 17: please add clearly you work on bulk material. *This was added*
- Line 27: "Moreover, the elemental concentrations tend to be lower in larger than in smaller shells." This is confusing, suggesting to change to something like "lower in the large size class compared to the smaller size class. *Improved.*
- Line 41-43: changes in font size. *Corrected.*
- Line 44: consider changing metals to trace metals or trace elements. *Corrected.*
- Line 45: consider rephrasing, you mean the pathways of trace metals into the CaCO₃? What do you mean with multistage process? Do the organisms form their shell through meta-stable phases of CaCO₃? *We meant that elements taken from the environment are transported to the skeleton through the body, so biological processes can affect their final concentration in the skeletons. The sentence was worded ambiguously, so we corrected it but chose to put it elsewhere, in Lines 94 – 96.*
- Line 124: remove 'it'. *Corrected.*
- 50 • Line 124-125: I disagree. You demonstrate the study area is highly fluctuating, so the older specimens will have experienced different environmental conditions. Change e.g. to '.. we can try to disentangle...'. *Corrected.*
- Line 135: renumber your figures, this should be fig. 1, since it is the first figure you reference). Check full manuscript. Line 169: So this is then Fig. 2. *Corrected.*
- Paragraph 2.3 As requested before, please add the sample time(month) in the manuscript, not only in the table. *Corrected.*
- 55 • Line 259: Is this 20% error propagated into the SD/values reported in Table 3? *No, the SDs in Table 3 reflect the spread of concentrations between individual specimens, not the analytical error. In most, if not all cases, the spread is much higher than the estimate of the analytical error anyway.*
- Line 221: change to 'based on the size'. *Corrected.*
- 60 • Line 235-238: Samples were split and measured by both ICP-OES and ICP-MS? *Both methods of analysis are solution-based. From an aliquot of homogenized powder, a single solution was prepared, which was then split and diluted as necessary for both the ICP-OES and ICP-MS analyses.*
- Line 254: What was the precision (%) compared to the reference values? *The estimated analytical uncertainty based on the reference values is given in Lines 255 – 258: "Based on the analyses of CRMs and matrix-matched solutions, the maximum analytical error for the typical range of concentrations in the shells can be estimated (in relative percentage) as 1.5% for Ca, Mg and Sr; 3% for Ba; 20% for Cu and U; and 10% for all other elements." If by "precision" one understands repeatability, it is similar or smaller than the uncertainty of the reference values, see Table 1 in Piwoni-Piõrewicz et al. (2017). The measurements in this work were done using the same technique, equipment and analysts and gave very similar results for the standards we decided not to include the tabulated data for the standards in this work, but refer the reader to our previous work: Lines 258 – 259: "More details on method validation were reported previously (Piwoni-Piõrewicz et al 2017)."*
- 70

- Line 272-274: “However, the concentrations of given metals were different between shells of Cerastoderma glaucum, Mya arenaria, Limecola balthica, Mytilus trossulus and Amphibalanus improvisus, showing high variability (Table 3, Fig. 3).” This sentence is confusion, please clarify the meaning. The variability was within a species, or between species? *Corrected.*
- Lin 367: change ‘contained’. *Changed into “produced”.*
- Line 364: in inorganic precipitated carbonate, precipitation rate is inversely correlated to Mn incorporation (i.e. higher precipitation equals less Mn, Lorens, 1981). Why is the opposite suggested for organic carbonates? *The inorganic calcite precipitation experiments have shown a negative relationship between precipitation rate and the Mn partition coefficient (e.g. Lorens, 1981). However, the relationship between the growth rate of organism and shell Mn/Ca was revealed to be positive. This indicates that Mn concentration in shells is not directly controlled by a kinetic calcium carbonate precipitation rate, but must reflect other processes, likely physiological in origin (e.g. Carré et al., 2006; Freiras et al., 2016). We discussed this issue in lines 445 – 448.*
- Line 368: change to ‘is in some degree regulating’ Line 382: trace metal, not trace metals. *Corrected.*
- Line 394-395: Please look into these sentences and your references. Takesue et al., 2008 showed actually the organic content was 19% for their studied species, and say aragnotic shells have ‘large component of non-lattice-bound Mg and Mn’. This is actually suggesting the opposite: at least Mg and Mn might be impacted by % organic matter. Line 394: separate ref for Sr? if not, remove. *These sentences were improved and the role of organic matrix in the total concentration of metals in CaCO₃ skeletons was highlighted.*
- Line 399-401. I totally agree, and believe this should also be mentioned in the abstract. (e.g. line 28: add composition and contribution of organic material). *Improved.*
- Discussion: Please also include organic material as a factor contributing to difference in (at least) Mg and Mn. *This was included in Lines 394 – 398.*
- Line 410-4111: I do not follow this logic. The larger shells (adults) still experienced a full year of environmental fluctuations. *Yes, but we believe that the long-lived shells additionally experienced environmental variability between years, and consequently elemental variability in shells of barnacles with lifespan of ~1 year might be lower.*
- Line 571 factors instead of features? Also, precipitation rate is a biological control? I would leave it at growth rate. *Corrected.*
- 581-583: It does not connect to the previous sentence, maybe rephrase or remove? This will never be possible from field samples, since it is impossible to know the biological impacts (growth, feed rate etc.). *The sentence was removed.*
- Table 2. Typo for size class I of Mytilus (should be 6-15)? *Corrected.*
- Figure 3. Consider also adding a symbols/column with values from other studies on the same species, maybe as a supplementary figure, if Figure 2 becomes to information dense. I see the authors added Table 4, but I would strongly advise to change this to a graphical presentation. *Such a figure would indeed be too information-dense. We still believe that the data in Table 4 are better in a tabular form so that other researchers can use it for reference, but we agree that this table can go to the Supplement if needed.*

Review 2 of revised manuscript version bg-2019-367

- Line 18: 'shells are discussed' Line 26: '...Cd) are more variable'. *Corrected.*
- Line 30: do you refer to your different sites? This should be 'sampling sites within the Gulf', if this refers to the comparison to literature data then this should be specified. *Corrected.*
- 115 • Line 36: ',mainly polymers,' comma missing Line 41: different font sizes, please correct. *Corrected.*
- Line 49: I would suggest to move the brackets after chemical factors, i.e. as follows '...chemical factors (e.g. metal...; Blackmore and Wang, 2002)'. *Corrected.*
- Line 52: I do not think this is correct, they are important, but I think dissolved C in the ocean is the largest C reservoir? *We agree that this is an imprecise statement and this was corrected.*
- 120 • Line 117: 'carbonate skeleton'. *Amended.*
- Line 135: this is the figure to appear so should be Figure 1. *Corrected.*
- Line 156: delete 'and' i.e. 'that is, lower Ca²⁺'. *Corrected.*
- Line 158-159: The equation for omega is incorrect, K^{*sp} is the solubility product calcite or aragonite (depending on the in situ conditions). The citation is not necessary as this is basic thermodynamics, but I see
125 Kawahata et al., 2019 present a nice overview so could be put as 'e.g. Kawahata et al., 2019'. *Corrected.*
- Line 214-215: There is something wrong with this sentence, it is said that 'Three species were found at MA...' but in the brackets there is only one given, and then for following stations M2 and MW it is again one each. *Corrected.*
- Line 234: Subheading space formatting – above and below not same as for the other headings. *Corrected.*
- 130 • Line 234: 'uncertainty (2.5 SD)' please be more specific, 2.5 of what? *The uncertainty of the recommended values (Imai, 1996).*
- Line 259: '4-10 % for all other elements' I would suggest to provide the details for each, unless it is always assumed that the uncertainty is not better than 10%, but then please mention it. *Changed to 10%.*
- Line 260: 'et al. 2017'. *Corrected.*
- 135 • Line 275: Should not be '316,000'? Please check the comma positions. *Corrected.*
- Line 276: Should not be '363,000'? *Yes, this was corrected.*
- Line 283: 'Both Sr and Mg were...' *Corrected.*
- Line 296: 'Shells' which ones you refer to? *Corrected.* Line 300: Two spaces missing, should be 'H ='. *Corrected.* Line 310: 'Shells' which ones? *Improved.*
- 140 • Line 370: better 'increased incorporation'? *Corrected.*
- Line 372: comma missing after 'in our study'. *Corrected.* Line 376: 'while larger Pb radii are favoured in aragonite structure'? *Corrected.*
- Line 379: 'determine their concentrations'. *Corrected.*
- Line 385: improvement of the data'. *Corrected.*
- 145 • Line 405: 'life spans'. *Corrected.*
- Line 409: 'drive its biogeochemical cycles'. *Corrected.*
- Line 411: commas missing ', to some extent,'. *Corrected.* Line 413-416: Please rephrase this sentence (seems convoluted). *Improved.*
- Line 429: 'if a significant'. *Corrected.*

- 150
- Line 431: ‘ while size class effects were less pronounced in clams’? Also ‘the varied elements’ please rephrase. *Improved.*
 - Line 451: ‘activity of an organism’. *Corrected.*
 - Line 488: Mg/Ca in many marine calcifiers has been used a temperature proxy, and known to be positively correlated with temperature. At the same time, Mg incorporation into the lattice is strongly dependent on growth rate, with more Mg incorporated under decreased precipitation rates. In addition, and in contrast to some other elements like Sr for example, Mg is thought to be transported by different pathways, and is strongly physiologically relevant. Growth increments are also lined with very high Mg contents, potentially linked to increased organics. Some organisms, like low-Mg brachiopods for example, actively discriminate against Mg. In summary, there are many known controls over Mg, but from the data in Figure 3 it is clear that in the studied samples it is the mineralogy (and especially on such larger orders). *We totally agree with this and all was included in the different sections of our discussion.*
- 155
- Line 530: ‘in a shallow zone’. *Corrected.*
 - Line 544: ‘most likely caused’. *Corrected.* Line 545: ‘as the trace elements’? *Corrected.* Line 6002: ‘Mytilus’ should be in italics. *Corrected.* Table 1: First row in the table ‘in situ’ should be in italics. *Corrected.*
- 160
- Table 3: Is the SD the standard deviation between all specimens of a species, please specify. Also please include sample size n along with the SDs and SEs. *Yes, this is the SD between all specimens. This is now explained in the table. The sample size is also given in the table.*
 - Table 4: I think there is something wrong with the formatting, some cells have hyphens that appear out of place, please check. *Improved.*
- 165
- Supplement: ‘Table S1’ (not Tabke S1). *Corrected.*
- 170

A couple of suggestions for the authors to consider that could be of aid to their future work:

I assume that the difference in the dissolution procedures between standards and samples should not significantly affect the final results of the study, however, for the future I urge the authors to treat samples and standards exactly the same. They should also consider finding more appropriate standards for biologic samples. A potential easy solution would be the making of an in-house standard by homogenising several individuals of a species, and cross-checking the different dissolution procedures on it. If an accepted international standard is not available for routine measurements, the authors could at least request small aliquots from the community or colleagues, cross check their in-house standard against it, and include it to the routine of running the limestone and dolomite standards. This would make their data and analytical procures way more convincing from the start and overcome some of the misunderstandings.

175

180

For the future, I would like to advise the authors to also collect and consider measuring water samples alongside the calcifiers. Such information would be very valuable and of great interest to the field. Widely accepted protocols for water sampling for trace element analyses are available from GEOTRACES.

We are very grateful for your comments, we will definitely use these suggestions in our future work.

185 *Line 1084: We changed the photos 2, 4 and 5 in Figure 2 as the new ones, in our opinion, represent species better.*

References:

Carré, M., Bentaleb, I., Bruguier, O., Ordinola, E., Barrett, N. T., and Fontugne, M.: Calcification rate influence on trace element concentrations in aragonitic bivalve shells: Evidences and mechanisms, *Geochim. Cosmochim. Acta*, 70, 4906–4920, <https://doi.org/10.1016/j.gca.2006.07.019>, 2006.

190 Freitas, P. S., Clarke, L. J., Kennedy, H., Richardson, C. A., and Abrantes, F.: Environmental and biological controls on elemental (Mg/Ca, Sr/Ca and Mn/Ca) ratios in shells of the king scallop *Pecten maximus*, *Geochim. Cosmochim. Acta*, 70, 5119–5133, <https://doi.org/10.1016/j.gca.2006.07.029>, 2006

195 Imai, N., Terashima, S., Itoh, S. and Ando, A.: Compilation of analytical data on nine GSJ geochemical reference samples, *Sedimentary rock series, Geostand. Newsl.*, 20(2), 165–216, <https://doi.org/10.1111/j.1751-908X.1996.tb00184.x>, 1996.

Lorens, R. B., Bender, M. L., and Island, R.: The impact of solution chemistry on *Mytilus edulis* calcite and aragonite, *Geochim. Cosmochim. Acta*, 44, 1265-1278, [https://doi.org/10.1016/0016-7037\(80\)90087-3](https://doi.org/10.1016/0016-7037(80)90087-3), 1980.

200 Piwoni-Piórewicz, A., Kukliński, P., Strekopytov, S., Humphreys-Williams, E., Najorka, J., and Iglíkowska, A.: Size effect on the mineralogy and chemistry of *Mytilus trossulus* shells from the southern Baltic Sea: implications for environmental monitoring, *Environ. Monit. Assess.*, 189, 197, <https://doi.org/10.1007/s10661-017-5901-y>, 2017.

Wolowicz, M. and Gouletquer, P.: The shell organic content in the energy budget of *Mytilus trossulus* from the South Baltic, *Haliotis*, 28, 1–10, 1999.

205

210

215

The patterns of elemental concentration (Ca, Na, Sr, Mg, Mn, Ba, Cu, Pb, V, Y, U and Cd) in shells of invertebrates representing different CaCO₃ polymorphs: a case study from the brackish Gulf of Gdańsk (the Baltic Sea)

Anna Piwoni-Piórewicz¹, Stanislav Strekopytov^{2,a}, Emma Humphreys-Williams², Piotr Kukliński^{1,3}

¹ Institute of Oceanology, Sopot, 81-712, Poland

² Imaging and Analysis Centre, Natural History Museum, London, SW7 5BD, United Kingdom

³ Department of Life Sciences, Natural History Museum, London, SW7 5BD, United Kingdom

^a current address: National Measurement Laboratory, LGC Limited, Teddington, TW11 0LY, United Kingdom

Correspondence: Anna Piwoni-Piórewicz (apiwoni@iopan.pl)

Abstract. The shells of calcitic arthropod *Amphibalanus improvisus*, aragonitic bivalve *Cerastoderma glaucum*, *Limecola balthica*, *Mya arenaria* and bimineralic bivalve *Mytilus trossulus* were collected in the brackish waters of the southern Baltic Sea in order to study patterns of **bulk** elemental concentration (Ca, Na, Sr, Mg, Ba, Mn, Cu, Pb, V, Y, U and Cd) in shells composed of different crystal lattices (calcite and aragonite). The factors controlling the elemental composition of shells **are** discussed in the context of crystal lattice properties, size classes of organisms and potential environmental differences between locations.

The study indicates that the elemental composition of studied species is a result of many biotic and abiotic factors acting on elemental incorporation mechanisms in a species-specific way. The incorporation of the main elements Ca, Na, Sr, Mg is mostly related to the crystal lattice properties of calcite and aragonite. Clams that precipitate fully aragonitic shells have a clear predominance of Sr over Mg in shells, contrary to dominant Mg accumulation over Sr in calcitic shells of barnacles. However, the barnacle calcite shell contains higher Sr concentration than bivalve aragonite. The elemental variability between size-grouped shells **is different for each studied species, and the elemental concentrations tend to be lower in the large size classes compared to the smaller size classes**. Biological differences between and within species, such as **growth rate, feeding strategy, including feeding rate and assimilation efficiency or composition and contribution of organic material** seem to be important factors determining the elemental accumulation in shells. **Because specimens used in this study were** obtained from different **sampling sites within the gulf**, the impact of local environmental factors associated with sampling location, such as sediment type, cannot be excluded.

1 Introduction

Marine invertebrates such as molluscs, brachiopods, corals, echinoderms, bryozoans and some groups of protozoa (foraminifera) are able to use naturally occurring **trace** elements to form their skeletons. The combination of inorganic CaCO₃ crystals with incorporated elemental impurities and organic compounds with a characteristic and ordered structure, mainly polymers, **create a composite strengthening material**. As a result of long-term adaptation, calcifiers are armed with hard protective internal and external body parts such as shells, tubes, walls or plates with

— **usunieto:** were

— **usunieto:** indicates that trace elements (Ba, Mn, Cu, Pb, V, Y, U and Cd) are more variable than Na, Sr, Mg, but this is variable between studied

— **usunieto:** . Moreover

— **usunieto:** .

— **usunieto:** lower in larger than in smaller shells

— **usunieto:** and precipitation

— **usunieto:** s

— **usunieto:** ies

— **usunieto:** We show that when

— **usunieto:** species

— **usunieto:** were

— **usunieto:** Gulf

— **usunieto:** regions

— **usunieto:**

— **usunieto:** the

275 various components, colours, shapes and functions. The biogenic CaCO₃ is deposited mainly in the form of two polymorphs, calcite and aragonite, which are commonly found co-existing in the same specimens and appear to be precipitated in the same environment (Cusack and Freer, 2008; Morse et al., 2007; Taylor et al., 2008; Stanley et al., 2008). The bulk elemental composition of carbonate skeletons is determined by both CaCO₃ crystal lattice and proteins (C, O, H, N, S, P). Furthermore, various other trace elements, especially those forming divalent ions – mainly Mg and Sr, as well as e.g. Mn, Br, Cd, Cu, Pb, V – are present as impurities in skeletons. The major sources of trace elements for organisms during the calcification process are aquatic soluble phases and the food base that may consist of suspended and/or sedimented particles (Newman and Unger, 2003; Rainbow, 1995; Rainbow and Phillips, 1993). However, the bioavailability of trace elements depends on a complex of environmental (e.g. salinity, pH, sediment type, oxygen conditions) and chemical factors (e.g. element-particle binding strength, the composition of particle, presence of other trace elements and compounds; Blackmore and Wang, 2002).

280 Biological carbonates determine a very important component of the hydrosphere's carbon reservoir, and the biogenic production of CaCO₃ has a strong interdependence on the ocean composition, biogeochemistry and the carbon cycle (Cohen and McConnaughey, 2003). In the last few decades, increasing attention has been paid to the relationship between the composition of shells and external environmental factors. It has been repeatedly observed that the mineral type and accumulated trace element concentrations in CaCO₃ shells of marine invertebrates are integrated records of environmental conditions (Marchitto et al., 2000; Rodland et al., 2006). The elemental composition of the carbonate skeleton can provide records of seawater chemistry and has a significant potential for the fields of palaeoceanography and palaeoclimatology (Freitas et al., 2006; Gillikin et al., 2006; Khim et al., 2003; Ponnurangam et al., 2016; Vander Putten et al., 2000). However, as recent studies have indicated (Dove, 2010), the influence of environmental parameters on shell precipitation could be very complex. The mineralogy and chemistry of shells are likely to be both linked to environmental conditions and controlled by the organism itself. Even a single population or closely related species within the same habitat may exhibit different accumulation strategies (Rainbow et al., 2000).

295 Calcite and aragonite differ in structure, symmetry and properties. The calcium ion has 9-fold coordination in aragonite and 6-fold coordination in calcite, and its coordination creates hexagonal and cubic packing (Putnis, 1992). Due to the spatial structure, aragonite shows preferential substitution with larger cations, such as Sr, while smaller cations, such as Mg, are energetically favoured in calcite. In natural systems, calcite commonly incorporates Mg (Morse et al., 2007; Reeder, 1983; Wang and Xu, 2001), and the solubility of Mg-containing calcite is known to increase with increasing Mg substitution (Kuklinski and Taylor, 2009; Smith et al., 2006). At the temperatures and pressures of the Earth's surface, low-Mg calcite is the most stable form of CaCO₃ (de Boer, 1977). Nevertheless, in many marine organisms, aragonite and high-Mg calcite are the dominant phases precipitated from seawater (Dickson, 2004). The solution chemistry (Cusack and Freer, 2008), temperature (Balthasar and Cusack, 2015), pressure (Allison et al., 2001), CaCO₃ saturation state (Watson et al., 2012), pCO₂ (Lee and Morse, 2010) and phylogenesis (Kuklinski and Taylor, 2009; Smith et al., 1998; Smith and Girvan, 2010) are known to influence shell mineralogy. The main driving force controlling the mineralogy of precipitated CaCO₃ is the ratio of Mg to Ca ions in seawater (Cusack and Freer, 2008; Morse et al., 2007). A Mg/Ca ratio > 2 favours the precipitation of aragonite and high-Mg calcite. At high Mg/Ca ratios, such as those in modern seawater (Mg/Ca = 5.2), calcitic structures incorporate Mg, which is observed to inhibit calcite nucleation and growth, whereas

— sformatowano: Czcionka: 10 pkt

— sformatowano: Czcionka: 10 pkt

— usunięto: trace elements

— usunięto: calcium carbonate

— usunięto: Metals incorporated into skeletons originate in the environment, yet as some of them are the components of enzymes or body fluids, the metal pathway to skeleton can be a multistage process (Cubadda et al., 2001; Luoma and Rainbow, 2008).

— usunięto: metals

— usunięto: metals

— usunięto: metal

— usunięto:) factors (

— usunięto:

— usunięto: the

— usunięto: largest

— usunięto: metal

330 aragonite nucleation is not affected by Mg in solution (De Choudens-Sanchez and Gonzalez, 2009; Morse et al., 2007). Most taxa producing low-Mg calcite are known to actively control the amount of incorporated Mg (Bentov and Erez, 2005; De Nooijer et al., 2014). Several studies of organisms that secrete calcareous skeletons have shown that lower seawater temperatures are correlated with the secretion of calcite skeletons with low Mg contents, rather than more soluble high-Mg calcite or aragonite skeletons (Taylor and Reid, 1990). The mineralogy of many calcareous structures changes with latitude, likely as a result of the temperature gradient from the poles to the equator (Kuklinski and Taylor, 2009; Loxton et al., 2014; Taylor et al., 2014). However, this is not an absolute rule (Cairns and Macintyre, 1992). Thermodynamics predicts that aragonite is the stable phase at pressures higher than 5000 hPa (roughly 40 m depth), and calcite is the stable phase at lower pressures. However, aragonite is still the major constituent of shells or pearls, indicating its metastable formation in shallow waters (Sunagawa et al., 2007). The incorporation of Sr was suggested to play a significant role in the biomineralogical precipitation of aragonite (Allison et al., 2001). Many studies have demonstrated a clear correlation between the concentration of Sr in the hard parts and precipitation of the aragonite layer (Iglukowska et al., 2016; Reeder, 1983). The ionic radius of Sr is larger than that of Ca; thus, Sr is more likely to form 9-fold coordination, which triggers metastable aragonite nucleation (Sunagawa et al., 2007).

345 Many studies have demonstrated that the biological control of shell composition is often more important than the environmental control (Carré et al., 2006; Freitas et al., 2005, 2006; Gillikin et al., 2005b). Elements incorporated into skeletons originate from the environment, yet as some of them are the components of enzymes or body fluids, the trace element pathway to skeleton can be altered by biological processes of the body (Cubadda et al., 2001; Luoma and Rainbow, 2008), which can affect the relationship between the concentrations of a given trace element between skeleton and environment. In biologically controlled mineralization, the organism drives the process of nucleation and growth of the minerals independently from the environmental conditions. Endogenous factors manifest themselves through co-regulation of all the structures and functions of the organism, including its sex, growth rate, metabolism, and feeding strategy (Lowenstam and Weiner, 1989). The main physiological processes involved in element accumulation are ingestion, assimilation, elimination and growth (Wang and Fisher, 1997). Throughout the lifespan, the biological system experiences ontogenetic trends and seasonal variations in physiology, determining metabolic expenses based on life's needs. Biological effects have been repeatedly used to explain shifts of elemental concentrations in shells from a theoretical equilibrium (Davis et al., 2000; Roger et al., 2017; Watson et al., 1995). Ontogenetic fluctuations of the growth rate and metabolic activity affect the intensity of the element uptake (Lee et al., 1998). Vander Putten et al. (2000) concluded that the seasonality of the accumulation of Mg, Sr and Pb in *Mytilus edulis* shells shows significant similarity across individuals, with a maximum during spring and early summer, and the elemental profiles cannot be explained by seasonal variations in the seawater composition. Carré et al. (2006) developed a model of ion transport in bivalve shells that shows that Ca²⁺ channels are less ion-selective when Ca²⁺ fluxes are higher. Other studies have found that the rate of trace element uptake increases as mussel filtration rate increases (Janssen and Scholtz, 1979).

365 It is still difficult to separate the degree to which the organism itself controls the composition of the carbonate skeletons and how much this process is affected by the environment (Casella et al., 2017; Schöne and Krause, 2016; Weiner et al., 2001). Although calcareous parts serve as a powerful tool for the interpretation of environmental conditions, a detailed insight into the different factors controlling the composition of carbonate skeletons is critical. Tracking potential sources of variation within calcifying organisms of many species with

- usunięto: in
- usunięto: .
- usunięto: .
- usunięto:
- usunięto: t
- usunięto: T
- usunięto: what can distinguish

— usunięto: metal

— usunięto: metal

— usunięto: metal

— usunięto: Jr

— usunięto: CaCO₃

diverse mineralogy should provide valuable insight into the patterns driving the biomineralization process (Smith et al., 1998).

The aim of this study is to assess the patterns of **elemental** variability (Ca, Na, Sr, Mg, Mn, Ba, Cu, Pb, V, Y, U and Cd) in shells of mussels and barnacles representing three possible mineralogical forms. The selected species were clams: aragonitic *Cerastoderma glaucum*, *Mya arenaria*, and *Limecola balthica*, bimineralic mussels *Mytilus trossulus*, and barnacle *Amphibalanus improvisus* with a fully calcitic shell, from the low-salinity environment of the southern Baltic Sea. A comparison of elemental concentration levels between size classes is also performed. Assuming the larger specimens are older than the smaller specimens of the same species, **we assess** how different ontogenetical stages influence elemental accumulation. The potential influence of biological control and local environmental conditions on the observed **elements** concentrations in shells is briefly discussed. The study area offers the variety of fluctuating factors, giving the opportunity to increase our understanding of elemental variation patterns of skeletons formed in the area. Brackish waters affect the activity and speciation of **elements**, enhancing their bioavailability (Fritioff et al., 2005). The seasonal changes (e.g. surface temperature, primary production and freshwater inflow) determine the **element** sources and drive the physiological processes of living organisms (Urey et al., 1951).

2 Material and methods

2.1 Study area

The study area is located in the Gulf of Gdańsk in the southern Baltic Sea, more precisely, in the outer Puck Bay and central Gulf of Gdańsk (Fig. 1). The gulf is partially sheltered from the northwest by the Hel Peninsula and from the west and south by the coastline (Kruk-Dowgiało and Szaniawska, 2008; Rainbow et al., 2004). This location makes the seawater the most turbulent in January and the calmest in June, with weak bottom currents and minimal tidal amplitudes. The hydrophysical parameters of the gulf are mostly driven by the temperate climate and the following seasonal changes. Differences in air temperature and water mixing cause seasonal fluctuations of the surface water temperature, ranging from approximately 4 to 22°C (Uścińowicz, 2011). The Gulf of Gdańsk is a low-salinity system under the influence of brackish water from the open southern Baltic Sea and fresh waters from rivers, mainly the Vistula River; the Vistula is the largest river in Poland and has an average annual inflow in the estuary of 1080 m³ s⁻¹, which varies seasonally from 250 to 8000 m³ s⁻¹ and has a maximum in spring (Cyberski et al., 2006). Thus, the average water salinity in the gulf is 7, varying from approximately 5.5 in summer to 8.4 in winter (Bulnheim and Gosling, 1988; Szefer, 2002).

The Gulf of Gdańsk is an area highly influenced by human activities. This is due to intensive usage of its resources and to anthropogenic emissions originating from various coastal sources, river inflows and atmospheric deposition. The most significant input of industrial and municipal pollution into the gulf is derived from the Vistula River, which transports pollutants from a catchment area of 194,000 km² (Pruszek et al., 2005). Both the water discharge and sediment load into the gulf are strongly seasonally dependent. The maximum river flow typically occurs in spring, with the minimum in autumn and winter, mainly due to periods of snow and ice melting (Cyberski et al., 2006; Pruszek et al., 2005; Szefer et al., 1996). Winter storms cause re-deposition of sediments further into the Gulf of Gdańsk (Damrat et al., 2013). Because of the local conditions, mainly the limited water exchange,

— usunięto: metal

— usunięto: it

— usunięto: will allow us to

— usunięto: can try to disentangle

— usunięto: demonstrate

— usunięto: metals

— usunięto: metals

— usunięto: metal

Sformatowano: Nie dodawaj odstępu między akapitami o takim samym stylu

river-borne contaminants remain in the ecosystem for decades, accumulating in the sediments and in living organisms (Glasby et al., 2004; Szumilo-Pilarska et al., 2016).

Most regions of the Baltic Sea have lower salinity and alkalinity (that is, lower Ca^{2+} and CO_3^{2-} concentrations) than oceanic surface waters (Beldowski et al., 2010; Cai et al., 2010; Findlay et al., 2008). Due to the seasonality of temperature and biogeochemical cycle, the amplitude of CaCO_3 saturation state ($\Omega = \frac{[\text{Ca}^{2+}] \times [\text{CO}_3^{2-}]}{K_{sp}}$, K_{sp} is the a solubility product of calcite or aragonite at situ conditions; e.g. Kawahata et al., 2019) in the Baltic Sea is high in comparison to saline waters. It alternates between approximately 1 to 5 for calcite and 0.5 to 2.5 for aragonite (Findlay et al., 2008).

The community of calcifiers from the Gulf of Gdańsk is characterized by the dominance of benthic filter feeders and deposit feeders (Kruk-Dowgiało and Dubrawski, 1998). These organisms exploit their growth potential during the productive seasons of the year when the availability of suspended matter, mainly phytoplankton is the highest (Pierscieniak et al., 2010; Staniszewska et al., 2016).

2.2 Species

The clam *Cerastoderma glaucum* (Mollusca, Bivalvia; Fig. 2.1), commonly known as the lagoon cockle, is a saltwater organism, found along the coasts of Europe and North Africa, including in the Mediterranean and Black Seas, the Caspian Lake, and the low-salinity Baltic Sea. It is a euryhaline species living in salinities between 4 and 84. *C. glaucum* can tolerate habitats with wide range of temperatures, from periodically freezing to above 30°C. It is a filter feeder that actively lives near the sediment surface, acting as a biodiffuser (Urban-Malinga et al., 2013). The clam is surrounded by a ribbed aragonite shell, which is externally yellowish to greenish brown (Jelnes et al., 1971). In the brackish environment of the Gulf of Gdańsk, *C. glaucum* spawns in May-July and typically lives up to 4 years, achieving a height of 27 mm (Żmudziński, 1990).

The soft-shell clam *Mya arenaria* (Mollusca, Bivalvia; Fig. 2.2) is a marine invasive species introduced into European waters from the Atlantic coasts of North America (Behrends et al., 2005). It has a wide global distribution, mainly due to its adaptability to varying environments with salinities between 4 and 35 and temperatures between -2 and 28°C (Gofas, 2004; Strasser et al., 1999). *M. arenaria* is a filter feeder, filtering organic particles and microinvertebrates using long fused siphons, and a deposit feeder. In the Gulf of Gdańsk, *M. arenaria* is a common inhabitant of shallow waters down to a depth of 30 m. It spawns once or twice a year in spring or summer, at temperatures of 10 – 15°C. Individuals live 10 – 12 years. They have aragonitic shells and grow up to 70 mm (Żmudziński, 1990).

The clam *Limecola balthica* (Mollusca, Bivalvia, Fig. 2.3) lives in the northern parts of the Atlantic and Pacific oceans, in Subarctic and European waters from southern France to the White Sea and Pechora Sea, including the Baltic Sea (Strelkov et al., 2007). It is a euryhaline clam capable of living in a wide range of water salinities from 3 to 40 and at temperatures from -2°C to above 30°C (Sartori and Gofas, 2016). *L. balthica* is a filter feeder and deposit feeder, has a semi-sessile lifestyle, with the ability to undertake periodic migrations (Hiddink et al., 2002). In the Baltic Sea, *L. balthica* lives at depths down to 40 m and grows to 24 mm. Adults reproduce in spring when the water temperature reaches 10°C and live 12 years (Żmudziński, 1990). They have aragonitic shells varying in colour between individuals and locations, mainly exhibiting white, pink, yellow and orange (Sartori and Gofas, 2016).

— usunięto: *

— usunięto: →

— usunięto: and

— usunięto: ($\Omega = [\text{Ca}^{2+}] [\text{CO}_3^{2-}] K_{sp}^{-1}$)

— usunięto:)

— sformatowano: Indeks górny

— usunięto:

— usunięto: is a function of salinity, temperature and pressure,

— usunięto: 1.1

— usunięto: clam

— usunięto: burrows 2–4 cm below the surface in soft sediments at shallow depths of secluded bays. It

— usunięto: 1.2

— usunięto: *M. arenaria* burrows into the sediment up to 20–30 cm below the surface of the sea floor.

— usunięto: 1.3

— usunięto: that lives buried a few centimetres below the surface. It ...

— usunięto: of

480 The mussel *Mytilus trossulus* (Mollusca, Bivalvia; Fig. 2.4) is one of three closely related taxa in the
Mytilus edulis complex of blue mussels, which, collectively, are widely distributed in the temperate and cold-water
coasts of the Northern Hemisphere and are often dominant organisms on hard substrates of shallow nearshore
habitats (Rainbow et al., 1999; Wenne et al., 2016). Generally, *M. trossulus* has a life span of approximately 12
485 years and grows to 100 mm, yet in the estuarine environment of the Gulf of Gdańsk, it reaches a maximum length
of approximately 50 mm (Gofas, 2004; Żmudziński, 1990). Mussels are sessile filter feeders, mainly depending
on phytoplankton. They reproduce from late spring to early autumn, depending on the temperature and food
abundance (Larsson et al., 2017; Lauringson et al., 2014; Rainbow et al., 2004). The shell of *M. trossulus* is
bimineral and consists of two calcium carbonate layers: an outer calcite and inner aragonite layer in variable
proportions between individuals (Dalbeck, 2008; Piwoni-Piórewicz et al., 2017).

— usunięto: 1.4

490 The barnacle *Amphibalanus improvisus* (Arthropoda, Maxillopoda; Fig. 2.5), commonly named the bay
barnacle, is a small sessile crustacean that typically exists in shallow coastal zones that are less than 10 m deep. It
is widespread around the Atlantic and has been dispersed by shipping to many parts of the world, now having a
worldwide distribution. It is a euryhaline and eurythermal species that is absent only from the Arctic and Antarctic
seas (Kerckhof, 2002). *A. improvisus* is a filter feeder that inhabits hard substrates. In the Baltic Sea, the
495 reproduction of barnacles starts in spring with temperatures over 10°C and ends in autumn. The species grows to
approximately 10 mm in diameter with a maximum height of approximately 6 mm, and generally, it has longevity
of one year (Żmudziński, 1990). It has a conical shell composed of six fused calcite plates (Weidema, 2000).

— usunięto: 1.5

— usunięto:

2.3 Sample collection and preparation

500 Samples of shells were gathered by a Van Veen grab sampler from four stations: GN (May 2013), MA, M2 and
MW (June 2014), located in the Gulf of Gdańsk (Table 1, Fig. 1). One species was found at stations MA (*Mya*
arenaria), M2 (*Cerastoderma glaucum*) and MW (*Limecola balthica*), while two species were collected at station
GN (*Mytilus trossulus*, *Amphibalanus improvisus*; Table 1). To ensure that the samples were not contaminated or
modified by solutions of preservatives, the collected material was transported alive in tanks filled with seawater
to the laboratory, where sample preparation took place.

— usunięto: 2

— usunięto: Three

— usunięto: ere

505 By measuring the shell heights of clams and shell diameters of barnacles using a calliper with an accuracy
of ±1 mm, the shells were classified into four size classes. The division into size classes was performed based on
the size, reached by each species in the southern Baltic Sea environment (Table 2). Forty shells (ten in each class)
510 were selected for *A. improvisus*, *C. glaucum*, *M. arenaria* and *L. balthica*. For *M. trossulus*, 20 shells were selected,
with five in each class, while the results for the rest were obtained from Piwoni-Piórewicz et al. (2017). After the
removal of soft tissues, each shell was viewed under a stereoscopic microscope to examine the epibiotic flora and
fauna, which could contaminate the sample and bias the chemical analysis. If any organisms were present on the
shell, they were carefully removed. To remove the biofilm, the periostracum was scraped with a scalpel, and pre-
cleaned shells were placed in an ultrasonic bath (InterSonic IS-7S) in ultra-pure water for 30 minutes and then
dried at 70°C for 24 hours. The shells were then crushed and ground into a fine powder with an agate mortar and
515 pestle. Aliquots (2.8 – 849 mg, mean = 132 mg) of the powdered samples were weighed using a 5-digit analytical
balance, placed into a 15 ml plastic tube (Sarstedt®) and dissolved in a mixture of 1.5 ml concentrated nitric acid
(HNO₃, Sigma Aldrich®, Trace SELECT for trace analysis), 1.5 ml ultra-pure water and 0.3 ml 30% hydrogen

— usunięto: on the basis of the size

525 peroxide (H₂O₂, Merck® Suprapure grade). After 24 hours at 70°C, the liquid samples were diluted to c. 15 ml by
weight with ultra-pure water.

2.4 Elemental analysis

530 Concentrations of chemical elements in the digested samples were determined at the Natural History Museum,
London, using a Thermo iCap 6500 Duo inductively coupled plasma optical emission spectrometer (ICP-OES) for
Ca, Na, Sr and Mg and an Agilent 7700x inductively coupled plasma mass spectrometer (ICP-MS) for Mn, Ba,
535 Cu, Pb, V, Y, U and Cd. Calibration of the ICP-OES analysis was performed using solutions containing 1–50 mg
l⁻¹ Ca, 0.01–5 mg l⁻¹ Na, and 0.001–0.5 mg l⁻¹ Sr and Mg in 0.8 M HNO₃. Na, Mg and Sr calibration solutions
all contained Ca at one hundred times the Mg concentration, to account for the effects on other wavelengths by
high Ca contents in the samples and standards. Multiple wavelengths for each element were recorded, and line
540 selection was performed by accounting for the suitability of the wavelength to the concentrations in the samples
and accounting for any potential spectral interferences. The accuracy and reproducibility of the analyses were
checked using two calcium-rich certified reference materials (CRMs), JLS-1 Limestone and JDo-1 Dolomite (both
from the Geological Survey of Japan). The reference materials were diluted to match the concentrations of Ca in
the sample solutions. Ca, Mg and Sr concentrations were found to be within ± 1 SD of the reported values (Imai
et al. 1996).

545 The limits of quantification (LOQ) of the ICP-MS analysis were generally determined as the
concentration corresponding to ten times the standard deviation of the signal obtained by analysing 0.8 M HNO₃
solution (6–7 times) in each individual run. ICP-MS was run in helium (He) mode (5 ml min⁻¹ He, 99.9995%
purity) for lighter elements (V, Mn, Cu, Y and Cd) to minimize the molecular interference from plasma and
solution components and Ca from the samples.

550 The accuracy and reproducibility were checked by analyses of JLS-1 and JDo-1 before and after every
batch of samples. The results obtained for all elements were within ± 2.5 SD of the recommended values (Imai et
al. 1996). Accuracy of Pb determination cannot be checked using these CRMs because of the large spread of
reference values probably due to insufficient homogeneity of Pb distribution in these samples. Based on the
555 analyses of CRMs and matrix-matched solutions, the maximum analytical error for the typical range of
concentrations in the shells can be estimated (in relative percentage) as 1.5% for Ca, Mg and Sr; 3% for Ba; 20%
for Cu and U; and 10% for all other elements. More details on method validation were reported previously (Piwoni-
Piórewicz et al., 2017).

2.5 Statistical analyses

560 To evaluate the effect of the shell size (ontogenesis stage) on the concentrations of trace elements in calcareous
parts of *A. improvisus*, *C. glaucum*, *M. arenaria*, *L. balthica* and *M. trossulus*, the concentrations of Ca, Na, Sr,
Mg, Mn, Ba, Cu, Pb, V, Y, U and Cd were examined in the four size classes separately for each species. The data
were not normally distributed (Shapiro-Wilk test); therefore, significant differences between the mean
concentrations of the selected trace elements in the size classes were identified by one-way Kruskal-Wallis
nonparametric ANOVA (p -value = 0.05) and post-hoc Dunn's tests for multiple independent groups. Statistical
computing and graphical visualizations were performed in RStudio.

— usunięto: 2.4 Elemental analysis

— sformatowano: Indeks górny

— usunięto: :

— sformatowano: Indeks górny

— usunięto: :

— usunięto: -

— usunięto: :

— sformatowano: Indeks górny

— usunięto: the uncertainty (

— usunięto:)

— usunięto: the uncertainty (

— usunięto:)

— usunięto: 4-

3 Results

The concentrations of trace elements in studied individuals can be found in Table S1 in the Supplement. The mean concentrations in all studied organisms decreased, being the highest for Ca and the lowest for Cd, in the following order Ca>Na>Sr>Mg>Mn>Ba>Cu>Pb>V>Y>U>Cd. However, the concentrations of given elements were different for *Cerastoderma glaucum*, *Mya arenaria*, *Limecola balthica*, *Mytilus trossulus* and *Amphibalanus improvisus*, showing high variability both between and within species (Table 3, Fig. 3).

There is a pattern of the highest concentration of Ca in all individuals, that ranges from $316,000 \pm 26,000 \mu\text{g g}^{-1}$ (mean \pm standard deviation) in *A. improvisus* to $363,000 \pm 18,000 \mu\text{g g}^{-1}$ in *M. arenaria*. The rest of elements had mean concentrations in shells below $4,000 \mu\text{g g}^{-1}$. In mussels most concentrated were Na>Sr>Mg, while in barnacles Mg>Na>Sr. The concentration of Na ranged, on average, from $2,000 \pm 300 \mu\text{g g}^{-1}$ in *M. trossulus* to $3,200 \pm 200 \mu\text{g g}^{-1}$ in *C. glaucum*. In *A. improvisus*, Mg ($3,940 \pm 320 \mu\text{g g}^{-1}$) was the dominant after Ca ($3,940 \pm 320 \mu\text{g g}^{-1}$), while mean concentration of Sr ($2,250 \pm 1,900 \mu\text{g g}^{-1}$) was lower than Na ($2,850 \pm 470 \mu\text{g g}^{-1}$). Clams *C. glaucum* (Mg: $80 \pm 30 \mu\text{g g}^{-1}$, Sr: $1,700 \pm 140 \mu\text{g g}^{-1}$, Na: $3,220 \pm 210 \mu\text{g g}^{-1}$), *M. arenaria* (Mg: $150 \pm 20 \mu\text{g g}^{-1}$, Sr: $2,160 \pm 280 \mu\text{g g}^{-1}$, Na: $3,080 \pm 210 \mu\text{g g}^{-1}$) and *L. balthica* (Mg: $80 \pm 30 \mu\text{g g}^{-1}$, Sr: $1,770 \pm 210 \mu\text{g g}^{-1}$, Na: $3,100 \pm 300 \mu\text{g g}^{-1}$) had concentrations of Sr over 15 times higher than those of Mg. Both Mg and Sr were concentrated in shells of clams less than Na. Mussels *M. trossulus* were characterized by concentrations of Mg and Sr, reaching $1,060 \pm 170 \mu\text{g g}^{-1}$ and $1,170 \pm 100 \mu\text{g g}^{-1}$, respectively. This species also was characterized by concentration of Na ($2,010 \pm 310 \mu\text{g g}^{-1}$) higher than Mg and Sr (Table 3, Fig. 3).

The trace elements (Mn, Ba, Cu, Pb, V, Y, U, Cd) exhibit a general trend of highest concentrations in *A. improvisus* and *M. trossulus*, lower in *C. glaucum* and *L. balthica* and the lowest in *M. arenaria*. Mn was the most variable element and increased from $1.4 \pm 1.0 \mu\text{g g}^{-1}$ in *M. arenaria* to $620 \pm 155 \mu\text{g g}^{-1}$ in *A. improvisus* (Table 3, Fig. 3).

The results of the Kruskal-Wallis nonparametric ANOVA test, which was used to compare the element concentrations between the four size classes in each species, revealed the lack of variability within *M. arenaria*. The smallest variability was found in *L. balthica*. Only the concentration of Na ($H = 10.586, p = 0.014$) decreased with shell growth for this clam. The third clam species, *C. glaucum*, showed high variability of the four trace elements. Shells of *C. glaucum* had increased concentrations of Sr ($H = 14.584, p = 0.002$), which was contrary to the decreasing concentration of Na ($H = 10.529, p = 0.015$), Mn ($H = 10.658, p = 0.014$) and Cd ($H = 11.655, p = 0.009$). Similarly, shells of *A. improvisus* also showed variability of four trace elements between size classes, namely, Mg ($H = 11.996, p = 0.007$), V ($H = 11.206, p = 0.011$), Cu ($H = 9.146, p = 0.027$) and Pb ($H = 13.308, p = 0.004$). However, in this case, the sequences of the changes were not straightforward but, rather, had a tendency to fluctuate between the smallest and the largest individuals. The highest variability was found within the bimineralic shells of *M. trossulus*. The size classes differed in terms of five trace elements. The incorporation of V ($H = 22.595, p < 0.001$), Cu ($H = 26.18, p < 0.001$), Y ($H = 10.819, p = 0.013$), Cd ($H = 15.353, p = 0.002$) and U ($H = 18.202, p < 0.001$) into shells decreased in larger mussels (Fig. 4).

Detailed analyses of the differences in the studied elements between the size classes based on post-hoc Dunn's tests for multiple independent groups indicated that the significant variations were not linear (Fig. 4). In *L. balthica*, Na concentration decreased in larger shells, showing differences between the size classes I and III and I and IV. In the shells of *C. glaucum*, Sr concentration increased gradually, reaching a peak in the size class IV,

— usunięto: metals

— usunięto: metals

— usunięto: between

— usunięto: shells of

— usunięto: ,

— usunięto: ,

— usunięto: metals

— usunięto: metals

— usunięto: metals

— usunięto: metal

— usunięto: metal

— usunięto: metals

while statistically significant differences were observed between the size classes I and IV and the III and IV. An inverse pattern was observed for Na, yet its concentration differed only between the smallest and largest clams. Shells of *C. glaucum* were also characterized by a common trend of the Mn and Cd, which decreased from I size class and later reached a plateau. In shells of *A. improvisus*, the concentrations of Mg, V, Cu and Pb decreased in larger individuals. The levels of Mg in shells statically differed between the size classes III and IV; likewise, shells from the size class III had the highest concentrations. The elements V and Pb occurred at the highest concentrations in shells of the smallest individuals, and later, they oscillated around a similar mean value. Cu decreased in growing shells of barnacles, reaching the minimum in the size class III. There were no statistically significant differences between the classes III and IV, and the oldest half of the group maintained the downward trend. However, it is worth noting that Cu concentrations in many of the oldest shells are several times higher. Shells of *M. trossulus* were characterized by the highest variability of trace element concentrations between size classes. The trend of decreasing concentrations was clearly marked for V, Cu, Cd and U. The concentration of Y decreased in larger shells, but the oldest shells showed an upward trend; therefore, significant differences were found between the size classes I and III (Fig. 5).

The comparison of elemental concentrations in shells of mussels and barnacles from different regions, based on literature data is presented in Table 4.

4 Discussion

4.1 CaCO₃ polymorph type and elemental concentrations

The Ca concentration of all species collected in the Baltic Sea was found to be 343,200 µg g⁻¹ (Table 3), which corresponds to c. 86% weight per weight (w/w) of pure CaCO₃. For comparison, same species or congeners from different regions contain between 310,000 and 420,000 µg g⁻¹ of Ca in shell (Table 4), the results above 400,000 µg g⁻¹ probably being caused by analytical bias.

Among shell impurities, the most concentrated elements were Na, Sr, Mg in all studied CaCO₃ polymorphs (Fig. 3). These compositions are considered to be typical in calcareous skeletons of marine invertebrates, as those elements are energetically favoured in CaCO₃ crystal lattice, substituting for Ca (Allison et al., 2001; Iglukowska et al., 2016; Reeder, 1983; Sugawara and Kato, 2000; Wang and Xu, 2001, see also Table 4). The main elemental constituents of the Baltic shells showed generally uniform distribution in collected samples, and within the ranges typical for a given species. Clams, that precipitate fully aragonitic shells and bimineralic mussels were characterized by the following order of accumulated concentrations: Na>Sr>Mg, while in barnacles this order was different: Mg>Na>Sr (Fig. 3). The most evident observation was that the aragonitic shells of *C. glaucum*, *M. arenaria* and *L. balthica* contained over 15 times more Sr than Mg. In the calcitic *A. improvisus*, Mg was 1.8 times more concentrated than Sr, while the bimineralic shells of *M. trossulus* containing layers of calcite and aragonite, were distinguished by equalized concentrations of Mg and Sr in shells (Table 3, Fig. 3). Such pattern of Mg and Sr is observed in number of calcareous species including bivalves and barnacles (Table 4; Dalbeck, 2008; Iglukowska et al., 2016; Wang and Xu, 2001; Zhao et al., 2017). However, by comparing species, it is evident that the calcite of barnacles *A. improvisus* deviated from this general trend. Out of the species studied in this work, both Mg and Sr concentrations were higher in calcitic barnacles than in aragonitic clams (Table 3, Fig. 3). Kinetic and biological effects influence the partitioning of Sr between the shell and seawater (Urey et al., 1951), and Sr in

— usunięto: Metals

— usunięto: average

— usunięto: content

— usunięto: metals

665 shells is known to significantly exceed its concentration expected at the thermodynamic equilibrium (Schöne et al., 2010). Furthermore, previous studies revealed that barnacles have significantly higher Sr shell concentration (up to 2,300 $\mu\text{g g}^{-1}$) than other marine invertebrates (Carpenter and Kyger, 1992; Ullmann et al., 2018). The concentration of Sr in shells of *A. improvisus* from this study ($2,250 \pm 190 \mu\text{g g}^{-1}$) supports these findings, suggesting that barnacle precipitation process differs from other marine organisms. Carpenter and Kyger (1992) concluded that Sr is a sensitive indicator of precipitation rate this may explain the elevated Sr concentrations in barnacles. The shell increment in barnacles in rapid (15 – 30 mm per year, Milliman, 1974) due to their relatively short lifespan (approximately one year). Consequently, the observed Sr concentration of *A. improvisus* may be caused by higher precipitation rate of barnacle calcite in comparison with the precipitation rate of aragonite in long-lived bivalves (Tables 3 and 4, Fig. 3). Crystal lattice distortions in barnacle calcite induced by rapid incorporation of impurities (Pokroy et al., 2006) may allow for even higher Sr incorporation and support the high Sr concentration in *A. improvisus* shell. This indicates that Mg and Sr concentration in shell are controlled by CaCO_3 lattice properties, yet in a strongly species-specific way (Skinner and Elderfield, 2005).

The concentrations of Mn and Ba are several orders of magnitude higher in the calcitic shells of barnacle *A. improvisus* than in other species (Table 3, Fig. 3). Based on the ionic radii of Mn and Ba, it is expected that aragonite shells would incorporate Ba more intensively than would calcitic shells (Findlater et al., 2014; Gillikin et al., 2006), yet this trend is not observed in this study, indicating Ba as not clearly related to the crystal lattice orientation. Furthermore, barnacles appear to have a stronger capacity for Mn incorporation into shells than other benthic calcifiers (Pilkey and Harris, 1966), even *A. improvisus* collected at the same location (GN, Fig. 1), possibly due to the species-specific biological factors (Bourget, 1974). Yet, as both species with highest concentration of Mn produced calcite (Table 3, Fig. 3), we should not rule out that the polymorph type of CaCO_3 to some degree regulates the level of shell Mn in low salinity environment.

It was observed that an increased incorporation of Mg and Sr into shell can contribute to distortion of CaCO_3 crystal lattice and results in parallel increased incorporation of trace elements into the shells (Harriss, 1965; Davis et al., 2000; Finch and Allison, 2007; Dalbeck, 2008;). In our study, shell lattices of mussels and barnacles could be changed through the concentration of Mg and Sr higher than in clams. Therefore, the concentration of Cu, V, Cd, Y and U seems to be driven to some degree by crystal lattice properties having the highest values in species containing calcite in their shells (Fig. 3). It is also important to note that the smaller ionic radii of V, Cd, Y, U and Cu are energetically favoured in calcite, while larger Pb radius is favored in aragonite structure (Morse et al., 1997; Reeder, 1983; Wang and Xu, 2001). However, trace elements Cu, V, Cd, Y were present at the highest levels in bimineralic *M. trossulus*, while only U, as well as Pb, in calcitic *A. improvisus* (Table 3), which suggests that additional factors, other than the crystal lattice effects, determine those concentrations. Furthermore, this study likewise revealed inconsistent variability of trace element concentrations between aragonitic clams. Out of the three species of clams, *M. arenaria* was characterized by the lowest concentration of all trace elements (Table 3). This also indicates that factors other than mineral properties co-regulate trace elements accumulation in shells.

This study considers element concentrations in shells that were not subjected to chemical removal of organic matter prior to the dissolution of the carbonate matrix. Chemical cleaning of carbonate skeletons prior to chemical analysis and both improvement of the data quality and potential artefacts associated with this are widely discussed in the literature (Barker et al., 2003; Holcomb et al., 2015; Loxton et al., 2017), but the plausible pre-treatment method for the removal of organics still needs to be found (Inoue et al., 2004). Mannella et al. (2020)

— usunięto: l

— usunięto: Therefore, the pattern observed in this investigation is not related to the crystal lattice orientation (Markulin et al., 2019; Poulain et al., 2015).

— usunięto: B

— usunięto: higher growth rate or

— usunięto: shell organic matter

— usunięto: in

— usunięto: At one station (GN, Fig. 2), we observed the highest concentration of Mn and Ba in the shells, and this pattern might be determined by the environmental parameters at that location. Yet, shells of both species with the highest concentration of Mn (*A. improvisus*, *M. trossulus*) contained calcite, therefore we should not rule out that the polymorph type of CaCO_3 is regulating to some degree the level of shell Mn in low salinity environment.

— usunięto: great incorporation

— usunięto: , in aragonite structure

— usunięto: metals

— usunięto: , Fig. 2

— usunięto: s

— usunięto: metal

— usunięto: metals

— usunięto: , Fig. 2

— usunięto: metals

— usunięto: metal

— usunięto: n

showed that the suitability of chemical pre-treatments for organic matter removal from carbonate matrices should be evaluated on a case-by-case basis and, in case of relatively low organic content, should be avoided. In addition to CaCO₃ crystal lattice, shells of barnacles and bivalves usually contain up to 5.0 wt% of organic matter (Bourget, 1987; Wolowicz and Gouletquer, 1999; Marin and Luquet, 2004; Rueda and Smaal, 2004). However, the specific features and composition of given organic matrix might be a cause of the inter-species and inter-individual variability of elemental concentration in shells (Fig. 3, Table 3; Takesue and van Geen, 2004). The organic fraction was found to be generally not associated with significant level of trace elements (Lingard et al., 1992; Takesue et al., 2008), which are strongly incorporated into the crystal phase. Yet, many authors found correlations, especially for Mg and Mn, associated with the shell organic matrix (Bourget, 1974; Walls et al., 1977; Lorens et al., 1980; Rosenberg et al., 2001; Takesue and van Geen, 2004). Despite replacing with Ca in shell lattice, these elements are biologically essential (Bellotto and Miekeley, 2007), and inter-species variability of Mg and Mn between barnacles, mussels and clams (Fig. 3) could be enhanced by specific properties of organic phases.

4.2 Size classes and potential biological impact on elemental concentrations

The recorded concentrations of trace elements in all populations exhibited marked variability among individuals (Table 3, Fig. 3), a feature previously recorded by several authors (Gillikin et al., 2005a; Vander Putten et al., 2000). In this study, individuals were collected over a wide range of sizes (Table 2), representing different ages and life spans. Bivalves are long-living organisms, and these of the Gulf of Gdańsk have life expectancy of 4 – 12 years (Gofas, 2004; Żmudziński, 1990), contrary to barnacles with the relatively short lifespan of approximately one year (Bornhold and Milliman, 1973). The southern Baltic Sea is driven by cyclical environmental dynamics, which evoke physiological stress, determine the food base and drive its biogeochemical cycles (Elder and Collins, 1991). Shells of *A. improvisus* experienced one-year variability of environmental factors, while bivalves represent long-term variability. Thus, the life span to some extent, may explain the lowest variability of trace elements in barnacles (Fig. 3). However, this relation is not noticeable in mussels, for which the inter-individual variability of trace elements in the youngest individuals (size class I) was not lower than in the oldest ones (size class IV, Fig. 4). Thébault et al. (2009) revealed low inter-individual elemental variability in bivalves and on this basis indicated the environment as a factor controlling their incorporation within shells. Therefore, the heterogeneous elemental concentrations between individuals from the brackish Gulf of Gdańsk may to some extent be caused by biological factors, that could lead to a deviation from what is expected with purely environmental control. The biological influence on the shell chemistry in the southern Baltic Sea could be reinforced by unfavourable conditions for calcification. The low salinity (~7) and alkalinity, which is typical for the studied area of the Gulf of Gdańsk, cause a reduced CaCO₃ saturation state (Beldowski et al., 2010; Cai et al., 2010; Findlay et al., 2008). Ions of Ca²⁺ and CO₃²⁻ are essential components for the crystal formation, and when their concentrations in seawater are low, calcifying organisms exert selective Ca²⁺ channels to enable an active ion capture from solution (Sather and McCleskey, 2003). The required higher contribution of Ca²⁺ active pumping results in greater degree of biological control over the calcification process (Sather and McCleskey, 2003; Waldbusser et al., 2016) and shells are not produced in equilibrium with environmental conditions when it comes to an elemental concentration.

Within species, organisms from juveniles to adults experience morphological and functional changes related to sex, metabolic rate or reproductive stage, which complicate the biomineralization process (Carré et al., 2006; Freitas et al., 2006; Gillikin et al., 2005b; Schöne et al., 2010, 2011; Warter et al., 2018). The size-related

- usunięto: Therefore
- usunięto: partial
- usunięto: metals
- usunięto: and Sr
- usunięto: is
- usunięto: (Takesue and van Geen, 2004; Walls et al., 1977). In contrast
- usunięto: some
- usunięto: indicating
- usunięto: as often
- usunięto: competition with
- usunięto: ²⁺
- usunięto: during biomineralization
- usunięto: they
- usunięto: are
- usunięto: elements
- usunięto: that
- usunięto: are incorporated into the organic matrix within precipitated CaCO₃, especially during rapid shell growth in *A. improvisus*. Therefore,
- usunięto: high
- usunięto:
- usunięto: metals
- usunięto: were produced in the shortest period of time and
- usunięto: less
- usunięto: abiotic variations
- usunięto: than
- usunięto: ¶
- usunięto: T
- usunięto: distribution of the
- usunięto: in organisms
- usunięto: fluctuating
- usunięto: that affect shell precipitation
- usunięto: and the chemistry of the shells
- usunięto: deviate
- usunięto: from
- usunięto:

810 elemental patterns in shells of *A. improvisus*, *C. glaucum*, *M. arenaria*, *L. balthica* and *M. trossulus* from the Gulf of Gdańsk indicate that if a significant variability exists, it is specifically expressed in trace element concentrations. The studied mussel *M. trossulus* and barnacle *A. improvisus* showed the greatest variability between size classes, while the size class effects were less pronounced in clams (Fig. 4). However, the variability of trace elements were not uniform for *M. trossulus* and *A. improvisus*, even though the organisms came from one location (Table 1). The size-related trend was observed for V, Cu, Y, Cd and U in molluscs, and Mg, V, Cu and Pb in barnacles (Fig. 3). Among clams, we found the lack of size-dependent changes within *M. arenaria*. In *L. balthica* only the concentration of Na decreased with shell growth, while *C. glaucum* showed variability of Sr, Na, Mn and Cd (Fig. 815 4). Different patterns of elemental accumulation for species in the same habitat were observed before (Rainbow, 2002, 1995). Rainbow et al. (2000) tested *A. improvisus* and *M. trossulus* from the Gulf of Gdańsk as environmental biomonitors by measuring the concentrations of Co, Zn, Fe, Cd, Pb, Mn and Ni in soft tissues. They found that mussels and barnacles occurring at the same location did not show the same variation in elemental bioavailabilities, probably because barnacles were particularly strong accumulators of trace elements (Rainbow, 820 2002, 1998). This shows that biological differences between species, such as growth rate, feeding rate, assimilation efficiency (Luoma and Rainbow, 2005), route and degrees of element uptake (Rainbow and Wang, 2001) are significant factors determining the elemental accumulation in shells.

825 In this study, it was generally observed that, when statistical differences between size classes were recorded, the concentrations of trace elements decreased with the shell size. The reverse was found only for Sr in the shells of *C. glaucum*, in which the concentration of Sr increased with size (Figs. 4 and 5). Large mussels pump less water per unit of the body weight, and their uptake of trace elements is lower than that in smaller individuals. When the concentrations of trace elements decrease with increasing shell size (Fig. 4), the incorporation might depend on the growth rate. The younger specimens could have a greater growth rate and shell precipitation rate, 830 resulting in a greater uptake of trace elements (Dalbeck, 2008; Szefer et al., 2002). Rosenberg and Hughes (1991) suggested that areas of higher shell curvature, such as the umbo, require greater metabolic expenditure, resulting in an increase of element uptake. When the metabolic activity of an organism decreases, the ionic flux likewise decreases, increasing the tendency of Ca²⁺ to block other ions fluxes (Carré et al., 2006; Friel and Tsien, 1989). Therefore, in a low salinity environment of the Gulf of Gdańsk, metabolic fluctuations of organisms can have an 835 exceptionally strong effect on elemental variability, which was high among studied individuals (Table 3, Fig. 3). The surface-to-volume ratio decreases with size and affects the contribution of the adsorbed element content to the bulk concentration (Azizi et al., 2018). Therefore, the negative correlation between the bulk elemental concentration and shell size (Fig. 4), noted in some previous studies (Martincic et al., 1992; Piwoni-Piórewicz et al., 2017; Ritz et al., 1982), could have been caused by a greater potential of surface adsorption in smaller 840 individuals. This is most pronounced for a few trace elements, the concentrations of which decreased across the four size classes in shells of *A. improvisus* (V, Cu, Pb), *M. trossulus* (V, Cu, Y, Cd, U) and *C. glaucum* (Mn, Cd, Figs. 4 and 5). Catsiki et al. (1994) suggested that, apart from metabolic processes, an active detoxification mechanism in tissues is responsible for this trend, and its efficiency is higher in older and larger individuals.

845 Nevertheless, many of the trace elements studied herein showed a lack of statistically significant relationships between the shell sizes. Few trace elements in the shells of *A. improvisus* (Y, U and Cd), *M. trossulus* (Pb), *C. glaucum* (V, Cu, Y, Pb and U) and all trace elements in the shells of *L. balthica* and *M. arenaria* (V, Cu, Y, Pb, U and Cd) showed no significant variability related to the size of organisms (Figs. 4 and 5). This is not an

— usunięto: the

— usunięto: metal

— usunięto: while it was less pronounced in clams

— usunięto: varied

— usunięto: these species

— usunięto: metal

— usunięto: metal

— usunięto: metals

— usunięto: metal

— usunięto: metals

— usunięto: metals

— usunięto: metal

— usunięto: metals

unusual pattern for marine invertebrates, which has been shown by a number of studies. Saavedra et al. (2004) observed no differences between Cd, Pb, Cr, Ni, As, Cu and Zn concentrations for different shell lengths of the raft *Mytilus galloprovincialis* separated into four size classes. Protasowicki et al. (2008) similarly found that the concentrations of Hg, Pb, Cd, Cu, Zn, Cr, Ni, Fe, Mn, V, Li and Al in the shells of the mussel *Mytilus edulis* from the Polish coast of the Baltic Sea did not vary between shell sizes. This inconsistent relationship shows that trace elements concentration in shells of different sizes might be under influence of a number of factors including species-specific biological mechanisms (e.g. metabolic rate).

— usunięto: metals

— usunięto: *

4.3 Environmental factors and elemental concentrations

Organisms derive trace elements in dissolved and particulate forms primarily from surrounding water, sediments and their food base (Freitas et al., 2006; Gillikin and Dehairs, 2005; Poulain et al., 2015). The concentration of basic macro elements Na, Mg and Sr in surrounding seawater is generally proportional to salinity (Beldowski et al., 2010; Cai et al., 2010; Findlater et al., 2014; Wit et al., 2013), therefore the environmental level of these elements should be rather homogenous in the study area (salinity range 6.9–7.3, Table 1). And indeed, our analysis has shown low variability of the concentrations of Na ($2,010 \pm 310 \mu\text{g g}^{-1}$ – $3,220 \pm 210 \mu\text{g g}^{-1}$) and Sr ($1,170 \pm 100 \mu\text{g g}^{-1}$ – $2,250 \pm 190 \mu\text{g g}^{-1}$, Table 3) in the shells of studied species, which might reflect environmental stability. However, the concentration of Mg in shells as this element was highly variable ($3,940 \pm 320 \mu\text{g g}^{-1}$ – $80 \pm 30 \mu\text{g g}^{-1}$, Table 3, Fig. 3). Although salinity was indicated as the factor controlling the concentration of Na, Sr and Mg in environment and skeletons built there (Elderfield and Ganssen, 2000; Rosenheim et al., 2004), the range of surface salinity in the study region was unlikely to explain the observed range of Mg concentrations. Mg is the most energetically preferred skeletal element (Allison et al., 2001; Wang and Xu, 2001), is associated with the shell organic matrix (Bourget, 1974) and its concentrations has been found to depend on seawater temperature (Freitas et al., 2005; Dalbeck, 2008; Schöne et al., 2011). Vander Putten et al. (2000) observed that the skeletal Mg/Ca variations in *M. edulis* could not be interpreted solely based on variations in the seawater Mg, while Dodd and Crisp (1982) showed that the Mg/Ca ratios of most estuarine waters only differ significantly from the open-ocean ratios at salinities below 10. Therefore, the variations in the shell Mg concentration must be the combination of many biological and environmental factors.

— usunięto: metals

— usunięto: the

— usunięto: Therefore, the concentration of Mg seems to not be dependent on the environment, but likely to have be influenced by physiological or kinetic factors.

— usunięto: .

— usunięto: Furthermore,

— usunięto: .

— usunięto: and

— usunięto: g/Ca

— usunięto: ratio

— usunięto: caused by factors not linked directly with the environment...

Among trace elements (Mn, Ba, Cu, Pb, V, Y, U and Cd), Mn and Ba were definitely the most concentrated in shells (Fig. 3), as previously reported for bivalves (Lazareth et al., 2003; Vander Putten et al., 2000). Such high concentrations of Mn and Ba are usually associated with freshwater inputs to estuarine systems, which likewise causes phytoplankton blooms (Gillikin et al., 2006; Vander Putten et al., 2000; Thébault et al., 2009). Consequently, Ba and Mn may be taken up by calcifiers through ingestion of phytoplankton (Stecher et al., 1996) or decaying algal flocs (Brannon and Rao, 1979; Stecher et al., 1996). The elemental incorporation into shell has been shown to correlate at species level with changes in primary production and phytoplankton blooms (Freitas et al., 2006; Lazareth et al., 2003; Vander Putten et al., 2000). Therefore, the food base and elemental transport in the trophic chain might cause the spatial and species-specific elemental variability in shells (Fig. 3). This pattern is generally confirmed in different regions by the contents of Mn and Ba relative to other trace elements (Fig. 4).

Seawater trace element concentrations in the study area depend on seasonality and human activity, but elemental concentrations in sediments represent long-term chemical background. In coastal regions, trace elements

915 discharged from various sources, such as atmosphere, rivers, and plankton blooms, can be rapidly transported from
the water column to the bottom sediments (Bendell-Young et al., 2002; Szefer et al., 1995). In this study, samples
were collected in two regions of the Gulf of Gdańsk: the outer part of the Puck Bay (stations MA, M2 and MW)
and central part of the Gulf of Gdańsk (station GN, Fig. 1). The shells of clams collected in the outer Puck Bay,
with sandy sediment (Szefer et al., 1998; Szefer and Grembecka, 2009; Uścińowicz, 2011), were depleted in trace
920 elements. On the other hand, mussels and barnacles from the central Gulf of Gdańsk, with sandy mud, were
characterized by higher elemental concentrations than clams (Fig. 3). On this basis we can assume that the
concentrations of trace ~~elements~~ Mn, Ba, Cu, Pb, V, Y, U and Cd in shells might be related to sediment
granulometry and increase from sandy to silty type (Góral et al., 2009; Uścińowicz, 2011). The maximum
concentration of trace elements within a given region is commonly associated with the finest sediment fraction
925 (<2 µm) as compared to the sandy fraction (Kim et al., 2004; Szefer et al., 1998). In addition, the formation of
Mn-Fe oxyhydroxides in the surface sediments (Glasby and Szefer, 1998; Szefer et al., 2002) has a particular role
in absorbing trace ~~elements~~ in the fine sediments (Pruysers et al., 1991; Szefer et al., 1995; Tessier et al., 1979). It
has been previously shown that for mussel *M. trossulus*, clam *L. balthica* and barnacle *A. improvisus* from the
central part of the Gulf of Gdańsk (near the GN station), elemental concentrations in shells (Szefer and Szefer,
930 1985) and tissues (Rainbow et al., 2000, 2004; Sokolowski et al., 2001) were similar to that in the Vistula River
plume and higher than ~~trace elements~~ concentration in macrozoobenthos from the outer Puck Bay.

— usunięto: metals

However, the studied ~~trace elements~~ exhibited variations in accumulated concentrations between species,
both within the Puck Bay (M2: *C. glaucum*, MA: *M. arenaria*, MW: *L. balthica*) and within the central Gulf of
Gdańsk (GN station: *M. trossulus* and *A. improvisus*, Fig. 3). The highest concentration of trace ~~elements~~ in *C.*
935 *glaucum* (M2: 10 m) and *L. balthica* (MW: 31 m) within clams from the sandy Puck Bay could be driven by
elevated amounts of trace elements in oxygenated zones where Fe-Mn oxyhydroxides accumulate. At the
Mn(II)/Mn(IV) redox interface manganese oxides may predominantly precipitate on the periostracum of molluscs
comparing to inorganic surfaces (Strekopytov et al., 2005), which may, in turn, influence the incorporation of trace
elements into shells. *M. arenaria* likewise was collected in a shallow zone (MA: 10 m), but had, nevertheless, the
940 lowest concentrations of all studied trace elements (Fig. 3). This bivalve mainly spends life buried 20 – 30 cm in
a sediment (Żmudziński, 1990). Szefer et al. (1998) reported that in the Gulf of Gdańsk the enrichment factors for
Cu, Zn, Ag, Cd and Pb are highest in the <2 µm fraction and decrease with increasing both fraction size and depth
of the sediment. This may be a reason why *C. glaucum* and *L. balthica* have similar patterns of elemental
accumulation, while *M. arenaria* was characterized by the lowest values (Fig. 3). Such dependence indicates that
945 ~~the sediment properties belong to factors~~ controlling concentration of trace ~~elements~~ in the shells.

— usunięto: metals

— usunięto: metals

— usunięto: metals

Mussels *M. trossulus* and barnacles *A. improvisus* from the same location (Fig. 1, Table 1) showed greater
chemical differentiation than clams. ~~This relationship is most evident for Mn and Ba.~~ Much lower concentrations
of Mn and Ba were found in the shells of molluscs (Mn: $54.0 \pm 15.0 \mu\text{g g}^{-1}$, Ba: $17.0 \pm 6.70 \mu\text{g g}^{-1}$) than in
barnacles (Mn: $625 \pm 160 \mu\text{g g}^{-1}$, Ba: $73.0 \pm 20.1 \mu\text{g g}^{-1}$, Table 3). A similar relationship was found in the soft
950 tissues of *M. trossulus* and *A. improvisus* collected from different locations in the Gulf of Gdańsk in May 1998
(Rainbow et al., 2000). The range of Mn in the soft tissues of *M. trossulus* varied from 19.0 to $41.0 \mu\text{g g}^{-1}$, while
that in *A. improvisus* ranged from 187 to $307 \mu\text{g g}^{-1}$ and was interpreted as species-specific accumulation
efficiency. ~~The concentration of Mn has been repeatedly reported to be influenced by phytoplankton blooms~~
(Vander Putten et al., 2000; Gillikin et al., 2006; Zhao et al., 2017), thus the diet seems to affect the shell Mn

— usunięto: could be a

— usunięto: s

— usunięto: metals

concentration. Due to size of the organism, the diet of *A. improvisus* depends more on Mn-rich phytoplankton than larger *M. trossulus* that easily picks zooplankton. The lower proportion of zooplankton in the barnacle diet could have hereby add to a higher Mn concentration in their shells (Fig. 3). This suggests that the Mn concentration in shell is highly species dependent.

Some studies have investigated trace element concentrations in shells (but many more have concentrated on the soft tissues) of marine invertebrates as a tool to assess trace elements contamination of the aquatic environment. The concentrations of trace elements Mn, Ba, Cu, Pb, Cd and U in the shells of a studied organism in Gulf of Gdańsk and in other regions was found to be highly variable, even within a single taxon (Table 4). Therefore, the environmental conditions prevailing during biomineralization are largely reflected in the trace element concentrations of the shells; nevertheless, their interpretation requires consideration of biological factors specific to the species.

5. Conclusions

The shells of calcitic *Amphibalanus improvisus*, aragonitic *Cerastoderma glaucum*, *Limecola balthica*, *Mya arenaria* and bimineralic *Mytilus trossulus* from the Gulf of Gdańsk are accumulators of a wide spectrum of trace elements from the surrounding environment. The elemental concentration levels in studied species are not only determined by their bioavailability in the environment. Many biotic and abiotic factors are acting on the shell incorporation mechanism and their effect is likely to be species-specific.

By determining Ca, Na, Sr, Mg, Mn, Ba, Cu, Pb, V, Y, U and Cd in the shells of given species we found some patterns of elemental accumulation. At a local scale of the Gulf of Gdańsk, the main elements Na, Sr and Mg are mostly dependent on crystal lattice properties of calcite and aragonite. Clams that precipitate fully aragonitic shells have a clear preference for accumulating Sr over Mg in shells, contrary to dominant Mg content over Sr in barnacle shell calcite. It is energetically more favourable for larger cations such as Na and Sr to enter the aragonite lattice with smaller cations (e.g. Mg) favouring calcite. However, this relationship breaks down when comparing shells of different species or genera. For example, the barnacle calcite contains higher Sr concentration than the bivalve aragonite. The level of main elements, especially Sr and Mg, seems to be determined by specific biological factors, such as growth rate.

In case of trace elements Mn, Ba, Cu, Pb, V, Y, U and Cd, factors other than given crystal lattice presence, seem to determine their concentrations. The elemental variability between size-grouped shells indicates that trace elements were more variable than Na, Sr, Mg, but this varies between species. Moreover, there is a trend of the elemental concentrations being lower in larger than in smaller shells. Biological differences between and within species, such as feeding including its rate and assimilation efficiency related to age of organisms (size of the shell), are potentially important factors determining the elemental accumulation in shells.

Given that the specimens were obtained from two regions of the Gulf of Gdańsk: the outer part of the Puck Bay and central part of the Gulf of Gdańsk, an impact of local environmental factors, such as the sediment type and the food base cannot be excluded as factors controlling concentration of trace elements in shells.

Author contribution. APP and PK designed and led the study. SS and EHW conducted elemental analysis. APP prepared the original draft, which was reviewed and edited by all co-authors.

Competing interests. The authors declare that they have no conflict of interest.

— sformatowano: Czcionka: Kursywa

— sformatowano: Czcionka: Kursywa

— usunięto: This trend is not noticeable to some trace elements (Cu, V, Y and Cd), which were not the most concentrated in barnacles (Fig. 3). This was the most likely

— usunięto: caused by differences in bioaccumulation strategy between mussels and

— usunięto: barnacle

— usunięto: s

— usunięto: and the trace elements deposited over time in the shells are determined by environmental and biological conditions. As this study was conducted in a highly dynamic coastal system, notable elemental variability between mussels and barnacles is associated with fluctuating environmental conditions. The *A. improvisus* shell is a record of annual variability only compared to the *M. trossulus* shell, which records many years of fluctuations of environmental parameters.

— usunięto: metal

— usunięto: metal

— usunięto: features

— usunięto: and precipitation

— usunięto: metals

— usunięto: On this basis, it can be emphasized that by analysing the species-specific biological factors in parallel with the elemental variability of shells within widely distributed species, it might be possible to separate the environmental and biological signals in the biomineralization process.

Data availability. The underlying research data can be accessed at Institute of Oceanology, Polish Academy of Sciences, Powstańców Warszawy 55, 81-712 Sopot, Poland.

Supplement. The supplement related to this article will be available online.

Acknowledgements. We would like to thank Dr Halina Kendzierska from the University of Gdańsk for cooperation during sampling, and [Piotr Bałazy \(Fot. 2, 4, 5\)](#), [Radosław Brzana \(Fot. 1\)](#) and [Jerzy Abramowicz \(Fot. 3\)](#) for photos of the studied species presented in [Figure 2](#).

Financial support. The research leading to these results received funding from the Polish National Science Centre in the frame of project contracts LOGGER/2017/25/N/ST10/02305 and PANIC/2016/23/B/ST10/01936.

References

- 1035 Allison, N., Finch, A. A., Sutton, S. R., and Newville, M.: Strontium heterogeneity and speciation in coral aragonite: implications for the strontium paleothermometer, *Geochim. Cosmochim. Acta*, 65, 2669–2676, [https://doi.org/10.1016/S0016-7037\(01\)00628-7](https://doi.org/10.1016/S0016-7037(01)00628-7), 2001.
- Ashraf, M. P., Meenakumari, B., and Thomas, S. N.: Seasonal variation of metal concentration in barnacles (*Balanus* spp.) of Cochin estuary, south-west coast of India, *Fish. Technol.*, 44(1), 73–84, 2007.
- 1040 Azizi, G., Akodad, M., Baghour, M., Layachi, M., and Moumen, A.: The use of *Mytilus* spp. mussels as bioindicators of heavy metal pollution in the coastal environment. A review, *J. Mater. Environ. Sci.*, 9, 1170–1181, <https://doi.org/10.26872/jmes.2018.9.4.129>, 2018.
- Balthasar, U. and Cusack, M.: Aragonite-calcite seas – Quantifying the gray area, *Geology*, 43, 99–102, <https://doi.org/10.1130/G36293.1>, 2015.
- 1045 Barker, S., Greaves, M., and Elderfield, H.: A study of cleaning procedures used for foraminiferal Mg/Ca paleothermometry, *Geochem. Geophys. Geosyst.*, 4, 8407, <https://doi.org/10.1029/2003GC000559>, 2003.
- Behrends, B., Hertweck, G., Liebezeit, G., and Goodfriend, G.: Earliest Holocene occurrence of the soft-shell clam, *Mya arenaria*, in the Greifswalder Bodden, Southern Baltic, *Mar. Geol.*, 216, 79–82, <https://doi.org/10.1016/j.margeo.2005.01.002>, 2005.
- 1050 Beldowski, J., Löffler, A., Schneider, B., and Joensuu, L.: Distribution and biogeochemical control of total CO₂ and total alkalinity in the Baltic Sea, *J. Mar. Syst.*, 81, 252–259, <https://doi.org/10.1016/j.jmarsys.2009.12.020>, 2010.
- Bellotto, V. R. and Miekeley, N.: Trace metals in mussel shells and corresponding soft tissue samples: A validation experiment for the use of *Perna perna* shells in pollution monitoring, *Anal. Bioanal. Chem.*, 389, 769–776, <https://doi.org/10.1007/s00216-007-1420-y>, 2007.
- 1055 Bendell-Young, L. I., Thomas, C. A., and Stecko, J. P.: Contrasting the geochemistry of oxic sediments across ecosystems: a synthesis, *Appl. Geochem.*, 17, 1563–1582, 2002.
- Bentov, S. and Erez, J.: Novel observations on biomineralization processes in foraminifera and implications for Mg/Ca ratio in the shells, *Geology*, 33, 841, <https://doi.org/10.1130/G21800.1>, 2005.
- 1060 Blackmore, G. and Wang, W. X.: Uptake and efflux of Cd and Zn by the green mussel *Perna viridis* after metal preexposure, *Environ. Sci. Technol.*, 36, 989–995, <https://doi.org/10.1021/es0155534>, 2002.
- Bornhold, B. D. and Milliman, J. D.: Generic and environmental control of carbonate mineralogy in Serpulid (Polychaete) Tubes, *J. Geol.*, 81, 363–373, <https://doi.org/10.1086/627876>, 1973.

— usunięto: 1

— sformatowano: Czcionka: Kursywa

— usunięto: .

- Bourget, E.: Barnacle shells: composition, structure and growth, in: Barnacle biology, edited by: Southward, A.J., A.A.Balkema, Rotterdam, The Netherlands, 267–285, <https://doi.org/10.1201/9781315138053-14> 1987.
- Bourget, F.: Environmental and structural control of trace elements in barnacle shells, *Mar. Biol.*, 28, 27–36, <https://doi.org/10.1007/BF00389114>, 1974.
- 1070 Brannon, A. C. and Rao, K. R.: Barium, strontium and calcium levels in the exoskeleton, hepatopancreas and abdominal muscle of the grass shrimp, *Palaemonetes pugio*: Relation to molting and exposure to barite, *Comp. Biochem. Physiol. Part A Physiol.*, 63, 261–274, [https://doi.org/10.1016/0300-9629\(79\)90158-0](https://doi.org/10.1016/0300-9629(79)90158-0), 1979.
- Bulnheim, H. P. and Gosling, E.: Population genetic structure of mussels from the Baltic Sea, *Helgoländer Meeresunters.*, 42, 113–129, <https://doi.org/10.1007/BF02364207>, 1988.
- 1075 Cai, W. J., Hu, X., Huang, W. J., Jiang, L. Q., Wang, Y., Peng, T. H., and Zhang, X.: Alkalinity distribution in the western North Atlantic Ocean margins, *J. Geophys. Res.*, 115(C8), C08014, <https://doi.org/10.1029/2009JC005482>, 2010.
- Cairns, S. D. and Macintyre, I. G.: Phylogenetic implications of calcium carbonate mineralogy in the Stylasteridae (Cnidaria: Hydrozoa), *Sediment. Geol.*, 7, 96–107, <https://doi.org/10.2307/3514799>, 1992.
- 1080 Carpenter, J. and Kyger, C.: Sr/Mg ratios of modern marine calcite: Empirical indicators of ocean chemistry and precipitation rate, *Geochim. Cosmochim. Acta*, 56, 1837–1849, [https://doi.org/10.1016/0016-7037\(92\)90314-9](https://doi.org/10.1016/0016-7037(92)90314-9), 1992.
- Carré, M., Bentaleb, I., Bruguière, O., Ordinola, E., Barrett, N. T., and Fontugne, M.: Calcification rate influence on trace element concentrations in aragonitic bivalve shells: Evidences and mechanisms, *Geochim. Cosmochim. Acta*, 70, 4906–4920, <https://doi.org/10.1016/j.gca.2006.07.019>, 2006.
- 1085 Casella, L. A., Griesshaber, E., Yin, X., Ziegler, A., Mavromatis, V., Müller, D., Ritter, A. C., Hippler, D., Harper, E. M., Dietzel, M., and Immenhauser, A.: Experimental diagenesis: insights into aragonite to calcite transformation of *Arctica islandica* shells by hydrothermal treatment, *Biogeosciences*, 14, 1461–1492, <https://doi.org/10.5194/bg-14-1461-2017>, 2017.
- 1090 Catsiki, V. A., Katsilieri, C., and Gialamas, V.: Chromium distribution in benthic species from a gulf receiving tannery wastes (Gulf of Geras – Lesbos island, Greece), *Sci. Total Environ.*, 145, 173–185, [https://doi.org/10.1016/0048-9697\(94\)90308-5](https://doi.org/10.1016/0048-9697(94)90308-5), 1994.
- Cohen, A. L. and McConnaughey, T. A.: Geochemical perspectives on coral mineralization, *Rev. Mineral. Geochem.*, 354, 151–187, <https://doi.org/10.2113/0540151>, 2003.
- 1095 Cubadda, F., Superiore, I., Conti, M. E., Cubadda, F., Enrique, M., and Campanella, L.: Size-dependent concentrations of trace metals in four Mediterranean gastropods, *Chemosphere*, 45, 561–569, [https://doi.org/10.1016/S0045-6535\(01\)00013-3](https://doi.org/10.1016/S0045-6535(01)00013-3), 2001.
- Cusack, M. and Freer, A.: Biomineralization: elemental and organic influence in carbonate systems, *Chem. Rev.*, 108, 4433–4454, <https://doi.org/10.1021/cr078270o>, 2008.
- 1100 Cyberski, J., Grześ, M., Gurty-Korycka, M., Nachlik, E., and Kundziewicz, W. W.: History of floods on the River Vistula, *Hydrol. Sci. J.*, 51, 799–817, <https://doi.org/10.1623/hysj.51.5.799>, 2006.
- Dalbeck, P.: Crystallography, stable isotope and trace element analysis of *Mytilus edulis* shells in the context of ontogeny, Ph.D. thesis, University of Glasgow, 235 pp., 2008.

- 1105 Damrat, M., Zaborska, A., and Zajęczkowski, M.: Sedimentation from suspension and sediment accumulation rate in the Vistula River prodelta, Gulf of Gdańsk (Baltic Sea), *Oceanologia*, 55, 937–950, <https://doi.org/10.5697/oc.55-4.937>, 2013.
- Davis, K. J., Dove, P. M., and De Yoreo, J. J.: The role of Mg^{2+} as an impurity in calcite growth, *Science*, 290, 1134–1138, <https://doi.org/10.1126/science.290.5494.1134>, 2000.
- 1110 de Boer, R. B.: Stability of Mg-Ca carbonates, *Geochim. Cosmochim. Acta*, 41, 265–270, [https://doi.org/10.1016/0016-7037\(77\)90234-4](https://doi.org/10.1016/0016-7037(77)90234-4), 1977.
- De Choudens-Sanchez, V. and Gonzalez, L. A.: Calcite and aragonite precipitation under controlled instantaneous supersaturation: elucidating the role of $CaCO_3$ saturation state and Mg/Ca ratio on calcium carbonate polymorphism, *J. Sediment. Res.*, 79, 363–376, <https://doi.org/10.2110/jsr.2009.043>, 2009.
- 1115 Dickson, J. A. D.: Echinoderm skeletal preservation; calcite-aragonite seas and the Mg/Ca ratio of Phanerozoic oceans, *J. Sediment. Res.*, 74, 355–365, <https://doi.org/10.1306/112203740355>, 2004.
- Dodd, J. R. and Crisp, E. L.: Non-linear variation with salinity of Sr/Ca and Mg/Ca ratios in water and aragonitic bivalve shells and implications for paleosalinity studies, *Paleogeogr., Paleoclimatol., Paleocol.*, 38, 45–56, 1982.
- Dove, P. M.: The rise of skeletal biominerals, *Elements*, 6(1), 37–42, <https://doi.org/10.2113/gselements.6.1.37>, 2010.
- 1120 Elder, J. F. and Collins, J.: Freshwater molluscs as indicators of bioavailability and toxicity of metals in surface-water systems, in: *Reviews of Environmental Contamination and Toxicology (Reviews of Environmental Contamination and Toxicology, vol 122)*, edited by: Ware, G.W., Springer, New York, USA, 37–69, https://doi.org/10.1007/978-1-4612-3198-1_2, 1991.
- Elderfield, H. and Ganssen, G.: Past temperature and $\delta^{18}O$ of surface ocean waters inferred from foraminiferal Mg/Ca ratios, *Nature*, 405, 442–445, <https://doi.org/10.1038/35013033>, 2000.
- 1125 Findlater, G., Shelton, A., Rolin, T., and Andrews, J.: Sodium and strontium in mollusc shells: Preservation, palaeosalinity and palaeotemperature of the Middle Pleistocene of eastern England, *Proc. Geol. Assoc.*, 125, 14–19, <https://doi.org/10.1016/j.pgeola.2013.10.005>, 2014.
- Findlay, H. S., Tyrrell, T., Bellerby, R. G. J., Merico, A., and Skjelvan, I.: Carbon and nutrient mixed layer dynamics in the Norwegian Sea, *Biogeosciences*, 5, 1395–1410, <https://doi.org/10.5194/bg-5-1395-2008>, 2008.
- 1130 Freitas, P., Clarke, L. J., Kennedy, H., Richardson, C., and Abrantes, F.: Mg/Ca, Sr/Ca, and stable-isotope ($\delta^{18}O$ and $\delta^{13}C$) ratio profiles from the fan mussel *Pinna nobilis*: Seasonal records and temperature relationships, *Geochem., Geophys. Geosyst.*, 6, Q04D14, <https://doi.org/10.1029/2004GC000872>, 2005.
- Freitas, P. S., Clarke, L. J., Kennedy, H., Richardson, C. A., and Abrantes, F.: Environmental and biological controls on elemental (Mg/Ca, Sr/Ca and Mn/Ca) ratios in shells of the king scallop *Pecten maximus*, *Geochim. Cosmochim. Acta*, 70, 5119–5133, <https://doi.org/10.1016/j.gca.2006.07.029>, 2006.
- 1135 Friel, D. D. and Tsien, R. W.: Voltage-gated calcium channels: Direct observation of the anomalous mole fraction effect at the single-channel level, *Proc. Natl. Acad. Sci. U. S. A.*, 86, 5207–5211, <https://doi.org/10.1073/pnas.86.13.5207>, 1989.
- 1140 Fritioff, A., Kautsky, L., and Greger, M.: Influence of temperature and salinity on heavy metal uptake by submersed plants, *Environ. Pollut.*, 133, 265–274, <https://doi.org/10.1016/j.envpol.2004.05.036>, 2005.
- Gillikin, D. P.: *Geochemistry of Marine Bivalve Shells: the potential for paleoenvironmental reconstruction*, Ph.D. thesis, Vrije Universiteit Brussel, 258 pp., 2005.

- 1145 Gillikin, D. P., Dehairs, F., Baeyens, W., Navez, J., Lorrain, A., and Andre, L.: Inter- and intra-annual variations of Pb/Ca ratios in clam shells (*Mercenaria mercenaria*): A record of anthropogenic lead pollution?, *Mar. Pollut. Bull.*, 50, 1530–1540, <https://doi.org/10.1016/j.marpolbul.2005.06.020>, 2005a.
- Gillikin, D. P., Lorrain, A., Navez, J., Taylor, J. W., Andre, L., Keppens, E., Baeyens, W., and Dehairs, F.: Strong biological controls on Sr/Ca ratios in aragonitic marine bivalve shells, *Geochem. Geophys. Geosyst.*, 6, Q05009, <https://doi.org/10.1029/2004GC000874>, 2005b.
- 1150 Gillikin, D. P., Dehairs, F., Lorrain, A., Steenmans, D., Baeyens, W., and André, L.: Barium uptake into the shells of the common mussel (*Mytilus edulis*) and the potential for estuarine paleo-chemistry reconstruction, *Geochim. Cosmochim. Acta*, 70, 395–407, <https://doi.org/10.1016/j.gca.2005.09.015>, 2006.
- Glasby, G. P. and Szefer, P.: Marine pollution in Gdansk Bay, Puck Bay and the Vistula Lagoon, Poland: An overview, *Sci. Total Environ.*, 212, 49–57, [https://doi.org/10.1016/S0048-9697\(97\)00333-1](https://doi.org/10.1016/S0048-9697(97)00333-1), 1998.
- 1155 Glasby, G. P., Szefer, P., Geldon, J., and Warzocha, J.: Heavy-metal pollution of sediments from Szczecin Lagoon and the Gdansk Basin, Poland, *Sci. Total Environ.*, 330, 249–269, <https://doi.org/10.1016/j.scitotenv.2004.04.004>, 2004.
- Gofas, S.: *Mytilus trossulus* Gould, 1850, MolluscaBase [online] Available from: <http://www.marinespecies.org/aphia.php?p=taxdetails&id=140482> (Accessed 6 February 2017), 2004.
- 1160 Góral, M., Szefer, P., Ciesielski, T., and Warzocha, J.: Distribution and relationships of trace metals in the isopod *Saduria entomon* and adjacent bottom sediments in the southern Baltic, *J. Environ. Monit.*, 11, 1875–1882, <https://doi.org/10.1039/b900366e>, 2009.
- Gordon, C., Carr, R., and Larson, R.: Influence of environmental factors on the sodium and manganese content of barnacle shells, *Limnol. Oceanogr.*, 15, 461–466, 1970.
- 1165 Heinemann, A., Fietzke, J., Eisenhauer, A., and Zumholz, K.: Modification of Ca isotope and trace metal composition of the major matrices involved in shell formation of *Mytilus edulis*, *Geochem. Geophys. Geosyst.*, 9, Q01006, <https://doi.org/10.1029/2007GC001777>, 2008.
- Heinemann, A., Hiebenthal, C., Fietzke, J., Eisenhauer, A., and Wahl, M.: Disentangling the biological and environmental control of *M. edulis* shell chemistry, *Geochem. Geophys. Geosyst.*, 12, Q03009, <https://doi.org/10.1029/2010GC003340>, 2011.
- 1170 Hiddink, J. G., Marijnissen, S. A., Troost, K., and Wolff, W. J.: Predation on 0-group and older year classes of the bivalve *Macoma balthica*: interaction of size selection and intertidal distribution of epibenthic predators, *J. Exp. Mar. Bio. Ecol.*, 269, 223–248, [https://doi.org/10.1016/S0022-0981\(02\)00002-3](https://doi.org/10.1016/S0022-0981(02)00002-3), 2002.
- Holcomb, M., DeCarlo, T.M., Schoepf, V., Dissard, D., Tanaka, K., and McCulloch, M.: Cleaning and pre-treatment procedures for biogenic and synthetic calcium carbonate powders for determination of elemental and boron isotopic compositions, *Chem. Geol.*, 398, 11–21, <https://doi.org/10.1016/j.chemgeo.2015.01.019>, 2015.
- 1175 Iglukowska, A., Beldowski, J., Chelchowski, M., Chierici, M., Kedra, M., Przytarska, J., Sowa, A., and Kuklinski, P.: Chemical composition of two mineralogically contrasting Arctic bivalves' shells and their relationships to environmental variables, *Mar. Pollut. Bull.*, 114, 903–916, <https://doi.org/10.1016/j.marpolbul.2016.10.071>, 2016.
- 1180 Iglukowska, A., Ronowicz, M., Humphreys-Williams, E., and Kukliński, P.: Trace element accumulation in the shell of the Arctic cirriped *Balanus balanus*, *Hydrobiologia*, 818, 43–56, <https://doi.org/10.1007/s10750-018-3564-5>, 2018.

[Imai, N., Terashima, S., Itoh, S. and Ando, A.: Compilation of analytical data on nine GSJ geochemical reference](#)

- 185 [samples. Sedimentary rock series, Geostand. Newsl., 20\(2\), 165–216, https://doi.org/10.1111/j.1751-908X.1996.tb00184.x, 1996.](https://doi.org/10.1111/j.1751-908X.1996.tb00184.x)
- Inoue, M., Nohara, M., Okai, T., Suzuki, A., and Kawahata, H.: Concentrations of trace elements in carbonate reference materials Coral JcP-1 and Giant Clam JcT-1 by inductively coupled plasma-mass spectrometry. *Geostand. Geoanal. Res.* 28, 411–416, <https://doi.org/10.1111/j.1751-908X.2004.tb00759.x>, 2004.
- 1190 Janssen, H. H. and Scholtz, N.: Uptake and cellular distribution of cadmium in *Mytilus edulis*, *Mar. Biol.*, 55, 133–141, <https://doi.org/10.1007/BF00397309>, 1979.
- Jelnes, J. E., Petersen, G. H., and Russell, P. C.: Isoenzyme taxonomy applied on four species of *Cardium* from Danish and British waters with a short description of the distribution of the species (*Bivalvia*), *Ophelia*, 9, 15–19, <https://doi.org/10.1080/00785326.1971.10430087>, 1971.
- 1195 Kawahata, H., Fujita, K., Iguchi, A., Inoue, M., Iwasaki, S., Kuroyanagi, A., Maeda, A., Manaka, T., Moriya, K., Takagi, H., Toyofuku, T., Yoshimura, T., and Suzuki, A.: Perspective on the response of marine calcifiers to global warming and ocean acidification—Behavior of corals and foraminifera in a high CO₂ world “hot house”, *Prog. Earth Planet. Sci.*, 6, 5, <https://doi.org/10.1186/s40645-018-0239-9>, 2019.
- Kerckhof, F.: Barnacles (Cirripedia, Balanomorphia) in Belgian waters, an overview of the species and recent evolutions, with emphasis on exotic species, *Bull. Inst. Roy. Sci. Nat. Belg., Biol.*, 72(Suppl.), 93–104, 2002.
- 1200 Khim, B., Krantz, D. E., Cooper, L. W., and Grebmeie, J. M.: Seasonal discharge of estuarine freshwater to the western Chukchi Sea shelf identified in stable isotope profiles of mollusk shells, *J. Geophys. Res. Ocean.*, 108(C9), 3300, <https://doi.org/10.1029/2003JC001816>, 2003.
- Kim, G., Alleman, L. Y., and Church, T. M.: Accumulation records of radionuclides and trace metals in two contrasting Delaware salt marshes, *Mar. Chem.*, 87, 87–96, <https://doi.org/10.1016/j.marchem.2004.02.002>, 2004.
- 1205 Klein, R. T., Lohmann, K. C., and Thayer, C. W.: Sr/Ca and ¹³C/¹²C ratios in skeletal calcite of *Mytilus trossulus*: Covariation with metabolic rate, salinity, and carbon isotopic composition of seawater, *Geochim. Cosmochim. Acta*, 60, 4207–4221, [https://doi.org/https://doi.org/10.1016/S0016-7037\(96\)00232-3](https://doi.org/https://doi.org/10.1016/S0016-7037(96)00232-3), 1996.
- Kruk-Dowgiało, L. and Dubrawski, R.: The state of environment of the Gulf of Gdańsk coastal zone in autumn 1994 and summer 1995, *Oceanol. Stud.*, 27(4), 137–159, 1998.
- 1210 Kruk-Dowgiało, L. and Szaniawska, A.: Gulf of Gdańsk and Puck Bay, in: *Ecology of Baltic Coastal Waters*, edited by: Schiewer, U., Springer, Berlin, Heidelberg, Germany, 139–165, https://doi.org/10.1007/978-3-540-73524-3_7, 2008.
- Kuklinski, P. and Taylor, P. D.: Mineralogy of Arctic bryozoan skeletons in a global context, *Facies*, 55, 489–500, <https://doi.org/10.1007/s10347-009-0179-3>, 2009.
- 1215 Larsson, J., Lind, E. E., Corell, H., Grahn, M., Smolarz, K., and Lönn, M.: Regional genetic differentiation in the blue mussel from the Baltic Sea area, *Estuar. Coast. Shelf Sci.*, 195, 98–109, <https://doi.org/10.1016/j.ecss.2016.06.016>, 2017.
- Lauringson, V., Kotta, J., Orav-Kotta, H., and Kaljurand, K.: Diet of mussels *Mytilus trossulus* and *Dreissena polymorpha* in a brackish nontidal environment, *Mar. Ecol.*, 35(Suppl. 1), 56–66, <https://doi.org/10.1111/maec.12120>, 2014.
- 1220 Lazareth, C. E., Vander Putten, E., André, L., and Dehairs, F.: High-resolution trace element profiles in shells of the mangrove bivalve *Isoognomon ephippium*: A record of environmental spatio-temporal variations?, *Estuar. Coast. Shelf Sci.*, 57, 1103–1114, [https://doi.org/10.1016/S0272-7714\(03\)00013-1](https://doi.org/10.1016/S0272-7714(03)00013-1), 2003.

— usunięto: -

- 1225 Lee, B. G., Wallace, W. G., and Luoma, S. N.: Uptake and loss kinetics of Cd, Cr and Zn in the bivalves *Potamocorbula amurensis* and *Macoma balthica*: effects of size and salinity, *Mar. Ecol. Prog. Ser.*, 175, 177–189, <https://doi.org/10.3354/meps175177>, 1998.
- Lee, J. and Morse, J. W.: Influences of alkalinity and pCO₂ on CaCO₃ nucleation from estimated Cretaceous composition seawater representative of “calcite seas”, *Geology*, 38, 115–118, <https://doi.org/10.1130/G30537.1>, 2010.
- 1230 Lingard, S. M., Evans, R. D., and Bourgoin, B. P.: Method for the estimation of organic-bound and crystal-bound metal concentrations in bivalve shells, *Bull. Environ. Contam. Toxicol.*, 48, 179–184, <https://doi.org/10.1007/BF00194369>, 1992.
- Lorens, R. B., Bender, M. L., and Island, R.: The impact of solution chemistry on *Mytilus edulis* calcite and aragonite, *Geochim. Cosmochim. Acta*, 44, 1265–1278, [https://doi.org/10.1016/0016-7037\(80\)90087-3](https://doi.org/10.1016/0016-7037(80)90087-3), 1980.
- 1235 Lowenstam, H. A. and Weiner, S.: *On Biomineralization*, Oxford University Press, New York, 1989.
- Loxton, J., Kuklinski, P., Barnes, D., Najorka, J., Spencer Jones, M., and Porter, J.: Variability of Mg-calcite in Antarctic bryozoan skeletons across spatial scales, *Mar. Ecol. Prog. Ser.*, 507, 169–180, <https://doi.org/10.3354/meps10826>, 2014.
- 1240 Loxton, J., Najorka, J., Humphreys-Williams, E., Kuklinski, P., Smith, A. M., Porter, J. S., Spencer Jones, M.: The forgotten variable: Impact of cleaning on the skeletal composition of a marine invertebrate, *Chem. Geol.*, 474, 45–57, <https://doi.org/10.1016/j.chemgeo.2017.10.022>, 2017.
- Luoma, S. N. and Rainbow, P. S.: *Metal Contamination in Aquatic environments: Science and Lateral Management*, Cambridge University Press, Cambridge, UK, 2008.
- 1245 Mannella, G., Zanchetta, G., Regattieri, E., Perchiazzi, N., Drysdale, R. N., Giaccio, B., Leng, M. J., and Wagneret, B.: Effects of organic removal techniques prior to carbonate stable isotope analysis of lacustrine marls: A case study from palaeo-lake Fucino (central Italy). *Rapid Commun. Mass Spectrom.*, 34, e8623, <https://doi.org/10.1002/rcm.8623>, 2020.
- Marchitto, T. M., Jones, G. A., Goodfriend, G. A., and Christopher, R. W.: Precise temporal correlation of Holocene mollusk shells using sclerochronology, *Quat. Res.*, 53, 236–246, <https://doi.org/10.1006/qres.1999.2107>, 2000.
- 1250 Marin, F. and Luquet, G.: Molluscan shell proteins, *Compt. Rend. Palevol*, 3, 469–492, <https://doi.org/10.1016/j.crpv.2004.07.009>, 2004.
- 1255 Martincic, D., Kwokal, Z., Peharec, Z., Margus, D., and Branica, M.: Distribution of Zn, Pb, Cd and Cu between seawater and transplanted mussels (*Mytilus galloprovincialis*), *Sci. Total Environ.*, 119, 211–230, [https://doi.org/10.1016/0048-9697\(92\)90265-T](https://doi.org/10.1016/0048-9697(92)90265-T), 1992.
- Milliman, J. D.: *Recent Sedimentary Carbonates. Part 1. Marine Carbonates*, Springer, Berlin, Heidelberg, Germany, 1974.
- 1260 Mititelu, M., Ionitã, C., Ionitã, E., Neacșu, S. M., Amzoiu, E., Averis, L. M. E., and Moroșan, E.: Detection of heavy metals from molluscs shells, *Ann. Univ. Craiova – Agric. Mont. Cadastre Ser.*, 44, 163–166, 2014.
- Morse, J. W., Wang, Q., and Tsio, M. Y.: Influences of temperature and Mg:Ca ratio on CaCO₃ precipitates from seawater, *Geology*, 25, 85–87, [https://doi.org/10.1130/0091-7613\(1997\)025<0085:IOTAMC>2.3.CO;2](https://doi.org/10.1130/0091-7613(1997)025<0085:IOTAMC>2.3.CO;2), 1997.
- Morse, J. W., Arvidson, R. S., and Lüttge, A.: Calcium carbonate formation and dissolution, *Chem. Rev.*, 107, 342–381, [https://doi.org/10.1016/0166-445X\(82\)90002-9](https://doi.org/10.1016/0166-445X(82)90002-9), 2007.

— usunięto: Markulin, K., Peharda, M., Mertz-Kraus, R., Schöne, B. R., Uvanović, H., Kovač, Z., and Janeković, I.: Trace and minor element records in aragonitic bivalve shells as environmental proxies, *Chem. Geol.*, 507, 120–133, <https://doi.org/10.1016/j.chemgeo.2019.01.008>, 2019.

- 1270 Newman, M. C. and Unger, M. A.: Uptake, biotransformation, detoxification, elimination, and accumulation, in: Fundamentals of Ecotoxicology, 2nd edn., CRC Press, Boca Raton, Florida, USA, 53–73, 2003.
- De Nooijer, L. J., Spero, H. J., Erez, J., Bijma, J., and Reichart, G. J.: Biomineralization in perforate foraminifera, Earth-Science Rev., 135, 48–58, <https://doi.org/10.1016/j.earscirev.2014.03.013>, 2014.
- 1275 Pierscieniak, K., Grzymala, J., Wołowicz, M., Pierscieniak, K., Grzymala, J., and Wołowicz, M.: Differences in reproduction and condition of *Macoma balthica* and *Mytilus trossulus* in the Gulf of Gdansk (Southern Baltic Sea) under anthropogenic influences, Oceanol. Hydrobiol. Stud., 39(4), 17–32, <https://doi.org/10.2478/v10009-010-0054-0>, 2010.
- Pilkey, O. H. and Harris, R. C.: The effect of intertidal environment on the composition of calcareous skeletal material, Limnol. Oceanogr., 11, 381–385, <https://doi.org/10.4319/lo.1966.11.3.0381>, 1966.
- 1280 Piwoni-Piórewicz, A., Kukliński, P., Strekopytov, S., Humphreys-Williams, E., Najorka, J., and Iglukowska, A.: Size effect on the mineralogy and chemistry of *Mytilus trossulus* shells from the southern Baltic Sea: implications for environmental monitoring, Environ. Monit. Assess., 189, 197, <https://doi.org/10.1007/s10661-017-5901-y>, 2017.
- Pokroy, B., Fitch, A. N., Marin, F., Kapon, M., Adir, N., and Zolotoyabko, E.: Anisotropic lattice distortions in biogenic calcite induced by intra-crystalline organic molecules, J. Struct. Biol., 155, 96–103, <https://doi.org/10.1016/j.jsb.2006.03.008>, 2006.
- 1285 Ponnurangam, A., Bau, M., Brenner, M., and Koschinsky, A.: Mussel shells of *Mytilus edulis* as bioarchives of the distribution of rare earth elements and yttrium in seawater and the potential impact of pH and temperature on their partitioning behavior, Biogeosciences, 13, 751–760, <https://doi.org/10.5194/bg-13-751-2016>, 2016.
- 1290 Ponnurangam, A.: Trace Elements in Mussel Shells as potential Tools for Environmental Reconstructions, Ph.D. thesis, Jacobs University, 2018.
- Poulain, C., Gillikin, D. P., Thébaud, J., Munaron, J. M., Bohn, M., Robert, R., Paulet, Y. M., and Lorrain, A.: An evaluation of Mg/Ca, Sr/Ca, and Ba/Ca ratios as environmental proxies in aragonite bivalve shells, Chem. Geol., 396, 42–50, <https://doi.org/10.1016/j.chemgeo.2014.12.019>, 2015.
- 1295 Price, G. D. and Pearce, N. J. G.: Biomonitoring of pollution by *Cerastoderma edule* from the British Isles: A laser ablation ICP-MS study, Mar. Pollut. Bull., 34, 1025–1031, [https://doi.org/10.1016/S0025-326X\(97\)00098-2](https://doi.org/10.1016/S0025-326X(97)00098-2), 1997.
- Protasowicki, M., Dural, M., and Jaremek, J.: Trace metals in the shells of blue mussels (*Mytilus edulis*) from the Poland coast of Baltic sea, Environ. Monit. Assess., 141, 329–337, <https://doi.org/10.1007/s10661-007-9899-4>, 2008.
- 1300 Pruszek, Z., van Ninh, P., Szymtkiewicz, M., Hung, N. M., and Ostrowski, R.: Hydrology and morphology of two river mouth regions (temperate Vistula Delta and subtropical Red River Delta), Oceanologia, 47(3), 365–385, 2005.
- Pruyters, P. A., de Lange, G. J., and Middelburg, J. J.: Geochemistry of eastern Mediterranean sediments: Primary sediment composition and diagenetic alterations, Mar. Geol., 100, 137–154, [https://doi.org/10.1016/0025-3227\(91\)90230-2](https://doi.org/10.1016/0025-3227(91)90230-2), 1991.
- 1305 Puente, X., Villares, R., Carral, E., and Carballeira, A.: Nacreous shell of *Mytilus galloprovincialis* as a biomonitor of heavy metal pollution in Galiza (NW Spain), Sci. Total Environ., 183, 205–211, [https://doi.org/10.1016/0048-9697\(96\)05066-8](https://doi.org/10.1016/0048-9697(96)05066-8), 1996.

- 1310 Putnis, A.: An Introduction to Mineral Sciences, Cambridge University Press, Cambridge, UK, 1992.
- Rainbow, P. S.: Physiology, physicochemistry and metal uptake—A crustacean perspective, *Mar. Pollut. Bull.*, 31, 55–59, [https://doi.org/10.1016/0025-326X\(95\)00005-8](https://doi.org/10.1016/0025-326X(95)00005-8), 1995.
- Rainbow, P. S.: Phylogeny of trace metal accumulation in crustaceans, in: *Metal Metabolism in Aquatic Environments*, edited by: Langston, W. J. and Bebianno, M. J., Springer, Dordrecht, The Netherlands, 285–319, 1315 https://doi.org/10.1007/978-1-4757-2761-6_9, 1998.
- Rainbow, P. S.: Trace metal concentrations in aquatic invertebrates: why and so what?, *Environ. Pollut.*, 120, 497–507, [https://doi.org/10.1016/S0269-7491\(02\)00238-5](https://doi.org/10.1016/S0269-7491(02)00238-5), 2002.
- Rainbow, P. S. and Phillips, D. J. H.: Cosmopolitan biomonitors of trace metals, *Mar. Pollut. Bull.*, 26, 593–601, [https://doi.org/10.1016/0025-326X\(93\)90497-8](https://doi.org/10.1016/0025-326X(93)90497-8), 1993.
- 1320 Rainbow, P. S. and Wang, W.: Comparative assimilation of Cd, Cr, Se, and Zn by the barnacle, *Mar. Ecol. Prog. Ser.*, 218, 239–248, <https://doi.org/10.3354/meps218239>, 2001.
- Rainbow, P. S., Amiard-Triquet, C., Amiard, J. C., Smith, B. D., Best, S. L., Nassiri, Y., and Langston, W. J.: Trace metal uptake rates in crustaceans (amphipods and crabs) from coastal sites in NW Europe differentially enriched with trace metals, *Mar. Ecol. Prog. Ser.*, 183, 189–203, <https://doi.org/10.3354/meps183189>, 1999.
- 1325 Rainbow, P. S., Wolowicz, M., Fialkowski, W., Smith, B. D., and Sokolowski, A.: Biomonitoring of trace metals in the Gulf of Gdansk, using mussels (*Mytilus trossulus*) and barnacles (*Balanus improvisus*), *Water Res.*, 34, 1823–1829, [https://doi.org/10.1016/S0043-1354\(99\)00345-0](https://doi.org/10.1016/S0043-1354(99)00345-0), 2000.
- Rainbow, P. S., Fialkowski, W., Sokolowski, A., Smith, B. D., and Wolowicz, M.: Geographical and seasonal variation of trace metal bioavailabilities in the Gulf of Gdansk, Baltic Sea using mussels (*Mytilus trossulus*) and barnacles (*Balanus improvisus*) as biomonitors, *Mar. Biol.*, 144, 271–286, <https://doi.org/10.1007/s00227-003-1197-2>, 2004.
- Raman, S. and Kumar, R.: Construction and nanomechanical properties of the exoskeleton of the barnacle, *Amphibalanus reticulatus*, *J. Struct. Biol.*, 176, 360–369, <https://doi.org/10.1016/j.jsb.2011.08.015>, 2011.
- Reeder, R. J.: Crystal chemistry of the rhombohedral carbonates, *Rev. Mineral.*, 11, 1–47, 1983.
- 1335 Ricardo, F., Génio, L., Costa Leal, M., Albuquerque, R., Queiroga, H., Rosa, R., and Calado, R.: Trace element fingerprinting of cockle (*Cerastoderma edule*) shells can reveal harvesting location in adjacent areas, *Sci. Rep.*, 5, 11932, <https://doi.org/10.1038/srep11932>, 2015.
- Ritz, D. A., Swain, R., and Elliott, N. G.: Use of the mussel *Mytilus edulis planulatus* (Lamarck) in monitoring heavy metal levels in seawater, *Mar. Freshw. Res.*, 33, 491–506, <https://doi.org/10.1071/MF9820491>, 1982.
- 1340 Rodland, D. L., Schöne, B. R., Helama, S., Nielsen, J. K., and Baier, S.: A clockwork mollusc: Ultradian rhythms in bivalve activity revealed by digital photography, *J. Exp. Mar. Biol. Ecol.*, 334, 316–323, <https://doi.org/10.1016/j.jembe.2006.02.012>, 2006.
- Roger, L. M., George, A. D., Shaw, J., Hart, R. D., Roberts, M., Becker, T., McDonald, B.J., and Evans, N.J.: Geochemical and microstructural characterisation of two species of cool-water bivalves (*Fulvia tenuicostata* and *Soletellina biradiata*) from Western Australia, *Biogeosciences*, 14, 1721–1737. <https://doi.org/10.5194/bg-14-1721-2017>, 2017.
- 1345 Rončević, S., Svedružić, L. P., Smetiško, J., and Medaković, D.: ICP-AES analysis of metal content in shell of mussel *Mytilus galloprovincialis* from croatian coastal waters, *Int. J. Environ. Anal. Chem.*, 90, 620–632, <https://doi.org/10.1080/03067310903410956>, 2010.

- 1350 Rosenberg, G. D. and Hughes, W. W.: A metabolic model for the determination of shell composition in the bivalve mollusc, *Mytilus edulis*, *Lethaia*, 24, 83–96, <https://doi.org/10.1111/j.1502-3931.1991.tb01182.x>, 1991.
- Rosenberg, G. D., Hughes, W. W., Parker, D. L., and Ray, B. D.: The geometry of bivalve shell chemistry and mantle metabolism, *Am. Malacol. Bull.*, 16, 251–261, 2001.
- Rosenheim, B. E., Swart, P. K., Thorrold, S. R., Willenz, P., Berry, L., and Latkoczy, C.: High-resolution Sr/Ca records in sclerosponges calibrated to temperature in situ, *Geology*, 32, 145–148, <https://doi.org/10.1130/G20117.1>, 2004.
- Rueda, J. L. and Smaal, A. C.: Variation of the physiological energetics of the bivalve *Spisula subtruncata* (da Costa, 1778) within an annual cycle, *J. Exp. Mar. Bio. Ecol.*, 301, 141–157, <https://doi.org/10.1016/j.jembe.2003.09.018>, 2004.
- 1360 Saavedra, Y., Gonzalez, A., Fernandez, P., and Blanco, J.: The effect of size on trace metal levels in raft cultivated mussels (*Mytilus galloprovincialis*), *Sci. Total Environ.*, 318, 115–124, [https://doi.org/10.1016/S0048-9697\(03\)00402-9](https://doi.org/10.1016/S0048-9697(03)00402-9), 2004.
- Sartori, A. F. and Gofas, S.: *Macoma balthica* (Linnaeus, 1758), MolluscaBase [online] Available from: <http://www.marinespecies.org/aphia.php?p=taxdetails&id=141579> (Accessed 5 February 2018), 2016.
- 1365 Sather, W. A. and McCleskey, E. W.: Permeation and selectivity in calcium channels, *Annu. Rev. Physiol.*, 65, 133–159, <https://doi.org/10.1146/annurev.physiol.65.092101.142345>, 2003.
- Schöne, B. R. and Krause, R. A., Jr.: Retrospective environmental biomonitoring – Mussel Watch expanded, *Glob. Planet. Change*, 144, 228–251, <https://doi.org/10.1016/j.gloplacha.2016.08.002>, 2016.
- Schöne, B. R., Zhang, Z., Jacob, D., Gillikin, D. P., Tütken, T., Garbe-Schönberg, D., McConnaughey, T., and Soldati, A.: Effect of organic matrices on the determination of the trace element chemistry (Mg, Sr, Mg/Ca, Sr/Ca) of aragonitic bivalve shells (*Arctica islandica*) – Comparison of ICP-OES and LA-ICP-MS data, *Geochem. J.*, 44, 23–37, <https://doi.org/10.2343/geochemj.1.0045>, 2010.
- 1375 Schöne, B. R., Zhang, Z., Radermacher, P., Thébault, J., Jacob, D. E., Nunn, E. V., and Maurer, A.: Sr/Ca and Mg/Ca ratios of ontogenetically old, long-lived bivalve shells (*Arctica islandica*) and their function as paleotemperature proxies, *Palaeogeogr. Palaeoclimatol. Palaeoecol.*, 302, 52–64, <https://doi.org/j.palaeo.2010.03.016>, 2011.
- Skinner, L. C. and Elderfield, H.: Constraining ecological and biological bias in planktonic foraminiferal Mg/Ca and $\delta^{18}\text{O}_{\text{cc}}$: A multispecies approach to proxy calibration testing, *Paleoceanography*, 20, PA1015, <https://doi.org/10.1029/2004PA001058>, 2005.
- 1380 Smith, A. M. and Girvan, E.: Understanding a bimineralic bryozoan: Skeletal structure and carbonate mineralogy of *Odontionella cyclops* (Foveolariidae: Cheilostomata: Bryozoa) in New Zealand, *Palaeogeogr. Palaeoclimatol. Palaeoecol.*, 289, 113–122, <https://doi.org/10.1016/j.palaeo.2010.02.022>, 2010.
- Smith, A. M., Nelson, C. S., and Spencer, H. G.: Skeletal carbonate mineralogy of New Zealand bryozoans, *Mar. Geol.*, 151, 27–46, [https://doi.org/10.1016/S0025-3227\(98\)00055-3](https://doi.org/10.1016/S0025-3227(98)00055-3), 1998.
- 1385 Smith, A. M., Key, M. M., and Gordon, D. P.: Skeletal mineralogy of bryozoans: Taxonomic and temporal patterns, *Earth Sci. Rev.*, 78, 287–306, <https://doi.org/10.1016/j.earscirev.2006.06.001>, 2006.
- Sokolowski, A., Wolowicz, M., and Hummel, H.: Distribution of dissolved and labile particulate trace metals in the overlying bottom water in the Vistula River plume (southern Baltic Sea), *Mar. Pollut. Bull.*, 42, 967–980, 2001.

– usunięto: -

- 1390 Staniszewska, M., Nehring, I., and Mudrak-Cegiołka, S.: Changes of concentrations and possibility of accumulation of bisphenol A and alkylphenols, depending on biomass and composition, in zooplankton of the Southern Baltic (Gulf of Gdansk), *Environ. Pollut.*, 213, 489–501, <https://doi.org/10.1016/j.envpol.2016.03.004>, 2016.
- Stanley, S. M.: Effects of global seawater chemistry on biomineralization: past, present, and future. *Chem. rev.*, 108(11), 4483–4498, <https://doi.org/10.1021/cr800233u>, 2008.
- 1395 Stecher, H. A., Krantz, D. E., Lord, C. J., Luther, G. W., and Bock, K. W.: Profiles of strontium and barium in *Mercenaria mercenaria* and *Spisula solidissima* shells, *Geochim. Cosmochim. Acta*, 60, 3445–3456, [https://doi.org/10.1016/0016-7037\(96\)00179-2](https://doi.org/10.1016/0016-7037(96)00179-2), 1996.
- Strasser, M., Walensky, M., and Reise, K.: Juvenile-adult distribution of the bivalve *Mya arenaria* on intertidal flats in the Wadden Sea: why are there so few year classes?, *Helgol. Mar. Res.*, 33, 45–55, <https://doi.org/10.1007/PL00012137>, 1999.
- 1400 Strasser, C. A., Mullineaux, L. S., and Walther, B. D.: Growth rate and age effects on *Mya arenaria* shell chemistry: Implications for biogeochemical studies, *J. Exp. Mar. Bio. Ecol.*, 355, 153–163, <https://doi.org/10.1016/j.jembe.2007.12.022>, 2008.
- 1405 Strelkopytov, S.V., Uspenskaya, T.Y., Vinogradova, E.L., and Dubinin, A.V. Geochemistry of early diagenesis of sediments of Kandalaksha Bay of the White Sea, *Geochem. Int.*, 43, 117–130.
- Strelkov, P., Nikula, R., and Väinölä, R.: *Macoma balthica* in the White and Barents Seas: properties of a widespread marine hybrid swarm (Mollusca: Bivalvia), *Mol. Ecol.*, 16, 4110–4127, <https://doi.org/10.1111/j.1365-294X.2007.03463.x>, 2007.
- 1410 Sugawara, A. and Kato, T.: Aragonite CaCO₃ thin-film formation by cooperation of Mg²⁺ and organic polymer matrices, *Chem. Commun.*, 6, 487–488, <https://doi.org/10.1039/A909566G>, 2000.
- Sunagawa, I., Takahashi, Y., and Imai, H.: Strontium and aragonite-calcite precipitation, *J. Mineral. Petrol. Sci.*, 102, 174–181, <https://doi.org/10.2465/jmps.060327a>, 2007.
- Szefer, P.: Metal pollutants and radionuclides in the Baltic Sea – an overview, *Oceanologia*, 44, 129–178, 2002.
- 1415 Szefer, P. and Grembecka, M.: Chemometric assessment of chemical element distribution in bottom sediments of the southern Baltic sea including Vistula and Szczecin Lagoons – An overview, *Polish J. Environ. Stud.*, 18, 25–34, 2009.
- Szefer, P. and Szefer, K.: Occurrence of ten metals in *Mytilus edulis* L. and *Cardium glaucum* L. from the Gdańsk Bay, *Mar. Pollut. Bull.*, 16(11), 446–450, [https://doi.org/10.1016/0025-326X\(85\)90415-1](https://doi.org/10.1016/0025-326X(85)90415-1), 1985.
- 1420 Szefer, P., Kusak, A., Szefer, K., Jankowska, H., Wołowicz, M., and Ali, A. A.: Distribution of selected metals in sediment cores of Puck Bay, Baltic Sea, *Mar. Pollut. Bull.*, 30, 615–618, [https://doi.org/10.1016/0025-326X\(95\)00079-3](https://doi.org/10.1016/0025-326X(95)00079-3), 1995.
- Szefer, P., Szefer, K., Glasby, G. P., Pempkowiak, J., and Kaliszan, R.: Heavy-metal pollution in surficial sediments from the Southern Baltic sea off Poland, *J. Environ. Sci. Health A Environ. Sci. Eng. Toxicol.*, 31, 2723–2754, <https://doi.org/10.1080/10934529609376520>, 1996.
- 1425 Szefer, P., Glasby, G. P., Kusak, A., Szefer, K., Jankowska, H., Wołowicz, M., and Ali, A. A.: Evaluation of the anthropogenic influx of metallic pollutants into Puck Bay, southern Baltic, *Appl. Geochemistry*, 13, 293–304, [https://doi.org/10.1016/S0883-2927\(97\)00098-X](https://doi.org/10.1016/S0883-2927(97)00098-X), 1998.

— usunięto: -

- 1430 Szefer, P., Frelek, K., Szefer, K., Lee, C. B., Kim, B. S., Warzocha, J., Zdrojewska, I., and Ciesielski, T.: Distribution and relationships of trace metals in soft tissue, byssus and shells of *Mytilus edulis trossulus* from the southern Baltic, *Environ. Pollut.*, 120, 423–444, [https://doi.org/10.1016/S0269-7491\(02\)00111-2](https://doi.org/10.1016/S0269-7491(02)00111-2), 2002.
- Szumiło-Pilarska, E., Grajewska, A., Falkowska, L., and Hajdrych, J.: Species differences in total mercury concentration in gulls from the Gulf of Gdansk (Southern Baltic), *J. Trace Elem. Med. Biol.*, 33, 100–109, <https://doi.org/10.1016/j.jtemb.2015.09.005>, 2016.
- 1435 Takesue, R. K. and van Geen, A.: Mg/Ca, Sr/Ca, and stable isotopes in modern and Holocene *Protothaca staminea* shells from a northern California coastal upwelling region, *Geochim. Cosmochim. Acta*, 68, 3845–3861, <https://doi.org/10.1016/j.gca.2004.03.021>, 2004.
- Takesue, R. K., Bacon, C. R., and Thompson, J. K.: Influences of organic matter and calcification rate on trace elements in aragonitic estuarine bivalve shells, *Geochim. Cosmochim. Acta*, 72, 5431–5445, <https://doi.org/10.1016/j.gca.2008.09.003>, 2008.
- 1440 Taylor, J. D. and Reid, D. G.: Shell microstructure and mineralogy of the Littorinidae: ecological and evolutionary significance, in: *Progress in Littorinid and Muricid Biology (Proceedings of the Second European Meeting on Littorinid Biology, Tjärnö Marine Biological Laboratory, Sweden, July 4–8, 1988)*, edited by: Johannesson, K., Raffaelli, D. G., and Hannaford Ellis, C. J., Kluwer, Dordrecht, The Netherlands, 199–215, https://doi.org/10.1007/978-94-009-0563-4_16, 1990.
- 1445 Taylor, P. D., James, N. P., Bone, Y., Kuklinski, P., Kyser, T. K., Taylor, P. D., James, N. P., Bone, Y., Kuklinski, P., and Kyser, T. K.: Evolving mineralogy of cheilostome bryozoans, *Palaios*, 24, 440–452, <https://doi.org/10.2110/palo.2008.p08-124r>, 2008.
- 1450 Taylor, P. D., Kudryavtsev, U. A. B., and Schopf, J. W.: Calcite and aragonite distributions in the skeletons of bimineralic bryozoans as revealed by Raman spectroscopy, *Invertebr. Biol.*, 127, 87–97, <https://doi.org/10.1111/j.1744-7410.2007.00106.x>, 2014.
- Tessier, A., Campbell, P. G. C., and Bisson, M.: Sequential extraction procedure for the speciation of particulate trace metals, *Anal. Chem.*, 51, 844–851, <https://doi.org/10.1021/ac50043a017>, 1979.
- 1455 Thébault, J., Chauvaud, L., Helguen, L., Clavier, J., and Pe, C.: Barium and molybdenum records in bivalve shells : Geochemical proxies for phytoplankton dynamics in coastal environments ?, *Limnol. Oceanogr.*, 54, 1002–1014, <https://doi.org/10.4319/lo.2009.54.3.1002>, 2009.
- Thomas, C. A. and Bendell-Young, L. I.: Linking the sediment geochemistry of an intertidal region to metal bioavailability in the deposit feeder *Macoma balthica*, *Mar. Ecol. Prog. Ser.*, 173, 197–213, <https://doi.org/10.3354/meps173197>, 1998.
- 1460 Ullmann, C. V., Gale, A. S., Huggett, J., Wray, D., Frei, R., Korte, C., Broom-Fendley, S., Littler, K., and Hesselbo, S. P.: The geochemistry of modern calcareous barnacle shells and applications for palaeoenvironmental studies, *Geochim. Cosmochim. Acta*, 243, 149–168, <https://doi.org/10.1016/j.gca.2018.09.010>, 2018.
- Urban-Malinga, B., Warzocha, J., and Zalewski, M.: Effects of the invasive polychaete *Marenzelleria* spp. on benthic processes and meiobenthos of a species-poor brackish system, *J. Sea Res.*, 80, 25–34, <https://doi.org/10.1016/j.seares.2013.02.005>, 2013.
- 1465 Urey, H. C., Lowenstam, H. A., Epstein, S., and McKinney, C. R.: Measurement of paleotemperatures and temperatures of the Upper Cretaceous of England, Denmark, and the southeastern United States, *Geol. Soc. Am. Bull.*, 62, 399–416, [https://doi.org/10.1130/0016-7606\(1951\)62\[399:MOPATO\]2.0.CO;2](https://doi.org/10.1130/0016-7606(1951)62[399:MOPATO]2.0.CO;2), 1951.

- 1470 Uścińowicz, S. (Ed.): *Geochemia osadów powierzchniowych Morza Bałtyckiego*, Państwowy Instytut Geologiczny – Państwowy Instytut Badawczy, Warszawa, 2011.
- Vander Putten, E., Dehairs, F., Keppens, E., and Baeyens, W.: High resolution distribution of trace elements in the calcite shell layer of modern *Mytilus edulis*: environmental and biological controls, *Geochim. Cosmochim. Acta*, 64, 997–1011, [https://doi.org/10.1016/S0016-7037\(99\)00380-4](https://doi.org/10.1016/S0016-7037(99)00380-4), 2000.
- 1475 Waldbusser, G. G., Hales, B., and Haley, B. A.: Calcium carbonate saturation state: on myths and this or that stories, *ICES J. Mar. Sci.*, 73, 563–568, <https://doi.org/10.1093/icesjms/fsv174>, 2016.
- Walls, R. A., Ragland, P. C., and Crisp, E. L.: Experimental and natural early diagenetic mobility of Sr and Mg in biogenic carbonates, *Geochim. Cosmochim. Acta*, 41, 1731–1737, [https://doi.org/10.1016/0016-7037\(77\)90204-6](https://doi.org/10.1016/0016-7037(77)90204-6), 1977.
- 1480 Wang, W. and Fisher, N. S.: Modeling the influence of body size on trace element accumulation in the mussel *Mytilus edulis*, *Mar. Ecol. Prog. Ser.*, 161, 103–115, <https://doi.org/10.3354/meps161103>, 1997.
- Wang, Y. and Xu, H.: Prediction of trace metal partitioning between minerals and aqueous solutions: a linear free energy correlation approach, *Geochim. Cosmochim. Acta*, 65, 1529–1543, [https://doi.org/10.1016/S0016-7037\(01\)00551-8](https://doi.org/10.1016/S0016-7037(01)00551-8), 2001.
- 1485 Warter, V., Erez, J., and Müller, W.: Environmental and physiological controls on daily trace element incorporation in *Tridacna crocea* from combined laboratory culturing and ultra-high resolution LA-ICP-MS analysis, *Palaeogeogr. Palaeoclimatol. Palaeoecol.*, 496, 32–47, 2018.
- Watson, D., Foster, P., and Walker, G.: Barnacle shells as biomonitoring material, *Mar. Pollut. Bull.*, 31, 111–115, [https://doi.org/10.1016/0025-326X\(95\)00021-E](https://doi.org/10.1016/0025-326X(95)00021-E), 1995.
- 1490 Watson, S. A., Peck, L. S., Tyler, P. A., Southgate, P. C., Tan, K. S., Day, R. W., and Morley, S. A.: Marine invertebrate skeleton size varies with latitude, temperature and carbonate saturation: Implications for global change and ocean acidification, *Glob. Chang. Biol.*, 18, 3026–3038, <https://doi.org/10.1111/j.1365-2486.2012.02755.x>, 2012.
- Weidema, I. R. (Ed.): *Introduced Species in the Nordic Countries*, Nordic Council of Ministers, Copenhagen, 2000.
- 1495 Weiner, S. and Dove, P. M.: An overview of biomineralization processes and the problem of the vital effect, *Rev. Mineral. Geochem.*, 54, 1–29, <https://doi.org/10.2113/0540001>, 2001.
- Wenne, R., Bach, L., Zbawicka, M., Strand, J., and McDonald, J. H.: A first report on coexistence and hybridization of *Mytilus trossulus* and *M. edulis* mussels in Greenland, *Polar Biol.*, 39, 343–355, <https://doi.org/10.1007/s00300-015-1785-x>, 2016.
- 1500 Wit, J. C., Nooijer, L. J. D., Wolthers, M., and Reichart, G. J.: A novel salinity proxy based on Na incorporation into foraminiferal calcite, *Biogeosciences*, 10, 6375–6387, <https://doi.org/10.5194/bg-10-6375-2013>, 2013.
- [Wolowicz, M. and Gouletquer, P.: The shell organic content in the energy budget of *Mytilus trossulus* from the South Baltic. *Haliotis*, 28, 1–10, 1999.](#)
- 1505 Zhang, G., He, L. S., Wong, Y. H., Xu, Y., Zhang, Y., and Qian, P. Y.: Chemical component and proteomic study of the *Amphibalanus* (= *Balanus*) *amphitrite* shell, *PLoS One*, 10(7), e0133866, <https://doi.org/10.1371/journal.pone.0133866>, 2015.

1510

Zhao, L., Schöne, B. R., and Mertz-Kraus, R.: Delineating the role of calcium in shell formation and elemental composition of *Corbicula fluminea* (Bivalvia), *Hydrobiologia*, 790, 259–272, <https://doi.org/10.1007/s10750-016-3037-7>, 2017.

Żmudziński, L.: Świat zwierzęcy Bałtyku – atlas makrofauny, WSiP, Warszawa., 1990.

Tables and Figures

Table 1. Details of the sampling locations. Temperature (T) and salinity were measured near the bottom during sample collection.

Station	Coordinates	Collected species	Depth (m)	T (°C)	Salinity	Sediment type ^a	Sampling date
				measured <i>in situ</i>			
GN	54°32'N 18°48'E	<i>Amphibalanus improvisus</i>	36	3.1	7.3	Sandy mud, silty sand	May 2013
GN	54°32'N 18°48'E	<i>Mytilus trossulus</i>	36	3.1	7.3	Sandy mud, silty sand	May 2013
M2	54°38'N 18°33'E	<i>Cerastoderma glaucum</i>	10	16.9	6.9	Sand	June 2014
MA	54°37'N 18°32'E	<i>Mya arenaria</i>	10	19.8	6.9	Sand	June 2014
MW	54°37'N 18°37'E	<i>Limecola balthica</i>	31	4.7	7.0	Fine sand, sandy mud, silty sand	June 2014

— sformatowano: Czcionka: Kursywa

1515

^a Based on Uścińowicz (2011)

Table 2. The range of shell sizes for each studied species within a given size class.

Species	Mineral type	Size classes (mm)				Maximum size in the Gulf of Gdańsk (mm) ^a
		I	II	III	IV	
<i>Amphibalanus improvisus</i>	Calcite	3–4	5–6	7–8	9–10	10
<i>Mytilus trossulus</i>	Bimineralic	6–15	16–25	26–35	36–44	50
<i>Cerastoderma glaucum</i>	Aragonite	4–8	9–12	12–16	16–20	27
<i>Mya arenaria</i>	Aragonite	10–20	20–30	30–40	40–49	70
<i>Limecola balthica</i>	Aragonite	4–7	8–11	12–15	15–18	24

^a Based on Żmudziński (1990)

1520

Table 3. Elemental concentrations in shells of studied organisms, presented in decreasing order of means for each species (SD = standard deviation *between all specimens of a species*).

— usunięto: , SE = standard error

Barnacle *Amphibalanus improvisus*: CALCITE

Element	Sample size	Mean conc.	SD	Weight ratio El/Ca	Molar ratio El/Ca
(El)	n	[$\mu\text{g g}^{-1}$]		[arbitrary]	[mmol/mol]
Ca	37	316,000	26,000	1	1
Mg	37	3,940	320	0.012	20.5
Na	37	2,850	470	0.009	15.7
Sr	37	2,250	190	0.007	3.3
Mn	37	625	160	1.978	1438.4
Ba	37	73.6	20.1	0.231	67.3
Cu	37	3.90	2.2	0.012	7.7
Pb	37	1.34	0.79	0.0042	0.82
V	36	0.47	0.156	0.0015	1.16
Y	37	0.21	0.12	0.0007	0.30
U	37	0.11	0.043	0.0003	0.06
Cd	37	0.06	0.02	0.0002	0.07

— usunięto: N

— usunięto: ±1

— usunięto:

Element	Sample size	Mean conc.	SD	Weight ratio El/Ca	Molar ratio El/Ca
(El)	n	[$\mu\text{g g}^{-1}$]		[arbitrary]	[mmol/mol]
Ca	40	348,000	16,000	1	1
Na	40	3,220	210	0.009	16.1
Sr	40	1,700	140	0.005	2.2
Mg	40	80	30	0.0002	0.4
Ba	40	15.0	10	0.043	12.6
Mn	40	11.9	10.5	0.034	24.9
Cu	40	4.08	6.29	0.012	7.3
Pb	34	0.14	0.1	0.0004	0.08
U	40	0.10	0.084	0.0003	0.05
Y	40	0.07	0.074	0.0002	0.09
V	37	0.07	0.061	0.0002	0.16
Cd	37	0.01	0.009	0.00003	0.01

— usunięto: N

— usunięto: ±1

— usunięto:

Element	Sample size	Mean conc.	SD	Weight ratio El/Ca	Molar ratio El/Ca
(El)	n	[$\mu\text{g g}^{-1}$]		[arbitrary]	[mmol/mol]
Ca	40	345,000	17,000	1	1
Na	40	3,100	300	0.009	15.6
Sr	40	1,770	210	0.005	2.3
Mg	40	80	30	0.0002	0.4
Ba	40	13	10	0.038	11.0
Mn	40	7.9	7.1	0.023	16.7
Cu	40	3.0	3.4	0.009	5.43
Pb	39	0.14	0.16	0.0004	0.08
Y	40	0.08	0.11	0.0002	0.10
V	35	0.04	0.031	0.0001	0.08

— usunięto: N

— usunięto: ±1

— usunięto:

Element	Sample size (n)	Mean conc. [$\mu\text{g g}^{-1}$]	SD	Weight ratio El/Ca [arbitrary]	Molar ratio El/Ca [mmol/mol]
U	40	0.03	0.024	0.0001	0.02
Cd	37	0.01	0.008	0.00002	0.01
Ca	40	363,000	18,159	1	1
Na	40	3,080	207	0.0085	14.8
Sr	40	2,160	280	0.0060	2.72
Mg	40	150	25	0.0004	0.68
Ba	40	2.60	1.6	0.00716	2.1
Mn	40	1.40	1	0.00386	2.8
Cu	40	0.031	0.024	0.00009	0.053
Y	40	0.020	0.018	0.00006	0.025
V	40	0.016	0.014	0.00004	0.035
Pb	40	0.015	0.014	0.00004	0.008
U	40	0.006	0.005	0.00002	0.003
Cd	37	0.002	0.003	0.00001	0.002

– usunięto: N

– usunięto: ± 1

– usunięto:

Element	Sample size (n)	Mean conc. [$\mu\text{g g}^{-1}$]	SD	Weight ratio El/Ca [arbitrary]	Molar ratio El/Ca [mmol/mol]
Ca	40	344,000	28,000	1	1
Na	21	2,010	310	0.006	10.2
Sr	41	1,170	100	0.003	1.6
Mg	40	1,060	170	0.003	5.1
Mn	35	54	15	0.157	114.16
Ba	38	17.0	6.7	0.049	14.40
Cu	40	14.0	10	0.041	25.44
Pb	32	1.00	1.4	0.003	0.56
V	40	0.78	0.52	0.002	1.78
Y	40	0.70	1.2	0.002	0.91
Cd	40	0.09	0.11	0.0003	0.09
U	40	0.05	0.033	0.0002	0.03

– usunięto: N

– usunięto: ± 1

– usunięto:

Table 4. Elemental concentrations in shells from different regions based on this study and literature data.

Element concentration in shell	Ca	Na	Sr	Mg	Mn	Ba	Cu	Pb	Cd	U
	[$\mu\text{g g}^{-1}$]				[$\mu\text{g g}^{-1}$]					
<i>Amphibalanus improvisus</i> ^a	316000	2850	2250	3940	625	73	3.90	1.34	0.11	0.06
<i>Balanus sp.</i> ^o		1600 –			80 –					
		5000			3800					
<i>Balanus sp.</i> ^z					39 –				0 –	
					313			<18.2	1.48	
<i>Balanus balanoides</i> ^d					77					

Sformatowana tabela

Sformatowano: Do lewej

Sformatowano: Do lewej

Sformatowano: Do lewej

Sformatowano: Do lewej

<i>Amphibalanus reticulatus</i> ^b				1000 – 2000																		Sformatowano: Do lewej		
<i>Cerastoderma glaucum</i> ^a	348000	3220	1700	80	11.9	15.0	4.08	0.140	0.011	0.096												Sformatowano: Do lewej		
<i>Cerastoderma glaucum</i> ^g	400000			280	26		0.16	17	0.015													Sformatowano: Do lewej		
<i>Cerastoderma edule</i> ^r								1.11 –		0.03 –												Sformatowano: Do lewej		
<i>Limicola balthica</i> ^a	345000	3100	1770	80	7.9	13.0	3.0	0.14	0.007	0.034												Sformatowano: Do lewej		
<i>Macoma (=Limecola) balthica</i> ^s								0.68														Sformatowano: Do lewej		
<i>Mya arenaria</i> ^a	363000	3080	2160	150	1.40	2.60	0.031	0.015	0.002	0.006												Sformatowano: Do lewej		
<i>Mya arenaria</i> ⁱ							9.5		0.05													Sformatowano: Do lewej		
<i>Mytilus trossulus</i> ^a	344000	2010	1170	1060	54	17	14	1	0.091	0.053												Sformatowano: Do lewej		
<i>Mytilus trossulus</i> ^j			1185																			Sformatowano: Do lewej		
<i>Mytilus trossulus</i> ^g	310000			1400	120		0.16	24	0.029													Sformatowano: Do lewej		
<i>Mytilus trossulus</i> ^g	420000			1700	90		<0.02	5.2	0.009													Sformatowano: Do lewej		
<i>Mytilus edulis</i> ^e			970	970	24.2	3.31	<dl	0.321		0.007												Sformatowano: Do lewej		
<i>Mytilus edulis</i> ^x			862	856	0.13	0.26	<dl	0.385		0.0009												Sformatowano: Do lewej		
<i>Mytilus edulis</i> ⁿ	398000																					Sformatowano: Do lewej		
<i>Mytilus galloprovincialis</i> ^v							9.54	1.19														Sformatowano: Do lewej		
<i>Mytilus galloprovincialis</i> ⁱ							10	7.3														Sformatowano: Do lewej		
<i>Mytilus galloprovincialis</i> ^b	360000	2500 – 4000	500 – 800	900 – 1400	<160	0 – 3.8	0 – 5.5	0 – 5.0	0 – 3.0													Sformatowano: Do lewej		
<i>Shell weight ratio element/Ca</i>		Na/Ca	Sr/Ca	Mg/Ca	Mn/Ca	Ba/Ca	Cu/Ca	Pb/Ca	Cd/Ca	U/Ca														
		[arbitrary]				[mg/g]																		
<i>Amphibalanus improvisus</i> ^a		0.012	0.009	0.007	1.978	0.231	0.012	0.0042	0.0003	0.0002													Sformatowano: Do lewej	
<i>Amphibalanus amphitrite</i> ^t			0.01																				Sformatowano: Do lewej	
<i>Balanus balanoides</i> ^u		0.009	0.009	0.01	0.0005																		Sformatowano: Do lewej	
<i>Balanus balanoides</i> ^u		0.010	0.007	0.01	0.001																		Sformatowano: Do lewej	
<i>Balanus balanoides</i> ^u		0.017	0.008	0.01	0.0003																		Sformatowano: Do lewej	
<i>Shell molar ratio element/Ca</i>		Na/Ca	Sr/Ca	Mg/Ca	Mn/Ca	Ba/Ca	Cu/Ca	Pb/Ca	Cd/Ca	U/Ca														
		[mmol/mol]				[μmol/mol]																		
<i>Amphibalanus improvisus</i> ^a		15.7	3.3	20.5	1438	67.3	7.71	0.82	0.070	0.057													Sformatowano: Do lewej	
<i>Amphibalanus improvisus</i> ^p			4.20	20.55	0.71																		Sformatowano: Do lewej	
<i>Balanus balanus</i> ^c		20.49	3.85	14.83	0.077	0.055																	Sformatowano: Do lewej	
<i>Mya arenaria</i> ^a		14.8	2.72	0.68	2.80	2.09	0.053	0.008	0.002	0.003													Sformatowano: Do lewej	
<i>Mya arenaria</i> ^m			2.1 –	1.0 –	0.06 –	1.7 –		0.002 –															Sformatowano: Do lewej	
<i>Mytilus trossulus</i> ^a			2.45	1.9	0.14	3.7		0.005															Sformatowano: Do lewej	
<i>Mytilus trossulus</i> ^a		10.16	1.55	5.07	114.16	14.40	25.44	0.56	0.094	0.026													Sformatowano: Do lewej	
<i>Mytilus edulis</i> ^w					40 – 190																		Sformatowano: Do lewej	
<i>Mytilus edulis</i> ^l			1.1 –	2.5 –																			Sformatowano: Do lewej	
<i>Mytilus edulis</i> ^f			1.6	6.0																			Sformatowano: Do lewej	
<i>Mytilus edulis</i> ^f			1.92	8.67																			Sformatowano: Do lewej	

<i>Mytilus edulis</i> ^k	1.34 – 1.5	5.1 – 7.86	13 – 35					
<i>Mytilus edulis</i> ⁿ	0.7 – 1.5	2.5 – 12.0	100 – 450	20 – 70	0.2 – 0.078	1.3 – 0.011		
<i>Cerastoderma glaucum</i> ^a	16.1	2.23	0.378	24.9	12.6	7.3	0.078	0.011
<i>Cerastoderma edule</i> ^y	1.6	1.5	20 – 60	15			0.01	0.046

Sformatowano: Do lewej

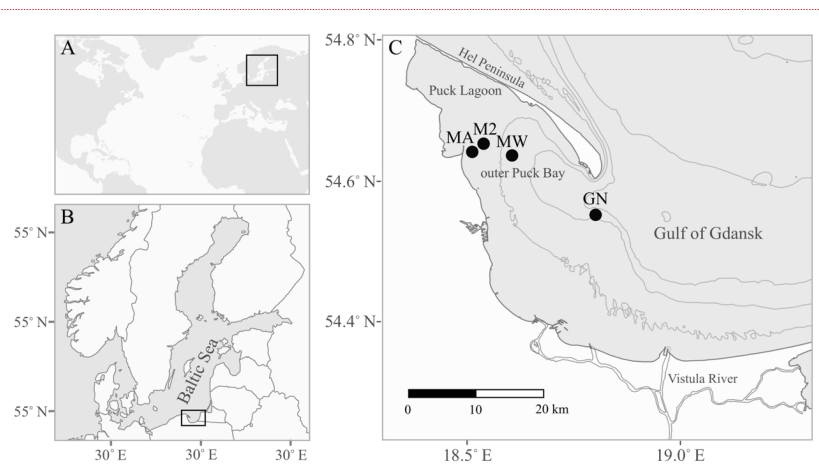
Sformatowano: Do lewej

Sformatowano: Do lewej

Sformatowano: Do lewej

1540 <dl – below the detection limit

1545 ^a Baltic Sea, Gulf of Gdańsk (this study), ^b Adriatic Sea, Croatia (Rončević et al., 2010), ^c Arctic (Iglukowska et al., 2018), ^d Atlantic, USA (Blanchard and Chasteen, 1976), ^e North Sea, Germany (Ponnurangam et al., 2018), ^f Baltic Sea, Germany (Heinemann et al., 2008), ^g Baltic Sea, Gulf of Gdańsk (Szefer and Szefer, 1985), ^h Bay of Bengal, India (Raman and Kumar, 2011), ⁱ Black Sea (Mititelu et al., 2014), ^j Canada (Klein et al., 1996), ^k Cultured (Freitas et al., 2009), ^l Cultured (Heinemann et al., 2011), ^m Cultured (Strasser et al., 2008), ⁿ Cultured (Vander Putten et al., 2000), ^o Cultured (Gordon et al., 1970), ^p Denmark (Ullmann et al., 2018), ^r England (Price and Pearce, 1997), ^s Canada, estuary (Thomas and Bendell-Young, 1998), ^t Hong Kong (Zhang et al., 2015), ^u Irish Sea, UK (Bourget, 1974), ^v Spain (Puente et al., 1996), ^w North Sea, UK (Freitas et al., 2016), ^x Portugal (Ponnurangam et al., 2018), ^y Portugal (Ricardo et al., 2015), ^z S-W coast of India (Ashraf et al., 2007)



1550 **Figure 2.** The location of the study area: the Baltic Sea (A) and the Gulf of Gdańsk (B) marked by black rectangles. Figure C shows the sampling stations as black circles (see Table 1 for station details). The grey lines indicate 20 m isobaths.

– usunięto: *

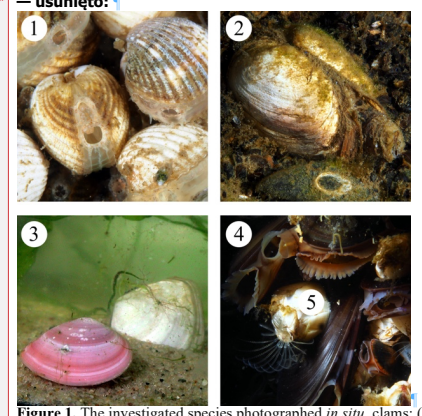


Figure 1. The investigated species photographed *in situ*, clams: (1) *Cerastoderma glaucum*, (2) *Mya arenaria*, and (3) *Limecola balthica*, mussels (4) *Mytilus trossulus* and barnacle (5) *Amphibalanus improvisus*.

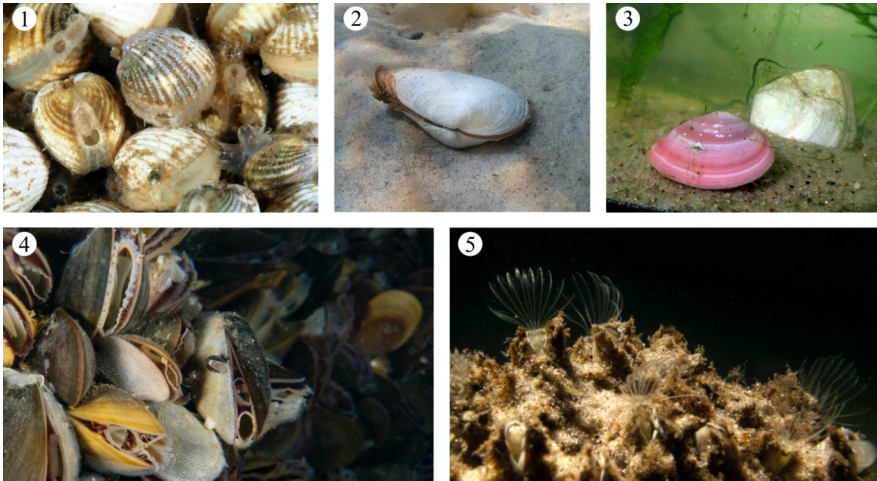


Figure 2. The investigated species photographed *in situ*. clams: (1) *Cerastoderma glaucum*, (2) *Mya arenaria*, and (3) *Limecola balthica*, mussels (4) *Mytilus trossulus* and barnacle (5) *Amphibalanus improvisus*.

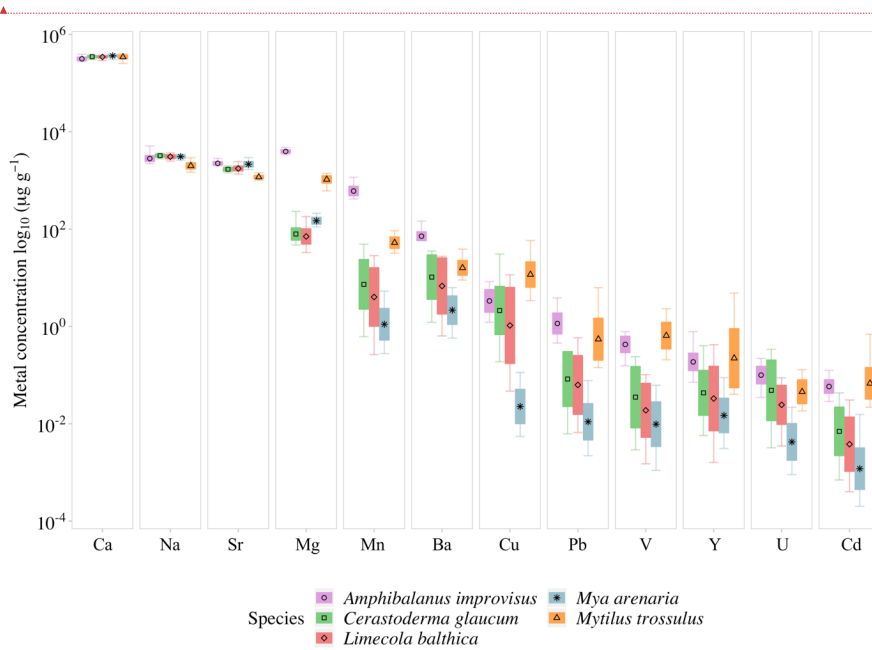


Figure 3. The distribution of logarithmically transformed mean elemental concentrations in shells of studied species (grouped by colour). The boxplots represent standard deviations ($\pm 1SD$) around means, and whiskers indicate the minimum and maximum concentrations for each studied species.

— sformatowano: Czcionka: 10 pkt, Nie Pogrubienie, Nie Kursywa

560

1565

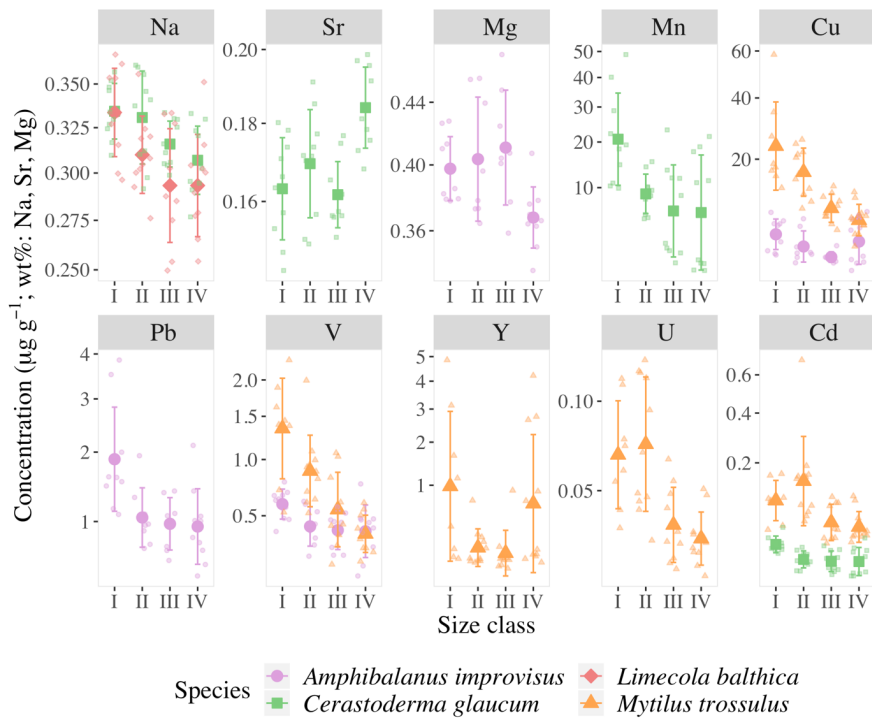
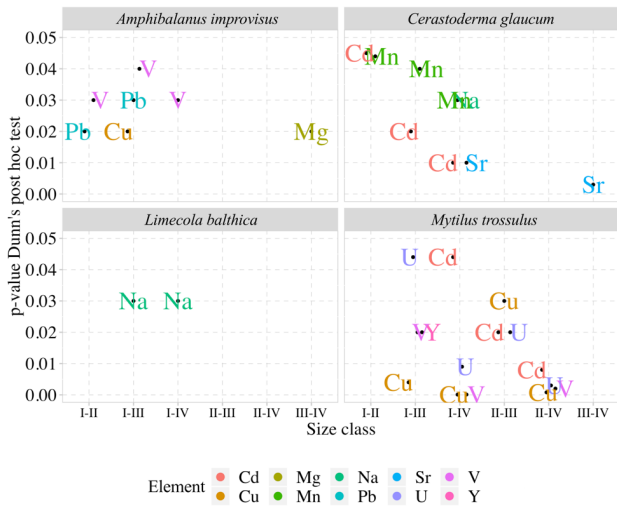


Figure 4. The mean concentrations of elements with statistically significant differences between the four size classes (for size class details see Table 2) in the shells of studied species, error bars indicate standard deviations ($\pm 1SD$). Concentrations of Mn, Cu, Pb, Cd, V and Y are presented in square root scale.

— usunięto: metals

Sformatowano: Normalny



1575 | **Figure 5.** Pairwise comparisons of elements in the shells of studied species with statistically significant differences ($p < 0.05$) between size classes (for size class details see Table 2).

— usunięto: metals