

Dear Silvio Pantoja,

We took into account the comments and suggestions for improvement provided by the two referees. We followed all comments and suggestions raised by Morgan Raven, except for the suggestion to perform additional sulphur analyses on the cysts from the Rhine Graben which is a good idea, indeed, but we consider beyond the scope of the paper.

From the comments by the first referee Jacob Vinther, we understand that we were not clear in what we think happened to the microfossils. We disagree to some extent with the comments and terminology in our case. We implemented the suggestion to better separate between intermolecular and intramolecular interactions. In our case, the former primarily adding molecules to the initial cyst biomacromolecule, the latter modifying the initial structure. Their added effects determine the modification from cyst bio- to geomolecule. To address these points we adapted the text to better elucidate these issues.

With respect to the oxygen exposure of the OM for the Kerguelen Plateau sample we added information on the depositional environment. Furthermore, we made more clearly where the differences lay between the cysts from the three samples: the modern analogue (published 2012), the Rhine graben (published 2007) and the Kerguelen Plateau (the new information). Our infrared, pyrolysis and thermochemolysis analyses are unanimous and support each other in that the molecular composition of the material from the Kerguelen Plateau differs less from the modern analogue than the material from the Rhine Graben - e.g. the former generates a carbohydrate signature upon thermochemolysis, the latter does not). On the basis of this evidence we conclude that the molecular preservation of the material preserved in the Kerguelen Plateau is better. Finally there seem to be different concepts (or possibly a semantic issue) with respect the use of 'kerogenisation' and polymerisation when applied to modification of biomacromolecules in a diagenetic context. To avoid these problems we rather refrain from using these as much as possible.

As a result of the suggestions by the reviewers the manuscript changed considerably in its organization and extension. The most relevant changes are that:

The abstract has been extended and more attention has been given to the different processes of oxic and anoxic modification of the cyst walls. In the introduction we added a section defining the terminology used and not-used and why (e.g. kerogenisation). We also added a section on the differences in preservation potential of different cysts and why we concentrated on the degradation resistant taxa.

The material and methods section was expanded by adding a more detailed account of the burial conditions and paleo-environment of the sited examined. We added a few lines on the FTIR method used and remeasuring and we added a section on the pyrolysis and thermally assisted chemolysis methodology used in Versteegh et al., 2007.

The results section was completely reorganized to account for the new results.

The discussion was also rewritten. First a better discussion is provided on the differences in preservation and pale-environment between the sites and the implications for the material and results. In 4.2. the spectra are discussed, their differences and the meaning thereof. Section 4.4. has been added discussing the influence of the presence or absence of oxygen is highlighted much more clearly on cyst structure at molecular level and placing the obtained insights in a much larger context addressing specifically also the influence of oxic and anoxic conditions.

The conclusions have been updated accordingly as has the (expanded) list of references.

Below you will find a detailed account of all the changes made and an explanation for those cases where we did not follow one of the reviewers. Furthermore, all changes are highlighted one by one in the annotated manuscript.

sincerely,

Gerard Versteegh

*Response to the interactive comment on “Better molecular preservation of organic matter in an oxic than in a sulphidic depositional environment: evidence from of *Thalassiphora pelagica* (Dinoflagellata, Eocene) cysts by Gerard J. M. Versteegh et al.”*

by **Morgan Raven (Referee)**

In this manuscript, the authors present a detailed characterization of dinoflagellate cyst walls that were deposited in oxic versus sulfidic sediments. This data directly inform a critical and timely knowledge gap, as they address the chemical mechanisms driving organic matter preservation as well as taphonomic issues. The dataset will be a significant contribution and I support its eventual publication in BGD. Before that point, however, I encourage the authors to significantly expand their discussion of the broader implications of their results, especially relating to selective biases in the fossil record and the importance of organic matter sulfurization versus other aspects of preservation under anoxic conditions.

We considerably expanded the manuscript taking these suggestions into account. However, we like to stress that the paper is not about the selective bias due to sulfurization alone. It rather highlights the differences in modification of refractory organic matter (dinosporin) between an aerobic and an anaerobic setting. To do this we present new information on the aerobic setting and add this to the published information already available for the anaerobic setting.

Specific notes:

Broadly speaking, many paragraphs would benefit from the addition of a clear concluding sentence, summarizing the main point or argument arising from the preceding results. [Such sentences have been added.](#)

Figure 2: One key thing the reader needs to assess here is whether the green line or the black line is more similar to the blue line, which is difficult to do in this arrangement. Consider rearranging your figure so the blue line is common among the sections. The common line also appears stretched at different scales, making it particularly difficult to cross compare the green vs blue lines. [We revised this figure completely and also remeasured spectra.](#)

Line 49 – Please revise this sentence: “in the absence of reactive Fe, which has the potential to outcompete organic molecules for reactive polysulfides and limit organic matter sulfurization”.

[Done](#)

Line 51 – , which [Done](#)

Line 69 –To broaden the accessibility of your results, provide a description of the key aspects of pelagica cyst composition here. Why is this organism relatively resistant to aerobic degradation, and what does that mean for the interpretation of your results? [We added a few lines on the aerobic and anaerobic degradation of dinoflagellate cysts. Since cysts sensitive to aerobic degradation degrade quickly \(Zonneveld et al., 2019 and references therein\) only resistant cysts remain in aerobic settings. The resistance means that we can do this comparison. In any other case, the cysts would be gone from the Kerguelen sample.](#)

Line 74 – I'm not sure what you mean by "the addition of carboxylic acids by early sulfurization of the cysts." To what molecule is the reduced sulfur being added? What is the source of the carboxylic acids? [Has been explained now.](#)

Line 83 – For both sites, please provide a description of the environment, including a summary of what is known about sedimentation rates. How do the burial ages of these samples differ? What other sedimentological differences exist between the sites? (e.g., clays vs biogenic silica, overall TOC, water depth etc). This information is critical to holistically assess the possible drivers of variation between the two sites. I would hope to see this section substantially expanded. [This section has been expanded now and a description of age, sedimentation rate, redox environment, TOC content and general environmental setting is now present.](#)

Line 85 –Please provide a complete description of the processing of the reducing cysts here. The 2007 paper is behind a paywall and not available to all of your readers. [Info has been added.](#)

Line 110 – Either write out the description of your conditions in sentences or use a table. [Done](#)

Line 112 – What internal standards were used to verify and track retention times? Were any of the identified compounds in your table 1 confirmed with authentic standards? Inclusion of such standards would significantly enhance confidence in the contents of Tables 1+2. [A mixture of n-alkane standards was used to calibrate the retention times. Over the years we produced a considerable library of compounds, spectra and relative retention times. During this period again and again, pyrolysis products were checked with internal standards \(such as n-alkanes, n-alcohols, n-carboxylic acids, a wide range of linear and cyclic isoprenoids, alkylated aromatics, carbohydrates, polycyclic aromatics. Identification is based this accumulated knowledge. We made this more clear in the text](#)

Line 114 – The paywall, again: please make your methods self-contained to this manuscript. [Information has been added](#)

Line 122 – I would find this information (band definitions, minima, etc) more useful in table format. A lot of your section 4.1.1 reads like results rather than discussion; consider moving that results interpretation up to this point. This will also allow your discussion section to focus on the exciting takeaways rather than more routine IDs. [We moved section 4.1.1. into the results section. As a result the former result section largely became obsolete and has been removed. We therefore also refrain from adding a table.](#)

Line 159 – marked absence of absorptions by CH₃ – this seems important and is highlighted in Figure 4, but the significance of this observation is not really discussed. What does this mean? [We elaborated more on this issue.](#)

Section 4.1.1 – Reads like results. [see reply to remark for line 122](#)

Line 204-207 – There are multiple sentences starting with "this" or "it" in this section, which makes it difficult to precisely follow the argument. Please revise for clarity. [Done.](#)

Line 205 – please revise sentence "and which for its absence in recent cysts we at- tribute" [Done](#)

Line 207 – What else is known about this rapid C=O addition phenomenon? What is the proposed mechanism? (It is an oxic phenomenon?) [We rephrased the sentence so that it is clear now this is an oxic mechanism.](#)

Line 213 – I like the way this is set up, and I agree chemical processes are likely dominant. But, there are also geological / sedimentological processes that may differ between the sites, most notably sedimentation rate and the composition of surrounding sediments. Please address these potential differences and explain why they do not explain the contrasts in cyst composition you observe. [A good point. We now provide a more thorough explanation of the geological settings and their implications.](#)

Line 218 – sentence: “Specifically, the Rhine Graben pelagica lack the absorption feature at 718cm⁻¹ and thus appear to lack long chains of algaenan, contrasting pelagica from the Kerguelan Plateau.” [Could not find this in the pdf](#)

Section 4.1.3 – Please add a concluding sentence to this section that summarizes your case for how FTIR spectra show that redox differences in the sedimentary environment are the key driver of differences in Figure 2. [We added a small concluding paragraph to what is now 4.2](#)

Line 213 “A further alteration in the same direction as the differences” is unclear. Please be as specific as possible about what observations you’re talking about. [The section has been rewritten](#)

Line 220 – sentence more like: “GC-MS results are consistent with the results of FTIR analyses, which suggest that differences in depositional environment are associated with differences in molecular structure” [OK, changed](#)

Line 225-227 – Please revise this sentence to clearly explain which group of alkanes were bound by which mechanism and where those pools ended up in your analytical flow. [Done](#)

Line 235 – define “it” (in “its presence”) their? [Done](#)

Line 239 – Consider driving home this point “sulfurization may thus eliminate/consume carbohydrate hydroxy groups from the cyst walls, leaving ___”. Indications for the molecular selectivity of sulfurization reactions seems like a significant aspect of your results - please discuss further. [In this case the text is about the oxidized cysts from the Kerguelen Plateau. Here the diagenetic processes presumably removed the hydroxyl groups of the carbohydrate, so that their methylation upon thermochemolysis with TMAH did not occur to such an extent.](#)

When you find that sulfurized materials are richer in long-chain aliphatics, what does that mean for the relative importance of carbohydrate vs. lipid sulfurization? [We do not think that we can draw a conclusion on this right away. The depositional environment of the Rhine Graben was such that large amounts of lipids must have reached the sea floor and were stored in the sediment. this kind of environment typically develops into a source rock for oil and gas. For the kerguelen plateau, these lipids have probably already been degraded during their transport through the oxic water column to the sediment floor.](#)

Line 240 – define which sample you are discussing in this paragraph. [Done](#)

Line 249 – don't stop! You've set up some really exciting observations (e.g., Fig. 8) and this feels as though their implications haven't been fully fleshed out yet. Please also clarify your final sentence – how exactly do you see aliphatic content fitting into the sulfurization story? [We added a paragraph just before the conclusions clarifying this in more detail.](#)

Can you say anything further about the signature of sulfurization in the geologic record? How cyst sulfurization would bias the interpretation of fossils? Which general categories of molecules would be most susceptible to alteration (e.g., carbohydrates, maybe lipids less so)? Many of these ideas seem to be hidden within the text but would benefit from being explicitly stated.

[We now discuss these questions in the manuscript.](#)

[The cyst sulphurisation is only apparent on molecular level, not visible at microscopic level and as such does not provide bias. Furthermore, the cysts belong intrinsically to the more refractory organic matter and the sulphurisation does not increase their preservation and therefore presence in the fossil record.](#)

[Our study does not provide an answer to the type of molecules that is most vulnerable to sulphurisation, it rather describes how the dinoflagellate cyst wall gets modified differently in different environments. The kind of interactions in both environments that are apparent are polymerization reactions with linear aliphatics, simply since these are not available in the initial biomacromolecule. We did implement answers to these questions in the revised manuscript.](#)

Finally, I would strongly advocate for the authors to include at least a rough quantification of the sulfur content of these samples, for example by combustion elemental analyzer or x-rays. Sulfur-to-carbon molar ratios would be extremely valuable for the identification of similar processes in other environments. Sulfur quantification would also allow you to assess to what extent sulfurization can explain the alteration of your bulk organic matter or whether some other aspect of a reducing environment might have been the main driver (for example, you could compare whether the sulfur addition is sufficient to account for the loss of hydroxyl functional groups that you observe.)

[We agree that it would be interesting to do these analyses. However, how interesting the questions that may be attacked we consider our non-quantitative study not suited to efficiently attack these questions and therefore the proposed analyses beyond the scope of this paper.](#)

*Reply to the interactive comment on “Better molecular preservation of organic matter in an oxic than in a sulphidic depositional environment: evidence from of *Thalassiphora pelagica* (Dinoflagellata, Eocene) cysts by Gerard J. M. Versteegh et al.”*

by **Jakob Vinther (Referee)**

The authors identify that samples in euxinic conditions have undergone substantial kerogenisation, while samples in 'oxic' settings have not.

Their argument that the oxic conditions are better seems apparently good on these premises. I would like to stress, though, that I am not certain about the premise of good preservation and also what constitute oxic environments.

I have two key issues:

1. Kerogenisation is not necessarily bad organic preservation. This may be a way to quench many labile organic molecules into larger macromolecules. What they mean is that the cysts have been overprinted by kerogenisation. This is not bad organic preservation per se, but not good if you want to look at the original composition of a microfossil.

We adapted the text to make a better distinction between intermolecular and intramolecular diagenetic processes accordingly to make clear what we do mean. We added a paragraph outlining that we consider better and worse molecular preservation, what we consider kerogenisation and polymerization as is explained also below:

As we mention in the text, kerogen has been defined as the sedimentary organic matter that is insoluble in common organic solvents (see Durand, B., 1980. Sedimentary organic matter and kerogen. Definition and quantitative importance of kerogen. In: Durand B., Kerogen : Insoluble Organic Matter from Sedimentary Rocks, Editions Technip, Paris 13-34). As such an organic microfossil fits in this definition of kerogen.

Kerogenisation is simply the process of diagenetic cross-linkage (see Butterfield, N. J., 1990. Organic preservation of non-mineralizing organisms and the taphonomy of the Burgess Shale. Paleobiology 16, 272-286). This cross linking may thus be intermolecular and intramolecular.

This definition of kerogenisation is too narrow for what we describe in the manuscript. We consider diagenetic change of the dinoflagellate cyst wall. This involves not only diagenetic cross linking (kerogenisation) but all kinds of structural changes, thus also e.g., modifying, adding and losing bonds and functional groups, changing stereochemistry.

We report on the extent to which the cyst biomacromolecule has been modified by different diagenetic regimes - indeed changes in the original structure of the microfossil biomacromolecule. In that perspective, each change away from the

original biomacromolecule is a decrease in its condition of preservation. We obtain insight in the degree of change through infrared spectroscopy, pyrolysis and thermochemolysis of the cysts and comparison with each other and an unaltered recent analogue. This shows that the cyst preserved in the environment that was subject to extensive aerobic OM mineralization underwent diagenetic changes which were different from the changes to the cysts preserved in the initially anaerobic setting. These changes not only involved diagenetic cross linkage but also addition and removal of functional groups. Unexpectedly, the cysts from the aerobic setting appear structurally more close to the recent analogue than the cysts preserved in the initially anaerobic setting. We do not mention or imply that the preservation is good or bad in an absolute sense, we only mention that the molecular structure of the cysts from the Kerguelen Plateau preserved better at molecular level than those from the Rhine Graben. And we find a reasonable explanation why this is so.

We revised the text such that this becomes more clear.

2. When the authors call the other deposit oxic I am not sure that this has been proven and in fact, I doubt it is fully oxic throughout. While it may be on the surface, almost all sediments switch to anoxic conditions quickly in the subsurface. Dinoflagellates are robust and survive initial oxic decay under almost any circumstances contrary to most other tissues. This is the reason why exceptional Konservat Lagerstätten are notoriously anoxic environments. But, this does not mean that oxic environments may not preserve extremely stable and recalcitrant biomolecules such as dinoflagellates and pollen as it will switch to anoxic conditions a few centimeters below the sediment- water interface.

We agree, we were not clear about this issue. We explain this more clearly now. The depositional setting has been oxic and considered to be an open oceanic setting with low sedimentation rate and carbon lean sediments. Oxygen penetration must have been more than a few centimeters. The oxygen exposure time must have been long and organic matter mineralization extensive. Considering the marine environment, probably the most common state is that the sediments are oxic beyond a few cm from the surface. With oceanic sedimentation rates this accounts easily for centuries to millennia of aerobic degradation which considering the low OM input from above produces OM poor oozes. In large parts of the Pacific oxygen penetration reaches even decimeters to meters below the sediment surface and even may reach the basement. Only in upwelling and shelf regions, mostly near the continental margins, this may be different but also here, bioturbation often significantly extends the oxygen exposure time of the sedimentary organic matter.

In conclusion. I would like the authors to nuance in their abstract, title and throughout the distinction between kerogenisation and in situ polymerisation with respect to preservation without it. Finally, I don't think that the dichotomy between 'euxinic' and 'oxic' is true given that sediments quickly become anoxic soon after deposition and dinoflagellates would survive the initial oxic conditions that would have been existing in the subsurface.

We elucidated that kerogenisation is diagenetic crosslinking as is in situ polymerization. The difference lies in the word polymer. A biopolymer is macromolecule that exists of repeating units of relatively simple molecules (biological monomers). In contrast to synthetic polymers small variations between the monomers are allowed (e.g. DNA, polypeptides, polysaccharides). We do not make this distinction for the above-mentioned reasons.

With respect to the preservation of organic-walled dinoflagellates there is a very strong difference in preservation potential between the different groups of dinoflagellates, with the most labile cyst types degrading under suboxic conditions and the most refractory cysts hardly degrading after millennia oxygen exposure (for a recent overview see

Zonneveld, K. A. F. Gray, D. D. Kuhn, G. and Versteegh, G. J. M., 2019. Postdepositional aerobic and anaerobic particulate organic matter degradation succession reflected by dinoflagellate cysts: The Madeira Abyssal Plain revisited. *Marine Geology* 408, 87-109).

We deliberately analysed a degradation resistant cyst species to avoid the problem that the species would have been entirely mineralized in the Kerguelen Plateau sediments. Therefore, I would focus on the nature of kerogenisation and how this complicates investigation of original biosignatures endogenous to a microfossil. Describe and discuss kerogenisation and therefore how an investigation of tissues in euxinic settings need to evaluate degrees of kerogenisation before doing other chemical analyses, such as isotope composition or more superficial chemical analyses, such as FTIR, RAMAN, TOF SIMS or similar, as they would characterise a mixed bag of molecules. This, I think, would make for an interesting comparison and a study I would find useful.

We would like to point out that this paper is not primarily on what happens with organic matter in euxenic settings and that we did FTIR.

Best wishes,

Gerard Versteegh

Better molecular preservation of organic matter in an oxic than in a sulphidic depositional environment: evidence from of *Thalassiphora pelagica* (Dinoflagellata, Eocene) cysts.

Gerard J. M. Versteegh^{1,2}, Alexander J. P. Houben^{3,4}, Karin A.F. Zonneveld²

¹Heisenberg Group Marine Kerogen, Marum Research Faculty, Universität Bremen, Bremen, D-28359, Germany.

² Micropaleontology Group, Division Marine Palynology, Marum Research Faculty, Universität Bremen, Bremen, D-28359, Germany.

³Geological Survey of the Netherlands, TNO, Utrecht, 3548 CB, The Netherlands.

⁴Marine Palynology and Palaeoceanography, Faculty of Geosciences, Utrecht University, Budapestlaan 4, 3584 CD Utrecht, The Netherlands.

Correspondence to: Gerard J. M. Versteegh (versteeg@uni-bremen.de)

Abstract.

Anoxic sediments as compared to oxic settings encompass a much higher proportion of relatively labile and thus more reactive organic matter, naturally giving rise to structural changes of the organic molecules themselves, as well as cross-linking between them (e.g. through reactive sulphur species).

Both processes transform the original biomolecules into geomolecules. For the oxic environment, these inter- and intramolecular transformations also operate, but cross-linking may be less important since the labile, reactive, component is rapidly removed. As such, one may expect a structurally better preservation of the more refractory initial biomolecules in the oxic environment. To test this hypothesis, initially identical biomolecules need to be compared between different preservational environments.

Here, we use the species specific morphology of organic microfossils to assure a single initial biosynthetic product (the cysts of the fossil dinoflagellate species *Thalassiphora pelagica*) for comparison. We assess the macromolecular structures of cysts from the Eocene (~40 Ma) sulphidic Rhine Graben and the oxic Kerguelen Plateau and compare them with each other and the structures of recent cysts. While between the sites the *T. pelagica* cysts are morphologically identical and show no

Gerard Versteegh 12-3-20 08:38

Gelöscht: condensation reactions

Gerard Versteegh 12-3-20 08:38

Gelöscht: such as vulcanisation

Gerard Versteegh 12-3-20 08:39

Gelöscht: ing

Gerard Versteegh 12-3-20 08:41

Gelöscht: where the labile, reactive, component is rapidly removed

Gerard Versteegh 12-3-20 08:41

Gelöscht: such condensation

Gerard Versteegh 12-3-20 08:43

Gelöscht: is much less likely so that

Gerard Versteegh 12-3-20 08:43

Gelöscht: would

Gerard Versteegh 12-3-20 08:43

Gelöscht: much

signs of morphological modification, pyrolysis gas chromatography mass spectroscopy and micro Fourier transform infra red analyses show that their macromolecular characteristics are strongly different. Comparison with recent cysts shows that the cysts deposited in the sulphidic Rhine Graben show a strong additional contribution of long-chain aliphatic moieties and thus less diagenetic intermolecular cross-linking. The presence of organic sulphur, identifies natural volcanisation as one of the diagenetic processes. Furthermore, we observe a loss of bound oxygen and no trace of the original carbohydrate signature of the cyst wall biomacromolecule. The material deposited in the oxic sediments of the Kerguelen Plateau shows no traces of sulphurisation. It shows a minor contribution of short carbon chains only, and thus less diagenetic intermolecular cross-linking. Furthermore, a carbohydrate signature was still preserved evidencing a better molecular preservation of the initial biomacromolecule, supporting our initial hypothesis. This shows that excellent morphological preservation doesn't imply excellent chemical preservation. It also leads to the conclusion that the best preservation of molecular structure is not necessarily where most organic matter gets preserved, which, in turn, is important for understanding the nature and fate of sedimentary organic matter and its isotopic signature.

1 Introduction

Kerogen, the insoluble sedimentary organic matter (OM) is by far the largest organic matter pool on Earth (Durand, 1980). It plays an important role in the biogeochemical cycles of carbon and related elements, fossil fuel formation and is a source of information on the history of life and environments. Despite considerable advances in elucidating the nature of kerogen over the last decades, many aspects of its formation, modification and structure at molecular level, are still far from understood (Vandenbroucke, and Largeau, 2007; de Leeuw and Largeau, 1993; Schiffbauer et al., 2014). This is particularly true for marine kerogen where the heterogeneity and the small size of the kerogen particles are complicating factors in the effort to understand kerogen formation and modification.

Organic microfossils are a special kind of kerogen since for many of them their specific morphology provides a direct link between the biological source and the initial biomacromolecule (often at species level) and the modified fossil geomacromolecule, for different environments and time-slices. As such, analysis of their molecular structure has the great advantage that we know the initial molecular structure

Gerard Versteegh 12-3-20 09:54

Gelöscht: T

Gerard Versteegh 12-3-20 09:57

Gelöscht: and

Gerard Versteegh 10-3-20 14:50

Gelöscht: , absent in the

Gerard Versteegh 10-3-20 14:51

Gelöscht: on the oxic

Gerard Versteegh 12-3-20 10:01

Gelöscht: . Comparison with recent cyst walls suggests a much better molecular preservation for the oxic depositional environment

Gerard Versteegh 12-3-20 10:02

Gelöscht: confirming

Gerard Versteegh 5-3-20 08:16

Gelöscht: the

Gerard Versteegh 5-3-20 08:15

Gelöscht: ,

Gerard Versteegh 5-3-20 08:15

Gelöscht: and modification

Gerard Versteegh 5-3-20 08:09

Gelöscht: of especially marine kerogen

Gerard Versteegh 5-3-20 08:09

Gelöscht: of

Gerard Versteegh 10-3-20 08:23

Gelöscht: Analysis of organic (micro)fossils enables

Gerard Versteegh 10-3-20 17:18

Gelöscht: structure

Gerard Versteegh 10-3-20 08:23

Gelöscht:

Gerard Versteegh 10-3-20 08:23

Gelöscht: it

85 so that we can separate the contributions of biosynthesis and post-mortem modification on the final kerogen structure.

The preservation of organic matter at molecular level and visible level — its apparent morphology — may be very different.

90 Chemical analysis of organic (micro)fossils has shown that despite excellent morphological preservation, molecular preservation may be poor, even to the extent that no recognizable trace of the original biomolecules is preserved (e.g. Stankiewicz et al., 2000; Stankiewicz et al., 1998; Gupta et al., 2007; de Leeuw et al., 2006).

At a molecular level we consider the accumulating diagenetic structural difference between the resulting geomolecule and the initial biomolecule, as an accumulating reduction of the molecular preservation. In practice, the degree of molecular preservation will be the degree to which the initial biomolecule can still be recognized by means of various analytical methods. The molecular changes may be diagenetic cross linking (kerogenisation, sensu Butterfield, 1990) but include also other kinds of structural changes, such as modifying bonds and functional groups or changing stereochemistry. These changes may take place aerobically or anaerobically and may be intramolecular (changing itself), and intermolecular (between molecules). The latter case may cause other molecules to become structural elements of the resulting geomolecule. Since this addition of structural elements can involve many different types of molecules, we prefer to use (intermolecular) cross linking rather than polymerization, which assumes a limited set of similar monomers. In oxic settings, organic matter degradation is mostly

95 severe and highly selective but nevertheless processes like photodegradation and inter- and intramolecular oxidative cross-linking may lead to condensation of the OM, already early in the fossilization process which reduces OM degradability, creates macromolecules from lipids and transforms biomacromolecules into geomacromolecules (e.g. Versteegh et al., 2004; Harvey et al., 1983; Rontani, 2008; Gatellier et al., 1993). In anoxic settings OM degradation is much less complete, often leading to the formation of organic-rich sediments (e.g. Bianchi et al., 2016). Here, condensation of OM may occur in various ways, catalyzed by clay minerals, reduced metal ions, and brought about by reactive sulphur species. Of these processes the natural sulphurisation has received ample attention and this process seems especially effective in the absence of reactive Fe, which has the potential to

Gerard Versteegh 10-3-20 17:13

Gelöscht: allows for

Gerard Versteegh 10-3-20 17:13

Gelöscht: ing

Gerard Versteegh 10-3-20 17:11

Gelöscht: .

Gerard Versteegh 10-3-20 17:16

Gelöscht: chemical

Gerard Versteegh 10-3-20 17:12

Gelöscht:

Gerard Versteegh 10-3-20 15:32

Gelöscht: polymerization

Gerard Versteegh 10-3-20 17:45

Gelöscht: .

Gerard Versteegh 10-3-20 17:46

Gelöscht: organic matter

Gerard Versteegh 10-3-20 15:06

Gelöscht: through sulphurisation,

Gerard Versteegh 10-3-20 15:07

Gelöscht: especially

outcompete organic molecules for reactive polysulphides and limit organic matter sulphurization (Kohnen et al., 1989; Nissenbaum, and Kaplan, 1972; Kutuzov et al., 2019).

In comparison to anaerobic post-mortem modification of sedimentary organic matter, only little attention has been paid to the signature of aerobic processes in the geomacromolecular structure, despite the importance of aerobic modification of OM, since the Great Oxidation Event.

Most of these insights have been obtained by analyzing different taxa from unique sedimentary environments which makes it hard to obtain insight in the relation between the species specific properties of its organic product and the subsequent post-mortem modification. For such a better separation of initial organic matter and post-mortem modification ideally one would analyse the same biomacromolecule from different environmental settings.

Here we elucidate the influence of differing sedimentary environments on the chemical preservation of same species, fossil dinoflagellate cysts of *Thalassiphora pelagica*.

By far most of the cysts producing dinoflagellates are either peridinioid or gonyaulacoid. The peridinioids species are generally heterotrophic and produce brown cysts whereas the gonyaulacoids (such as cysts of *T. pelagica*) are mostly phototrophic and produce colorless cysts. Cyst degradation experiments using moorings, in surface sediments and near oxidation fronts has demonstrated that the brown peridinioid cysts rapidly degrade in oxic, and some also in suboxic environments. In contrast to this the transparent gonyaulacoid cysts are much more resistant, and often survive millennia of oxic conditions (Zonneveld et al., 2010, 2019 and references therein). These differences in degradability are also reflected in different a molecular structure of the walls of organic dinoflagellate cysts, which varies considerably between species (e.g. Mertens et al., 2016; Bogus et al., 2014; Gurdebeke et al., 2018). They all seem to consist of a carbohydrate-backbone but with various contributions of proteinaceous material that appears to be species specific (Versteegh et al., 2012; Bogus et al., 2014). Basically the same variability has been reported from fossil material where the molecular structure could even be used to distinguish between closely related *Apectodinium* species (Bogus et al., 2012). However, it became apparent that in some cases post-mortem modification may considerably change the molecular structure of the cyst wall. For instance, contributions of long-chain aliphatic moieties have been reported for *Chiropteridium* spp. (de Leeuw et al., 2006) and *T. pelagica* cysts from the Oligocene

Gerard Versteegh 10-3-20 08:39

Gelöscht: The

Gerard Versteegh 10-3-20 08:43

Gelöscht: extant

Gerard Versteegh 10-3-20 08:43

Gelöscht: ere known, may vary

Gerard Versteegh 5-3-20 08:45

Gelöscht:

55 Rhine Graben (Versteegh et al., 2007). These modifications may be so pronounced that the original signature is largely lost (de Leeuw et al., 2006; Versteegh et al., 2007). However, the extent to which environment transforms the initial biomacromolecule to its geomacromolecular derivate is still to a large extent terra incognita.

60 Here we concentrate on the impact of oxic versus anoxic sedimentary environments on the macromolecular structure of *T. pelagica* cysts. *T. pelagica* belongs to the transparent gonyaulacoid dinoflagellates, and thus belongs to the group of cysts resistant to aerobic degradation. This resistance enables our comparison in the first place. The molecular structure of cysts of this species that were deposited under anaerobic sulphate reducing conditions has already been discussed (2007). Characterization of the molecular composition of the cyst walls with FTIR micro-spectroscopy, py-GC-MS and thermally assisted hydrolysis and methylation (THM)-GC-MS showed that the cyst wall macromolecule of these cysts is relatively condensed which is in line with the condensation of an initially carbohydrate-based wall biomacromolecule. Nevertheless, an average chain length of ~ 12 carbon atoms was recorded which was explained by post-mortem addition of carboxylic acids by early sulphurisation of the cysts in the anoxic to suboxic setting of the depositional environment. These carboxylic acids were most probably poly-unsaturated and derived from the membranes and lipid bodies of the once living cell inside the cyst. The sulphur species readily attack functionalised groups, such as double bonds, ketones and aldehydes in organic matter (Viaravamurthy and Mopper, 1987; Schouten et al., 1994a,b; Hebbing et al., 2006) and are thus well suited to crosslink unsaturated fatty acids and other functionalized components to the carbohydrate based cyst-wall macromolecule. Here we compare the results of the study on anoxically deposited and sulphurised *T. pelagica* cysts to new analysis of cysts of the same species that have been deposited in an oxic depositional environment. This allows us to determine the diagenetic effects of aerobic versus anaerobic sulphate reducing environments on the molecular structure of organic microfossils.

2 Material and Methods

80 The *T. pelagica* cysts from the oxic depositional environment (Kerguelen Plateau) have been collected during IODP Leg 120 Site 748B (58°26.45'S, 78°58.89'E) and have been isolated from sample 18H

Gerard Versteegh 10-2-20 15:06

Gelöscht: , a microfossil known to be

Gerard Versteegh 12-3-20 10:05

Gelöscht: f

Gerard Versteegh 12-3-20 10:41

Gelöscht: f

85 17W 55-57 cm. The sample is derived from 152.6 m below the sea floor from the upper part of unit II
consisting of nannofossil ooze with an organic carbon content < 0.2 % and a sedimentation rate of about
0.6 cm/ka. This typically open oceanic environment must have been well ventilated at the sea floor and
90 considering the low sedimentation rate and low organic matter content the sediment has been subject to
long and extensive aerobic degradation prior to reaching a burial depth below the oxic/suboxic
interface. The sample has been deposited during the Middle Eocene Climatic Optimum, about
40 Ma ago (Schlich et al., 1989). The sample was crushed and minerals were removed using HCl (36%)
and HF (40%) at room temperature. The sample was washed and the > 20 µm fraction was mounted to
enable palynofacies analysis by light microscope.
The material from the Rhine Graben from the Middle Rupelian (Oligocene) has an age of about 31 Ma.
95 At that time the Rhine Graben is a restricted and narrow basin connecting the Tethys with the North
Sea. It has been deposited in a sulphate-reducing environment. The sample is derived from the
Fischschiefer Unit consisting of 80 m of bituminous, finely laminated marly clay- and silt-stones
typically with an organic carbon content > 3% and deposited in about 1.8 Ma, representing an average
sedimentation rate of 4.4 cm/ka. The environment experienced anoxia in the water column and sediment
00 (Pross, 2001). Freshly formed cysts sinking to the sea floor as such experienced only minimal aerobic
degradation (Pross and Schmiedl, 2002). The sample was carefully cleaned and about 50 g of sediment
was crushed and treated with 20% HCl to remove carbonates. Subsequently the sample was repeatedly
treated ultrasonically and washed over a 125 µm sieve. The cysts were picked for FTIR micro-
spectroscopy and for py-GC-MS and THM-GC-MS from the 315-125 µm fraction. HF or oxidizing
05 agents such as HNO₃ or H₂O₂ have not been used.

2.1 FTIR Analysis

10 Preliminary analyses using transmission, reflection and attenuated total reflection (ATR) spectroscopy
showed that for our material, ATR analyses provided the best results with respect to S/N ratio and
scattering. Furthermore, to reduce the effects of instrument- and measurement-method-dependent
differences between the spectra of the taxa compared, we re-measured cysts of *T. pelagica* (Versteegh
et al., 2007) from the Rhine Graben and the culture-derived cysts of *Lingulodinium polyedrum*

(Versteegh et al., 2012) using the same instrument and protocol. At least three cysts were analysed twice for each sample by micro-FTIR after cleaning the cysts with distilled water and methanol. Only specimens were measured that were visually clean. Measurements were made with a BRUKER Invenio-S spectrometer coupled to a Hyperion 1000 IR microscope equipped with a KBr beamsplitter and liquid N₂-cooled MCT detector. Two hundred and fifty-six scans were obtained at 4 cm⁻¹ resolution using a germanium ATR crystal of 100 µm diameter. The spectra were corrected for atmospheric CO₂ and baseline corrected using a concave rubberband correction 64 baseline points and 5 iterations. The ATR spectra have been transformed such that the position and intensity of the absorption bands are similar to transmission spectra by using the advanced ATR correction algorithm with the an average refraction index of 1.5, a 45° angle of incidence and one ATR reflection as parameters (Nunn, and Nishikida, 2008). Assignments of characteristic IR group frequencies follow Colthup, Daly, and Wiberly (1990) and published literature. For calculation of first and second derivatives and fitting of Gaussian curves using the Levenberg-Marquardt algorithm, the software package Fytik 1.2.1 has been used (Wojdyr, 2010).

2.2 Pyrolysis and thermally assisted hydrolysis and methylation gas chromatography-mass spectrometry

The cysts from the Kerguelen Plateau were solvent extracted and transferred to a quartz tube (CDS 10A1-3015) for pyrolysis. For thermally assisted hydrolysis and methylation (THM) in the presence of TMAH about 0.2 ml of 10% aqueous TMAH were added and the quartz tube oven dried for 1 h at 60 °C. The sample was inserted in a CDS 5200 pyrolysis unit and kept for 5 min at 700 °C. The pyrolysate and thermochemolysate were transferred to a gas chromatograph Agilent 7890A series using a 300 °C interface and transfer-line temperature. Sample injection was in splitless mode with a delay time of 6 min. HP5MS GC column was used of 30 m length, 0.25 mm diameter and with a 0.25 µm film thickness. The GC conditions were 3 min iso-therm at 40 °C followed by a temperature increase of 15 °C/min up to 130 °C, an increase of 8 °C/min to 250 °C and finally an increase of 20 °C/min to 320 °C. The final temperature was held for 5 min. The interface between GC and MS was at 280 °C. For mass spectrometry an Agilent 5975C MSD was used in full scan mode (mass range m/z 50-500 with 3.25 scans/s at 70 eV). Compound identification was performed using the NIST spectral library and relative

Gerard Versteegh 14-2-20 21:18

Gelöscht: The cysts from the Kerguelen Plateau... t least three cysts were an ... [1]

Gerard Versteegh 10-2-20 17:38

Gelöscht: S...plitless mode with a , [2]

retention times. Relative retention times were calibrated in comparison with a mixture of *n*-alkane standards run prior to each analysis.

For Pyrolysis and thermochemolysis gas chromatography-mass spectrometry of the cysts from the Rhine Graben (see also Versteegh et al., 2007) the purified cysts were transferred to a quartz tube (CDS 10A1-3015) for pyrolysis. For thermochemolysis in the presence of TMAH about 0.2 ml of 10% aqueous TMAH were added and the quartz tube oven dried for 1 h at 60 °C. The sample was inserted in a CDS AS2500-plus pyrolysis unit and kept for 5 min at 700°C. The pyrolysate and thermochemolysate were transferred to a gas chromatograph Agilent 6090N series using a 280°C inter-face temperature. Splitless mode, delay time 6 min. GC column HP5MS, 30 m length, 0.25 mm diameter, 0.25 µm film thickness. GC conditions: 3 min iso-therm at 40°C, 15 °C/min to 130°C, 8°C/min to 250°C, 20°C/min to 320°C and 5 min isotherm. Interface temperature 280°C GC to MS. For mass spectrometry and Agilent 5973 MSD was used in full scan mode (mass range *m/z* 50-500, 3.25 scans/s, 70 eV). Prior to each analysis a mixture of *n*-alkane standards was analysed to check for contaminants and calibrate retention times.

Compound identification was performed using the NIST spectral library and relative retention times. Furthermore, we used our internal library that is based upon decades of collection of spectra with relative retention times of a wide variety of standards, natural and pyrolysis products.

3 Results

3.1 Palynofacies analysis

The assemblage consists of a nearly monotypical assemblage *T. pelagica* cysts with occasional *Phthanoperidinium* and indeterminable organic debris (Fig 1). The residue left after additional purification with a sieve with 50 µm pore-size consisted of *T. pelagica* cysts only.

3.2 FTIR micro-spectroscopy

The FTIR spectra are closely similar for the specimens from the same sample but there are consistent differences between the spectra of specimens from the different samples. Therefore, only the average spectrum is shown for each sample (Fig. 2). The spectra can be divided into six absorption

Gerard Versteegh 11-2-20 10:47

Gelöscht: and

Gerard Versteegh 14-2-20 11:47

Gelöscht: ... [3]

Gerard Versteegh 27-2-20 18:50

Gelöscht: t

Gerard Versteegh 14-2-20 10:29

Gelöscht: um

bands (A—F). The second derivative reveals the locations of absorptions maxima and in shoulders in much more detail (Fig. 3).

3.2.1 The FTIR spectra of the *T. pelagica* cysts from the oxidised depositional environment (Kerguelen Plateau)

The absorption of band A ($3700\text{--}3000\text{ cm}^{-1}$), centred at 3400 cm^{-1} is assigned to alcoholic OH, phenolic OH, and/or carboxylic OH.

The strong, narrow aliphatic absorptions of band B ($3000\text{ cm}^{-1}\text{--}2700\text{ cm}^{-1}$), centred at 2928 and 2863 cm^{-1} are assigned to antisymmetric stretching vibrations from CH_2 and symmetric stretching vibrations from CH_2 methylene groups, respectively. Further deconvolution shows that a third Gaussian/Lorentzian band at 2892 cm^{-1} is required to model this part of the spectrum (Fig 4). This third band is attributed to CH stretch. There is a marked absence of evidence for absorptions by CH_3 . In algal walls such a low contribution of methyl groups is typically associated with the presence of long aliphatic chains in the wall macromolecule, such as the algaenan of e.g. *Chlorella emersonii* (Fig 2). However, the corresponding absorption of CH_2 in long carbon chains near 723 cm^{-1} (see also McMurry, and Thornton, 1952) is also absent from our spectra leading to the conclusion that the *T. pelagica* wall macromolecule consists primarily of short carbon chains without free methyl groups, which is in agreement with the pyrolysis and spectroscopy based hypothesis that the gonyaulacoid dinoflagellate cyst walls (such as e.g. *L. polyedrum*) primarily consist of a carbohydrate-based biopolymer (Versteegh et al., 2012).

For band C ($1800\text{--}1500\text{ cm}^{-1}$) the absorption centred at 1705 cm^{-1} as well as the shoulder 1768 cm^{-1} we assign to the vibration of carbonyl C=O . Hereby, the absorption at 1705 cm^{-1} may represent α and β unsaturated aliphatic ketones or hydrogen bonding in carboxylic acid dimers (Colthup et al., 1990) the corresponding -enol tautomers may provide a second explanation for the moderate absorption centred at 1612 cm^{-1} .

For band D ($1500\text{--}1300\text{ cm}^{-1}$), the absorption at 1411 cm^{-1} may be attributed to deformation of CH_2 next to carbonyls. Alternatively the absorption at 1411 cm^{-1} may arise from olefin CH rocking. Absorptions at 1463 cm^{-1} we relate to scissors deformation of CH_2 . There is no clear symmetric

umbrella deformation of C-CH₃ at 1375 cm⁻¹ of hydrocarbons, which agrees with the absence of evidence for methyl groups in band B.

The weakly defined absorptions between 1305 and 1203 cm⁻¹ (Band E; 1300—1150 cm⁻¹) can be related to C-O carboxylic acids.

For band F (1150—900 cm⁻¹), the absorptions at 1112, 1047, and 986 cm⁻¹ are assigned to C-O e.g. as C-O-C and C-O-H of carbohydrates.

For band G the minor absorption at 728 cm⁻¹ is attributable to CH₂ rock, its low intensity agrees with only a minor contribution of predominantly short carbon chains < 4 CH₂ sequences (McMurry, and Thornton, 1952).

As such the spectrum indicates a relatively short-chain polymer. The absence of evidence for CH₃ indicates it to be heavily branched and/or functionalised. The richness in C-O, and O-H suggests the functionalities to be primarily hydroxyl groups and ether bonds and a much lower abundance of carbonyl groups; a combination typically found in carbohydrate-based polymers. There is no evidence for an aromatic contribution but some aliphatic C=C can't be excluded.

3.2.2 The FTIR spectra of re-analysed cultured *L. polyedrum* cysts and *T. pelagica* cysts from the Rhine Graben

The new spectra for *L. polyedrum* differ from the published spectrum (Versteegh et al., 2012). We measured in ATR mode and the spectrum published has been obtained in reflection mode. Re-measuring also in reflection mode, the spectrum was very similar to the published one (Supplementary information figure S1), confirming that the observed differences result from a different mode of measurement and spectrum correction. The much larger relative abundance of bands A and B and reduction of band F result from a wavenumber dependent amplification of the absorption of the ATR correction algorithm. As such the differences between the published spectra and those presented here, predominantly result from different measurement and spectrum correction algorithms and do not require a new spectral interpretation. Since Mie scattering causing spectrum distortion plays a relatively large role for these small objects in reflection mode (Herman 1962), we use the corrected ATR spectra for comparison.

The new ATR spectra obtained for *T. pelagica* from the Rhine basin are closely similar to the transmission spectrum published except for band F (Supplementary information figure S2), which was much weaker in the spectra of Versteegh et al. (2007). This difference is unlikely to be accounted for by degradation of the sample since over the years it has been kept frozen at -20°C in distilled water. Also here we attribute the observed difference to the different modes of measurement (ATR versus transmission) and the difficulty of measuring single cysts in transmission mode. The interpretation of the absorption bands is similar to that for the specimens from the Kerguelen plateau but there are large differences in relative strengths of these bands, notably the stronger relative absorptions of B, C and to some extent D.

3.3 Pyrolysis–GC–MS

The pyrolysate (Fig. 5; Table 1) contains both aliphatic and aromatic moieties. There is a considerable number of oxygen containing saturated and unsaturated non-aromatic moieties with 5-membered and 6-membered rings and up to three additional carbon atoms amongst which are furans, cyclopent/anones, phenols, benzofurans, indanones and naphthalenones and naphthalenols. Furthermore, there are several series of aromatic moieties. Phenol (m/z 94) and methylated phenols (m/z $94 + 14 * n$) have been detected up to $n = 4$. Benzene (m/z 78) and alkyl benzenes (m/z $78 + 14 * n$) have been detected up to $n = 9$. Compounds with more than three carbon atoms attached to naphthalene and indene were not detected. Linear carbon chains play only a minor role and their distribution becomes only apparent from mass chromatograms of their characteristic ions. *n*-Alkanes and *n*-alkenes (m/z 83 and 85) show alkane/alkene pairs for $C_7 - C_9$ and a series of only *n*-alkanes for $C_{14} - C_{21}$. The mass chromatogram m/z 58 reveals a series of *n*-alkan-2-one / *n*-alken-2-one pairs from $C_6 - C_{12}$ and m/z 60 shows $C_3 - C_{10}$ alkanoic acids.

The mass distribution in the first 28 min of the chromatogram (Fig. 6) shows that the masses representing aromatic moieties (such as m/z 91, 105, 115, 117, 119, 128, 129) clearly emerge above their neighbour masses ($m/z \pm 5$). The masses representing saturated aliphatic moieties (m/z 57, 71, 85) do not emerge above background as is the case for alkenes $> C_5$ (m/z 83, 97).

Gerard Versteegh 14-2-20 10:56

Gelöscht: Band A shows a low broad absorption centred at 3400 cm^{-1} and a minor absorption at 3036 cm^{-1} . Band B, ($3000\text{ cm}^{-1} - 2700\text{ cm}^{-1}$) is the least intense. It shows absorption maxima at 2929 and 2854 cm^{-1} . Band C (1800 and 1500 cm^{-1}) absorbs stronger than A and B. Absorption maxima are at 1707 and 1610 cm^{-1} . Absorption in band D ($1500 - 1300\text{ cm}^{-1}$) has a maximum at 1411 cm^{-1} and an intensity similar to band C. Band E ($1300 - 1150\text{ cm}^{-1}$) shows a continuation of band D with respect to the decrease in absorption. Band F ($1150 - 900\text{ cm}^{-1}$) has the strongest absorption of the entire spectrum at 1047 cm^{-1} . Finally, band G ($900 - 700\text{ cm}^{-1}$) contains narrow and relatively minor absorptions of which the one at 857 cm^{-1} is the most prominent. The second derivative reveals the locations of narrower absorption maxima absorptions in shoulders in much more detail (Fig. 3) whereby three Gaussian/Lorentzian bands can be fitted in the aliphatic C-H_2 stretching region from $3000 - 2700\text{ cm}^{-1}$ (Fig 4).

3.3 THM–GC–MS

THM–GC–MS (Fig.7; Table 2) clearly shows methyl esters of C₃–C₉ and C₁₄–C₁₆ *n*-alkanoic acids (C₁₇ and C₁₈ could not be detected) and C₄–C₉ α,ω dicarboxylic-dimethylesters the latter with a strong preference for the butanedioic moiety. Few oxygen containing aromatic compounds are present. The most prominent are mono- to tri-methoxy benzenes and mono-and dimethoxy benzoic-acid methylesters. Traces of alkane/alkene doublets (using *m/z* 83/85) are absent.

4 Discussion

4.1 Palaeoenvironment

The Rhine Graben restricted marine sedimentary environment is very different from that of the open ocean Kerguelen Plateau. The Rhine Graben sediments (Pross, 2001) are about 10 Ma younger, the apparent sedimentation rate (4.4 cm/ka) and total organic carbon contents (>3%) are at least an order of magnitude higher than at the Kerguelen Plateau (sedimentation rate 0.6 cm/ka; and TOC < 0.2%, Schlich et al., 1989). However, the most important factor for organic matter diagenesis and preservation is the redox environment, notably the oxygen exposure time of the organic matter. With the change from an aerobic redox environment via progressively less powerful electron acceptors to sulphidic conditions the amount of energy gained during the oxidation of organic matter also progressively decreases, and OM degradation becomes increasingly thermodynamically limited (Arndt et al., 2013). Therefore, in settings with short oxygen exposure not only the TOC contents, but also the concentration of more labile and reactive organic matter remains much higher over geological time in comparison to equivalent settings with longer oxygen exposure (e.g. Hedges and Keil, 1995, Hoefs et al., 2002, Versteegh et al., 2010, Nierop et al., 2017). Thus, the Rhine Graben sediments with anoxia already in the water column and sulphidic conditions in the sediment never experienced prolonged aerobic degradation. As such sedimentary organic carbon concentrations are higher as is the reactivity of this organic matter in the presence of reactive sulphur species. The Kerguelen sediments experienced much longer oxygen exposure. This exposure was long enough to enable demineralization of most of the OM reaching the sea floor, resulting in sediments lean in OM and where this OM is refractory. With

35 sedimentation continuing, the sediments containing the *T. pelagica* cysts will have become suboxic over
time. However, the refractory nature of the OM and its low concentration severely limit anaerobic
intermolecular cross-linking, due to a lack of available substrate. Furthermore, OM mineralization rates
will have remained so low that the system never reached sulphate reduction and release of reactive
sulphur species. This implies the OM surviving until the environment becomes suboxic, may be
40 expected to remain diagenetically relatively unaltered from that moment.

4.2 Comparison of the FTIR spectra (Fig. 2)

Infrared analysis of cysts from surface sediments and dinoflagellate cultures shows that the cysts cluster
in two groups (Bogus et al., 2014; Ellegaard et al., 2013). (1) Transparent cysts with a cellulose-like
cyst wall such as *Lingulodinium polyedrum* (Versteegh et al., 2012), and (2) Brown cysts with a chitin-
45 like cyst wall such as *Polykrikos kofoidii* (Bogus et al., 2014). The former resist aerobic degradation, the
readily degrade aerobically. The extinct genus *Thalassiphora* produces cysts that belong to the first,
degradation resistant group as is apparent from their morphology. This also explains their survival in the
Kerguelen Plateau sediments.

The spectra of the *Thalassiphora* cysts from the Kerguelen Plateau are very similar to those of the
50 culture-derived *Lingulodinium* cysts (Fig. 2A) except for the considerably lower absorptions for the E
and F bands (various C-O stretching modes). This similarity implies only little change to the cyst
macromolecule.

Since this is not accompanied by a loss in band A (O-H) we attribute this difference primarily to a
relative loss in ether bonds rather than hydroxyl groups. In the Kerguelen Plateau setting the relative
55 decrease in ether bonds is likely to be achieved through oxidation, of the carbohydrate. This leads to
ring opening, chain-breaking and increases the relative abundance of carboxylic acids, aldehydes and
ketones which, in turn may increase the intramolecular and intermolecular hydrogen bonding (Potthast
et al., 2006) and thus reduces the relative abundance of ether bonds. Additionally, oxidative cross-
linking may add carboxylic acids to the cyst wall, a process already starting before burial (Blom, 1936;
60 Harvey et al., 1983; Versteegh et al., 2004; Stankiewicz et al., 2000). Plankton is rich in unsaturated
fatty acids which will reach the sea floor and play a role in early diagenesis. Oxidative cross-linking,

- Gerard Versteegh 5-3-20 17:52
Gelöscht: 4.1 FTIR Spectroscopy -
T. pelagica cysts are transparent gonyaulacoid
gonyaulacoid dinoflagellate cysts.
- Gerard Versteegh 5-3-20 17:54
Gelöscht: 1.
- Gerard Versteegh 14-2-20 10:45
Gelöscht: 2
- Gerard Versteegh 5-3-20 14:05
Gelöscht: with
- Gerard Versteegh 5-3-20 14:05
Gelöscht: of *T. pelagica* cysts from the
oxic environment (Kerguelen Plateau) and
of other dinoflagellate species
- Gerard Versteegh 27-2-20 22:02
Gelöscht: *T. pelagica* cysts are transparent
gonyaulacoid dinoflagellate cysts.
- Gerard Versteegh 18-2-20 08:58
Gelöscht: fresh cysts
- Gerard Versteegh 11-3-20 18:10
Gelöscht: their infra-red spectra
- Gerard Versteegh 5-3-20 14:06
Gelöscht:
- Gerard Versteegh 14-2-20 10:57
Gelöscht:
- Gerard Versteegh 18-2-20 09:16
Gelöscht:
- Gerard Versteegh 5-3-20 14:07
Gelöscht: are produced by dinoflagellates
with a predominantly phototrophic life style
- Gerard Versteegh 5-3-20 14:07
Gelöscht: latter by species with a
predominantly heterotrophic life style
- Gerard Versteegh 27-2-20 22:05
Gelöscht:
- Gerard Versteegh 18-2-20 10:27
Gelöscht: Within these groups there is
considerable structural variation between the
different species (Versteegh et al., 2012;
Mertens et al., 2016; Mertens et al., 2015;
Mertens et al., 2015; Bogus et al., 2014;
Gurdebeke et al., 2018; Luo et al., 2018)

attacks primarily the double bonds of unsaturated fatty acids, leading to fragmentation of the fatty acids as well as cross-linking. This addition will increase in O-H and C=O relative to CH₂ (Lazzari and Chiantore, 1999; Scalarone et al., 2001). The carboxylic groups are less reactive and remain largely unaltered during this process (Scalarone et al., 2001). This condensation process thus also adds C=O, O-H and CH₂ and reduces the relative proportion of ether bonds in the resulting cyst geomacromolecule.

The spectra of the *Thalassiphora* cysts from the Rhine Graben differ much from the spectra of culture-derived *Lingulodinium* cysts than the cysts from the Kerguelen Plateau (Fig. 2B). Compared to the latter, there is significantly less absorption in bands A (O-H), more in band B (CH_x) (Fig. 2C) whereas in band D the broad maximum at 1407 cm⁻¹ splits giving rise to maxima at 1448 (CH₂ deformation and CH₃ asymmetric deformation) and 1376 cm⁻¹ (CH₃ deformation). In contrast to cysts of *T. pelagica* from the Kerguelen plateau the cysts from the Rhine Graben have been deposited in an environment with sulphidic conditions (Versteegh et al., 2007); sedimentation rate and the sedimentary OM content are an order of magnitude higher (Pross and Schmiedl, 2002). In this sulphidic environment with ample labile OM the most easily explanation is the addition of longer-chain aliphatics such as carboxylic acids to the cyst wall through anaerobic cross-linking such as natural vulcanisation. Reactive sulphur species particularly attack aldehydes, ketones, conjugated, distal and to a lesser extent mid chain C=C double bonds but react much less with carboxyl and hydroxyl groups (Viaravamurthy and Mopper, 1987; Schouten et al., 1994a,b; Hebbing et al., 2006). The strong decrease in O-H absorption and increase in C=O seem to disagree with this. However, the initial carbohydrate-based cyst wall is intrinsically poor in O-H and C=O, chemical modification such as addition of alkanolic acids automatically decreases the relative abundance of these bond types and increases CH_x and C=O. Moreover, in this anaerobic environment oxygen as a powerful electron acceptor is in high demand and will selectively be removed, contributing to the loss of hydroxyl groups of the cyst macromolecule. Also here, the amply available polyunsaturated carboxylic acids from the marine plankton including the dinoflagellate cysts of which many died without hatching (Pross, 2001) provide a rich source of lipids for this process, increasing the relative abundances of foremost CH₂ and C=O relative to C-O and O-H. Available clay minerals and free metal ions may have played a catalytic role (e.g. Schiffbauer et al., 2014) primarily outside the cyst wall.

As discussed above, both the Kerguelen Plateau and the Rhine Graben sedimentary environments have modified the *T. pelagica* cysts, albeit in different ways. Infra-red analysis of extant cysts of other members of this group of Gonyaulacoid dinoflagellate cysts show structural differences between the species (Versteegh et al., 2012; Mertens et al., 2016; Mertens et al., 2015; Mertens et al., 2015; Bogus et al., 2014; Gurdebeke et al., 2018; Luo et al., 2018). Hence, the question arises to which part of the differences recorded between the spectra of these *T. pelagica* with other Gonyaulacoid taxa arises from differences in cyst biosynthesis and what part arises from post-mortem modification. The spectra of the recent Gonyaulacoid cysts show a consistent pattern in their order of absorption strength for bands D, E and F, with band F being strongest and band E weakest. This pattern is also seen for the cysts from the Kerguelen Plateau. However, for band C this is more complicated. Analysis of recent cysts by Bogus et al. (2014) shows for all members of the Gonyaulacaceae (*Lingulodinium*, *Spiniferites*, *Impagidinium*, *Protoceratium*) a band C with weaker absorption than bands D and E. In Gurdebeke et al. (2018), all members of the gonyaulacacean *Spiniferites* (except *S. pachydermus* which spectrum was taken from Bogus et al., 2014) show a strong absorption near 1600 cm⁻¹ in band C that exceeds the absorptions in band D. This we also see for *T. pelagica* which, considering the variability of this band in recent cysts, we consider intrinsic feature of the biopolymer. In band C recent gonyaulacacean cysts also show a shoulder near 1705 cm⁻¹, which is always of less amplitude than the absorption 1590 cm⁻¹. This is clearly different for *T. pelagica* for which the absorption at 1705 cm⁻¹ is the most pronounced one in band C and for this difference with recent cysts we attribute the high absorption at 1705 cm⁻¹ for *T. pelagica* to diagenesis.

To get better insight in the role of diagenesis we have to directly compare the cysts from the Rhine Graben and the Kerguelen Plateau (Fig. 2C). They represent the same species *T. pelagica*. Therefore, we may assume identical or at least closely similar chemical structures prior to diagenesis so that all spectral differences between them logically reflect differences in preservation. Clearly, this only provides the accumulated differences, changes common to both the cysts from the Kerguelen Plateau and the Rhine Graben are not apparent. The differences lie foremost in the higher contribution of band A (O-H) and lower of band B (CH_x) for the cysts from the Kerguelen plateau. The spectrum of these cysts from the Kerguelen Plateau also more closely matches the spectrum of *L. polyedrum*. Indeed, with

Gerard Versteegh 18-2-20 10:13

Gelöscht: .

... [4]

Gerard Versteegh 18-2-20 10:27

Gelöscht: Bogus et al., 2014; Gurdebeke et al., 2018

Gerard Versteegh 5-3-20 22:59

Gelöscht:

Gerard Versteegh 5-3-20 22:59

Gelöscht: E

Gerard Versteegh 5-3-20 16:35

Gelöscht: much

Gerard Versteegh 28-2-20 18:17

Gelöscht: smaller

Gerard Versteegh 11-2-20 11:05

Gelöscht: this

Gerard Versteegh 28-2-20 18:17

Gelöscht: absorption

Gerard Versteegh 11-2-20 11:05

Gelöscht: and which for its absence

Gerard Versteegh 28-2-20 18:19

Gelöscht: in

Gerard Versteegh 5-3-20 16:40

Gelöscht: . It represents absorptions by C=O of the kind typically also present in e.g. algaenan of *C. emersonii* (Fig. 2). This is a typical and common feature of post-mortem modification, a phenomenon that easily occurs, even already in the water column (Blom, 1936; Harvey et al., 1983; Versteegh et al., 2004; Stankiewicz et al., 2000)

Gerard Versteegh 5-3-20 17:53

Gelöscht: .

... [5]

Gerard Versteegh 5-3-20 17:56

Gelöscht: T

Gerard Versteegh 11-2-20 13:48

Gelöscht: chemical

70 the stronger absorption by CH_x and relatively weak absorptions of the other bands, the spectrum of the Rhine Graben specimens has become much more similar to that of the algaenan walls of green algae such as *C. emersonii* (Fig. 2D; Allard, and Templier, 2001) or *Tetraedron minimum* (Blokke et al., 1998; Goth et al., 1988) albeit without the absorption at 718 cm⁻¹ and thus lacking the long carbon chains of algaenan.

75 As such it appears on the basis of infrared spectroscopy of both *Thalassiphora* samples in comparison to recent cysts from cultures and surface sediments that we must assume that part of the observed differences with the *Lingulodinium* cysts may result from differences in cyst biosynthesis. The infrared spectra of recent *L. polyedrum* and fossil *T. pelagica* from the Kerguelen Plateau are very similar suggesting that the cysts of *L. polyedrum* are a good modern analogue. Nevertheless, the stronger absorption for the fossil cysts of probably conjugated carbonyl at 1705 cm⁻¹ can be assigned to diagenesis. Further comparison with *Lingulodinium* shows that cysts from the Kerguelen Plateau are depleted in ether bonds. This depletion we attribute to modification of the cyst wall by oxidation and oxidative cross-linking. The cysts from the Rhine Graben differ considerably more from the *L. polyedrum* cysts than those from the Kerguelen Plateau. These differences are particularly an enrichment in CH_x and to a lesser extent C=O, and show a relative loss of O-H. These differences are 85 attributed to reactions by reactive sulphur species crosslinking the cyst wall and adding linear carbon chains to it. Furthermore, in the anaerobic depositional environment of the Rhine Graben, we expect cyst diagenesis to lead to a loss of oxygen, rather than an increase as we observe for the cysts from Kerguelen Plateau.

4.3. py-GC-MS and THM-GC-MS

90 GC-MS results are consistent with the results of the infrared analyses, which suggest that differences in depositional environment are associated with differences in molecular structure. Pyrolysis of macromolecules consisting of long alkyl chains, such as algaenans or polyethylene, typically produces a series of alkane/alkene doublets (Fig. 5). The presence of such *n*-alkane/alkene doublets up to C₉ (and similarly C₇—C₁₁ methyl-alkanone/alkenone doublets) in the cysts from the Kerguelen Plateau suggests 95 that these have been derived from the cyst macromolecule. The length, up to C₉ may not be accidental

Gerard Versteegh 5-3-20 23:18

Gelöscht: These differences show a further alteration in the same direction as the differences between *T. pelagica* cysts of the Kerguelen Plateau and the unaltered cysts represented by *L. polyedrum*. This is demonstrated by a much stronger absorption of band B (CH_x), and a weaker absorption of band D and almost no absorption in band E (C-O). In that respect,

Gerard Versteegh 10-3-20 10:09

Gelöscht: is

Gerard Versteegh 10-3-20 10:06

Gelöscht: . W

Gerard Versteegh 10-3-20 10:06

Gelöscht:)

Gerard Versteegh 9-3-20 11:24

Gelöscht: 2

Gerard Versteegh 18-2-20 11:07

Gelöscht: Results of the GC-MS analyses support the above suggested depositional environment related alterations in molecular structure

15 since many unsaturated *n*-alkanoic acids have double bonds at ω -9 or closer to the end of the molecule and oxidative cross-linking operates at such double bonds whereby the remainder of the molecule may be released (e.g. Lazzari and Chiantone, 1999). Upon pyrolysis, the chains will break at these cross-links resulting in a characteristic chain length distribution. The absence of alkane/alkene doublets from C_{10} in these cysts suggests that the aliphatic chains were relatively short which agrees with the absence of an absorption near 720 cm^{-1} in the infrared spectrum. The absence of $> C_{10}$ *n*-alkanoic acids supports this further. The presence of a minor abundance of *n*-alkanes without accompanying *n*-alkenes for C_{14} — C_{21} and their absence for C_{10} — C_{13} suggests that these C_{14} — C_{21} *n*-alkanes either were not covalently bound to the cyst macromolecule and they may have been absorbed by the cyst wall and failed to be removed upon extraction or were exclusively ester-bound so that upon their release no *n*-alkenes were formed.

25 For the Kerguelen Plateau cysts we find a similar gap in distribution in the *n*-alkanoic methyl-esters released upon and methylated by the thermochemolysis with C_{10} — C_{13} absent, C_{14} — C_{16} present, but no longer chains (Fig. 6). The absence of the ubiquitous C_{18} *n*-alkanoic methyl ester indicates that these longer C_{14} — C_{16} chains are not simply contamination but that also these were associated to the cysts themselves. In dinoflagellates, the saturated carboxylic acids are often dominated by C_{16} with C_{14} second in abundance (e.g. Mansour et al., 1999; Robinson et al., 1987; Mooney et al., 2007; Chu et al., 2009) and this same pattern obtained by thermochemolysis supports the hypothesis that these lipids originate from the nearest source, the dinoflagellate cytoplasm. The shorter C_3 — C_9 *n*-alkenoic methyl esters are accompanied by (C_4 — C_9) alkanedioic dimethyl esters with a strong dominance of the C_4 representative and, provide evidence for a cyst wall with short-chain ester-cross-linked moieties. Fresh *L. polyedrum* cysts do not show any aliphatic signature so that we attribute the aliphatic signature in the *T. pelagica* cyst wall to diagenetic modification of the initial macromolecule.

35 The thermochemolysis of cultured *L. polyedrum* cysts produced a series of mono- to penta-methoxy-benzenes, evidencing the carbohydrate hydroxy groups in the cyst-wall polymer (Versteegh et al., 2012). We observe up to tri-methoxy-benzenes as thermochemolysis products of the cysts from the Kerguelen Plateau, but they are of much less abundance. This suggests that the carbohydrate nature is still recognizable in these fossil cysts. In contrast to this, di-, to penta-methoxy-benzenes have not been

Gerard Versteegh 27-2-20 11:57

Gelöscht: only

Gerard Versteegh 9-3-20 11:27

Gelöscht: longer

Gerard Versteegh 9-3-20 11:28

Gelöscht: compounds

Gerard Versteegh 27-2-20 18:42

Gelöscht:

Gerard Versteegh 10-3-20 11:33

Gelöscht: again,

Gerard Versteegh 18-2-20 11:11

Gelöscht: its presence

Gerard Versteegh 27-2-20 15:45

Gelöscht: (Fig. 7)

Gerard Versteegh 27-2-20 18:43

Gelöscht: providing evidence for

Gerard Versteegh 10-3-20 11:38

Gelöscht: The

Gerard Versteegh 27-2-20 18:46

Gelöscht: near absence of such products

Gerard Versteegh 27-2-20 18:46

Gelöscht: for

Gerard Versteegh 27-2-20 18:46

Gelöscht:

Gerard Versteegh 27-2-20 18:46

Gelöscht: s

Gerard Versteegh 10-3-20 11:41

Gelöscht: this signature has been almost completely erased by diagenesis

detected as thermochemolysis products of the cysts from the Rhine Basin indicating that for those cysts the carbohydrate nature has been entirely lost.

For the *T. pelagica* cysts from Kerguelen Plateau, the detection of benzenes with up to nine attached carbon atoms and phenols with up to four attached carbon atoms fully agrees with the observed chain length distribution of the aliphatic component and again suggests a macromolecule with carbon chains shorter than C_9 . These series are longer than for the cultured *L. polyedrum* cysts but shorter than for the *T. pelagica* cysts from the Rhine Graben.

The stronger diagenetic alteration and sulphurisation of the material from the Rhine Graben is also reflected by the relatively higher abundance of masses characteristic for sulphur (m/z 64, SO_2) and alkylthiophenes (m/z 97, 111, 125 and 139 together with a contribution by longer *n*-alkenes) whereas oxygen containing moieties are more abundant in the material from the Kerguelen Plateau (m/z 93, 107, 121, 135 from phenols and m/z 95, 145 from (benzo)furans) as are alkylbenzenes (m/z 79, 105, 119, 133) (Fig. 8). Comparison to mass distributions of pyrolysates of other macromolecules (Fig. 6) demonstrates the much lower aliphatic contribution of the Kerguelen material, and the disappearance of oxygen from, and addition of sulphur to the cysts from the Rhine Graben.

4.4 Cyst wall diagenesis, diagenetic processes and implications

The diagenetic modification of the cyst walls is complex and involves different processes at different times and in different environments. We do not pretend that we can resolve all these processes and modifications. What we can identify is the presence of sulphurisation, the presence of linear carbon chains and the extent to which the resulting cyst geomolecule deviates from the modern analogue biomolecule.

As a result of the very different sedimentary environments of the Rhine Graben and the Kerguelen Plateau the initially identical cyst biomacromolecules of the *T. pelagica* cysts have been transformed into clearly different geomacromolecules. The cyst geomolecule from the Kerguelen Plateau contains still a lot of oxygen-bearing functionalities and only a small amount of predominantly short linear carbon chains have been detected. Upon thermochemolysis, the carbohydrate nature of the wall material still can be evidenced. This is explained by the paleoenvironmental setting with oligotrophic surface

Gerard Versteegh 27-2-20 11:41

Gelöscht: T

Gerard Versteegh 18-2-20 11:00

Gelöscht: carbon chains <

Gerard Versteegh 18-2-20 11:00

Gelöscht: chains

Gerard Versteegh 9-3-20 14:27

Gelöscht: P

Gerard Versteegh 10-3-20 11:06

Gelöscht: 8

Gerard Versteegh 10-3-20 11:07

Gelöscht: 6

waters, the aerobic depositional environment and low sedimentation rates. Here, oxic degradation and oxidative cross-linking prevail during transport of organic matter through the water column and in the surface sediments. We consider these processes to be most important modifiers of the cyst macromolecule for the Kerguelen Plateau environment. In such an environment with considerable oxygen exposure times all but the most refractory organic matter has been rapidly remineralized aerobically resulting in organic carbon lean sediments and only little substrate to contribute to the cyst walls through oxidative cross-linking. In contrast to this, anoxia prevailed in the water column and sediment in the Rhine Graben environment. The Rhine Graben sediments remained rich in lipids and more refractory organic matter (Böcker et al., 2017) due to thermodynamic limitation of OM degradation under anaerobic (compared to aerobic) conditions (e.g. Arndt et al., 2013). As a result, there is ample substrate to react with the cyst biomacromolecule, which explains the ample presence of linear carbon chains (up to C₂₀) associated to the cyst wall. The presence of alkyl thiophenes upon in the pyrolysate identifies natural sulphurisation as one of the mechanisms turning the cyst biomacromolecule into a geomacromolecule. As a result of the diagenetic modification, the cysts macromolecule shows an overall loss of oxygen bearing functional groups and its carbohydrate signature can't evidenced anymore upon thermochemolysis. On the basis of the results from pyrolysis, thermochemolysis and infrared analyses it appears thus that the cysts from the Kerguelen Plateau structurally more closely resemble the recent analogue than the cysts from the Rhine Graben and as such display better structural preservation. The cysts from the Rhine Graben not only display stronger intermolecular cross linking but structural changes to the initial molecule also resulted in loss of its the carbohydrate signature upon thermochemolysis.

Experiments show that both the oxidative cross-linking (Lazzari and Chiantore, 1999; Scalarone et al., 2001) and sulphurisation (Schouten et al., 1994a,b) preferably attack double bonds. Subsequently the activated group cross-link with a nearby carbon atom or functional group of the same (macro)molecule or a different one. For oxidative cross-linking the aliphatic chain may break at the double bond position during this process, which could provide an additional explanation for the absence of long carbon chains in the pyrolysate of the cysts from the Kerguelen Plateau. As far as we are aware of, this shortening mechanism has not been observed for natural sulphurisation. Furthermore, and not

surprisingly, the aerobically modified cysts appear to be rich in oxygen bearing functionalities whereas a general loss of such functionalities is observed for the cysts from the anaerobic setting. This difference in organically bound oxygen provokes the speculation that repeatedly changing organic matter from oxic to anoxic states such as occurs in bioturbated sediments effectively supplies the anoxic environment with organically bound oxygen facilitating anaerobic organic matter degradation whereas the change from anoxic to oxic conditions enables aerobic processes to oxidise labile functionalities created anaerobically. This could be an additional explanation why redox oscillation promotes OM remineralisation (Aller, 2001).

For the Kerguelen Plateau, the aerobic degradation will rapidly decrease the OM concentration, foremost of the most reactive and labile components. As such, the rate of modification of the cyst molecular structure as a result of interaction with other OM will rapidly decrease. Due to ongoing sedimentation, the cysts will get out of the reach of oxygen diffusing into the sediment and enter the suboxic zone. The low concentration and refractory nature of the remaining OM will have allowed for low suboxic diagenetic rates too and the system will never have reached the sulphate reduction zone. Therefore we consider that for the cysts from the Kerguelen Plateau, by far most molecular change will have been in an early, aerobic stage, especially with respect to interaction with other organic matter.

In contrast to this, the Rhine Graben sediments have an order of magnitude higher OM contents, whereas the anaerobic redox environment promotes the production and accumulation of small, relatively labile organic molecules and reactive sulphur species. Initially, with a lot of fresh OM, mineralisation rates were similar to aerobic environments (Arndt et al., 2013). We suggest that this also accounts for the diagenetic modification of the cyst molecule. In contrast to the Kerguelen Plateau, the high OM content must have supported active anaerobic degradation and with it the generation of reactive organic and inorganic molecules for a much longer time. Therefore, it seems logical that the accumulated molecular change (through intermolecular cross-linking, and structural modification) of the cysts from the Rhine Graben is larger than for the cysts from the Kerguelen Plateau.

Finally, despite the changes taking place to the *T. pelagica* cysts at molecular level, at microscopic level nothing of these changes is apparent. Therefore, excellent morphologic preservation is no proof of excellent molecular preservation and this should be kept in mind e.g. upon isotopic analyses of organic

matter. Fortunately, a simple infrared analysis, at least in our example, may be sufficient to identify to what extent chemical modification may have taken place. Finally, the nature of the cysts is such that they belong intrinsically to the refractory organic matter so that the changes brought about in the anaerobic environment do not introduce bias due to a higher presence of these cysts in the fossil record.

5. Conclusions

By analysing remains of the same organism (*T. pelagia*) from two contrasting environmental settings, differences in the composition of the starting material can be excluded. As such, all chemical differences between the cysts from the different depositional settings can be assigned to post-mortem modification of the original biomacromolecule. However, alteration processes that the different settings have in common will remain undetected and requires knowledge of the initial state. Here we circumvent the absence of such material by comparing to a close analog, recent cysts of *L. polyedrum*.

Analysis of the composition and structure of *T. pelagica* cysts from the Kerguelen Plateau and comparison to recent cysts of gonyaulacoid dinoflagellates, the group of which *Thalassiphora* is a member, shows that the fossil cysts to a large extent have been structurally preserved. Diagenetic modification is mainly confined to an increase in C=O a loss of C-O and presumably an increase in hydrogen bridges. Thermochemolysis generates despite a strong decrease in their production di- and trimethoxybenzenes indicating that part of the carbohydrates nature has preserved. The presence of carbon chains up to C₁₁ is also attributed to diagenesis since such an aliphatic component is absent in culture-derived gonyaulacoid cysts.

Comparison with modern gonyaulacoid cyst walls demonstrates that the *T. pelagica* cysts from the Kerguelen Plateau and Rhine Graben have been structurally changed by diagenetic intermolecular crosslinking and by intermolecular modification. Both processes were stronger for cysts from the Rhine Graben than the 10 Ma younger specimens of the same species from the Kerguelen Plateau and despite the absence of any visual indication for these differences upon microscopic examination. In contrast to the cysts from the Kerguelen Plateau, the cysts from the Rhine Graben, lost their carbohydrate signature of the initial biomacromolecule. We attribute this to a stronger diagenetic change enforced by the organic rich and sulphidic diagenetic setting the Rhine Graben material has been subject to. This study

Gerard Versteegh 9-3-20 11:25

Gelöscht: 4

Gerard Versteegh 11-3-20 18:17

Gelöscht: s

Gerard Versteegh 11-3-20 18:17

Gelöscht: on the diagenetic process

Gerard Versteegh 10-3-20 12:19

Gelöscht: Specifically, we a

Gerard Versteegh 10-3-20 12:19

Gelöscht: ed

Gerard Versteegh 10-3-20 12:19

Gelöscht: .

Gerard Versteegh 10-3-20 12:20

Gelöscht: Comparison

Gerard Versteegh 9-3-20 16:04

Gelöscht: and

Gerard Versteegh 10-3-20 12:23

Gelöscht: shows

Gerard Versteegh 10-3-20 12:24

Gelöscht: of methoxy benzenes

Gerard Versteegh 10-3-20 12:24

Gelöscht: the initially present hydroxy moieties associated to

Gerard Versteegh 10-3-20 12:24

Gelöscht: have become lost diagenetically

Gerard Versteegh 12-3-20 10:53

Gelöscht: T

Gerard Versteegh 12-3-20 10:50

Gelöscht: are compositionally very different from

Gerard Versteegh 10-3-20 12:26

Gelöscht: coeval

Gerard Versteegh 12-3-20 10:51

Gelöscht: Rhine Graben, despite representing the same species and

Gerard Versteegh 12-3-20 10:54

Gelöscht: These cysts from the Rhine Graben also deviate much more from the ... [6]

Gerard Versteegh 12-3-20 10:46

Gelöscht: much

Gerard Versteegh 10-3-20 12:27

Gelöscht: overprint

Gerard Versteegh 12-3-20 10:57

Gelöscht: the material from

05 | nicely demonstrates the advantage of using organic particles of narrowly defined (species level) biological sources for unravelling post-mortem modification of organic matter. It also shows that excellent morphological preservation doesn't imply excellent structural preservation at molecular level and that the post-mortem modification of the same initial biomacromolecule can differ considerably between sedimentary settings. Furthermore, it leads to the counterintuitive conclusion that the best preservation of molecular structure may not be found where most organic matter is preserved.

Gerard Versteegh 6-3-20 16:07
Gelöscht:

5 Code and Data Availability

Data are available at <https://doi.pangaea.de/10.1594/PANGAEA.905696>

10 | 6 Author Contributions

Gerard J. M. Versteegh collected the geochemical data interpreted them and wrote the manuscript. Alexander J. P. Houben provided the material and did the palynology. Karin A. F. Zonneveld was responsible for project funding and administration and together with GJMV formulated the overarching research goals and aims. All authors discussed data and earlier manuscript versions.

15 | 7 Competing Interests

The authors declare they have no competing interests

8 Acknowledgments

20 | We thank Henk Brinkhuis (Utrecht University, Royal NIOZ) for his constructive comments on the manuscript. We also thank reviewers Morgan Raven and Jacob Vinther for their constructive comments, which significantly improved the manuscript. This work has benefited from funding by the

Gerard Versteegh 9-3-20 16:06
Gelöscht: N.N

Gerard Versteegh 9-3-20 16:36
Gelöscht: N.N

Gerard Versteegh 9-3-20 16:36
Gelöscht: .

References

- Allard, B., Templier, J.: Comparison of neutral lipid profile of various trilaminar outer cell wall (TLS)-containing microalgae with emphasis on algaenan occurrence, *Phytochem.*, 54, 369-380, doi: 10.1016/S0031-9422(00)00135-7, 2000.
- Allard, B., Templier, J.: High molecular weight lipids from the trilaminar outer wall (TLS)-containing microalgae *Chlorella emersonii*, *Scenedesmus communis* and *Tetraedron minimum*, *Phytochem.*, 57, 459-467, doi: 10.1016/S0031-9422(01)00071-1, 2001.
- Aller, R. C.: Transport and reactions in the bioirrigated zone, in: *The Benthic Boundary Layer*, edited by: Boudreau, B. P. and Jørgensen, B. B., Oxford University Press, Oxford, 269–301, 2001.
- Arndt, S., Jørgensen, B. B., LaRowe, D. E., Middelburg, J. J., Pancost, R. D., Regnier, R.: Quantifying the degradation of organic matter in marine sediments: A review and synthesis. *Earth-Science Rev.* 123, 53-86, doi: 10.1016/j.earscirev.2013.02.008, 2013.
- Bianchi, T. S., Schreiner, K. M., Smith, R. W., Burdige, D. J., Woodart, S., Conley, D. J.: Redox Effects on Organic Matter Storage in Coastal Sediments During the Holocene: A Biomarker/Proxy Perspective, *Ann. Rev. Earth Planet. Sci.*, 44, 295-319, doi:10.1146/annurev-earth-060614-105417, 2016.
- Blokke, P., Schouten, S., van den Ende, H., de Leeuw, J. W., Hatcher, P. G., Sinninghe Damsté, J. S.: Chemical structure of algaenans from the fresh water algae *Tetraedron minimum*, *Scenedesmus communis* and *Pediastrum boryanum*, *Org. Geochem.*, 29, 1453-1468, doi: 10.1016/S0146-6380(98)00111-9, 1998.
- Blom, A. V.: Quelques remarques sur le mécanisme de séchage des peintures à l'huile, *Peintures, Pigments, Vernis*, 13, 156-162, 1936.
- Bogus, K., Harding, I. C., King, A., Charles, A. A., Zonneveld, K. A. F., Versteegh, G. J. M.: The composition and diversity of dinosporin in species of the *Apectodinium* complex (Dinoflagellata), *Rev. Palaeobot. Palynol.*, 183, 21-31, doi:10.1016/j.revpalbo.2012.07.001, 2012.

- Bogus, K., Mertens, K. N., Lauwaert, J., Harding, I. C., Vrielinck, H., Zonneveld, K. A. F., Versteegh, G. J. M.: Differences in the chemical composition of organic-walled dinoflagellate resting cysts from phototrophic and heterotrophic dinoflagellates, *J. Phycol.*, 50, 254-266, doi:10.1111/jpy.12170, 2014.
- Böcker, J., Littke, R., Forster, A. : An overview on source rocks and the petroleum system of the central Upper Rhine Graben. *Int J Earth Sci (Geol Rundsch) International Journal of Earth Sciences : GR Geol. Rundschau* 106, 707-742, doi: 10.1007/s00531-016-1330-3, 2017.
- Butterfield, N. J.: Organic preservation of non-mineralizing organisms and the taphonomy of the Burgess Shale. *Paleobiol.* 16, 272-286, doi: 10.1017/S0094837300009994, 1990.
- Colthup, N. B., Daly, L. H., Wiberly, S. E.: Introduction to Infrared and Raman Spectroscopy, Academic Press Limited, London, 1990.
- Chu, F. -L. E. Lund, D. Littreal, R. Ruck, E., Harvey, E.: Species-specific differences in long-chain n-3 essential fatty acid, sterol, and steroidal ketone production in six heterotrophic protist species. *Aquat. Biol.* 6, 159-172, doi: 10.3354/ab00174, 2009.
- Durand, B.: Sedimentary organic matter and kerogen. Definition and quantitative importance of kerogen., in: Durand B., Kerogen : Insoluble Organic Matter from Sedimentary Rocks, Editions Technip, Paris, pp. 13-34, 1980.
- Ellegaard, M., Figueroa, R., Versteegh, G. J. M.: Dinoflagellate life cycles and diversity: key foci for future research., in: Lewis J. M., Marret F., Bradley L. (eds.), Biological and Geological Perspectives of Dinoflagellates, *Geol. Soc. London*, pp. 241-54, doi:10.1144/TMS5.24 2013.
- Gatellier, J. P. L. A., de Leeuw, J. W., Sinninghe Damsté, J. S., Derenne, S., Largeau, C., Metzger, P.: A comparative study of macromolecular substances of a Coorongite and cell walls of the extant alga *Botryococcus braunii*, *Geochim. Cosmochim. Acta*, 57, 2053-2068, doi: 10.1016/0016-7037(93)90093-C, 1993.
- Goth, K., de Leeuw, J. W., Püttmann, W., Tegelaar, E. W.: Origin of Messel Oil Shale kerogen, *Nature.*, 336, 759-761, doi: 10.1038/336759a0, 1988.
- Gupta, N. S., Briggs, D. E. G., Collinson, M. E., Evershed, R. P., Michels, R., Pancost, R. D.: Molecular preservation of plant and insect cuticles from the Oligocene Enspel Formation, Germany: Evidence against derivation of aliphatic polymer from sediment, *Org. Geochem.*, 38, 404-418, doi: 10.1016/j.orggeochem.2006.06.012, 2007.

- 85 Gurdebeke, P. R., Mertens, K. N., Bogus, K., Marret, F., Chomérat, N., Vrielinck, H., Louwye, S.: Taxonomic re-investigation and geochemical characterization of Reid's (1974) species of *Spiniferites* from holotype and topotype material, *Palynol.*, doi:10.1080/01916122.2018.1465735, 2018.
- Harvey, G. R., Boran, D. A., Chesal, L. A., Tokar, J. M.: The structure of marine fulvic and humic acid, *Mar. Chem.*, 12, 119-132, doi: 10.1016/0304-4203(83)90075-0, 1983.
- 90 Hebbing, Y., Schaeffer, P., Behrens, A., Adam, P., Schmitt, G., Schneckenburger, P., Bernasconi, S. M., Albrecht, P.: Biomarker evidence for a major preservation pathway of sedimentary organic carbon. *Science* 312, 1627-1631, 10.1126/science.1126372, 2006.
- Hedges, J. I., Keil, R. G.: Sedimentary organic matter preservation: an assessment and speculative synthesis. *Mar. Chem.* 49, 81-115, doi: 10.1016/0304-4203(95)00008-F, 1995.
- Herman, B. M.: Infra-red absorption, scattering, and total attenuation cross-sections for water spheres. *Quart. J. Royal Meteorol. Soc.*, 88, 143-150, 1962.
- 95 Hoefs, M. J. L., Rijpstra, W. I. C., Sinninghe Damsté, J. S.: The influence of oxic degradation on the sedimentary biomarker record I: Evidence from Madeira Abyssal Plain turbidites. *Geochim. Cosmochim. Acta* 66, 2719-2735, doi: 10.1016/S0016-7037(02)00864-52 2002.
- Kohnen, M. E. L., Sinninghe Damsté, J. S., ten Haven, H. L., de Leeuw, J. W.: Early incorporation of polysulfides in sedimentary organic matter, *Nature*, 341, 640-641, doi: 10.1038/341640a0, 1989.
- 00 Kutuzov, I., Rosenberg, Y. O., Bishop, A., Amrani, A.: The Origin of Organic Sulphur Compounds and Their Impact on the Paleoenvironmental Record. In: Wilkes H., *Hydrocarbons, Oils and Lipids: Diversity, Origin, Chemistry and Fate*, Springer, Cham 1-54, doi: 10.1007/978-3-319-54529-5_1-1, 2019.
- de Leeuw, J. W., Largeau, C.: A review of macromolecular compounds that comprise living organisms and their role in kerogen, coal and petroleum formation, in: Engel M. H., Macko S. A. (eds.), *Organic Geochemistry. Principles and Applications*, Plenum Press, New York, pp. 23-72, doi: 10.1007/978-1-4615-2890-6_2, 1993.
- 05 de Leeuw, J. W., Versteegh, G. J. M., van Bergen, P. F.: Biomacromolecules of plants and algae and their fossil analogues, *Plant Ecol.*, 189, 209-233, doi: 10.1007/s11258-005-9027-x, 2006.

- 10 | Lazzari, M., Chiantore, O.: Drying and oxidative degradation of linseed oil. *Polymer Degr. Stabil.* 65, 303-313, doi: 10.1016/S0141-3910(99)00020-8, 1999.
- Lin, R., Ritz, G. P.: Reflectance FT-IR microspectroscopy of fossil algae contained in organic-rich shales, *Appl. Spectroscopy*, 47, 265-271, doi:10.1366/0003702934066794, 1993.
- Luo, Z., Lim, Z. F., Mertens, K. N., Gurdebeke, P., Bogus, K., Carbonell-Moore, M. C., Vrielinck, H.,
15 | Leaw, C. P., Lim, P. T., Chomérat, N., Li, X., Gu, H.: Morpho-molecular diversity and phylogeny of *Bysmatrum* (Dinophyceae) from the South China Sea and France, *European. J. Phycol.*, doi:10.1080/09670262.2018.1449014, 2018.
- Mansour, M. P. Volkman, J. K. Jackson, A. E., Blackburn, S. I.: The fatty acid and sterol composition of five marine dinoflagellates. *J. Phycol.* 35, 710-720, doi: 10.1046/j.1529-8817.1999.3540710.x, 1999.
- 20 | McMurry, H. L., Thornton, V.: Correlation of Infrared Spectra, *Anal. Chem.*, 24, 318-334, doi:10.1021/ac60062a018, 1952.
- Mertens, K. N., Gu, H., Takano, Y., Price, A. M., Pospelova, V., Bogus, K., Versteegh, G. J. M., Marret, F., Turner, R. E., Rabalais, N. N., Matsuoka, K.: The cyst-theca relation of *Trinovantedinium pallidifulum*, with erection of *Protopteridinium lousianensis* sp. nov. and their phylogenetic position
25 | within the *Conica* group, *Palynol.*, 41, 183-202, doi:10.1080/01916122.2016.1147219, 2016 .
- Mertens, K. N., Takano, Y., Yamaguchi, A., Gu, H., Bogus, K., Kremp, A., Bagheri, S., Matishov, G., Matsuoka, K.: The molecular characterization of the enigmatic dinoflagellate *Kolkwitzella acuta* reveals an affinity to the *Excentrica* section of the genus *Protopteridinium*, *Syst. Biodiv.*, doi:10.1080/14772000.2015.1078855, 2015.
- 30 | Mertens, K. N., Wolny, J., Carbonell-Moore, C., Bogus, K., Ellegaard, M., Limoges, A., de Vernal, A., Gurdebeke, P., Omura, T., Al-Muftah, A., Matsuoka, K.: Taxonomic re-examination of the toxic armored dinoflagellate *Pyrodinium bahamense* Plate 1906: Can morphology or LSU sequencing separate *P. bahamense* var. *compressum* from var. *bahamense*? *Harmful Algae*, 41, 1-24, doi:10.1016/j.hal.2014.09.010, 2015.
- 35 | Mooney, B. D. Nichols, P. D. de Salas, M. F., Hallegraeff, G. M.: Lipid, fatty acid and sterol composition of eight species of Kareniaceae (Dinophyta): chemotaxonomy and putative lipid phycotoxins. *J. Phycol.* 43, 101-111, doi: 10.1111/j.1529-8817.2006.00312, 2007.

- 40 Nierop, K. G., Reichart, G., Veld, H., Sinninghe Damsté, J. S.: The influence of oxygen exposure time on the composition of macromolecular organic matter as revealed by surface sediments on the Murray Ridge (Arabian Sea). *Geochim. Cosmochim. Acta* 206, 40-56, doi: 10.1016/j.gca.2017.02.032, 2017.
- Nissenbaum, A., Kaplan, I. R.: Chemical and isotopic evidence for the in situ origin of marine humic substances, *Limnol. Oceanogr.*, 17, 570-582, doi:10.4319/lo.1972.17.4.0570, 1972.
- Nunn, S., Nishikida, K.: Advanced ATR correction algorithm, *Thermo Fisher Appl. Notes.*, Note 50581, 1-3, 2008.
- 45 Robinson, N. Cranwell, P. A. Eglinton, G., Jaworski, G. H. M.: Lipids of four species of freshwater dinoflagellates. *Phytochemistry* 26, 411-421, doi: 10.1016/S0031-9422(00)81423-5, 1987.
- Potthast, A., Rosenau, T., Kosma, P.: Analysis of Oxidized Functionalities in Cellulose. *Adv. Polym. Sci.* 205, 1-48, doi: 10.1007/12_099, 2006.
- 50 Rontani, J. F.: Photooxidative and autoxidative degradation of lipid components during the senescence of phototrophic organisms, in: , *Phytochemistry Research Progress*, Nova Science Publishers, Hauppauge, NY, pp. 115-44, 2008.
- Pross, J.: Paleo-oxygenation in Tertiary epeiric seas: evidence from dinoflagellate cysts. *Palaeogeography, Palaeoclimatology, Palaeoecology* 166, 369-381, doi: 10.1016/S0031-0182(00)00219-4, 2001.
- 55 Pross, J., Schmiedl, G.: Early Oligocene dinoflagellate cysts from the Upper Rhine Graben (SW Germany): paleoenvironmental and paleoclimatic implications. *Marine Micropaleontology* 45, 1-24, 10.1016/S0377-8398(01)00046-9, 2002.
- Scalarone, D. Lazzari, M., Chiantore, O.: Thermally assisted hydrolysis and methylation-pyrolysis-gas chromatography/mass spectrometry of light-aged linseed oil. *J. Anal. Appl. Pyrol.* 58-59, 503-512, doi: 60 10.1016/S0165-2370(00)00127-3, 2001.
- Schiffbauer, J. D., Xiao, S., Cai, Y., Wallace, A. F., Hua, H., Hunter, J., Xu, H., Peng, Y., Kaufman, A. J.: A unifying model for Neoproterozoic–Palaeozoic exceptional fossil preservation through pyritization and carbonaceous compression. *Nature Communications* 5, 1-12, doi: 10.1038/ncomms6754, 2014
- Schouten, S. de Graaf, W. Sinninghe Damsté, J. S. Van Driel, G. B., de Leeuw, J. W.: Laboratory 65 simulation of natural sulfurization. 2. Reaction of multi-functionalized lipids with inorganic

- polysulfides at low-temperatures. *Org. Geochem.* 22, 825-834, doi: 10.1016/0146-6380(94)90142-2, 1994a.
- Schouten, S., van Driel, G., Sinninghe Damsté, J. S., de Leeuw, J. W.: Natural sulphurisation of ketones and aldehydes: a key reaction in the formation of organic sulphur compounds. *Geochim. Cosmochim. Acta* 58, 5111-5116, 10.1016/j.orggeochem.2007.06.007, 1994b.
- Schlich, R., Wise, S. W., Jr. and Shipboard Scientific Party.: Site 748. *Proc. ODP Init. Repts.* 120. College station, TX pp. 157-235, doi: 10.2973/odp.proc.ir.120.110.1989, 1989
- Stankiewicz, B. A., Briggs, D. E. G., Michels, R., Collinson, M. E., Flannery, M. B., Evershed, R. P.: Alternative origin of aliphatic polymer kerogen, *Geol.*, 28, 559-562, doi:10.1130/0091-7613(2000)28<559:AOOAPI>2.0.CO;2, 2000.
- Stankiewicz, B. A., Scott, A. C., Collinson, M. E., Finch, P., Möslé, B., Briggs, D. E. G., Evershed, R. P.: Molecular taphonomy of arthropod and plant cuticles from the Carboniferous of North America: implications for the origin of kerogen, *J. Geol. Soc. London*, 155, 453-462, doi: 10.1144/gsjgs.155.3.0453, 1998.
- Vandenbroucke, M., Largeau, C.: Kerogen origin, evolution and structure, *Org. Geochem.*, 38, 719-833, doi: 10.1016/j.orggeochem.2007.01.001, 2007.
- Versteegh, G. J. M., Blokker, P., Bogus, K., Harding, I., Lewis, J., Oltmanns, S., Rochon, A., Zonneveld, K. A. F.: Infra red spectroscopy, flash pyrolysis, thermally assisted hydrolysis and methylation (THM) in the presence of tetramethylammonium hydroxide (TMAH) of cultured and sediment-derived *Lingulodinium polyedrum* (Dinoflagellata) cyst walls, *Org. Geochem.*, 43, 92-102, doi:10.1016/j.orggeochem.2011.10.007, 2012.
- Versteegh, G. J. M., Blokker, P., Marshall, C. R., Pross, J.: Macromolecular composition of the dinoflagellate cyst *Thalassiphora pelagica* (Oligocene, SW Germany), *Org. Geochem.*, 38, 1643-1656, doi: 10.1016/j.orggeochem.2007.06.007, 2007.
- Versteegh, G. J. M., Blokker, P., Wood, G., Collinson, M. E., Sinninghe Damsté, J. S., de Leeuw, J. W.: An example of oxidative polymerization of unsaturated fatty acids as a preservation pathway for microalgal organic matter, *Org. Geochem.*, 35, 1129-1139, doi: 10.1016/j.orggeochem.2004.06.012, 2004.

Gerard Versteegh 9-3-20 15:49

Gelöscht: -

95 | Versteegh, G. J. M., Zonneveld, K. A. F., de Lange, G. J.: Selective aerobic and anaerobic degradation
of lipids and palynomorphs in the Eastern Mediterranean since the onset of sapropel S1 deposition.
Marine Geology 278, 177-192, doi:10.1016/j.margeo.2010.10.00, 2010.

Wojdyr, M.: Fityk: a general-purpose peak fitting program, J. Appl. Crystallogr., 43, 1126-1128, doi:
10.1107/S0021889810030499, 2010.

00 | Vairavamurthy, A., Mopper, K.: Geochemical formation of organosulphur compounds (thiols) by
addition of H₂S to sedimentary organic matter . Nature 329, 623-625, doi: 10.1038/329623a0, 1987.

Zonneveld, K. A. F., Versteegh, G. J. M., Kasten, S., Eglinton, T. I., Emeis, K. C., Huguet, C., Koch, B.
P., de Lange, G. J., de Leeuw, J. W., Middelburg, J. J., Mollenhauer, G., Prahl, F. G., Rethemeyer, J.,
Wakeham, S. G.: Selective preservation of organic matter in marine sediments - processes and impact
05 | on the fossil record. Biogeosci. 7, 483-511. doi: 10.5194/bg-7-483-2010, 2010.

Zonneveld, K. A. F., Gray, D. D., Kuhn, G., Versteegh, G. J. M.: Postdepositional aerobic and
anaerobic particulate organic matter degradation succession reflected by dinoflagellate cysts: The
Madeira Abyssal Plain revisited. Mar. Geol. 408, 87-109, doi: 10.1016/j.margeo.2018.11.010, 2019.

10 |

15 |

20 |

Gerard Versteegh 10-2-20 15:04

Gelöscht: .

Table 1. Compounds identified in the pyrolysate^a

#	Name	M+
1	Methylcyclopentadiene (C ₆ H ₈)	80
2	Benzene	78
3	Cyclohexadiene	80
4	2,5 Dimethylfuran	96
5	Toluene	92
6	? C ₈ H ₁₂	108
7	Cyclopentenone + Furfural	96 + 82
8	Ethyl-benzene	106
9	2-Propylfuran	110
10	1,3 + 1,4 dimethylbenzene	106
11	Pentanoic acid	102
12	1,2 dimethylbenzene	106
13	Styrene	104
14	2-Methyl-2-cyclopentenone (67, 96)	67, 96
15	Acetylfuran	95, 110
16	Cyclopentandione	69, 98
17	Cyclohexenone	68, 96
18	Propylbenzene	120
19	3-Methyl-2-cyclopentenone	96
20	3-Methylbenzene + Unknown (43/85)	120

Table 1. Compounds identified in the pyrolysate^a

21	Phenol	94
22	C _{3:1} Benzene + 3-Methylbenzene	118, 120
23	Cyclohexandione (70,112)	70, 112
24	Octanal	128
25	Methylcyclopentandione (69,112)	112
26	Limonene (?)	136
27	Indane	118
28	2,3-Methylcyclopentenone (67,110)	110
29	Indene	116
30	Methyl-propylbenzene	134
31	Methylphenol	108
32	C ₄ Benzene	134
33	C ₃ Cyclopentenone ? (109,124)	124
34	Acetophenone	120
35	Methylbenzaldehyde	120
36	Methylbenzaldehyde	120
37	C _{3:1} Benzene + C ₃ Benzene	132 + 134
38	4-Ethenyl, C ₂ -benzene	132
39	Nonenol (no 114)	142
40	C ₂ Phenol	122
41	1-Acetylcyclohexene + C ₁ -Benzofuran	124 + 132
42	3-ethyl-2-hydroxy-2-cyclopentenone	126
43	Methylindene	130
44	C ₅ Benzene	146
45	Naphthalene	128

Table 1. Compounds identified in the pyrolysate^a

46	Trimethylphenol (121, 136)	136
47	C ₂ Benzofuran	146
48	C ₂ -Indene	144
48	Indanone	132
49	Methylnaphthalene	142
50	Naphthalenone	146
51	Me-Indanone	146
52	C ₂ -Indanone	160
53	1,3 Diphenylpropane	196

^aPeak numbers refer to Fig. 5

30

35

40

45

Table 2. Compounds identified in the thermochemolysate^a

#	Name	M+
1	Trimethylamine - TMAH product	59
2	Cyclopentadiene	66
3	C _{3:1} Fatty acid - Me	86
4	Cyclohexadiene	80
5	Benzene	78
6	Methyl-cyclohexadiene	94
7	Dimethylamino-acetonitrile - TMAH product	84
8	Toluene	92
9	Ethylbenzene	106
10	1,3 + 1,4 Dimethylbenzene	106
11	Styrene + 1,2 Dimethylbenzene	104 + 106
12	2-Methyl-2-cyclopenten-1-one	96
13	Isopropylbenzene	120
14	Propenylbenzene	120
15	Propylbenzene	120
16	1-Methyl-3-ethylbenzene	120
17	1-Methy-4-ethylbenzene	120
18	1,3,5-Trimethylbenzene	120
19	Methylstyrene + 1-Methyl-2-ethylbenzene	118 + 120
20	Methylstyrene	118
21	Indane	118

Table 2. Compounds identified in the thermochemolysate^a

22	Methoxyphenol	108
23	Indene	116
24	C ₄ Benzene	134
25	Acetophenone	120
26	C ₄ Benzene	134
27	C _{4:1} Benzene	132
28	Dimethoxybenzene (123, 138)	138
29	C ₁ Indene	130
30	Naphthalene	128
31	Methylbenzoicacid	150
32	C ₂ Indene	144
33	Indanone	132
34	Methylnaphthalene	142
35	Methoxybenzoicacid - Me	166
36	Trimethoxybenzene	168
37	C ₃ Indene	158
38	Diaromatic C ₁₂ H ₁₀	154
39	Ethyl naphthalene	156
40	C ₂ Naphthalene	156
41	C _{2:1} Naphthalene	154
42	Acenaphthylene	152
43	Dibenzoicacid-Me	194
44	C ₃ Naphthalene	170

Table 2. Compounds identified in the thermochemolysate^a

45	Methyl diaromatic	168
46	Dimethoxybenzoicacid-Me	196
47	Diaromatic C ₁₃ H ₁₀ (e.g. Fluorene)	166
48	Triaromatic C ₁₄ H ₁₀	178

^aPeak numbers refer to Fig. 8.

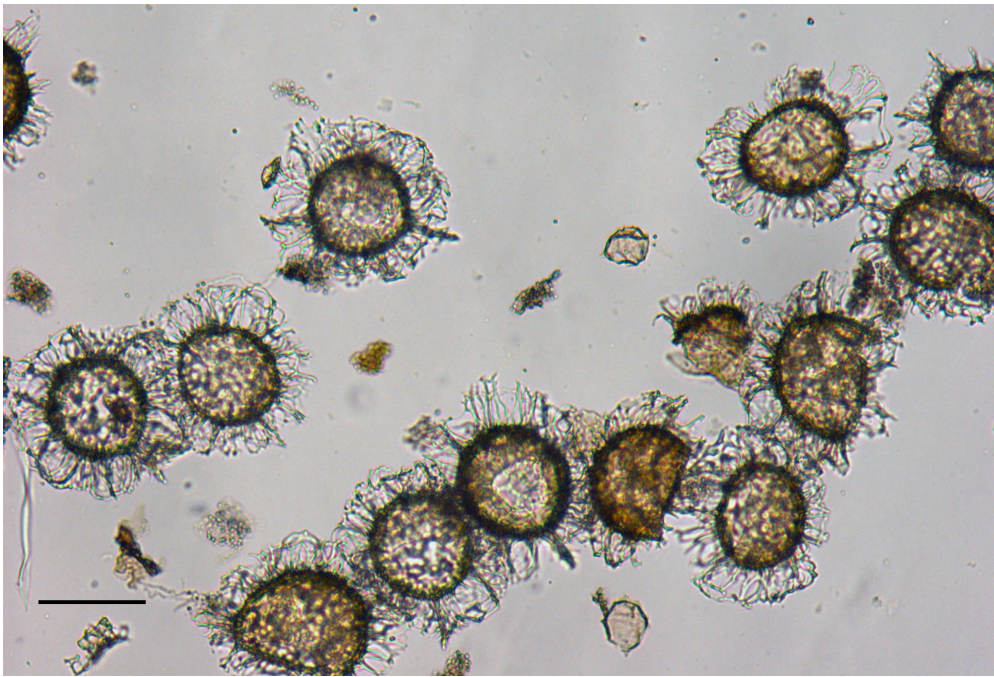


Figure 1: Microphotograph of the *Thalassiphora pelagica* assemblage from the Kerguelen Plateau prior to purification with a sieve with 50 µm pore size. Scale bar = 100 µm.

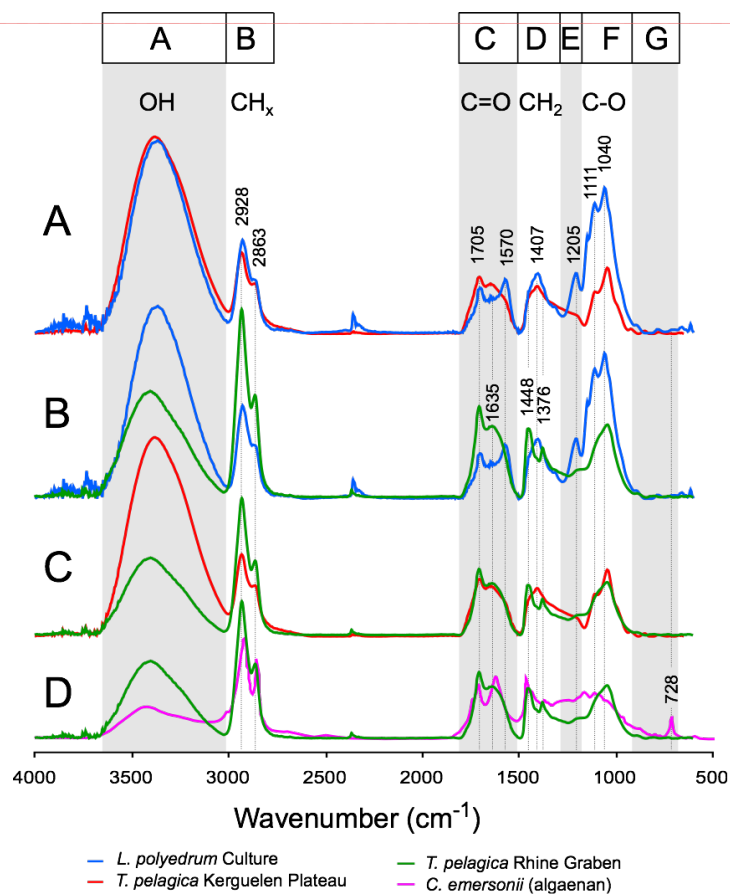


Figure 2: Pairs of micro-Fourier transform infra red ATR spectra of algae. *Lingulodinium polyedrum* cysts from culture (blue line), re-measured sample of Versteegh et al. (2007); *Thalassiphora pelagica* cysts from the Kerguelen Plateau (red line); *Thalassiphora pelagica* from the Rhine Graben (green line) remeasured sample of Versteegh et al., (2007); *Clorella emersonii* (orange line) (adapted from Allard, and Templier, 2000). For further explanation see text.

Gerard Versteegh 6-3-20 18:25

Gelöscht: Figure 2: Fourier transform infra red spectra of algae, *Thalassiphora pelagica* from the Kerguelen Plateau in black compared to: A *Thalassiphora pelagica* from the Rhine Graben (green line) (Versteegh et al., 2007); B. *Lingulodinium polyedrum* cysts from culture (blue line) (from Versteegh et al., 2012); C. *Clorella emersonii* (orange line) (adapted from Allard, and Templier, 2000). ... [7]

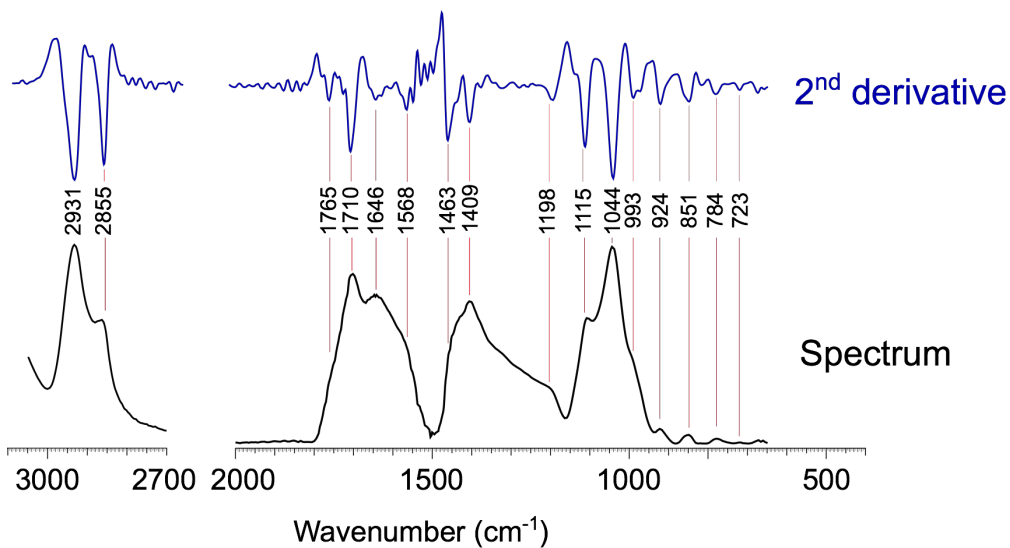


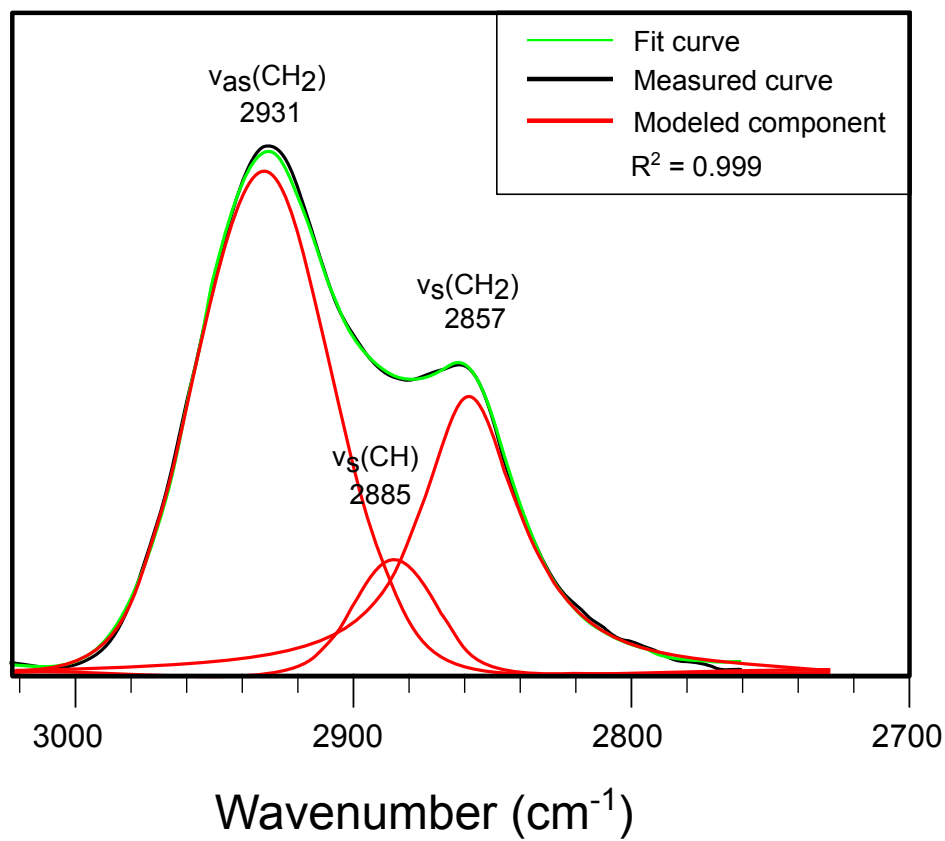
Figure 3: Detailed views of the fourier transform infra red spectrum of *Thalassiphora pelagica* from the Kerguelen Plateau with second derivative. Top Panel, detail of the 3500-2500 cm⁻¹ region of the FTIR absorption spectrum (transmission mode) of *T. pelagica*. Lower panel, detail of the 2000—700 cm⁻¹ region with the maxima of the spectrum 2nd derivative showing the locations of absorption bands.

Gerard Versteegh 10-3-20 11:08

Gelöscht: -

... [8]

25



30

Figure 4: Deconvolution of the CH₂ absorption bands for the 3100-2700 cm⁻¹ region demonstrating the absence of significant CH₃ absorption. Modelled curves are Lorentzian (curve at 2931 cm⁻¹) and Gaussian (the other curves).

Gerard Versteegh 6-3-20 18:39

Gelöscht: 5

Gerard Versteegh 6-3-20 18:58

Gelöscht: a mixed

Gerard Versteegh 6-3-20 23:11

Gelöscht: L+G)

Gerard Versteegh 6-3-20 19:00

Gelöscht: or Gaussian only (G). Percentages indicate the proportion to which the curve represents the Lorentzian function. The curve at 2934 cm⁻¹ is 25% Lorentzian, intensity 2.4 and width 57.; the curve at 2829 cm⁻¹ is purely Gaussian with intensity 0.6 and width 51; the curve at 2858 cm⁻¹ is 70% Lorentzian with intensity 1.3 and width 45

Gerard Versteegh 6-3-20 19:00

Gelöscht:

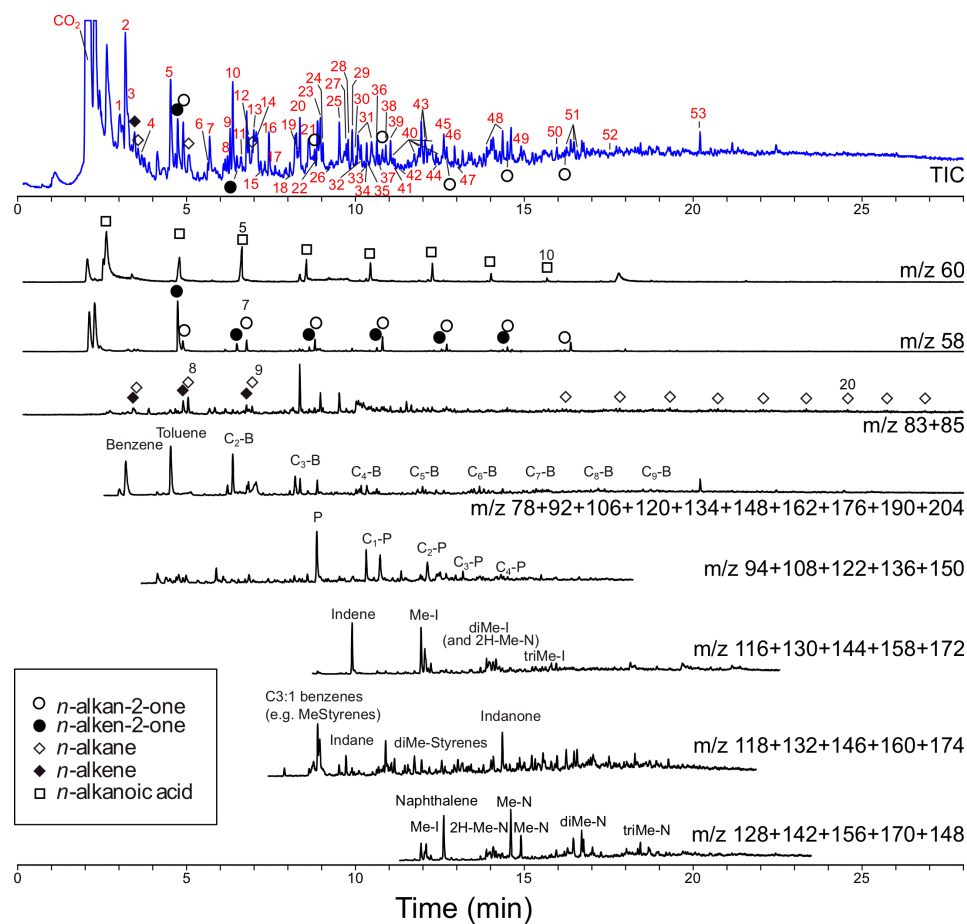


Figure 5: Chromatogram and mass chromatograms of pyrolysed *Thalassiphora pelagica* cysts from the Kerguelen Plateau. For the total ion current (TIC) the compound names corresponding to numbered peaks (red numbers) are given in Table 1. For the mass chromatograms B=benzene, P=Phenol, N= Naphthalene, I= Indene, 'C-with-number' indicates the number of carbon atoms added to the basic structure.

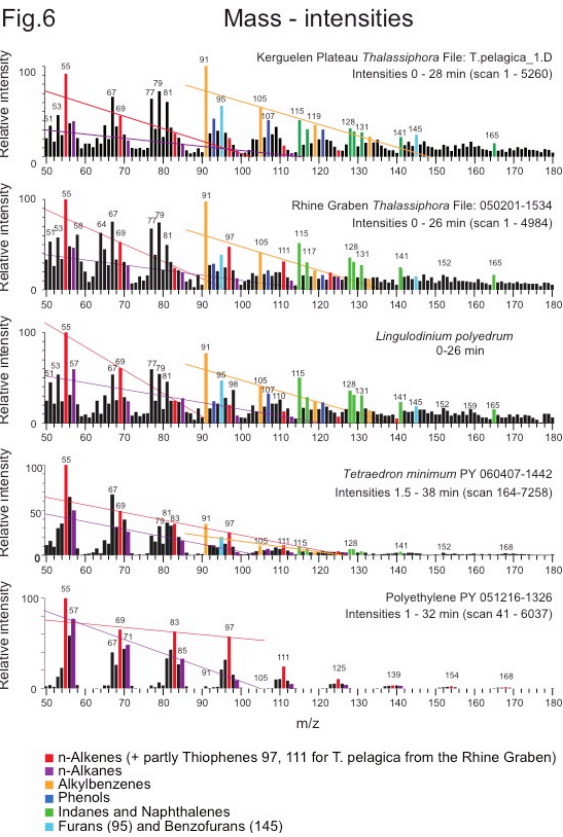


Figure 6: Mass intensity plots of the total chromatograms of (a) *Thalassiphora pelagica* from the Kerguelen Plateau, (b) *Thalassiphora pelagica* from the Rhine Graben (Versteegh et al., 2007), (c) Recent *Lingulodinium polyedrum* (Versteegh et al., 2012), (d) *Tetradron minimum* and (e) polyethylene. The lines connect masses indicative for *n*-alkenes (m/z 69, 83, 97), *n*-alkanes (m/z 57, 71, 85, 99) and alkylbenzenes (m/z 105, 119), respectively. Note that the total ion current of polyethylene is dominated by series of ions meeting the criteria C_nH_{2n-1} and C_nH_{2n+1} , reflecting the highly aliphatic nature of the macromolecule. Note for *T. pelagica* the relatively high aromatic contribution (orange bars; m/z 91, 105, 115, 117, 128, 129, 131) in comparison to the ‘aliphatic-derived’ fragments of alkanes and alkenes, and for *T. pelagica* from the Rhine Graben the high relative contribution of m/z 97 and 111 as compared to m/z 69 and 83 which is attributed to the presence of alkylthiophenes.

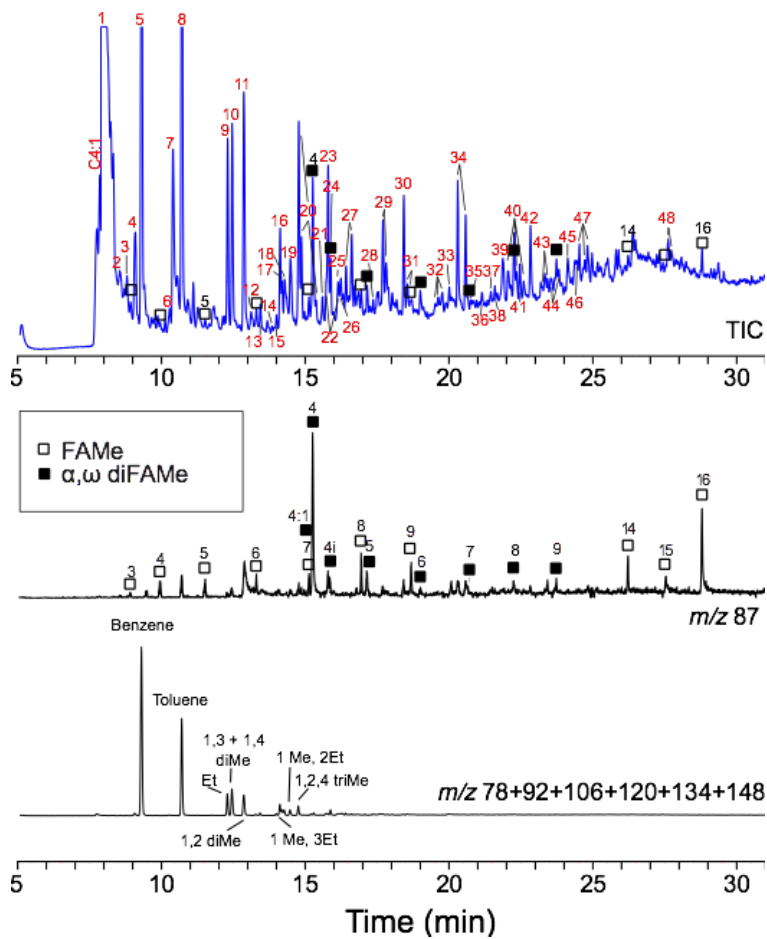


Figure 7: Chromatogram and mass chromatograms of *Thalassiphora pelagica* cysts from the Kerguelen Plateau after THM-GC-MS. Open squares *n*-alkanoic acids; closed squares *n*-alkanedioic acids. Black numbers indicate the number of carbon atoms of the compound. Red numbers refer to compound names listed in Table 2. Upper panel total ion current (TIC).; Lower panel mass chromatogram of m/z = 87 showing methyl esters of *n*-alkanoic acids and *n*-alkanedioic acids; 4:1 refers to the butenedioic acid, 4i refers to the iso-butanedioic acid. FAME stands for fatty acid methyl ester.

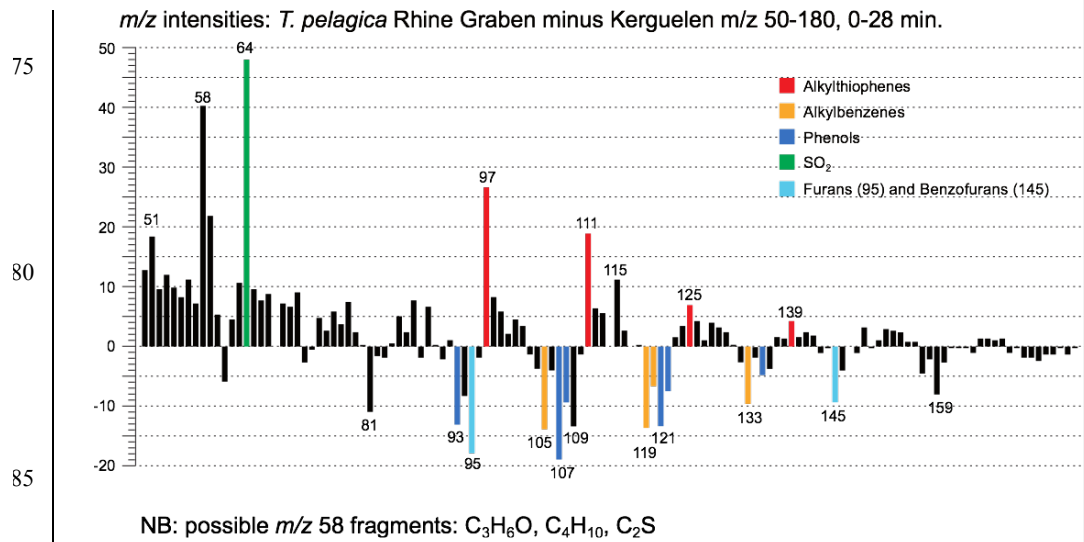


Figure 8: Relative mass intensities of the total chromatograms of *Thalassiphora pelagica* from the Rhine Graben minus those of *Thalassiphora pelagica* from the Kerguelen Plateau (Versteegh et al., 2007). Masses with abundances < 0 are more abundant in the specimens from the Kerguelen Plateau. Note the masses indicating sulphur containing fragments (thiophenes) are more important in the specimens from the Rhine Graben whereas masses characterizing oxygen containing fragments (furans, phenols) and alkylbenzenes are more abundant in specimens from the Kerguelen Plateau.

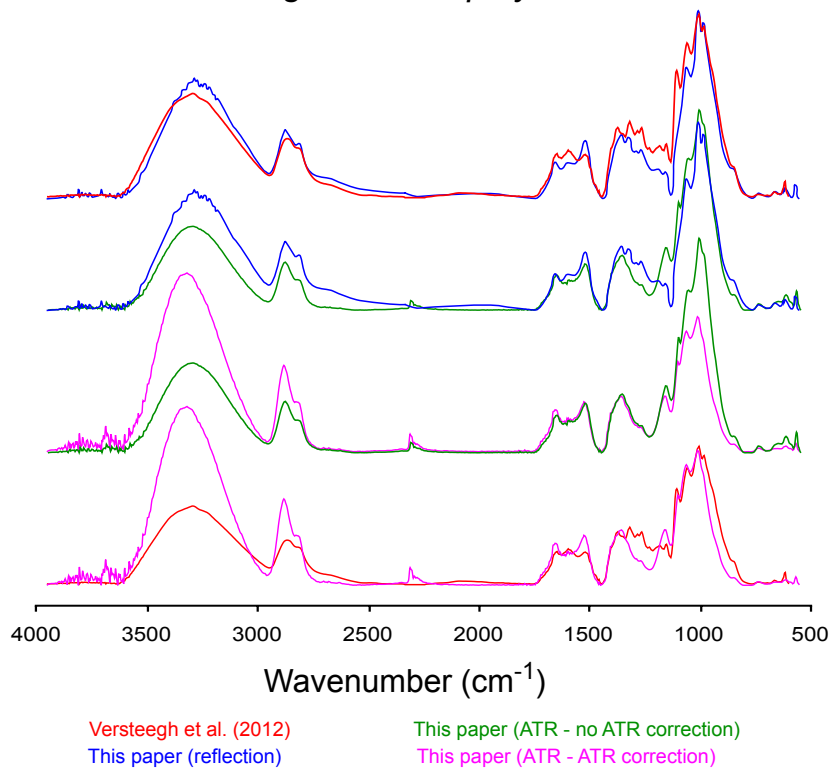
Gerard Versteegh 6-3-20 23:10

Gelöscht:

Supplementary Information

Published infrared spectra of the cysts of *L. polyedrum* and *T. pelagica* had been obtained by means of different spectrometric methods and using different brands and types of equipment. To obtain a better insight in the extent to which differences between spectra resulted from differences in cyst structure or differences in measurement conditions we traced the original material and re-measured all cysts using the same analytical procedure. Supplementary figures 1 and 2 demonstrate the influence of different methods of measurement.

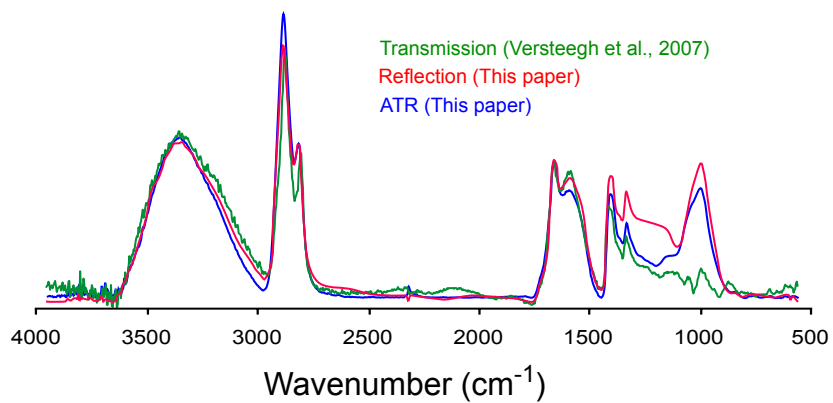
Lingulodinium polyedrum



10 Supplementary Figure 1: Comparison of published and re-measured infrared spectra derived from culture derived *Lingulodinium polyedrum* cysts measured in reflection mode and micro ATR mode. All spectra are derived from same sample, and received the same sample processing.

15

Thalassiphora pelagica - Rhine Graben



20 Supplementary Figure 2: Comparison of published and re-measured infrared spectra derived from *Thalassiphora pelagica* cysts from the Rhine Graben, measured in transmission, reflection and micro ATR modes. All spectra are derived from same sample, and received the same sample processing.

Seite 7: [2] Gelöscht	Gerard Versteegh	10-02-20 17:38
S		
Seite 7: [2] Gelöscht	Gerard Versteegh	10-02-20 17:38
S		
Seite 7: [2] Gelöscht	Gerard Versteegh	10-02-20 17:38
S		
Seite 7: [2] Gelöscht	Gerard Versteegh	10-02-20 17:38
S		
Seite 7: [2] Gelöscht	Gerard Versteegh	10-02-20 17:38
S		
Seite 7: [2] Gelöscht	Gerard Versteegh	10-02-20 17:38
S		
Seite 7: [2] Gelöscht	Gerard Versteegh	10-02-20 17:38
S		
Seite 7: [2] Gelöscht	Gerard Versteegh	10-02-20 17:38
S		
Seite 8: [3] Gelöscht	Gerard Versteegh	14-02-20 11:47

Three specimens of *T. pelagica* were analysed, each at least twice. The FTIR spectra are closely similar and

Seite 15: [4] Gelöscht	Gerard Versteegh	18-02-20 10:13
------------------------	------------------	----------------

The spectra of cyst walls of *T. pelagica* from the Kerguelen Plateau and recent, culture derived *L. polyedrum* (Versteegh et al., 2012) share the characteristic strong absorption of band F (C-O). Band A (CH_x) is similar. Band C (C=O) is clearly stronger for the *T. pelagica* cysts suggesting a higher carboxylic contribution. Nevertheless, the *T. pelagica* cysts differ from the fresh

dinosporin of *Lingulodinium* in having relatively stronger absorptions by CH₂, CH₃ and C=O are weaker absorption by C-O. I

Seite 15: [5] Gelöscht

Gerard Versteegh

05-03-20 17:53

4.1.3 Comparison of the micro-FTIR spectra of *T. pelagica* cysts from the oxic environment (Kerguelen Plateau) and the anoxic Rhine Graben

Seite 21: [6] Gelöscht

Gerard Versteegh

12-03-20 10:54

These cysts from the Rhine Graben also deviate much more from the modern gonyaulacoid cysts than the specimens from the Kerguelen Plateau

Seite 37: [7] Gelöscht

Gerard Versteegh

06-03-20 18:25

Figure 2: Fourier transform infra red spectra of algae, *Thalassiphora pelagica* from the Kerguelen Plateau in black compared to: A *Thalassiphora pelagica* from the Rhine Graben (green line) (Versteegh et al., 2007); B. *Lingulodinium polyedrum* cysts from culture (blue line) (from Versteegh et al., 2012); C. *Clorella emersonii* (orange line) (adapted from Allard, and Templier, 2000).

Capotal A-G refer to spectral regions discussed in the text. Numbers refer to wavenumbers in cm⁻¹.

Seite 38: [8] Gelöscht

Gerard Versteegh

10-03-20 11:08