

5

Ocean Deoxygenation and Copepods: Coping with Oxygen Minimum Zone Variability

Karen F. Wishner¹, Brad Seibel², Dawn Outram¹

10

¹Graduate School of Oceanography, University of Rhode Island, Narragansett, RI 02882, USA

²College of Marine Science, University of South Florida, St. Petersburg, FL 33701, USA

Correspondence to: Karen Wishner (kwishner@uri.edu)

15

Abstract. Increasing deoxygenation (loss of oxygen) of the ocean, including expansion of oxygen minimum zones (OMZs), is a potentially important consequence of global warming. We examined present day variability of vertical distributions of 23 calanoid copepod species in the Eastern Tropical North Pacific (ETNP) living in locations with different water column oxygen profiles and OMZ intensity (lowest oxygen concentration and its vertical extent in a profile). Copepods and hydrographic data were collected in vertically-stratified day and night MOCNESS tows (0-1000 m) during four cruises over a decade (2007-2017) that sampled four ETNP locations: Costa Rica Dome, Tehuantepec Bowl, and two oceanic sites further north (21°-22°N) off Mexico. The sites had different vertical oxygen profiles: some with a shallow mixed layer, abrupt thermocline, and extensive very low oxygen OMZ core, and others with a more gradual vertical development of the OMZ (broad mixed layer and upper oxycline zone) and a less extensive OMZ core where oxygen was not as low. Calanoid copepod species (including examples from the genera *Eucalanus*, *Pleuromamma*, and *Lucicutia*) demonstrated different distributional strategies (implying different physiological characteristics) associated with this variability. We identified sets of species that (1) changed their vertical distributions and depth of maximum abundance associated with the depth and intensity of the OMZ and its oxycline inflection points, (2) shifted their depth of diapause, (3) adjusted their diel vertical migration, especially the nighttime upper depth, or (4) expanded or contracted their depth range within the mixed layer and upper part of the thermocline in association with the thickness of the aerobic epipelagic zone (habitat compression concept). These distribution depths changed by 10's to 100's of meters depending on the species, oxygen profile, and phenomenon. For example, at the lower oxycline, the depth of maximum abundance for *Lucicutia hulsemannae* shifted from ~600 m to ~800 m, and the depth of diapause for *Eucalanus inermis* shifted from ~500 m to ~775 m, in an expanded OMZ compared to a thinner OMZ, but remained at similar low oxygen levels in both situations. These species or lifestages are examples of "hypoxiphilic" taxa. For the migrating copepod *Pleuromamma abdominalis*, its nighttime depth was shallow (~20 m) when the aerobic mixed layer was thin and the low oxygen OMZ broad, but much deeper (~100 m) when the mixed layer and higher oxygen extended deeper; daytime depth in both situations was ~300 m. Because temperature decreased with depth, these distributional depth shifts had metabolic implications.

20

25

30

35

40

The upper ocean to mesopelagic depth range encompasses a complex interwoven ecosystem characterized by intricate relationships among its inhabitants and their environment. It is a critically important zone for oceanic biogeochemical and export processes and hosts key food web components for commercial fisheries. Among the zooplankton, there will likely be winners and losers with increasing ocean deoxygenation as species cope with environmental change. Changes in individual

copepod species abundances, vertical distributions, and life history strategies may create potential perturbations to these intricate food webs and processes. Present day variability provides a window into future scenarios and potential effects of deoxygenation.

45 **1 Introduction**

Increasing ocean deoxygenation (loss of oxygen), including expansion of oxygen minimum zones (OMZs), is a potentially important consequence of global warming (Breitburg et al., 2018; Levin, 2018; Stramma et al., 2008). In the future, OMZs (oceanic depth zones of low oxygen) are predicted to expand in geographic extent and to have even lower oxygen concentrations in their centers compared to the present. The zooplankton community from the mixed layer into the mesopelagic is a key
50 component of oceanic food webs, particle processing, and biogeochemical cycles (Robinson et al., 2010; Steinberg and Landry, 2017). From earlier work, some mesopelagic species are known to be sensitive to environmental oxygen concentration and respond to that variability by altering their distribution patterns (Wishner et al., 2018, 2013; Seibel and Wishner, 2019). If the OMZ expands on a broader scale, distributions and abundances of many zooplankton species will likely be affected, with potential consequences for oceanic ecosystems.

55 We previously noted the presence of zooplankton boundary layers (sharp peaks of high zooplankton biomass and abundances of certain fish and copepod indicator species) at the upper and lower edges (oxyclines) of the OMZ core at two sites (Costa Rica Dome, Tehuantepec Bowl) in the Eastern Tropical North Pacific (ETNP), and how the lower oxycline biomass peak shifted depth by tracking oxygen concentration (Wishner et al., 2013). These peaks of zooplankton concentration in the water column
60 were also locations of active trophic processing (Williams et al., 2014), life history events (diapause depths) for some species (Wishner et al., 2013), and predator concentrations (Maas et al., 2014).

Here, we examine the variability of vertical distributions of copepod species living in locations with different water column oxygen profiles and OMZ intensity (lowest oxygen concentration and its vertical extent in a profile). We obtained quantitative
65 vertically-stratified zooplankton samples from the surface to 1000 or 1200 m, with simultaneous hydrographic data, from four cruises from 2007 – 2017 at several sites in the ETNP, an oceanic region with a strong OMZ (Fiedler and Talley, 2006; Karstensen et al., 2008; Paulmier and Ruiz-Pino, 2009). The tows sampled four different geographic locations, each showing a distinctive shape of the vertical oxygen profile through the OMZ. Some sites had a narrow shallow mixed layer, abrupt thermocline, and extensive very low oxygen OMZ core, while others had a more gradual vertical development of the OMZ
70 (broad upper oxycline zone of diminishing oxygen) and a less extensive OMZ core where the concentration of oxygen was not as low. On the 2017 cruise, horizontally-sequenced transects and tows at three different depths within the OMZ exhibited considerable submesoscale physical and biological variability (including km-scale features of oxygen); zooplankton abundance differences were associated with oxygen differences of only a few μM (Wishner et al., 2018). Here, we focus on copepod vertical distributions in order to compare species-specific responses to large scale spatial and temporal environmental variability
75 among the four different OMZ locations.

Many marine taxa, including zooplankton, are physiologically sensitive to the oxygen partial pressure in their environment (Childress and Seibel, 1998; Seibel, 2011; Seibel et al., 2016; Seibel and Wishner, 2019). One measure, typically viewed as an index of hypoxia tolerance, is P_{crit} , defined as the lowest experimentally determined partial pressure of oxygen at which an
80 individual of a species can maintain its oxygen consumption rate (MO_2). Recent work demonstrates that hypoxia does not

specifically select for a lower P_{crit} , but rather that the ratio of MO_2 to P_{crit} is a reflection of the physiological capacity to extract and transport oxygen, which is dependent on PO_2 as well as a species' activity level (Seibel and Deutsch, 2019). Species living in extreme hypoxia, such as those in OMZs, have greater oxygen supply capacity than do species living in air-saturated water. As a result, measured P_{crits} are generally related to the environmental parameters (temperature, oxygen, depth) where the species occurs (Childress, 1975; Seibel, 2011). Mesopelagic species living in OMZs have the lowest measured P_{crits} among animals (Seibel et al., 2016; Thuesen et al., 1998; Wishner et al., 2018). For most of these species, hypoxia tolerance is reduced at higher temperatures (P_{crits} are higher) because respiration increases, but one copepod species (*Lucicutia hulsemannae*), living at the OMZ lower oxycline, has a reverse temperature response, which is adaptive in this habitat where oxygen and temperature are inversely correlated (Wishner et al., 2018). *In situ* abundances of some OMZ species also respond to slight environmental oxygen variations at very low oxygen concentrations ($<10 \mu M$) at mesopelagic depths, corresponding to their experimentally determined physiological tolerances (Wishner et al., 2018). Here, we document oxygen and temperature ranges at the depth of maximum abundance in vertical profiles for a number of copepod species, as an indicator of the most metabolically suitable habitat for each species at the time and place of collection.

Alterations in zooplankton distributions in response to oxygen may have wider implications for ecosystem function and ultimately drive potential societal impacts (e.g. fisheries effects). Present day comparisons among locations with different water column oxygen structure can be used as proxies to illuminate potential future effects of OMZ expansion. We analyzed zooplankton vertical distributions spatially and temporally, using key copepod species as examples, to address the following important questions about OMZ expansion effects:

1. Do mesopelagic copepod species adjust their depth distribution, especially the occurrence of boundary layers at oxyclines, in association with the shape of the vertical profile of oxygen?
2. Does the depth of diel vertical migration (DVM) for particular species change in association with OMZ thickness and oxygen concentration, or do the copepods continue to migrate to the same depth regardless of oxygen?
3. Can distributional effects of aerobic habitat compression on epipelagic copepod species be documented? Specifically, do mixed layer species have different lower depth boundaries depending on the depth and abruptness at which very low oxygen occurs?

2 Methods

2.1 Sampling

Zooplankton samples were collected in day and night vertically-stratified net tows during 4 cruises to the ETNP (Fig. 1, Table 1). In Oct – Nov 2007 on *R/V Seward Johnson* and Dec 2008 on *R/V Knorr* (cruise 19502), sites at the Costa Rica Dome (CRD) ($9^\circ N$, $90^\circ W$) and Tehuantepec Bowl (TB) ($13^\circ N$, $105^\circ W$) were sampled as part of the ETP Project. A few years later as part of the Metabolic Index Project, *R/V Oceanus* (cruise OC1604B) in Apr 2016 occupied a station (OC) farther north at $22^\circ N$, $120^\circ W$, and the next year in Jan-Feb 2017, *R/V Sikuliaq* (cruise SKQ201701S) occupied a station (SKQ) at $21^\circ N$, $117^\circ W$. These station abbreviations are used for graph labels in the figures.

120 At all locations, a series of vertically stratified MOCNESS (Multiple Opening Closing Net and Environmental Sensing System
(Wiebe et al., 1985) tows, along with simultaneous hydrographic data, collected day and night zooplankton samples from depth
(1000 or 1200 m) to the surface (Table 1, Table S1 (Wishner et al., 2019)). Standard tows sampled the entire 0-1000 m depth
range in 100 or 200 m intervals (8 or 9 nets). At most stations, additional fine scale tows were taken over various intermediate
depth ranges, usually at sampling intervals of 25, 50, or 150 m. Adaptive sampling targeting particular oxygen values
(“physiology” and “oxycline” tows) was also done. At SKQ, 2 sequential day tows (Tows 718 and 719) and 1 night tow (Tow
125 720), that targeted the 350-650 m depth zone with 8 sampling nets for each tow, opportunistically encountered different vertical
oxygen profiles, and some species distributions responded to this variability. This tow series is referred to as the “mid-depth
comparison”. Results from horizontally-sequenced tows at specific mesopelagic depths within the OMZ, performed during the
R/V Sikuliaq cruise, were previously published (Wishner et al., 2018).

130 Zooplankton were sampled on the upcast portion of a tow close to noon or midnight, and the hydrographic data from the
MOCNESS sensors taken simultaneously with the sampling was used. In a few instances when sensors failed, hydrographic
information for some depths was used from the downcast portion of the tow or from a nearby CTD cast. The MOCNESS was
towed at a speed of ~1.5 kt along an oblique path; vertical speeds during the deeper sampling upcast were typically 1 to 3 m
min⁻¹. Because OMZ zooplankton are sparse, large volumes of water (typically 600 to >1000 m³) were filtered by each net for
135 the deeper samples, and those nets were open for ~20 minutes each. The duration of the deeper tows was ~7 h (most of a day or
night, centered around noon or midnight). Shallower tows were shorter in duration, and smaller volumes were filtered for the
mixed layer and upper water samples. Details of tows (time and location), depth intervals, and volume filtered for each net are in
Table S1 (Wishner et al., 2019) and the BCO-DMO data repository (see Data availability section).

140 By combining data from multiple tows for a given location to construct a full depth series, we were able to resolve fine scale
vertical distributions within the OMZ and at its upper and lower boundaries. The process for assembling vertical profiles from
multiple tows was described in Wishner et al., (2013) for the 2007 and 2008 cruises; a similar process was used for the other
cruises although depth strata varied (Table 1).

2.2 MOCNESS instrument

145 Two versions of the 1 m² MOCNESS were used. The *R/V Seward Johnson* and *R/V Knorr* cruises used the University of
Miami’s classic MOCNESS with the standard MOCNESS deck unit, software, and sensors, with the oxygen sensor incorporated
into the options unit. The *R/V Oceanus* and *R/V Sikuliaq* cruises used the upgraded Scripps Institution of Oceanography’s
MOCNESS in which a Seabird 911CTD with hydrographic sensors and software was physically attached to the MOCNESS
frame and its software integrated with the MOCNESS system (Wishner et al., 2018); the bottle-closing CTD feature was
150 transformed into a net bar release controller. The basic net frame and nets, net bar release mechanism, and flow meter were the
same in both systems. The recent upgrades provided more stable hydrographic sensor data and facilitated real-time adaptive
sampling with an improved shipboard data and graphical user interface. In the two earlier cruises, the net mesh size was 153 µm;
in the two later cruises it was 222 µm. Sensors included pressure (depth), temperature, salinity, *in situ* fluorescence, light
transmission, PAR (later cruises), and a TSK flow meter (for volume filtered). The oxygen sensor for all cruises was a Seabird
155 SBE43, calibrated in advance of the cruises.

2.3 Sample processing, copepod sorting, and abundance data

At sea, cod ends upon retrieval were placed in buckets with plastic ice packs to maintain cool temperature in the tropical heat. Fresh samples were rinsed with filtered seawater into large 153 μm mesh metal sieves and photographed. Most samples from the earlier cruises were then split in a flat-bottomed Motoda splitter. Typically, a half split was preserved in 4% sodium-borate buffered formaldehyde in seawater solution for later species identification, while other splits were used for experimental studies, at-sea size-fractionated biomass measurements (first two cruises), photography, and stable isotope analyses. Samples from the later cruises were usually preserved whole without splitting, except for a few individuals that were set aside for live experiments (and recorded at that time).

Onshore processing, including copepod sorting and identification, varied among the cruises because of time and funding constraints. Onshore sorting of copepods occurred months to years after a cruise. The 2007 CRD tows, most of the 2016 OC tows, and most of the 2017 SKQ tows were sorted to substantial species-level and lifestage detail, while others (especially some 2007 and 2008 TB tows) were sorted for only a few selected species. For the 2016 and 2017 cruises, only larger copepods were counted after the sample was poured through a 2 mm sieve in the lab, while copepods of all sizes were counted in the 2007 CRD samples (targeting major groups). Splits of the whole sample were used in most cases, with a target sample size of 100 calanoid copepods. In some instances for SKQ horizontal tows, Stempel pipette aliquots of the small or large size fractions were checked and quantified for particular taxa. About 22,000 identified copepods are included in this paper's dataset.

Certain copepod species were consistently identified and visually searched for in most tows, with a focus on the genera *Lucicutia* and *Pleuromamma* and the family Eucalanidae. Many other copepod species were identified when present, except for deeper TB samples (below 200 m) for which only targeted species were quantified. Some species, especially ones that were rarer, smaller, immature, or difficult to identify, were not always separated and were often lumped into broader categories such as genus, family, or "miscellaneous calanoid". Because adult morphological features are typically needed for species confirmation, identification targeted adult calanoid copepods. For some species in which particular younger stages were abundant, easily recognizable, and essential for ecological understanding, those stages were counted separately. This was especially important for the copepod *Eucalanus inermis* which had an obvious diapausing layer sometimes associated with OMZ oxyclines. Copepods were identified by an experienced technician (Dawn Outram) based on the literature and websites, especially Razouls et al. (2005-2019), website <http://copepodes.obs-banyuls.fr/en>. Identifications of individuals were done by hand with Nikon and Wild stereo and compound microscopes, enabling more detailed species and lifestage delineation than possible with bulk sample electronic scanning. An upgraded microscope with greater acuity was used for the 2016 and 2017 sample processing, allowing greater species resolution. Other sample components, including size-fractionated biomass, zooplankton stable isotope and body composition, and abundances of other taxa including euphausiids, fish larvae, cephalopods, and foraminifera are reported elsewhere or are currently under analysis (Birk et al., 2019; Cass et al., 2014; Cass and Daly, 2014, 2015; Maas et al., 2014; Williams et al., 2014; Wishner et al., 2018, 2013).

During the first two cruises, all individuals of the copepod *E. inermis* were scanned by microscope for the presence of stored oil, an indicator of diapause. They were categorized as containing oil (orange in color in these preserved specimens), clear (no oil), or brownish (no oil but brown in color). A total of 9,998 specimens from all nets and tows, separated by lifestage from copepodite 3 to adult females and males, were examined. Only a subset of these data is discussed in this paper.

Abundances within each net, usually reported as number of individuals (1000 m)⁻³, were calculated after accounting for split size and volume filtered (Table S1, Wishner et al., 2019). Abundances in vertical distribution graphs are plotted at the mid-depth of the sampling interval. Water column abundance (reported as number of individuals m⁻² for a selected depth range, (usually 0-1000 m) was calculated by multiplying each sample abundance by the depth range of that sample and then summing those values for the complete sample series over the total selected depth range.

2.4 Species selection for this paper and depth of maximum abundance

To clarify critical issues about OMZ effects on zooplankton, we selected a subset of 23 species from the extensive full species list (over 300 species) in order to highlight specific responses to OMZ variability (Table 2). We chose these species based on their abundance and frequency of occurrence (presence/absence) in the different locations and cruises and their usefulness as examples to illustrate different types of distributional responses to variability in the shape (and lowest oxygen concentration) of the oxygen profile. In a set of graphs, we show day and night vertical distributions of particular species relative to the oxygen profile from each sampling location and time (when that species was present).

The depth of maximum abundance (DMA) was defined as the single net and its depth interval with the highest abundance for a particular species at each station during each cruise, with all tows considered (Table 3). The MOCNESS sensor data during the time of collection (upcast) was used to delineate the habitat parameters (oxygen and temperature ranges) at the DMA; these are from the particular tow and net listed. Most species also occurred (at lower abundance) over a broader vertical range beyond the single DMA net, as evident in the figures and Table S1 (Wishner et al., 2019). Some species exhibited bimodal distributions. It should be noted that because each net in a MOCNESS tow encompassed a range of depths and consequently a range of hydrographic values, it is unknown where within that range the collected animals were actually located. However, our fine scale sampling in many cases encompassed very narrow environmental intervals such that we could constrain the OMZ habitat preferences and tolerances (oxygen and temperature ranges) for many species.

3 Results

3.1 Environmental structure

Hydrographic profiles from MOCNESS sensors are shown in Fig. 2 for each location for both the full sampling range (0-1000 m) and the upper water column (0-200 m). We selected one oxygen profile from each site and year to represent that location in the vertical abundance graphs, although abundance profiles were derived from combining multiple day and night tows (see sect. 2.1 and 2.3). In a few cases, we discuss small scale distributional variability between sequential tows at the same location, especially the “mid-depth comparison” series at SKQ. Supplementary Fig. S1 shows all MOCNESS oxygen profiles at each station to provide a sense of oxygen variability among tows at the same location.

The OMZ water column consists of several ecological zones, previously described, each of which has a characteristic hydrographic structure and forms the habitat for a suite of organisms and processes (Wishner et al., 2008, 2013). Zonal boundaries depend on both the shape of the oxygen profile and oxygen concentration, and boundary depths vary by profile. We describe these zones briefly below to introduce terminology and provide a framework for analysis. The mixed layer is the water column above the thermocline with high oxygen and temperature. The upper oxycline (UO), which begins just below the thermocline, has decreasing oxygen with depth and may be abrupt or broad. The OMZ core has the lowest oxygen values stable over a depth range; at these locations OMZ core oxygen was often < ~1-2 μM, but was always detectable. The lower oxycline

235 (LO) starts at the inflection point at the base of the OMZ core where oxygen begins to increase with depth. The LO is often
characterized by a sharp subsurface peak in zooplankton biomass and abundance and the presence of specific indicator taxa.
Oxygen would continue to increase below our sampling range.

240 The lowest oxygen values in the OMZ core during these cruises occurred at CRD and TB (values down to 1.0 μM). The mixed
layer was very thin at both CRD and TB, with the start of the thermocline at 16-34 m in different tows and with temperature and
oxygen decreasing rapidly below. However, TB in 2007 had a subsurface oxygen intrusion in the upper oxycline zone, so the
OMZ core did not begin until about 350 m and extended to 550 m, similar to the OMZ core extent at CRD that same year. TB in
2008 had the most vertically extensive OMZ core (oxygen values of 1.1-1.5 μM) extending from depths of 80-700 m, with an
abrupt thermocline and almost nonexistent upper oxycline. It was also notable for the occurrence of double subsurface
245 fluorescence peaks, one near the shallow thermocline (~ 40 m) as expected and also a deeper peak at ~ 120 m within the low
oxygen water of the OMZ core.

The mixed layer extended deeper at the northern stations, OC and SKQ. Fluorescence peaks near the thermocline were deeper
(~ 80 -100 m) at OC and SKQ, compared to the thermocline-associated peak (~ 50 m) at CRD. At OC and SKQ, the oxygen
profile was more rounded in shape without a clear cut extensive OMZ core. The upper oxycline was broad, with relatively high
250 oxygen concentration down to ~ 450 m. The OMZ core was narrow (only ~ 25 m thick, ~ 525 -550 m at OC and at more variable
depths between 400-600 m in different tows at SKQ). Oxygen values in the core at OC reached only as low as 3.6 μM ,
substantially higher oxygen than at CRD or TB. SKQ had some low oxygen values of 1.0 μM for parts of particular net
intervals, especially in the mesopelagic horizontal tows during transects through submesoscale features (Wishner et al., 2018).

255 Temperature decreased with depth below the thermocline and was similar through the mesopelagic at all these stations (Fig. 2).
Mixed layer salinity was comparatively low except at the OC and SKQ stations, which were farther north than those of the
earlier cruises, and where there was a subsurface salinity minimum (~ 80 -250 m), likely an influence of the southern extent of the
California Current.

260 Temperature-salinity and temperature-oxygen graphs illustrate the different water masses and metabolic habitats encountered
(Fig. 2, bottom row). The high-resolution temperature-oxygen graph (bottom right) highlights the small scale habitat variability
of the OMZ and oxyclines (see also Wishner et al., (2018)). In different locations, animals at the same mesopelagic depth (i.e.
same temperature) could experience quite different oxygen regimes; animals tracking a specific oxygen concentration might live
at different depths (and temperatures).

265 **3.2 Copepod distributions and responses to oxygen profile variability**

Copepod distributions are presented in a series of graphs and tables described below. Environmental data (ranges for depth,
oxygen, and temperature) and abundances (number (1000 m)⁻³) in the single net at the depth of maximum abundance (DMA) for
each species are in Table 3, along with water column abundances (number m⁻² usually for the 0-1000 m depth interval) for that
species at that station. Abundances of each species in all tows and nets are in Table S1 (Wishner et al., 2019).

270 **3.2.1 OMZ oxycline and OMZ core species that shift depth and track oxygen**

275 These were primarily mesopelagic species, most with no diel vertical migration, whose peak abundance was associated with the inflection point at the upper edge (UO) or lower edge (LO) of the OMZ core. These species showed distributional shifts associated with the changing depth of the inflection points and the OMZ core on the different cruises (details below). Peak abundances often occurred abruptly in a very narrow depth interval (a single or only a few sampling nets) and could be several orders of magnitude higher than in adjacent nets.

280 *Lucicutia hulsemannae*. This copepod (Markhaseva and Ferrari, 2005), formerly called *L. grandis*, is considered to be an indicator species of the LO (Wishner et al., 2000, 2013). Its peak abundance occurred at the LO inflection point at the base of the OMZ core in the tows with lowest oxygen and most extensive OMZ (Fig. 3, Table 3). Its maximum abundance in a single net (997 individuals (1000 m)⁻³) occurred at 600-625 m at CRD in 2007, with oxygen in that interval at 1.7-5.9 μM and temperature at 6.3-6.5°C. It was also very abundant at TB in 2008 (maximum of 781 individuals (1000 m)⁻³), but in this case that peak occurred deeper (800-825 m) and thus at lower temperature (5.5-5.6°C), just below the extensive OMZ core of lowest oxygen. This net sampled a more constrained oxygen range (1.8-2.4 μM) confirming that this species can thrive in extremely low oxygen water (Wishner et al., 2018). At OC and SKQ, where oxygen was not as low and where the oxygen profile was more rounded without a clear-cut OMZ core, *L. hulsemannae* was distributed more broadly throughout the overall OMZ and both oxyclines, and its water column abundance (7-16 m⁻² from 0-1000 m) was usually lower. Maximum abundances (65-92 individuals (1000 m)⁻³) were also substantially less (with one exception) and occurred shallower (450-550 m at OC; 500-600 or 600-650 m at SKQ) at these northern stations, although temperature at depth was similar to CRD. During SKQ in horizontally-sequenced tows reported elsewhere, this species also had strong physiological and distributional responses to very small (several 290 μM) oxygen differences and had higher abundances in lower oxygen (Wishner et al., 2018). In the SKQ “mid-depth comparison” series, highest abundances were usually associated with the tow and nets with lower oxygen (Fig. 4). Younger stages, from copepodite 2 to 5, were recorded, and often abundant, in many of the same nets and depths as the adults. No adults or young stages were found in shallow samples. *L. hulsemannae* thus appears to be actively growing and developing within this extremely hypoxic part of the OMZ.

295 A congeneric species, *Lucicutia ovalis*, occurred in the deeper LO several hundred meters below *L. hulsemannae* and consequently at lower temperature and higher oxygen levels (Table 3, not graphed). It also shifted depth between locations and was deeper at CRD (1100-1200 m) and TB (900-1000 m) (stations with a thick OMZ) than at OC (700-750 m). It was less abundant than *L. hulsemannae* and was not found on the SKQ cruise (perhaps due in part to its small size and likely absence from the large size fraction that was sorted). 300

305 *Disseta palumbii*. This widely distributed species in the family Heterorhabdidae (Razouls et al., 2005-2019) was also typical of the LO, but its abundance peaked about 50-100 m deeper than *L. hulsemannae* (Fig. 3). Consequently, the oxygen at its DMA was slightly higher and the temperature lower than for *L. hulsemannae*. Its water column abundance and maximum abundance were highest at the stations where OMZ oxygen was higher, and it was more abundant at OC and SKQ than in earlier cruises. Younger stages (copepodites 4 and 5) were present in some cruises at similar depths to adults and were sometimes more abundant than adults.

310 Another Heterorhabdidae species complex, *Heterostylites longicornis/longioperculis*, was very abundant from the UO through the OM to the LO and was another characteristic species of this habitat (Fig. 3). It was likely a mixture of two species that are

difficult to separate microscopically (Razouls et al., 2005-2019), so was treated as one entity. In contrast to *D. palumbii*, abundances were highest in the earlier cruises at CRD and TB08, where it co-occurred with *L. hulsemannae* at the LO in very low oxygen. At OC and SKQ where it was less abundant, it occurred primarily in the UO and shallower than *L. hulsemannae* and *D. palumbii*. Oxygen values in its habitat at SKQ were similar to the low values of earlier cruises, but in OC its shallower peaks (100-250 m) were at higher oxygen. Younger stages occurred at many of the same depths.

Two Aetideidae species, *Gaetanus kruppi* and *Gaetanus pseudolatifrons*, and two Augaptilidae species, *Euaugaptilus magnus* and *Euaugaptilus nodifrons*, also demonstrated distributional separation between congeners within the LO zone (Fig. 5). *G. kruppi* occurred shallower than *G. pseudolatifrons* and usually at lower oxygen and higher temperature because it was closer to the LO inflection point. Both were most abundant at CRD. *E. magnus* was clearly a LO species, while *E. nodifrons* had a distribution pattern split between the UO and LO. These latter two species were identified only from the later cruises.

Several other species, including *Metridia brevicauda*, *Metridia princeps*, and *Paraeuchaeta californica*, also showed a split distribution pattern with peaks of adults usually at both the UO and LO sides of the OMZ core but almost no specimens in the OMZ core itself or in shallow water (Fig. 6, 7). The predominant peak for *M. brevicauda* adults was typically in the UO, while the predominant peak for *P. californica*, *M. princeps*, and *E. nodifrons* could be either in the LO or UO. *P. californica* and *E. nodifrons* in the LO occurred deeper and at higher oxygen than the LO secondary peak of *M. brevicauda*. The LO peak (at 675-700 m) for *M. princeps* was especially clear-cut at CRD since this species was not present shallower there; however, its highest total water column abundance was at SKQ where it occurred over a broader depth range at both the UO and LO.

Oxygen where *M. brevicauda* was most abundant was 1.0-5.7 μM with a temperature of 10.0 – 10.8°C (Table 3) in the UO of CRD in 2007 (300-350 m, maximum adult abundance in this net of 15,958 (1000 m)⁻³), indicating the ability of this species to thrive at very low oxygen (similar to *L. hulsemannae*) but at somewhat higher temperature. Younger smaller life history stages of *M. brevicauda* were quantified in the CRD and TB08 cruises (counted only from 0-200 and 550-1000 m in TB08) (Fig. 6), but not in later cruises, when only the large copepod size fraction (> 2 mm) was sorted (and small taxa like *M. brevicauda* may have been under-represented). Younger stages (copepodites 2–5) occurred at similar depths as adults, while the youngest stage (copepodite 1) was very abundant (up to 23,589 (1000 m)⁻³ at night) in TB08, primarily in the lower mixed layer (50-100 m). This life history distribution pattern suggested active reproduction at depth, with ontogenetic migration of the youngest stages up into the well-oxygenated warmer mixed layer at some times.

The Scolecitrichidae copepods *Lophothrix frontalis* and *Scaphocalanus magnus* were common UO components during the OC and SKQ cruises (not differentiated during earlier cruises), with possible DVM within the UO (Fig. 7). Peak daytime abundance of *L. frontalis* was located at 425-468 m (oxygen 4.6-7.4 μM), while at night it was at 100-150 or 200-250 m where oxygen was much higher. *S. magnus* occurred somewhat deeper (extending from the UO into the OMZ core) and its possible DVM was deeper. Both species also had higher abundances in the higher oxygen profile of the SKQ “mid-depth comparison” series (Fig. 4).

3.2.2 *Eucalanus inermis*, a copepod that diapauses in the OMZ

The Eucalanidae copepod *E. inermis* was especially abundant at CRD and TB where it formed concentrated diapausing layers at the UO and LO inflection points (Fig. 8). These were considered diapausing layers because of their lifestage composition and

350 the presence of stored oil in many individuals. Stored oil, an indicator of diapause, was visibly apparent as an orange colored material inside many preserved copepods during the first two cruises. Individuals from the diapausing layer that had no obvious stored oil were either brownish or clear in preserved samples. From the total of 9,998 *E. inermis* individuals examined microscopically for oil (all tows and nets on these two cruises), there were 334 adult females from the four DMA nets listed in Table 3 (plus two additional DMA nets, ID numbers 6371 and 6368, from tows at CRD in 2008 not included in Table 3). From 355 67% to 93% of adult female *E. inermis* in the diapausing layers (DMA nets) during these 6 tows contained stored oil (total of 269 individuals), as did high proportions of the older immature males (copepodites 4 and 5) also present there. Oil presence was not quantified on the later cruises, but actively swimming specimens from near surface samples examined live at sea were transparent, with some, but not all, having some transparent stored oil.

360 Multiple layers (near surface, UO, LO) with different lifestage composition and relative abundances occurred at both locations during the first two cruises (Fig. 8). Adult diapausing copepods were primarily females, but large concentrations of copepodite 4 and 5 males and a few adult males, as well as some younger stages, occurred in these same samples. Locations of the diapausing animals were the UO and LO layers, while young stages, as well as some presumably non-diapausing adults, occurred near-surface. Peak abundance of diapausing adults ($33,912 (1000 \text{ m})^{-3}$) was located in a layer at 300-350 m (UO) during CRD in 365 2007, while at CRD in 2008, the peak abundance ($19,242 (1000 \text{ m})^{-3}$) was at the LO at 500-550 m. At TB in 2007, peak adult abundance occurred at the UO (20-80 m), whereas the next year at TB, the maximum adult abundance was at the LO at 775-800 m. At the LO, when the diapausing layer was fortuitously sampled as an entity in a single net, it occurred as a monospecific aggregation located just above the more diverse LO community (e.g. *L. hulsemannae* and associates), as noted earlier (Wishner et al., 2013). During 2008 at TB, there was also a very high concentration of copepodite 1 and 2 stages (total of $211,894 (1000 \text{ m})^{-3}$) at 60-80 m at the UO, indicating that reproduction and development had occurred recently (Fig. 8). Similar near-surface 370 layers of mixed life stages, including many immature specimens, were also found at CRD in both years. During the last two cruises, abundances at those more northerly stations were substantially lower (but still included immature life history stages) and were not as sharply layered, occurring within the broad UO (400-550 m). There was no concentrated layer of diapausing animals on these later cruises. No DVM was evident for any cruise.

375 *E. inermis* diapausing layers were located at extremely low oxygen, 1.0-5.7 μM (except for the shallow layer at TB in 2008 where the net probably sampled across zones) (Table 3). These layers were at the edges of the OMZ core, but usually not at the lowest oxygen of the OMZ. The large percentage of animals with stored oil in these layers, and the sharpness of layer boundaries, were strong indicators that this species undergoes its diapause in a precisely defined zone of extremely low oxygen. Our sampling did 380 not address seasonal cycles at particular locations, so we do not know the temporal progression of reproduction and development or how long diapause layers persisted at depth in low oxygen. The brownish or clear specimens may have been animals that had depleted their oil reserves.

Other common copepod species from the family Eucalanidae observed during the cruises did not have the obvious diapause 385 behavior of *E. inermis*. *Eucalanus californicus* and *Eucalanus spinifer* were moderately abundant farther north during the latter two cruises (not found at CRD and not separately identified at TB) (Fig. 5); they are common in the California Current and subtropics respectively (Goetze, 2003; Goetze and Ohman, 2010). They occurred primarily within the broad UO, with *E. californicus* being slightly deeper and also having many copepodite stages 4 and 5. These species occurred at somewhat higher oxygen than the *E. inermis* diapausing animals.

390 3.2.3 Diel vertical migrators and OMZ intensity

Copepod species in the genus *Pleuromamma* (Family Metridinidae) are well known as strong diel vertical migrators, including species that descend to mesopelagic depths during the day in the ETNP (Haury, 1988; Hirai et al., 2015; Razouls et al., 2005-2019). Three of these species provided insight into varying strategies in response to differences in OMZ and mixed layer vertical extent and differences in oxygen values among cruises (Fig. 9). We expected that their daytime depth would be most affected by
395 OMZ variability as they coped with different conditions during their diel transit. However, for *Pleuromamma abdominalis* and *Pleuromamma quadrungulata*, it was the nighttime depth that changed with the shape of the oxygen profile, while the daytime depth remained similar across cruises for each species (Table 3). For example, for *P. abdominalis*, its nighttime depth was 20-30 m at CRD in 2007 in the high oxygen mixed layer above the sharp thermocline and low oxygen below, but 100-150 m at OC in 2016 and 50-75 m at SKQ in 2017 where the mixed layer was broader and higher oxygen extended deeper. Daytime depth was
400 250-350 m at all these stations in the UO just above the OMZ core.

Pleuromamma johnsoni (Ferrari and Saltzman, 1998) tended to occur deeper during the day than the other species (400-450 m at CRD in 2007 and SKQ in 2017) and had some day and night layers associated with the LO below the OMZ core (Fig. 9). At TB in 2008, with its vertically extensive OMZ, abundant daytime layers of *P. johnsoni* occurred at both 250-300 m in the OMZ core
405 (oxygen 1.2-1.4 μM , temperature 10.8-11.3°C) and 850-875 m at the LO inflection point (oxygen 2.5-4.3 μM , temperature 5.2-5.4°C). There was also an especially abundant nighttime layer of *P. johnsoni* (20,059 individuals (1000 m)⁻³) at the thermocline where oxygen and temperature were higher (50-60 m, oxygen 21.8-82.6 μM , temperature 19.7-24.2°C).

There were also clear-cut geographic differences in presence/absence and abundance among these species (Fig. 9, Table 3), with
410 *P. abdominalis* most abundant at CRD in 2007 and *P. quadrungulata* most abundant at OC in 2016 and SKQ in 2017, but absent at CRD in 2007. *P. johnsoni* was most abundant at TB but absent at OC in 2016, whereas the other two *Pleuromamma* species were absent at TB in both years (except for one juvenile specimen of *P. abdominalis*). *Pleuromamma* species were specifically targeted for identification at all stations and nets, so these presence/absence comparisons are strongly supported. Whether these patterns resulted from distinct environmental preferences associated with habitat availability (oxygen and temperature
415 combinations) or from other temporal and spatial changes or ecological factors cannot be resolved with our sampling.

3.2.4 Epipelagic habitat compression and mixed layer species responses

Four abundant species that occurred primarily in the warm well-oxygenated mixed layer or near the thermocline were used to examine the aerobic habitat compression hypothesis by comparing copepod abundances from cruises with substantial difference in the shape of oxygen profiles. The first two cruises had a narrower aerobic mixed layer habitat with an abrupt transition to the
420 OMZ core, while the last two cruises had a broader aerobic mixed layer and more gradual UO. There were several complications associated with choosing representative epipelagic taxa. Many upper water column tropical copepods were small or hard to identify (i.e. *Clausocalanus spp.*) or occurred primarily as immature stages; these were not a focus of this OMZ project, and many were not identified to species. During some cruises, the mixed layer was sampled only as a single net interval and not subdivided into multiple strata, so small scale distributional differences there were not defined. Also, these four species,
425 generally smaller in size than the deeper living copepods discussed earlier, may have been relatively under-sampled during the later cruises when a slightly larger mesh size was used and only the >2 mm size fraction sorted; however, this should not affect within-cruise distributional patterns.

430 The Eucalanidae copepod *Subeucalanus subtenius*, the Paracalanidae copepod *Mecynocera clausi*, and the Lucicutiidae copepod
Lucicutia flavicornis were most abundant shallower in the thermocline at the first two stations (20-30 m at CRD in 2007, 40-60
m at TB in 2008), but occurred deeper and in lower abundance within the broader mixed layer (usually 75-100 m) on the later
cruises (Fig. 10). Maximum abundances reached 33,647 (1000 m)⁻³ (*S. subtenius* during CRD in 2007, 20-30 m). There was no
clear signal of DVM for these species although our sampling cannot rule out small scale shifts within the mixed layer. For these
abundant epipelagic copepods, the vertical range contraction observed in distributions in the two earlier cruises compared to the
435 later ones was likely a response to habitat compression of the aerobic mixed layer.

Another abundant copepod, the Heterorhabdidae *Haloptilus longicornis*, occurred at the base of the mixed layer in the first two
cruises (100-150 m at CRD in 2007 and 60-80 m at TB in 2008 during the day) but substantially deeper within the UO (200-300
m during the day) in the latter two cruises (Fig. 9). Because of the different shapes of the oxygen profiles, oxygen at these very
440 different daytime depths was similar and moderate (13.1-61.2 μM), except at TB in 2008 which had lower oxygen. However,
temperature was about 3°C lower at the deeper daytime depths in the latter cruises compared to the shallower earlier ones (Table
3). Additionally, *H. longicornis* exhibited a short DVM up to 75-100 m at night at two of the stations.

4 Discussion

4.1 Overview

445 The unique feature of our work is the effort to document precise habitat conditions pertinent to metabolic requirements (oxygen
and temperature) at depths where particular species are most abundant, and how the shapes of their vertical abundance profiles
are modified in concert with the changing vertical profiles of oxygen in these extreme OMZ habitats.

Although the ETNP copepod fauna and, in some cases, distributional relationships to oxygen have been studied previously in
450 numerous locations and programs (Fernández-Álamo and Färber-Lorda, 2006), the sampling schemes, technology, and scientific
foci differed from ours. Chen (1986) analyzed vertical distributions for both individual copepod taxa and large multispecies
samples, collected with opening-closing bongo nets, at stations along a transect from Baja California to the equator during the
Krill Expedition. Copepod vertical distributions in the Costa Rica Dome, long known as a productive feature important to
fisheries (Fiedler, 2002; Landry et al., 2016), have been reported (Décima et al., 2016; Fiedler, 2002; Jackson and Smith, 2016;
455 Landry et al., 2016; Sameoto, 1986; Vinogradov et al., 1991; Wishner et al., 2013). Copepod vertical distributions from
MOCNESS tows near the Volcano 7 seamount in the ETNP (13°N 102°W) were described by Saltzman and Wishner (1997).
Many studies also analyzed vertical distributions of some of these species in adjacent subtropical regions, including the central
north Pacific (Ambler and Miller, 1987; Landry et al., 2001; McGowan and Walker, 1979) and the southern extent of the
California Current off Baja California (Jiménez-Pérez and Lavaniegos, 2004; Longhurst, 1967) where there is a strong OMZ.
460 Mesopelagic copepod distributions in other strong OMZs worldwide have also been detailed in the Eastern Tropical South
Pacific off Peru and Chile (Escribano et al., 2009; Judkins, 1980; Tutasí and Escribano, 2019), the southeastern Atlantic (Bode et
al., 2018; Teuber et al., 2013a, 2013b, 2019), and the Arabian Sea (Smith and Madhupratap, 2005; Wishner et al., 2008).

Many earlier zooplankton studies did not collect the comprehensive hydrographic data available from modern electronic CTD
465 and oxygen sensors, did not sample and target specific oxyclines and fine scale vertical strata with precision control, did not
extend to deeper mesopelagic depths, or occurred before the recent perspective of OMZ deoxygenation impacts that guides
present research (Breitburg et al., 2018). It is also essential to have species-level and life stage identification (not just biomass,

size class, or large taxonomic grouping) to understand the multifaceted interactions and evolutionary adaptations of diverse zooplankton to the strong persistent (but variable) oxygen gradients of OMZs. OMZ oxygen is far more variable spatially and temporally than is generally appreciated, even at mesopelagic depths (Fig. 2), and copepod distributions responded to both large and subtle differences.

The physical oceanographic complexity of oxygen distributions and sources in the ETNP, including spatial and temporal variability, has also long been an active topic of investigation (e.g. Deutsch et al., 2011; Fiedler and Talley, 2006; Margolskee et al., 2019; Wishner et al., 2018). However, although we compared vertical distribution differences relative to oxygen gradients among locations and cruises, our sampling was not designed to elucidate responses to the many other spatially and temporally variable environmental forces pertinent to this region, such as climate cycles (El Nino-Southern Oscillation) or the dynamic variability of the major regional ocean currents or deep advective flow (Kessler, 2006).

4.2 OMZ, oxycline, and “hypoxiphilic” taxa

Oxycline-associated and OMZ species showed a remarkable ability to alter their vertical distributions to conform to different oxygen profile shapes at different locations. Many taxa had very narrow oxygen habitat ranges and strong layering, indicative of precise habitat preference and exceptional tolerance for low oxygen. These species tended to alter depth (and temperature) while maintaining a relatively constant oxygen level (Table 3). Important caveats overall are that (1) we focused primarily on adults (except for species previously noted) and (2) total population distributions, even for adults, often extended over broader depth and oxygen ranges beyond the DMA.

We propose the term “hypoxiphilic” to describe species whose population distributions, especially maximum abundances, are focused in habitats with very low oxygen. This term is best used in a comparative sense (without an exact oxygen definition) to allow flexibility for use in other regions and ecological situations and with other taxa, since we know little about the *in situ* low oxygen physiology of many species (Teuber et al., 2013b; Thuesen et al., 1998). *L. hulsemannae* is the most obvious “hypoxiphilic” copepod (both adults and young stages living in very low oxygen at multiple locations here and in prior work). Earlier studies of its gut contents indicated recent omnivory (Gowing and Wishner, 1992), suggesting active feeding, as well as growth, in this habitat. Other possible “hypoxiphilic” copepods in this area at this time included *D. palumbii*, *G. kruppi*, *E. magnus*, *E. spinifer*, diapausing stages of *E. inermis*, and *M. brevicauda* adults, but less is known about the vertical and geographic distributional variability of all life history stages for these species.

4.3. Diapausing in the OMZ

E. inermis is endemic to the ETP, occurring both north and south of the equator (Chen, 1986; Fleminger, 1973; Goetze, 2003, 2010; Goetze and Ohman, 2010; Hidalgo et al., 2005b, 2005a; Jackson and Smith, 2016; Sameoto, 1986). It is known to inhabit extremely low oxygen water (Boyd et al., 1980; Escribano et al., 2009; Judkins, 1980; Saltzman and Wishner, 1997; Wishner et al., 2013), as well as oxygenated depths, and has unique physiological and biochemical adaptations for the low oxygen environment (Cass et al., 2014, 2014; Cass and Daly, 2015). Overall population distributions at particular locations in this and prior work usually encompassed a range of oxygen concentrations, although most earlier studies had relatively broad sampling strata that did not isolate specific oxygen ranges or did not have electronic oxygen sensors co-located on the zooplankton sampling systems. DVM by this species, usually over a relatively short depth range between the near-surface and UO, was reported by some authors at some times and places, but not others (Escribano et al., 2009; Jackson and Smith, 2016). We

previously identified apparent diapause layers at the upper and lower OMZ boundaries at the CRD and TB stations in 2007-2008 (Wishner et al., 2013), and Saltzman and Wishner (1997), Sameoto (1986), and Vinogradov et al. (1991) also noted abundance peaks associated with OMZ edges in the CRD and other ETNP locations. Diapause layers in our study varied in depth at different times and stations, allowing the copepods to remain in a constant low oxygen habitat.

510

Use of extremely low oxygen habitats for diapause is likely a predator avoidance mechanism during an extended period of inactivity. Metabolic adaptations that enable longterm survival for copepods in this habitat, while not specifically studied, likely include metabolic suppression and fuel (lipid) storage. Metabolic suppression, typically triggered by epigenetic mechanisms facilitated by microRNAs, enables a variety of animals to survive temporary resource limitation and involves shutting down energetically costly processes such as translation and transcription, ion transport and protein synthesis (Biggar and Storey, 2010; Storey and Storey, 2004). The high proportion of animals with stored oil in these remarkably sharp narrow monospecific layers, composed primarily of adult females and older copepodite stages, were strong indicators of diapause. No obvious gut contents were visually noted in these specimens. *E. inermis* collected at all depths at CRD and TB had stable isotope signatures indicative of feeding at the surface and not on deeper material (Williams et al., 2014), suggesting inactivity at depth. The seasonal ontogenetic and reproductive cycle of *E. inermis* was documented at a location off Chile but the sampling depth was too shallow (75 m) to elucidate deeper diapause behavior (Hidalgo et al., 2005a, 2005b). Another calanoid copepod, *Calanus pacificus*, also has an apparent diapause layer just above the anoxic bottom water of the deep Santa Barbara Basin off California (Aldredge et al., 1984; Osgood and Checkley Jr, 1997), and *Calanoides carinatus* in the Arabian Sea and Benguela Current diapauses at depth just below the extensive OMZ (Auel and Verheye, 2007; Smith et al., 1998; Smith, 1982; Wishner et al., 2008).

515

520

525

4.4 Diel vertical migration into low oxygen

Species in the genus *Pleuromamma* have been studied intensively in the ETNP with regard to their extensive DVM into low oxygen water, as previously noted. However, unlike resident oxycline and OMZ core taxa, these species appeared to require a period of time at night in well-oxygenated water, presumably to pay off the oxygen debt incurred during daytime residence in low oxygen. It was surprising that the part of their diel distribution that changed with differing oxygen profiles was the shallow nighttime depth, not the deep daytime depth. They continued to migrate to the same depth in the day at different locations, presumably determined by light penetration, and likely an avoidance response to visual predators (Wishner et al., 2013). At night, they came up only until they encountered the depth at which there was sufficient oxygen, within or just above the thermocline, although the temperature was higher at their nighttime depth when the thermocline was shallow, and metabolic costs would be elevated. The thermocline was also usually a peak of zooplankton biomass (Wishner et al., 2013) and fluorescence (Fig. 2), so food was abundant there as well. Thus, the upper nighttime depth likely resulted from the combination of higher oxygen, food availability, and avoidance of even higher temperature in shallower waters.

530

535

Pleuromamma species traveled over different depth ranges within low oxygen water to their daytime depth at the different stations. Our sampling could not resolve whether they moved faster or took longer to make the journey when the depth range was greater, i.e. how long an individual resided in the low oxygen water in different circumstances and what the comparative metabolic costs might be for the migration. It is also unknown whether all of these species undergo metabolic suppression when in low oxygen, as do many euphausiids and other strong migrators (Seibel et al., 2016, 2018). Teuber et al. (2013b, 2013a, 2019) found that *Pleuromamma* species in the eastern tropical Atlantic had high thermal and hypoxia tolerances and classified these species as adaptive migrants on the basis of functional traits. Active transport by diel vertical migrators is a critical mechanism

540

545 of export flux in the CRD (Stukel et al., 2018), and export fluxes appear to be relatively inefficient in locations with OMZs
(Berelson et al., 2015). Strong presence/absence differences among stations, especially for *Pleuromamma*, suggested that some
locations may have exceeded the metabolic capabilities of particular species of diel vertical migrators, which could be a factor
affecting export flux.

4.5 Aerobic habitat compression and epipelagic copepods

550 The aerobic habitat compression hypothesis was supported by the distributional shifts of several abundant epipelagic species that
occurred over a broader depth range at stations where the well-oxygenated mixed layer extended deeper. However, our sampling
strata, which focused on the mesopelagic, did not resolve small scale details, such as short DVM within the mixed layer or
thermocline. Additionally, our taxonomic focus on adults of larger easily identified species excluded numerous smaller
epipelagic copepods and immature stages. Higher resolution mixed layer sampling and more taxonomic breadth is required to
555 thoroughly address this issue for ETNP copepods. The high oxygen concentration within the mixed layer would not be a
metabolic constraint, but, of course, many other ecological factors could affect distributions.

4.6 Metabolic implications

Animal metabolic rates are highly variable depending on physical factors, including temperature and oxygen, as well as on the
ecological and evolutionary requirements for energy to support growth, reproduction, predator-prey interactions and basic
560 maintenance (Seibel and Drazen, 2007). The factorial aerobic metabolic scope (FAS, the maximum as a factor of minimum
metabolic rate) typically ranges from about 2-6, depending on temperature (Killen et al., 2016; Seibel and Deutsch, 2019). The
FAS at any given temperature can be estimated as the ratio of environmental PO₂ (below the P_{crit} for maximum metabolic rate) to
the P_{crit} for resting metabolic rate, which is numerically equivalent to the Metabolic Index described by Deutsch et al (2015).
This means that the maximum available environmental PO₂ is usually a factor of 2-6 above the critical PO₂ for resting
565 metabolism, depending on temperature.

For species exposed to air-saturated water, including vertical migrators during their nighttime forays into shallow water, any
reduction in PO₂ will result in a quantifiable reduction in maximum capacity and FAS. In this light, our observations that the
nighttime depth distribution of vertical migrators responded more strongly to variations in oxygen content than did the deeper
570 daytime depth is not surprising. Migrators descend during the day to depths consistent with predator avoidance in low light. If
the oxygen at those depths is below the P_{crit}, then metabolic suppression is triggered, which dramatically increases tolerance time
to low oxygen (Seibel et al., 2014, 2016, 2018).

In contrast, permanent residents of the lower oxycline and OMZ core have much lower P_{crits}. *L. hulsemannae*, for example, has
575 the lowest P_{crit} ever measured for an animal (minimum values of 0.1 kPa and 0.3 kPa; mean values of 0.38 and 0.67 kPa at 8 and
5°C, respectively), comparable to only two other known OMZ specialists, the pelagic red crab, *Pleuoncodes planipes* (Quetin
and Childress, 1976) and the shrimp, *Gennades* spp. (Wishner et al., 2018). Using the minimum values and assuming a typical
FAS ranging from 2-6 (Seibel and Deutsch, 2019; Killen et al., 2016), we suggest that the maximum available environmental
PO₂ to which *L. hulsemannae* is ever exposed is ~1.8 kPa at 5°C and ~0.6 kPa at 8°C. These values are very close to the highest
580 values at which *L. hulsemannae* was captured in the present study. The minimum oxygen pressures recorded across the habitat
for *L. hulsemannae* (0.77 to 0.30 kPa at different locations) are very near the mean P_{crits} and about 2-3x the minimum P_{crits}, thus
providing little aerobic scope at those depths. The reverse temperature effect observed for *L. hulsemannae*, in which higher

585 temperature results in a lower P_{crit} despite a higher metabolic rate, ensures a FAS similar to that known to bound the latitudinal distributions of many marine species (Deutsch et al., 2015). The reverse temperature effect is adaptive in the lower oxycline of the OMZ where temperature decreases while oxygen increases with increasing depth.

590 The unique metabolic adaptations for hypoxia tolerance of *L. hulsemannae*, especially its reverse temperature response, result in a nearly constant ratio (~1 to 2) of environmental PO_2 to the mean P_{crit} across the inhabited depth range. In fact, Wishner et al. (2018) showed that when this ratio (the Metabolic Index; Deutsch et al., 2015) approaches 2, abundance declines. Using the minimum, rather than the mean, values measured for *L. hulsemannae* suggests higher ratios (~2-6), which may better represent the *in vivo* abilities of the species and is more consistent with values shown to support marine animal populations (Deutsch et al., 2015). A ratio below 1 suggests that the species is incapable of meeting its resting needs, whereas a ratio above 1 allows a proportional increase in the scope for aerobic activities, including locomotion, growth and reproduction. The minimum PO_2 at the minimum temperatures reported at all stations results in a drop in the Metabolic Index consistently below 1 (using mean values). Although our sampling regime cannot pinpoint the precise conditions under which individual animals are found, the Metabolic Index suggests that this species may not be able to tolerate the most extreme low oxygen at low temperature. Because critical PO_2 and its temperature sensitivity vary considerably among species, it is not possible to estimate metabolically available habitat for species lacking P_{crit} data or those for which data exist at only a single temperature.

5 Conclusions

600 Individual copepod species demonstrated different distributional strategies in response to present-day variability of oxygen vertical profiles in the ETNP region. We identified sets of species that (1) changed their vertical distributions and depth of maximum abundance associated with the depth and intensity of the OMZ and its oxycline inflection points, (2) adjusted their diel vertical migration, especially the nighttime upper depth, (3) shifted their depth of diapause, (4) or expanded / contracted their depth range within the mixed layer and upper thermocline in association with the thickness of the aerobic epipelagic zone (Table 2). Congeners, closely related species in the same genus, often showed similar adaptation strategies that were centered at different depths. “Hypoxiphilic” species had their highest abundances in low oxygen habitats. These species examples represented a range of calanoid copepod families and trophic ecologies. We expect that similar distributional adaptations to OMZ variability occur across a broad suite of copepod groups, as well as other zooplankton and fish taxa. The schematic diagram Fig. 11 depicts potential zooplankton distributional responses to OMZ expansion, based on present-day patterns.

610 Combinations of environmental oxygen concentration and temperature, two critical determinants of metabolic rates, defined habitats with the highest abundances for each species at each site. In different locations, animals living at, or transiting through, the same depth (same temperature) could experience quite different oxygen regimes: for example, the daytime migration paths of *Pleuromamma* species. Animals requiring a specific oxygen partial pressure might be forced to live at different depths (and temperatures): for example, the lower oxycline copepod *L. hulsemannae* and thermocline inhabitant *H. longicornis*. Thus, animals at locations with different oxygen profiles experienced different oxygen regimes, but the same temperature, at a particular mesopelagic depth, while animals whose peak distributions varied in depth experienced different temperature regimes often at the same oxygen level. Previous work demonstrated that zooplankton can and do respond to very small oxygen and temperature differences in both oceanic and coastal locations (Pierson et al., 2017; Roman et al., 2019; Svetlichny et al., 2000; 620 Wishner et al., 2018). Of course, many other ecological and environmental conditions affect habitat choice and population abundance, but it is likely that the extremely low oxygen of the ETNP OMZ is a critical controlling factor in this region.

As is becoming apparent from numerous studies, the upper ocean to mesopelagic depth range is a complex interwoven ecosystem with intricate relationships among its various inhabitants and their environment. It is also a critically important zone for oceanic biogeochemical and export processes that can be affected by oxygen gradients and hosts key food web components for commercial fisheries. Among the zooplankton, there will likely be winners and losers as ocean deoxygenation continues in the future and becomes more widespread. Changes in individual copepod species abundances, vertical distributions, and life history strategies may create perturbations to these intricate food webs and processes. For example, “hypoxiphilic” taxa, such as *L. hulsemannae*, as well as the other oxycline and OMZ species, might increase in abundance and expand their depth range until other physiological (temperature) or ecological (food, predators) barriers become overwhelming. Present day variability provides a window into future scenarios (Fig. 11), but much more research is required to fully elucidate and quantify consequences.

Data availability: All data needed to evaluate the conclusions in the paper are present in the paper and in two online repositories: the Supplementary Table S1 that includes copepod species abundances in each net for these tows (Wishner et al. 2019, <https://digitalcommons.uri.edu/gso-data/1/>) and the BCO-DMO repository that includes time and location data for each MOCNESS tow, <https://www.bco-dmo.org>, doi:10.1575/1912/bco-dmo.786098.1 and doi:10.1575/1912/bco-dmo.787329.1 Upon publication, the full manuscript will be deposited in the BCO-DMO database (with a doi identifier), as required for National Science Foundation-funded projects. Extensive files of continuous hydrographic data from MOCNESS tows are available from KFW. Additional data related to this paper may be requested from the authors.

Author contributions: KFW led the writing effort, with substantial contributions from all co-authors. KFW directed the MOCNESS sampling component including analyses of zooplankton abundances and distributions, with assistance at sea and in the lab by all co-authors. DO sorted and identified most of the copepods and processed and graphed data. BAS directed the metabolic sampling and experiments at sea and led the analyses and writing of those sections of the paper.

Competing interests: The authors declare that they have no conflict of interest.

Acknowledgments

We thank the captains, crews, and marine technicians of all the ships and the institutional marine offices (University of Miami, Woods Hole Oceanographic Institution, University of Washington, University of Alaska). MOCNESS instruments and technical support were provided by the University of Miami and Scripps Institution of Oceanography, with assistance from E. Horgan, J. Lovin, P. Wiebe, C. Matson, and J. Calderwood. K. Daly and B. Seibel served as cruise chief scientists. Many students, technicians, and colleagues helped at sea and in the lab over the years with the MOCNESS tows, sample processing, and data analyses, especially T.J. Adams, N. Charriere, K. Daly, C. Flagg, S. Frazar, J. Graff, J. Ivory, A. Maas, J. McGreal, M. McNamara, M. O'Brien, D. Moore, J. Pelsler, B. Phillips, S. Riley, C. Roman, C. T. Shaw, and R. Williams. Funding was provided by National Science Foundation grants OCE0526545 (Daly), OCE0526502 (Wishner, Seibel), OCE1459243 (Seibel, Wishner, Roman), and OCE1458967 (Deutsch). The University of Rhode Island's Graduate School of Oceanography's summer REU program, SURFO, funded S. Frazar and S. Riley (OCE-0851794, OCE1460819) and the Coastal Institute contributed to publication costs. We also thank our institutions for faculty and student funding.

References

- Allredge, A. L., Robison, B. H., Fleminger, A., Torres, J. J., King, J. M. and Hamner, W. M.: Direct sampling and in situ observation of a persistent copepod aggregation in the mesopelagic zone of the Santa Barbara Basin, *Mar. Biol.*, 80(1), 75–81, 1984.
- 665 Ambler, J. W. and Miller, C. B.: Vertical habitat-partitioning by copepodites and adults of subtropical oceanic copepods, *Mar. Biol.*, 94(4), 561–577, 1987.
- Auel, H. and Verheye, H. M.: Hypoxia tolerance in the copepod *Calanoides carinatus* and the effect of an intermediate oxygen minimum layer on copepod vertical distribution in the northern Benguela Current upwelling system and the Angola–Benguela Front, *J. Exp. Mar. Biol. Ecol.*, 352(1), 234–243, doi:10.1016/j.jembe.2007.07.020, 2007.
- 670 Berelson, W. M., Haskell, W. Z., Prokopenko, M., Knapp, A. N., Hammond, D. E., Rollins, N. and Capone, D. G.: Biogenic particle flux and benthic remineralization in the Eastern Tropical South Pacific, *Deep Sea Res. Pt. 1*, 99, 23–34, doi:10.1016/j.dsr.2014.12.006, 2015.
- Biggar, K. K. and Storey, K. B.: The emerging roles of microRNAs in the molecular responses of metabolic rate depression, *J. Mol. Cell. Biol.*, 3(3), 167–175, 2010.
- 675 Birk, M. A., Mislán, K. A. S., Wishner, K. F. and Seibel, B. A.: Metabolic adaptations of the pelagic octopod *Japetella diaphana* to oxygen minimum zones, *Deep Sea Res. Pt. 1*, 148, 123–131, 2019.
- Bode, M., Hagen, W., Cornils, A., Kaiser, P. and Auel, H.: Copepod distribution and biodiversity patterns from the surface to the deep sea along a latitudinal transect in the eastern Atlantic Ocean (24° N to 21° S), *Prog. Oceanogr.*, 161, 66–77, 2018.
- Boyd, C. M., Smith, S. L. and Cowles, T. J.: Grazing patterns of copepods in the upwelling system off Peru, *Limnol. Oceanogr.*, 25(4), 583–596, 1980.
- 680 Breitbart, D., Levin, L. A., Oschlies, A., Grégoire, M., Chavez, F. P., Conley, D. J., Garçon, V., Gilbert, D., Gutiérrez, D., Isensee, K., Jacinto, G. S., Limburg, K. E., Montes, I., Naqvi, S. W. A., Pitcher, G. C., Rabalais, N. N., Roman, M. R., Rose, K. A., Seibel, B. A., Telszewski, M., Yasuhara, M. and Zhang, J.: Declining oxygen in the global ocean and coastal waters, *Science*, 359(6371), eaam7240, doi:10.1126/science.aam7240, 2018.
- 685 Cass, C. J. and Daly, K. L.: Eucalanoid copepod metabolic rates in the oxygen minimum zone of the eastern tropical north Pacific: Effects of oxygen and temperature, *Deep Sea Res. Pt. 1*, 94, 137–149, 2014.
- Cass, C. J. and Daly, K. L.: Ecological characteristics of eucalanoid copepods of the eastern tropical North Pacific Ocean: Adaptations for life within a low oxygen system, *J. Exp. Mar. Biol. Ecol.*, 468, 118–129, 2015.
- Cass, C. J., Daly, K. L. and Wakeham, S. G.: Assessment of storage lipid accumulation patterns in eucalanoid copepods from the eastern tropical Pacific Ocean, *Deep Sea Res. Pt. 1*, 93, 117–130, 2014.
- 690 Chen, Y.-Q.: The vertical distribution of some pelagic copepods in the eastern tropical Pacific, *CalCOFI Report*, 27(1), 205–227, 1986.
- Childress, J. J.: The respiratory rates of midwater crustaceans as a function of depth of occurrence and relation to the oxygen minimum layer off southern California, *Comp. Biochem. Physiol. Pt. A: Physiology*, 50(4), 787–799, 1975.
- 695 Childress, J. J. and Seibel, B. A.: Life at stable low oxygen levels: adaptations of animals to oceanic oxygen minimum layers., *J. Exper. Biol.*, 201(8), 1223–1232, 1998.
- Décima, M., Landry, M. R., Stukel, M. R., Lopez-Lopez, L. and Krause, J. W.: Mesozooplankton biomass and grazing in the Costa Rica Dome: amplifying variability through the plankton food web, *J. Plank. Res.*, 38(2), 317–330, doi:10.1093/plankt/fbv091, 2016.

- 700 Deutsch, C., Brix, H., Ito, T., Frenzel, H. and Thompson, L.: Climate-forced variability of ocean hypoxia, *Science*, 333(6040), 336–339, doi:10.1126/science.1202422, 2011.
- Deutsch, C., Ferrel, A., Seibel, B., Pörtner, H.-O. and Huey, R. B.: Climate change tightens a metabolic constraint on marine habitats, *Science*, 348(6239), 1132–1135, doi:10.1126/science.aaa1605, 2015.
- 705 Escribano, R., Hidalgo, P. and Krautz, C.: Zooplankton associated with the oxygen minimum zone system in the northern upwelling region of Chile during March 2000, *Deep Sea Res. Pt. 2*, 56(16), 1083–1094, doi:10.1016/j.dsr2.2008.09.009, 2009.
- Fernández-Álamo, M. A. and Färber-Lorda, J.: Zooplankton and the oceanography of the eastern tropical Pacific: A review, *Prog. Oceanogr.*, 69(2–4), 318–359, doi:10.1016/j.pocean.2006.03.003, 2006.
- Ferrari, F. D. and Saltzman, J.: *Pleuromamma johnsoni*, a new looking-glass copepod from the Pacific Ocean with redescription of *P. robusta* (Dahl, 1893), *P. antarctica* Steuer, 1931 new rank, and *P. scutullata* Brodskii, 1950 (Crustacea, Calanoida, Metridinidae), *Plank. Biol. Ecol.*, 45(2), 203–223, 1998.
- 710 Fiedler, P. C.: The annual cycle and biological effects of the Costa Rica Dome, *Deep Sea Res. Pt. 1*, 49(2), 321–338, doi:10.1016/S0967-0637(01)00057-7, 2002.
- Fiedler, P. C. and Talley, L. D.: Hydrography of the eastern tropical Pacific: A review, *Prog. Oceanogr.*, 69(2–4), 143–180, doi:10.1016/j.pocean.2006.03.008, 2006.
- 715 Fleminger, A.: Pattern, number, variability, and taxonomic significance of integumental organs (sensilla and glandular pores) in the genus *Eucalanus* (Copepoda, Calanoida), *Fish. Bull.*, 71(4), 965–1010, 1973.
- Goetze, E.: Cryptic speciation on the high seas; global phylogenetics of the copepod family Eucalanidae, *Proc. R. Soc. London, B: Biological Sciences*, 270(1531), 2321–2331, 2003.
- Goetze, E.: Species discovery in marine planktonic invertebrates through global molecular screening, *Mol. Ecol.*, 19(5), 952–967, 2010.
- 720 Goetze, E. and Ohman, M. D.: Integrated molecular and morphological biogeography of the calanoid copepod family Eucalanidae, *Deep Sea Res. Pt. 2*, 57(24–26), 2110–2129, doi:10.1016/j.dsr2.2010.09.014, 2010.
- Gowing, M. M. and Wishner, K. F.: Feeding ecology of benthopelagic zooplankton on an eastern tropical Pacific seamount, *Mar. Biol.*, 112(3), 451–467, 1992.
- 725 Haurly, L. R.: Vertical distribution of *Pleuromamma* (copepoda: Metridinidae) across the eastern north Pacific Ocean, *Hydrobiologia*, 167(1), 335–342, 1988.
- Hidalgo, P., Escribano, R. and Morales, C. E.: Annual life cycle of the copepod *Eucalanus inermis* at a coastal upwelling site off Mejillones (23°S), northern Chile, *Mar. Biol.*, 146(5), 995–1003, doi:10.1007/s00227-004-1487-3, 2005a.
- Hidalgo, P., Escribano, R. and Morales, C. E.: Ontogenetic vertical distribution and diel migration of the copepod *Eucalanus inermis* in the oxygen minimum zone off northern Chile (20–21° S), *J. Plank. Res.*, 27(6), 519–529, doi:10.1093/plankt/fbi025, 2005b.
- 730 Hirai, J., Tsuda, A. and Goetze, E.: Extensive genetic diversity and endemism across the global range of the oceanic copepod *Pleuromamma abdominalis*, *Prog. Oceanogr.*, 138, 77–90, 2015.
- Jackson, M. L. and Smith, S. L.: Vertical distribution of Eucalanoid copepods within the Costa Rica Dome area of the Eastern Tropical Pacific, *J. Plank. Res.*, 38(2), 305–316, doi:10.1093/plankt/fbv117, 2016.
- 735 Jiménez-Pérez, L. C. and Lavaniegos, B. E.: Changes in dominance of copepods off Baja California during the 1997–1999 El Niño and La Niña, *Mar. Ecol. Prog. Ser.*, 277, 147–165, 2004.
- Judkins, D. C.: Vertical distribution of zooplankton in relation to the oxygen minimum off Peru, *Deep Sea Res. Pt. A.*, 27(6), 475–487, 1980.

- 740 Karstensen, J., Stramma, L. and Visbeck, M.: Oxygen minimum zones in the eastern tropical Atlantic and Pacific oceans, *Prog. Oceanogr.*, 77(4), 331–350, doi:10.1016/j.pocean.2007.05.009, 2008.
- Kessler, W. S.: The circulation of the eastern tropical Pacific: A review, *Prog. Oceanogr.*, 69(2–4), 181–217, doi:10.1016/j.pocean.2006.03.009, 2006.
- 745 Killen, S. S., Glazier, D. S., Rezende, E. L., Clark, T. D., Atkinson, D., Willener, A. S. and Halsey, L. G.: Ecological influences and morphological correlates of resting and maximal metabolic rates across teleost fish species, *Am. Nat.*, 187(5), 592–606, 2016.
- Landry, M. R., Al-Mutairi, H., Selph, K. E., Christensen, S. and Nunnery, S.: Seasonal patterns of mesozooplankton abundance and biomass at Station ALOHA, *Deep Sea Res. Pt. 2*, 48(8–9), 2037–2061, 2001.
- Landry, M. R., De Verneil, A., Goes, J. I. and Moffett, J. W.: Plankton dynamics and biogeochemical fluxes in the Costa Rica Dome: introduction to the CRD Flux and Zinc Experiments, *J. Plank. Res.*, 38(2), 167–182, doi:10.1093/plankt/fbv103, 2016.
- 750 Levin, L. A.: Manifestation, drivers, and emergence of open ocean deoxygenation, *Ann. Rev. Mar. Sci.*, 10(1), 229–260, doi:10.1146/annurev-marine-121916-063359, 2018.
- Longhurst, A. R.: Vertical distribution of zooplankton in relation to the eastern Pacific oxygen minimum, *Deep Sea Res.* 14(1), 51–63, doi:10.1016/0011-7471(67)90028-9, 1967.
- 755 Maas, A. E., Frazar, S. L., Outram, D. M., Seibel, B. A. and Wishner, K. F.: Fine-scale vertical distribution of macroplankton and micronekton in the Eastern Tropical North Pacific in association with an oxygen minimum zone, *J. Plank. Res.*, 36(6), 1557–1575, doi:10.1093/plankt/fbu077, 2014.
- Margolskee, A., Frenzel, H., Emerson, S. and Deutsch, C.: Ventilation pathways for the North Pacific Oxygen Deficient Zone, *Glob. Biogeochem. Cycles*, 2019.
- 760 Markhaseva, E. L. and Ferrari, F. D.: New species of *Lucicutia* and taxonomic status of *L. grandis* (Copepoda, Calanoida, Lucicutiidae), *J. Nat. Hist.*, 39(15), 1077–1100, 2005.
- McGowan, J. A. and Walker, P. W.: Structure in the copepod community of the North Pacific central gyre, *Ecol. Monogr.*, 49(2), 195–226, 1979.
- Osgood, K. E. and Checkley Jr, D. M.: Seasonal variations in a deep aggregation of *Calanus pacificus* in the Santa Barbara Basin, *Mar. Ecol. Prog. Ser.*, 148, 59–69, 1997.
- 765 Paulmier, A. and Ruiz-Pino, D.: Oxygen minimum zones (OMZs) in the modern ocean, *Prog. Oceanogr.*, 80(3–4), 113–128, doi:10.1016/j.pocean.2008.08.001, 2009.
- Pierson, J. J., Slater, W.-C. L., Elliott, D. and Roman, M. R.: Synergistic effects of seasonal deoxygenation and temperature truncate copepod vertical migration and distribution, *Mar. Ecol. Prog. Ser.*, 575, 57–68, 2017.
- 770 Quetin, L. B. and Childress, J. J.: Respiratory adaptations of *Pleuroncodes planipes* to its environment off Baja California, *Mar. Biol.*, 38(4), 327–334, doi:10.1007/BF00391372, 1976.
- Razouls, C., de Bovee, F., Kouwenberg, J., Desreumaux, N: Diversity and Geographic Distribution of Marine Planktonic Copepods. Sorbonne University, CNRS, [online] Available from: <http://copepodes.obs-banyuls.fr/en>, 2005.
- Robinson, C., Steinberg, D. K., Anderson, T. R., Arístegui, J., Carlson, C. A., Frost, J. R., Ghiglione, J.-F., Hernández-León, S., 775 Jackson, G. A. and Koppelman, R.: Mesopelagic zone ecology and biogeochemistry—a synthesis, *Deep Sea Res. Pt. 2*, 57(16), 1504–1518, 2010.
- Roman, M. R., Brandt, S. B., Houde, E. D. and Pierson, J. J.: Interactive effects of hypoxia and temperature on coastal pelagic zooplankton and fish, *Front. Mar. Sci.*, 6, 139, 2019.

- 780 Saltzman, J. and Wishner, K. F.: Zooplankton ecology in the eastern tropical Pacific oxygen minimum zone above a seamount: 2. Vertical distribution of copepods, *Deep Sea Res. Pt. 1*, 44(6), 931–954, doi:10.1016/S0967-0637(97)00006-X, 1997.
- Sameoto, D. D.: Influence of the biological and physical environment on the vertical distribution of mesozooplankton and micronekton in the eastern tropical Pacific, *Mar. Biol.*, 93(2), 263–279, doi:10.1007/BF00508264, 1986.
- Seibel, B. A.: Critical oxygen levels and metabolic suppression in oceanic oxygen minimum zones, *J. Exper. Biol.*, 214(2), 326–336, doi:10.1242/jeb.049171, 2011.
- 785 Seibel, B. A. and Deutsch, C.: Oxygen supply capacity in animals evolves to meet maximum demand at the current oxygen partial pressure regardless of size or temperature, *bioRxiv*, doi:http://dx.doi.org/10.1101/701417, 2019.
- Seibel, B. A. and Drazen, J. C.: The rate of metabolism in marine animals: environmental constraints, ecological demands and energetic opportunities, *Philos. Trans. R. Soc. Lond. B. Biol. Sci.*, 362(1487), 2061-2078.
- Seibel, B. A., Häfker, N. S., Trübenbach, K., Zhang, J., Tessier, S. N., Pörtner, H.-O., Rosa, R. and Storey, K. B.: Metabolic 790 suppression during protracted exposure to hypoxia in the jumbo squid, *Dosidicus gigas*, living in an oxygen minimum zone, *J. Exper. Biol.*, 217(14), 2555–2568, 2014.
- Seibel, B. A., Schneider, J. L., Kaartvedt, S., Wishner, K. F. and Daly, K. L.: Hypoxia tolerance and metabolic suppression in oxygen minimum zone euphausiids: Implications for ocean deoxygenation and biogeochemical cycles, *Integr. Compar. Biol.*, 56(4), 510–523, doi:10.1093/icb/icw091, 2016.
- 795 Seibel, B. A., Luu, B. E., Tessier, S. N., Towanda, T. and Storey, K. B.: Metabolic suppression in the pelagic crab, *Pleuroncodes planipes*, in oxygen minimum zones, *Comp. Biochem. Physiol.*, 224, doi:DOI: 10.1016/j.cbpb.2017.12.017, 2018.
- Smith, S., Roman, M., Prusova, I., Wishner, K., Gowing, M., Codispoti, L. A., Barber, R., Marra, J. and Flagg, C.: Seasonal response of zooplankton to monsoonal reversals in the Arabian Sea, *Deep Sea Res. Pt. 2*, 45(10–11), 2369–2403, 1998.
- Seibel, B. A. and Wishner, K. F.: Chapter 8.1 The significance of ocean deoxygenation for mesopelagic communities. pp.265- 800 276. In Laffoley, D. and Baxter, J. M. (eds) *Ocean Deoxygenation: Everyone's problem - Causes, impacts, consequences and solutions*. Gland, Switzerland: IUCN. xxii+562 pp., 2019.
- Smith, S. L.: The northwestern Indian Ocean during the monsoons of 1979: distribution, abundance, and feeding of zooplankton, *Deep Sea Res. Pt. A*, 29(11), 1331–1353, 1982.
- Smith, S. L. and Madhupratap, M.: Mesozooplankton of the Arabian Sea: patterns influenced by seasons, upwelling, and oxygen 805 concentrations, *Prog. Oceanogr.*, 65(2–4), 214–239, 2005.
- Steinberg, D. K. and Landry, M. R.: Zooplankton and the ocean carbon cycle, *Ann. Rev. Mar. Sci.*, 9, 413–444, doi:doi.org/10.1146/annurev-marine-010814-015924, 2017.
- Storey, K. B. and Storey, J. M.: Metabolic rate depression in animals: transcriptional and translational controls, *Biol. Rev.*, 79(1), 207–233, 2004.
- 810 Stramma, L., Johnson, G. C., Sprintall, J. and Mohrholz, V.: Expanding oxygen-minimum zones in the tropical oceans, *Science*, 320(5876), 655–658, doi:10.1126/science.1153847, 2008.
- Stukel, M. R., Décima, M., Landry, M. R. and Selph, K. E.: Nitrogen and isotope flows through the Costa Rica Dome upwelling ecosystem: The crucial mesozooplankton role in export flux, *Glob. Biogeochem. Cycles*, 32(12), 1815–1832, 2018.
- Svetlichny, L. S., Hubareva, E. S., Erkan, F. and Gucu, A. C.: Physiological and behavioral aspects of *Calanus euxinus* females 815 (Copepoda: Calanoida) during vertical migration across temperature and oxygen gradients, *Mar. Biol.*, 137(5–6), 963–971, 2000.
- Teuber, L., Schukat, A., Hagen, W. and Auel, H.: Distribution and ecophysiology of calanoid copepods in relation to the oxygen minimum zone in the eastern tropical Atlantic, *PloS one*, 8(11), e77590, 2013a.

- Teuber, L., Kiko, R., Séguin, F. and Auel, H.: Respiration rates of tropical Atlantic copepods in relation to the oxygen minimum zone, *J. Exper. Mar. Biol. Ecol.*, 448, 28–36, doi:10.1016/j.jembe.2013.06.012, 2013b.
- 820 Teuber, L., Hagen, W., Bode, M. and Auel, H.: Who is who in the tropical Atlantic? Functional traits, ecophysiological adaptations and life strategies in tropical calanoid copepods, *Prog. Oceanogr.*, 171, 128–135, doi:https://doi.org/10.1016/j.pocean.2018.12.006, 2019.
- Thuesen, E., Miller, C. and Childress, J.: Ecophysiological interpretation of oxygen consumption rates and enzymatic activities of deep-sea copepods, *Mar. Ecol. Prog. Ser.*, 168, 95–107, doi:10.3354/meps168095, 1998.
- 825 Vinogradov, M. E., Shushkina, E. A., Gorbunov, A. E. and Shashkov, N. L.: Vertical distribution of the macro- and mesoplankton in the region of the Costa Rica dome. Distribución vertical del macro y mesoplancton en la región del domo de Costa Rica., *Okeanologiya.*, 31(5), 559–565, 1991.
- Wiebe, P. H., Morton, A. W., Bradley, A. M., Backus, R. H., Craddock, J. E., Barber, V., Cowles, T. J. and Flierl, G. dy] 1985: New development in the MOCNESS, an apparatus for sampling zooplankton and micronekton, *Mar. Biol.*, 87(3), 313–323, 830 1985.
- Williams, R. L., Wakeham, S., McKinney, R. and Wishner, K. F.: Trophic ecology and vertical patterns of carbon and nitrogen stable isotopes in zooplankton from oxygen minimum zone regions, *Deep Sea Res. Pt. 1*, 90, 36–47, doi:10.1016/j.dsr.2014.04.008, 2014.
- Wishner, K., Seibel, B., Roman, C., Deutsch, C., Outram, D., Shaw, C., Birk, M., Mislan, K., Adams, T., Moore, D. and Riley, 835 S.: Ocean deoxygenation and zooplankton: very small oxygen differences matter., *Sci. Adv.* eaau5180 DOI 10.1126/sciadv.aau5180, 4(12), doi:10.1126/sciadv.aau5180, 2018.
- Wishner, K. F., Gowing, M. M. and Gelfman, C.: Living in suboxia: Ecology of an Arabian Sea oxygen minimum zone copepod, *Limnol. Oceanogr.*, 45(7), 1576–1593, doi:10.4319/lo.2000.45.7.1576, 2000.
- Wishner, K. F., Gelfman, C., Gowing, M. M., Outram, D. M., Rapien, M. and Williams, R. L.: Vertical zonation and 840 distributions of calanoid copepods through the lower oxycline of the Arabian Sea oxygen minimum zone, *Prog. Oceanogr.*, 78(2), 163–191, doi:10.1016/j.pocean.2008.03.001, 2008.
- Wishner, K. F., Outram, D. M., Seibel, B. A., Daly, K. L. and Williams, R. L.: Zooplankton in the eastern tropical north Pacific: Boundary effects of oxygen minimum zone expansion, *Deep Sea Res. Pt. 1*, 79, 122–140, doi:10.1016/j.dsr.2013.05.012, 2013.
- Wishner, K. F., Seibel, B., Outram, D.: Supplementary Table S1 for Ocean deoxygenation and copepods: Coping with oxygen 845 minimum zone variability, <https://digitalcommons.uri.edu/gso-data/1/> 2019.

Figure Captions

Figure 1: Map showing station locations.

- 850 **Figure 2: Hydrographic data. Top row:** Hydrographic profiles for 0-1000 m (noted as “All Depths”). Each station (colors) is represented by one profile for each variable; all stations are included for that variable in one graph. Stations are noted by abbreviation and year. Two versions of the oxygen profiles are shown: a full range version (0-250 μM) to encompass oxygen from the surface to depth (top left) and a higher resolution version with a smaller oxygen range (0-60 μM) to highlight the OMZ core and oxycline variability between stations (top row, second from left). **Second row:** Similar profiles for the upper water column (noted as “Upper 200 m” and with its depth range indicated by the bracket on the “All Depths” plot). Only a single 855 oxygen range is used for this well-oxygenated part of the water column. **Bottom row:** Temperature-salinity diagram (bottom

left) and two temperature-oxygen diagrams, the first (bottom middle) encompassing the full range of these variables and the second (bottom right) highlighting the smaller temperature and oxygen ranges and variability associated with the OMZ core and oxyclines at the different stations (data range shown by the outlined box in the “All Depths” oxygen and temperature plots).

860

Figure 3: Vertical distributions relative to oxygen: Lower oxycline species. Vertical distributions day (red) and night (dark blue) relative to the oxygen profile (light blue) at each station from 0–1000 m. Stations are noted at the top (station abbreviation and year), and each column comes from the indicated station. Each row is a different species. Missing boxes are locations and cruises where the species was not recorded. “No Data” indicates that the species was either not present or not identified to species in those samples. “Absent” indicates that the species was searched for but not found (abundance = 0). Abundances (number (1000 m)⁻³) are for adults (combined females and males) and come from nets and tows listed in Table 1. Abundances are plotted at the mid-depth of the sampling interval. Horizontal abundance axes vary to highlight the peaks. Table S1 (Wishner et al., 2019) provides numerical abundance data for each net.

865

870

Figure 4: Vertical distributions of 3 species relative to oxygen for the 3 sequential tows (2 day, 1 night) in the “mid-depth comparison” series at SKQ 17. Oxygen profiles from each tow (color coded by tow, see legend) are shown in the left graph. Species distributions from each tow are color coded to match the oxygen profile. The depth range for these profiles is 350–650 m. These species responded to the slight variations in oxygen between tows.

875

Figure 5: Vertical distributions relative to oxygen: Congeneric species from 3 genera. Each row shows 2 species (adults) from a particular genus at the same stations (listed at the top and repeated for each half of the figure). Each row is a different genus. See Fig. 3 caption for more explanation.

880

Figure 6: Vertical distributions relative to oxygen for *Metridia brevicauda* (adults) at each station (top row). Second and third rows: Life history stage distributions (color coded bar graphs) are shown for CRD in 2007 night and day (to 750 m, the deepest depth with both night and day abundance data) and for TB in 2008 for the upper water column (0-200 m, the only depth range with life history stage counts for that cruise) night and day. Abundance axes vary. Bars are plotted by sample order with increasing depth. See the vertical profiles (top row) and Tables 1 and S1 for depth ranges for each net and Table 3 for the DMA. See Fig. 3 caption for more explanation of the vertical profiles.

885

Figure 7: Vertical distributions relative to oxygen: Upper oxycline species and those with split oxycline distributions. Two species are shown in each row with stations repeated for each half. See Fig. 3 caption for more explanation.

890

Figure 8: Vertical distributions relative to oxygen for *Eucalanus inermis* adults day and night at each station (top row), and daytime life history stage distributions (color coded bar graphs) at each of these stations (two bottom rows). Abundance axes vary. Bars are plotted by sample order with increasing depth. At CRD in 2007, daytime data extended only to 750 m. See the vertical profiles (top row) and Tables 1 and S1 for depth ranges for each net and Table 3 for the DMA. See Fig. 3 caption for more explanation of the vertical profiles.

895 **Figure 9: Vertical distributions relative to oxygen: Diel vertical migrators.** Each row is a different species. For the
900 *Pleuromamma* species, which were searched for and identified in all tows, missing figures represent locations with zero
abundances.

Figure 10: Vertical distributions relative to oxygen: Epipelagic species. Each row is a different species. The depth axis for
these graphs is 0-200 m. The uppermost point in the graphs includes the sampling interval that extends to the sea surface
(plotted at the mid-depth of the interval). See Fig. 3 caption for more explanation.

Figure 11: Schematic illustration of OMZ expansion effects on zooplankton distributions. The bracket indicates the most
aerobic habitat of the water column (mixed layer plus upper oxycline). The dashed line represents diel vertical migration. The
layer of diapausing *E. inermis* is shown just above the lower oxycline. This figure updates earlier depictions (Seibel, 2011;
Wishner et al., 2013; Seibel and Wishner, 2019) with new information from this study.

Supplementary Material

Figure S1: Oxygen profile variability. All oxygen profiles at each station are shown for the vertically-stratified MOCNESS
tows used for zooplankton distributions discussed in this paper. These are from the upcast portion of the tow during zooplankton
sampling. In some cases, portions of tows were not available because of sensor issues.

Table S1: Details for each net in a tow including depth range and volume filtered, followed by abundances in each net (number
(1000 m)⁻³) for each of the species considered in this paper (Wishner et al., 2019, <https://digitalcommons.uri.edu/gso-data/1/>).
Species names are shortened; full names are in Table 2.

915

Table 1. Cruises, stations, tows, and net depth intervals used in copepod abundance graphs. Several tows were often combined to obtain detailed vertical profiles to depth (see sect. 2.1). D=day, N=night. NS = no sample. Parameters for each tow (dates, times, locations) are in the BCO-DMO data repository, and Table S1 (Wishner et al., 2019) provides depth and abundance data for each net (see Data Availability section for doi numbers).

920

Cruise and Stations	Station Time		Tow IDs	Dates GMT	Depth m	Net Intervals m
	Abbrev	D/N				
18 Oct -17 Nov 2007						
<i>R/V Seward Johnson (SJ07)</i>						
Tehuantepec Bowl	TB	D	607	28 Oct	0-1200	0-20-80-150-350-550-750-900-1200
Costa Rica Dome	CRD	N	615, 617, 619, 621	8-11 Nov	0-1200	0-20-30-40-50-60-80-100-150-200-250-300-350-400-450-500-550-550-750-800-850-900-950-1000-1100-1200
Costa Rica Dome	CRD	D	616, 618, 623	8-12 Nov	0-775	0-20-30-40-50-60-80-100-150-200-250-300-350-400-450-500-550-575-600-625-650-675-700-733-775
8 Dec 2008-6 Jan 2009						
<i>R/V Knorr (19502, KN08)</i>						
Tehuantepec Bowl	TB	D	626, 630, 631	15, 17-18 Dec	0-1000	0-20-30-40-50-60-80-100-150-200-250-300-350-400-450-500-550-700-775-800-825-850-875-900-1000
Tehuantepec Bowl	TB	N	628, 632, 633	17, 19-20 Dec	0-1000	0-20-30-40-50-60-80-100-150-200-250-300-350-400-450-500-550-700-775-800-825-850-875-900-1000
Costa Rica Dome	CRD	D	635, 637, 640	28-30 Dec	0-1000	0-20-30-40-50-60-80-100-150-200-250-300-350-400-450-500-525-550-575-600-625-650-750-900-1000
Costa Rica Dome	CRD	N	636, 638, 641	29-30 Dec, 1 Jan	0-1000	0-20-30-40-50-60-80-100-150-NS-200-250-300-350-400-450-500-NS-525-550-575-600-625-650-750-900-1000
16 Apr-6 May 2016						
<i>R/V Oceanus (OC1604B)</i>						
Oceanus	OC	N	707, 709	26, 28 Apr	0-1000	0-100-150-200-250-300-350-400-450-550-600-650-700-750-800-850-1000
	OC	D	708, 710	26-29 Apr	0-1000	0-100-150-200-250-300-350-400-450-550-600-650-700-750-800-850-1000
	OC	D	711	30 Apr	350-470	468-460-463-384-390-390-367-385-348 (Physiology Tow)
	OC	D	713	2 May	600-800	600-625-650-675-700-725-750-775-800
19 Jan -15 Feb 2017						
<i>R/V Sikuliaq (SKQ201701S)</i>						
Sikuliaq	SKQ	N	716	26 Jan	0-1000	0-100-200-300-400-500-600-700-800-1000
	SKQ	D	718	28 Jan	350-650	350-400-425-450-475-500-550-600-650 (Mid-Depth Comparison)
	SKQ	D	719	29 Jan	350-650	350-400-425-450-475-500-550-600-650 (Mid-Depth Comparison)
	SKQ	N	720	31 Jan	350-650	350-400-425-450-475-500-550-600-650 (Mid-Depth Comparison)
	SKQ	N	721	1 Feb	0-350	0-50-75-100-125-150-200-250-300-350
	SKQ	D	722	1 Feb	0-350	0-50-75-100-125-150-200-250-300-350
	SKQ	D	724	4 Feb	425	Horizontal Tow (8 nets)
	SKQ	D	725	5 Feb	0-1000	0-100-200-300-400-500-600-700-800-1000
	SKQ	D	726	7 Feb	430	Horizontal Tow (8 nets)
	SKQ	D	727	8 Feb	600-825	600-625-650-675-700-725-775-800-825 (Oxycline Tow)
	SKQ	D	728	9 Feb	800	Horizontal Tow (8 nets)

Table 2. Copepod species discussed in this paper.

OMZ and oxycline species

Disseta palumbii
Euaugaptilus magnus
Euaugaptilus nodifrons
Eucalanus californicus
Eucalanus spinifer
Gaetanus kruppi
Gaetanus pseudolatifrons
Heterostylites longicornis/longioperculis
Lophothrix frontalis
Lucicutia hulsemannae
Lucicutia ovalis
Metridia brevicauda
Metridia princeps
Paraeuchaeta californica
Scaphocalanus magnus

OMZ diapause species

Eucalanus inermis

Diel vertical migrators into OMZ

Pleuromamma abdominalis
Pleuromamma johnsoni
Pleuromamma quadrangulata

Epipelagic and thermocline species

Haloptilus longicornis
Lucicutia flavicornis
Mecynocera clausi
Subeucalanus subtenuis

Table 3. Depth of maximum abundance (DMA) for the species (adults) discussed in the text along with environmental data from MOCNESS sensors for that habitat (oxygen and temperature ranges for the DMA net), abundances in the DMA net (Max Abund) (adults, number (1000 m)⁻³), and water column abundances (adults, number m⁻², 0-1000 m depth interval except 0-750 m for CRD07 day) for that species at that station. Species names are shortened (full names in Table 2). Data are included for each location for both day (D) and night (N) when available. “X” indicates situations where the species was not recorded, either because it was not present or not identified. “None” indicates situations where the species was searched for but not found, i.e. abundance of 0 and consequently no associated environmental data. Ranges for depth (DMA, m), oxygen (Ox, μM), and temperature (Temp, °C) are shown for the indicated DMA net (net IDs in Table S1, first 3 digits are the tow number). Ranges rather than means are given, because each net covered a depth interval, and it is not known where within that interval the animals occurred. NA for oxygen = not available (oxygen sensor malfunction).

Day or Night	Diseta pakumbii	Euaugiappi magnus	Euaugiappi nodifrons	Eucaluanus californicus	Eucaluanus spinifer	Gastanus krupti	Gastanus pseudidali	Heterostyxi longifrons	Lophothrix frontalis	Luciulla hulsemann	Luciulla ovalis	Metriacia brevicauda	Metriacia prinops	Paraneucha californica	Scaphocal magnus	Eucaluanus inermis	Pleuromia abdominal	Pleuromia johnsoni	Pleuromia quadruma	Haloptilus longicornis	Luciulla flavicornis	Luciulla meynocer clausi	Subeucala subebanus
D	6231	X	X	X	none	6232	none	6237	X	6235	none	6165	6233	X	X	6165	6166	6163	none	6181	6181	6187	6187
N	6198	X	X	X	none	6198	6193	6173	X	6173	6191	6156	6194	X	X	6155	6217	6173	none	6212	6217	6216	6218
D	X	X	X	X	X	X	X	X	X	6072	X	X	X	X	X	6077	none	6072	none	X	X	X	X
D	X	X	X	X	X	X	X	X	X	6315	6311	6316	X	X	X	6316	none	6296	none	6263	6264	6265	6264
N	7135	7105	7081	7107	7108	7081	7102	7085	7111	7098	7104	7071	7111	7081	7112	7112	7084	none	7083	7088	7088	7088	
CC	7086	7083	7091	7071	7095	7092	7077	7077	7098	7094	7071	7071	7073	7073	7071	7071	7077	none	7074	7074	7078	7078	
D	7278	7273	7221	7276	7184	7272	7194	7186	7254	7254	none	7196	7255	7274	7278	7193	7221	7196	7221	7257	7227	7227	
N	7162	7162	7162	7162	7162	7161	7207	7213	7201	7201	none	7208	7166	7162	7162	7203	7218	7217	7211	7217	7169	7218	
D	23	X	X	X	none	42	0	1004	X	997.3	0	15958	49	X	X	3391.2	3251	40	none	2210	943	11216	33647
N	25	X	X	X	none	25	21	1151	X	64	75	8542	17	X	X	16539	13386	64	none	1515	6693	8092	21864
D	X	X	X	X	X	X	X	X	X	288	X	X	X	X	X	5255.4	none	1234.3	none	X	X	X	1989.1
D	X	X	X	X	X	X	X	X	X	1040.8	X	X	X	X	X	4905.4	none	3283.6	none	508.1	13757.8	15215.5	33336.1
CC	40.6	2.7	1.3	3.1	6.4	11.3	1	10.9	63.7	82.8	1.2	10.5	13.1	3.8	14.5	41.6	80.2	none	38.3	26.7	144.8	24.1	
CC	24.8	1	0.8	11.5	2.2	0.8	46.4	6.8	91.9	1.9	26.8	8.1	6.5	7.7	69	31	none	201.3	83.2	120	48	none	
N	53.8	3.7	5.3	1.9	4.6	2.7	8.9	20.3	44.4	81.9	none	3.1	17.6	4.9	17.9	226.8	41.4	202.8	6.8	10.6	10.6	5.3	
N	22.1	1.1	2.2	0	3	1.1	1.9	74.7	16.9	65.2	none	4.7	3.6	1.1	7.7	192.6	382.1	30.7	38.5	46.1	4.1	15.9	
D	732-773	X	X	X	none	700-733	none	575-600	X	600-625	none	300-350	675-700	X	X	300-350	250-300	400-450	none	100-150	100-150	20-30	20-30
N	700-750	X	X	X	none	700-750	950-1000	550-747	X	550-750	1100-1200	250-300	900-950	X	X	300-350	550-750	550-750	none	80-100	20-30	30-40	0-20
D	X	X	X	X	X	X	X	X	X	750-900	X	X	X	X	X	20-80	none	750-900	none	X	X	X	0-20
D	X	X	X	X	X	X	X	X	X	800-825	900-1000	775-800	460-468	X	X	775-800	365-395	250-300	none	60-80	50-60	40-50	50-60
CC	675-700	650-700	400-450	550-600	400-450	400-450	200-250	460-468	100-150	400-450	700-750	460-468	460-468	400-450	460-463	460-463	250-300	none	300-350	250-300	0-100	0-100	
CC	800-650	750-800	850-1000	400-450	400-450	400-450	800-850	100-150	100-150	400-450	700-750	400-450	400-450	300-350	400-450	400-450	100-150	none	100-150	250-300	0-100	0-100	
D	611-633	725-778	300-350	652-681	475-500	778-813	475-500	425-450	500-500	425-450	500-550	425-450	400-450	704-725	611-633	500-550	300-350	425-450	300-350	200-300	75-100	75-100	
N	700-800	700-800	700-800	700-800	700-800	800-1000	400-425	200-250	600-650	600-650	none	350-400	300-400	700-800	700-800	500-550	300-350	75-100	300-350	75-100	50-75	75-100	
D	7.5-9.7	X	X	X	none	7.4-8.3	none	1.3-2.0	X	1.7-5.9	none	1.0-5.7	7.1-8.0	X	X	1.0-5.7	3.4-8.6	1.0-1.1	none	13.1-21.6	13.1-21.6	NA	NA
N	7.8-8.4	X	X	X	none	7.8-8.4	18.4-24.8	1.1-7.6	X	1.1-7.6	28.9-35.2	1.3-1.6	14.6-18.7	X	X	1.2-1.6	NA	1.1-7.6	none	16.7-22	NA	28.0-28.0	NA
D	X	X	X	X	X	X	X	X	X	1.75-7.20	X	X	X	X	X	3.0-20.0	none	1.8-7.2	none	X	X	X	186-200
D	X	X	X	X	X	X	X	X	X	1.84-2.41	5.7-9.9	1.4-1.9	X	X	1.4-1.9	none	1.2-1.4	none	1.2-1.4	none	3.9-35.7	39.3-74.5	3.9-35.7
CC	5.8-6.3	5.4-6.2	6.5-8.2	4.3-4.8	4.4-5.3	8.9-10.6	26.6-69.3	4.6-5.0	6.4-7.4	7.1-10.2	4.6-5.0	6.5-8.2	4.4-5.0	4.4-5.0	15.7-32.0	none	12.7-17.4	none	13.2-20	203-231	203-231	203-231	
CC	4.4-5.8	7.4-8.9	10.4-15.4	4.1-5.4	4.1-5.4	5.6-6.8	8.9-10.7	97.3-195	97.3-195	30-4.6	6.4-7.6	4.1-5.4	11.7-17.8	4.1-5.4	4.1-5.4	97.3-195	97.3-195	none	97.3-195	189-228	189-228	189-228	
N	4.0-4.8	4.2-7.4	6.8-20.1	3.2-5.9	4.2-6.1	6.6-8.1	1.0-1.7	5.0-7.4	38.5-65.5	1.5-3.3	none	1.2-5.7	6.8-20.1	4.0-4.8	4.0-4.8	12.2-2	6.8-20.1	1.2-5.7	6.8-20.1	15.6-61.2	207-214	207-214	
N	3.2-5.3	3.2-5.3	3.2-5.3	3.4-7.8	3.2-5.3	4.7-16.8	1.0-1.9	39.5-65.5	1.5-3.3	none	1.3-4.9	1.3-7.1	3.2-5.3	3.2-5.3	3.2-5.3	1.0-1.9	202-205	203-215	6.3-21.5	170-210	202-205	203-215	
D	5.4-5.7	X	X	X	none	5.7-5.9	none	6.5-6.6	X	6.3-6.5	none	10.0-10.8	5.9-6.0	X	X	10.0-10.8	10.8-11.6	8.2-9.1	none	12.7-13.4	12.7-13.4	15.6-19.2	
N	5.7-6.1	X	X	X	none	5.7-6.1	4.5-4.7	5.8-7.4	X	5.8-7.4	3.7-4.2	10.8-11.6	4.7-4.9	X	X	10.1-10.8	17.8-26.7	5.8-7.4	none	13.8-14	17.8-26.7	15.6-17.3	
D	X	X	X	X	X	X	X	X	X	5.21-5.90	X	X	X	X	X	13.5-27.4	none	5.2-5.9	none	X	X	X	27.5-27.7
D	X	X	X	X	X	X	X	X	X	5.5-5.6	4.7-5.1	5.6-5.8	X	X	5.6-5.8	none	10.8-11.3	none	10.8-11.3	none	14.4-16.9	17.2-20.8	
CC	5.7-5.9	5.7-6.0	7.6-8.1	4.9-5.1	10.4-11.0	7.5-7.7	6.6-7.7	8.7-9.1	7.5-7.7	7.6-8.1	7.7-7.8	7.7-7.8	7.7-7.8	7.7-7.8	7.7-7.8	9.6-10.4	none	8.8-9.6	9.6-10.4	15.8-21.7	15.8-21.7	15.8-21.7	
N	6.0-6.4	5.2-5.4	4.4-4.9	7.8-8.3	6.6-6.0	4.9-5.2	11.7-15.1	11.7-15.1	6.8-7.7	6.8-7.7	5.4-5.7	7.9-8.3	8.8-9.4	8.8-9.4	7.9-8.3	7.9-8.3	11.7-15.1	none	11.7-15.1	9.4-10.2	15.1-21.7	15.1-21.7	
D	6.2-6.4	5.3-5.7	9.6-9.9	5.8-6.2	7.7-7.9	5.1-5.2	7.6-8.1	8.1-8.5	6.8-7.3	6.8-7.3	none	8.3-8.6	7.3-8.5	5.6-5.7	6.2-6.4	7.0-7.6	9.5-9.9	8.3-8.6	9.5-9.9	9.9-11.2	19.3-21.4	19.3-21.4	
N	5.4-5.9	5.4-5.9	5.4-5.9	5.4-5.9	5.4-5.9	4.4-5.4	8.7-9.0	10.5-11.5	6.2-6.7	6.2-6.7	none	9.0-9.4	9.0-10.8	5.4-5.9	5.4-5.9	7.2-7.8	22.6-22.7	20.3-22.7	9.6-9.9	20.3-22.7	22.6-22.7	20.3-22.7	
D	0.5	X	X	X	0	2.1	0	78.5	X	28.7	0	984.3	1.2	X	X	2182.5	217.5	2.5	0	302.4	62.1	117.7	584.9
N	2.7	X	X	X	0	1.8	2.5	230	X	9.6	7.5	755.8	1.4	X	X	1345.5	353.7	10.9	0	122.5	179.3	125.1	608
D	X	X	X	X	X	X	X	X	X	43.2	X	X	X	X	X	348.6	0	302.7	0	X	X	X	118.9
D	X	X	X	X	X	X	X	X	X	38.6	6.3	107.8	X	X	X	246	0	435.4	0	13.3	171.1	254.3	480.9
CC	7	0.7	0.1	0.3	1.2	0.8	0.2	1.4	0.9	10.6	0.2	0.6	1.3	0.5	1.2	1.7	6.5	none	3.7	1.8	16.1	14.5	
CC	6	0.1	0.2	1	0	0.2	0.1	4.8	0.7	10.6	0.2	2.3	1.2	0.9	1.1	6.5	2.2	none	13.2	12.9	12.8	4.8	
N	4.5	0.8	0.5	0.1	0	0.5	1.1	0.4	2.8	15.6	none	0.2	4.1	0.4	3.2	2.5	1.4	9	1.6	0.8	0.2	0.3	
N	4.8	0.1	0.2	0	0.6	0.1	0.4	2.3	1.1	7.1	none	1.1	1	0.3	2.8	29.9	7.2	0.2	5.5	0.7	0.5	0.1	

Figure 1

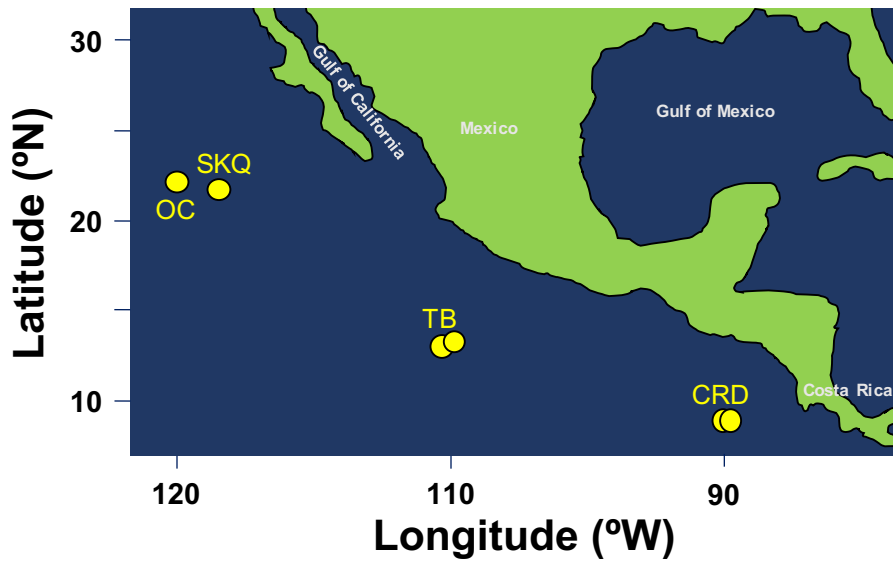


Figure 2

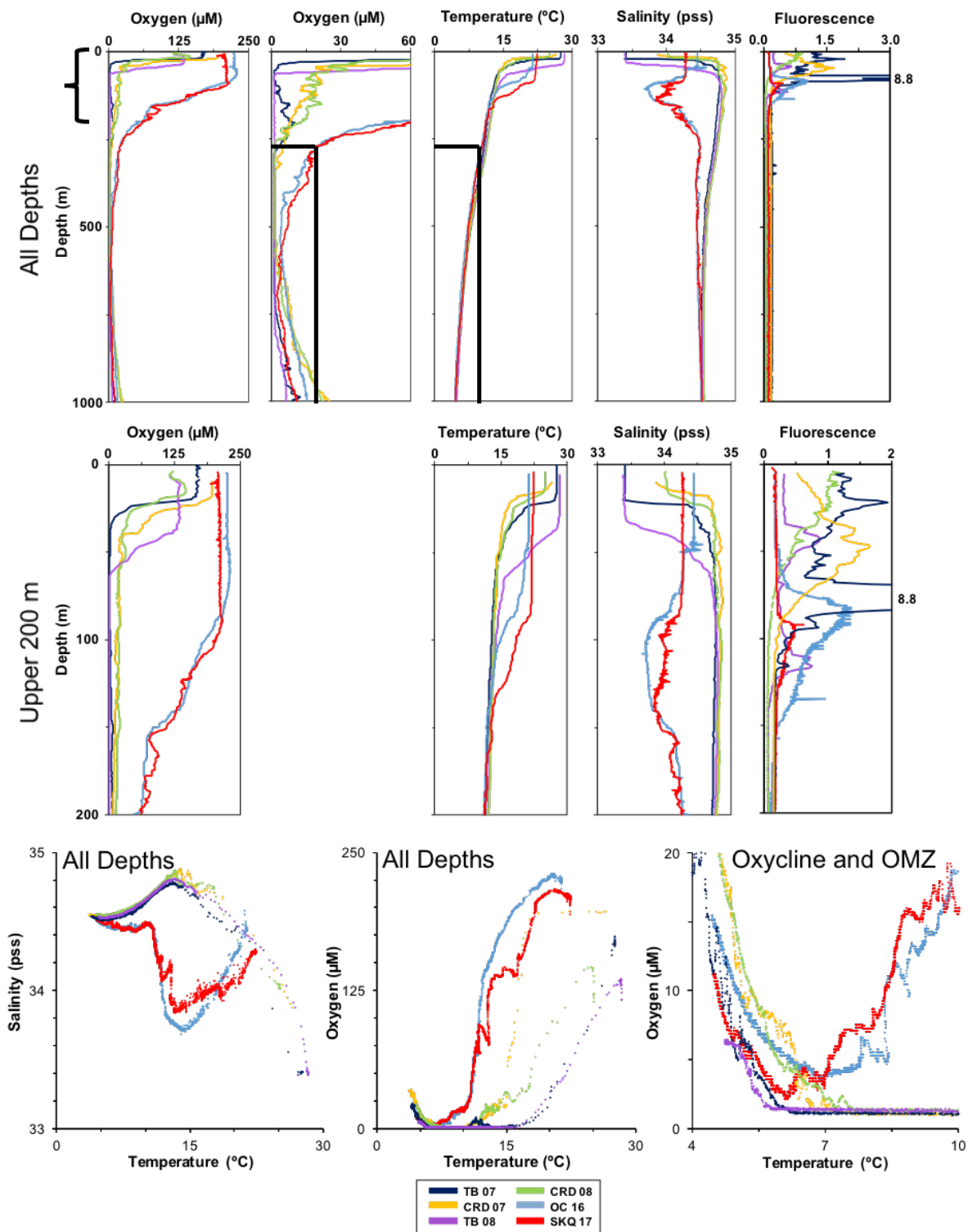


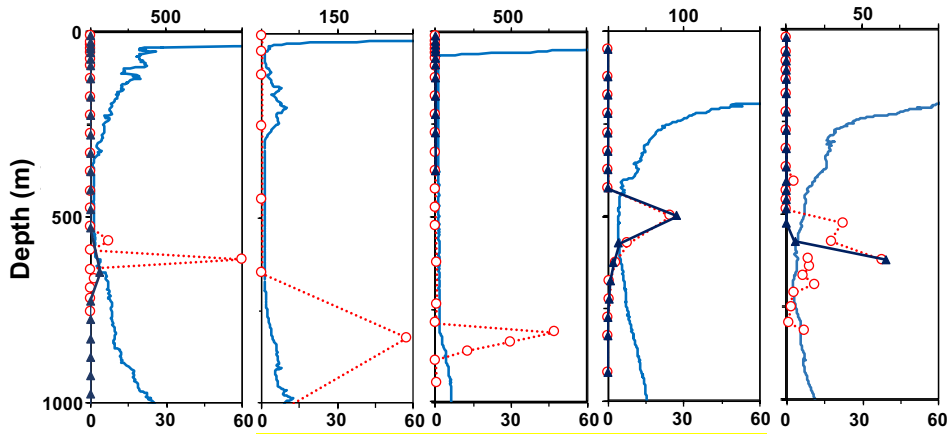
Figure 3

Lower Oxycline Species

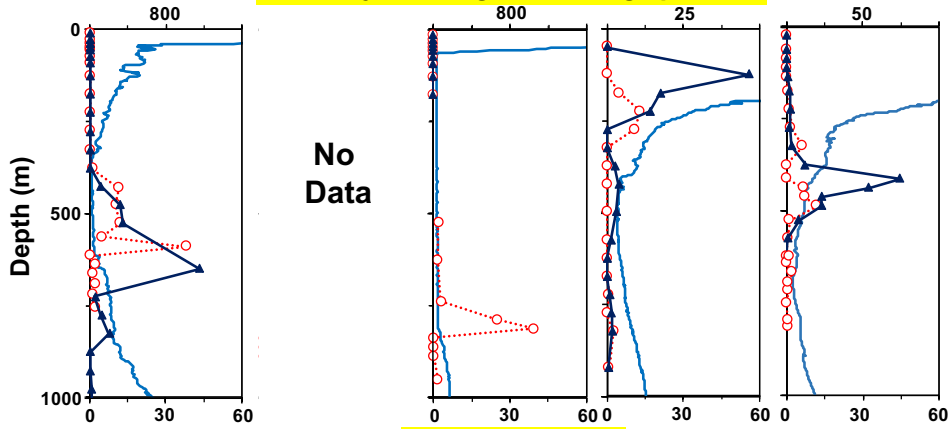
CRD 07 TB 07 TB 08 OC 16 SKQ 17

Abundance (#/1000 m³)

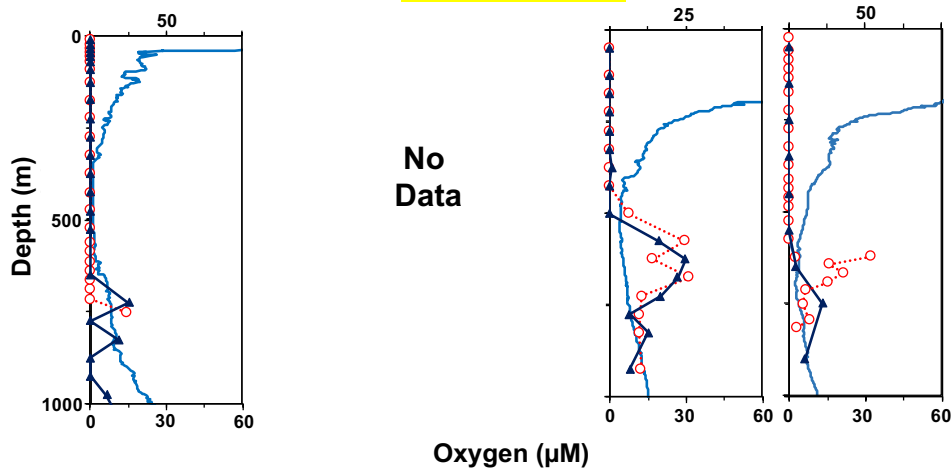
Lucicutia hulsemannae



Heterostylites longicornis/longioperculis



Disseta palumbii



Oxygen (μM)

Figure 4

Mid-Depth Comparison: 3 Species

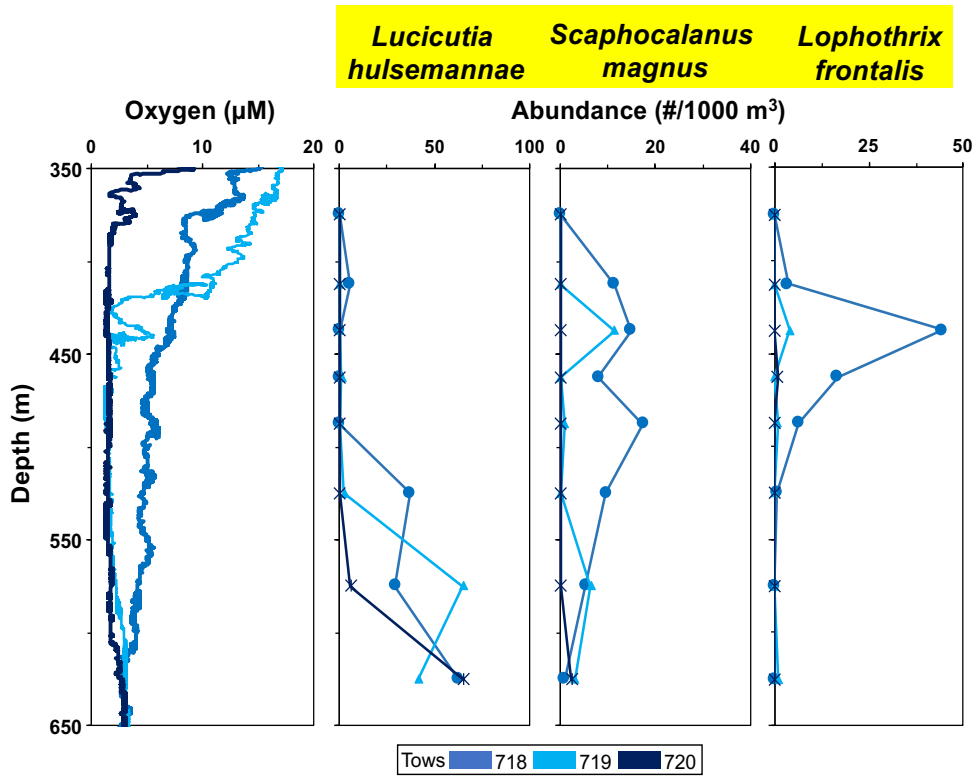


Figure 5

Congeneric Species

CRD 07 OC 16 SKQ 17 CRD 07 OC 16 SKQ 17

Abundance (#/1000 m³)

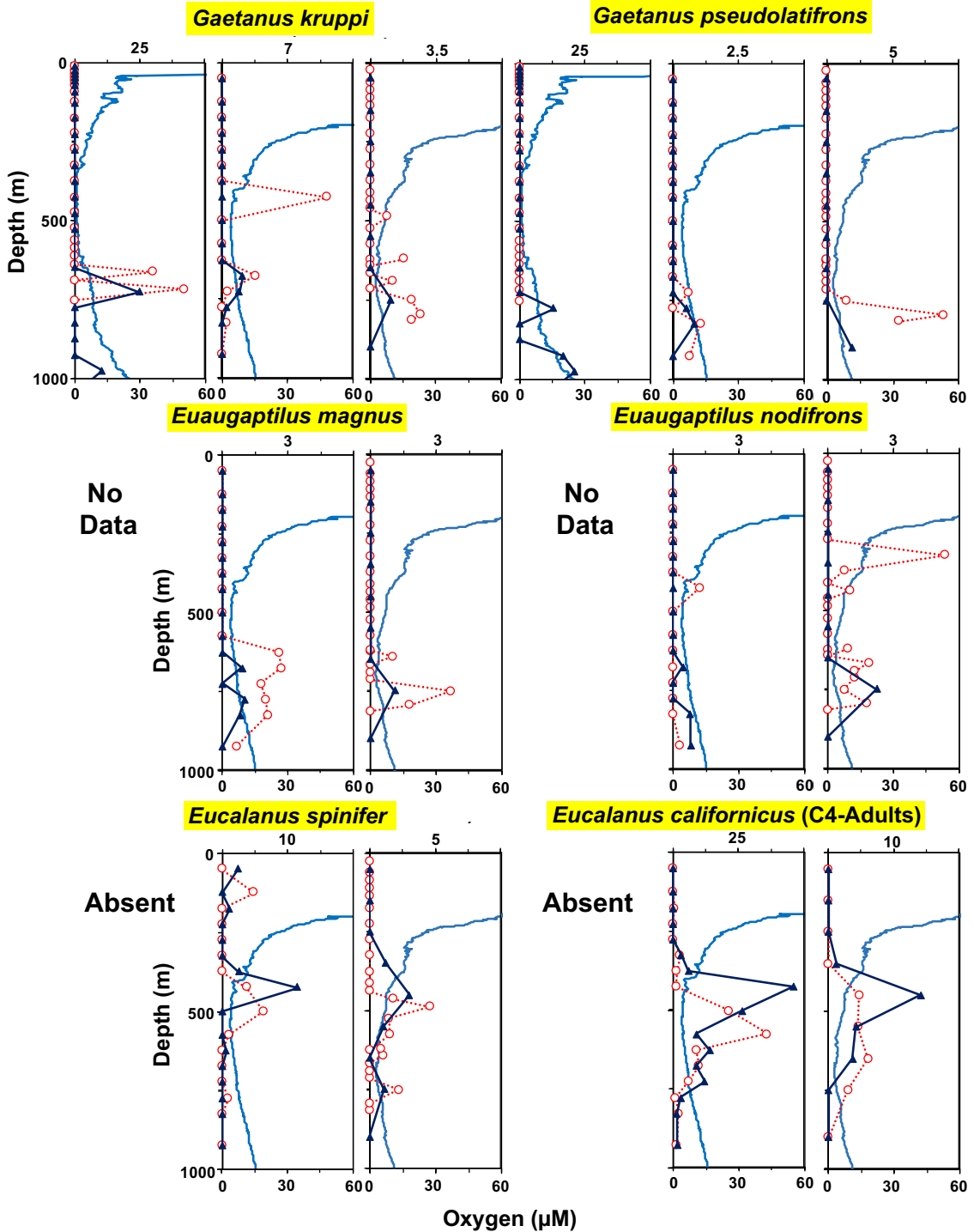


Figure 6

Split Distribution: *Metridia brevicauda*

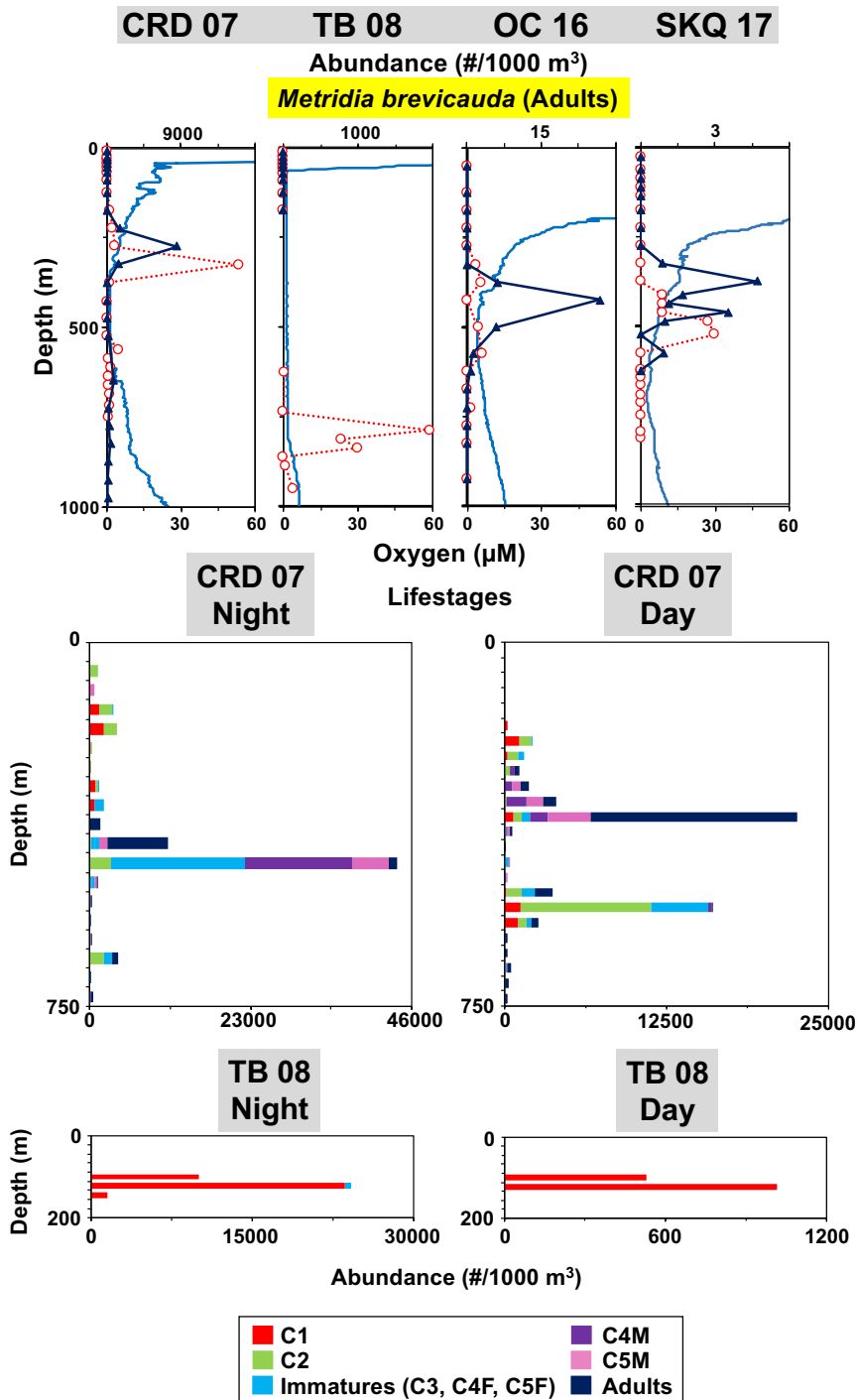


Figure 7

Upper Oxycline and Split Distribution Species

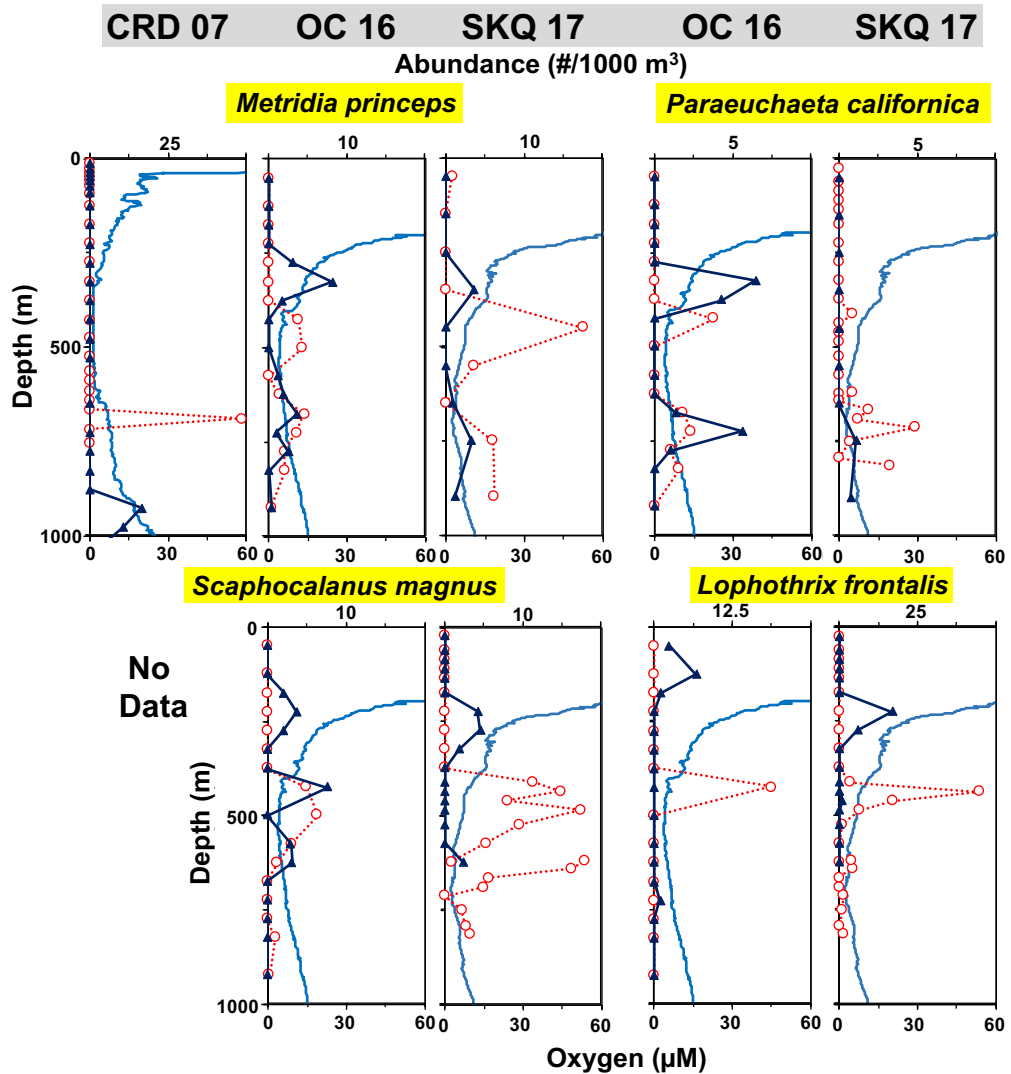


Figure 8

Eucalanus inermis: A Diapausing Species

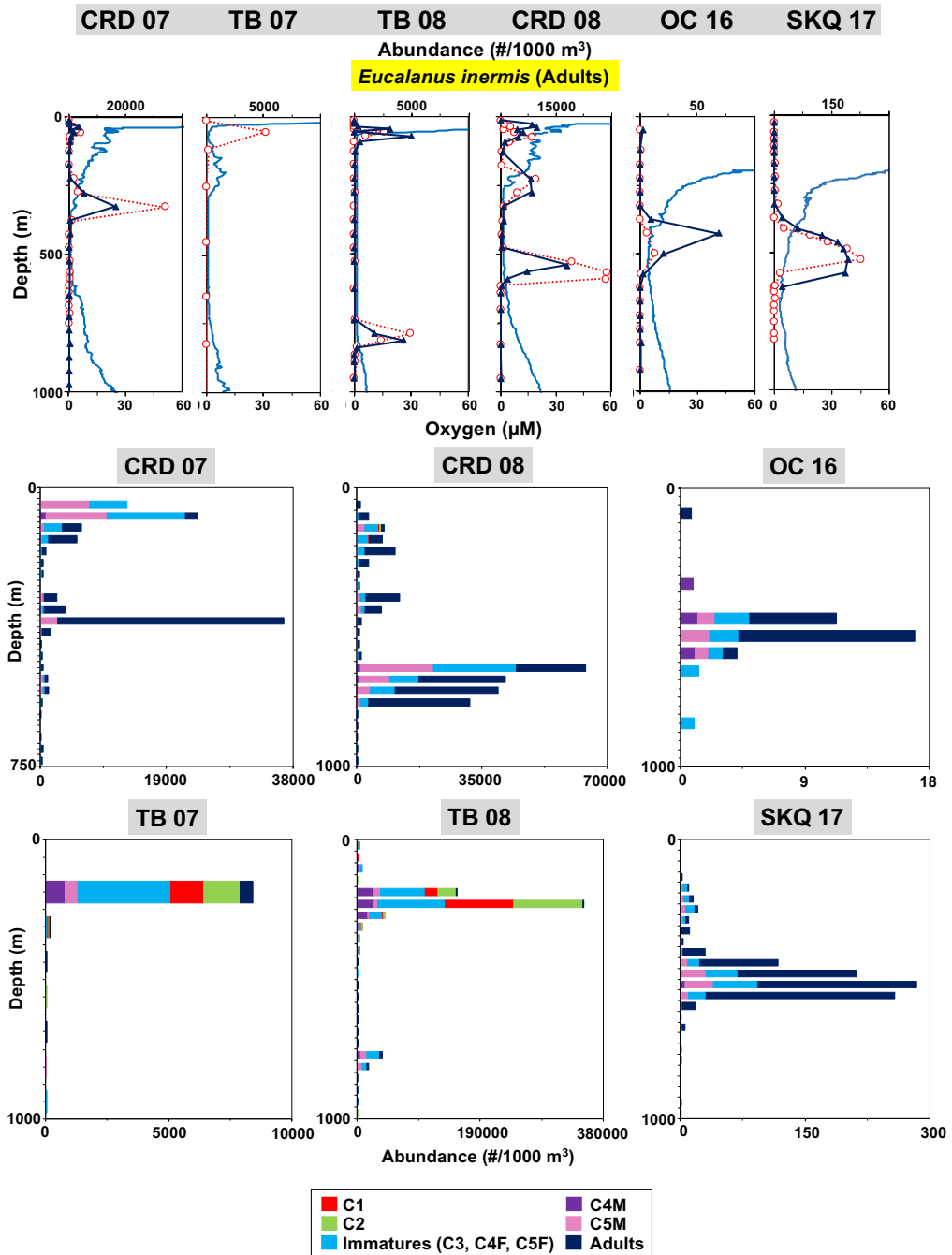


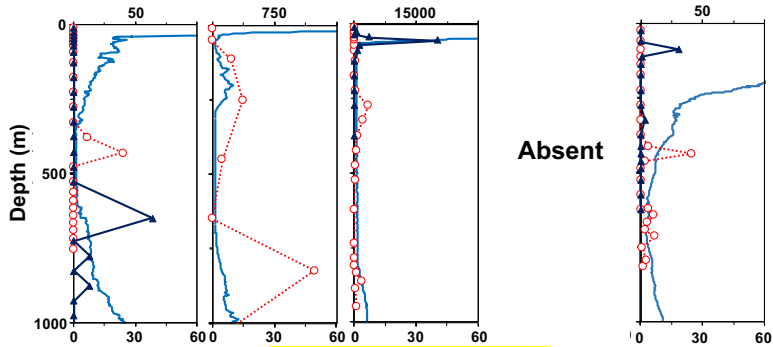
Figure 9

Diel Vertical Migrators

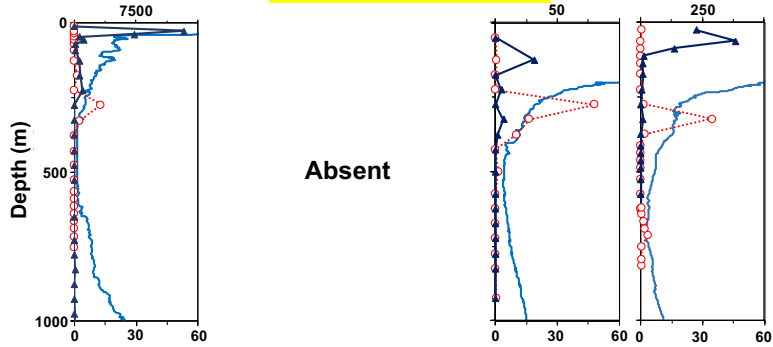
CRD 07 TB 07 TB 08 OC 16 SKQ 17

Abundance (#/1000 m³)

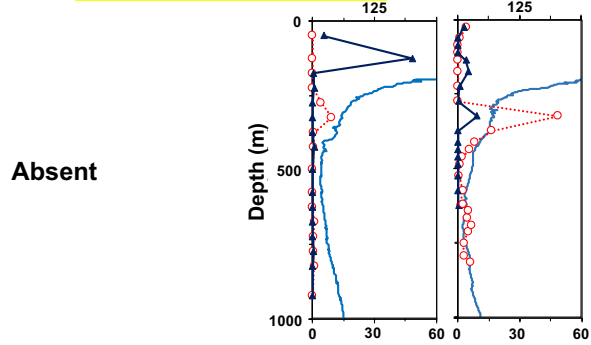
Pleuromamma johnsoni



Pleuromamma abdominalis



Pleuromamma quadrangulata



Haloptilus longicornis

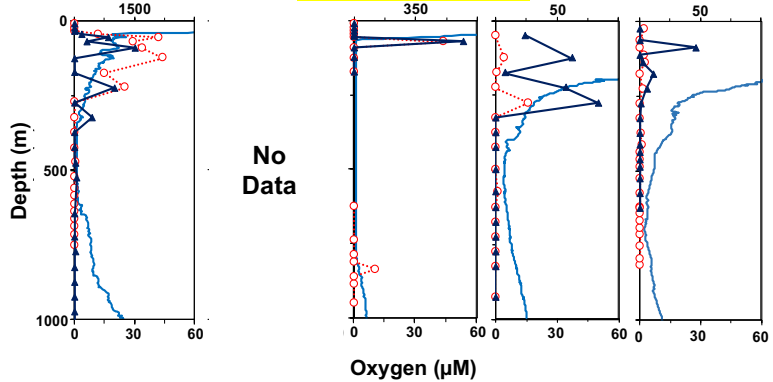


Figure 10

Epipelagic Species

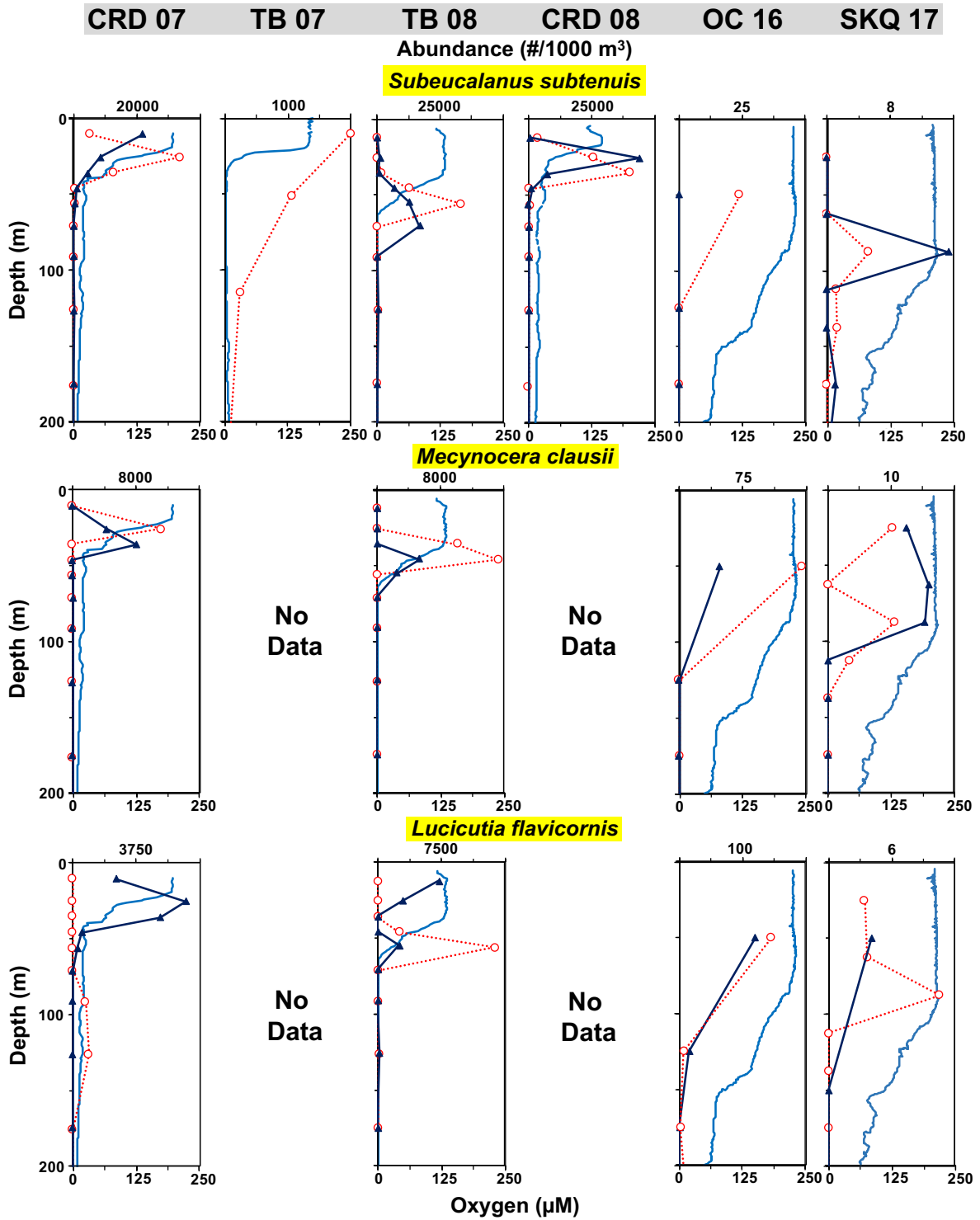
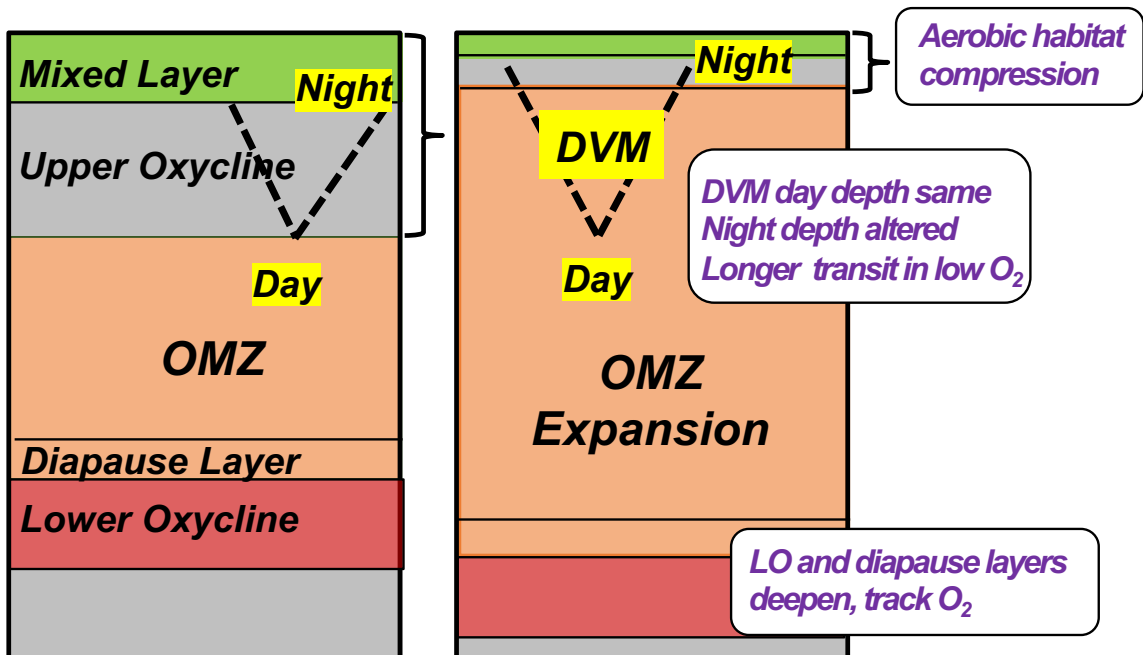


Figure 11



Supplementary Figure S1

