

# A meta-analysis on environmental drivers of marine phytoplankton C:N:P

Tatsuro Tanioka and Katsumi Matsumoto

Department of Earth & Environmental Sciences, University of Minnesota, Minneapolis, MN, USA

5 *Correspondence to:* Tatsuro Tanioka (tanio003@umn.edu)

**Abstract.** The elemental stoichiometry of marine phytoplankton plays a critical role in the global biogeochemical cycle through its impacts on nutrient cycling, secondary production, and carbon export. Although extensive laboratory experiments have been carried out over the years to assess the influence of different environmental drivers on the elemental composition of phytoplankton, a comprehensive quantitative assessment of the processes is still lacking. Here, we synthesized the responses of P:C and N:C ratios of marine phytoplankton to five major drivers (inorganic phosphorus, inorganic nitrogen, inorganic iron, irradiance, and temperature) by meta-analysis of laboratory experimental data across 366 experiments from 104 journal articles. Our results show that the response of the ratios to changes in macronutrients is consistent across all the studies, where the increase in nutrient availability is positively related to changes in P:C and N:C ratios. We found that eukaryotic phytoplankton are more sensitive to the changes in macronutrients compared to prokaryotes, possibly due to their larger cell size and their abilities to quickly regulate their gene expression patterns required for nutrient uptake. The effect of irradiance was significant and constant across all studies where an increase in irradiance decreased both P:C and N:C. The response to temperature changes was mixed depending on the culture growth mode and the growth phase of phytoplankton at the time of harvest but the weighted mean P:C ratio decreased significantly with warming. Along with other oceanographic conditions of the subtropical gyres (e.g., low macronutrient availability), elevated temperature may explain why P:C is consistently low in subtropical oceans. Iron addition did not systematically change neither P:C or N:C. Overall, our findings highlight the high stoichiometric plasticity of eukaryotes and the importance of macronutrients in determining P:C and N:C ratios, which both provide us insights on how to understand and model plankton diversity and productivity.

10  
15  
20  
25

## 1 Introduction

Elemental stoichiometry of biological production in the surface ocean plays a crucial role in cycling of elements in the global ocean. The elemental ratio between carbon and the key limiting macronutrients, nitrogen (N) and phosphorus (P), in exported organic matter expressed in terms of C:N:P ratio helps determine how much atmospheric carbon is sequestered in the deep ocean with respect to the availability of limiting nutrients. On geologic timescale, N:P ratio reflects the relative availability of nitrate with respect to phosphate, both of which are externally supplied from atmosphere via nitrogen-fixation and/or continents via river supply and lost by denitrification and burial (Broecker, 1982; Lenton and Watson, 2000; Redfield, 1958; Tyrrell, 1999). On shorter timescales, the average stoichiometry of exported bulk organic matter reflects elemental stoichiometry of phytoplankton (Bonachela et al., 2016; Garcia et al., 2018; Martiny et al., 2013b) with additional influences of biological diversity and secondary processing of organic matter by zooplankton and heterotrophic bacteria. In the face of global change, understanding and quantifying the mechanisms that leads to variability in C:N:P ratios are crucial in order to have an accurate projection of future climate change.

A key unresolved question is what determines C:N:P of individual phytoplankton. Phytoplankton grow in the upper light-lit layer of the ocean where the amount of inorganic nutrients, light, and temperature vary spatially and temporally. Laboratory studies show that these fluctuations trigger responses at the cellular level, whereby cells modify resource allocation in order to adapt optimally to their ambient environment (Geider and La Roche, 2002). For example, phytoplankton may alter resource allocation between P-rich biosynthetic apparatus, N-rich light-harvesting apparatus, and C-rich energy storage reserves (Moreno and Martiny, 2018). Under a typical future warming scenario, the global ocean is expected to undergo changes in nutrient availability, temperature, and irradiance (Boyd et al., 2010). These changes are likely to have profound effects on physiology of phytoplankton (Finkel et al., 2010; van de Waal et al., 2010) and observations show that competitive phytoplankton species are able to acclimate and adapt to changes in temperature, irradiance, and nutrients on decadal timescales (Irwin et al., 2015). Numerous laboratory and field experiments have been conducted thus far to study the relationship between C:N:P ratio of phytoplankton and environmental drivers. It is however challenging to synthesize those studies and generalize the response of phytoplankton C:N:P to changes in

55 environmental drivers. Individual studies employ different sets of statistical analyses to characterize  
effects of environmental driver(s) on elemental ratios, ranging from a simple t-test to more complex mixed  
models, which makes interstudy comparisons challenging. In addition, since environmentally induced  
trait changes are driven by a combination of plasticity (acclimation), adaptation, and life history (Collins  
et al., 2020; Ward et al., 2019), stoichiometric responses of phytoplankton can be variable even amongst  
60 closely related species.

Meta-analysis/systematic-review is a powerful statistical framework for synthesizing and  
integrating research results obtained from independent studies and for uncovering general trends  
(Gurevitch et al., 2018). The seminal synthesis by Geider and La Roche (2002) as well the more recent  
work by Persson et al. (2010) have shown that C:P and N:P could vary up to a factor of 20 between  
65 nutrient-replete and nutrient-limited cells. These studies have also shown that C:N ratio is plastic due to  
nutrient limitation. A meta-analysis study by Hillebrand et al. (2013) highlighted the importance of  
growth rate in determining elemental stoichiometry showed that both C:P and N:P ratios decrease with  
increasing growth rate. Yvon-Durocher et al. (2015) investigated the role of temperature in modulating  
C:N:P. Although their dataset was limited to studies conducted prior to 1996, they have shown a  
70 statistically significant relationship between C:P and temperature increase. MacIntyre et al. (2002) and  
Thrane et al. (2016) have shown that irradiance plays an important role in controlling optimal cellular  
C:N and N:P ratios. Most recently, Moreno and Martiny (2018) provided a comprehensive summary of  
how environmental conditions regulate cellular stoichiometry from physiological perspective.

Here, we present results from a systematic literature review and subsequent meta-analysis to  
75 quantify how five key environmental drivers affect C:P and C:N ratios of marine phytoplankton. Unlike  
previous meta-analyses on elemental stoichiometry of phytoplankton that strictly synthesized the effect  
of a single environmental driver, our study assessed the effects of five drivers, specifically for marine  
phytoplankton species. Importantly, we use a unique newly defined measure of effect size, a *stoichiometry  
sensitivity factor* (Tanioka and Matsumoto, 2017), which is a dimensionless parameter that relates a  
80 fractional change in P:C or N:C to a fractional change in a particular environmental driver. We compute  
effect size for each driver-stoichiometry pair from independent studies and subsequently determine the  
weighted mean P:C and N:C ratios. Further, we compute mean effect size within different subgroups of

moderators such as plankton types and growth conditions ~~for detecting~~ any systematic heterogeneity between those subgroups.

## 85 2 Materials and Methods

### 2.1 Bibliographic search and screening

We systematically screened peer-reviewed publications on monoculture laboratory experiment studies that assessed the effects of dissolved inorganic phosphorus, dissolved inorganic nitrogen, dissolved iron, irradiance, and temperature on P:C and N:C ratios of marine phytoplankton. These five environmental  
90 drivers are considered to be the top drivers of open-ocean phytoplankton group in studies (Boyd et al., 2010, 2015). Although CO<sub>2</sub> is another potentially important driver, we did not consider the effects of CO<sub>2</sub> on elemental ratios as previous meta-analysis studies showed that no generalization can be made with respect to the direction of trends in P:C or N:C ratios as a function of CO<sub>2</sub> concentration both in the laboratory-bases  
experiments (Liu et al., 2010) and mesocosm/field-based experiments (Kim et al., 2018).

95 Firstly, we conducted a literature search using Web of Science (last accessed in February 2019) with the sequence of key terms (Table 1). This search yielded 4899 hits. We also closely inspected all the primary studies mentioned in the 8 recent review papers including meta-analyses studies on elemental stoichiometry of phytoplankton in aquatic environment (Flynn et al., 2010; Geider and La Roche, 2002; Hillebrand et al., 2013; Moreno and Martiny, 2018; Persson et al., 2010; Thrane et al., 2016; Villar-Argaiz  
100 et al., 2018; Yvon-Durocher et al., 2015). The list is also augmented with data from ~~additional six~~ studies that did not appear in the literature search or in the review papers but were cited elsewhere. Papers were further screened and selected to meet the following criteria: (1) experiments must be carried out in ~~the~~ controlled laboratory environments, where all the environmental factors including temperature, photon flux density, salinity, and any other relevant conditions are controlled; (2) all outdoor experiments such  
105 as mesocosm or pond experiments are excluded; (3) experiments must be conducted under unialgal/monoculture settings. However, we note that not all the experiments are carried ~~under~~ strictly axenic condition (i.e., not completely devoid of bacteria and virus); and (4) experiments must be conducted with replicates and must report either standard deviation or standard error. Subsequent

selection processes based on abstracts, graphs, tables, and full text, and removal of duplicates led to a total of 104 journal articles (Fig. 1).

## 2.2 Data Extraction

Data with means and standard deviations of P:C and N:C under varying environmental values provided by the original studies are used directly. GraphClick (Arizona Software, 2010) was used to read off values from graphs when necessary. In cases where N:P and only one of either P:C or N:C is provided, the remaining ratio is determined by either multiplying or dividing by N:P. Similarly, elemental ratios are computed from the measurements of phytoplankton POC, PON, and POP when the ratios are not explicitly given in the original studies.

For nutrient (P, N, or Fe) manipulation studies, we selected two end-members (nutrient limited and nutrient replete) based on the definition given in the original studies. For batch and semi-continuous batch experiments, we compared fractional change in initial concentrations between nutrient replete and limited conditions when calculating stoichiometry sensitivity factor (see section 2.3.2). For continuous (chemostat or turbidostat) nutrient experiments, we used difference in the inflow concentrations of the nutrient replete and limited cultures to determine stoichiometry sensitivity factor. When multiple levels of concentrations are used, we selected two end-member points, one with the lowest growth rate and the other with highest growth rate. When the growth rate was not provided in the original study, we selected two end-member values based on the highest and lowest nutrient uptake rate, chlorophyll concentration, or total concentration level with the underlying assumption that phytoplankton growth is nutrient limited within the range of nutrient levels considered.

For temperature and irradiance manipulations studies, we selected the lowest value and the optimal or saturating value that led to the maximum growth rate for phytoplankton. When growth rate was not explicitly mentioned we selected the lowest and the highest treatment values with the assumption that the phytoplankton is temperature or light limited within the range of values considered.

When more than two factors were manipulated in the same study, multiple experimental units are extracted if and only if each environmental driver was manipulated separately (i.e., conducted in a factorial manner). For example, we extracted total of 4 experimental units from a 2-by-2 factorial study

on temperature and nutrient: (1) comparing nutrient limited vs. replete treatment at low temperature; (2) same as in (1) at high temperature; (3) comparing low vs. high temperature response at nutrient limited condition; and (4) as in (3) at nutrient replete condition. An experimental unit refers to a controlled experiment of the same phytoplankton species or clade between control and treatment groups while all the other environmental factors are kept constant. If experiments reported multiple measurements over time, only the final value was extracted.

We also extracted for each experimental unit phytoplankton functional type (i.e., [Diatoms, Coccolithophores, Dinoflagellates, other Eukaryotes, non-diazotrophic Cyanobacteria, Diazotrophs], Eukaryotes vs. Prokaryotes, cold-water vs. temperate species), growth mode (i.e., batch vs. semi-continuous vs. continuous), growth phase at harvest for batch/semi-continuous experiments (i.e., lag, exponential, stationary, decline), N form [ $\text{NO}_3^-$ ,  $\text{NH}_4^+$ ,  $\text{NO}_3^- + \text{NH}_4^+$ ,  $\text{N}_2$ ], and light regime (i.e., continuous vs. periodic light). Cold-water species is operationally defined if the control temperature (for P, N, Fe, or I manipulated experiments) or the maximum treatment temperature (for T manipulated experiments) was less than the threshold temperature of 10 °C. Attempted but ultimately discarded moderators for subsequent analysis mainly due to the lack of sample size include salinity, axenic nature of the culture, and the number of generations required for acclimation before the start of the experiment.

Our final dataset consists of 241 experimental units of P:C and 366 experimental units of N:C from 104 journal articles encompassing 7 taxonomic phyla (Bacillariophyta, Chlorophyta, Cryptophyta, Cyanobacteria, Haptophyta, Miozoa, and Ochrophyta), and 6 plankton functional types (Diatoms, Coccolithophores, Dinoflagellates, other Eukaryotes, non-diazotrophic Cyanobacteria, and Diazotrophs) and are available in the Zenodo data repository (<http://doi.org/10.5281/zenodo.3723121>).

### 2.3 Statistical analysis

We used two different measures of effect size for this study. One is a commonly used natural logarithm-transformed response ratios,  $\ln(\text{RR})$  (Hedges et al., 1999) and the other is the stoichiometry sensitivity factor (Tanioka and Matsumoto, 2017). By using two separate measures, we can give a more robust

prediction on how elemental stoichiometry varies with a change in given environmental driver. All statistical analyses were performed with R v3.5.2 (R Core Team, 2018).

165

### 2.3.1 Response ratios

The natural logarithm-transformed response ratios  $\ln(RR)$  of individual experimental unit and its variance ( $v$ ) was calculated following Lajeunesse (2015):

$$\ln(RR) = \ln\left(\frac{Y_t}{Y_c}\right) + \frac{1}{2} \left[ \frac{S_t^2}{N_t * Y_t^2} - \frac{S_c^2}{N_c * Y_c^2} \right] \quad (1)$$

170

$$v = \frac{S_t^2}{N_t * Y_t^2} + \frac{S_c^2}{N_c * Y_c^2} + \frac{1}{2} \left[ \frac{S_t^4}{N_t^2 * Y_t^4} - \frac{S_c^2}{N_c^2 * Y_c^4} \right] \quad (2)$$

Y denotes mean P:C or N:C, S the standard deviation of that mean, and N is the sample size for the treatment (subscript t) and the control (subscript c) groups. We removed any experimental unit with a studentized residual value of  $\ln(RR)$  exceeding the absolute value of 3 as an outlier (Viechtbauer and Cheung, 2010).

175

### 2.3.2. Stoichiometry sensitivity factor

The second effect size is the newly defined stoichiometry sensitivity factor  $s_X^Y$  (Tanioka and Matsumoto, 2017), which relates a fractional change in an elemental stoichiometry (response variable Y) to a fractional change in environmental driver (variable X):

180

$$s_X^Y = \frac{(Y_t - Y_c)/Y_c}{(X_t - X_c)/X_c} \quad (3)$$

We estimate variance of  $s_X^Y$  from the simple error propagation of equation (3) by assuming that the uncertainties associated with the environmental driver X is negligible compared to the errors associated with Y:

$$v_X^Y = \left( \frac{(Y_t - Y_c)/Y_c}{(X_t - X_c)/X_c} \right)^2 \left[ \frac{S_t^2/N_t + S_c^2/N_c}{(Y_t - Y_c)^2} + \frac{S_c^2}{N_c * Y_c^2} \right] \quad (4)$$

185

In essence, the magnitude of s-factor is a measure of how sensitive Y (P:C or N:C) is to a change in stressor level X, and the sign indicates whether Y changes in the same direction as X (positive sign) or in the opposite direction to X (negative sign). The s-factor allows for different kinds of response: a linear response of Y with respect to X ( $s_X^Y = 1$ ), a near hyperbolic response that saturates at high X ( $0 < s_X^Y <$

1), a logarithmic growth ( $1 < s_X^Y$ ), a decay ( $0 > s_X^Y$ ), and the null response ( $s_X^Y = 0$ ). This s-factor  
190 metric is conceptually similar to the homeostasis coefficient H (Persson et al., 2010), which relates  
fractional change in resource nutrient stoichiometry to fractional change in organism's nutrient  
stoichiometry.

Importantly, an advantage of using  $s_X^Y$  as effect size is that its magnitude is a direct, quantitative  
measure of the strength of environmental driver over the range of values examined. In contrast,  $\ln(\text{RR})$   
195 only compares the effect of stressor on two end point values (control and treatment) without taking  
changes in the stressor into an account. Further, we can directly compare the strength of  $s_X^Y$  across  
different pairs of X and Y as it is non-dimensional. For convenience, we use the term “s-factor” in the  
rest of this paper when describing  $s_X^Y$  in a generic sense.

We used the same set of experimental units used in calculating  $\ln(\text{RR})$  to calculate s-factors (i.e.,  
200 any outliers are carried over). However, we did not calculate s-factors for iron because the fractional  
change in dissolved iron concentration, often spanning multiple orders of magnitude, are substantially  
larger compared to the fractional change in P:C or N:C ratios leading to extremely low s-factor. For  
temperature-manipulated experiments, we converted degrees Celsius into absolute temperature scale  
Kelvin. We used photon-flux density (PSD) measured in  $\mu\text{mol photons m}^{-2} \text{ s}^{-1}$  for irradiance and  $\mu\text{M}$  for  
205 inorganic phosphorus and nitrogen experiments.

#### 2.3.4. Meta-analysis and weighted mean responses

We calculated weighted mean  $\ln(\text{RR})$  ( $\overline{\ln(\text{RR})}$ ) and s-factor ( $\overline{s_X^Y}$ ) using the mixed-effects model with the  
R package *metafor* (Viechtbauer, 2010). The weighted mean ( $M$ ) and its variance ( $V$ ) are calculated as:

$$210 \quad M = \frac{\sum_{j=1}^k W_j M_j}{\sum_{j=1}^k W_j} \quad (5)$$

$$V = \frac{1}{\sum_{j=1}^k W_j} \quad (6)$$

where  $k$  is the total number of experimental units,  $M_j$  is effect size ( $\ln(\text{RR})$  or  $s_X^Y$ ) in experimental unit  $j$ ,  
and  $W_j$  is the weighting factor which is inverse of the variance (Hedges et al., 1999). The 95% confidence  
interval for the weighted mean was computed as



215 
$$CI = M \pm 1.96 \times \sqrt{V} \quad (7)$$

In the subsequent sections of this paper, the values of  $\overline{\ln(RR)}$  are back-transformed and represented as percent change:

$$(e^{\overline{\ln(RR)}} - 1) \times 100\% \quad (8)$$

and considered statistically significant if 95% CIs do not overlap with zero.

220

### 2.3.5. Testing the effect of moderators

We determined the effects of moderators by *rma* function of *metafor* package which is an omnibus test of between-moderator heterogeneity based on  $\chi^2$  distribution (Liang et al., 2020). Moderators we tested are PFT, N form, growth mode, growth phase at extraction, and light regime (continuous vs. periodic).

225 The effect of moderator is considered significant when P-value is less than 0.05. We use the weighted mean s-factors in determining the effects of moderators except for iron experiments where we used response ratios instead.

## 3 Results

Phosphate addition increases both the mean P:C (235% [95% CI: 169%, 322%]) and N:C (23% [13%,  
230 34%]) significantly (Fig. 2b). Mean stoichiometric sensitivity factor of P:C ( $s_p^{P:C}$ ) with respect to change in phosphate is 0.21 [0.12, 0.29] (Table 2) which means that on average P:C ratio of phytoplankton changes by 0.21% for every 1% increase in  $PO_4$  concentration. The effect of phosphate on N:C is an order of magnitude smaller but also statistically significant and positively correlated ( $s_p^{N:C} = 0.023$  [0.004, 0.042]). Eukaryotic phytoplankton have significantly larger  $s_p^{P:C}$  than prokaryotes ( $P < 0.05$ , Fig. 3a) and  
235 the diatoms and coccolithophores especially have noticeably large  $s_p^{P:C}$  (Fig. S1a, Table S1). In addition, phytoplankton grown under chemostat experiments have significantly larger stoichiometric sensitivity compared to those grown under batch or chemostat condition (Fig. 3b,  $P < 0.001$ ). There was no between-moderator heterogeneity in  $s_p^{N:C}$  (Table S1).

The response of N:C to changes in inorganic nitrogen is similar to the response of P:C to  $PO_4$   
240 changes where an increase in inorganic nitrogen raises N:C on average by 70% [49%, 93%] (Fig. 2b) with the positive overall mean s-factor  $s_N^{N:C}$  of 0.14 [0.08, 0.20] (Table 2). Again, eukaryotic phytoplankton

have higher stoichiometric sensitivity than prokaryotes (Fig. 3a,  $P < 0.01$ ). Nitrogen addition does not affect the weighted mean P:C (Fig. 2). Surprisingly however, phytoplankton grown with the culture made of up nitrate and ammonia have significantly larger  $s_N^{P:C}$  compared to those grown with nitrate only, ammonia only, or those under semi-diazotrophic condition (Fig. S2, Table S1). The small sample size however precludes us from making any firm conclusions.

Increase in iron availability does not lead to significant changes in both P:C and N:C (Fig. 2b). In addition, the effects of any moderates are not statistically significant (Table S1). Although diazotrophs that utilize  $N_2$  as its nitrogen source have significantly large response compared to other PFTs (-20% [-36%, 1%]) (Table S1), their stoichiometric response is not quite statistically significant.

Increase in light availability significantly decreases both P:C (-21% [-38%, -0.4%]) and N:C (-18% [-23%, -12%]) with overall negative s-factors ( $s_I^{P:C} = -0.034 [-0.062, -0.007]$ ,  $s_I^{N:C} = -0.024 [-0.034, -0.013]$ ). Although the magnitudes of both the response ratios and s-factors are small compared to those of macronutrients, the responses across PFTs are consistent (Fig. S1c, S1f, Table S1). Phytoplankton grown under chemostat or batch condition have significantly more negative  $s_I^{N:C}$  compared to those grown under semi-continuous environment (Fig. 3b,  $P < 0.01$ ). In addition, plankton grown under periodic light cycle have significantly lower  $s_I^{N:C}$  compared to those grown under continuous light (Fig. 3d,  $P < 0.05$ ).

The response of P:C to warming is significant where on average P:C decreases by 15% [-24%, -5%] with negative mean s-factor of  $s_T^{P:C} = -3.6 [-6.8, -0.4]$  (Fig. 2a, b). The large magnitude of s-factor compared to that of other drivers reflects the fact that the fractional change in temperature (measured in kelvins) is considerably smaller than the fractional change in P:C. There is a significant variability due to growth mode where batch culture and chemostat culture experiments respectively have more negative s-factors for P:C and N:C (Fig. 3b,  $P < 0.05$ ). In addition, phytoplankton extracted during exponential have noticeably more negative s-factors than those extracted during stationary growth phase (Fig. 3c) for both P:C ( $P < 0.001$ ) and N:C ( $P < 0.05$ ). The difference in mean response s-factor ratio amongst PFTs and between cold vs. temperate species is not statistically significant (Fig. S1e, Table S1). Response of N:C is mixed and the weighted mean effect sizes are therefore not statistically significant.

## 4 Discussion

### 4.1 Basic framework

270 One of the fundamental tenets of chemical oceanography is the Redfield Ratio, which implies that  
phytoplankton cells achieve a constant cellular C:N:P ratio at the well-known molar ratio of 106:16:1  
(Redfield et al., 1963). Constant C:N:P is achieved for algal cells growing under steady state conditions  
where the balance is achieved between uptake of elements and assimilation into cellular functional pool  
(Berman-Frank and Dubinsky, 1999; Klausmeier et al., 2004). Under such conditions, the growth rate of  
275 all cellular constituents averaged over one generation is the same, whether it is the carbon-specific,  
nitrogen (protein)-specific, or phosphorus (DNA)-specific growth rates (Falkowski and Raven, 2007). In  
the real ocean however, balanced growth is not always achieved due to short-term and long-term changes  
in physical conditions of ocean- (Moore et al., 2013; Moore and Doney, 2007). For example, the  
deficiency of essential nutrients limits the formation of building blocks of new cells (e.g., N for proteins,  
280 P for nucleic acids and ATP), light limitation slows carbon assimilation (i.e. making of carbohydrates and  
reductants), and low temperature slows down the essential cellular transport and enzymatic reactions for  
growth (Madigan et al., 2006). A good example of unbalanced growth is phytoplankton bloom in the  
spring where the transient changes in surface temperature, irradiance and nutrient supply rate alter the  
growth rate and elemental stoichiometry of phytoplankton (Polimene et al., 2015; Talarmin et al., 2016).  
285 In addition, future environmental variabilities caused by climate change are expected to cause temporal  
shift in phytoplankton C:N:P on longer timescales (Kwiatkowski et al., 2018b, 2019; Tanioka and  
Matsumoto, 2017).

The degrees to which phytoplankton C:N:P ratios are affected by stresses depend both on the  
cellular stress response mechanisms and the magnitude of the environmental change as well as temporal  
290 variability of environmental drivers. Most types of stress responses can be divided into a stress-specific,  
primary response and a general secondary response (Brembu et al., 2017). The stress-specific responses  
are strong, robust and consistently observed across photosynthetic organisms, while secondary responses  
are variable amongst different organisms. Primary and secondary responses are closely related to  
acclimation (plasticity response) and adaptation (evolutionary response) respectively. In essence,  
295 acclimation refers to environmentally induced trait change of an organism in the absence of any genetic

change, while adaptation involves genetic changes driven by natural selection (Collins et al., 2020). Since primary responses do not involve genetic adjustment or natural selection, the responses are fast and often commonly shared amongst different marine phytoplankton. For example, changing the nutrient uptake affinity of a lineage within a generation in response to changing nutrient supply is a commonly seen trait across all phytoplankton groups. On the other hand, secondary response depends both on the environmental condition and genotype (Brembu et al., 2017). The secondary responses take longer time (usually up to few hundred generations) and there is typically no single, unique response even when referring to a single species or functional group and a specific environmental driver (Collins et al., 2020). In the subsections below, we discuss any possible underlying cellular mechanisms responsible for producing changes in C:N:P ratios (see Fig. 4 for schematic illustration).

#### 4.2 Macronutrients (Phosphate and Nitrate)

Overall, we observe a consistent trend across all studies where P:C and N:C increases with increase in the supply of dissolved inorganic phosphorus and nitrogen respectively (Fig. 2). Since the changes in X:C and the supply of element X are positively related,  $s_P^{P:C}$  and  $s_N^{N:C}$  are both positive. Observations of phosphate/nitrate against particulate organic matter P:C and N:C across the global ocean indeed broadly follow this general trend (Galbraith and Martiny, 2015; Tanioka and Matsumoto, 2017).

Phytoplankton can temporally store excess nutrient intracellularly until the rate of carbon assimilation catches up to achieve steady-state balanced growth. Excess phosphorus for example can be stored mainly as polyphosphate (Dyhrman, 2016) and excess nitrate can be stored primarily as protein and free amino acids (Liefer et al., 2019; Sterner and Elser, 2002). Phytoplankton can consume these internal stores of nutrients (e.g., polyphosphates under P limitation) while maintaining the same level of carbon fixation, when the uptake of the nutrients does not meet its demand for growth (Cembella et al., 1984). In addition, phytoplankton can reduce their number of ribosomes and RNA content under P limitation as RNA typically accounts for 50% of non-storage phosphorus (Hessen et al., 2017; Lin et al., 2016) which would conserve phosphorus for other uses in a cell, resulting in lower P:C ratios. Similarly, cells can reduce synthesis of N-rich protein content under N limitation resulting in lower N:C ratio (Grosse et al., 2017; Liefer et al., 2019). These transient processes controlling the intracellular content of

P or N (but not C content as much) likely result in positive correlation between P:C and N:C with  
325 macronutrient concentrations.

Although  $s_p^{P:C}$  and  $s_N^{N:C}$  are consistently positive across all the studies, they are noticeably higher  
for eukaryotic phytoplankton than for prokaryotes (Fig. 3a). There are several hypotheses for explaining  
this trend. One of the most plausible hypotheses is related to the size and storage capacity difference  
amongst phytoplankton groups (Edwards et al., 2012; Lomas et al., 2014). Since eukaryotes are generally  
330 larger and possess more storage capacity, they are capable of greater luxury uptake and accumulation of  
internal P and N reserves when the nutrient is in excess (Talmy et al., 2014; Tozzi et al., 2004). When  
nutrients are scarce, large cell size of eukaryotes allow them to increase their carbon content considerably  
by accumulating excess carbon as polysaccharides and lipids (Liefer et al., 2019; Lin et al., 2016). Another  
plausible hypothesis concerns variability in acclimation/adaptation strategy at the genetic level (Dyhrman,  
335 2016). Recent studies suggest that different phytoplankton groups exhibit different levels of  
transcriptional responsiveness and have dissimilar strategies for using nitrate (Lampe et al., 2019) and  
phosphate (Martiny et al., 2019). For example, diatoms have superior abilities to uptake and store nutrients  
by being able to quickly regulate their gene expression patterns required for nutrient uptake compared to  
other phytoplankton groups (Cáceres et al., 2019; Lampe et al., 2018, 2019). These hypotheses provide  
340 plausible explanations for why eukaryotes have elevated stoichiometry sensitivity to macronutrients  
compared to prokaryotes.

### 4.3 Iron

Iron is used in key biochemical processes such as electron transport, respiration, protein synthesis, and N  
345 fixation (Marchetti and Maldonado, 2016; Twining and Baines, 2013). Many of the iron-dependent  
processes are required for harvesting energy and biochemical intermediates. As energy acquisition is  
equivalent to light acquisition in phototrophs, it makes sense that % changes in stoichiometry for iron are  
similar in sign and magnitude as for light (Fig. 2b). Although the effect of increasing iron on N:C is  
similar in sign and magnitude to that of light, we found unlike irradiance increase that increasing iron  
350 availability does not lead to a significant change in mean N:C (Figure 2b). This suggests smaller than  
expected changes in the carbon or the nitrogen content (e.g., compounds such as porphyrin and

phycobiliprotein that are essential for light harvesting) under Fe limitation (Falkowski and Raven, 2007; Twining and Baines, 2013). Alternatively, Fe availability may be affecting cellular C, N, and P more or less proportionally for all phytoplankton leading to constant P:C and N:C (Greene et al., 1991; van Oijen et al., 2004; La Roche et al., 1993; Takeda, 1998). We also did not find noticeable heterogeneities in P:C and N:C amongst different moderators. In the future study, we could combine cellular C:N:P information with other measures of phytoplankton physiology (e.g., chlorophyll fluorescence, Fv/Fm ratio) in order to provide a more coherent, mechanistic picture on how changes in iron availability affect their physiology.

360

#### 4.4 Irradiance

Light availability affects the photoacclimation strategy of phytoplankton and subsequently the cellular allocation of volume between N-rich light-harvesting apparatus, P-rich biosynthetic apparatus, and C-rich energy storage reserves (Falkowski and LaRoche, 1991; Moreno and Martiny, 2018). At a fixed growth rate, high irradiance should downregulate production of N-rich light harvesting proteins and pigments in order to minimize the risk of photooxidative stress. Excess carbon fixed under high irradiance condition is stored as C-rich storage compounds such as lipids and polysaccharides (Berman-Frank and Dubinsky, 1999). As a result, N:C is expected to decrease under high light. In contrast, under low light condition, macromolecular composition should favor N-rich light harvesting apparatus over C-rich storage reserves, thus elevating N:C. This line of reasoning would predict negative relationship for the effect of irradiance increase on N:C, which is borne out in our meta-analysis (Fig. 2).

Similarly, P quota should be affected by change in irradiance if P is the main limiting nutrient (Moreno and Martiny, 2018). Under P limitation, P:C is expected to decrease at increased light level because the total supply of inorganic phosphorus will not be able to keep up with the increase in photosynthetic carbon fixation, leading to decoupled uptake of C and P (Hessen et al., 2002, 2008). Conversely, P:C is expected to increase at lower irradiance because carbon fixation decreases while phosphorus uptake remains constant (Urabe and Sterner, 1996). As we did observe such P:C responses with statistically significant negative s-factor (Fig. 2), we can infer that most of the experiments were likely to have been P-limited, although such information is not necessarily given in the original studies.

380 The magnitude of the weighted mean s-factors for both P:C and N:C however are small and the  
heterogeneity amongst PFTs are not discernible. This result agrees with a previous study which compiled  
experimental data prior to 1997 (MacIntyre et al., 2002). It is possible however that s-factors obtained in  
our meta-analysis are underestimated as there are several factors that may mute the effect of irradiance  
on N:C ratio of phytoplankton. For example, increase in nitrogen requirement for Rubisco (Li et al., 2015)  
385 and nutrient uptake machinery (Ågren, 2004) at high irradiance could be partly offset the reduction in N  
content resulting from the down regulation of light harvesting apparatus. In addition, multiple studies  
have noted an increase in the protein demand (e.g., D1 protein) for repairing damaged light harvesting  
apparatus at high irradiance (Demmig-Adams and Adams, 1992; Li et al., 2015; Talmy et al., 2013) which  
also works in favor of stabilizing N content. Furthermore, we may have underestimated our s-factor if the  
390 high end member irradiance were above the optimal light level. This is a fundamental limitation of s-  
factor determination as the original studies do not measure the true optimal irradiance across the range of  
irradiance values but simply report an arbitrary value that is either “high” or “light replete”.

Interestingly, we observed larger stoichiometric shifts in nutrient replete batch and chemostat culture  
compared to those cultures conducted under semi-continuous setting (Fig. 3b). In addition, we found  
395 that experiments conducted under periodic daily light cycle have larger negative s-factors compared to  
those experiments carried under continuous light (Fig. 3d). This is consistent with the global observation  
(Martiny et al., 2013a) and model studies (Arteaga et al., 2014; Talmy et al., 2014, 2016) which have  
shown that both the magnitude and temporal variability of N:C of phytoplankton are higher in the nutrient-  
rich, light-limited polar/subpolar regions than in the light-replete subtropics.

400

#### 4.5 Temperature

We found that P:C ratio decreases as temperature increases while N:C remains relatively unchanged. Our  
result is consistent with a previous meta-analysis (Yvon-Durocher et al., 2015) that showed decrease in  
405 phytoplankton P:C under both laboratory and field settings. Moreover, our study and the study by Yvon-  
Durocher et al. both support the idea that P:C is more flexible than N:C with respect to change in

temperature, which suggest that intracellular P content is more sensitive to change in temperature than intracellular N content.

410 Although the underlying mechanism for explaining lower P:C at higher temperature is not fully understood, there are currently three main hypotheses (Paul et al., 2015): (1) increase in metabolic stimulation of inorganic carbon uptake over phosphorus uptake; (2) increase in nutrient use efficiency which enables greater carbon fixation for given nutrient availability; and (3) “translation compensation theory,” which predicts that less P-rich ribosomes are required for protein synthesis and growth as the translation process becomes kinetically more efficient (McKew et al., 2015; Toseland et al., 2013; Woods et al., 2003; Xu et al., 2014; Zhu et al., 2017).

420 Differences in s-factors amongst PFTs was not statistically significant and none of the PFT displayed statistically significant response in isolation. In other words, we did not see any PFT-specific adaptive/evolutionary response to warming (Schaum et al., 2018; Taucher et al., 2015). However, we observed noticeable variability due to the difference in culture growth mode (Fig. 3b) and growth phase at extraction (Fig. 3c). The latter factor is particularly noticeable for P:C, where phytoplankton extracted during nutrient-replete exponential growth phase have significantly more negative stoichiometric flexibility with larger magnitude compared to those extracted during nutrient-deplete stationary phase. This is consistent with multiple recent studies which suggest that the effect of temperature on growth and metabolic rates are greater when plankton are not nutrient and/or light limited (Aranguren-Gassis et al., 425 2019; Marañón et al., 2018; Roleda et al., 2013). This leads us to hypothesize that change in P:C ratio due to ongoing warming will be more noticeable in the nutrient rich polar regions especially given the fact that temperature is already increasing at a startling rate due to polar amplification (Post et al., 2019).

#### 4.6 Limitations and caveats

430 In the real ocean, none of the environmental changes discussed will likely occur in isolation because changes in irradiance, temperature, and nutrient availability are often linked. For example, an increase in sea surface temperature enhances the vertical stratification of the water column, which leads to greater levels of irradiance and nutrient limitation for phytoplankton trapped in a more shallow mixed layer (Boyd et al., 2015; Hutchins and Fu, 2017). Indeed, a meta-analysis on the pair-wise effects of environmental



435 drivers on elemental stoichiometry of phytoplankton has shown that the interactions of two environmental stressors can impose predominantly non-additive effects to C:N:P of phytoplankton so that the overall effect of multiple stressors is more than simply the sum of its parts (Villar-Argaiz et al., 2018). In addition to the individual phytoplankton stoichiometry, the bulk organic matter stoichiometry also reflects the phytoplankton community composition (Bonachela et al., 2016; Weber and Deutsch, 2010) as well as the  
 440 stoichiometry of detrital material. Processes such as decomposition (Karl and Dobbs, 1998; Verity et al., 2000; Zakem and Levine, 2019), viral shunt (Jover et al., 2014), and preferential remineralization of phytoplankton macromolecules (Frigstad et al., 2011; Grabowski et al., 2019; Kreuz et al., 2015) can also decouple phytoplankton C:N:P from the bulk organic matter C:N:P.

#### 445 **4.7 Implications for global ocean biogeochemistry**

Recent global biogeochemical models are starting to incorporate a more realistic representation of plankton physiology, which includes flexible phytoplankton C:N:P (e.g., Buchanan et al., 2018). Modeling studies with flexible phytoplankton stoichiometry have demonstrated that proliferation of C-rich phytoplankton under future climate scenario has the potential to buffer expected future decline in  
 450 carbon export and net primary productivity caused by increased stratification (Kwiatkowski et al., 2018a; Moreno et al., 2018; Tanioka and Matsumoto, 2017). This buffering effect cannot be simulated by biogeochemical models with fixed phytoplankton C:N:P.

One way to model the dependencies of multiple environmental drivers (e.g., P, N, irradiance, and temperature) on C:N:P of marine phytoplankton is the power-law formulation by Tanioka and Matsumoto  
 455 (2017):

$$[X:C] = [X:C]_0 \left( \frac{[PO_4]}{[PO_4]_0} \right)^{s_{PO_4}^{X:C}} \left( \frac{[NO_3]}{[NO_3]_0} \right)^{s_{NO_3}^{X:C}} \left( \frac{I}{I_0} \right)^{s_I^{X:C}} \left( \frac{T}{T_0} \right)^{s_T^{X:C}} \quad (X = P \text{ or } N) \quad (9)$$

where subscript “0” indicates reference values. The s-factors obtained from this meta-analysis are the exponents of equation (9) for different PFTs. Within the context of the power law formulation, our results  
 460 would indicate, for example, that eukaryotic phytoplankton would have the largest plasticity in P:C and N:C compared to prokaryotes with respect to the change in nutrient availability. Under future warming,

high s-factors of eukaryotes may thus play an important role in buffering the expected future decline in carbon export and net primary productivity (Kemp and Villareal, 2013).

We can give a first-order estimate of how much the elemental stoichiometry of marine phytoplankton may change in the future using equation (9) given a typical projection of the change in the key environmental drivers and the estimates of the s-factors (Table 3; Fig. 4). Global climate models generally predict a decline in macronutrients and increase in temperature and irradiance as a result of surface warming, increased vertical stratification and reduced mixed layer depth (Bopp et al., 2013; Boyd et al., 2015). With large projected declines in macronutrients (-28.0% for phosphate, -18.7% for nitrate) we can predict increase in C:P and C:N by ~10 units (molar ratio) and ~0.2 units, respectively, assuming the mean biomass-weighted particulate organic matter C:N:P of 146:20:1 as the present-day value (Martiny et al., 2013b). Further increase in C:P is expected due to temperature increase of around 1% (~3K). The total C:P change ranges from +6 ~ +25 taking into account all the uncertainties associated with the s-factors. For C:N, we estimate an overall increase by 0.1~0.4 units largely driven by decrease in nitrogen availability. The effect of change in irradiance is noticeably smaller (Table 3). In summary, this simple calculation highlights potentially a large shift for C:N:P, whose change is predominantly driven by reduction in macronutrients and temperature increase.

## 5. Conclusions

Our meta-analysis represents an important bottom-up approach in predicting how elemental stoichiometry of phytoplankton may evolve with the climate change. We conclude that macronutrient availability is the most significant and shared environmental driver of C:N:P. Changes in C:N:P by macronutrients are driven by primary/plasticity responses commonly shared across phytoplankton. Our analysis shows that eukaryotic phytoplankton have higher stoichiometric plasticity compared to prokaryotes. Eukaryotes' large stoichiometric flexibility and high intrinsic growth rate can explain their unexpectedly high diversity (Malviya et al., 2016) and large contribution to carbon export globally, even in oligotrophic regions (Agusti et al., 2015; Nelson and Brzezinski, 1997). The effects of temperature on C:P is also significant, suggesting that future ocean with elevated temperature and increased stratification will favor production of carbon-rich organic matter. Future laboratory-based studies focused on exploring the effects of multiple

490 environmental drivers would interactively alter the elemental composition of phytoplankton would be  
needed for a complete understanding. In addition, a further investigation on how change in environmental  
drivers affect stoichiometry of heterotrophs and zooplankton will be useful in filling the gaps to gain more  
mechanistic views on how these drivers affect the whole marine ecosystem.

495

*Data availability:* All the data and codes used in the meta-analysis are available in Zenodo data repository  
(<http://doi.org/10.5281/zenodo.3723121>).

*Author contributions:* TT and KM designed the study. TT carried out the literature review, data selection,  
500 analysis, and created figures. Both TT and KM wrote the manuscript.

*Competing interests:* The authors declare no conflict of interest.

*Acknowledgements:* This research was supported by a grant from the US National Science Foundation  
505 (OCE-1827948). TT acknowledges support from University of Minnesota Doctoral Dissertation  
Fellowship. KM acknowledges sabbatical support by the Leverhulme Trust Visiting Professorship and  
the University of Oxford. We thank Carolyn Bishoff, Julia Kelly, and Amy Riegelman from University  
of Minnesota Library for helping out literature search and data selection. We also thank James Cotner for  
providing us feedback on the manuscript.

510

## References

- Ågren, G. I.: The C:N:P stoichiometry of autotrophs - Theory and observations, *Ecol. Lett.*, 7(3), 185–  
191, doi:10.1111/j.1461-0248.2004.00567.x, 2004.
- Agusti, S., González-Gordillo, J. I., Vaqué, D., Estrada, M., Cerezo, M. I., Salazar, G., Gasol, J. M. and  
515 Duarte, C. M.: Ubiquitous healthy diatoms in the deep sea confirm deep carbon injection by the  
biological pump, *Nat. Commun.*, 6(1), 7608, doi:10.1038/ncomms8608, 2015.
- Aranguren-Gassis, M., Kremer, C. T., Klausmeier, C. A. and Litchman, E.: Nitrogen limitation inhibits

- marine diatom adaptation to high temperatures, edited by A. Bates, *Ecol. Lett.*, 22(11), 1860–1869, doi:10.1111/ele.13378, 2019.
- 520 Artega, L., Pahlow, M. and Oschlies, A.: Global patterns of phytoplankton nutrient and light colimitation inferred from an optimality-based model, *Global Biogeochem. Cycles*, 28(7), 648–661, doi:10.1002/2013GB004668, 2014.
- Berman-Frank, I. and Dubinsky, Z.: Balanced Growth in Aquatic Plants: Myth or Reality?, *Bioscience*, 49, 29–37, doi:10.1525/bisi.1999.49.1.29, 1999.
- 525 Bonachela, J. A., Klausmeier, C. A., Edwards, K. F., Litchman, E. and Levin, S. A.: The role of phytoplankton diversity in the emergent oceanic stoichiometry, *J. Plankton Res.*, 38(4), 1021–1035, doi:10.1093/plankt/fbv087, 2016.
- Bopp, L., Resplandy, L., Orr, J. C., Doney, S. C., Dunne, J. P., Gehlen, M., Halloran, P., Heinze, C., Ilyina, T., Séférian, R., Tjiputra, J. and Vichi, M.: Multiple stressors of ocean ecosystems in the 21st  
530 century: projections with CMIP5 models, *Biogeosciences*, 10(10), 6225–6245, doi:10.5194/bg-10-6225-2013, 2013.
- Boyd, P. W., Strzepek, R., Fu, F. and Hutchins, D. A.: Environmental control of open-ocean phytoplankton groups: Now and in the future, *Limnol. Oceanogr.*, 55(3), 1353–1376, doi:10.4319/lo.2010.55.3.1353, 2010.
- 535 Boyd, P. W., Lennartz, S. T., Glover, D. M. and Doney, S. C.: Biological ramifications of climate-change-mediated oceanic multi-stressors, *Nat. Clim. Chang.*, 5(1), 71–79, doi:10.1038/nclimate2441, 2015.
- Brembu, T., Mühlroth, A., Alipanah, L. and Bones, A. M.: The effects of phosphorus limitation on carbon metabolism in diatoms, *Philos. Trans. R. Soc. B Biol. Sci.*, 372(1728), 20160406, doi:10.1098/rstb.2016.0406, 2017.
- 540 Broecker, W. S.: Ocean chemistry during glacial time, *Geochim. Cosmochim. Acta*, 46(10), 1689–1705, doi:10.1016/0016-7037(82)90110-7, 1982.
- Buchanan, P. J., Matear, R. J., Chase, Z., Phipps, S. J. and Bindoff, N. L.: Dynamic Biological Functioning Important for Simulating and Stabilizing Ocean Biogeochemistry, *Global Biogeochem. Cycles*, 32(4), 565–593, doi:10.1002/2017GB005753, 2018.
- 545 Cáceres, C., Spatharis, S., Kaiserli, E., Smeti, E., Flowers, H. and Bonachela, J. A.: Temporal phosphate

- gradients reveal diverse acclimation responses in phytoplankton phosphate uptake, *ISME J.*, 13(11), 2834–2845, doi:10.1038/s41396-019-0473-1, 2019.
- Cembella, A. D., Antia, N. J., Harrison, P. J. and Rhee, G.-Y.: The Utilization of Inorganic and Organic Phosphorous Compounds as Nutrients by Eukaryotic Microalgae: A Multidisciplinary Perspective: Part 2, *CRC Crit. Rev. Microbiol.*, 11(1), 13–81, doi:10.3109/10408418409105902, 1984.
- 550 Collins, S., Boyd, P. W. and Doblin, M. A.: Evolution, Microbes, and Changing Ocean Conditions, *Ann. Rev. Mar. Sci.*, 12(1), annurev-marine-010318-095311, doi:10.1146/annurev-marine-010318-095311, 2020.
- Demmig-Adams, B. and Adams, W. W.: Photoprotection and other responses of plants to high light stress, *Annu. Rev. Plant Physiol. Plant Mol. Biol.*, 43(1), 599–626, doi:10.1146/annurev.pp.43.060192.003123, 1992.
- 555 Dyrhman, S. T.: Nutrients and Their Acquisition: Phosphorus Physiology in Microalgae, in *The Physiology of Microalgae*, pp. 155–183, Springer International Publishing, Cham., 2016.
- Edwards, K. F., Thomas, M. K., Klausmeier, C. A. and Litchman, E.: Allometric scaling and taxonomic variation in nutrient utilization traits and maximum growth rate of phytoplankton, *Limnol. Oceanogr.*, 57(2), 554–566, doi:10.4319/lo.2012.57.2.0554, 2012.
- 560 Falkowski, P. G. and LaRoche, J.: Acclimation to Spectral Irradiance in Algae, *J. Phycol.*, 27(1), 8–14, doi:10.1111/j.0022-3646.1991.00008.x, 1991.
- Falkowski, P. G. and Raven, J. A.: *Aquatic Photosynthesis*, Princeton University Press, Princeton, NJ., 565 2007.
- Finkel, Z. V., Beardall, J., Flynn, K. J., Quigg, A., Rees, T. A. V. and Raven, J. A.: Phytoplankton in a changing world: cell size and elemental stoichiometry, *J. Plankton Res.*, 32(1), 119–137, doi:10.1093/plankt/fbp098, 2010.
- Flynn, K. J., Raven, J. A., Rees, T. A. V., Finkel, Z., Quigg, A. and Beardall, J.: Is the growth rate hypothesis applicable to microalgae?, *J. Phycol.*, 46(1), 1–12, doi:10.1111/j.1529-8817.2009.00756.x, 2010.
- 570 Frigstad, H., Andersen, T., Hessen, D. O., Naustvoll, L.-J., Johnsen, T. M. and Bellerby, R. G. J.: Seasonal variation in marine C:N:P stoichiometry: can the composition of seston explain stable Redfield

- ratios?, *Biogeosciences*, 8(10), 2917–2933, doi:10.5194/bg-8-2917-2011, 2011.
- 575 Galbraith, E. D. and Martiny, A. C.: A simple nutrient-dependence mechanism for predicting the stoichiometry of marine ecosystems, *Proc. Natl. Acad. Sci.*, 112(27), 8199–8204, doi:10.1073/pnas.1423917112, 2015.
- Garcia, C. A., Baer, S. E., Garcia, N. S., Rauschenberg, S., Twining, B. S., Lomas, M. W. and Martiny, A. C.: Nutrient supply controls particulate elemental concentrations and ratios in the low latitude eastern Indian Ocean, *Nat. Commun.*, 9(1), 4868, doi:10.1038/s41467-018-06892-w, 2018.
- 580 Geider, R. and La Roche, J.: Redfield revisited: variability of C:N:P in marine microalgae and its biochemical basis, *Eur. J. Phycol.*, 37(1), 1–17, doi:10.1017/S0967026201003456, 2002.
- Grabowski, E., Letelier, R. M., Laws, E. A. and Karl, D. M.: Coupling carbon and energy fluxes in the North Pacific Subtropical Gyre, *Nat. Commun.*, 10(1), 1895, doi:10.1038/s41467-019-09772-z,
- 585 2019.
- Greene, R. M., Geider, R. J. and Falkowski, P. G.: Effect of iron limitation on photosynthesis in a marine diatom, *Limnol. Oceanogr.*, 36(8), 1772–1782, doi:10.4319/lo.1991.36.8.1772, 1991.
- Grosse, J., van Breugel, P., Brussaard, C. P. D. and Boschker, H. T. S.: A biosynthesis view on nutrient stress in coastal phytoplankton, *Limnol. Oceanogr.*, 62(2), 490–506, doi:10.1002/lno.10439, 2017.
- 590 Gurevitch, J., Koricheva, J., Nakagawa, S. and Stewart, G.: Meta-analysis and the science of research synthesis, *Nature*, 555(7695), 175–182, doi:10.1038/nature25753, 2018.
- Hedges, L. V., Gurevitch, J. and Curtis, P. S.: The Meta-Analysis of Response Ratios in Experimental Ecology, *Ecology*, 80(4), 1150, doi:10.2307/177062, 1999.
- Hessen, D. O., Faerovig, P. J. and Andersen, T.: Light, Nutrients, and P:C Ratios in Algae: Grazer Performance Related to Food Quality and Quantity, *Ecology*, 83(7), 1886, doi:10.2307/3071772,
- 595 2002.
- Hessen, D. O., Leu, E., Færøvig, P. J. and Falk Petersen, S.: Light and spectral properties as determinants of C:N:P-ratios in phytoplankton, *Deep Sea Res. Part II Top. Stud. Oceanogr.*, 55(20–21), 2169–2175, doi:10.1016/j.dsr2.2008.05.013, 2008.
- 600 Hessen, D. O., Hafslund, O. T., Andersen, T., Broch, C., Shala, N. K. and Wojewodzic, M. W.: Changes in Stoichiometry, Cellular RNA, and Alkaline Phosphatase Activity of *Chlamydomonas* in Response

- to Temperature and Nutrients, *Front. Microbiol.*, 8, 18, doi:10.3389/fmicb.2017.00018, 2017.
- Hillebrand, H., Steinert, G., Boersma, M., Malzahn, A., Léo Meunier, C., Plum, C. and Ptacnik, R.: Goldman revisited: Faster growing phytoplankton has lower N:P and lower stoichiometric flexibility, *Limnol. Oceanogr.*, 58(6), 2076–2088, doi:10.4319/lo.2013.58.6.2076, 2013.
- 605
- Hutchins, D. A. and Fu, F.-X.: Microorganisms and ocean global change, *Nat. Microbiol.*, 2(6), 17058, doi:10.1038/nmicrobiol.2017.58, 2017.
- Irwin, A. J., Finkel, Z. V., Müller-Karger, F. E. and Troccoli Ghinaglia, L.: Phytoplankton adapt to changing ocean environments, *Proc. Natl. Acad. Sci.*, 112(18), 5762–5766, doi:10.1073/pnas.1414752112, 2015.
- 610
- Jover, L. F., Effler, T. C., Buchan, A., Wilhelm, S. W. and Weitz, J. S.: The elemental composition of virus particles: implications for marine biogeochemical cycles, *Nat. Rev. Microbiol.*, 12(7), 519–528, doi:10.1038/nrmicro3289, 2014.
- Karl, D. M. and Dobbs, F. C.: Molecular Approaches to Microbial Biomass Estimation in the Sea, in Molecular Approaches to the Study of the Ocean, pp. 29–89, Springer Netherlands., 1998.
- 615
- Kemp, A. E. S. and Villareal, T. A.: High diatom production and export in stratified waters – A potential negative feedback to global warming, *Prog. Oceanogr.*, 119, 4–23, doi:10.1016/j.pocean.2013.06.004, 2013.
- Kim, J., Lee, K., Suh, Y. and Han, I.: Phytoplankton do not produce carbon-rich organic matter in high CO<sub>2</sub> oceans, *Geophys. Res. Lett.*, 4189–4197, doi:10.1029/2017GL075865, 2018.
- 620
- Klausmeier, C. A., Litchman, E., Daufresne, T. and Levin, S. A.: Optimal nitrogen-to-phosphorus stoichiometry of phytoplankton, *Nature*, 429(6988), 171–174, doi:10.1038/nature02454, 2004.
- Kreus, M., Schartau, M., Engel, A., Nausch, M. and Voss, M.: Variations in the elemental ratio of organic matter in the central Baltic Sea: Part I—Linking primary production to remineralization, *Cont. Shelf Res.*, 100, 25–45, doi:10.1016/j.csr.2014.06.015, 2015.
- 625
- Kwiatkowski, L., Aumont, O., Bopp, L. and Ciais, P.: The Impact of Variable Phytoplankton Stoichiometry on Projections of Primary Production, Food Quality, and Carbon Uptake in the Global Ocean, *Global Biogeochem. Cycles*, 32(4), 516–528, doi:10.1002/2017GB005799, 2018a.
- Kwiatkowski, L., Aumont, O., Bopp, L. and Ciais, P.: The impact of variable phytoplankton stoichiometry

- 630 on projections of primary production, food quality and carbon uptake in the global ocean, *Global Biogeochem. Cycles*, 1–13, doi:10.1002/2017GB005799, 2018b.
- Kwiatkowski, L., Aumont, O. and Bopp, L.: Consistent trophic amplification of marine biomass declines under climate change, *Glob. Chang. Biol.*, 25(1), 218–229, doi:10.1111/gcb.14468, 2019.
- Lajeunesse, M. J.: Bias and correction for the log response ratio in ecological meta-analysis, *Ecology*, 635 96(8), 2056–2063, doi:10.1890/14-2402.1, 2015.
- Lampe, R. H., Cohen, N. R., Ellis, K. A., Bruland, K. W., Maldonado, M. T., Peterson, T. D., Till, C. P., Brzezinski, M. A., Bargu, S., Thamatrakoln, K., Kuzminov, F. I., Twining, B. S. and Marchetti, A.: Divergent gene expression among phytoplankton taxa in response to upwelling, *Environ. Microbiol.*, 20(8), 3069–3082, doi:10.1111/1462-2920.14361, 2018.
- 640 Lampe, R. H., Wang, S., Cassar, N. and Marchetti, A.: Strategies among phytoplankton in response to alleviation of nutrient stress in a subtropical gyre, *ISME J.*, ele.13373, doi:10.1038/s41396-019-0489-6, 2019.
- Lenton, T. M. and Watson, A. J.: Redfield revisited: 1. Regulation of nitrate, phosphate, and oxygen in the ocean, *Global Biogeochem. Cycles*, 14(1), 225–248, doi:10.1029/1999GB900065, 2000.
- 645 Li, G., Brown, C. M., Jeans, J. A., Donaher, N. A., McCarthy, A. and Campbell, D. A.: The nitrogen costs of photosynthesis in a diatom under current and future pCO<sub>2</sub>, *New Phytol.*, 205(2), 533–543, doi:10.1111/nph.13037, 2015.
- Liang, X., Zhang, T., Lu, X., Ellsworth, D. S., BassiriRad, H., You, C., Wang, D., He, P., Deng, Q., Liu, H., Mo, J. and Ye, Q.: Global response patterns of plant photosynthesis to nitrogen addition: A meta- 650 analysis, *Glob. Chang. Biol.*, gcb.15071, doi:10.1111/gcb.15071, 2020.
- Liefer, J. D., Garg, A., Fyfe, M. H., Irwin, A. J., Benner, I., Brown, C. M., Follows, M. J., Omta, A. W. and Finkel, Z. V.: The Macromolecular Basis of Phytoplankton C:N:P Under Nitrogen Starvation, *Front. Microbiol.*, 10, 763, doi:10.3389/fmicb.2019.00763, 2019.
- Lin, S., Litaker, R. W. and Sunda, W. G.: Phosphorus physiological ecology and molecular mechanisms 655 in marine phytoplankton., *J. Phycol.*, 52(1), 10–36, doi:10.1111/jpy.12365, 2016.
- Liu, J., Weinbauer, M., Maier, C., Dai, M. and Gattuso, J.: Effect of ocean acidification on microbial diversity and on microbe-driven biogeochemistry and ecosystem functioning, *Aquat. Microb. Ecol.*,



- 61(3), 291–305, doi:10.3354/ame01446, 2010.
- 660 Lomas, M. W., Bonachela, J. A., Levin, S. A. and Martiny, A. C.: Impact of ocean phytoplankton diversity on phosphate uptake, *Proc. Natl. Acad. Sci.*, 111(49), 17540–17545, doi:10.1073/pnas.1420760111, 2014.
- MacIntyre, H. L., Kana, T. M., Anning, T. and Geider, R. J.: Photoacclimation of photosynthesis irradiance response curves and photosynthetic pigments in microalgae and cyanobacteria, *J. Phycol.*, 38(1), 17–38, doi:10.1046/j.1529-8817.2002.00094.x, 2002.
- 665 Madigan, M. T., Martinko, J. M. and Parker, J.: *Brock biology of microorganisms*, Pearson Prentice Hall, Upper Saddle River., 2006.
- Malviya, S., Scalco, E., Audic, S., Vincent, F., Veluchamy, A., Poulain, J., Wincker, P., Iudicone, D., de Vargas, C., Bittner, L., Zingone, A. and Bowler, C.: Insights into global diatom distribution and diversity in the world's ocean, *Proc. Natl. Acad. Sci.*, 113(11), E1516–E1525, doi:10.1073/pnas.1509523113, 2016.
- 670 Marañón, E., Lorenzo, M. P., Cermeño, P. and Mouriño-Carballido, B.: Nutrient limitation suppresses the temperature dependence of phytoplankton metabolic rates, *ISME J.*, 12(7), 1836–1845, doi:10.1038/s41396-018-0105-1, 2018.
- Marchetti, A. and Maldonado, M. T.: Iron, in *The Physiology of Microalgae*, pp. 233–279, Springer International Publishing, Cham., 2016.
- 675 Martiny, A. C., Vrugt, J. A., Primeau, F. W. and Lomas, M. W.: Regional variation in the particulate organic carbon to nitrogen ratio in the surface ocean, *Global Biogeochem. Cycles*, 27(3), 723–731, doi:10.1002/gbc.20061, 2013a.
- Martiny, A. C., Pham, C. T. A., Primeau, F. W., Vrugt, J. A., Moore, J. K., Levin, S. A. and Lomas, M. W.: Strong latitudinal patterns in the elemental ratios of marine plankton and organic matter, *Nat. Geosci.*, 6(4), 279–283, doi:10.1038/ngeo1757, 2013b.
- 680 Martiny, A. C., Ustick, L., A. Garcia, C. and Lomas, M. W.: Genomic adaptation of marine phytoplankton populations regulates phosphate uptake, *Limnol. Oceanogr.*, Ino.11252, doi:10.1002/Ino.11252, 2019.
- 685 McKew, B. A., Metodieva, G., Raines, C. A., Metodiev, M. V. and Geider, R. J.: Acclimation of E

- miliania huxleyi (1516) to nutrient limitation involves precise modification of the proteome to scavenge alternative sources of N and P, *Environ. Microbiol.*, 17(10), 4050–4062, doi:10.1111/1462-2920.12957, 2015.
- 690 Moore, C. M., Mills, M. M., Arrigo, K. R., Berman-Frank, I., Bopp, L., Boyd, P. W., Galbraith, E. D., Geider, R. J., Guieu, C., Jaccard, S. L., Jickells, T. D., La Roche, J., Lenton, T. M., Mahowald, N. M., Marañón, E., Marinov, I., Moore, J. K., Nakatsuka, T., Oschlies, A., Saito, M. A., Thingstad, T. F., Tsuda, A. and Ulloa, O.: Processes and patterns of oceanic nutrient limitation, *Nat. Geosci.*, 6(9), 701–710, doi:10.1038/ngeo1765, 2013.
- 695 Moore, J. K. and Doney, S. C.: Iron availability limits the ocean nitrogen inventory stabilizing feedbacks between marine denitrification and nitrogen fixation, *Global Biogeochem. Cycles*, 21(2), doi:10.1029/2006GB002762, 2007.
- Moreno, A. R. and Martiny, A. C.: Ecological Stoichiometry of Ocean Plankton, *Ann. Rev. Mar. Sci.*, 10(1), 43–69, doi:10.1146/annurev-marine-121916-063126, 2018.
- 700 Moreno, A. R., Hagstrom, G. I., Primeau, F. W., Levin, S. A. and Martiny, A. C.: Marine phytoplankton stoichiometry mediates nonlinear interactions between nutrient supply, temperature, and atmospheric CO<sub>2</sub>, *Biogeosciences*, 15(9), 2761–2779, doi:10.5194/bg-15-2761-2018, 2018.
- Nelson, D. M. and Brzezinski, M. A.: Diatom growth and productivity in an oligo-trophic midocean gyre: A 3-yr record from the Sargasso Sea near Bermuda, *Limnol. Oceanogr.*, 42(3), 473–486, doi:10.4319/lo.1997.42.3.0473, 1997.
- 705 van Oijen, T., van Leeuwe, M. A., Gieskes, W. W. and de Baar, H. J.: Effects of iron limitation on photosynthesis and carbohydrate metabolism in the Antarctic diatom *Chaetoceros brevis* (Bacillariophyceae), *Eur. J. Phycol.*, 39(2), 161–171, doi:10.1080/0967026042000202127, 2004.
- Persson, J., Fink, P., Goto, A., Hood, J. M., Jonas, J. and Kato, S.: To be or not to be what you eat: regulation of stoichiometric homeostasis among autotrophs and heterotrophs, *Oikos*, 119(5), 741–710 751, doi:10.1111/j.1600-0706.2009.18545.x, 2010.
- Polimene, L., Mitra, A., Saille, S. F., Ciavatta, S., Widdicombe, C. E., Atkinson, A. and Allen, J. I.: Decrease in diatom palatability contributes to bloom formation in the Western English Channel, *Prog. Oceanogr.*, 137, 484–497, doi:10.1016/j.pocean.2015.04.026, 2015.

- Post, E., Alley, R. B., Christensen, T. R., Macias-Fauria, M., Forbes, B. C., Gooseff, M. N., Iler, A.,  
715 Kerby, J. T., Laidre, K. L., Mann, M. E., Olofsson, J., Stroeve, J. C., Ulmer, F., Virginia, R. A. and  
Wang, M.: The polar regions in a 2°C warmer world, *Sci. Adv.*, 5(12), eaaw9883,  
doi:10.1126/sciadv.aaw9883, 2019.
- R Core Team: R: A Language and Environment for Statistical Computing, [online] Available from:  
<http://www.r-project.org/>, 2018.
- 720 Redfield, A. C.: The biological control of chemical factors in the environment, *Am. Sci.*, 46(3), 205–221,  
1958.
- Redfield, A. C., Ketchum, B. H. and Richards, F. A.: The influence of organisms on the composition of  
Seawater, in *The composition of seawater: Comparative and descriptive oceanography. The sea:  
ideas and observations on progress in the study of the seas*, vol. 2, edited by M. N. Hill, pp. 26–77,  
725 Interscience Publishers, New York., 1963.
- La Roche, J., Geider, R. J., Graziano, L. M., Murray, H. and Lewis, K.: Induction of specific proteins in  
eukaryotic algae grown under iron-, phosphorus-, or nitrogen-deficient conditions, *J. Phycol.*, 29(6),  
767–777, doi:10.1111/j.0022-3646.1993.00767.x, 1993.
- Roleda, M. Y., Slocombe, S. P., Leakey, R. J. G., Day, J. G., Bell, E. M. and Stanley, M. S.: Effects of  
730 temperature and nutrient regimes on biomass and lipid production by six oleaginous microalgae in  
batch culture employing a two-phase cultivation strategy, *Bioresour. Technol.*, 129, 439–449,  
doi:10.1016/j.biortech.2012.11.043, 2013.
- Schaum, C.-E., Buckling, A., Smirnoff, N., Studholme, D. J. and Yvon-Durocher, G.: Environmental  
fluctuations accelerate molecular evolution of thermal tolerance in a marine diatom, *Nat. Commun.*,  
735 9(1), 1719, doi:10.1038/s41467-018-03906-5, 2018.
- Sterner, R. W. and Elser, J. J.: *Ecological stoichiometry: the biology of elements from molecules to the  
biosphere*, Princeton University Press, Princeton, NJ., 2002.
- Takeda, S.: Influence of iron availability on nutrient consumption ratio of diatoms in oceanic waters,  
*Nature*, 393(6687), 774–777, doi:10.1038/31674, 1998.
- 740 Talarmin, A., Lomas, M. W., Bozec, Y., Savoye, N., Frigstad, H., Karl, D. M. and Martiny, A. C.:  
Seasonal and long-term changes in elemental concentrations and ratios of marine particulate organic

- matter, *Global Biogeochem. Cycles*, 30(11), 1699–1711, doi:10.1002/2016GB005409, 2016.
- 745 Talmy, D., Blackford, J., Hardman-Mountford, N. J., Dumbrell, A. J. and Geider, R. J.: An optimality model of photoadaptation in contrasting aquatic light regimes, *Limnol. Oceanogr.*, 58(5), 1802–1818, doi:10.4319/lo.2013.58.5.1802, 2013.
- Talmy, D., Blackford, J., Hardman-Mountford, N. J., Polimene, L., Follows, M. J. and Geider, R. J.: Flexible C: N ratio enhances metabolism of large phytoplankton when resource supply is intermittent, *Biogeosciences*, 11(17), 4881–4895, doi:10.5194/bg-11-4881-2014, 2014.
- 750 Talmy, D., Martiny, A. C., Hill, C., Hickman, A. E. and Follows, M. J.: Microzooplankton regulation of surface ocean POC:PON ratios, *Global Biogeochem. Cycles*, 30(2), 311–332, doi:10.1002/2015GB005273, 2016.
- Tanioka, T. and Matsumoto, K.: Buffering of Ocean Export Production by Flexible Elemental Stoichiometry of Particulate Organic Matter, *Global Biogeochem. Cycles*, 31(10), 1528–1542, doi:10.1002/2017GB005670, 2017.
- 755 Taucher, J., Jones, J., James, A., Brzezinski, M. A., Carlson, C. A., Riebesell, U. and Passow, U.: Combined effects of CO<sub>2</sub> and temperature on carbon uptake and partitioning by the marine diatoms *Thalassiosira weissflogii* and *Dactyliosolen fragilissimus*, *Limnol. Oceanogr.*, 60(3), 901–919, doi:10.1002/lno.10063, 2015.
- 760 Thrane, J.-E., Hessen, D. O. and Andersen, T.: The impact of irradiance on optimal and cellular nitrogen to phosphorus ratios in phytoplankton, *Ecol. Lett.*, 19(8), 880–888, doi:10.1111/ele.12623, 2016.
- Toseland, A., Daines, S. J., Clark, J. R., Kirkham, A., Strauss, J., Uhlig, C., Lenton, T. M., Valentin, K., Pearson, G. A., Moulton, V. and Mock, T.: The impact of temperature on marine phytoplankton resource allocation and metabolism, *Nat. Clim. Chang.*, 3(11), 979–984, doi:10.1038/nclimate1989, 2013.
- 765 Tozzi, S., Schofield, O. and Falkowski, P.: Historical climate change and ocean turbulence as selective agents for two key phytoplankton functional groups, *Mar. Ecol. Prog. Ser.*, 274, 123–132, doi:10.3354/meps274123, 2004.
- Twining, B. S. and Baines, S. B.: The Trace Metal Composition of Marine Phytoplankton, *Ann. Rev. Mar. Sci.*, 5(1), 191–215, doi:10.1146/annurev-marine-121211-172322, 2013.

- 770 Tyrrell, T.: The relative influences of nitrogen and phosphorus on oceanic primary production, *Nature*, 400(6744), 525–531, doi:10.1038/22941, 1999.
- Urabe, J. and Sterner, R. W.: Regulation of herbivore growth by the balance of light and nutrients., *Proc. Natl. Acad. Sci.*, 93(16), 8465–8469, doi:10.1073/pnas.93.16.8465, 1996.
- Verity, P. G., Williams, S. C. and Hong, Y.: Formation, degradation, and mass:volume ratios of detritus  
775 derived from decaying phytoplankton, *Mar. Ecol. Prog. Ser.*, 207, 53–68, doi:10.3354/meps207053, 2000.
- Viechtbauer, W.: Conducting Meta-Analyses in R with the metafor Package, *J. Stat. Softw.*, 36(3), 1–48, doi:10.18637/jss.v036.i03, 2010.
- Viechtbauer, W. and Cheung, M. W.-L.: Outlier and influence diagnostics for meta-analysis, *Res. Synth. Methods*, 1(2), 112–125, doi:10.1002/jrsm.11, 2010.  
780
- Villar-Argaiz, M., Medina-Sánchez, J. M., Biddanda, B. A. and Carrillo, P.: Predominant Non-additive Effects of Multiple Stressors on Autotroph C:N:P Ratios Propagate in Freshwater and Marine Food Webs, *Front. Microbiol.*, 9(JAN), 69, doi:10.3389/fmicb.2018.00069, 2018.
- van de Waal, D. B., Verschoor, A. M., Verspagen, J. M., van Donk, E. and Huisman, J.: Climate-driven  
785 changes in the ecological stoichiometry of aquatic ecosystems, *Front. Ecol. Environ.*, 8(3), 145–152, doi:10.1890/080178, 2010.
- Ward, B. A., Collins, S., Dutkiewicz, S., Gibbs, S., Bown, P., Ridgwell, A., Sauterey, B., Wilson, J. D. and Oschlies, A.: Considering the Role of Adaptive Evolution in Models of the Ocean and Climate System, *J. Adv. Model. Earth Syst.*, 1–19, doi:10.1029/2018MS001452, 2019.
- 790 Weber, T. S. and Deutsch, C. A.: Ocean nutrient ratios governed by plankton biogeography., *Nature*, 467(7315), 550–554, doi:10.1038/nature09403, 2010.
- Woods, H. A., Makino, W., Cotner, J. B., Hobbie, S. E., Harrison, J. F., Acharya, K. and Elser, J. J.: Temperature and the chemical composition of poikilothermic organisms, *Funct. Ecol.*, 17(2), 237–245, doi:10.1046/j.1365-2435.2003.00724.x, 2003.
- 795 Xu, J., Gao, K., Li, Y. and Hutchins, D.: Physiological and biochemical responses of diatoms to projected ocean changes, *Mar. Ecol. Prog. Ser.*, 515, 73–81, doi:10.3354/meps11026, 2014.
- Yvon-Durocher, G., Dossena, M., Trimmer, M., Woodward, G. and Allen, A. P.: Temperature and the

biogeography of algal stoichiometry, *Glob. Ecol. Biogeogr.*, 24(5), 562–570, doi:10.1111/geb.12280, 2015.

800 Zakem, E. J. and Levine, N. M.: Systematic variation in marine dissolved organic matter stoichiometry and remineralization ratios as a function of lability, *Global Biogeochem. Cycles*, 1–28, doi:10.1029/2019GB006375, 2019.

Zhu, Z., Qu, P., Gale, J., Fu, F. and Hutchins, D. A.: Individual and interactive effects of warming and CO<sub>2</sub> on *Pseudo-nitzschia subcurvata* and *Phaeocystis antarctica*, two dominant phytoplankton from the Ross Sea, Antarctica, *Biogeosciences*, 14(23), 5281–5295, doi:10.5194/bg-14-5281-2017, 2017.

805

## Captions for figures

810 **Figure 1.** Flow chart showing (1) the preliminary selection criteria and (2) the refined selection criteria  
used for determining s-factors. Numbers (k values) correspond to the number of journal articles. See  
Supplementary Information (Appendix S1) for a full list of studies included in the meta-analysis.

**Figure 2.** Summary plot showing weighted mean responses of P:C and N:C using (a) Stoichiometry  
815 sensitivity factor, and (b) % changes between control and treatment. Numbers next to the plots in (b)  
correspond to the number of experimental units and the numbers are identical in (a). Numbers in the  
outside column are the weighted means.  $P > 0.05$ ; \*,  $P < 0.05$ ; \*\*,  $P < 0.01$ ; \*\*\*,  $P < 0.001$ , ns: not  
significant. Note that x-axis is different for temperature experiments in (a).

820 **Figure 3.** Summary plot showing statistically significant effects of moderators. (a) Eukaryotes vs  
Prokaryotes, (b) Growth mode, (c) Growth phase at harvest, (d) Light regime.  $P > 0.05$ ; \*,  $P < 0.05$ ; \*\*,  
 $P < 0.01$ ; \*\*\*,  $P < 0.001$

**Figure 4.** Illustration of how the five environmental drivers under a typical future climate scenario affect  
825 the cellular allocation of volume between P-rich (red), N-rich (blue), and C-rich (orange) pools. The  
values for projected changes in C:P and C:N between 1981-2000 and 2081-2100 are given in Table 3.

830

835

## Tables

Key search terms
(TS=(phytoplankton OR algae OR microalgae OR diatom OR coccolithophore* OR cyanobacteri* OR diazotroph*) AND TS=(stoichiometr* OR "chemical composition" OR "element* composition" OR "nutritional quality" OR "nutrient composition" OR "nutrient content" OR "nutrient ratio*" OR C:N OR C:P OR N:P OR P:C OR N:C OR "cellular stoichiometr*" OR C:N:P OR "element* ratio*" OR "food qualit*" OR "nutrient concentration" OR “carbon budget”) AND TS = (phosph* OR "phosph* limit*" OR nitr* OR "nitr* limit*" OR iron OR "iron limit*" OR nutrient OR "nutrient limit*" OR "nutrient supply" OR "nutrient availabilit*" OR "supply ratio*" OR eutrophication OR fertili* OR enrichment OR temperature OR warming OR light OR irradiance OR "light limit*") AND TS = (marine or sea or ocean OR seawater OR aquatic)).

**Table 1.** Key word search terms used for literature search (Web of Science, February 2019). In the search field, “TS” refers to a field tag for “topic” and “\*” is a wildcard search operator.



Drivers	n	Stoichiometry sensitivity factor				Log-response ratio			
		$\overline{s_X^Y}$	ci.lb	ci.ub	sig.	$\overline{\ln(RR)}$	ci.lb	ci.ub	sig.
Phosphorus									
<b>P:C</b>	54	0.21	0.12	0.29	***	1.21	0.99	1.44	***
<b>N:C</b>	52	0.023	0.0041	0.042	*	0.21	0.12	0.29	***
Nitrogen									
P:C	32	0.0073	-0.0053	0.020	ns	0.09	-0.070	0.25	ns
<b>N:C</b>	60(1)	0.14	0.082	0.20	***	0.53	0.40	0.66	***
Fe									
P:C	37					0.0090	-0.14	0.16	ns
N:C	65					-0.019	-0.094	0.055	ns
Irradiance									
<b>P:C</b>	35	-0.0034	-0.062	-0.0070	*	-0.24	-0.47	-0.0034	*
<b>N:C</b>	94	-0.0224	-0.034	-0.013	***	-0.20	-0.26	-0.13	***
Temperature									
<b>P:C</b>	83	-3.6	-6.8	-0.35	*	-0.16	-0.27	-0.053	**
N:C	96	-0.42	-1.90	1.07	ns	-0.014	-0.061	0.033	ns

**Table 2.** Summary of the meta-analysis using the stoichiometry sensitivity factor and natural logarithm-transformed response ratio. *n*, number of experimental units (numbers in bracket = number of outlier studies).  $\overline{s_X^Y}$ , weighted mean stoichiometry sensitivity factor with environmental driver X and response variable Y;  $\overline{\ln(RR)}$ , weighted mean value of the natural logarithm-transformed response ratio; ci.lb, lower boundary of 95% CI; ci.ub, upper boundary of 95% CI; sig., significance of the mean weighted effect size; ns,  $P > 0.05$ ; \*,  $P < 0.05$ ; \*\*,  $P < 0.01$ ; \*\*\*,  $P < 0.001$ . Any experiments with studentized residual value of  $\ln(RR)$  exceeding 3 was removed as outliers. Red bold texts highlight statistically significant environmental driver using both effect sizes.

845

850

Change in stoichiometry	Change in Environmental Drivers					
	P↓ (-28%)	N↓ (-18.7%)	I↑ (+0.7%)	T↑ (+0.9%)	Fe↑ (+6.5%)	Combined
Δ (C:P) (molar)	+10.4 (5.9-14.6)	/	+0.03 (0.01-0.06)	+3.7 (0.4-7.1)	/	+16 (6-25)
Δ (C:N) (molar)	+0.06 (0.01-0.10)	+0.22 (0.12-0.31)	<0.01	/	/	+0.3 (0.1-0.4)

**Table 3.** Projected changes in C:P (molar) and C:N (molar) between 1981-2000 and 2081-2100 given model-based projected changes in environmental drivers from Boyd et al. (2015). Changes in C:N and C:P are calculated separately for each driver with s-factors from Table 2 combined with reference C:N:P of 148:20:1, a global biomass-weighted mean ratio of particulate organic matter (Martiny et al., 2013b). Ranges are derived from propagating uncertainties for the weighted mean s-factors in Table 2. We used Equation (9) in the main text for estimating the combined effect of multiple drivers.

855

**Figure 1**

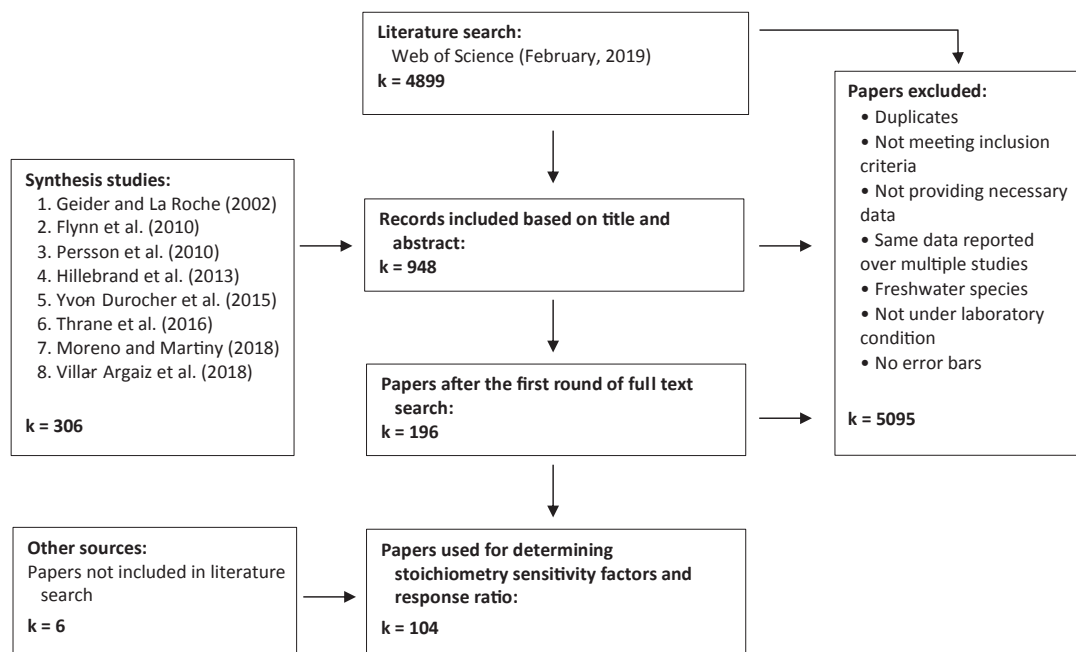
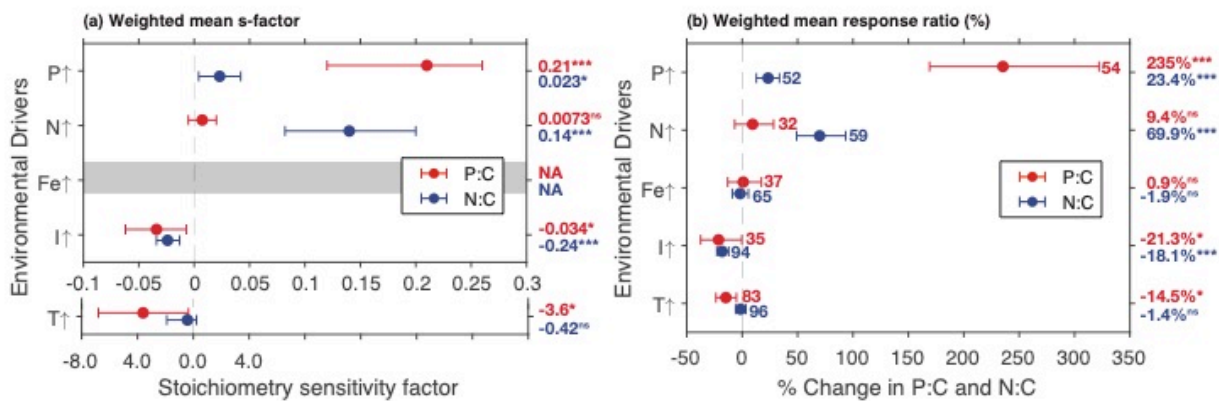
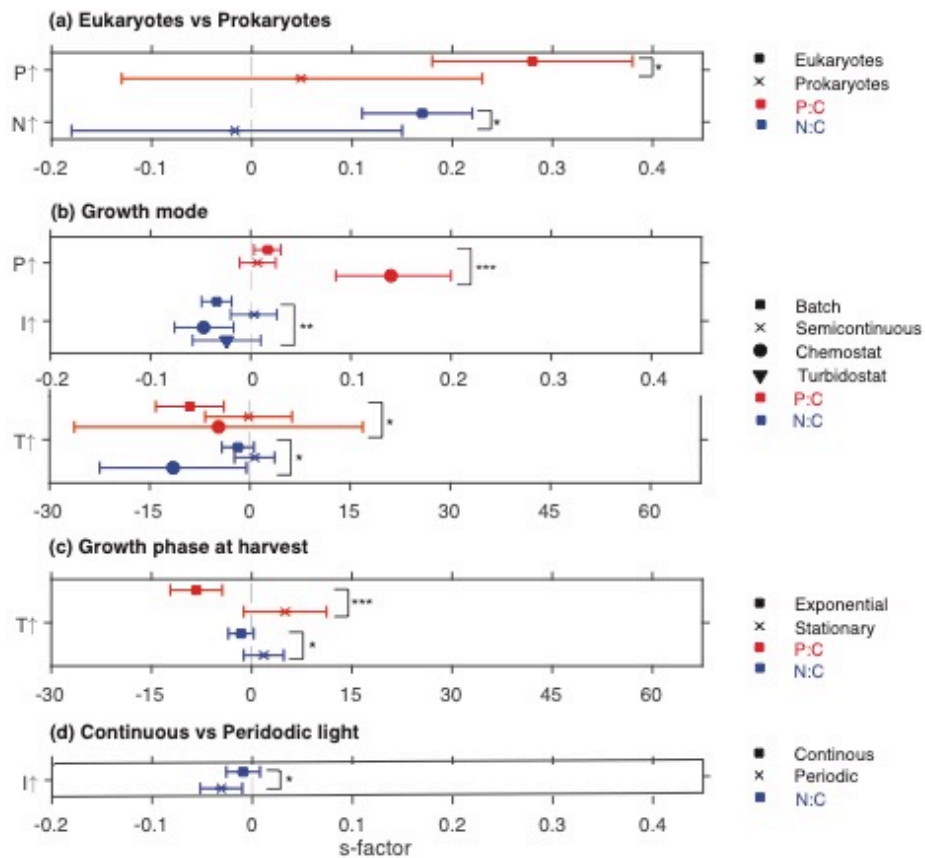


Figure 2



860

Figure 3



865

Figure 4

