

Response to RC2 Minor Revisions

RC2: Reviewer comment (in black)

AC: Author comment (in gray)

RC2: Comments on revised version of “Southern California margin benthic foraminiferal assemblages record recent centennial-scale changes in oxygen minimum zone” by Palmer et al.
Referee #2

Overall, I am happy with the revised version answering and revisiting all the comments I had made. There are final minor details that I would recommend authors to have another look. Below comments indicating line numbers are based on the file showing track changes “bg-2019-446-author_response-version1”.

- AC: We thank the reviewer for their additional reviews and comments. We have responded to each comment below.

RC2: Please check usage of abbreviation OMZ throughout the text. Sometimes within the same paragraph it is used and followed by oxygen minimum zone (e.g., first paragraph of introduction; paragraph starting with line 595).

- AC: We have made the suggested correction and streamlined the use of the OMZ abbreviation throughout the manuscript.

RC2: Relationship between nitrate and benthic foraminifera could still be improved. Current stage of the discussion serves the purpose of the manuscript and I am aware nitrate was not measured. Nevertheless, I think adding the potential impact of nitrate availability on certain species would only make the MS better. In case Authors decide to improve this part, I would highly recommend them to check publications from Kuhnt et al., 2013 (<http://dx.doi.org/10.1016/j.dsr.2012.11.013>) and Glock et al., 2019 (www.pnas.org/cgi/doi/10.1073/pnas.1813887116) and the references therein.

- AC: We have added an additional sentence on benthic foraminiferal nitrate respiration in the discussion and included the suggested citations.

RC2: Paragraph starting with line 124 is rather confusing. It says studies focusing on benthic foraminifera in Southern California are limited to the basins and there are few other from outside. Both Mallon and Erdem reported foraminifera from the Peruvian margin. I would recommend either remove these citations or change the description to Eastern Pacific Ocean continental margin, or something like that. In this case, please check Cardich et al., 2019 (<https://doi.org/10.3389/fmars.2019.00270>).

- AC: We have updated the language as recommended and removed the citations. Further, we have included a citation of Cardich et al., 2019 in the manuscript.

RC2: Line 419. Short names can be given instead of the full names of the species.

- AC: We made the suggested correction.

RC2: Table 1. Four digit after decimal points needed?

- AC: We updated the Temperature column on Table 1 to reflect the same number of digits after decimal points to other reported variables (Salinity).

RC2: I am glad to see a plate included in the supplementary material. When I mentioned about a species list with references, I had something like this I prepared below. These are species mentioned in the manuscript. Hopefully, I did not miss any. This could be included after the plate as done in Balestra et al., 2018; Erdem and Schoenfeld, 2017.

Example taxonomic reference list for benthic foraminifera species mentioned in the MS:

Bolivina argentea Cushman 1926. (Figure S4)

Bolivina spissa *Bolivina subadvaena* Cushman var. *spissa* Cushman 1926 (Figure S4)

Bulimina sp. (any note on why species is not identified?)

Cassidulina carinata *Cassidulina laevigata* d'Orbigny var. *carinata* Silvestri, 1896 (Figure S4)

Cibicidoides sp. (any note on why species is not identified?)

Epistominella sp. (Figure S4)

Globobulimina pacifica and so on...

Globobulimina ovata

Globocassidulina subglobosa (Figure S4)

Nonionella stella

Quinqueloculina sp (any note on why species is not identified?)

Uvigerina peregrina (Figure S4)

- AC: Thank you for the suggestion. We have included a Taxonomic Reference List for the species discussed in this manuscript according to the outline given above. The list can be found in the Supplemental Information following Supplemental Figure 4.

Southern California margin benthic foraminiferal assemblages record recent centennial-scale changes in oxygen minimum zone

Hannah M. Palmer^{1,2}, Tessa M. Hill^{1,2}, Peter D. Roopnarine³, Sarah E. Myhre⁴, Katherine R. Reyes^{1,5}, and Jonas T. Donnenfeld^{1,6}

¹Bodega Marine Laboratory, University of California, Davis, California, USA

²Department of Earth and Planetary Sciences, University of California, Davis, California, USA

³Department of Invertebrate Zoology and Geology, California Academy of Sciences, San Francisco, California, USA

⁴School of Oceanography, University of Washington, Seattle, Washington, USA

⁵Department of Natural Sciences and Mathematics, Dominican University of California, San Rafael, California, USA

⁶Geology Department, Carleton College, Northfield, Minnesota, USA

Correspondence to: Hannah M. Palmer (hmpalmer@ucdavis.edu)

Abstract. Microfossil assemblages provide valuable records to investigate variability in continental margin biogeochemical cycles, including dynamics of the oxygen minimum zone (OMZ). Analyses of modern assemblages across environmental gradients are necessary to understand relationships between assemblage characteristics and environmental factors. Five cores were analyzed from the San Diego margin (32°42'00"N, 117°30'00"W, 300-1175 m water depth) for core top benthic foraminiferal assemblages to understand relationships between community assemblages and spatial hydrographic gradients and for down core benthic foraminiferal assemblages to identify changes in the OMZ through time. Comparisons of benthic foraminiferal assemblages from two size fractions (63-150 and >150 µm) exhibit similar trends across the spatial/environmental gradient, or in some cases exhibit more pronounced spatial trends in the >150 µm fraction. A range of species diversity exists within the modern OMZ (1.910-2.586 H, Shannon Index), suggesting that diversity is not driven by oxygenation alone. We identify two hypoxic associated species (*B. spissa* and *U. peregrina*), one oxic associated species (*G. subglobosa*) and one OMZ edge-associated species (*B. argentea*). Down core analysis of indicator species reveal variability in the upper margin of the OMZ (528 m water depth) while the core of the OMZ (800 m) and below the OMZ (1175 m) remained stable in the last 1.5 ka. We document expansion of the upper margin of the OMZ beginning 400 ybp on the San Diego margin that is synchronous with other regional records of oxygenation.

Deleted: oxygen minimum zone

1 Introduction

Ocean oxygenation is declining globally; rising ocean temperatures decrease oxygen solubility at the sea surface and increased stratification inhibits ventilation, leading to decreased oxygen at depth (Breitburg et al., 2018; Levin et al., 2009; Stramma et al., 2010). Expansions of oxygen minimum zones (OMZ) have already been documented and
40 further expansions are predicted (Bograd et al., 2008; Schmidtko et al., 2017; Stramma et al., 2010). Within the California Current system, a decline in dissolved oxygen (DO) concentration, shoaling of the hypoxic boundary, and decreased pH have been documented (Bakun, 2017; Bograd et al., 2008). The intensity and geographic extent of the CA margin OMZ has oscillated in response to past changes in climate and ocean temperatures on millennial
45 timescales – weakening during cool periods and strengthening during warm periods (Cannariato and Kennett, 1999; Jaccard et al., 2014; Moffitt et al., 2014, 2015a; Ohkushi et al., 2013). Determination of timing and drivers of past expansions and contractions of OMZs is critical to developing accurate predictions of future change (Jaccard et al., 2014).

Deleted: oxygen minimum zone

Deleted: oxygen minimum zone

Continental margin biogeochemical dynamics structure shelf ecosystems across space and time (Levin et al., 2009;
50 Levin and Dayton, 2009). In particular, oxygenation is a key determinant of benthic zonation; seafloor ecosystems are subject to major turnover in response to relatively minor inferred changes in oxygenation (Levin, 2003; Levin and Dayton, 2009; Moffitt et al., 2015b). Areas of low oxygen availability typically contain low abundance and diversity of organisms (Levin, 2003; Levin and Dayton, 2009). However, several species of benthic foraminifera are adapted to survive in low-oxygen conditions and are thus present, and often abundant, in such environments
55 (Bernhard and Gupta, 1999; Gooday et al., 2000; Kaiho, 1994, 1999; Keating-Bitonti and Payne, 2016).

1.1 Benthic foraminifera record changes in coastal margin biogeochemistry

Microfossil records from the Southern California Borderlands are a critical tool for understanding changes in productivity (Cannariato and Kennett, 1999; Emmer and Thunell, 2000; Stott et al., 2000), orbital and millennial
60 scale climate changes (Hendy, 2010; Hendy and Kennett, 2000; Taylor et al., 2015), and climate change through the Holocene (Balmaki et al., 2019; Fislser and Hendy, 2008; Friddell et al., 2003; Roark et al., 2003). Benthic foraminiferal assemblages are widely used as a proxy for changes in oxygenation through time (Balestra et al., 2018; Bernhard et al., 1997; Bernhard and Gupta, 1999; Cannariato and Kennett, 1999; Gooday, 2003; Jorissen et al., 2007; Moffitt et al., 2014; Ohkushi et al., 2013; Shibahara et al., 2007; Tetard et al., 2017). Previous work (through
65 analysis of benthic foraminifera along environmental depth gradients and in laboratory culturing studies) documented relationships between benthic foraminiferal taxa and water depth, oxygen concentration, sediment substrate, position in the sediment matrix, nitrate availability, and organic matter availability (Bernhard et al., 1997; Bernhard and Bowser, 1999; Bernhard and Gupta, 1999; Cardich et al., 2019; Caille et al., 2014; Douglas, 1981; Douglas and Heitman, 1979; Erdem et al., 2019; Jorissen et al., 2007; Kaiho, 1994, 1999; Mallon et al., 2012;
70 Mazumder and Nigam, 2014; Mullins et al., 1985).

75 Generally, low oxygen environments contain high abundance and low diversity of benthic foraminifera; in these settings, infaunal, elongate, thin-walled species with high porosity dominate over porcelaneous and epifaunal taxa (Bernhard et al., 1997; Douglas, 1981; Jorissen et al., 1995, 2007; Kaiho, 1994, 1999; Mazumder and Nigam, 2014). Further work has explored the relationship between foraminiferal size and oxygenation; generally volume to surface area ratios of foraminiferal tests are positively correlated with dissolved oxygen, yet studies of individual taxa on the Southern California margin do not consistently show this relationship (Keating-Bitonti and Payne, 2016; Keating-
80 Bitonti and Payne, 2017; Rathburn et al., 2018). Often, individual taxa of foraminifera are classified into groups based on oxygen affinity or individually identified as oxygen indicator taxa (Jorissen et al., 1995; Kaiho, 1999; Moffitt et al., 2014). In particular, bolivinid taxa are noted as low oxygen indicator taxa (Cardich et al., 2015; Caille et al., 2014; Mallon et al., 2012; Mullins et al., 1985). However, these relationships between foraminiferal assemblages and environmental metrics are regionally defined and cannot be applied globally; regional calibrations
85 of the benthic foraminifera oxygen proxy are required for accurate paleoceanographic analyses (Bernhard et al., 1997; Caille et al., 2014; Kaiho, 1999; Mallon et al., 2012; Mazumder and Nigam, 2014). Similarly, the classification of oxygenation levels varies among paleoceanographic studies (Balestra et al., 2018; Kaiho, 1994; Moffitt et al., 2015a). This study uses the following classification: oxic ($[O_2] > 1.5$ ml/L), intermediate hypoxia/suboxic ($[O_2] 1.5-0.5$ ml/L), and severe hypoxia/dysoxic ($[O_2] < 0.5$ ml/L) (Moffitt et al., 2015a). Although
90 oxygenation is a dominant driver of ecosystem zonation in marginal environments, sediment substrate, organic matter availability, and nitrate availability also play important roles in structuring benthic foraminiferal assemblages. Further analysis of the interacting environmental factors along depth/environmental gradients is needed (Jorissen et al., 1995, 2007; Mullins et al., 1985; Venturelli et al., 2018).

95 Previous studies of oxygenation change over time from the Southern California margin focus largely on the Santa Barbara and Santa Monica Basins, due to their high sedimentation rates and regular laminations (Balestra et al., 2018; Cannariato and Kennett, 1999; Christensen et al., 1994; Kaiho, 1999; Moffitt et al., 2014; Schimmelmann et al., 2013). Significantly fewer studies [in the Northeast Pacific](#) investigate sediments outside of those basin environments (McGann, 2002). Further analysis is therefore needed to constrain relationships between benthic
100 foraminifera and environmental conditions in the open continental margin where biological and chemical gradients are more variable, and to identify decadal to centennial changes in [OMZ](#) dynamics.

1.2 Regional Setting

105 The California margin is a well-studied system characterized by southward flow of the California Current, a strong seasonal upwelling regime bringing cold, nutrient rich waters to the surface, high coastal productivity, and a large [OMZ](#) occurring at intermediate water depths (Checkley and Barth, 2009). The San Diego margin is dominated by two surface currents: the southward flowing California Current and the seasonal, northward flowing surface Davidson Current (Checkley and Barth, 2009).

Deleted: oxygen minimum zone

Deleted: oxygen minimum zone

An important feature of California margin coastal oceanography is the presence of a large, intermediate depth ~~OMZ~~ and carbon maximum zone (CMZ), from approximately 500 to 1000 m water depth (Helly and Levin, 2004; Stramma et al., 2010). The intensity and spatial extent of the modern California margin OMZ is driven by physical mixing of well-oxygenated surface water, biological activity at the surface and at depth, and intrusion of lower oxygen bottom waters (Gilly et al., 2013). Both physical processes (temperature-dependent diffusion from atmosphere, mixing, stratification, deep water circulation) and biological processes (primary productivity at the surface and respiration at depth) control the intensity and extent of OMZs (Gilly et al., 2013; Helly and Levin, 2004).

Deleted: oxygen minimum zone

Deleted: (OMZ)

Here we utilize the spatial variability of the continental margin as a natural laboratory to analyze relationships between core top, modern benthic foraminiferal assemblages and *in situ* measurements of environmental parameters (temperature, oxygenation, carbonate chemistry). We then quantify benthic foraminiferal assemblages down core to understand past environmental change.

2 Methods

2.1 Study site

The San Diego margin is located in the Southern California Borderlands in the Eastern North Pacific (Fig. 1). The margin slopes downward to a depth of approximately 1200 m at a distance of 30 km normal to shore (Fig. 1) and is bounded by a bathymetric rise (600 m water depth) to the west. All hydrographic data and sediment cores used in this study were collected by the San Diego Coastal Expedition aboard the R/V *Melville* in December 2012 by a team from the Scripps Institution of Oceanography.

2.2 Oceanographic data collection

Bottom water temperature, salinity, and dissolved oxygen concentration were collected at each coring location using a Seabird CTD (SBE9), with a dissolved oxygen probe (Seabird Electronics Sensor SBE43). Carbonate chemistry was completed using *in situ* bottle sampling for pH and total dissolved inorganic carbon (DIC) and were previously published (Nam et al., 2015; Takeshita et al., 2015). Bottom depths were measured acoustically at each site.

2.3 Sediment cores

Five sediment cores collected along a depth transect from 300 to 1175 m depth were selected for use in this study (Figure 1; Table 1). Short (15-31 cm) surface sediment cores were collected along the coastal margin using a deep-sea multicore with 9 cm diameter cores. Each core was divided into 1 cm intervals aboard the ship and immediately frozen. Sediments were not stained upon retrieval; thus, we could not carry out an analysis of live vs. dead or depth habitat of these species. Total organic matter of core top sediments was measured as percent ash-free dry weight and previously published in Grupe et al. 2015 (Grupe et al., 2015). Subsamples were each disaggregated in deionized water, washed over a 63 μm sieve and oven dried at 50° C.

2.3 Foraminiferal assemblages

Assemblages were counted from the > 150 μm and 63 - 150 μm fraction for comparison between the size fractions. Sediments were split using a sediment splitter and dry sieved; a minimum of 300 foraminifera per sediment sample (in the >150 μm fraction) were identified and counted for all core top samples to provide a representative assemblage, unless fewer than 300 specimens were present in the entire sample. Identification of benthic foraminiferal taxa was based on previously published descriptions and images of benthic foraminifera (see Supporting Information, Figure S4 for images of dominant taxa [and taxonomic reference list](#)) (Balestra et al., 2018; Erdem and Schönfeld, 2017; Keating-Bitonti and Payne, 2017; Moffitt et al., 2014; Setoyama and Kaminski, 2015). Assemblages in the 63-150 μm fraction were quantified from the same sediment fraction as the > 150 μm to allow for comparison of abundance between the two groups. Down core assemblages were quantified in the > 150 μm size fraction (see discussion below) and a minimum of 150 foraminifera per sediment sample were counted in all down core samples unless fewer than 150 specimens were present in the sample (Mallon et al., 2012). Assemblage counts are standardized to the volume (63.62 cm^3) of the sampled cylinder of the sediment (core). Core top sediment (0-1, 1-2 cm) calcareous benthic foraminiferal assemblages were described for all cores. Complete down-core records of benthic foraminiferal assemblages were examined at 1 or 2 cm intervals for cores MV1217-2-3 (0-18 cm, sampled at 1 cm interval, 528 m water depth), MV1217-1-3 (0-10 cm, sampled at 1 cm interval; 10-20 cm, sampled at 2 cm interval, 800 m water depth). In order to build a longer temporal record at 1175 m we combine two multi cores; core MV1217-4-3 (0-10 cm, sampled at 1 cm interval) and MV1217-4-1 (sampled at 10-16 cm, 2 cm interval, 1175 m water depth).

Shannon Index of diversity was used to describe foraminiferal diversity (Peet, 1974). Analysis of variance (ANOVA) was used to analyze to determine differences between assemblages in two size fractions > 150 μm and 63 - 150 μm . Distance-based redundancy analysis (dbRDA) with Bray-Curtis distances was used to ordinate core top assemblages and examine relationship to environmental variables. Non-metric multidimensional scaling ordination, using square root transformation of assemblage species counts and Bray-Curtis similarities, were completed to identify relatedness between assemblages through time. All multivariate analyses were completed using the Vegan R package (Myhre et al., 2017; Oksanen et al., 2013).

2.4 Radiocarbon based chronology

Cores from two sites (528 m water depth, MV1217-2-3, 1175 m water depth, MV1217-4-1 and MV1217-4-3) were selected for radiocarbon (^{14}C) dating using mixed planktonic foraminifera. Core MV1217-2-3 (528 m) was sampled at three 1-cm intervals (11-12 cm, 16-17 cm, 25-26 cm). To generate an age model for the multicores at 1175m water depth, core MV1217-4-3 (1175 m) was sampled at one 1-cm interval (5-6 cm) and core MV1217-4-1 (1175 m) was sampled at two 1-cm intervals (10-11 cm, 20-21 cm) (Table 2). Radiocarbon analysis was completed at the Lawrence Livermore National Laboratory using $\delta^{13}\text{C}$ assumed values following the convention of Stuiver and Polach 1977 (Stuiver and Polach, 1977). The quoted age was given in radiocarbon years using the Libby half-life of

5568 years. The Calib7.1 calibration program was used to calibrate ages using a reservoir age of 220.0 +/- 40.0 (Ingram and Southon, 1996; Stuiver and Polach, 1977).

190 3.0 Results

3.1 Vertical profiles, sediment characterization of San Diego margin

Across the depth profile, bottom water temperature decreased steadily with depth (300 m to 1175 m) ranging from 8.6°C (300 m) to 3.8°C (1175 m) (Figure 2, Table 1). Salinity (not plotted here) had a mean of 34.4 psu ranging from 34.1 to 34.5 psu. Water column DO measurements collected directly above each coring site show oxic conditions at 195 300 m (1.54 ml/L) above the OMZ, intermediate hypoxia at 1175 m (0.58 ml/L) below the OMZ, and severe hypoxia at 528 m (0.35 ml/L) at the upper edge of the OMZ, and within the OMZ at 700 m (0.26 ml/L) and 800 m (0.29 ml/L). Although not greatly variable, a pH minimum occurs at 700 m (7.55) and is higher at 300 m (7.65) and 1175 m, (7.59) (Figure 2, Table 1). Total organic matter increased with depth (6.8-14.7% AFDW, Table 1). These results are consistent with previous analyses of the California margin OMZ/CMZ (Helly and Levin, 2004).

200

3.2 Benthic foraminiferal assemblage across modern environmental gradient

Relative abundance of benthic foraminifera was quantified for all sites in the 0-1 and 1-2 cm intervals. We compared the 0-1 cm interval to the 1-2 cm interval to assess if depth habitat of any species determined their relative abundance in the core top assemblage. Specimens were not Rose Bengal stained, thus their presence in any interval does not indicate that they were living at the time of collection. We do not identify any significant relationship between relative abundance of a species and depth interval (ANOVA; in all cases $p > 0.05$ or r^2 is < 0.001). Foraminiferal abundance is low (< 100 individuals) in some of the samples from 0-1 cm. Thus, in order to utilize sufficient numbers of individuals and because there were no significant differences in abundance of species between 0-1 cm and 1-2 cm, for the rest of the discussion we refer to the 0-2 cm fraction as the core top material (Figure 2 205 and 3). Calcareous taxa dominated the assemblage at every site; agglutinated foraminifera made up 0 (300 m) to 21% (700 m) of the assemblage. Due to their propensity for degradation and to remain consistent with other regional studies, we exclude agglutinated taxa and all values are reported as percent of total calcareous taxa for the remainder of the text (Balestra et al., 2018; Kaiho, 1994; Moffitt et al., 2014; Venturelli et al., 2018).

215 Total abundance of foraminifera decreases with depth (Figure 2). Core top assemblages were dominated by *Bolivina argentea*, *Uvigerina peregrina*, *Globocassidulina subglobosa*, *Epistominella* sp., *Cassidulina carinata*, and *Bolivina spissa*, in order of decreasing abundance (see Figure S4 for images of dominant taxa). These dominant taxa make up 80% of all calcareous foraminifera counted across all core top samples. All other species each represent less than four percent of the total assemblage across all core tops. The following taxa are found at all five water depths:
220 *Bolivina argentea*, *Bolivina spissa*, *Bulimina* spp., *Cibicidoides* sp., *Epistominella* sp., *Globobulimina pacifica*, *Globocassidulina subglobosa*, *Globobulimina ovata*, *Nonionella stella*, *Quinqueloculina* sp. and *Uvigerina peregrina*.

225 First, we report the benthic foraminiferal assemblage from the >63 µm size fraction; we then report on a comparison
between the 63 - 150 µm and >150 µm size fractions. The assemblage at 300 m is dominated by *G. subglobosa*
(28%), *B. argentea* (25%), *U. peregrina* (10%), *Epistominella* sp. (8%), and *Bolivina spissa* (6%); species richness
is 24 and diversity (H) is 2.133. The assemblage at 528 m is dominated by *B. argentea* (37%), *U. peregrina* (23%),
Epistominella sp. (15%), *C. carinata* (6%) and *G. subglobosa* (5%); species richness is 25 and diversity (H) is
1.910. The assemblage at 700 m is dominated by *Epistominella* sp. (29%), *C. carinata* (15%), *U. peregrina* (13%),
230 *G. subglobosa* (11%), *B. argentea* (10%), and *B. spissa* (7%); species richness is 23 and diversity (H) is 2.249. The
assemblage at 800 m is dominated by *B. spissa* (16%), *U. peregrina* (16%), *Epistominella* sp. (13%), *C. carinata*
(10%), *Cibicidoides* sp. (10%), and *Globobulimina ovata* (13%); species richness is 25 and diversity (H) is 2.586.
The assemblage at 1175 m is dominated by *C. carinata* (25%), *Epistominella* sp. (20%), *G. subglobosa* (8%), *B.*
spissa (6%); species richness is 25 and diversity (H) is 2.389 (Figure 2).

235

3.3 Comparison of benthic foraminifera in two size fractions

Comparison of foraminiferal abundance between the 63-150 µm and >150 µm shows higher abundance in the small
fraction at 300 m, 700 m and 1175 m, and higher abundance in the large size fraction at 528 m and 800 m. Several
taxa are found in both size fractions at all five water depths: *Globocassidulina subglobosa* and *Epistominella* sp.

240 Four species have significantly different relative abundances between size classes; three are more likely to be found
in the 63-150 µm (*C. carinata*, *Epistominella* sp. and *G. subglobosa*) and one species (*U. peregrina*) is significantly
more likely to be found in the 150 µm size fraction (ANOVA, $p < 0.05$ for all, Figure 3).

245 In the >150 µm size fraction, species diversity (H) ranges from 1.316–2.700; minimum diversity (H) is found at 528
m (1.316) and maximum diversity (H) is found at 1175 m (2.700). In comparison, in the 63-150 µm size fraction,
species diversity (H) ranges from 1.710–2.042; minimum diversity (H) is found at 700 m (1.710) and maximum
diversity (H) is found at 800 m (2.042) (Figure 2). Species diversity is greater in the >150 µm size fraction relative
to the 63-150 µm size fraction at all sites except the site at 528 m (Figure 2).

250 When we consider the complete assemblage (>63µm) we can classify the most abundant species into four groups
based on their trends relative to the OMZ (Figure 3). Two species are more abundant within the OMZ: *B. spissa*, and
U. peregrina; we identify these species as dysoxic indicator species. One species is less abundant within the OMZ
relative to sites outside of the range of the OMZ: *G. subglobosa*; we identify this species as an oxic indicator species
(Kaiho, 1999). Two species increase in abundance with water depth: *C. carinata* and *Epistominella* sp. One species
255 is most abundant near the uppermost edge of the OMZ: *B. argentea*; this species may be edge-associated (Mullins et
al., 1985). Importantly, when we consider only the >150 µm size fraction, we observe the same trends: high
abundance in OMZ (*B. spissa*, *U. peregrina*), low abundance in OMZ (*G. subglobosa*), increased abundance with
depth (*C. carinata* and *Epistominella* sp.), and OMZ edge-associated (*B. argentea*) (Figure 3). Generally, we find
that trends across depth are similar between the complete (>63 µm) and large size fraction (>150 µm) or are more
260 pronounced in the >150 µm size fraction compared to the 63-150 µm size fraction (Figure 3). In some taxa, trends in

Deleted: oxygen minimum zone

Deleted:

265 both size fractions are similar across depth (*B. spissa*, *Epistominella* sp., *G. subglobosa*, *C. carinata*) (Figure 3). For other taxa, we observe a low relative abundance of a species in the (63-150 μm) fraction throughout all water depths, while for the same species in the >150 μm size fraction, we observe a pronounced trend through depth (*U. peregrina*, *B. argentea*) (Figure 3).

270 To further analyze these trends, we completed pairwise analysis of relative abundances of benthic foraminifera and environmental parameters. DO concentrations and pH are correlated at all water depths; here we chose to compare foraminiferal abundances to dissolved oxygen, yet we acknowledge that these affiliations may be driven by the combined effect of the OMZ/CMZ. When we analyze the complete assemblage (>63 μm) we identify a significant positive correlation between *G. subglobosa* and dissolved oxygen ($r^2=0.76$, $p<0.05$) and temperature ($r^2=0.64$, $p<0.05$) and a significant negative correlation between *G. subglobosa* and total organic matter ($r^2=-0.72$, $p<0.05$). If we analyze the >150 μm size fraction only, we identify the same significant positive correlation between DO and *G. subglobosa* ($r^2=0.96$, $p<0.05$) and also identify a positive correlation between *C. carinata* and water depth; abundance of this species increases with depth ($r^2=0.93$, $p<0.05$). When we analyze the 63-150 μm size fraction alone, we identify the same trends as observed in the >150 μm fraction: a significant positive correlation between *G. subglobosa* and dissolved oxygen ($r^2=0.90$, $p<0.05$). and a significant positive correlation between *C. carinata* and water depth ($r^2=0.88$, $p<0.05$). In the 63-150 μm fraction we also identify a significant negative correlation between *U. peregrina* and water depth ($r^2=-0.95$, $p<0.05$). We do not identify significant correlations between any other taxa and environmental parameter.

Deleted: oxygen minimum/carbon maximum zone

3.4 Multivariate analyses of benthic foraminiferal assemblage

285 Multivariate statistical analysis (using distance-based redundancy analysis) of core top assemblages identifies several taxa that contribute most strongly to the ordination of the assemblages (*G. subglobosa*, *U. peregrina*, *B. argentea*) (Figure S1). Oxygenation operates on an axis - separating sites at 300 m and 1175 m from the three OMZ sites 528 m, 700 m, and 800 m. Temperature operates on a second axis (Figure S1). Our findings support previous work that identify *G. subglobosa* with higher oxygen environments and *B. argentea* and *U. peregrina* with lower oxygen environments (Bernhard et al., 1997; Kaiho, 1994, 1999; Moffitt et al., 2014).

Deleted: lobocassidulina

Deleted: olivina

Deleted: vigerina

3.5 Age model development

295 Radiocarbon dating of two cores yielded variable sedimentation rates, from 6.1 to 42.2 cm/ka (error of ± 11.3 , see Table 2). An age model was developed for each core based on linear interpolation between radiocarbon dates (Figure S2). Core MV1217-3-3 (800 m water depth) was not radiocarbon dated; for this core we apply an average sedimentation rate (19.6 cm/ka) generated from the core above (528 m) and below (1175 m) this core. All following results will be discussed in age (years before present).

3.6 Temporal change in benthic foraminiferal assemblages

Down core assemblages were quantified in three cores (from 528, 800, and 1175 m water depth) in the >150 µm size fraction only, following results from core top analysis (see section 4.1). Down core assemblages contained similar species to core tops. Down core assemblages were dominated by (in descending order) *Uvigerina peregrina*, *Bolivina spissa*, *Bolivina argentea*, *Globobulimina* sp., *Cibicidoidea* sp., and *Epistominella* sp.. These dominant taxa make up more than 75% of all foraminifera counted across all cores and subsamples. All other species each account for less than 5% of total assemblage across all cores and depths. The total number of species in each sample ranged from 11 to 26, comparable to the number of species found in the core tops.

Multivariate statistical analysis (using non-metric multidimensional scaling) of down core assemblages and core top assemblages shows that, through time, assemblage similarity within sites exceeds similarity to assemblages at any other site (Figure S3). In multivariate space, the difference between sites across space is greater than within any one site through time. For this reason, we subsequently discuss change in assemblage through time at each site independently.

At 528 m water depth, foraminiferal assemblages vary through time, with a notable shift occurring at 400 ybp. Diversity decreases from 400 ybp to present, which is concurrent with a decrease in oxic indicator taxa *G. subglobosa*, an increase in dysoxic indicator *U. peregrina*, and a major increase in the proportion of *B. argentea* (Figure 4).

At 800 m water depth, we do not document a significant shift in relative abundance of oxic indicators or dysoxic indicators over time, or a significant change in diversity over the interval examined (Figure 4). We interpret these assemblages to reflect environmental stability over the past 1.5ka (Figure 4). At 1175 m water depth, we document little change in relative abundance of oxic and dysoxic indicator species from 200-800 ybp. Beginning at 200 ybp, we document an increase in *B. spissa*, but no change in *U. peregrina* (Figure 4).

4 Discussion

4.1 Benthic foraminiferal assemblages across modern environmental gradient

Analysis of benthic foraminifera from two size fractions (63-150 µm and >150 µm) across a modern environmental gradient improves our understanding of benthic foraminifera as a proxy for past change. Total number of foraminifera in each size class varies with depth (Figure 2). A range of species diversity exists within the OMZ, suggesting that diversity is not driven by oxygenation alone (Figure 2).

In most cases, trends of relative abundance of benthic foraminifera across space are either similar between the complete assemblage (>63µm) and the >150 µm size fraction or trends in the >150 µm size fraction are more pronounced than in the complete assemblage (Figure 3). Trends across the OMZ gradient are similar in both size fractions (63-150 µm and >150 µm) in *G. subglobosa*, *Epistominella* sp., and *C. carinata*. If one were to interpret the combined assemblage or the >150 µm assemblage in these species, the results would be similar, despite these species being higher in abundance in the small size fraction. Two species (*B. argentea* and *U. peregrina*) are present

340 in the 63-150 μm size fraction in all sites in similar (low) relative abundance, while in the >150 μm fraction, we
document distinct trends in relative abundance of these two species across space (Figure 3). This is noteworthy as it
may indicate that these species are able to tolerate a range of environmental conditions, and thus are present in small
numbers and small shell sizes at all sites, but that in certain environments, these species are able to thrive and out-
345 compete other species, thus allowing them to grow to larger sizes (De Villiers, 2004; Gooday, 2003; Levin et al.,
2010). This is supported by previous work showing that environmental conditions do not play a role in determining
volume of benthic foraminiferal proloculus (skeletal remains of initial cell), while volume and volume to surface
350 area ratio of adult benthic foraminifera are controlled by dissolved oxygen within low oxygen environments
(Keating-Bitonti and Payne, 2018).

In the Southern California Borderlands, the disciplinary convention has largely been to focus on the >150 μm size
355 fraction, therefore quantifying this fraction is necessary for comparison to previously published studies (Balestra et
al., 2018; Cannariato and Kennett, 1999; Moffitt et al., 2014). Our findings show that spatial trends in the >150 μm
size fraction generally reflect those found in the >63 μm size fraction or are muted by the inclusion of the 63-150
 μm (Figure 3). Results from a similar study in the Arabian Sea OMZ showed that assemblages were similar within
the 63 – 125 μm fraction and >125 μm fraction and interpretation of the larger fraction was more useful to compare
360 results to most paleoceanographic studies (Cauille et al., 2014). Thus, we recommend that workers utilize the >150
 μm size fraction for analysis when targeting indicator taxa such as *B. argentea*, *B. spissa*, *U. peregrina*, *G.*
subglobosa or when assessing trends across the OMZ gradient. However, it is useful to quantify the complete
 $>63\mu\text{m}$ assemblage in a subset of samples to ascertain whether there are important species or trends being missed. If
the target of a project is to quantify changes in the ecology of a site or in specific metrics such as diversity, shell
365 size, or shell weight, we recommend the inclusion of the complete assemblage (>63 μm). We acknowledge that the
identification of microfossils as a tool for paleoceanographic interpretation contains inherent uncertainty due to
variability in identification of species between observers and within single observers (Al-Sabouni et al., 2018; Fox et
al., 2018; Hsiang et al., 2019). Further, it has been shown that there is a correlation between size of specimen and
accuracy of identification, meaning that the inclusion of the smaller specimens in the >63 μm fraction may reduce
370 the accuracy of identification (Fox et al., 2018). Given this uncertainty, in subsequent text we focus only on
spatial/environmental trends that change by a minimum of 10% relative abundance across the depth transect or
through time.

In order to better compare to other similar studies from the Southern California Borderlands, for the remainder of the
375 discussion we analyze the >150 μm fraction only. We identify two hypoxic-associated species (*B. spissa* and *U.*
peregrina), one oxic-associated species (*G. subglobosa*) and one OMZ edge-associated species (*B. argentea*). These
trends are shown in both the >150 μm assemblage and in the complete assemblage (>63 μm) (Figure 3). Not
surprisingly, these taxa are commonly used as indicator species in previous studies (Balestra et al., 2018; Cannariato
and Kennett, 1999; Moffitt et al., 2014). The species we identify as dysoxic and edge-associated (*B. spissa*, *U.*
peregrina, and *B. argentea*) are elongated in shape and are infaunal species. In comparison, *G. subglobosa* is more

abundant in higher oxygen environments and is a spherical, epifaunal species. This supports previous findings that infaunal vs. epifaunal habitat preference impacts the species distribution across the oxygenation gradient and that species in low oxygen zones have lower volume to surface area ratios relative to those in well oxygenated areas (Kaiho, 1999; Keating-Bitonti and Payne, 2016, 2018; Venturelli et al., 2018). In general, infaunal species are more common within the OMZ, while epifaunal are more common in well-oxygenated areas (Kaiho, 1999).

Previous studies have categorized benthic foraminifera into categories of oxygenation based upon similar work combining *in situ* environmental conditions and assemblage data (Cannariato and Kennett, 1999; Douglas and Heitman, 1979; Kaiho, 1994; Moffitt et al., 2014). Our findings indicate that region (or environment) specific oxygen species associations may be necessary, as our findings do not align directly with previous categorization of species. Several species that were previously recognized as low-oxygen indicators (*B. argentea*, *B. spissa*, and *U. peregrina*) were found at all water depths in this study, but we find only very low abundances of two well-documented low-oxygen indicator species, *Nonionella stella* and *Bolivina tumida* (Bernhard et al., 1997; Bernhard and Gupta, 1999; Cannariato and Kennett, 1999; Moffitt et al., 2014). These taxa have documented adaptations to extreme environments; *B. tumida* is associated with methane seep environments (Hill et al., 2003) and *N. stella* is known to sequester symbionts or plastids in extreme conditions (Bernhard and Bowser, 1999). We hypothesize that the marginal environment studied here does not reach the extreme hypoxic to anoxic conditions that are suitable for *B. tumida* or *N. stella*. Several species of documented oxic indicators (*Cibicidoides* sp. and *Quinqueloculina* sp. are found across all depths (300-1175 m) and oxygenation environments (0.26-1.54 ml/L) in the San Diego margin. Many past categorizations of these species were generated using species from very low oxygen basins (e.g., Santa Barbara Basin) where seasonal anoxia is present. The presence of oxic indicator species across all water depths on the San Diego margin may provide evidence for periodic flushing of high oxygen water or a selection for species that can tolerate a range of environmental conditions rather than a specific threshold of oxygenation. Alternatively, these species may be able to tolerate lower dissolved oxygen than previously thought if other environmental conditions (including substrate) are favorable or they may be able to tolerate short periods of low oxygen conditions (Burkett et al., 2016; Keating-Bitonti and Payne, 2018; Venturelli et al., 2018) (Figure 3). Further, habitat heterogeneity, including grain size (not measured here), may play a role in the determination of species assemblages at this site, particularly in low-oxygen areas in which the nature of the sediment matrix determines oxygenation of sediment porewater (Levin et al., 2010; Venturelli et al., 2018).

We document the presence of members of the *Bolivina* genera at all water depths and in some intervals described here, bolivinids make up more than fifty percent of the total assemblage. Therefore, any changes in abundance of this genus alone can drive changes in the assemblages as a whole. Within-species variation of morphologic traits have been correlated with affinities for certain environmental conditions (Lutze, 1964), yet congeneric gradations such as those observed here in the bolivinid genera merit further investigation. While bolivinids are widely accepted as low-oxygen dwelling species, *Bolivina argentea* specifically has been utilized as a low-oxygen indicator taxon

and analysis of their abundance and distribution requires careful scrutiny (Cardich et al., 2015; Caille et al., 2014; Mallon et al., 2012).

415 We identify an anomalous assemblage at 528 m water depth; this assemblage is the least diverse ($H=1.316$, in >150
420 μm size fraction). Importantly, the low diversity at this site is driven by the dominance of a single species, *B.*
argentea. We observe the dominance of *B. argentea* at 528 m water depth, near the modern upper margin of the
425 OMZ and a lower relative abundance of this species at 700 and 800 m water depth, in the heart of the OMZ (Figure
3). This pattern of *B. argentea* at high abundances near the upper margin of the OMZ has been previously observed
(Douglas, 1981; Mullins et al., 1985) and these species are often used as indicators of dysoxic environments
(Bernhard et al., 1997; Kaiho, 1999). We attribute some of the unexpected variability in benthic communities that
does not correlate with bottom water oxygenation to “edge effects” of the OMZ. Specifically, there is more
biologically available nitrate and nitrifying bacteria at the edges of the OMZ as compared to the center, and thus we
expect greater nutrient concentrations and larger food availability in these zones (Mullins et al., 1985). Multiple
430 species of benthic foraminifera respire nitrate in low oxygen environments; in particular, *B. argentea* is particularly
effective in utilizing nitrate as an alternative electron acceptor and this may contribute to its dominance at the upper
edge of the OMZ (Bernhard et al., 2012; Glock et al., 2019; Kuhnt et al., 2013). Further, seasonal or annual
variability in oxygenation of the upper margin of the OMZ causing a variable oxygenation regime at 528 m may
drive selection for species that can tolerate a range of environmental conditions rather than a specific threshold of
oxygenation. Further, environmental and ecological factors may combine to drive assemblage diversity; the
interactive effects of competition and environmental adaptation may promote habitat specialization at this water
depth (Fine et al., 2004). While the sites measured here document changes in the upper margin of the OMZ (528 m
site), they may exclude the lower margin of the OMZ due to sampling depths of coring sites.

Deleted: oxygen minimum zone

Deleted:

Deleted: S

Deleted: oxygen minimum zone

435 4.2 Temporal change in benthic foraminiferal assemblages record environmental change through time

Following results of analysis across modern core tops, all down core benthic foraminiferal assemblages were
collected from the >150 μm size fraction. The combination of analysis from three distinct modern environments
(upper margin of the OMZ (528 m), the center of the OMZ (800 m) and below the OMZ (1175 m)) allows for
reconstruction of oceanographic change through the water column. We acknowledge that the environment is more
440 variable than we can describe given the record available. Oxygenation varies on seasonal, annual, and decadal
timescales - yet each interval of sediment analyzed represents >35 years, thus we are capturing a time-averaged
signal. Further, several factors complicate our ability to interpret benthic assemblage records: relative preservation
of various shell types, post-depositional changes in sediment, dominant fauna within some assemblages that
dominate responses, and high frequency variability not captured in the record. Yet, we are still able to analyze
445 benthic foraminiferal assemblages to identify environmental changes through the time interval described here.

Integrating analysis of cores from multiple depths reveals decadal to centennial variability in oxygenation at the
upper margin of the OMZ (528 m) during the last 1.5 ka, but little to no change in the oxygenation at the center of

the OMZ (800 m) or below the OMZ (1175 m) (Figure 4). The change in assemblage at 528 m beginning at 400 ybp indicates a transition to the OMZ 'edge' environment in which *B. argentea* and *U. peregrina* species dominate in the modern. The formation of an assemblage that is similar to modern at 400 ybp implies the onset of modern conditions at this site which would include relatively low oxygen with variable oxygenation on seasonal to yearly timescales. We interpret the transition in assemblage as a decrease in oxygenation at this depth and a shoaling of the upper margin of the OMZ beginning at 400 ybp and continuing to present. The combined suite of foraminiferal assemblages reveals shoaling of the upper margin of the OMZ in the last 400 years, while the center of the OMZ and below the OMZ remained stable (Figure 4). As such, we document an expansion of the upper margin of the OMZ beginning ~ 1600 CE and continuing to the present.

Deleted: oxygen minimum zone

Our findings are consistent with observations from other regional records of oxygenation, including those from well-resolved records in nearby basins. Santa Monica Basin (SMB) and Santa Barbara Basin (SBB) are silled basins that experience periodic flushing; changes in the strength or oxygen content of North Pacific Intermediate Water, stratification or surface productivity can lead to changes in oxygenation within each basin (Balestra et al., 2018; Cannariato and Kennett, 1999; Schimmelmann et al., 2013). Marine sediment records from Santa Monica Basin show non-annual laminations (indicating a hypoxic to anoxic environment) beginning 400 ybp and document shoaling of the low-oxygen zone within the basin from 400 ybp to present (Christensen et al., 1994). Santa Barbara Basin has well-documented sediment laminations through most of the Holocene indicating persistent low oxygen, but also shows gradual intensification of the OMZ within SBB since 1850 CE (Wang et al., 2017).

Deleted: oxygen minimum zone

The synchronous decrease in oxygenation in Santa Monica Basin (Christensen et al., 1994) and San Diego margin (this study) from 400 ybp to present indicates that this deoxygenation is not driven by basinal changes alone; rather it is likely driven by regional scale phenomena. The decrease in oxygenation across the Southern California margin since 400 ybp could be attributed to 1) a change in oxygenation or strength of North Pacific Intermediate Water, 2) an increase in organic carbon flux from sea surface to depth driven by changes in surface productivity, or 3) decrease in bottom water mixing or ventilation as a result of changes in surface water temperatures. We note that within the San Diego margin and Santa Monica Basin records, deoxygenation trends begin ~400 ybp but continue or intensify in the last 200 years. In the last 150 years, deoxygenation is synchronous across SBB, SMB and SDM. In this interval, decreases in oxygenation may be due to an increase in organic carbon supply from terrestrial sources due to human land use change in the Southern CA region which has documented impacts on nearby benthic ecosystems (Tomasovych and Kidwell, 2017; Wang et al., 2017). Investigation of oxygenation change over time requires further research to identify forcing mechanisms for changes in the upper margin of the OMZ and to discern the relative impact of human and natural forcing in changing oxygenation across the last few centuries.

5 Conclusion

This spatial and temporal analysis of benthic foraminifera assemblages across a modern oxygen gradient on the San Diego margin improves our understanding of the relationship between assemblages and their environment.

Comparison of the relative abundance of benthic foraminifera in two size fractions (63-150 and >150 μm) across the modern OMZ shows that trends are either similar in both size fractions or are more pronounced in the larger size fraction. As a result, we conclude that analysis of the >150 μm assemblage for this site provides the most useful record for interpreting benthic foraminifera as a proxy for past change. We identify two hypoxic associated species (*B. spissa*, and *U. peregrina*), one oxic associated species (*G. subglobosa*) and one OMZ edge-associated species (*B. argentea*). Down core analysis of indicator species reveals variability in the upper margin of the OMZ while the center of the OMZ remained stable in the last 1.5ka. At 528 m, benthic foraminiferal assemblages indicate a decrease in oxygenation at this depth and a shoaling of the upper margin of the OMZ beginning at 400 ybp and continuing to present. Expansion of the upper margin of OMZ beginning 400 ybp is synchronous with regional records of oxygenation.

Data Availability

505 All data collected for this paper is electronically archived by the NOAA Paleoclimatology Database as “San Diego Margin Benthic Foraminiferal Assemblages from Late Holocene.”

Author Contributions

510 HMP, SEM, and TMH conceptualized and designed the project. HMP, SEM, JTD, and KRR completed data collection. HMP, TMH, and PDR completed data analysis. HMP wrote the manuscript. All authors contributed to editing of the manuscript.

Acknowledgements

515 We would like to acknowledge the San Diego Coastal Expedition team for their work in collecting the oceanographic data and sediment cores used in this study, particularly PIs Dr. Christina Frieder and Dr. Benjamin Grupe. We thank Dr. Seth Finnegan and Sara Kahanamoku for their support in microscopy and imaging. We acknowledge NSF support to T. Hill (OCE 1444451 and OCE 1832812), and Russell J. and Dorothy S. Bilinski Fellowship at Bodega Marine Laboratory, Geological Society of America Graduate Student Research Grant, Cushman Foundation for Foraminiferal Research William V. Sliter Research Award, and UC Davis Earth and Planetary Sciences Durrell Grant for support to H. Palmer. We acknowledge two helpful reviews that improved this manuscript.

520

References

- 525 Al-Sabouni, N., Fenton, I. S., Telford, R. J. and Kučera, M.: Reproducibility of species recognition in modern planktonic foraminifera and its implications for analyses of community structure, *Journal of Micropalaeontology*; Bath, 37(2), 519–534, doi:<http://dx.doi.org/10.5194/jm-37-519-2018>, 2018.
- 530 Bakun, A.: Climate change and ocean deoxygenation within intensified surface-driven upwelling circulations, *Philos T R Soc A*, 375(2102), doi:[ARTN 20160327 10.1098/rsta.2016.0327](https://doi.org/10.1098/rsta.2016.0327), 2017.
- Balestra, B., Krupinski, N. B. Q., Erohina, T., Fessenden-Rahn, J., Rahn, T. and Paytan, A.: Bottom-water oxygenation and environmental change in Santa Monica Basin, Southern California during the last 23 kyr, *Palaeogeography, Palaeoclimatology, Palaeoecology*, 490, 17–37, 2018.
- 535 Balmaki, B., Wigand, P. E., Frontalini, F., Shaw, T. A., Avnaim-Katav, S. and Rostami, M. A.: Late Holocene paleoenvironmental changes in the Seal Beach wetland (California, USA): A micropaleontological perspective, *Quaternary International*, doi:[10.1016/j.quaint.2019.10.012](https://doi.org/10.1016/j.quaint.2019.10.012), 2019.
- Bernhard, J. M. and Bowser, S. S.: Benthic foraminifera of dysoxic sediments: chloroplast sequestration and functional morphology, *Earth-Sci Rev*, 46(1–4), 149–165, 1999.
- 540 Bernhard, J. M. and Gupta, B. K. S.: Foraminifera of oxygen-depleted environments, in *Modern foraminifera*, pp. 201–216, Springer., 1999.
- Bernhard, J. M., Sen Gupta, B. K. and Borne, P. F.: Benthic foraminiferal proxy to estimate dysoxic bottom-water oxygen concentrations: Santa Barbara Basin, US Pacific continental margin, *The Journal of Foraminiferal Research*, 27(4), 301–310, 1997.
- 545 Bernhard, J. M., Casciotti, K. L., McIlvin, M. R., Beaudoin, D. J., Visscher, P. T. and Edgcomb, V. P.: Potential importance of physiologically diverse benthic foraminifera in sedimentary nitrate storage and respiration, *Journal of Geophysical Research: Biogeosciences*, 117(G3), doi:[10.1029/2012JG001949](https://doi.org/10.1029/2012JG001949), 2012.
- Bograd, S. J., Castro, C. G., Di Lorenzo, E., Palacios, D. M., Bailey, H., Gilly, W. and Chavez, F. P.: Oxygen declines and the shoaling of the hypoxic boundary in the California Current, *Geophysical Research Letters*, 35(12), doi:[Artn L12607 10.1029/2008gl034185](https://doi.org/10.1029/2008gl034185), 2008.
- 550 Breitburg, D., Levin, L. A., Oschlies, A., Gregoire, M., Chavez, F. P., Conley, D. J., Garçon, V., Gilbert, D., Gutierrez, D., Isensee, K., Jacinto, G. S., Limburg, K. E., Montes, I., Naqvi, S. W. A., Pitcher, G. C., Rabalais, N. N., Roman, M. R., Rose, K. A., Seibel, B. A., Telszewski, M., Yasuhara, M. and Zhang, J.: Declining oxygen in the global ocean and coastal waters, *Science*, 359(6371), 46–+, doi:[10.1126/science.aam7240](https://doi.org/10.1126/science.aam7240), 2018.
- 555 Burkett, A. M., Rathburn, A. E., Elena Pérez, M., Levin, L. A. and Martin, J. B.: Colonization of over a thousand *Cibicides wuellerstorfi* (foraminifera: Schwager, 1866) on artificial substrates in seep and adjacent off-seep locations in dysoxic, deep-sea environments, *Deep Sea Research Part I: Oceanographic Research Papers*, 117, 39–50, doi:[10.1016/j.dsr.2016.08.011](https://doi.org/10.1016/j.dsr.2016.08.011), 2016.
- 560 Cannariato, K. G. and Kennett, J. P.: Climatically related millennial-scale fluctuations in strength of California margin oxygen-minimum zone during the past 60 k.y., *Geology*, 27(11), 975–978, doi:[Doi 10.1130/0091-7613\(1999\)027<0975:Crmsfi>2.3.Co;2](https://doi.org/10.1130/0091-7613(1999)027<0975:Crmsfi>2.3.Co;2), 1999.
- Cardich, J., Gutiérrez, D., Romero, D., Pérez, A., Quiúzcoa, L., Marquina, R., Yupanqui, W., Solís, J., Carhuapoma, W., Sifeddine, A. and Rathburn, A.: Calcareous benthic foraminifera from the upper central Peruvian margin: control of the assemblage by pore water redox and sedimentary organic matter, *Marine Ecology Progress Series*, 535, 63–87, doi:[10.3354/meps11409](https://doi.org/10.3354/meps11409), 2015.

- 565 Cardich, J., Sifeddine, A., Salvatucci, R., Romero, D., Briceño-Zuluaga, F., Graco, M., Anculle, T., Almeida, C. and Gutiérrez, D.: Multidecadal Changes in Marine Subsurface Oxygenation Off Central Peru During the Last ca. 170 Years, *Front. Mar. Sci.*, 6, doi:10.3389/fmars.2019.00270, 2019.
- Caulle, C., Koho, K. A., Mojtahid, M., Reichart, G. J. and Jorissen, F. J.: Live (Rose Bengal stained) foraminiferal faunas from the northern Arabian Sea: faunal succession within and below the OMZ, *Biogeosciences*, 11(4), 1155–1175, doi:10.5194/bg-11-1155-2014, 2014.
- 570 Checkley, D. M. and Barth, J. A.: Patterns and processes in the California Current System, *Prog Oceanogr.* 83(1–4), 49–64, doi:10.1016/j.pocean.2009.07.028, 2009.
- Christensen, C. J., Gorsline, D. S., Hammond, D. E. and Lund, S. P.: Non-annual laminations and expansion of anoxic basin-floor conditions in Santa Monica Basin, California Borderland, over the past four centuries, *Mar Geol.* 116(3–4), 399–418, 1994.
- 575 De Villiers, S.: Optimum growth conditions as opposed to calcite saturation as a control on the calcification rate and shell-weight of marine foraminifera, *Marine Biology*, 144(1), 45–49, 2004.
- Douglas, R.: Paleocology of Continental Margin Basins: A modern case history from the borderland of Southern California, *Depositional System of Active Continental Margin Basins- Short Course Notes*, 1981.
- 580 Douglas, R. G. and Heitman, H. L.: Slope and basin benthic foraminifera of the California borderland, 1979.
- Emmer, E. and Thunell, R. C.: Nitrogen isotope variations in Santa Barbara Basin sediments: Implications for denitrification in the eastern tropical North Pacific during the last 50,000 years, *Paleoceanography*, 15(4), 377–387, doi:Doi 10.1029/1999pa000417, 2000.
- 585 Erdem, Z. and Schönfeld, J.: Pleistocene to Holocene benthic foraminiferal assemblages from the Peruvian continental margin, *Palaeontologia Electronica*, doi:10.26879/764, 2017.
- Erdem, Z., Schönfeld, J., Rathburn, A. E., Perez, M.-E., Cardich, J. and Glock, N.: Bottom-water deoxygenation at the Peruvian Margin during the last deglaciation recorded by benthic foraminifera, *Biogeosciences Discussions*, doi:https://orcid.org/0000-0002-5509-8733, 2019.
- 590 Fine, P. V. A., Mesones, I. and Coley, P. D.: Herbivores promote habitat specialization by trees in amazonian forests, *Science*, 305(5684), 663–665, doi:DOI 10.1126/science.1098982, 2004.
- Fisler, J. and Hendy, I. L.: California Current System response to late Holocene climate cooling in southern California, *Geophysical Research Letters*, 35(9), doi:Artn L09702 10.1029/2008gl033902, 2008.
- 595 Fox, L., Liebrand, D., Giles Miller, C., Roseby, Z. A., Stukins, S., Taylor, B., Pearson, P. N., Wade, B. S. and Purvis, A.: Factors affecting consistency and accuracy in identifying modern macroperforate planktonic foraminifera, *Journal of Micropalaeontology*, 37(2), 431–443, 2018.
- Friddell, J. E., Thunell, R. C., Guilderson, T. P. and Kashgarian, M.: Increased northeast Pacific climatic variability during the warm middle Holocene, *Geophysical Research Letters*, 30(11), 2003.
- Gilly, W. F., Beman, J. M., Litvin, S. Y. and Robison, B. H.: Oceanographic and Biological Effects of Shoaling of the Oxygen Minimum Zone, *Annu Rev Mar Sci*, 5, 393–420, doi:10.1146/annurev-marine-120710-100849, 2013.
- 600 Glock, N., Roy, A.-S., Romero, D., Wein, T., Weissenbach, J., Revsbech, N. P., Høglund, S., Clemens, D., Sommer, S. and Dagan, T.: Metabolic preference of nitrate over oxygen as an electron acceptor in foraminifera from the Peruvian oxygen minimum zone, *PNAS*, 116(8), 2860–2865, doi:10.1073/pnas.1813887116, 2019.

- Gooday, A. J.: Benthic foraminifera (Protista) as tools in deep-water palaeoceanography: environmental influences on faunal characteristics, 2003.
- 605 Gooday, A. J., Bernhard, J. M., Levin, L. A. and Suhr, S. B.: Foraminifera in the Arabian Sea oxygen minimum zone and other oxygen-deficient settings: taxonomic composition, diversity, and relation to metazoan faunas, *Deep Sea Research Part II: Topical Studies in Oceanography*, 47(1–2), 25–54, 2000.
- Grupe, B. M., Krach, M. L., Pasulka, A. L., Maloney, J. M., Levin, L. A. and Frieder, C. A.: Methane seep ecosystem functions and services from a recently discovered southern California seep, *Mar Ecol-Evol Persp*, 36, 91–108, doi:10.1111/maec.12243, 2015.
- 610 Helly, J. J. and Levin, L. A.: Global distribution of naturally occurring marine hypoxia on continental margins, *Deep-Sea Res Pt I*, 51(9), 1159–1168, doi:10.1016/j.dsr.2004.03.009, 2004.
- Hendy, I. L.: The paleoclimatic response of the Southern Californian Margin to the rapid climate change of the last 60 ka: A regional overview, *Quatern Int*, 215(1–2), 62–73, 2010.
- 615 Hendy, I. L. and Kennett, J. P.: Dansgaard-Oeschger cycles and the California Current System: Planktonic foraminiferal response to rapid climate change in Santa Barbara Basin, Ocean Drilling Program hole 893A, *Paleoceanography*, 15(1), 30–42, doi:10.1029/1999pa000413, 2000.
- Hill, T. M., Kennett, J. P. and Spero, H. J.: Foraminifera as indicators of methane-rich environments: a study of modern methane seeps in Santa Barbara Channel, California, *Mar Micropaleontol*, 49(1–2), 123–138, 2003.
- 620 Hsiang, A. Y., Brombacher, A., Rillo, M. C., Mleneck-Vautravers, M. J., Conn, S., Lordsmith, S., Jentzen, A., Henehan, M. J., Metcalfe, B., Fenton, I. S., Wade, B. S., Fox, L., Meilland, J., Davis, C. V., Baranowski, U., Groeneveld, J., Edgar, K. M., Movellan, A., Aze, T., Dowsett, H. J., Miller, C. G., Rios, N. and Hull, P. M.: Endless Forams: >34,000 Modern Planktonic Foraminiferal Images for Taxonomic Training and Automated Species Recognition Using Convolutional Neural Networks, *Paleoceanography and Paleoclimatology*, 34(7), 1157–1177, doi:10.1029/2019PA003612, 2019.
- 625 Ingram, B. L. and Southon, J. R.: Reservoir ages in eastern Pacific coastal and estuarine waters, *Radiocarbon*, 38(3), 573–582, 1996.
- Jaccard, S. L., Galbraith, E. D., Frolicher, T. L. and Gruber, N.: Ocean (De)Oxygenation across the Last Deglaciation Insights for the Future, *Oceanography*, 27(1), 26–35, 2014.
- 630 Jorissen, F. J., de Stigter, H. C. and Widmark, J. G. V.: A conceptual model explaining benthic foraminiferal microhabitats, *Marine Micropaleontology*, 26(1), 3–15, doi:10.1016/0377-8398(95)00047-X, 1995.
- Jorissen, F. J., Fontanier, C. and Thomas, E.: Chapter Seven Paleooceanographical Proxies Based on Deep-Sea Benthic Foraminiferal Assemblage Characteristics, in *Developments in Marine Geology*, vol. 1, pp. 263–325, Elsevier., 2007.
- 635 Kaiho, K.: Benthic Foraminiferal Dissolved-Oxygen Index and Dissolved-Oxygen Levels in the Modern Ocean, *Geology*, 22(8), 719–722, doi:10.1130/0091-7613(1994)022<0719:Bfdoia>2.3.Co;2, 1994.
- Kaiho, K.: Effect of organic carbon flux and dissolved oxygen on the benthic foraminiferal oxygen index (BFOI), *Mar Micropaleontol*, 37(1), 67–76, doi:10.1016/S0377-8398(99)00008-0, 1999.
- 640 Keating-Bitonti, C. R. and Payne, J. L.: Physicochemical controls on biogeographic variation of benthic foraminiferal test size and shape, *Paleobiology*, 42(4), 595–611, 2016.
- Keating-Bitonti, C. R. and Payne, J. L.: Ecophenotypic responses of benthic foraminifera to oxygen availability along an oxygen gradient in the California Borderland, *Marine Ecology*, 38(3), 2017.

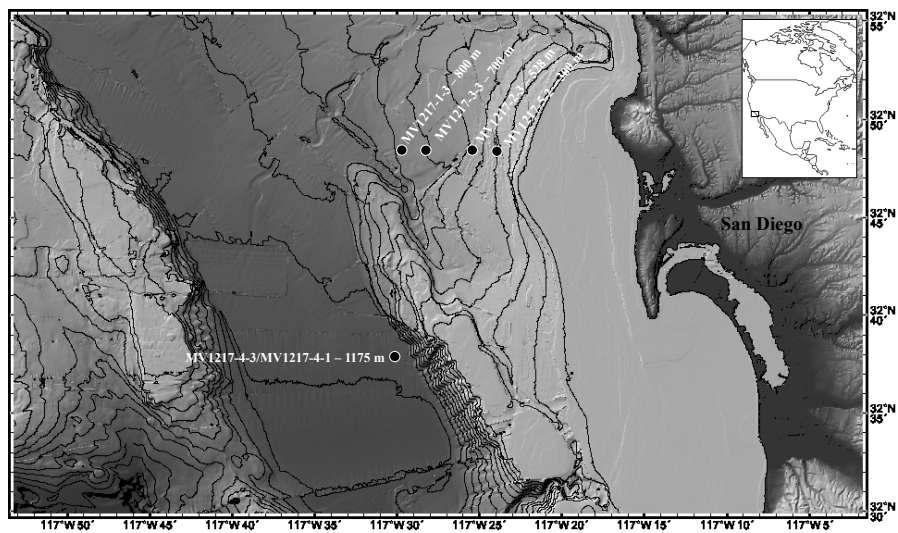
- Keating-Bitonti, C. R. and Payne, J. L.: Environmental influence on growth history in marine benthic foraminifera, *Paleobiology*, 44(4), 736–757, doi:10.1017/pab.2018.19, 2018.
- 645 Kuhnt, T., Friedrich, O., Schmiedl, G., Milker, Y., Mackensen, A. and Lückge, A.: Relationship between pore density in benthic foraminifera and bottom-water oxygen content, *Deep Sea Research Part I: Oceanographic Research Papers*, 76, 85–95, doi:10.1016/j.dsr.2012.11.013, 2013.
- Levin, L. A.: Oxygen minimum zone benthos: Adaptation and community response to hypoxia, *Oceanogr Mar Biol*, 41, 1–45, 2003.
- 650 Levin, L. A. and Dayton, P. K.: Ecological theory and continental margins: where shallow meets deep, *Trends Ecol Evol*, 24(11), 606–617, doi:10.1016/j.tree.2009.04.012, 2009.
- Levin, L. A., Ekau, W., Gooday, A. J., Jorissen, F., Middelburg, J. J., Naqvi, S. W. A., Neira, C., Rabalais, N. N. and Zhang, J.: Effects of natural and human-induced hypoxia on coastal benthos, *Biogeosciences*, 6(10), 2063–2098, doi:10.5194/bg-6-2063-2009, 2009.
- 655 Levin, L. A., Sibuet, M., Gooday, A. J., Smith, C. R. and Vanreusel, A.: The roles of habitat heterogeneity in generating and maintaining biodiversity on continental margins: an introduction, *Mar Ecol-Evol Persp*, 31(1), 1–5, doi:DOI 10.1111/j.1439-0485.2009.00358.x, 2010.
- Lutze, G. F.: Statistical Investigations of the variability of *Bolivina argentea* Cushman, *Contributions from the Cushman Foundation for Foraminiferal Research*, XV(3), 1964.
- 660 Mallon, J., Glock, N. and Schönfeld, J.: The Response of Benthic Foraminifera to Low-Oxygen Conditions of the Peruvian Oxygen Minimum Zone, in *Anoxia: Evidence for Eukaryote Survival and Paleontological Strategies*, edited by A. V. Altenbach, J. M. Bernhard, and J. Seckbach, pp. 305–321, Springer Netherlands, Dordrecht., 2012.
- Mazumder, A. and Nigam, R.: Bathymetric preference of four major genera of rectilinear benthic foraminifera within oxygen minimum zone in Arabian Sea off central west coast of India, *J Earth Syst Sci*, 123(3), 633–639, doi:10.1007/s12040-014-0419-y, 2014.
- 665 McGann, M.: Historical and modern distributions of benthic foraminifera on the continental shelf of Monterey Bay, California, *Mar Geol*, 181(1–3), 115–156, doi:Pii S0025-3227(01)00264-X Doi 10.1016/S0025-3227(01)00264-X, 2002.
- Moffitt, S. E., Hill, T. M., Ohkushi, K., Kennett, J. P. and Behl, R. J.: Vertical oxygen minimum zone oscillations since 20 ka in Santa Barbara Basin: A benthic foraminiferal community perspective, *Paleoceanography*, 29(1), 44–57, doi:10.1002/2013pa002483, 2014.
- 670 Moffitt, S. E., Moffitt, R. A., Sauthoff, W., Davis, C. V., Hewett, K. and Hill, T. M.: Paleoceanographic insights on recent oxygen minimum zone expansion: lessons for modern oceanography, *PLoS One*, 10(1), e0115246, doi:10.1371/journal.pone.0115246, 2015a.
- Moffitt, S. E., Hill, T. M., Roopnarine, P. D. and Kennett, J. P.: Response of seafloor ecosystems to abrupt global climate change, *P Natl Acad Sci USA*, 112(15), 4684–4689, doi:10.1073/pnas.1417130112, 2015b.
- 675 Mullins, H. T., Thompson, J. B., McDougall, K. and Vercoutere, T. L.: Oxygen-Minimum Zone Edge Effects - Evidence from the Central California Coastal Upwelling System, *Geology*, 13(7), 491–494, doi:Doi 10.1130/0091-7613(1985)13<491:Ozeef>2.0.Co;2, 1985.
- 680 Myhre, S. E., Kroeker, K. J., Hill, T. M., Roopnarine, P. and Kennett, J. P.: Community benthic paleoecology from high-resolution climate records: Mollusca and foraminifera in post-glacial environments of the California margin, *Quaternary Sci Rev*, 155, 179–197, doi:10.1016/j.quascirev.2016.11.009, 2017.

- 685 Nam, S., Takeshita, Y., Frieder, C. A., Martz, T. and Ballard, J.: Seasonal advection of Pacific Equatorial Water alters oxygen and pH in the Southern California Bight, *J Geophys Res-Oceans*, 120(8), 5387–5399, doi:10.1002/2015jc010859, 2015.
- Ohkushi, K., Kennett, J. P., Zeleski, C. M., Moffitt, S. E., Hill, T. M., Robert, C., Beaufort, L. and Behl, R. J.: Quantified intermediate water oxygenation history of the NE Pacific: A new benthic foraminiferal record from Santa Barbara basin, *Paleoceanography*, 28(3), 453–467, doi:10.1002/palo.20043, 2013.
- 690 Oksanen, J., Blanchet, F. G., Kindt, R., Legendre, P., Minchin, P. R., O'hara, R. B., Simpson, G. L., Solymos, P., Stevens, M. H. H. and Wagner, H.: Package 'vegan,' *Community ecology package*, version, 2(9), 2013.
- Peet, R. K.: The measurement of species diversity, *Annual review of ecology and systematics*, 5(1), 285–307, 1974.
- Rathburn, A. E., Willingham, J., Ziebis, W., Burkett, A. M. and Corliss, B. H.: A New biological proxy for deep-sea paleo-oxygen: Pores of epifaunal benthic foraminifera, *Sci Rep*, 8(1), 9456, doi:10.1038/s41598-018-27793-4, 2018.
- 695 Roark, E. B., Ingram, B. L., Southon, J. and Kennett, J. P.: Holocene foraminiferal radiocarbon record of paleocirculation in the Santa Barbara Basin, *Geology*, 31(4), 379–382, doi:Doi 10.1130/0091-7613(2003)031<0379:Hfrop>2.0.Co;2, 2003.
- Schimmelmann, A., Hendy, I. L., Dunn, L., Pak, D. K. and Lange, C. B.: Revised similar to 2000-year chronostratigraphy of partially varved marine sediment in Santa Barbara Basin, California, *Gff*, 135(3–4), 258–264, doi:10.1080/11035897.2013.773066, 2013.
- 700 Schmidtko, S., Stramma, L. and Visbeck, M.: Decline in global oceanic oxygen content during the past five decades, *Nature*, 542(7641), 335–+, doi:10.1038/nature21399, 2017.
- Setoyama, E. and Kaminski, M.: Neogene Benthic Foraminifera from the southern Bering Sea (IODP Expedition 323), *Palaeontologia Electronica*, doi:10.26879/462, 2015.
- 705 Shibahara, A., Ohkushi, K., Kennett, J. P. and Ikehara, K.: Late Quaternary changes in intermediate water oxygenation and oxygen minimum zone, northern Japan: A benthic foraminiferal perspective, *Paleoceanography*, 22(3), doi:Artn Pa3213 10.1029/2005pa001234, 2007.
- Stott, L. D., Neumann, M. and Hammond, D.: Intermediate water ventilation on the northeastern Pacific margin during the late Pleistocene inferred from benthic foraminiferal delta C-13, *Paleoceanography*, 15(2), 161–169, doi:Doi 10.1029/1999pa000375, 2000.
- 710 Stramma, L., Johnson, G. C., Firing, E. and Schmidtko, S.: Eastern Pacific oxygen minimum zones: Supply paths and multidecadal changes, *Journal of Geophysical Research: Oceans*, 115(C9), 2010.
- Stuiver, M. and Polach, H. A.: Discussion reporting of 14 C data, *Radiocarbon*, 19(3), 355–363, 1977.
- 715 Takeshita, Y., Frieder, C. A., Martz, T. R., Ballard, J. R., Feely, R. A., Kram, S., Nam, S., Navarro, M. O., Price, N. N. and Smith, J. E.: Including high-frequency variability in coastal ocean acidification projections, *Biogeosciences*, 12(19), 5853–5870, 2015.
- Taylor, M. A., Hendy, I. L. and Pak, D. K.: The California Current System as a transmitter of millennial scale climate change on the northeastern Pacific margin from 10 to 50 ka, *Paleoceanography*, 30(9), 1168–1182, doi:10.1002/2014pa002738, 2015.
- 720 Tetard, M., Licari, L. and Beaufort, L.: Oxygen history off Baja California over the last 80 kyr: A new foraminiferal-based record, *Paleoceanography*, 32(3), 246–264, doi:10.1002/2016PA003034, 2017.

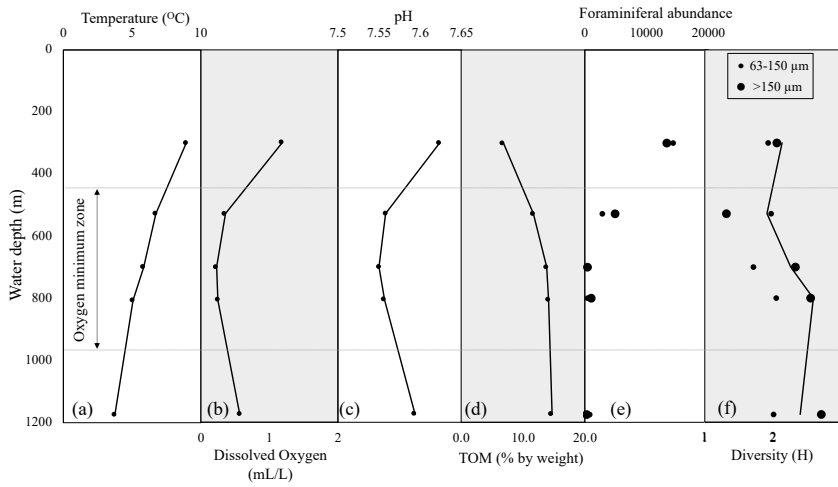
Tomasovych, A. and Kidwell, S. M.: Nineteenth-century collapse of a benthic marine ecosystem on the open continental shelf, *P Roy Soc B-Biol Sci*, 284(1856), doi:ARTN 20170328 10.1098/rspb.2017.0328, 2017.

725 Venturelli, R. A., Rathburn, A., Burkett, A. and Ziebis, W.: Epifaunal Foraminifera in an Infaunal World: Insights Into the Influence of Heterogeneity on the Benthic Ecology of Oxygen-Poor, Deep-Sea Habitats, *Frontiers in Marine Science*, 5, 344, 2018.

Wang, Y., Hendy, I. and Napier, T. J.: Climate and Anthropogenic Controls of Coastal Deoxygenation on Interannual to Centennial Timescales, *Geophysical Research Letters*, 2017.



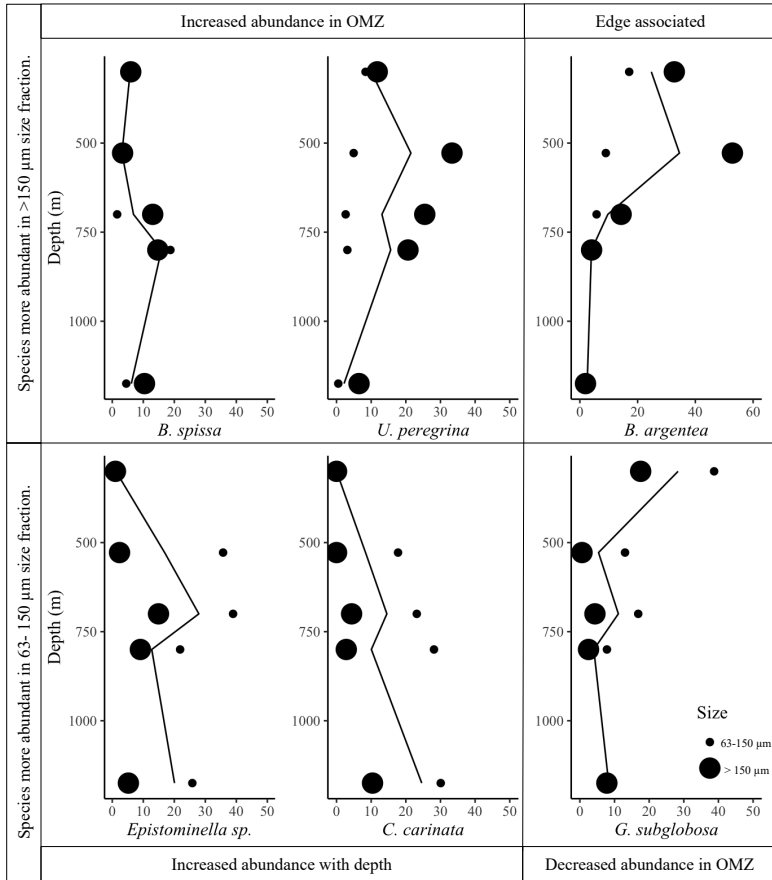
735 **Figure 1.** Map of cores used in this study. The cores were collected along a transect perpendicular to shore at the following water depths: 300, 528, 700, 800, 1175 m. Core top samples were analyzed for all cores. Cores MV1217-2-3, MV1217-1-3, and MV1217-4-3/MV1217-4-1 were analyzed down core.



740

Figure 2. Profiles of temperature (a), dissolved oxygen (b), pH (c), and total organic matter (% by weight) (d) across depth transect. Foraminiferal abundance (total calcareous foraminifera) (e) and diversity (Shannon Index, H) (f) are shown for two size fractions. In panels (e) and (f), large black dots are >150 μm size fraction, small black dots are 63-150 μm and black line on diversity plot represents trends from the complete assemblage (>63 μm). Assemblage counts are standardized to the volume (63.62 cm³) of the sampled cylinder of the sediment (core). Gray dashed line shows approximate boundaries of the oxygen minimum zone.

745



750

Figure 3: Relative abundance of foraminiferal species (percent of total calcareous taxa) in core top sample (0-2 cm) vs. water depth (m). Large black dots are >150 μm size fraction, small black dots are 63-150 μm size fraction and black lines represent trends considering the complete assemblage (>63 μm).

755

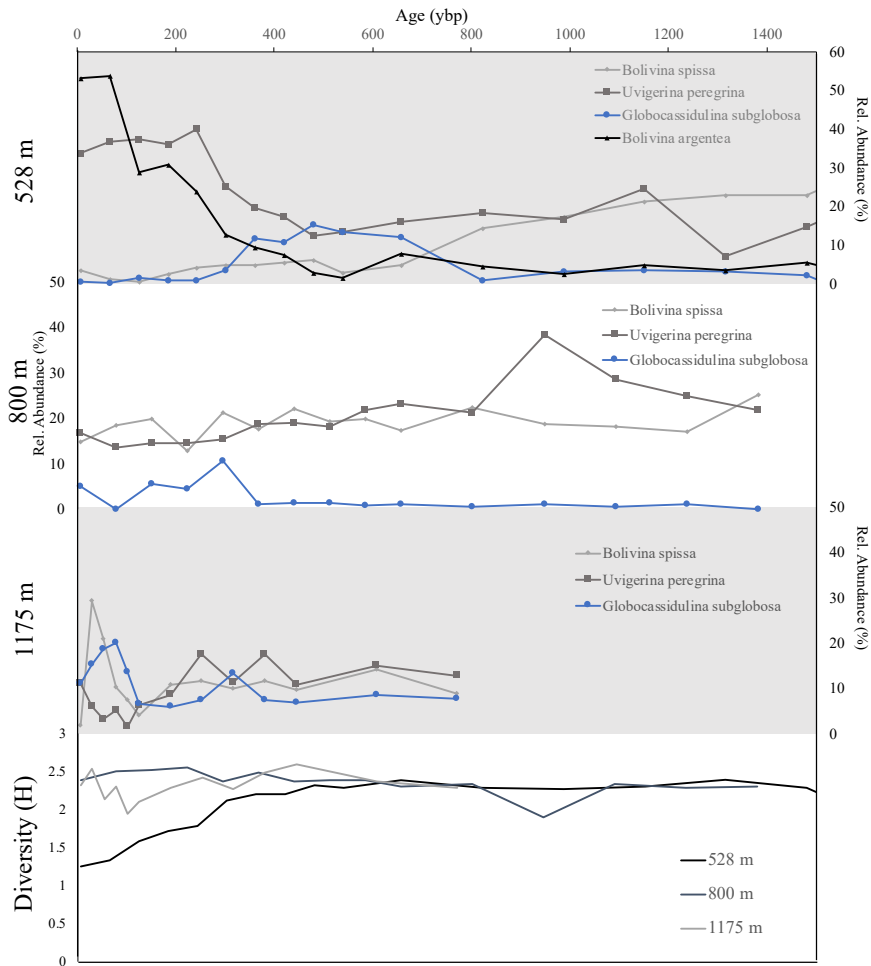


Figure 4: Top 3 panels show relative abundance of two species of low-oxygen foraminifera (*B. spissa* and *U. peregrina*, gray lines) and one species of oxic foraminifera (*G. subglobosa*, blue lines) from the >150 μm size fraction down core through time, in years before present for cores from 3 water depths (528 m, 800 m, 1175 m). Top panel also includes relative abundance of *B. argentea*. Bottom panel shows diversity (Shannon's Index, H) through time for 3 cores.

760

765

Tables

Core Name	Water Depth (m)	Latitude	Longitude	Core Length (cm)	Temperature (°C)	Dissolved Oxygen (mL/L)	pH	Salinity (psu)	Total organic matter (% wt)
MV1217-5-2	300	32.8100166	117.468100	16	8.614	1.54	7.65	34.145	6.8
MV1217-2-3	528	32.8100333	117.416583	26	6.622	0.35	7.57	34.313	11.7
MV1217-3-3	700	32.8099666	117.450966	20	5.898	0.26	7.56	34.348	13.9
MV1217-1-3	800	32.8095166	117.506933	20	5.049	0.29	7.56	34.405	14.2
MV1217-4-3/1	1175	32.6333333	117.499883	16	3.823	0.58	7.59	34.501	14.7

Deleted: 37
 Deleted: 17
 Deleted: 75
 Deleted: 1
 Deleted: 1

Table 1: Data for cores used in this study. Temperature, dissolved oxygen, pH and salinity were measured in bottom water directly above each coring site.

770

Core	Sample Interval	Age (¹⁴ C years)	±	1 Sigma Maximum Calendar Age Range	1 Sigma Minimum Calendar Age Range	Age in Calendar Years	Sedimentation Rate (cm/ka)	±
MV1217-2-3	11-12 cm	1230	30	1403	1319	1361	16.9	1.0
MV1217-2-3	16-17 cm	2085	30	602	474	538	6.1	0.2
MV1217-2-3	25-26 cm	2405	35	237	107	172	24.6	0.1
MV1217-4-3	5-6 cm	670	35	1950	1837	1893.5	42.2	11.3
MV1217-4-1	10-11 cm	960	30	1630	1518	1574	15.6	0.2
MV1217-4-1	20-21 cm	1840	35	817	698	757.5	12.3	0.4

Table 2. Radiocarbon ages of mixed planktonic foraminifera from MV1217-2-3 (528 m water depth), MV1217-4-3 (1175 m water depth) and MV1217-4-1 (1175 m water depth).

Supporting Information for
Southern California margin benthic foraminiferal assemblages record recent centennial-scale changes in oxygen minimum zone

Hannah M. Palmer^{1,2}, Tessa M. Hill^{1,2}, Peter D. Roopnarine³, Sarah E. Myhre⁴, Katherine R. Reyes^{1,5}, and Jonas T. Donnenfield^{1,6}

¹Bodega Marine Laboratory, University of California, Davis, California, USA

²Department of Earth and Planetary Sciences, University of California, Davis, California, USA

³Department of Invertebrate Zoology and Geology, California Academy of Sciences, San Francisco, California, USA

⁴School of Oceanography, University of Washington, Seattle, Washington, USA

⁵Department of Natural Sciences and Mathematics, Dominican University of California, San Rafael, California, USA

⁶Geology Department, Carleton College, Northfield, Minnesota, USA

This supplement contains four supplemental figures [and a taxonomic reference list for the benthic foraminiferal species included in the text of the manuscript](#). All materials and methods for data collection are described in the main text of this article.

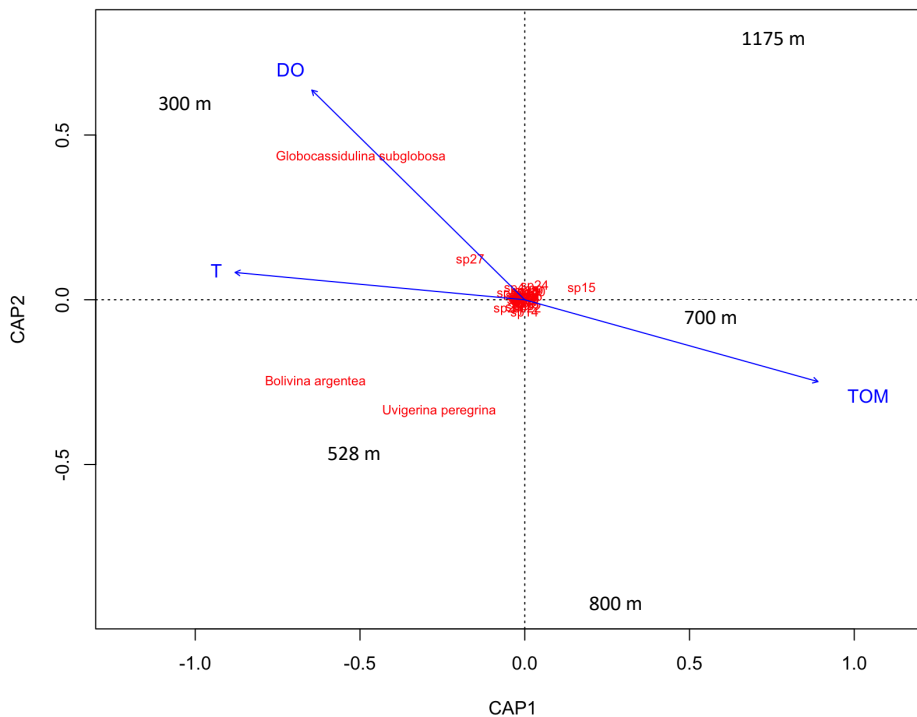


Figure S1. Distance Based Redundance Analysis of core-top benthic foraminiferal assemblages including both size fractions (>63 μm). Species are listed in red – species discussed in manuscript are labeled. Sites are listed as water depth in meters. Blue arrows show ordination of environmental factors T= temperature, DO = dissolved oxygen, TOM= total organic matter). Eigenvalues for two axes are CAP1 (0.4575) and CAP2 (0.2024).

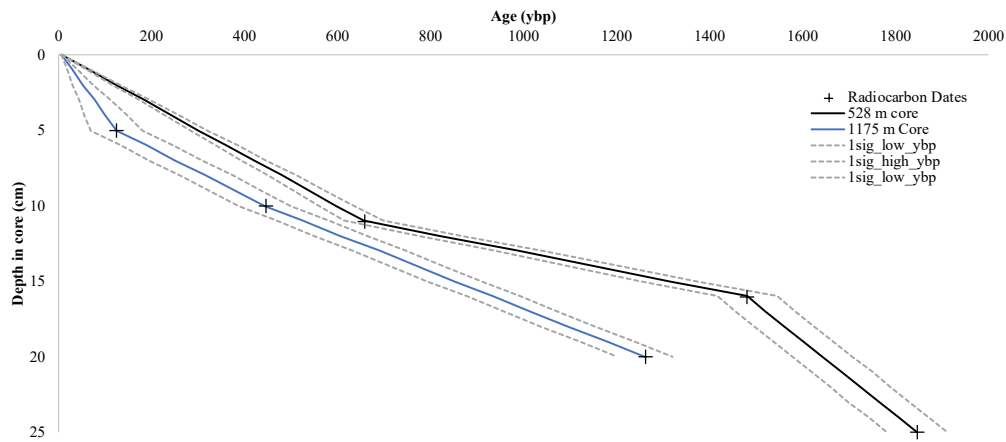


Figure S2. Age model for two cores. Age shown in years before present. Linear interpolation between radiocarbon dates (+). MV1217-2-3 (528 m water depth) is black line. MV1217-4-3 and MV1217-4-1 (1175 m) is blue line. Dashed lined represent +/- 1 sigma years.

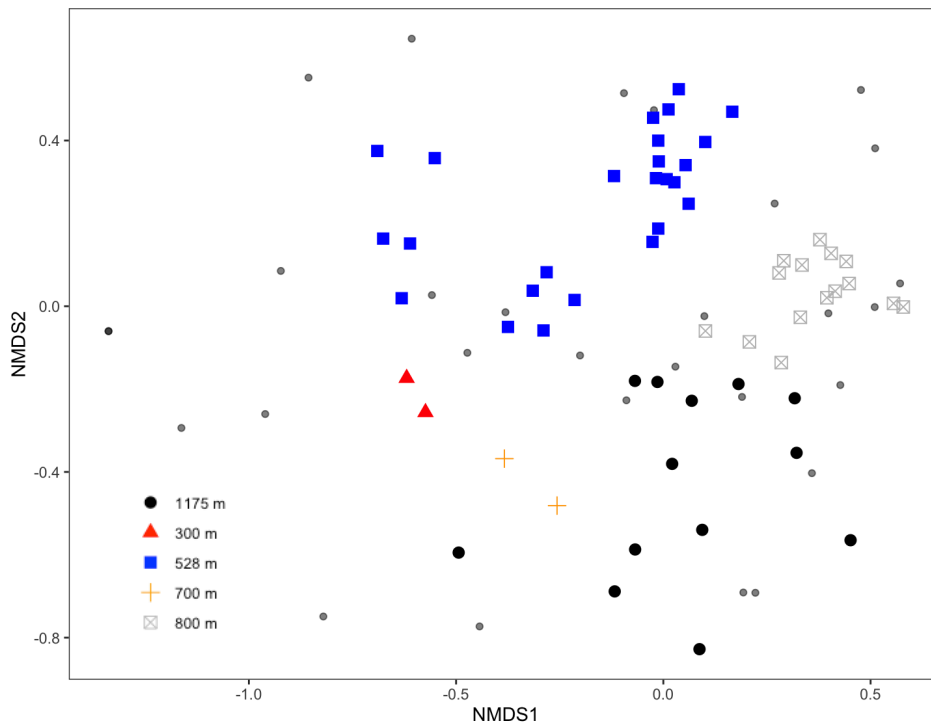


Figure S3. Non-metric multidimensional scaling plot of all benthic foraminiferal assemblages through time. Species are plotted as small gray dots. All other points represent assemblages from 1 cm intervals through time at each of the 5 cores. Legend shows which dots represent each water depth/site (Red triangle = 300 m, blue square = 528 m, orange crosshair = 700 m, Grey box with x = 800 m, black circle = 1175 m).



Figure S4: Light microscope images of benthic foraminifera (*Bolivina spissa*, *Uvigerina peregrina*, *Bolivina argentea*, *Epistominella* sp., *Cassidulina carinata*, *Globocassidulina subglobosa*) evaluated in this study. All scale bars are 100 µm.

Taxonomic reference list of benthic foraminifera species included in manuscript

Bolivina argentea Cushman 1926. (Figure S4)

Bolivina spissa = *Bolivina subadvaena* Cushman var. *spissa* Cushman 1926. (Figure S4)

Bulimina spp. * (includes *Bulimina mexicana* = *Bulimina inflata* Seguenza var. *mexicana* Cushman, 1922 and

Bulimina exilis = *Bulimina elegans* d'Orbigny var. *exilis* Brady, 1884.)

Cassidulina carinata = *Cassidulina laevigata* d'Orbigny var. *carinata* Silvestri, 1896. (Figure S4)

Cibicidoides sp. **

Epistominella sp. (Figure S4)

Globobulimina pacifica Cushman, 1927.

Globobulimina ovata d'Orbigny 1846.

Globocassidulina subglobosa = *Cassidulina subglobosa* Brady, 1881. (Figure S4)

Nonionella stella = *Nonionella miocenica* Cushman var. *stella* Cushman and Moyer, 1930.

Quinqueloculina sp. **

Uvigerina peregrina (Figure S4) Cushman 1923.

* Individuals in this genus were identified to species but considered together for the interpretations of this paper.

**Due to low abundance, individuals in this genus were not identified to species level.