

Figure S1

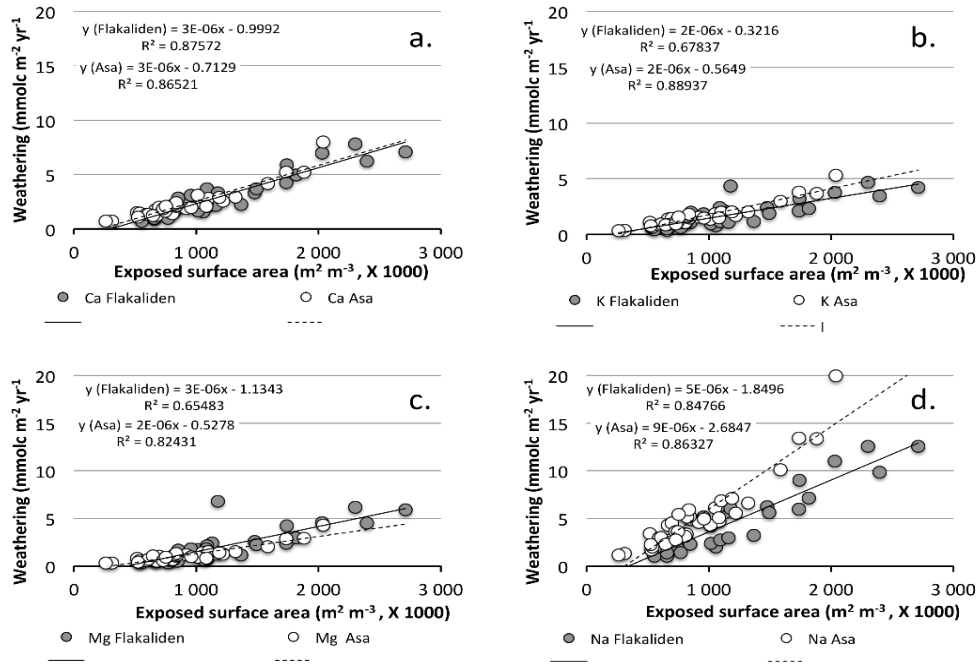


Figure S2

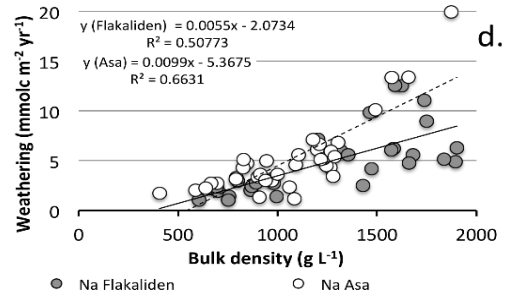
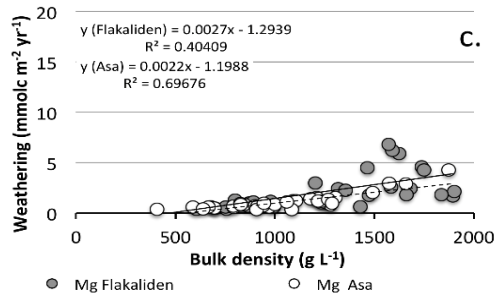
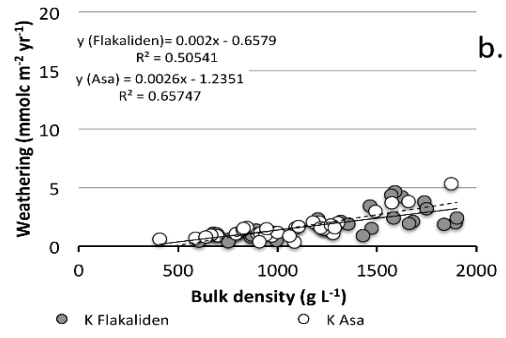
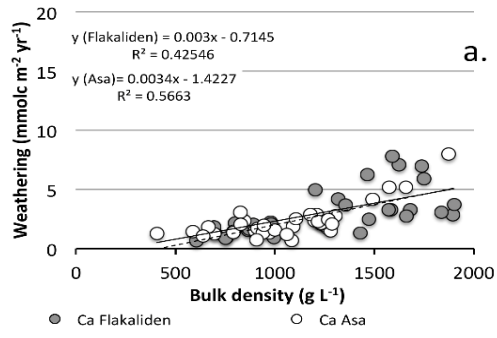


Figure S3

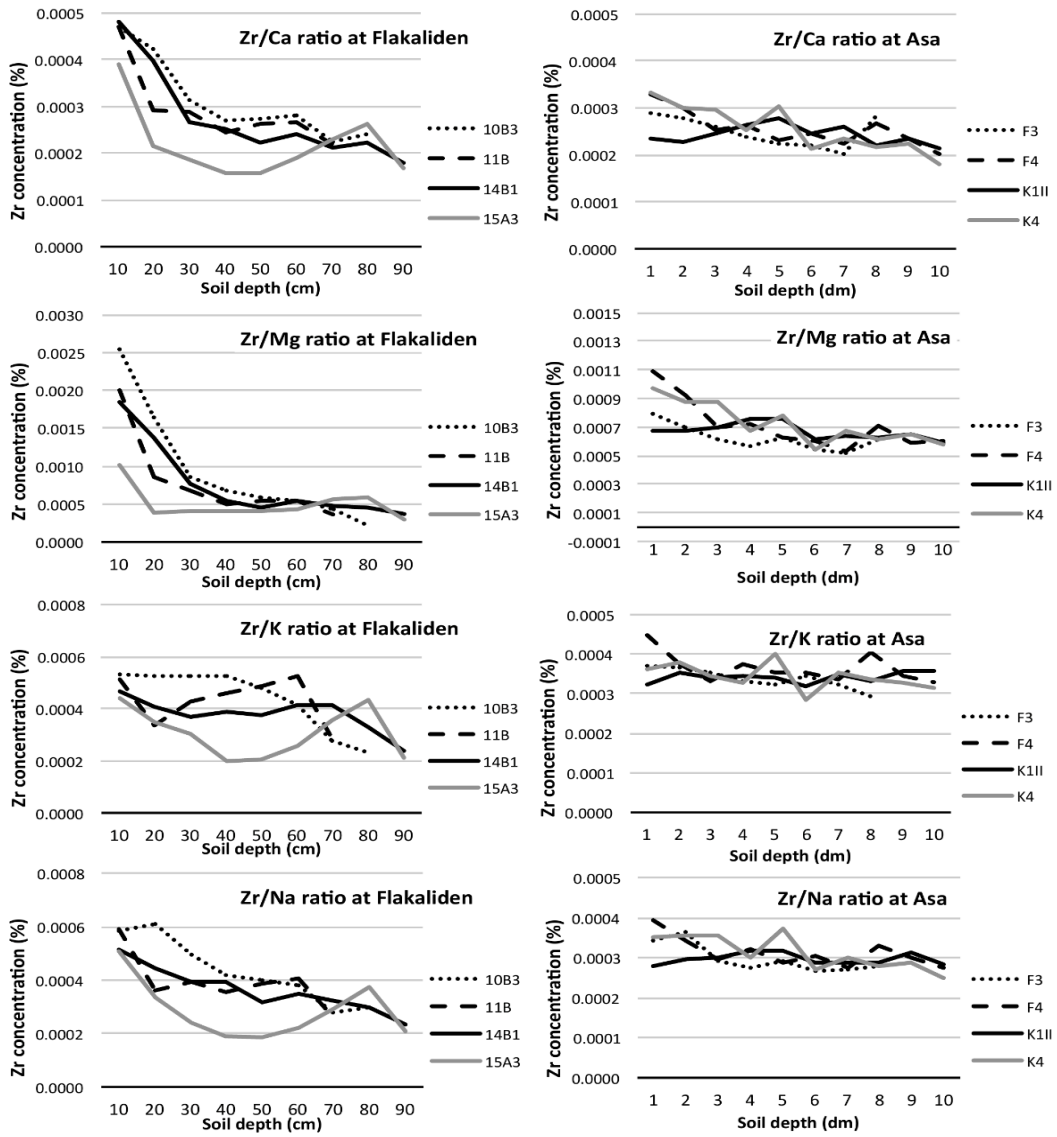


Table S1: Sensitivity analysis of PROFILE at Flakaliden based on three different scenarios compared to original results as used in this study. (i.e. Homogeneous soil (i.e. Homogeneous soil (soil physics and mineralogy), Homogeneous Soil physical properties (soil bulk density and specific exposed mineral surface area), Homogeneous mineralogy) compared to original results as used in this study.

| Soil profile | Soil depth | Type | Ca | Mg | K | Na |
|--------------|------------|--------------------------------------|------|------|------|------|
| 11B | 0-10 | Original results | 1,7 | 0,6 | 1,1 | 2,1 |
| 11B | 10-20 | Original results | 1,6 | 0,7 | 0,8 | 2,0 |
| 11B | 20-30 | Original results | 2,2 | 1,1 | 1,2 | 3,2 |
| 11B | 30-40 | Original results | 4,2 | 2,4 | 2,1 | 6,0 |
| 11B | 40-50 | Original results | 6,3 | 4,5 | 3,5 | 9,8 |
| 11B | 50-60 | Original results | 7,1 | 5,9 | 4,2 | 12,5 |
| 11B | 60-70 | Original results | 3,3 | 2,6 | 2,4 | 6,2 |
| 11B | 0-50cm | Original results | 16,0 | 9,4 | 8,6 | 23,1 |
| 11B | 0-10 | Homogeneous soil | 6,0 | 3,5 | 3,2 | 7,3 |
| 11B | 10-20 | Homogeneous soil | 3,4 | 2,1 | 1,8 | 4,7 |
| 11B | 20-30 | Homogeneous soil | 3,2 | 1,9 | 1,9 | 5,0 |
| 11B | 30-40 | Homogeneous soil | 3,1 | 1,9 | 1,9 | 5,1 |
| 11B | 40-50 | Homogeneous soil | 3,0 | 1,9 | 1,9 | 5,0 |
| 11B | 50-60 | Homogeneous soil | 3,0 | 1,9 | 1,9 | 5,0 |
| 11B | 60-70 | Homogeneous soil | 3,0 | 1,9 | 1,9 | 5,0 |
| 11B | 0-50cm | Homogeneous soil | 18,7 | 11,3 | 10,7 | 27,2 |
| 11B | 0-10 | Homogeneous Soil physical properties | 4,9 | 1,9 | 3,3 | 6,4 |
| 11B | 10-20 | Homogeneous Soil physical properties | 3,1 | 1,4 | 1,7 | 4,1 |
| 11B | 20-30 | Homogeneous Soil physical properties | 3,2 | 1,6 | 1,8 | 4,9 |
| 11B | 30-40 | Homogeneous Soil physical properties | 3,6 | 2,0 | 1,8 | 5,2 |
| 11B | 40-50 | Homogeneous Soil physical properties | 3,5 | 2,5 | 1,9 | 5,5 |
| 11B | 50-60 | Homogeneous Soil physical properties | 3,1 | 2,6 | 1,9 | 5,5 |
| 11B | 60-70 | Homogeneous Soil physical properties | 2,8 | 2,2 | 2,0 | 5,2 |
| 11B | 0-50cm | Homogeneous Soil physical properties | 18,2 | 9,5 | 10,5 | 26,1 |
| 11B | 0-10 | Homogeneous mineralogy | 2,1 | 1,2 | 1,0 | 2,4 |
| 11B | 10-20 | Homogeneous mineralogy | 1,7 | 1,0 | 0,9 | 2,3 |
| 11B | 20-30 | Homogeneous mineralogy | 2,2 | 1,4 | 1,3 | 3,3 |
| 11B | 30-40 | Homogeneous mineralogy | 3,7 | 2,2 | 2,3 | 5,9 |
| 11B | 40-50 | Homogeneous mineralogy | 5,5 | 3,3 | 3,4 | 9,0 |
| 11B | 50-60 | Homogeneous mineralogy | 6,9 | 4,3 | 4,2 | 11,5 |
| 11B | 60-70 | Homogeneous mineralogy | 3,6 | 2,2 | 2,2 | 6,0 |
| 11B | 0-50cm | Homogeneous mineralogy | 15,2 | 9,2 | 8,8 | 22,9 |
| 14B | 0-10 | Original results | 1,3 | 0,4 | 0,9 | 1,9 |
| 14B | 10-20 | Original results | 0,9 | 0,4 | 0,6 | 1,4 |
| 14B | 20-30 | Original results | 0,7 | 0,4 | 0,4 | 1,0 |
| 14B | 30-40 | Original results | 1,7 | 1,0 | 0,9 | 2,4 |
| 14B | 40-50 | Original results | 3,7 | 2,2 | 1,9 | 5,6 |
| 14B | 50-60 | Original results | 7,0 | 4,6 | 3,8 | 11,0 |
| 14B | 60-70 | Original results | 5,9 | 4,3 | 3,2 | 9,0 |
| 14B | 70-80 | Original results | 2,5 | 1,7 | 1,5 | 4,2 |
| 14B | 80-90 | Original results | 3,3 | 2,4 | 2,1 | 5,6 |
| 14B | 0-50cm | Original results | 8,2 | 4,5 | 4,8 | 12,4 |
| 14B | 0-10 | Homogeneous soil | 4,3 | 2,5 | 2,3 | 5,2 |
| 14B | 10-20 | Homogeneous soil | 2,4 | 1,4 | 1,3 | 3,3 |
| 14B | 20-30 | Homogeneous soil | 2,3 | 1,4 | 1,4 | 3,6 |
| 14B | 30-40 | Homogeneous soil | 2,3 | 1,3 | 1,4 | 3,7 |
| 14B | 40-50 | Homogeneous soil | 2,2 | 1,3 | 1,4 | 3,7 |
| 14B | 50-60 | Homogeneous soil | 2,2 | 1,3 | 1,4 | 3,7 |
| 14B | 60-70 | Homogeneous soil | 2,2 | 1,3 | 1,4 | 3,7 |
| 14B | 70-80 | Homogeneous soil | 2,2 | 1,3 | 1,4 | 3,7 |
| 14B | 80-90 | Homogeneous soil | 2,2 | 1,3 | 1,4 | 3,7 |
| 14B | 0-50cm | Homogeneous soil | 13,4 | 8,0 | 7,7 | 19,4 |
| 14B | 0-10 | Homogeneous Soil physical properties | 3,0 | 1,0 | 2,1 | 4,5 |
| 14B | 10-20 | Homogeneous Soil physical properties | 1,9 | 0,8 | 1,3 | 2,9 |
| 14B | 20-30 | Homogeneous Soil physical properties | 2,1 | 1,1 | 1,3 | 3,2 |
| 14B | 30-40 | Homogeneous Soil physical properties | 2,3 | 1,4 | 1,3 | 3,5 |
| 14B | 40-50 | Homogeneous Soil physical properties | 2,5 | 1,5 | 1,3 | 3,9 |
| 14B | 50-60 | Homogeneous Soil physical properties | 2,6 | 1,7 | 1,4 | 4,0 |
| 14B | 60-70 | Homogeneous Soil physical properties | 2,6 | 1,8 | 1,4 | 3,8 |
| 14B | 70-80 | Homogeneous Soil physical properties | 2,4 | 1,7 | 1,5 | 4,0 |
| 14B | 80-90 | Homogeneous Soil physical properties | 2,4 | 1,7 | 1,5 | 4,0 |
| 14B | 0-50cm | Homogeneous Soil physical properties | 11,7 | 5,8 | 7,3 | 18,1 |
| 14B | 0-10 | Homogeneous mineralogy | 1,8 | 1,1 | 0,9 | 2,2 |
| 14B | 10-20 | Homogeneous mineralogy | 1,2 | 0,7 | 0,6 | 1,6 |
| 14B | 20-30 | Homogeneous mineralogy | 0,7 | 0,5 | 0,4 | 1,1 |
| 14B | 30-40 | Homogeneous mineralogy | 1,7 | 1,0 | 1,0 | 2,6 |
| 14B | 40-50 | Homogeneous mineralogy | 3,3 | 2,0 | 2,0 | 5,3 |
| 14B | 50-60 | Homogeneous mineralogy | 6,1 | 3,7 | 3,8 | 10,1 |
| 14B | 60-70 | Homogeneous mineralogy | 5,2 | 3,2 | 3,2 | 8,7 |
| 14B | 70-80 | Homogeneous mineralogy | 2,3 | 1,4 | 1,4 | 3,9 |
| 14B | 80-90 | Homogeneous mineralogy | 3,1 | 1,9 | 1,9 | 5,2 |
| 14B | 0-50cm | Homogeneous mineralogy | 8,7 | 5,2 | 5,0 | 12,8 |
| 15A | 0-10 | Original results | 2,1 | 1,1 | 1,4 | 2,7 |
| 15A | 10-20 | Original results | 0,9 | 0,6 | 0,4 | 1,0 |
| 15A | 20-30 | Original results | 0,9 | 0,6 | 0,5 | 1,4 |
| 15A | 30-40 | Original results | 1,3 | 0,6 | 0,9 | 2,5 |
| 15A | 40-50 | Original results | 2,8 | 1,7 | 2,0 | 4,9 |
| 15A | 50-60 | Original results | 3,7 | 2,1 | 2,4 | 6,3 |
| 15A | 60-70 | Original results | 3,1 | 1,8 | 1,9 | 5,2 |
| 15A | 70-80 | Original results | 2,7 | 1,8 | 1,9 | 4,8 |
| 15A | 0-50cm | Original results | 8,1 | 4,6 | 5,1 | 12,5 |
| 15A | 0-10 | Homogeneous soil | 3,6 | 2,2 | 2,0 | 4,7 |
| 15A | 10-20 | Homogeneous soil | 1,7 | 1,0 | 1,0 | 2,5 |
| 15A | 20-30 | Homogeneous soil | 1,6 | 1,0 | 1,0 | 2,6 |
| 15A | 30-40 | Homogeneous soil | 1,7 | 1,0 | 1,1 | 2,9 |
| 15A | 40-50 | Homogeneous soil | 1,7 | 1,0 | 1,1 | 2,9 |
| 15A | 50-60 | Homogeneous soil | 1,7 | 1,0 | 1,1 | 2,9 |
| 15A | 60-70 | Homogeneous soil | 1,7 | 1,0 | 1,1 | 2,9 |
| 15A | 70-80 | Homogeneous soil | 1,7 | 1,0 | 1,1 | 2,9 |
| 15A | 0-50cm | Homogeneous soil | 10,4 | 6,2 | 6,2 | 15,5 |
| 15A | 0-10 | Homogeneous Soil physical properties | 3,1 | 1,7 | 2,0 | 4,1 |
| 15A | 10-20 | Homogeneous Soil physical properties | 1,8 | 1,2 | 0,8 | 2,1 |
| 15A | 20-30 | Homogeneous Soil physical properties | 1,7 | 1,1 | 0,9 | 2,5 |
| 15A | 30-40 | Homogeneous Soil physical properties | 1,7 | 0,8 | 1,2 | 3,3 |
| 15A | 40-50 | Homogeneous Soil physical properties | 1,7 | 1,0 | 1,2 | 3,0 |
| 15A | 50-60 | Homogeneous Soil physical properties | 1,8 | 1,0 | 1,1 | 3,0 |
| 15A | 60-70 | Homogeneous Soil physical properties | 1,8 | 1,1 | 1,1 | 3,0 |
| 15A | 70-80 | Homogeneous Soil physical properties | 1,8 | 1,2 | 1,2 | 3,0 |
| 15A | 0-50cm | Homogeneous Soil physical properties | 9,9 | 5,7 | 6,1 | 15,0 |
| 15A | 0-10 | Homogeneous mineralogy | 2,4 | 1,5 | 1,3 | 3,1 |
| 15A | 10-20 | Homogeneous mineralogy | 0,8 | 0,5 | 0,5 | 1,2 |
| 15A | 20-30 | Homogeneous mineralogy | 0,9 | 0,6 | 0,6 | 1,5 |
| 15A | 30-40 | Homogeneous mineralogy | 1,4 | 0,8 | 0,8 | 2,2 |
| 15A | 40-50 | Homogeneous mineralogy | 2,8 | 1,7 | 1,8 | 4,6 |
| 15A | 50-60 | Homogeneous mineralogy | 3,6 | 2,1 | 2,4 | 6,1 |
| 15A | 60-70 | Homogeneous mineralogy | 2,9 | 1,7 | 1,9 | 4,9 |
| 15A | 70-80 | Homogeneous mineralogy | 2,7 | 1,6 | 1,7 | 4,6 |
| 15A | 0-50cm | Homogeneous mineralogy | 8,4 | 5,0 | 5,0 | 12,6 |
| 10B | 0-10 | Original results | 1,8 | 0,5 | 1,1 | 2,3 |
| 10B | 10-20 | Original results | 2,1 | 0,8 | 1,1 | 2,7 |
| 10B | 20-30 | Original results | 2,2 | 1,3 | 1,1 | 3,0 |
| 10B | 30-40 | Original results | 5,0 | 3,0 | 2,3 | 7,2 |
| 10B | 50-60 | Original results | 7,8 | 6,2 | 4,7 | 12,6 |
| 10B | 60-70 | Original results | 3,3 | 6,8 | 4,3 | 6,1 |
| 10B | 70-80 | Original results | 9,1 | 21,5 | 14,1 | 20,0 |
| 10B | 0-40cm | Original results | 11,1 | 5,5 | 5,6 | 15,2 |
| 10B | 0-10 | Homogeneous soil | 5,4 | 4,7 | 3,7 | 6,8 |
| 10B | 10-20 | Homogeneous soil | 3,8 | 3,6 | 2,8 | 5,6 |
| 10B | 20-30 | Homogeneous soil | 3,5 | 3,4 | 2,8 | 5,8 |
| 10B | 30-40 | Homogeneous soil | 3,4 | 3,2 | 2,7 | 5,7 |
| 10B | 50-60 | Homogeneous soil | 3,3 | 3,2 | 2,6 | 5,7 |
| 10B | 60-70 | Homogeneous soil | 3,3 | 3,2 | 2,6 | 5,7 |
| 10B | 0-40cm | Homogeneous soil | 3,3 | 3,2 | 2,6 | 5,6 |
| 10B | 0-10 | Homogeneous Soil physical properties | 16,1 | 14,9 | 12,0 | 23,9 |
| 10B | 10-20 | Homogeneous Soil physical properties | 4,7 | 1,3 | 2,8 | 6,1 |
| 10B | 20-30 | Homogeneous Soil physical properties | 3,6 | 1,3 | 2,1 | 4,9 |
| 10B | 30-40 | Homogeneous Soil physical properties | 3,6 | 2,2 | 2,1 | 5,6 |
| 10B | 40-50 | Homogeneous Soil physical properties | 4,2 | 2,5 | 2,0 | 6,2 |
| 10B | 50-60 | Homogeneous Soil physical properties | 4,0 | 3,1 | 2,4 | 6,4 |
| 10B | 60-70 | Homogeneous Soil physical properties | 3,3 | 6,8 | 4,4 | 6,1 |
| 10B | 70-80 | Homogeneous Soil physical properties | 2,5 | 5,7 | 3,8 | 5,4 |
| 10B | 0-40cm | Homogeneous Soil physical properties | 16,3 | 7,4 | 8,9 | 22,7 |
| 10B | 0-10 | Homogeneous mineralogy | 2,1 | 1,8 | 1,4 | 2,5 |
| 10B | 10-20 | Homogeneous mineralogy | 2,2 | 2,1 | 1,5 | 3,0 |
| 10B | 20-30 | Homogeneous mineralogy | 2,0 | 1,9 | 1,5 | 3,1 |
| 10B | 30-40 | Homogeneous mineralogy | 4,0 | 3,7 | 3,2 | 6,7 |
| 10B | 50-60 | Homogeneous mineralogy | 6,7 | 6,3 | 5,3 | 11,3 |
| 10B | 60-70 | Homogeneous mineralogy | 3,3 | 3,2 | 2,6 | 5,6 |
| 10B | 70-80 | Homogeneous mineralogy | 12,1 | 11,8 | 9,7 | 21,0 |
| 10B | 0-40cm | Homogeneous mineralogy | 10,3 | 9,5 | 7,6 | 15,4 |

Table S2: Sensitivity analysis of PROFILE at Aaa based on three different scenarios compared to original results as used in this study. (i.e. Homogeneous soil (soil physics and mineralogy), Homogeneous Soil physical properties (soil bulk density and specific exposed mineral surface area), Homogeneous mineralogy) compared to original results as used in this study.

| Soil profile | Soil depth | Type | Ca | Mg | K | Na |
|--------------|------------|--------------------------------------|------|-----|------|------|
| K4 | 0-10 | Original results | 1.3 | 0.4 | 0.6 | 1.7 |
| K4 | 10-20 | Original results | 2.3 | 0.9 | 1.5 | 4.7 |
| K4 | 20-30 | Original results | 1.5 | 0.5 | 1.0 | 3.3 |
| K4 | 30-40 | Original results | 1.5 | 0.7 | 1.1 | 3.4 |
| K4 | 40-50 | Original results | 1.9 | 1.2 | 1.5 | 4.6 |
| K4 | 50-60 | Original results | 2.4 | 1.4 | 1.9 | 6.1 |
| K4 | 60-70 | Original results | 2.8 | 1.5 | 2.0 | 6.9 |
| K4 | 70-80 | Original results | 1.7 | 1.0 | 1.4 | 4.3 |
| K4 | 80-90 | Original results | 2.0 | 1.0 | 1.4 | 4.5 |
| K4 | 90-100 | Original results | 1.5 | 0.8 | 1.1 | 3.4 |
| K4 | 0-50cm | Original results | 8.5 | 3.6 | 5.9 | 17.7 |
| K4 | 0-10 | Homogeneous soil | 2.8 | 1.1 | 1.4 | 4.1 |
| K4 | 10-20 | Homogeneous soil | 1.9 | 0.9 | 1.4 | 4.3 |
| K4 | 20-30 | Homogeneous soil | 1.7 | 0.9 | 1.3 | 4.0 |
| K4 | 30-40 | Homogeneous soil | 1.7 | 0.8 | 1.2 | 4.0 |
| K4 | 40-50 | Homogeneous soil | 1.7 | 0.8 | 1.2 | 4.0 |
| K4 | 50-60 | Homogeneous soil | 1.7 | 0.9 | 1.3 | 4.0 |
| K4 | 60-70 | Homogeneous soil | 1.7 | 0.9 | 1.3 | 4.1 |
| K4 | 70-80 | Homogeneous soil | 1.9 | 0.9 | 1.4 | 4.2 |
| K4 | 80-90 | Homogeneous soil | 2.0 | 0.9 | 1.4 | 4.2 |
| K4 | 90-100 | Homogeneous soil | 2.0 | 0.9 | 1.4 | 4.3 |
| K4 | 0-50cm | Homogeneous soil | 9.7 | 4.6 | 6.6 | 20.4 |
| K4 | 0-10 | Homogeneous Soil physical properties | 2.7 | 0.8 | 1.3 | 3.7 |
| K4 | 10-20 | Homogeneous Soil physical properties | 1.9 | 0.7 | 1.3 | 3.9 |
| K4 | 20-30 | Homogeneous Soil physical properties | 1.7 | 0.6 | 1.2 | 3.9 |
| K4 | 30-40 | Homogeneous Soil physical properties | 1.7 | 0.7 | 1.2 | 3.8 |
| K4 | 40-50 | Homogeneous Soil physical properties | 1.6 | 1.0 | 1.3 | 3.9 |
| K4 | 50-60 | Homogeneous Soil physical properties | 1.6 | 1.0 | 1.3 | 4.2 |
| K4 | 60-70 | Homogeneous Soil physical properties | 1.8 | 1.3 | 1.4 | 4.3 |
| K4 | 70-80 | Homogeneous Soil physical properties | 1.9 | 1.0 | 1.5 | 4.5 |
| K4 | 80-90 | Homogeneous Soil physical properties | 2.1 | 1.1 | 1.4 | 4.5 |
| K4 | 90-100 | Homogeneous Soil physical properties | 2.0 | 1.1 | 1.5 | 4.5 |
| K4 | 0-50cm | Homogeneous Soil physical properties | 9.7 | 3.9 | 6.4 | 19.2 |
| K4 | 0-10 | Homogeneous mineralogy | 1.3 | 0.5 | 0.7 | 1.9 |
| K4 | 10-20 | Homogeneous mineralogy | 2.3 | 1.1 | 1.7 | 5.1 |
| K4 | 20-30 | Homogeneous mineralogy | 1.5 | 0.7 | 1.1 | 3.7 |
| K4 | 30-40 | Homogeneous mineralogy | 1.5 | 0.8 | 1.1 | 3.6 |
| K4 | 40-50 | Homogeneous mineralogy | 2.0 | 1.0 | 1.5 | 4.7 |
| K4 | 50-60 | Homogeneous mineralogy | 2.4 | 1.2 | 1.8 | 5.8 |
| K4 | 60-70 | Homogeneous mineralogy | 2.8 | 1.4 | 2.1 | 6.6 |
| K4 | 70-80 | Homogeneous mineralogy | 1.8 | 0.9 | 1.3 | 4.0 |
| K4 | 80-90 | Homogeneous mineralogy | 1.9 | 0.9 | 1.4 | 4.2 |
| K4 | 90-100 | Homogeneous mineralogy | 1.5 | 0.7 | 1.0 | 3.2 |
| K4 | 0-50cm | Homogeneous mineralogy | 8.5 | 4.1 | 6.0 | 18.7 |
| K1 | 0-10 | Original results | 1.4 | 0.6 | 0.7 | 2.0 |
| K1 | 10-20 | Original results | 1.2 | 0.5 | 0.9 | 2.7 |
| K1 | 20-30 | Original results | 1.5 | 0.7 | 1.0 | 3.4 |
| K1 | 30-40 | Original results | 1.4 | 0.7 | 1.1 | 3.1 |
| K1 | 40-50 | Original results | 2.5 | 1.2 | 1.7 | 5.6 |
| K1 | 50-60 | Original results | 2.9 | 1.5 | 2.0 | 6.6 |
| K1 | 60-70 | Original results | 4.2 | 2.1 | 3.0 | 10.1 |
| K1 | 70-80 | Original results | 5.2 | 2.9 | 3.8 | 12.4 |
| K1 | 80-90 | Original results | 8.0 | 4.3 | 5.3 | 19.9 |
| K1 | 90-100 | Original results | 5.2 | 2.9 | 3.7 | 13.3 |
| K1 | 0-50cm | Original results | 8.1 | 3.7 | 5.4 | 16.8 |
| K1 | 0-10 | Homogeneous soil | 4.8 | 1.9 | 2.3 | 7.1 |
| K1 | 10-20 | Homogeneous soil | 2.9 | 1.4 | 2.1 | 6.6 |
| K1 | 20-30 | Homogeneous soil | 2.7 | 1.4 | 1.9 | 6.3 |
| K1 | 30-40 | Homogeneous soil | 2.6 | 1.3 | 1.8 | 6.1 |
| K1 | 40-50 | Homogeneous soil | 2.5 | 1.3 | 1.8 | 6.1 |
| K1 | 50-60 | Homogeneous soil | 2.5 | 1.3 | 1.8 | 6.1 |
| K1 | 60-70 | Homogeneous soil | 2.5 | 1.3 | 1.8 | 6.1 |
| K1 | 70-80 | Homogeneous soil | 2.6 | 1.4 | 1.8 | 6.2 |
| K1 | 80-90 | Homogeneous soil | 2.7 | 1.4 | 1.9 | 6.3 |
| K1 | 90-100 | Homogeneous soil | 2.7 | 1.4 | 1.9 | 6.4 |
| K1 | 0-50cm | Homogeneous soil | 15.5 | 7.4 | 10.0 | 32.4 |
| K1 | 0-10 | Homogeneous Soil physical properties | 4.8 | 2.0 | 2.4 | 6.5 |
| K1 | 10-20 | Homogeneous Soil physical properties | 2.9 | 1.2 | 2.1 | 6.5 |
| K1 | 20-30 | Homogeneous Soil physical properties | 2.7 | 1.3 | 1.8 | 6.0 |
| K1 | 30-40 | Homogeneous Soil physical properties | 2.6 | 1.3 | 2.0 | 6.1 |
| K1 | 40-50 | Homogeneous Soil physical properties | 2.6 | 1.3 | 1.8 | 5.9 |
| K1 | 50-60 | Homogeneous Soil physical properties | 2.6 | 1.4 | 1.8 | 6.0 |
| K1 | 60-70 | Homogeneous Soil physical properties | 2.5 | 1.3 | 1.8 | 6.2 |
| K1 | 70-80 | Homogeneous Soil physical properties | 2.5 | 1.4 | 1.8 | 6.5 |
| K1 | 80-90 | Homogeneous Soil physical properties | 2.7 | 1.4 | 1.8 | 6.7 |
| K1 | 90-100 | Homogeneous Soil physical properties | 2.7 | 1.5 | 1.9 | 6.8 |
| K1 | 0-50cm | Homogeneous Soil physical properties | 15.5 | 7.1 | 10.0 | 31.3 |
| K1 | 0-10 | Homogeneous mineralogy | 1.4 | 0.6 | 0.7 | 2.1 |
| K1 | 10-20 | Homogeneous mineralogy | 2.8 | 1.6 | 2.8 | 8.9 |
| K1 | 20-30 | Homogeneous mineralogy | 1.5 | 0.8 | 1.1 | 3.5 |
| K1 | 30-40 | Homogeneous mineralogy | 1.4 | 0.7 | 1.0 | 3.2 |
| K1 | 40-50 | Homogeneous mineralogy | 2.5 | 1.2 | 1.7 | 5.8 |
| K1 | 50-60 | Homogeneous mineralogy | 2.9 | 1.5 | 2.0 | 6.7 |
| K1 | 60-70 | Homogeneous mineralogy | 4.2 | 2.2 | 3.0 | 10.0 |
| K1 | 70-80 | Homogeneous mineralogy | 5.4 | 2.8 | 3.8 | 12.8 |
| K1 | 80-90 | Homogeneous mineralogy | 7.8 | 4.1 | 5.5 | 18.9 |
| K1 | 90-100 | Homogeneous mineralogy | 5.1 | 2.7 | 3.6 | 12.5 |
| K1 | 0-50cm | Homogeneous mineralogy | 8.1 | 3.9 | 5.4 | 17.4 |
| F4 | 0-10 | Original results | 1.8 | 0.6 | 0.8 | 2.7 |
| F4 | 10-20 | Original results | 1.1 | 0.4 | 0.8 | 2.2 |
| F4 | 20-30 | Original results | 2.1 | 0.8 | 1.5 | 5.1 |
| F4 | 30-40 | Original results | 2.9 | 1.4 | 2.0 | 7.1 |
| F4 | 40-50 | Original results | 2.0 | 1.0 | 1.5 | 5.0 |
| F4 | 50-60 | Original results | 2.1 | 1.0 | 1.5 | 5.2 |
| F4 | 60-70 | Original results | 2.1 | 1.1 | 1.5 | 5.2 |
| F4 | 70-80 | Original results | 2.3 | 1.2 | 1.6 | 5.1 |
| F4 | 80-90 | Original results | 2.4 | 1.4 | 1.8 | 5.9 |
| F4 | 90-100 | Original results | 2.1 | 1.0 | 1.6 | 5.4 |
| F4 | 0-50cm | Original results | 9.8 | 4.2 | 6.7 | 21.6 |
| F4 | 0-10 | Homogeneous soil | 2.9 | 1.1 | 1.4 | 4.5 |
| F4 | 10-20 | Homogeneous soil | 2.1 | 1.0 | 1.5 | 4.9 |
| F4 | 20-30 | Homogeneous soil | 1.9 | 0.9 | 1.4 | 4.7 |
| F4 | 30-40 | Homogeneous soil | 1.8 | 0.9 | 1.3 | 4.6 |
| F4 | 40-50 | Homogeneous soil | 1.8 | 0.9 | 1.3 | 4.6 |
| F4 | 50-60 | Homogeneous soil | 1.9 | 0.9 | 1.4 | 4.6 |
| F4 | 60-70 | Homogeneous soil | 1.9 | 0.9 | 1.4 | 4.7 |
| F4 | 70-80 | Homogeneous soil | 2.0 | 1.0 | 1.5 | 4.8 |
| F4 | 80-90 | Homogeneous soil | 2.2 | 1.0 | 1.5 | 4.9 |
| F4 | 90-100 | Homogeneous soil | 2.1 | 1.0 | 1.5 | 4.9 |
| F4 | 0-50cm | Homogeneous soil | 10.6 | 4.8 | 7.1 | 23.2 |
| F4 | 0-10 | Homogeneous Soil physical properties | 2.6 | 0.8 | 1.4 | 4.0 |
| F4 | 10-20 | Homogeneous Soil physical properties | 2.1 | 0.6 | 1.6 | 4.6 |
| F4 | 20-30 | Homogeneous Soil physical properties | 1.8 | 0.8 | 1.4 | 4.6 |
| F4 | 30-40 | Homogeneous Soil physical properties | 1.9 | 0.9 | 1.3 | 4.7 |
| F4 | 40-50 | Homogeneous Soil physical properties | 1.9 | 0.9 | 1.4 | 4.7 |
| F4 | 50-60 | Homogeneous Soil physical properties | 1.9 | 0.9 | 1.4 | 4.8 |
| F4 | 60-70 | Homogeneous Soil physical properties | 1.9 | 1.0 | 1.3 | 4.7 |
| F4 | 70-80 | Homogeneous Soil physical properties | 2.2 | 1.1 | 1.5 | 4.8 |
| F4 | 80-90 | Homogeneous Soil physical properties | 2.2 | 1.2 | 1.6 | 5.0 |
| F4 | 90-100 | Homogeneous Soil physical properties | 2.0 | 0.9 | 1.5 | 5.3 |
| F4 | 0-50cm | Homogeneous Soil physical properties | 10.4 | 4.3 | 7.0 | 22.5 |
| F4 | 0-10 | Homogeneous mineralogy | 2.0 | 0.8 | 1.0 | 3.1 |
| F4 | 10-20 | Homogeneous mineralogy | 1.1 | 0.5 | 0.8 | 2.8 |
| F4 | 20-30 | Homogeneous mineralogy | 2.1 | 1.0 | 1.6 | 5.2 |
| F4 | 30-40 | Homogeneous mineralogy | 2.8 | 1.4 | 2.0 | 6.9 |
| F4 | 40-50 | Homogeneous mineralogy | 1.9 | 0.9 | 1.4 | 4.8 |
| F4 | 50-60 | Homogeneous mineralogy | 2.0 | 1.0 | 1.5 | 5.1 |
| F4 | 60-70 | Homogeneous mineralogy | 2.1 | 1.0 | 1.5 | 5.2 |
| F4 | 70-80 | Homogeneous mineralogy | 2.2 | 1.0 | 1.6 | 5.2 |
| F4 | 80-90 | Homogeneous mineralogy | 2.4 | 1.1 | 1.7 | 5.6 |
| F4 | 90-100 | Homogeneous mineralogy | 2.2 | 1.0 | 1.5 | 5.1 |
| F4 | 0-50cm | Homogeneous mineralogy | 9.9 | 4.6 | 6.8 | 22.4 |
| F3 | 0-10 | Original results | 3.1 | 0.9 | 1.4 | 4.3 |
| F3 | 10-20 | Original results | 1.7 | 0.7 | 1.1 | 3.6 |
| F3 | 20-30 | Original results | 1.3 | 0.6 | 0.9 | 3.0 |
| F3 | 30-40 | Original results | 1.3 | 0.7 | 0.9 | 3.0 |
| F3 | 40-50 | Original results | 1.6 | 0.8 | 1.2 | 3.6 |
| F3 | 50-60 | Original results | 0.7 | 0.3 | 0.4 | 1.3 |
| F3 | 60-70 | Original results | 0.7 | 0.3 | 0.3 | 1.2 |
| F3 | 70-80 | Original results | 1.2 | 1.1 | 0.9 | 2.3 |
| F3 | 80-90 | Original results | 9.1 | 3.7 | 5.4 | 17.5 |
| F3 | 90-100 | Original results | 2.0 | 0.9 | 2.9 | 6.9 |
| F3 | 0-10 | Homogeneous soil | 1.5 | 0.7 | 1.0 | 3.2 |
| F3 | 10-20 | Homogeneous soil | 1.3 | 0.7 | 0.9 | 3.0 |
| F3 | 20-30 | Homogeneous soil | 1.3 | 0.7 | 0.9 | 3.0 |
| F3 | 30-40 | Homogeneous soil | 1.3 | 0.7 | 0.9 | 3.0 |
| F3 | 40-50 | Homogeneous soil | 1.4 | 0.7 | 0.9 | 3.8 |
| F3 | 50-60 | Homogeneous soil | 1.5 | 0.7 | 0.8 | 2.6 |
| F3 | 60-70 | Homogeneous soil | 1.5 | 0.7 | 0.7 | 2.5 |
| F3 | 70-80 | Homogeneous soil | 1.3 | 0.6 | 0.7 | 2.3 |
| F3 | 80-90 | Homogeneous soil | 2.5 | 3.7 | 4.7 | 15.0 |
| F3 | 90-100 | Homogeneous soil | 2.0 | 0.6 | 0.9 | 2.8 |
| F3 | 0-10 | Homogeneous Soil physical properties | 1.5 | 0.5 | 1.0 | 3.2 |
| F3 | 10-20 | Homogeneous Soil physical properties | 1.4 | 0.6 | 0.9 | 3.1 |
| F3 | 20-30 | Homogeneous Soil physical properties | 1.4 | 0.7 | 1.0 | 3.1 |
| F3 | 30-40 | Homogeneous Soil physical properties | 1.3 | 0.7 | 0.9 | 2.8 |
| F3 | 40-50 | Homogeneous Soil physical properties | 1.3 | 0.7 | 0.8 | 2.8 |
| F3 | 50-60 | Homogeneous Soil physical properties | 1.5 | 0.7 | 0.8 | 2.6 |
| F3 | 60-70 | Homogeneous Soil physical properties | 1.6 | 0.7 | 0.7 | 2.6 |
| F3 | 70-80 | Homogeneous Soil physical properties | 1.1 | 1.0 | 2.1 | 2.1 |
| F3 | 80-90 | Homogeneous Soil physical properties | 7.6 | 3.2 | 4.6 | 15.0 |
| F3 | 90-100 | Homogeneous Soil physical properties | 3.1 | 1.3 | 1.5 | 4.5 |
| F3 | 0-10 | Homogeneous mineralogy | 1.7 | 0.8 | 1.2 | 3.6 |
| F3 | 10-20 | Homogeneous mineralogy | 1.3 | 0.7 | 0.9 | 2.9 |
| F3 | 20-30 | Homogeneous mineralogy | 1.3 | 0.7 | 0.9 | 2.9 |
| F3 | 30-40 | Homogeneous mineralogy | 1.3 | 0.7 | 0.9 | 2.9 |
| F3 | 40-50 | Homogeneous mineralogy | 1.7 | 0.9 | 1.1 | 3.6 |
| F3 | 50-60 | Homogeneous mineralogy | 0.7 | 0.4 | 0.4 | 1.3 |
| F3 | 60-70 | Homogeneous mineralogy | 0.7 | 0.4 | 0.3 | 1.1 |
| F3 | 70-80 | Homogeneous mineralogy | 1.4 | 0.7 | 0.8 | 2.5 |
| F3 | 80-90 | Homogeneous mineralogy | 9.0 | 4.4 | 5.6 | 17.6 |
| F3 | 90-100 | Homogeneous mineralogy | 2.0 | 0.6 | 0.9 | 2.8 |