

Interactive comment on “Acidification-vulnerable carbonate system of the East Sea (Japan Sea)” by Taehee Na et al.

Taehee Na et al.

thna@snu.ac.kr

Received and published: 12 February 2020

We appreciate the reviews and constructive comments. We believe that we can revise the manuscript incorporating the major concerns. Our response to the major concerns is as follows:

1. The data are not abundant. We have results at one more site in the Japan Basin in 2014 and at three more sites in the Ulleung Basin in 2017. The data from each basin are similar as can be seen in the following figure for the Ulleung Basin (Fig. 1). We opted to present the result at one representative site for each locality in the original submission. We can provide these additional results in the revised manuscript either in the main text or in the supplement.

[Printer-friendly version](#)

[Discussion paper](#)



2. Re-initiated deep convection in the deep Japan Basin As we wrote in the response to the earlier review and comment, we thoroughly re-examined the 2014 data. We found that re-calibrated data of AOU and DIC concentrations did not show any significant meridional, basin-to-basin difference. Therefore, our argument based on the meridional difference is not justifiable and needs to be revised thoroughly.

In addition, we can incorporate all minor editorial comments in the revision.

Taehee Na and co-authors

Interactive comment on Biogeosciences Discuss., <https://doi.org/10.5194/bg-2019-474>, 2019.

BGD

Interactive
comment

Printer-friendly version

Discussion paper



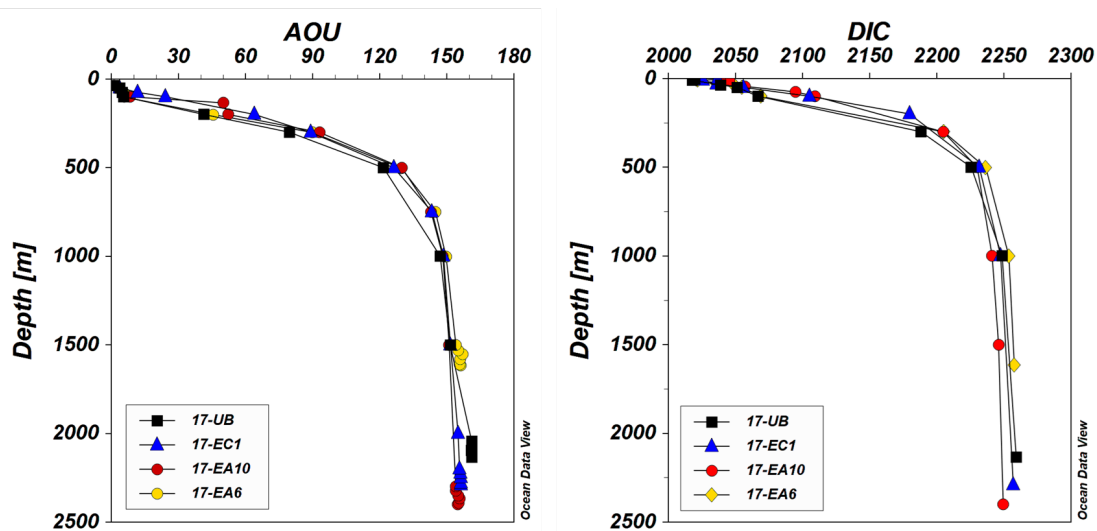


Fig. 1. (left) AOU and (right) DIC values at four sites in the Ulleung Basin in 2017

Printer-friendly version

Discussion paper

