

Response Overview and List of Changes

Below, comments of the editor and referee (starting with '**Comment:**'), and our responses (starting with 'Response' and/or 'Change') are provided in black and blue fonts, respectively.

Dear Dr. Cook,

we would like to thank the referee for their further comments and you for your re-evaluation.

Regarding the points that you highlighted in your report;

Comment: 1. When explaining or clarifying a point made by the reviewer, it should not just be aimed at the reviewer, it should also include any necessary change to the text, and a clear indication of where this has occurred. As the reviewer notes this was not always clear in your response.

Thank you for pointing this out. We felt that some of the referee's comments required clarification, but we were under the impression that these would not be relevant for the readership. We would also like to clarify, that in the previous revision round, we had included marked-up version with our revisions, and where we saw the need, we had indicated the sections where the changes had taken place. Based on these materials we submitted, we assumed that it would be straightforward to locate where the changes had taken place. In our point-to-point responses below, we indicated the line numbers of some of the relevant changes that we had introduced in the previous revision. In order to prevent such inconveniences for this revision, we included the line numbers that indicate where the changes took place in the newly revised manuscript.

Comment: 2. That there be some comparison with the benthic fluxes put out by the model with actual measured rates, ideally within the same system with reference to the role of benthic organisms may have over this.

We have addressed this issue, by further elaborating the benthic fluxes and including an extensive discussion of the role of benthic organisms.

Comment: 3. Tone down some of the overconfident language about the accuracy of the model.

As we documented in detail below, in our previous revision, we already had changed and where necessary, expanded a number of statements that we considered being potentially overconfident. In the current revision, we removed the only specific statement pointed out in the respective comment of the referee in the detailed comments section.

Our point-to-point responses, and a marked-up manuscript version can be found below.

On behalf of all authors,
Onur Kerimoglu

Response to Anonymous Referee #1

GENERAL

Comment: I am a little bit confused in general by the authors response, which seems directed purely at me and which includes references to changes in the future tense (“we will”). My confusion on certain descriptions can be shared by others, and therefore the authors should not explain things directly to me but in the manuscript text. And they should state clearly wherethey have included new or altered text, for instance “in line xxx we have now included the following text: ...” so that reviewers like me can see what alteration have been included. Statements like “we will extend the model description section to clarify the model structure” without stating the actual changes made do not allow me to judge the changes made to the manuscript to assess improved readability. Now I had to search for changes in the resubmitted text, which did not include track changes of any form, in order to locate any alterations.

Response: We would like to clarify that, in our response letter (which is based on, but not identical to our response in discussion forum), where we used past tense, we did refer to the sections where the change occurred, whenever we felt that the location of the change may not be obvious. We also did submit a marked-up manuscript version, according to the instructions specified in the journal’s web site. We verify that, at the time of writing this response, we can access both of these documents through the respective website of the journal. For some comments, we were under the impression that an explanation to the referee seemed more suitable than a change in the manuscript, since we were not convinced that these would relevant for the general audience. In our current response, we will refer to line numbers to indicate any changes in the manuscript, in hopes to prevent any inconvenience.

Comment: These seemed to be semantical throughout, with the only real addition in the new section 4.3 Model limitations and perspectives, where the authors have included some discussion on some of the reservations I had towards the applied model.

Response: There were various other changes, which have been documented in our earlier response letter and the marked-up manuscript version.

Comment: Model limitations are better included now, in said section, including the lack of bacterial dynamics and sediment nutrient budgets. Figures have been enlarged and are much more readable, and there is a better model description in the manuscript, outlining differences with existing models. However, the impact of benthos is still not discussed

Response: In our previous revision, we had added a full paragraph in section 4.3 on ‘the role of sediments’, as was requested by the referee. See our response below about the discussion of benthos (a discussion of which was previously not explicitly requested).

Comment: and the authors remain, in my view, rather optimistic about the performance of the biological part of their model. They did downscale their conclusions on the biological impact somewhat by stressing that the results are indicative of a system response, rather than a predicted ecosystem state.

Response: in the previous revision, besides the change referred to by the referee, we had included a dedicated section (4.3) for discussing the limitations of the approach, and had toned down any statements that may be regarded as overconfident. In particular:

- 1) We had replaced ‘and exhibit no signs of systematic deviations or biases’ with ‘There is a slight cold bias at the lower temperature range (29-32 g/kg), which seems to be canceled out by the slight warm bias at the higher range. These deviations are mostly

within a 1 °C range, therefore presumably do not have a significant effect. At an intermediate range, salinity is overestimated by up to 2 g/kg, indicating insufficient spread of coastal waters with low salinity. This may either be due to (still) underestimated horizontal mixing (see Appendix A), or inaccuracies in the advection patterns.’ (L168-172).

- 2) We had included the explanation ‘Underestimated NO₃ at an intermediate range (10-40 µMN) is possibly due to the aforementioned underrepresentation of N-rich riverine waters within the transition zone. Regarding DIP, the measured-simulated pairs that represent major underestimation errors (e.g., in the <0.5 µMP simulation band) point to the inability of the model to capture summer maxima occurring in specific coastal regions.’ (L174-177).
- 3) Relevant to points 1 and 2, in the discussion, we had included: ‘The insufficient spread of coastal waters is potentially the reason for overestimated salinities and underestimated NO₃ in the transition zone, characterized by intermediate salinities and NO₃ concentrations (Fig. 5). These errors, in turn, may have lead to an over- and underestimation of the importance of riverine discharges on the stratification dynamics and productivity in the coastal and transition zones, respectively (L316-319).
- 4) In the original statement ‘the oxygen depletion in the bottom layers in 2013, and the lack thereof in 2012 are *qualitatively reproduced*.’, we had replaced ‘*qualitatively reproduced*’ with ‘qualitatively captured, although the DO depletion in 2013 is not fully reproduced’ (L283).
- 5) We had replaced ‘... low bias and high correlation coefficients in general (e.g., Fig. 5)’ with ‘... low bias and high correlation coefficients for temperature, salinity and nutrients (e.g., Figs. 5, 6, 8). The skill of the model in reproducing chlorophyll concentrations was not as good (Fig. 8, see below for a discussion of potential reasons)’ (L328-330).
- 6) We had removed the oversimplifying statement ‘The ability of the model to capture the sharp increase in DIN during June/July 2013 at the Helgoland station suggests that the spreading of the plume of the Elbe-Weser rivers following the flood event was realistically reproduced’ in the Results section (3.2) and provided the following, nuanced discussion: ‘For instance, the sharp DIN peak observed and simulated at Helgoland during June/July 2013 is uncommon for the summer season (see Fig.12 in Voynova et al., 2017). Overlapping DIN and freshwater fronts simulated by the model, temporarily spreading to the west of Helgoland during the same period (not shown), and supported also by a sharp decline of observed and simulated salinities (Fig. 6), reveal that this rare summer DIN peak was caused by the plume of the Elbe-Weser flood. This provides evidence for the model’s ability to reproduce the behavior of the plume.’ (L334-339).

Please see below for the additional actions taken in this revision, in response to a specific comment of the referee.

Comment: Some detailed responses are given below.

1. “It is not entirely clear to us, what is meant by ‘why not use ECOHAM for that’. If it means directly applying a readily available ECOHAM setup, this was not an option: to the best of our knowledge, the only available HAMSOM-ECOHAM setup, performance of which have been sufficiently documented (e.g., Große, 2017), is simply too coarse (20 km horizontal resolution, and 7 z-levels within the deepest part of the study area) for being able to capture the meso-scale features of the system, in particular, the haline stratification caused by the Elbe river (Pätsch et al., 2017).”

I was not referring to an existing setup (an application of a model to a certain area), but to a model itself (ECOHAM), therefore I do not understand the given response: horizontal

and vertical resolutions can be adapted to create a more suitable setup. It may not have been practical (is there a FABM version of ECOHAM?), but that is another reason.

Response: In our previous response, besides clarifying why using an existing ECOHAM setup was not an option, we had also provided a detailed explanation of the shortcomings of ECOHAM regarding the description of phytoplankton physiology and growth, and how these are more realistically represented in our model by accounting for their variable Chl:C:N:P composition. To the best of our knowledge, and based on our personal communication with H. Lenhart, J. Pätsch, M. Kreuz, there is no functional FABM version of ECOHAM (an initiative several years ago was discontinued).

Comment: It seems to me the choice of model was based on availability and previous experience, rather than a careful process of selecting the best suitable model for the desired application. This is fine, and common practice in a world limited by project deadlines and budgets, but it should be stated as such. Including the limitations of this model compared to others. Within the new manuscript the model is now compared to others applied in the same area, which is somewhat limited.

Response: The referee's impression that the choice of model was based on the availability of our experience and other external motivations is wrong. There are good reasons to keep the model complexity low, such as avoiding overparameterization and reducing computational costs.

We compared our model against four recent studies that describe model applications in the study region and four other model studies in different, but comparable systems. We believe that these references provide a sufficient perspective, and show that in some aspects, even simpler models, in comparison to ours, are being actively developed and used for studying the research questions similar to those we addressed in this study.

Comment: 5. "It was again not entirely clear to us what is exactly meant by 'a model with benthos' by the referee." I am a bit mystified by the authors answer. They state that they do not understand the line " a model with benthos", and then proceed to detail some of the abiotic benthic processes included in the model. Even if by rare chance they really do not know the meaning of the word "benthos" (organisms living in, on or near the seabed) it is easy to look it up. And they should explain in the manuscript the importance of benthic organisms in sediment dynamics and seabed nutrient budgets, and the possible impact of not including these dynamics on their results. In shallow coastal areas the benthic compartment forms an integral part of the local ecosystem, including its carbon and nutrient pathways. At the moment this is not included in the added section 4.3. The impact of burrowing or filter feeding animals on water quality is not negligible. Neither are algal mats preventing resuspension.

Response: these comments are connected with the next set of comments, therefore please see our response below.

Comment: Response: There are certainly more complex models, but considering the purposes of our study, it is not clear in which specific sense would such a model be better suited. It should be noted that, with regard to benthic/pelagic coupling, models of similar complexity have been used until recently, for studying the nutrient concentrations and bottom oxygen conditions in the North Sea (e.g., Große et al., 2017, using ECOHAM), as well as other similarly dynamic coastal shelf systems such as the Louisiana Shelf (e.g., Fennel and Laurent, 2018) or even shallower systems such as the Chesapeake Bay (Irby et al. 2018).

Response: necessity for the presentation of a validation of benthic nutrient concentrations

of fluxes (which is very rarely done in studies similar to ours) is not clear. There are, as said, more complex models out there. The question is whether they do a better job of describing the pelagic-benthic coupling and resulting pelagic nutrient concentrations in shallow areas, by allowing for bio-turbidity, bio-irrigation, filter feeding and long-term storage of nutrients and as such creating more dynamic sediment nutrient profiles and benthic-pelagic nutrient fluxes. Validation is indeed seldom done, and it is hard to get “right” compared to in-situ measurements (which are mere snapshots), but that doesn’t mean it shouldn’t be done. It would be good to know if the fluxes as produced by the model are comparable to observations, to get an idea of 1. The importance of benthic-pelagic fluxes in the area for pelagic nutrient concentrations (particularly in stratified conditions) and 2. The (possible) limitations of the simple benthic module.

Response:

1) We believe that ‘getting an idea of the importance of benthic-pelagic fluxes in the area for pelagic nutrient concentrations’ requires a targeted study, and is beyond the scope of our study.

2) In the previous revision of our manuscript, we had already mentioned limitations cast by the simple benthic model, such as the underestimated phosphorus concentrations (L463-469) and underestimated oxygen depletion (L425-L429), as driven by potentially misrepresented POM deposition rates (L431-434) and benthic oxygen profiles (L460-463).

Change: In the newly revised version, we substantially extended the discussion of the benthic processes by: a) mentioning the estimated relevance of benthic transformations in the study system (L422-425) b) pointing to the link between the benthic oxygen consumption and remineralization (L429-431) rates; c) a detailed account of the role of benthos on benthic fluxes, and implications of not having resolved these in our model (L434-449); d) a comparison of estimated and measured benthic denitrification rates (L450-459).

Comment: L201 “A consistent source of error seems to be the failure of the model to estimate the timing of the spring bloom”

This is a serious issue and I appreciate the authors frankness regarding it. It is difficult to get the timing correct, but in essence the main aim of a coastal biogeochemical model is just that: to assess/predict/be able to analyse coastal productivity. To have this as a consistent error is worrying and suggests the biogeochemical model is missing some key drivers / processes, as indicated by the lack of good Chl validation results. Which is why I do not share the confidence of the authors in the presented biogeochemical model.

Response: We believe that the failure of our model to estimate the timing of the spring bloom does not disqualify it from assessing *the response of coastal productivity to the hydrometeorological extremes during the summer months, and the mechanisms mediating this response*, which we targeted in this study. Secondly, as we had pointed out in section 4.3, the most likely reason for this failure is understood and its implications were discussed in the previous revision of the manuscript (L368 and L473-474).

Comment: L417 “oxygen consumption and denitrification (Fig. 2) were largely based on ECOHAM (see Section 2.1 Appendix B), which was earlier derived from ERSEM.”

The ERSEM model is mentioned a few times in the text, but only with the references of Ford et al (2017) and Blackford and Radford (1995). In line 417 it is mentioned for the first time without any references at all. I strongly suggest including the original ERSEM publications by Baretta and Baretta-Bekker, in order to give credit where credit is due: Baretta JW, Ebenhöh W, Ruardij P (1995) The European Regional Seas Ecosystem

Model, a complex marine ecosystem model. Neth J Sea Res 33(3/4):233–246
Baretta-Bekker JG (ed) (1995) European Regional Seas Ecosystem Model I (1990–1993).
Neth J Sea Res 33(3/4):229–483
Baretta-Bekker JG, Baretta JW (eds) (1997) European Regional Seas Ecosystem Model II
(1993–1996). J Sea Res 38(3/4):169–436

Change: at the first mentioning of ERSEM, we now cited the first reference suggested by the referee (L418). But we believe that citing two further suggested journal volumes is not warranted, considering that these are not cited even by the recent ERSEM studies, and as their relevance for the scientific argumentation of the manuscript are not clear.

Comment: L445 “which is out of the scope of this study.”

I have never heard the combination “out of the scope of” before, “outside of the scope of” is more common.

Change: we adopted the suggested form (L477).

Comment: L457 “However, the model structure and formulations represent the state of the art” I find this very bold, given the fact that the benthic compartment is mainly parameterized, mixotrophs are not included, bacterial dynamics are not directly included and different algal groups are not represented (e.g. the mentioned Phaeocystis). The model is not bad, and will be near state of the art with the additions and developments mentioned in the text. But this is not the model applied here.

Change: We removed the statement and in the following sentence, we replaced ‘this study is of heuristic value’ with ‘this study is *expected to be* of heuristic value’ (L490).

Interactive impacts of meteorological and hydrological conditions on the physical and biogeochemical structure of a coastal system

Onur Kerimoglu^{1,2}, Yoana G. Voynova¹, Fatemeh Chegini^{3,4}, Holger Brix¹, Ulrich Callies¹, Richard Hofmeister¹, Knut Klingbeil³, Corinna Schrum¹, and Justus E.E. van Beusekom¹

¹Institute for Coastal Research, Helmholtz-Zentrum Geesthacht, Germany

²Institute for Chemistry and Biology of the Marine Environment, Carl von Ossietzky University Oldenburg, Germany

³Leibniz Institute for Baltic Sea Research, Warnemünde, Germany

⁴now at: Max Planck Institute for Meteorology, Hamburg, Germany

Correspondence: Onur Kerimoglu (kerimoglu.o@gmail.com)

Abstract. The German Bight was exposed to record high riverine discharges in June 2013, as a result of flooding of the Elbe and Weser rivers. Several anomalous observations suggested that the hydrodynamical and biogeochemical states of the system were impacted by this event. In this study, we developed a biogeochemical model and coupled it with a previously introduced high resolution hydrodynamical model of the southern North Sea, in order to better characterize these impacts, and gain insight into the underlying processes. Performance of the model was assessed using an extensive set of *in-situ* measurements for the period 2011-2014. We first improved the realism of the hydrodynamic model with regard to the representation of cross-shore gradients, mainly through inclusion of flow-dependent horizontal mixing. Among other characteristic features of the system, the coupled model system can reproduce the low salinities, high nutrient concentrations and low oxygen concentrations in the bottom layers observed within the German Bight following the flood event. Through a scenario analysis, we examined the sensitivity of the patterns observed during July 2013 to the hydrological and meteorological forcing in isolation. Within the region of freshwater influence (ROFI) of the Elbe-Weser rivers, the flood event clearly dominated the changes in salinity and nutrient concentrations, as expected. However, our findings point out to the relevance of the peculiarities in the meteorological conditions in 2013 as well: a combination of low wind speeds, warm air temperatures and cold bottom water temperatures resulted in a strong thermal stratification in the outer regions, and limited vertical nutrient transport to the surface layers. Within the central region, the thermal and haline dynamics interactively resulted in an intense density stratification. This intense stratification, in turn, led to enhanced primary production within the central region enriched by nutrients due to the flood, but reduction within the nutrient-limited outer region, and it caused a wide-spread oxygen depletion in bottom waters. Our results further point to the enhancement of the current velocities at the surface as a result of haline stratification, and intensification of the thermohaline estuarine-like circulation at the Wadden Sea, both driven by the flood event.

1 Introduction

Riverine discharges influence the thermohaline stratification, nutrient availability and as a result, primary production within the coastal zones (e.g., Hickey et al., 2010; Cloern et al., 2014; Emeis et al., 2015). Excess amounts of riverine nutrient inputs cause coastal eutrophication, associated with a host of problems (Smith and Schindler, 2009), including development of dense and harmful algal blooms (e.g., Garnier et al., 2019), decline of submerged vegetation (e.g., Dolch et al., 2013), and oxygen depletion (see the review by Fennel and Testa, 2019). Fraction of riverine freshwater and nutrients that reaches the open ocean is an open question, with estimates ranging between 15% and 80 % (Sharples et al., 2017; Izett and Fennel, 2018).

Mixing of riverine freshwater with the surrounding saline marine waters at the coasts is driven by a set of hydrodynamical processes intriguingly linked together (for a recent review, see Geyer and Maccready, 2014). The freshwater inputs by rivers may lead to haline stratification in the coastal region, in the absence of any thermal stratification (van Aken, 1986). Horizontal density gradients caused by riverine freshwater inputs govern gravitational circulation (i.e., exchange flow), where the seaward flow of the lighter water at the surface is counteracted by a landward flow of the saltier, denser waters near the sea floor (see Burchard et al., 2018). Destabilizing and stabilizing effects of flood and ebb currents, respectively, may further enhance the gravitational circulation (Burchard and Hetland, 2010).

The study system, the German Bight, is a shallow area located in the southeastern North Sea (Fig. 1). The prevailing wind direction is southwesterly (Siegismund and Schrum, 2001), governing a large cyclonic gyre within the southern North Sea (Sündermann and Pohlmann, 2011). But under easterly and northeasterly winds, anticyclonic circulation may prevail (Becker et al., 1992; Dippner, 1993; Callies et al., 2017). Occurrence of thermohaline stratification within the German Bight is driven by buoyancy inputs from the rivers to the coastal waters and heat fluxes in deeper areas (Frey, 1990; Simpson et al., 1993). Stratification is also strongly influenced by wind intensity and direction: while westerly winds allow, and easterly winds enhance stratification, southerly winds have a particularly destratifying effect (Schrum, 1997). An estuarine-like circulation has been shown to be present within the coastal areas of the German Bight (Burchard et al., 2008; Burchard and Badewien, 2015). This mechanism has been suggested to contribute to the maintenance of the steep, cross-shore suspended particulate matter (SPM) and nutrient gradients (Flöser et al., 2011; Hofmeister et al., 2017), with regional differences (van Beusekom et al., 2019). The steep cross-shore gradients observed in SPM and nutrient concentrations have been recently reproduced by numerical models (Staneva et al., 2009; Gräwe et al., 2016) owed to high resolution grids and the terrain-following vertical coordinates that enable representation of the estuarine circulation.

Surrounded by industrialized and densely populated countries, the southern North Sea has been experiencing eutrophication related problems (Radach, 1992; Hickel et al., 1993; OSPAR, 2017), such as occasional oxygen depletion events during summer (Frey, 1990; Große et al., 2016). The Elbe and Weser rivers have been estimated to be the primary sources of nitrogen (N) in the southern North Sea (Große et al., 2017). Since the 1980s, nutrient concentrations in these and other contributing rivers (e.g., Rhine, Meuse), have been significantly reduced, more for phosphorus (P) than for N (Radach and Pätsch, 2007). This has resulted in some improvement in water quality, especially within the northern Wadden Sea (Wiltshire et al., 2008; van

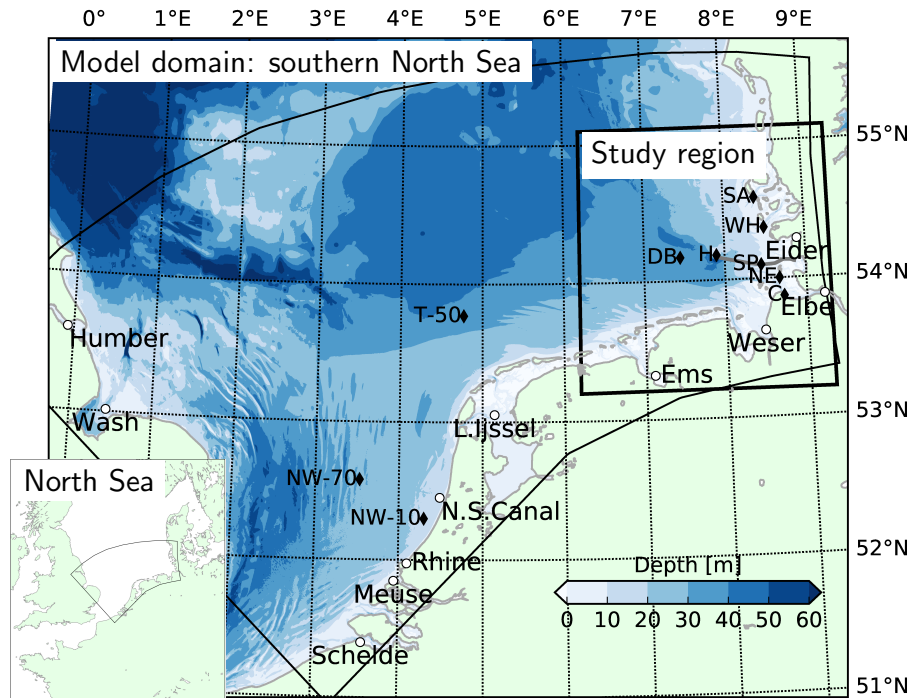


Figure 1. Model domain, bathymetry (data from the European Marine Observation and Data Network, EMODnet), and the location of the study region, the German Bight. Filled circles: location of river mouths on the grid, diamonds: monitoring stations (NW: Noordwijk, T: Terschelling, DB: Deutsche Bucht, H: Helgoland, SP: Suederpiep, SA: Southern Amrum, WH: Westerhever, NE: Norderelbe, C: Cuxhaven), gray line: the average route of the Ferrybox transect between Helgoland and Büsum (see section 2.3).

Beusekom et al., 2019), but according to a recent study, the nutrient concentrations within the coastal areas are estimated to be still 50-70% higher than the pre-industrial levels (Kerimoglu et al., 2018).

The extent to which the hydrodynamical structure, and the transport of riverine material within the German Bight depends on the interannual variability in riverine discharges is not fully understood. In particular, whether and to what extent a flood event would influence the thermohaline stratification within the off-shore waters, or the estuarine circulation at the coastal waters has not been explicitly investigated. In this study, based on the simulations obtained with a coupled physical-biogeochemical model, we examine the physical and biogeochemical structure in the German Bight during July 2013, i.e., following a major flood event (Voynova et al., 2017), in comparison to those in the previous year, to characterize the sensitivity of the hydrodynamical and biogeochemical structure within the German Bight to the meteorological and hydrological conditions. Through a numerical scenario analysis, we try to disentangle the effects of the flood event, meteorology, and in particular the wind conditions.

2 Material & Methods

65 2.1 The Model

The hydrodynamical host, the General Estuarine Transport Model (GETM, Burchard and Bolding, 2002) is a free-surface baroclinic model that uses terrain-following vertical coordinates. GETM was previously applied to the greater North Sea area (Stips et al., 2004; Pätsch et al., 2017) and the German Bight and Wadden Sea regions in higher resolution (Staneva et al., 2009; Gräwe et al., 2016). In the current application, GETM is defined on a curvilinear grid with a resolution of 1.5-4 km
70 (Fig. 1) and 20 vertical layers, and operated with integration time steps of 5 s and 360 s for the barotropic and baroclinic modes, respectively. At the northern and western boundaries, surface elevations extracted from TRIM-NP-2D (Gaslikova and Weisse, 2013) are provided as clamp boundary conditions at hourly resolution (see below for other boundary conditions). For the discretization of advection, we employed a third order, total variation diminishing P2-PDM (i.e., ULTIMATE QUICKEST) scheme, recognized for its accuracy and gradient conserving qualities (e.g., Pietrzak, 1998; Burchard and Rennau, 2008).

75 An almost identical model setup was previously employed and shown to capture the spatial and temporal distributions of temperature and salinity within the German Bight for the period 2000-2010 (Kerimoglu et al., 2017a), as well as the tidal dynamics (Nasermoaddeli et al., 2018). Since then, the following refinements were made: *i*) providing meteorological forcing at hourly resolution extracted from a COSMO-CLM hindcast simulation (Geyer, 2014), which was previously at 6-hr resolution; *ii*) specifying the monthly average vertical temperature and salinity profiles at the boundaries for each year separately as
80 predicted by HAMSOM (for a recent description of the setup, see Große et al., 2017), instead of providing climatological averages for all years; *iii*) explicitly describing horizontal diffusion through a Smagorinsky parameterization (Smagorinsky, 1963). Impacts of the first two refinements *i-ii* were subtle and local, but introduction of horizontal diffusion (*iii*) systematically improved the representation of coastal gradients, and resulted in more plausible total mixing rates overall (see Appendix A).

The biogeochemical model employed here, provisionally named ‘Generalized Plankton Model’ (GPM), has been recently
85 developed. It has two main components: a component that describes plankton dynamics, and a geochemistry component that describes the recycling of the organic material within the water and sediments. These compartments, both of which are implemented as FABM (Framework for Aquatic Biogeochemical Models, Bruggeman and Bolding (2014)) modules, are coupled in run-time. Elemental fluxes between various model compartments are illustrated in Fig. 2.

The plankton component has been developed based on the carbon (C-) and P- resolving generic plankton model, described by
90 Kerimoglu et al. (2017b) in the context of a lake application. Specifically, the extensions included descriptions of N and silicate (Si) limitation of phytoplankton (diatoms for the latter), and variations of the Chl:C ratio according to Geider et al. (1997). Heterotrophs can now handle and properly recycle prey with constant or variable C:N:P:Si ratios. The ‘genericity’ of the previous model version (Kerimoglu et al., 2017b) was due to the fact that each plankton species was described as a potential mixotroph with a prescribed autotrophy/heterotrophy ratio. In the new version, explicit phytoplankton and zooplankton modules are used,
95 in order to facilitate future development, where phytoplankton-, zooplankton- and mixotroph- specific functionalities are foreseen to be included in future work. In the present application, plankton comprises of two phytoplankton functional groups, namely diatoms and flagellates, and two zooplankton functional groups, namely micro- and meso-zooplankton.

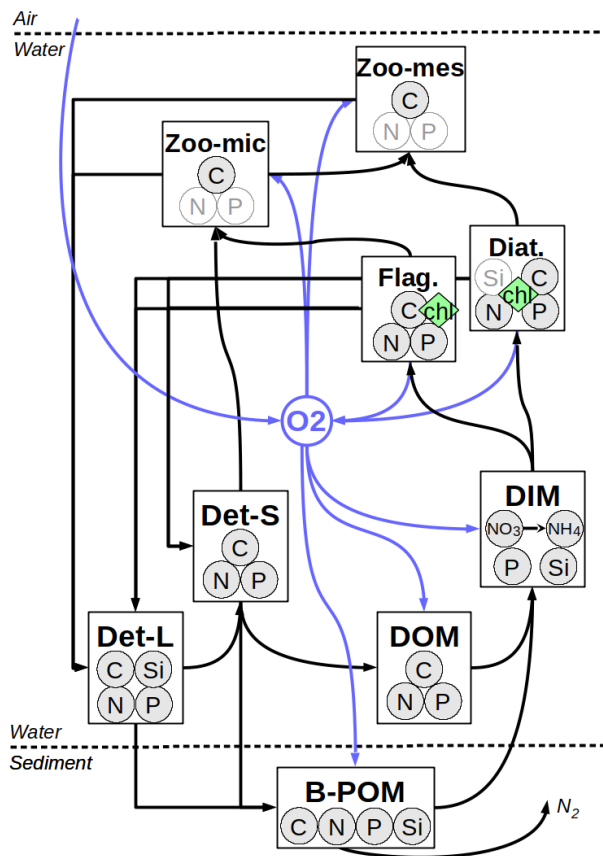


Figure 2. Elemental fluxes between model compartments. Det-L and Det-S: large and small detritus, DOM: Dissolved Organic Matter, DIM: Dissolved Inorganic Matter, B-POM: Benthic Particulate Organic Matter. The pale N and P in micro- and mesozooplankton and Si in diatoms represent diagnostic state variables which are determined by a fixed prescribed ratio to the C-bound to these pools, resolved as a state variable. For the sake of simplification, fluxes from phytoplankton and zooplankton to DOM and DIM pools are not shown (see Appendix B for a detailed description of model).

The abiotic component (i.e., module describing non-planktonic processes) is largely based on ECOHAM. Description of the dynamics of two detritus pools (large and small), dissolved oxygen, dissolved inorganic material (DIM) pool that resolves PO_4 , Si, NO_3 and NH_4 , and a plate (not vertically resolved) benthic pool are as in Lorkowski et al. (2012). ECOHAM's carbonate cycle was excluded, and a simpler description for DOM remineralization was used. Finally, light conditions are determined by the shading by phytoplankton, detritus, DOM and a parameterization of background turbidity caused by SPM. A detailed description of the model formulations and parameters can be found in Appendix B.

Starting from the initial conditions obtained earlier, the model was spun-up for the period 2008-2010 with the parameterization presented here, since up to 3 years was found to be necessary for the solutions to converge from arbitrary initial conditions. We then considered the period 2011-2014 for the model performance assessment. For the analysis of the years 2012 and 2013,

in addition to the reference run, we consider three scenarios in order to investigate the sensitivity of the physical and biogeochemical structure of the system to the meteorological and hydrological forcing: based on the 2013 run (with respect to ocean boundary and initial conditions), the scenario ‘2013-R12’ was run with the river forcing of 2012, ‘2013-M12’ was run with the meteorological forcing of 2012. In a third scenario, ‘2013-W12’, only June-August 2013 was simulated with the wind and atmospheric pressure fields from the respective months in 2012, starting from the initial conditions of June 2013 and using the ocean boundary conditions of 2013.

2.2 Riverine and Atmospheric Forcing

Both for atmospheric forcing of the coupled physical-biogeochemical model, and for the analysis of meteorological conditions, we use the COSMO-CLM atmospheric hindcast, that has a 0.22° resolution (Geyer, 2014). Meteorological forcing from COSMO-CLM comprises precipitation, total cloud cover, mean sea level pressure, relative humidity and air temperature at 2m above sea surface, and U- and V- components of wind at 10m above sea surface, whereas evaporation was calculated by GETM. Shortwave radiation at the surface was calculated according to astronomical functions provided by GETM, and corrected by cloud cover and seasonal variations in surface albedo according to Payne (1972). Longwave radiation was calculated according to Clark et al. (1974). Momentum and heat fluxes were calculated according to bulk formulae by Kondo (1975).

Atmospheric deposition rate of oxidized and reduced nitrogen, added respectively to the modelled NO_3 and NH_4 at the surface layer, was downloaded from the website of the European Monitoring and Evaluation Programme (EMEP). Riverine discharges and nutrient fluxes were derived from the OSPAR Commission’s ICG-EMO (Intersessional Correspondence Group on Eutrophication Modelling) database, provided by S. van Leeuwen (NIOZ) upon personal request. Here, we considered only the major rivers shown in Fig. 1 (Witham, Welland, Nene and Great Ouse are collectively labeled as the ‘Wash’). Based on Amann et al. (2012), 30 % of the organic material (total minus inorganic form for each of the C, N, P and Si) is assumed to be in particulate form (detritus), and the rest to be in dissolved form (DOM). Small (<30d) gaps in riverine data were filled using linear interpolation, and larger gaps were replaced with long-term (2000-2017) climatologies. Riverine inputs were applied over the full depth, given the fact that the outlets of all considered rivers are at shallow sites (Fig. 1).

2.3 Observation data

Station data (Helgoland, Cuxhaven, Deutsche Bucht; see Fig. 1) for temperature, salinity and oxygen (the latter only at Deutsche Bucht) were downloaded from the COSYNA (Coastal Observing System for Northern and Arctic Seas) data portal (www.cosyna.de, see Breitbach et al., 2016) at daily resolution (snapshots at 00:00 averaged within an hourly time window). Collection and processing of the semi-continuous data collected by FerryBox platforms at the Cuxhaven and Helgoland monitoring stations and on the M/V *Funny Girl* ferry operating between Büsum and Helgoland during May-September have been described previously by Petersen et al. (2011) and Voynova et al. (2017) and are available from the COSYNA data portal as well.

N, P, Si and chlorophyll data at the Helgoland-Roads station were collected at semi-daily (every working day), and using standard procedures as described by Wiltshire et al. (2008). Data from the Noordwijk, Terschelling, Norderelbe, Suederpiep

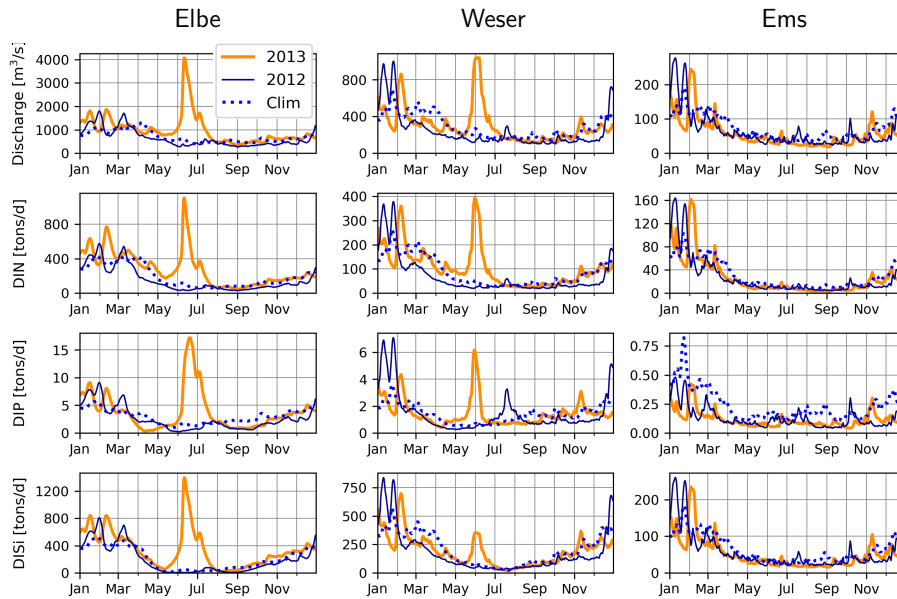


Figure 3. Measured discharge, DIN (NO_3+NH_4), DIP and DISi loading rates at rivers Elbe, Weser, and Ems during 2012 (dark blue lines), 2013 (orange lines) and the 2005-2014 climatology, excluding 2013 (dashed blue lines).

140 and Westerhever stations are available at monthly intervals. For the Noordwijk-70 and Terschelling-50 stations, we consider only the surface measurements available at biweekly intervals, while the data at other stations are located at shallow sites, and therefore provide only surface measurements. Mooring data for surface (<10 m) salinity, temperature and nutrients, randomly distributed over the entire model domain and simulation period 2011-2014, were obtained from the International Council for the Exploration of the Sea (ICES). In this dataset, the outliers, defined as the values falling outside the $[\bar{o} \pm 4\sigma]$ range, where \bar{o} and σ stand for the mean and standard deviation of the raw observations, were removed.

145 Spatial matching of all data was performed by calculating the distance-weighted mean of the nearest four modelled grid values around the observation, using the ‘spatial.cKDTree’ package from the Scipy library, version 1.1.0 of Python 3.5.

3 Results

3.1 Hydrological and Meteorological Conditions

150 Variability of discharge rates and concentration of inorganic and organic constituents for the period 1977-2000 was explored by Radach and Pätsch (2007). Here, we analyze the discharge and nutrient fluxes for the specific time period of interest. Typically, the discharge rates of the continental rivers around the southern North Sea peak during winter/early spring (e.g., Lenhart et al., 1997). For the rivers Elbe, Weser and Ems, the major rivers discharging to the German Bight, this pattern holds for the decade that includes and precedes the time period of interest, and 2012 in particular (Fig.3). But during June 2013, a large

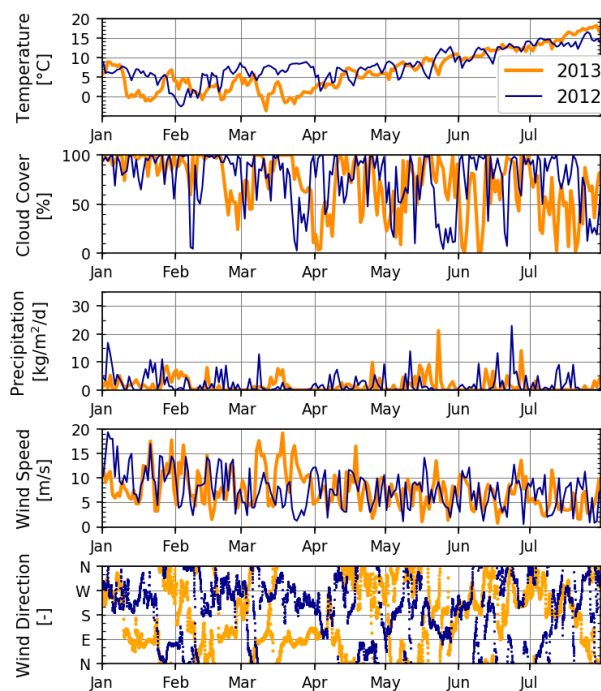


Figure 4. Meteorological variables during January-July 2012 and 2013, extracted from a representative grid point ($54^{\circ}14'N$, $7^{\circ}29'E$) of the meteorological hindcast, used also as model forcing (see Section 2.2). Temperature is from 2 m and wind is from 10 m height above the sea level. Wind direction is shown at hourly resolution, all other variables at daily resolution.

155 precipitation event over central Europe caused flooding of several major river basins (Merz et al., 2014), including Elbe and
 Weser (Fig.3). The Elbe flood can be considered as a 100-year event with discharge rates of up to $4060 \text{ m}^3 \text{ s}^{-1}$ during 11
 and 12 June (Voynova et al., 2017), which is four-fold higher than the typical discharge rates during winter (Fig.3). Ems, and
 the other rivers in the model domain do not show such an extreme response, underlining the locality of the aforementioned
 meteorological event. Nitrogen, phosphorus and silicate concentrations did not vary systematically during the flood event, and
 160 therefore their fluxes paralleled the discharge rates, with distinct peaks during June 2013 for the Elbe and Weser rivers (Fig.3).

Meteorological conditions during 2012 and 2013 differed systematically during two periods (Fig. 4). The first of these
 occurred during the early spring: March 2012 was characterized by relatively warm air temperatures and winds mildly blowing
 from the west/southwest, whereas March 2013 was cold with strong easterly winds. The second period occurred during the
 middle of summer: July 2012 was relatively cold with overcast skies and some precipitation, contrasting with warmer, drier
 165 and calmer conditions in July 2013.

3.2 Assessment of the Model Performance

Simulated temperature and salinities at the surface match, in general, well the observations found in the ICES database, randomly distributed throughout the model domain within the period 2011-2014 (Fig. 5). There is a slight cold bias at the lower temperature range (29-32 g/kg), which seems to be canceled out by the slight warm bias at the higher range. These deviations are mostly within a 1 °C range, therefore presumably do not have a significant effect. At an intermediate range, salinity is overestimated by up to 2 g/kg, indicating insufficient spread of coastal waters with low salinity. This may either be due to (still) underestimated horizontal mixing (see Appendix A), or inaccuracies in the advection patterns. Match of the simulated NO₃ and DIP to the ICES-observation set is reasonably well, with -5% normalized bias and correlation coefficients larger than 0.6 for both variables (Fig. 5). Underestimated NO₃ at an intermediate range (10-40 μMN) is possibly due to the aforementioned underrepresentation of N-rich riverine waters within the transition zone. Regarding DIP, the measured-simulated pairs that represent major underestimation errors (e.g., in the <0.5 μMP simulation band) point to the inability of the model to capture summer maxima occurring in specific coastal regions.

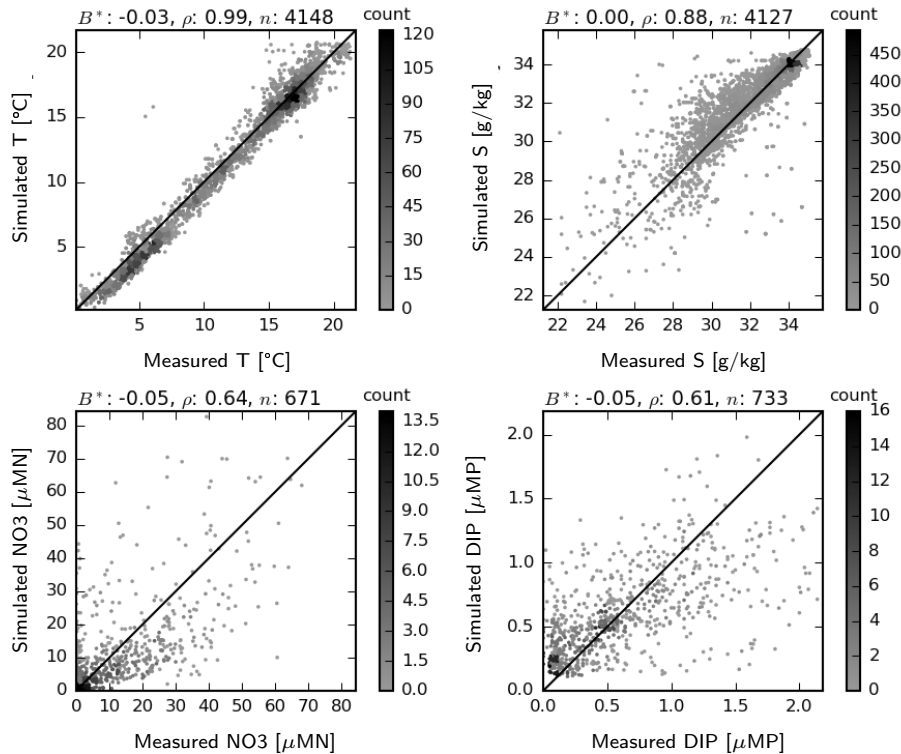


Figure 5. Two dimensional histogram of simulated vs measured temperature, salinity, NO₃ and DIP at the surface for the period 2011-2014. Count indicates the occurrence frequency of simulation-observation pairs. B^* : normalized bias, ρ : correlation coefficient, n : number of observation-simulation pairs.

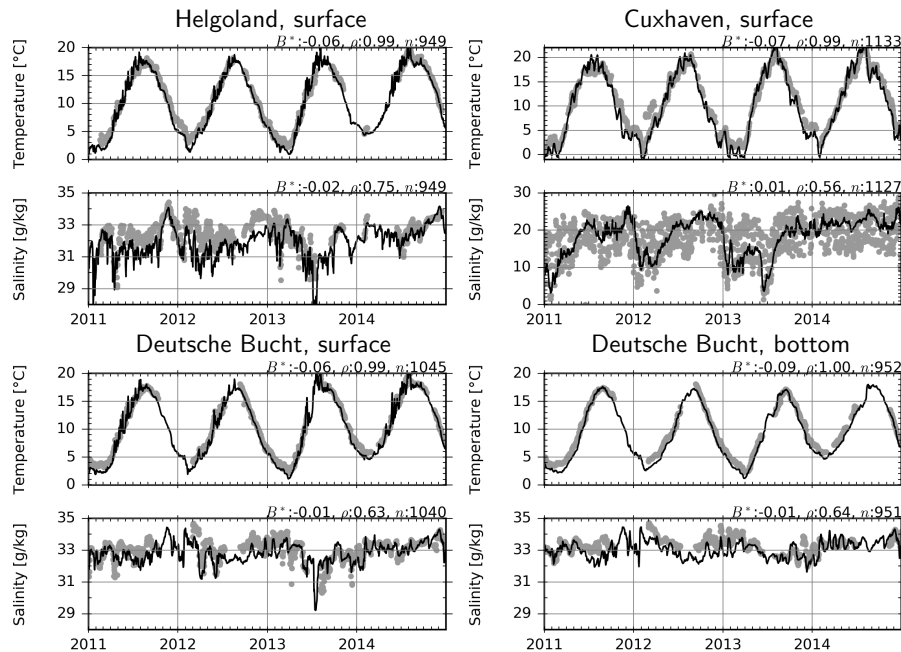


Figure 6. Observations (dots) and model estimates (lines) of temperature and salinity. B^* : normalized bias, ρ : correlation coefficient, n : number of observation-simulation pairs.

Simulated and measured temperature and salinity are compared at 3 fixed monitoring stations (Fig. 6). Two of these stations, Helgoland and Cuxhaven are located at shallow sites, therefore provide only surface measurements, whereas the third one, the Deutsche Bucht, provides measurements also at 30m depth. At all these stations, temperature is estimated with 5-9% negative bias, and correlation scores range between 0.99-1.0. The interannual variations are well captured: the relatively warm winters (January-March) of 2012 and 2014, and the cold winter of 2013 manifest as cold and warm water temperatures according to the observations, and these differences are realistically reproduced by the model, despite the modeled temperatures being about 0.5-1.0 °C lower. Salinity is modelled consistently with only up to 2% bias at all 3 stations, despite the lower correlation coefficients in comparison to temperature (Fig.6). The relatively higher variability of the salinity measurements is due to the tidal variations (most obvious at the Cuxhaven station), which are smeared out in the daily average model output. The freshwater plume of the flood event of June 2013, and other similar events have been accurately reproduced by the model.

According to the June-July average salinities measured by FerryBox on the M/V *Funny Girl* ferry between Büsum and Helgoland (Fig. 1), the salinities gradually decrease from about 32 g/kg at Helgoland to about 27 g/kg at Büsum in 2012 (Fig. 7). In 2013, driven by the freshwater plume of the flood, the average salinities were lower at both edges, with about 27-29 g/kg at Helgoland and 22-23 g/kg at Büsum. The model estimates are quite accurate at the off-shore areas, but underestimate the observations near the coast, up to 2 g/kg in 2012 and 3-5 g/kg in 2013. Despite these biases, the clear difference between the two years as captured by the FerryBox is qualitatively captured by the model.

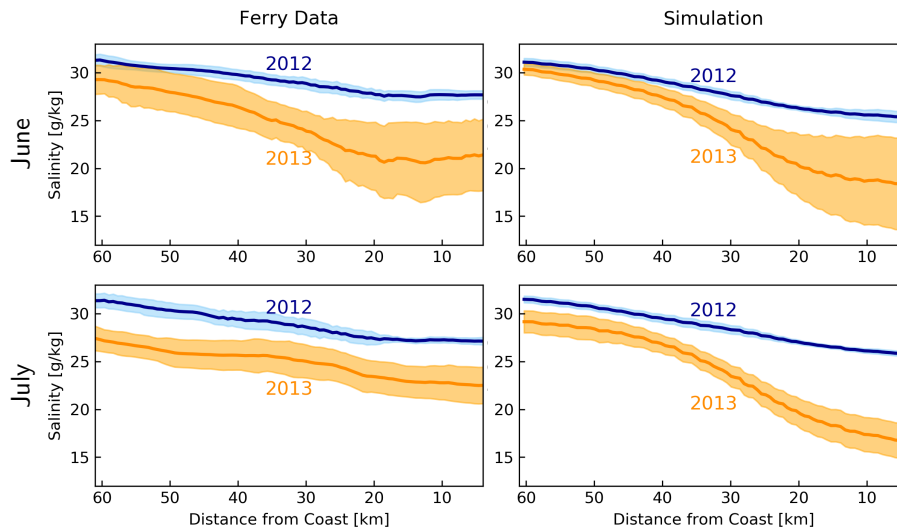


Figure 7. Average (dark lines) and standard deviation (shadings) of salinities between Helgoland and Büsum, according to the FerryBox data from M/V *Funny Girl* and simulation by the model during June and July 2012 and 2013.

Dissolved inorganic N (DIN, which in our model comprise NO_3 and NH_4 , as NO_2 was not considered) and P (DIP, i.e.,
 195 PO_4) are generally well reproduced at all considered monitoring stations (Fig.8), as suggested by low bias and moderate correlations. For dissolved silicate, Si, model estimates overshoot the observations by about 50% at Helgoland and up to 100% at the Noordwijk stations. The latter is mainly driven by the strong DISi fluxes from the western boundary, reflecting the overestimation of Si specified at the boundaries (Fig. 1).

For chlorophyll, there is up to 120% positive bias at the off-shore stations (Fig.8), while the correlation coefficients are
 200 particularly low at the Terschelling-50 and Noordwijk-70 stations and moderate at Helgoland and Noordwijk-10. A consistent source of error seems to be the failure of the model to estimate the timing of the spring bloom. However, differences between stations, i.e., values at Helgoland and Noordwijk-10 being higher than at Terschelling-50 and Noordwijk-70 stations, are well reproduced.

Measured and simulated NO_3 and DIP concentrations at 3 coastal stations, Norderelbe, Suederpiep and Westerhever, located
 205 along the North-Frisian Wadden Sea (Fig. 1), are shown in Fig. 9. For NO_3 , measurements in both June and July 2013 were distinctly higher than those in 2012 at Norderelbe and Suederpiep stations, but not at Westerhever in July. Despite a tendency to overestimate, the range of simulated values mostly encloses the measurements, and the qualitative differences between 2012 and 2013 and between different stations were captured by the model. Average DIP measurements did not differ between 2012 and 2013, but gradually decreased with distance from the Elbe mouth. The model captures this gradual decline, but the
 210 difference it suggests between the two years at the Norderelbe and Suederpiep stations in July is larger than that indicated by the measurements.

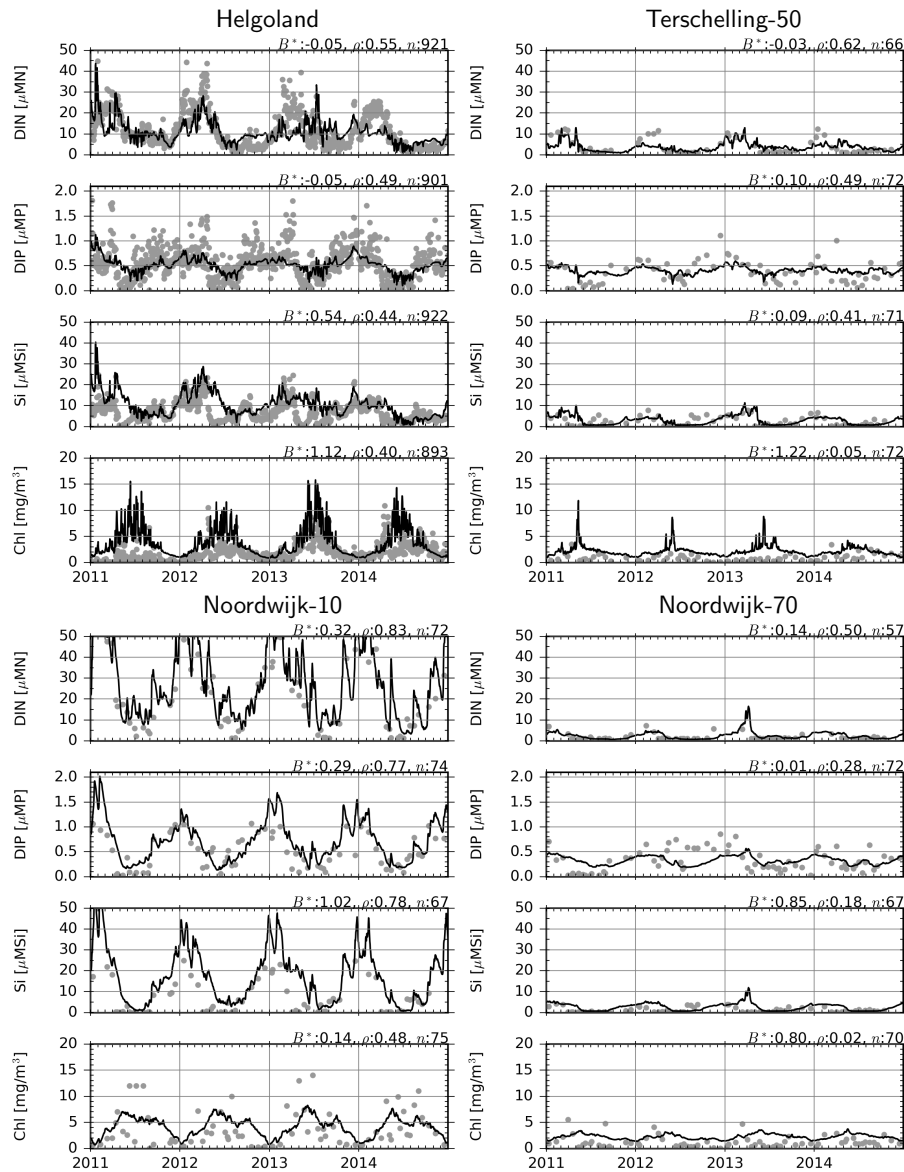


Figure 8. Observations (dots) and model estimates (lines) of surface DIN, DIP, DISi and chlorophyll concentrations. B^* : normalized bias, ρ : correlation coefficient, n : number of observation-simulation pairs.

3.3 Thermohaline structure, nutrient status and productivity of the system

Average salinities in the surface and bottom layers estimated by the model suggest considerable extension of the Elbe-Weser ROFI during July 2013, in comparison to July 2012 (Fig. 10). This extension is similar in surface and bottom layers within the well mixed shallow areas, but stronger at the surface in deeper regions where a thermohaline stratification develops (Fig. 11).

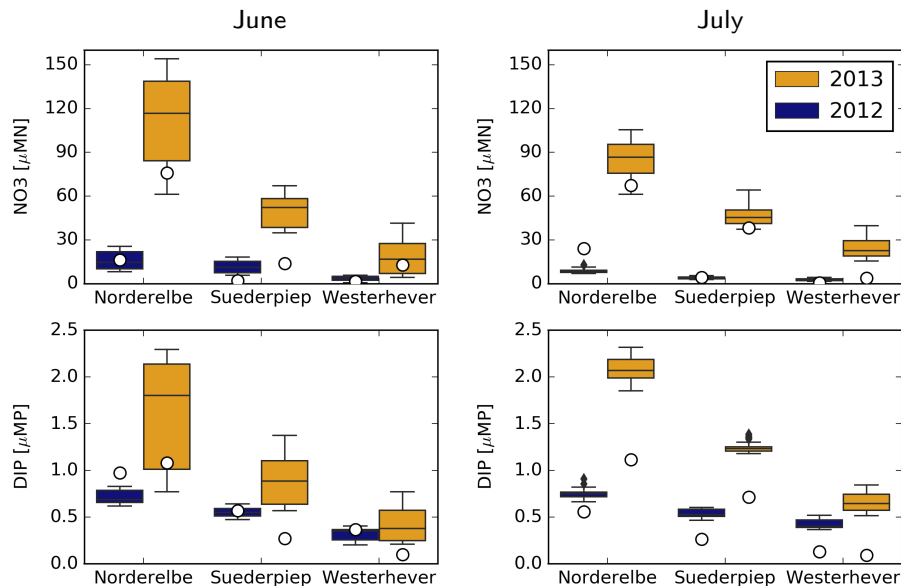


Figure 9. Monthly average measurements (circles) and temporal distribution of the simulations (boxes showing the median, 1st and 3rd quartile and whiskers showing the minimum and maximum values) for surface NO_3 and DIP concentrations at three coastal stations shown in Fig. 1.

The surface and bottom temperatures display similar horizontal gradients during July 2012 and 2013 with higher temperatures near the coast, and lower temperatures within the offshore regions (Fig. 10). However, the surface temperatures within the outer areas during July 2013 are 1-2 °C higher than those during July 2012 (Fig. 4). In contrast, the bottom temperatures during 2013 July are lower than those during July 2012.

220 When the riverine forcing of 2012 was used for simulating 2013 ('2013-R12' scenario), the characteristic freshwater plume of 2013 disappears (Fig. 10). The resulting freshwater front (e.g., as hinted by 30 g/kg isohaline) differs from that of 2012 as well, having retreated to the southern latitudes. Under this scenario, the temperatures at the bottom layers remain identical to those of 2013, but the surface layer becomes slightly colder. The latter is explained by the increasing stability of the water column due to the extra buoyancy caused by the flood event in 2013, reflected by the larger area of intense ($>1 \text{ kg m}^{-3}$) density stratification (Fig. 11, compare 2013 and 2013-R12).

225 The effect of exchanging the entire meteorological forcing (as indicated by the 2013-M12 scenario), compared to that of exchanging only the short-term (i.e., starting from June) wind forcing (2013-W12 scenario) on the salinity distribution is almost identical: according to both scenarios, the freshwater plume around the mouth of Elbe and Weser is preserved, but the plume spreads along the coast instead of spreading towards the outer German Bight as was the case in the original 2013 simulation (Fig. 10). Thus, it can be concluded that the distribution of salinity within the central and outer German Bight in July 2013 is driven by the short-term wind conditions. The freshwater front (e.g., as indicated by the 27-30 g/kg isohalines), simulated

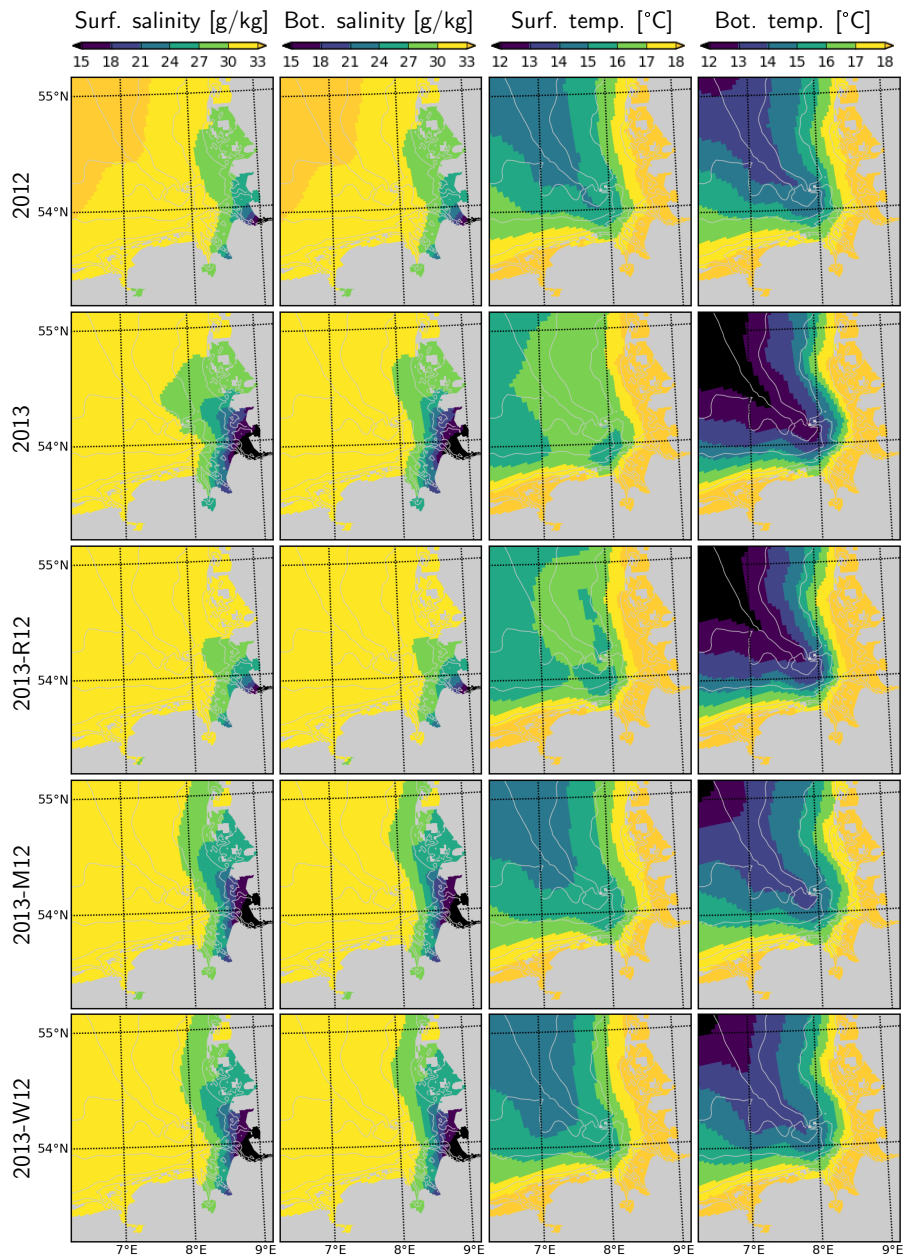


Figure 10. Salinity and temperature in the surface and bottom layers during July for the years 2012 and 2013 and scenarios 2013-R12, 2013-M12 and 2013-W12.

according to both 2013-M12 and 2013-W12 scenarios, extends further to the North in comparison to 2012, which is evidently driven by the additional freshwater inputs due to the flood.

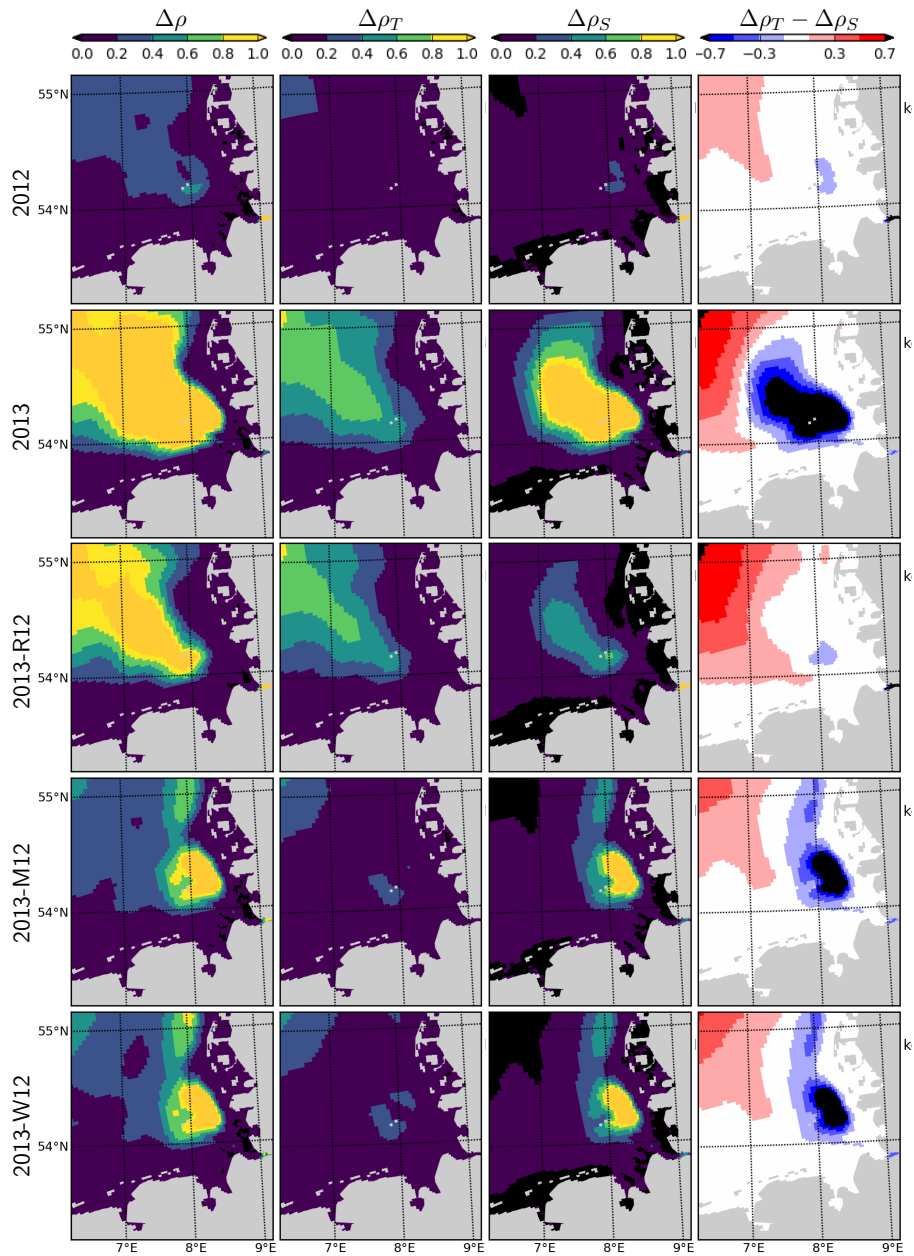


Figure 11. Density difference between the surface and bottom layers ($\Delta\rho$), contribution of temperature and salinity, ($\Delta\rho_T$ and $\Delta\rho_S$, see the text), and their difference ($\Delta\rho_T - \Delta\rho_S$), during July for the years 2012 and 2013 and scenarios 2013-R12, 2013-M12 and 2013-W12.

Temperatures simulated according to 2013-M12 scenario are similar to those simulated for 2012, characterized by relatively
 235 low temperatures at the surface and the relatively high temperatures at the bottom, in comparison to the original estimations
 for 2013. Interestingly, the temperatures simulated by the 2013-W12 scenario are similar to those simulated by the 2013-M12

scenario, indicating that the large differences in surface and bottom temperatures during July 2013 were mainly caused by the wind conditions. In the 2013-W12 scenario, enhanced turbulent vertical mixing, driven by the stronger winds in July 2012 does not allow the surface temperatures to build up, while it causes the cold bottom temperatures to increase to the levels originally simulated for July 2012, except within the northwestern margin of the study region, where the bottom temperatures remain cold.

The combination of temperature and salinity dynamics determines the 3-dimensional density (ρ) structure of the system. The difference between the density of the surface and bottom layers ($\Delta\rho$) therefore indicates the intensity of the thermohaline stratification, and hence, gives insight into the average light conditions primary producers experience in the surface layers. Average $\Delta\rho$ during July 2012 indicate a weak stratification in the outer German Bight with values mostly below 0.4 kg m^{-3} , with the exception of a small patch south of Helgoland (Fig. 11). During July 2013, $\Delta\rho$ displays an area of strong stratification ($\Delta\rho > 1.0 \text{ kg m}^{-3}$) penetrating to the inner German Bight along the old Elbe Valley. Contributions of temperature and salinity to the $\Delta\rho$, i.e., $\Delta\rho_T$ and $\Delta\rho_S$, as approximately estimated by the linearized equation of state ($\rho - \rho_0 = \alpha(T - T_0) + \beta(S - S_0) + \gamma(P - P_0)$), with $\alpha = -0.15 \text{ kg m}^{-3}/\text{K}$ and $\beta = 0.78 \text{ kg m}^{-3} / (\text{g kg}^{-1})$) suggests that $\Delta\rho_S$ is larger than $\Delta\rho_T$ in a region surrounding and extending northwest of Helgoland. The 2013-R12 scenario results in a $\Delta\rho$ similar in intensity and shape to that in 2013, only narrower in the inner German Bight, whereas the $\Delta\rho$ estimated by the 2013-M12 and 2013-W12 scenarios are small within the outer areas as in 2012, but forms a large patch located northeast of Helgoland.

Simulated DISi and DIN plumes of Elbe in 2013 July following the flood event (Fig. 12) resemble the freshwater plumes (Fig. 10). This plume disappears when the river forcing of 2012 is used (2013-R12) and it gets pushed along the eastern coast in the 2013-M12 scenario (Fig. 12), similar to the freshwater plume (Fig. 10). The plume of DIP on the other hand, when scaled to the Redfield proportions (molar N:P=16), is confined to a smaller region closer to the Elbe estuary. Thus, the impact of the river plume on the nutrients can be tracked by the enhanced N:P ratios.

Spatial distribution of the water-column integrated net primary production rate, NPPR is considerably different in July 2013 than in July 2012 (Fig. 12). Two areas with prominent changes can be distinguished: *i*) outer German Bight (OGB), i.e., west of 7.5°E and north of 54.5°N ; *ii*) central German Bight (CGB), i.e., region around Helgoland, and its westward and northward extensions. Within the OGB, NPPR estimated for 2013 is lower than 2012 and by 2013-M12/W12. This can be explained by the nutrient limited phytoplankton growth in this region, and the intensification of nutrient limitation due to stronger stratification in 2013 driven by meteorological conditions (Fig. 11). Within the CGB, the distinctive patch of high NPPR that is narrowly present in July 2012 expands considerably in July 2013. In comparison to 2013, the 2013-R12 scenario results in a weakening of NPPR within the entire CGB, in terms of both peak rates and areal coverage of high values, especially in the northern portion. The 2013-M12/W12 scenarios also lead to local reductions of the peak rates achieved at around and north of Helgoland, pointing to the relevance of the hydrological conditions for the intensity of NPPR during July 2013. The enhancement of NPPR within the CGB can be explained by the enhancement of light conditions due to strong stratification in this nutrient-rich region, especially following the flood event (Fig. 12).

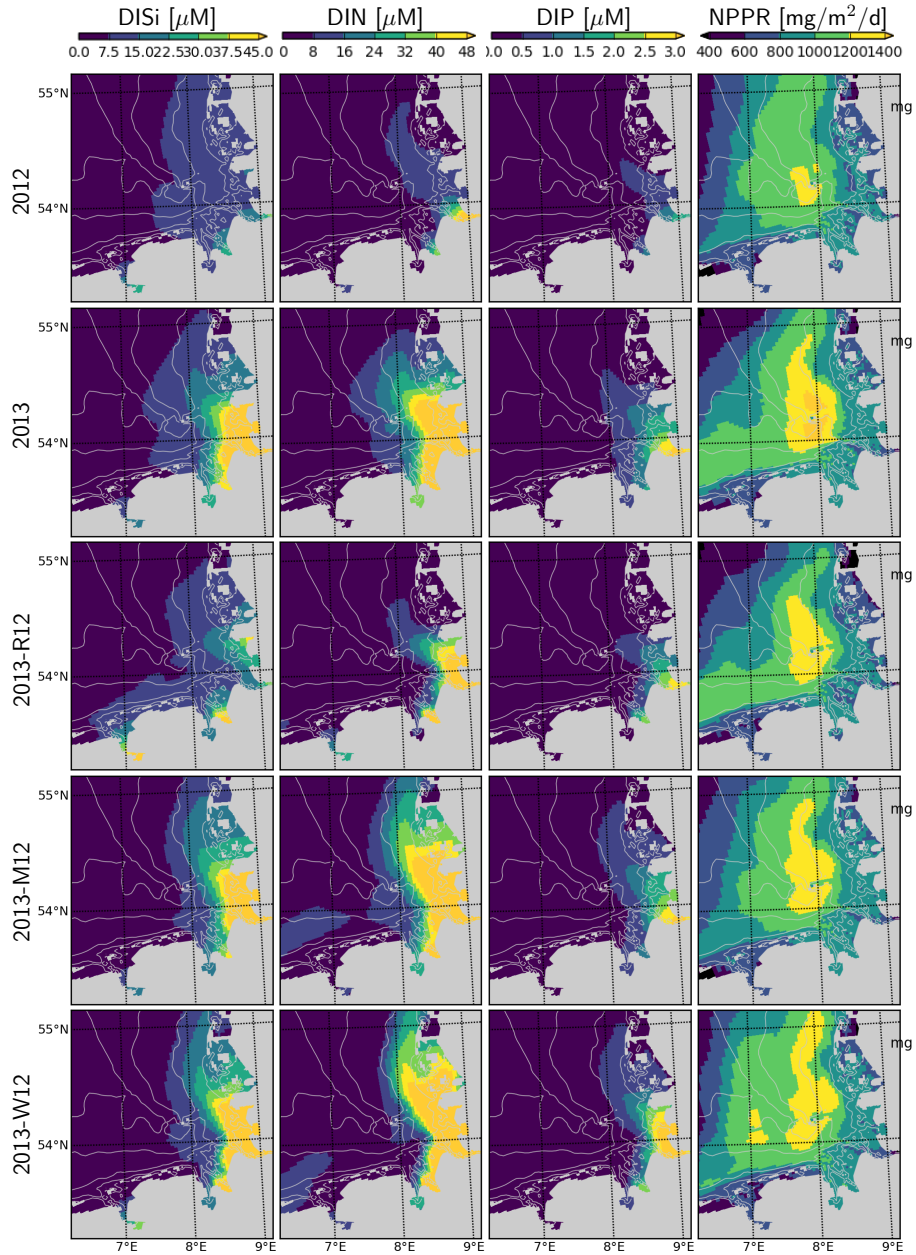


Figure 12. Surface DISi, DIN, DIP and integrated net primary production rate during July for the years 2012 and 2013 and scenarios 2013-R12, 2013-M12 and 2013-W12.

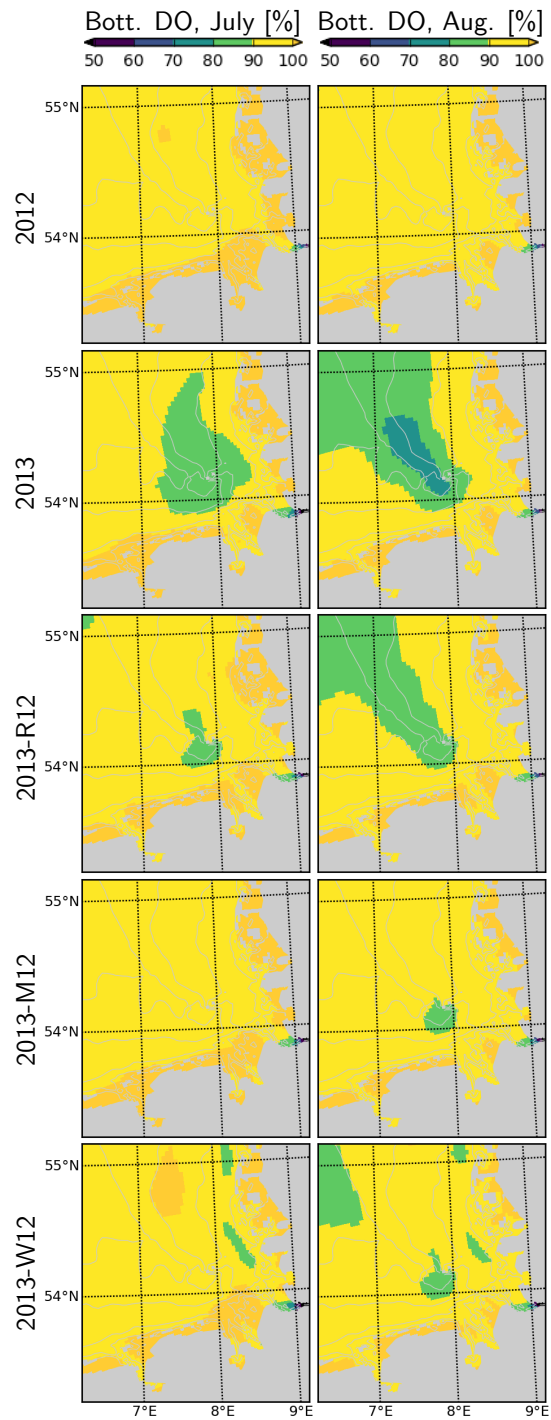


Figure 13. Dissolved oxygen in bottom layers during July and August, for the years 2012 and 2013 and scenarios 2013-R12, 2013-M12 and 2013-W12.

270 In 2012, Dissolved Oxygen (DO) remains close to saturation (Fig. 13). In contrast, in July 2013, a widespread patch of oxygen undersaturation ($< 90\%$ of saturation) develops within the bottom layers of the CGB. This further intensifies ($< 80\%$) and expands towards the OGB during August 2013. Occurrence of this oxygen undersaturation can be explained by the enhanced DO consumption, fueled by the increased NPPR within the CGB (Fig. 12) and the intense stratification within the entire German Bight (Fig. 11) that limits the oxygenation of the bottom layers. In the OGB, the widespread oxygen undersaturation despite the lower NPPR (Fig. 12), highlights the importance of stratification (Fig. 11). Under the 2013-R12 scenario, oxygen levels do not drop as much as in the 2013 scenario within the CGB, and the area with oxygen undersaturation shrinks especially during July, but also in August. The 2013-M12 and 2013-W12 scenarios result in a complete disappearance of the oxygen undersaturation within the CGB during July, pointing to the effectiveness of wind-induced mixing in the oxygenation of bottom layers.

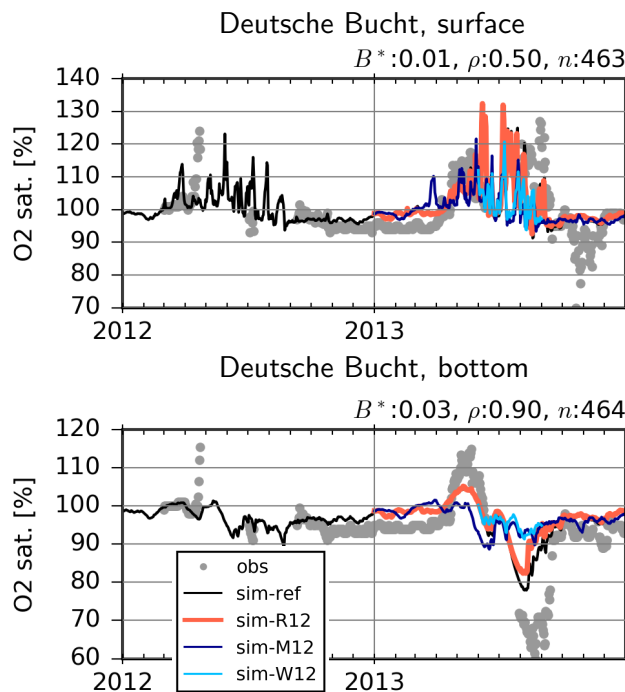


Figure 14. Observed (dots) and simulated (lines) dissolved oxygen in the surface and bottom layer at the Deutsche Bucht station. B^* : normalized bias, ρ : correlation coefficient, n : number of observation-simulation pairs based on the reference (ref) run.

280 At the Deutsche Bucht station, where the temperature and salinity measurements were shown to be reasonably reproduced (Fig. 6), the DO measurements are also mostly well reproduced (Fig. 14). Importantly, the higher levels of supersaturation during 2013 in comparison to 2012, driven by higher NPPR (Fig. 12), and the oxygen depletion in the bottom layers in 2013, and the lack thereof in 2012 are qualitatively captured, although the DO depletion in 2013 is not fully reproduced. Especially the 2013-M12/W12, and to a lesser extent, 2013-R12 scenarios result in lower levels of supersaturation at the surface, indicating
 285 lower levels of NPPR (Fig. 12). At the bottom, especially the 2013-M12/W12 scenarios result in the disappearance of the

oxygen drawdown in July 2013, which is driven by both lesser amounts of organic material to degrade as a result of lower NPPR, and the oxygenation of bottom layers via vertical mixing caused by the windy conditions of 2012. The 2013-R12 results in a lower level of drawdown in comparison to the reference (2013) simulation, and an earlier recovery back to the saturation levels.

290 In order to demonstrate the effects of the thermohaline structure on the current velocities, we consider two specific days characterized by different wind regimes in June 2013, and compare the original estimates with those obtained with 2013-R12 scenario (Fig.15). In order to remove the movements caused by lunar (M2) tides, the current velocities with 30 min. resolution were averaged over 25h intervals, centered around 12:00 of each day. Differences between the two simulations (Fig.15b,e) reveal an increase in current velocities at the surface within the zone affected by the river plume. In the bottom
 295 layers, differences occur as well, but these are smaller in magnitude (not shown).

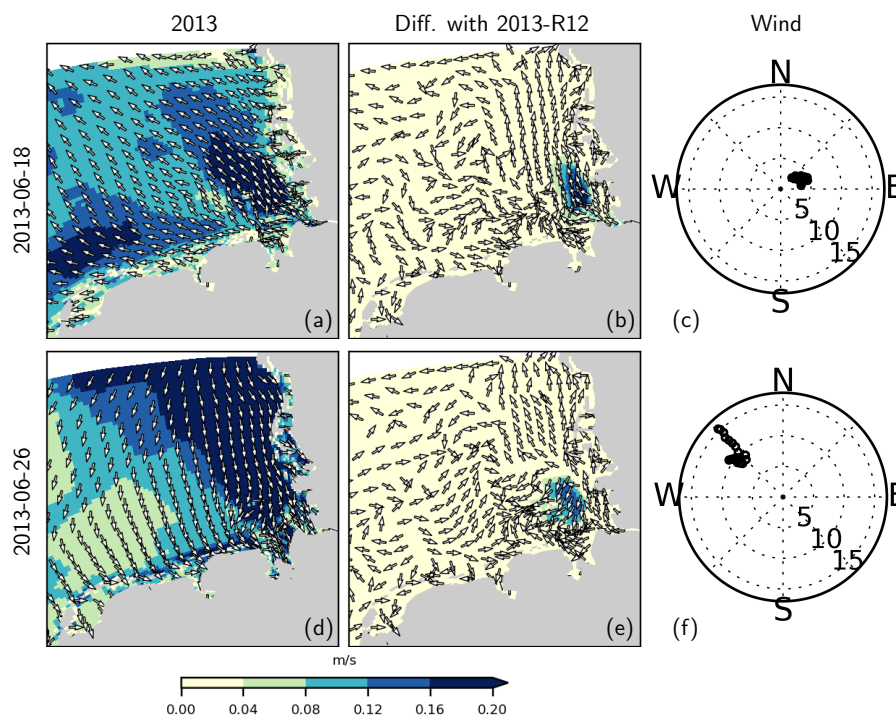


Figure 15. 25h-averaged (residual) current velocities at the surface (a,d) and the difference with those obtained with 2013-R12 during two different wind conditions (c,f). In c,f, wind speed at each hour is marked, with distance from origin indicating wind speed, in m/s.

For a better understanding of the modulation of the flow structure by the flood event within the coastal zone, we elaborate 3 cross-shore transects, two of which cross through the monitoring stations, nutrient concentrations at which were displayed in Fig. 9). We focus on the conditions during 18 June 2013 that was considered in Fig. 15a-c, characterized by low wind speeds. On this particular day, an estuarine-like circulation is strongly manifested along the southern part of the north-Frisian
 300 Wadden Sea (see Fig. 1), with the cross-shore (x-) velocities at the bottom layers directed towards the shore, and at the surface

directed off the shore (Fig.16). Removal of the flood event, as predicted by the 2013-R12, results in a weakening of the bottom currents at the southern section (as represented by Suederpiep) and the middle section (as represented by Westerhever). The along-shore (y-) velocities in the bottom layers, directed towards south (outwards the plane) display a similar weakening of the bottom currents. These results provide evidence for the determination of the efficiency of estuarine circulation by an interplay
 305 between the meteorological and hydrological conditions, which are subject to spatio-temporal variations.

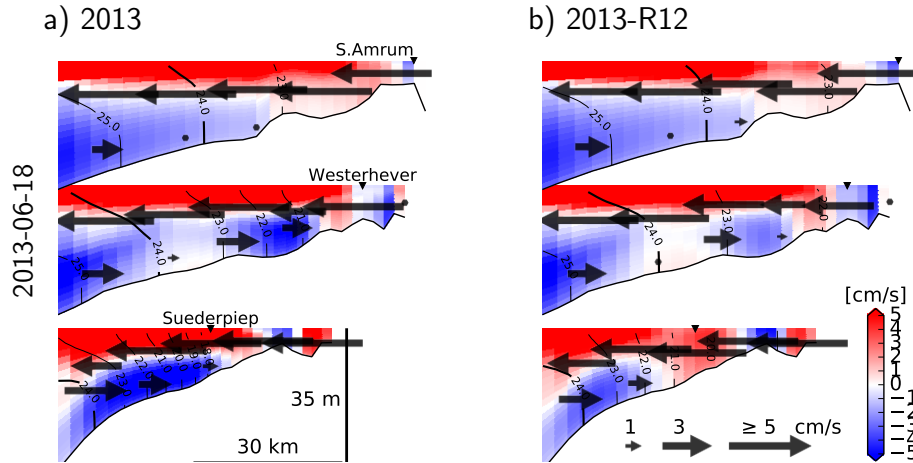


Figure 16. 25h-averaged velocity and density structure simulated with the reference model (a) and with the riverine forcing of 2012 (b), under the northeasterly winds on June 18, 2013 (see Fig.15). Two of the transects cross from the stations shown in Fig.9 (marked by ▼ symbols). Arrows indicate the cross-shore velocities, and the colors indicate along-shore velocities with positive values indicating northward flows (i.e., inward the drawing plane). Contour lines indicate σ_T .

4 Discussion

4.1 Model Performance

In comparison to the performance of the previous version of the hydrodynamical model setup presented by Kerimoglu et al. (2017a), the ability of the model in representing the cross-shore salinity gradients has been significantly improved, mainly due
 310 to the introduction of flow-dependent horizontal diffusion (e.g., Fig.A1). As suggested by the comparisons with ICES data (Fig. 5), realism of temperature has also been improved, with the normalized bias decreasing from -0.11 to -0.03, and the correlation increasing from 0.95 to 0.99 (compare with Fig. 4 of Kerimoglu et al. (2017a)). There have been incremental improvements in the prediction of nutrient concentrations as well. However, these minor deviations may be related to the differences in specific time periods of interest (2006-2010 in the former study vs 2011-2014 in this study).

315 The underestimation of salinities (Fig. 7), and consequently the overestimation of nutrient concentrations along the coast (Fig.9) are possibly due to underestimating the flushing rate at the coastal zone. The insufficient spread of coastal waters is

potentially the reason for overestimated salinities and underestimated NO_3 in the transition zone, characterized by intermediate salinities and NO_3 concentrations (Fig. 5). These errors, in turn, may have led to an over- and underestimation of the importance of riverine discharges on the stratification dynamics and productivity in the coastal and transition zones, respectively. Before the application of explicit horizontal diffusion, these errors were much larger (Appendix A). Application of higher horizontal diffusion rates (e.g., via higher Smagorinsky coefficient C_S , see Appendix A) further improved the model performance along the east Frisian Wadden Sea. However, this was at the cost of overestimation of salinities at the mouth of the estuary, such as at the Cuxhaven station (Fig.6), as well as further dampening of the tidal amplitudes, which were already slightly underestimated (not shown). A spatially variable C_S field, with gradually decreasing values at the mouth of the Elbe helped circumventing this problem, but this spatially variable parameterization was not adopted in this study. Before resorting to such ad-hoc solutions, other potential sources of error need to be assessed.

Despite the potential imperfections in the representation of hydrodynamical processes, the model was able to reproduce various characteristic features of the system, as indicated by the low bias and high correlation coefficients for temperature, salinity and nutrients (e.g., Figs. 5, 6, 8). The skill of the model in reproducing chlorophyll concentrations was not as good (Fig. 8, see below for a discussion of potential reasons). Importantly, the influence of the meteorological and hydrological peculiarities on the hydrodynamical (Figs. 6, 7, A1) and biogeochemical structure of the system were captured (Figs.8, 9, 14).

The skill of the model at the Helgoland station, both with respect to the physical (Fig.6) and biogeochemical variables (Fig.8) is noteworthy, given the heterogeneities caused by the complex topography, and the sharp gradients around the island (Callies and Scharfe, 2015), owed to its location at a coastal transition zone. For instance, the sharp DIN peak observed and simulated at Helgoland during June/July 2013 is uncommon for the summer season (see (Voynova et al., 2017), Fig. 12)(see Fig. 12 in Voynova et al., 2017). Overlapping DIN and freshwater fronts simulated by the model, temporarily spreading to the west of Helgoland during the same period (not shown), and supported also by a sharp decline of observed and simulated salinities (Fig. 6), reveal that this rare summer DIN peak was caused by the plume of the Elbe-Weser flood. This provides evidence for the model's ability to reproduce the behavior of the plume.

340 4.2 Physical and biogeochemical structure of the system

Based on a plethora of *in-situ* observations, Voynova et al. (2017) reported a number of anomalies in the German Bight, following the historical flood event in June 2013, during which, a large quantity of freshwater and nutrients were delivered to the coast by the Elbe and Weser rivers within a short time period (Fig. 3). Our numerical simulations are in agreement with many of those findings, such as the anomalous spatial distribution of salinity, nitrogen and silicate following the flood event (e.g., compare Fig. 10, 12 with the Fig. 11 of Voynova et al. (2017)).

In addition, our findings point to the relevance of the meteorological conditions that interact with the impacts of the flood event. In particular, our findings suggest that mainly the wind conditions (Fig. 4) resulted in a particularly intense stratification (Fig.11). Within the central German Bight, a combination of thermal and haline dynamics extended the area of intense stratification. The thermohaline dynamics in the inner German Bight have been recognized before (Frey, 1990; van Leeuwen et al., 2015). Following the flood event, these interactions have moved away from the coast to further offshore regions of the German

Bight. It should be noted that, variations in stratification intensity driven by the spring and neap tides as in the Rhine ROFI (Simpson et al., 1993) have been identified for our study system as well, but these are relevant at shorter (weekly) time scales (Chegini et al., submitted).

The enhanced water column stability (Fig. 11), and hence reduced light limitation, in combination with higher nutrient availability supplied by the flood event (Fig. 3, 12), increased the NPPR within the central German Bight (Fig. 12), which may explain the high pH and DO oversaturation reported by Voynova et al. (2017). In turn, the combination of uninterrupted phases of stratification during July that gave rise to a large average density difference (Fig. 11) and the breakdown of high amounts of organic material as a result of enhanced NPPR (Fig. 12), following the flood event, lead to a widespread oxygen depletion in the bottom layers. The DO supersaturation in the surface layers, and subsequent undersaturation in bottom waters observed in the Deutsche Bucht station, which was previously documented by Voynova et al. (2017), was correctly captured by the model (Fig.14). The scenario analysis suggests that, especially the meteorological conditions during the summer of 2013, but also the flood event were relevant for the occurrence and intensity of this oxygen drawdown in the German Bight (Fig. 13-14). This explains why such a degree of oxygen depletion in the German Bight is unusual (e.g., Voynova et al., 2017; Große et al., 2016, 2017). Within the outer German Bight, the higher water column stability lead to an intensification of the nutrient limitation within the upper mixed layer, and consequently lower NPPR (Fig. 12). At the vicinity of the mouths of the Elbe and Weser rivers, NPPR did not respond strongly to the flood (Fig. 12), as these areas were limited by light, rather than nutrients (see also Loebel et al., 2009). In reality, an even stronger light limitation in the vicinity of the mouth of the Elbe estuary is likely, due to the increase in the SPM towards the Elbe estuary (van Beusekom and Brockmann, 1998; Gayer et al., 2006), which is only partially accounted for by the model (see Appendix B2). It should be noted that the riverine influence within the coastal zone may be overestimated by our simulations, given the lower than observed salinities (Fig. 7), and higher than observed nutrient concentrations (Fig. 9).

Our results point to an increase in current velocities at the surface under the influence of the 2013 flood (Fig. 15), which is presumably driven by the reduced dissipation of kinetic energy through vertical mixing, owed to the intensification of haline stratification (Fig. 11), i.e., the baroclinicity of the current structure. Enhancement of the current velocities at the surface, in turn, might have facilitated the spread of the plume towards the outer German Bight in 2013 (Fig.10-12). However, the main reason for the eastward spread of the plume is the wind conditions, which presumably lead to a dominance of anticyclonic circulation during July 2013, as was also suggested by a principal component analysis of a barotropic model simulation (<https://coastmap.hzg.de/coastmap/modeldata/model1/#/residualcurrents>, see Callies et al. (2016) for data access). It has been shown that the residual surface currents in the German Bight are largely determined by the wind patterns (Schrum, 1997; Callies et al., 2017).

van Beusekom et al. (2019) has shown and discussed the presence of regional differences in thermohaline estuary-type circulation (as in Burchard and Badewien, 2015; Hofmeister et al., 2017) in the Wadden Sea. Here, our results suggest that the strength of the thermohaline estuarine circulation (Burchard and Badewien, 2015) can be enhanced by surplus buoyancy fluxes, here driven by the flood event (Fig. 16). This is as expected, and can enhance coastal accumulation of SPM and nutrients even away from the estuary itself (Hofmeister et al., 2017).

Our model-based analysis here is not conclusive, but rather exploratory. Given the anticipated increase in the frequency and intensity of the hydro-meteorological extremes due to climate change (Beniston et al., 2007; Wetz and Yoskowitz, 2013), further research is needed to understand the processes underlying the interactive impacts of these events on the physical and biogeochemical structure of the coastal systems and estuaries. Such a mechanistic understanding is essential for policy making, such as the regulation of nutrient loading rates in rivers (see, e.g., OSPAR, 2017).

4.3 Model limitations and perspectives

Since the first 3D models of the North Sea (Backhaus, 1985; Dippner, 1993; Schrum, 1997), computational capacity has been significantly improved, which resulted in development of ever finer resolution setups that can resolve meso-scale features such as the coastal freshwater fronts and baroclinic eddies (Holt and James, 2006; Pohlmann, 2006; Staneva et al., 2009; Pätsch et al., 2017), and smaller-scale dynamics, such as the estuarine processes (Gräwe et al., 2016; Stanev et al., 2019; Pein et al., 2019). For large-domain biogeochemical applications that require a costly calculation of transport of many additional state variables, the coarse-resolution models (10-20 km) are being actively used (e.g., Große et al., 2016; Ford et al., 2017; Daewel et al., 2019). With a spatial resolution of 1.5-4.5 km covering the southern North Sea (Fig. 1), the setup we employed here falls in the middle of the spectrum, and is similar to the setup used by Los et al. (2008) and the ‘southeastern North Sea’ setup of Androsov et al. (2019).

A potential source of bias in salinity and nutrients along the Elbe-plume is the misrepresentation of the Elbe estuary in our model setup (Fig. 1). For instance, according to a recent, high resolution model of the Elbe estuary, the freshwater-saline water transition (0-5 g/kg) occurs at about 50-75 km upstream of the mouth of Elbe (under normal hydrological conditions), and the N and Si concentrations vary considerably within the estuary (Pein et al., 2019). Indeed, a high resolution (300m) setup of the German Bight that resolves up to 150 km upstream the Elbe mouth (Chegini et al., submitted) demonstrated better skill in reproducing the salinity observations shown in Fig.7 and Fig. A1. Another contingent error source is potential inaccuracies in advective transport rates, e.g., as a result of imperfections in meteorological forcing (Geyer, 2014); or ignoring the effects of off-shore wind-farms on the thermohaline circulation (Carpenter et al., 2016; Platis et al., 2018). In order to assess the realism of the advective transport rates estimated by our hydrodynamic setup, we are planning to do a comparison with other models, such as the operational model of the BSH (see Callies et al., 2017).

The structure and process descriptions used for the biogeochemical model introduced in this study are similar to those used recently for studying the interaction between the hydrodynamical and biogeochemical processes in coastal systems, in particular, nutrient cycling and oxygen dynamics, in the North Sea (e.g. Große et al., 2016; Kerimoglu et al., 2017a), the Elbe estuary (Pein et al., 2019) and other similarly dynamic coastal shelf systems, such as the Louisiana Shelf (Fennel and Laurent, 2018) and the Chesapeake Bay (Irby et al., 2018). Description of the non-planktonic components, consisting of two detritus classes, dissolved organic material, dissolved inorganic nutrients, oxygen, and a simple benthic pool to represent benthic remineralization, oxygen consumption and denitrification (Fig. 2) were largely based on ECOHAM (see Section 2.1 Appendix B), which was earlier derived from ERSEM (Baretta et al., 1995). Unlike ECOHAM, but like in a majority of the aforementioned models (Feng et al., 2015; Kerimoglu et al., 2017a; Laurent et al., 2017; Pein et al., 2019), DOM remineralization is described

420 as first order kinetics, instead of mediated by an explicitly described bacteria, which, considering the purposes of the model, we consider to be non-critical.

Water column processes dominate the organic matter turnover in coastal systems amounting to about 80% in the deeper parts of the German Bight to around 50% in the Wadden Sea (Heip et al., 1995; van Beusekom et al., 1999). Based on these estimates, within the outer German Bight, we do not expect a large sensitivity of our results to the resolution of benthic processes, but this may be the case for the shallower sites and the Wadden Sea. Underestimated oxygen depletion (Fig. 14), and the inability of the model to capture some high P concentrations (reflected as sporadic, but large underestimation errors in Fig. 5), are possibly related to the oversimplifications in the benthic model, which is, again, a weakness shared by a majority of the aforementioned model studies. Simulated . The simulated benthic oxygen consumption rates, of up to 15 mmol m⁻² d⁻¹ during the summer months is are less than half of the upper range of measurements in the German Bight (e.g. Ahmerkamp et al., 2017)(e.g. Ahmerkamp et al., 2017; Neumann et al., 2017). Since the benthic oxygen consumption rates are calculated based on the benthic remineralization rates in our model, the underestimation of benthic oxygen consumption implies an underestimation of the role played by the sediments in nutrient cycling in some locations and times of the year. The foremost reason for this underestimation is likely the inaccuracies in POM deposition rate as determined by the prescribed sedimentation sedimentation flux as determined as a fraction of sinking rates of detritus in our model (Table B8). Deposition rate is Sedimentation fluxes and benthic transformation rates, in reality, increasingly are recognized to be controlled by the spatially heterogeneous sediment permeability (Ahmerkamp et al., 2017) and microalgal/macrofaunal activity in the benthos increasingly, by the activity of benthic organisms, which vary not only spatially, but also temporally (e.g., Singer et al., 2016). The micro- and macroalgae, for instance, which can form substantial biomass in the intertidal mudflats of the Wadden Sea (Christianen et al., 2017), may contribute to the imbalances in the cycling rates of C, N and P (Cook et al., 2007), and due to producing high amounts of extracellular polymeric substances, alter the resuspension and sedimentation rates (Hanlon et al., 2006). Bioturbating animals alter the decomposition and oxygen consumption rates, directly, by their own consumption (Middelburg, 2018), and indirectly, by altering the solute transport and ventilation rates (Herman et al., 1999). Suspension feeders and sponge, on the other hand, by consuming the suspended particulate matter and DOC in the water column and excreting into the sediments, enhance the water-to-sediment flux (Middelburg, 2018). The response of benthic macrofaunal groups to changes in pelagic productivity (Fig. 12) and the deterioration of the oxygenation state (Fig. 13) caused by the flood event may differ (Rosenberg et al., 2002; Lessin et al., 2019). This may imply alterations of the benthic functioning at time scales that may well exceed the scales studied here. Analyses of such effects with models require a very detailed representation of the benthic communities and their function. Such models are rare (but see, e.g., Baird et al., 2016; Lessin et al., 2019), however, this is expected to change with the improving data availability and computational capacities (Lessin et al., 2018). An intermediate step might be to use statistically estimated distribution of benthic organisms for various scenarios (e.g., Singer et al., 2017) as external forcing in biogeochemical models (see, e.g., Nasermoaddeli et al., 2018).

In spite of its simplicity, the benthic model is partially successful in estimating the denitrification rates: for the German Bight, the simulated rates reach to about 1.5 mmol N m⁻² d⁻¹ during summer months, which is close to the upper measurement range of 1.9 (e.g., Bratek et al., 2020). Adjacent to the Elbe Estuary, the model reproduces the strong

455 heterogeneity in denitrification rates (Deek et al., 2013), and to a satisfactory degree, the measured rates as well: at the
'NW' station of Deek et al. (2013, their Fig.1), the simulated denitrification of $2.5\text{-}3\text{ mmol N m}^{-2}\text{ d}^{-1}$ for 2012, only slightly
overestimates the measured rates of approximately $2.2\text{-}2.6\text{ mmol N m}^{-2}\text{ d}^{-1}$ (Deek et al., 2013, their Fig.3). Following
the flood event in 2013, simulated benthic denitrification rates within the areas adjacent to the Elbe Estuary increase
460 by more than 50%. This increase is solely driven by the increased POM loading during the flood (Fig. 3) according to
our model. But in reality, the enhanced oxygen depletion in bottom layers (Fig.13) may lead to a disproportional benthic
deoxygenation, which may, in turn, enhance benthic denitrification rates within the off-shore regions as well.

The lack of an explicit representation of the benthic oxygen profiles and redox reactions may have contributed to the **prob-**
lem **underestimation of benthic oxygen consumption as well**, although it was shown that a vertically integrated approximation
like the benthic model we used, especially when combined with meta-model parameterizations, can reliably behave like a
465 computationally demanding, vertically resolved explicit diagenetic model (Soetaert et al., 2000). The sporadic large underes-
timation errors in P concentrations are identified to occur in some coastal regions during summer months, when the nitrogen
concentrations are at their lowest. Such decoupling of phosphorus and nitrogen in certain Wadden Sea regions is well known,
and recognized to be driven by the depletion of benthic oxygen during summer, which leads to release of iron-bound P, while
promoting denitrification in the sediments (see, e.g. Loebl et al., 2007; Grunwald et al., 2010; Leote et al., 2015). Although the
470 latter is accounted for by our model (Table B8), the former is not, which can explain the inability of the model in capturing the
late-summer P peaks.

In three out of four stations we considered, chlorophyll concentrations are overestimated (Fig. 8). Considering these biases,
rather than the absolute values of NPPR estimates, simulated responses to hydro-meteorological forcing should be regarded
(Fig. 12). Reasons for the overestimation of chlorophyll concentrations seem to be region specific: overestimation of winter
475 concentrations in Terschelling-50 and Noordwijk-70 suggest insufficient respiration rates, whereas spring blooms starting too
early at Helgoland suggest inaccuracies in the seasonality of under-water light climate. During the summer months, misrep-
resentation of grazing losses and vertical distribution of chlorophyll (e.g., van Leeuwen et al., 2013; Kerimoglu et al., 2017a)
may have contributed to the overestimation errors as well. A detailed identification of the chlorophyll dynamics therefore
require a careful consideration of all these factors and comparisons against additional datasets, which is **out outside** of the
480 scope of this study. However, differences in baseline concentrations at different stations during summer are quite realistically
reproduced, suggesting that the large-scale gradients are realistically represented (Fig. 8), which we consider to be sufficient
for the purposes of this study. The structure of the plankton food web assumed in this study, consisting of two phytoplankton
(flagellates and diatoms) and two zooplankton (micro- and mesozooplankton) groups, is similar to those by Große et al. (2017)
and Pein et al. (2019), but here the variability in phytoplankton cellular composition were taken into account, using the Droop
485 and Geider et al. (1997) formulations to resolve the variability in C:N:P and Chl:C, respectively, similar to as in, e.g., ERSEM
(e.g., Ford et al., 2017). In the future, we are planning to improve the representation of other plankton groups in the system,
such as colony-forming *Phaeocystis* and mixotrophic forms, which can be abundantly found in the coastal waters of the south-
ern North Sea (Löder et al., 2012; Burson et al., 2016). A module that provides a simplistic description of mixotrophy (as in

Kerimoglu et al., 2017b), is already available, but we chose not to use it in this study, for the sake of avoiding increasing the
490 model complexity further.

Given the limitations of the biogeochemical model discussed above, its predictions should not be interpreted in an absolute sense. However, the model structure and formulations represent the state of the art, and the simulated responses by the model are plausible. Therefore, and therefore the analysis presented in this study is expected to be of heuristic value in gaining a systematic understanding of the role of riverine and meteorological forcing in shaping of the hydrodynamical and biogeochemical structure of the system.

495 5 Conclusions

In this study, we presented a newly developed biogeochemical model and improvements of a hydrodynamical model described in an earlier study. The coupled hydrodynamical-biogeochemical model system is shown to satisfactorily reproduce the characteristic features of the German Bight ecosystem, and the impacts of a 100-year flooding of the Elbe and Weser rivers. Our results reveal that the flood event coincided with special meteorological conditions in the region, namely a calm and warm
500 summer dominated by an anticyclonic circulation, resulting in a particularly intense and widespread stratification. The stronger stratification, and the increased availability of nutrients impacted the primary production in the system and the oxygen levels in the bottom waters. Through a scenario analysis, we found that the observed anomalies in July 2013 were likely driven by the meteorological conditions within the outer German Bight, and the interaction between meteorological and hydrological conditions within the central German Bight, suggesting that the impacts of flood events in the system are context-dependent. These
505 extreme flooding and meteorological conditions may occur more frequently in the future, which requires a better understanding of the mechanisms governing the response of the coastal systems to such extreme events.

Code and data availability. Codes of the hydrodynamical models and the coupler are available at the following git repositories: GETM: <https://sourceforge.net/p/getm>, GOTM: <https://github.com/gotm-model>, FABM: <https://github.com/fabm-model/fabm>. The biogeochemical model code will be released in the near future, but a beta version can be provided by OK upon request. ICES and COSYNA data used
510 for model validation are available from <https://ices.dk> and <https://cosyna.de>, respectively. Data from Terschelling and Noordwijk stations are available at <https://waterinfo.rws.nl>. Surface elevation, meteorological and EMEP atmospheric deposition data used as model forcing are available from, respectively: https://doi.org/10.1594/WDCC/coastDat-2_TRIM-NP-2d, https://doi.org/10.1594/WDCC/coastDat-2_COSMO-CLM and <https://emep.int>. EMODnet bathymetry data is available from <https://emodnet-bathymetry.eu>. Model output of the current study will be provided by OK upon request.

515 **Appendix A: Description of horizontal diffusion in the hydrodynamical model**

Modern advection schemes (including TVD-transport as used in many coastal applications) are developed and tested for homogeneous grid spacing (Pietrzak, 1998; Barthel et al., 2012), although coastal applications tend to use varying grid spacing in curvilinear horizontal, unstructured horizontal and general vertical grids (e.g., Zhang et al., 2016; Kerimoglu et al., 2017a). The performance of slope limiters and the involved numerical mixing is therefore almost unpredictable for two reasons: a) tracer mixing is ultimately always a combination of numerical mixing and physical mixing terms, both effects reduce each other (Hofmeister et al., 2011), and b) numerical mixing as a nonlinear effect of the advection is seldom analyzed in model applications. Comparisons of the mixing term strength between model applications then potentially result in differences of the advection scheme performance, more than an analysis of the physical effect of mixing mass concentrations.

There exists a plethora of methods for the specification of horizontal diffusion or isopycnal mixing for ocean models (see, e.g. Gent and McWilliams, 1990; Roberts and Marshall, 1998; Beckers et al., 2000; Griffies and Hallberg, 2000), a review or discussion of which is beyond the scope of this appendix. Here, we will demonstrate the use of a simple subgridscale parameterization by Smagorinsky (1963), which was originally for modelling atmospheric circulation, and is now commonly used in both atmospheric and ocean circulation models (Becker and Burkhardt, 2007). The magnitude of horizontal diffusivity is recognized to exhibit strong variations in space and time (Wang, 2003). The Smagorinsky parameterization achieves such variations by scaling the diffusion coefficient proportionally with the grid size and deformation rates of lateral velocities, e.g., for the horizontal diffusion of momentum:

$$A_M = C_S * \Delta x \Delta y * \sqrt{\left(\frac{\partial u}{\partial x}\right)^2 + \left(\frac{\partial v}{\partial y}\right)^2 + \frac{1}{2} \left(\frac{\partial u}{\partial y} + \frac{\partial v}{\partial x}\right)^2} \quad (\text{A1})$$

where, C_S is the empirical Smagorinsky constant, u , v , Δx and Δy are velocities and grid spacings along x and y dimensions, respectively. Then the horizontal diffusion of tracers, A_H follows:

$$535 \quad A_H = A_M / Prt \quad (\text{A2})$$

In (A1), C_S is not physically well constraint, but is adjusted based on numerical considerations (Kantha and Clayson, 2000), e.g., the diffusion vs. dispersion trade-off (Pietrzak, 1998). In this study, we set $C_S = 0.6$ and Prandtl number, $Prt = 1.0$, and examine the effects of this parameterization on the representation of the river plume during 2012-2013, with a focus on the freshwater plume during the flooding event. Specifically, we compare the predictions of 2 model variants against the Ferrybox measurements taken by the platform installed on the M/V *Funny Girl* ferry, that are analyzed in greater detail in the main text (Fig. 7).

The variant where no diffusion was enabled, overestimates the cross-shore salinity gradient along the North Frisian coast, i.e., North of Elbe, in the form of too low near-coast salinities (Fig.A1b). On the other hand, the variant where horizontal diffusion was described with Smagorinsky parameterization, have considerably better skill in reproducing the FerryBox measurements along the Büsum-Helgoland ferry track (Fig. A1c).

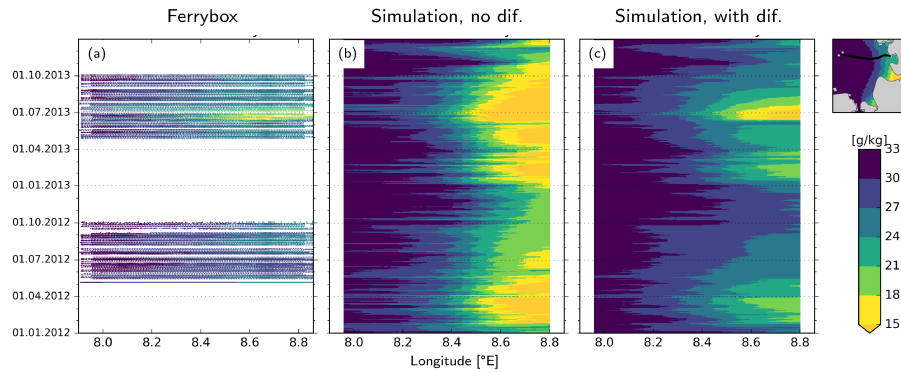


Figure A1. Hovmöller diagrams of salinity distribution in 2012 and 2013 along the (average) transect shown at the top right corner, as measured by the FerryBox platform (a) and models without (b) and with (c) horizontal diffusion.

Plausibility of the total horizontal mixing, and its physical and numerical components can be diagnosed by an analysis of the discrete variance decay (DVD) of salinity (Klingbeil et al., 2014) based on Burchard and Rennau (2008). In the absence of explicit diffusion, the sum of physical and numerical mixing becomes negative at the mouth of the Elbe and Weser rivers, and within their ROFI, implying spuriously enhanced horizontal gradients (Fig. A2c). With the application of explicit diffusion, numerical mixing values effectively decrease both within the positive and negative spectra (Fig. A2d), leading to near-complete elimination of negative values in total mixing (Fig. A2f).

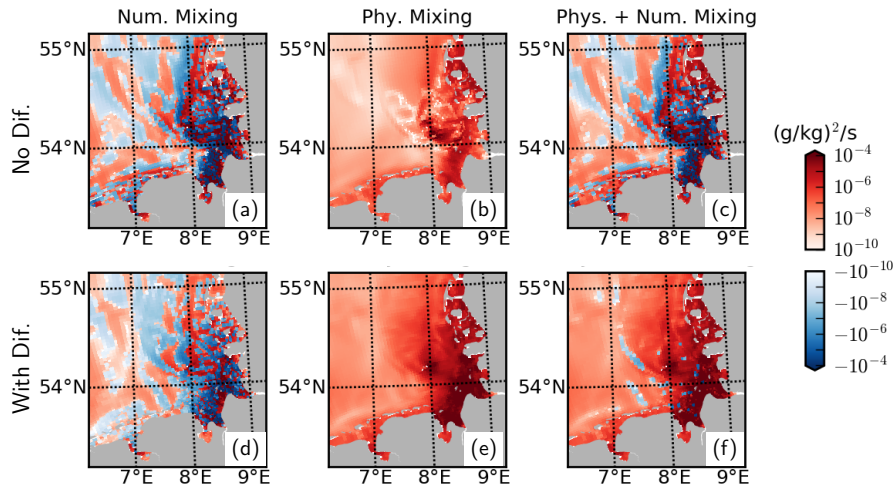


Figure A2. Mixing analysis for July 2013 based on temporally averaged values at the surface.

We conclude that application of explicit horizontal mixing through a simple parameterization can be useful in improving the skill of a 3-D coupled physical-biogeochemical model within the vicinity of river discharges, and eliminate implausible negative total (physical + numerical) mixing values.

555 Appendix B: Detailed description of the biogeochemical model

All modelled state variables and fluxes between various pools are shown in Fig. 2. In the following sections, sink and source terms for the planktonic and abiotic variables ($s(v)$ in Tables B1, B7) and the description of processes (Tables B2, B4, B9) will be provided. For describing the fluxes between various pools, where possible, we adopt the *source_target* notation as in Pätzsch and Kühn (2008), which was earlier adopted from ERSEM (Blackford and Radford, 1995). Although this notation is consistent with that used in the Fortran module of abiotic components, the programming notation of the plankton module is somewhat different, due to their different historical origins.

All kinetic rates in planktonic and abiotic components are modified with temperature using the Q10 rule:

$$f_{T,(phy,zoo-j,abio)} = Q10_{(phy,zoo-j,abio)}^{(T-T_{ref})/T_{ref}} \quad (B1)$$

with $T_{ref} = 10^{\circ}\text{C}$, and $Q10_{phy} = Q10_{zoo-mic} = Q10_{abio} = 1.5$ and $Q10_{zoo-mes} = 2.0$.

565 B1 Planktonic components

The plankton model was developed based on Kerimoglu et al. (2017b) regarding the modularity concept that allows coupling plankton units in run time (see Bruggeman and Bolding, 2014), as well as description of internal variation of P quota of phytoplankton (B2,B4,B12) according to the Droop model (as in Morel, 1987). Here, we further considered the uptake NO_3 and NH_4 of phytoplankton (similar to Pätzsch and Kühn, 2008), and the resulting variations of N quota (B3,B13); limitation of diatoms by Si (B11) using a Monod-type relationship (Flynn, 2003); dependence of the light limitation on the chlorophyll content, i.e., θ (B15), in phytoplankton (B9), and the dynamic variations of θ (B5,B16) following Geider et al. (1997). The plankton module provides various options for the representation of nutrient and carbon limitation in a consistent way, which is intended to be further enriched and elaborated in future studies. Given the suppleness of the model with respect to the description of physiological processes and interactions between plankton groups, the model is provisionally named as the 'Generalized Plankton Model' (GPM).

Table B1. Source-sink terms of the dynamic variables (all in $\text{mmol}/\text{m}^3/\text{d}$) of the plankton module. Indices $p_i = \{\text{diatoms, flagellates}\}$; $z_j = \{\text{microzooplankton, mesozooplankton}\}$; $t_k = \text{zooplankton target}$.

| | | |
|--------------------|--|------|
| C bound to p_i | $s(p_i^C) = DIC_p_i^C - p_i^C_DOC - M_i^C - \sum_j I_{j,i}^C \cdot z_j^C$ | (B2) |
| N bound to p_i | $s(p_i^N) = \text{NO}_3_p_i^N + \text{NH}_4_p_i^N - p_i^N_DON - M_i^N - \sum_j I_{j,i}^N \cdot z_j^C$ | (B3) |
| P bound to p_i | $s(p_i^P) = \text{DIP}_p_i^P - p_i^P_DOP - M_i^P - \sum_j I_{j,i}^P \cdot z_j^C$ | (B4) |
| Chl bound to p_i | $s(p_i^{chl}) = \rho_i \cdot DIC_p_i^C - (p_i^C_DOC + M_i^C + \sum_j I_{j,i}^C \cdot \theta_i \cdot 12.0[\text{gC}/\text{molC}] \cdot z_j^C$ | (B5) |
| C bound to z_j | $s(z_j^C) = \sum_k t_k^C \cdot z_j^C - z_{Cj_DIC} - M_j^C$ | (B6) |

As in Kerimoglu et al. (2017a), sinking rate of phytoplankton is formulated as a function of their nutrient status.

$$w_{p,i} = w'_p \cdot \left(0.1 + 0.9 \cdot \exp \left(-5.0 * \min \left(\frac{QP_i - QP_{min,i}}{QP_{max,i} - QP_{min,i}}, \frac{QN_i - QN_{min,i}}{QN_{max,i} - QN_{min,i}} \right) \right) \right) \quad (B7)$$

In (B7) and in Tables B1-B2, $QX = X : C$ within a certain phytoplankton or zooplankton pool, which may be either a fixed constant (as provided in Table B3), or diagnostically calculated from the instantaneous values (for $X = P, N$ quota of phytoplankton). Exudates of the phytoplankton are assumed to be in DOM form (B2,B17).

Table B2. Process equations and functional relationships used in the phytoplankton module

| | | | |
|---|------------------|--|-------|
| C uptake rate of p_i | $DIC_p_i^C$ | $= p_i^C \cdot f_{T,phy} \cdot V_{max,i}^C \cdot f_{I,i} \cdot \min(f_{N,i}, f_{P,i}, f_{Si,i})$ | (B8) |
| Light limitation of p_i | $f_{I,i}$ | $= 1.0 - \exp \left(\frac{-\alpha_i \cdot \theta_i \cdot I}{f_{T,phy} \cdot V_{max,i}^C \cdot \min(f_{N,i}, f_{P,i})} \right)$ | (B9) |
| Nutrient ($X=\{N,P\}$) limitation of p_i | $f_{X,i}$ | $= 1.0 - QX_{min,i} / QX_i$ | (B10) |
| Silicate limitation of diatoms | $f_{Si,i}$ | if $i : diatoms = \frac{DIS_i}{K_i^{Si} + DIS_i}$, else = 1.0 | (B11) |
| DIP uptake rate of p_i | $DIP_p_i^P$ | $= p_i^C \cdot f_{T,phy} \cdot V_{max,i}^P \cdot \frac{QP_{max,i} - QP_i}{QP_{max,i} - QP_{min,i}} \cdot \frac{DIP}{K_i^P + DIP}$ | (B12) |
| DINX ($NX=\{NO_3, NH_4\}$) uptake rate of p_i | $DIX_p_i^N$ | $= p_i^C \cdot f_{T,phy} \cdot V_{max,i}^N \cdot \frac{QN_{max,i} - QN_i}{QN_{max,i} - QN_{min,i}} \cdot \frac{DINX / K_i^{NX}}{1.0 + \sum_X DINX / K_i^{NX}}$ | (B13) |
| Silicate uptake rate of p_i | $DISi_p_i^{Si}$ | if $i : diatoms = DIC_p_i^C \cdot QSi_i$, else = 0.0 | (B14) |
| Chl:C ratio bound to p_i | θ_i | $= p_i^{chl} / (p_i^C \cdot 12[\text{gC/molC}])$ | (B15) |
| Ratio of chl. synthesis to C fixation | ρ_i | $= \frac{DIC_p_i^C / p_i^C}{\alpha_i \cdot \theta_i \cdot I}$ | (B16) |
| X (=C,N,P) exudation of p_i | $p_i^X_DOX$ | $= DIC_p_i^C \cdot \gamma_i \cdot QX_i$ | (B17) |
| X (=C,N,P) Mortality rate of p_i | M_i^X | $= p_i^X \cdot f_{T,phy} \cdot (m1_i + p_i^C \cdot m2_i)$ | (B18) |

Process formulations for the zooplankton module are provided in Table B4. Following Fasham et al. (1990), prescribed preferences of prey items for each zooplankton (Table B6) are dynamically weighed with their relative abundance to determine the effective preferences (B26,B27). Zooplankton are assumed to excrete into DIM pool (B6,B24). As in Kerimoglu et al. (2017b), assimilated and un-assimilated fractions of the ingested prey by each zooplankton j are determined by the assimilation efficiency ϵ_j^X (B28),B29), which is continuously adjusted (as in Grover, 2002), such that the zooplankton can maintain their homeostatic elemental composition. Here this scheme was extended to multiple nutrients, i.e., N and P, and ϵ^X are calculated iteratively, similar to that in (Kerimoglu et al., 2018). Starting from each ϵ^X set to default values (Table B5), if P to be ingested would be less than the amount required to match the ingested C, ϵ^C is down-regulated, and vice versa:

$$\epsilon^P = \frac{\epsilon_j^C \cdot \sum_k I_{j,k}^C \cdot QP_j}{\sum_k I_{j,k}^P}, \quad \text{if } \epsilon_j^P \cdot \sum_k I_{j,k}^P > \epsilon_j^C \cdot \sum_k I_{j,k}^C \cdot QP_j \quad (B19)$$

$$\epsilon^C = \frac{\epsilon_j^P \cdot \sum_k I_{j,k}^P}{\sum_k I_{j,k}^C \cdot QP_j}, \quad \text{otherwise} \quad (B20)$$

Table B3. Parameters of the phytoplankton module. Where necessary, multiple values were provided for diatoms and flagellates. Sources: G98: based on Geider et al. (1998); K17: Kerimoglu et al. (2017b); L12: Lorkowski et al. (2012); A: assumed; C: calibrated.

| Symbol | Description | Value _i | Unit | Source |
|------------------------|---|--------------------|--|--------|
| $V_{\max,i}^C$ | Maximum C uptake rate | 3.0, 2.0 | d^{-1} | G98 |
| $V_{\max,i}^N$ | Maximum N uptake rate | 0.3, 0.6 | $\text{molN} (\text{mmolC d})^{-1}$ | G98 |
| $V_{\max,i}^P$ | Maximum P uptake rate | 0.01, 0.02 | $\text{molP} (\text{mmolC d})^{-1}$ | A |
| $K_i^{NO_3}$ | Half saturation constant for NO_3 uptake | 3.0 | mmolN m^{-3} | G98 |
| $K_i^{NH_4}$ | Half saturation constant for NH_4 uptake | 1.0 | mmolN m^{-3} | A |
| K_i^P | Half saturation constant for P uptake | 0.4 | mmolP m^{-3} | K17 |
| K_i^{Si} | Half saturation constant for Si limitation | 1.0 | mmolSi m^{-3} | A |
| Q^{Si}_{diat} | Fixed Si:C ratio of diatoms | 0.17 | molSi molC^{-1} | L12 |
| $QN_{\max,i}$ | Maximum quota for N | 0.18 | molN molC^{-1} | G98 |
| $QP_{\max,i}$ | Maximum quota for P | 0.008 | molP molC^{-1} | A |
| $QN_{\min,i}$ | Subsistence N quota | 0.045, 0.06 | molN molC^{-1} | G98 |
| $QP_{\min,i}$ | Subsistence P quota | 0.002, 0.003 | molP molC^{-1} | A |
| α_i | Chl. sp. slope of P-I curve | 9.0, 6.0 | $\text{gC gChl}^{-1} / (\text{molE m}^{-2})$ | G98 |
| $\theta_{\max,i}$ | Max. chl:C ratio | 0.10, 0.07 | $\text{m}^2 \text{gChl/gC}^{-1}$ | A |
| γ_i | Exudation fraction | 0.05 | - | L12 |
| $m1_i$ | Linear mortality rate | 0.05 | d^{-1} | C |
| $m2_i$ | Quadratic mortality rate | 0.001 | $\text{d}^{-1}/(\text{mmolC m}^{-3})$ | C |
| $\delta_{S,i}$ | Fraction of dead cells diverted to small det. | 0.7, 1.0 | - | L12 |
| w'_p | Maximum potential sinking rate | 4.0, 0.2 | m d^{-1} | C |

Next, following the same logic, ϵ^N and ϵ^C are regulated to match the C- and N-intake according to the QN_j :

$$\epsilon^N = \frac{\epsilon_j^C \cdot \sum_k I_{j,k}^C \cdot QN_j}{\sum_k I_{j,k}^N}, \quad \text{if } \epsilon_j^N \cdot \sum_k I_{j,k}^N > \epsilon_j^C \cdot \sum_k I_{j,k}^C \cdot QN_j \quad (\text{B21})$$

$$\epsilon^C = \frac{\epsilon_j^N \cdot \sum_k I_{j,k}^N}{\sum_k I_{j,k}^C \cdot QN_j}, \quad \text{otherwise} \quad (\text{B22})$$

Finally, ϵ^P is adjusted again, as a potential modification of ϵ^C in (B21) may require an updated P-intake:

$$595 \quad \epsilon^P = \frac{\epsilon_j^C \cdot \sum_k I_{j,k}^C \cdot QP_j}{\sum_k I_{j,k}^P}, \quad \text{if } \epsilon_j^P \cdot \sum_k I_{j,k}^P > \epsilon_j^C \cdot \sum_k I_{j,k}^C \cdot QP_j \quad (\text{B23})$$

Table B4. Process equations and functional relationships used in the zooplankton module.

| | | | |
|---|-----------------|--|-------|
| X (=C,N,P) Excretion rate of z_j | $z_j^X - DI X$ | $= z_j^C \cdot e_j \cdot f_{T, z_{oo}-j} \cdot Q X_j$ | (B24) |
| X (=C,N,P) Mortality rate of z_j | M_j^X | $= z_j^C \cdot (m1_j + z_j^C \cdot m2_j) \cdot Q X_j$ | (B25) |
| Ingestion rate of X from t_k | $I_{j,k}^X$ | $= I_{max,j} \cdot f_{T, z_{oo}-j} \cdot \frac{p w_{j,k} \cdot t_k^C}{K_j^C + \sum_k (p w_{j,k} \cdot t_k^C)} \cdot Q X_k$ | (B26) |
| Weighed preference of target k by j | $p w_{j,k}$ | $= pref_{j,k} \cdot t_k^C / \sum_k (pref_{j,k} \cdot t_k^C)$ | (B27) |
| Assimilated X={C,N,P,Si} ingestion of | $t_k^X - z_j^X$ | $= z_j^C \cdot \epsilon_j^X \cdot I_{j,k}^X$ | (B28) |
| Total unass. X={C,N,P,Si} ing. by z_j | U_j^X | $= z_j^C \cdot \sum_k \cdot (1 - \epsilon_j^X) \cdot I_{j,k}^X$ | (B29) |

Table B5. Parameters of the zooplankton module. Where necessary, multiple values were provided for micro- and meso-zooplankton. Sources: H97: based on the range provided by Hansen et al. (1997); S97: based on Straile (1997); K17: Kerimoglu et al. (2017b); L12: Lorkowski et al. (2012); RF: Redfield ratio; A: assumed; C: calibrated.

| Symbol | Description | Value _j | Unit | Source |
|--------------------|--|--------------------|---|--------|
| $I_{max,j}$ | Maximum ingestion rate | 1.8, 1.5 | - | H97 |
| K_j^C | Half saturation constant | 15.0, 20.0 | - | H97 |
| Q_j^N | Constant N:C ratio of z_j | 0.15 | molN molC ⁻¹ | RF |
| Q_j^P | Constant P:C ratio of z_j | 0.0094 | molP molC ⁻¹ | RF |
| ϵ_j^C | C Assimilation efficiency | 0.5, 0.4 | - | S97 |
| $\epsilon_j^{N,P}$ | N&P Assimilation efficiency | 0.8, 0.8 | - | A |
| e_j | Excretion rate | 0.05 | d ⁻¹ | A |
| $m1_j$ | Linear mortality rate | 0.02 | d ⁻¹ | C |
| $m2_j$ | Quadratic mortality rate | 0.01, 0.02 | d ⁻¹ /(mmolC m ⁻³) | C |
| $\delta_{S,j}$ | Fraction of mort. & unass. ing. diverted to small det. | 0.85, 0.7 | - | L12 |
| δ_{dom} | Fraction of DOM in unassimilated ingestion | 0.8 | - | A |

Table B6. Assumed grazing preferences $pref_{j,k}$ of predator j (rows) for target t_k (columns).

| | det_S | $pflag$ | $pdiat$ | $zmic$ |
|--------|---------|---------|---------|--------|
| $zmic$ | 0.4 | 0.5 | 0.1 | - |
| $zmes$ | - | 0.3 | 0.1 | 0.6 |

B2 Abiotic component

B2.1 Organic material and nutrients

The abiotic components, describe the geochemical transformation between various organic and inorganic pools (DIM, DOM, small and large detritus classes, O₂ and the particulate organic matter in the benthos (B-POM), see Fig. 2). Model structure

600 used here is simplified from ECOHAM (Lorkowski et al., 2012), by excluding carbonate dynamics entirely and simplifying the description of DOM remineralization. The latter is described here as a first order kinetic reaction (eq. B43), instead of a more detailed description of scavenging of DOM by bacterial biomass in the original model. Coupling of the abiotic component with the planktonic components are mediated through the uptake of DIM by phytoplankton (B3,B4), and the recycling of the dead and surplus material. The unassimilated fraction of the ingestion by zooplankton are distributed into the DOM (B35) and the two detritus pools as in Lorkowski et al. (2012). For X=C,N,P, mortality of plankton (B18,B25) are distributed into the small and large detritus classes (B36,B37). For Si, there are no DOM or det_S^{Si} pools (Fig.2), therefore all diatom mortality and Si bound to the ingested diatoms are diverted to the det_L^{Si} (B38).

605 Conversion of areal units ($mmolX/m^2/d$) of the surface and bottom flux terms (B52-B56) to volumetric units ($mmolX/m^3/d$) required for the pelagic variables is handled by the FABM coupler through division by the surface and bottom layer thicknesses ($\Delta z(s)$, $\Delta z(b)$) internally, which are specified here but not in the model codes.

Table B7. Source-sink terms of the dynamic variables (all in $mmol/m^3/d$, except for the benthic variables (B39-B40) in $mmol/m^2/d$) of the abiotic module. Description of processes or functional relationships and parameters are provided in Tables B9 and B8, respectively.

| | | |
|----------------------|---|-------|
| DINO3 | $s(DINO3) = DINH4_DINO3 - \sum_i DINO3_p_i^N - DINO3_BPOM/\Delta z(b) - DINO3_N2$ | (B30) |
| DINH4 | $s(DINH4) = BPON_DINH4/\Delta z(b) + DON_DINH4 + sum_j z_j^N_DIN - \sum_i DINH4_p_i^N - DINH4_DINO3$ | (B31) |
| DIP | $s(DIP) = BPOP_DIP/\Delta z(b) + DOP_DIP + sum_j z_j^P_DIP - \sum_i DIP_p_i^P$ | (B32) |
| DISi | $s(DISi) = BPOSi_DISi/\Delta z(b) + det_L^{Si}_DISi - \sum_i DISi_p_i^{Si}$ | (B33) |
| O2 | $s(O2) = air_O2/\Delta z(s) + \sum_i p_i_O2 - \sum_j O2_z_j - O2_DOM - O2_DINH4 - O2_BPOM$ | (B34) |
| Diss. org. X={C,N,P} | $s(DOX) = \sum_i p_i^X_DOX + \sum_j (\delta_{dom} \cdot U_j^X) + \sum_{C=S,L} det_c^X_DOX - DOX_DIX$ | (B35) |
| Small det. X={C,N,P} | $s(det_S^X) = \sum_i (\delta_{S,i} \cdot M_i^X) + \sum_j (\delta_{S,j} \cdot ((1 - \delta_{dom}) \cdot U_j^X + M_j^X) - det_S^X_DOX - det_S^X_BPOM/\Delta z(b)$ | (B36) |
| Large det. X={C,N,P} | $s(det_L^X) = \sum_i ((1 - \delta_{S,i}) \cdot M_i^X) + \sum_j ((1 - \delta_{S,j}) \cdot ((1 - \delta_{dom}) \cdot U_j^X + M_j^X) - det_L^X_DOX - det_L^X_BPOM/\Delta z(b)$ | (B37) |
| Large det. Si | $s(det_L^{Si}) = \sum_i (M_i^{Si}) + \sum_j U_j^{Si} - det_L^{Si}_DISi - det_L^{Si}_BPOSi/\Delta z(b)$ | (B38) |
| Benthic-POX={C,P,Si} | $s(BPOX) = \sum_{c=S,L} det_c^X_BPOX - BPOX_DIX$ | (B39) |
| Benthic-PON | $s(BPON) = \sum_{c=S,L} det_c^N_BPON - BPON_DINH4 - BPON_N2$ | (B40) |

B2.2 Light

In GETM, light intensity at a given depth, $I(z)$, is described by:

$$I(z) = I_0 \cdot a \cdot \exp\left(-\frac{z}{\eta_1}\right) + I_0 \cdot (1 - a) \cdot \exp\left(-\frac{z}{\eta_2} - \int_z^0 \sum_n K_n(z') dz'\right) \quad (B62)$$

615 where, I_0 is the light at the water surface, a , η_1 and η_2 describe the attenuation of the red and blue-green spectra, and K_n describe various constituents in the water, i.e., phytoplankton, detritus, DOC and SPM. For the former three, concentrations of

Table B8. Parameters of the abiotic module. Sources: L12: Lorkowski et al. (2012); E5C: ECOHAM5 source code; S96: Seitzinger and Giblin (1996); A: assumed; C: calibrated.

| Symbol | Description | Value | Unit | Source |
|-----------------|--|-------------------------|------------------------|--------|
| λ^X | Rem. rate of DOM | 0.05 | d^{-1} | C |
| $r_S^{N,P}$ | Decay rate of N&P in small det. | 0.12 | d^{-1} | L12 |
| r_S^C | Decay rate of C in small det. | $r_S^{N,P} \cdot 0.85$ | d^{-1} | L12 |
| $r_L^{N,P}$ | Decay rate of N&P in large det. | 0.1 | d^{-1} | L12 |
| r_L^C | Decay rate of C in large det. | $r_S^{N,P} \cdot 0.85$ | d^{-1} | L12 |
| r_L^{Si} | Decay rate of Si in large det. | $r_S^{N,P} \cdot 0.085$ | d^{-1} | E5C |
| r_{nit} | Nitrification rate | 0.05 | d^{-1} | C |
| QN_b | Bacterial N:C ratio | 0.25 | molN/molC | L12 |
| w_{detS} | Sinking rate of small det. | 2.0 | $m d^{-1}$ | C |
| w_{detL} | Sinking rate of large det. | 10.0 | $m d^{-1}$ | L12 |
| br^C | Benthic rem. rate of C | 0.028 | d^{-1} | L12 |
| $br^{N,P}$ | Benthic rem. rate N&P | 0.0333 | d^{-1} | L12 |
| br^{Si} | Benthic rem. rate of Si | 0.0130 | d^{-1} | L12 |
| ρ_{Seitz} | Denit./O ₂ cons. prop. constant | 0.116 | molN/molO ₂ | S96 |
| ω_{detS} | Sed. rate of small det. | $0.25 \cdot w_{detS}$ | $m d^{-1}$ | C |
| ω_{detL} | Sed. rate of large det. | $0.5 \cdot w_{detL}$ | $m d^{-1}$ | C |

which are explicitly modelled, $K_n = k_n \cdot C_n$, where C_n is the concentration of constituent n , and k_n is the specific attenuation coefficients, which are set to $k_{p_i^C} = 0.015$, $k_{det^C} = 0.01$ and $k_{DOC} = 0.002 m^2 mmolC^{-1}$ (Oubelkheir et al., 2005; Stedmon et al., 2001). For describing the contribution of SPM, K_{SPM} , which is not explicitly modeled here, we use an analytical function of the form:

$$620 \quad K_{SPM} = K'_{SPM} \cdot f_{SPM}(z) \cdot f_{SPM}(t) \quad (B63)$$

where, the K'_{SPM} is the maximum potential attenuation, $f_{SPM}(z_{max})$ (z_{max} : bottom depth) is a sigmoidal function of depth to account for the cross-shore variations and $f_{SPM}(t)$ (t : day of year) is a sinusoidal function to account for the cyclic seasonal variations driven by the riverine discharges at the coastal region and thermal stratification offshore:

$$f_{SPM}(z_{max}) = fz_{minfr} + (1.0 - fz_{minfr}) * (1.0 - 1.0 / (1.0 + \exp(z *_{max} - z_{max} * 0.5))) \quad (B64)$$

$$625 \quad f_{SPM}(t) = F * (A * \sin(2.0 \cdot t \cdot \pi / 365.0 + 2.0 \cdot L \cdot \pi / 365.0) + B) \quad (B65)$$

Based on an analysis (see Kerimoglu, 2014) of the temporally and spatially variable SPM data collected by a Scanfish device (see Maerz et al. (2016) for a description of the data set), and the model performance, we fitted $K'_{SPM} = 1.5$, $fz_{minfr} = 0.3$, $z *_{max} = 7.5$ and $F = 0.05$, $A = 6.0$, $B = 12.0$, $L = 85.0$ for $f_{SPM}(t)$. Finally, for the parameterization of a , η_1 and η_2 , we specify the Jerlov Type-1 option in GETM, which corresponds to clear ocean waters (Paulson and Simpson, 1977), given that

630 we explicitly take the attenuation by organic and SPM constituents into account.

Table B9. Process equations and functional relationships used in the abiotic module.

| | | | |
|--|-----------------|--|-------|
| O ₂ switch | SW_{O_2} | if $O_2 > 0.0 = 1.0$, else $= 0.0$ | (B41) |
| NO ₃ switch | SW_{NO_3} | if $DINO_3 > 0.0 = 1.0$, else $= 0.0$ | (B42) |
| Remineralization of DOX | DOX_DIX | $= f_{T,abio} \cdot \lambda^X \cdot DOX$ | (B43) |
| Decay of X={C,N,P} in det _S | $det_S^X_DOX$ | $= f_{T,abio} \cdot r_S^X \cdot det_S^X$ | (B44) |
| Decay of X={C,N,P,Si} in det _L | $det_L^X_DOX$ | $= f_{T,abio} \cdot r_L^X \cdot det_L^X$ | (B45) |
| Nitrification of pelagic NH ₄ | $DINH4_DINO_3$ | $= SW_{O_2} \cdot f_{T,abio} \cdot DINH4 \cdot r_{nit}$ | (B46) |
| Denitrification in water | $DINO_3_N_2$ | $= 0.5 \cdot (1 - SW_{O_2}) \cdot SW_{NO_3} \cdot DOC_DIC \cdot QN_b$ | (B47) |
| O ₂ production by p_i | $p_i_O_2$ | $= DIC_p_i^C \cdot 1.0[\text{molO}_2/\text{molC}]$ | (B48) |
| O ₂ consumption by z_j | $O_2_z_j$ | $= z_j^C \cdot DIC \cdot 1.0[\text{molO}_2/\text{molC}]$ | (B49) |
| O ₂ consumption by remin. | O_2_DOM | $= SW_{O_2} \cdot DOC_DIC + (1 - SW_{O_2}) \cdot (1 - SW_{NO_3}) \cdot DOC_DIC$ | (B50) |
| O ₂ consumption by nitrif. | O_2_DINH4 | $= DINH4_DINO_3 \cdot 2.0[\text{molO}_2/\text{molN}]$ | (B51) |
| O ₂ flux from air | air_O_2 | $= k(O_{20} - O_2)$, k from Wanninkhof (1992), O_{20} from UNESCO (1986) | (B52) |
| Sedimentation of det _S ^X | $det_S^X_BPOX$ | $= \omega_{detS} \cdot det_S^X$ | (B53) |
| Sedimentation of det _L ^X | $det_L^X_BPOX$ | $= \omega_{detL} \cdot det_L^X$ | (B54) |
| Benthic X={C,P,Si} remin. | $BPOX_DIX$ | $= br^X \cdot BPOX$ | (B55) |
| Benthic O ₂ consumption | O_2_BPOM | $= SW_{O_2(b)} \cdot BPOC_DIC + (1 - SW_{O_2(b)}) \cdot (1 - SW_{NO_3(b)}) \cdot BPOC_DIC$ | (B56) |
| Potential benthic denit. | $BPON_N_2'$ | $= \rho_{Seitz} \cdot O_2_BPOM$ | (B57) |
| Benthic denitrification | $BPON_N_2$ | $= BPON_N_2' - \max(0.0, BPON_N_2' - BPON_DINH4')$ | (B58) |
| Potential benthic N remin. | $BPON_DINH4'$ | $= br^N \cdot BPON$ | (B59) |
| Benthic N remineralization | $BPON_DINH4$ | $= \max(0.0, BPON_DINH4' - BPON_N_2')$ | (B60) |
| Benthic NO ₃ reduction | $DINO_3_BPOM$ | $= 0.5 \cdot SW_{O_2} \cdot SW_{NO_3} \cdot BPON_DINH4$ | (B61) |

Author contributions. OK designed the study with contributions from YV, developed the biogeochemical model, performed the model skill assessment and conducted the model-based analyses with contributions by FC and prepared the first draft of the manuscript. JvB provided the monthly average nutrient concentrations, and YV assisted the compilation of the monitoring data. RH and KK assisted the improvement of the hydrodynamical model with horizontal diffusion. All co-authors contributed to the discussion of the results and revisions of the manuscript.

635 *Competing interests.* The authors declare that no competing interests are present.

Acknowledgements. OK was supported by the German Environment Agency, UBA [3718252110] and German Science Foundation, DFG [KE 1970/1-1 and KE 1970/2-1]. OK and FC was supported by the German Federal Ministry of Research and Education, BMBF [03F0740B]. KK was financed by the Collaborative Research Centre of the DFG, TRR 181 [274762653]. Data at Helgoland were provided by Alfred Wegener Institute (AWI), and at Nordereibe, Suederpiep and Westerhever were provided by the Landesamt für Landwirtschaft, Umwelt und ländliche Räume des Landes Schleswig Holstein. Noordwijk and Terschelling data were provided by the Rijkswaterstaat. Simulations were performed on the 'Mistral' supercomputer of the German Climate Computing Center (DKRZ). We thank Johannes Pätsch (Uni. Hamburg) for providing the boundary conditions and ECOHAM code that helped developing the abiotic component of the model, Sonja van Leeuwen (NIOZ) for providing the riverine data, Wilhelm Petersen, Gisbert Breitbach and KOI group of the HZG for the acquisition and maintenance of the FerryBox and COSYNA data and Ivan Kuznetsov (then at HZG) for the cooperation on model validation. OK is grateful to the developers of the open source platforms and free software that made this work possible, foremost, GETM, GOTM, FABM, NetCDF, NCO, Python, Kubuntu OS and UNIX tools. We thank H.-J. Lenhart, J. Pätsch and two anonymous referees for their valuable comments.

References

- Ahmerkamp, S., Winter, C., Krämer, K., de Beer, D., Janssen, F., Friedrich, J., Kuypers, M. M., and Holtappels, M.: Regulation of benthic oxygen fluxes in permeable sediments of the coastal ocean, *Limnology and Oceanography*, 62, 1935–1954, 650 <https://doi.org/10.1002/lno.10544>, 2017.
- Amann, T., Weiss, A., and Hartmann, J.: Carbon dynamics in the freshwater part of the Elbe estuary, Germany: Implications of improving water quality, *Estuarine, Coastal and Shelf Science*, 107, 112–121, <https://doi.org/10.1016/j.ecss.2012.05.012>, 2012.
- Androsov, A., Fofonova, V., Kuznetsov, I., Danilov, S., Rakowsky, N., Harig, S., Brix, H., and Wiltshire, K. H.: FESOM-C : coastal dynamics on hybrid unstructured meshes, *Geoscientific Model Development*, 12, 1009–1028, <https://doi.org/10.5194/gmd-2018-112>, 2019.
- 655 Backhaus, J. O.: A three-dimensional model for the simulation of shelf sea dynamics, *Deutsche Hydrographische Zeitschrift*, 38, 165–187, <https://doi.org/10.1007/BF02328975>, 1985.
- Baird, M. E., Adams, M. P., Babcock, R. C., Oubelkheir, K., Mongin, M., Wild-allen, K. A., Skerratt, J., Robson, B. J., Petrou, K., Ralph, P. J., Brien, K. R. O., Carter, A. B., Jarvis, J. C., and Rasheed, M. A.: A biophysical representation of seagrass growth for application in a complex shallow-water biogeochemical model, *Ecological Modelling*, 325, 13–27, <https://doi.org/10.1016/j.ecolmodel.2015.12.011>, 660 2016.
- Baretta, J., Ebenhöf, W., and Ruardij, P.: The European regional seas ecosystem model, a complex marine ecosystem model, *Netherlands Journal of Sea Research*, 33, 233–246, 1995.
- Barthel, K., Daewel, U., Pushpadas, D., Schrum, C., Årthun, M., and Wehde, H.: Resolving frontal structures: on the payoff using a less diffusive but computationally more expensive advection scheme, *Ocean Dynamics*, 62, 1457–1470, <https://doi.org/10.1007/s10236-012-0578-9>, 665 2012.
- Becker, E. and Burkhardt, U.: Nonlinear Horizontal Diffusion for GCMs, *Monthly Weather Review*, 135, 1439–1454, <https://doi.org/10.1175/MWR3348.1>, 2007.
- Becker, G., Dick, S., and Dippner, J.: Hydrography of the German Bight, *Marine Ecology Progress Series*, 91, 9–18, 1992.
- Beckers, J.-M., Burchard, H., Deleersnijder, E., and Mathieu, P.: Numerical Discretization of Rotated Diffusion Operators in Ocean Models, 670 *Monthly Weather Review*, 128, 2711–2733, 2000.
- Beniston, M., Stephenson, D. B., Christensen, O. B., Ferro, C. a. T., Frei, C., Goyette, S., Halsnaes, K., Holt, T., Jylhä, K., Koffi, B., Palutikof, J., Schöll, R., Semmler, T., and Woth, K.: Future extreme events in European climate: an exploration of regional climate model projections, *Climatic Change*, 81, 71–95, <https://doi.org/10.1007/s10584-006-9226-z>, 2007.
- Blackford, J. C. and Radford, P. J.: A structure and methodology for marine ecosystem modelling, *Netherlands Journal of Sea Research*, 33, 675 247–260, [https://doi.org/10.1016/0077-7579\(95\)90048-9](https://doi.org/10.1016/0077-7579(95)90048-9), 1995.
- Bratek, A., E. E. Van Beusekom, J., Neumann, A., Sanders, T., Friedrich, J., Emeis, K. C., and Dähnke, K.: Spatial variations in sedimentary N-transformation rates in the North Sea (German Bight), *Biogeosciences*, 17, 2839–2851, <https://doi.org/10.5194/bg-17-2839-2020>, 2020.
- Breitbach, G., Krasemann, H., Behr, D., Beringer, S., Lange, U., and Vo, N.: Accessing diverse data comprehensively – CODM , the COSYNA data portal, *Ocean Science*, 12, 909–923, <https://doi.org/10.17616/R3K02T>, 2016.
- 680 Bruggeman, J. and Bolding, K.: A general framework for aquatic biogeochemical models, *Environmental Modelling & Software*, 61, 249–265, <https://doi.org/10.1016/j.envsoft.2014.04.002>, 2014.
- Burchard, H. and Badewien, T. H.: Thermohaline residual circulation of the Wadden Sea, *Ocean Dynamics*, 65, 1717–1730, <https://doi.org/10.1007/s10236-015-0895-x>, 2015.

- Burchard, H. and Bolding, K.: GETM: A general estuarine transport model, Tech. rep., Joint Research Centre, Ispra, Italy, 2002.
- 685 Burchard, H. and Hetland, R. D.: Quantifying the Contributions of Tidal Straining and Gravitational Circulation to Residual Circulation in Periodically Stratified Tidal Estuaries, *Journal of Physical Oceanography*, 40, 1243–1262, <https://doi.org/10.1175/2010JPO4270.1>, 2010.
- Burchard, H. and Rennau, H.: Comparative quantification of physically and numerically induced mixing in ocean models, *Ocean Modelling*, 20, 293–311, <https://doi.org/10.1016/j.ocemod.2007.10.003>, 2008.
- 690 Burchard, H., Flöser, G., Staneva, J. V., Badewien, T. H., and Riethmüller, R.: Impact of Density Gradients on Net Sediment Transport into the Wadden Sea, *Journal of Physical Oceanography*, 38, 566–587, <https://doi.org/10.1175/2007JPO3796.1>, 2008.
- Burchard, H., Schuttelaars, H. M., and Ralston, D. K.: Sediment Trapping in Estuaries, *Annual Review of Marine Science*, 10, 371–395, <https://doi.org/10.1146/annurev-marine-010816-060535>, 2018.
- Burson, A., Stomp, M., Akil, L., Brussaard, C. P. D., and Huisman, J.: Unbalanced reduction of nutrient loads has created an offshore gradient from phosphorus to nitrogen limitation in the North Sea, *Limnology and Oceanography*, 61, 869–888, <https://doi.org/10.1002/lno.10257>, 2016.
- 695 Callies, U. and Scharfe, M.: Mean spring conditions at Helgoland Roads, North Sea: Graphical modeling of the influence of hydro-climatic forcing and Elbe River discharge, *Journal of Sea Research*, 101, 1–11, <https://doi.org/10.1016/j.seares.2014.06.008>, 2015.
- Callies, U., Gaslikova, L., Kapitza, H., and Scharfe, M.: German Bight residual current variability on a daily basis: principal components of multi-decadal barotropic simulations, Tech. rep., <https://doi.org/10.1007/s00367-016-0466-2>, 2016.
- 700 Callies, U., Gaslikova, L., Kapitza, H., and Scharfe, M.: German Bight residual current variability on a daily basis: principal components of multi-decadal barotropic simulations, *Geo-Marine Letters*, 37, 151–162, <https://doi.org/10.1007/s00367-016-0466-2>, 2017.
- Carpenter, J. R., Merckelbach, L., Callies, U., Clark, S., Gaslikova, L., and Baschek, B.: Potential Impacts of Offshore Wind Farms on North Sea Stratification, *PloS one*, 11, e0160830, <https://doi.org/10.1594/WDCC/coastDat-2>, 2016.
- 705 Chegini, F., Holtermann, P., Kerimoglu, O., Becker, M., Kreuz, M., Klingbeil, K., Gräwe, U., Winter, C., and Burchard, H.: Processes of stratification and de-stratification during an extreme river discharge event in the German Bight in a model study, *Journal of Geophysical Research : Oceans*.
- Christianen, M., Middelburg, J., Holthuijsen, S., Jouta, J., Compton, T., van der Heide, T., Piersma, T., Sinninghe Damste, J., van der Veer, H., Schouten, S., and Olf, H.: Benthic primary producers are key to sustain the Wadden Sea food web: stable carbon isotope analysis at landscape scale, *Ecology*, 98, 1498–1512, <https://doi.org/10.1002/ecy.1837>, 2017.
- 710 Clark, N., Eber, L., Laurs, R., Renner, J., and Saur, J.: Heat exchange between ocean and atmosphere in the Eastern North Pacific for 1961–1971, Tech. rep., NOAA, Washington, DC, USA, 1974.
- Cloern, J. E., Foster, S. Q., and Kleckner, A. E.: Phytoplankton primary production in the world’s estuarine-coastal ecosystems, *Biogeochemistry*, 11, 2477–2501, <https://doi.org/10.5194/bg-11-2477-2014>, 2014.
- 715 Cook, P. L., Veuger, B., Böer, S., and Middelburg, J. J.: Effect of nutrient availability on carbon and nitrogen incorporation and flows through benthic algae and bacteria in near-shore sandy sediment, *Aquatic Microbial Ecology*, 49, 165–180, <https://doi.org/10.3354/ame01142>, 2007.
- Daewel, U., Schrum, C., and Macdonald, J. I.: Towards end-to-end (E2E) modelling in a consistent NPZD-F modelling framework (ECOSMO E2E_v1.0): application to the North Sea and Baltic Sea, *Geoscientific Model Development*, 12, 1765–1789, 2019.
- 720 Deek, A., Dähnke, K., Van Beusekom, J., Meyer, S., Voss, M., and Emeis, K.: N₂ fluxes in sediments of the Elbe Estuary and adjacent coastal zones, *Marine Ecology Progress Series*, 493, 9–21, <https://doi.org/10.3354/meps10514>, 2013.
- Dippner, J. W.: A frontal-resolving model for the German Bight, *Continental Shelf Research*, 13, 49–66, 1993.

- Dolch, T., Buschbaum, C., and Reise, K.: Persisting intertidal seagrass beds in the northern Wadden Sea since the 1930s, *Journal of Sea Research*, 82, 134–141, <https://doi.org/10.1016/j.seares.2012.04.007>, <http://dx.doi.org/10.1016/j.seares.2012.04.007>, 2013.
- 725 Emeis, K. C., van Beusekom, J., Callies, U., Ebinghaus, R., Kannen, A., Kraus, G., Kröncke, I., Lenhart, H., Lorkowski, I., Matthias, V., Möllmann, C., Pätsch, J., Scharfe, M., Thomas, H., Weisse, R., and Zorita, E.: The North Sea - A shelf sea in the Anthropocene, *Journal of Marine Systems*, 141, 18–33, <https://doi.org/10.1016/j.jmarsys.2014.03.012>, 2015.
- Fasham, M., Ducklow, H., and Mckelvie, S.: A nitrogen-based model of plankton dynamics in the oceanic mixed layer, *Journal of Marine Research*, 48, 591–639, 1990.
- 730 Feng, Y., Friedrichs, M. A., Wilkin, J., Tian, H., Yang, Q., Hofmann, E. E., Wiggert, J. D., and Hood, R. R.: Chesapeake Bay nitrogen fluxes derived from a land-estuarine ocean biogeochemical modeling system: Model description, evaluation, and nitrogen budgets, *Journal of Geophysical Research G: Biogeosciences*, 120, 1666–1695, <https://doi.org/10.1002/2015JG002931>, 2015.
- Fennel, K. and Laurent, A.: N and P as ultimate and proximate limiting nutrients in the northern Gulf of Mexico: Implications for hypoxia reduction strategies, *Biogeosciences*, 15, 3121–3131, <https://doi.org/10.5194/bg-15-3121-2018>, 2018.
- 735 Fennel, K. and Testa, J. M.: Biogeochemical Controls on Coastal Hypoxia, *Annual Review of Marine Science*, 11, 4.1–4.26, <https://doi.org/10.1146/annurev-marine-010318-095138>, 2019.
- Flöser, G., Burchard, H., and Riethmüller, R.: Observational evidence for estuarine circulation in the German Wadden Sea, *Continental Shelf Research*, 31, 1633–1639, <https://doi.org/http://dx.doi.org/10.1016/j.csr.2011.03.014>, 2011.
- Flynn, K. J.: Modelling multi-nutrient interactions in phytoplankton; balancing simplicity and realism, *Progress in Oceanography*, 56, 249–279, [https://doi.org/10.1016/S0079-6611\(03\)00006-5](https://doi.org/10.1016/S0079-6611(03)00006-5), 2003.
- 740 Ford, D. A., van der Molen, J., Hyder, K., Bacon, J., Barciela, R., Creach, V., McEwan, R., Ruardij, P., and Forster, R.: Observing and modelling phytoplankton community structure in the North Sea: can ERSEM-type models simulate biodiversity?, *Biogeosciences*, 14, 1419–1444, <https://doi.org/10.5194/bg-2016-304>, <http://www.biogeosciences-discuss.net/bg-2016-304/>, 2017.
- Frey, H.: Stratification during periods of oxygen deficiency in the German Bight during the summers from 1981 to 1983: a comparison with the long-term variation in stratification., *Meeresforschung*, 32, 306–328, 1990.
- 745 Garnier, J., Riou, P., Gendre, R. L., Ramarson, A., Billen, G., Cugier, P., Shapira, M., Théry, S., Thieu, V., and Alain, M.: Managing the Agri-Food System of Watersheds to Combat Coastal Eutrophication: A Land-to-Sea Modelling Approach to the French Coastal English Channel, *Geosciences*, 9, <https://doi.org/10.3390/geosciences9100441>, 2019.
- Gaslikova, L. and Weisse, R.: coastDat-2 TRIM-NP-2d Tide-Surge North Sea, Tech. rep., WDCC at DKRZ, https://doi.org/10.1594/WDCC/coastDat-2_TRIM-NP-2d, 2013.
- 750 Gayer, G., Dick, S., Pleskachevsky, A., and Rosenthal, W.: Numerical modeling of suspended matter transport in the North Sea, *Ocean Dynamics*, 56, 62–77, <https://doi.org/10.1007/s10236-006-0070-5>, 2006.
- Geider, R., MacIntyre, H., and Kana, T.: Dynamic model of phytoplankton growth and acclimation: responses of the balanced growth rate and the chlorophyll a:carbon ratio to light, nutrient-limitation and temperature, *Marine Ecology Progress Series*, 148, 187–200, 1997.
- 755 Geider, R., MacIntyre, H., and Kana, T.: A dynamic regulatory model of phytoplanktonic acclimation to light, nutrients, and temperature, *Limnol. Oceanogr.*, 43, 679–694, 1998.
- Gent, P. R. and McWilliams, J. C.: Isopycnal mixing in ocean circulation models, *Journal of Physical Oceanography*, 20, 150–155, 1990.
- Geyer, B.: High-resolution atmospheric reconstruction for Europe 1948–2012: coastDat2, *Earth System Science Data*, 6, 147–164, <https://doi.org/doi:10.5194/essd-6-147-2014>, 2014.

- Geyer, W. R. and Maccready, P.: The Estuarine Circulation, *Annual Review of Fluid Mechanics*, 46, 175–197, 760 <https://doi.org/10.1146/annurev-fluid-010313-141302>, 2014.
- Gräwe, U., Flöser, G., Gerkema, T., Duran-Matute, M., Badewien, T., Schulz, E., and Burchard, H.: A numerical model for the entire Wadden Sea: skill assessment and analysis of hydrodynamics, *Journal of Geophysical Research: Oceans*, 121, 5231–2551, <https://doi.org/10.1002/2016JC011655>, 2016.
- Griffies, S. M. and Hallberg, R. W.: Biharmonic Friction with a Smagorinsky-Like Viscosity for Use in Large-Scale Eddy-Permitting Ocean 765 *Models*, *Monthly Weather Review*, 128, 2935–2946, 2000.
- Große, F., Greenwood, N., Kreuz, M., Lenhart, H. J., Machoczek, D., Pätsch, J., Salt, L. A., and Thomas, H.: Looking beyond stratification: a model-based analysis of the biological drivers of oxygen deficiency in the North Sea, *Biogeosciences*, 13, 2511–2535, <https://doi.org/10.5194/bgd-12-12543-2015>, 2016.
- Große, F., Kreuz, M., Lenhart, H.-J., Pätsch, J., and Pohlmann, T.: A Novel Modeling Approach to Quantify the Influence of Nitrogen Inputs 770 on the Oxygen Dynamics of the North Sea, *Frontiers in Marine Science*, 4, 1–21, <https://doi.org/10.3389/fmars.2017.00383>, 2017.
- Grover, J.: Stoichiometry, Herbivory and Competition for Nutrients: Simple Models based on Planktonic Ecosystems, *J. Theoret. Biol.*, 214, 599–618, <https://doi.org/10.1006/jtbi.2001.2488>, 2002.
- Grunwald, M., Dellwig, O., Kohlmeier, C., Kowalski, N., Beck, M., Badewien, T. H., Kotzur, S., Liebezeit, G., and Brumsack, H.-J.: Nutrient 775 dynamics in a back barrier tidal basin of the Southern North Sea: Time-series, model simulations, and budget estimates, *Journal of Sea Research*, 64, 199–212, <https://doi.org/10.1016/j.seares.2010.02.008>, <http://linkinghub.elsevier.com/retrieve/pii/S1385110110000316>, 2010.
- Hanlon, A. R., Bellinger, B., Haynes, K., Xiao, G., Hofmann, T. A., Gretz, M. R., Ball, A. S., Osborn, A. M., and Underwood, G. J.: Dynamics of extracellular polymeric substance (EPS) production and loss in an estuarine, diatom-dominated, microalgal biofilm over a tidal emersion-immersion period, *Limnology and Oceanography*, 51, 79–93, <https://doi.org/10.4319/lo.2006.51.1.0079>, 2006.
- Hansen, P., Bjørnsen, P., and Hansen, B.: Zooplankton grazing and growth: Scaling within the 2-2,000 μ m body size range, *Limnology and Oceanography*, 42, 687–704, 1997. 780
- Heip, C., Goosen, N., Herman, P., Kromkamp, J., Middelburg, J., and Soetaert, K.: Production and Consumption of Biological Particles in Temperate Tidal Estuaries, vol. 33, <https://doi.org/10.1007/BF01426068>, 1995.
- Herman, P., Middelburg, J., van de Koppel, J., and Heip, C.: Ecology of Estuarine Macrobenthos, *Advances in Ecological Research*, 29, 195–240, [https://doi.org/10.1016/S0065-2504\(08\)60194-4](https://doi.org/10.1016/S0065-2504(08)60194-4), 1999.
- Hickel, W., Mangelsdorf, P., and Berg, J.: The human impact in the German Bight: Eutrophication during three decades (1962-1991), 785 *Helgoländer Meeresuntersuchungen*, 47, 243–263, <https://doi.org/10.1007/BF02367167>, 1993.
- Hickey, B. M., Kudela, R. M., Nash, J. D., Bruland, K. W., Peterson, W. T., MacCready, P., Lessard, E. J., Jay, D. a., Banas, N. S., Baptista, a. M., Dever, E. P., Kosro, P. M., Kilcher, L. K., Horner-Devine, a. R., Zaron, E. D., McCabe, R. M., Peterson, J. O., Orton, P. M., Pan, J., and Lohan, M. C.: River Influences on Shelf Ecosystems: Introduction and synthesis, *Journal of Geophysical Research*, 115, C00B17, 790 <https://doi.org/10.1029/2009JC005452>, 2010.
- Hofmeister, R., Beckers, J.-M., and Burchard, H.: Realistic modelling of the exceptional inflows into the central Baltic Sea in 2003 using terrain-following coordinates, *Ocean Modelling*, 39, 233–247, <https://doi.org/10.1016/j.ocemod.2011.04.007>, 2011.
- Hofmeister, R., Flöser, G., and Schartau, M.: Estuary-type circulation as a factor sustaining horizontal nutrient gradients in freshwater-influenced coastal systems, *Geo-Marine Letters*, 37, 179–192, <https://doi.org/10.1007/s00367-016-0469-z>, 2017.
- Holt, J. T. and James, I. D.: An assessment of the fine-scale eddies in a high-resolution model of the shelf seas west of Great Britain, *Ocean Modelling*, 13, 271–291, <https://doi.org/10.1016/j.ocemod.2006.02.005>, 2006. 795

- Irby, I. D., Friedrichs, M. A., Da, F., and Hinson, K. E.: The competing impacts of climate change and nutrient reductions on dissolved oxygen in Chesapeake Bay, *Biogeosciences*, 15, 2649–2668, <https://doi.org/10.5194/bg-15-2649-2018>, 2018.
- Izett, J. G. and Fennel, K.: Estimating the Cross-Shelf Export of Riverine Materials: Part 2. Estimates of Global Freshwater and Nutrient Export, *Global Biogeochemical Cycles*, 32, 176–186, <https://doi.org/10.1002/2017GB005668>, 2018.
- Kantha, L. H. and Clayson, C. A.: Numerical models of oceans and oceanic processes, Academic Press, 2000.
- Kerimoglu, O.: Parameterization of turbidity in the German Bight, Tech. rep., Helmholtz-Zentrum Geesthacht, Geesthacht, <https://www.hzg.de/imperia/md/content/hzg/zentrale{ }einrichtungen/bibliothek/berichte/hzg{ }reports{ }2019/hzg{ }report{ }2019{ }2.pdf>, 2014.
- Kerimoglu, O., Hofmeister, R., Maerz, J., Riethmüller, R., and Wirtz, K. W.: The acclimative biogeochemical model of the southern North Sea, *Biogeosciences*, 14, 4499–4531, <https://doi.org/10.5194/bg-14-4499-2017>, 2017a.
- Kerimoglu, O., Jacquet, S., Vinçon-Leite, B., Lemaire, B. J., Rimet, F., Soullignac, F., Trévisan, D., and Anneville, O.: Modelling the plankton groups of the deep, peri-alpine Lake Bourget, *Ecological Modelling*, 359, 415–433, <https://doi.org/10.1016/j.ecolmodel.2017.06.005>, 2017b.
- Kerimoglu, O., Große, F., Kreuz, M., Lenhart, H.-J., and van Beusekom, J. E.: A model-based projection of historical state of a coastal ecosystem: relevance of phytoplankton stoichiometry, *Science of the Total Environment*, 639, 1311–1323, <https://doi.org/10.1016/j.scitotenv.2018.05.215>, 2018.
- Klingbeil, K., Mohammadi-Aragh, M., Gräwe, U., and Burchard, H.: Quantification of spurious dissipation and mixing – Discrete variance decay in a Finite-Volume framework, *Ocean Modelling*, 81, 49–64, <https://doi.org/10.1016/j.ocemod.2014.06.001>, 2014.
- Kondo, J.: Air-sea bulk transfer coefficients in diabatic conditions, *Boundary Layer Meteorology*, 9, 91–112, 1975.
- Laurent, A., Fennel, K., Cai, W.-J., Huang, W.-J., Barbero, L., and Wanninkhof, R.: Eutrophication-induced acidification of coastal waters in the northern Gulf of Mexico: Insights into origin and processes from a coupled physical- biogeochemical model Arnaud, *Geophysical Research Letters*, 44, 946–956, <https://doi.org/10.1002/2016GL071881>, 2017.
- Lenhart, H., Radach, G., and Ruardij, P.: The effects of river input on the ecosystem dynamics in the continental coastal zone of the North Sea using ERSEM, *Journal of Sea Research*, 38, 249–274, 1997.
- Leote, C., Mulder, L. L., Philippart, C. J. M., and Epping, E. H. G.: Nutrients in the Western Wadden Sea: Freshwater Input Versus Internal Recycling, *Estuaries and Coasts*, <https://doi.org/10.1007/s12237-015-9979-6>, <http://link.springer.com/10.1007/s12237-015-9979-6>, 2015.
- Lessin, G., Artioli, Y., Almroth-rosell, E., Blackford, J. C., Dale, A. W., Glud, R. N., Middelburg, J. J., Pastres, R., Rabouille, C., Regnier, P., Soetaert, K., Solidoro, C., Stephens, N., and Yakushev, E.: Modelling Marine Sediment Biogeochemistry: Current Knowledge Gaps, Challenges, and Some Methodological Advice for Advancement, *Frontiers in Marine Science*, 5, 19, <https://doi.org/10.3389/fmars.2018.00019>, 2018.
- Lessin, G., Bruggeman, J., McNeill, C. L., and Widdicombe, S.: Time scales of benthic macrofaunal response to pelagic production differ between major feeding groups, *Frontiers in Marine Science*, 6, 1–12, <https://doi.org/10.3389/fmars.2019.00015>, 2019.
- Löder, M., Kraberg, A., Aberle, N., Peters, S., and Wiltshire, K.: Dinoflagellates and ciliates at Helgoland Roads, North Sea, *Helgoland Marine Research*, 66, 11–23, <https://doi.org/10.1007/s10152-010-0242-z>, 2012.
- Loebl, M., Dolch, T., and Beusekom, J. E. E. V.: Annual dynamics of pelagic primary production and respiration in a shallow coastal basin, *Journal of Sea Research*, 58, 269 – 282, <https://doi.org/10.1016/j.seares.2007.06.003>, 2007.
- Loebl, M., Colijn, F., van Beusekom, J., Baretta-Bekker, J., Lancelot, C., Philippart, C., Rousseau, V., and Wiltshire, K.: Recent patterns in potential phytoplankton limitation along the Northwest European continental coast, *Journal of Sea Research*, 61, 34–43, <https://doi.org/10.1016/j.seares.2008.10.002>, 2009.

- 835 Lorkowski, I., Pätsch, J., Moll, A., and Kühn, W.: Interannual variability of carbon fluxes in the North Sea from 1970 to 2006 - Competing effects of abiotic and biotic drivers on the gas-exchange of CO₂, *Estuarine, Coastal and Shelf Science*, 100, 38–57, <https://doi.org/10.1016/j.ecss.2011.11.037>, 2012.
- Los, F., Villars, M., and Van der Tol, M.: A 3-dimensional primary production model (BLOOM/GEM) and its applications to the (southern) North Sea (coupled physical–chemical–ecological model), *Journal of Marine Systems*, 74, 259–294, <https://doi.org/10.1016/j.jmarsys.2008.01.002>, 2008.
- 840 Maerz, J., Hofmeister, R., van der Lee, E. M., Gräwe, U., Riethmüller, R., and Wirtz, K. W.: Maximum sinking velocities of suspended particulate matter in a coastal transition zone, *Biogeosciences*, 13, 4863–4876, <https://doi.org/10.5194/bg-13-4863-2016>, 2016.
- Merz, B., Elmer, F., Kunz, M., Mühr, B., Schröter, K., and Uhlemann-Elmer, S.: The extreme flood in June 2013 in Germany, *La Houille Blanche*, 1, 5–10, <https://doi.org/10.1051/lhb/2014001>, <http://www.shf-lhb.org/10.1051/lhb/2014001>, 2014.
- 845 Middelburg, J. J.: Reviews and syntheses: To the bottom of carbon processing at the seafloor, *Biogeosciences*, 15, 413–427, <https://doi.org/10.5194/bg-15-413-2018>, 2018.
- Morel, F.: Kinetics of nutrient uptake and growth in phytoplankton, *Journal of Phycology*, 23, 137–150, 1987.
- Naseroaddeli, M. H., Lemmen, C., Stigge, G., Kerimoglu, O., Burchard, H., Klingbeil, K., Hofmeister, R., Kreuz, M., Wirtz, K. W., and Kösters, F.: A model study on the large-scale effect of macrofauna on the suspended sediment concentration in a shallow shelf sea, *Estuarine, Coastal and Shelf Science*, 211, 62–76, <https://doi.org/10.1016/j.ecss.2017.11.002>, 2018.
- 850 Neumann, A., van Beusekom, J. E., Holtappels, M., and Emeis, K. C.: Nitrate consumption in sediments of the German Bight (North Sea), *Journal of Sea Research*, 127, 26–35, <https://doi.org/10.1016/j.seares.2017.06.012>, 2017.
- OSPAR: Eutrophication Status of the OSPAR Maritime Area. Third Integrated Report on the Eutrophication Status of the OSPAR Maritime Area Submitted by ICG-EMO, Tech. rep., 2017.
- 855 Oubelkheir, K., Sciandra, A., and Babin, M.: Bio-optical and biogeochemical properties of different trophic regimes in oceanic waters, *Limnology and Oceanography*, 50, 1795–1809, <https://doi.org/10.4319/lo.2005.50.6.1795>, 2005.
- Pätsch, J. and Kühn, W.: Nitrogen and carbon cycling in the North Sea and exchange with the North Atlantic—A model study. Part I. Nitrogen budget and fluxes, *Continental Shelf Research*, 28, 767–787, <https://doi.org/10.1016/j.csr.2007.12.013>, 2008.
- Pätsch, J., Burchard, H., Dieterich, C., Gräwe, U., Gröger, M., Mathis, M., Kapitza, H., Bersch, M., Moll, A., Pohlmann, T., Su, J., Hagemann, H. T., Schulz, A., Elizalde, A., and Eden, C.: An evaluation of the North Sea circulation in global and regional models relevant for ecosystem simulations, *Ocean Modelling*, 116, 70–95, <https://doi.org/10.1016/j.ocemod.2017.06.005>, 2017.
- 860 Paulson, C. and Simpson, J.: Irradiance measurements in the upper ocean, *Journal of Physical Oceanography*, 7, 952–956, 1977.
- Payne, R. E.: Albedo of the Sea Surface, *Journal of the Atmospheric Sciences*, 29, 959–970, [https://doi.org/10.1175/1520-0469\(1972\)029<0959:AOTSS>2.0.CO;2](https://doi.org/10.1175/1520-0469(1972)029<0959:AOTSS>2.0.CO;2), 1972.
- 865 Pein, J., Eisele, A., Hofmeister, R., Sanders, T., Daewel, U., Stanev, E. V., Beusekom, J. V., Staneva, J., and Schrum, C.: Nitrogen cycling in the Elbe estuary from a joint 3D-modelling and observational perspective, *Biogeosciences Discussions*, pp. 1–34, 2019.
- Petersen, W., Schroeder, F., and Bockelmann, F.-D.: FerryBox - Application of continuous water quality observations along transects in the North Sea, *Ocean Dynamics*, 61, 1541–1554, <https://doi.org/10.1007/s10236-011-0445-0>, <http://link.springer.com/10.1007/s10236-011-0445-0>, 2011.
- 870 Pietrzak, J.: The Use of TVD Limiters for Forward-in-Time Upstream-Biased Advection Schemes in Ocean Modeling, *Monthly Weather Review*, 126, 812–830, 1998.

- Platis, A., Siedersleben, S. K., Bange, J., Lampert, A., Bärfuss, K., Hankers, R., Cañadillas, B., Foreman, R., Schulz-stellenfleth, J., Djath, B., Neumann, T., and Emeis, S.: First in situ evidence of wakes in the far field behind offshore wind farms, *Scientific Reports*, 8, 2163, <https://doi.org/10.1038/s41598-018-20389-y>, 2018.
- 875 Pohlmann, T.: A meso-scale model of the central and southern North Sea: Consequences of an improved resolution, *Continental Shelf Research*, 26, 2367–2385, <https://doi.org/10.1016/j.csr.2006.06.011>, 2006.
- Radach, G.: Ecosystem Functioning in the German Bight Under Continental Nutrient Inputs by Rivers, *Estuaries*, 15, 477–496, <https://doi.org/10.2307/1352392>, 1992.
- Radach, G. and Pätsch, J.: Variability of Continental Riverine Freshwater and Nutrient Inputs into the North Sea for the Years 1977 – 2000 and Its Consequences for the Assessment of Eutrophication, *Estuaries and Coasts*, 30, 66–81, <https://doi.org/10.1007/BF02782968>, 2007.
- 880 Roberts, M. and Marshall, D.: Do We Require Adiabatic Dissipation Schemes in Eddy-Resolving Ocean Models?, *Journal of Physical Oceanography*, 28, 2050–2063, 1998.
- Rosenberg, R., Agrenius, S., Hellman, B., Nilsson, H. C., and Norling, K.: Recovery of marine benthic habitats and fauna in a Swedish fjord following improved oxygen conditions, *Marine Ecology Progress Series*, 234, 43–53, <https://doi.org/10.3354/meps234043>, 2002.
- 885 Schrum, C.: Thermohaline stratification and instabilities at tidal mixing fronts: Results of an eddy resolving model for the German Bight, *Continental Shelf Research*, 17, 689–716, [https://doi.org/10.1016/S0278-4343\(96\)00051-9](https://doi.org/10.1016/S0278-4343(96)00051-9), 1997.
- Seitzinger, S. P. and Giblin, A. E.: Estimating denitrification in North Atlantic continental shelf sediments, *Biogeochemistry*, 35, 235–260, https://doi.org/10.1007/978-94-009-1776-7_7, 1996.
- Sharples, J., Middelburg, J., Fennel, K., and Jickells, T.: What proportion of riverine nutrients reaches the open ocean?, *Global Biogeochemical Cycles*, 31, 39–58, <https://doi.org/10.1002/2016GB005483>, 2017.
- 890 Siegismund, F. and Schrum, C.: Decadal changes in the wind forcing over the North Sea, *Climate Research*, 18, 39–45, 2001.
- Simpson, J., Bos, W., Schirmer, F., Souza, A., Rippeth, T., Jones, S., and Hydes, D.: Periodic stratification in the Rhine ROFI in the North Sea, *Oceanologica Acta*, 16, 23–32, 1993.
- Singer, A., Schückel, U., Beck, M., Bleich, O., Brumsack, H. J., Freund, H., Geimecke, C., Lettmann, K. A., Millat, G., Staneva, J., Vanselow, A., Westphal, H., Wolff, J. O., Wurpts, A., and Kröncke, I.: Small-scale benthos distribution modelling in a North Sea tidal basin in response to climatic and environmental changes (1970s-2009), *Marine Ecology Progress Series*, 551, 13–30, <https://doi.org/10.3354/meps11756>, 2016.
- 895 Singer, A., Millat, G., and Staneva, J.: Modelling benthic macrofauna and seagrass distribution patterns in a North Sea tidal basin in response to 2050 climatic and environmental scenarios, *Estuarine, Coastal and Shelf Science*, 188, 99–108, <https://doi.org/10.1016/j.ecss.2017.02.003>, 2017.
- 900 Smagorinsky, J.: General circulation experiments with the primitive equations. Part I: The basic experiment, *Monthly Weather Review*, 91, 99–164, <https://doi.org/10.1126/science.27.693.594>, 1963.
- Smith, V. H. and Schindler, D. W.: Eutrophication science: where do we go from here?, *Trends in Ecology & Evolution*, 24, 201–207, <https://doi.org/10.1016/j.tree.2008.11.009>, 2009.
- 905 Soetaert, K., Middelburg, J. J., Herman, P. M. J., and Buis, K.: On the coupling of benthic and pelagic biogeochemical models, *Earth-Science Reviews*, 51, 173–201, 2000.
- Stanev, E. V., Jacob, B., and Pein, J.: German Bight estuaries : An inter-comparison on the basis of numerical modeling, *Continental Shelf Research*, 174, 48–65, <https://doi.org/10.1016/j.csr.2019.01.001>, <https://doi.org/10.1016/j.csr.2019.01.001>, 2019.

- Staneva, J., Stanev, E., Wolff, J.-O., Badewien, T., Reuter, R., Flemming, B., Bartholomä, A., and Bolding, K.: Hydrodynamics and sediment
910 dynamics in the German Bight. A focus on observations and numerical modelling in the East Frisian Wadden Sea, *Continental Shelf
Research*, 29, 302–319, <https://doi.org/10.1016/j.csr.2008.01.006>, 2009.
- Stedmon, C., Markager, S., and Kaas, H.: The optics of chromophoric dissolved organic matter (CDOM) in the Greenland Sea: An al-
gorithm for differentiation between marine and terrestrially derived organic matter, *Limnology and Oceanography*, 46, 2087–2093,
<https://doi.org/10.4319/lo.2001.46.8.2087>, 2001.
- 915 Stips, A., Bolding, K., Pohlmann, T., and Burchard, H.: Simulating the temporal and spatial dynamics of the North Sea using the new model
GETM (general estuarine transport model), *Ocean Dynamics*, 54, 266–283, <https://doi.org/10.1007/s10236-003-0077-0>, 2004.
- Straile, D.: Gross growth efficiencies of protozoan and metazoan zooplankton and their dependence on food concentration, predator-prey
weight ratio, and taxonomic group, *Limnology and Oceanography*, 42, 1375–1385, 1997.
- Sündermann, J. and Pohlmann, T.: A brief analysis of North Sea physics, *Oceanologia*, 53, 663–689, <https://doi.org/10.5697/oc.53-3.663>,
920 2011.
- UNESCO: Progress on oceanographic tables and standards 1983–1986: work and recommendations of the UNESCO/SCOR/ICES/IAPSO
Joint Panel. Technical Papers in Marine Science, 50., Tech. rep., 1986.
- van Aken, H. M.: The onset of seasonal stratification in shelf seas due to differential advection in the presence of a salinity gradient,
Continental Shelf Research, 5, 475–485, [https://doi.org/10.1016/0278-4343\(86\)90071-3](https://doi.org/10.1016/0278-4343(86)90071-3), 1986.
- 925 van Beusekom, J. and Brockmann, U.: Transformation of Phosphorus in the Elbe Estuary, *Estuaries*, 21, 518–526, 1998.
- van Beusekom, J., Brockmann, U., Hesse, K.-J., Hickel, W., Poremba, K., and Tillmann, U.: The importance of sediments in the transfor-
mation and turnover of nutrients and organic matter in the Wadden Sea and German Bight, *Deutsche Hydrographische Zeitschrift*, 51,
245–266, <https://doi.org/10.1007/BF02764176>, <http://link.springer.com/article/10.1007/BF02764176>, 1999.
- van Beusekom, J. E., Carstensen, J., Dolch, T., Grage, A., Hofmeister, R., Lenhart, H., Kerimoglu, O., Kolbe, K., Pätsch, J., Rick, J.,
930 Rönn, L., and Rüter, H.: Wadden Sea Eutrophication: Long-Term Trends and Regional Differences, *Frontiers in Marine Science*, 6, 370,
<https://doi.org/10.3389/fmars.2019.00370>, 2019.
- van Leeuwen, S., Tett, P., Mills, D., and Van Der Molen, J.: Stratified and nonstratified areas in the North Sea: Long-term variability and
biological and policy implications, *Journal of Geophysical Research: Oceans*, 120, 4670–4686, <https://doi.org/10.1002/2014JC010485>,
2015.
- 935 van Leeuwen, S. M., van der Molen, J., Ruardij, P., Fernand, L., and Jickells, T.: Modelling the contribution of deep chlorophyll maxima to
annual primary production in the North Sea, *Biogeochemistry*, 113, 137–152, <https://doi.org/10.1007/s10533-012-9704-5>, 2013.
- Voynova, Y. G., Brix, H., Petersen, W., Weigelt-Krenz, S., and Scharfe, M.: Extreme Flood Impact on Estuarine and Coastal Biogeochemistry:
the 2013 Elbe Flood, *Biogeosciences*, 14, 541–557, <https://doi.org/10.5194/bg-2016-218>, 2017.
- Wang, Y.: Importance of subgrid-scale parameterization in numerical simulations of lake circulation, *Advances in Water Resources*, 26,
940 277–294, 2003.
- Wanninkhof, R.: Relationship between wind speed and gas exchange over the ocean, *Journal of Geophysical Research*, 97, 7373–7382,
<https://doi.org/10.1029/92JC00188>, 1992.
- Wetz, M. S. and Yoskowitz, D. W.: An ‘extreme’ future for estuaries ? Effects of extreme climatic events on estuarine water quality and
ecology, *Marine Pollution Bulletin*, 69, 7–18, <https://doi.org/10.1016/j.marpolbul.2013.01.020>, 2013.

- 945 Wiltshire, K. H., Malzahn, A. M., Wirtz, K., Greve, W., Janisch, S., Mangelsdorf, P., Manly, B. F. J., and Boersma, M.: Resilience of North Sea phytoplankton spring bloom dynamics: An analysis of long-term data at Helgoland Roads, *Limnology and Oceanography*, 53, 1294–1302, <https://doi.org/10.4319/lo.2008.53.4.1294>, 2008.
- Zhang, Y. J., Ye, F., Stanev, E. V., and Grashorn, S.: Seamless cross-scale modeling with SCHISM, *Ocean Modelling*, 102, 64–81, <https://doi.org/10.1016/j.ocemod.2016.05.002>, 2016.