

Supplement

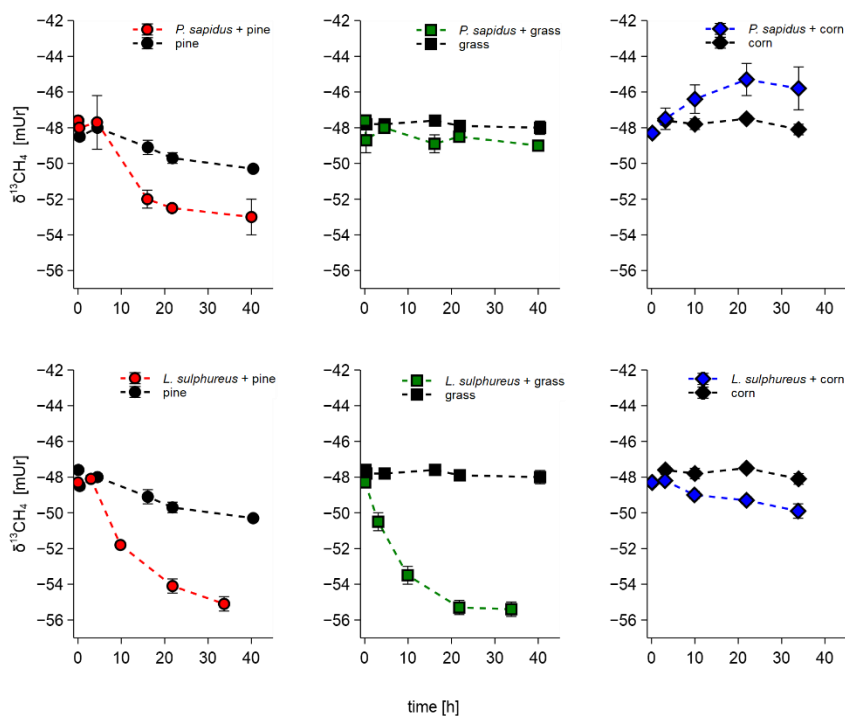


Figure S1: Stable carbon isotope values of CH₄ of *P. sapidus* (a-c) and *L. sulphureus* (d-f) grown on pine, grass, and corn. Values are presented as mean values with SD (n=3), except for $\delta^{13}\text{C}_{\text{CO}_2}$ of *L. sulphureus* grown on corn (n=2).

5

Table S1: Statistical data including p-values of two-way ANOVA analysis performed to test the significance of “species”, “substrate” effects on CH₄ and CO₂ emission rates, the CH₄ : CO₂ emission ratios, $\delta^{13}\text{C}\text{-CH}_4$ and $\delta^{13}\text{C}\text{-CO}_2$ source signatures by *P. sapidus* and *L. sulphureus*.

		p-value	f-value
CH₄ emission rates	Species effect	0.03	6.5
	Substrate effect	< 0.001	14
CO₂ emission rates	Species effect	< 0.001	53
	Substrate effect	< 0.001	75
CH₄ : CO₂ emission ratio	Species effect	0.47	0.55

	Substrate effect	<i>0.07</i>	<i>3.4</i>
$\delta^{13}\text{C-CH}_4$	Species effect	<i>< 0.001</i>	<i>100</i>
	Substrate effect	<i>< 0.001</i>	<i>147</i>
$\delta^{13}\text{C-CO}_2$	Species effect	<i>0.008</i>	<i>10</i>
	Substrate effect	<i>< 0.001</i>	<i>742</i>

10