

# Global peatland area and carbon dynamics from the Last Glacial Maximum to the present – a process based model investigation

Jurek Müller<sup>1,2</sup> and Fortunat Joos<sup>1,2</sup>

<sup>1</sup>Climate and Environmental Physics, Physics Institute, University of Bern, Bern, Switzerland

<sup>2</sup>Oeschger Centre for Climate Change Research, University of Bern, Bern, Switzerland

**Correspondence:** Jurek Müller (jurek.mueller@climate.unibe.ch)

## Abstract.

Peatlands are an essential part of the terrestrial carbon cycle and the climate system. Understanding their history is key to understanding future and past land-atmosphere carbon fluxes. We performed transient simulations over the last 22,000 years with a dynamic global peat and vegetation model forced by Earth System Model climate output, thereby complementing data-based reconstructions for peatlands. Our novel results demonstrate a highly dynamic evolution with concomitant gains and losses of active peatland areas. Modelled gross area changes exceed net changes several fold, while net peat area increases by 60 % over the deglaciation. Peatlands expand to higher northern latitudes in response to warmer and wetter conditions and retreating ice sheets and are partly lost in mid-latitude regions. In the tropics, peatlands are partly lost due to flooding of continental shelves and regained through non-linear responses to the combined changes in temperature, precipitation, and CO<sub>2</sub>. Large north-south shifts of tropical peatlands are driven by shifts in the position of the Inter Tropical Convergence Zone associated with the abrupt climate events of the glacial termination. Time slice simulations for the Last Glacial Maximum (LGM) demonstrate large uncertainties in modelled peatland extent (global range: 1.5 to 3.4 million square kilometers (Mkm<sup>2</sup>)) stemming from uncertainties in climate forcing. Net uptake of atmospheric CO<sub>2</sub> by peatlands, modelled at 351 GtC since the LGM, considers decay from former peatlands. Carbon uptake would be misestimated, in particular during periods of rapid climate change and subsequent shifts in peatland distribution, when considering only changes in the area of currently active peatlands. Our study highlights the dynamic nature of peatland distribution and calls for an improved understanding of former peatlands to better constrain peat carbon sources and sinks.

*Copyright statement.* TEXT

## 1 Introduction

Peatlands are a wetland landscape type that is characterized by permanently waterlogged conditions, resulting in accumulation of dead plant material as peat (Gorham, 1957; Moore, 1989; Blodau, 2002). Peatlands are globally distributed and can take multiple forms from minerotrophic fens to ombrotrophic bogs and forested tropical peat swamps (Rydin and Jeglum, 2013;

Page and Baird, 2016; Lindsay, 2018). Peatlands cover less than 3% of the global land area (Xu et al., 2018), but store a share of the total global soil organic carbon that is up to an order of magnitude higher (Page et al., 2011; Yu, 2012). They are at the same time a significant carbon sink (e.g. Gorham et al., 2012; Lahteenoja et al., 2012; Leifeld et al., 2019) and a large natural source of methane (e.g. Frohking and Roulet, 2007; LAI, 2009; Korhola et al., 2010; Yu et al., 2013; Packalen et al., 2014), and thus  
5 an integral part of the terrestrial carbon cycle (Gorham, 1991; Yu, 2011; Page et al., 2011). Most of today's peatlands, formed over the past 12,000 years, as a result of deglacial climate change and ice sheet retreat (e.g. Halsey et al., 2000; Gajewski et al., 2001; MacDonald et al., 2006; Gorham et al., 2007; Yu et al., 2010; Ruppel et al., 2013; Morris et al., 2018b; Treat et al., 2019). Since then northern peatlands alone sequestered about 500 GtC (Yu et al., 2010; Yu, 2012) resulting in a net cooling effect on the climate (Frohking and Roulet, 2007). Drainage and conversion of existing peatlands to plantations or other forms  
10 of land use leads to release of peat carbon into the atmosphere adding to the ongoing global warming trend (Dommain et al., 2018; Leifeld et al., 2019). Additionally, global warming will likely diminish the net carbon sink of remaining global peatlands (Spahni et al., 2013; Gallego-Sala et al., 2018; Wang et al., 2018; Leifeld et al., 2019; Ferretto et al., 2019), despite a possible increase in the sink of some northern peatlands (Swindles et al., 2015; Chaudhary et al., 2017a).

Despite their global importance, peat research has long focused almost exclusively on northern high latitude peatlands with  
15 about 80% of dated peat cores taken in Europe and North America, which only covers about 40% of global peat area (Xu et al., 2018; Treat et al., 2019). Although research on tropical peatlands has increased in recent years (e.g. Page et al., 2011; Dommain et al., 2011, 2014; Lawson et al., 2015; Silvestri et al., 2019; Gumbrecht et al., 2017; Cobb and Harvey, 2019; Leng et al., 2019; Illes et al., 2019), our understanding about tropical peatlands, their dynamics and life cycles is still limited. This also entails ongoing new discoveries of previously unknown peatland complexes such as in the Congo Basin (Dargie et al.,  
20 2017). The tendency to search for the deepest core within a peatland (Loisel et al., 2017) and the acute lack of information about the fate of old and buried peat (Treat et al., 2019) represent additional sampling biases that contribute to our limited understanding of peatland evolution and its drivers. These gaps in our understanding are also reflected in the large ranges of literature estimates of today's peatland area (e.g. Yu et al., 2010; Page et al., 2011; Loisel et al., 2017; Xu et al., 2018) and peatland carbon (e.g. Tarnocai et al., 2009; Yu et al., 2010; Yu, 2012; Page et al., 2011; Gumbrecht et al., 2017). Only recently,  
25 a highly contested study proposed a doubling of conventional northern high latitudes peat carbon stock estimates (Nichols and Peteet, 2019; Yu, 2019). Refining our understanding and estimates of peatland carbon dynamics is timely as the potential past and future effects of peatlands on the global carbon cycle are substantial, and knowledge of the amount, timing and speed of carbon removal and release is crucial to constrain them.

Results from process based models can offer an independent perspective on the transient evolution of global peatlands and  
30 peat carbon stocks, complementing data-based reconstructions of global peatland expansion and carbon accumulation (e.g. MacDonald et al., 2006; Gorham et al., 2007; Yu et al., 2010; Ruppel et al., 2013; Dommain et al., 2014; Loisel et al., 2017; Treat et al., 2019). Efforts to model peatlands and processes within them exist on site level (e.g. Frohking et al., 2010; Morris et al., 2011; Baird et al., 2012; Morris et al., 2012; Kurnianto et al., 2015; Cresto Aleina et al., 2015; Chaudhary et al., 2017b; Cobb and Harvey, 2019) as well as on regional to global scales (e.g. Wania et al., 2009a, b; Kleinen et al., 2012;  
35 Spahni et al., 2013; Gallego-Sala et al., 2016; Alexandrov et al., 2016; Chaudhary et al., 2017a; Stocker et al., 2017; Largerone

et al., 2018; Qiu et al., 2018b; Swinnen et al., 2019). Although still small, the number of Dynamic Global Vegetation Models (DGVMs) with integrated peatland modules and dynamic peatland area is increasing (Kleinen et al., 2012; Stocker et al., 2014; Llargeron et al., 2018; Qiu et al., 2018a) enabling, for the first time, a hindcast of past and a prediction of future peatlands on large spatial and temporal scales. Representations of peatlands were also developed for the inclusion in the land modules of complex Earth System Models (Lawrence and Slater, 2008; Schuldt et al., 2013). However, peatlands are in general still prominently missing from the newest generation of Earth System Models (ESM) taking part in the sixth phase of the Climate Model Intercomparison Project (CMIP6), which is the main source for future climate and carbon cycle projections used for the determination of international climate mitigation targets (Eyring et al., 2016). Rigorous testing and improvement of the existing peat modules has thus not only the potential to yield further insights into peatland dynamics, but can also pave the way for the integration of peat into the next generation of ESMs for improved climate projections.

Peatlands and their carbon stocks evolve dynamically through time and over glacial cycles. Peatlands may disintegrate or be buried by mineral sediments when climatic conditions become locally unfavorable for peat growth or local hydrologic conditions change (e.g. Talbot et al., 2010; Tchilinguirian et al., 2014; Campos et al., 2016; Lahteenoja et al., 2012; Tipping, 1995). Peatlands on exposed coastal shelves may be flooded during periods of rising sea level (Kreuzburg et al., 2018), and new peatlands may form in areas previously covered by continental ice sheets, or in areas that were previously too cold or too dry for peat establishment. Net changes in peat extent are, therefore, the difference of concomitant gains and losses in peatland area. Similarly, the net flux of CO<sub>2</sub> from the atmosphere to peat carbon is the sum of complex changes. Peat carbon accumulates on active and expanding peatlands. Dying peatlands may lose some of the accumulated carbon to the atmosphere through degradation while another part might be buried and thus conserved on long timescales. Estimating peat carbon stocks for today's still active peatlands is an important but not sufficient step to fully constrain the influence of peat carbon changes on the atmospheric carbon balance. At the same time, peatlands are, in absence of abrupt anthropogenic disturbance, slowly reacting systems with process time scales ranging from years to millenia. The present distribution of peatland and peat carbon and their future fate thus depend on past peatland dynamics and legacy effects from the last glacial-interglacial climate transition as well as the current interglacial (Holocene). However, model studies that thoroughly investigate the establishment as well as the disintegration of global peatlands constraining the total carbon balance transiently over the deglaciation are still lacking.

Here our goal is to present a rigorous model investigation of peatland area and carbon dynamics since the Last Glacial Maximum (LGM), 21,000 years before present (BP). We use a DGVM to simulate LGM peatland distribution and assess uncertainties stemming from the climate forcing. Transient model and factorial simulations from the LGM to the present are analyzed to learn about past peatland dynamics, underlying drivers and the net peatland carbon balance. Model results are compared to available data for present and LGM as well as to reconstructions of modern day peatland initiation and development.

## 2 Methods

### 2.1 Model description

The simulations presented here were performed with the Land surface Processes and eXchanges (LPX-Bern) dynamic global vegetation model (DGVM) version 1.4 (Lienert and Joos, 2018). It includes an interactive carbon, water and nitrogen cycle and  
5 simulates dynamic vegetation composition with plant functional types (PFTs), which compete for water, light and nutrients (Sitch et al., 2003; Xu-Ri et al., 2012; Spahni et al., 2013). The implementation of permafrost and peatlands as long term carbon stores are based on the LPJ-WHyMe model (Wania et al., 2009a, b) and a module to simulate peat area dynamically (Stocker et al., 2014). Peatlands are represented as a separate land class within a grid cell. The area of each grid cell is split  
10 into a fraction covered by the land classes "peat", "mineral soils" and "old peat" (formerly active peat now treated as mineral soils). In this study, anthropogenic land use and land use change and corresponding land classes are not considered. Estimates about peat carbon loss through land use only exist for the industrial period. Leifeld et al. (2019) estimate that about  $22 \pm 5$  GtC of peat carbon was lost globally between 1850 and 2015. Houghton and Nassikas (2017) used results from Randerson et al. (2015) and Hooijer et al. (2010) to estimate carbon loss from draining and burning of peatlands for oil palm plantations in Southeast Asia. Losses are negligible before 1980 and amount to about 6 GtC for the period from 1980 to 2015. These  
15 estimates of the loss of peat carbon through land use, although substantial, are still small compared to the total pool sizes. Peatland vegetation is represented by five peat PFTs: *Sphagnum* and flood tolerant graminoids as indicative mostly for high latitude peatlands, and flood tolerant tropical evergreen and deciduous tree PFTs as well as a flood tolerant version of the C4 grass PFT, as indicative mostly for tropical peatlands (Stocker et al., 2014). Carbon cycling in peat soils is based on the distinction between a lower, fully water saturated slow overturning pool (catotelm) and an upper fast overturning pool (acrotelm)  
20 with fluctuating water table position (WTP) (Spahni et al., 2013). For the determination of the carbon flux between acrotelm and catotelm a fixed average acrotelm C density ( $18.7 \text{ kg C m}^{-3}$ ) is used, together with a fixed acrotelm depth of 0.3 m. The difference between this target acrotelm density and the actual average acrotelm density, determined by carbon influx from the litter pools and heterotrophic respiration within the acrotelm, is used to determine the size and sign of the daily flux between acrotelm and catotelm (Spahni et al., 2013). Decay rates are modulated by temperature in the catotelm and by temperature and  
25 WTP in the acrotelm (Wania et al., 2009a).

The area fraction covered by peat ( $f_{peat}$ ) in a given grid cell is determined dynamically with the DYPTOP module (Dynamical Peatland Model Based on TOPMODEL) (Stocker et al., 2014). The TOPMODEL approach (Beven and Kirkby, 1979) is used to predict the monthly inundated area fraction given sub-gridscale topographic information and mean grid cell WTP. Here  
30 the WTP calculation of mineral soils has slightly changed with respect to Stocker et al. (2014), with drainage runoff excluded from the calculation. The area potentially available for peatlands ( $f_{pot}$ ) is then determined by inundation persistency. Peatlands expand or shrink towards a changing  $f_{pot}$  with a rate of 1% of current  $f_{peat}$  per year. The gridcell fraction lost during peatland retreat is treated as a separate land use class named "old peat". It inherits the carbon stocks of the dying peat and is subsequently

treated in the same way as the mineral soils regarding vegetation, hydrology and carbon cycling. Growing active peatlands first expand on eventual old peat inheriting the remaining carbon there.

As vegetation growth and carbon cycling continues normally on the old peat fraction, the carbon inherited by the former peatland, which would form distinct organic soil layers in the real world, can in the model not be distinguished from new carbon accumulated by new non-peatland vegetation. The same is true for gridcells that get flooded by rising sea level. Given the evidence of coastal peat carbon deposits (Kreuzburg et al., 2018; Treat et al., 2019), we assume that most of the carbon is buried within sediments rather than released to the atmosphere during flooding. In case of flooding in the model, carbon from all land use classes in the respective cell is combined into a single "flooded" land use class, where it slowly decays with a mean lifetime of 15 kyr. Despite this mixing of carbon from different sources, we can track peat carbon in post processing using the transient model output for peatland area changes, decay rates of slow pool carbon, and carbon input into the catotelm of the active peatlands. Area changes are used to transfer carbon between active, old and flooded peatlands. Transient decay rates are used to decay the carbon in the respective pools. Carbon is thus tracked from the entry into the catotelm of an active peatland until decay in either an active, old or peatland flooded by ocean. This approach can not take account of the acrotelm carbon. However acrotelm carbon constitutes only a small part of total peat carbon (5% at pre-industrial), and we can assume that this carbon at the peat surface is quickly respired after peatland transformation. The "old peat carbon" calculated this way represents the remaining peatland carbon after peatland death and is used in the calculation of the peatland carbon balance (see Sect. 3.3.5).

Peatland existance, beyond a small peatland "seed" ( $f_{peat} = 10^{-5}$ ) in every grid cell, is further limited by criteria on its carbon (C) and water balance. In this study, the evapotranspiration for peatland tree PFTs is now calculated analogously to non-peatland tree PFTs using demand and supply functions (Sitch et al., 2003). The determination of the criterion of a positive water balance (precipitation over evapotranspiration ratio in peat  $> 1$ ), however, was kept functionally unchanged to Stocker et al. (2014). The C criteria were slightly improved in this study. The peat establishment and persistence criterion on the C balance during the spinup is a positive net ecosystem production (NEP) and an acrotelm to catotelm flux higher than  $10 \text{ g m}^{-2} \text{ yr}^{-1}$ , or C stocks of the peat seed exeeding  $50 \text{ kg m}^{-2}$  as in Stocker et al. (2014). During the transient run this criterion is changed so that peat establishment depends on the acrotelm to catotelm flux alone. For peat persistence, the sharp C stock threshold is softened. For a peat C stock from  $50 \text{ kg m}^{-2}$  to about  $45 \text{ kg m}^{-2}$   $f_{pot}$ , is reduced to an actual potential peatland fraction ( $f_{apot}$ ) according to a sigmoid function:

$$f_{apot} = f_{pot} \times \frac{1}{1 + 20 e^{-2.4(C_{peat}-46)}} \quad | \text{ if } C_{peat} < 50 \text{ kg m}^{-2} \quad (1)$$

with  $C_{peat}$  representing the peatland soil carbon pool in  $\text{kg m}^{-2}$ . This avoids peatland collapse due to a sharp threshold. Peatlands can now endure short periods of carbon loss even with C pools falling bellow the threshold of  $50 \text{ kg m}^{-2}$ , but have to suffer area losses as a consequence, as  $f_{peat}$  now approaches  $f_{apot}$ .

The above described representation of peatlands in the LPX is a simplification in many respects. The absence of local processes and information like lateral water flow, the influence of sea level variations on the water balance, local soil features,

or influence of animals by grazing and river damming can limit the ability of the TOPMODEL approach to predict peatlands on a regional to local scale. Further, direct human-caused influences such as land use, drainage, or peat mining are not considered. The lack of a distinction and transition between different peatland types like fens, bogs, blanket bogs, or marshes neglects possible differences in the constraints on their formation and evolution. The treatment of acrotelm and catotelm as single carbon pools, and the absence of strong disturbances such as peat fires, constitute limits on the comparability of the model results to peat core carbon profiles. This simplified representation however has been shown to reproduce peatland area and carbon accumulation well within the observational constraints (Wania et al., 2009a; Spahni et al., 2013; Stocker et al., 2014, 2017) while using a minimal set of free parameters. Our efficient representation allows for long transient paleo simulations and sensitivity studies as we present here.

## 10 2.2 Simulation setup

The transient LPX simulations from the Last Glacial Maximum (LGM), 22 kyr before present (BP), till present are run with a model resolution of  $2.5^\circ$  latitude  $\times$   $3.75^\circ$  longitude and were forced with  $\text{CO}_2$  (Joos and Spahni, 2008), temperature and precipitation fields, and transient evolving orbital parameters influencing available photosynthetic active radiation. Temperature and precipitation anomalies are taken from the transient CCSM3 run TraCE21k (Liu et al., 2009). The TraCE21k experiment constitutes a unique climate forcing, not only because it is to date the only published transient simulation over the deglaciation using a fully coupled general circulation model (GCM), but also because the meltwater forcing in TraCE21k was chosen, using sensitivity experiments, to best reproduce the abrupt climate events such as the Bølling-Allerød (BA) and the Younger Dryas (YD) (He, 2011). The TraCE21k anomalies are imposed on the CRU TS 3.1 (Mitchell and Jones, 2005) base climate from 1960 to 1990. Inter annual variability thus is adopted from TraCE21k. The land-sea-ice mask is changing every 1 kyr according to Peltier (2004) and is interpolated in between. The model is spun up under LGM conditions for 2.5 kyr before starting the transient simulations.

In addition to the standard LPX transient simulation, five transient factorial simulations were performed using the same setup but for each keeping one of the five transient forcings (land-sea-ice mask, orbital,  $\text{CO}_2$ , precipitation, and temperature) constant at LGM levels. These were used to identify the dominant drivers and driver contributions through time, by comparing the factorial and standard runs. (see Sect. 3.3)

To investigate the uncertainty stemming from the choice of climate forcing, seven additional LGM timeslice simulations were performed. Mean LGM climate anomalies from six different PMIP3 models (Braconnot et al. (2012); including CCSM4, COSMOS-ASO, IPSL-CM5A-LR, MIROC-ESM, MPI-ESM-P, and MRI-CGCM3) and the mean LGM anomaly of the TraCE21k simulation were imposed on the CRU 3.1 climatology from 1901-1931. Inter annual variability thus is adopted from CRU.  $\text{CO}_2$ , ice-sea-land mask and orbital parameters are set to LGM levels (in this case 21 kyr BP). Two of the eight available LGM simulations from phase 3 of the Paleomodel Intercomparison Project (PMIP3) were not used (FGOALS-g2 and CNRM-CM5), because of their poor performance compared to observational data, especially in the variables of temperature and precipitation (Harrison et al., 2014). Simulations are spun up for 2.5 kyr and run an additional 2 kyr under unchanged conditions. In the analysis the temporal mean over the last 2 kyr is used.

## 2.3 Validation data

Even estimates for the current global peatland area are still subject to large uncertainties as peatlands often lie in remote, inaccessible or understudied regions, such as the tropical forests or the Arctic tundra. Even estimates for the relatively well studied northern high-latitude peatlands have a range from 2.4 to 4.0 Mkm<sup>2</sup> (see Loisel et al. (2017) for a review). Total area of tropical peatlands is even less well defined and estimates range from 0.37-1.7 Mkm<sup>2</sup> (Yu et al., 2010; Page et al., 2011; Gumbrecht et al., 2017). The upper end of this range is given by an estimate that uses an expert system method, combining hydrological modelling, satellite imaging, and topographic data and thus tries to also account for still undiscovered peatlands (Gumbrecht et al., 2017). The to date most extensive and comprehensive compilation of known peatlands is the recent PEATMAP by Xu et al. (2018). PEATMAP shows a distribution shifted more towards the tropics, than previous literature estimates. For example Yu et al. (2010) estimates the area of northern peatlands to 4 Mkm<sup>2</sup> and of tropical peatlands to 0.37 Mkm<sup>2</sup>, whereas PEATMAP gives 3.18 Mkm<sup>2</sup> and 0.99 Mkm<sup>2</sup>, respectively. In Fig. 1, Table 1, and Sect. 3.1 LPX present day peatland extent and global distribution are compared against a 0.5°×0.5° gridded version of PEATMAP.

Measured peat core basal dates have long been used to estimate northern peat initiation and lateral expansion through time. Yu et al. (2013) compiled a dataset containing 2808 basal dates combining published datasets from MacDonald et al. (2006), Gorham et al. (2007) and Korhola et al. (2010). Loisel et al. (2017) used this dataset (MGK13) to produce a version with only the oldest date per 1°×1° gridcell (MGK13G), as a proxy for peatland initiation. The MGK13G dataset is used in this study to compare to simulated northern peat initiation (see Sect. 3.3.4). Multiple local basal dates are needed to disentangle lateral expansion from initiation. Loisel et al. (2017) compiled a reconstruction based on the gridded MGK13 dataset, but only gridcells with three or more peat cores were considered (MGK13S). Expansion curves were built regionally and then stacked to compensate for regional sampling bias. Korhola et al. (2010) used a similar approach using 954 basal dates from 138 sites, with at least 3 dated cores per site. Their expansion reconstruction (KOR10) shows delayed expansion compared to Loisel et al. (2017) and fastest expansion between 3 and 5 kyr BP. Both MGK13S and KOR10 are compared to the expansion simulated by LPX for currently existing northern peatlands (see Sect. 3.3.4), thereby not including area changes of previously existing, but by now disappeared peatlands.

## 25 3 Results and discussion

### 3.1 Distribution and carbon inventories of present day peatlands

#### 3.1.1 Peatland area

Modern peatland distribution simulated by LPX-Bern (standard run) compares well to the distribution given by PEATMAP (see Fig. 1 and Table 1). LPX and PEATMAP yield, with 4.37 Mkm<sup>2</sup> and 4.23 Mkm<sup>2</sup> respectively, a very similar global peatland area. The same is true for the latitudinal distribution. LPX simulates 3.2 Mkm<sup>2</sup> in the high latitudes (>30° N) and 1.15 Mkm<sup>2</sup> in the tropics (30° S - 30° N), whereas PEATMAP gives 3.18 Mkm<sup>2</sup> and 0.99 Mkm<sup>2</sup> respectively. This broad scale

agreement between LPX and PEATMAP notably emerges without any tuning of the LPX against PEATMAP. These results are similar to previous results using the LPX (Stocker et al., 2014) with slightly larger tropical peatland coverage in the current study. Differences are due to a new model version after data assimilation, LPX v1.4, (Lienert and Joos, 2018) and the additional model changes described in Sect. 2.1.

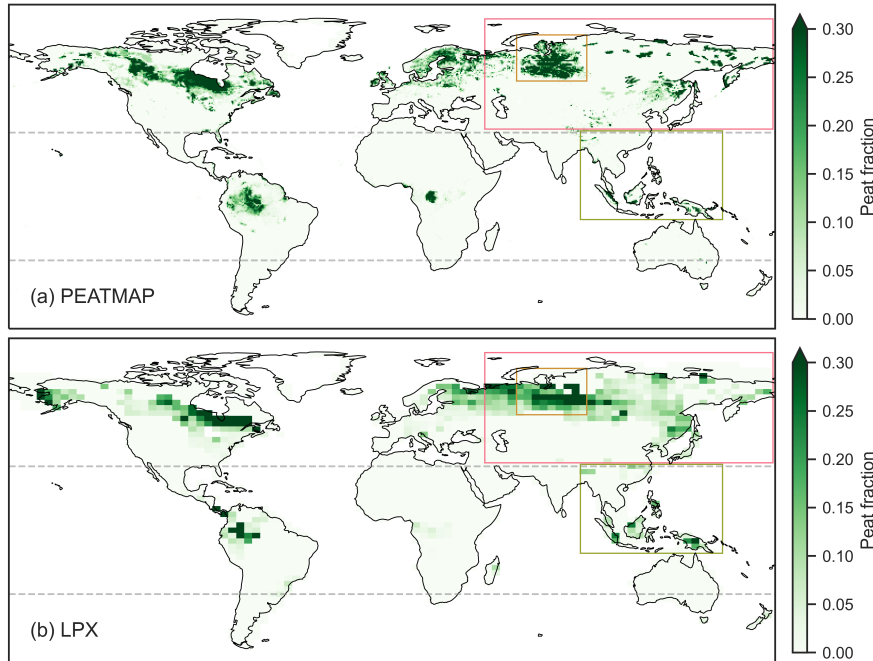
5 Minor and major differences in peatland area between LPX and PEATMAP are seen on the local to regional scale (Fig. 1 and Table 1). In the tropics, LPX simulates more peat in South America and Southeast Asia than PEATMAP indicates. Compared to the estimate of Gumbrecht et al. (2017), LPX peatland extent is similar for South America and a factor two smaller for Southeast Asia. The vast peatland complex in the Congo Basin is almost absent in LPX. In the northern mid to high latitudes, LPX seems to underestimate European peatland area by a factor of two and slightly overestimates peatland area in northern  
10 Asia, mostly west and east of the Western Siberian Lowland (WSL) peat complex. In North America, LPX simulates more peat in Alaska and Quebec and less in Western Canada than PEATMAP.

Other modeling studies present results from prognostic simulations of Northern hemisphere peatlands. Kleinen et al. (2012) simulated peatland dynamics and carbon accumulation over the past 8000 years using the coupled climate carbon cycle model CLIMBER2-LPJ. However, no quantitative results in terms of peatland area were reported. Qiu et al. (2018b) used  
15 the ORCHIDEE-PEAT DGVM Qiu et al. (2018a) to simulate northern ( $>30^{\circ}$  N) peat expansion over the Holocene. Their simulated northern present day peatland area is with  $3.9 \text{ Mkm}^2$  slightly larger than in LPX. They find similar regional discrepancies between simulated and observation-based peat area in North America, northern Europe and Asia, as described above for LPX. Peat area dynamics in ORCHIDEE-PEAT are also using the TOPMODEL approach following Stocker et al. (2014), with some different expansion criteria. This might indicate that these discrepancies could have their source in the TOPMODEL  
20 approach and its limitations. Another major source of uncertainties is in the climate data used to force LPX (see also Sect. 3.2.2). In particular precipitation data show large discrepancies between available observational products (Sun et al., 2018).

### 3.1.2 Peatland carbon

Total peat carbon estimates are closely linked to the estimates for area and thus inherit their uncertainties. Additional assumptions on bulk density and peat depth introduce additional uncertainties. The range of carbon estimates therefore is similarly  
25 large as for area (Gorham, 1991; Turunen et al., 2002; Yu et al., 2010). The research bias allows for more constrained estimates in well studied regions such as Europe and North America and less constrained in the tropics and Northern Asia. Estimates for northern peatlands range from 270 to 604 GtC, obtained with various methods and area estimates (see Yu (2012) and Yu et al. (2014) for a review). The modern carbon inventory of northern peatlands simulated by LPX at the end of the transient standard run from the LGM till present is with 361 GtC well within this observational range. In the tropics, LPX simulates a peat carbon  
30 inventory of 136 GtC which is substantially larger than classical literature estimates that range from 50-87 GtC (Yu et al., 2010; Page et al., 2011). These, however, also assume a substantially smaller tropical peatland area than LPX or PEATMAP suggest (see Sect. 3.1.1). Including estimates for the newly discovered peat in the Congo Basin, Dargie et al. (2017) estimate a tropical peat inventory of 69.6-129.8 GtC, closer to the LPX results. Gumbrecht et al. (2017) calculate an even larger area than





**Figure 1.** Global present day peatland distribution according to PEATMAP (Xu et al., 2018) in a  $0.5^\circ \times 0.5^\circ$  gridded version (a) and simulated by LPX-Bern after the transient 'standard' setup simulation from 22 kyr BP to present (b). Colored rectangulars show three of the regions listed in Table 1: Northern Asia (red), Western Siberian lowlands (orange), and Southeast Asia (green)

LPX and combining their area estimate with the peat properties assumed by Page et al. (2011) would result in a tropical peat inventory of 350 GtC.

Previous studies with LPX-Bern reported somewhat different carbon inventories than given here. Stocker et al. (2014) reported 460 GtC and 88 GtC for northern and tropical peatlands respectively. Differences stem from an updated model version, also resulting in different areas as mentioned in the previous section. Additionally, their carbon stocks were the results of an accelerated spinup scheme, whereas in this study the pools are filled over a transient run. Spahni et al. (2013) also reports northern peatland carbon stocks after a transient LPX run from the LGM, however with prescribed not prognostic peatland area. Their simulation resulted in 365 GtC stored in northern peatlands.

Other model studies with dynamic peatland area reported 317 GtC after an 8 kyr Holocene run (Kleinen et al., 2012) and 463 GtC after a 12 kyr Holocene run (Qiu et al., 2018b) in northern peatlands.

**Table 1.** Peatland area for different regions and latitudinal bands as given by PEATMAP (Xu et al., 2018) for today and peatland area and their carbon stocks as simulated by LPX-Bern for the preindustrial period (PI) and the Last Glacial Maximum (LGM) in the transient 'standard' setup simulation from 22 kyr BP to present. The extent of the regions Northern Asia, Western Siberian (WS) Lowlands, and Southeast Asia are shown in Fig. 1.

Region	PEATMAP	LPX (PI)		LPX (LGM)	
	Mkm <sup>2</sup>	Mkm <sup>2</sup>	GtC	Mkm <sup>2</sup>	GtC
<b>Global</b>	<b>4.232</b>	<b>4.366</b>	<b>499.3</b>	<b>2.687</b>	<b>275.6</b>
<b>Northern (&gt; 30°N)</b>	<b>3.168</b>	<b>3.202</b>	<b>361.4</b>	<b>1.430</b>	<b>142.1</b>
<b>Tropics (30°S to 30°N)</b>	<b>0.976</b>	<b>1.151</b>	<b>135.7</b>	<b>1.236</b>	<b>131.6</b>
North America	1.330	1.294	99.2	0.823	86.4
South America	0.489	0.744	94.9	0.634	62.7
Europe	0.414	0.231	19.6	0.331	30.8
Northern Asia	1.467	1.685	243.4	0.301	27.0
WS Lowlands	0.624	0.691	108.9	0.030	2.5
Africa	0.189	0.050	3.9	0.115	7.0
SE Asia	0.273	0.349	36.1	0.471	60.4

## 3.2 Peatlands during the Last Glacial Maximum

### 3.2.1 Peatland distribution and carbon storage

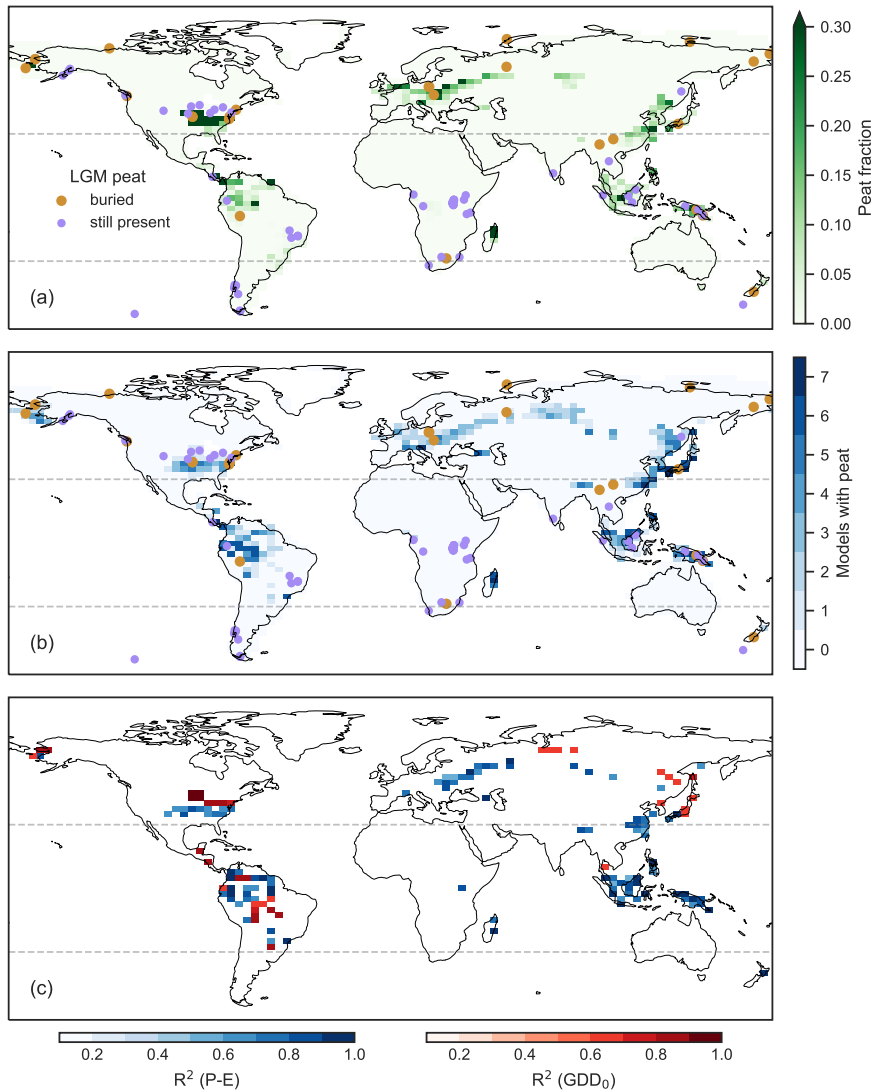
Under LGM conditions global simulated peatland area and carbon inventories are reduced compared to preindustrial (Table 1). Globally, simulated peatland area and peat C inventory are 38% and 45% smaller at LGM than PI respectively. This reduction is dominated by the northern extratropics, where peat extent and C inventory are by almost 60% smaller at LGM than PI. In contrast, peat C inventory in the tropics is only about 3% smaller and tropical peat area is even 7% larger at LGM than PI. This difference in the tropics is mostly linked to large peatlands simulated on flat exposed continental shelves in Southeast Asia at the LGM, which were subsequently flooded during the deglaciation. Another modeling study by Kaplan (2002) also suggests extensive wetlands on the flat Sunda Shelf, but reconstructions of Indonesian peatlands suggest that vast peat presence in Indonesia during the LGM is unlikely (Dommain et al., 2014). Establishment of now existing inland peatlands seems to be connected to rising sea level (Dommain et al., 2011). In sediment cores from the now submerged Sunda Shelf, there is little evidence of peatlands during the LGM (Hanebuth et al., 2011). Dommain et al. (2014) suggest that the shelf, although with a small topographic gradient, had an effective drainage system with deeply incised river valleys, preventing the formation of large wetlands. Both, the hydrological feedback of rising sea level and deep river systems, are not represented in LPX and thus might limit the models ability to reproduce peat and wetland dynamics in this region correctly.

Simulated peatland coverage in northern mid and high-latitudes is smaller and shifted southwards at LGM compared to PI. Ice sheets covered large parts of Europe and North America during the LGM preventing vegetation and peat from growing. But also in Northern Asia and the WSL, peat is mostly absent due to the substantially colder and dryer conditions compared to today. On the other hand, large peatland complexes are simulated along the southern ice sheet margins in North America and in Europe (Fig. 2), in regions where modelled peatlands are mostly absent under current conditions. This even leads to a simulated net increase of peatland area in Europe (+43%) compared to present. Verifying the existence of these extensive LGM peatlands that do not exist under present conditions (compare Fig. 1) is difficult, as existing compilations of peat core dates focus almost exclusively on today's existing peatlands (MacDonald et al., 2006; Gorham et al., 2007; Yu et al., 2010; Loisel et al., 2017). In a recent study Treat et al. (2019) presented a compilation of dated buried peat deposits together with simulated peatland area and carbon stocks. Their simulation also suggests large mid latitude peatlands in North America in agreement with our results. Their peat deposits data for the LGM (Fig. 2; dots), together with pollen analyses suggesting the presence of at least some *Sphagnum* in eastern North America (Halsey et al., 2000; Gajewski et al., 2001), provide plausible evidence for the existence of mid-latitude LGM peatlands in North America and Europe. Their extent however is probably overestimated in our simulation. Comparisons between the North-American LGM hydroclimate in TraCE21k and proxy reconstructions have resulted in a poor skill score especially in eastern North-America (Lora and Ibarra, 2019). Bad performance in this region is shared with all PMIP3 models (Lora and Lora, 2018).

### 3.2.2 Uncertainties from climate forcing

The peat distribution as simulated by LPX-Bern for the LGM and the past 20,000 years is subject to many uncertainties. Uncertainties arise from model parameterisations, not only in the peat module, but through all components of the model, and are often hard to quantify. Data assimilation, as done recently for the LPX in Lienert and Joos (2018) to constrain model parameters, is an approach to improve model performance in the light of uncertain key parameters. Another source of uncertainty stems from uncertainties in the prescribed forcings. Orbital parameters, atmospheric CO<sub>2</sub> mixing ratio, and land-sea-ice mask for the LGM and their deglacial evolution are all well constrained for the purpose of peat modelling in contrast to the climate anomalies. Although there are paleoclimate reconstructions for the LGM (Bartlein et al., 2011; Schmittner et al., 2011; Annan and Hargreaves, 2013), 6k (Bartlein et al., 2011) and the last millennium (Hakim et al., 2016; Tardif et al., 2019), they lack the temporal resolution and/or spatial coverage needed for a global transient simulation from the LGM to present. Climate models can fill these gaps; however climate anomalies are model dependent and model performance differs between variables, regions, and simulated time period (Harrison et al., 2014). These differences in climate models have been shown to propagate large uncertainties into carbon cycle projections (Stocker et al., 2013; Ahlström et al., 2017).

We assess the uncertainty in peatland area and peat carbon stemming from climate forcing uncertainties. Climate anomalies from seven different models are used to force the LPX into seven different LGM states (see Sect. 2.2). This yields a very wide range for global mean inundated area (2.6-3.6 Mkm<sup>2</sup>), peat area (1.5-3.4 Mkm<sup>2</sup>) and peat carbon (147-347 GtC). Interestingly, simulated wetland and peatland area and peat C inventory for the 21 kyrBP period are also substantially different between the

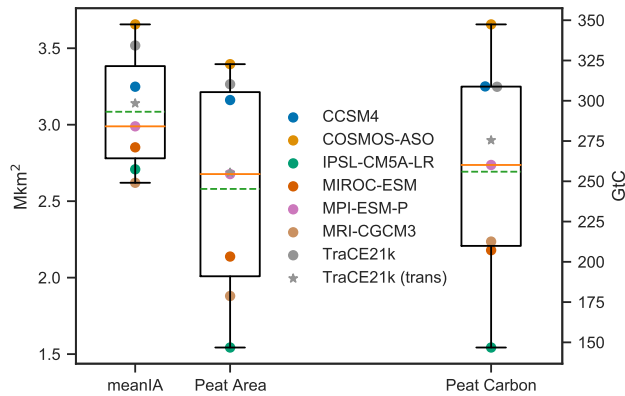


**Figure 2.** Peatland distribution at the Last Glacial Maximum (LGM) as simulated by LPX-Bern in the standard setup (a), agreement (as number of models simulating peat in given gridcell) between LGM timeslice simulations run with LPX and forced with different climates anomalies from six PMIP3 models as well as the TraCE21k anomaly (b), and squared correlation coefficient for a linear regression between physical properties of the different timeslice simulations (precipitation minus evapotranspiration (P-E) and growing degree days above 0 °C) and peat fraction in the respective cells. Plotted are only cells with significant correlation ( $p > 0.05$ ). Color shading in (b) indicates how many timeslice simulations show a peat fraction of  $> 0.05$  in the respective cell. Color code in (c) denotes the dominant predictor in the respective cell. Dots in (a) and (b) show buried and still active peat deposits that indicate active peat accumulation during the LGM (24.5-17.5 kyr BP). Peat core data are from Treat et al. (2019).

standard transient simulation using temporally evolving climate anomalies from the TraCE21k simulation compared to the timeslice simulation forced with TraCE21k anomalies (Fig. 3; grey star versus grey dot). This highlights both the influence of different methods of input preparation, with slightly different treatment of anomalies and an inter annual variability taken from TraCE21k in the transient simulation and from CRU 3.1 for the timeslice, as well as the importance of memory effects for a slowly reacting system such as peatlands.

Agreement on simulated peat extent among the seven simulations differs among regions (Fig. 2 (b)). It tends to be higher in the tropics and East Asia, and lower in North America, Europe and West Siberia. Differences in temperature and precipitation anomalies propagate into differences in the water balance and productivity, partly limited by growing season length, and thus into differences in peat abundance and extent.

A statistical analysis of the differences in climatic drivers and simulated peat area reveals regionally different mechanisms (Fig. 2 (c)). Temperature, precipitation, precipitation minus evapotranspiration (P-E), and growing degree days over 0 °C ( $GDD_0$ ) are considered as climatic predictor variables for the peat fraction within a gridcell. We correlated, for each grid cell, the seven climatological mean values of a selected predictor with the modelled peat fraction from each of the seven time slice simulations. P-E and  $GDD_0$  show significant correlations ( $p < 0.05$ ) in more gridcells than precipitation and temperature, respectively. Both moisture balance and  $GDD_0$  have been shown to be among the most important predictors of northern peat initiation and carbon accumulation in the past (Morris et al., 2018a; Charman et al., 2013). In LPX the water balance, influenced by P-E, and the carbon balance, influenced by temperature and growing season length, define thresholds on peatland existence and size. In eastern Europe, differences in peat extent between the seven LGM time slice simulations are mostly driven by differences in local precipitation anomalies driving P-E. The same is true in the tropics, with MRI-CGCM3 and IPSL-CM5A-LR being the driest models with the least tropical peatlands and TraCE21k and COSMOS-ASO being the wettest with the largest tropical peatlands. In parts of central South America however, temperature is the dominant predictor signaling a fragile carbon balance, where peat presence in some of the model climates is possible because of cooler conditions and thus reduced respiration. In the south of North America, moisture balance, with contributions of both P and E, is the dominant determinant of the inter model differences. The timeslice forced with TraCE21k climate shows the peatland distribution in North America more shifted to the east compared to most other PIMP3 forcings alongside warmer and wetter conditions (see also Lora and Lora (2018)). Peatland extent in the north of North America is sensitive to temperature differences with longer growing season allowing for increased productivity and therefore peat formation. In the MRI-CGCM3 timeslice temperature anomalies with respect to preindustrial are lowest and peat is subsequently shifted northwards compared to other time slices. Similar is true for Northern and East Asia where lower temperature anomalies allow for more peatlands. Large areas in central Europe, East Asia and South America show differences in peatland extent induced by differences in climate forcings, but no significant correlations between peat fraction and predictor variables are found. This might be the result of non linear interactions and threshold behaviours not captured by our linear regression approach. Taken together these findings demonstrate a strong sensitivity of simulated peat extent and C inventory to the prescribed climate fields and a strong dependence of the results on the choice of climate model output used to force LPX . In other words, caution is warranted In other words, caution



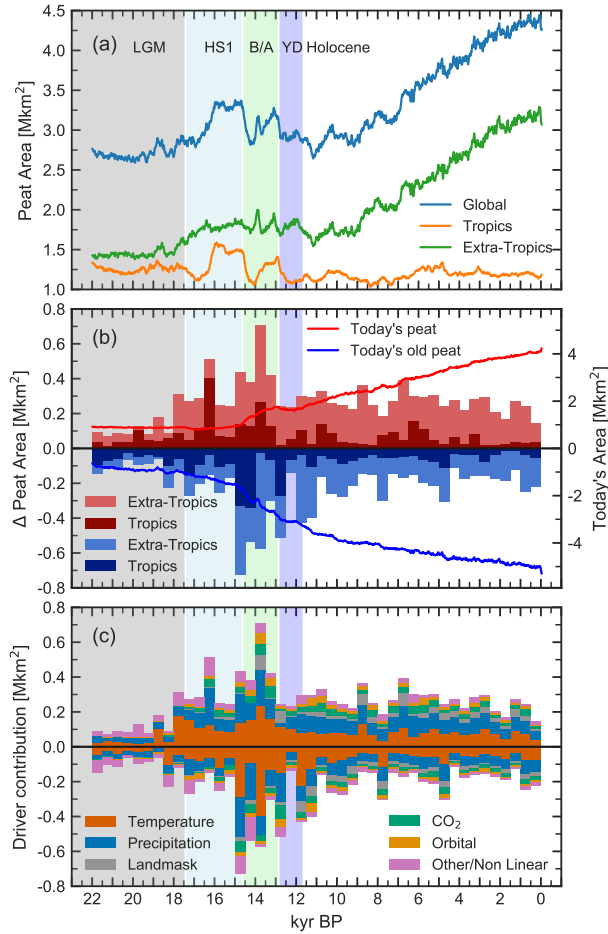
**Figure 3.** Spread of global annual mean inundated area (meanIA), peatland area, and peatland carbon during the LGM (21 kyr BP) in timeslices forced with climate anomalies from seven different climate models (see Sect. 2.2). The box, the solid line, and the dashed line indicate the interquartile range, the median and the mean from the seven simulations. The star indicates the values of the transient simulation for the same time period using climate anomalies from TraCE21k.

is warranted when interpreting model results for times and regions in which proxy records or observations are sparse and have limited power to constrain the actual climate conditions. This holds not only in the context of this study, but for global peat and carbon cycle model studies in general.

when interpreting model results for times and regions in which proxy records or observations are sparse and have limited power to constrain the actual climate conditions. This holds not only in the context of this study, but for global peat and carbon cycle model studies in general.

### 3.3 Transient peat evolution

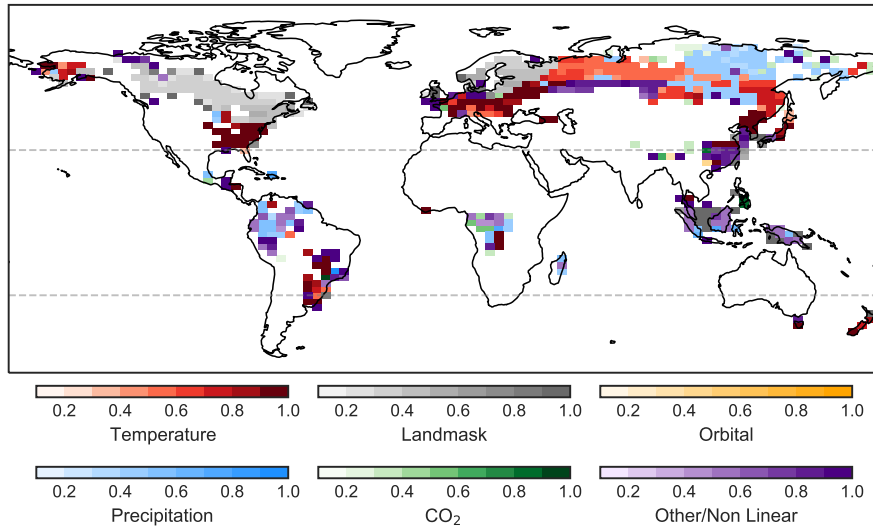
Figure 4 (a) shows the peatland evolution in the transient model run. The model simulates the establishment and expansion of peatlands under favorable conditions, but also the decay and disappearance of peatlands under unfavorable conditions. Both processes can happen simultaneously on a global as well as a regional scale (Fig. A1). To treat carbon storage in a consistent manner, we distinguish between the active peatlands, which are treated as peatlands in the LPX, and old peatlands, which are treated as mineral soils. Old peatlands inherit the carbon stocks of the peatlands that are shrinking or vanishing. Similarly, growing active peatlands first expand onto the area of old peatlands inheriting the remaining carbon stored there (see also Sect. 3.3.5). In the analysis, we decompose the net changes of peatland area into gross positive and negative changes. This allows for a deeper insight into the underlying temporal dynamics (Fig. 4 (b)). Transient factorial runs, performed over the same time period as the standard setup (see Sect. 2.2), allow us to attribute driver contributions to the simulated changes (Fig. 4 (c) and 5).



**Figure 4.** Simulated peatland area over time (a), gross positive and negative peatland area changes in 0.5 kyr bins, as well as evolution of today's simulated peatland area and old peat area (b), and driver contributions to the same changes (c), calculated using factorial simulations (see Sect. 2.2). Contributions by regions (b) and by drivers (c) are plotted cumulatively. Vertical bars indicate the Last Glacial Maximum (LGM) period, the Heinrich Stadial 1 (HS1) Northern Hemisphere cold phase, the Bølling-Allerød (BA) Northern Hemisphere warm phase, and the Younger Dryas (YD) Northern Hemisphere cold phase.

### 3.3.1 22 kyr BP - 17.43 kyr BP

Global changes in peatland area and carbon before the onset of the Heinrich Stadial 1 (HS1) are small, due to the relatively small changes in the main drivers. There is initial carbon loss in some regions of the tropics, due to some gridcells still approaching equilibrium after the spinup (Fig A1). North America sees an accelerating carbon accumulation with unchanging area already before the HS1, driven mostly by increasing temperature. Carbon and area also increase in Europe with large temperature driven fluctuations



**Figure 5.** Drivers of the change in peatland area from LGM to present. Colors indicate the most important driver, and color shade the contribution of the respective driver on a scale from 0 (no contribution) to 1 (only contributor).

### 3.3.2 17.43 kyr BP - 11.65 kyr BP

Three main features characterize the peat area evolution over the last glacial termination: (i) a northward shift in the distribution of northern extratropical peatlands, including peat expansion in northern Asia, (ii) dipole-like north-south shifts in tropical South America, associated with north-south shifts of the rain belts of the Inter Tropical Convergence Zone (ITCZ), and (iii) flooding of peatlands on continental shelves, mostly in Southeast Asia, due to rising sea levels.

The last termination represents the transition of the climate system from the last glacial to the current interglacial, accompanied by large warming, ocean circulation changes, and an increase in atmospheric CO<sub>2</sub> (Monnin et al., 2001; Shakun and Carlson, 2010; Ritz et al., 2013). The termination is divided into the HS1 (17.43 - 14.63 kyr BP) northern hemisphere (NH) cold period, the Bølling-Allerød (BA, 14.63 - 12.85 kyr BP) NH warm period, and the Younger Dryas (YD, 12.85 - 11.65 kyr BP) NH cold period (Rasmussen et al., 2014). These NH cold-warm swings are associated with a large-scale reorganization of ocean circulation, thought to have been provoked by freshwater release from ice sheet melting leading to changes in the ocean heat transport (Stocker and Johnsen, 2003). With changing low- to high-latitude temperature gradients the ITCZ shifted and with it the high precipitation zones in the tropics (McGee et al., 2014; Shi and Yan, 2019; Cao et al., 2019). These climate dynamics are well captured by the transient TraCE21k simulation (Liu et al., 2009).

The responses of peatlands in LPX to these climatic changes are drastic. Large shifts in peatland area start to set in at the onset of the HS1 and increase into the BA. During the BA, peatlands show the fastest gross positive and negative area changes throughout the simulation (see Fig. 4 (b)). In the northern mid and high latitudes, peatlands shift north and eastward (see Fig. 6 and Fig. A2). Peatlands disappear in mid latitude North America and Europe and new peatlands emerge at higher latitudes



and in cold continental regions of Asia. These new peatlands include the large peat complex in the Western Siberian Lowlands (WSL). Some of the peatlands established in northern Europe during HS1 vanish again during the BA. The described changes are driven by the TraCE21k climate which shows a substantial warming and wetting of the Northern Hemisphere already starting during the HS1. Temperature is the dominant driver for peat loss and expansion in Europe and North America. The loss of old peat is especially abrupt in North America (see Fig. A1 (b)). Here precipitation decreases and temperature increases abruptly over southwestern North America at 13870 BP. Both changes decrease the water balance given by P-E which leads to a decrease in potential peat area and thus loss of the previous extensive peat complexes. As this abrupt climate change occurs at a discontinuity of the trace boundary conditions (changes in ice sheet configuration and freshwater forcing), the speed of this change is probably drastically overestimated. In Northern Asia both temperature and precipitation drive the peatland expansion. This expansion sees a pronounced halt during the YD where northern hemisphere climate is briefly returning to more glacial conditions (see Fig. A2 (e)).

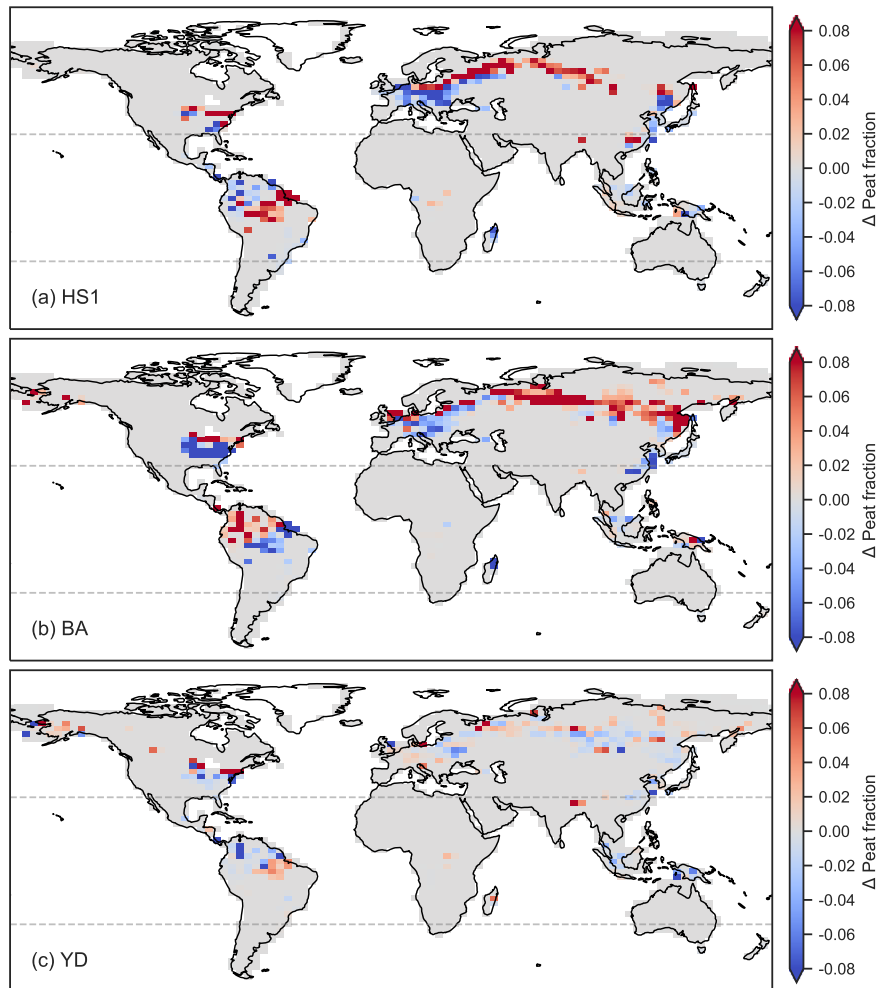
In the tropics, the area and carbon changes are mostly driven by precipitation changes. Largest changes are simulated in South America, where precipitation patterns respond to changes in ITCZ position (see Fig. 6). During the HS1 and the YD where the Atlantic meridional overturning circulation (AMOC) is in a reduced state, peatland area shifts to the south following the southward shift of the ITCZ. During the BA the AMOC is strong and precipitation and peatland area shift back north. In Africa half the peatland area is lost during the BA mostly driven by drying. In South East Asia peatlands are lost over the whole termination due to precipitation changes and the onset of sea level rise, which starts to flood the large continental shelves at about 16 kyr BP.

The shifts in peatland distribution result in a similar global peatland area at the beginning of the Holocene compared to the LGM and at the onset of the HS1. However, much less carbon is stored in active peatlands at the beginning of the Holocene than during the LGM and at the onset of the HS1. Thus, the carbon density per unit area is much lower for the newly established peatlands than for the lost LGM peatlands.

### 3.3.3 11.65 kyr BP - 0 kyr BP

Modelled peatlands in the Holocene show a continuous net expansion in the northern extratropics, with newly forming peatlands more than balancing the loss of peatlands elsewhere. The Holocene experienced relative stability in climate and CO<sub>2</sub> levels compared to the termination. The early to mid Holocene was likely characterized by warmer summer temperatures than pre-industrial with a larger seasonality in the northern hemisphere (Marcott et al., 2013; Liu et al., 2014; Samartin et al., 2017). Ice sheet retreat and sea level rise lagged behind the deglacial temperature increase and was mostly completed at about 7 kyr BP (Peltier, 2004). Locally new land keeps emerging to this day due to isostatic rebound. This effect is especially pronounced in the Hudson Bay Lowlands, where new land emerges with a rate of up to 12 mm yr<sup>-1</sup> (Henton et al., 2006).

For northern peatlands, positive area changes are consistently larger than negative changes throughout most of the Holocene (see Fig. 4 (a)). This leads to a large continuous area expansion. Old peatland area is also simulated to increase continuously during the Holocene (Fig. 4 (b)), showing that the parallel positive and negative changes are more than mere fluctuations of existing peat but that there is actual continuous peatland loss and growth. Net area increase picks up at about 9 kyr BP,



**Figure 6.** Maps showing the changes in peatland fraction during three periods of past substantial climate change: Heinrich Stadial 1 (HS1, 17.43 - 14.63 kyr BP) (a), the Bølling-Allerød northern hemisphere warm period (BA, 14.63 - 12.85 kyr BP) (b), and the Younger Dryas northern hemisphere cold period (YD, 12.85 - 11.65 kyr BP) (c)

decreases in the late Holocene and turns into a net area reduction in the last millennium. This late Holocene slow down and reversal of net peatland area growth is most pronounced in Northern Asia where increasing negative changes start to balance and eventually offset the still large positive changes (Fig. A1 and A2). Both negative and positive dynamics here are driven by temperature and precipitation. The early fast expansion in Northern Asia is offset by a temperature driven net area loss in Europe which is recovered partly towards the late Holocene. Net area increase in North America is delayed by continued loss of mid latitude peat and the slow retreat of the Laurentide Ice Sheet, which limits the establishment of new peatlands. Today's peatlands in North America start to establish after about 9 kyr BP with most of today's peatlands forming between 7 and 2

kyr BP. Carbon stocks follow these regional trends but with larger relative increases especially towards the late Holocene. As the timescale for building up carbon pools is generally much longer than the timescale of potential area changes, fluctuations in area, mostly by young peatlands, are smoothed in the carbon stocks (see e.g. Fig. A1 (b)).

The tropical peatland area is simulated to stay relatively stable throughout the Holocene, with positive changes balancing negative changes. Southeast Asia sees a reduction in area in the early Holocene due to continued sea level rise and a subsequent gradual recovery of integrated peat area driven by precipitation and non linear effects. Peat area in South America increases slightly over the Holocene with mostly precipitation driven fluctuations in between. On the other hand, fluctuations in region-integrated peat carbon stocks are largely absent in South America, as carbon, with changing area, is shifted between peat and old peat pools. Peat carbon stocks in South America show a large relative increase following a near linear path. Africa sees an increase in area at about 10 kyr BP driven by precipitation and enabled by high CO<sub>2</sub> concentrations. The new area gradually degrades again until 3 kyr BP with another peak at 0.5 kyr BP.

### 3.3.4 Model versus reconstructions

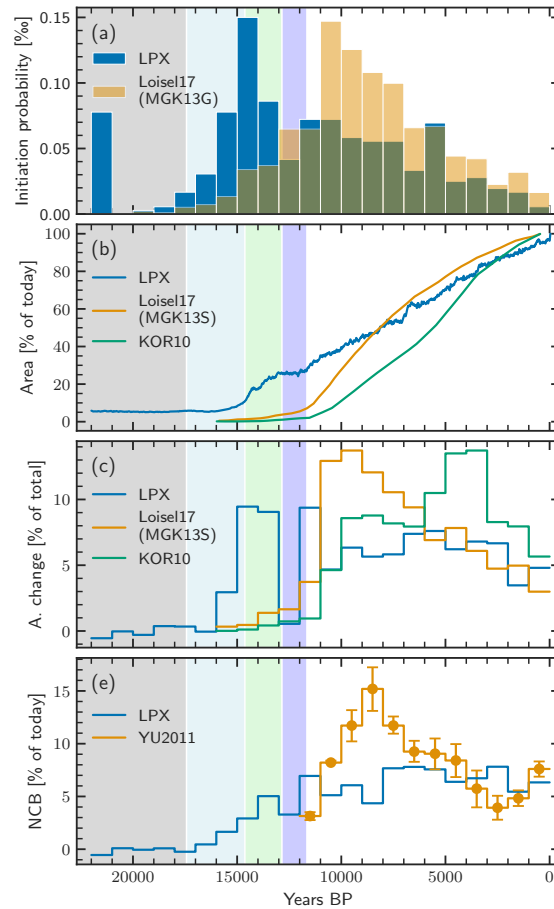
The study of peatland initiation, life cycle, dynamics and responses to external forcing has been focused on today's existing and active peatlands. This work includes large compilations of peat core basal dates (MacDonald et al., 2006; Gorham et al., 2007; Yu et al., 2010) which are used to reconstruct initiation dates and lateral expansion (Yu et al., 2010; Korhola et al., 2010; Dommain et al., 2014; Loisel et al., 2017) of the sampled active peatlands. This approach, however, does not include earlier peatlands that dried out, were buried or flooded or otherwise ceased to be active accumulating peatlands. Treat et al. (2019) presented a first compilation of dated buried peat layers, but the small sample size make quantitative reconstructions difficult. We thus limit most of the model-data comparison of the transient behaviour to the today's existing peatlands. Figures 7 and 8 (c) show modeled initiation date frequency, area and carbon dynamics of northern peatlands that are still active at present.

Figure 7 (a) compares LPX results to a gridded 'oldest age' dataset compiled by Loisel et al. (2017) and Fig. 7 (b) and (c) to two different reconstructions for lateral expansion (Loisel et al., 2017; Korhola et al., 2010) based on similar methods but different underlying peat core datasets (see Sect. 2.3). The two reconstructions for peat expansion agree on a limited pre Holocene expansion, but disagree substantially on the timing of fastest expansion during the Holocene (7). Both simulated initiation and peat expansion have peaks about 4 kyr earlier than the reconstructions. The model simulates early initiation of today's northern peatlands, already beginning in HS1, and a large expansion during BA. The reconstructions on the other hand suggest lateral peat expansion picking up only with the transition into the Holocene. Agreement between model and reconstructions becomes good in the mid to late Holocene.

The early expansion in the model also propagates to the carbon balance for presently active peatlands. The model simulates earlier accumulation extending into the HS1 and slower accumulation during the early Holocene than suggested by net carbon balance (NCB) reconstructions by Yu (2011) (Fig. 7 (c)). The summed simulated carbon increase from LGM to PI in today's northern peatlands amounts to 313 GtC (Fig. 8 (c)).

The early expansion of northern peatlands in the simulation is mostly dominated by peat establishment in Western Siberian Lowlands (WSL) and Northern Asia in general (see Sect. 3.3.2 and Fig. A1). The dominant drivers of this expansion are temperature and precipitation, which, according to TraCE21k, both increase substantially over Northern Asia during the HS1 and BA. A similar simulated early expansion into the WSL was reported by Treat et al. (2019), with the coupled CLIMBER2-LPJ setup. Morris et al. (2018b) investigated possible climatic drivers for peat initiation in a modelling study using the HadCM3 model. They suggest the WSL to have responded to an increase in effective precipitation at about 11.5 kyr BP, instead of the early warming. One source of the model data mismatch could lie in the uncertainties in climate anomalies discussed in Sect. 3.2.2. Especially in high latitudes climate anomalies can vary greatly between climate models, and model performance at one point in time does not always correspond to performance at another point in time (Harrison et al., 2014). Although the fresh-water change of TraCE21k was designed to capture the rapid climate events during the glaciation, the magnitude and timing of regional or even hemispheric changes can still have large biases. To date TraCE21k is the only available transient GCM simulation, but new simulations under the umbrella of PMIP4 might shed more light on the model dependence of the warming pattern in question (Ivanovic et al., 2016). Another source of the mismatch could lie in the simple representation of peatlands in the model, which might be unsuitable to reproduce specific initiation and expansion pathways, like terrestrialization and fen-bog transition that might have been important controlling factors in that time and region (Kremenetski et al., 2003). One example could be the relative weakness of the initiation criteria on the moisture balance (precipitation over evapotranspiration  $> 1$ ), which is almost always weaker than the indirectly mediated condition on inundation persistence. This might pose a problem especially in the WSL where moisture balance might have been the driving factor for peat initiation (Morris et al., 2018b). Lastly, although the WSL is relatively densely sampled and reconstructions of peat initiation robust, other areas of northern Asia are vastly under sampled and reconstructions less reliable.

Throughout the tropics dated buried and active peat cores show peatland presence already during and preceding the LGM. But peatland extent or evolution towards the present are not well constrained and are subject to large uncertainties. The small number of available dated tropical peat cores impedes a statistical approach. Applied nevertheless, it indicates a more or less continuous growth of today's peatlands since about 19 kyr BP with largest expansion rates between 8 and 4 kyr BP (Yu et al., 2010). Dommain et al. (2014) reconstructed the evolution of Indonesian peatlands using a combination of dated cores and a transfer function between depth and age. They argue for a peat expansion much later than inferred by basal ages alone, with 90% of today's peat establishing after 7 kyr BP and 60% after 3 kyr BP. In this study the dominant control on peatland area was found to be local sea level. Rising sea level during the termination and the early Holocene triggering the establishment of inland peatlands through alterations in moisture availability and the hydrological gradient, and stabilization of sea level and subsequent sea level regression after 4 kyr BP prompting the establishment of coastal peatlands. In contrast to these reconstructions, the transient simulation shows 60% of today's tropical peatland area already present in the LGM and only small expansion during the recent millennia. The sparsity of the data warrants caution when comparing to model results. However, in Southeast Asia, this discrepancy could indicate the importance of the feedback of sea level on local hydrology, missing in LPX.

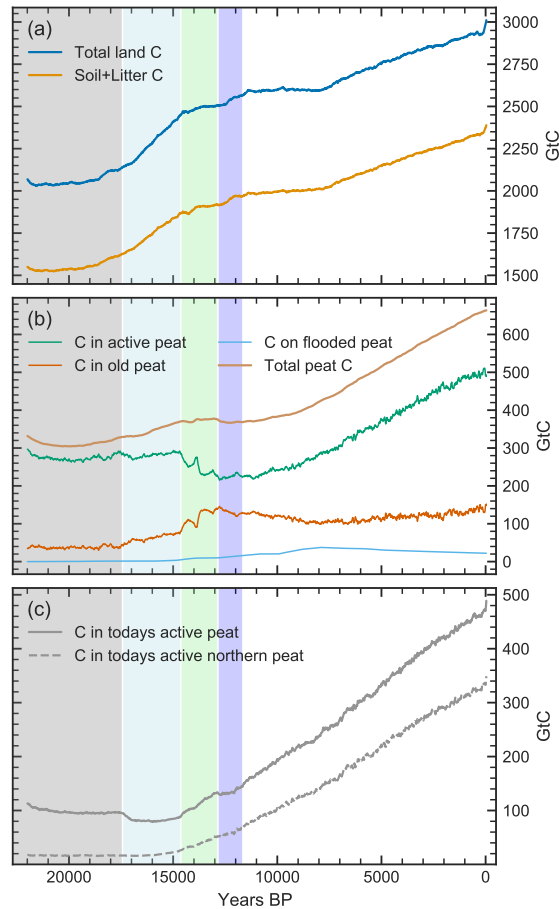


**Figure 7.** Simulated and reconstructed dynamics of today's existing northern peatlands: Peatland initiation frequency (two overlapping histograms) (a), peatland area expansion (b) and expansion rate (c), and net carbon balance (NCB) normalized by respective estimates of today's carbon pool (d). The reconstruction datasets are described in Sect. 2.3. Background coloring indicates different time periods, same as in Fig. 4

### 3.3.5 Transient carbon balance of peatland soils and the land biosphere as seen by the atmosphere

In this section, we address how carbon stored in soils of active peatlands and carbon stored in the remains of former peat soils changed over time. Thereby, we quantify the overall contribution of peatland soils and peat carbon to the changes in the global carbon inventory of the land biosphere.

- 5 When trying to quantify the net effect of peatlands on the atmosphere, looking only at carbon stored in today's active peatlands can be misleading. Former active peatlands have transformed into other landscapes. Organic rich peat layers may



**Figure 8.** Carbon on global land (soil + litter + vegetation) (a), active peatland areas, old peatland areas, on flooded continental shelves (b), and in today's active peatlands (c). The brown line in (b) represents global carbon that originated from peatlands even if it is not part of an active peatland anymore. Background coloring indicates different time periods, same as in Fig. 4

now be buried under mineral soils on land or in coastal ocean sediments (Treat et al., 2019; Kreuzburg et al., 2018). When analyzing the transient carbon balance of global peatlands such "old peat carbon" pools have to be considered.

Figure 8 (b) shows the temporal evolution of carbon stored in soils of active peatlands, old peat soil carbon remaining on former peatlands, and old peat carbon stored on flooded continental shelves. The here presented old peat pools include exclusively the carbon from the organic rich layers of formerly active peatlands, remaining after accounting for decomposition over time (see 2.1). At PI 499 GtC, 139 GtC, and 22 GtC of peat carbon are stored in their respective pools. The total simulated increase in peat carbon from LGM to PI within these three pools is 351 GtC. This represents the simulated net carbon accumulation of global peat and thus the net amount of carbon sequestered from the atmosphere by peat. When only considering carbon stored in active peatlands we would underestimate the deglacial peat carbon change with 224 GtC. On the

other hand if we only consider the carbon stored in today's active peatlands, the inferred deglacial change amounts to 365 GtC (Figure 8 (c)), and we would overestimate the net peat accumulation since the LGM. While the latter difference in net peat carbon accumulation between the complete and incomplete accounting scheme appears small for the total deglacial change, the difference can be substantial and relevant for other periods. For example, a particular large difference is identified for the phase of high peatland expansion and loss rates as simulated from the Bølling/Allerød to the Preboreal in our model. Here the carbon balance is given by the complete accounting, including old peat, as 12 GtC versus 102 GtC when only looking at the carbon in today's active peat for the period from 14.6 to 10 kyr BP.

Peatlands contribute about 40% to the total land biosphere carbon increase of 893 GtC. The result for the total land carbon increase between LGM and PI is in good accordance with a recent estimate, integrating multiple proxy constraints (median: 850 GtC; 450 - 1250 GtC  $\pm$  1 standard deviation ) (Jeltsch-Thömmes et al., 2019). The model also simulates the total change of the land biosphere carbon inventory between the beginning of the Holocene and preindustrial in reasonable agreement with the reconstruction by Elsig et al. (2009). The simulated temporal evolution, however, is different, with a rapid uptake in the early Holocene in the reconstruction, compared to a delayed uptake in the mid to late Holocene in the simulation.

#### 4 Conclusions

We used the LPX-Bern dynamic global vegetation model to produce an in depth model analysis of transient area and carbon dynamics of global peatlands from the Last Glacial Maximum (LGM) to the present. For the LGM, peatland area, reduced to the tropics and northern mid latitudes, is predicted at 2.687 Mkm<sup>2</sup> in the transient run, storing 275.6 GtC of carbon. Under LGM climatic conditions, LPX-Bern predicts peatlands in areas with low or no peat cover at present, or on now submerged continental shelves. Uncertainty from the climate forcing was assessed by using, in addition to the TraCE21k, climate anomalies from six different time slice simulations for the LGM from phase 3 of the Paleomodel Intercomparison Project PMIP3. This results in a peat area range of 1.5-3.4 Mkm<sup>2</sup> with a carbon storage of 147-347 GtC. This large range illustrates the dependence of results on, uncertain, LGM climate conditions and the sensitivity of simulated peatlands to these differences. Sparse data on paleo peatlands, on their extent, and their carbon storage make it difficult to further constrain this range. At the same time there are, to date, only a few coupled climate simulations for the LGM and only one transient simulation with an atmosphere-ocean general circulation model available for the period LGM to present.

A driver attribution of the simulated transient evolution of peatlands using factorial simulations showed regional and temporal differences. Modelled changes in the tropics were dominated by shifts in the position of the Inter Tropical Convergence Zone and associated precipitation changes during the last glacial termination as well as by rising sea level. Changes in the northern high latitudes are mostly driven by temperature and precipitation increases. The largest model mismatches to available area reconstructions can be seen in the onset and timing of the earliest expansion of today's northern peatlands. A strong warming in the climate forcing during Heinrich Stadial 1 and the Bølling/Allerød triggers a first expansion into Northern Asia, which according to reconstructions only starts during the Preboreal, about 4 kyr later.

The simulated transient evolution of peatlands is characterized by continuous and simultaneous increases and decreases of area and carbon, with fastest positive and negative changes happening during the termination (Heinrich Stadial 1 and Bølling/Allerød). This reveals a different perspective than the commonly assumed linear and continuous growth of global peatlands. Instead peatlands become a dynamic, growing, dying and shifting landscape. Carbon in soils of formerly active peatlands can be trapped in mineral soils or ocean sediments. When assessing the net carbon balance of global peatlands over time, accounting for paleo peatlands and their remains thus becomes essential. In our transient simulation the LGM to PI net peat carbon balance is predicted at 351 GtC, with 499 GtC, 139 GtC, and 22 GtC stored at pre-industrial in soils of still active peatlands, in the remains of former peat soils on land, and in the remains on submerged shelves, respectively. For today's active northern peatlands, simulated peat area and carbon is in good accordance with the range of literature estimates, whereas predictions for the tropics are larger than most estimates. However, data constraints in the tropics are significantly weaker as peatland sciences has long focused on the northern high latitudes and only in the last decades is accelerating its effort in the tropics. Even fewer data is available to constrain old peat carbon that remains outside of today's active peatlands.

Taken together our study provides an in-depth model analysis of peatland development, the associated drivers, and uncertainties on a global scale. It contributes to a foundation for a better understanding of past peat dynamics and emphasises the importance of treating and understanding peatlands as dynamic and evolving systems. In a next step, the results presented here can serve as a starting point for projections of future peat dynamics under different scenarios.

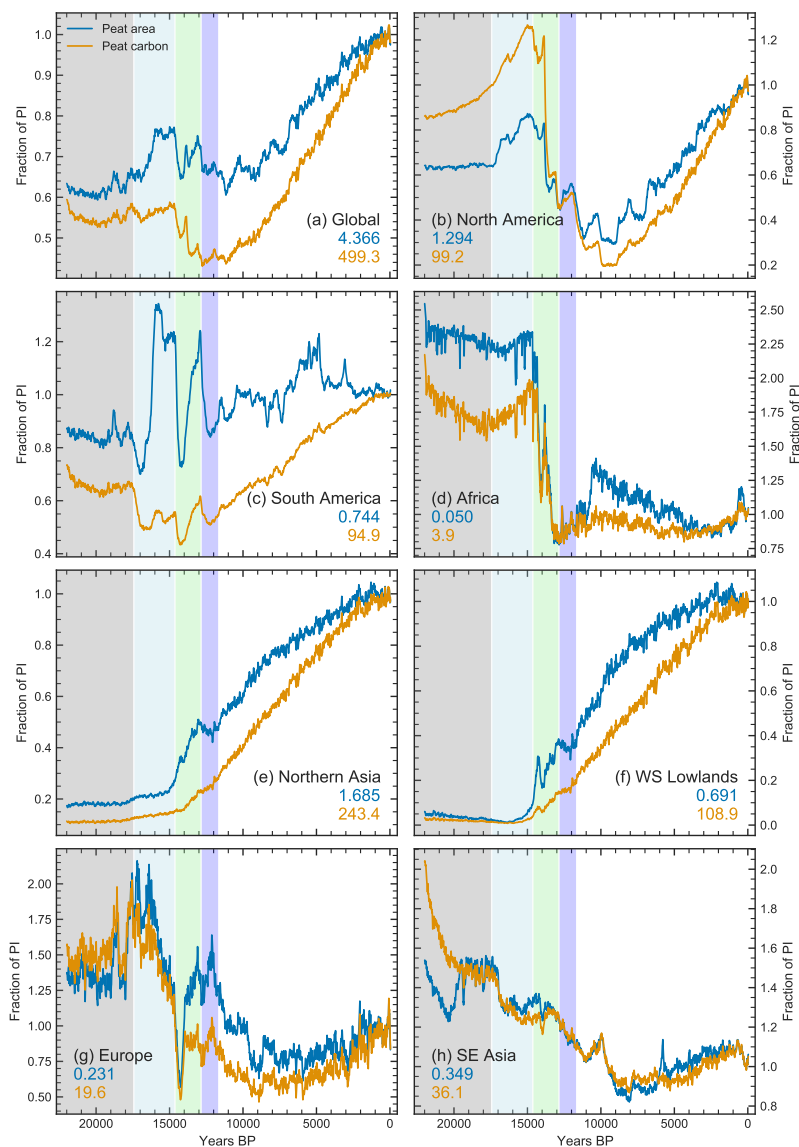
A growing database of buried peat and knowledge emerging from the growing literature on anthropogenically drained peatlands might shed more light on the fate of old peat carbon and inform future modeling studies. New timeslice and transient climate model simulations under PMIP4 (Ivanovic et al., 2016; Kageyama et al., 2017) together with an increased effort of the peat community to fill in gaps in sample coverage both for today's peatlands and buried peat layers, especially in North America, Northern Asia, and the tropics, might help to constrain past peat dynamics further and to test the robustness of the results presented here. At the same time there is potential for improvements to the LPX-Bern that could decrease model data mismatches especially on the regional scale. Future improvements could include refining the moisture balance criteria on peat initiation, improving hydrology and boundary conditions on continental shelves, and finding key processes that might benefit from a more complex representation, such as a multi layer peat profile and distinctions between different peatland types.

*Data availability.* Data from main text figures are available as electronic supplementary material and further data is available on request

## **Appendix A: Supplementary Figures**

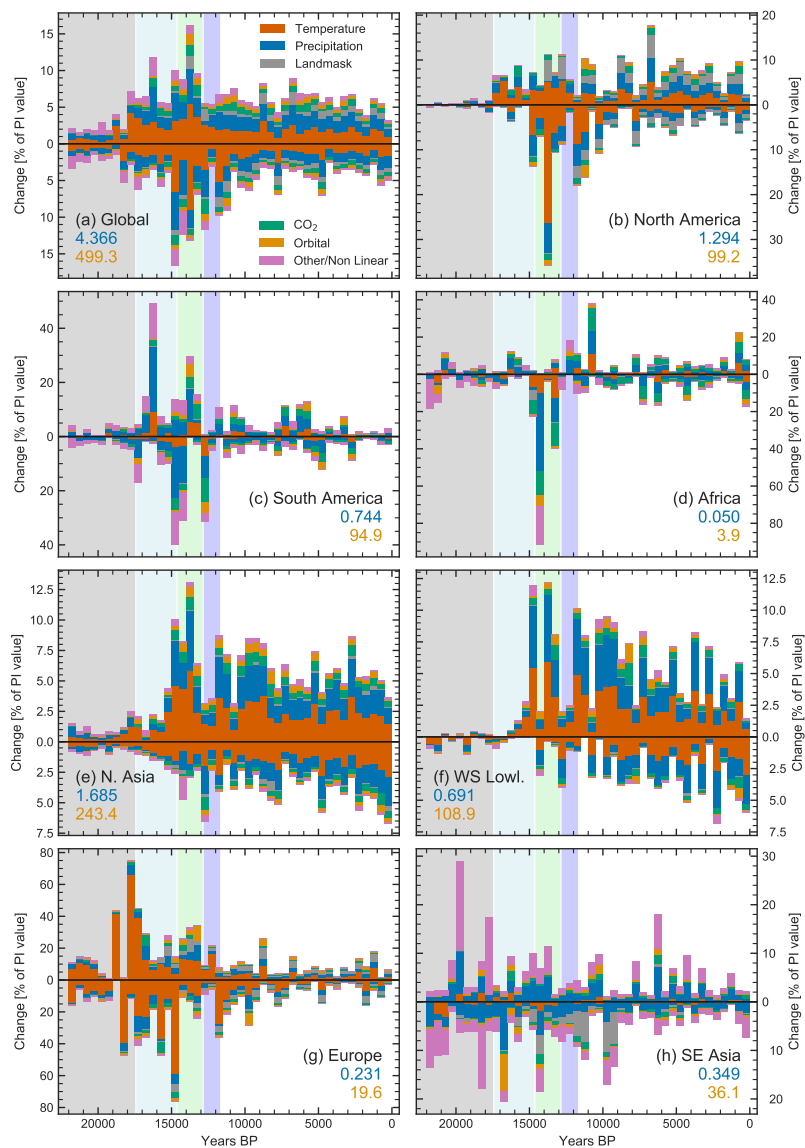
*Competing interests.* The authors declare to have no competing interests





**Figure A1.** Simulated global and regional peatland area and carbon dynamics over time, relative to PI levels. PI levels are given in Mkm<sup>2</sup> for peat area and GtC for peat carbon. The extent of the regions Northern Asia, Western Siberian (WS) Lowlands, and Southeast Asia are shown in Fig. 1. Background coloring indicates different time periods, same as in Fig. 4

*Acknowledgements.* This study was funded by the Swiss National Science Foundation (#200020\_172476). We thank Sebastian Lienert for fruitful discussion and support regarding LPX-Bern



**Figure A2.** Simulated global and regional gross positive and negative changes in peatland area in 0.5 kyr bins, relative to PI levels. PI levels are given in  $\text{Mkm}^2$  for peat area and  $\text{GtC}$  for peat carbon. Colors indicate driver contributions to changes attributed using factorial simulations. The extent of the regions Northern Asia, Western Siberian (WS) Lowlands, and Southeast Asia are shown in Fig. 1. Background coloring indicates different time periods, same as in Fig. 4

## References

- Ahlström, A., Schurgers, G., and Smith, B.: The large influence of climate model bias on terrestrial carbon cycle simulations, *Environ. Res. Lett.*, 12, 014004, <https://doi.org/10.1088/1748-9326/12/1/014004>, 2017.
- Alexandrov, G. A., Brovkin, V. A., and Kleinen, T.: The influence of climate on peatland extent in Western Siberia since the Last Glacial Maximum, *Sci. Rep.*, 6, 6–11, <https://doi.org/10.1038/srep24784>, 2016.
- Annan, J. D. and Hargreaves, J. C.: A new global reconstruction of temperature changes at the Last Glacial Maximum, *Clim. Past*, 9, 367–376, <https://doi.org/10.5194/cp-9-367-2013>, 2013.
- Baird, A. J., Morris, P. J., and Belyea, L. R.: The DigiBog peatland development model 1: rationale, conceptual model, and hydrological basis, *Ecohydrology*, 5, 242–255, <https://doi.org/10.1002/eco.230>, 2012.
- Bartlein, P. J., Harrison, S. P., Brewer, S., Connor, S., Davis, B. A., Gajewski, K., Guiot, J., Harrison-Prentice, T. I., Henderson, A., Peyron, O., Prentice, I. C., Scholze, M., Seppä, H., Shuman, B., Sugita, S., Thompson, R. S., Viau, A. E., Williams, J., and Wu, H.: Pollen-based continental climate reconstructions at 6 and 21 ka: A global synthesis, *Clim. Dyn.*, 37, 775–802, <https://doi.org/10.1007/s00382-010-0904-1>, 2011.
- Beven, K. J. and Kirkby, M. J.: A physically based, variable contributing area model of basin hydrology, *Hydrol. Sci. Bull.*, 24, 43–69, <https://doi.org/10.1080/02626667909491834>, 1979.
- Blodau, C.: Carbon cycling in peatlands &#151; A review of processes and controls, *Environ. Rev.*, 10, 111–134, <https://doi.org/10.1139/a02-004>, 2002.
- Braconnot, P., Harrison, S. P., Kageyama, M., Bartlein, P. J., Masson-Delmotte, V., Abe-Ouchi, A., Otto-Bliesner, B., and Zhao, Y.: Evaluation of climate models using palaeoclimatic data, *Nat. Clim. Chang.*, 2, 417–424, <https://doi.org/10.1038/nclimate1456>, 2012.
- Campos, J. R. d. R., Silva, A. C., Slater, L., Nanni, M. R., and Vidal-Torrado, P.: Stratigraphic control and chronology of peat bog deposition in the Serra do Espinhaço Meridional, Brazil, *CATENA*, 143, 167–173, <https://doi.org/10.1016/j.catena.2016.04.009>, 2016.
- Cao, J., Wang, B., and Ma, L.: Attribution of Global Monsoon Response to the Last Glacial Maximum Forcings, *J. Clim.*, 32, 6589–6605, <https://doi.org/10.1175/jcli-d-18-0871.1>, 2019.
- Charman, D. J., Beilman, D. W., Blaauw, M., Booth, R. K., Brewer, S., Chambers, F. M., Christen, J. A., Gallego-Sala, A., Harrison, S. P., Hughes, P. D., Jackson, S. T., Korhola, A., Mauquoy, D., Mitchell, F. J., Prentice, I. C., Van Der Linden, M., De Vleeschouwer, F., Yu, Z. C., Alm, J., Bauer, I. E., Corish, Y. M., Garneau, M., Hohl, V., Huang, Y., Karofeld, E., Le Roux, G., Loisel, J., Moschen, R., Nichols, J. E., Nieminen, T. M., MacDonald, G. M., Phadtare, N. R., Rausch, N., Sillasoo, U., Swindles, G. T., Tuittila, E. S., Ukonmaanaho, L., Väliranta, M., Van Bellen, S., Van Geel, B., Vitt, D. H., and Zhao, Y.: Climate-related changes in peatland carbon accumulation during the last millennium, *Biogeosciences*, 10, 929–944, <https://doi.org/10.1016/j.protis.2013.07.005>, 2013.
- Chaudhary, N., Miller, P. A., and Smith, B.: Modelling past, present and future peatland carbon accumulation across the pan-Arctic region, *Biogeosciences*, 14, 4023–4044, <https://doi.org/10.5194/bg-14-4023-2017>, 2017a.
- Chaudhary, N., Miller, P. A., and Smith, B.: Modelling Holocene peatland dynamics with an individual-based dynamic vegetation model, *Biogeosciences*, 14, 2571–2596, <https://doi.org/10.5194/bg-14-2571-2017>, 2017b.
- Cobb, A. R. and Harvey, C. F.: Scalar Simulation and Parameterization of Water Table Dynamics in Tropical Peatlands, *Water Resour. Res.*, 55, 9351–9377, <https://doi.org/10.1029/2019WR025411>, 2019.
- Cresto Aleina, F., Runkle, B. R., Kleinen, T., Kutzbach, L., Schneider, J., and Brovkin, V.: Modeling micro-topographic controls on boreal peatland hydrology and methane fluxes, *Biogeosciences*, 12, 5689–5704, <https://doi.org/10.5194/bg-12-5689-2015>, 2015.

- Dargie, G. C., Lewis, S. L., Lawson, I. T., Mitchard, E. T., Page, S. E., Bocko, Y. E., and Ifo, S. A.: Age, extent and carbon storage of the central Congo Basin peatland complex, *Nature*, 542, 86–90, <https://doi.org/10.1038/nature21048>, 2017.
- Dommain, R., Couwenberg, J., and Joosten, H.: Development and carbon sequestration of tropical peat domes in south-east Asia: Links to post-glacial sea-level changes and Holocene climate variability, *Quat. Sci. Rev.*, <https://doi.org/10.1016/j.quascirev.2011.01.018>, 2011.
- 5 Dommain, R., Couwenberg, J., Glaser, P. H., Joosten, H., and Suryadiputra, I. N. N.: Carbon storage and release in Indonesian peatlands since the last deglaciation, *Quat. Sci. Rev.*, 97, 1–32, <https://doi.org/10.1016/j.quascirev.2014.05.002>, 2014.
- Dommain, R., Froelking, S., Jeltsch-Thömmes, A., Joos, F., Couwenberg, J., and Glaser, P. H.: A radiative forcing analysis of tropical peatlands before and after their conversion to agricultural plantations, *Glob. Chang. Biol.*, 24, 5518–5533, <https://doi.org/10.1111/gcb.14400>, 2018.
- Elsig, J., Schmitt, J., Leuenberger, D., Schneider, R., Eyer, M., Leuenberger, M., Joos, F., Fischer, H., and Stocker, T. F.: Stable isotope  
10 constraints on Holocene carbon cycle changes from an Antarctic ice core, *Nature*, 461, 507–510, <https://doi.org/10.1038/nature08393>, 2009.
- Eyring, V., Bony, S., Meehl, G. A., Senior, C. A., Stevens, B., Stouffer, R. J., Taylor, K. E., Dynamique, D. M., Pierre, I., Laplace, S., and Ipsi, L. M. D.: Overview of the Coupled Model Intercomparison Project Phase 6 (CMIP6) experimental design and organization, *Geosci. Model Dev*, pp. 1937–1958, <https://doi.org/10.5194/gmd-9-1937-2016>, 2016.
- 15 Ferretto, A., Brooker, R., Aitkenhead, M., Matthews, R., and Smith, P.: Potential carbon loss from Scottish peatlands under climate change, *Reg. Environ. Chang.*, 19, 2101–2111, <https://doi.org/10.1007/s10113-019-01550-3>, 2019.
- Froelking, S. and Roulet, N. T.: Holocene radiative forcing impact of northern peatland carbon accumulation and methane emissions, *Glob. Chang. Biol.*, 13, 1079–1088, <https://doi.org/10.1111/j.1365-2486.2007.01339.x>, 2007.
- Froelking, S., Roulet, N. T., Tuittila, E., Bubier, J. L., Quillet, A., Talbot, J., and Richard, P. J. H.: A new model of Holocene peatland net  
20 primary production, decomposition, water balance, and peat accumulation, *Earth Syst. Dyn.*, 1, 1–21, <https://doi.org/10.5194/esd-1-1-2010>, 2010.
- Gajewski, K., Viau, A., Sawada, M., Atkinson, L. J., and Wilson, S.: Sphagnum peatland distribution in North America and Eurasia during the past 21,000 years, *Carbon N. Y.*, 15, 297–310, 2001.
- Gallego-Sala, A. V., Charman, D. J., Harrison, S. P., Li, G., and Prentice, I. C.: Climate-driven expansion of blanket bogs in Britain during  
25 the Holocene, *Clim. Past*, <https://doi.org/10.5194/cp-12-129-2016>, 2016.
- Gallego-Sala, A. V., Charman, D. J., Brewer, S., Page, S. E., Colin Prentice, I., Friedlingstein, P., Moreton, S., Amesbury, M. J., Beilman, D. W., Björk, S., Blyakharchuk, T., Bochicchio, C., Booth, R. K., Bunbury, J., Camill, P., Carless, D., Chimner, R. A., Clifford, M., Cressey, E., Courtney-Mustaphi, C., de Vleeschouwer, Jong, R., Fialkiewicz-Koziel, B., Finkelstein, S. A., Garneau, M., Githumbi, E., Hribljan, J., Holmquist, J., Hughes, P. D., Jones, C., Jones, M. C., Karofeld, E., Klein, E. S., Kokfelt, U., Korhola, A., Lacourse, T., Roux, G., Lamentowicz, M., Large, D., Lavoie, M., Loisel, J., Mackay, H., MacDonald, G. M., Makila, M., Magnan, G., Marchant, R., Marcisz, K., Martamp, A., de Cortizas, Massa, C., Mathijssen, P., Mauquoy, D., Mighall, T., Mitchell, F. J., Moss, P., Nichols, J., Oksanen, P. O., Orme, L., Packalen, M. S., Robinson, S., Roland, T. P., Sanderson, N. K., Britta Sannel, A. K., Steinberg, N., Swindles, G. T., Edward Turner, T., Uglow, J., Vamp, M., Bellen, S., Linden, M., Geel, B., Wang, G., Yu, Z., Zaragoza-Castells, J., and Zhao, Y.: Latitudinal limits  
30 to the predicted increase of the peatland carbon sink with warming, *Nat. Clim. Chang.*, 8, 907–914, <https://doi.org/10.1038/s41558-018-0271-1>, 2018.
- Gorham, E.: The Development of Peat Lands, *Q. Rev. Biol.*, 32, 145–166, <https://doi.org/10.1086/401755>, 1957.
- Gorham, E.: Northern Peatlands: Role in the Carbon Cycle and Probable Responses to Climatic Warming, *Ecol. Appl.*, 1, 182–195, <https://doi.org/10.2307/1941811>, 1991.

- Gorham, E., Lehman, C., Dyke, A., Janssens, J., and Dyke, L.: Temporal and spatial aspects of peatland initiation following deglaciation in North America, *Quat. Sci. Rev.*, 26, 300–311, <https://doi.org/10.1016/j.quascirev.2006.08.008>, 2007.
- Gorham, E., Lehman, C., Dyke, A., Clymo, D., and Janssens, J.: Long-term carbon sequestration in North American peatlands, *Quat. Sci. Rev.*, 58, 77–82, <https://doi.org/10.1016/j.quascirev.2012.09.018>, 2012.
- 5 Gumbrecht, T., Roman-Cuesta, R. M., Verchot, L., Herold, M., Wittmann, F., Householder, E., Herold, N., and Murdiyarso, D.: An expert system model for mapping tropical wetlands and peatlands reveals South America as the largest contributor, *Glob. Chang. Biol.*, 23, 3581–3599, <https://doi.org/10.1111/gcb.13689>, 2017.
- Hakim, G. J., Emile-Geay, J., Steig, E. J., Noone, D., Anderson, D. M., Tardif, R., Steiger, N., and Perkins, W. A.: The last millennium climate reanalysis project: Framework and first results, *J. Geophys. Res.*, 121, 6745–6764, <https://doi.org/10.1002/2016JD024751>, 2016.
- 10 Halsey, L. A., Vitt, D. H., Gignac, L. D., Bryologist, T., and Summer, N.: Sphagnum-Dominated Peatlands in North America since the Last Glacial Maximum : Their Occurrence and Extent Sphagnum-dominated Peatlands in North America Since the Last Glacial Maximum : Their Occurrence and Extent, *Bryologist*, 103, 334–352, [https://doi.org/10.1639/0007-2745\(2000\)103\[0334:SDPINA\]2.0.CO;2](https://doi.org/10.1639/0007-2745(2000)103[0334:SDPINA]2.0.CO;2), 2000.
- Hanebuth, T. J., Voris, H. K., Yokoyama, Y., Saito, Y., and Okuno, J.: Formation and fate of sedimentary depocentres on Southeast Asia’s Sunda Shelf over the past sea-level cycle and biogeographic implications, *Earth-Science Rev.*, 104, 92–110, <https://doi.org/10.1016/j.earscirev.2010.09.006>, 2011.
- 15 Harrison, S. P., Bartlein, P. J., Brewer, S., Prentice, I. C., Boyd, M., Hessler, I., Holmgren, K., Izumi, K., and Willis, K.: Climate model benchmarking with glacial and mid-Holocene climates, *Clim. Dyn.*, 43, 671–688, <https://doi.org/10.1007/s00382-013-1922-6>, 2014.
- He, F.: Simulating Transient Climate Evolution of the Last deglaciation with CCSM3, Ph. d., University of Wisconsin-Madison, 2011.
- Henton, J. A., Craymer, M. R., Ferland, R., Dragert, H., Mazzotti, S., and Forbes, D. L.: C Rustal Motion and Deformation, *Geomatica*, 60, 173–191, 2006.
- 20 Hooijer, A., Page, S., Canadell, J. G., Silvius, M., Kwadijk, J., Wösten, H., and Jauhiainen, J.: Current and future CO<sub>2</sub> emissions from drained peatlands in Southeast Asia, *Biogeosciences*, 7, 1505–1514, <https://doi.org/10.5194/bg-7-1505-2010>, 2010.
- Houghton, R. A. and Nassikas, A. A.: Global and regional fluxes of carbon from land use and land cover change 1850-2015, *Global Biogeochem. Cycles*, 31, 456–472, <https://doi.org/10.1002/2016GB005546>, 2017.
- 25 Illés, G., Sutikno, S., Szatmári, G., Sandhyavitri, A., Pásztor, L., Kristijono, A., Molnár, G., Yusa, M., and Székely, B.: Facing the peat CO<sub>2</sub> threat: digital mapping of Indonesian peatlands—a proposed methodology and its application, *J. Soils Sediments*, 19, 3663–3678, <https://doi.org/10.1007/s11368-019-02328-0>, 2019.
- Ivanovic, R. F., Gregoire, L. J., Kageyama, M., Roche, D. M., Valdes, P. J., Burke, A., Drummond, R., Peltier, W. R., and Tarasov, L.: Transient climate simulations of the deglaciation 21-9 thousand years before present (version 1) - PMIP4 Core experiment design and boundary conditions, *Geosci. Model Dev.*, 9, 2563–2587, <https://doi.org/10.5194/gmd-9-2563-2016>, 2016.
- 30 Jeltsch-Thömmes, A., Battaglia, G., Cartapanis, O., Jaccard, S. L., and Joos, F.: Low terrestrial carbon storage at the Last Glacial Maximum: Constraints from multi-proxy data, *Clim. Past*, 15, 849–879, <https://doi.org/10.5194/cp-15-849-2019>, 2019.
- Joos, F. and Spahni, R.: Rates of change in natural and anthropogenic radiative forcing over the past 20,000 years, *Proc. Natl. Acad. Sci. U. S. A.*, 105, 1425–1430, <https://doi.org/10.1073/pnas.0707386105>, 2008.
- 35 Kageyama, M., Albani, S., Braconnot, P., Harrison, S. P., Hopcroft, P. O., Ivanovic, R. F., Lambert, F., Marti, O., Peltier, W. R., Peterschmitt, J.-Y., Roche, D. M., Tarasov, L., Zhang, X., Brady, E. C., Haywood, A. M., LeGrande, A. N., Lunt, D. J., Mahowald, N. M., Mikolajewicz, U., Nisancioglu, K. H., Otto-Bliesner, B. L., Renssen, H., Tomas, R. A., Zhang, Q., Abe-Ouchi, A., Bartlein, P. J., Cao, J., Lohmann, G., Ohgaito, R., Shi, X., Volodin, E., Yoshida, K., Zhang, X., and Zheng, W.: The PMIP4 contribution to CMIP6 – Part 4: Scientific objectives

- and experimental design of the PMIP4-CMIP6 Last Glacial Maximum experiments and PMIP4 sensitivity experiments, *Geosci. Model Dev.*, 10, 4035–4055, <https://doi.org/10.5194/gmd-2017-18>, 2017.
- Kaplan, J. O.: Wetlands at the Last Glacial Maximum: Distribution and methane emissions, *Geophys. Res. Lett.*, 29, 3–1–3–4, <https://doi.org/10.1029/2001GL013366>, 2002.
- 5 Kleinen, T., Brovkin, V., and Schuldt, R. J.: A dynamic model of wetland extent and peat accumulation: Results for the Holocene, *Biogeosciences*, 9, 235–248, <https://doi.org/10.5194/bg-9-235-2012>, 2012.
- Korhola, A., Ruppel, M., Seppä, H., Väliranta, M., Virtanen, T., and Weckström, J.: The importance of northern peatland expansion to the late-Holocene rise of atmospheric methane, *Quat. Sci. Rev.*, <https://doi.org/10.1016/j.quascirev.2009.12.010>, 2010.
- Kremenetski, K. V., Velichko, A. A., Borisova, O. K., MacDonald, G. M., Smith, L. C., Frey, K. E., and Orlova, L. A.: Peatlands of the Western Siberian lowlands: Current knowledge on zonation, carbon content and Late Quaternary history, *Quat. Sci. Rev.*, 22, 703–723, [https://doi.org/10.1016/S0277-3791\(02\)00196-8](https://doi.org/10.1016/S0277-3791(02)00196-8), 2003.
- 10 Kreuzburg, M., Ibenthal, M., Janssen, M., Rehder, G., Voss, M., Naumann, M., and Feldens, P.: Sub-marine Continuation of Peat Deposits From a Coastal Peatland in the Southern Baltic Sea and its Holocene Development, *Front. Earth Sci.*, 6, <https://doi.org/10.3389/feart.2018.00103>, <https://www.frontiersin.org/article/10.3389/feart.2018.00103/full>, 2018.
- 15 Kurnianto, S., Warren, M., Talbot, J., Kauffman, B., Murdiyarso, D., and Frohking, S.: Carbon accumulation of tropical peatlands over millennia: A modeling approach, *Glob. Chang. Biol.*, 21, 431–444, <https://doi.org/10.1111/gcb.12672>, 2015.
- Lähteenoja, O., Reátegui, Y. R., Räsänen, M., Torres, D. D. C., Oinonen, M., and Page, S.: The large Amazonian peatland carbon sink in the subsiding Pastaza-Marañón foreland basin, Peru, *Glob. Chang. Biol.*, 18, 164–178, <https://doi.org/10.1111/j.1365-2486.2011.02504.x>, 2012.
- 20 LAI, D.: Methane Dynamics in Northern Peatlands: A Review, *Pedosphere*, 19, 409–421, [https://doi.org/10.1016/S1002-0160\(09\)00003-4](https://doi.org/10.1016/S1002-0160(09)00003-4), 2009.
- Larger, C., Krinner, G., Ciais, P., and Brutel-Vuilmet, C.: Implementing northern peatlands in a global land surface model: Description and evaluation in the ORCHIDEE high-latitude version model (ORC-HL-PEAT), *Geosci. Model Dev.*, 11, 3279–3297, <https://doi.org/10.5194/gmd-11-3279-2018>, 2018.
- 25 Lawrence, D. M. and Slater, A. G.: Incorporating organic soil into a global climate model, *Clim. Dyn.*, 30, 145–160, <https://doi.org/10.1007/s00382-007-0278-1>, 2008.
- Lawson, I. T., Kelly, T. J., Aplin, P., Boom, A., Dargie, G., Draper, F. C., Hassan, P. N., Hoyos-Santillan, J., Kaduk, J., Large, D., Murphy, W., Page, S. E., Roucoux, K. H., Sjögersten, S., Tansey, K., Waldram, M., Wedeux, B. M., and Wheeler, J.: Improving estimates of tropical peatland area, carbon storage, and greenhouse gas fluxes, *Wetl. Ecol. Manag.*, 23, 327–346, <https://doi.org/10.1007/s11273-014-9402-2>,
- 30 2015.
- Leifeld, J., Wüst-Galley, C., and Page, S.: Intact and managed peatland soils as a source and sink of GHGs from 1850 to 2100, *Nat. Clim. Chang.*, 9, <https://doi.org/10.1038/s41558-019-0615-5>, 2019.
- Leng, L. Y., Ahmed, O. H., and Jalloh, M. B.: Brief review on climate change and tropical peatlands, *Geosci. Front.*, 10, 373–380, <https://doi.org/10.1016/j.gsf.2017.12.018>, 2019.
- 35 Lienert, S. and Joos, F.: A Bayesian ensemble data assimilation to constrain model parameters and land-use carbon emissions, *Biogeosciences*, 15, 2909–2930, <https://doi.org/10.5194/bg-15-2909-2018>, 2018.
- Lindsay, R.: Peatland Classification, in: *Wetl. B.*, pp. 1515–1528, Springer Netherlands, Dordrecht, [https://doi.org/10.1007/978-90-481-9659-3\\_341](https://doi.org/10.1007/978-90-481-9659-3_341), 2018.

- Liu, Z., Otto-Bliesner, B. L., He, F., Brady, E. C., Tomas, R., Clark, P. U., Carlson, A. E., Lynch-Stieglitz, J., Curry, W., Brook, E., Erickson, D., Jacob, R., Kutzbach, J., and Cheng, J.: Transient simulation of last deglaciation with a new mechanism for bolling-allerod warming, *Science* (80-. ), 325, 310–314, <https://doi.org/10.1126/science.1171041>, 2009.
- Liu, Z., Zhu, J., Rosenthal, Y., Zhang, X., Otto-Bliesner, B. L., Timmermann, A., Smith, R. S., Lohmann, G., Zheng, W., and Timm, O. E.:  
5 The Holocene temperature conundrum, *Proc. Natl. Acad. Sci. U. S. A.*, 111, <https://doi.org/10.1073/pnas.1407229111>, 2014.
- Loisel, J., van Bellen, S., Pelletier, L., Talbot, J., Hugelius, G., Karran, D., Yu, Z., Nichols, J., and Holmquist, J.: Insights and issues with estimating northern peatland carbon stocks and fluxes since the Last Glacial Maximum, *Earth-Science Rev.*, 165, 59–80, <https://doi.org/10.1016/j.earscirev.2016.12.001>, 2017.
- Lora, J. M. and Ibarra, D. E.: The North American hydrologic cycle through the last deglaciation, *Quat. Sci. Rev.*, 226, 105991, <https://doi.org/10.1016/j.quascirev.2019.105991>, 2019.  
10
- Lora, J. M. and Lora, J. M.: Components and Mechanisms of Hydrologic Cycle Changes over North America at the Last Glacial Maximum, *J. Clim.*, pp. JCLI-D-17-0544.1, <https://doi.org/10.1175/JCLI-D-17-0544.1>, 2018.
- MacDonald, G. M., Beilman, D. W., Kremenetski, K. V., Sheng, Y., Smith, L. C., and Velichko, A. A.: Rapid Early Development of Circumarctic Peatlands and Atmospheric CH<sub>4</sub> and CO<sub>2</sub> Variations, *Science* (80-. ), 314, 285–288, <https://doi.org/10.1126/science.1131722>,  
15 2006.
- Marcott, S. a., Shakun, J. D., Clark, P. U., and Mix, A. C.: A Reconstruction of Regional and Global Temperature for the Past 11,300 Years, *Science* (80-. ), 339, 1198–1201, <https://doi.org/10.1126/science.1228026>, 2013.
- McGee, D., Donohoe, A., Marshall, J., and Ferreira, D.: Changes in ITCZ location and cross-equatorial heat transport at the Last Glacial Maximum, Heinrich Stadial 1, and the mid-Holocene, *Earth Planet. Sci. Lett.*, 390, 69–79, <https://doi.org/10.1016/j.epsl.2013.12.043>,  
20 2014.
- Mitchell, T. D. and Jones, P. D.: An improved method of constructing a database of monthly climate observations and associated high-resolution grids, *Int. J. Climatol.*, 25, 693–712, <https://doi.org/10.1002/joc.1181>, 2005.
- Monnin, E., Indermühle, A., Dällenbach, A., Flückiger, J., Stauffer, B., Stocker, T. F., Raynaud, D., and Barnola, J. M.: Atmospheric CO<sub>2</sub> concentrations over the last glacial termination, *Science* (80-. ), 291, 112–114, <https://doi.org/10.1126/science.291.5501.112>, 2001.
- 25 Moore, P. D.: The ecology of peat-forming processes: a review, *Int. J. Coal Geol.*, 12, 89–103, [https://doi.org/10.1016/0166-5162\(89\)90048-7](https://doi.org/10.1016/0166-5162(89)90048-7), 1989.
- Morris, P. J., Belyea, L. R., and Baird, A. J.: Ecohydrological feedbacks in peatland development: A theoretical modelling study, *J. Ecol.*, 99, 1190–1201, <https://doi.org/10.1111/j.1365-2745.2011.01842.x>, 2011.
- Morris, P. J., Baird, A. J., and Belyea, L. R.: The DigiBog peatland development model 2: ecohydrological simulations in 2D, *Ecohydrology*,  
30 5, 256–268, <https://doi.org/10.1002/eco.229>, 2012.
- Morris, P. J., Swindles, G. T., Valdes, P. J., Ivanovic, R. F., Gregoire, L. J., Smith, M. W., Tarasov, L., Haywood, A. M., and Bacon, K. L.: Global peatland initiation driven by regionally asynchronous warming - Supporting Information, *Proc. Natl. Acad. Sci.*, <https://doi.org/10.1073/pnas.1717838115>, 2018a.
- Morris, P. J., Swindles, G. T., Valdes, P. J., Ivanovic, R. F., Gregoire, L. J., Smith, M. W., Tarasov, L., Haywood, A. M., and  
35 Bacon, K. L.: Global peatland initiation driven by regionally asynchronous warming, *Proc. Natl. Acad. Sci.*, 115, 4851–4856, <https://doi.org/10.1073/pnas.1717838115>, 2018b.
- Nichols, J. E. and Peteet, D. M.: Rapid expansion of northern peatlands and doubled estimate of carbon storage, *Nat. Geosci.*, 12, 917–922, <https://doi.org/10.1038/s41561-019-0454-z>, 2019.

- Packalen, M. S., Finkelstein, S. A., and McLaughlin, J. W.: Carbon storage and potential methane production in the Hudson Bay Lowlands since mid-Holocene peat initiation, *Nat. Commun.*, 5, 1–8, <https://doi.org/10.1038/ncomms5078>, 2014.
- Page, S. and Baird, A.: Peatlands and Global Change: Response and Resilience, *Ssrn*, <https://doi.org/10.1146/annurev-environ-110615-085520>, 2016.
- 5 Page, S. E., Rieley, J. O., and Banks, C. J.: Global and regional importance of the tropical peatland carbon pool, *Glob. Chang. Biol.*, 17, 798–818, <https://doi.org/10.1111/j.1365-2486.2010.02279.x>, 2011.
- Peltier, W.: GLOBAL GLACIAL ISOSTASY AND THE SURFACE OF THE ICE-AGE EARTH: The ICE-5G (VM2) Model and GRACE, *Annu. Rev. Earth Planet. Sci.*, 32, 111–149, <https://doi.org/10.1146/annurev.earth.32.082503.144359>, 2004.
- Qiu, C., Zhu, D., Ciais, P., Guenet, B., Krinner, G., Peng, S., Aurela, M., Bernhofer, C., Brümmer, C., Bret-Harte, S., Chu, H., Chen, J.,  
10 Desai, A. R., Dušek, J., Euskirchen, E. S., Fortuniak, K., Flanagan, L. B., Friborg, T., Grygoruk, M., Gogo, S., Grünwald, T., Hansen, B. U., Holl, D., Humphreys, E., Hurkuck, M., Kiely, G., Klatt, J., Kutzbach, L., Langeron, C., Laggoun-Défarge, F., Lund, M., Lafleur, P. M., Li, X., Mammarella, I., Merbold, L., Nilsson, M. B., Olejnik, J., Ottosson-Löfvenius, M., Oechel, W., Parmentier, F. J. W., Peichl, M., Pirk, N., Peltola, O., Pawlak, W., Rasse, D., Rinne, J., Shaver, G., Peter Schmid, H., Sottocornola, M., Steinbrecher, R., Sachs, T., Urbaniak, M., Zona, D., and Ziemblinska, K.: ORCHIDEE-PEAT (revision 4596), a model for northern peatland CO<sub>2</sub>, water, and energy  
15 fluxes on daily to annual scales, *Geosci. Model Dev.*, 11, 497–519, <https://doi.org/10.5194/gmd-11-497-2018>, 2018a.
- Qiu, C., Zhu, D., Ciais, P., Guenet, B., Peng, S., Krinner, G., Tootchi, A., Ducharne, A., and Hastie, A.: Modelling northern peatlands area and carbon dynamics since the Holocene with the ORCHIDEE-PEAT land surface model (SVN r5488), *Geosci. Model Dev. Discuss.*, pp. 1–45, <https://doi.org/10.5194/gmd-2018-256>, 2018b.
- Randerson, J. T., van der Werf, G. R., Giglio, L., Collatz, G. J., and Kasibhatla, P. S.: Global Fire Emissions Database, Version 4 (GFEDv4),  
20 <https://doi.org/10.3334/ORNLDAAC/1293>, 2015.
- Rasmussen, S. O., Bigler, M., Blockley, S. P., Blunier, T., Buchardt, S. L., Clausen, H. B., Cvijanovic, I., Dahl-Jensen, D., Johnsen, S. J., Fischer, H., Gkinis, V., Guillevic, M., Hoek, W. Z., Lowe, J. J., Pedro, J. B., Popp, T., Seierstad, I. K., Steffensen, J. P., Svensson, A. M., Vallelonga, P., Vinther, B. M., Walker, M. J., Wheatley, J. J., and Winstrup, M.: A stratigraphic framework for abrupt climatic changes during the Last Glacial period based on three synchronized Greenland ice-core records: refining and extending the INTIMATE event  
25 stratigraphy, *Quat. Sci. Rev.*, 106, 14–28, <https://doi.org/10.1016/j.quascirev.2014.09.007>, 2014.
- Ritz, S. P., Stocker, T. F., Grimalt, J. O., Menviel, L., and Timmermann, A.: Estimated strength of the Atlantic overturning circulation during the last deglaciation, *Nat. Geosci.*, 6, 208–212, <https://doi.org/10.1038/ngeo1723>, 2013.
- Ruppel, M., Väiliranta, M., Virtanen, T., and Korhola, A.: Postglacial spatiotemporal peatland initiation and lateral expansion dynamics in North America and northern Europe, *Holocene*, 23, 1596–1606, <https://doi.org/10.1177/0959683613499053>, 2013.
- 30 Rydin, H. and Jeglum, J. K.: *The Biology of Peatlands*, Oxford University Press, <https://doi.org/10.1093/acprof:osobl/9780199602995.001.0001>, 2013.
- Samartin, S., Heiri, O., Joos, F., Renssen, H., Franke, J., Brönnimann, S., and Tinner, W.: Warm Mediterranean mid-Holocene summers inferred from fossil midge assemblages, *Nat. Geosci.*, 10, 207–212, <https://doi.org/10.1038/ngeo2891>, 2017.
- Schmittner, A., Urban, N. M., Shakun, J. D., Mahowald, N. M., Clark, P. U., Bartlein, P. J., Mix, A. C., and Rosell-Mele, A.: Climate Sensitivity Estimated from Temperature Reconstructions of the Last Glacial Maximum, *Science (80-. )*, 334, 1385–1388, <https://doi.org/10.1126/science.1203513>, 2011.
- Schuldt, R. J., Brovkin, V., Kleinen, T., and Winderlich, J.: Modelling Holocene carbon accumulation and methane emissions of boreal wetlands-an Earth system model approach, *Biogeosciences*, 10, 1659–1674, <https://doi.org/10.5194/bg-10-1659-2013>, 2013.



- Shakun, J. D. and Carlson, A. E.: A global perspective on Last Glacial Maximum to Holocene climate change, *Quat. Sci. Rev.*, 29, 1801–1816, <https://doi.org/10.1016/j.quascirev.2010.03.016>, 2010.
- Shi, J. and Yan, Q.: Evolution of the Asian–African Monsoonal Precipitation over the last 21 kyr and the Associated Dynamic Mechanisms, *J. Clim.*, 32, 6551–6569, <https://doi.org/10.1175/jcli-d-19-0074.1>, 2019.
- 5 Silvestri, S., Knight, R., Viezzoli, A., Richardson, C. J., Anshari, G. Z., Dewar, N., Flanagan, N., and Comas, X.: Quantification of Peat Thickness and Stored Carbon at the Landscape Scale in Tropical Peatlands: A Comparison of Airborne Geophysics and an Empirical Topographic Method, *J. Geophys. Res. Earth Surf.*, 124, 3107–3123, <https://doi.org/10.1029/2019JF005273>, 2019.
- Sitch, S., Smith, B., Prentice, I. C., Arneth, A., Bondeau, A., Cramer, W., Kaplan, J. O., Levis, S., Lucht, W., Sykes, M. T., Thonicke, K., and Venevsky, S.: Evaluation of ecosystem dynamics, plant geography and terrestrial carbon cycling in the LPJ dynamic global vegetation model, *Glob. Chang. Biol.*, 9, 161–185, <https://doi.org/10.1046/j.1365-2486.2003.00569.x>, 2003.
- 10 Spahni, R., Joos, F., Stocker, B. D., Steinacher, M., and Yu, Z. C.: Transient simulations of the carbon and nitrogen dynamics in northern peatlands: From the Last Glacial Maximum to the 21st century, *Clim. Past*, 9, 1287–1308, <https://doi.org/10.5194/cp-9-1287-2013>, 2013.
- Stocker, B. D., Roth, R., Joos, F., Spahni, R., Steinacher, M., Zaehle, S., Bouwman, L., Xu-Ri, and Prentice, I. C.: Multiple greenhouse-gas feedbacks from the land biosphere under future climate change scenarios, *Nat. Clim. Chang.*, 3, 666–672, <https://doi.org/10.1038/nclimate1864>, <http://www.nature.com/doi/finder/10.1038/nclimate1864>, 2013.
- 15 Stocker, B. D., Spahni, R., and Joos, F.: DYP TOP: A cost-efficient TOPMODEL implementation to simulate sub-grid spatio-temporal dynamics of global wetlands and peatlands, *Geosci. Model Dev.*, 7, 3089–3110, <https://doi.org/10.5194/gmd-7-3089-2014>, 2014.
- Stocker, B. D., Yu, Z., Massa, C., and Joos, F.: Holocene peatland and ice-core data constraints on the timing and magnitude of CO<sub>2</sub> emissions from past land use, *Proc. Natl. Acad. Sci.*, 114, 1492–1497, <https://doi.org/10.1073/pnas.1613889114>, 2017.
- 20 Stocker, T. F. and Johnsen, S. J.: A minimum thermodynamic model for the bipolar seesaw, *Paleoceanography*, 18, 1–9, <https://doi.org/10.1029/2003PA000920>, 2003.
- Sun, Q., Miao, C., Duan, Q., Ashouri, H., Sorooshian, S., and Hsu, K.: A Review of Global Precipitation Data Sets: Data Sources, Estimation, and Intercomparisons, *Rev. Geophys.*, 56, 79–107, <https://doi.org/10.1002/2017RG000574>, 2018.
- Swindles, G. T., Morris, P. J., Mullan, D., Watson, E. J., Turner, T. E., Roland, T. P., Amesbury, M. J., Kokfelt, U., Schoning, K., Pratte, S., Gallego-Sala, A., Charman, D. J., Sanderson, N., Garneau, M., Carrivick, J. L., Woulds, C., Holden, J., Parry, L., and Galloway, J. M.: The long-term fate of permafrost peatlands under rapid climate warming, *Sci. Rep.*, 5, 1–6, <https://doi.org/10.1038/srep17951>, <http://dx.doi.org/10.1038/srep17951>, 2015.
- Swinnen, W., Broothaerts, N., and Verstraeten, G.: Modelling long-term blanket peatland development in eastern Scotland, *Biogeosciences*, 16, 3977–3996, <https://doi.org/10.5194/bg-16-3977-2019>, 2019.
- 30 Talbot, J., Richard, P., Roulet, N., and Booth, R.: Assessing long-term hydrological and ecological responses to drainage in a raised bog using paleoecology and a hydrosequence, *J. Veg. Sci.*, 21, 143–156, <https://doi.org/10.1111/j.1654-1103.2009.01128.x>, 2010.
- Tardif, R., Hakim, G. J., Perkins, W. A., Horlick, K. A., Erb, M. P., Emile-Geay, J., Anderson, D. M., Steig, E. J., and Noone, D.: Last Millennium Reanalysis with an expanded proxy database and seasonal proxy modeling, *Clim. Past*, 15, 1251–1273, <https://doi.org/10.5194/cp-15-1251-2019>, 2019.
- 35 Tarnocai, C., Canadell, J. G., Schuur, E. A. G., Kuhry, P., Mazhitova, G., and Zimov, S.: Soil organic carbon pools in the northern circumpolar permafrost region, *Global Biogeochem. Cycles*, 23, 1–11, <https://doi.org/10.1029/2008GB003327>, 2009.
- Tchilinguirian, P., Morales, M., Oxman, B., Lupo, L., Olivera, D., and Yacobaccio, H.: Early to Middle Holocene transition in the Pastos Chicos record, dry Puna of Argentina, *Quat. Int.*, 330, 171–182, <https://doi.org/10.1016/j.quaint.2012.03.006>, 2014.

- Tipping, R.: Holocene evolution of a lowland Scottish landscape: Kirkpatrick Fleming. Part I, peat- and pollen-stratigraphic evidence for raised moss development and climatic change, *The Holocene*, 5, 69–81, <https://doi.org/10.1177/095968369500500108>, 1995.
- Treat, C. C., Kleinen, T., Broothaerts, N., Dalton, A. S., Dommain, R., Douglas, T. A., Drexler, J. Z., Finkelstein, S. A., Grosse, G., Hope, G., Hutchings, J., Jones, M. C., Kuhry, P., Lacourse, T., Lähteenoja, O., Loisel, J., Notebaert, B., Payne, R. J., Peteet, D. M., Sannel, A. B. K., Stelling, J. M., Strauss, J., Swindles, G. T., Talbot, J., Tarnocai, C., Verstraeten, G., Williams, C. J., Xia, Z., Yu, Z., Väliranta, M., Hättestrand, M., Alexanderson, H., and Brovkin, V.: Widespread global peatland establishment and persistence over the last 130,000 y, *Proc. Natl. Acad. Sci.*, 116, 201813305, <https://doi.org/10.1073/pnas.1813305116>, 2019.
- Turunen, J., Tolonen, K., Tomppo, E., and Reinikainen, A.: Estimating carbon accumulation rates of undrained mires in Finland - Application to boreal and subarctic regions, *Holocene*, 12, 69–80, <https://doi.org/10.1191/0959683602hl522rp>, 2002.
- 10 Wang, S., Zhuang, Q., Lähteenoja, O., Draper, F. C., and Cadillo-Quiroz, H.: Potential shift from a carbon sink to a source in Amazonian peatlands under a changing climate, *Proc. Natl. Acad. Sci.*, 115, 12407–12412, <https://doi.org/10.1073/pnas.1801317115>, 2018.
- Wania, R., Ross, I., and Prentice, I. C.: Integrating peatlands and permafrost into a dynamic global vegetation model: 2. Evaluation and sensitivity of vegetation and carbon cycle processes, *Global Biogeochem. Cycles*, 23, n/a–n/a, <https://doi.org/10.1029/2008GB003413>, 2009a.
- 15 Wania, R., Ross, L., and Prentice, I. C.: Integrating peatlands and permafrost into a dynamic global vegetation model: 1. Evaluation and sensitivity of physical land surface processes, *Global Biogeochem. Cycles*, 23, 1–19, <https://doi.org/10.1029/2008GB003412>, 2009b.
- Xu, J., Morris, P. J., Liu, J., and Holden, J.: PEATMAP: Refining estimates of global peatland distribution based on a meta-analysis, *CATENA*, 160, 134–140, <https://doi.org/10.1016/j.catena.2017.09.010>, 2018.
- Xu-Ri, Prentice, I. C., Spahni, R., and Niu, H. S.: Modelling terrestrial nitrous oxide emissions and implications for climate feedback, *New Phytol.*, 196, 472–488, <https://doi.org/10.1111/j.1469-8137.2012.04269.x>, 2012.
- 20 Yu, Z.: Holocene carbon flux histories of the world’s peatlands: Global carbon-cycle implications, *Holocene*, 21, 761–774, <https://doi.org/10.1177/0959683610386982>, 2011.
- Yu, Z.: No support for carbon storage of >1000 GtC in northern peatlands Comment on the paper by Nichols & Peteet (2019) in *Nature Geoscience* (12: 917–921), *Nat. Geosci.*, in review, <https://doi.org/10.31223/osf.io/hynm7>, 2019.
- 25 Yu, Z., Loisel, J., Brosseau, D. P., Beilman, D. W., and Hunt, S. J.: Global peatland dynamics since the Last Glacial Maximum, *Geophys. Res. Lett.*, 37, 1–5, <https://doi.org/10.1029/2010GL043584>, 2010.
- Yu, Z., Loisel, J., Turetsky, M. R., Cai, S., Zhao, Y., Frohking, S., MacDonald, G. M., and Bubier, J. L.: Evidence for elevated emissions from high-latitude wetlands contributing to high atmospheric CH<sub>4</sub> concentration in the early Holocene, *Global Biogeochem. Cycles*, 27, 131–140, <https://doi.org/10.1002/gbc.20025>, 2013.
- 30 Yu, Z., Loisel, J., Charman, D. J., Beilman, D. W., and Camill, P.: Holocene peatland carbon dynamics in the circum-Arctic region: An introduction, *Holocene*, 24, 1021–1027, <https://doi.org/10.1177/0959683614540730>, 2014.
- Yu, Z. C.: Northern peatland carbon stocks and dynamics: A review, *Biogeosciences*, 9, 4071–4085, <https://doi.org/10.5194/bg-9-4071-2012>, 2012.