

Chemical characterization of Punta de Fuencaliente CO₂ seep system (La Palma Island, NE Atlantic Ocean): a new natural laboratory for ocean acidification studies

Sara González-Delgado¹, David González-Santana^{2,3}, Magdalena Santana-Casiano², Melchor González-Dávila², Celso A. Hernández¹, Carlos Sangil¹, José Carlos Hernández¹.

¹ Departamento de Biología Animal, Edafología y Geología, Facultad de Ciencias, Universidad de La Laguna, Canary Islands, Spain.

² Instituto de Oceanografía y Cambio Global, IOCAG-ULPGC. Universidad de Las Palmas de Gran Canaria, Canary Islands, Spain.

³ Univ Brest, CNRS, IRD, Ifremer, LEMAR, F-29280 Plouzane, France.

Corresponding author: Sara González-Delgado (sgonzald@ull.edu.es)

Abstract. We present a new natural carbon dioxide (CO₂) system located off the southern coast of La Palma Island (Canary Islands, Spain). Like CO₂ seeps, these CO₂ submarine groundwater discharges (SGD) can be used as an analogue to study the effects of ocean acidification (OA) on the marine realm. With this aim, we present the chemical characterization of the area, describing the carbon system dynamics, by measuring pH, A_T and C_T, and calculating Ω_{aragonite} and Ω_{calcite}. Our explorations on the area have found several emission points with similar chemical features. Here, the C_T varies from 2120.10 to 10784.84 μmol kg⁻¹, A_T from 2415.20 to 10817.12 μmol kg⁻¹, pH from 7.12 to 8.07, Ω_{aragonite} from 0.71 to 4.15 and Ω_{calcite} from 1.09 to 6.49 units. Also, the CO₂ emission flux varies between 2.8 to 28 kg CO₂ d⁻¹, becoming a significant source of carbon. These CO₂ emissions, which are of volcanic origin, acidify the brackish groundwater that is discharged into the coast and alter the local seawater chemistry. Although this kind of acidified system is not a perfect image of future oceans, this area of La Palma island is an exceptional spot to perform studies aimed to understand the effect of different levels of OA on the functioning of marine ecosystems. These studies can then be used to comprehend how life has persisted through past Eras, with higher atmospheric CO₂, or to predict the consequences of present fossil fuel usage on the marine ecosystem of the future oceans.

Keywords. Volcanic, hydrothermal, brackish water discharge, groundwater, ocean acidification, ocean chemistry.

1 Introduction

Since the last decade, marine systems with natural carbon dioxide (CO₂) sources have been used as analogous of the acidified future oceans (GAT) to understand its effects on organisms and marine ecosystems functioning (IPCC, 2014; Hall – Spencer et al., 2008; Foo et al., 2018; González-Delgado and Hernández, 2018). These areas are characterized by an extra-CO₂ input from volcanic (normally called CO₂ seeps), karstic or biological sources or originate from upwelling (González-Delgado and Hernández, 2018). Due to its origin, CO₂ vent systems are very common and can be found all over the world from mid-oceanic ridges to oceanic island and intra-plate magmatism (Dando et al., 1999; Tarasov et al., 2005). Moreover, there are marine shallow areas affected by CO₂ gas diffusive emissions through submarine groundwater discharges (SGD) that acidify the surrounding waters (Hall-Spencer et al., 2008).

Numerous advances in OA studies have been achieved using these systems, such as acidification effect on ecology interaction (ej. Nagelkerken et al., 2016), physiological (ej. Migliaccio et al., 2019) and genetic adaptations (ej. Olivé et al., 2017). Nowadays, it is possible to better understand the direct and indirect effects of OA in marine environments due to these acidified

Eliminado: others

Eliminado: seeps

Eliminado: an accurate

Eliminado: seeps system carbon emissions

systems, for instance we now know that OA related changes will reflect in the services that ecosystems provide to us (Hall-Spencer and Harvey, 2019). Acidified systems can be also used to look back into the past of the Earth, and to study how early life could have originated on the planet (Martin et al., 2008). Understanding how life has adapted in the past acidified Eras, can be extremely useful to understand how current life will change in the expected future (Gattuso et al., 1998).

50 In general, the vent systems have emissions in the form of bubbles which are 90-99% CO₂. The remaining percentage corresponds to other gases or elements, such as methane (CH₄), sulfide (H₂S), heavy metals, and others. However, these undesired gases or metals have had an insignificant effect on the studies performed in these areas (Boatta et al., 2013; Vizzini et al., 2013; Agostini et al., 2015; Pichler et al., 2019). The most notable features of these acidified systems are the fluctuation of pH, the aragonite and calcite saturation states (Ω) (declining between 1 and 3) and dissolved inorganic carbon (DIC) which

55 increases up to 3.2 mol C m⁻³ (González-Delgado and Hernández, 2018).

The Canary Islands, located in the North-Eastern Atlantic Ocean, are an oceanic volcanic archipelago formed by numerous hotspot island chains (Carracedo et al., 2001). The youngest islands are El Hierro with 1.1 million years and La Palma with an age of 2 million years (Carracedo et al., 2001). These islands are located to the west of the archipelago and it is where the last historical eruptions have taken place. The last two were the Teneguía volcano in La Palma in 1971, and the Tagoro volcano in

60 El Hierro in 2011 (Padrón et al., 2015; Santana-Casiano et al., 2016).

Currently, in the historic volcanic area in the south of La Palma (Cumbre Vieja volcano complex), there is a continuous degassing of CO₂ (Carracedo et al., 2001; Padrón et al., 2015). Correspondingly, on the nearby shore, CO₂ emissions have been detected recently in two different locations: Las Cabras site (Hernandez et al., 2016) and Punta de Fuencaliente, which has already been used for OA ecological studies (Pérez, 2017; Viotti et al., 2019). However, in these works only the pH and

65 pCO₂ were measured, in localised points where certain samples were taken.

The local name “Fuencaliente”, which translates into hot-springs, refers to the thermal fresh waters that emerge at the coast. Before the conquest of the islands in 1492, its waters were used by locals for its healing properties, and after that by visitors from all over the world (Soler, 2007). However, these *thermas* were buried by the eruption of the San Antonio volcano in the 17th Century. These thermal waters have been so famous and important for Fuencaliente people, that there was an engineering

70 project to dig up these special waters (Soler, 2007). The brackish water features measured by Soler (2007) showed high concentrations of bicarbonate (HCO₃⁻), sulphate (SO₄²⁻), chloride (Cl⁻), that together with high temperatures (almost 50 °C) confirmed the influence of internal magmatic activity. Nearby, there are brackish lagoons located in the innermost part of Echentive beach, about 200 m from the coastline with diameters of 30 m and depths of up to 4 m (Fig. 1). Measures of oxygen isotope ($\delta^{18}\text{O}$ SMOW) (Calvet et al., 2003) suggest a slight dilution of the seawater in the lagoons by inland brackish

75 groundwater flowing into it. This indicates that in the system there are groundwater discharges, which probably comes from the thermal waters studied by Soler (2007).

In the last two decades, an increasing number of studies underlined the importance of SGD (Jeandel, 2016). SGD is an essential but poorly recognized pathway of material transport to the marine environment (Szymczycha et al., 2014). The term SGD includes the discharge of fresh groundwater to coastal seas to which recirculation of seawater often contributes (Burnett et al.,

80 2006, Charette et al., 2016). For issues related to oceanography, the term is restricted to fluid circulation through continental shelf sediments with emphasis on the coastal zone (Burnett et al., 2006, Jeandel, 2016). One aspect that has yet not been considered is, what occurs in areas where SGD is enriched by the emissions of recent volcanism or by hydrothermal activity?. In this case, these discharges can also act as sources of gases and hydrothermal emission compounds to the ocean and become points of emission of CO₂ that contribute to the OA. However, shallow coastal beaches and intertidal lagoons are highly

85 dynamic systems controlled by physical processes and subjected to marine and continental influences. Processes as the tide or the submarine groundwater discharges produce higher ranges of variation in physical and chemical parameters than in the open ocean water and could provide a natural environment for laboratory studies.

Con formato: Subíndice

Eliminado: submarine groundwater discharges

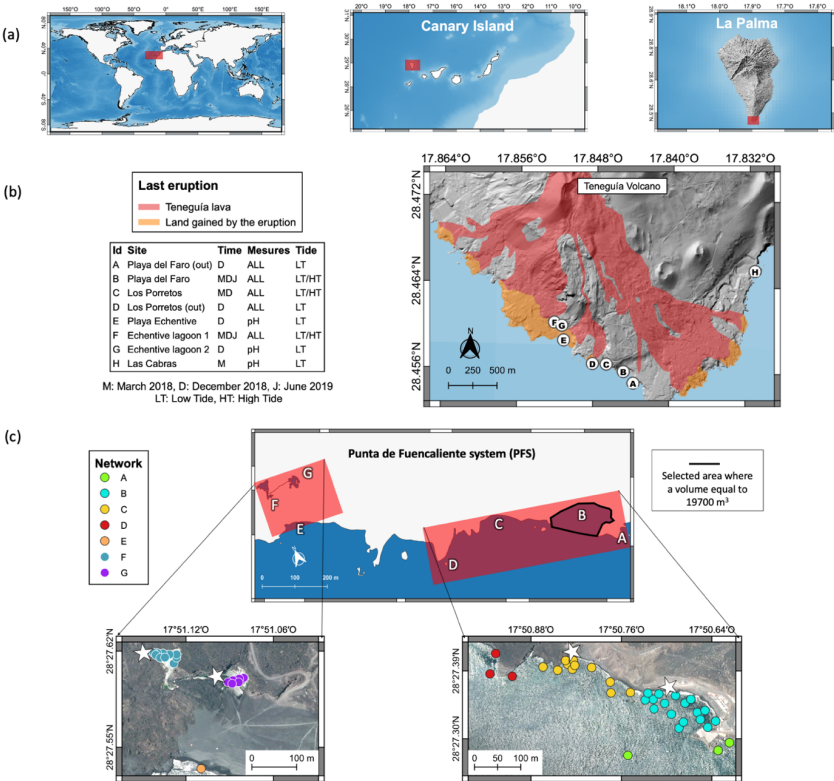
Eliminado: (SGD)

Hence, and with the purpose of using the Punta de Fuencaliente area as a natural acidified laboratory, an accurate physical and chemical characterization of this area is presented in this study. The main objectives were (1) determining the area affected by the emissions and detecting new emissions points for replication studies, (2) characterize the ocean chemistry of the area, and (3) to confirm the volcanic origin of the acidification.

2 Material and methods

2.1 Study area

The physical-chemical parameters were sampled across the south of La Palma island, located in the west of the Canary Islands (North-Eastern Atlantic Ocean) (Fig. 1a, supplementary material 1, 2). The sampling took places between 0 and 2 m depth, at three different times (March 2018, December 2018 and June 2019) and during low and high tide when it was necessary to assess the continuity of the natural emissions (Fig. 1b, supplementary material 2 - Table SM2). Following the previous studies in the area (Hernández et al., 2016; Pérez, 2017; González-Delgado et al., 2018a; González-Delgado et al., 2018b; Hernández et al., 2018; Viotti et al., 2019), a sampling network was created for the first time. It is formed by seven sites: Playa del Faro, Los Porretos and surroundings (that together with Las Cabras site, they are known as Punta de Fuencaliente system or PFS), Playa Echentive and the two Echentive lagoons (Fig. 1c).



105 Figure 1: (a) Location of study are on North-Eastern Atlantic Ocean, in the west of the Canary Island, in the South of La Palma
 110 Island. (b) Location of the seven sampling sites (A-G) in the south of the island of La Palma. The location of Punta Las Cabras (H)
 considered in Hernández et al. (2016) is also included. The area covered by the last volcanic eruption, Teneguía volcano, is also
 indicated. (c) Location of sampling network performed in this work around the Punta de Fuencaliente system (PFS) and the selected
 area where the volume was calculated to CO₂ flux calculation. The stars are included as a help to better interpret and locate the
 interpolation graphics from Figure 2-4. The map and image base layers used are distributed under public domain
 (https://www.grafcan.es/).

Scuba diving was used for sampling all bottles unless the reference station out of Playa del Faro (Fig. 1c A), where a CTD
 rosette was used. For the scuba sampling, the bottles were previously rinsed three times at the sampling location and then the
 bottle was immersed with the mouth down and turned at 1 m depth for sampling. Samples were poisoned with 100 µl of
 115 saturated HgCl₂ solution, sealed, kept at darkness, and analysed on the lab. In March 2018, this was done the same day while
 in December it was done two days later. For pH 100 ml borosilicate glass bottles were filled with seawater.

2.2 Carbon dioxide system parameters

In March and December of 2018, the total dissolved inorganic carbon concentration (C_T), total alkalinity (A_T), pH, salinity and
 temperature were measured, whilst in June 2019 only the pH and temperature were measured. Total alkalinity and C_T were
 120 respectively determined by potentiometric and coulometric methods, using a VINDTA3C system (Mintrop et al., 2000). The
 calibrations were made using certified reference material batch #163 (González-Dávila et al., 2007). The pH was measured at
 a constant temperature ~~thank to a thermostat~~ at 25 °C in less than one hour ~~using~~ an Orion pH meter with a combined Orion
 glass electrode (pH_{T, is}). The calibration was performed on the total seawater scale using a TRIS artificial seawater buffer
 (salinity 35) according to the Guide to best practices for ocean CO₂ measurements (Dickson et al., 2007, SOP 6a).

125 Salinity and temperature were analysed ~~in situ~~ using a handheld conductivity meter (Hanna Instruments HI98192).
 Furthermore, 200 ml salinity bottles were measured on the laboratory in less than two days and using a high-precision Portasal
 salinometer, accurate to ±0.001. The pH under “*in situ*” conditions, the partial pressure of carbon dioxide (pCO₂) and the
 saturation states of calcium carbonate forms (Ω aragonite and Ω calcite) were determined from A_T and C_T data using the
 CO2sys program (Pierrot et al., 2006).

130 Atmospheric CO₂ concentrations used for fluxes calculations were those measured at the Izaña station at the island of Tenerife
 (IZO site and available in the World Data Centre for Greenhouse Gases).

We used the linear interpolation method to represents the A_T, C_T, pH_{T, is}, Ω aragonite and calcite parameters measurement when
 anomalies were found.

3 Results

135 After extensive sampling throughout the south of La Palma, we detected four areas where natural ~~enrichment~~ ~~CO₂~~ groundwater
 emissions occur. These four areas, Las Cabras, La Playa del Faro, Los Porretos and the two Echentive Lagoons (Fig. 1b,c),
 correspond to areas that were not buried by the lava during the last eruption (Teneguía volcano 1971; Padrón et al., 2015, Fig.
 1b). Las Cabras site was discarded in subsequent samplings due to the difficult access, the poor sea conditions and the small
 size of the area affected by the emissions (Hernández et al. 2016). In all cases, the anomalies were the highest during low tide
 140 (supplementary material 2 - figure SM2).

3.1 Temperature and salinity

Temperature and salinity in Playa del Faro and Los Porretos do not present major changes between the different time points
 (supplementary material 3). During March 2018, Playa del Faro had an average temperature of 19.00 ± 0.20 °C with colder

145 values of 18.70 °C near shore, Los Porretos was not measured this time. In December 2018, both Playa del Faro and Los Porretos presented an average temperature of 21.50 ± 0.02 °C. However, salinity values present a minor diminution from 37.05 to 36.51 in Playa del Faro and from 37.05 to 36.07 in Los Porretos (supplementary material 3). Both sites presented colder and slightly less saline water near the coast. Regarding the Echentive lagoons, only the biggest lagoon was measured, where the salinity varied from 31.00 to 32.00 units (supplementary material 3). The same lagoon presented warmer temperatures than the coastal waters during June 2019, 26.40 ± 0.70 °C and 22.00 ± 0.10 °C, respectively.

150 3.2 Carbon dioxide system parameters

In both studied shore areas of PFS (Playa del Faro and Los Porretos) the parameters of the carbon dioxide system, $\text{pH}_{\text{T, is}}$ (Fig. 2A, B), A_{T} , C_{T} and Ω aragonite and calcite (Fig. 3, 4B) were strongly affected by the entrance of ~~the SGD~~ with less salinity.

Eliminado: water

3.2.1 Playa del Faro

155 In March 2018, the pH changed from 8.06 in offshore samples to 7.50 nearshore, reaching 7.16 and 7.13 during December 2018 and June 2019, respectively (Fig. 2A). Similarly, high A_{T} and DIC were measured throughout Playa del Faro. In March 2018, the ocean data obtained in the furthest coast station of Playa del Faro reached typical values of $2132.13 \mu\text{mol kg}^{-1}$ and $2418.38 \mu\text{mol kg}^{-1}$, respectively for C_{T} and A_{T} (supplementary material 3). As we approached the shore, both factors increased to values that exceeded $3100 \mu\text{mol kg}^{-1}$, following an inverse distribution observed with salinity, with an increase in the $C_{\text{T}}:A_{\text{T}}$ ratio close to 1:1, indicating an important contribution of bicarbonate along the area (Fig. 3a, b). In December 2018, the anomaly increased to over $3500 \mu\text{mol kg}^{-1}$ in both parameters. As a direct consequence of the low pH values, although compensated by the high C_{T} , A_{T} and dissolved calcium contents (determined by ICP-MS, data not presented), the calcite and aragonite saturation states were also affected. It was observed that the area nearest to the shore presented saturation values of calcite and aragonite that were below 1.50 (Fig. 3c, d).

165 During high tide, the anomalies almost disappeared, which means that the tide acts as a pressure plug of the flow of this water to the coastal area. Nevertheless, we still found a mild increase in A_{T} and C_{T} (reaching 2692.13 and $2512.35 \mu\text{mol kg}^{-1}$ respectively) (Fig. 3a, b) and pH values of 7.75 - 7.85 in the sampling points closest to the coast (Fig. 2A).

3.2.2 Los Porretos

170 Los Porretos, is a continuation of Playa del Faro that is also affected by the ~~SGD~~ with high C_{T} and low pH. This ~~discharge~~ was first observed during March 2018. The measured C_{T} exceeded $3400 \mu\text{mol kg}^{-1}$ and the $\text{pH}_{\text{T, is}}$ reached 7.25 at the emission station (Fig. 2B, Fig. 4B). In December, the sampling was repeated, observing that the most anomalous values occurred in the stations closest to the coast. The emission point presented C_{T} concentrations of $3456.6 \mu\text{mol kg}^{-1}$ (corresponding with carbon dioxide pressure values of 5200 μatm), pH values of 7.27, and 1.45 and 0.95 values of Ω calcite and aragonite, respectively (Fig. 2B, Fig. 4B, supplementary material 3).

175 In both beaches, the emission is acting as an important source of CO_2 into the atmosphere. In Playa del Faro, the partial pressures of CO_2 in surface waters reached up to 5000 μatm in low tide (the values in the atmosphere were between 405 and 410 μatm) (supplementary material 3). This produced high concentration gradients that combined with high-intensity winds characteristic of the area, produced CO_2 fluxes that can reach up to $1 \text{ mol m}^{-2} \text{ day}^{-1}$ (considering its main effects during low tide and Wanninkhof, 2014 for the gas transfer velocity coefficient) that amount up to 150 tons of CO_2 per year.

Eliminado: emission of wate

Eliminado: r

Eliminado: emission

3.2.3 Echentive lagoons

180 The two lagoons at Playa Echentive (Fig. 1c) show the maximum anomalies in the south of La Palma. They presented low salinities and low pH, below 7.5 in all stations, and reaching 7.39 in the northwest during March 2018 (data only from the big

lagoon) (Fig. 2C, D). Similarly, the C_T was above $9700 \mu\text{mol kg}^{-1}$, with comparable values for A_T (Fig. 4Ca, b). These C_T and A_T concentration together with the low pH values counteracted the saturation states of calcite and aragonite that were, respectively, never below 4.35 and 2.79 (Fig. 4Cc, d). Furthermore, when both lagoons were sampled during December 2018, similar concentrations were measured at low and high tide (Fig. 2C, D). The north-western part of the big lagoon presented the highest C_T concentration (greater than $10000 \mu\text{mol kg}^{-1}$) and the lowest pH reached 7.38 in low tide and 7.55 at high tide that coincided with a decrease in salinity and a mild temperature increase (Fig. 2C, D, supplementary material 3). The rest of the big lagoon remained at pH 7.58, ~~like the small lagoon with a maximum pH of 7.63. However, the small lagoon presented a lower pH range, with a minimum of 7.50 in low tide and a maximum of 7.64 in high tide in the northern part (Fig. 2C, D).~~

The water levels in both lagoons were tide dependent. The entry of salty marine water during high tide reduced the anomaly caused by the intrusion of lower salinity water rich in C_T and A_T .

Eliminado: similar to

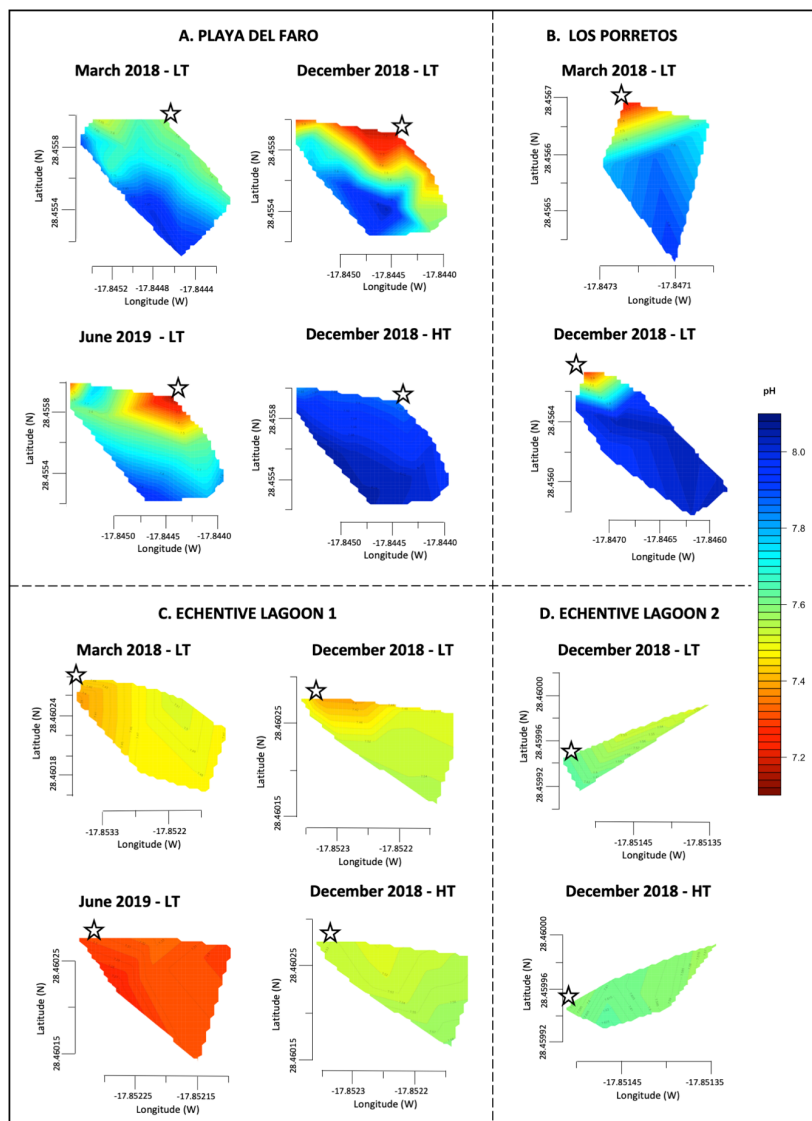


Figure 2: Linear interpolation graphs of pH values that were collected in March 2018, December 2018 and June 2019 during low tide (LT) and high tide (HT) in Playa del Faro (A), Los Porretos (B), Echentive lagoon 1 (C) and Echentive lagoon 2 (D). The star symbol is the reference mark on the map in Figure 1c.

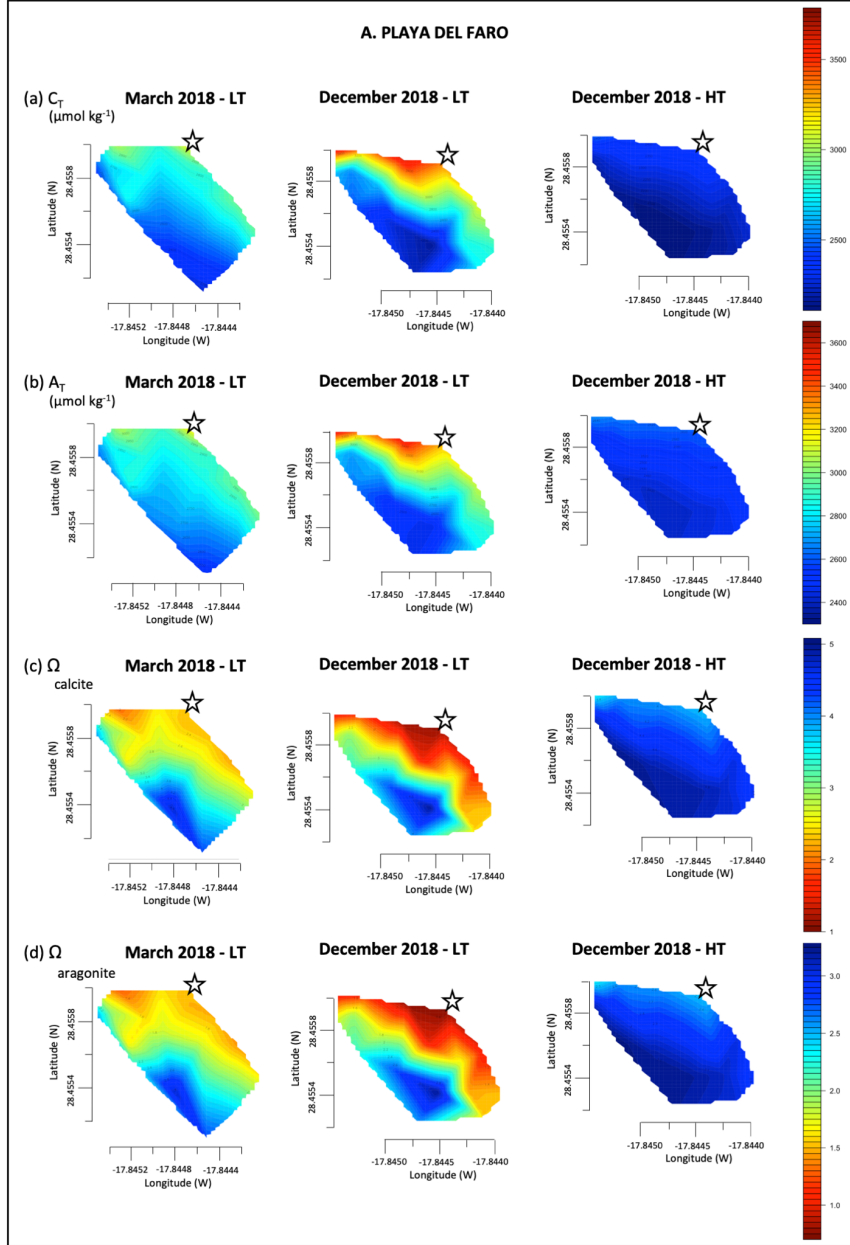
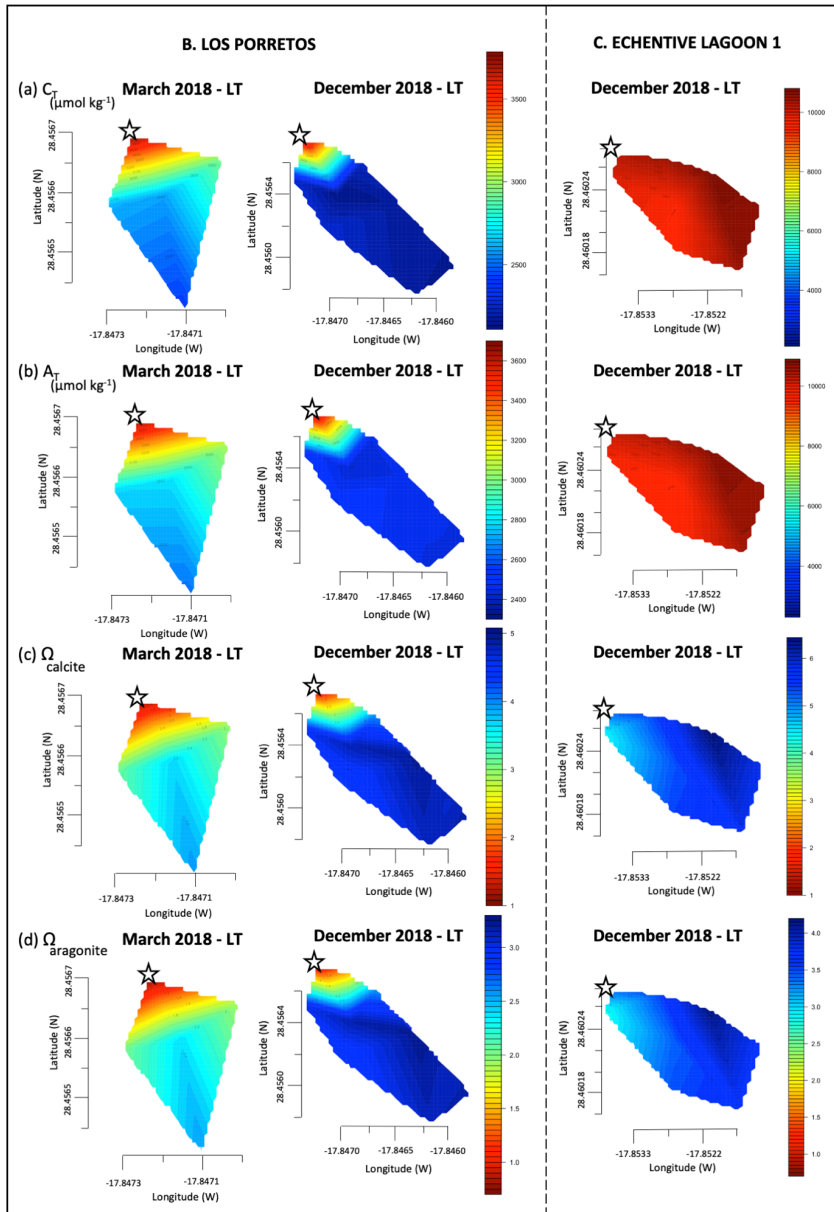


Figure 3: Linear interpolation graphs of C_T (a), A_T (b), Ω_{calcite} (c) and $\Omega_{\text{aragonite}}$ (d) values during March 2018, December 2018 during low tide (LT) and high tide (HT) in Playa del Faro. The star symbol is the reference mark on the map in Figure 1c.



205 Figure 4: Linear interpolation graphs of C_T (a), A_T (b), Ω_{calcite} (c) and $\Omega_{\text{aragonite}}$ (d) values during March 2018 and December 2018 during low tide (LT) in Los Porretos (B) and Echentive Lagoon 1 (C). The star symbol is the reference mark on the map in Figure 1c.

3.3 CO_2 flux calculation

210 The CO₂ flux was calculated for Playa del Faro. We assumed two end members, the open ocean endmember and **an the SGD** endmember. Soler (2007) discovered an aquifer near this area with brackish water (salinity = 30). Considering the bathymetry, the volume occupied by seawater was 19700 m³. We also assumed that groundwater discharge only occurred at low tide. The average salinity changed from 36.93 (equivalent to 745.8 Tons of sea **sat**) at low tide to 37.02 at high tide (747.5 Tons of sea salt). The decrease in salinity at low tide could be accounted for by the emission of 57m³ of brackish groundwater.

215 The brackish groundwater was also responsible for the A_T and C_T changes (Fig. 3a, b). Alkalinity increased by 219 μmol kg⁻¹ from high tide (2465 μmol kg⁻¹) to low tide (2684 μmol kg⁻¹). Considering 57 m³ of brackish water, 4.40 kmol of alkalinity was required therefore, the brackish groundwater had an A_T concentration of 76 mmol kg⁻¹. Similarly, the C_T in the beach increased by 333 μmol kg⁻¹, from high tide (2190 μmol kg⁻¹) to low tide (2523 μmol kg⁻¹). The brackish water caused the increase of 6.7 kmol of inorganic carbon to the beach and therefore, had an endmember concentration of 116 mmol kg⁻¹.

220 Considering the *in situ* temperature (20.67 °C), the pH_{T, is} decreased by 0.25 from 8.01 in high tide to 7.76 in low tide. This meant that the acidity increased by 80%. This pH reduction meant that the water discharged on the beach had a pH of 5.57. The medium partial pressure of carbon dioxide for the area increased from 459 μatm at high tide to a value of 988 μatm at low tide. Considering an average wind speed at the beach of 7 m s⁻¹ (<https://datosclima.es/Aemethistorico/Vientostad.php>), La Playa del Faro acts as a strong source of CO₂, emitting 5.70 mmol CO₂ m⁻² d⁻¹ at high tide and increasing an order of magnitude at low tide (57 mmol CO₂ m⁻² d⁻¹, Wanninkhof, 2014). Consequently, La Playa del Faro with its small area of only 0.01 km²,

225 is responsible for an atmospheric CO₂ emission flux varying between 2.80 kg CO₂ d⁻¹ to 28 kg CO₂ d⁻¹.

Eliminado: aquifer

4 Discussion

4.1 The origin of the CO₂ **submarine groundwater discharge**

Eliminado: seeps

230 Although CO₂ emissions on Fuencaliente coast had already been detected (e.g. Hernández et al., 2016; Viotti et al., 2019), this is the first time that this naturally acidified system has been described chemically and physically. Previous works have focused on punctual questions; Hernández and collaborators (2016) published for the first time the presence of CO₂ SGD in Fuencaliente, specifically in Las Cabras beach. Later, in the thesis by Pérez (2017), as well as in the conference papers by González-Delgado et al. (2018a,b) and in the article by Viotti et al. (2019), new points of acidification were discovered on Playa del Faro and Los Porretos. However, in none of them was a chemical characterization of the whole area made as here.

235 Our results reveal the **continuous** influence of brackish water discharge in the acidification process of Punta de Fuencaliente System (PFS), **which had been missed before** (Fig. 5). Similar to aerial remnant volcanic activity in La Palma that generates high CO₂ **diffusive** atmospheric concentration (Padrón et al., 2015), submarine remnant volcanic activity causes the acidification process found here, **as indicated by the chemical composition of the groundwater analysed, which is less than 200 m from the coast (Soler, 2007). The activity of this SGD is** comparable with other CO₂ vent and seep systems worldwide (references within González-Delgado and Hernández, 2018). Moreover, the presence of acidic water flow of La Palma also

240 has a slight resemblance with the acidification phenomenon found in Mexico, originating from a karstic groundwater discharge (Crook et al., 2012). Furthermore, the highly alkalized and bicarbonate waters found in Echentive lagoons are an artefact of water discharge from the hydrothermally affected aquifers of the area (Soler, 2007), as found in Las Cañadas del Teide, in Tenerife (another island of the same archipelago) (Marrero et al., 2008).

245 In PFS there is a decrease in salinity due to brackish water discharges. Hence, there is a constant filtration of brackish acidified waters through high permeable volcanic rocks (Carracedo et al., 2001; Marrero et al., 2008), with chemical features due to underground volcanic activity, such as a 5.57 pH, a concentration of 76 mmol Kg⁻¹ of A_T and 116 mmol Kg⁻¹ of C_T. However, the effect on the surrounding seawaters depends upon tidal pressure and, more likely, other oceanic forces such as wind and waves (Moore, 2010; Mulligan et al., 2019).

Con formato: Subíndice

Con formato: Inglés (americano)

Con formato: Inglés (americano)

Con formato: Inglés (americano)

Con formato: Inglés (americano)

Con formato: Inglés (americano)

Eliminado:

Eliminado: i

Eliminado: s

Eliminado: is

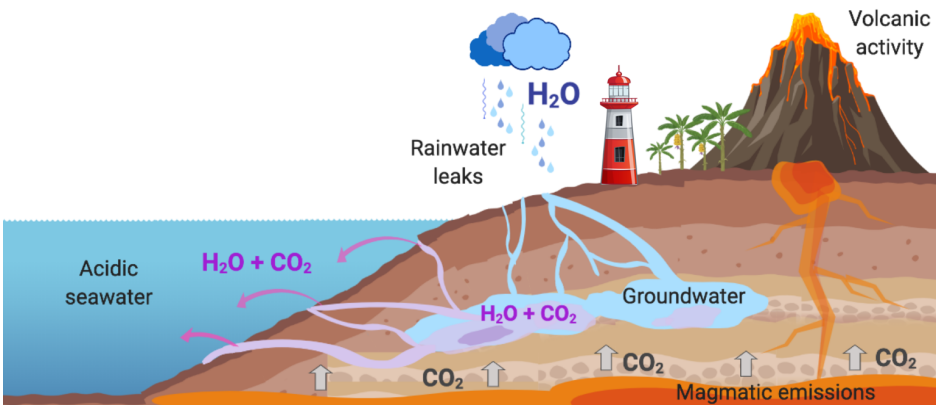


Figure 5: Acidification process representation of Punta de Fuencaliente system (PFS) (made with Biorender).

4.2 Alteration of the carbon chemistry system and organism's assemblages

In the case of PFS, the water with lower salinity (36.79 - 36.45) and high concentration of C_T and A_T affect the surroundings, decreasing the seawater pH up to 0.8 and reducing the carbonates saturation state up to 1.1 of calcite and 0.7 of aragonite. This situation generates a carbon imbalance affecting carbonated organisms, especially those that precipitate aragonite on their calcareous structures (Kroeker et al., 2010). When the saturation values are below one, the formation of carbonates is not thermodynamically possible, although certain species require much higher saturation levels (Kroeker et al., 2010). The calcifying organisms that could live in these acidified areas may present weaker shells, skeletons and/or others solid structures, as we have recently observed in the mollusc *Phorcus sauciatius* (Viotti et al., 2019), as well as in the rest of calcifying organisms (Pérez, 2017). This excess of CO_2 has also modified the community composition and trophic structure, causing a loss of ecological and functional diversity on the benthic marine ecosystem (González-Delgado et al., in press).

In the case of Echentive lagoons, the anomaly is amplified due to a lower tidal influence and insulation. These acidified lagoons, which are at around 200 m distance from the coast (Fig. 1), have a salinity of 32 and C_T and A_T concentrations five times higher than normal ocean values. The C_T and A_T concentrations are so high that they compensate the decrease in pH with the content of carbonates in the water. These singular characteristics create a unique marine ecosystem. The environment is dominated by a biofilm of microorganisms predominantly microalgae, cyanobacteria and diatoms (Sangil et al., 2008), and probably other bacteria and fungi. Nonetheless, some marine invertebrates persist, such as the common errant polychaete *Eurythoe complanata* and the anemone *Actinia* sp. (Sangil et al., 2008). A more in-depth physiological study of these species could help us to better understand their adaptation process to these conditions and to give insights of what we might expect in future ocean acidification conditions, especially at the PFS area.

4.3 La Palma as a natural laboratory for marine research

The natural CO_2 gradients south of La Palma have been characterized from shore to offshore, varying for C_T from 2120.10 to 3794.00 $\mu\text{mol kg}^{-1}$, for pH from 7.12 to 8.07, for $\Omega_{\text{aragonite}}$ from 0.71 to 3.28 and Ω_{calcite} from 1.09 to 5.02. These variations are very similar to other acidified natural systems. For example, the CO_2 vent of Ischia (Italy) has pH levels from 6.07 to 8.17, $\Omega_{\text{aragonite}}$ from 0.07 to 4.28 and Ω_{calcite} from 0.11 to 6.40 (Hall-Spencer et al., 2008). The one from the island of Vulcano (Italy) has pH values between 6.80 and 8.20, $\Omega_{\text{aragonite}}$ from 1.49 to 4.65, and Ω_{calcite} from 2.28 to 7.00 (Boatta et al., 2013).

Eliminado: n

- Con formato: Subíndice
- Con formato: Inglés (americano)
- Con formato: Inglés (americano)
- Con formato: Inglés (americano)
- Con formato: Inglés (americano)

285 Meanwhile the CO₂ seeps from Papua New Guinea have pH levels between 7.29 - 7.98, *Q*aragonite 1.2 - 3.4 and *Q*calcite between 1.36 - 5.12 (Fabricius et al., 2011). That from Shikine island (Japan) have pH values between 6.80 and 8.10, *Q*aragonite from 0.20 to 2.22, and *Q*calcite from 0.30 to 3.45 (Agostini et al., 2015). Although these systems are far from being perfect predictors of the ocean future due to their chemical variability and physical limitations, they have proven to be important tools for the study of ocean acidification (Foo et al., 2018; González-Delgado and Hernández, 2018; Aiuppa et al., 2020). These natural acidified systems, such as Punta de Fuencaliente system (PFS), can be used as natural analogue of climate change scenarios predicted by the IPCC (2014) (Fig. 6). Therefore PFS can be considered a very useful spot for large-scale and long-term adaptation experiments, as seen in other CO₂ systems (e.g. Ricevuto et al., 2014; Uthicke et al., 2019). Moreover, the acidified system of La Palma highlight by the absence of bubbling, since the volcanic degasification takes place in the aquifers and not directly on the coast as in other acidified systems of volcanic origin (e.g. Hall-Spencer et al., 2008; Fabricius et al., 2011) (Fig. 5). This could give us new insights of the effect of acidification *in situ* avoiding the effects of bubbling (González-Delgado and Hernández, 2018). Nevertheless, several caveats for future prediction experiments should be considered, as well as in other natural acidified systems, especially those related with increased alkalinity values in the submarine discharge.

First, there is a clear tidal influence, this is an important force that controls the acidified brackish water discharges. Although a fluctuation of the emission is observed, normal ocean conditions can occur for a short time, about 2-4 hours per day, during high tide, and depending on the oceanic conditions (Viotti et al., 2019). The pH is very affected by the location, reaching down to ~7.2 in the emissions points, so a careful selection of the study site is recommended, depending on the study objectives (Fig. 6). This tidal phenomenon has also been reported in other acidified natural systems such as Puerto Morelos in Mexico (Crook et al., 2012) and Ischia (Kerrison et al., 2011). However, the pH time fluctuation can be used to our advantage, as a daily and seasonal fluctuation of the pH is normal in coastal habitats environment (Hofmann et al., 2011). So, it could be considered very useful to incorporate pH variability in ocean acidification studies as environmental fluctuations that can have a large impact on marine organisms (Hofmann et al., 2011).

Second, one of the most common concerns with CO₂ seeps and SGD areas is the presence of other gases or elements associated with volcanic emissions, such as nitrogen (N₂), mercury (Hg), methane (CH₄), etc. (e.g. Fabricius et al., 2011; Boatta et al., 2013; Aiuppa et al., 2020). Although there are no traces of the presence of harmful volcanic elements for marine organisms such as methane or sulphates in the seawater of PFS (Hernández et al., 2016), there is an extra supply of different elements such as Mg that comes from groundwater (Soler, 2007). Groundwater has 10 times more magnesium than normal, but when mixed with seawater, the supply is considerably lower compared to CO₂. Nevertheless, Mg plays an important role in the calcification of marine organisms that have magnesite-calcite, such as echinoderms (Weber, 1969) and some bryozoans' species (Smith et al., 2006). Similarly, Hernández et al. (2016) found an increase in silicates in the nearby area of Las Cabras. In these cases, Si could participate in the calcification of diatoms (Paasche, 1973) as well as in many sponges (Smith et al., 2013). The increase of these essential elements for certain calcifying species can allow their survival and growth in PFS while buffering the effects of acidification (Smith et al., 2016; Ma et al., 2009). Therefore, measurements of heavy metals and other elements in seawater should be considered in the following studies.

The high concentration of bicarbonate in the brackish waters also implies an extra contribution of alkalinity and carbonate that can buffer the effect of acidification in the area, so it is necessary to take this into account when making predictions of the future. These values together with calcium content are especially important factors in the case of the saturation state for both calcite and aragonite, that shows high values for seawater with low pH values. Hence, despite the fact that we are dealing with a subtropical ecosystem, the values obtained in both saturation states are more similar to the predictions for a tropical ecosystem, such as the values found in Papua New Guinea seeps (Fabricius et al., 2011; IPCC, 2014).

325 Finally, the area is not very large and only one type of rocky benthic habitat, the most typical community of Canary island, is present at the PFS (Sangil et al., 2018). Therefore, all conclusions derived from this acidified system should be interpreted

Con formato: Subíndice

Con formato: Inglés (americano)

Con formato: Inglés (americano)

Con formato: Inglés (americano)

Con formato: Inglés (americano)

Eliminado: Which is similar to other natural acidified systems worldwide (references within González-Delgado and Hernández, 2018). These chemical features make PFS a

Eliminado: , where the natural CO₂ gradient can be used as an analogue of climate change scenarios predicted by the IPCC (2019) (Fig. 6)

Con formato: Fuente: Cursiva

Eliminado: .

Con formato: Español

Con formato: Español

Con formato: Subíndice

Eliminado: Magnesium

Con formato: Inglés (americano)

Con formato: Inglés (americano)

335 with caution and has local effects. Hence, it is crucial to establish a collaborative network of researchers who are working in
 other natural acidified systems worldwide to have a more realistic interpretation of future ocean scenarios.
 The Echentive lagoons are an oversaturated carbonate system. Like hydrothermal alkalinity vents (Martin et al., 2008), it could
 help us to understand the early life on Earth from the Precambrian, 4000 million years ago, when the atmosphere was rich in
 CO₂ (Kasting, 1993; Nakamura and Kato, 2004) (Fig. 6). These studies could allow us to disentangled adaptation and evolution
 340 of marine life to the changing carbonate conditions over time (Gattuso et al., 1998).
 Additionally, and to our knowledge, it is the first time that a brackish water discharge altered by volcanic activity has been
 studied. Each studied beach with a contribution of 150 tons of CO₂ per year becomes an important source of carbon into the
 sea. Correspondingly, La Playa del Faro it is emitting 28 kg CO₂ d⁻¹ in each tidal flow to the atmosphere. It may seem very
 scarce compared to volcanic eruptions such as the most recent in the Canaries that occurred in the neighbouring island, El
 345 Hierro, in 2010, which was emitting $6.0 \cdot 10^5 \pm 1.1 \cdot 10^5$ kg d⁻¹ and now the emissions are unappreciated (Santana-Casiano et al.,
 2016). However, the flux of CO₂ from La Palma island seems to have been started before the islands were conquered in 1493
 (Soler, 2007), being in a more advanced degassing phase than El Hierro, with fewer emissions, but continued over time.
 Therefore, if we consider its timescale, La Palma becomes a significant CO₂ source. For all these reasons, PFS and the lagoons
 are an interesting area for future hydrological and oceanographic research, helping in new studies focusing on groundwater
 350 fluxes, the oceanic water cycle and oceanic carbon fluctuation (Moore, 2010; Santana-Casiano et al., 2016; Mulligan et al.,
 2019).

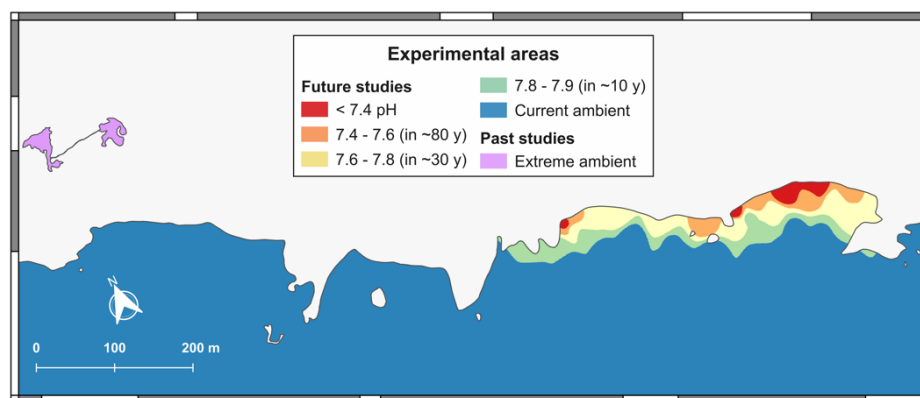


Figure 6: Selected areas for experimental purpose (Interpolation IDW, 4.0 of correlation with Qgis).

5 Conclusions

355 The studies carried out show the existence of continuous natural acidification in the southern coast of La Palma. This
 acidification process is caused by two natural phenomena: the discharge of submarine brackish waters from the aquifer and
 the magmatic emissions of CO₂ gas. Therefore, the monitoring of both sources is important not only from the biological point
 of view but also from an atmospheric, oceanographic, volcanologist and hydrological perspective. The groundwater discharges
 found in Playa del Faro and Los Porretos (PFS) have similar chemical properties (even when alkalinity does not remain
 360 constant) that create a natural pH gradient analogous to future oceans conditions. Consequently, they can be used as natural
 laboratories to predict the effects of OA on the functioning of future oceans. In addition, the interior Echentive lagoons where
 the chemical alterations are intensified, present the conditions capable of disentangling how life has persisted during higher
 atmospheric CO₂ periods on planet Earth.

Eliminado: ¶

Eliminado: emission

Eliminado: T

Appendix A

Table A1: Summary of the sampling methodology, with the locations sampled ("Sites"), the date of each sampling ("Date"), whether the sampling was done during the low (LT) or high (HT) tide and whether the parameters measured ("Measures") were all (ALL) or only the pH (pH).

Sites	Date	Tide	N°	Measures
Playa del Faro	mar-18	LT	23	All
Playa del Faro	dec-18	HT	17	All
Playa del Faro	dec-18	LT	19	All
Playa del Faro	jun-19	HT	11	pH
Playa del Faro	jun-19	LT	11	pH
Los Porretos	mar-18	LT	5	All
Los Porretos	dec-18	LT	14	All
Los Porretos	dec-18	HT	10	All
Echentive lagoon 1	mar-18	LT	8	All
Echentive lagoon 1	dec-18	LT	10	All
Echentive lagoon 1	dec-18	HT	10	All
Echentive lagoon 1	jun-19	LT	6	pH
Echentive lagoon 2	dec-18	LT	6	pH
Echentive lagoon 2	dec-18	HT	6	pH

Appendix B

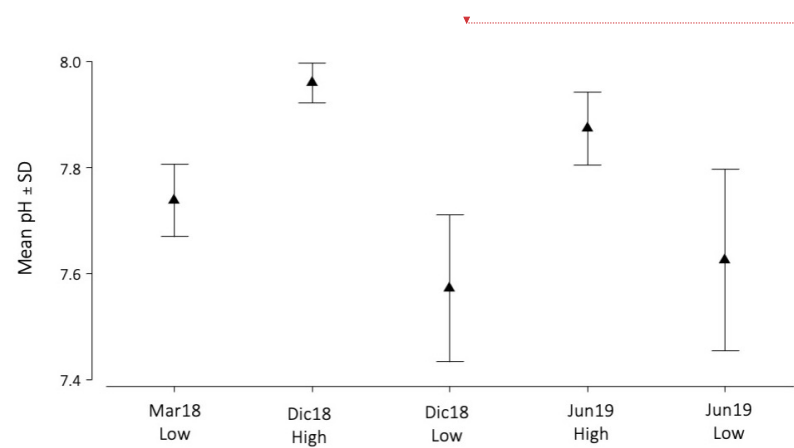
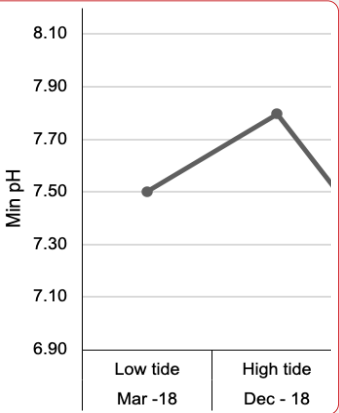


Figure B1: Graph representing the tidal fluctuation (Low and High tide) of the mean pH with standard deviation (SD) at Playa del Faro, during March 2018 (Mar18), December 2018 (Dec18) and June 2019 (Jun19).

Data availability

All measures obtained and used in this work will be published as supplementary material.



- Eliminado:
- Eliminado: Line
- Eliminado: g
- Eliminado: inimum
- Eliminado: values
- Eliminado: (
- Eliminado: Min pH
- Eliminado:)
- Eliminado: -
- Eliminado: -
- Eliminado: -

Author contribution

Sampling and data analysis were performed by all authors. SGD and JCH lead the paper writing and all authors contributed to the interpretation of the results and writing.

Competing interests

395 The authors declare that they have no conflict of interest.

Acknowledgements

400 This research received a grant from the Fundación Biodiversidad of the Ministerio para la Transición Ecológica of the Spanish Government and help from the Ministerio de Economía y Competitividad through ATOPFe project (CTM2017-83476). In March 2018, we thank to the officers, crew and researcher of the R/V Ángeles Alvariño from Instituto Español de Oceanografía (IEO) for their help during sampling process, specially Dr. E. Fraile and F. Domingo (from VULCANA-II-0318 project). Also, we want to thank Adrián Castro for his help during the water sample analysis in the laboratory of QUIMA group (ULPGC) and Dr. E. Lozano-Bilbao from the University of La Laguna for his comments and feedback. Finally, we very much appreciate all the help offered by the Fuencaliente town hall (La Palma).

References

- 405 Agostini, S., Wada, S., Kon, K., Omori, A., Kohtsuka, H., Fujimura, H., Tsuchiyaa, Y., Satoa, T., Shinagawaa, H., Yamadaa, Y., Inaba, K. Geochemistry of two shallow CO₂ seeps in Shikine Island (Japan) and their potential for ocean acidification research. *Reg. Stud. Mar. Sci.* 2, 45–53, 2015.
- 410 [Aiuppa, A., Hall-Spencer, J. M., Milazzo, M., Turco, G., Caliro, S. and Di Napoli, R. Volcanic CO₂ seep geochemistry and use in understanding ocean acidification. *Biogeochemistry*, pp.1-23, 2020.](#)
- Boatta, F., D'Alessandro, W., Gagliano, A. L., Liotta, M., Milazzo, M., Rodolfo-Metalpa, R., Hall-Spencer, J. M., Parelo, F. Geochemical survey of Levante Bay, Vulcano Island (Italy), a natural laboratory for the study of ocean acidification. *Mar. Pollut. Bull.* 73 (2), 485–494, 2013.
- 415 Burnett W. C., Aggarwal, P. K., Aureli, A., Bokuniewicz, H., Cable, J. E., Charette, M. A., et al. Quantifying submarine groundwater discharge in the coastal zone via multiple methods. *Sci. Total Environ.* 367, 498-543 <https://doi.org/10.1016/j.scitotenv.2006.05.009>, 2006.
- 420 Calvet, F., Cabrera, M. C., Carracedo, J. C., Mangas, J., Recio, C. and Travé, A. Beachrocks from the island of La Palma (Canary Islands, Spain). *Mar. Geol.*, 197(1-4), 75-93, [https://doi.org/10.1016/S0025-3227\(03\)00090-2](https://doi.org/10.1016/S0025-3227(03)00090-2), 2003.
- Carracedo, J. C., Rodríguez-Badiola, E., Guillou, H., de la Nuez and Pérez-Torrado, F. J. Geology and volcanology of La Palma and El Hierro, Western Canaries. *Estudios Geológicos*, 57, 5-6, 2001.
- 425 Charette, M.A., Lam, P.J., Lohan, M. C., Kwon, E. Y., Hatje, V., Jeandel, C., Shiller, A. M., Cutter, G. A., Thomas, A., Boyd, P. W. and Homoky, W. B. Coastal ocean and shelf-sea biogeochemical cycling of trace elements and isotopes: lessons learned from GEOTRACES. *Philos. Trans. R. Soc. A*, 374(2081), p.20160076, <https://doi.org/10.1098/rsta.2016.0076>, 2016.
- 430 Crook, E. D., Potts, D., Rebolledo-Vieyra, M., Hernandez, L. and Paytan, A. Calcifying coral abundance near low-pH springs: implications for future ocean acidification. *Coral Reefs*, 31(1), 239-245, <https://doi.org/10.1007/s00338-011-0839-y>, 2012.
- Dando, P. R., Stüben, D., & Varnavas, S. P. Hydrothermalism in the Mediterranean sea. *Prog. Oceanogr.*, 44(1-3), 333-367, [https://doi.org/10.1016/S0079-6611\(99\)00032-4](https://doi.org/10.1016/S0079-6611(99)00032-4), 1999.
- 435 Dickson, A. G., Sabine, C. L. and Christian, J. R. Guide to best practices for ocean CO₂ measurements. *North Pac. Mar. Sci. Organ.*, p.191 <http://hdl.handle.net/11329/249>, 2007.

Código de campo cambiado

Código de campo cambiado

Código de campo cambiado

Código de campo cambiado

- 440 [Fabricius, K. E., Langdon, C., Uthicke, S., Humphrey, C., Noonan, S., De'ath, G., Okazaki, R., Muehllehner, N., Glas, M. S. and Lough, J. M. Losers and winners in coral reefs acclimatized to elevated carbon dioxide concentrations. Nat. Clim. Change, 1\(3\), pp.165-169, 2011.](#)
- 445 Foo, S. A., Byrne, M., Ricevuto, E. and Gambi, M. C. The carbon dioxide vents of Ischia, Italy, a natural system to assess impacts of ocean acidification on marine ecosystems: an overview of research and comparisons with other vent systems. Oceanogr. Mar. Biol. Annu. Rev., 56, 237-310, 2018.
- Gattuso, J. P., Frankignoulle, M., Bourge, I., Romaine, S., and Buddemeier, R. W. Effect of calcium carbonate saturation of seawater on coral calcification. Glob. Planet. Change, 18(1-2), 37-46, [https://doi.org/10.1016/S0921-8181\(98\)00035-6](https://doi.org/10.1016/S0921-8181(98)00035-6), 1998.
- 450 González-Dávila, M., Santana-Casiano, J. M. and González-Dávila, E. F. Interannual variability of the upper ocean carbon cycle in the northeast Atlantic Ocean. Geophys. Res. Lett., 34, L07608, doi:10.1029/2006GL028145, 2007.
- González-Delgado, S. and J. C. Hernández. The importance of natural acidified systems in the study of ocean acidification: what have we learned?. Adv. Mar. Biol. 80, 57-99, DOI: 10.1016/bs.amb.2018.08.001, 2018.
- 455 González-Delgado, S., Hernández, J. C., Epherra, L., Hernández, C., Alfonso, B. Effect of a natural CO₂ gradient on egg characteristics of *Arbacia lixula*. Program & Abstracts: 16th International echinoderm Conference, Nagoya, pp 165, 2018a. (Abstract).
- 460 González-Delgado, S., Hernández, J. C., Wangenstein, O., Alfonso, B., Soto, A. Changes in echinoderm populations due to a natural CO₂ gradient. Program & Abstracts: 16th International echinoderm Conference, Nagoya, pp 58, 2018b. (Abstract).
- 465 Hall-Spencer, J. M., Rodolfo-Metalpa, R., Martin, S., Ransome, E., Fine, M., Turner, S. M., Rowley, S. J., Tedesco, D. and Buia, M. C. Volcanic carbon dioxide vents show ecosystem effects of ocean acidification. Nature, 454(7200), 96-99, <https://doi.org/10.1038/nature07051>, 2008.
- Hall-Spencer, J. M. and Harvey, B. P. Ocean acidification impacts on coastal ecosystem services due to habitat degradation. Emerg. Top. Life Sci., 3(2), 197-206, <https://doi.org/10.1042/ETLS20180117>, 2019.
- 470 Hernández, C. A., Epherra, L., Alfonso, B., González-Delgado, S., Hernández, J. C. Characterization of a CO₂ vent in La Palma (Canary Islands) and its effects on the calcified structures of *Arbacia lixula*. Program & Abstracts: 16th International echinoderm Conference, Nagoya, pp 63, 2018 (Abstract)
- 475 Hernández, C. A., Sangil, C. and Hernández, J. C. A new CO₂ vent for the study of ocean acidification in the Atlantic. Mar. Pollut. Bull. 109(1), 419-426, <https://doi.org/10.1016/j.marpolbul.2016.05.040>, 2016.
- 480 [Hofmann, G. E., Smith, J. E., Johnson, K. S., Send, U., Levin, L. A., Micheli, F., Paytan, A., Price, N. N., Peterson, B., Takeshita, Y., Matson, P. G., Crook, E. D., Kroeker, K. J., Gambi, M. C., Rivest, E. B., Frieder, C. A., Yu, P. C. and Martz, T. R. High-frequency dynamics of ocean pH: a multi-ecosystem comparison. PLoS One 6\(12\), e28983, 2011.](#)
- IPCC. In: Core Writing Team, Pachauri, R.K., Meyer, L.A. (Eds.), Climate Change 2014: Synthesis Report. Contribution of Working Groups I, II and III to the Fifth Assessment Report of the Intergovernmental Panel on Climate Change, p. 151. Geneva (Switzerland), 2014.
- 485 Jeandel, C. Overview of the mechanisms that could explain the 'Boundary Exchange' at the land-ocean contact. Philos. Trans. A. Math. Phys. Eng. Sci., 374(2081), 20150287, <https://doi.org/10.1098/rsta.2015.0287>, 2016.
- Kasting, J. F. Earth's early atmosphere. Science, 259(5097), 920-926, DOI: 10.1126/science.11536547, 1993.
- 490 [Kerrison, P., Hall-Spencer, J. M., Suggett, D. J., Hepburn, L. J. and Steinke, M. Assessment of pH variability at a coastal CO₂ vent for ocean acidification studies. Estuar. Coast. Shelf Sci. 94\(2\), 129-137, 2011.](#)
- Kroeker, K. J., Kordas, R. L., Crim, R. N. and Singh, G. G. Meta-analysis reveals negative yet variable effects of ocean acidification on marine organisms. Ecol. Lett., 13: 1419-1434, <https://doi.org/10.1111/j.1461-0248.2010.01518.x>, 2010.
- 495 Ma Y., Aichmayer B., Paris O., Fratzl P., Meibom A., Metzler R. A., Politi Y., Addadi L., Gilbert P. U. and Weiner S. The grinding tip of the sea urchin tooth exhibits exquisite control over calcite crystal orientation and Mg distribution. Proc. Natl. Acad. Sci. 106(15), 6048-53, <https://doi.org/10.1073/pnas.0810300106>, 2009
- 500 Marrero, R., López, D. L., Hernández, P. A., and Pérez, N. M. Carbon dioxide discharged through the las Cañadas aquifer, Tenerife, Canary Islands. Pure and Appl. Geophys., 165(1), 147-172, <https://doi.org/10.1007/s00024-007-0287-3>, 2008.

Eliminado: ¶

Código de campo cambiado

Eliminado: b

Eliminado: a

Código de campo cambiado

Código de campo cambiado

Con formato: Fuente: Cursiva

Código de campo cambiado

Con formato: Subíndice

Código de campo cambiado

Código de campo cambiado

Código de campo cambiado

- 505 Martin, W., Baross, J., Kelley, D. and Russell, M. J. Hydrothermal vents and the origin of life. *Nat. Rev. Microbiol.*, 6(11), 805, <https://doi.org/10.1038/nrmicro1991>, 2008.
- 510 Marty, B. and Tolstikhin, I. N. CO₂ fluxes from mid-ocean ridges, arcs and plumes. *Chem. Geol.* 145(3-4), 233-248, [https://doi.org/10.1016/S0009-2541\(97\)00145-9](https://doi.org/10.1016/S0009-2541(97)00145-9), 1998.
- 515 Migliaccio, O., Pinsino, A., Maffioli, E., Smith, A. M., Agnisola, C., Matranga, V., Nonnis, S., Tedeschi, G., Byrne, M., Gambi, M. C. and Palumbo, A. Living in future ocean acidification, physiological adaptive responses of the immune system of sea urchins resident at a CO₂ vent system. *Science of The Total Environment*, 672, pp.938-950, 2019.
- Mintrop, L., Pérez, F. F., González-Dávila, M., Santana-Casiano, J. M. and Körtzinger, A. Alkalinity determination by potentiometry: Intercalibration using three different methods, *Cienc. Mar.*, 26, 23-37, <http://hdl.handle.net/10261/25136>, 2000.
- 520 Moore, W. S. The effect of submarine groundwater discharge on the ocean. *Ann. Rev. Mar. Sci.* 2, 59-88, <https://doi.org/10.1146/annurev-marine-120308-081019>, 2010.
- Mulligan, A. E., Charette, M. A., Tamborski, J. J. and Moosdorf, N. Submarine Groundwater Discharge. Elsevier, 108-119, <https://doi.org/10.1016/B978-0-12-409548-9.11482-4>, 2019.
- 525 Nagelkerken, I., Russell, B. D., Gillanders, B. M., Connell, S. D. Ocean acidification alters fish populations indirectly through habitat modification. *Nat. Clim. Chang.* 6, 89-93, 2016.
- 530 Nakamura, K., and Kato, Y. Carbonatization of oceanic crust by the seafloor hydrothermal activity and its significance as a CO₂ sink in the Early Archean. *Geochim. Cosmochim. Acta*, 68(22), 4595-4618, <https://doi.org/10.1016/j.gca.2004.05.023>, 2004.
- 535 Olivé, I., Silva, J., Lauritano, C., Costa, M. M., Ruocco, M., Procaccini, G., Santos, R. Linking gene expression to productivity to unravel long-and short-term responses of seagrasses exposed to CO₂ in volcanic vents. *Sci. Rep.* 7, 42278, 2017.
- Paasche, E. Silicon and the ecology of marine plankton diatoms. II. Silicate-uptake kinetics in five diatom species. *Mar. Biol.*, 19(3), 262-269, <https://doi.org/10.1007/BF02097147>, 1973.
- 540 Padrón, E., Pérez, N. M., Rodríguez, F., Melián, G., Hernández, P. A., Sumino, H., Padilla, G., Barrancos, J., Dionis, S., Notsu, K. and Calvo, D. Dynamics of carbon dioxide emissions from Cumbre Vieja volcano, La Palma, Canary Islands. *Bull. Volcanol.*, 77, 1-15, <https://doi.org/10.1007/s00445-015-0914-2>, 2015.
- 545 Pérez, C. Effects of a Natural CO₂ Gradient on Benthic Coastal Populations, Degree Project, University of La Laguna, 2017. <https://riull.ull.es/xmlui/handle/915/6758>.
- Pichler, T., Biscéré, T., Kinch, J., Zampighi, M., Houlbrèque, F., and Rodolfo-Metalpa, R. Suitability of the shallow water hydrothermal system at Ambitle Island (Papua New Guinea) to study the effect of high pCO₂ on coral reefs. *Mar. Pollut. Bull.*, 138, 148-158, 2019.
- 550 Pierrot, D., Lewis, E. and Wallace, D.W.R.. MS Excel program developed for CO₂ system calculations. In ORNL/CDIAC-105a. Carbon Dioxide Information Analysis Center, Oak Ridge National Laboratory, US Department of Energy, Oak Ridge, Tennessee, 2006.
- 555 [Ricevuto, E., Kroeker, K. J., Ferrigno, F., Micheli, F., and Gambi, M. C. Spatio-temporal variability of polychaete colonization at volcanic CO₂ vents indicates high tolerance to ocean acidification. *Mar. Biol.* 161\(12\), 2909-2919, 2014.](#)
- Sangil, C., Clemente, S. and Francisco, L. C. Ambientes litorales marginales en las islas Canarias: estructura y composición de las comunidades bentónicas en las Lagunas de Echentive (La Palma). *Vieraea*, 36, pp.143-162, 2008.
- 560 Sangil, C., Martins, G. M., Hernández, J. C., Alves, F., Neto, A. I., Ribeiro, C., León-Cisneros, K., Canning-Clode, J., Rosas-Alquicira, E., Mendoza, J.C. and Titley, I. Shallow subtidal macroalgae in the North-eastern Atlantic archipelagos (Macaronesian region): a spatial approach to community structure. *Eur. J. Phycol.*, 53(1), pp.83-98, <https://doi.org/10.1080/09670262.2017.1385098>, 2018.
- 565 Santana-Casiano, J. M., Fraile-Nuez, E., González-Dávila, M., Baker, E. T., Resing, J. A. and Walker, S. L. Significant discharge of CO₂ from hydrothermalism associated with the submarine volcano of El Hierro Island. *Sci. Rep.* 6, p.25686, <https://doi.org/10.1038/srep25686>, 2016.

Código de campo cambiado

Código de campo cambiado

Código de campo cambiado

Código de campo cambiado

Código de campo cambiado

Código de campo cambiado

Con formato: Subíndice

Con formato: Español

Código de campo cambiado

- 570 Smith, A. M., Berman, J., Key Jr, M. M., and Winter, D. J. Not all sponges will thrive in a high-CO₂ ocean: Review of the
mineralogy of calcifying sponges. *Palaeogeogr. Palaeoclimatol. Palaeoecol.*, 392, 463-472,
<https://doi.org/10.1016/j.palaeo.2013.10.004>, 2013.
- 575 Smith, A. M., Clark, D. E., Lamare, M. D., Winter, D. J., and Byrne, M. Risk and resilience: variations in magnesium in
echinoid skeletal calcite. *Mar. Ecol. Prog. Ser.*, 561, 1-16, <https://doi.org/10.3354/meps11908>, 2016.
- Smith, A. M., Key Jr, M. M. and Gordon, D. P. Skeletal mineralogy of bryozoans: taxonomic and temporal patterns. *Earth-
Sci. Rev.*, 78(3-4), 287-306, <https://doi.org/10.1016/j.earscirev.2006.06.001>, 2006.
- 580 Soler-Liceras, C. La historia de la Fuente Santa. Editorial Turquesa. Santa Cruz de Tenerife, 2007.
- Szymczycha, B., Maciejewska, A., Winogradow, A. and Pempkowiak, J. Could submarine groundwater discharge be a
significant carbon source to the southern Baltic Sea?. *Oceanologia*, 56(2), 327-347, <https://doi.org/10.5697/oc.56-2.327>, 2014.
- 585 Tarasov, V. G., Gebruk, A. V., Mironov, A. N. and Moskalev, L. I. Deep-sea and shallow water hydrothermal vent
communities: two different phenomena?. *Chem. Geol.* 224 (1-3), 5-39, <https://doi.org/10.1016/j.chemgeo.2005.07.021>, 2005.
- [Uthicke, S., Deshpande, N. P., Liddy, M., Patel, F., Lamare, M. and Wilkins, M. R. Little evidence of adaptation potential to
ocean acidification in sea urchins living in "Future Ocean" conditions at a CO₂ vent. *Ecol. Evol.*, 9\(17\), 10004-10016, 2019.](#)
- 590 Viotti, S., Sangil, C., Hernández, C. A. and Hernández, J. C. Effects of long-term exposure to reduced pH conditions on the
shell and survival of an intertidal gastropod. *Mar. Environ. Res.*, 152, p.104789,
<https://doi.org/10.1016/j.marenvres.2019.104789>, 2019.
- 595 Vizzini, S., Di Leonardo, R., Costa, V., Tramati, C. D., Luzzu, F., Mazzola, A. Trace element bias in the use of CO₂ vents as
analogues for low pH environments: implications for contamination levels in acidified oceans. *Estuar. Coast. Shelf Sci.* 134,
19-30, 2013.
- Wanninkhof, R. Relationship between wind speed and gas exchange over the ocean revisited. *Limnol. Oceanogr.-Meth.*, 12(6),
351-362, <https://doi.org/10.1029/92JC00188>, 2014.
- 600 Weber J. N. The incorporation of magnesium into the skeletal calcites of echinoderms. *Am. J. Sci.* 267: 537-566, doi:
10.2475/ajs.267.5.537, 1969.

Código de campo cambiado

Código de campo cambiado

Código de campo cambiado

Con formato: Subíndice

Código de campo cambiado