

Dear editors,

Please find attached the revised manuscript. The changes made to the manuscript are shown in this document. To address  
5 your comment on emissions from wild animals and domestic ruminants, we have added the following text to the revised  
manuscript:

“**There are a large number of wild animals in the SSWR region, which in total emit 0.03 Tg yr<sup>-1</sup> as per Crutzen et al. (1986).** Livestock is the largest anthropogenic methane source in SSWR region: 0.36 Tg yr<sup>-1</sup> in 2012 as per EDGAR v4.3.2,  
10 and 0.37 Tg yr<sup>-1</sup> in 2015 as per EDGAR version 5 (Crippa et al., 2020). South Sudan has a large population of livestock: 7.5  
million dairy cattle, 4.6 million non-dairy cattle, 13.5 million goats and 16.3 million sheep in 2018, which causes 0.63 Tg  
yr<sup>-1</sup> of methane emissions (FAOSTATS, 2020). This amount is twice of what we use to calculate the wetlands emissions for  
SSWR. Manure management emissions in SSWR (0.01 Tg/y as per EDGAR v4.3.2) are small even though there is a large  
15 cattle population in South Sudan due to lack of effective management practices. This is reflected in the small emission  
factors used for manure management for the country by EDGAR, **for example**, the dairy cattle emission factors are 1 kg  
CH<sub>4</sub> head<sup>-1</sup> for South Sudan vs 48 kg CH<sub>4</sub> head<sup>-1</sup> for USA. **As per FAOSTATS (2020), the total emissions from manure  
management of dairy and non-dairy cattle, asses, chickens, sheep and goats from the whole South Sudan are 0.02 Tg  
yr<sup>-1</sup>.** In the extreme case that all the South Sudan emissions are located in SSWR, it would slightly reduce our wetland  
emission estimate, however, well within its uncertainty margin.”

20

# Using satellite data to identify the methane emission controls of South Sudan's wetlands

25 Sudhanshu Pandey<sup>1</sup>, Sander Houweling<sup>1,2</sup>, Alba Lorente<sup>1</sup>, Tobias Borsdorff<sup>1</sup>, Maria Tsvilidou<sup>3</sup>, A. Anthony Bloom<sup>4</sup>, Benjamin Poulter<sup>5</sup>, Zhen Zhang<sup>6</sup>, Ilse Aben<sup>1</sup>

<sup>1</sup>SRON Netherlands Institute for Space Research, Utrecht, the Netherlands

<sup>2</sup>Department of Earth Sciences, Vrije Universiteit Amsterdam, Amsterdam, the Netherlands

30 <sup>3</sup>Laboratoire d'Aérodynamique, Université de Toulouse, CNRS, UPS, IRD, France

<sup>4</sup>Jet Propulsion Laboratory, California Institute of Technology, Pasadena, CA, 91109, USA

<sup>5</sup>NASA Goddard Space Flight Center, Greenbelt, MD, 20771, USA

<sup>6</sup>Department of Geographical Sciences, University of Maryland, College Park, MD, 20740, USA

35 *Correspondence:* Sudhanshu Pandey (s.pandey@sron.nl)

**Abstract.** The TROPospheric Monitoring Instrument (TROPOMI) provides observations of atmospheric methane (CH<sub>4</sub>) at an unprecedented combination of high spatial resolution and daily global coverage. Hu et al. (2018) reported unexpectedly large methane enhancements over South Sudan in these observations. Here we assess methane emissions from the wetlands of South Sudan using two years (December 2017–November 2019) of TROPOMI total column methane observations. We estimate annual wetland emissions of  $7.42 \pm 3.2$  Tg yr<sup>-1</sup>, which agrees with the ~~multiyear~~ GOSAT inversions of Lunt et al. (2019) but is an order of magnitude larger than estimates from wetland process models. This disagreement may be explained by the up to 4 times underestimation of inundation extent by the hydrological schemes used in those models. We investigate the seasonal cycle of the emissions and find the lowest emissions during the June–August season when the process models show the largest emissions. Using satellite altimetry-based river water height measurements, we infer that this seasonal mismatch is likely due to a seasonal mismatch in inundation extent. In models, inundation extent is controlled by regional precipitation, scaled to static wetland extent maps, whereas the actual inundation extent is driven by water inflow from rivers like the White Nile and the Sobat. We find the lowest emission in the highest perception and lowest temperature season JJA when models estimate large emissions. In general, our TROPOMI-emission estimates show better agreement, in terms of both seasonal cycle and annual mean, with model estimates that use a stronger temperature dependence. This suggests that temperature might be a stronger control for the South Sudan wetlands emissions than currently assumed by models~~the best explanatory control for the emissions from wetlands in South Sudan.~~ Our findings demonstrate the use of satellite instruments for quantifying emissions from inaccessible and uncertain tropical wetlands, providing clues for improvement of process models, and thereby improving our understanding of the currently uncertain contribution of wetlands to the global methane budget.

55

## 1 Introduction

Reducing anthropogenic methane emissions has been recognized as an important requirement for achieving the 2015 Paris Agreement target of limiting global temperature rise below 2° C relative to pre-industrial times (Ganesan et al., 2019). However, large uncertainties remain in the atmospheric budget of methane, calling for an improved understanding of its emissions from both anthropogenic and natural sources (Saunois et al., 2016). Wetlands are ecosystems with seasonally or permanently inundated or saturated soils, including peatlands (bogs and fens), mineral wetlands (swamps and marshes), and seasonal or permanent floodplains, where methanogens produce methane in the anaerobic decomposition of organic matter. Emissions from natural wetlands are the largest and the most uncertain emission category of methane (Kirschke et al., 2013). Saunois et al. (2016) provide global methane emission estimates for all source categories combined of 540–568 Tg yr<sup>-1</sup> using top-down approaches and 596–884 Tg yr<sup>-1</sup> using bottom-up approaches for the period 2003–2012. They attribute the mismatch between the two approaches mainly to uncertainties in emissions from natural wetlands, inland waters and geological sources. They report total emissions of 127–202 Tg yr<sup>-1</sup> and 153–227 Tg yr<sup>-1</sup> from wetlands using top-down and bottom-up approaches, respectively, which accounts for 30 % of global emissions.

In addition to being an important source of uncertainty in methane budget, wetlands emissions can have significant climate feedback due to their sensitivity to changes in precipitation and temperature (Arneeth et al., 2010; Zhang et al., 2018; Zhu et al., 2017). By analyzing surface and satellite measurements of methane, Pandey et al. (2017) reported enhanced methane emissions from tropical wetlands due to precipitation and temperature anomalies associated with the La Niña of 2010. Furthermore, according to Zhang et al. (2017), the feedback of methane should be accounted for in climate mitigation policies as they find that the global wetland emissions will increase by 50 to 170 Tg yr<sup>-1</sup> at the end of the 21st century because of the temperature-driven increase in wetland emissions under the different Representative Concentration Pathways (RCP) adopted by the IPCC. Their results indicate that the increase in wetland emissions maybe 38–56 % larger than the projected anthropogenic emission increase by the end of the 21<sup>st</sup> century under the strong climate mitigation scenario (RCP 2.6).

To improve wetland emission estimates is very challenging due to many reasons. Wetlands are spread over large, inaccessible regions around the world. Upscaling a few localized measurements of wetland emissions is often futile as these emissions have large temporal and spatial variability, and the parameters controlling them are very uncertain. The emissions are also difficult to monitor on the ground due to logistical limitations. This makes satellite observations a promising and crucial source of information to advance our understanding of the role of wetland methane emissions in the carbon cycle.

Hu et al. (2018) observed large methane enhancements over South Sudan in TROPOMI data collected during the first two months of the commissioning phase of the satellite, November and December 2017. Frankenberg et al. (2011) also observed an enhancement over the region in a seven-year average (2003–2010) of SCanning Imaging Absorption spectroMeter for Atmospheric CHartography (SCIAMACHY) observations. These studies indicated that the enhancements are likely caused

by large emissions from wetlands in the region. Recently, Lunt et al. (2019) used methane observations from the Japanese Greenhouse gases Observing Satellite (GOSAT) in inverse modelling to infer emissions from tropical Africa during 2010–2016. They found that emissions from South Sudan were more than 3 times larger than the ensemble mean estimates from the Wetcharts process model (Bloom et al., 2017). They also found that emissions from the Sudd wetlands in the region increased rapidly from 2.4–4.2 Tg yr<sup>-1</sup> in 2010–2011 to 5.2–6.9 Tg yr<sup>-1</sup> in 2016, likely, because of an inundation extent (~~HE~~) expansion due to an increase in water inflow from the White Nile river.

95 This study aims to infer the scale of the wetland methane emissions from South Sudan from TROPOMI observations using a simplified emission quantification method and investigate its relationship with the results of wetland process models and the seasonally varying climatological conditions. This study is structured as follows. Section 2 describes the method and data used including the TROPOMI data, wetland models and ~~HE~~-inundation extent data, and the emission quantification method. Section 3 presents our results and discussion including emission estimates from TROPOMI and their comparison with the process models, and an analysis of the differences between models and TROPOMI emission estimates using ~~HE~~-inundation extent and meteorological data. Our conclusions are given in Section 4.

## 2 Data and method

### 2.1 TROPOMI methane data

TROPOMI is the single instrument onboard the Copernicus Sentinel-5 Precursor (S-5P) satellite, launched on 13 October 2017 in a sun-synchronous orbit at 824 km altitude (Veefkind et al., 2012). It is a push-broom imaging spectrometer, recording spectra along a 2600 km swath while orbiting the Earth every 100 min, resulting in daily global coverage. Total column methane (XCH<sub>4</sub>) is retrieved with near-uniform sensitivity in the troposphere from its absorption band around 2.3 μm using earthshine radiance measurements from the Short Wave Infrared (SWIR) channel of TROPOMI (Hu et al., 2016; 2018). TROPOMI XCH<sub>4</sub> has a ground pixel size of 7 × 7 km<sup>2</sup> (7 × 5.56 km<sup>2</sup> since August 2019) at nadir with larger ground pixels towards the edges of its swath.

In this study, we use the operational two-band retrieval product of TROPOMI (Hasekamp et al., 2019). It uses 0.76 μm O<sub>2</sub>A and 2.3 μm CH<sub>4</sub> bands in the Near Infrared (NIR) and SWIR spectra. XCH<sub>4</sub> is retrieved using the full-physics RemoTeC algorithm, which accounts for light path perturbations due to scattering by aerosol and cirrus cloud particles in the atmosphere (Butz et al., 2012; Hu et al., 2016). We only use high-quality XCH<sub>4</sub> measurements retrieved under favourable cloud-free conditions. Also, XCH<sub>4</sub> is filtered (“qa”=1) for solar zenith angle (< 70°), viewing zenith angle (< 60°), smooth topography (1-standard deviation surface elevation variability < 80 m within a 5 km radius) and low aerosol load (aerosol optical thickness < 0.3 in ~~SWIR-NIR~~ band). Note that Hu et al. (2018) used two months of XCH<sub>4</sub> data from the “scientific” retrieval product of SRON Netherlands Institute for Space Research. Those measurements had a relatively sparse temporal coverage over South Sudan because they were performed during the commissioning phase of TROPOMI when algorithm tests and calibrations were

ongoing. The operational product used here provides a more temporally homogenous coverage and a surface albedo-dependent bias correction (Hasekamp et al., 2019).

## 2.2 Process model data

We compare TROPOMI emission estimates with two wetlands process models: Wetcharts (Bloom et al., 2017) and LPJ-wsl (Zhang et al., 2016). These models calculate monthly methane emissions on a global grid of  $0.5^\circ \times 0.5^\circ$  resolution by simulating the microbial production and oxidation processes in the soil using temperature, HE-inundation extent and heterotrophic respiration data. Wetcharts calculates wetland emissions using in total four HE-inundation extent parameterizations, nine terrestrial biosphere models of heterotrophic respiration and three  $\text{CH}_4\text{:C}$  temperature parameterizations (q10). Wetcharts version 1.0 provides two ensembles: (1) an ensemble with 324 emission estimates for 2009-2010, called the “Full Ensemble” and (2) an 18-member extended-in-time ensemble for 2001-2015, called the Wetcharts “Extended Ensemble”. In the Wetcharts Full Ensemble, the set of four HE-inundation extent estimates are calculated based on two maximum wetland area estimates, multiplied with two monthly varying scaling factors. The wetlands area estimates are taken from (1) the Global Lakes and Wetlands Database (GLWD; Lehner and Döll, 2004), and (2) the sum of all GLOBCOVER wetland and freshwater land types (Bontemps et al., 2011). The scaling factors are calculated from (1) precipitation data from ERA-Interim meteorological data and (2) HE-inundation extent data from the Surface Water Microwave Product Series (SWAMPS) multi-satellite surface water product (Schroeder et al., 2015). The 18-member Wetcharts Extended Ensemble provides emission estimates for only the two HE-inundation extent estimates that are based on ERA-Interim and only one terrestrial biosphere model CARDAMOM (Bloom et al., 2016).

LPJ-wsl methane model is based on the process-based dynamic global vegetation model Lund Postdam Jena (LPJ). It uses soil temperature, soil moisture-dependent fraction of heterotrophic respiration ( $R_h$ ), and HE-inundation extent to calculate wetlands methane emissions. The HE-inundation extent of LPJ-wsl is calculated by the TOPography-based hydrological model (TOPMODEL) driven by meteorology from ERA-Interim. TOPMODEL simulates hydrologic fluxes of water, including lateral transport, such as infiltration-excess overland flow, infiltration, exfiltration, subsurface flow, evapotranspiration, and channel routing through a watershed.

## 2.3 Inundation extent data

Earlier studies have indicated that the water availability is particularly important in the tropics (temperature is less limiting here in contrast to high latitudes), and hence, HE-inundation extent is one of the main sources of uncertainty for tropical wetlands (Bloom et al., 2010; Ringeval et al., 2010). We analyze the HE-inundation extent data used in process models: TOPMODEL (used in LPJ-wsl); GLWD and GLOBCOVER with ERA-Interim (used in the Wetcharts Extended Ensemble). We compare these HE-inundation extent estimates against the remote sensing-based high-resolution HE-inundation extent data from Gumbrecht et al. (2017), which maps wetlands and peatlands at 231 meters spatial resolution by combining three biophysical

indices related to wetland and peat formation: (1) long-term water supply exceeding atmospheric water demand, (2) annually or seasonally waterlogged soils, and (3) geomorphological position where water is supplied and retained. They use 2011  
155 MODIS data to map the duration of wet and inundated soil conditions and Shuttle Radar Topography Mission (SRTM) for  
topography. In addition, we use satellite altimetry-based water height measurements from the Hydroweb database (Crétaux et  
al., 2011; Da Silva et al., 2010). The water height anomalies of the White Nile and Sobat rivers are used as a proxy for ~~H~~  
inundation extent variations in the Sudd and Macher wetlands, respectively. Fig. 1b shows the location of the river height  
measurement sites. We also analyze temperature and precipitation data from the European Centre for Medium-Range Weather  
160 Forecasts' ERA5 meteorological reanalysis (Hersbach and Dee, 2016).

## 2.4 Emission Quantification method

The wetland distribution from Gumbrecht et al. (2017) is shown in Fig. 1 for the region in South Sudan where a large TROPOMI  
XCH<sub>4</sub> enhancement can be observed. This region, which includes Sudd, Machar and other smaller wetlands, is hereafter  
referred to as the South Sudan wetland region (SSWR). To calculate emissions, we first prepare seasonally averaged  
165 TROPOMI XCH<sub>4</sub> maps on a grid of at 0.1° × 0.1° resolution. Only grid cells with at least 5 high-quality TROPOMI  
measurements are used in the season average map. We apply the mass balance method of Buchwitz et al. (2017) to ~~seasonally~~  
~~averaged TROPOMI XCH<sub>4</sub>~~ to calculate emissions from December 2017 to November 2019. The emission  $Q$  (Tg yr<sup>-1</sup>) from  
the SSWR box in Fig. 1a for a given period is calculated using the following equation:

$$170 \quad Q = \Delta XCH_4 \times M \times M_{exp} \times L \times V \times C \quad (1)$$

Where,  $\Delta XCH_4$  is the “source XCH<sub>4</sub> enhancement”, i.e., the mean XCH<sub>4</sub> difference between the source and the surrounding  
background.  $C$  is a dimensionless factor of 2.0 derived by Buchwitz et al. (2017) based on the concentration difference of air  
parcels before and after entering a source area.  $M$  (5.345 Tg CH<sub>4</sub> km<sup>-2</sup> ppb<sup>-1</sup>) is the atmospheric total column mixing ratio-to-  
175 mass conversion factor for a surface pressure of 1013.25 hPa, which is the standard atmospheric pressure.  $M_{exp}$  is a  
dimensionless factor used to correct for the changes in column air mass with surface elevation, calculated as the ratio of surface  
pressure in the source and standard atmospheric pressure (1013.25 hPa).  $L$  is the “effective size” of the source region (632  
km), calculated as the square root of its area ( $4.0 \times 10^5$  km<sup>2</sup>).  $V$  (km yr<sup>-1</sup>) is the ventilation wind speed derived from the ERA5  
meteorological reanalysis vertical wind speed profile. Surface elevation variations change the contribution of tropospheric to  
180 the total atmospheric column, which influences XCH<sub>4</sub>. TROPOMI XCH<sub>4</sub> maps are corrected for this effect by adding the  
correction factor 7 ppb km<sup>-1</sup> from Buchwitz et al. (2017), using GMTED2010 elevation data shown in Fig. A1 (Danielson et  
al., 2010). We remove the large scale latitudinal XCH<sub>4</sub> gradient from the seasonal average TROPOMI XCH<sub>4</sub> maps by  
subtracting a 3<sup>rd</sup> order polynomial fit from the background region, excluding the source region (see Figure 2a).

Figure 32 shows the monthly average ERA5 wind speed at 10:00 UTC (TROPOMI overpass time) in the SSWR as a function of pressure within the local boundary layer during select months. To calculate  $V$ , the pressure-weighted average of these boundary layer wind speed is calculated over SSWR using monthly average ERA5 boundary layer height data. We use average boundary layer winds instead of 10-meter winds because it was found to better represent the ventilation wind speed in the source region (see Varon et al., 2018). For SSWR, the 10-meter wind speed is on average 35 % lower than the boundary layer wind speed, consistent with the diminishing influence of the surface friction with height.

The uncertainty of  $Q$  is calculated as sum-in-quadrature of uncertainties associated with  $\Delta XCH_4$  and  $V$ . The  $\Delta XCH_4$  uncertainty is estimated as sum-in-quadrature of (1) 1-standard deviation of  $\Delta XCH_4$  estimates calculated by sequentially increasing the size of the background box from  $1^\circ$  to  $10^\circ$  longitude and latitude in  $1^\circ$  interval, and (2) the  $XCH_4$  uncertainty of a single  $0.1^\circ \times 0.1^\circ$  grid cell in the average map (= 22 ppb), taken as 1-standard deviation  $XCH_4$  of all the grid cells in Fig. 1a. Note that this approach overestimates the  $XCH_4$  uncertainty of the grid cells as  $XCH_4$  variations within the grid are also caused by emissions and surface elevation variations in addition to measurement errors. The uncertainty of  $V$  is estimated from the variation in wind speed during 4 consecutive hours (09:00 UTC, 10:00 UTC, 11:00 UTC, 12:00 UTC) centered around the TROPOMI overpass time. Note that we use the mass balance method equation from Buchwitz et al. (2017), but not their empirical equation to estimate the uncertainty of  $Q$ . They derive that equation using a fixed wind speed of 1.1 m/s globally, which would give a larger uncertainty in comparison to our approach of using location and time-specific wind information: ERA5 average  $V$  is  $2.5 \pm 0.42 \text{ m s}^{-1}$  in SSWR during 2018-2019.

## 205 3 Results

### 3.1 $XCH_4$ enhancements

We first assess the  $XCH_4$  enhancements over South Sudan in the two-year average map of TROPOMI  $XCH_4$  shown in Fig. 1a in relation to the SSWR wetland distribution in Fig. 1b. Similar to previous remote sensing studies (Frankenberg et al., 2011; Lunt et al., 2019; Hu et al., 2018), we observe a large  $XCH_4$  enhancement over the Sudd wetlands. In addition, the TROPOMI data also resolve another distinct enhancement over the Machar and Lotilla wetlands in eastern South Sudan, indicating large emissions from these wetlands too. The second enhancement was also observed by Hu et al. (2018) using two months of TROPOMI  $XCH_4$ .

The Sudd wetlands are flooded by the main White Nile tributary originating from Lake Victoria, whereas the wetlands in Southeast Sudan are along smaller rivers like the Kangen and Sobat, originating from the Ethiopian mountains. Lunt et al. (2019) attributed their GOSAT inversion emission estimates only to Sudd and evaluated the emissions using auxiliary data for

Sudd. However, as the wetlands in the east are flooded by a different set of rivers and have a substantial contribution to the overall XCH<sub>4</sub> enhancement, they also need to be considered when studying the mechanisms driving the large emissions in this region.

220

The XCH<sub>4</sub> enhancement for SSWR in the two-year average is  $18.8 \pm 2.8$  ppb, which is more than 3 times the enhancement over the Permian basin in the USA as reported by Zhang et al. (2020). It is very unlikely that the SSWR enhancement is an artefact of the known aerosol or surface albedo biases in the TROPOMI XCH<sub>4</sub> data. We elaborate further on this in Appendix Sect. A1. Figure 23 shows seasonally average XCH<sub>4</sub> maps over SSWR, and Table 1 quantifies the seasonal XCH<sub>4</sub> enhancement and areal coverage of the TROPOMI data. TROPOMI has good coverage in SSWR, ranging from 40 % in JJA to > 90 % DJF. It is higher than 70 % in all seasons except JJA, likely due to persistent cloud cover during the wet season. The lowest enhancements are observed in JJA in both 2018 ( $10.5 \pm 4.1$  ppb) and 2019 ( $2.6 \pm 3.7$  ppb). It is unlikely that these low enhancements are artefacts of the low coverage as there is still sufficient TROPOMI data (> 40 %) and measurement are not systematically missing over the ~~over the areas with~~ large emissions ~~areas of~~ SSWR, the Sudd and Machar wetlands. SON-2019 has the largest enhancement of  $29.3 \pm 4.0$  ppb, ~~26.3 ± 2.2 ppb~~ likely due to low wind speeds, while DJF-2018 and MAM-2018 also have large enhancements of about 22 ppb.

225

230

### 3.2 Emissions quantification

We use the mass balance method of Buchwitz et al. (2017) to estimate emissions from SSWR for each season (see Table 1). ~~The lowest emissions are in JJA, corresponding to the lowest XCH<sub>4</sub> enhancements.~~ Emissions during ~~other~~ most seasons are close to  $109$  Tg yr<sup>-1</sup> ~~except for DJF-2018, except for the low emissions in JJA.~~ We find very low emission in JJA-2019 ( $1.4 \pm 2.1$  Tg yr<sup>-1</sup>), but it accommodates the season's anthropogenic emissions of about 0.48 Tg yr<sup>-1</sup> (sum of 2012 EDGAR emissions, and 2016 oil and gas emissions from Scarpelli et al., 2020) and GFED biomass burning emissions (0.003 Tg yr<sup>-1</sup>). ~~The lowest emissions are in JJA, corresponding to the lowest XCH<sub>4</sub> enhancements.~~ Direct application of the mass balance method on the two-year average XCH<sub>4</sub> map shown in Fig. 1a yields an annual emission of  $10 \pm 1.7$  Tg yr<sup>-1</sup>. However, this is likely an overestimate as the two-year average temporally under samples the low emissions of JJA seasons due to low coverage during these seasons. Therefore, to ensure uniform temporal sampling of all seasons, we calculate annual SSWR emissions by averaging the seasonal emission estimates, resulting in  $8.29 \pm 3.2$  Tg yr<sup>-1</sup>. Moreover, this approach is likely less sensitive to error due to mean-of-products vs product-of-means effect. A caveat of the mass balance method is that it ignores two factors: (1) the influence of emissions in the background region, and (2) the contribution of emissions in the source region to the background average XCH<sub>4</sub>. Both factors increase the background XCH<sub>4</sub> and ignoring them results in an underestimation of the emission estimate. However, this underestimation is large when the ratio of the area of the background region and the source region is small, and as we apply the method using a large background, we do not expect a significant impact on our emission estimates.

235

240

245



250 Lunt et al. (2019) report methane emissions for all sources (including wetlands, biomass burning, anthropogenic, wild animals) from the Sudd wetlands using ~~multiyear~~ GOSAT inversions. Their emission estimate of 5.2–6.9 Tg yr<sup>-1</sup> for 2016 is within the uncertainty bounds of our SSWR total emission estimate of 8.0 ± 3.2 Tg yr<sup>-1</sup> for 2018-2019. Note that some difference in the emission estimates can be explained by the difference in the definition of the source region between the two studies as their region extends more north and less east than ours. TROPOMI shows a large XCH<sub>4</sub> enhancement over Lottila and Machar wetlands in the east SSWR, indicating large emissions from these wetlands. As the source region in Lunt et al. (2019) only partially covers these wetlands, our emission estimates are expected to be higher.

To calculate wetlands emissions from SSWR, we account for other methane emissions in the region using bottom-up data. According to the EDGAR (version 4.3.2, Janssens-Maenhout et al., 2017) inventory for 2012, the total anthropogenic emissions from SSWR were 0.43 Tg yr<sup>-1</sup> with enteric fermentation (0.36 Tg yr<sup>-1</sup>) being the largest anthropogenic category. The region has small emissions from wastewater management (0.03 Tg yr<sup>-1</sup>), energy for buildings (0.01 Tg yr<sup>-1</sup>) and manure management (0.01 Tg yr<sup>-1</sup>). EDGAR does not report any significant emissions from fossil fuel exploitation sector in the region. Recently, Scarpelli et al (2020) presented a new inventory for the oil and gas sector in which UNFCCC reported national emissions are spatially allocated to the fossil fuel infrastructure. They report 0.05 Tg yr<sup>-1</sup> emissions from SSWR in 2016. Biomass burning is the largest natural methane source after wetlands in SSWR with average emissions of 0.20 Tg yr<sup>-1</sup> in 2018-2019 according to GFED4s (0.23 Tg yr<sup>-1</sup> in 2018, 0.16 Tg yr<sup>-1</sup> in 2019, Van der Werf et al., 2017). Another significant natural source is the emission from termites (0.16 Tg yr<sup>-1</sup>, Sanderson, 1996). We subtract the total of these non-wetlands emissions to calculate wetland emissions of 7.42 ± 3.2 Tg yr<sup>-1</sup> from SSWR in 2018-2019. This estimate is an order of magnitude larger than the 0.5 Tg yr<sup>-1</sup> wetlands emissions from the prominent Pantanal wetlands of South America in 2010–2018 which are estimated using GOSAT inversions by Tunnicliffe et al. (2020).

Our SSWR wetlands emission estimate of 7.4 ± 3.2 Tg yr<sup>-1</sup> can be an overestimate if the emissions from the above-mentioned non-wetlands sectors are underestimated in the inventories. However, this is unlikely as it would require a very large underestimation in the inventories for the two years studied here. For example, for the oil and gas sector, the annual emissions (0.05 Tg yr<sup>-1</sup>) will need to be underestimated by two orders of magnitude to have a significant error impact on the wetland emission estimates. Moreover, the strong seasonality shown by the TROPOMI emission estimates is not expected in oil and gas emissions. The SSWR biomass burning emissions are ~~larger~~ higher in comparison to the other sectors, but a large underestimation in annual emissions by GFED is unlikely as it uses remote sensing-based fire activity and vegetation productivity data. There are a large number of wild animals in the SSWR region, which in total emit 0.03 Tg yr<sup>-1</sup> as per Crutzen et al. (1986). Livestock is the largest anthropogenic methane source in SSWR region: 0.36 Tg yr<sup>-1</sup> in 2012 as per EDGAR v4.3.2, and 0.37 Tg yr<sup>-1</sup> in 2015 as per EDGAR version 5 (Crippa et al., 2020). South Sudan has a large population of livestock: 7.5 million dairy cattle, 4.6 million non-dairy cattle, 13.5 million goats and 16.3 million sheep in 2018, which causes 0.63 Tg yr<sup>-1</sup> of methane emissions (FAOSTATS, 2020). This amount is twice of what we use to

285 calculate the wetlands emissions for SSWR. Manure management emissions in SSWR (0.01 Tg/y as per EDGAR v4.3.2) are  
small even though there is a large cattle population in South Sudan due to lack of effective management practices. This is  
reflected in the small emission factors used for manure management for the country by EDGAR, for example, the dairy  
cattle emission factors are 1 kg CH<sub>4</sub> head<sup>-1</sup> for South Sudan vs 48 kg CH<sub>4</sub> head<sup>-1</sup> for USA. As per FAOSTATS (2020), the  
total emissions from manure management of dairy and non-dairy cattle, asses, chickens, sheep and goats from the whole  
South Sudan are 0.02 Tg yr<sup>-1</sup>. In the extreme case that all the South Sudan emissions are located in SSWR, it would slightly  
290 reduce our wetland emission estimate, however, well within its uncertainty margin.

## 295 3.3 Comparison to wetland process models

### 3.3.1 Annual means

SSWR integrated mean methane emission estimates from the process models are nearly an order of magnitude lower than those from TROPOMI (Table 2). For example, the multiannual mean emission from LPJ-wsl for 1980-2016 is 1.1 Tg yr<sup>-1</sup> (ranging from 0.5 Tg yr<sup>-1</sup> in 1990 to 1.5 Tg yr<sup>-1</sup> in 1998). The multi-annual mean individual ensemble estimates from Wetcharts  
300 Extended Ensemble range from 0.4 Tg yr<sup>-1</sup> (uses GLWD) to 1.8 Tg yr<sup>-1</sup> (uses GLOBCOVER). Its smallest and largest annual emission estimates from these ensemble members are 0.29 Tg yr<sup>-1</sup> in 2009 and 2.21 Tg yr<sup>-1</sup> in 2013. The Wetcharts Full Ensemble, with 324 estimates for 2009-2010, has a mean of 0.9 Tg yr<sup>-1</sup>, ranging from 0.07 to 3.7 Tg yr<sup>-1</sup>.

Table 2 also presents the maximum ~~HE~~-inundation extent (i.e., sum of seasonal and permanent wetland areas) extent in the ~~HE~~  
305 ~~data~~ used by the process models. ~~It which~~ range from 25,000 to 69,000 km<sup>2</sup> across the models. These ~~HE~~-inundation extent are up to 4 times lower than the observation-based maximum ~~HE~~-inundation extent estimates of 99,000 km<sup>2</sup> by Gumbrecht et al. (2017). Huges & Huges (1992) give the permanent wetland area of the different wetlands in SSWR (Table A1). The sum of these areas is 36,000 km<sup>2</sup>, significantly larger than the permanent ~~HE~~-inundation extent area (i.e., minimum mean monthly inundation extent ~~HE~~) used in the models (Wetcharts Extended Ensemble: 1,000 km<sup>2</sup>; LPJ-wsl: 14,000 km<sup>2</sup>; SWAMPS: 16,000  
310 km<sup>2</sup>). Rebelo et al. (2011) used remote sensing data to characterize ~~HE~~-inundation extent of the Sudd wetlands over a 12 months period, yielding a total wetlands area of 50,000 km<sup>2</sup> (41,000 km<sup>2</sup> of seasonally inundated and 9,000 km<sup>2</sup> of permanent inundated). According to Huges & Huges (1992), other wetlands in the SSWR have a total permanent wetlands area of >20,500 km<sup>2</sup>, meaning that Sudd accounts for only about a third of the SSWR's total wetland area. As other wetlands in SSWR are also along rivers like Sobat, their ~~HE~~-inundation extent likely has a large seasonality, and assuming that the relative seasonal  
315 amplitude of ~~HE~~-inundation extent of these other wetlands is similar to that of Sudd would give a total (seasonal + permanent)

flooded area of 134,000 km<sup>2</sup>. Adding the Sudd IE-inundation extent yields a total SSWR IE-inundation extent of 164,000 km<sup>2</sup>, which is larger than the total IE-estimate of 99,000 km<sup>2</sup> from Gumbrecht et al. (2017). Overall, we find substantial evidence of underestimations of SSWR IE-inundation extent in the process models, which may explain their emission underestimations as they assume that IE-inundation extent is a strong control of the emissions.

320

We now look at variations in annual mean IE-inundation extent to find a possible cause of high emissions in 2018-2019. Lunt et al. (2019) attribute the emission increase in South Sudan between 2010 and 2016 to an IE-inundation extent increase in the Sudd owing to an increased water inflow from the White Nile river found in satellite altimetry-based river water height measurements. To investigate this for the period 2018-2019, we look at trends in water height (see Fig. 4) of Lake Victoria, and White Nile and Sobat rivers. Similar to Lunt et al. (2019), we observe a rapid water height increase during 2011–2014. After this period, water levels stabilize and slightly decrease but remain significantly higher than in 2009–2010. 2019 shows the highest water level for the Sobat river due to a renewed positive trend from 2017 onward. This suggests that the total SSWR IE-inundation extent was significantly higher in 2018-2019 than the pre-2011 levels. In contrast, the IE-inundation extent data used in the process models, shown in Fig. 4a, have negative trends, which means that the process models do not account for the emission increase during 2010-2016 due to increasing IE-inundation extent, as suggested by Lunt et al. (2019).

330

IE-Inundation extent estimates from the remote sensing-based SWAMPS also do not show the increase and underestimate annual means IE. Schroeder et al. (2015) have recommended not to use SWAMPS absolute IE-inundation extent as the microwave sensors used in SWAMPS have limited capability to detect water underneath the soil surface or beneath closed forest canopies. This effect can impact also the temporal IE-changes, in addition to the absolute IE-inundation extent, as such flooding changes beneath the forest canopies would also not be observed. It is unclear why TOPMODEL, which accounts for lateral water transport processes, does not capture the trend in river outflow. These are interesting topics for follow-on investigations.

335

### 3.3.2 Seasonal cycle

Next, we assess the seasonal cycle of the TROPOMI-derived emission estimates. Figure 5a shows the seasonal cycles in 2018 and 2019. The largest emissions are in DJF in 2018, while DJF, MAM and SON have large emissions of similar magnitude in 2019. In both 2018 and 2019, TROPOMI emissions are lowest in JJA; in contrast, the process models estimate the lowest emissions in DJF (Fig. 5c). We investigate this mismatch by looking at the seasonal cycle of IE-inundation extent in the models. The model emissions have a strong correlation with ~~the their inundation extent they use respective IE's~~ (Wetcharts  $R = 0.91$ ; LPJ-wsl  $R = 0.94$ , where  $R$  is correlation coefficient), indicating that the seasonality of emissions is driven by inundation extentIE. In fact, the differences in IE-inundation extent seasonality between LPJ-wsl and Wetcharts are consistent with the emissions differences; for example, both IE-inundation extent and emissions in LPJ-wsl are lower than in Wetcharts during MAM.

345

350 The seasonality of the altimetry-based river water height measurements, shown in Fig. 5d, is highest in SON and is very  
different from Wetcharts ~~HE-inundation extent~~ (highest in JJA). This can partially explain the difference in the seasonal cycles  
of Wetcharts and TROPOMI emissions. The seasonal cycle of Wetcharts ~~Extended Ensemble HE-inundation extent shown here~~  
is strongly correlated with local precipitation (Fig. 5b), as the intra-annual ~~HE-inundation extent~~ variation is calculated using  
precipitation. However, this method would not accurately account for ~~HE-inundation extent~~ variation due to lateral water fluxes  
355 and evapotranspiration. Surface runoff is especially important for river-fed wetlands like Sudd, whose ~~HE-inundation extent~~ is  
controlled by water inflow from the White Nile because ~~regionally~~ the evapotranspiration rate exceeds rainfall ~~in the region~~  
(Lunt et al., 2019; Sutcliffe and Brown, 2018). LPJ-wsl ~~HE-inundation extent~~ seasonality shows better agreement with the river  
height data as it is calculated using TOPMODEL, which accounts for the lateral fluxes and evapotranspiration. However, LPJ-  
wsl emissions still show large differences with the seasonal cycle of TROPOMI emissions. Previous remote sensing studies  
360 for the Sudd wetlands have found the largest ~~HE-inundation extent~~ during September-January in 2007-2008 (Robelo et al.,  
2012) and during December-January in 1991–1992 (Travaglia et al., 1995), in better agreement with river height measurements  
than the process models. Overall, ~~HE-inundation extent~~ seasonality of models appears to be significantly off, which can explain  
part of the mismatch between TROPOMI and model emissions.

365 In both 2018 and 2019, TROPOMI emission estimates are the lowest during JJA, while river height measurements are the  
lowest in MAM. A similar seasonal cycle mismatch in the GOSAT emission estimates and ~~HE-inundation extent~~, derived using  
MODIS Land Surface Temperature (LST) as a proxy, is shown in Lunt et al (2019). ~~Furthermore, t~~They find the highest  
emissions trend during SON, which had the smallest trend in ~~inundationHE~~, but no trend in emissions during MAM, which has  
the highest ~~HE-inundation extent~~ trend (i.e. strongest negative LST trend).

370 An explanation for the difference in seasonal phasing can be a higher temperature dependence of emissions than suggested by  
the models as temperatures are lowest during JJA. We evaluate this hypothesis using Wetcharts Full Ensemble, which provides  
a total of 324 emission estimates for three temperature dependences  $q_{10}$  ( $=1, 2, 3$ ; see Bloom et al., 2017). Figure 6 compares  
the average seasonal cycle of TROPOMI emissions with Wetcharts emissions using different  $q_{10}$ 's (see also Table 3).  
375 Wetcharts emissions with  $q_{10} = 1$  have the poorest agreement with the seasonal cycle of TROPOMI ( $R = -0.6274$ ).  
Interestingly, these emissions also have the lowest annual means ( $= 0.5 \text{ Tg yr}^{-1}$ ). Conversely, Wetcharts emissions with  $q_{10} =$   
 $3$  have the best correlation with TROPOMI ( $R = -0.282$ ) and have the largest annual mean ( $=1.0 \text{ Tg yr}^{-1}$ ). In fact, the member  
estimate—out of the 324-member Full Ensemble—with the largest annual emissions of  $3.7 \text{ Tg yr}^{-1}$  ~~also~~ has the best correlation  
with TROPOMI ( $R = 0.0043$ ). As expected, this member uses  $q_{10} = 3$ . The agreement of TROPOMI with the larger  $q_{10}$   
380 model estimates, in terms of both annual mean and seasonal cycle, suggests that wetland emissions from SSWR have a large  
temperature dependence. In their study of wetlands in the Amazon Basin, Tunnicliffe et al. (2020) pointed to temperature as a  
more important control on methane emissions than ~~inundation extentHE~~. They find a simultaneous, spatially correlated emission

and temperature increases in the west Brazilian Amazon during the El-Nino of 2015, with unchanged inundation extent. Moreover, Wilson et al. (2016) found a negligible impact on wetlands emissions in the Amazon basin despite the large difference in precipitation between 2010 and 2011, which impacted inundation extent significantly. Note that it is also possible that the higher q10's we find for SSWR emissions are simply compensating for errors due to a remaining misrepresentation of inundation extent; or other factors covarying with temperature.

Figure 7 shows the emission anomalies time series from TROPOMI along with temperature and inundation extent, which we assume to be proportional to river height. A small lag between the river height and inundation extent is expected, but we expect it to be negligible in comparison to a full season. We observe that the emissions show a strong correlation with temperature (R= 0.4966), but a poorer correlation with inundation extent (R= 0.2407). The emissions peak a full season later than inundation extent, and accounting for this seasonal lag improves the correlation significantly (R= 0.805). An explanation for this can be the higher temperature dependence of emissions discussed earlier. Another explanation could be the "activation" time of methanogenesis after flooding, as after flooding it takes time for anoxic conditions to develop and alternative electron acceptors to be depleted. Jerman et al. (2009) documented that methane emissions from water-saturated soil slurries remained very low for a long time: methane production started after a lag of 84 days at 15° C and a minimum of 7 days at 37° C, the optimum temperature for methanogenesis. They found that the lag was inversely related to iron reduction, which is expected as iron reduction outcompeted methanogenesis. Similarly, Itoh et al. (2011) investigated methane emissions from rice paddy fields and found a time lag of a few weeks between the onset of inundation and peak emissions.

Process models assume that wetland emissions are instantaneously regulated by inundation extent, and they do not account for the time lag as information on the availability of alternate electron accepters is generally not available. This results in an incorrect temporal allocation of the wetland emissions when the emissions are scaled with precipitation or even IE directly. Furthermore, some models assume inundation extent is instantaneously regulated by precipitation. For In river floodplains like Sudd, scaling emissions directly with precipitation would give even worse estimates in models as the IE inundation extent is mostly controlled by river inflow, and not the local precipitation, as the evapotranspiration rates exceed the rainfall in the region. Therefore, scaling with precipitation would even worse emission estimates. Overall, a combination of temperature and inundation extent dependences that are used in the models can explain their seasonal cycle mismatch with TROPOMI emissions.

## 5 Conclusions

XCH<sub>4</sub> enhancements over South Sudan have been observed in remote sensing studies suggesting large emissions from the Sudd wetlands as the cause (Lunt et al., 2019, Hu et al., 2018, Frankenberg et al., 2011). We observe two large enhancements

in the region in a 2-year average map of TROPOMI XCH<sub>4</sub>—over Sudd, and Machar and Lotilla wetlands. Sudd Wetlands are flooded by the White Nile river originating from Lake Victoria, while the wetlands in the east are around smaller rivers like the Sobat originating in the Ethiopian mountains. In this study, we examine these wetlands, and their river systems, together to understand the controls of the emissions causing the large XCH<sub>4</sub> enhancements.

420

We estimate methane emissions of  $7.42 \pm 3.2$  Tg yr<sup>-1</sup> from wetlands in South Sudan during 2018–2019 using a mass balance approach applied to TROPOMI data. We find large differences between the emission estimates from TROPOMI and wetland process models LPJ-wsl and Wetcharts. The annual mean estimates from TROPOMI are an order of magnitude larger than ~~mean estimates of from~~ the models, which may be explained by the up to 4 times underestimated ~~HE-inundation extent~~ in the models. We find differences in interannual variability and average seasonal cycles of TROPOMI and models, which can be again, partially explained by the strong dependence of model emissions on poor ~~HE-inundation extent~~ estimates. ~~We find the lowest emission in the highest perception and lowest temperature season JJA, when models estimate large emissions as they incorrectly assume an instantaneous influence of the precipitation-derived inundation extent.~~ We find that the Wetcharts emission estimates that use a ~~high~~~~stronger~~ temperature dependence ( $q_{10} = 3$ ) show a better agreement with TROPOMI concerning both seasonality and annual emissions. This indicates that the models may also underestimate the temperature sensitivity of the methane emissions. ~~The causes of this need to be investigated further.~~

425

430

435

440

The ~~HE-inundation extent~~ of SSWR is analyzed using satellite altimetry-based river height measurements of White Nile and Sobat rivers at locations within the Sudd and Macher wetlands. The ~~HE-inundation extent~~ estimates used in models are based on the local precipitation, whereas, the actual ~~HE-inundation extent~~ of SSWR is driven by water inflow from the rivers as evapotranspiration exceeds the ~~local~~ precipitation ~~in the region~~. As a result, both the seasonal cycle and trend of model ~~HE-inundation extent~~ disagree with river height data. The seasonal cycle of ~~HE-inundation extent~~ from river height data shows better agreement with the TROPOMI emissions when a full season-long lag between the two is assumed. This time lag can be explained by the time needed for methanogenesis to develop in the seasonally flooded areas of the wetlands. A more precise estimate of the lag is not possible due to the coarse temporal resolution of our TROPOMI emissions estimates.

445

The lack of information on the correct relationship of wetland emissions with ~~HE-inundation extent~~ and temperature results in large model uncertainties. Such large gaps in our understanding of the processes driving wetland emissions call for further investigation. As shown here for the wetlands of South Sudan, TROPOMI provides valuable observations over remote and inaccessible wetland regions of the world, which future wetland studies can take advantage of.

## APPENDIX

### Section A1. Systematic Measurement Uncertainties

Surface albedo and aerosols can alter the optical light path, introducing biases in XCH<sub>4</sub> (Butz et al., 2011). Therefore, the XCH<sub>4</sub> enhancement over South Sudan can be affected by the differences between the source and background region values of these parameters. The average retrieved aerosol optical thickness (AOT) and surface albedo in the SWIR band of TROPOMI are shown in Fig. A1. For SSWR and its background, the AOT and albedo differences in two-year average data are 0.001 and -0.10, respectively. The average differences for seasonal average maps are  $-0.01 \pm 0.01$ ,  $-0.15 \pm 0.02$  and  $16.3 \pm 8.4$  ppb for AOT, albedo and XCH<sub>4</sub> respectively. The negative albedo difference for SSWR occurs due to the high albedo the Sahara in the background. This small albedo difference is unlikely to influence the SSWR XCH<sub>4</sub> enhancement significantly, especially, as an albedo-based bias correction is applied to the XCH<sub>4</sub> in operational TROPOMI product (Hasekamp et al., 2019). We also examined the possibility that the XCH<sub>4</sub> enhancement over South Sudan is an artefact of sun glint geometry of TROPOMI observations due to refraction on standing water of the Lakes and inundated areas in the region. This can happen when the observation geometry over a water body surface is at the specular reflection angle (i.e., the viewing zenith angle matches the solar zenith angle) causing a spike in the level 1 radiance measurements. However, this was found not to occur over the wetlands of South Sudan.

*Data Availability.* TROPOMI data are available at the Copernicus Open Access Hub (<https://scihub.copernicus.eu/>) Satellite altimetry river height dataset is available at Hydroweb website (<http://hydroweb.theia-land.fr/>). Wetcharts data can be downloaded from [https://daac.ornl.gov/CMS/guides/CMS\\_Global\\_Monthly\\_Wetland\\_CH4.html](https://daac.ornl.gov/CMS/guides/CMS_Global_Monthly_Wetland_CH4.html). SWAMPS ~~HE~~-inundation extent data is available at <http://wetlands.jpl.nasa.gov>. LPJ-wsl data is available from Zhen Zhang (yuisheng@gmail.com) upon request.

*Author contributions.* The study was designed by SP, IA & SH. AL and TB provided the TROPOMI XCH<sub>4</sub> data. AAB provided Wetcharts data. BP and ZZ provided LPJ-wsl data. SP and MT performed the analysis. SP, IA & SH wrote the manuscript using contributions from all the co-authors.

*Acknowledgements.* We thank the team that has realized the TROPOMI instrument, consisting of the partnership between Airbus Defence and Space Netherlands, Royal Netherlands Meteorological Institute (KNMI), SRON Netherlands Institute for Space Research (TNO), and Netherlands Organisation for Applied Scientific Research (TNO), Netherlands Space Office (NSO), and European Space Agency. This research is supported through the GALES (Gas Leaks from Space) project (Grant 15597) by the Dutch Technology Foundation, which is part of the Netherlands Organisation for Scientific Research (NWO), and is partly funded by Ministry of Economic Affairs, ~~the The~~-Netherlands. Part of this research was conducted at the Jet

480 Propulsion Laboratory, California Institute of Technology, Anthony Bloom acknowledges support from NASA Earth Science grant (#NNH14ZDA001N-CMS). Benjamin Poulter and Zhen Zhang acknowledge support from the Gordon and Betty Moore Foundation through Grant GBMF5439 ‘Advancing Understanding of the Global Methane Cycle’ supporting the Methane Budget activity for the Global Carbon Project (globalcarbonproject.org)

485 *Competing interests.* The authors declare that they have no competing interests.

## References

Arnth, A., Harrison, S. P., Zaehle, S., Tsigaridis, K., Menon, S., Bartlein, P. J., Feichter, J., Korhola, A., Kulmala, M., O'Donnell, D., Schurgers, G., Sorvari, S., and Vesala, T.: Terrestrial biogeochemical feedbacks in the climate system, Nature Geosci, 3, 525-532, [http://www.nature.com/ngeo/journal/v3/n8/supinfo/ngeo905\\_S1.html](http://www.nature.com/ngeo/journal/v3/n8/supinfo/ngeo905_S1.html), 2010.

Bloom, A.A., Palmer, P.I., Fraser, A., Reay, D.S. and Frankenberg, C.: Large-scale controls of methanogenesis inferred from methane and gravity spaceborne data. Science, 327(5963), pp.322-325, 2010.

495 Bloom, A. A., Exbrayat, J.-F., van der Velde, I. R., Feng, L., and Williams, M.: The decadal state of the terrestrial carbon cycle: Global retrievals of terrestrial carbon allocation, pools, and residence times, P. Natl. Acad. Sci. USA, 113, 1285–1290, <https://doi.org/10.1073/pnas.1515160113>, 2016.

Bloom, A., Bowman, W. K., Lee, M., Turner, J. A., Schroeder, R., Worden, R. J., Weidner, R., McDonald, C. K. and Jacob, 500 J. D.: A global wetland methane emissions and uncertainty dataset for atmospheric chemical transport models (WetCHARTs version 1.0), Geosci. Model Dev., 10(6), 2141–2156, doi:10.5194/gmd-10-2141-2017, 2017.

Bontemps, S., Defourny, P., Bogaert, E. V., Arino, O., Kalogirou, V., and Perez, J. R.: Globcover Products Description and Validation Report, Tech. rep., ESA, 2011. Last access: 27 June 2020

505

Buchwitz, M., Schneising, O., Reuter, M., Heymann, J., Krautwurst, S., Bovensmann, H., Burrows, J. P., Boesch, H., Parker, R. J., Somkuti, P., Detmers, R. G., Hasekamp, O. P., Aben, I., Butz, A., Frankenberg, C., and Turner, A. J.: Satellite-derived methane hotspot emission estimates using a fast data-driven method, Atmos. Chem. Phys., 17, 5751-5774, doi:10.5194/acp- 510 17-5751-2017, 2017.



Butz, A., Galli, A., Hasekamp, O., Landgraf, J., Tol, P., and Aben, I.: TROPOMI aboard Sentinel-5 Precursor: Prospective performance of {CH<sub>4</sub>} retrievals for aerosol and cirrus loaded atmospheres, *Remote Sens. Environ.*, 120, 267–276, doi:10.1016/j.rse.2011.05.030, 2012.

515

Crétau, J. F., Jelinski, W., Calmant, S., Kouraev, A., Vuglinski, V., Bergé-Nguyen, M., Gennero, M. C., Nino, F., Abarca Del Rio, R., Cazenave, A. and Maisongrande, P.: SOLS: A lake database to monitor in the Near Real Time water level and storage variations from remote sensing data, *Adv. Sp. Res.*, 47(9), 1497–1507, doi:10.1016/j.asr.2011.01.004, 2011.

520

[Crippa, M., Oreggioni, G., Guizzardi, D., Muntean, M., Schaaf, E., Lo Vullo, E., Solazzo, E., Monforti-Ferrario, F., Olivier, J.G.J., Vignati, E.: Fossil CO<sub>2</sub> and GHG emissions of all world countries - 2019 Report, EUR 29849 EN, Publications Office of the European Union, Luxembourg, ISBN 978-92-76-11100-9, 10.2760/687800, 2019.](#)

525

[Crutzen, P. J., Aselmann, I., and Seiler, W.: Methane production by domestic animals, wild ruminants, other herbivorous fauna, and humans, \*Tellus B\*, 38, 271–284, <https://doi.org/10.1111/j.1600-0889.1986.tb00193.x>, 1986.](#)

Da Silva, J. S., Calmant, S., Seyler, F., Rotunno Filho, O. C., Cochonneau, G., and Mansur, W. J.: Water levels in the Amazon basin derived from the ERS 2 and ENVISAT radar altimetry missions. *Remote sensing of environment*, 114(10), 2160–2181, 2010.

530

Danielson, J.J., and Gesch, D.B.: Global multi-resolution terrain elevation data 2010 (GMTED2010): U.S. Geological Survey Open-File Report 2011-1073, 26 p, 2011. <https://pubs.usgs.gov/of/2011/1073/pdf/of2011-1073.pdf>. Last access: 27 June 2020.

535

[FAOSTAT Online Statistical Service \(Food and Agriculture Organization; FAO\): <http://faostat3.fao.org>, access: October 1, 2020.](#)

Frankenberg, C., Aben, I., Bergamaschi, P., Dlugokencky, E. J., van Hees, R., Houweling, S., van der Meer, P., Snel, R. and Tol, P.: Global column-averaged methane mixing ratios from 2003 to 2009 as derived from SCIAMACHY: Trends and variability, *J. Geophys. Res.*, 116(D4), D04302, doi:10.1029/2010JD014849, 2011.

540

Ganesan, A. L., Schwietzke, S., Poulter, B., Arnold, T., Lan, X., Rigby, M., Vogel, F. R., van der Werf, G. R., Janssens-Maenhout, G., Boesch, H., Pandey, S., Manning, A. J., Jackson, R. B., Nisbet, E. G. and Manning, M. R.: Advancing Scientific Understanding of the Global Methane Budget in Support of the Paris Agreement, *Global Biogeochem. Cycles*, 33(12), 1475–1512, doi:10.1029/2018GB006065, 2019.

545

- Gumbrecht, T., Roman-Cuesta, R. M., Verchot, L., Herold, M., Wittmann, F., Householder, E., Herold, N. and Murdiyarso, D.: An expert system model for mapping tropical wetlands and peatlands reveals South America as the largest contributor, *Glob. Chang. Biol.*, 23(9), 3581–3599, doi:10.1111/gcb.13689, 2017.
- 550 Hasekamp, O., Lorente, A., Hu, H., Butz, A., Aan De Brugh, J. and Landgraf, J.: Algorithm Theoretical Baseline Document for Sentinel-5 Precursor Methane Retrieval., <https://sentinel.esa.int/web/sentinel/home>, (last access: 27 June 2020), 2019.
- Hersbach, H. and Dee, D.: ERA5 reanalysis is in production, *ECMWF Newsletter*, Vol. 147, p. 7, available at:  
555 <https://www.ecmwf.int/en/newsletter/147/news/era5-reanalysis-production>, (last access: 27 June 2020), 2016.
- Hu, H., Hasekamp, O., Butz, A., Galli, A., Landgraf, J., Aan De Brugh, J., Borsdorff, T., Scheepmaker, R. and Aben, I.: The operational methane retrieval algorithm for TROPOMI, *Atmos. Meas. Tech.*, 9(11), 5423–5440, doi:10.5194/amt-9-5423-2016, 2016.
- 560 Hu, H., Landgraf, J., Detmers, R., Borsdorff, T., Aan de Brugh, J., Aben, I., Butz, A. and Hasekamp, O.: Toward Global Mapping of Methane With TROPOMI: First Results and Intersatellite Comparison to GOSAT, *Geophys. Res. Lett.*, doi:10.1002/2018GL077259, 2018.
- 565 Hughes, R. H. and Hughes, J. S.: A Directory of African wetlands, International Union for the Conservation of Nature, Gland, Switzerland, United Nations Environment Programme, Nairobi, Kenya and World Conservation Monitoring Centre, Cambridge, UK, 1922.
- Itoh, M., Sudo, S., Mori, S., Saito, H., Yoshida, T., Shiratori, Y., Suga, S., Yoshikawa, N., Suzue, Y., Mizukami, H. and  
570 Mochida, T.: Mitigation of methane emissions from paddy fields by prolonging midseason drainage. *Agriculture, ecosystems & environment*, 141(3-4), pp.359-372, 2011.
- Janssens-Maenhout, G., Crippa, M., Guizzardi, D., Muntean, M., Schaaf, E., Dentener, F., Bergamaschi, P., Pagliari, V., Olivier, J. G. J., Peters, J. A. H. W., van Aardenne, J. A., Monni, S., Doering, U., and Petrescu, A. M. R.: EDGAR v4.3.2  
575 Global Atlas of the three major Greenhouse Gas Emissions for the period 1970–2012, *Earth Syst. Sci. Data Discuss.*, <https://doi.org/10.5194/essd-2017-79>, 2017.

- Jerman, V., Metje, M., Mandić-Mulec, I., and Frenzel, P.: Wetland restoration and methanogenesis: the activity of microbial populations and competition for substrates at different temperatures, *Biogeosciences*, 6, 1127–1138, 580 <https://doi.org/10.5194/bg-6-1127-2009>, 2009.
- Kirschke, S., Bousquet, P., Ciais, P., Saunio, M., Canadell, J. G., Dlugokencky, E. J., Bergamaschi, P., Bergmann, D., Blake, D. R., Bruhwiler, L., Cameron-Smith, P., Castaldi, S., Chevallier, F., Feng, L., Fraser, A., Heimann, M., Hodson, E. L., Houweling, S., Josse, B., Fraser, P. J., Krummel, P. B., Lamarque, J.-F., Langenfelds, R. L., Le Quéré, C., Naik, V., O'Doherty, 585 S., Palmer, P. I., Pison, I., Plummer, D., Poulter, B., Prinn, R. G., Rigby, M., Ringeval, B., Santini, M., Schmidt, M., Shindell, D. T., Simpson, I. J., Spahni, R., Steele, L. P., Strode, S. a., Sudo, K., Szopa, S., van der Werf, G. R., Voulgarakis, A., van Weele, M., Weiss, R. F., Williams, J. E. and Zeng, G.: Three decades of global methane sources and sinks, *Nat. Geosci.*, 6(10), 813–823, doi:10.1038/ngeo1955, 2013.
- 590 Lehner, B. and Döll, P.: Development and validation of a global database of lakes, reservoirs, and wetlands, *J. Hydrol.*, 296, 1– 22, <https://doi.org/10.1016/j.jhydrol.2004.03.028>, 2004.
- Lunt, M. F., Palmer, P. I., Feng, L., Taylor, C. M., Boesch, H., and Parker, R. J.: An increase in methane emissions from tropical Africa between 2010 and 2016 inferred from satellite data, *Atmos. Chem. Phys.*, 19, 14721–14740, 595 <https://doi.org/10.5194/acp-19-14721-2019>, 2019.
- Pandey, S., Houweling, S., Krol, M., Aben, I., Monteil, G., Nechita-Banda, N., Dlugokencky, E. J., Detmers, R., Hasekamp, O., Xu, X., Riley, W. J., Poulter, B., Zhang, Z., McDonald, K. C., White, J. W. C., Bousquet, P. and Röckmann, T.: Enhanced methane emissions from tropical wetlands during the 2011 la Niña, *Sci. Rep.*, 7(October 2016), 1–8, doi:10.1038/srep45759, 600 2017.
- Rebelo, L.-M., Senay, G. B., and McCartney, M. P.: Flood Pulsing in the Sudd Wetland: Analysis of Seasonal Variations in Inundation and Evaporation in South Sudan, *Earth Interact.*, 16, 1–19, <https://doi.org/10.1175/2011ei382.1>, 2012.
- 605 Ringeval, B., De Noblet-Ducoudré, N., Ciais, P., Bousquet, P., Prigent, C., Papa, F. and Rossow, W. B.: An attempt to quantify the impact of changes in wetland extent on methane emissions on the seasonal and interannual time scales, *Global Biogeochem. Cycles*, 24(2), doi:10.1029/2008GB003354, 2010.
- Saunio, M., Bousquet, P., Poulter, B., Peregón, A., Ciais, P., Canadell, J. G., Dlugokencky, E. J., Etiope, G., Bastviken, D., 610 Houweling, S., Janssens-Maenhout, G., Tubiello, F. N., Castaldi, S., Jackson, R. B., Alexe, M., Arora, V. K., Beerling, D. J., Bergamaschi, P., Blake, D. R., Brailsford, G., Brovkin, V., Bruhwiler, L., Crevoisier, C., Crill, P., Curry, C., Frankenberg, C.,

- Gedney, N., Höglund-Isaksson, L., Ishizawa, M., Ito, A., Joos, F., Kim, H.-S., Kleinen, T., Krummel, P., Lamarque, J.-F., Langenfelds, R., Locatelli, R., Machida, T., Maksyutov, S., McDonald, K. C., Marshall, J., Melton, J. R., Morino, I., O'Doherty, S., Parmentier, F.-J. W., Patra, P. K., Peng, C., Peng, S., Peters, G. P., Pison, I., Prigent, C., Prinn, R., Ramonet, M., Riley, W. J., Saito, M., Schroder, R., Simpson, I. J., Spahni, R., Steele, P., Takizawa, A., Thorton, B. F., Tian, H., Tohjima, Y., Viovy, N., Voulgarakis, A., van Weele, M., van der Werf, G., Weiss, R., Wiedinmyer, C., Wilton, D. J., Wiltshire, A., Worthy, D., Wunch, D. B., Xu, X., Yoshida, Y., Zhang, B., Zhang, Z. and Zhu, Q.: The Global Methane Budget: 2000-2012, *Earth Syst. Sci. Data Discuss.*, (June), 1–79, doi:10.5194/essd-2016-25, 2016.
- 615 Sanderson, M. G.: Biomass of termites and their emissions of methane and carbon dioxide: A global database, *Global Biogeochem. Cy.*, 10, 543–557, <https://doi.org/10.1029/96gb01893>, 1996.
- 625 Scarpelli, T. R., Jacob, D. J., Maasackers, J. D., Sulprizio, M. P., Sheng, J.-X., Rose, K., Romeo, L., Worden, J. R., and Janssens-Maenhout, G.: A global gridded ( $0.1^\circ \times 0.1^\circ$ ) inventory of methane emissions from oil, gas, and coal exploitation based on national reports to the United Nations Framework Convention on Climate Change, *Earth Syst. Sci. Data*, 12, 563–575, <https://doi.org/10.5194/essd-12-563-2020>, 2020.
- 630 Schroeder, R., McDonald, K., Chapman, B., Jensen, K., Podest, E., Tessler, Z., Bohn, T. and Zimmermann, R.: Development and evaluation of a ~~multiyear~~~~multi-year~~ fractional surface water data set derived from active/passive microwave remote sensing data, *Remote Sens.*, 7(12), 16688–16732, doi:10.3390/rs71215843, 2015.
- Sutcliffe, J. and Brown, E.: Water losses from the Sudd, *Hydrological Sciences Journal*, 63:4, 527–541, [doi:10.1080/02626667.2018.1438612](https://doi.org/10.1080/02626667.2018.1438612), 2018.
- 635 Travaglia C, McDaid Kapetsky J., and Righini G.: Monitoring wetlands for fisheries by NOAA AVHRR LAC thermal data, *SC Series (FAO)*, 1995.
- Tunnicliffe, R. L., Ganesan, A. L., Parker, R. J., Boesch, H., Gedney, N., Poulter, B., Zhang, Z., Lavrič, J. V., Walter, D., Rigby, M., Henne, S., Young, D., and O'Doherty, S.: Quantifying sources of Brazil's CH<sub>4</sub> emissions between 2010 and 2018 from satellite data, *Atmos. Chem. Phys. Discuss.*, <https://doi.org/10.5194/acp-2020-438>, in review, 2020.
- 640 van der Werf, G. R., Randerson, J. T., Giglio, L., van Leeuwen, T. T., Chen, Y., Rogers, B. M., Mu, M., van Marle, M. J. E., Morton, D. C., Collatz, G. J., Yokelson, R. J., and Kasibhatla, P. S.: Global fire emissions estimates during 1997–2016, *Earth Syst. Sci. Data*, 9, 697–720, <https://doi.org/10.5194/essd-9-697-2017>, 2017.

- Varon, D. J., Jacob, D. J., McKeever, J., Jervis, D., Durak, B. O. A., Xia, Y., and Huang, Y.: Quantifying methane point sources from fine-scale satellite observations of atmospheric methane plumes, *Atmos. Meas. Tech.*, 11, 5673–5686, <https://doi.org/10.5194/amt-11-5673-2018>, 2018.
- 645 Veefkind, J. P., Aben, I., McMullan, K., Förster, H., de Vries, J., Otter, G., Claas, J., Eskes, H. J., de Haan, J. F., Kleipool, Q., van Weele, M., Hasekamp, O., Hoogeveen, R., Landgraf, J., Snel, R., Tol, P., Ingmann, P., Voors, R., Kruizinga, B., Vink, R., Visser, H. and Levelt, P. F.: TROPOMI on the ESA Sentinel-5 Precursor: A GMES mission for global observations of the atmospheric composition for climate, air quality and ozone layer applications, *Remote Sens. Environ.*, doi:10.1016/j.rse.2011.09.027, 2012.
- 650 Wilson, C., Gloor, M., Gatti, L.V., Miller, J.B., Monks, S.A., McNorton, J., Bloom, A.A., Basso, L.S. and Chipperfield, M.P.: Contribution of regional sources to atmospheric methane over the Amazon Basin in 2010 and 2011. *Global Biogeochemical Cycles*, 30, 22–23, <https://doi.org/10.1002/2015GB005300>, 2016.
- Zhang, Z., Zimmermann, N. E., Kaplan, J. O. and Poulter, B.: Modeling spatiotemporal dynamics of global wetlands: Comprehensive evaluation of a new sub-grid TOPMODEL parameterization and uncertainties, *Biogeosciences*, 13(5), 1387–  
655 1408. <https://doi.org/10.5194/bg-13-1387-2016>, 2016.
- Zhang, Z., Zimmermann, N. E., Stenke, A., Li, X., Hodson, E. L., Zhu, G., Huang, C. and Poulter, B.: Emerging role of wetland methane emissions in driving 21st century climate change, *Proc. Natl. Acad. Sci.*, 201618765, doi:10.1073/pnas.1618765114, 2017.
- Zhang, Z., Zimmermann, N. E., Calle, L., Hurtt, G., Chatterjee, A., and Poulter, B.: Enhanced response of global wetland  
660 methane emissions to the 2015-2016 El Niño-Southern Oscillation event, *Environmental Research Letters*, 13, <https://doi.org/10.1088/1748-9326/aac939>, 2018.
- Zhang, Y., Gautam, R., Pandey, S., Omara, M., Maasackers, J. D., Sadavarte, P., Lyon, D., Nesser, H., Sulprizio, M. P., Varon, D. J., Zhang, R., Houweling, S., Zavala-Araiza, D., Alvarez, R. A., Lorente, A., Hamburg, S. P., Aben, I. and Jacob, D. J.: Quantifying methane emissions from the largest oil-producing basin in the United States from space, *Sci. Adv.*, 6(17),  
665 eaaz5120, doi:10.1126/sciadv.aaz5120, 2020.
- Zhu, Q., Peng, C., Ciais, P., Jiang, H., Liu, J., Bousquet, P., Li, S., Chang, J., Fang, X., Zhou, X., Chen, H., Liu, S., Lin, G., Gong, P., Wang, M., Wang, H., Xiang, W. and Chen, J.: Interannual variation in methane emissions from tropical wetlands triggered by repeated El Niño Southern Oscillation *Glob. Chang. Biol.*, 23(11), 4706–4716, doi:10.1111/gcb.13726, 2017.



**Table 1.** SSWR XCH<sub>4</sub> enhancement and emission estimates. The enhancements ( $\Delta$ XCH<sub>4</sub>) is the XCH<sub>4</sub> difference between SSWR and the background after correcting XCH<sub>4</sub> for latitudinal variation. Data coverage is defined here as the fraction of the number of  $0.1^\circ \times 0.1^\circ$  grid cells in SSWR with at least five high-quality TROPOMI measurement in a quarter data. Wind speed is the average boundary layer winds from ERA5. Emission estimates are calculated using Eq. (1).  $\pm$  represents  $1 \sigma$  uncertainty.

Season	Data coverage (%)	Wind speed (m s <sup>-1</sup> )	XCH <sub>4</sub> enhancement (ppb)	Emissions (Tg yr <sup>-1</sup> )
DJF-2018	91	$3.5 \pm 0.9$	<u><math>16.5 \pm 4.3</math></u> <del><math>21.7 \pm 1.5</math></del>	<u><math>11.5 \pm 4.2</math></u> <del><math>15.1 \pm 5.2</math></del>
MAM-2018	74	$2.1 \pm 1.2$	<u><math>20.2 \pm 4.1</math></u> <del><math>21.6 \pm 1.4</math></del>	<u><math>8.5 \pm 5.1</math></u> <del><math>9.0 \pm 5.3</math></del>
JJA-2018	44	$2.7 \pm 0.3$	<u><math>10.5 \pm 4.1</math></u> <del><math>7.3 \pm 2.4</math></del>	<u><math>5.7 \pm 2.3</math></u> <del><math>4.0 \pm 2.0</math></del>
SON-2018	83	$2.7 \pm 0.4$	<u><math>18.7 \pm 4.3</math></u> <del><math>16.5 \pm 2.0</math></del>	<u><math>10.1 \pm 2.8</math></u> <del><math>8.9 \pm 2.0</math></del>
DJF-2019	98	$3.2 \pm 0.9$	<u><math>13.4 \pm 2.7</math></u> <del><math>14.4 \pm 1.1</math></del>	<u><math>8.6 \pm 3.0</math></u> <del><math>9.2 \pm 2.7</math></del>
MAM-2019	92	$3.1 \pm 0.8$	<u><math>13.6 \pm 3.6</math></u> <del><math>14.8 \pm 1.2</math></del>	<u><math>8.4 \pm 3.1</math></u> <del><math>9.1 \pm 3.0</math></del>
JJA-2019	43	$2.8 \pm 0.3$	<u><math>2.6 \pm 3.7</math></u> <del><math>-1.5 \pm 2.4</math></del>	<u><math>1.4 \pm 2.1</math></u> <del><math>0.9 \pm 1.4</math></del>
SON-2019	83	$1.9 \pm 0.2$	<u><math>29.3 \pm 4.0</math></u> <del><math>26.3 \pm 2.2</math></del>	<u><math>11.2 \pm 1.9</math></u> <del><math>9.8 \pm 1.4</math></del>





**Table 2.** Annual emission and maximum  $\text{H}_2\text{O}$  inundation extent estimates for SSWR. The values in parentheses show 1-standard deviation spread over the given periods. The dashed values give the range of Wetcharts ensemble estimates.

685

	<b>Period</b>	<b>Maximum <u><math>\text{H}_2\text{O}</math> inundation extent</u> (<math>10^3 \text{ km}^2</math>)</b>	<b>Emissions (<math>\text{Tg yr}^{-1}</math>)</b>
Wetcharts Extended Ensemble/GLWD	2001-2015	32 (7)	0.4 (0.1) – 1.0 (0.2)
Wetcharts Extended Ensemble/GLOBCOVER	2001-2015	69 (10)	0.70 (0.1) – 1.8 (0.2)
Wetcharts Full Ensemble	2010	30–66	0.07 – 3.7
LPJ-wsl/ TOPMODEL	1980-2016	57 (9)	1.1 (0.25)
SWAMPS	2001-2019	25 (5)	–
Gumbrecht et al. (2017)	2011	99	–
TROPOMI	2018-2019	–	7.42 ± 3.2

690 **Table 3.** Annual emission estimates from Wetcharts Full ensemble (2010) for different temperature dependencies, and correlation coefficient (R) of their respective average seasonal cycle with TROPOMI emissions.

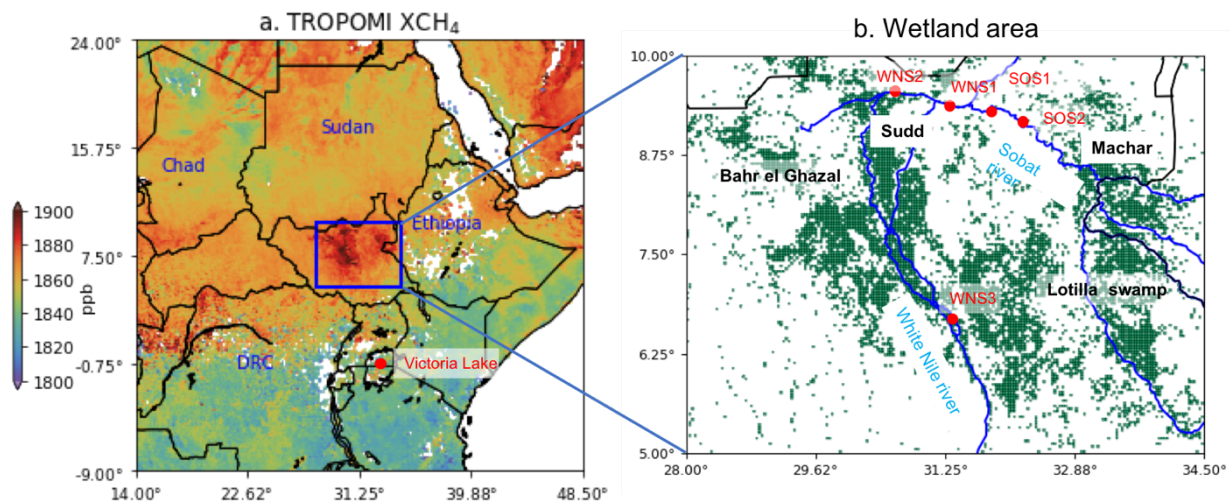
Temperature dependence (q10)	Emissions (Tg yr <sup>-1</sup> )	R (with TROPOMI)
1	0.5	-0. <del>6271</del>
2	0.8	-0. <del>4140</del>
3	1.0	-0. <del>2822</del>
Maximum*	3.7	0. <del>0013</del>

\*The maximum annual emission estimate in the 324-member ensemble of Wetcharts Full Ensemble. Its q10 is 3.

**Table A1.** The total permanent SSWR HE-inundation extent from Huges & Huges (1992).

695

<b>Wetlands in SSWR</b>	<b>Wetland Area (km<sup>2</sup>)</b>
Sudd	16,500
Machar marshes	9,000
Lottila Swamps	2,000
Veveno, Adiet and LiLebook	6,500
Kenamuke and Kobowen swamps	1,700
Bahr el Ghazal floodplains	900
<b>Total</b>	<b>36,000</b>

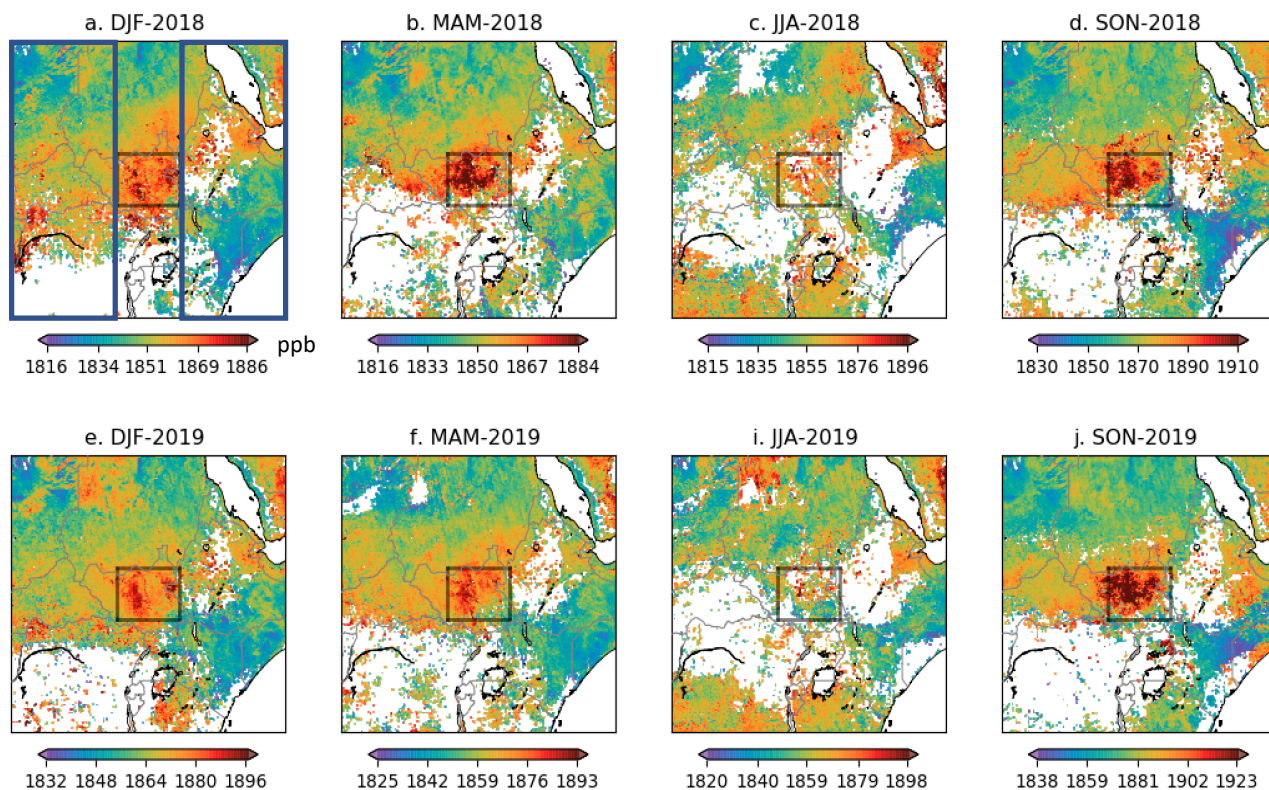


700

**Figure 1.** The TROPOMI XCH<sub>4</sub> enhancement over the South Sudan wetlands. (a) Average of two years (December 2017 to November 2019) of TROPOMI XCH<sub>4</sub> at  $0.1^\circ \times 0.1^\circ$  resolution (b) Wetlands in South Sudan from Gumbrecht et al. (2017) are shown in green, and the rivers in the region are shown in blue. The area within the blue rectangle ( $5^\circ$ – $10^\circ$  N and  $28^\circ$ – $34.5^\circ$  E) is referred to as South Sudan wetlands region (SSWR). The red dots show the locations of satellite altimetry-based river water height measurement sites.

705

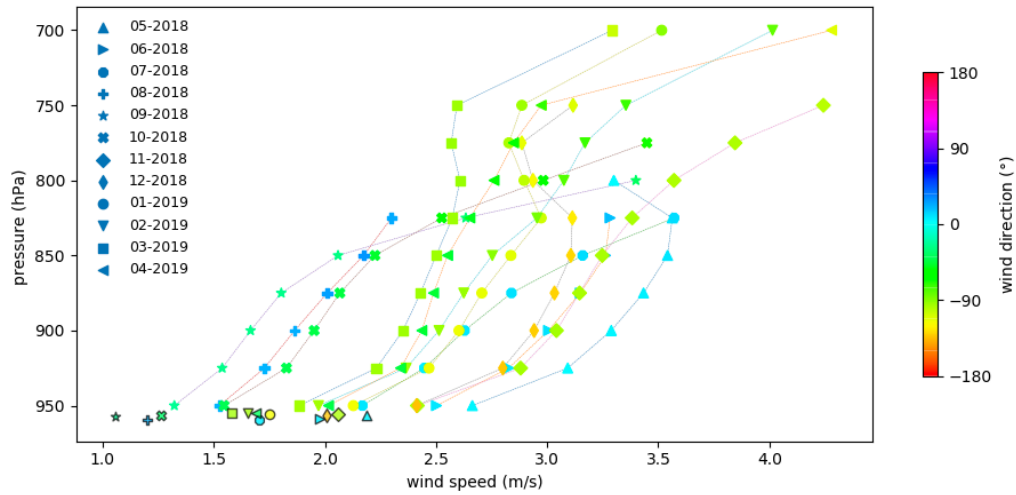
### TROPOMI XCH<sub>4</sub>



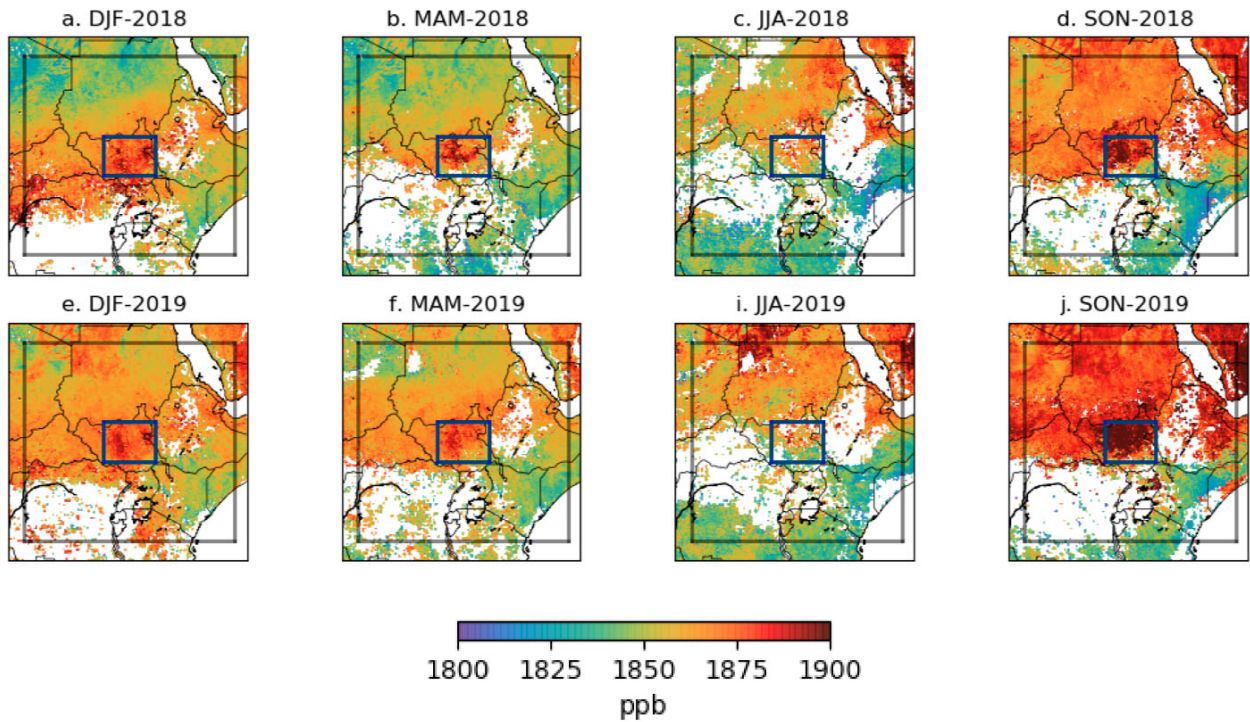
**Figure 2.** Seasonally average TROPOMI XCH<sub>4</sub> (ppb) at  $0.1^\circ \times 0.1^\circ$  resolution. The black rectangle at the centre of each panel shows the SSWR source region. The area outside of it is used as the background region. XCH<sub>4</sub> is corrected for large-scale latitudinal variation by subtracting a 3<sup>rd</sup> order polynomial fit using the region shown by blue rectangles in panel a. The region excludes the longitudes of the source region. Note that DJF includes December of the previous year.

710

715



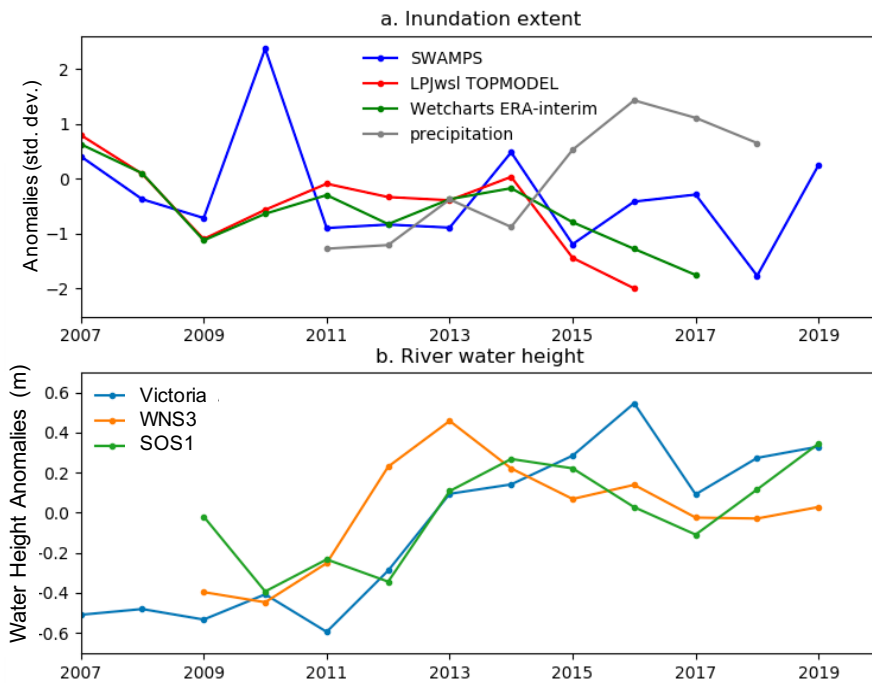
720 **Figure 32.** Monthly average boundary layer ERA5 winds in SSWR. Wind speeds (X-axis) and directions (colour of the markers) at 10:00 UTC, which is the closest hour to the local TROPOMI overpass time, are shown at different pressure levels of the model. The markers with dark edges represent 10-meter height winds.



725

**Figure 3.** Seasonally average TROPOMI XCH<sub>4</sub> at 0.1°×0.1° resolution. The blue rectangles show SSWR and the larger black rectangles show the background areas used for calculating XCH<sub>4</sub> enhancements. Note that DJF of a year includes December of the previous year.

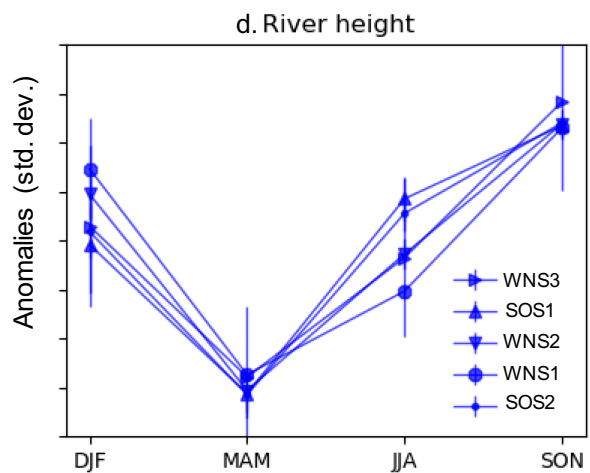
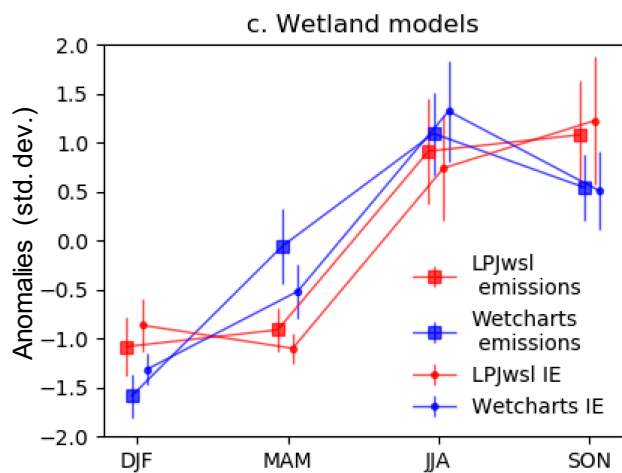
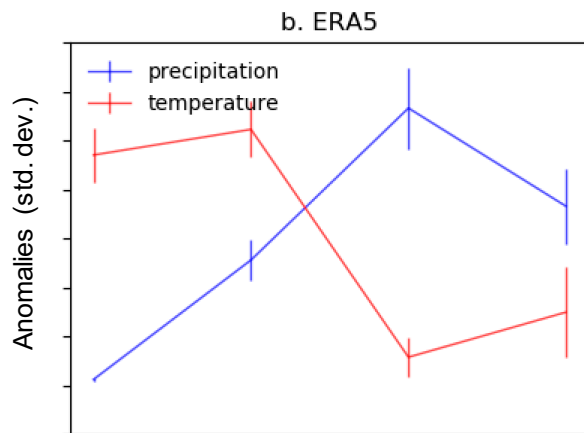
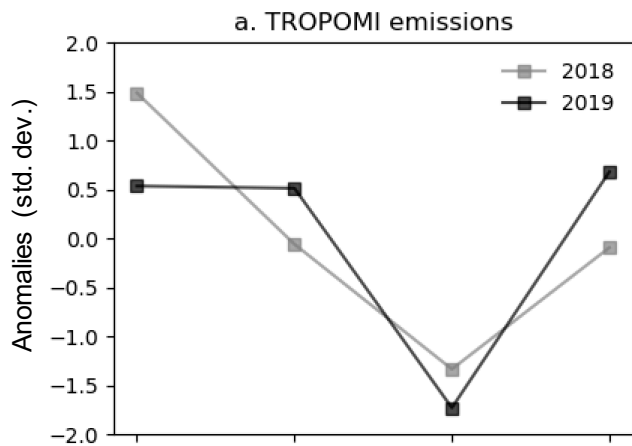
730

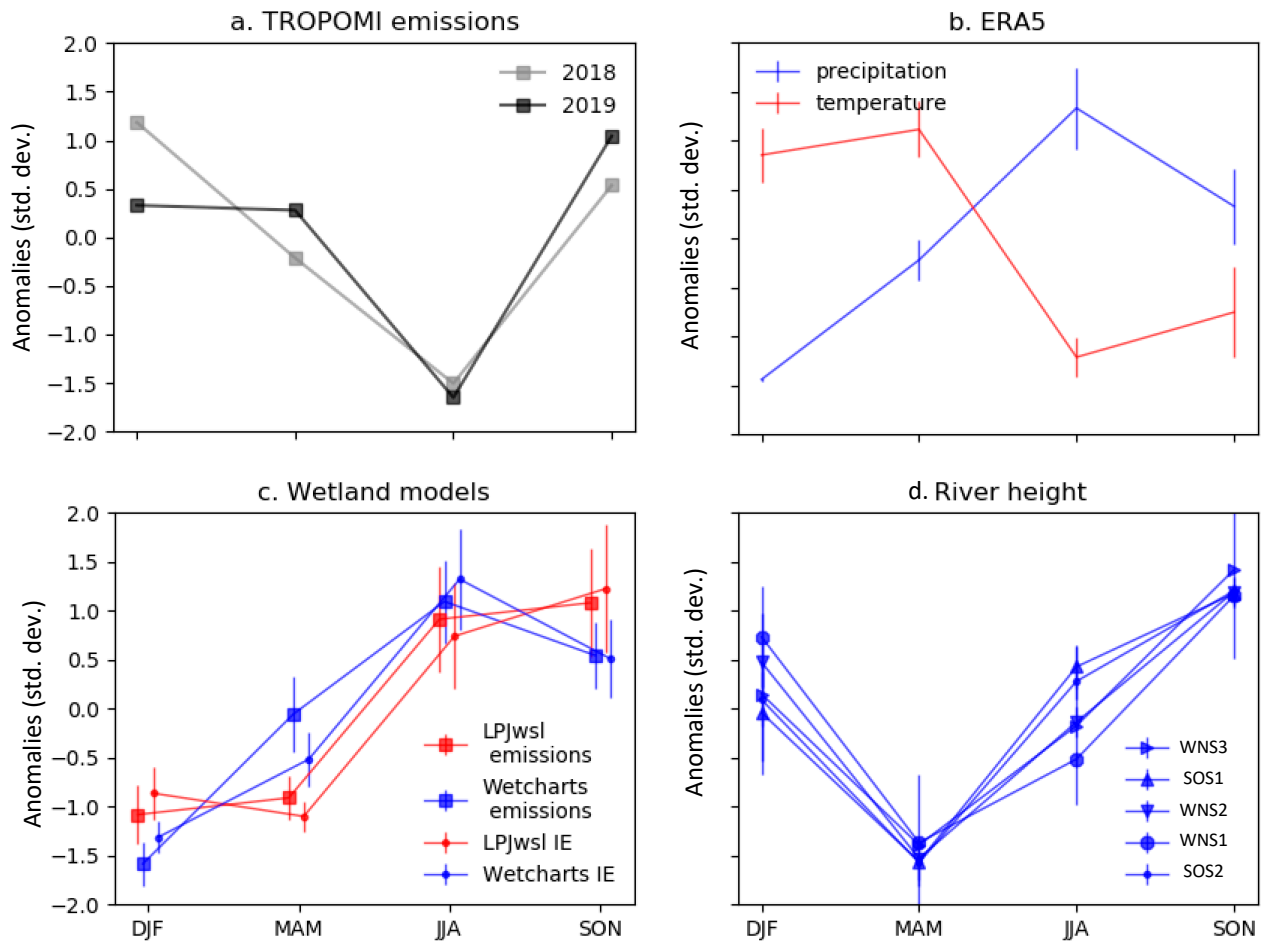


735 **Figure 4.** SSWR H-inundation extent estimates. (a) Annual anomalies of H-inundation extent estimates of SWAMPS, TOPMODEL and Wetcharts (ERA-interim), used in process models, and ERA5 precipitation, expressed in the unit of the standard deviation of the respective annualized time series. (b) Water height anomalies for the altimetry sites in Lake Victoria, and White Nile (WNS3) and Sobat (SOS1) rivers from the Hydroweb database. Locations of these altimetry sites are given in Figure 1. Here we only use the altimetry sites which have a sufficiently long temporal coverage that includes 2018-2019.

740

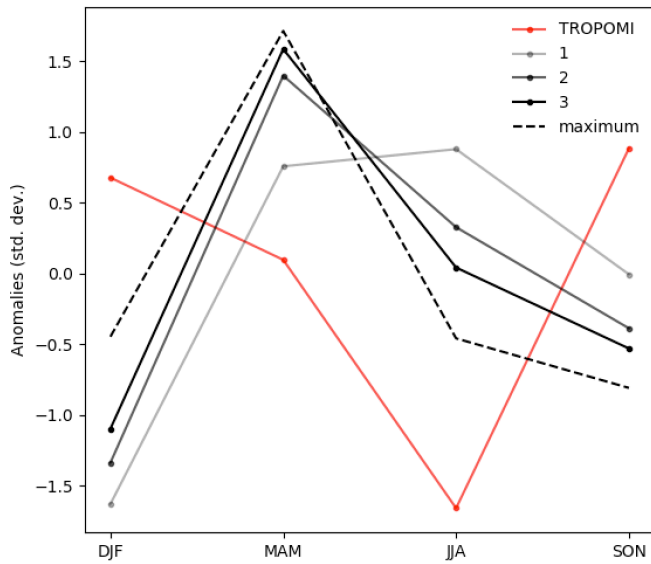
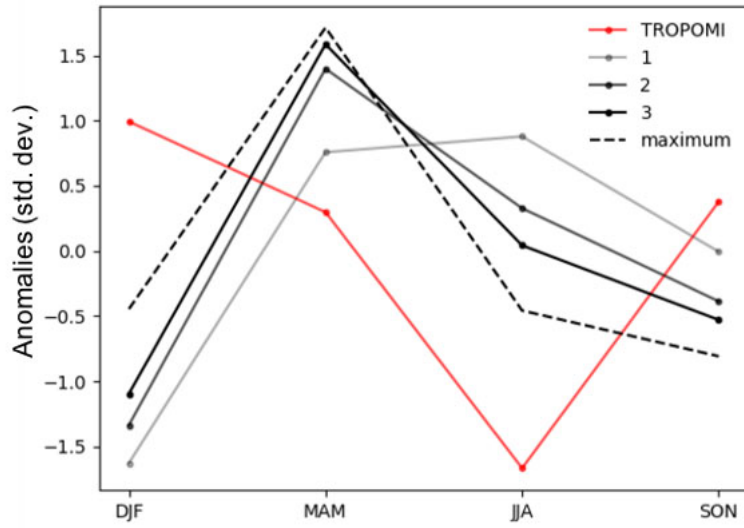






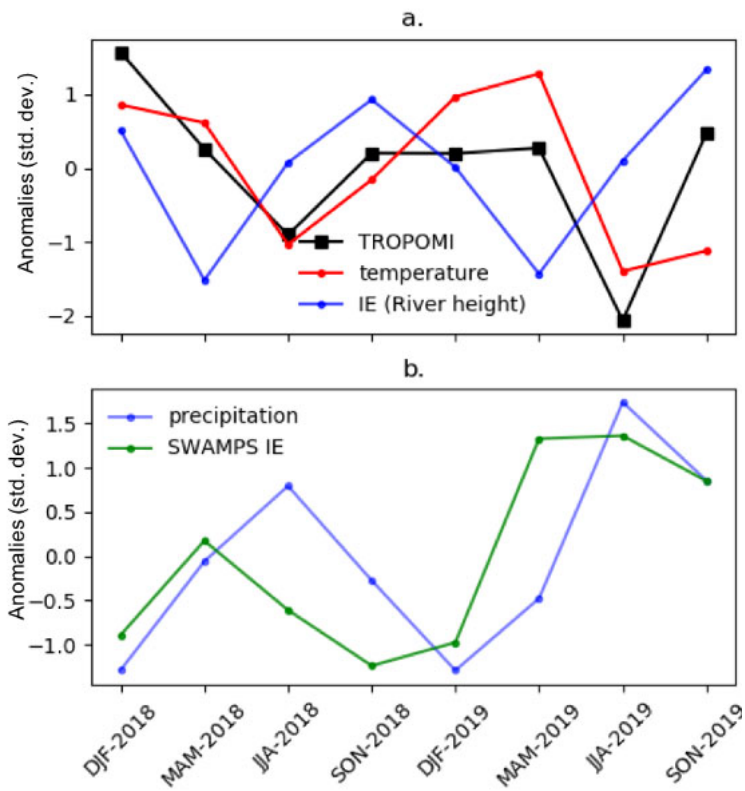
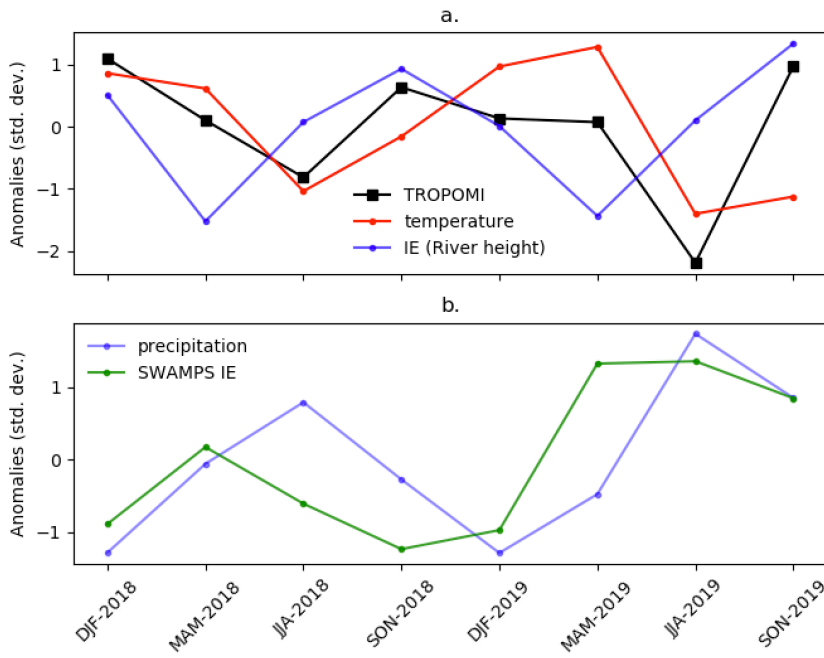
**Figure 5.** Mean seasonal cycles expressed in the unit of the standard deviation of respective time series. (a) Emission estimates from TROPOMI; (b) precipitation and temperature from ERA5 (2010-2019); (c) emissions and IE-inundation extent from the process models LPJ-wsl and Wetcharts Extended Ensemble; (d) river water height measurements at the altimetry sites given in Figure 1b. The vertical bars represent 1-standard deviation spread over different years.

745

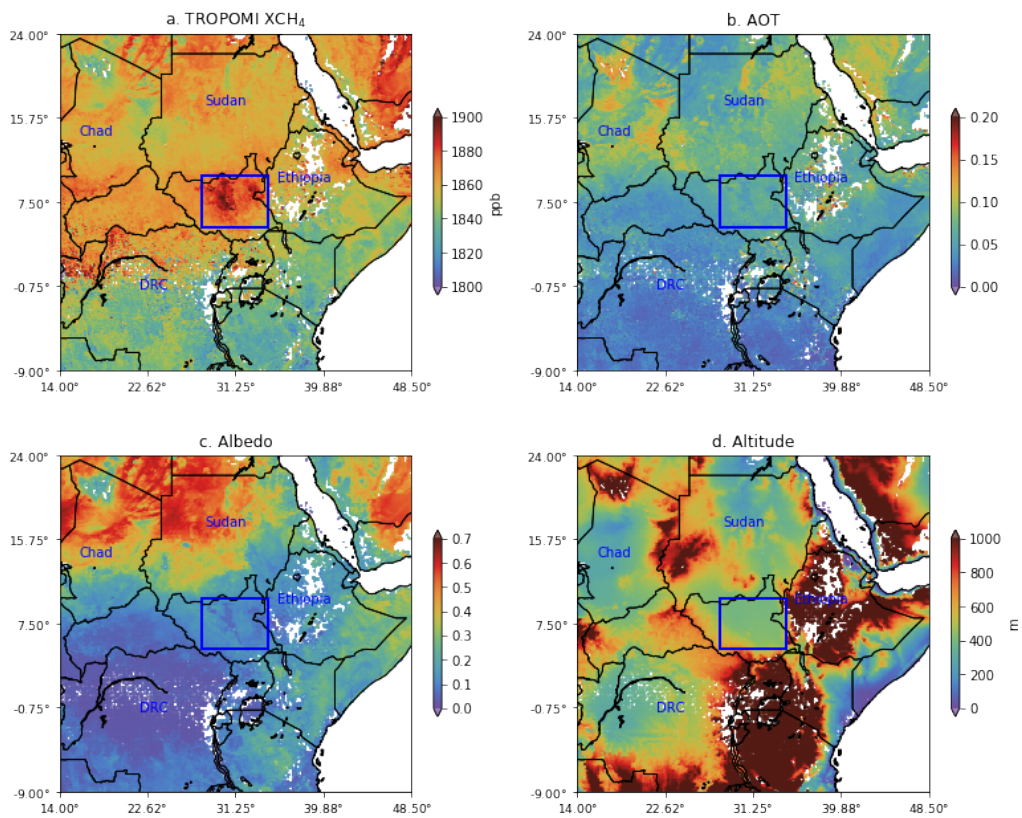


**Figure 6.** Seasonal cycle of SSWR emissions. Methane emissions from Wetcharts Full Ensemble for 2010 (December 2009 – November 2010) and TROPOMI are shown. The solid lines show the average of an emission estimate ensemble for a temperature dependency ( $q_{10}$ ). The dashed line shows the seasonal cycle of the Wetcharts estimate that has the largest annual emissions. All values are shown in the unit of standard deviation.





765 **Figure 7.** Seasonal anomalies in SSWR. (a) TROPOMI emissions estimates ~~of TROPOMI~~, ERA5 temperature and ~~H~~  
~~inundation extent, using from~~ river height measurements, are shown. (b) Local precipitation and SWAMPS ~~H~~  
~~inundation~~  
extent data are shown. All values are expressed in the unit of standard deviation. Correlation coefficients (R) of TROPOMI  
emissions with temperature, river height, SWAMPS and precipitation are 0.4966 and 0.2407, ~~-0.3341~~, ~~-0.6780~~, respectively.



**Figure A1.** Average TROPOMI data (2018-2019) at  $0.1^\circ \times 0.1^\circ$  resolution. The albedo and AOT are retrieved for the SWIR 770 band at  $2.3 \mu\text{m}$ .