

Figure S1 Influence of vapor pressure deficit (VPD) on COS ecosystem flux ($\text{pmol m}^{-2} \text{s}^{-1}$) at times of high incoming photosynthetic active radiation ($\text{PAR}_{\text{inc}} \geq 800$)

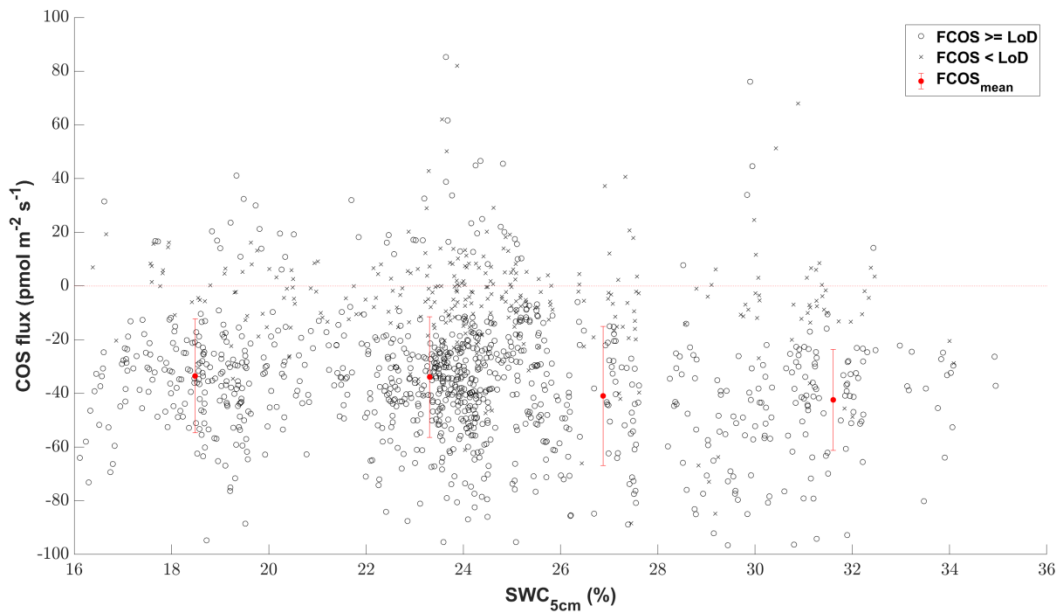


Figure S2 Influence of the soil water content at 5 cm depth on the COS ecosystem flux at times of high incoming photosynthetic active radiation ($\text{PAR}_{\text{inc}} \geq 800$). Black circles depict the COS ecosystem fluxes ($\text{pmol m}^{-2} \text{s}^{-1}$) if they are above the limit of detection and black x's if they are below. Filled red circles depict the mean COS ecosystem fluxes for $\text{SWC}_{5\text{cm}}$ of 5 % bins. The red error bars depict the ± 1 standard deviation of the mean.

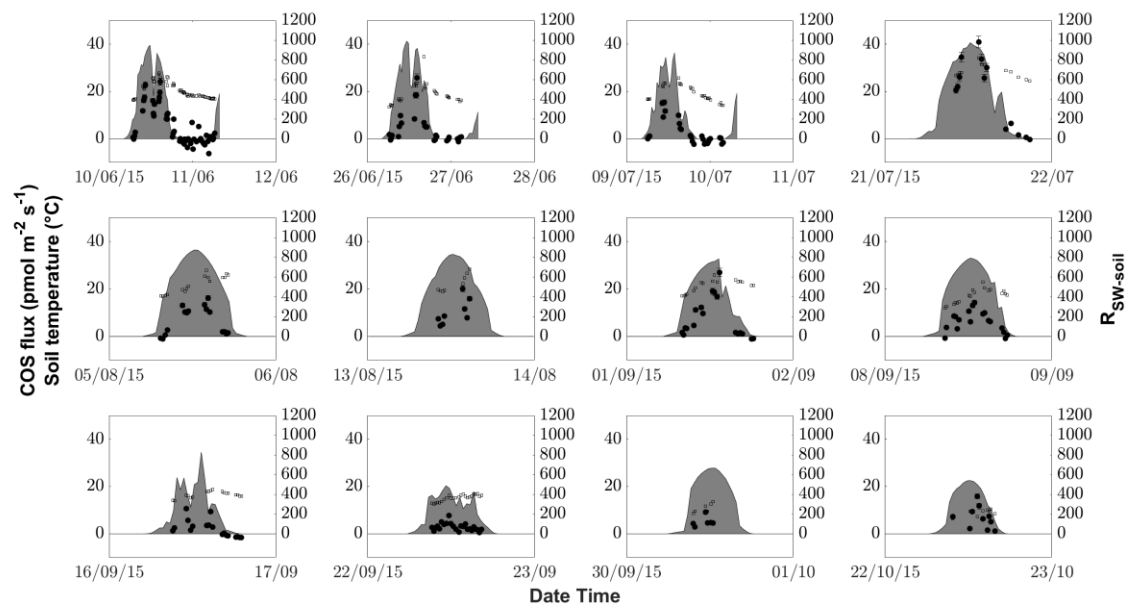


Figure S3 COS and CO₂ soil fluxes ($\text{pmol m}^{-2}\text{s}^{-1}$ and $\mu\text{mol m}^{-2}\text{s}^{-1}$) originating from manual chamber measurements depicted by black circles and diamonds, respectively, incident shortwave radiation reaching the soil surface ($R_{\text{SW-soil}}$) depicted by the gray area and soil temperature (T_{soil}) depicted by empty black bordered squares.

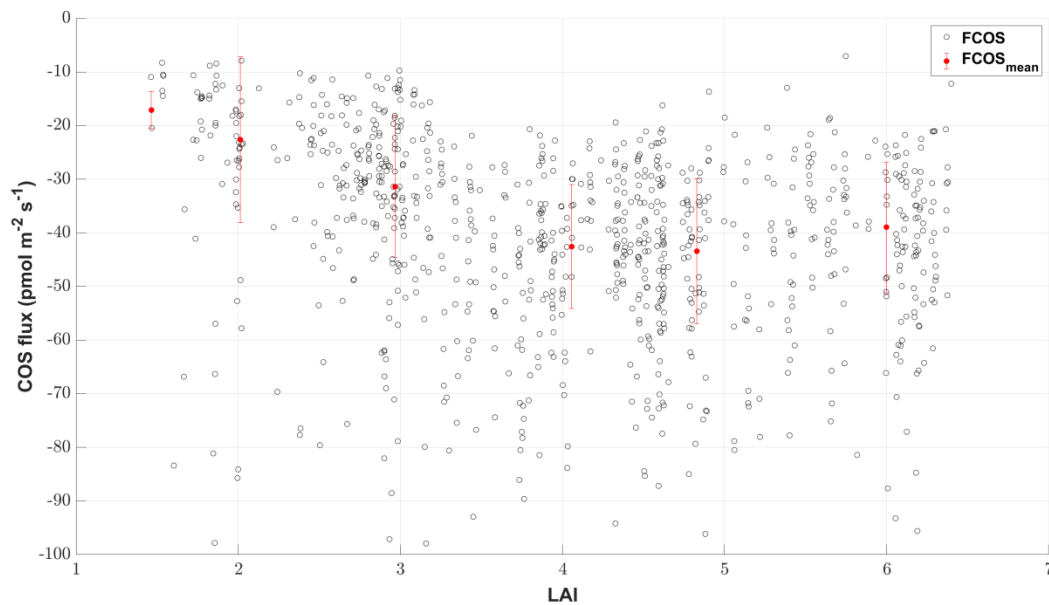


Figure S4 Back circles depict the COS uptake ($\text{pmol m}^{-2}\text{s}^{-1}$) plotted against the leaf area index (LAI) at times of high incoming photosynthetic active radiation ($\text{PAR}_{\text{inc}} \geq 800$), while red filled circles depict the mean COS uptake per LAI class.

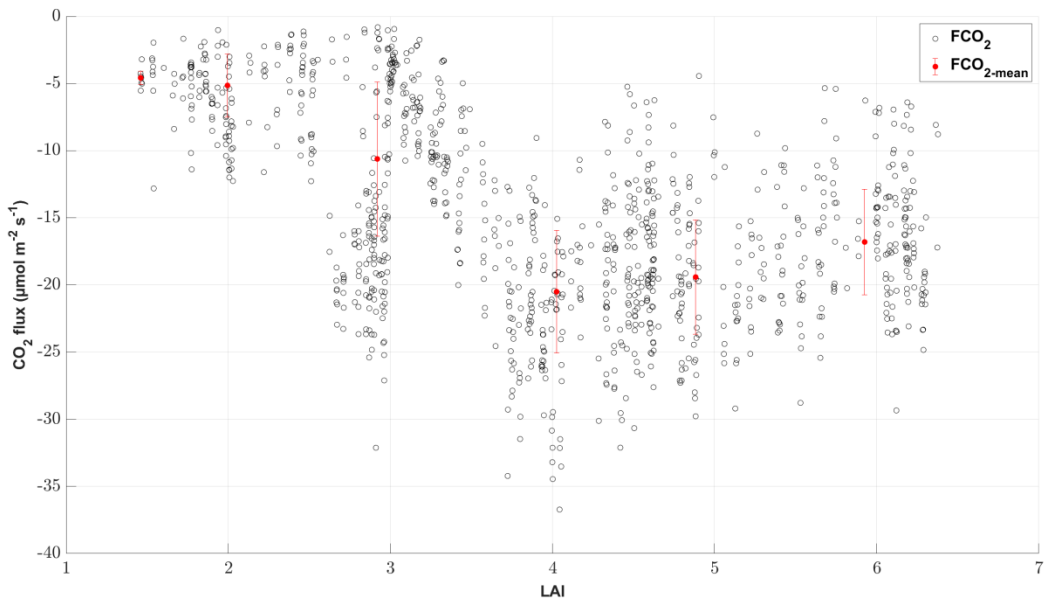


Figure S5 Black circles depict the NEE ($\mu\text{mol m}^{-2} \text{s}^{-1}$) plotted against the leaf area index (LAI) at times of high incoming photosynthetic active radiation ($\text{PAR}_{\text{inc}} \geq 800$) and filtered to exclude net emissions, while red filled circles depict the mean NEE per LAI class.

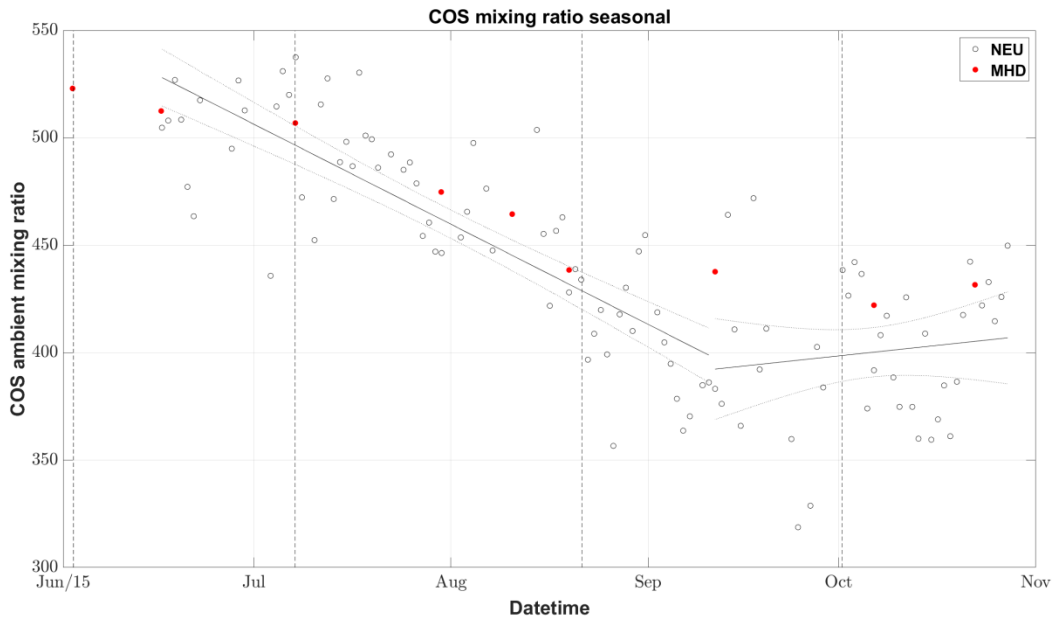


Figure S6 Seasonal COS mixing ratio of Neustift (Austria) and Mace Head (Ireland), depicted by black and filled red circles respectively (change point detection Barr et al. (2013)).

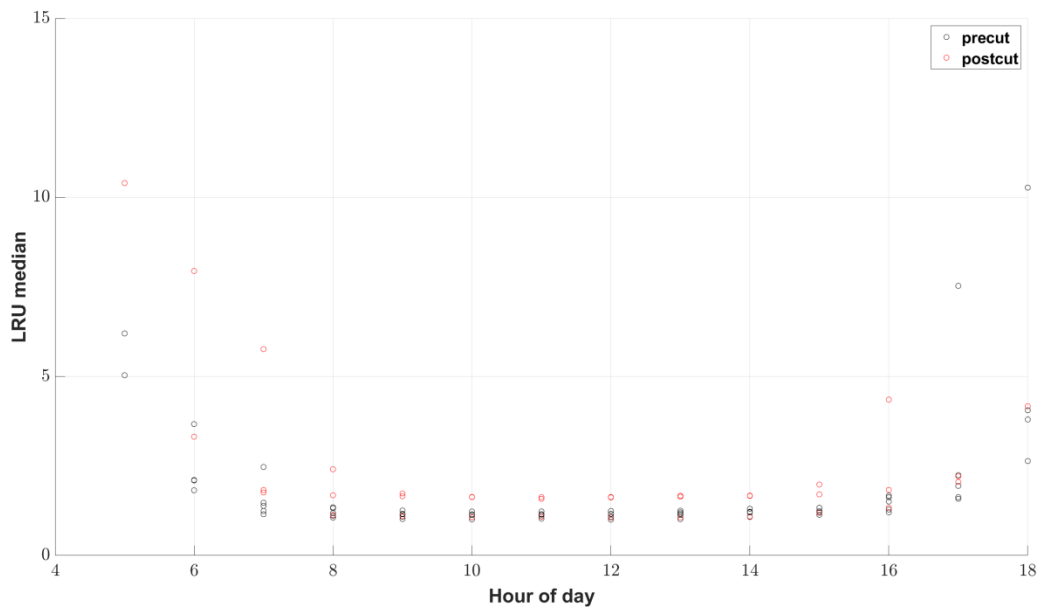


Figure S7 Mean diurnal variation of LRU calculated from ι and κ separated into the pre- and post- cut periods (~15 days each) depicted by black and red circles respectively.



Photo S1 Grassland before the cut (21.08.2015 12:00)



Photo S2 Grassland during the cut when the grass was left to dry (21.08.2015 16:00)



Photo S3 Dead plant parts covering the majority of the grassland (23.08.2015 12:00)