

# Dynamics of the Deep Chlorophyll Maximum in the Black Sea as depicted by BGC-Argo floats

Florian Ricour<sup>1,2,\*</sup>, Arthur Capet<sup>1,\*</sup>, Fabrizio D'Ortenzio<sup>2</sup>, Bruno Delille<sup>1</sup>, and Marilaure Grégoire<sup>1</sup>

<sup>1</sup>Freshwater and Oceanic science Unit of reSearch (FOCUS), University of Liege, Belgium

<sup>2</sup>Laboratoire d'Océanographie de Villefranche, Sorbonne Universités, Villefranche-sur-Mer, France

\*AC and FR equally contributed to the production of this paper

**Correspondence:** Arthur Capet (acapet@uliege.be)

**Abstract.** The ~~Deep Chlorophyll Maximum~~ deep chlorophyll maximum (DCM) is a well known feature of the global ocean. However, its description and the study of its formation are a challenge, especially in the peculiar ~~Black Sea environment~~ environment that is the Black Sea. The retrieval of ~~Chlorophyll~~ chlorophyll a (Chla) from fluorescence (Fluo) profiles recorded by ~~Biogeochemical-Argo~~ biogeochemical-Argo (BGC-Argo) floats is not trivial in the Black Sea, due to the very high content of ~~Colored-Dissolved~~ colored dissolved organic matter (CDOM) which contributes to the fluorescence signal and produces an apparent increase of the Chla concentration with depth.

Here, we revised Fluo correction protocols for the Black Sea context using co-located in-situ ~~High-Performance-Liquid Chromatography~~ high-performance liquid chromatography (HPLC) and BGC-Argo measurements. The processed set of ~~Argo~~ Argo Chla data (2014–2019) is then used to provide a systematic description of the seasonal DCM dynamics in the Black Sea, and to explore different hypotheses concerning the mechanisms underlying its development.

Our results show that the corrections applied to the Chla profiles are consistent with HPLC data. In the Black Sea, the DCM ~~is initiated~~ begins to form in March, throughout the basin, at a ~~pyenal~~ density level set by the previous winter mixed layer. ~~The DCM then~~ During a first phase (April-May), the DCM remains attached to this particular layer ~~until the end of September~~. The spatial homogeneity of this feature suggests a ~~self-sustaining DCM structure, locally influenceing hysteresis mechanism, i.e.,~~ that the DCM structure locally influences environmental conditions rather than adapting instantaneously to external factors.

~~In summer~~ In a second phase (July-September), the DCM migrates upward, where there is higher irradiance, which suggests the interplay of biotic factors. Overall, the DCM concentrates around ~~50-45~~ 50-45 to 65% of the total chlorophyll content within a 10 m layer centered around a depth of 30 ~~, where light conditions ranged from 0.5 to 4.5% of surface incoming irradiance.~~

~~In October, as the DCM structure is gradually eroded, a longitudinal gradient appears in the DCM-pyenal depth, indicating that autumnal mixing induces a relocation of the DCM which is this time driven by regional factors, such as nutrients-lateral loads and turbidity~~ to 40 m, which stresses the importance of considering DCM dynamics when evaluating phytoplankton productivity at basin scale.

Copyright statement. TEXT

## 1 Introduction

25 The Black Sea is a semi-enclosed basin receiving discharges from a catchment area covering the European and Asian continents over a surface area more than four times ~~larger than~~ that of the Black Sea. The intrusion of saline (salinity  $\approx \sim$  36) Mediterranean waters into the Black Sea and the large riverine inflow have created a permanent halocline, resulting in an extremely stable vertical stratification. Waters below the main pycnocline ( $\approx \sim$  100-150 m) are ventilated by cold water formation and convection (Ivanov et al., 1997; Stanev et al., 2003; Miladinova et al., 2018), intrusion of the Mediterranean inflow and subsequent entrainment of surface and intermediate waters (Özsoy et al., 2001; Falina et al., 2017), as well as mesoscale activity along the shelf break (Ostrovskii and Zatsepin, 2016). However, ~~those~~ these ventilation mechanisms are not sufficient to ventilate deep waters, and the residence time of Black Sea water masses increases from a few years in the ~~layer of the main pycnocline~~ main pycnocline layer to several hundred years for the deep sea (Murray et al., 1991). Therefore, almost 90% of the Black Sea ~~'s~~ volume is devoid of oxygen, contains large amounts of reduced elements (e.g. hydrogen sulphide, ammonium) and is only inhabited by organisms that have developed anaerobic respiration pathways. ~~Those conditions set~~ These conditions create a very specific environment, which affects many aspects of the ~~marine~~ Black Sea biogeochemical cycles. ~~In particular, the absence of oxygen causes the degradation of detrital matter to be less efficient (Claustre et al., 2008), resulting in the accumulation of~~ Moreover, large quantities of ~~Coloured Dissolved Organic Matter~~ coloured dissolved organic matter (CDOM) are observed, much larger than in the ~~Mediterranea~~ Mediterranean Sea (Organelli et al., 2014) and in the global ocean (Nelson and Siegel, 2013). ~~If~~ This fact results firstly from the allochthonous influx of terrestrial dissolved organic carbon (DOC) (Ducklow et al., 2007; Margolin et al., 2016, 2018). Second, anoxia is likely responsible for the accumulation of CDOM through autochthonous production of CDOM via solubilisation of fluorescent material, diffusion of fluorescent compounds out of the sediments, production of fluorescent compounds within the detrital loop and the absence of degradation of fluorescent compounds (Coble et al., 1991; Para et al., 2010).

45 Although the relationship between the physical vertical structure and the profiles of chemical elements have been extensively investigated (e.g. Tugrul et al., 1992; Konovalov and Murray, 2001), the imprint of the vertical density structure on living organisms at basin scale and, in particular, primary producers is by far less ~~addressed~~ known.

Yunev et al. (2005) analysed the subsurface chlorophyll peak in summer over the period 1964-1992, addressing a potential shift due to eutrophication and climate change. More specifically, based on ~~the~~ an analysis of 352 profiles (mostly from the Black Sea NATO TU Database) collected in the deep sea from March to November, the authors concluded that the depth of the ~~Deep Chlorophyll Maximum~~ deep chlorophyll maximum (DCM) and its chlorophyll content can be considered ~~as spatially homogeneous and to be spatially homogeneous, and they~~ highlighted a vertical decoupling between the chlorophyll subsurface peak and nitrate maximum. The authors highlighted the importance of considering the mechanisms of ~~the DCM dynamics~~ DCM dynamics in order to understand the response of primary production in the central Black Sea to the important eutrophication period that affected the Black Sea in the 1970s and 1980s.

In addition, Finenko et al. (2005) showed that in the deep part of the basin, uniform chlorophyll a (Chla) profiles with high concentrations were mostly observed between December and March when ~~the~~ winter mixing is strong ~~with the absence of a~~

~~thermocline. Then, by and the thermocline is absent. By~~ the end of spring ~~as the thermocline forms,~~ the thermocline begins to form and the majority of the Chla profiles showed a subsurface chlorophyll peak, highly variable in depth, that was stable until the end of summer. A new transition to uniform Chla profiles, due to the weakening of the thermal stratification and ~~the~~ strengthening of the vertical mixing, occurred later in November.

More recently, the composition and phenology of planktonic blooms have been investigated on the basis of in-situ sampling in concert with contemporaneous remote-sensing and autonomous profiler data, ~~therefore thereby~~ focusing on local scales and addressing ~~mechanisms triggering the mechanisms that trigger~~ surface blooms. For instance, the winter-spring bloom phenology has been investigated using Chla derived from satellite data (Mikaelyan et al., 2017b, a) while in Mikaelyan et al. (2018), in-situ data are used to identify and explain species succession. These ~~works highlighted papers highlight~~ a clear differentiation of planktonic community composition in surface and ~~sub-surface subsurface~~ layers (Mikaelyan et al., 2018, 2020) and the importance of environmental factors such as surface winds (Mikaelyan et al., 2017b) and mesoscale vertical dynamics (Mikaelyan et al., 2020) in triggering local surface blooms in autumn. The winter-spring bloom dynamics, and ~~its~~ their interannual variations in particular, have been ~~depicted in details described in detail~~ and used to propose the Pulsing Bloom hypothesis (Mikaelyan et al., 2017a), an extension of the general Critical Depth hypothesis and its derivatives (Sverdrup, 1953; Huisman et al., 1999; Chiswell et al., 2015), that applies to highly stratified waters.

Basin scale and seasonal perspective have often been adopted in studies addressing surface Chla dynamics on the basis of remote-sensing observations, exploiting the synoptic nature of those datasets. These studies generally depict a clear seasonal cycle in the central Black Sea, with ~~maximal maximum~~ surface Chla concentrations observed during winter-spring and autumn blooms (e.g. Kopelevich et al., 2002; Finenko et al., 2014), and minimal concentrations in summer. However, the extent to which this seasonal cycle is representative of vertically integrated Chla content is challenged ~~as soon as when~~ vertical profiles are considered (Finenko et al., 2005).

Today, the advent of autonomous profilers ~~allows an even provides a regular~~ seasonal sampling and ~~permits allows one~~ to adopt this annual and basin-wide perspective to study the dynamics of ~~the vertical chlorophyll distribution, and vertical chlorophyll distributions,~~ especially the DCM ~~,~~ which has not yet been clearly investigated *per se* in the Black Sea. The DCM, also known as the ~~Subsurface Chlorophyll Maximum subsurface chlorophyll maximum~~ (Cullen, 2015) is a common widespread feature of the world ~~'s ocean ocean and is~~ characterized by a subsurface layer of maximum Chla concentration. This Chla subsurface maximum can correspond either to a maximum in phytoplankton biomass (Varela et al., 1992; Estrada et al., 1993; Beckmann and Hense, 2007; Mignot et al., 2014) or to a change in ~~the~~ cellular Chla content resulting from a physiological adaptation, known as ~~photo-acclimatation photoacclimation~~. Therefore, the DCM is not necessarily associated ~~to~~ with a peak in biomass (Fennel and Boss, 2003) and can either ~~be an enhancing mechanism for species adapted to result from an adaptative mechanism to optimize growth at~~ low light intensities (Fennel and Boss, 2003; Dubinsky and Stambler, 2009) or ~~from~~ a protective mechanism to avoid cell damage at high irradiance intensities near the water surface (Marra, 1997; Xing et al., 2012). Although it has been studied for more than 60 years (Anderson, 1969; Cullen, 1982; Furuya, 1990; Parslow et al., 2001; Huisman et al., 2006; Ardyna et al., 2013), the mechanisms of formation and maintenance of DCM are still ~~debated and are reviewed in under debate and have been reviewed by~~ Cullen (2015). When the DCM is associated ~~to with~~ a peak in biomass, the

reasons evoked to explain its occurrence mainly refer to instantaneous factors, such as maximum growth conditions resulting from a compromise between light and ~~nutrients~~ nutrient limitations, aggregation at a particular density gradient (Richardson and Cullen, 1995) or reduced grazing (Macedo et al., 2000).

More recently however, Navarro and Ruiz (2013) proposed another explanation arguing that the DCM ~~emerges from the bloom history prolonging the winter bloom~~ is conditioned by the history of the bloom, and emerges in spring at a density corresponding to that of the winter mixed layer. The DCM would act as a self-preserving biological structure that ~~maintains over the year at its density~~ remains at a near constant density layer by preventing the nutrient flux from below to reach overlying waters ~~while limiting the~~ , while limiting growth in the underlying waters through a shading effect. This theory ~~advocates that the~~ suggests that the location of the DCM can not be solely explained by instantaneous conditions but ~~rather results from a~~ rather, results from hysteresis of the water mass. ~~It~~ This can explain why ~~the analysis analyses~~ of chlorophyll profiles in the global temperate ocean and ~~in~~ the Mediterranean Sea ~~evidences suggest~~ that if the depth of the DCM ~~may be is~~ highly variable, its ~~density of occurrence remains quite~~ resident density remains largely unchanged (Yilmaz et al., 1994; Ediger and Yilmaz, 1996; Navarro and Ruiz, 2013).

The peculiarities of the open Black Sea environment, i.e. its strong and stable stratification, and the relatively low water transparency (Kara et al., 2005), ~~makes make~~ it an interesting site to study ~~the~~ DCM dynamics at basin scale.

Estimation of chlorophyll concentrations from the signal produced by fluorometers requires the use of empirical equations. Indeed, the relationship between Chla and ~~the~~ fluorescence (Fluo) can be altered due to ~~, on one hand, the variability in the~~ variability in phytoplankton species composition and physiological response to environmental conditions (e.g. light, nutrients). Therefore, for a given chlorophyll concentration, the amount of emitted fluorescence may differ (Claustre et al., 2009; Xing et al., 2011, 2012). ~~On the other hand~~ In addition, the presence of high concentrations of CDOM and particulate coloured detrital material (e.g. phaeopigments) can also contribute to the Fluo signal emitted ~~in~~ within the bandwidth of Chla fluorometers (Cullen, 1982; Proctor and Roesler, 2010). This last point is particularly critical in an anoxic environment like the Black Sea (Coble et al., 1991) where a quasi-linear increase of Chla concentrations with depth has been observed (Xing et al., 2017) and ~~can be~~ has been referred to in the ~~litterature as the deep sea red fluorescence~~ literature as deep sea red fluorescence (e.g. Röttgers and Koch, 2012).

In this study, we used ~~≈~~ ~ 1000 Chla profiles ~~delivered from measured with~~ 5 Biogeochemical-Argo (BGC-Argo) floats deployed in the Black Sea for the period 2014-2019 in order to investigate the vertical structure of the bloom and, in particular, the process of formation and maintenance of the DCM. To this aim, we derived local parameters in order to apply the correction method of Xing et al. (2017) for inferring Chla content from Fluo data, and we validated this calibration using ~~High-Performance-Liquid-Chromatography~~ high-performance liquid chromatography (HPLC) measurements. This extensive and validated dataset is then exploited to identify general characteristics of the vertical structure of Chla distribution ~~and~~ , and to explore their seasonal and spatial variability using both depth and density vertical scales ~~, in order to describe the morphology, seasonal dynamics and relevance of DCM in the Black Sea, in particular~~ in regards with regard to synoptic surface Chla dynamics that ~~is depicted by~~ are seen with remote-sensing observations.

## 2 Material and methods

### 2.1 Dataset preparation

Data from 5 BGC-Argo floats (WMO 6900807, 6901866, 6903240, 7900591 and 7900592) were downloaded from the Coriolis data center (<ftp://ftp.ifremer.fr/ifremer/argo/dac/coriolis/>) for a six-year period (2014-2019), i.e. 1400 vertical profiles. All floats have a Chla fluorometer (excitation at 470 nm; emission at 695 nm) and a particle backscattering sensor (BBP) at 700 nm while only floats 6900807, 6901866 and 6903240 carry a WET Labs ECO FLBBCD that ~~involves~~includes, in addition to a Chla fluorometer and a BBP sensor, a CDOM fluorometer (excitation at 370 nm; emission at 460 nm). Photosynthetic available radiation (PAR) ~~data were provided by~~ was measured with a Satlantic OCR-504 Multispectral Radiometer for all floats but one (6900807). Additionally, T and S data were obtained from a CTD Seabird model 41CP for all floats. ~~First, descending profiles were removed~~ (

~~First, we removed descending profiles, which concerns~~ 398 profiles ~~the majority of them was empty for the float 6903240 because coming mostly from float 6900807. Indeed,~~ the time interval between ascending and descending profiles ~~was too short (hours) to is short (~ hours) in comparison with the time frame between two successive ascending profiles (10 days). Using both ascending and descending profiles would thus induce localized redundancy, as we could not~~ observe significant differences in the Chla distribution between ~~these two profiles such a profile pair~~. Then, 18 profiles were removed for consistency and automatization of the data processing: missing metadata (latitude and/or longitude), no data above 5 m, a bottom depth too shallow (i.e. less than 40 m) or because pressure data were ~~wrong (i.e. "stuck" profiles). Finally, Chla profiles were firstly quality controlled by removing data points considered as bad data, i.e. Quality Control obviously wrong. Points with a Quality Control flag (QC) = of 4 ("bad data") were removed from Chla profiles~~ (Argo Data Management Team, 2019; Schmechtig et al., 2018) while data with a QC = 3 (~~i.e.~~ "probably bad data") were retained because most of the time this flagging is due to the increase of measured Fluo with depth, ~~a common feature which is common~~ in the Black Sea. Indeed, the presence of large amounts of CDOM and poorly degraded Chla pigments due to anoxic conditions lead to an increase of the Chla signal with depth, resulting in an in-situ ~~estimated~~ Chla dark signal estimate (Fluo value measured by the fluorometer in the absence of Chla) significantly different from its factory calibration (Schmechtig et al., 2018). On the other hand, BBP profiles were quality controlled (removing 4 additional profiles with QCs 3 and 4), whereas ~~CDOM profiles were simply extracted (CDOM has no quality control yet, i.e. QC = 0)~~ no quality filtering of CDOM values was possible due to unavailability of quality flags. Finally, the selected data (980 profiles of Chla, BBP and CDOM, when available) were smoothed with a 5-point moving median filter along the vertical dimension.

PAR data were quality controlled using the method described in Organelli et al. (2016). T and S data with a QC = 1 or 2 (i.e. respectively good and probably good data) as in Wong et al. (2018) were used to compute ~~the  $\sigma_\theta$  profiles referenced to the sea surface and defined by the Thermodynamic Equation Of Seawater potential density anomaly profiles ( $\sigma_\theta$ , noted here as  $\sigma$ ), following the thermodynamic equation of seawater~~ of 2010 (IOC, SCOR and IAPSO, 2010). In the Black Sea, the ~~Mixed Layer Depth mixed layer depth~~ (MLD) is usually defined as the depth at which the density is greater than  $0.125 \text{ kg m}^{-3}$  compared to the surface density (i.e. 3 m) as proposed by Kara et al. (2009). Unfortunately, T and S data near the surface were often flagged

as potential bad data ~~and thus the MLD was determined by~~. The MLD was thus defined as the depth at which the potential density exceeded by  $0.03 \text{ kg m}^{-3}$  the 10-density anomaly as proposed in potential density recorded at 10 m, as proposed by de Boyer Montégut et al. (2004). 3 profiles were removed because their MLD could not be determined.

## 2.2 Retrieval of Chla from fluorometers

165 The retrieval of Chla data from Fluo involves three main steps: ~~the~~ application of a regional bias correction due to fluorometer calibration issue, ~~the correction of the correction of~~ deep sea red fluorescence due to the presence of high amounts of CDOM ~~-, affecting the signal perceived that affect the signal returned~~ by Chla fluorometers ~~and the correction for Non-Photochemical Quenching, and non-photochemical quenching (NPQ) correction~~ in the surface waters.

First, due to a systematic bias in Chla data from WET Labs fluorometers, we applied a correction factor of 0.65 to all Chla 170 profiles, following the recommendations of Roesler et al. (2017) for the Black Sea.

Second, as already noted by Xing et al. (2017), the Fluo signal measured by BGC-Argo floats in the Black Sea ~~is linearly increasing linearly increases~~ with depth below 100 m ~~up-down~~ to 1000 m (parking depth of the float) ~~instead of presenting in contrast to~~ the typical constant offset associated ~~to-with~~ the sensor bias (from factory calibration) that can be corrected using the so-called deep-offset correction (Schmechtig et al., 2018). The profile of this deep sea red fluorescence is very similar to that 175 of CDOM, as illustrated in Fig. 2. Therefore, the Chla-Fluo equation needs to be adapted for the presence of CDOM in oxygen deficient environments. Here we used the method proposed by Xing et al. (2017), referred to as the FDOM-based method, that removes the contribution of CDOM from the Chla fluorescence signal ~~the contribution of CDOM~~, assumed to be proportional to the amount of CDOM. ~~This method computes two correction parameters (see Appendix A) obtained by linear regression between Chla and CDOM below the Chla minimum (see Fig. 2) and then applies these correction parameters to the entire~~ 180 profile. The FDOM-based method was applied on the three floats carrying a CDOM fluorometer whereas the minimum-offset method correction described in Xing et al. (2017) was used on the other two. The latter consists in subtracting from each profile the minimum value of Chla found at depth (i.e. the depth at which Chla is assumed to be zero) and sets the profile to zero below that depth. Imperfect linearity between raw Chla and CDOM profiles may eventually result in small negative corrected Chla values. As such occurrences were all of insignificant amplitude and located below 80 m, they were set to zero.

185 Finally, all daytime ~~profile profiles~~ were corrected for NPQ, a protective mechanism triggered at cellular level in high light intensities, which induces a reduction of the fluorescence signal for ~~a same amount an equivalent quantity~~ of Chla. Daytime and nighttime profiles were determined based on the *sunalc* package (RStudio Team, 2016) which provides ~~a tool to obtain the sun position for a given location, hence allowing the computation of the local the local time for~~ sunset and sunrise. We assume that NPQ does not affect nighttime profiles because these profiles are collected a few hours after (before) ~~the sunset~~ 190 (sunrise). Daytime profiles were corrected for NPQ by extrapolating the maximum Chla value observed over 90% of the MLD up to the surface (Schmechtig et al., 2018). ~~Eventually, we set to zero all negative Chla concentration. They vary from  $\approx 10^{-7}$  to  $10^{-2}$  and represent  $\approx 28\%$  of all Chla observations. However, those negative concentrations are firstly observed below 80 on average and therefore appear between 80 and the bottom of the profile ( $\approx 1000$ ) where we assume, based on HPLC data, that there is no more Chla.~~



## 195 2.3 Data processing

In order to discriminate profiles depicting a DCM signature, all Chla profiles were fitted to 5 specific mathematical forms which are considered to represent the diversity of Chla vertical profiles (Mignot et al., 2011; Carranza et al., 2018): a sigmoid ("S"), an exponential ("E"), a Gaussian ("G"), a combination of a Gaussian with a sigmoid ("GS") and a combination of a Gaussian with an exponential ("GE") (Fig. ??1, Appendix B). The Gaussian was modified to take into account the possible asymmetry of the Chla vertical profile with higher values at the surface rather than at depth as in Mignot et al. (2011). The selected 977 profiles were fitted using a nonlinear square fit function applying the Levenberg-Marquardt algorithm (Moré, 1978) using the R package *minpack.lm*. For each fit, an adjusted coefficient of determination,  $R_{adj}^2$ , was computed to take into account the number of parameters involved in the mathematical forms and thus avoid ~~over-fitting~~ ~~overfitting~~. As in Mignot et al. (2011), profiles for which the  $R_{adj}^2$  was below 0.9 for all forms were classified as "Others" (27 profiles). The remaining profiles (950) were classified according to their best fit.

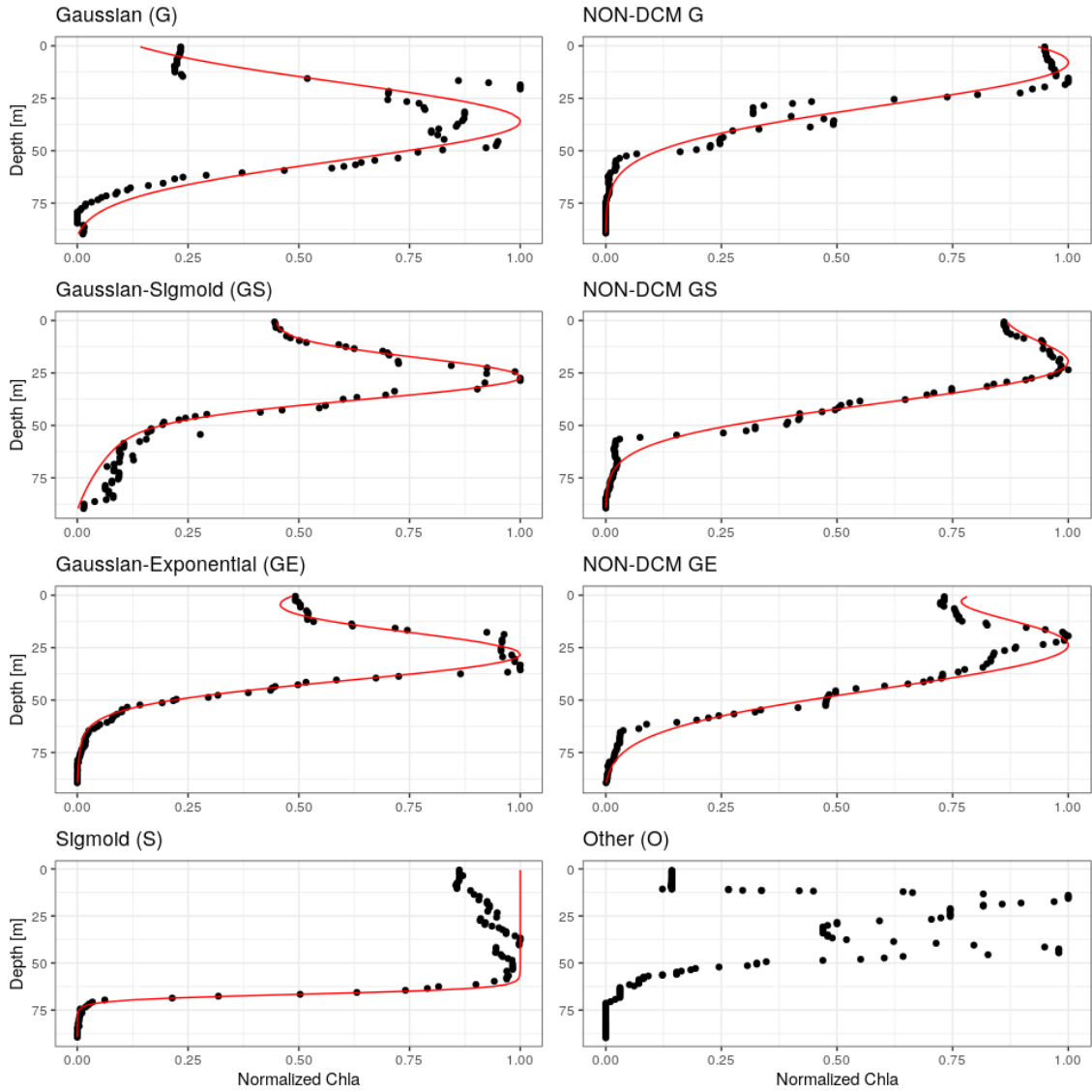
## 2.4 Chla sampling and float deployment

~~In view of validating the Chla-Fluo relationship~~ To validate the retrieval of Chla concentration from fluorometers in the Black Sea, a new BGC-Argo float (WMO 6903240) equipped with both Chla and CDOM fluorometers was deployed in the western Black Sea on the 29th of March 2018. Conjointly at the site of deployment, water samples were collected for Chla determination in the lab. This sampling took place on board the RV *Akademik* (Institute of Oceanology – Bulgarian Academy of Sciences) at a station localized at 43°10'N and 29°E. Seawater samples were obtained using a CTD carousel equipped with twelve 5-L Niskin bottles. Samples were taken at 12 different depths between 1000 m and the surface, and were considered to be co-located in time and space with the float ~~first profiles. After that, seawater~~ deployment. Seawater samples were vacuum filtered through 47 mm diameter Whatman GF/F glass fibre filters (0.7  $\mu\text{m}$  pore size). ~~No bloom was present during that period at this location.~~ Filtered volumes varied between 4 L near the surface and approximately 5 L between 100 m and 1000 m. After filtration, filters were immediately stored in liquid nitrogen and then at -80°C until HPLC analyses at the Villefranche Oceanographic Laboratory. These analyses were performed using the procedure from Ras et al. (2008) for the determination of Chla concentrations and other pigments. The first deep Chla profile taken by the float after deployment (during the descent) was used to retrieve Chla using the FDOM correction and compared with HPLC data. Only one HPLC profile was taken, strictly collocated at the deployment of the new float. It was not possible to take additional collocated HPLC profiles after the float was deployed. Therefore, we have to assume that the absence of Chla at depth, as shown by our unique HPLC profile, is valid at basin scale and at all times. This assumption is supported by the relative spatial uniformity of CDOM profiles (not shown).

## 2.5 Profile diagnostics

To characterize the Chla vertical distribution and its environmental context we consider the following diagnostics.

225 –  $z_{low}$  locates the deepest penetration of Chla ( $> 0.01 \text{ mg m}^{-3}$ ).



**Figure 1.** Examples of Chla profiles matching matched by each of the 4-observed-considered analytical functions forms. Right column: DCM profiles. Left column : Non-DCM profiles discriminated by the ratio between surface and DCM Chla concentration (Sect. 3.2), and an example for the unmatched "other" category, which often corresponds to double Chla peaks.

- $z_{50,bottom}$  and  $z_{50,up}$  were derived as boundaries to the bulk of the chlorophyll content. Both were obtained by assessing the depth needed to obtain 75% of total Chla content by vertical integration, going downward from surface ( $z_{50,bottom}$ ) and upward from 200 m ( $z_{50,up}$ ). These boundaries thus locate the depth interval containing 50% of the Chla content (hereafter referred to as the bulk of Chla content or the Chla bulk).



- 230 –  $z_{DCM}$  indicates the depth of the DCM.
- $z_{MLD}$  indicates the depth of the MLD.
- $z_{PAR1\%}$  indicates the depth where in-situ PAR reaches 1% of its surface values.

The pycnal depths of diagnostics presented above are noted similarly using  $\sigma$  instead of  $z$ , and obtained from interpolation of potential density anomalies at sampling depths.

## 235 2.6 Backscattering data and normalization

In order to evaluate the correspondence between chlorophyll and phytoplankton cells, we consider BBP data.

This is the best proxy that can be obtained from the current Black Sea BGC-Argo dataset, although the complexity and variability of the Black Sea optical properties ([Churilova et al., 2017](#)) prohibit the establishment of a strict relationship between BBP and the ~~presence~~ abundance of phytoplanktonic cells.

- 240 ~~To establish an uniform context, allowing to proceed with this comparison while overcoming~~ To compare the Chla and BBP values from many profiles despite the variability in vertical distribution and ~~absolute concentration~~ values concentration, the Chla, BBP and depth ~~values are normalized for this case of~~ individual profiles are normalized as follows:

$$z_{norm} = \frac{z - z_{MLD}}{z_{DCM} - z_{MLD}} \quad (1)$$

245  $Chla_{norm} = \frac{Chla}{Chla_{DCM}} \quad (2)$

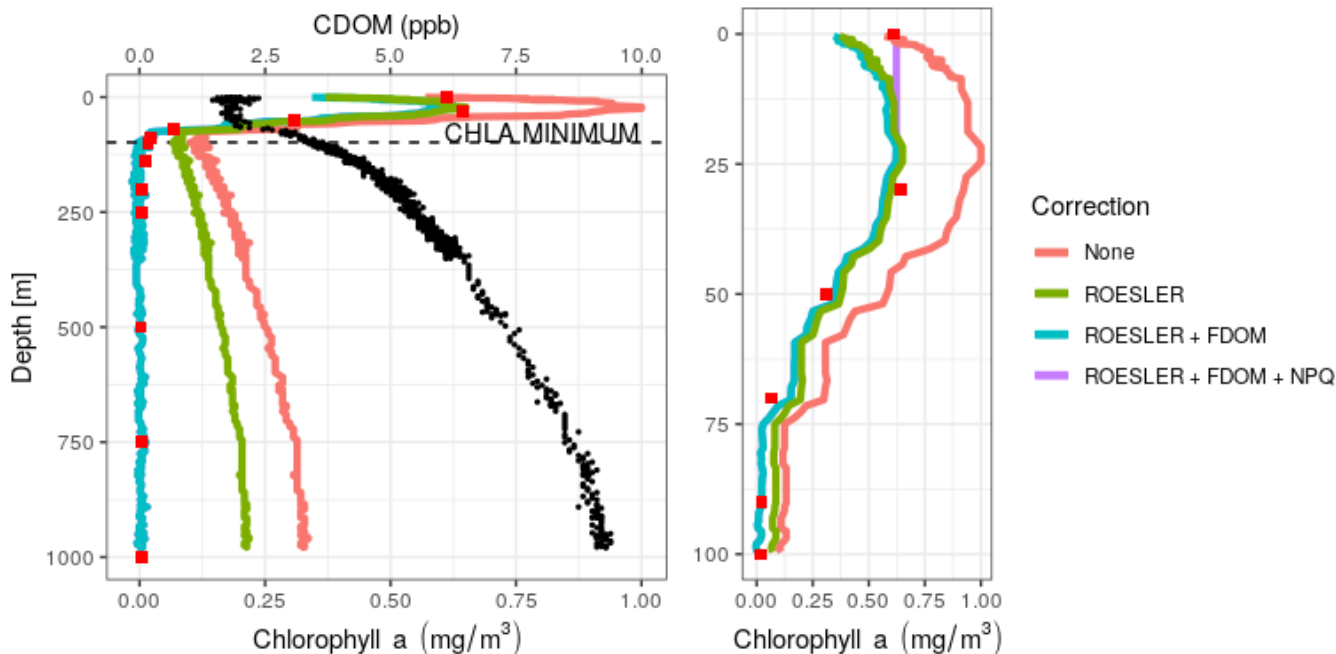
$$BBP_{norm} = \frac{BBP}{BBP_{max}}, \quad (3)$$

- where  $BBP_{max}$  is the maximum  $BBP$  value evaluated for each individual profiles between the surface and 1.5 times  $z_{DCM}$ . The latter vertical restriction is considered to avoid the peak in  $BBP$  that is typically visible in the vicinity of the anoxic  
250 interface and is related to bacterial activity (Karabashev, 1995).

## 3 Results

### 3.1 Validation of the FDOM-based method in the Black Sea

- In this section, HPLC data taken at deployment will be compared with successive levels of correction on Chla data: 1) No correction (raw data), 2) Application of the correction factor of Roesler et al. (2017) for the Black Sea on raw data, 3) FDOM-  
255 based correction of Xing et al. (2017) and 4) NPQ correction, in order to validate the global correction of Chla profiles in the Black Sea.



**Figure 2.** Vertical Chla profiles obtained at the deployment of the float 6903240 on the 29/03/2018 at 49°10'N and 29°E, using different levels of correction. HPLC data are depicted in red squares and CDOM (in ppb/10) in black dots. Right panel: zoom in the surface layer.

Firstly, HPLC data evidence the absence of Chla below a depth of 200 m ( $< 0.01 \text{ mg m}^{-3}$ , ranging from 0.002 to 0.004  $\text{mg m}^{-3}$ ). HPLC also provides insight on the planktonic communities (Sathyendranath et al., 2014). Here, we observed a dominance of diatoms with Fucoxanthin concentrations ranging from 0.13 to 0.16  $\text{mg m}^{-3}$  in the 0-50 m range. Low abundance of dinoflagellates, prymnesiophytes, pelagophytes, cryptophytes and cyanobacteria were also observed in the 0-30 m range. The increase in the fluorescence signal (Fig. 2) that characterizes Black Sea Chla profiles, is thus not associated to Chla but more likely results from the presence of high levels of CDOM as suggested by Xing et al. (2017).

Then, a regional correction factor of 0.65 following the recommendation of Roesler et al. (2017) was applied on all data (results in Table 1) before using the FDOM-based correction. The shape of the Chla profile after the FDOM correction in the surface layer is questionable. Based on HPLC data, it seems that it displays a Sigmoid shape. However, based on Chla not corrected for NPQ, it is qualified as a Gaussian-exponential with a  $\frac{Chla_{DCM}}{Chla_{surface}}$  ratio of  $\approx 1.8$ . Corrected for NPQ, the aforementioned algorithm qualifies it as a Gaussian-sigmoid but rejects it due to its ratio  $Chla_{DCM}/Chla_{surface}$  of 1. This discrepancy highlights the importance of NPQ correction for daytime Chla profiles. Although, a denser vertical sampling for the HPLC acquisition would have been needed to demonstrate the total absence of a subsurface chlorophyll maximum. In deeper waters, not affected by NPQ, the Chla minimum measured by the float (on the red curve, i.e. no correction) is located at 98.5 m ( $0.102-0.10 \text{ mg m}^{-3}$ ) while the minimum non negligible value from discrete water samples (HPLC) is located at 140 m ( $0.012-0.01 \text{ mg m}^{-3}$ ). Below that depth, Chla concentrations can be considered as zero. In the deep

layer (i.e. below the Chla minimum, see also Fig 2), the RMSE<sup>1</sup> between Chla estimations obtained by HPLC (observations) and Chla retrieved from the ROESLER+FDOM Chla corrected profile (modeled values) is equal to 0.01 mg m<sup>-3</sup> while the RMSE for raw data is ~~0.1985~~ 0.19 mg m<sup>-3</sup>. In the surface layer, the RMSE is equal to 0.13, 0.05 and 0.20 mg m<sup>-3</sup> for the ROESLER+FDOM, the ROESLER+FDOM+NPQ and the uncorrected profiles, respectively. Therefore, we assume that the ROESLER+FDOM+NPQ correction is a consistent approach for Chla profiles in the Black Sea, and we use the notation *Chla* to denote  $F_{Chla,ROESLER+FDOM+NPQ}$  data for the rest of the manuscript.

	Deep Layer	Surface Layer	Entire profile
No correction (raw data)	<del>0.199</del> <u>0.19</u>	<del>0.208</del> <u>0.20</u>	<del>0.215</del> <u>0.22</u>
ROESLER	<del>0.127</del> <u>0.13</u>	<del>0.130</del> <u>0.13</u>	<del>0.137</del> <u>0.14</u>
ROESLER+FDOM	<del>0.040</del> <u>0.01</u>	<del>0.131</del> <u>0.13</u>	<del>0.085</del> <u>0.09</u>
ROESLER+FDOM+NPQ	<del>0.040</del> <u>0.01</u>	<del>0.053</del> <u>0.05</u>	<del>0.035</del> <u>0.04</u>

**Table 1.** RMSE (mg m<sup>-3</sup>) comparison between HPLC measurements ([i.e. 12 points, see section 2.4 for more details](#)) and Chla retrieved from Fluo using different levels of correction.

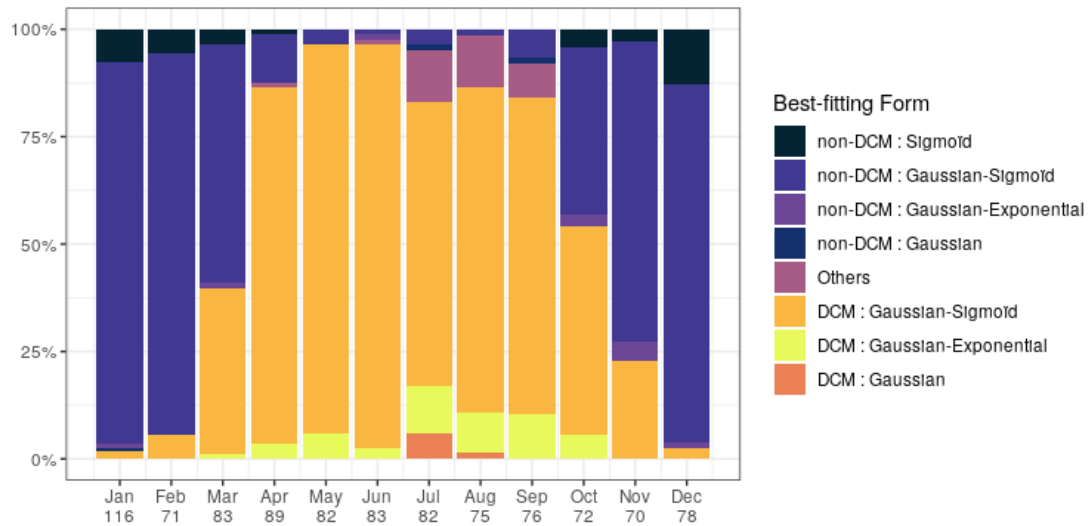
### 3.2 Categories of Chla profiles

Chla profiles are firstly categorized according to the best-fitting analytical form (Fig. 3). Despite the use of a  $R_{adj}^2$  metric, it seems that the plasticity of the Gaussian-sigmoid formulation provides a best fit in most cases. The best-fitting form can therefore not be used as a single criterion to discriminate DCM and non-DCM profiles, and individual profiles are further requested to have a Chla concentration at the DCM that is at least a third higher than at the surface to be tagged as DCM profiles. This criterion was chosen based on visual inspection, to filter out profiles wrongly tagged as DCM due to signal fluctuations near the surface. Non-DCM profiles dominate from November to March, while a clear DCM dynamics sets in from April to October. A complication arises in this DCM seasonal sequence when profiles categorized as "Others" are counted as non-DCMs ([Fig. 3](#)). Those profiles most often consist in double peaks ~~-, which explain~~ ([see example Fig. 1](#)), [which explains](#) their rejection based on  $R_{adj}^2$ . Yet, all series of "Other" profiles for ~~each~~ any individual float are systematically preceded and followed by DCM forms. In the following, "Others" are thus considered as local perturbations of DCM structures (e.g. Mikaelyan et al., 2020) and ~~included~~ counted among DCM profiles.

The non-DCM season is largely dominated by Gaussian-sigmoid forms. Pure exponential profiles are never observed. ~~The~~ Pure sigmoid profiles, which denote a well-homogenized planktonic biomass in the surface layer, are observed from October to April with a clear peak in December/January, in consistence with the known seasonality of the MLD in the Black Sea (e.g. Capet et al., 2014).

The DCM season opens mainly with Gaussian-sigmoid profiles. Later, Gaussian-exponential and finally simple Gaussian profiles are observed, which denote a successive depletion of the surface Chla content (Fig. 3).

<sup>1</sup>Root Mean Squared Error,  $RMSE = \sqrt{\frac{\sum_{n=1}^N (obs_n - mod_n)^2}{N}}$  where *obs* are observations, *mod* are modeled values and *N* is the number of points.



**Figure 3.** Percentage of best-fitting forms for Chla profiles for each month. Number of profiles are given on the horizontal axis.

No meaningful spatial structuring pattern of the DCM dynamics components period can be evidenced at first glance (Fig. 4) and it appears that the deep basin can be considered as homogeneous regarding to both the beginning and the end of the DCM season , as far as the current sampling allows to perceive is consistent across the basin.

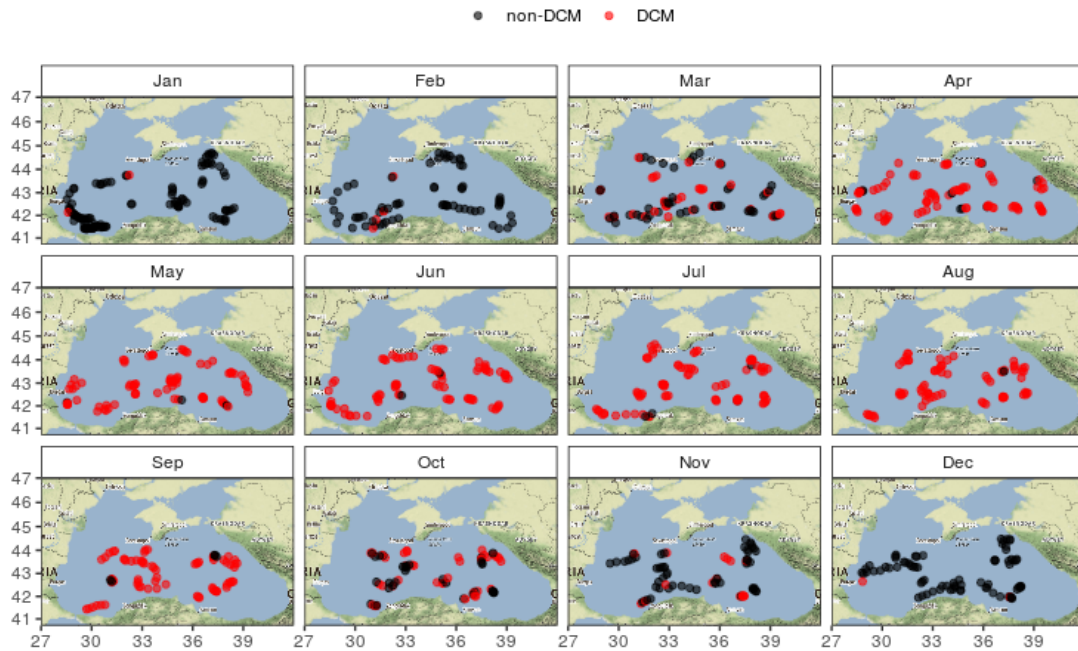
### 300 3.2.1 Depth and density horizons

### 3.3 Seasonal variations in specific diagnostics of the chlorophyll distribution.

Here we present We present here the seasonal evolution of diagnostics (cf. Sect. 2.5) extracted from Chla profiles and their environmental context, using both depth and density (Fig. 5a) and density (Fig. 5b) vertical scales, and referred to as depth-diagnostics and density-diagnostics, respectively. DCM-specific diagnostics considering the absolute irradiance observed at those layers (Fig. 5c). Diagnostics specific to the DCM are not considered from November to March-

Seasonal variations of depth horizons characterizing the Chla vertical distribution and its environment. Boxplots indicate monthly medians and interquartile ranges. Continuous lines indicate monthly means and their 95% confidence interval (shaded area, bootstrap estimates). While boxplots are slightly shifted to avoid overlapping, the means are all centered on the monthly grid. , according to Sect. 3.2.

310 In winter, the deep MLD bounds the productive area, and a clear coincidence is visible between  $z_{50,bottom}$  and  $z_{MLD}$  at  $\sim 30-40$  mixed layer reaches a mean depth of 35 m in December, January and February (Fig. ??). Chla in this period penetrates to depths of and extends over the entire euphotic zone (defined by the 1% of surface incoming PAR., Fig. 5a). The deepest Chla records are found near 70 m. A large spread, illustrated by the interquartile ranges in Fig. ??, is observed for most



**Figure 4.** Monthly spatial distribution of DCM and non-DCM profiles indicates homogeneous DCM dynamics in the open basin. This map was created using tiles by Stamen Design, under CC BY 3.0 with data from © OpenStreetMap contributors 2020, distributed under a Creative Commons BY-SA License.

depth-diagnostics during this period, but most of the chlorophyll content is located within the mixed layer. Accordingly, the lower bulk boundary,  $z_{50,bottom}$  coincides with  $z_{MLD}$ . By definition, density is homogeneous within the mixed layer, at a mean value of  $14 \text{ kg m}^{-3}$ , and the density scale only reveals that some Chla content is still observed within the upper pycnocline, slightly above the  $15 \text{ kg m}^{-3}$  density layer (Fig. 5b). A similar situation lasts for December, January and February.

As stratification establishes progressively in In March,  $z_{MLD}$  gets shallower and the bulk of Chla content penetrates slightly deeper decreases with the progressive onset of stratification. The upper boundary of the bulk Chla content evolves slightly downwards, with a progressive appearance of DCM profiles (Fig. 3). In April, all depth-diagnostics of the Chla distribution migrate downward, together with the euphotic depth. At the same time, the absolute PAR observed at those horizons remains relatively unchanged (Fig. 5c). Deep Chla records are observed at 80 m, which is the annual maximum. The DCM is first formed at the lower boundary,  $z_{50,bottom}$ , around now firmly formed at a depth of about 40 and remains in the lower part of the Chla bulk until June. During this transition period,  $z_{low}$  extends downward to 80-m. From April to May, the DCM remains close to the lower bulk boundary, and the Chla vertical distribution presents a notable downward skewness. In particular the DCM is recorded at relatively low absolute irradiance levels, in average below  $10 \mu\text{mol photons m}^{-2} \text{ s}^{-1}$ . On a density scale,  $\sigma_{50,bottom}$  is observed near the layer of the winter  $\sigma_{MLD}$  and a collocation between  $\sigma_{DCM}$  and  $\sigma_{50,bottom}$  persists until May.

~~The vertical structure~~ In June, the vertical Chla distribution shifts towards a structure that remains stable during the month of June, July and August. ~~For~~ During this period, the DCM depth is sensibly shallower (30 m) than during the formation months and presents a large spread between 12 and 50 DCM formation months. The median value of  $z_{DCM}$  is now clearly distinguished from that of  $z_{50,bottom}$ . ~~Until~~, and the skewness in the vertical Chla distribution is weaker. The DCM is also found at higher PAR value than during the period of Apr-May (Fig. 5c). On the contrary, the PAR values at  $z_{50,top}$ ,  $z_{50,bottom}$  and  $z_{50,low}$ , remains practically unchanged during the entire year. From June to August, the bulk Chla area slightly progressively narrows around  $z_{DCM}$  (see  $z_{50,bottom}$  and  $z_{50,top}$ , Fig. 5a) and remains located well below  $z_{MLD}$ .

335 In September and October, the thermocline starts to weaken. In contrary to what was observed between March and April,  $z_{50,top}$ ,  $z_{50,bottom}$  and  $z_{low}$  migrate upwards. As  $z_{DCM}$  upward migration is slower, it is rejoined by  $z_{50,bottom}$ . The spread of  $z_{DCM}$  in the end of the DCM season is narrow, compared to the rest of the year, and spans between 17 and 40.

While  $z_{PART\%}$  is homogeneously (low spread) located around 30 in December and January, its spread expands for the rest of the year, denoting a more important spatial variability.  $z_{PART\%}$  is located slightly above  $z_{50,bottom}$  and close to  $z_{DCM}$  in the first part of the year, but seems to penetrate below  $z_{DCM}$  and to reach  $z_{50,bottom}$  content from August onward.

340 Exploring the seasonal evolution of the above diagnostics on upward, together with the euphotic depth, while they remains at a similar location in terms of PAR. On a density scale provides another point of view which is better adapted to depict processes driven by diffusive transport along isopycnals.

By definition,  $\sigma_{MLD}$  corresponds to the density in the MLD which varies between 10 and 60 in winter (Fig. ??). It appears that the highest winter  $\sigma_{MLD}$  sets the lower pycnal depth, it appears that  $\sigma_{50,bottom}$  still remains at its previous location, while the upper boundary  $\sigma_{50,top}$  is lifted up to lighter layers, and presents an important variability. In October, the deepening MLD reaches the upper part of the bulk of Chla content,  $\sigma_{50,bottom}$ , which remains stable from February to September.

350 Again, the DCM first forms at  $\sigma_{50,bottom}$ , and then settles in slightly lighter layers until October. The spread of  $\sigma_{DCM}$  is relatively narrow during Chla. An important decrease occurs in the proportion of DCM profiles (Fig. 3): this is the end of the DCM season but expands in September and October. The spread of  $\sigma_{50,up}$  also largely increases in September, while that of  $\sigma_{50,bottom}$  extends later in October. The  $\sigma$ -layer of.

Interestingly, the position of the deepest Chla records is quite remarkably stable along the season and coincides with in terms of absolute irradiance, and hence undergoes seasonal variations in depth coordinates as the surface incoming irradiance increases in summer. On a density scale, it just overlays the nitracline level, located at  $15.5 \text{ kg m}^{-3}$  by Konovalov et al. (2006).

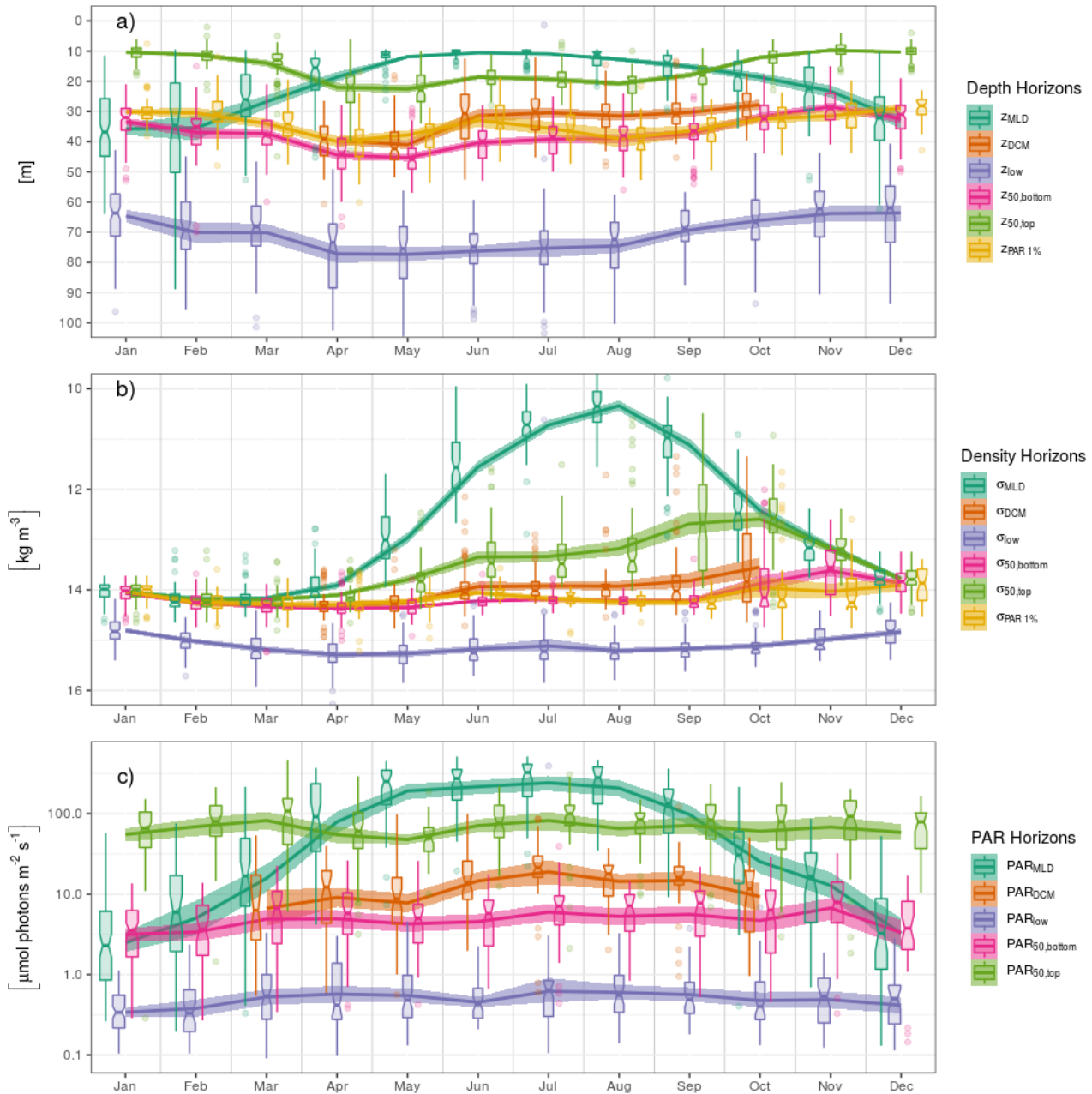
355 Interestingly,  $\sigma_{PART\%}$  depicts a quite narrow spread during the main DCM period (June, July, August), while it bears an important spread on the depth scale (Fig. ??).

### 3.4 Chla concentrations and vertically integrated content

Here, we consider seasonal variations in Chla concentrations at the surface, at the DCM and integrated over the vertical, as well as the vertical distribution of this integrated Chla content.

360 The average Chla concentration is defined to represent the integrated Chla content. In order to obtain units of volumetric concentration ( $\text{g m}^{-3}$ ), the integrated in the total Chla content, i.e. the concentration integrated over the vertical. In the following, the





**Figure 5.** Seasonal variations in the position of density-diagnostics horizons characterizing the Chla vertical distribution and its environment on a) depth, b) density and c) PAR irradiance scales. Boxplots indicate monthly medians and interquartile ranges. Continuous lines indicate monthly means and their 95% confidence interval (shaded area, bootstrap estimates). While boxplots are slightly shifted horizontally to avoid overlapping, the means are all centered on the monthly grid.

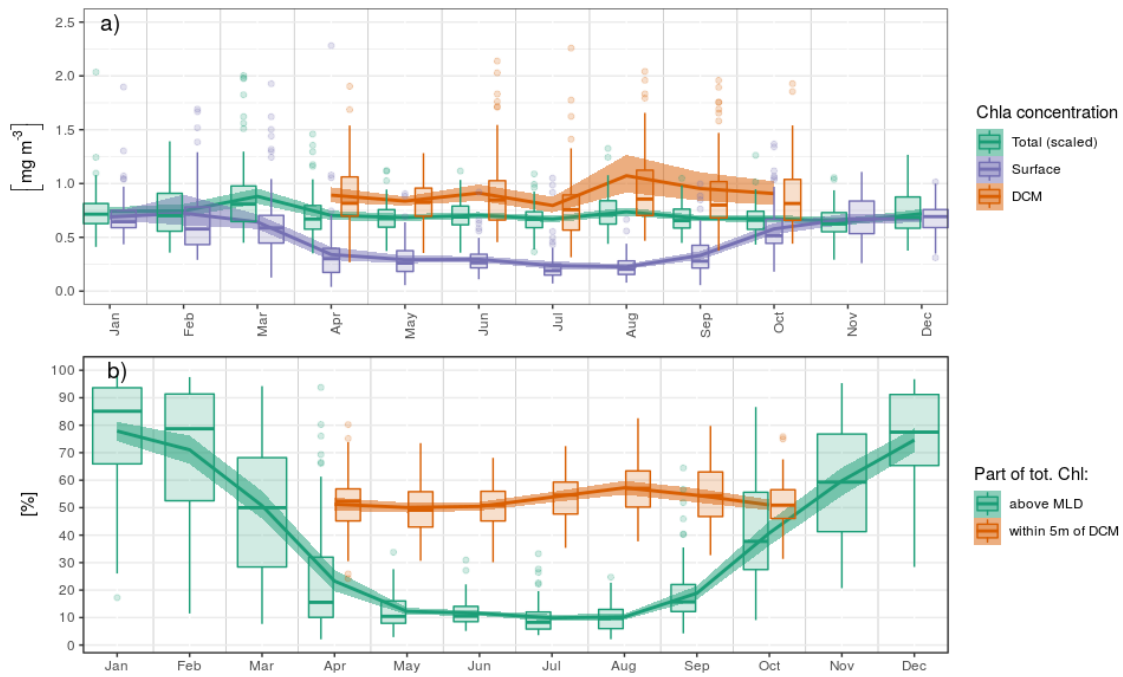
total Chla content is scaled by a constant depth of 40 m, chosen as to reach units of volumetric concentration ( $\text{mg m}^{-3}$ ). The arbitrary scale of 40 m corresponds to the mean of  $z_{50, \text{bottom}}$ .

Ranging between 0.5 and 2  $\text{mg m}^{-3}$  (i.e. 20 and 80  $\text{mg m}^{-2}$ ), the total Chla content only presents weak seasonal variations with a maximum in March (Fig. ??). The spread of this integrated content is rather constant along the year-

6a). Surface chlorophyll concentration, instead, has a marked seasonal variability and decreases by a factor of two to reach 0.35  $\text{mg m}^{-3}$  from April to September, while Chla concentrations at the DCM is generally close to 0.8  $\text{mg m}^{-3}$  in this period and reaches mean values above 1.5  $\text{mg m}^{-3}$  in August.

Seasonal variations of surface, DCM and vertically integrated Chla concentrations. Vertically integrated Chla content is scaled by a constant depth of 40 to reach unit of volumetric concentrations (-).

To summarize the above descriptions To summarize, roughly 80% of the chlorophyll total Chla content is contained within the MLD in winter, while this ratio falls to 10% during the DCM season (Fig. ??6b). In summer, about 50% of the integrated total content can be found within a 10 m layer surrounding the DCM, a value that peaks in August and reaches 80% in some cases.



**Figure 6.** Seasonal variations of in a) surface, DCM and total Chla concentrations and b) relative parts of the total Chla distribution content around specific horizons. The total Chla concentration in a) is the vertical integral of Chla concentration scaled by a constant depth of 40 m to reach unit of volumetric concentrations ( $\text{mg m}^{-3}$ ).

b)

### 375 3.5 Normalized chlorophyll and backscattering profiles

For the interested readers, we propose in App. C the interannual equivalent of Figs. 5 and 6, although we decided to concentrate this study on describing a typical seasonal cycle, considering that the data were too scarce to support a reliable interannual analysis.

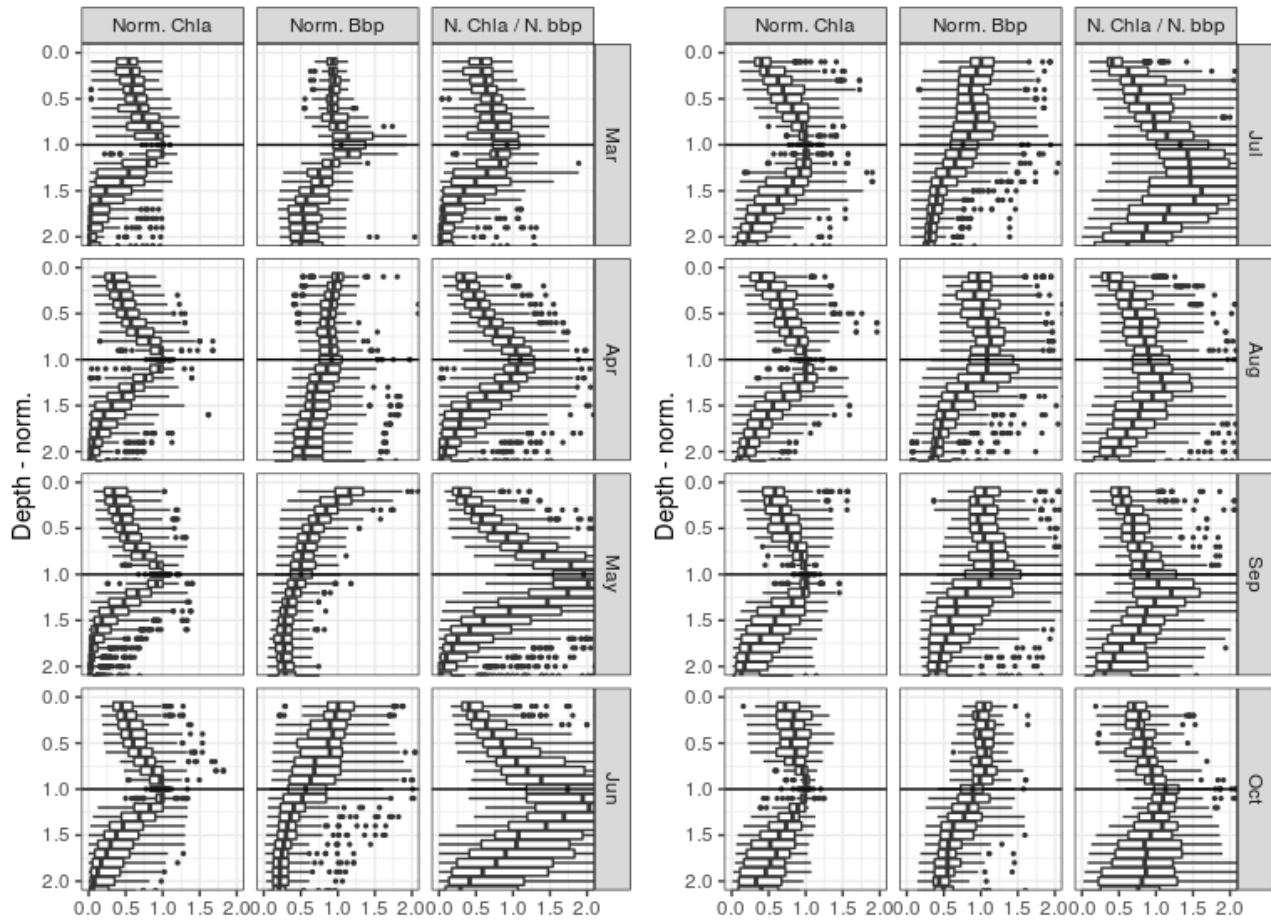
### 3.5 Normalized chlorophyll and backscattering profiles

380 We analyze here the ~~normalized~~ Chla and BBP values (~~Sect. 2.6~~) ~~computed~~ for DCM profiles ~~, and in particular the only~~. In particular, we seek for an eventual correspondence between local maxima in Chla and BBP at  $z_{DCM}$ , or a vertical shift in the position of these maxima, in order to characterize the nature of the DCM. Indeed, a Chla profile such as recorded by BGC-Argo floats only reflects the product between a profile of planktonic biomass and a profile of their cellular Chla content. It is only considered *per se* for the reason that it is easily measurable.

385 ~~The shapes of normalized Chla profiles generally validate~~ In order to provide a general overview of all profiles despite their disparity in terms of DCM depths and concentrations, a normalized referential was used to build Fig. 7 (see Sect. 2.6 for a description of the normalization procedure). The fact that narrow maxima of Chla are depicted at the normalized depth of 1, which is defined on the basis of the calibrated  $Z_{max}$  parameter of the best-fitting analytical forms (App. B), simply confirms the reliability of the approach considered to characterize the DCM, ~~in particular i.e~~ the classification protocol ~~based on analytical~~  
390 ~~forms~~ and the use of parameters issued from their calibration.

~~A~~ A well defined maximum in BBP can be seen at the DCM depth in March. A similar local maximum in BBP profiles can ~~also~~ be seen close to the DCM reference depth for ~~most months, considering the notable exception of June (Fig. 7)~~ other months, but never as clearly as for the month of March.

The ~~first DCM profiles in March correspond to a well defined maximum in BBP values. From April to June/July, the BBP~~  
395 ~~profiles depict high values in the surface layers, which are not matched by Chla values. This vertical discrepancy in the BBP to Chla ratio may denote 1) the presence of non-phytoplanktonic particles in the upper layers, 2) larger cellular Chla content for phytoplankton located around the DCM, and/or 3) ratio between normalized BBP and Chla value then evidences~~ an important difference in terms of phytoplanktonic communities, in particular in terms of cell sizes. For the late ~~between the two phases of the DCM period described in Sect. 3.3. During the first phase of the DCM period (August-October Apr-May), a subsurface~~  
400 ~~BBP maximum at the level of the DCM is more systematically visible, although high near-surface BBP values remain~~ peak in this ratio is clearly visible at the DCM depth, while from June and during the second phase (Jul-Sep) the peak in the Chla/BBP ratio is found below the DCM depth.



**Figure 7.** Distribution of normalized Chla and BBP values for different layers of normalized depth. The depth is normalized for each profile so that values of one and zero corresponds to the depths of DCM and MLD, respectively (see Sect. 2.6 for the normalization procedure).

## 4 Discussion

### 4.1 Using BGC-Argo to decipher the Black Sea DCM dynamics

405 The spatial distribution of BGC-Argo datasets is data in the Black Sea is presently incomplete and opportunistic. Besides, free-floating In addition, in the Black Sea BGC-Argo floats tend to exclude areas characterized with divergent flow by divergent flows such as the shelf regions or the center-centers of the two central gyres. However, the regular float Argo sampling protocol permits an even regular seasonal sampling of the central basin, which constitutes an important asset compared to traditional cruise-based datasets, and provides a decent satisfactory number of observations when considering the monthly perspective

410 adopted in this study (for seasonal analysis (numbers of profiles for each month are given in Fig. 3). Furthermore, the dense ver-

tical sampling ~~characterizing Argo datasets obtained from BGC-Argo floats~~ permits a refined ~~eharacterization~~ characterisation of DCM depth- and density-diagnostics. ~~BGC-Argo floats thus allow to evidence a clear seasonal DCM dynamics that prevails for the entire central Black Sea, with almost all profiles categorized as DCM from April to September (Fig. 3). During this period the DCM concentrates 50-70% of the total Chla content in a narrow layer located from 40 to 30 below the surface, where local PAR conditions reache from 0.5 to 4.5 % of surface incoming radiation.~~

415 ~~These depths obtained for the DCM are deeper than those previously reported by Finenko et al. (2005), but the lack of overlapping data prevents to discuss if this should be related to methodological reasons or interannual variability. One could consider, however, the fact that both Yunev et al. (2005) and Finenko et al. (2005) used a single analytical form (modified Gaussian) to characterize Chla distribution as a function of depth during the DCM season. Here, the use of refined analytical forms and subsequent criterion to classify DCM and non-DCM profiles provides a refined description of DCM diagnostics. In particular, to ignore the distinction between DCM and non-DCM profiles may considerably bias the estimates obtained for DCM diagnostics.~~

420 ~~As for now, At present~~ BGC-Argo floats only provide limited proxies to evaluate the ~~relationship~~ relationships between chlorophyll content and phytoplankton biomass, which is essential to upscale the present analysis to larger scale considerations such as productivity and carbon sequestration issues. ~~This might change in the future, however, considering the foreseen enrichment of the Argo's sensor apparatus (e.g. Underwater Vision Profiler (Picheral et al., 2010), with a 6th version to be embedded on future floats).~~ However, the fact that the first DCM profiles (~~March~~) in March correspond to a clear maximum in BBP (Fig. 7) suggests that the DCM is initiated also as a peak in phytoplankton biomass and not only as a local increase in the chlorophyll cellular content, as suggested by Finenko et al. (2005). ~~From April to July, surface maxima in BBP tend to favor the interpretation of DCMs being related to high intra-cellular chlorophyll content, which is in line with~~

430 ~~In the first phase (Apr-May), no clear vertical shift can be seen between the (normalized) profiles of Chla, BBP and their ratio. In the second phase (Jul-Sep), however, a maxima in the Chla/BBP ratio is clearly seen below the DCM depth, which is similar to the theoretical profiles of Fennel and Boss (2003) that describe the imprint of photoacclimation mechanisms on the vertical distribution of phytoplankton biomass and their Chla content. This important difference between the two phases of the DCM periods suggests that the influence of photoacclimation mechanisms on the shapes of Chla profiles evolves seasonally, which nuances the conclusions of Finenko et al. (2005). Here again, the~~ Furthermore, according to Fennel and Boss (2003), it suggests that a subsurface maximum in planktonic biomass may exist above the DCM during the second phase.

440 ~~Figure 7 shows high BBP values in the upper part of the normalized scale (i.e. between  $z_{MLD}$  and  $z_{DCM}$ ) that are not mirrored in the Chla records. This vertical discrepancy may indicate 1) the presence of non-phytoplanktonic particles in the upper layers, 2) larger cellular Chla content in phytoplankton located around the DCM, and/or 3) an important difference in terms of phytoplanktonic communities, and in particular in terms of cell size. The known disparity in species dominance between surface and subsurface waters (Mikaelyan et al., 2020), and in particular regarding the size of dominant species, prevents to consider consideration of a strict relationship between particle ~~backseattering~~ backscattering and planktonic biomass. Finally, from August to October, a clear correspondence between Chla and BBP profiles, so that we cannot argue for one or another of the above propositions. However, the peak in BBP that is visible near the DCM depth for several months supports the~~

hypothesis that the ~~depicted DCM does indeed~~ DCM does, to some substantial extent, correspond to a local peak in planktonic biomass.

#### 4.2 ~~Considering horizontal variability in the depth and density coordinate systems~~

450 ~~BGC-Argo floats thus provide evidences for a clear seasonal DCM dynamics that prevails over the entire central Black Sea, with almost all profiles categorized as DCM from April to September (Fig. 3), and suggests the existence of two distinct phases during which the relationship between Chla and phytoplankton biomass differs. During this period, the DCM concentrates about 45-65% (and up to 80% in some specific cases) of the total Chla content inside a 10 m layer located from 40 to 30 m below the surface, where local PAR irradiance ranges from 4 to 15 and from 10 to 20  $\mu\text{mol photons m}^{-2} \text{s}^{-1}$ , for the first (Apr-May) and second (Jul-Sep) phases, respectively (reporting first and third quartiles).~~

455 ~~Both~~ These DCM depth estimates are deeper than those previously reported by Finenko et al. (2005), but the lack of overlapping data precludes an association with either methodological factors or interannual variability. One could consider, however, the fact that both Yunev et al. (2005) and Finenko et al. (2005) ~~consider a depth scale to characterize~~ used a single analytical form (modified Gaussian) to characterize Chla distribution as a function of depth during the DCM season. In particular, to ignore the distinction between DCM and non-DCM profiles may considerably bias DCM diagnostics estimates.

#### 460 4.2 ~~Considering horizontal variability in the different vertical coordinate systems~~

~~Both Yunev et al. (2005) and Finenko et al. (2005) considered depth coordinates to characterise~~ the vertical distribution of Chla during the DCM period. Yunev et al. (2005) ~~completes this~~ completed their analysis by assessing, for each considered ~~profiles profile~~, the depth of the  $16.2 \text{ kg m}^{-3}$  isopycnal, in order to characterize ~~sub-regions subregions~~ (or "hydrodynamic regimes") of the central Black Sea. The authors ~~conclude~~ concluded that  $z_{DCM}$  can be considered as independent from hydrodynamic regimes, which ~~amount to say~~ amounts to saying that depth-diagnostics are sufficiently consistent across the basin to serve as ~~a basis for interannual trends~~ the basis for an interannual trend analysis. On the contrary, Finenko et al. (2005) ~~highlight highlighted~~ the variability of  $z_{DCM}$  and ~~consider it in relation to its relationship with~~ the surface Chla content, as the ~~author seek to formulate a general relationship allowing~~ authors aimed to identify a general formulation to retrieve the vertically integrated biomass from remote sensing surface observations. The authors ~~do did~~ not further comment on the spatial structure of ~~the~~ DCM diagnostics.

475 ~~Our results indicate that  $z_{DCM}$  indeed presents a substantial variability when considered on a vertical scale, but that this variability is mainly a direct consequence of the spatial variability in the  $z_{MLD}$ , and can thus be reduced by considering a density scale.~~ No clear spatial pattern emerges from the analysis of ~~the~~ DCM depth-diagnostics, and Fig. 4 ~~highlight highlights~~ that the seasonality of the DCM dynamics is consistent ~~for over~~ the entire central basin. ~~The Black Sea can thus be distinguished~~ In this regard the Black Sea differs from the Mediterranean ~~conditions, in which~~ Sea, where clear longitudinal gradients in environmental conditions (nutrients and light) induce spatial gradients for DCM characteristics, visible all along the DCM period (Letelier et al., 2004; Mignot et al., 2014; Lavigne et al., 2015).



Nevertheless, the open Black Sea does present a major spatial structure which lies in the general curvature of isopycnals: layers of equal density are dome-shaped and significantly shallower in the center than in the periphery (Murray et al., 1991). In addition, isopycnals ~~are subject to vertical motion~~ undergo vertical displacement at time scales ~~of days-weeks under the influence of~~ from hours (internal waves, inertial oscillations scale at about 17h in the Black Sea, e.g. Filonov (2000)) to weeks (eddies and mesoscale dynamics. ~~This brings~~, Stanev et al. (2013)). ~~This leads~~ many authors to use density ~~as a vertical coordinate system~~, rather than depth, as a vertical coordinate system (Tugrul et al., 1992) in order to minimize the spread of vertical diagnostics ~~and reduced artifacts resulting from unevenly sampled scarce datasets~~ (Tugrul et al., 1992).

Using a density scale ~~thus reduces the horizontal variability of vertical diagnostics~~ characterizing layers that are ~~maintained by diffusion along isopycnals~~ mostly maintained by isopycnal diffusion, such as the nitracline and oxycline depths. ~~On the other hand, one might expect that light in-situ conditions, for instance, that proceed from instantaneous vertical penetration would be more homogeneously described on a depth scale. This last assumption, of course, is restricted by the fact that seawater constituents contributing to light attenuation might themselves be distributed along isopycnals. To decipher which driving factors rule the development and structure of DCM dynamics in the Black Sea, we thus consider in the following discussion~~ Here, the spread of ~~the different depth and density horizons presented in Sect. 3.3.~~

~~The spreads depicted by monthly interquartile ranges and extrema in figures ?? and ??~~ monthly diagnostics are depicted by the interquartile ranges in Fig. 5, and mainly derive from interannual and/or horizontal variability. ~~Here, we~~ We assume that a seasonal change in the spread of ~~some variable (eg. narrow range in spring, large range in autumn) denotes a change in its horizontal variability, since we would not expect interannual variations to be so strictly seasonally consistent (Sect. C on interannual variability).~~

### 4.3 Drivers of the DCM dynamics

All along the season, the lower boundary of the Chla bulk,  $z_{50,bottom}$ , remains attached to the density layer reached by the winter maximum MLD. The DCM develops from this lower boundary and remains at the same pycnal level until September. During this period, and in particular in August during which the DCM concentrates the biggest part of the Chla content, the spread of DCM location is relatively low on a pycnal scale, and rather large position of specific horizons, presented on depth, density or irradiance scales, can be exploited to decipher which driving factors rule the development and structure of DCM dynamics in the Black Sea.

### 4.3 Drivers of the seasonal DCM dynamics

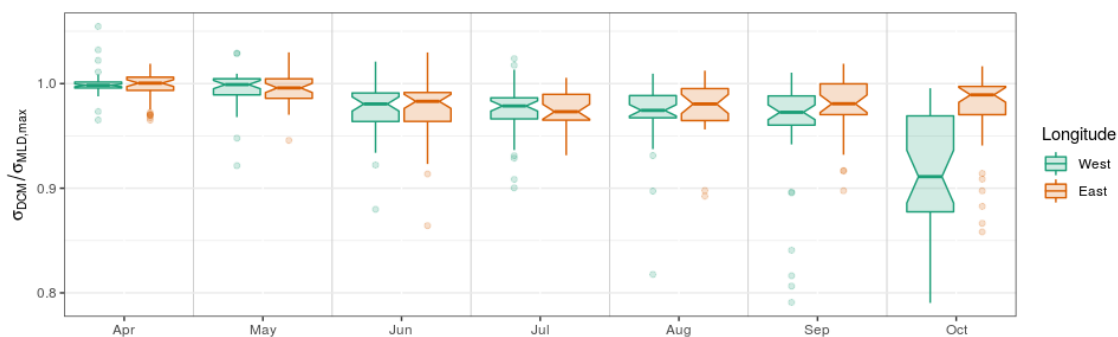
It is remarkable that the irradiance values recorded at  $z_{50,top}$ ,  $z_{50,bottom}$  and  $z_{low}$  are essentially constant over the seasonal cycle. The seasonal vertical displacement of those horizons on a depth scale ~~This indicates that the DCM dynamics is firstly settled by density-structured factors, such as turbulent diffusion, and attached to particular water masses. It then develops until August by remaining attached to these particular water masses, rather than adapting instantaneously to depth-structured factors, such as light, in agreement with the hypothesis formulated by Navarro and Ruiz (2013).~~

510 In September and October, surface incoming irradiance decreases, mixing increases and several diagnostics of the Chla vertical distributions migrate upward (both on depth and density scales). During this period, the spreads of Chla diagnostics decrease on a depth scale, while these largely increase on a density scale. According to our frame of analysis, this indicates that, by the end of the DCM season, may thus be associated with the seasonal variation in the DCM is detached from its initial water mass and restructured by depth-related environmental factors. It is worth noting that this transition is first visible for the upper boundary of the Chla bulk content in September, while lower horizons (DCM, lower boundary) remain stable until October. surface incoming radiation, which is significant at the latitudes of the Black Sea. Such a simplified description does not hold, however, for  $z_{DCM}$ , which we detail as follows.

520 During winter, the MLD extends beyond the euphotic depth (Fig. 5a). The appearance of a DCM at the base of the MLD, when it is shoaling at the end of winter, is thus in agreement with the general Sverdrup theory (and its extensions described in the introduction).

To further test this analysis, a ratio has been derived. During the first phase of the DCM season (Apr-May), the DCM remains close to the density layer that corresponds to the winter MLD. Following Navarro and Ruiz (2013), this is highlighted by the ratio obtained between individual  $\sigma_{DCM}$  values and  $\sigma_{MLD,max}$ , i.e. the maximum  $\sigma_{MLD}$  value experienced registered by the same float in the same year (Fig. 8a). This ratio is strongly segregated around one in the two first months close to unity during the first phase of the DCM period, regardless of spatial or interannual variability, which clearly indicates that the depth of initial DCM settlement is ruled basin-wide by the intensity of winter mixing.

530 Both the value and vertical extent of the winter MLD, and that this initial location holds for at least two months. Note that the spread of the ratio remain relatively constant further along the DCM period. In October, last month of the DCM period, and only for the western part of the basin, the ratio decreases and its spread expands largely. This indicates that upon closure  $PAR_{DCM}$  (Fig. 5c) is large during this first phase, which further supports the hypothesis for density-related driving factors in setting the vertical position of the DCM season, local environmental conditions drive the DCM upwards in ways that are affected by a significant spatial variability.



**Figure 8.** a) Ratio between the  $\sigma_{DCM}$  of individual profiles and the maximum  $\sigma_{MLD}$  recorded by the same float during the same year. b) Fraction of surface incoming PAR that is observed at  $z_{DCM}$ . West and East longitude are defined with respect to the meridian of 34.5°E

Light conditions at depth can hardly be considered as an external structuring factor, given that absorption and backscattering by phytoplankton cells induce a direct impact. Obviously, fast biomass regeneration occurs within the DCM. The standing DCM thus results from a balance between growth, loss and transport terms that respond to environmental factors, i.e. mainly nutrient fluxes from below, light fluxes from above, density gradients and grazing pressure (Cullen, 2015). But the environment to which these terms respond is shaped by the presence of the DCM on light attenuation. Yet, non-planktonic factors also imprint spatial variability on light attenuation in the Black Sea (Churilova et al., 2017, and references therein), so that light conditions found at the DCM may vary spatially and are worth further investigation. For instance, accounting for light attenuation by phytoplankton and nutrient recycling upon cellular decay provides mechanistic explanations for such “bending forces” (e.g. Klausmeier and Litchman, 2001; Beckmann and Hense, 2007). The fact that such mechanisms induce hysteresis in the pycnal position of the DCM, and that this is the most likely explanation for the high concordance between density DCM position and density reached by winter MLD is essentially the message of Navarro and Ruiz (2013). Our results concur with this description for the first phase of the DCM period, during which BBP profiles also suggest that photoacclimation mechanisms have not yet induced a substantial structure in the BBP to Chla ratio (Sect. 4.1).

The DCM is initially set at relatively poor light conditions ( $\sim 1\%$  of surface incoming PAR, Fig. 8b). Further along the DCM season, light conditions met at the DCM depth increase globally to reach  $\sim 2.2\%$  of surface incoming PAR. This is explained first, by a slight vertical displacement of the DCM from May to June. We then observe in June a shift towards a different DCM structure that holds from July to September. This shift involves: i) a decoupling between particle backscattering (our best proxy for biomass; Fig. 7) and chlorophyll profiles, and the establishment of a maximum in the Chla/BBP ratio below the DCM, which suggests impacts of photoacclimation mechanisms on the DCM structure (Fennel and Boss, 2003); ii) the appearance of pure Gaussian profiles (Fig. ??) and then by the 3) implying depletion of surface Chla content (see Fig. ?? and appearance of Gaussian profiles in Fig. 3) allowing a deeper light penetration in summer (; iii) an upward displacement of the DCM, on both depth and pycnal scales (Fig. ??).

This increase in light at the DCM suggests a gradual positioning of the DCM towards optimal growth conditions. We also note that the longitudinal gradient highlighted in Fig. 8a, is not visible for the light conditions at 5a,b) and an upward displacement of the DCM in terms of the irradiance scale (Fig. 5c), from about 4–15 to about 10–20  $\mu\text{mol photons m}^{-2} \text{s}^{-1}$ ; iv) a decrease in the spread of the irradiance value at the DCM (see the interquartile ranges on Fig. 5c); v) a gradual increase (peaking in August) of Chla concentration at the DCM (Fig. 6a), and in the proportion of total Chla content that is located around the DCM (Fig. 8b), suggesting indeed that this positioning for light is driven by local conditions. Yet, light conditions at DCM always present a relatively large spread, reaching between 0.5 and 4.5% of the surface incoming PAR at the end 6b).

The fact that this shift occurs at the time of the year when surface irradiance is maximal, and opposes the expected responses to increased surface incoming irradiance (i.e. a downward displacement of the DCM period. This tends to indicate that other factors limit the DCM potential to seek upward for more light; Beckmann and Hense (2007)), suggests an important role of biotic factors in reshaping the vertical distribution of Chla, e.g. species succession in phytoplanktonic population (Mikaelyan et al., 2018) and/or changes in grazing pressure; or a substantial seasonal increase in the upward nutrient supply. We tend to favor the lead of biotic factors, since seasonal assessment of the vertical turbulent transport in the Black Sea points

towards a decrease of diapycnal diffusion during the warm period (Podymov et al., 2020) which, again, would bring the DCM downward. However, these are hypotheses that we do not have the means to confirm on the basis of the considered dataset.

570 ~~The spatial gradient revealed in Fig. 8a depicts a lower ratio (i.e. DCM occupying lighter pycnal levels) In October, as the DCM season ends, spread in  $\sigma_{DCM}$  (Fig 5b)  $_{DCM}$  (Fig 5c) largely increases. For the first time in the year, a clear spatial differentiation occurs as the DCM evolves away from the density layer of the winter MLD, significantly more in the western part of the basin, where basin than in the east (Fig. 8). This indicates that, upon closure of the DCM season, the environmental conditions that drive the DCM upward are affected by a significant spatial variability. A likely explanation for this longitudinal difference lies in the fact that lateral nutrient inputs are enhanced in the western part of the basin by the proximity of the northwestern shelf system. It can thus be considered We thus suggest that lateral nutrient inputs trigger this spatial disparity of the Black Sea DCM dynamics that only appears in the very last months of the DCM season. This is in agreement, which concurs with the fact that the nutrient export from the north-western shelf to the open sea has been evaluated to be maximal in October (Grégoire and Beckers, 2004).~~

580 Ultimately, model studies would be required to test different hypotheses on the driving forces of the DCM dynamics and to compare these to DCM dynamics, and to make comparisons with those identified in other parts of the world, considering in particular, the neighboring Mediterranean sea (Terzić et al., 2019). Our analysis nonetheless indicates a clear pycnal structuring of the DCM depth at its formation, that is primarily set by that the intensity of the winter mixing. After this initial settlement, we consider that the DCM acts as a self-preserving structure seeking to optimize growth conditions, by reaching better enlightened depths as far as nutrient inputs permit, and is thus spatially modulated by nutrient lateral fluxes towards the end of the DCM season in October.

#### 4.4 Interannual variability

Analyzing the interannual variability of the DCM seasonal sequence on the basis of the Argo dataset is difficult. First, because the dataset only expands over five years. Second, because sub-setting the data per year gives even more place to the artifacts induced by uneven spatial sampling, the latter being particularly relevant for 2014 ( $\approx$  max 10 profiles/month).

590 Yet, to give a general appreciation of the stability of the DCM seasonal dynamics, Fig. C1 provides the specific annual expressions of the seasonal dynamics illustrated in Figs. ??, ??, ?? and ??.

The most striking features is the relative stability of the DCM seasonal cycle. Although some years do present some noticeable anomalies with respect to the average seasonal cycle, no clear systematic implications could be drawn from this limited dataset. Questioning the drivers of interannual variability of the seasonal DCM dynamics is thus left over for further studies. We redirect the interested reader to such a corresponding recent analysis proposed by Kubryakova and Kubryakov (2020)

Interannual variability (year-specific monthly medians) depicted with general monthly seasonal medians, for figures ??, ??, ??, and ??. Sea (Terzić et al., 2019).

## 600 5 Conclusions

In this study, we ~~exploit-use~~ BGC-Argo data (2014–2019, ~~≈about~~ 1000 profiles) to characterize the vertical distribution of Chla in the Black Sea.

~~First, we~~ We first highlight the importance of processing raw fluorescence data obtained ~~by-from~~ BGC-Argo floats to obtain accurate Chla estimates. ~~In particular this involves applying sensor correction such as proposed by Roesler et al. (2017),~~ which involves: i) applying a sensor correction (Roesler et al., 2017); ii) a correction for CDOM fluorescence as proposed by Xing et al. (2017), and iii) non-photochemical quenching as proposed by Xing et al. (2012). While the above procedures are validated on the basis of an HPLC in-situ profile, we ~~advocate-suggest~~ that further in-situ HPLC datasets should be consolidated in order to fine-tune ~~the~~ corrections of BGC-Argo Fluor measurements in the Black Sea.

~~Then, the retrieved set of Chla data is~~ The processed Chla dataset is then used to characterize ~~the~~ seasonal changes in the vertical distribution of Chla, and ~~in particular to discuss mechanisms underlying~~ to discuss the mechanisms that underlie the DCM dynamics.

~~Our analyses depict a~~ Our analyses reveal DCM dynamics that ~~dominates the~~ dominate Chla distribution from April to October, ~~consistently~~ over the entire central basin, ~~which agrees with previous descriptions by Yunev et al. (2005); Finenko et al. (2005)~~ Whereas in agreement with previous studies (Yunev et al., 2005; Finenko et al., 2005). While Yunev et al. (2005) considered that ~~depth-diagnostics of the DCM were sufficiently consistent across the basin~~ DCM depth-diagnostics were sufficient to infer long term trends from limited ~~sets~~ datasets, the detailed vertical sampling provided by ~~Argo~~ BGC-Argo floats and the use of refined analytical forms to distinguish between DCM and non-DCM profiles allowed us to demonstrate ~~a-substantial-spatial variability in DCM diagnostics~~ i) that a significant variability affects DCM diagnostics when expressed on a depth scale. ~~We show indeed that during summer the DCM concentrates 50-70% of the total Chla content in a 10 layer located between 12 and~~ 50 below the surface, where local PAR conditions reach from 0.5 to 4.5% of surface incoming radiation.

This variability in DCM diagnostics may be alleviated by the use of density coordinates, ~~which provide some indications on the processes driving its formation and development.~~ Density-diagnostics reveal that ~~the~~ and ii) that the DCM is strictly initiated ~~at the pycnal level~~ season can be divided into two phases with distinct driving mechanisms. Our analysis indeed indicates that, during the first phase (April-May), the DCM remains attached to the density layer reached by the winter maximum MLD, ~~and remains attached to this layer in a way that is consistent for the entire central basin and all along the DCM season.~~ This supports the. This concurs with the hysteresis hypothesis proposed by Navarro and Ruiz (2013), in which the DCM is depicted-seen as a self-sustaining structure influencing-on-that influences its surrounding environment, rather than a local maximum adapting ~~instantly-instantaneously~~ to external factors. ~~Only~~ During the second phase (July-September), we suggest that biotic factors are responsible for an upward displacement of the DCM structure, visible in depth, density and irradiance scales, since increased surface irradiation and reduced diapycnal mixing at the pycnocline would normally induce a downward displacement. On average, the DCM concentrates about 50% (resp. 55%) of the total Chla content within a 10 m layer centered at a depth of about 40 m (resp. 30 m), for the first and second phases, respectively. It is only towards the end of the thermocline season (October) ~~that~~ the disturbed DCM tends to evolve towards optimal-growth-conditions which are set by local environmental

635 ~~drivers. This finally opens the way for~~ structure indicates a substantial spatial gradient, which we suggest is structured by the enhanced ~~nutrient lateral inputs~~ lateral inputs of nutrients in the western region.

~~As for now, At present~~ the Black Sea BGC-Argo dataset does not allow us to establish a strict relationship between Chla and planktonic biomass. ~~Although the DCM is likely to be associated with the increase of the~~ The DCM is clearly associated with an increase of intra-cellular chlorophyll content at depth ~~in summer, the correspondence between (normalized) chlorophyll and backscattering maxima observed in March, and from August to October indicates during the second phase, which shows~~ the typical signatures of photoacclimation mechanisms (Fennel and Boss, 2003). However, the presence of local peaks in BBP profiles at the DCM depth suggests that the DCM ~~is also directly~~ can also be associated with peaks in biomass ~~for those parts of the year.~~

645 ~~The dynamics highlighted above permits a direct response of the DCM dynamics to the interannual variability in winter mixing conditions, although such interannual responses were relatively low in recent years, as far as the limited BGC-Argo dataset allows to perceive.~~

This study highlights the importance of considering ~~the~~ DCM dynamics in ~~the assessment of the~~ assessments of Black Sea productivity. In order to further ~~the appreciation of~~ appreciate its interannual variability, and to ~~strengthens~~ strengthen the extrapolation from Chla to actual biomass and productivity, we ~~advocate for a~~ encourage continuous support and enrichment of the Black Sea BGC-Argo fleet ~~both~~ in terms of both the number of floats and ~~of~~ equipped sensors.

650 *Code and data availability.* Processed data and scripts used for the analyses and figures used in this study are uploaded on GitHub and available at the Zenodo repository Ricour and Capet (2020)

## Appendix A: FDOM Method

According to the following equation:

$$FChla_{cor} = FChla_{meas} - FChla_{dark} - Slope_{FDOM} \cdot (FDOM_{meas} - FDOM_{dark}) \quad (A1)$$

655 where  $FChla_{cor}$  is the corrected Chla obtained by removing from the measured Chla ( $FChla_{meas}$ ) the sensor bias ( $FChla_{dark}$ , dark signal measured in the absence of Chla) and the contribution from CDOM estimated as proportional (coefficient  $Slope_{FDOM}$ ) to the amount of CDOM estimated as the measured CDOM ( $FDOM_{meas}$ ) corrected for the sensor bias ( $FDOM_{dark}$ ). All values are obtained after conversion from Fluo values (in voltage or digital counts) with parameters provided by the manufacturer of each sensor, in  $\text{mg m}^{-3}$  for Chla and in ppb for CDOM.  $Slope_{FDOM}$  represents the ratio between the fluorescence of

660 CDOM measured by a Chla and a CDOM fluorometer. This ratio is assumed to be constant over depth and its units are given in  $\text{mg m}^{-3} \text{ppb}^{-1}$ .

Below a certain depth,  $FChla_{meas}$  should be zero and hence Equation (A1) gives:

$$FChla_{meas} = FChla_{dark} + Slope_{FDOM} \cdot (FDOM_{meas} - FDOM_{dark}) \quad (A2)$$



That can also be written as:

$$665 \quad FChla_{meas} = Slope_{FDOM} \cdot FDOM_{meas} + \alpha \quad (A3)$$

where  $\alpha = FChla_{dark} - Slope_{FDOM} \cdot FDOM_{dark}$ .

$\alpha$  is a constant bias that results from factory calibration error. Equation A3 shows that  $Slope_{FDOM}$  and  $\alpha$  can be retrieved with a linear regression in the depth range where  $FChla_{meas}$  is expected to be zero due to the - assumed - absence of Chla. This depth range starts at the Chla minimum down to the bottom of the profile. In all investigated profiles, the Chla minimum  
670 is always deeper than the MLD or the DCM during the stratified season and never below 400 m thus the determination of the depth range for the linear regression is easier than in Xing et al. (2017). Once  $Slope_{FDOM}$  and  $\alpha$  are known, the profile can be corrected according to Equation A1.

## Appendix B: Analytical forms of Chla profiles

Chla profiles were fitted with the following analytical forms: a) Sigmoid,  $F(z) = \frac{F_{surf}}{1+e^{(Z_{1/2}-z)s}}$  with  $F_{surf}$ , the Chla surface  
675 concentration,  $Z_{1/2}$  the depth at which the Chla concentration is half the Chla concentration at the surface and  $s$  the proxy of the sigmoid fit slope at  $Z_{1/2}$ ; b) Exponential,  $F(z) = F_{surf}e^{-\frac{\ln 2}{Z_{1/2}} \cdot z}$ ; c) Gaussian,  $F(z) = F_{max}e^{-\frac{(z-Z_{max})^2}{dz^2}}$  with  $F_{max}$ , the maximum Chla value,  $Z_{max}$ , the depth of the DCM and  $dz$ , the proxy of the Gaussian fit thickness; d) Gaussian-Exponential,  $F(z) = F_{surf}e^{-\frac{\ln 2}{Z_{1/2}} \cdot z} + F_{max}e^{-\frac{(z-Z_{max})^2}{dz^2}}$ ; e) Gaussian-sigmoid,  $F(z) = \frac{F_{surf}}{1+e^{(Z_{1/2}-z)s}} + F_{max}e^{-\frac{(z-Z_{max})^2}{dz^2}}$

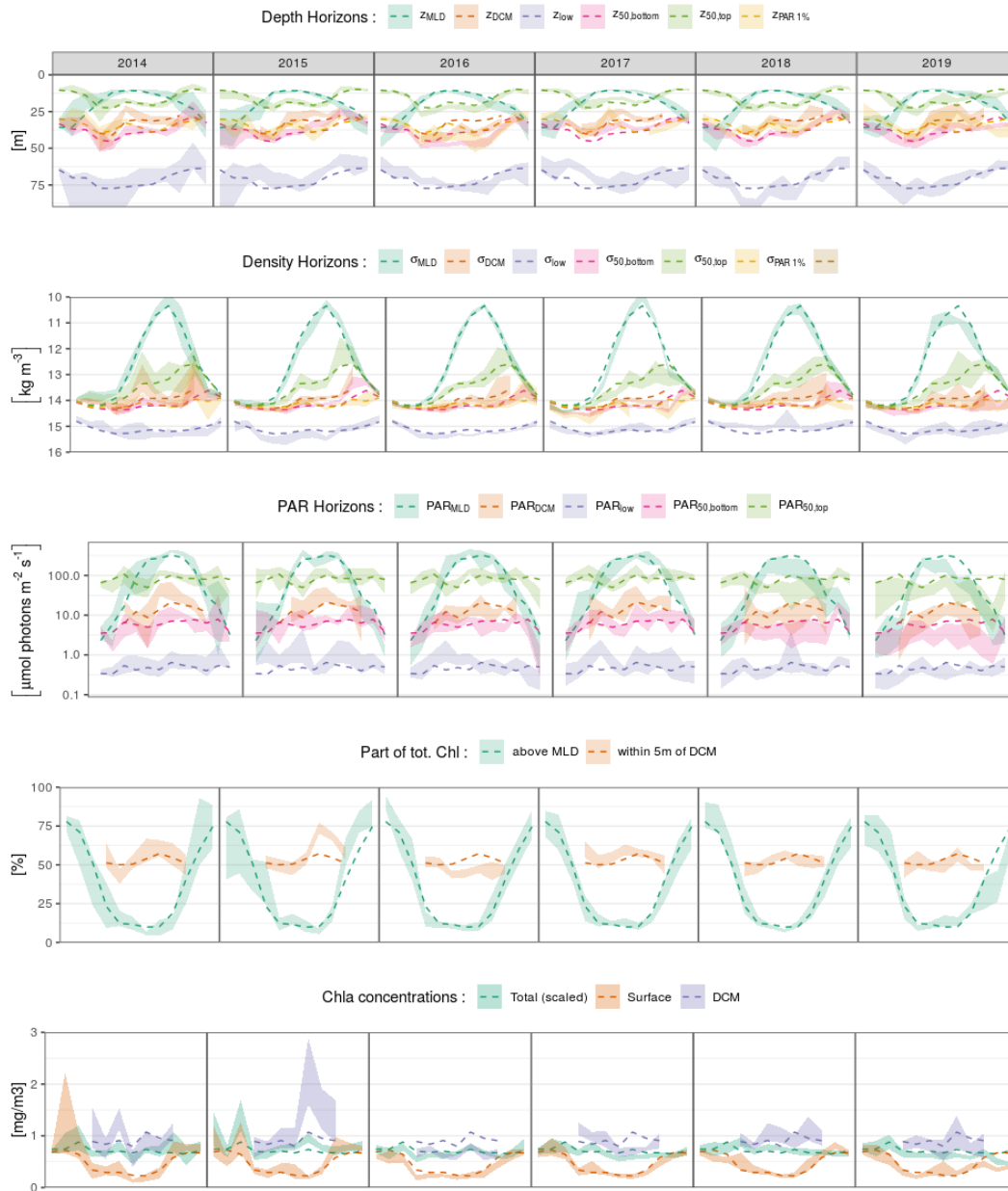
The initial parameters used before the fitting procedure were chosen based on the observed profiles.  $F_{surf}$  was chosen to  
680 be the mean Chla value in the MLD,  $Z_{1/2}$  was chosen as the depth where  $F_{surf}$  was divided by 2 or replaced by the MLD if the MLD was deeper than  $Z_{1/2}$ .  ~~$Z_{max}$~~   $Z_{max}$  and  $F_{max}$  followed their definition while  $dz$  and  $s$  were initially fixed at, respectively, 5 m and -0.01. In this configuration, the algorithm converged in most cases.

## Appendix C: Interannual variability

Analyzing the interannual variability of the DCM seasonal sequence on the basis of the BGC-Argo dataset is difficult. First, because the dataset only expands over five years. Second, because subsetting the data per year gives even more place to the artifacts induced by uneven spatial sampling, the latter being particularly relevant for 2014 (~ max 10 profiles/month).

Yet, to give a general appreciation of the stability of the DCM seasonal dynamics, Fig. C1 provides the specific annual expressions of the seasonal dynamics illustrated in Figs. 5 and 6.

The most striking features is the relative stability of the DCM seasonal cycle. Although some years do present some notable anomalies with respect to the average seasonal cycle, no clear systematic implications could be drawn from this limited dataset. Questioning the drivers of interannual variability of the seasonal DCM dynamics is thus left over for further studies. We redirect the interested reader to such a corresponding recent analysis proposed by Kubryakova and Kubryakov (2020).



**Figure C1.** [Interannual variability \(year-specific monthly medians\) depicted with general monthly seasonal medians, for Figures 5a , 5b , 6b, and 6a.](#)

*Author contributions.* FR, AC and MG conceptualized the research project. FR and AC proceeded to data curation and validation, formal analysis, conducted the investigation, produced the software code and visualizations and wrote the initial draft. MG acquired the funding.

695 AC, FO and MG supervised the execution of this study. All authors contributed to discuss the methodology and to edit and comment the final draft. FO and BD provided resources and supervision for the experimental part.

*Competing interests.* The authors declare that they have no conflict of interest.

*Acknowledgements.* FR would like to thank Marin Cornec and Louis Terrats, PhD students at the Villefranche Oceanographic Laboratory for the scripts they provided (NPQ correction and PAR quality control, respectively). FR would also like to thank Snejana Moncheva, director of  
700 IO-BAS and the crew of the RV *Akademik* for their conviviality and their help during the cruise. The authors would like to thank Pierre-Marie Poulain for having provided the BGC-ARGO float for deployment. Finally, FR would like to thank Josephine Ras and Céline Dimier for their help with the HPLC analysis. FR, AC, BD and MG are research fellow, postdoctoral, research associate and research director of the Fonds de la Recherche Scientifique - FNRS, respectively. The data used in this manuscript were collected and made freely available by the International Argo Program and the national programs that contribute to it (<http://www.argo.ucsd.edu>, <http://argo.jcommops.org>)

## 705 **References**

- Anderson, G.: Subsurface chlorophyll maximum in the northeast Pacific Ocean, *Limnology and Oceanography*, 14, 386–391, 1969.
- Ardyna, M., Babin, M., Gosselin, M., Devred, E., Bélanger, S., Matsuoka, A., and Tremblay, J.-É.: Parameterization of vertical chlorophyll a in the Arctic Ocean: impact of the subsurface chlorophyll maximum on regional, seasonal, and annual primary production estimates, *Biogeosciences*, 10, 4383, 2013.
- 710 Argo Data Management Team: Argo User’s manual V3.3., 2019.
- Beckmann, A. and Hense, I.: Beneath the surface: Characteristics of oceanic ecosystems under weak mixing conditions—a theoretical investigation, *Progress in Oceanography*, 75, 771–796, 2007.
- Capet, A., Troupin, C., Carstensen, J., Grégoire, M., and Beckers, J.-M.: Untangling spatial and temporal trends in the variability of the Black Sea Cold Intermediate Layer and mixed Layer Depth using the DIVA detrending procedure, *Ocean Dynamics*, 64, 315–324, 2014.
- 715 Carranza, M. M., Gille, S. T., Franks, P. J., Johnson, K. S., Pinkel, R., and Girton, J. B.: When Mixed Layers Are Not Mixed. Storm-Driven Mixing and Bio-optical Vertical Gradients in Mixed Layers of the Southern Ocean, *Journal of Geophysical Research: Oceans*, 123, 7264–7289, 2018.
- Chiswell, S. M., Calil, P. H. R., and Boyd, P. W.: Spring blooms and annual cycles of phytoplankton: a unified perspective, *J. Plankton Res.*, 37, 500–508, <https://doi.org/10.1093/plankt/fbv021>, 2015.
- 720 Churilova, T., Suslin, V., Krivenko, O., Efimova, T., Moiseeva, N., Mukhanov, V., and Smirnova, L.: Light absorption by phytoplankton in the upper mixed layer of the Black Sea: Seasonality and parametrization, *Frontiers in Marine Science*, 4, 2017.
- Claustre, H., Sciandra, A., and Vaultot, D.: Introduction to the special section bio-optical and biogeochemical conditions in the South East Pacific in late 2004: the BIOSOPE program, *Biogeosciences Discussions*, 5, 605–640, 2008.
- Claustre, H., Antoine, D., Boehme, L., Boss, E., D’Ortenzio, F., D’Andon, O. F., Guinet, C., Gruber, N., Handegard, N. O., Hood, M., et al.: 725 Guidelines towards an integrated ocean observation system for ecosystems and biogeochemical cycles, 2009.
- Coble, P., Gagosian, R., Codispoti, L., Friederich, G., and Christensen, J.: Vertical distribution of dissolved and particulate fluorescence in the Black Sea, *Deep-Sea Research, Part A*, 38, S985–S1001, 1991.
- Cullen, J.: The deep chlorophyll maximum: comparing vertical profiles of chlorophyll a., *Canadian Journal of Fisheries and Aquatic Sciences*, 39, 791–803, 1982.
- 730 Cullen, J.: Subsurface chlorophyll maximum layers: Enduring enigma or mystery solved?, *Annual Review of Marine Science*, 7, 207–239, 2015.
- de Boyer Montégut, C., Madec, G., Fischer, A., Lazar, A., and Iudicone, D.: Mixed layer depth over the global ocean: An examination of profile data and a profile-based climatology, *Journal of Geophysical Research C: Oceans*, 109, 1–20, 2004.
- Dubinsky, Z. and Stambler, N.: Photoacclimation processes in phytoplankton: mechanisms, consequences, and applications, *Aquatic Micro-*
- 735 *bial Ecology*, 56, 163–176, 2009.
- Ducklow, H. W., Hansell, D. A., and Morgan, J. A.: Dissolved organic carbon and nitrogen in the Western Black Sea, *Marine Chemistry*, 105, 140–150, 2007.
- Ediger, D. and Yilmaz, A.: Characteristics of deep chlorophyll maximum in the Northeastern Mediterranean with respect to environmental conditions, *Journal of Marine Systems*, 9, 291–303, 1996.
- 740 Estrada, M., Marrase, C., Latasa, M., Berdalet, E., Delgado, M., and Riera, T.: Variability of deep chlorophyll maximum characteristics in the northwestern Mediterranean, *Marine Ecology Progress Series*, 92, 289–300, 1993.

- Falina, A., Sarafanov, A., Özsoy, E., and Utku Turunçoğlu, U.: Observed basin-wide propagation of Mediterranean water in the Black Sea, *J. Geophys. Res. C: Oceans*, 122, 3141–3151, <https://doi.org/10.1002/2017JC012729>, 2017.
- Fennel, K. and Boss, E.: Subsurface maxima of phytoplankton and chlorophyll: Steady-state solutions from a simple model, *Limnology and Oceanography*, 48, 1521–1534, 2003.
- 745 Filonov, A. E.: Thermic structure and intense internal waves on the narrow continental shelf of the Black Sea, *J. Mar. Syst.*, 24, 27–40, [https://doi.org/10.1016/S0924-7963\(99\)00077-9](https://doi.org/10.1016/S0924-7963(99)00077-9), 2000.
- Finenko, Z., Churilova, T., and Lee, R.: Dynamics of the vertical distributions of chlorophyll and phytoplankton biomass in the Black Sea, *Oceanology*, 45, S112–S126, 2005.
- 750 Finenko, Z., Suslin, V., and Kovaleva, I.: Seasonal and long-term dynamics of the chlorophyll concentration in the Black Sea according to satellite observations, *Oceanology*, 54, 596–605, 2014.
- Furuya, K.: Subsurface chlorophyll maximum in the tropical and subtropical western Pacific Ocean: Vertical profiles of phytoplankton biomass and its relationship with chlorophylla and particulate organic carbon, *Marine Biology*, 107, 529–539, 1990.
- Grégoire, M. and Beckers, J.-M.: Modeling the nitrogen fluxes in the Black Sea using a 3D coupled hydrodynamical-biogeochemical model: transport versus biogeochemical processes, exchanges across the shelf break and comparison of the shelf and deep sea ecodynamics, 2004.
- 755 Huisman, J., van Oostveen, P., and Weissing, F. J.: Species Dynamics in Phytoplankton Blooms: Incomplete Mixing and Competition for Light, *Am. Nat.*, 154, 46–68, <https://doi.org/10.1086/303220>, 1999.
- Huisman, J., Pham Thi, N., Karl, D., and Sommeijer, B.: Reduced mixing generates oscillations and chaos in the oceanic deep chlorophyll maximum, *Nature*, 439, 322–325, 2006.
- 760 IOC, SCOR and IAPSO: The international thermodynamic equation of seawater - 2010 : Calculation and use of thermodynamic properties, Intergovernmental Oceanographic Commission, Manuals and Guides No. 56, UNESCO (English), 196 pp., 2010.
- Ivanov, L. I., Beşiktepe, Ş., and Özsoy, E.: The Black Sea Cold Intermediate Layer, in: Sensitivity to Change: Black Sea, Baltic Sea and North Sea, edited by Özsoy, E. and Mikaelyan, A., pp. 253–264, Springer Netherlands, Dordrecht, [https://doi.org/10.1007/978-94-011-5758-2\\_20](https://doi.org/10.1007/978-94-011-5758-2_20), 1997.
- 765 Kara, A. B., Wallcraft, A. J., and Hurlburt, H. E.: Sea surface temperature sensitivity to water turbidity from simulations of the turbid Black Sea using HYCOM, *J. Phys. Oceanogr.*, 35, 33–54, 2005.
- Kara, A. B., Helber, R. W., Boyer, T. P., and Elsner, J. B.: Mixed layer depth in the Aegean, Marmara, Black and Azov Seas: Part I: general features, *Journal of Marine Systems*, 78, S169–S180, 2009.
- Karabashev, G.: Diurnal rhythm and vertical distribution of chlorophyll fluorescence as evidence of bacterial photosynthetic activity in the Black Sea, *Ophelia*, 40, 229–238, 1995.
- 770 Klausmeier, C. A. and Litchman, E.: Algal games: The vertical distribution of phytoplankton in poorly mixed water columns, *Limnol. Oceanogr.*, 46, 1998–2007, <https://doi.org/10.4319/lo.2001.46.8.1998>, 2001.
- Konovalov, S. and Murray, J.: Variations in the chemistry of the Black Sea on a time scale of decades (1960–1995), *Journal of Marine Systems*, 31, 217–243, 2001.
- 775 Konovalov, S. K., Murray, J. W., Luther, G. W., and Tebo, B. M.: Processes controlling the redox budget for the oxic/anoxic water column of the Black Sea, *Deep Sea Res. Part 2 Top. Stud. Oceanogr.*, 53, 1817–1841, <https://doi.org/10.1016/j.dsr2.2006.03.013>, 2006.
- Kopelevich, O. V., Sheberstov, S. V., Yunev, O., Basturk, O., Finenko, Z. Z., Nikonov, S., and Vedernikov, V. I.: Surface chlorophyll in the Black Sea over 1978–1986 derived from satellite and in situ data, *J. Mar. Syst.*, 36, 145–160, [https://doi.org/10.1016/S0924-7963\(02\)00184-7](https://doi.org/10.1016/S0924-7963(02)00184-7), 2002.

- 780 Kubryakova, E. A. and Kubryakov, A. A.: Warmer winter causes deepening and intensification of summer subsurface bloom in the Black Sea: the role of convection and self-shading mechanism, *Biogeosci. Discuss.*, pp. 1–14, <https://doi.org/10.5194/bg-2020-210>, 2020.
- Lavigne, H., D’Ortenzio, F., Ribera D’Alcalà, M., Claustre, H., Sauzède, R., and Gacic, M.: On the vertical distribution of the chlorophyll a concentration in the Mediterranean Sea: A basin-scale and seasonal approach, *Biogeosciences*, 12, 5021–5039, 2015.
- Letelier, R. M., Karl, D. M., Abbott, M. R., and Bidigare, R. R.: Light driven seasonal patterns of chlorophyll and nitrate in the lower euphotic zone of the North Pacific Subtropical Gyre, *Limnology and Oceanography*, 49, 508–519, 2004.
- 785 Macedo, M., Duarte, P., Ferreira, J., Alves, M., and Costa, V.: Analysis of the deep chlorophyll maximum across the Azores Front, *Hydrobiologia*, 441, 155–172, 2000.
- Margolin, A. R., Gerringa, L. J. A., Hansell, D. A., and Rijkenberg, M. J. A.: Net removal of dissolved organic carbon in the anoxic waters of the Black Sea, *Mar. Chem.*, 183, 13–24, <https://doi.org/10.1016/j.marchem.2016.05.003>, 2016.
- 790 Margolin, A. R., Gonnelli, M., Hansell, D. A., and Santinelli, C.: Black Sea dissolved organic matter dynamics: Insights from optical analyses, *Limnology and Oceanography*, 2018.
- Marra, J.: Analysis of diel variability in chlorophyll fluorescence, *Journal of Marine Research*, 55, 767–784, 1997.
- Mignot, A., Claustre, H., D’Ortenzio, F., Xing, X., Poteau, A., and Ras, J.: From the shape of the vertical profile of in vivo fluorescence to Chlorophyll-a concentration, *Biogeosciences*, 8, 2391–2406, 2011.
- 795 Mignot, A., Claustre, H., Uitz, J., Poteau, A., D’Ortenzio, F., and Xing, X.: Understanding the seasonal dynamics of phytoplankton biomass and the deep chlorophyll maximum in oligotrophic environments: A Bio-Argo float investigation, *Global Biogeochemical Cycles*, 28, 856–876, 2014.
- Mikaelyan, A. S., Chasovnikov, V. K., Kubryakov, A. A., and Stanichny, S. V.: Phenology and drivers of the winter–spring phytoplankton bloom in the open Black Sea: The application of Sverdrup’s hypothesis and its refinements, *Prog. Oceanogr.*, 151, 163–176, 2017a.
- 800 Mikaelyan, A. S., Shapiro, G. I., Chasovnikov, V. K., Wobus, F., and Zancacchi, M.: Drivers of the autumn phytoplankton development in the open Black Sea, *J. Mar. Syst.*, 174, 1–11, <https://doi.org/10.1016/j.jmarsys.2017.05.006>, 2017b.
- Mikaelyan, A. S., Kubryakov, A. A., Silkin, V. A., Pautova, L. A., and Chasovnikov, V. K.: Regional climate and patterns of phytoplankton annual succession in the open waters of the Black Sea, *Deep Sea Res. Part I*, 142, 44–57, <https://doi.org/10.1016/j.dsr.2018.08.001>, 2018.
- Mikaelyan, A. S., Mosharov, S. A., Kubryakov, A. A., Pautova, L. A., Fedorov, A., and Chasovnikov, V. K.: The impact of physical processes on taxonomic composition, distribution and growth of phytoplankton in the open Black Sea, *J. Mar. Syst.*, 208, 103–368, 805 <https://doi.org/10.1016/j.jmarsys.2020.103368>, 2020.
- Miladinova, S., Stips, A., Garcia-Gorriz, E., and Macias Moy, D.: Formation and changes of the Black Sea cold intermediate layer, *Prog. Oceanogr.*, 167, 11–23, <https://doi.org/10.1016/j.pocean.2018.07.002>, 2018.
- Moré, J. J.: The Levenberg-Marquardt algorithm: implementation and theory, in: *Numerical analysis*, pp. 105–116, Springer, 1978.
- 810 Murray, J. W., Top, Z., and Özsoy, E.: Hydrographic properties and ventilation of the Black Sea, *Deep Sea Research Part A. Oceanographic Research Papers*, 38, S663–S689, 1991.
- Navarro, G. and Ruiz, J.: Hysteresis conditions the vertical position of deep chlorophyll maximum in the temperate ocean, *Global Biogeochemical Cycles*, 27, 1013–1022, 2013.
- Nelson, N. B. and Siegel, D. A.: The global distribution and dynamics of chromophoric dissolved organic matter, *Ann. Rev. Mar. Sci.*, 5, 815 447–476, <https://doi.org/10.1146/annurev-marine-120710-100751>, 2013.



- Organelli, E., Bricaud, A., Antoine, D., and Matsuoka, A.: Seasonal dynamics of light absorption by chromophoric dissolved organic matter (CDOM) in the NW Mediterranean Sea (BOUSSOLE site), *Deep Sea Res. Part I*, 91, 72–85, <https://doi.org/10.1016/j.dsr.2014.05.003>, 2014.
- Organelli, E., Claustre, H., Bricaud, A., Schmechtig, C., Poteau, A., Xing, X., Prieur, L., D’Ortenzio, F., Dall’Olmo, G., and Vellucci, V.: A novel near-real-time quality-control procedure for radiometric profiles measured by bio-argo floats: Protocols and performances, *Journal of Atmospheric and Oceanic Technology*, 33, 937–951, 2016.
- Ostrovskii, A. G. and Zatsepin, A. G.: Intense ventilation of the Black Sea pycnocline due to vertical turbulent exchange in the Rim Current area, *Deep Sea Res. Part I*, 116, 1–13, <https://doi.org/10.1016/j.dsr.2016.07.011>, 2016.
- Özsoy, E., Di Iorio, D., Gregg, M. C., and Backhaus, J. O.: Mixing in the Bosphorus Strait and the Black Sea continental shelf: observations and a model of the dense water outflow, *J. Mar. Syst.*, 31, 99–135, [https://doi.org/10.1016/S0924-7963\(01\)00049-5](https://doi.org/10.1016/S0924-7963(01)00049-5), 2001.
- Para, J., Coble, P. G., Charrière, B., Tedetti, M., Fontana, C., and Sempéré, R.: Fluorescence and absorption properties of chromophoric dissolved organic matter (CDOM) in coastal surface waters of the northwestern Mediterranean Sea, influence of the Rhône River, *Biogeosciences*, 7, 4083–4103, 2010.
- Parslow, J. S., Boyd, P. W., Rintoul, S. R., and Griffiths, F. B.: A persistent subsurface chlorophyll maximum in the Interpolar Frontal Zone south of Australia: Seasonal progression and implications for phytoplankton-light-nutrient interactions, *Journal of Geophysical Research: Oceans*, 106, 31 543–31 557, 2001.
- Picheral, M., Guidi, L., Stemann, L., Karl, D. M., Iddaoud, G., and Gorsky, G.: The Underwater Vision Profiler 5: An advanced instrument for high spatial resolution studies of particle size spectra and zooplankton, *Limnology and Oceanography: Methods*, 8, 462–473, 2010.
- Podymov, O., Zatsepin, A., Kubryakov, A., and Ostrovskii, A.: Seasonal and interannual variability of vertical turbulent exchange coefficient in the Black Sea pycnocline in 2013–2016 and its relation to variability of mean kinetic energy of surface currents, *Ocean Dyn.*, 70, 199–211, <https://doi.org/10.1007/s10236-019-01331-w>, 2020.
- Proctor, C. and Roesler, C.: New insights on obtaining phytoplankton concentration and composition from in situ multispectral Chlorophyll fluorescence, *Limnology and Oceanography: Methods*, 8, 695–708, 2010.
- Ras, J., Claustre, H., and Uitz, J.: Spatial variability of phytoplankton pigment distributions in the Subtropical South Pacific Ocean: Comparison between in situ and predicted data, *Biogeosciences*, 5, 353–369, 2008.
- Richardson, T. L. and Cullen, J. J.: Changes in buoyancy and chemical composition during growth of a coastal marine diatom: ecological and biogeochemical consequences, *Marine Ecology Progress Series*, pp. 77–90, 1995.
- Ricour, F. and Capet, A.: fricour/DCM-Black-Sea-Paper: Release of data and scripts used in the frame of the paper entitled "Dynamics of the Deep Chlorophyll Maximum in the Black Sea as depicted by BGC-Argo floats", <https://doi.org/10.5281/zenodo.3966002>, <https://doi.org/10.5281/zenodo.3966002>, 2020.
- Roesler, C., Uitz, J., Claustre, H., Boss, E., Xing, X., Organelli, E., Briggs, N., Bricaud, A., Schmechtig, C., Poteau, A., D’Ortenzio, F., Ras, J., Drapeau, S., Haëntjens, N., and Barbieux, M.: Recommendations for obtaining unbiased chlorophyll estimates from in situ chlorophyll fluorometers: A global analysis of WET Labs ECO sensors, *Limnology and Oceanography: Methods*, 15, 572–585, 2017.
- Röttgers, R. and Koch, B.: Spectroscopic detection of a ubiquitous dissolved pigment degradation product in subsurface waters of the global ocean, *Biogeosciences*, 9, 2585–2596, 2012.
- Sathyendranath, S., Aiken, J., Alvain, S., Barlow, R., Bouman, H., Bracher, A., Brewin, R., Bricaud, A., Brown, C. W., Ciotti, A. M., Clementson, L. A., Craig, S. E., Devred, E., Hardman-Mountford, N., Hirata, T., Hu, C., Kostadinov, T. S., Lavender, S., Loisel, H.,

- Moore, T. S., Morales, J., Mouw, C. B., Nair, A., Raitsos, D., Roesler, C., Shutler, J. D., Sosik, H. M., Soto, I., Stuart, V., Subramaniam, A., and Uitz, J.: Phytoplankton functional types from Space., <http://www.ioccg.org/reports/IOCCG%5fReport%5f15%5f2014.pdf>, 2014.
- 855 Schmechtig, C., Claustre, H., Poteau, A., and D'Ortenzio, F.: Bio-Argo quality control manual for the Chlorophyll-A concentration, 2018.
- Stanev, E., He, Y., Grayek, S., and Boetius, A.: Oxygen dynamics in the Black Sea as seen by Argo profiling floats, *Geophysical Research Letters*, 40, 3085–3090, 2013.
- Stanev, E. V., Bowman, M. J., Peneva, E. L., and Staneva, J. V.: Control of Black Sea intermediate water mass formation by dynamics and topography: Comparison of numerical simulations, surveys and satellite data, *J. Mar. Res.*, 61, 59–99, <https://doi.org/10.1357/002224003321586417>, 2003.
- 860 Sverdrup, H. U.: On conditions for the vernal blooming of phytoplankton, *J. Cons. Int. Explor. Mer*, 18, 287–295, 1953.
- Terzić, E., Lazzari, P., Organelli, E., Solidoro, C., Salon, S., D'Ortenzio, F., and Conan, P.: Merging bio-optical data from Biogeochemical-Argo floats and models in marine biogeochemistry, *Biogeosciences*, 16, 2527–2542, <https://doi.org/10.5194/bg-16-2527-2019>, 2019.
- Tugrul, S., Basturk, O., Saydam, C., and Yilmaz, A.: Changes in the hydrochemistry of the Black Sea inferred from water density profiles, *Nature*, 359, 137, 1992.
- 865 Varela, R., Cruzado, A., Tintore, J., and Garcia Ladona, E.: Modelling the deep-chlorophyll maximum: a coupled physical- biological approach, *Journal of Marine Research*, 50, 441–463, 1992.
- Wong, A., Keeley, R., Carval, T., and the Bio Argo Team: Argo Quality Control Manual for CTD and Trajectory Data, 2018.
- Xing, X., Morel, A., Claustre, H., Antoine, D., D'Ortenzio, F., Poteau, A., and Mignot, A.: Combined processing and mutual interpretation of radiometry and fluorimetry from autonomous profiling Bio-Argo floats: Chlorophyll a retrieval, *Journal of Geophysical Research: Oceans*, 116, 2011.
- 870 Xing, X., Claustre, H., Blain, S., D'Ortenzio, F., Antoine, D., Ras, J., and Guinet, C.: Quenching correction for in vivo chlorophyll fluorescence acquired by autonomous platforms: A case study with instrumented elephant seals in the Kerguelen region (Southern Ocean), *Limnology and Oceanography: Methods*, 10, 483–495, 2012.
- 875 Xing, X., Claustre, H., Boss, E., Roesler, C., Organelli, E., Poteau, A., Barbieux, M., and D'Ortenzio, F.: Correction of profiles of in-situ chlorophyll fluorometry for the contribution of fluorescence originating from non-algal matter, *Limnology and Oceanography: Methods*, 15, 80–93, 2017.
- Yilmaz, A., Ediger, D., Basturk, O., and Tugrul, S.: Phytoplankton fluorescence and deep chlorophyll maxima in the northeastern Mediterranean, *Oceanologica Acta*, 17, 69–77, 1994.
- 880 Yunev, O. A., Moncheva, S., and Carstensen, J.: Long-term variability of vertical chlorophyll a and nitrate profiles in the open Black Sea: eutrophication and climate change, *Marine Ecology Progress Series*, 294, 95–107, 2005.