

# 1 The effect of salinity, light regime and food source on C and N uptake in a benthic 2 foraminifera

3  
4 Michael Lintner<sup>1</sup>, Bianca Lintner<sup>1</sup>, Wolfgang Wanek<sup>2</sup>, Nina Keul<sup>3</sup> and Petra Heinz<sup>1</sup>

5 <sup>1</sup>University of Vienna, Department of Palaeontology, Vienna, Austria

6 <sup>2</sup>University of Vienna, Department of Microbiology and Ecosystem Science, Division of Terrestrial Ecosystem  
7 Research, Vienna, Austria

8 <sup>3</sup>Christian-Albrechts-Universität zu Kiel, Institute of Geosciences, Germany

## 9 10 Abstract

11 Foraminifera are unicellular organisms that play an important role in marine organic matter cycles. Some species are  
12 able to isolate chloroplasts from their algal food source and incorporate them as kleptoplasts into their own metabolic  
13 pathways, a phenomenon known as kleptoplastidy. One species showing this ability is *Elphidium excavatum*, a common  
14 foraminifer in the Kiel fjord, Germany. The Kiel fjord is fed by several rivers and thus forms a habitat with strongly  
15 fluctuating salinity. Here, we tested the effects of food source, salinity and light regime on the food uptake (via <sup>15</sup>N and  
16 <sup>13</sup>C algal uptake) in this kleptoplast-bearing foraminifer. In our study *E. excavatum* was cultured in the lab at three  
17 salinity levels (15, 20, 25) and uptake of C and N from the food source *Dunaliella tertiolecta* (Chlorophyceae) and  
18 *Leyanella arenaria* (Bacillariophyceae) were measured over time (after 3, 5, 7 days). The species was very well adapted  
19 to the current salinity of the sampling region, as both, algal N and C uptake was highest at a salinity of 20. It seems that  
20 *E. excavatum* coped better with lower than with higher salinities. The amount of absorbed C from the green algae *D.*  
21 *tertiolecta* showed a tendency effect of salinity, peaking at a salinity of 20. Nitrogen uptake was also highest at a salinity  
22 of 20 and steadily increased with time. In contrast, C uptake from the diatom *L. arenaria* was highest at a salinity of 15  
23 and decreased at higher salinities. We found no overall significant differences in C and N uptake from green algae  
24 versus diatoms. Furthermore, the food uptake at a light/dark rhythm of 16:8 h was compared to continuous darkness.  
25 Darkness had a negative influence on algal C and N uptake, and this effect increased with incubation time. Starving  
26 experiments showed a stimulation of food uptake after 7 days. In summary, it can be concluded that *E. excavatum* copes  
27 well with changes of salinity to a lower level. For changes in light regime, we showed that light reduction caused a  
28 decrease of C and N uptake by *E. excavatum*.

29

## 30 1. Introduction

### 31 1.1. General information

32 Foraminifera are unicellular, highly diverse marine organisms known since the early Cambrian (e.g., Scott et al., 2003;  
33 Pawlowski et al., 2003). As major consumers of phytodetritus they play an important role in organic matter recycling in  
34 marine environments, particularly in marine sediments (benthos), from coasts to the deep sea, and in brackish water

35 (Boltovskoy and Wright, 1976). Most foraminifera are heterotrophic, but some can isolate functional chloroplasts from  
36 their algal food sources, keep them viable in their cells and incorporate them into their own cellular metabolism, a process  
37 termed kleptoplastidy (Bernhard & Bowser, 1999). *Elphidium*, a benthic foraminifera, is one of currently nine known  
38 genera of foraminifera (*Bulimina*, *Elphidium*, *Haynesina*, *Nonion*, *Nonionella*, *Nonionellina*, *Reophax*, *Stainforthia* and  
39 *Virgulinitella*) which perform kleptoplastidy (Lopez, 1979; Lee et al., 1988; Cedhagen, 1991; Bernhard and Bowser, 1999;  
40 Correia and Lee, 2000; Grzymiski et al., 2002; Goldstein et al., 2004; Pillet et al., 2011; Lechliter, 2014; Tsuchiya et al.,  
41 2015). *Elphidium* has a worldwide distribution and occurs from tropical to Arctic waters (Murray, 1991). This genus  
42 makes up a particularly high proportion of the total foraminiferal population in the shallow water of the Mediterranean,  
43 the English Channel, the North Sea and the Baltic Sea (Murray, 1991). More than 60 morphospecies of *Elphidium* are  
44 known (Murray, 1991), many of which are present in the North and Baltic Seas. A detailed description of the different  
45 species and morphotypes is given in Darling et al. (2016). The most common species are *E. albiumbilicatum*, *E. excavatum*  
46 *clavatum*, *E. excavatum excavatum*, *E. gerthi*, *E. guntheri*, *E. incertum* or *E. williamsoni* (Weiss, 1954; Terquem, 1876;  
47 Williamson, 1858; Lutze, 1965; Frenzel et al., 2005; Nikulina et al., 2008; Polovodova and Schönfeld, 2008). *Elphidium*  
48 *excavatum* shows a large morphological intraspecific variability (Miller et al., 1982). Two subspecies of this foraminifer  
49 (*E. e. excavatum* and *E. e. clavatum*) have been found to coexist in the Baltic Sea (Lutze, 1965). Schweizer et al. (2010)  
50 showed that these species exhibit large genetic differences with respect to each other and therefore can be regarded as  
51 subspecies rather than as ecophenotypes.

52 During longer periods of starvation, kleptoplasts may possibly serve as nutritional source that can be digested (Falkowski  
53 and Raven, 2007). But they can also supplement the nutrition through photosynthesis under light conditions. Diatoms are  
54 the major chloroplast sources for *Elphidium*, with an average of  $3.7 \times 10^4$  chloroplasts possessed by one foraminiferal  
55 individual (Correia and Lee, 2000). The retention time of functional chloroplasts in foraminifera may vary from several  
56 days to several months (Lopez, 1979; Lee et al., 1988; Correia and Lee, 2002). Another genus *Haynesina* (Pillet et al.,  
57 2011) can sustain their kleptoplasts efficiently for more than a week (Jauffrais et al., 2016). The uptake of kleptoplasts by  
58 *Haynesina germanica* and *Elphidium williamsoni* through the consumption of diatoms can be seen in the comparison of  
59 spectral signatures and pigment composition (Jauffrais et al., 2016; 2019). Further experiments showed that not all algae  
60 are excellent chloroplast donors (Lee and Lee, 1989; Correia and Lee, 2001). It was observed that *Elphidium* absorbs up  
61 to five times more chloroplasts from diatoms than from green algae (Correia and Lee, 2000). It was also pointed out that  
62 different light/dark regimes had no influence on the uptake of chloroplasts by *Elphidium* (Correia and Lee, 2000).  
63 Foraminifera below the photic zone can also perform kleptoplastidy (Bernhard and Bowser, 1999). These aspects suggest  
64 that foraminifera can not only incorporate chloroplasts for photosynthetic activity, but may also benefit from other  
65 catabolic mechanisms (LeKieffre et al., 2018). This means not only C or N pathways, one of these mechanisms could also  
66 be the sulfur-cycle (Jauffrais et al., 2019). Recent studies showed, that foraminifera host sulphur-cycle bacteria which have  
67 the potential to act as endobionts (Salonen et al., 2019). Experiments showed, that foraminifera can even use kleptoplasts  
68 to control the pH-value in their cytoplasm (Tsuchiya et al., 2019). This leads to an increased intracellular pH environment,  
69 which allows foraminifera to produce a high magnesian calcite test. (Tsuchiya et al., 2019).

70 Currently little is known about the feeding behavior and the C and N metabolism of foraminifera species exhibiting  
71 kleptoplastidy, such as *Elphidium* or *Haynesina*. Moreover, given that plastids may either supplement the nutrition of  
72 foraminifera by providing photosynthates or by being digested, kleptoplastid species may show a slower detrimental  
73 response to starvation, or a slower uptake of (pulses of) algal food (Lintner et al., 2020). Foraminiferal food uptake  
74 depends on several factors such as size of food (Murray, 1963), the type of food (e.g., Lee and Müller, 1973; Nomaki et

75 al., 2014), the age of the foraminifera and food quality (Lee et al., 1966), water temperature (Wukovits et al., 2017; Heinz  
76 et al. 2012) or salinity (Lintner et al., 2020; Dissard et al., 2009). Salinity and light conditions are highly variable in  
77 intertidal and brackish milieus where foraminifera thrive in highly diverse and active communities. Very little is known  
78 on such light-dark and salinity effects on the feeding behavior of foraminifera. For example, the kleptoplastid species  
79 *Haynesina germanica* showed no response to changes in salinity while food uptake by the non-kleptoplastid species  
80 *Ammonia tepida* increased with salinity (Lintner et al., 2020). In the same study, both species showed large differences in  
81 the retention of C relative to N, with subsequent adverse effects on the re-cycling of these elements by  
82 mineralization/respiration and excretion to the environment. Such differences, given that these species are (co)dominant  
83 in their foraminifera community, can have important implications on local marine biogeochemical cycles of C and N.

84 Based on the above mentioned aspects, this study investigated the food uptake and food preference (green algae versus  
85 diatoms) of *Elphidium excavatum* spp. at different salinity levels and a changing light/dark rhythm. *Elphidium excavatum*  
86 is optimally suited for this purpose, as it is representative for foraminifera in coastal regions and can account for over  
87 90% of the total foraminiferal population in some areas (Schönfeld and Numberger, 2007). After Darling et al. (2016) our  
88 used foraminifera (*E. excavatum*) are called *E. selseyense*. Actually *E. selseyense* is official called as *Criboelphidium*  
89 *selseyense*. But due to the high important of the “older” name we used for this manuscript the most common and more  
90 often cited name *E. excavatum*.

## 91 1.2. Sampling location Kiel Fjord

92 Foraminifera studied here were collected in the Kiel Fjord in northern Germany. The Kiel Fjord covers 9.5 km in length.  
93 It is about 250 m wide in the south (inner Fjord) and widens to the northern part to a width of 7.5 km (outer Fjord) (Nikula  
94 et al., 2007; Polovodova and Schönfeld, 2008). The inner Fjord is about 10 – 12 m deep, whereas the outer Fjord has  
95 more than 20 m water depth. The water in the inner Fjord is well homogenized and has a relatively constant temperature  
96 and salinity at any depth (Schwarzer and Themann, 2003). During the summer months stratification of water masses  
97 occurs, with the surface water having a temperature of 16 °C and a salinity of 14 and the bottom water with 12 °C and a  
98 salinity of 21 (Nikula et al., 2007; Polovodova and Schönfeld, 2008). In the southeast of the Fjord, a fresh water supply,  
99 the Schwentine, contributes to a lower salinity of water in this area. Earlier investigations showed that occasional sea  
100 water inflow from the Baltic Sea (very saline surface water with a salinity of 33) has no major impact on the hydrography  
101 in the Kiel Fjord (Fennel, 1996). The most common sediments in the fjord are fine sand and dark, organic rich mud  
102 (especially found in the inner Fjord). In this area corrosion (abrasion and redeposition) of foraminiferal tests plays an  
103 important role, due to the undersaturation of carbonate in the surface water (Grobe and Fütterer, 1981).

104

## 105 **2. Materials and methods**

### 106 2.1. Sample collection and culturing

107 The samples were collected from the Kiel Fjord in northern Germany on 26<sup>th</sup> and 27<sup>th</sup> September 2018 with a box corer  
108 on the research vessel F. S. ALKOR. Detailed data on sampling sites are given in Table 1. The light penetration depth of  
109 this area is about 10.7 m (1%-depth of surface photosynthetically active radiation, Rohde et al., 2008). On board of the  
110 research vessel, the upper 5 – 7 cm of the box corer sediments were wet-sieved through a 63 or 125 µm sieve and kept in  
111 storage containers with seawater from the sampling site until arrival at the laboratory at the University of Vienna (29<sup>th</sup>

112 September 2018). The permanent cultures (glass tubes covered with thin foil against evaporation) were kept at constant  
113 20 °C (room temperature) and at a salinity of 20 in the laboratory.

114

115 Tab.1: Information of the sampling points: 1: Strander Bucht, 2: Laboe.

Sample	N	E	depth [m]	T [°C]	Salinity [ ]
<b>Strander Bucht</b>	54°25.998'	010°11.105'	16.3	14.8	20.9
<b>Laboe</b>	54°25.235'	010°12.409'	15.3	14.9	20.9

116

## 117 2.2. Preparation of labeled food source

118 Feeding experiments were performed with the green alga *Dunaliella tertiolecta* and the benthic diatom *Leyanella arenaria*  
119 as food sources. These algae were often used in other feeding experiments with foraminifera, therefore we can assume that  
120 they would also be consumed by *E. excavatum*. A f/2 nutrient medium (Guillard & Ryther, 1962; Guillard, 1975), enriched  
121 with the isotopes <sup>13</sup>C and <sup>15</sup>N by amendment to a level of 1.5 mmol L<sup>-1</sup> NaH<sup>13</sup>CO<sub>3</sub> and 0.44 mmol L<sup>-1</sup> Na<sup>15</sup>NO<sub>3</sub>, was  
122 prepared for both cultures. The algal cultures were kept at 20 °C and a light/dark rhythm of 16:8h in isotopically enriched  
123 medium. *Dunaliella tertiolecta* was harvested at peak biomass, when the cultures showed a strong green color. *Leyanella*  
124 *arenaria* was harvested as soon as the bottom of the mixing vessel was densely populated and homogenously brown  
125 colored. These two states reflect the characteristics of an optimal culture, where the algae are consumed later preferentially  
126 by foraminifera (Lee et al., 1966). To collect isotopically enriched algae, the cultures were centrifuged at 800 xg for 10  
127 min. The resultant algal pellet was washed three times with artificial seawater (Enge et al., 2011) and centrifuged after  
128 each washing step. Afterwards, the algal pellet was shock frozen in liquid nitrogen and lyophilized for 3 days at 0.180  
129 mbar. In order to retain a high quality of food, the dried algae were stored in a dry and dark place until use. The labeled  
130 algal powder was isotopically enriched by about 3.3 at%<sup>13</sup>C and 32.3 at%<sup>15</sup>N for *D. tertiolecta* and about 12.6 at%<sup>13</sup>C  
131 and 17.9 at%<sup>15</sup>N for *L. arenaria*. The C:N ratios based on C and N content of the diatom and the green algal food source  
132 were 9.14 for *L. arenaria* and 5.78 for *D. tertiolecta*, respectively.

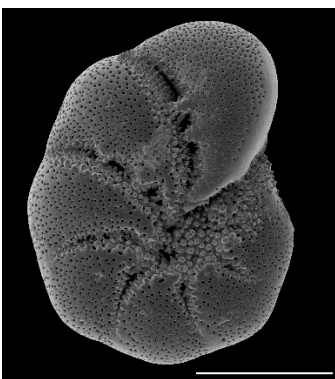
## 133 2.3. Feeding experiments

134 Before the start of the experiments (4 days after sampling of the material) all glassware was cleaned in a muffle furnace  
135 (500 °C for 5 h). The "picking tools" and tin capsules were cleaned with a 1:1 (v:v) mixture of dichloromethane (CH<sub>2</sub>Cl<sub>2</sub>)  
136 and methanol (CH<sub>3</sub>OH).

137 20 foraminifera specimens (> 150 µm *E. excavatum* S5 after Darling et al., 2016, see fig. 1) were collected from the  
138 permanent cultures using small brushes and placed in a crystallization dish with 280 ml sterile filtered sea water from the  
139 sampling site in triplicates for the different time points and experiments. For the experiments we picked only foraminifera  
140 which tests were fully filled with brownish cytoplasm. The food source was added once at the beginning of the  
141 experiments (in case of (iv) the food was added after the starving period). After the experiments, there was still enough  
142 food at the bottom of the dishes, which indicated that there was sufficient food available during the whole experiment.  
143 Triplicates were analyzed for each time point and parameter (time, salinity, food source or light condition):

- 144 (i) Salinity: To test the influence of salinity and time on food uptake, the original seawater (salinity of 20) was  
145 adjusted by adding NaCl or distilled water to obtain the desired salinity level (15, 20 and 25). These salinities  
146 correspond to different areas of the Kiel Fjord (salinities of 15 at the Schwentinemündung, 20 at the  
147 sampling location Strander Bucht/Laboe and 25 at the outer Fjord). Subsequently, foraminifera were  
148 incubated for 24 h at 20 °C and a 16:8 h light:dark (30  $\mu\text{mol photons m}^{-2} \text{s}^{-1}$ ) cycle without food addition to  
149 acclimate to the new parameters, before labelled *D. tertiolecta* food (5 mg) was added. Food uptake was  
150 measured after 3, 5 and 7 days.
- 151 (ii) Food preference: The second experiment investigated the effect of different algal food sources on food  
152 uptake of the foraminifera species. For this, the green algae *D. tertiolecta* (5 mg) and the diatom *L. arenaria*  
153 (5 mg) were offered to foraminifera at salinities of 15, 20 and 25 and a light/dark rhythm of 16:8 h (30  $\mu\text{mol}$   
154  $\text{photons m}^{-2} \text{s}^{-1}$ ) and specimens collected after 5 d.
- 155 (iii) Light: The third experiment tested the effect of different light conditions on food uptake (only *D. tertiolecta*  
156 food, 5 mg). Here, foraminifera were acclimatized 24 h before food addition to continuous darkness or a  
157 18:6 h light:dark cycle (30  $\mu\text{mol photons m}^{-2} \text{s}^{-1}$ ), at 20 °C and a salinity of 20, and samples were collected  
158 after 1, 3, 5 and 7 days.
- 159 (iv) Starvation: In order to determine the starvation effect on food uptake of this species, foraminifera were  
160 cultured in the dark without nutritional supplement for different periods of time (1 – 7 days), at 20 °C and a  
161 salinity of 20, and then were fed for 24 hours with 5 mg *D. tertiolecta*.

162 At the end of the test period, foraminifera were picked from the crystallization dishes and any food residues were removed  
163 from the tests. Afterwards, they were washed three times with distilled water. It should be mentioned, that this process  
164 could lead to a loss of cytoplasm due to osmotic shock. Therefore, the washing process should be done carefully and  
165 quick to avoiding a breakup of the tests, which we do not observed during our experiments. Generally, we used always  
166 the same amount of distilled water, so they were all treated in the same way. So far, any impact of using distilled water  
167 has the same effect on all samples. For isotope analysis, 20 foraminifera were transferred into pre weighted clean tin  
168 capsules (Sn 99.9, IVA Analysentechnik GmbH & Co. KG) and dried for three days at room temperature. Finally, 5  $\mu\text{l}$  of  
169 4% HCl was added twice to dissolve carbonate from foraminiferal tests. The dissolution was carried out at 60 °C in a  
170 drying oven. Before weighing and isotope analysis, the tin capsules were dried again at 60 °C for 24 h to remove any  
171 residual moisture. The dried and weighed samples were stored in a desiccator until isotope measurements.



172  
173 Fig. 1: SEM – picture of the incubated foraminifera *E. excavatum* S5 after Darling et al., (2016). Bar scale = 100  $\mu\text{m}$ .

174

## 175 2.4. Isotope analysis

176 Isotope analysis was performed at the Stable Isotope Laboratory for Environmental Research (SILVER) at the University  
177 of Vienna. Ratios of  $^{13}\text{C}/^{12}\text{C}$  and  $^{15}\text{N}/^{14}\text{N}$  were recorded by isotope ratio mass spectrometry (IRMS), using an elemental  
178 analyzer (EA 1110, CE Instruments) coupled with an interface (ConFlo III, Thermo Scientific) to a Delta<sup>PLUS</sup> IRMS  
179 (Thermo Scientific).

180 In order to determine the amount of absorbed C or N the at% was calculated according to:

$$181 \text{ at. \%} = \frac{100 \times R_{\text{standard}} \times \left(\frac{\delta X_{\text{sample}}}{1000} + 1\right)}{1 + R_{\text{standard}} \times \left(\frac{\delta X_{\text{sample}}}{1000} + 1\right)} \quad (1)$$

182 where X stands for C or N here,  $R_{\text{Standard}}$ : Vienna PeeDee Belemnite  $R_{\text{VPDB}} = 0.0112372$  for C, and atmospheric nitrogen  
183  $R_{\text{atmN}} = 0.0036765$  for N.

184 Since the heavy stable isotopes used as a tracer ( $^{13}\text{C}$  and  $^{15}\text{N}$ ) are also occurring naturally, the natural abundance of these  
185 isotopes needs to be accounted for which was measured in foraminifera (untreated specimens from the main culture) that  
186 did not obtain labelled algal food sources. To take this into account, the so-called isotope excess (E) is calculated  
187 (Middelburg et al., 2000):

$$188 E = \frac{\text{atom } X_{\text{sample}} - \text{atom } X_{\text{background}}}{100} \quad (2)$$

189 As  $X_{\text{background}}$  isotope abundances of foraminifera were used, which were not fed and thus reflect the natural isotope  
190 abundance signal.

191 The absorbed amount of isotopes can now be quantified, i.e. labeled  $I_{\text{iso}}$  for incorporated C or N.

$$192 I_{\text{iso}} \mu\text{g mg}^{-1} = E \times C(N) \mu\text{g mg}^{-1} \quad (3)$$

193 Here, either the number of individuals ( $\text{ind}^{-1}$ ) or the mass (dry matter without test, see 3.1.) of foraminifera were used as  
194 reference.

195 Finally, we need to consider the different isotopic enrichment of the algal food sources. Thus, “phytodetrital carbon (pC)  
196 or nitrogen (pN)“ is calculated accounting for the isotopic enrichment of the food sources. These values are calculated as  
197 follows:

$$198 pX = \frac{I_{\text{iso}}}{\frac{\text{at.\% } X_{\text{phyto}}}{100}} \quad (4)$$

## 199 2.5. Statistics

200 To test the main effects of salinity, food source, time, dark: light cycles and starvation, on pC and pN uptake we applied  
201 Kruskal-Wallis tests with a confidence interval of 95,0 %. All statistical tests were performed using Statgraphics Centurion  
202 XVI. The points in the graphs are the mean values from triplicates, with an  $2\sigma$  error bar for the standard deviation.

203

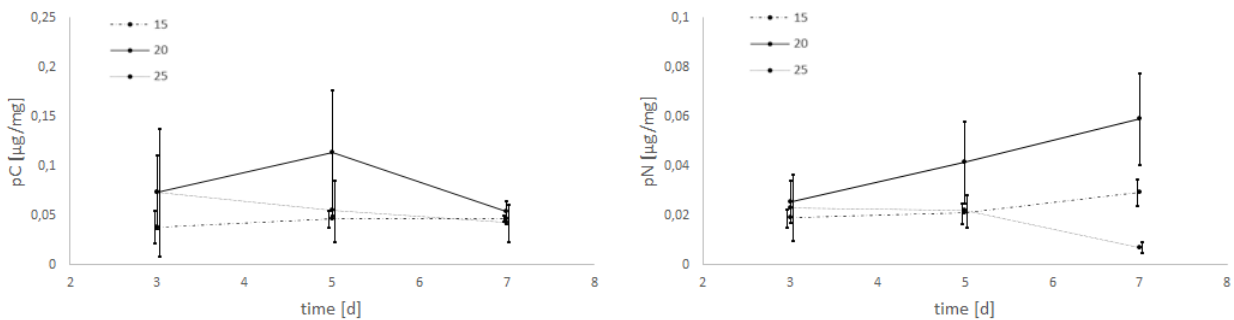
## 204 **3. Results**

205 3.1. Effect of salinity and time on C and N uptake from green algal food

206 The uptake of C (pC) and N (pN) from green algal food sources by *E. excavatum* was slightly affected by salinity (Fig.  
207 2). The statistical evaluation (Kruskal-Wallis) showed a significant effect of salinity on pC ( $p=0.050$ ), but no significant  
208 effect of time ( $p=0.651$ ). For a better insight into the described results, all data (values) are given in the supplementary.  
209 pC tended to be highest at a salinity of 20, followed by 25 and 15 across the whole time series. Considering the mean  
210 values after 3 days of feeding, *E. excavatum* showed the lowest pC values at salinities 15 and 25. The uptake of C showed  
211 a different pattern after 5 days and here reached a maximum at a salinity of 20 while the values at salinities 15 and 25  
212 were lower but similar. After 7 days the amount of incorporated C was approximately the same at all three salinities (15,  
213 20 and 25).

214 The amount of absorbed nitrogen (pN) was highly significantly affected by salinity ( $p=0.004$ ) though not by time  
215 ( $p=0.589$ ). At salinities of 15 and 20 N uptake (mean values) increased steadily from 3 to 7 days while at a salinity of 25  
216 N uptake remained constant between 3 and 5 days and thereafter decreased. The values of pN were very similar after 3  
217 days. This changed after 5 days, where the highest amount of pN was determined at a salinity of 20 while N uptake was  
218 approximately the same at salinities of 15 and 25 ( $p<0.1$ ). The pattern of pN at this time point (5 days) is highly  
219 comparable with the C uptake pattern. With increasing incubation time, the pN values differed significantly. After 7 days  
220 ( $p<0.01$ ), the maximum of pN was observed at a salinity of 20 and was quite lower at salinities of 15 and 25.

221



222

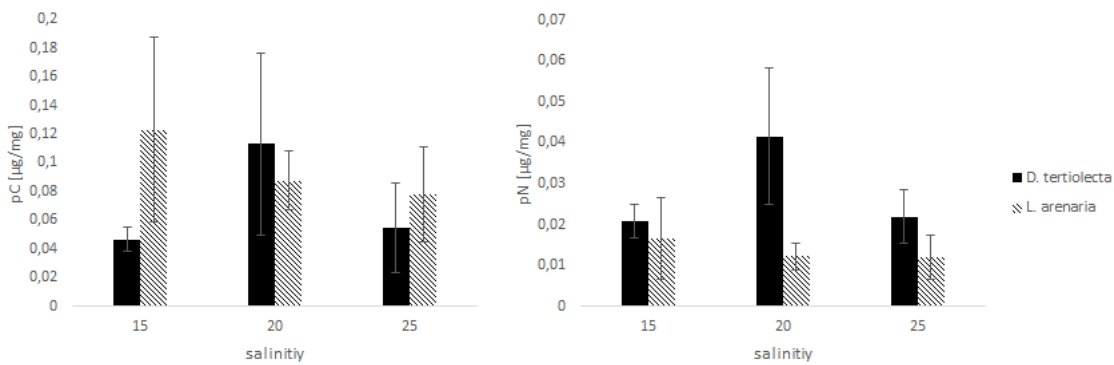
223 Fig.2: Salinity effects on the uptake of C (pC) and N (pN) from the green algae *D. tertiolecta* by *E. excavatum* after different feeding times at 20 °C and  
224 a light:dark cycle of 18:6 h.

225

226 3.2. Effect of food source (green algae and diatoms) and salinity on C and N uptake

227 The values of C and N uptake from different food sources at three salinity levels are listed in Fig. 3.

228



229

230 Fig. 3: The uptake of C (pC) and N (pN) from different food sources (the green algae *D. tertiolecta* and the diatom *L. arenaria*) by *E. excavatum* after  
 231 5 days at 20 °C and a light:dark cycle of 16:8 h.

232 Kruskal-Wallis of the C uptake showed no significant difference ( $p=0.825$ ) between the offered food sources. However,  
 233 this main salinity effect differed by food source: pC from *D. tertiolecta* peaked at a salinity of 20 while pC from *L.*  
 234 *arenaria* was highest at a salinity of 15 and showed a sharp decrease at higher salinities.

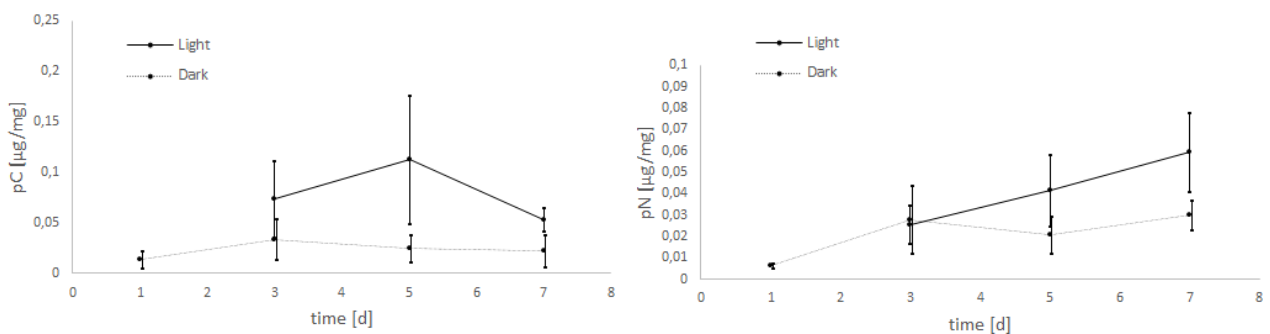
235 Nitrogen uptake showed quite different patterns compared to C uptake. We found a highly significant difference in pN  
 236 between food sources ( $p=0.004$ ). In contrast to pC, pN was significantly higher after feeding on green algae than on  
 237 diatoms. Otherwise, food-specific effects of salinity on pN followed those of pC, i.e., pC peaked at a salinity of 20 for *D.*  
 238 *tertiolecta* and was highest at a salinity of 15 for *L. arenaria*.

239 Comparing the salinity effects on incorporated C and N from feeding with *D. tertiolecta* with those of *L. arenaria*,  
 240 different trends can be deduced. The highest pC was reached at the lowest salinity (15) from the diet with *L. arenaria*  
 241 while at highest salinity (25) the C uptake was highest when fed with *D. tertiolecta*. In contrast, N was preferentially  
 242 incorporated from a diet with *D. tertiolecta*. Such differences in pC and pN from different algal sources were also reflected  
 243 in distinct ratios of pC: pN, which were 2.2-2.7 in *D. tertiolecta* and 6.4-7.5 in *L. arenaria*.

244 3.3. Effects of light regime on the uptake of C and N from green algal food

245 The experiments clearly showed a strong effect of light regime on the food uptake of *E. excavatum*, with *D. tertiolecta* as  
 246 the food source (Fig. 4). Kruskal-Wallis of these data showed that the light regime had a highly significant effect on pC  
 247 of *E. excavatum* ( $p<0.001$ ) while time ( $p=0.561$ ) was not significant. Continuous darkness caused a sizable reduction of  
 248 pC compared to 16:8 h light:dark cycles.

249 The negative effect of continuous darkness was also observable on pN ( $p=0.102$ ). Despite this negative effect, pN tended  
 250 to increase with time ( $p=0.058$ ), particularly so under 16:8 h light:dark cycles.



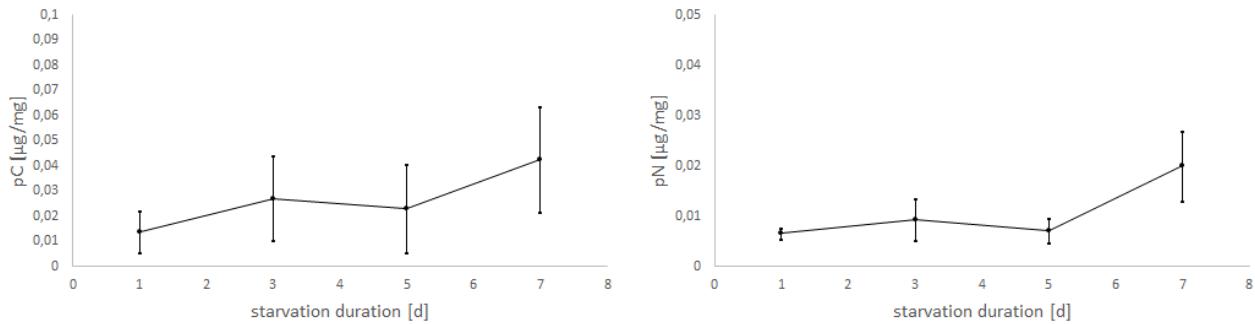
251



252 Fig. 4: Effects of light regime (light:dark cycle of 18:6 h versus continuous darkness) on the uptake of C (pC) and N (pN) from the green algae *D.*  
253 *tertiolecta* by *E. excavatum* after different feeding times at 20 °C and a salinity of 20. The values of the “light-experiments” are the same as used in Fig.  
254 2.

### 255 3.4. Effects of starvation on the uptake of C and N from green algal food

256 In a fourth experiment, foraminifera were incubated for different time intervals (1, 3, 5 and 7 days) without any food in  
257 the darkness. After each starvation period they were fed with *D. tertiolecta* and exposed to light for 24 h.



258 Fig. 5: Uptake of C (pC) and N (pN) from green algal food (*D. tertiolecta*) by *E. excavatum* after different starvation periods in the dark at a salinity of  
259 20 and 20 °C.  
260

261 Considering the positive slope of the correlation line for the mean values (pC:  $k = 0.0041$ , pN:  $k = 0.0019$ ), it seems that  
262 the longer the foraminifera were starved, the more food was consumed within 24 h (Fig. 5). However, Kruskal-Wallis test  
263 showed no significant starvation time effect of C uptake ( $p=0.223$ ), but there was a tendency increase in pN with  
264 increasing starvation duration ( $p=0.113$ ). During the first 5 days in darkness without food, there was hardly any difference  
265 in N uptake, while after 7 days in darkness a clear increase of pN was recorded. Similarly, pC tended to be stimulated by  
266 prolonged starvation but the variation was too high to become significant.

267

## 268 4. Discussion

### 269 4.1. Food uptake of *E. excavatum* at different salinities and type of food

270 Salinity (15, 20 and 25) significantly affected the food uptake of *E. excavatum*, especially for longer test times. The low  
271 level of ingested *D. tertiolecta* in comparison to other studies with *Ammonia tepida* ( $0.4 - 1.2 \mu\text{g C mg}^{-1}$  and  $0.2 - 0.4 \mu\text{g}$   
272  $\text{N mg}^{-1}$  at a salinity of 24) and *Haynesina germanica* ( $0.05 - 0.35 \mu\text{g C mg}^{-1}$  and  $0.03 - 0.13 \mu\text{g N mg}^{-1}$  at a salinity of  
273 24) (Lintner et al., 2020; Wukovits et al. 2017) suggests that this green algae was not a preferred dietary source of this  
274 foraminifer species. This observation can be compared with experiments by Correia and Lee (2000) which demonstrated  
275 an increased absorption of chloroplasts by *E. excavatum*, which corresponds to a dietary preference for diatoms. Though  
276 the amount of ingested C from the diatom *L. arenaria* was also low here we found a tendency preference of *E. excavatum*  
277 for the diatom diet over the green algal diet. It is therefore likely that *E. excavatum* prefers the algal diet that corresponds  
278 to the source of its kleptoplasts. Moreover, generally food (C) uptake by a kleptoplastid species (*H. germanica*) was lower  
279 than that of a species not showing kleptoplastidy (*A. tepida*) (Lintner et al., 2020; Wukovits et al. 2017), indicating that  
280 the chloroplasts can supplement the C nutrition of species exhibiting kleptoplastidy. A shift of C uptake from diatoms at  
281 a salinity of 15 to green algae at salinities of 20-25 is also noteworthy and has not yet been observed in this or other  
282 foraminifera species. This might have strong implications on foraminiferal C and N re-cycling in habitats where *E.*

283 *excavatum* is dominant, given that N retention was approximately 3-fold higher with diets of green algae compared to  
284 diatoms (pC:pN was 2.2-2.7 for *D. tertiolecta* compared to 6.4-7.5 for *L. arenaria*).

285 On a closer look, it can be seen that foraminifera reacted to an increased salt content in the longer term by lower rates of  
286 green algal food consumption. The mean C uptake recorded at a salinity of 20 showed a maximum five days after food  
287 addition and declined thereafter. Such a behavior is already known from *H. germanica* (Lintner et al., 2020), a closely  
288 related species living in the same habitat. In Lintner et al. (2020) this behavior was explained by the fact that *H. germanica*  
289 also contained kleptoplasts, which may serve as internal C and N sources via digestion. In the case of foraminiferal N  
290 uptake in our study this effect was not evident, as the amount of incorporated N increased steadily, at least at salinities of  
291 15 and 20. At this point it should be noted that foraminifera metabolize food C and N during their digestive process and  
292 release them into the surrounding environment as excreta or as respiratory CO<sub>2</sub> (Hannah et al., 1994; Nomaki et al., 2014).  
293 This needs to be taken into account the longer an experiment lasts and might explain the decrease in the incorporated  
294 amount of C from day 5 to 7 (Fig. 2). Although C is constantly being absorbed by foraminifera in the form of food, it is  
295 also partially relocated and excreted or released by cellular respiration (Hannah et al., 1994). Furthermore, C can also be  
296 used for test formation as shown in the study of LeKieffre et al. (2017). During the preparation of foraminifera for isotope  
297 analysis, the test is dissolved in hydrochloric acid and the amount of incorporated C in the test is not measured, which  
298 may cause an underestimation of pC relative to pN at prolonged feeding times. Although N can also be transferred into  
299 various excretions and released into the surrounding water in organic and inorganic form, a large part still remains in the  
300 form of proteins or amino acids in the cell of the organisms (Nomaki et al., 2014).

301 After 3 day, foraminifera showed minimum C uptake at the lowest salinity (15). Comparing the entire time series of green  
302 algal uptake, the 15-salinity series is the only one with a positive slope of mean values ( $k = 0.0021$ ) for pC with time.  
303 Based on this observation, foraminifera might feel uncomfortable at low salinities and react to this with a reduced  
304 metabolism. There are a few studies which discuss the reduction of metabolism due to stressful conditions (Bernhard and  
305 Alve, 1996; Ross and Hallock, 2016; LeKieffre et al., 2017). This may lead to a generally lower activity of foraminifera,  
306 which reduces their cell respiration and results in a lower C output. This reduced C output could be linked to the  
307 accumulation of lipid droplets which seems to be a common response of benthic foraminifera in response to stressful  
308 conditions such as anoxia or increased heavy metals concentrations (Le Cadre and Debenay, 2006; Frontalini et al., 2016;  
309 2015; Koho et al., 2018). Foraminifera held at higher salinity (20 or 25) may have a higher activity and thus a greater C  
310 output due to cell respiration and excretion. The combination of these aspects could explain the negative slopes or peaks  
311 of the 20 and 25 salinity trend lines. Direct observations during the experiments showed that foraminifera cultured in  
312 crystallization dishes at salinities of 20 or 25 were more mobile (personal observation of crawling observations) than  
313 those at a salinity of 15. This aspect confirms the higher activity of foraminifera at higher salinities.

314 The results of N incorporation differed from those of C. Here, both the 15 and 20 salinity series showed a positive slope  
315 with time while in the long term, less N was absorbed at higher salinities (25). The magnitude of the slope of the 15-  
316 salinity series was markedly lower than that at a salinity of 20. Again, this could be due to the lower activity of foraminifera  
317 at a salinity of 15 compared to experiments at a salinity of 20. However, the decrease of N at a salinity of 25 with time  
318 cannot be explained so easily. A possible explanation is faster N metabolism coupled to increased excretion of N-  
319 containing substances by foraminifera at high salinity. There are no other studies which are dealing with this arguments,  
320 so further experiments are necessary to resolve this observation. Moreover, the combination of high salinity with an  
321 inappropriate diet (green algae) could cause long-term stress-related damage of the cells. Overall, this experiment

322 highlighted that the digestion and metabolic pathways of C and N differ substantially and are differentially influenced by  
323 environmental parameters in foraminifera (Lintner et al., 2020; Wukovits et al. 2017).

#### 324 4.2. Influence of the light/dark rhythm and starvation on the food uptake of *E. excavatum*

325 Food uptake was affected by light conditions (see fig. 4). Foraminifera had a much lower C and N uptake during  
326 continuous darkness. pC values were low and more or less constant from day 1 through to day 7 (p=0.547). However, N  
327 uptake increased slightly under dark conditions. As already mentioned, *Elphidium* species possess chloroplasts  
328 (kleptoplasts), which they incorporate from their food sources into their own metabolic cycle (Correia and Lee, 2000).  
329 This aspect could be an important contribution to explain the light regime effects on food uptake rates. There are two  
330 different explanations.

331 First, in complete darkness foraminifera could stop foraging and start feeding on their 'own' chloroplasts. Past  
332 investigations showed that chloroplasts in *Elphidium* were exclusively derived from diatoms, making diatoms their  
333 preferred food source (Pillet et al., 2011). Our experiments showed that *E. excavatum* had a significantly higher food  
334 uptake after 7 days of starvation compared to the days before (Fig. 5). During the first 5 days, foraminifera may have  
335 either stagnated with a reduced metabolism or they may have begun to digest their chloroplasts. For further investigations  
336 it would be interesting to detect chlorophyll in foraminifera spectroscopically, since this molecule is found exclusively in  
337 chloro- or kleptoplasts (Cevasco et al., 2015; Krause and Weis, 1991; Mackinney, 1941). One aspect to be discussed here  
338 is the life time of (viable) kleptoplasts in foraminifera under natural conditions. For example, *Nonionella labradorica*  
339 showed a strong seasonal variation in plastid viability (Cedhagen, 1991). According to Cedhagen (1991) specimens of *N.*  
340 *labradorica* collected in February were yellowish and showed no photosynthetic activity. In contrast, individuals sampled  
341 after the spring bloom in March or April were completely green and photosynthetically active. In a study by Cevasco  
342 (2015) foraminifera still contained chlorophyll (>288 photosynthetic plastids) after being held 5 days without food in the  
343 darkness. The experiments by Lopez (1979) showed that *E. williamsoni* needs to ingest 65 chloroplasts per hour and  
344 individual in order to keep a constant number of chloroplasts in the cell. At the moment there is no study which has shown  
345 that the chloroplasts in *E. excavatum* are photosynthetically active. Lopez (1979) showed that there is no light induced  
346 uptake of inorganic C by chloroplasts in *E. excavatum*. It should be noted that the aspect of difference in color mentioned  
347 by Cedhagen (1991) is probably also applicable to our foraminifera. Specimens of *Elphidium* for this study were collected  
348 in September, living in the top few cm of the sediment and showed a yellow coloring. It can therefore be assumed that  
349 these individuals contained fewer functional chloroplasts from the beginning onwards compared to those in the study by  
350 Lopez (1979). The different residence times of kleptoplasts in foraminifera can be fundamentally explained by different  
351 feeding and sequestration strategies as well as diverse digestion abilities (Jauffrais et al., 2018).

352 Secondly, different food uptake rates under dark or light conditions by *E. excavatum* in this study could be explained by  
353 indirect light effects on chloroplasts in the foraminiferal cells. This aspect is rather speculative and needs of course further  
354 studies to clarify. This raises the question whether inactive chloroplasts are degraded or stored for some time in order to  
355 be able to reactivate them. Furthermore, it is interesting to know whether *E. excavatum*, which lives in a suboxic milieu  
356 like the Kiel fjord, possesses chloroplasts to acquire oxygen from chloroplast photosynthesis to sustain respiratory  
357 metabolism of their mitochondria. This in turn leads to the question whether *E. excavatum* is viable without chloroplasts  
358 or whether the metabolism works in the long-term only with this additional organelle. To answer these questions clearly  
359 further experiments are needed.

360 According to Jauffrais et al. (2016) the number of chloroplasts in *H. germanica* during starvation periods strongly depends  
361 on illumination conditions. Based on this, foraminifera with kleptoplastidy are more likely to lose active chloroplasts at  
362 light-exposed circumstances (Jauffrais et al., 2016). Combined with the results of Lopez (1979), who stated that  
363 foraminifera must obtain a certain number of chloroplasts from food to maintain a constant number in their cells, our  
364 experiments showed the following: *E. excavatum* is expected to be in a dormant phase under dark conditions, which  
365 entails limited food uptake (Fig. 4). After prolonged starving periods (>7d) in the dark, a starvation effect of this species  
366 is noticeable (Fig. 5). The triggers for this effect are currently unknown. It seems that *E. excavatum* can survive in the  
367 darkness from the previously ingested food for up to 5 days of starvation. Only after 7 days of starvation a significantly  
368 higher food uptake was observed.

#### 369 4.3. The influence of salinity and food source on the foraminiferal assemblages in the Kiel fjord

370 In line with the observations of Lee und Müller (1973) dietary sources used in our experiments had a tendency effect on  
371 C uptake, with higher C uptake from the diatom food. The effect of food type was even more pronounced for N uptake,  
372 with clearly higher incorporation rates of N from the green algal food. However, different salinity levels caused significant  
373 differences with time. Since *E. excavatum* is one of the dominant species in the Kiel fjord (Schönfeld and Numberger,  
374 2007) and thus plays an important role in the turnover of organic matter, this aspect is discussed in more detail here.

375 The Baltic Sea had several transgressive phases that play crucial roles in salinity changes (Robertsson, 1990; Jensen et  
376 al., 1997). The most important salinity indicators in this region are diatoms (Bak et al., 2006; Witkowski, 1994; Abelmann,  
377 1985). Since diatoms serve as the natural food source for *E. excavatum* examined here, their salinity based distribution  
378 plays an essential role in the interpretation of our results. A study by Schönfeld and Numberger (2007) demonstrated the  
379 close connection between foraminifera and diatoms. Their study showed that few days after a phytoplankton bloom of  
380 diatoms a large depositional pulse of organic matter occurred, whereupon the population of *E. excavatum* increased 2 –  
381 6fold. In our experiments we found a slight preference of *E. excavatum* for the tested diatoms (*L. arenaria*) over green  
382 algae (*D. tertiolecta*). Previous experiments showed how certain foraminifera are stimulated particularly by specific food  
383 sources (Lee et al., 1961). However, considering the small amount of incorporated C and N in our experiments, neither  
384 *L. arenaria* nor *D. tertiolecta* belongs to the preferred food sources of *E. excavatum*.

385 The Baltic Sea is the largest brackish water basin in the world (Voipio, 1981). During the sampling, the salinity was close  
386 to 21 (surface water). This brackish milieu leads to a low diversity of foraminifera (Hermelin, 1987; Murray, 2006).  
387 According to Lutze (1965) benthic foraminifera of this region require a minimum salinity of 11–12 to survive. The lowest  
388 salinity in our experiment was set slightly above this limit, with 15. Interestingly, the amount of incorporated N was higher  
389 after 7 days at a salinity of 15 than at a salinity of 25, and both pN and pC were highest at a salinity of 20 (considering  
390 mean values of the uptake). Low salinities or strong salinity fluctuations can lead to smaller test sizes or test abnormalities  
391 of foraminifera (Brodiewicz, 1965; Polovodova and Schönfeld, 2008). Only foraminifera without test abnormalities  
392 were taken for experiments. After the feeding experiments, no visual influence of salinity on test abnormalities or new  
393 chambers were recorded, but the time intervals in this study was likely too short for such observations. The influence of  
394 salinity on the test structure of *Elphidium* in the Baltic Sea has already been investigated (e.g., Binczewska et al., 2018).  
395 At our sampling point in Laboe test abnormalities occur in 12 – 33 individuals per 10 cm<sup>3</sup> (Polovodova and Schönfeld,  
396 2008). The authors suggested a connection between the high number of abnormalities in the Kiel fjord and the salt-rich  
397 inflows from the Belt Sea. The Belt Sea represents the interface where the low-salt Baltic Sea water mixes with the salty  
398 Kattegat waters (salinities of 20-26; Hurtig, 1966). At highest salinity (25) in this study, food uptake apparently decreased

399 over a longer period of time. Considering the recorded amount of N uptake (Fig. 2) only the 25-salinity series showed a  
400 negative correlation and this trend was neither observed in the 15 nor in the 20-salinity series, which indicates that *E.*  
401 *excavatum* was very good adapted to the brackish milieu of the Kiel Fjord.

402 The influences of salinity changes on foraminiferal communities in the Kiel fjord were also investigated by Nikulina et  
403 al. (2008). As discussed before, an increase of salinity probably leads to a decrease of the amount of living *E. excavatum*.  
404 Nowadays, the species *Ammotium cassis* is barely found in the inner Kiel fjord, while a decade ago it was a subdominant  
405 part of the foraminiferal community (Nikulina et al., 2008). This shows how important changes of the salinity are for  
406 changes in the foraminiferal communities. According to Lutze (1965), *A. cassis* is well adapted to a strong halocline  
407 between the surface and deep waters. Several factors contribute to the formation of a halocline (Steele et al., 1995; Rudels  
408 et al., 1996). Generally, eutrophication and increased storm frequency are important issues in the Baltic Sea (Christiansen  
409 et al., 1996; Seidenkranz, 1993). These factors can lead to a better mixing of the water masses and thus reduce the halocline  
410 and influence the faunal composition. However, the inner Kiel fjord is less saline than the open Kiel Bight and the fauna  
411 is dependent on the salinity of the water (Nikulina et al., 2008; Lutze 1965).

412 In summary, we found significant differences in food uptake at different salinities. *Elphidium excavatum* seems to cope  
413 better with lower salinities, which correlates very well with the brackish milieu in the Kiel fjord. An increase of the salinity  
414 from 20 to 25 caused more stress for the species than a reduction from 20 to 15 (see reduced uptake of C and N after 7  
415 days at higher salinities in fig. 2). This once again demonstrates the good adaptation of *E. excavatum* to habitats of lower  
416 salinity. Foraminifera can convert up to 15 % of the total annual flux of particulate organic matter in the Kiel fjord  
417 (Altenbach, 1985). In addition, this region is strongly affected by eutrophication, making the Kiel fjord an interesting  
418 field of research in the future, where interactions of changing environmental parameters with foraminiferal communities  
419 can be studied.

420

## 421 5. References

- 422 Altenbach, A.: Die Biomasse der benthischen Foraminiferen. Auswertung von 'Meteor' - Expedition im östlichen  
423 Nordatlantik. Dissertation an der Christian-Albrechts-Universität zu Kiel: 133, 1985.
- 424 Bernhard, J. and Alve E.: Survival, ATP pool, and ultrastructural characterization of benthic foraminifera from  
425 Drammensfjord (Norway): response to anoxia. *Mar. Micropal.* 28, 1, 5-17, 1996.
- 426 Bernhard, J., and Bowser, S.: Benthic foraminifera of dysoxic sediments: chloroplast sequestration and functional  
427 morphology: *Earth-Sci. Rev.*, 46, 149–165, 1999.
- 428 Boltovskoy, E., and Wright, R.: *Recent Foraminifera*: W. Junk, The Hague, 515, 1976.
- 429 Binczewska, A., Moros, M., Polovodova-Asteman, I., Sławinska, J., and Bak, M.: Changes in the inflow of saline water  
430 into the Bornholm Basin (SW Baltic Sea) during the past 7100 years – evidence from benthic foraminifera record.  
431 *Boreas*, 47, 297–310, 2018.
- 432 Brodniewicz, I.: Recent and some Holocene foraminifera of the southern Baltic Sea. *Acta Pal. Pol.* 10, 131–157, 1965.
- 433 Cedhagen, T.: Retention of chloroplasts and bathymetric distribution in the Sublittoral Foraminiferan *Nonionellina*  
434 *labradorica*: *Ophelia*, 33, 17–30, 1991.
- 435 Cevasco, M., E., Lechlitter, S., M., Mosier, A., E., and Perez, J.: Initial Observations of Kleptoplastidy in the Foraminifera  
436 of Coastal South Carolina; *South. Nat.*, 14(2), 361-372, 2015.
- 437 Chanvalon, A., T., Metzger, E., Mouret, A., Cesborn, F., Knoery, J., Rozuel, E., Launeau, P., Nardelli, M., P., Jorissen, F.,  
438 J., Geslin, E.; Two-dimensional distribution of living benthic foraminifera in anoxic sediment layers of an estuarine  
439 mudflat (Loire estuary, France); *BG*, 12, 6219-6234, 2015.

- 440 Christiansen, C., Kunzendorf, H., Laima, M., Lund-Hansen, L., and Pedersem, A.: Recent changes in environmental  
441 conditions in the southwestern Kattegat, Scandinavia. *Bulletin Norges Geologiske Undersökelse* 430, 137-144,  
442 1996.
- 443 Correia, M., and Lee, J.: Chloroplast retention by *Elphidium excavatum* (Terquem). Is it a selective process?; *Sym.*, 29,  
444 343–355, 2000.
- 445 Correia, M., and Lee, J.: Fine Structure of the Plastids Retained by the Foraminifer *Elphidium excavatum* (Terquem).  
446 *Sym.*, 32, 15-26, 2001.
- 447 Debenay, J., Jouanneau, J., Sylvestre, F., Weber, O., Guiral, D.; Biological Origin of Rhythmites in Muddy Sediments of  
448 French Guiana; *JCR*, 23(6), 1431 – 1442, 2007.
- 449 Dissard, D., Nehrke, G., Reichart, G., and Bijma, J.: The impact of salinity on the Mg/Ca and Sr/Ca ratio in the benthic  
450 Foraminifera *Ammonia tepida*: Results from culture experiments, *Geochim. Cosmochim. Acta* 74, 928-940, 2009.
- 451 Enge, A., Nomaki, H., Ogawa, N., Witte, U., Moeseneder, M., Lavik, G., Ohkouchi, N., Kitazato, H., Kucera, M., and  
452 Heinz, P.: Response of the benthic foraminiferal community to a simulated short-term phytodetritus pulse in the  
453 abyssal North Pacific, *Mar. Ecol.-Prog. Ser.*, 438, 129-142, 2011.
- 454 Falkowski, P., and Raven J.; *Aquatic photosynthesis*; Princeton University Press, QK882.F36, (Book) 2007.
- 455 Fennel, W.: Wasserhaushalt und Strömungen, in Rheinheimer, *Meereskunde der Ostsee*: Springer Verlag, Berlin, 56-67,  
456 1996.
- 457 Frenzel, P., Tech, T., and Bartholdy, J.: Checklist and annotated bibliography of recent Foraminifera from the German  
458 Baltic Sea coast. *Stud. Geol. Pol.*, 124, 67-86, 2005.
- 459 Frontalini, F., Curzi, D., Giordano, F., Bernhard, J., Falcieri, E. and Coccioni, R.: Effects of Lead Pollution on *Ammonia*  
460 *Parkinsoniana* (Foraminifera): Ultrastructural and Microanalytical Approaches. *Eur. J. Histochem.* 59, 2460, 2015.
- 461 Frontalini, F., Curzi, D., Cesarini, E., Canonico, B., Giordano, F., Matteis, F., Bernhar, J., Pieretti, N., Eskelsen, G., Jubb,  
462 J., Zhao, A., Pierce, L., Gobbi, E., Papa, P. and Coccioni, R.: Mercury-Pollution Induction of Intracellular Lipid  
463 Accumulation and Lysosomal Compartment Amplification in the Benthic Foraminifer *Ammonia parkinsoniana*. *Plos*  
464 *one* 11, e0162401, 2016.
- 465 Gerlach, S.: Oxygen depletion 1980-1983 in coastal waters of the Federal Republic of Germany, *Berichte aus dem Institut*  
466 *für Meereskunde an der Christian-Albrechts-Universität Kiel*, 130, 97,1984.
- 467 Gerlach, S.: Nitrogen, phosphorus, plankton and oxygen deficiency in the German Bight and the Kiel Bay, *Kieler*  
468 *Meeresforschungen, Sonderheft* 7, 341, 1990.
- 469 Grobe, H., and Fütterer, D.: Zur Fragmentierung benthischer Foraminifera in der Kieler Bucht (Westliche Ostsee):  
470 *Mayniana*, 33, 85-96, 1981.
- 471 Grzyski, J., Schönfield, J., Falkowski, P., and Bernhard, J.: The function of plastids in the deep-sea benthic foraminifer,  
472 *Nonionella stella*: *L&O*, 47, 1569–1580, 2002.
- 473 Goldstein, S., Bernhard, J., and Richardson, E.: Chloroplast Sequestration in the Foraminifer *Haynesina germanica*:  
474 Application of High Pressure Freezing and Freeze Substitution; *Microsc. Microanal.*, 10, 1458–1459, 2004.
- 475 Guillard, R.: Culture of phytoplankton for feeding marina invertebrates in: *Culture of marine invertebrates animals*,  
476 Springer, 29-60, 1975.
- 477 Guillard, R., and Ryther, J.: Studies of marina planktonic diatoms: I *Cyclotella nana* Hustedt, and *Detonula confervacea*  
478 (CLEVE) Gran, *Can. j. Microbiol.*, 8, 229-239, 1962.
- 479 Hannah, F., Rogerson R., and Laybourn-Parry, J.: Respiration rates and biovolumes of common benthic Foraminifera  
480 (Protozoa); Cambridge University Press, 72(2), 301-312, 1994.
- 481 Heinz P., Marten R., Linshy V., Haap T., Gesling E., and Köhler H.: 70kD stress protein (Hsp70) analysis in living  
482 shallow-water benthic foraminifera. *MBRJ*, 8, 677-681, 2012.
- 483 Hermelin, J.: Distribution of Holocene benthic foraminifera in the Baltic Sea. *JFR* 17, 63–72, 1987.
- 484 Jauffrais, T., LeKieffre, C., Schweizer, M., Geslin, E., Metzger, E., Bernhard, J., Jesus, B., Filipsson, H., Maire, O. and  
485 Meibom, A.: Kleptoplastidic benthic foraminifera from aphotic habitats: insights into assimilation of inorganic C,  
486 N and S studied with sub-cellular resolution. *Envir. Microbiol.* 21, 1, 125-141, 2019.

- 487 Jauffrais, T., LeKieffre, C., Schweizer, M., Jesus, B., Metzger, E. and Geslin, E.: Response of a kleptoplastic  
488 foraminifer to heterotrophic starvation: photosynthesis and lipid droplet biogenesis. *FEMS Microb. Ecol.*, 95 (5),  
489 2019.
- 490 Jauffrais, T., LeKieffre, C., Koho, K., Tsuchiya, M., Schweizer, M., Bernhard, J., Meibom, A. and Geslin, E.;  
491 Ultrastructure and distribution of kleptoplasts in benthic foraminifera from shallow-water (photic) habitats; *Mar.*  
492 *Micropal.*, 138, 46-62, 2018.
- 493 Jauffrais, T., Jesus, B., Metzger, E., Mouget, J., Jorissen, F. and Geslin, E.: Effect of light on photosynthetic efficiency  
494 of sequestered chloroplasts in intertidal benthic foraminifera (*Haynesina germanica* and *Ammonia tepida*). *BG* 13,  
495 2715-2726, 2016.
- 496 Krause, G., Weis, E.; Chlorophyll fluorescence and photosynthesis: The Basics; *Annu. Rev. Plant Physiol. Plant Mol.*  
497 *Biol.* 42:313-349, 1991.
- 498 Koho, K., LeKieffre, C., Nomaki, H., Salonen, I., Geslin, E., Mabilieu, G., Sogaard, J. and Reichert, G.: Changes in  
499 ultrastructural features of the foraminifera *Ammonia* spp. in response to anoxic conditions: Field and laboratory  
500 observations. *Mar. Micropal.*, 138, 72-82, 2018.
- 501 Lee, J., Price S., Tentchoff, M., and McLaughlin, J.: Growth and Physiology of Foraminifera in the Laboratory: Part 1:  
502 Collection and Maintenance. *Micropal.*, 7(4), 461-466, 1961.
- 503 Lee, J., McEnery, M., Pierce, S., Freudenthal, H., and Muller, W.: Tracer Experiments in Feeding Littoral Foraminifera,  
504 *J. of Euk. Microbio.*, 13(4), 659-670, 1966.
- 505 Lee, J., and Müller, W.: Trophic dynamics and niches of salt marsh foraminifera; *Am. Zool.* 13, 215-223, 1973.
- 506 Lee, J., Lanners, E., and Kuile, B.: The retention of chloroplasts by the foraminifer *Elphidium crispum*: *Symbiosis*, 5,  
507 45-59, 1988.
- 508 Lee, J., and Lee, R.: Chloroplast retention in elphids (Foraminifera). *Endocyto.*, 215-220, 1989.
- 509 Lechlitter, S.: Preliminary study of kleptoplasty in foraminifera of South Carolina: *Bridges*, 8, 44, 2014.
- 510 Le Cadre, V. and Debenay, J.: Morphological and cytological responses of *Ammonia* (foraminifera) to copper  
511 contamination: Implication for the use of foraminifera as bioindicators of pollution. *Envir. Poll.* 143, 2, 304-317,  
512 2006.
- 513 LeKieffre, C., Spangenberg, J., Mabilieu, G., Escrig, S., Meibom, A. and Geslin, E.: Surviving anoxia in marine  
514 sediment: The metabolic response of ubiquitous benthic foraminifera (*Ammonia tepida*). *Plos one*, 2017.
- 515 Lintner, M., Biedrawa, B., Wukovits, J., Wanek, W., and Heinz, P.: Salinity-depending algae uptake and subsequent carbon  
516 and nitrogen metabolisms of two intertidal foraminifera (*Ammonia tepida* and *Haynesina germanica*). *BG*, 17, 3723-  
517 3732, 2020.
- 518 Lopez, E.: Algal chloroplasts in the protoplasm of three species of benthic foraminifera: taxonomic affinity, viability  
519 and persistence. *Mar. Bio.*, 53, 201-211, 1979.
- 520 Lutze, G.: Zur Foraminiferen: Fauna der Ostsee. *Meyniana* 15, 75-142, 1965.
- 521 Mackinney, G.; Absorption of light by chlorophyll solutions; *J. of Bio. Chem.*, 140, 315-322, 1941.
- 522 Middelburg, J., Barranguet, C., Boschker, H., Herman, P., Moens, T., and Heip, C: The fate of intertidal  
523 microphytobenthos carbon: An in situ <sup>13</sup>C-labeling study, *Limnol. Oceanogr.* 45, 1224-1234, 2000.
- 524 Miller, A., Scott, D., and Medioli, F.: *Elphidium excavatum* (Terquem): ecophenotypic versus subspecific variation. *J*  
525 *Foramin. Res.*, 12, 116-144, 1982
- 526 Murray, J.: Ecological experiments on Foraminifera, *Journal of the Marine Biological Association of the United*  
527 *Kingdom*, 43(3), 621-642, 1963.
- 528 Murray, J.: Ecology and paleoecology of benthic foraminifera. Longman, Harlow, 1991.
- 529 Murray, J.: Ecology and Applications of Benthic Foraminifera. Cambridge University Press, 426, 2006.
- 530 Nikulina, A., Polovodova, I., and Schönfeld, J.: Environmental response of living benthic foraminifera in Kiel Fjord, SW  
531 Baltic Sea; HAL archives-ouvertes, Hal Id: hal-00298257, 2007.

- 532 Nikulina, A., Polodovoda, I, and Schönfeld, J.: Foraminiferal response to environmental changes in Kiel Fjord, SW Baltic  
533 Sea. *Earth*, 3, 37-49, 2008.
- 534 Nomaki, H., Chikaraishi, Y., Tsuchiya, M., Ohkouchi, N., Uematsu, K., Tame, A., and Kitazato, H.: Nitrate uptake by  
535 foraminifera and use in conjunction with endobionts under anoxic conditions; *Limno. and Oceano.*, 59(6), 1879-  
536 1888, 2014.
- 537 Pawlowski, J., Holzmann, M., Bemey, C., Fahmi, J., Gooday, A., Cedhagen, T., Habura, A., and Bowser, S.: The Evolution  
538 of early Foraminifera; *PNAS*, 100(2), 11494-11498, 2003.
- 539 Pillet, L., Vargas, C., and Pawlowski, J.: Molecular identification of sequestered diatom chloroplasts and kleptoplastidy  
540 in foraminifera. *Protist*, 162, 394–404. 2011.
- 541 Polodovoda, I., and Schönfeld, J.: Foraminiferal test abnormalities in the Western Baltic Sea. *J. Foramin. Res.*, 38(4),  
542 318-336, 2008.
- 543 Rhode, S., Hiebenthal, C., Wahl, M., Karez, R. and Bischof, K.: Decreased depth distribution of *Fucus vesiculosus*  
544 (Phaeophyceae) in the Western Baltic: effects of light deficiency and epibionts on growth and photosynthesis. *Eur. J.*  
545 *Phycol.*, 43, 2, 143–150, 2008.
- 546 Ross B. and Hallock P.: Dormancy in the foraminifera: A review. *J. For. Res.* 46, 358-368, 2016.
- 547 Rudels, B., Anderson, L., and Jones, E.: Formation and evolution of the surface mixed layer and halocline of the Arctic  
548 Ocean. *J. of Geo. Res.*, 101(C4), 8807-8821, 1996.
- 549 Salonen, I., Chronopoulou, P., Bird, C., Reichert, G. and Koho, K.: Enrichment of intracellular sulphur cycle –associated  
550 bacteria in intertidal benthic foraminifera revealed by 16S and aprA gene analysis. *Sci. Rep.* 9, 11692, 2019.
- 551 Seidenkrantz, M.: Subrecent changes in the foraminiferal distribution in the Kattegat and the Skagerrak, Scandinavia:  
552 anthropogenic influence and natural causes. *Boreas*, 22, 383-395. 1993.
- 553 Senocak, T.: Schwermetalluntersuchung an Fischen der deutschen Ostseeküste (Kliesche, *Limanda limanda*; Flunder,  
554 *Platichthys flesus*; Hering, *Clupea harengus* und Dorsch, *Gadus morhua*). *Berichte aus dem Institut für*  
555 *Meereskunde an der Christian-Albrechts-Universität Kiel*, 270, 177, 1995.
- 556 Scott, D., Mediolo, F., and Braund, R.: Foraminifera from the Cambrian of Nova Scotia: The oldest multichambered  
557 foraminifera. *Micropal.*, 49(2), 109-126, 2003.
- 558 Steele, M., Morison, J. and Curtin, T.: Halocline water formation in the Barents Sea. *J. of Geo. Res.*, 100(C1), 881-894,  
559 1995.
- 560 Schönfeld, J. and Numberger, L.: Seasonal dynamics and decadal changes of benthic foraminiferal assemblages in the  
561 western Baltic Sea (NW Europe). *Journal of Micropal.*, 26, 47-60, 2007.
- 562 Schwarzer, K., and Themann, S.: Sediment distribution and geological buildup of Kiel Fjord (Western Baltic Sea), *Mey.*,  
563 55, 91-115, 2003.
- 564 Schweizer, M., Polodovoda, I., Nikulina, A., and Schönfeld, J.: Molecular identification of *Ammonia* and *Elphidium*  
565 species (Foraminifera, Rotaliida) from the Kiel Fjord (SW Baltic Sea) with rDNA sequences. *Helgol. Mar. Res.*, 65,  
566 1-10, 2011.
- 567 ter Jung, C.: Beitrag zum Schwermetallgehalts-Monitoring (Yn, Cd, Hg, Cn, Ag, Pb, Cr, Ni) in Miesmuscheln an der  
568 schleswig-holsteinischen Ostseeküste (1988-1989). *Berichte aus dem Institut für Meereskunde an der Christian-*  
569 *Albrechts-Universität Kiel*, 221, 89, 1992.
- 570 Terquem, O.: Essai sur le classement des animaux qui vivent sur la plage et dans les environs de Dunkerque, pt. 1.  
571 *Memoires de la Societe Dunkerquoise pour l'Encouragement des Sciences, des Lettres et des Arts*, 19, 405-457, 1876.
- 572 Tsuchiya, M., Miyawaki, S., Oguri, K., Toyofuku, T., Tame, A., Uematsu, K., Takeda, K., Sakai, Y., Miyake, H. and  
573 Marayuma, T.: Acquisition, Maintenance, and Ecological Roles of Kleptoplasts in *Planoglabratella opercularis*  
574 (Foraminifera, Rhizaria). *Front. Mar. Sci.* 7, 585, 2020.
- 575 Tsuchiya, M., Toyofuku, T., Uematsu, K., Bruchert, V., Collen, J., Yamamoto, H. and Kitazato, H.: Cytologic and genetic  
576 characteristics of endobiotic bacteria and kleptoplasts of *Virgulinema fragilis* (Foraminifera): *Journal of Eukaryotic*  
577 *Microbio.*, 62, 454–469, 2015.



- 578 Voipio, A.: The Baltic Sea (Book). Elsevier Oceanography Series 30. Institute of Marine Research, Helsinki, Finland  
579 1981.
- 580 Weiss, L.: Foraminifera and Origin of the Gardiners Clay (Pleistocene), Eastern Long Island, New York. Geol. Survey  
581 Professional Paper, 254-G, 1954.
- 582 Williamson, W.: On the recent foraminifera of Great Britain (Book). Ray Society, 107, 1858.
- 583 Wukovits, J., Enge, A., Wanek, W., Watzka, M. and Heinz, P.: Increased temperature causes different carbon and  
584 nitrogen processing patterns in two common intertidal foraminifera (*Ammonia tepida* and *Haynesina germanica*),  
585 BG, 14, 2815-2829, 2017.