

Impact of bottom trawling on sediment biogeochemistry: a modelling approach

Emil De Borger^{1,2}, Justin Tiano^{2,1}, Ulrike Braeckman¹, Adriaan D. Rijnsdorp³, Karline Soetaert^{2,1}.

¹Ghent University, Department of Biology, Marine Biology Research Group, Krijgslaan 281/S8, 9000 Ghent, Belgium

5 ²Royal Netherlands Institute of Sea Research (NIOZ), Department of Estuarine and Delta Systems, and Utrecht University, Korringaweg 7, P.O. Box 140, 4401 NT Yerseke, The Netherlands

³Wageningen Marine Research, Wageningen University & Research, IJmuiden, The Netherlands

Correspondence to : Emil De Borger (emil.de.borger@nioz.nl)

Abstract

10 Bottom trawling in shelf seas can occur more than 10 times per year for a given location. This affects the benthic metabolism, through a mortality of the macrofauna, resuspension of organic matter from the sediment, and alterations of the physical sediment structure. However, the trawling impacts on organic carbon mineralization and associated processes are not well known. Using a modelling approach, the effects of increasing trawling frequencies on early diagenesis were studied in five different sedimentary environments, simulating the effects of a deeper penetrating gear (e.g. a tickler chain beam trawl) versus
15 a shallower, more variable penetrating gear (e.g. an electric pulse trawl). Trawling events strongly increased oxygen and nitrate concentrations in surface sediment layers, and led to significantly lower amounts of ammonium (43 – 99 % reduction) and organic carbon in the top 10 cm of the sediment (62 – 96 % reduction). As a result, total mineralization rates in the sediment were decreased by up to 28 %. The effect on different mineralization processes differed both between sediment types, and between trawling frequencies. The shallow penetrating gear had a slightly smaller effect on benthic denitrification than the
20 deeper penetrating gear, but there were no statistically different results between gear types for all other parameters. Denitrification was reduced by 69 % in a fine sandy sediment, whereas nitrogen removal nearly doubled in a highly eutrophic mud. This suggests that even relatively low penetration depths from bottom fishing gears generate significant biogeochemical alterations. Physical organic carbon removal through trawl-induced resuspension of sediments, exacerbated by a removal of bioturbating macrofauna, was identified as the main cause of the changes in the mineralization process.

25 1 Introduction

Bottom trawl fisheries provide for 23% of global fish landings (Cashion et al., 2018), with the vast majority of this type of fishing taking place in productive coastal shelf seas (Amoroso et al., 2018). In bottom trawl fisheries, nets are dragged along the bottom with the help of weighted devices such as otter boards, shoes, or beams, while chains, groundropes, and/or electrical stimuli are used to coerce fish into the net. Bottom trawl gears penetrate the seafloor, up to 35 cm deep for otter trawl boards,

30 and 10 cm deep for tickler chain rigged beam trawls, depending on the gear specifics and the sediment type (Paschen et al.,
2000; Lucchetti and Sala, 2012; Depestele et al., 2016). Hence, during a trawling event, sediment is mixed down to a certain
depth, and hydraulic drag introduced by the moving gear can cause the erosion of an additional sediment layer (Depestele et
al., 2016, 2019; O'Neill and Summerbell, 2011; O'Neill and Ivanović, 2016). Sediment disturbances by bottom trawling occur
35 on very large scales: 63% of all North Sea sediments are trawled between 1 and more than 10 times per year (Eigaard et al.,
2017).

Scientific literature is rich in studies showing the physical and ecological alterations to the benthic environment caused by
bottom trawling. Acute impacts of bottom trawling include the homogenization of surface sediment (Depestele et al., 2019;
Ferguson et al., 2020) and the removal of significant proportions of benthic fauna (Bergman and Hup, 1992; Bergman and Van
Santbrink, 2000, Tiano et al., 2020). Consistent fishing pressure favors organisms with shorter life spans and/or increasing
40 resistance to trawling, while communities become depleted of species with key functional roles (Kaiser et al., 2006; Hiddink
et al., 2017; Sciberras et al., 2018). Both fining (Trimmer et al., 2005) and coarsening (Palanques et al., 2014; Mengual et al.,
2016) of the sediment has been attributed to trawling, as well as chronic organic matter depletion (Pusceddu et al., 2014;
Paradis et al., 2019). The effects of bottom trawling on biogeochemical dynamics, however, remain relatively understudied.
Trawling has been linked with enhanced carbon mineralization rates due to organic matter priming (van de Velde et al., 2018)
45 and/or trawl-induced increases in organic material (Polymenakou et al., 2005; Pusceddu et al., 2005; Palanques et al., 2014;
Sciberras et al., 2016). These results seemingly contrast with findings of organic matter depletion (Mayer et al., 1991; Brylinsky
et al., 1994; Watling et al., 2001) and reduced mineralization rates after acute trawling (Tiano et al., 2019), highlighting the
lack of knowledge on this topic and the need for further investigation.

Geochemical alterations impact the capacity of the sediment to recycle organic matter back to bioavailable nutrients (i.e. the
50 sediment biogeochemistry). These are important processes in shallow coastal seas where primary production is strongly
dependent on nutrients regenerated in the sediment (Soetaert and Middelburg, 2009; Provoost et al., 2013). Observed
biogeochemical changes caused by sediment resuspension can lead to the instantaneous release of nutrients from the sediment
into the water column (Durrieu de Madron et al., 2005), temporarily enhanced oxygen consumption (Tiano et al., 2019) and
increased nutrient concentrations in the bottom water (Riemann and Hoffmann, 1991; Almroth et al., 2009; Couceiro et al.,
55 2013). Furthermore, trawling has been linked to an increase of the sediment oxygenated layer depth (Allen and Clarke, 2007;
Tiano et al., 2019) and a reduction of the denitrification capacity of cohesive sediments (Ferguson et al., 2020). It has been
argued, based on *in situ* measurements, that the sediment biogeochemistry in consistently disturbed sediments remains in a
transient state, i.e. the sediments are permanently recovering from a disturbance event (Van De Velde et al., 2018). These
effects can potentially be mitigated with alternative fishing gears or modified gear configurations, however, the effectiveness
60 of which needs to be assessed.

To reduce fishing impacts, alternative bottom trawl gears such as pulse fishing gears are being investigated (Van Marlen et al.,
2014; McConnaughey et al., 2020). With pulse gears, the heavy tickler chains are replaced by electrodes, which emit electrical
pulses that induce a cramping response in flatfish (Soetaert et al., 2015b). This causes fish to become temporarily immobilized,

allowing their capture in a net which drags behind the electrodes. Pulse gears exhibit lower penetration depths (~50%) than conventional beam trawls (Depestele et al., 2019), and also erode less material into suspension through hydrodynamic drag due to a reduced towing speed (Rijnsdorp et al., 2020a). The lower penetration depth of the pulse gear compared to standard tickler chain methods has been shown to decrease the effects of bottom trawling on the sediment redox layer (Depestele et al., 2019) and on chlorophyll *a* reduction (Tiano et al., 2019), but it is yet unclear how specific mineralization processes might be affected on longer temporal scales.

The aim of this study was to explore the possible impacts of bottom trawling on the sediment carbon and nitrogen cycling for two gears with different penetration depth distributions, and with increasing trawling frequency. We use a dynamic diagenetic model, to which trawling disturbances were added. We parametrized the model for five locations in the North Sea, with sediments ranging from coarse sands to fine mud. Our hypotheses were (1) that the effects of bottom trawling would differ depending on the sedimentary environment, and (2) that fishing gear with reduced sediment penetration would incur less changes in biogeochemical cycling.

2 Materials and methods

2.1 Model setup

2.1.1 Model description.

To model the effects of bottom trawling on sediment biogeochemistry, disturbance events were added to a dynamic implementation of the early diagenesis model OMEXDIA (Soetaert et al., 1996a, 1996b). This model describes the concentrations of organic matter, oxygen, nitrate, ammonium, dissolved inorganic carbon (DIC) and oxygen demand units (ODU's, reduced reaction products of anoxic mineralization). These are calculated on a 1D grid, with 100 layers increasing in thickness, starting from 0.01 cm at the sediment water interface (SWI) and extending up to a sediment depth of 100 cm. The incoming flux of organic matter (detritus) consists of a labile, fast decaying fraction (FDET) and a semi-labile, slow decaying fraction (SDET), and is mineralized in either oxic mineralization, denitrification, or anoxic mineralization (Table 1). With oxic mineralization and denitrification, the consumption of oxygen and nitrate as terminal acceptors is explicitly modelled (Table 1; Eqs. 1.1, 1.2). Anoxic mineralization processes with alternative oxidants such as manganese oxides, iron oxides, sulphate, and organic matter are collected into one process that produces oxygen demand units (ODU's) as reaction products (Table 1; Eq. 1.3). ODU reoxidation, and nitrification, the biological oxidation of ammonia to nitrate, are two additional processes that consume oxygen (Table 1; Eqs. 1.4, 1.5). Mineralization rates are dependent on carbon availability (first order kinetics), and oxidant availability (Michaelis-Menten type kinetics), and inhibited by concentrations of inhibiting solutes (e.g., oxygen inhibits denitrification and anoxic mineralization). FDET, SDET, O₂, NO₃⁻, NH₄⁺, ODU's, and DIC are the 7 state variables of which the concentrations are modelled in every layer.

Exchange of state variables between the different layers is caused by advection (sediment accretion, v) or molecular diffusion (for solutes), and bioturbation (for solids). The solute flux J_D due to molecular diffusion and advection is described by Fick's first law (Fick, 1855),

$$J_D = \varphi D_i \frac{\partial C}{\partial z} + \varphi v C \quad (\text{Eq. 1})$$

where the effective diffusion coefficient is estimated as $D_i = D_0/\theta^2$, with D_0 the molecular diffusivity of the solute, $\theta^2 = 1 - 2\ln(\varphi)$ the factor correcting for sediment tortuosity (Boudreau, 1996), φ the sediment porosity, which was kept constant with depth z , and C the concentration of the state variable. Molecular diffusion coefficients were calculated using R-package *marelac* (Soetaert and Petzoldt, 2018). Bioturbation is depth-dependent, and assumes a constant biodiffusivity value Db_0 in a layer with thickness L_{mix} . Below this depth, bioturbation decreases rapidly to zero, determined by the attenuation coefficient for bioturbation (Db_{coeff}).

$$Db_z = Db_0 e^{-(z - L_{mix})/Db_{coeff}} \quad (\text{Eq. 2})$$

105 2.1.2 Model parametrization

The model was parametrized for 5 different sedimentary settings in the Southern North Sea (Figure 1, Table 2): a coarse sandy sediment (hereafter denoted as “Coarse”) with a median grain size of 433 μm located on a sandbank in the Belgian part of the North Sea (BPNS). Two sediments with intermediate grainsizes (216 – 220 μm): one with a low nutrient load situated on the Dogger Bank (“FineL”), the other nearshore (BPNS) with a comparatively high nutrient load (“FineH”). Finally two muddy sediments with a high silt content (74 – 88 %): one with a low nutrient load situated offshore, on the Fladen Grounds (“MudL”), and one with a comparatively high nutrient load, situated nearshore in the BPNS (“MudH”).

Biogeochemical data from these stations were collected from boxcore samples (30 cm ID, 25-30 cm sediment height) in two separate sampling campaigns on the North Sea, one in September 2017 (Coarse, FineH, MudH; Toussaint et al. (2021)), the other in May-June 2018 (FineL, MudL; De Borger et al. (2021)). From these boxcore samples, sediment characteristics and the distribution of nutrients in the sediment were subsampled, and nutrient exchange rates across the sediment-water interface were determined in incubation experiments (see section S1 in the supplementary information for an extensive description of the methodology used to derive this information).

Model parameters included both measured concentrations in the bottom water, as well as process rate parameters that were derived following a 2-step steady state fitting procedure (Table 3). Using the measured DIC flux as the upper boundary organic carbon input flux, the O_2 flux and porewater profiles of O_2 , NO_3^- , and NH_4^+ were first fitted manually by tweaking a limited set of model parameters. The degradation rate of low degrading material (*rSlow*), and the biodiffusivity constant (Db) were constrained by fitting NH_4^+ and O_2 profiles. Mechanistically, decreasing the bioturbation rate Db reduces the build-up of NH_4^+ with depth, increases the oxygen penetration depth, and changes the shape of the NO_3^- profile (deepening the NO_3^- peak). Whereas the degradation rate of the semi-labile organic matter also impacts deep NH_4^+ concentrations, it has a larger effect on the *shape* of the NH_4^+ profile, with lower degradation rates causing a more gradual build-up with sediment depth. Subsequently,

parameters affecting the NO_3^- and NH_4^+ profiles were tuned (the nitrification rate *rnit*, and denitrification constants *ksNO3denit* and *kinO2denit*). Higher nitrification rates increase the build-up of NH_4^+ , and increase concentrations of NO_3^- , typically producing a nitrate concentration peak within the oxic zone. The shape of the oxygen profiles further constrained the oxidation rate of oxygen demanding units (ODU's), and inhibition constants for anoxic mineralization (*kinO2anox*, *kinNO3anox*). Then
130 followed an automated constrained parameter fitting step using an optimization algorithm. In this second step, the fitted parameters were allowed to vary in a range $\pm 10\%$ around the manually fitted parameter values. Also the DIC fluxes were refitted within a narrow range (0.98 -1.02 of measured value), to allow freedom to the fitting algorithm. A random-based minimization algorithm (Price, 1977) implemented in the R package FME (Soetaert and Petzoldt, 2010) was used. This algorithm pseudo-randomly sampled the parameter space, until the parameter set was found which returned the minimal model
135 cost, the latter defined as the sum of variable costs (modeled - measured values), scaled using the mean - standard deviation relation determined for each nutrient.

Using the steady-state condition as initial condition, several time variable boundary conditions were imposed for the dynamic model simulations. A sinusoidally varying detrital carbon deposition flux, with the model derived carbon flux (*Cflux*, Table 3) as the annual average, and imposing an amplitude of 1 was used as the upper boundary organic carbon flux (Figure 2 A). The
140 uniform amplitude of 1 for all sites was chosen to simplify temporal variations between sites. This resulted in differing organic carbon fluxes for each location. Additional time variable boundary conditions (daily bottom water concentrations of O_2 , NH_4^+ , NO_3^- and PO_4^{3-} , as well as bottom water temperature) were extracted from the Copernicus Marine Environmental Monitoring Service implementation of the ERSEM model (European Regional Seas Ecosystem Model, Butenschön et al., 2016; Copernicus Marine Service Information, 2020) for each location.

145 **2.1.3 Disturbance modelling**

Trawling disturbances were modelled as events causing the instantaneous removal of the surface layer due to hydraulic erosion (Depestele et al., 2016), followed by the mixing of a layer below that due to the actual gear penetration (Figure 3). The hydraulic erosion was implemented as a reset of the sediment water interface (SWI) to the depth of the eroded layer. The mixing was implemented as a homogenization of solids (FDET, SDET) over the mixing depth (Figure 3 A), whereas solutes in the mixing
150 depth (O_2 , NO_3^- , NH_4^+ , DIC) were set equal to the bottom water concentration of the respective solute to represent a complete flushing of the mixed layer with bottom water (Figure 3 B).

Modelled trawling events also caused an immediate reduction in bioturbation rates, due to the mortality of benthic fauna after a trawl pass (Figure 2 B). Benthic mortality is mostly dependent on the total penetration depth of the gear (Hiddink et al., 2017), but also varies with habitat (Pitcher et al., 2017). The instantaneous reduction in bioturbation was included as a
155 proportional depletion (*d*), dependent on the sediment type (lowest in coarse sand, highest in mud) and the penetration depth (Figure 2 C). It was calculated based on the total gear penetration depth (*TPD*, i.e. the sum of the eroded layer depth and the penetration depth, in cm), and the mud content (*% mud*, particles $< 63\ \mu\text{m}$) of the sediment, as described in Eq. 3 derived from Sciberras et al. (2018).

$$d = (TPD \cdot 3 + mud \cdot 0.3) / 100$$

Eq. 3

160 The subsequent recovery of the bioturbation was modelled based on the logistic growth equation (Eq. 4), with the recovery rate (r) the inverse of the longevity of the species community, kept constant at 0.04 y^{-1} (Rijnsdorp et al., 2016; Hiddink et al., 2019).

$$\frac{dN}{dt} = r \cdot N \left(1 - \frac{N}{K}\right)$$

Eq. 4

165 Here N is the bioturbation rate ($\text{cm}^2 \text{ d}^{-1}$), with K the full bioturbation rate for a species community at carrying capacity. The maximum reduction of the bioturbation was set to 90 %, to account for quasi immediate recolonization of trawled sediment by scavengers (Sciberras et al., 2018), and deeper living species that can survive intense trawling activity (Rijnsdorp et al., 2018).
Electrical pulses were assumed to not affect benthos mortality in addition to the physical effects, since current available research shows very limited to no increased mortality by electrical pulses when compared to control situations (ICES, 2020; van Marlen et al., 2009; Murray et al., 2016; Soetaert et al., 2015a, 2016).

2.2 Simulations

The model description was implemented in R (R Core Team, 2020), the concentration changes of simulated species due to transport were calculated using the R-package *ReacTran* (Soetaert and Meysman, 2012), and the resulting system of differential equations was solved using the *deSolve* package (Soetaert et al., 2010). Dynamic model simulations were initialized with a steady state solution calculated with annually averaged boundary conditions as input parameters, using the R-package *rootSolve* (Soetaert, 2009). This is necessary to build up an organic carbon, ammonium, ODU and DIC stock in the sediment (Soetaert et al., 1996b). Dynamic simulations were run for 15 years, with daily output, to generate sufficient independence from starting conditions. Reported modelling results stem from the last simulated year.

175 The frequency of the trawling events imposed ranged from 0 (the baseline) to 5 y^{-1} , based on realistic values of bottom trawling intensities in the North Sea (Rijnsdorp et al., 1998; Eigaard et al., 2017). Events were distributed randomly throughout the year, given the absence of a clear seasonal pattern in trawling intensities (Rijnsdorp et al., 2020a). For each trawling frequency and site, 30 model simulations were performed, each with a different pair of penetration and erosion depths, generated from a log-normal distribution of penetration depths. For the tickler chain trawl, a log normal distribution of penetration depths was generated given the average values (95% confidence limits) for sand and mud summarized by Pitcher et al. (pers. comm.): 3.2 (1.5, 6.7) cm and 1.9 (1.0, 3.7) cm for mud and sand respectively; the erosion depth was set to 22% of the penetration depth. The penetration depths for the pulse gear were set to 50 % of the tickler gear: 1.6 cm (0.75, 3.38) and 0.95 (0.49, 1.83) cm for mud and sand. The erosion depth for the pulse gear was set to 70 % of the tickler gear (Figure 2 C ; Depestele et al., 2016, 2019; Rijnsdorp et al., 2020b).

2.3 Statistical analysis

Linear models were constructed with selected model output variables to analyse the effects of the different gear types, trawling frequency, and the sedimentary context, on the rates of the different mineralization processes and on the total mineralization (the sum of the separate mineralization processes). A normal distribution was adopted for the process responses. To deal with heterogeneity of variances of the residuals (for all models) in the linear models, a generalized least squares (GLS) structure was added (Pinheiro and Bates, 2000; Zuur et al., 2009; West et al., 2014), which allowed for unequal variances among treatment combinations to be included as a variance structure (Pinheiro and Bates, 2000; West et al., 2014). To find the most suitable variance structure, models with different variance structures were compared using AIC scores (Akaike, 1974), and plots of fitted values and individual model terms versus the residuals (Zuur et al., 2009). For all models, a variance structure was selected that allowed for variances conditional on the station, and trawling frequency. This variance structure was of the form sediment*frequency, using the “varIdent” function of the R package “nlme” (Pinheiro et al., 2019). Subsequently the fixed model component was optimized by manual stepwise selection, using the likelihood ratio test, and associated *p*-values as validation for removing excess terms (Zuur et al., 2009). During this step, the philosophy was adopted to not include significant interaction terms containing a certain variable, when said variable was not significant by itself. The minimal adequate model was represented using restricted maximum likelihood estimation (REML, West et al., 2014). GLS models were implemented using the R package “nlme” (Pinheiro et al., 2019).

3 Results

3.1 Baseline model simulations

Baseline model simulations (undisturbed) show the differences in organic matter cycling between the chosen locations. In the coarse sand station (Coarse), the average total mineralization rate was 13.6 mmol C m⁻² d⁻¹, with 89 % of this due to oxic mineralization, 6 % due to anoxic mineralization, and 5 % was denitrified (see Table S2, supplement). The two muddy stations had either very high or very low total mineralization rates (MudH: 82 mmol C m⁻² d⁻¹, MudL: 8.5 mmol C m⁻² d⁻¹), and similar for the two fine sandy stations (FineH: 30 mmol C m⁻² d⁻¹, FineL: 8.1 mmol C m⁻² d⁻¹), related to the difference in organic matter deposition between nearshore – offshore locations (Table 3). Oxic mineralization dominated in FineL (oxic: 81 %, anoxic: 12 %, denit.: 6 %), FineH (oxic: 78 %, anoxic: 22 %, denit.: 0 %) and MudL (oxic: 72 %, anoxic: 18 %, denit.: 10 %), whereas the mineralization in the nearshore muddy station (MudH) was dominated by anoxic processes (oxic: 27 %, anoxic: 68 %, denit.: 5 %).

3.2 Impact on biota

Trawling-induced depletion of fauna substantially decreased average annual bioturbation rates. Bioturbation decreased with increasing penetration depth (Figure 2 B, C), resulting in strongest decreases in muddy sediment (MudL, MudH), and larger

decreases in the deep penetrating gear versus the shallow penetrating gear (Table 4). In the Coarse sediment, the annually averaged bioturbation decreased gradually, from 81 % of its original value at 1 trawl y^{-1} to 19 % at 5 trawls y^{-1} in the tickler gear, and 49 % at 5 trawls y^{-1} for the pulse gear. For the fine (FineL, FineH) and muddy (MudL, MudH) sediments the maximum depletion was reached after 4 (5 for the shallow gear) and 2 trawling events respectively.

220 **3.3 Nutrient and organic carbon distribution**

With higher trawling frequencies, concentrations of oxygen and nitrate in the sediment generally increased, whereas ammonium and organic carbon contents were always reduced (Figure 4, Figure 5). The magnitude of concentration changes was similar for both gear types (Table S1, supplement shows the mean percentage change relative to baseline concentrations reported). Increases in oxygen (Figure 4: A-E) and nitrate (Figure 4: F-J) concentrations were largest in the oligotrophic stations
225 FineL and MudL, where concentrations of oxygen in the upper 5 cm increased 15 – 16 fold (resp. 1604 and 1516 %), while nitrate concentrations increased 9 - 19 fold (resp. 909 and 1911 %) at highest trawling intensities (See Figure S2 in supplement for the range of nutrient concentrations throughout the year). In contrast, O_2 and NO_3^- concentrations initially decreased at MudH by 25 and -50 % maximally for 1 – 2 trawls y^{-1} , before increasing by 52 to 81 % (O_2), and 123 to 188 % (NO_3^-) at 5 trawls y^{-1} . Ammonium (NH_4^+) concentrations decreased strongly in all sediments, with a decrease of up to 69 % in Coarse, 68
230 % in MudH, and > 90 % in FineL, FineH, MudL (Figure 4: K-O, Table S1).

Increasing the trawling frequency reduced the total amount of reactive organic carbon (labile + semi-labile, OC) in the sediment, and reduced the penetration depth of the OC (Figure 5, Table S1). Trawling frequencies of 3-5 y^{-1} led to near-total depletion of reactive OC in all sediments in the upper 10 cm (> 95 % removed for Coarse and FineH, > 90 % for FineL, MudL and MudH, Figure 5). The mean OC profiles for both gears at a given frequency were often visually different (dotted vs. full
235 lines on Figure 5), but the average concentrations over 10 cm did not differ significantly. A redistribution of organic carbon was visible in the upper cm of the sediment, where organic carbon concentrations were higher in the impacted than in the baseline simulation (example in the cutout of the top 5 mm shown for MudH, Figure 5). In FineL, MudL and MudH the ratio of labile organic carbon (FDET) as a proportion of the carbon pool (FDET + SDET) increased between 25 and 34 % (Figure S3, supplement). This effect was only noticeable in the upper 0.2 – 0.5 cm, below this depth values of this ratio in all trawling
240 frequencies converged to 0 due to the depletion of labile organic carbon.

3.4 Total mineralization rates

The trawling frequency had a significant negative impact on all studied mineralization process rates (oxic, anoxic, denitrification), and on the total organic carbon mineralization, as confirmed by the negative coefficients in the GLS models (“Freq”, Table 5). Changes in process rates also differed between the studied sediments, as seen by the inclusion of an
245 interaction term between the sediment type and the trawling frequency (Freq:Sed). The sediment biogeochemical response to increasing trawling frequency was often nonlinear warranting the inclusion of a squared frequency term (Freq²). The gear type

was only included as a significant explanatory variable in the model for denitrification, where the deeper penetrating gear (tickler) decreased denitrification rates more than the shallow penetrating gear (Table 5).

The total mineralization rate was impacted negatively in all cases, and decreases ranged from 5 % for 1 trawl y^{-1} for MudL to
250 -28.9 % for 5 trawls y^{-1} , for FineL (Figure 6: A-E, values summarized in supplementary Table S2).

The change in oxic mineralization rates (base: 12.0, 23.3, 6.5, 6.1, 23.1 $mmol\ m^{-2}\ d^{-1}$ for Coarse, FineL, FineH; MudL, and
MudH resp.) showed different patterns depending on the station (Figure 6: F-J). For Coarse and FineH there was a consistent
decrease in oxic mineralization rates with increasing trawling frequency, with maximum decreases at 5 trawls y^{-1} of 21 % and
23 % for the tickler gear, and 21 % and 25 % for the pulse gear. In contrast, for FineL and MudL oxic mineralization remained
255 the same, or increased at a frequency of 1 trawl y^{-1} (8 % and 11 %), followed by a decrease at higher trawling frequencies with
maximal decreases of 15 % and 10 % at 5 trawls y^{-1} for the tickler gear; the values for the pulse gear were similar (Figure 6:
F-J). For MudH, oxic mineralization increased by a maximum of 56 % at 5 trawls y^{-1} for both gears.

Anoxic mineralization rates (base: 0.9, 1.0, 6.6, 1.5, 57.7 $mmol\ m^{-2}\ d^{-1}$ for Coarse, FineL, FineH; MudL, and MudH resp.)
were also affected similarly by the two gear types and decreased for all stations, though with differing magnitudes (Figure 6:
260 K-L). The lowest decrease was in the Coarse sediment, where the decrease in the anoxic mineralization rate was similar for all
trawling frequencies (range of 18 % to 25 %), and the highest decrease was modelled at MudL, where anoxic rates decreased
between 73 % and 83 %.

Denitrification rates (base: 0.6, 0.5, 0.1, 0.8, 4.2 $mmol\ m^{-2}\ d^{-1}$ for Coarse, FineL, FineH; MudL, and MudH respectively)
decreased with increasing trawling frequencies at all stations except MudH, with a maximum reduction of 74 % (tickler) and
265 68 % (pulse) at FineL (Figure 6: P-T). Trawling frequencies of 1 – 2 y^{-1} did not consistently alter denitrification for the Coarse
sediment, and FineL and MudL. For the MudH trawls, denitrification rates increased by 50 and 49 % towards 5 trawls y^{-1} for
tickler and pulse gear respectively.

As a result of the changes to denitrification, the removal of reactive N from the sediment changed. The sediments where
denitrification decreased most (FineL, MudL), had 35 and 51 % of N produced by mineralization removed by denitrification
270 when undisturbed and this reduced to 11 % and 45 % respectively for 5 trawls y^{-1} . For the Coarse sediment the fraction of N
removed increased from 26 % when undisturbed to 30 % for 1 trawl y^{-1} , and then decreased again to 25 %. In MudH more N
was removed as well, with a near-doubling as a peak at 5 trawls y^{-1} (48 %, up from 26 % as the base).

All previous results represent average changes throughout the year, but trawling also showed instantaneous effects, as
illustrated by the decrease of denitrification rates (to nearly 0 $mmol\ m^{-2}\ d^{-1}$) immediately after a trawl events (Figure 7).

275 **3.5 Relative changes**

The relative contribution of the mineralization processes to the total mineralization changed markedly between trawling
frequencies and stations (Figure 8). In general, the proportion of oxic mineralization increased (Figure 8: A-E), at the expense
of anoxic mineralization (Figure 8: F-J). The largest changes occurred when switching from 0 to 1 trawling event y^{-1} , and
values remained stable from 2 events y^{-1} onwards. The proportion of oxic mineralization increased most at MudH (tickler: 116

280 %, pulse: 112% for 5 trawls y^{-1}), and smallest changes occurred at Coarse (<1% for both gears). The proportion of anoxic mineralization on the other hand, decreased in all simulations. Largest changes were modelled at FineL and MudL (69 % and 78 % respectively), and smallest for Coarse and FineH (14 and 18 % respectively). The proportion of mineralization performed by denitrification decreased in FineL and MudL (71 % and 10 %, 5 events y^{-1}), doubled at MudH (100 %) and remained practically the same for Coarse and FineH (Figure 8: K-O).

285 **4 Discussion**

4.1 Organic carbon depletion

Simulated trawling of the seafloor impacted the sediment biogeochemistry in all environments, and for all trawling frequencies. The amount of total mineralizable carbon in the sediment consistently decreased with higher trawl frequencies, but the changes in mineralization pathways differed from case to case. The main drivers of the biogeochemical changes were found to be the
290 depletion of organic carbon (OC) in the sediment (i.e. the substrate for mineralization itself), the redistribution of this OC nearer to the SWI (Figure 5), and the increasing oxygenation of the sediment. With each trawl pass, a part of the organic carbon rich top layer is removed (Figure 5). This is associated with an injection of oxidized reactants from the water column (O_2 , NO_3^-) deeper into the sediment, and a homogenization of OC concentrations in the mixed layer during the mixing phase. Simultaneously, part of the benthos in the sediment is removed, often strongly decreasing the bioturbation rate, affecting the
295 rate at which organic matter is distributed in the sediment (especially after multiple trawling events y^{-1} , Table 4). Sediment mixing alone could potentially increase OC contents at the bottom of the mixing zone, but successive trawling events, and the removal of bioturbators that can transport OC far below the mixing zone, resulted in a redistribution of OC closer to the sediment-water interface in all simulated sediments.

The fine sandy station with low organic matter content (FineL), as well as both muddy stations (MudL, mudH), showed smaller
300 decreases in surface organic carbon concentrations compared to the eutrophic fine sandy (FineH) and Coarse sediments (Table S1), mainly because baseline bioturbation rates in the former were 3 orders of magnitude larger (Table 3). As such, bioturbation seems to cause an increased resistance to carbon loss by facilitating transport to deeper layers, making it less vulnerable to surface disturbances. While the physical OC depletion caused by the penetrating gear is aggravated by the loss of bioturbating fauna in the sediment, this effect is context-dependent as bioturbators show variable levels of resistance to trawling (Hale et al., 2017; Tiano et al., 2020). Our modelled results provide further evidence that surviving fauna help buffer and mitigate the biogeochemical effects of trawling (Duplisea et al., 2001). The comparison with the work of Duplisea et al. (2001) is in fact remarkable, as Duplisea et al. (2001) used a food-web based model to investigate changes to carbon cycling, whereas a diagenetic model was used in this work. Both very different approaches, that both highlight a shift to more oxic mineralization, and the importance of benthic fauna as a stabilizing factor. Tiano et al. (2019) observed decreases in sedimentary chl *a* in the
305 upper 1 cm immediately after trawling, of 41 and 83 % for pulse and tickler gears respectively. Also, OM depletion as a result of long term fishing has been reported, even at water depths beyond 500 m (Martín et al., 2014; Pusceddu et al., 2014; Paradis

et al., 2019), where comparisons between trawled and untrawled sites yielded a difference in OC between 20 and 60 % (Paradis et al., 2019), or 60 – 100 % of the daily input flux of organic carbon was removed from sediments by trawling (Pusceddu et al., 2014). In fact, these deep-water sediments are particularly sensitive to trawling disturbances, a concerning feature given
315 the steady expansion of fishing practices into deeper waters in recent decades (Morato et al., 2006; Puig et al., 2012; Watson and Morato, 2013). Deep-water species communities are slow-growing and thus recover slowly, organic matter deposition rates are low, and the generally finer-grained sediments found in the deep are easily resuspended following a trawl passage (Norse et al., 2012; Mengual et al., 2016). All three of these factors increase the impacts of trawling events on organic matter cycling in the model presented in this work, and further modelling work could be useful to investigate the potentially large
320 impact that deep-sea habitats experience. There are also studies reporting enhanced OC concentrations in trawled areas, in contrast with our results (Palanques et al., 2014; Pusceddu et al., 2005; Sciberras et al., 2016), possibly due to differing hydrodynamic and morphological conditions of the North Sea compared to other areas.

The decrease in total mineralization rates may partly be offset by re-deposition of organic matter, which was not considered in our model. Not all eroded organic matter stays in the water column, but a part resettles on the sediments. How this
325 redistribution occurs depends on the sediment type and the local hydrodynamics, which determine the distance over which eroded sediment particles are transported (Le Bot et al., 2010; Robinson et al., 2005). It can be expected that for coarser, heavier sediments, a fraction will be redeposited in the trawling track, but that for muddy sediments, lighter and rich in organic matter (Mayer, 1994), eroded material remains in suspension long enough to be transported elsewhere (Palanques et al., 2014). In the North Sea, suspended material is transported from the Southern Bight northward by counterclockwise residual currents.
330 Ultimately, the partially degraded materials are deposited in the Skagerrak (Dauwe et al., 1998). So given the intensity, and the persistence with which vast areas of the southern North Sea are trawled (e.g. total annual sediment mobilization by the Dutch trawling fleet varied between 8 and 17 10^{14} kg of sediment between 2010 and 2016, Rijnsdorp et al., 2020a), we expect that trawling-induced sediment resuspension plays a significant role in the northward transport, and actively contributes to organic matter depletion in southern areas.

335 **4.2 Changes to mineralization pathways**

Trawling activities generally caused strong increases in sedimentary oxygen and nitrate availability, and decreases in the ammonium content (Figure 4, Figure 7). Sediment oxygenation increased both because of a direct injection of oxygen rich
340 bottom water in deeper sediment layers during a trawling event, and because oxygen consumption by mineralization processes decreased as a result of strong decreases in OC and ammonium. As a result of increased oxygen availability, the importance of oxic mineralization generally increased with trawling, whereas anoxic mineralization decreased (Figure 8).

Strongest increases in the proportion of oxic mineralization were modelled for the sediment characterized by a high silt percentage and organic matter load (mudH). These types of sediments also have a low permeability, high mineralization rates and a low oxygen penetration depth (Braeckman et al., 2014), with a lesser importance of oxic relative to anoxic mineralization in undisturbed conditions. Fishing gears penetrate deepest in these muds, and as such provide oxygen to deeper layers, although

345 this is consumed rapidly. Van De Velde et al. (2018) found an increase in mineralization rates of over 200 % after a disturbance event in muddy sediments (from the same origin as MudH). This was attributed to multiple possible factors, such as ‘self-priming’ by mixing refractory with labile organic matter, burial of phytoplankton in settling sediment, and the introduction of oxygen to redox shuttle mechanisms. Our results show an enhancement of total oxic mineralization at mudH, but no increase in the total mineralization rate, perhaps because the aforementioned processes were not included in the used model.

350 The higher oxygen concentrations also had a clear inhibiting effect on denitrification rates (Figure 7). Denitrification in coastal shelf sediments accounts for an estimated third of all nitrogen loss in Earth’s marine surfaces (Middelburg et al., 1996), making these regions crucial to counteract nitrogen eutrophication (Galloway et al., 2004; Seitzinger et al., 2006). For all stations, trawling events caused an instantaneous dip in denitrification rates, because of the injection of O₂, and removal of the electron acceptor (NO₃⁻) from the sediment, similar to the results of van der Molen et al. (2013) (Figure 7, black vertical lines). However,

355 a discrepancy was noted between the biogeochemical impacts of trawling in cohesive sediments with high organic matter concentrations versus sandier and comparatively low nutrient sediments, consistent with literature findings (Polymenakou et al., 2005; Van De Velde et al., 2018; Tianio et al., 2019). The coarsest sandy sediments (Coarse) were by default deeply oxygenated Figure 4: A-B), with denitrification maximally inhibited by oxygen concentrations. Larger pore-spaces in these sediments allow for bottom water to penetrate more deeply into the sediment matrix, bringing oxygen and other reactants into

360 deeper sediment layers (Huettel and Gust, 1992). Cohesive sediments mostly lack such advective transport. As a result, oxygen often fuels rapid mineralization in coarse grained sediments (Huettel and Rusch, 2000; Ehrenhauss et al., 2004). The increasing trawling frequency in coarse sediments thus had little effect on oxygen penetration, and nitrate concentrations only marginally increased (Figure 7: A-B), resulting in minor changes to mineralization pathways such as denitrification on average, although instantaneous effects could be prominent (Figure 7 C). In oligotrophic finer sediments (FineL, mudL), there was a massive

365 increase in both oxygen and nitrate concentrations as a result of trawling (Figure 7: D-E). Whereas increasing NO₃⁻ concentrations would stimulate denitrification on their own, the rise of oxygen concentrations strongly inhibited denitrification, leading to a drop in denitrification rates throughout the year (Figure 7 F). The more eutrophic fine sediment FineH displayed a similar pattern of increased oxygenation mineralization as the other fine sandy sites, but the already low baseline denitrification rates did not decrease further. In the unperturbed simulation of MudH, mineralization was predominantly anoxic

370 (68 %), with denitrification limited by NO₃⁻ availability. Increasing the oxygenation in this type of sediment caused the denitrification to double, by increasing the nitrate availability (Figure 7 G-I).

Ferguson et al. (2020) found that denitrification rates in Moreton Bay, Australia were reduced between 11 and 50 %, within 3 hours after a trawling event, and this rate decreased after successive trawling events during the studied period. These decreases were attributed to homogenization of the sediment, which removes oxic microniches created by fauna, and thus zones of

375 intense coupled nitrification-denitrification (Ferguson et al., 2020). Though the key role of redox microniches is not directly investigated here, we acquired decreases in denitrification rates in a similar range in all sediments apart from MudH, especially when trawling frequencies increased.

380 Within the marine environment, shelf sediments are sites characterized by high nutrient concentrations, therefore offering resilience against reductions in nutrient loadings. Soetaert and Middelburg (2009) showed that storage of ammonium in sediments significantly delays the response of shallow systems to oligotrophication, as the efflux of nitrogen from the sediment will compensate part of the losses in the water column. The increased reduction of the ammonium concentrations with fishing intensity will affect this buffering capacity of the sediment. The nitrogen buffering capacity of the investigated sediments, representative for a large fraction of North Sea sediments, was affected similarly by both gears. Firstly, the stock of nitrogen (as NH_4^+) in the sediment was directly affected by porewater flushing during trawling (with decreases > 99 % in some cases, 385 Figure 7 F). Secondly, lower availability of reaction substrate (OC, NH_4^+) decreased denitrification rates, reducing N removal to the atmosphere.

4.3 Reducing gear disturbance of the seafloor

In our work the differences with respect to organic matter mineralization dynamics between gear types with differing penetration depths (e.g. 3.2 ± 1.2 cm vs. 1.6 ± 0.6 cm in mud) mostly remained suggestive, rather than statistically conclusive. 390 The fishing gear type was only included as a significant predictor for the denitrification rates, with a small coefficient (-0.00038; Table 5). This is because the freshly deposited stocks of organic carbon are present near the sediment surface, and any gear that penetrates the sediment impacts this layer, especially for multiple trawling events per year (Figure 5, Table 5). This indicates that only a thin layer of surface sediment needs to be disturbed to generate significant biogeochemical changes (Dounas et al., 2005). Many biogeochemical processes are mediated by the dynamics of oxygen near the sediment-water 395 interface, which itself is influenced by the composition, and permeability of the sediment. A shift towards fining (an increased proportion of finer grain size classes) has been described in certain trawled areas, with expected consequences for sediment biogeochemistry, such as an increased rate of sulphate reduction (Trimmer et al., 2005). But the opposite occurs just as well (Depestele et al., 2019; Mengual et al., 2019; Tiano et al., 2019). In these cases resuspended fine-grained material is exported away from the trawling site, leaving a coarsened trawling track, with the results subtly different between gear types (Depestele 400 et al., 2019; Tiano et al., 2019). This means that the effects of fishing gears on grain size sorting should be better characterized for various sediment types, to constrain the uncertainty around predictions of gear impacts on sediment functioning.

This does not imply that the penetration depth is irrelevant. Other studies have reported clear positive effects of reducing the penetrations depths of fishing gears, such as decreased sediment mobilization and homogenization, and reduced organic matter depletion (Depestele et al., 2019; Tiano et al., 2019). Conversely, assuming that the eroded layer and the mixing depth scale 405 with more deeply penetrating gears than those tested here, the depletion effects should become more pronounced. In a single trawling event more of the (reactive carbon rich) top sediment layer would be removed, there would be a higher mortality of organisms, and more of the nutrient build-up would be removed.

Aside from the penetration depth, largest impacts occurred when increasing the trawling frequency from 0 to 1 trawling event per year, and the response of mineralization processes to increased trawling frequency was often non-linear, making them 410 more difficult to predict. This would imply that management strategies aimed at maintaining the ecosystem functions provided

by shelf sediments should be focused on spatial controls, bottom impact quotas, and effort control of trawling gears that per definition require contact with the bottom to catch commercially viable target species (McConnaughey et al., 2020). An effective strategy limits the impacted surface area, and allows carbon stocks and faunal communities in the sediment to recover from a disturbance, resulting in the recovery of vital biogeochemical functions such as denitrification and carbon burial. This includes technical adaptations to improve catch-efficiency. Whereas our study only focused on direct head-to-head comparisons between the two gear types, pulse trawls are associated with lower spatial footprints due to their relatively higher catch efficiencies compared to beam trawls (Poos et al., 2020; Rijnsdorp et al., 2020; ICES, 2020).

Shifting the fishing effort from peripheral areas to core fishing grounds would also reduce the area where the top sediment layer is removed on a regular basis, along with the associated reduction in mineralization of organic matter. This can be achieved through time-restricted bottom trawling, in which fishing grounds are closed off temporarily. Similarly, areas with high denitrification rates, crucial for eutrophication mitigation can be closed to trawling completely, as done in other regions of the world (Ferguson et al., 2020). Site-specific conditions such as rates of biogeochemical recovery and sedimentation rates need to be known to determine the resilience of ecosystems to trawling, and fine-tune management plans (Paradis et al., 2021).

5. Conclusion

With the addition of perturbation events to a model of early diagenesis, and a description of faunal mortality and recovery, we simulated the effects of increasing bottom trawling frequencies on sediment biogeochemistry. The results showed that bottom trawl fisheries strongly impacted the sediment biogeochemistry, and the magnitudes of the changes were dependent on the sedimentary context and trawling frequency. Two types of fishing gears were investigated. The exposed top sediment layer rich in organic matter was targeted similarly by both fishing gears, resulting in a similar loss of organic carbon, which was further exacerbated by the loss of bioturbating fauna. A shift towards increasingly oxic mineralization at the cost of anoxic mineralization was observed, driven by an often strongly increased oxygen availability in the sediment. The removal of fixed nitrogen by denitrification was not affected similarly in all sediments. Denitrification increased in nearshore cohesive mud, and decreased elsewhere, with highest decreases in offshore sediments with lower carbon loads. Our modelling results corroborate multiple patterns found in other studies, and can serve to interpret research and search for mitigation strategies. Trawling impacts are hard to mitigate by only reducing the penetration depth of the gear, so additional management strategies are needed to allow for partial, or full recovery of biogeochemical functions in-between trawling events.

Code availability

Model code and instructions for producing similar output are available on a Github repository (https://github.com/edeborger/Trawling_Biogeochemistry_BGS).

440 **Author contribution**

EDB, JT, KS, and AJR devised the study, and contributed to the manuscript. UB contributed to the manuscript. EDB collected field data used for the model descriptions and performed the model simulations. KS developed the dynamic modelling environment in R.

Competing interests

445 None of the authors have any financial benefits or other conflicts of interest resulting from the publication of this manuscript.

Acknowledgements

E.D.B. is a doctoral research fellow funded by the Belgian Science Policy Office BELSPO, contract BR/154/A1/FaCE-It. J.T. is a doctoral research fellow funded by the European Maritime and Fisheries Fund EMFF, and the Netherlands Ministry of Agriculture Nature and Food Quality LNV (Grant/Award Number: 1300021172). U.B. is a postdoctoral research fellow at
450 Research Foundation - Flanders (FWO, Belgium) (Grant 1201720N). We thank Toussaint et al. for the data needed to parametrize the nearshore sediments used in this modelling exercise. The methodology conducted in this research will be used for the BFIAT (Bottom Fisheries Assessment Tool) project funded by the Netherlands Organization for Scientific Research (NWO) (Grant 18523).

References

- 455 Akaike, H.: A new look at the statistical model identification, *IEEE Trans. Automat. Contr.*, 19(6), 716–723, doi:10.1109/TAC.1974.1100705, 1974.
- Almroth, E., Tengberg, A., Andersson, J. H., Pakhomova, S. and Hall, P. O. J.: Effects of resuspension on benthic fluxes of oxygen, nutrients, dissolved inorganic carbon, iron and manganese in the Gulf of Finland, Baltic Sea, *Cont. Shelf Res.*, 29(5–6), 807–818, doi:10.1016/j.csr.2008.12.011, 2009.
- 460 Amoroso, R. O., Pitcher, C. R., Rijnsdorp, A. D., McConnaughey, R. A., Parma, A. M., Suuronen, P., Eigaard, O. R., Bastardie, F., Hintzen, N. T., Althaus, F., Baird, S. J., Black, J., Buhl-Mortensen, L., Campbell, A. B., Catarino, R., Collie, J., Cowan, J. H., Durholtz, D., Engstrom, N., Fairweather, T. P., Fock, H. O., Ford, R., Gálvez, P. A., Gerritsen, H., Góngora, M. E., González, J. A., Hiddink, J. G., Hughes, K. M., Intelmann, S. S., Jenkins, C., Jonsson, P., Kainge, P., Kangas, M., Kathena, J. N., Kavadas, S., Leslie, R. W., Lewis, S. G., Lundy, M., Makin, D., Martin, J., Mazor, T., Gonzalez-Mirelis, G., Newman, S.
465 J., Papadopoulou, N., Posen, P. E., Rochester, W., Russok, T., Salal, A., Semmens, J. M., Silvan, C., Tsoloso, A., Vanelslander, B., Wakefield, C. B., Wood, B. A., Hilborn, R., Kaiser, M. J. and Jennings, S.: Bottom trawl fishing footprints on the world's continental shelves, *Proc. Natl. Acad. Sci. U. S. A.*, 115(43), E10275–E10282, doi:10.1073/pnas.1802379115, 2018.

- Bergman, M. J. N. and Hup, M.: Direct effects of beamtrawling on macrofauna in a sandy sediment in the southern north sea, *ICES J. Mar. Sci.*, 49(1), 5–11, doi:10.1093/icesjms/49.1.5, 1992.
- 470 Bergman, M. J. N. and Van Santbrink, J. W.: Mortality in megafaunal benthic populations caused by trawl fisheries on the Dutch continental shelf in the North Sea in 1994, *ICES J. Mar. Sci.*, 57(5), 1321–1331, doi:10.1006/jmsc.2000.0917, 2000.
- De Borger, E., Braeckman, U. and Soetaert, K.: Rapid organic matter cycling in North Sea sediments, *Cont. Shelf Res.*, 214, 104327, doi:10.1016/j.csr.2020.104327, 2021.
- Le Bot, S., Lafite, R., Fournier, M., Baltzer, A. and Desprez, M.: Morphological and sedimentary impacts and recovery on a
475 mixed sandy to pebbly seabed exposed to marine aggregate extraction (Eastern English Channel, France), *Estuar. Coast. Shelf Sci.*, 89(3), 221–233, doi:https://doi.org/10.1016/j.ecss.2010.06.012, 2010.
- Boudreau, B. P.: The diffusive tortuosity of fine-grained unlithified sediments, *Geochim. Cosmochim. Acta*, 60(16), 3139–3142, doi:10.1016/0016-7037(96)00158-5, 1996.
- Braeckman, U., Foshtomi, M. Y., Van Gansbeke, D., Meysman, F., Soetaert, K., Vincx, M. and Vanaverbeke, J.: Variable
480 Importance of Macrofaunal Functional Biodiversity for Biogeochemical Cycling in Temperate Coastal Sediments, *Ecosystems*, 17(4), 720–737, doi:10.1007/s10021-014-9755-7, 2014.
- Brylinsky, M., Gibson, J. and Gordon Jr., D. C.: Impacts of Flounder Trawls on the Intertidal Habitat and Community of the Minas Basin, Bay of Fundy, *Can. J. Fish. Aquat. Sci.*, 51(3), 650–661, doi:10.1139/f94-066, 1994.
- Butenschön, M., Clark, J., Aldridge, J. N., Icarus Allen, J., Artioli, Y., Blackford, J., Bruggeman, J., Cazenave, P., Ciavatta,
485 S., Kay, S., Lessin, G., Van Leeuwen, S., Van Der Molen, J., De Mora, L., Polimene, L., Sailley, S., Stephens, N. and Torres, R.: ERSEM 15.06: A generic model for marine biogeochemistry and the ecosystem dynamics of the lower trophic levels, *Geosci. Model Dev.*, 9(4), 1293–1339, doi:10.5194/gmd-9-1293-2016, 2016.
- Cashion, T., Al-Abdulrazzak, D., Belhabib, D., Derrick, B., Divovich, E., Moutopoulos, D. K., Noël, S. L., Palomares, M. L. D., Teh, L. C. L., Zeller, D. and Pauly, D.: Reconstructing global marine fishing gear use: Catches and landed values by gear
490 type and sector, *Fish. Res.*, 206(October), 57–64, doi:10.1016/j.fishres.2018.04.010, 2018.
- Copernicus Marine Service Information, E. U.: Atlantic- European North West Shelf- Ocean Biogeochemistry Reanalysis, [online] Available from: http://marine.copernicus.eu/services-portfolio/access-to-products/?option=com_csw&view=details&product_id=NORTHWESTSHELF_REANALYSIS_BIO_004_011 (Accessed 4 April 2020), 2020.
- 495 Couceiro, F., Fones, G. R., Thompson, C. E. L., Statham, P. J., Sivyver, D. B., Parker, R., Kelly-Gerreyn, B. A. and Amos, C. L.: Impact of resuspension of cohesive sediments at the Oyster Grounds (North Sea) on nutrient exchange across the sediment-water interface, *Biogeochemistry*, 113(1–3), 37–52, doi:10.1007/s10533-012-9710-7, 2013.
- Dauwe, B., Herman, P. M. J. and Heip, C. H. R.: Community structure and bioturbation potential of macrofauna at four North Sea stations with contrasting food supply, *Mar. Ecol. Prog. Ser.*, 173(November 1998), 67–83, doi:10.3354/meps173067, 1998.
- 500 Depestele, J., Ivanović, A., Degrendele, K., Esmaeili, M., Polet, H., Roche, M., Summerbell, K., Teal, L. R., Vanelslander, B. and O'Neill, F. G.: Measuring and assessing the physical impact of beam trawling, *ICES J. Mar. Sci.*, 73(suppl_1), i15–i26,

doi:10.1093/icesjms/fsv056, 2016.

- Depestele, J., Degrendele, K., Esmaeili, M., Ivanovic, A., Kröger, S., O'Neill, F. G., Parker, R., Polet, H., Roche, M., Teal, L. R., Vanelslander, B. and Rijnsdorp, A. D.: Comparison of mechanical disturbance in soft sediments due to tickler-chain
505 SumWing trawl vs. Electro-fitted PulseWing trawl, *ICES J. Mar. Sci.*, 76(1), 312–329, doi:10.1093/icesjms/fsy124, 2019.
- Dounas, C. G., Davies, I. M., Hayes, P. J., Arvanitidis, C. D. and Koulouri, P. T.: The effect of different types of otter trawl ground rope on benthic nutrient releases and sediment biogeochemistry, *Benthic Habitats Eff. Fish.*, 41(January), 539–544, 2005.
- Duplisea, D. E., Jennings, S., Malcolm, S. J., Parker, R. and Sivyer, D. B.: Modelling potential impacts of bottom trawl fisheries
510 on soft sediment biogeochemistry in the North Sea, *Geochem. Trans.*, 2, 112–117, doi:10.1039/b108342b, 2001.
- Durrieu de Madron, X., Ferré, B., Le Corre, G., Grenz, C., Conan, P., Pujo-Pay, M., Buscail, R. and Bodiot, O.: Trawling-induced resuspension and dispersal of muddy sediments and dissolved elements in the Gulf of Lion (NW Mediterranean), *Cont. Shelf Res.*, 25(19–20), 2387–2409, doi:10.1016/j.csr.2005.08.002, 2005.
- Ehrenhauss, S., Witte, U., Janssen, F. and Huettel, M.: Decomposition of diatoms and nutrient dynamics in permeable North
515 Sea sediments, *Cont. Shelf Res.*, 24(6), 721–737, doi:10.1016/j.csr.2004.01.002, 2004.
- Eigaard, O. R., Bastardie, F., Hintzen, N. T., Buhl-Mortensen, L., Buhl-Mortensen, P., Catarino, R., Dinesen, G. E., Egekvist, J., Fock, H. O., Geitner, K., Gerritsen, H. D., González, M. M., Jonsson, P., Kavadas, S., Laffargue, P., Lundy, M., Gonzalez-Mirelis, G., Nielsen, J. R., Papadopoulou, N., Posen, P. E., Pulcinella, J., Russo, T., Sala, A., Silva, C., Smith, C. J., Vanelslander, B. and Rijnsdorp, A. D.: The footprint of bottom trawling in European waters: Distribution, intensity, and seabed
520 integrity, *ICES J. Mar. Sci.*, 74(3), 847–865, doi:10.1093/icesjms/fsw194, 2017.
- Ferguson, A. J. P., Oakes, J. and Eyre, B. D.: Bottom trawling reduces benthic denitrification and has the potential to influence the global nitrogen cycle, *Limnol. Oceanogr. Lett.*, doi:10.1002/lol2.10150, 2020.
- Fick, A.: Ueber Diffusion, *Ann. der Phys. und Chemie*, 170(1), 59–86, doi:10.1002/andp.18551700105, 1855.
- Galloway, J. N., Dentener, F. J., Capone, D. G., Boyer, E. W., Howarth, R. W., Seitzinger, S. P., Asner, G. P., Cleveland, C.
525 C., Green, P. A., Holland, E. A., Karl, D. M., Michaels, A. F., Porter, J. H., Townsend, A. R. and Vorosmarty, C. J.: Nitrogen Cycles: Past, Present, and Future, *Biogeochemistry*, 70(2), 153–226, doi:10.1007/s10533-004-0370-0, 2004.
- GEBCO Compilation Group: GEBCO 2020 Grid, , doi:10.5285/a29c5465-b138-234d-e053-6c86abc040b9, 2020.
- Hiddink, J. G., Jennings, S., Sciberras, M., Szostek, C. L., Hughes, K. M., Ellis, N., Rijnsdorp, A. D., McConnaughey, R. A., Mazor, T., Hilborn, R., Collie, J. S., Pitcher, C. R., Amoroso, R. O., Parma, A. M., Suuronen, P. and Kaiser, M. J.: Global
530 analysis of depletion and recovery of seabed biota after bottom trawling disturbance, *Proc. Natl. Acad. Sci. U. S. A.*, 114(31), 8301–8306, doi:10.1073/pnas.1618858114, 2017.
- Hiddink, J. G., Jennings, S., Sciberras, M., Bolam, S. G., Cambiè, G., McConnaughey, R. A., Mazor, T., Hilborn, R., Collie, J. S., Pitcher, C. R., Parma, A. M., Suuronen, P., Kaiser, M. J. and Rijnsdorp, A. D.: Assessing bottom trawling impacts based on the longevity of benthic invertebrates, *J. Appl. Ecol.*, 56(5), 1075–1084, doi:10.1111/1365-2664.13278, 2019.
- 535 Huettel, M. and Gust, G.: Impact of bioroughness on interfacial solute exchange in permeable sediments, *Mar. Ecol. Prog.*

- Ser., 89(2–3), 253–267, doi:10.3354/meps089253, 1992.
- Huettel, M. and Rusch, A.: Transport and degradation of phytoplankton in permeable sediment, *Limnol. Oceanogr.*, 45(3), 534–549, doi:10.4319/lo.2000.45.3.0534, 2000.
- ICES: Working Group on Electrical Trawling (WGELECTRA), *ICES Sci. Reports / Rapp. Sci. du Ciem*, 1(71), 87, 540 doi:10.17895/ices.pub.5619, 2020.
- Kaiser, M. J., Clarke, K. R., Hinz, H., Austen, M. C. V., Somerfield, P. J. and Karakassis, I.: Global analysis of response and recovery of benthic biota to fishing, *Mar. Ecol. Prog. Ser.*, 311(May 2014), 1–14, doi:10.3354/meps311001, 2006.
- Lucchetti, A. and Sala, A.: Impact and performance of mediterranean fishing gear by side-scan sonar technology, *Can. J. Fish. Aquat. Sci.*, 69(11), 1806–1816, doi:10.1139/f2012-107, 2012.
- 545 van Marlen, B., de Haan, D., van Gool, A. and Burggraaf, D.: The effect of pulse stimulation on marine biota – Research in relation to ICES advice – Progress report on the effects on benthic invertebrates, , 53, 2009.
- Van Marlen, B., Wiegerinck, J. A. M., van Os-Koomen, E. and van Barneveld, E.: Catch comparison of flatfish pulse trawls and a tickler chain beam trawl, *Fish. Res.*, 151, 57–69, doi:10.1016/j.fishres.2013.11.007, 2014.
- Martín, J., Puig, P., Masqué, P., Palanques, A. and Sánchez-Gómez, A.: Impact of bottom trawling on deep-sea sediment 550 properties along the flanks of a submarine canyon, *PLoS One*, 9(8), doi:10.1371/journal.pone.0104536, 2014.
- Mayer, L. M.: Surface area control of organic carbon accumulation in continental shelf sediments, *Geochim. Cosmochim. Acta*, 58(4), 1271–1284, doi:10.1016/0016-7037(94)90381-6, 1994.
- Mayer, L. M., Schick, D. F., Findlay, R. H. and Rice, D. L.: Effects of commercial dragging on sedimentary organic matter, *Mar. Environ. Res.*, 31(4), 249–261, doi:10.1016/0141-1136(91)90015-Z, 1991.
- 555 McConnaughey, R. A., Hiddink, J. G., Jennings, S., Pitcher, C. R., Kaiser, M. J., Suuronen, P., Sciberras, M., Rijnsdorp, A. D., Collie, J. S., Mazor, T., Amoroso, R. O., Parma, A. M. and Hilborn, R.: Choosing best practices for managing impacts of trawl fishing on seabed habitats and biota, *Fish Fish.*, 21(2), 319–337, doi:10.1111/faf.12431, 2020.
- Mengual, B., Cayocca, F., Le Hir, P., Draye, R., Laffargue, P., Vincent, B. and Garlan, T.: Influence of bottom trawling on sediment resuspension in the ‘Grande-Vasière’ area (Bay of Biscay, France), *Ocean Dyn.*, 66(9), 1181–1207, 560 doi:10.1007/s10236-016-0974-7, 2016.
- Mengual, B., Le Hir, P., Cayocca, F. and Garlan, T.: Bottom trawling contribution to the spatio-temporal variability of sediment fluxes on the continental shelf of the Bay of Biscay (France), *Mar. Geol.*, 414(May), 77–91, doi:10.1016/j.margeo.2019.05.009, 2019.
- Middelburg, J. J., Soetaert, K., Herman, P. M. J. and Heip, C. H. R.: Denitrification in marine sediments: A model study, 565 *Global Biogeochem. Cycles*, 10(4), 661–673, doi:10.1029/96GB02562, 1996.
- van der Molen, J., Aldridge, J. N., Coughlan, C., Parker, E. R., Stephens, D. and Ruardij, P.: Modelling marine ecosystem response to climate change and trawling in the North Sea, *Biogeochemistry*, 113(1–3), 213–236, doi:10.1007/s10533-012-9763-7, 2013.
- Morato, T., Watson, R., Pitcher, T. J. and Pauly, D.: Fishing down the deep, *Fish Fish.*, 7(1), 24–34, doi:10.1111/j.1467-

- 570 2979.2006.00205.x, 2006.
- Murray, F., Copland, P., Boulcott, P., Robertson, M. and Bailey, N.: Impacts of electrofishing for razor clams (*Ensis* spp.) on benthic fauna, *Fish. Res.*, 174, 40–46, doi:10.1016/j.fishres.2015.08.028, 2016.
- Norse, E. A., Brooke, S., Cheung, W. W. L., Clark, M. R., Ekeland, I., Froese, R., Gjerde, K. M., Haedrich, R. L., Heppell, S. S., Morato, T., Morgan, L. E., Pauly, D., Sumaila, R. and Watson, R.: Sustainability of deep-sea fisheries, *Mar. Policy*, 36(2), 575 307–320, doi:10.1016/j.marpol.2011.06.008, 2012.
- O’Neill, F. G. and Ivanović, A.: The physical impact of towed demersal fishing gears on soft sediments, *ICES J. Mar. Sci.*, 73(suppl_1), i5–i14, doi:10.1093/icesjms/fsv125, 2016.
- O’Neill, F. G. and Summerbell, K.: The mobilisation of sediment by demersal otter trawls, *Mar. Pollut. Bull.*, 62(5), 1088–1097, doi:10.1016/j.marpolbul.2011.01.038, 2011.
- 580 Palanques, A., Puig, P., Guillén, J., Demestre, M. and Martín, J.: Effects of bottom trawling on the Ebro continental shelf sedimentary system (NW Mediterranean), *Cont. Shelf Res.*, 72, 83–98, doi:10.1016/j.csr.2013.10.008, 2014.
- Paradis, S., Pusceddu, A., Masqué, P., Puig, P., Moccia, D., Russo, T. and Iacono, C. Lo: Organic matter contents and degradation in a highly trawled area during fresh particle inputs (Gulf of Castellammare, southwestern Mediterranean), *Biogeosciences*, 16(21), 4307–4320, doi:10.5194/bg-16-4307-2019, 2019.
- 585 Paradis, S., Goñi, M., Masqué, P., Durán, R., Arjona-Camas, M., Palanques, A. and Puig, P.: Persistence of Biogeochemical Alterations of Deep-Sea Sediments by Bottom Trawling, *Geophys. Res. Lett.*, 48(2), 1–12, doi:10.1029/2020gl091279, 2021.
- Paschen, M., Richter, U. and Köpnick, W.: Trawl Penetration in the Seabed (TRAPESE). Final report Contract No. 96-006., 2000.
- Pinheiro, J., Bates, D., DebRoy, S., Sarkar, D. and R Core Team: {nlme}: Linear and Nonlinear Mixed Effects Models, [online] 590 Available from: <https://cran.r-project.org/package=nlme>, 2019.
- Pinheiro, J. C. and Bates, D. M.: *Mixed-Effects Models in S and S-PLUS*, edited by J. Chambers, W. Eddy, W. Hardle, S. Sheater, and L. Tierney, Springer-Verlag, New York., 2000.
- Pitcher, C. R., Ellis, N., Jennings, S., Hiddink, J. G., Mazor, T., Kaiser, M. J., Kangas, M. I., McConnaughey, R. A., Parma, A. M., Rijnsdorp, A. D., Suuronen, P., Collie, J. S., Amoroso, R., Hughes, K. M. and Hilborn, R.: Estimating the sustainability 595 of towed fishing-gear impacts on seabed habitats: a simple quantitative risk assessment method applicable to data-limited fisheries, *Methods Ecol. Evol.*, 8(4), 472–480, doi:10.1111/2041-210X.12705, 2017.
- Polymenakou, P. N., Pusceddu, A., Tselepides, A., Polychronaki, T., Giannakourou, A., Fiordelmondo, C., Hatziyanni, E. and Danovaro, R.: Benthic microbial abundance and activities in an intensively trawled ecosystem (Thermaikos Gulf, Aegean Sea), *Cont. Shelf Res.*, 25(19–20), 2570–2584, doi:10.1016/j.csr.2005.08.018, 2005.
- 600 Poos, J.-J., Hintzen, N. T., van Rijssel, J. C. and Rijnsdorp, A. D.: Efficiency changes in bottom trawling for flatfish species as a result of the replacement of mechanical stimulation by electric stimulation, edited by M. Pol, *ICES J. Mar. Sci.*, doi:10.1093/icesjms/fsaa126, 2020.
- Price, W. L.: A controlled random search procedure for global optimisation, *Comput. J.*, 20(4), 367–370,

doi:10.1093/comjnl/20.4.367, 1977.

- 605 Provoost, P., Braeckman, U., Van Gansbeke, D., Moodley, L., Soetaert, K., Middelburg, J. J. and Vanaverbeke, J.: Modelling benthic oxygen consumption and benthic-pelagic coupling at a shallow station in the southern North Sea, *Estuar. Coast. Shelf Sci.*, 120, 1–11, doi:10.1016/j.ecss.2013.01.008, 2013.
- Puig, P., Canals, M., Company, J. B., Martín, J., Amblas, D., Lastras, G., Palanques, A. and Calafat, A. M.: Ploughing the deep sea floor, *Nature*, 489(7415), 286–289, doi:10.1038/nature11410, 2012.
- 610 Pusceddu, A., Fiordelmondo, C., Polymenakou, P., Polychronaki, T., Tselepides, A. and Danovaro, R.: Effects of bottom trawling on the quantity and biochemical composition of organic matter in coastal marine sediments (Thermaikos Gulf, northwestern Aegean Sea), *Cont. Shelf Res.*, 25(19–20), 2491–2505, doi:10.1016/j.csr.2005.08.013, 2005.
- Pusceddu, A., Bianchelli, S., Martín, J., Puig, P., Palanques, A., Masqué, P. and Danovaro, R.: Chronic and intensive bottom trawling impairs deep-sea biodiversity and ecosystem functioning, *Proc. Natl. Acad. Sci. U. S. A.*, 111(24), 8861–8866, doi:10.1073/pnas.1405454111, 2014.
- 615 R Core Team: R: A language and environment for statistical computing, [online] Available from: <http://www.r-project.org/>, 2020.
- Riemann, B. and Hoffmann, E.: Ecological consequences of dredging and bottom trawling in the Limfjord, Denmark, *Mar. Ecol. Prog. Ser.*, 69(1–2), 171–178, doi:10.3354/meps069171, 1991.
- 620 Rijnsdorp, A.: Micro-scale distribution of beam trawl effort in the southern North Sea between 1993 and 1996 in relation to the trawling frequency of the sea bed and the impact on benthic organisms, *ICES J. Mar. Sci.*, 55(3), 403–419, doi:10.1006/jmsc.1997.0326, 1998.
- Rijnsdorp, A. A. D., Boute, P., Tiano, J., Lankheet, M., Soetaert, K., Beier, U., De Borger, E. and Hintzen, N.: The implications of a transition from tickler chain beam trawl to electric pulse trawl on the sustainability and ecosystem effects of the fishery for North Sea sole : an impact assessment, *IJmuiden.*, 2020a.
- 625 Rijnsdorp, A. D., Bastardie, F., Bolam, S. G., Buhl-Mortensen, L., Eigaard, O. R., Hamon, K. G., Hiddink, J. G., Hintzen, N. T., Ivanović, A., Kenny, A., Laffargue, P., Nielsen, J. R., O'Neill, F. G., Piet, G. J., Polet, H., Sala, A., Smith, C., van Denderen, P. D., van Kooten, T. and Zengin, M.: Towards a framework for the quantitative assessment of trawling impact on the seabed and benthic ecosystem, *ICES J. Mar. Sci.*, 73(suppl_1), i127–i138, doi:10.1093/icesjms/fsv207, 2016.
- 630 Rijnsdorp, A. D., Bolam, S. G., Garcia, C., Hiddink, J. G., Hintzen, N. T., van Denderen, P. D. and van Kooten, T.: Estimating sensitivity of seabed habitats to disturbance by bottom trawling based on the longevity of benthic fauna, *Ecol. Appl.*, 28(5), 1302–1312, doi:10.1002/eap.1731, 2018.
- Rijnsdorp, A. D., Depestele, J., Eigaard, O. R., Hintzen, N. T., Ivanović, A., Molenaar, P., O'Neill, F. G., Polet, H., Poos, J. J. and Kooten, T. van: Mitigating seafloor disturbance of bottom trawl fisheries for North Sea sole *Solea solea* by replacing mechanical with electrical stimulation. (in press), *PLoS One*, doi:10.1371/journal.pone.0228528, 2020b.
- 635 Robinson, J. E., Newell, R. C., Seiderer, L. J. and Simpson, N. M.: Impacts of aggregate dredging on sediment composition and associated benthic fauna at an offshore dredge site in the southern North Sea, *Mar. Environ. Res.*, 60(1), 51–68,

doi:<https://doi.org/10.1016/j.marenvres.2004.09.001>, 2005.

640 Sciberras, M., Parker, R., Powell, C., Robertson, C., Kröger, S., Bolam, S. and Geert Hiddink, J.: Impacts of bottom fishing on the sediment infaunal community and biogeochemistry of cohesive and non-cohesive sediments, *Limnol. Oceanogr.*, 61(6), 2076–2089, doi:10.1002/lno.10354, 2016.

645 Sciberras, M., Hiddink, J. G., Jennings, S., Szostek, C. L., Hughes, K. M., Kneafsey, B., Clarke, L. J., Ellis, N., Rijnsdorp, A. D., McConnaughey, R. A., Hilborn, R., Collie, J. S., Pitcher, C. R., Amoroso, R. O., Parma, A. M., Suuronen, P. and Kaiser, M. J.: Response of benthic fauna to experimental bottom fishing: A global meta-analysis, *Fish Fish.*, 19(4), 698–715, doi:10.1111/faf.12283, 2018.

Seitzinger, S., Harrison, J. A., Böhlke, J. K., Bouwman, A. F., Lowrance, R., Peterson, B., Tobias, C. and Van Drecht, G.: Denitrification across landscapes and waterscapes: A synthesis, *Ecol. Appl.*, 16(6), 2064–2090, doi:10.1890/1051-0761(2006)016[2064:DALAWA]2.0.CO;2, 2006.

650 Soetaert, K.: rootSolve: Nonlinear root finding, equilibrium and steady-state analysis of ordinary differential equations, 2009. Soetaert, K. and Meysman, F.: Reactive transport in aquatic ecosystems: Rapid model prototyping in the open source software R, *Environ. Model. Softw.*, 32, 49–60, doi:10.1016/j.envsoft.2011.08.011, 2012.

Soetaert, K. and Middelburg, J. J.: Modeling eutrophication and oligotrophication of shallow-water marine systems: The importance of sediments under stratified and well-mixed conditions, *Hydrobiologia*, 629(1), 239–254, doi:10.1007/s10750-009-9777-x, 2009.

655 Soetaert, K. and Petzoldt, T.: Inverse Modelling, Sensitivity and Monte Carlo analysis in R Using PACKage FME, *J. Stat. Softw.*, 33(3), 1–28, doi:10.18637/jss.v033.i03, 2010.

Soetaert, K. and Petzoldt, T.: marelac: Tools for Aquatic Sciences, [online] Available from: <https://cran.r-project.org/package=marelac>, 2018.

660 Soetaert, K., Herman, P. M. J. and Middelburg, J. J.: A model of early diagenetic processes from the shelf to abyssal depths, *Geochim. Cosmochim. Acta*, 60(6), 1019–1040, doi:10.1016/0016-7037(96)00013-0, 1996a.

Soetaert, K., Herman, P. M. J. and Middelburg, J. J.: Dynamic response of deep-sea sediments to seasonal variations: A model, *Limnol. Oceanogr.*, 41(8), 1651–1668, doi:10.4319/lno.1996.41.8.1651, 1996b.

Soetaert, K., Petzoldt, T. and Setzer, R. W.: Solving Differential Equations in R: Package deSolve, *J. Stat. Softw.*, 33(9), 1–25, doi:10.18637/jss.v033.i09, 2010.

665 Soetaert, M., Chiers, K., Duchateau, L., Polet, H., Verschueren, B. and Decostere, A.: Determining the safety range of electrical pulses for two benthic invertebrates: brown shrimp (*Crangon crangon* L.) and ragworm (*Alitta virens* S.), *ICES J. Mar. Sci.*, 72(3), 973–980, doi:10.1093/icesjms/fsu176, 2015a.

Soetaert, M., Decostere, A., Polet, H., Verschueren, B. and Chiers, K.: Electrotrawling: a promising alternative fishing technique warranting further exploration, *Fish Fish.*, 16(1), 104–124, doi:10.1111/faf.12047, 2015b.

670 Soetaert, M., Verschueren, B., Chiers, K., Duchateau, L., Polet, H. and Decostere, A.: Laboratory Study of the Impact of Repetitive Electrical and Mechanical Stimulation on Brown Shrimp *Crangon crangon*, *Mar. Coast. Fish.*, 8(1), 404–411,

doi:10.1080/19425120.2016.1180333, 2016.

- 675 Tiano, J. C., Witbaard, R., Bergman, M. J. N., Van Rijswijk, P., Tramper, A., Van Oevelen, D., Soetaert, K. and Degraer, S.: Acute impacts of bottom trawl gears on benthic metabolism and nutrient cycling, *ICES J. Mar. Sci.*, 76(6), 1917–1930, doi:10.1093/icesjms/fsz060, 2019.
- Tiano, J. C., van der Reijden, K. J., O’Flynn, S., Beauchard, O., van der Ree, S., van der Wees, J., Ysebaert, T. and Soetaert, K.: Experimental bottom trawling finds resilience in large-bodied infauna but vulnerability for epifauna and juveniles in the Frisian Front, *Mar. Environ. Res.*, 159(December 2019), 104964, doi:10.1016/j.marenvres.2020.104964, 2020.
- 680 Toussaint, E., De Borger, E., Braeckman, U., De Backer, A., Soetaert, K. and Vanaverbeke, J.: Faunal and environmental drivers of carbon and nitrogen cycling along a permeability gradient in shallow North Sea sediments, *Sci. Total Environ.*, 144994, doi:10.1016/j.scitotenv.2021.144994, 2021.
- Trimmer, M., Petersen, J., Sivyver, D., Mills, C., Young, E. and Parker, E.: Impact of long-term benthic trawl disturbance on sediment sorting and biogeochemistry in the southern North Sea, *Mar. Ecol. Prog. Ser.*, 298, 79–94, doi:10.3354/meps298079, 2005.
- 685 Van De Velde, S., Van Lancker, V., Hidalgo-Martinez, S., Berelson, W. M. and Meysman, F. J. R.: Anthropogenic disturbance keeps the coastal seafloor biogeochemistry in a transient state, *Sci. Rep.*, 8(1), doi:10.1038/s41598-018-23925-y, 2018.
- Watling, L., Findlay, R. H., Mayer, L. M. and Schick, D. F.: Impact of a scallop drag on the sediment chemistry, microbiota, and faunal assemblages of a shallow subtidal marine benthic community, *J. Sea Res.*, 46(3–4), 309–324, doi:10.1016/S1385-1101(01)00083-1, 2001.
- 690 Watson, R. A. and Morato, T.: Fishing down the deep: Accounting for within-species changes in depth of fishing, *Fish. Res.*, 140, 63–65, doi:10.1016/j.fishres.2012.12.004, 2013.
- West, B. T., Welch, K. B. and Galecki, A. T.: *Linear Mixed Models*, Chapman and Hall/CRC., 2014.
- Zuur, A. F., Ieno, E. N., Walker, N., Saveliev, A. A. and Smith, G. M.: *Mixed effects models and extensions in ecology with R*, Springer New York, New York, NY., 2009.

695

Figures

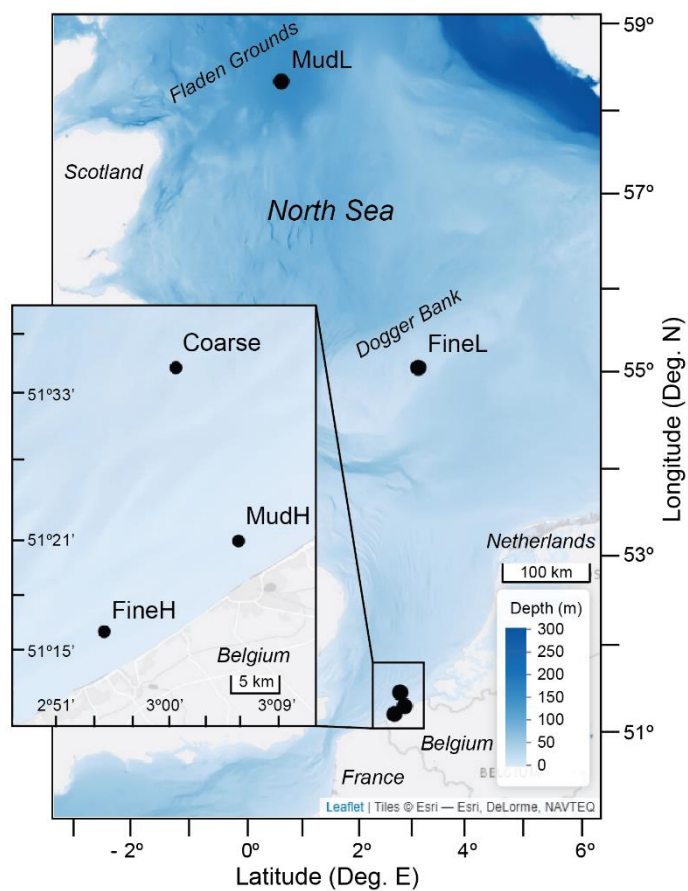
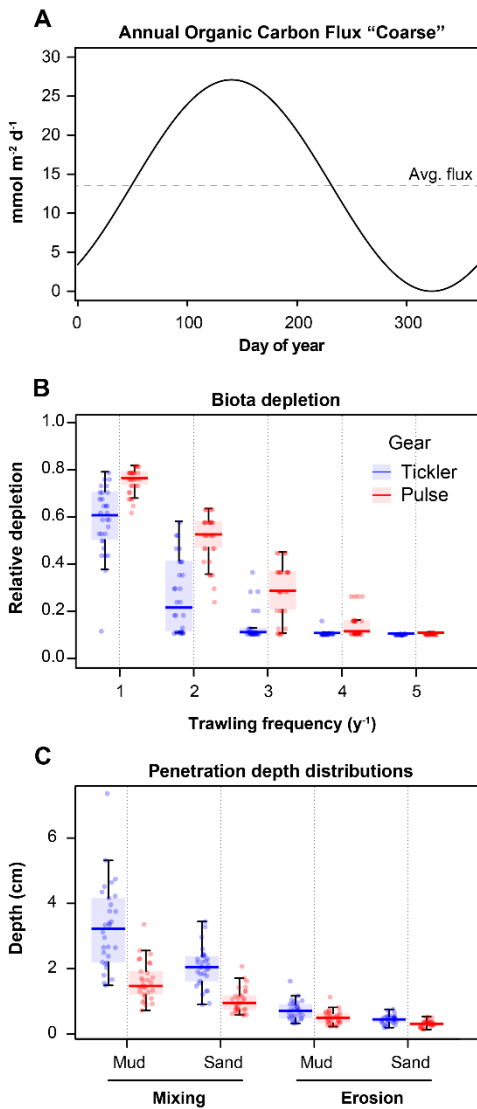
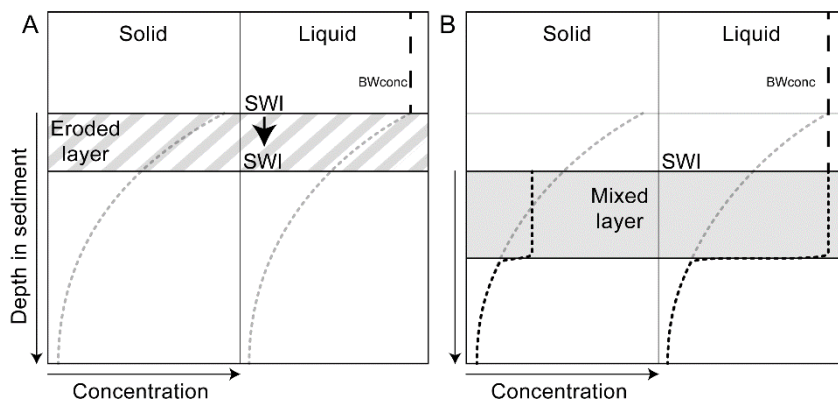


Figure 1: Sampling locations in the North Sea. Offshore stations MudL and FineL sampled by De Borger et al. (2021), and nearshore stations (inset) in the Belgian part of the North Sea by Toussaint et al. (2021). L = low nutrient content relative to H high nutrient content. Basemap: © Esri, depth raster by GEBCO Compilation Group (2020).



705 **Figure 2:** (A) Example of sinusoidal varying organic carbon deposition flux, based on average DIC efflux measured by Toussaint et al. (2021) for the Coarse sediment. (B) Simulated depletion of bioturbation, relative to the maximum (y-axis), with increasing trawling frequency (y^{-1} , x-axis) in fine sands. Doy = day of year. (C) Imposed mixing and erosion depths (cm), for fine sandy and muddy sediments, for the two gear types (tickler chain and pulse gear).



710 **Figure 3: Implementation of a trawling event, on sediment concentrations of solids and liquids. Dotted grey lines: initial concentration profile, black line: profile after the event. (A) Hydraulic erosion removes a layer of sediment, moving the sediment-water interface (SWI) downward; the effect is implemented similarly for solids and liquids. (B) Subsequent mixing of the sediment homogenises the solid concentration over the mixed layer depth whereas liquids are set to the overlying bottom water concentration (BWconc). Depths of both impacts are defined in the text.**

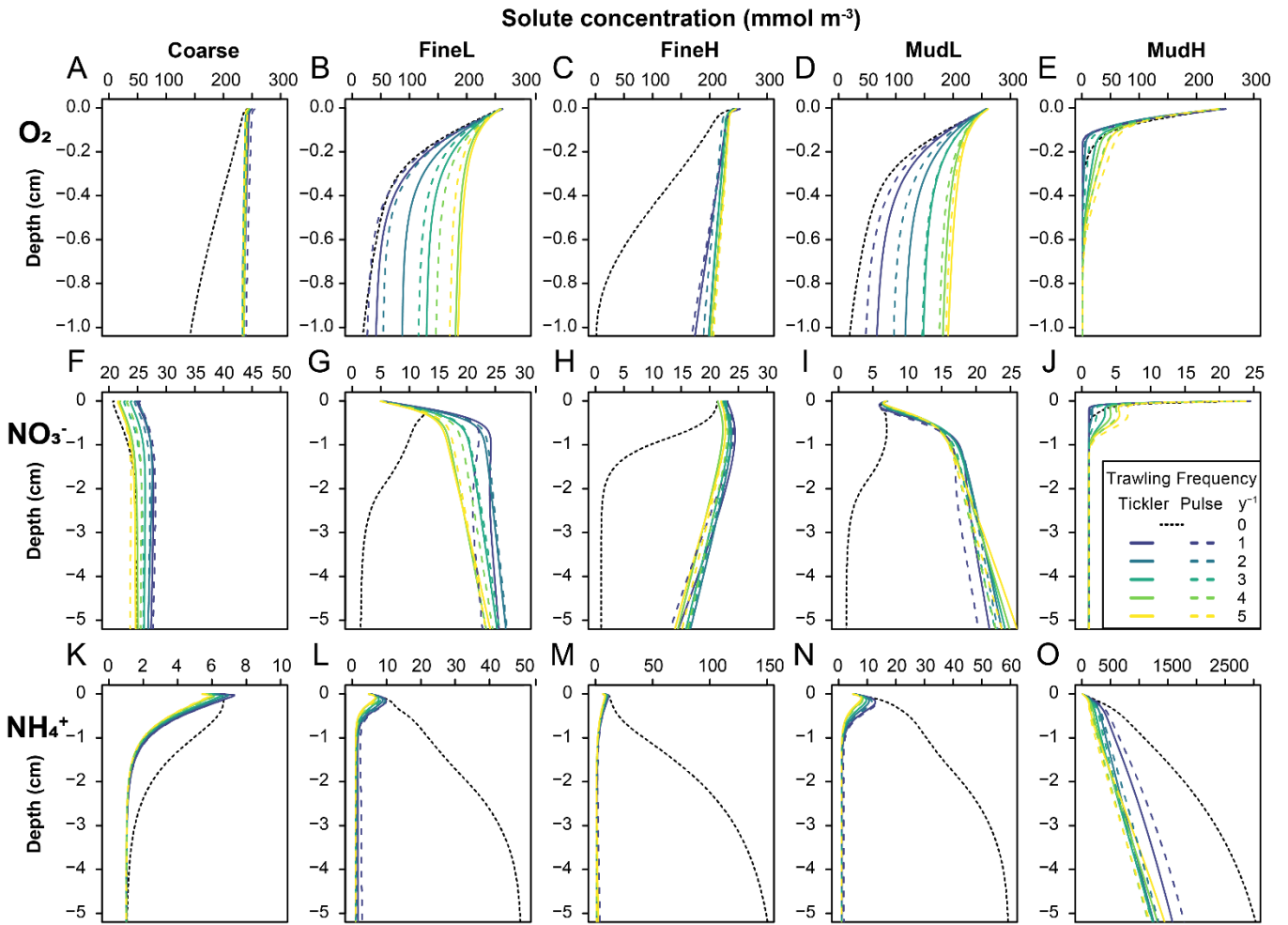


Figure 4: Annually averaged modelled concentrations (mmol m⁻³) of oxygen (A - E), nitrate (F - J), and ammonium (K - O; rows) in the different types of sediment used as the basis for the disturbance simulations (columns). Black dotted line is the 0 trawl default, full and dotted coloured lines are tickler and pulse gear respectively, with increasing trawling frequencies as different colours.

715

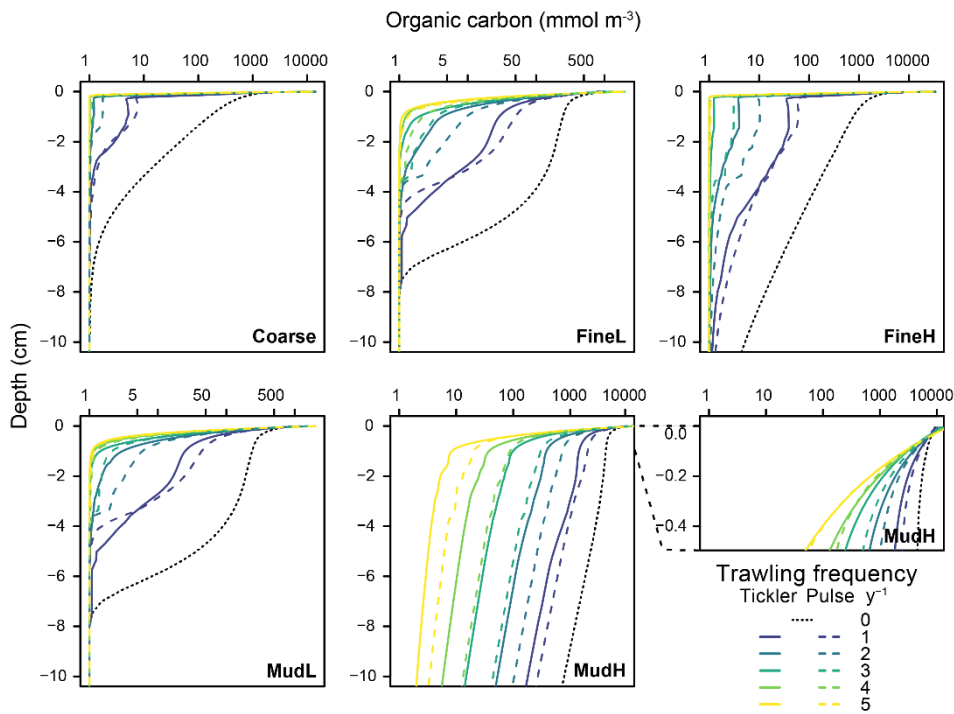


Figure 5: Total organic carbon concentrations in the upper 10 cm of the sediment (mmol m^{-3}) for the different stations (X-axis on log-scale). Profiles represent the average profile per trawling intensity ($n = 30$), for the deep penetrating gear (full), and shallow penetrating gear (dotted line). For station MudH a cut-out of the first 0.5 cm is inflated to show the displacement of OC to the surface.

720

Effects on mineralization rates

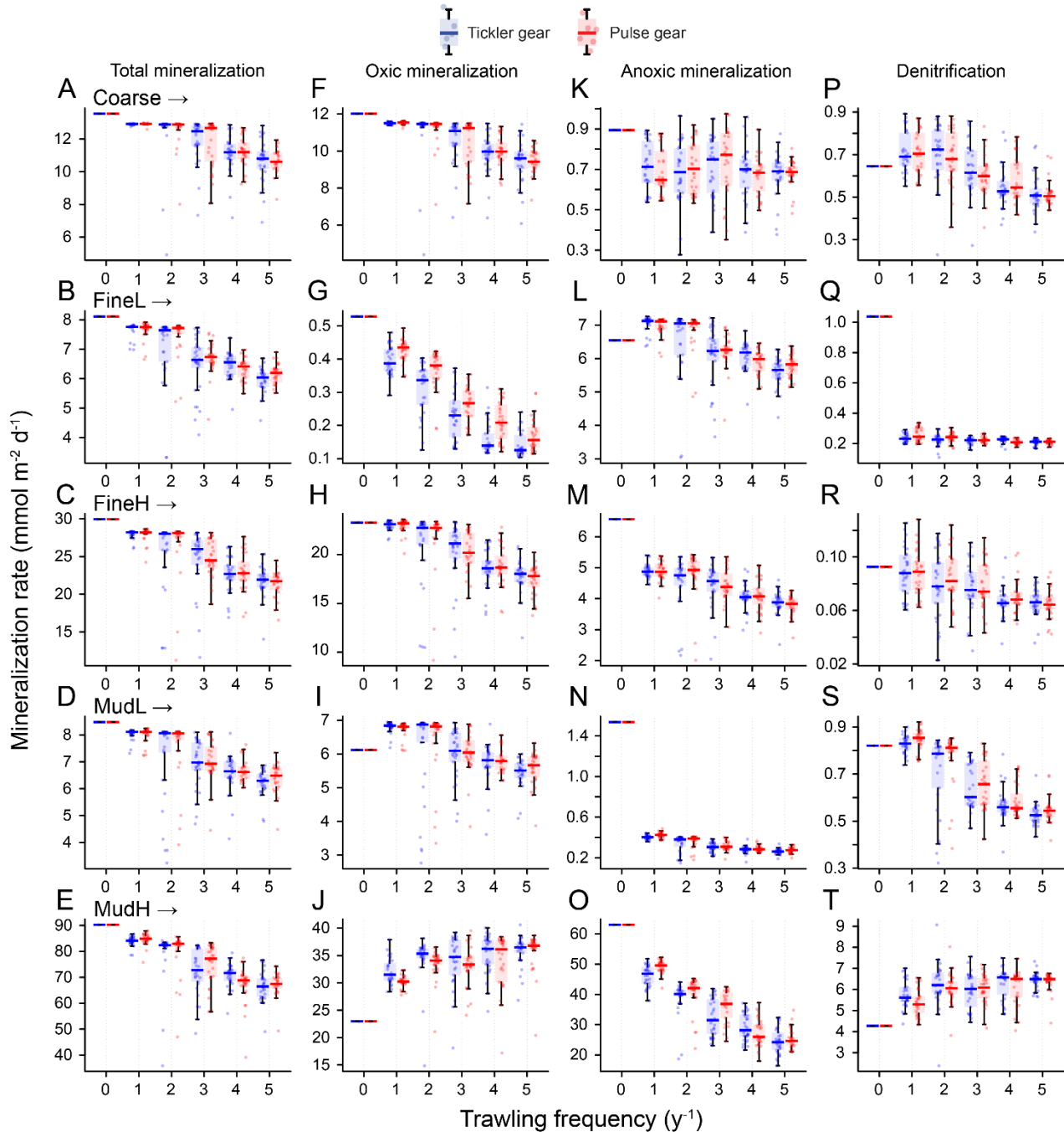
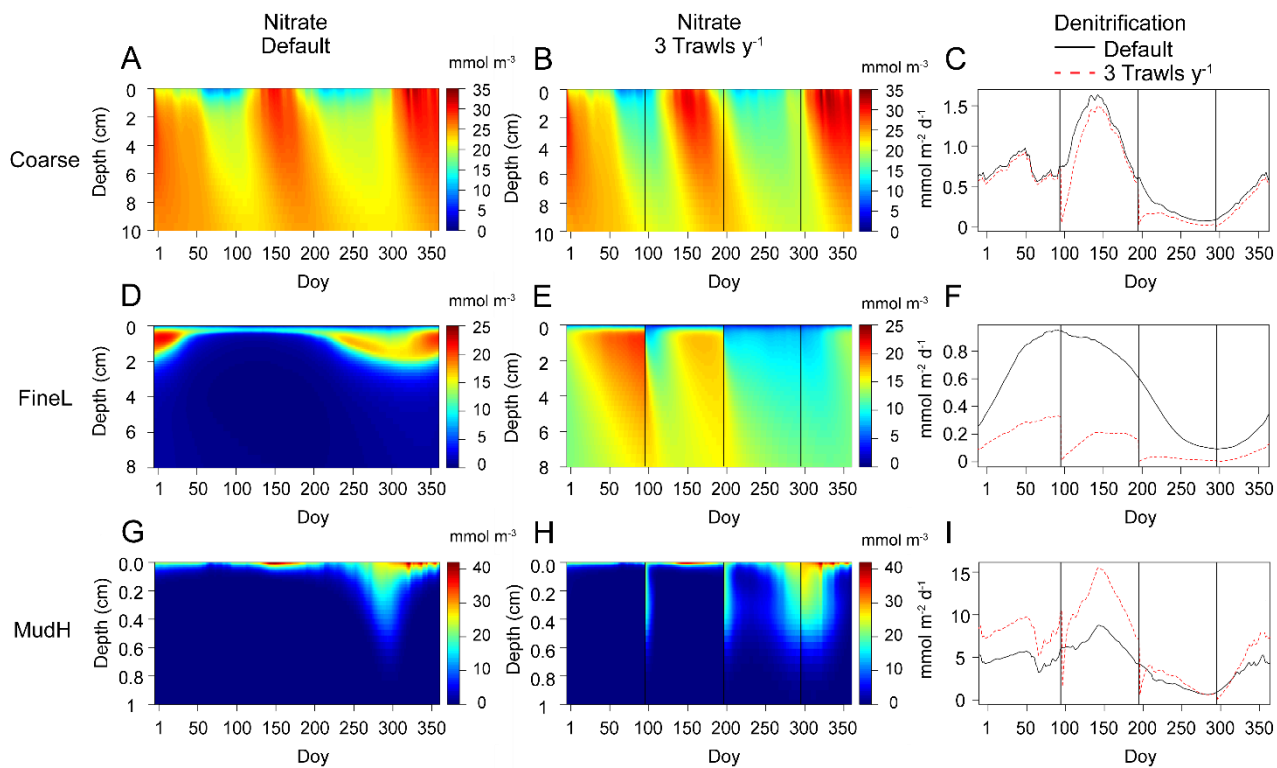


Figure 6: Rates of total mineralization (A - E), and the three main mineralization processes (F - J: oxidic; K - O: anoxic; P - T: denitrification) (y-axis, $\text{mmol m}^{-2} \text{d}^{-1}$) for each gear type (blue boxes: tickler gear; red boxes: pulse gear), and for increasing trawling frequency (x-axis, y^{-1})



725

Figure 7: Nitrate concentrations (mmol m^{-3}) in the sediment for a no-trawling simulation (A, D, G), and for 3 trawls y^{-1} (D, E, F), and associated annual denitrification rates ($\text{mmol m}^{-2} \text{d}^{-1}$, black lines = default (0 trawls y^{-1}), red dotted lines = trawling simulation). Represented stations are Coarse (A – C), FineL (D – F), and MudH (G – I). Black vertical lines indicate when trawling events take place.

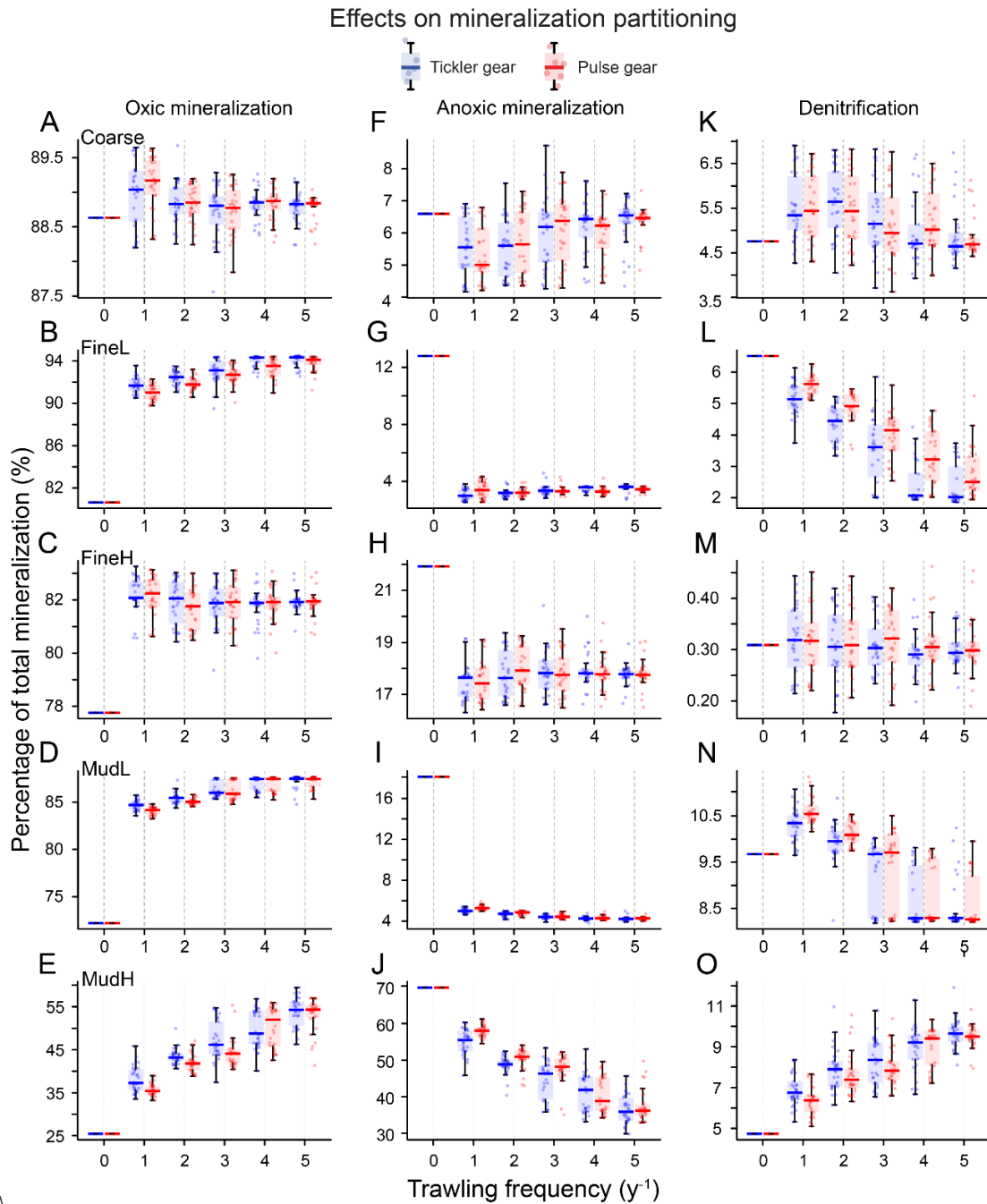


Figure 8: Relative contributions (y-axis, as proportion) of the three main mineralization processes (A - E: oxic; F - J: anoxic; F - O: denitrification) to the total mineralization for each gear type (blue boxes: tickler gear; red boxes: pulse gear), and for increasing trawling frequency (x-axis, y^{-1}).

Table 1: Diagenetic reactions used in OMEXDIA. x denotes the molar C:P ratio, y the molar N:P ratio in organic matter per mole of phosphorus (for Redfield Stoichiometry, $x = 106$, $y = 16$).

Process	Reaction	
Oxic mineralization	$(\text{CH}_2\text{O})_x (\text{NH}_3)_y (\text{H}_3\text{PO}_4) + x\text{O}_2 \rightarrow x\text{CO}_2 + y\text{NH}_3 + \text{H}_3\text{PO}_4 + x\text{H}_2\text{O}$	(1.1)
Denitrification	$(\text{CH}_2\text{O})_x (\text{NH}_3)_y (\text{H}_3\text{PO}_4) + 0.8 \cdot \text{HNO}_3 \rightarrow x\text{CO}_2 + y\text{NH}_3 + 0.4 \cdot \text{N}_2 + \text{H}_3\text{PO}_4 + 1.4 \cdot \text{H}_2\text{O}$	(1.2)
Anoxic mineralization	$(\text{CH}_2\text{O})_x (\text{NH}_3)_y (\text{H}_3\text{PO}_4) + \text{an oxidant} \rightarrow x\text{CO}_2 + y\text{NH}_3 + \text{H}_3\text{PO}_4 + x\text{ODU} + x\text{H}_2\text{O}$	(1.3)
Nitrification	$\text{NH}_3 + 2\text{O}_2 \rightarrow \text{HNO}_3 + \text{H}_2\text{O}$	(1.4)
ODU oxidation	$\text{ODU} + \text{O}_2 \rightarrow \text{an oxidant}$	(1.5)

740 **Table 2: Characteristics of the selected sites. Low and High nutrient classification is based on relative differences in nutrient build-up for the same sediment type (see figure S1 in supplement). MGS, SD.1, and SD.9 are median grainsize, and the boundaries of the 10th and 90th percentile of the grainsize respectively (in μm). Percentage of sand (63 – 1000 μm), and mud (< 63 μm), are weight percentages of a dried sediment sample sieved over a 1 mm sieve.**

Sediment type	Nutrients	Name	Lat (Deg. N)	Lon (Deg. E)	Depth (m)	MGS (μm)	SD.1 (μm)	SD.9 (μm)	Sand (%)	Mud (%)	Source*
Coarse sand	Low	Coarse	51.43483	2.809822	22	433 \pm 43	286 \pm 31	660 \pm 67	99 \pm 1	0 \pm 0	a
	Low	FineL	55.17374	3.161264	26	216 \pm 2	143 \pm 0	328 \pm 7	99 \pm 7	0 \pm 0	b
Fine sand	High	FineH	51.1853	2.7013	9	220 \pm 8	91 \pm 61	394 \pm 67	81 \pm 5	9 \pm 5	a
	Low	MudL	58.20097	0.525871	148	24 \pm 1	4 \pm 0	67 \pm 3	10 \pm 7	88 \pm 1	b
Mud	High	MudH	51.2714	2.905033	11	19 \pm 1	3 \pm 0	208 \pm 28	25 \pm 4	74 \pm 5	a

*a: Toussaint et al., 2021; b: De Borger et al., 2021.

Table 3: Parameters used for modelling the different sediment types.

Parameter	Description	Unit	Coarse	FineL	FineH	MudL	MudH
a. Fitted parameters							
wSed	Advection rate	cm d^{-1}	3.00 10^{-4}	3.00 10^{-7}	3.00 10^{-4}	3.00 10^{-7}	3.00 10^{-4}
pFast	Fast degrading fraction organic matter	-	0.94	0.95	0.93	0.95	0.90
pSlow	Slow degrading fraction organic matter	-	0.06	0.05	0.07	0.05	0.10
rFast	Decay rate FDET	d^{-1}	0.07	0.05	0.05	0.05	0.06
rSlow	Decay rate SDET	d^{-1}	3.82 10^{-4}	1.00 10^{-4}	1.86 10^{-4}	1.08 10^{-4}	3.65 10^{-5}
Db	Biodiffusivity coefficient	$\text{cm}^2 \text{d}^{-1}$	0.10 10^{-6}	1.03 10^{-3}	2.18 10^{-6}	1.11 10^{-3}	1.73 10^{-3}
biotdepth	Mixed layer depth	cm	0.50	2.00	2.00	2.00	0.50
rnit	Max. nitrification rate	d^{-1}	1.76	24.84	1.92	11.62	3.62
rODUox	Max. ODU oxidation rate	d^{-1}	0.70	3.82	2.26	5.92	3.58
ksO2oduox	Half saturation, O_2 in ODU oxidation	$\text{mmol O}_2 \text{m}^{-3}$	1.11	2.74	0.69	4.61	3.50
ksNO3denit	Half saturation, NO_3^- in denitrification	$\text{mmol NO}_3 \text{m}^{-3}$	72.73	48.02	68.70	14.47	8.80
kinO2denit	Half saturation, O_2 inhibition of denitrification	$\text{mmol O}_2 \text{m}^{-3}$	82.63	57.69	33.56	86.55	77.00

kinNO3anox	Half saturation, NO ₃ ⁻ inhibition anoxic mineralization	mmol NO ₃ m ⁻³	6.44	1.26	6.30	2.33	8.67
kinO2anox	Half saturation, O ₂ inhibition anoxic mineralization	mmol O ₂ m ⁻³	91.00	57.69	95.08	42.19	75.84
rCaPprod	Rate of CaP production	d ⁻¹	0.08	1.85 10 ⁻³	2.19 10 ⁻³	0.00	9.82 10 ⁻⁷
rCaPdis	Rate of CaP dissolution	d ⁻¹	6.60 10 ⁻⁵	9.01 10 ⁻⁹	0.00	0.00	4.47 10 ⁻⁶
rFePadsorp	Rate of FeP adsorption	d ⁻¹	0.094	0.16	4.06	0.10	0.36
rFePdesorp	Rate of FeP desorption	d ⁻¹	0.00	9.26 10 ⁻⁵	0.02	0.00	0.11
b. Measured parameters							
Cflux	Carbon deposition flux	nmolC cm ⁻² d ⁻¹	1354.7	810.9	2994.0	848.0	9025.5
Φ	Porosity	-	0.35	0.59	0.42	0.71	0.73

745 **Table 4: Percentage of bioturbation (average ± sd) remaining after sustained trawling activity at a given trawling frequency (y⁻¹), for the different sediment types. T: deeply penetrating tickler gear, P: shallow penetrating pulse gear.**

Frequency	Coarse		Fine		Mud	
	T	P	T	P	T	P
1	81 ± 7	90 ± 3	60 ± 16	76 ± 7	27 ± 17	42 ± 12
2	61 ± 13	80 ± 14	26 ± 16	51 ± 1	11 ± 1	11 ± 1
3	42 ± 17	69 ± 21	14 ± 7	28 ± 12	11 ± 0	11 ± 0
4	27 ± 18	59 ± 25	11 ± 1	15 ± 6	11 ± 0	11 ± 0
5	19 ± 15	49 ± 26	11 ± 1	11 ± 1	11 ± 0	11 ± 0

Table 5: Generalized least squares (GLS) models for the total mineralization, oxic mineralization; anoxic mineralization, and denitrification as a function of increasing trawling frequency (Freq and Freq²), the fishing gear type (Gear), and the sediment context (Sed) and interactions between model terms Freq:Sed, Freq²:Sed.

Response variable y	Model
Total mineralization	$y = \text{Intercept} + a \cdot \text{Freq} + b \cdot \text{Freq}^2 + c \cdot \text{Sed} + d \cdot \text{Freq:Sed} + e \cdot \text{Freq}^2:\text{Sed}$ $y = 29.96 - 1.93 \text{ Freq} + 0.07 \text{ Freq}^2 + 55.05 \text{ S1}^* - 21.85 \text{ S2}^* - 16.40 \text{ S3}^* - 21.48 \text{ S4}^* + 2.62 \text{ Freq:S1} + 1.49 \text{ Freq:S2} + 1.31 \text{ Freq:S3} + 1.50 \text{ Freq:S4} - 0.95 \text{ Freq}^2:\text{S1} - 0.07 \text{ Freq}^2:\text{S2} - 0.07 \text{ Freq}^2:\text{S3} - 0.07 \text{ Freq}^2:\text{S4}$
Oxic mineralization	$y = \text{Intercept} + a \cdot \text{Freq} + b \cdot \text{Freq}^2 + c \cdot \text{Sed} + d \cdot \text{Freq:Sed} + e \cdot \text{Freq}^2:\text{Sed}$ $y = 23.29 - 0.12 \text{ Freq} - 0.20 \text{ Freq}^2 - 0.21 \text{ S1} - 16.74 \text{ S2} - 11.28 \text{ S3} - 17.17 \text{ S4} + 7.63 \text{ Freq:S1} + 0.58 \text{ Freq:S2} - 0.38 \text{ Freq:S3} + 0.91 \text{ Freq:S4} - 0.90 \text{ Freq}^2:\text{S1} + 0.06 \text{ Freq}^2:\text{S2} + 0.19 \text{ Freq}^2:\text{S3} + 0.01 \text{ Freq}^2:\text{S4}$
Anoxic mineralization	$y = \text{Intercept} + a \cdot \text{Freq} + b \cdot \text{Freq}^2 + c \cdot \text{Sed} + d \cdot \text{Freq:Sed} + e \cdot \text{Freq}^2:\text{Sed}$ $y = 6.57 - 1.23 \text{ Freq} + 0.14 \text{ Freq}^2 + 51.14 \text{ S1} - 5.53 \text{ S2} - 5.67 \text{ S3} - 5.03 \text{ S4} - 8.27 \text{ Freq:S1} + 0.80 \text{ Freq:S2} + 1.12 \text{ Freq:S3} + 0.59 \text{ Freq:S4} + 0.55 \text{ Freq}^2:\text{S1} - 0.09 \text{ Freq}^2:\text{S3} - 0.13 \text{ Freq}^2:\text{S3} - 0.07 \text{ Freq}^2:\text{S4}$
Denitrification	$y = \text{Intercept} + a \cdot \text{Freq} + b \cdot \text{Freq}^2 + c \cdot \text{Gear} + d \cdot \text{Sed} + e \cdot \text{Freq:Sed} + f \cdot \text{Freq}^2:\text{Sed}$ $y = 0.09 - 0.0034 \text{ Freq} - 0.00035 \text{ Freq}^2 - 0.00038 \text{ TicklerGear} + 4.14 \text{ S1} + 0.44 \text{ S2} + 0.55 \text{ S3} + 0.73 \text{ S4} + 1.26 \text{ Freq:S1} - 0.11 \text{ Freq:S2} + 0.06 \text{ Freq:S3} - 0.03 \text{ Freq:S4} - 0.18 \text{ Freq}^2:\text{S1} + 0.01 \text{ Freq}^2:\text{S2} - 0.02 \text{ Freq}^2:\text{S3} - 0.01 \text{ Freq}^2:\text{S4}$
*S1 = MudH, **S2 = FineL, ***S3 = Coarse, ****S4 = MudL	