

Destruction and reinstatement of coastal hypoxia in the South China Sea off the Pearl River Estuary

Yangyang Zhao^{1,2}, Khanittha Uthaipan¹, Zhongming Lu³, Yan Li¹, Jing Liu¹, Hongbin Liu^{4,5}, Jianping Gan^{3,5,6}, Feifei Meng¹, Minhan Dai¹

¹State Key Laboratory of Marine Environmental Science, College of Ocean and Earth Sciences, Xiamen University, Xiamen, 361102, China

²Environmental Physics, Institute of Biogeochemistry and Pollutant Dynamics, ETH Zurich, Zurich, 8092, Switzerland

³Division of Environment and Sustainability, Hong Kong University of Science and Technology, Kowloon, Hong Kong SAR, China

⁴Division of Life Science, Hong Kong University of Science and Technology, Kowloon, Hong Kong SAR, China

⁵Department of Ocean Science, Hong Kong University of Science and Technology, Kowloon, Hong Kong SAR, China

⁶Department of Mathematics, Hong Kong University of Science and Technology, Kowloon, Hong Kong SAR, China

Correspondence to: Minhan Dai (mdai@xmu.edu.cn)

Abstract. We examined the evolution of intermittent hypoxia off the Pearl River Estuary based on three cruise legs conducted in July 2018: one during severe hypoxic conditions before the passage of a typhoon and two post-typhoon legs showing destruction of the hypoxia and its reinstatement. The lowest ever recorded regional dissolved oxygen (DO) concentration of $3.5 \mu\text{mol kg}^{-1}$ ($\sim 0.1 \text{ mg L}^{-1}$) was observed in bottom waters during Leg 1, with a $\sim 660 \text{ km}^2$ area experiencing hypoxic conditions ($\text{DO} < 63 \mu\text{mol kg}^{-1}$). Hypoxia was completely destroyed by the typhoon passage but was quickly restored ~ 6 days later, resulting primarily from high biochemical oxygen consumption in bottom waters that averaged $14.6 \pm 4.8 \mu\text{mol O}_2 \text{ kg}^{-1} \text{ d}^{-1}$. The shoreward intrusion of offshore subsurface waters contributed to an additional $8.6 \pm 1.7 \%$ of oxygen loss during the reinstatement of hypoxia. Freshwater inputs suppressed wind-driven, turbulent mixing, stabilizing the water column and facilitating the hypoxia formation. The rapid reinstatement of summer hypoxia has a shorter timescale than the water residence time, which is however comparable with that of its initial disturbance from frequent tropical cyclones that occur throughout the wet season. This has important implications towards better understanding the intermittent nature of hypoxia and predicting coastal hypoxia in a changing climate.

1 Introduction

Coastal hypoxia has been increasingly exacerbated near the mouths of large rivers as a consequence of anthropogenic nutrient inputs (Gilbert et al., 2010; Rabalais et al., 2014; Breitburg et al., 2018). The rise in the size, intensity and frequency of eutrophication-induced hypoxia exposes coastal oceans to a higher risk of elevated N_2O and CH_4 production, enhanced ocean acidification and associated reductions in biodiversity, shifts in community structures and negative impacts on food security and livelihoods (Diaz and Rosenberg, 2008; Vaquer-Sunyer and Duarte, 2008; Naqvi et al., 2010).

Style Definition: Heading 1: Space Before: 12 pt, After: 0 pt, Line spacing: 1.5 lines

Style Definition: Heading 2: Space Before: 6 pt, After: 0 pt, Line spacing: 1.5 lines

Style Definition: Heading 3: Space Before: 6 pt, After: 6 pt

Deleted: during

Deleted: and tidal-

Deleted: induced

Deleted: comparable

Deleted: with

Deleted: and a

Deleted: timescale

40 Coastal hypoxia can be intermittent due to the dynamic nature of estuarine and coastal environments, where winds, tides, river discharge and circulation patterns strongly affect the ventilation of oxygen-deficient waters (Wang and Justić, 2009; Lu et al., 2018; Zhang et al., 2019). Constraints on oxygen supply can be easily eroded by changes in physical forcings, leading to the temporal alleviation of hypoxia (Laurent and Fennel, 2019). Despite the wide application of oxygen budget analysis and modelling to diagnose the dominant processes driving the formation and maintenance of hypoxia (Yu et al., 2015; Li et al., 45 2016; Lu et al., 2018), the evolution of intermittent hypoxia, such as the destruction and reinstatement of hypoxia from disturbance by tropical cyclones, remains to be better characterized (Testa et al., 2017). Specifically, the identification of key processes and timescale constraints for these hypoxia destruction and recovery processes is of critical importance in order to predict site-specific hypoxia and its cascading effects, and to forecast the long-term impact of hypoxia under a changing climate with higher-intensity extreme events (Knutson et al., 2010; Mendelsohn et al., 2012).

50 Large riverine nutrient loadings and the resulting eutrophication have recently tipped the lower Pearl River Estuary (PRE) and adjacent shelf areas into seasonally hypoxic systems (Yin et al., 2004; Rabouille et al., 2008; Su et al., 2017; Qian et al., 2018; Cui et al., 2019; Zhao et al., 2020). Modelling results have shown that summer hypoxia off the PRE is largely intermittent owing to high-frequency variations in wind forcing and tidal fluctuations (Wang et al., 2017; Huang et al., 2019). Hypoxia is 55 often interrupted by the passage of typhoons, but redevelops quickly with a tendency toward rapid oxygen declines (Su et al., 2017; Huang et al., 2019). The prevailing southwest monsoon usually favours the expansion of a quasi-steady-state freshwater bulge outside the entrance of the PRE (Gan et al., 2009; Lu et al., 2018) that promotes water column stability. However, it remains unclear how the interaction between wind stress, tidal forcing and freshwater buoyancy affects the bottom oxygen conditions when the winds shift in the downwelling-favourable easterly or southeasterly direction, especially in the wake of 60 tropical cyclones.

It is known that aerobic respiration of organic matter is largely responsible for the oxygen depletion here (Su et al., 2017; Qian et al., 2018). Common methods to quantify oxygen sinks under hypoxic conditions include the analysis of oxygen budgets based on the mass balance of oxygen and estimates of community/bacterial respiration or nitrification rates using field 65 incubations (Zhang and Li, 2010; Li et al., 2015; Su et al., 2017; Cui et al., 2019). However, the budget analysis of oxygen typically assumes a steady state system (Zhang and Li, 2010; Cui et al., 2019) given that the change of oxygen over time is often much smaller than the oxygen depletion and advection/diffusion fluxes (Cui et al., 2019). The respiration or nitrification rates estimated from (enriched) incubation experiments also merely indicate the oxygen consumption rate (OCR) under a specific low-oxygen condition at the time of sampling (He et al., 2014; Su et al., 2017). The actual magnitude of *in situ* OCR 70 during the hypoxia formation has rarely been reported at large-scales. The role of lateral advection (and/or upwelling) also remains to be better quantified (Zhang and Li, 2010; Lu et al., 2018; Qian et al., 2018; Cui et al., 2019).

Deleted: A

Deleted: usually

Deleted: ass

Deleted: , since

Deleted: Considering the oxygen consumption rate (OCR) has primarily been estimated based on incubations examining bacterial or community respiration (Su et al., 2017; Cui et al., 2019; Li et al., 2019), t...

Deleted: process

We investigated the destruction and reinstatement of summer hypoxia off the PRE to examine the effects of freshwater inputs and winds on water column stability and the maintenance, destruction and formation of hypoxia. With the aid of a three-member mixing model, we partitioned physical- and biochemical-induced oxygen sinks and calculated the OCR and timescale for hypoxia regeneration after its destruction by a typhoon. The impacts of tropical cyclones on the evolution of seasonal hypoxia in river-dominated ocean margins is further discussed.

2 Materials and methods

2.1 Study area and cruise background

The shelf of northern South China Sea (NSCS) receives an average annual freshwater discharge of $\sim 10,000 \text{ m}^3 \text{ s}^{-1}$ originating from the Pearl River, the 17th largest river in the world (Cai et al., 2004; Dai et al., 2014). Nearly four fifths of freshwater discharge occurs during the wet season, typically from April to September (Dai et al., 2014). The riverine freshwater extends offshore to form a widespread plume over the shelf in summer (Gan et al., 2009; Cao et al., 2011; Chen et al., 2017), via eight outlets through three sub-estuaries (i.e., Lingdingyang, Modaomen and Huangmaohai; Fig. 1b). On the inner shelf, coastal upwelling interacts with the buoyant plume, propelled by the prevailing southwest monsoon and intensified along the eastward widened shelf (Gan et al., 2009; Chen et al., 2017). Climatologically, about 7 tropical cyclones per year impacted the NSCS from 1949-2019, half of which featured maximum wind speeds greater than 32.7 m s^{-1} .

Field observations and sampling were conducted onboard the R/V Haikē 68 off the PRE on the inner-shelf of the NSCS in the summer of 2018. The cruise was interrupted by the passage of typhoon SONTINH across the NSCS, $\sim 350 \text{ km}$ south of the PRE (Fig. 1a). Leg 1 (July 8-14) was the cruise period before the typhoon, and Leg 2 (July 21-25) and Leg 3 (July 26-29) were conducted after its passage (Fig. 1b). During each leg we collected samples from west to east and along the cross-shelf transects within isobaths of 10-35 m. Almost all stations in Leg 1 (56 stations) were revisited during Leg 2 (56 stations, including 4 stations differing from Leg 1), and nearly half again during Leg 3 (27 stations). Eight stations were additionally revisited on the way back to the port on July 31. Time-series observations with a sampling interval of 1 h were conducted at Station F303 for 26 h before Leg 2, beginning at 16:00 pm on July 19 (Fig. 1b). In contrast to the typical southwesterly winds in the NSCS with average monthly wind speeds of $< 6 \text{ m s}^{-1}$ from June to September (Su, 2004), easterly winds prevailed during the cruise period due to the typhoon, with the wind speeds increasing up to $\sim 13 \text{ m s}^{-1}$ (Fig. 1c) at the Waglan Island to the east of the study area (Fig. 1b).

2.2 Sampling and analysis

Temperature and salinity were determined using a SBE 917 plus conductivity-temperature-depth (CTD) recorder (SeaBird Electronics, Inc.). Discrete samples were collected using 5 L free-flow water samplers mounted onto a Rosette sampling assembly. Dissolved oxygen (DO), dissolved inorganic carbon (DIC), total alkalinity (TA) and Chlorophyll *a* (Chl *a*)

Deleted: ,

Deleted: and tides

115 concentrations were measured at all stations with depth profiles from 1 m below the surface down to ~ 4-6 m above the bottom,
generally at three depth layers. Additional high-resolution vertical samplings were conducted at 7-8 depth layers (Fig. 1b).

Salinity was calibrated against discrete water samples measured by a Multi 340i salimeter (WTW). The DO concentrations
were measured onboard within ~ 12 h using the spectrophotometric Winkler method (Labasque et al., 2004), with a precision
120 better than $\pm 2 \mu\text{mol L}^{-1}$. DIC was measured on ~ 0.5 mL acidified water samples using an infrared CO₂ detector (Apollo ASC-
3) with a precision of $\pm 2 \mu\text{mol L}^{-1}$ (Cai et al., 2004). TA was determined on 25 mL samples in an open-cell setting based on
the Gran titration technique (see details in Cai et al.(2010)) with a KloeHN digital syringe pump. The analytical precision was
 $\pm 2 \mu\text{mol L}^{-1}$. Both DIC and TA concentrations were calibrated against certified reference materials provided by Dr. A. G.
Dickson at the Scripps Institution of Oceanography, University of California, San Diego. Chl *a* concentrations were determined
125 using a Trilogy laboratory fluorometer (Turner Designs, Inc.) after being extracted with 90% acetone for 14 h at -20 °C
(Welschmeyer, 1994) and calibrated using a Sigma Chl *a* standard.

2.3 Water column stability

Water column stability regulates the ventilation of subsurface waters and replenishment of DO by suppressing turbulent mixing
with stratification (Obenour et al., 2012; Lu et al., 2018; Cui et al., 2019), which can be indicated by the buoyancy frequency
130 (also known as the Brunt-Väisälä frequency),

$$N^2 = -(g/\rho)(\partial\rho/\partial z) \quad (1)$$

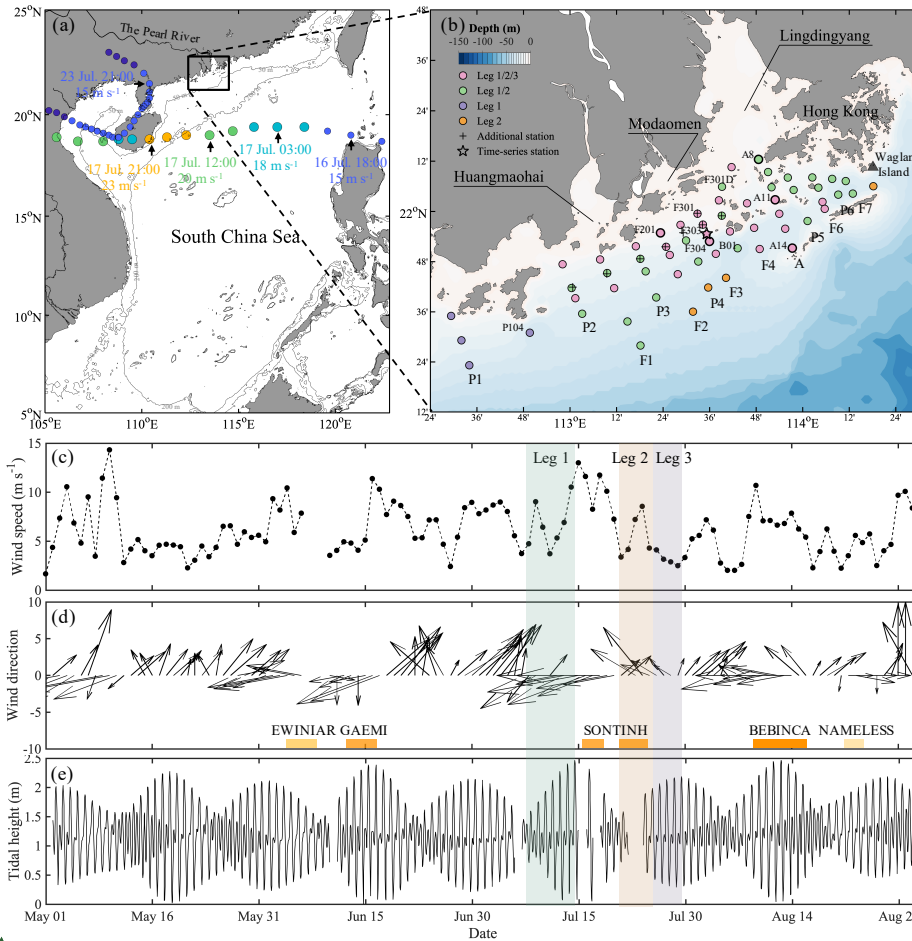
where *g* is the gravitational acceleration, ρ is potential density, and *z* is the height above the seabed. Generally, a positive N^2
(i.e., $N^2 > 0$) indicates a stable regime where stratification may suppress turbulence (Tedford et al., 2009), and a larger N^2 value
indicates a more stable water column. [CTD temperature and salinity were used to calculate the buoyancy frequency for
135 sampling stations, to indicate the controls of density stratification on the development of hypoxia \(Section 4.1\).](#)

2.4 Oxygen consumption rate

From the perspective of Euler observations and based on mass balance, the DO changes (ΔDO) in subsurface waters over a
specified time interval at a specific site can be decomposed into two components, one driven by physical mixing ($\Delta\text{DO}^{\text{mix}}$) and
the other induced by biochemical processes ($\Delta\text{DO}^{\text{bc}}$). Here, we define the biochemical-induced DO consumption with time as
140 the oxygen consumption rate (OCR). A higher OCR value indicates stronger oxygen consumption and a negative value
indicates oxygen production via biochemical processes (e.g., photosynthesis). For revisited stations, ΔDO is the difference in
DO values measured between the two sampling periods. The physical-mixing-induced DO variations were derived using a
three-endmember mixing model, which construct the conservative mixing scheme among different water masses: brackish
plume water (PW), offshore surface water (SW) and upwelled subsurface water (SUB) (Su et al., 2017; Cui et al., 2019; Zhao
145 et al., 2020). The model is constrained by salinity (*S*) and potential temperature (θ) according to the following equations:

$$f_{\text{PW}} + f_{\text{SW}} + f_{\text{SUB}} = 1 \quad (2)$$

$$S_{\text{PW}} \times f_{\text{PW}} + S_{\text{SW}} \times f_{\text{SW}} + S_{\text{SUB}} \times f_{\text{SUB}} = S^{\text{meas}} \quad (3)$$



Moved down [3]: $\theta_{FW} \times f_{FW} + \theta_{SW} \times f_{SW} + \theta_{SUB} \times f_{SUB} = \theta^{meas}$
 $\rightarrow \rightarrow \rightarrow \rightarrow \rightarrow \rightarrow \rightarrow (4)^*$

Moved down [2]: where the superscript 'meas' denotes measured values, and f represents the fraction that each endmember contributes to the *in situ* samples. Assuming that DO concentrations in surface waters before sinking to the depth were equilibrated with the atmosphere and the subsurface waters were isolated from the atmosphere due to restriction by stratification, these fractions were applied to predict conservative concentrations of DO (DO^{cons}) resulting solely from conservative mixing. \uparrow

150 **Figure 1:** (a) Map of the study area on the shelf of the northern South China Sea (NSCS), showing the track of Typhoon SONTIHN (circles) across the NSCS during July 16-24, 2018. The color of the circles represents the magnitude of wind speed. Additionally, the smaller circles denote tropical depression (wind speeds $\leq 17.1 \text{ m s}^{-1}$) and the larger circles denote tropical storm (wind speeds within $17.2\text{-}32.6 \text{ m s}^{-1}$). The arrows denote the locations of the typhoon as marked with time and wind speed. The grey lines are the depth contours at 50 and 200 m. (b) Sampling stations on the NSCS shelf off the Pearl River Estuary in summer 2018. The pink, green, purple and orange circles denote the stations surveyed in all three legs, only both Leg 1 and Leg 2, only Leg 1 and only Leg 2, respectively. Time-series observations were

conducted at Station F303 as marked by the star, and vertically high-resolution samplings were conducted at stations marked with bold circles. (c) The wind speed and (d) wind direction at Waglan Island (triangle in (b)) from May to August, 2018. Bars at the bottom of (d) mark times when tropical cyclones impacted the NSCS. (e) The tidal height at the Dawanshan gauge station near Station F303 from May to August, 2018. The shaded area indicates the cruise periods for Leg 1 (grey), Leg 2 (pink) and Leg 3 (blue), respectively.

$$\theta_{PW} \times f_{PW} + \theta_{SW} \times f_{SW} + \theta_{SUB} \times f_{SUB} = \theta^{meas} \quad (4)$$

where the superscript 'meas' denotes measured values, and f represents the fraction that each endmember contributes to the *in situ* samples. Assuming that DO concentrations in surface waters before sinking to the depth were equilibrated with the atmosphere and the subsurface waters were isolated from the atmosphere due to restriction by stratification, these fractions were applied to predict conservative concentrations of DO (DO^{mix}) resulting solely from conservative mixing,

$$DO^{mix} = DO_{PW} \times f_{PW} + DO_{SW} \times f_{SW} + DO_{SUB} \times f_{SUB} \quad (5)$$

Similarly, ΔDO^{mix} is the difference in "conservative" DO values between visits, assuming that the bottom water masses where biochemical oxygen consumption prevailed were constrained by strong convergence and their outflow from the sampling area is insignificant on the time scale of the water residence time (Lu et al., 2018; Li et al., 2020). As a result,

$$OCR = -\Delta DO^{bc} / \Delta t = -(\Delta DO - \Delta DO^{mix}) / \Delta t \quad (6)$$

where Δt is the duration between the two observations at times t_1 and t_2 ($t_2 > t_1$), respectively, and $\Delta X = X^{t_2} - X^{t_1}$ ($X = DO, DO^{mix}, DO^{bc}$, etc.). The uncertainty in the calculation of OCR mainly derives from the estimation of conservative values predicted from the three-endmember mixing model. Sources of the composite uncertainty (ε) in derivation of DO^{mix} are

$$\varepsilon_{DO^{mix}} = \sqrt{\sum_i^n \left[(f_i \cdot \sigma_{DO_i})^2 + (DO_i \cdot \sigma_{f_i})^2 \right]} \quad (7)$$

where σ_{DO} and σ_f are uncertainties in the DO concentration and the fraction of each endmember i (i.e., PW, SW and SUB), the latter of which can be calculated as

$$\sigma_{f_i} = \sqrt{\sum_j^n \left[\left(\frac{\partial f_i}{\partial \theta_j} \cdot \sigma_{\theta_j} \right)^2 + \left(\frac{\partial f_i}{\partial S_j} \cdot \sigma_{S_j} \right)^2 \right]} \quad (8)$$

where j also denotes each endmember.

2.5 Endmember selection and validations of the three-endmember mixing model

The potential temperature – salinity diagram is shown in Fig. 2a. The three-endmember mixing scheme for the bottom layer has been elucidated in Zhao et al. (2020) that had a spatial coverage similar to this study. We adopted the endmember values of the offshore surface water and upwelled subsurface water from Zhao et al. (2020) given that our sampling was almost exclusively within the 30-m isobaths (Fig. 1b) and these values were consistent with those found in previous studies (Cao et al., 2011; Guo and Wong, 2015; Su et al., 2017). The brackish plume water was assumed to partly subduct to the bottom layer under downwelling favourable wind conditions (Huang et al., 2019; Li et al., 2021). The endmember values of the brackish plume water were thus determined from the surface water samples near the mouth of the PRE with a salinity of ~ 16.9, mainly

Moved (insertion) [3]

Deleted: ¶

Moved (insertion) [2]

Deleted: ¶

consisting of a mixture of riverine freshwater and offshore surface water. The DIC endmember of brackish plume water here was consistent with the predicted value using the endmember values of riverine/plume water reported by Su et al. (2017), whereas it was higher than that calculated using the endmember values of riverine freshwater from Zhao et al. (2020) since the riverine DIC concentrations might be diluted by abnormally high river discharge in 2017 (Guo et al., 2008). For simplification, DO concentrations in offshore surface water were assumed to be saturated, in equilibrium with the atmosphere, while the upwelled subsurface water was assumed to be oxygen-deficient by ~16% relative to the saturation level. The DO endmember value of brackish plume water was also assumed to be equilibrated with the atmosphere, which should be in order because the biological productivity was largely limited by high turbidity in shallow estuarine waters. A summary of the end-member values is listed in Table 1. In estimating the OCR, we excluded the above-pycnocline samples collected at depths < 10 m affected by the upper plume waters that are subject to strong air-sea exchanges and/or photosynthetic production of oxygen.

The predicted quasi-conservative TA ($TA^{pre} = TA_{PW} \times f_{RW} + TA_{SW} \times f_{SW} + TA_{SUB} \times f_{SUB}$; same for DIC^{pre}) is mostly consistent with our measured values (Fig. 2b), with a subtle difference of $8 \pm 8 \mu\text{mol kg}^{-1}$ likely associated with measurement errors, computational errors in the mixing scheme and/or biological processes. The slope of ΔDIC ($\Delta DIC = DIC^{meas} - DIC^{pre}$) vs. ΔDO in bottom waters was -0.93 ± 0.07 (Fig. 2c), similar to that reported by Zhao et al. (2020).

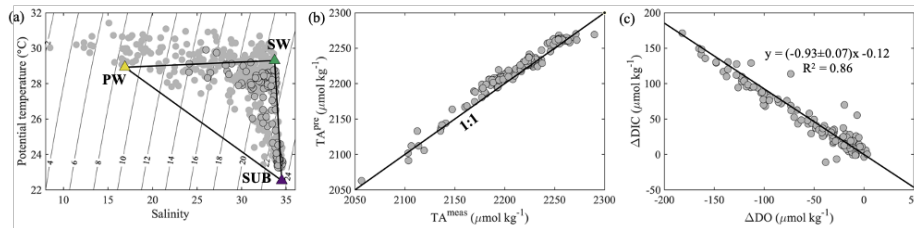


Figure 2: (a) Potential temperature ($^{\circ}\text{C}$) vs. salinity, (b) predicted TA (TA^{pre} , $\mu\text{mol kg}^{-1}$) vs. measured TA (TA^{meas} , $\mu\text{mol kg}^{-1}$), and (c) ΔDIC ($\mu\text{mol kg}^{-1}$) vs. ΔDO ($\mu\text{mol kg}^{-1}$) on the NSCS shelf off the PRE. The black-edged circles represent bottom water samples with depths > 10 m. The yellow, green and purple triangles in (a) represent the endmember values of brackish plume water (PW), offshore surface water (SW) and upwelled subsurface water (SUB), respectively. The black line in (c) denotes the slope of ΔDIC plotted against ΔDO derived from the Model II regression.

Table 1: Summary of the end-member values adopted in the three-endmember mixing model

Water mass	θ ($^{\circ}\text{C}$)	Salinity	DIC ($\mu\text{mol kg}^{-1}$)	DO ($\mu\text{mol kg}^{-1}$)
Brackish plume water	28.9 ± 0.4^b	16.9	1776 ± 29^b	217.3 ± 1.4^c
Offshore surface water ^a	29.3 ± 0.1	33.7 ± 0.1	1922 ± 5	194.4 ± 0.3^c
Upwelled subsurface water ^a	22.5 ± 0.1	34.5 ± 0.0	2022 ± 3	180.9 ± 0.4^c

^aAdopted from Zhao et al. (2020)

^bUncertainties were derived from multiple samples collected at the entrance of the PRE

^cUncertainties were calculated by propagating errors associated with the estimation of oxygen solubility using Benson and Krause (1984)

Deleted: ¶

Formatted: Line spacing: 1.5 lines

Formatted: Superscript

3 Evolution of intermittent hypoxia off the PRE

3.1 Extensive hypoxia before the typhoon

230 The water columns showed a prominent two-layer structure on the inner NSCS shelf off the PRE (Fig. 3 and Fig. 4). In the surface layer, the freshwater plume mainly attached the coast when veering to the west as constrained by estuarine topography, the Coriolis force (Wong et al., 2003), and easterly winds during Leg 1 (Fig. 1d), despite a freshwater bulge that remained near the mouth of the Lingdingyang sub-estuary due to persistent southwesterly winds before the cruise (Fig. 1d) and the weak shelf current there (Gan et al., 2009; Lu et al., 2018). A strong bloom occurred in the surface plume waters near the Huangmaohai sub-estuary, characterized by high Chl *a* concentrations of > 20 $\mu\text{g L}^{-1}$ and oversaturated DO of > 300 $\mu\text{mol kg}^{-1}$ (equivalent to a DO saturation level > 150 %) (Fig. 3g, j). The freshwater bulge also featured a relatively weak bloom, with Chl *a* concentrations of $\sim 10 \mu\text{g L}^{-1}$ and DO of $\sim 250 \mu\text{mol kg}^{-1}$ (equivalent to a DO saturation level of $\sim 125 \%$). Similar blooms were previously observed to be associated with high nutrient concentrations, a sufficiently long water residence time and an abundance of photosynthetically active radiation (Lu and Gan, 2015). The surface water temperature was mostly > 29 °C. Exceptions occurred to the southwest of Hong Kong (Fig. 3a) where the air temperature was 2-3 °C lower at the time of sampling (Fig. S1 in the Supplement).

At the bottom layer, low-temperature (< 26 °C), high-salinity (> 33), deep shelf waters intruded upslope to the 10-20 m isobaths beneath the surface plume (Fig. 4a, d). An extensive hypoxic zone (DO < 63 $\mu\text{mol kg}^{-1}$) developed beneath the freshwater bulge and extended westwards along the 20-30 m isobaths to the region off the Modaomen sub-estuary (Fig. 4g). To the east, a relatively weak hypoxic centre occurred adjoining the Hong Kong waters. Additionally, a smaller-scale hypoxic zone appeared beneath the surface bloom near the Huangmaohai sub-estuary, a region where hypoxia was also ever reported but not fully covered by survey measurements (Su et al., 2017; Cui et al., 2019). The general spatial pattern of hypoxic centres was similar to that found in summers of 2014 and 2017 (Su et al., 2017; Zhao et al., 2020), yet with a slight offshore shift. The minimum oxygen level was 3.5 $\mu\text{mol kg}^{-1}$ ($\sim 0.1 \text{ mg L}^{-1}$) in bottom waters at Station F303, lower than the previously reported minimum ($\sim 7 \mu\text{mol kg}^{-1}$ at Station F304, Su et al. (2017)). Within the surveyed region, the total area of the hypoxic zone reached $\sim 660 \text{ km}^2$ and the oxygen-deficit zone (DO < 94 $\mu\text{mol kg}^{-1}$) occupied $\sim 1470 \text{ km}^2$, larger than those in summer 2014 (> 280 km^2 for the hypoxic zone and > 800 km^2 for the oxygen-deficit zone) when we surveyed in a smaller area (Su et al., 2017). Cui et al. (2019) reported that spring-neap tidal oscillations lead to variations in the DO concentration outside of the Lingdingyang sub-estuary with a maximum neighbouring oxygen range of $\sim 15 \mu\text{mol kg}^{-1}$. As our observations were conducted during the transition from the neap tide to the spring tide (Fig. 1e), the total area of the hypoxic zone and the oxygen-deficient zone would be at most $\sim 990 \text{ km}^2$ and $\sim 1930 \text{ km}^2$, respectively, 34-50% larger than our observed areas.

3.2 Destruction of hypoxia by the typhoon

260 The spatial patterns of temperature, salinity, DO and Chl *a* concentrations all changed drastically from disturbance by intensified easterly winds during the typhoon period. Strong winds drove the warm, low-salinity and oxygen-saturated surface

Deleted: , likely owing to the

Deleted: favourable

Deleted:

Deleted: during our

Deleted: visits

Deleted: shelf benthic waters

Deleted: onshore

Deleted: low

Deleted: under

Deleted: which

Deleted: zones

Deleted: formation

Deleted: These findings might nevertheless indicate that summer hypoxia off the PRE has been increasingly exacerbated in recent years (Su et al., 2017; Qian et al., 2018; Zhao et al., 2020).

waters to mix downward, increasing temperature and DO concentrations and decreasing salinity in bottom waters (Fig. 4). Time-series observations at Station F303 before Leg 2 showed a vertically well-mixed water column in the first half, as reflected by homogeneous distributions of intermediate temperature (~ 28 °C), salinity (~ 32), and DO levels (~ 180 $\mu\text{mol kg}^{-1}$) (Fig. 5a-c). The less well-mixed water column in the second half of the time-series observations likely resulted from the weakened winds, showing an upward intrusion of bottom waters which were slightly warmer than surface waters which lost heat to the low-temperature atmosphere (Fig. S1). With subdued winds that shifted to southwesterly in the following two days (Fig. 1c, d), the offshore spreading of the river plume suppressed the upward intrusion of slightly warm bottom waters and facilitated the restoration of a two-layer water column, as observed in the second half of the time-series observations (Fig. 5) and during Leg 2 (Fig. 3 and Fig. 4). Large phytoplankton blooms were identified in the surface plume, widely spreading from

the mouth of the Lingdingyang sub-estuary to near the Huangmaohai sub-estuary (Fig. 3k), potentially fuelled by nutrients mixed upward from the depth in addition to riverine inputs (Wang et al., 2017; Qiu et al., 2019). The maximum Chl *a* concentration was > 40 $\mu\text{g L}^{-1}$ off the Modaomen sub-estuary, accompanied by an extraordinarily high DO concentration of > 350 $\mu\text{mol kg}^{-1}$ (Fig. 3h, k). The surface water temperature was ~ 29.0±0.5 °C, higher than that in bottom waters by 0.8 °C during Leg 2 (Fig. 3b and Fig. 4b).

In bottom waters, hypoxia had been completely destroyed due to strong reaeration in the wake of the typhoon travelling across the NSCS, replaced by a homogenous spatial distribution of relatively high DO concentrations (~ 171±16 $\mu\text{mol kg}^{-1}$) during Leg 2 (Fig. 4h). The cross-shore gradients in temperature and salinity were also largely relaxed, with isotropically elevated temperatures up to ~ 28 °C and decreased salinity (Fig. 4b, e). The mid-depth distributions of temperature, salinity and DO concentrations showed similar patterns as at the bottom layer (Fig. S2). Although the water column remained relatively well-mixed in the subsurface layer, freshwater buoyancy and weakened winds facilitated the revitalization of density stratification and subsequent oxygen decline below the pycnocline. Indeed, the bottom water DO concentration at Station F303 decreased by ~ 18 $\mu\text{mol kg}^{-1}$ compared to that in the time-series observations and was lower than that at adjacent stations by ~ 9-22 $\mu\text{mol kg}^{-1}$ when revisited during Leg 2 on July 22 (Fig. S3).

3.3 Reinstatement of hypoxia after the typhoon

With the dying-out of the typhoon after its landfall to the west of the study area on July 23 (Fig. 1a), the wind speed decreased to < 5 m s^{-1} on July 25 while the wind direction remained from the southeast before it shifted to southwesterly on July 29 (Fig. 1c, d). The DO concentrations in bottom waters were noticeably lower (139-164 $\mu\text{mol kg}^{-1}$ shallower than 20-m isobaths) starting around July 23 in the second half of Leg 2 (Fig. 1b and 4h). During Leg 3 from July 26-29, hypoxia was present again in bottom waters, due to favourable conditions for its formation (Fig. 3 and Fig. 4). The surface layer was warmed up to over 30 °C (Fig. 3c), increasing vertical thermal gradients relative to Leg 2 (Fig. 3 and Fig. 4) and strengthening the stratification (Allahdadi and Li, 2017). The freshwater bulge of lower salinity (< 15) advected offshore around the Modaomen sub-estuary, with the offshore migration of the bloom (Fig. 4f, l) likely driven by the interaction between the seaward buoyant current and northeastward shelf current (Pan et al., 2014; Li et al., 2020). The Chl *a* concentrations near the entrances of the three sub-

Deleted: Stronger

Deleted: than that during Leg 1

Deleted: however,

Deleted: under the surface layer

estuaries remained relatively high ($> 10 \mu\text{g L}^{-1}$), and the DO concentrations remained at high levels of $> 250 \mu\text{mol kg}^{-1}$, ~ 20 % over the saturation levels (Fig. 3i, l).

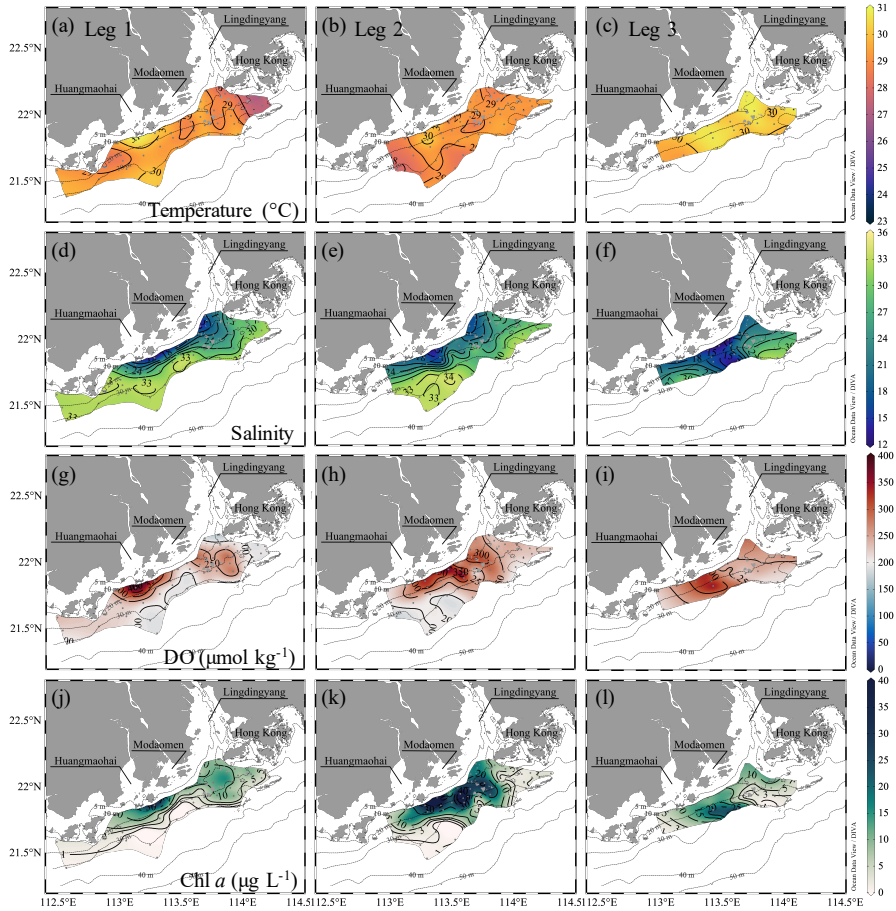


Figure 3: Distributions of temperature ($^{\circ}\text{C}$), salinity, DO ($\mu\text{mol kg}^{-1}$) and Chl *a* concentrations ($\mu\text{g L}^{-1}$) at the surface water layer off the PRE during Leg 1 pre-typhoon, and during Legs 2 and 3 post-typhoon. The white and magenta contours in (g) and (w) show the hypoxic ($\text{DO} < 63 \mu\text{mol kg}^{-1}$) and oxygen-deficient ($\text{DO} < 94 \mu\text{mol kg}^{-1}$) zones. Figures were produced using Ocean Data View v. 5.3.0 (<http://odv.awi.de>, last access: 08 June 2020)

320

Formatted: Centred

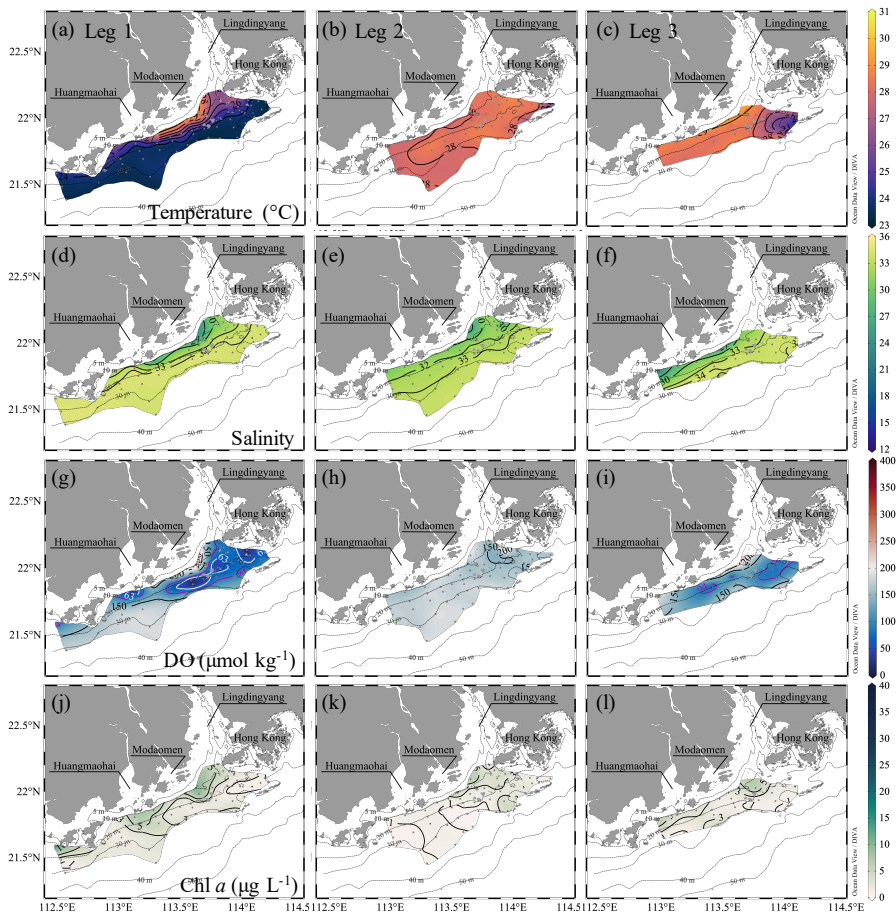


Figure 4: Distributions of temperature ($^{\circ}\text{C}$), salinity, DO ($\mu\text{mol kg}^{-1}$) and Chl *a* concentrations ($\mu\text{g L}^{-1}$) at the bottom water layer off the PRE during Leg 1 pre-typhoon, and during Legs 2 and 3 post-typhoon. The white and magenta contours in (g) and (w) show the hypoxic ($\text{DO} < 63 \mu\text{mol kg}^{-1}$) and oxygen-deficit ($\text{DO} < 94 \mu\text{mol kg}^{-1}$) zones.

Similar to Leg 1 and Leg 2, the surface waters penetrated into the subsurface layer along the coast (Fig. 4f), likely forced by the downwelling-favourable winds (Fig. 1d) (Huang et al., 2019; Li et al., 2021), augmenting temperature and DO concentrations but bringing down salinity, particularly in the mid-depth layer (Fig. S2). The downward penetration of surface waters, nonetheless, seemed to be restricted to the ~10-m isobath and thus offset only a limited amount of the oxygen reduction caused by biochemical consumption (Koweek et al., 2020). DO concentrations in bottom waters were reduced to ~46 $\mu\text{mol kg}^{-1}$ off the Maodaomen sub-estuary along the 20-m isobaths and to < 94 $\mu\text{mol kg}^{-1}$ to the southwest of Hong Kong (Fig. 4i), indicating the reinstatement of hypoxia. When sites were revisited on July 31, the re-emerging hypoxia was found to have been strengthened, with oxygen levels down to ~37 $\mu\text{mol kg}^{-1}$. We found that hypoxia formed in bottom waters with a temperature of ~28 °C off the Modaomen sub-estuary during Leg 3, while the oxygen-deficit zone to the southwest of Hong Kong showed a relatively low temperature of < 27 °C (Fig. 4c), likely due to the cross-isobath transport of deep shelf waters, arising from local topographic effects (Dai et al., 2014; Wang et al., 2014) as during Leg 1. In this sense, the shoreward intrusion of deep shelf waters is not a prerequisite for the initiation of hypoxia formation off the PRE, but it contributes to the reinstatement of hypoxia southwest off Hong Kong.

Deleted: and expanded along the 20-m isobaths

Deleted: shelf benthic waters

Deleted: shelf benthic waters

Deleted: still

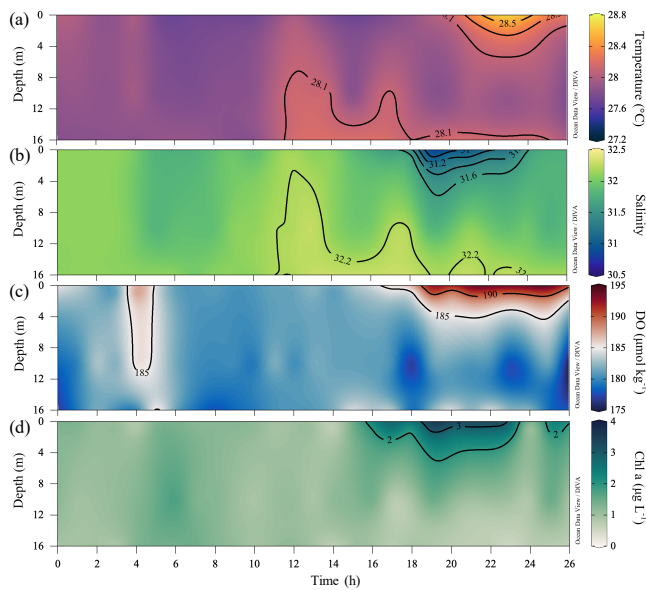


Figure 5: Time-series observations of (a) temperature (°C), (b) salinity, (c) DO ($\mu\text{mol kg}^{-1}$) and (d) Chl *a* concentrations ($\mu\text{g L}^{-1}$) at Station F303 (see Fig. 1b) from July 19-20, 2018 after the typhoon passage, showing the complete destruction and the subsequent rapid development of stratification.

4 Physical and biochemical controls on the evolution of intermittent hypoxia

4.1 Water column stability

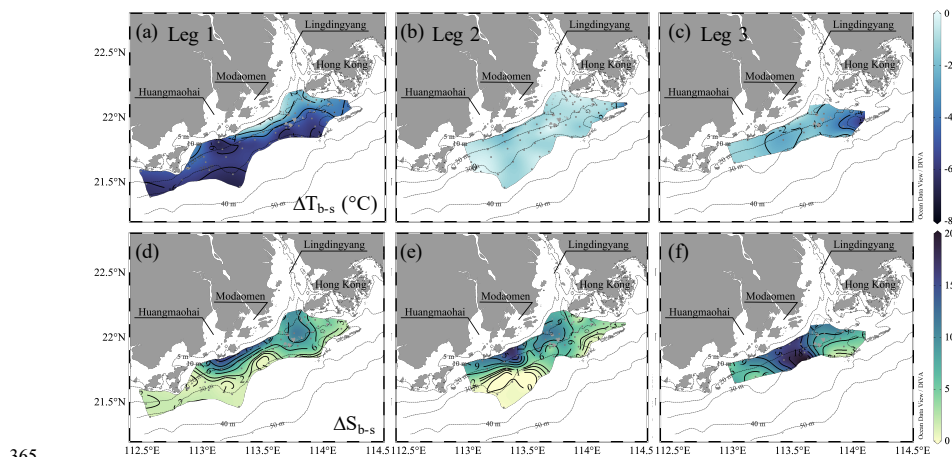
350 A stable water column is a key prerequisite for the formation and maintenance of hypoxia in coastal oceans (Wang and Justić, 2009; Obenour et al., 2012; Testa and Kemp, 2014; Lu et al., 2018; Zhang et al., 2019), which restricts the oxygen supply by suppressing advective and diffusive mixing with oxygen-rich waters (Murphy et al., 2011; Cui et al., 2019). Many studies have demonstrated that density stratification becomes enhanced and stabilizes subsurface waters when freshwater flows over seawater (Gan et al., 2009; MacCready et al., 2009; Bianchi et al., 2010), allowing oxygen depletion over a longer timescale (Fennel and Testa, 2019). In the second half of the time-series observations, the two-layer structure re-emerged with the spreading of the river plume, which suppressed the vertical mixing in the subsurface layer, as reflected by the receded upward intrusion of slightly warm, saline bottom waters (Fig. 5a, b). The Chl *a* concentrations in the surface layer increased, followed by an elevated DO level in surface waters and a lowered DO level in subsurface waters (Fig. 5c, d). The surface-to-bottom salinity difference showed large values within the surface plume area, which almost covered the bottom hypoxic zones (Fig. 4g, i). Exceptions only occurred to the hypoxic zone off the Modaomen sub-estuary, where the surface-to-bottom salinity differences were relatively small but the temperature differences were large (i.e., $\Delta T_{b-s} < -4$ °C in Fig. 6a-c) due to the shoreward intrusion of cold **deep shelf** waters (Fig. 4a-c). The regions occupied by the surface plume and the shoreward-intruded **deep shelf** waters therefore overlapped, resulting in a more stable water column where a patchy hypoxic zone could persist for more than 5 days (Cui et al., 2019).

Deleted: Maintenance, destruction and reinstatement

Deleted: coastal

Deleted: offshore subsurface

Deleted: shelf bottom



365 **Figure 6:** The surface-to-bottom temperature (a-c) and salinity (d-e) distributions off the PRE during Leg 1 pre-typhoon, and during Legs 2 and 3 post-typhoon. ΔT_{b-s} and ΔS_{b-s} represent the difference in temperature and salinity between the bottom and surface layer, respectively.

Off the PRE, when not influenced by freshwater inputs the surface layer showed a relatively small N^2 close to 0 and vertically well-mixed temperature, salinity and DO concentrations (e.g., in the top ~ 10 m at Station A14, Fig. 7c). However, in the presence of the freshwater plume, the surface layer became more stable, with a larger N^2 of $> 1 \times 10^{-3}$, or even $> 5 \times 10^{-3}$ (e.g., stations A8 and A11, Fig. 7a, b). The DO concentrations decreased sharply at the base of the surface plume (salinity ~ 30). Using the eddy diffusivity for density (K_z) of $< 5 \times 10^{-6} \text{ m}^2 \text{ s}^{-1}$ for N^2 larger than 1×10^{-3} (Cui et al., 2019), we estimated the vertical diffusion for DO concentrations (VDIF = $K_z \times (\partial \text{DO} / \partial z)$) of $\sim 0.25 \text{ g m}^{-2} \text{ d}^{-1}$ with a maximum of $0.54 \text{ g m}^{-2} \text{ d}^{-1}$ in the top 10 m at stations A8 and A11, which was comparable to the results from Cui et al. (2019). It therefore acted as a barrier layer, with weak dissipation of oxygen into the subsurface waters. The inherent pycnocline between the offshore surface water and **deep shelf waters** mainly driven by steep temperature gradients (Qu et al., 2007), such as at Station A14, acted as a second pycnocline in the plume region (e.g., stations A8 and A11, Fig. 7a), yet with weaker stratification likely from increased shear stresses in shallower waters (Pan and Gu, 2016; Li et al., 2020). At the edge of the freshwater plume (Fig. 1b and Fig. 3a), such as Station F304, the second pycnocline was more stable than that induced by freshwater inputs (Fig. 7d). This three-layer structure, separated by two pycnoclines, therefore effectively decreased oxygen influx from the surface and facilitated oxygen depletion in bottom waters.

Water column stability also largely depends on wind stress and/or direction in coastal waters (Wilson et al., 2008; Wang and Justić, 2009). Higher wind stress usually de-stratifies the water column, leading to stronger turbulent mixing, air-sea gas exchange and re-aeration (Chen et al., 2015; Lu et al., 2018; Huang et al., 2019), relieving hypoxic conditions (Ni et al., 2016; Wei et al., 2016). During the typhoon period, the wind speed rose to as high as 13 m s^{-1} (Fig. 1c), which was large enough to break the stratification (Geng et al., 2019) driven by freshwater inputs and the inherent thermocline, and resulted in a vertically well-mixed water column (Fig. 5). The surface waters became undersaturated ($\sim 90\%$ of the oxygen saturation level), due to the upward mixing of low-oxygen waters, which in turn favoured the ventilation of bottom waters and the breakdown of hypoxic conditions (Hu et al., 2017). Despite wind speeds still as high as 10 m s^{-1} during Leg 2 (Fig. 1c), stratification was regenerated in the top ~ 10 m of the plume region, which had relatively large surface-to-bottom salinity differences (Fig. 6e) and high N^2 (Fig. 7e-h) under easterly winds (Fig. 1d). This suggests that freshwater input-induced stratification suppressed turbulent mixing driven by wind stress, favouring the initiation of hypoxia development even under downwelling-favourable conditions. Most modelling works simulated the formation of hypoxia off the PRE under the typical summer southwest monsoon (Wei et al., 2016; Lu et al., 2018; Li et al., 2020; Yu et al., 2020); when southwest winds blow in a more southward direction, a larger hypoxic zone develops (Wei et al., 2016). In contrast to southwesterly winds that facilitate the wide eastward spreading of the surface plume (Gan et al., 2009), the downwelling-favourable easterly winds tend to constrain the surface plume to flow westward near the coast (Li et al., 2021), as shown during Leg 2, and even drive the surface oxygen-saturated waters to penetrate into the deep along the coast (Fig. S2 and Fig. 4), resulting in an offshore or westward shift of hypoxic zones with a limited spatial extent beneath the surface plume. If the easterly winds last for a longer time than the hypoxia formation timescale, stronger blooms in the surface plume (Fig. 3k) would enhance the bottom hypoxia with abundant supply

Deleted: shelf benthic waters

Deleted: . The strong winds facilitated mixing high-temperature, low-salinity surface waters and cold, saline bottom waters,

Deleted: ing

Deleted: -homogeneous temperature and salinity, as observed in the first half of the time-series observations before Leg 2

Deleted: The sudden decrease in Chl *a* concentrations in the surface layer might owe to dilution from the vertical mixing of surface plume waters with subsurface seawaters (Qiu et al., 2019).

Deleted: , also likely

Deleted: (Li et al., 2021)

Deleted:

of fresh, labile ~~organic matter~~; but the downwelling-favourable winds also would destroy the bottom hypoxia if the wind stresses become strong enough (Li et al., 2021).

~~Deleted:~~ organic matters

420

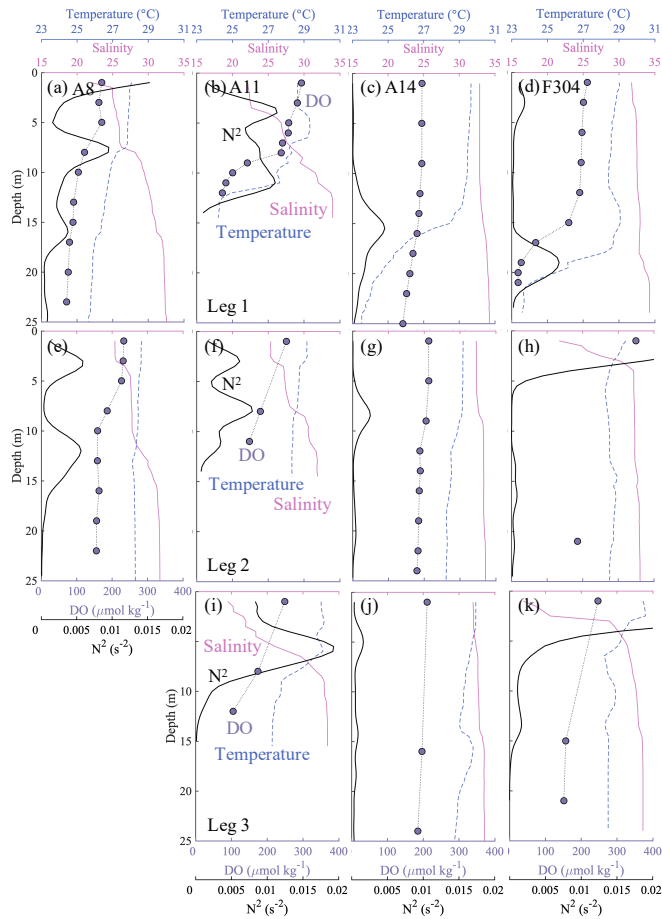


Figure 7: Profiles of temperature ($^{\circ}\text{C}$) (blue dashed lines), salinity (pink solid lines), dissolved oxygen (DO , $\mu\text{mol kg}^{-1}$) (purple dots) and buoyancy frequency N^2 (s^{-2}) (bold black solid lines) at stations A8, A11, A14 and F304 (see Fig. 1b), with visits both pre-typhoon (Leg 1) and post-typhoon (Legs 2 and 3). The vertical distributions of N^2 have been smoothed by the Gaussian method.

~~Formatted:~~ Line spacing: Multiple 1.15 li

~~Deleted:~~ green

~~Deleted:~~ ¶

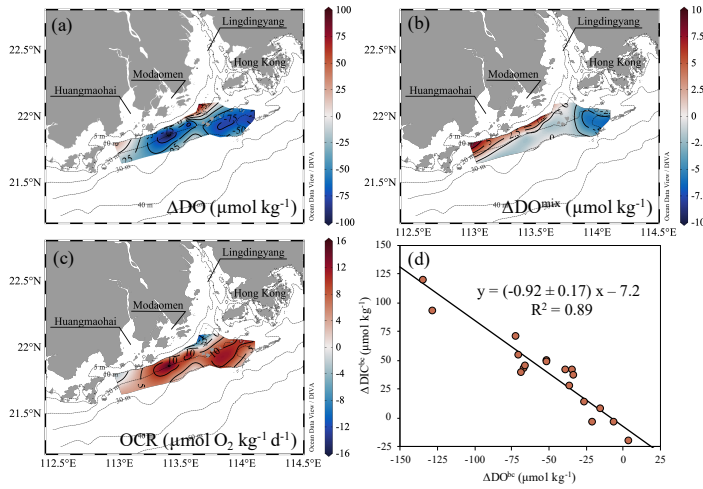
4.2 Oxygen sinks and hypoxia formation timescale

4.2.1 Mixing-induced oxygen sinks

430 With the restoration of density stratification from Leg 2 to Leg 3, DO concentrations in bottom waters were generally reduced by $> 25 \mu\text{mol kg}^{-1}$, with two hotspots showing reductions up to $75 \mu\text{mol kg}^{-1}$: one located offshore of the Lingdingyang sub-estuary, to the southwest of Hong Kong, and the other between the Modaomen and Huangmaohai sub-estuaries (Fig. 8a). The mixing-induced DO changes were positive along the coast within 10-20 m isobaths, as the oxygen-saturated surface waters penetrated downward to re-aerate the bottom waters driven by the downwelling-favourable easterly winds (Huang et al., 2019).

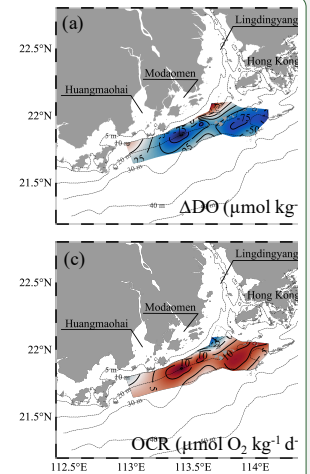
435 The mixing-induced oxygen sinks mainly occurred in bottom waters southwest off Hong Kong, with an average of $-5.7 \pm 0.8 \mu\text{mol kg}^{-1}$, higher than in other regions west of the PRE (e.g. beyond the 20-m isobath; $-1.4 \pm 0.8 \mu\text{mol kg}^{-1}$) (Fig. 8b). The mixing-induced oxygen sinks can be attributed to the shoreward intrusion of oceanic cold, oxygen-undersaturated subsurface waters — as reflected by lowered temperature ($< 27^\circ\text{C}$; Fig. 4c), which usually act as a non-local driver on coastal hypoxia by lowering the initial DO concentration (Wang, 2009; Qian et al., 2017). The cold, saline oceanic subsurface waters also

440 completely occupied the bottom layer beyond the 20-m isobath during Leg 1, where extensive hypoxia developed (Fig. 4a, g). This upwelling-induced reduction in the initial DO level amounted to $8.6 \pm 1.7\%$ of the oxygen decline to the southwest of Hong Kong, suggesting coastal upwelling played a minor role in the hypoxia formation.



445 **Figure 8:** Distributions of (a) total DO changes (ΔDO , $\mu\text{mol kg}^{-1}$), (b) mixing-induced DO changes ($\Delta\text{DO}^{\text{mix}}$, $\mu\text{mol kg}^{-1}$) and (c) the biochemical-induced oxygen consumption rate (OCR, $\mu\text{mol O}_2 \text{ kg}^{-1} \text{ d}^{-1}$) between Leg 3 and Leg 2 on the inner NSCS shelf off the PRE. (d)

Deleted: Tidal forcing has been suggested as another factor influencing the stability of the water column and the presence of hypoxia (Luo et al., 2009; Chen et al., 2015). Rabouille et al. (2008) demonstrated that tidal mixing could disrupt stratification and break hypoxia. Neap tides facilitate hypoxia formation relative to spring tides (Huang et al., 2019), and thus the intensity and area of hypoxia decreases during spring tides and increases during neap tides (Luo et al., 2009; Chen et al., 2015). As our observations were all conducted during the transformation from the neap tide to the spring tide (Fig. 1e), the intensity and spatial extent of the hypoxic zones off the PRE probably were underestimated. In the PRE, the dominant irregular semidiurnal mixed tide has a mean tidal range of 0.86-1.63 m, and a spring tidal range of 3.66 m (Mao et al., 2004). On the inner shelf, the spring tidal range can reach ~ 2.5 m (Fig. 1e). The flood-ebb and spring-neap tidal oscillations lead to variations in the DO concentration outside of the Lingdingyang sub-estuary with a ... [1]



Moved down [1]:

Deleted: Oxygen sinks fundamentally drive the hypoxia formation under favourable physical conditions. Common methods to quantify oxygen sinks under hypoxic conditions include the analysis of oxygen budgets based on the mass balance of oxygen and estimates of community/bacterial respiration or nitrification rates using field incubations (Zhang and Li 2010; Li et al., 2015; Cui et al., 2019). However, the budget analysis of.. [2]

Deleted: ¶

Formatted: Heading 3

Formatted: Font: (Default) Times New Roman, (Asian) Times New Roman, English (UK)

Moved (insertion) [1]

Formatted: Line spacing: Multiple 1.15 li

540 The biochemical-induced changes in DIC ($\Delta\text{DIC}^{\text{bc}}$, $\mu\text{mol kg}^{-1}$) vs. DO ($\Delta\text{DO}^{\text{bc}}$, $\mu\text{mol kg}^{-1}$) in bottom waters with depths > 10 m from Leg 2 to Leg 3. The black line denotes the slope of $\Delta\text{DIC}^{\text{bc}}$ plotted against $\Delta\text{DO}^{\text{bc}}$ derived from the Model II regression.

The contribution of oxygen-deficient coastal upwelling to the hypoxia formation varies in different ocean marginal systems, which is largely dependent on the source of the subsurface water masses and biogeochemical reactions along the pathway of the intrusion. Qian et al. (2017) showed the apparent oxygen utilization (AOU) values of $\sim 50 \mu\text{mol kg}^{-1}$ in the source waters of nearshore Kuroshio branch at the shelf-break northeast of Taiwan and an AOU increment of $\sim 40 \mu\text{mol kg}^{-1}$ throughout its
545 travel time of ~ 60 days to the vicinity off the Changjiang River (Yang et al., 2013). In eastern boundary upwelling systems along the northeast Pacific Ocean, the source waters typically have the low DO concentration of ~ 80 - $160 \mu\text{mol kg}^{-1}$, even near or below hypoxic levels from a depth of ~ 100 - 200 m (Grantham et al., 2004). The DO deficits were further exacerbated by respiration when the source waters transited shoreward over the shelf. Comparing with these systems, the source water
550 originating from the low-latitude, high-temperature oligotrophic NSCS (Wong et al., 2007) has a higher DO level (AOU $\sim 35 \mu\text{mol kg}^{-1}$). As the NSCS shelf is narrower than the East China Sea shelf, the source water spends a shorter time intruding toward the coastal zone after diverting its direction from the continental slope (Gan et al., 2009; Wang et al., 2014). These might explain the relatively low contribution of coastal upwelling to the oxygen depletion on the inner NSCS shelf off the PRE.

Deleted: ¶
¶

Deleted: to

Deleted: a higher DO level in

Deleted: s

Deleted: (AOU $\sim 35 \mu\text{mol kg}^{-1}$)

Deleted:

Deleted: and a shorter shoreward travel time

Deleted: their

4.2.2 Biochemical-induced oxygen sinks

555 The biochemical-induced DO and DIC changes from Leg 2 to Leg 3 also showed a good relationship with a slope of -0.92 ± 0.17 (Fig. 8d), consistent with the slope of biochemical-induced variations in DO against DIC concentrations throughout the sampling legs (Fig. 2c), implying that aerobic respiration of organic matter indeed dominated the oxygen consumption. The distribution of OCR estimates in bottom waters almost mirrored variations in the total DO pattern from Leg 2 to Leg 3 (Fig. 8a, c). This biochemically-mediated OCR ranged from $0.9 \mu\text{mol O}_2 \text{ kg}^{-1} \text{ d}^{-1}$ at offshore non-hypoxic stations to $19.5 \pm 0.4 \mu\text{mol O}_2 \text{ kg}^{-1} \text{ d}^{-1}$ in hypoxic waters, with an average of $14.6 \pm 4.8 \mu\text{mol O}_2 \text{ kg}^{-1} \text{ d}^{-1}$ in the oxygen-deficit zone. The uncertainty introduced by the mixing scheme was 0.63 - $0.98 \mu\text{mol O}_2 \text{ kg}^{-1} \text{ d}^{-1}$, accounting for a deviation of 4 - 27 %. The geographical locations of high-OCR zones at the bottom layer (OCR $> 10 \mu\text{mol O}_2 \text{ kg}^{-1} \text{ d}^{-1}$) were not fully overlapped with those of surface blooms (Fig. 3l and Fig. 8c). Cui et al. (2019) suggested that the patchy distribution of bottom hypoxia was closely associated with the river plume front which traps organic particles (Hetland and DiMarco, 2008), accelerating their settlement and deposition in the overlapping zones between the river plume and shelf salt wedge (Zhang and Li, 2010) to fuel the high OCR there. In fact, only the west hypoxic centre was located beneath the surface bloom from Leg 2 to Leg 3 (Fig. 3j-l and Fig. 4g-i). Lu et al. (2018) proposed another explanation that small detritus of external sources could be accumulated and remineralized in the bottom flow convergence zone as regulated by highly variable coastline and bottom topography. Our observed hypoxic zones generally coincided with the modelled strong convergence zones (Lu et al., 2018; Li et al., 2020), implying sufficient
570 organic matter supply fuelled the high OCR to restore hypoxia in bottom waters.

Deleted:

Deleted: organic matters

Deleted: spatial variability of the bottom

Formatted: Subscript

Formatted: Superscript

Formatted: Superscript

Deleted: as

Deleted: not fully coupled

Deleted: the location

Deleted: that

Deleted: ,

Deleted: even though eutrophication-produced organic matters were primarily responsible for fuelling oxygen depletion in the hypoxic zone (Su et al., 2017; Yu et al., 2020; Zhao et al., 2020).

Formatted: Font: (Default) Times New Roman, (Asian) Times New Roman, English (UK)

Our estimated OCR is comparable in magnitude to the community/bacterial respiration rate from previous studies in this study area ($9.6 \mu\text{mol O}_2 \text{ kg}^{-1} \text{ d}^{-1}$, Su et al. (2017); 7.9 to $19.0 \mu\text{mol O}_2 \text{ kg}^{-1} \text{ d}^{-1}$, Cui et al. (2019); $16.8 \pm 8.9 \mu\text{mol O}_2 \text{ kg}^{-1} \text{ d}^{-1}$, Li et al. (2019)) and within the range in other estuaries and coastal systems (Dortch et al., 1994; Robinson, 2008), despite a lower limit due to a potential overestimation of the actual time if significant oxygen consumption started later than our observations during the first half of Leg 2 and an assumed negligible oxygen flux supplied from the surface by diffusion. From Leg 2 to Leg 3, the vertical oxygen diffusion flux was $\sim 0.18 \text{ g m}^{-2} \text{ d}^{-1}$, amounting to a supply of ~ 0.6 - $1.1 \mu\text{mol O}_2 \text{ kg}^{-1} \text{ d}^{-1}$ to the bottom waters with a thickness of 5-10 m. The exclusion of this vertical oxygen diffusion flux in our estimates therefore might underestimate the OCR by $\sim 6\%$ on average. We also assumed that the OCR was uniform in the subsurface waters several meters above the seabed because we collected samples at three depth layers during Leg 2 and Leg 3, with usually only one layer below the pycnocline for most stations. For stations with the middle layer also below the pycnocline, such as Station F304 during Leg 3, the profile of DO concentrations showed almost constant values below the pycnocline (Fig. 7k). Sediment oxygen demand might be significant near the seabed or in its overlying water column in shallow waters (Kemp et al., 1992; Zhang and Li, 2010). ~~However, our sampling at the bottom layer was 4-6 m above the seabed and the water depth of the hypoxic zones was nearly 20 m (Fig. 4). In such sampling areas.~~ Cui et al. (2019) found that oxygen losses by sediment oxygen demand (i.e., benthic respiration) were much smaller than the bacterial respiration in the water column based on both incubation experiments and oxygen budget analysis. We thus assumed the sediment oxygen demand was negligible and the microbial respiration in the water column dominated the estimated OCR.

However, the estimated OCR here differs in implications from that derived from the steady-state budget analysis in which the oxygen consumption was completely offset by the physical transport of oxygen (Zhang and Li, 2010; Cui et al., 2019). ~~In our estimates, the OCR was derived during the hypoxia formation in which the *in situ* DO concentrations decreased over time (i.e., in a non-steady state) as oxygen sinks exceed sources.~~ To shift from such a non-steady state towards a balance between oxygen consumption and replenishment for the maintenance of hypoxia, the OCR might decrease or the physical-induced oxygen supply increases. Kalvelage et al. (2015) found that aerobic respiration rates decreased with decreasing *in situ* DO concentrations, i.e., from the upper boundary of oxygen minimum zone (OMZ) towards the OMZ core off Peru. The oxygen enriched incubation of unfiltered water samples revealed that the OCR changed little when the *in situ* DO concentration was higher than $\sim 90 \mu\text{mol kg}^{-1}$, but also decreased when the *in situ* DO concentration decreased to $\sim 30 \mu\text{mol kg}^{-1}$ (He et al., 2014). Despite the bottom DO concentrations of $\sim 180 \mu\text{mol kg}^{-1}$ at Station F303 during the time-series observations, DO declined at a rate of $\sim 9 \mu\text{mol O}_2 \text{ kg}^{-1} \text{ d}^{-1}$ from July 20-22, when the winds remained strong, and the OCR decreased to $\sim 5.5 \mu\text{mol O}_2 \text{ kg}^{-1} \text{ d}^{-1}$ from Leg 2 (DO $\sim 164 \mu\text{mol kg}^{-1}$) to Leg 3 (DO $\sim 127 \mu\text{mol kg}^{-1}$) (from July 22-29) (Fig. S3). The OCR declined likely as inhibited by the reduced supply of labile organic matter (Yuan et al., 2010) — the strong blooms shifted offshore with the river plume and the Chl *a* concentrations over the hypoxic zone also decreased from Leg 2 to Leg 3 (Fig. 3k, l). If we considered the shoreward intrusion of deep shelf waters following up the hypoxia development instead of contributing to lowering the initial DO level, their intrusion onto the inner shelf supplied oxygen to the oxygen-depleted waters, such as the

Deleted: ,

Deleted: but in our sampling area

Deleted: ,

Deleted: found

Deleted: (Cui et al., 2019)

Formatted: Font: Italic

Deleted: During the hypoxia formation, the DO concentrations are in a non-steady state as oxygen sinks exceed sources

Deleted: a significant correlation between OCR and *in situ* DO concentrations off Peru —

Formatted: Font: Italic

Deleted: at

Deleted: also

Deleted: could be significantly enhanced when the initial *in situ* DO concentration was low (e.g., $\sim 30 \mu\text{mol kg}^{-1}$), but

Deleted: shelf benthic waters

640 cold, saline subsurface waters occupied the bottom layer covering the hypoxic zone on the inner shelf during Leg 1 (Fig. 4a, g). As density stratification limited the vertical diffusivity of oxygen from the upper layer, bottom hypoxia was therefore progressively formed and maintained until the decreasing OCR almost achieved equilibrium with the oxygen supply from the lateral advection.

4.2.3 Hypoxia formation timescale

645 The above estimated OCR and the contribution of shoreward-intruded deep shelf waters made it possible to roughly estimate the hypoxia formation timescale: i.e., the time that the DO level in a known volume of water takes to decrease below the hypoxia threshold from an assumed initial DO concentration (Fennel and Testa, 2019). In this study, for the reinstatement of hypoxia after the typhoon, the initial DO level in subsurface waters could be taken as $\sim 180 \mu\text{mol kg}^{-1}$, which varied within $\pm 5 \mu\text{mol kg}^{-1}$ throughout the time-series observations (Fig. 5c). Considering the OCR for the hypoxic zone was at most $\sim 20 \mu\text{mol O}_2 \text{ kg}^{-1} \text{ d}^{-1}$, and the negligible contribution of lateral advection to oxygen loss off the Modaomen sub-estuary (Fig. 4), it took 650 nearly 6 days for the drawdown of DO to reach concentrations of $\sim 63 \mu\text{mol kg}^{-1}$ within a limited area. Scaling to a larger area, it would instead take 8-12 days if we choose the average OCR of the oxygen-deficient zone, $\sim 15 \pm 5 \mu\text{mol O}_2 \text{ kg}^{-1} \text{ d}^{-1}$ (Fig. 8c).
655 These estimates of hypoxia formation timescale are shorter than the bottom water residence time (> 15 days, Li et al. (2020)), which favoured the hypoxia formation to the west off the PRE (Su et al., 2017; Zhao et al., 2020).

Deleted: shelf benthic waters

Deleted: The closeness of t

Deleted: with

Deleted: ~

Deleted: could partly explain the occurrence of periodic hypoxia

660 For a more common scenario of hypoxia formation starting from late spring, we assumed that the shoreward-intruded oxygen-deficient offshore subsurface waters almost occupied the bottom layer on the inner shelf instead of the well-oxygenated offshore surface waters, as during Leg 1 (Fig. 4a, d). Based on above estimates that the shoreward-intruded subsurface waters totally reduced the initial DO level by $8.6 \pm 1.7\%$ of the oxygen decline for hypoxia formation, the initial DO level was lowered by $\sim 11 \mu\text{mol kg}^{-1}$ to be $\sim 183 \mu\text{mol kg}^{-1}$ before biochemical oxygen consumption. The hypoxia hotspot will then first occur ~ 6 days after its initiation on the inner NSCS shelf off the PRE and extend to a larger hypoxic zone within the water residence time of > 15 days (Lu et al., 2018; Li et al., 2020). This result is larger than that estimated by Fennel and Testa (2019) — 4 days — using the modelled OCR of $\sim 34 \mu\text{mol O}_2 \text{ kg}^{-1} \text{ d}^{-1}$ in the water column with a sediment oxygen demand of $\sim 2.1 \text{ g m}^{-2} \text{ d}^{-1}$, which were only applicable to the hypoxia formation in the Lingdingyang sub-estuary with shallower waters ($\sim 5 \text{ m}$) 665 (Zhang and Li, 2010). This result is still at the lower end of the hypoxia formation timescale in large river-dominated shelves globally (e.g., East China Sea off the Changjiang estuary, Northern Gulf of Mexico and Northwestern Black Sea), which varies from 8 to 89 days for hypoxia to develop once initiated (Fennel and Testa, 2019). This short hypoxia formation timescale likely owes to a high OCR in relatively warm subsurface waters fuelled by abundant labile organic matter (Su et al., 2017; Zhao et al., 2020).

Deleted: ~

Deleted: organic matters

670 4.3 Imprint of tropical cyclones on the evolution of coastal hypoxia

Tropical cyclones dramatically alter the physical stability of the water column and attenuate or even disrupt hypoxic conditions at low and mid-latitudes, such as off the Changjiang Estuary (Ni et al., 2016; Zhang et al., 2020) and the PRE (Su et al., 2017;

680 Huang et al., 2019), in the Chesapeake Bay (Testa and Kemp, 2014; Testa et al., 2017) and the northern Gulf of Mexico (Wang
and Justić, 2009; Feng et al., 2012). These intense, episodic storms thus strongly impact the duration and intensity of oxygen
depletion in coastal bottom waters (Rabalais et al., 2009; Wang et al., 2017; Zhang et al., 2020), driving the seasonal hypoxia
to be intermittent. As shown in Fig. 1, at least four named tropical cyclones impacted the study area from May to August in
2018, most of which shifted the wind direction from prevailing southwesterly to easterly or southeasterly and increased the
685 wind speed up to over 9 m s^{-1} , being able to destroy water column stratification and interrupt hypoxia formation (Geng et al.,
2019). This was not an exception, as annually there were ~ 6 tropical cyclones travelling across the NSCS from May to
September, when seasonal hypoxia develops (Qian et al., 2018; Wang et al., 2018), during the period from 1975-2019 (Fig.
9a). About five of the six annual tropical cyclones, on average, had the potential to overwhelmingly destroy the stability of the
water column and replenish the bottom waters with oxygen. Indeed, when tropical cyclones impacted the NSCS over the last
690 four decades, the local maximum wind speeds typically reached over 9 m s^{-1} , and often were larger than 15 m s^{-1} (Fig. 9b); the
local wind direction was inclined to be from the east, accounting for 56.2% in frequency, followed by the north (19.8%) and
the west (16.0%) (Fig. 9d). The long-lasting easterly winds (Fig. 9e) were more likely to confine the river plume to the coast
(Xu et al., 2019) and even force the riverine freshwater to subduct down to the depth (Fig. S2), strengthening the re-aeration of
the oxygen-poor bottom waters (Wang et al., 2017; Wang et al., 2018; Huang et al., 2019). We also found that the time interval
695 between two successive tropical cyclones was mostly less than 15 days, especially from July to September (Fig. 9c), close to
the timescale for hypoxia formation. The number of the time interval < 15 days showed a decreasing trend over 1975-2019
(Fig. 9c). Specifically, this number was averaged 4.1 per year before the year of 2000, in contrast to 2.8 per year after 2000.
This might partly explain less hypoxia was formed and even observed before the year of 2000 (Yin et al., 2004; Rabouille et
al., 2008). Therefore, frequent disturbance by tropical cyclones is one of the vital controls on the intermittent hypoxia in low-
700 latitude river-dominated ocean margins.

Although strong winds constrain the development of hypoxia, tropical cyclones potentially promote intensive oxygen depletion
after the transient dissipation of hypoxia (Rabalais et al., 2009). Heavy precipitation delivered by storms usually increases
riverine freshwater loading to the coastal ocean (Zhou et al., 2012), resulting in intensified stratification when winds weaken
705 (Wilson et al., 2008; Su et al., 2017). Indeed, heavy precipitation happened in the Pearl River Delta region after the landing of
typhoon SONTIHN, leading to a wide spreading of the river plume with lower salinity (< 15) than that during Leg 1 and the
intensification of stratification (Fig. 6), even though the river discharge of the PRE did not increase significantly (Li et al.,
2021). Enhanced vertical mixing and/or freshwater discharge supplied large amounts of nutrients to the surface layer to fuel
phytoplankton blooms following large storms (Zhao et al., 2009; Ni et al., 2016; Wang et al., 2017), as shown in Fig. 3 that
710 strong blooms occurred in the surface plume along the coast with much higher Chl *a* concentrations during Leg 2 than that
during Leg 1. The fresh autochthonous organic matter, together with the resuspended sedimentary organic carbon, provides
sufficient substrates for microbial respiration in a re-stratified water column, leading to renewed or even exacerbated bottom
water oxygen depletion (Zhou et al., 2012; Song et al., 2020). Along the east coast of North America, lowered DO

Deleted: subdue

Deleted: (Guangdong Meteorological Service,
http://gd.cma.gov.cn/qxfw/qhgk/201812/t20181217_92844.html)

Deleted: d

Deleted: in

Deleted:

Deleted: (Li et al., 2021)

concentrations were observed after storms (Paerl et al., 2000; Tomasko et al., 2006). Hypoxia was re-established across a larger area when Hurricane Katrina crossed the southeast Louisiana coast (Rabalais et al., 2009). Off the PRE, we also found that hypoxia re-occurred in the wake of a more extensive freshwater plume and enhanced eutrophication after the passage of typhoon SONTIHN (e.g., $\sim 45 \mu\text{mol kg}^{-1}$ at stations F202 and F302). Whether it can develop into more severe hypoxia compared to that found initially during Leg 1 depends on the net OCR and water column stability, up until the passage of the next storm, Typhoon BEBINCA (Fig. 1d).

In a changing climate, tropical cyclone features are believed to have a trend with higher intensity but lower frequency (Knutson et al., 2010; Chu et al., 2020). In the NSCS, the annual mean number of tropical cyclones in each decade decreased from 1950-2019, but the number of strong typhoons — the maximum wind speed near the center is between $41.5\text{-}50.9 \text{ m s}^{-1}$ over its lifetime — increased in the last decade (Table 2). The time interval between two successive tropical cyclones therefore increased by 2-3 days in the last two decades than prior to 2000 (Fig. 9c). The less-frequent disturbance in the stability of the water column by tropical cyclones and the elongated time interval between two successive tropical cyclones likely favour more persistent hypoxia. However, intensified tropical cyclones would destroy the hypoxia more completely. Despite stronger blooms after tropical cyclones as during Leg 2 (Fig. 3k), the winds shifting back to prevailing southwest monsoon might drive the blooms offshore (Fig. 3l), reducing the downward transport of fresh, labile organic matter to fuel intensive oxygen consumption in subsurface waters. In this sense, the development of coastal hypoxia depends on a trade-off between the intensity and frequency of tropical cyclones in a warmer ocean.

Table 2: Summary of average frequency of tropical cyclones in each decade from 1950-2019. TD, TS, STS, TY and STY represent tropical depressions (the maximum wind speed near the centre is between $10.8\text{-}17.1 \text{ m s}^{-1}$ over its lifetime), tropical storms ($17.2\text{-}24.4 \text{ m s}^{-1}$), strong tropical storms ($24.5\text{-}32.6 \text{ m s}^{-1}$), typhoons ($32.7\text{-}41.4 \text{ m s}^{-1}$) and strong typhoons ($41.5\text{-}50.9 \text{ m s}^{-1}$), respectively.

Years	TD	TS	STS	TY	STY	SUM
1950-1959	3.5	1.1	1.2	1.1	1.5	8.4
1960-1969	1.7	0.6	1.5	2.1	2.7	8.6
1970-1979	1.8	0.7	2.1	2.1	1.2	7.9
1980-1989	1.5	0.7	2.5	1.3	1.3	7.3
1990-1999	0.7	1.2	1.8	2	1.1	6.8
2000-2009	0.9	1.4	1.5	1.5	0.8	6.1
2010-2019	0.6	1.8	1.4	0.4	1.5	5.7

Formatted: Font colour: Auto

Deleted: Fig. 4

Deleted: activity is expected

Deleted: shift towards

Deleted: stronger storms but with

Deleted: a decreasing trend

Deleted: , especially in tropics and subtropics

Deleted: before the year of

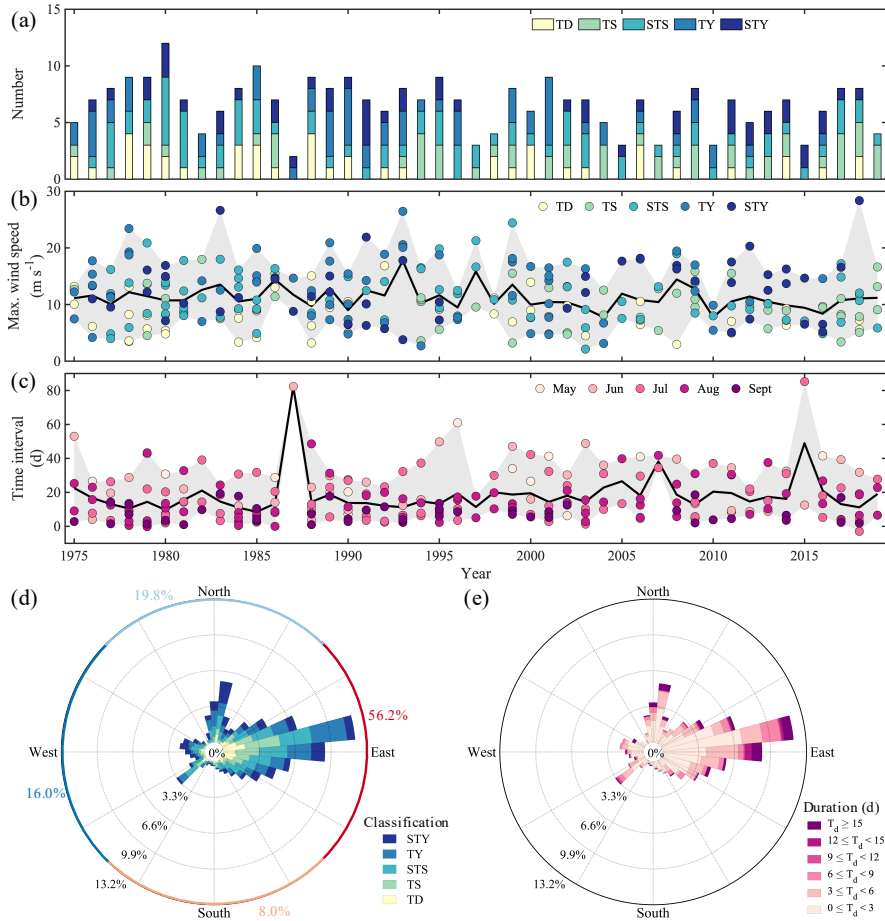


Figure 9: Statistics of tropical cyclones passing the northern South China Sea (NSCS) from May to September over 1975-2019. (a) Numbers of tropical cyclones. TD, TS, STS, TY and STY represent tropical depressions (the maximum wind speed near the centre is between 10.8-17.1 $m s^{-1}$ over its lifetime), tropical storms (17.2-24.4 $m s^{-1}$), strong tropical storms (24.5-32.6 $m s^{-1}$), typhoons (32.7-41.4 $m s^{-1}$) and strong typhoons (41.5-50.9 $m s^{-1}$), respectively. (b) The maximum wind speed of each tropical cyclone. The black line and grey shadow denote the annual average and range of the maximum wind speeds. (c) The time interval between two successive tropical cyclones. The black line and grey shadow denote the annual average and range of the time intervals. The negative time interval indicates an overlap in time of two

successive tropical cyclones. (d) The wind rose of the intensity of tropical cyclones. (e) The wind rose of the duration of tropical cyclones. The wind speed in (b) and wind direction in (d, e) were recorded at the Waglan Island station (Figure 1b).

5 Conclusions

We have demonstrated the evolution of intermittent hypoxia in summertime as disturbed by the typhoon passage on the inner NSCS shelf off the PRE and examined the controls on maintenance, destruction and reinstatement of hypoxia in this dynamic river-dominated marginal system. Eutrophication-induced hypoxia off the PRE was exacerbated with an enlarged area of ~ 660 km² and the lowest ever recorded regional DO concentration of 3.5 μmol kg⁻¹ (~ 0.1 mg L⁻¹). This hypoxia area was likely underestimated due to spring-neap tidal oscillations, which has recently been demonstrated by a numerical model (Li et al., 2020). Freshwater inputs suppressed wind-driven turbulent mixing and stabilized the water column, restricting the ventilation of the subsurface water and facilitating the formation and maintenance of hypoxia. We estimated for the first time the upwelling-induced oxygen decline and *in situ* OCR over the destruction and reinstatement of hypoxia, which took place on a time scale of 6-12 d. This *in situ* OCR could help constrain the source/sink terms for modelling oxygen dynamics in subtropical coastal waters. As the hypoxia timescale is shorter than water residence time but comparable with the disturbance of hypoxia from frequent tropical cyclones or high-wind events throughout the summer season, it could largely explain the intermittent nature of hypoxia off the PRE. Comparing with the hypoxia off large river systems at higher latitudes, tropical cyclones greatly influence the evolution of coastal hypoxia in tropical/subtropical regions. Nevertheless, how the changes in intensity and frequency of tropical cyclones would impact the development of coastal hypoxia in a warmer ocean clearly warrants further studies with carefully designed long-term observations and coupled physical-biogeochemical modelling.

Data Availability. Data for temperature, salinity, DO and Chl *a* are available at National Earth System Science Data Sharing Infrastructure, National Science & Technology Infrastructure of China (<http://www.geodata.cn>) with DOI (10.12041/geodata.30199559780656.ver1.db). The wind speeds and directions at the Waglan Island from May to August, 2018 were obtained from the Hong Kong Observatory (<http://www.hko.gov.hk/tc/cis/climat.htm>). The tidal heights at the Dawanshan gauge station near the Station F303 from May to August, 2018 were downloaded from the website (<http://www.chinaports.com/tidal/>). Information from the tropical cyclone database (1949-2019) was obtained from the China Meteorological Administration (<http://tcdata.typhoon.org.cn/>).

Supplement. Additional figures referenced in text: **Figure S1.** Surface water temperature and air temperature in July 2018. **Figure S2.** Distributions of temperature, salinity, DO and Chl *a* concentrations at the middle layer off the PRE during Leg 1 prior to Typhoon, and during Legs 2 and 3 post-typhoon. **Figure S3.** Profiles of temperature, salinity and DO at station F303 at the end of time-series observations and during Leg 2 and Leg 3.

Competing interests. The authors declare that they have no conflict of interest.

Deleted: ¶

Deleted: In a changing climate, tropical cyclone activity is expected to shift towards stronger storms but with a decreasing trend in frequency (Knutson et al., 2010; Chu et al., 2020). In the NSCS, the annual mean number of tropical cyclones in each decade decreased from 1950-2019, but the number of strong typhoons — the maximum wind speed near the center is between 41.5-50.9 m s⁻¹ over its lifetime — increased in the last decade (Table 2). The time interval between two successive tropical cyclones therefore increased by 2-3 days in the last two decades than before the year of 2000 (Fig. 9c). The less-frequent disturbance in the stability of the water column by tropical cyclones and the elongated time interval between two successive tropical cyclones likely favour more persistent hypoxia. However, intensified tropical cyclones would destroy the hypoxia more completely. Despite stronger blooms after tropical cyclones as during Leg 2 (Fig. 3k), the winds shifting back to prevailing southwest monsoon might drive the blooms offshore (Fig. 3l), reducing the downward transport of fresh, labile organic matters to fuel enduring intensive oxygen consumption in subsurface waters. In this sense, tropical cyclones may have the potential to relieve the exacerbation of coastal hypoxia in a warmer ocean. ¶

Table 2: Summary of average frequency of tropical cyclones in each decade from 1950-2019. TD, TS, STS, TY and STY represent tropical depressions (the maximum wind speed near the centre is between 10.8-17.1 m s⁻¹ over its lifetime), tropical storms (17.2-24.4 m s⁻¹), strong tropical storms (24.5-32.6 m s⁻¹), typhoons (32.7-41.4 m s⁻¹) and strong typhoons (41.5-50.9 m s⁻¹), respectively. ¶
Years ... [3]

Deleted: ling works

Deleted: induced by wind stress and/or tidal forcing

Formatted: Font: Italic

Deleted: This

Deleted: comparable with

Deleted: and

Deleted: which

Deleted: how

Deleted: the

Deleted: ill

Deleted: needs

Deleted: still needs

Deleted: exploration

Deleted: Despite the less-frequent disturbance from tropical cyclones and the elongated time interval between successive tropical cyclones, the elevated intensity of tropical cyclones and possible offshore-advected blooms after tropical cyclones may have the potential to relieve the exacerbation of coastal hypoxia in a warmer ocean. ¶

Deleted: currently for review and will be

Formatted: Font: 10 pt

Deleted: Air temperature at the Hong Kong Observatory in July 2018

Author contribution. YZ and MD are major contributors to the study's conception, data analysis and drafting the paper. KU contributed the sample collection and measurements of DO data. ZL contributed substantially to sample collections and data analysis of physical forcing. HL provided Chl *a* data, and JG provided CTD data. YL, JL, and FM also contributed significantly to cruise design, sample collections and/or data acquisition.

Acknowledgements. This research was funded by the Hong Kong Research Grants Council under the Theme-based Research Scheme (TRS) through project no. T21-602/16R and the Ministry of Science and Technology of China under the National Key Scientific Research Project through grant 2015CB954000. Y. Zhao was also supported by the China Scholarship Council through a joint PhD program scholarship (201906310060). We thank Xue Song, Zhiqiang Liu, Dou Li, Zhongya Cai, Zhirong Xu and Xuechao Wang for their assistance in sample collections; Liguoguo, Shilei Jin and Weizhen Jiang for assisting with sample measurements; Jianzhong Su for discussions and suggestions; and Richard Smith of Global Aquatic Research for assistance in English. We express our gratitude to two anonymous reviewers for their insightful comments and suggestions that help substantially improve clarity of the paper. The captain and the crew of R/V Haike 68 are acknowledged for their cooperation during the cruise.

References

- 860 Allahdadi, M. N. and Li, C.: Numerical Experiment of Stratification Induced by Diurnal Solar Heating Over the Louisiana Shelf, in: Modeling Coastal Hypoxia: Numerical Simulations of Patterns, Controls and Effects of Dissolved Oxygen Dynamics, edited by: Justic, D., Rose, K. A., Hetland, R. D. and Fennel, K., Springer International Publishing, Cham, 1-22, https://doi.org/10.1007/978-3-319-54571-4_1, 2017.
- 865 Benson, B. B. and Krause Jr, D.: The concentration and isotopic fractionation of oxygen dissolved in freshwater and seawater in equilibrium with the atmosphere, *Limnol Oceanogr*, 29, 620-632, <https://doi.org/10.4319/lo.1984.29.3.0620>, 1984.
- Bianchi, T. S., Dimarco, S. F., Cowan, J. H., Hetland, R. D., Chapman, P., Day, J. W. and Allison, M. A.: The science of hypoxia in the northern Gulf of Mexico: A review, *Sci Total Environ*, 408, 1471-1484, <https://doi.org/10.1016/j.scitotenv.2009.11.047>, 2010.
- 870 Breitburg, D., Levin, L. A., Oschlies, A., Grégoire, M., Chavez, F. P., Conley, D. J., Garçon, V., Gilbert, D., Gutiérrez, D., Isensee, K., Jacinto, G. S., Limburg, K. E., Montes, I., Naqvi, S. W. A., Pitcher, G. C., Rabalais, N. N., Roman, M. R., Rose, K. A., Seibel, B. A., Telszewski, M., Yasuhara, M. and Zhang, J.: Declining oxygen in the global ocean and coastal waters, *Science*, 359, eaam7240, <https://doi.org/10.1126/science.aam7240>, 2018.
- 875 Cai, W.-J., Hu, X., Huang, W.-J., Jiang, L.-Q., Wang, Y., Peng, T.-H. and Zhang, X.: Alkalinity distribution in the western North Atlantic Ocean margins, *Journal of Geophysical Research: Oceans*, 115, <https://doi.org/10.1029/2009JC005482>, 2010.
- 880 Cai, W. J., Dai, M. H., Wang, Y. C., Zhai, W. D., Huang, T., Chen, S. T., Zhang, F., Chen, Z. Z. and Wang, Z. H.: The biogeochemistry of inorganic carbon and nutrients in the Pearl River estuary and the adjacent Northern South China Sea, *Cont Shelf Res*, 24, 1301-1319, <https://doi.org/10.1016/j.csr.2004.04.005>, 2004.
- Cao, Z. M., Dai, M. H., Zheng, N., Wang, D. L., Li, Q., Zhai, W. D., Meng, F. F. and Gan, J. P.: Dynamics of the carbonate system in a large continental shelf system under the influence of both a river plume and coastal upwelling, *J Geophys Res-Biogeosci*, 116, G02010, <https://doi.org/10.1029/2010jg001596>, 2011.

Formatted: English (US)

Formatted: English (US)

Formatted: English (US)

Field Code Changed

Field Code Changed

Formatted: English (US)

Formatted: English (US)

Field Code Changed

Formatted: English (US)

Formatted: English (US)

Field Code Changed

Formatted: English (US)

Formatted: English (US)

Field Code Changed

Formatted: English (US)

Formatted: English (US)

Field Code Changed

Formatted: English (US)

Formatted: English (US)

Field Code Changed

Formatted: English (US)

Formatted: English (US)

885	Chen, X., Shen, Z., Li, Y. and Yang, Y.: Physical controls of hypoxia in waters adjacent to the Yangtze Estuary: A numerical modeling study, <i>Mar Pollut Bull</i> , 97, 349-364, https://doi.org/10.1016/j.marpolbul.2015.05.067 , 2015.	Formatted ... [5] Field Code Changed ... [4] Formatted ... [6] Formatted ... [8] Field Code Changed ... [7] Formatted ... [9] Formatted ... [11] Formatted ... [12] Field Code Changed ... [10] Field Code Changed ... [13] Formatted ... [14] Formatted ... [15] Field Code Changed ... [16] Formatted ... [17] Formatted ... [18] Field Code Changed ... [19] Formatted ... [20] Formatted ... [21] Field Code Changed ... [22] Formatted ... [23] Formatted ... [24] Field Code Changed ... [25] Formatted ... [26] Formatted ... [27] Field Code Changed ... [28] Formatted ... [29] Formatted ... [30] Field Code Changed ... [31] Formatted ... [32] Formatted ... [33] Formatted ... [35] Formatted ... [36] Field Code Changed ... [34] Field Code Changed ... [37] Formatted ... [38] Formatted ... [39] Field Code Changed ... [40] Formatted ... [41] Formatted ... [42] Field Code Changed ... [43] Formatted ... [44] Formatted ... [45]
890	Chen, Z., Gong, W., Cai, H., Chen, Y. and Zhang, H.: Dispersal of the Pearl River plume over continental shelf in summer, <i>Estuarine, Coastal and Shelf Science</i> , 194, 252-262, https://doi.org/10.1016/j.ecss.2017.06.025 , 2017.	
895	Chen, Z., Pan, J., Jiang, Y. and Lin, H.: Far-reaching transport of Pearl River plume water by upwelling jet in the northeastern South China Sea, <i>J Marine Syst</i> , 173, 60-69, https://doi.org/10.1016/j.jmarsys.2017.04.008 , 2017.	
900	Chu, J.-E., Lee, S.-S., Timmermann, A., Wengel, C., Stuecker, M. F. and Yamaguchi, R.: Reduced tropical cyclone densities and ocean effects due to anthropogenic greenhouse warming, <i>Sci Adv</i> , 6, eabd5109, https://doi.org/10.1126/sciadv.abd5109 , 2020.	
905	Cui, Y. S., Wu, J. X., Ren, J. and Xu, J.: Physical dynamics structures and oxygen budget of summer hypoxia in the Pearl River Estuary, <i>Limnol Oceanogr</i> , 64, 131-148, https://doi.org/10.1002/lno.11025 , 2019.	
910	Dai, M., Gan, J., Han, A., Kung, H. and Yin, Z.: Physical dynamics and biogeochemistry of the Pearl River plume, in: <i>Biogeochemical Dynamics at Major River-Coastal Interfaces: Linkages with Global Change</i> , edited by: Bianchi, T. S., Allison, M. and Cai, W.-J., Cambridge University Press, Cambridge, 321-352, 2014.	
915	Diaz, R. J. and Rosenberg, R.: Spreading Dead Zones and Consequences for Marine Ecosystems, <i>Science</i> , 321, 926, https://doi.org/10.1126/science.1156401 , 2008.	
920	Dortch, Q., Rabalais, N. N., Turner, R. E. and Rowe, G. T.: Respiration rates and hypoxia on the Louisiana shelf, <i>Estuaries</i> , 17, 862-872, https://doi.org/10.2307/1352754 , 1994.	
925	Feng, Y., Dimarco, S. F. and Jackson, G. A.: Relative role of wind forcing and riverine nutrient input on the extent of hypoxia in the northern Gulf of Mexico, <i>Geophys Res Lett</i> , 39, https://doi.org/10.1029/2012GL051192 , 2012.	
930	Fennel, K. and Testa, J. M.: Biogeochemical Controls on Coastal Hypoxia, <i>Annual Review of Marine Science</i> , 11, 105-130, https://doi.org/10.1146/annurev-marine-010318-095138 , 2019.	
	Gan, J., Cheung, A., Guo, X. and Li, L.: Intensified upwelling over a widened shelf in the northeastern South China Sea, <i>Journal of Geophysical Research: Oceans</i> , 114, https://doi.org/10.1029/2007JC004660 , 2009.	
	Gan, J. P., Li, L., Wang, D. X. and Guo, X. G.: Interaction of a river plume with coastal upwelling in the northeastern South China Sea, <i>Cont Shelf Res</i> , 29, 728-740, https://doi.org/10.1016/j.csr.2008.12.002 , 2009.	
	Geng, B. X., Xiu, P., Shu, C., Zhang, W. Z., Chai, F., Li, S. Y. and Wang, D. X.: Evaluating the Roles of Wind- and Buoyancy Flux-Induced Mixing on Phytoplankton Dynamics in the Northern and Central South China Sea, <i>J Geophys Res-Oceans</i> , 124, 680-702, https://doi.org/10.1029/2018jc014170 , 2019.	
	Gilbert, D., Rabalais, N. N., Diaz, R. J. and Zhang, J.: Evidence for greater oxygen decline rates in the coastal ocean than in the open ocean, <i>Biogeosciences</i> , 7, 2283-2296, https://doi.org/10.5194/bg-7-2283-2010 , 2010.	
	Grantham, B. A., Chan, F., Nielsen, K. J., Fox, D. S., Barth, J. A., Huyer, A., Lubchenco, J. and Menge, B. A.: Upwelling-driven nearshore hypoxia signals ecosystem and oceanographic changes in the northeast Pacific, <i>Nature</i> , 429, 749-754, https://doi.org/10.1038/nature02605 , 2004.	

935	Guo, X. H., Cai, W. J., Zhai, W. D., Dai, M. H., Wang, Y. C. and Chen, B. S.: Seasonal variations in the inorganic carbon system in the Pearl River (Zhujiang) estuary, <i>Cont Shelf Res</i> , 28, 1424-1434, https://doi.org/10.1016/j.csr.2007.07.011 , 2008.	Formatted ... [47]
		Field Code Changed ... [46]
		Formatted ... [48]
		Formatted ... [50]
	Guo, X. H. and Wong, G. T. F.: Carbonate chemistry in the Northern South China Sea Shelf-sea in June 2010, <i>Deep-Sea Res Pt II</i> , 117, 119-130, https://doi.org/10.1016/j.dsr2.2015.02.024 , 2015.	Field Code Changed ... [49]
940		Formatted ... [51]
		Formatted ... [53]
		Formatted ... [54]
		Field Code Changed ... [52]
945	Hetland, R. D. and Dimarco, S. F.: How does the character of oxygen demand control the structure of hypoxia on the Texas-Louisiana continental shelf?, <i>J Marine Syst</i> , 70, 49-62, https://doi.org/10.1016/j.jmarsys.2007.03.002 , 2008.	Field Code Changed ... [55]
		Formatted ... [56]
		Formatted ... [57]
		Field Code Changed ... [58]
950	Hu, X. P., Li, Q., Huang, W. J., Chen, B. S., Cai, W. J., Rabalais, N. N. and Turner, R. E.: Effects of eutrophication and benthic respiration on water column carbonate chemistry in a traditional hypoxic zone in the Northern Gulf of Mexico, <i>Mar Chem</i> , 194, 33-42, https://doi.org/10.1016/j.marchem.2017.04.004 , 2017.	Formatted ... [59]
		Formatted ... [60]
		Field Code Changed ... [61]
		Formatted ... [62]
955	Kalvelage, T., Lavik, G., Jensen, M. M., Revsbech, N. P., Löscher, C., Schunck, H., Desai, D. K., Hauss, H., Kiko, R., Holtappels, M., Laroche, J., Schmitz, R. A., Graco, M. I. and Kuypers, M. M. M.: Aerobic Microbial Respiration In Oceanic Oxygen Minimum Zones, <i>Plos One</i> , 10, e0133526, https://doi.org/10.1371/journal.pone.0133526 , 2015.	Formatted ... [63]
		Field Code Changed ... [64]
		Formatted ... [65]
		Formatted ... [66]
960	Kemp, W. M., Sampou, P. A., Garber, J., Tuttle, J. and Boynton, W. R.: Seasonal depletion of oxygen from bottom waters of Chesapeake Bay: roles of benthic and planktonic respiration and physical exchange processes, <i>Mar Ecol Prog Ser</i> , 85, 137-152, http://www.jstor.org/stable/24829928 , 1992.	Field Code Changed ... [67]
		Formatted ... [68]
		Formatted ... [69]
		Field Code Changed ... [70]
965	Koweek, D. A., García-Sánchez, C., Brodrick, P. G., Gassett, P. and Caldeira, K.: Evaluating hypoxia alleviation through induced downwelling, <i>Sci Total Environ</i> , 719, 137334, https://doi.org/10.1016/j.scitotenv.2020.137334 , 2020.	Formatted ... [71]
		Formatted ... [72]
		Field Code Changed ... [73]
		Formatted ... [74]
970	Labasque, T., Chaumery, C., Aminot, A. and Kergoat, G.: Spectrophotometric Winkler determination of dissolved oxygen: re-examination of critical factors and reliability, <i>Mar Chem</i> , 88, 53-60, https://doi.org/10.1016/j.marchem.2004.03.004 , 2004.	Formatted ... [75]
		Formatted ... [77]
		Formatted ... [78]
975	Li, D., Gan, J., Hui, C., Yu, L., Liu, Z., Lu, Z., Kao, S.-J. and Dai, M.: Spatiotemporal Development and Dissipation of Hypoxia Induced by Variable Wind-Driven Shelf Circulation off the Pearl River Estuary: Observational and Modeling Studies, <i>Journal of Geophysical Research: Oceans</i> , 126, e2020JC016700, https://doi.org/10.1029/2020JC016700 , 2021.	Field Code Changed ... [76]
		Field Code Changed ... [79]
		Formatted ... [80]
		Formatted ... [81]
980	Li, D., Gan, J., Hui, R., Liu, Z., Yu, L., Lu, Z. and Dai, M.: Vortex and Biogeochemical Dynamics for the Hypoxia Formation Within the Coastal Transition Zone off the Pearl River Estuary, <i>Journal of Geophysical Research: Oceans</i> , 125, e2020JC016178, https://doi.org/10.1029/2020JC016178 , 2020.	Field Code Changed ... [82]
		Formatted ... [83]
		Formatted ... [84]
		Field Code Changed ... [85]
		Formatted ... [86]
		Formatted ... [87]

985 Li, M., Lee, Y. J., Testa, J. M., Li, Y., Ni, W., Kemp, W. M. and Di Toro, D. M.: What drives interannual variability of hypoxia in Chesapeake Bay: Climate forcing versus nutrient loading?, *Geophys Res Lett*, 43, 2127-2134, <https://doi.org/10.1002/2015GL067334>, 2016. Formatted ... [88]
Field Code Changed

Li, X. F., Xu, J., Shi, Z. and Li, R. H.: Response of Bacterial Metabolic Activity to the River Discharge in the Pearl River Estuary: Implication for CO₂ Degassing Fluxes, *Front Microbiol*, 10, 1026, <https://doi.org/10.3389/fmicb.2019.01026>, 2019. Formatted ... [89]
Field Code Changed

990 Li, Y., Li, M. and Kemp, W. M.: A Budget Analysis of Bottom-Water Dissolved Oxygen in Chesapeake Bay, *Estuar Coast*, 38, 2132-2148, <https://doi.org/10.1007/s12237-014-9928-9>, 2015. Formatted ... [90]
Field Code Changed

995 Lu, Z. M. and Gan, J. P.: Controls of seasonal variability of phytoplankton blooms in the Pearl River Estuary, *Deep-Sea Res Pt II*, 117, 86-96, <https://doi.org/10.1016/j.dsr2.2013.12.011>, 2015. Formatted ... [91]
Field Code Changed

Lu, Z. M., Gan, J. P., Dai, M. H., Liu, H. B. and Zhao, X. Z.: Joint Effects of Extrinsic Biophysical Fluxes and Intrinsic Hydrodynamics on the Formation of Hypoxia West off the Pearl River Estuary, *J Geophys Res-Oceans*, 123, 6241-6259, <https://doi.org/10.1029/2018jc014199>, 2018. Field Code Changed
Formatted ... [92]
Field Code Changed

000 Maccready, P., Banas, N. S., Hickey, B. M., Dever, E. P. and Liu, Y.: A model study of tide- and wind-induced mixing in the Columbia River Estuary and plume, *Cont Shelf Res*, 29, 278-291, <https://doi.org/10.1016/j.csr.2008.03.015>, 2009. Formatted ... [93]
Field Code Changed

005 Mendelsohn, R., Emanuel, K., Chonabayashi, S. and Bakkensen, L.: The impact of climate change on global tropical cyclone damage, *Nat Clim Change*, 2, 205-209, <https://doi.org/10.1038/Nclimate1357>, 2012. Field Code Changed
Formatted ... [94]
Field Code Changed

Murphy, R. R., Kemp, W. M. and Ball, W. P.: Long-Term Trends in Chesapeake Bay Seasonal Hypoxia, Stratification, and Nutrient Loading, *Estuar Coast*, 34, 1293-1309, <https://doi.org/10.1007/s12237-011-9413-7>, 2011. Formatted ... [95]
Field Code Changed

010 Naqvi, S. W. A., Bange, H. W., Fariás, L., Monteiro, P. M. S., Scranton, M. I. and Zhang, J.: Marine hypoxia/anoxia as a source of CH₄ and N₂O, *Biogeosciences*, 7, 2159-2190, <https://doi.org/10.5194/bg-7-2159-2010>, 2010. Field Code Changed
Formatted ... [96]
Field Code Changed

015 Ni, X., Huang, D., Zeng, D., Zhang, T., Li, H. and Chen, J.: The impact of wind mixing on the variation of bottom dissolved oxygen off the Changjiang Estuary during summer, *J Marine Syst*, 154, 122-130, <https://doi.org/10.1016/j.jmarsys.2014.11.010>, 2016. Field Code Changed
Formatted ... [97]
Field Code Changed

Obenour, D. R., Michalak, A. M., Zhou, Y. and Scavia, D.: Quantifying the Impacts of Stratification and Nutrient Loading on Hypoxia in the Northern Gulf of Mexico, *Environ Sci Technol*, 46, 5489-5496, <https://doi.org/10.1021/es204481a>, 2012. Formatted ... [98]
Formatted

020 Paerl, H. W., Bales, J. D., Ausley, L. W., Buzzelli, C. P., Crowder, L. B., Eby, L. A., Go, M., Peierls, B. L., Richardson, T. L. and Ramus, J. S.: Hurricanes' hydrological, ecological effects linger in major U.S. estuary, *Eos, Transactions American Geophysical Union*, 81, 457-462, <https://doi.org/10.1029/00EO00338>, 2000. Field Code Changed
Formatted ... [99]
Field Code Changed

025 Pan, J. Y. and Gu, Y. Z.: Cruise observation and numerical modeling of turbulent mixing in the Pearl River estuary in summer, *Cont Shelf Res*, 120, 122-138, <https://doi.org/10.1016/j.csr.2016.03.019>, 2016. Formatted ... [100]
Field Code Changed

Pan, J. Y., Gu, Y. Z. and Wang, D. X.: Observations and numerical modeling of the Pearl River plume in summer season, *J Geophys Res-Oceans*, 119, 2480-2500, <https://doi.org/10.1002/2013jc009042>, 2014. Formatted ... [101]
Formatted

030 Qian, W., Dai, M., Xu, M., Kao, S.-J., Du, C., Liu, J., Wang, H., Guo, L. and Wang, L.: Non-local drivers of the summer hypoxia in the East China Sea off the Changjiang Estuary, *Estuarine, Coastal and Shelf Science*, 198, 393-399, <https://doi.org/10.1016/j.ecss.2016.08.032>, 2017. Field Code Changed
Formatted ... [102]

		Formatted	... [104]
		Field Code Changed	... [103]
		Formatted	... [105]
035	Qian, W., Gan, J. P., Liu, J. W., He, B. Y., Lu, Z. M., Guo, X. H., Wang, D. L., Guo, L. G., Huang, T. and Dai, M. H.: Current status of emerging hypoxia in a eutrophic estuary: The lower reach of the Pearl River Estuary, China, <i>Estuar Coast Shelf S</i> , 205, 58-67, https://doi.org/10.1016/j.ecss.2018.03.004 , 2018.	Formatted	... [107]
		Field Code Changed	... [106]
		Formatted	... [108]
040	Qiu, D., Zhong, Y., Chen, Y., Tan, Y., Song, X. and Huang, L.: Short-Term Phytoplankton Dynamics During Typhoon Season in and Near the Pearl River Estuary, South China Sea, <i>Journal of Geophysical Research: Biogeosciences</i> , 124, 274-292, https://doi.org/10.1029/2018JG004672 , 2019.	Formatted	... [110]
		Formatted	... [111]
		Field Code Changed	... [109]
		Field Code Changed	... [112]
045	Rabalais, N. N., Cai, W. J., Carstensen, J., Conley, D. J., Fry, B., Hu, X. P., Quinones-Rivera, Z., Rosenberg, R., Slomp, C. P., Turner, R. E., Voss, M., Wissel, B. and Zhang, J.: Eutrophication-Driven Deoxygenation in the Coastal Ocean, <i>Oceanography</i> , 27, 172-183, https://doi.org/10.5670/oceanog.2014.21 , 2014.	Formatted	... [113]
		Formatted	... [114]
		Field Code Changed	... [115]
050	Rabalais, N. N., Turner, R. E., Diaz, R. J. and Justic, D.: Global change and eutrophication of coastal waters, <i>Ices J Mar Sci</i> , 66, 1528-1537, https://doi.org/10.1093/icesjms/fsp047 , 2009.	Formatted	... [116]
		Formatted	... [117]
		Field Code Changed	... [118]
		Formatted	... [119]
		Formatted	... [120]
055	Robinson, C.: Heterotrophic Bacterial Respiration, in: <i>Microbial Ecology of the Oceans</i> , edited by: Kirchman, D. L., 299-334, https://doi.org/10.1002/9780470281840.ch9 , 2008.	Field Code Changed	... [121]
		Formatted	... [122]
		Formatted	... [123]
060	Song, G., Zhao, L., Chai, F., Liu, F., Li, M. and Xie, H.: Summertime Oxygen Depletion and Acidification in Bohai Sea, China, <i>Front Mar Sci</i> , 7, https://doi.org/10.3389/fmars.2020.00252 , 2020.	Field Code Changed	... [124]
		Formatted	... [125]
		Formatted	... [126]
		Field Code Changed	... [127]
065	Su, J.: Overview of the South China Sea circulation and its influence on the coastal physical oceanography outside the Pearl River Estuary, <i>Cont Shelf Res</i> , 24, 1745-1760, https://doi.org/10.1016/j.csr.2004.06.005 , 2004.	Formatted	... [128]
		Formatted	... [129]
		Field Code Changed	... [130]
		Formatted	... [131]
070	Tedford, E. W., Carpenter, J. R., Pawlowicz, R., Pieters, R. and Lawrence, G. A.: Observation and analysis of shear instability in the Fraser River estuary, <i>Journal of Geophysical Research: Oceans</i> , 114, https://doi.org/10.1029/2009JC005313 , 2009.	Formatted	... [132]
		Formatted	... [134]
		Formatted	... [135]
		Field Code Changed	... [133]
075	Testa, J. M., Clark, J. B., Dennison, W. C., Donovan, E. C., Fisher, A. W., Ni, W., Parker, M., Scavia, D., Spitzer, S. E., Waldrop, A. M., Vargas, V. M. D. and Ziegler, G.: Ecological Forecasting and the Science of Hypoxia in Chesapeake Bay, <i>Bioscience</i> , 67, 614-626, https://doi.org/10.1093/biosci/bix048 , 2017.	Field Code Changed	... [136]
		Formatted	... [137]
		Formatted	... [138]
080	Testa, J. M. and Kemp, W. M.: Spatial and Temporal Patterns of Winter–Spring Oxygen Depletion in Chesapeake Bay Bottom Water, <i>Estuar Coast</i> , 37, 1432-1448, https://doi.org/10.1007/s12237-014-9775-8 , 2014.	Field Code Changed	... [139]
		Formatted	... [140]
		Formatted	... [141]
		Field Code Changed	... [142]
		Formatted	... [143]
		Formatted	... [144]

	Vaquer-Sunyer, R. and Duarte, C. M.: Thresholds of hypoxia for marine biodiversity, <i>Proceedings of the National Academy of Sciences</i> , 105, 15452, https://doi.org/10.1073/pnas.0803833105 , 2008.	Formatted ... [146]
		Field Code Changed ... [145]
		Formatted ... [147]
085	Wang, B.: Hydromorphological mechanisms leading to hypoxia off the Changjiang estuary, <i>Mar Environ Res</i> , 67, 53-58, https://doi.org/10.1016/j.marenvres.2008.11.001 , 2009.	Formatted ... [149]
		Field Code Changed ... [148]
		Formatted ... [150]
090	Wang, B., Chen, J. F., Jin, H. Y., Li, H. L., Huang, D. J. and Cai, W. J.: Diatom bloom-derived bottom water hypoxia off the Changjiang estuary, with and without typhoon influence, <i>Limnol Oceanogr</i> , 62, 1552-1569, https://doi.org/10.1002/lno.10517 , 2017.	Formatted ... [152]
		Formatted ... [153]
		Field Code Changed ... [151]
095	Wang, B., Hu, J. T., Li, S. Y. and Liu, D. H.: A numerical analysis of biogeochemical controls with physical modulation on hypoxia during summer in the Pearl River estuary, <i>Biogeosciences</i> , 14, 2979-2999, https://doi.org/10.5194/bg-14-2979-2017 , 2017.	Field Code Changed ... [154]
		Formatted ... [155]
		Formatted ... [156]
	Wang, B., Hu, J. T., Li, S. Y., Yu, L. Q. and Huang, J.: Impacts of anthropogenic inputs on hypoxia and oxygen dynamics in the Pearl River estuary, <i>Biogeosciences</i> , 15, 6105-6125, https://doi.org/10.5194/bg-15-6105-2018 , 2018.	Field Code Changed ... [157]
		Formatted ... [158]
		Formatted ... [159]
100	Wang, D. X., Shu, Y. Q., Xue, H. J., Hu, J. Y., Chen, J., Zhuang, W., Zu, T. T. and Xu, J. D.: Relative contributions of local wind and topography to the coastal upwelling intensity in the northern South China Sea, <i>J Geophys Res-Oceans</i> , 119, 2550-2567, https://doi.org/10.1002/2013jc009172 , 2014.	Field Code Changed ... [160]
		Formatted ... [161]
		Formatted ... [162]
105	Wang, L. and Jusić, D.: A modeling study of the physical processes affecting the development of seasonal hypoxia over the inner Louisiana-Texas shelf: Circulation and stratification, <i>Cont Shelf Res</i> , 29, 1464-1476, https://doi.org/10.1016/j.csr.2009.03.014 , 2009.	Field Code Changed ... [163]
		Formatted ... [164]
		Formatted ... [165]
	Wei, X., Zhan, H. G., Ni, P. T. and Cai, S. Q.: A model study of the effects of river discharges and winds on hypoxia in summer in the Pearl River Estuary, <i>Mar Pollut Bull</i> , 113, 414-427, https://doi.org/10.1016/j.marpolbul.2016.10.042 , 2016.	Field Code Changed ... [166]
		Formatted ... [167]
110	Welschmeyer, N. A.: Fluorometric analysis of chlorophyll a in the presence of chlorophyll b and pheopigments, <i>Limnol Oceanogr</i> , 39, 1985-1992, https://doi.org/10.4319/lo.1994.39.8.1985 , 1994.	Formatted ... [168]
		Field Code Changed ... [169]
115	Wilson, R. E., Swanson, R. L. and Crowley, H. A.: Perspectives on long-term variations in hypoxic conditions in western Long Island Sound, <i>Journal of Geophysical Research: Oceans</i> , 113, https://doi.org/10.1029/2007JC004693 , 2008.	Formatted ... [170]
		Formatted ... [171]
	Wong, G. T. F., Ku, T.-L., Mulholland, M., Tseng, C.-M. and Wang, D.-P.: The SouthEast Asian Time-series Study (SEATS) and the biogeochemistry of the South China Sea—An overview, <i>Deep Sea Research Part II: Topical Studies in Oceanography</i> , 54, 1434-1447, https://doi.org/10.1016/j.dsr2.2007.05.012 , 2007.	Field Code Changed ... [172]
		Formatted ... [173]
		Formatted ... [174]
120	Wong, L. A., Chen, J., Xue, H., Dong, L. X., Su, J. L. and Heinke, G.: A model study of the circulation in the Pearl River Estuary (PRE) and its adjacent coastal waters: 1. Simulations and comparison with observations, <i>J Geophys Res-Oceans</i> , 108, https://doi.org/10.1029/2002jc001451 , 2003.	Formatted ... [176]
		Formatted ... [177]
		Field Code Changed ... [175]
125	Xu, C., Xu, Y. J., Hu, J. T., Li, S. Y. and Wang, B.: A numerical analysis of the summertime Pearl River plume from 1999 to 2010: Dispersal patterns and intraseasonal variability, <i>J Marine Syst</i> , 192, 15-27, https://doi.org/10.1016/j.jmarsys.2018.12.010 , 2019.	Field Code Changed ... [178]
		Formatted ... [179]
		Formatted ... [180]
		Field Code Changed ... [181]
130	Yang, D., Yin, B., Sun, J. and Zhang, Y.: Numerical study on the origins and the forcing mechanism of the phosphate in upwelling areas off the coast of Zhejiang province, China in summer, <i>J Marine Syst</i> , 123-124, 1-18, https://doi.org/10.1016/j.jmarsys.2013.04.002 , 2013.	Formatted ... [182]
		Formatted ... [183]
		Field Code Changed ... [184]
		Formatted ... [185]
		Formatted ... [186]

- Yin, K. D., Lin, Z. F. and Ke, Z. Y.: Temporal and spatial distribution of dissolved oxygen in the Pearl River Estuary and adjacent coastal waters, *Cont Shelf Res*, 24, 1935-1948, <https://doi.org/10.1016/j.csr.2004.06.017>, 2004.
- 135 Yu, L., Fennel, K., Laurent, A., Murrell, M. C. and Lehrter, J. C.: Numerical analysis of the primary processes controlling oxygen dynamics on the Louisiana shelf, *Biogeosciences*, 12, 2063-2076, <https://doi.org/10.5194/bg-12-2063-2015>, 2015.
- Yu, L., Gan, J., Dai, M., Hui, C. R., Lu, Z. and Li, D.: Modeling the role of riverine organic matter in hypoxia formation within the coastal transition zone off the Pearl River Estuary, *Limnol Oceanogr*, n/a, <https://doi.org/10.1002/lno.11616>, 2020.
- 140 Yuan, X., Yin, K., Harrison, P. J., Cai, W., He, L. and Xu, J.: Bacterial production and respiration in subtropical Hong Kong waters: influence of the Pearl River discharge and sewage effluent, *Aquat Microb Ecol*, 58, 167-179, <https://doi.org/10.3354/ame01346>, 2010.
- 145 Zhang, H., Fennel, K., Laurent, A. and Bian, C.: A numerical model study of the main factors contributing to hypoxia and its interannual and short-term variability in the East China Sea, *Biogeosciences*, 17, 5745-5761, <https://doi.org/10.5194/bg-17-5745-2020>, 2020.
- Zhang, H. and Li, S. Y.: Effects of physical and biochemical processes on the dissolved oxygen budget for the Pearl River Estuary during summer, *J Marine Syst*, 79, 65-88, <https://doi.org/10.1016/j.jmarsys.2009.07.002>, 2010.
- 150 Zhang, W., Wu, H., Hetland, R. D. and Zhu, Z.: On Mechanisms Controlling the Seasonal Hypoxia Hot Spots off the Changjiang River Estuary, *Journal of Geophysical Research: Oceans*, 124, 8683-8700, <https://doi.org/10.1029/2019jc015322>, 2019.
- 155 Zhao, H., Tang, D. L. and Wang, D. X.: Phytoplankton blooms near the Pearl River Estuary induced by Typhoon Nuri, *J Geophys Res-Oceans*, 114, <https://doi.org/10.1029/2009jc005384>, 2009.
- 160 Zhao, Y., Liu, J., Uthaiapan, K., Song, X., Xu, Y., He, B., Liu, H., Gan, J. and Dai, M.: Dynamics of inorganic carbon and pH in a large subtropical continental shelf system: Interaction between eutrophication, hypoxia, and ocean acidification, *Limnol Oceanogr*, 65, 1359-1379, <https://doi.org/10.1002/lno.11393>, 2020.
- 165 Zhou, W., Yin, K., Harrison, P. J. and Lee, J. H. W.: The influence of late summer typhoons and high river discharge on water quality in Hong Kong waters, *Estuarine, Coastal and Shelf Science*, 111, 35-47, <https://doi.org/10.1016/j.ecss.2012.06.004>, 2012.

Formatted: English (US)

Field Code Changed

Formatted: English (US)

Field Code Changed

Formatted: English (US)

Formatted: English (US)

Formatted: English (US)

Formatted: English (US)

Field Code Changed

Field Code Changed

Formatted: English (US)

Formatted: English (US)

Field Code Changed

Formatted: English (US)

Formatted: English (US)

Field Code Changed

Formatted: English (US)

Formatted: English (US)

Field Code Changed

Formatted: English (US)

Formatted: English (US)

Field Code Changed

Formatted: English (US)

Formatted: English (US)

Field Code Changed

Formatted: English (US)

Formatted: English (US)

Field Code Changed

Formatted: English (US)

Formatted: English (US)

Page 16: [1] Deleted	Zhao Yangyang	05/03/2021 17:37:00
Page 16: [2] Deleted	Zhao Yangyang	05/03/2021 17:08:00
Page 23: [3] Deleted	Zhao Yangyang	05/03/2021 21:53:00
Page 24: [4] Change Field Code Changed	Unknown	
Page 25: [5] Formatted English (US)	Zhao Yangyang	07/03/2021 10:17:00
Page 25: [6] Formatted English (US)	Zhao Yangyang	07/03/2021 10:17:00
Page 24: [7] Change Field Code Changed	Unknown	
Page 25: [8] Formatted English (US)	Zhao Yangyang	07/03/2021 10:17:00
Page 25: [9] Formatted English (US)	Zhao Yangyang	07/03/2021 10:17:00
Page 24: [10] Change Field Code Changed	Unknown	
Page 25: [11] Formatted English (US)	Zhao Yangyang	07/03/2021 10:17:00
Page 25: [12] Formatted English (US)	Zhao Yangyang	07/03/2021 10:17:00
Page 24: [13] Change Field Code Changed	Unknown	
Page 25: [14] Formatted English (US)	Zhao Yangyang	07/03/2021 10:17:00
Page 25: [15] Formatted English (US)	Zhao Yangyang	07/03/2021 10:17:00
Page 24: [16] Change Field Code Changed	Unknown	
Page 25: [17] Formatted English (US)	Zhao Yangyang	07/03/2021 10:17:00
Page 25: [18] Formatted	Zhao Yangyang	07/03/2021 10:17:00

English (US)

▲
Page 25: [21] Formatted Zhao Yangyang 07/03/2021 10:17:00

English (US)

▲
Page 24: [22] Change Unknown

Field Code Changed

▲
Page 25: [23] Formatted Zhao Yangyang 07/03/2021 10:17:00

English (US)

▲
Page 25: [24] Formatted Zhao Yangyang 07/03/2021 10:17:00

English (US)

▲
Page 24: [25] Change Unknown

Field Code Changed

▲
Page 25: [26] Formatted Zhao Yangyang 07/03/2021 10:17:00

English (US)

▲
Page 25: [27] Formatted Zhao Yangyang 07/03/2021 10:17:00

English (US)

▲
Page 24: [28] Change Unknown

Field Code Changed

▲
Page 25: [29] Formatted Zhao Yangyang 07/03/2021 10:17:00

English (US)

▲
Page 25: [30] Formatted Zhao Yangyang 07/03/2021 10:17:00

English (US)

▲
Page 24: [31] Change Unknown

Field Code Changed

▲
Page 25: [32] Formatted Zhao Yangyang 07/03/2021 10:17:00

English (US)

▲
Page 25: [33] Formatted Zhao Yangyang 07/03/2021 10:17:00

English (US)

▲
Page 24: [34] Change Unknown

Field Code Changed

▲
Page 25: [35] Formatted Zhao Yangyang 07/03/2021 10:17:00

English (US)

▲
Page 25: [36] Formatted Zhao Yangyang 07/03/2021 10:17:00

English (US)

▲
Page 25: [39] Formatted Zhao Yangyang 07/03/2021 10:17:00

English (US)

▲
Page 24: [40] Change Unknown

Field Code Changed

▲
Page 25: [41] Formatted Zhao Yangyang 07/03/2021 10:17:00

English (US)

▲
Page 25: [42] Formatted Zhao Yangyang 07/03/2021 10:17:00

English (US)

▲
Page 24: [43] Change Unknown

Field Code Changed

▲
Page 25: [44] Formatted Zhao Yangyang 07/03/2021 10:17:00

English (US)

▲
Page 25: [45] Formatted Zhao Yangyang 07/03/2021 10:17:00

English (US)

▲
Page 24: [46] Change Unknown

Field Code Changed

▲
Page 26: [47] Formatted Zhao Yangyang 07/03/2021 10:17:00

English (US)

▲
Page 26: [48] Formatted Zhao Yangyang 07/03/2021 10:17:00

English (US)

▲
Page 24: [49] Change Unknown

Field Code Changed

▲
Page 26: [50] Formatted Zhao Yangyang 07/03/2021 10:17:00

English (US)

▲
Page 26: [51] Formatted Zhao Yangyang 07/03/2021 10:17:00

English (US)

▲
Page 24: [52] Change Unknown

Field Code Changed

▲
Page 26: [53] Formatted Zhao Yangyang 07/03/2021 10:17:00

English (US)

▲
Page 26: [54] Formatted Zhao Yangyang 07/03/2021 10:17:00

English (US)

▲
Page 26: [57] Formatted Zhao Yangyang 07/03/2021 10:17:00

English (US)

▲
Page 24: [58] Change Unknown

Field Code Changed

▲
Page 26: [59] Formatted Zhao Yangyang 07/03/2021 10:17:00

English (US)

▲
Page 26: [60] Formatted Zhao Yangyang 07/03/2021 10:17:00

English (US)

▲
Page 24: [61] Change Unknown

Field Code Changed

▲
Page 26: [62] Formatted Zhao Yangyang 07/03/2021 10:17:00

English (US)

▲
Page 26: [63] Formatted Zhao Yangyang 07/03/2021 10:17:00

English (US)

▲
Page 24: [64] Change Unknown

Field Code Changed

▲
Page 26: [65] Formatted Zhao Yangyang 07/03/2021 10:17:00

English (US)

▲
Page 26: [66] Formatted Zhao Yangyang 07/03/2021 10:17:00

English (US)

▲
Page 24: [67] Change Unknown

Field Code Changed

▲
Page 26: [68] Formatted Zhao Yangyang 07/03/2021 10:16:00

English (US)

▲
Page 26: [69] Formatted Zhao Yangyang 07/03/2021 10:16:00

English (US)

▲
Page 24: [70] Change Unknown

Field Code Changed

▲
Page 26: [71] Formatted Zhao Yangyang 07/03/2021 10:16:00

English (US)

▲
Page 26: [72] Formatted Zhao Yangyang 07/03/2021 10:16:00

English (US)

▲
Page 26: [75] Formatted Zhao Yangyang 07/03/2021 10:16:00

English (US)

▲
Page 24: [76] Change Unknown

Field Code Changed

▲
Page 26: [77] Formatted Zhao Yangyang 07/03/2021 10:16:00

English (US)

▲
Page 26: [78] Formatted Zhao Yangyang 07/03/2021 10:16:00

English (US)

▲
Page 24: [79] Change Unknown

Field Code Changed

▲
Page 26: [80] Formatted Zhao Yangyang 07/03/2021 10:16:00

English (US)

▲
Page 26: [81] Formatted Zhao Yangyang 07/03/2021 10:16:00

English (US)

▲
Page 24: [82] Change Unknown

Field Code Changed

▲
Page 26: [83] Formatted Zhao Yangyang 07/03/2021 10:16:00

English (US)

▲
Page 26: [84] Formatted Zhao Yangyang 07/03/2021 10:16:00

English (US)

▲
Page 24: [85] Change Unknown

Field Code Changed

▲
Page 26: [86] Formatted Zhao Yangyang 07/03/2021 10:16:00

English (US)

▲
Page 26: [87] Formatted Zhao Yangyang 07/03/2021 10:16:00

English (US)

▲
Page 27: [88] Formatted Zhao Yangyang 07/03/2021 10:16:00

English (US)

▲
Page 27: [88] Formatted Zhao Yangyang 07/03/2021 10:16:00

English (US)

▲

English (US)

▲
Page 27: [90] Formatted Zhao Yangyang 07/03/2021 10:16:00

English (US)

▲
Page 27: [91] Formatted Zhao Yangyang 07/03/2021 10:16:00

English (US)

▲
Page 27: [91] Formatted Zhao Yangyang 07/03/2021 10:16:00

English (US)

▲
Page 27: [92] Formatted Zhao Yangyang 07/03/2021 10:17:00

English (US)

▲
Page 27: [92] Formatted Zhao Yangyang 07/03/2021 10:17:00

English (US)

▲
Page 27: [93] Formatted Zhao Yangyang 07/03/2021 10:17:00

English (US)

▲
Page 27: [93] Formatted Zhao Yangyang 07/03/2021 10:17:00

English (US)

▲
Page 27: [94] Formatted Zhao Yangyang 07/03/2021 10:17:00

English (US)

▲
Page 27: [94] Formatted Zhao Yangyang 07/03/2021 10:17:00

English (US)

▲
Page 27: [95] Formatted Zhao Yangyang 07/03/2021 10:17:00

English (US)

▲
Page 27: [95] Formatted Zhao Yangyang 07/03/2021 10:17:00

English (US)

▲
Page 27: [96] Formatted Zhao Yangyang 07/03/2021 10:17:00

English (US)

▲
Page 27: [96] Formatted Zhao Yangyang 07/03/2021 10:17:00

English (US)

▲
Page 27: [97] Formatted Zhao Yangyang 07/03/2021 10:17:00

English (US)

▲
Page 27: [97] Formatted Zhao Yangyang 07/03/2021 10:17:00

English (US)

▲

English (US)

▲
Page 27: [99] Formatted Zhao Yangyang 07/03/2021 10:17:00

English (US)

▲
Page 27: [100] Formatted Zhao Yangyang 07/03/2021 10:17:00

English (US)

▲
Page 27: [100] Formatted Zhao Yangyang 07/03/2021 10:17:00

English (US)

▲
Page 27: [101] Formatted Zhao Yangyang 07/03/2021 10:17:00

English (US)

▲
Page 27: [101] Formatted Zhao Yangyang 07/03/2021 10:17:00

English (US)

▲
Page 27: [102] Formatted Zhao Yangyang 07/03/2021 10:17:00

English (US)

▲
Page 27: [102] Formatted Zhao Yangyang 07/03/2021 10:17:00

English (US)

▲
Page 24: [103] Change Unknown

Field Code Changed

▲
Page 28: [104] Formatted Zhao Yangyang 07/03/2021 10:17:00

English (US)

▲
Page 28: [105] Formatted Zhao Yangyang 07/03/2021 10:17:00

English (US)

▲
Page 24: [106] Change Unknown

Field Code Changed

▲
Page 28: [107] Formatted Zhao Yangyang 07/03/2021 10:17:00

English (US)

▲
Page 28: [108] Formatted Zhao Yangyang 07/03/2021 10:17:00

English (US)

▲
Page 24: [109] Change Unknown

Field Code Changed

▲
Page 28: [110] Formatted Zhao Yangyang 07/03/2021 10:17:00

English (US)

▲
Page 28: [111] Formatted Zhao Yangyang 07/03/2021 10:17:00

English (US)

▲
Page 28: [114] Formatted Zhao Yangyang 07/03/2021 10:17:00

English (US)

▲
Page 24: [115] Change Unknown

Field Code Changed

▲
Page 28: [116] Formatted Zhao Yangyang 07/03/2021 10:17:00

English (US)

▲
Page 28: [117] Formatted Zhao Yangyang 07/03/2021 10:17:00

English (US)

▲
Page 24: [118] Change Unknown

Field Code Changed

▲
Page 28: [119] Formatted Zhao Yangyang 07/03/2021 10:17:00

English (US)

▲
Page 28: [120] Formatted Zhao Yangyang 07/03/2021 10:17:00

English (US)

▲
Page 24: [121] Change Unknown

Field Code Changed

▲
Page 28: [122] Formatted Zhao Yangyang 07/03/2021 10:17:00

English (US)

▲
Page 28: [123] Formatted Zhao Yangyang 07/03/2021 10:17:00

English (US)

▲
Page 24: [124] Change Unknown

Field Code Changed

▲
Page 28: [125] Formatted Zhao Yangyang 07/03/2021 10:17:00

English (US)

▲
Page 28: [126] Formatted Zhao Yangyang 07/03/2021 10:17:00

English (US)

▲
Page 24: [127] Change Unknown

Field Code Changed

▲
Page 28: [128] Formatted Zhao Yangyang 07/03/2021 10:17:00

English (US)

▲
Page 28: [129] Formatted Zhao Yangyang 07/03/2021 10:17:00

English (US)

▲
Page 28: [132] Formatted Zhao Yangyang 07/03/2021 10:17:00

English (US)

▲
Page 24: [133] Change Unknown

Field Code Changed

▲
Page 28: [134] Formatted Zhao Yangyang 07/03/2021 10:17:00

English (US)

▲
Page 28: [135] Formatted Zhao Yangyang 07/03/2021 10:17:00

English (US)

▲
Page 24: [136] Change Unknown

Field Code Changed

▲
Page 28: [137] Formatted Zhao Yangyang 07/03/2021 10:17:00

English (US)

▲
Page 28: [138] Formatted Zhao Yangyang 07/03/2021 10:17:00

English (US)

▲
Page 24: [139] Change Unknown

Field Code Changed

▲
Page 28: [140] Formatted Zhao Yangyang 07/03/2021 10:17:00

English (US)

▲
Page 28: [141] Formatted Zhao Yangyang 07/03/2021 10:17:00

English (US)

▲
Page 24: [142] Change Unknown

Field Code Changed

▲
Page 28: [143] Formatted Zhao Yangyang 07/03/2021 10:17:00

English (US)

▲
Page 28: [144] Formatted Zhao Yangyang 07/03/2021 10:17:00

English (US)

▲
Page 24: [145] Change Unknown

Field Code Changed

▲
Page 29: [146] Formatted Zhao Yangyang 07/03/2021 10:17:00

English (US)

▲

English (US)

▲
Page 29: [150] Formatted Zhao Yangyang 07/03/2021 10:17:00

English (US)

▲
Page 24: [151] Change Unknown

Field Code Changed

▲
Page 29: [152] Formatted Zhao Yangyang 07/03/2021 10:17:00

English (US)

▲
Page 29: [153] Formatted Zhao Yangyang 07/03/2021 10:17:00

English (US)

▲
Page 24: [154] Change Unknown

Field Code Changed

▲
Page 29: [155] Formatted Zhao Yangyang 07/03/2021 10:17:00

English (US)

▲
Page 29: [156] Formatted Zhao Yangyang 07/03/2021 10:17:00

English (US)

▲
Page 24: [157] Change Unknown

Field Code Changed

▲
Page 29: [158] Formatted Zhao Yangyang 07/03/2021 10:17:00

English (US)

▲
Page 29: [159] Formatted Zhao Yangyang 07/03/2021 10:17:00

English (US)

▲
Page 24: [160] Change Unknown

Field Code Changed

▲
Page 29: [161] Formatted Zhao Yangyang 07/03/2021 10:17:00

English (US)

▲
Page 29: [162] Formatted Zhao Yangyang 07/03/2021 10:17:00

English (US)

▲
Page 24: [163] Change Unknown

Field Code Changed

▲
Page 29: [164] Formatted Zhao Yangyang 07/03/2021 10:17:00

English (US)

▲

English (US)

▲
Page 29: [168] Formatted Zhao Yangyang 07/03/2021 10:17:00

English (US)

▲
Page 24: [169] Change Unknown

Field Code Changed

▲
Page 29: [170] Formatted Zhao Yangyang 07/03/2021 10:17:00

English (US)

▲
Page 29: [171] Formatted Zhao Yangyang 07/03/2021 10:17:00

English (US)

▲
Page 24: [172] Change Unknown

Field Code Changed

▲
Page 29: [173] Formatted Zhao Yangyang 07/03/2021 10:17:00

English (US)

▲
Page 29: [174] Formatted Zhao Yangyang 07/03/2021 10:17:00

English (US)

▲
Page 24: [175] Change Unknown

Field Code Changed

▲
Page 29: [176] Formatted Zhao Yangyang 07/03/2021 10:17:00

English (US)

▲
Page 29: [177] Formatted Zhao Yangyang 07/03/2021 10:17:00

English (US)

▲
Page 24: [178] Change Unknown

Field Code Changed

▲
Page 29: [179] Formatted Zhao Yangyang 07/03/2021 10:17:00

English (US)

▲
Page 29: [180] Formatted Zhao Yangyang 07/03/2021 10:17:00

English (US)

▲
Page 24: [181] Change Unknown

Field Code Changed

▲
Page 29: [182] Formatted Zhao Yangyang 07/03/2021 10:17:00

English (US)

▲
Page 29: [183] Formatted Zhao Yangyang 07/03/2021 10:17:00

English (US)

▲.....
Page 29: [186] Formatted

Zhao Yangyang

07/03/2021 10:17:00

English (US)
▲.....