

Author's Response to Reviewer #1

Thank you very much for the thorough review and your valuable recommendations and suggestions, which surely helped to improve the manuscript.

5

Carbon dioxide (CO₂) and methane (CH₄) are climate-relevant trace gases. Therefore, investigations of their distributions as well as estimates of their natural and anthropogenic sources and sinks have received a lot of attention during the last five decades. In general, the coastal oceans are an overall sink of atmospheric CO₂ and an overall source of atmospheric CH₄. However, getting a comprehensive picture of the CO₂/CH₄ distributions in coastal ocean environments is hampered by the fact that the seasonal and interannual variabilities are usually not well known or even unknown. To this end, the manuscript (ms) under review presents underway time series measurements of dissolved CO₂ and CH₄ concentrations from the surface layer of the Baltic Sea made on-board a commercial vessel commuting between Lubeck and Helsinki in the period from 2010 to 2017. The data set is used to show the effects of coastal upwelling on the distributions and air/sea fluxes of dissolved CO₂ and CH₄ in various (selected) regions of the Baltic Proper and the Gulf of Finland. Although I think that the ms presents a new data set of high relevance to address questions about seasonality and interannual variability of dissolved CO₂ and CH₄ in coastal areas such as the Baltic Sea, its major scientific objectives remain unclear. In large parts, the ms reads more like a technical or methodological report and thus needs considerable re-writing. Therefore, I can recommend publication only after significant major revisions.

Thank you for your critical and very helpful assessment. We agree that the scientific objectives of our study had to be stated clearer in the introduction and that some points in the discussion were missing. Please refer to our answers below for detailed comments. In addition to addressing seasonality and interannual variability, we do see the development of techniques for upwelling detection and extrapolation also as important part of the scientific scope of the paper (in agreement with Reviewer #2). Nevertheless, we absolutely agree with you that these objectives have to be (and are now) presented more clearly in the introduction.

Major points:

1) The introduction needs significant re-writing. It should give the basic scientific background why this kind of measurements and data analysis are done. Moreover, the overarching scientific objectives addressed by the study need to be given.

There was indeed room for improvement regarding the scientific background of the analyses and clearly stating what the major objectives of our study are. We rewrote and restructured the introduction accordingly.

We started with an introduction on coastal upwelling (not only in the Baltic Sea) and on how it relates to greenhouse gases, mentioning important processes and ongoing changes as a motivation to measure greenhouse gases:

“Coastal upwelling areas are known to be hotspots of greenhouse gas emissions from marine systems to the atmosphere (Capelle and Tortell, 2016; Morgan et al., 2019). This is a result of enhanced productivity and mineralisation, often hypoxic conditions in the subsurface waters leading to increased concentrations of reduced compounds, and an effective transport mechanism of these subsurface waters to the air–sea interface. Climate change is expected to have an amplifying effect on the intensity of coastal upwelling in the global ocean (Bakun et al., 2015; Xiu et al., 2018). Eutrophication and reduced ventilation lead to the spreading and intensification of hypoxia in coastal systems (Diaz and Rosenberg, 2008). The combination of these effects will undoubtedly affect the trace gas dynamics in upwelling regions.” (Line 21)

We continued with ongoing environmental changes in the Baltic Sea (which you also mentioned in point 5). This highlights not only the importance of our measurements “out of local interest”, but gives good reasons to see the Baltic Sea as a “test lab” for other regions because changes can probably be spotted early here and methods can be developed accordingly:

“The Baltic Sea – a brackish, semi-enclosed sea in northern Europe (Fig. 1) – is among the fastest-warming marginal seas world-wide (Kniefbusch et al., 2019). It is further known to be strongly affected by environmental changes such

as eutrophication (HELCOM, 2018), changing wind patterns, and, thus, upwelling intensity (BACC II Author Team, 2015), and has also been shown to encounter a decrease of oxygen on a large number of coastal sites over the last decades (Caballero-Alfonso et al., 2015). The Baltic Sea, therefore, offers the potential to study feedbacks between anthropogenic and climatic drivers and upwelling-induced greenhouse gas fluxes early and with a high signal intensity.” (Line 28)

The following paragraphs were only slightly changed, based on, e.g. suggestions by Reviewer #2. We moved the paragraph on SOOPs and on the instrumentation (which was the first one before) towards the end of the introduction.

We then summarise our motivation and give reasons to do these kind of studies and develop new methods in the Baltic Sea, using SOOP data:

“The large extent to which the Baltic Sea is influenced by climatic and anthropogenic forces and the availability of the presented eight-years data set of SOOP Finnmaid and of high-resolution models (Placke et al., 2018; Gräwe et al., 2019) make the Baltic Sea a unique study site to detect feedbacks early and to develop methods and process understanding that can be used to analyse long-term data sets with respect to, e.g. upwelling-induced trace gas dynamics. The SOOP strategy allows us to investigate the influence of coastal upwelling on surface $p\text{CO}_2$ and $c\text{CH}_4$ in the Baltic Sea on a large spatial and temporal scale without issues of bad coverage of seasonality due to (biased) individual RV-based studies. Furthermore, methods developed here can possibly be used for the treatise of upwelling in regions that are more important for global trace gas fluxes and budgets.” (Line 90)

As requested, we revised the presentation of our objectives, as well:

In this study, we:

- present a method to identify upwelling events along the SOOP track based on wind and modelled SST data,
- compare upwelling-induced trace gas dynamics within several regions in the Baltic Sea,
- examine the relaxation of upwelling events over time with a focus on underlying processes,
- discuss interannual variability within the data set with a focus on controlling mechanisms of seasonality and highlight the importance of upwelling to understand CO_2 and CH_4 dynamics in the Baltic Sea,
- test whether a long-term trend can be inferred from the analysis of this eight-years data set, and
- demonstrate the potential of extrapolating trace gas observations based on modelled SST data and show ways to estimate air–sea trace gas fluxes on a broader spatial scale under extremely variable conditions.

(Line 97)

2) Section 2 ‘Data methods’: I would like to suggest to move sections 2.2 and 2.4-2.6 to the Appendix. The information given in these sections is relevant only for side aspects of the data analysis. (Please note that Fig. 9 is already mentioned in section 2.4, so the numbering of figures is not correct, it should appear as Fig. 5)

We followed this suggestion by moving sections 2.4, 2.5, and 2.6 to the appendix (now sections A1, A2, B1), as they address side aspects of the paper or data handling. (This also solves the incorrect figure labelling.)

Section 2.2, however, describing wind and model data, is a section dealing with two main input parameters of vital importance to the study. Thus, after thoughtful consideration and discussion, we would like to keep this section in the main part of the manuscript.

3) Section 3 ‘Results and Discussion’: Coastal upwelling as significant sources of trace gases such as CO_2 and CH_4 have been found in other coastal systems as well (for example in the eastern boundary upwelling systems off Oregon, Peru, Mauritania, NW Africa). Please discuss the results from the Baltic Sea in light of the results reported in the literature from other coastal upwelling systems. An overview table with saturation/flux data from literature may help to facilitate the comparison.

90 Upwelling in the Baltic Sea – compared to oceanic upwelling – is not persistent, but episodic, and admittedly of less
importance for the global budget and fluxes. We expanded this information in the introduction, also with respect
to the objectives of the study (see above). Our study is focused on $p\text{CO}_2$ and $c\text{CH}_4$, specifically (i) on their seasonality,
interannual variability, and relaxation, (ii) on the drivers and possible feedbacks behind the observed dynamics, and
95 (iii) on providing tools/methods for the community to deal with similar data in other upwelling areas, some of which
might be more important in a global context. The last section concerning the flux estimate is intended to be an
outlook on future perspectives, however, because the resulting fluxes are based on extrapolated rather than
measured data and are, thus, in our eyes, not reliable enough to be compared with other data. Therefore, we would
like to refrain from a comparison table, which is beyond the scope of the study focusing on the characteristics of
our data set and methodological advancements.

To address this – apart from improvements in the introduction – we also clarified our focus on the methods and
100 their potential applicability at the end of Sect. 3.5:

“the presented method provides means to constrain upwelling-induced trace gas fluxes based on SOOP and model
(or, potentially, remote sensing) data on large spatial and temporal scales, which may also be used to study other
upwelling areas with potentially greater impact on global trace gas fluxes than the Baltic Sea. [...] In general, this
extrapolation method should be applicable in every upwelling area world-wide where near-linear trace gas – SST
105 relationships are observed and could, therefore, be a valuable tool to produce flux maps from (scarce) surface
observations.” (Line 455)

We also added the following sentence to the conclusion to emphasise the need to prove the method’s validity
before comparing these extrapolated data with other published fluxes:

“If future investigations show that freshly upwelled waters near the coast possess similar characteristics as those
110 observed from the SOOP, a then well-founded flux estimate will properly constrain upwelling-induced CO_2 and CH_4
fluxes in the Baltic Sea and enable to relate the trace gas flux magnitude caused by upwelling to total annual flux
estimates, as well as a robust comparison with other upwelling regions on a global scale.” (Line 491)

We further stressed the potential applicability of our methods to other upwelling areas at the end of the conclusion:

“Furthermore, the detection and extrapolation methods presented here could be applicable in other upwelling
115 areas, which are more relevant on a global scale regarding trace gas fluxes and balances, but lack an appropriate
data coverage.” (Line 498)

With these changes, we are certain that – although we were not able to do a flux comparison with a total annual
flux – we clearly demonstrated the way towards this goal and that we gave good reasons for this choice. With the
presented methods, we think that our manuscript is worth reading for the international community nonetheless.

120
*4) Section 3 ‘Results and Discussion’: I am wondering if the authors could now quantify the significance of the contributions of
upwelling-induced CO_2/CH_4 fluxes to the overall emission estimates of the Baltic Sea. And indeed, on page 18, lines 372-373, I
found a statement on this issue saying this ‘[: :] still needs further investigation.’. This is rather confusing (and disappointing) since
the authors have the data sets at hand to come up with some numbers to prove the significance.*

125 The phrase “needs further investigation” was indeed an unfortunate one. We replaced the sentence with:

“Despite a more detailed analysis of the statistical prevalence of upwelling in this study, the question of the
importance of upwelling on the annual trace gas balance of the Baltic Sea cannot be answered here based on the
data available. Apart from the high variability within observed upwelling events, general statements on this matter
are further complicated by little knowledge about fluxes in shallow areas (Humborg et al., 2019), large
130 heterogeneities between basins (Gülzow et al., 2013), and the unknown CO_2 source/sink behaviour of the entire
Baltic Sea (Schneider et al., 2014b). Answering this question in the future requires more knowledge on the Baltic
Sea CO_2/CH_4 balances in general and extended insight into limitations of upwelling-induced flux estimates in the
Baltic Sea (discussed in Sect. 3.5).” (Line 352)

135 This should give proper justification to our statement. As stated above, we also made clearer in the introduction
that our main objectives are to find controls of the observed variability and dynamics within eight years, and to
show ways to deal with extremely variable conditions in long-term data sets.

140 5) Section 3 'Results and Discussion': Moreover, I am wondering why the authors do not discuss the effects of the ongoing
environmental changes of the Baltic Sea (such as warming, changing wind patterns etc.). An important question to be addressed
might be: Are there any trends detectable for the upwelling-induced CO₂/CH₄ fluxes during the course of the study which after all
covers eight-years? If yes, what are the main factors causing this trend?

145 Indeed, looking for trends in the data set was one objective of ours, which we now added in the introduction,
including information on environmental changes in the Baltic Sea (see above). However, this analysis was difficult
due to several circumstances, which we now explain at the end of Sect. 3.4:

150 "It was not possible to identify trends in frequency or magnitude of enhanced pCO₂ and cCH₄ caused by upwelling
events on the limited time scale of eight years covered by our observations. The main reason for this is the high
spatial and temporal variability of upwelling (and of several other processes with influence on dissolved trace gases)
in the Baltic Sea, which led to the necessity to do parts of the analyses on a per-event basis and effectively impeded
a universal approach. Moreover, the observed endmembers of minimum SST and maximum pCO₂/cCH₄ are
dependent on data coverage, which adds another layer of uncertainty to any trend analysis on the data set,
especially in boxes around Gotland (two different ship routes) and during years with larger data gaps. Typical water
residence times of 10–30 years (Feistel et al., 2010) imply that longer trace gas time series are needed to detect
trends other than variability using the methods we presented here. In fact, Schneider and Müller (2018) managed
to find a trend in surface pCO₂ between 4.6 and 6.1 µatm year⁻¹ in the Baltic Sea from 2008 to 2015, but did so
without a focus on upwelling events only and by filling data gaps through interpolation, which effectively yielded a
considerably larger data basis compared to this study. We suppose that if, at some point, the extrapolation scheme
proposed in Sect. 3.5 could be expanded to cover more than single events, a trend analysis based on the resulting
pCO₂/cCH₄ fields should be possible, since these data would not be restricted by spatial-temporal coverage or event-
specific features." (Line 400)

160 We also added the following to the conclusion:

165 "The observed high variability combined with uncertainties from data coverage prevented a detailed trend analysis
since parts of the study are still limited to single events. Further, long water residence times (10–30 years)
characteristic for the Baltic Sea require equally large data sets. Here, the presented detection and extrapolation
methods might facilitate trend analysis in the future by providing pCO₂/cCH₄ fields that are not limited by spatial-
temporal coverage or event-specific features." (Line 484)

We added the following to the abstract:

"Trend analysis is still prevented by the observed high variability, uncertainties from data coverage, and long water
residence times of 10–30 years." (Line 14)

170 We also added more context concerning environmental changes in the Baltic Sea to the introduction, as explained
above.

6) Section 4 'Conclusions': It is well-known that CO₂ and CH₄ are affected by upwelling in the Baltic Sea. This was already shown
in publications by the same group (see Gülzow et. al., Biogeosci., 2013; Schneider et al., J Mar Sys., 2014) and thus it surprising to
see this stated as a major conclusion (see page 23, 2nd paragraph of section '4 Conclusions').

175 The criticised sentence was intended to provide context for the following paragraph, but you are right that it was
an unfortunate choice of words. We replaced it with:

"Based on the long-term SOOP data set, we identified controlling parameters of upwelling-induced trace gas
dynamics in the Baltic Sea on large spatial and temporal scales." (Line 470)

180 This should indicate clearer which advancements have been made compared to previous studies. We also removed the corresponding statement in the abstract.

Minor points:

1) Section 2 'Data and Methods' (and throughout the rest of the text): The authors use the term 'saturation concentration' which is misleading. This term should be replaced with 'equilibrium concentration'.

185 **Equilibrium concentration is in fact the more suitable expression, thank you. We replaced it accordingly throughout the manuscript, but stuck to the phrases "supersaturated / undersaturated" as these are clear within the context (we defined relative saturation as ratio of c_{CH_4} to equilibrium concentration) and are used frequently in the literature in similar context.**

190 2) Figure 1: Please indicate the location of the Uto station in the map.

Done.

3) P5L101-103: Please note that a concentration is only independent from temperature when it is given as mol kg^{-1} . If it is given as mol L^{-1} (as in the ms) it is not independent from temperature. Moreover, the partial pressure is depending on the temperature when you refer to the partial pressure in equilibrium with the water phase. Please correct.

195 **We corrected/clarified both statements. We replaced with:**

200 **"Note that – neglecting the very small influence of temperature on water density – we can handle the concentration (of CH_4 in nmol L^{-1}) as a quasi-conservative parameter with respect to temperature changes in the discussion. In contrast, the partial pressure (of CO_2) in equilibrium with the water phase is temperature-dependent (see also Sect. 3.3)." (Line 122)**

205 **At the end, we have the feeling that the manuscript has improved a lot as a result of your suggestions. The rewritten introduction should give better context and orientation than the old one, and the added information to discussion and conclusion should give more insight into the details and perspectives of our work. Thank you again for your valuable and helpful review.**

Author's Response to Reviewer #2

210 Thank you very much for the thorough review and your valuable recommendations and suggestions, which surely helped to improve the manuscript.

215 *Jacobs et al. present 8-years of underway surface CO₂ and CH₄ measurements from the Baltic Sea. They assess the role of upwelling on surface gas concentrations and fluxes on seasonal time-scales, and describe typical annual cycles, as well as anomalies. The paper is very well written, and thoroughly describes regional and temporal differences in CO₂ and CH₄ concentrations, showing clearly the influence of upwelling and temperature. The methods used appear to be robust, and well-explained, with careful consideration of potential sources of error. The data set itself is of tremendous value, and the interpretation is well-done and could be applied to other regions with underway CO₂ and/or CH₄ systems.*

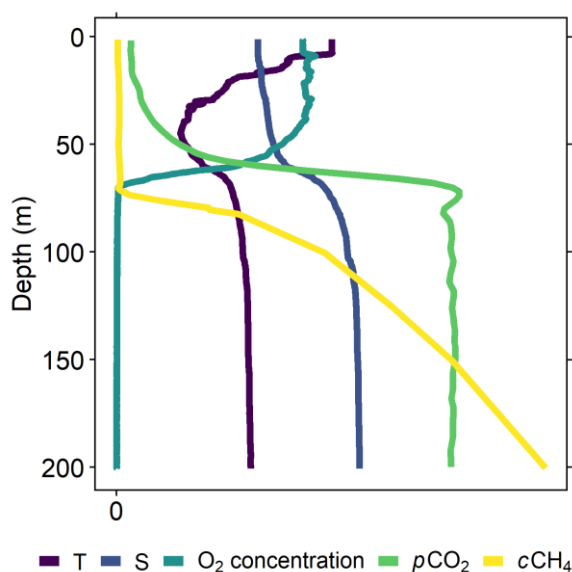
220 *Although it could be argued the paper lacks clear objectives or motivation, I propose the value of this paper is in the methodological development used to extrapolate discrete underway data, thus improving its already high-resolution. Additionally, the development of a robust technique for identifying upwelling and linking it with observations on these spatiotemporal scales is well done and could be of value to others interpreting similar data sets, which could facilitate more robust extrapolation of such measurements in regions sorely lacking data. This makes for a valuable contribution to understanding the importance of upwelling on temporal and spatial variability in CO₂ and CH₄ flux, and a delight to read.*

225 **Thank you for the encouraging words. The objectives you mentioned are indeed main foci of our study. As Reviewer #1 pointed out, however, we had to emphasise these goals clearer in the introduction, which we now did.**

I have only minor suggestions to improve clarity of figures (especially regarding choice of colors), and text. I recommend publication of the manuscript.

230 *Fig. 2-. The profile colors are hard to distinguish, and likely would be near impossible for anyone with color-blindness. I suggest using more easily discernable colors.*

235 **We have spent many thoughts on this topic and all colour scales in the manuscript have been chosen with the colour-blindness issue in mind. The colour scales we used (<https://cran.r-project.org/web/packages/viridis/vignettes/intro-to-viridis.html>) are perceptually uniform and robust to both colour-blindness and grey-scale printing. We would like to keep all those advantages. However, we do agree that the differences between colours are rather small in Fig. 2, which is partly because we left out yellow. You find the new version of the plot below, which includes yellow (thereby widens the colour gradient) and has bolder lines to make the colours more distinguishable. We hope that this improved version will find your approval.**



240 *Fig. 2. Is oxygen available? I suspect it would be relevant especially for CH4.*

Figure 2 already contains an oxygen profile. However, we do realize that we did not define “cO₂” because we do not need the term elsewhere and that it is rather easy to be confused with “CO₂”. Therefore, we replaced the legend label with “O₂ concentration” to make it clearer (see above).

245 *Line 41: ‘two minima’ are mentioned, but the subsequent text implies a minima during the spring bloom, and several subsequent minima throughout summer. Not clear when the second surface pCO₂ minima typically occurs, or if there are several more? Perhaps revise ‘two minima’ to ‘: : a minimum during spring and one or more subsequent minima throughout summer: :’*

Indeed, the two sentence parts do not really fit together and we revised the sentence according to your recommendation:

250 **“The typical seasonality of surface carbon dioxide (CO₂) partial pressure (pCO₂) in the Baltic Sea features a minimum during spring and one or more subsequent minima throughout summer” (Line 37)**

Lines-41-47 – could you clarify when the surface CO₂ is typically under-saturated vs. super-saturated when describing the spring/summer surface pCO₂?

255 **We added the following to the end of the paragraph:**

“and undersaturation is usually observed from March/April to September/October, depending on region (Schneider and Müller, 2018).” (Line 45).

Line 48-49 – ‘..vertical redox..’ would be helpful to add oxygen profile to fig 2.

260 **Please see above comment addressing Figure 2.**

Fig. 6 –colors are difficult to distinguish.

265 **As outlined above, the colour scales we used follow all criteria and many thoughts have been spent on them. We would like to keep it as is, since there are only three colours in this example. We made the legend labels bolder, though, as these were indeed a little hard to distinguish.**

270 *Line 332-335 You state that the estimated +0.4degK warming from atmospheric heat flux is insufficient to account for the observed warming. Can you remind the reader what the total surface warming was, and/or how much additional warming needs to be accounted for by mixing? (this could be included in this paragraph, or in the paragraph at the start of this section that describes temp relaxation after upwelling).*

We clarified this and replaced “the observed warming of upwelled water masses” with “the observed warming of upwelled water masses in the order of 5–10 K” (Line 314).

Upwelling-induced trace gas dynamics in the Baltic Sea inferred from 8 years of autonomous measurements on a ship of opportunity

Erik Jacobs¹, Henry C. Bittig¹, Ulf Gräwe¹, Carolyn A. Graves², Michael Glockzin¹, Jens D. Müller¹, Bernd Schneider¹, and Gregor Rehder¹

¹Leibniz Institute for Baltic Sea Research Warnemünde (IOW), Seestraße 15, 18119 Rostock, Germany

²Centre for Environment, Fisheries and Aquaculture Science (Cefas), Pakefield Road, Lowestoft, Suffolk NR22 0HT, UK

Correspondence: Erik Jacobs (erik.jacobs@io-warnemuende.de)

Abstract.

Autonomous measurements aboard ships of opportunity (SOOP) provide in situ data sets with high spatial and temporal coverage. In this study, we use 8 years of carbon dioxide (CO₂) and methane (CH₄) observations from SOOP *Finnmaid* to study the influence of upwelling on trace gas dynamics in the Baltic Sea. Between spring and autumn, coastal upwelling transports water masses enriched with CO₂ and CH₄ to the surface of the Baltic Sea. We study the seasonality, regional distribution, relaxation, and interannual variability of this process. We use reanalysed wind and modelled sea surface temperature (SST) data in a newly established statistical upwelling detection method to identify major upwelling areas and time periods. Strong [surface expressions of](#) upwelling events are most frequently detected around August after a long period of thermal stratification, i.e. limited exchange between surface and underlying waters. We found that these ~~strong~~-upwelling events with large SST excursions shape local trace gas dynamics and often lead to near-linear relationships between increasing trace gas levels and decreasing temperature. Upwelling relaxation is mainly driven by mixing ~~and~~, modulated by air–sea gas exchange, and possibly primary production. Subsequent warming through air–sea heat exchange has the potential to enhance trace gas saturation. In 2015, quasi-continuous upwelling over several months led to weak summer stratification, which directly impacted the observed trace gas and SST dynamics in several upwelling-prone areas. [Trend analysis is still prevented by the observed high variability, uncertainties from data coverage, and long water residence times of 10–30 years.](#) We introduce an extrapolation method based on trace gas – SST relationships that allows us to estimate upwelling-induced trace gas fluxes in upwelling-affected regions. In general, the surface water reverses from CO₂ sink to source and CH₄ outgassing is intensified as a consequence of upwelling. We conclude that ~~upwelling is an important and relevant process controlling trace gas dynamics in near-coastal environments in the Baltic Sea, and that~~ SOOP data, especially when combined with other data sets, enable flux quantification and process studies ~~on larger~~ [addressing the environmentally important process of upwelling on large](#) spatial and temporal scales.

1 Introduction

~~The highly resolved quantification of dissolved greenhouse gases like carbon dioxide (CO₂) and methane (CH₄) across large spatial and temporal scales is critical to derive accurate climate projections (Friedlingstein et al., 2019) and helps to understand~~

processes involved in the biogeochemical cycling of both gases (Takahashi et al., 2009; Webb et al., 2016). Traditional research cruises usually involve discrete sampling in the water column and often continuous surface water measurements using an air–water equilibrator coupled to nondispersal infrared spectroscopy for CO₂ (e.g. Körtzinger et al., 1996), gas chromatography for CH₄ (e.g. Bange et al., 1994), or cavity-enhanced absorption spectroscopy (CEAS, e.g. Gülzow et al., 2011; Du et al., 2014) – a relatively new technique with high sensitivity for both gases (Gagliardi and Loeck, 2014). Whereas research cruises enable vertically resolved measurements in a certain region over several weeks, they do not provide wide temporal and sometimes spatial coverage, which is Coastal upwelling areas are known to be hotspots of greenhouse gas emissions from marine systems to the main advantage of autonomous measurements aboard ships of opportunity (SOOP). SOOP data sets enable studies with a broader perspective that atmosphere (Capelle and Tortell, 2016; Morgan et al., 2019). This is a result of enhanced productivity and mineralisation, often hypoxic conditions in the subsurface waters leading to increased concentrations of reduced compounds, and an effective transport mechanism of these subsurface waters to the air–sea interface. Climate change is expected to have an amplifying effect on the intensity of coastal upwelling in the global ocean (Bakun et al., 2015; Xiu et al., 2018) . Eutrophication and reduced ventilation lead to the spreading and intensification of hypoxia in coastal systems (Diaz and Rosenberg, 2008) . The combination of these effects will undoubtedly affect the trace gas dynamics in upwelling regions.

The Baltic Sea – unlike remote sensing and modelling – are still based on in-situ measurements. While SOOP-based CO₂ measurements are common owing to the available hardware (Pierrot and Steinhoff, 2019), CH₄ measurements are still scarce due to the comparatively recent development of CEAS and the elaborate setup aboard a SOOP (Gülzow et al., 2011; Nara et al., 2014) . The ferry and SOOP *Finnmaid* hosts such an autonomous setup measuring surface concentrations of dissolved CO₂ and CH₄ since late 2009 using a CEAS sensor (Gülzow et al., 2011), resulting in a unique long-term data set. The vessel transects the Baltic Sea between Lübeck-Travemünde (Germany) and Helsinki (Finland) about four times per week (a brackish, semi-enclosed sea in northern Europe (Fig. 1) . SOOP *Finnmaid* is part of the German contribution to the ICOS (Integrated Carbon Observation System) Research Infrastructure.

Map and bathymetry of the study area with typical routes of SOOP *Finnmaid* (grey) between Lübeck-Travemünde (L) and Helsinki (H). Boxes highlight seven regions (solid lines) in which we expect upwelling to occur and one in the open Gotland Sea (dashed lines) as reference (Table 1). Red dots mark the locations of wind data used for this study with red arrows indicating upwelling-favourable wind directions. We further marked the islands of Bornholm (B), Öland (Ö), Gotland (G), and Hiiumaa (Hi).

– is among the fastest-warming marginal seas world-wide (Kniebusch et al., 2019). It is further known to be strongly affected by environmental changes such as eutrophication (HELCOM, 2018), changing wind patterns, and, thus, upwelling intensity (BACC II Author Team, 2015), and has also been shown to encounter a decrease of oxygen on a large number of coastal sites over the last decades (Caballero-Alfonso et al., 2015). The Baltic Sea (Fig. 1) is a brackish, semi-enclosed sea in northern Europe, therefore, offers the potential to study feedbacks between anthropogenic and climatic drivers and upwelling-induced greenhouse gas fluxes early and with a high signal intensity.

The Baltic Sea is characterised by riverine inflow of freshwater from a larger-large drainage basin and inflows of seawater from the North Sea, which, together with its basin structure, results in a permanent vertical salinity and density stratification

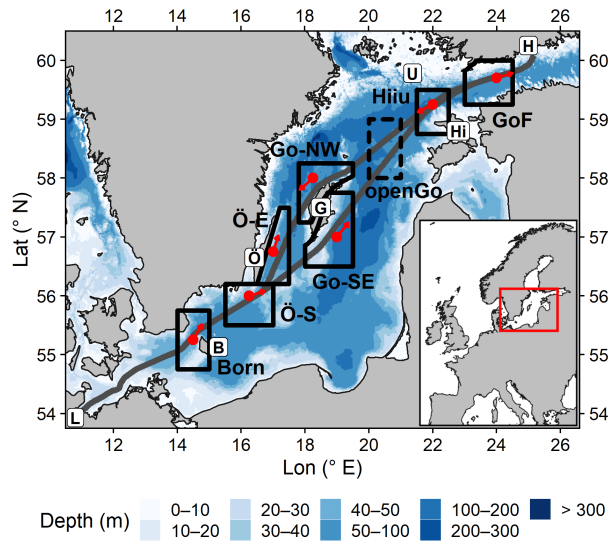


Figure 1. Map and bathymetry of the study area with typical routes of SOOP *Finnmaid* (grey) between Lübeck-Travemünde (L) and Helsinki (H). Boxes highlight seven regions (solid lines) in which we expect upwelling to occur and one in the open Gotland Sea (dashed lines) as reference (Table 1). Red dots mark the locations of wind data used for this study with red arrows indicating upwelling-favourable wind directions. We further marked the islands of Bornholm (B), Öland (Ö), Gotland (G), and Hiiumaa (Hi), and Utö (U).

(Feistel et al., 2010). A shallow surface thermocline is present during summer and large parts of the Baltic Sea are additionally characterised by a permanent halocline, with hypoxic or even anoxic water underneath (Fig. 2). The typical seasonality of surface CO_2 -carbon dioxide (CO_2) partial pressure ($p\text{CO}_2$) in the Baltic Sea features two minima in spring and a minimum during spring and one or more subsequent minima throughout summer: The spring bloom starts in March/April with the formation of the surface thermocline and peaks in mid-May (Schneider and Müller, 2018). Pulses of mid-summer bloom events are driven by nitrogen fixation (Schneider et al., 2014a). $p\text{CO}_2$ slightly increases in between due to warming, air-sea exchange, and remineralisation of organic matter (Schneider et al., 2014b). Beginning in September/October, deepening of the mixed layer leads to increasing $p\text{CO}_2$ in the surface water as a consequence of entrainment of deeper waters that have been subject to organic matter remineralisation (Schneider et al., 2014a). Typical $p\text{CO}_2$ values in the central Baltic Sea range from about 100 to 500 μatm (Schneider et al., 2014a) and undersaturation is usually observed from March/April to September/October, depending on region (Schneider and Müller, 2018).

The CH_4 -methane (CH_4) distribution in the Baltic Sea is mainly governed by the vertical redox and density stratification (Fig. 2): Anoxic, CH_4 -enriched bottom water in the deep basins and CH_4 oxidation in the water column, especially in the redox zone located slightly below the permanent halocline (Jakobs et al., 2013), lead to strong vertical gradients and concentrations near atmospheric equilibrium in the surface water (Schmale et al., 2010; Jakobs et al., 2013). CH_4 is also produced in the upper, oxic water column (Jakobs et al., 2014; Schmale et al., 2018), partially by zooplankton (Schmale et al., 2018; Stawiarski et al.,

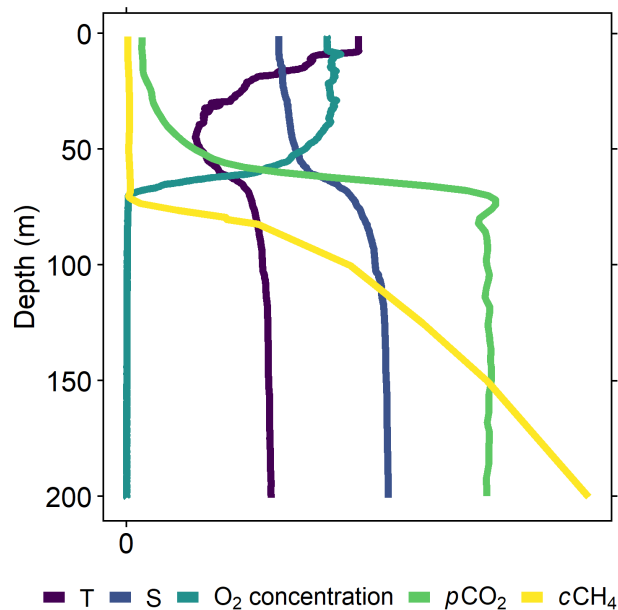


Figure 2. Typical vertical profiles of parameters relevant for this study from 58.58° N, 18.23° E on 23 May 2019, which show shapes typical for the summer situation in the central Baltic Sea in summer on arbitrary scale. The profiles display temperature, salinity, oxygen concentration, CO₂ partial pressure, and CH₄ concentration on arbitrary scale, truncated at a depth of 200 m.

75 2019). The Baltic Sea acts as a permanent source of atmospheric CH₄. Highest exports are observed in the Gulf of Finland in winter (Gülzow et al., 2013) and in the shallow western basins due to CH₄-rich sediments (Schmale et al., 2010).

Local coastal upwelling increases both $p\text{CO}_2$ and CH₄ concentration ($c\text{CH}_4$) in the surface water of the Baltic Sea by introducing enriched water from below the summer thermocline (Fig. 2) to the surface (Gülzow et al., 2013; Norman et al., 2013; Schneider et al., 2014b; Humborg et al., 2019; Stawiarski et al., 2019). However, since previous studies were limited to
80 episodic events, only little is known about the seasonality and regional distribution of upwelling-induced trace gas signals in the Baltic Sea and their relaxation. Ferry-based measurements enable studies on upwelling in the Baltic Sea on larger scales, which has already been demonstrated for physical parameters in the Gulf of Finland (Kikas and Lips, 2016).

Upwelling events in the Baltic Sea are common, but irregular since they depend on wind conditions (Lehmann and Myrberg, 2008). Westerly to south-westerly winds prevail in the Baltic Sea area, which enhances the possibility of upwelling near southern and south-eastern coasts (see red arrows in Fig. 1). These upwelling events have a typical lifetime of several days up to one
85 month with sharper horizontal gradients compared to oceanic upwelling (Lehmann and Myrberg, 2008). In summer, sea surface temperature (SST) may decrease by more than 10 °C during an upwelling event, while salinity changes are usually below 0.5 (Lehmann and Myrberg, 2008). The influence of upwelling decreases in autumn and winter, when no seasonal stratification is present. While for oceanic upwelling regions, it is known that upwelling may trigger extreme primary production through
90 nutrient transport, the influence of upwelling on primary production in the Baltic Sea is still poorly constrained (Lehmann and

Myrberg, 2008). However, upwelled waters characterised by low N/P ratios have been reported to fuel cyanobacteria blooms during nitrogen limitation (Vahtera et al., 2005; Lips et al., 2009; Wasmund et al., 2012). Yet, time lags of about three weeks ~~are possible~~ have been reported for this feedback with an initial decline of phytoplankton biomass (Vahtera et al., 2005; Wasmund et al., 2012). As an explanation for this delay, Wasmund et al. (2012) propose that the initialisation of a cyanobacteria bloom
95 requires mixing of biomass-rich surface water with phosphate-rich upwelled water.

The ~~eo-occurrence of episodic upwelling periods and dynamic trace gas patterns, and the combination of the~~ highly resolved quantification of dissolved greenhouse gases like CO₂ and CH₄ across large spatial and temporal scales is critical to derive accurate climate projections (Friedlingstein et al., 2019) and helps to understand processes involved in the biogeochemical cycling of both gases (Takahashi et al., 2009; Webb et al., 2016). Traditional research cruises usually involve discrete sampling
100 in the water column and often continuous surface water measurements using an air–water equilibrator coupled to nondispersal infrared spectroscopy for CO₂ (e.g. Körtzinger et al., 1996), gas chromatography for CH₄ (e.g. Bange et al., 1994), or cavity-enhanced absorption spectroscopy (CEAS, e.g. Gülzow et al., 2011; Du et al., 2014) – a relatively new technique with high sensitivity for both gases (Gagliardi and Looock, 2014). Whereas research cruises enable vertically resolved measurements in a certain region over several weeks, they do not provide wide temporal and sometimes spatial coverage, which is the main advantage
105 of autonomous measurements aboard ships of opportunity (SOOP). SOOP data sets enable studies with a broader perspective that – unlike remote sensing and modelling – are still based on in situ measurements. While SOOP-based CO₂ measurements are common owing to the available hardware (Pierrot and Steinhoff, 2019), CH₄ measurements are still scarce due to the comparatively recent development of CEAS and the elaborate setup aboard a SOOP (Gülzow et al., 2011; Nara et al., 2014). The ferry and SOOP *Finnmaid* hosts such an autonomous setup measuring surface concentrations of dissolved CO₂ and CH₄
110 since late 2009 using a CEAS sensor (Gülzow et al., 2011), resulting in a unique long-term data set. The vessel transects the Baltic Sea between Lübeck-Travemünde (Germany) and Helsinki (Finland) about four times per week (Fig. 1). SOOP *Finnmaid* is part of the German contribution to the European ICOS (Integrated Carbon Observation System) Research Infrastructure.

The large extent to which the Baltic Sea is influenced by climatic and anthropogenic forces and the availability of the presented eight-years data set of SOOP *Finnmaid* and of high-resolution models (Placke et al., 2018; Gräwe et al., 2019) ~~allow~~
115 make the Baltic Sea a unique study site to detect feedbacks early and to develop methods and process understanding that can be used to analyse long-term data sets with respect to, e.g. upwelling-induced trace gas dynamics. The SOOP strategy allows us to investigate the influence of coastal upwelling on surface pCO₂ and cCH₄ in the Baltic Sea on a large spatial and temporal scale
–without issues of bad coverage of seasonality due to (biased) individual RV-based studies. Furthermore, methods developed here can possibly be used for the treatise of upwelling in regions that are more important for global trace gas fluxes and budgets.
120 In this study ~~we are aiming at, we:~~

- ~~presenting~~ present a method to identify upwelling events ~~within the data set~~ along the SOOP track based on wind and modelled SST data,
- ~~comparing~~ compare upwelling-induced trace gas dynamics within several regions in the Baltic Sea,
- ~~examining~~ examine the relaxation of upwelling events over time with a focus on underlying processes,

- 125 – ~~discussing~~ discuss interannual variability within the data set with a focus on controlling mechanisms of seasonality and highlighting highlight the importance of upwelling to understand CO₂ and CH₄ dynamics in the Baltic Sea,
- test whether a long-term trend can be inferred from the analysis of this eight-years data set, and
- demonstrating demonstrate the potential of extrapolating trace gas observations based on modelled SST data and show ways to estimate air–sea trace gas fluxes on a broader spatial scale under extremely variable conditions.
- 130 We present most of the findings by use of illustrating examples, but provide more information in the appendix, supplement, and data set.

2 Data and methods

2.1 Measurements aboard SOOP *Finnmaid*

SOOP *Finnmaid* is equipped with a variety of sensors to survey the surface water of the Baltic Sea between Lübeck-Travemünde
135 in Germany and Helsinki in Finland (Fig. 1). Parameters including SST, salinity, $p\text{CO}_2$, and $c\text{CH}_4$ are logged every minute. The data set used for this study ~~is filtered~~ refers to the time period from May to September and ~~within~~ the regions defined in Table 1 and consists of 482 transects from 2010 to ~~2017 with about 395,000 observations~~ 2017.

The on-board trace gas measurement system consists of a *Los Gatos Research* CH₄/CO₂ analyser coupled with an air–water
equilibrator (Körtzinger et al., 1996), which is described in detail in Schneider et al. (2014b) and Gülzow et al. (2011, 2013)
140 including details on the following calculations: The measured variables are the mole fractions $x\text{CO}_2$ and $x\text{CH}_4$ in ppm, which are corrected to dry-air values using $x\text{H}_2\text{O}$ data from the same instrument. These mole fractions are converted into partial pressures using atmospheric pressure data and calculating saturation water vapour pressure following Weiss and Price (1980) under the assumption of 100 % humidity in the equilibrator headspace. In literature, CO₂ data are usually reported as partial pressure or fugacity, while CH₄ data are converted into concentrations. Accordingly, we report $p\text{CO}_2$ and $c\text{CH}_4$, the latter
145 was calculated from the partial pressure ($p\text{CH}_4$) using Bunsen solubility coefficients determined by Wiesenburg and Guinasso (1979). Note that ~~concentration is a conservative~~ neglecting the very small influence of temperature on water density – we can handle the concentration (of CH₄ in nmol L⁻¹) as a quasi-conservative parameter with respect to temperature changes ~~– while partial pressure~~ in the discussion. In contrast, the partial pressure (of CO₂) in equilibrium with the water phase is temperature-dependent (see also Sect. 3.3). To compensate the effect of water warming from inlet to equilibrator, $p\text{CO}_2$ is
150 temperature-corrected following Takahashi et al. (1993). The data set was not corrected for equilibrator response times, which especially affect CH₄ measurements due to its poor solubility (Webb et al., 2016), for reasons detailed in Sect. A2.

We post-calibrated $x\text{CO}_2$ and $x\text{CH}_4$ using a single-point calibration to a standard gas at near-atmospheric concentrations. These standard gas measurements were performed automatically when leaving the harbour to yield a drift correction between transects. The measurement system aboard SOOP *Finnmaid* also includes a *LI-COR* 6262 CO₂/H₂O analyser with a separate
155 equilibrator. Even though these additional CO₂ data are not presented here, they provided cross-validation and quality

control. Presenting both CO₂ and CH₄ measurements from the same instrument ensures best consistency between the two trace gases. Therefore, minor deviations from the previously published CO₂ data set in SOCAT (Surface Ocean CO₂ Atlas, <https://www.socat.info>, Bakker et al., 2016) exist, which is a combined product of both setups. In the study area and period, these differences in *p*CO₂ have a median of 0.75 µatm and an interquartile range (IQR) of 2.1 µatm.

160 We further used monthly-averaged atmospheric CO₂ and CH₄ data to calculate atmospheric equilibrium conditions. For the closest distance to observations from SOOP *Finnmaid*, we utilised atmospheric data from Utö station (Finnish Meteorological Institute, Helsinki) starting in March 2012. Prior to that or to fill gaps in the Utö series, atmospheric data from Mace Head station (National University of Ireland, Galway) via the NOAA ESRL Carbon Cycle Cooperative Global Air Sampling Network (Dlugokencky et al., 2019a, b) were used and both data sets were matched to those of Utö by linear regression (Fig. A2 for
165 details). The atmospheric data are displayed as atmospheric partial pressure for CO₂ or as saturation-equilibrium concentration calculated from SST and salinity for CH₄. We also plotted relative CH₄ saturation, which is the ratio of *c*CH₄ to saturation-equilibrium concentration.

2.2 Wind and modelled SST data

Wind-induced upwelling in summer results in decreasing SST. Thus, to ~~find-upwelling-induced-attribute~~ trace gas signals
170 within-in the data set of SOOP *Finnmaid* to upwelling and to assess the spatial and temporal dimensions of upwelling events, we combined reanalysed wind and modelled SST data to locate upwelling events in space and time before starting the actual in situ data analysis. Using modelled SST data enabled us to also identify events that SOOP *Finnmaid* missed, ~~without cloud-coverage-limitations-present-in-remote-sensing-data--~~. We found that model-derived SST data were more suitable than remote-sensing-derived SST data, which are subject to, e.g. cloud coverage.

175 We used the SST output of the numerical ocean model GETM (General Estuarine Transport Model) for the Baltic Sea. The model has a horizontal resolution of 1 nautical mile and 50 vertical terrain-following levels. The uppermost level has a maximum thickness of 50 cm to properly represent the SST and ocean-atmosphere fluxes. The model run covers the period from 1961 to 2019. For a detailed analysis of the model performance see Placke et al. (2018) and Gräwe et al. (2019). For the present run, we restarted the model in 2003, but changed the atmospheric forcing to the operational reanalysis data set of
180 the German Weather Service (DWD), with a spatial resolution of 7 km and a temporal resolution of 3 h (Zängl et al., 2015). The same wind data – extracted for one location per upwelling region, respectively (Fig. 1) – were used to identify upwelling events (Sect. 2.3). To give an impression of the model performance, Fig. 3 and the Supplement S1 illustrate SST in the Baltic Sea during a strong upwelling event taken from both the model and a multi-sensor level 3 SST remote sensing product for the European seas (Copernicus, 2020). This comparison demonstrates both good agreement and the advantage of model data due
185 to insensitivity to cloud coverage. Differences between modelled SST data along the track of SOOP *Finnmaid* and shipboard SST observations in the entire study area and period have a median of 0.04 °C and an IQR of 1.41 °C. Differences between model and observations partly result from different time scales, i.e. daily means (model data) vs. real time (in situ data).

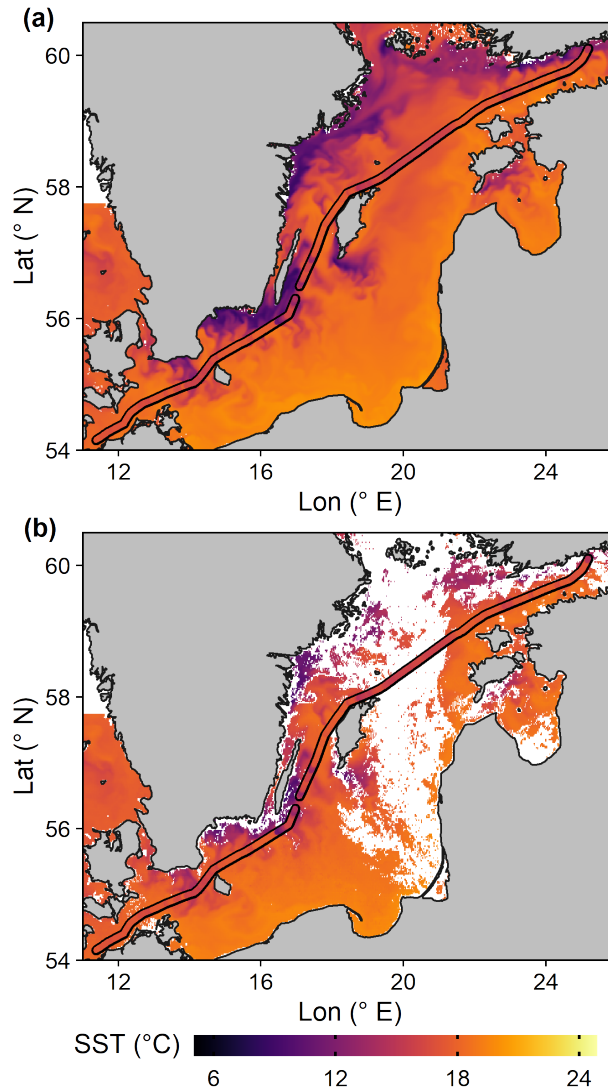


Figure 3. SST in the Baltic Sea on 16 August 2016 (daily mean) as extracted from (a) the model and (b) the remote sensing product (see text). ~~Supplement S1 contains an animation over time with the same colour scale.~~ SST measurements aboard SOOP *Finnmaid* from the same day are plotted on top of both panels. We chose this day for demonstration purposes as best compromise between remote sensing and SOOP data coverage as well as observable upwelling signals. [Supplement S1 contains an animation over time with the same colour scale.](#)

2.3 Identification of upwelling events

Based on the statistical analysis of upwelling in the Baltic Sea by Lehmann et al. (2012), we defined major upwelling areas that SOOP *Finnmaid* crosses ~~as foci of this study~~ (Fig. 1 and Table 1). We excluded the Arkona Basin and the Mecklenburg Bight (areas west of 14° E) because strong wind may trigger vertical mixing through the entire water column in these shallower

Table 1. Upwelling areas crossed by SOOP *Finnmaid* (abbreviated and long name), their boundaries (latitude/longitude) including a specification if the respective box is not rectangular (Fig. 1), their upwelling-favourable wind direction and the distance between the track of SOOP *Finnmaid* within the box and the coast given as median and minimum. This distance is calculated perpendicular to the upwelling-favourable wind direction and based on an average track.

Abbrev.	Long name	Lat (° N)	Lon (° E)	Specification	Upw.-fav. wind direction (°)	Med. (min.) dist. to coast (km)
Born	close to Bornholm	54.75–55.75	14–15	–	225 (45) ^a	43 (21)
Ö-S	S of Öland	55.5–56.2	15.5–17	–	260	42 (25)
Ö-E	E of Öland	56.2–57.5	16.5–17.5	only E of Öland	210	27 (21)
Go-SE	SE of Gotland	56.5–57.75	18–19.5	only SE of Gotland	235	25 (17)
Go-NW	NW of Gotland	57.25–58.25	17.8–19.5	only NW of Gotland	65	10 (4)
Hiiu	close to Hiiumaa	58.75–59.5	21.5–22.5	–	75	43 (27)
GoF	Gulf of Finland	59.25–60	23–24.5	only SE of Hanko Peninsula	260 (80) ^a	28 (19)
openGo	open Gotland Sea	58–59	20–21	–	none ^b	64 (40) ^c

^a Wind directions in brackets have been considered but found to have only little influence on data from SOOP *Finnmaid*.

^b Due to large distances to surrounding coasts.

^c Calculated as nearest coast in any direction.

areas, thereby eliminating the usual decoupling between sediment and surface water and greatly enhancing surface trace gas concentrations (Gülzow et al., 2013). Thus, it is impossible to disentangle the influence of wind-induced upwelling in these areas by the method proposed here. We included an area in the open Gotland Sea, which should not be directly influenced by upwelling due to being far from the coast (> 40 km, Table 1), for comparison. Furthermore, we only considered data from May to September each year, when upwelling-induced SST signals can be observed (Lehmann et al., 2012), which is – together with a wind criterion – the basis of the detection method we used.

According to Lehmann et al. (2012), we defined an upwelling event as: upwelling-favourable wind, i.e. the wind component projected parallel to the coast (Fig. 1) exceeding 3.5 m s^{-1} for two days, causing a temperature drop by more than $2 \text{ }^{\circ}\text{C}$ in the respective box. Both criteria (wind and ΔSST) were evaluated per day and box and visualised in yearly plots, which also display data coverage of SOOP *Finnmaid* (Fig. 4, A3, and A4).

We calculated the wind criterion as running mean of upwelling-favourable wind speeds of the last 48 h with a temporal resolution of 3 h. The criterion is considered as "met" if at least 4 of the 8 mean values per day exceed the threshold of 3.5 m s^{-1} .

The ΔSST criterion was calculated as difference between median and minimum model-SST in the respective area, since a local upwelling event will lower the minimum SST while the median remains relatively stable. To achieve a more robust median, the boxes were selected to extend beyond the actual upwelling areas. This results in a pronounced increase in ΔSST during upwelling events, while the criterion is mostly below the $2 \text{ }^{\circ}\text{C}$ threshold otherwise. This calculation can be based on

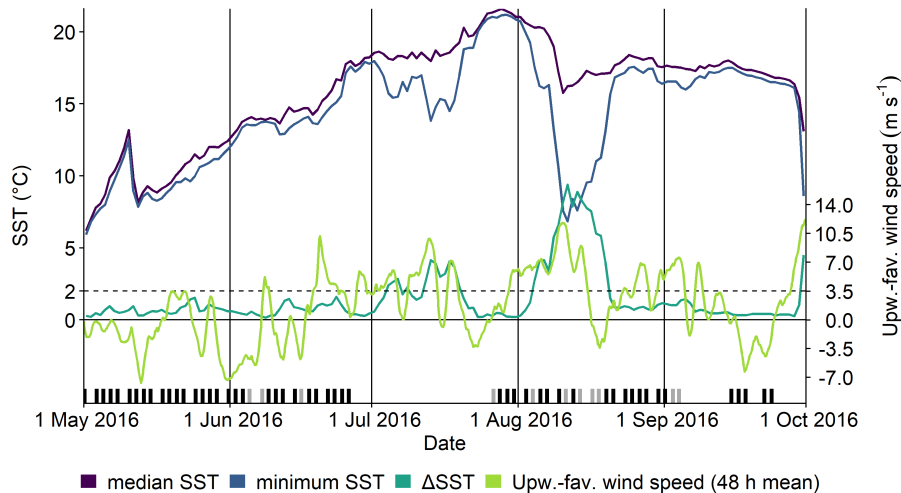


Figure 4. Time series to demonstrate upwelling detection within box Go-SE. Purple and blue lines are median and minimum model-SST along the transect of SOOP *Finnmaid*; the turquoise line shows their difference (Δ SST). The green line represents the running mean of upwelling-favourable wind speeds, calculated every 3 h for the last 48 h, respectively. The dashed black line indicates the chosen thresholds of the Δ SST and wind criteria, respectively ($2\text{ }^{\circ}\text{C}$, 3.5 m s^{-1}). Each passage of SOOP *Finnmaid* through the box is marked with a black dash at the bottom. Grey dashes mark when the ship took the western route around Gotland, thereby missing this particular box on the east side. A strong upwelling event in August is observed with small data gaps due to SOOP *Finnmaid* taking the western route. Another event in July is missed because of a sensor malfunction.

either, first, the entire area inside the boxes (Fig. A3) or just, second, on sub-transects, i.e along the track of SOOP *Finnmaid* (Fig. 4). We mainly used the latter for the purposes of this study, which is justified by a comparison of the capability of both approaches to match a daily Δ SST criterion calculated from SST observations aboard SOOP *Finnmaid*: The second approach based on sub-transects is less sensitive (hit rate: 0.57 vs. 0.94 for the first approach), but has a higher specificity (false alarm rate: 0.08 vs. 0.48) and better skill to forecast correctly (proportion correct: 0.88 vs. 0.57; critical success index: 0.36 vs. 0.21). These verification measures were calculated according to Jolliffe and Stephenson (2003). The differences in number of events correctly identified depending on which subset of SST data is used are explained by the fact that upwelling events start near the coast and then propagate seawards and, thus, SST drops along the sub-transect are delayed and often smaller. The first approach (using all SST data within the upwelling box) does not incorporate this lag, but is usually better aligned with the wind criterion for the same reason. Therefore, the appropriate method choice depends on the desired use: Including more spatial coverage of SST data would be appropriate to analyse the occurrence of upwelling in a certain region statistically. However, we chose to use only SST data along the SOOP route to amplify the agreement with the in situ SST and trace gas measurements. We provide a more detailed method assessment in Sect. 3.1.

Note that a large-scale upwelling event triggers a drop in median SST, but due to increased spatial variability during those events, the sensitivity of Δ SST is usually still sufficient to exceed the threshold of 2 °C in these cases (e.g. Fig. 4 and A3 on ca. 10 August 2016).

225 2.4 Calculation of theoretical relaxation and flux estimates

We calculated theoretical relaxation curves (Sect. 3.3) as follows: CO₂ system calculations were performed using the R package *seacarb* (Gattuso et al., 2019) with K_1/K_2 from Millero (2010), K_w/K_T from Dickson and Riley (1979) and K_S from Dickson (1990). p CH₄ was calculated from e CH₄ (Wiesenburg and Guinasso, 1979). Since salinity changes by upwelling in the Baltic Sea are usually small (Lehmann and Myrberg, 2008) and no calcifying organisms are present (Schneider et al., 2014a), we assumed a constant salinity of 7 and a total alkalinity (A_T) of 1600 (Müller et al., 2016). These along with the values for the initial (upwelled) water mass (SST = 10, p CO₂ = 700, e CH₄ = 5) and the background water mass (SST = 20, p CO₂ = 150, e CH₄ = 3.5) used for mixing are typical for late-summer upwelling in the central box Go-SE (Fig. 7d,i). However, as we mainly discuss the shapes of the curves, which are unaffected by variation of the input variables over a reasonable range, Fig. 8 is used to discuss processes in all regions.

230 Fluxes were calculated according to Wanninkhof (2014). We approximated the Schmidt number dependence on salinity via linear interpolation between the values for freshwater and seawater. In Sect. 3.3, we assumed constant wind speeds of 10, SST = 10, air temperature = 20, relative humidity = 0.8, and relative cloud coverage = 0.8. In Sect. 3.5, we used the available wind data with 3 resolution to calculate daily fluxes.

235 2.4 Air-water equilibrator response times

240 Gas phase measurements using air-water equilibrators are subject to response times (Johnson, 1999), which depend on construction and operation parameters of the setup, solubility of the respective gas, temperature and salinity (Webb et al., 2016). The e -folding time constants τ of the system aboard SOOP *Finnmaid* were determined to be 226 for CO₂ and 676 for CH₄ at room temperature using fresh water (Gülzow et al., 2011). Non-negligible response times lead to smoothed and delayed signals in both time and space, with a more pronounced impact on CH₄ than CO₂. Corrections for temporal and spatial lag are used in profiling sensor applications (Fiedler et al., 2012; Bittig et al., 2014), but they are often neglected for surface trace gas measurements. We demonstrate such a correction using the method described in Bittig et al. (2018) to illustrate potential advantages and practical issues (Fig. A1).

245 Demonstration of response time correction based on data from 24 August 2010 within box Go-SE. The three upper plots display longitudinal patterns of (a) SST, (b) p CO₂, and (c) e CH₄. Black symbols are original values, red symbols are corrected using response times of τ_{CO_2} = 226 and τ_{CH_4} = 676 (Gülzow et al., 2011) and procedures according to Bittig et al. (2018). (d-g) reveal relationships between (d) original and (e) τ -corrected p CO₂ and SST, as well as (f) original and (g) τ -corrected e CH₄ and SST. (h) displays the position of SOOP *Finnmaid* over time. Time is colour-coded to link all plots.

In the illustrated example, SOOP *Finnmaid* travels from south-west to north-east through box Go-SE (Fig. A1h). Compared to SST measurements (Fig. A1a), the CO₂ and especially CH₄ signals are delayed and smoothed (Fig. A1b,c, black curves). In

255 comparison, the corrected signals (Fig. A1b,c, red curves, most prominently around 18.5) respond earlier, are more pronounced,
exhibit more fine structure, and mirror the SST signal better, which is expected when entering a new water mass. The
relationships between uncorrected trace gas signals and SST (Fig. A1d,f) feature hysteresis, which is reduced substantially
after the correction (Fig. A1e,g). However, the method introduces artefacts like overshoots (e.g. Fig. A1b,c, low values around
19.15) and noise particularly if data density is low and/or τ is poorly characterised. This problem can be mitigated, but not
260 solved, by applying additional smoothing before and/or after the correction (not done here).

Unfortunately, this response time correction only provided satisfactory results for a minority of cases. Elsewhere, the
resulting noise degraded data quality and created additional hysteresis. We attribute this to the unknown dependence of τ on,
e.g. temperature, salinity, and water/gas flows, all of which vary along a transect. This issue would be particularly influential
for this study since, e.g. SST gradients caused by upwelling are sharper and steeper compared to measurements in open
265 basins, which leads to perpetual changes of τ . Thus, we decided to refrain from a response time correction to avoid introducing
additional bias into the data set. However, the algorithm we used (Bittig et al., 2018) is capable of handling variable τ , allowing
more precise response time corrections if τ is sufficiently characterised as function of, e.g. temperature, salinity, and air/water
flows, which leaves room for future studies.

2.4 Data processing and visualisation

270 Data analysis and visualisation were executed using R (R Core Team, 2019), particularly the packages *tidyverse* (Wickham et al., 2019)
, *cowplot* (Wilke, 2019), and colour scales from *viridis* (Garnier, 2018). For maps, we used bathymetry data from *marmap*
(Pante and Simon-Bouhet, 2013) and coastline data from *naturalearth* (South, 2017). Three-dimensional plots were rendered
with *rayshader* (Morgan-Wall, 2020).

3 Results and discussion

275 3.1 Upwelling statistics based on wind and modelled SST data

To assess the prevalence of upwelling in the data set of SOOP *Finnmaid*, we identified the main upwelling periods and areas
along the transect using the method of combining a Δ SST and a wind criterion (Sect. 2.3). Here, we present a summary of
the climatological mean number of days per month and box where the criteria were met (Fig. 5). The Δ SST criterion was
calculated based on sub-transects. We provide a full overview further distinguishing by year and selection of SST data (entire
280 box vs. sub-transect) in the appendix (Fig. B1, B2, and B3). The wind criterion is usually met more frequently than the Δ SST
criterion calculated along sub-transects. This reflects that not every occurrence of wind strong enough to induce upwelling leads
to upwelled water masses actually reaching the track of SOOP *Finnmaid*. This is illustrated in Fig. 4 (June 2016) and in the
Supplement S1. Downwelling may also lead to quickly vanishing signals (Sect. 3.3). In general, the Δ SST criterion is not very
sensitive in May due to a less pronounced thermocline compared to summer. Similarly, only small upwelling-induced trace gas
285 signals are observed in May, which become greater in late summer owing to longer decoupling of surface water and underlying

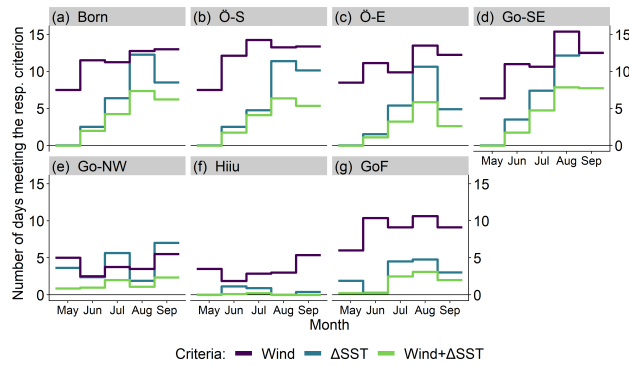


Figure 5. Overview of the two upwelling criteria used in this study: wind (purple) and Δ SST (blue). Displayed is the number of days per month and box in which the respective criterion is met, averaged over 2010 to 2017. Δ SST was calculated along the route of SOOP *Finnmaid* through the boxes (Sect. 2.3, second approach) to display events that are actually observable from the ship. "Wind+ Δ SST" (green) only applies to instances of both criteria being met on the exact same day and therefore excludes occasional instances of lag between wind and Δ SST signals. Box openGo is not included here since no upwelling-favourable wind direction can be defined.

sub-thermocline waters (Sect. 3.4). Upwelling in autumn and winter either leads to a general deepening of the mixed-layer depth (discussed in Gülzow et al., 2013) or plays no important role when the physical and biogeochemical differences between surface and upwelled waters have vanished in winter.

The Δ SST criterion based on the entire area is more sensitive than that calculated along sub-transects, but less specific regarding the prediction of upwelling in dynamic areas like the GoF since it is essentially a measure for SST variability $> 2^\circ\text{C}$ within the box (Sect. 2.3). It is triggered more frequently than the wind criterion and due to the high sensitivity of Δ SST, the agreement with the wind criterion and, thus, both criteria being met, is high (Fig. B3).

Boxes Born, Ö-S, Ö-E, Go-SE, and GoF follow similar patterns with respect to both criteria (Fig. 5), which is not surprising given the fact that in all of these cases, upwelling is induced by the same south-westerly to westerly winds and the minimum distances to the coast are rather similar. The upwelling-favourable wind direction is opposite in boxes Go-NW and Hiiu. In box Hiiu, however, both criteria are almost never met at the same time, which indicates that the distance between sub-transect and coast is too large to observe strong upwelling signals (minimum 27 km, median 43 km, Table 1). Admittedly, the sub-transect in box Ö-S is comparable to Hiiu in terms of distance to the coast, but the crucial difference seems to be the upwelling-favourable wind direction since strong westerly winds are more frequent and intense. This is supported by the fact that, even if we calculate Δ SST based on the entire area, the number of days where both criteria are met in box Ö-S is higher than in box Hiiu (Fig. B3), clearly indicating that upwelling is more common in Ö-S. In contrast, the sub-transect in box Go-NW is frequently influenced by upwelling, but yet, it is the only box where the Δ SST is met more often than the wind criterion (Fig. 5e). We attribute this to the small distance to the coast (minimum 4 km, median 10 km, Table 1) leading to higher SST variability and, thus, more similarity to the Δ SST criterion that includes the entire area (Fig. B3e).

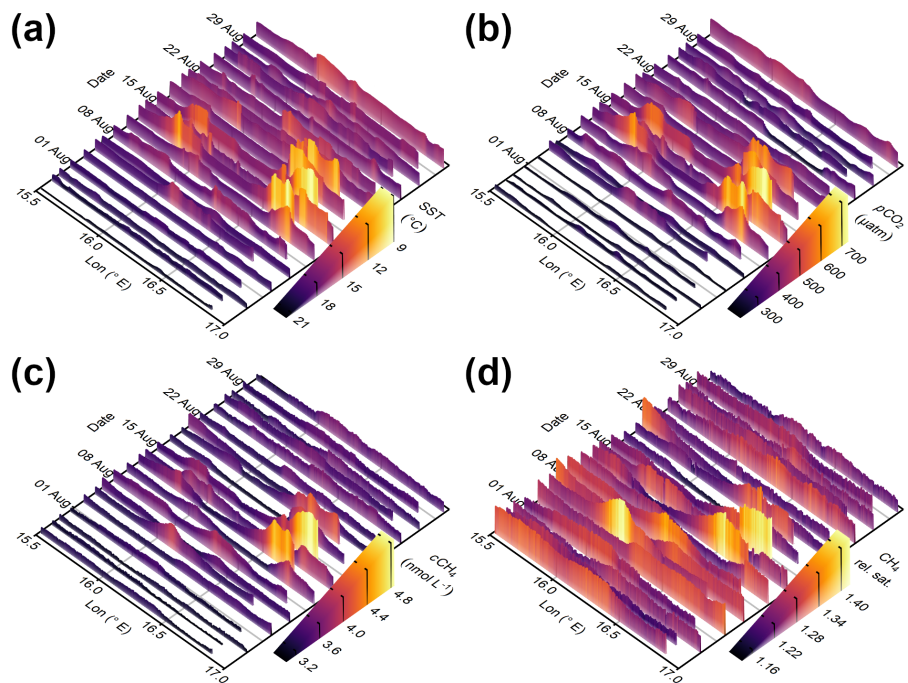


Figure 6. (a) Sea surface temperature, (b) CO₂ partial pressure, (c) CH₄ concentration, and (d) relative CH₄ saturation within box Ö-S as measured by SOOP *Finnmaid* on 21 sub-transects from 26 July to 30 August 2016. In all panels, abscissa is position given as longitude, ordinate is time, and the respective variable is displayed by both colour and height of the curve. Please note the inverted SST scale in (a) to highlight the correlation between decreasing SST and increasing $p\text{CO}_2$ and $c\text{CH}_4$. Data presented in (a–c) correspond to Fig. 7b,j.

305 Based on this statistical analysis, we chose box Ö-S as example area for most of the following discussion since it features prominent upwelling signals concerning both frequency and magnitude. Additionally, data coverage in this area is high as it is crossed by SOOP *Finnmaid* on either of its routes (Fig. 1).

3.2 Regional comparison of upwelling events

In this section, we investigate upwelling events that were caused by strong winds across the entire study area in August 2016, leading to temperature and trace gas signals in almost all previously defined upwelling areas (Fig. B1 and B2), which allows us to compare the observations in these regions and to assess the importance of upwelling for the observed trace gas dynamics. This case study exemplifies more general findings we gained during the analysis of the entire data set.

The entire month was characterised by strong westerly to south-westerly winds (Fig. 4), leading to upwelling in boxes Born, Ö-S, Ö-E, Go-SE, and GoF, interrupted by a week (15–22 August 2016) of more north-easterly winds, triggering upwelling in boxes Hiiu and Go-NW. The resulting SST drops by up to 16 °C predominantly near all southern and eastern coasts propagated seawards and relaxed within several weeks (Supplement S1). Coverage of data from SOOP *Finnmaid* in this period is very

dense, with the majority of transects along the east side of Gotland (see ratio of black and grey dashes in Fig. 4). We illustrate the temporal and spatial evolution of this event (Fig. 6) taking the example of box Ö-S.

Before the event, SST is at a typical summer value of 21 °C throughout the entire sub-transect. As expected, upwelling leads to SST decreases (displayed as peaks in Fig. 6a) with temperatures down to 9 °C. These minima move over time (see also Supplement S1) and are subject to relaxation, which is further discussed in Sect. 3.3. The pre-upwelling temperature is usually not reached again during this time of the year, most probably due to an increased mixed-layer depth as an additional effect of stronger winds, and weakened solar irradiation at the end of August.

The observed trace gas patterns are similar to the temperature distribution: The first sub-transect can be considered as background conditions with typical late summer values of about 250 μatm for $p\text{CO}_2$ and 3.2 nmol L^{-1} for $c\text{CH}_4$ in this area. During the upwelling event, we observe elevated $p\text{CO}_2$ and $c\text{CH}_4$, with trace gas maxima correlated to minimum SST. For CO_2 , this results in a switch from undersaturation to supersaturation. CH_4 is always supersaturated or in equilibrium with the atmosphere in the SOOP *Finnmaid* data set and strong upwelling further increases this supersaturation and, eventually, CH_4 outgassing. However, upwelling is not the only factor controlling increased CH_4 supersaturation (Fig. 6d). Warming of upwelled waters increases $p\text{CH}_4$ and, therefore, relative saturation. As with SST, the enhanced trace gas levels relax subsequently.

To extend these findings to the different regions, we investigated the relationships between trace gas data and temperature over time (Fig. 7). The example from box Ö-S is representative of the majority of strong upwelling events affecting trace gases in the data set of SOOP *Finnmaid*, which are generally characterised by near-linear relationships between trace gases and SST. Maximum $p\text{CO}_2$ and $c\text{CH}_4$ values would not be reached without upwelling in summer (Fig. B4). We observe the same behaviour in boxes Go-SE, Ö-E, and Go-NW despite their reduced data coverage (Fig. 7). Box Ö-E features the highest $p\text{CO}_2$ in the data set of over 800 μatm . In box Go-NW, the observable upwelling event began only at the end of trace gas data coverage on the western route due to a different favourable wind direction, hence, the more extreme values are missing in this example. However, the resulting pattern resembles the ones of boxes Ö-S, Ö-E, and Go-SE, just with lower maximum $p\text{CO}_2$ and $c\text{CH}_4$.

Boxes Born and GoF show the same relationships as the previous boxes in their $p\text{CO}_2$ –SST diagram with considerable dynamic range in case of box GoF (Fig. 7a,g). The respective $c\text{CH}_4$ –SST diagrams, however, only contain a small branch of increasing $c\text{CH}_4$ with decreasing SST (Fig. 7i,o). These regions are dominated by temperature-independent CH_4 variability, which indicates that other processes than upwelling might cause higher-than-usual $c\text{CH}_4$: Box Born is situated between two basins (Arkona and Bornholm basin), which are interlinked via lateral transport, and which both feature gassy sediments (Gülzow et al., 2014; Tóth et al., 2014), from which CH_4 may be released via pressure changes caused by strong winds (Schneider von Deimling et al., 2010; Gülzow et al., 2013). $c\text{CH}_4$ variability in box GoF might be driven by the highly variable physical conditions, e.g. changes of the estuarine circulation up to full reversal (Westerlund et al., 2019) or enhanced vertical transport by boundary wall shear (Schmale et al., 2010). These effects would lead to a less distinct impact of upwelling compared to boxes Ö-S, Ö-E, Go-SE, and Go-NW, where vertical decoupling is more stable.

The discussed phenomena can be contrasted with the behaviour of the sub-transect within box Hiiu: Although we find a clear correlation between decreasing SST and increasing $p\text{CO}_2$ resembling that of the other boxes, we do not observe temperatures

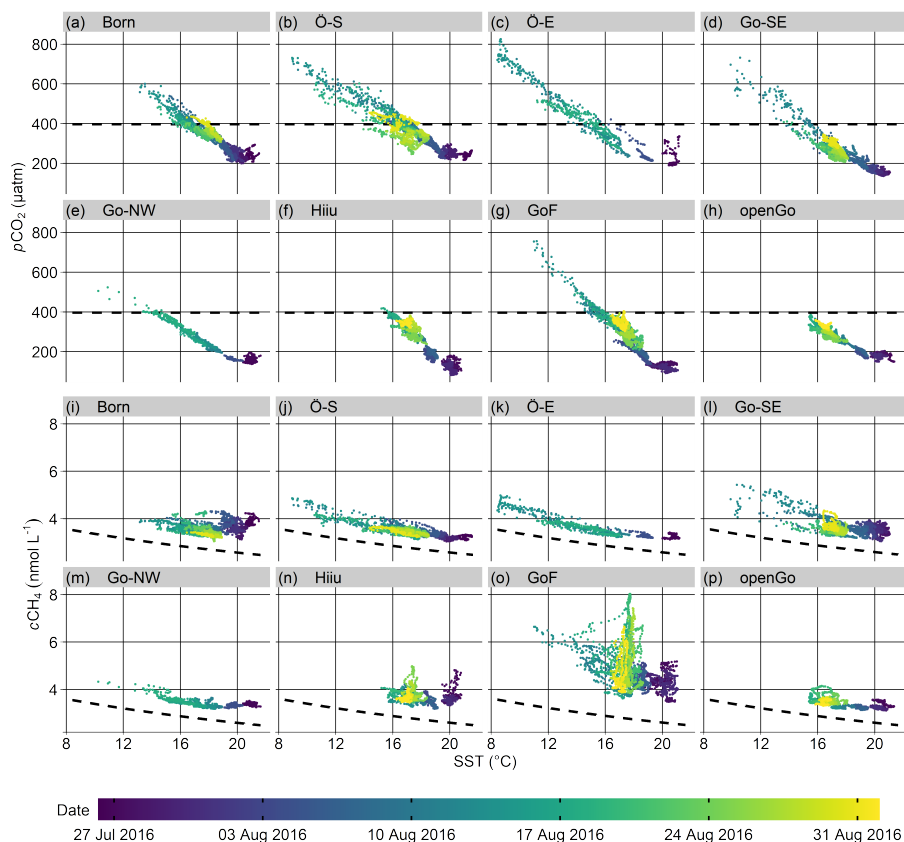


Figure 7. Surface $p\text{CO}_2$ (a–h) and $c\text{CH}_4$ (i–p) as measured by SOOP *Finnmaid* on 21 transects from 26 July to 30 August 2016, each plotted against SST within the seven upwelling regions and the open Gotland Sea box for comparison. The measurement date is colour-coded. Temporal coverage in box Go-SE (15 transects, see black dashes in Fig. 4) and boxes Ö-E and Go-NW (6 transects, see grey dashes therein) is reduced since SOOP *Finnmaid* uses two different routes around Gotland. Black dashed lines indicate atmospheric equilibrium partial pressure for CO_2 and concentration for CH_4 (calculated using mean salinity per box in the given time period), respectively.

lower than $15\text{ }^\circ\text{C}$ and $p\text{CO}_2$ higher than $420\text{ }\mu\text{atm}$, which is close to atmospheric equilibrium (Fig. 7f). This relationship is similar to that of box openGo, the patterns in which we attribute to mixed-layer deepening and air–sea gas exchange caused by stronger winds instead of upwelling because of its distance to the coast (minimum 40 km, median 64 km, Table 1). Since
 355 the route of SOOP *Finnmaid* within box Hiiu is the furthest away from the coast of all boxes (minimum 27 km, median 43 km, Table 1) and the observed $p\text{CO}_2$ –SST relationships are so similar to openGo, we infer that upwelling has only minor influence on the observed values in this region during this time period. This is consistent with maps of modelled SST (Fig. 3 and Supplement S1, most pronounced around 18 August 2016), where no upwelled water masses reach out to the ship track, and confirms the same finding from the statistical identification of main upwelling areas presented in Sect. 3.1.

360 The $c\text{CH}_4$ –SST diagram of box Hiiu (Fig. 7n) resembles, to some extent, that of box GoF (Fig. 7o) without the upwelling branch and smaller maximum $c\text{CH}_4$, and indicates considerable $c\text{CH}_4$ variability compared to, e.g. boxes Ö-S, Ö-E, Go-SE, and Go-NW. In late July, for example, CH_4 concentration drops from 4.8 to 3.3 nmolL^{-1} at more or less constant temperature (Fig. 7n), equating to a change in relative CH_4 saturation from 1.9 to 1.3. In the adjacent region openGo, no instances of increasing $c\text{CH}_4$ at constant SST (vertical branches in Fig. 7n–p) were observed.

365 We summarise that upwelling affects observed SST, $p\text{CO}_2$, and $c\text{CH}_4$ drastically in the defined boxes in late summer of 2016. It typically causes near-linear relationships between surface trace gas signals and temperature with varying ranges and slopes between regions. For CO_2 , this can be observed in all regions (with limitations in box Hiiu), while in the case of CH_4 , strong variability caused by other processes may mask the effects of upwelling and closest-to-linear relationships are observed in boxes Ö-S, Ö-E, Go-SE, and Go-NW.

370 3.3 Typical relaxation of upwelling-induced trace gas signals

The surface water properties of a region influenced by upwelling change over the course of the upwelling event. This can be seen in Fig. 7, where the evolution of the relationship over time between SST and $p\text{CO}_2$ or $c\text{CH}_4$ is indicated by colour, and in Fig. B4. Before an event, we observe high temperature and low trace gas levels, with low spatial variability within sub-transects. During strong upwelling, a variety larger variability of SST, $p\text{CO}_2$, and $c\text{CH}_4$ are is observed concurrently as
375 SOOP *Finnmaid* transects the respective region. ~~These values usually form a near-linear relationship~~ Trace gas and SST data are usually related linearly after the upwelling event. After upwelling-favourable winds cease, the range of signals as well as their intensity is reduced through relaxation in a quasi-linear fashion (Fig. 7). The final state after relaxation, when compared to the initial state, is shifted towards lower temperatures, higher $p\text{CO}_2$, and slightly elevated $c\text{CH}_4$, which equals a roughly comparable CH_4 supersaturation at this decreased, final temperature. Depending on time of the year, SST might re-increase
380 due to subsequent warming, or not recover completely (as in late summer).

In order to discuss the processes that are involved in the relaxation of upwelling signals, we calculated theoretical relaxation curves in trace gas – temperature diagrams (Fig. 8). Assumed endmember characteristics, physical driving parameters, and process descriptions are summarised in Sect. B1. We focus on air–sea gas exchange, air–sea heat exchange, and mixing with a typical water mass with pre-upwelling conditions. CH_4 oxidation in the upper, oxic water column should not play a major role
385 on the short time scales considered here (Jakobs et al., 2013). Primary production (e.g. by nitrogen fixation) has the potential to decrease $p\text{CO}_2$ distinctly, but is difficult to constrain since it depends on meteorological conditions and nutrient availability with possible time lags of several weeks (Vahtera et al., 2005; Wasmund et al., 2012).

The relaxation of SST is mainly driven by mixing. We estimated a total surface heat flux of ca. $300 \text{ J m}^{-2} \text{ s}^{-1}$, which translates to a daily SST change of ca. 0.4 K d^{-1} assuming a mixed-layer depth of 15 m, which is rather typical for windy
390 conditions in summer (derived from model data, not shown). Therefore, air–sea heat exchange contributes only little to the observed warming of upwelled water masses in the order of 5–10 K, leaving mixing as the dominant process. Despite the excess of the surrounding water masses, mixing does not necessarily lead to pre-upwelling conditions since the endmember

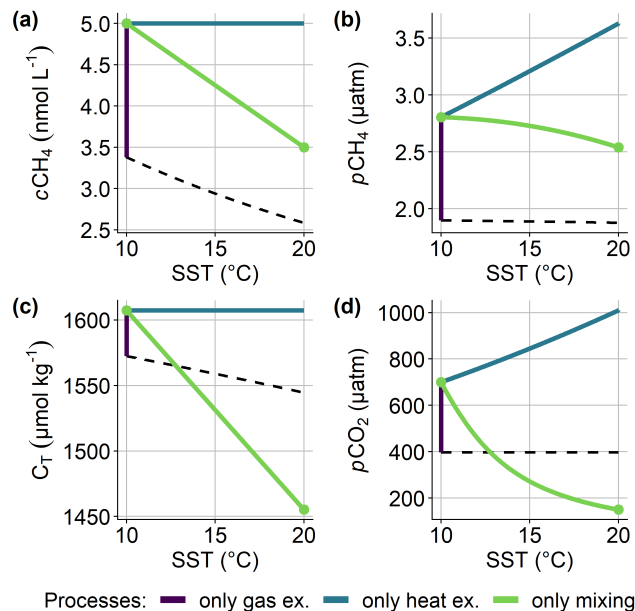


Figure 8. Theoretical relaxation curves of surface trace gas and temperature signals caused by upwelling. We calculated all graphs based on the processes (i) air–sea gas exchange, (ii) air–sea heat exchange, and (iii) mixing with a typical water mass with pre-upwelling conditions, with only one process considered at a time, starting at the point where the three lines intersect. Bold green points highlight the mixing endmembers. Black, dashed lines indicate atmospheric equilibrium conditions for the respective trace gas (397 ppm of CO_2 , 1920 ppb of CH_4). Mixing lines were calculated for (a) $c\text{CH}_4$ using linear interpolation between endmembers (conservative behaviour), (b) $p\text{CH}_4$ from $c\text{CH}_4$ and SST, (c) C_T using linear interpolation between endmembers whose C_T was calculated from A_T and $p\text{CO}_2$ (conservative behaviour), and (d) $p\text{CO}_2$ from C_T and A_T . See Sect. B1 for details concerning calculation parameters.

may change due to enhanced mixing in the open basins caused by stronger wind. SST might re-increase in the following weeks depending on meteorological conditions.

395 Mixing also shapes the typically observed $c\text{CH}_4$ –SST relationships (Fig. 7i–o and 8a), leading to near-linear mixing curves since concentration is a conservative parameter with respect to temperature changes (we neglect the influence on water [volume density here](#)). The upwelled water mass releases ca. $7700 \text{ nmol m}^{-2} \text{ d}^{-1}$ of CH_4 into the atmosphere. This results in a daily $c\text{CH}_4$ loss of $0.51 \text{ nmol L}^{-1} \text{ d}^{-1}$ in a 15 m mixed layer, which is an efficient sink considering the magnitude of observed concentrations. Therefore, air–sea gas exchange alters the slope of the $c\text{CH}_4$ –SST relationship. Note, however, that gas
 400 flux is highly dependent on wind speeds, which are biased in $c\text{CH}_4$ –SST diagrams presented here: Pre-upwelling conditions involve low wind speeds, while the upwelling event is caused by stronger winds, which eventually weaken. Heat exchange has no influence on $c\text{CH}_4$, but the relative CH_4 saturation is determined by its partial pressure $p\text{CH}_4$, which increases by the order of 2 \% K^{-1} (Wiesenburg and Guinasso, 1979). This effect should not play a major role concerning relaxation given the low surface heat flux. However, as outlined above, SST might re-increase in the following weeks, thereby increasing $p\text{CH}_4$ and,

405 thus, potentially lead to enhanced fluxes into the atmosphere over a longer time period of weeks following the upwelling event. Likewise, mixing leads to elevated $p\text{CH}_4$ and relative saturation compared to linear behaviour (Fig. 8b).

Similarly, the relaxation of $p\text{CO}_2$ cannot be considered independently from SST relaxation due to its temperature dependence. Warming by air–sea heat exchange causes a $p\text{CO}_2$ increase in the order of $4\% \text{K}^{-1}$ (Takahashi et al., 1993), which should not play a major role concerning relaxation given the low surface heat flux. As with $p\text{CH}_4$, however, this effect could
410 lead to increasing $p\text{CO}_2$ and enhanced CO_2 fluxes into the atmosphere (or reduced fluxes into the sea) in the following weeks.

The relaxation of upwelling-induced $p\text{CO}_2$ signals (Fig. 7a–g) cannot be explained solely by mixing because the theoretical $p\text{CO}_2$ –SST mixing curve obtained from CO_2 system calculations features a distinct curvature with lower $p\text{CO}_2$ compared to linear behaviour (Fig. 8d). The observed near-linear relationship is likely caused by air–sea CO_2 exchange: At a wind speed of 10 m s^{-1} , the upwelled water mass in this example (Fig. 8d) releases ca. $0.074 \text{ mol m}^{-2} \text{ d}^{-1}$ of CO_2 into the atmosphere,
415 which translates into a daily C_T (total dissolved inorganic carbon) loss of $4.8 \text{ } \mu\text{mol kg}^{-1} \text{ d}^{-1}$ in a 15 m mixed layer. This C_T decrease in CO_2 -oversaturated waters explains the deviation from the expected linear (conservative) mixing curve in C_T estimated from $p\text{CO}_2$ observations (Fig. B5 vs. 8c). Primary production triggered by upwelling has a similar (potentially even greater) influence on $p\text{CO}_2$, but with different kinetics. One could argue that air–sea CO_2 exchange should similarly increase C_T in CO_2 -undersaturated waters, which is not observed (Fig. B5). This can be explained with the aforementioned wind speed
420 bias, resulting in very low fluxes under pre-upwelling conditions (see also Sect. 3.5). The bent C_T –SST curve translates into a near-linear $p\text{CO}_2$ –SST curve, which, in conclusion, can be interpreted as the combined result of mixing and decrease of the highest $p\text{CO}_2$ values due to gas exchange and possibly primary production.

The importance of air–sea gas exchange as a relaxation process and the potential long-term effect of increasing supersaturation due to heat exchange imply that upwelling amplifies surface trace gas fluxes, especially for CH_4 by circumventing the sink
425 of CH_4 oxidation in the water column. Schneider et al. (2014b) mentioned these upwelling-induced trace gas fluxes previously for the Baltic Sea, but questioned the importance for the annual balance since the upper water column would be ventilated in autumn and winter anyhow and CH_4 turnover times in the upper, oxic water column are in the magnitude of years (Jakobs et al., 2013). Despite a more detailed analysis of the statistical prevalence of upwelling in this study, the question of the importance of upwelling on the annual trace gas balance of the Baltic Sea ~~still needs further investigation. cannot be answered here based~~
430 on the data available. Apart from the high variability within observed upwelling events, general statements on this matter are further complicated by little knowledge about fluxes in shallow areas (Humborg et al., 2019), large heterogeneities between basins (Gülzow et al., 2013), and the unknown CO_2 source/sink behaviour of the entire Baltic Sea (Schneider et al., 2014b). Answering this question in the future requires more knowledge on the Baltic Sea CO_2/CH_4 balances in general and extended insight into limitations of upwelling-induced flux estimates in the Baltic Sea (discussed in Sect. 3.5).

435 Another possible relaxation pathway is downwelling. Figure B6 provides an example of quickly vanishing upwelling signals after turning wind. There, we expect downwelling to quickly remove upwelled waters from the surface, thereby restoring the previous surface water mass that underwent only small changes in SST, $p\text{CO}_2$, and $c\text{CH}_4$. This limits enhanced trace gas fluxes to a short time period during the upwelling event. This example is rather unique because it requires upwelling- and downwelling-favourable wind conditions in quick succession and can only be observed in close proximity to the coast (box

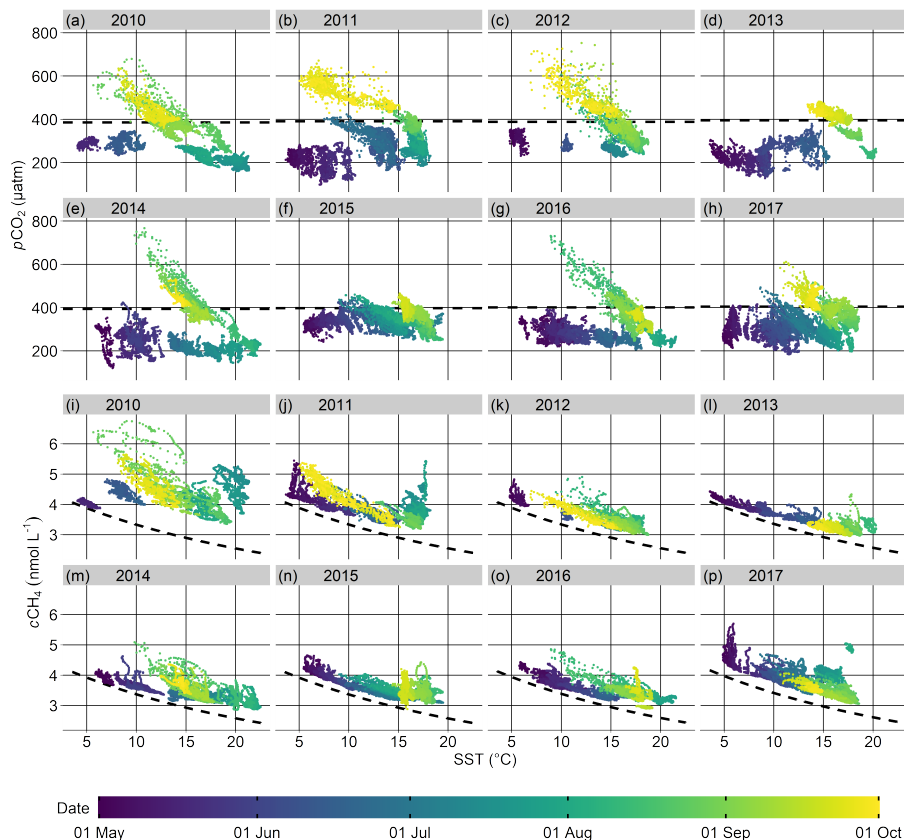


Figure 9. Surface CO₂ partial pressure (a–h), and CH₄ concentration (i–p) from 1 May to 30 September within box Ö-S, each plotted against temperature for individual years. The measurement date is colour-coded. Black dashed lines indicate atmospheric equilibrium partial pressure and concentration (calculated using mean seasonal salinity), respectively.

440 Go-NW in this example), i.e. where the upwelled water mass is young and has not yet expanded towards the open sea. We can
 445 exclude lateral transport out of the box as possible explanation for this effect based on maps of modelled SST (data not shown).

3.4 Interannual variability of upwelling-induced trace gas signals

Since upwelling in the Baltic Sea is an episodic phenomenon based on wind conditions, it is subject to considerable interannual
 445 variability. In Fig. 9, we present seasonal plots (from May to September) of $p\text{CO}_2$ and $c\text{CH}_4$ versus SST in box Ö-S. The
 coloured date scale allows to follow the temporal evolution of signals throughout the season and also highlights larger data
 gaps (e.g. in 2012 and 2013).

Most years feature consistent patterns with respect to $p\text{CO}_2$ (Fig. 9), reflecting its yearly cycle (see Introduction and Schnei-
 der and Müller, 2018): CO₂ is already undersaturated with respect to the atmosphere in May due to primary production during
 the spring bloom. Over the following weeks, the change in $p\text{CO}_2$ is usually rather small, but SST increases as a result of solar

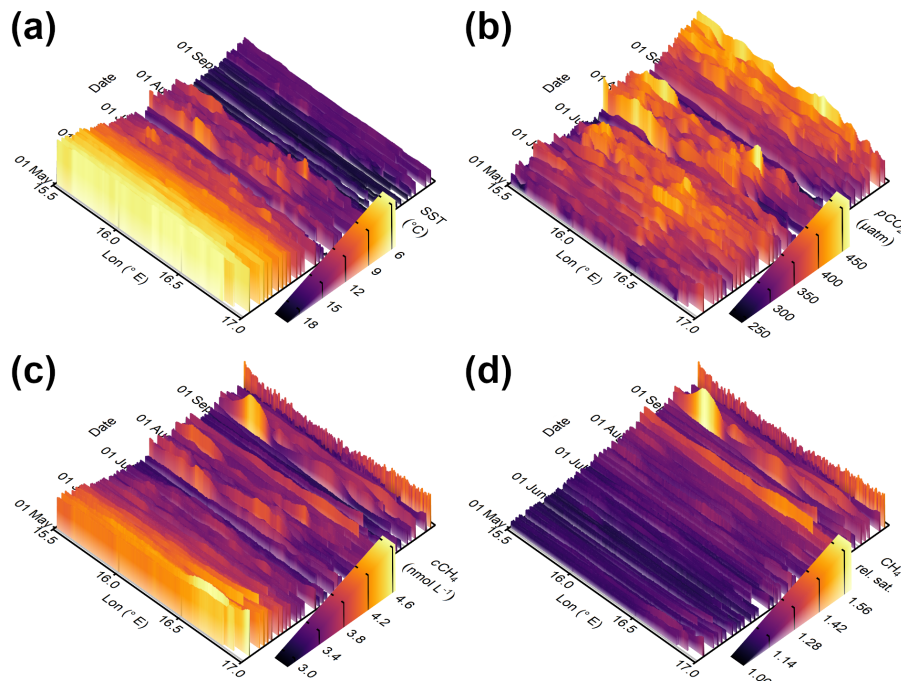


Figure 10. (a) Sea surface temperature, (b) CO₂ partial pressure, (c) CH₄ concentration, and (d) relative CH₄ saturation within box Ö-S on 82 transects from 2 May to 21 September 2015. In all panels, abscissa is position given as longitude, ordinate is time, and the respective variable is displayed by both colour and height of the curve. Please note the inverted SST scale in (a) to highlight the correlation between decreasing SST and increasing *c*CH₄ and *p*CO₂. Data presented in (a–c) correspond to Fig. 9f,n.

450 irradiation and often weaker winds (see also Fig. B4). The resulting stabilisation of the surface thermocline and the accumulation of remineralised CO₂ below combined with decreasing air–sea CO₂ exchange and ongoing primary production lead to increasing *p*CO₂ gradients between surface and sub-thermocline water (which are the cause of upwelling-induced *p*CO₂ signals, Fig. 2) and a permanent undersaturation of the surface water with respect to the atmosphere. The characteristic *c*CH₄–SST conditions follow the CH₄ [saturation-equilibrium](#) curve towards lower concentrations at higher temperatures most probably due to air–sea CH₄ exchange, maintaining a persistent supersaturation. In most years, most notably in 2010, 2012, 2014, and 2016, strong upwelling around August overrides these typical summer conditions, resulting in characteristic *p*CO₂–SST and *c*CH₄–SST patterns. For these years, the ranges of SST, *p*CO₂, and, to a certain extent, *c*CH₄ are similar (but still not equal), with the notable exception of very dynamic *c*CH₄ in 2010. For the other years, we observe a high degree of variability from these typical conditions: Strong upwelling-favourable winds in June 2011 led to an early increase of *p*CO₂ and lower SST overall. Later, at 460 the end of July 2011, a pronounced, sharp increase of *c*CH₄ at rather constant temperature was observed, which clearly is not related to upwelling.

The year 2015 is particularly interesting because it demonstrates the influence of quasi-continuous upwelling-favourable winds over the course of several months, which overrides the typical summer trace gas situation. The year was dominated by

upwelling-favourable, westerly winds until the beginning of August (Fig. A4), effectively prohibiting strong thermal stratification of the surface water (Fig. 10a and low maximum temperature in Fig. 9f,n). This special case is problematic for the detection method because the observable Δ SST gradients become too small for every day to be counted as an "upwelling day" (Fig. A4). As a result of weakened stratification, surface CO_2 undersaturation is unusually weak compared to the typical summer situation (Fig. 10b and high minimum $p\text{CO}_2$ in Fig. 9f). Furthermore, we observe reduced $c\text{CH}_4$ variability as a result of continuous mixing and intensified air–sea exchange through increased turbulence, so that $c\text{CH}_4$ follows the **saturation**
470 **equilibrium** curve more closely than during most years (Fig. 9n). Elevated $c\text{CH}_4$ (Fig. 10c) does not necessarily translate into elevated saturation (Fig. 10d) depending on SST – however, as pointed out in Sect. 3.3, the water mass will become supersaturated as a consequence of subsequent warming. In July 2015 (turquoise hues in Fig. 9f,n), near-linear trace gas – temperature curves are characteristic for strong upwelling (see Sect. 3.2). Compared to, e.g. August 2014 and 2016, however, where the upwelling SST, $p\text{CO}_2$, and $c\text{CH}_4$ signals stand out prominently from the rest of the values, their range concerning all three
475 parameters is reduced in 2015 since decoupling of surface and underlying water was partly impeded.

It was not possible to identify trends in frequency or magnitude of enhanced $p\text{CO}_2$ and $c\text{CH}_4$ caused by upwelling events on the limited time scale of eight years covered by our observations. The main reason for this is the high spatial and temporal variability of upwelling (and of several other processes with influence on dissolved trace gases) in the Baltic Sea, which led to the necessity to do parts of the analyses on a per-event basis and effectively impeded a universal approach. Moreover, the
480 observed endmembers of minimum SST and maximum $p\text{CO}_2/c\text{CH}_4$ are dependent on data coverage, which adds another layer of uncertainty to any trend analysis on the data set, especially in boxes around Gotland (two different ship routes) and during years with larger data gaps. Typical water residence times of 10–30 years (Feistel et al., 2010) imply that longer trace gas time series are needed to detect trends other than variability using the methods we presented here. In fact, Schneider and Müller (2018) managed to find a trend in surface $p\text{CO}_2$ between 4.6 and 6.1 $\mu\text{atm year}^{-1}$ in the Baltic Sea from 2008 to 2015, but did so
485 without a focus on upwelling events only and by filling data gaps through interpolation, which effectively yielded a considerably larger data basis compared to this study. We suppose that if, at some point, the extrapolation scheme proposed in Sect. 3.5 could be expanded to cover more than single events, a trend analysis based on the resulting $p\text{CO}_2/c\text{CH}_4$ fields should be possible, since these data would not be restricted by spatial-temporal coverage or event-specific features.

3.5 Potential to estimate upwelling-induced air–sea trace gas fluxes

490 The observed near-linear relationships between $p\text{CO}_2$ or $c\text{CH}_4$ and SST can be used to spatially extrapolate trace gas observations from sub-transects based on modelled SST fields, assuming that these relationships are consistent for entire upwelling areas. This enables us to estimate air–sea CO_2 and CH_4 fluxes resulting from upwelling events (Fig. 11, Sect. B1). Since we used linear regression (Fig. 11f,g), SST minima near the coast translate into $p\text{CO}_2$ and $c\text{CH}_4$ maxima, retaining the overall pattern and fine structure of the SST field (Fig. 11a–c).

495 The CO_2 flux ($F\text{CO}_2$, Fig. 11d) depends on the difference in $p\text{CO}_2$ between sea and air, which determines the flux direction, and the transfer coefficient, which is parametrised mostly by wind speed. Therefore, $p\text{CO}_2$ and $F\text{CO}_2$ share the same spatial pattern with positive and negative fluxes being present in the box at the same time. Both CO_2 outgassing ($0.13 \text{ mol m}^{-2} \text{ d}^{-1}$)

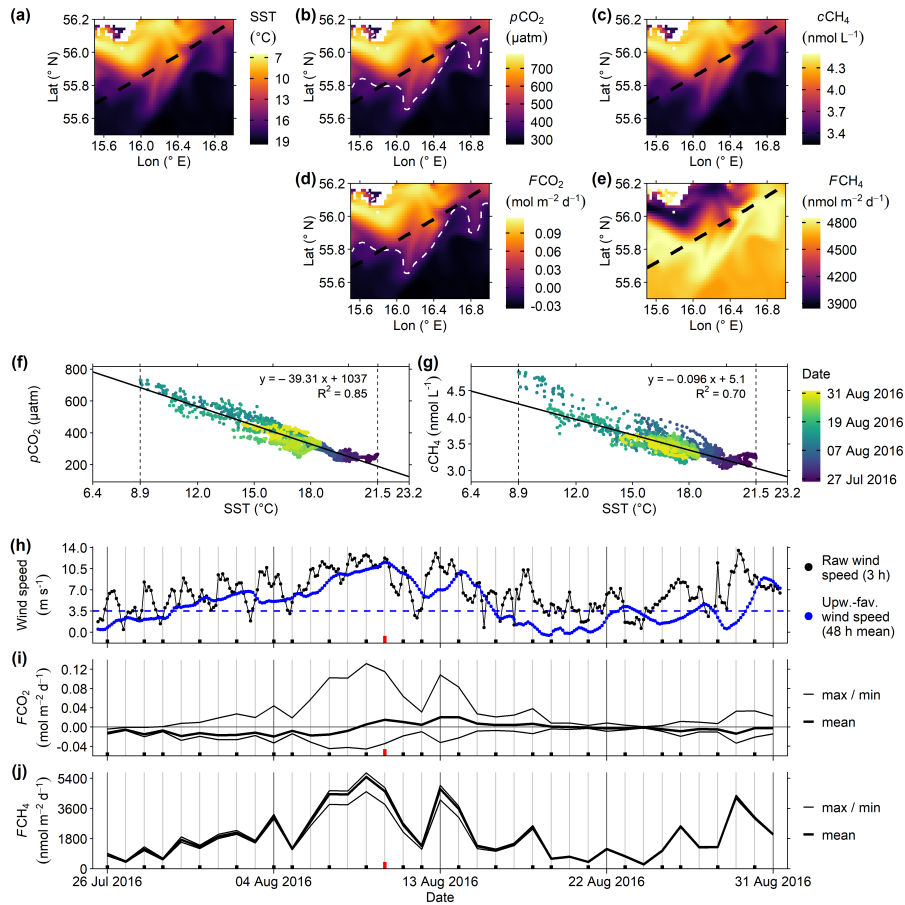


Figure 11. Air–sea trace gas flux estimate for region Ö–S from 26 July to 31 August 2016. Maps depict the situation on 10 August, when SST was minimal: (a) Modelled SST (inverted colour scale), based on which (b) $p\text{CO}_2$ and (c) $c\text{CH}_4$ were extrapolated from measurements aboard SOOP *Finnmaid*, leading to air–sea flux estimates of (d) CO_2 and (e) CH_4 . Black dashed lines represent the track of SOOP *Finnmaid*, white dashed lines indicate atmospheric equilibrium for CO_2 (CH_4 is always supersaturated). (f) Relationship of $p\text{CO}_2$ or (g) $c\text{CH}_4$ and SST as measured by SOOP *Finnmaid* on 21 sub-transects from 26 July to 30 August 2016 with colour indicating date (same as Fig. 7b,j), [which were used for the calculation of \$p\text{CO}_2\$ and \$c\text{CH}_4\$ in \(b\) and \(c\)](#). Dashed vertical lines display the observed SST range, while the limits of the SST axis represent the range of modelled SST and, thus, the extrapolation limits. The relationships were approximated via linear regression (black solid line), the regression functions and R^2 are given in the respective panels. (h) Wind speed (black dots and lines) and the running 48 h mean of upwelling-favourable wind speed (blue dots and lines) over time, with the dashed blue line indicating the threshold of the wind criterion (3.5 m s^{-1}). (i) Daily air–sea CO_2 and (j) CH_4 fluxes over time. Bold lines represent mean and thin lines max/min fluxes per day, respectively. Black dashes at the bottom of (h–j) mark transects of SOOP *Finnmaid* within the box; a red, long dash marks 10 August, the date of the maps (a–e).

and uptake ($-0.046 \text{ mol m}^{-2} \text{ d}^{-1}$) peak on 9 August, when wind speeds are highest. CH_4 fluxes ($F\text{CH}_4$, Fig. 11e) into the

atmosphere reach their maximum ($5730 \text{ nmol m}^{-2} \text{ d}^{-1}$) on the same day. However, the spatial distribution of $F\text{CH}_4$ differs from that of $c\text{CH}_4$ due to the temperature dependence of the CH_4 [saturation-equilibrium](#) concentration: For instance, the lowest fluxes on 10 August occur close to the coast despite high concentrations in this area because supersaturation decreases with lower SST, indicating that the upwelled water mass has a lower CH_4 supersaturation than the surrounding waters in this example. However, relative CH_4 saturation is highly sensitive to changes in slope of the applied regression curve, which underestimates the observed maximum supersaturation in this example (Fig. 11g) and likely leads to this special spatial distribution. Even careful tweaking of the regression curve would result in a pattern much more similar to that of $F\text{CO}_2$ and this similarity increases with increasing supersaturation of the upwelled water mass compared to pre-upwelling conditions. In other examples, the two flux patterns are more similar than here (data not shown). The discussed "tweaking" of the $c\text{CH}_4$ -SST regression, though impacting the derived pattern considerably, would have only a small impact on the areal flux. In any case, daily $F\text{CH}_4$ peak under intermediate conditions where the flux-increasing effects of rising $c\text{CH}_4$ and rising SST combine. On many days in this example, including 10 August (Fig. 11e), this area of maximum daily $F\text{CH}_4$ is in close proximity to the transect of SOOP *Finnmaid*, where it can be observed by in situ measurements, whereas areas of maximum daily $F\text{CO}_2$ tend to be closer to the coast. It should be noted that the spatial variability of $F\text{CO}_2$ is much higher than that of $F\text{CH}_4$ (see maximum and minimum values in Fig. 11i,j).

The importance of wind is also reflected by the evolution of air-sea gas fluxes over time (Fig. 11i,j). Fluxes are weak under pre-upwelling conditions due to low wind speeds (Fig. 11h), increase distinctly with rising wind speeds, and reach a minimum (considering absolute values for $F\text{CO}_2$) in the relaxation period after the upwelling event, when the wind calms down again. The sea is a permanent source of atmospheric CH_4 with varying strength based mostly on wind speed in this example, which can be generalised to the entire data set. In contrast, $F\text{CO}_2$ is negative (CO_2 uptake from the atmosphere) under pre-upwelling conditions. CO_2 outgassing starts with the onset of upwelling, but at this point, the area is still dominated by increasing CO_2 uptake due to rising wind speeds. Both positive and negative CO_2 fluxes intensify over the following days, but CO_2 outgassing reaches higher absolute values as a result of high $p\text{CO}_2$ due to upwelling. The area is a net source of CO_2 for the atmosphere (mean $F\text{CO}_2 > 0$) from 9 August, when wind speeds are maximal, to 19 August, when $p\text{CO}_2$ gradients have sufficiently diminished due to relaxation. Note, however, that mean $F\text{CO}_2$ depends on the (arbitrary) choice of box boundaries.

The presented flux estimates depend largely on the applicability of the observed near-linear trace gas – SST relationships for the entire area and period, including extrapolation to temperatures lower than the minimum temperature of the trace gas – SST regression (i.e. towards the core of the upwelled water mass, see SST axis in Fig. 11f,g). Verification of this assumption would require a dedicated research cruise involving trace gas measurements perpendicular to the track of SOOP *Finnmaid* with transects towards both coast and open basin. Based on the presented findings, we assume that the extrapolation scheme proposed here [underestimates-leads to a conservative estimate of](#) the actual fluxes since the applied regression is based on waters that have already been subject to air-sea gas exchange (see also Sect. 3.3) as opposed to "young" upwelled waters, which are not observed by SOOP *Finnmaid*. Still, the presented method provides means to constrain upwelling-induced trace gas fluxes based on SOOP and model (or, potentially, remote sensing) data on large spatial and temporal scales, [which may also be used to study other upwelling areas with potentially greater impact on global trace gas fluxes than the Baltic Sea](#). We

recommend using this approach on a per-event basis to properly calibrate the applied trace gas – SST relationships, which
535 might differ between regions and events. In general, this extrapolation method should be applicable in every upwelling area world-wide where near-linear trace gas – SST relationships are observed and could, therefore, be a valuable tool to produce flux maps from (scarce) surface observations.

4 Conclusions

Upwelling in the Baltic Sea can be observed using autonomous measurements aboard SOOP, which, compared to dedicated
540 research cruises, provide higher spatial and temporal coverage at the cost of being restricted to surface data and, depending on route, a higher-larger distance to the coast. They enable studies on seasonality, comparison of regions, and observation of processes over long time periods. Combining SOOP-based trace gas measurements with other high-resolution data sets like model or remote sensing data further allows us to a) assess their spatial and temporal representativity by adding information perpendicular-to-beyond the ferry track, b) assess the prevalence of upwelling even during SOOP data gaps caused by ship
545 schedule and (rare) outages, c) compare events by size, duration, and signal intensity, and d) estimate upwelling-induced air–sea fluxes.

~~We found that upwelling is an important process to understand~~ Based on the long-term SOOP data set, we identified controlling parameters of upwelling-induced trace gas dynamics in ~~near-coastal environments of~~ the Baltic Sea ~~–on large spatial and temporal scales~~: Deviations from the usual summer trace gas distribution (as determined for the open basins) are
550 dominated by upwelling in some regions, particularly in coastal areas of the central Baltic Sea, while there appear to be other relevant effects especially towards the Gulf of Finland and around the island of Bornholm. The strongest upwelling-induced trace gas signals in the Baltic Sea occur during intense wind events at the end of summer after a long, relatively calm period of decoupling between surface and underlying water. These strong upwelling events stand out prominently from the other-wise rather uniformly distributed trace gas data in summer and are characterised by near-linear relationships between $p\text{CO}_2$
555 or $c\text{CH}_4$ and SST. The relaxation of these upwelling-induced trace gas signals is mainly driven by mixing and modulated by air–sea gas exchange and possibly primary production. ~~Air–sea heat exchange stimulates enhanced supersaturation by warming~~ Subsequent warming after an upwelling event leads to enhanced supersaturation on a time scale of ~~several~~ weeks.

Interannual variability of upwelling in the Baltic Sea depends on prevailing wind conditions. Half of the years in the data set feature strong upwelling around August, which overrides the typical summer trace gas distributions and leads to values that
560 are unreachable by other means in this season (depending on region for CH_4). Quasi-persistent upwelling can prevent strong stratification and cause untypical values for SST, $p\text{CO}_2$, and $c\text{CH}_4$, as well as impede the formation of strong vertical gradients. The observed high variability combined with uncertainties from data coverage prevented a detailed trend analysis since parts of the study are still limited to single events. Furthermore, long water residence times (10–30 years) characteristic for the Baltic Sea require equally large data sets. Here, the presented detection and extrapolation methods might facilitate trend analysis in
565 the future by providing $p\text{CO}_2/c\text{CH}_4$ fields that are not limited by spatial-temporal coverage or event-specific features.

The observed near-linear relationships between $p\text{CO}_2$ or $c\text{CH}_4$ and SST suggest extrapolation of trace gas observations based on SST fields from a numerical ocean model (like GETM) or remote sensing. This allows for the estimation of upwelling-induced trace gas fluxes over the course of individual upwelling events, though the validity of this extrapolation of linear trace gas – SST relationships to the core of the upwelling cell requires further verification. If future investigations show that freshly upwelled waters near the coast possess similar characteristics as those observed from the SOOP, a then well-founded flux estimate will properly constrain upwelling-induced CO_2 and CH_4 fluxes in the Baltic Sea and enable to relate the trace gas flux magnitude caused by upwelling to total annual flux estimates, as well as a robust comparison with other upwelling regions on a global scale.

The presented results on spatial and temporal characteristics of upwelling in the Baltic Sea on large scales also enable improved cruise planning to conduct more detailed research on the topic, e.g. extensive research-vessel-based process studies. Furthermore, the detection and extrapolation methods presented here could be applicable in other upwelling areas, which are more relevant on a global scale regarding trace gas fluxes and balances, but lack an appropriate data coverage.

Appendix A: Methods

A1 Data processing and visualisation

580 Data analysis and visualisation were executed using R (R Core Team, 2019), particularly the packages *tidyverse* (Wickham et al., 2019), *cowplot* (Wilke, 2019), and colour scales from *viridis* (Garnier, 2018). For maps, we used bathymetry data from *marmap* (Pante and Simon-Bouhet, 2013) and coastline data from *rnaturalearth* (South, 2017). Three-dimensional plots were rendered with *rayshader* (Morgan-Wall, 2020).

A2 Air–water equilibrator response times

585 Gas phase measurements using air–water equilibrators are subject to response times (Johnson, 1999), which depend on construction and operation parameters of the setup, solubility of the respective gas, temperature and salinity (Webb et al., 2016). The *e*-folding time constants τ of the system aboard SOOP *Finnmaid* were determined to be 226 s for CO₂ and 676 s for CH₄ at room temperature using fresh water (Gülzow et al., 2011). Non-negligible response times lead to smoothed and delayed signals in both time and space, with a more pronounced impact on CH₄ than CO₂. Corrections for temporal and spatial lag
590 are used in profiling sensor applications (Fiedler et al., 2012; Bittig et al., 2014), but they are often neglected for surface trace gas measurements. We demonstrate such a correction using the method described in Bittig et al. (2018) to illustrate potential advantages and practical issues (Fig. A1).

In the illustrated example, SOOP *Finnmaid* travels from south-west to north-east through box Go-SE (Fig. A1h). Compared to SST measurements (Fig. A1a), the CO₂ and especially CH₄ signals are delayed and smoothed (Fig. A1b,c, black curves).
595 In comparison, the corrected signals (Fig. A1b,c, red curves, most prominently around 18.5° E) respond earlier, are more pronounced, exhibit more fine structure, and mirror the SST signal better, which is expected when entering a new water mass. The relationships between uncorrected trace gas signals and SST (Fig. A1d,f) feature hysteresis, which is reduced substantially after the correction (Fig. A1e,g). However, the method introduces artefacts like overshoots (e.g. Fig. A1b,c, low values around 19.15° E) and noise particularly if data density is low and/or τ is poorly characterised. This problem can be mitigated, but not
600 solved, by applying additional smoothing before and/or after the correction (not done here).

Unfortunately, this response time correction only provided satisfactory results for a minority of cases. Elsewhere, the resulting noise degraded data quality and created additional hysteresis. We attribute this to the unknown dependence of τ on, e.g. temperature, salinity, and water/gas flows, all of which vary along a transect. This issue would be particularly influential for this study since, e.g. SST gradients caused by upwelling are sharper and steeper compared to measurements in open
605 basins, which leads to perpetual changes of τ . Thus, we decided to refrain from a response time correction to avoid introducing additional bias into the data set. However, the algorithm we used (Bittig et al., 2018) is capable of handling variable τ , allowing more precise response time corrections if τ is sufficiently characterised as function of, e.g. temperature, salinity, and air/water flows, which leaves room for future studies.

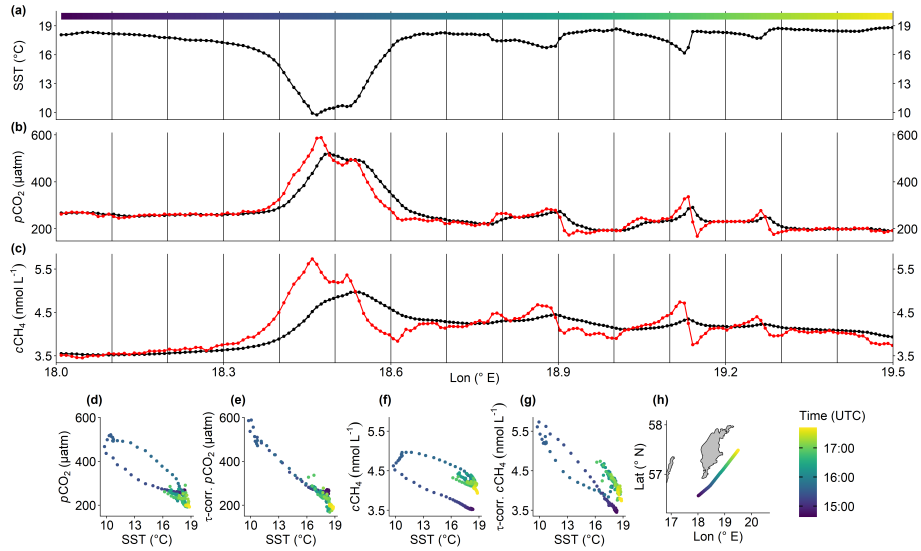


Figure A1. Demonstration of response time correction based on data from 24 August 2010 within box Go-SE. The three upper plots display longitudinal patterns of (a) SST, (b) $p\text{CO}_2$, and (c) $c\text{CH}_4$. Black symbols are original values, red symbols are corrected using response times of $\tau_{\text{CO}_2} = 226$ s and $\tau_{\text{CH}_4} = 676$ s (Gülzow et al., 2011) and procedures according to Bittig et al. (2018). (d–g) reveal relationships between (d) original and (e) τ -corrected $p\text{CO}_2$ and SST, as well as (f) original and (g) τ -corrected $c\text{CH}_4$ and SST. (h) displays the position of SOOP *Finnmaid* over time. Time is colour-coded to link all plots.

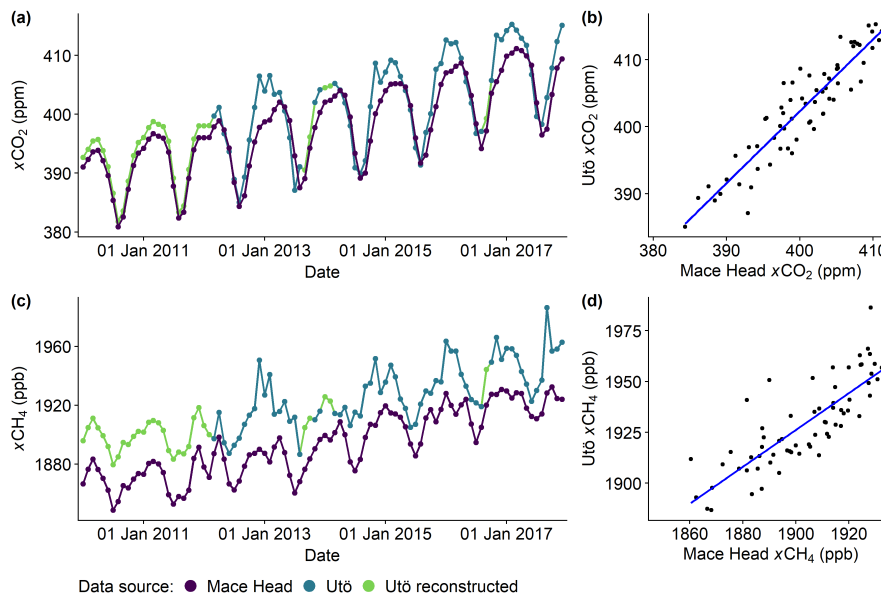


Figure A2. Monthly means of atmospheric (a) CO₂ and (c) CH₄ mole fractions from 2010 to 2017. We preferred data from Utö station (Finnish Meteorological Institute, Helsinki), which start in March 2012, due to their proximity to observations from SOOP *Finnmaid*. Concerning measurements on Utö, the method described in Kilkki et al. (2015) is applicable for the study period except that the Nafion dryer has not been in use since November 2013 (Juha Hatakka, pers. comm.). For the period before 2012 and to fill data gaps in September 2013 and 2016 in the Utö series, we used atmospheric data from Mace Head station (National University of Ireland, Galway) via the NOAA ESRL Carbon Cycle Cooperative Global Air Sampling Network (Dlugokencky et al., 2019a, b), which is roughly at similar latitude. To correct differences between both stations, we normalised the data from Mace Head to those from Utö based on the shared period from 2012 to 2017 using linear regression (b,d). This very simple approach is sufficient to evaluate the magnitude of saturation-super- and undersaturation and compare it on interannual scales.

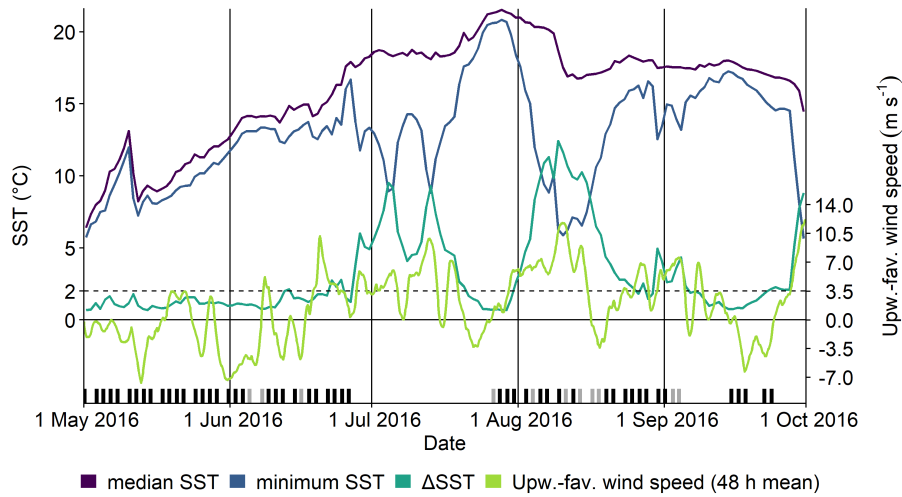


Figure A3. As Fig. 4, but based on model-SST data from the entire box instead of along the sub-transect of SOOP *Finnmaid*. Please refer to Sect. 2.3 for a comparison to Fig. 4. Both approaches are further discussed in Sect. 3.1.

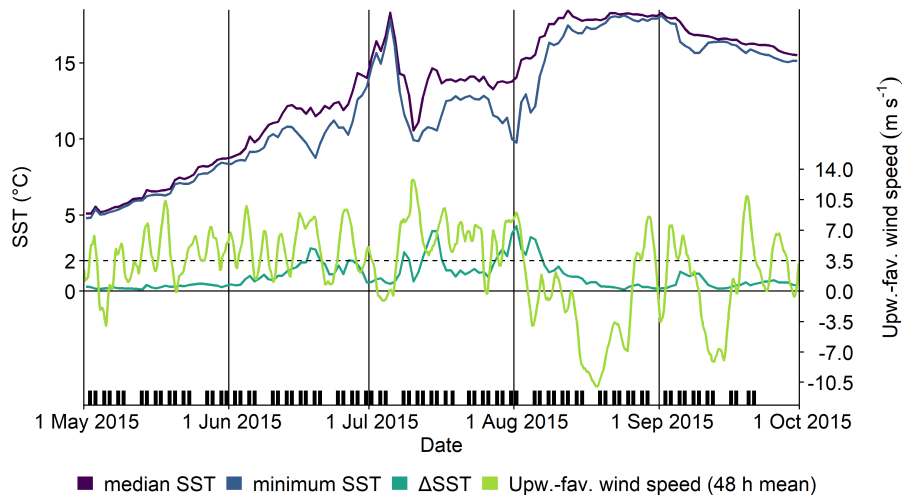


Figure A4. As Fig. 4, but within box Ö-S in 2015 (here, both routes go through the box). Quasi-persistent upwelling-favourable wind conditions until the beginning of August effectively prohibited strong thermal stratification of the surface water. This results in lower possible SST gradients from upwelling and, therefore, a rather unreliable Δ SST criterion, which is only triggered during the most intense periods. Please refer to Sect. 3.4 for a detailed discussion of this event.

Appendix B: Results and discussion

610 B1 Calculation of theoretical relaxation and flux estimates

We calculated theoretical relaxation curves (Sect. 3.3) as follows: CO₂ system calculations were performed using the R package *seacarb* (Gattuso et al., 2019) with K₁/K₂ from Millero (2010), K_w/K_f from Dickson and Riley (1979) and K_s from Dickson (1990). pCH₄ was calculated from cCH₄ (Wiesenburg and Guinasso, 1979). Since salinity changes by upwelling in the Baltic Sea are usually small (Lehmann and Myrberg, 2008) and no calcifying organisms are present (Schneider et al., 2014a), we assumed a constant salinity of 7 and a total alkalinity (A_T) of 1600 μmol kg⁻¹ (Müller et al., 2016). These along with the values for the initial (upwelled) water mass (SST = 10 °C, pCO₂ = 700 μatm, cCH₄ = 5 nmol L⁻¹) and the background water mass (SST = 20 °C, pCO₂ = 150 μatm, cCH₄ = 3.5 nmol L⁻¹) used for mixing are typical for late-summer upwelling in the central box Go-SE (Fig. 7d,l). However, as we mainly discuss the shapes of the curves, which are unaffected by variation of the input variables over a reasonable range, Fig. 8 is used to discuss processes in all regions.

620 Fluxes were calculated according to Wanninkhof (2014). We approximated the Schmidt number dependence on salinity via linear interpolation between the values for freshwater and seawater. In Sect. 3.3, we assumed constant wind speeds of 10 m s⁻¹, SST = 10 °C, air temperature = 20 °C, relative humidity = 0.8, and relative cloud coverage = 0.8. In Sect. 3.5, we used the available wind data with 3 h resolution to calculate daily fluxes.

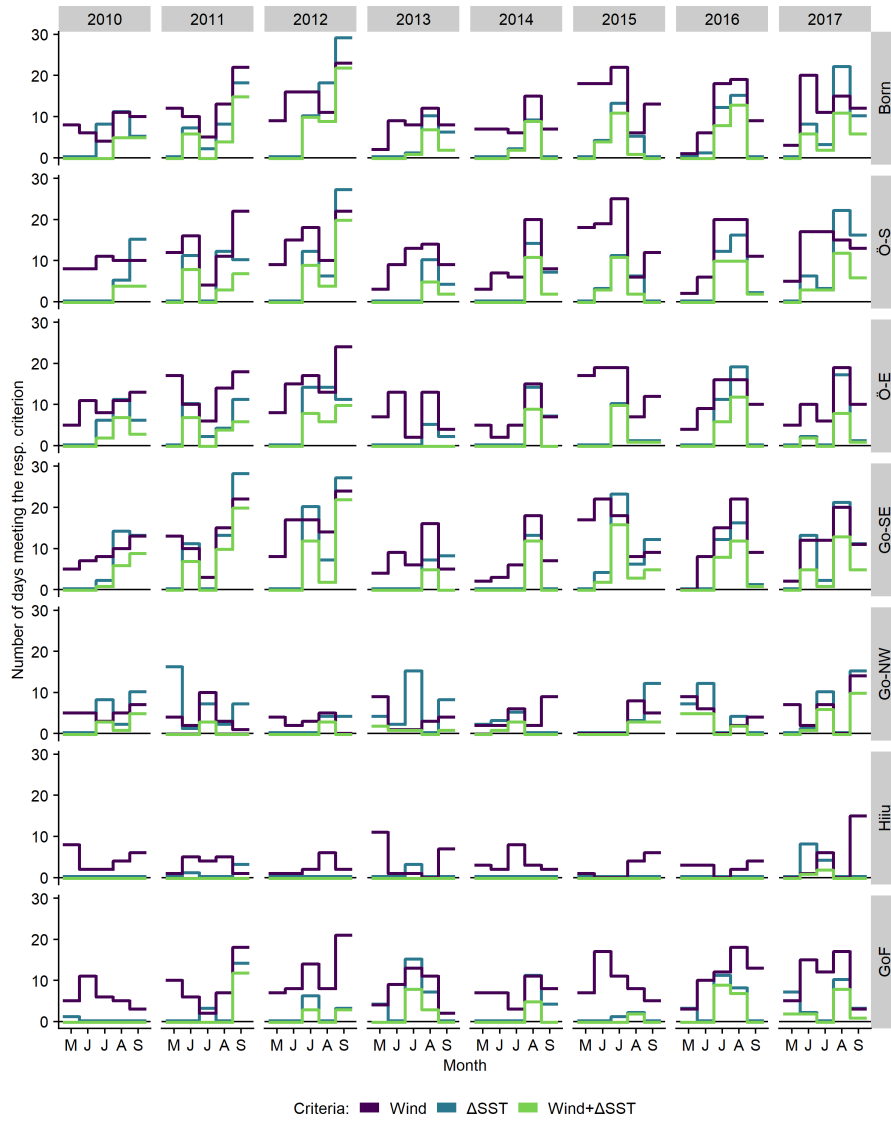


Figure B1. As Fig. 5, but further distinguished by year. Δ SST was calculated along the route of SOOP *Finnmaid* through the boxes (Sect. 2.3, second approach). Month abbreviations denote the period May–September.

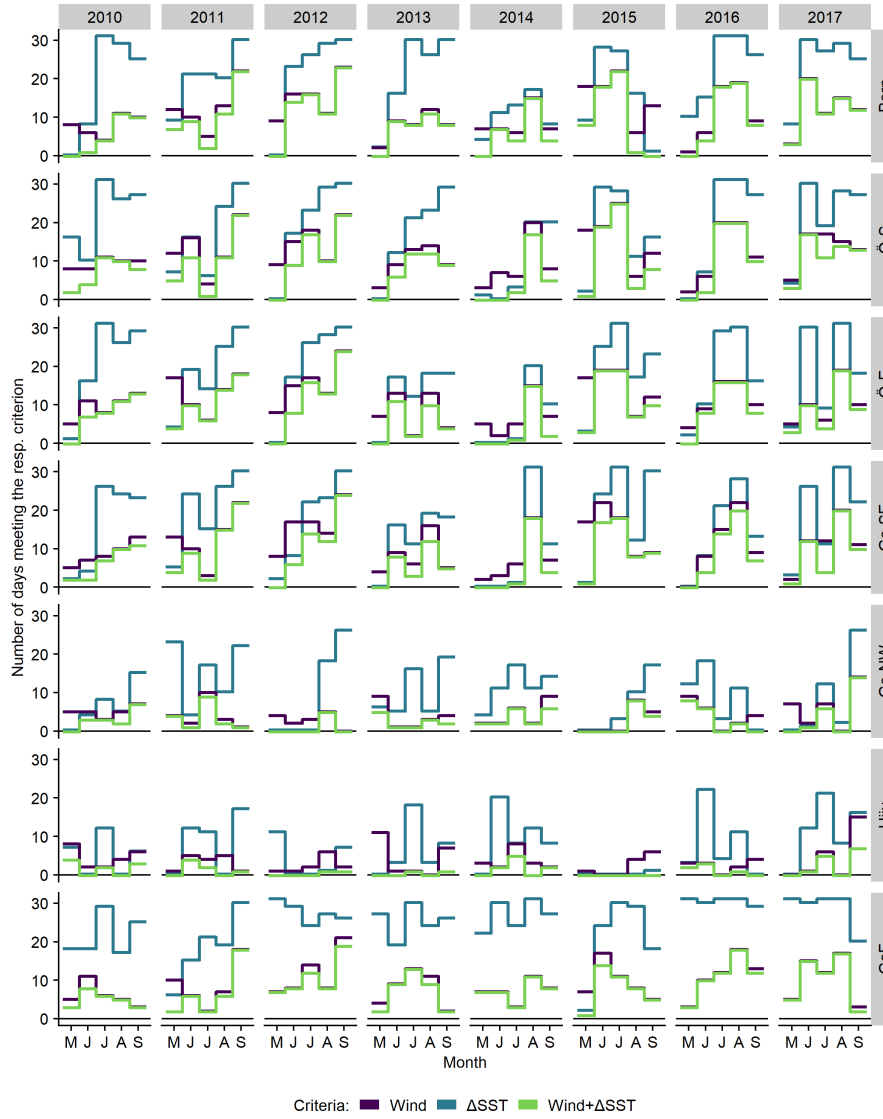


Figure B2. As Fig. 5, but further distinguished by year and using a different Δ SST criterion, which was calculated based on the entire area of the boxes (Sect. 2.3, first approach). Month abbreviations denote the period May–September.

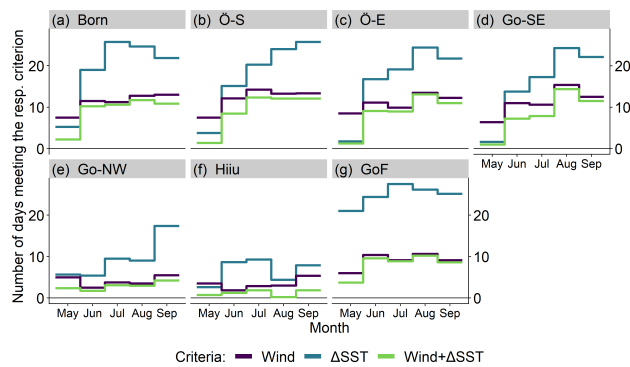


Figure B3. As Fig. 5, but using a different Δ SST criterion, which was calculated based on the entire area of the boxes (Sect. 2.3, first approach).

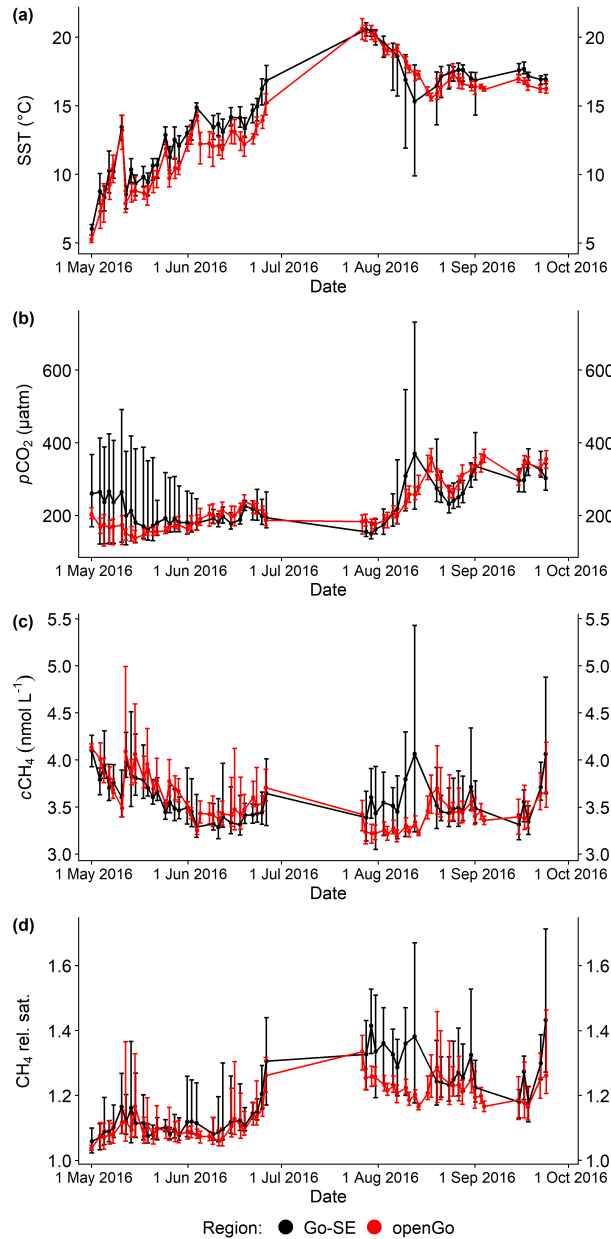


Figure B4. (a) Sea surface temperature, (b) CO_2 partial pressure, (c) CH_4 concentration, and (d) relative CH_4 saturation within boxes Go-SE (black) and openGo (red) from 1 May to 23 September 2016. Points and lines represent mean values per sub-transect, error bars denote maximum and minimum, respectively. The effect of upwelling is very prominent in August 2016 (compare Fig. 4), when box Go-SE features decreased SST and increased $p\text{CO}_2$, $c\text{CH}_4$, and relative CH_4 saturation values compared to box openGo, which is not affected by upwelling.

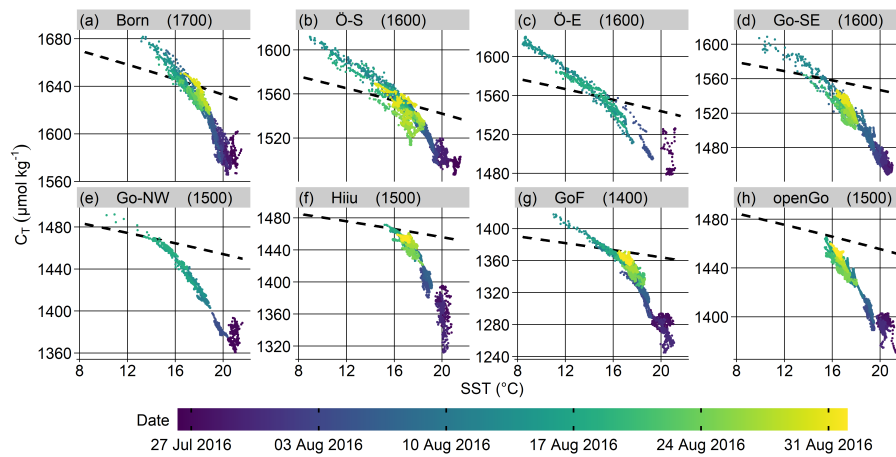


Figure B5. Surface C_T estimated from $p\text{CO}_2$ as measured by SOOP *Finnmaid* on 21 transects from 26 July to 30 August 2016, each plotted against SST within the seven upwelling regions and the open Gotland Sea box for comparison. We estimated A_T for each box (values in $\mu\text{mol kg}^{-1}$ in parentheses) based on Müller et al. (2016). The measurement date is colour-coded. Temporal coverage in box Go-SE (15 transects) and boxes Ö-E and Go-NW (6 transects) is reduced since SOOP *Finnmaid* uses two different routes around Gotland. Black dashed lines indicate atmospheric equilibrium C_T (calculated using mean salinity per box in the given time period).

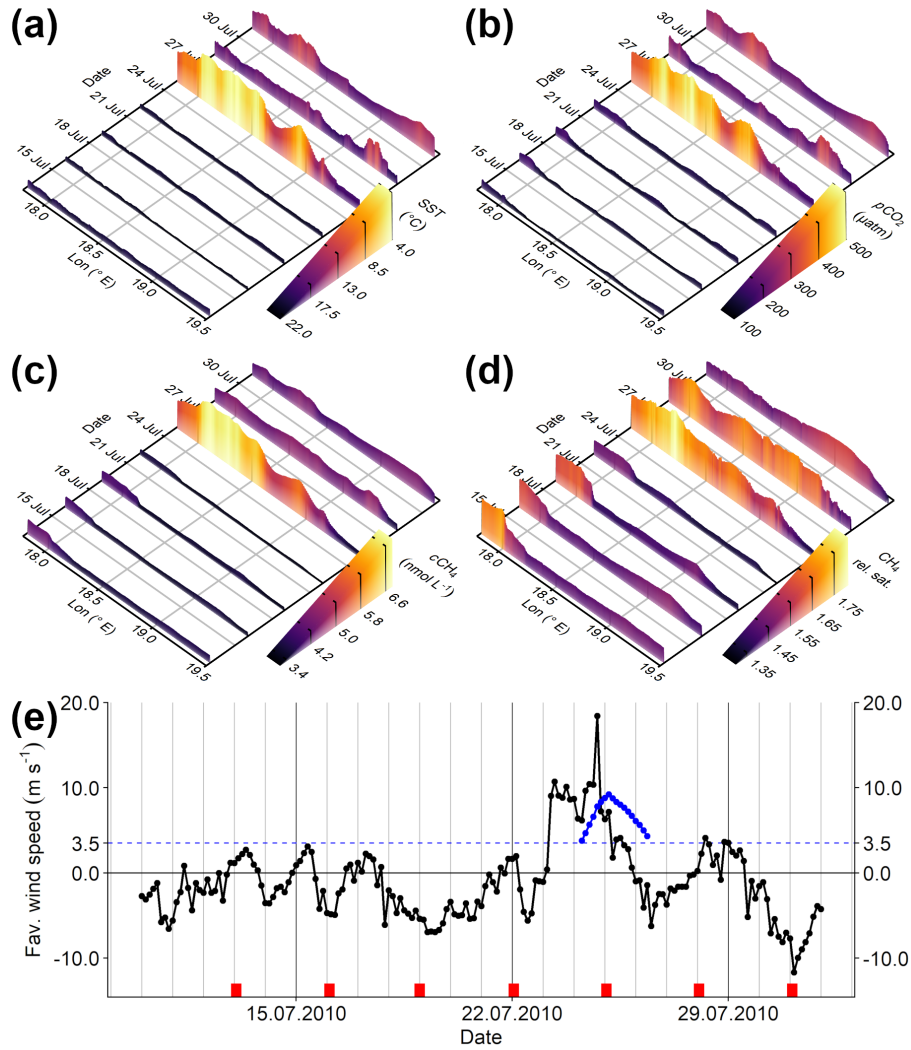


Figure B6. (a) Sea surface temperature, (b) CO₂ partial pressure, (c) CH₄ concentration, and (d) relative CH₄ saturation within box Go-NW as measured by SOOP *Finnmaid* on 7 transects from 12 to 31 July 2010. In (a–d), abscissa is position given as longitude, ordinate is time, and the respective variable is displayed by both colour and height of the curve. Please note the inverted SST scale in (a) to highlight the correlation between decreasing SST and increasing *p*CO₂ and *c*CH₄. (e) Upwelling-favourable wind component in the same period: Black dots and lines are in 3 h intervals, blue dots represent the running 48 h mean, if this mean is above 3.5 m s⁻¹. The dashed blue line indicates the chosen threshold of the wind criterion. Red dashes at the bottom mark transects of SOOP *Finnmaid* within the box (see (a–d)). This example shows distinct upwelling signals on 25 July, which vanish quickly after turning wind, hinting towards downwelling as the relevant process for fast relaxation of upwelling signals. In fact, post-upwelling values of SST, *p*CO₂, and *c*CH₄ differ only slightly from pre-upwelling values.

625 *Data availability.* The trace gas data set from SOOP *Finnmaid* ~~will be made available in an openly accessible data base upon final publication.~~
is available at <https://doi.org/10.12754/data-2021-0001>.

Author contributions. EJ, GR, and CAG conceived the study. MG, BS, and EJ processed the *Finnmaid* data set and carried out quality control. UG did the model run and provided wind and remote sensing data. HCB, JDM, and CAG provided assistance with analyses. EJ carried out all analyses, prepared the figures, and wrote the manuscript, to which all co-authors provided editorial and scientific recommendations.

Competing interests. The authors declare that they have no conflict of interest.

630 *Acknowledgements.* The authors would like to thank Bernd Sadkowiak for regular maintenance of the measurement setup aboard *Finnmaid*.
Finnmaid T/S data were provided by Alg@line marine monitoring service at the Finnish Environment Institute (SYKE, Jukka Seppälä).
Atmospheric CO₂ and CH₄ data from Utö station were provided by the Finnish Meteorological Institute (FMI, Juha Hatakka). CAG ac-
knowledges support of her visiting researcher position by the Leibniz Institute for Baltic Sea Research Warnemünde (IOW). This work was
635 funded by the project BONUS INTEGRAL (grant No. 03F0773A), which receives funding from BONUS (Art 185), funded jointly by the
EU, the German Federal Ministry of Education and Research, the Swedish Research Council Formas, the Academy of Finland, the Pol-
ish National Centre for Research and Development, and the Estonian Research Council. The measurements were temporarily (2009–2011)
funded by the German Federal Ministry of Education and Research in the frame of the BONUS projects Baltic-C (grant No. 03F0486A),
Baltic Gas (grant No. 03F0488B), and, since 2012, ICOS-D (grant Nos. 01LK1101F and 01LK1224D).

References

- 640 [BACC II Author Team: Second Assessment of Climate Change for the Baltic Sea Basin, Regional Climate Studies, Springer International Publishing, Cham, Switzerland, https://doi.org/10.1007/978-3-319-16006-1_2015.](https://doi.org/10.1007/978-3-319-16006-1_2015)
- Bakker, D. C. E., Pfeil, B., Landa, C. S., Metzler, N., O'Brien, K. M., Olsen, A., Smith, K., Cosca, C., Harasawa, S., Jones, S. D., Nakaoka, S.-i., Nojiri, Y., Schuster, U., Steinhoff, T., Sweeney, C., Takahashi, T., Tilbrook, B., Wada, C., Wanninkhof, R., Alin, S. R., Balestrini, C. F., Barbero, L., Bates, N. R., Bianchi, A. A., Bonou, F., Boutin, J., Bozec, Y., Burger, E. F., Cai, W.-J., Castle, R. D., Chen, L.,
- 645 Chierici, M., Currie, K., Evans, W., Featherstone, C., Feely, R. A., Fransson, A., Goyet, C., Greenwood, N., Gregor, L., Hankin, S., Hardman-Mountford, N. J., Harlay, J., Hauck, J., Hoppema, M., Humphreys, M. P., Hunt, C. W., Huss, B., Ibáñez, J. S. P., Johannessen, T., Keeling, R., Kitidis, V., Körtzinger, A., Kozyr, A., Krasakopoulou, E., Kuwata, A., Landschützer, P., Lauvset, S. K., Lefèvre, N., Lo Monaco, C., Manke, A., Mathis, J. T., Merlivat, L., Millero, F. J., Monteiro, P. M. S., Munro, D. R., Murata, A., Newberger, T., Omar, A. M., Ono, T., Paterson, K., Pearce, D., Pierrot, D., Robbins, L. L., Saito, S., Salisbury, J., Schlitzer, R., Schneider, B., Schweitzer, R.,
- 650 Sieger, R., Skjelvan, I., Sullivan, K. F., Sutherland, S. C., Sutton, A. J., Tadokoro, K., Telszewski, M., Tuma, M., van Heuven, S. M. A. C., Vandemark, D., Ward, B., Watson, A. J., and Xu, S.: A multi-decade record of high-quality $f\text{CO}_2$ data in version 3 of the Surface Ocean CO_2 Atlas (SOCAT), *Earth Syst. Sci. Data*, 8, 383–413, <https://doi.org/10.5194/essd-8-383-2016>, 2016.
- [Bakun, A., Black, B. A., Bograd, S. J., García-Reyes, M., Miller, A. J., Rykaczewski, R. R., and Sydeman, W. J.: Anticipated Effects of Climate Change on Coastal Upwelling Ecosystems, *Curr. Clim. Change Rep.*, 1, 85–93, https://doi.org/10.1007/s40641-015-0008-4,](https://doi.org/10.1007/s40641-015-0008-4)
- 655 [2015.](https://doi.org/10.1007/s40641-015-0008-4)
- Bange, H. W., Bartell, U. H., Rapsomanikis, S., and Andreae, M. O.: Methane in the Baltic and North Seas and a reassessment of the marine emissions of methane, *Global Biogeochem. Cy.*, 8, 465–480, <https://doi.org/10.1029/94GB02181>, 1994.
- Bittig, H. C., Fiedler, B., Scholz, R., Krahnemann, G., and Körtzinger, A.: Time response of oxygen optodes on profiling platforms and its dependence on flow speed and temperature, *Limnol. Oceanogr. Meth.*, 12, 617–636, <https://doi.org/10.4319/lom.2014.12.617>, 2014.
- 660 Bittig, H. C., Körtzinger, A., Neill, C., van Ooijen, E., Plant, J. N., Hahn, J., Johnson, K. S., Yang, B., and Emerson, S. R.: Oxygen Optode Sensors: Principle, Characterization, Calibration, and Application in the Ocean, *Front. Mar. Sci.*, 4, 429, <https://doi.org/10.3389/fmars.2017.00429>, 2018.
- [Caballero-Alfonso, A. M., Carstensen, J., and Conley, D. J.: Biogeochemical and environmental drivers of coastal hypoxia, *J. Marine Syst.*, 141, 190–199, https://doi.org/10.1016/j.jmarsys.2014.04.008, 2015.](https://doi.org/10.1016/j.jmarsys.2014.04.008)
- 665 [Capelle, D. W. and Tortell, P. D.: Factors controlling methane and nitrous-oxide variability in the southern British Columbia coastal upwelling system, *Mar. Chem.*, 179, 56–67, https://doi.org/10.1016/j.marchem.2016.01.011, 2016.](https://doi.org/10.1016/j.marchem.2016.01.011)
- Copernicus: Marine environment monitoring service. Product SST_EUR_SST_L3S_NRT_OBSERVATIONS_010_009_a, <https://marine.copernicus.eu/>, last access: 1 April 2020.
- [Diaz, R. J. and Rosenberg, R.: Spreading Dead Zones and Consequences for Marine Ecosystems, *Science*, 321, 926–929, https://doi.org/10.1126/science.1156401, 2008.](https://doi.org/10.1126/science.1156401)
- 670 Dickson, A. G.: Standard potential of the reaction: $\text{AgCl}(s) + \frac{1}{2}\text{H}_2(g) = \text{Ag}(s) + \text{HCl}(aq)$, and the standard acidity constant of the ion HSO_4^- in synthetic sea water from 273.15 to 318.15 K, *J. Chem. Thermodyn.*, 22, 113–127, [https://doi.org/10.1016/0021-9614\(90\)90074-Z](https://doi.org/10.1016/0021-9614(90)90074-Z), 1990.
- Dickson, A. G. and Riley, J. P.: The estimation of acid dissociation constants in seawater media from potentiometric titrations with strong
- 675 base. I. The ionic product of water – K_w , *Mar. Chem.*, 7, 89–99, [https://doi.org/10.1016/0304-4203\(79\)90001-X](https://doi.org/10.1016/0304-4203(79)90001-X), 1979.

- Dlugokencky, E., Crotwell, A., Mund, J., Crotwell, M., and Thoning, K.: Atmospheric Methane Dry Air Mole Fractions from the NOAA ESRL Carbon Cycle Cooperative Global Air Sampling Network, 1983–2018, Version: 2019-07, <https://doi.org/10.15138/VNCZ-M766>, 2019a.
- 680 Dlugokencky, E., Mund, J., Crotwell, A., Crotwell, M., and Thoning, K.: Atmospheric Carbon Dioxide Dry Air Mole Fractions from the NOAA ESRL Carbon Cycle Cooperative Global Air Sampling Network, 1968–2018, Version: 2019-07, <https://doi.org/10.15138/wkgj-f215>, 2019b.
- Du, M., Yvon-Lewis, S., Garcia-Tigreros, F., Valentine, D. L., Mendes, S. D., and Kessler, J. D.: High Resolution Measurements of Methane and Carbon Dioxide in Surface Waters over a Natural Seep Reveal Dynamics of Dissolved Phase Air–Sea Flux, *Environ. Sci. Technol.*, 48, 10 165–10 173, <https://doi.org/10.1021/es5017813>, 2014.
- 685 Feistel, R., Weinreben, S., Wolf, H., Seitz, S., Spitzer, P., Adel, B., Nausch, G., Schneider, B., and Wright, D. G.: Density and Absolute Salinity of the Baltic Sea 2006–2009, *Ocean Sci.*, 6, 3–24, <https://doi.org/10.5194/os-6-3-2010>, 2010.
- Fiedler, B., Fietzek, P., Vieira, N., Silva, P., Bittig, H. C., and Körtzinger, A.: In Situ CO₂ and O₂ Measurements on a Profiling Float, *J. Atmos. Ocean. Tech.*, 30, 112–126, <https://doi.org/10.1175/JTECH-D-12-00043.1>, 2012.
- Friedlingstein, P., Jones, M. W., O’Sullivan, M., Andrew, R. M., Hauck, J., Peters, G. P., Peters, W., Pongratz, J., Sitch, S., Quéré, C. L., 690 Bakker, D. C. E., Canadell, J. G., Ciais, P., Jackson, R. B., Anthoni, P., Barbero, L., Bastos, A., Bastrikov, V., Becker, M., Bopp, L., Buitenhuis, E., Chandra, N., Chevallier, F., Chini, L. P., Currie, K. I., Feely, R. A., Gehlen, M., Gilfillan, D., Gkritzalis, T., Goll, D. S., Gruber, N., Gutekunst, S., Harris, I., Haverd, V., Houghton, R. A., Hurtt, G., Ilyina, T., Jain, A. K., Joetzjer, E., Kaplan, J. O., Kato, E., Klein Goldewijk, K., Korsbakken, J. I., Landschützer, P., Lauvset, S. K., Lefèvre, N., Lenton, A., Lienert, S., Lombardozzi, D., Marland, G., McGuire, P. C., Melton, J. R., Metzl, N., Munro, D. R., Nabel, J. E. M. S., Nakaoka, S.-I., Neill, C., Omar, A. M., Ono, T., Peregon, 695 A., Pierrot, D., Poulter, B., Rehder, G., Resplandy, L., Robertson, E., Rödenbeck, C., Séférian, R., Schwinger, J., Smith, N., Tans, P. P., Tian, H., Tilbrook, B., Tubiello, F. N., Werf, G. R. v. d., Wiltshire, A. J., and Zaehle, S.: Global Carbon Budget 2019, *Earth Syst. Sci. Data*, 11, 1783–1838, <https://doi.org/10.5194/essd-11-1783-2019>, 2019.
- Gagliardi, G. and Loock, H.-P., eds.: *Cavity-Enhanced Spectroscopy and Sensing*, vol. 179 of *Springer Series in Optical Sciences*, Springer, Berlin, Heidelberg, Germany, <https://doi.org/10.1007/978-3-642-40003-2>, 2014.
- 700 Garnier, S.: viridis: Default Color Maps from 'matplotlib', <https://CRAN.R-project.org/package=viridis>, r package version 0.5.1, 2018.
- Gattuso, J.-P., Epitalon, J.-M., Lavigne, H., and Orr, J.: seacarb: Seawater Carbonate Chemistry, <https://CRAN.R-project.org/package=seacarb>, r package version 3.2.12, 2019.
- Gräwe, U., Klingbeil, K., Kelln, J., and Dangendorf, S.: Decomposing Mean Sea Level Rise in a Semi-Enclosed Basin, the Baltic Sea, *J. Climate*, 32, 3089–3108, <https://doi.org/10.1175/JCLI-D-18-0174.1>, 2019.
- 705 Gülzow, W., Rehder, G., Schneider, B., Schneider v. Deimling, J., and Sadkowiak, B.: A new method for continuous measurement of methane and carbon dioxide in surface waters using off-axis integrated cavity output spectroscopy (ICOS): An example from the Baltic Sea, *Limnol. Oceanogr. Meth.*, 9, 176–184, <https://doi.org/10.4319/lom.2011.9.176>, 2011.
- Gülzow, W., Rehder, G., Schneider v. Deimling, J., Seifert, T., and Tóth, Z.: One year of continuous measurements constraining methane emissions from the Baltic Sea to the atmosphere using a ship of opportunity, *Biogeosciences*, 10, 81–99, <https://doi.org/10.5194/bg-10-81-2013>, 2013.
- 710 Gülzow, W., Gräwe, U., Kedzior, S., Schmale, O., and Rehder, G.: Seasonal variation of methane in the water column of Arkona and Bornholm Basin, western Baltic Sea, *J. Marine Syst.*, 139, 332–347, <https://doi.org/10.1016/j.jmarsys.2014.07.013>, 2014.
- [HELCOM: State of the Baltic Sea – Second HELCOM holistic assessment 2011–2016. Baltic Sea Environment Proceedings 155, 2018.](#)

- Humborg, C., Geibel, M. C., Sun, X., McCrackin, M., Mörth, C.-M., Stranne, C., Jakobsson, M., Gustafsson, B., Sokolov, A., Norkko, A.,
715 and Norkko, J.: High Emissions of Carbon Dioxide and Methane From the Coastal Baltic Sea at the End of a Summer Heat Wave, *Front. Mar. Sci.*, 6, 493, <https://doi.org/10.3389/fmars.2019.00493>, 2019.
- Jakobs, G., Rehder, G., Jost, G., Kießlich, K., Labrenz, M., and Schmale, O.: Comparative studies of pelagic microbial methane oxidation within the redox zones of the Gotland Deep and Landsort Deep (central Baltic Sea), *Biogeosciences*, 10, 7863–7875, <https://doi.org/10.5194/bg-10-7863-2013>, 2013.
- 720 Jakobs, G., Holtermann, P., Berndmeyer, C., Rehder, G., Blumenberg, M., Jost, G., Nausch, G., and Schmale, O.: Seasonal and spatial methane dynamics in the water column of the central Baltic Sea (Gotland Sea), *Cont. Shelf Res.*, 91, 12–25, <https://doi.org/10.1016/j.csr.2014.07.005>, 2014.
- Johnson, J. E.: Evaluation of a seawater equilibrators for shipboard analysis of dissolved oceanic trace gases, *Anal. Chim. Acta*, 395, 119–132, [https://doi.org/10.1016/S0003-2670\(99\)00361-X](https://doi.org/10.1016/S0003-2670(99)00361-X), 1999.
- 725 Jolliffe, I. T. and Stephenson, D. B., eds.: *Forecast verification: a practitioner's guide in atmospheric science*, J. Wiley, Chichester, England, <https://doi.org/10.1256/wea.123.03>, 2003.
- Kikas, V. and Lips, U.: Upwelling characteristics in the Gulf of Finland (Baltic Sea) as revealed by Ferrybox measurements in 2007–2013, *Ocean Sci.*, 12, 843–859, <https://doi.org/10.5194/os-12-843-2016>, 2016.
- Kilkki, J., Aalto, T., Hatakka, J., Portin, H., and Laurila, T.: Atmospheric CO₂ observations at Finnish urban and rural sites, *Boreal Environ.*
730 *Res.*, 20, 227–242, <hdl.handle.net/10138/228120>, 2015.
- [Kniebusch, M., Meier, H. E. M., Neumann, T., and Börgel, F.: Temperature Variability of the Baltic Sea Since 1850 and Attribution to Atmospheric Forcing Variables, *J. Geophys. Res. Oceans*, 124, 4168–4187, <https://doi.org/10.1029/2018JC013948>, 2019.](https://doi.org/10.1029/2018JC013948)
- Körtzinger, A., Thomas, H., Schneider, B., Gronau, N., Mintrop, L., and Duinker, J. C.: At-sea intercomparison of two newly designed underway pCO₂ systems – encouraging results, *Mar. Chem.*, 52, 133–145, [https://doi.org/10.1016/0304-4203\(95\)00083-6](https://doi.org/10.1016/0304-4203(95)00083-6), 1996.
- 735 Lehmann, A. and Myrberg, K.: Upwelling in the Baltic Sea – A review, *J. Marine Syst.*, 74, S3–S12, <https://doi.org/10.1016/j.jmarsys.2008.02.010>, 2008.
- Lehmann, A., Myrberg, K., and Höflich, K.: A statistical approach to coastal upwelling in the Baltic Sea based on the analysis of satellite data for 1990–2009, *Oceanologia*, 54, 369–393, <https://doi.org/10.5697/oc.54-3.369>, 2012.
- Lips, I., Lips, U., and Liblik, T.: Consequences of coastal upwelling events on physical and chemical patterns in the central Gulf of Finland
740 (Baltic Sea), *Cont. Shelf Res.*, 29, 1836–1847, <https://doi.org/10.1016/j.csr.2009.06.010>, 2009.
- Millero, F. J.: Carbonate constants for estuarine waters, *Mar. Freshwater Res.*, 61, 139–142, <https://doi.org/10.1071/MF09254>, 2010.
- [Morgan, E. J., Lavric, J. V., Arévalo-Martínez, D. L., Bange, H. W., Steinhoff, T., Seifert, T., and Heimann, M.: Air-sea fluxes of greenhouse gases and oxygen in the northern Benguela Current region during upwelling events, *Biogeosciences*, 16, 4065–4084, <https://doi.org/10.5194/bg-16-4065-2019>, 2019.](https://doi.org/10.5194/bg-16-4065-2019)
- 745 Morgan-Wall, T.: rayshader: Create Maps and Visualize Data in 2D and 3D, <https://CRAN.R-project.org/package=rayshader>, r package version 0.15.1, 2020.
- Müller, J. D., Schneider, B., and Rehder, G.: Long-term alkalinity trends in the Baltic Sea and their implications for CO₂-induced acidification, *Limnol. Oceanogr.*, 61, 1984–2002, <https://doi.org/10.1002/lno.10349>, 2016.
- Nara, H., Tanimoto, H., Tohjima, Y., Mukai, H., Nojiri, Y., and Machida, T.: Emissions of methane from offshore oil and gas platforms in
750 Southeast Asia, *Sci. Rep.*, 4, 6503, <https://doi.org/10.1038/srep06503>, 2014.

- Norman, M., Parampil, S. R., Rutgersson, A., and Sahlée, E.: Influence of coastal upwelling on the air–sea gas exchange of CO₂ in a Baltic Sea Basin, *Tellus B*, 65, 21 831, <https://doi.org/10.3402/tellusb.v65i0.21831>, 2013.
- Pante, E. and Simon-Bouhet, B.: marmap: A Package for Importing, Plotting and Analyzing Bathymetric and Topographic Data in R, *PLoS ONE*, 8, e73 051, <https://doi.org/10.1371/journal.pone.0073051>, 2013.
- 755 Pierrot, D. and Steinhoff, T.: Installation of autonomous underway pCO₂ instruments onboard ships of opportunity, NOAA Technical Report, OAR-AOML-50, Atlantic Oceanographic and Meteorological Laboratory, Miami, Florida, <https://doi.org/10.25923/ffz6-0x48>, 2019.
- Placke, M., Meier, H. E. M., Gräwe, U., Neumann, T., Frauen, C., and Liu, Y.: Long-Term Mean Circulation of the Baltic Sea as Represented by Various Ocean Circulation Models, *Front. Mar. Sci.*, 5, 287, <https://doi.org/10.3389/fmars.2018.00287>, 2018.
- R Core Team: R: A Language and Environment for Statistical Computing, R Foundation for Statistical Computing, Vienna, Austria, <https://www.R-project.org/>, 2019.
- 760 Schmale, O., Schneider v. Deimling, J., Gülzow, W., Nausch, G., Waniek, J. J., and Rehder, G.: Distribution of methane in the water column of the Baltic Sea, *Geophys. Res. Lett.*, 37, L12 604, <https://doi.org/10.1029/2010GL043115>, 2010.
- Schmale, O., Wäge, J., Mohrholz, V., Wasmund, N., Gräwe, U., Rehder, G., Labrenz, M., and Loick-Wilde, N.: The contribution of zooplankton to methane supersaturation in the oxygenated upper waters of the central Baltic Sea, *Limnol. Oceanogr.*, 63, 412–430, <https://doi.org/10.1002/lno.10640>, 2018.
- 765 Schneider, B. and Müller, J. D.: Biogeochemical Transformations in the Baltic Sea, Springer Oceanography, Springer International Publishing, Cham, Switzerland, <https://doi.org/10.1007/978-3-319-61699-5>, 2018.
- Schneider, B., Gustafsson, E., and Sadkowiak, B.: Control of the mid-summer net community production and nitrogen fixation in the central Baltic Sea: An approach based on pCO₂ measurements on a cargo ship, *J. Marine Syst.*, 136, 1–9, <https://doi.org/10.1016/j.jmarsys.2014.03.007>, 2014a.
- 770 Schneider, B., Gülzow, W., Sadkowiak, B., and Rehder, G.: Detecting sinks and sources of CO₂ and CH₄ by ferrybox-based measurements in the Baltic Sea: Three case studies, *J. Marine Syst.*, 140, 13–25, <https://doi.org/10.1016/j.jmarsys.2014.03.014>, 2014b.
- Schneider von Deimling, J., Greinert, J., Chapman, N. R., Rabbel, W., and Linke, P.: Acoustic imaging of natural gas seepage in the North Sea: Sensing bubbles controlled by variable currents, *Limnol. Oceanogr. Meth.*, 8, 155–171, <https://doi.org/10.4319/lom.2010.8.155>, 2010.
- 775 South, A.: rnaturalearth: World Map Data from Natural Earth, <https://CRAN.R-project.org/package=rnaturalearth>, r package version 0.1.0, 2017.
- Stawiarski, B., Otto, S., Thiel, V., Gräwe, U., Loick-Wilde, N., Wittenborn, A. K., Schloemer, S., Wäge, J., Rehder, G., Labrenz, M., Wasmund, N., and Schmale, O.: Controls on zooplankton methane production in the central Baltic Sea, *Biogeosciences*, 16, 1–16, <https://doi.org/10.5194/bg-16-1-2019>, 2019.
- 780 Takahashi, T., Olafsson, J., Goddard, J. G., Chipman, D. W., and Sutherland, S. C.: Seasonal variation of CO₂ and nutrients in the high-latitude surface oceans: A comparative study, *Global Biogeochem. Cy.*, 7, 843–878, <https://doi.org/10.1029/93GB02263>, 1993.
- Takahashi, T., Sutherland, S. C., Wanninkhof, R., Sweeney, C., Feely, R. A., Chipman, D. W., Hales, B., Friederich, G., Chavez, F., Sabine, C., Watson, A., Bakker, D. C. E., Schuster, U., Metzl, N., Yoshikawa-Inoue, H., Ishii, M., Midorikawa, T., Nojiri, Y., Körtzinger, A., Steinhoff, T., Hoppema, M., Olafsson, J., Arnarson, T. S., Tilbrook, B., Johannessen, T., Olsen, A., Bellerby, R., Wong, C. S., Delille, B., Bates, N. R., and de Baar, H. J. W.: Climatological mean and decadal change in surface ocean pCO₂, and net sea–air CO₂ flux over the global oceans, *Deep-Sea Res. Pt. II*, 56, 554–577, <https://doi.org/10.1016/j.dsr2.2008.12.009>, 2009.
- 785 Tóth, Z., Spiess, V., Mogollón, J. M., and Jensen, J. B.: Estimating the free gas content in Baltic Sea sediments using compressional wave velocity from marine seismic data, *J. Geophys. Res. Sol. Ea.*, 119, 8577–8593, <https://doi.org/10.1002/2014JB010989>, 2014.

- Vahtera, E., Laanemets, J., Pavelson, J., Huttunen, M., and Kononen, K.: Effect of upwelling on the pelagic environment and bloom-forming cyanobacteria in the western Gulf of Finland, Baltic Sea, *J. Marine Syst.*, 58, 67–82, <https://doi.org/10.1016/j.jmarsys.2005.07.001>, 2005.
- 790 Wanninkhof, R.: Relationship between wind speed and gas exchange over the ocean revisited, *Limnol. Oceanogr. Meth.*, 12, 351–362, <https://doi.org/10.4319/lom.2014.12.351>, 2014.
- Wasmund, N., Nausch, G., and Voss, M.: Upwelling events may cause cyanobacteria blooms in the Baltic Sea, *J. Marine Syst.*, 90, 67–76, <https://doi.org/10.1016/j.jmarsys.2011.09.001>, 2012.
- 795 Webb, J. R., Maher, D. T., and Santos, I. R.: Automated, in situ measurements of dissolved CO₂, CH₄, and δ¹³C values using cavity enhanced laser absorption spectrometry: Comparing response times of air-water equilibrators, *Limnol. Oceanogr. Meth.*, 14, 323–337, <https://doi.org/10.1002/lom3.10092>, 2016.
- Weiss, R. F. and Price, B. A.: Nitrous oxide solubility in water and seawater, *Mar. Chem.*, 8, 347–359, [https://doi.org/10.1016/0304-4203\(80\)90024-9](https://doi.org/10.1016/0304-4203(80)90024-9), 1980.
- 800 Westerlund, A., Tuomi, L., Alenius, P., Myrberg, K., Miettunen, E., Vankevich, R. E., and Hordoir, R.: Circulation patterns in the Gulf of Finland from daily to seasonal timescales, *Tellus A*, 71, 1627–1649, <https://doi.org/10.1080/16000870.2019.1627149>, 2019.
- Wickham, H., Averick, M., Bryan, J., Chang, W., McGowan, L. D., François, R., Grolemund, G., Hayes, A., Henry, L., Hester, J., Kuhn, M., Pedersen, T. L., Miller, E., Bache, S. M., Müller, K., Ooms, J., Robinson, D., Seidel, D. P., Spinu, V., Takahashi, K., Vaughan, D., Wilke, C., Woo, K., and Yutani, H.: Welcome to the tidyverse, *Journal of Open Source Software*, 4, 1686, <https://doi.org/10.21105/joss.01686>, 2019.
- 805 Wisenburg, D. A. and Guinasso, N. L.: Equilibrium solubilities of methane, carbon monoxide, and hydrogen in water and sea water, *J. Chem. Eng. Data*, 24, 356–360, <https://doi.org/10.1021/je60083a006>, 1979.
- Wilke, C. O.: cowplot: Streamlined Plot Theme and Plot Annotations for 'ggplot2', <https://CRAN.R-project.org/package=cowplot>, r package version 1.0.0, 2019.
- 810 [Xiu, P., Chai, F., Curchitser, E. N., and Castruccio, F. S.: Future changes in coastal upwelling ecosystems with global warming: The case of the California Current System, *Sci. Rep.*, 8, 2866, <https://doi.org/10.1038/s41598-018-21247-7>, 2018.](https://doi.org/10.1038/s41598-018-21247-7)
- Zängl, G., Reinert, D., Rípodas, P., and Baldauf, M.: The ICON (ICOsahedral Non-hydrostatic) modelling framework of DWD and MPI-M: Description of the non-hydrostatic dynamical core, *Q. J. Roy. Meteor. Soc.*, 141, 563–579, <https://doi.org/10.1002/qj.2378>, 2015.