

# The motion of trees in the wind: a data synthesis

- Toby D. Jackson<sup>1</sup>, Sarab Sethi<sup>2</sup>, Ebba Dellwik<sup>3</sup>, Nikolas Angleou<sup>3</sup>, Amanda Bunce<sup>4</sup>, Tim van Emmerik<sup>5</sup>, Marine Duperat<sup>6</sup>, Jean-Claude Ruel<sup>6</sup>, Axel Wellpott<sup>7</sup>, Skip Van Bloem<sup>8</sup>, Alexis Achim<sup>9</sup>,  
5 Brian Kane<sup>10</sup>, Dominick M. Ciruzzi<sup>11</sup>, Steven P. Loheide II<sup>11</sup>, Ken James<sup>12</sup>, Daniel Burcham<sup>13</sup>, John Moore<sup>14</sup>, Dirk Schindler<sup>15</sup>, Sven Kolbe<sup>15</sup>, Kilian Wiegmann<sup>16</sup>, Mark Rudnicki<sup>17</sup>, Victor J. Lieffers<sup>18</sup>, John Selker<sup>19</sup>, Andrew V. Gougherty<sup>20</sup>, Tim Newson<sup>21</sup>, Andrew Koeser<sup>22, 23</sup>, Jason Miesbauer<sup>24</sup>, Roger Samelson<sup>25</sup>, Jim Wagner<sup>26</sup>, Anthony Ambrose<sup>27</sup>, Andreas Detter<sup>28</sup>, Steffen Rust<sup>29</sup>, David Coomes<sup>1</sup>, Barry Gardiner<sup>30</sup>
- 10 <sup>1</sup> Plant Sciences, University of Cambridge, CB2 3EA, UK  
<sup>2</sup> Department of Mathematics, Imperial College London, UK  
<sup>3</sup> Department of Wind Energy, Technical University of Denmark, Frederiksborgevej 399, Roskilde, 4000, Denmark  
<sup>4</sup> Department of Natural Resources, University of Connecticut, Mansfield, CT 06269, USA  
<sup>5</sup> Hydrology and Quantitative Water Management Group, Wageningen University, Wageningen, The Netherlands  
15 <sup>6</sup> Department of Wood and Forest Sciences, Laval University, Quebec, G1V 0A6, Canada  
<sup>7</sup> Bavarian State Institute of Forestry (LWF), Hans-Carl-von-Carlowitz-Platz 1, D-85354 Freising  
<sup>8</sup> Baruch Institute of Coastal Ecology and Forest Science, Clemson University, PO Box 596, Georgetown, SC 29442, USA  
<sup>9</sup> Centre de recherche sur les matériaux renouvelables, Département des sciences du bois et de la forêt, Université Laval, Québec, QC G1V 0A6, Canada  
20 <sup>10</sup> Department of Environmental Conservation, University of Massachusetts, Amherst, MA 01003, USA  
<sup>11</sup> Civil and Environmental Engineering, University of Wisconsin Madison, Madison, WI  
<sup>12</sup> School of Ecosystem and Forest Sciences, Faculty of Science, University of Melbourne, Melbourne, Australia  
<sup>13</sup> Centre for Urban Greenery and Ecology, National Parks Board, 259569 Singapore  
<sup>14</sup> Timberlands Ltd., Rotorua 3010, New Zealand  
25 <sup>15</sup> Environmental Meteorology, University of Freiburg, Germany  
<sup>16</sup> Argus Electronics gmbh, Erich-Schlesinger-Str. 49d, 18059 Rostock  
<sup>17</sup> College of Forest Resources and Environmental Science, Michigan Technological University, Houghton, MI 49931 USA  
<sup>18</sup> Renewable Resources Dept, University of Alberta, Canada  
<sup>19</sup> Oregon State University, Corvallis, OR 97331, USA  
30 <sup>20</sup> Department of Botany, University of British Columbia, Canada  
<sup>21</sup> Department of Civil and Environmental Engineering, Western University, Canada  
<sup>22</sup> Department of Environmental Horticulture, IFAS, University of Florida  
<sup>23</sup> Gulf Coast Research and Education Center, 14625 County Road 672, Wimauma, FL 33598, United States  
<sup>24</sup> The Morton Arboretum, Lisle, IL 60532, USA  
35 <sup>25</sup> College of Earth, Ocean, and Atmospheric Sciences, Oregon State University, Corvallis OR 97331 USA  
<sup>26</sup> Oregon Research Electronics, Tangent, OR 97389, USA  
<sup>27</sup> Dept. of Integrative Biology, UC Berkeley, CA 94720-3140, USA  
<sup>28</sup> Brudi and Partner TreeConsult, Berengariastr. 9, D-82131, Gauting, Germany  
<sup>29</sup> University of Applied Science and Art, Faculty of Resource Management, Göttingen, Germany  
40 <sup>30</sup> Institut Européen de la Forêt Cultivée, 69 route d'Arcachon, 33612, Cestas, France

Correspondence to: Toby D Jackson ([tobydjackson@gmail.com](mailto:tobydjackson@gmail.com))

## **Abstract.**

45 1. Interactions between wind and trees control energy exchanges between the atmosphere and forest canopies. This energy  
exchange can lead to the widespread damage of trees and wind is a key disturbance agent in many of the world's forests.  
However, most research on this topic has focused on conifer plantations, where risk management is economically important,  
rather than broadleaf forests, which dominate the forest carbon cycle. This study brings together tree motion time-series data  
to systematically evaluate the factors influencing tree responses to wind loading, including data from both broadleaf and  
50 coniferous trees in forests and open environments.

2. We found that the two most descriptive features of tree motion were: (a) the fundamental frequency, which is a measure of  
the speed at which a tree sways and is strongly related to tree height, and (b) the slope of the power spectrum, which is  
related to the efficiency of energy transfer from wind to trees. Intriguingly, the slope of the power spectrum was found to  
55 remain constant from medium to high wind speeds for all trees in this study. This suggests that, contrary to some predictions,  
damping or amplification mechanisms do not change dramatically at high wind speeds and therefore wind damage risk is  
related, relatively simply, to wind speed.

3. Conifers from forests were distinct from broadleaves in terms of their response to wind loading. Specifically, the  
60 fundamental frequency of forest conifers was related to their size according to the cantilever beam model (i.e. vertically  
distributed mass), whereas broadleaves were better approximated by the simple pendulum model (i.e. dominated by the  
crown). Forest conifers also had a steeper slope of the power spectrum. We interpret these findings as being strongly related  
to tree architecture, i.e. conifers generally have a simple shape due to their apical dominance, whereas broadleaves exhibit a  
much wider range of architectures with more dominant crowns.

## 65 **1. Introduction**

Tree size and growth rate are influenced by their local wind environment (Bonnesoeur et al., 2016; MacFarlane and Kane,  
2017) which in turn impact on forest carbon storage and dynamics. Monitoring the motion of trees in the wind can help us  
understand this interaction and model the risk of wind damage (Moore et al., 2018), which is a key driver of the forest  
carbon cycle in both temperate and tropical regions (Espírito-Santo et al., 2014; Schelhaas et al., 2003; Senf and Seidl,  
70 2020).

Trees have characteristic and recognisable swaying patterns. This means that tree motion time-series are distinct from each  
other and from the time-series of local wind speeds. These tree motion characteristics are determined by tree size, shape and,

to a lesser extent, material properties (Dargahi et al., 2020; Jackson et al., 2019; Sellier and Fourcaud, 2009). Therefore, just  
75 as some types of trees have recognisable architectures, we expect them to have distinctive patterns of motion in response to  
wind loading. For example, trees in dense forests generally have a slender form with a small crown near the top (MacFarlane  
and Kane, 2017), which leads to a slow, pendulum-like motion (Sellier and Fourcaud, 2009).

Previous data syntheses have focused on the fundamental sway frequency ( $f_0$ ) of conifers and have found that larger, heavier  
80 trees sway more slowly than shorter, lighter ones (Moore and Maguire, 2004). This finding demonstrates that conifers can  
be approximated by a cantilever beam (i.e. a beam with distributed mass), but it is unclear whether this model extends to  
other types of trees. Jackson et al., (2019) demonstrated that tree architecture strongly influences  $f_0$  using a combination of  
field data and finite element simulations. Additionally, a tree's  $f_0$  has been observed to change over time in response to  
variations in tree mass and elasticity. These changes can be used as a proxy to measure phenology (Bunce et al., 2019;  
85 Gougherty et al., 2018) and water status of trees (Ciruzzi and Loheide, 2019) at high time resolution (e.g. every 10 minutes  
or hour) using low-cost sensors. Therefore, tree motion characteristics are expected to change with the seasons, with the  
presence or absence of leaves in deciduous trees and the freezing soil in high latitudes having important effects (Bunce et al.,  
2019).

90 Energy is transferred from the wind to a tree due to aerodynamic drag and is then dissipated by damping mechanisms in the  
tree. The balance between energy transfer from the wind to the tree and energy dissipation by damping determines a tree's  
risk of wind damage. A number of processes, both amplifying and damping the tree motion, have been suggested to become  
significant in the high wind speed regime. For example, damping by branching, whereby the branching patterns of open-  
grown trees increase damping efficiency by transferring energy to the outermost branches where it can be efficiently  
95 dissipated (de Langre, 2008; De Langre, 2019; Spatz and Theckes, 2013; Theckes et al., 2011). Another example is the  
dynamic amplification of the tree motion as the peak energy of the wind spectrum approaches the natural frequency of the  
tree, inducing resonant effects (Blackburn et al., 1988; Ciftci et al., 2013; Holbo et al., 1980; Oliver and Mayhead, 1974;  
Rodriguez et al., 2008). We cannot measure these processes in the field, but the slope of the power spectrum ( $S_{freq}$ ) can be  
used as an overall measure of energy transfer between wind and tree at different frequency ranges (van Emmerik et al., 2018;  
100 Van Emmerik et al., 2017). The spectrum of the tree is essentially the spectra of the wind, modified by the properties of the  
tree (Gardiner, 1992; Kerzenmacher and Gardiner, 1998; Mayer, 1987; Sellier et al., 2008). Therefore, the slope of the tree  
spectrum ( $S_{freq}$ ) is the result of the energy transfer between wind and tree as well as the energy transfer within the tree itself.  
We calculate  $S_{freq}$  for each hour of tree motion data and look for changes with increasing wind speed.

105 This study brings together data on tree motion from tropical, temperate and boreal regions to explore key similarities and  
differences in the motion of these trees in the wind. We do this by comparing features calculated from the tree motion time  
series data. While  $S_{freq}$  and  $f_0$  are clearly important features of tree motion, thousands of other time-series features have been

developed across multiple disciplines which may provide further insight. Fulcher and Jones, (2017) compiled a set of over 7,700 time-series features and Lubba et al., (2019) distilled them to the most descriptive and minimally redundant 22 features (*'catch22'* features). We use these *catch22* features as well as  $f_0$  and  $S_{freq}$  (and associated features described in the methods) to systematically explore the similarities and differences in the way trees move. We expect to find differences between conifers and broadleaves due to their different architectures (Jackson et al., 2019) as well as between open-grown trees and those in forests.

The specific questions we address are:

- Q1. What models best predict the fundamental frequency of broadleaf trees and conifers?
- Q2. Are characteristics of tree motion distinct between tree groups (conifers, broadleaves, forest, open-grown)?
- Q3. To what extent does increasing wind speed (or the change between summer and winter) change the characteristics of tree motion?

## 2. Methods

### 2.1 Description of the data

We collated data from 20 studies that included 243 trees and more than 1 million hours of tree motion data at resolutions ranging from 4 to 20 Hz. These studies used three types of sensor: (1) strain gauges which measure the bending strains at the base of the tree (Moore et al., 2005) (2) inclinometers measuring the changing inclination angle of the trunk (Bunce et al., 2019; Schindler et al., 2010) and (3) accelerometers measuring the acceleration at the top of the trunk (Van Emmerik et al., 2017). We refer to these in general as measures of tree deflection. Five studies additionally measured branch motion, which is not used here but may provide further insight in future studies. Some datasets span multiple years, while others are confined to a short time during windy conditions. Most data sets contained tree height ( $H$ ) and diameter at breast height ( $dbh$ ) measurements and tree species data. Many of the individual studies in our data set did not measure high-resolution ( $>1$  Hz) wind speeds because this requires sonic anemometers and so substantially increases the cost of the field study. Also, in most cases the wind measurements were not in the same location as the trees, which hinders detailed analysis at high time-resolution. We therefore focus on analyses which do not require high-resolution wind speed data (although we explore this data in supplementary S2). For the purposes of our analyses, we categorized trees as broadleaf or conifer and as open-grown or forest (as defined by the data owners). Table 1 gives an overview of the data sets.

### 2.2 Data processing and feature extraction

We re-sampled each time-series to the lowest sampling frequency in the data set (4 Hz) to avoid sampling rate confounding our analysis. This frequency was sufficient to capture tree motion characteristics for all trees in our sample. Although each type of sensor measures a different property of tree motion, these properties are very strongly correlated and are complementary measures of tree motion. Each type of sensor has its own units, so absolute values are only comparable

for this sensor type. All sensors are susceptible to a drift in the measurements resulting in an offset which varies slowly with temperature and other environmental factors. This is particularly evident in the strain gauges, presumably because they are directly attached to the tree and so respond to the daily changes in tree diameter. We removed this offset using a 10-minute high-pass Butterworth filter and applied the same filter to inclinometer and accelerometer data to ensure a fair comparison. This filter effectively removes the low-frequency (variations slower than 10 minutes) part of the tree motion, including any mean displacement and offset in the data. This period seems reasonable to capture most effects of wind-tree interaction, although open-grown trees exposed to strong winds may be displaced from their resting position for continuously for long periods of time due to the mean wind speed on this timescale (Angelou et al., 2019; James et al., 2006). Therefore, different data filtering techniques may be more appropriate for open-grown trees (Angelou et al., 2019).

Site	Country	Year	Group	# Trees	Sensor	Resolution (Hz)	Wind resolution
Rivox	UK	1988	Conifer Forest	4	Displacement sensors	10	10 Hz
Kershope	UK	1989	Conifer Forest	11	Strain gauges	10	10 Hz
Whitecourt	Canada	1999	Conifer Forest	10	Inclinometers	10	0.2 Hz
Clocaenog	UK	2005	Conifer Forest	9	Strain gauges	4	10 Hz
Kyloe	UK	2006	Conifer Forest	9	Strain gauges	4	10 Hz
Belchertown	USA, MA	2006	Broadleaf Open	9	Strain gauges	20	-
Various	Australia	2006	Mixed Open	9	Strain gauges	20	1 Hz
Guanica	Puerto Rico	2007	Broadleaf Forest	9	Strain gauges	4	-
-	USA, OR	2011	Broadleaf Open	3	Accelerometer	20	-
Gauting	Germany	2011	Conifer Open	2	Accelerometer	20	-
Hechendorf	Germany	2012	Conifer Open	2	Strain gauges	6	-
Storrs	USA, CT	2013	Broadleaf Forest	13	Inclinometer	10	30 min
Alexandra	Singapore	2013	Broadleaf Open	4	Accelerometer	10	-
Orange	USA, CT	2015	Broadleaf Forest	14	Inclinometer	10	30 min
Torrington	USA, CT	2015	Mixed Forest	14	Inclinometer	10	30 min
Manaus	Brazil	2015	Broadleaf Forest	19	Accelerometer	10	15 min
Various	USA	2016	Broadleaf Open	9	Accelerometer	10	-

Hartheim	Freiburg	2016	Conifer Forest	4	Inclinometers	10	10 Hz
Morton arboretum	USA, IL	2016	Broadleaf Open	8	Accelerometers	10	-
Wytham	UK	2016	Broadleaf Forest	21	Strain gauges	4	1 Hz
Riso	Denmark	2017	Broadleaf Open	1	Strain gauges	20	20 Hz
Danum	Malaysia	2017	Broadleaf Forest	19	Strain gauges	4	1 Hz
Fond du Lac	USA, WI	2018	Broadleaf Forest	4	Accelerometer	16	5 min
Trout Lake	USA, WI	2018	Broadleaf Open	8	Accelerometer	16	1 min
Montmorency	Canada	2018	Conifer Forest	15	Strain gauges	5	5 Hz
Big Sur	USA, CA	2018	Conifer Forest	2	Accelerometer	5	10 min
Appalachian Lab	USA, MD	2019	Broadleaf Open	20	Accelerometer	10	-
Various	Germany	2019	Mixed Open	16	Inclinometer	20	-
Freiburg	Germany	2019	Conifer Open	1	Accelerometer	10	10 Hz
Hartheim	Germany	2019	Conifer Open	1	Accelerometer	10	10 Hz
Göttingen	Germany	2019	Broadleaf Open	1	Inclinometer	20	-

150

**Table 1 - Overview of the data sets used in this study. Links to download the data sets are provided in the data availability section.**

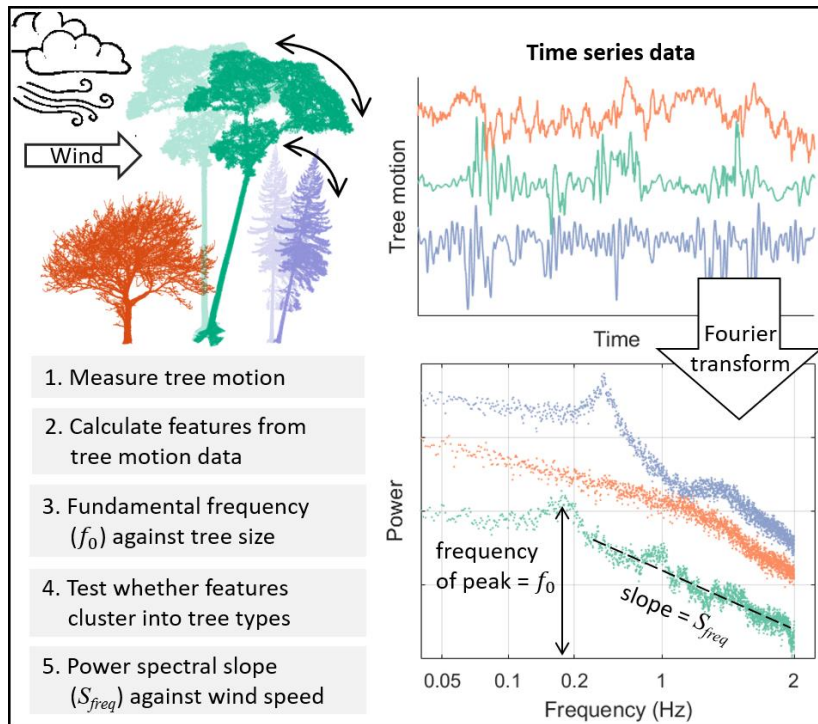
We selected 1-hour samples during the windiest conditions available for each tree and calculated all tree motion features for all 243 trees in our data set. We first calculated features from the combined horizontal components of tree motion. We fitted an extreme value distribution and retained the shape parameter,  $k$ , which does not depend on the absolute values and so is comparable across sites. The scale and location parameters of the extreme value distribution depend on absolute values and we did not use them in this study. Next, we calculated features from tree motion along a single axis of motion, since combining the two horizontal axes distorts important features such as  $f_0$ . The coordinate systems of each tree were not aligned with the wind direction. We therefore used a principal component analysis to select the axis with highest variance, the ‘stream-wise’ component, and the perpendicular ‘cross-stream’ component. We calculated the ratio of the explained variance in the two components, a measure of how elliptical the tree sway pattern is. We found that the cross-stream component did not contribute additional information and so all analysis in this study used the stream-wise component of tree sway only. This is similar to using a time series from a single, horizontal axes of motion which is aligned with the dominant direction of the wind loading.

155

160

We centered and scaled the stream-wise component of tree sway and calculated the *catch22* features (Lubba et al., 2019). These 22 features were selected to be maximally descriptive over a wide range of time-series data. Examples of these features are: (1) the time interval between successive extreme events above the mean (2) the mean error from forecasting the next value of the time-series as the mean of the previous three and (3) the centroid of the Fourier power spectrum. For more  
170 details of these features please see the supplementary materials and the original publications (Fulcher and Jones, 2017; Lubba et al., 2019).

We also calculated the power spectral density of the stream-wise component using Welch's method (Welch, 1967). We then calculated the slope of the power spectrum,  $S_{freq}$ , by fitting a linear model between log-transformed frequency and log-  
175 transformed power spectral density (Van Emmerik et al., 2017). Since different frequency ranges represent different physical scales of energy transfer between wind and trees (see Figure 1), we calculated this slope for multiple frequency ranges (0.05-0.8 Hz, 0.8-2 Hz and 0.05-2 Hz). We test the sensitivity of this feature to different frequency ranges and fitting methods in the supplementary materials (S1) and found that the trends and differences between trees are not sensitive to the choice of frequency range, although the absolute values are. We tested calculating  $S_{freq}$  with reference to the tree's  $f_0$ , but this method  
180 proved too noisy at low wind speeds. Finally, we extracted the frequency, width, height and dominance of the  $f_0$  peak from the stream-wise component. The dominance was defined as the ratio of the fundamental peak height to the sum of all the heights of all other peaks in the spectrum (Jackson et al., 2019). In this study we focus on the features which help distinguish between tree types or are correlated with tree size. We do not discuss those features which don't meet these criteria, although these features may also exhibit interesting trends that warrant further study.



**Figure 1 – Overview of the study design. Top left – conceptual diagram of data collection showing three ‘types’ of trees (colours) swaying in the wind. Top right – five-minute sample of tree motion data for three trees. Bottom right – Fourier transformed data used to calculate the fundamental frequency, slope of the power spectrum and related features.**

### 190 2.3 Linear models of fundamental frequency against tree size and tree type

The aim of this analysis was to test whether the previously observed relationship between  $f_0$  and tree size hold across the additional data in this study, especially the broadleaves. In addition to the detailed tree motion data for the 243 trees described above, we collated summary data on  $f_0$  and tree size for a further 591 trees (Baker, 1997; Moore and Maguire, 2004). We used a linear regression on log-transformed data to explore the relationship between  $f_0$  and tree size. We tested

195 the simple pendulum model  $\sqrt{\frac{1}{H}}$ , and a cantilever beam model  $\frac{dbh}{H^2}$ . This study improves upon previous work (Jackson et al 2019) by (1) increasing the sample size in the underrepresented open-grown trees (2) calculating  $f_0$  in a consistent way across the 243 timeseries instead of using summary data and (3) testing the simple pendulum model. Initial results showed that different models were more appropriate for conifers and broadleaves, so we performed a separate analysis for each tree type instead of using multiple linear regression.. We report the best fit models based on the coefficient of determination ( $R^2$ )  
 200 and Akaike’s Information Criterion (AIC) (Pan, 2001).



## 2.4 Classifying tree types based on tree motion features

The aim in this analysis was to test whether different types of trees exhibited distinct, characteristic motion in the wind. We note that we could not account for systematic differences in wind conditions with this data. We first tested whether the trees grouped into the predefined groups (open-grown broadleaf, forest broadleaf, open-grown conifers, forest conifer) using a principal component analysis. We then used supervised methods (linear discriminant analysis and multinomial regression) to determine which two features best classified the trees into types. We also used a 10-fold cross validation with a 50:50 training to testing data ratio to test whether the trees could be classified by type according to the features of their motion using a random forest model. We assessed the classification accuracy using Cohens kappa (Cohen, 1960). We centered and scaled all features prior to analysis.

210

Note that our sample did not contain enough open-grown conifers to perform statistical analysis on this group. We therefore performed the above analysis on 89 forest broadleaves and the 63 open-grown broadleaves and the 63 forest conifers. The 17 open-grown conifers were projected onto the resulting axes in Figure 3. Since the sample sizes in each group were not equal, we randomly re-sampled the larger groups to the size of the smallest (N=63) and repeated each analysis with this approach 50 times. We use this evenly sampled data set in the linear discriminant analysis and random forest classification analysis, but not in the principal component analysis because it did not make a substantial difference.

215

We tested whether the classification analysis was likely impacted by the unequal tree size distributions in each tree type category. We used a subset of 169 trees (86 forest broadleaves, 54 forest conifers and 29 open-grown broadleaves) for which we have raw tree motion data as well as tree size data. We used a mixed-effects model (*lme4*) to predict tree size from the tree motion features and tree type (included in the model as a factor). We conducted separate analysis for tree height and *dbh* and the best predictors were ordered using a two-way stepwise procedure based on minimizing AIC (Pan, 2001). The factor “tree type” was the 7<sup>th</sup> most explanatory feature in the model of height and 9<sup>th</sup> in the model of *dbh* (see S4 for details). This demonstrates that tree size is more strongly related to tree motion features than it is to tree type. Therefore, the relationship between tree type and tree motion features is unlikely to be confounded by differences in tree size, and hence the results of our classification analyses are valid..

220

225

## 2.5 Tracking changes in key tree motion characteristics with increasing wind speed

The aim of this analysis was to test whether the relationship between tree motion and wind speed varies between summer and winter, and whether  $S_{freq}$  changes in a predictable way with wind speed. For the data sets with long-term tree motion and wind speed data (N=103 trees, 74 forest broadleaves and 29 forest conifers) we calculated each of the features described above for every hour of data available. We also calculated the hourly mean wind speed, the maxima and 99th percentile of the tree deflection. We fitted a linear model to the relationship between tree deflection and squared wind speed for each tree

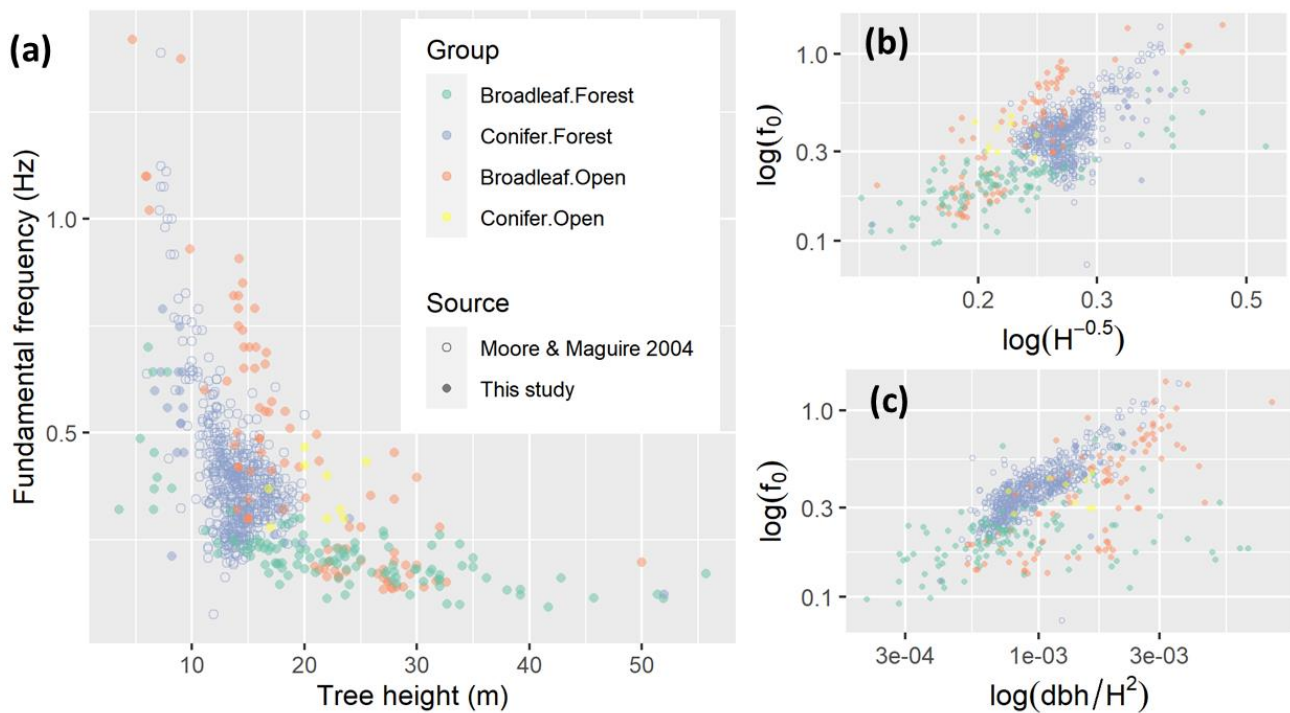
230

separately and save the coefficient, the slope of this fit line. We then calculated the ratio of this the slope in summer (defined as 1st May - 31st September) to the slope in winter. For deciduous trees, this ratio indicates whether the increased drag due to leaves in summer causes increased deflection, or whether other mechanisms such as sheltering and damping compensate. We excluded trees with low sample sizes (<10 hours), open-grown trees (due to low sample size) and tropical trees from this analysis. We therefore focussed on the comparison between deciduous forest broadleaves with forest conifers.

As the wind speed increases, both the drag coefficient and damping mechanisms will change (e.g. due to streamlining). The frequency range in which energy transfers from the wind to the tree will therefore shift, and this will be reflected in the slope of the power spectrum. Since our study contains a number of different forest structures as well as open-grown trees, we cannot assume all sites have similar wind spectra. We therefore study the change in  $S_{freq}$  with wind speed for all 103 trees individually. We display these data by fitting a smoothing spline to them.

### 3. Results

#### 3.1 Relationship between tree size and fundamental frequency



**Figure 2 - a - Fundamental frequency against tree height on a linear scale. Small panels on log-log scales show fundamental frequency against (b) the simple pendulum model and (c) the cantilever beam model.**

250 Figure 2 shows an overall decrease in  $f_0$  with tree height, especially between 5 m and 20 m. These short trees are mostly from conifer forests, the majority of which were included in a previous review (Moore & Maguire, 2004). The open-grown broadleaves display a similar sharp decrease in  $f_0$  with height, although they are offset by approximately 0.5 Hz, which may be due to their wider stems. Table 2 shows that the best predictor of  $f_0$  for the conifers was the cantilever beam model ( $f_0 \sim \frac{dbh}{H^2}$ ) as demonstrated by (Moore and Maguire, 2004). This is unsurprising, since data from the previous review dominate this

255 group of trees, but this relationship still holds in the new data for forest conifers. However, for both open-grown and forest broadleaves the simple pendulum model ( $f_0 \sim \sqrt{\frac{1}{H}}$ ) was the best predictor of  $f_0$ . It is important to note that the taller trees in our study are almost exclusively broadleaves, and almost all were from a forest environment. Also, a mixed effects model showed that  $f_0$  was the feature most strongly correlated with tree height out of all the features in this study and that tree group, included in the model as a factor, was relatively unimportant (see S2 for details). This confirms that the trends we

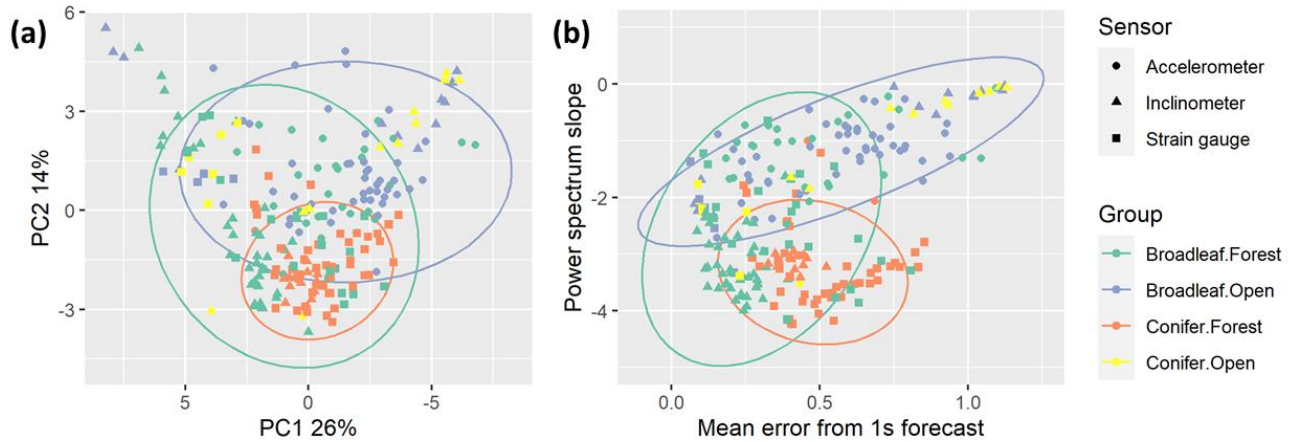
260 observed hold across groups as well as within them and do not represent group differences.

Group	N	Model	R <sup>2</sup>	AIC
Conifer Forest	631	Cantilever beam	0.67	-354
		Simple pendulum	0.29	142
Broadleaf Forest	111	Cantilever beam	0.13	78
		Simple pendulum	0.61	-11
Broadleaf Open	89	Cantilever beam	0.55	110
		Simple pendulum	0.67	82

**Table 2 - Summary statistics for linear models predicting fundamental frequency using the cantilever beam model and the simple pendulum model for three groups of trees. The data were log-transformed prior to model fitting.**

265

### 3.2 Differences between types of trees



270 **Figure 3 - Features of tree motion from 229 trees during summer high (local) wind speed conditions projected on (a) first two principal component axes (arbitrary units) and (b) maximally discriminant axes (original units, unscaled). Ellipses represent Student's t-distributions around the data and were only drawn around groups with sufficient samples [broadleaf. forest (n=86), conifer. forest (n=63), broadleaf. open (n=63)].**

Figure 3 shows considerable overlap in the features of all groups of trees in this study. The trees from conifer forests are grouped together and cover a small proportion of the variance in both panels. The open-grown conifers seem to mainly overlap with the open-grown broadleaves, but we did not have enough samples to test this statistically. The forest broadleaves covered the largest area and overlapped with all other groups. We tested whether sample size affected this pattern by randomly sampling a subset of the forest broadleaves to the same sample size as the other types and repeating the analysis and found no substantial change in the distribution.

280 As expected, given that the *catch22* features were designed to be minimally redundant, the principal components did not explain a large amount of the total variation across all features (Figure 3a). The first principal component was driven by *catch22* features, primarily the mean error from a rolling 3-sample mean forecasting. The second principal component, while it only explained 14% of the variation, helped distinguish between the groups of trees. The second principal component comprised mainly spectral features, specifically  $S_{freq}$  and the height of the fundamental frequency peak.

285

Figure 3b shows how the trees group along the two most discriminant features, determined using linear discriminant analysis and multinomial regression. It shows a clear separation between forest conifers and open-grown broadleaves, driven by  $S_{freq}$ , which is related not only to the damping efficiency of the tree, but also to the energy spectrum of the local wind loading (see discussion). We note that a mixed effects model analysis showed that  $S_{freq}$  was strongly correlated with *dbh* but that tree group, included in the model as a factor, was not (see S2 for details). The x-axis provides the best separation of forest

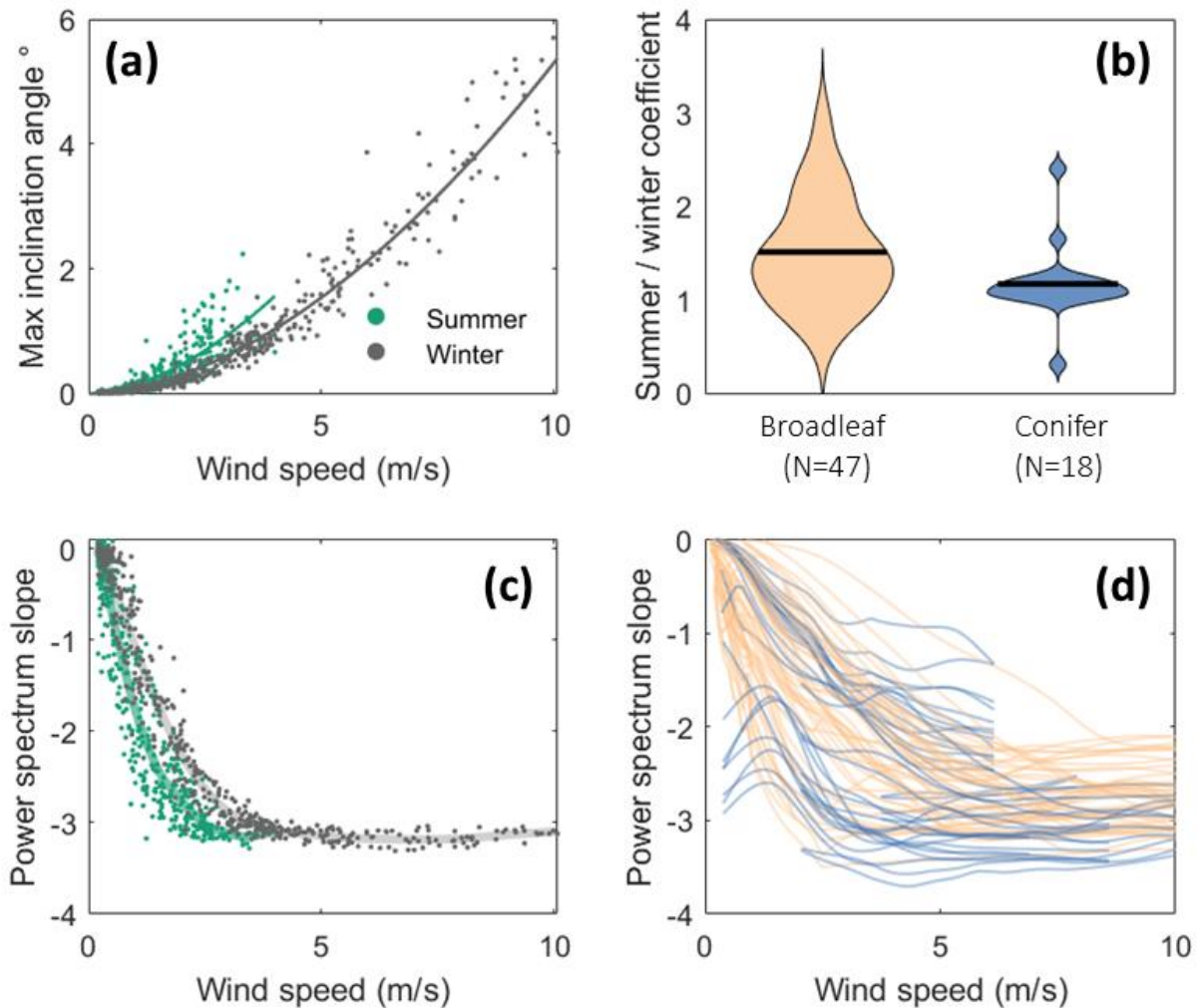
290

broadleaves from the other groups based on the mean error from a 1-second forecast (predicting the 4th value from the previous 3 in a 4 Hz signal). This feature describes how predictable the signal is at short timescales and is likely influenced by both the speed and responsiveness of the tree motion as well as the level of noise in the signal.

295 We performed multiple classification tasks using a random forest model with evenly balanced groups (N=63), a 50:50 training to testing data split and a 10-fold cross validation approach. In all cases we found that the stream-wise *catch22* features improved classification ability compared to using only the features from the literature, but that the cross-stream features added minimal further information. We found a moderate classification ability, Cohen's kappa = 0.646, for the three-group classification (omitting open-grown conifers due to lack of data). Two group classification analyses for the  
300 forest broadleaves against the other groups had slightly lower accuracy (kappa = 0.533 for open-grown broadleaves and kappa = 0.639 for forest conifers). However, the two-group classification between open-grown broadleaves and forest conifers resulted in a high accuracy, kappa = 0.90. These results align with our qualitative interpretation of the overlap between groups in Figure 3, as described above.

### **3.3 Changes in tree response with wind speed**

305



310 **Figure 4 - Changes in tree motion characteristics with wind speed for trees in forests. a - Tree inclination angle against wind speed measured outside the forest for an example deciduous tree (*Acer rubrum* in Orange, Connecticut) in summer and winter, with power law fit lines overlaid. b - Ratio of power law fit slopes in summer and winter for all trees with >10 hours of data in both seasons, excluding tropical trees. The horizontal black lines represent the median value. c - Slope of the power spectrum (between 0.05 and 2 Hz) for a single tree (same as panel a) in summer and winter with smoothing splines overlaid. d - same as panel c but for all trees. Trends are approximated by smoothing splines and summer and winter data are combined.**

Figure 4a shows a typical power-law relationship between tree deflection (in this case measured as inclination) and wind speed. Figure 4b shows how much more deflection occurs for a given wind speed in summer as compared to winter. As  
 315 expected, we found that the deciduous broadleaves deflection increased more than the conifers ( $p < 0.001$ ) due to the presence of leaves in summer. Interestingly, we also observed an increase in some conifers, possibly due to soil conditions, and a decrease in a few broadleaves, possibly due to sheltering effects. We note that wind speeds were measured in different

locations for each experiment, mostly outside the forest or at canopy height, meaning that the reported wind speeds do not represent inflow wind speed for each tree.

320

Figure 4c shows a sharp decrease in  $S_{freq}$  at low wind speeds, followed by a constant  $S_{freq}$  above 3-4 m/s. For this tree we found a slight difference between summer and winter, but there was no systematic difference across all deciduous trees so we combined data from both seasons in the following analysis. Figure 4d shows  $S_{freq}$  for all tree with > 10 hours of data (N=93). As in Figure 4c, we see an initial decline followed by a constant  $S_{freq}$  above a given threshold. Part of this trend is likely driven by noise at low wind speeds, since the sensors will not reliably measure very low-level tree motion. However, since our data set contains a wide variety of sensors, some of which are extremely sensitive, and which all exhibit similar patterns, we do not believe that the noise at low wind speeds is the (main) reason for the pattern. We found no systematic difference in this behaviour between types of trees.

325

## 4. Discussion

330

### 4.1 Key features of tree motion

As expected, we found that  $f_0$  was a key feature of tree motion, being strongly correlated with tree height (Figure 2 and S3-4) and playing an important role in distinguishing between tree types. We showed that  $S_{freq}$  was stable at medium-high wind speeds (Figure 4d) and this was the feature which best distinguished the different types of trees. The fact that two features previously used in the literature remain important when compared to the *catch22* features, which were specifically designed for time-series classification, demonstrates that these two features capture key characteristics of tree motion. Interestingly, the width, height and dominance of the fundamental frequency peak were not important features in this analysis, i.e. they did not explain much of the difference between tree types and were not strongly correlated with tree size.

335

340

We also found that a number of *catch22* features were important for classifying tree types and were highly correlated with tree size (S3-4). In particular, the mean error from a rolling 3-sample mean forecast was important in distinguishing tree types (Figure 3b). We interpret this feature as a measure of the regularity of the tree motion at 1 second timescales (all signals were analysed at 4 Hz). This regularity could be related to the wind conditions (i.e. a turbulent wind in a multi-layered forest leading to lower regularity) or the properties of the tree. For example, a small fast moving conifer would be less predictable and a large broadleaf with complex branching architecture may be less affected by changes wind loading and therefore steadier and more predictable (Rodriguez et al., 2012; Theckes et al., 2011). We found that cross-stream features were superfluous in our analysis, i.e. the features from the literature and stream-wise *catch22* features explained as much of the variability as was possible using this approach.

345

## 4.2 Differences in motion characteristics between tree types

We were surprised, given their differences in architecture, to find no clear separation between open-grown trees and forest trees in our clustering analyses (Figure 3) and a relatively low accuracy in classifying these groups based on their motion. We did, however, observe that the open-grown conifers overlapped mostly with the open-grown broadleaves rather than the forest conifers, but the low sample size in this group (N=17) hindered any statistical analysis. Given their markedly divergent growth forms (MacFarlane and Kane, 2017), we expected open-grown trees to behave quite differently to the slender trees found in a forest environment (Q2). This lack of difference could be due to the diversity of broadleaves in this sample and difficulty of defining the boundary between open-grown and forest trees (in this study the data owners provided their own interpretation). This negative result may be interpreted as good news from a wind damage modelling point of view, since it suggests that existing models (developed for conifer forests) may be generalisable to open-grown trees.

We found a consistent and distinct grouping of the forest conifers in both the supervised and unsupervised clustering analyses (Figure 3) and also reflected in the classification analysis. This was driven by their steeper  $S_{freq}$ , which suggests a difference in either the wind-tree energy transfer or the damping mechanisms. We also found that the  $f_0$  of conifers was best predicted by the cantilever beam model (i.e. a beam with distributed weight) (Moore and Maguire, 2004). Broadleaves, however, were best approximated by the pendulum model (i.e. dominated by the weight of the crown) (Q1). This is likely due to the higher, heavier and more distinct crowns of broadleaves determining the characteristics of their motion more strongly than the distributed crowns of conifers. Together, these findings support the theory that the motion of coniferous trees are relatively similar due to their simple architecture (Jackson et al., 2019), whereas the opposite is true of broadleaves in general. On this basis, we would expect emergent tropical trees, which also have a simple and consistent architecture, to respond to wind in a similarly predictable way. If this is the case (we did not have sufficient data from tall trees to test this theory here) this could enable a simple yet accurate wind damage model for tropical forests focussing only on the large trees, which store the majority of the forest carbon (Bastin et al., 2015). We note that the conifers in this study were considerably smaller than the broadleaf trees. We suggest that the simpler, pendulum model may be valid for a wider range of tree sizes than the cantilever beam model, and it would be interesting to test this for a range of tall conifers.

It is important to note that, in order to maximise the number of trees in our study, the clustering analyses did not incorporate any wind data. Therefore, differences in wind environment may confound differences in tree response. For example, the grouping of the conifers could be explained if patterns of wind flow over conifer forests are generally similar, but wind flow over broadleaf forests and open-grown trees is more variable. This emphasises the importance of collecting high-resolution (> 1 Hz) wind data alongside tree motion data to understand the details of this interaction. These data are currently lacking for open-grown trees and especially for tropical forests.



### 380 4.3 Trends with increasing wind speed and seasonal differences

As expected, maximum tree deflection (measured by either acceleration, inclination or bending strain) increased with wind speed (Figure 4a). We found that the gradient of this increase was generally steeper in summer for the deciduous trees (Q3) (Figure 4b), presumably because their leaves provide a larger sail area. This effect is consistent with an increased drag on trees with leaves found by previous studies (Dellwik et al., 2019; Kane and Smiley, 2006). High wind speeds are more  
385 common in winter so losing leaves will reduce a tree's risk of wind damage. However, for some deciduous trees this ratio was below 1, which could be explained by increased sheltering from nearby trees. We also found a slight increase in the tree deflection in summer for some conifers, which could be explained by soil conditions or wood properties, especially in the sites which freeze in winter, although additional measurements would be required to test this.

390 The spectrum of the tree (characterized by  $S_{freq}$ ) is essentially the spectra of the wind, modified by the properties of the tree. We observed a remarkably constant  $S_{freq}$  from medium to high wind speeds. This plateau in  $S_{freq}$  suggests that the frequencies at which energy is transferred from the wind to the tree do not change in the high wind speed regime. This plateau in  $S_{freq}$  suggests that no important additional damping or amplification mechanisms emerge above this threshold, meaning that wind damage risk is likely simply to increase with wind speed. We note that the classification analysis and correlation of features  
395 with tree size used these stable, high wind speed  $S_{freq}$  values.

We could not explain the fact that  $S_{freq}$  increased from low to medium wind speeds. We found a wide variation between individual trees in the shape of this curve as well as the stable value, but we found no consistent difference between seasons, suggesting it is not driven by leaf streamlining processes.

### 400 4.4 Future research directions

A number of research questions arise from this study and the collation of this data set. Most importantly, does wind damage risk increase with tree height? Damage assessments after destructive wind-storms have shown a larger proportion of tall trees uprooted or snapped (Magnabosco Marra et al., 2018; Rifai et al., 2016), which suggests that large trees are more vulnerable to wind damage. However, post-damage assessments may be confounded by other processes, such as disease or lightning,  
405 driving the observed pattern in tree mortality. Wind damage risk was measured directly on living trees and found to increase in two conifer forests (Duperat et al., 2020; Hale et al., 2012) and a tropical forest in Malaysia (Jackson et al., 2020). It would be highly valuable to extend this analysis across all trees with long-term data in this study to test whether this trend is consistent. However, the different types sensors used to measure tree motion and their mounting positions made this data difficult to interpret in terms of risk across sites. We recommend the use of strain gauges to measure tree motion in this case,  
410 since they provide comparable absolute values which can be related to the risk of mechanical damage. In addition, the low number of trees in each individual experiment limited the applicability of a mixed-effects model in this context. We note that

this research question could be answered with local hourly wind speed measurements and therefore does not require sonic anemometers and so could be achieved at low-cost. To aid comparison between sites, locally measured wind speeds could be related to some near-surface reference wind speed available at hourly resolution, such as the hourly 10 m wind gust product  
415 provided by the European Centre for Medium-Range Weather Forecasts.

Collating this data set highlighted the paucity of data available for open-grown conifers, with the exception of (James et al., 2006). The low number of these trees in our data set precluded statistical analysis and further data collection in this area would be highly valuable. We also note the low representation of tropical forests, which are likely to be the most complex  
420 due to their structure and diversity. Neither of the two tropical sites in this study had high-resolution wind speed data for high wind periods.

A number of single-site studies have demonstrated intriguing relationships between fundamental frequency and ecological processes such as phenology, water status, rain interception and drought (Bunce et al., 2019; Ciruzzi and Loheide, 2019; van  
425 Emmerik et al., 2018; Gougherty et al., 2018). Extending these analyses across the full data set would allow us to test how robust these relationships are and therefore whether trees can be used as indicators of ecological processes in other ecosystems. This could be particularly interesting in sites which freeze in winter, since this will have a profound effect on the wood elasticity. Additional data collection for these purposes should use Inertial Measurement Units (IMUs) which combine accelerometers, inclinometers and magnetometers, because the signals have a lower drift than the strain gauges.

430 In addition, there has been a long-standing debate on the potential role of resonance between the wind and the tree leading to wind damage (i.e. a high-energy frequency in the wind spectra coinciding with  $f_0$ ) (BLACKBURN et al., 1988; Holbo et al., 1980; Oliver and Mayhead, 1974; Rodriguez et al., 2008; Schindler et al., 2010; Schindler and Mohr, 2018). Previous work used singular spectrum analysis to show that the oscillatory component of tree sway diminished with wind speed for four  
435 forest Scots Pine trees (Schindler and Mohr, 2018). This result shows that no resonance between wind and tree occurs at the observed wind speeds, and that resonance is unlikely to occur at higher wind speeds. It would be useful to test whether this result holds across all the trees in the current study.

The subset of data with high-resolution wind speed measurements could be used to explore energy transfer and damping  
440 efficiency of different trees. In particular, the identification of  $S_{freq}$  as a key feature of tree motion, possibly related to the drag factor and damping efficiency, warrants further exploration (van Emmerik et al., 2018). Further data collection aimed at understanding the mechanisms involved in energy transfer from the wind to the tree should use arrays of sonic anemometers above and below the canopy close to the target trees to collect high-resolution (> 5 Hz) local wind speed data. We suggest future studies of this kind combine multiple sensors to measure tree motion and follow a standardised protocol to calibrate  
445 the sensors and so ensure data are comparable between studies.

## 5. Conclusions

In this study, we collated data on tree motion in order to explore the key similarities and differences amongst trees as well as possible trends with tree size and wind speed. We compared trees and tested trends based on features extracted from the tree motion time-series.

450

We found that trees in conifer forests exhibit similar responses to wind loading, and that these were distinct from those of broadleaves, presumably as a result of their simpler branching architecture. However, we could not reliably distinguish between open-grown and forest broadleaves based on their motion in the wind, despite their substantial architectural differences. Our analysis confirms previous studies showing that the fundamental frequency, which describes the speed of tree sway, is a robust feature with which to compare the motion of trees and is strongly related to tree size. Future studies should examine how the fundamental frequency of trees changes over time, since this is related to tree mass and elasticity and hence to a range of important ecological processes such as leaf phenology and water status.

455

We also found that the slope of the power spectrum, which is related to the wind-tree energy transfer, is an important feature in distinguishing tree types and displayed consistent trends with wind speed. All trees in this study exhibited a remarkably constant slope of the power spectrum from medium to high wind speeds in both summer and winter. This suggests that the relationship between wind loading and tree deflection is simply related to wind speed in the high wind speed range. This result could be an important contribution to estimating wind damage risk and understanding the role of wind in forest ecology more generally.

460

### 465 **Code availability**

All code created for this analysis is available here: [10.5281/zenodo.4265811](https://doi.org/10.5281/zenodo.4265811). Please contact the corresponding author if you have any questions or need additional materials.

### **Data availability**

This data set is a product of the work of many researchers and collaborations are encouraged. Almost all of the data used in this study is available online. Most of the data is available in a single repository at <https://eidc.ac.uk/> (currently waiting on DOI), which also stores meta-data for all trees used in this study. The Singapore data is available at <https://doi.org/10.7910/DVN/FHJBYG>, the Montmorency data is available at <https://doi.org/10.5683/SP2/WZIKSR>, the Manaus data is available at [https://data.4tu.nl/articles/dataset/Tree\\_sway\\_of\\_19\\_Amazon\\_trees/12714989/1](https://data.4tu.nl/articles/dataset/Tree_sway_of_19_Amazon_trees/12714989/1), the Wytham Woods data is available at <https://doi.org/10.5285/533d87d3-48c1-4c6e-9f2f-fda273ab45bc> and the Danum Valley data is available at <https://doi.org/10.5285/657f420e-f956-4c33-b7d6-98c7a18aa07a>. The Trout Lake and Fond du Lac data are

475

available at <http://www.hydroshare.org/resource/38ae9d9fb88d49f9ad2eed1ee07475c0>. For any questions regarding data availability please contact the corresponding author.

## Supplement link

## Competing interests

480 The authors declare that they have no conflict of interest.

## Author contributions

TJ, BG and DS conceived the idea. TJ collated the data, which was contributed by JS, AG, DB, DC, SL, MD, JCR, TvE, AB, BK, KJ, ED, NA, BG, DS, SK, AW, AK, RS, JM, MR, AA, VL and SvB. TJ conducted the analysis with input from SS, DS, BG, TN, NNA and ED. All authors contributed to the writing and agreed on the final version

## 485 Acknowledgments

TJ and DC are supported by NERC grant NE/S010750/1. SS was support by EPSRC grant EP/R511547/1. TvE was supported by the 4TU Federation project Plantenna. JCR and MD were supported by the Natural Sciences and Engineering Research Council of Canada, grant number RGPIN-2016-05119 and Canadian Wood Fibre Centre, grant CWFC1820-009. SvB was supported by US Dept of Agriculture PR00-NRI-001. SPL and DMC were supported by National Science  
490 Foundation grant # EAR-1700983 and US Forest Service agreement #18-JV-11242308-016 under Focus Area 3 of the US EPA Great Lakes Restoration Initiative. MR and VL were supported by NSERC irlsa 233737-98. AG was supported by National Science Foundation Award# IOS-1461868. RS was supported by National Science Foundation, Grants OCE-1600109 and OCE-1853039. BG was supported by National Science Foundation, Grants OCE-1600109 and OCE-1853039.

## References

495

Angelou, N., Dellwik, E. and Mann, J.: Wind load estimation on an open-grown European oak tree, *For. An Int. J. For. Res.*, doi:10.1093/forestry/cpz026, 2019.

Baker, C. J.: Measurements of the natural frequencies of trees, *J. Exp. Bot.*, 48(310), 1125–1132, doi:10.1093/jxb/48.5.1125, 1997.

500 Bastin, J. F., Barbier, N., Réjou-Méchain, M., Fayolle, A., Gourlet-Fleury, S., Maniatis, D., De Haulleville, T., Baya, F., Beeckman, H., Beina, D., Couteron, P., Chuyong, G., Dauby, G., Doucet, J. L., Droissart, V., Dufrene, M., Ewango, C., Gillet, J. F., Gonmadje, C. H., Hart, T., Kvali, T., Kenfack, D., Libalah, M., Malhi, Y., Makana, J. R., Pélissier, R., Ploton, P., Serckx, A., Sonké, B., Stevart, T., Thomas, D. W., De Cannière, C. and Bogaert, J.: Seeing Central African forests through their largest trees, *Sci. Rep.*, 5,

doi:10.1038/srep13156, 2015.

- BLACKBURN, P., PETTY, J. A. and MILLER, K. F.: An Assessment of the Static and Dynamic Factors Involved in Windthrow, *Forestry*, 61(1), 29–43, doi:10.1093/forestry/61.1.29, 1988.
- Bonnesoeur, V., Constant, T., Moulia, B. and Fournier, M.: Forest trees filter chronic wind-signals to acclimate to high winds, *New Phytol.*, 210(3), 850–860, doi:10.1111/nph.13836, 2016.
- Bunce, A., Volin, J. C., Miller, D. R., Parent, J. and Rudnicki, M.: Determinants of tree sway frequency in temperate deciduous forests of the Northeast United States, *Agric. For. Meteorol.*, 266–267, 87–96, doi:10.1016/J.AGRFORMET.2018.11.020, 2019.
- 510 Ciftci, C., Brena, S. F., Kane, B. and Arwade, S. R.: The effect of crown architecture on dynamic amplification factor of an open-grown sugar maple, *Trees*, 27(4), 1175–1189, doi:10.1007/s00468-013-0867-z, 2013.
- Ciruzzi, D. M. and Loheide, S. P.: Monitoring Tree Sway as an Indicator of Water Stress, *Geophys. Res. Lett.*, 46(21), 12021–12029, doi:10.1029/2019GL084122, 2019.
- Cohen, J.: A Coefficient of Agreement for Nominal Scales, *Educ. Psychol. Meas.*, 20(1), 37–46, doi:10.1177/001316446002000104, 1960.
- 515 Dargahi, M., Newson, T. and R. Moore, J.: A Numerical Approach to Estimate Natural Frequency of Trees with Variable Properties, *Forests*, 11(9), 915, doi:10.3390/f11090915, 2020.
- Dellwik, E., van der Laan, M. P., Angelou, N., Mann, J. and Sogachev, A.: Observed and modeled near-wake flow behind a solitary tree, *Agric. For. Meteorol.*, 265, 78–87, doi:10.1016/j.agrformet.2018.10.015, 2019.
- 520 Duperat, M., Gardiner, B. and Ruel, J.-C.: Testing an individual tree wind damage risk model in a naturally regenerated balsam fir stand: potential impact of thinning on the level of risk, *For. An Int. J. For. Res.*, doi:10.1093/forestry/cpaa023, 2020.
- van Emmerik, T., Steele-Dunne, S., Gentine, P., Oliveira, R. S., Bittencourt, P., Barros, F. and van de Giesen, N.: Ideas and perspectives: Tree-atmosphere interaction responds to water-related stem variations, *Biogeosciences Discuss.*, (July), 1–17, doi:10.5194/bg-2018-289, 2018.
- 525 Van Emmerik, T., Steele-Dunne, S., Hut, R., Gentine, P., Guerin, M., Oliveira, R. S., Wagner, J., Selker, J. and Van De Giesen, N.: Measuring tree properties and responses using low-cost accelerometers, *Sensors (Switzerland)*, 17(5), doi:10.3390/s17051098, 2017.
- Espírito-Santo, F. D. B., Gloor, M., Keller, M., Malhi, Y., Saatchi, S., Nelson, B., Junior, R. C. O., Pereira, C., Lloyd, J., Frohking, S., Palace, M., Shimabukuro, Y. E., Duarte, V., Mendoza, A. M., López-González, G., Baker, T. R., Feldpausch, T. R., Brienen, R. J. W., Asner, G. P., Boyd, D. S. and Phillips, O. L.: Size and frequency of natural forest disturbances and the Amazon forest carbon balance, *Nat. Commun.*, 5, doi:10.1038/ncomms4434, 2014.
- 530 Fulcher, B. D. and Jones, N. S.: hctsa: A Computational Framework for Automated Time-Series Phenotyping Using Massive Feature Extraction, *Cell Syst.*, 5(5), 527–531.e3, doi:10.1016/j.cels.2017.10.001, 2017.
- Gardiner, B. A.: Mathematical modelling of the static and dynamic characteristics of plantation trees, *Math. Model. For. Ecosyst.*, 40--61., doi:3-7939-0800-3, 1992.
- 535 Gougherty, A. V., Keller, S. R., Kruger, A., Stylinski, C. D., Elmore, A. J. and Fitzpatrick, M. C.: Estimating tree phenology from high frequency tree movement data, *Agric. For. Meteorol.*, 263, 217–224, doi:10.1016/j.agrformet.2018.08.020, 2018.
- Hale, S. E., Gardiner, B. A., Wellpott, A., Nicoll, B. C. and Achim, A.: Wind loading of trees: Influence of tree size and competition, *Eur. J. For. Res.*, 131(1), 203–217, doi:10.1007/s10342-010-0448-2, 2012.
- Holbo, H. R., Corbett, T. C. and Horton, P. J.: Aeromechanical behavior of selected Douglas-fir, *Agric. Meteorol.*, 21(2), 81–91, doi:10.1016/0002-1571(80)90056-4, 1980.
- 540 Jackson, T., Shenkin, A., Moore, J., Bunce, A., Emmerik, T. van, Kane, B., Burcham, D., James, K., Selker, J., Calders, K., Origo, N., Disney, M., Burt, A., Wilkes, P., Raunonen, P., Menaca, J. G. de T., Lau, A., Herold, M., Goodman, R. C., Fourcaud, T. and Malhi, Y.:

- An architectural understanding of natural sway frequencies in trees, *J. R. Soc. Interface*, doi:10.1098/RSIF.2019.0116, 2019.
- 545 Jackson, T. D., Shenkin, A. F., Majalap, N., Bin Jami, J., Bin Sailim, A., Reynolds, G., Coomes, D. A., Chandler, C. J., Boyd, D. S., Burt, A., Wilkes, P., Disney, M. and Malhi, Y.: The mechanical stability of the world's tallest broadleaf trees, *Biotropica*, doi:10.1111/btp.12850, 2020.
- James, K. R., Haritos, N. and Ades, P. K.: Mechanical stability of trees under dynamic loads, *Am. J. Bot.*, 93(10), 1522–1530, doi:10.3732/ajb.93.10.1522, 2006.
- Kane, B. and Smiley, E. T.: Drag coefficients and crown area estimation of red maple, *Can. J. For. Res.*, 36(8), 1951–1958, doi:10.1139/x06-086, 2006.
- 550 Kerzenmacher, T. and Gardiner, B.: A mathematical model to describe the dynamic response of a spruce tree to the wind, *Trees - Struct. Funct.*, 12(6), 385–394, doi:10.1007/s004680050165, 1998.
- de Langre, E.: Effects of Wind on Plants, *Annu. Rev. Fluid Mech.*, 40(1), 141–168, doi:10.1146/annurev.fluid.40.111406.102135, 2008.
- De Langre, E.: Plant vibrations at all scales: a review, *J. Exp. Bot.*, 70(14), 3521–3531, doi:10.1093/jxb/erz209, 2019.
- 555 Lubba, C. H., Sethi, S. S., Knaute, P., Schultz, S. R., Fulcher, B. D. and Jones, N. S.: catch22: CANonical Time-series CHaracteristics, [online] Available from: <http://arxiv.org/abs/1901.10200>, 2019.
- MacFarlane, D. W. and Kane, B.: Neighbour effects on tree architecture: functional trade-offs balancing crown competitiveness with wind resistance, edited by M. Larjavaara, *Funct. Ecol.*, 31(8), 1624–1636, doi:10.1111/1365-2435.12865, 2017.
- 560 Magnabosco Marra, D., Trumbore, S. E., Higuchi, N., Ribeiro, G. H. P. M., Negrón-Juárez, R. I., Holzwarth, F., Rifai, S. W., dos Santos, J., Lima, A. J. N., Kinupp, V. F., Chambers, J. Q. and Wirth, C.: Windthrows control biomass patterns and functional composition of Amazon forests, *Glob. Chang. Biol.*, doi:10.1111/gcb.14457, 2018.
- Mayer, H.: Wind-induced tree sways, *Trees*, 1(4), 195–206, doi:10.1007/BF01816816, 1987.
- Moore, J., Gardiner, B. and Sellier, D.: *Tree Mechanics and Wind Loading*, in *Plant Biomechanics*, pp. 79–106, Springer International Publishing, Cham., 2018.
- 565 Moore, J. R. and Maguire, D. A.: Natural sway frequencies and damping ratios of trees: concepts, review and synthesis of previous studies, *Trees - Struct. Funct.*, 18(2), 195–203, doi:10.1007/s00468-003-0295-6, 2004.
- Moore, J. R., Gardiner, B. A., Blackburn, G. R. A., Brickman, A. and Maguire, D. A.: An inexpensive instrument to measure the dynamic response of standing trees to wind loading, *Agric. For. Meteorol.*, 132(1–2), 78–83, doi:10.1016/j.agrformet.2005.07.007, 2005.
- Oliver, H. R. and Mayhead, G. J.: Wind measurements in a pine forest during a destructive gale, *Forestry*, 47(2), 185–194, doi:10.1093/forestry/47.2.185, 1974.
- 570 Pan, W.: Akaike's Information Criterion in Generalized Estimating Equations, *Biometrics*, 57(1), 120–125, doi:10.1111/j.0006-341X.2001.00120.x, 2001.
- Rifai, S. W., Urquiza Muñoz, J. D., Negrón-Juárez, R. I., Ramírez Arévalo, F. R., Tello-Espinoza, R., Vanderwel, M. C., Lichstein, J. W., Chambers, J. Q. and Bohlman, S. A.: Landscape-scale consequences of differential tree mortality from catastrophic wind disturbance in the Amazon, *Ecol. Appl.*, 26(7), 2225–2237, doi:10.1002/eap.1368, 2016.
- 575 Rodriguez, M., De Langre, E. and Moulia, B.: A scaling law for the effects of architecture and allometry on tree vibration modes suggests a biological tuning to modal compartmentalization, *Am. J. Bot.*, 95(12), 1523–1537, doi:10.3732/ajb.0800161, 2008.
- Rodriguez, M., Ploquin, S., Moulia, B. and de Langre, E.: The Multimodal Dynamics of a Walnut Tree: Experiments and Models, *J. Appl. Mech.*, 79(4), 44505, doi:10.1115/1.4005553, 2012.
- Schelhaas, M.-J. J., Nabuurs, G.-J. J. and Schuck, A.: Natural disturbances in the European forests in the 19th and 20th centuries, *Glob.*

- 580 Chang. *Biol.*, 9(11), 1620–1633, doi:10.1046/j.1529-8817.2003.00684.x, 2003.
- Schindler, D. and Mohr, M.: Non-oscillatory response to wind loading dominates movement of Scots pine trees, *Agric. For. Meteorol.*, 250–251, 209–216, doi:10.1016/j.agrformet.2017.12.258, 2018.
- Schindler, D., Vogt, R., Fugmann, H., Rodriguez, M., Schönborn, J. and Mayer, H.: Vibration behavior of plantation-grown Scots pine trees in response to wind excitation, *Agric. For. Meteorol.*, 150(7–8), 984–993, doi:10.1016/j.agrformet.2010.03.003, 2010.
- 585 Sellier, D. and Fourcaud, T.: Crown structure and wood properties: Influence on tree sway and response to high winds, *Am. J. Bot.*, 96(5), 885–896, doi:10.3732/ajb.0800226, 2009.
- Sellier, D., Brunet, Y. and Fourcaud, T.: A numerical model of tree aerodynamic response to a turbulent airflow, *Forestry*, 81(3), 279–297, doi:10.1093/forestry/cpn024, 2008.
- Senf, C. and Seidl, R.: Mapping the forest disturbance regimes of Europe, *Nat. Sustain.*, doi:10.1038/s41893-020-00609-y, 2020.
- 590 Spatz, H. C. and Theckes, B.: Oscillation damping in trees, *Plant Sci.*, 207, 66–71, doi:10.1016/j.plantsci.2013.02.015, 2013.
- Theckes, B., De Langre, E. and Boutillon, X.: Damping by branching: A bioinspiration from trees, *Bioinspiration and Biomimetics*, 6(4), doi:10.1088/1748-3182/6/4/046010, 2011.
- Welch, P.: The use of fast Fourier transform for the estimation of power spectra: A method based on time averaging over short, modified periodograms, *IEEE Trans. Audio Electroacoust.*, 15(2), 70–73, doi:10.1109/TAU.1967.1161901, 1967.
- 595