

# ***Interactive comment on “Assessing Climate Change Impacts on Live Fuel Moisture and Wildfire Risk Using a Hydrodynamic Vegetation Model” by Wu Ma et al.***

**Wu Ma et al.**

wuma@mix.wvu.edu

Received and published: 9 March 2021

Please see attached response letter in the Supplement.

Please also note the supplement to this comment:

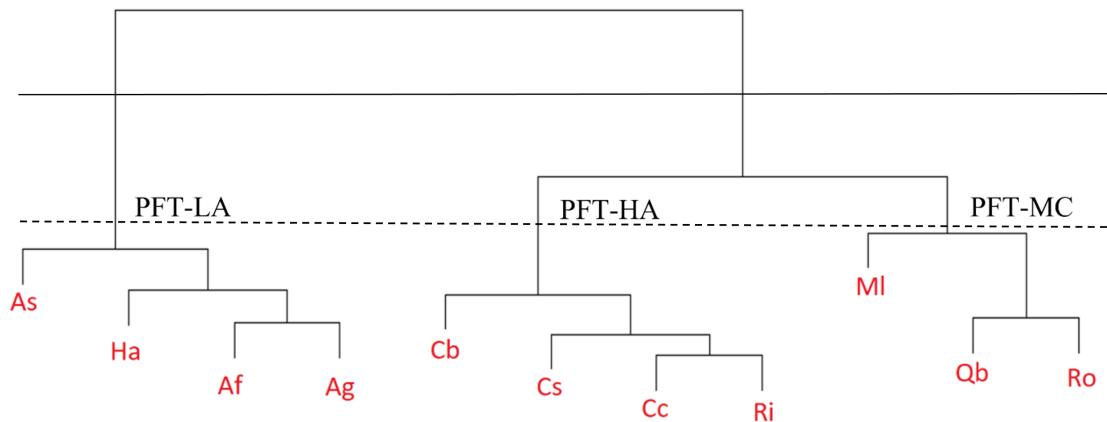
<https://bg.copernicus.org/preprints/bg-2020-430/bg-2020-430-AC1-supplement.zip>

Interactive comment on Biogeosciences Discuss., <https://doi.org/10.5194/bg-2020-430>, 2020.

Printer-friendly version

Discussion paper





**Fig. 1.**

Printer-friendly version

Discussion paper



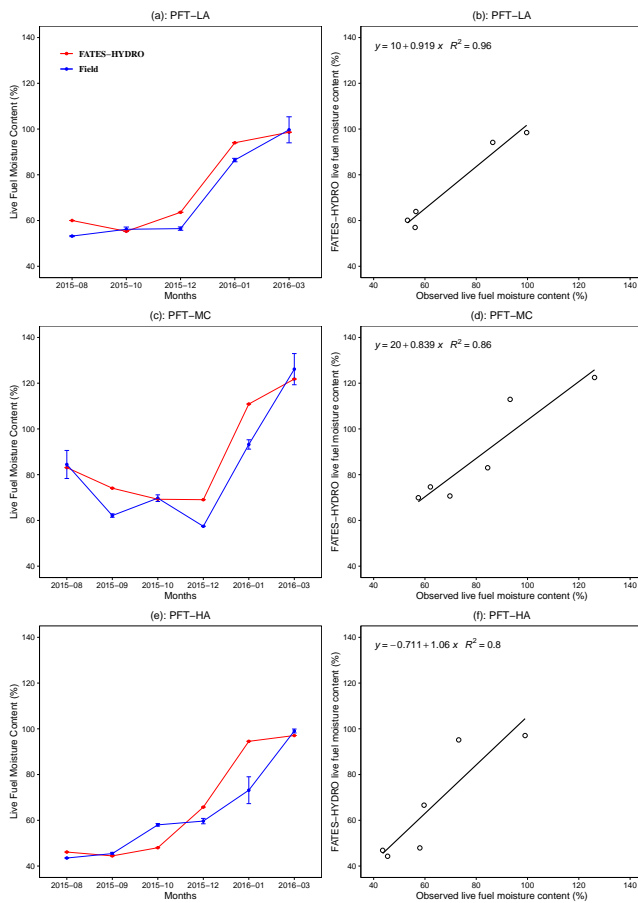


Fig. 2.

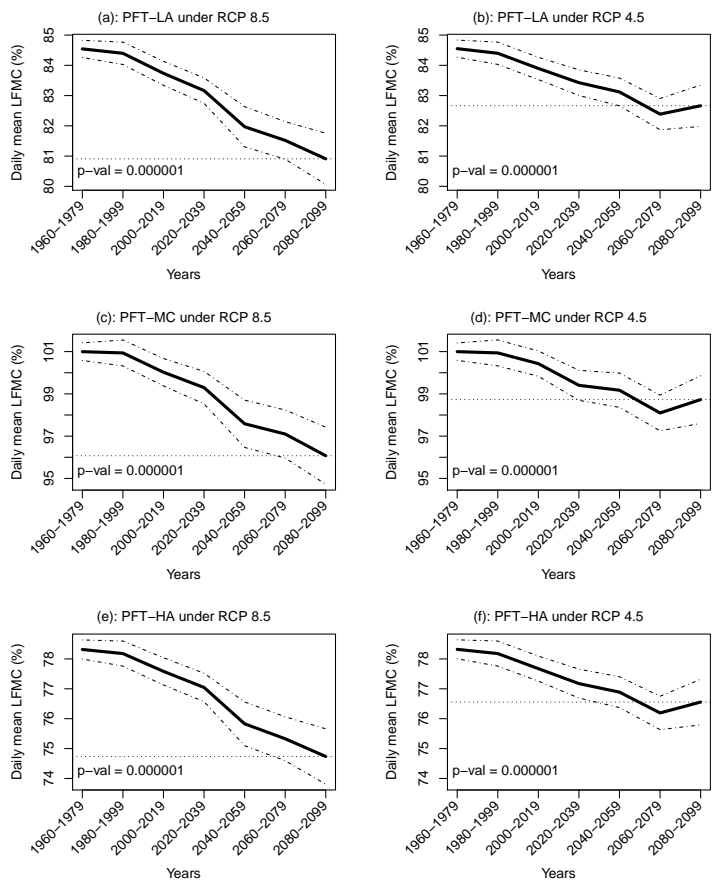


Fig. 3.

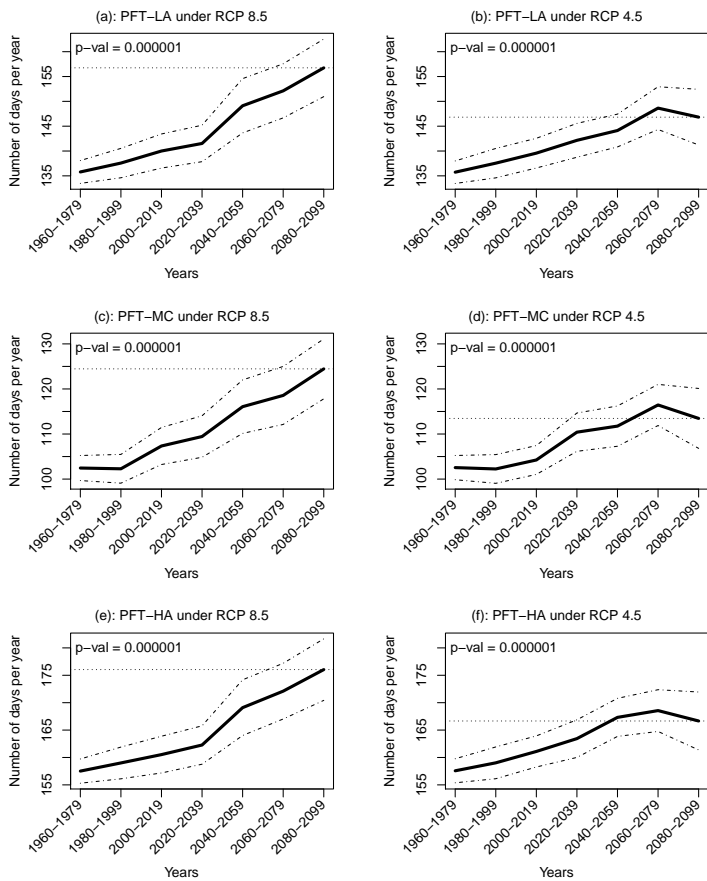


Fig. 4.

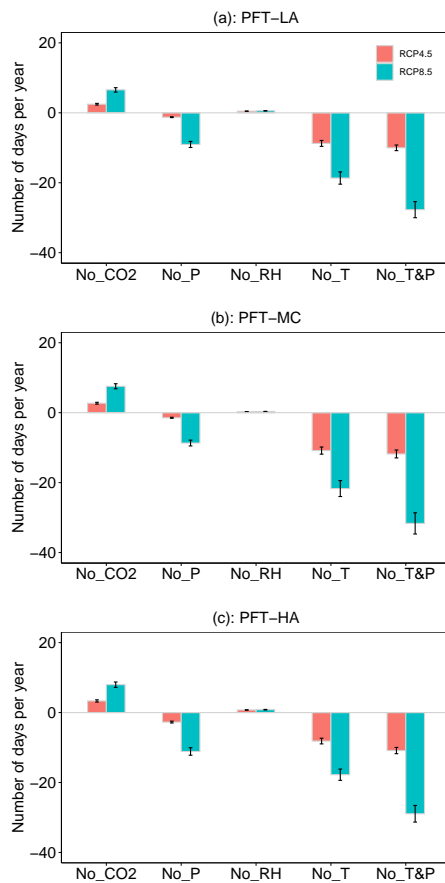


Fig. 5.

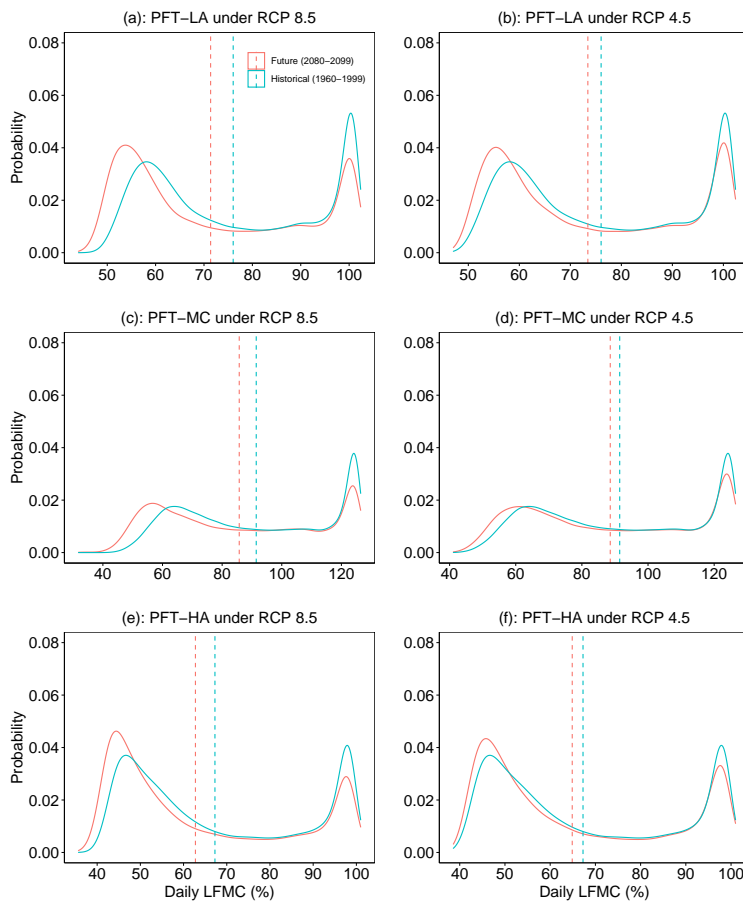


Fig. 6.

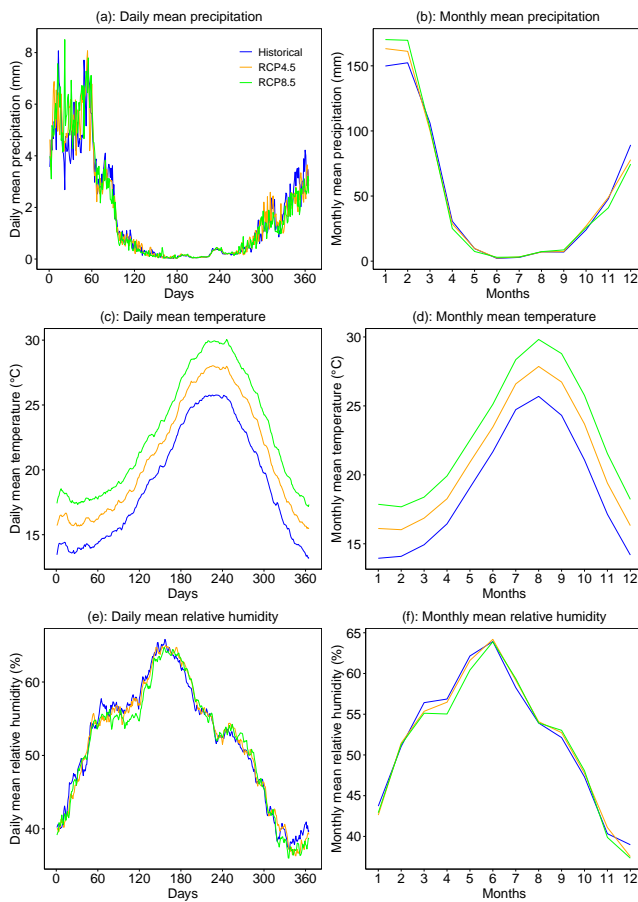


Fig. 7.