

## ***Interactive comment on “Assessing Climate Change Impacts on Live Fuel Moisture and Wildfire Risk Using a Hydrodynamic Vegetation Model” by Wu Ma et al.***

**Wu Ma et al.**

wuma@mix.wvu.edu

Received and published: 9 March 2021

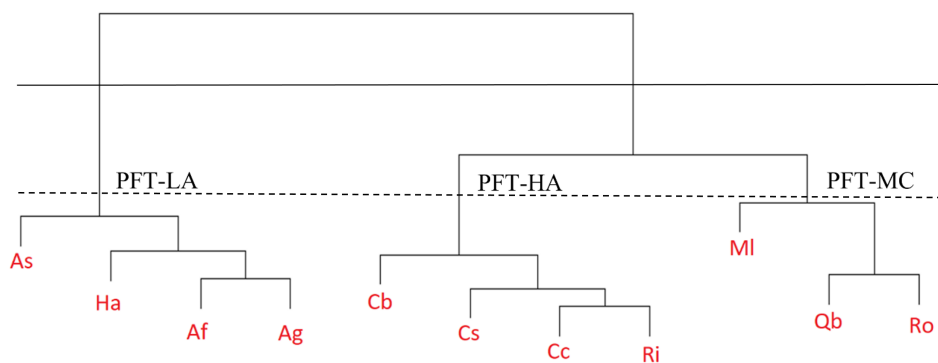
Please see attached response letter in the Supplement.

Please also note the supplement to this comment:

<https://bg.copernicus.org/preprints/bg-2020-430/bg-2020-430-AC2-supplement.zip>

Interactive comment on Biogeosciences Discuss., <https://doi.org/10.5194/bg-2020-430>, 2020.

C1



**Fig. 1.**

C2

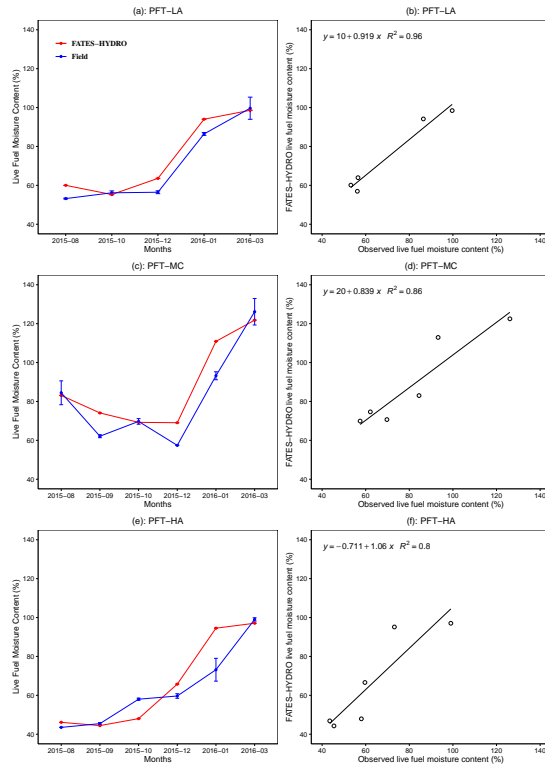


Fig. 2.

C3

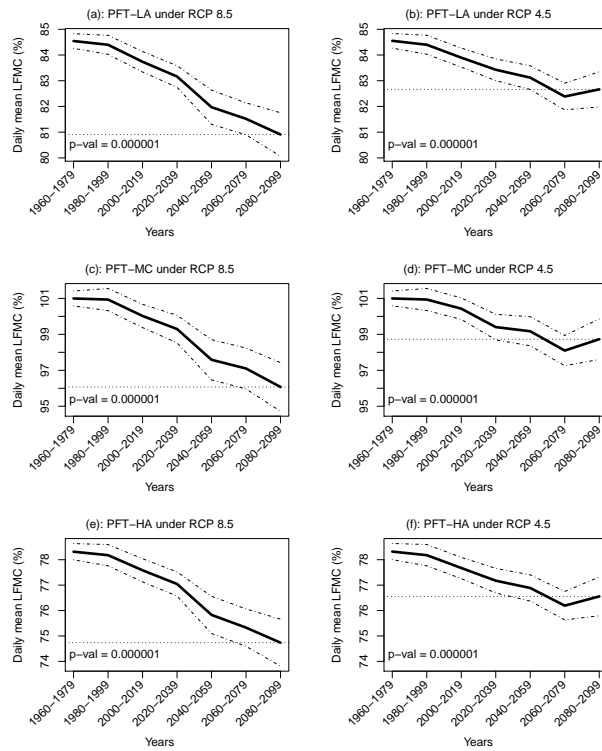


Fig. 3.

C4

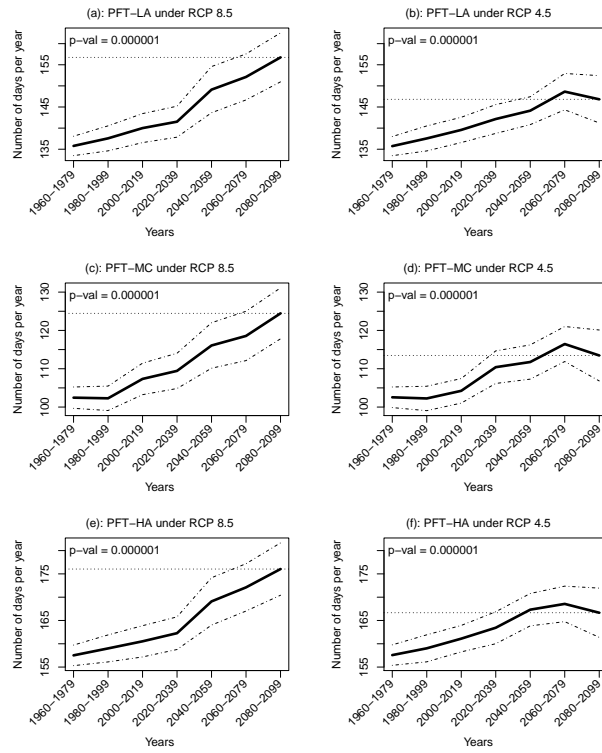


Fig. 4.

C5

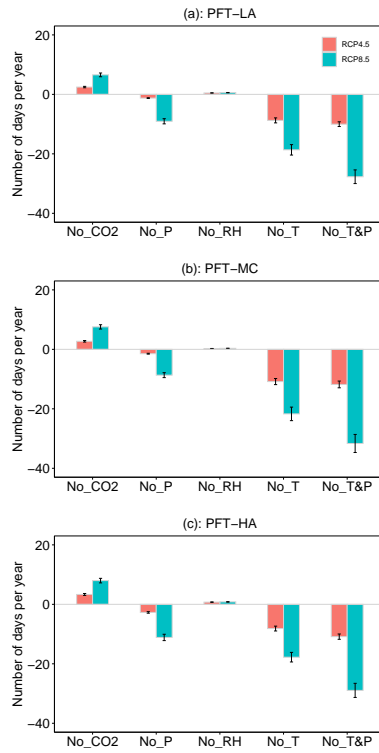


Fig. 5.

C6

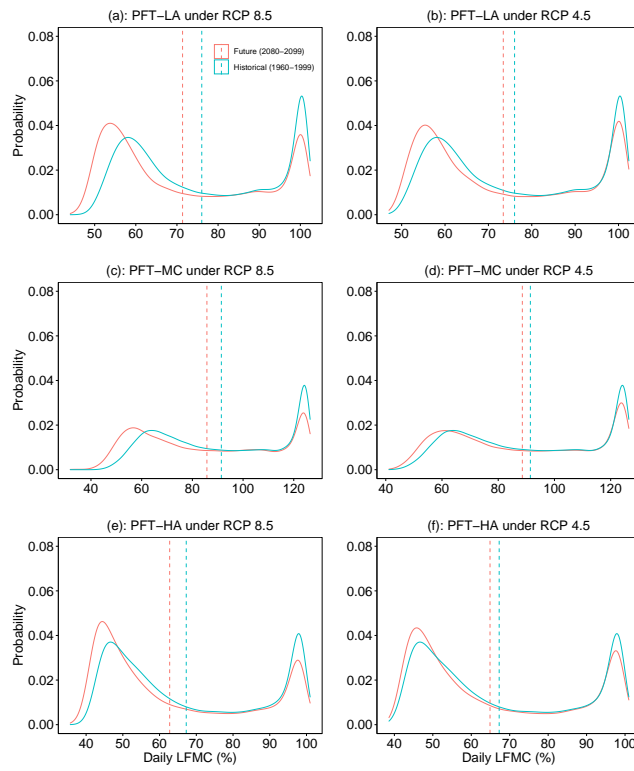


Fig. 6.

C7

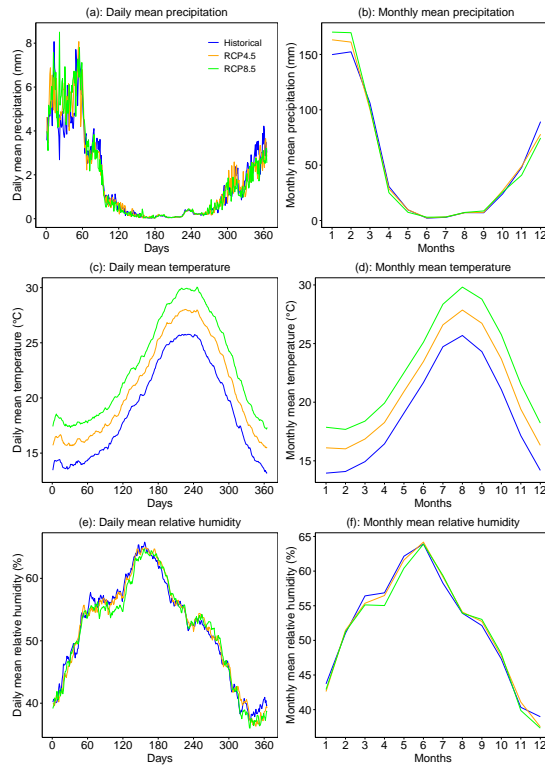


Fig. 7.

C8