

Effects of Earth System feedbacks on the potential mitigation of large-scale tropical forest restoration

Alexander Koch^{a,c}, Chris Brierley^a, and Simon L. Lewis^{a,b}

^aDepartment of Geography, University College London, Gower Street, WC1E 6BT London, UK

^bSchool of Geography, University of Leeds, LS2 9JT Leeds, UK

^cDepartment of Earth Sciences, University of Hong Kong, Hong Kong, HKSAR

Correspondence: Alexander Koch (akoch@hku.hk)

Abstract. To achieve the Paris Agreement requires aggressive mitigation strategies alongside negative emission technologies. Recent studies suggest that increasing tree cover can make a substantial contribution to negative emissions, with the tropics being the most suitable region from a biogeophysical perspective. Yet these studies typically do not account for subsequent carbon cycle and climate responses to large-scale land use change. Here we quantify the maximum potential temperature and CO₂ benefits from pantropical forest restoration, including the earth system response, using a fully-coupled, emission-driven Earth System Model (HadGEM2-ES). We perform an idealised experiment where all land use in the tropics is stopped and vegetation is allowed to recover, on top of an aggressive mitigation scenario (RCP 2.6). We find that tropical restoration of 1529 Mha increases carbon stored in live biomass by 130 Pg C by 2100 CE. Whilst avoiding deforestation and tropical restoration in the tropics removes 42 Pg C compared to RCP 2.6, the subsequent reduction in extra-tropical and ocean carbon uptake mean that carbon in the atmosphere only reduces by 18 Pg C by 2100. The resulting, small CO₂ (9 ppm) benefit does not translate to a detectable reduction in global surface air temperature compared to the control experiment. The greatest carbon benefit is achieved 30–50 years after restoration before the Earth System response adjusts to the new land-use regime and declining fossil fuel use. Comparing our results with previous modelling studies we identify two model-independent key points: (i) in a world where emission reductions follow the Paris Agreement, restoration is best deployed immediately, (ii) the global carbon cycle response to reduced emissions limits the efficacy of negative emissions technologies by more than half. We conclude that forest restoration can reduce peak CO₂ mid-century, but can only modestly contribute to negative emissions.

Copyright statement. TEXT

1 Introduction

Only a limited quantity of additional carbon can be added to the atmosphere before temperatures exceed the threshold of 2°C above the pre-industrial levels specified in the Paris Agreement on Climate Change (Allen et al., 2009; United Nations Treaty Collection, 2016). The most comprehensive assessment gives a remaining budget of 318 Pg C for a 67% chance to remain within 2°C, albeit excluding some Earth System feedbacks such as permafrost thawing (Rogelj et al., 2018). To stay within

2°C, net-zero emissions need to be achieved or if overshoot, negative emissions will be needed thereafter. Increasing the land carbon sink via natural climate solutions, such as forest restoration, particularly in the tropics, is often seen as a low-cost alternative to carbon capture and storage technologies, or at least as a bridge until these negative emissions technologies are widely available (Griscom et al., 2017; Busch et al., 2019). Forest restoration is broadly defined as actions that lead to the recovery of forests, their biomass, biodiversity, or other ecosystem services, for example by preventing further disturbance (Lamb et al., 2005). However, there is much uncertainty and controversy over the role of large-scale forest restoration in sequestering carbon, often because the carbon cycle and energy balance responses of the Earth System to widespread land-use change are not considered (Bastin et al., 2019; Friedlingstein et al., 2019a; Lewis et al., 2019b,a; Veldman et al., 2019).

The impact of an increased land carbon sink on atmospheric carbon is mediated by its response to temperature changes and the global carbon cycle feedback via ocean carbon uptake and CO₂ fertilisation impacts (e.g. Joos et al., 1999). Hence, the efficiency of proposed natural climate solutions such as tropical forest restoration should be considered in an Earth System context. The tropics are generally considered most suitable for large-scale forest restoration due to their high above ground biomass (AGB) potential and biogeophysical response to increased tree cover, via enhanced evaporative cooling and limited albedo changes (Claussen et al., 2001; Arora and Montenegro, 2011). The potential carbon and temperature benefit of increasing tropical tree cover has been explored using various approaches that do not include the feedbacks between climate and carbon cycle (Houghton et al., 2015; Houghton and Nassikas, 2018; Bastin et al., 2019; Busch et al., 2019). Approaches with Earth System Models that include the feedbacks between climate and carbon cycle used either pre-industrial CO₂ conditions (Bathiany et al., 2010) or high-CO₂ conditions (Arora and Montenegro, 2011). However, no model experiment has been conducted that includes large scale tropical forest restoration, interactive land use emissions, and Earth System feedbacks in a scenario that would limit warming to 2°C. This is an important omission from the literature because large scale restoration is most likely to occur as part of a set of measures designed to meet commitments in the Paris Agreement.

Here we explore the potential climate benefits of pan-tropical natural restoration until the end of the century in an Earth System Model (HadGEM2-ES) under an aggressive mitigation scenario (RCP 2.6) that limits warming to below 2°C. This scenario sees a rapid and sustained reduction of fossil fuel emissions, in part through replacement by an expansion of bioenergy crops. Based on an emission-driven RCP 2.6 control simulation (*esmrcp26*) with dynamic vegetation (Jones et al., 2013) we performed a simulation where all current and future anthropogenic land use in the tropics (19.375°S–23.125°N) is stopped after two years following RCP 2.6 land use, and set to zero thereafter (2008–2100 CE). We call this experiment, where natural vegetation is then allowed to regrow, the restoration simulation (*esmrcp26restor*).

2 Methods

2.1 HadGEM2-ES

The Earth System Model used here, HadGEM2-ES, (Collins et al., 2011) contributed results to the last IPCC report (AR5, IPCC, 2013) and was part of phase 5 of the Coupled Model Intercomparison Project (CMIP5, Jones et al., 2011; Taylor et al., 2007). HadGEM2-ES includes a land and ocean carbon cycle, optionally with interactive land use emissions, as well as a

land surface scheme (MOSES II) with a dynamic global vegetation model that simulates the grid cell proportion each plant functional type (PFT) occupies dynamically (TRIFFID). The atmosphere and land components have a resolution of 1.25° latitude and 1.875° longitude with a vertical atmosphere resolution of 38 layers up to 39 km in altitude. The ocean component has a horizontal grid of varying resolution, increasing from around 1° in the extratropics to $1/3^\circ$ at the equator, and a vertical resolution of 40 unevenly spaced layers that increase towards the sea surface.

2.1.1 Met Office Surface Exchange Scheme version 2 (MOSES II)

The land surface scheme in HadGEM2-ES is the Met Office Surface Exchange Scheme (MOSES II, Essery et al., 2001), which simulates the fluxes of carbon as well as biogeophysical processes associated with the land surface. MOSES II employs a tiling approach that differentiates between nine different surface types: urban, water, ice, bare soil, and the five plant functional types (PFTs): C_3 and C_4 grasses, shrubs, broadleaf and needleleaf tree. There is no explicit crop surface type in the land surface scheme, meaning crops, and pastures, are represented as C_3 and C_4 grasses depending on environmental conditions. TRIFFID's ability to simulate the share of each PFT on a grid cell allows grassy and woody vegetation to expand onto abandoned grid cell space. After the cessation of agricultural activity, shrubs and trees therefore regrow depending on the climatological suitability of the region for each PFT and inter-PFT competition. The share of each PFT of a grid cell depends firstly on a grass-shrub-tree hierarchy where shrub PFTs dominate grasses and tree PFTs dominate grasses and shrub, and secondly on a species competition approach (Lotka-Volterra) that determines the share between two PFTs of the same type (e.g. broadleaf and needleleaf) depending on height (Cox, 2001). Anthropogenic land use is represented by a disturbance mask, where shrubs and trees are removed and prevented from growing. The resulting bare soil is allocated to crops, i.e. C_3 or C_4 grasses (Collins et al., 2011). Harvesting cycles and consequences of intensive agriculture such as nutrient depletion and fertilizer input are not considered in the model. This means abandoned agricultural land is of the same "quality" as natural grassland and succession is not impacted by previous land use activities (e.g. soil nutrient depletion). Arrested succession (e.g. from plant diseases, fires, invasive species) is not considered in the model.

Land use emissions are calculated interactively in the model following the land use dynamics specified in RCP 2.6. Both simulations have continued land use outside the tropics. Only emissions from the removal of woody PFTs (i.e. deforestation) are considered as separate land use flux. Thereby deforested biomass is allocated to wood product pools with a fixed turnover of 1, 10, and 100 years (F_{WP} being the sum of all biomass entering the WP pools), with the fraction allocated to each pool depending on the woody PFT type (Jones et al., 2011). Emissions from land use into the atmosphere (E_{DEFOR}) are therefore the sum of the carbon fluxes from the wood product pools into the atmosphere at a given time. The carbon flux from the regrowth from abandoned areas, as well as the annual growth cycle of grasses/crops within agriculture regions, are included in the natural land carbon fluxes (F_{LA} , Jones et al., 2011; Liddicoat et al., 2013). This means E_{DEFOR} is not directly comparable with land use emissions from, for example the Global Carbon Budget (Le Quéré et al., 2018). The land-to-atmosphere flux (F_{LA}), as the difference between carbon uptake through NPP and the release of carbon into the atmosphere through R_h , excludes anthropogenic emissions but includes carbon uptake from regrowing vegetation following the cessation of anthropogenic disturbance (also known as "net ecosystem production").

90 Aside the wood product pools, the land surface scheme in HadGEM2-ES consists of four soil carbon pools with different carbon residence times, modulated by soil temperature, soil moisture and soil carbon content (Collins et al., 2011). Carbon converted from living to dead biomass directly enters the soil carbon pools via litter flux (F_{SC}), meaning there are no litter carbon pools in HadGEM2-ES.

2.2 RCP 2.6

95 The IPCC AR5-scenario that comes closest to a 2°C world is the Representative Concentration Pathway 2.6-3PD (Peak-Decline, for simplicity RCP 2.6, van Vuuren et al., 2011). In this scenario atmospheric CO₂ concentrations achieve a peak radiative forcing of 3.0 W m⁻² by 2050 CE and declines to 2.6 W m⁻² by the end of the century. This corresponds to a warming of just under 2°C in HadGEM2-ES, (CMIP5 mean: 2°C, Jones et al., 2013). To achieve this in RCP 2.6, CO₂ emissions need to decrease rapidly from 2020 CE onwards through a combination of measures, including bioenergy with carbon capture and
100 storage (BECCS) (Smith et al., 2016; van Vuuren et al., 2011). Emissions from fossil fuels are projected to peak by 2020 and turn negative in this scenario by the end of the century (Liddicoat et al., 2013; van Vuuren et al., 2011). Peak net carbon emissions from land use and land cover change (LULCC) in RCP 2.6 are small (< 2 Pg C year⁻¹) compared to fossil fuel emissions (9.2 Pg C year⁻¹). With the widespread implementation of BECCS tropical forest is replaced by bioenergy crops leading to an increase in land use area by 286 million ha (Mha) by 2100 in RCP2.6 (van Vuuren et al., 2011). New bioenergy
105 crops are primarily allocated near existing land use (Hurtt et al., 2011; van Vuuren et al., 2011).

The simulations presented here use carbon emissions from the use of fossil fuels and land use to interactively calculate atmospheric CO₂ rather than prescribing CO₂ concentrations (i.e. it is “emission driven”). HadGEM2-ES would simulate lower atmospheric CO₂ concentrations than defined by RCP 2.6 when driven by fossil fuel emissions directly derived from the integrated assessment model simulations (Jones et al., 2013). Therefore fossil fuel emissions were computed by a RCP 2.6
110 concentration driven HadGEM2-ES simulation (Liddicoat et al., 2013). The interactive carbon budget in HadGEM2-ES and its terms are presented in equation 1.

$$\frac{dC_{ATM}}{dt} = G_{ATM} = E_{FF} + E_{DEFOR} - F_{OA} - F_{LA} \quad (1)$$

In addition to the land use carbon flux (E_{DEFOR}), fossil fuel emissions (E_{FF}), and the land flux into the atmosphere (F_{LA}), the carbon cycle in HadGEM2-ES includes the flux from ocean to atmosphere (F_{OA}), and the rate of change in atmospheric carbon
115 concentration (dC_{ATM}/dt) or atmospheric growth rate of carbon (G_{ATM}) (Equation 1). All forcing data, except the scenario related fossil fuel and land use/disturbance mask have been implemented in HadGEM2-ES as described in (Jones et al., 2011). The urban (20 Mha), inland water (330 Mha) and the ice areas (163 Mha) remain constant throughout both simulations.

3 Results

3.1 Restoration impacts on land cover 2006–2100 CE

120 In the control simulation (*esmrcp26*), broadleaf forest declined globally by 107 Mha from 2006–2100 CE, driven by a decline
of 213 Mha in the tropics that is somewhat offset by an 106 Mha increase in the extratropics. In the restoration simulation
(*esmrcp26restor*), abandoning all present-day and future land use areas led to an increase in broadleaf forest of 671 Mha
globally, and 572 Mha in the tropics (Fig. 1A). Unsurprisingly, the largest differences between *esmrcp26* and *esmrcp26restor*
in all five plant functional types (PFTs) used in the model (Cox, 2001) are located in the tropics (Table A1). Anthropogenic
125 land use increases in *esmrcp26* over the 94 years, as do C₃ grasses (and crops) and to a smaller extent shrubs, while tree PFTs
and C₄ grasses decline. By contrast, in *esmrcp26restor* current anthropogenic land use of 1529 Mha in the tropics abruptly
ends, with shrub area increasing rapidly in the first decade after the cessation of land use at the expense of C₃ grasses (and
crops), followed by a long-term increase in broadleaf trees. The successional cycle after the cessation of anthropogenic land
use is characterised by an increase in shrub PFTs within seven years, before slowly declining again towards the end of the
130 century, making way for tree PFTs.

The spatial pattern of land cover change shows that the largest change in *esmrcp26restor* compared to *esmrcp26* by 2100,
786 Mha, is the growth of new broadleaf trees, mostly located on the edges of the Amazon and Congo basins, and the periphery
of the SE Asian and Australasian tropics where broadleaf trees more than doubled by the 2090s (Fig. 1B). The only region in
the tropics with substantially fewer broadleaf trees in *esmrcp26restor* compared to *esmrcp26* is located at the Brazilian Atlantic
135 coast, likely due to simulated warmer and dryer conditions (Figure A2). Most of the smaller 10 Mha increase in needleleaf
trees in the tropics is located around the edges of the Amazon and Congo basin in *esmrcp26restor*. Shrubs also substantially
increased in the tropics by 409 Mha in *esmrcp26restor* compared to *esmrcp26* (Table A1). These increases in tree and shrub
cover in *esmrcp26restor* compared to *esmrcp26* in the tropics, were at the expense of C₃ and C₄ grasses (including crops).

Abruptly stopping anthropogenic land use in the tropics led to vegetation changes outside the tropics. Broadleaf trees de-
140 clined, by 8 Mha, mostly in the high latitudes of North America and East Asia, being replaced by needleleaf trees. Shrubs
declined in total, particularly along the eastern edge of the Arabian peninsula. C₃ grasses declined overall, with a complex
spatial pattern: increases in Australia, southern Africa, and central Asia, but almost 100% decreases in western Asia and the
mid-western U.S. C₄ vegetation increases in Australia and the mid-western U.S., leading to a net increase in C₄ grasses in the
extratropics. Overall, tropical land use change altered patterns of vegetation cover globally by 2100 CE.

145 Finally, global deforestation emissions, E_{DEFOR} , correspond to the episodes of land use expansion in RCP 2.6, with de-
forestation halted in the tropics only in *esmrcp26restor*. The pattern is reflecting waves of deforestation until 2035 CE, after
which emissions decline rapidly and remain low for the rest of the century (Fig. 2). In *esmrcp26*, these deforestation emissions
are largest in the tropics, particularly the Amazon, central Africa, and south-east Asia (Fig. A1). In *esmrcp26restor*, tropical
deforestation is halted, but extratropical deforestation occurs at a modest level until 2035 CE under RCP 2.6. Overall, global cu-
150 mulative E_{DEFOR} are 16.1 Pg C (*esmrcp26*) and 6.5 Pg C (*esmrcp26restor*), resulting in the prevention of 9.6 Pg C of emissions
by halting deforestation alone.

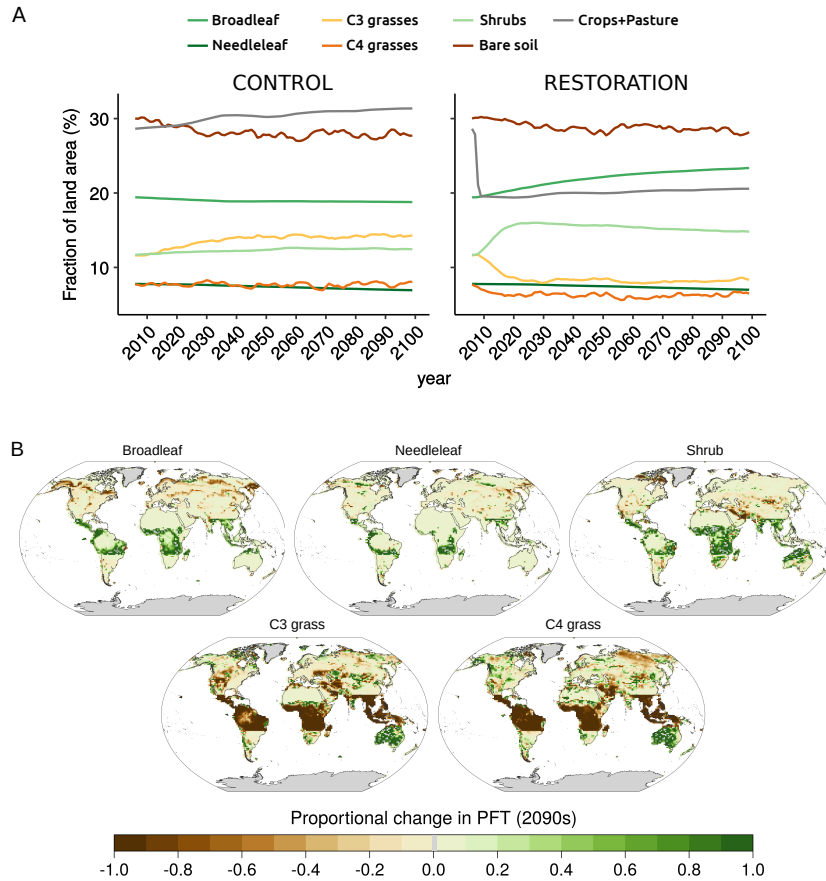


Figure 1. (A) Change in land cover 2006–2100 CE in control (left) and restoration (right) simulation. Urban (0.1%), inland water (1.9%), and ice fraction (9.7%) are constant and not included. An anthropogenic land use mask is added on top of other land cover types, replacing woody PFTs with bare soil and preventing woody PFTs from replacing grassy PFTs, which include crops and pasture (see Methods 2.1.1). (B) Spatial difference in land cover in the restoration simulation relative to the control simulation over the 2090s. A change of 1 represents a doubling of that land cover type relative to the control simulation, a change of -1 means a reduction of 100%.

Table 1. Cumulative terrestrial carbon fluxes for NPP, litterfall (F_{SC}), flux to the wood product pools (F_{WP}), soil respiration (R_h), net change in living biomass ($NPP - F_{SC} - F_{WP}$), net change soil carbon ($F_{SC} - R_h$) and the net land to atmosphere carbon flux (F_{LA}) over the period 2006–2100 CE in the control and restoration simulation, as well as their difference. Global, tropical, and extratropical fluxes are presented. Negative F_{LA} indicates a net terrestrial sink. Values may not completely add up due to rounding.

	Global			Tropics			Extratropics		
	Control (Pg C)	Restoration (Pg C)	Difference (Pg C)	Control (Pg C)	Restoration (Pg C)	Difference (Pg C)	Control (Pg C)	Restoration (Pg C)	Difference (Pg C)
NPP	7855.0	7070.9	-784.1	3969.1	3275.6	-693.5	3885.9	3795.2	-90.7
F_{SC}	7853.6	6949.6	-904.0	3987.7	3169.9	-817.8	3865.9	3779.7	-86.2
F_{WP}	14.4	4.3	-10.1	10.2	0.2	-10.0	4.1	4.1	0.0
R_h	7711.7	6904.2	-807.5	3959.9	3224.7	-763.0	3751.8	3679.5	-72.3
Δ Biomass	-13.0	117.0	130.0	-28.9	105.5	134.4	15.9	11.5	-4.4
Δ Soil carbon	141.9	45.4	-96.5	27.8	-54.8	-82.6	114.1	100.1	-14.0
F_{LA}	-143.3	-166.7	-23.4	-9.2	-51.0	-41.8	-134.2	-115.7	18.5

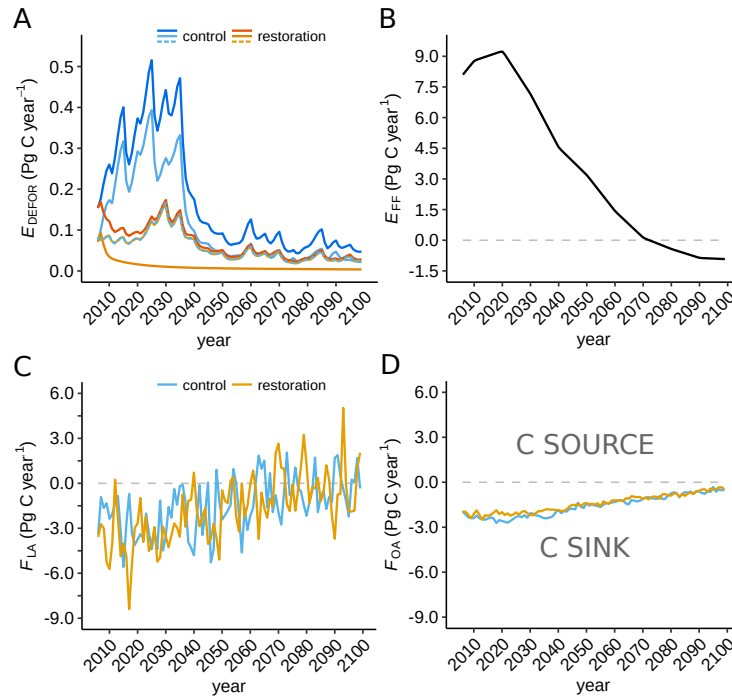


Figure 2. Modelled carbon emissions and fluxes 2006–2100 CE into the atmosphere for the control run (blues) and restoration simulation (oranges). (A) Deforestation emissions (E_{DEFOR}), dark colours are global emissions, light colours are the tropics and dashed lines are emissions outside the tropics. (B) Prescribed fossil fuel emissions (E_{FF}) following RCP 2.6 (Liddicoat et al., 2013). (C) Global land-to-atmosphere flux (F_{LA}); (D) Global ocean-to-atmosphere flux (F_{OA}). Negative values represent a carbon sink. Note the different vertical scales.

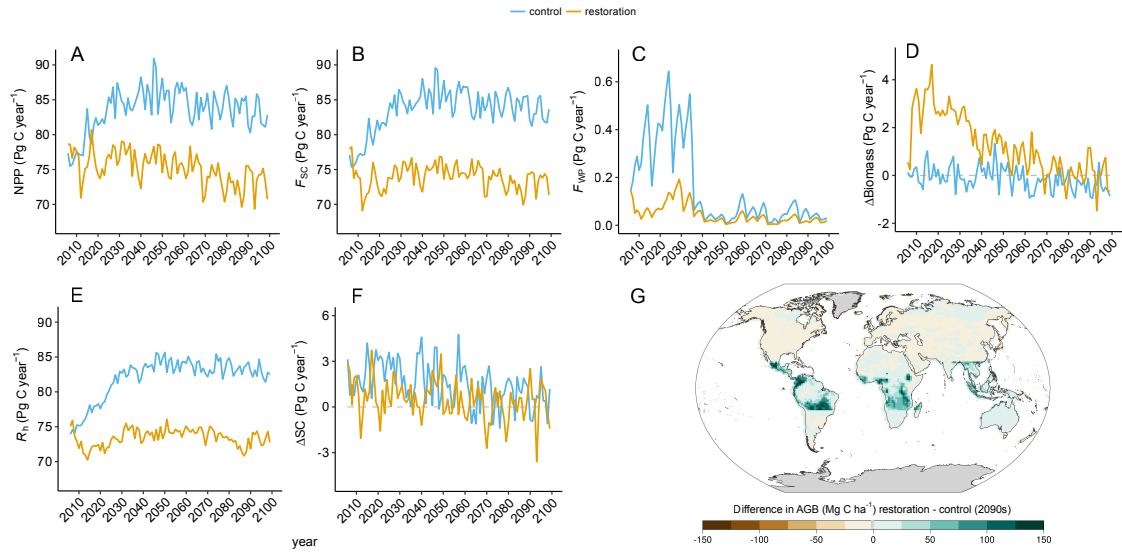


Figure 3. Time series of (A) global net primary production (NPP), (B) global carbon flux into the soil (F_{SC}), (C) global carbon flux into the wood product pools (F_{WP}), (D) global annual change in above ground biomass (Δ Biomass), (E) global soil respiration (R_h), and (F) global annual change in soil carbon (Δ SC) in the restoration (yellow) and control (blue) simulation. (G) Spatial difference in biomass between the restoration and control simulation over the 2090s ($1 \text{ Mg C ha}^{-1} = 10 \text{ kg C m}^{-2}$)

3.2 Land carbon response to tropical restoration

The terrestrial carbon cycle responds to the tropical land cover change with an increase in net carbon uptake, driven by an increase in biomass in the tropics. Overall, there is a decline in net primary productivity (NPP), but there is also a stronger
 155 decline in litterfall (flux of dead plant matter) into the soil. The flux of carbon into the atmosphere from soil respiration is smaller than the uptake through NPP, thereby creating a net carbon sink (Table 1). NPP declines globally at first due to the change from grassy vegetation and crops to trees in *esmrcp26restor*, and secondly due to the lower atmospheric CO_2 concentrations in *esmrcp26restor* relative to *esmrcp26* (Fig. A3A). The subsequent decline in dead plant matter leads to lower soil carbon stocks in *esmrcp26restor* compared to *esmrcp26*, which ultimately leads to lower soil respiration (Table 1).

160 The flux of carbon from the atmosphere into the living biomass carbon pool is modulated by the NPP of the different vegetation types. The global trend, variability, and the differences in both simulations are driven by tropical NPP, although extratropical NPP also declines after ~ 40 years (Fig. A3A). Taken together this results in lower cumulative global NPP at the end of *esmrcp26restor* compared to *esmrcp26* (Table 1). The main reasons for the greater NPP decline in *esmrcp26restor* is that grassy vegetation has a two to three times greater NPP per unit area than tree PFTs in HadGEM2-ES (Table A2), and a
 165 lower CO_2 fertilisation from lower atmospheric CO_2 in the second half of the century.

The carbon flux of dead plant matter into the soil carbon pool (F_{SC}) is determined by a temperature and PFT-specific turnover rate, as well as the areal extent and biomass of each PFT. Trends in F_{SC} have a similar spatial and temporal pattern to NPP (Fig. 3B; Table 1). In *esmrcp26*, global F_{SC} increases before it slowly declines from 2040 CE onward. In *esmrcp26restor*, F_{SC} initially drops, before it increases until 2040 CE and then again declines over the second half of the simulation. In both
170 simulations global F_{SC} is primarily modulated by the tropics (Fig. A3B). Outside the tropics F_{SC} gradually increases until 2030 CE, after which it remains constant in *esmrcp26* but slowly declines in *esmrcp26restor*. The difference in cumulative global F_{SC} by 2100 CE is driven by its large decrease in the tropics and further amplified by a more modest decline in the extratropics (Table 1). In particular the decrease in tropical F_{SC} in *esmrcp26restor* is caused by the decline in grassy vegetation. At the same time lower overall production in extratropics leads to decreased F_{SC} in *esmrcp26restor*.

175 Finally, some land area is deforested, 458 Mha, as specified by RCP 2.6 land use in *esmrcp26*, but only the 172 Mha specified by RCP 2.6 land use in the extratropics in *esmrcp26restor*. This global carbon flux from deforestation is largely transferred into the wood product pool (F_{WP}), and so shows the same pattern as deforestation (Fig. 3C *c.f.* Fig. 2A).

The net change in living biomass carbon is the difference between NPP and the combined fluxes into the soil carbon pool and the wood product pool ($\Delta\text{Biomass} = \text{NPP} - F_{SC} - F_{WP}$). Globally, in *esmrcp26*, $\Delta\text{Biomass}$ slowly shifts from net-zero change
180 to a small loss by the end of the century (Fig. 3D). This is because high deforestation before 2040 CE compensates for the initial rise in NPP and litterfall flux (F_{SC}). In *esmrcp26restor*, $\Delta\text{Biomass}$ moves from a rapid gain in the first decade towards net-zero change by the end of the century, driven by NPP initially exceeding F_{SC} and no tropical deforestation resulting in a small flux from wood products (F_{WP} ; Fig. 3D). Again, these differences are driven by changes in the tropics. Here $\Delta\text{Biomass}$ continuously declines in *esmrcp26* but peaks and then declines in *esmrcp26restor* (Fig. A3F). In the extratropics, $\Delta\text{Biomass}$
185 turns from a net gain in the first half of the century into a net loss in the second half of both simulations, although more so in *esmrcp26restor*. The cumulative global biomass difference between both simulations is driven by the increase in biomass in the tropics in *esmrcp26restor*, which is slightly offset by the late decline in extratropical biomass (Table 1). In total the increase in biomass resulting from tropical restoration alone is 134.4 Pg C by 2100 CE, with a total global difference from *esmrcp26* of 130 Pg C (Table 1). Averaged over the last decade of the simulation, the grid cell by grid cell difference in mean biomass
190 carbon density in the tropics is up to 150 Mg C ha⁻¹ between the two simulations (Fig. 3G). Biomass growth mirrors the increase in woody PFTs and is highest around existing forest edges in Amazonia, northern Mexico and the Congo Basin.

In terms of timescales, biomass carbon increases are highest in the first 20–40 years after land use ceases. On a per hectare basis the median carbon accumulation rates over first 20 years after land use cessation is 1.8 Mg C ha⁻¹ yr⁻¹ (range 0–5.5 Mg C ha⁻¹ yr⁻¹), using the grid cells where the share of broadleaf trees increased by at least 30% of the grid box area (n
195 = 224) in *esmrcp26restor* (dark green in Fig. 3G). Thereafter uptake rates decrease to a median of 0.5 Mg C ha⁻¹ yr⁻¹ (–3.4 to 3.8 Mg C ha⁻¹ yr⁻¹) for the remaining 71 years. Median biomass increases by 35.4 Mg C ha⁻¹ (0.6–86.3 Mg C ha⁻¹) within 20 years of tropical land use stopping and by 81.3 Mg C ha⁻¹ (41.6–146.7 Mg C ha⁻¹) over the whole simulation (Fig. A5). By 2100 CE median biomass for these new broadleaf forests is 165.2 Mg C ha⁻¹ (62.9–209.7 Mg C ha⁻¹). For comparison, in *esmrcp26* the same 224 grid cells have a median biomass of 56.3 Mg C ha⁻¹ (5.3–134.6 Mg C ha⁻¹) by 2100 CE. The median

200 biomass for all of the tropics is $46.9 \text{ Mg C ha}^{-1}$ ($0\text{--}207.1 \text{ Mg C ha}^{-1}$) in *esmrcp26* with land use and $105.0 \text{ Mg C ha}^{-1}$ ($0\text{--}210.5 \text{ Mg C ha}^{-1}$) in *esmrcp26restor*.

The changes in soil carbon (ΔSC) are of the same magnitude as the changes in biomass carbon. In *esmrcp26*, ΔSC increased by 141.9 Pg C over 2006–2100 CE, mostly in the extratropics (114.1 Pg C), because of lower heterotrophic soil respiration relative to the litter influx (Table 1), likely due to cooler temperatures. In *esmrcp26restor*, global soil carbon uptake is much
205 lower at 45.4 Pg C , with a similar strong uptake in the extratropics (100.1 Pg C), but a loss of soil carbon in the tropics (-54.8 Pg C). This is due to land cover change from grass and crops to woody vegetation with lower NPP and litter input (Table 1). The net change of the soil carbon pool is determined by the difference between litter inputs (F_{SC}) and heterotrophic soil respiration (R_{h}), the flux from the soil carbon pool into the atmosphere. R_{h} itself is a function of temperature, soil carbon and F_{SC} (Essery et al., 2003), so it increases as F_{SC} and NPP increase. Therefore, overall R_{h} increases to a much higher
210 level in *esmrcp26* by about 2030 CE, and stays high with a slight decline. By contrast R_{h} declines rapidly in *esmrcp26restor* within a decade, and only partially recovers, staying at a lower level until 2100 CE (Fig. 3E). As with the NPP and F_{SC} , the global differences in R_{h} between *esmrcp26* and *esmrcp26restor* are driven by the decline in tropical R_{h} in *esmrcp26restor* and modulated by marginal differences in the extratropics (Fig. A3E), ultimately linked to lower atmospheric CO_2 concentrations leading to less CO_2 fertilisation, lower NPP and less litterfall in *esmrcp26restor* compared to *esmrcp26* (Table 1). Global ΔSC
215 in both *esmrcp26* and *esmrcp26restor* is net positive but saturates towards the end of the century, with, on average, lower values in *esmrcp26restor* (Fig. 3F). The difference comes from the tropics, where ΔSC in *esmrcp26* varies around zero but is on average $\sim 1 \text{ Pg C year}^{-1}$ lower in *esmrcp26* (Fig. A3G). Extratropical ΔSC slowly declines in both simulations but remains net positive. Reason for the cumulative difference in global soil carbon content is a net decline in R_{h} relative to F_{SC} (Table 1).

Both simulations show that the land-to-atmosphere flux (F_{LA}) is a strong carbon sink at the beginning of the simulation
220 (average 3.4 Pg C yr^{-1} in the 2020s in both simulations), but that this sink is diminishing (Fig. 2C). This is driven by a greater decline in NPP relative to R_{h} . In the tropics, terrestrial carbon uptake reduces throughout both simulations and the land turns into a carbon source in the final 50 years of both simulations. In the extratropics, the land is a carbon sink for most of both simulations, only turning into an occasional net source towards the end of the century. Overall, cumulative carbon uptake in *esmrcp26restor* is 16% higher than in *esmrcp26* (Table 1). The overall increased carbon uptake in *esmrcp26restor* relative to
225 *esmrcp26* becomes apparent in the difference in cumulative F_{LA} (Fig. 4C). The difference between the two simulations first grows until 2036 CE, but then declines again after 2066 CE. This pattern is due to a greater change in NPP relative to R_{h} in *esmrcp26restor*. First the tropical land cover change increases NPP relative to R_{h} in *esmrcp26restor* while in *esmrcp26* this ratio remains unchanged until 2036 CE. In the last part of both simulations NPP then declines relative to R_{h} , but more so in *esmrcp26restor* due to lower CO_2 fertilisation from lower atmospheric CO_2 compared to *esmrcp26*, causing the difference
230 between both simulations to shrink. The global cumulative difference in land to atmosphere flux between *esmrcp26restor* and *esmrcp26* is -23.4 Pg C (Table 1), with the largest difference at 2031 CE (-26.5 Pg C).

A large multi-year variability in F_{LA} is associated with fluctuations between the components of the land-atmosphere carbon flux (Fig. 2C). Global NPP in the simulations exhibits large multi-year variability of 4 Pg C year^{-1} throughout both simu-

Table 2. Cumulative global fluxes of all carbon cycle components: land-atmosphere flux (F_{LA}), ocean-atmosphere flux (F_{OA}), deforestation emissions (E_{DEFOR}), fossil fuel emissions (E_{FF}), and total net flux to atmosphere (F_A) in the restoration simulation, the control simulation, and their differences. F_{LA} is the difference between heterotrophic respiration (R_h) and NPP. “Interactive” = calculated by the model, “Prescribed” = taken from input data. Negative values represent a carbon sink to the atmosphere.

Carbon fluxes	Definition	Control (Pg C)	Restoration (Pg C)	Difference (Pg C)
$\sum F_{LA}$	Interactive	-143.3	-166.7	-23.4
$\sum F_{OA}$	Interactive	-149.0	-134.0	15.0
$\sum E_{DEFOR}$	Interactive	16.1	6.5	-9.6
$\sum E_{FF}$	Prescribed	321.6	321.6	0.0
$\sum F_A$	$\sum F_{LA} + F_{OA} + E_{DEFOR} + E_{FF}$	45.4	27.4	-18.0

lations, driven by climate variability (Fig. 3A). This variability of ~ 4 Pg C year⁻¹ is also seen in F_{SC} and translates into a ~ 3 Pg C year⁻¹ variability in ΔSC and R_h (Fig. 3B, E, and F).

3.3 Ocean and Atmosphere feedbacks

The ocean net carbon sink (i.e. ocean to atmosphere carbon flux, F_{OA}) declines in both *esmrcp26* and *esmrcp26restor* over the whole simulation period (Fig. 2D). The cumulative net sink is smaller in *esmrcp26restor* compared to *esmrcp26* by 15 Pg C, resulting from the lower atmospheric CO₂ concentrations, leading to a reduced disequilibrium between ocean pCO₂ and the atmospheric CO₂ concentrations. This reduced uptake by the ocean limits the impact of restoration on atmospheric CO₂. The cumulative difference in F_{OA} increases between both runs between 2014–2036 CE before saturating in the second part of the century (Fig. 4C and Table 2).

The net carbon flux into the atmosphere (F_A) peaks in the mid-2040s before turning negative (Fig. ??C). This is driven firstly by the specified RCP 2.6 fossil fuel emission scenario which peaks at 2020 CE (Fig. ??B). The difference between *esmrcp26* and *esmrcp26restor* is that peak emissions are lower because of the additional forest restoration and halting anthropogenic land use emissions (Fig. ??B). Cumulatively, F_A is lower by 18 Pg C in *esmrcp26restor* than *esmrcp26* (Table 2).

This 18 Pg C difference is equivalent to a benefit of 9.5 ppm atmospheric CO₂ in *esmrcp26restor*. The maximum difference between both simulations is 17.1 ppm at 2037 CE (35.1 Pg C), with an extended period of relatively lower CO₂ concentrations until 2070s (Fig. 5C), and seen more clearly as decadal means (Fig. 5D). After the 2070s the difference between *esmrcp26* and *esmrcp26restor* diminishes, caused by a combined decline in ocean and land carbon uptake in *esmrcp26restor* relative to *esmrcp26*. Both can be explained through the carbon cycle response to lower atmospheric CO₂: a decrease in the difference in partial pressure of CO₂ between atmosphere and oceans, and a decline in plant NPP due to lower CO₂ fertilisation. This results in a CO₂ sensitivity to forest restoration of -0.61 ppm CO₂ per 10³ Mha restored (Table A3).

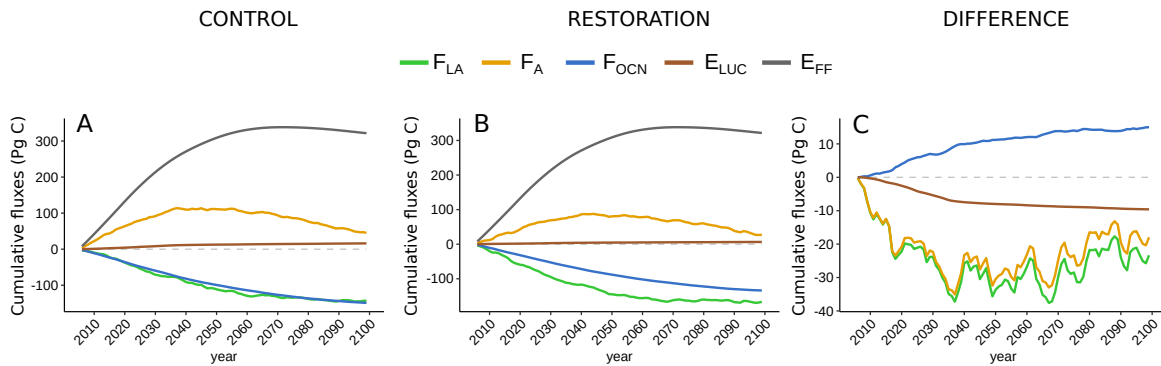


Figure 4. Effect of tropical land use stop and secondary succession on cumulative global carbon fluxes (2006–2100 CE) in (A) control and (B) restoration, and (C) cumulative difference between restoration and control simulation for land-atmosphere flux (F_{LA} , green), ocean-atmosphere flux (F_{OA} , blue), deforestation emissions (E_{DEFOR} , brown), atmospheric carbon (F_A , orange), and fossil fuel emissions (E_{FF} , grey). The difference in fossil fuel emissions is zero and not plotted. Dashed line indicated zero, fluxes below zero indicate a carbon benefit in the restoration simulation w.r.t. the control simulation. Note the different vertical scales.

3.4 Biogeophysical feedbacks

255 Beyond CO_2 , several other Earth System feedbacks may be important for large-scale tropical restoration impacts on global surface air temperatures; change in albedo, evapotranspiration, and precipitation. Surface albedo decreases in both simulations, yet more so in *esmrcp26restor*. This “darkening” is due to trees with darker canopies replacing grasses and crops. Most of this occurs in the tropics, with surface albedo substantially lower in *esmrcp26restor* (5% , 2.62 W m^{-2}). This has a warming effect on Earth’s surface temperature. Increased forest cover can also lead to increases in cloud cover and thus changes in top of the atmosphere (TOA) albedo. Both global and tropical mean TOA albedo decreases in both simulations with similar magnitudes, suggesting no overall impact of large scale forest regrowth on albedo from changes in cloud cover in HadGEM2-ES.

260

Evapotranspiration (ET) of water at, or near, the surface moderates surface temperature through the surface latent heat flux. Increased woody vegetation increases ET and surface latent heat flux, which lowers surface temperature and counteracts the warming effect of lower albedo in the tropics. The total latent heat flux over land in the tropics remains relatively constant in *esmrcp26*, but increases with the vegetation change in *esmrcp26restor* over the first two decades before levelling off for the remainder of the century. The decadal averaged tropical latent heat flux is 0.52 W m^{-2} higher in *esmrcp26restor* than in *esmrcp26* in 2090s, and therefore only moderately offsets the 2.62 W m^{-2} surface energy surplus from the lowered albedo. The spatial pattern of the combined annual average for the whole simulation period shows a strong latent heat flux in areas with increased abundance in broadleaf trees.

265

270 Finally, ET and other land surface properties may affect precipitation. While global precipitation increases in *esmrcp26* and *esmrcp26restor* over the first 40 years, this broadly follows the increase in global temperature. Mean land-only precipitation in

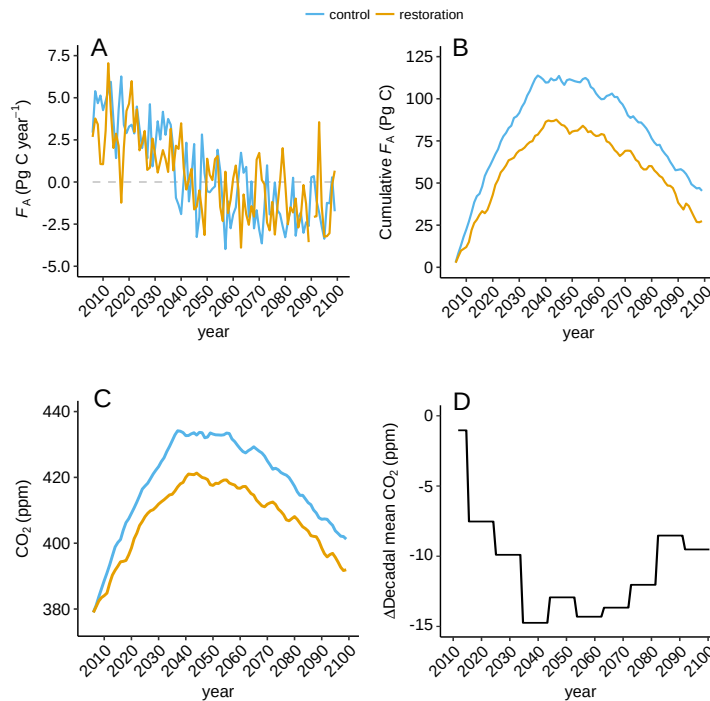


Figure 5. Impact of tropical land use stop on net carbon flux into the atmosphere and CO_2 , (A) Net carbon flux into the atmosphere (F_A), (B) cumulative F_A , (C) atmospheric CO_2 for restoration (yellow) and control (blue) simulation, and (D) decadal averaged CO_2 difference between the simulations. Note the different vertical scales.

the tropics over the whole simulation is 2% higher in *esmrcp26restor* than in *esmrcp26*, but as no robust spatial pattern is seen over the tropical restoration area it is unclear if this is due to internal variability or a systematic change.

3.5 Surface temperature

275 Restoration reduces global surface temperatures by nearly 0.2°C in the first 30 years of the simulation as a result from the net
 impact of radiative CO_2 forcing, albedo and ET changes. However, this difference weakens to become negligible by the 2090s
 (Fig. 6B and C). The early temperature differences overlap with the periods with the largest differences in atmospheric CO_2
 and before changes in surface energy, due to lowered albedo, counteract the reduced radiative CO_2 forcing later in the century.
 This suggests that tropical forest restoration has near-term climate benefits, and in combination with fossil fuel mitigation can
 280 lower peak warming.

Under both simulations global average temperature stays below 2°C , but surpasses 1.5°C relative to pre-industrial during
 nearly 50 years after 2035 CE (Fig. 6A). As the standard deviation of the decadal variability of HadGEM2-ES is 0.1°C (Jones
 et al., 2011), only the short-term impacts of restoration result in a detectable temperature reduction.

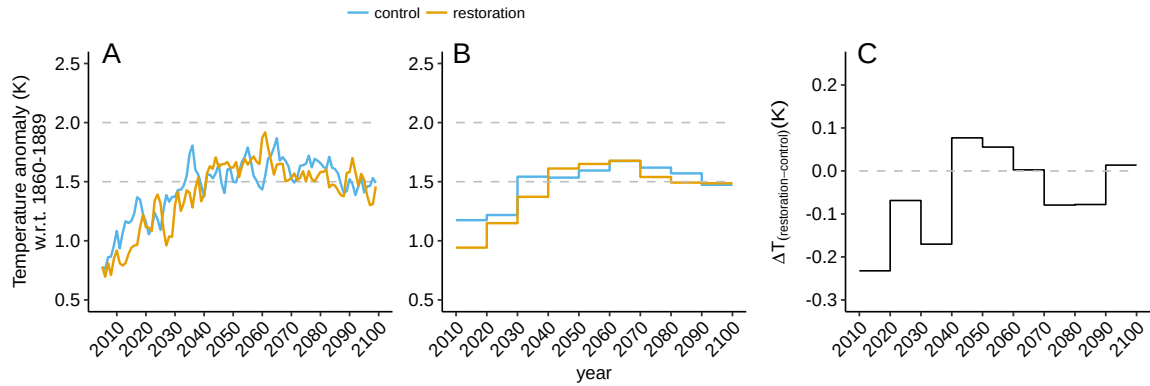


Figure 6. Global temperature time series showing (A) annual averages and (B) decadal averages for the restoration (yellow) and control (blue) simulation; (C) decadal difference between both simulations.

No persistent spatial temperature patterns are observable over time in comparing *esmrcp26* and *esmrcp26restor*. There is, however, a temperature gradient between sites with increased broadleaf trees and adjacent areas. Grid cells with increased tree cover are up to 0.6°C warmer than adjacent cells that have no new tree growth, as seen on the tropical restoration boundaries, suggesting that albedo warming is stronger than ET cooling in these cells, causing localised surface warming, which in turn may lead to lower plant carbon uptake and increased soil respiration.

4 Discussion

Stopping anthropogenic land use in the tropics has two impacts on land cover. First as most deforestation in RCP 2.6 is projected to occur in the tropics over the first half of the 21st century, 286 Mha deforestation is avoided by the end of the century (9.6 Pg C reduction in emissions). Second, trees replace grassy vegetation during secondary succession, renaturalising 1529 Mha of land. NPP, litterfall, soil carbon, and soil respiration respond to the land cover change. Overall, as NPP declines less than litterfall under restoration, tropical total biomass increases by 105.5 Pg C in *esmrcp26restor* compared to a loss of 28.8 Pg C in *esmrcp26*, given a net biomass increase of 134.4 Pg C. However, while often neglected, lower CO_2 fertilisation reduces biomass growth outside the tropics by 4.4 Pg C, and changes in soil carbon dynamics store 96.5 Pg C less in soils in *esmrcp26restor* over the simulation period, as reductions in R_h are lower than those in F_{SC} following restoration. This leaves a net land carbon sink under both simulations, but an additional land carbon benefit from restoration of only 23.4 Pg C. The ocean air-sea carbon exchange responds almost instantaneously to the enhanced land carbon sink through a cumulative reduction in carbon uptake of 15 Pg C over the century following restoration, relative to *esmrcp26*. The combined effect leads to a reduction in atmospheric carbon of 18 Pg C between both simulations, equivalent to modest a 9.3 ppm CO_2 by the end of the century, given 1529 Mha were allowed to be restored and 286 Mha additional deforestation was avoided. The largest difference is found in the 2040s (30 Pg C; 14.6 ppm CO_2).

The net global temperature benefit from the combined effect of lower radiative forcing due to lower atmospheric CO₂ concentrations and the biogeophysical responses to land cover change is up to 0.2°C in the decades after restoration, but is minimal (<0.01°C) by the end of the century. Overall, large-scale restoration increases carbon storage on land, and can reduce warming in the decades after restoration. Critically, when combined with aggressive mitigation actions, stopping deforestation and restoring forest in the tropics can limit peak warming later this century. Yet, the carbon sequestration and implied climate benefits are substantially smaller than recent, widely publicised claims of a potential tree restoration carbon uptake of 205 Pg C globally (104 Pg C of that in the tropics) (Bastin et al., 2019, but see Bastin et al., 2020). The difference originates likely from ignoring the full range of Earth System feedbacks.

4.1 Restoration timescales and carbon uptake

Generally succession is reproduced in HadGEM2-ES following a grass-shrub-tree cycle, which is likely too slow as observations show that carbon accumulation is driven almost immediately by tree growth in most tropical locations. Meanwhile the absence of fire disturbance in HadGEM2-ES means that succession is never interrupted. Given the slow tree growth in the model it is not surprising that the modelled pantropical median biomass increase of 1.8 Mg C ha⁻¹ yr⁻¹ (range 0.5–5.5 Mg C ha⁻¹ yr⁻¹; see SI) for first 20 years is lower than the observed net carbon uptake rates over 20–30 years after the cessation of land use for the tropics (2.5–6.6 Mg C ha⁻¹ yr⁻¹, Bonner et al., 2013; Koch et al., 2019), although values as low as 1.5 Mg C ha⁻¹ yr⁻¹ have been reported (Brown and Lugo, 1992). The median uptake rate of 0.5 Mg C ha⁻¹ yr⁻¹ simulated in later decades is in agreement with other studies from different parts of the tropics (Houghton and Nassikas, 2018; Lewis et al., 2009; Phillips et al., 2009; Poorter et al., 2016). Consequently, the modelled biomass increase after 20 years (41 Mg C ha⁻¹, Fig. A5) is also smaller than the biomass observed in recovering forest in various regions of the Neotropics (135–150 Mg C ha⁻¹, Orihuela-Belmonte et al., 2013; Poorter et al., 2016). The median biomass (165.2 Mg C ha⁻¹) by the end of the simulation is in the range of reported values for the tropics (100–200 Mg C ha⁻¹, Saatchi et al., 2011). Initial grid-box biomass, however, was already higher in *esmrcp26restor* than biomass found in real world post-disturbance monitoring plots, meaning less modelled biomass growth is sufficient to match observations.

The low biomass increase leads to an underestimate in carbon accumulation in the model by a factor of up to two and adjusting for this would equal a 15 ppm CO₂ uptake by the end of the century in *esmrcp26restor* compared to *esmrcp26*. This is because a doubling in biomass would be caused by either an increase in NPP and no change in litter flux, or no change in NPP and a decline in litter flux, causing no change in soil carbon and R_h , meaning the ratio between NPP and R_h increases, leading to an increase in tropical F_{LA} also by a factor of two (83.6 Pg C). Scaling this by the ratio between F_{LA} (tropics) and F_{LA} (global) (Table 1) gives the global F_{LA} from doubling tropical biomass (46.8 Pg C). Scaling by the ratio between F_{OA} and F_{LA} (Table 2) results in a cumulative net flux to the atmosphere of 30 Pg C, equal to 15 (14.2–16) ppm CO₂ (based on 2.00 ± 0.12 Pg C = 1 ppm CO₂ in HadGEM2-ES). This estimate assumes a linear carbon cycle response to increasing biomass and excludes any climate-carbon cycle feedbacks. This suggests that assisted restoration, i.e. reducing competition from grasses and shrubs, is preferable from a carbon uptake perspective over more natural restoration approaches.

4.2 Tropical restoration and carbon cycle feedbacks

Stopping tropical deforestation has a greater carbon benefit on a per unit area basis ($0.034 \text{ Pg C Mha}^{-1}$; $9.6 \text{ Pg C} / 286 \text{ Mha}$) compared to forest restoration ($0.027 \text{ Pg C Mha}^{-1}$; $41.8 \text{ Pg C} / 1529 \text{ Mha}$). Taken together, preventing tropical deforestation of 286 Mha (9.6 Pg C) and the subsequent tropical forest restoration (41.8 Pg C) of 1529 Mha has a carbon benefit of 51.4 Pg C over *esmrcp26* by 2100 CE, excluding any feedbacks. This is at the lower end of published uptake estimates when normalised over the renaturalised area (Table 3). The difference is primarily influenced by the choice of model (e.g. interactive calculation of biomass vs fixed biomass scaling, processes included), CO_2 scenario choice, reference point (time zero, before restoration vs an evolving control simulation) and the type of renaturalisation. This shows that estimates that do not include carbon cycle and climate feedback processes overestimate the carbon uptake potential of natural climate solutions. Our simulations are closest to unguided forest restoration, while other studies calculate uptake rates from either simulated reforestation or assisted natural regeneration (without successional cycle). Assisted natural regeneration obtains higher carbon uptake rates faster but needs to be actively managed (i.e. more expensive) and, if implemented incorrectly, prone to detrimental impacts on biodiversity and other ecosystem functions (Lewis and Maslin, 2018). The soil carbon response is also important, but is often ignored (Bastin et al., 2019) or uncertain (Friedlingstein et al., 2014).

The carbon benefit from tropical forest restoration (51.4 Pg C) is partially offset by the Earth System response to lower atmospheric CO_2 . In particular by a lower extratropical uptake in *esmrcp26restor* compared to *esmrcp26* (18.5 Pg C) and a lower ocean carbon uptake (15 Pg C). This leads to 65% of the carbon benefit being diminished by reductions in carbon uptake by the ocean and extra-tropical forests. This is larger than the 20–50% range found in previous studies employing coupled carbon cycle models (Arora and Montenegro, 2011; Bathiany et al., 2010; Jones et al., 2016; Pongratz et al., 2009; Stocker et al., 2011) and the 53% of anthropogenic emissions taken up by land and ocean carbon sinks over 1990–2018 (Friedlingstein et al., 2019b). The difference is likely to be down the use of dynamically regrowing vegetation vs prescribed land cover, uncertainties in the CO_2 fertilisation effect on plants, the sensitivity of the land carbon to temperature changes, the sensitivity of ocean carbon to changing temperatures and atmospheric CO_2 concentrations, and different time scales (decades to multiple centuries). The actual carbon benefit when considering the Earth System response (18 Pg C) is smaller than the 51.4 Pg C from emission reduction and tropical vegetation uptake alone due to changes in soil carbon, CO_2 fertilisation, and ocean carbon cycle feedbacks. This is important, as other approaches often do not take into account these CO_2 feedbacks or the response of the carbon cycle to climate change. Indeed, the most high-profile restoration potential estimate Bastin et al. (2019) includes none of these feedbacks, suggesting a CO_2 benefit normalised by area far higher than all other estimates (Table 3).

All carbon fluxes and carbon cycle responses combined add up to a CO_2 reduction of 9.3 ppm at the end of the century. A prior study utilising a fully-coupled ESM and reforesting 270 Mha cropland in the tropics (compared to 1529 Mha renaturalised here) under the SRES A2 scenario finds a CO_2 benefit of more than double: 20 ppm CO_2 (Arora and Montenegro, 2011). Their CO_2 sensitivity to tropical vegetation regrowth (CO_2 benefit normalised by the area returned to natural vegetation, Arora and Montenegro, 2011) was substantially higher than both other studies (Claussen et al., 2001; Bathiany et al., 2010) and the sensitivity found by this experiment (Table A3). The higher normalised CO_2 benefit is due to prescribed vegetation,

Table 3. Carbon uptake estimates for tropical afforestation (affor), reforestation (refor), and forest restoration (restor), normalised by area, cumulative uptake by 2100 CE, renaturalised area, type of renaturalisation strategy, and method for calculation, whether carbon cycle feedbacks (CC), biogeophysical feedbacks (BP), CO₂ fertilisation (β), or plant temperature responses (γ) were included, successional dynamics, CO₂ concentrations in control experiments. ESM = Earth System Model. All values are for tropics only (tropics as specified by each study), except Lewis et al. (2019b) includes some extratropical regions under the Bonn Challenge. Note that Arora and Montenegro (2011) uses the term afforestation for turning present-day cropland that would be forest back into forest, here we label this reforestation.

Carbon uptake (Pg C / Mha)	Cumulative		Type	Method	Feedbacks included	Successional dynamics	CO ₂ (ppm)	Study
	Carbon uptake (Pg C)	Area (Mha)						
0.03	27	1052	affor	ESM	CC & BP	no	275	Bathiany et al. (2010)
0.19	50	270	refor	ESM	CC & BP	no	760	Arora and Montenegro (2011)
0.08	85	1036	rest	Bookkeeping	none	no	present-day	Houghton and Nassikas (2018)
0.35	104	295	rest	Extrapolation	none	no	present-day	Bastin et al. (2019)
0.21	19.9 (2050 CE)	94	refor+affor	Extrapolation	none	no	present-day	Busch et al. (2019)
0.12	42	350	rest	Extrapolation	$\beta + \gamma$	no	present-day	Lewis et al. (2019b)
0.03	51.4	1529	rest	ESM	CC & BP	plant competition	450	this study

meaning cropland instantaneously becomes forest rather than is converted through secondary succession, the choice of a higher CO₂ scenario resulting in a greater CO₂ fertilisation of vegetation, and a 30% lower ocean carbon sensitivity to changes in atmospheric carbon in CanESM2 (Friedlingstein et al., 2014), resulting in a lower reduction in ocean carbon uptake following an increased land carbon sink. This demonstrates that ESM estimates of the benefit of forest restoration vary with model formulation and baseline scenario. The sensitivity found here is within the range of earlier studies (Table A3), and employs a more recent ESM and scenario choice.

4.3 Temperature benefit to low emissions

The IPCC Special Report on 1.5°C permissible carbon budget to stay within 2°C (Rogelj et al., 2018) is 445 Pg C (± 180 Pg C) between 2006 CE and 2100 CE, with 139 Pg C already used (Friedlingstein et al., 2019b). The diagnosed fossil fuel emissions in HadGEM2-ES (E_{FF} : 320.4 Pg C) combined with the prognostic *esmrcp26* land use change emissions (E_{DEFOR} : 16.1 Pg C) therefore are close to the emissions budget for 2°C. Together with the prescribed RCP 2.6 non-CO₂ radiative forcings and biogeophysical feedback processes in the model warming only amounts to 1.5°C relative to the pre-industrial by the 2090s in both HadGEM2-ES simulations. This is due to a relatively low transient climate response to cumulative emissions (TCRE) of 1.1°C per 1000 Pg C in HadGEM2-ES (5–95% range of observational TCRE constraints: (0.7–2.0°C per 1000 Pg C, Gillett et al., 2013)). Therefore it is not surprising that the small CO₂ benefit (18 Pg C) in *esmrcp26restor* relative to the standard RCP 2.6 *esmrcp26* does not result in a detectable cooling at the end of the century.

4.4 Assessing model dependence

Although our findings are based on a single Earth System Model, two key conclusions are model independent: (i) in a world where emission reductions follow the Paris Agreement, restoration is best deployed immediately, and (ii) the ocean carbon
390 feedbacks will reduce the efficacy of negative emissions technologies, natural or technological. Replicating this experiment with other ESMS would likely give a smaller or larger carbon benefit from large scale tropical restoration, depending on how the various processes impacting the carbon cycle are represented. The simulation of the biomass increase after the cessation of anthropogenic land use depends on whether the dynamical expansion of vegetation is included, the variety of PFTs in the model and the implementation of their resource competition (with a greater number of PFTs, however, not necessarily
395 performing better, Koven et al., 2020), the inclusion of fire disturbance, and the balance between productivity and mortality (commonly a challenge for ESMS, Negrón-Juárez et al., 2015). The representation of land use, whether only deforestation emissions or more complex processes are considered, is another factor influencing the carbon benefit in our experimental set up. For example, including processes such as tillage leads to increase historical land use change emissions by 70% (Pugh et al., 2015). The response of vegetation to changes in atmospheric CO₂ depends on the magnitude of CO₂ fertilisation which
400 is limited by nutrient (nitrate and phosphate) availability. Nutrient limitation is not included in HadGEM2-ES, models that include nutrient limitation generally show a weaker CO₂ fertilisation impact on plant productivity (50–100%, Huntzinger et al., 2017; Fleischer et al., 2019) but the magnitude of the effect in the real world is still uncertain (Haverd et al., 2020). The decline of the ocean carbon sink when lowering atmospheric CO₂ is an expected response (Schwinger and Tjiputra, 2018), its sensitivity to changes in atmospheric CO₂ (and temperature), however, is between 39% lower and 30% higher than the carbon
405 sink in HadGEM2-ES over the historical period (Friedlingstein et al., 2014). Comparing these processes with HadGEM2-ES, the greater carbon benefit from cutting higher land use emissions would be balanced by the smaller negative impact of lower atmospheric CO₂ on extratropical carbon uptake, with an uncertain magnitude in ocean carbon uptake change. A coordinated effort exploring the intermodel spread of earth system feedbacks to nature-based solutions (e.g. in the Carbon Dioxide Removal Model Intercomparison Project–CDRMIP, Keller et al., 2018) would be beneficial given the importance of these feedbacks and
410 the policy relevance of nature-based solutions.

5 Conclusions

We find small temperature benefits from large-scale tropical forest restoration over a few decades, and no impact in the longer term. Tropical restoration reduces peak atmospheric CO₂ concentrations, but the Earth System response to tropical restoration itself offsets nearly two-thirds of the initial carbon benefit from restoration. This work provides further insight into the Earth
415 System response to negative emissions, particularly under a policy-relevant low CO₂ trajectory. Some of these findings may be model-dependent, due to low modelled NPP of broadleaf trees, large modelled changes in albedo, and lower modelled changes in ET. Given the idealised extent of the forest restoration (1529 Mha) in this experiment, currently pledged restoration (e.g. 350 Mha in the Bonn Challenge, over four times less than the restored area here) would have little noticeable impact on global temperatures in the long-term even if HadGEM2-ES underestimates its impact somewhat. This result does not mean that natural

420 solutions are not important for meeting climate targets. While ecosystem restoration only has a small carbon benefit in the long term and is no alternative to reducing fossil fuel emissions, it can, however, contribute to reducing peak CO₂ concentrations and peak temperatures, which may be critical for societal and ecosystem adaptation. Furthermore negative emissions and lower atmospheric CO₂ concentrations represent a system of diminishing returns. The magnitude of the land and ocean carbon sinks becomes smaller as atmospheric CO₂ decreases and thereby erasing up to two thirds of the additional carbon sink from
425 LULCC. While well known in the modelling community (Jones et al., 2016; Schwinger and Tjiputra, 2018), it is also important to consider that the carbon benefits of avoided deforestation and the increase in forest cover are not fully realized because the resulting reduction in atmospheric CO₂ also reduces carbon uptake by the ocean and extra-tropical forests to avoid making misleading statements (e.g. Bastin et al., 2019) on the potential of carbon sinks from tropical restoration (Bastin et al., 2020; Friedlingstein et al., 2019a; Lewis et al., 2019a). In short, the more processes are considered in mitigation estimates for negative
430 emission technologies—dynamic vegetation, climate, and carbon cycle response—the greater the reduction in their mitigation potential.

However, this idealised experiment shows that in the short to medium term (~30 years) carbon uptake from tropical forest restoration, alongside radical reduction in fossil fuel use can provide a valuable additional time until other negative emission technologies become more widely available to remove countries' remaining residual emissions to meet the societal goal of
435 stabilising the climate by reaching net zero greenhouse gas emissions.

Code and data availability. Code and data to recreate figures are available from <http://dx.doi.org/10.17632/j39bw4rzsr.1>

Appendix A

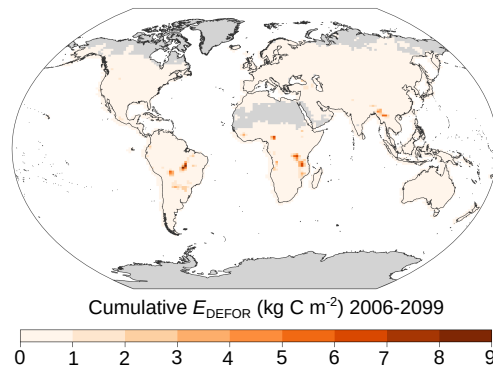


Figure A1. Hotspots of deforestation emissions in RCP 2.6. Cumulative deforestation emissions (2006–2099 CE) in the control simulation.

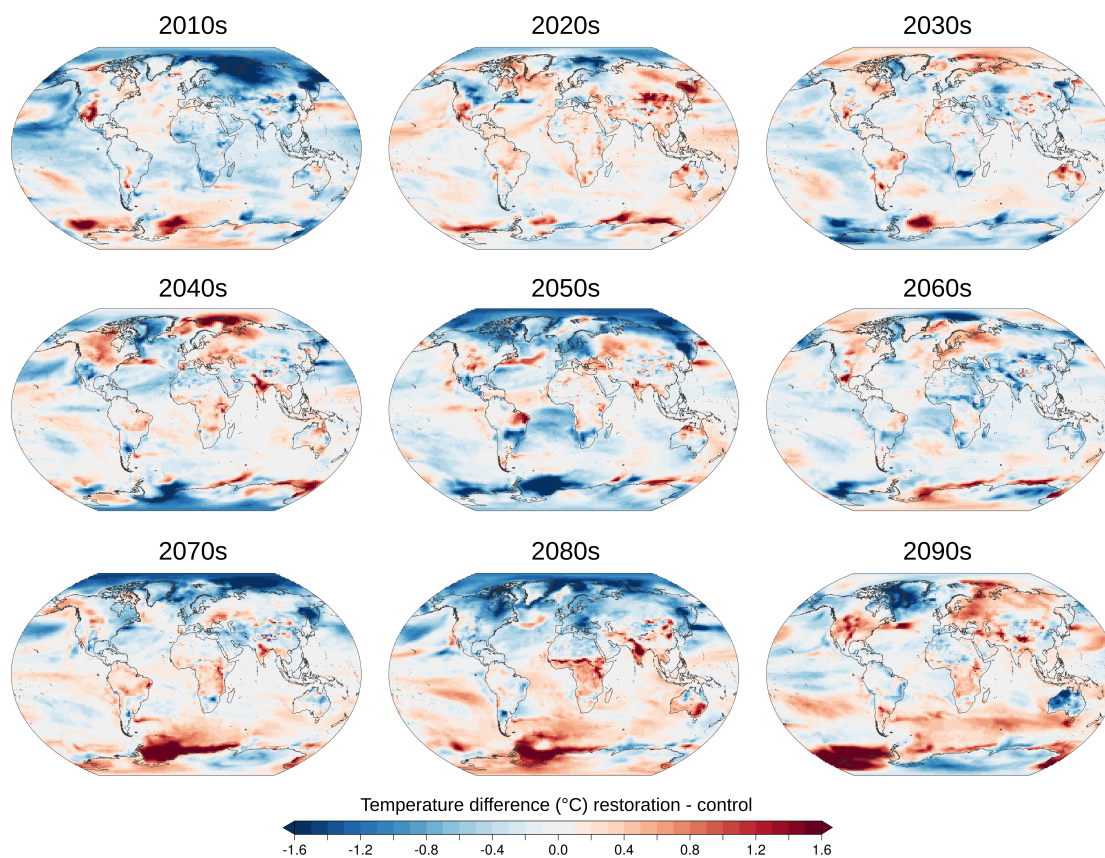


Figure A2. Temperature difference of decadal means between *esmrcp26restor* and *esmrcp26*.

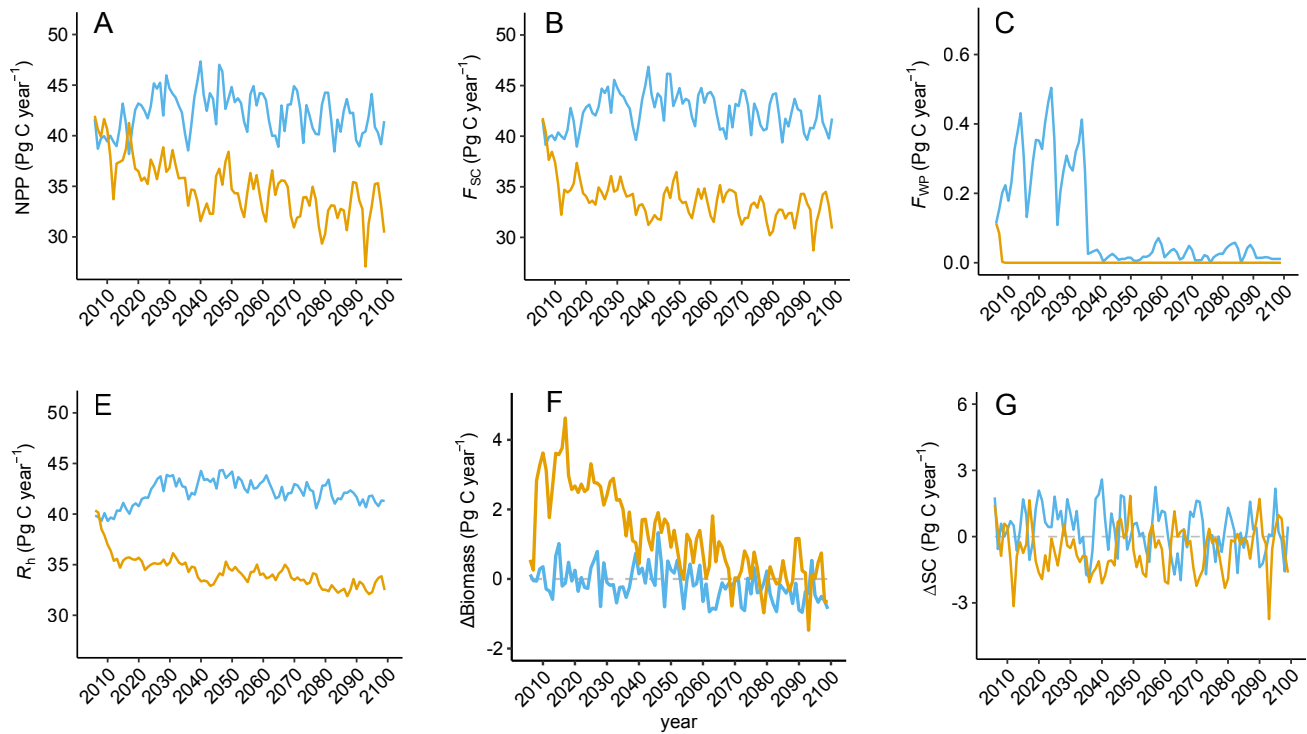


Figure A3. Time series of (A) global net primary production (NPP), (B) global carbon flux into the soil (FSC), (C) global carbon flux into the wood product pools (FWP), (D) global annual change in above ground biomass ($\Delta\text{Biomass}$), (E) global soil respiration (R_h), and (F) global annual change in soil carbon (ΔSC) in the restoration (yellow) and control(blue) simulation.

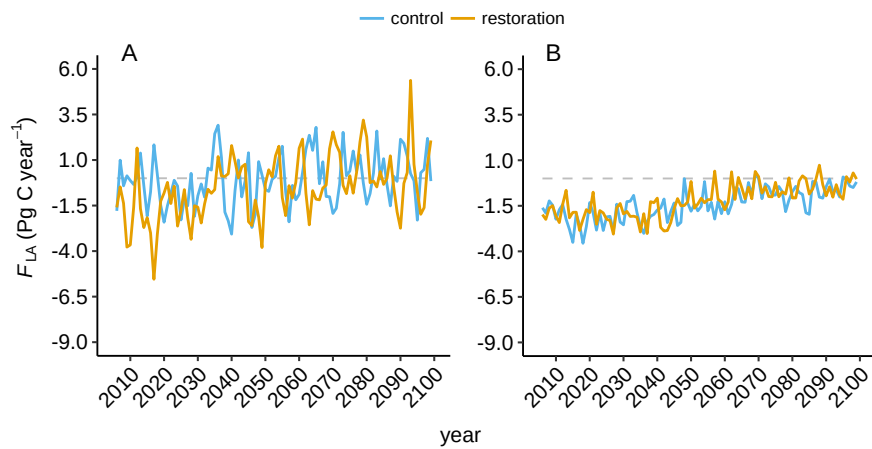


Figure A4. Tropical (A) and extratropical (B) land-atmosphere flux (F_{LA}) in the restoration (yellow) and control (blue) simulation.

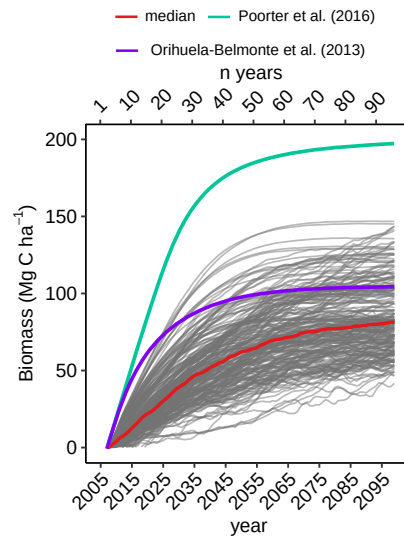


Figure A5. Aboveground biomass change in regenerating broadleaf forest in the restoration simulation. Modelled median increase (red) compared to observations (Orihuela-Belmonte et al., 2013; Poorter et al., 2016). Regenerating broadleaf forest are defined as grid cells with an increase in broadleaf PFTs of >30% of grid cell value.

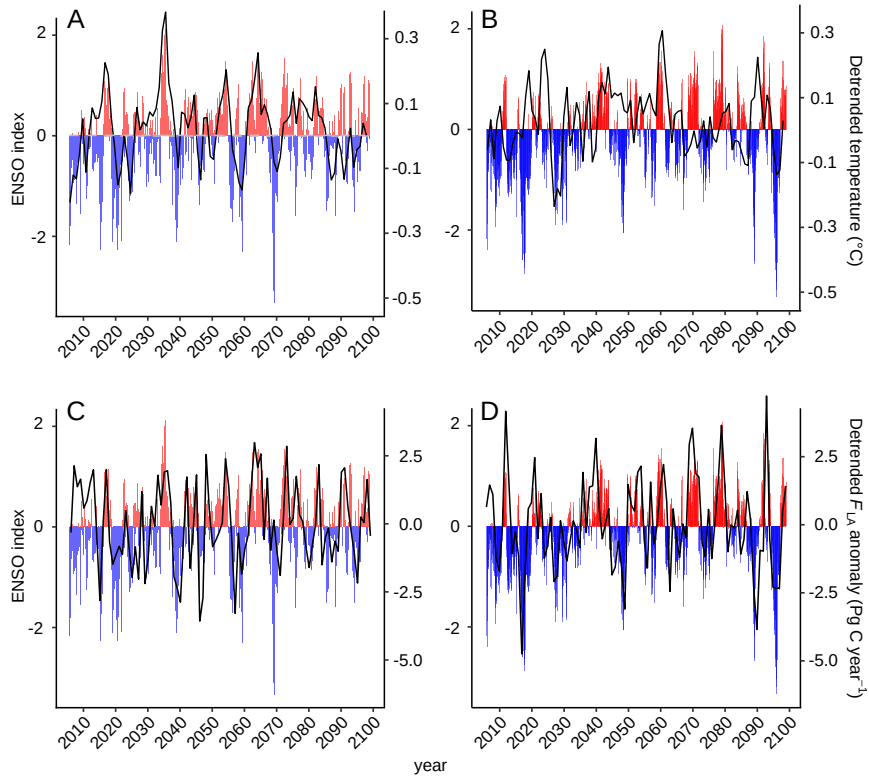


Figure A6. The impact of ENSO on global surface air temperature in the (A) control and (B) restoration simulation, and on the land carbon sink (F_{LA}) in the (C) control and (D) restoration simulation. Positive ENSO values represent El Niño events (red), negative values represent La Niña events (blue).

Table A1. Change in land cover between control and restoration simulation by 2100 CE (in Mha; 1 Mha = 10,000 km²). Negative values indicate a decrease in land cover type in the restoration simulation. Anthropogenic land use is a mask that covers all land cover type areas (see Methods 2.1.1). Note: values may not add up completely due to rounding.

	Land use	Bare soil	Broadleaf tree	Needleleaf tree	Shrubs	C ₃ grasses	C ₄ grasses
	(Mha)	(Mha)	(Mha)	(Mha)	(Mha)	(Mha)	(Mha)
ΔGlobal	-1815	104	778	15	380	-1034	-243
ΔTropics	-1815	1	786	10	409	-918	-287
ΔExtratropics	0	103	-8	5	-28	-116	44

Table A2. Global and tropical average net primary production (NPP) per PFT.

PFT	Broadleaf	Needleleaf	Shrubs	C ₃ grass	C ₄ grass
Global mean NPP (kg C m ⁻² year ⁻¹)	0.41	0.22	0.67	0.76	1.04
Tropics mean NPP (kg C m ⁻²)	0.68	0.66	0.92	1.34	2.05

Table A3. CO₂ and temperature sensitivities to forest regrowth (incl. land use change) in Earth System Models. Area weighted CO₂ and temperature for the last 20 simulation years (this simulation and Arora and Montenegro, 2011), the last 30 simulation years (Bathiany et al., 2010), and an average of the last 150 simulation years (Claussen et al., 2001).

CO ₂ (ppm 10 ³ Mha ⁻¹)	Temperature (°C 10 ³ Mha ⁻¹)	Study
-0.99	-0.007	Claussen et al. (2001)(Claussen et al., 2001)
-0.38	-0.006	Bathiany et al. (2010)(Bathiany et al., 2010)
-7.41	-0.059	Arora & Montenegro (2011) (Arora and Montenegro, 2011)
-0.61	-0.002	This simulation

Author contributions. AK, CB, and SSL conceived and developed the study; AK performed and analysed the experiment, and wrote the manuscript, all authors commented on the manuscript.

440 *Competing interests.* The authors declare no competing interest.

Acknowledgements. We thank E. Robertson for providing the HadGEM2-ES control simulation. We are grateful for computational support from the National Centre for Atmospheric Science (NCAS), especially G. Lister and R. Hatcher, and the UK national high performance computing service, ARCHER. We thank two anonymous reviewers for their suggestions. This work has been supported by the UK Natural Environmental Research Council Doctoral Training Partnership initiative (NE/L002485/1).

445 References

- Allen, M. R., Frame, D. J., Huntingford, C., Jones, C. D., Lowe, J. A., Meinshausen, M., and Meinshausen, N.: Warming caused by cumulative carbon emissions towards the trillionth tonne, *Nature*, 458, 1163–1166, <https://doi.org/10.1038/nature08019>, <http://www.nature.com/doi/10.1038/nature08019>, 2009.
- Arora, V. K. and Montenegro, A.: Small temperature benefits provided by realistic afforestation efforts, *Nat. Geosci.*, 4, 514–518, <https://doi.org/10.1038/ngeo1182>, 2011.
- 450 Bastin, J.-F., Finegold, Y., Garcia, C., Mollicone, D., Rezende, M., Routh, D., Zohner, C. M., and Crowther, T. W.: The global tree restoration potential, *Science* (80.), 365, 76–79, <https://doi.org/10.1126/science.aax0848>, <http://www.sciencemag.org/lookup/doi/10.1126/science.aax0848>, 2019.
- Bastin, J.-F., Yelena Finegold, Garcia, C., Gellie, N., Lowe, A. J., Mollicone, D., Rezende, M., Routh, D., Sacande, M., Sparrow, B., Zohner, C. M., and Crowther, T. W.: Erratum for the Report: “The global tree restoration potential”, *Science*, 368, <https://doi.org/10.1126/science.abc8905>, <https://science-sciencemag-org.eproxy.lib.hku.hk/content/368/6494/eabc8905>, publisher: American Association for the Advancement of Science Section: Erratum, 2020.
- 455 Bathiany, S., Claussen, M., Brovkin, V., Raddatz, T., and Gayler, V.: Combined biogeophysical and biogeochemical effects of large-scale forest cover changes in the MPI earth system model, *Biogeosciences*, 7, 1383–1399, <https://doi.org/10.5194/bg-7-1383-2010>, 2010.
- 460 Bonner, M. T. L., Schmidt, S., and Shoo, L. P.: A meta-analytical global comparison of aboveground biomass accumulation between tropical secondary forests and monoculture plantations, *For. Ecol. Manage.*, 291, 73–86, <https://doi.org/10.1016/j.foreco.2012.11.024>, <http://dx.doi.org/10.1016/j.foreco.2012.11.024>, 2013.
- Brown, S. and Lugo, A.: Aboveground biomass estimates for tropical moist forests of the Brazilian Amazon, *Interciencia*, 17, 8–18, 1992.
- Busch, J., Engelmann, J., Cook-Patton, S. C., Griscorn, B. W., Kroeger, T., Possingham, H., and Shyamsundar, P.: Potential for low-cost carbon dioxide removal through tropical reforestation, *Nat. Clim. Chang.*, 9, 463–466, <https://doi.org/10.1038/s41558-019-0485-x>, <http://www.nature.com/articles/s41558-019-0485-x>, 2019.
- 465 Claussen, M., Brovkin, V., and Ganopolski, A.: Biogeophysical versus biogeochemical feedbacks of largerscale land cover change, *Geophys. Res. Lett.*, 28, 1011–1014, <http://onlinelibrary.wiley.com/doi/10.1029/2000GL012471/full>, 2001.
- Collins, W. J., Bellouin, N., Doutriaux-Boucher, M., Gedney, N., Halloran, P., Hinton, T., Hughes, J., Jones, C. D., Joshi, M., Liddicoat, S., Martin, G., O'Connor, F., Rae, J., Senior, C., Sitch, S., Totterdell, I., Wiltshire, A., and Woodward, S.: Development and evaluation of an Earth-System model – HadGEM2, *Geosci. Model Dev.*, 4, 1051–1075, <https://doi.org/10.5194/gmd-4-1051-2011>, <http://www.geosci-model-dev.net/4/1051/2011/>, 2011.
- Cox, P. M.: Description of the " TRIFFID " Dynamic Global Vegetation Model, Tech. rep., 2001.
- Essery, R., Best, M., and Cox, P.: MOSES 2.2 Technical Documentation, Tech. rep., Met Office, London, 2001.
- 475 Essery, R. L. H., Best, M. J., Betts, R. a., Cox, P. M., and Taylor, C. M.: Explicit representation of subgrid heterogeneity in a GCM land surface scheme, *J. Hydrometeorol.*, 4, 530–543, [https://doi.org/10.1175/1525-7541\(2003\)004<0530:EROSHI>2.0.CO;2](https://doi.org/10.1175/1525-7541(2003)004<0530:EROSHI>2.0.CO;2), <http://hdl.handle.net/10036/48595>, 2003.
- Fleischer, K., Rammig, A., De Kauwe, M. G., Walker, A. P., Domingues, T. F., Fuchs-lueger, L., Garcia, S., Goll, D. S., Grandis, A., Jiang, M., Haverd, V., Hofhansl, F., Holm, J. A., Kruijt, B., Leung, F., Medlyn, B. E., Mercado, L. M., Norby, R. J., Pak, B., von Randow, C., Quesada, C. A., Schaap, K. J., Valverde-Barrantes, O. J., Wang, Y.-P., Yang, X., Zaehle, S., Zhu, Q., and Lapola, D. M.: Amazon forest response
- 480

- to CO₂ fertilization dependent on plant phosphorus acquisition, *Nat. Geosci.*, 12, 736–741, <https://doi.org/10.1038/s41561-019-0404-9>, <http://dx.doi.org/10.1038/s41561-019-0404-9>, 2019.
- Friedlingstein, P., Meinshausen, M., Arora, V. K., Jones, C. D., Anav, A., Liddicoat, S. K., and Knutti, R.: Uncertainties in CMIP5 climate projections due to carbon cycle feedbacks, *J. Clim.*, 27, 511–526, <https://doi.org/10.1175/JCLI-D-12-00579.1>, 2014.
- 485 Friedlingstein, P., Allen, M., Canadell, J. G., Peters, G. P., and Seneviratne, S. I.: Comment on “The global tree restoration potential”, *Science* (80), 366, eaay8060, <https://doi.org/10.1126/science.aay8060>, <http://www.sciencemag.org/lookup/doi/10.1126/science.aay8060>, 2019a.
- Friedlingstein, P., Jones, M. W., O’Sullivan, M., Andrew, R. M., Hauck, J., Peters, G. P., Peters, W., Pongratz, J., Sitch, S., Le Quéré, C., Bakker, D. C. E., Canadell, J. G., Ciais, P., Jackson, R. B., Anthoni, P., Barbero, L., Bastos, A., Bastrikov, V., Becker, M., Bopp, L., Buitenhuis, E., Chandra, N., Chevallier, F., Chini, L. P., Currie, K. I., Feely, R. A., Gehlen, M., Gilfillan, D., Gkritzalis, T., Goll, D. S., Gruber, N., Gutekunst, S., Harris, I., Haverd, V., Houghton, R. A., Hurtt, G., Ilyina, T., Jain, A. K., Joetzjer, E., Kaplan, J. O., Kato, E., Klein Goldewijk, K., Korsbakken, J. I., Landschützer, P., Lauvset, S. K., Lefèvre, N., Lenton, A., Lienert, S., Lombardozzi, D., Marland, G., McGuire, P. C., Melton, J. R., Metzl, N., Munro, D. R., Nabel, J. E. M. S., Nakaoka, S.-I., Neill, C., Omar, A. M., Ono, T., Peregón, A., Pierrot, D., Poulter, B., Rehder, G., Resplandy, L., Robertson, E., Rödenbeck, C., Séférian, R., Schwinger, J., Smith, N., Tans, P. P., Tian, H., Tilbrook, B., Tubiello, F. N., van der Werf, G. R., Wiltshire, A. J., and Zaehle, S.: Global Carbon Budget 2019, *Earth System Science Data*, 11, 1783–1838, <https://doi.org/10.5194/essd-11-1783-2019>, <https://essd.copernicus.org/articles/11/1783/2019/>, 2019b.
- 495 Gillett, N. P., Arora, V. K., Matthews, D., and Allen, M. R.: Constraining the ratio of global warming to cumulative CO₂ emissions using CMIP5 simulations, *J. Clim.*, 26, 6844–6858, <https://doi.org/10.1175/JCLI-D-12-00476.1>, 2013.
- Griscom, B. W., Adams, J., Ellis, P. W., Houghton, R. A., Lomax, G., Miteva, D. A., Schlesinger, W. H., Shoch, D., Siikamäki, J. V., Smith, P., Woodbury, P., Zganjar, C., Blackman, A., Campari, J., Conant, R. T., Delgado, C., Elias, P., Gopalakrishna, T., Hamsik, M. R., Herrero, M., Kiesecker, J., Landis, E., Laestadius, L., Leavitt, S. M., Minnemeyer, S., Polasky, S., Potapov, P., Putz, F. E., Sander-manc, J., Silvius, M., Wollenberg, E., and Fargione, J.: Natural Climate Solutions Symposium, *Proc. Natl. Acad. Sci.*, 114, 1–6, <https://doi.org/10.1073/pnas.1710465114>, 2017.
- Haverd, V., Smith, B., Canadell, J. G., Cuntz, M., Mikaloff-Fletcher, S., Farquhar, G., Woodgate, W., Briggs, P. R., and Trudinger, C. M.: Higher than expected CO₂ fertilization inferred from leaf to global observations, *Global Change Biology*, 26, 2390–2402, <https://doi.org/10.1111/gcb.14950>, <http://onlinelibrary.wiley.com/doi/abs/10.1111/gcb.14950>, [_eprint: https://onlinelibrary.wiley.com/doi/pdf/10.1111/gcb.14950](https://onlinelibrary.wiley.com/doi/pdf/10.1111/gcb.14950), 2020.
- 505 Houghton, R. A. and Nassikas, A. A.: Negative emissions from stopping deforestation and forest degradation, globally, *Glob. Chang. Biol.*, 24, 350–359, <https://doi.org/10.1111/gcb.13876>, 2018.
- Houghton, R. A., Byers, B., and Nassikas, A. A.: A role for tropical forests in stabilizing atmospheric CO₂, *Nat. Clim. Chang.*, 5, 1022–1023, <https://doi.org/10.1038/nclimate2869>, <http://www.nature.com/doi/10.1038/nclimate2869>, 2015.
- 510 Huntzinger, D. N., Michalak, A. M., Schwalm, C., Ciais, P., King, A. W., Fang, Y., Schaefer, K., Wei, Y., Cook, R. B., Fisher, J. B., Hayes, D., Huang, M., Ito, A., Jain, A. K., Lei, H., Lu, C., Maignan, F., Mao, J., Parazoo, N., Peng, S., Poulter, B., Ricciuto, D., Shi, X., Tian, H., Wang, W., Zeng, N., and Zhao, F.: Uncertainty in the response of terrestrial carbon sink to environmental drivers undermines carbon-climate feedback predictions, *Scientific Reports*, 7, 1–8, <https://doi.org/10.1038/s41598-017-03818-2>, <http://www.nature.com/articles/s41598-017-03818-2>, number: 1 Publisher: Nature Publishing Group, 2017.
- Hurtt, G. C., Chini, L. P., Frohling, S., Betts, R. a., Feddema, J., Fischer, G., Fisk, J. P., Hibbard, K., Houghton, R. a., Janetos, a., Jones, C. D., Kindermann, G., Kinoshita, T., Klein Goldewijk, K., Riahi, K., Shevliakova, E., Smith, S., Stehfest, E., Thomson, a., Thornton, P., van

- Vuuren, D. P., and Wang, Y. P.: Harmonization of land-use scenarios for the period 1500-2100: 600 years of global gridded annual land-use transitions, wood harvest, and resulting secondary lands, *Clim. Change*, 109, 117–161, <https://doi.org/10.1007/s10584-011-0153-2>, 2011.
- 520 IPCC: The Physical Science Basis. Contribution of Working Group I to the Fifth Assessment Report of the Intergovernmental Panel on Climate Change, Cambridge University Press, Cambridge & New York, NY, 2013.
- Jones, C., Robertson, E., Arora, V., Friedlingstein, P., Shevliakova, E., Bopp, L., Brovkin, V., Hajima, T., Kato, E., Kawamiya, M., Liddicoat, S., Lindsay, K., Reick, C. H., Roelandt, C., Segschneider, J., and Tjiputra, J.: Twenty-First-Century Compatible CO₂ Emissions and Airborne Fraction Simulated by CMIP5 Earth System Models under Four Representative Concentration Pathways, *J. Clim.*, 26, 4398–
- 525 4413, <https://doi.org/10.1175/JCLI-D-12-00554.1>, <http://journals.ametsoc.org/doi/abs/10.1175/JCLI-D-12-00554.1>, 2013.
- Jones, C., Ciais, P., Davis, S. J., Friedlingstein, P., Gasser, T., Peters, G. P., Rogelj, J., van Vuuren, D. P., Canadell, J. G., Cowie, A., Jackson, R. B., Jonas, M., Kriegler, E., Littleton, E., Lowe, J. A., Milne, J., Shrestha, G., Smith, P., Torvanger, A., and Wiltshire, A.: Simulating the Earth system response to negative emissions, *Environ. Res. Lett.*, 11, 095 012, <https://doi.org/10.1088/1748-9326/11/9/095012>, <http://stacks.iop.org/1748-9326/11/i=9/a=095012?key=crossref.6b5747055a178d1c59ffa940adb33091>, 2016.
- 530 Jones, C. D., Hughes, J. K., Bellouin, N., Hardiman, S. C., Jones, G. S., Knight, J., Liddicoat, S., O'Connor, F. M., Andres, R. J., Bell, C., Boo, K.-O., Bozzo, a., Butchart, N., Cadule, P., Corbin, K. D., Doutriaux-Boucher, M., Friedlingstein, P., Gornall, J., Gray, L., Halloran, P. R., Hurtt, G., Ingram, W., Lamarque, J.-F., Law, R. M., Meinshausen, M., Osprey, S., Palin, E. J., Parsons Chini, L., Raddatz, T., Sanderson, M., Sellar, a. a., Schurer, a., Valdes, P., Wood, N., Woodward, S., Yoshioka, M., and Zerroukat, M.: The HadGEM2-ES implementation of CMIP5 centennial simulations, *Geosci. Model Dev. Discuss.*, 4, 689–763, <https://doi.org/10.5194/gmdd-4-689-2011>, 2011.
- 535 Joos, F., Meyer, R., Bruno, M., and Leuenberger, M.: The variability in the carbon sinks as reconstructed for the last 1000 years, *Geophys. Res. Lett.*, 26, 1437, <https://doi.org/10.1029/1999GL900250>, 1999.
- Keller, D. P., Lenton, A., Scott, V., Vaughan, N. E., Bauer, N., Ji, D., Jones, C. D., Kravitz, B., Muri, H., and Zickfeld, K.: The Carbon Dioxide Removal Model Intercomparison Project (CDRMIP): rationale and experimental protocol for CMIP6, *Geoscientific Model Development*, 11, 1133–1160, <https://doi.org/10.5194/gmd-11-1133-2018>, <https://www.geosci-model-dev.net/11/1133/2018/>, 2018.
- 540 Koch, A., Brierley, C., Maslin, M. M., and Lewis, S. L.: Earth system impacts of the European arrival and Great Dying in the Americas after 1492, *Quat. Sci. Rev.*, 207, 13–36, <https://doi.org/10.1016/j.quascirev.2018.12.004>, <https://doi.org/10.1016/j.quascirev.2018.12.004>, 2019.
- Koven, C. D., Knox, R. G., Fisher, R. A., Chambers, J. Q., Christoffersen, B. O., Davies, S. J., Detto, M., Dietze, M. C., Faybishenko, B., Holm, J., Huang, M., Kovenock, M., Kueppers, L. M., Lemieux, G., Massoud, E., McDowell, N. G., Muller-Landau, H. C., Needham, J. F.,
- 545 Norby, R. J., Powell, T., Rogers, A., Serbin, S. P., Shuman, J. K., Swann, A. L. S., Varadharajan, C., Walker, A. P., Wright, S. J., and Xu, C.: Benchmarking and parameter sensitivity of physiological and vegetation dynamics using the Functionally Assembled Terrestrial Ecosystem Simulator (FATES) at Barro Colorado Island, Panama, *Biogeosciences*, 17, 3017–3044, <https://doi.org/https://doi.org/10.5194/bg-17-3017-2020>, <https://bg.copernicus.org/articles/17/3017/2020/>, publisher: Copernicus GmbH, 2020.
- Lamb, D., Erskine, P. D., and Parrotta, J. A.: Restoration of Degraded Tropical Forest Landscapes, *Science* (80), 310, 1628–1632, 2005.
- 550 Le Quéré, C., Andrew, R. M., Friedlingstein, P., Sitch, S., Pongratz, J., Manning, A. C., Korsbakken, J. I., Peters, G. P., Canadell, J. G., Jackson, R. B., Boden, T. A., Tans, P. P., Andrews, O. D., Arora, V. K., Bakker, D. C. E., Barbero, L., Becker, M., Betts, R. A., Bopp, L., Chevallier, F., Chini, L. P., Ciais, P., Cosca, C. E., Cross, J., Currie, K., Gasser, T., Harris, I., Hauck, J., Haverd, V., Houghton, R. A., Hunt, C. W., Hurtt, G., Ilyina, T., Jain, A. K., Kato, E., Kautz, M., Keeling, R. F., Klein Goldewijk, K., Körtzinger, A., Landschützer, P., Lefèvre, N., Lenton, A., Lienert, S., Lima, I., Lombardozzi, D., Metzl, N., Millero, F., Monteiro, P. M. S., Munro, D. R., Nabel, J. E. M. S., Nakaoka,
- 555 S.-I., Nojiri, Y., Padin, X. A., Peregon, A., Pfeil, B., Pierrot, D., Poulter, B., Rehder, G., Reimer, J., Rödenbeck, C., Schwinger, J., Séférian,

- R., Skjelvan, I., Stocker, B. D., Tian, H., Tilbrook, B., Tubiello, F. N., Van Der Laan-Luijckx, I. T., Van Der Werf, G. R., Van Heuven, S., Viovy, N., Vuichard, N., Walker, A. P., Watson, A. J., Wiltshire, A. J., Zaehle, S., and Zhu, D.: Global Carbon Budget 2017, *Earth Syst. Sci. Data*, 10, 405–448, <https://doi.org/10.5194/essd-10-405-2018>, www.earth-syst-sci-data.net/10/405/2018/C.LeQu{e}r{e}.etal.:GlobalCarbonBudget2017407, 2018.
- 560 Lewis, S. L. and Maslin, M. A.: *The Human Planet: How we created the Anthropocene*, Pelican Books, London, 1 edn., 2018.
- Lewis, S. L., Lopez-Gonzalez, G., Sonké, B., Affum-Baffoe, K., Baker, T. R., Ojo, L. O., Phillips, O. L., Reitsma, J. M., White, L., Comiskey, J. A., Djuikouo K, M. N., Ewango, C. E., Feldpausch, T. R., Hamilton, A. C., Gloor, M., Hart, T., Hladik, A., Lloyd, J., Lovett, J. C., Makana, J. R., Malhi, Y., Mbago, F. M., Ndangalasi, H. J., Peacock, J., Peh, K. S., Sheil, D., Sunderland, T., Swaine, M. D., Taplin, J., Taylor, D., Thomas, S. C., Votere, R., and Wöll, H.: Increasing carbon storage in intact African tropical forests, *Nature*, 457, 1003–1006, <https://doi.org/10.1038/nature07771>, 2009.
- 565 Lewis, S. L., Mitchard, E. T. A., Prentice, C., Maslin, M., and Poulter, B.: Comment on “The global tree restoration potential”, *Science* (80), 366, eaaz0388, <https://doi.org/10.1126/science.aaz0388>, <http://www.sciencemag.org/lookup/doi/10.1126/science.aaz0388>, 2019a.
- Lewis, S. L., Wheeler, C. E., Mitchard, E. T. A., and Koch, A.: Restoring natural forests is the best way to remove atmospheric carbon, *Nature*, 568, 25–28, <https://doi.org/10.1038/d41586-019-01026-8>, <http://www.nature.com/articles/d41586-019-01026-8>, 2019b.
- 570 Liddicoat, S., Jones, C., and Robertson, E.: CO₂ emissions determined by HadGEM2-ES to be compatible with the representative concentration pathway scenarios and their extensions, *J. Clim.*, 26, 4381–4397, <https://doi.org/10.1175/JCLI-D-12-00569.1>, 2013.
- Negrón-Juárez, R. I., Koven, C. D., Riley, W. J., Knox, R. G., and Chambers, J. Q.: Observed allocations of productivity and biomass, and turnover times in tropical forests are not accurately represented in CMIP5 Earth system models, *Environ. Res. Lett.*, 10, <https://doi.org/10.1088/1748-9326/10/6/064017>, 2015.
- 575 Orihuela-Belmonte, D. E., De Jong, B. H. J., Mendoza-Vega, J., Van der Wal, J., Paz-Pellat, F., Soto-Pinto, L., and Flamenco-Sandoval, a.: Carbon stocks and accumulation rates in tropical secondary forests at the scale of community, landscape and forest type, *Agric. Ecosyst. Environ.*, 171, 72–84, <https://doi.org/10.1016/j.agee.2013.03.012>, 2013.
- Phillips, O. L., Aragao, L. E. O. C., Lewis, S. L., Fisher, J. B., Lloyd, J., Lopez-Gonzalez, G., Malhi, Y., Monteagudo, A., Peacock, J., Quesada, C. A., van der Heijden, G., Almeida, S., Amaral, I., Arroyo, L., Aymard, G., Baker, T. R., Banki, O., Blanc, L., Bonal, D., Brando, P., Chave, J., de Oliveira, A. C. A., Cardozo, N. D., Czimczik, C. I., Feldpausch, T. R., Freitas, M. A., Gloor, E., Higuchi, N., Jimenez, E., Lloyd, G., Meir, P., Mendoza, C., Morel, A., Neill, D. A., Nepstad, D., Patino, S., Penuela, M. C., Prieto, A., Ramirez, F., Schwarz, M., Silva, J., Silveira, M., Thomas, A. S., Steege, H. t., Stropp, J., Vasquez, R., Zelazowski, P., Davila, E. A., Andelman, S., Andrade, A., Chao, K.-J., Erwin, T., Di Fiore, A., C., E. H., Keeling, H., Killeen, T. J., Laurance, W. F., Cruz, A. P., Pitman, N. C. A., Vargas, P. N., Ramirez-Angulo, H., Rudas, A., Salamao, R., Silva, N., Terborgh, J., and Torres-Lezama, A.: Drought Sensitivity of the Amazon Rainforest, *Science* (80), 323, 1344–1347, <https://doi.org/10.1126/science.1164033>, <http://www.sciencemag.org/cgi/doi/10.1126/science.1164033>, 2009.
- 585 Pongratz, J., Reick, C. H., Raddatz, T., and Claussen, M.: Effects of anthropogenic land cover change on the carbon cycle of the last millennium, *Global Biogeochem. Cycles*, 23, 1–13, <https://doi.org/10.1029/2009GB003488>, 2009.
- Poorter, L., Bongers, F., Aide, T. M., Almeyda Zambrano, A. M., Balvanera, P., Becknell, J. M., Boukili, V., Brancalion, P. H. S., Broadbent, E. N., Chazdon, R. L., Craven, D., de Almeida-Cortez, J. S., Cabral, G. A. L., de Jong, B. H. J., Denslow, J. S., Dent, D. H., DeWalt, S. J., Dupuy, J. M., Durán, S. M., Espírito-Santo, M. M., Fandino, M. C., César, R. G., Hall, J. S., Hernandez-Stefanoni, J. L., Jakovac, C. C., Junqueira, A. B., Kennard, D., Letcher, S. G., Licona, J.-c., Lohbeck, M., Marín-Spiotta, E., Martínez-Ramos, M., Massoca, P., Meave, J. A., Mesquita, R., Mora, F., Muñoz, R., Muscarella, R., Nunes, Y. R. F., Ochoa-Gaona, S., de Oliveira, A. A., Orihuela-Belmonte, E., Peña-Claros, M., Pérez-García, E. A., Piotto, D., Powers, J. S., Rodríguez-Velázquez, J., Romero-Pérez, I. E., Ruíz, J., Saldarriaga,

J. G., Sanchez-Azofeifa, A., Schwartz, N. B., Steininger, M. K., Swenson, N. G., Toledo, M., Uriarte, M., van Breugel, M., van der
595 Wal, H., Veloso, M. D. M., Vester, H. F. M., Vicentini, A., Vieira, I. C. G., Bentos, T. V., Williamson, G. B., and Rozendaal, D. M. A.:
Biomass resilience of Neotropical secondary forests, *Nature*, 530, 211–214, <https://doi.org/10.1038/nature16512>, <http://dx.doi.org/10.1038/nature16512><http://www.nature.com/doi/10.1038/nature16512>, 2016.

Pugh, T. A. M., Arneith, A., Olin, S., Ahlström, A., Bayer, A. D., Goldewijk, K. K., Lindeskog, M., and Schurgers, G.: Simulated carbon
emissions from land-use change are substantially enhanced by accounting for agricultural management, *Environmental Research Letters*,
600 10, 124 008, <https://doi.org/10.1088/1748-9326/10/12/124008>, publisher: IOP Publishing, 2015.

Rogelj, J., Shindell, D., Jiang, K., Fifita, S., Forster, P., Ginzburg, V., Handa, C., Kheshgi, H., Kobayashi, S., Kriegler, E., Mundaca, L.,
Séférián, R., and Vilaríño, M.: Mitigation Pathways Compatible with 1.5°C in the Context of Sustainable Development, in: *Glob. Warm.*
1.5°C. An IPCC Spec. Rep. impacts *Glob. Warm. 1.5°C above pre-industrial levels Relat. Glob. Greenh. gas Emiss. pathways*, Context
Strength. *Glob. response to Threat Clim. Chang.*, edited by Masson-Delmotte, V., Zhai, P., Pörtner, H.-O., Roberts, D., Skea, J., Shukla, P.,
605 Pirani, A., Moufouma-Okia, W., Péan, C., Pidcock, R., Connors, S., Matthews, J., Chen, Y., Zhou, X., Gomis, M., Lonnoy, E., Maycock,
T., Tignor, M., and Waterfield, T., chap. 2, p. 82, IPCC, Geneva, 2018.

Saatchi, S. S., Harris, N. L., Brown, S., Lefsky, M., Mitchard, E. T. A., and Salas, W.: Benchmark map of forest carbon stocks in tropical
regions across three continents, *PNAS*, 108, <https://doi.org/10.1073/pnas.1019576108>, 2011.

Schwinger, J. and Tjiputra, J.: Ocean carbon cycle feedbacks under negative emissions, *Geophys. Res. Lett.*,
610 <https://doi.org/10.1029/2018GL077790>, <http://doi.wiley.com/10.1029/2018GL077790>, 2018.

Smith, P., Davis, S. J., Creutzig, F., Fuss, S., Minx, J., Gabrielle, B., Kato, E., Jackson, R. B., Cowie, A., Kriegler, E., van Vuuren, D. P.,
Rogelj, J., Ciais, P., Milne, J., Canadell, J. G., McCollum, D., Peters, G., Andrew, R., Krey, V., Shrestha, G., Friedlingstein, P., Gasser,
T., Grubler, A., Heidug, W. K., Jonas, M., Jones, C. D., Kraxner, F., Littleton, E., Lowe, J., Moreira, J. R., Nakicenovic, N., Obersteiner,
M., Patwardhan, A., Rogner, M., Rubin, E., Sharifi, A., Torvanger, A., Yamagata, Y., Edmonds, J., and Yongsung, C.: Biophysical and
615 economic limits to negative CO₂ emissions, *Nat. Clim. Chang.*, 6, 42–50, <http://dx.doi.org/10.1038/nclimate2870>, 2016.

Stocker, B. D., Strassmann, K., and Joos, F.: Sensitivity of Holocene atmospheric CO₂ and the modern carbon budget to early human land
use: analyses with a process-based model, *Biogeosciences*, 8, 69–88, <https://doi.org/10.5194/bg-8-69-2011>, <http://www.biogeosciences.net/8/69/2011/>, 2011.

Taylor, K. E., Stouffer, R. J., and Meehl, G. a.: A Summary of the CMIP5 Experiment Design, *Tech. Rep.* January 2011,
620 <https://doi.org/10.1175/BAMS-D-11-00094.1>, <http://cmip-pcmdi.llnl.gov/cmip5/docs/Taylor{ }CMIP5{ }design.pdf>, 2007.

United Nations Treaty Collection: Paris Agreement, 2016.

van Vuuren, D. P., Stehfest, E., den Elzen, M. G. J., Kram, T., van Vliet, J., Deetman, S., Isaac, M., Goldewijk, K. K., Hof, A., Beltran,
A. M., Oostenrijk, R., and van Ruijven, B.: RCP2.6: Exploring the possibility to keep global mean temperature increase below 2C, *Clim.*
Change, 109, 95–116, <https://doi.org/10.1007/s10584-011-0152-3>, 2011.

625 Veldman, J. W., Aleman, J. C., Alvarado, S. T., Anderson, T. M., Archibald, S., Bond, W. J., Boutton, T. W., Buchmann, N., Buisson, E.,
Canadell, J. G., Dechoum, M. d. S., Diaz-Toribio, M. H., Durigan, G., Ewel, J. J., Fernandes, G. W., Fidelis, A., Fleischman, F., Good, S. P.,
Griffith, D. M., Hermann, J.-M., Hoffmann, W. A., Le Stradic, S., Lehmann, C. E. R., Mahy, G., Nerlekar, A. N., Nippert, J. B., Noss, R. F.,
Osborne, C. P., Overbeck, G. E., Parr, C. L., Pausas, J. G., Pennington, R. T., Perring, M. P., Putz, F. E., Ratnam, J., Sankaran, M., Schmidt,
I. B., Schmitt, C. B., Silveira, F. A. O., Staver, A. C., Stevens, N., Still, C. J., Strömberg, C. A. E., Temperton, V. M., Varner, J. M., and Za-
630 loulomis, N. P.: Comment on “The global tree restoration potential”, *Science* (80), 366, eaay7976, <https://doi.org/10.1126/science.aay7976>,
<http://www.sciencemag.org/lookup/doi/10.1126/science.aay7976>, 2019.