

A triple tree-ring constraint for tree growth and physiology in a global land surface model

Jonathan Barichivich^{1,2}, Philippe Peylin¹, Thomas Launois¹, Valerie Daux¹, Camille Risi³, Jina Jeong⁴, and Sebastiaan Luyssaert⁴

¹Laboratoire des Sciences du Climat et de l'Environnement (LSCE), Gif sur Yvette, France.

²Instituto de Conservación Biodiversidad y Territorio, Universidad Austral de Chile, Valdivia, Chile.

³Laboratoire de Météorologie Dynamique (LMD), Paris, France.

⁴Department of Ecological Sciences, VU University, 1081HV Amsterdam, The Netherlands.

Correspondence: Jonathan Barichivich (jonathan.barichivich@ipsl.lsce.fr)

Abstract. Annually-resolved tree-ring records extending back to pre-industrial conditions have the potential to constrain the responses of global land surface models at interannual to centennial time scales. Here, we demonstrate a framework to simultaneously constrain the representation of tree growth and physiology in the ORCHIDEE global land surface model using the simulated variability of tree-ring width and carbon ($\Delta^{13}\text{C}$) and oxygen ($\delta^{18}\text{O}$) stable isotopes in six sites in boreal and temperate Europe. We exploit the resulting tree-ring triplet to derive integrative constraints for leaf physiology and growth from well-known mechanistic relationships among the variables. ~~The model ORCHIDEE~~ simulates $\Delta^{13}\text{C}$ ($r = 0.31\text{-}0.80$) and $\delta^{18}\text{O}$ ($r = 0.36\text{-}0.74$) better than tree-ring width ($r < 0.55$), with an overall skill similar to that of ~~other models. The results show a tree-ring model (MAIDENiso) and another isotope-enabled global vegetation model (LPX-Bern). The comparison with tree-ring data showed~~ that growth variability is not well represented in ORCHIDEE, and that the parameterization of leaf-level physiological responses (stomatal control) to drought stress in the temperate region can be ~~improved with constrained using the interannual variability of tree-ring data~~ stable isotopes. The representation of carbon storage and remobilization dynamics ~~is critical~~ emerged as a critical process to improve the realism of simulated growth variability, temporal ~~carrying over~~ carryover and recovery of forest ecosystems after climate extremes. ~~The simulated physiological response to rising CO₂ over the 20th century is consistent with~~ Simulated forest Gross Primary Productivity (GPP) correlates with simulated tree-ring data in the temperate region, despite an overestimation of seasonal drought stress and stomatal control on photosynthesis. Photosynthesis correlates directly with isotopic $\Delta^{13}\text{C}$ and $\delta^{18}\text{O}$ variability, but the origin of ~~correlations with the correlations with tree-ring~~ $\delta^{18}\text{O}$ is not entirely physiological. The integration of tree-ring data and land surface models as demonstrated here should guide model improvements and contribute towards reducing current uncertainties in forest carbon and water cycling.

1 Introduction

A major challenge for the Land Surface Model (LSM) component of ~~the~~ Earth System models ~~currently used to project climate change~~ is to accurately simulate the historical and future dynamical coupling between the global biosphere and climate (Friedlingstein et al., 2014). Although LSMs are skillful at reproducing short-term (<20 years) contemporary observations

of plant water and carbon cycling, their ~~responses~~ simulated responses to environmental changes at longer time scales from decades to century are still highly uncertain and contribute to the spread in current climate change projections (Ciais et al., 2013; Friedlingstein et al., 2014). Some of these models project that the terrestrial biosphere will continue behaving as a carbon sink of anthropogenic emissions during the course of the century, while others simulate that it will turn into an additional carbon source to the atmosphere that will accelerate climate change (Friedlingstein et al., 2006; Jones et al., 2013; Friedlingstein et al., 2014). The uncertainties in simulated long-term trends are also evident for the water cycle and over the historical period (~~Phillips et al., 2019~~). ~~For instance, global models simulate trends in transpiration of European forests during the 20th century ranging from -7 to 9% for evergreen conifers and 3 to 26% for deciduous broadleaf forests (Frank et al., 2015) (Frank et al., 2015; Phillips et al., 2019).~~ The lack of a general agreement on the historical and future long-term responses of the terrestrial biosphere in land surface models thus limit confidence in future climate projections (Ciais et al., 2013).

The development, parameterization and evaluation of current land surface models have been based on a handful of manipulative experiments (Ainsworth and Long, 2005; Smith et al., 2015; Andresen et al., 2016; Song et al., 2019), a quasi-global network of eddy-covariance observations, Earth observations and forest inventories covering the last few decades. Most of these data streams are not able to reveal the temporal evolution of plant responses to global change factors at multi-decadal and longer time scales, where mechanistic understanding on how trees ~~adapt or perish to environmental changes~~ perish or adapt to environmental change is still limited (McDowell et al., 2008; Cailleret et al., 2018). ~~Empirical tree-ring studies~~ Tree-ring width and their carbon ($\delta^{13}\text{C}$) and oxygen ($\delta^{18}\text{O}$) stable isotope data are increasingly being used to address the lack of direct observations on long-term changes in plant physiology and growth with global change (~~Huang et al., 2007; Frank et al., 2015; Babst et al., 2018; Zuidema et al., 2018~~) ~~(Huang et al., 2007; Frank et al., 2015; Girardin et al., 2016; Babst et al., 2018; de Boer et al., 2019; Lavergne et al., 2020), and could provide the much needed long-term benchmark for land surface models (Zuidema et al., 2018).~~

~~The width, anatomy and chemistry of tree rings are unique integrators of responses to climatic and micro-climatic conditions directly affecting photosynthetic rates, carbon allocation patterns and cambial growth dynamics of trees (Fritts, 1976). Commonly measured tree-ring parameters such as ring width, density, anatomy and carbon and oxygen stable isotopes are therefore ideally suited to study the range of responses of mature trees to global change (Gunderson and Wullschlegel, 1994; Norby et al., 1999; Kirdyanov et al., 2005), especially if used together and for multiple species across a gradient of functional traits or environmental conditions (McCarroll et al., 2003). However, most of currently available tree-ring data have been collected for climate reconstruction purposes rather than for estimating forest growth changes (Klesse et al., 2018; Zhao et al., 2019). Re-purposing this vast archive to estimate and upscale growth trends from tree-level ring width data is still a major challenge in the tree-ring community (Bowman et al., 2013; Brien et al., 2017). Most of earlier attempts have been cursed by sampling biases associated with the preferential collection of the largest and oldest trees in dendroclimatology (Cherubini et al., 1998; Brien et al., 2012; Nehrbass-Ahles et al., 2014; Duchesne et al., 2019). Yet, annual tree rings are the only practical method of assessing historical growth and physiological responses over the lifespan of long-lived organisms like trees.~~

In recent decades, some dendrochronological and forest process-based models have successfully integrated the simulation of tree-ring width with ~~carbon or oxygen isotopic ratios~~ stable isotopes in order to interpret measurements and improve simulated tree water status, photosynthesis and growth (Fritts et al., 1999; Hemming et al., 2001; Ogée et al., 2009;

Eglin et al., 2010; Danis et al., 2012; Wei et al., 2014; Ulrich et al., 2019). ~~These models typically simulate short-term radial growth with different levels of complexity from the daily dynamics of cambial cells~~ Radial growth is represented with decreasing complexity from tree to stand-level models, considering different degrees of integration of controls from sources (photosynthesis and allocation) and sinks (cell growth) of carbon in the trees (Vaganov et al., 2011; Körner, 2015).

5 ~~The tree-ring community has developed a detailed source-sink representation of radial growth for conifers as the product of daily cambial dynamics and wood formation (i.e., cell division, enlargement, and wall thickening) to the carbon and water balance of an individual tree. Because the simulation of cell dynamics becomes complex and computationally expensive for scales larger than an individual tree, most forest models simulate radial growth based solely on carbon allocation to stem (Deleuze et al., 2004; Misson, 2004; Sato et al., 2007; Danis et al., 2012; Li et al., 2014).~~

10 ~~A dendrochronological model of intermediate complexity is MAIDENiso (Danis et al., 2012). It simulates annual growth increment at the tree level based on daily carbon allocation to leaves, stem, roots and storage as a function of climate, soil water balance and atmospheric CO₂. Along annual,~~ coupled or not to a full representation of tree-level photosynthesis and carbon allocation (Fritts et al., 1999; Hemming et al., 2001; Vaganov et al., 2011; Drew and Downes, 2015). Stand-level forest models parameterize radial growth of conifers and angiosperms as a direct dependency of photosynthesis, using the allocation

15 ~~of photosynthates and tree allometry (Deleuze et al., 2004; Misson, 2004; Sato et al., 2007; Li et al., 2014). A well-known stand-level tree-ring width, it concurrently simulates daily model using this approach is MAIDENiso (Danis et al., 2012; Lavergne et al., 2017), which has the unique triple capability to simulate radial growth and oxygen and carbon isotopic ratios. This triple tree-ring capability makes MAIDENiso a good reference for benchmarking mechanistic developments in larger scale vegetation models in tree rings.~~

20 ~~Tree rings have only recently been considered for the evaluation of models in the global land surface modelling community. However, currently~~ The representation of tree biomass growth in global land surface models is still rudimentary and is one of the critical areas where much improvement is needed (Fatichi et al., 2014; Körner, 2015; Jones et al., 2020). Like stand-level models, most global models represent growth using a simple carbon-source approach and consider it as the difference between instantaneous photosynthetic carbon assimilation and respiration. Sink processes of wood formation, emphasized in tree-level

25 ~~models (Vaganov et al., 2011), are neglected (Fatichi et al., 2014). Reserve pools of labile carbon are only recently being considered because of the need to realistically represent continued forest growth when photosynthesis is suppressed by environmental stresses (Naudts et al., 2015; Vuichard et al., 2019; Jones et al., 2020). Currently there is no global land surface model with the capability to explicitly simulate tree-ring width, despite the variety of approaches available to describe radial growth at different temporal and spatial scales.~~ Nevertheless, tree-ring width data have been used as an indirect benchmark for the interannual variability of simulated Net Primary Productivity in some global land surface models (~~Rammig et al., 2014, 2015; Churakova et al., 2016~~)

30 (~~Rammig et al., 2015; Churakova et al., 2016~~). In contrast to ring width, tree-ring ~~carbon ($\delta^{13}\text{C}$) or oxygen (or $\delta^{18}\text{O}$)~~ stable isotopes have already been incorporated in some global land surface models such as FOREST-BGC (Panek and Waring, 1997), ORCHIDEE (Shi et al., 2011; Churakova et al., 2016; Risi et al., 2016), JULES (Bodin et al., 2013), LPX-Bern (Saurer et al., 2014; Keel et al., 2016; Keller et al., 2017) and CLM4.5 (Raczka et al., 2016; Keller et al., 2017).

An enormous benefit of explicitly modelling tree-ring width and stable isotopes in the global land surface models is the ability to directly compare readily available tree-ring data to modelled data. Thus, the global models can be evaluated and improved with freely available worldwide tree-ring data found, for example, in the ITRDB and tree-ring laboratories around the world. Furthermore, the interpretation of these tree-ring data can be supported by model simulations. The comparison of simulated $\delta^{13}\text{C}$ and derived physiological indicators such as the carbon isotopic discrimination ($\Delta^{13}\text{C}$) by plants and the intrinsic water use efficiency (iWUE) with direct tree-ring isotopic measurements has helped benchmarking stomatal responses to drought stress and rising atmospheric CO_2 concentrations in the global models (Panek and Waring, 1997; Bodin et al., 2013; Saurer et al., 2014; Keller et al., 2017). Simulated $\delta^{18}\text{O}$ has been used to evaluate the representation of hydrological processes along the soil-plant-atmosphere continuum (Risi et al., 2016) and interpret the variability in tree-ring $\delta^{18}\text{O}$ data in terms of climatic drivers and source water $\delta^{18}\text{O}$ (Shi et al., 2011; Keel et al., 2016; Churakova et al., 2016). The interannual variability of tree-ring $\delta^{13}\text{C}$ and $\delta^{18}\text{O}$ has been shown to correlate with local eddy-covariance measurements of forest productivity (Belmecheri et al., 2014; Tei et al., 2019). A recent study showed that the relationship holds at regional scale and is stronger for $\delta^{18}\text{O}$ than $\delta^{13}\text{C}$ and tree-ring width (Levesque et al., 2019), suggesting that tree-ring isotopic variability might integrate large-scale physiological signals useful to evaluate global carbon cycle models. Yet, stable isotope-productivity relationships have not been studied in this type of models.

Empirical tree-ring studies ~~typically~~ frequently combine $\delta^{18}\text{O}$ and $\delta^{13}\text{C}$ as a means to mechanistically interpret plant physiological responses (~~Saurer et al., 1997; Scheidegger et al., 2000; Barnard et al., 2012; Roden and Farquhar, 2012~~) (Saurer et al., 1997; Scheidegger et al., 2000; Barnard et al., 2012; Roden and Farquhar, 2012). In contrast, most of the studies with land surface models have focused on the simulation and evaluation of a single tree-ring variable (Saurer et al., 2014; Keel et al., 2016; Keller et al., 2017). Key developments in the ORCHIDEE global land surface model now allow to explicitly simulate radial growth (Bellassen et al., 2010; Naudts et al., 2015; Jeong et al., 2020) and carbon and oxygen composition in tree-ring cellulose (Risi et al., 2016) ~~as done in the MAIDENiso tree-ring model (Danis et al., 2012)~~ as done in the MAIDENiso tree-ring model (Danis et al., 2012). This offers the opportunity to explore how multiple tree-ring variables can be used to constrain the long-term plant responses simulated by global land surface models and identify processes that need to be better represented or parameterized ~~in these models~~.

The aims of this study are to (i) integrate key developments and identify the critical processes to concurrently simulate the interannual variability of tree-ring width and its carbon ($\Delta^{13}\text{C}$) and oxygen (~~$\delta^{18}\text{O}$~~) stable isotopes in the ORCHIDEE global land surface model, (ii) develop a conceptual triple tree-ring constraint for simulated growth and physiology that exploits the mechanistic relationships among tree-ring variables, and (iii) evaluate the simulated relationships between productivity and tree-ring carbon and oxygen stable isotopes. We first assess and compare the ability of ORCHIDEE and ~~the MAIDENiso tree-ring model (Danis et al., 2012)~~ MAIDENiso models to simulate 20th century tree-ring width and isotopic variability, and their inter-relationships ~~climate responses and relationships with productivity~~ in the Fontainebleau forest in France. Then, we run ORCHIDEE in five other sites along a climate gradient from boreal Finland to temperate France, and compare its ability to simulate $\delta^{18}\text{O}$ variability in the gradient with that of the LPX-Bern global vegetation model (Keel et al., 2016). The simulated relationships between isotopic variability and productivity in ORCHIDEE are also evaluated along the gradient.

2 Model and evaluation data

2.1 Model description

The global land surface model ORCHIDEE (Krinner et al., 2005) is the terrestrial component of the IPSL (Institut Pierre Simon Laplace) Earth System model (Dufresne et al., 2013; Boucher et al., 2020). ORCHIDEE simulates the half-hourly exchange of energy, carbon and water between the terrestrial biosphere and the atmosphere, either coupled with the LMDz (Laboratoire de Météorologie Dynamique Zoom) general circulation model (Hourdin et al., 2006) or forced by observed meteorology.

The global forests are represented by eight Plant Functional Types (PFTs) described by a common set of governing equations with specific parameter values, with the only exception of some PFT-specific phenology representations (Krinner et al., 2005). Canopy photosynthesis is based on the leaf-level photosynthesis formulation of Farquhar et al. (1980) and together with respiration, the energy balance and hydrological processes are simulated at a half-hourly time step, which is the typical resolution of eddy-covariance measurements of carbon and water fluxes (Baldocchi et al., 2001). Leaf gas exchange is simulated by coupling the photosynthesis model with the stomatal conductance model of Ball et al. (1987). The CO₂ demand is determined as the minimum of Rubisco carboxylation and RuBP regeneration, while CO₂ supply depends on the difference in CO₂ concentration between the air outside the leaf and the carboxylation sites. Carbon allocation to the different vegetation pools, phenology and mortality are calculated at a daily time step.

Soil hydrology is modelled using a surface and a deep reservoir (Choisnel et al., 1995) ~~instead of the more complex multilayer soil diffusion scheme introduced in later versions of ORCHIDEE (Guimberteau et al., 2014)~~. Water enters the surface layer via throughfall, snow melt, and dew and frost. Water can leave the soil reservoir through transpiration, bare soil evaporation, surface runoff and drainage. Plant water stress is calculated at half-hourly time steps as a function of soil water content (McMurtrie et al., 1990) weighted by root mass. Water stress reduces transpiration through a direct reduction of stomatal conductance as soil moisture depletes.

The key developments used for simulating tree-ring parameters include the addition of a forest management module (Bellassen et al., 2010) and the simulation of oxygen stable isotope ratios along the soil-plant-atmosphere continuum (Risi et al., 2016). The model code used in this study (SVN r898 version) precede the current code that merged the nitrogen cycle and canopy structure in ORCHIDEE r5698 (Naudts et al., 2015; Vuichard et al., 2019), where the tree-ring functionality will also be ported (Jeong et al., 2020).

2.1.1 Tree-ring width

The forest management module explicitly simulates the temporal trajectory of stem growth of trees in a size-structured forest stand. The size structure of the stand is prescribed by defining a starting density of trees per hectare distributed across a number of stem diameter size classes, typically following an inverted-J distribution. Initial tree height and biomass are obtained by allometric relationships with stem diameter (Bellassen et al., 2010). For each PFT, photosynthesis and NPP are computed at the stand level at half-hourly and daily steps, respectively.

At the end of the year, accumulated woody NPP increment is allocated across the different diameter classes following an empirical competition rule for even-aged stands (Deleuze et al., 2004). A greater NPP share is allocated to larger dominant trees compared to smaller less vigorous trees, emulating the competition for light and resources within the stand. The absolute annual stem growth increment in the allocation rule is determined by a parameter (λ) that defines the slope between the fraction of NPP allocated to each diameter class and the mean diameter of the class. A second parameter (σ) represents a diameter threshold below which less vigorous trees receive only a fixed part of the yearly stand NPP increment. ~~These parameters are saved through the simulation and allow reconstructing the growth trajectory of each diameter class. In addition, the~~ The stem growth of the largest and smallest tree is tracked individually through the entire simulation (Bellassen et al., 2010).

Simulated tree-ring width (i.e., radial growth) for each diameter class was computed from annual increments in stem circumference as follows:

$$TRW_t = \frac{Circ_t - Circ_{t-1}}{2\pi} \quad (1)$$

where TRW_t is the annual tree-ring width in millimetres for year t and $Circ_t$ and $Circ_{t-1}$ are the stem circumferences for the current year and the previous year, respectively. The annual ring-widths simulated in this scheme account for the size-related trend in stem growth increment and PFT-specific tree allometry, providing a mean representation of radial growth for trees across a range of sizes that can be meaningfully compared with measured tree-ring width data. However, in this formulation tree-ring width variability ~~still~~ depends only on direct GPP allocation (i.e., it is a ~~carbon-source~~ carbon-source driven process) and does not consider the dynamics of carbon storage or wood formation processes that can account for a large fraction of observed interannual tree-ring width variation (Misson, 2004).

2.1.2 Tree-ring carbon isotopes

To ~~distinguish between variations in the~~ eliminate the effect of $\delta^{13}C$ of atmospheric CO_2 and preserve only the effects of plant metabolic processes, the ^{13}C enrichment of plant organic material is usually expressed in terms of the carbon isotope discrimination ($\Delta^{13}C$). Differences between the ^{13}C enrichment of atmospheric CO_2 and plant material are attributed to discriminatory processes during photosynthesis.

Photosynthetic carbon isotope discrimination was estimated at half-hourly time steps using the simple formulation of Farquhar et al. (1982) for C3 plants:

$$\Delta^{13}C = a + (b - a) \frac{c_i}{c_a} \quad (2)$$

where a (4.4‰) is the kinetic discrimination associated with diffusion between free air and the stomatal cavity, b (27‰) is the fractionation during CO_2 fixation by the Rubisco enzyme, c_i is the leaf internal CO_2 concentration simulated by ORCHIDEE and c_a is the atmospheric CO_2 concentration prescribed from measurements (McCarroll and Loader, 2004). Annual tree-ring carbon discrimination ($\Delta^{13}C_R$) was then calculated as the mean of the half-hourly discrimination values in the above-ground

biomass weighted by Gross Primary Productivity (GPP) between the start (*SOS*) and the end (*EOS*) of the growing season:

$$\Delta^{13}\text{C}_R = \frac{1}{\sum_{n=SOS}^{EOS} \text{GPP}(n)} \sum_{n=SOS}^{EOS} (\Delta^{13}\text{C}(n) \times \text{GPP}(n)) \quad (3)$$

This formulation for carbon discrimination is commonly used as a simple approximation for discrimination derived from measured $\delta^{13}\text{C}$ in tree-ring cellulose (Francey and Farquhar, 1982). For simplicity, it assumes that further post-photosynthetic fractionation during photo- and dark-respiration and carbohydrate remobilization and storage is negligible. Although these processes normally have an important impact on whole-ring cellulose isotopic composition (Gessler et al., 2009; Werner et al., 2012), at least the impact of carbon remobilization is minimal in the latewood component of tree rings (Helle and Schleser, 2004). The c_i term in Eq. (2) integrates the gas exchange dynamics (i.e., stomatal conductance and photosynthesis) simulated by the model as a complex function of micrometeorological variability, seasonal water stress, and the long-term warming and increase in c_a . Hence, despite its simplicity, simulated carbon discrimination using Eq. (2) has been shown to be valuable to constrain the integrated environmental response of land surface models using carbon discrimination derived from tree-ring $\delta^{13}\text{C}$ measurements (e.g., Bodin et al., 2013; Churakova et al., 2016; Keel et al., 2016).

2.1.3 Tree-ring oxygen isotopes

The $\delta^{18}\text{O}$ signature in tree-ring cellulose reflects primarily the isotopic composition of soil water and the evaporative enrichment of leaf water due to transpiration, but other mixing and biochemical fractionation processes during water transport along the soil-plant-atmosphere continuum also contribute to the final $\delta^{18}\text{O}$ signature (McCarroll and Loader, 2004; Gessler et al., 2014) (Gessler et al., 2014). The $\delta^{18}\text{O}$ isotopic composition of the source water used by plants may originate from rainfall or groundwater, while the $\delta^{18}\text{O}$ isotopic enrichment of leaf water depends strongly on vapour pressure deficit (i.e., the ratio of the vapour pressure in the atmosphere and the intercellular spaces of the leaves) or relative humidity (Farquhar et al., 1998; Scheidegger et al., 2000).

The $\delta^{18}\text{O}$ fractionation and mixing processes in all water pools and fluxes along the soil-plant-atmosphere continuum (Risi et al., 2016) is represented following a similar formulation than in other isotope-enabled global land surface models (Aleinov and Schmidt, 2006; Haese et al., 2012). The isotopic compositions of precipitation and near-surface water vapour have to be prescribed monthly when running the model stand-alone or are simulated by the LMDZ general circulation model in coupled simulations. Precipitation reaching the soil surface or intercepting the canopy fractionates during evaporation according to the Craig and Gordon equation (Craig and Gordon, 1965), which generically describes the preferential evaporation of the lighter isotope of a free water body at steady state.

The resulting isotopic composition of soil water and mixing are parameterized as a vertical profile to overcome the limitation of depth resolution in the two-layer representation of ~~soils-soil~~ in the model. No isotopic fractionation is assumed to occur during absorption of soil water by roots and thus the isotopic signature of xylem water is the same as that of soil water. The

isotopic composition of leaf water at the evaporation sites ($\delta^{18}\text{O}_e$) is diagnosed by inverting the Craig and Gordon (1965) equation:

$$\delta^{18}\text{O}_e = \alpha (\alpha_k \times (1 - h) \times \delta^{18}\text{O}_{\text{sw}} + h \times \delta^{18}\text{O}_v) \quad (4)$$

where $\delta^{18}\text{O}_{\text{sw}}$ is the isotopic composition of soil water taken up by the roots integrating older soil water and recent precipitation, $\delta^{18}\text{O}_v$ is the isotopic composition of atmospheric water vapour, α is the equilibrium fractionation due to the phase change from liquid water to vapour, α_k is the kinetic fractionation due to diffusion of vapour into unsaturated air, and h is the relative humidity normalized to surface temperature.

Isotopic enrichment of leaf water in the mesophyll ($\delta^{18}\text{O}_{\text{lw}}$) results from mixing between isotopically enriched leaf water at the evaporative site and depleted xylem water ($\delta^{18}\text{O}_{\text{xw}}$) through the so-called Peclet effect:

$$\delta^{18}\text{O}_{\text{lw}} = \delta^{18}\text{O}_e \times f + \delta^{18}\text{O}_{\text{xw}} \times (1 - f) \quad (5)$$

where $f = (1 - e^{-P})/P$ is a coefficient that decreases as the Peclet effect increases, with $P = (E \times L)/(W \times D)$ as the Peclet parameter. E is the transpiration rate per leaf area, L is the effective diffusion length and W is the leaf water content per leaf volume. In order to keep the model as simple as possible, L was set to 8 mm and W was assumed to be 103 kg m⁻³ for all PFTs following Risi et al. (2016). Admittedly, constant L is a major assumption and source of uncertainty for global models (Keel et al., 2016; Risi et al., 2016) since it is highly variable between species and also depends on climate conditions and leaf anatomy, morphology and age (Barnard et al., 2007; Roden et al., 2015). The value used for L was obtained from an optimization of simulated diurnal isotopic cycles against observations at mid-latitude sites (Risi et al., 2016).

Half-hourly tree-ring cellulose isotopic composition ($\delta^{18}\text{O}_{\text{cell}}$) is calculated from the isotopic composition of leaf water ($\delta^{18}\text{O}_{\text{lw}}$) and xylem water ($\delta^{18}\text{O}_{\text{xw}}$) following the formulation of Anderson et al. (2002):

$$\delta^{18}\text{O}_{\text{cell}} = (f_0 \times \delta^{18}\text{O}_{\text{xw}} + (1 - f_0) \times \delta^{18}\text{O}_{\text{lw}}) \times (1 + \epsilon) \quad (6)$$

Where f_0 is the fraction of ~~leaf-water-exchanged~~ exchange with xylem water prior to cellulose synthesis, which reduces the imprint of leaf water on cellulose. For $\delta^{18}\text{O}$ this exchange is estimated to be 0.42 based on the best fit relationship under controlled experiments (Roden et al., 2000). The parameter ϵ is the biochemical fractionation factor during cellulose formation associated with water carbonyl interactions and is estimated to be 27‰ (DeNiro and Epstein, 1979; Stenberg and DeNiro, 1983).

An estimate of growing season tree-ring isotopic composition ($\delta^{18}\text{O}_R$) is obtained by weighting $\delta^{18}\text{O}_{\text{cell}}$ by GPP as done for $\Delta^{13}\text{C}_R$ in Eq. (3):

$$\delta^{18}\text{O}_R = \frac{1}{\sum_{n=\text{SOS}}^{\text{EOS}} \text{GPP}(n)} \sum_{n=\text{SOS}}^{\text{EOS}} (\delta^{18}\text{O}_{\text{cell}}(n) \times \text{GPP}(n)) \quad (7)$$

A model evaluation across a network of 10 sites in Europe and North America shows that this representation is able to reproduce the main features of the seasonal and vertical variations in soil water isotope content, as well as the seasonal isotopic signals in stem and leaf water (Risi et al., 2016). The isotopic variability simulated by ORCHIDEE has been used to interpret local climatic signals in ~~boreal~~-tree-ring $\delta^{18}\text{O}$ records (Shi et al., 2011; Churakova et al., 2016) and to investigate regional and

5 global isotopic signatures of continental recycling (Risi et al., 2013).

Table 1. Location and characteristics of the six tree-ring sites used for model evaluation. The ORCHIDEE Plant Functional Types (PFTs) corresponding to the sites are Boreal Needleleaf Evergreen (BoNE), Boreal Broadleaf Summergreen (BoBS) and Temperate Broadleaf Summergreen (TeBS).

	Site					
	Kessi	Sivakkovaara	Bromarv	Rennes	Fontainebleau	Annecy
Country	Finland	Finland	Finland	France	France	France
Species	Pine	Pine	Oak	Oak	Oak	Oak
ORCHIDEE PFT	BoNE	BoNE	BoBS	TeBS	TeBS	TeBS
Latitude	68.6	62.5	60.0	48.1	48.4	45.9
Longitude	28.2	31.2	23.0	-1.7	2.7	6.2
Elevation (m)	159	200	5	70	100	450
Stand age (years)	400	400	150	120	120	70
Stand density (trees ha ⁻¹)	-	-	-	240	140	40
No. trees for tree-ring width	16	28	7	28	15	13
No. trees for tree-ring isotopes	4	4	4	4	4	9
Soil type	Sandy loam	Sandy loam	Sandy loam	Loam	Calcareous loam	Clay loam
Soil depth (m)	<0.5	<0.5	0.5	1.5	1.0	-
Annual precipitation (mm)	390	582	502	677	678	906
Annual mean minimum temperature (°C)	-4.8	-1.8	4.5	7.6	6.4	6.6
Annual mean maximum temperature (°C)	4.3	5.8	9.1	16.0	15.4	16.2

2.2 Tree-ring data

Six previously published tree-ring sites in northern and western Europe with simultaneous measurements of ring-width and $\delta^{13}\text{C}$ and $\delta^{18}\text{O}$ compositions were used to evaluate the skill of the model along a climate gradient (Table 1). The three northernmost sites are located in the temperature-limited boreal region in Finland, and have chronologies of ring-width and $\delta^{13}\text{C}$ and $\delta^{18}\text{O}$ composition for Scotch pine (Kessi and Sivakkovaara; Hilasvuori et al., 2009) and Pedunculate oak (Bromarv; Hilasvuori and Berninger, 2010). The remaining three sites are located in France and represent moisture-sensitive temperate

10

forests of Sessile oak (Fontainebleau; Etien et al., 2009) and Pedunculate oak (Rennes and Annecy; Raffalli-Delerce et al., 2004; Danis et al., 2006). In all sites, except Annecy, the available ring-width and $\delta^{13}\text{C}$ and $\delta^{18}\text{O}$ chronologies cover the common period 1960–2000.

The tree-ring width measurement series available for each site were standardized by dividing each series by its mean ring width (Cook et al., 1990). The resulting series of tree-ring width indices were averaged together to produce a mean site chronology composed by seven to twenty-eight trees (Table 1). This simple standardization method allows the computation of average tree-ring chronologies without the average being dominated by the faster growing trees with wider rings. Depending on the site, 4 to 9 trees were selected to develop carbon ($\delta^{13}\text{C}_\text{R}$) and oxygen ($\delta^{18}\text{O}_\text{R}$) stable isotope chronologies ~~for each site~~ by pooling rings from the selected trees (Table 1) and using standard methods for cellulose extraction and measurement of the isotopic ratios (McCarroll and Loader, 2004; Daux et al., 2018). For oaks, earlywood and latewood sections were separated but only latewood was processed. For pine, the carbon and oxygen isotopic compositions were measured for the whole ring.

Tree-ring carbon discrimination was computed by subtracting the stable carbon isotope composition of the atmosphere ($\delta^{13}\text{C}_\text{a}$) from the measurements using the expression of Farquhar et al. (1982):

$$\Delta^{13}\text{C}_\text{R} = \frac{\delta^{13}\text{C}_\text{a} - \delta^{13}\text{C}_\text{R}}{1 + \frac{\delta^{13}\text{C}_\text{R}}{1000}} \quad (8)$$

~~For Fontainebleau, the intrinsic Water Use Efficiency (iWUE) was calculated from c_i and c_a for the period 1901–2000 following the expression (Farquhar et al., 1982):-~~

$$\text{iWUE} = c_a \left(1 - \frac{c_i}{c_a}\right) \times 0.625$$

~~c_i was computed by reordering the terms of Eq. (2). Data for $\delta^{13}\text{C}_\text{a}$ and c_a were obtained from McCarroll and Loader (2004) for the period prior to 1997 and from the Scripps website (<http://scrippsco2.ucsd.edu/>) from 1998 onwards. The three well-known theoretical scenarios for gas exchange under rising CO_2 (constant c_i , constant c_i/c_a and constant $c_a - c_i$) of Saurer et al. (2004) were used as a guideline to interpret the observed and simulated changes in iWUE over the 20th century. These scenarios differ only in the degree in which the increase in c_i follows the increase in c_a (either not at all, in a proportional way, or at the same rate, respectively). Mean c_i over 1901–1910 was used as the starting point for the scenarios. 1901–2000.~~

2.3 Simulations

The model was run at each tree-ring site over the period 1901–2000 using as meteorological forcing the nearest 0.5° grid of the 6-hourly CRU-NCEP dataset (Viovy, 2014). This gridded forcing dataset is a statistical merging of the monthly CRU TS station-based dataset of the Climate Research Unit (New et al., 2000) with the atmospheric reanalysis from the National Center for Environmental Prediction (NCEP). The corresponding soil type and vegetation PFT were prescribed for the sites (Table 1). Monthly $\delta^{18}\text{O}$ composition of precipitation ($\delta^{18}\text{O}_\text{p}$) and water vapour ($\delta^{18}\text{O}_\text{v}$) were obtained from the nearest grid of a global simulation of the isotope-enabled LMDz general circulation model nudged by an atmospheric reanalysis over the period 1890–2007 (Risi et al., 2010).

Biomass and soil carbon pools were initialized to steady state equilibrium by a 5000-year spinup obtained by cycling over the meteorology for the period 1901–1910. The model was then run over the period 1901–2000 using observed CO₂ and an initial tree density of 1000 trees per hectare to approach current forest age and density following tree mortality over time due to self-thinning.

- 5 ~~For a comparison with~~ In order to benchmark the triple tree-ring ability of ORCHIDEE, a simulation of the MAIDENiso tree-ring model for the Fontainebleau forest was obtained from an earlier study (Danis et al., 2012). The model simulates tree-ring $\delta^{13}\text{C}$ and $\delta^{18}\text{O}$ stable isotopes using the formulation of Lloyd and Farquhar (1994) and the Craig-Gordon model (Craig and Gordon, 1965), respectively. Ring width is parameterized as the annual stem growth increment based on daily carbon allocation to leaves, stem, roots and storage as a function of climate, soil water balance and atmospheric CO₂. Growth
- 10 is decoupled from instantaneous photosynthesis by a labile carbon pool, which allows the model to reproduce the temporal autocorrelation in tree rings (Misson, 2004). The simulation was produced using a site-specific calibration and includes tree-ring width, ~~$\Delta^{13}\text{C}$~~ $\delta^{13}\text{C}$ and $\delta^{18}\text{O}$ over the period 1953–2000 ~~as described in Danis et al. (2012). The daily $\delta^{18}\text{O}_p$ and $\delta^{18}\text{O}_v$ forcings were obtained by using a linear regression based on daily mean air temperature and precipitation from two nearby stations as predictors, with coefficients obtained from the nearest isotopic observations in Saclay.~~
- 15 In addition, ~~simulated~~ tree-ring $\delta^{18}\text{O}$ simulated with the LPX-Bern Dynamic Global Vegetation Model (Keel et al., 2016) was extracted for each site from a published global simulation available for the period 1960–2012 at 3.75°x2.75° (~~Keel et al., 2016, dataset available at: www.climate.unibe.ch~~). This simulation was obtained by forcing LPX-Bern with monthly soil water $\delta^{18}\text{O}$ ($\delta^{18}\text{O}_{sw}$), $\delta^{18}\text{O}_v$, and relative humidity data from a simulation with the coupled atmosphere-land surface model ECHAM5-JSBACH driven by observed sea surface temperature (Haese et al., 2013; Keel et al., 2016). LPX-Bern uses the Pelet modified Craig-Gordon
- 20 model to calculate daily $\delta^{18}\text{O}$ in leaf water together with the formulation of Roden-Lin-Ehleringer (Roden et al., 2000) to determine $\delta^{18}\text{O}$ in tree-ring cellulose.

2.4 Model-data comparison

The ability of ORCHIDEE to simulate the interannual variability of the three tree-ring parameters over the course of the 20th century was first evaluated in the Fontainebleau forest (Table 1). Fontainebleau is a well-studied tree-ring site in France

25 (Michelot et al., 2011, 2012; Daux et al., 2018) and it has been used to evaluate the MAIDENiso tree-ring model (Danis et al., 2012). We compared our simulation of ring-width, $\Delta^{13}\text{C}$ and $\delta^{18}\text{O}$ for this site with the simulation of MAIDENiso over the period 1953–2000. Then, the evaluation was conducted in the rest of the sites over the common period 1960–2000, except in Annecy where a shorter span of the observations limited the model-data comparison to the period 1971–2000.

A simulated tree-ring width chronology was derived for each site by dividing the simulated tree-ring width series of the

30 largest model tree by its mean. Since growth allocation in the model increases almost linearly with stem size, the absolute annual ring-width vary among stem size-classes but its interannual variability remains similar across all size classes, thus the choice of size class does not affect the standardized variability. The standardization removes the effect of stem size-class and conserves the interannual and longer variability but does not remove the juvenile effect in tree-ring width. However, the juvenile

trend in simulated and observed ring-width does not affect the evaluation period (1960-2000) because at this time trees were already mature canopy individuals with their radial growth fluctuating around the mean.

Simulated $\delta^{18}\text{O}$ and $\Delta^{13}\text{C}$ tree-ring chronologies were obtained by averaging the simulated half-hourly isotopic variability between May and August. Using just the summer season (Jun–August) improves results for $\Delta^{13}\text{C}$ but degrades substantially results for $\delta^{18}\text{O}$, thus May was included as a compromise in order to use a common season for the isotopes and ensure comparability across sites. [Late-May and early-June correspond to the seasonal peak in transpiration and photosynthesis of oak in Fontainebleau, which is closely followed by the transition between earlywood and latewood \(Michelot et al., 2011\).](#) A mean $\delta^{18}\text{O}$ series was created from the nearest LPX-Bern grid ($3.75^\circ \times 2.75^\circ$) and corresponding PFT to each evaluation site for a comparison with the observations and ORCHIDEE over the common period 1960–2000.

Since the focus of our evaluation is on the interannual variability and not on the absolute values, correlation and the normalised standard deviation (i.e., the standard deviation of simulated tree-ring parameters divided by the standard deviation of the observations) were used to quantitatively evaluate the skill of the models to simulate the variability in tree-ring width and stable isotopes. Differences in the temporal persistence (i.e., ~~carrying-over~~ [carryover](#) effect) in the observed and simulated tree-ring parameters were evaluated using the first-order autocorrelation of the time series. ~~The climate response of simulated ring-width, $\Delta^{13}\text{C}$ and $\delta^{18}\text{O}$ in Fontainebleau was compared with that of the observations using monthly correlations against precipitation and vapour pressure deficit (VPD) from a nearby station (Daux et al., 2018). The monthly correlations and their bootstrapped significance were computed with the *dendroTools* R package (Jevšenak, 2020).~~

The integrated growth-isotope responses simulated by ORCHIDEE and MAIDENiso models in Fontainebleau were qualitatively compared with observations using a bivariate response surface between tree-ring width variability and the joint variability of the two isotopes. A smoothed response surface was fitted using a data-adaptive bivariate generalized additive model (GAM) implemented with the *mgcv* package (Wood, 2017) in the R environment (R Core Team, 2020). This visualization device extends the dual isotope conceptual model of Scheidegger et al. (2000) to illustrate the mechanistic information content of the triple tree-ring constraint for models introduced in this study. It neatly reveals the complex association of tree growth with gas exchange inferred from stable isotopes in both observations and models.

To disentangle the relative importance of source water ($\delta^{18}\text{O}_{\text{sw}}$) and leaf water enrichment above source water ($\Delta^{18}\text{O}_{\text{lw}} = \delta^{18}\text{O}_{\text{lw}} - \delta^{18}\text{O}_{\text{sw}}$) between May and August in determining the variability of $\delta^{18}\text{O}_{\text{R}}$ simulated by ORCHIDEE [and LPX-Bern](#) we used the Lindeman-Merenda-Gold (LMG) method (Grömping et al., 2006). ~~H-~~ [This linear decomposition method](#) allows to quantify the contribution of different correlated regressors (here $\delta^{18}\text{O}_{\text{sw}}$ and $\Delta^{18}\text{O}_{\text{lw}}$) to the total r^2 of a multiple linear regression model.

3 Results

3.1 ~~Model-evaluation~~ A triple tree-ring constraint for ORCHIDEE and MAIDENiso in Fontainebleau

3.1.1 ~~Tree-ring width~~ Interannual and isotopic decadal tree-ring variability

- ORCHIDEE shows a significant skill in simulating the interannual and multidecadal variability of oak tree-ring width ($r=0.59$, $p<0.01$) and latewood $\Delta^{13}\text{C}_\text{R}$ ($r=0.41$, $p<0.01$) and $\delta^{18}\text{O}_\text{R}$ ($r=0.49$, $p<0.01$) over the 20th century in Fontainebleau (Fig. 1a–c). The magnitude of the interannual variability of $\delta^{18}\text{O}_\text{R}$ is well simulated (NSD=1.04) but that of tree-ring width is overestimated by 37% (NSD=1.37), while that of $\Delta^{13}\text{C}_\text{R}$ is underestimated by about a similar magnitude (NSD=0.55). $\Delta^{13}\text{C}_\text{R}$ is systematically overestimated since 1980, when the observations show a decrease by about 1‰ (Fig. 1b). Overall, the model simulates 35% of the observed tree-ring width variability and 17–24% of latewood isotopic variability over the 20th century.
- The first-order autocorrelation or ~~carrying-over~~ carryover in observed tree-ring width is significant ($r_{\text{lag1}}=0.54$, $p<0.001$) and its magnitude indicates that ring width in the previous year explains up to 30% of current year tree-ring width variability. In contrast, simulated tree-ring width has no first-order autocorrelation ($r_{\text{lag1}}=0.02$, $p>0.1$) because ~~ORCHIDEE does not account for the carrying over in radial growth associated with carbon storage and remobilization of the direct coupling of growth with carbon source from photosynthesis in the model~~. As a result, in years with extreme summer drought conditions like in 1921 and 1976 the model does not simulate any stem growth because photosynthesis is strongly suppressed (Fig. 1a). ~~The lack of modulation of simulated radial growth by carbon storage dynamics makes the~~ The simulated growth recovery after these extremes occurs too fast compared with the observations. The first-order autocorrelation in the isotopic observations is significant only for $\Delta^{13}\text{C}_\text{R}$ ($r_{\text{lag1}}=0.37$, $p<0.001$) while in the simulations it is marginally significant for both $\Delta^{13}\text{C}_\text{R}$ ($r_{\text{lag1}}=0.18$, $p<0.1$) and $\delta^{18}\text{O}_\text{R}$ ($r_{\text{lag1}}=0.27$, $p<0.01$).
- The skill of ORCHIDEE compares well with that of the ~~specialized~~ MAIDENiso tree-ring model (Fig. 1a–c), ~~which was~~ specifically calibrated for the site over the period 1953–2000. Over this period, MAIDENiso is able to simulate between 30% and 46% of the total variability of the observations of tree-ring width and isotopes, which compares to the 20% to 44% of the total observed variance simulated by ORCHIDEE over the same period with standard parameterization. MAIDENiso is considerably better than ORCHIDEE at simulating tree-ring width ($r=0.68$ vs $r=0.51$) and $\Delta^{13}\text{C}_\text{R}$ ($r=0.58$ vs $r=0.45$) variability, but despite simulating well the amplitude of $\Delta^{13}\text{C}_\text{R}$ and $\delta^{18}\text{O}_\text{R}$ (NSD=0.91–1.16) it substantially underestimates the amplitude of tree-ring width (NSD=0.68). Unlike ORCHIDEE, it is able to simulate a significant first-order autocorrelation in tree-ring width ($r_{\text{lag1}}=0.45$, $p<0.01$) with a magnitude similar to that of the observations ($r_{\text{lag1}}=0.50$, $p<0.01$). This ~~carrying over~~ carryover effect accounts for up to 25% of current year tree-ring width variability in the observations (1953–2000) and is thus an important component of the growth variability captured by ~~its~~ the carbon remobilization dynamics of the model.
- MAIDENiso is able to simulate the observed decrease in $\Delta^{13}\text{C}_\text{R}$ since 1980 better than ORCHIDEE (Fig. 1b). The amount and amplitude of $\delta^{18}\text{O}_\text{R}$ variability is slightly better simulated by ORCHIDEE ($r=0.66$, $p<0.001$; NSD=1.04) than by MAIDENiso ($r=0.54$, $p<0.001$; NSD=0.91; Fig. 1c). The partitioning of the r^2 of a multiple linear regression shows that source water ($\delta^{18}\text{O}_\text{sw}$) and leaf water enrichment above source water ($\Delta^{18}\text{O}_\text{lw}$) account for 56% and 37% of the total variability

of $\delta^{18}\text{O}_\text{R}$ simulated by ORCHIDEE over the period 1953–2000, respectively. We could not quantify the contributions of $\delta^{18}\text{O}_\text{sw}$ and $\Delta^{18}\text{O}_\text{lw}$ in MAIDENiso because these simulated data were not available. The two different forcing series of $\delta^{18}\text{O}_\text{p}$ used to drive MAIDENiso and ORCHIDEE are not significantly correlated over the May–August period ($r=-0.07$, $p>0.1$). Nevertheless, $\delta^{18}\text{O}_\text{R}$ simulated by the two models is significantly correlated ($r=0.56$, $p<0.001$), suggesting a similarity of simulated $\Delta^{18}\text{O}_\text{lw}$ variability.

Comparison of bivariate response surfaces simulated by ORCHIDEE with and without the influence of source water ($\delta^{18}\text{O}_\text{sw}$) over the common period 1953–2000. **a** Response surface with $\delta^{18}\text{O}_\text{R}$ that combines the effect of source water and leaf water enrichment as in Fig. 1c. **b** Response surface with $\Delta^{18}\text{O}_\text{R}$ ($\delta^{18}\text{O}_\text{R}-\delta^{18}\text{O}_\text{sw}$), which removes the effect of source water from $\delta^{18}\text{O}_\text{R}$ but conserves the effect of leaf water enrichment and associated stomatal responses to air relative humidity (Scheidegger et al., 2000). The significance of the three-way correlations between the tree-ring variables are indicated along the edges of each surface as in Fig. 1.

3.1.2 The growth-isotope tree-ring triplet

Monthly climatic response functions of the observations in Fontainebleau and the corresponding tree-ring parameters simulated by ORCHIDEE and MAIDENiso over the period 1960–2000. **a–c** Correlation between monthly precipitation from January to September and tree-ring width, $\Delta^{13}\text{C}_\text{R}$ and $\delta^{18}\text{O}_\text{R}$. **e–f** Same than in **a–c** but for VPD (air vapour pressure deficit). Significant correlations at the 95% confidence level are indicated by a black dot. The gray shading denotes summer months.

3.1.3 **Observed and simulated relationships among tree-ring variables**

So far the performance evaluation statistics used above only describe the unidimensional skill of the models and do not evaluate their ability to simulate the joint relationships that exist among tree-ring width and $\Delta^{13}\text{C}_\text{R}$ and $\delta^{18}\text{O}_\text{R}$. The strength of the correlations between observed the actual tree-ring width and isotopic variability chronologies in Fontainebleau indicates that oak radial growth has 10% and 24% of common variance with latewood $\delta^{18}\text{O}_\text{R}$ and $\Delta^{13}\text{C}_\text{R}$, respectively (Fig. 1d). In turn, the isotopes have 16% of common variability. The interpretation of these three-way relationships in the observations (correlations) can be aided by visualizing the bivariate surface response of tree-ring width as a function of the dual latewood isotope variability (Fig. 1d). The resulting surface provides, at a glance, insights on causal and non-causal (indirect) relationships between environmental variability (temperature and drought stress) and stomatal responses and growth (see axes in Fig. 1d). The main geometry of the surface can be described by three regression slopes: $b1$: tree-ring width in relation to $\delta^{18}\text{O}_\text{R}$, $b2$: tree-ring width in relation to $\Delta^{13}\text{C}_\text{R}$ and $b3$: $\Delta^{13}\text{C}_\text{R}$ in relation to $\delta^{18}\text{O}_\text{R}$ (Fig. 1d). These slopes can be used to compare the surface of the observations with those simulated by models.

The bivariate surface response in Fontainebleau shows that in this site observed the observations, ring-width is positively and linearly related to has a consistent positive and significant linear relationship with latewood $\Delta^{13}\text{C}_\text{R}$ ($b2=0.16$, $r=0.48$, $p<0.01$), whereas the its relationship with $\delta^{18}\text{O}_\text{R}$ is negative (highly non-linear and with an overall negative slope ($b1=-0.11$, $r=-0.31$, $p<0.05$)) and non-linear (Fig. 1d). This indicates that narrow rings during dry years like in 1976 are mechanistically linked to reduced latewood $\Delta^{13}\text{C}_\text{R}$ because trees tend to close their stomata for longer during the summer to reduce water loss at the

expense of reducing their photosynthesis. The opposite occurs during moist years, when growth, stomatal conductance and photosynthesis are high (Fig. 1d).

The apparent relationship between growth and $\delta^{18}\text{O}_\text{R}$ suggests interactions between the factors (air temperature, relative humidity and soil moisture) driving the growth process and $\delta^{18}\text{O}$ enrichment of source and leaf water (see axes in Fig. 1d). For instance, years with high temperature tend to be also dry (e.g., 1976, 1990 and 1996) and associated with reduced atmospheric humidity and soil moisture, resulting in reduced growth and increased $\delta^{18}\text{O}$ enrichment of source water, vapour and leaf water due to higher evaporation rates and stomatal closure. The negative scatter of the observation points across the surface depicts a negative and significant linear relationship between the two latewood isotopic variables (carbon and oxygen isotopic ratios ($b_3=-0.45$, $r=-0.40$, $p<0.01$), apparent in the scatter of the observation points across the surface (Fig. 1d), provides evidence for a significant degree of stomatal control (g_s) of trees to avoid dehydration under warmer and drier conditions.

The two models simulate qualitatively different growth-isotope surface responses and none is able to capture the observed non-linear relationship between tree-ring width and $\delta^{18}\text{O}_\text{R}$ (Fig. 1e–f). ORCHIDEE simulates a surface response slightly. The surface simulated by ORCHIDEE is more consistent with the observations than MAIDENiso, but none of the two simulations captures the observed non-linear relationship (Fig. 1e). It captures the sign and significance of the relationships between tree-ring width and $\delta^{18}\text{O}_\text{R}$ that might arise from source water or isotopic enrichment of leaf water. Although ORCHIDEE simulates a significant relationship of tree-ring width with $\delta^{18}\text{O}_\text{R}$ ($r=0.54$, $p<0.001$) and $\Delta^{13}\text{C}_\text{R}$ ($r=0.87$, $p<0.001$), the strength of the relationships is overestimated (Fig. 1e). Subtracting the isotopic variability of source water ($\delta^{18}\text{O}_\text{sw}$) from $\delta^{18}\text{O}_\text{R}$ ($\Delta^{18}\text{O}_\text{R} = \delta^{18}\text{O}_\text{R} - \delta^{18}\text{O}_\text{sw}$) to isolate the leaf signal does not change much the surface response of ORCHIDEE but increases substantially the correlation between the residual isotopic variability ($\Delta^{18}\text{O}_\text{R}$) and $\Delta^{13}\text{C}_\text{R}$ and GPP-driven ring-width (Fig. 2a–b).

MAIDENiso does not simulate any significant relationship between tree-ring width and $\delta^{18}\text{O}_\text{R}$ (and also between the isotopic ratios ($r=0.16$, $p>0.1$), but it captures well the magnitude of the observed correlation ($r=0.30$, $p<0.01$) between ring-width (0.001). However, the corresponding slopes b_1 (-0.22) and b_2 (0.71) are respectively two and four times higher than in the observations (Fig. 1e). The slope b_3 (-0.35) is slightly smaller than observed (-0.45), but still the correlation between $\delta^{18}\text{O}_\text{R}$ and $\Delta^{13}\text{C}_\text{R}$ (Fig. 1f). Both models largely overestimate the common variability between the isotopes, as is evident from the rather even spread of the data points across the diagonal of the surfaces (Fig. 1e–f). MAIDENiso and ORCHIDEE simulate 62 is overestimated. Therefore, ORCHIDEE captures important features of the observed tree-ring triplet, but it substantially overestimates the coupling between growth and isotopic variability (29–50% of common variance) and between isotopes (48% of common isotopic variability, respectively. This is three times above the observed 16%, indicating that the models overestimate the stomatal responses to summer drought stress (variance).

Comparison of observed and simulated changes in iWUE and relationships between simulated tree-ring variables and productivity during the 20th century in Fontainebleau. **a** Observed and modelled change in iWUE with respect to the mean of the earlier period 1901–1910. The theoretical scenarios of gas exchange of Saurer et al. (2004) are shown as reference, considering mean c_i over 1901–1910 as starting point. **b** Correlations between simulated May–August Gross Primary Productivity (GPP) and simulated $\delta^{18}\text{O}_\text{R}$ (left), $\Delta^{13}\text{C}_\text{R}$ (middle) and tree-ring width (right) over the period 1901–2000.

3.1.3 Climate response

The magnitude of the seasonal climatic responses of the observed tree-ring width, $\Delta^{13}\text{C}_R$ and $\delta^{18}\text{O}_R$ in Fontainebleau is well captured by the models, but there are some important differences in the timing and duration of the period of significant response. The growth-isotope surface response of MAIDENiso is rather flat and considerably different from the surfaces derived from the observations and ORCHIDEE (Fig. 3). The seasonal correlation patterns with precipitation and VPD indicate that tree-ring width and $\Delta^{13}\text{C}_R$ in ORCHIDEE are too sensitive to moisture variability over the growing season compared with the observations (Fig. 3). In contrast, ring-width in MAIDENiso has too little sensitivity to precipitation variability. Nevertheless, MAIDENiso captures well the observed climatic response of $\Delta^{13}\text{C}_R$ to summer VPD, while the effect of summer VPD on $\delta^{18}\text{O}_R$ is better captured by ORCHIDEE and its isotopic forcing.

Taylor diagram showing the correlation (angular coordinate) and normalized standard deviation (NSD; radial coordinate) of the simulated tree-ring parameters (ORCHIDEE, MAIDENiso and LPX-Bern) with respect to the observations for the six sites used in this study (see Table 1). Tree-ring width is denoted by square symbols and $\Delta^{13}\text{C}_R$ and $\delta^{18}\text{O}_R$ by orange and blue circles, respectively. The models are denoted by solid symbols (ORCHIDEE), open symbols (MAIDENiso in Fontainebleau or site 5) and blue crosses (LPX-Bern). The statistics were computed over the common period 1960–2000, except in Anneey (site 6) where data availability limited the comparison to the period 1971–2000. The target point (NSD and correlation equal to 1) is represented by a circle. The gray, blue and orange shading denotes the range of the performance statistics covered by ORCHIDEE for tree-ring width, $\Delta^{13}\text{C}_R$ and $\delta^{18}\text{O}_R$, respectively.

3.1.3 20th-century change in water-use efficiency

The $\Delta^{13}\text{C}_R$ data show that in Fontainebleau the observed intrinsic water-use efficiency (iWUE) of oak measured as the change between 1901–1910 and 1990–2000 has increased by 25.5% following the gas-exchange scenario of constant e_i/e_a (Fig. 4). Most of the change followed the steady increase in atmospheric CO_2 concentration since 1960, though the increasing trend in iWUE stalled around 1980 while atmospheric CO_2 continued increasing. ORCHIDEE produces a slightly lower increase in iWUE over the 20th century (21.2%), but also follows the gas exchange response of constant e_i/e_a . The model underestimates iWUE since around 1980 and in contrast to the observations simulates a steady increase since 1960. This model-data mismatch is linked to the overestimation of $\Delta^{13}\text{C}_R$ in ORCHIDEE during this recent period as described earlier, an issue that does not affect MAIDENiso (Fig. 1b).

3.1.3 Simulated relationship between productivity and isotopic variability

Simulated isotopic variability in Fontainebleau is significantly correlated with growing season (May–August) GPP (Fig. 4b). The magnitude of the correlations indicate that simulated $\delta^{18}\text{O}_R$ (1f). It reveals a decoupling between growth and isotopic variability with slopes b_1 (-0.03) and b_2 ($\neq 0.04$) close to zero. Yet, the model simulates a strong coupling between isotopic ratios ($b_3 = -0.62$, $p = 1.31$ and 62% of common variance, $p < 0.001$) and, which is three times higher than in the observations and ORCHIDEE. The large slope b_3 in MAIDENiso results from the overestimation of the simulated $\Delta^{13}\text{C}_R$ variability

($r_{NSD}=0.84$, $p<0.001$) explain 38% and 71% of GPP variability over the 20th century, respectively. Since stem growth in ORCHIDEE depends directly on the allocation of GPP, simulated tree-ring width variability is by definition strongly correlated with growing season GPP ($r=1.16$) combined with underestimated $\delta^{18}O_R$ variability ($NSD=0.90$, $p<0.001$) as it can be seen in Fig. 4b (0.91). This demonstrates that the good performance of the model in simulating individual tree-ring variables (Fig. 1a–c) does not necessarily translate into a realistically simulated tree-ring triplet (Fig. 1f).

3.2 Model performance across sites

3.2 Model performance across sites

The performance of ORCHIDEE for tree-ring width, $\Delta^{13}C_R$ and $\delta^{18}O_R$ varies substantially across sites (Fig. 52), with no clear pattern along the climate gradient from Finland to France or between species for any parameter. However, it is clear that the isotopic variability is better simulated than tree-ring width and also that $\delta^{18}O_R$ is the tree-ring variable best simulated by the model better simulated. Tree-ring width is well simulated (25–30% of the observed variability) at only two out of six sites. It is not clear whether the fact that the best simulations are for the two southernmost sites (Fontainebleau and Annecy) is a coincidence or suggest that the model processes and/or parameters are biased in favour of deciduous temperate forests. In the remaining sites, the simulations account for less than 10% ($r<0.32$) of the observed variability. The lower ability of ORCHIDEE to simulate tree-ring width is to a large extent due to the present inability of the model to simulate the significant carrying-over effect of growth (autocorrelation) evident in the observations (Fig. 7a), falling mostly in the region of poor performance in Fig. 2.

Although ORCHIDEE is able to simulate about 10–64% ($r=0.31$ – 0.80) of the observed $\Delta^{13}C_R$ variability, it tends to underestimate its amplitude by 30–60%, particularly in the northernmost sites of pine (Kessi and Sivakkovaara) where the isotopic ratios were measured over the whole ring (Fig. 52). With the exception of the northernmost site, the amplitude of $\delta^{18}O_R$ variability is simulated within $\pm 20\%$ and the simulations account for 13–55% ($r=0.36$ – 0.74) of the variance of the observations. The primary driver of simulated $\delta^{18}O_R$ variability in five out of the six sites is the isotopic composition of source water ($\delta^{18}O_{sw}$). It accounts for 46–85% of the simulated $\delta^{18}O_R$ variability, whereas leaf water enrichment ($\Delta^{18}O_{lw}$) accounts for 14–53% of $\delta^{18}O_R$ (Fig. 6a). Except by the coolest northernmost site, where $\delta^{18}O_{sw}$ drives almost entirely $\delta^{18}O_R$ (85% of the variance), there is no clear latitudinal pattern for the relative importance of $\delta^{18}O_{sw}$ or $\Delta^{18}O_{lw}$, with all the sites falling in the region of moderate to good performance in Fig. 2.

ORCHIDEE overestimates the correlation between $\delta^{18}O_R$ and $\Delta^{13}C_R$ in the temperate sites in France, but it simulates very well the magnitude of the isotopic coupling observed in the boreal oak and pine sites in Finland (Fig. 6b). This means that the simulated stomatal control and responses to atmospheric humidity are overestimated in the temperate deciduous PFT, as is apparent in a stronger correlation between simulated isotopic variability and VPD in these sites compared with the observations (Fig. 6c–d).

The $\delta^{18}O_R$ simulations of the LPX-Bern global model are systematically better than the simulations of ORCHIDEE in terms of correlations and amplitude of the interannual variability (Fig. 52). In Fontainebleau LPX-Bern simulates 74% ($r=0.86$) of

the observed $\delta^{18}\text{O}_\text{R}$ variability. In this site, ORCHIDEE and MAIDENiso are able to simulate only 40% ($r=0.63$) and 34% ($r=0.58$) of the observed variability, respectively. Three sites (Kessi, Sivakkovaara and Fontainebleau) exceed the range of performance of ORCHIDEE (blue shading in Fig. 52), mostly due to the good skill of the LPX-Bern simulation in terms of correlation with the observations.

5 **Influence of source and leaf water $\delta^{18}\text{O}$ on simulated $\delta^{18}\text{O}_\text{R}$ in ORCHIDEE and response of isotopic variability to VPD across the climate gradient from boreal Finland (left) to temperate France (right) during 1960–2000. **a** Relative contribution (r^2) of soil (light gray) and leaf water (dark gray) $\delta^{18}\text{O}$ to simulated $\delta^{18}\text{O}_\text{R}$ variability. **b** Correlation between $\delta^{18}\text{O}_\text{R}$ and $\Delta^{13}\text{C}_\text{R}$ in simulations (dark gray) and observations (black). **c–d** Correlations between growing season VPD and simulated (dark gray) and observed (black) $\delta^{18}\text{O}_\text{R}$ and $\Delta^{13}\text{C}_\text{R}$ variability, respectively. For Annecey the period of analysis is 1971–2000. Significance at the 95% confidence level is indicated by the black dots.**

First-order autocorrelation in observed (black) and simulated (gray) tree-ring variables over the period 1960–2000. **a** Tree-ring width. **b** $\Delta^{13}\text{C}_\text{R}$. **c** $\delta^{18}\text{O}_\text{R}$. For Annecey the period of analysis is 1971–2000. Significance at the 95% confidence level is indicated by the black dots.

Correlations between the simulated tree-ring variables at each site and simulated May–August Gross Primary Productivity (GPP) over the evaluation period 1960–2000. **a** Correlations of $\delta^{18}\text{O}_\text{R}$ (light gray), $\Delta^{13}\text{C}_\text{R}$ (dark gray) and tree-ring width (black) with GPP. **b** Correlations of soil and leaf water $\delta^{18}\text{O}$ components of $\delta^{18}\text{O}_\text{R}$ with GPP. For Annecey the period of analysis is 1971–2000. Significance at the 95% confidence level is indicated by the black dots.

The significant relationship found between simulated $\delta^{18}\text{O}_\text{R}$ and GPP in Fontainebleau is also observed across all the other sites (Fig. 8a). Its strength (r) In order to understand the origin of the differences between ORCHIDE and LPX-Bern, it is necessary to compare their isotopic drivers and the relative contributions of the isotopic composition of source water ($\delta^{18}\text{O}_\text{sw}$) and leaf water enrichment ($\Delta^{18}\text{O}_\text{lw} = -0.47 - \delta^{18}\text{O}_\text{lw} - \delta^{18}\text{O}_\text{sw}$) to -0.73) appears to increase from the boreal to the temperate region, accounting for up to 22–53% of GPP variability. This empirical relationship is driven by a synergistic effect of source water and leaf water enrichment above source water because both variables correlate negatively with GPP (Fig. 8b). Leaf water enrichment tends to correlate with GPP more strongly than source water, though in the northernmost pine site only source water is correlated with GPP. $\Delta^{13}\text{C}_\text{R}$ is also significantly correlated with GPP in most of the sites, but correlations are insignificant or change sign in the colder northernmost sites (Fig. 8a). Tree-ring width is by definition highly correlated with GPP simulated $\delta^{18}\text{O}_\text{R}$ variability in each model. In contrast to LPX-Bern, ORCHIDEE simulates a much stronger contribution of $\delta^{18}\text{O}_\text{sw}$ (46–85%) than $\Delta^{18}\text{O}_\text{lw}$ (14–53%) to $\delta^{18}\text{O}_\text{R}$ variability (Fig. 3a). The $\delta^{18}\text{O}_\text{R}$ variability simulated by LPX-Bern is dominated by the $\Delta^{18}\text{O}_\text{lw}$ (42–78%) isotopic signal (Fig. 3b). ORCHIDEE does not simulate any clear latitudinal pattern for the relative importance of $\delta^{18}\text{O}_\text{sw}$ and $\Delta^{18}\text{O}_\text{lw}$. In contrast, LPX-Bern simulates an increasing importance of $\Delta^{18}\text{O}_\text{lw}$ toward the north, except at the coolest northernmost site where $\delta^{18}\text{O}_\text{R}$ is dominated by the signature of $\delta^{18}\text{O}_\text{sw}$ in the two models.

The isotopic signatures of precipitation ($\delta^{18}\text{O}_\text{p}$) and vapour ($\delta^{18}\text{O}_\text{v}$) from the LMDZ atmospheric model used to drive ORCHIDEE are poorly correlated with those produced by the ECHAM5 atmospheric model that underlay $\delta^{18}\text{O}_\text{sw}$ used to force LPX-Bern (Fig. 8a).

4 Discussion

3.1 Integrating tree-ring width and carbon and oxygen isotopes for insights on growth and gas exchange

The enhanced information content obtained by combining multiple and complementary tree-ring variables has long been recognized in multi-proxy dendroclimatology (McCarroll et al., 2003; Loader et al., 2008; Hlasvuori et al., 2009; Daux et al., 2011; Schol
5 and dendroecology (Guerrieri et al., 2009; Savard, 2010; Leonelli et al., 2012; Shestakova and Martínez-Sancho, 2020), but its potential remained largely untapped in ecological modelling. Tree-ring widths provide a historical record of annual aboveground biomass increment (Clark et al., 2001; Bouriaud et al., 2005; Babst et al., 2018; Cernusak and English, 2015; Foster et al., 2016; Dye et al
- The stable carbon isotope ratio of plant material, usually reported as $\delta^{13}\text{C}$, is related to the ratio of intercellular (c_i) and atmospheric CO_2 concentration (Farquhar et al., 1982). As this ratio varies according to changes in stomatal aperture (g_s ; supply of CO_2) and assimilation rate (A ; CO_2 demand), it integrates the physiological response of plants to environmental changes such as drought stress and increasing atmospheric CO_2 concentration (McCarroll and Loader, 2004; Gessler et al., 2014)

Changes in c_i can result from changes in either A or g_s , thus the interpretation of changes in carbon isotope alone is difficult. The imprint of 3c). In spite of this lack of agreement, the soil-integrated $\delta^{18}\text{O}_{\text{sw}}$ variability simulated by ORCHIDEE and
15 JBACH (coupled with ECHAM5) land surface models are significantly correlated. The strength of the correlations increase for the resulting $\Delta^{18}\text{O}_{\text{lw}}$ and $\delta^{18}\text{O}_{\text{R}}$ variability simulated by ORCHIDEE and LPX-Bern (Fig. 3c). This pattern of correlations indicates that, in models, seasonal differences in the isotopic composition of precipitation are strongly buffered by water mixing in the soil profile, resulting in coherent isotopic variations in source water and thereby contributing to the correlation of the $\delta^{18}\text{O}_{\text{R}}$ signals simulated by the models. The significant resemblance of simulated $\Delta^{18}\text{O}_{\text{lw}}$ between the models points
20 to similarities in the response of leaf evaporative enrichment on $\delta^{18}\text{O}$ of tree-ring cellulose is not affected by A and like the carbon isotope depends on g_s (McCarroll and Loader, 2004; Gessler et al., 2014). Hence, and meteorological forcings (i.e., VPD). Taken together, the analysis of the leaf enrichment signal of tree-ring $\delta^{18}\text{O}$ isotopic forcings and contributions of source water and leaf enrichment suggests that the better performance of LPX-Bern derives from the higher contribution of leaf enrichment to simulated $\delta^{18}\text{O}_{\text{R}}$ variability.

ORCHIDEE overestimates the correlation between $\delta^{18}\text{O}_{\text{R}}$ and $\Delta^{13}\text{C}_{\text{R}}$ in the temperate sites in France, but it simulates very well the magnitude of the isotopic coupling observed in the boreal oak and pine sites in Finland ($\Delta^{18}\text{O}_{\text{lw}}$) is an independent
25 proxy for g_s and can be used to disentangle the physiological drivers (A or g_s) of variations in carbon isotope fractionation and growth in the same tree ring (Saurer et al., 1997; Scheidegger et al., 2000; Barnard et al., 2012) Fig. 4a). This means that the simulated stomatal control and responses to atmospheric humidity are overestimated in the temperate deciduous PFT, as
30 is apparent in a stronger correlation between simulated isotopic ratios and VPD in these sites compared with the observations (Fig. 4b–c).

The concurrent variability of tree-ring width,

Measured latewood or whole-ring isotopic ratios have no significant first-order autocorrelation in the sites (Fig. 5b–c), with the exception of $\Delta^{13}\text{C}_{\text{R}}$ and in Fontainebleau. However, ORCHIDEE simulates substantial autocorrelation in $\delta^{18}\text{O}_{\text{R}}$ is

driven by coordinated ecophysiological responses to external environmental factors that, depending on species and location, can imprint a varying degree of covariability among them as seen in the tree-ring triplet variability in the three temperate sites in France and also in the northernmost boreal site in Finland (Fig. 1d). In a temperate location such as Fontainebleau, it is expected that dry summer conditions associate with narrow tree rings, decreased $\Delta^{13}\text{C}_\text{R}$ and increased oxygen isotope enrichment in the leaf water (thus higher $\delta^{18}\text{O}_\text{R}$) because trees close their stomata to reduce g_s and avoid dehydration during drought stress at the expense of photosynthesis (Saurer et al., 1997; Scheidegger et al., 2000; Barnard et al., 2012). Consistent with this expectation, our bivariate response surface shows that years with narrow rings like 1976 (5c), 1990 and 1996 are associated with low $\delta^{18}\text{O}_\text{R}$ likely as a result of autocorrelation in the isotopic composition of source water. In contrast, simulated $\Delta^{13}\text{C}_\text{R}$ and high $\delta^{18}\text{O}_\text{R}$ in latewood has significant autocorrelation only in Rennes, although it is nearly significant as well in Fontainebleau (Fig. 1d). The opposite occurs during moist years with wider rings, when conditions for stomatal aperture and photosynthesis are optimal. This demonstrates that projecting tree-ring width variability into the isotopic space allows unravelling the underlying mechanistic relationships between tree growth and gas exchange to obtain an integrated picture of how trees respond to drought stress, an eventually also to temperature anomalies if $\delta^{18}\text{O}_\text{R}$ can be interpreted as a temperature proxy (Fig. 1d-f, 5b).

The often dominant effect of $\delta^{18}\text{O}_\text{sw}$ on $\delta^{18}\text{O}_\text{R}$ variability

3.1 Simulated relationship between productivity and isotopic variability

Growing season (May-August) GPP is significantly correlated with the simulated isotopic variability across all sites (Fig. 6a) dilutes the leaf enrichment signal and reduces the correlation between $\delta^{18}\text{O}_\text{R}$ and $\Delta^{13}\text{C}_\text{R}$ ($r = -0.47$ to -0.73) than with $\Delta^{13}\text{C}_\text{R}$ (Fig. 2a). Studies using the dual isotope conceptual model to interpret physiological signals typically remove or minimize its effect (Scheidegger et al., 2000; Barnard et al., 2012; Roden and Siegwolf, 2012). In modelling studies, this signal can be quantified and used to evaluate the quality of the isotopic forcings (precipitation and vapour) of modelled $r = -0.40$ to 0.85 along the climate gradient. The strength of the correlations between $\delta^{18}\text{O}_\text{R}$ and attribute data-model mismatches. In addition, $\delta^{18}\text{O}_\text{sw}$ carries a well-known paleo-temperature signal (McCarroll and Loader, 2004) that can be used to disentangle the climatic forcing of past growth anomalies and physiological responses inferred from $\Delta^{13}\text{C}_\text{R}$ well beyond the duration of the meteorological records.

The three-way correlations among tree-ring width and $\Delta^{13}\text{C}_\text{R}$ and $\delta^{18}\text{O}_\text{R}$ (or $\Delta^{18}\text{O}_\text{R}$) variability provide a measure of the interannual coupling between growth and gas exchange, revealing direct and indirect associations driven by common or correlated environmental forcings. GPP ($r = -0.47$ to -0.73) appears to increase from the boreal to the temperate region. This empirical relationship is driven by a synergistic effect of source water and leaf water enrichment because both variables correlate negatively with GPP (Fig. 1d). The strength of the direct causal relationships expected from mechanistic understanding, like the correlation between isotopes (Scheidegger et al., 2000) and between photosynthesis or biomass increment and carbon isotopes (Belmecheri et al., 2014; Battipaglia et al., 2013; Lévesque et al., 2014; Fernandes et al., 2016), is a simple benchmark to constrain the physiological parameterization of models as we discuss below. 6b). Leaf water enrichment tends to correlate

with GPP more strongly than source water, though in the northernmost pine site only source water is correlated with GPP. Simulated tree-ring width is highly correlated with simulated GPP because of its direct dependency on it (Fig. 6a).

4 Discussion

4.1 Critical Uncertainties and critical processes for the concurrent simulation of multiple modelling tree-ring variables width and isotopic ratios in a global land surface models model

Our evaluation in Fontainebleau and other five sites across a boreal-to-temperate climate gradient in Europe showed that ORCHIDEE simulates better the interannual variability of tree-ring stable isotopes than ring-width (30-64% and <30% of the observed variability, respectively), with a general performance for the stable isotopes similar to MAIDENiso and slightly lower than LPX-Bern models (Figs. 1 and 5 (Figs. 1 and 2)). The lower skill for tree-ring width results primarily from the inability of ORCHIDEE to simulate the significant temporal autocorrelation observed in ring-width variability (Fig. 7a). This temporal carrying-over effect is common in 6a). Temporal carryover is characteristic of tree-ring width (Cailleret et al., 2018; Breitenmoser et al., 2011) and results from carbon remobilization from previous years (Kagawa et al., 2006) and to some extent from cambial dynamics (Vaganov et al., 2011). It (Fritts, 1976; Cook, 1985) and varies considerably with species and location but typically accounts for 20–25% of current year ring-width variability (Breitenmoser et al., 2014). Several developmental and physiological processes involved in tree growth can produce carryover, including primarily remobilization of non-structural carbohydrates from previous years (Kagawa et al., 2006; Keel et al., 2006; Carbone et al., 2013), cambial dynamics (Vaganov et al., 2011), leaf lifespan (LaMarche Jr and Stockton, 1974; Monserud and Marshall, 2001) and environmental cycles or slowly varying crown and root dynamics that affect tree water and carbon balance across several years (Fritts, 1976; Rocha et al., 2006). The carryover of ring-width observations can be removed through statistical prewhitening (Cook, 1985). A data-model comparison using prewhitened observations results in slightly higher correlations with simulated ring-width variability in the three French sites (e.g., increase in r from 0.50 to 0.56 in Fontainebleau) but not in the Finish sites (not shown), where autocorrelation was lower (Fig. 6a).

The ORCHIDEE version used in this study (r898) lacks the representation of the influence of carbon storage on simulated tree-ring width and instead growth a labile carbon pool and like most other global land surface models (Fatichi et al., 2014; Jones et al., 2020) is unable to simulate growth carryover. As a result, simulated growth depends directly on instantaneous photosynthesis and thereby it reflects only current year GPP variability (see Figs. 3b and Fig. 6a). This simplified representation of growth is currently the major limitation of the model to simulate the tree-ring triplet (Fig. 5 width variability (Figs. 1a and 2)). Nevertheless, in Fontainebleau ORCHIDEE still simulates 26% of the observed interannual variability but overestimates its amplitude and the speed of recovery from drought extremes like 1976 (Fig. 1a). Legacy effects of reduced growth following drought events can persist for 1 to 4 years in drought-sensitive ecosystems (Anderegg et al., 2015; Cailleret et al., 2018). Such prolonged legacy effects are typically not simulated by global carbon cycle models because most of them, like ORCHIDEE, that lack the representation of the significant dependency of interannual tree growth on carbon remobilization from storage in their carbon allocation schemes (Anderegg et al., 2015). Recent developments to improve the realism of growth variability in land surface

models have added a module of labile carbon storage and its utilization to decouple growth from instantaneous photosynthesis (Naudts et al., 2015; Vuichard et al., 2019; Jeong et al., 2020; Jones et al., 2020). This allows reproducing growth carryover and realistically sustain growth from storage during periods of environmental stress that might suppress photosynthesis, such as severe or prolonged drought (Jones et al., 2020). The newest version of ORCHIDEE (r5698) includes a pool of labile carbon that should contribute to a more realistic simulation of tree-ring width variability and ecosystem recovery from climate extremes (Vuichard et al., 2019; Jeong et al., 2020).

Unlike global models, MAIDENiso explicitly represents the autocorrelation in tree-ring width in its carbon allocation scheme (Misson, 2004; Danis et al., 2012) and as a result through its carbon storage pool and utilization scheme (Misson, 2004; Danis et al., 2012). However, the calibrated model overestimated the magnitude of the observed autocorrelation, which led to muted interannual variability in simulated tree-ring width ($NSD=0.68$). Because of the simulated carryover, it was able to capture the enduring effect of the extreme drought of 1976 in Fontainebleau even when tree growth is represented through GPP allocation as in ORCHIDEE (Fig. 1a). This result demonstrates that a simple approach to represent the dependency of tree growth on carbon remobilization might produce a substantial improvement in ORCHIDEE and allow a direct tree-ring constraint for the simulation of ecosystem recovery from climate extremes. Implementing wood formation dynamics would be a fully process-based approach to represent tree-ring growth (Fritts et al., 1999; Friend et al., 2019), but in a global model it implies an important tradeoff with computing time. In this extreme year, photosynthesis was strongly reduced and carbon expenditure to growth and respiration in the model was sustained by stored carbon at the cost of partially depleting the pool. The carbon pool then took several years to recover, mimicking the observed slow recovery of growth after the drought (Fig. 1a).

ORCHIDEE was able to simulate 30-64% of the observed $\Delta^{13}C_R$ variability along the climate gradient, but the amplitude of the interannual variations was underestimated by 30-60% (Fig. 5) and the observed 2) and it failed to capture the decrease in $\Delta^{13}C_R$ since 1980 in Fontainebleau was not captured (Fig. 1b). An earlier study with ORCHIDEE also found a similar underestimation of the interannual variability of $\Delta^{13}C_R$ for larch in northeastern Yakutia, where the model simulated 26% ($r = 0.51$) of the observed variability (Churakova et al., 2016). The low amplitude of the simulated variability can be related to missing post-photosynthetic fractionation and mixing processes and the parameterization of soil in the simple representation used for $\Delta^{13}C_R$ (Eq. 2). However, the same formulation has been shown to reproduce the observations in earlier studies in Europe with the LPX-Bern and CLM4.5 global land surface models (Keller et al., 2017). The representation of water stress and processes that affect c_i such as photosynthesis and moisture responses.

could also explain the lower performance of ORCHIDEE. A simple parameter sensitivity test in Fontainebleau (not shown) indicated that the amplitude of simulated $\Delta^{13}C_R$ in ORCHIDEE is very sensitive to soil depth and maximum photosynthetic capacity ($V_{max}V_{cmax}$). This suggests that simulated $\Delta^{13}C_R$ simulated by Eq. 2 and the associated drought and stomatal responses can be better parameterized by using tree-ring data as an observational constraint to optimize model parameters. Nevertheless, besides an improved parameterization, using a more complete formulation for carbon discrimination (Lloyd and Farquhar, 1994) combined with a scheme of carbohydrate mixing (Hemming et al., 2001; Ogée et al., 2009; Danis et al., 2012) of isotopic signatures from old stored carbon and new photosynthetic carbon (Hemming et al., 2001; Danis et al., 2012) should

contribute to improve the simulation of $\Delta^{13}\text{C}_\text{R}$ and stomatal responses in ~~ORCHIDEE~~the latest version of ORCHIDEE (Jeong et al., 2020).

The long-term evaluation in Fontainebleau shows that ORCHIDEE simulates no overall change in 20th century $\Delta^{13}\text{C}_\text{R}$ (Fig 1b), implying that the simulated c_i/c_a ratio remained roughly constant as atmospheric CO_2 concentrations increased by about

5 ~~25~~Modelling the fractionation processes of $\delta^{18}\text{O}$ along the soil-plant-atmosphere continuum is complicated by interactions between environmental factors and physiological responses (Gessler et al., 2009; Werner et al., 2012; Gessler et al., 2014). As a result, $\delta^{18}\text{O}_\text{R}$ is arguably one the tree-ring variables most difficult to interpret (Roden and Siegwolf, 2012; Barbour and Song, 2014) and to simulate in a global model. Our results show that despite this complexity and uncertainties, global models like ORCHIDEE and LPX-Bern can simulate the amplitude of $\delta^{18}\text{O}_\text{R}$ within $\pm 20\%$ (Saurer et al., 2004). Under this type of gas-exchange response, Eq. (9) shows that $i\text{WUE}$ should increase proportionally to the relative increase in atmospheric CO_2 (Saurer et al., 2004). Indeed, the simulated centennial increase in $i\text{WUE}$ is 21.2 and account for up to 74% with respect to the 1901–1910 period of the observed interannual variability (Fig. 4a). This is still comparable with the observed increase in $i\text{WUE}$ of 25.5%, indicating that the decrease of about 1‰ in $\Delta^{13}\text{C}_\text{R}$ (decrease in c_i) since 1980 (Fig1b) was not sufficient to shift the constant c_i/c_a type of response of oak to rising CO_2 in Fontainebleau 2). Disentangling the effect of isotopic signatures from source water and leaf evaporative enrichment revealed that the better performance of LPX-Bern to simulate $\delta^{18}\text{O}$ variability was due to its higher sensitivity to leaf evaporative enrichment compared with ORCHIDEE (Fig. 3a), which is predominantly sensitive to source water $\delta^{18}\text{O}$ (Fig. 4a). Constant c_i/c_a ratio over the 20th century is the most common physiological response reported for trees in Europe (Saurer et al., 2014; Frank et al., 2015) and has also been correctly simulated by the LPX-Bern vegetation model (Saurer et al., 2014; Keller et al., 2017), which uses the same formulation for $\Delta^{13}\text{C}_\text{R}$ (Eq. 2) than ORCHIDEE. The implication of this stomatal response for land-atmosphere interactions is a centennial-scale reduction in transpiration as trees under present environmental conditions use less water for the production of the same amount of biomass compared with earlier decades of the 20th century.

ORCHIDEE simulated the amplitude of 3b). This implies that the observations support a dominant control of leaf evaporative enrichment on $\delta^{18}\text{O}_\text{R}$ within $\pm 20\%$ in our study sites. A similar result was found with MAIDENiso for species in Canada and Patagonia (Lavergne et al., 2017). We could not verify if this is also the case in the MAIDENiso simulation used for Fontainebleau (Danis et al., 2012) because simulated $\delta^{18}\text{O}_\text{sw}$ and $\delta^{18}\text{O}_\text{lw}$ were not available. A previous tree-ring study using ORCHIDEE with the same parameterization in the Tibetan Plateau found that $\delta^{18}\text{O}_\text{lw}$ accounted for 66% and accounted for 43–55% of the observed variability (Fig. 5). Consistent with earlier palaeoclimatic and modelling studies (Roden et al., 2000; Robertson et al., 2000), most of the simulated variability of variability of simulated $\delta^{18}\text{O}_\text{R}$ (46–85%) in ORCHIDEE is driven by (Shi et al., 2011) , which although dominant still shows the considerable sensitivity of the model to $\delta^{18}\text{O}_\text{sw}$ (Fig. 6a). Leaf water enrichment ($\Delta^{18}\text{O}_\text{lw}$) accounted for 14–53 i.e., 34% of $\delta^{18}\text{O}_\text{R}$ variability, without showing any latitudinal pattern in its contribution (Fig. 6a). Nevertheless, the coolest northernmost pine site had the lowest contribution of $\Delta^{18}\text{O}_\text{lw}$ to $\delta^{18}\text{O}_\text{R}$ variability as it would be expected from lower transpiration rates in a cool environment (Treydte et al., 2014). the variance).

The general pattern of relative contributions of source Given the support for a larger relative importance of $\delta^{18}\text{O}$ evaporative enrichment of leaf water with transpiration in LPX-Bern and MAIDENiso, uncertainties in the parameterization of leaf

physiology and mixing of source (xylem) and leaf water enrichment highlights the strong dependence and sensitivity of $\delta^{18}\text{O}_\text{R}$ to the choice of the precipitation isotopic forcing in modelling studies. Differences in the isotopic drivers might account for most of the observed differences among models will have a large impact on the overall skill of the models when compared with the observations. LPX-Bern and ORCHIDEE have a similar representation of the Peclet effect (Eq. 5) and isotopic mixing during cellulose production (Eq. 6; Keel et al., 2016), which is reflected in the significant correlation of simulated $\Delta^{18}\text{O}_\text{lw}$ (Fig. 53c). The isotopic forcings for main difference in the parameterization of the Peclet effect is for the path length L . LPX-Bern (Haese et al., 2013; Keel et al., 2016) and ORCHIDEE (Risi et al., 2010) were produced by isotope-enabled global circulation models driven or nudged by reanalysis products, whereas for MAIDENiso simple regressions with temperature and precipitation were used to produce daily precipitation and water vapour used a value of 3 mm for all PFTs (Keel et al., 2016), while we used a value of 8 mm obtained from tuning against seasonal observations in a few mid-latitude sites (Risi et al., 2016). Eq. 5 shows that the almost three times higher L in ORCHIDEE should result in a larger Peclet effect, which increases (decreases) the contribution of xylem water (evaporative enrichment) to the $\delta^{18}\text{O}$ forcings (Danis et al., 2012).

The signature of leaf water. In addition, we assumed the common value 0.42 for the parameter f_0 (fraction of exchange with xylem water prior to cellulose synthesis) in Eq. 6, while a value of 0.4 was used in LPX-Bern simulations of (Keel et al., 2016). These parameter differences enhanced the imprint of the isotopic signature of xylem water in $\delta^{18}\text{O}_\text{R}$ consistently compared better with the observations than the simulations of ORCHIDEE and MAIDENiso, both in terms of correlations and amplitude of the variability (Fig. 5). Notably, LPX-Bern was able to simulate 74% of the observed $\delta^{18}\text{O}_\text{R}$ variability in the grid-box corresponding to Fontainebleau, which is considerably higher than the variance accounted for by ORCHIDEE (44%) and MAIDENiso (29%) in the site. This pattern suggests that the higher performance of LPX-Bern might be related to a better isotopic forcing simulated by ORCHIDEE. Future studies should evaluate model sensitivity to these parameters and constrain them with tree-ring observations.

Overall, a scheme of carbon storage and remobilization dynamics (e.g., Misson, 2004) or wood formation (Fritts et al., 1999; Friend et al. should be implemented in ORCHIDEE as part of the ongoing developments to produce novel observational benchmarks from The seasonal and interannual variability in the $\delta^{18}\text{O}$ composition of precipitation and air vapour at tree-ring width data (Jeong et al., 2020). Such development will allow capturing the significant autocorrelation in sites is a source of uncertainty for modelling tree-ring width (Fig. 7a) and improving the simulation of $\Delta^{13}\text{C}_\text{R}$ variability, resulting in a better representation of the impacts of climate extremes on forest ecosystems. Since the choice of isotopic forcing has a large impact on the simulation of $\delta^{18}\text{O}_\text{R}$, more than one forcing should be used to evaluate the magnitude of the uncertainty of source water signals in simulated $\delta^{18}\text{O}_\text{R}$ - $\delta^{18}\text{O}$ (Evans, 2007; Danis et al., 2012; Lavergne et al., 2017; Keel et al., 2016). However, the dampening effect of soil water mixing reduces considerably the impact of the seasonal variability in $\delta^{18}\text{O}$ of precipitation on the more integrated $\delta^{18}\text{O}_\text{sw}$ signal (Danis et al., 2012). Our results showed that even when precipitation $\delta^{18}\text{O}$ from two atmospheric models does not correlate, the resulting $\delta^{18}\text{O}_\text{sw}$ variability might be consistent and significantly correlated (Fig. 3c). The current parameterization of the Peclet effect (L) and exchange with xylem water (f_0) in ORCHIDEE make it more sensitive to uncertainties in precipitation $\delta^{18}\text{O}$ forcing data. A dedicated model intercomparison study for tree-ring $\delta^{18}\text{O}$ using the same

meteorological and isotopic forcing will help to evaluate uncertainties and attribute differences to forcing data, parameters and model structure.

4.2 Constraining model processes with the growth-isotope tree-ring triplet

The enhanced information content obtained by combining multiple and complementary tree-ring variables has long been recognized in multi-proxy dendroclimatology (McCarroll et al., 2003; Scholten et al., 2013; Loader et al., 2015) and dendroecology (Guerrieri et al., 2009; Savard, 2010; Shestakova and Martínez-Sancho, 2020) but its potential remained largely untapped in ecological modelling. The novel simulation of the growth-isotope tree-ring triplet (ring width, $\Delta^{13}\text{C}_\text{R}$ and $\delta^{18}\text{O}_\text{R}$) in a global land surface model enabled us to use (Fig. 1e) enables using known mechanistic relationships between isotopes (Scheidegger et al., 2000) and between growth and carbon isotopes (Francey and Farquhar, 1982; Cernusak and English, 2015; Shestakova et al., 2019) in the same ring (Francey and Farquhar, 1982; Cernusak and English, 2015; Shestakova et al., 2017) to benchmark the physiological responses of the model. This brings a new perspective on data-model comparisons beyond the traditional use of the interannual variability or trends (Panek and Waring, 1997; Danis et al., 2012; Bodin et al., 2013; Churakova et al., 2016; Keel et al., 2016; Keller et al., 2017; Ulrich et al., 2019). A much stronger negative correlation between simulated

The relationship between $\Delta^{13}\text{C}_\text{R}$ (or $\delta^{13}\text{C}_\text{R}$) and $\delta^{18}\text{O}_\text{R}$ is the basis of the well-known dual isotope conceptual model (Saurer et al., 1997; Scheidegger et al., 2000), which is widely used as a physiological constraint of leaf-level plant responses to environmental variability (Barnard et al., 2012). $\delta^{18}\text{O}_\text{R}$ variation is interpreted as a proxy for stomatal conductance (g_s), assuming that it reflects only changes in leaf water enrichment caused by variation in air relative humidity, whereas changes in $\Delta^{13}\text{C}_\text{R}$ are interpreted as an integrated measure of photosynthesis (A) relative to stomatal conductance, that is the intrinsic water use efficiency (iWUE). A negative relationship between $\delta^{18}\text{O}_\text{R}$ and $\delta^{18}\text{O}_\text{R}$ than in the observations suggests that ORCHIDEE might overestimate the limitation of photosynthetic carbon assimilation by stomatal control in the temperate region (Rennes, Fontainebleau- $\Delta^{13}\text{C}_\text{R}$, as seen across the diagonal of the tree-ring triplet in Fontainebleau (slope b3 in Fig. 1d), would indicate that plants have a strong stomatal control of gas exchange and stomatal conductance (rather than photosynthetic rate) drives variations in $\Delta^{13}\text{C}_\text{R}$ and iWUE.

Depending on regional climate, the slope between tree-ring width and $\delta^{18}\text{O}_\text{R}$ (b1 in Fig. 1d) can capture the seasonally integrated response of trees to air temperature and environmental moisture (Rebetez et al., 2003; Liu et al., 2017). However, the shape and nature of the relationship alone might be difficult to interpret without separating the effects of oxygen isotopic fractionation in leaves and source water variability on $\delta^{18}\text{O}_\text{R}$ (Barnard et al., 2012; Roden and Siegwolf, 2012; Sargeant et al., 2019). But when ring-width variations are simultaneously negatively related to $\delta^{18}\text{O}_\text{R}$ and positively to $\Delta^{13}\text{C}_\text{R}$ variations, as observed in Fontainebleau (Fig. 1d), it can be established with confidence that tree growth is modulated by leaf physiology through the stomatal limitation of CO_2 supply to photosynthesis as a response to air and soil humidity constraints (see axes in Fig. 1d).

The slope between tree-ring width and $\Delta^{13}\text{C}_\text{R}$ (b2 in Fig. 1d) provides a robust indication of the main climatic and carbon assimilation drivers (i.e., supply of CO_2 by stomatal conductance or demand of CO_2 by photosynthesis) associated with wood biomass growth variability (Voelker et al., 2014; Shestakova et al., 2017, 2019). In Mediterranean and temperate climates with moisture-limited tree growth, the slope or correlation between ring width and $\Delta^{13}\text{C}_\text{R}$ is positive (Shestakova et al., 2019), as

seen in Fontainebleau (Fig. 1d). This means that tree growth and leaf physiology are both similarly driven by soil moisture constraints through a limitation of CO_2 supply to photosynthesis due to reduced stomatal conductance to avoid dehydration. In the boreal region north of the Arctic circle, where tree growth and function are controlled by low temperatures and radiation, the slope and correlation between ring width and $\Delta^{13}\text{C}_\text{R}$ turn negative (Shestakova et al., 2019). Under these conditions, the main control of $\Delta^{13}\text{C}_\text{R}$ is assimilation rate and therefore lower $\Delta^{13}\text{C}_\text{R}$ is associated with increased photosynthesis and growth. The growth- $\Delta^{13}\text{C}_\text{R}$ coupling will be stronger when tree-growth variability is driven by concurrent climate and photosynthetic rates. In contrast, it will be weaker when growth relies more on stored carbohydrates and other processes that contribute to growth carryover and isotopic mixing.

The growth-isotope relationships can change over time with increased drought and warming (Shestakova et al., 2017, 2019) and are clearer during climate extremes. For instance, in a temperate location such as Fontainebleau it is expected that dry summer conditions would associate with narrow tree rings, decreased $\Delta^{13}\text{C}_\text{R}$ and increased oxygen isotope enrichment in leaf water (thus higher $\delta^{18}\text{O}_\text{R}$) because trees would close their stomata to reduce stomatal conductance and avoid dehydration at the expense of photosynthesis. Precipitation and soil water $\delta^{18}\text{O}$ would also be enriched because of higher temperatures, further increasing $\delta^{18}\text{O}_\text{R}$. Consistent with this expectation, our bivariate response surface shows that years with extremely narrow rings like 1976, 1990 and ~~Anneey; Fig. 6b)~~ 1996 are associated with low $\Delta^{13}\text{C}_\text{R}$ and high $\delta^{18}\text{O}_\text{R}$ in latewood (Fig. 1d). The opposite occurs during moist years with wider rings, when conditions for stomatal aperture are optimal. Depending on the climatic region, the paleo-temperature signals carried by $\delta^{18}\text{O}_\text{R}$ could be used to disentangle changes in the climatic forcing of past growth anomalies and physiological responses inferred from the growth-isotope triplet under pre-industrial and current climate conditions.

The growth-isotope triplet of the observations can be directly compared with the simulated triplet to mechanistically constrain the realism of model responses. The geometry of the tree-ring triplet simulated by ORCHIDEE r898 (Fig. 1e) demonstrates that the model is able to simulate more realistic physiological responses to environmental variability than MAIDENiso in Fontainebleau (Fig. 1f). However, the simulated growth- $\Delta^{13}\text{C}_\text{R}$ and $\Delta^{13}\text{C}_\text{R}$ - $\delta^{18}\text{O}_\text{R}$ relationships in ORCHIDEE are much stronger than in the observations. Removing the $\delta^{18}\text{O}_\text{sw}$ effect from simulated $\delta^{18}\text{O}_\text{R}$ to highlight the effect of leaf water enrichment in Fontainebleau further ~~increases-increased~~ the strength of the ~~isotopic-coupling (Fig. 2). It implies that growth and gas exchange for the temperate Broadleaf Summergreen PFT of the model are likely too sensitive to atmospheric evaporative demand and drought stress. This is consistent with correlations between VPD and simulated isotopic variability being stronger than in the observations in these sites (Fig. 6c-d), and with an overestimated sensitivity of simulated tree-ring width to precipitation and VPD in Fontainebleau (Fig. 3).~~ coupling between $\delta^{18}\text{O}_\text{R}$ and $\Delta^{13}\text{C}_\text{R}$ (not shown). The correlation between stable isotopes and their correlations with VPD are also substantially overestimated in the other temperate sites (Rennes and Annecy; Fig. 4a-b). These model-data mismatches indicate that the model overestimates drought stress and the limitation of photosynthetic carbon assimilation by stomatal control in the temperate region, where stomatal regulation strongly drives variability in plant water use efficiency (Frank et al., 2015; Shestakova et al., 2019).

The implication of such a strong stomatal constraint for land-atmosphere interactions in ORCHIDEE r898 is an overestimation of energy partitioning towards sensible heat and an underestimation of transpiration and carbon uptake per unit of leaf area in

the temperate region. In the boreal region (Kessi, Sivakkovvara and Bromarv), where stomatal control is not the main driver of $\Delta^{13}\text{C}_\text{R}$ (Shestakova et al., 2019). ORCHIDEE simulated a level of correlation between stable isotopes (Fig. 6b4b) and sensitivity to VPD (Fig. 6e4c) in good agreement with the observations, indicating a better gas-exchange parameterization for the boreal Broadleaf Summergreen and Needleleaf Evergreen PFTs. ~~These results illustrate how tree-ring data can be used to evaluate and identify critical processes in the parameterization of a global land surface model. (Table 1).~~ The parameterization of the ~~temperate PFT can~~ Temperate Broadleaf Summergreen PFT of the model could be improved by assimilating tree-ring data together with other ecosystem observations ~~at shorter time scales (e.g., eddy covariance, forest inventories, earth observations)~~ using a data assimilation technique (Peylin et al., 2016; Thum et al., 2017).

~~We did not remove the effect of $\delta^{18}\text{O}_\text{sw}$ on $\delta^{18}\text{O}_\text{R}$ in the observations because the actual isotopic composition of precipitation is unknown. Thus, we caveat that the interpretation of the direct correlations between the two isotopes. The poor realism of the growth-isotope triplet simulated by MAIDENiso (Fig. 4) might violate the basic assumption of a dominant leaf-water signal in the dual-isotope approach (Roden and Siegwolf, 2012). Nevertheless, removing simulated $\delta^{18}\text{O}_\text{sw}$ from $\delta^{18}\text{O}_\text{R}$ reduces the correlation between the isotopes in the observations for the temperate sites and further increases the correlation in the simulations (not shown), reinforcing the finding that ORCHIDEE overestimates stomatal control in the temperate PFT. The strengthening of the isotopic coupling after removing the effect of $\delta^{18}\text{O}_\text{sw}$ from simulated $\delta^{18}\text{O}_\text{R}$ can be seen in Fontainebleau (Fig. 2).~~

~~Observed 1f) is related to the low amplitude of simulated ring-width variability (NSD=0.68) due to excessive carryover from carbon remobilization, which decouples growth from current photosynthesis and leads to small growth-isotope slopes (b1 and b2). Although MAIDENiso was calibrated against the tree-ring width was significantly and positively correlated with observations in Fontainebleau (Danis et al., 2006), it still simulates a stomatal control even stronger than in ORCHIDEE, as indicated by a higher correlation between $\delta^{18}\text{O}_\text{R}$ and $\Delta^{13}\text{C}_\text{R}$ in Fontainebleau (Fig. 1d). This correlation is common in pine and oak forests in the mid-latitudes of Europe and reflects that tree growth and leaf physiology are both similarly driven by water stress (Shestakova et al., 2019). ORCHIDEE (r898) largely overestimated this relationship because of an excessive drought sensitivity and lack of (r=0.79, p<0.001). These issues demonstrate that the statistical calibration of growth and physiological processes separately does not necessarily lead to an improved realism of simulated tree responses to environmental variability. An integrative constraint such as the tree-ring triplet presented here provides a way forward to improve the representation and parameterization of the representation of carbon remobilization, which would buffer the effect of the instantaneous leaf response on tree growth (Fig. 1e). Because of the latter process MAIDENiso captured the right magnitude of the expected coupling between leaf physiology and radial growth in the site (Fig. 1f). biology of tree growth and function in models. If only one tree-ring variable is simulated it is easier to tune a model to fit the data. But if the growth-isotope triplet is to be fit, the constraint is stronger and mechanistically informed.~~

4.3 Simulated relationship between isotopic variability and ~~photosynthesis~~ productivity

Our results showed that the simulated interannual variability in $\delta^{18}\text{O}_\text{R}$ was significantly and negatively correlated with GPP across all sites in the climate gradient ($r = -0.47$ to -0.73 , $p < 0.01$) because both source water ($\delta^{18}\text{O}_\text{sw}$) and leaf water

enrichment ($\Delta^{18}\text{O}_{\text{lw}}$) related negatively with GPP (Fig. 86). Although $\Delta^{18}\text{O}_{\text{lw}}$ dominates the correlation in most sites, it is the synergistic effect of $\delta^{18}\text{O}_{\text{sw}}$ variations that contributes to the apparent spatial consistency of the $\delta^{18}\text{O}_{\text{R}}$ –GPP correlation. The negative sign of the correlations of GPP with both components of $\delta^{18}\text{O}_{\text{R}}$ points to temperature as their underlying cause. On the one hand, higher temperatures during the growing season result in enriched $\delta^{18}\text{O}$ in precipitation and further enrich $\delta^{18}\text{O}_{\text{sw}}$ through evaporation. On the other hand, higher temperatures also lead to increased VPD, which increases leaf water enrichment and reduces GPP because of stomatal closure (Fig. 1d).

An earlier study attributed the correlation between $\delta^{18}\text{O}_{\text{R}}$ variability and satellite-based estimates of Net Primary Productivity (NPP) at large spatial scales to the common but opposite effect of VPD on leaf water enrichment and NPP, without considering the possible effect of source water (Levesque et al., 2019). Our finding suggests that $\delta^{18}\text{O}_{\text{R}}$ –productivity correlations should be interpreted with caution because they are not entirely driven by leaf physiology, and source water is often a dominant-an important driver of $\delta^{18}\text{O}_{\text{R}}$ (Fig. 6a3a–b).

The simulated interannual variability in $\Delta^{13}\text{C}_{\text{R}}$ also correlated with GPP in most sites, but the relationship was less spatially consistent since its significance and sign varied across the boreal-to-temperate climate gradient (Fig. 8a6a). A positive correlation between simulated $\Delta^{13}\text{C}_{\text{R}}$ and GPP in all temperate and boreal oak sites ($r = 0.45$ to 0.85 , $p < 0.01$) is coherent with a stomatal limitation of carbon assimilation (Shestakova et al., 2019). In the two boreal pine sites, correlations were weaker and only the northernmost site had a significant negative correlation ($r = -0.40$, $p < 0.01$). In such cool and moist environment, internal leaf CO_2 concentration is-and water use efficiency are controlled by photosynthetic rate, which is limited by temperature and sunshine (McCarroll and Loader, 2004; Hiltunen et al., 2009).

This contrast in $\Delta^{13}\text{C}_{\text{R}}$ –GPP correlations between the temperate and boreal region mirrors a shift from a positive to a negative relationship between $\Delta^{13}\text{C}_{\text{R}}$ and tree-ring width due to a change from water-limited to temperature-limited leaf physiology (Shestakova et al., 2019). These model-based isotope-GPP relationships are consistent with recent findings showing that tree-ring $\delta^{18}\text{O}$ correlates with satellite-based NPP over large spatial scales, whereas $\Delta^{13}\text{C}$ has a more local-and spatially variable correlation with GPP (Belmecheri et al., 2014; Levesque et al., 2019; Tei et al., 2019) -and ring width (Shestakova et al., 2017, 2019).

25 5 Conclusion

We demonstrated the potential of a tree-ring width-and-carbon-and-oxygen-triplet based on tree-ring width and $\Delta^{13}\text{C}$ and $\delta^{18}\text{O}$ stable isotopes to constrain the representation of tree growth and physiology in the global land surface model ORCHIDEE (r898), bridging the long-standing gap between the tree-ring and land surface modelling communities. ORCHIDEE had-an-overall-performance-to-simulate-The comparisons with tree-ring isotopic-variability-similar-to-that-of-the-specialized MAIDENiso-tree-ring-model-and-the-global-vegetation-model-data and the MAIDENiso and LPX-Bern -However, the lack of representation-for-the-dependency-models showed that the parameterization of leaf-level physiological responses (stomatal control) of ORCHIDEE can be mechanistically constrained using the simulated tree-ring isotopic variability but the representation of tree growth and carbon-isotopes-on-carbon-requires improvement. The lack of carbon remobilization from storage in the

model is currently a major limitation for ~~the concurrent~~ a realistic simulation of the ring-width-isotope triplet (ring width, $\Delta^{13}\text{C}_R$ and $\delta^{18}\text{O}_R$). The large contribution of the isotopic signature of source water on $\delta^{18}\text{O}_R$ makes its simulation sensitive to the choice of the prescribed isotopic drivers. Future modelling studies would benefit from quantifying uncertainties on $\delta^{18}\text{O}_R$ ~~variability from the isotopic drivers~~ interannual coupling between tree physiology and growth and the enduring legacy effects

5 of climate extremes on ecosystem dynamics. This calls for an updated representation of the biology of tree growth beyond the simple carbon-source approach, considering the effects of carbon storage and controls from wood tissue formation.

The ~~simulated long-term physiological response of constant leaf e_t/e_a ratio under rising CO_2 during the 20th century is consistent with the observations in the temperate region, despite an overestimation of seasonal drought stress and the limitation of photosynthetic carbon assimilation by stomatal control. The interannual variability of use of the growth-isotope tree-ring~~

10 triplet showed that good performance of a model in simulating individual tree-ring variables does not necessarily translate into realistically simulated tree responses to environmental variability. Because the tree-ring triplet integrates the response of the soil-plant-atmosphere system to environmental variability it is a powerful mechanistic constraint for tree growth and physiology in the context of modelling forest-atmosphere interactions. Consistent with recent observational studies, interannual variations in simulated forest productivity (GPP) correlated ~~consistently with the simulated variability of~~ significantly with

15 simulated variations in tree-ring ~~carbon and oxygen stable isotopes, but correlations with oxygen isotopes $\Delta^{13}\text{C}$ and $\delta^{18}\text{O}$~~ stable isotopes. However, correlations between tree-ring $\delta^{18}\text{O}$ and productivity are not entirely driven by leaf physiology and ~~should be interpreted with caution because of the significant and often large effect contribution of source water on the correlations~~ $\delta^{18}\text{O}$ to the relationship. These results establish the foundations for improving the simulation of tree rings in ORCHIDEE (Jeong et al., 2020) and a forthcoming optimization of model parameters using tree-ring data together with other

20 short-term ecosystem observations (e.g., remote sensing, eddy-covariance, forest inventories) in a formal data assimilation technique (Peylin et al., 2016). Such advances should contribute to reduce current uncertainties in historical and future ~~trends~~ changes in forest carbon and water cycling.

Data availability. All the tree-ring data and ORCHIDEE tree-ring simulations used in this study are available at https://github.com/jBarichivich/barichivich2020_biogeosciences

25 *Code and data availability.* The model code (SVN r898) is accessible in the ORCHIDEE webpage <https://forge.ipsl.jussieu.fr/orchidee/wiki/SourceCode>

The code for producing the bivariate surface from the tree-ring triplet is available at https://github.com/jBarichivich/barichivich2020_biogeosciences

Author contributions. JB, PP, TL and VD designed the research. TL conducted the simulations with support of CR. JJ and SL contributed to model development and research design. JB revised the model, analyzed the data and wrote the manuscript. All the authors contributed to

30 data interpretation and commented on the manuscript.

Competing interests. The authors declare no competing interests.

Acknowledgements. This research is part of a post-doctoral grant to Jonathan Barichivich from the presidential programme “Make Our Planet Great Again” (MOPGA) conducted through the Centre National de la Recherche Scientifique (CNRS) of France. We thank Joel Guiot for sharing the simulations of MAIDENiso for Fontainebleau ~~and~~, [Fortunat Joos and Martin Werner for kindly sharing the isotopic forcing used for their LPX-Bern simulations and](#) Manuel Gloor and Roel Brien for ~~discussion~~ [discussions on isotopic theory. We also thank two anonymous reviewers for their constructive comments that improved the paper.](#) We acknowledge support from the European Commission, Horizon 2020 Framework Programme, VERIFY (grant no. 776810).

References

- Ainsworth, E. A. and Long, S. P.: What have we learned from 15 years of free-air CO₂ enrichment (FACE)? A meta-analytic review of the responses of photosynthesis, canopy properties and plant production to rising CO₂, *New Phytologist*, 165, 351–372, 2005.
- Aleinov, I. and Schmidt, G.: Water isotopes in the GISS ModelE land surface scheme, *Global and Planetary Change*, 51, 108–120, 2006.
- 5 Anderegg, W. R., Schwalm, C., Biondi, F., Camarero, J. J., Koch, G., Litvak, M., Ogle, K., Shaw, J. D., Shevliakova, E., Williams, A., et al.: Pervasive drought legacies in forest ecosystems and their implications for carbon cycle models, *Science*, 349, 528–532, 2015.
- Anderson, W., Bernasconi, S., McKenzie, J., Saurer, M., and Schweingruber, F.: Model evaluation for reconstructing the oxygen isotopic composition in precipitation from tree ring cellulose over the last century, *Chemical Geology*, 182, 121–137, 2002.
- Andresen, L. C., Müller, C., De Dato, G., Dukes, J. S., Emmett, B. A., Estiarte, M., Jentsch, A., Kröel-Dulay, G., Lüscher, A., Niu, S., et al.: Shifting impacts of climate change: Long-term patterns of plant response to elevated CO₂, drought, and warming across ecosystems, in: *Advances in Ecological Research*, vol. 55, pp. 437–473, Elsevier, 2016.
- 10 Babst, F., Bodesheim, P., Charney, N., Friend, A. D., Girardin, M. P., Klesse, S., Moore, D. J., Seftigen, K., Björklund, J., Bouriaud, O., et al.: When tree rings go global: challenges and opportunities for retro-and prospective insight, *Quaternary Science Reviews*, 197, 1–20, 2018.
- Baldocchi, D., Falge, E., Gu, L., Olson, R., Hollinger, D., Running, S., Anthoni, P., Bernhofer, C., Davis, K., Evans, R., et al.: FLUXNET: A new tool to study the temporal and spatial variability of ecosystem-scale carbon dioxide, water vapor, and energy flux densities, *Bulletin of the American Meteorological Society*, 82, 2415–2434, 2001.
- 15 Ball, J. T., Woodrow, I. E., and Berry, J. A.: A model predicting stomatal conductance and its contribution to the control of photosynthesis under different environmental conditions, in: *Progress in Photosynthesis Research*, pp. 221–224, Springer, 1987.
- Barbour, M. M. and Song, X.: Do tree-ring stable isotope compositions faithfully record tree carbon/water dynamics?, *Tree Physiology*, 34, 792–795, 2014.
- 20 Barnard, H., Brooks, J., and Bond, B.: Applying the dual-isotope conceptual model to interpret physiological trends under uncontrolled conditions, *Tree Physiology*, 32, 1183–1198, 2012.
- Barnard, R. L., Salmon, Y., Kodama, N., Sörgel, K., Holst, J., Rennenberg, H., Gessler, A., and Buchmann, N.: Evaporative enrichment and time lags between $\delta^{18}\text{O}$ of leaf water and organic pools in a pine stand, *Plant, Cell & Environment*, 30, 539–550, 2007.
- 25 Battipaglia, G., Saurer, M., Cherubini, P., Calfapietra, C., McCarthy, H. R., Norby, R. J., and Francesca Cotrufo, M.: Elevated CO₂ increases tree-level intrinsic water use efficiency: insights from carbon and oxygen isotope analyses in tree rings across three forest FACE site, *New Phytologist*, 197, 544–554, 2013.
- Bellassen, V., Le Maire, G., Dhôte, J.-F., Ciais, P., and Viovy, N.: Modelling forest management within a global vegetation model–Part 1: Model structure and general behaviour, *Ecological Modelling*, 221, 2458–2474, 2010.
- 30 Belmecheri, S., Maxwell, R. S., Taylor, A. H., Davis, K. J., Freeman, K. H., and Munger, W. J.: Tree-ring $\delta^{13}\text{C}$ tracks flux tower ecosystem productivity estimates in a NE temperate forest, *Environmental Research Letters*, 9, 074 011, 2014.
- Bodin, P. E., Gagen, M., McCarroll, D., Loader, N. J., Jalkanen, R., Robertson, I., R Switsur, V., Waterhouse, J. S., Woodley, E. J., Young, G. H., et al.: Comparing the performance of different stomatal conductance models using modelled and measured plant carbon isotope ratios ($\delta^{13}\text{C}$): implications for assessing physiological forcing, *Global Change Biology*, 19, 1709–1719, 2013.
- 35 Boucher, O., Servonnat, J., Albright, A. L., Aumont, O., Balkanski, Y., Bastrikov, V., Bekki, S., Bonnet, R., Bony, S., Bopp, L., et al.: Presentation and evaluation of the IPSL-CM6A-LR climate model, *Journal of Advances in Modeling Earth Systems*, 12, 1–52, 2020.

- Bouriaud, O., Bréda, N., Dupouey, J.-L., and Granier, A.: Is ring width a reliable proxy for stem-biomass increment? A case study in European beech, *Canadian Journal of Forest Research*, 35, 2920–2933, 2005.
- Bowman, D. M., Brien, R. J., Gloor, E., Phillips, O. L., and Prior, L. D.: Detecting trends in tree growth: not so simple, *Trends in Plant Science*, 18, 11–17, 2013.
- 5 Breitenmoser, P. D., Brönnimann, S., and Frank, D.: Forward modelling of tree-ring width and comparison with a global network of tree-ring chronologies, *Climate of the Past*, 10, 437–449, 2014.
- Brien, R. J., Gloor, E., and Zuidema, P. A.: Detecting evidence for CO₂ fertilization from tree ring studies: The potential role of sampling biases, *Global Biogeochemical Cycles*, 26, 2012.
- Brien, R. J., Gloor, M., and Ziv, G.: Tree demography dominates long-term growth trends inferred from tree rings, *Global Change Biology*, 10
23, 474–484, 2017.
- Cailleret, M., Dakos, V., Jansen, S., Robert, E. M., Aakala, T., Amoroso, M. M., Antos, J. A., Bigler, C., Bugmann, H., Caccianiga, M., et al.: Early-warning signals of individual tree mortality based on annual radial growth, *Frontiers in Plant Science*, 9, 1964, 2018.
- Carbone, M. S., Czimczik, C. I., Keenan, T. F., Murakami, P. F., Pederson, N., Schaberg, P. G., Xu, X., and Richardson, A. D.: Age, allocation and availability of nonstructural carbon in mature red maple trees, *New Phytologist*, 200, 1145–1155, 2013.
- 15 Cernusak, L. A. and English, N. B.: Beyond tree-ring widths: stable isotopes sharpen the focus on climate responses of temperate forest trees, *Tree Physiology*, 35, 1–3, 2015.
- Cherubini, P., Dobbertin, M., and Innes, J. L.: Potential sampling bias in long-term forest growth trends reconstructed from tree rings: a case study from the Italian Alps, *Forest Ecology and Management*, 109, 103–118, 1998.
- Choisnel, E., Jourdain, S., and Jacquart, C.: Climatological evaluation of some fluxes of the surface energy and soil water balances over 20
France, *Annales Geophysicae*, 13, 666–674, 1995.
- Churakova, O. V., Shashkin, A. V., Siegwolf, R. T., Spahni, R., Launois, T., Saurer, M., Bryukhanova, M. V., Benkova, A. V., Kuptsova, A. V., Peylin, P., et al.: Application of eco-physiological models to the climatic interpretation of $\delta^{13}\text{C}$ and $\delta^{18}\text{O}$ measured in Siberian larch tree-rings, *Dendrochronologia*, 39, 51–59, 2016.
- Ciais, P., Sabine, C., Bala, G., Bopp, L., Brovkin, V., Canadell, J., Chhabra, A., DeFries, R., Galloway, J., Heimann, M., Jones, C., Le Quéré, 25
C., Myneni, R., Piao, S., and Thornton, P.: Carbon and Other Biogeochemical Cycles. In: *Climate Change 2013: The Physical Science Basis. Contribution of Working Group I to the Fifth Assessment Report of the Intergovernmental Panel on Climate Change*, pp. 465–570, Cambridge University Press, Cambridge, United Kingdom and New York, NY, USA, 2013.
- Clark, D. A., Brown, S., Kicklighter, D. W., Chambers, J. Q., Thomlinson, J. R., and Ni, J.: Measuring net primary production in forests: concepts and field methods, *Ecological Applications*, 11, 356–370, 2001.
- 30 Cook, E., Briffa, K., Shiyatov, S., and Mazepa, V.: Tree-Ring Standardization and Growth-Trend Estimation, in: *Methods of Dendrochronology: Applications in the Environmental Sciences*, edited by Cook, E. and Kairiukstis, L., pp. 104–123, Kluwer, Dordrecht, 1990.
- Cook, E. R.: A time series analysis approach to tree ring standardization, PhD Dissertation, University of Arizona Tucson, 1985.
- Craig, H. and Gordon, L. I.: Deuterium and oxygen-18 variations in the ocean and the marine atmospheres, in: *Proceedings of a Conference on Stable Isotopes in Oceanographic Studies and Palaeotemperature*, edited by Tongiorgi, E., pp. 9–130, Liscia and Figli, Pisa, Italy, 1965.
- 35 Danis, P., Masson-Delmotte, V., Stievenard, M., Guillemin, M., Daux, V., Naveau, P., and Von Grafenstein, U.: Reconstruction of past precipitation $\delta^{18}\text{O}$ using tree-ring cellulose $\delta^{18}\text{O}$ and $\delta^{13}\text{C}$: a calibration study near Lac d’Annecy, France, *Earth and Planetary Science Letters*, 243, 439–448, 2006.

- Danis, P.-A., Hatté, C., Misson, L., and Guiot, J.: MAIDENiso: a multiproxy biophysical model of tree-ring width and oxygen and carbon isotopes, *Canadian Journal of Forest Research*, 42, 1697–1713, 2012.
- Daux, V., Edouard, J., Masson-Delmotte, V., Stievenard, M., Hoffmann, G., Pierre, M., Mestre, O., Danis, P., and Guibal, F.: Can climate variations be inferred from tree-ring parameters and stable isotopes from *Larix decidua*? Juvenile effects, budmoth outbreaks, and divergence
5 issue, *Earth and Planetary Science Letters*, 309, 221–233, 2011.
- Daux, V., Michelot-Antalik, A., Lavergne, A., Pierre, M., Stievenard, M., Bréda, N., and Damesin, C.: Comparisons of the performance of $\delta^{13}\text{C}$ and $\delta^{18}\text{O}$ of *Fagus sylvatica*, *Pinus sylvestris*, and *Quercus petraea* in the record of past climate variations, *Journal of Geophysical Research: Biogeosciences*, 123, 1145–1160, 2018.
- de Boer, H. J., Robertson, I., Clisby, R., Loader, N. J., Gagen, M., Young, G. H., Wagner-Cremer, F., Hipkin, C. R., and McCarroll, D.: Tree-
10 ring isotopes suggest atmospheric drying limits temperature–growth responses of treeline bristlecone pine, *Tree Physiology*, 39, 983–999, 2019.
- Deleuze, C., Pain, O., Dhôte, J.-F., and Hervé, J.-C.: A flexible radial increment model for individual trees in pure even-aged stands, *Annals of Forest Science*, 61, 327–335, 2004.
- DeNiro, M. J. and Epstein, S.: Relationship between the oxygen isotope ratios of terrestrial plant cellulose, carbon dioxide, and water,
15 *Science*, 204, 51–53, 1979.
- Drew, D. M. and Downes, G.: A model of stem growth and wood formation in *Pinus radiata*, *Trees*, 29, 1395–1413, 2015.
- Duchesne, L., Houle, D., Ouimet, R., Caldwell, L., Gloor, M., and Brienens, R.: Large apparent growth increases in boreal forests inferred from tree-rings are an artefact of sampling biases, *Scientific Reports*, 9, 6832, 2019.
- Dufresne, J.-L., Foujols, M.-A., Denvil, S., Caubel, A., Marti, O., Aumont, O., Balkanski, Y., Bekki, S., Bellenger, H., Benshila, R., et al.:
20 Climate change projections using the IPSL-CM5 Earth System Model: from CMIP3 to CMIP5, *Climate Dynamics*, 40, 2123–2165, 2013.
- Dye, A., Barker Plotkin, A., Bishop, D., Pederson, N., Poulter, B., and Hessel, A.: Comparing tree-ring and permanent plot estimates of aboveground net primary production in three eastern US forests, *Ecosphere*, 7, e01454, 2016.
- Eglin, T., Francois, C., Michelot, A., Delpierre, N., and Damesin, C.: Linking intra-seasonal variations in climate and tree-ring $\delta^{13}\text{C}$: a functional modelling approach, *Ecological Modelling*, 221, 1779–1797, 2010.
- Etien, N., Daux, V., Masson-Delmotte, V., Mestre, O., Stievenard, M., Guillemain, M., Boettger, T., Breda, N., Haupt, M., and Perraud, P.:
25 Summer maximum temperature in northern France over the past century: instrumental data versus multiple proxies (tree-ring isotopes, grape harvest dates and forest fires), *Climatic Change*, 94, 429–456, 2009.
- Evans, M.: Toward forward modeling for paleoclimatic proxy signal calibration: A case study with oxygen isotopic composition of tropical woods, *Geochemistry, Geophysics, Geosystems*, 8, 2007.
- 30 Evans, M. E., Falk, D. A., Arizpe, A., Swetnam, T. L., Babst, F., and Holsinger, K. E.: Fusing tree-ring and forest inventory data to infer influences on tree growth, *Ecosphere*, 8, e01889, 2017.
- Farquhar, G., Barbour, M., and Henry, B.: Interpretation of oxygen isotope composition of leaf material, in: *Stable isotopes: integration of biological, ecological, and geochemical processes*, edited by Griffiths, H., pp. 27–48, Bios Scientific, 1998.
- Farquhar, G. D., von Caemmerer, S., and Berry, J. A.: A biochemical model of photosynthetic CO_2 assimilation in leaves of C3 species,
35 *Planta*, 149, 78–90, 1980.
- Farquhar, G. D., O’Leary, M. H., and Berry, J. A.: On the relationship between carbon isotope discrimination and the intercellular carbon dioxide concentration in leaves, *Functional Plant Biology*, 9, 121–137, 1982.

- Fatichi, S., Leuzinger, S., and Körner, C.: Moving beyond photosynthesis: from carbon source to sink-driven vegetation modeling, *New Phytologist*, 201, 1086–1095, 2014.
- Fernandes, T. J., Del Campo, A. D., Herrera, R., and Molina, A. J.: Simultaneous assessment, through sap flow and stable isotopes, of water use efficiency (WUE) in thinned pines shows improvement in growth, tree-climate sensitivity and WUE, but not in WUEi, *Forest Ecology and Management*, 361, 298–308, 2016.
- 5 Foster, J. R., Finley, A. O., D’Amato, A. W., Bradford, J. B., and Banerjee, S.: Predicting tree biomass growth in the temperate–boreal ecotone: Is tree size, age, competition, or climate response most important?, *Global Change Biology*, 22, 2138–2151, 2016.
- Francey, R. and Farquhar, G.: An explanation of $^{13}\text{C}/^{12}\text{C}$ variations in tree rings, *Nature*, 297, 28, 1982.
- Frank, D., Poulter, B., Saurer, M., Esper, J., Huntingford, C., Helle, G., Treydte, K., Zimmermann, N. E., Schleser, G., Ahlström, A., et al.:
10 Water-use efficiency and transpiration across European forests during the Anthropocene, *Nature Climate Change*, 5, 579, 2015.
- Friedlingstein, P., Cox, P., Betts, R., Bopp, L., von Bloh, W., Brovkin, V., Cadule, P., Doney, S., Eby, M., Fung, I., et al.: Climate–carbon cycle feedback analysis: results from the C4MIP model intercomparison, *Journal of Climate*, 19, 3337–3353, 2006.
- Friedlingstein, P., Meinshausen, M., Arora, V. K., Jones, C. D., Anav, A., Liddicoat, S. K., and Knutti, R.: Uncertainties in CMIP5 climate projections due to carbon cycle feedbacks, *Journal of Climate*, 27, 511–526, 2014.
- 15 Friend, A. D., Eckes-Shephard, A. H., Fonti, P., Rademacher, T. T., Rathgeber, C. B., Richardson, A. D., and Turton, R. H.: On the need to consider wood formation processes in global vegetation models and a suggested approach, *Annals of Forest Science*, 76, 49, 2019.
- Fritts, H.: *Tree Rings and Climate*, Academic Press, 1976.
- Fritts, H., Shashkin, A., and Downes, G.: A simulation model of conifer ring growth and cell structure, in: *Tree Ring Analysis: Biological, Methodological and Environmental Aspects*, edited by Wimmer, R. and Vetter, R. E., Wallingford, UK, CABI Publishing, 1999.
- 20 Gessler, A., Brandes, E., Buchmann, N., Helle, G., Rennenberg, H., and Barnard, R. L.: Tracing carbon and oxygen isotope signals from newly assimilated sugars in the leaves to the tree-ring archive, *Plant, Cell & Environment*, 32, 780–795, 2009.
- Gessler, A., Ferrio, J. P., Hommel, R., Treydte, K., Werner, R. A., and Monson, R. K.: Stable isotopes in tree rings: towards a mechanistic understanding of isotope fractionation and mixing processes from the leaves to the wood, *Tree Physiology*, 34, 796–818, 2014.
- Girardin, M. P., Bouriaud, O., Hogg, E. H., Kurz, W., Zimmermann, N. E., Metsaranta, J. M., de Jong, R., Frank, D. C., Esper, J., Büntgen,
25 U., et al.: No growth stimulation of Canada’s boreal forest under half-century of combined warming and CO₂ fertilization, *Proceedings of the National Academy of Sciences*, 113, E8406–E8414, 2016.
- Grömping, U. et al.: Relative importance for linear regression in R: the package relaimpo, *Journal of Statistical Software*, 17, 1–27, 2006.
- Guerrieri, M., Siegwolf, R., Saurer, M., Jäggi, M., Cherubini, P., Ripullone, F., and Borghetti, M.: Impact of different nitrogen emission sources on tree physiology as assessed by a triple stable isotope approach, *Atmospheric Environment*, 43, 410–418, 2009.
- 30 Guimberteau, M., Ducharne, A., Ciais, P., Boisier, J.-P., Peng, S., de Weirdt, M., and Verbeeck, H.: Testing conceptual and physically based soil hydrology schemes against observations for the Amazon Basin, *Geoscientific Model Development*, 7, 1115–1136, 2014.
- Gunderson, C. A. and Wullschleger, S. D.: Photosynthetic acclimation in trees to rising atmospheric CO₂: a broader perspective, *Photosynthesis Research*, 39, 369–388, 1994.
- Haese, B., Werner, M., Lohmann, G., et al.: Stable water isotopes in the coupled atmosphere-land surface model ECHAM5-JSBACH,
35 *Geoscientific Model Development*, 6, 3375–3418, 2012.
- Haese, B., Werner, M., and Lohmann, G.: Stable water isotopes in the coupled atmosphere-land surface model ECHAM5-JSBACH, *Geoscientific Model Development*, 6, 1463–1480, 2013.

- Hartl-Meier, C., Zang, C., Büntgen, U., Esper, J., Rothe, A., Göttelein, A., Dirnböck, T., and Treydte, K.: Uniform climate sensitivity in tree-ring stable isotopes across species and sites in a mid-latitude temperate forest, *Tree Physiology*, 35, 4–15, 2015.
- Helle, G. and Schleser, G.: Beyond CO₂-fixation by Rubisco—an interpretation of ¹³C/¹²C variations in tree rings from novel intra-seasonal studies on broad-leaf trees, *Plant, Cell & Environment*, 27, 367–380, 2004.
- 5 Hemming, D., Fritts, H., Leavitt, S., Wright, W., Long, A., and Shashkin, A.: Modelling tree-ring $\delta^{13}\text{C}$, *Dendrochronologia*, 19, 23–28, 2001.
- Hilasvuori, E. and Berninger, F.: Dependence of tree ring stable isotope abundances and ring width on climate in Finnish oak, *Tree Physiology*, 30, 636–647, 2010.
- Hilasvuori, E., Berninger, F., Sonninen, E., Tuomenvirta, H., and Jungner, H.: Stability of climate signal in carbon and oxygen isotope records and ring width from Scots pine (*Pinus sylvestris* L.) in Finland, *Journal of Quaternary Science*, 24, 469–480, 2009.
- 10 Hourdin, F., Musat, I., Bony, S., Braconnot, P., Codron, F., Dufresne, J.-L., Fairhead, L., Filiberti, M.-A., Friedlingstein, P., Grandpeix, J.-Y., et al.: The LMDZ4 general circulation model: climate performance and sensitivity to parametrized physics with emphasis on tropical convection, *Climate Dynamics*, 27, 787–813, 2006.
- Huang, J.-G., Bergeron, Y., Denneler, B., Berninger, F., and Tardif, J.: Response of forest trees to increased atmospheric CO₂, *Critical Reviews in Plant Sciences*, 26, 265–283, 2007.
- 15 Jeong, J., Barichivich, J., Peylin, P., Haverd, V., McGrath, M. J., Vuichard, N., Evans, M. N., Babst, F., and Luyssaert, S.: Using the International Tree-Ring Data Bank (ITRDB) records as century-long benchmarks for land-surface models, *Geoscientific Model Development Discussions*, 2020, 1–45, 2020.
- Jevšenak, J.: New features in the dendroTools R package: bootstrapped and partial correlation coefficients for monthly and daily climate data, *Dendrochronologia*, p. 125753, 2020.
- 20 Jones, C., Robertson, E., Arora, V., Friedlingstein, P., Shevliakova, E., Bopp, L., Brovkin, V., Hajima, T., Kato, E., Kawamiya, M., Liddicoat, S., Lindsay, K., Reick, C. H., Roelandt, C., Segschneider, J., and Tjiputra, J.: Twenty-First-Century Compatible CO₂ Emissions and Airborne Fraction Simulated by CMIP5 Earth System Models under Four Representative Concentration Pathways, *Journal of Climate*, 26, 4398–4413, 2013.
- 25 Jones, S., Rowland, L., Cox, P., Hemming, D., Wiltshire, A., Williams, K., Parazoo, N. C., Liu, J., da Costa, A. C., Meir, P., et al.: The impact of a simple representation of non-structural carbohydrates on the simulated response of tropical forests to drought, *Biogeosciences*, 17, 3589–3612, 2020.
- Kagawa, A., Sugimoto, A., and Maximov, T. C.: ¹³CO₂ pulse-labelling of photoassimilates reveals carbon allocation within and between tree rings, *Plant, Cell & Environment*, 29, 1571–1584, 2006.
- 30 Keel, S. G., Siegwolf, R. T., and Körner, C.: Canopy CO₂ enrichment permits tracing the fate of recently assimilated carbon in a mature deciduous forest, *New Phytologist*, 172, 319–329, 2006.
- Keel, S. G., Joos, F., Spahni, R., Saurer, M., Weigt, R. B., and Klesse, S.: Simulating oxygen isotope ratios in tree ring cellulose using a dynamic global vegetation model, *Biogeosciences*, 13, 3869–3886, 2016.
- Keller, K., Lienert, S., Bozbiyik, A., Stocker, T., Frank, D. C., Klesse, S., Koven, C. D., Leuenberger, M., Riley, W. J., Saurer, M., et al.: 20th century changes in carbon isotopes and water-use efficiency: tree-ring-based evaluation of the CLM4. 5 and LPX-Bern models, *Biogeosciences*, 14, 2641–2673, 2017.
- 35 Kirdyanov, A. V., Treydte, K. S., Nikolaev, A., Helle, G., and Schleser, G. H.: Climate signals in tree-ring width, density and $\delta^{13}\text{C}$ from larches in Eastern Siberia (Russia), *Chemical Geology*, 252, 31–41, 2008.

- Klesse, S., DeRose, R. J., Guiterman, C. H., Lynch, A. M., O'Connor, C. D., Shaw, J. D., and Evans, M. E.: Sampling bias overestimates climate change impacts on forest growth in the southwestern United States, *Nature Communications*, 9, 1–9, 2018.
- Körner, C.: Paradigm shift in plant growth control, *Current Opinion in Plant Biology*, 25, 107–114, 2015.
- Krinner, G., Viovy, N., de Noblet-Ducoudré, N., Ogée, J., Polcher, J., Friedlingstein, P., Ciais, P., Sitch, S., and Prentice, I. C.: A dynamic global vegetation model for studies of the coupled atmosphere-biosphere system, *Global Biogeochemical Cycles*, 19, 2005.
- LaMarche Jr, V. C. and Stockton, C. W.: Chronologies from temperature-sensitive bristlecone pines at upper treeline in Western United States, *Tree-Ring Bulletin*, 1974.
- Lavergne, A., Gennaretti, F., Risi, C., Daux, V., Boucher, E., Savard, M. M., Naulier, M., Villalba, R., Bégin, C., and Guiot, J.: Modelling tree ring cellulose $\delta^{18}\text{O}$ variations in two temperature-sensitive tree species from North and South America, *Climate of the Past*, 13, 1515–1526, 2017.
- Lavergne, A., Voelker, S., Csank, A., Graven, H., de Boer, H. J., Daux, V., Robertson, I., Dorado-Liñán, I., Martínez-Sancho, E., Battipaglia, G., et al.: Historical changes in the stomatal limitation of photosynthesis: empirical support for an optimality principle, *New Phytologist*, 225, 2484–2497, 2020.
- Leonelli, G., Battipaglia, G., Siegwolf, R. T., Saurer, M., di Cella, U. M., Cherubini, P., and Pelfini, M.: Climatic isotope signals in tree rings masked by air pollution: a case study conducted along the Mont Blanc Tunnel access road (Western Alps, Italy), *Atmospheric Environment*, 61, 169–179, 2012.
- Lévesque, M., Siegwolf, R., Saurer, M., Eilmann, B., and Rigling, A.: Increased water-use efficiency does not lead to enhanced tree growth under xeric and mesic conditions, *New Phytologist*, 203, 94–109, 2014.
- Levesque, M., Andreu-Hayles, L., Smith, W. K., Williams, A. P., Hobi, M. L., Allred, B. W., and Pederson, N.: Tree-ring isotopes capture interannual vegetation productivity dynamics at the biome scale, *Nature Communications*, 10, 1–10, 2019.
- Li, G., Harrison, S., Prentice, I., and Falster, D.: Simulation of tree ring-widths with a model for primary production, carbon allocation and growth, *Biogeosciences*, 11, 6711–6724, 2014.
- Liu, X., Zhang, X., Zhao, L., Xu, G., Wang, L., Sun, W., Zhang, Q., Wang, W., Zeng, X., and Wu, G.: Tree ring $\delta^{18}\text{O}$ reveals no long-term change of atmospheric water demand since 1800 in the northern Great Hinggan Mountains, China, *Journal of Geophysical Research: Atmospheres*, 122, 6697–6712, 2017.
- Lloyd, J. and Farquhar, G. D.: ^{13}C discrimination during CO_2 assimilation by the terrestrial biosphere, *Oecologia*, 99, 201–215, 1994.
- Loader, N., Santillo, P., Woodman-Ralph, J., Rolfe, J., Hall, M., Gagen, M., Robertson, I., Wilson, R., Froyd, C., and McCarroll, D.: Multiple stable isotopes from oak trees in southwestern Scotland and the potential for stable isotope dendroclimatology in maritime climatic regions, *Chemical Geology*, 252, 62–71, 2008.
- Loader, N., Street-Perrott, F., Daley, T., Hughes, P., Kimak, A., Levanic, T., Mallon, G., Mauquoy, D., Robertson, I., Roland, T., et al.: Simultaneous determination of stable carbon, oxygen, and hydrogen isotopes in cellulose, *Analytical Chemistry*, 87, 376–380, 2015.
- McCarroll, D. and Loader, N. J.: Stable isotopes in tree rings, *Quaternary Science Reviews*, 23, 771–801, 2004.
- McCarroll, D., Jalkanen, R., Hicks, S., Tuovinen, M., Gagen, M., Pawellek, F., Eckstein, D., Schmitt, U., Autio, J., and Heikkinen, O.: Multiproxy dendroclimatology: a pilot study in northern Finland, *The Holocene*, 13, 829–838, 2003.
- McDowell, N., Pockman, W. T., Allen, C. D., Breshears, D. D., Cobb, N., Kolb, T., Plaut, J., Sperry, J., West, A., Williams, D. G., et al.: Mechanisms of plant survival and mortality during drought: why do some plants survive while others succumb to drought?, *New Phytologist*, 178, 719–739, 2008.

- McMurtrie, R., Rook, D., and Kelliher, F.: Modelling the yield of *Pinus radiata* on a site limited by water and nitrogen, *Forest Ecology and Management*, 30, 381–413, 1990.
- Michelot, A., Eglin, T., Dufrene, E., LELARGE-TROUVERIE, C., and Damesin, C.: Comparison of seasonal variations in water-use efficiency calculated from the carbon isotope composition of tree rings and flux data in a temperate forest, *Plant, Cell & Environment*, 34, 230–244, 2011.
- Michelot, A., Bréda, N., Damesin, C., and Dufrêne, E.: Differing growth responses to climatic variations and soil water deficits of *Fagus sylvatica*, *Quercus petraea* and *Pinus sylvestris* in a temperate forest, *Forest Ecology and Management*, 265, 161–171, 2012.
- Misson, L.: MAIDEN: a model for analyzing ecosystem processes in dendroecology, *Canadian Journal of Forest Research*, 34, 874–887, 2004.
- 10 Monserud, R. A. and Marshall, J. D.: Time-series analysis of $\delta^{13}\text{C}$ from tree rings. I. Time trends and autocorrelation, *Tree physiology*, 21, 1087–1102, 2001.
- Naudts, K., Ryder, J., McGrath, M., Otto, J., Chen, Y., Valade, A., Bellasen, V., Berhongaray, G., Bönisch, G., Campioli, M., et al.: A vertically discretised canopy description for ORCHIDEE (SVN r2290) and the modifications to the energy, water and carbon fluxes, *Geoscientific Model Development*, 8, 2035–2065, 2015.
- 15 Nehrbass-Ahles, C., Babst, F., Klesse, S., Nötzli, M., Bouriaud, O., Neukom, R., Dobbertin, M., and Frank, D.: The influence of sampling design on tree-ring-based quantification of forest growth, *Global Change Biology*, 20, 2867–2885, 2014.
- New, M., Hulme, M., and Jones, P.: Representing twentieth-century space–time climate variability. Part II: Development of 1901–96 monthly grids of terrestrial surface climate, *Journal of Climate*, 13, 2217–2238, 2000.
- Norby, R. J., Wullschleger, S. D., Gunderson, C. A., Johnson, D. W., and Ceulemans, R.: Tree responses to rising CO_2 in field experiments: implications for the future forest, *Plant, Cell & Environment*, 22, 683–714, 1999.
- 20 Ogée, J., Barbour, M. M., Wingate, L., Bert, D., Bosc, A., Stievenard, M., Lambrot, C., Pierre, M., Bariac, T., Loustau, D., et al.: A single-substrate model to interpret intra-annual stable isotope signals in tree-ring cellulose, *Plant, Cell & Environment*, 32, 1071–1090, 2009.
- Panek, J. A. and Waring, R. H.: Stable carbon isotopes as indicators of limitations to forest growth imposed by climate stress, *Ecological Applications*, 7, 854–863, 1997.
- 25 Peñuelas, J., Canadell, J. G., and Ogaya, R.: Increased water-use efficiency during the 20th century did not translate into enhanced tree growth, *Global Ecology and Biogeography*, 20, 597–608, 2011.
- Peylin, P., Bacour, C., MacBean, N., Leonard, S., Rayner, P., Kuppel, S., Koffi, E., Kane, A., Maignan, F., Chevallier, F., et al.: A new stepwise carbon cycle data assimilation system using multiple data streams to constrain the simulated land surface carbon cycle, *Geoscientific Model Development*, 9, 2016.
- 30 Phillips, T. J., Bonfils, C. J., and Zhang, C.: Model consensus projections of US regional hydroclimates under greenhouse warming, *Environmental Research Letters*, 14, 014 005, 2019.
- R Core Team: R: A Language and Environment for Statistical Computing, R Foundation for Statistical Computing, Vienna, Austria, <https://www.R-project.org/>, 2020.
- Raczka, B., Duarte, H. F., Koven, C. D., Ricciuto, D., Thornton, P. E., Lin, J. C., and Bowling, D. R.: An observational constraint on stomatal function in forests: evaluating coupled carbon and water vapor exchange with carbon isotopes in the Community Land Model (CLM4. 5), *Biogeosciences*, 13, 5183–5204, 2016.
- 35

- Raffalli-Delerce, G., Masson-Delmotte, V., Dupouey, J.-L., Stievenard, M., Breda, N., and Moisselin, J.: Reconstruction of summer droughts using tree-ring cellulose isotopes: a calibration study with living oaks from Brittany (western France), *Tellus B: Chemical and Physical Meteorology*, 56, 160–174, 2004.
- Rammig, A., Wiedermann, M., Donges, J., Babst, F., von Bloh, W., Frank, D., Thonicke, K., and Mahecha, M.: Tree-ring responses to extreme climate events as benchmarks for terrestrial dynamic vegetation models., *Biogeosciences Discussions*, 11, 2014.
- Rammig, A., Wiedermann, M., Donges, J. F., Babst, F., Von Bloh, W., Frank, D., Thonicke, K., and Mahecha, M. D.: Coincidences of climate extremes and anomalous vegetation responses: comparing tree ring patterns to simulated productivity, *Biogeosciences*, 12, 373–385, 2015.
- Rebetez, M., Saurer, M., and Cherubini, P.: To what extent can oxygen isotopes in tree rings and precipitation be used to reconstruct past atmospheric temperature? A case study, *Climatic Change*, 61, 237–248, 2003.
- 10 Risi, C., Bony, S., Vimeux, F., and Jouzel, J.: Water-stable isotopes in the LMDZ4 general circulation model: Model evaluation for present-day and past climates and applications to climatic interpretations of tropical isotopic records, *Journal of Geophysical Research: Atmospheres*, 115, 2010.
- Risi, C., Noone, D., Frankenber, C., and Worden, J.: Role of continental recycling in intraseasonal variations of continental moisture as deduced from model simulations and water vapor isotopic measurements, *Water Resources Research*, 49, 4136–4156, 2013.
- 15 Risi, C., Ogée, J., Bony, S., Bariac, T., Raz-Yaseef, N., Wingate, L., Welker, J., Knohl, A., Kurz-Besson, C., Leclerc, M., et al.: The water isotopic version of the land-surface model ORCHIDEE: Implementation, evaluation, sensitivity to hydrological parameters, *Hydrology Current Research*, 7, 1000 258, 2016.
- Robertson, I., Waterhouse, J. S., Barker, A. C., Carter, A., and Switsur, V. R.: Oxygen isotope ratios of oak in east England: implications for reconstructing the isotopic composition of precipitation, *Earth and Planetary Science Letters*, 191, 21–31, 2001.
- 20 Rocha, A. V., Goulden, M. L., Dunn, A. L., and Wofsy, S. C.: On linking interannual tree ring variability with observations of whole-forest CO₂ flux, *Global Change Biology*, 12, 1378–1389, 2006.
- Roden, J. and Siegwolf, R.: Is the dual-isotope conceptual model fully operational?, *Tree Physiology*, 32, 1179–1182, 2012.
- Roden, J., Kahmen, A., Buchmann, N., and Siegwolf, R.: The enigma of effective path length for ¹⁸O enrichment in leaf water of conifers, *Plant, Cell & Environment*, 38, 2551–2565, 2015.
- 25 Roden, J. S. and Farquhar, G. D.: A controlled test of the dual-isotope approach for the interpretation of stable carbon and oxygen isotope ratio variation in tree rings, *Tree Physiology*, 32, 490–503, 2012.
- Roden, J. S., Lin, G., and Ehleringer, J. R.: A mechanistic model for interpretation of hydrogen and oxygen isotope ratios in tree-ring cellulose, *Geochimica et Cosmochimica Acta*, 64, 21–35, 2000.
- Sargeant, C. I., Singer, M. B., and Vallet-Coulomb, C.: Identification of source-water oxygen isotopes in trees toolkit (ISO-Tool) for deciphering historical water use by forest trees, *Water Resources Research*, 55, 10 954–10 975, 2019.
- 30 Sato, H., Itoh, A., and Kohyama, T.: SEIB–DGVM: A new Dynamic Global Vegetation Model using a spatially explicit individual-based approach, *Ecological Modelling*, 200, 279–307, 2007.
- Saurer, M., Aellen, K., and Siegwolf, R.: Correlating $\delta^{13}\text{C}$ and $\delta^{18}\text{O}$ in cellulose of trees, *Plant, Cell & Environment*, 20, 1543–1550, 1997.
- Saurer, M., Siegwolf, R. T., and Schweingruber, F. H.: Carbon isotope discrimination indicates improving water-use efficiency of trees in northern Eurasia over the last 100 years, *Global Change Biology*, 10, 2109–2120, 2004.
- 35 Saurer, M., Spahni, R., Frank, D. C., Joos, F., Leuenberger, M., Loader, N. J., McCarroll, D., Gagen, M., Poulter, B., Siegwolf, R. T., et al.: Spatial variability and temporal trends in water-use efficiency of European forests, *Global Change Biology*, 20, 3700–3712, 2014.

- Savard, M. M.: Tree-ring stable isotopes and historical perspectives on pollution—An overview, *Environmental Pollution*, 158, 2007–2013, 2010.
- Scheidegger, Y., Saurer, M., Bahn, M., and Siegwolf, R.: Linking stable oxygen and carbon isotopes with stomatal conductance and photosynthetic capacity: a conceptual model, *Oecologia*, 125, 350–357, 2000.
- 5 Schollaen, K., Heinrich, I., Neuwirth, B., Krusic, P. J., D’Arrigo, R. D., Karyanto, O., and Helle, G.: Multiple tree-ring chronologies (ring width, $\delta^{13}\text{C}$ and $\delta^{18}\text{O}$) reveal dry and rainy season signals of rainfall in Indonesia, *Quaternary Science Reviews*, 73, 170–181, 2013.
- Shestakova, T. A. and Martínez-Sancho, E.: Stories hidden in tree rings: a review on the application of stable carbon isotopes to dendrosciences, *Dendrochronologia*, p. 125789, 2020.
- Shestakova, T. A., Camarero, J. J., Ferrio, J. P., Knorre, A. A., Gutierrez, E., and Voltas, J.: Increasing drought effects on five European pines
10 modulate $\delta^{13}\text{C}$ -growth coupling along a Mediterranean altitudinal gradient, *Functional Ecology*, 31, 1359–1370, 2017.
- Shestakova, T. A., Voltas, J., Saurer, M., Berninger, F., Esper, J., Andreu-Hayles, L., Daux, V., Helle, G., Leuenberger, M., Loader, N. J., et al.: Spatio-temporal patterns of tree growth as related to carbon isotope fractionation in European forests under changing climate, *Global Ecology and Biogeography*, 28, 1295–1309, 2019.
- Shi, C., Masson-Delmotte, V., Risi, C., Eglin, T., Stievenard, M., Pierre, M., Wang, X., Gao, J., Bréon, F.-M., Zhang, Q.-B., et al.: Sampling
15 strategy and climatic implications of tree-ring stable isotopes on the southeast Tibetan Plateau, *Earth and Planetary Science Letters*, 301, 307–316, 2011.
- Smith, M. D., La Pierre, K. J., Collins, S. L., Knapp, A. K., Gross, K. L., Barrett, J. E., Frey, S. D., Gough, L., Miller, R. J., Morris, J. T., et al.: Global environmental change and the nature of aboveground net primary productivity responses: insights from long-term experiments, *Oecologia*, 177, 935–947, 2015.
- 20 Song, J., Wan, S., Piao, S., Knapp, A. K., Classen, A. T., Vicca, S., Ciais, P., Hovenden, M. J., Leuzinger, S., Beier, C., et al.: A meta-analysis of 1,119 manipulative experiments on terrestrial carbon-cycling responses to global change, *Nature Ecology & Evolution*, 3, 1309–1320, 2019.
- Stenberg, L. and DeNiro, M. J.: Biogeochemical implications of the isotopic equilibrium fractionation factor between the oxygen atoms of acetone and water, *Geochimica et Cosmochimica Acta*, 47, 2271–2274, 1983.
- 25 Szejner, P., Belmecheri, S., Ehleringer, J. R., and Monson, R. K.: Recent increases in drought frequency cause observed multi-year drought legacies in the tree rings of semi-arid forests, *Oecologia*, 192, 241–259, 2020.
- Tei, S., Sugimoto, A., Kotani, A., Ohta, T., Morozumi, T., Saito, S., Hashiguchi, S., and Maximov, T.: Strong and stable relationships between tree-ring parameters and forest-level carbon fluxes in a Siberian larch forest, *Polar Science*, 21, 146–157, 2019.
- Thum, T., MacBean, N., Peylin, P., Bacour, C., Santaren, D., Longdoz, B., Loustau, D., and Ciais, P.: The potential benefit of using forest
30 biomass data in addition to carbon and water flux measurements to constrain ecosystem model parameters: case studies at two temperate forest sites, *Agricultural and Forest Meteorology*, 234, 48–65, 2017.
- Treydte, K., Boda, S., Graf Pannatier, E., Fonti, P., Frank, D., Ullrich, B., Saurer, M., Siegwolf, R., Battipaglia, G., Werner, W., et al.: Seasonal transfer of oxygen isotopes from precipitation and soil to the tree ring: source water versus needle water enrichment, *New Phytologist*, 202, 772–783, 2014.
- 35 Ulrich, D. E., Still, C., Brooks, J. R., Kim, Y., and Meinzer, F. C.: Investigating old-growth ponderosa pine physiology using tree-rings, $\delta^{13}\text{C}$, $\delta^{18}\text{O}$, and a process-based model, *Ecology*, 100, e02656, 2019.

- Vaganov, E. A., Anchukaitis, K. J., and Evans, M. N.: How well understood are the processes that create dendroclimatic records? A mechanistic model of the climatic control on conifer tree-ring growth dynamics, in: *Tree Rings and Climate: Sharpening the Focus, Developments in Environmental Research*, vol. 11, edited by Hughes, M. and Swetnam, T.W. and Diaz, H., pp. 37–75, Springer, 2011.
- Viovy, N.: CRUNCEP v4 (CRU TS 3.21), <http://dods.extra.cea.fr/data/p529viov/cruncep>, accessed: 2020-11-07, 2014.
- 5 Voelker, S. L., Meinzer, F. C., Lachenbruch, B., Brooks, J. R., and Guyette, R. P.: Drivers of radial growth and carbon isotope discrimination of bur oak (*Quercus macrocarpa* Michx.) across continental gradients in precipitation, vapour pressure deficit and irradiance, *Plant, Cell & Environment*, 37, 766–779, 2014.
- Vuichard, N., Messina, P., Luyssaert, S., Guenet, B., Zaehle, S., Ghattas, J., Bastrikov, V., and Peylin, P.: Accounting for carbon and nitrogen interactions in the global terrestrial ecosystem model ORCHIDEE (trunk version, rev 4999): multi-scale evaluation of gross primary production, *Geoscientific Model Development*, 12, 4751–4779, 2019.
- 10 Wei, L., Marshall, J. D., Link, T. E., Kavanagh, K. L., Du, E., Pangle, R. E., Gag, P. J., and Ubierna, N.: Constraining 3-PG with a new $\delta^{13}\text{C}$ submodel: a test using the $\delta^{13}\text{C}$ of tree rings, *Plant, Cell & Environment*, 37, 82–100, 2014.
- Werner, C., Schnyder, H., Cuntz, M., Keitel, C., Zeeman, M., Dawson, T., Badeck, F.-W., Brugnoli, E., Ghashghaie, J., Grams, T., et al.: Progress and challenges in using stable isotopes to trace plant carbon and water relations across scales, *Biogeosciences*, 9, 3083–3111, 2012.
- 15 Wood, S.: *Generalized Additive Models: An Introduction with R*, Chapman and Hall/CRC, 2 edn., 2017.
- Zhao, S., Pederson, N., D’Orangeville, L., HilleRisLambers, J., Boose, E., Penone, C., Bauer, B., Jiang, Y., and Manzanedo, R. D.: The International Tree-Ring Data Bank (ITRDB) revisited: Data availability and global ecological representativity, *Journal of Biogeography*, 46, 355–368, 2019.
- 20 Zuidema, P. A., Poulter, B., and Frank, D. C.: A wood biology agenda to support global vegetation modelling, *Trends in Plant Science*, 23, 1006–1015, 2018.

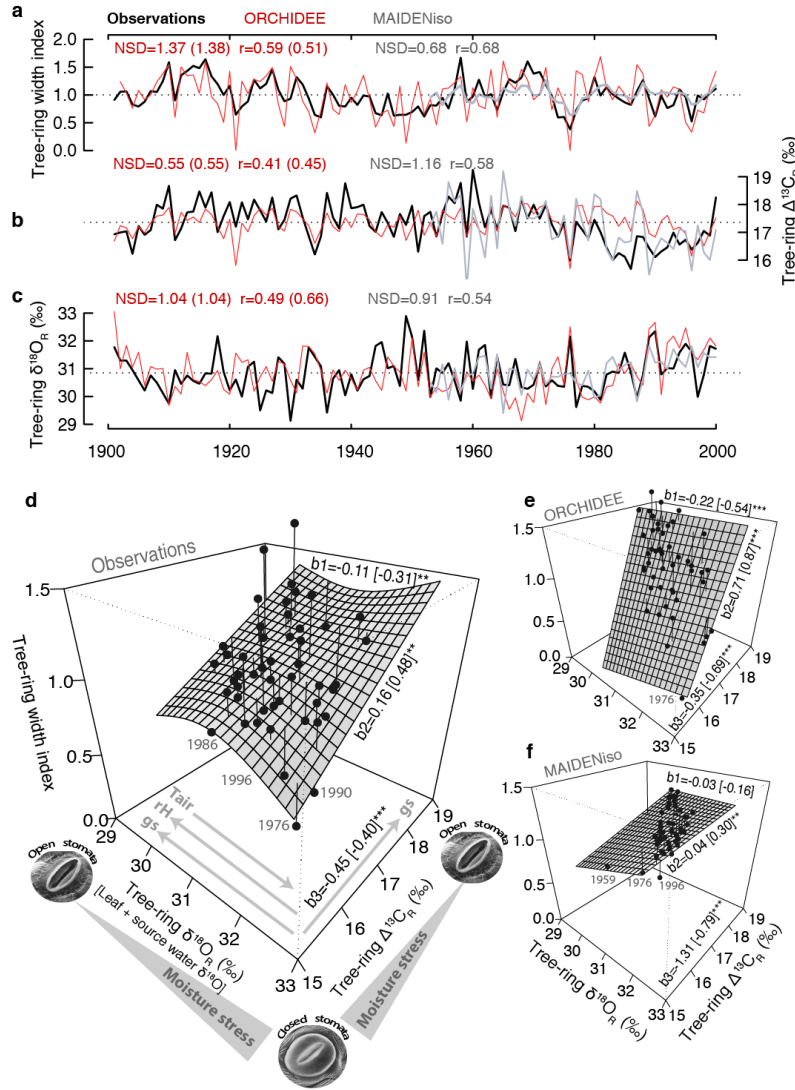


Figure 1. Comparison of simulated and observed tree-ring width and isotopic variability in Fontainebleau and the triple tree-ring constraint to assess the integrated model responses. **a-c** Comparison of tree-ring width and latewood $\Delta^{13}C_R$ and $\delta^{18}O_R$ variability simulated by ORCHIDEE (red) and MAIDENiso (gray) with observations (black). The normalised standard deviation (NSD) and Pearson correlation (r) are indicated in each case. The mean of the simulations was set to that of the observations for each parameter. **d-f** Bivariate response surface of tree-ring width as a function of $\delta^{18}O_R$ and $\Delta^{13}C_R$ variability based on observations and on ORCHIDEE and MAIDENiso simulations over the common period 1953–2000. The individual years are indicated by the black dots and their vertical distance to the surface is represented by the lines. The most extreme years with low growth and high moisture stress are labelled in each panel. The three-way correlations regression slopes between the tree-ring variables are indicated along the edges of each surface: tree-ring width vs $\delta^{18}O_R$ (**top** b_1), tree-ring width vs $\Delta^{13}C_R$ (**right** b_2) and $\delta^{18}O_R$ vs $\Delta^{13}C_R$ (**bottom** b_3) as predictand vs predictor order. In each case, the linear correlation is indicated in brackets. The asterisks denote the significance levels of the slopes and correlations: *: $p < 0.1$, **: $p < 0.05$ and ***: $p < 0.001$. In panel **d**, the relationship between stomatal aperture and moisture stress is indicated along the isotopic axes together with the expected changes in stomatal conductance (g_s) and relative humidity (rH) according to the dual isotope model (Scheidegger et al., 2000). The expected enrichment of source water $\delta^{18}O$ with increasing air temperature (T_{air}) is also indicated.

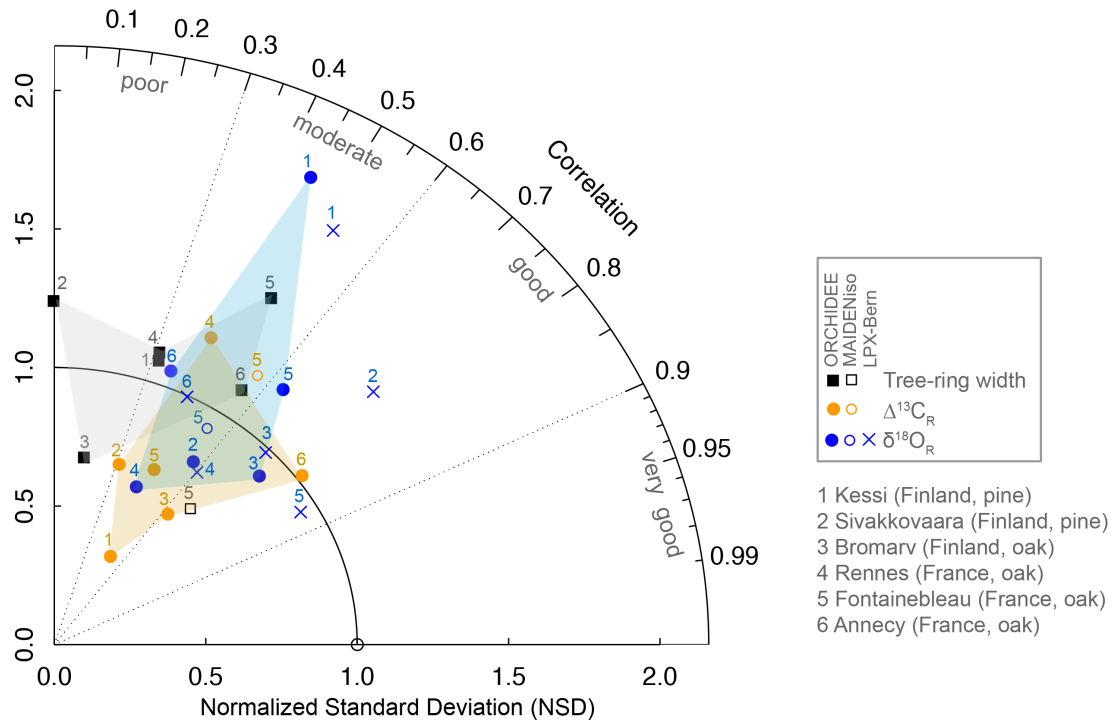


Figure 2. Taylor diagram showing the correlation (angular coordinate) and normalized standard deviation (NSD; radial coordinate) of the simulated tree-ring parameters (ORCHIDEE, MAIDENiso and LPX-Bern) with respect to the observations for the six sites used in this study (see Table 1). Tree-ring width is denoted by square symbols and $\Delta^{13}C_R$ and $\delta^{18}O_R$ by orange and blue circles, respectively. The models are denoted by solid symbols (ORCHIDEE), open symbols (MAIDENiso in Fontainebleau or site 5) and blue crosses (LPX-Bern). The statistics were computed over the common period 1960–2000, except in Annecy (site 6) where data availability limited the comparison to the period 1971–2000. The target point (NSD and correlation equal to 1) is represented by a circle. The gray, blue and orange shading denotes the range of the performance statistics covered by ORCHIDEE for tree-ring width, $\Delta^{13}C_R$ and $\delta^{18}O_R$, respectively. Four qualitative areas of performance in terms of the magnitude of correlations or simulated variance are indicated as a visual aid.

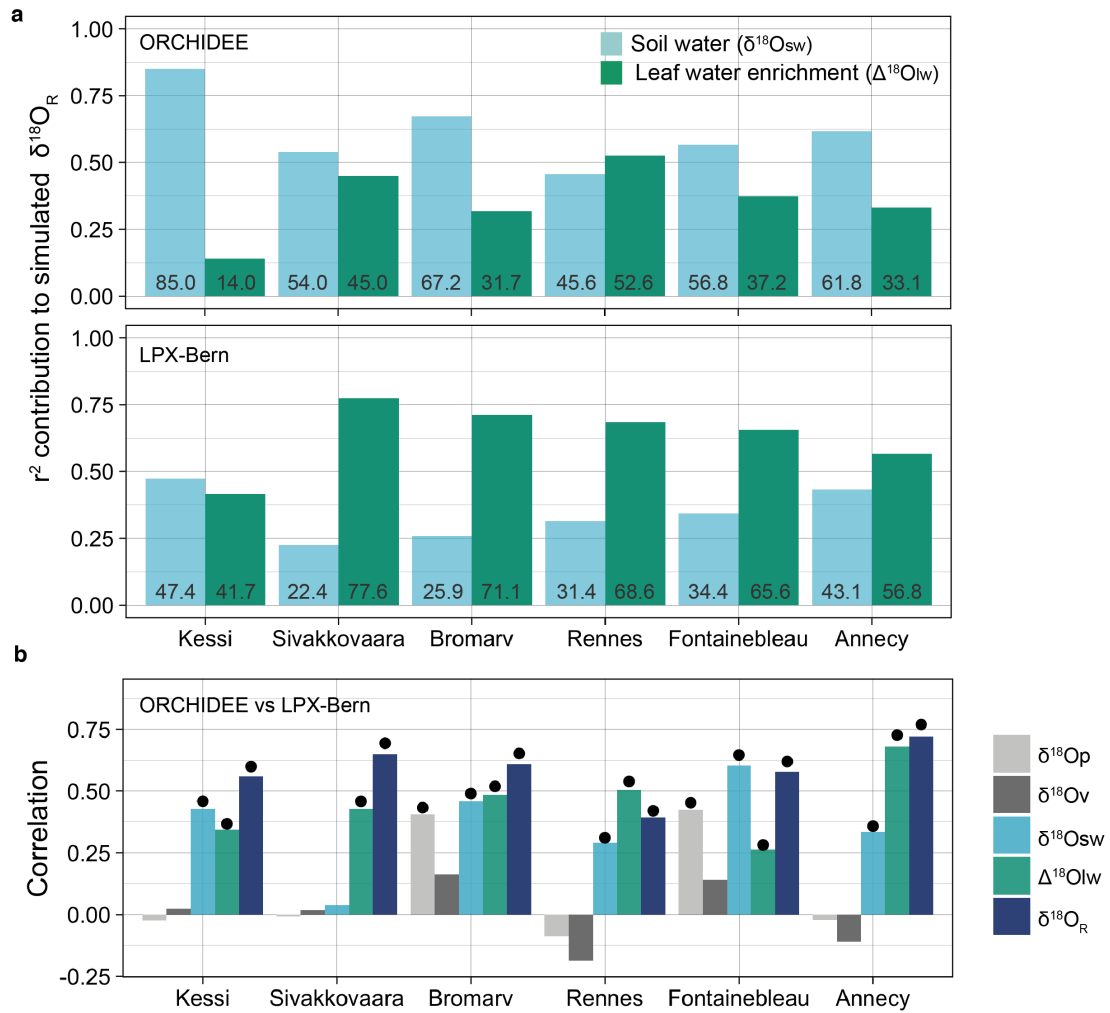


Figure 3. Drivers of simulated $\delta^{18}\text{O}_{\text{R}}$ variability and consistency between isotopic forcings and simulations of ORCHIDEE and LPX-Bern across the climate gradient from boreal Finland (left) to temperate France (right). **a** Simulated contributions of source water ($\delta^{18}\text{O}_{\text{sw}}$; turquoise) and leaf water enrichment ($\Delta^{18}\text{O}_{\text{lw}}$; green) signals to $\delta^{18}\text{O}_{\text{R}}$ variability during 1960–2000. The percentage of explained variance (r^2) is indicated in each bar. **b** Correlation between the isotopic composition of precipitation ($\delta^{18}\text{O}_{\text{p}}$; light gray) and air vapour ($\delta^{18}\text{O}_{\text{v}}$; dark gray) used to force the models and the resulting $\delta^{18}\text{O}_{\text{sw}}$ (turquoise), $\Delta^{18}\text{O}_{\text{lw}}$ (green) and $\delta^{18}\text{O}_{\text{R}}$ (dark blue) simulated by ORCHIDEE and LPX-Bern during 1960–2000. All variables were averaged over the period May–August. Significance at the 95% confidence level is indicated by the black dots.

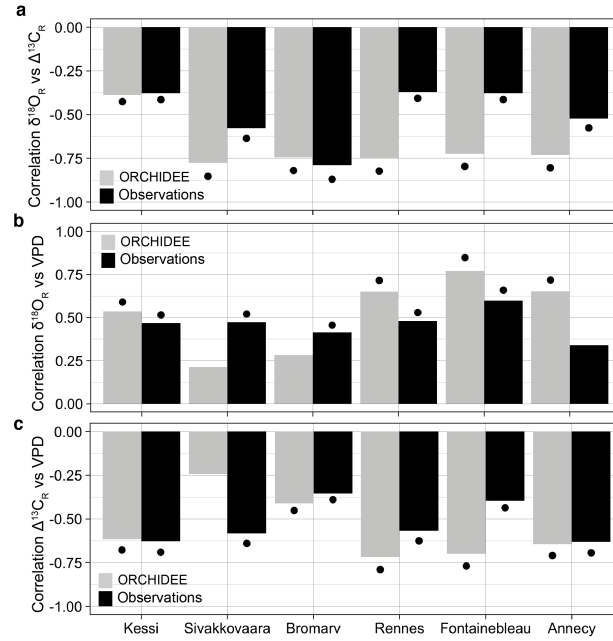


Figure 4. Observed and simulated isotopic coupling and response to VPD across the climate gradient during 1960–2000. **a** Correlation between $\delta^{18}\text{O}_R$ and $\Delta^{13}\text{C}_R$ in simulations (gray) and observations (black). **b–c** Correlations between growing season VPD and simulated (gray) and observed (black) $\delta^{18}\text{O}_R$ and $\Delta^{13}\text{C}_R$ variability, respectively. For Annecy the period of analysis is 1971–2000. Significance at the 95% confidence level is indicated by the black dots.

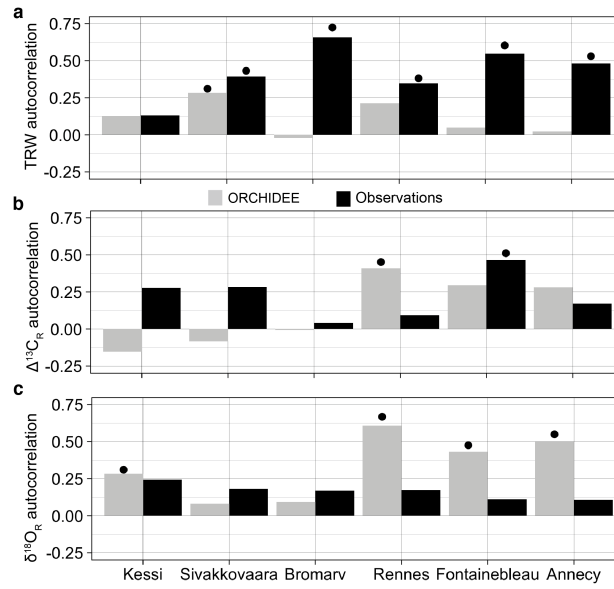


Figure 5. First-order autocorrelation in observed (black) and simulated (gray) tree-ring variables over the period 1960–2000. **a** Tree-ring width. **b** $\Delta^{13}C_r$. **c** $\delta^{18}O_r$. For Annecy the period of analysis is 1971–2000. Significance at the 95% confidence level is indicated by the black dots.

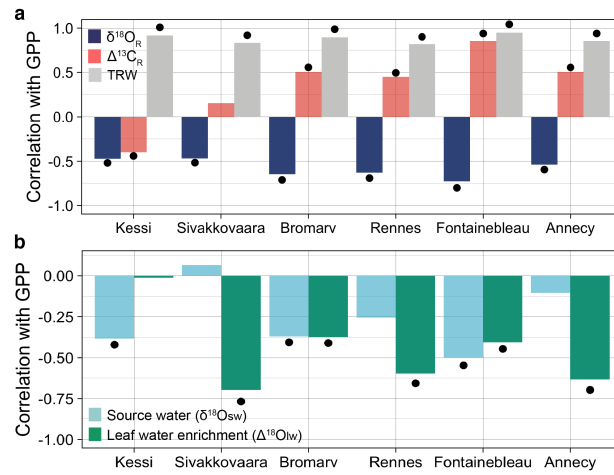


Figure 6. Correlations between the simulated tree-ring variables at each site and simulated May-August Gross Primary Productivity (GPP) over the evaluation period 1960–2000. **a** Correlations of $\delta^{18}\text{O}_R$ (dark blue), $\Delta^{13}\text{C}_R$ (light red) and tree-ring width (gray) with GPP. **b** Correlations of soil and leaf water $\delta^{18}\text{O}$ components of $\delta^{18}\text{O}_R$ with GPP. For Annecy the period of analysis is 1971–2000. Significance at the 95% confidence level is indicated by the black dots.