

A nitrate budget of the Bohai Sea based on an isotope mass balance model

Shichao Tian¹, Birgit Gaye¹, Jianhui Tang², Yongming Luo^{2,3}, Wenguo Li⁴, Niko Lahajnar¹, Kirstin Dähnke⁵, Tina Sanders⁵, Tianqi Xiong⁶, Weidong Zhai⁶, Kay-Christian Emeis^{1,5}

5 ¹Institute for Geology, Universität Hamburg, Hamburg, 20146, Germany

²Yantai Institute of Coastal Zone Research, Chinese Academy of Sciences, Yantai, China

³Institute of Soil Science, Chinese Academy of Sciences, Nanjing, China

⁴Institute of Oceanography, Universität Hamburg, Hamburg, 20146, Germany

⁵Helmholtz-Zentrum Hereon, Institute for Coastal Research, Geesthacht, 21502, Germany

10 ⁶Institute of Marine Science and Technology, Shandong University, Qingdao, China

Correspondence to: Shichao Tian (shichao.tian@uni-hamburg.de)

Abstract. The Bohai Sea (BHS) is a semi-closed marginal sea impacted by one of the most populated areas of China. The supply of nutrients, markedly that of reactive nitrogen, via fluvial and atmospheric transport has strongly increased in parallel with the growing population. Therefore, it is crucial to quantify the reactive nitrogen input to the BHS and understand the processes and determine the quantities of nitrogen eliminated in and exported from the BHS. The nitrogen budget and in particular the internal sources and sinks of nitrate were constrained by using a mass-based and dual stable-isotope approach based on $\delta^{15}\text{N}$ and $\delta^{18}\text{O}$ of nitrate (NO_3^-). Samples of water, suspended matter and sediments were taken in the BHS in spring (March and April) and summer (July and August) 2018. The Yellow River (YR) was sampled in May, July to November and Daliao River, Hai River, Luan River and Xiaoqing River were sampled in November of 2018. In addition to nutrient, particulate organic carbon and nitrogen concentrations, the dual isotopes of nitrate ($\delta^{15}\text{N}$ and $\delta^{18}\text{O}$), $\delta^{15}\text{N}$ of suspended matters and sediments were determined. Based on the available mass fluxes and isotope data an updated nitrogen budget is proposed. Compared to previous estimates, it is more complete and includes the impact of interior cycling (nitrification) on the nitrate pool. The main nitrate sources are rivers contributing 19.2–25.6 % and the combined terrestrial runoff (including submarine fresh groundwater discharge of nitrate) accounting for 27.8–37.1 % of the nitrate input to the BHS while atmospheric input contributes 6.9–22.2 % to total nitrate. An unusually active interior nitrogen cycling contributes 40.7–65.3 % to total nitrate via nitrification. Nitrogen is mainly trapped in the BHS and mainly removed by sedimentation (70.4–77.8 %) and only very little is exported to the Yellow Sea (YS) (only 1.8–2.4 %). At present denitrification is active in the sediments and removes 20.4–27.2 % of nitrate from the pool. However, a further eutrophication of the BHS could induce water column hypoxia and denitrification, as is increasingly observed in other marginal seas and seasonally off river mouths.

1. Introduction

Reactive nitrogen (N_r) is an essential nutrient of life on earth, but only few organisms can fix nitrogen directly from the large atmospheric dinitrogen pool. Since the invention of the Haber-Bosch process the amount of fixed nitrogen (120 Tg N year⁻¹) has constantly grown and since 2010 exceeds the natural terrestrial sources of reactive N of 63 Tg N year⁻¹ (Fowler et al., 2013). Hotspots of agricultural N fertilizer application shifted from the US and western Europe in the 1960s to eastern Asia in the early 21st century (Lu and Tian, 2017). In China, the Haber-Bosch process produces 37.1 Tg N year⁻¹, which is almost 3 times of the biological N fixation of 12.0 Tg N year⁻¹. An estimated 32.0 Tg N year⁻¹ are produced for fertilizer (Gu et al., 2015) and China accounted for 29 % of the global ammonium production in 2018 (IFA, 2019). The leakage and volatilization of this man-made reactive nitrogen has strongly impacted limnic and marine ecosystems in China. Riverine reactive nitrogen discharged to the ocean from China was estimated at 5.4 Tg N year⁻¹ (Gu et al., 2015). The total load of Chinese major estuaries to coastal seas was about 9 % of the global river load for dissolved inorganic nitrogen (DIN) and 1.5 % of the global phosphate load, respectively (Smith et al., 2003; Liu et al., 2009).

The Bohai Sea (BHS) is a semi-enclosed basin with a surface area of 77×10^3 km² and an average depth of 18 m (Chen, 2009; Su, 2001) that is heavily impacted by human activities in one of the most densely populated terrestrial catchments of the world. It exchanges salt water with the Yellow Sea (YS) through Bohai Strait and the Yellow River (YR) is a major source of freshwater to BHS (Chen, 2009). During last fifty years, rising anthropogenic activity in the catchment induced severe environmental changes in the BHS, including increasing salinity, temperature, concentrations of DIN and changes in stoichiometric nutrient ratios (Zhao et al., 2002; Zhang et al., 2004; Wang et al., 2019; Ning et al., 2010; Xin et al., 2019). DIN concentrations increased from 0.30 $\mu\text{mol L}^{-1}$ to 3.55 $\mu\text{mol L}^{-1}$ in the time from 1982–2009, while phosphate (from 0.76 $\mu\text{mol L}^{-1}$ to 0.31 $\mu\text{mol L}^{-1}$) and silicate (26.6 $\mu\text{mol L}^{-1}$ to 6.60 $\mu\text{mol L}^{-1}$) concentrations significantly decreased, so that N/P increased about 30 times (Zhang et al., 2004; Liu et al., 2011). Phytoplankton nutrient limitation in the BHS switched from nitrogen to phosphorus in the period of the 1980s to the 1990s and this limitation pattern persists until present day (Xu et al., 2010; Liu et al., 2009; Wang et al., 2019).

The total annual water discharge of rivers into BHS is about 68.5×10^9 m³ year⁻¹, of which the YR accounts for more than 75 % (Liu et al., 2011). Water exchange time of the YR estuary is only 0.1–0.2 days (Liu et al., 2009), which implies a fast transfer of nutrients into the open BHS and much of these are trapped in Laizhou Bay (Fig. 1) (Zhang et al., 2004). The atmospheric deposition of nitrate (3.42×10^9 mol year⁻¹) in BHS was modelled to be less than riverine nitrate (7.25×10^9 mol year⁻¹), while more ammonium was supplied from atmospheric deposition (6.15×10^9 mol year⁻¹) than from riverine input (0.93×10^9 mol year⁻¹) in the 1990s (Zhang et al., 2004). BHS nitrate budgets reported during the last two decades were not completely constrained, because crucial data, such as groundwater discharge or nitrification, were not available (Zhang et al.,

2004; Liu et al., 2003; Liu et al., 2009; Liu et al., 2011). There are few published nutrient data from the BHS over the last decade, and the terms in the N_r budget of BHS concerning the quantities of N_r generated or eliminated by biogeochemical cycling within the basin have not been addressed.

65 The nitrogen budget and in particular the internal sources and sinks of nitrate can be constrained with a mass-based and dual stable-isotope approach based on $\delta^{15}N$ and $\delta^{18}O$ of nitrate. The combination of data permits tracking of nitrate and quantification of internal cycling of inorganic nitrogen (Sigman et al., 2005; Wankel et al., 2006; Sugimoto et al., 2009; DiFiore et al., 2006; Montoya et al., 2002; Emeis et al., 2010). Stable isotopes of reactive nitrogen have been used to explore nitrogen sources in the eastern Chinese seas (Umezawa et al., 2013; Wang et al., 2016; Liu et al., 2017b; Wu et al., 2019; Liu et al., 70 2020; Yu et al., 2021; Li et al., 2019a) and the Changjiang Estuary (Yu et al., 2015; Wang et al., 2017; Yang et al., 2018; Chen et al., 2013).

For this study, we analyzed water, suspended matter and sediments in the Bohai Sea sampled during the spring and summer seasons for nutrient concentrations, carbon and nitrogen contents, dual isotopes ($\delta^{15}N$ and $\delta^{18}O$) of nitrate and $\delta^{15}N$ of particulate nitrogen. The aim of the study is to characterize and quantify N_r sources and sinks, in particular those from internal 75 cycling processes that have not been included in previous budgets (Zhang et al., 2004; Liu et al., 2003; Liu et al., 2009; Liu et al., 2011) to track the fate of N_r in the present Bohai Sea. The observation data presented here are the basis for a combined mass and isotope balance model, results of which will be a basis for future studies on the rising impact of fast-growing megacities in the BHS catchment and their possible impact on the adjacent YS.

2. Materials and methods

80 2.1. Sample collection

Research cruises were carried out on board R/V *Dongfanghong 2* in spring and summer 2018 with 24 sampling sites in April and 25 sites in August, respectively (Fig. 1). Water samples were taken from several depths by 12 L Niskin bottles attached to a CTD rosette (911plus, Seabird, USA). The water samples for nutrients and isotope analysis were filtered using nucleopore polycarbonate filters (0.4 μm) with plastic Nalgene filtration units. The filtered water was collected in Falcon PE 85 tubes (45 mL) as duplicates for measurements of nutrients and nitrate isotope analysis, frozen immediately (-20 °C) and kept frozen until analyses in the home laboratory in Germany. Between 1 to 8 L of water were filtered through pre-weighed GF/F filters (0.7 μm , $\Phi = 47$ mm, Sigma Aldrich) which had been pre-combusted at 450 °C for 4 h. The filters were subsequently dried on board under 45 °C for 24 h. Surface sediments were taken with a box corer and surface samples were transferred into plastic bags with a metal spoon, frozen at -20 °C and were kept frozen until later analysis in the home lab.

90 YR water samples were taken from the Kaiyuan floating bridge in Lijin, located 44 km upstream of the river mouth. Samples were taken in the middle of the river course with a plastic reversing water sampler at 1 m under the surface. The water samples were filtered immediately for nutrient analysis and collection of suspended particles, and subsequently were stored frozen until delivered to the home laboratory. Samples were taken monthly in May, July to November of 2018 from YR, and in November of the same year from Daliao River, Hai River, Luan River and Xiaoqing River (Fig. 1).

95

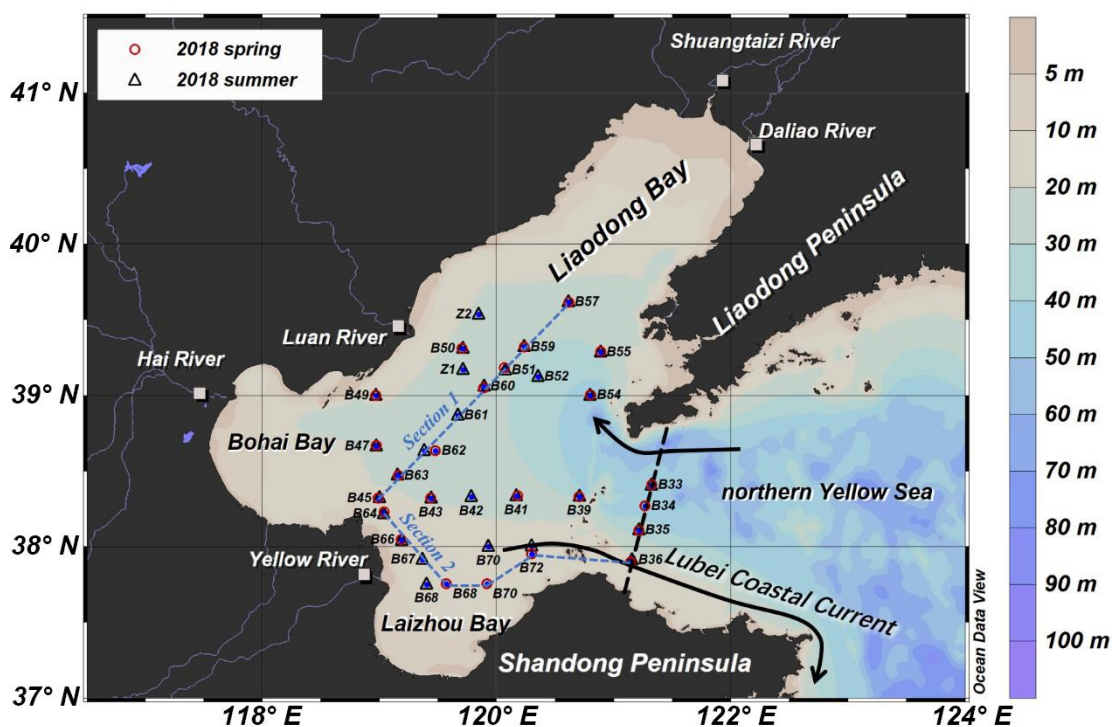


Figure 1. Sampling sites in Bohai Sea and rivers (Xiaoqing River not shown). Open red circles stand for sampling site in spring, open blue triangles stand for sampling sites in summer, names of the sites are marked nearby. Black arrows stand for the most significant currents flows in and out of the BHS. Blue dashed lines stand for two main sections, black dashed line stands for the boundary of our study area. (Base map sourced by Ocean Data View, Schlitzer, Reiner, Ocean Data View, <https://odv.awi.de>, 2021)

2.2. Measurements of nutrients and nitrate isotopes

Nutrient concentrations were measured with an AutoAnalyzer 3 system (Seal Analytics) using standard colorimetric methods (Grasshoff et al., 2009). The relative error of duplicate sample measurements was below 1.5 % for NO_x and phosphate

105 (PO₄³⁻) concentrations, below 0.3 % for ammonium. The detection limit was < 0.05 μmol L⁻¹ for NO_x, > 0.01 μmol L⁻¹ for PO₄³⁻, and >0.013 μmol L⁻¹ for ammonium.

110 $\delta^{15}\text{N}$ and $\delta^{18}\text{O}$ of nitrate ($\delta^{15}\text{N} = [({}^{15}\text{N}/{}^{14}\text{N})_{\text{sample}} / ({}^{15}\text{N}/{}^{14}\text{N})_{\text{standard}} - 1] \times 1000 \text{ ‰}$, $\delta^{18}\text{O} = [({}^{18}\text{O}/{}^{16}\text{O})_{\text{sample}} / ({}^{18}\text{O}/{}^{16}\text{O})_{\text{standard}} - 1] \times 1000 \text{ ‰}$), were determined following the denitrifier method (Sigman et al., 2001; Casciotti et al., 2002). Only the samples with nitrate concentrations > 1.7 μmol L⁻¹ were analyzed and $\delta^{15}\text{N}$ and $\delta^{18}\text{O}$ were analyzed in one sample run. Water samples were injected into a suspension of the denitrifier *Pseudomonas aureofaciens* with injection volumes adjusted to yield 10 nmol N₂O. The N₂O gas was purged by helium into a GasBench 2 (Thermo Finnigan) for purification. Afterwards the N₂O gas was analyzed by a Delta V Advantage and a Delta V Plus mass spectrometer. Samples were measured in duplicate and the two international standards IAEA-NO₃⁻ ($\delta^{15}\text{N}\text{-NO}_3^- = +4.7 \text{ ‰}$, $\delta^{18}\text{O}\text{-NO}_3^- = +25.6 \text{ ‰}$) and USGS-34 ($\delta^{15}\text{N}\text{-NO}_3^- = -1.8 \text{ ‰}$, $\delta^{18}\text{O}\text{-NO}_3^- = -27.9 \text{ ‰}$) and an internal potassium nitrate standard were measured in each batch. The data were corrected by applying a bracketing correction (Sigman et al., 2009) and the standard deviations of the international and in-house standards was found to be ≤ 0.2 ‰ for $\delta^{15}\text{N}$ and ≤ 0.5 ‰ for $\delta^{18}\text{O}$. The standard deviations of duplicate samples were in the same range. Nitrite affects the results and was removed following the protocol of Granger and Sigman (2009) whenever [NO₂⁻] exceeded 5 % of the NO_x pool. In all other cases, we report combined (nitrite + nitrate) values.

2.3. Measurements of suspended matters and sediments

120 The tared GF/F filters were weighed to calculate the amount of suspended particulate matter (SPM) per liter of water. Total carbon and nitrogen concentrations in SPM and sediment samples were measured by a Euro EA 3000 (Euro Vector SPA) Elemental Analyzer, and SPM samples with high carbon and nitrogen contents and sediments were acidified to measure organic carbon content. The precision of total and organic carbon determination is 0.05 %, that of nitrogen is 0.005 %, and the standard deviations are less than 0.08 for total and organic carbon and 0.02 for nitrogen. Nitrogen isotope ratios were determined with a FlashEA 1112 coupled to a MAT 252 (Thermo Fisher Scientific) isotope ratio mass spectrometer. The precision of nitrogen isotope analyses is better than 0.2 ‰, and the standard deviation is less than 0.03 ‰.

2.4. Measurements of dissolved oxygen

130 The dissolved oxygen (DO) samples were collected, fixed, and titrated on board following the Winkler procedure at an uncertainty level of <0.5 %. A small quantity of NaN₃ was added during subsample fixation to remove possible interferences from nitrite (Wong, 2012). The DO saturation (DO %) was calculated from field-measured DO concentration divided by the DO concentration at equilibrium with the atmosphere which was calculated from temperature, salinity and local air pressure, as per the Benson and Krause Jr (1984) equation.

2.5. Hydrodynamic model of nutrient export from BHS to the Yellow Sea

The regional three-dimensional hydrodynamic Hamburg Shelf Ocean Model, HAMSOM (Backhaus, 1985), was applied in the East China Seas (23°–45° N, 117°–131° E) to calculate the water and nutrient transport through the Bohai Strait for the year 2018. The HAMSOM model has been applied to investigate the Bohai Sea physical circulation for several decades now and has been extensively validated in the Bohai Sea (Jia and Chen, 2021; Hainbucher et al., 2004; Huang et al., 1999). The spatial resolution of the model is 2' (approx. 3.7 km) with 20 layers in vertical direction, while the calculation time step is 3 minutes. The upper 50 m of the HAMSOM model are resolved by layers of 5 m thickness. The topography data (resolution of 2') were obtained from marine navigation charts. The meteorological forcing was derived from an hourly ERA5 dataset with a spatial resolution of 0.25° (CCCS, 2017). The open boundary SSH and the boundary T and S data and for the initial T and S fields were extracted from the daily Mercator-Ocean dataset (1/12 degrees) (Lellouche et al., 2019). 13 partial tides derived from the TPXO8-atlas v1 were superimposed to the SSH along the open boundary (Egbert and Erofeeva, 2002). The observed monthly river discharge were available for the two largest rivers, i.e., Changjiang and YR (China, 2015-2018), while the inputs for the remaining rivers were derived from the Watergap dataset (0.5°, monthly climatology) (Müller Schmied et al., 2014). The spin-up period of this model is 1 year.

Four sites on a north-south section through the Bohai Strait, i.e., B33, B34, B35, and B36, have been selected to represent the open boundary of the BHS (Fig. 1). The simulated SSH and current velocities (west-east-component) were extracted along this section. In addition, nutrient concentrations were interpolated from the observed data at the four sites to the grid of the hydrodynamic model along the Bohai Strait section. Since the observational data just include spring and summer values, the mean value of nitrate in spring and summer had to be extrapolated to an entire year.

3. Results

3.1. Hydrological properties and nutrients

3.1.1. Hydrological properties

Averages of salinity and temperature in spring were 32.3 ± 0.5 ($n = 72$) and $4.7 \pm 0.8^\circ\text{C}$ ($n = 72$), respectively, and the water column was vertically mixed (Fig. 2 and Fig. 3). The YR discharged relatively warm water and the lowest salinity was observed in the southeast of YR estuary (site B68, $T > 6^\circ\text{C}$, $S < 31$). Thus, the Yellow River Diluted Water (YRDW) is here defined as the water off the YR estuary with salinities lower than 31. In summer, averages of salinity and temperature were 31.6 ± 0.8 ($n = 88$) and $22.4 \pm 4.2^\circ\text{C}$ ($n = 88$), respectively, and the surface layer was stratified. The YRDW extended to an even larger area than in spring caused by high river discharge. The YRDW turned northeast towards LiaoDong Bay into the central BHS in the surface layer ($T > 27^\circ\text{C}$, $S < 31$).

The water column oxygen concentrations (see Supplement 1) in the study area in spring and summer were 10.27–11.47 mg L⁻¹ and 3.84–8.86 mg L⁻¹, respectively, and thus much higher than the threshold for water column denitrification (0.15 mg L⁻¹) (Altabet, 2006). The detailed results of DO and other parameters are shown in Supplement 2.

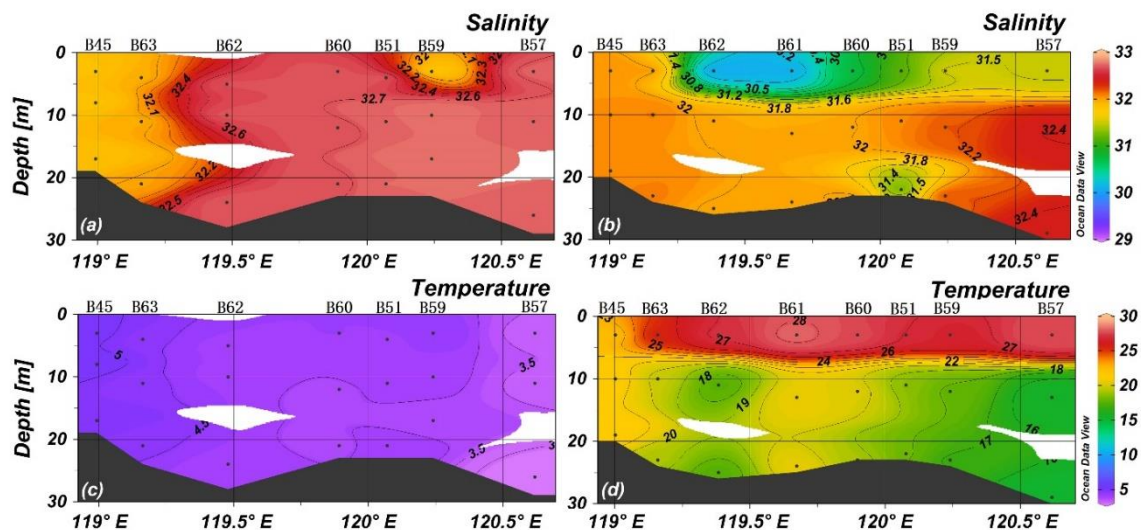


Figure 2. Temperature (°C) and salinity of section 1 of spring (a and c) and summer (b and d).

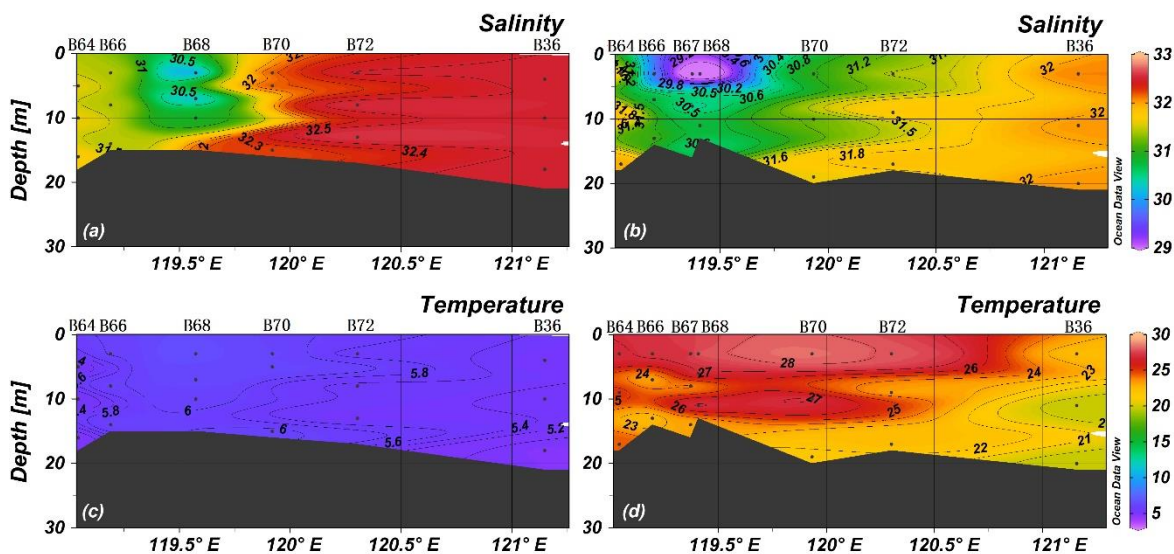


Figure 3. Temperature (°C) and salinity of section 2 of spring (a and c) and summer (b and d).

3.1.2. Nutrient concentrations and distributions

Nutrient concentrations in spring were almost vertically uniform, consistent with temperatures and salinities, and no distinct nutricline was observed (Fig. 4 and Fig. 5). The prominent plume of low NO_3^- of the middle layer along stations B45 and B63 may mark the influence water advected from more offshore sites with low NO_3^- concentration. The YR discharge is indicated by a nitrate maximum at station B68 ($31.0 \mu\text{mol L}^{-1}$) and the lowest observed salinity (Fig. 5). Concentrations of NH_4^+ were higher than $1 \mu\text{mol L}^{-1}$ and PO_4^{3-} concentrations were lower than $0.4 \mu\text{mol L}^{-1}$ adjacent to YR estuary, and PO_4^{3-} increased towards the central BHS (along section 1) and north of Shandong peninsula (along section 2). The average concentrations of NO_3^- , NO_2^- , NH_4^+ and PO_4^{3-} of all spring samples were $6.5 \pm 5.8 \mu\text{mol L}^{-1}$, $0.2 \pm 0.2 \mu\text{mol L}^{-1}$, $0.8 \pm 0.5 \mu\text{mol L}^{-1}$, and $0.4 \pm 0.2 \mu\text{mol L}^{-1}$ ($n = 72$), respectively.

In summer, in the central BHS (section 1), the upper 10 m water layer was nutrient depleted, while concentrations were high in the lower layer (Fig. 4). NO_3^- was almost depleted in the BHS except for stations B66 and B67 (included in section 2) located in the tongue of YRDW. NO_2^- and NH_4^+ concentration was higher than $2 \mu\text{mol L}^{-1}$ and $5.5 \mu\text{mol L}^{-1}$, respectively, in the same area (Fig. 5). The average concentrations of NO_3^- , NO_2^- , NH_4^+ and PO_4^{3-} of 1.9 \pm 2.7 $\mu\text{mol L}^{-1}$, $0.8 \pm 1.1 \mu\text{mol L}^{-1}$, $1.6 \pm 1.9 \mu\text{mol L}^{-1}$ and $0.1 \pm 0.1 \mu\text{mol L}^{-1}$ ($n = 85$), respectively.

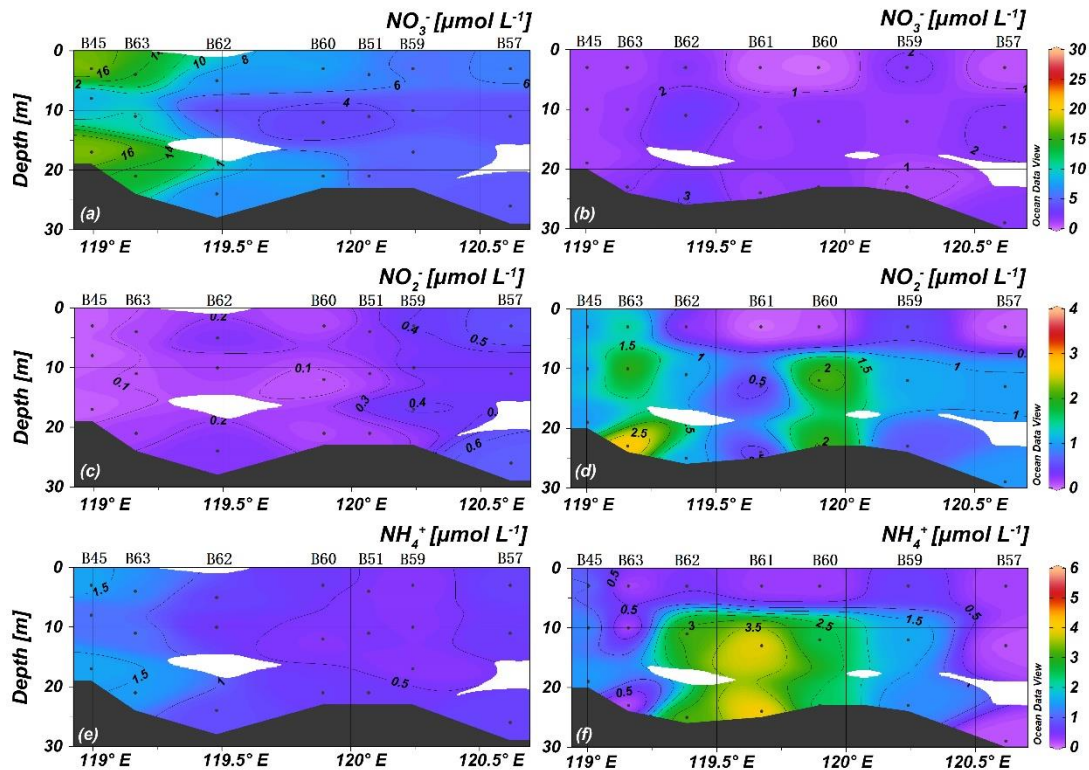


Figure 4. Nutrients of section 1 ($\mu\text{mol L}^{-1}$) of spring (a, c, and e) and summer (b, d, and f).

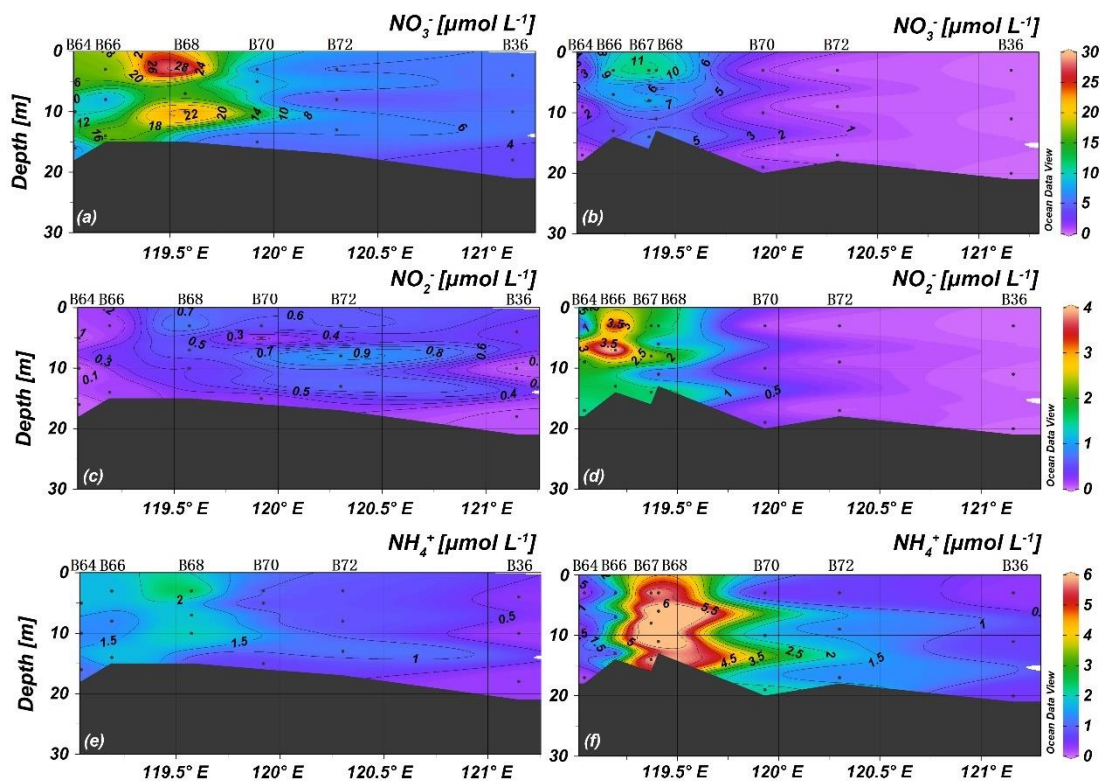


Figure 5. Nutrients of section 2 ($\mu\text{mol L}^{-1}$) of spring (a, c, and e) and summer (b, d, and f).

190 3.2. Dual isotopes of nitrate

In spring, the average values of $\delta^{15}\text{N}$ and $\delta^{18}\text{O}$ were $7.8 \pm 1.4 \text{ ‰}$ and $12.0 \pm 3.3 \text{ ‰}$ ($n = 52$), and $\delta^{15}\text{N}$ and $\delta^{18}\text{O}$ ranged between 5.6–10.5 ‰, and 5.0–20.0 ‰, respectively. $\delta^{15}\text{N}$ and $\delta^{18}\text{O}$ were both vertically homogenous, corresponding to the vertical profile of salinity, temperature, and nitrate. Relatively high $\delta^{15}\text{N}$ values were observed in the southwestern part of BHS including the areas adjacent to Bohai Bay and Laizhou Bay, which is consistent with high nitrate concentrations. The $\delta^{18}\text{O}$ was inversely related to $\delta^{15}\text{N}$ with low values near the YR estuary and high values in the northeast of the central BHS and north of Shandong peninsula (Fig. 6 and Fig. 7).

195 Due to the low nitrate concentration in summer, only a subset of samples could be analyzed and most of these are from the YRDW that had $[\text{NO}_3^-] > 1.7 \mu\text{mol L}^{-1}$. The average values of $\delta^{15}\text{N}$ and $\delta^{18}\text{O}$ were $9.9 \pm 3.5 \text{ ‰}$ ($n = 23$) and $8.7 \pm 3.3 \text{ ‰}$ ($n = 23$), and ranged between 3.5–23.9 ‰ and 3.1–18.4 ‰, respectively. The mean value of $\delta^{15}\text{N}$ was higher than that of spring

200 samples, whereas the $\delta^{18}\text{O}$ value was lower. Relatively high $\delta^{15}\text{N}$ and $\delta^{18}\text{O}$ values of 23.9 ‰ and 18.4 ‰ were registered in the surface water of YRDW (site B62) and decreased with water depths at increasing nitrate concentrations.

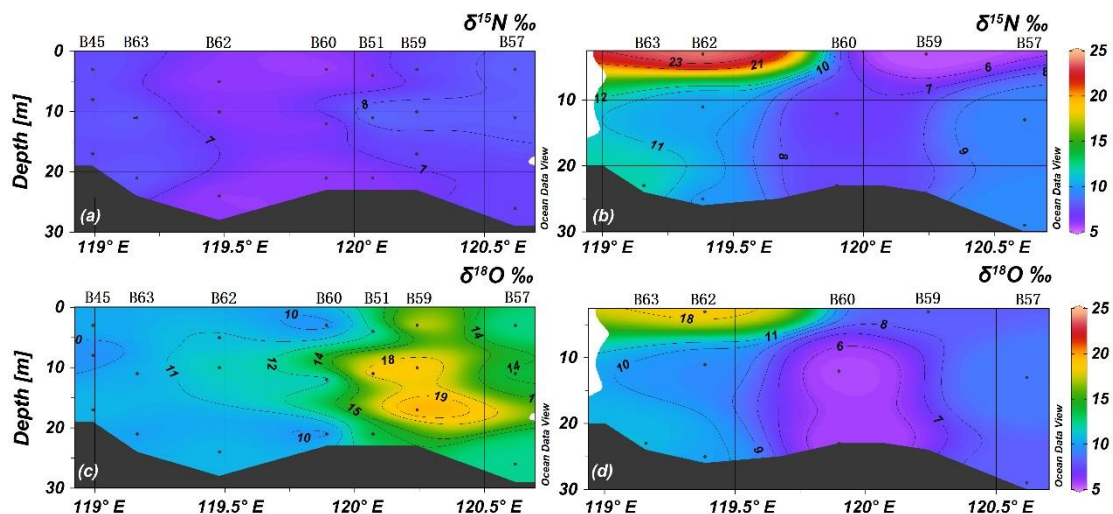


Figure 6. Nitrate isotopes (‰) of section 1 of spring (a and c) and summer (b and d).

205

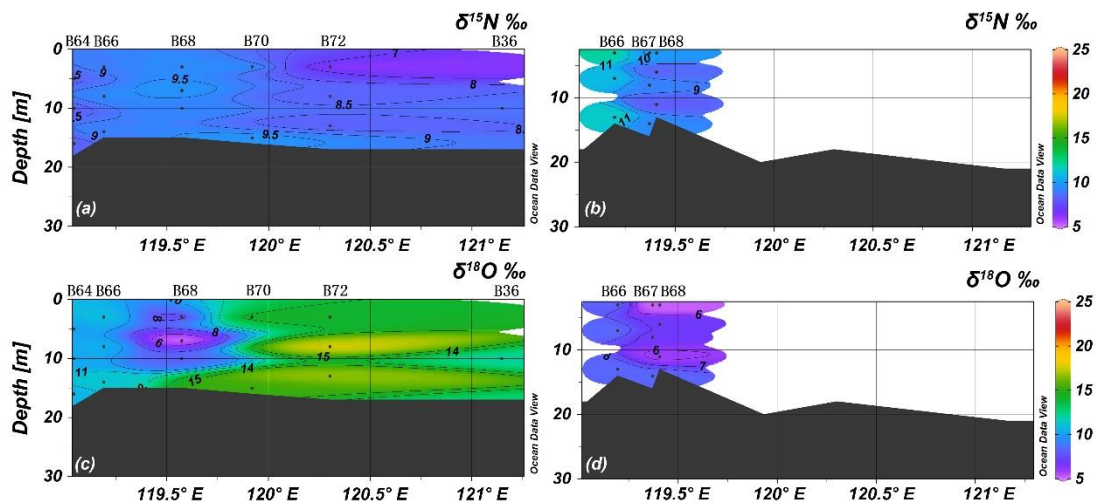


Figure 7. Nitrate isotopes (‰) of section 2 of spring (a and c) and summer (b and d).

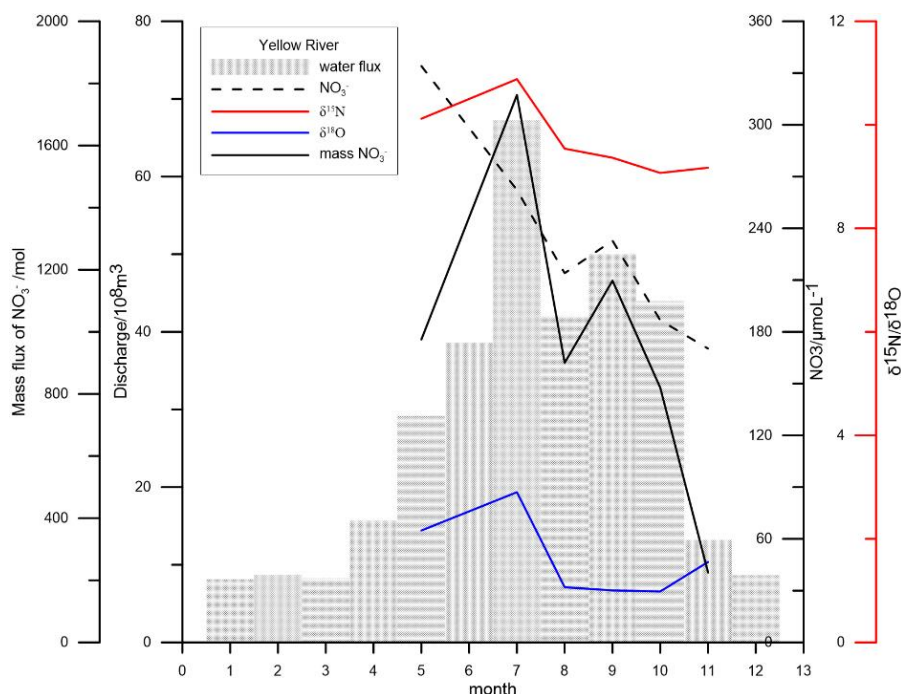
3.3. Suspended particulate matter

210 In spring suspended particulate matter (SPM) concentrations were mostly vertically homogenous along both transects with high values ($>15 \text{ mg L}^{-1}$) close to the YR mouth (see Supplement 3). C_{org} % and N % are inversely correlated with SPM concentrations and high values occurred in the central BHS and north of Shandong Peninsula. In summer SPM concentrations were significantly higher than in spring and maxima occurred in deep water off the YR ($> 30 \text{ mg L}^{-1}$) and in the west part of the BHS. C_{org} % and N % maxima occur in surface waters in the eastern Laizhou Bay and the central BHS.

215 The average $\delta^{15}\text{N}$ of SPM in spring was $4.8 \pm 0.9 \text{ ‰}$ ($n = 14$), with a maximum ($> 6.10 \text{ ‰}$, $n = 3$) south of Luan River. The lowest values were observed in the southern Bohai Strait and northeast of YR estuary. The other samples varied in a narrow range of $3.9\text{--}4.7 \text{ ‰}$ ($n = 11$). In summer, the average of $\delta^{15}\text{N}$ was $5.7 \pm 0.8 \text{ ‰}$ ($n = 34$) and ranged from 3.9 ‰ to 7.2 ‰ . Systematic variation of $\delta^{15}\text{N}$ of SPM was barely discernable and only exhibited a weak decline from the YR mouth into the northeastern BHS (section 1) and into the Bohai Strait (section 2) (see Supplement 3), thus tracking the salinity dilution gradient in the surface layer.

220 3.4. The discharge of the Yellow River

225 The water discharge of the year 2018 determined at the Lijin hydrography station was $333.8 \times 10^9 \text{ m}^3$ which was by 14 % higher than the multi-year average of $292.8 \times 10^9 \text{ m}^3$ (1952-2015) (MWR, 2019). The monthly mean discharge was $27.80 \pm 20.21 \times 10^9 \text{ m}^3$ per month ($n = 12$), which was higher than the multi-year average value by 14–51 %, indicating that in YR basin 2018 was a flood year. The water discharge maximum was from July to October (Fig. 8). During May to November in 2018 (no value for June), the mass fluxes of nitrate, phosphate increased with the water discharge of YR, while the monthly fluxes of nitrite and ammonium exhibited an opposite trend. $\delta^{15}\text{N}$ and $\delta^{18}\text{O}$ of YR nitrate ranged from $9.1\text{--}10.9 \text{ ‰}$ and $1.1\text{--}3.0 \text{ ‰}$, respectively. The monthly mass-weighted average value of $\delta^{15}\text{N}$ and $\delta^{18}\text{O}$ were 9.9 ‰ and 1.9 ‰ , respectively. $\delta^{15}\text{N}$ and $\delta^{18}\text{O}$ were positively correlated ($\delta^{18}\text{O} = 1.04 \times \delta^{15}\text{N} - 8.43$, $R^2 = 0.85$), as were $\delta^{15}\text{N}$ and the monthly mass flux of nitrate ($R^2 = 0.63$).

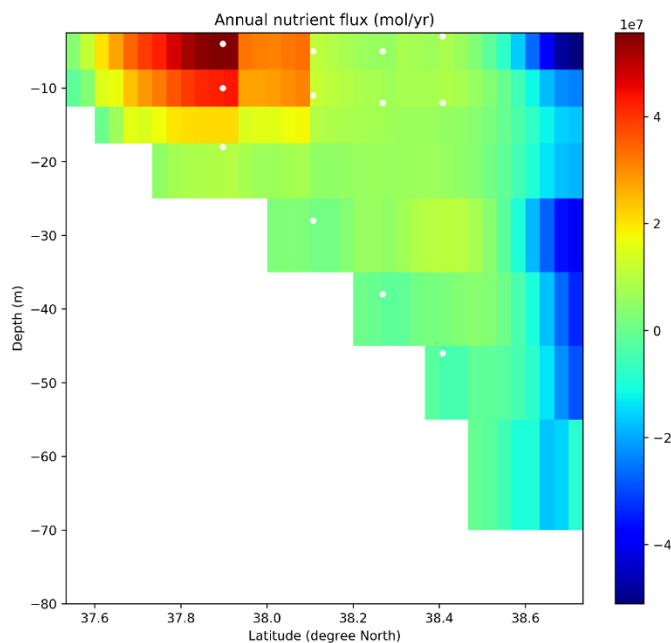


230 **Figure 8.** Monthly variation of water flux (shadowed bar), nitrate concentration (dashed line), mass flux of nitrate (solid line), and dual nitrate isotopes ($\delta^{15}\text{N}$ in upper red solid line and $\delta^{18}\text{O}$ in lower blue solid line) of YR in 2018. Water samples were monthly collected in May, July to November in Lijin, nitrate concentrations ($\mu\text{mol L}^{-1}$) and dual isotopes ($\delta^{15}\text{N}$ and $\delta^{18}\text{O}$, in per mil) were measured in home laboratory, monthly water flux data (10^8 m^3) are according to the YR Sediment Bulletin 2018 (<http://www.yrcc.gov.cn/nishagonggao/2018/index.html#p=20>).

235 3.5. Nitrate exchange with the Yellow Sea

Based on current velocities and nutrient concentrations along the section crossing the Bohai Strait, the annual water and nitrate export from BHS to the YS in the year 2018 was calculated to $1.26 \times 10^{-3} \text{ Sv}$ ($1 \text{ Sv} = 10^6 \text{ m}^3 \text{ s}^{-1}$) and $0.9 \times 10^9 \text{ mol year}^{-1}$, respectively. In this study, the exported nitrate are assumed with the average isotopes values of the BHS ($\delta^{15}\text{N} = 8.9 \text{ ‰}$ and $\delta^{18}\text{O} = 10.4 \text{ ‰}$).

240 Making use of the three-dimensional model (HAMSOM) results, it is also possible to determine a spatial distribution of the annual nutrient flux through the Bohai Strait section (Fig. 9). Positive values represent a nutrient flux out of the Bohai Sea, while negative ones indicate a flux into the Bohai Sea. The strongest nutrient export occurs at the southern part of the Bohai Strait, while the major import takes place in the upper 15 m in the northern Bohai Strait (Fig. 9).



245 **Figure 9.** Simulated net fluxes of nitrate (mol year^{-1}) in the Bohai Strait of the year 2018. White dots are the sampling sites, the color bar is the flux of nitrate ($10^7 \text{ mol year}^{-1}$), positive values stand for the export of nitrate from BHS to YS.

4. Discussion

4.1. The hydrographic and nutrients characteristics in spring and summer

250 The sampling in early spring occurred during a season of low biological activity so that nutrients behaved almost conservatively (Wei et al., 2003; Tan and Shi, 2006). YR discharged $333.8 \times 10^9 \text{ m}^3$ water and $8.0 \times 10^9 \text{ mol}$ nitrate to the Bohai Sea in 2018, accounting for 85 % and 84 % of water and nitrate discharge of all large rivers in the Bohai Sea, respectively. As is indicated by the negative correlations of NO_3^- ($r = -0.78$, $p < 0.01$), and NH_4^+ ($r = -0.79$, $p < 0.01$) with salinity, the YR is one of the major sources of these nutrients in the BHS, whereas PO_4^{3-} is contributed by the inflow of saline waters from the YS as indicated by the positive correlation with salinity ($r = 0.43$, $p < 0.01$). Concentrations of nitrate were relatively high in the southern Bohai Strait but low in its northern part, suggesting that in spring nitrate-rich water flows out of Bohai Strait along the northern shore of Shandong Peninsula in the LCC, while nitrate-depleted water flows in from the northern YS via the northern strait. In summer, the water is stratified with the thermocline at about 8 m water depth and coinciding with halo- and nutriclines. Nutrients are depleted to trace amounts above the thermocline. In contrast to the other nutrients, phosphate concentrations did not increase with depth in the southwestern part of BHS (i.e. Bohai Bay and Laizhou Bay). Similar to the
 255
 260 spring situation, salinity was weakly positively correlated with PO_4^{3-} ($r = 0.29$, $p < 0.05$) and NO_2^- ($r = 0.32$, $p < 0.05$),

whereas it was negatively correlated with NO_3^- ($r = -0.69$, $p < 0.01$) and NH_4^+ ($r = -0.37$, $p < 0.01$), respectively. The average N/P ratio in BHS in spring and summer was 28.2 ± 38.2 and 86.9 ± 126.3 , respectively, implying that productivity in BHS was phosphorus limited. Thus, diazotrophic N_2 fixation is excluded as a significant input of N_r because of high N:P ratios.

4.2. The main sources and sinks of nitrate in the BHS

265 Most of the external and internal sources of nitrate to the BHS are characterized by distinct dual isotope values. These fingerprints combined with mass flux estimates are in the following used to constrain the mass and isotope budget of nitrate in the BHS. Specifically, the role of internal cycling processes can thus be quantified, which were lacking in previous budgets. In the following, each of the sources and sinks is described, along with isotope composition or isotope fractionation associated with cycling processes.

270 4.2.1. Riverine inputs

The main input from this source of BHS N_r is from the YR and we calculated a nitrate input of YR of 7.95×10^9 mol year⁻¹, based on the annual average discharge (Yellow River Conservancy Commission of MWR, 2019) and the load-weighted nitrate concentration during our sampling period during the year 2018. The water discharge of the other 7 important rivers (Hai River, Shuangtaizi River, Daliao River, Luan River, Xiaoqing River, Daling River and Xiaoling River) sums up to 59.86×10^8 m³ year⁻¹ (MWR, 2019; Ma et al., 2004; Yu et al., 2018; Zhang et al., 2004). Nitrate fluxes of these rivers were calculated based on water discharge and our nitrate measurements in YR, Hai River, Daliao River, Luan River and Xiaoqing River. Owing to a lack of data on nitrate concentrations of Shuangtaizi River, Daling River and Xiaoling River and considering that these rivers drain basins adjacent to Daliao River, we assume that nitrate concentration of these rivers were same as those of the Daliao River. The total riverine input of nitrate summed up to 9.49×10^9 mol.

280 The mass-weighted average annual values for $\delta^{15}\text{N}$ and $\delta^{18}\text{O}$ of nitrate in these rivers were 10.0 ‰ and 1.3 ‰, respectively, taken here to represent the river nitrate isotopic composition discharged into BHS.

4.2.2. Submarine groundwater input

285 The DIN supplied to BHS by submarine groundwater discharge (SGD) flux has been estimated to be 2–10 times the YR discharge (Luo and Jiao, 2016; Peterson et al., 2008; Wang et al., 2015). These fluxes of SGD are a mixture of submarine fresh groundwater discharge (SFGD) and recirculated saline groundwater discharge (RSGD) (Liu et al., 2011; Peterson et al., 2008; Liu et al., 2017a), but only the freshwater component is relevant as a source for the budget.

The latest estimates of SGD for the BHS are 10.0×10^9 m³ year⁻¹ (Liu et al., 2017a) and 19.1×10^9 m³ year⁻¹ (Wang et al., 2015), respectively. The nitrate concentration of SFGD is not documented, but the nitrate concentration of groundwater in YR

Delta was $304.2 \pm 254.2 \mu\text{mol L}^{-1}$ (Liu et al., 2011). For reducing the error of these indirectly measured data, we decided to use the value of $4.25 \times 10^9 \text{ mol year}^{-1}$ for the nitrate flux of SFGD, which is the averaged products of SFGD water fluxes and nitrate concentrations shown above. This value is only approximately 10 % of previous estimates of the input nitrate for SGD into BHS (Liu et al., 2011) due to the exclusion of RSGD.

Because of pollution and denitrification processes in soils, aquifers and groundwater (Zhang et al., 2013; Chen et al., 2007; Soares, 2000), the value of $\delta^{15}\text{N}$ and $\delta^{18}\text{O}$ of nitrate in SFGD is more enriched than those of river runoff and this is illustrated by the observed $\delta^{15}\text{N}$ value of $20.2 \pm 9.0 \text{ ‰}$ ($n = 19$) of on-land groundwater near the YR delta (Chen et al., 2007). As there are as yet no reported $\delta^{15}\text{N}$ values of SFGD and RSGD inputs, we decided to take this value as the signal of nitrate $\delta^{15}\text{N}$ imported by SFGD into the BHS. There are no data available for $\delta^{18}\text{O}$ of nitrate of SFGD, and we will discuss possible constraints in the box model discussion (Sect. 4.3.2).

4.2.3. Atmospheric deposition

Combined atmospheric input by wet and dry deposition ranged from $3.14 \times 10^9 \text{ mol year}^{-1}$ to $3.42 \times 10^9 \text{ mol yr}^{-1}$ (Zhang et al., 2004; Liu et al., 2003). We adopted the annual mass of NO_x deposition for China of 6.2 Tg year^{-1} (Zhao et al., 2017) and related this value to the area of the BHS, which results in an annual deposition of $3.6 \times 10^9 \text{ mol year}^{-1}$. Owing to a lack of directly measured data for atmospheric NO_x the BHS, we adopt $3.42 \pm 2.29 \times 10^9 \text{ mol year}^{-1}$ (Zhang et al., 2004) as the atmospheric nitrate flux.

The nitrate $\delta^{15}\text{N}$ values of $\text{PM}_{2.5}$ (fine particulate matter suspended in the air) ranged from 3.5–17.8 ‰ in northern China (Fan et al., 2019; Zong et al., 2017; Song et al., 2020; Zhang et al., 2019), whereas nitrate $\delta^{15}\text{N}$ of precipitation ranged from -2.5 to +0.9 ‰ (Zhang et al., 2008; Chang et al., 2019; Li et al., 2019b; Kim et al., 2019). Assuming that $\text{PM}_{2.5}$ is the main component of dry deposition we use a $\delta^{15}\text{N}$ value of 8.2 ‰ reported from Beihuangcheng island in Bohai Strait (Zong et al., 2017), while the wet deposition has a $\delta^{15}\text{N}$ value of -2.35 ‰ (Chang et al. (2019)). Wet deposition in BHS was estimated as 54–68 % of total deposition (Liu et al., 2003; Zhang et al., 2008; Zhao et al., 2017), resulting in a mass-weighted average of BHS atmospheric deposition ranging from 1.03 –2.56 ‰, of which the arithmetic mean value of 1.80 ‰ is adopted here.

The nitrate $\delta^{18}\text{O}$ of $\text{PM}_{2.5}$ in BHS ranged from 65.0–88.1 ‰ (seasonally) (Zong et al., 2017), the value in Beijing is $88.3 \pm 6.9 \text{ ‰}$ (Song et al., 2020) and $57.80 \pm 4.23 \text{ ‰}$ in cloud samples of Shandong (Chang et al., 2019). For nitrate $\delta^{18}\text{O}$ of dry deposition, we thus assume a mean value of 80.5 ‰ and that wet deposition has a $\delta^{18}\text{O}$ of 57.8 ‰. These two estimates combined give a ratio of dry and wet deposition in the range of 65.8–68.0 ‰. The arithmetic mean value is 66.9 ‰, which we take to represent the $\delta^{18}\text{O}$ of nitrate deposited from the atmosphere to the BHS.

The ammonium deposited from the atmosphere is assimilated by phytoplankton and is subsequently entrained into the N cycle via remineralization and nitrification or is nitrified directly in the water. Thus, the nitrified atmospheric ammonium is

320 included here as a source bearing on $\delta^{15}\text{N}$ of nitrate in the seawater. The ammonium deposition in BHS was 6.15×10^9 mol year⁻¹, which is more than the nitrate deposition of 3.42×10^9 mol year⁻¹ (Zhang et al., 2004).

The atmospheric ammonium has low $\delta^{15}\text{N}$ values of -6.53 to -1.2 ‰ (Zhang et al., 2008; Chang et al., 2019). Given that the $\delta^{15}\text{N}$ value of ammonium of the North China Plain is $-1.2 \text{ ‰} \pm 4.5 \text{ ‰}$ (Zhang et al., 2007), and that there is no obvious accumulation of ammonium in the surface layer in the observations, we assume that this isotope value is identical to the $\delta^{15}\text{N}$ value of nitrified atmospheric ammonium.

325 The $\delta^{18}\text{O}$ of nitrate from nitrification is roughly 1 ‰ higher than that of ambient H₂O (Sigman et al., 2009; DiFiore et al., 2009; Casciotti et al., 2007; Casciotti et al., 2008b). The $\delta^{18}\text{O}$ of H₂O in the BHS was reported as $-0.67 \text{ ‰} \pm 0.25 \text{ ‰}$ (n=10) (Kang et al., 1994; Wu, 1991) and thus the $\delta^{18}\text{O}$ of the newly nitrified nitrate should be approximately 0.3 ‰.

4.2.4. Benthic fluxes

4.2.4.1. Nitrate diffusing from water to sediment

330 A latest number of benthic reactive nitrogen loss including denitrification and anammox for the BHS and northern YS is 3.5×10^9 t N year⁻¹ (Zhang et al., 2018). Combining the area of the BHS and assuming that 82 % benthic nitrogen loss was by denitrification, the denitrification flux calculates to 10.1×10^9 mol year⁻¹. Globally, the sediment denitrification rate varies in the range of approximately 0.5 to 2 mmol m⁻² d⁻¹ (Devol, 2015), which is equivalent to 14.1×10^9 mol year⁻¹ to 28.2×10^9 mol year⁻¹ in the BHS. We assume that diffusion is not accompanied by isotope fractionation (Devol, 2015), so that $\delta^{15}\text{N}$ and $\delta^{18}\text{O}$ of nitrate diffusing into the sediment are the same as the nitrate pool in BHS (8.9 ‰ and 10.4 ‰, respectively).

4.2.4.2. Ammonium diffusing from sediment to water

340 The processes of nitrogen cycling in sediments are complex and variable (Lehmann et al., 2004). The degradation of organic matter, nitrification and assimilation are acting under aerobic conditions, whereas denitrification, anammox and dissimilatory nitrate reduction to ammonium (DNRA) are observed under anaerobic conditions. When organic matter is degraded in the surface sediments, part of the produced ammonium diffuses into the overlying bottom water and subsequently is nitrified to nitrite and nitrate under aerobic condition. For our purpose only the ammonium nitrified bears on the seawater nitrate pool. The mean $\delta^{15}\text{N}$ value of sediment in BHS was 5.4 ‰ (n = 20), and according to the fractionation factor during organic matter remineralization of 2 ‰ (Möbius, 2013) and subsequent nitrification (see above), the $\delta^{15}\text{N}$ and $\delta^{18}\text{O}$ of nitrate efflux from the sediment are assumed to be 3.4 ‰ and 0.3 ‰, respectively.

4.2.5. Sedimentation

345 The mass flux of N_r sedimentation is unknown. In terms of the effects of N_r sedimentation on nitrate dual isotopes, phytoplankton organisms that assimilate nitrate from the dissolved phase are the main source of sinking particles, so that the

N and O will be removed from the nitrate pool following the assimilation fractionation factor. Sinking particles in the BHS have a $\delta^{15}\text{N}$ of 5.2 ‰ ($\delta^{15}\text{N}_{\text{sink}}$) corresponding to the average values of spring and summer, which integrates multiple processes such as photosynthesis of phytoplankton, heterotrophic synthesis of bacteria, and heterotrophic degradation (rem mineralization).

There is no observed data of $\delta^{18}\text{O}$ of nitrate removed from the pool during assimilation ($\delta^{18}\text{O}_{\text{sink}}$), but this value can be estimate by the assimilation fractionation factor ($^{18}\epsilon$). The per mil fractionation factors ϵ of N ($^{15}\epsilon$) and O ($^{18}\epsilon$) in nitrate during assimilation are generally assumed to be around 5 ‰, so that $^{15}\epsilon : ^{18}\epsilon = 1 : 1$. Here we adopt the average of $^{15}\epsilon$ and $^{18}\epsilon$ as 5 ‰ (Granger et al., 2010; DiFiore et al., 2009; Liu et al., 2017b; Wu et al., 2019; Umezawa et al., 2013; Wang et al., 2016), so that the $\delta^{18}\text{O}$ of nitrate removed from the pool during assimilation ($\delta^{18}\text{O}_{\text{sink}}$) should be 5.0 ‰ according to the $\delta^{18}\text{O}$ (10.0 ‰) of the dissolved nitrate pool.

4.3. The nitrate budget in the BHS

A box model of the nitrate budgets for the Bohai following the LOICZ approach (Zhang et al., 2004) balanced sources and sinks of nitrate in BHS and was updated by several other nitrate budgets for the BHS during last two decades (Zhang et al., 2004; Liu et al., 2003; Liu et al., 2011; Liu et al., 2009). All were, in general, not completely constrained because of a lack of data on some important source or loss terms. We here associate the nitrate isotope compositions of pools, sources, and sinks of nitrogen with a box model of the BHS nitrate in order to improve the understanding of nitrate cycling in the BHS. Finally, based on the combined mass and isotope box model informed by new data on the isotopic composition of nitrate, surface sediment, and suspended particulate nitrogen in the water column discussed above, we propose an updated N-budget that is internally consistent.

4.3.1. The nitrate budget based on mass fluxes and corresponding $\delta^{15}\text{N}$ values

The sources of nitrate for BHS are river inputs, submarine fresh groundwater input, atmospheric deposition, and remineralization. The most important sinks are net export to the YS, sediment denitrification and particulate matter sedimentation. Assuming the mass and N isotope of nitrate in the BHS are in steady-state, the sources and sinks of nitrate follow the Eq. (1) and Eq. (2):

$$(m_{\text{atm}} + m_{\text{r}} + m_{\text{N}} + m_{\text{SFGD}} + m_{\text{ntr}}) - (m_{\text{net}} + m_{\text{sink}} + m_{\text{denitr}}) = 0 \quad (1)$$

$$(\delta^{15}\text{N}_{\text{atm}}m_{\text{atm}} + \delta^{15}\text{N}_{\text{r}}m_{\text{r}} + \delta^{15}\text{N}_{\text{N}}m_{\text{N}} + \delta^{15}\text{N}_{\text{SFGD}}m_{\text{SFGD}} + \delta^{15}\text{N}_{\text{ntr}}m_{\text{ntr}}) - (\delta^{15}\text{N}_{\text{net}}m_{\text{net}} + \delta^{15}\text{N}_{\text{sink}}m_{\text{sink}} + \delta^{15}\text{N}_{\text{denitr}}m_{\text{denitr}}) = 0 \quad (2)$$

where the terms m with different subscripts refer to the corresponding nitrogen mass fluxes, m_{atm} refers to atmospherically deposited nitrate, m_{r} refers to river nitrate, m_{N} refers to nitrified ammonium deposited from the atmosphere, m_{SFGD} refers to nitrate in submarine fresh groundwater discharge, m_{ntr} refers to nitrification in the water column. In terms of sinks, m_{net}

refers to the mass fluxes associated with net export of nitrate from BHS to the YS, m_{sink} refers to nitrate sedimenting from seawater as particulate N, and m_{denitr} refers to denitrification in the sediment. The unit of the mass fluxes is 10^9 mol. The “ $\delta^{15}\text{N}$ ” refers to the $\delta^{15}\text{N}$ value of the N mass flux which with the same subscripts. As mentioned previously, the mass fluxes for m_{N} , m_{nr} , m_{sink} and $\delta^{15}\text{N}_{\text{nr}}$ are unknown and need to be constrained.

The range of $\delta^{15}\text{N}_{\text{nr}}$ can be constrained by a simplified interior nitrate cycling model. Ammonium links particles and nitrate in this interior cycling, and there are two different sources of remineralised ammonium in seawater. One is ammonium diffusing from the sediment, the other is the ammonification of PN in the water column. The ammonium from remineralization through both processes is then nitrified in the water column and is a source of nitrate. The average $\delta^{15}\text{N}$ values of PN and sediments in the BHS in our study are 5.2 ‰ and 5.4 ‰, respectively. The fractionation factor of ammonification of PN and sediment as the first step of generating recycled nitrate are estimated to 3 ‰ (Sigman and Fripiat, 2019) and 2 ‰ (Möbius, 2013), respectively. The remineralised ammonium from PN and sediments thus should have $\delta^{15}\text{N}$ values between 2.2 ‰ and 3.4 ‰.

The ammonium concentrations in the BHS are low in the water column in spring and in the surface layer in summer, indicating that the ammonium from PN mineralization is most likely completely converted to nitrate, so that there is no fractionation effect for this step. Thus, the $\delta^{15}\text{N}$ value of newly nitrified nitrate from complete nitrification of ammonium generated by PN mineralization is 2.2 ‰. In the case of incomplete nitrification, especially under the thermocline in summer, the newly nitrified nitrate has a $\delta^{15}\text{N}$ of 0.2 ‰, given a net fractionation factor of nitrification (ammonium to nitrate) of 2 ‰ (Sigman and Fripiat, 2019). In our model below, the assimilation of ammonium originating from SPM remineralization was not included, as its proportion is unknown in the BHS. The simplified model may thus underestimate the input of ^{15}N -depleted nitrogen into the nitrate pool.

Ammonium diffusing out of the sediment will either be mixed into the euphotic layer and subsequently assimilated by the phytoplankton, or nitrified in the water column. The accumulating of ammonium beneath the thermocline was a significant process in summer, as shown by the high nitrite and ammonium concentrations beneath the thermocline. The ratio of these two branching processes is not known in the BHS. If all of the ammonium from sediment is nitrified, the produced nitrate will have a $\delta^{15}\text{N}$ of 3.4 ‰ (see above). If the ammonium is only partially nitrified (especially in summer beneath the thermocline), the produced nitrate will have a $\delta^{15}\text{N}$ of 1.4 ‰ at a fractionation factor of nitrification of 2 ‰ (Sigman and Fripiat, 2019). Thus, the $\delta^{15}\text{N}$ value of the nitrate produced by nitrification ($\delta^{15}\text{N}_{\text{nr}}$) of ammonium from sediment is in the range of 1.4 ‰ to 3.4 ‰.

Overall, combining the $\delta^{15}\text{N}$ ranges of PN- and sediment- originated nitrate, the range of $\delta^{15}\text{N}$ for newly nitrified nitrate is 0.2–3.4 ‰.

4.3.2. The coupled N and O budgets box model of nitrate

Because the nitrate mass fluxes m_N , m_{ntr} , and m_{sink} , cannot be segregated only based on N mass budgets and $\delta^{15}N$ values, we turn to the $\delta^{18}O$ values of the sources and sinks of nitrate for further constraints. Eq. (3) applies if we assume that the oxygen isotope composition of nitrate reflects the steady-state mass fluxes, as does $\delta^{15}N$ of the nitrate pool:

$$(\delta^{18}O_{atm}m_{atm} + \delta^{18}O_r m_r + \delta^{18}O_{ntr}m_N + \delta^{18}O_{SFGD}m_{SFGD} + \delta^{18}O_{ntr}m_{ntr}) - (\delta^{18}O_{net}m_{net} + \delta^{18}O_{sink}m_{sink} + \delta^{18}O_{denitr}m_{denitr}) = 0 \quad (3)$$

where the $\delta^{18}O$ subscripts refer to the nitrate mass flux with the same subscripts. The $\delta^{18}O$ of different sources and sinks are either fixed values or ranges of values in our own data, or those taken from the literature (Table 1).

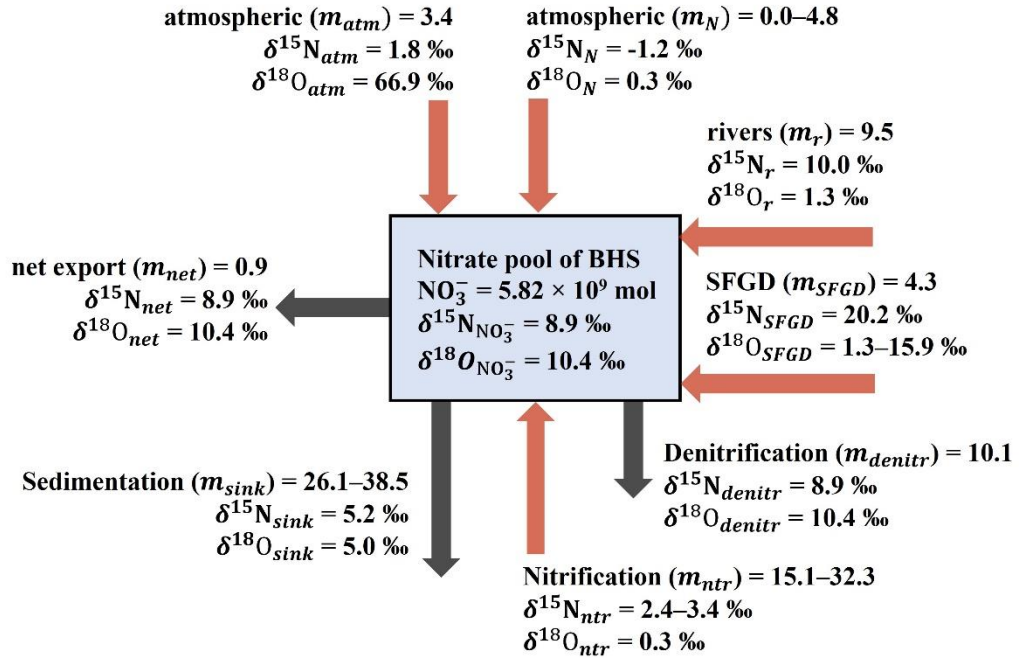
According to Eq. (1), (2) and (3), the unknown mass fluxes m_N , m_{ntr} and m_{sink} can be solved by a set of ternary linear equations including the three unknown terms, when appropriate boundary values of $\delta^{15}N_{ntr}$ and $\delta^{18}O_{SFGD}$ are chosen. $\delta^{15}N_{ntr}$ ranged in 0.2 ‰ to 3.4 ‰ as discussed in Sect. 4.3.1, whereas $\delta^{18}O_{SFGD}$ is a crucial term without any data or literature constraint. As the only constraint, $\delta^{18}O_{SFGD}$ is expected to be higher than the value of nitrate imported from the rivers ($\delta^{18}O_r=1.3$ ‰) due to the fractionation associated with denitrification in the anaerobic aquifers (see Sect. 4.2.2). The results can be summed up in three different cases:

(1) When setting the value of $\delta^{15}N_{ntr}$ to 3.4 ‰, we obtain estimates for m_N that range from 0.00 to 4.83×10^9 mol yr⁻¹, for m_{ntr} in the range of 15.08 to 32.27×10^9 mol yr⁻¹ and m_{sink} in the range of 26.08– 38.45×10^9 mol yr⁻¹. The corresponding values of $\delta^{18}O_{SFGD}$ range from 1.3–15.9 ‰, and the upper range of $\delta^{18}O_{SFGD}$ yields $m_N=0.0$ due to the assumption that any mass flux must be equal or greater than 0.

(2) When we choose a $\delta^{15}N_{ntr}$ value of 3.2 – 2.4 ‰, respectively, to explore effects of the methodological error of $\delta^{15}N$ for our isotope method (0.2 ‰, see Sect. 2.2), again under the premise that the mass fluxes are positive numbers, results in m_N , m_{ntr} and m_{sink} estimates in a narrower range than when $\delta^{15}N_{ntr}$ is 3.4 ‰; these results are not shown.

(3) $\delta^{15}N_{ntr}$ values lower than 2.4 ‰ result in $\delta^{18}O_{SFGD}$ lower than 1.3 ‰, which is highly unlikely.

Thus, reasonable solutions only are reached when $\delta^{15}N_{ntr}$ is between 3.4 ‰ and 2.4 ‰. The results of the budget are shown in Fig. 10 and Table 1, respectively.



430

Fig. 10 The budgets and the corresponding dual isotope values of nitrate in the BHS 2018. The terms included are discussed in the text in Sect. 4.3. The unit of mass flux is $10^9 \text{ mol year}^{-1}$.

Table 1 Sources and sinks and the corresponding $\delta^{15}\text{N}$ and $\delta^{18}\text{O}$ values of nitrate in the BHS

	Contributions	Mass fluxes		$\delta^{15}\text{N}$	References	$\delta^{18}\text{O}$	References
		10^9mol NO_3^-	References				
Sources							
Atmosphere (nitrate)	6.9–9.2 %	3.4	Zhang et al. (2004)	1.8 ‰	Assumption based on Zong et al. (2017); Chang et al. (2019); Liu et al. (2003); Zhang et al. (2008); Zhao et al. (2017), see Sect. 4.2.3	66.9 ‰	Assumption based on Zong et al. (2017); Song et al. (2020); Chang et al. (2019); Liu et al. (2003); Zhang et al. (2008); Zhao et al. (2017), see Sect. 4.2.3
Atmosphere (nitrified ammonium)	0.0–13.0 %	0.0–4.8	Assumption based on this study, see Sect. 4.2.3	-1.2 ‰	Assumption based on Zhang et al. (2007); Sigman et al. (2005), see Sect. 4.2.3	0.3 ‰	Assumption based on Casciotti et al. (2008a); Sigman et al. (2009); DiFiore et al. (2009); Casciotti et al. (2007); Kang et al. (1994); Wu (1991), see Sect. 4.2.3
Rivers	19.2 – 25.6 %	9.5	Assumption based on Ma et al. (2004); Yu et al. (2018); Zhang et al. (2004) and this study, see Sect. 4.2.1	10.0 ‰	This study	1.3 ‰	This study

SFGD	8.6– 11.5 %	4.3	Assumption based on Wang et al. (2015); Liu et al. (2011); Chen et al. (2007); (Liu et al., 2017a), see Sect. 4.2.2	20.2 ‰	Chen et al. (2007)	1.3– 15.9 ‰	Assumption based on this study, see Sect. 4.2.2 and 4.3.2
Nitrification	40.7 – 65.3 %	15.1–32.3	Assumption based on this study, see Sect. 4.3.2	2.4– 3.4 ‰	Assumption based on Sigman and Fripiat (2019); Möbius (2013), see Sect. 4.3.2	0.3 ‰	Assumption based on Casciotti et al. (2008a); Sigman et al. (2009); DiFiore et al. (2009); Casciotti et al. (2007); Kang et al. (1994); Wu (1991), see Sect. 4.2.3
<i>Sinks</i>							
Net export	1.8–2.4 %	0.9	Assumption based on this study, see Sect. 3.5	8.9 ‰	Assumption based on this study, see Sect. 3.5	10.4 ‰	Assumption based on this study, see Sect. 3.5
Sedimentation	70.4 – 77.8 %	26.1–38.5	Assumption based on this study, see Sect. 4.3.2	5.2 ‰	Assumption based on this study, see Sect. 4.2.5	5.0 ‰	Assumption based on this study, see Sect. 4.2.5
Denitrification	20.4 – 27.2 %	10.1	Liu et al. (2011); (Zhang et al., 2018)	8.9 ‰	Assumption based on this study, see Sect. 4.2.4	10.4 ‰	Assumption based on this study, see Sect. 4.2.4

The mass flux of nitrate (m_N) originating from nitrification of atmospheric ammonium ranges from 0.00 to 4.83×10^9 mol yr^{-1} and accounts for up to 79 % of the total ammonium deposition (6.15×10^9 mol year^{-1} ; Zhang et al. (2004)). This in turn implies that most of the atmospherically deposited ammonium is directly assimilated rather than nitrified to nitrate. This agrees with phytoplankton preference to assimilate ammonium rather than nitrate (Glibert et al., 2016). The bulk of internal sources of nitrate originates from nitrification in the water column (from water column ammonification and ammonium diffusing from sediment). This single source (m_{ntr}) accounts for 40.7–65.3 % of the total sources of nitrate in BHS and appears to be much more important than in other coastal environments. For example, between 15–27 % of productivity was supported by nitrified ammonium in the seawater in Monterey Bay (Wankel et al., 2007). Likewise, nitrification supplied 34 % of the surface nitrate in eastern Hainan Island, which like Monterey Bay is also an upwelling area (Chen et al., 2020). This indicates that nitrate regeneration by nitrification may play a more important role in shallow and land-input dominated marginal seas than in upwelling dominated marine settings.

4.3.3. Assessment of model uncertainties

The uncertainties of the modeled nitrate mass and isotope budget lie essentially in some of the mass flux estimates and in possibly erroneous assumptions on values of $\delta^{15}\text{N}$ and $\delta^{18}\text{O}$ in some of the sources and sinks. In the sensitivity test, the three critical mass fluxes m_N , m_{ntr} , and m_{sink} , and the upper limit value of $\delta^{18}\text{O}_{\text{SFGD}}$ change correspondingly when only one single term or one group of terms change (i.e., mass flux or isotope value). Note that the lower limit of m_N and $\delta^{18}\text{O}_{\text{SFGD}}$ is fixed as 0 and 1.3 ‰, respectively, so that only the relative deviations of their upper limits are discussed below. The results are given in relative deviation to our best estimates in the budget. In addition, the widest ranges of mass fluxes and $\delta^{18}\text{O}_{\text{SFGD}}$ are covered when $\delta^{15}\text{N}_{\text{ntr}}=3.4$ ‰ in the standard budget, thus we only compare the deviations when $\delta^{15}\text{N}_{\text{ntr}} = 3.4$ ‰.

River input of nitrate is 9.49×10^9 mol in the year 2018 as suggested above. Considering that the river fluxes are variable annually, we also adopt the multi-year average value (1952-2015) water discharge of YR of 292.8 km^3 instead of 333.8 km^3 in 2018 (MWR, 2019). Hence the annual nitrate discharge is 8.52×10^9 mol and is 10 % less than our preferred estimate; the resulting relative deviations are shown in Table 2. With respect to the isotope composition of the river nitrate, our observations suggest that the nitrate $\delta^{15}\text{N}$ and $\delta^{18}\text{O}$ of YR changed little during the sampling period. On the other hand, the average values of nitrate $\delta^{15}\text{N}$ and $\delta^{18}\text{O}$ for rivers are mass weighted instead of arithmetic mean values, so that a change of nitrate $\delta^{15}\text{N}$ and $\delta^{18}\text{O}$ for rivers with low nitrate discharges would induce little change of the average values. Considering the wide variations of the riverine dual nitrate isotopes around the BHS (Yu et al., 2021; Yue et al., 2013), we tested situations where the dual nitrate isotope values of the smaller rivers are 0.5 and 2 times our observed values (Table 2: 0.5 $\delta^{15}\text{N}_r$ and $\delta^{18}\text{O}_r$, 2 $\delta^{15}\text{N}_r$ and $\delta^{18}\text{O}_r$). The results suggest that the budget is particularly sensitive to higher $\delta^{15}\text{N}_r$ and $\delta^{18}\text{O}_r$ than assumed in our preferred model.

We consider the mass flux of atmospheric deposition of nitrate to be reliable, because differences in estimates from previous studies are quite small. According to these previous estimates (Zhao et al., 2017; Liu et al., 2003), we adopt the minimum and maximum in mass flux of 3.14×10^9 mol to 3.65×10^9 mol for uncertainty estimates. For $\delta^{15}\text{N}_{\text{atm}}$, we test the values 1.0 ‰ and 2.6 ‰ according to the variable proportion of wet/dry deposition with different $\delta^{15}\text{N}$ endmembers. Likewise, $\delta^{18}\text{O}_{\text{atm}}$ was varied in the range of 60.3 ‰ to 71.6 ‰.

The flux of SFGD into the BHS varies in the range of 2.68×10^9 mol to 5.82×10^9 mol, which is mainly due to the different SFGD water fluxes assumed in our budget. Only if m_{SFGD} is assumed to be $> 2.90 \times 10^9$ mol the results match our assumption. When $m_{\text{SFGD}} = 5.82 \times 10^9$ mol, the relative deviations are large (Table 2), implying that our budget is very sensitive to m_{SFGD} .

The flux of denitrification in the BHS has a confidence interval of 15 % (Zhang et al., 2018), resulting in the m_{dentr} to range from 8.57×10^9 mol to 11.60×10^9 mol. The results of tests with these two fluxes are shown in Table 2.

Overall, these tests indicate that m_{N} and $\delta^{18}\text{O}_{\text{SFGD}}$ vary by ± 50 % and are particularly sensitive to uncertainties of the assumed endmembers, whereas the relative deviations of m_{ntr} , m_{sink} normally vary in the range of ± 20 %. Uncertainties will be significantly reduced if any of these terms can be constrained by further empirical studies.

Table 2 Results of sensitivity tests on mass fluxes and isotopes.

test	m_{N}	m_{ntr}	m_{sink}	$\delta^{18}\text{O}_{\text{SFGD}}$
$m_{\text{r}} = 8.52$	-28 %	-8 % to 14 %	-9 % to 1 %	-25 %
0.5 $\delta^{15}\text{N}_{\text{r}}$ and $\delta^{18}\text{O}_{\text{r}}$	-20 %	-8 % to 6 %	-7 % to 0	-18 %
2 $\delta^{15}\text{N}_{\text{r}}$ and $\delta^{18}\text{O}_{\text{r}}$	39 %	-11 % to 16 %	1 % to 13 %	37 %
$m_{\text{atm}} = 3.14$	5 %	-19 % to -7 %	-15 % to -9 %	4 %
$m_{\text{atm}} = 3.65$	-54 %	-9 % to 41 %	-10 % to 11 %	-49 %
$\delta^{15}\text{N}_{\text{atm}} = 1.0 \text{ ‰}$	-40 %	-13 % to 18 %	-13 % to 0 %	-37 %
$\delta^{15}\text{N}_{\text{atm}} = 2.6 \text{ ‰}$	-15 %	-3 % to 10 %	-5 % to 0 %	-14 %
$\delta^{18}\text{O}_{\text{atm}} = 60.3 \text{ ‰}$	8 %	-27 % to 8 %	-18 % to -9 %	8 %
$\delta^{18}\text{O}_{\text{atm}} = 71.6 \text{ ‰}$	-54 %	-8 % to 44 %	-9 % to 12 %	-49 %
$m_{\text{SFGD}} = 5.82$	116 %	-41 % to 46 %	1 % to 38 %	54 %
$m_{\text{dentr}} = 8.57$	13 %	6 % to 10 %	12 %	12 %

$m_{\text{dentr}} = 11.60$

-13 %

-10 % to -6 %

-12 %

-12 %

4.3.4. Biogeochemical implications of the box model

In other coastal eutrophic regions, such as the North Sea, a high $\delta^{15}\text{N}$ of river nitrate is reflected in a halo of high $\delta^{15}\text{N}$ in surface sediments in offshore areas (Pätsch et al., 2010). In the Bohai Sea, such an isotopic halo of river-borne eutrophication is not observed despite similar water exchange rates of 1–2 years (Li et al., 2015; Serna et al., 2010) and similarly isotopically enriched river inputs. We speculate that the lack of a fingerprint of river nitrate in the $\delta^{15}\text{N}$ of sediments of BHS may be masked by active nitrification and atmospheric deposition that rapidly eradicate and homogenise spatial gradients.

Despite the uncertainties that are related to the box model approach, combining mass and isotope budgets of nitrate sources and sinks is clearly superior to solely nitrate mass balance considerations, especially when it comes to segregating the anthropogenic nitrate and the recycled nitrate inputs. It is of note that the BHS does not appear to pass on significant amounts of nitrate to the adjacent northern YS, so that the effects of excessive loading of this shallow mixing zone between land and ocean with anthropogenic nitrogen are yet mitigated by internal cycling processes.

5 Conclusions

Rivers contributed 19.2 %–25.6 % and the combined terrestrial runoff (including submarine discharge of nitrate with fresh groundwater) account for 27.8 %–37.1 % of the total nitrate input to the BHS. Atmospheric input contributes 6.9 %–22.2 % of nitrate to the BHS. Nitrification contributes 40.7 %–65.3 % of the total nitrate, indicating an unusually active interior nitrogen cycling of in the BHS. Nitrate was mainly trapped in the BHS and only very little was exported to the YS (only 1.8 %–2.4 %). Furthermore, nitrate was rather assimilated than exported to the YS along the main transport pathway Lubei Coastal Current, effectively retaining N_r in BHS. Sedimentation trapped 70.4 %–77.8 % of nitrate inputs, whereas denitrification was only active in the sediments that removed 20.4 %–27.2 % of nitrate from the pool. Seasonal biogeochemical variations were observed in the BHS in that dissolved inorganic nitrogen increased during summer under the thermocline, implying significant biological regeneration. If the interior cycling increases, for instance fueled by increased terrestrial and atmospheric N_r inputs, respiration coupled to organic matter and N recycling will increase and water-column hypoxia could consequently spread in the future and compromise ecosystems in the BHS. Whether this will invigorate water-column denitrification to balance the additional inputs is an open question, as is the capacity of BHS as a nitrate buffer between the growing source of N_r on land and the open ocean.

Appendix A:

510 Nitrate was reduced to nitrite with a copperized cadmium column first. The nitrite ions reacted with sulfanilamide and N-
1-naphthylethylenediamine (NEDD) to form red azo dye, and then measured at 520-560 nm. Phosphate determination
515 followed the method of Murphy and Riley (Murphy and Riley, 1962). Under acid conditions a phosphomolybdic complex was
formed of ortho- phosphate, antimony and molybdate ions (Wurl, 2009). Followed by the reduction of ascorbic acid, the blue
colour complex was measured at 880 nm. The sample with ammonium is reacted with o-phthalaldehyde (OPA) at 75 °C in the
presence of borate buffer and sodium sulfite to form a fluorescent species proportional to the ammonia concentration. The
fluorescence is measured at 460 nm following excitation at 370 nm (K erouel and Aminot, 1997). Silicate is reacted with
520 ammonium molybdate to silicomolybdate, and reduced in acidic solution to molybdenum blue by ascorbic acid (Grasshoff et
al., 2009).

Data availability:

The data will be uploaded to PANGAEA and are available from the corresponding author upon request.

The contribution description:

520 BG and KCE designed the study. ST collected the samples on board. JT and YL supported the sampling on cruises and
field trips. ST, NL, and TS analyzed samples. TX and WZ supplied the dissolved oxygen data. WL ran the HAMSOM model
and calculated water mass exchanges. ST, BG, KCE and KD interpreted the data. ST prepared the manuscript with input from
all co-authors.

Competing interests:

525 The authors declare that they have no conflict of interest

Acknowledgment:

The study was part of the project FINGBOYEL (03F07686B) carried out within the MEGAPOL consortium and financed
by the German Federal Ministry of Education and Research (BMBF). We thank the crew of the Chinese research vessel
Dongfanghong 2 for their support of our work on board. We are indebted to Yuan Li from Yantai Institute of Coastal Zone
530 Research for sampling the Yellow River. We thank Markus Ankele and Frauke Langenberg for their support of the nutrient and
stable isotope analyses.

References

- Altabet, M. A.: Isotopic tracers of the marine nitrogen cycle: present and past, in: Marine organic matter: biomarkers, isotopes and DNA, Springer, 251-293, 2006.
- 535 Backhaus, J. O.: A three-dimensional model for the simulation of shelf sea dynamics, Dtsch. Hydrogr. Zetischrift, 38, 165-187, <https://doi.org/10.1007/BF02328975>, 1985.
- Benson, B. B., and Krause Jr, D.: The concentration and isotopic fractionation of oxygen dissolved in freshwater and seawater in equilibrium with the atmosphere 1, Limnol. Oceanogr., 29, 620-632, <https://doi.org/10.4319/lo.1984.29.3.0620>, 1984.
- 540 Casciotti, K., Trull, T., Glover, D., and Davies, D.: Constraints on nitrogen cycling at the subtropical North Pacific Station ALOHA from isotopic measurements of nitrate and particulate nitrogen, Deep Sea Research Part II: Topical Studies in Oceanography, 55, 1661-1672, 2008a.
- Casciotti, K. L., Sigman, D. M., Hastings, M. G., Böhlke, J., and Hilkert, A.: Measurement of the oxygen isotopic composition of nitrate in seawater and freshwater using the denitrifier method, Anal. Chem., 74, 4905-4912, 545 <https://doi.org/10.1021/ac020113w>, 2002.
- Casciotti, K. L., Böhlke, J. K., McIlvin, M. R., Mroczkowski, S. J., and Hannon, J. E.: Oxygen isotopes in nitrite: Analysis, calibration, and equilibration, Anal. Chem., 79, 2427-2436, <https://doi.org/10.1021/ac061598h>, 2007.
- Casciotti, K. L., Trull, T. W., Glover, D. M., and Davies, D.: Constraints on nitrogen cycling at the subtropical North Pacific Station ALOHA from isotopic measurements of nitrate and particulate nitrogen, Deep Sea Research Part II: 550 Topical Studies in Oceanography, 55, 1661-1672, <https://doi.org/10.1016/j.dsr2.2008.04.017>, 2008b.
- Chang, Y., Zhang, Y. L., Li, J., Tian, C., Song, L., Zhai, X., Zhang, W., Huang, T., Lin, Y. C., Zhu, C., Fang, Y., Lehmann, M. F., and Chen, J.: Isotopic constraints on the atmospheric sources and formation of nitrogenous species in clouds influenced by biomass burning, Atmospheric Chemistry and Physics, 19, 12221-12234, <https://doi.org/10.5194/acp-19-12221-2019>, 2019.
- 555 Chen, C.-T. A.: Chemical and physical fronts in the Bohai, Yellow and East China seas, J. Mar. Syst., 78, 394-410, <https://doi.org/10.1016/j.jmarsys.2008.11.016>, 2009.
- Chen, F., Chen, J., Jia, G., Jin, H., Xu, J., Yang, Z., Zhuang, Y., Liu, X., and Zhang, H.: Nitrate $\delta^{15}\text{N}$ and $\delta^{18}\text{O}$ evidence for active biological transformation in the Changjiang Estuary and the adjacent East China Sea, Acta Oceanol. Sin., 32, 11-17, DOI: 10.1007/s13131-013-0294-4, 2013.
- 560 Chen, F., Lao, Q., Zhang, S., Bian, P., Jin, G., Zhu, Q., and Chen, C.: Nitrate sources and biogeochemical processes identified using nitrogen and oxygen isotopes on the eastern coast of Hainan Island, Cont. Shelf Res., 104209, <https://doi.org/10.1016/j.csr.2020.104209>, 2020.
- Chen, J., Taniguchi, M., Liu, G., Miyaoka, K., Onodera, S.-i., Tokunaga, T., and Fukushima, Y.: Nitrate pollution of groundwater in the Yellow River delta, China, Hydrogeol. J., 15, 1605-1614, 10.1007/s10040-007-0196-7, 2007.
- 565 China, M. o. W. R. o.: China Water Resources Bulletin, China Water & Power Press, Beijing, 2015-2018.

- Devol, A. H.: Denitrification, Anammox, and N₂ Production in Marine Sediments, *Annual Review of Marine Science*, 7, 403-423, [10.1146/annurev-marine-010213-135040](https://doi.org/10.1146/annurev-marine-010213-135040), 2015.
- DiFiore, P. J., Sigman, D. M., Trull, T. W., Lourey, M. J., Karsh, K., Cane, G., and Ho, R.: Nitrogen isotope constraints on subantarctic biogeochemistry, *J. Geophys. Res.-Oceans*, 111, <https://doi.org/10.1029/2005JC003216>, 2006.
- 570 DiFiore, P. J., Sigman, D. M., and Dunbar, R. B.: Upper ocean nitrogen fluxes in the Polar Antarctic Zone: Constraints from the nitrogen and oxygen isotopes of nitrate, *Geochem. Geophys. Geosyst.*, 10, <https://doi.org/10.1029/2009GC002468>, 2009.
- Egbert, G. D., and Erofeeva, S. Y.: Efficient inverse modeling of barotropic ocean tides, *J. Atmos. Ocean. Tech.*, 19, 183-204, [https://doi.org/10.1175/1520-0426\(2002\)019<0183:EIMOBO>2.0.CO;2](https://doi.org/10.1175/1520-0426(2002)019<0183:EIMOBO>2.0.CO;2), 2002.
- 575 Emeis, K. C., Mara, P., Schlarbaum, T., Möbius, J., Dähnke, K., Struck, U., Mihalopoulos, N., and Krom, M.: External N inputs and internal N cycling traced by isotope ratios of nitrate, dissolved reduced nitrogen, and particulate nitrogen in the eastern Mediterranean Sea, *J. Geophys. Res.-Biogeo.*, 115, <https://doi.org/10.1029/2009JG001214>, 2010.
- Fan, M.-Y., Zhang, Y.-L., Lin, Y.-C., Chang, Y.-H., Cao, F., Zhang, W.-Q., Hu, Y.-B., Bao, M.-Y., Liu, X.-Y., Zhai, X.-Y., Lin, X., Zhao, Z.-Y., and Song, W.-H.: Isotope-based source apportionment of nitrogen-containing aerosols: A case study in an industrial city in China, *Atmos. Environ.*, 212, 96-105, <https://doi.org/10.1016/j.atmosenv.2019.05.020>, 2019.
- 580 Fowler, D., Coyle, M., Skiba, U., Sutton, M. A., Cape, J. N., Reis, S., Sheppard, L. J., Jenkins, A., Grizzetti, B., and Galloway, J. N. J. P. T. o. t. R. S. B. B. S.: The global nitrogen cycle in the twenty-first century, 368, 20130164, <https://doi.org/10.1098/rstb.2013.0164>, 2013.
- 585 Glibert, P. M., Wilkerson, F. P., Dugdale, R. C., Raven, J. A., Dupont, C. L., Leavitt, P. R., Parker, A. E., Burkholder, J. M., and Kana, T. M.: Pluses and minuses of ammonium and nitrate uptake and assimilation by phytoplankton and implications for productivity and community composition, with emphasis on nitrogen-enriched conditions, *Limnol. Oceanogr.*, 61, 165-197, <https://doi.org/10.1002/lno.10203>, 2016.
- Granger, J., and Sigman, D. M.: Removal of nitrite with sulfamic acid for nitrate N and O isotope analysis with the denitrifier method, *Rapid Commun. Mass Spectrom.*, 23, 3753-3762, <https://doi.org/10.1002/rcm.4307>, 2009.
- 590 Granger, J., Sigman, D. M., Rohde, M., Maldonado, M., and Tortell, P.: N and O isotope effects during nitrate assimilation by unicellular prokaryotic and eukaryotic plankton cultures, *Geochim. Cosmochim. Acta*, 74, 1030-1040, <https://doi.org/10.1016/j.gca.2009.10.044>, 2010.
- Grasshoff, K., Kremling, K., and Ehrhardt, M.: *Methods of seawater analysis*, John Wiley & Sons, 2009.
- 595 Gu, B., Ju, X., Chang, J., Ge, Y., and Vitousek, P. M.: Integrated reactive nitrogen budgets and future trends in China, *Proc. Natl. Acad. Sci. USA*, 112, 8792, <https://doi.org/10.1073/pnas.1510211112>, 2015.
- Hainbucher, D., Hao, W., Pohlmann, T., Sündermann, J., and Feng, S.: Variability of the Bohai Sea circulation based on model calculations, *J. Mar. Syst.*, 44, 153-174, <https://doi.org/10.1016/j.jmarsys.2003.09.008>, 2004.
- 600 Huang, D., Su, J., and Backhaus, J. O.: Modelling the seasonal thermal stratification and baroclinic circulation in the Bohai Sea, *Cont. Shelf Res.*, 19, 1485-1505, [https://doi.org/10.1016/S0278-4343\(99\)00026-6](https://doi.org/10.1016/S0278-4343(99)00026-6), 1999.

- IFA: Short-Term Fertilizer Outlook 2019 – 2020, Versailles, 8, 2019.
- Jia, B., and Chen, X. e.: Application of an ice-ocean coupled model to Bohai Sea ice simulation, *Journal of Oceanology and Limnology*, 39, 1-13, 10.1007/s00343-020-9168-8, 2021.
- 605 Kang, D.-J., Chung, C. S., Kim, S. H., Hong, G. H., and Kim, K.-R.: Oxygen isotope characteristics of seawaters in the Yellow Sea, *La mer*, 32, 279-284, 1994.
- Kérouel, R., and Aminot, A.: Fluorometric determination of ammonia in sea and estuarine waters by direct segmented flow analysis, *Mar. Chem.*, 57, 265-275, [https://doi.org/10.1016/S0304-4203\(97\)00040-6](https://doi.org/10.1016/S0304-4203(97)00040-6), 1997.
- Kim, H., Park, G.-H., Lee, S.-E., Kim, Y.-i., Lee, K., Kim, Y.-H., and Kim, T.-W.: Stable isotope ratio of atmospheric and seawater nitrate in the East Sea in the northwestern Pacific ocean, *Mar. Pollut. Bull.*, 149, 110610, 610 <https://doi.org/10.1016/j.marpolbul.2019.110610>, 2019.
- Lehmann, M. F., Sigman, D. M., and Berelson, W. M.: Coupling the 15N/14N and 18O/16O of nitrate as a constraint on benthic nitrogen cycling, *Mar. Chem.*, 88, 1-20, <https://doi.org/10.1016/j.marchem.2004.02.001>, 2004.
- Li, Y., Wolanski, E., and Zhang, H.: What processes control the net currents through shallow straits? A review with application to the Bohai Strait, China, *Estuar. Coast. Shelf Sci.*, 158, 1-11, <https://doi.org/10.1016/j.ecss.2015.03.013>, 615 2015.
- Li, Y., Yan, W., Wang, F., Lv, S., Li, Q., and Yu, Q.: Nitrogen pollution and sources in an aquatic system at an agricultural coastal area of Eastern China based on a dual-isotope approach, *Environmental Science and Pollution Research*, 26, 23807-23823, 10.1007/s11356-019-05665-2, 2019a.
- Li, Z., Walters, W. W., Hastings, M. G., Zhang, Y., Song, L., Liu, D., Zhang, W., Pan, Y., Fu, P., and Fang, Y.: Nitrate Isotopic Composition in Precipitation at a Chinese Megacity: Seasonal Variations, Atmospheric Processes, and 620 Implications for Sources, *Earth and Space Sci.*, <https://doi.org/10.1029/2019EA000759>, 2019b.
- Liu, J., Du, J., and Yi, L.: Ra Tracer-Based Study of Submarine Groundwater Discharge and Associated Nutrient Fluxes into the Bohai Sea, China: A Highly Human-Affected Marginal Sea, *J. Geophys. Res.-Oceans*, 122, 8646-8660, <https://doi.org/10.1002/2017JC013095>, 2017a.
- 625 Liu, S., Hong, G.-H., Zhang, J., Ye, X., and Jiang, X.: Nutrient budgets for large Chinese estuaries, *Biogeosciences*, 6, 2245-2263, <https://doi.org/10.5194/bg-6-2245-2009>, 2009.
- Liu, S. M., Zhang, J., and Jiang, W. S.: Pore water nutrient regeneration in shallow coastal Bohai Sea, China, *J. Oceanogr.*, 59, 377-385, <https://doi.org/10.1023/A:1025576212927>, 2003.
- Liu, S. M., Li, L. W., and Zhang, Z.: Inventory of nutrients in the Bohai, *Cont. Shelf Res.*, 31, 1790-1797, 630 <https://doi.org/10.1016/j.csr.2011.08.004>, 2011.
- Liu, S. M., Altabet, M. A., Zhao, L., Larkum, J., Song, G. D., Zhang, G. L., Jin, H., and Han, L. J.: Tracing Nitrogen Biogeochemistry During the Beginning of a Spring Phytoplankton Bloom in the Yellow Sea Using Coupled Nitrate Nitrogen and Oxygen Isotope Ratios, *J. Geophys. Res.-Biogeo.*, 122, 2490-2508, 10.1002/2016jg003752, 2017b.

- 635 Liu, S. M., Ning, X., Dong, S., Song, G., Wang, L., Altabet, M. A., Zhu, Z., Wu, Y., Ren, J. L., and Liu, C. G.: Source Versus Recycling Influences on the Isotopic Composition of Nitrate and Nitrite in the East China Sea, *J. Geophys. Res.-Oceans*, 125, e2020JC016061, <https://doi.org/10.1029/2020JC016061>, 2020.
- Lu, C. C., and Tian, H.: Global nitrogen and phosphorus fertilizer use for agriculture production in the past half century: shifted hot spots and nutrient imbalance, *Earth System Science Data*, 9, 181, 10.5194/essd-9-181-2017, 2017.
- 640 Luo, X., and Jiao, J. J.: Submarine groundwater discharge and nutrient loadings in Tolo Harbor, Hong Kong using multiple geotracer-based models, and their implications of red tide outbreaks, *Water Res.*, 102, 11-31, <https://doi.org/10.1016/j.watres.2016.06.017>, 2016.
- Ma, S., Xin, F., Cui, Y., and Qiao, X.: Assessment of Main Pollution Matter Volume into the Sea from Yellow River and Xiaoqing Rive, *Progress in Fishery Sciences (in Chinese)*, 25, 47-51, 10.3969/j.issn.1000-7075.2004.05.009, 2004.
- 645 Möbius, J.: Isotope fractionation during nitrogen remineralization (ammonification): Implications for nitrogen isotope biogeochemistry, *Geochim. Cosmochim. Acta*, 105, 422-432, <https://doi.org/10.1016/j.gca.2012.11.048>, 2013.
- Montoya, J. P., Carpenter, E. J., and Capone, D. G.: Nitrogen fixation and nitrogen isotope abundances in zooplankton of the oligotrophic North Atlantic, *Limnol. Oceanogr.*, 47, 1617-1628, <https://doi.org/10.4319/lo.2002.47.6.1617>, 2002.
- 650 Müller Schmied, H., Eisner, S., Franz, D., Wattenbach, M., Portmann, F. T., Flörke, M., and Döll, P.: Sensitivity of simulated global-scale freshwater fluxes and storages to input data, hydrological model structure, human water use and calibration, *Hydrology and Earth System Sciences*, 18, 3511-3538, 10.5194/hess-18-3511-2014, 2014.
- Murphy, J., and Riley, J. P.: A modified single solution method for the determination of phosphate in natural waters, *Anal. Chim. Acta*, 27, 31-36, 1962.
- 655 MWR, C.: China River Sediment Bulletin 2018 (in Chinese), Beijing, 81, 2019.
- Ning, X., Lin, C., Su, J., Liu, C., Hao, Q., Le, F., and Tang, Q.: Long-term environmental changes and the responses of the ecosystems in the Bohai Sea during 1960–1996, *Deep Sea Research Part II: Topical Studies in Oceanography*, 57, 1079-1091, <https://doi.org/10.1016/j.dsr2.2010.02.010>, 2010.
- 660 Pätsch, J., Serna, A., Dähnke, K., Schlarbaum, T., Johannsen, A., and Emeis, K.-C.: Nitrogen cycling in the German Bight (SE North Sea)—Clues from modelling stable nitrogen isotopes, *Cont. Shelf Res.*, 30, 203-213, <https://doi.org/10.1016/j.csr.2009.11.003>, 2010.
- Peterson, R. N., Burnett, W. C., Taniguchi, M., Chen, J., Santos, I. R., and Ishitobi, T.: Radon and radium isotope assessment of submarine groundwater discharge in the Yellow River delta, China, *J. Geophys. Res.-Oceans*, 113, <https://doi.org/10.1029/2008JC004776>, 2008.
- 665 Serna, A., Pätsch, J., Dähnke, K., Wiesner, M. G., Hass, H. C., Zeiler, M., Hebbeln, D., and Emeis, K.-C.: History of anthropogenic nitrogen input to the German Bight/SE North Sea as reflected by nitrogen isotopes in surface sediments, sediment cores and hindcast models, *Cont. Shelf Res.*, 30, 1626-1638, <https://doi.org/10.1016/j.csr.2010.06.010>, 2010.

- 670 Sigman, D. M., Casciotti, K. L., Andreani, M., Barford, C., Galanter, M., and Böhlke, J.: A bacterial method for the nitrogen isotopic analysis of nitrate in seawater and freshwater, *Anal. Chem.*, 73, 4145-4153, <https://doi.org/10.1021/ac010088e>, 2001.
- Sigman, D. M., Granger, J., DiFiore, P. J., Lehmann, M. M., Ho, R., Cane, G., and van Geen, A.: Coupled nitrogen and oxygen isotope measurements of nitrate along the eastern North Pacific margin, *Global Biogeochem. Cycles*, 19, <https://doi.org/10.1029/2005GB002458>, 2005.
- 675 Sigman, D. M., DiFiore, P. J., Hain, M. P., Deutsch, C., Wang, Y., Karl, D. M., Knapp, A. N., Lehmann, M. F., and Pantoja, S.: The dual isotopes of deep nitrate as a constraint on the cycle and budget of oceanic fixed nitrogen, *Deep-Sea Res. Pt. I*, 56, 1419-1439, <https://doi.org/10.1016/j.dsr.2009.04.007>, 2009.
- Sigman, D. M., and Fripiat, F.: Nitrogen Isotopes in the Ocean, in: *Encyclopedia of Ocean Sciences (Third Edition)*, edited by: Cochran, J. K., Bokuniewicz, H. J., and Yager, P. L., Academic Press, Oxford, 263-278, 2019.
- 680 Smith, S. V., Swaney, D. P., Talaue-Mcmanus, L., Bartley, J. D., Sandhei, P. T., McLAUGHLIN, C. J., Dupra, V. C., Crossland, C. J., Buddemeier, R. W., and Maxwell, B. A.: Humans, hydrology, and the distribution of inorganic nutrient loading to the ocean, *Bioscience*, 53, 235-245, [https://doi.org/10.1641/0006-3568\(2003\)053\[0235:HHATDO\]2.0.CO;2](https://doi.org/10.1641/0006-3568(2003)053[0235:HHATDO]2.0.CO;2), 2003.
- Soares, M.: Biological denitrification of groundwater, *Water, Air, Soil Pollut.*, 123, 183-193, 2000.
- 685 Song, W., Liu, X.-Y., Wang, Y.-L., Tong, Y.-D., Bai, Z.-P., and Liu, C.-Q.: Nitrogen isotope differences between atmospheric nitrate and corresponding nitrogen oxides: A new constraint using oxygen isotopes, *Sci. Total Environ.*, 701, 134515, <https://doi.org/10.1016/j.scitotenv.2019.134515>, 2020.
- Su, J.: A review of circulation dynamics of the coastal oceans near China (in Chinese), *Acta Oceanol. Sin.*, 23, 1-16, 10.3321/j.issn:0253-4193.2001.04.001, 2001.
- 690 Sugimoto, R., Kasai, A., Miyajima, T., and Fujita, K.: Transport of oceanic nitrate from the continental shelf to the coastal basin in relation to the path of the Kuroshio, *Cont. Shelf Res.*, 29, 1678-1688, <https://doi.org/10.1016/j.csr.2009.05.013>, 2009.
- Tan, S., and Shi, G.: Satellite-derived primary productivity and its spatial and temporal variability in the China seas, *Journal of Geographical Sciences*, 16, 447-457, 10.1007/s11442-006-0408-4, 2006.
- 695 Umezawa, Y., Yamaguchi, A., Ishizaka, J., Hasegawa, T., Yoshimizu, C., Tayasu, I., Yoshimura, H., Morii, Y., Aoshima, T., and Yamawaki, N.: Seasonal shifts in the contributions of the Changjiang River and the Kuroshio Current to nitrate dynamics at the continental shelf of the northern East China Sea based on a nitrate dual isotopic composition approach, *Biogeosci. Disc.*, 10, 10143-10188, <https://doi.org/10.5194/bg-11-1297-2014>, 2013.
- Wang, J., Yu, Z., Wei, Q., and Yao, Q.: Long-term nutrient variations in the Bohai Sea over the past 40 years, *J. Geophys. Res.-Oceans*, 124, 703-722, <https://doi.org/10.1029/2018JC014765>, 2019.
- 700 Wang, W., Yu, Z., Song, X., Wu, Z., Yuan, Y., Zhou, P., and Cao, X.: The effect of Kuroshio Current on nitrate dynamics in the southern East China Sea revealed by nitrate isotopic composition, *J. Geophys. Res.-Oceans*, 121, 7073-7087, <https://doi.org/10.1002/2016JC011882>, 2016.

- 705 Wang, W., Yu, Z., Song, X., Wu, Z., Yuan, Y., Zhou, P., and Cao, X.: Characteristics of the $\delta^{15}\text{N}_{\text{NO}_3}$ distribution and its drivers in the Changjiang River estuary and adjacent waters, *Chin. J. Oceanol. Limnol.*, 35, 367-382, 10.1007/s00343-016-5276-x, 2017.
- Wang, X., Li, H., Jiao, J. J., Barry, D. A., Li, L., Luo, X., Wang, C., Wan, L., Wang, X., and Jiang, X.: Submarine fresh groundwater discharge into Laizhou Bay comparable to the Yellow River flux, *Sci. Rep.-UK*, 5, 8814, <https://doi.org/10.1038/srep08814>, 2015.
- 710 Wankel, S. D., Kendall, C., Francis, C. A., and Paytan, A.: Nitrogen sources and cycling in the San Francisco Bay Estuary: A nitrate dual isotopic composition approach, *Limnol. Oceanogr.*, 51, 1654-1664, <https://doi.org/10.4319/lo.2006.51.4.1654>, 2006.
- Wankel, S. D., Kendall, C., Pennington, J. T., Chavez, F. P., and Paytan, A.: Nitrification in the euphotic zone as evidenced by nitrate dual isotopic composition: Observations from Monterey Bay, California, *Global Biogeochem. Cycles*, 21, <https://doi.org/10.1029/2006GB002723>, 2007.
- 715 Wei, H., Zhao, L., and Feng, S.: Annual cycle of phytoplankton biomass and primary production in the Bohai Sea simulated by a three-dimensional ecosystem model (in Chinese), *Acta Oceanol. Sin.*, 25, 7, 2003.
- Wong, G. T.: Removal of nitrite interference in the Winkler determination of dissolved oxygen in seawater, *Mar. Chem.*, 130, 28-32, <https://doi.org/10.1016/j.marchem.2011.11.003>, 2012.
- 720 Wu, S.: Oxygen isotope compositions of seawaters in the Huanghai (Yellow) Sea and the Bohai Sea, *Science in China, Ser. B*, 8, CNKI:SUN:JBXG.0.1991-03-008, 1991.
- Wu, Z., Yu, Z., Song, X., Wang, W., Zhou, P., Cao, X., and Yuan, Y.: Key nitrogen biogeochemical processes in the South Yellow Sea revealed by dual stable isotopes of nitrate, *Estuar. Coast. Shelf Sci.*, 225, 106222, <https://doi.org/10.1016/j.ecss.2019.05.004>, 2019.
- 725 Wurl, O.: Practical guidelines for the analysis of seawater, CRC press, 2009.
- Xin, M., Wang, B., Xie, L., Sun, X., Wei, Q., Liang, S., and Chen, K.: Long-term changes in nutrient regimes and their ecological effects in the Bohai Sea, China, *Mar. Pollut. Bull.*, 146, 562-573, <https://doi.org/10.1016/j.marpolbul.2019.07.011>, 2019.
- 730 Xu, S., Song, J., Li, X., Yuan, H., Li, N., Duan, L., and Sun, P.: Changes in nitrogen and phosphorus and their effects on phytoplankton in the Bohai Sea, *Chin. J. Oceanol. Limnol.*, 28, 945-952, 10.1007/s00343-010-0005-3, 2010.
- Yang, Z., Chen, J., Li, H., Jin, H., Gao, S., Ji, Z., Zhu, Y., Ran, L., Zhang, J., and Liao, Y.: Sources of nitrate in Xiangshan Bay (China), as identified using nitrogen and oxygen isotopes, *Estuar. Coast. Shelf Sci.*, 207, 109-118, <https://doi.org/10.1016/j.ecss.2018.02.019>, 2018.
- Yellow River Conservancy Commission of MWR, C.: Yellow River Sediment Bulletin 2018 (in Chinese), Yellow River Conservancy Commission of MWR, China, Zhengzhou, 35, 2019.
- 735 Yu, H., Yu, Z., Song, X., Cao, X., Yuan, Y., and Lu, G.: Seasonal variations in the nitrogen isotopic composition of dissolved nitrate in the Changjiang River estuary, China, *Estuar. Coast. Shelf Sci.*, 155, 148-155, <https://doi.org/10.1016/j.ecss.2015.01.017>, 2015.

- 740 Yu, J., Zhang, W., Tan, Y., Zong, Z., Hao, Q., Tian, C., Zhang, H., Li, J., Fang, Y., and Zhang, G.: Dual-isotope-based source apportionment of nitrate in 30 rivers draining into the Bohai Sea, north China, *Environ. Pollut.*, 283, 117112, <https://doi.org/10.1016/j.envpol.2021.117112>, 2021.
- Yu, Q., Lou, A., Zhang, X., and Li, N.: Numerical Analysis on the Impact of Main River Runoff on the Plain Distribution in the Low-Salinity Area at North Liaodong Bay, *Transactions of Oceanology and Limnology* (in Chinese), 88-96, 2018.
- 745 Yue, F.-J., Li, S.-L., Liu, C.-Q., Zhao, Z.-Q., and Hu, J.: Using dual isotopes to evaluate sources and transformation of nitrogen in the Liao River, northeast China, *Appl. Geochem.*, 36, 1-9, <https://doi.org/10.1016/j.apgeochem.2013.06.009>, 2013.
- Zhang, G., Zhang, J., and Liu, S.: Characterization of nutrients in the atmospheric wet and dry deposition observed at the two monitoring sites over Yellow Sea and East China Sea, *Journal of Atmospheric Chemistry*, 57, 41-57, 10.1007/s10874-007-9060-3, 2007.
- 750 Zhang, J., Yu, Z., Raabe, T., Liu, S., Starke, A., Zou, L., Gao, H., and Brockmann, U.: Dynamics of inorganic nutrient species in the Bohai seawaters, *J. Mar. Syst.*, 44, 189-212, <https://doi.org/10.1016/j.jmarsys.2003.09.010>, 2004.
- Zhang, L., Song, L., Zhang, L., Shao, H., Chen, X., and Yan, K.: Seasonal dynamics in nitrous oxide emissions under different types of vegetation in saline-alkaline soils of the Yellow River Delta, China and implications for eco-restoring coastal wetland, *Ecol. Eng.*, 61, 82-89, <https://doi.org/10.1016/j.ecoleng.2013.09.065>, 2013.
- 755 Zhang, X., Zhang, Q., Yang, A., Hou, L., Zheng, Y., Zhai, W., and Gong, J.: Incorporation of Microbial Functional Traits in Biogeochemistry Models Provides Better Estimations of Benthic Denitrification and Anammox Rates in Coastal Oceans, *J. Geophys. Res.-Biogeo.*, 123, 3331-3352, <https://doi.org/10.1029/2018JG004682>, 2018.
- Zhang, Y., Liu, X., Fangmeier, A., Goulding, K., and Zhang, F.: Nitrogen inputs and isotopes in precipitation in the North China Plain, *Atmos. Environ.*, 42, 1436-1448, <https://doi.org/10.1016/j.atmosenv.2007.11.002>, 2008.
- 760 Zhang, Z., Zheng, N., Zhang, D., Xiao, H., Cao, Y., and Xiao, H.: Rayleigh based concept to track NO_x emission sources in urban areas of China, *Sci. Total Environ.*, 135362, <https://doi.org/10.1016/j.scitotenv.2019.135362>, 2019.
- Zhao, L., Wei, H., and Feng, S.: Annual Cycle and Budgets of Nutrients in the bohai Sea, 2002.
- Zhao, Y., Zhang, L., Chen, Y., Liu, X., Xu, W., Pan, Y., and Duan, L.: Atmospheric nitrogen deposition to China: A model analysis on nitrogen budget and critical load exceedance, *Atmos. Environ.*, 153, 32-40, <https://doi.org/10.1016/j.atmosenv.2017.01.018>, 2017.
- 765 Zong, Z., Wang, X., Tian, C., Chen, Y., Fang, Y., Zhang, F., Li, C., Sun, J., Li, J., and Zhang, G.: First Assessment of NO_x Sources at a Regional Background Site in North China Using Isotopic Analysis Linked with Modeling, *Environ. Sci. Technol.*, 51, 5923-5931, 10.1021/acs.est.6b06316, 2017.

770