



## Reviews and syntheses: Trends in primary production in the Bay of Bengal – is it at a tipping point?

Carolin R. Löscher<sup>1</sup>

<sup>1</sup> Nordcee, DIAS, Department of Biology, University of Southern Denmark, Campusvej 55, 5230 Odense M-

DK *Correspondence to:* Carolin R. Löscher ([cloescher@biology.sdu.dk](mailto:cloescher@biology.sdu.dk))

**Abstract.** Ocean primary production is the basis of the marine food web, sustaining life in the ocean via photosynthesis, and removing carbon dioxide from the atmosphere. Recently, a small but significant decrease of global marine primary production has been reported based on ocean color data, which was mostly ascribed to decreases in primary production in the northern Indian Ocean, particularly in the Bay of Bengal.

Available reports on primary production from the Bay of Bengal (BoB) are limited, and due their spatial and temporal variability difficult to interpret. Primary production in the BoB has historically been described to be driven by diatom and chlorophyte clades, while only more recent datasets also show an abundance of smaller, visually difficult to detect cyanobacterial primary producers. The different character of the available datasets, i.e. direct counts, metagenomic and biogeochemical data, and satellite-based ocean color observations, make it difficult to derive a consistent pattern. However, making use of the most highly resolved dataset based on satellite imaging a shift in community composition of primary producers is visible in the BoB over the last two decades. This shift is driven by a decrease in chlorophyte abundance, and a coinciding increase in cyanobacterial abundance, despite stable concentrations of total chlorophyll. A similar but somewhat weaker trend is visible in the Arabian Sea, where satellite imaging points towards decreasing abundances of chlorophytes in the North and increasing abundances of cyanobacteria in the eastern parts. Statistical analysis indicated a correlation of this community change in the BoB to decreasing nitrate concentrations, which may provide an explanation for both, the decrease of eukaryotic nitrate-dependent primary producers and the increase of small unicellular cyanobacteria related to *Prochlorococcus*, which have a comparably higher affinity to nitrate. Changes in community composition of primary producers and an overall decrease of system productivity would strongly impact oxygen concentrations of the BoB's low oxygen intermediate waters. Assuming decreasing nitrate concentrations and concurrent decreasing biomass production, export and respiration, oxygen concentrations within the oxygen minimum zone would not be expected to further decrease, an effect which would be enhanced by stronger stratification as a result of future warming. Therefore, given a decrease in primary production, the BoB may not be at a tipping point for becoming anoxic, unless external nutrient inputs increase.

### 1 The role of the Bay of Bengal for primary production in the global Ocean – a historical perspective

Marine primary producers contribute around 50% to global net primary production (Behrenfeld et al. 2001), leading to a carbon flux from the atmosphere into the ocean of 45- 50 Tg C per year (Longhurst et al. 1995). Changes in ocean primary



production exert an important control on atmospheric carbon dioxide (CO<sub>2</sub>) concentrations, and thus on global climate  
35 (Falkowski, Barber, and Smetacek 1998). The BoB has often been described as an area of low primary production compared  
to the Arabian Sea. This low productivity has classically been ascribed to a strongly stratified water column as a result of  
increased surface water temperatures (Kumar et al. 2004) in combination with lowered surface water salinity due to  
monsoon-governed episodes of massive rainfall and river discharge with maximum freshwater inputs in September (e.g.,  
Mahadevan (2016)). The stratification extends through large parts of the BoB basin (Subramanian 1993), restricting nutrient  
40 fluxes to the surface and eventually limiting primary production. In coastal areas, nutrient inputs from the major rivers have  
been described to stimulate primary production, however, rapid consumption as well as a ballasting effect with lithogenic  
particles and subsequent sedimentation of organic matter prevent offshore transport (Singh, Gandhi, and Ramesh 2012;  
Singh and Ramesh 2011; Krishna et al. 2016; Kumar et al. 2004; Ittekkot 1993). Open waters therefore appear low in  
macronutrients, exhibiting at least temporarily a slight nitrogen undersaturation (Bristow et al. 2017; Löscher et al. 2020).  
45 However, nitrogen fixation has been described low to non-existent (Saxena et al. 2020; Löscher et al. 2020), therefore not  
compensating the nitrogen deficit. The available geological record suggests that nitrogen turnover is generally absent since  
the last glacial maximum where isotope records lastly were enriched for delta<sup>15</sup>N, indicative for nitrogen fixation (Contreras-  
Rosales et al. 2016; Shetye et al. 2014), as reflected by low primary production suggested from deep time records of total  
organic carbon (TOC, Fig. 1A) on a geological time scale.

50 While a decrease in primary production has been derived in models for the last decades (Fig. 1B; (Gregg and Rousseaux  
2019; Roxy et al. 2016)) in the Indian ocean, shorter historical records of primary production in the BoB are not too  
abundant. However, records of direct rate measurements go back to the RV Galathea and RV Anton Bruun expeditions in the  
early 1950ies, followed by the International Indian Ocean Expedition (IIOE) from 1959 to 1965 (Snider 1961). Those  
earliest records report primary production rates of 0.1 – 2.16 mg C m<sup>-2</sup> d<sup>-1</sup> for the shelf regions and 0.1 - 0.3 mg C m<sup>-2</sup> d<sup>-1</sup> for  
55 open ocean waters of the BoB. Comparably higher rates were reported from an expedition with the Russian RV Vityaz from  
1956 to 1960, with rates between 70 to 3600 mg C m<sup>-2</sup> d<sup>-1</sup>, from a record from 1970 with a rate of 190 mg C m<sup>-2</sup> d<sup>-1</sup> (Nair et  
al. 1973), and from a summer monsoon situation in 1976 with rates between 130 and 330 mg C m<sup>-2</sup> d<sup>-1</sup> (Radhakrishna et al.  
1978). Some of those earlier measurements were, however, likely biased as a result of trace metal contamination before trace  
metal clean techniques were available, a problem identified by calculating primary production to chlorophyll ratios, which  
60 turned out to be extremely high (250- 2500 compared to an average of 23 ± 13 in later data presented in Table 1;  
Madhupratap et al. (2003)). Later reports show a high variability of primary production rates ranging between 0.3 and 936  
mg C m<sup>-2</sup> d<sup>-1</sup> (Gomes, Goes, and Saino 2000; Murty et al. 2000; Balachandran et al. 2008; Madhupratap et al. 2003; Gauns et  
al. 2005; Kumar et al. 2010; Mohanty, Pramanik, and Dash 2014; Subha Anand et al. 2017; Löscher et al. 2020), and  
extremes of 2200 mg C m<sup>-2</sup> d<sup>-1</sup> (Bhattathiri, Devassy, and Radhakrishna 1980), with generally higher rates in shelf regions as  
65 compared to the open ocean, which were combined into average rates of 500 and 300 mg C m<sup>-2</sup> d<sup>-1</sup> for shelf and open ocean,  
respectively, to obtain a carbon flux budget (Naqvi et al. 2010). These average rates are quantitatively comparable to the  
studies presented in Table1, however, for instance mesoscale water mass dynamics have been observed to promote primary



production in the BoB beyond those ranges up to  $920 \text{ mg C m}^{-2} \text{ d}^{-1}$ , likely because of eddy-related decreases in stratification and pumping of nutrients into otherwise nutrient-exhausted photic surface waters (Sarma and Udaya Bhaskar 2018).  
70 Additional variation results from the strong influence of the three monsoon governed seasons on primary production rates ((Gomes, Goes, and Saino 2000; Jyothibabu et al. 2018; Madhu et al. 2002; Gauns et al. 2005); Table 1). Based on the presented data, a current estimate of primary production rates would be in the range of  $361 \pm 145$  and  $236 \pm 121 \text{ mg C m}^{-2} \text{ d}^{-1}$  for coastal and open ocean regions, respectively, which is one to two orders of magnitude below the Arabian Sea, depending on the region and time of the year (Naqvi et al. 2010).

## 75 **2 Key primary producers in BoB waters**

Compared to records of primary production rates, even less data on the primary producer community are available, and chlorophyll concentrations are often the only parameter presented (Table 1). Typically, coastal chlorophyll concentrations are about an order of magnitude higher compared to those in the central BoB (e.g. (Radhakrishna et al. 1978; Ramaiah et al. 2010; Balachandran et al. 2008; Gauns et al. 2005; Kumar et al. 2010). A detailed glider-based survey in the southern open  
80 ocean waters of the BoB recorded chlorophyll distributions with maxima of  $0.3\text{--}1.2 \text{ mg m}^{-3}$  located at the base of the mixed layer at about 50 - 60 m water depth (Thushara et al. 2019). Records of discrete measurements show a comparable distribution for the open waters of the BoB and in addition an extension of chlorophyll concentrations of up to  $0.3 \text{ mg m}^{-3}$  north of  $15^\circ\text{N}$  possibly connected to riverine nutrient imports (Bhushan et al. 2018; Löscher et al. 2020; Li et al. 2012). Exemplaric vertical profiles of open ocean chlorophyll distributions and a diversity of typically observable primary  
85 producers are depicted in Figure 2.

Historically available phytoplankton diversity records have methodological limitations relying mostly on direct or microscopic phytoplankton counts; therefore, small sized phytoplankton and cyanobacteria are likely not correctly represented. There is, however, a general consensus in earlier and newer studies that diatoms dominate the pool of primary producers (Gauns et al. 2005; Madhupratap et al. 2003; Devassy, Bhattathiri, and Radhakrishna 1983), with some historical  
90 records being astonishingly detailed, presenting phytoplankton distribution down to the genus and species levels (Nair and Gopinathan 1983) and their results are comparable to more recent studies (Ramaiah et al. 2010) showing a diversity of diatoms including *Thalassiothrix*, *Nitzschia*, *Thalassionema*, *Skeletonema*, *Chaetoceros* and *Coscinodiscus* clades being abundant (Devassy, Bhattathiri, and Radhakrishna 1983; Ramaiah et al. 2010). Diversity analysis based on bulk DNA and amplicon sequencing complemented those previously available datasets by adding a higher diversity of eukaryotic  
95 phytoplankton, including *Pelagophyceae*, *Haptophyceae*, *Chrysophyceae*, *Eustigmatophyceae*, *Xanthophyceae*, *Cryptophyceae*, *Dictyochophyceae*, and *Pinguiphyceae* adding and importantly by adding small cyanobacteria, which are difficult to count microscopically and were therefore not included into previous records (Löscher et al. 2020; Yuqiu et al. 2020; Bernal, Anil, and Amol 2019; Larkin et al. 2020; Pujari et al. 2019). Those cyanobacteria accounted for up to 60% of the primary producer abundance in sequence datasets in the central BoB (Li et al. 2012), and include *Synechococcus* and



100 *Prochlorococcus*, the former has been detected from the surface down to the chlorophyll maximum, while the latter has been  
found abundant in the lower margin of the chlorophyll maximum at around 50 – 80 m water depth, slightly deeper than the  
maximum of eukaryotic primary producers (Löscher et al. 2020; Yuqiu et al. 2020). The *Prochlorococcus* population has  
been described to consist of several different ecotypes of the HLII clade with their respective abundances being governed by  
macro- and micronutrient distribution and by temperature (Larkin et al. 2020; Pujari et al. 2019). Similar distributions of  
105 *Prochlorococcus* and *Synechococcus* have been found in other OMZ areas (Beman and Carolan 2013; Franz et al. 2012;  
Meyer et al. 2015), following similar vertical and coast to open ocean patterns. The deeper maximum of *Prochlorococcus* as  
a result of its pigment composition adapted to lower light levels (Moore, Rocap, and Chisholm 1998) possibly allows for  
utilization of nutrients from sinking organics matter at the lower boundary of the mixed layer. Metagenomes from the  
Atlantic have previously demonstrated the genetic potential of *Prochlorococcus* HLII clades to grow on nitrate (Rusch et al.  
110 2007) supporting earlier suggestion that some *Prochlorococcus* ecotypes thrive at the base of the euphotic zone to acquire  
nitrate from underlying waters (Vaulot and Partensky 1992; Olson et al. 1990). While a community shift within small  
cyanobacteria is speculative and may for bulk primary production quantitatively not be chiefly relevant, an overall increase  
in abundance of small cyanobacteria in concert with a decrease of eukaryotic primary producers would be expected to impact  
BoB biogeochemistry, especially the spatial expansion and the intensity of the OMZ through modified export production and  
115 respiration into low oxygen intermediate waters.

Besides those small cyanobacteria, there are reports on nitrogen fixing cyanobacteria of the *Trichodesmium* clade (Devassy,  
Bhattathiri, and Radhakrishna 1983; Jyothibabu et al. 2017; Sahu et al. 2017; Hegde et al. 2008; Shetye et al. 2013; Wu et al.  
2019); other reports included diatom-diazotroph associations playing a role for BoB nitrogen fixation (Bhaskar et al. 2007).  
However, for both types of nitrogen fixing primary producers, datasets are not conclusive and indicate high spatial and  
120 temporal variability. Nitrogen fixing microbes have been proposed to be limited by iron, other micronutrients or organic  
matter in the BoB (Löscher et al. 2020; Saxena et al. 2020; Shetye et al. 2013). While micronutrients would have the  
potential to also directly limit primary production, a limitation of nitrogen fixers by organic matter would result in a  
feedback regulation of low primary production limiting nitrogen fixation and resulting low nitrogen availability limiting  
primary production.

125

### 3 Trends in primary production in the BoB

Over the last two decades, primary production in the global ocean has decreased (Gregg et al. 2003; Behrenfeld et al. 2006),  
and recent studies deducted a decrease in ocean primary production of 2.1% per decade associated largely to a decrease of  
chlorophytes in the marine photic realm (Gregg, Rousseaux, and Franz 2017; Gregg and Rousseaux 2019). Decreasing rates  
130 of primary production have been associated with high latitude regions (Gregg et al. 2003), but also with the Northern and  
Equatorial Indian Ocean with a decrease of 9.7 and 17.2 % per decade, respectively (Gregg and Rousseaux 2019). These  
estimates, based on satellite imaging, were explained by a decrease in diatom and chlorophyte primary production of 15.4



and 24.8 % per decade, respectively, for both the BoB and its sister basin, the Arabian Sea (Fig. 3). This decrease has been connected to decreasing nitrate and silicate concentrations of 32.4% and 22.8% per decade in those waters limiting those larger, fast-growing primary producer groups (Gregg and Rousseaux 2019), with nitrate rather than silicate being limiting primary production if assuming Redfield stoichiometry (Kumar et al. 2010; Radhakrishna et al. 1978). At the same time, an increase in small cyanobacterial primary producers, *Prochlorococcus* and *Synechococcus*, was described in this region, with an increase in cyanobacterial primary production of 16.7 % per decade (Gregg and Rousseaux 2019). Satellite-based imaging indeed showed a southward expansion and increase in abundance of cyanobacteria in the Bay of Bengal and through the Southern Arabian Sea (Fig. 3). Molecular genetic data showed, however, that not only *Prochlorococcus* is expanding but that mostly certain ecotypes of high light *Prochlorococcus* increased in abundance and extended their habitat (Larkin et al. 2020). Given the decrease in both nitrate and silicate, a decrease in the silicate correlated ecotypes currently dominant in the northern BoB would be expected and those may be replaced by an open ocean ecotype sensitive to increasing iron concentrations in those waters. The overall increase in cyanobacteria derived from satellite monitoring is, however, not provable by direct measurements due to the lack of counts in the earlier reports, and further doesn't seem to impact the overall prediction on primary production decrease.

Qualitatively consistent with the short term trend of decreasing primary production between 1998 and 2015, a pronounced decrease of up to 20% in phytoplankton in the Western Indian Ocean over the past six decades has been ascribed to increasing ocean stratification as a consequence of rapid warming in the Indian Ocean, which suppresses nutrient mixing from subsurface layers (Roxy et al. 2016). This result is indeed consistent with a long term trend with decreasing productivity since the last glacial maximum (Contreras-Rosales et al. 2016; Shetye et al. 2014), therefore challenging the often discussed situation of the BoB at a tipping point (Bristow et al. 2017; Canfield et al. 2019; Rixen et al. 2020) to developing severe anoxia.

#### 155 4 Possible scenarios in response to changes in primary production on the BoB OMZ

Reports of decreasing primary production in the BoB available from geological records, Earth system modelling, and satellite imaging are consistent over different time scales. But explanations on why primary production and chlorophyll concentrations decrease differ. Proposed important parameters include iron stress with iron concentrations having decreased in the geological record over the last 5000 years (Shetye et al. 2014), a decrease in nitrate and silicate availability directly impacting primary producer growth (Gregg and Rousseaux 2019), and a rapid temperature increase of 0.6°C over the last six decades, which may directly or indirectly via increased stratification decrease primary production (Roxy et al. 2016). These considerations cannot clearly be compared and evaluated using the few direct measurements available, as those expose a high temporal and spatial variability. They allow, however, for exploring theoretically what would happen to the BoB biogeochemistry if nutrient concentrations would decrease further, with the exception of coastal regions, where nitrogen



inputs may increase and enter the ocean via rivers but would also at the same time be removed quickly and close to the coast as currently happening in the BoB (Naqvi et al. 2010), and temperatures would increase.

Assuming a limitation of primary production could be by nitrogen availability, we would expect a niche for nitrogen fixation developing in the BoB. Until now, nitrogen fixation rates have shown to be low (Löscher et al. 2020; Saxena et al. 2020) and while there were reports on local blooms of the efficient nitrogen fixer *Trichodesmium* (Shetye et al. 2013), the nitrogen fixer community is dominated by typically less active heterotrophic bacteria (Wu et al. 2019; Turk-Kubo et al. 2014). Nitrogen fixers in general have a high requirement for iron, therefore an iron limitation could ultimately limit nitrogen fixation and indirectly primary production, as discussed earlier (Löscher et al. 2020). A further decrease in iron would intensify this limitation and progressively decrease the productivity in the BoB. In addition, a decrease in silicate would limit diatom growth which need silica to form their shells. Therefore, a combined decrease of iron, nitrate and silicate concentrations will lower primary production of various groups of primary producers at the same time, which may not only explain the trend visible from satellite imaging (Gregg and Rousseaux 2019) but may allow to predict a future trend for the BoB biogeochemistry.

Our earlier studies presented possible feedback cycles able to explain the persistent nanomolar levels of oxygen in the BoB OMZ (Canfield et al. 2019; Löscher et al. 2020). One approach included low mixing levels, or permanent stratification limiting euphotic zone nutrient concentrations to an extent that new production is persistently low and organic matter recycling will not support the organic carbon requirement of the detected heterotrophic nitrogen fixer community. This we suggested to lead the system to being locked in a low productivity and increasingly nitrogen limited scenario with the OMZ increasingly weakening. Applying lower concentrations of nitrate and iron (Fig. 4; silicate is not parametrized in our model but would lead to a similar effect if it would be limiting primary production), we observe that the OMZ respiration will lower, low oxygen concentrations will be maintained, and denitrification will only occur if nutrients are imported into the OMZ from land, via rivers, from the atmosphere, or by increased upwelling (Fig. 4). This would mean the BoB may not be at a tipping point towards anoxia but is a system with a weakening OMZ in its open waters, with progressive warming stabilizing this trend by increasing stratification in the photic zone and cutting this part of the water column off any nutrient supply.

Comparing scenarios of primary production and its impact on the BoB OMZ, the last glacial maximum signifies an episode of high productivity in the geological record (Contreras-Rosales et al. (2016), Fig. 5A). Higher land runoff and riverine inputs led to both higher nutrient imports, but also increased loads of terrigenous material leading facilitating organic carbon export from the productive zone to the sediments through ballasting. This effect is currently also seen, with nutrients being imported and consumed close to the shelf and organic material exported out of the photic zone (Fig. 5B), leading to a carbon pump with similar export rates like in the Arabian Sea (Singh and Ramesh 2015). A scenario with production being enhanced would strongly depend on external nutrient inputs, those could come from land and riverine inflow, and could for example result from deforestation, enhanced monsoon events, increasing atmospheric input, or enhanced upwelling, which has been described to enhance primary production in mesoscale eddies (Sarma and Udaya Bhaskar (2018), Fig. 5B). Because



200 global warming will result in increased stratification, enhanced nutrient pumping from deeper waters may be limited to mesoscale eddies, the BoB may be a rather stable system in itself and the observed and predicted changes in primary producers are not suggestive of a development of anoxia in the BoB OMZ.

205

#### Acknowledgement

210 I thank C. F. Reeder, P. Xu and J. Rønning, J. Lincy, and D. E. Canfield for helpful discussions on BoB productivity patterns and the BoB OMZ, I also thank the Villum foundation for funding my research.





## References

- 215 Balachandran, K. K., Laluraj C M, Jyothibabu Retnamma, N. V. Madhu, K. R. Muraleedharan, J. G. Vijay, P. A. Maheswaran, T. T. M. Ashraff, K. K. C. Nair, and C. T. Achuthankutty. 2008. 'Hydrography and biogeochemistry of the north western Bay of Bengal and the north eastern Arabian Sea during winter monsoon', *Journal of Marine Systems*, 73: 76-86.
- Behrenfeld, Michael J., Robert T. O'Malley, David A. Siegel, Charles R. McClain, Jorge L. Sarmiento, Gene C. Feldman, Allen J. Milligan, Paul G. Falkowski, Ricardo M. Letelier, and Emmanuel S. Boss. 2006. 'Climate-driven trends in contemporary ocean productivity', *Nature*, 444: 752-55.
- 220 Behrenfeld, Michael J., James T. Randerson, Charles R. McClain, Gene C. Feldman, Sietse O. Los, Compton J. Tucker, Paul G. Falkowski, Christopher B. Field, Robert Frouin, Wayne E. Esaias, Dorota D. Kolber, and Nathan H. Pollack. 2001. 'Biospheric Primary Production During an ENSO Transition', 291: 2594-97.
- Bemal, Suchandan, Arga Chandrashekar Anil, and P. Amol. 2019. 'Picophytoplankton variability: Influence of Rossby wave propagation in the southeastern Arabian Sea', *Journal of Marine Systems*, 199: 103221.
- 225 Beman, J. Michael, and Molly T. Carolan. 2013. 'Deoxygenation alters bacterial diversity and community composition in the oceans largest oxygen minimum zone', *Nat Commun*, 4.
- Bhaskar, Jane T, Nagappa Ramaiah, Mangesh Gauns, and Veronica Fernandes. 2007. 'Preponderance of a few diatom species among the highly diverse microphytoplankton assemblages in the Bay of Bengal', *J Marine Biology*, 152: 63-75.
- Bhattachiri, P.M.A., V.P. Devassy, and K. Radhakrishna. 1980. 'Primary production in the Bay of Bengal during southwest monsoon of 1978', *Mahasagar-Bulletin of the National Institute of Oceanography*, 13: 315-23.
- 230 Bhushan, Ravi, Srinivas Bikkina, Jayati Chatterjee, Satinder Singh, Vineet Goswami, C. L, and A. K. Sudheer. 2018. 'Evidence for enhanced chlorophyll-a levels in the Bay of Bengal during early north-east monsoon', *Journal of Oceanography and Marine Science*, 9: 15-23.
- Boyle, R. A., J. R. Clark, S. W. Poulton, G. Shields-Zhou, D. E. Canfield, and T. M. Lenton. 2013. 'Nitrogen cycle feedbacks as a control on euxinia in the mid-Proterozoic ocean', *Nature Communications*, 4: 1533.
- 235 Bristow, L. A., C. M. Callbeck, M. Larsen, M. A. Altabet, J. Dekaezemacker, M. Forth, M. Gauns, R. N. Glud, M. M. M. Kuypers, G. Lavik, J. Milucka, S. W. A. Naqvi, A. Pratihary, N. P. Revsbech, B. Thamdrup, A. H. Treusch, and D. E. Canfield. 2017. 'N<sub>2</sub> production rates limited by nitrite availability in the Bay of Bengal oxygen minimum zone', *Nature Geosci*, 10: 24-29.
- Canfield, Don E., Beate Kraft, Carolin R. Löscher, Richard A. Boyle, Bo Thamdrup, and Frank J. Stewart. 2019. 'The regulation of oxygen to low concentrations in marine oxygen-minimum zones', *Journal of Marine Research*, 77: 297-324.
- 240 Contreras-Rosales, L. A., E. Schefuß, V. Meyer, L. Palamenghi, A. Lückge, and T. C. Jennerjahn. 2016. 'Origin and fate of sedimentary organic matter in the northern Bay of Bengal during the last 18ka', *Global and Planetary Change*, 146: 53-66.
- Devassy, V.P. , P.M.A. Bhattachiri, and K. Radhakrishna. 1983. 'Primary production in the Bay of Bengal during August, 1977', *Mahasagar-Bulletin of National Institute of Oceanography*, 16: 443-47.
- Falkowski, P. G., R. T. Barber, and V. V. Smetacek. 1998. 'Biogeochemical Controls and Feedbacks on Ocean Primary Production', *Science*, 281: 200-7.
- 245 Franz, Jasmin, Gerd Krahnmann, Gaute Lavik, Patricia Grasse, Thorsten Dittmar, and Ulf Riebesell. 2012. 'Dynamics and stoichiometry of nutrients and phytoplankton in waters influenced by the oxygen minimum zone in the eastern tropical Pacific', *Deep-Sea Research Part I: Oceanographic Research Papers*, 62: 20-31.
- 250 Gauns, Mangesh, M. Madhupratap, Ramaiah Nagappa, Jyothibabu Retnamma, V. Fernandes, Jane Bhaskar, and S. PrasannaKumar. 2005. 'Comparative accounts of biological productivity characteristics and estimates of carbon fluxes in the Arabian Sea and the Bay of Bengal', *Deep Sea Research Part II Topical Studies in Oceanography*, 52.
- Gomes, H. R., J. I. Goes, and T. Saino. 2000. 'Influence of physical processes and freshwater discharge on the seasonality of phytoplankton regime in the Bay of Bengal', *Cont. Shelf Res.*, 20: 313-30.
- 255 Gregg, W. W., C. S. Rousseaux, and B. A. Franz. 2017. 'Global trends in ocean phytoplankton: a new assessment using revised ocean colour data', *Remote Sens Lett*, 8: 1102-11.
- Gregg, Watson W, and Nancy W Casey. 2007. 'Modeling coccolithophores in the global oceans', *Deep Sea Research Part II: Topical Studies in Oceanography*, 54: 447-77.
- Gregg, Watson W., Margarita E. Conkright, Paul Ginoux, John E. O'Reilly, and Nancy W. Casey. 2003. 'Ocean primary production and climate: Global decadal changes', 30.
- 260 Gregg, Watson W., and Cecile S. Rousseaux. 2019. 'Global ocean primary production trends in the modern ocean color satellite record (1998-2015)', *Environmental Research Letters*, 14: 124011.
- Hegde, S., Arga Anil, Jagadish Patil, Smita Mitbavkar, Venkat Krishnamurthy, and Vissa Gopalakrishna. 2008. 'Influence of environmental settings on the prevalence of *Trichodesmium* spp. in the Bay of Bengal', *Marine Ecology Progress Series*, 356.
- 265 Ittekkot, Venugopalan. 1993. 'The abiotically driven biological pump in the ocean and short-term fluctuations in atmospheric CO<sub>2</sub> contents', *Global and Planetary Change*, 8: 17-25.





- Jyothibabu, R., N. Arunpandi, L. Jagadeesan, C. Karnan, K. R. Lallu, and P. N. Vinayachandran. 2018. 'Response of phytoplankton to heavy cloud cover and turbidity in the northern Bay of Bengal', *Scientific Reports*, 8: 11282-82.
- Jyothibabu, R., C. Karnan, L. Jagadeesan, N. Arunpandi, R. S. Pandiarajan, K. R. Muraleedharan, and K. K. Balachandran. 2017. 'Trichodesmium blooms and warm-core ocean surface features in the Arabian Sea and the Bay of Bengal', *Marine Pollution Bulletin*, 121: 201-15.
- 270 Krishna, M. S., M. H. K. Prasad, D. B. Rao, R. Viswanadham, V. V. S. S. Sarma, and N. P. C. Reddy. 2016. 'Export of dissolved inorganic nutrients to the northern Indian Ocean from the Indian monsoonal rivers during discharge period', *Geochimica et Cosmochimica Acta*, 172: 430-43.
- Kumar, S. Prasanna, Jayu Narvekar, Nuncio Murukesh, Ramaiah Nagappa, S. Sardesai, Mangesh Gauns, V. Fernandes, and Jane Bhaskar. 2010. 'Is the biological productivity in the Bay of Bengal light limited?', *Current Science*, 98: 1331-39.
- 275 Kumar, Sanjeev, R. Ramesh, S. Sardesai, and M. S. Sheshshayee. 2004. 'High new production in the Bay of Bengal: Possible causes and implications', *Geophysical Research Letters*, 31.
- Larkin, Alyse A., Catherine A. Garcia, Kimberly A. Ingoglia, Nathan S. Garcia, Steven E. Baer, Benjamin S. Twining, Michael W. Lomas, and Adam C. Martiny. 2020. 'Subtle biogeochemical regimes in the Indian Ocean revealed by spatial and diel frequency of Prochlorococcus haplotypes', 65: S220-S32.
- 280 Li, Gang, Qiang Lin, Guangyan Ni, Pingping Shen, Yanzhi Fan, Liangmin Huang, and Yehui Tan. 2012. 'Vertical Patterns of Early Summer Chlorophyll a Concentration in the Indian Ocean with Special Reference to the Variation of Deep Chlorophyll Maximum', *Journal of Marine Biology*, 2012: 801248.
- Longhurst, A. R., S. Sathyendrenath, T. Platt, C. Caverhill, and J. Plankton Res. 1995. 'An estimation of global primary production in the ocean from satellite radiometer data', *J. Plankton Res.*, 17: 1245-71.
- 285 Löscher, C. R., W. Mohr, H. W. Bange, and D. E. Canfield. 2020. 'No nitrogen fixation in the Bay of Bengal?', *Biogeosciences* 17: 851-64.
- Madhu, N. V., P. A. Maheswaran, Jyothibabu Retnamma, V. Sunil, C. Revichandran, Balasubramanian Thangavel, T. C. Gopalakrishnan, and K. K. C. Nair. 2002. 'Enhanced biological production off Chennai triggered by October 1999 super cyclone (Orissa)', *Current Science*, 82.
- 290 Madhupratap, M., Mangesh Gauns, Ramaiah Nagappa, S. PrasannaKumar, P. M. Muraleedharan, S. N. DeSousa, Sandip Sardesai, and Dr Usha Muraleedharan. 2003. 'Biogeochemistry of the Bay of Bengal: Physical, chemical and primary productivity characteristics of the central and western Bay of Bengal during summer monsoon 2001', *Deep Sea Research Part II Topical Studies in Oceanography*, 50.
- 295 Mahadevan, Amala. 2016. 'The Impact of Submesoscale Physics on Primary Productivity of Plankton', *Annual Review of Marine Science*, 8: 161-84.
- Meyer, J., C. R. Löscher, S. C. Neulinger, A. F. Reichel, A. Loginova, C. Borchard, R. A. Schmitz, H. Hauss, R. Kiko, and U. Riebesell. 2015. 'Changing nutrient stoichiometry affects phytoplankton production, DOP build up and dinitrogen fixation – a mesocosm experiment in the eastern tropical North Atlantic', *Biogeosciences Discuss.*, 12: 9991-10029.
- 300 Mohanty, Swati Sucharita, D.S. Pramanik, and B.P. Dash. 2014. 'Primary Productivity of Bay of Bengal at Chandipur in Odisha, India', *International Journal of Scientific and Research Publications*, 4.
- Moore, Lisa R., Gabrielle Rocop, and Sallie W. Chisholm. 1998. 'Physiology and molecular phylogeny of coexisting Prochlorococcus ecotypes', *Nature*, 393: 464-67.
- 305 Murty, V.S.N., G.V.M. Gupta, V.V. Sarma, B.P. Rao, D. Jyothi, P.N.M. Shastri, and Y. Supraveena. 2000. 'Effect of vertical stability and circulation on the depth of the chlorophyll maximum in the Bay of Bengal during May-June, 1996', *Deep-Sea Research I*, 47: 859-73.
- Nair, P.V. Ramachandran, and C.P. Gopinathan. 1983. 'Primary production in coastal waters', *CMFRI Bulletin*, 34: 29-32.
- Nair, P.V.R., S. Samuel, K.J. Joseph, and V.K. Balachandran. 1973. 'Primary production and potential fishery resources in the seas around India.' in, *Proceedings of the symposium on 'Living resources of the seas around India'* (Cochin: Central Marine Fisheries Research Institute.).
- 310 Naqvi, S. W. A., H. Naik, W. D'Souza, P. V. Narvekar, A. L. Paropkari, and H. W. Bange. 2010. 'Carbon and nitrogen fluxes in the North Indian Ocean.' in K.-K. Liu, L. Atkinson, R. Quiñones and L. Talaue-McManus (eds.), *Carbon and nutrient fluxes in continental margins: A global synthesis* (Springer-Verlag: New York).
- 315 Olson, Robert J, Sallie W Chisholm, Erik R Zettler, Mark A Altabet, and Jeffrey A %J Deep Sea Research Part A. Oceanographic Research Papers Dusenberry. 1990. 'Spatial and temporal distributions of prochlorophyte picoplankton in the North Atlantic Ocean', 37: 1033-51.
- Pujari, Laxman, Chao Wu, Jinjun Kan, Nan Li, Xingzhou Wang, Guicheng Zhang, Xiaomei Shang, Min Wang, Chun Zhou, and Jun Sun. 2019. 'Diversity and Spatial Distribution of Chromophytic Phytoplankton in the Bay of Bengal Revealed by RuBisCO Genes (rbcL)', 10.
- 320 Radhakrishna, K., V.P. Devassay, R.M.S. Bhargava, and P.M.A. Bhattathiri. 1978. 'Primary production in the Northern Arabian Sea', *Indian Journal of Marine Sciences*, 7: 271-75.



- Ramaiah, N., V. Fernandes, Jane Bhaskar, Jyothibabu Retnamma, Mangesh Gauns, and E. A. Jayraj. 2010. 'Seasonal variability in biological carbon biomass standing stocks and production in the surface layers of the Bay of Bengal', *Indian Journal of Marine Sciences*, 39.
- 325 Rixen, T., G. Cowie, B. Gaye, J. Goes, H. do Rosário Gomes, R. R. Hood, Z. Lachkar, H. Schmidt, J. Segschneider, and A. Singh. 2020. 'Reviews and syntheses: Present, past, and future of the oxygen minimum zone in the northern Indian Ocean', *Biogeosciences*, 17: 6051-80.
- Roxy, Mathew Koll, Aditi Modi, Raghu Murtugudde, Vinu Valsala, Swapna Panickal, S. Prasanna Kumar, M. Ravichandran, Marcello Vichi, and Marina Lévy. 2016. 'A reduction in marine primary productivity driven by rapid warming over the tropical Indian Ocean', 43: 826-33.
- 330 Rusch, Douglas B., Aaron L. Halpern, Granger Sutton, Karla B. Heidelberg, Shannon Williamson, Shibu Yooseph, Dongying Wu, Jonathan A. Eisen, Jeff M. Hoffman, Karin Remington, Karen Beeson, Bao Tran, Hamilton Smith, Holly Baden-Tillson, Clare Stewart, Joyce Thorpe, Jason Freeman, Cynthia Andrews-Pfannkoch, Joseph E. Venter, Kelvin Li, Saul Kravitz, John F. Heidelberg, Terry Utterback, Yu-Hui Rogers, Luisa I. Falcón, Valeria Souza, Germán Bonilla-Rosso, Luis E. Eguiarte, David M. Karl, Shubha Sathyendranath, Trevor Platt, Eldredge Bermingham, Victor Gallardo, Giselle Tamayo-Castillo, Michael R. Ferrari, Robert L. Strausberg, Kenneth Neelson, Robert Friedman, Marvin Frazier, and J. Craig Venter. 2007. 'The Sorcerer II Global Ocean Sampling Expedition: Northwest Atlantic through Eastern Tropical Pacific', *PLOS Biology*, 5: e77.
- 335 Sahu, Biraja Kumar, Sanjiba Kumar Baliarsingh, Aneesh A. Lotliker, Chandanlal Parida, Suchismita Srichandan, and Kali Charan Sahu. 2017. 'Winter thermal inversion and Trichodesmium dominance in north-western Bay of Bengal', *Ocean Science Journal*, 52: 301-06.
- 340 Sarma, V. V. S. S., and T. V. S. Udaya Bhaskar. 2018. 'Ventilation of Oxygen to Oxygen Minimum Zone Due to Anticyclonic Eddies in the Bay of Bengal', 123: 2145-53.
- Saxena, Himanshu, Deepika Sahoo, Mohammad Atif Khan, Sanjeev Kumar, A. K. Sudheer, and Arvind Singh. 2020. 'Dinitrogen fixation rates in the Bay of Bengal during summer monsoon', *Environmental Research Communications*, 2: 051007.
- 345 Shetye, Suhas S., Maruthadu Sudhakar, Rahul Mohan, and Babula Jena. 2014. 'Contrasting productivity and redox potential in Arabian Sea and Bay of Bengal', *Journal of Earth Science*, 25: 366-70.
- Shetye, Suhas, Maruthadu Sudhakar, Babula Jena, and Rahul Mohan. 2013. 'Occurrence of Nitrogen Fixing Cyanobacterium Trichodesmium under Elevated CO<sub>2</sub> Conditions in the Western Bay of Bengal', *International Journal of Oceanography*, 2013: 350465.
- 350 Singh, A., N. Gandhi, and R. Ramesh. 2012. 'Contribution of atmospheric nitrogen deposition to new production in the nitrogen limited photic zone of the northern Indian Ocean', *Journal Geophysical Research*, 117.
- Singh, A., and R. Ramesh. 2011. 'Contribution of riverine dissolved inorganic nitrogen flux to new production in the coastal northern Indian Ocean: An assessment', *Int. J. Oceanogr.*, 2011: 7p.
- 355 Singh, Arvind, and R. Ramesh. 2015. 'Environmental controls on new and primary production in the northern Indian Ocean', *Progress in Oceanography*, 131: 138-45.
- Snider, R. G. 1961. 'The Indian Ocean expedition—An international venture', 42: 289-94.
- Subha Anand, S., R. Rengarajan, V. V. S. S. Sarma, A. K. Sudheer, R. Bhushan, and S. K. Singh. 2017. 'Spatial variability of upper ocean POC export in the Bay of Bengal and the Indian Ocean determined using particle-reactive 234Th', 122: 3753-70.
- Subramanian, V. 1993. 'Sediment load of Indian rivers', *Curr. Sci.*, 64: 928-30.
- 360 Thushara, V., P. N. M. Vinayachandran, A. J. Matthews, B. G. M. Webber, and B. Y. Queste. 2019. 'Vertical distribution of chlorophyll in dynamically distinct regions of the southern Bay of Bengal', *Biogeosciences*, 16: 1447-68.
- Turk-Kubo, K. A., M. Karamchandani, D. G. Capone, and J. P. Zehr. 2014. 'The paradox of marine heterotrophic nitrogen fixation: abundances of heterotrophic diazotrophs do not account for nitrogen fixation rates in the Eastern Tropical South Pacific', *Environ Microbiol*, 16: 3095-114.
- 365 Vulot, Daniel, and Frédéric %J Deep Sea Research Part A. Oceanographic Research Papers Partensky. 1992. 'Cell cycle distributions of prochlorophytes in the north western Mediterranean Sea', 39: 727-42.
- Wu, Chao, Jinjun Kan, Haijiao Liu, Laxman Pujari, Congcong Guo, Xingzhou Wang, and Jun Sun. 2019. 'Heterotrophic Bacteria Dominate the Diazotrophic Community in the Eastern Indian Ocean (EIO) during Pre-Southwest Monsoon', *Microbial Ecology*, 78: 804-19.
- 370 Yuqiu, Wei, Zhao Xiangwei, Yuying Zhao, danyue huang, and Jun Sun. 2020. 'Biogeographic variations of picophytoplankton in three contrasting seas: the Bay of Bengal, South China Sea and Western Pacific Ocean', *Aquatic Microbial Ecology*, 84.



375

380 **Tables**

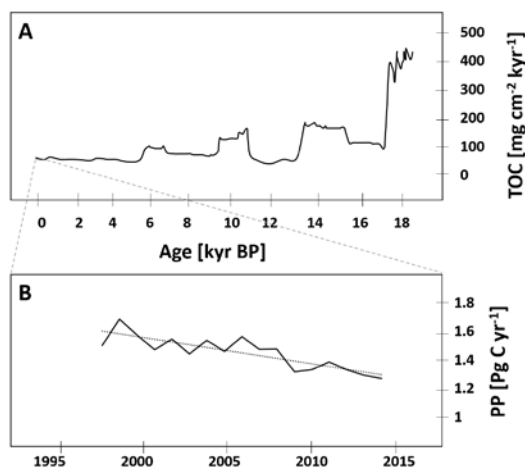
**Table 1: Historical record of water column integrated chlorophyll a concentration, surface chlorophyll a concentration, and primary production rates**

Year	Month	Season	water column integrated Chl a [ $\text{mg m}^{-2}$ ]	Surface Chl a [ $\text{mg m}^{-3}$ ]	Primary production [ $\text{mg C m}^{-2} \text{d}^{-1}$ ]	Reference
1951					0.1 - 2.16	Galathea and Anton Brunn expedition,
1956					70 to 3600	Steemann Nielsen and Jensen, 1957
1961					190	R.V. Vityaz in 1956-60 Nair 1970
1976		summer monsoon	8.63 - 28.45	0.084 - 1.67	129.99 - 329.49	Rhadakrishna et al 1978
1977		summer monsoon	2.11 - 33.72	0.03 - 1.04		Devassy et al 1983
1978	Aug	summer monsoon	1.28 - 33.72 (up to 50)	0.01 - 1.01	180 - 2200	Bhattachiri et al. 1980
1996	May/ June	summer monsoon		0.01 - 0.2		Murtv et al 2000
1996	April/ May	spring intermonsoon	up to 53		4.5	Gomes et al 2000
1996		summer monsoon	up to 92		0.3	Gomes et al 2000
2000	Nov/ Dec	winter monsoon		9.0 - 15	87 - 187	Balachandran et al 2008
2001	Nov/ Dec	winter monsoon	coastal: 7 - 23 oceanic: 8 - 18	coastal: 0.06 - 0.16 oceanic: 0.06 - 0.28	coastal: 253 - 566 oceanic: 99- 423	Gauns et al., 2005 Madhupratap et al 2001
2001	July/ Aug	summer monsoon	coastal 12-19 oceanic 10 - 11		coastal: 40 - 502 oceanic: 89 - 221	Gauns et al., 2005
2002	Sept/ Oct	intermonsoon	coastal 11 - 19 oceanic: 13 - 16		coastal: 250 - 469 oceanic: 202 - 427	Gauns et al., 2005
2002	April/ May	spring intermonsoon		0.25 - 0.4		Prasanna Kumar et al 2010
2003	Sept	summer monsoon		0.2 - 0.35	89.4 - 220.6	Prasanna Kumar et al 2010
2003		fall intermonsoon		0.3 - 0.4	184.14 - 512.85	Prasanna Kumar et al 2010
2010		summer			221.41 ± 4.97	Swati Sucharita Mohanty et al 2014
2010		winter			186.69 ± 9.87	Swati Sucharita Mohanty et al 2014
2010		monsoon			151.25 ± 2.16	Swati Sucharita Mohanty et al 2014
2010		post monsoon			167.87 ± 3.02	Swati Sucharita Mohanty et al 2014
2014	Jan	NE monsoon		0.08 - 0.035	1.4 - 9.3	Löscher et al. 2020
2014	March April	intermonsoon			182 - 1261 (average 936 ± 350)	Anand et al. (2017)
2018	March/ April	intermonsoon	34.6 ± 4	cyclonic eddy 0.35 ± 0.08	411-920	Sarma, et al (2019)
2018	March/ April	intermonsoon	26.4 ± 4	outside eddy 0.22 ± 0.06		Sarma, et al (2019)
2018	March/ April	intermonsoon	23.6 ± 3	anticyclonic eddy northern region 0.11 ± 0.06		Sarma, et al (2019)
2018	March/ April	intermonsoon	22.2 ± 3	anticyclonic eddy southern region 0.10 ± 0.03		Sarma, et al (2019)

385

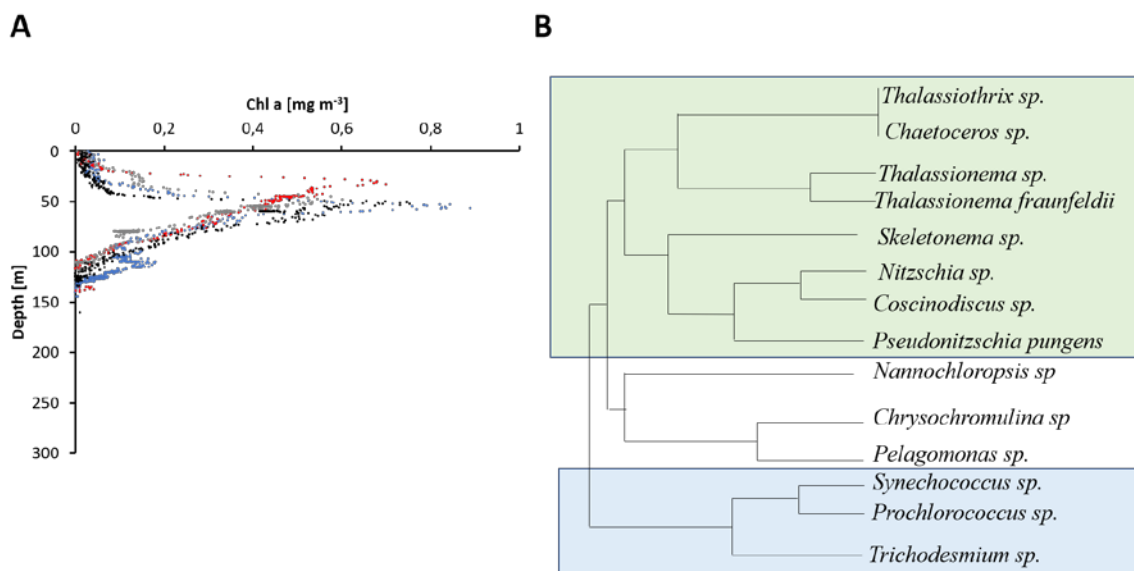


Figures

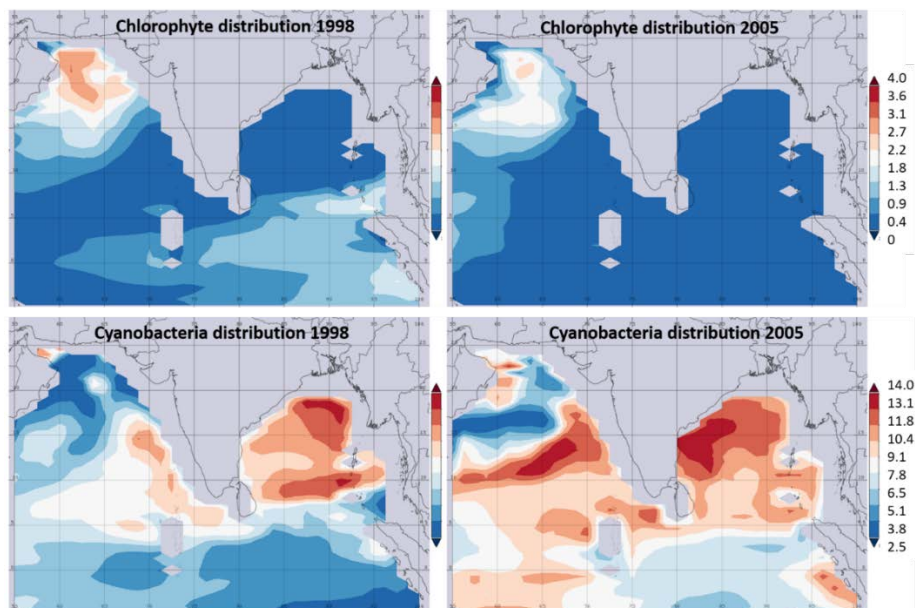


390

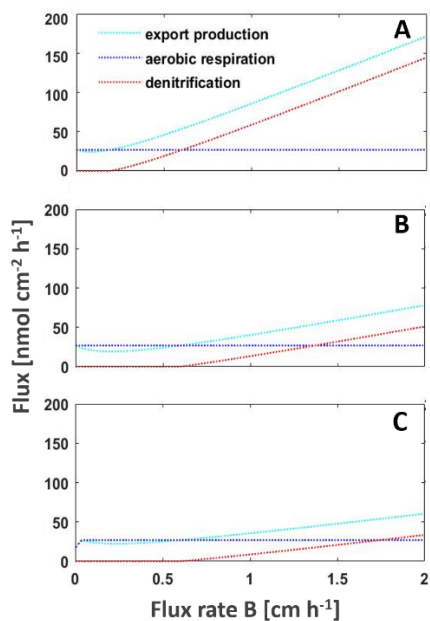
Figure 1: (A) Trends of total organic carbon (TOC) in the sediment record over the last 18 kyr before present adapted from Contreras-Rosales et al. (2016), and (B) modelled decrease in primary production between 1998 and 2014 modified from Gregg and Rousseaux (2019)



395 Figure 2: (A) Vertical profiles of chlorophyll a from four stations in the open ocean region of the BoB taken from Löscher et al. (2020). (B) Schematic depiction of the phylogenetic diversity of primary producers identified in the BoB, green box: diatoms, blue box: cyanobacteria.

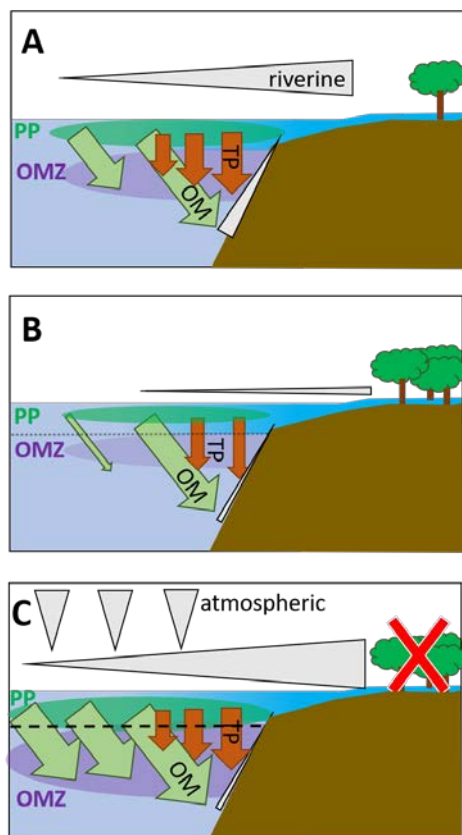


**Figure 3: Satellite imaging- based comparison of chlorophytes (top) and cyanobacteria from 1998 and 2015 in  $\text{mg m}^{-3}$**   
400 <sup>3</sup> Data obtained from a combination of the Sea-viewing Wide Field of view Sensor (SeaWiFS), the Moderate  
Resolution Imaging Spectroradiometer (MODIS-Aqua), and the Visible Infrared Imaging Radiometer Suite  
(VIIRS) satellite product as available from <https://giovanni.gsfc.nasa.gov> have been averaged from Jan to 15Dec  
1998 and 2005, respectively. The combination of those sensors allows for covering a range of different  
wavelengths useful to identify different phytoplankton clades. The maps have been generated using the NASA  
405 Ocean Biogeochemical Model (NOBM, (Gregg and Casey 2007)) using the most recent version of NASA ocean  
colour data product (R2014). NOBM is designed to represent open ocean areas (water depths > 200 m).



410 **Figure 4: Model of the main processes export production, aerobic respiration and denitrification shaping the intensity of the BoB OMZ to changing nutrient fluxes from either riverine, land, atmospheric inputs or upwelling to increased upwelling, with (A) current nutrient loads (B) decreased nitrate concentrations by 32% as predicted by Gregg et al. (2019) and (C) with both, decreased nitrate concentrations and decreased nutrient fluxes from deeper waters as a result of warming-dependent increased stratification. The model is adapted from Boyle et al. (2013).**





415 **Figure 5: Schematic depiction of fluxes impacting primary production and the oxygen minimum zone in the BoB (A)**  
**during the last glacial maximum (modified from Contreras-Rosales et al. (2016)), (B) currently, (C) and in a scenario**  
**leading to an anoxic OMZ.** The latter would require higher nutrient fluxes from either the atmosphere, from upwelling or  
from rivers and land. Fluxes from land may increase e.g. from deforestation, or enhanced rainfalls, however, higher  
terrigenous particle load would likely accompany increased nutrient loads and therefore, even if coastal primary production  
420 would increase, export production would increase via ballasting, too. The effect on the OMZ would then be rather small.  
Upwelling-dependent nutrient pumping is unlikely to increase due to warming and enhanced stratification but may occur  
especially in eddy systems, i.e. as eddy pumping. Grey triangles depict nutrient fluxes from land and rivers, from upwelling  
along the shelf and from the atmosphere, brown arrows depict terrigenous particle fluxes as imported from rivers and leading  
to ballasting and enhanced organic carbon export, green arrows depict organic material exported from the photic zone  
425 primary production (green bubble, PP) into the OMZ (purple bubble). Sizes of triangles, arrows, and bubbles qualitatively  
indicate proportions.