

Please find our point-by-point response below. The line numbers refer to the line numbers in the previous marked-up-manuscript. The review comments are given in blue and our reply in black.

Point-by-point response to the editor

5 First I would like to thank the Authors for their careful considerations and responses to the reviewers' comments. Few minor comments still remain which the authors are ask to address before publication and are listed below. We very much thank the editor for his feedback and the comments to improve the manuscript.

1. Figure 1(?) at the top of Page 14 is missing a caption...

10 Figure 1 was removed from the manuscript and replaced by a new, higher quality version of the same figure (the new Figure 1). The removed figure still appears in the track-changes version of the manuscript, but it is not in the actual version of the manuscript.

2. Figure 2. What is the difference between this Figure and Figure 1(?)

15 See reply to point 1.

3. Line 601. The term 'ecosystem type' requires definition. In particular, what is the difference between 'ecosystem type' and 'vegetation type' (e.g., L.452) or cover type (e.g., in caption of figure 3)?

20 We thank the editor for his comment. Ecosystem type, vegetation type, and cover type refer to the same IGBP land cover classification. All terms in the text referring to this classification are changed into 'vegetation type'.

Examining the link between vegetation leaf area and land-atmosphere exchange of water, energy, and carbon fluxes using FLUXNET data

Anne J. Hoek van Dijke^{1,2,3}, Kaniska Mallick¹, Martin Schlerf¹, Miriam Machwitz¹, Martin Herold², Adriaan J. Teuling³

25

¹Remote Sensing and Natural resources Modeling, Department ERIN, Luxembourg Institute of Science and Technology (LIST), Belvaux, Luxembourg

²Laboratory of Geo-Information Science and Remote Sensing, Wageningen University & Research, Wageningen, The Netherlands

30 ³Hydrology and Quantitative Water Management Group, Wageningen University & Research, Wageningen, The Netherlands

Correspondence to: Anne J. Hoek van Dijke (anne.hoekvandijke@wur.nl)

Abstract

Vegetation regulates the exchange of water, energy, and carbon fluxes between the land and the atmosphere. This regulation of surface fluxes differs with vegetation type and climate, but the effect of vegetation on surface fluxes is not well understood. A better knowledge of how and when vegetation influences surface fluxes could improve climate models and the extrapolation of ground-based water, energy, and carbon fluxes. We aim to study the link between vegetation and surface fluxes by combining yearly average MODIS leaf area index (LAI) with flux tower measurements of water (latent heat), energy (sensible heat), and carbon (gross primary productivity and net ecosystem exchange). We show that the correlation between LAI and water and energy fluxes depends on vegetation type and aridity. In water-limited conditions, the link between LAI and water and energy fluxes is strong, which is in line with a strong stomatal or vegetation control found in earlier studies. In energy-limited forest we found no link between LAI and water and energy fluxes. In contrast to water and energy fluxes, we found a strong spatial correlation between LAI and gross primary productivity that was independent of vegetation type and aridity. This study provides insight into the link between vegetation and surface fluxes. It indicates that for modelling or extrapolating surface fluxes, LAI can be useful in savanna and grassland, but LAI is only of limited use in deciduous broadleaf forest and evergreen needleleaf forest to model variability in water and energy fluxes.

1 Introduction

Vegetation and water, energy, and carbon fluxes are tightly coupled. Large-scale vegetation patterns are driven by the long-term memory of water and energy availability (Köppen, 1936; Prentice et al., 1992; Cramer et al., 2001).

Recent climate change leads to shifts in the spatial distribution of vegetation, as well as shifts in the timing of the growing season (Jeong et al., 2011; Rosenzweig et al., 2008; Fei et al., 2017). Additionally, vegetation plays a crucial role in the exchange of water, energy, and carbon between the land surface and the atmosphere, mainly through its effects on evapotranspiration, turbulence, redistribution of water, and surface heating (Shao et al., 2015; 55 Jia et al., 2014; Esau and Lyons, 2002). Large-scale reforestation and afforestation increased evapotranspiration over most of Europe (Teuling et al., 2019), and large-scale deforestation increased the air temperature in tropical regions and decreased air temperature in boreal regions (Perugini et al., 2017). This two-way interaction between vegetation and terrestrial surface fluxes has been known for a long time (e.g. Bates and Henry, 1928; Woodwell et al., 1978), but is still a very relevant research topic today (Forkel et al., 2019; Lu et al., 2019; Teuling and Hoek 60 van Dijke, 2020; Kirchner et al., 2020; Evaristo and McDonnell, 2019), given the importance of understanding the impacts of climate change on vegetation, as well as the effects of land cover change on climate.

Plants regulate the exchange of water, energy, and carbon with the atmosphere through their stomata. The stomatal regulation of these fluxes depends on available energy, transpiration demand, and available soil moisture in the 65 root zone. When both the available energy and soil moisture are abundant, stomata open and water and carbon can freely move in and out: the stomatal control on surface fluxes is low. When the available energy is high, but soil moisture is limiting, stomata tend to close and exert a large control on water and carbon fluxes (Mallick et al., 2016; O'Toole and Cruz, 1980). Zooming out from stomatal to canopy scale, there are several other ways in which vegetation influences surface fluxes. Soil and crown mutual shadowing and deep ground water uptake by vegetation 70 influence the latent heat flux whereas soil moisture influences ecosystem respiration and thereby carbon exchange (Chen et al., 2019; Schmitt et al., 2010). The vegetation control of ecosystem fluxes has been shown by different data or modelling studies and depends on climate and vegetation type (Williams et al., 2012; Xu et al., 2013; Wagle et al., 2015). Williams and Torn (2015) found a strong vegetation control on surface heat flux partitioning in both arid and humid grassland, cropland, and forest, but Padrón et al. (2017) concluded that globally, vegetation control 75 on evapotranspiration was low and even absent in the equatorial regions. Chen et al. (2019) showed that for wetland sites, temperature, precipitation and vegetation leaf area explained 91% of the mean annual variability in vegetation carbon uptake. Mallick et al. (2018) showed that vegetation control on evapotranspiration was stronger in arid ecosystems as compared to the mesic ecosystems. Similar results were found for dry and wet Amazonian forest (Costa et al., 2010; Mallick et al., 2016) and dry and wet grassland (De Kauwe et al., 2017). Ferguson et al. (2012) 80 studied land-atmosphere coupling of fluxes, which includes the effect of vegetation as well as other factors as soil wetness, soil texture, and surface temperature. From remote sensing data and model output, they concluded that

transitional zones between arid and humid climates (shrublands, grasslands, and savannas) tend to have a strong land-atmosphere coupling, while in the energy-limited regions, land-atmosphere coupling is weak.

85 Vegetation is coupled to the atmosphere through its leaves. The leaf area index (LAI) is an important vegetation characteristic and is indicative of the total amount of foliage that intercepts light and assimilates carbon. Furthermore, both rainfall interception and canopy conductance increase with LAI (Van Heerwaarden and Teuling, 2014; Gómez et al., 2001). A high LAI is therefore related to high vegetation carbon uptake and high canopy evapotranspiration of water (Lindroth et al., 2008; Duursma et al., 2009). Highest mean yearly LAI is found in
90 tropical and temperate forests, while a low LAI is found in cold and in arid climate zones (Iio et al., 2014; Asner et al., 2003) (Figure 1). This global LAI pattern closely resembles large-scale patterns in estimates of water, energy, and carbon exchange (Miralles et al., 2011; Jung et al., 2011). With an increasing availability of remotely sensed LAI data, LAI – besides its usage in many remote sensing applications (e.g. Si et al., 2012; Zheng and Moskal, 2009) – became a frequently used variable to represent vegetation in land-surface models (Williams et al., 2016;
95 Sellers et al., 1997; Lawrence and Chase, 2010 amongst many others) or to estimate or extrapolate regional or global water and carbon fluxes (Beer et al., 2007; Yan et al., 2012; Turner et al., 2003; Xie et al., 2019). The algorithms to retrieve LAI from remotely sensed data improved during the past decades, increasing the accuracy of LAI products (Shabanov et al., 2005; Yan et al., 2016). Nevertheless, it is important to be aware of the product uncertainties, especially over dense forest, where saturated reflectance and canopy clumping can only provide
100 limited information for LAI retrievals (Shabanov et al., 2005; Xu et al., 2018), and at high latitudes, where the solar zenith angle is low (Fang et al., 2019).

The interaction between vegetation LAI and surface fluxes on larger scale is not yet well understood and vegetation is not well represented in many land-atmosphere and climate models (Williams et al., 2016). A small scale study in temperate deciduous forest, for instance, revealed that the correlation between sap flow and the normalized difference vegetation index (NDVI) can change from positive to negative depending on the season and soil moisture availability (Hoek van Dijke et al., 2019). A detailed knowledge of how and when vegetation LAI is linked to the surface fluxes is required to improve global climate modelling and extrapolation of water and carbon fluxes from canopy to ecosystems. The high availability of remote sensing LAI products, recent developments in cloud-based platforms for geospatial analysis (Mutanga and Kumar, 2019), and the availability of publicly available eddy covariance data from FLUXNET (Baldocchi et al., 2001) allows for an analysis of the link between vegetation characteristics and surface fluxes. The objective of our study is to get an insight about the link between vegetation LAI and surface fluxes for different vegetation types along an aridity gradient. We address the following research

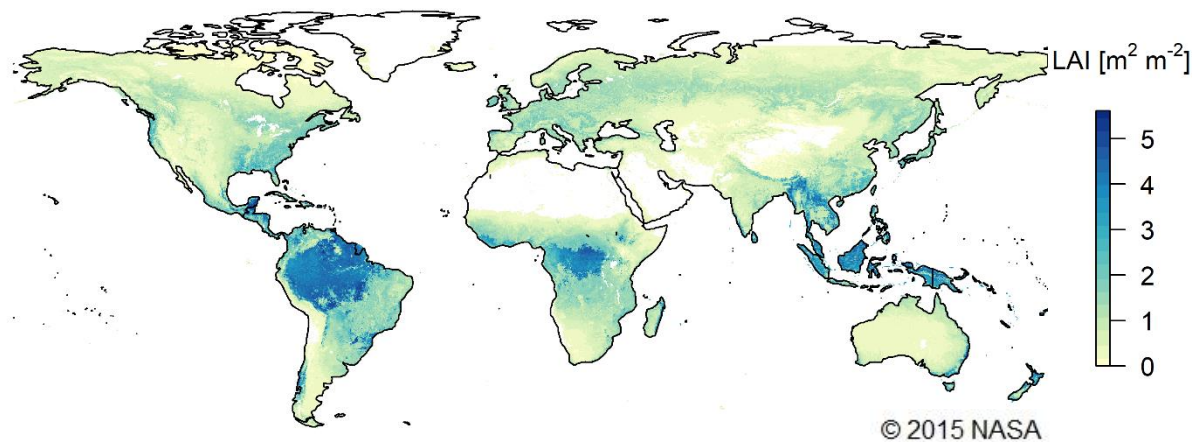


Figure 1 Global distribution of vegetation leaf area index (LAI). The mean LAI, at 5 km resolution, is derived from the MODIS data product MCD15A3H.006 (Myneni et al., 2015).

questions: 1) What is the link between LAI versus water, energy, and carbon fluxes in different vegetation types?
2) How is the interaction between LAI versus water, energy, and carbon fluxes governed by climatological aridity?
We hypothesise that the link between LAI and surface fluxes is strong in semi-arid and arid climates, owing to the strong stomatal control, while the link is weak in humid climates.

In our study we focus on five metrics of water, energy, and carbon fluxes measured by flux towers. Latent heat (LE), a measure for the evapotranspiration of water, and sensible heat (H), represent the exchange of water and energy between the Earth's surface and the atmosphere. LE and H are linked through the evaporative fraction (EF). The EF is the ratio of latent heat to the sum of LE and H and is a useful measure of the partitioning of total available

energy between the evapotranspiration of water and surface heating. Net Ecosystem Exchange (NEE) is the net exchange of carbon between the land and the atmosphere, which is directly measured by flux towers. Gross primary productivity (GPP) is derived from NEE and is the gross uptake of atmospheric carbon by the vegetation.

2 Data and methodology

2.1 Data

2.1.1 Data selection

This study includes five vegetation types: savanna (SAV), grassland (GRA), deciduous broadleaf forest (DBF), evergreen broadleaf forest (EBF), and evergreen needleleaf forest (ENF). The SAV sites include the two classes 'savanna' and 'woody savanna'. These vegetation types follow the International Geosphere-Biosphere Program (IGBP) classification (Loveland et al., 2001). The five vegetation types were selected because of the availability of a high number of flux tower sites. For some site-years, LAI, flux, or meteorological measurements were not available. These site-years were included in each of the analyses for which the required metrics were available.

135

Within the FLUXNET-2015 dataset (Baldocchi et al., 2001), we selected all Tier-1 sites (open and free for scientific purposes) within the five studied vegetation types. We completed the dataset with two sites from the OzFLUX network to increase the number of sites in the EBF class (Liddell, 2013b, a). Two forest sites were excluded from the analyses because they were effected by a beetle outbreak that resulted in high tree mortality, and one heavily managed grassland site was excluded from the analysis. For each site, only years with good-quality data were selected, following the quality selection procedure that is explained below. This site selection procedure, in combination with the quality check, resulted in a dataset of 545 site-years spread over 93 sites (Figure 2, Table 1).

140

2.1.2 Data averaging and aggregation

We studied yearly averaged LAI and surface fluxes for different vegetation types. In most vegetation types, LAI and surface fluxes showed seasonal variability, with high values during the growing season and lower or zero LAI and surface fluxes during the cold or dry season. The non-growing season might be non-relevant for finding the link between LAI and surface fluxes, however, selecting growing season values only lead to difficulties. The vegetation types differ in the timing, number, and length of growing seasons, and for instance time-series analysis did not successfully select the growing seasons. To be consistent in the methodology, yearly averaged fluxes were used for all flux tower sites. Using yearly averaged values for every site (referred to as 'site-years') has few

150

implications 1) we study both spatial (site-to-site) variability and temporal (year-to-year) variability simultaneously, and 2) averaged flux and meteorological measurements might not represent similar conditions. The latter is for example when a site-year receives plenty of precipitation in December, increasing the site-year's aridity index, while this precipitation mainly impacts the next site-year's fluxes or LAI values. To test the effect of using site-year data, we also studied spatial and temporal variability separately. For these analyses, the data was aggregated in three ways: 1) Site-year data, having one average value per site per year, 2) multi-year data, having one multi-year average LAI and flux value per site, to study spatial correlation, and 3) yearly average data for a few sites, to study the temporal correlation. Sites were included in the multi-year data if at least three years of data were available. The three aggregation methods led to similar conclusions for water and energy, but slightly different results for carbon, as is shown in the manuscript.

2.1.3 Flux measurements

Within the FLUXNET 2015 database, LE, H, NEE, and GPP measurements are gapfilled using the MDS (Marginal Distribution Sampling) method (Reichstein et al., 2005), and LE and H are corrected by an energy balance closure correction factor. The MDS method uses the correlation of fluxes with the driver variables (incoming radiation, temperature, and vapour pressure deficit) to estimate flux values during gap periods. The energy balance closure corrects LE and H for the total incoming radiation, assuming that the Bowen ratio (the ratio of the sensible heat flux to the latent heat flux) is correct. A similar energy balance closure correction was applied to the LE and H

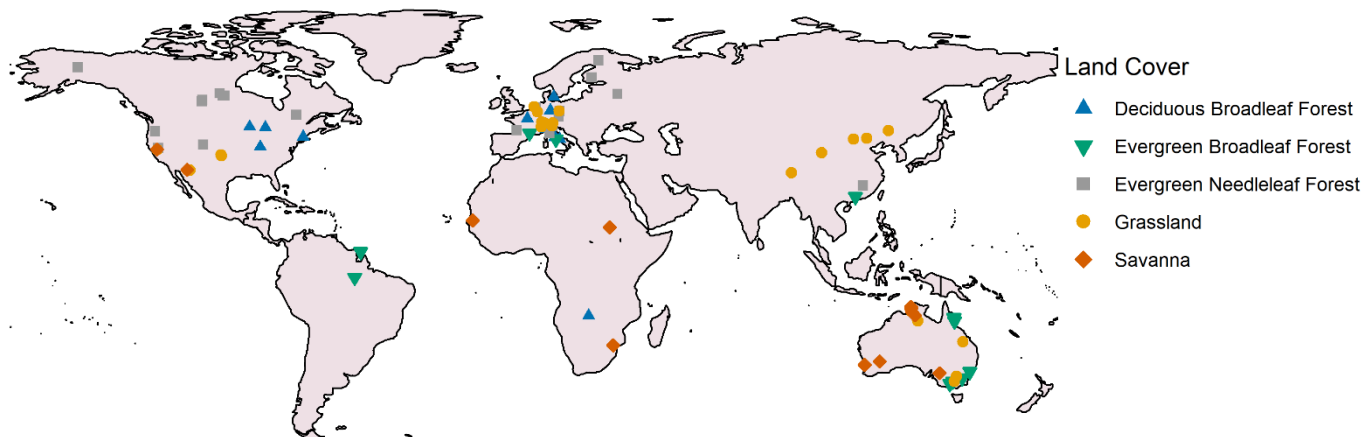


Figure 2 Location and ~~land-vegetation cover~~ type of the 93 included flux tower sites.

measurements of the OzFLUX sites. Monthly averaged flux values were discarded if the percentage of measured and good quality gapfill data was below 50%. Yearly average fluxes were calculated if measurements for each

170 month were available. The evaporative fraction (EF), the ratio between LE and the total energy available at Earth's surface was calculated using Eq. (1) as follows:

$$EF = \frac{LE}{LE+H}, \quad (1)$$

where LE is the latent heat flux and H is the sensible heat flux.

2.1.4 Meteorological measurements

175 Meteorological measurements are delivered with the flux tower data. Precipitation data is downscaled from the ERA-interim reanalysis data (Vuichard and Papale, 2015). Net radiation and air temperature are measured at the flux tower and gap-filled using the MDS (Marginal Distribution Sampling) method (Reichstein et al., 2005). Yearly potential evaporation (Ep) was calculated from mean daily air temperature and net radiation using the Priestley-Taylor formulation (Priestley and Taylor, 1972). The Priestley-Taylor equation is a modification of the Penman
180 equation and requires less measurements. The aridity index (AI), an indicator of dryness, was calculated according to Eq. (2)

$$AI = \frac{P}{Ep}, \quad (2)$$

where P is precipitation and Ep is the potential evaporation. An aridity value of one indicates that, on a yearly scale,
185 precipitation equals potential evaporation, while values below one indicate site-years that received less precipitation than their potential evaporation.

2.1.5 Leaf Area Index

Leaf Area Index (LAI) is the ratio of green leaf area to ground area (in $m^2 m^{-2}$). We used LAI derived from the MODIS data product MCD15A3H.006 (Myneni et al., 2015). This algorithm derives 4-day composite LAI values
190 on 500 m spatial resolution from the Terra and Aqua satellites and is available for 2003 onwards. Within this 4-day period, the best pixel is selected from the MODIS sensors located on the Terra and Aqua satellite for the calculation of LAI. The LAI calculation algorithm uses a Look-up-Table that was generated using a 3D radiative transfer equation (Myneni et al., 2015). Heinsch et al. (2006) compared the MODIS data product with ground measurements at FLUXNET sites and concluded that 62.5% of the MODIS LAI was well estimated, but that
195 MODIS LAI overestimated ground measured LAI for the other sites. Despite this overestimation, MODIS LAI was used, because it has a long record length, good (and free) data availability, good spatial coverage, and high temporal resolution. The overestimation and saturation of the signal at high LAI could introduce noise in the LAI data. We do however not expect this noise to change the conclusions of our analysis. The resolution of the LAI data product

is 500 m, compared to a typical flux tower footprint length of 100 to 1000 m (Kim et al., 2006). The exact size and location of the footprint of flux towers however varies with among others wind direction and wind speed, surface roughness, and flux measurement height (Kim et al., 2006; Barcza et al., 2009). For our analyses, we selected the one nearest LAI pixel for each flux tower. Data were filtered to remove clouds, using the with the product delivered quality label. To smoothen outliers, the moving mean LAI was calculated for three consecutive data points. Monthly mean values were calculated if at most one data point was missing. Site-year average LAI was calculated when no monthly data were missing.

2.2 Methodology

To study the link between LAI and surface fluxes, we performed a linear regression between LAI and the surface fluxes. We calculated the correlation coefficient for 1) site-year data, 2) multi-year average data (spatial variability) and 3) yearly data for a few specific sites (temporal variability). Afterwards, to study if the link between LAI and fluxes changed with aridity, all site-years within one ecosystem-vegetation type were ranked by aridity, from most arid to most humid. For each consecutive 30 site-years in this ranking, we performed a linear regression between LAI and the fluxes. For some site-years, part of the data was missing that was needed to calculate the regression.

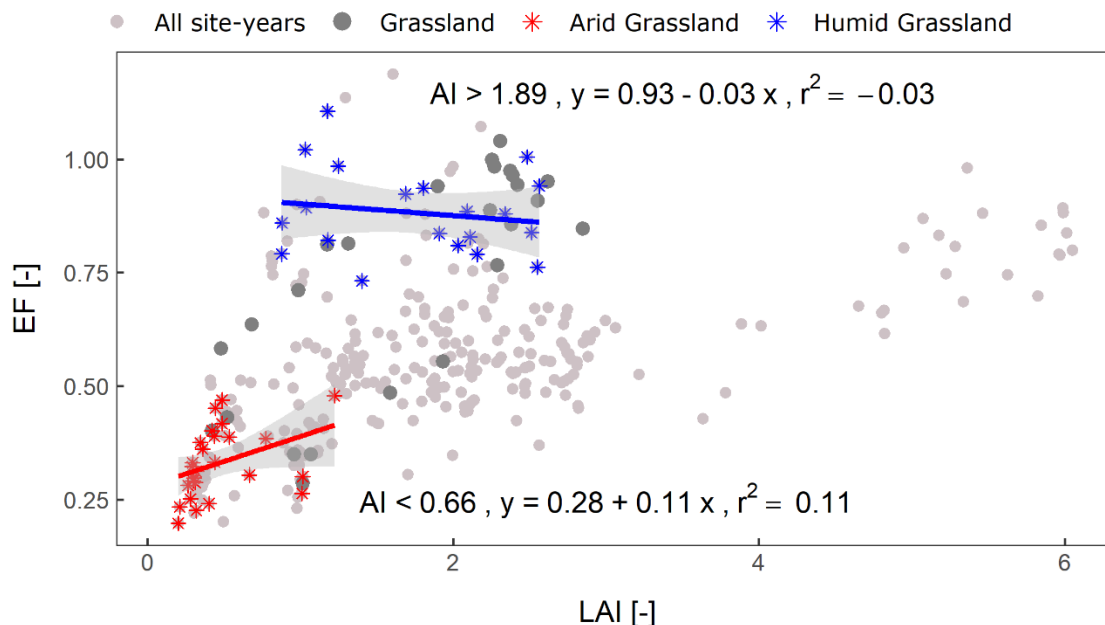


Figure 3 Illustration of the applied methodology. The correlation coefficient between leaf area index (LAI) and evaporative fraction (EF) is calculated for 30 site-years for grassland over a moving window of aridity index. In the illustration, the correlation has a significant positive slope at $p = 0.056$ for the 30 most arid grassland sites, while for the 30 most humid grassland sites, the slope is nearly flat and not significant ($p = 0.49$).

Within each window of 30 site-years, the slope of the regression was calculated if at least 15 complete site-years were available (Figure 3).

215 **Table 1** A list of all included site-years for the 93 sites. For each site, yearly average leaf area index (LAI) and aridity index (AI) are calculated for all years included in the dataset.

FLUXNET-ID	Country	Years included	mean LAI	mean AI	Vegetation	DOI
AT_Neu	Austria	2002-2012	2.31	1.78	GRA	10.18140/FLX/1440121
AU_Ade	Austria	2008	1.19	0.96	Woody SAV	10.18140/FLX/1440193
AU_Cow	Australia	2009-2018	5.78	3.83	EBF	102.100.100/14244
AU_Cpr	Australia	2011-2013	0.47	0.29	SAV	10.18140/FLX/1440195
AU_Ctr	Australia	2010-2018	5.39	3.80	EBF	102.100.100/14242
AU_Cum	Australia	2013-2014	1.34	0.49	EBF	10.18140/FLX/1440196
AU_DaP	Australia	2008, 2010	1.71	1.11	GRA	10.18140/FLX/1440123
AU_DaS	Australia	2008-2010, 2012-2014	1.34	0.87	SAV	10.18140/FLX/1440122
AU_Dry	Australia	2012, 2014	1.26	0.52	Woody SAV	10.18140/FLX/1440197
AU_Emr	Australia	2012, 2013	0.76	0.51	GRA	10.18140/FLX/1440198
AU_Gin	Australia	2014	0.96	0.34	Woody SAV	10.18140/FLX/1440199
AU_GWW	Australia	2013	0.37	-	SAV	10.18140/FLX/1440200
AU_How	Australia	2003, 2008, 2010-2014	1.83	1.09	Woody SAV	10.18140/FLX/1440125
AU_Rig	Australia	2011-2012, 2014	1.56	0.47	GRA	10.18140/FLX/1440202
AU_Rob	Australia	2014	5.82	1.43	EBF	10.18140/FLX/1440203
AU_Stp	Australia	2010, 2012, 2014	0.52	0.53	GRA	10.18140/FLX/1440204
AU_Tum	Australia	2002-2003, 2005-2009, 2011, 2013-2014	4.62	0.97	EBF	10.18140/FLX/1440126
AU_Whr	Australia	2012-2014	1.12	0.34	EBF	10.18140/FLX/1440206
AU_Wom	Australia	2011-2012	5.10	1.07	EBF	10.18140/FLX/1440207
AU_Ync	Australia	2013	0.45	0.58	GRA	10.18140/FLX/1440208
BR_Sa3	Brazil	2001-2003	5.94	0.96	EBF	10.18140/FLX/1440033
CA_Man	Canada	1995, 2001	1.07	0.64	ENF	10.18140/FLX/1440035
CA_NS1	Canada	2003-2004	1.10	-	ENF	10.18140/FLX/1440036
CA_NS3	Canada	2002-2004	0.75	-	ENF	10.18140/FLX/1440038
CA_NS5	Canada	2004	1.10	0.48	ENF	10.18140/FLX/1440040
CA_NS6	Canada	2002-2004	0.76	0.49	ENF	10.18140/FLX/1440041
CA_NS7	Canada	2003-2004	0.32	0.66	ENF	10.18140/FLX/1440042
CA_Qfo	Canada	2004-2009	0.87	1.82	ENF	10.18140/FLX/1440045
CA_SF1	Canada	2004-2005	1.34	1.08	ENF	10.18140/FLX/1440046
CA_SF2	Canada	2003-2004	1.06	0.73	ENF	10.18140/FLX/1440047
CA_SF3	Canada	2003-2005	0.66	0.98	ENF	10.18140/FLX/1440048
CH_DAV	Switzerland	1997, 1999-2004, 2006-2014	0.94	1.46	ENF	10.18140/FLX/1440132
CH_Fru	Switzerland	2007-2008, 2011-2014	1.88	2.67	GRA	10.18140/FLX/1440133
CH_Oe1	Switzerland	2005-2008	1.27	2.41	GRA	10.18140/FLX/1440135
CN_Cng	China	2008-2009	0.41	0.75	GRA	10.18140/FLX/1440209
CN_Dan	China	2004-2005	0.11	1.14	GRA	10.18140/FLX/1440138
CN_Din	China	2003, 2005	3.30	1.49	EBF	10.18140/FLX/1440139
CN_Du2	China	2007-2008	0.45	0.52	GRA	10.18140/FLX/1440140
CN_HaM	China	2003-2004	0.41	1.21	GRA	10.18140/FLX/1440190
CN_Qia	China	2003-2005	2.95	1.30	ENF	10.18140/FLX/1440141
CN_Sw2	China	2011	0.25	0.32	GRA	10.18140/FLX/1440212
DE_Gri	Germany	2004-2010, 2012-2014	2.40	1.93	GRA	10.18140/FLX/1440147
DE_Hai	Germany	2000-2009, 2011-2012	2.65	1.60	DBF	10.18140/FLX/1440148
DE_Lkb	Germany	2011-2012	0.84	2.53	ENF	10.18140/FLX/1440214
DE_Obe	Germany	2009-2014	2.47	1.96	ENF	10.18140/FLX/1440151
DE_RuR	Germany	2012-2014	2.58	1.97	GRA	10.18140/FLX/1440215
DE_Tha	Germany	1997-2014	2.59	1.53	ENF	10.18140/FLX/1440152
DK_Sor	Denmark	1997-2004, 2006-2010, 2012	2.30	1.93	DBF	10.18140/FLX/1440155
FI_Hyy	Finland	1997-1999, 2001-2014	1.79	1.44	ENF	10.18140/FLX/1440158
FI_Sod	Finland	2003-2011, 2013-2014	0.56	2.27	ENF	10.18140/FLX/1440160
FR_Fon	France	2006-2013	2.67	1.10	DBF	10.18140/FLX/1440161
FR_LBr	France	1998, 2001-2008	1.61	0.88	ENF	10.18140/FLX/1440163
FR_Pue	France	2001-2010, 2013-2014	2.02	1.20	EBF	10.18140/FLX/1440164
GF_Guy	French Guiana	2004, 2006-2014	5.24	1.89	EBF	10.18140/FLX/1440165
IT_CA1	Italy	2012, 2014	1.23	-	DBF	10.18140/FLX/1440230
IT_CA3	Italy	2012, 2013	1.16	1.03	DBF	10.18140/FLX/1440232
IT_Col	Italy	2007, 2009, 2011, 2014	2.32	1.53	DBF	10.18140/FLX/1440167

IT_Cp2	Italy	2013	3.84	0.93	EBF	10.18140/FLX/1440233
IT_Cpz	Italy	2003, 2006, 2007	3.12	0.89	EBF	10.18140/FLX/1440168
IT_Isp	Italy	2013, 2014	1.66	2.41	DBF	10.18140/FLX/1440234
IT_Lav	Italy	2003-2013	2.55	1.74	ENF	10.18140/FLX/1440169
IT_MBO	Italy	2003-2013	1.16	2.41	GRA	10.18140/FLX/1440170
IT_PT1	Italy	2003	0.81	0.77	DBF	10.18140/FLX/1440172
IT_Ren	Italy	2003, 2005-2013	1.53	1.60	ENF	10.18140/FLX/1440173
IT_Ro1	Italy	2002-2006	-	0.91	DBF	10.18140/FLX/1440174
IT_Ro2	Italy	2002-2007, 2012	1.99	0.83	DBF	10.18140/FLX/1440175
IT_SR2	Italy	2013	2.12	1.38	ENF	10.18140/FLX/1440236
IT_SRo	Italy	1999-2004, 2006-2007, 2009, 2012	2.05	0.70	ENF	10.18140/FLX/1440176
IT_Tor	Italy	2010-2014	0.98	2.54	GRA	10.18140/FLX/1440237
NL_Hor	Netherlands	2004-2005, 2007-2008, 2010	1.81	2.01	GRA	10.18140/FLX/1440177
NL_Loo	Netherlands	1996-1997, 2000-2013	2.09	1.20	ENF	10.18140/FLX/1440178
RU_Fyo	Russia	1999-2014	2.09	1.19	ENF	10.18140/FLX/1440183
SD_Dem	Sudan	2008	0.34	0.12	SAV	10.18140/FLX/1440186
SN_Dhr	Senegal	2012	0.61	0.27	SAV	10.18140/FLX/1440246
US_AR1	United States	2010-2011	0.57	0.68	GRA	10.18140/FLX/1440103
US_AR2	United States	2010-2011	0.54	0.59	GRA	10.18140/FLX/1440104
US_Blo	United States	2000-2006	1.94	1.26	ENF	10.18140/FLX/1440068
US_Ha1	United States	1992, 1994-2001, 2004, 2006, 2009, 2011	2.58	1.91	DBF	10.18140/FLX/1440071
US_Me2	United States	2002, 2004-2005, 2007, 2009-2010, 2012-2014	1.97	0.65	ENF	10.18140/FLX/1440079
US_Me6	United States	2014	0.82	-	ENF	10.18140/FLX/1440099
US_MMS	United States	1999-2014	2.71	1.28	DBF	10.18140/FLX/1440083
US_NR1	United States	1999-2014	1.32	1.02	ENF	10.18140/FLX/1440087
US_Prr	United States	2011	-	0.92	ENF	10.18140/FLX/1440113
US_SRG	United States	2009-2014	0.41	0.42	GRA	10.18140/FLX/1440114
US_SRM	United States	2004-2014	0.35	0.31	Woody SAV	10.18140/FLX/1440090
US_Ton	United States	2002-2006, 2008-2014	1.02	0.50	Woody SAV	10.18140/FLX/1440092
US_UMB	United States	2000-2014	2.14	0.95	DBF	10.18140/FLX/1440093
US_UMd	United States	2008-2013	1.90	1.09	DBF	10.18140/FLX/1440101
US_Var	United States	2001-2004, 2006-2014	1.07	0.70	GRA	10.18140/FLX/1440094
US_WCr	United States	2000-2003, 2005, 2011, 2013-2014	2.00	1.40	DBF	10.18140/FLX/1440095
US_Wkg	United States	2005-2014	0.28	0.35	GRA	10.18140/FLX/1440096
ZA_Kru	South Africa	2002, 2010	1.08	0.38	SAV	10.18140/FLX/1440188
ZM_Mon	Zambia	2008	1.62	0.49	DBF	10.18140/FLX/1440189

3 Results

220 3.1 The link between water, energy, and carbon fluxes versus LAI

LAI and LE were positively correlated in SAV, GRA, and EBF (Figure 4, Table 2). The slope of the correlation between the different vegetation types is different; the slope was steepest for SAV (slope = 46.1 W m⁻²): a doubling in LAI (1 to 2) was associated with almost a doubling in LE (51 to 97 W m⁻²), compared to a flatter slope in GRA (9.80 W m⁻²) and EBF (13.0 W m⁻²). In ENF and DBF, LAI and LE were not significantly correlated. LAI and H

225 were negatively correlated in SAV, GRA and EBF, while there was no significant correlation in ENF and DBF. LAI and the EF were positively correlated in SAV, GRA and EBF, while no correlation was found in ENF and DBF. A positive slope indicates that, for a higher LAI, a higher fraction of the available energy is used for

evapotranspiration of water, compared to surface heating. The slope between LAI and EF was steeper in SAV and GRA (slope = 0.27 for both) than in EBF (slope = 0.08). A positive correlation between LAI and GPP was found
230 in all vegetation types ($r = 0.47 - 0.97$), with a very strong correlation coefficient for SAV ($r = 0.97$). The correlation followed a steep slope for SAV (slope = $3.37 \text{ gC m}^{-2} \text{ d}^{-1}$) and GRA (slope = $2.17 \text{ gC m}^{-2} \text{ d}^{-1}$), a similar slope in EBF (slope = $1.71 \text{ gC m}^{-2} \text{ d}^{-1}$) and ENF (slope = $1.81 \text{ gC m}^{-2} \text{ d}^{-1}$), and a less steep slope in DBF (slope = $0.76 \text{ gC m}^{-2} \text{ d}^{-1}$). The correlation between LAI and NEE is negative in SAV, EBF, and ENF. This indicates that net carbon uptake increases with LAI. Among the different fluxes, GPP showed the strongest correlation with LAI for all vegetation
235 types. Comparing the different vegetation types, the correlation between LAI and fluxes was strongest in SAV.

Using multi-year average data reduced the number of data points to only 5 to 16 sites per vegetation type. Nevertheless, the spatial correlation (site-to-site variability) between LAI and surface fluxes is very similar to the spatio-temporal correlation (Figure 5, Table 2). For SAV, GRA, and ENF, the slope and strength of the correlation
240 were similar when compared with the site-year data. For the EBF, for the site-year data, the correlation with LE and EF was only significant at $p \leq 0.1$ and the correlation was not significant for H and NEE.

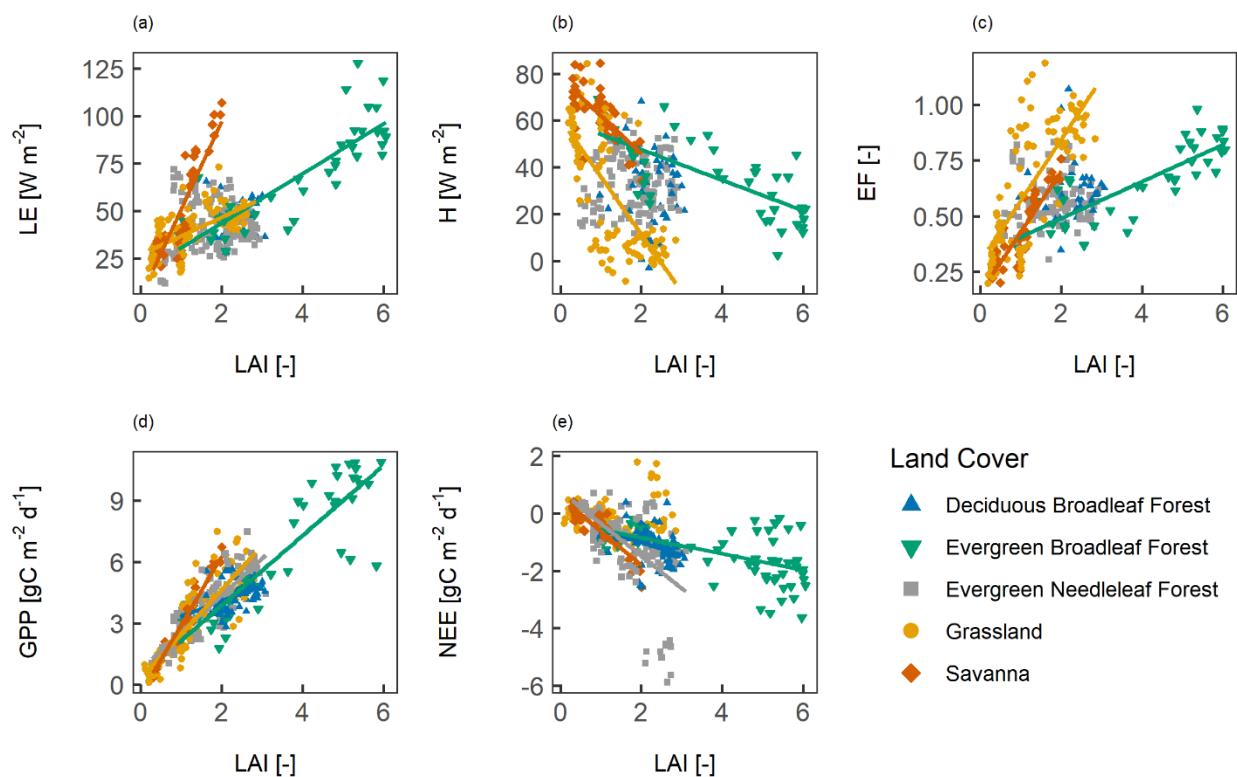


Figure 4 The spatio-temporal correlation between surface fluxes and leaf area index (LAI). Panels show (a) the latent heat flux (LE), (b) the sensible heat flux (H), (c) the evaporative fraction (EF), (d) gross primary productivity (GPP), and (e) net ecosystem exchange (NEE). A line indicates a significant correlation at $p < 0.05$.

Table 2 Strength and significance of the correlation between LAI versus surface fluxes for site-year and multi-year average data. The correlation coefficients are shown for significant correlations at $p \leq 0.05$ (*) or at $p \leq 0.1$ (·). A - indicates that the correlation was not significant.

	Site-years					Multi-year average				
	LE	H	EF	GPP	NEE	LE	H	EF	GPP	NEE
Savanna	0.88*	-0.72*	0.89*	0.97*	-0.89*	0.94*	-0.96*	0.95*	0.99*	-0.90*
Grassland	0.65*	-0.71*	0.74*	0.86*	-	0.68*	-0.80*	0.79*	0.84*	-
Evergreen Broadleaf Forest	0.84*	-0.69*	0.83*	0.88*	-0.51*	0.87·	-	0.87·	0.96*	-
Evergreen Needleleaf Forest	-	-	-	0.84*	-0.58*	-	-	-	0.89*	-0.57*
Deciduous Broadleaf Forest	-	-	-	0.47*	-0.33*	-	-	-	0.65·	-

Temporal (year-to-year) variability in LAI and surface fluxes was smaller than spatial (site-to-site) variability (Figure 6). For both SAV sites, and one of the two GRA, EBF, and DBF sites, LAI and LE were positively correlated in time. For H, one EBF site showed a significant negative correlation with LAI, and for EF, and one of

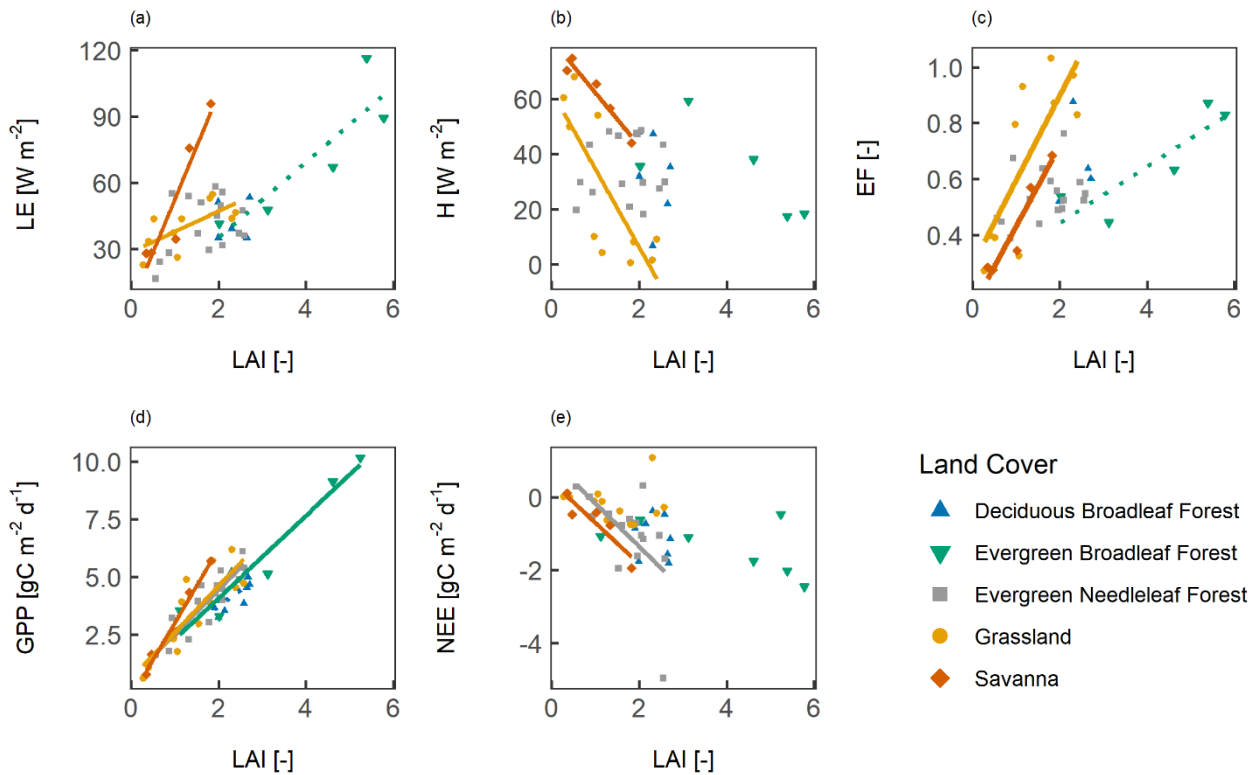


Figure 5 The spatial correlation between surface fluxes and leaf area index (LAI). Panels show (a) the latent heat flux (LE), (b) the sensible heat flux (H), (c) the evaporative fraction (EF), (d) gross primary productivity (GPP), and (e) net ecosystem exchange (NEE). All sites are included that have at least three years of LAI and flux data available. A line indicates a significant correlation at $p < 0.05$ and a dashed line indicates a significant correlation at $p < 0.1$.

250 the two SAV, GRA, EBF, and DBF sites showed a positive correlation with LAI ($p \leq 0.1$ or $p \leq 0.05$). For GPP and NEE, one of the SAV, GRA, EBF, and ENF sites showed a positive correlation, and for NEE. Overall, the temporal correlations between LAI and surface fluxes was of similar direction as the spatio-temporal and spatial

correlations. For more than half of the sites in Figure 6, however, year-to-year variability in LAI and surface fluxes was low and variability in fluxes was not significantly correlated with variability in LAI.

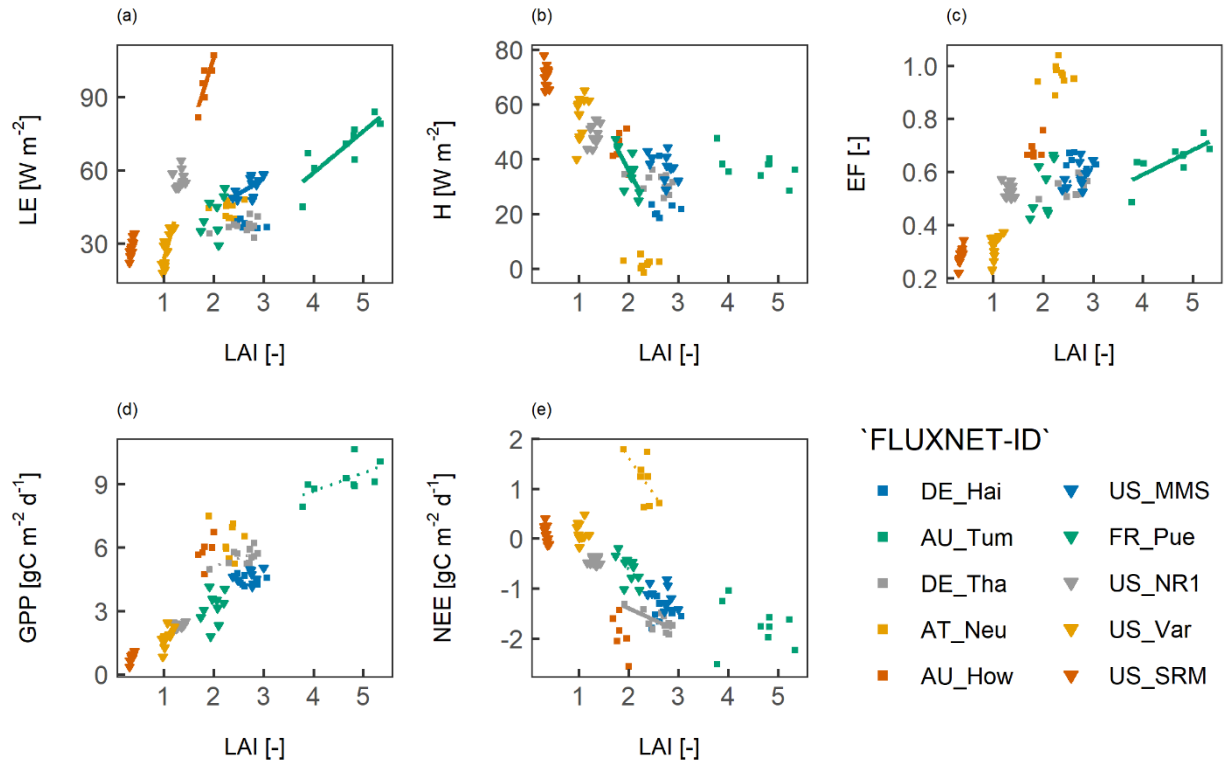


Figure 6 An illustration of the temporal correlation between yearly average surface fluxes and leaf area index (LAI). For each land cover type, two sites were selected that had the highest number of available data. The colours of the symbols indicate the land cover type as in Fig 4 and Fig 5. Panels show (a) the latent heat flux (LE), (b) the sensible heat flux (H), (c) the evaporative fraction (EF), (d) gross primary productivity (GPP), and (e) net ecosystem exchange (NEE). A line indicates a significant correlation at $p < 0.05$ and a dashed line indicates a significant correlation at $p < 0.1$.

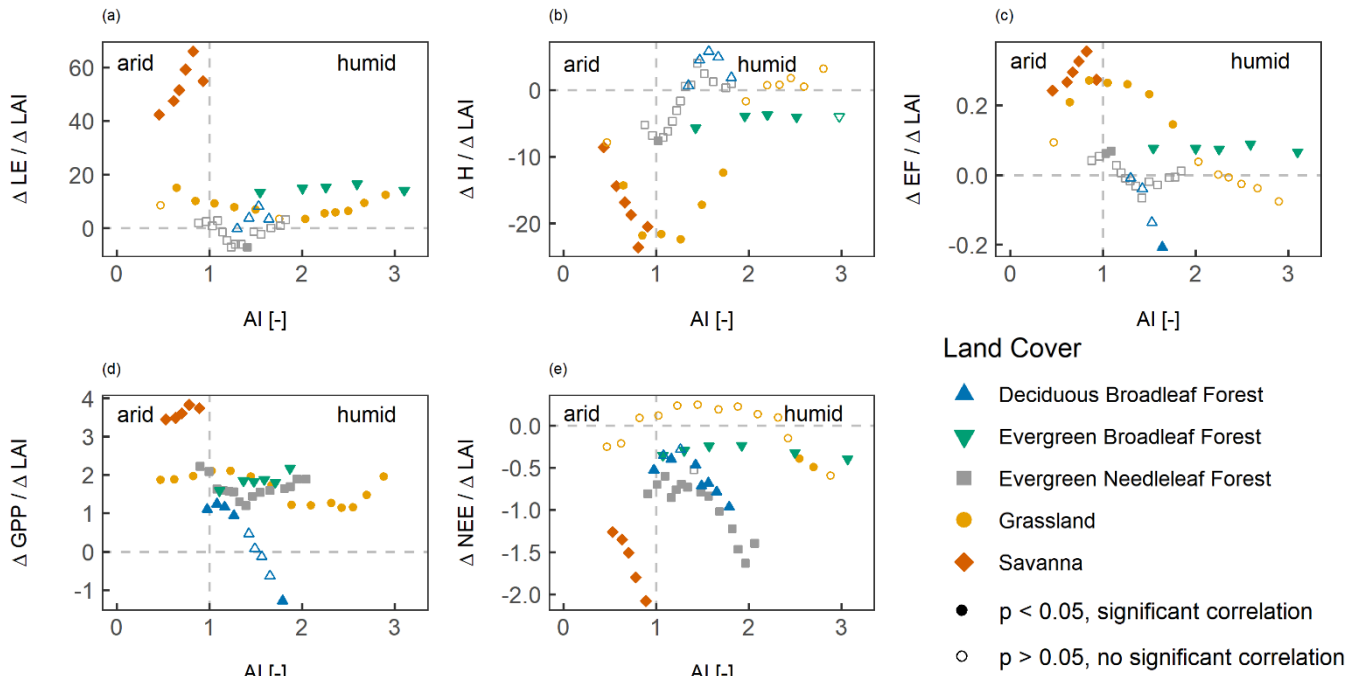


Figure 7 The effect of aridity on the relation between surface fluxes and leaf area index (LAI). The slope of the correlation between LAI and surface fluxes is shown for different aridity values for (a) the latent heat flux (LE), (b) the sensible heat flux (H), (c) the evaporative fraction (EF), (d) gross primary productivity (GPP), and (e) net ecosystem exchange (NEE). Each dot indicates the slope value for the 30 closest aridity values. The filled symbols indicate that the correlation was significant at $p < 0.05$, while the empty symbols indicate a non-significant correlation.

255

3.2 The effect of climatological aridity on the link between LAI and surface fluxes

Figure 7 shows the steepness and significance of the correlation between LAI and surface fluxes for different aridity values. In dry vegetation types or regions, the correlation between LAI and fluxes was significant and had a steeper slope, while in the more humid vegetation types or regions, the slope was relatively horizontal and the correlation was often not significant. In SAV, GRA, and EBF, the correlation between LAI and LE was significant for the whole range of aridity values. In arid GRA, the correlation had a steeper slope, as compared to humid GRA. For LAI versus H and LAI versus EF, the slope was steep and significant for SAV. For GRA, the correlation was strong and significant in the arid regions, and insignificant for the humid regions. For EBF, the slope and significance of the correlation did not change with aridity. For LAI and GPP, the slope and significance of the correlation did not change with aridity for SAV, GRA, EBF, and ENF. For DBF, the correlation between LAI and GPP was negative at higher aridity, but these results were strongly influenced by one site with an above average LAI for all the site-

260

265

years. For LAI versus NEE, a steep slope with negative correlation was found in arid SAV and humid ENF. In other humid regions, the correlation was less steep.

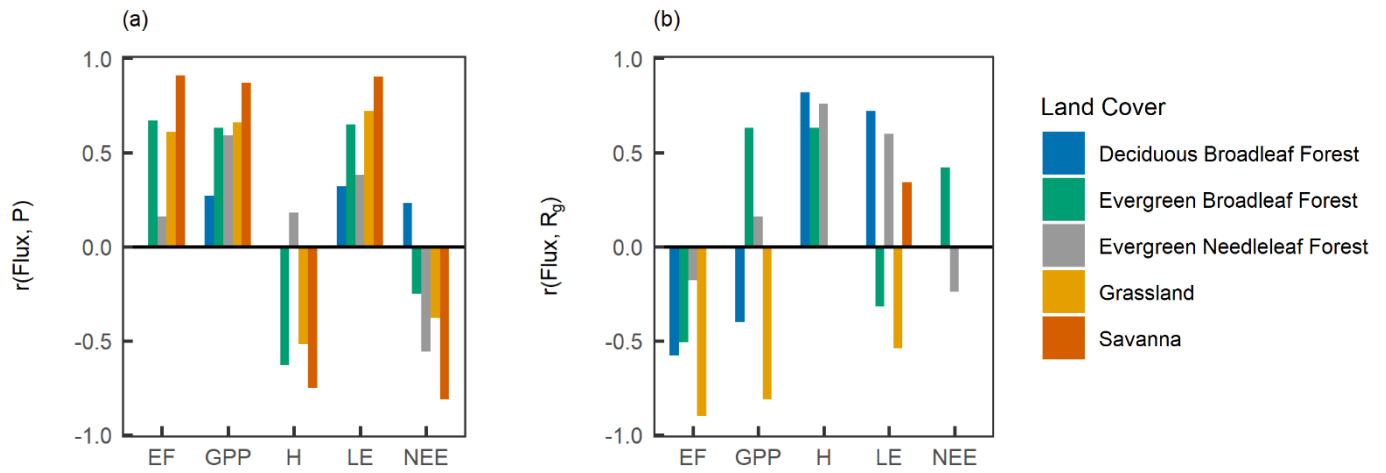


Figure 8 Water and energy control on surface fluxes. The correlation coefficient (r) between site-year surface fluxes versus (a) mean yearly precipitation (P) and (b) incoming shortwave radiation (R_g). Each bar indicates a significant correlation at $p < 0.05$.

To study how the correlations varied with climatic drivers of surface fluxes, we calculated the correlation coefficient between the fluxes versus precipitation (P) and incoming shortwave radiation (R_g) (Figure 8). In SAV, GRA, and EBF, the water fluxes showed a strong correlation with P , indicating that water availability partly explained the spatio-temporal variability in surface fluxes. In ENF and DBF, there was a weak or no correlation between LE and P , but a strong correlation with R_g . This indicates that available radiation was the primary driver of water and energy fluxes in these sites.

275 **4 Discussion**

The EBF site-years span a wide range of LAI values (LAI = 0.9 - 6.1) and aridity conditions (AI = 0.3 - 9.3), and both are a potential limitation of our analysis for the EBF vegetation type. The uncertainty of the LAI retrieval in dense vegetation is higher compared to other vegetation types due to saturation of the remotely sensed signal. The large range of climatic conditions indicates that our EBF site-years range from arid, water-limited conditions to humid conditions. Despite this high variability in site-years, the sites fell within one vegetation type.

The correlation between LAI versus water and energy fluxes (LE, H, and EF) varied with vegetation type and aridity. For the spatio-temporal and spatial variability, we found 1) strong (positive or negative) correlations and

(partly) steep slopes for SAV and GRA, 2) a significant correlation, but less steep slope for EBF, and 3) no
285 significant correlations for ENF and DBF. For the temporal variability, this pattern was similar for LE, but almost
no significant correlations were found for LAI versus H and EF for SAV and GRA. Evapotranspiration is the sum
of transpiration, soil evaporation and interception evaporation and the magnitude of each component depends on
LAI. Transpiration increases with LAI at the cost of soil evaporation when there is sufficient moisture available
(Gu et al., 2018; Wang et al., 2014). In arid climates, the transpiration component is higher compared to wetter
290 climates (Gu et al., 2018) and the link between transpiration and LAI is particularly strong in these arid climates
(Sun et al., 2019). When soil moisture is deficient and vegetation encounters a high evaporative demand, stomatal
control is stronger (Mallick et al., 2016). This accelerates a strong stomatal coupling between LAI and LE and
could explain the strong correlation between LAI versus LE, H, and EF that was found in SAV and arid GRA. Soil
water deficiency and high evaporative demand leads to a high increase in LE, for a small increase in LAI, which
295 could explain the steep(er) slope in arid GRA and SAV vegetation.

In forests, soil evaporation is low, while interception evaporation is large. The high interception evaporation is due
to the large leaf area (both green leaves included in the LAI and brown leaves after leaf senescence) with a high
canopy water storage capacity and a high turbulence, enhancing fast evaporation (De Jong and Jetten, 2007). In
EBF, interception evaporation contributes to up to 30% of total evapotranspiration (Wei et al., 2017; Gu et al.,
300 2018). This could explain the strong correlation between LAI versus water and energy fluxes in EBF. A high
interception evaporation was however also reported for temperate and boreal forest (Miralles et al., 2011), while
for these forest types, we found no correlation between LAI and water and energy fluxes. The ENF and DBF sites
were found in humid regions, and fluxes were in the first place energy-limited. In these energy-limited sites, LAI
played no, or a weak role in controlling surface fluxes. This indicates a weak or no vegetation control on surface
305 water and energy fluxes in energy-limited sites. This is in line with a low land-atmosphere coupling in energy-
limited sites (Ferguson et al., 2012).

In contrast to the results for water and energy fluxes, the spatio-temporal and spatial correlation between GPP
versus LAI was strong across all vegetation types and (almost) all aridity gradients. A strong link between LAI and
310 carbon uptake on yearly timescale over all vegetation types is expected, as plants try to optimize carbon gain and
would generally not display leaves with a negative carbon balance. A strong link between LAI and mean yearly
GPP was also shown by Hashimoto et al. (2012). Other studies however found a weak link between LAI and GPP
for annual time scales (Law et al., 2002). In contrast to the spatial variability, year-to-year variability in GPP was
only in part of the sites correlated to LAI. Water availability is an important driver for temporal variability in GPP

315 (Williams and Albertson, 2004; Kutsch et al., 2008), and GPP is strongly reduced under drought conditions (Vicca
et al., 2016). The effect of drought is also visible in reduced LAI, but on a longer time scale of one or two years in
forest (Le Dantec et al., 2000; Kim et al., 2017). This different response time to water availability for forest LAI
and GPP could partly explain the absence of a temporal correlation for part of the sites. The spatial correlation
between LAI and NEE was less strong as compared to GPP, which is in agreement with results of Chen et al.
320 (2019). NEE is the sum of carbon uptake by the vegetation (GPP) and carbon loss by ecosystem respiration.
Ecosystem respiration varies with climate and soil carbon storage, which are not directly related with LAI. This
could explain the absence of a correlation between LAI and NEE.

The results partly confirmed our hypothesis. As hypothesised, the correlation between LAI and surface fluxes was
325 strong in arid regions for water and energy fluxes, and the correlation was absent in humid ENF and DBF. For
humid EBF, however, we found a strong correlation between LAI and water and energy fluxes, and for GPP, the
correlation with LAI was strong across all aridity gradients. While carbon uptake is the primary goal of vegetation,
independent of the aridity gradient, ecosystem water loss comes inevitably with carbon uptake, but also depends
on vapour pressure deficit, available radiation, and soil moisture, which are not directly linked to LAI.

330 Our statistical analysis cannot be used to study causality between LAI and surface fluxes, or to study vegetation
control on the surface fluxes. The correlation between LAI and water fluxes is confounded by the effect of soil
moisture, especially in arid and semi-arid ecosystems, where both canopy development and LE increase with water
availability (Kergoat, 1998; Mallick et al., 2018). Similarly, precipitation is the main controller for spatial
335 variability in both vegetation and GPP (Koster et al., 2014). Furthermore, LAI is related to vegetation properties,
but not a direct measure of canopy conductance. Despite, there are similarities with previous studies showing the
stomatal or vegetation control on surface fluxes. A strong vegetation control on water and energy fluxes in arid and
semi-arid regions was shown on timescales of days or smaller (e.g. Mallick et al., 2016; Mallick et al., 2018) and
also our study shows that, on large spatio-temporal scale, LAI versus water and energy fluxes show the strongest
340 correlation in arid regions. For EBF however, we found a strong spatial correlation between vegetation versus
water, and energy fluxes, while Padrón et al. (2017) showed that vegetation control in equatorial regions was absent.
An interesting follow-up study would be to link stomatal control for different vegetation types (De Kauwe et al.,
2017) to the canopy-scale pattern investigated in this study.

345 Our analyses give insight in how and when vegetation LAI is related to surface fluxes. The results show that LAI is a good predictor for spatial variability in GPP across different vegetation types and aridity gradients. Furthermore, the analysis suggests that, in SAV, GRA, and EBF, LAI could be used to describe canopy-scale spatio-temporal variability water and energy fluxes. LAI is however not a good predictor for water and energy fluxes in ENF and DBF and for NEE. It is important to be aware of these limitations when using LAI to describe
350 or estimate water, energy, and carbon fluxes in climate models or extrapolation methods. This study provides insight in the link between surface fluxes and LAI and could be used to improve predictions of the effects of land cover change on surface fluxes.

5 Conclusions

The objective of this study was to get an insight about the link between vegetation LAI and land-atmosphere fluxes
355 for different vegetation types along an aridity gradient. We studied this link at large spatio-temporal scale using flux tower measurements of water, energy, and carbon, combined with satellite derived LAI data. The data analysis led to the following conclusions:

- a) The link between LAI versus water and energy fluxes depends on vegetation type and aridity. The correlation between LAI versus water and energy fluxes is strong in SAV, GRA, and EBF. In DBF and
360 ENF however, no significant correlation was found. Contrary to water and energy fluxes, the spatial correlation between LAI versus GPP was strong, independent of vegetation type and aridity. This suggests that using LAI to model or extrapolate surface fluxes of water and energy is well possible in SAV, GRA, and EBF, but is limited in DBF and ENF.
- b) As hypothesised, the link between LAI and water and energy fluxes was strong in arid, water-limited
365 conditions and absent or weak for humid, radiation-limited conditions. EBF, which was found over a high range of aridity conditions, but mostly in humid environments, forms an exception: the spatial correlation between LAI versus water and energy fluxes was strong, despite the overall humid conditions.

This research – facilitated by the recent availability of large global datasets of remotely sensed LAI, flux tower data, and cloud-computing platforms – has added to the understanding of LAI interaction with surface fluxes and
370 could help to improve modelling or extrapolating surface fluxes.

Author contribution

The data analyses were done by AJHvD in close consultation with KM, MS, MM, MH, and AJT. AJHvD prepared the draft manuscript and all authors contributed to the discussions and writing of the manuscript.

375

Acknowledgements

This study was supported by the Luxembourg National Research Fund (FNR) (PRIDE15/10623093/HYDROCSI). We also acknowledge Prof. Michael Liddell for providing the data of two OzFlux research sites. We further acknowledge the FLUXNET community, for acquiring and sharing the eddy covariance data, including these
380 networks: AmeriFlux, AfriFlux, AsiaFlux, CarboAfrica, CarboEuropeIP, CarboItaly, CarboMont, ChinaFlux, Fluxnet-Canada, GreenGrass, ICOS, KoFlux, LBA, NECC, OzFlux-TERN, TCOS-Siberia, and USCCC. The FLUXNET eddy covariance data processing and harmonization was carried out by the European Fluxes Database Cluster, AmeriFlux Management Project, and Fluxdata project of FLUXNET, with the support of CDIAC and ICOS Ecosystem Thematic Center, and the OzFlux, ChinaFlux and AsiaFlux offices. The ERA-Interim reanalysis
385 data are provided by ECMWF and processed by LSCE.

Competing interests

The authors declare that they have no conflict of interest.

References

- 390 Asner, G. P., Scurlock, J. M. O., and Hicke, J. A.: Global synthesis of leaf area index observations: implications for ecological and remote sensing studies, *Global Ecol. Biogeogr.*, 12, 191-205, <https://doi.org/10.1046/j.1466-822X.2003.00026.x>, 2003.
- Baldocchi, D., Falge, E., Gu, L., Olson, R., Hollinger, D., Running, S., Anthoni, P., Bernhofer, C., Davis, K., Evans, R., Fuentes, J., Goldstein, A., Katul, G., Law, B., Lee, X., Malhi, Y., Meyers, T., Munger, W., Oechel, W., Paw, U. K. T.,
395 Pilegaard, K., Schmid, H. P., Valentini, R., Verma, S., Vesala, T., Wilson, K., and Wofsy, S.: FLUXNET: A New Tool to Study the Temporal and Spatial Variability of Ecosystem-Scale Carbon Dioxide, Water Vapor, and Energy Flux Densities, *Bull. Am. Meteorol. Soc.*, 82, 2415-2434, [https://doi.org/10.1175/1520-0477\(2001\)082<2415:FANTTS>2.3.CO;2](https://doi.org/10.1175/1520-0477(2001)082<2415:FANTTS>2.3.CO;2), 2001.
- Barcza, Z., Kern, A., Haszpra, L., and Kljun, N.: Spatial representativeness of tall tower eddy covariance measurements using remote sensing and footprint analysis, *Agric. For. Meteorol.*, 149, 795-807,
400 <https://doi.org/10.1016/j.agrformet.2008.10.021>, 2009.
- Bates, C. G., and Henry, A. J.: Second phase of streamflow experiment at Wagon Wheel Gap, Colo, *Mon. Weather Rev.*, 56, 79-80, [https://doi.org/10.1175/1520-0493\(1928\)56<79:sposea>2.0.co;2](https://doi.org/10.1175/1520-0493(1928)56<79:sposea>2.0.co;2), 1928.
- Beer, C., Reichstein, M., Ciais, P., Farquhar, G. D., and Papale, D.: Mean annual GPP of Europe derived from its water balance, *Geophys. Res. Lett.*, 34, <https://doi.org/10.1029/2006gl029006>, 2007.

- 405 Chen, S., Zou, J., Hu, Z., and Lu, Y.: Climate and Vegetation Drivers of Terrestrial Carbon Fluxes: A Global Data Synthesis, *Adv. Atmos. Sci.*, 36, 679-696, <https://doi.org/10.1007/s00376-019-8194-y>, 2019.
- Costa, M. H., Biajoli, M. C., Sanches, L., Malhado, A. C. M., Hutyrá, L. R., da Rocha, H. R., Aguiar, R. G., and de Araújo, A. C.: Atmospheric versus vegetation controls of Amazonian tropical rain forest evapotranspiration: Are the wet and seasonally dry rain forests any different?, *J. Geophys. Res.: Biogeosci.*, 115, <https://doi.org/10.1029/2009jg001179>, 2010.
- 410 Cramer, W., Bondeau, A., Woodward, F. I., Prentice, I. C., Betts, R. A., Brovkin, V., Cox, P. M., Fisher, V., Foley, J. A., Friend, A. D., Kucharik, C., Lomas, M. R., Ramankutty, N., Sitch, S., Smith, B., White, A., and Young-Molling, C.: Global response of terrestrial ecosystem structure and function to CO₂ and climate change: Results from six dynamic global vegetation models, *Glob. Change Biol.*, 7, 357-373, <https://doi.org/10.1046/j.1365-2486.2001.00383.x>, 2001.
- De Jong, S. M., and Jetten, V. G.: Estimating spatial patterns of rainfall interception from remotely sensed vegetation indices and spectral mixture analysis, *Int. J. Geogr. Inf. Sci.*, 21, 529-545, <https://doi.org/10.1080/13658810601064884>, 2007.
- 415 De Kauwe, M. G., Medlyn, B. E., Knauer, J., and Williams, C. A.: Ideas and perspectives: how coupled is the vegetation to the boundary layer?, *Biogeosciences*, 14, 4435-4453, <https://doi.org/10.5194/bg-14-4435-2017>, 2017.
- Duursma, R. A., Kolari, P., Perämäki, M., Pulkkinen, M., Mäkelä, A., Nikinmaa, E., Hari, P., Aurela, M., Berbigier, P., Bernhofer, C., Grünwald, T., Loustau, D., Mölder, M., Verbeeck, H., and Vesala, T.: Contributions of climate, leaf area
- 420 index and leaf physiology to variation in gross primary production of six coniferous forests across Europe: A model-based analysis, *Tree Physiol.*, 29, 621-639, <https://doi.org/10.1093/treephys/tpp010>, 2009.
- Esau, I. N., and Lyons, T. J.: Effect of sharp vegetation boundary on the convective atmospheric boundary layer, *Agric. For. Meteorol.*, 114, 3-13, [https://doi.org/10.1016/S0168-1923\(02\)00154-5](https://doi.org/10.1016/S0168-1923(02)00154-5), 2002.
- Evaristo, J., and McDonnell, J. J.: Global analysis of streamflow response to forest management, *Nature*,
- 425 <https://doi.org/10.1038/s41586-019-1306-0>, 2019.
- Fang, H., Baret, F., Plummer, S., and Schaepman-Strub, G.: An Overview of Global Leaf Area Index (LAI): Methods, Products, Validation, and Applications, *Rev. Geophys.*, 57, 739-799, <https://doi.org/10.1029/2018rg000608>, 2019.
- Fei, S., Desprez, J. M., Potter, K. M., Jo, I., Knott, J. A., and Oswalt, C. M.: Divergence of species responses to climate change, *Science Advances*, 3, e1603055, <https://doi.org/10.1126/sciadv.1603055>, 2017.
- 430 Ferguson, C. R., Wood, E. F., and Vinukollu, R. K.: A Global Intercomparison of Modeled and Observed Land–Atmosphere Coupling, *J. Hydrometeorol.*, 13, 749-784, <https://doi.org/10.1175/jhm-d-11-0119.1>, 2012.
- Forkel, M., Drüke, M., Thurner, M., Dorigo, W., Schaphoff, S., Thonicke, K., Von Bloh, W., and Carvalhais, N.: Constraining modelled global vegetation dynamics and carbon turnover using multiple satellite observations, *Sci. Rep.*, 9, 18757, <https://doi.org/10.1038/s41598-019-55187-7>, 2019.
- 435 Gómez, J. A., Giráldez, J. V., and Fereres, E.: Rainfall interception by olive trees in relation to leaf area, *Agricultural Water Management*, 49, 65-76, [https://doi.org/10.1016/S0378-3774\(00\)00116-5](https://doi.org/10.1016/S0378-3774(00)00116-5), 2001.

- Gu, C., Ma, J., Zhu, G., Yang, H., Zhang, K., Wang, Y., and Gu, C.: Partitioning evapotranspiration using an optimized satellite-based ET model across biomes, *Agric. For. Meteorol.*, 259, 355-363, <https://doi.org/10.1016/j.agrformet.2018.05.023>, 2018.
- 440 Hashimoto, H., Wang, W., Milesi, C., White, M. A., Ganguly, S., Gamo, M., Hirata, R., Myneni, R. B., and Nemani, R. R.: Exploring Simple Algorithms for Estimating Gross Primary Production in Forested Areas from Satellite Data, *Remote Sens.*, 4, 303-326, <https://doi.org/10.3390/rs4010303>, 2012.
- Heinsch, F. A., Zhao, M., Running, S. W., Kimball, J. S., Nemani, R. R., Davis, K. J., Bolstad, P. V., Cook, B. D., Desai, A. R., Ricciuto, D. M., Law, B. E., Oechel, W. C., Kwon, H., Luo, H., Wofsy, S. C., Dunn, A. L., Munger, J. W., Baldocchi, D. D., Xu, L., Hollinger, D. Y., Richardson, A. D., Stoy, P. C., Siqueira, M. B. S., Monson, R. K., Burns, S. P., and Flanagan, L. B.: Evaluation of remote sensing based terrestrial productivity from MODIS using regional tower eddy flux network observations, *IEEE Trans. Geosci. Remote Sens.*, 44, 1908-1923, <https://doi.org/10.1109/TGRS.2005.853936>, 2006.
- 445 Hoek van Dijke, A. J., Mallick, K., Teuling, A. J., Schlerf, M., Machwitz, M., Hassler, S. K., Blume, T., and Herold, M.: Does the Normalized Difference Vegetation Index explain spatial and temporal variability in sap velocity in temperate forest ecosystems?, *Hydrol. Earth Syst. Sci.*, 23, 2077-2091, <https://doi.org/10.5194/hess-23-2077-2019>, 2019.
- Iio, A., Hikosaka, K., Anten, N. P. R., Nakagawa, Y., and Ito, A.: Global dependence of field-observed leaf area index in woody species on climate: a systematic review, *Global Ecol. Biogeogr.*, 23, 274-285, <https://doi.org/10.1111/geb.12133>, 2014.
- 455 Jeong, S. J., Ho, C. H., Gim, H. J., and Brown, M. E.: Phenology shifts at start vs. end of growing season in temperate vegetation over the Northern Hemisphere for the period 1982-2008, *Glob. Change Biol.*, 17, 2385-2399, <https://doi.org/10.1111/j.1365-2486.2011.02397.x>, 2011.
- Jia, X., Zha, T. S., Wu, B., Zhang, Y. Q., Gong, J. N., Qin, S. G., Chen, G. P., Qian, D., Kellomäki, S., and Peltola, H.: Biophysical controls on net ecosystem CO₂ exchange over a semiarid shrubland in northwest China, *Biogeosciences*, 11, 4679-4693, <https://doi.org/10.5194/bg-11-4679-2014>, 2014.
- 460 Jung, M., Reichstein, M., Margolis, H. A., Cescatti, A., Richardson, A. D., Arain, M. A., Arneth, A., Bernhofer, C., Bonal, D., Chen, J., Gianelle, D., Gobron, N., Kiely, G., Kutsch, W., Lasslop, G., Law, B. E., Lindroth, A., Merbold, L., Montagnani, L., Moors, E. J., Papale, D., Sottocornola, M., Vaccari, F., and Williams, C.: Global patterns of land-atmosphere fluxes of carbon dioxide, latent heat, and sensible heat derived from eddy covariance, satellite, and meteorological observations, *J. Geophys. Res.: Biogeosci.*, 116, <https://doi.org/10.1029/2010JG001566>, 2011.
- 465 Kergoat, L.: A model for hydrological equilibrium of leaf area index on a global scale, *J. Hydrol.*, 212-213, 268-286, [https://doi.org/10.1016/S0022-1694\(98\)00211-X](https://doi.org/10.1016/S0022-1694(98)00211-X), 1998.
- Kim, J., Guo, Q., Baldocchi, D. D., Leclerc, M. Y., Xu, L., and Schmid, H. P.: Upscaling fluxes from tower to landscape: Overlaying flux footprints on high-resolution (IKONOS) images of vegetation cover, *Agric. For. Meteorol.*, 136, 132-146, <https://doi.org/10.1016/j.agrformet.2004.11.015>, 2006.
- 470

- Kim, K., Wang, M.-c., Ranjitkar, S., Liu, S.-h., Xu, J.-c., and Zomer, R. J.: Using leaf area index (LAI) to assess vegetation response to drought in Yunnan province of China, *Journal of Mountain Science*, 14, 1863-1872, <https://doi.org/10.1007/s11629-016-3971-x>, 2017.
- 475 Kirchner, J. W., Berghuijs, W. R., Allen, S. T., Hrachowitz, M., Hut, R., and Rizzo, D. M.: Streamflow response to forest management, *Nature*, 578, E12-E15, <https://doi.org/10.1038/s41586-020-1940-6>, 2020.
- Köppen, W.: Das geographische System der Klimate, in: *Handbuch der Klimatologie*, edited by: Köppen, W., and Geiger, G., Gebrüder Borntraeger, Berlin, 1936.
- Koster, R. D., Walker, G. K., Collatz, G. J., and Thornton, P. E.: Hydroclimatic Controls on the Means and Variability of Vegetation Phenology and Carbon Uptake, *J. Clim.*, 27, 5632-5652, <https://doi.org/10.1175/jcli-d-13-00477.1>, 2014.
- 480 Kutsch, W. L., Hanan, N., Scholes, B., McHugh, I., Kubheka, W., Eckhardt, H., and Williams, C.: Response of carbon fluxes to water relations in a savanna ecosystem in South Africa, *Biogeosciences*, 5, 1797-1808, <https://doi.org/10.5194/bg-5-1797-2008>, 2008.
- 485 Law, B. E., Falge, E., Gu, L., Baldocchi, D. D., Bakwin, P., Berbigier, P., Davis, K., Dolman, A. J., Falk, M., Fuentes, J. D., Goldstein, A., Granier, A., Grelle, A., Hollinger, D., Janssens, I. A., Jarvis, P., Jensen, N. O., Katul, G., Mahli, Y., Matteucci, G., Meyers, T., Monson, R., Munger, W., Oechel, W., Olson, R., Pilegaard, K., Paw U, K. T., Thorgeirsson, H., Valentini, R., Verma, S., Vesala, T., Wilson, K., and Wofsy, S.: Environmental controls over carbon dioxide and water vapor exchange of terrestrial vegetation, *Agric. For. Meteorol.*, 113, 97-120, [https://doi.org/10.1016/S0168-1923\(02\)00104-1](https://doi.org/10.1016/S0168-1923(02)00104-1), 2002.
- Lawrence, P. J., and Chase, T. N.: Investigating the climate impacts of global land cover change in the community climate system model, *Int. J. Clim.*, 30, 2066-2087, <https://doi.org/10.1002/joc.2061>, 2010.
- Le Dantec, V., Dufrêne, E., and Saugier, B.: Interannual and spatial variation in maximum leaf area index of temperate deciduous stands, *Forest Ecol. Manag.*, 134, 71-81, [https://doi.org/10.1016/S0378-1127\(99\)00246-7](https://doi.org/10.1016/S0378-1127(99)00246-7), 2000.
- Liddell, M.: Cow Bay OzFlux tower site, in, *OzFlux: Australian and New Zealand Flux Research and Monitoring*, <https://doi.org/10.2100/100/14244> 2013a.
- 495 Liddell, M.: Cape Tribulation Ozflux tower site, in, *OzFlux: Australian and New Zealand Flux Research and Monitoring*, <https://doi.org/10.2100/100/14242>, 2013b.
- Lindroth, A., Lagergren, F., Aurela, M., Bjarnadottir, B., Christensen, T., Dellwik, E., Grelle, A., Ibrom, A., Johansson, T., Lankreijer, H., Launiainen, S., Laurila, T., Mölder, M., Nikinmaa, E., Pilegaard, K., Sigurdsson, B. D., and Vesala, T.: Leaf area index is the principal scaling parameter for both gross photosynthesis and ecosystem respiration of Northern deciduous and coniferous forests, *Tellus B*, 60 B, 129-142, <https://doi.org/10.1111/j.1600-0889.2006.00330.x>, 2008.
- 500 Lu, Z., Miller, P. A., Zhang, Q., Wårlind, D., Nieradzki, L., Sjolte, J., Li, Q., and Smith, B.: Vegetation Pattern and Terrestrial Carbon Variation in Past Warm and Cold Climates, *Geophys. Res. Lett.*, 46, 8133-8143, <https://doi.org/10.1029/2019gl083729>, 2019.

- 505 Mallick, K., Trebs, I., Boegh, E., Giustarini, L., Schlerf, M., Drewry, D. T., Hoffmann, L., Von Randow, C., Kruijt, B., Araújo, A., Saleska, S., Ehleringer, J. R., Domingues, T. F., Ometto, J. P. H. B., Nobre, A. D., Luiz Leal De Moraes, O., Hayek, M., William Munger, J., and Wofsy, S. C.: Canopy-scale biophysical controls of transpiration and evaporation in the Amazon Basin, *Hydrol. Earth Syst. Sci.*, 20, 4237-4264, <https://doi.org/10.5194/hess-20-4237-2016>, 2016.
- 510 Mallick, K., Toivonen, E., Trebs, I., Boegh, E., Cleverly, J., Eamus, D., Koivusalo, H., Drewry, D., Arndt, S. K., Griebel, A., Beringer, J., and Garcia, M.: Bridging Thermal Infrared Sensing and Physically-Based Evapotranspiration Modeling: From Theoretical Implementation to Validation Across an Aridity Gradient in Australian Ecosystems, *Water Resour. Res.*, 54, 3409-3435, <https://doi.org/10.1029/2017wr021357>, 2018.
- Miralles, D. G., De Jeu, R. A. M., Gash, J. H., Holmes, T. R. H., and Dolman, A. J.: Magnitude and variability of land evaporation and its components at the global scale, *Hydrol. Earth Syst. Sci.*, 15, 967-981, <https://doi.org/10.5194/hess-15-967-2011>, 2011.
- 515 Mutanga, O., and Kumar, L.: Google earth engine applications, *Remote Sens.*, 11, <https://doi.org/10.3390/rs11050591>, 2019.
- Myneni, R., Knyazikhin, Y., and Park, T.: MCD15A2H MODIS/Terra+Aqua Leaf Area Index/FPAR 8-day L4 Global 500m SIN Grid V006 [data set], NASA EOSDIS Land Processes DAAC, <https://doi.org/10.5067/MODIS/MCD15A2H.006>, 2015.
- O'Toole, J. C., and Cruz, R. T.: Response of Leaf Water Potential, Stomatal Resistance, and Leaf Rolling to Water Stress, *Plant Physiol.*, 65, 428-432, <https://doi.org/10.1104/pp.65.3.428>, 1980.
- 520 Padrón, R. S., Gudmundsson, L., Greve, P., and Seneviratne, S. I.: Large-Scale Controls of the Surface Water Balance Over Land: Insights From a Systematic Review and Meta-Analysis, *Water Resour. Res.*, 53, 9659-9678, <https://doi.org/10.1002/2017WR021215>, 2017.
- Perugini, L., Caporaso, L., Marconi, S., Cescatti, A., Quesada, B., De Noblet-Ducoudré, N., House, J. I., and Arneeth, A.: 525 Biophysical effects on temperature and precipitation due to land cover change, *Environ. Res. Lett.*, 12, <https://doi.org/10.1088/1748-9326/aa6b3f>, 2017.
- Prentice, I. C., Cramer, W., Harrison, S. P., Leemans, R., Monserud, R. A., and Solomon, A. M.: Special Paper: A Global Biome Model Based on Plant Physiology and Dominance, Soil Properties and Climate, *J. Biogeogr.*, 19, 117-134, <https://doi.org/10.2307/2845499>, 1992.
- 530 Priestley, C. H. B., and Taylor, R. J.: On the Assessment of Surface Heat Flux and Evaporation Using Large-Scale Parameters, *Mon. Weather Rev.*, 100, 81-92, [https://doi.org/10.1175/1520-0493\(1972\)100<0081:otaosh>2.3.co;2](https://doi.org/10.1175/1520-0493(1972)100<0081:otaosh>2.3.co;2), 1972.
- Reichstein, M., Falge, E., Baldocchi, D., Papale, D., Aubinet, M., Berbigier, P., Bernhofer, C., Buchmann, N., Gilmanov, T., Granier, A., Grünwald, T., Havránková, K., Ilvesniemi, H., Janous, D., Knohl, A., Laurila, T., Lohila, A., Loustau, D., Matteucci, G., Meyers, T., Miglietta, F., Ourcival, J.-M., Pumpanen, J., Rambal, S., Rotenberg, E., Sanz, M., Tenhunen, 535 J., Seufert, G., Vaccari, F., Vesala, T., Yakir, D., and Valentini, R.: On the separation of net ecosystem exchange into assimilation and ecosystem respiration: review and improved algorithm, *Glob. Change Biol.*, 11, 1424-1439, <https://doi.org/10.1111/j.1365-2486.2005.001002.x>, 2005.

- Rosenzweig, C., Karoly, D., Vicarelli, M., Neofotis, P., Wu, Q., Casassa, G., Menzel, A., Root, T. L., Estrella, N., Seguin, B., Tryjanowski, P., Liu, C., Rawlins, S., and Imeson, A.: Attributing physical and biological impacts to anthropogenic climate change, *Nature*, 453, 353-357, <https://doi.org/10.1038/nature06937>, 2008.
- 540 Schmitt, M., Bahn, M., Wohlfahrt, G., Tappeiner, U., and Cernusca, A.: Land use affects the net ecosystem CO₂ exchange and its components in mountain grasslands, *Biogeosciences*, 7, 2297-2309, <https://doi.org/10.5194/bg-7-2297-2010>, 2010.
- Sellers, P. J., Dickinson, R. E., Randall, D. A., Betts, A. K., Hall, F. G., Berry, J. A., Collatz, G. J., Denning, A. S., Mooney, H. A., Nobre, C. A., Sato, N., Field, C. B., and Henderson-Sellers, A.: Modeling the Exchanges of energy, water and carbon between continents and the atmosphere, *Science*, 275, 502-509, <https://doi.org/10.1126/science.275.5299.502> 1997.
- 545 Shabanov, N. V., Dong, H., Wenze, Y., Tan, B., Knyazikhin, Y., Myneni, R. B., Ahl, D. E., Gower, S. T., Huete, A. R., Aragao, L. E. O. C., and Shimabukuro, Y. E.: Analysis and optimization of the MODIS leaf area index algorithm retrievals over broadleaf forests, *IEEE Trans. Geosci. Remote Sens.*, 43, 1855-1865, <https://doi.org/10.1109/TGRS.2005.852477>, 2005.
- 550 Shao, J., Zhou, X., Luo, Y., Li, B., Aurela, M., Billesbach, D., Blanken, P. D., Bracho, R., Chen, J., Fischer, M., Fu, Y., Gu, L., Han, S., He, Y., Kolb, T., Li, Y., Nagy, Z., Niu, S., Oechel, W. C., Pinter, K., Shi, P., Suyker, A., Torn, M., Varlagin, A., Wang, H., Yan, J., Yu, G., and Zhang, J.: Biotic and climatic controls on interannual variability in carbon fluxes across terrestrial ecosystems, *Agric. For. Meteorol.*, 205, 11-22, <https://doi.org/10.1016/j.agrformet.2015.02.007>, 2015.
- Si, Y., Schlerf, M., Zurita-Milla, R., Skidmore, A., and Wang, T.: Mapping spatio-temporal variation of grassland quantity and quality using MERIS data and the PROSAIL model, *Remote Sens. Environ.*, 121, 415-425, <https://doi.org/10.1016/j.rse.2012.02.011>, 2012.
- 555 Sun, X., Wilcox, B. P., and Zou, C. B.: Evapotranspiration partitioning in dryland ecosystems: A global meta-analysis of in situ studies, *J. Hydrol.*, 576, 123-136, <https://doi.org/10.1016/j.jhydrol.2019.06.022>, 2019.
- Teuling, A. J., de Badts, E. A. G., Jansen, F. A., Fuchs, R., Buitink, J., Hoek van Dijke, A. J., and Sterling, S. M.: Climate change, reforestation/afforestation, and urbanization impacts on evapotranspiration and streamflow in Europe, *Hydrol. Earth Syst. Sci.*, 23, 3631-3652, <https://doi.org/10.5194/hess-23-3631-2019>, 2019.
- 560 Teuling, A. J., and Hoek van Dijke, A. J.: Forest age and water yield, *Nature*, 578, E16-E18, <https://doi.org/10.1038/s41586-020-1941-5>, 2020.
- Turner, D. P., Ritts, W. D., Cohen, W. B., Gower, S. T., Zhao, M., Running, S. W., Wofsy, S. C., Urbanski, S., Dunn, A. L., and Munger, J. W.: Scaling Gross Primary Production (GPP) over boreal and deciduous forest landscapes in support of MODIS GPP product validation, *Remote Sens. Environ.*, 88, 256-270, <https://doi.org/10.1016/j.rse.2003.06.005>, 2003.
- 565 Van Heerwaarden, C. C., and Teuling, A. J.: Disentangling the response of forest and grassland energy exchange to heatwaves under idealized land-atmosphere coupling, *Biogeosciences*, 11, 6159-6171, <https://doi.org/10.5194/bg-11-6159-2014>, 2014.

- 570 Vicca, S., Balzarolo, M., Filella, I., Granier, A., Herbst, M., Knohl, A., Longdoz, B., Mund, M., Nagy, Z., Pintér, K., Rambal, S., Verbesselt, J., Verger, A., Zeileis, A., Zhang, C., and Peñuelas, J.: Remotely-sensed detection of effects of extreme droughts on gross primary production, *Sci. Rep.*, 6, 28269, <https://doi.org/10.1038/srep28269>, 2016.
- Vuichard, N., and Papale, D.: Filling the gaps in meteorological continuous data measured at FLUXNET sites with ERA-Interim reanalysis, *Earth Syst. Sci. Data*, 7, 157-171, <https://doi.org/10.5194/essd-7-157-2015>, 2015.
- 575 Wagle, P., Xiao, X., Scott, R. L., Kolb, T. E., Cook, D. R., Brunzell, N., Baldocchi, D. D., Basara, J., Matamala, R., Zhou, Y., and Bajgain, R.: Biophysical controls on carbon and water vapor fluxes across a grassland climatic gradient in the United States, *Agric. For. Meteorol.*, 214-215, 293-305, <https://doi.org/10.1016/j.agrformet.2015.08.265>, 2015.
- Wang, L., Good, S. P., and Caylor, K.: Global synthesis of vegetation control on evapotranspiration partitioning, *Geophys. Res. Lett.*, 41, 6753-6757, <https://doi.org/10.1002/2014GL061439>, 2014.
- 580 Wei, Z., Yoshimura, K., Wang, L., Miralles, D. G., Jasechko, S., and Lee, X.: Revisiting the contribution of transpiration to global terrestrial evapotranspiration, *Geophys. Res. Lett.*, 44, 2792-2801, <https://doi.org/10.1002/2016gl072235>, 2017.
- Williams, C. A., and Albertson, J. D.: Soil moisture controls on canopy-scale water and carbon fluxes in an African savanna, *Water Resour. Res.*, 40, <https://doi.org/10.1029/2004wr003208>, 2004.
- Williams, C. A., Reichstein, M., Buchmann, N., Baldocchi, D., Beer, C., Schwalm, C., Wohlfahrt, G., Hasler, N., Bernhofer, C., Foken, T., Papale, D., Schymanski, S., and Schaefer, K.: Climate and vegetation controls on the surface water balance: Synthesis of evapotranspiration measured across a global network of flux towers, *Water Resour. Res.*, 48, <https://doi.org/10.1029/2011WR011586>, 2012.
- Williams, I. N., and Torn, M. S.: Vegetation controls on surface heat flux partitioning, and land-atmosphere coupling, *Geophys. Res. Lett.*, 42, 9416-9424, <https://doi.org/10.1002/2015gl066305>, 2015.
- 590 Williams, I. N., Lu, Y., Kueppers, L. M., Riley, W. J., Biraud, S. C., Bagley, J. E., and Torn, M. S.: Land-atmosphere coupling and climate prediction over the U.S. Southern Great Plains, *J. Geophys. Res.: Atmos.*, 121, 1125-1144, <https://doi.org/10.1002/2016jd025223>, 2016.
- Woodwell, G. M., Whittaker, R. H., Reiners, W. A., Likens, G. E., Delwiche, C. C., and Botkin, D. B.: The Biota and the World Carbon Budget, *Science*, 199, 141-146, <https://doi.org/10.1126/science.199.4325.141>, 1978.
- 595 Xie, X., Li, A., Jin, H., Tan, J., Wang, C., Lei, G., Zhang, Z., Bian, J., and Nan, X.: Assessment of five satellite-derived LAI datasets for GPP estimations through ecosystem models, *Sci. Total Environ.*, 690, 1120-1130, <https://doi.org/10.1016/j.scitotenv.2019.06.516>, 2019.
- Xu, B., Park, T., Yan, K., Chen, C., Zeng, Y., Song, W., Yin, G., Li, J., Liu, Q., Knyazikhin, Y., and Myneni, R. B.: Analysis of global LAI/FPAR products from VIIRS and MODIS sensors for spatio-temporal consistency and uncertainty from 2012-2016, *Forests*, 9, <https://doi.org/10.3390/f9020073>, 2018.
- 600 Xu, X., Liu, W., Scanlon, B. R., Zhang, L., and Pan, M.: Local and global factors controlling water-energy balances within the Budyko framework, *Geophys. Res. Lett.*, 40, 6123-6129, <https://doi.org/10.1002/2013gl058324>, 2013.

- 605 Yan, H., Wang, S. Q., Billesbach, D., Oechel, W., Zhang, J. H., Meyers, T., Martin, T. A., Matamala, R., Baldocchi, D.,
Bohrer, G., Dragoni, D., and Scott, R.: Global estimation of evapotranspiration using a leaf area index-based surface
energy and water balance model, *Remote Sens. Environ.*, 124, 581-595, <https://doi.org/10.1016/j.rse.2012.06.004>, 2012.
- Yan, K., Park, T., Yan, G., Liu, Z., Yang, B., Chen, C., Nemani, R. R., Knyazikhin, Y., and Myneni, R. B.: Evaluation of
MODIS LAI/FPAR product collection 6. Part 2: Validation and intercomparison, *Remote Sens.*, 8,
<https://doi.org/10.3390/rs8060460>, 2016.
- 610 Zheng, G., and Moskal, L. M.: Retrieving Leaf Area Index (LAI) Using Remote Sensing: Theories, Methods and Sensors,
Sensors, 9, 2719-2745, <https://doi.org/10.3390/s90402719>, 2009.